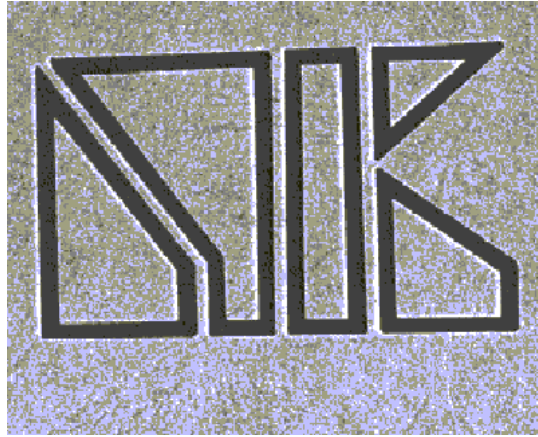


# **KELAPA DUA HUMAN DEVELOPMENT PROJECT**



## **CONSULTATION SUMMARY STATEMENT**

**August 1976**

**KELAPA DUA HUMAN DEVELOPMENT PROJECT**

### **CONSULTATION SUMMARY STATEMENT**

**Prolegomena**

**I. The Operating Vision**

**II. The Underlying Contradictions**

**III. The Practical Proposals**

**IV. The Tactical Systems**

**V. The Actuating Programs**

**Epilogue**

KDPH

The Kelapa Dua Human Development Consultation was the initiating step in a comprehensive demonstration project by the people of Kelapa Dua, a remote rural village located in the Tangerang District of West Java, Indonesia. In 1969, the Republic of Indonesia, the fifth most populous nation in the world, initiated the first Five-Year Plan to stabilize its economy. In spite of enormous barriers and occasional setbacks, the project has been a success.

INDONESIA

JAKARTA The enormous local energy and resolve needed to continue Indonesia's determined growth. Recognizing the dangers inherent in over-crowded cities, t  
JARARTA Jakarta, capital city of Indonesia, stands on the Sudanese plain of West Java and through its central location along a 5440 kilometer wide archipe

KHDP  
ICA Consultants

Project begin to deal with imperding social dislocation in the surrounding rural society.

TANGERANG The district of Tangerang lies 30 kilometers west of Jakarta on a highway connecting the two trading, exchange and entry points of Jakarta and Banten. me district's population of one millic  
KELAPA DVA

The project area is a complex of three village units called "kampungs", Asam, Nurdin and Dahung, bounded on the south by the Islamic Village and facing the rice paddies on the north, we

KHDP  
ICA Consultants

a major problem. Bamboo and thatched homes, owned by villagers, house large extended families. Occasional glass windows, tile roofs or gasoline lanterns vary the normal pattern of the packed;

AGENT  
ORIGIN

The Institute of Cultural Affairs is an intraglobal research, training, and demonstration group concerned with the human factor in world development. The ICA is coordinated with the Ecumenical

Since 1970, the Institute of Cultural Affairs has been working throughout Indonesia with people who are concerned for reformulation of community life at the local level from its office in Singapo

KHDP  
ICA Consultants

PA RTICIPANTS

demonstrate a comprehensive approach to community development. After giving serious consideration to a number of possible locations for the project, the Kelapa Dua complex was cho  
The Consult took place in Kelapa Dua from August 815, 1976. The team of consultants numbered 155, 70 of whom were local residents. Approximately 450 additional residents were ind

This diversified group of consultants acted as a unified research body using methods of comprehensive community reformulation. First, the Consult charted the Operating Vision of the p  
the Underlying Contradictions which are blocking the realization of that vision. Third, they built a set of overall Practical Proposals for dealing effectively with  
the Contradictions. Fourth, they created a set of Tactical

VISION

KHDP  
ICA Consultants

IMPACT

Systems by which the proposals could be realized. Finally, they discerned the necessary programs which would allow the application of the Tactical Systems. The aim of the Consult was to as

Kelapa Dua was surprisingly ready to begin the Human Development Project. Working teams which met in the kampungs daily grew in size as local residents, who initially watched from a dis  
than the years such proposals often take to be actualized. "Nothing like this has every happened in our remote and silent village". Throughout the week, guests from outside community ager

The task following the Consult is to initiate implementation of the tactics which are focused in the Actuating Programs reported in this document. First, this will involve the ongoing meeting

FOLLOWUP  
FORMATION

staff reside in the community to begin the training and the building of incentive and selfreliance that will raise a communitywide sign.

Virtually any local community provides the elements required for a Human Development Project. In the past 20 years, the work of the Institute of Cultural Affairs in rural villages, urban nei;

Second, a potential location will be characterized by apparent hopelessness and the absence of community projects. The initiation of a project in the most of visible Human suffering dramat  
Effective economic development at the local level rests upon five principles. First, the community must be imagined as a self-contained independent economic entity whose development is a

#### ECONOMIC

#### SOCIAL

credit lines, by using state and federal funds, and in some instances by soliciting special cash grants and donations in kind. Third, as many externally injected funds as possible must be retained

There are five foundational guidelines in the arena of social development. First, the project has a clearly delineated geographical focus. This concentrates energy upon a social unit small enough to be  
arenas previously considered impossible. Fourth, particular effort is made to involve all social and age groups in the task of recreating the community. Finally, social symbols are employed to

The actuation of a Human Development Project involves the application of five guidelines to establish the support systems for effective implementation. First, the coordinated effort of both

#### ACTUATION

DOCUMENT sustained. Fourth, actuating agencies to oversee the social and economic development programs are required to ensure the coordination and direction of all implementation efforts in a un

The body of the following summary document contains the detailed findings of the Consult. It is divided into five parts. Part I deals with the Operating Vision; Part II, the Underlying Core  
Subsequent paragraphs discuss the particular findings of each phase. Each part of the document also contains one or more holding charts which illustrate specific aspects of the narrative a

#### PRACTICALITY

This summary report is intended to be a highly practical tool. It summarizes the results of the consultation research which provided an occasion for local citizens to focus their concerns, t

#### VISION

The first task of the Consult consisted of objectifying the Operating Vision of the future shared by the people of Kelapa Dua. Such a vision for any people is never totally explicit. It is woven through  
Vision of the community emerged.

In order to discern this local vision, the consultants were divided into five teams and spent a whole day in the field becoming generally familiar with the community. In addition to the overall st

#### PROCESS

#### RESULTS

exists in the understanding of the people of Kelapa Dua. It was in relationship to this model that the underlying contradictions could be discerned in the subsequent phase of the Consult.

The Operating Vision Chart (Plate 1) is the result of the first phase of the Consult. Its five major sections indicate the overarching dimensions of the vision of the people of Kelapa Dua. Sect

A major theme emerging in the Operating Vision of the people of Kelapa Dua is the decision to develop infrastructures and services to ensure the basic physical wellbeing for all. Two arena

#### WELL-BEING

#### BUSINESS

village also realizes that sanitation systems are required not only for obtaining clean drinking and wash water, but also for hygienic sewage disposal and drainage. Villagers know that only  
care will they be able to release their attention and creativity to reconstruct the village.

The people of Kelapa Dua see the expansion of local business as crucial. Village income needs to be raised and basic commercial ventures undertaken. Villagers aspire to improve local economy to bring in capital and create additional jobs. Many stressed the importance of expanding cottage industries which are already in existence. This involves not only intensifying production and PRODUCTION was mentioned, including better transport to markets in Tangerang and Jakarta. A weekly market in Kelapa Dua is desired in order to provide a local outlet for producers and lower prices for

Accelerated farm production is a dream of Kelapa Dua's residents. People hope to move from subsistence rice farming to producing cash crops. Local Consult participants stressed their need

Practical education was envisioned, broad enough in scope to include both functional equipping for all ages and formal education for the young. The people of Kelapa Dua expressed desire

#### EDUCATION

and infant levels, as well as informal educational events after school. Finally, the community would like to see greater opportunities for advanced education made available to them.

STYLE The people of Kelapa Dua see that the future of their village requires a conscious development of community style in terms of community facilities and identity. They are anxious to establish recreation important to the overall design of the village. In addition to constructing such facilities, the Consult discerned a longing to develop ways to strengthen the local identity of Kelapa Dua Community. They desire ways to celebrate their identity through telling traditional and modern stories, using symbols to mark the community and singing local songs. Overall there is a longing in Kelapa Dua for a