

ICA

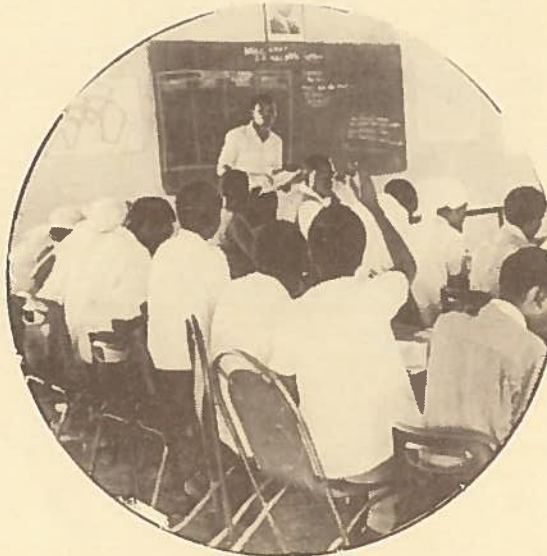
THE INSTITUTE OF CULTURAL AFFAIRS

RURAL KENYA IS C

The Institute of Cultural Affairs is a research, training and demonstration group concerned with the human factor in world development. The Institute has worked for twenty-five years to design and demonstrate effective methods of community renewal.

The Institute of Cultural Affairs is an informal federation of nationally autonomous, non-profit-making organisations working in 34 countries. The staff of the Institute is self-supporting and represents many nationalities and backgrounds. More than one hundred field offices are served by co-ordinating centres in Bombay, Brussels, Chicago, Hong Kong, Singapore and Nairobi. The work of the Institute's full time staff is complemented by an international network of voluntary consultants representing a wide range of expertise. Consultants donate both time and resources to assist in the planning and implementation of the Institute programmes. The work of the Institute of Cultural Affairs is supported by government agencies, foundations, businesses, church and service organisations and concerned individuals.

Since 1968, the Institute of Cultural Affairs has been working in Kenya and is registered under the Societies Act.



Kawangware and Kamweleni

In 1975, the first Human Development Project was initiated in Kawangware, an urban settlement on the outskirts of Nairobi. The following year, the Institute began to conduct Village Meetings throughout Kenya as a means to motivate people in the villages to accelerate their own development through self-help. In 1978, the second Human Development Project was launched in Kamweleni, a rural village in Machakos District. The Kawangware and Kamweleni Human Development Projects, the urban and rural pilots in Kenya, have played a key role in demonstrating what is possible when comprehensive socio-economic development is implemented at the grass roots level. Rebuilding the urban situation is only carried out when residents of the rural areas are enabled to "remain on the land" and meet their own needs. An effort to develop the rural requires a systematic approach that engages people from the private and public sectors and above all, the people of the villages. Business and other private organisations are demonstrating an increasing concern for village development. The results of Village Meetings throughout Kenya show that local villagers are ready to move if given the means whereby they can plan and implement their own future.



N THE MOVE



Human Development Training Institute

The Human Development Training Institute is for men and women of every background who care deeply about the future of rural communities. It requires of all participants a decision to engage themselves fully in the eight-week intensive, residential school. Hosted by the village of Kamweleni, the students are daily exposed to basic community development skills, planning methods and leadership style. First the participants learn how to identify the actual human needs in different types of communities. Next they learn about and see with their own eyes practical new ways of dealing with age-old problems that have seemed insolvable. They learn to utilize the local resources, government services and appropriate technology available for resolving these same problems. They are also trained in methods of corporate leadership which allow them to work as a team and to create the motivity necessary to engage an entire community in the common planning and work of it own development. The school graduates approximately 100 students each quarter with over 95% continuing work in the Human Development Projects and Village Meeting Programme.



Kenya Replication

Rural Kenya has approximately 14 million people living in over 14,000 villages. In order to reach these villages a series of Human Development Projects are planned throughout the nation. They act as demonstrations which communicate to the village residents motivational techniques and methods of renewal toward enabling the national effort of comprehensive socio-economic development of the rural villages. The replication plan anticipates setting up 35 demonstrations projects by 1981 in district or divisional levels to give every villager an opportunity to see the possibility of local renewal. The Machakos District will, at the same time, be the focus of an experiment in a cluster village plan bringing nearby villages together to work on common programmes. A week-long consultation for each cluster will initiate the programme where a two-year plan will be created by the villagers. The corporate resources of the combined villages will be focused on projects of mutual benefit for all the villages in the cluster. The intent of each project is finally to enable the villages to move toward self-sufficiency, self-reliance and self-confidence.



PROGRAMMATIC CHART

Toward the Actuation of Comprehensive Human Development Projects on the Local Level

thirty-six programmes—nine structures—three dynamics—one project

A ECONOMIC DEVELOPMENT LOCAL PRODUCTIVITY —toward self-sustenance	B HUMAN DEVELOPMENT LOCAL MOTIVITY —toward self-confidence	C SOCIAL DEVELOPMENT LOCAL SOCIALITY —toward self-reliance
Enabling local— COOPERATIVE AGRICULTURE 1 expanded cultivation 2 intensified production 3 water delivery 4 equipment pool	Reconstructing local— LIVING ENVIRONMENT 13 domestic housing 14 public facilities 15 village design 16 essential services	Creating local— PREVENTIVE CARE 25 intermediate sanitation 26 total nutrition 27 systematic immunization 28 primary treatment
Developing local— APPROPRIATE INDUSTRY 5 cottage production 6 agro-business 7 processing plants 8 ancillary industry	Catalyzing local— CORPORATE PATTERNS 17 total engagement 18 community commons 19 consensus assemblies 20 corporate workdays	Establishing local— FUNCTIONAL EDUCATION 29 early learning 30 formal schooling 31 youth training 32 adult education
Initiating local— COMMERCIAL SERVICES 9 common marketing 10 local merchandising 11 savings & loans 12 basic transport	Recovering local— IDENTITY SYSTEMS 21 community self-story 22 symbol systems 23 corporate rituals 24 village celebrations	Instituting local— COMMUNITY WELFARE 33 family development 34 women's advancement 35 youth task-force 36 elderly engagement

A REPRESENTATIVE LIST OF CONTRIBUTORS

APPROPRIATE TECHNOLOGY INTERNATIONAL
 AUSTRALIAN HIGH COMMISSION
 B.A.T KENYA DEVELOPMENTS LTD.
 BARCLAYS BANK INTERNATIONAL LTD.
 BRITISH HIGH COMMISSION
 BROOKE BOND LIEBIG KENYA LTD.
 CANADIAN HIGH COMMISSION
 CITIBANK N.A.
 CHLORIDE EXIDE (K) LTD.
 COCA-COLA AFRICA LTD.
 COLGATE PALMOLIVE (E.A.) LTD.
 COME-CONS AFRICA LTD.
 E.S.A. PRINTERS LTD.
 ELLIOT'S BAKERIES LTD.
 ESSO STANDARD (K) Ltd.
 F.M.C. INTERNATIONAL
 FAMILY PLANNING INTERNATIONAL ASSOC.
 FIRESTONE EAST AFRICA LTD.
 FORD FOUNDATION
 GALAXY PAINT CO. LTD.
 GENERAL PRINTERS LTD.
 GREENHAM READY MIX CONCRETE (K) LTD.
 GREENHUT W. CONSTRUCTION C. LTD.

HARTZ & BELL LTD.
 IBM WORLD TRADE CORPORATION
 J.K. INDUSTRIES LTD.
 JOHNSON WAX (E.A.) LTD.
 JUBILEE INSURANCE CO. LTD.
 KENYA BUS SERVICES LTD.
 KENYA CHARITY SWEEPSTAKES
 KENYA PIPELINE COMPANY LTD.
 KULIA INVESTMENTS LTD.
 MAY & BAKER LTD.
 MECOL LTD.
 NORAD
 NETHERLAND EMBASSY
 OTIS ELEVATOR COMPANY LTD.
 PANAFRIC HOTEL
 PROOST PAPER (E.A.) LTD.
 RANK XEROX KENYA LTD.
 SHAH FLOUR MILLS
 TEXT BOOK CENTRE LTD.
 THORN TREE SAFARIS LTD.
 TOTAL OIL PRODUCTS (E.A.) LTD.
 VAN LEER (E.A.) LTD.
 HEIFER PROJECT INTERNATIONAL
 WORLD NEIGHBOURS

ICA OFFICES IN AFRICA

ABIDJAN
 01 BP 3970
 ABIDJAN 01
 REPUBLIC OF IVORY COAST

LUSAKA
 BOX 1454
 LUSAKA
 ZAMBIA

NAIROBI
 BOX 21679
 NAIROBI, KENYA
 TEL. 567728

LAGOS
 P.O. BOX 5017
 LAGOS
 NIGERIA

CAIRO
 1079 CORNICHE EL NILE
 c/o IBA
 GARDEN CITY, CAIRO
 ARAB REPUBLIC OF EGYPT



THE INSTITUTE OF CULTURAL AFFAIRS



THE NEW VILLAGE MOVEMENT: Nation building

Many people doubt the possibility of lasting local development because they have never seen it in operation. A Human Development Project (HDP) demonstrates people's capacity to change their lives and shape their future. The villages look together at their hopes and dreams, discern underlying contradictions and create timed actions to deal with the contradictions. Corporately they do these plans, discovering new community pride, accomplishment and collegiality.

KAWANGWARE-KABIRO HUMAN DEVELOPMENT PROJECT

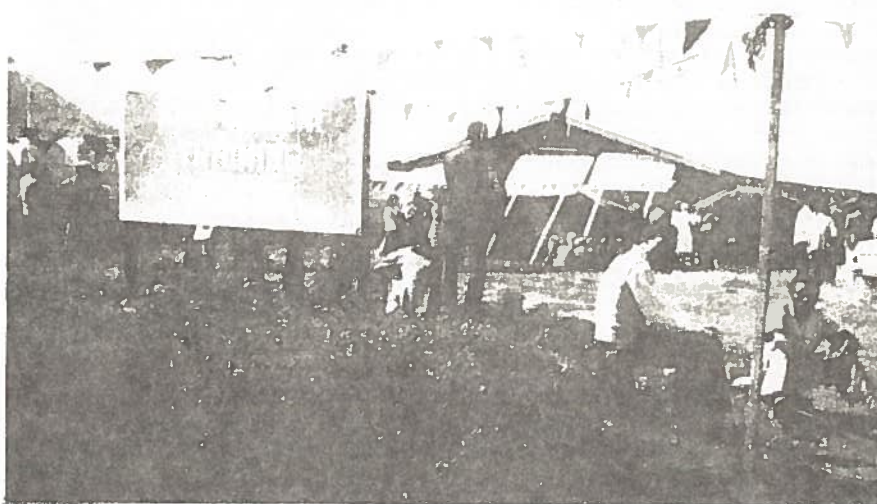
In 1975 the first Human Development Project in Kenya was initiated in Kawangware on the outskirts of Nairobi's west side. Over the past six years, local people with the public and private sectors have made great strides in developing their community. Some of their accomplishments include:

- * **Comprehensive Health Programme:** Clinic staffed by two full-time nurses, a part-time doctor and fourteen community health caretakers.
- * **Pre-primary and Primary Self-help School:** 400 children, school staffed by local residents.
- * **Adult Literacy Classes:** 150 people, taught in conjunction with the Ministry of Adult Education, is one of the largest literacy programmes in Kenya.
- * **Community Centre:** Being constructed as a demonstration in low cost building and roofing materials in cooperation with the University of Nairobi and the Building Research Establishment.
- * **Family Planning Programme:** 75 families are participating in this programme staffed by health caretakers and special youth workers who reach the young people in the community.

KAMWELANI HUMAN DEVELOPMENT PROJECT

In 1978 the Kamweleni Human Development Project in the Central Division of the Machakos District was established as an extension of methods used in Kawangware into rural areas where the need of local self-development is so much more dramatic. Over the past three years the following has been accomplished:

- * **Nursery School and Primary School:** New facilities constructed; 150 children attend classes through Standard VI; staffed by the residents and the



The community helped construct the Kabiro Clinic



Kamweleni is the site of staff training and planning

- Ministry of Basic Education.
- * **Road Construction Programme:** Roadway cleared and water drift built. Mbooni Division connected to the Machakos-Kitui road through Kamweleni.
- * **Local Agricultural Programme:** Land terraced and improved plowing employed; new seeds and chemicals used to increase yield; cash crops: cotton, tomatoes and sorghum introduced.
- * **Comprehensive Health Programme:** Trained health caretakers with monthly visits by the mobile clinic.
- * **Local Water Supply:** Most houses provided with water jars made by trained local people; 25,000 gallon water tank constructed to provide water for the village.
- * **Local Business Expansion:** Three dukas and one tea shop opened, owned and operated by Kamweleni residents.

through village Harambee spirit

Cast a stone in still water and ripples spread in ever-widening circles. When a model for local self-development works in one community, it can be shared with others; this process done systematically is replication. The success of the Kawangware and Kamweleni Human Development Projects led to the creation of a replication plan for spreading human

development throughout the nation. The current phase, 1980-84, involves at least one project in each of the 27 districts in the 90% population belt and one project in a nomadic area. The present district projects are now moving toward extending structures of comprehensive development to neighbouring villages in locations and sub-locations through cluster projects.

HUMAN DEVELOPMENT PROJECT

Kawangware-Kabiro
Kamweleni

Ulutya

Kilisa-Kyamue
Kyuluni-Kivalusa
Maiku-Muthungue
Muuni-Mwanyani
Kitandi

Kipsianan-Koisamo
Kalwani-Shamalogo
Nguluku
Chororget
Kusa
Gatuto
Kituni
Vwevvesi
Samutet-Chemabei
Matindiri
Kaongo
Nyakoora
Eldume
Mugumoini

ADMINISTRATIVE DISTRICT

Nairobi

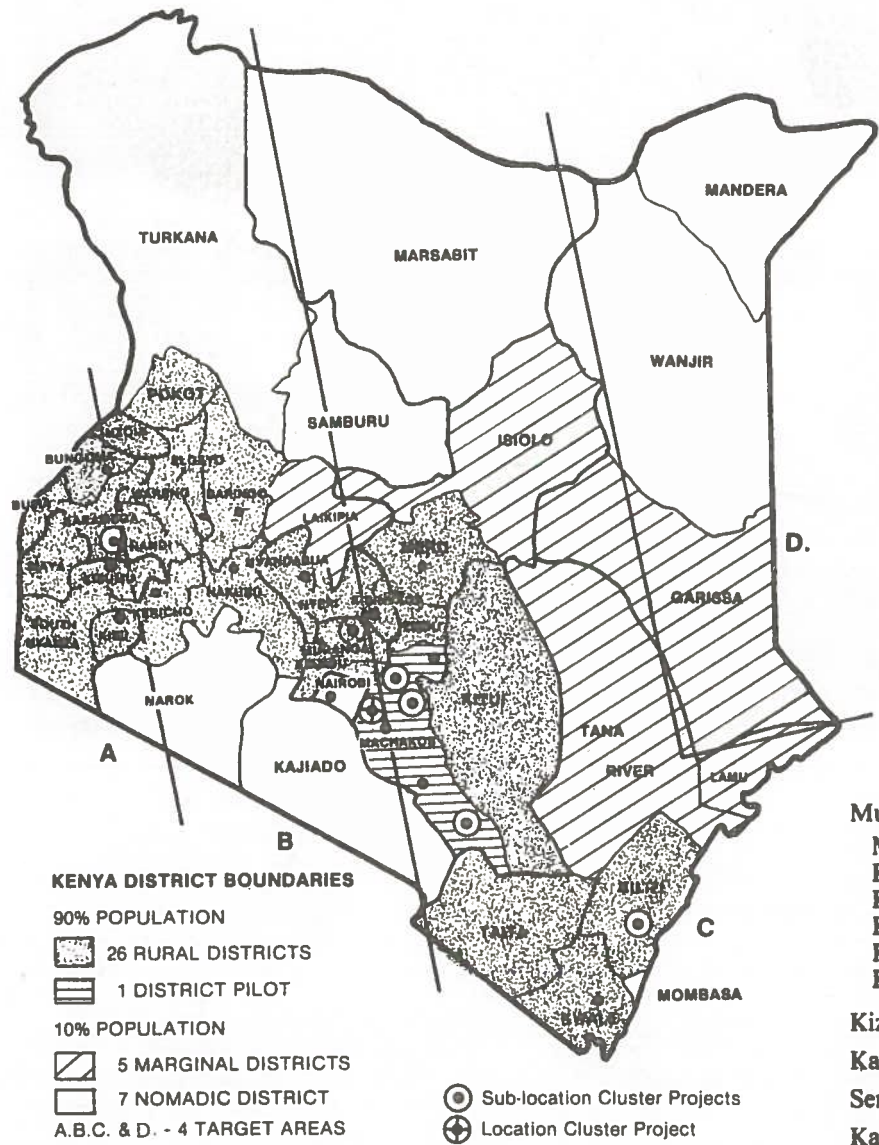
Machakos: Central Division
Machakos: Yatta Division
Machakos: Eastern Division
Machakos: Northern Division
Machakos: Kibwezi Division.
Machakos Makueni Division
Machakos: Western Division
Nakuru

Kakamega

Kwale
Elgeyo-Marakwet
Kisumu
Kirinyaga
Bungoma
Kilifi
Kericho

Nyandarua
Meru
Kisii
Baringo
Murang'a

KENYA REPLICATION SCHEME



CLUSTER PROJECTS

- Muputi Location Cluster Project
 - Muputi Sub-location Cluster
 - Kaani Sub-location Cluster
 - Kivandini Sub-location Cluster
 - Kitunduni Sub-location Cluster
 - Kiima-Kimwe Sub-location Cluster
 - Kimutwa Sub-location Cluster
- Kizingo Sub-location Cluster
- Kakuswi Sub-location Cluster
- Senende Sub-location Cluster
- Kamwala Sub-location Cluster
- Thange Sub-location Cluster
- Giathaini Sub-location Cluster

Kilifi
Machakos
Kakamega
Machakos
Machakos
Murang'a

VILLAGE ADOPTION PROGRAM

HELPING OTHERS TO HELP THEMSELVES



Since 1978, over 50 United Methodist Churches in Iowa have chosen to support the Maharashtra, India Human Development Projects of the Institute of Cultural Affairs by funding the Village Adoption Program. This year the Village Adoption Program is being expanded to include Human Development Programs in Africa, Latin America, Southeast Asia and other states in India.

WHAT PERPETUATES HUNGER IN THIRD WORLD COUNTRIES?

One crop per year in a climate which could support three, due to a lack of basic irrigation and agricultural methods.

Infectious diseases and parasites robbing human energy, debilitating local labor capacity.

Malnutrition due to lack of understanding of food values.

The local village poverty cycle of ignorance, destitution and despair.

HOW HUMAN DEVELOPMENT PROJECTS LEAD TO THE ELIMINATION OF HUNGER IN RURAL VILLAGES!

By establishing demonstration villages which are working to meet their own nutritional needs.

By establishing, within each demonstration village, a basic level of health and vitality which allows consistent food production.

By linking demonstration villages to existing national rural development funds and agricultural education programs.

By making each demonstration village a practical sign of hope and motivation.

WHO IS DOING HUMAN DEVELOPMENT?

Villagers trained in the methods of comprehensive local development at a Training School in their nation.

International volunteer staff of the Institute of Cultural Affairs who live in the villages on a stipend comparable to the average income of the local villagers. (\$24 per month in Kenya.)

Volunteers within each nation encompassing business, industry, government agencies and university students.

Church persons and other concerned individuals from around the world who share their energy, knowledge and resources, including living and working in demonstration villages for varied periods of time.

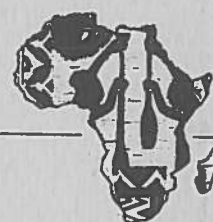
YOU ARE INVITED TO HELP SUPPORT HUMAN DEVELOPMENT

Financially assist programs in Human Development Projects.

Visit a Human Development Project. A group of Iowa church members and youth worked in a project for three weeks in Guatemala setting up an irrigation system and playground.

A thirty minute film describing this work is available upon request.

Invite a resident from one of these countries to visit and describe the results.



IJEDE HUMAN DEVELOPMENT PROJECT, Nigeria, Africa

Ijede, near Lagos, counts among its accomplishments since 1977:

19 local Health Caretakers have been trained, a garbage disposal system built, weekly community cleanups, vaccinations and health and hygiene education.

Children's Club (preschool with community teachers, provides nutritious meals.

Sewing factory employing 30 tailors, income from which supports social services.

Fishing industry, block factory increased employment.

PROJECTED NEEDS

The Ijede Project is entering an advanced phase for the community's social and economic development.

	1 year	3 years
Club and Nutrition Program:		
Balanced diet and health care for 150 children	\$2400	\$7200
Fishing program:		
Capital for expansion will employ 6 people	\$3000	\$7200
Agriculture Development:		
5 acres for peanuts, tomatoes, pepper and casava	\$1800	\$5400
Poultry Farm:		
Initiation of 400 laying hens/year	\$1200	\$3600

KAPINI HUMAN DEVELOPMENT PROJECT, Zambia, Africa

Kapini, near Lusaka, has accomplished since 1978:

Preschool with 8 local staff teaching 90% of the 3-8 year old children.

Health Care System recognised by the Ministry of Health as a national demonstration.

The Farmers' Association granted loans which allowed increased production six fold.

5 new roads built, 8 kilometer access road widened and graded and 2 bridges built.

EXPANSION NEEDS

The Kapini Project is expanding to twelve neighboring villages.

Human Development Training School:	
3 week residential training in agriculture, health and planning methods	
60 scholarships @ \$200/participant	\$12,000
Human Development Planning Consultation:	
5 step process to build the socio-economic development plan	
12 @ \$5000	\$60,000
Implementation Circuits:	
bi-weekly visits to villages for training and implementation of programs	
6 months @ \$1500/month	\$9,000
Program Initiation:	
Seed money for education, health, agriculture and education programs	
4 @ \$2000	\$8,000

KAMWELANI HUMAN DEVELOPMENT PROJECT, Kenya Africa

Kamweleni, Machakos district, includes as accomplishments since 1978:

Kamweleni Training Center trains 500 villagers to date.

230 National staff training and implementing programs in 70 HDPs plus 9 Village Cluster Projects.

Health, Education, Agriculture Guilds established in Cluster Villages through Training Modules.

EXPANSION NEEDS

The Kamweleni Project is becoming the training center for Clusters of Villages

Village Leader Institutes	350 scholarships	\$70,000
Women's Advancement Modules	350 scholarships	\$75,000
Implementation Modules	70 HDP's	\$36,000
Health, Education, & Agricultural Training Modules	9 clusters	\$18,000