

KAWANGWARE



ICA

INSTITUTE OF CULTURAL AFFAIRS

BRUSSELS
rue de Suisse 26
1060 Brussels, Belgium

Tel: 322/538

SINGAPORE
357 Bukit Timah Road
Singapore 10, Singapore

Tel: 252-9009

NAIROBI
P. O. Box 21679
Nairobi, Kenya

Tel: 567728

HONG KONG
16 Kimberly Rd., Block B.4A
Kowloon, Hong Kong

Tel: 3-677-695

BOMBAY
P. O. Box 660
Bombay, India 400001

Tel: 37-3741

CHICAGO
4750 N. Sharidan
Chicago, Illinois 6040 U.S.A.

Tel: 312/769-5635

BUILDING FOR THE FUTURE

Planning New Community



Agriculture yields new income source.



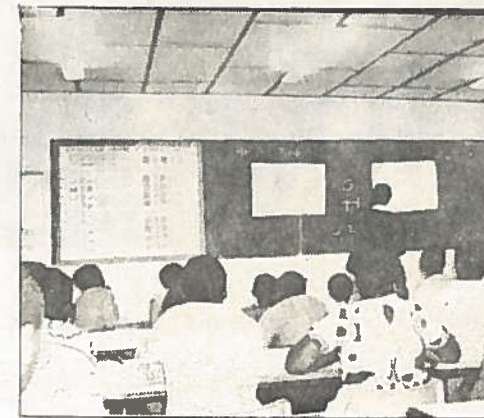
Banana baskets and mats exported to Europe and the U.S.A.

THE SEVENTEEN ACTUATING PROGRAMMES				
Economic Advancement		Village Rehabilitation Services	Social Advancement	
Agriculture	Commerce		Training	Well-Being

The 17 programmes created by the community are a way to deal directly with all the contradictions at once, releasing the communities vision and motivity.



Training certificates for 1,200 people.



Basic health instruction in every programme.

Building Community Identity



Kawangware, a community planning for the future.

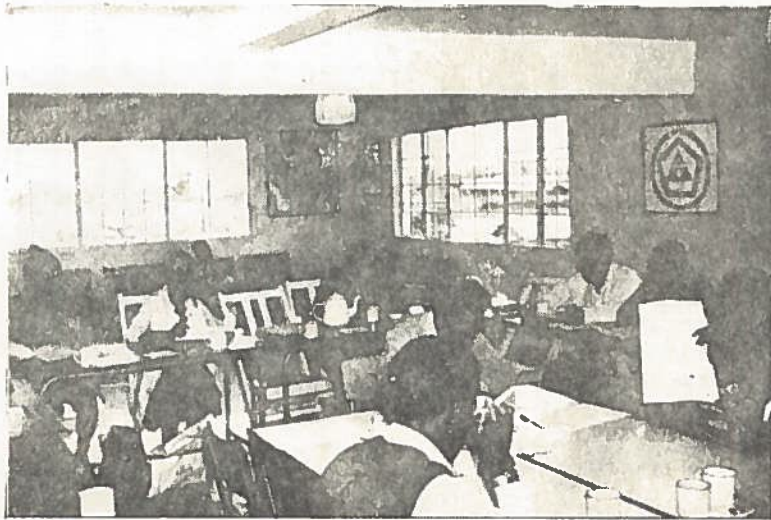
THE CONSULT

Each social demonstration begins with an invitation from local community leaders and various government officials to the Institute staff to hold a local consultation that articulates the needs and the plans of the local residents. The Kawangware consult consisted of 150 local residents and 35 consultants from various nations and fields of expertise. The tangible product of the consultation was the Kawangware document which presented the specific suggestions of the community in the following five arenas: The vision of the people of Kawangware; the contradictions prohibiting fulfilment of this vision; the proposals for turning the problems into possibilities; the tactical systems needed to initiate change; and the 17 programmes (shown on the next page) which implement the model.

THE METHOD

This method of discerning the directions of a local community was not only a tool of initiating the project, but has become the major training tool for developing leadership in the 17 programmes. As a result of this training, ten of the programmes are now fully implemented by local residents and the remaining seven programmes are in the process of training residents in various areas of technical expertise and business sophistication. Relative to the larger population of Kawangware, there are 137 persons engaged full time in the 17 programmes; an additional 325 are full time participants in the associations, clubs, and community meetings; 1,130 children from 2 years to 14 years are enrolled in the supplemental educational programmes; and 472 adults are enrolled in the various training and apprenticeship programmes.

Training Community leadership



Programme leaders plan the day.

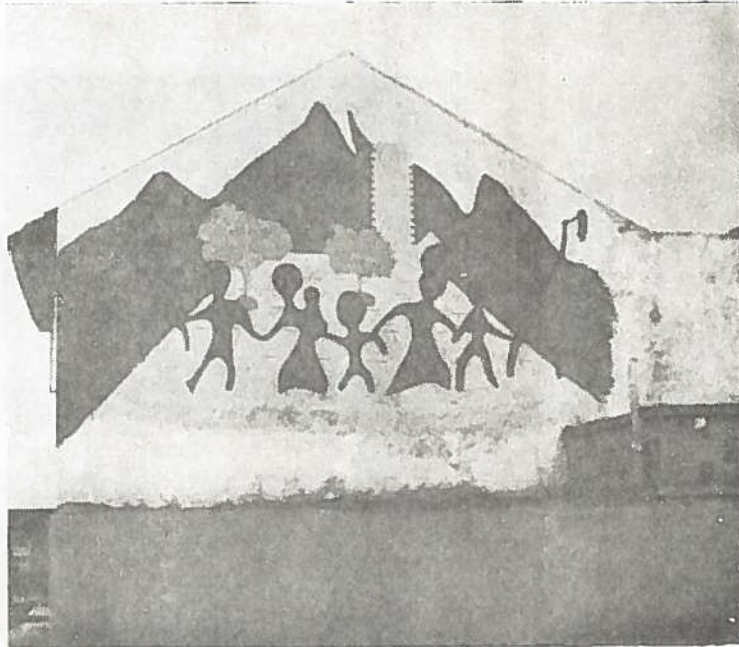
FOUNDATIONAL PRINCIPLES

In the past 20 years, the work of the Institute of Cultural Affairs in inner city neighbourhoods, suburban towns, and rural villages across the globe has confirmed the understanding that wherever there is local community, there is the readiness and the need for creative social change. Five guidelines serve as reference points in the formation of Human Development Projects. First, the selection of a community is guided by the understanding that the project is a demonstration of the possibility of comprehensive development in any local community. Second, a potential location will be characterized by apparent hopelessness. Third, both social and economic development measures are necessary to provide comprehensiveness and depth. Fourth, both local and outside perspectives are required in planning a Human Development Project. Fifth, it is necessary to discern from the beginning the viability of the systematic replication of the pilot project across inclusive geographical area.

KAWANGWARE

Kawangware is an urban village located seven kilometres west of central Nairobi. A community with a large transient population, it is a gateway to the city for the surrounding countryside. Of its 20,000 residents seventy percent of the employable are unemployed or underemployed. Lack of proper drainage makes it a sea of mud during the rainy seasons and constitutes a perpetual health hazard. Kawangware's citizens see their critical contradictions to be inadequate care structures, an atmosphere of social insecurity and the absence of commercial services. Members of the community provided the substance for the planning of the Kwangware Human Development Project. Its purpose is to upgrade the local economy, improve and modernise facilities and services, and provide the practical training necessary to enable full employment.

Dawning of Demonstration



HUMAN DEVELOPMENT

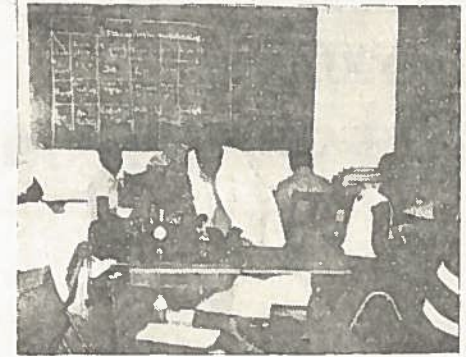
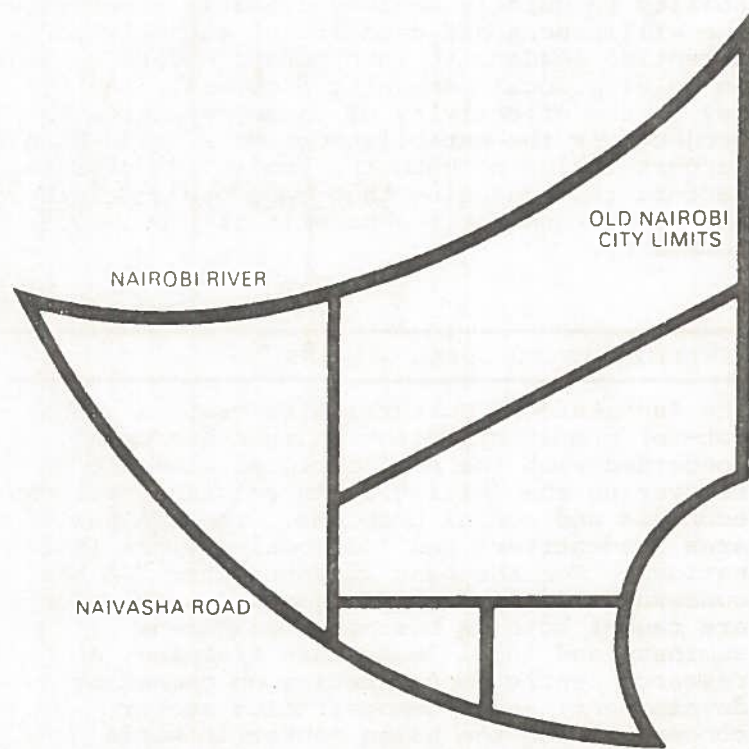
Human development begins with local people and local communities. Around the globe 24 project sites constitute a signal demonstration of the methods and resources required for rapid socio-economic development in diverse settings. Key to this development is the training of local residents - in planning and implementing the various programmes.

At the end of 1977, these 24 sites are projected as pilot projects in different global areas that will serve as prototypes of community development in rural and urban settings. The present projects have demonstrated the local residents' ability to quickly achieve dramatic results by the willingness and capacity of established or potential leaders to incorporate modern methods in solving local community problems. Another key to the effectivity of these demonstration projects is the establishment of a broad-base support including both the public and private sector, thus ensuring that each project is by the effort and for the benefit of the larger community.

INSTITUTE OF CULTURAL AFFAIRS

The Institute of Cultural Affairs is a global not-for-profit organization that has been concerned with the need of local communities recovering the initiative in solving their own economic and social problems. The ICA has 6 area headquarters and 103 local offices in 23 nations. For the past 22 years, the ICA has concerned itself with planning methods which are taught both as business management seminars and local leadership training; a research centre concentrating on community development; and a demonstration sector concerned with the human factor in world development. The ICA's programmes around the world are funded by grants and contributions from government departments at all levels and from private foundations, corporations, businesses, and individuals. In all the programmes, the emphasis is on effective methodologies relating to motivity, corporate effort, and tactical planning.

Kawangware place of Glory



Women learn practical skills.



Theoretical and practical Farm Management skills increase.



Family Community Training classes expand basic literacy skills.

The depth human issue beneath all the underlying socio-economic contradictions is discerned and addressed releasing people to see the possibility of effective engagement in arenas previously considered impossible.

Action removes the doubt...



FUTURE PLANS FOR KAWANGWARE

VISIBLE SIGNS

- Community Centre
- Community Kitchen
- Community Hostel
- Co-op Office
- Co-op Warehouse
- Emergency Vehicle
- Health Clinic
- Livestock Units
- Low Cost Housing
- Model Compound
- Nursery School
- New Roads
- Portable Irrigation Equipment
- Small (2 wheel) Tractor

SOCIAL AND ECONOMIC ADVISORS

A REPRESENTATIVE LIST

Dino Bhattessa
Nalin Nail Works Ltd.

W. R. Gitobu
Esso Standard Kenya
Ltd.

Walter Greenhut
W. Greenhut Construction
Co.

Esther Keli
Ministry of Housing
& Social Services

James J. Mageria
Etc Limited

M. J. Rughani
Afri-International
(Kenya) Ltd.

Simeon Shitemi
Office of the President

My friends, we are now an independent nation,
and our destiny is henceforward in our own
hands.

- Mzee Jomo Kenyatta