

*With despair abounding
And a lack of hope around
Still the spirit comes
To the ones who birth the day
Giving breath and being
To the ones who give their death
Born of fire
Filled with power
For all men*

Pentecost Hymn

SEMI-ANNUAL REPORT

SPRING/SUMMER 1971

THE LOCAL CHURCH

For years the Church has been painfully searching to find practical ways of putting theological insights and depth concern into meaningful action. Through the concerted efforts of laymen and clergy across the continent, working together with the staff of the Institute, an amazingly comprehensive model for creatively reformulating local congregations has been realized.

LOCAL CONGREGATION

Since January 1971 the initial steps of the Local Church Demonstration Project have been taken. The decisions of the congregations of key local churches and of deeply involved core groups, or cadres, within those congregations, has created a group of signal churches. These churches, from a variety of socio-economic and denominational backgrounds across the continent, have begun to put into action this carefully designed demonstration project. An exciting aspect of this program is that in all cases churches within the same geographical area assist each other in actualizing the program. This makes for truly grassroots ecumenism.

As the program continues, additional congregations will participate and will build on the earlier experiences. As the methodologies are refined the total Church will see the possibility of renewal in each local situation.

5th CITY HIGHLIGHTS



Almost \$3,000,000 in housing rehabilitation and construction is anticipated in 1971. This building will be completely rehabilitated.

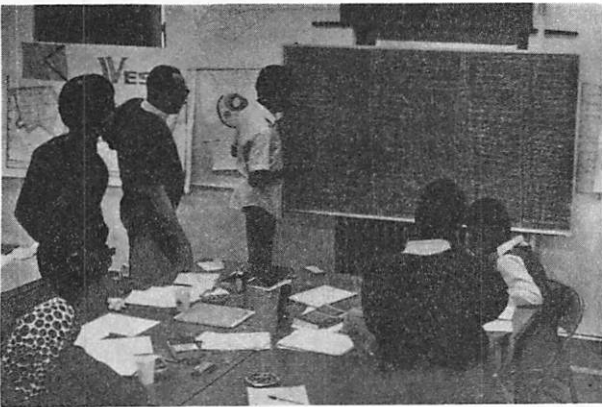
The 5th City health center provides comprehensive health care for the 5000 residents of 5th City.

Teacher-aides in training for G.E.D. examinations, all residents of 5th City, combine teaching with the chance to develop their own learning skills.

IN THE GLOBAL CONTEXT

Concurrent to the emergence of the Local Church demonstration project there has been a considerable rise in the demand for courses throughout the continent. There is an increasing number of courses in which a large number of the participants come from the same congregation bringing with them a mood of hopeful seriousness. In addition to the demand for the basic RS-I course of the Theological Revolution there has been a larger number of Advanced courses indicating the decision by churchmen everywhere to do the hard work necessary to form effective corporate leadership in their local situations.

		Number of Cities	Number of courses	Number of participants
The Theological Revolution	RS-I	84	116	2876
	PLC	19	25	459
Cultural and Religious Studies	Advanced	31	59	1340



THE URBAN ACADEMY

The Urban Academy, a six-week training program for inner city leaders, has continued to grow both in size and in the depth concern of the participants. The vast majority of the participants are churchmen committed to the grassroots renewal of their congregations and their local communities. They see in the Urban Academy the possibility of acquiring the tools, vision, and skills necessary to realize their commitment. Among other things the Urban Academy places responsibility for the black community within a context of global responsibility.

THE EIGHT-WEEK ACADEMY

The Eight-Week Academy, held each quarter in Chicago, was designed to meet the need to equip churchmen for leadership quickly and comprehensively. For this purpose it includes a 24-course curriculum plus practical labs and pedagogical and religious style training. The Academy, now completing its third year, has continually grown in number of participants and recently has included increasing numbers of international churchmen. The curriculum, format, and design of the Academy has undergone continual refinement so that each quarter it has offered an increasingly effective tool to participants.

THE GLOBAL CONTEXT

Staff already
Assigned

EAST ASIA

Justin Morrill
Dolores Morrill
Joseph Hsu
Bicha Hsu
Basil Sharp
Marie Sharp
Robert Vance
Cynthia Vance
Kwok NaiWong
Kwok Tao Lai

SOUTHEAST ASIA

David McClesky
Donna McClesky
Kjell Knutsen
Marge Knutsen
Don Clark
Christina Clark
Robertson Work
Mary Work
Vance Engleman
George Walters
Carol Walters

AUSTRALIA

David Morton
Betsy Morton
Joseph Crocker
Marilyn Crocker
George Holcombe
Wanda Holcombe
Russ Campbell
Jim Bishop
Isobel Bishop
Rod Rippel
Elsie Rippel

INDIA

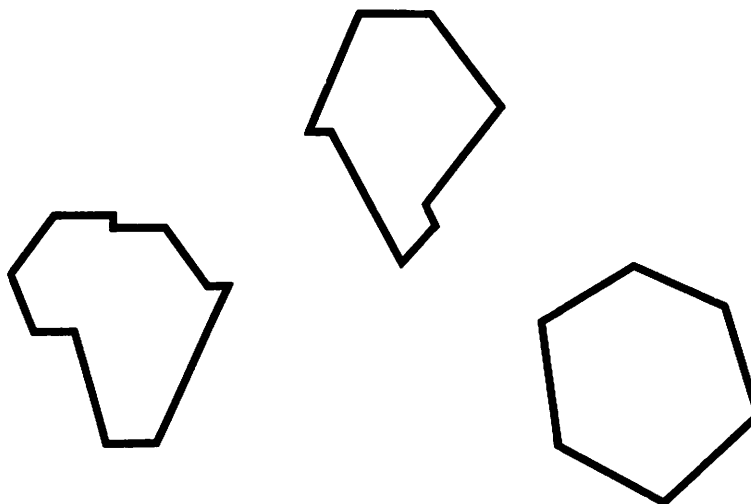
Robert Fishel
Judy Fishel
Kay Hayes
Ray Spencer

PACIFICA

John Oyler
Marilyn Oyler
Stan Bahner
Barbara Bahner
Douglas Curts
Joel Radford
Betsy Radford

EUROPE

Charles Hahn
Doris Hahn



NEW ASSIGNMENTS

Ike Powell	India
Charlene Powell	India
Charles Lingo	India
Dawn Lingo	India
Ken Filipski	Japan
Ann Filipski	Japan
Joseph Slicker	Asia and Africa
Joseph Pierce	Japan
Phil Smith	Australia
Beverly Smith	Australia
Nelson Stover	Australia
Elaine Stover	Australia
Jim Kilgore	Australia
Mary Kilgore	Australia
John Clark	
Nancy Clark	
David Zollars	
Lois Zollars	

INTERNATIONAL INTERNS IN TRAINING

Garnet Banks	Australia
Elisabeth Banks	Australia
Kunio Libokmeto	Marshall I.
Bien Lorenzo	Philippines
Zenaida Lorenzo	Philippines
Michio Matsui	Malaysia
Toshifumi Aso	Japan
Michiko Aso	Japan

FOR THE LOCAL CHURCH

COMMUNITY REFORMULATION

Community reformulation is not restricted to the inner-city. In the heart of Australia, the ancient Aboriginal culture is in danger of being crushed by 20th Century technological society. The world stands in peril of losing their unique and diverse gifts unless ways are developed soon to enable these tribal people to enter responsibly and creatively into the world society. In Derby, Australia, the 5th City Reformulation Model is being used in the Mowanjam Community to permit these people to use their natural resources and be economically self-supporting. With the entire community organized into work guilds, they are farming the land, raising sheep and producing works of art that incorporate their ancient skills and heritage.



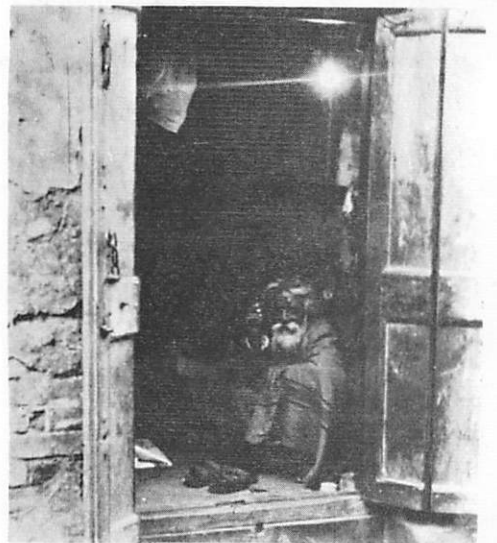
IMAGINAL EDUCATION

Fifteen years of research and experimentation with adults and children of all ages and of diverse cultural and educational backgrounds undergird the methodologies of Imaginal Education. In high schools in Japan, Samoa, and across the North American continent, these are now being utilized to meet the growing demand for more relevant and effective educational processes. At Shum Oi Church in the heart of the resettlement area of Hong Kong, the total 5th City model is being applied. At the preschool, all ages of children from infancy to school age are taught by teachers from the area who have been trained by the Institute staff.



SPIRIT REMOTIVATION

The paralysis experienced in the face of the massive world problems points to the need for remotivation in the depths of men's lives. Through the International Training Institutes, a new vision for the future has awakened men to see again the crucial role of the church in this remotivation. Coupled with the methods of creating specific signs of possibility, this new spirit is reawakening the Christian Church around the world.



NEEDED
ANNUAL INCOME
\$1,200,000.00

CONTINENTAL SUPPORT
SINGLE GIFTS
5 annual gifts of \$5000 50 annual gifts of \$1000 100 annual gifts of \$ 500 1000 annual gifts of \$ 100

CONTINENTAL SOURCES— 90%

Program Income	30%
Corporations & Foundations	15%
Churches & Denominations	5%
Large Donors	20%
Other Donors	10%
Order	10%

CONTINENTAL SUPPORT
MONTHLY GIFTS
5 monthly gifts of \$250 50 monthly gifts of \$100 100 monthly gifts of \$ 50 1000 monthly gifts of \$ 25

INTERNATIONAL SOURCES — 10%

Churches	2%
Denominations	2%
Individuals	3%
Corporations	1%
Subsidiaries of U.S. Companies	2%

**ANTICIPATED
ANNUAL EXPENSES
\$1,200,000.00**

CONTINENTAL PROGRAMS

TRAINING PROGRAMS	25%
The Academy	
Urban Academy	
Courses	
	RS-I
	PLC
	Advanced
RESEARCH	25%
Local Church	
Permeation Courses	
Summer '71	
Preschool	
5th City	
FACILITIES	10%
International Conference Center	
Supplementary	

TRAVEL TO MANILA

From:	
Bangkok	\$248
Bacca E. Pakestan	387
Djakarta	327
Guam	277
HongKong	121
Karachi	508
Melbourne	708
Osaba	288
Fort Moresby	482
Singapore	229
Sydney	665
Taipai	151
Tokyo	316

INTERNATIONAL PROGRAMS

ITI'S	15%
Accommodations	
Program Materials	
Travel	
Recruitment	
Stipends	
Staff Travel	
FOLLOW-UP	15%
Materials	
Travel	
Accommodations	
Communications	
TEACHING PROGRAMS	10%
Courses	
Consults	

TRAVEL TO JELAPUR

From:	
Ahmedabad	\$56
Bangalore	91
Bhopal	80
Calcutta	153
Cochin	108
Colombo, Ceylon	108
Delhi	117
Gualion	103
Hyderbad	81
Indore	65
Jaipur	99
Jamnagar	52
Kandla	56
Madras	62
Najpur	81

**The Ecumenical Institute
3444 West Congress Parkway
Chicago, Illinois 60624
312/722-3444**