



UPTOWN 5 DATA BOOK

	Page
UPTOWN 5 DESTINAL STORY.	1
THE HISTORY OF UPTOWN.	3
RAW HISTORICAL DATA.	5
GRIDS	
CHICAGO METRO GRID.	7
UPTOWN MICRO.	9
UPTOWN PARISH11
PROTO-PARISH GRIDS	
UPTOWN 5 GRID OVERLAYING PHOTO-MAP.13
UPTOWN 5 WARDS AND STAKES15
UPTOWN 5 WARDS, STAKES AND STREETS.17
UPTOWN 5 POPULATION BY WARDS.19
UPTOWN 5 POPULATION BY BLOCKS21
UPTOWN 5 POPULATION OF PERSONS AGED 62+ BY WARDS.23
UPTOWN 5 POPULATION OF PERSONS AGED 62+ BY BLOCKS25
UPTOWN 5 BLACK POPULATION BY WARDS.27
UPTOWN 5 BLACK POPULATION BY BLOCKS29
UPTOWN 5 AVERAGE MONTHLY RENTS BY BLOCKS.31
LOCAL CHURCHES' DATA	
UPTOWN PARISH LOCAL CHURCHES.33
UPTOWN 5 LOCAL CHURCHES35
CHURCHES IN UPTOWN PARISH37
UPTOWN PARISH POLITICAL WARDS.41
SOCIAL STRUCTURES AND AGENCIES	
UPTOWN 5 SOCIAL STRUCTURES AND AGENCIES GRID.43
UPTOWN 5 SOCIAL STRUCTURES AND AGENCIES ALPHABETICAL LISTING.45
UPTOWN 5 SOCIAL STRUCTURES AND AGENCIES GESTALT47
BUSINESS	
UPTOWN 5 RECREATION, RESTAURANTS, AND SERVICES.49
UPTOWN 5 PRINCIPAL COMMERCIAL LOCATIONS GRID.51
UPTOWN 5 BUSINESS ESTABLISHMENTS GESTALT.53
LAND USE AND HOUSING	
UPTOWN 5 LAND USE BY WARDS.55
UPTOWN 5 HOUSING SURVEY BY WARDS.65
UPTOWN 5 OPERATING PRINCIPLES.75
UPTOWN 5 PROBLEMAT.77
UPTOWN 5 STRATEGIC OBJECTIVES79
UPTOWN 5 INITIATING MODEL OF ECUMENICAL PARISH.81

A TIME OF GLOBAL RESURGENCE

This is a time of the resurgence of the human spirit, the dawn of a new great age of man. Sociologically, it is a time of deep yearning all over the world for a realistic way to leap the gap to a practical implementation of this resurgent spirit. The church is also experiencing resurgence as it has completed a theoretical or theological revolution and now is moving into the practical revolution. It too is hungering for ways to implement its image of mission in this new age. Local man is the key to this practical revolution, for it is in local man's new images of greatness and power and human meaning that the resurgence of our time is most clearly manifest. Local man is experiencing himself as turning to the world, away from the narrow concentration on himself. There is a new upsurge in awareness of an authentic revolutionary pluralism that honors the uniqueness of each group and yet brings them all together in a common mission to the world. The ecumenical parish is a creative response to resurgence. It is the taking of this new spirit and injecting it into the midst of local communities throughout the globe.

THE GREAT TURN OF THE SPIRIT MOVEMENT

The Spirit Movement has journeyed through the development of a comprehensive curriculum, the grounding in community reformulation, the creation of a global network, and the reconstruction of the local church. Now the demand is to create a new entity that draws together the wisdom of each of these thrusts and yet is synonymous with none of them. The ecumenical parish is the new action, the new doing of the movement, which leads the Great Turn to the structuring of spirit resurgence in our time. It is not doing something better or more interesting than before, but it is a new doing that retells the story of the movement's past and future. The turn to the world that was signalled in Summer '72 will be actualized in Summer '73 as people from across the globe come together to forge the theoretical constructs and operating manuals for the ecumenical parish. Uptown-5 will provide a laboratory for direct experimentation with and refinement of the models of the Research Assembly. It will provide a concrete sign for the Assembly and the movement as a whole of the possibility of actualizing ecumenical parishes almost immediately anywhere in the globe.

THE UPTOWN-5 EXPERIMENT

The Uptown-5 experiment is in a neighborhood located in the heart of Chicago's North Side. Chicago, the continent's second largest city, is recognized as one of the greatest cities in the world. It is the site of the world's tallest building and the busiest airport. It is a center for economic affairs, cultural media and political power for the nation. It may be the only large city in the U. S. where the mayor is able to provide public services without constant disruptions.

Uptown itself (an area containing about a hundred thousand people) has a distinguished history, one being the only major shopping center outside the Loop, serving the entire North Shore. It has been a major national cultural

center with the famous Aragon Ballroom and Edgewater Beach Hotel. In fact, it was once proposed that the Pennsylvania Railroad trains to New York depart from Uptown rather than the Loop.

In the present day, Uptown is a paradigm of the global present in the local. It holds the pluriformity of the world with all six Urs, all nine continents, and over 50 languages represented among its residents. It contains in the space of a block the wealthy Gold Coast apartment dweller and the penniless drifter. In terms of neighborhood organizations, it presents a complete range of types of approaches to urban problems--from government supported programs to business-supported independent commissions to radical volunteer groups and many others in between. One count revealed 87 community agencies or organizations.

Uptown-5 is the 5th ^{neighborhood, or} parish, in the Uptown area. Bordered by Lake Michigan and Broadway, Montrose and Foster streets, it contains 30,000 people, including blacks, American Indians, Orientals, Asian Indians, Spanish-speaking people, Europeans, as well as whites from many other parts of the U.S., especially Appalachia. It also offers an excellent opportunity to work with the elderly as it contains the highest concentration in Chicago of those over 65.

Uptown-5 is an experiment on behalf of the entire globe, or how any ordinary group of residents can be servants of the community and the world, by catalyzing an outburst of human motivity so that every last human being in that piece of geography is cared for. The method is to bring together representatives of all the ethnic, economic and cultural diversity, to forge and implement a comprehensive plan for awakening, caring for, and reformulating the community. All community organizations, including the church, business, governmental and civic organizations, will be honored for their unique contributions to the overall care for the community. Specifically, by the end of July the movement will be able to point to a working prototype of an ecumenical parish in its initial stages.

A SIGN FOR THE FUTURE

Uptown-5 is an experiment in which the renewal forces in the church and community will work together to forge a practical way to care for every person in every community. It is now time for all those who have decided to expend their lives on behalf of the 21st century to step forth and join with others in this leap into the future. From Uptown-5 will spring thousands of ecumenical parishes and the new earth will be built.

On an old Indian Trail in the late 1840's, somewhere about 1847, a small settlement was established at the present junction of Clark and Sunnyside Streets. It was called Cedar Falls, and served as the initial point of development that led to modern Uptown.

In the 1850's, further north on the same old Indian Trail, and now serving as a Wagon Train route north of Chicago, on a piece of high ground, on the left hand side of the trail, about eight miles from Chicago another settlement began where the present Rosehill Cemetery is now situated. It was from Rosehill south and south-west that the settlement of what is now Ravenswood took place. A little later, and just south of Cedar Falls, the present Graceland cemetery was laid out, and around which further settlement took place. Further to the east on another old Indian Trail, which is called Sheridan today, another form of development was taking place in the form of country estates, which bordered on the Lake as it was then, prior to the Great Fill In, and on which Lake Shore Drive and Lincoln Park are situated. Among these estates was the famous Buena Park, whose name is perpetuated in the current community of the same name.

In the early 1880's, Kemper bought land of subdivision and development in what became known as Argyle Park, and area bounded by Lawrence, Foster, the Lake and Broadway. The whole area including Rosehill, Graceland, Argyle Park, Wilson, were known as "Lake View City", until it was annexed into the City of Chicago in 1889, following the consent of the community taken at a popular vote.

Following that initial settlement phase, came the normal stabilizing phase which was marked by success and a full life for the community.

Rapid settlement of the area around Wilson was enabled by the building of the L to Wilson in 1900, and in stages further north until it arrived at Howard in 1916. In the period of time the number of fares sold at Wilson in any one day was in excess of twelve thousand. As might be expected, businesses grew apace with three banking institutions, the Federal Savings, Uptown National, and the Bank of Chicago. Departmental Stores were soon on the scene around Wilson and along Broadway, and business was so good that it became known as the "Little Loop".

The last part of the area to be developed was that which was bought by William Deering, a farming Machinery Manufacturer, and bounded by Clark, Lawrence, Montrose and the Lake, Mr Deering made the deal in 1894. Originally it was called Sheridan Park. The community began to change with the building of the first apartments in 1911, and in increasing numbers in 1912, and 1913. Despite the first early signs of the middle-class exodus to the north the population grew to around 90,000.

The coming of the Movie Industry at this time also stabilised the community, bring with it the building of great theatres, such as the Riviera, and the Uptown, the Uptown being considered the largest in the nation West of New York. Many famous stars were part of the community at that time, among whom are Gloria Swanson, Charles Chaplain, Wallace Beery, and others. The Aragon was also built in this period. It was able to accommodate some three thousand patrons. Many famous band leaders were featured here.

This period did not continue into the thirties, and instead a process of forming a new kind of community began. The early move northwards by middle class people became pronounced, especially as apartments grew in number, and properties

intended to provide six to eight flats, were modified so as to provide for from eighteen up to twentyfour flats. Property values dropped, and the whole process of social change was under way.

With the exodus the middle-class northwards, the poor poured in, and they included peoples of every Ur, the black, white, the red, the yellow, the tan and the brown. Old middle class stability began to disappear, and the community took on something of a transitory character, as people came, got on their feet and moved out. Population growth for the next forty years was slow, some six percent each census. The present population numbers some one hundred and forty thousand. Not only is every Ur culture in the globe represented in the community, but equally importantly, representation from each of the nine geo-social continents around the globe. Uptown was going through the process called the meltingpot which was in keeping with the myth of the multi-racial society. However, beyond that, the shape of a new people was being forged.

Today the community has been through a process, the end of which points to the possibility of a globalised urban community unlike anyother, anywhere in the world and capable of being an image of possibility for urbanites all around the globe.

The key task in revitalising the globe is in giving creative form to the grass-roots resurgence that is present in every local community. The local signs of the global manifestation, rooted in the present sociological imbalances and the emerging vision of a new community, will take the form of a guild of local leaders and residents, the spirit leaders of the local congregations in the galaxy, the direct tactics that create the forms of the ecumenical parish, and the temple that symbolises the destiny of the parish. These forms will signal the new global society created by common man's wisdom, sustaining the motivity in the pricess of balancing the social walties that create a human world.

ORIGIN

Turn to the World

The history of Uptown has been the story of man perpetually shaping anew for us urban settlement. From its start 120 years ago as an outpost of community life, located on a trail used by Indians and wagon trains, Uptown has demonstrated one daring experiment in urban living after another. It has always been a community of the future, a "model city" long before any program of that name was thought of, a practical vehicle of hope in the changing demands of history.

Uptown began in response to the need for stable settlements around the center city. Farm houses and country estates formed the prairie, the forest and swaying wasteland. At the first great migration, Uptown symbolized urban character by writing to be annexed to Chicago in 1889.

The next forty years were the years of the "Second Loop". As Europeans poured into American cities, Uptown responded to this burgeoning urban population by developing a second economic and cultural center for Chicago. Expanded transportation, fine beaching, economic growth generated a climate of optimism symbolized "The Great White Way" home of a flourishing movie industry which featured Gloria Swanson, Charlie Chaplin and _____, and by the building of the Aragon Ballroom made internationally known by Genny Goodman and Paul Whitman. But Uptown did not have the stock _____ to become complacent about its accomplishment. The market crash of 1929 brought this period to an end and ushered in a yet more challenging 40 years

The world wide economic depression brought a new wave of migration to the cities. From all parts of the nation and all nations of the earth they came, and Uptown engaged in one of its greatest experiments--to mold a truly cosmopolitan community, to engage its people in a new urban style, to provide for its human needs in the midst of the almost overwhelming complexity of modern urban living. And Uptown responded to this challenge. Luxurious homes were subdivided to provide shelter, businesses adapted to a new complexity of consumer needs, and a welcome war provided for the uprooted and the forgotten peoples of the world. Multiple social service agencies appeared, to deal with all the urban problems confronting youth and elders alike. A long range comprehensive community plan was initiated by the community itself. Uptown has become a community in which people of all ages and all races dwell, experimenting together in the new forms of urban settlement for the future, the global community where multiple styles of economic, political and cultural life are ~~the~~ orchestrated into one symphony of urban life.

~~Universal~~

UNIVERSAL CARE

Social Agencies

As long as men form social agencies to alleviate human suffering, despite the evident despair and cynicism that so often abounds in urban communities, the Spirit of Universal Care abounds although sometimes reduced and ineffective for want of adequate community agencies.

Groups Uptown is unique in the spread of such agencies and ways will be considered to pioneer urban situation in this form of care, political parties. The more is there lack of community groups from _____ to those that frequent bars, more often in ethnic context.

All-Ages Groups are also manifest in the community and large through all the phases. Care is ~~the~~ evident in the active life of the elder groups in the Elder Homes, the elders comprising about 25% of the total population. Though the largest portion of the community is in the elder segment, young people and young adults are also evident on the streets and in Lincoln Park and demonstrate the community is inclusive of all ages.

Authentic Engagement

Humanitarian concern is not dead (_____ are the people despite the handicaps they suffer. The demand now is to provide them with the means to free the potential in universal care to _____ and bear fruit of full human life for all.

Authentic Engagement (cont)

Humanitarian care is not dead, nor is there lack of spirituality, despite the inadequate structure that exist. The need now is to liberate the latent yet evident potential in universal care to that full humanness may flourish.

RADICAL INTEGRITY

Another existing reality about Uptown is the continuing interests of the business leaders of the community. The miracle story here is the Uptown Chicago Commission that was created as a continuation of a committee which had been forced to get oo-street parking for Uptown from the city. At the time the Commission was found (1955), there were no other agencies in Uptown takking the problems of housing, education and human relations. This Commission, formed out of a vision of radical concern for Uptown, was intially responsible for bringing in services for youth, health, senior citizens, welfare, Urban Renewal, etc.

The springing up of block clubs across the community is also a sign of increasing citizen concern and participation in the problems of Uptown.

The numerous temporary employment centers peppered throughout Uptown, while at the most are, an immediate solution for a long range contradiction and at least a quick source of income for the unemployed, nevertheless, are pointing Uptown in the direction of an authentic arena of community struggle for the future--that of the arena of authentic vocation for the vast diverse population.

Up

Uptown is now at the point ot having to live with the tensions of a complex urban existence, which have the possibility of being the great creative tensions that build for the future.

AUTHENTIC FULFILLMENT

Uptown has always been the symbol of future signalling the trends of global urbanization, and the accompanying values born out of living in the midst of the complex urban realities that have collapsed other urban centers. Virtually all its businesses are multi-lingual, speaking up to 27 different languages to accommodate the wealth of the culture's heritages manifest in this excitingly "Global Community."

The rich history of Uptown symbolized by the Aragon Ba-lroom and Lincoln Park leaves a legacy of creative turns in the vital areas of community life that will clearly carry far into the future. It continues to be a focal point for the emergence of the trends, symbols, and stories for what it means to be a community demonstrating the form of effective, creative community life if in a world where the complexities seem overwhelming.

Uptown is a good community in which to live. Its destiny is to create for all men what it means to live in an urban world, honoring the gifts of every culture, and giving form to the emerging new world.

DESTINY - GLOBAL SIGN

Uptown has always played the role of incubator that hatches the future. Now with the rebirth of human resurgence, Uptown again stands at a pivotal point in the Civilizing Process as the site of catalytic sign of possibility in urban living.

Uptown's unique situation as a cosmopolitan, urban, complex that ser-es as the home for every tribe and clan of human kind, where man and women of every nation have struggled and are struggling now as one unified community to create a human world is the fortelling of the future of every urban reality and its greatest gift.

Uptown has burst on to the stage of history, as a living challenge to every local man to respond to the call of the spirit of resurgence, to adopt the mantle of authentic community realism and to march as the army that will rebuild the earth.

RAW HISTORICAL DATA.

1 The community of Uptown includes several older neighborhoods which were once the northern part of the township and later the city of Lake View. When the township of Lake View was organized in 1857, this area was almost completely prairie, forest, or swampy wasteland. There was a small settlement just to the southeast of this territory.

2 There were two railroads in the territory, the Chicago and Milwaukee along the lake shore, and the predecessor of the Chicago and Northwestern along what is now the western boundary. The earliest settlements were along the latter route which was laid out along a ridge of higher land. The land to the east of this ridge was for the most part swamp and marsh and, therefore, its subdivision came later. An exception was the southeastern corner of the community where, in the late 1860's, some large homes were built in the vicinity of the newly-erected Marine Hospital.

3 The two decades, 1870-1890, were years of relatively substantial growth for Uptown. The community settlers were predominantly German or of German descent, although they included an increasing number of Swedes. They lived in modest frame cottages or farmhouses, although there were more elaborate residences in the community belonging to wealthy Chicagoans who sought a suburban life reasonably close to the city. In 1889, Uptown became part of Chicago when the city of Lake View elected to be annexed.

4 The decades between 1890-1920 witnessed the most rapid growth of the community, primarily as a result of improvement in transportation facilities. By 1920, the Swedes were the dominant foreign-born group, although there were still many Germans and persons of German descent in the community. Many Germans and Irish, or those of German or Irish descent, moved into Uptown from older residential areas in Chicago which were being occupied by newer nationality groups such as the Italians, Poles, and Russians (Jews).

5 By 1919, Uptown had reached residential maturity. Its growth, however, was not experienced uniformly throughout the community. The older area west of Clark Street, a section chiefly of single-family, one-, or two-story frame homes, developed gradually but steadily. It was in the area east of Clark Street, however, that the greatest strides were made in residential and commercial development during the period between 1890 and 1920. The installation of new transit lines such as the Lawrence Avenue car line, the extension of others, such as the Broadway Avenue and Clark Street lines, and the extension in 1900 of the Northwestern elevated line to Wilson Avenue, fostered this growth. In the southern part of the community, apartment houses, apartment hotels, and hotels sprang up alongside of the old frame and stone homes. The development of transit facilities along with the development of the Wilson Avenue and Clarendon Avenue beaches, were the initial factors in determining the residential, commercial, and recreational characteristics of the area. A rapid increase in land values checked the construction of residences in the section east of Clark Street and promoted instead the erection of multiple-apartment buildings, apartment hotels, and hotels. The desirability of location and the excellent transportation facilities attracted many young single people or young married couples to this section. As a result, some of the older residences were converted into rooming houses, a practice which gathered momentum in the ensuing decades.

6 Development of the central and northern parts of the community east of Clark Street between 1890 and 1920 was also a result of these transit improvements. Settlements which had already begun at stops along the Chicago and Milwaukee line continued to grow. The first extensive subdivision was begun about 1900 in census tract 34. Shortly thereafter, additions were laid out west of Clark Street and east to the

lakefront. This area constituted the nucleus of modern Edgewater. More intensive development came with the extension of the elevated line to Howard Street in 1907.

7 The Edgewater area experienced a tremendous increase in population after the turn of the century. German and Irish elements moved from older residential areas into Edgewater. Before World War I, as Italians began to settle on the Near North Side, a large number of Swedes moved into Edgewater from their Oak Street settlement.

8 During the 1920's, the population of Uptown continued to increase, but more slowly. The area west of Clark Street was inhabited chiefly by Germans and Swedes or those of German or Swedish descent. The predominant foreign-born group in Edgewater was the Swedes, but there were considerable Germans and Irish. The Russian Jews and those of Russian Jewish descent continued to move into the community from the West Side. In the 1920's, there was a northward movement of Greeks, some of whom settled in the northeastern part of Uptown. The small Negro population was concentrated in census tract 23. This settlement probably started when the Uptown area was one of single-family homes of wealthy people who had Negro servants.

9 The area west of Clark Street remained predominantly residential, except for the industrial concentration along Ravenswood Avenue. This industrial zone continued to develop, with more modern type factories being constructed. The tendency of this time, however, was to tear down the older homes and small apartment buildings and erect new multiple-apartment buildings, apartment hotels, and hotels. East of Clark Street, apartment buildings were rapidly replacing single-family residences.

10 From 1930 to 1950, the population of Uptown increased slowly and during the 1950-60 decade it actually declined for the first time. There has been little residential construction in recent decades—only 6 per cent of the 1960 housing units were in structures built since 1940. What little new construction there has been was concentrated in the southern part of the community and along the lake shore. Recent construction has been primarily multiple-family structures so that by 1960 71 percent of the housing units were in structures containing 10 or more units. Conversion of larger apartments and residences into smaller apartments and rooming houses has apparently continued, for Uptown had the second largest number of authorized conversions in the city during the 1950's. The vacancy rate in 1960 of 11 percent is unusually high.

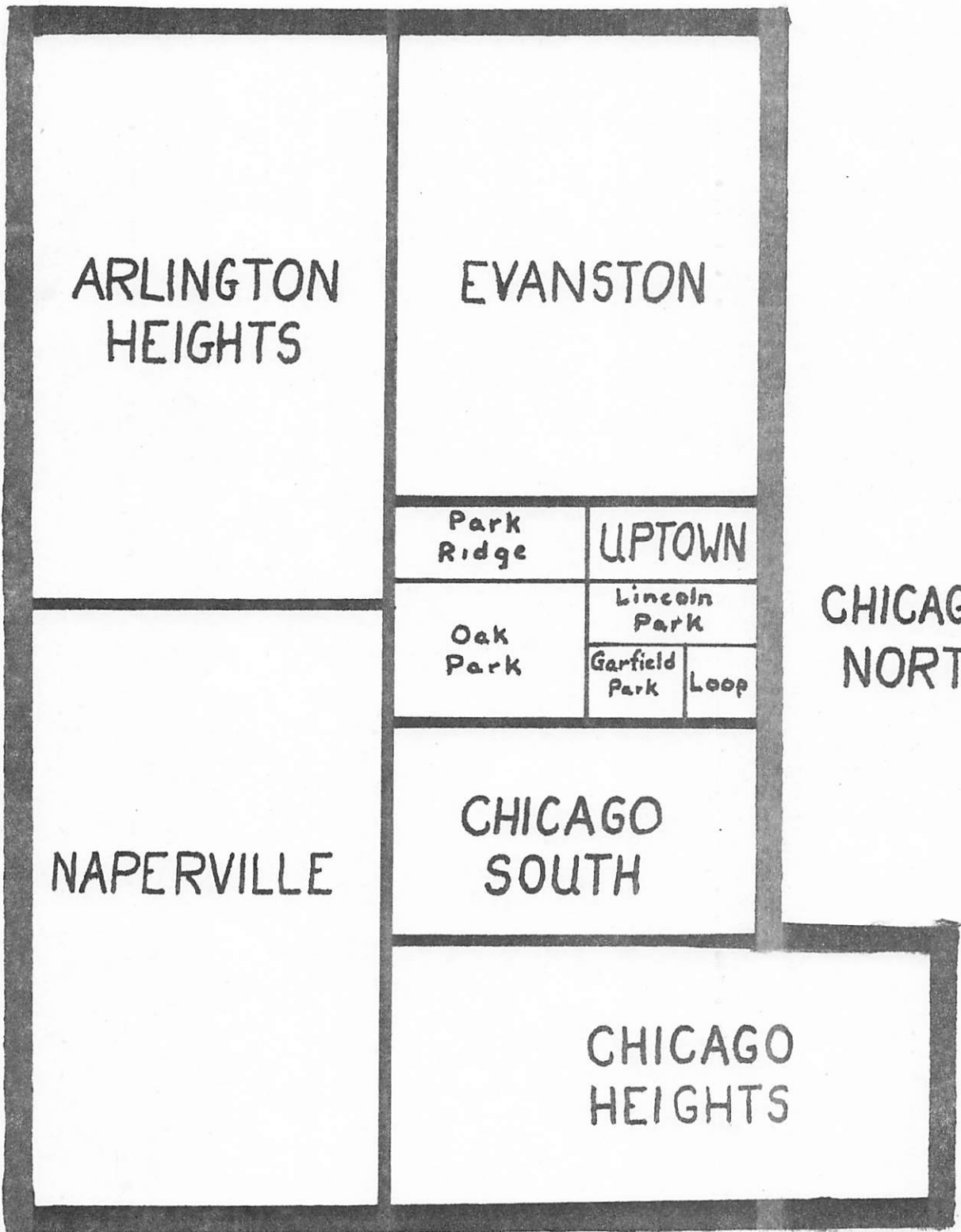
11 The leading nationalities among the foreign stock in 1960 were Germans, Russians (Jews), Swedes, and Irish. The Negro community has remained relatively stationary. A significant development since 1945 has been the increasing number of Japanese-Americans in the Uptown community until in 1960 more than one-third of the Japanese in the city lived in the Uptown community. There also appears to have been some influx of Southern whites since 1950.

12 In 1958, the Community Conservation Board of Chicago delineated the "East Ravenswood" urban renewal area which included census tracts 18 and 29 in the Uptown community. In 1962, the program for the area was being developed.

13 Uptown's industrial plants, which are relatively few in number, are concentrated along Ravenswood Avenue, although a few have been constructed, since 1940, along the elevated tracks and east of Broadway. The Uptown community also includes a Major Retail Center in the southern part of the community, which includes the stores on Broadway from Gunnison Street to Sunnyside Avenue and on Wilson Avenue from Sheridan Road to Broadway.

CHICAGO METRO

7



ARLINGTON
HEIGHTS

EVANSTON

Park
Ridge

UPTOWN

Lincoln
Park

Oak
Park

Garfield
Park

Loop

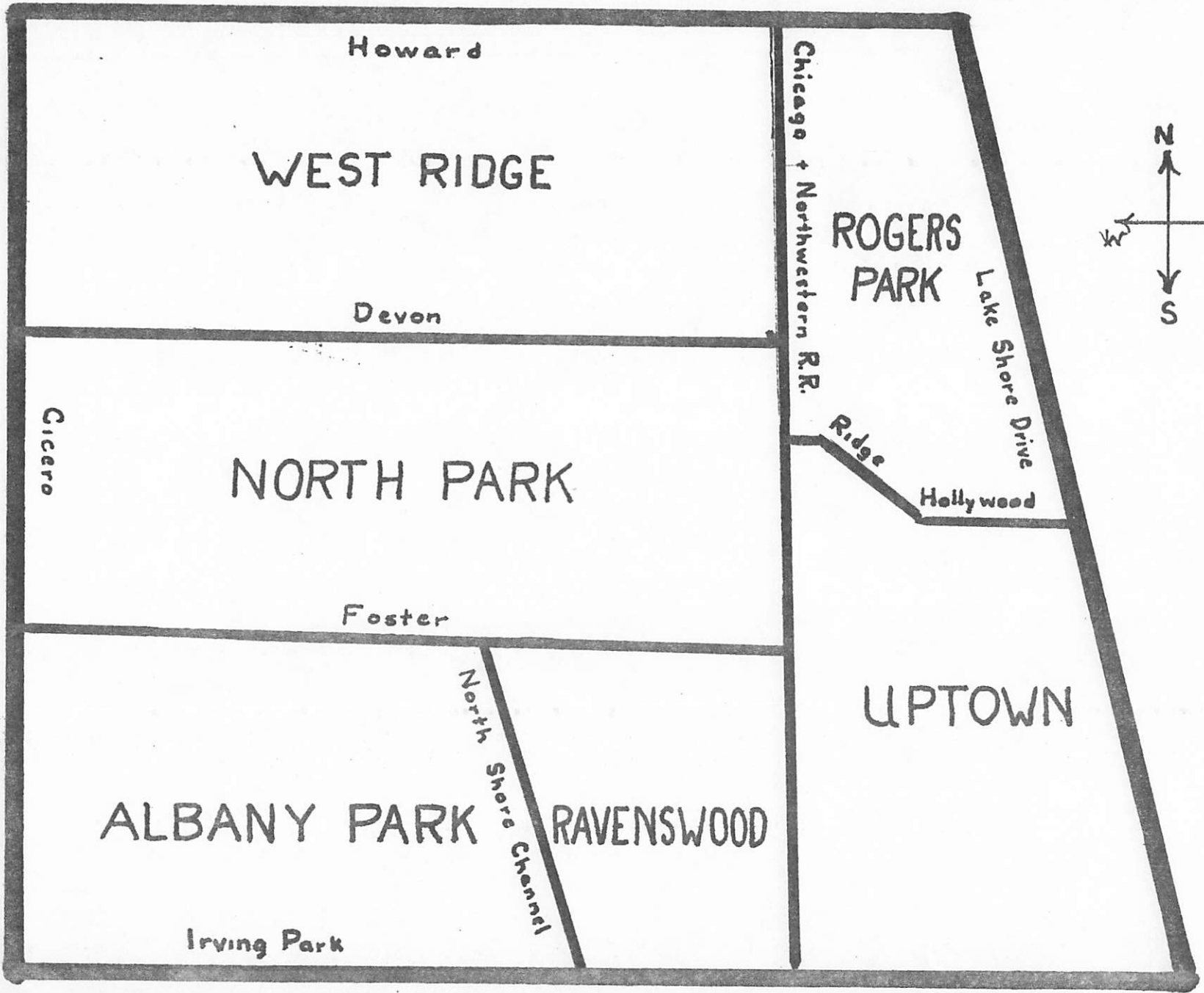
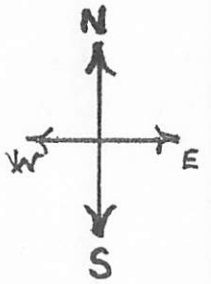
CHICAGO
NORTH

NAPERVILLE

CHICAGO
SOUTH

CHICAGO
HEIGHTS

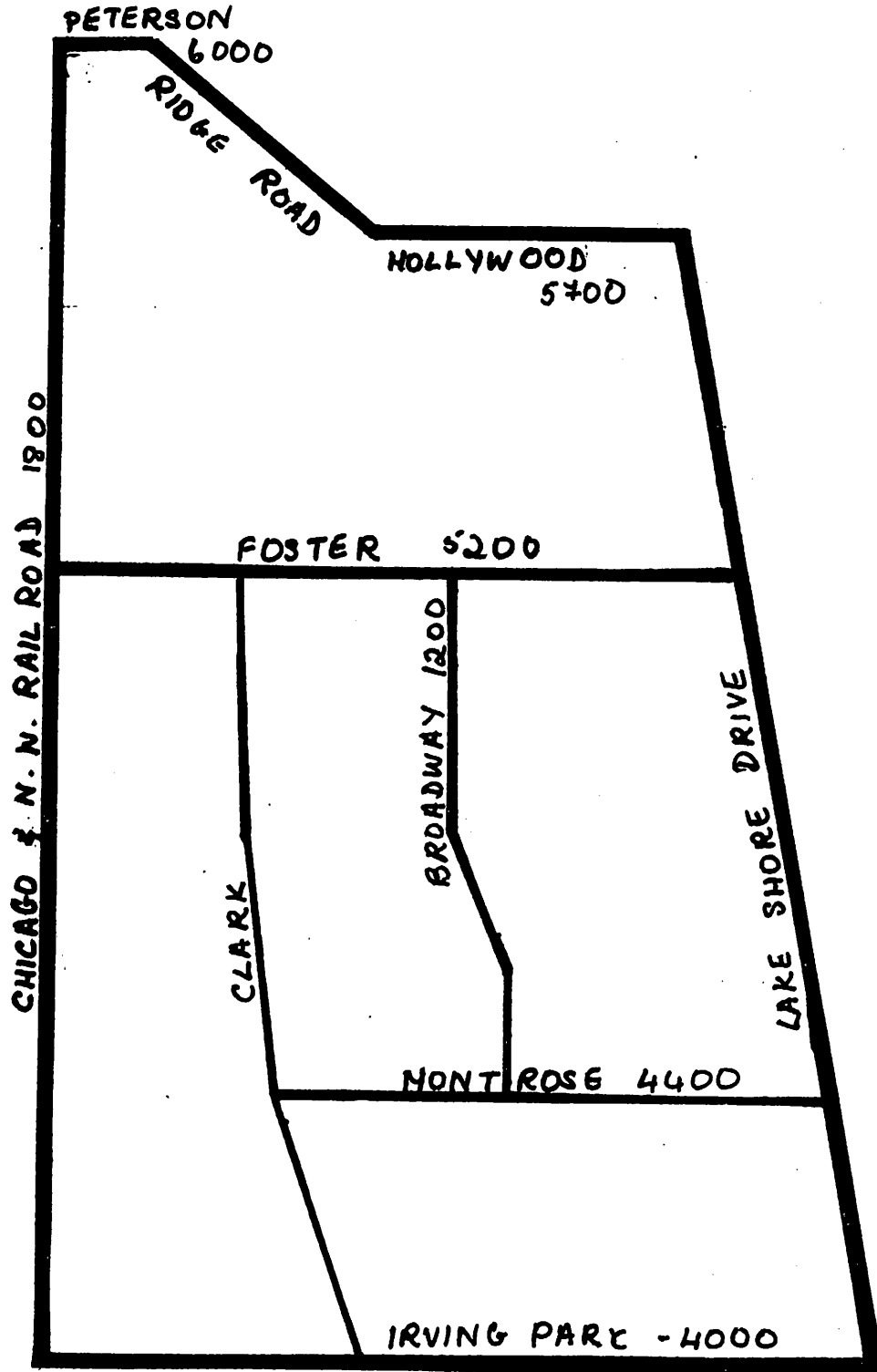
UPTOWN MICRO



7/1/23

UPTOWN PARISH

June 30 '73 11



13
UPTOWN 5
PROTOPARISH

Photo map with
an overlay of
the grid

June 30, 48



STA.

STAC.

W WYONA AV
W ARMEN AV
W A GYLE ST
W MARGATE TER
W ANSLIE ST
W CASTLEWOOD TER
W GUNNISON ST
W LAKESIDE PL
W LELAND AV
W EASTWOOD AV
W WINDSOR AV
W SUNNYSIDE AV
W AGATITE AV

MARINE DRIVE

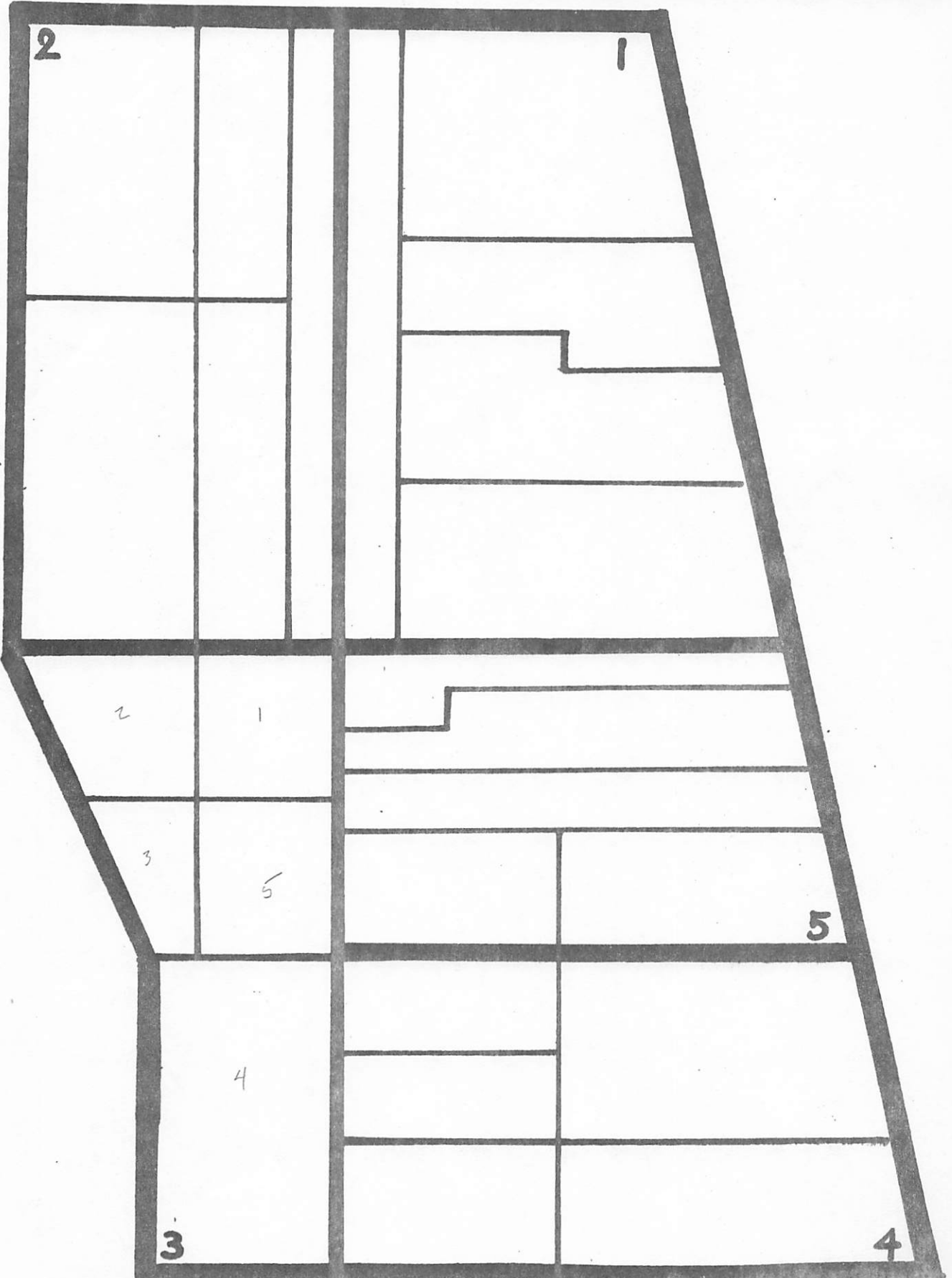
N RACINE AV

N CLIFTON AV

HAZEL AV

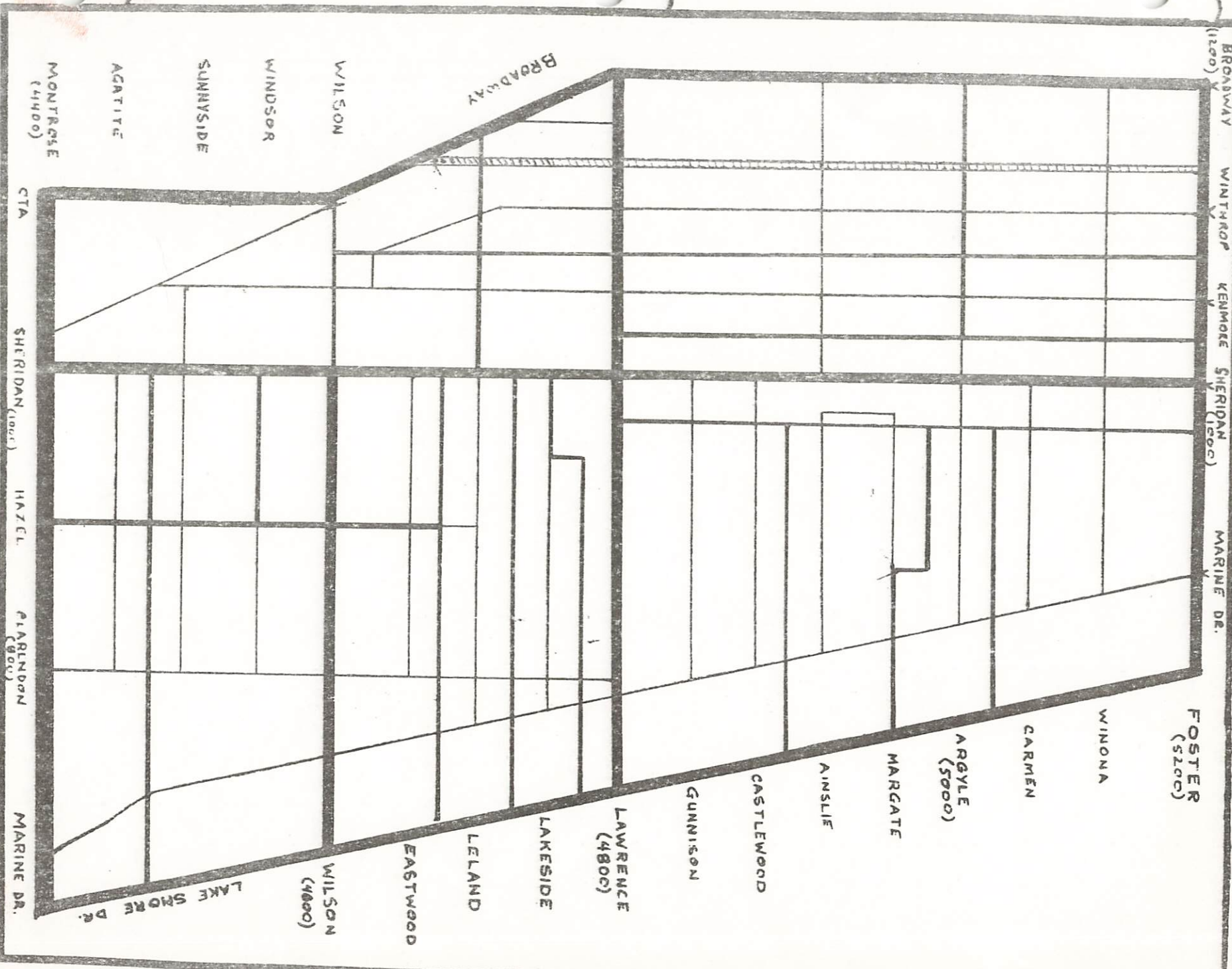
N

UPTOWN 5 GRID BY WARDS & STAKES¹⁵



6/22/73

UPTOWN 5 -- STREETS WITH WARDS & STAKES



UPTOWN 5

TOTAL POPULATION BY WARDS 19

②

6728

①

7819

TOTAL Pop
28,393

③

2823

⑤

6079

④

4944

6/23/73

UPTOWN 5 - TOTAL POPULATION by BLOCKS²¹

BROADWAY (200)	WINTHROP	KENMORE	SHERIDAN (1000)	MARINE DR.	FOSTER (5200)	(1970 Census)
9	51	527	368	842		
				663	WINONA	
46	64	768	926	1978	CARMEN	
				1668	ARGYLE (5000)	
104	270	468	624	853	MARGATE	0
				422	AINSLIE	
10	525	565	833	320	CASTLEWOOD	
				1073	GUNNISON	
				1943	LAWRENCE (4800)	
2	3	283	481	254	LAKESIDE	0
				1191		0
		224		639	LELAND	0
		248	497	672	EASTWOOD	0
				1124	510	0
WILSON				901	264	WILSON (4800)
	15	399		698	863	
WINDSOR				549	532	104
SUNNYSIDE		0	417	567	466	0
AGATITE						
MONTROSE (4400)						

6/23/73

CTA

SHERIDAN (1000)

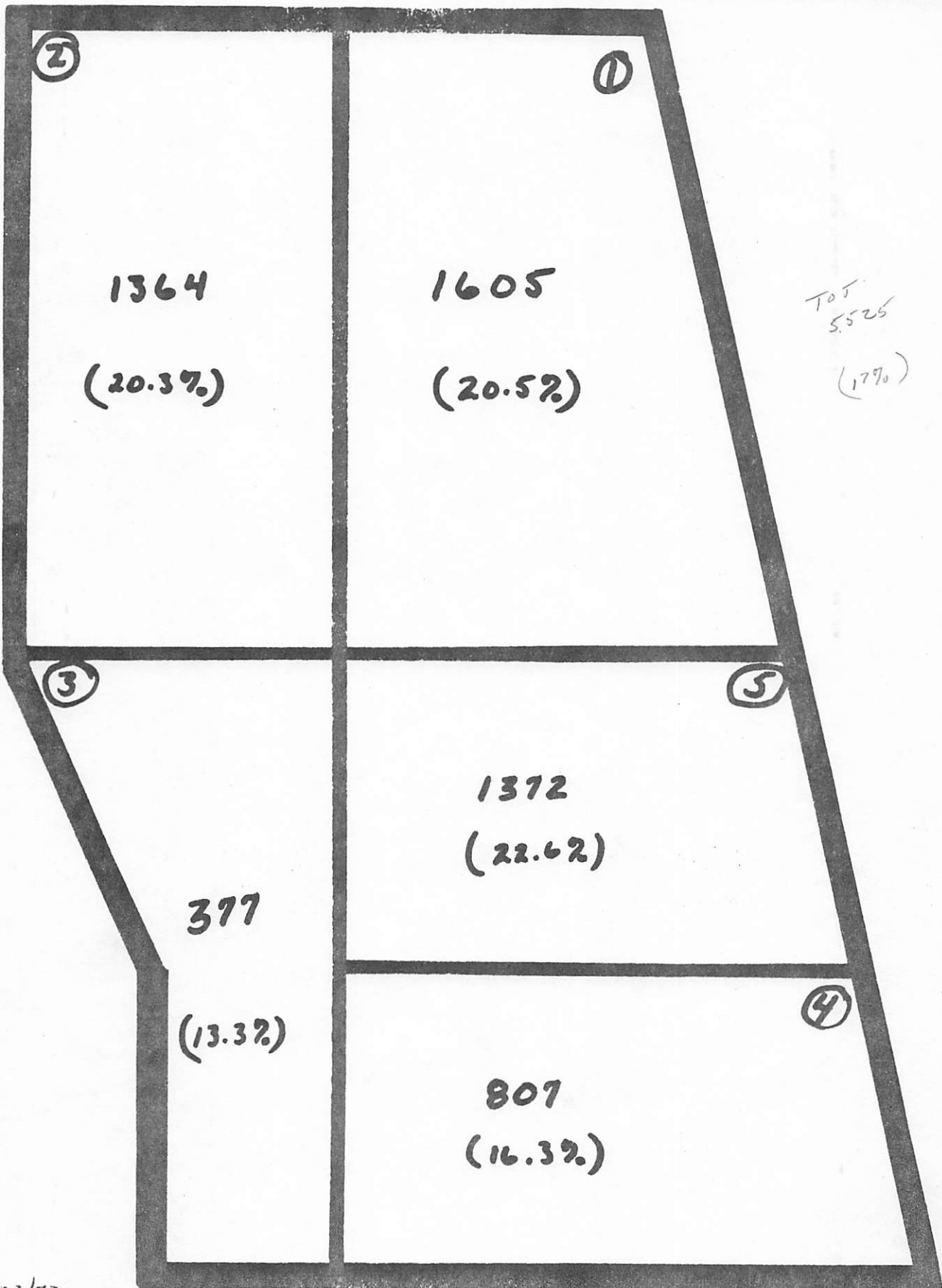
HAZEL

PIARENDON
(800)

MARINE DR.

LAKE SHORE DR.

UPTOWN 5 : POPULATION OF PERSONS AGED 62+ BY WARDS



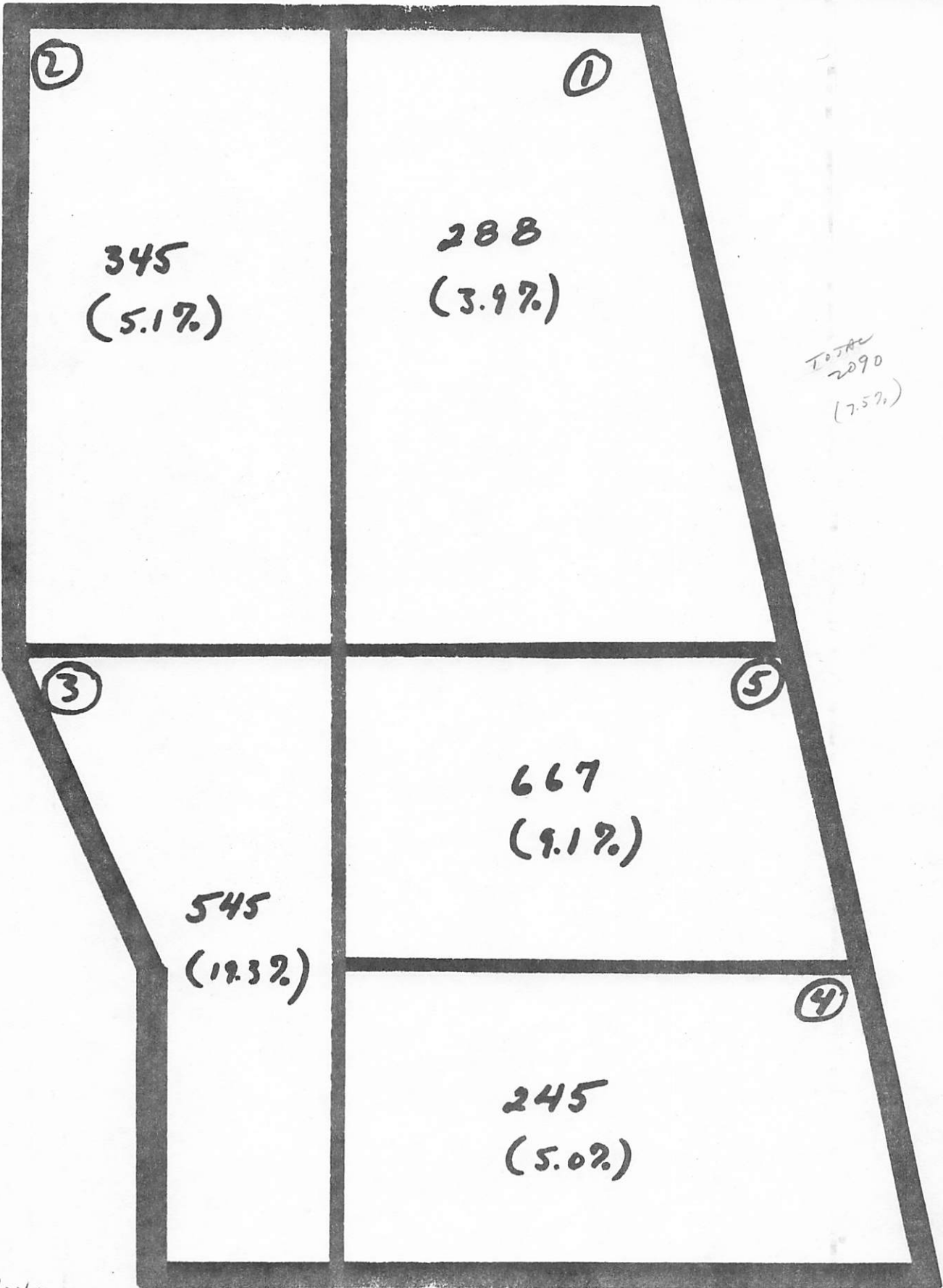
TOT
5,525
(17%)

UPTOWN 5 - Population Over Age 62 by Blocks (1970 ²⁵ Cen.)

BROADWAY (1200)	WINTHROP	KENMORE	SHERIDAN (1000)	MARINE DR.			
5	2	16	77	235	FOSTER (5200)		
18	135	246	222	126	WINONA		
				416	CARMEN		
20	67	70	69	184	ARGYLE (5000)		
				196	MARGATE		
				76	AINSLIE		
0	37	57	324	115	CASTLEWOOD		
				257	GUNNISON		
-	-	37	94	30	175	LAWRENCE (4800)	
					0	LAKESIDE	
				143	0	LELAND	
	35	29	55	313	40	0	EASTWOOD
				650	51		
WILSON				208	42	WILSON (4800)	
WINDSOR		6	60	42	104		
SUNNYSIDE				77	69	61	
AGATITE	0		29	148	56		
MONTROSE (4400)							
	CTA	SHERIDAN (1000)	HAZEL	FLARNDON (800)	MARINE DR.	LAKE SHORE DR.	

UPTOWN 5

BLACK POPULATION by WARDS (1970)



6/23/73

UPTOWN 5 - BLACK POPULATION by BLOCKS²⁹

BROADWAY (200)	WINTHROP	KENMORE	SHERIDAN (1000)	MARINE DR.	FOSTER (5200)	(1970 Census)
0	34	32	33	8	WINONA	
0	18	69	19	7	CARMEN	
				99	ARGYLE (5000)	
0	6	14	12	17	MARGATE	
				17	AINSLIE	
0	58	17	33	0	CASTLEWOOD	
				0	GUNNISON	
				140	LAWRENCE (4800)	
0	1	116	120	5	292	LAKESIDE
					60	LELAND
	69	106	79	13	242	EASTWOOD
				45	15	WILSON (4000)
WILSON		0	24	108	37	
WINDSOR				21	43	
SUNNYSIDE				11	5	
AGATITE		0	25	6	14	
MONTROSE (4400)						

6/23/73

CTA SHERIDAN (1000) HAZEL CLARENDON (800) MARINE DR.

UPTOWN 5 - Average Monthly Rent (1970 Census)

Street	Block	Area	Population	Avg Monthly Rent
BROADWAY	122	115	106	\$ 143
BROADWAY	128	82	114	\$ 181
BROADWAY	127	88	80	\$ 125
BROADWAY	121	102	99	\$ 128
BROADWAY	89	102	86	\$ 144
BROADWAY	103	114	103	\$ 144
BROADWAY	103	114	103	\$ 127
BROADWAY	103	114	103	\$ 105
BROADWAY	103	114	103	\$ 68
BROADWAY	103	114	103	\$ 128
BROADWAY	103	114	103	\$ 132
BROADWAY	103	114	103	\$ 99
BROADWAY	103	114	103	\$ 112
BROADWAY	103	114	103	\$ 106
BROADWAY	103	114	103	\$ 117
WILSON	4000	-	-	\$ 113
WINDSOR	-	-	-	\$ 99
SUNNYSIDE	-	-	-	\$ 110
AGATITE	-	-	-	\$ 113
MONTRÖSE	4400	-	-	\$ 113

FOSTER (5200)

WINONA

CARMEN

ARGYLE (5000)

MARGATE

AINSLIE

CASTLEWOOD

GUNNISON

LAWRENCE (4800)

LAKESIDE

LELAND

EASTWOOD

WILSON (4000)

LAKE SHORE DR.

MONTRÖSE (4400)

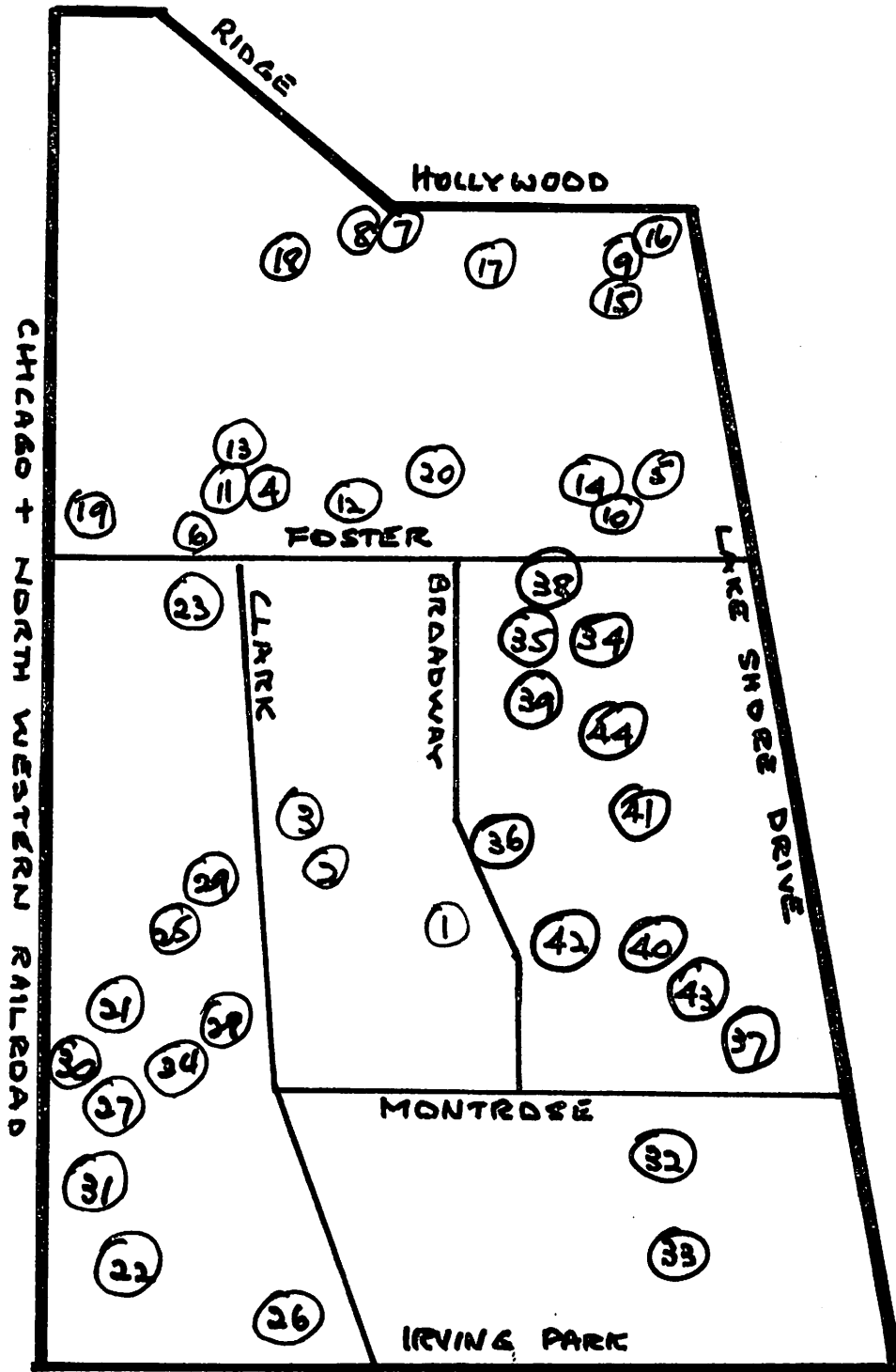
CTA

SHERIDAN (1000)

HAZEL

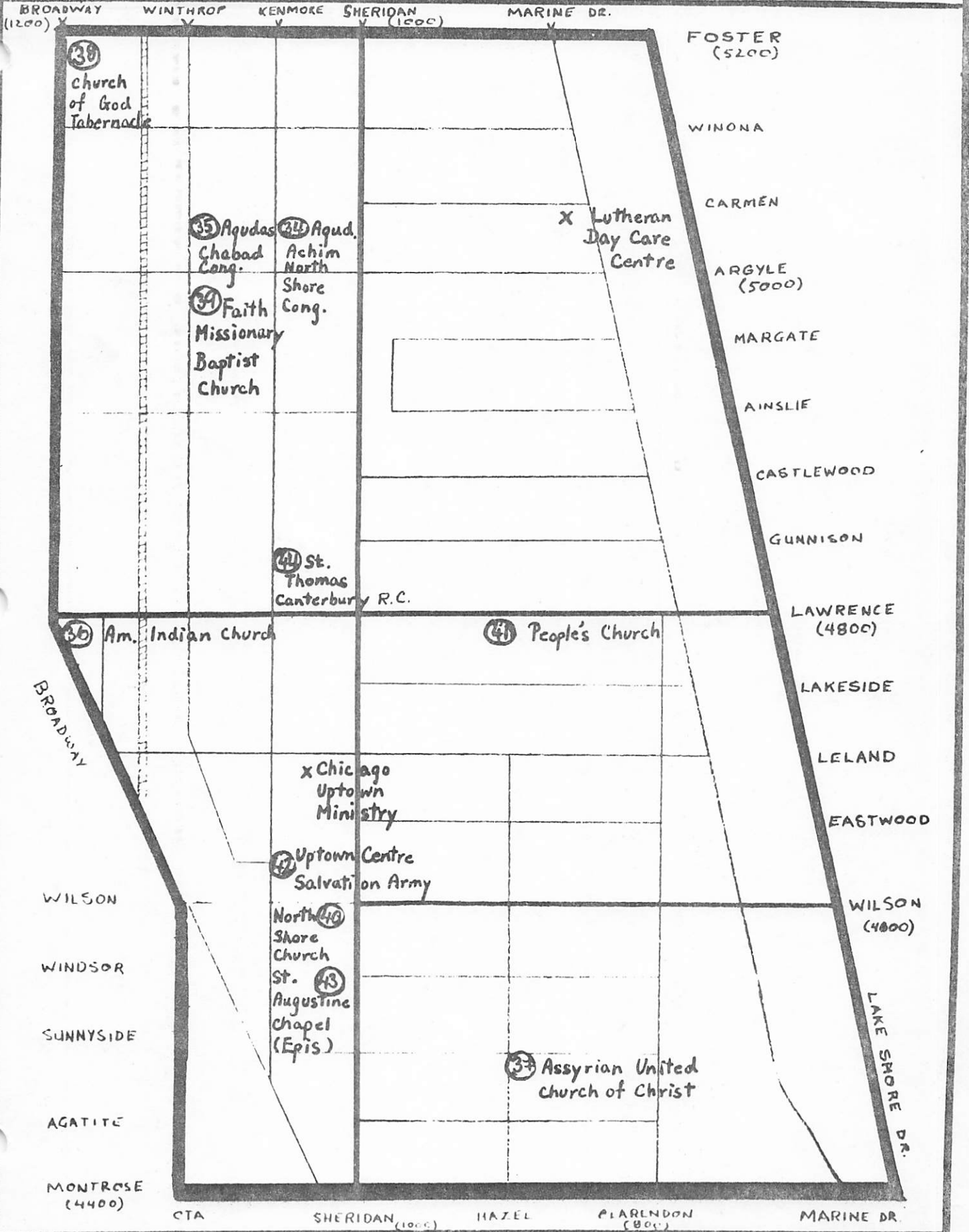
PLAHLNDON (900)

MARINE DR.



UPTOWN 5 - LOCAL CHURCHES

35



33 Church of God Tabernacle

35 Agudas Chabad Cong.

34 Faith Missionary Baptist Church

34 Agud. Achim North Shore Cong.

41 St. Thomas Canterbury R.C.

41 Am. Indian Church

41 People's Church

x Chicago Uptown Ministry

42 Uptown Centre Salvation Army

North Shore Church St. 43 Augustine Chapel (Epis)

37 Assyrian United Church of Christ

x Lutheran Day Care Centre

FOSTER (5200)

WINONA

CARMEN

ARGYLE (5000)

MARGATE

AINSLIE

CASTLEWOOD

GUNNISON

LAWRENCE (4800)

LAKESIDE

LELAND

EASTWOOD

WILSON (4000)

LAKE SHORE DR.

BROADWAY (1200)

WINTHROP

KENMORE

SHERIDAN (1000)

MARINE DR.

BROADWAY

WILSON

WINDSOR

SUNNYSIDE

AGATITE

MONTROSE (4400)

CTA

SHERIDAN (1000)

HAZEL

FLARENDON (800)

MARINE DR.

CHURCHES IN UPTOWN PARISHFOR INTERNAL USE ³⁷
ONLY

June 30, 1973

	CHURCH	ADDRESS	ADDITIONAL INFORMATION	PRO PAR
1	BUDDHIST TEMPLE OF CHICAGO	1151 Leland 334-4661	Buddhist Rev. G. Savio	1
2	KOREAN PRESBYTERIAN CHURCH	4738 North Beacon	Presbyterian	1
3	ST. JOHN'S ASSYRIAN AMERICAN APOSTOLIC CHURCH	1421 West Lawrence	Apostolic Christian	1
4	ANDERSONVILLE CORPS	1473 West Berwyn LO 1-1048	Salvation Army	2
5	ARMENIAN CONGREGATION U.C.C. CHURCH	5430 North Sheridan 334-2962	United Church of Christ Rev. Garabet Tilikian	2
6	EBENEZER LUTHERAN CHURCH	1650 West Foster LO-1-8496	Lutheran Church in America	2
7	EDGEWATER BAPTIST CHURCH	1401 West Hollywood 784-3040 784-3092	Baptist Rev. Thurlow Axley	2
8	EDGEWATER MISSION COVENANT CHURCH	5610 North Glenwood ED 4-9656	Evangelical Covenant Rev. W. D. Morris Rev. Veril Peterson (lesser)	2
9	EDGEWATER PRESBYTERIAN CHURCH	1020 West Bryn Mawr LO 1-4748 LO 1-4749	Rev. Robert Linthecomb (<i>plan pillar - Exec. Dir. of consortium</i>).	2
10	EPWORTH UNITED METHODIST CHURCH	5253 North Kenmore 561-6422	Methodist Rev. Seymour Halford	2
11	FIRST EVANGELICAL FREE CHURCH	5255 North Ashland LO 1-4175	Evangelical Free Church Rev. Arley L. Bragg	2
12	NORTH SHORE BAPTIST CHURCH	5244 North Lakewood RA 8-4200	Baptist Dr. William R. Meyers	2
13	PHILADELPHIA CHURCH	5437 North Clark RA 8-5106	Assembly of God Rev. Robert J. Anderson	2
14	SEVENTH CHURCH OF CHRIST	5318 North Kenmore LO 1-2834	Christian Science	2
15	SEVENTH CHURCH READING ROOM	1110 Bryn Mawr Avenue	Christian Science	2

CHURCHES IN UPTOWN PARISH

FOR INTERNAL USE

ONLY

June 30, 1973

Page 2

	CHURCH	ADDRESS	ADDITIONAL INFORMATION	PRO PAR
16	ST. ANDREW'S GREEK ORTHODOX	5649 No. Sheridan ED 4-3661	Greek Orthodox Rev. John Hondras, pstr.	2
17	ST. ITA	5500 North Broadway LO 1-5343	Roman Catholic Msgr. Girard C. Picard	2
18	ST. GREGORY	1634 Gregory LO 1-3546	Roman Catholic Rev. Edward Baseheart	2
19	SUMMERDALE COMMUNITY	1700 West Farragut 561-5755	United Church of Christ Rev. Richard Vought	2
20	UNITY CHURCH LUTHERAN	5409 North Magnolia UP 8-4747	Lutheran Rev. David Mattson	2
21	ALL SAINTS CHURCH	4556 North Hermitage LO 1-0111	Episcopal Rev. Father Burden	3
22	BETHANY UNITED CHURCH OF CHRIST	4242 North Paulina GR 2-0729	United Church of Christ Rev. Henry F. Baumgertel	3
23	BETHANY UNITED METHODIST CHURCH	5030 North Ashland LO 1-5135	Methodist Rev. John Hudson	3
24	FIRST CONGREGATIONAL CHURCH	1718 Montrose	United Church of Christ Rev. Wilfred Hansen	3
25	FOURTEENTH CHURCH OF CHRISTIAN SCIENCE	1713 West Sunnyside LO1-2190	Christian Science Chairman: Jacobsen Magnus	3
26	LAKESHORE BAPTIST CHURCH	4100 North Greenview 784-7052	Baptist Rev. Max Canon	3
27	NORTH SHORE SPANISH BAPTIST CHURCH	4401 North Hermitage 784-7052	Baptist Rev. Ignacio Lopez	3
28	NORTH SIDE CHRISTIAN CHURCH	1507 West Sunnyside LO 1-4368	Disciples of Christ	3
29	OUR LADY OF LOURDES	4640 North Ashland LO 1-2141	Roman Catholic Father Thomas Goldrick Father McCue	3
30	RAVENSWOOD UNITED METHODIST	4511 North Hermitage LO 1-2610	United Methodist Rev. Brooks Parker	3

CHURCHES IN UPTOWN PARISH

#	CHURCH	ADDRESS	ADDITIONAL INFORMATION	PRO PAR
31	RAVENSWOOD PRESBYTERIAN CHURCH	4300 North Hermitage BU 1-8172	Presbyterian Rev. James Peterson, Pastor William Quiceno-Span. Min.	3
32	BUENA MEMORIAL PRESBYTERIAN CHURCH	4301 North Sheridan LA 5-3511	Presbyterian Rev. William Larkin	4
33	ST. MARY OF THE LAKE	4200 North Sheridan GR 2-3711	Roman Catholic Rev. John H. Kuhlney	4
34	AGUDAS ACHIM NORTH SHORE CONGREGATION	5029 North Kenmore LO 1-0435	Jewish Traditional Rabbi Lifschultz	5
35	AGUDAS CHABAD CONGREGATION	5041 North Winthrop 334-0112	Jewish Orthodox Rabbi Leef	5
36	AMERICAN INDIAN CHURCH	4753 North Broadway 275-0619	Fundamentalist	5
37	ASSYRIAN UNITED CHURCH OF CHRIST	4447 North Hazel 561-6585	United Church of Christ Rev. Samuel Peters	5
38	CHURCH OF GOD TABERNACLE	5145 North Broadway 738-1893		5
39	FAITH M. B. CHURCH	4947 North Winthrop	Rev. Toney	5
40	NORTH SHORE CHURCH	1011 Wilson 784-2823	Fundamentalist Rev. Earnest Green	5
41	PEOPLE'S CHURCH	941 West Lawrence 784-6633	Unitarian Dr. Preston Bradley	5
42	SALVATION ARMY UPTOWN CENTER	1028 West Wilson 334-5387	Salvation Army Capt. Dalburg	5
43	ST. AUGUSTINE CHAPEL	4512 North Sheridan 784-1050	Episcopal-American Indian Fr. Peter Powell	5
44	ST. THOMAS OF CANTERBURY CHURCH	4827 North Kenmore 878-5507	Roman Catholic Fr. Millea Fr. Pelca	5

UPTOWN PARISH GRID - POLITICAL WARD⁴³

RU22
6/22/72

Petersen
6000

RIDGE
RD.

Hollywood - 5700

40

48

Foster

47

CHICAGO
T.M.
R.
R.
1800

CLARK

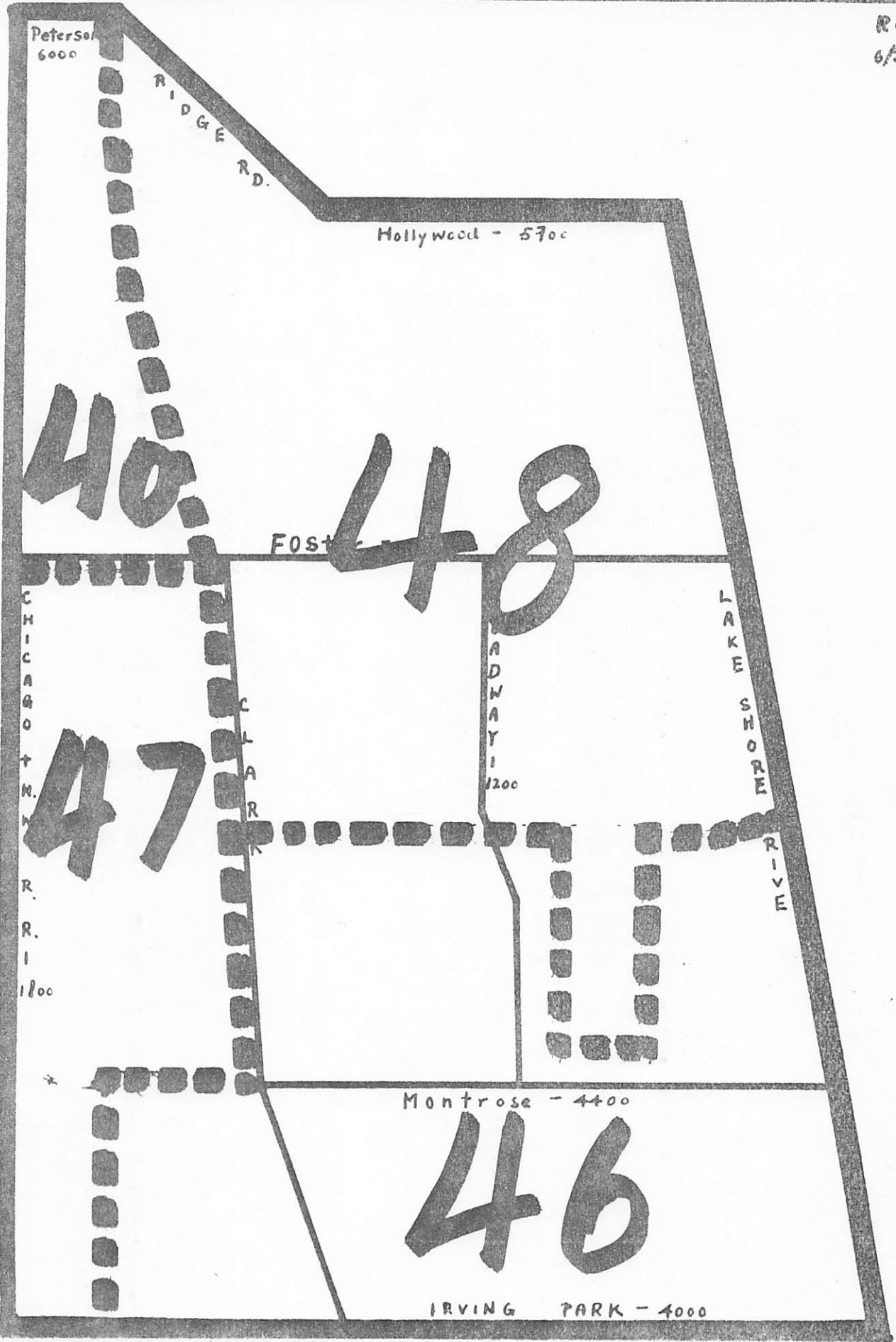
ADWAY
1200

LAKE
SHORE
RIVE

Montrose - 4400

46

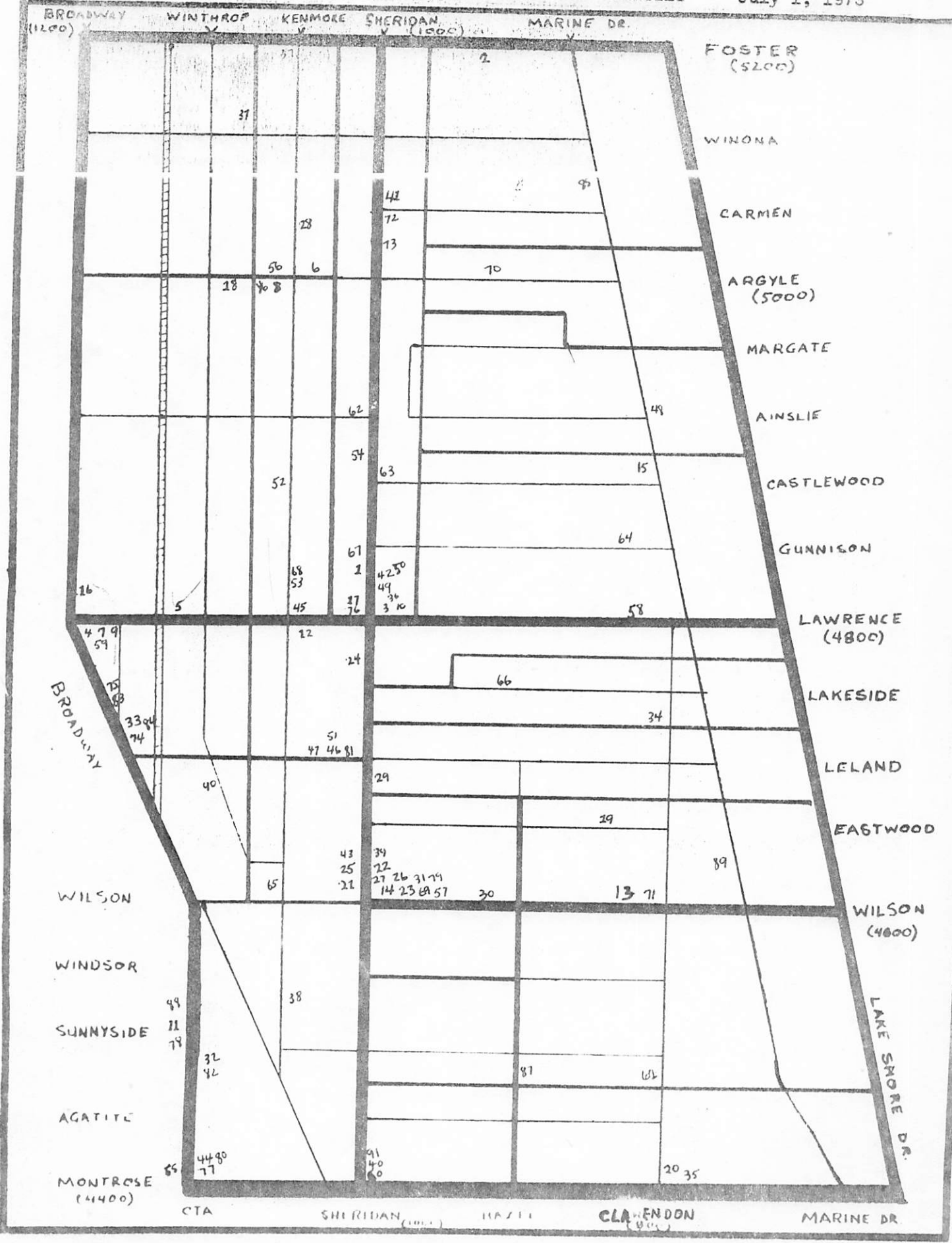
IRVING PARK - 4000



UPTOWN 5 - SOCIAL STRUCTURES AND AGENCIES

July 1, 1973

40



UPTOWN FIVE SOCIAL AGENCIES - ALPHABETICAL LISTING

June 23, 1973

Ru21
P1

1. ATA Family Counseling Center - 4828 Sheridan - Ward 2
2. The Admiral (elders) - 909 Foster - Ward 1
3. Alcoholics Anonymous - meets at People's Church - Ward 5
4. American Indian Church Inc. - 4753 Broadway, Room 1027 - Ward 3
5. Aragon Ballroom - 1000 block of Lawrence - Ward 2
6. Argyle Clinic - 1018 Argyle - Ward 2
7. Association Medical Murphy, Uptown Clinical Lab., Inc. - 4753 B'way, rm 1118 - Wd 3
8. Bargain Resale Shop for Cerebral Palsy Children - 1027 Argyle - Ward 2
9. A Better Nursing Service - 4753 Broadway, room 1132 - Ward 3
10. Boy Scouts of America - meet at People's Church - Ward 5
11. Broadway-Wilson Medical Center - 4544 Broadway - Ward 3
12. Canterbury House Teen Center - 1035 Lawrence - Ward 3
13. Chelsea House (elders) - 920 Wilson - Ward 4
14. Chicago Flat Janitor's Union - 1046 Wilson, Uptown Professional Building - Ward 3
15. Chicago Lakeshore Hospital - 4840 Marine Drive (private mental) - Ward 1
16. Chicago Motor Club (Northside branch) - 4833 Broadway - Ward 2
17. Chicago School for Retarded Children Thrift Shop - 4816 Sheridan - Ward 2
18. Chinese Society - 1121 Argyle - Ward 2
19. Christopher's House Model Cities CCUO Day Care Center - 850 Eastwood - Ward 5
20. Clarendon Park Community Center - 4501 Clarendon - Ward 4
21. Committee of Us - 4608 Sheridan - Ward 3
22. Community Life Service Center - 4613 Sheridan - Ward 5
23. Council of Mojave, Inc. - 1046 Wilson, Uptown Professional Building - Ward 3
24. The Dance Center (Columbia College of Chicago) - 4730 Sheridan - Ward 3
25. Deaton Universal Crusaders - 4608 Kenmore - Ward 3
26. Department of Mental Health - 1046 Wilson, Uptown Professional Building - Ward 3
27. Division Medical Laboratory - 4609 Sheridan - Ward 5
28. Edgewater Primary School (private, next to Agudas Schim Synagogue) - 5029 Kenmore
Ward 2
29. Edgewater-Uptown Senior Center - 4645 Wheridan - Ward 5
30. Edgewater-Uptown Mental Health Center - 1004 Wilson - Ward 3
31. Ex-convicts United, Inc. - 1046 Wilson, Uptown Professional Building - Ward 3
32. Forty-sixth Ward Public Service Office (Democratic Headquarters) - 4527 Broadway
Ward 3
33. Fourth Force (Uptown Joint Youth Development Center) - 4715 B'way - Ward 3
34. Fox River Hospital (Mental Health) - 4700 Clarendon - Ward 5
35. Frank Cuneo Hospital - 750 W. Montrose - Ward 4
36. Girl Scouts of America - meet at People's Church - Ward 5
37. Goudy School (Main) - 5120 Winthrop - Ward 2
(Branch) - Foster and Kenmore - Ward 2
38. Graeme Stewart School - 4525 Kenmore - Ward 3
39. Grasmere Hotel (convalescent for elders) - 4621 Sheridan - Ward 5
40. Green Dragon Society (Chinese Fighting Arts Assoc.) - 4407 Sheridan - Ward 4
41. Hadassah House - North Resale Shop - 5039 Sheridan - Ward 1
42. Headstart - McCutcheon School, 4865 Sheridan - Ward 1
43. Infant Aid Thrift Shop - 4616 Sheridan - Ward 1
44. Just Jobs - 4429 Broadway - Ward 2
45. Lawrence House (elders) - Lawrence at Kenmore - Ward 2
46. Leland-Kenmore Family Service Center - 1004 Leland - Ward 3
47. Leland-Kenmore Service Center - 1030 Leland - Ward 3
48. Lincoln Park Margate Fieldhouse - 4921 Marine Drive - Ward 1
49. McCormick Boy's Club - 4835 Sheridan - Ward 1
(includes dental clinic and vision clinic)

UPTOWN FIVE SOCIAL AGENCIES - ALPHABETICAL LISTING

June 23, 1973

R421

P.2

50. McCutcheon School (Elementary) - 4865 Sheridan - Ward 1
(Branch) - 4846 Kenmore - Ward 2
51. Mick and Tom Ministry - 1004 Leland - Ward 3
52. Mid-America Convalescent Center - 4920 Kenmore - Ward 2
53. Mid-Uptown Peoples Action Program-4827 Kenmore - Ward 2
54. Mini-college - 4942 Sheridan - Ward 2
55. Montrose-Broadway Medical Center - 4400 Broadway - Ward 3
56. N.C.J.W. Thrift Shop - 1064 Argyle - Ward 2
57. Net and Paddle Club - 1026 Wilson - Ward 3
58. Normandy Terrace Convalescent and Extended Care Facility-820 Lawrence - Ward 1
820 Lawrence - Ward 1
59. Northside "E" Federal Credit Union - 4753 Broadway, room 626 - Ward 3
60. Northeastern Illinois University Uptown People's Center - 4401 Sheridan - Ward 3
61. Pilgrim Child Development and Day Care Institute - 4550 Clarendon - Ward 4
62. Playlot - Ainsle at Sheridan - Ward 1
63. Playlot - Cottonwood at Sheridan (Boy's club) - Ward 1
64. Playlot - 800 block of Gunnison (tennis and basketball) - Ward 1
65. Playlot - 4600 Kenmore - Ward 3
66. Pre-school - 920 Lakeside Place - Ward 5
67. Retail Clerk's Union (AFL-CIO) - 4858 Sheridan - Ward 2
68. St. Thomas of Canterbury Church School - 4827 Kenmore - Ward 2
69. Salvation Army - 1028 Wilson - Ward 3
70. Self-Help Center (elders) - 908 Argyle - Ward 1
71. Sheridan Plaza Hotel (elders) - 906 Wilson - Ward 4
72. Somerset Family Health Center - 5019 Sheridan - Ward 1
73. Somerset Hotel (elders) - 5009 Sheridan - Ward 1
74. State of Illinois, Dept. of Mental Health - 4707 Broadway - Ward 3
75. State Representative (12th District) - Dr. Bruce Douglas - 4753 B'way - Ward 3
76. 1010 Medical Center - 1010 Lawrence - Ward 2
77. Trifaith Employment - 4407 Broadway - Ward 3
78. Twelfth District Independant Democratic Legislative Office - 4540 B'way - Ward 3
79. United States Army Recruiting Center - 1056 Wilson - Ward 3
80. Universal Crusaders - 4425 Broadway - Ward 3
81. Universal Crusaders - 1020 Leland - Ward 3
82. Uptown Chamber of Commerce - 4525 Broadway - Ward 3
83. Uptown Chicago Commission - 4723 N. Broadway - Ward 3
84. Uptown Community Clinic (Illinois Drug Abuse Program) - 4753 Broadway - Ward 3
85. Uptown Luthern Day Care Center - 5030 Marine Drive - Ward 1
86. Uptown Medical Center - 1057 Argyle - Ward 2
87. Uptown Neighborhood Health Center - 4541 Hazel - Ward 3
88. Uptown Neighborhood Legal Services (United Charities of Chicago)-4564 B'way-W3
89. Weiss Memorial Hospital - 4646 Marine Drive - Ward 5
90. Winthrop Day Care Center (Model Cities) - 4848 Winthrop - Ward 2
91. YWCA - 4409 Sheridan - Ward 4

AGENCIES

47

June 23, 1973

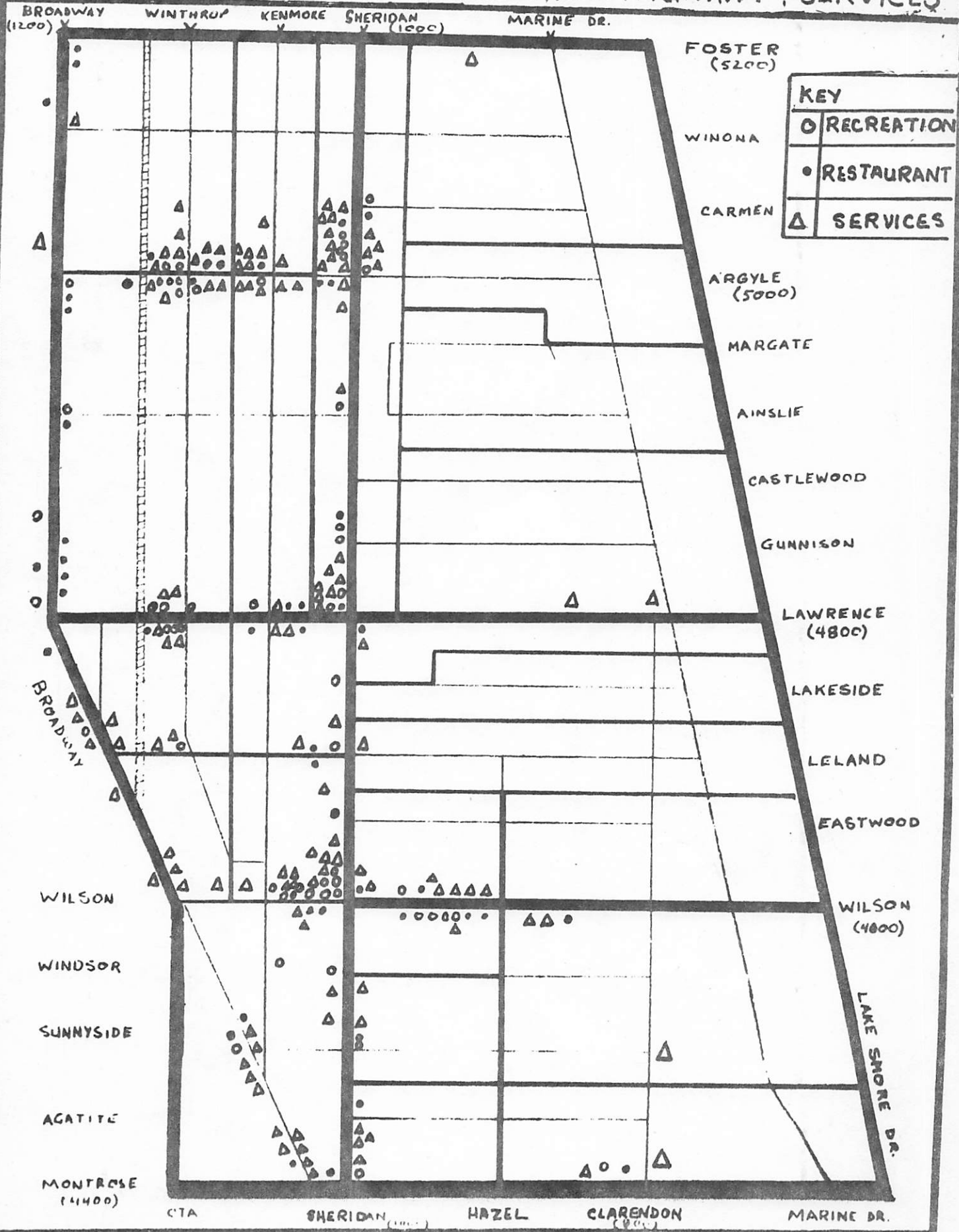
		STYLE	POLITICAL	
ES Long Le st Church ry (Epis) Christ		<u>YOUTH and RECREATIONAL FACILITY</u>		<u>GRASSROOT ORGANISATION</u>
	2	Lincoln Park Margate Field House	1	Mid-uptown People's Action Programme
	2	Mc Cormick Boys Club	1	Committee of U.S.
	2	Playlor Castlewood and Sheridan	1	
	2	Playlor Ainsle and Sheridan	1	
	3	Playlor 800 Block Gunnison	1	
	4	Playlot 4600 Kenmore	3	
	4	Canterbury House Team Centre	3	
	4	Fourth Force (youth dev.)	3	
	5	Net and Paddle Club	3	
		YWCA-4 Clarendon Pk. Com. Centre	4	
	Boy Scout-5 Girls Scout ass.	5		
S e. Inc.		<u>ELDERS CARE</u>		<u>CITY and ESTAB. ORGANISATION</u>
	3	Admiral Hotel	1	Uptown Chicago Commission
	3	Self Help Centre	1	Chicago Flat Janitors Union
		Sommerset Hotel	1	Uptown Neighborhood Legal Service
		Lawrence House	2	Retail Clerke Union
		Better Nursing Service	3	
		Chelsea Hotel	4	
		Edgewater Uptown Senior Centre	5	
	Graesmere Hotel	5		
ia College ople's Cen.		<u>INDIVIDUAL REHAB</u>		<u>FEDERAL ORGANISATIONS</u>
	3	Dept. of Mental Health	3	U.S. Army Recruiting Centre
		Ex-Convicts United Inc.	3	Model City's Office
	3	Alcoholics Anonymous	5	
	Leland Kenmore Service Centre	3		
TRE		<u>ETHNIC and FLY.ORGANISATIONS</u>		<u>LEGISLATIVE GROUPS</u>
	2	ATA Family Counselling Centre	2	State Representative, 12th Dist.
		Chinese Society	2	12th Dist. Independent Dem. Office
		Counsel of the Mojave	3	46th Ward Democratic Headquarters
		Leland-Kenmore Family Service	3	
		Green Dragon Society	4	

SOCIAL STRUCTURES

UPTOWN-5

ECONOMIC	WISDOM *education	SYMBOL symbolic life
<u>City Hospitals</u> Chicago Lakeshore Hospital Normandy Terrace Convalescent Extended Care Facility Midamerica Conv. Center Weiss Memorial Hospital Fox River Hospital	<u>PUBLIC ELEM. and HIGH SCHOOLS</u> Mc Cutcheon School Mc Cutcheon School Branch Goudy School Goudy School Branch Graeme Stewart School	<u>CHURCHES and SYNAGOGUES</u> Aqudas Achim N. Sh... Aqudas Chabad Cong... Church of God Taber... Faith Missionary B... St. Thomas of Cant... Salvation Army North Shore Church St. Augustine Chap... Assyrian United Ch... Peoples Church
<u>LOCAL CLINIC</u> Sommerset Family Health Center McCormick Dental Clinic, Vision Uptown Medical Centre Uptown Community Clinic DAB Edgewater Uptown Mental HC Uptown Clinical Laboratory Montrose Broadway Med. Centre. Uptown Heighorhood Health Ce. Broadway Wilson Med. Med. cen. Division Dedical Lab.	<u>PRIVATE and PAROCHIAL E and H Sch</u> St. Thomas of Canterbury Church School Edgewater Primary School (Jewish)	<u>RELIGIOUS ORGANISATIONS</u> American Indian Ch... Mick and Tom Minis...
<u>THRIFT SHOP</u> Hadassah Resale Shop Chicago School for Retarded Thrift Shop Bargain Resale Shop (cerebral baby) NCJW Thrift Shop Deaton Universal Crusaders Infant Aid Thrift Shop	<u>PRE SCHOOL and DAY CARE</u> Uptown Lutheran Day Care Center Mc Cutcheon Head Start Wimthrop Day Care Centre Pilgrim Day Care Centre Chrostophers House Day Care Centre Lakeside Square Apartments Presh.	<u>EXPRESSIVE ART</u> Dance Centre of Co... North Eastern Illi... Universit...
<u>EMPLOY SERVICE</u> Chicago Motor Club Leland-Kenmore Service Centre The Northside and Federal Credit Union Tri- Faith Employment Just Jobs Chamber of Commerce	<u>EXTRA FORMAL</u> Mini College	<u>COMMUNITY FESTIVAL</u> Aragon Ball Room

UPTOWN - 5 - RECREATION, RESTAURANT & SERVICES ²⁹

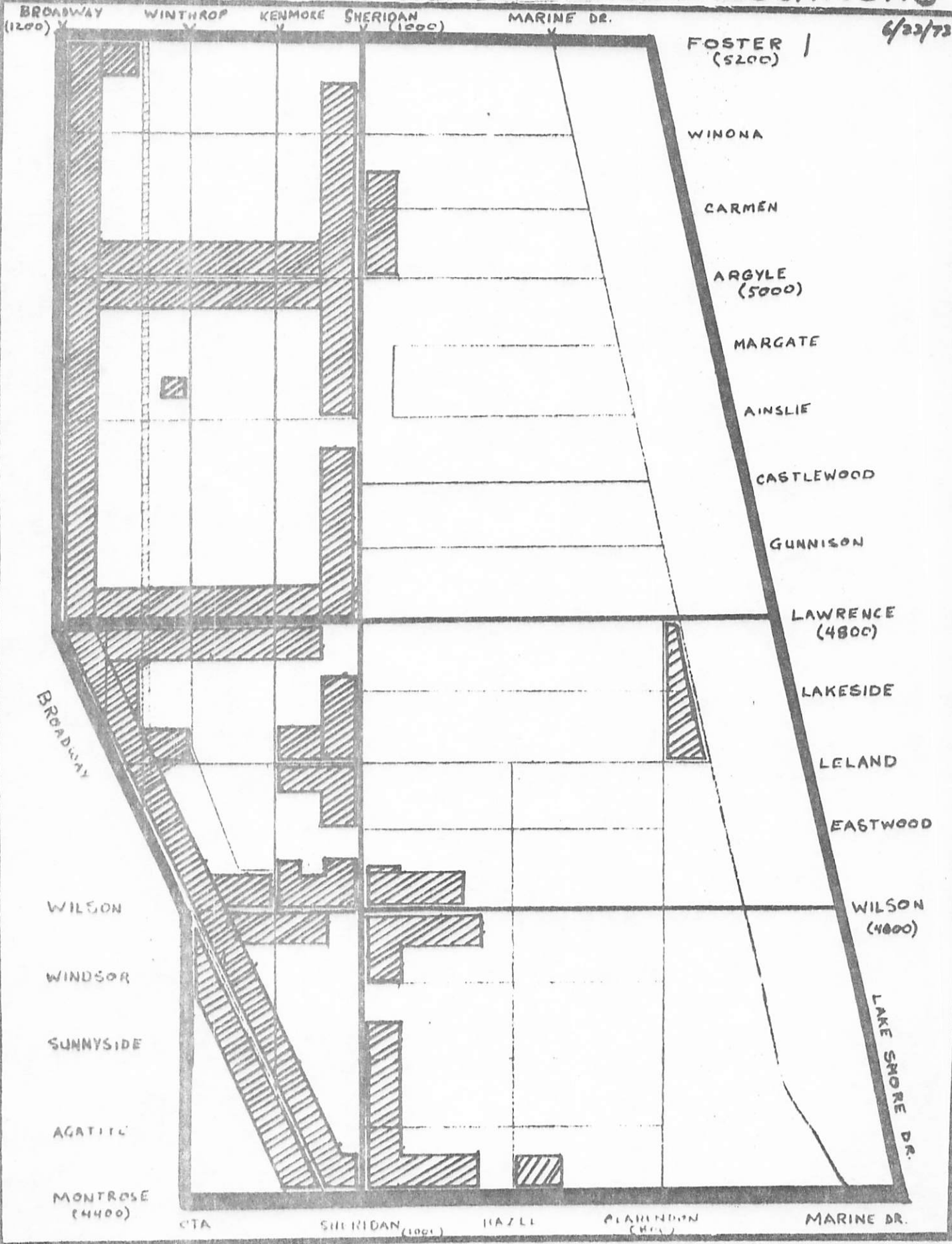


KEY	
○	RECREATION
●	RESTAURANT
△	SERVICES

BROADWAY (1200) **WINTHRUP** **KENMORE** **SHERIDAN (1000)** **MARINE DR.**
FOSTER (5200)
WINONA
CARMEN
ARGYLE (5000)
MARGATE
AINSLIE
CASTLEWOOD
GUNNISON
LAWRENCE (4800)
LAKESIDE
LELAND
EASTWOOD
WILSON (4800)
WILSON
WINDSOR
SUNNYSIDE
AGATITE
MONTROSE (14400)
CTA **SHERIDAN** **HAZEL** **CLARENDON** **MARINE DR.**

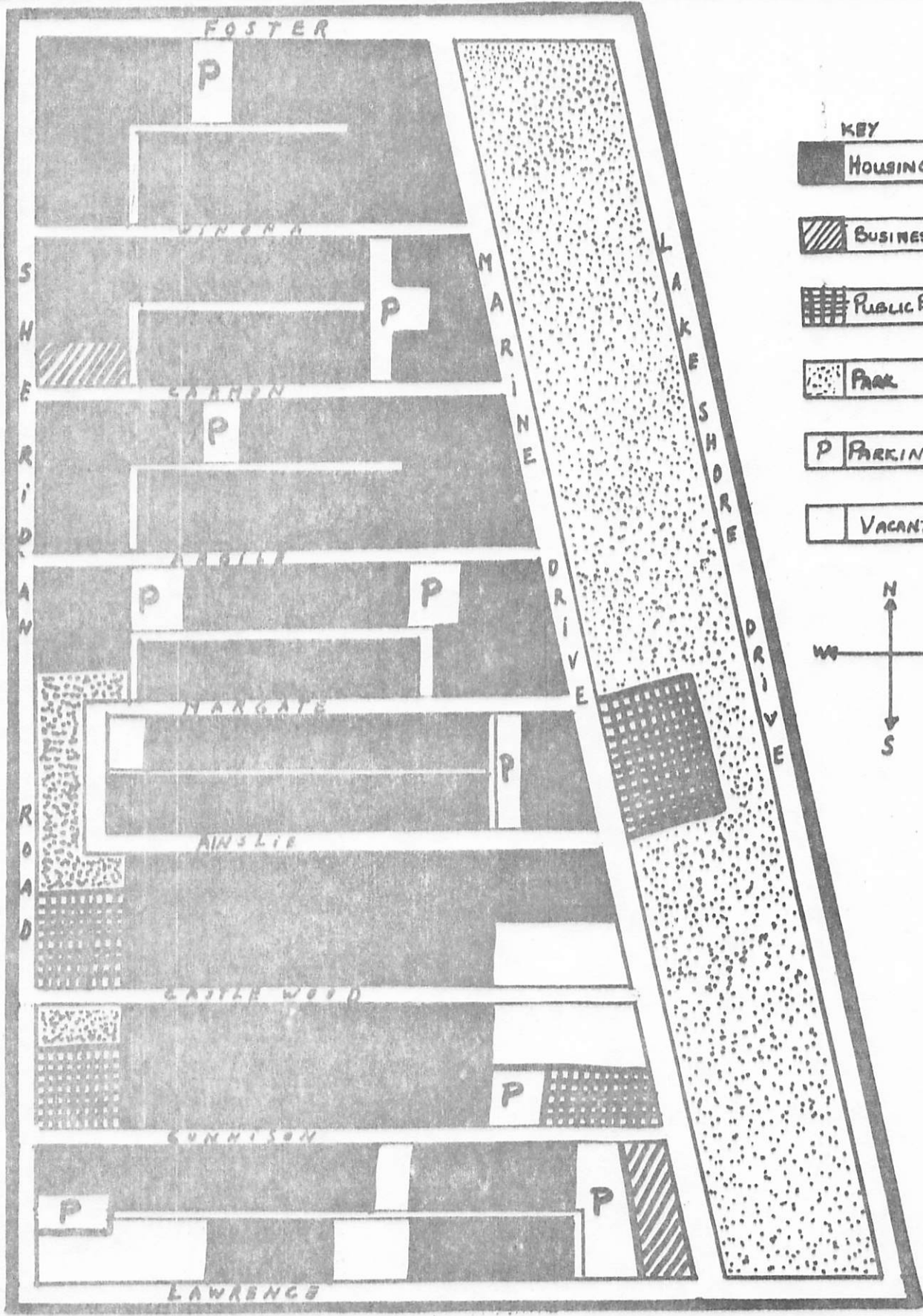
UPTOWN-5 PRINCIPAL COMMERCIAL LOCATIONS⁵¹

6/22/73

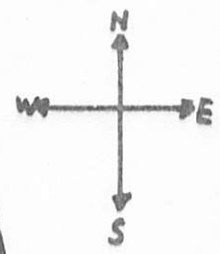


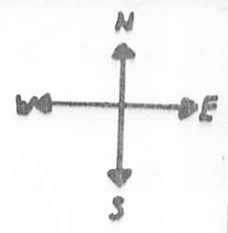
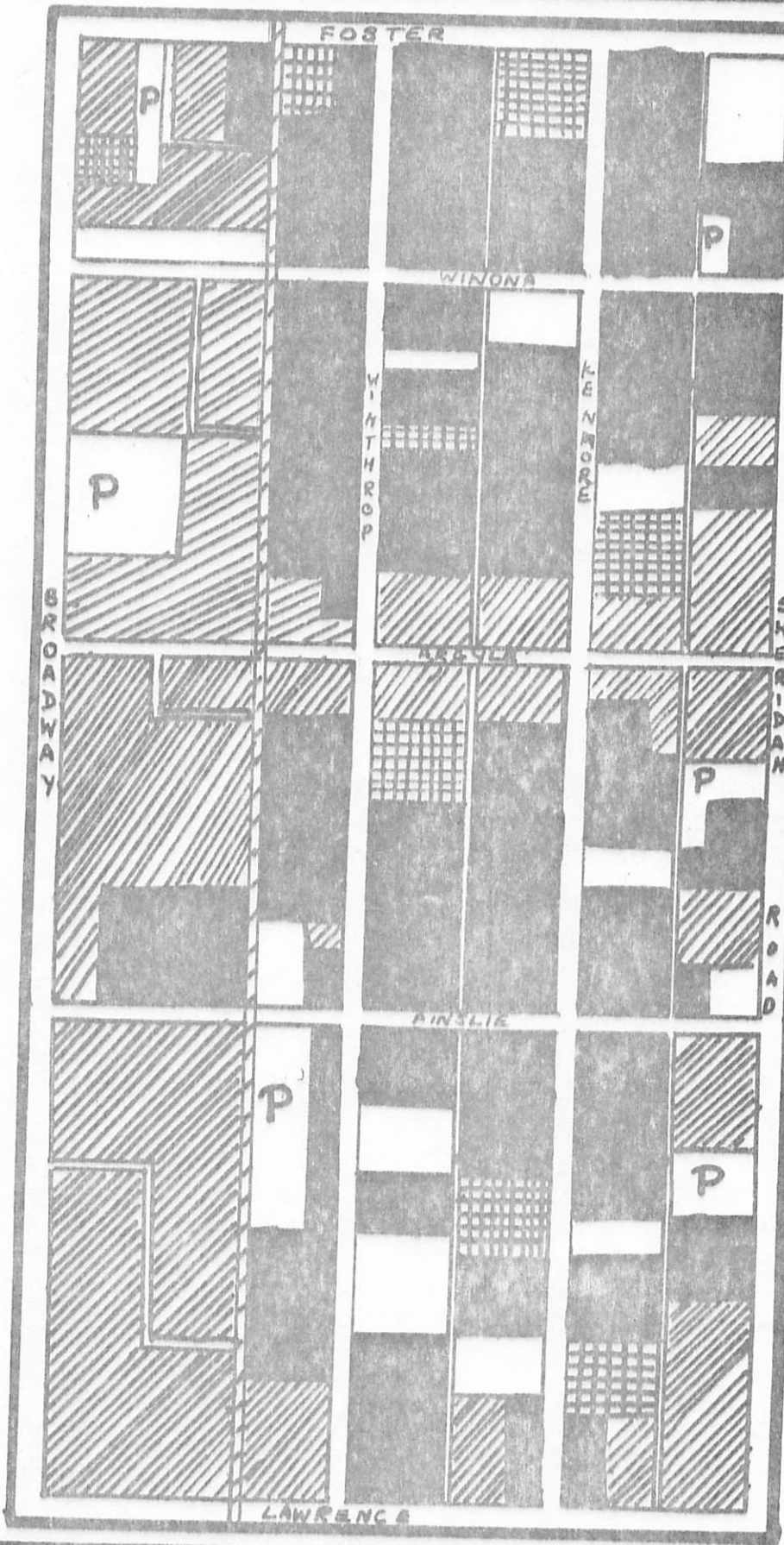
Ru 12 PL

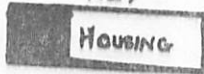





I. RECREATION		
(i) bars -----		44
(ii) billiards -----		3
(iii) dance, bowling -----		7
	Total =	54
II. RESTAURANTS -----		53
	Total =	53
III. SERVICES		
(i) banks -----		4
(ii) laundromats -----		7
(iii) launderers and cleaners -----		24
(iv) barbers and beauty shops -----		33
(v) medical services -----		27
(vi) hotels -----		11
(vii) motels -----		1
(viii) temporary job services -----		13
(ix) others -----		37
	Total =	157
IV. RETAIL		
(i) drugstores -----		12
(ii) grocery stores -----		38
(iii) liquors -----		5
(iv) gas stations -----		7
(v) auto sales and repair -----		8
(vi) general and miscellaneous retail -----		103
(vii) resale stores -----		22
	Total =	195
V. INDUSTRIES -----		7
	Total =	7
	TOTAL =	466

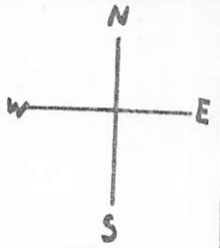
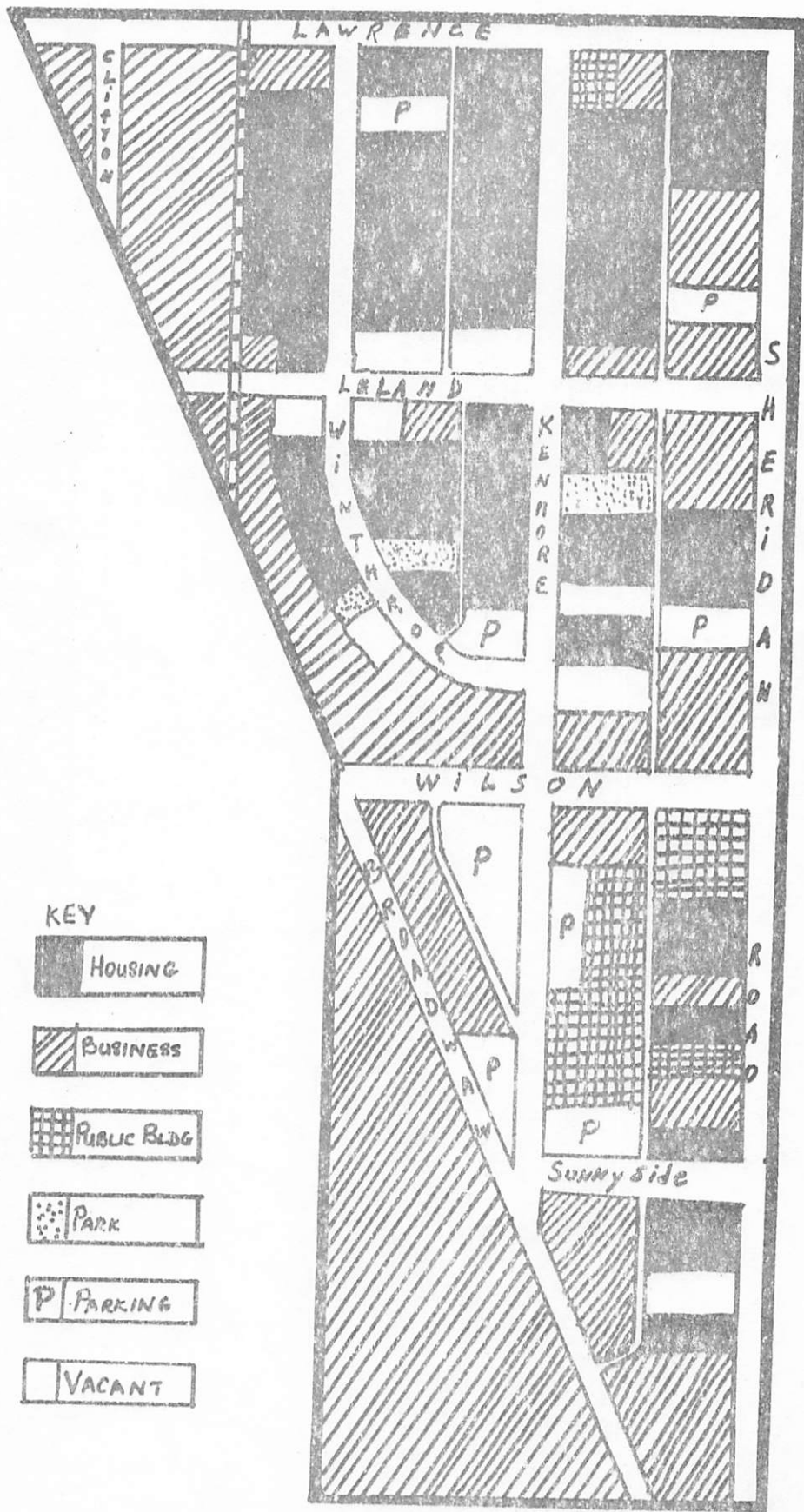


- KEY
- HOUSING
 - BUSINESS
 - PUBLIC BLD
 - PARK
 - PARKING
 - VACANT



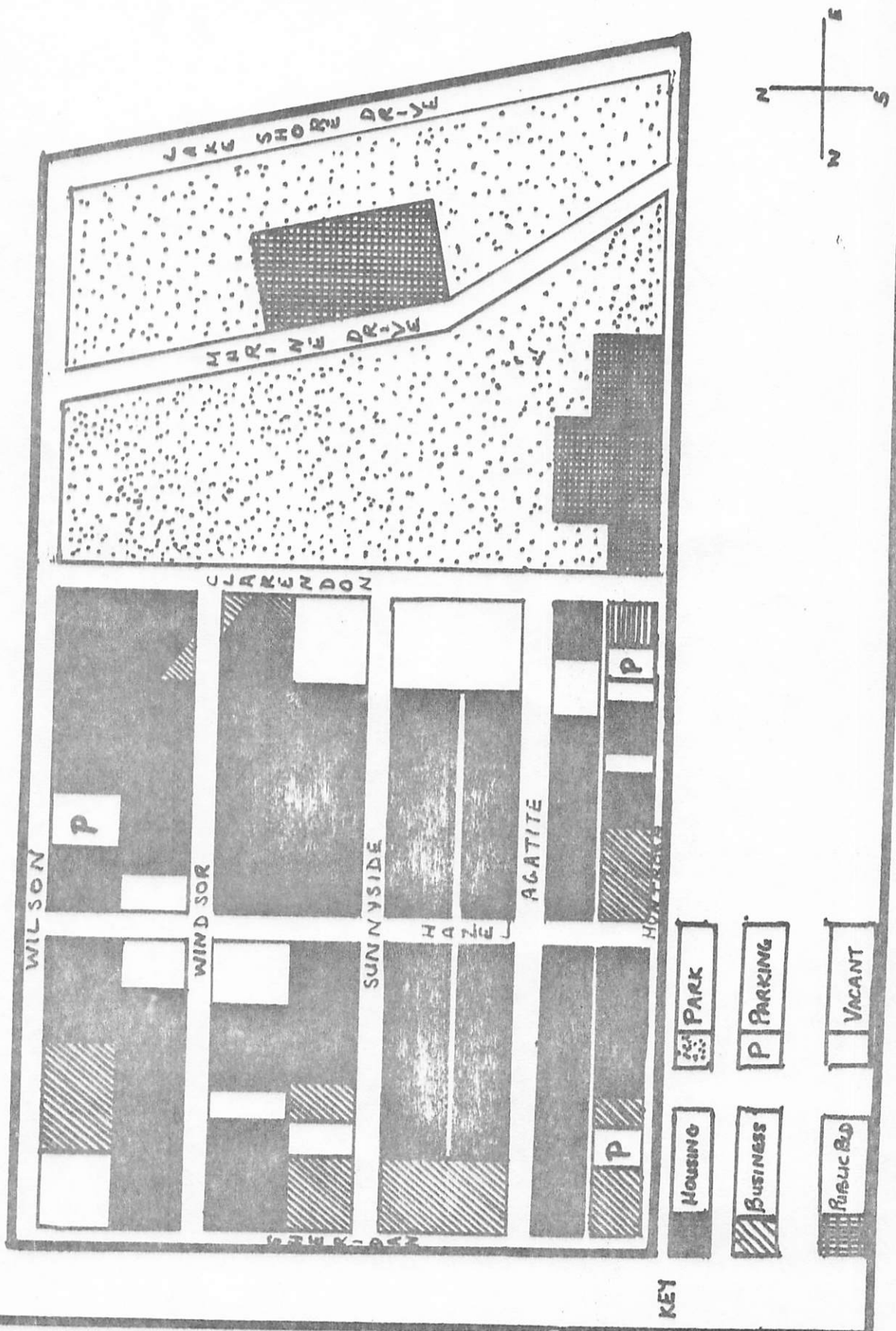


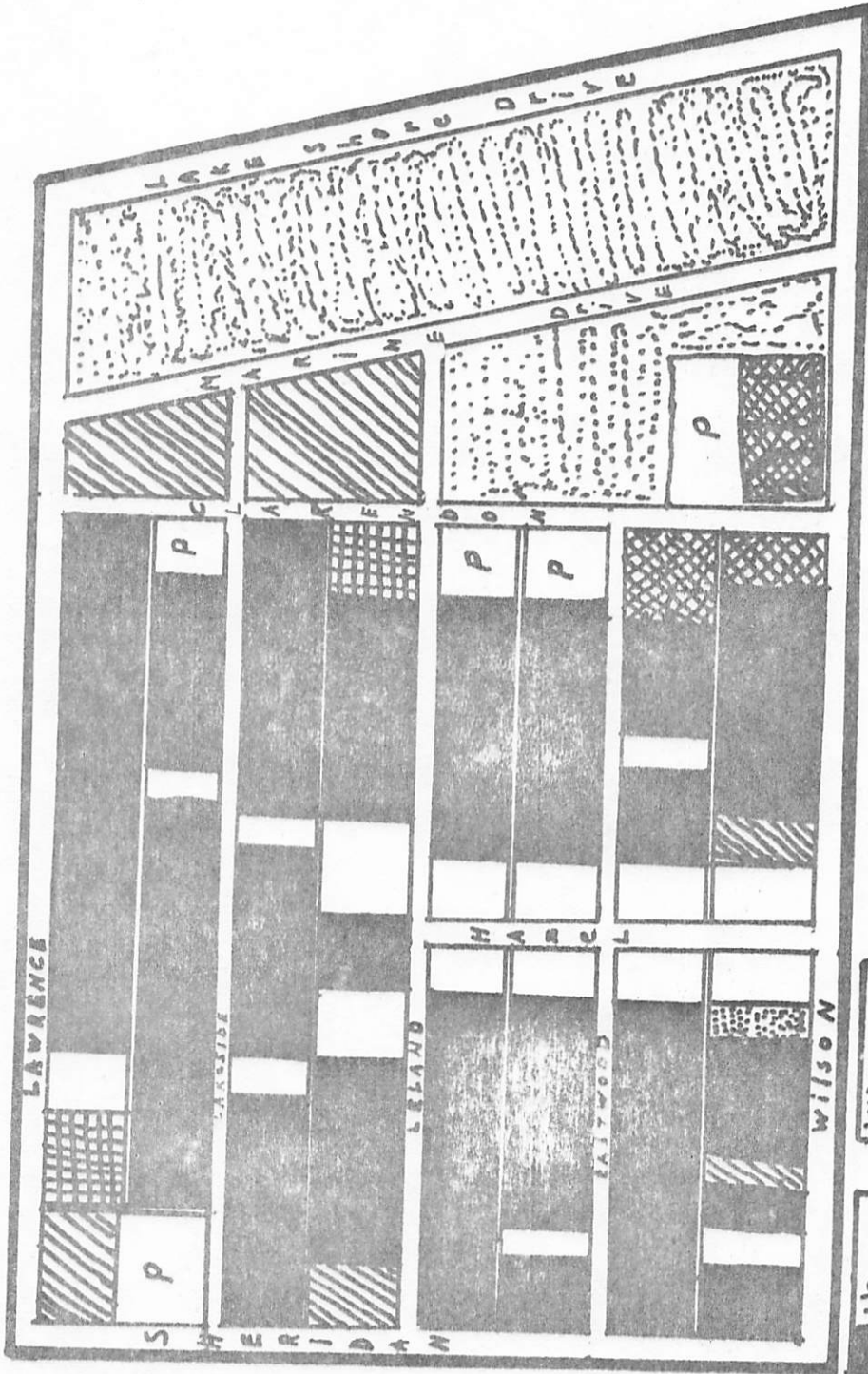
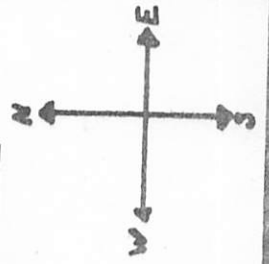
- KEY
-  HOUSING
 -  BUSINESS
 -  PUBLIC BLD
 -  PARK
 -  PARKING
 -  VACANT



KEY

- HOUSING
- BUSINESS
- PUBLIC BLDG
- PARK
- P PARKING
- VACANT

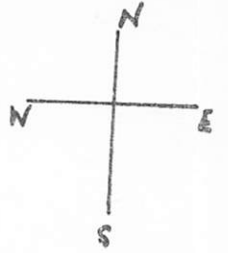
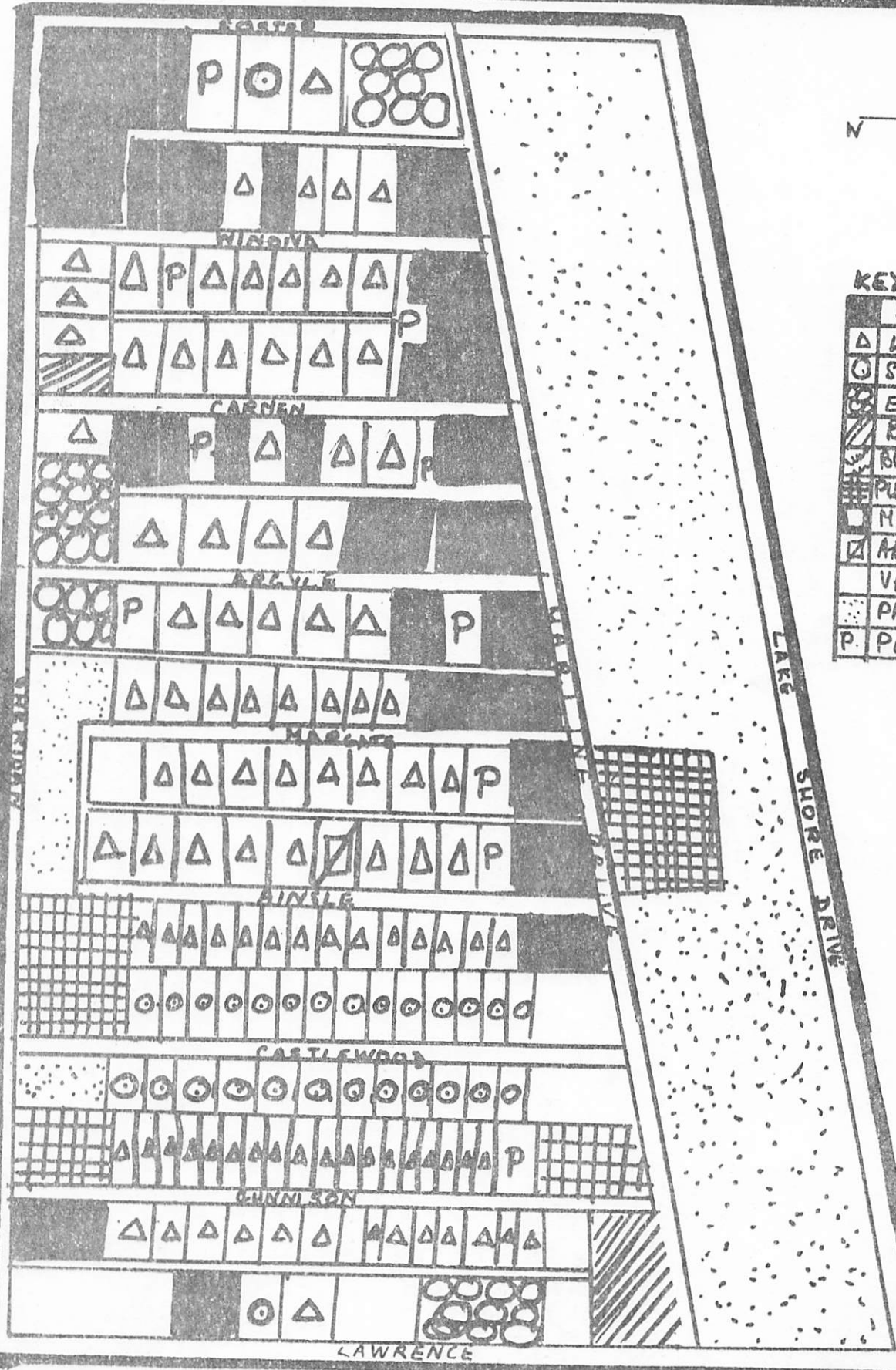




KEY

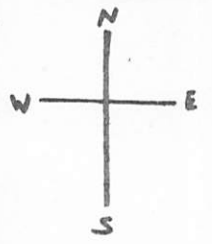
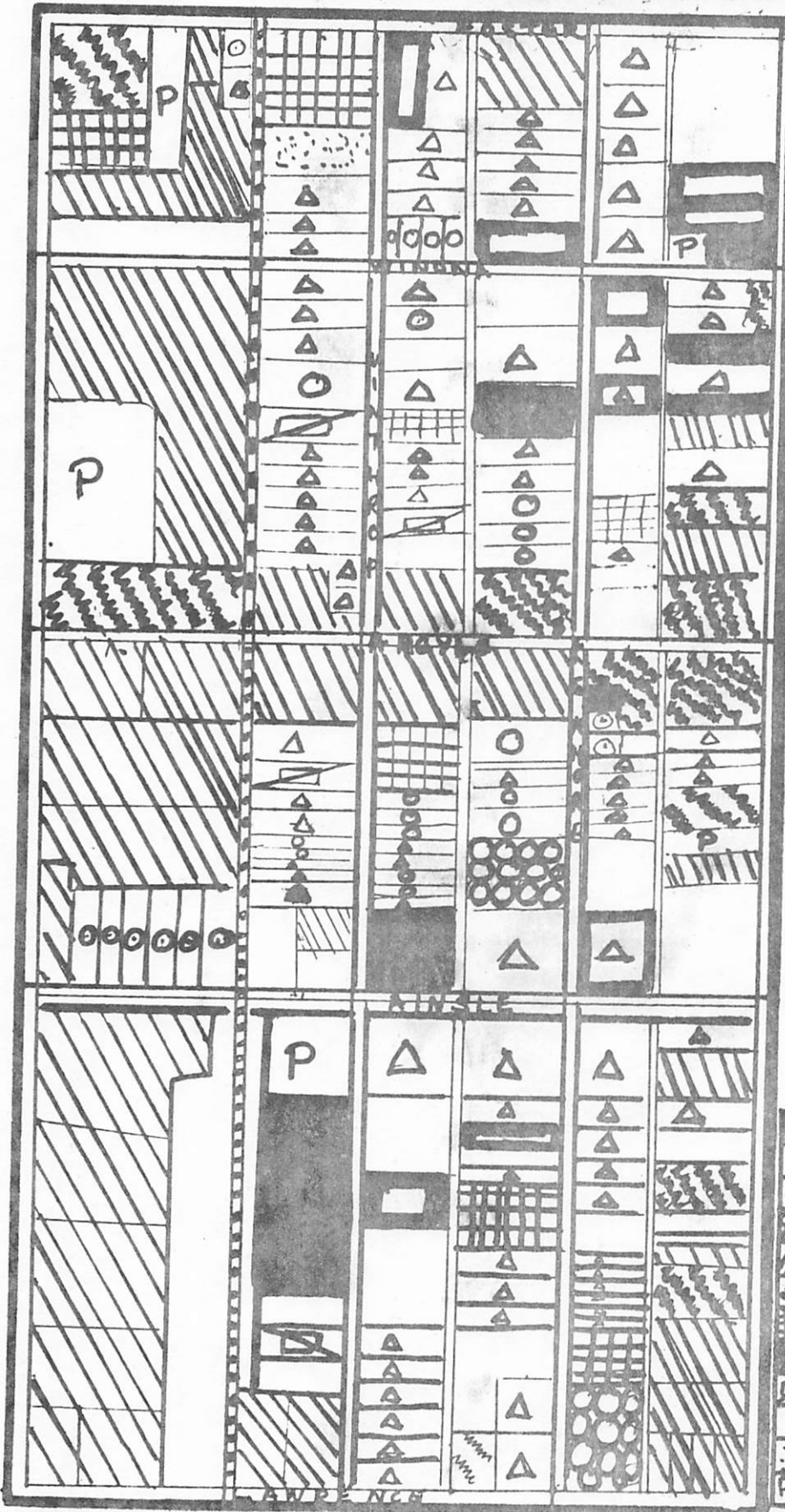
[Solid Gray Box]	HOUSING
[Diagonal Lines Box]	BUSINESS
[Cross-hatching Box]	PUBLIC BU
[Stippling Box]	PARK
[Box with 'P']	P PARKING
[Empty Box]	VACANT

KEY



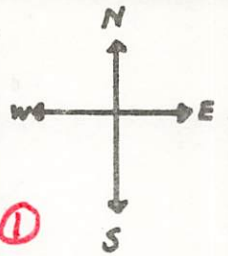
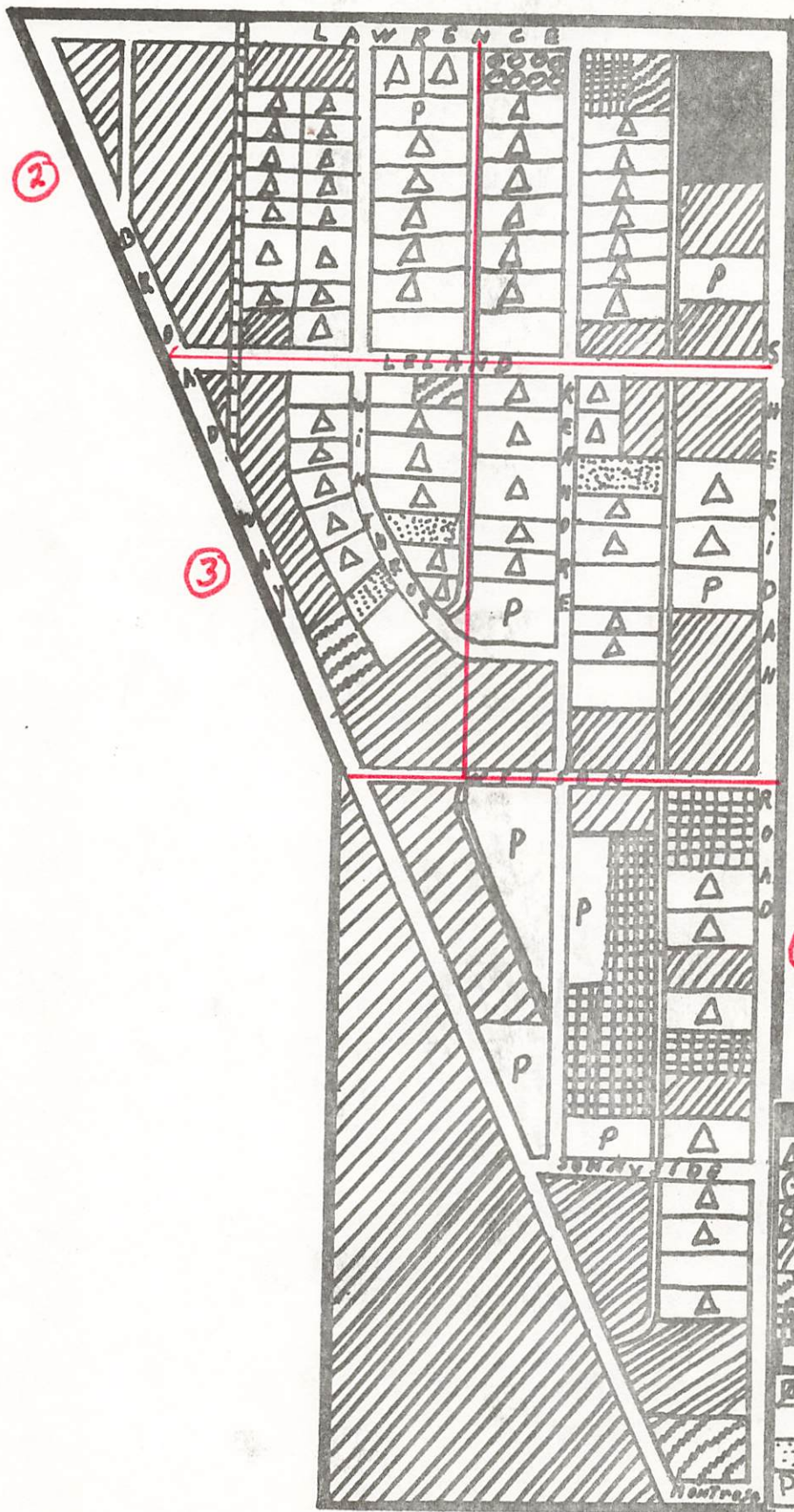
KEY

○	HIGH RISE
△	LOW RISE
⊙	SINGLE FAMILY
⊗	ELDER'S
▨	BUSINESS
⊕	BUS RESIDENCE
▩	PUR. BLDG.
□	MARGINAL
⊠	ABANDONED
	VACANT
⋯	PARK & PLAYLOT
P	PARKING



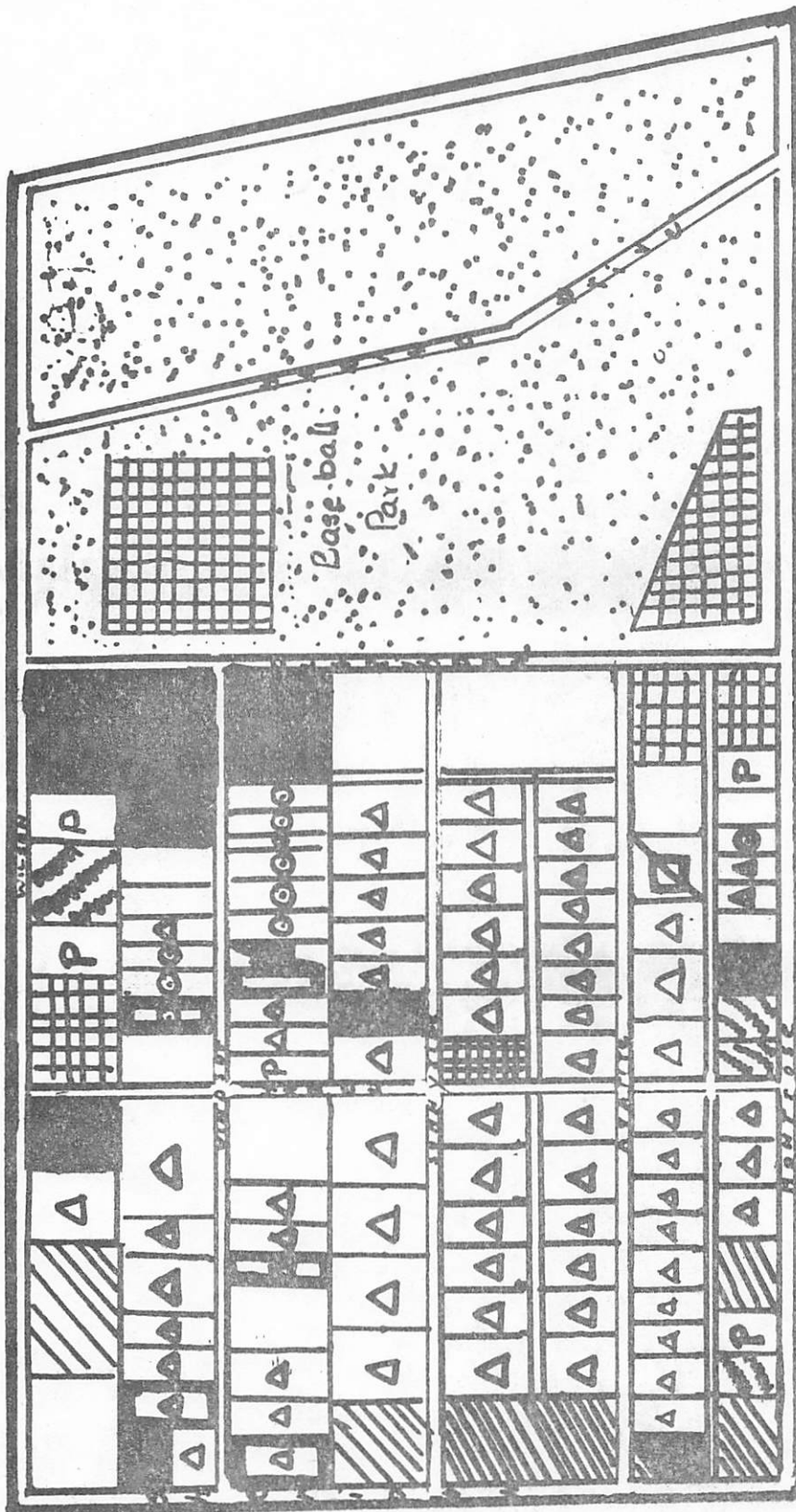
KEY

[Hatched pattern]	HIGH RISE
[Triangle]	LOW RISE
[Circle]	SINGLE FAMILY
[Wavy pattern]	ELDERS
[Diagonal lines]	BUSINESS
[Checkered pattern]	BUS + RESIDENCE
[Grid pattern]	PUBLIC BLDG
[White square]	MARGINAL
[Diagonal lines]	ABANDONED
[White square]	VACANT
[Dotted pattern]	PARK & PLAYLOT
[P]	PARKING



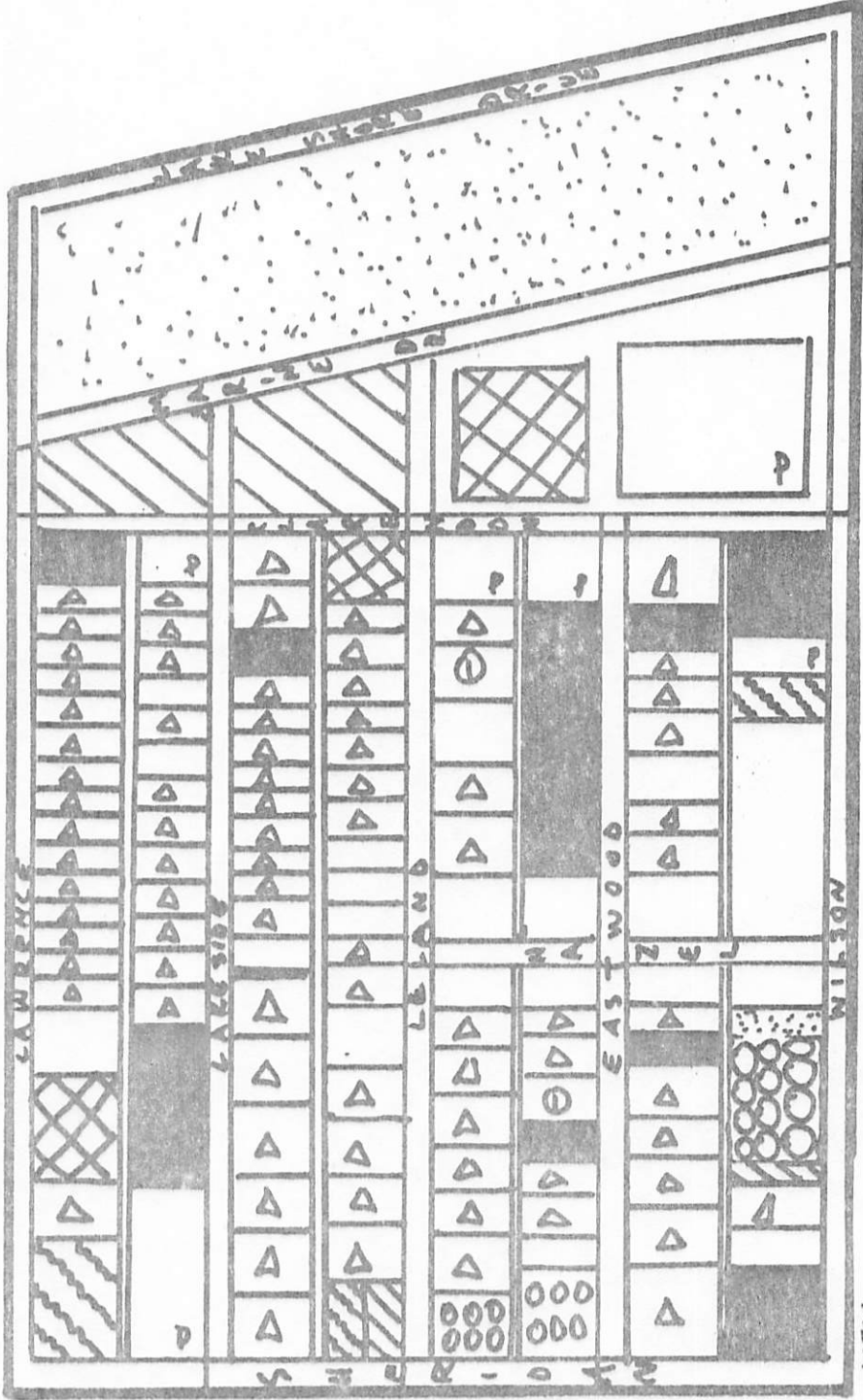
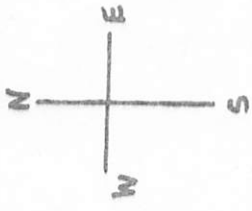
KEY

[Grid Pattern]	HIGH RISE
[Triangle]	LOW RISE
[Circle]	SINGLE FAMILY
[Circle with X]	ELDERS
[Diagonal Lines]	BUSINESS
[Cross-hatch]	BUS & RESIDENCE
[Stippled]	PUBLIC BLDG
[White]	MARGINAL
[Diagonal Lines]	ABANDONED
[Wavy Lines]	VACANT
[Dotted]	PARK & PLAYLOT
[P]	PARKING



KEY

▣	HIGH RISE	▣	PUBLIC BLDG
△	LOW RISE	▣	MARGINAL
○	SINGLE FAMILY	▣	ABANDONED
⊗	ELDERS	▣	VACANT
▨	BUSINESS	▣	PARK & PLAY LOT
▩	MUS. & RECRE	▣	PARKING



KEY

▨	PUBLIC BLDG.
▧	MARGINAL
△	LOW RISE
○	SINGLE FAMILY
⊗	ELDER'S
▨	BUSINESS
▨	BUS & RESIDENCE
□	ABANDONED
◻	VACANT
⋯	PARK & PLAYLOT
P	PARKING

1. The Ecumenical Parish is a comprehensive reformulation of a particular community which deals with all the problems of all the people of all ages and races and traditions in a long range approach which relates that delimited community to the globe.
2. We will deal always with the Depth Spirit Problem - that particular form of radical self-depreciation that holds the people of this community in bondage rather than releasing them to engage the problems of Uptown.
3. The primary vehicle of reformulation is the local church, which means catalyzing renewal in the congregations of the parish, in which the clergy and the symbolic figures of leadership in caring for Uptown, and we are his invisible servants.
4. Those who would catalyze change will manifest a trans-establishment stance as those who embrace the fantastic diversity of the community and being the unifying dynamic amid that diversity, relying on the wisdom of the local residents, over technological expertise, and seeking always the intensification opportunity that takes the revolutionary leap rather than simple expansion.
5. The key to an Ecumenical Parish is the constant use of the Symbolic dimension in preference to preoccupation with actualities, of focusing on the imaginal rather than the practical, by making every occasion a great spiritual occasion for everyone present.

ECONOMIC	EDUCATION	SYMBOL	STYLE	POLITICAL
UNSTABLE EMPLOYMENT PATTERNS	UTILITARIAN EDUCATIONAL CONTEXT	FRAGMENTED COMMUNITY IMAGE	INDIVIDUAL- SOCIETAL ISOLATION	DISINTERESTED PARA-COMMUNITY RESPONSIBILITY
PROPERTY MAINTENANCE NEGLECT	REDUCED POSSIBILITY PERSPECTIVE	COMMON DETERIORATION SYNDROME	FAMILY INSTABILITY PATTERN	DISUNITED COMMUNITY SERVICES
EXCESSIVE COST INDEX	CONSTRICTED EDUCATIONAL OPPORTUNITIES	SYMBOLIZED CUT-OFF FUTURE	RURAL SIMPLISTIC YEARNING	LIMITED LEADERSHIP SCOPE
CRISIS ORIENTED SERVICES	INSUFFICIENT PRE-SCHOOLING FACILITIES	COMMUNITY PERSONAL NON-IDENTIFICATION	DEBILITATING ELDER ISOLATION	PAROCHIALIZED PROBLEM APPROACH
FRAGMENTED HEALTH CARE	REDUCED SOCIAL CONSCIOUSNESS	IRRELEVANT CHURCH IMAGE	OVERT VIOLENCE PATTERN	GRASS-ROOTS CARE MINIMIZED

Summer '73
First Week

UPTOWN 5 STRATEGIC OBJECTIVES

Saturday
June 30, 1973

GUILD	GALAXY	TEMPLE	SIGNS	AUTHORIZATION
Guild Formation System	Four Clergy Committed	Symbolic Sacred Space	Community Symbol Forged & Displayed	Periodic Reporting Contact
Active Guild Hall	Catalyze Galaxy	Display Imaginal Decor	Cabaret Presentation	Regular Story Interpretation
Regular Guild Meeting	Galaxy Participants in Guild	Rehearse Human Drama	Nodes Transformation	Continuing Enabling Support
Discernable Catalytic Leadership	Congregation Preparation Plan	Provide Religious Priorship	Auto-Park Festival	Ongoing Engagement Occasions
Signal Planning Completed	Four Year/Quarterly Penetration Plan	Demonstrate Futuristic Leadership	Flood Community with Parish's Historical Display	Perpetual Neighborhood Presence

Summer '73
First Week

UPTOWN 5
INITIATING MODEL OF ECUMENICAL PARISH

Saturday
June 30, 1973

GRID	ECONO-POL CULT ANALYSIS	DESIGN ENTRY PLAN	WIN COMPREHEN- SIVE AUTH- ORIZATION	CAPTURE COMMUNITY IMAGINA- TION	STRUCTURE LOCAL COMMUNITY	SUBTLELY DRAMATIZE POSSIBIL- ITY	INITIATE LEADERSHIP TRAINING	DRAMATIZE SERIOUS INTENT	SOLIDIFY FOR FUTURE THRUST
Global- Regional	Key Arenas of Each	Basic Model -grid -whistle pt -pres. pts -5thC Strat -5thC Orch.	Servant's Presence -Doing Deed	Disclose Community Uniqueness -gift/poss -destiny -hid.pwer	Space -publish grid	Impossible Event	General Education -locate leaders	Claiming the Outcast -elders -Am Indian -youth -Dis-est	Celebrating Accomplish- ment
Micro- Sub-Micro	Problematic -image -power -structures -spirit	Strategiz- ing -obj/strat -tact/T/L -op.prin. -op.image	Leadership -symbolic -middle -grassroot -informal	Claim Future -missional story -particu. action	Symbolic -name/flag -color -cov/rite -story -preamble	Felt Need -economic -political -cultural -spirit	Direct Training -courses -methods	Transmute Awe Into Symbol -every deed is sym- bolic	Planning
Parish Ward Stake Sector Unit	Vision of Possibil- ity	Internal Organizatn -story -rite -symbol covenant	Popular (Gen'l Public Image) -Cleanness	Focus -directing energy -spirit mood poster art	Organizatn -of some kind -Iron man image	Strategic Complexity -elder -youth -Am. Indian -etc.	Indirect Training -roles -image Exp -immediate involve.	Global self/cons. -spirit fellowhood	Firming Up Authoriza- tion
Overlay	Establish- ment -100 VIP's -organiza.	Operational Plan -public stry -op. image -op. princ. -emphasis	Evoke Invitatr -estab. credential -avoid be- ing threat	Community Education	Leadership Establishd -locate vac -affirm -look for pot. ldrs	Celebra- tion -cabaret	Extending Leader- ship	Anchor Project	Healing Any Rifts
Local Church	Church Analysis -members -activity- -sp md/stry	Selecting Churches -key/story -design -plan visit	Grads &Min- isters/wife -preaching mission -open house	Penetratr -courses -4 wk exp -visiting -soc.gath.	Create Cadre -establish ecclesiolas	External Thrust	Deepening Commitment -BTS -cadre -auxiliary	Call For Commitment to the Long March	Retreat and Consults

UPTOWN IS A GREAT PLACE TO BE ALIVE!

THE PIONEERING PAST

Uptown has been the trend-setting community for Chicago since its founding along the Indian trading trails to Green Bay. It led the way in creating new, attractive, living space out of swampy wasteland long before the great lakefront fill created Lincoln Park along its borders. It was one of the first "suburban" communities, settled by those desiring to live beyond the congestion of the city.

In the first years of this century, Uptown became the symbol of economic and cultural success. It was the business and shopping center for northern Chicago. The first movie industry was centered here. The whole nation looked to the Aragon Ballroom and the Edgewater Beach Hotel, and the nearby lake beaches, as the focus of the big band era.

With the coming of the Depression and the collapse of "The Good Life," Uptown began to search for the more adequate style of urban life, inviting the dispossessed and newcomers from this country and the whole globe to make this their home.

UPTOWN, THE GLOBAL COMMUNITY

Uptown is, perhaps, the only community where you can stand on its street corners and talk with people from every race in the world. Each of the six cultures of man (White, Black, Red, Yellow, Brown and Tan) brings its own unique gifts to this local community. All the classes of society live here side by side. The concentration of elders gives Uptown unique access to the wisdom of life's meanings gained through years of reflection. It is a place of new beginnings for those first entering the urban world. Uptown is a cosmopolitan community.

THE PROMISING FUTURE

Uptown, as a result of its unique history, has the possibility of pioneering the shape of the new global community. For the first time in history, the world is a global society. Chicago has taken the lead in forging patterns of urban settlement for Century 21. No other city in the world can boast of such a vibrant downtown area. Chicago's new plan of recovery for the central city is challenging the escapism of suburbia and attracting a cosmopolitan urban population. The world is looking for signs of neighborhoods where all races live together and share their gifts with one another. Uptown already stands as a symbol of diversity, not melting away differences, but celebrating the rich treasury of the whole globe in one spot. Uptown is a great place to be alive.