

**INTERNATIONAL
EXPOSITION
OF RURAL
DEVELOPMENT**

**JAWALE HUMAN
DEVELOPMENT
PROJECT**



A REPORT OF THE JAWALE CLUSTER HUMAN DEVELOPMENT PROJECT

This is a report of the accomplishments of the Jawale Cluster Human Development Project, 1981-82. This is a project of the Institute of Cultural Affairs, India in cooperation with the private, public, volunteer and local sector individuals and groups.

The programme work of the ICA, India is comprehensive development including economic, human and social development. ICA India works in 9 programme arenas with the villages; the economic development programmes include agriculture, industry and commerce; the human development programmes include environment, consensus and identity; the social development programmes include health, education and welfare.

The first phase of our development work involved single village development. Jawale village began as a single village project in 1978. Jawale has become the teaching village demonstrating a model of comprehensive development.

The present phase of our development work is multiple village development. This involves working with a cluster of neighboring villages in a common development plan. In Jawale Cluster there are 11 villages. Jawale Cluster is one of 3 experimental cluster projects in Maharashtra. On the basis of this project development is expanding to other clusters of project development is expanding to other clusters of villages across the taluka.

The development programme work of ICA, India is a self-development approach which depends upon teaching organization methods and structuring cooperation in the villages with the help of ICA volunteer staff who circuit to the villages on a regular 2 week visitation cycle and with the support of private, public and volunteer resources and consultancy.

The following is a summary of major accomplishments of the 1981-82 year.

Agricultural Training

Rashtriya Chemicals and Fertilizers, Satara, has held 3 clusterwide agricultural training sessions in sewing methods, hybrid seeds and use of fertilizers. RCF sponsored a cluster Farmer's seminar focusing on cereals, potatoes and fruit trees. The event was attended by 150 farmers from all 11 villages of the Cluster. RCF has also done soil-testing for 350 farmers.

A demonstration plot has also been started in each of the cluster villages. These plots include bajri and potatoes. An RCF field staff visited the cluster on a regular basis and continues to do training

Canara Bank also sponsored an Agriculture Exhibition on gobar gas plants and a film on crop storage. Canara Bank also sponsored a trip to Urli Kanchan, BAIF for 72 cluster farmers from all 11 villages to see the cattle-breeding and fodder demonstration projects.

The Kirloskar Foundation, Pune, also sponsored 3 cluster farmers to see ICRISAT, the experimental and farming project near Hyderabad.

DRINKING WATER AND IRRIGATION

The limited development of drinking water and irrigation resources is one of the key contradictions faced by farmers in Jawale Cluster and Khandala Taluka. Progress has been made in the development of drinking water resources in the past year in Jawale Cluster. A pipeline system has been sanctioned in the village of Karnewadi. Atit, Zagelwadi and Kanheri have had surveys and have proposals submitted and are pending. 3 new handpump borewells have been installed by the Groundwater Survey and Development Agency, one in Ghadgewadi and two in Wadgaon. A jet borewell mini-tank system is ready for installation in Mirje upon payment of electrical line installation fees. Kawate village has sent an application for a pipeline water supply system. Lohom village, which desires a pipeline water supply system is not presently on the GOI difficult village list. ICA staff is continuing to work with the villages in submitting and monitoring applications as they move through the various stages of request. Raising local 10% funds has been a contradiction for some villages.

Irrigation and water conservation schemes are important for the development of the cluster villages. At present there are a limited number of these schemes in the cluster.

Jawale village is the pilot demonstration for the other villages in the development of these resources. 32 Jawale farmers are presently forming a cooperative society for a sanctioned lift irrigation scheme from Wadgaon Dam; also a cooperative society in Wadgaon village has recently completed laying pipeline for a lift irrigation scheme with a loan from the Land Development Bank.

The Minor Irrigation Department has completed surveys of 17 potential percolation tank sites in and around Jawale Cluster. Jawale village is at present consenting on a percolation tank site; Canara Bank and Bharti Agro Industries Foundation are prepared to provide loans and grants for construction. Resolving to development of other such sites.

COMMERCE AND BANKING

Between August and October of 1981 two new branch banks were opened in Jawale serving the cluster villages. Canara Bank opened 24 August and District Central Cooperative Bank opened 2 October. Canara Bank has adopted Jawale village.

The presence of these 2 branch banks has significantly extended the availability of adequate credit in the cluster.

CANARAR BANK REPORT. September, 1981 to September, 1982.

Canara Bank provides individual loans in Jawale Cluster. These include the following kinds of loans:

Retail Trade	30 accounts	Rs. 40,000
Professional/Self-Employed	25 accounts	Rs. 30,000
Weaker Sections	30 accounts	Rs. 18,000
Agriculture (cows, buffaloes, wells)	60 accounts	Rs. 3,61,000
Transport Operators for unemployed	14 accounts	Rs. 12,72,000
Housing Loans (weaker sections)	5 accounts	Rs. 60,000

Differential Rate of Interest Loans (Weaker Sections)	31 accounts	Rs. 16,000
Non-Priority	67 accounts	Rs. 65,000
Small-Scale Industry	6 accounts	Rs. 19,000
Development Loans	46 accounts	Rs. 1,31,000
Total	515 accounts	Rs. 20,62,000

The loans which effect the largest number of people are the agricultural loans, primarily for the purchase of cows and buffaloes. Land Development loans have resulted in the levelling of land for 20 farmers in the Cluster. Small-Scale industry loans have resulted in opening of 2 chili machines and 2 flour mills. DRI Loans have resulted in new shoemaking and rope industry and in cycle rental shops for weaker sections. Loans for transport operators have enabled 2 new matadors for formerly unemployed persons.

District Central Co-operative Bank, Satara, October, 1981 to October, 1982 Report

DCC Bank provides loans to five development societies in Jawale Cluster: Jawale, Atit, Karnewadi, Lohom and Kanheri. These include the following kinds of loans:

Short-term 1 year (crop loans)	3,00,000
Medium-term 3 years (cows, buffaloes, goats)	6,39,000
Gold loans	5,000
Other loans (individual savings)	6,000
Total	9,50,000

The largest loan was given to Lohom Vikas Society: Rs.2,60,000 for dairy cow expansion (44 cows).

Though a drought situation has existed in the kharif season, these societies have continued to repay their loans.

WELDING BUSINESS

Thermax Company, Chinchwad, is working with 2 Jawale Cluster villages to provide welding training and markets for a local welding business. Thermax is helping 3 Jawale youth to receive training through ITI. Thermax is also assisting a former Bombay welder originally from Wadgaon village to start a new welding business in his home village.

ENVIRONMENT

4000 fruit, fodder and beautification trees were planted in the 11 villages of Jawale Cluster during the monsoon tree planting campaign through the one-student one-tree, scheduled castes and small farmers schemes. Also a major fodder plot was planted in Kanheri village. Trees were provided by the District and Taluka Offices of Social Forestry.

Major internal and approach road and drainage shramdands were done in the villages of the Cluster. 4 villages have constructed drama stages for village festivals. All the villages have named and erected road and chowk signboards. Major beautification painting was done in 3 villages.

HEALTH

Taluka government officers, medical staff and Jawale leaders inaugurated the new site for the Primary Health and Family Planning hospital in Jawale on 15 August, 1982. The hospital has been located at temporary site in the village. The Saktia Seva Society Pune started a series of childrens health camp for the Cluster village. Health camps are scheduled on a monthly bases in the Cluster village. Followup being done through the local doctors and Pune/Satara doctors for more serious medical treatment.

PRESCHOOLS

5 preschools are presently open in Jawale Cluster in the villages of Jawale, Kanheri, Zagelwadi, Wadgaon and Lohom. A first training session in preschool curriculum was held by ICA staff and regular trainning is scheduled. These schools received donations of books preschools instruction equipment and uniform cloth from private buisness in Pune, At present the preschool teachers' salaries in 4 of the villages are supported by the parents and one teacher is volunteering her time. Other villages are in the process of selecting a teacher and creating a salary plan.

WOMENS' PROGRAMMES AND TRAINING

In 8 villages of Jawale Cluster mahila mandals have been organized and registered. This has been the basis for starting the first five preschools in the Cluster and for holding cluster-wide women's meeting and celebrations.

A new Women's Sewing Training Centre has been constructed in Jawale which will provide sewing classes for women of the Cluster classes will be held for 10 women at a time in 6 month sessions. The small farmers development administration, Satara will pay the teachers salary. Canara Bank will provide the loans for sewing machines. Building construction costs have been donated by private business in Pune and ICA; construction has been done by volunteer and skilled labour from Jawale village.

YOUTH ENGAGEMENT:

Youth have played an important role in the development efforts of the cluster villages. In the past year one new youth mandal has been organised and registered making 2 registered mandals in the cluster. A third village is organising a youth mandal. Other villages have Youth groups not yet organised. These youth organisations and groups participate in local village shramdans and in the regular consensus meetings of the villages. Youth sports competitions are planned to focus the energy and organization of the cluster youth.

KHANDALA BLOCK TRAINING CENTRE:

A Training centre is being constructed in Jawale village to serve the villages of Khandala Taluka and Pune-Satara areas. The Training Centre will provide training in village development and leadership skills as well as serve a centre for vocational skill training. It will be a source of ongoing training programmes in the block.

100 Jawale villagers held 3 day Shramdan to dig the Training Centre foundation. Construction of ground floor will be completed in January 1981.

40 GRAM SABHAS HELD IN KHANDALA BLOCK:

50 villages held Gram Sabhas in Khandala Block in May and August conducted by ICA with the help of Jawale village leaders. 2200 persons from 40 villages participated in Gram Sabhas. The village people discussed their vision for their villages, named the issues and the key contradictions in their villages and then they created proposals that they could do themselves to change these contradictions in their villages. Some of the main proposals were expanding Irrigation Schemes and Creating Village Unity. Visits back to these villages, showed that some of the villages, had followed upon their proposals (such as Balwadi that started a preschool).

40 people from 12 of these villages came together for a Khandala Block leaders and ICA. These villages decided to make a visit to see the successful irrigation and drinking water projects in Naigaon by the Pani Panchayat, near Pune.

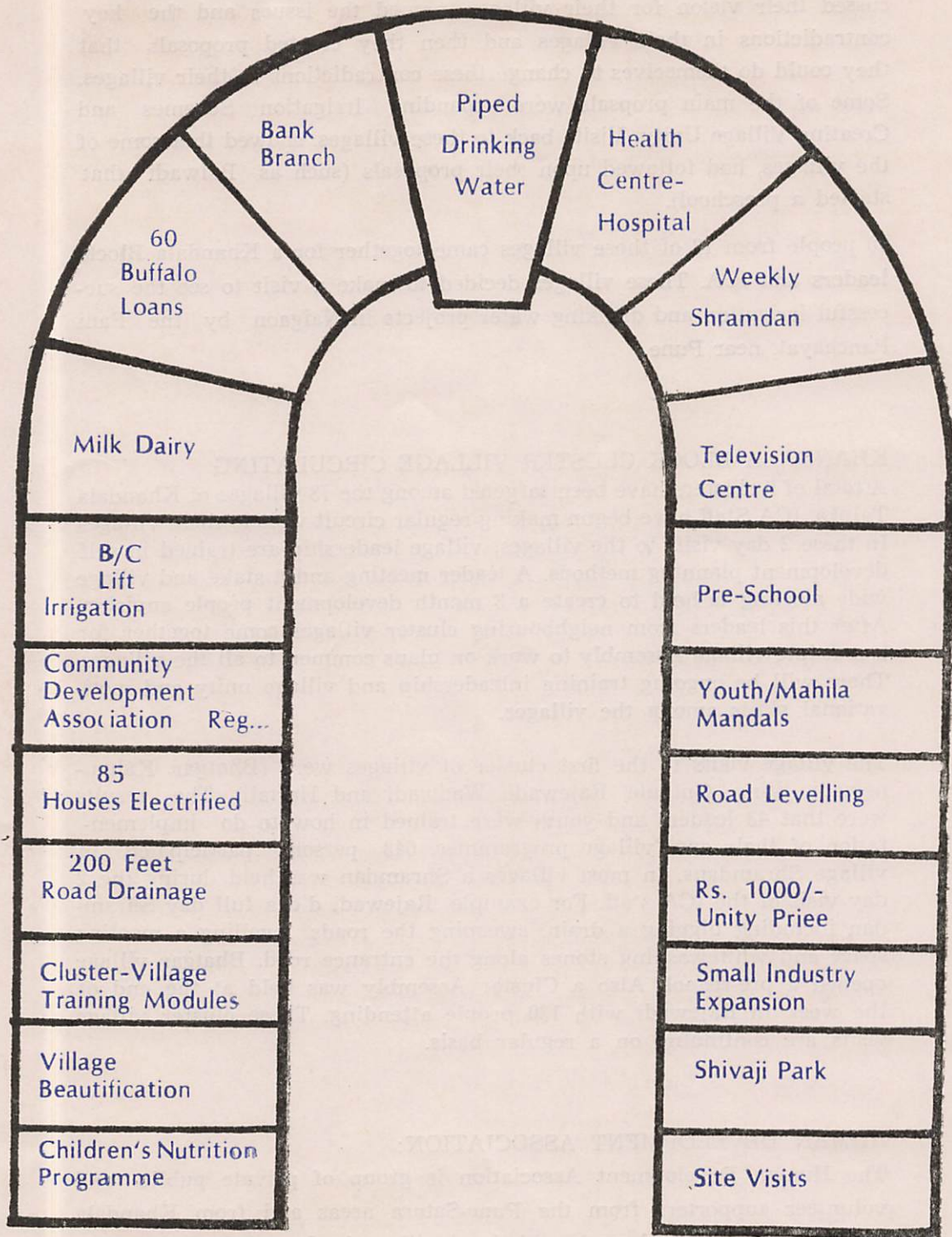
KHANDALA BLOCK CLUSTER VILLAGE CIRCULATING

A total of 9 clusters have been targeted among the 73 villages of Khandala Taluka. ICA Staff have begun making regular circuit visit to these villages. In these 2 day visits to the villages, village leadership are trained in self development planning methods. A leader meeting and a stake and village wide meeting is held to create a 3 month development people envision. After this leaders from neighbouring cluster villages come together for a multiple village Assembly to work on plans common to all the villages. There will be ongoing training in leadership and village unity and motivational skills among the villages.

The village visits to the first cluster of villages were (Bhatgar, Kahanewadi, Wing, Guthale, Rajewadi, Wadwadi and Hartali). The results were that 43 leaders and youth were trained in how to do implementation of their own village programmes. 643 persons participated in village Shramdans. In most villages a Shramdan was held during the 2 day visit of the ICA staff. For example, Rajewadi did a full day Shramdan including digging a drain, sweeping the roads, levelling a meeting space and whitewashing stones along the entrance road. Bhatgar village opened a pre-school. Also a Cluster Assembly was held at the end of the week in Rajewadi with 130 people attending. These cluster village visits are continuing on a regular basis.

HUMAN DEVELOPMENT ASSOCIATION:

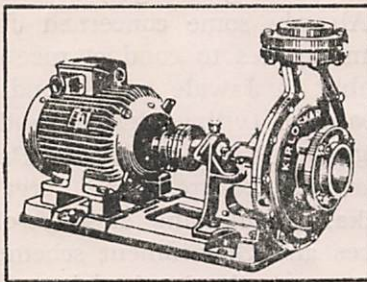
The Human Development Association is group of private public and volunteer supporters from the Pune-Satara areas and from Khandala Taluka who meet and work with local village leaders and who provide funding, resources, training and consultation. This group has been meeting since March. This 4 sector partnership co-ordinate their efforts for rapid development.



खेती के लिए आदर्श किलोस्कर पम्प हरसाल १५०० रु. की बचत

एन डब्ल्यू कपल्ड पम्पसेट

किलोस्कर एन डब्ल्यू पम्प एन्ड सक्शन पम्प दस से जादा आकारों में उपलब्ध हैं। ७३ लिटर प्रति सेकन्ड से २० लिटर प्रति सेकन्ड पानी खिचने की और ६ से ३० मीटर उंचाई तक पानी पहुँचाने की क्षमता रखने वाला

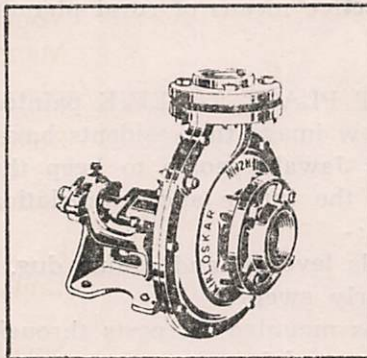


एन डब्ल्यू पम्प कार्यशीलता और गुणवत्ता में बेजोड है।

परीक्षण द्वारा यह साबित हुआ है की, किलोस्कर पम्प अगर किसी भी मोटर के साथ प्रतिदिन ८ घंटे चलाने पर बाजार में मिलनेवाले किसी भी अच्छे पम्प की तुलना में बिजली के खर्च में हरसाल न्यूनतम ६०० रुपयोंकी बचत होती है।

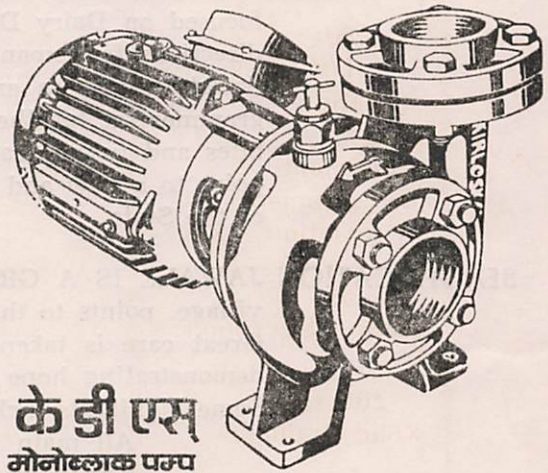
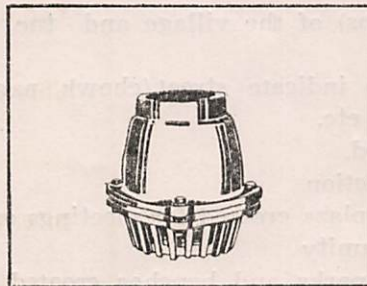
एन डब्ल्यू एच

डिज़ल इंजिन पम्पसेट के लिए किलोस्कर का एक पम्प और फुटवाल्व खरीदने पर बाजार में मिलने वाले किसी भी अच्छे पम्प की तुलना में हरसाल करीबन १५०० रुपयों की बचत होती है।



फ्रिक्शनलेस फुटवाल्व

किलोस्कर फुटवाल्व यह नया घर्षणहीन फुटवाल्व है। इसका इस्तेमाल करने से डिज़ल और बिजली की बचत के अलावा २०% अधिक पानी उपलब्ध होता है।



के डी एस मोनोब्लॉक पम्प

किलोस्कर के डी एस मोनोब्लॉक पम्प २८ आकारोंमें, उपलब्ध है। यह पम्प ४ मीटर से ६१ मीटर की उंचाई तक पानी पहुँचाते हैं एवम् प्रति सेकन्ड २ लिटर से ३७ लिटर तक पानी खिचने की क्षमता रखते हैं।



**किलोस्कर
ब्रदर्स लिमिटेड**

उद्योग भवन, तिलक रोड, पुणे-४११००२

RS. 1,000/-
PRIZE

Jawale Village was awarded a prize of Rs. 1,000/- from the Government as the number one village in the state for unity and development for 1980. At the award presenting ceremony held in the village recently the youth Mandal Leader declared once again before all officials and the village, that there was no untouchability in their village, describing such events as meals shared by brahmins and harijans in each others houses and working side by side at corporate village events, meetings etc. what was made clear at that meeting was that the task was still before us all to carry that unifying spirit into the hearts of all other villages.

CLUSTER
ASSEMBLIES

Jawale residents are inviting Government, private sector and voluntary agencies to build Jawale as a Village Development Training Centre where learnings can be exchanged and plans created, initially for the development of a cluster of surrounding villages, eventually for the benefit of the whole Taluka. Already some concerned Jawale leaders have visited neighbouring communities to conduct meetings and share ideas. The first Cluster Assembly in Jawale was attended by 40 people consisting of all local sarpanches (village leader) and some local Government officials, including the President of the Panchayat Committee. This body evaluated Jawale's progress and created general future directions for the Taluka, emphasising close co-ordination of village efforts, company resources and Government schemes. A second meeting focused on Dairy Development, the local vision, problems and creative directions for expansion of this industry for a cluster of villages. Dairy Society members and local Government officers related to dairy programmes sat together and combined their corporate wisdom. The assemblies and future training programmes to be held in Jawale could well point to a new and effective means of rural planning for every District of the State.

BEAUTIFICATION JAWALE IS A GREAT PLACE TO LIVE painted on a wall in the village, points to the new image the residents have come to live out of. Great care is taken by Jawale people to keep their village beautiful, demonstrating hope for the future and appreciation of village life.

Some highlights include:-

All main roads levelled and drains dug.

Streets regularly swept

Rubbish drums mounted on posts throughout the village to collect waste material.

Grids (or maps) of the village and the world, painted on street walls.

Signboards to indicate street/chowk names, village industries schools, parks etc.

Houses painted.

Toilet construction

Central stone plaza created for meetings and television viewing for the community

Community parks and benches created and painted

Perhaps the most significant learning experienced is that much can be done towards beautification with very little financial output and Government help.

SMALL INDUSTRIES

Much concern is given to the expansion of small industries, providing opportunities for more employment and increased family income.

In Jawale, the rope-maker families have come together to form a registered society for obtaining loans for necessary equipment. Already they have designed and built a small model rope twisting machine. The women have also come together, arranged training events and have begun to make papads (a food product) of very high quality, weighed and packed into labelled plastic bags. The successful dairy in Jawale supports milk production and is expanding to provide every family with additional income. Already 60 buffaloes have been purchased and programmes are underway to purchase more animals and develop sufficient irrigation for fodder resources. New practical ideas for industrial expansion are greatly sought after and will need the guidance and creativity of the private and public sectors.

LIFT IRRIGATION

A number of farmers have taken bank loans for the construction of lift-irrigation schemes. This involves either digging a well or pumping the water uphill from the river which runs through the village. Ground water from bore wells has not been too successful in this area but potential still exists for more lift schemes utilizing the river water perhaps the most significant scheme was the lifting of water from a new well near the river through a pumping house to lands given to the previous landless labourers by the Government. Irrigated land means that the farmers can grow crops all year round as opposed to seasonally. Further schemes will be aimed at corporate water usage benefitting the small farmers as much as possible.

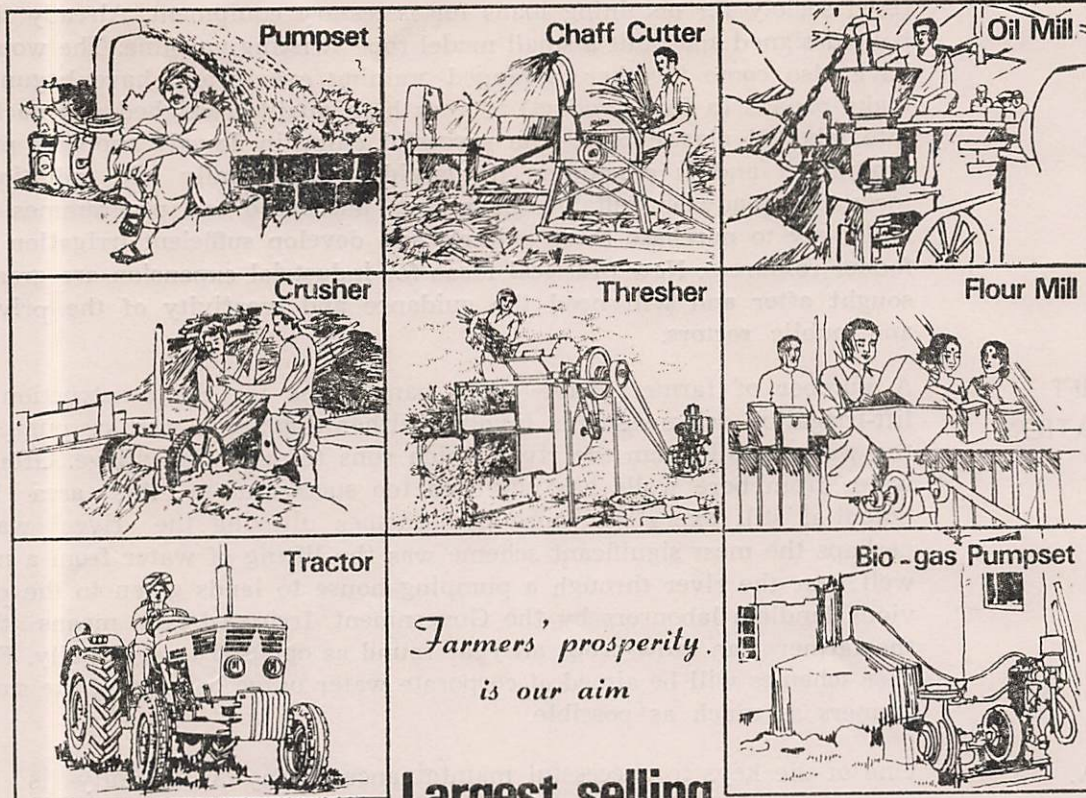
C. D. A.

One of the keys to successful maintenance of any community is the structures which enable all residents to participate in deciding and creating their future, Jawale is divided into five geographical areas (or stakes), each one having their own chosen leader to be responsible for ensuring the comprehensive care of the residents. The stake leaders arrange workdays and weekly stake meetings, encouraging the full participation of all ages across the village.

The C.D.A. or Community Development Association Jawale, is a registered public trust with a board of managers requiring all the stake representatives a minimum of two landless people and two women residents. The C.D.A. ensures that the community consensus is actuated and that effective management and book keeping procedures are carried out in the community with corporate funds. The Board of Managers meets once a week and the community assembly meets monthly unless otherwise notified. All residents are eligible for C.D.A. membership.

YOUTH AND WOMENS GROUPS

The Youth Mandal encourages the active participation of the young people in such community activities as shramdams, toilet construction and fund raising (e.g. film shows) Jawale Youth Mandal activities are always well attended and enjoy the privilege of strong and concerned leadership. The women's group (or Mahila Mandal) meets regularly every week, allowing the women to sit together for discussion of common issues and to engage incorporate economic ventures such as the Papad Industry. Exchange of learnings with outside Mahila Mandals has enabled greater motivation and injection of new ideas.



Largest selling

**Kirloskar diesel engines
for agricultural applications**

**Dependable engines
to keep the green revolution going.**



KOEL SALES & SERVICE

(A Branch of Kirloskar Oil Engines Limited)
Kothrud, Pune 411 029

Pratibha 83-241

SITE
VISITS

Jawale has enabled many people to see signs of hope and possibility, greatly needed in the rural areas. Numbers of Government and Company officials have visited the village and have been awe-struck at the confident style of the village as they display the story of the progress. It is a story of depth human awakement and co-operation rarely seen, even in cities of the western world. The Minister of State for Agriculture and Rural Reconstruction (Central), Mr. R. V. Swaminathan, visited Jawale on the 15th November, 1980. He was greatly impressed with how clean the village appeared and with how the people worked closely together, crossing caste barriers, to achieve their common vision.

It is hoped that more people have the opportunity to visit Jawale and share in the excitement of this worthwhile venture. Residents are proud of their village, eager to welcome visitors and to share their village, eager to welcome visitors and to share their stories of progress stories or progress.



I am very much happy to see the achievement of Jawali people have made during last five years from 1978 with the association of ICA people this is real way to approach "RAMRAJYAA" which Mahatma Gandhi was visualising. I wish all success.

K. L. Ginde
Kenetic Engineering Limited
Chinchwad Pune

What impressed me most was the overall development in this village and the manner in which the ICA volunteers are an integral part of the progress here

Chetan Shetty
A/141 Shantikunj
Pune-1.



**The world-class
Greaves Lombardini
Diesel Pumpset. Easy to lift,
easy to carry.**



Components of special metals, make it the lightest pumpset.

**Lightweight, heavy-duty
Highly economical**

1. Maintenance costs less because of superior components
2. Light enough to lift and carry. There's a saving there!

**GREAVES COTTON & CO. LTD.,
Engine Division**

1, Dr. V.B. Gandhi Marg, Bombay 400 023.
25 Brabourne Road, Calcutta 700 001.
124 Janpath, New Delhi 110 001.
13, Second Line Beach, Madras 600 001.



- The Lombardini engine has many applications
- Approved by banks
- 5 hp and more
- Backed by Greaves Cotton after-sales service



YEARS OF DEDICATION
AND
QUALITY CONSCIOUSNESS
BRING YOU THE BEST

FROM

J. N. MARSHALL PVT. LTD.

POONA 411034

Complete Design And Consultancy Services For

- * THE EFFICIENT UTILISATION OF STEAM IN PROCESS PLANTS
- * PROCESS CONTROL INSTRUMENTATION FOR PAPER, TEXTILES
CHEMICALS SUGAR, CEMENT, HOTELS, AND HOSPITALS.

OUR SYSTEMS

YOUR EFFICIENCY

: With best compliments from :



Amphetronix Limited

Manufacturers of all Types of Connectors
Radio Frequency, Printed Circuit and
Rack and Panel

For Details please contact

AMPHETRONIX LIMITED
105, Bhosari Industrial Area
P. O. Box No. 1
POONA-411 026

Tel. : 83363/83463
Grams : AMPHENOL
Telex : PN 0145 337



Well
Wishes

“ An organisation is people.
The Group considers that its greatest
single investment is not in its land,
buildings, machinery or steel, but in its
men. And it stands or falls in exact
proportions to the productivity of this
investment in human resources ”

THERMAX PRIVATE LIMITED, THERMAX HOUSE
4 BOMBAY PUNE ROAD, SHIVAJINAGAR, PUNE 411 005


THERMAX

with best compliments from :



SANDVIK ASIA LTD.

Manufacturers in India of SANDVIK COROMANT
Cemented Carbide Products

BANGALORE BOMBAY CALCUTTA
DELHI HYDERABAD MADRAS POONA

With best compliments from :



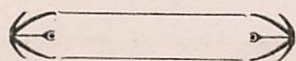
Poona Intermesh Pumps Pvt. Ltd.

S-116, PUNE - 411 026.

Telephone : 8 3 5 1 0

Telex : 1454-453 BLCR IN

With
Best
Wishes
From:



Walchandnagar Industries Ltd.

INDUSTRIAL MACHINERY DIVN.

(Works at Walchandnagar & Marketing Divn. at Poona)

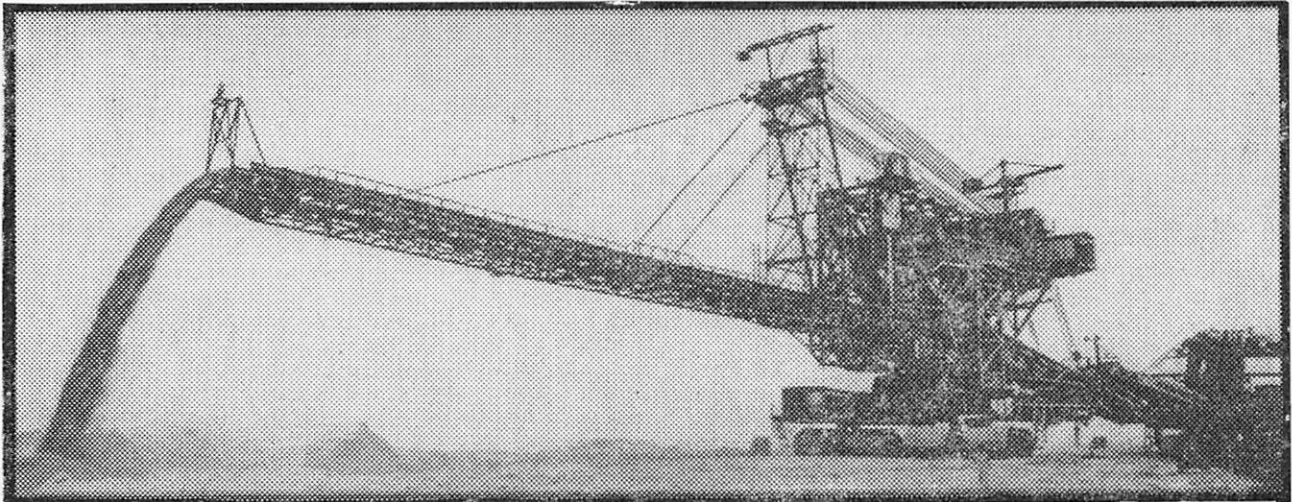
With Best Compliments from



Space Subscribed By

Mather and Platt (I) Limited

CHINCHWAD, POONA 411 019.



11,000 tonnes per hour Spreader for Neyveli Lignite Corporation.

**TECHNOLOGY THAT HAS A
BACKING OF ONE HUNDRED
YEARS OF SOLID EXPERIENCE**

In collaboration with BUCKAU R WOLF AG, WEST GERMANY & KRUPP POLYSIUS, WEST GERMANY, we engineer, manufacture and install custom built Bulk Material Handling Systems involving Stackers, Reclaimers, Excavators, Spreaders and allied equipment.

Some of the industries being served by us are —

CEMENT PLANTS * THERMAL POWER STATIONS * LIGNITE/COAL MINES * STEEL PLANTS * BAUXITE * OTHER INDUSTRIES

SIGN OF TECHNICAL PROGRESS

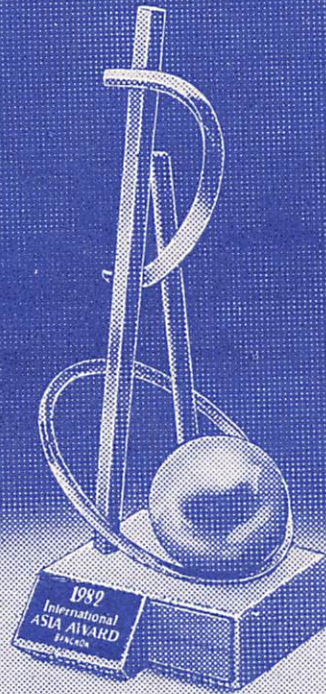


BUCKAU WOLF

BUCKAU WOLF INDIA LIMITED, PIMPRI, PUNE 411 018 (INDIA).
TELEPHONE: 84461 CABLE: DEVCORP TELEX: 145-267

PADMAJA

The burglar-resistant
drill-resistant
torch-resistant
international award



Steelage Industries Ltd. Ace in security equipment.

Steelage Industries Limited, Opp. P. O. Mazagaon, Bombay 400 010, India.
Phone: 392961/62, 396065/36, Telex: 011-4728, Cable: Steelage.
Branches: Bombay, Calcutta, Madras, Bangalore, Delhi, Kanpur.

Dattaram.SA.89/82

AGENTS CORNER

661/A, Shivajinagar, Deccan Gymkhana, Pune-411 004. Tel. : 54865/57489