

LOGISTICS OF THE GUILD

Whistle Point # IX

Action Factor

Summer '73  
Research Assembly

Working Copy  
Not For Publication

ACTIONAL  
PLANNING  
PRESIDIUM

1. Actional Planning Presidium is major component characterized by a comprehensively planned meeting, which allows for interchange and planning within metros. The intent of this major component is to penetrate structures within the metro. This major component has no primary impact on any of the other components. It has secondary impact on Movemental Development strategy through giving movemental troops a structure to plan their actions upon their community. This major component is impacted by movement development strategy in the form of creation of regional stories of possibility spun within the component. One illustration of this major component in action is Regional Councils.

METHODS  
DEVELOPMENT  
SYSTEM

2. Methods Development System is a major component characterized by the development of a system which impacts the model building, writing, workshopping and problemating methods. The intent of this major component is to train the movement in a systematic way in the well-tested methods of leading groups. This major component impacts Global Research Centrum as it is one of the structures which holds Global Centrum accountable. This major component is also impacted by Global Research Centrum as it is one of the vehicles which Global Research uses to disseminate methods and data across the movement. One illustration of the major components in action is the sending out of methods manuals by Global Research Centrum to the regions to be used in training sessions.

ESTABLISHMENT  
PERMEATION  
CONSTRUCT

3. Establishment Permeation Construct is a major component characterized by the structures, research, evaluations, workshops and guild forces which can release and influence responsible decision making within the establishment dynamic of society. The intent of this major component is to honor and release the major source of economic, cultural and political power in present society. This major component impacts the following major components: Economic Standardization Program and Creative Engagement Structures, through contexting, communication, engagement opportunities and distribution standards. This major component is also impacted by these other major components: Demonstration Training Module, in the form of movement demonstration projects, and training programs. One illustration of this major component in action is the LENS course.

ECONOMIC  
STANDARD-  
IZATION  
PROGRAMS

4. Economic Standardization Programs is a major component characterized by equal distribution standards and mass media communications. The intent of this major component is to rebalance the economic process through quota establishments, investment rational, controlled location of industry and using mass media such as drama and films as a tool for recontextualization. This major component does not primarily impact any other component. Secondarily it impacts Resource Possibility Analysis through such

MOVEMENTAL  
DEVELOPMENT  
STRATEGIES

methods as controlling location of industry. This major component is impacted by the following major components Resource Possibility Analysis in the form of identifying cultural groups and tactically reforming prisons. One illustration of this major component in action is the recycling of surplus goods.

5. Movemental Development Strategies is a major component characterized by structures to enable engagement such as Week I and Week II assignment rationales, enablement structures and interchange of global priors in religious houses. The intent of this major component is to develop concrete, organizational structures to enable comprehensive engagement. This major component impacts the following other major components: historical movemental model through symbolic care in enablement structures, corporate assignment rationales and the assignment rotation of symbolic order personnel across the globe. This major component is impacted by the following other major components: creative engagement structures in the form of weekend format rationales, team structures enabled by priors, and use of songs to enable spirit breakloose. One illustration of the major component in action is the creation and implementation of a regional Week I and Week II quarterly assignment chart to engage as many local people as possible in missional structures.

DEMONSTRATION  
TRAINING  
MODULE

6. Demonstration Training Module is a major component characterized by renewing society structures through demonstration signs in local communities. The intent of Demonstration Training Module is to enable local man to participate through courses such as RS-I and PLC. It impacts the following other major components: visionary forms complex, Establishment Permeation construct through grassroots planning and giving concrete forms to vision. It also enables re-evaluation of historical data. Demonstration Training Module is impacted by Visionary Forms complex in the form of Reconstruction of Social Processes. One illustration of this is enabling local man to participate in Summer Research Assemblies.

COMMUNITY  
WISDOM  
CHANNEL

7. Community Wisdom Channel is a major component characterized by building comprehensive care models, researching vocational possibility, and establishing community interchange systems. The intent of this major component is to provide channels for enlisting the wisdom of community members to further enablement of the community, through a system of interchange. Community Wisdom Channel impacts Resource Possibility Analysis by providing tactics for identifying resource possibilities. One illustration of this major component in action is a group of interested people or a guild to structure community participation in social action.

HISTORICAL  
MOVEMENTAL  
MODEL

8. Historical Movemental Model is a major component characterized by comprehensive care structures, corporate assignment methods and financial and professional enablement. The intent of this major component is to maintain an accountable corporate order for the development of grass-roots leadership. The Historical Movemental Model impacts the Global Research Centrum through supplying it with the self-conscious leadership and enablement necessary for the effective research. This major component is supported by movemental development strategies, in the form of the concrete structures and strategies this component offers the historical movement. One illustration of this major component in action is the interaction between professionals, local churchmen, financial guardian and community leadership in the 5th City project.

COMPREHENSIVE  
MISSIONAL  
CELEBRATION

9. Comprehensive Missional Celebration is a major component characterized by engaging people in a missional activity during leisure time. The intent of this major component is to establish a Teachers Association in Education, develop models for art and celebration, and create methods of service and spiritual exercises. This major component is not impacted by any other major component. This major component is impacted by the following other major components: Structure Creative Engagement and Movement Development Strategies. Implementation of Missional Activity in the form of Creative Participation that involves the family. One illustration of this major component in action is the Summer '73 Cabaret.

MISSIONAL  
LEISURE-TIME  
ACTIVITIES

10. Missional Leisure-Time Activities is a major component characterized by various activities which point to missional engagement of colleagues. The intent of this major component is to give local man a structural way to participate in creating the new earth. This major component has no primary impact on any of the other components. It has secondary impact on the comprehensive missional celebrations and Global Research Centrum by holding them accountable to providing models for comprehensive missional celebrations. This major component is impacted by the following other major components: Creative Engagement Structures, Global Research Centrum and Visionary Forms Complex to enable man to see and use leisure time as missional engagement. One illustration of this major component in action is the Summer Program.

SPIRIT  
JOURNEY  
CONSTRUCTS

11. Spirit Journey Constructs is a major component characterized by use of conversation methods, odyssey construct and sacred space contexts. The intent of this major component is to provide constructs to enable every man to experience the depths of life. This major component impacts the following other major components: comprehensive missional celebrations

and Demonstration Training Model through creation of models to conduct activities such as spirit conversations, scripture conversations and spirit visits and demonstrating the use of these methods. This major component is impacted by the following other major components: demonstration training model and creative engagement structures in the form of the Spirit Odyssey and conversation constructs. One illustration of this major component in action is the planning and implementation of scripture conversations before meetings in a local guild meeting.

CREATIVE  
ENGAGEMENT  
STRUCTURE

12. Creative Engagement Structure is a major component characterized by obtaining additional data to be used in creating new methods for engaging man. The intent of this major component is to clarify and intentionalize the order functions. This major component impacts the following other major components, Movemental Development strategies, Comprehensive Missional Celebration and Missional Leisure-Time Activities through providing the necessary data needed to find new ways to provide for economic contributions, vocational involvement for global man and the extension of vocation to the expanses of mans life. This major component is impacted by Movemental Development strategies, Establishment of permeation constructs and Global research centrum in the form of financing of providing vehicles for research data and models for implementing new methods of engagement. An illustration of this major component in action is the gridding done in parishes to ground the cadre in the area so as to provide the needed program and methods.

GLOBAL  
RESEARCH  
CENTRUM

13. Global Research Centrum is a major component characterized by creating timelines and building of corporate work areas in the community. The intent of this major component is to let communities lay out programs. This major component impacts the following other major components, Missional Leisure-Time Activities and Method Development Systems which build comprehensive models which allow a corporate body to move with one spirit and one action, to carry off the missional tasks, and serve the local church by enabling both a global and a movemental context for churchmen. This major component is impacted by the following other major components: Methods Development System and Historical Movement Model which release creative engagement, missional style, global reformation, and the development of grassroot leadership. One illustration of this major component in action is the enabling of local man through participating in courses and training.

VISIONARY  
FORMS  
COMPLEX

14. Visionary Forms Complex is a major component characterized by grassroots engagement in implementing the vision of the reconstruction of the social process by giving concrete form to the vision. The intent of this major component is to develop local outreach operational structures to enable people to participate in re-arranging the social vision. This major component impacts the following other major components: demonstration training models and resource possibility analysis through the formation of guilds; creation of a regional training center and corporate reading and research responsibilities. This major component is impacted by the following other major components: demonstration training module in the form of guild implementation allowing broad base participation; corporate research and reading assignments to enable formulating of the global vision; and the regional training center enabling local man to become skilled in articulating this vision to the grassroots people. One illustration of this major component in action is community based structures to provide a supporting dynamic and to deal with community concerns in relation to the vision.

RESOURCE  
POSSIBILITY  
ANALYSIS

15. Resource Possibility Analysis is a major component characterized by a system of research, evaluation and planning. The intent of resource possibility analysis is to plan necessary resources of the future through the evaluation of current resources followed by research development. This major component impacts the following other major components: Economic Standardization Program and Community Wisdom channeled through showing new possibility of what it might mean to participate in the economic. This major component is impacted by Visionary Forms Complex and Community Wisdom Channel in the form of continuous feeding in of data from the community and by supplying a vision. One illustration of this major component in action is the creation of jobs by those who need jobs.

ACTIONAL  
PLANNING  
PRESIDIUM

16. Actional Planning Presidium is intended to penetrate structures within the metro. The forces who will implement this array are movemental colleagues. The first three steps in doing this array are creating the model for the presidium, creating enablement structures and creation of a battleplan by the presidium. This array has a valence of 1729 which indicates it will have a low sociological impact. An illustration of the array is regional councils.

1. Planning the presidium functions as the back-up system to the presidium.
2. Penetrate structure functions as the actional context the presidium operates out of.
3. Battleplan functions as the model created for colleagues to penetrate structures.

4. Model for movement gathering function as data will give wisdom to the planning of presidium.

5. Regional models function to give commonness throughout metros.

6. Regional stories function to give individual an operational context of his geography.

7. Stories of Possibility functions as an interweaving of possibility into the individuals operational context.

8. Enablement assignments function as the source to handle the tasks involved in the operating of the planning presidium.

9. Teaching assignments function to give the presidium the necessary training.

10. Metro-mobilization functions to rise up and spiritize troops.

11. Creating Small Group Interchange Care Systems within the community functions as the accountability structure for movemental colleagues.

12. Transportation System functions to transport colleagues to the presidium.

13. Maintenance facilities function to provide necessary operative mechanism, and mangement.

17. Method Development System is intended to provide the movement with the consensed-on methods and a systematic way of disseminating them. The forces who will implement this array are the religious house personnel. The first three steps in doing this array are analyzing the existing methods, creating a schema including the new methods and developing a system which encompasses distribution to every religious house. This array has a valence of 1,340 which indicates a relatively low impact on society. An illustration of this array is distributing the Summer '72 methods manuals.

1. Model-building functions to insure comprehensive planning.

2. Reduplicating methods functions to ensure the continuing controlled experiments.

3. Use computing methods functions to systematize the methods and commonize them.

4. Corporate writing functions to provide a pool of common wisdom.

5. Twentieth-century comprehensive methods functions to give local man the tools he needs to engage in the particulars of his local situation.

6. Problemmatting functions to give every man an objective screen to view his local situation.

7. Workshops functions to distil data and illuminate the local situation.

METHODS  
DEVELOPMENT  
SYSTEM

ESTABLISHMENT  
PERMEATION  
CONSTRUCT

8. Weapons and tools functions to allow every man to get his creativity into the ongoing social process.

9. Research assemblies functions to pull together the troops to recast the vision and to plan comprehensively.

10. Paraphernalia functions to give every man the tools he needs to engage in the task.

18. Establishment Permeation Construct is intended to honor and release the major source of economic, cultural and political power in present society. The forces who will implement this array are trained movemental teachers, regional research bodies, and local guild forces. The first three steps in doing this array are large-scale research assemblies such as Summer '73, the creation of a secular myth dealing with a specific geographic area, and the penetration of movementally-trained teachers. This array has a valence of 1,435 which indicates a relatively low potential impact on society. An illustration of this array is holding a LENS course.

1. Research coordination center functions to get clarity on sociological implications.

2. Workshop local history functions to reveal the grist of a local secular myth.

3. Local storytelling guild functions to rehearse the stories that hold a community in being.

4. Reevaluate historical data functions to pull the grist of history through an adequate value screen previous to the creation of a secular myth.

5. Prioritizing pressure points functions to reveal the more strategic steps in changing history.

6. Hold local PSUs functions to get clarity on the actual local situation and the possible solutions.

7. Prioritize regional tasks functions to reveal the tactics and assignments necessary to honor the pressure points.

8. Reevaluate social priorities functions to honor the dynamic rather than the static needs of society through continuing research, etc.

9. Contradict matrices analysis functions to leave research in sociological trends open.

ECONOMIC  
STANDARDIZATION  
PROGRAMS

19. Economic Standardization Programs is intended to readjust the economic wellbeing of the globe. The forces who will implement this array are trained guildsmen functioning within the economic structure. The first three steps in doing this array are analyzing the urban community, establishing a guild net political cooperative program, and establishing a quota system. This array has a valence of 3,240 which indicates a medium high impact. An illustration of this array is the creation of an investment rationale.

1. Global broadcast network functions to channel data across the globe through radio and television media.

7. Deployment of religious house people functions to coordinate assignment of religious house personnel to meet troop needs.

8. Reassignment of priors functions to enable coordination of local needs with priors available.

9. Global tracking teams functions to coordinate deployment of trackers across the globe.

10. Social service agencies functions to locate job opportunities for missional employment.

11. Indirect implementation mechanisms functions to provide ways to enable programs to occur.

12. Demonstrate missional style functions to create a sign of possibility within a community.

13. Activating movement courses functions to enable implementation of courses across the globe.

14. Technological expertise exchange functions to enable global interchange of technological wisdom.

15. Enabling political approval functions to gain positive reactions from political agencies within the community.

DEMONSTRATION  
TRAINING  
MODULE

21. Demonstration Training Module is intended to renew societal structures. The forces which will implement this array are churches and members of the local community. The first three steps in doing this array are clergy recruitment, RS-I courses, and PLC courses. This array has a valence of 7,561 which indicates that demonstration training is necessary for local man.

1. Corporate discipline enables accountability, such as getting to daily office on time.

2. Social context shifts is a shifting of life style.

3. Local outreach schema functions to reach local community members.

4. Priorities project is a listing of things to be done in order of importance.

5. Delegations enables troop recruitment.

6. Corporate reading research is reading together.

7. Attend assignments enables accountability.

8. Regular training centers is a specific place for meetings on a regular basis.

9. Recruiting RS-I involves getting new troops.

10. Metro in region enables courses to take place.

11. Guild formation activates latent colleagues.

12. Participant observer attends course to enable and observe teaching methods.

13. Galaxy models provides a battle plan for each galaxy church.

14. List of church officials provides information regarding church leaders.

15. Regulating assemblies schemes includes a pre-planning staff.

COMMUNITY  
WISDOM  
CHANNEL

22. Community Wisdom Channel is intended to provide a media for enlisting the wisdom of community members with which to build comprehensive models for community care. The forces to implement this structure are concerned citizens, existing social action groups, movement pedagogues, recruiters and regular channel consult teams. The first three steps for this construct are offering a LENS course, creating a self-conscious body to build comprehensive care models, and surveying the needs of the community. This array has a valence of 4,235, which indicates that Community Wisdom Channel is crucial to the performance of the Action Factor. An illustration of this array is the LENS course and followup meetings which gestalt community needs.

1. Building comprehensive care models functions to prioritize the community needs and offer concrete possibility for meeting those needs.
2. Course setup functions to awaken deeply caring local citizens to the consciousness of possibility for creative expenditure.
3. Battle planning and gestalting functions to provide practical data for the self-conscious local citizen.
4. Social process models functions to hold the local community over against the dynamics of all society.
5. Creation of guilds functions to organize scattered deeply caring local citizens into self-conscious history-changing units.
6. Social action groups function to provide troops and forces to carry out models developed by local guilds.
7. Articulated community needs functions to focus models on the actual local situation.
8. Researching vocational possibility functions to serve as a resource for local man who has lost his sense of vocation.
9. Producing local miracles functions to be a sign of possibility within a community.
10. Charades and phase montages functions as concrete ways to illustrate vocational possibility.
11. Establishment of community node functions to channel disoriented local people into events which renew the community.
12. Community accountability structure functions to hold guildsmen decisive in commitment to the community.
13. Interchange systems functions to open channels of communication within the community and the relationship with the movement.
14. Consult teams functions to relate the local community to what is going on across the globe.
15. Public announcements calendar functions as one concrete method for interchange within the community.

HISTORICAL  
MOVEMENT  
MODEL

23. Historical Movement Models are intended to aid in the development of grassroots leadership. The forces who will implement this array are an accountable corporate order. The first three steps in doing this array are to build the necessary care structures, seek financial enablement, and provide ongoing nurture structures. This array has a valence of 3,785 which indicates that it is of central importance. An illustration of this array is the Order of the Ecumenical Institute.

1. Historical order functions to release creative corporate engagement.
2. Historical movement model functions to create comprehensive care, assignments, and financial enablement.
3. Extended order functions as the covenantal movement dynamic within the establishment.
4. Movement order functions as the catalyst in engaging grassroots participation.
5. Corporate assignment functions to provide equal training opportunities.
6. Funding support functions to enable the continuing of the spirit movement.
7. Comprehensive care functions to enable every man to embrace his full humanness.
8. Symbolic care functions to maintain self-consciousness and to rehearse one's role in history.
9. Contextual re-education functions to ground and illuminate one's self-story.
10. Fifth City engagement functions to aid grassroots people in housing, medical, and employment care.
11. Second-year interns functions to enable life decisions.
12. Local church functions to be that foundation upon which resurgence is built.
13. Common budget functions to allow every man to participate in the building of new structures and the training of churchmen.
14. Grassroots leadership development functions to create global iron men.
15. Travel model functions to provide economic enablement.

COMPREHENSIVE  
MISSIONAL  
CELEBRATION

24. Comprehensive Missional Celebration is intended to engage people in mission. The forces who will implement this array are the assigned guildsmen. The first three steps in doing this array are obtain information, publicize and impact, and engage local community. This array has a valence of 3,585 which indicates that it is fairly high in its potential impact on society. An illustration of this array is the Summer '73 Cabaret.

1. Global celebration functions to engage the community.
2. Ur significance functions to imply that man is unique.
3. Global/local functions to deal with the particular within the comprehensive.
4. Celebrations functions to allow affirmation of life.
5. Film series on local possibility functions to publicize by viewing.
6. Public impact forums functions to introduce programs to the public.
7. Nation and world functions to engage the world.
8. Missional exploration functions to exploit the missional area.
9. Spiritized practics functions to develop a spiritual program.
10. Women's forum functions to employ women in a decisional body.
11. Teachers personnel association functions to construct a personnel program in education.
12. Proposals functions to construct other possibilities
13. Develop model for art functions to release creativity.
14. Operational structure functions to construct methods
15. Think tanks functions to develop potential.

MISSIONAL  
LEISURE-TIME  
ACTIVITIES

25. Missional Leisure-time Activities is intended to give local man a structured way to participate in creating the new earth. The forces who will implement this array are movemental colleagues. The first three steps in this array are establishing projects in local church arenas, summer programs, and incorporating cultural art forms. This array has a valence of 1,516 which indicates a low priority in relation to the major component. An illustration of this array is a research assembly.

1. Reconstruction of local institutions functions to release creativity within already existing structures.
2. The church distribution of money to the needy functions in giving a sign of possibility of the care of man for his neighbor.
3. Establishing galaxy family model functions to allow galaxy families to participate in community.
4. Establishing local church project functions to establish a sign to the church.
5. War boards functions to give an objective way to look at plans for the immediate future.
6. Experiment with symbols functions to release people toward new possibilities and creativity.
7. Summer programs functions to pull movemental colleagues together to engage in research and planning future programs.

SPIRIT  
JOURNEY  
CONSTRUCTS

8. Auxiliary training functions to give colleagues tools necessary to do the Local Church Experiment.

9. Corporate life style functions to give basis to the research of movemental colleagues.

10. Missional contributions functions to give men a new way to concretely participate in movemental dynamics.

11. Art forms functions as a method of reflection for the movemental participants.

12. History of art forms functions to give local man expansion of cultural study.

13. Art supplies function to give appropriate materials applicable to the development of the program.

14. Art form conversations functions to provide a method of corporate reflection.

26. Spirit Journey Constructs is intended to provide constructs to enable every man to experience the depths of life. The forces who will implement this array are religious house personnel and local spirit people in guilds. The first three steps in doing this array are to create spirit methods constructs, train spirit-filled leadership in use of methods, and demonstrate the methods in meetings and weekend courses. This array has a valence of 2,458 which indicates a medium impact sociologically. An illustration of this array is use of scripture conversations in local guild meetings.

1. Odyssey construct functions to enable man's spirit journey in a comprehensive context.

2. Create global context functions to give historic and cultural understanding of other Urs.

3. Assignments rationale functions to enable creation of leadership dynamics for spirit journey enablement.

4. Create journey model functions to enable journey of every individual through recruitment to courses.

5. Sacred space context functions to enable recovery of worship centers and fill the need for sacred space in the secular world.

6. Week I/Week II time context functions to enable people to see themselves as under assignment.

7. Area conference calls functions to raise up new colleagues and nurture present colleagues.

8. Conversation methods functions to enable spirit breakloose in any situation.

9. Prayer vigil functions to enable one to think through the necessary action.

10. Family symbol functions to remind the family of its decision to care for the world.

11. Weekend consult functions to build local tactics.

12. Discussion groups functions to articulate corporate decisions.

CREATIVE  
ENGAGEMENT  
STRUCTURES

13. Spirit journey functions to bring self-consciousness to interior life.
14. Scripture conversation functions to ground understanding of scripture.
15. World wisdom conversation functions to share insights on current affairs.

27. Creative Engagement Structures is intended to clarify and intentionalize the order's functions. The forces who will implement this array would be the local religious house. The first three steps in doing this array are gathering the informational data, evaluating and analyzing this data, and formulating the objectives to be accomplished. This array has a valence of 3,514 which indicates that it is somewhat limited in its impact.

1. Singing functions to provide a motivational and sustenance force.
2. Field survey functions to provide data.
3. Gridding functions to provide a picture of data.
4. Lecturing functions to disseminate data and relationships.
5. Involving all phases functions to assure that all men are engaged in local visioning.
6. Child involvement functions to assure methods for engagement of persons in this life phase.
7. Adult involvement functions to assure methods for engagement of persons in this life phase.
8. Intentionalize youth functions to assure the consciousness of youth.
9. Articulate story of elders functions to assure wisdom continuity.
10. Weekend format functions to extend the consciousness of local man.
11. Formal representations functions to assure the local presence in a larger body.
12. Global council functions to maintain the global awareness of the movement.
13. Team structures functions to care for local man and is a source of data on his requirements.
14. External mission prior functions to provide temporary leadership.
15. Short course file functions to maintain a resource bank of courses already taught.

GLOBAL  
RESEARCH  
CENTRUM

28. Global Research Centrum functions to supply data for further development of local/global movemental structures. The forces who will implement this array are concerned citizen, the existing social agencies, and members of the clergy. The first three steps in doing this array are system creation, a research centrum, and comprehensive time line. This array has a valence of 2,196 which indicates it

ranks low in level of importance. An illustration of this array is displayed in the methods of the movement.

1. Systems creation functions to provide information to penetrate a community.
2. Develop comprehensive time line functions to establish a calendar for future penetration of the local/global area.
3. Permeate community structures functions to provide data for necessary action.
4. Build corporate play areas functions to raise community morale.
5. Corporate work day functions to establish a guide line for movemental endeavors within a day.
6. Enablement programs functions to provide necessary assistance in financial areas.
7. Decor creation committee functions to design and build missional decor.

VISIONARY  
FORMS  
COMPLEX

29. Visionary Forms Complex is intended to engage local man in giving concrete forms to the vision of the reconstruction of the social process. The forces who will implement this array are personnel who are trained in the vision of society in which the earth belongs to all and those local persons who are longing to engage creatively in shaping the future for all people. The first three steps in doing this array are establishing a religious house or outpost with people who can expand the consciousness of local man and show him the concrete possibility of directly participating in the model to create the new society to enable humanness for all; exposing local people to LENS to enable them to see the possibility of creating the future; and setting up guilds to enable local man to have a group to participate in to implement the vision. This array has a valence of 2,952 which indicates an average sociological impact. An illustration of this array is the creation of a guild within a community.

1. Local outreach operational structures functions to enable implementation of community vision.
2. Self-support dynamic functions to enable communities to perform their visionary task.
3. Public concerns community functions to feed important data to the operational structures.
4. Community directory functions to provide data on local personnel.
5. Community newspaper functions to publish pertinent information for the local people.
6. New printing methods functions to disseminate information rapidly.
7. Rearranging social montage functions to give local man a comprehensive global vision.

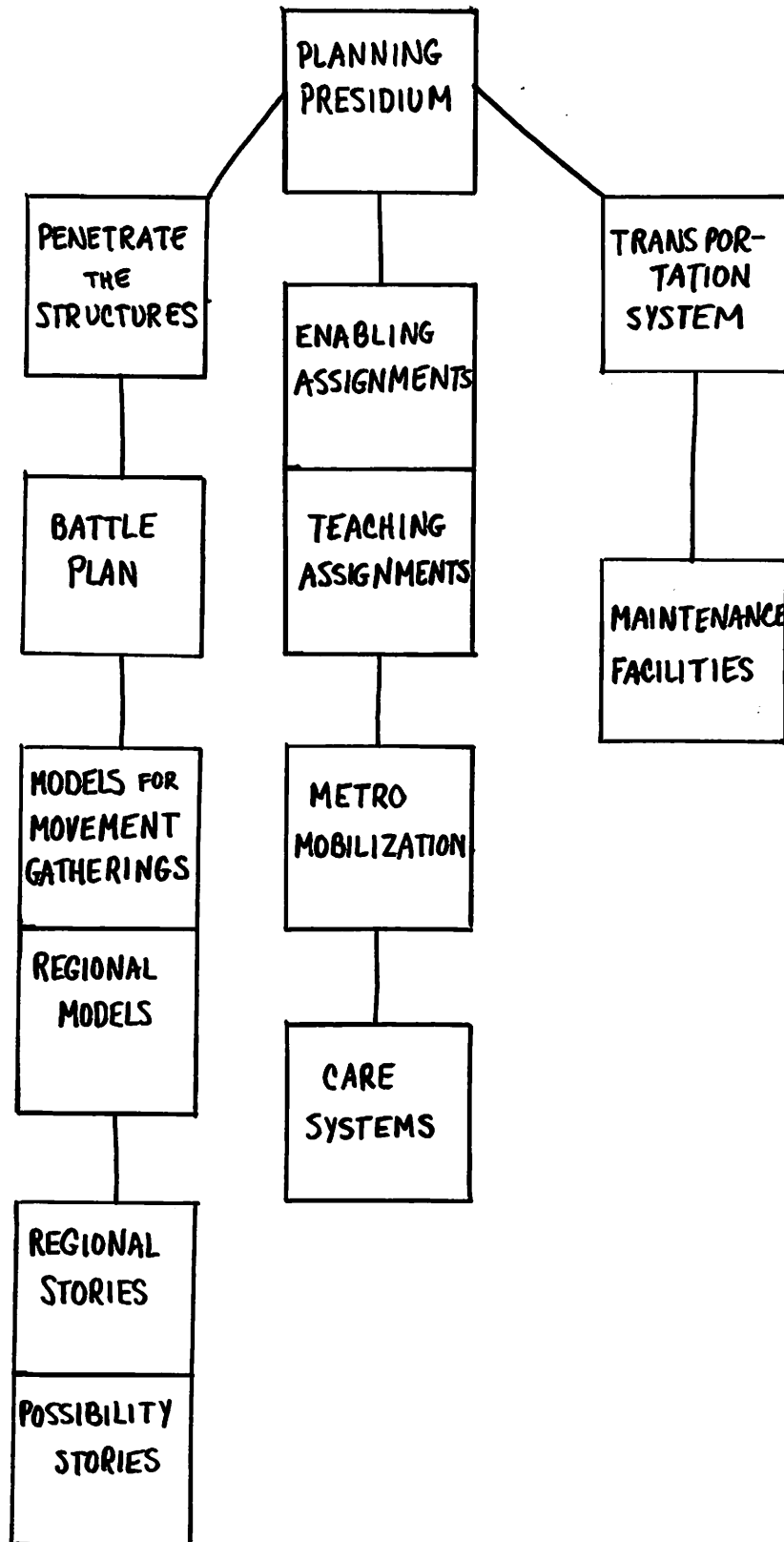
8. Strategic location of religious houses functions to impact local areas with global vision.
9. Flow charts functions to trace the operations of local outreach operational structures.
10. Reconstruction of social process functions to give form to the new society.
11. Community resource participation functions to create programs and structures to enable broad base participation.
12. Learning other languages functions to globalize local man.
13. Career day programs enable students to reflect on their life's work and make basic decisions.
14. Mobilizing local initiative functions to engage local man in reconstructing society.
15. Grassroots planning functions to enable local man to give form to his vision by planning tactics to compliment.
16. Cultural engagement functions to provide opportunities to celebrate and honor local man's heritage.

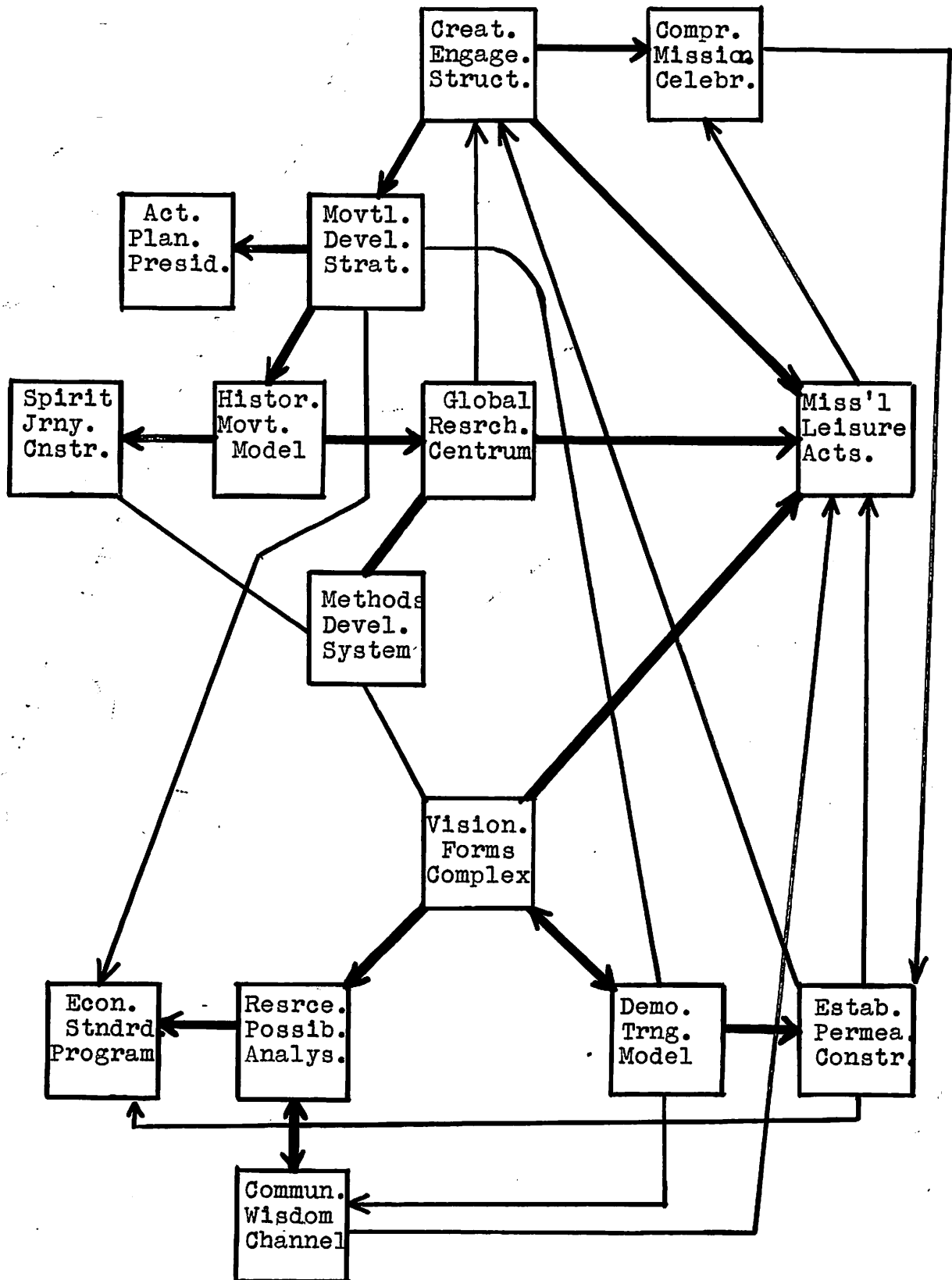
RESOURCE  
POSSIBILITY  
ANALYSIS

30. Resource Possibility Analysis is intended to plan present and future development models. The forces who will implement this area are movement colleagues. The first three steps in doing this area are evaluating the past, discovering new possibilities and creating a timeline for the future. This area has a valence of 1884 which indicates a low impact in relation to the other components. An illustration of this area is the identifying of cultural groups within a community and prioritizing them in terms of the need of the future and their particular gifts.

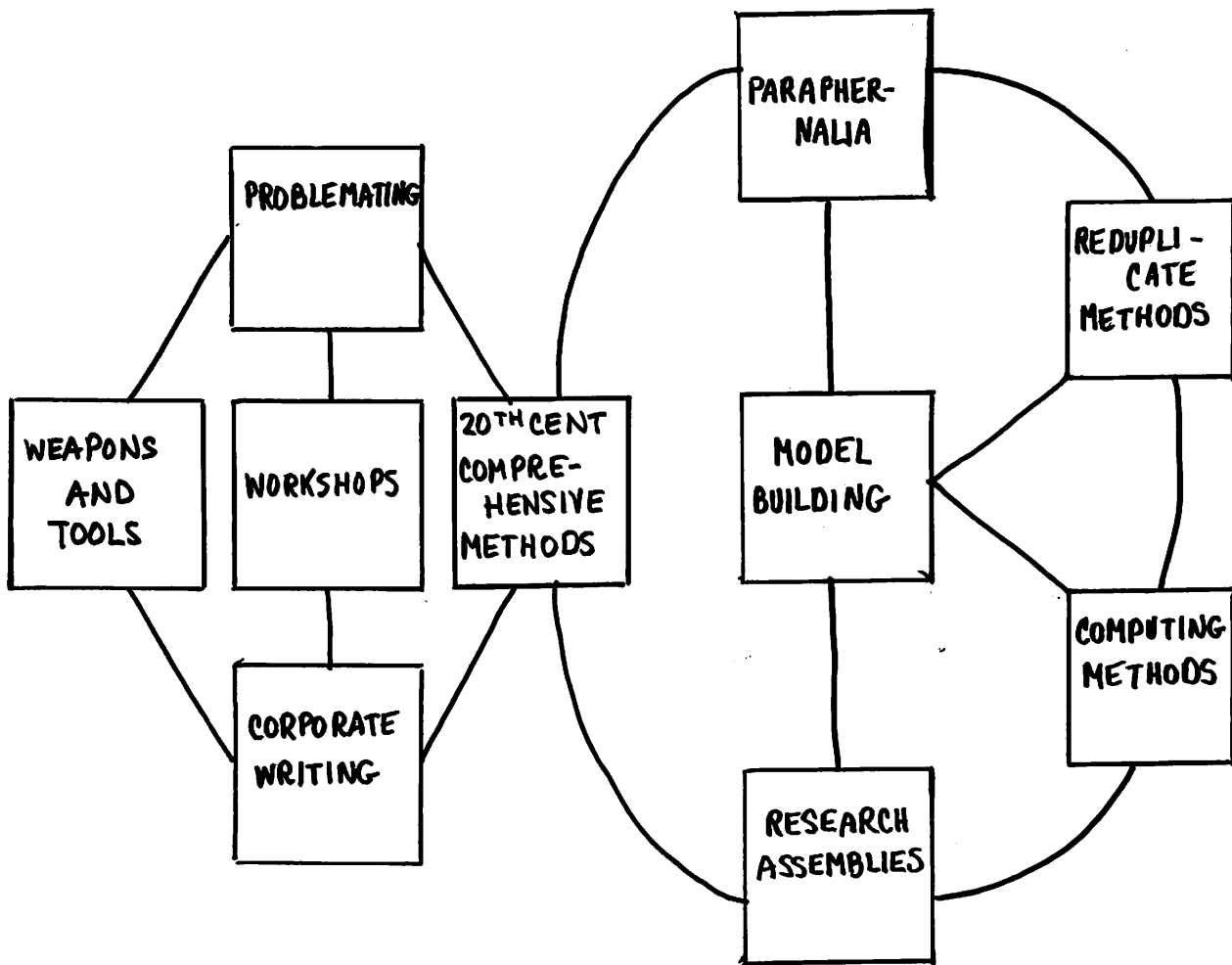
1. Create employment functions to establish the necessary jobs for individuals.
2. Prison reform tactics functions to give prisoners a new way to participate in their structures.
3. Identify cultural groups functions to discover a wide area of possibilities within a given community and to prioritize those possibilities.
4. Longrange development timeline functions to give a picture of the future.
5. Tactical approach functions to give a method of doing the task.
6. Recycling of surplus functions to allow for coordination and interchange.
7. Field surveys function to allow for obtaining a broad base of data.
8. Evaluate past work functions to glean all the wisdom from past work in such a way that it can be incorporated into the future.

(I) ACTIONAL PLANNING PRESIDIUM

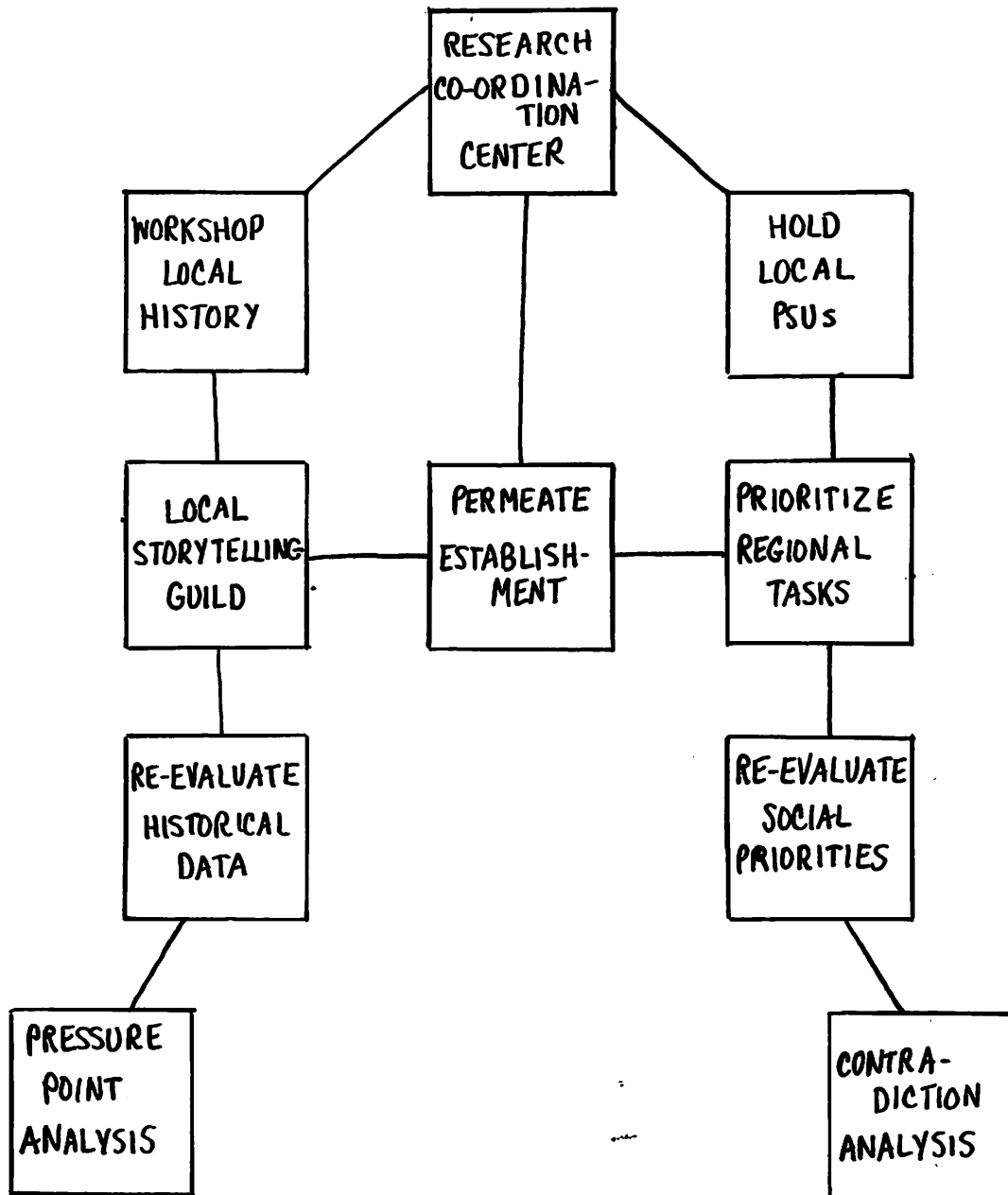




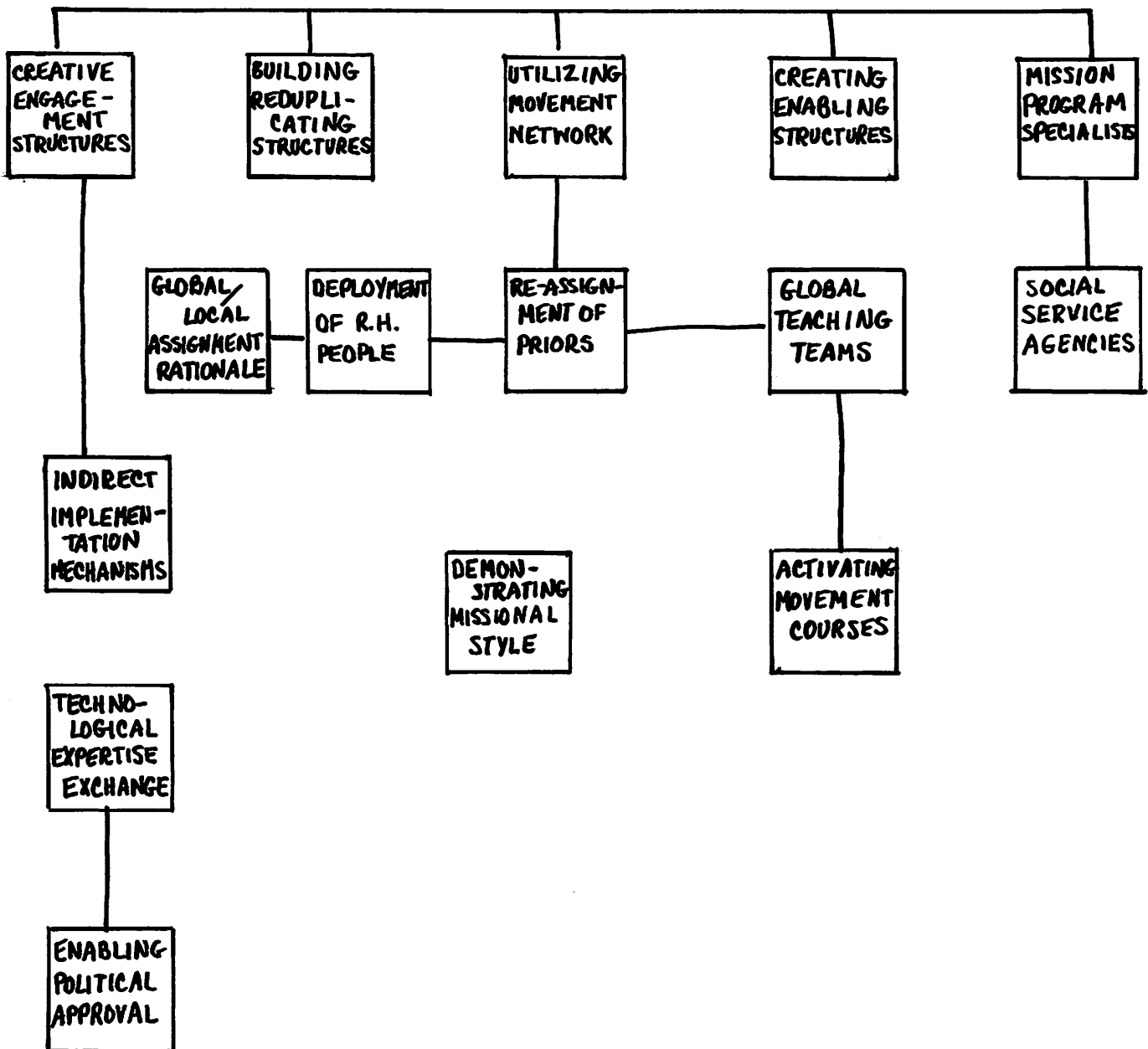
## (2) METHODS DEVELOPMENT SYSTEM

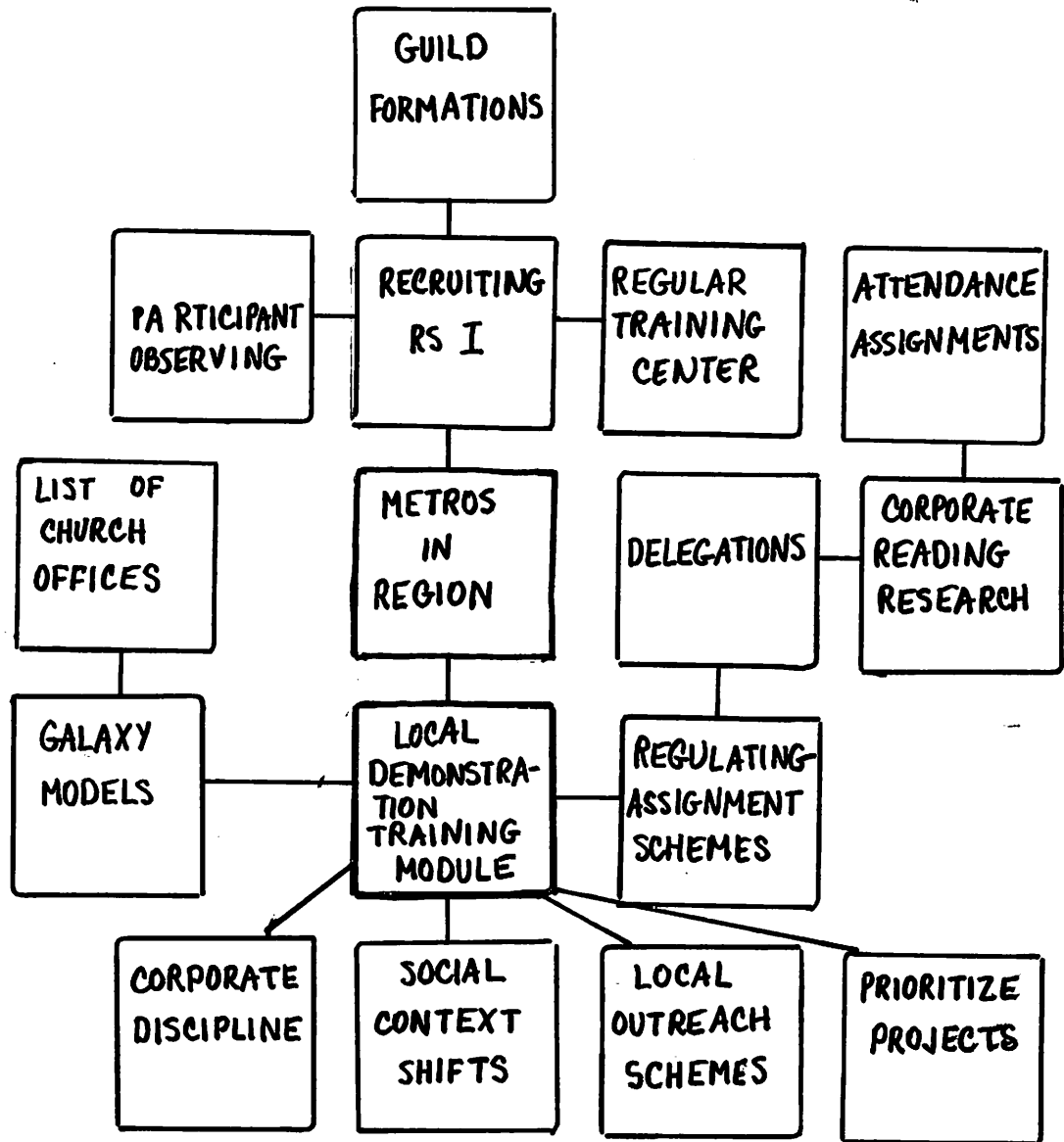


### (3) ESTABLISHMENT PERMEATION CONSTRUCT



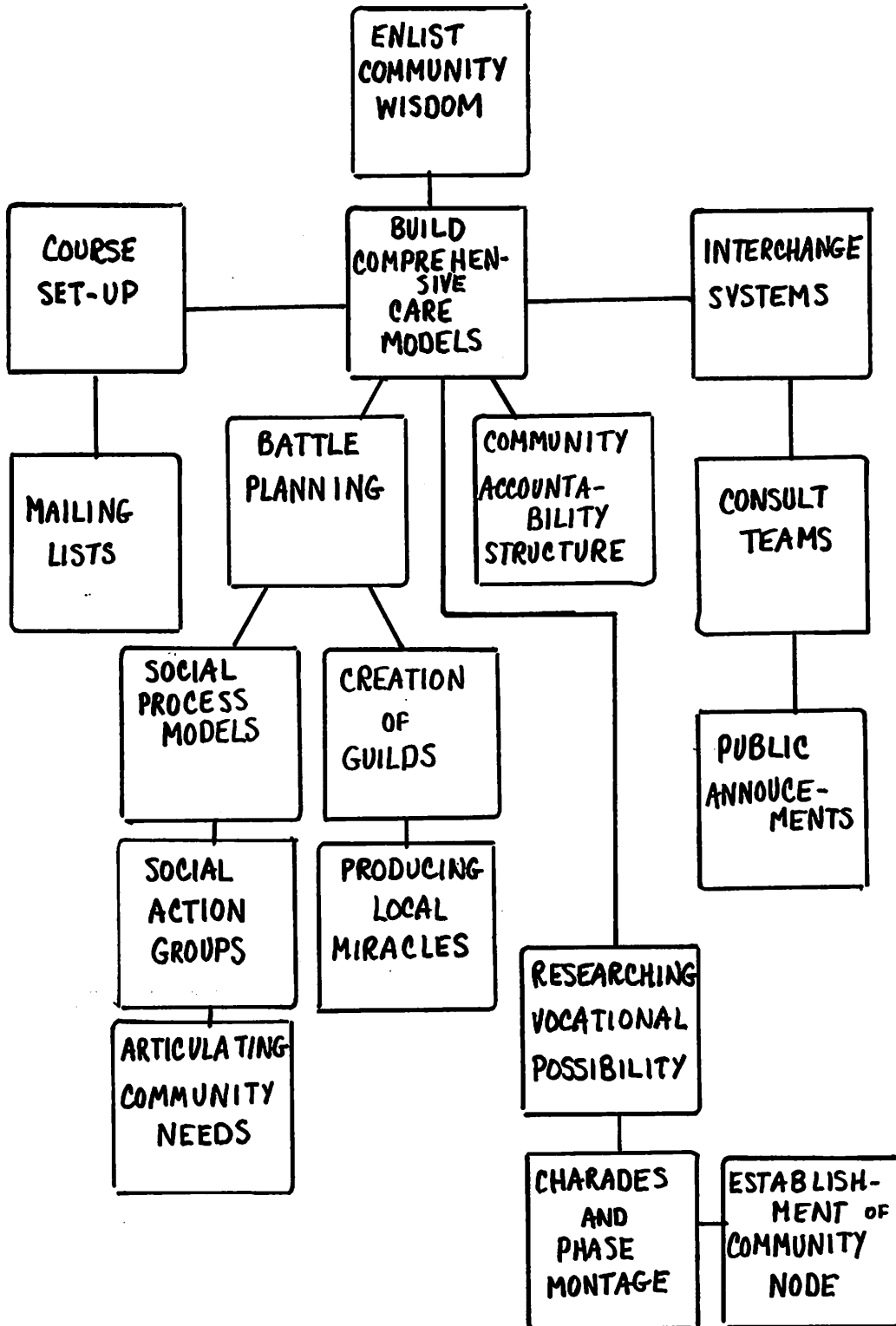
(5) MOVEMENT DEVELOPMENT STRATEGIES



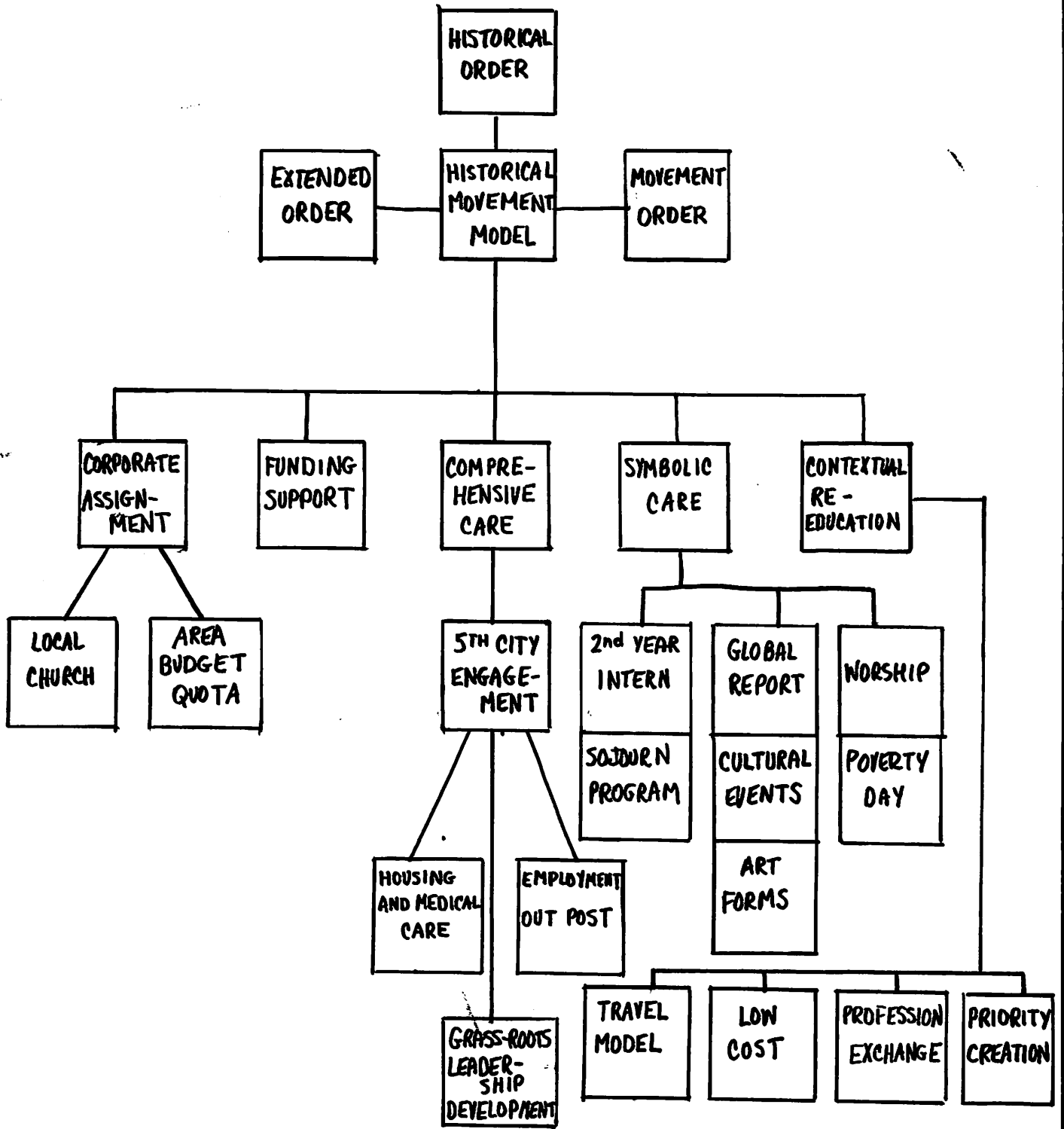


(6) DEMONSTRATION TRAINING MODULE

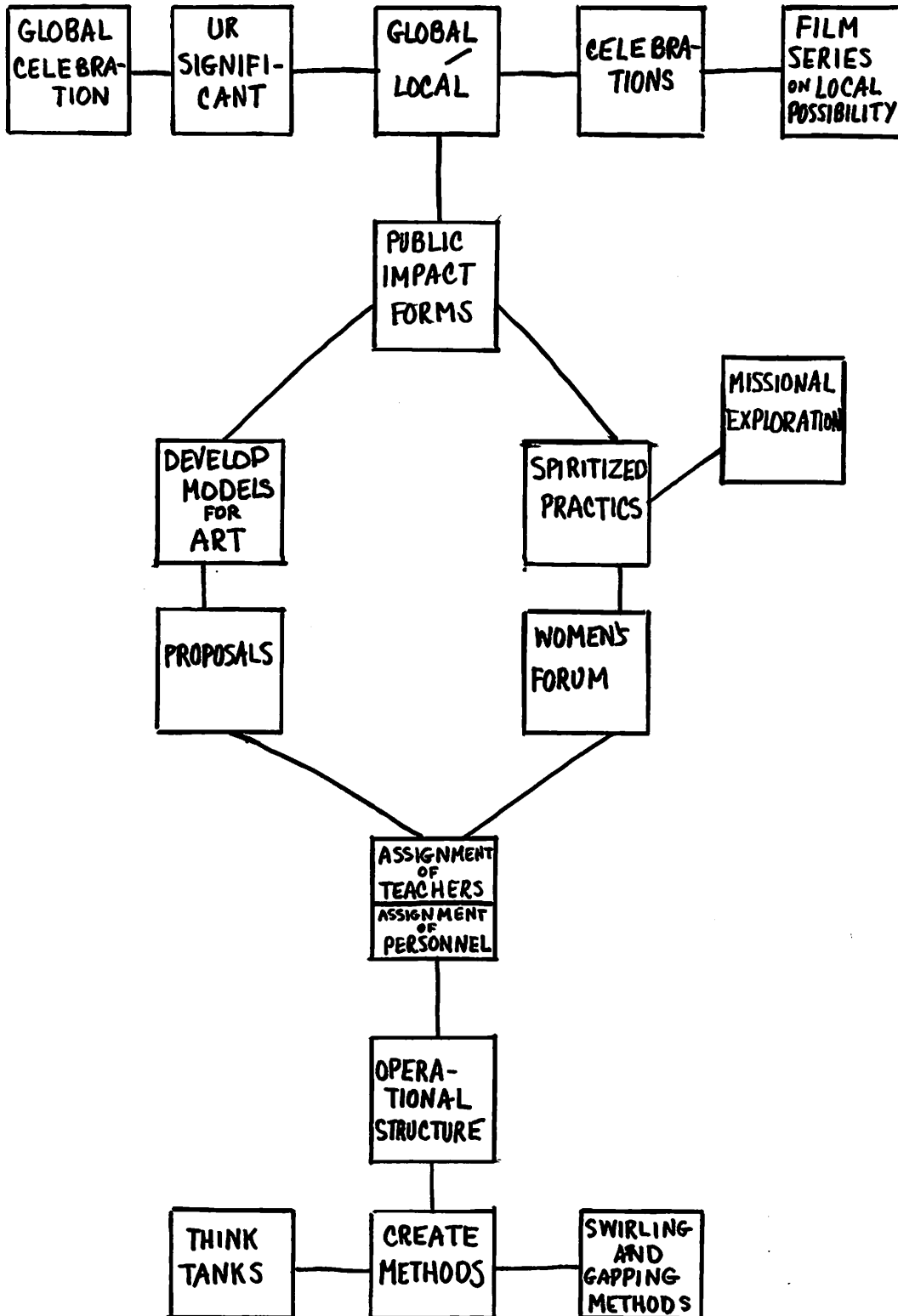
### (7) COMMUNITY WISDOM CHANNEL



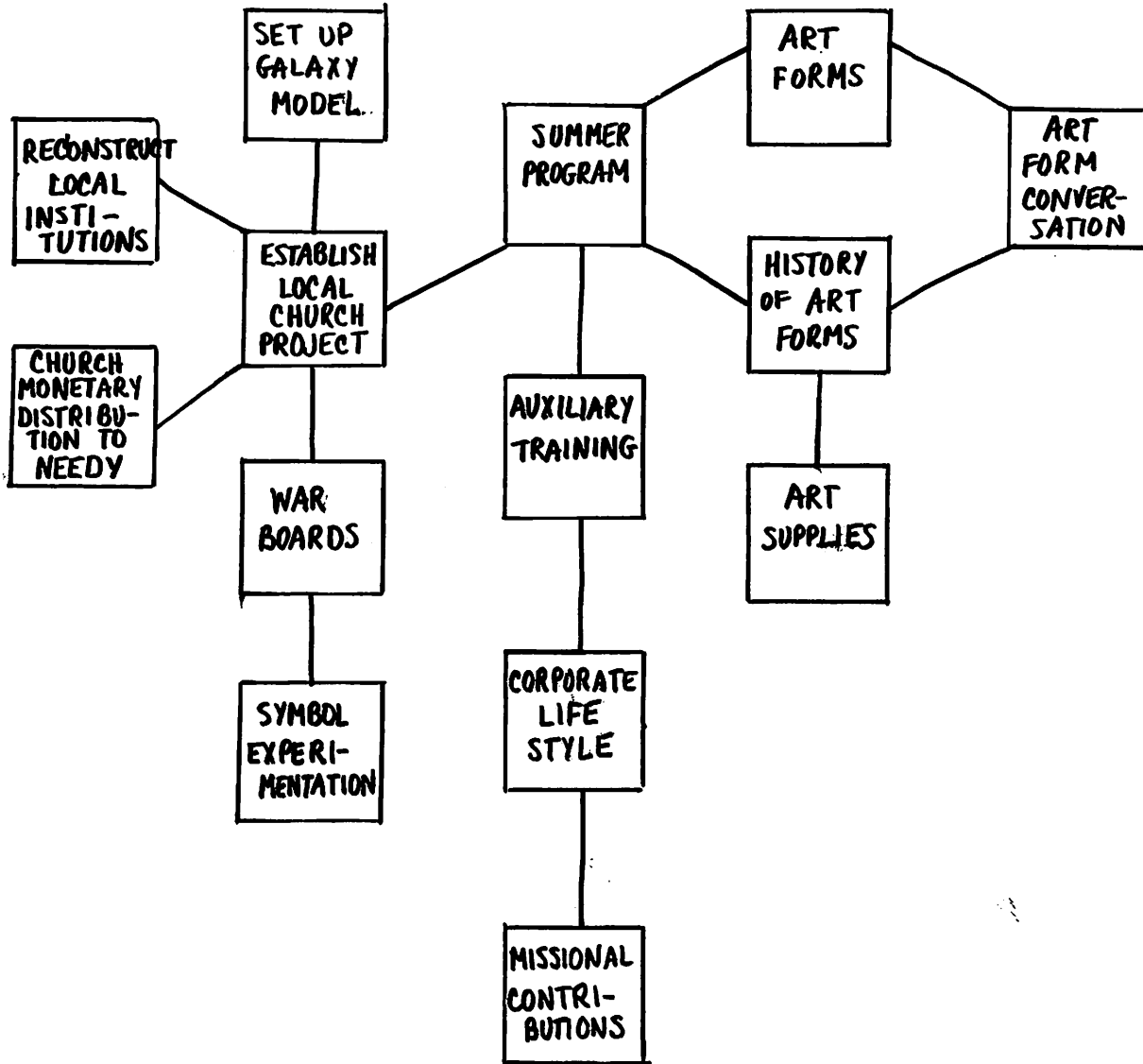
(8) HISTORICAL MOVEMENTAL MODEL



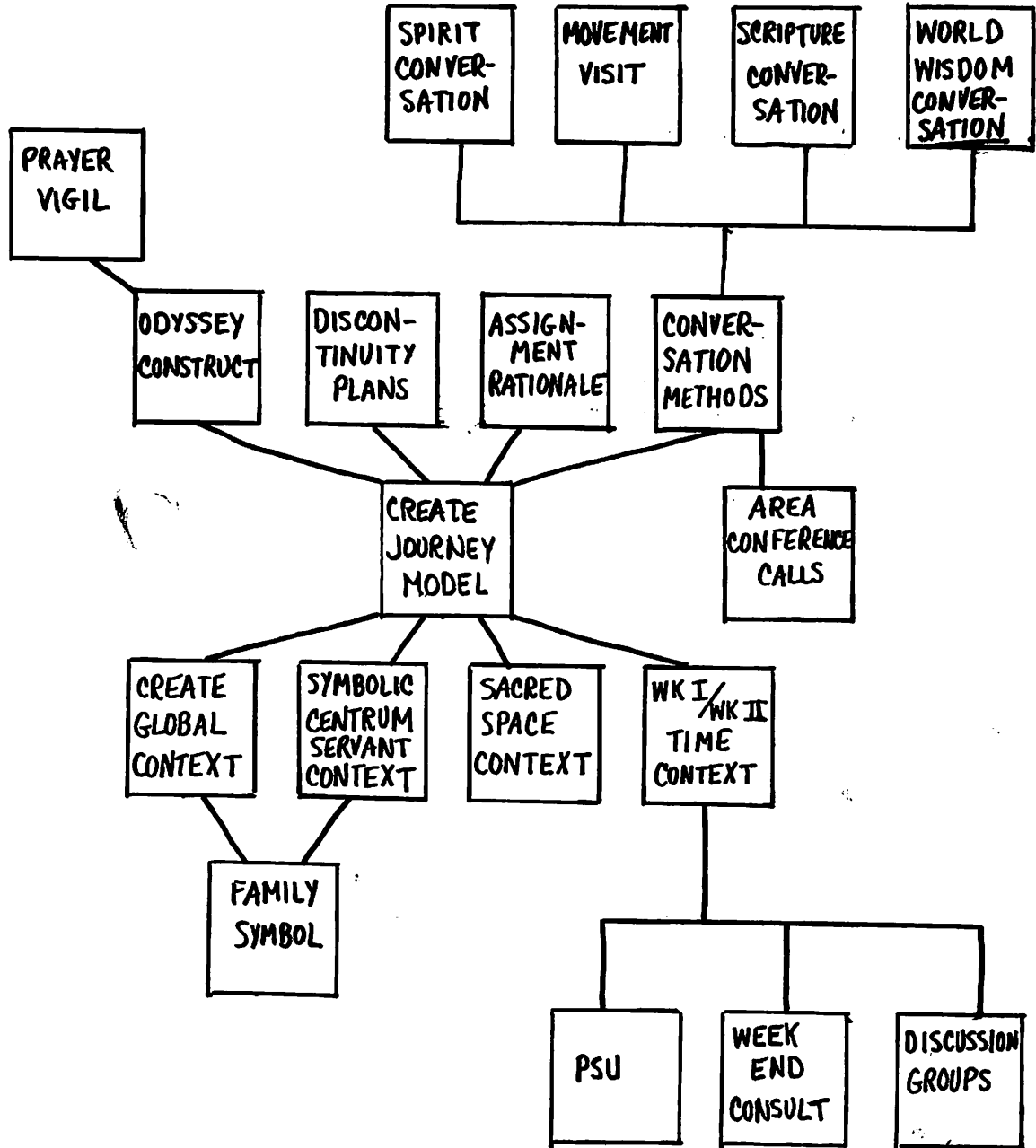
(9) COMPREHENSIVE MISSIONAL CELEBRATIONS



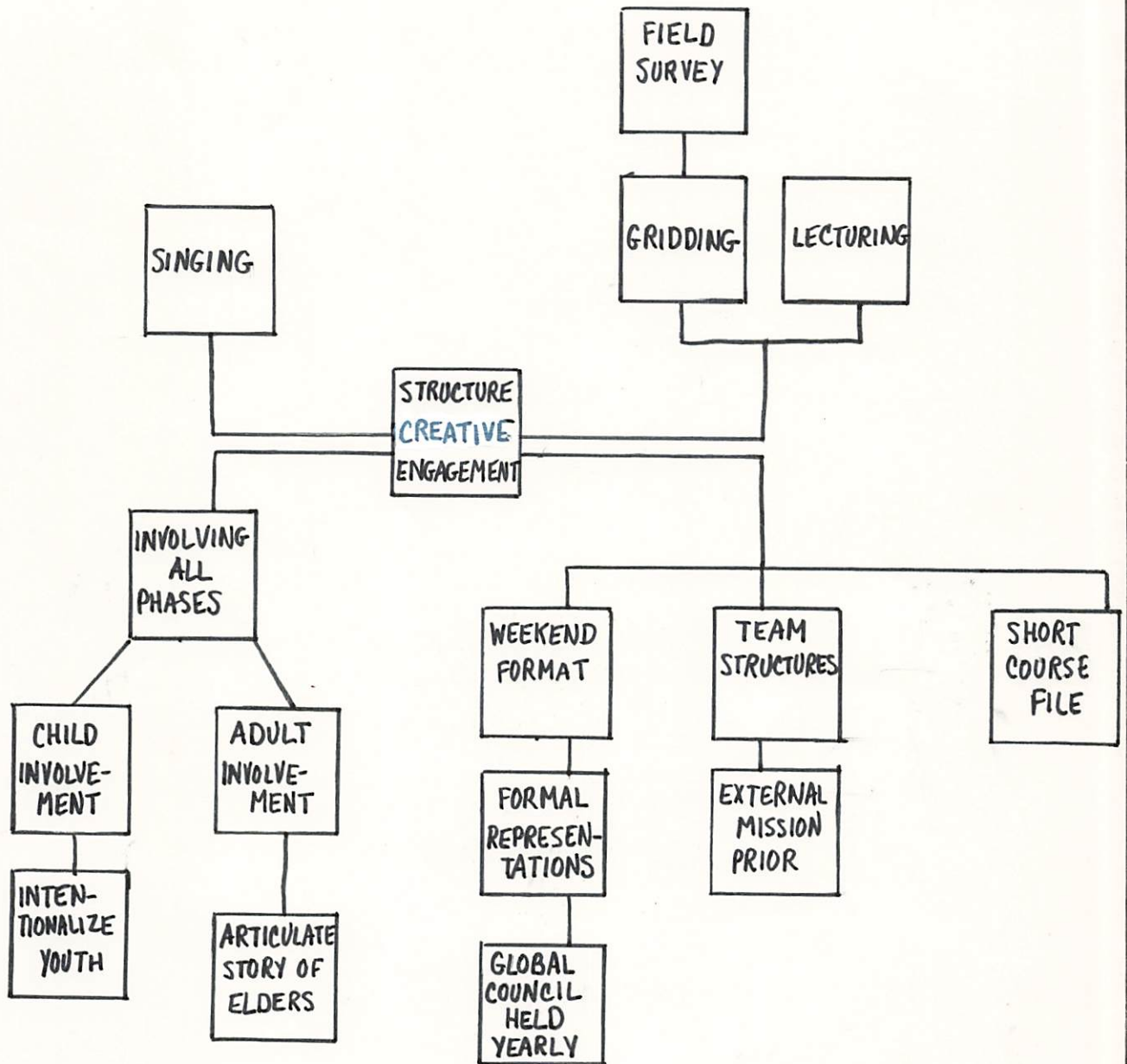
(10) MISSIONAL LEISURE-TIME ACTIVITIES



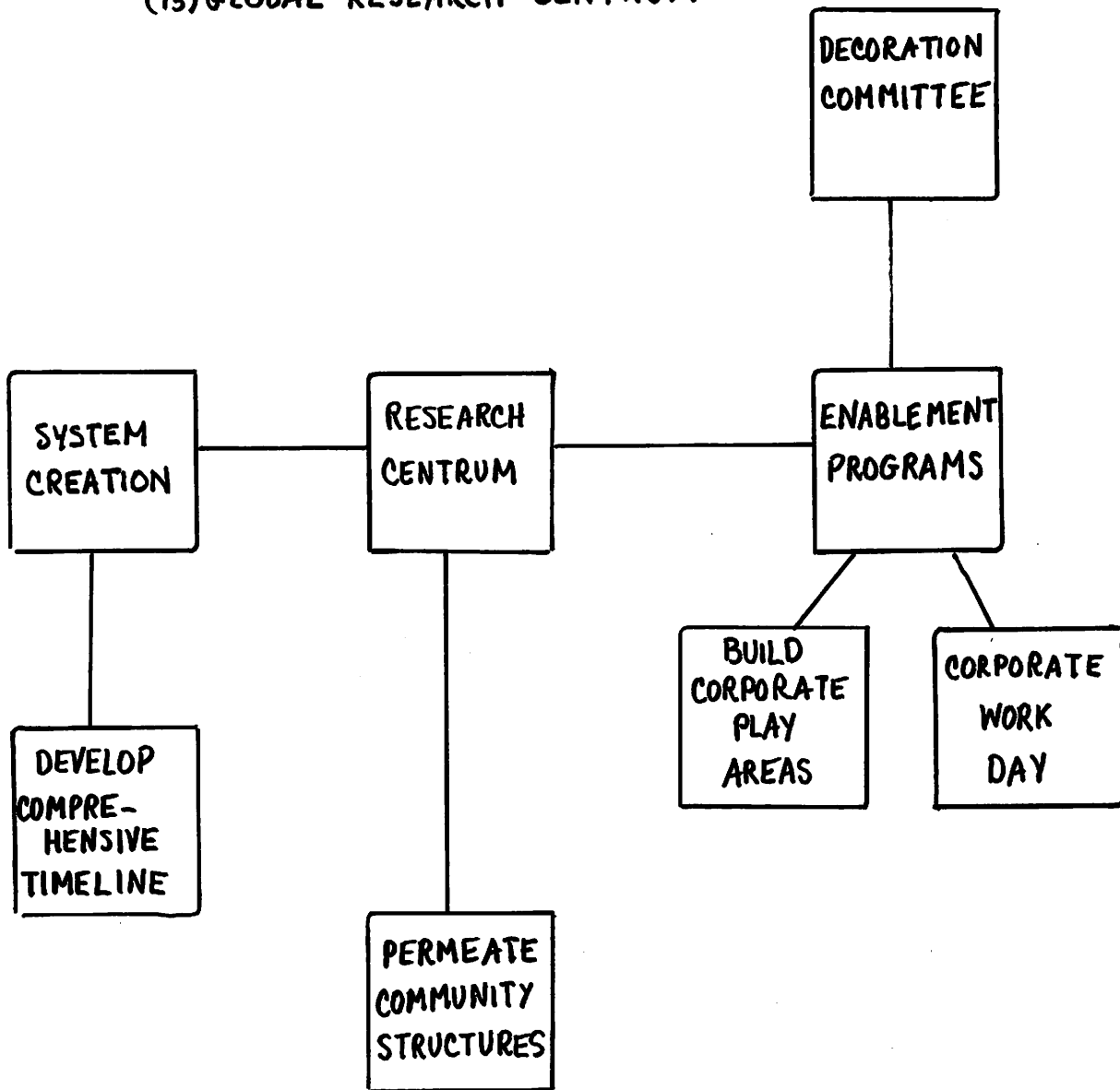
(II) SPIRIT JOURNEY CONSTRUCTS



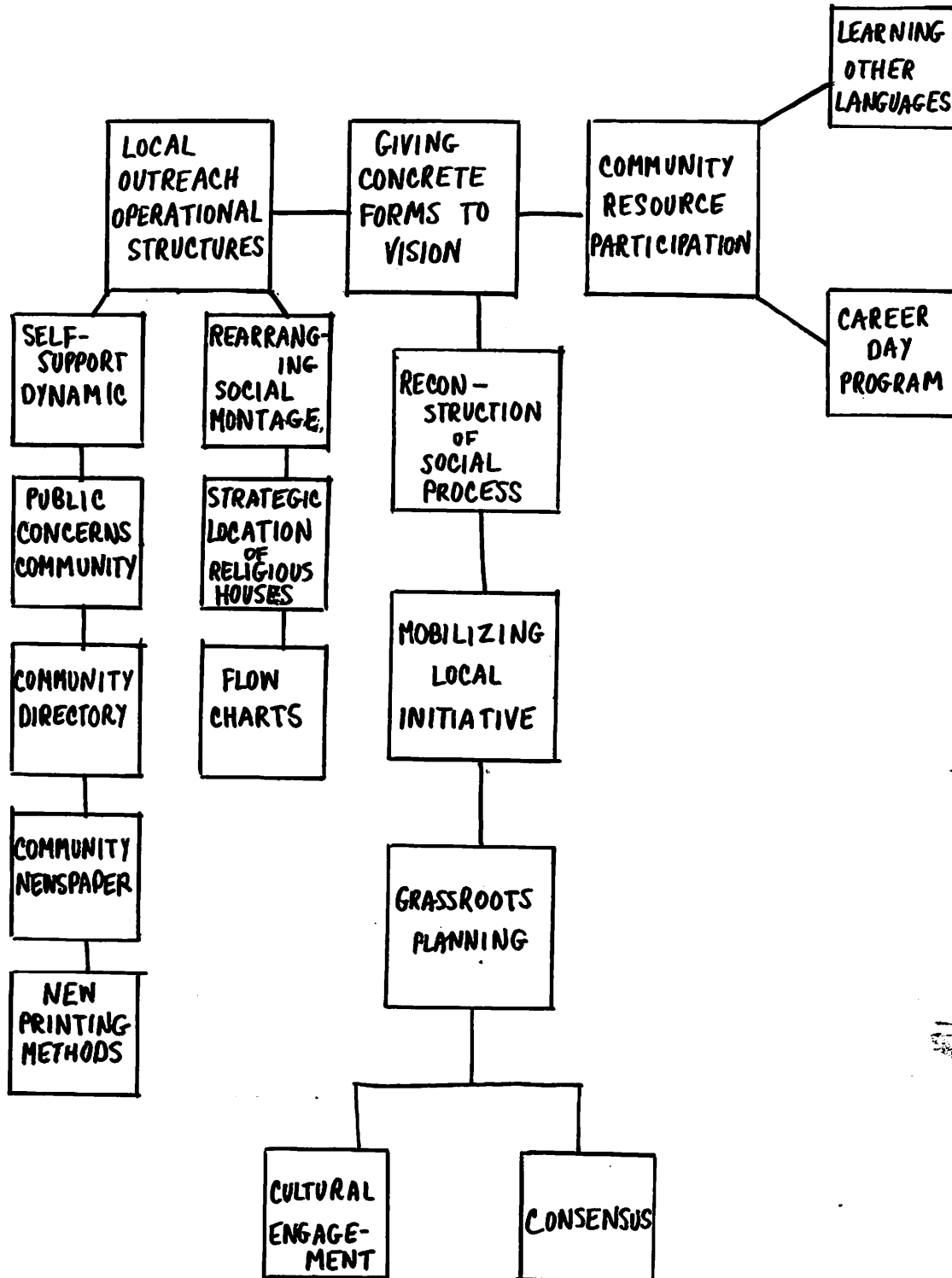
## (12) CREATIVE ENGAGEMENT STRUCTURE



(13) GLOBAL RESEARCH CENTRUM



(14) VISIONARY FORMS COMPLEX



(15) RESOURCE POSSIBILITY ANALYSIS

