

LOGISTICS OF THE GUILD

Whistle Point # II

Order Force

Summer '73
Research Assembly

Working copy
not for publication

Global
Resurgent
Style

1. Global Resurgent Style is a major component characterized by Release of Secular-Religious Style, the Embodied Global Servant, and Total Missional Engagement. The intent of this major component is to revitalize the Established Church and provide for local secular man a new possibility for embodying comprehensive care through guild structures, thereby becoming totally missionally engaged in global reformation. This major component impacts Order/Established Church Relations by demonstrating new worship forms and new possibilities for missional engagement for both clergy and laity. Order/Established Church Relations impacts Global Resurgent Style by providing the stage for the new forms of the Resurgent Style and authenticating feedback on the Resurgent Style; Local Guilding Constructs impact Global Resurgent Style in an authentic manner for local secular man. Local Servanthood training impacts this major component by providing forces for Embodied Global Servanthood. An illustration for this component would be the innholders guild of medieval times.

Historical
Order
Invention

2. Historical Order Invention is a major component characterized by symbolic order, corporate collegiality and the training sustenance of indigenous leaders. The intent of this major component is to create and clarify the unique and related functions of the symbolic, movemental and extended order. This major component impacts the following other major components: Religious Life Sustenance, Order/Established Church, through Resurgent Vocation. This major component is impacted by the following other major components: by Religious Life Sustenance, Resurgent Vocations, Global Order Community, and Order/Established Church components. St. Francis of Assisi's order is, perhaps, a clear parallel example, where in a period of resurgence the historic church blessed the creation of an extended movemental, and symbolic order.

Local
Guilding
Constructs

3. Local Guilding Constructs is a major component characterized by creating future vision, providing guild constructs, creating the ecumenical parish. The intent of this major component is to provide a framework for authentically engaging local man in the local/global effort. This major component impacts the following other major components: Embodying Global Resurgent Style, Catalyzing Local/Global Troops, Channeling Resurgent Vocation, Impacting the Local Church, through concretizing the objective of enabling all men to realize the full humanness and channeling resurgence in the local Church. This major component is impacted by the following other major components: channeling resurgent vocation, Impacting the Local Church in the form of modifying the local guilding constructs, adapting them to local conditions, and in the form of re-imagining life vocations. One illustration of this major component in action is: the local guilding construct provides a way of engaging local man in a way that enables him to be global and visionary, but which is adapted to his particular need and circumstances.

Global
Order
Community

4. Global Order Community is a major component characterized by Global Planning, Global Order Community, Leadership Formation. The intent of this major component is to discover the needs of the human community and to provide local structures for caring for the needs of local man, while holding before him a global vision. This major component impacts the following other major components: Catalyze Local/Global Troops through its presence and structure, Global/Local Church Relations through its presence as the local, Resurgent Vocation through the structures and as enablement in the local, Historical Order Invention through its support as the force becoming. This major component is impacted by the following other major components: Religious Life Sustenance in the form of internal life, Catalyze Local/Global Troops in the form of the forces which become: Resurgent Vocation in the form of the demand upon all those in the community, Global Resurgent Style in the form of the style lived. One illustration of this is the religious house community which is present now around the globe.

Catalyzed
Global/Local
Troops

5. Catalyzed Global/Local Troops is a major component characterized by Order and Movemental impactment of the globe with corporate troops. The intent of this major component is for the training and corporatizing troops drawn together from global and local arenas to impact every society with the spirit movement curriculum and structures. This major component impacts the following other major components: Global Order Community and Local Servanthood Troops through recruiting, training, teaching, and engaging local leadership and order members in corporate vision. This major component is impacted by the following other major components: Discerning Resurgence Signs, Local Servanthood Training and Local Church Impact in the form of indigenous leadership, data, facilities, cultural happenings and Religious/Secular Corporate Troops. One illustration of this major component in action is PSU on local resurgence signs with troops from local churches business leaders, metro and order members.

Religious
Life
Sustenance

6. Religious Life Sustenance is a major component characterized by Symbolic Life Development, Study Life Structure, and Internal Discipline Building. The intent of this major component is to build and maintain the structures that will enable the development of a comprehensive symbolic and actual sustenance structure. Religious Life Sustenance components impact the following other major components: Historical Order Inventions and Global Order Community through the development of symbolic life structures and accountability structures. This component is impacted by local Servanthood troops component that provides and promotes the training and development of local man through the RSI course, the Local Church Project, and the Institute of Cultural Affairs. The Global Order Community component impacts it by the Religious house and involvement of as many people as possible in the structures of decision-making and assignments. The Historical Order Involvement impacts the component by the style of the Order. An illustration of this major component is as the model builder for all symbolic structures such as House Church, study rationale, liturgy development,

celebrations, and decor.

Local
Church
Impactment

7. Local Church Impactment is a major component characterized by L. C. Project Commonality, Developing Galactic Hubs, and Developing Follow-Up Methodologies. The intent of this major component is to impact the local church with the movement in order to develop self-conscious churchmen who can care for their parish out of a global context. This major component impacts the following other major components: Local Guilding Constructs through the coordination of community planning, Catalyze Local/Global Troops through comprehensive nurture and follow-up of troops and Discerning Resurgence Signs through enabling coordination of research and the exchange data. This major component is impacted by the following other major components: Local Servanthood Training through a comprehensive training structure for course grads, Local Guilding Constructs through the creation of the ecumenical parish and recruitment of the uninvolved local church professional, and Order/Establish Church Relations in the form of determining new church vision. One illustration of this major component is cross metro nurture calls.

Reawakening
Vocational
Mission

8. Reawakening Vocational Mission is a major component characterized by Indigenous Lens Pedagogues, Elder Vocational Consultations, and Related Vocational Seminars. The intent of this major component is to insure that local man experiences resurgence in the midst of his daily work as he senses the possibility of missional engagement. This major component impacts the following other major components: the Historical Order Invention by demanding that the Order keep before it an image of the guild and models for its creation; the Local Guilding Constructs through developing a plan of recruitment for the local guilds and developing a full guild construct. The major component is impacted by the following other major components: Local Guilding Constructs through allowing the creation of constructs which will allow vocational reimaging, Discerning Resurgence Signs which create methodologies and demonstration projects that release hope; and Local Servanthood training which creates a comprehensive local training network to release creative vocation. One illustration of this major component in action is College-High School Vocational Consultants.

Discerning
Resurgent
Signs

9. Discerning Resurgence Signs is a major component characterized by Geo-Social Analysis, Resurgence Research, and Art-Media Expressions. The intent of this major component is to identify and work with resurgent forms throughout the globe. This major component impacts the following other major components: Global Resurgent Style and Catalysis of Global Troops through the identification of alternative models, troop growth in numbers, and global representation in the training programs for the troops. This major component is impacted by the following other major component: Local Servanthood Training through the Institute of Cultural Affairs and the Lay training programs. One illustration of this component in action is: the global spirit movement would initiate research on other resurgent forms and

strategically deploy troops so as to facilitate development of collegial relations with these global resurgent forms.

Order/Established
Church
Relations

10. Order/Established Church Relations is a major component characterized by Order Serving Denominations, Church Dynamic Visioning, and Established Church Support. The intent of this major component is to open new avenues of communication and service for the order as it begins to expand its enablement role within the established church. This major component impacts the following other major components: Local Church Impact through the established church's recognition of the authentic resurgence qualities of the global spirit movement. This major component is impacted by the following other major components: Local Guilding Construct, Historical Order Invention, and Local Servanthood Training in the form of facilitated and expedited collegial relations with the established church by providing a concrete practical picture of possible renewal within the structures of the 20th century church. One illustration of this major component in action is increased use of the services of the spirit movement in local churches and through increased participation by the established church in defining the grassroots resurgence of the spirit movement.

Local
Training
Servanthood

11. Local Training Servanthood is a major component characterized by LCP troops, Guild Troops, and Indigenous Order Training. The intent of local Servanthood Training is to localize and secularize a global training network. The major component impacts the following other major components: Reawakening Vocational Mission through transmitting vocational possibilities, Local/Global Catalyzing Troops through enabling indigenous leadership development; Religious Life Sustenance through allowing the order to teach movement curriculum; Local Church Impact through creating a way to develop comprehensive commonality, and Order/Establishment Church Relationships through demonstrating a concrete vision of possibility for the established church. It also indirectly activates the Global Resurgent Style and Discerning Resurgent Signs. This major component is impacted by the following other major components: Local Church Impact and Catalyze Local/Global Troops in the form of groups which demand servanthood training. One illustration of this major component in action is: the Institute of Cultural Affairs.

Global
Resurgent
Style

12. Global Resurgent Style is intended to hold before all men a vision of new hope and to ground that hope in concrete constructs for caring for the needs of local man. The forces who will implement this array are all members of the global order in whatever locale to which they are assigned. The first three steps in doing this array are to form a force who have decided to embody the global resurgent style, to engage them in a covenantal servant relationship, and to articulate and demonstrate that style in a specific mission focus. This array has a valence of 1515 which indicates that its value in second lowest in a grouping of 11 components and that greater effort needs to be made to inform consciously the local church with the global resurgent style. An illustration of this array would be global

religious communities seeking to enable humanness in the local setting, thereby making present the object of their hope.

1. Servant covenant functions to provide corporate direction in engaging the revolutionary in serving the needs of all men.
2. Embodied servant functions to ground the revolutionary in service.
3. Totally engaged functions to commit him radically to enabling humanness.
4. Release secular religious style functions to allow the order force member to engage secular man in confronting and embracing the mystery.
5. Embodiment style functions to ground the secular religious style.
6. Decisional style functions to enable man to decide to live his life and to be the man in history who is called to change its course.
7. Cabaret style functions to reveal to man the transparency of his life situation, to heal him, and to dramatize human hope.
8. Staff style functions to provide a leadership group a way of corporately approaching the resurgent style.

Historical
Order
Invention

13. Historical Order Invention is intended to bring into society the symbolic, movemental, and extended orders and to symbolize that three-fold reality as a socio-spirit force in history. The forces who will implement this array are the representatives of the historic church in its pluriform manifestations and the order forces. The first three steps in doing this array are the convening of a great church council, creating a time-line and a disciplined time design for creating rule and covenant of the order. This array has a valence of 2592 which indicates that this factor stands at the mid-point of this order force whistletop. An illustration of this array is the Carmelite Third Order who live under a rule of life, although not celibate, or the Benedictine Choir (symbolic), the claustral (movemental) tertiaries (extended).

1. The Continental Praesidium functions to decide movement interim strategy.
2. Quarterly consult functions to enable commonness in the order.
3. Time design functions to order the weekly rhythm.
4. Sustaining leaders functions to sustain the leadership of the order.
5. One-day wonder functions to provide maintenance to physical facilities in sanitary and usable condition.
6. Track assignments function to guarantee balanced training.
7. Week II functions to imaginably mark time to produce a shift in the week.

8. Regional representation functions to provide movemental presence in order deliberations.
9. Finding the task functions to identify the task for the Week II time design.
10. Sojourning program functions to give opportunity for short-term stay in a religious house.
11. Training indigenous priors functions to raise up local potential prior leadership.
12. Create order functions to articulate how the order would come into being.
13. Symbolic order functions to hold the comprehensive deeps.
14. Extended order functions to be the order dynamic in its most secular form.
15. Intended order functions to be the movemental dynamic under orders and assignment.
16. Intentional third order functions to be the symbolic order in the guild construct.
17. Historical order functions to maintain historical continuity with past orders.
18. Corporate collegiality functions to build collegiality between order and movemental colleagues.
19. Movemental order design functions to picture the relationships between the dynamics of the order.
20. Presbytery functions to oversee the intellectual task of the order.
21. Symbolic representation functions to hold the symbolic before the order.
22. Quarterly spirit books function to guarantee common order memory.

Local
Guilding
Constructs

14. Local Guilding Constructs is intended to be the mechanism to sociologically freight the ecumenical parish and to be the broad logistical systems which sustain the ecumenical parish and relate it globally. The forces who will implement this array are the symbolic order, the guild auxiliary, the guardians in the area, other consultants, and the local troops. The first three steps in doing this array are pre-guild meetings, program recruitment complex, and training the troops. This array has a valence of 3316, which indicates that a comprehensive construct is necessary for any final formulation of the guild. An illustration of this array is the comprehensive nature of the medieval guild, in which a guildsman's entire life was cared for: celebrations, even burial and care for his widow and children after his death was understood as necessary for the corporate care of the individual.

1. Projection Structures function to look at future possibilities.
2. Operating Construct Expertise functions to create

enabling constructs.

3. Recruit professionals functions to ensure excellence in guild work.
4. Group consults functions to enable local man to create healthy communities.
5. Provide secular structures functions to create secular community structure.
6. Movement guardians functions to plan for future economic possibilities in guild creation.
7. Administrative Designs function to enable administrative work.
8. Guild constructs function to creat commonality in guild creation.
9. Create future vision functions to see that visioning takes years.
10. Guild Auxiliary functions to demonstrate power of committed guildsmen.
11. Create ecumenical parish functions to be a back-up system for the guilds.
12. Program recruitment complex functions to ensure recruitment of guildsmen.
13. Complex Guild Structure functions to provide a comprehensive web.
14. Permeation Logistics administration functions to coordinate permeation of the parish.
15. Guild Recruitment functions to enable parish renewal.
16. Pre-guild meeting functions to begin guilding formation.
17. Re-image Time functions to timeline guild creation and use of guildsmen.
18. Ensure life necessities functions to remove blocks for guildsmen.

Global
Order
Community

15. Global Order Community is intended to make visible the order in all its functions that will enable local man to be global and hold the global man accountable to the local situation. The forces who will implement this array will be the symbolic order, the Movemental Order, the Extended Order, and the Global Order. The first three steps in doing this array are Creating a comprehensive plan, develop a polity system, and train () leaders. This array has a valence of 3196 which indicates this array is necessary in allowing the order force to complete its task. An illustration of this array would be the ordering dynamics of the United Nations in its leadership and assistance to member countries that ask for help. An international company such as IBM would also be an example.

1. Order Forms function to the development of models for a global order.
2. Leadership Formulation functions to the training and development of more people for teaching and priorship roles.

3. Religious House Structures function to the creating and development of local troops and setting an example of the style of the missional family.

4. Consensus polity functions to the ability to make decisions through consensus by honoring all the knowledge and creativity of the group.

5. Assignment Rationale functions to the development of a system that ensures all roles being assigned with both ability and leadership development a consideration.

6. Global Order Community functions to the demonstration to the world of what it means to be a sign of resurgence to the world.

7. Global Planning functions to the comprehensive consideration of all the world.

Catalyze
Local/Global
Troops

16. Catalyze Local/Global Troops is intended to create a bridge between Local/Global Movement and to develop indigenous leadership. The forces who would implement this array would be international interns, corporate troops, order faculty, the local church, religious house, and the symbolic movemental order. The first three steps to implementing this array would be to recruit international interns plan ITI, train pedagogues and create an international faculty. This array has a valence of 2233 which indicates that it is not in the upper 50% of the valence chart, but is one what would enable the movement in its leadership development of the indigenous man. An illustration of this array is the international student exchanges such as American Field Services that function at both high school and college levels. The student would live with a local family, attend school, and participate in the local social activities.

1. International Intern Exchange functions to the global vision development of local man.

2. The Indigenous Recruitment Manual functions to the honoring and development of all cultures as an area is penetrated.

3. ITI Penetration Teams function to the development of indigenous recruitment teams.

4. Education Follow-up Structures function to the training of local leadership.

5. International Speakers Bureau functions to the training and coordinating of global speaking engagements.

6. Local Leadership School functions to provide intense training for local leadership.

7. Global/Local Representative functions to provide a link between local/global forces.

8. Grassroots Cultural Exchange functions to provide global interchange.

9. Catalyzed Global/Local Troops function to renew the parish. Research ways to engage local man in polis function

to provide opportunities to engage local man.

10. Trained Corporate Cadres function to provide a core group for guild structure.

11. Administrative Procedures function to enable efficient use of troops.

12. Coordinated Engagement forces functions to coordinate forces.

13. Practics functions to enable intentional recruiting and use of troops.

14. Expansion Rationale functions to create a rationale for expansion.

Religious
Life
Sustenance

17. Religious Life Sustenance is intended to build the sustaining support systems to celebrate the religious life and to study the religious life-style examples out of the past, present, for the future. The forces who will implement this array are the Symbolic Order. The first three steps in doing this array are to study symbolic systems, to build models, and to sustain the order through practice of religious exercises. This array has a valence of 6696 which indicates that it functions as the most crucial component within the order force whistle-point. An illustration of this array is the liturgical interior life of the Benedictines who regularly rehearse their offices.

1. Model Building functions to the creating of models for how the religious life is sustained.

2. Study Life functions to the comprehensive planning of study plan for at least one year at a time.

3. Symbolic life functions to the symbols that are the story out of which each man lives his life.

4. Liturgy functions to planning and research of all forms available in both modern and historical arenas.

5. Celebrations functions to the development of the cabaret dynamic, for all men as a life method.

6. House Church Functions to the nurture of grads in the metro.

7. Decor functions to the impactment of all through the visual projection of the movement.

8. Secondary Symbols functions to hold before man how it is that he lives out his life.

9. Build Internal Discipline functions to forming of a method to deal with all aspects of life.

10. Financial Budget Development functions to the releasing of finances to the task of the mission.

11. Internal Space functions to create sustaining spirit deeps.

12. Covenantal Accountability Structure functions to the honoring of each man's covenant to the order as well as all other covenants he is part of.

Local
Church
Impact

18. Local Church Impact is intended to ground the revolution in service to a very particular church. The forces who will implement this array are the movement members in the regions, metros, galaxies, cadres. The first three steps in doing this array are: missioning members to the local church, gridding the local parish, setting up structures to care for local needs. This array has a high valence of 3579, which indicates recognition of the need to touch local man. An illustration of this array is the parish council and committee members who take responsibility for meeting local parish needs.

1. Regional management functions to direct and coordinate group activities.
2. Program liaison functions to articulate the need for local programs and to enable such programs to take place and be effective.
3. Corporate community planning centrum functions to provide a vehicle for collegial planning.
4. Enablement Coordination Centrum functions to provide auxiliary supportive help to activities.
5. Develop Follow-Up Methodology functions to evaluate methodology and to reconstruct and improve it when necessary.
6. Maintain Contact functions to keep in touch with those interested in the movement and in movement activities.
7. Share Experience Exchange Data functions to make available the results of experience to enrich, to impact.
8. Cross Metro Nurture Calls functions to build a collegial network.
9. Project Commonality functions to identify elements which are similar in a local situation.
10. Impact Local Church functions to make concrete the efforts of the revolutionary on the local scene.
11. Galactic Hub functions to designate an area of responsibility and support.
12. Provides Comprehensive Context functions to enable global awareness and responsibility to provide a framework for local action.
13. Develop Self-conscious Cadre functions to enable the troops to see the transparent in the local situation.
14. Weekly Forum functions to provide opportunities consistently for evaluation, planning and contexting.
15. Provide grants functions to enable financial support for the local/global effort.

Resurgent
Vocation

19. Resurgent Vocation is intended to actively missionally engage every local man in his situation by re-imaging life as vocation in and through all its aspects, enabling him to move beyond viewing life as a series of unfocused occupations. Teachers in schools, guildsmen operating in their jobs and communities, utilizing students in high school and college and elders of the community as

consultants in determining rationale and methods are those forces which will implement the array. To impact all life-phases across the entire community, forces must be enlisted, community needs and resources must be determined, and a training and follow-up model must be created. This array has a valence of 1945 which indicates that this array may already be becoming actualized, but in any case, is not a crucial array in the web. An illustration of resurgent vocation would be the SCORE (Service Corps of Retired Executives) program, functioning collaterally with VISTA and Peace Corps, which keeps the wisdom of the elders available to the entire community.

1. Indigenous LENS Pedagogues functions to ground the excitement and possibility of the LENS course.
2. Cross-section Socio-economic Faculty functions to relate the curriculum to the particular experience of all people.
3. Corporate Leadership functions to signal the enabling style.
4. LENS Teaching Teams functions to effectively transmit the curriculum.
5. Missional Engagement functions to enable each man's decision.
6. Related Vocational Seminars freight the message and sustain the troops.
7. Teachers of Guildsmen functions to train the penetrating troops.
8. Corporation Alliances coordinate guildsmen.
9. Secular Re-training functions to ground the troops
10. Transmit Vocational Possibilities functions to let every person know the excitement of possibility.
11. Occupational Service Assignments engage troops intentionally.
12. Re-image Life Vocation creates the story.
13. Youth/Elder Vocational Roles functions to delineate those roles.
14. College/High School Vocational Consultants functions to solicit the wisdom and vision of the young.
15. Elders Vocational Consultants functions to enable elders to re-image their vocation.
16. Establish Elders' Council functions to honor the wisdom of the elders.
17. Recontexted Honoring functions to enable people to see how it is they honor one another.

Discerning
Resurgence
Signs

20. Discerning Resurgence Signs is intended to discern signs of resurgence in society and out of these signs to create new visions of vocational possibility. The forces who will implement this array are local churchmen, global order forces and the historical order. The first three steps in doing this array are developing a geo-social analysis, researching current resurgence myths and experimenting with

developing those resurgence signs. This array has a valence of 3714 which indicates that it is a very important array relative to the entire web. An illustration of this array is the news conversations at breakfast during the summer '73 Research Assembly. [redacted]

1. Resurgence Research functions to experiment with resurgence signs.
2. Geo-social analysis functions to find out what's happening in the world.
3. Demonstration Projects functions to create signs of resurgence.
4. Discerning Resurgence Signs functions to enable signs to be made visible.
5. Art/Media Expressions functions to express re-surgent myths.
6. Art Form Conversations functions to call for the resurgence from deeps of human experience.
7. Art Reviews Functions to enable pointing to extremely creative signs of resurgence in art.
8. Resurgence Myths functions to allow the creation of a story out of which secular man can live his life.
9. Motivation Methods functions to create ways of enabling motivation to be resurgence in the 20th century.

Order/
Established
Church
Relations

21. Order/Established Church Relations is intended to allow the order to act as servant to enable the historical church to broaden its vision and be the symbolic center for the community. The forces who will implement this array are the galaxy auxiliaries, and order members, and established church friends of the movement in the church hierarchy. The first three steps in doing this array are regular contact with church hierarchy, clergy nurture and the development of intentional church relationships with key churches. This array has a valence of 1359 which indicates that, although it is essential, it functions as an undercurrent, rather than a top priority for other more crucial arrays. An illustration of this array would be the development of an intentional liaison relationship with People's Church because of its key role in Uptown and Chicago at large.

1. Clergy Drop-out Nurture functions to re-engage "burned out" clergy men in their vocation.
2. Clergy Guide functions to enable the nurture of clergymen on their journey.
3. Pulpit Exchange functions to allow the clergymen to be free to be where they are needed on a given Sunday instead of being tied to one particular congregation and at the same time broadens the context of the congregation through a variety of contact.
4. Denominational Assignment to E. I. which functions to broaden the base of denominations which assign order members or ministers to programs at E.I. or to be in the

religious order at E.I.

5. Church Money for Community Enablement functions to re-image church monies to be channeled into the community to build the structures which will meet its needs.

6. Signal Diocesan Project functions to be a demonstration sign of care within a given geographical location.

7. Enlist Support of the established church functions to authenticate the order in its role as servant to the Church.

8. Model for Relation of Historical Order to Denominations functions to allow denominations to give their nod to the order as a serving order.

9. Attend to Internal Criticism functions to re-context the order relative to latent hostilities towards the church.

10. Symbolic Centrum and External Relations functions to coordinate relationships of the order to the established church.

11. Create Church Board Vision functions to re-contextualize church boards to globalize their vision and to crack the back of parochialism.

12. Concrete Vision functions to release vision that is not too abstract to be realized.

13. Determine New Church Vision functions to release the church in creating the vision of its participation as the guardian of the symbolic for local man and thus responsible for building the structures that will enable him to fully participate in society.

Local
Servanthood
Training

22. Local Servanthood Training is intended to train and engage local missional forces to teach (RSI) and serve to enable the Local Church Project. The forces who will implement this array are the international and local movemental faculties, local colleagues, and guildsmen. The first three steps in doing this array are penetration, recruitment and training, beginning with an intensified RSI. The valence of this array is 2424, which indicates that it provides an essential primary function which catalyzes the master array. An illustration of this array would be labor apprenticeship programs.

1. RSI functions to arouse vocational questions.

2. Indigenous Order Training functions to provide indigenous pedagogues.

3. LCP Troops functions to staff the LCP.

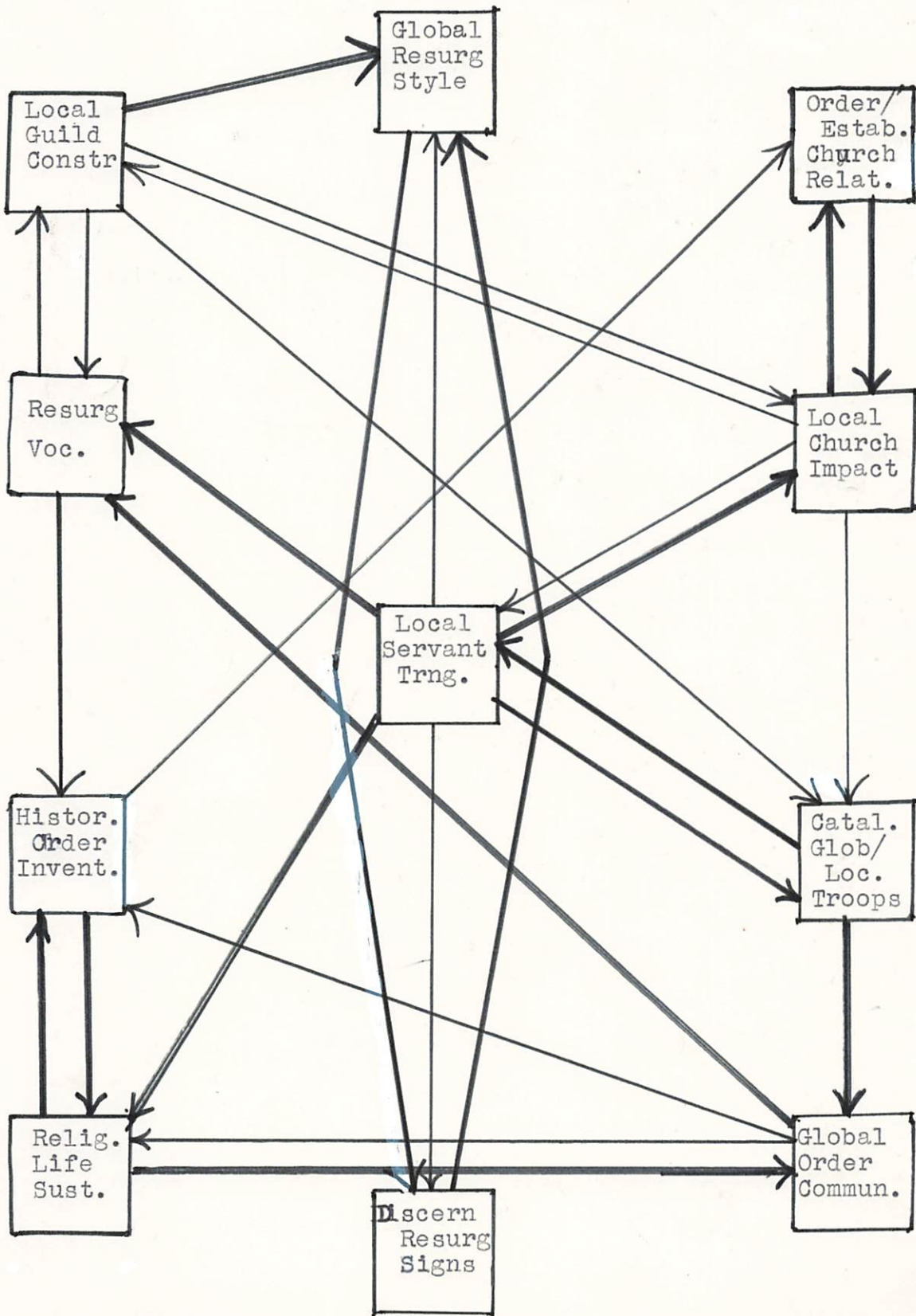
4. LCP Training functions to train the LC Auxiliary.

5. CSI functions to articulate the scientific, secular, and urban revolution.

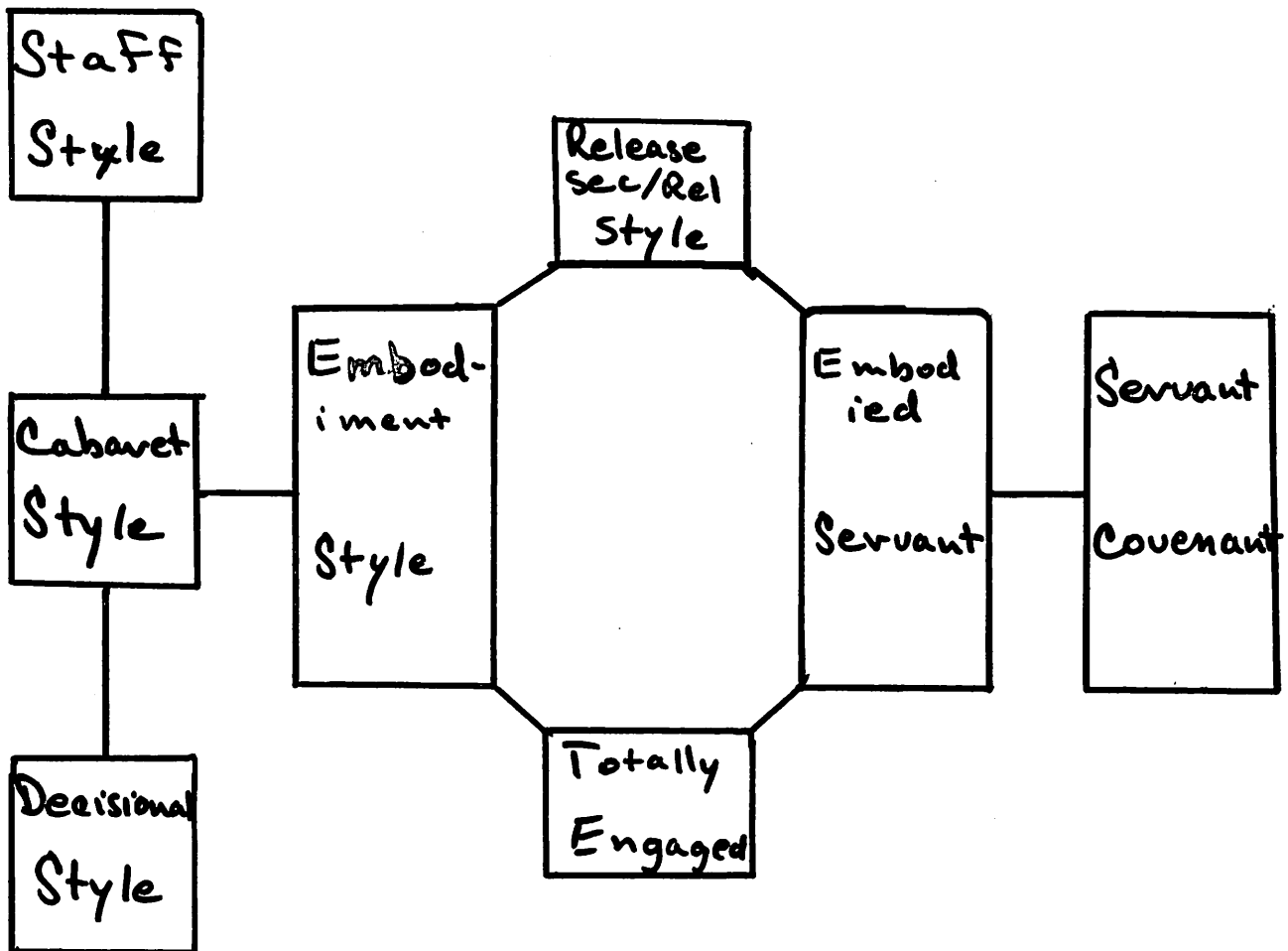
6. Institute of Cultural Affairs functions to research and enable effective living in the 20th century.

7. Guild Troops function to parallel the work that LCP troops do for RSI, for the Institute of Cultural Affairs.

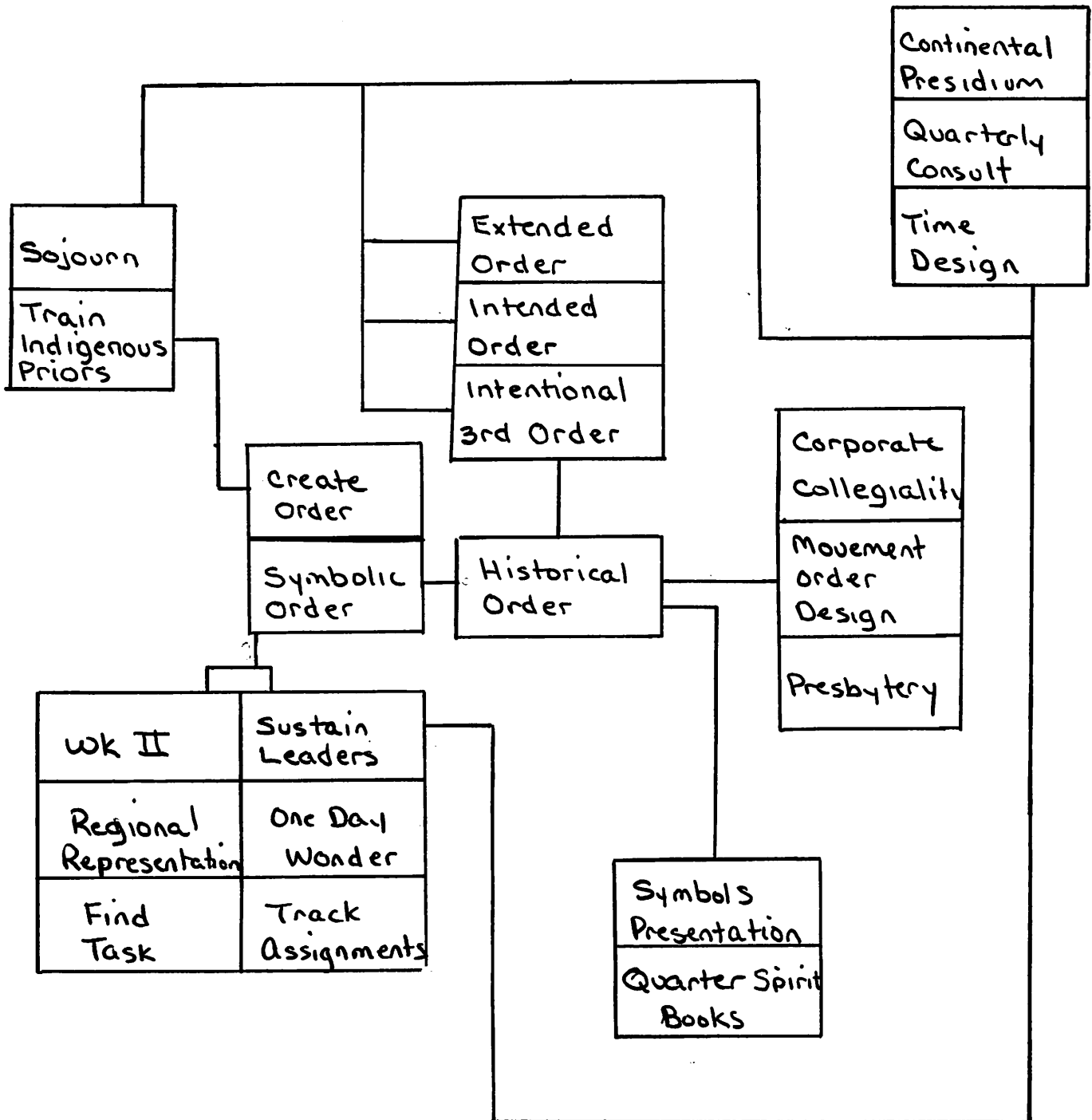
8. Course Enablement functions to prepare, provide and provision courses.
9. Regional Course Scheduling functions to enable maximum course contact throughout the region and maximum effective use of pedagogues.
10. Flow Charts function to chart dynamic relationships of the course.
11. Theologic Grounding functions to authenticate the course.
12. Translation of Course Papers functions to enable full understanding of courses by global colleagues.
13. Leadership Criteria functions to ensure consistent pedagogy.
14. Continental Faculty functions to universalize course impact.
15. Bi-lingual Pedagogues function to enable fuller participation of global colleagues.
16. Assignment of Pedagogues functions to provide objectivity in pedagogy.
17. Local Ecumenical Institute functions as the training dynamic in the region.
18. Penetration constructs function to provide recruitment rationale.
19. Localized Training functions to enlist and renew missional engagement of local colleagues.
20. Recruitment Centrum functions to organize recruitment.



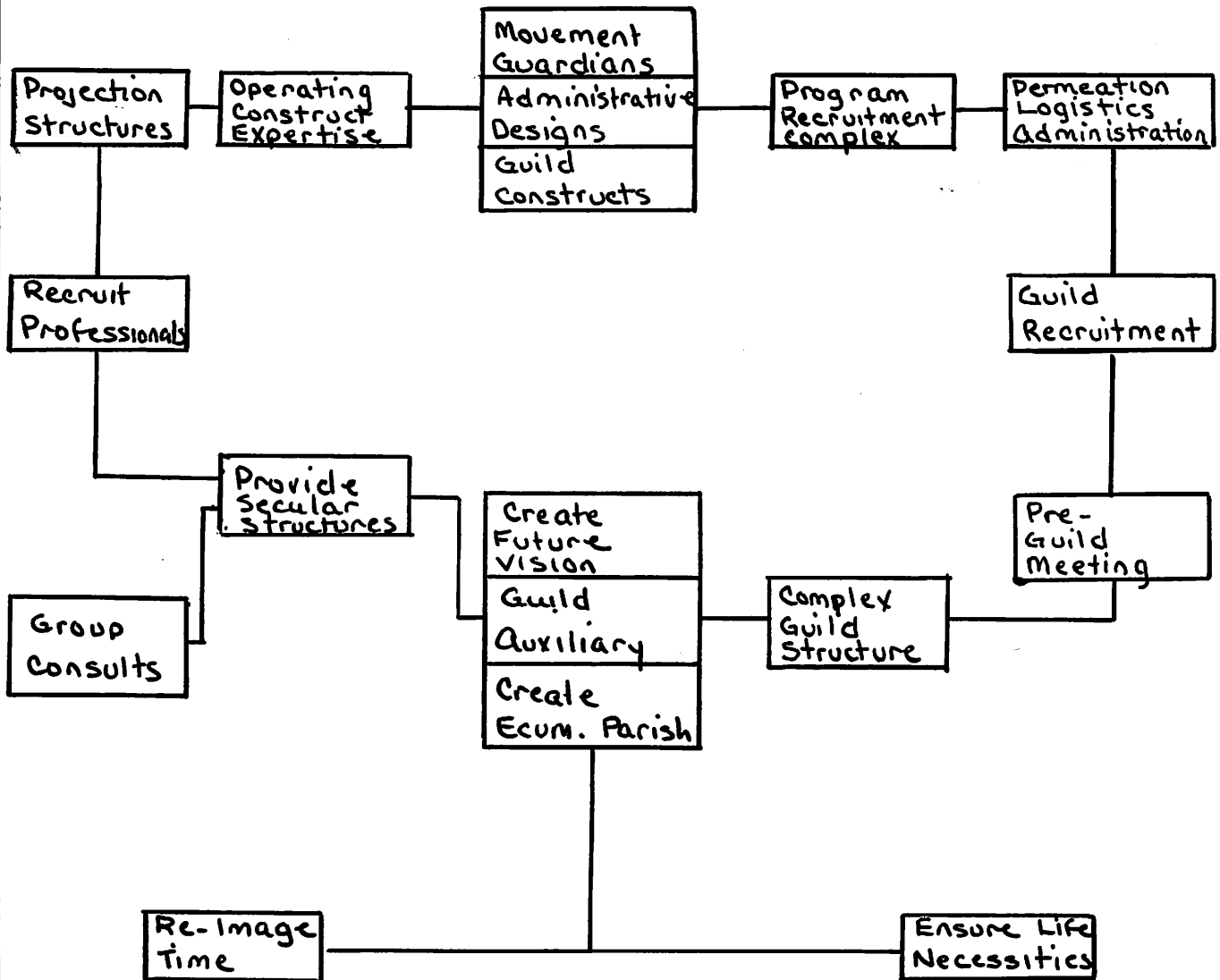
Global Resurgent Style #1



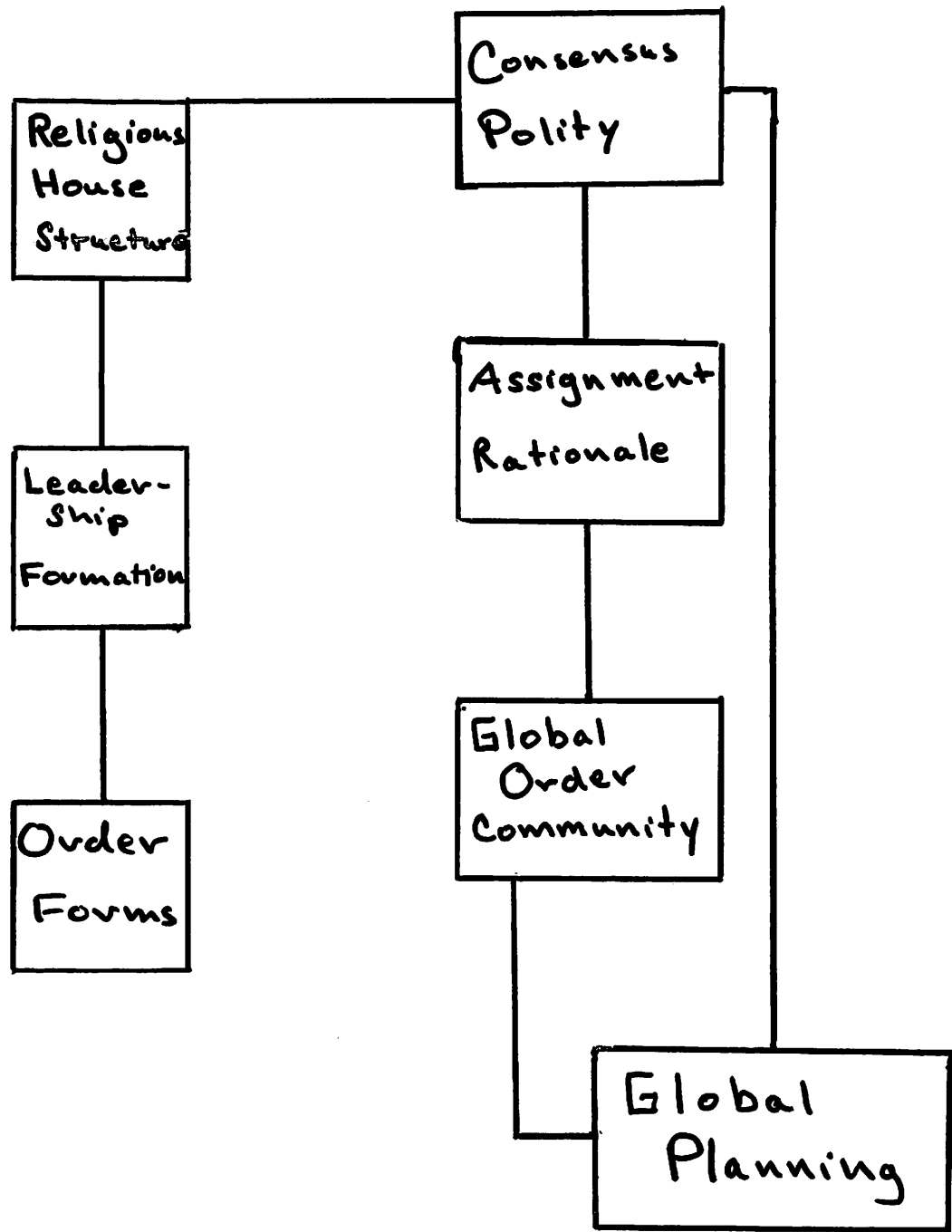
Historical Order Invention #2



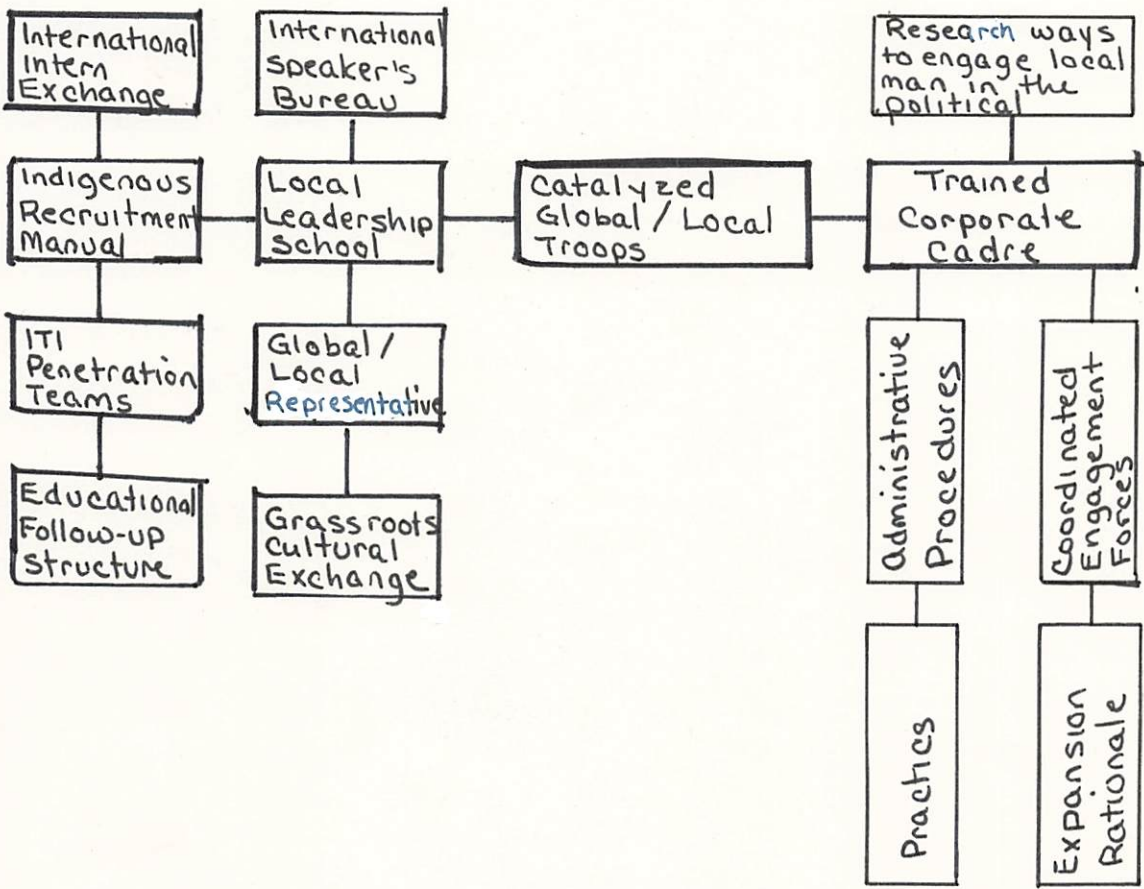
Local Guilding Construct # 3



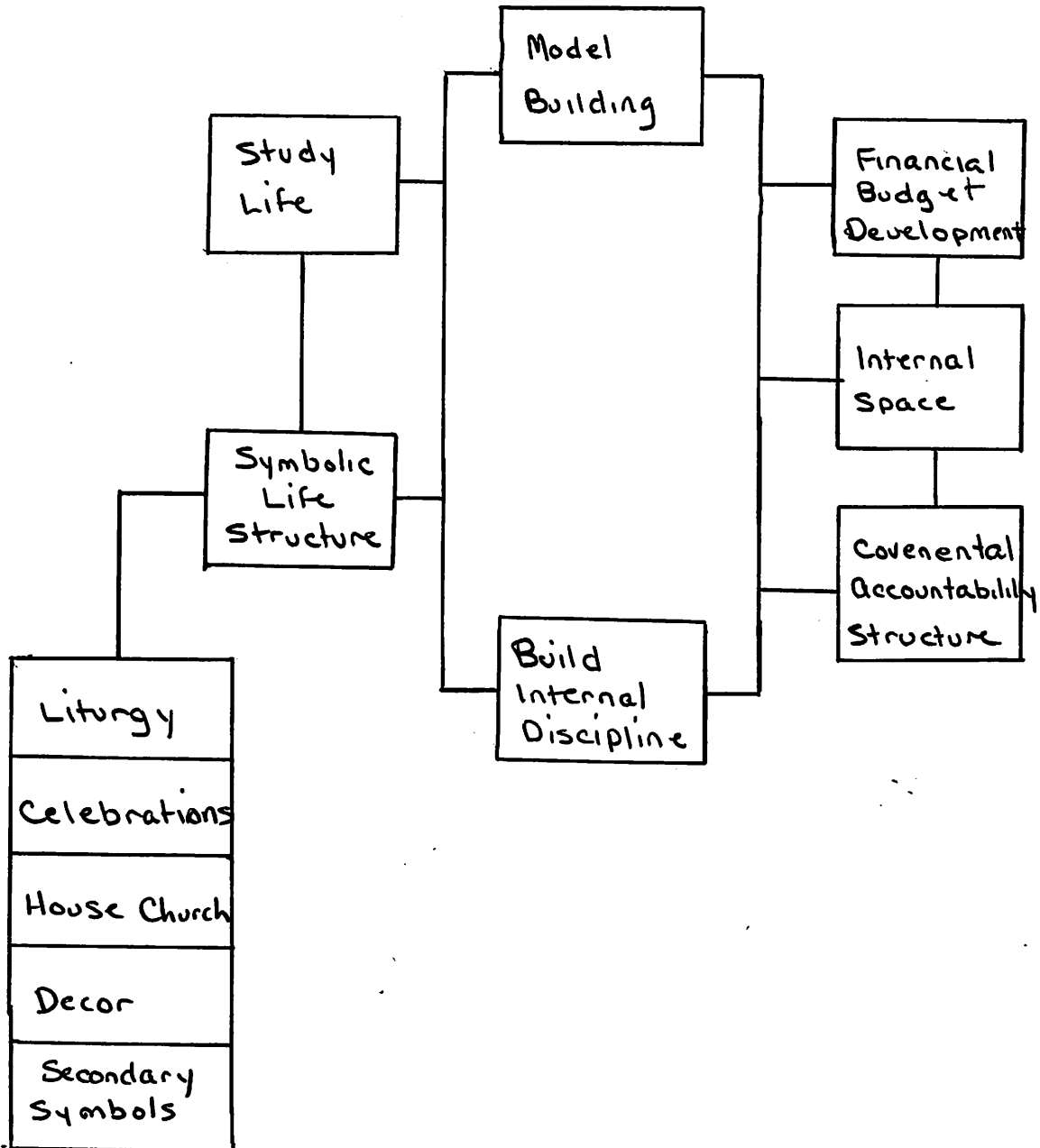
Global Order Community #4



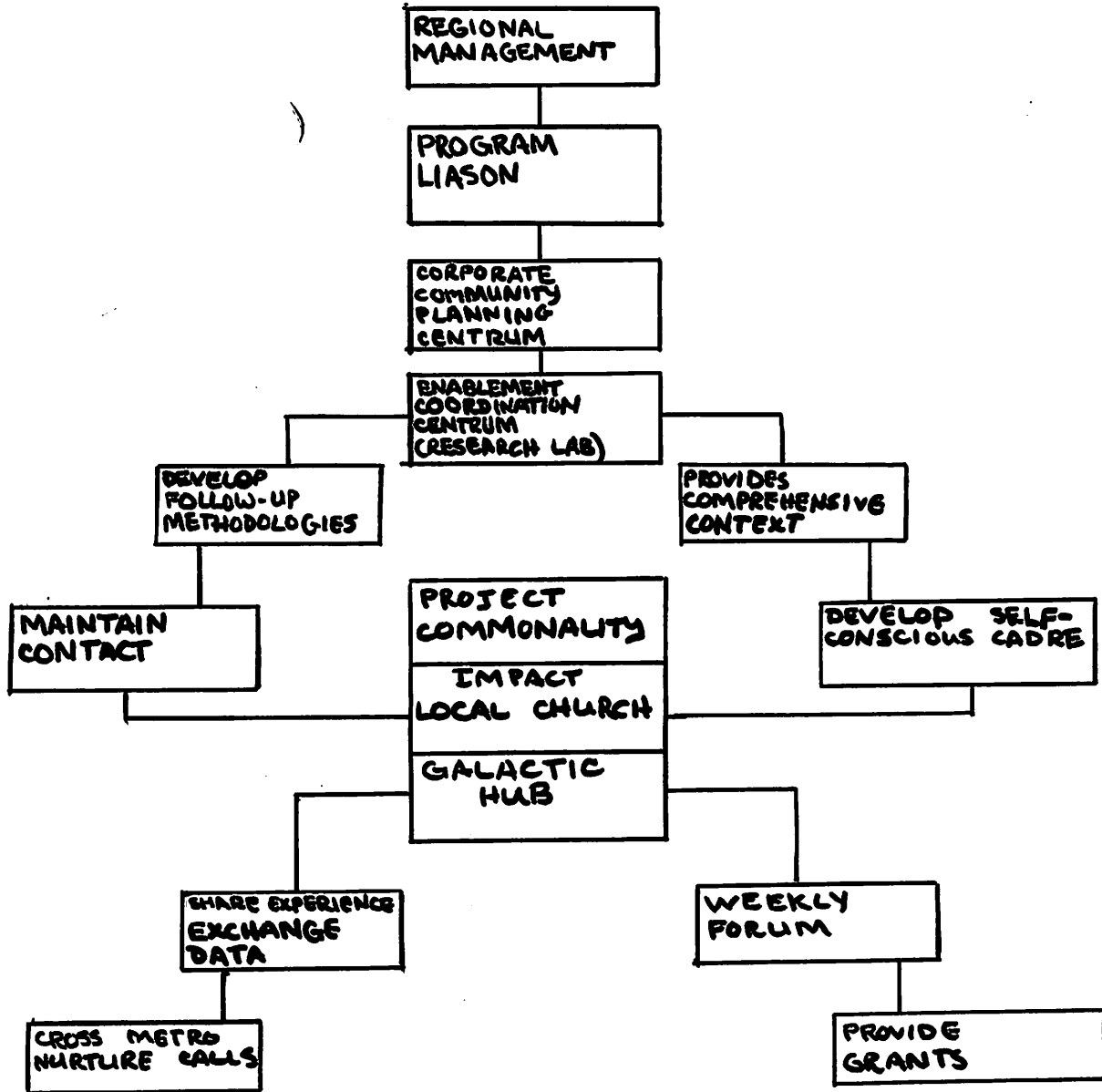
5 Catalyzed Global / Local Troops



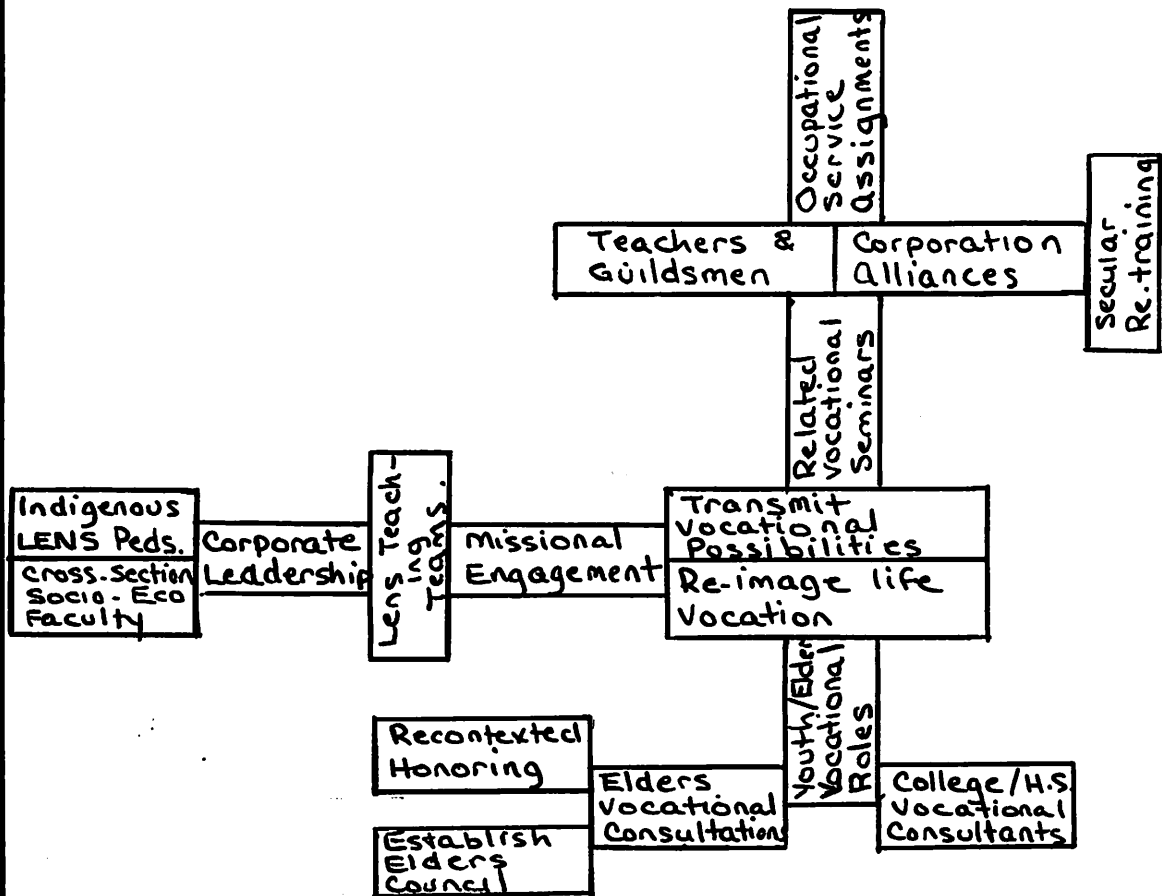
Religious Life Sustainance # 6



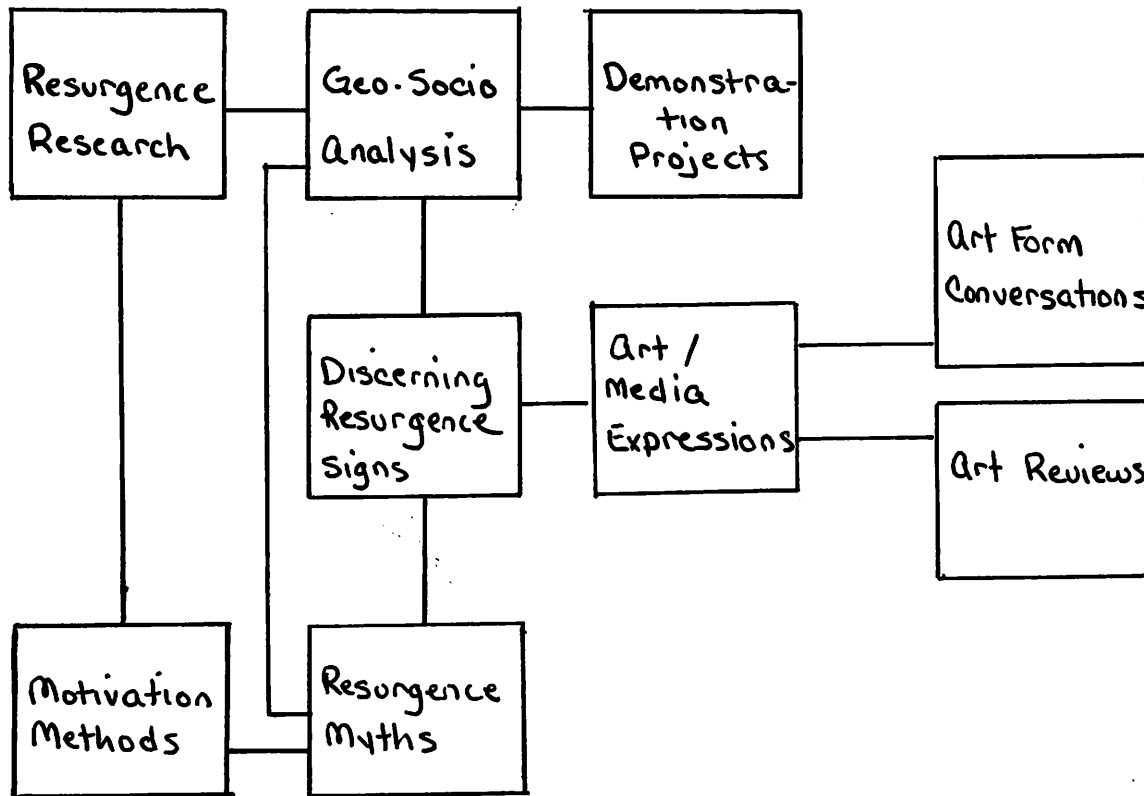
Local Church Impact #7



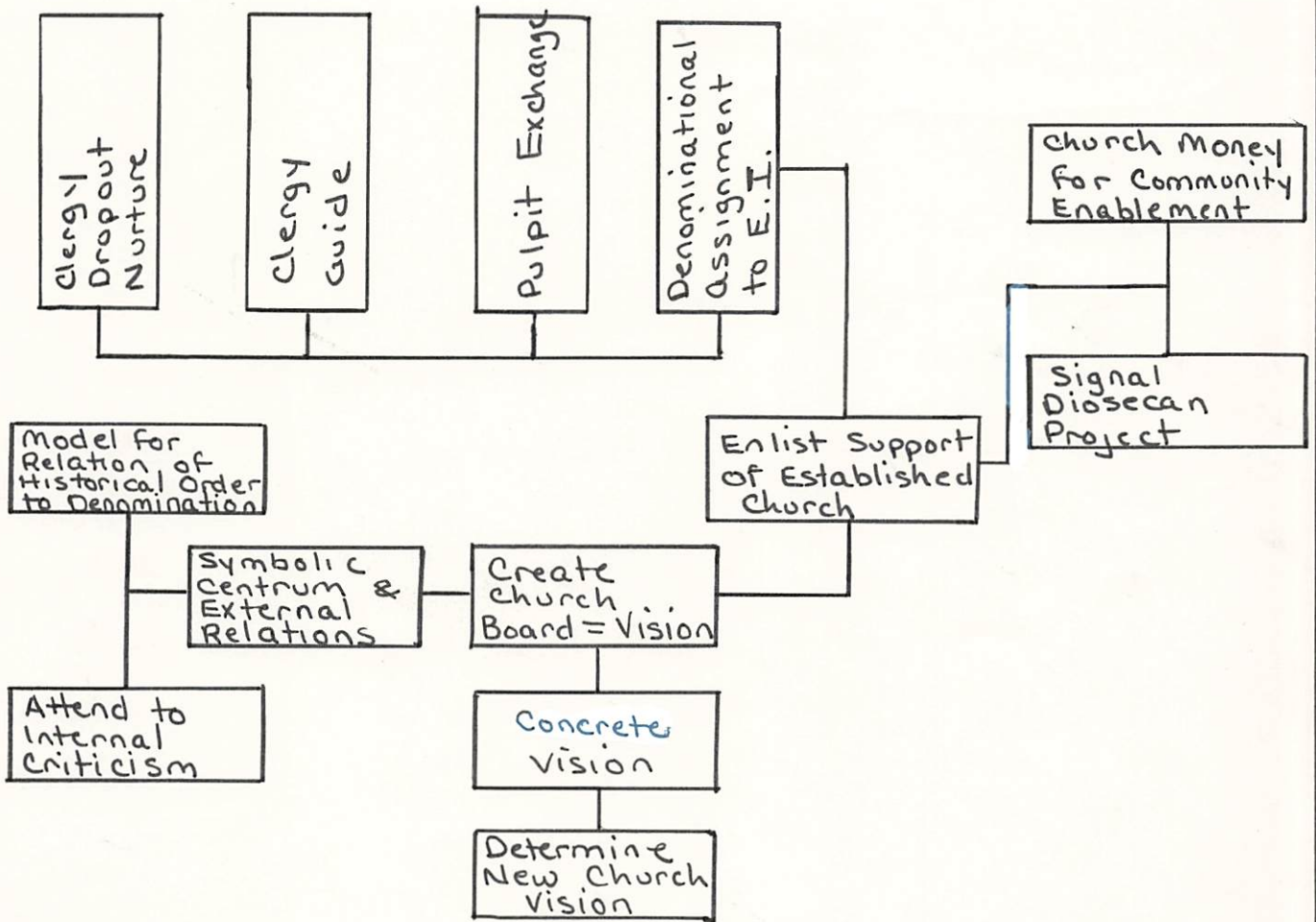
Reawakening Vocational Mission # 8



Discerning Resurgence Signs # 9



Order-Established Church Relations # 10



Local Servanthood Training # 11

