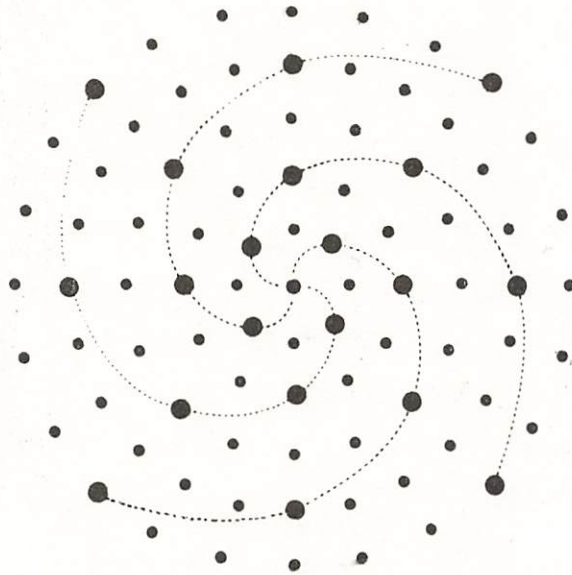
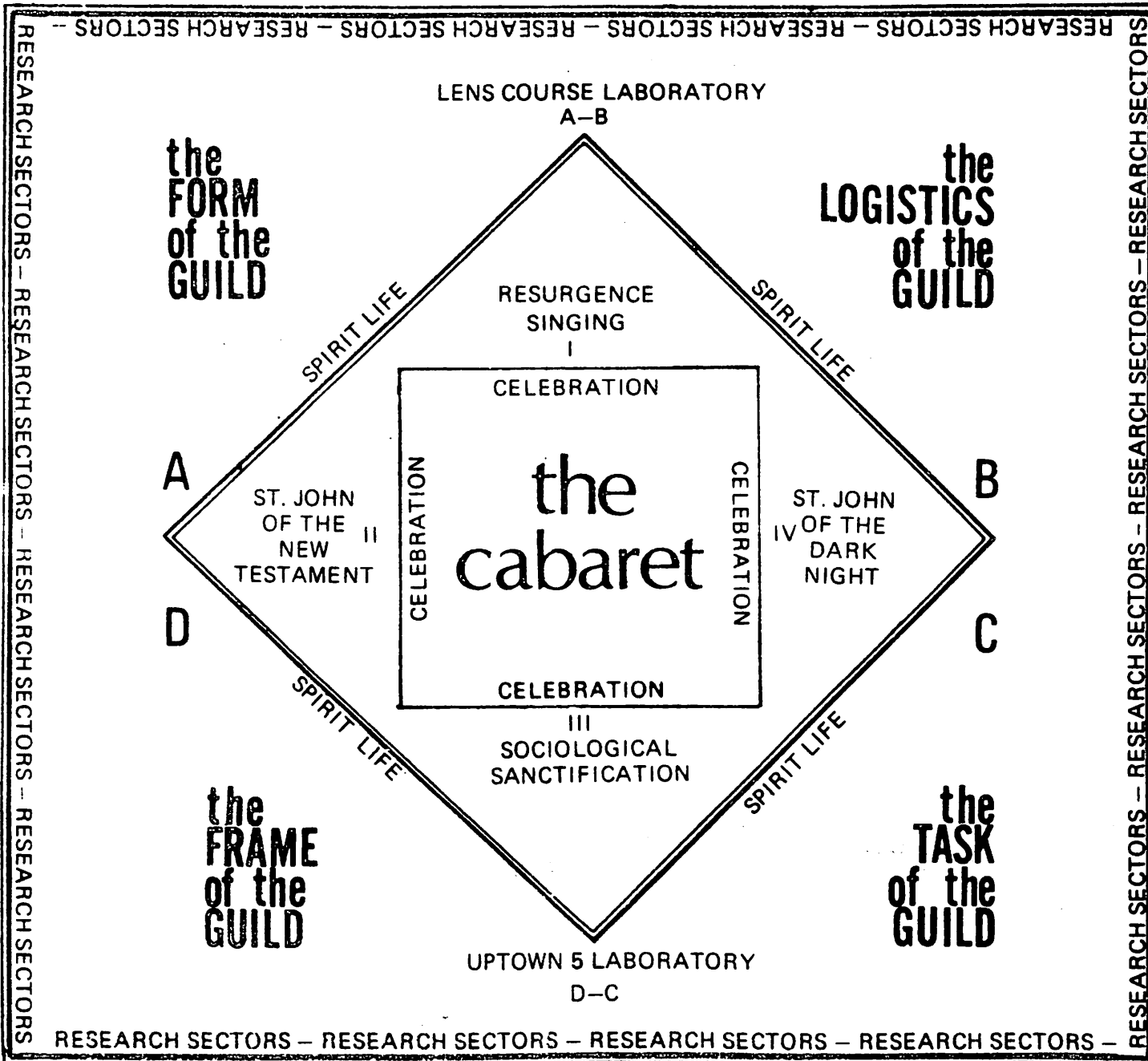


SUMMER 73



THE YEAR OF THE GLOBAL GUILD



THE GUILD DYNAMIC IS THE CHURCH IN MISSION AWAKENING THE HUMAN SPIRIT; CARING FOR LIFE'S NEEDS; AND WATCHING OVER THE SOCIAL FORMS ON BEHALF OF ALL MANKIND EVEN UNTO DEATH

SUMMER '73: THE YEAR OF THE GUILD

CREATING THE PRACTICAL GUILD

THE RESEARCH

THE PLANNING

FOCUSING
THE
20
YEAR
MARCH

THE
FORM
OF
THE
GUILD

THE
LOGISTICS
OF
THE
GUILD

THE
TASK
OF
THE
GUILD

THE
FRAME
OF
THE
GUILD

THE
ACTUALIZING
OF
THE
GUILD

THE
ORDERING
OF
THE
HOUSES

THE
TRAINING
OF
THE
PRIORS

THE
SYMBOLIZING
OF
THE
GLOBE

EMBODYING
THE
RESURGENCE

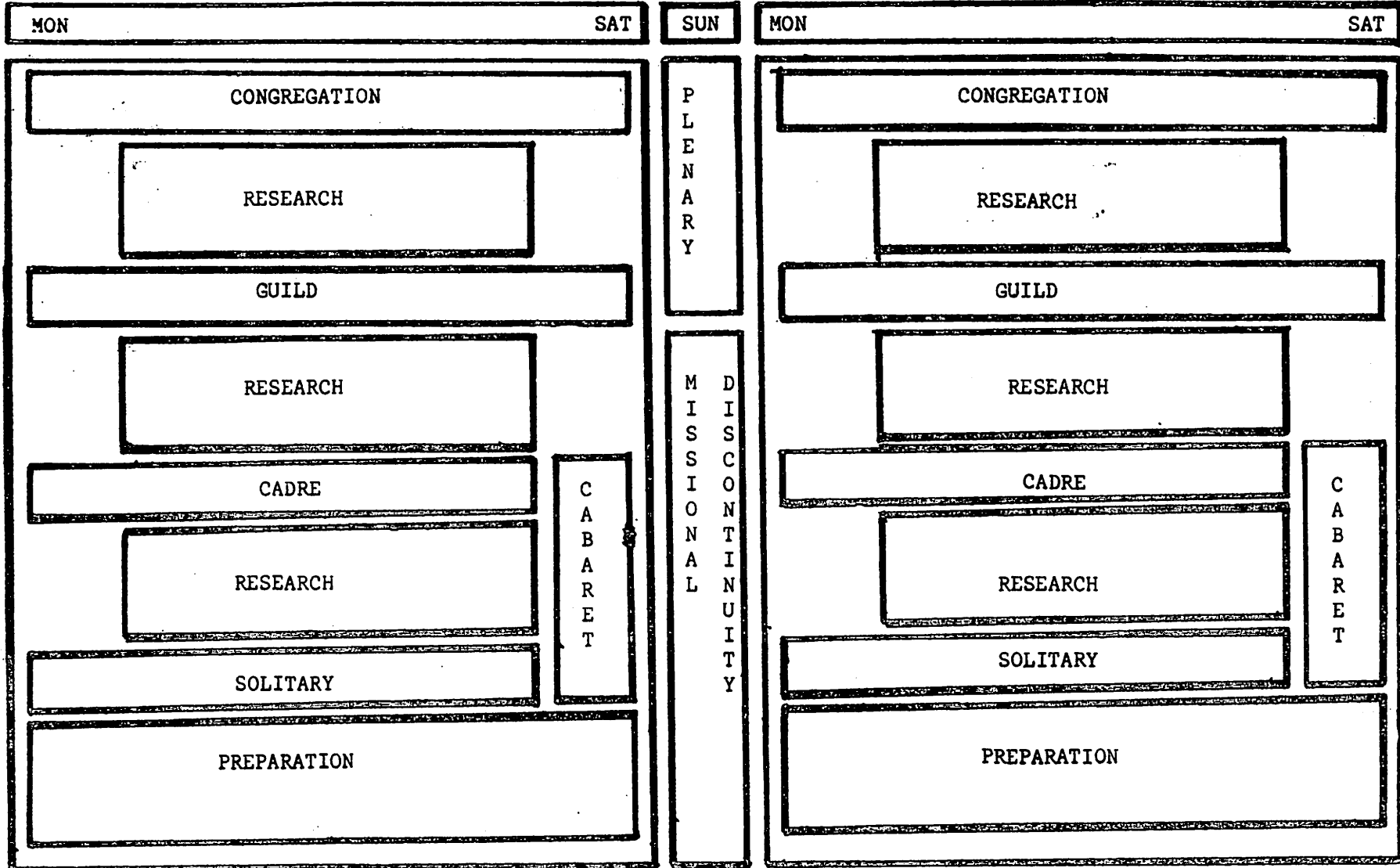
THE LABORATORIES

THE PROJECTIONS

COMMONIZING THE GLOBAL MISSION

ABSTRACT TIME DESIGN WEEK 1 & 2

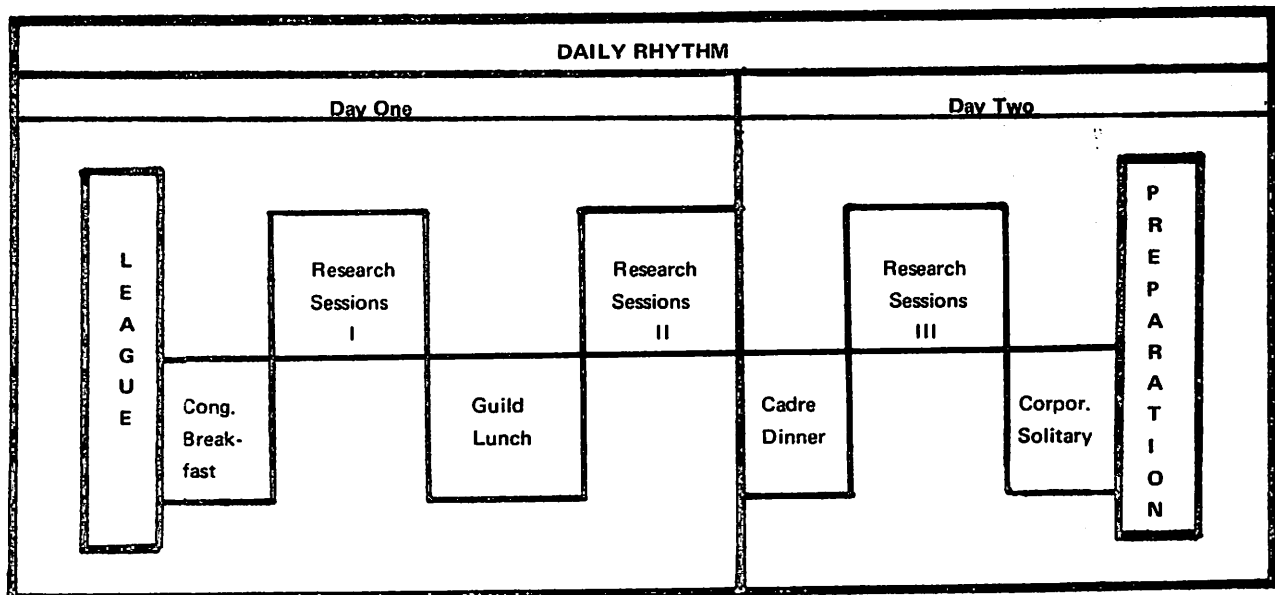
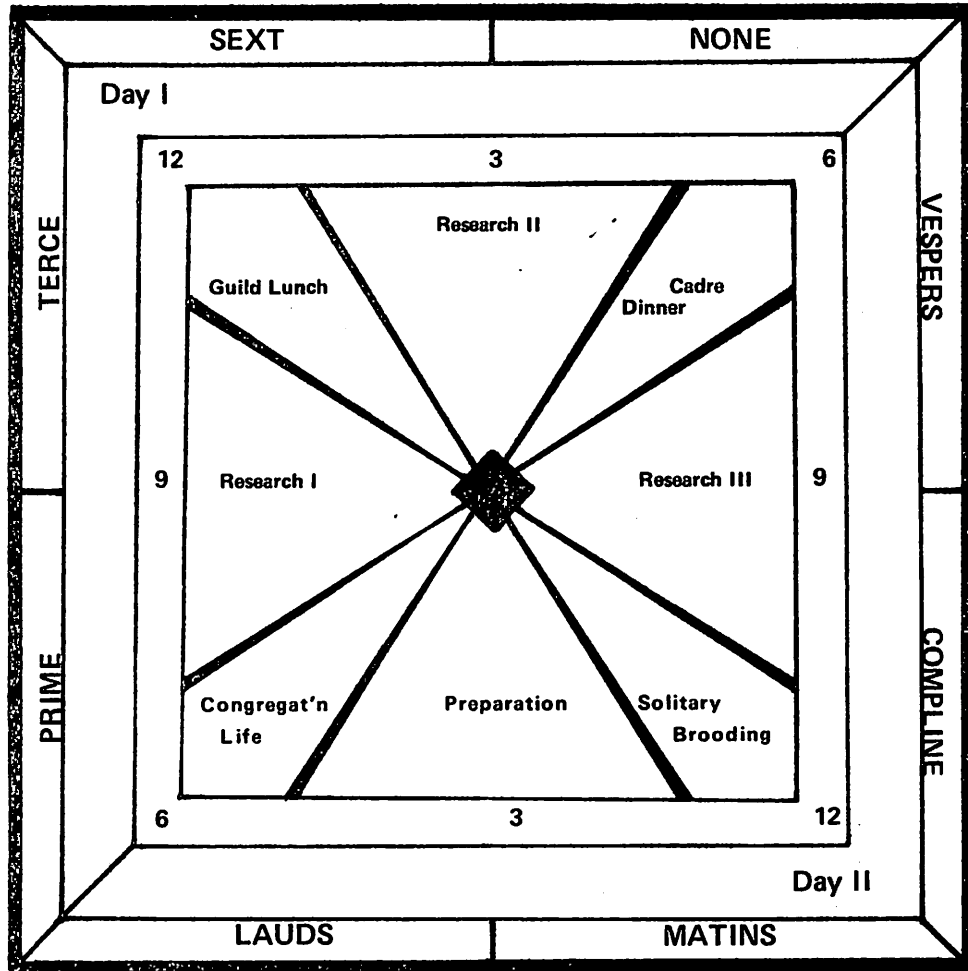
DAILY OFFICE



LEAGUE

DETAILED TWO WEEK TIME DESIGN

		WEEK FIRST							WEEK SECOND									
		BLOCK 1		BLOCK 2		BLOCK 3			DISCONT	BLOCK 1		BLOCK 2		BLOCK 3			DISCONT	
SUN		MON	TUES	WED	THUR	FRI	SAT	SUN	MON	TUES	WED	THUR	FRI	SAT	SUN			
D A Y I	5	RISE		LEAGUE WORSHIP					PREP	RISE		LEAGUE WORSHIP					PREP	
	6	CONGREGATION BREAKFAST							CONG HOUSE CHURCH	CONGREGATION BREAKFAST							PREP	
	7																	
	8	PLENUM	PLENUM		PLENUM			LEAGUE PLEN- ARY	PLENUM	PLENUM		PLENUM			CLOSING FEAST PLENARY			
	9	RESEARCH SESSION I							RESEARCH SESSION I									
	10	TEAM WORK							TEAM WORK									
	11	GUILD LUNCH							GUILD LUNCH									
	12	TEAM REFLECTION							TEAM REFLECTION									
	1	CORPORATE SOLITARY							CORPORATE SOLITARY									
	2	RESEARCH SESSION II							MISSIO- NAL DISCONT	RESEARCH SESSION II							MISSIO- NAL DISCONT	
	3	CADRE DINNER					C A B A R E T	CADRE DINNER					C A B A R E T					
	4	RESEARCH SESSION III								RESEARCH SESSION III								
5	SOLITARY SOLITARY							SOLITARY										
6	PREPARATION							PREPARATION										
D A Y II	7	OPEN	RESEARCH SESSION III							RESEARCH SESSION III							OPENING FEAST PREP	
	8	FEAST	SOLITARY SOLITARY							SOLITARY								
	9	PREP	PREPARATION							PREPARATION								
	10	PREPARATION							PREPARATION									
	11	PREPARATION							PREPARATION									
	12	PREPARATION							PREPARATION									
	1	PREPARATION							PREPARATION									
	2	PREPARATION							PREPARATION									
	3	PREPARATION							PREPARATION									
	4	PREPARATION							PREPARATION									



DYNAMICS OF THE
MON LIFE
IN
YEAR OF THE GUILD

ONE
LEAGUE

FOUR
CONGREGATIONS

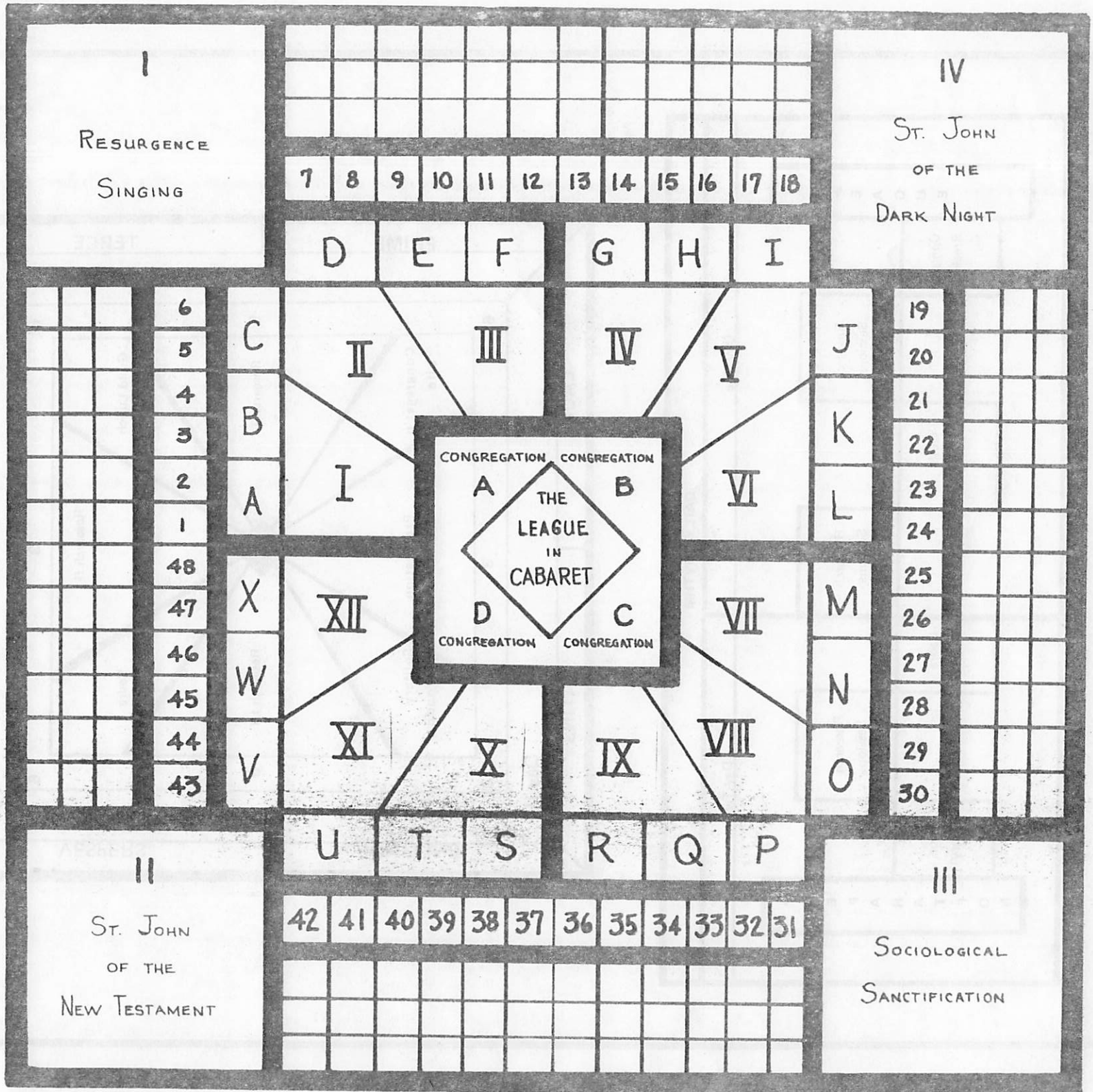
TWELVE
GUILDS

TWENTY-FOUR
CADRES

FORTY-EIGHT
TEAMS

ONE HUNDRED
FORTY-FOUR
UNITS

ONE THOUSAND
GUILDSMEN



MASTER CHART OF SPIRIT DYNAMICS

	THE LEAGUE	THE CONGREGATION	THE GUILD	THE CADRE	THE TEAM/UNIT
	Releasing the Power	Proclaiming the Stance	Embracing the Possibility	Sustaining the Journey	Creating the Iron
T H E V I S I O N	Plenaries & Feasts	Sanctification	Indicative Visioning	St. John of the Cross Conversation	Reflection on Journey
T H E A W E	Daily Office	House Church	Song Conversation	St. John of the Cross Study	Epistle Writing
T H E C O M P I A S I O N	Cabaret	Epistle of John	Research Reflection	Sodality	Team/Unit Practices
	THE MOVEMENTAL FORCE	THE HISTORIC CHURCH	THE RESURGENT WORLD	THE PRIMAL UNIT	THE DISCIPLINED CORE

GLOBAL RESEARCH
ASSEMBLY

THE YEAR OF THE GUILD
Assignment Rational

SUMMER '73
BASE CENTRUM

A
GUILD FORM
RESEARCH

B
GUILD LOGISTICS
RESEARCH

C
GUILD TASK
RESEARCH

D
GUILD FRAME
RESEARCH

Room E Form

Room E Logistics

Room E Task

Room E Frame

LENS LABORATORY

UPTOWN 5 LABORATORY

Coordination And Spirit

PRODUCTION

PRACTICES

Editorial

Typing

Distribution

Printing

Hosting

Services

Kitchen

Inkind

SUMMER EXTENSION

Global
Odyssey

Sixth Grade
Trip

Eighth Grade
Work Project

New Day
Nation Camp

CENTRUM OPERATIONS

FUTURE PROJECTION

A FORMS			B LOGISTICS			C TASK			D FRAME		
I	II	III	IV	V	VI	VII	VIII	IX	X	XI	XII
A	C	E	G	I	K	M	O	Q	S	U	W
a RESEARCH			RESEARCH			RESEARCH			RESEARCH		
c Coordination And Spirit						Production And Practics					
a RESEARCH			RESEARCH			RESEARCH			RESEARCH		
b RESEARCH			RESEARCH			RESEARCH			RESEARCH		
c Room E Form			Room E Logistics			Room E Task			Room E Frame		
B	D	F	H	J	L	N	P	R	T	V	X
a RESEARCH			RESEARCH			RESEARCH			RESEARCH		
b RESEARCH			RESEARCH			RESEARCH			RESEARCH		
c Centrum Operations						Future Projection					
a RESEARCH			RESEARCH			RESEARCH			RESEARCH		
b RESEARCH			RESEARCH			RESEARCH			RESEARCH		
c LENS Laboratory						Uptown 5 Laboratory					

Congregation A Forms			Congregation B Logistics			Congregation C Task			Congregation D Frame		
Guild I	Guild II	Guild III	Guild IV	Guild V	Guild VI	Guild VII	Guild VIII	Guild IX	Guild X	Guild XI	Guild XII
Cadre A	Cadre C	Cadre E	Cadre G	Cadre I	Cadre K	Cadre M	Cadre O	Cadre Q	Cadre S	Cadre U	Cadre W
TEAM 1 a b c	TEAM 5 a b c	TEAM 9 a b c	TEAM 13 a b c	TEAM 17 a b c	TEAM 21 a b c	TEAM 25 a b c	TEAM 29 a b c	TEAM 33 a b c	TEAM 37 a b c	TEAM 41 a b c	TEAM 45 a b c
TEAM 2 a b c	TEAM 6 a b c	TEAM 10 a b c	TEAM 14 a b c	TEAM 18 a b c	TEAM 22 a b c	TEAM 26 a b c	TEAM 30 a b c	TEAM 34 a b c	TEAM 38 a b c	TEAM 42 a b c	TEAM 46 a b c
Cadre B	Cadre D	Cadre F	Cadre H	Cadre J	Cadre L	Cadre N	Cadre P	Cadre R	Cadre T	Cadre V	Cadre X
TEAM 3 a b c	TEAM 7 a b c	TEAM 11 a b c	TEAM 15 a b c	TEAM 19 a b c	TEAM 23 a b c	TEAM 27 a b c	TEAM 31 a b c	TEAM 35 a b c	TEAM 39 a b c	TEAM 43 a b c	TEAM 47 a b c
TEAM 4 a b c	TEAM 8 a b c	TEAM 12 a b c	TEAM 16 a b c	TEAM 20 a b c	TEAM 24 a b c	TEAM 28 a b c	TEAM 32 a b c	TEAM 36 a b c	TEAM 40 a b c	TEAM 44 a b c	TEAM 48 a b c

GENERAL CONTEXT

Where the People of God gather, there is the Congregation. Where a self-conscious relationship to God through Jesus Christ brings people together, there is the Congregation. Where Christians gather for worship, study, nurture and missional preparation as a disciplined body, there is the Congregation. The Church through history is its congregation. The League is the Church assembled to perform a particular task, and within the life of the League is the Congregation.

Thus, the Congregation is the residential group, meeting each morning for the Congregation Breakfast. Each Congregation is made up of three Guilds which are the primary research units also meeting for the Guild Lunches. There are two Cadres in each Guild which meet for the dynamic of the Cadre Dinner. Guardianship of the Word takes place through the Congregation gatherings in encounters with the scripture and through the Cadre gatherings in the well-springs of Christian tradition as well as in Team and Unit Meetings.

The mission of the Congregation is the Parish, and during this Assembly of the League, the mission is carried out in research and model building through the Guild.

THE CONGREGATION BREAKFAST				
THE STANCE		THE DAY	THE TASK	
RITUALS	REFLECTIONS		THEOLOGY	MISSION
Songs	First John	Scripture	Sanctification	Contexts
Accountability		News	Discourse	Send-Out

THE GUILD							
TEAM	LUNCH						TEAM
CORPORATE WORK	P	INDICATIVE VISION	SONG	PLENARY REFLECT.	P	C	R
	R		CONVERSATION		O	O	E
	E				S	R	F
	L	Detachment	Transparency	Engagement	T	P	L
U	RELEASING THE PASSION						L
						E	T

THE CADRE DINNER		
COLLEGE	SEMINARY	SODALITY
Songs Rituals Day II Office Conversation	ST. JOHN OF THE CROSS <u>Dark Night of the Soul</u>	Reflection Send-Out

OBEDIENCES

THE CONTEXT FOR OBEDIENCES

The obediences are a secular-religious exercise of obedient engagement. It is grounded in the primordial dynamic of humanness. Its religious nature is unobservable from the outside, but it serves as an interior index for the person. In the exercise of obedience, it is built around a task which could always be done in some other way, but one that does involve physical work. The practice requires that we actually involve energy expenditure as we rehearse the total bodily expenditure that is demanded in the final act of cruciformity. While the obedience does involve the physical, it is for the sake of the spiritual discipline. It signifies the interior decision to be a sign.

The obediences are primarily related to space. It is an indirect means of investing the missional space of the corporate body with intentional spirit. The Ecumenical Parish - a very specific "postage stamp" where one concretely labors on behalf of all - is the space where global-local responsibility is enacted. The Obedience is the symbolic space, the concrete postage stamp that stands in relation to all other space, where one rehearses his Obedience to God in responsibility for the world. Such a daily rehearsal reminds the guildsman of his vocational decision in covenantal corporateness to renew the earth as his genuine obligation to the Mystery and to the neighbor.

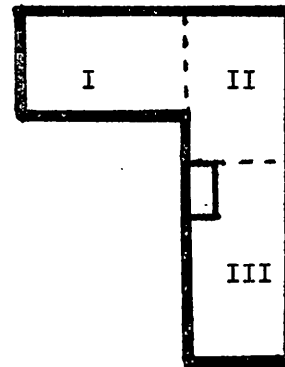
The obediences are also related to time. They are a discontinuous interjection in the midst of the routine work. They are done at the time of one's own choosing, around the edges. This is not to be simply a break, but rather a rehearsal of the nature of spirit tangents. They are like going aside to pray, though the spirit always comes indirectly; we are not expecting it; it is always a surprise. The exercise of obedience is a complete activity in itself. And regardless of whether this structure actually occasions new insights, one begins to grasp the double reflective nature of transparency present in any experience.

The obedience is a drama of missional action. It is done under assignment but with complete freedom and creativity; creativity of the spirit. It is a symbol of servanthood. It is performed in accountability to history. And it is performed on behalf of all.

THE PRACTICES OF OBEDIENCES

A non-work task will be assigned to every guildsman through the Cadre Team/Unit structure. The work must not be practical work in the first instance; to emphasize the practical character of the work would destroy the symbolic obedience. To decide to care for this space is not practical work, but a decision to care concretely for the world. Each Cadre will have its Obedience area and within that area will assign specific individual obedience spaces through the Teams. The Team/Unit structure will be the channel for the context, assignment and accountability for Obediences. The name of the "Obedient" for each space will be posted on the space on placques which will be available through the teams. Each guildsman is to care for his space once a day, spending from five to ten minutes at a time of his choosing, to create a spirit happening out of the space. Accountability will be indirect in the form of reflective conversations.

The space of each floor will be assigned to three Cadres for obedience space, using the basic rationale in the diagram at the right.



CONG.	GUILD	CADRE	SPACE
A	I	a	Guild Hall South and Men's Bathroom
		b	Guild Hall North and Women's Bathroom
		c	Distribution/Print Shop
		d	Fifth Floor, Area I and stairwell 4-5
		e	Fifth Floor, Area II
		f	Fifth Floor, Area III
B	II	g	2nd Floor, Areas I & II
		h	2nd Floor, Area III and Bathrooms
		i	Great Hall
		j	Sixth Floor, Area I and stairwell 5-6
		k	Sixth Floor, Area II
		l	Sixth Floor, Area III
C	III	m	3rd Floor, Area I and stairwell 2-3
		n	3rd Floor, Area II
		o	3rd Floor, Area III
		p	7th Floor, Area I and stairwell 6-7
		q	7th Floor, Area II
		r	7th Floor, Area III
D	IV	s	4th Floor, Area I and stairwell 3-4
		t	4th Floor, Area II
		u	4th Floor, Area III
		v	8th Floor, Area I and stairwell 7-8
		w	8th Floor, Area II
		x	8th Floor, Area III

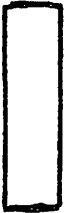
TEAM/UNIT CORPORATE WORK ASSIGNMENTS

TASK		CONGREGATION			
		A	B	C	D
R O O M 1.	Pick up paper - empty trash - empty/wash ash trays	1 a	13 a	25 a	37 a
	Wash blackboard - clean eraser	2 a	14 a	26 a	38 a
	Wash tables	3 a	15 a	27 a	39 a
	Wash tables	4 a	16 a	28 a	40 a
	Straighten tables and chairs	5 b	17 b	29 b	41 b
	Straighten tables and chairs	6 b	18 b	30 b	42 b
R O O M 2	Pick up paper - empty trash - empty/wash ash trays	7 a	19 a	31 a	43 a
	Wash blackboard - clean eraser	8 a	20 a	32 a	44 a
	Wash tables - straighten tables/chairs	5 a	17 a	29 a	41 a
	Wash tables - straighten tables/chairs	6 a	18 a	30 a	42 a
R O O M 3	Straighten tables and chairs - wash tables	11 a	23 a	35 a	47 a
	Straighten tables and chairs - wash tables	12 a	24 a	36 a	48 a
	Pick up paper - empty trash - empty/wash ash trays	9 a	21 a	33 a	45 a
	Wash blackboard - clean eraser	10 a	22 a	34 a	46 a
R O O M 4	Wash blackboard/tables - clean eraser - empty/wash ash	3 b	15 b	27 b	39 b
	Pick up paper - straighten tables/chairs - empty trash	4 b	16 b	28 b	40 b
R O O M 5	Wash blackboard/tables-clean eraser-empty/wash ash tray	7 b	19 b	31 b	43 b
	Pick up paper-straighten tables/chairs-empty trash	8 b	20 b	32 b	44 b
R O O M 6	Wash blackboard/tables-clean eraser-empty/wash ash tray	11 b	23 b	35 b	47 b
	Pick up paper-straighten tables/chairs-empty trash	12 b	24 b	36 b	48 b
R O O M 7	Pick up paper - straighten decor	9 b	21 b	33 b	45 b
	Sweep floor - straighten furniture	10 b	22 b	34 b	46 b
	Empty/wash ash trays/tables	11 b	23 b	35 b	47 b
	Empty trash	12 b	24 b	36 b	48 b

	CONGREGATION		A		B		C		D	
	Week	Task	1	2	1	2	1	2	1	2
B R E A K F A S T	SET		1 a	2 a	13 a	14 a	25 a	26 a	37 a	38 a
			5 a	6 a	17 a	18 a	29 a	30 a	41 a	42 a
			9 a	10 a	21 a	22 a	33 a	34 a	45 a	46 a
	CLEAR		3 a	4 a	15 a	16 a	27 a	28 a	39 a	40 a
			7 a	8 a	19 a	20 a	31 a	32 a	43 a	44 a
			11 a	12 a	23 a	24 a	35 a	36 a	47 a	48 a
G U I L D	SET	I	1 b	2 b	13 b	14 b	25 b	26 b	37 b	38 b
		II	5 b	6 b	17 b	18 b	29 b	30 b	41 b	42 b
		III	9 b	10 b	21 b	22 b	33 b	34 b	45 b	46 b
	CLEAR	I	3 b	4 b	15 b	16 b	27 b	28 b	39 b	40 b
		II	7 b	8 b	19 b	20 b	31 b	32 b	43 b	44 b
		III	11 b	12 b	23 b	24 b	35 b	36 b	47 b	48 b
C A D R E	S E T	A	2 a	1 a	14 a	13 a	26 a	25 a	38 a	37 a
		B	4 a	3 a	16 a	15 a	28 a	27 a	40 a	39 a
		C	6 a	5 a	18 a	17 a	30 a	29 a	42 a	41 a
		D	8 a	7 a	20 a	19 a	32 a	31 a	44 a	43 a
		E	10 a	9 a	22 a	21 a	34 a	33 a	46 a	45 a
		F	12 a	11 a	24 a	23 a	36 a	35 a	48 a	47 a
	C L E A R	A	2 b	1 b	14 b	13 b	26 b	25 b	38 b	37 b
		B	4 b	3 b	16 b	15 b	28 b	27 b	40 b	39 b
		C	6 b	5 b	18 b	17 b	30 b	29 b	42 b	41 b
		D	8 b	7 b	20 b	19 b	32 b	31 b	44 b	43 b
		E	10 b	9 b	22 b	21 b	34 b	33 b	46 b	45 b
		F	12 b	11 b	24 b	23 b	36 b	35 b	48 b	47 b

LECTIONARY

<u>Date</u>	<u>Old Testament</u>		<u>New Testament</u>		<u>Capital Verse</u>
JULY					
1	Ezekiel	47:1-14	Acts	28:15-31	20
2	Daniel	Ch. 1	Hebrews	Ch. 1	3-4
3		2:1-16		Ch. 2	17-18
4		2:17-23		Ch. 3	5-6
5		2:24; 2:36-49		Ch. 4	8-10
6		3:1-7		Ch. 5	11-14
7		3:8-23		Ch. 6	11-12
8		3:24-30		7:1-19	18-19
9		7:1-10		7:20-8:13	28-29
10		7:19-28		9:1-14	11-12
11		8:1-14		9:15-28	15-16
12		8:15-27		10:1-18	8-10
13		10:1-14		10:19-11:3	23-25
14		10:15-11:1		11:4-22	13-16
15		11:20-39		11:23-40	39-40
16		11:20-39		12:1-13	11
17	Ezra	Ch. 1		12:14-29	28
18		Ch. 3		Ch. 13	9
19		7:11-23	Peter I	1:1-21	8
20		8:31-36		1:22-2:10	9
21		9:1-9		2:11-3:7	4
22		9:10-15		3:8-22	22
23	Nehemiah	2:1-16		Ch. 4	10
24		2:17-3:5		Ch. 5	2
25		4:6-23	Peter II	1:1-19	8
26		12:27-30		1:20-2:22	20
27		13:1-14		Ch. 3	13
28	Leviticus	19:1-18	Thessalonians I	Ch. 1	8
29		19-19-37		2:1-16	11
30		23:1-8		2:17-3:13	8
31		23:9-25		Ch. 4	10



TEAM 3	TEAM 4	TEAM 7	TEAM 8	TEAM 11	TEAM 12
CADRE B		CADRE D		CADRE F	
TEAM 1	TEAM 2	TEAM 5	TEAM 6	TEAM 9	TEAM 10
CADRE A		CADRE C		CADRE E	
GUILD I		GUILD II		GUILD III	
CONG A					

TEAM 15	TEAM 16	TEAM 19	TEAM 20	TEAM 23	TEAM 24
CADRE H		CADRE J		CADRE L	
TEAM 13	TEAM 14	TEAM 17	TEAM 18	TEAM 21	TEAM 22
CADRE G		CADRE I		CADRE K	
GUILD IV		GUILD V		GUILD VI	
CONG B					

CONG C					
GUILD VII		GUILD VIII		GUILD IX	
CADRE M		CADRE O		CADRE Q	
TEAM 25	TEAM 26	TEAM 29	TEAM 30	TEAM 33	TEAM 34
CADRE N		CADRE P		CADRE R	
TEAM 27	TEAM 28	TEAM 31	TEAM 32	TEAM 35	TEAM 36

CONG D					
GUILD X		GUILD XI		GUILD XII	
CADRE S		CADRE U		CADRE W	
TEAM 37	TEAM 38	TEAM 41	TEAM 42	TEAM 45	TEAM 46
CADRE T		CADRE V		CADRE X	
TEAM 39	TEAM 40	TEAM 43	TEAM 44	TEAM 47	TEAM 48

ONE DAY WONDER TASK RATIONALE

	DAY I				DAY			
	6:00	9:00	12:00	3:00	6:00	9:00	12:00	3:00
	Units 7 & 8		Units 1 & 2		Units 3 & 4		Units 5 & 6	
Printing	Operate presses, collate and clean as necessary							
Distribution								
Kitchen	Units 3 & 4 Breakfast dishes, lunch prep and serve, dinner pre-prep	Units 5 & 6 Lunch dishes, dinner prep and serve, snack serve	Units 7 & 8 Dinner dishes, kitchen thoroughly clean	Units 1 & 2 Breakfast prep, lunch and dinner pre-prep				
Security housing	Units 5 & 6 Clean 1st & 2nd floors and trash alley 6 people on Security	Units 7 & 8 Clean all bathrooms, stock janitor closets, collect trash 3 ELEVATOR OPERATORS, 1 ROVER, 1 MESSENGER,	Units 1 & 2 Clean sidewalks, parking lot, stairwell, halls	Units 3 & 4 Clean elevator lobbies, lounges, meeting rooms 1 DRIVER				
Sleep	Units 1 & 2	Units 3 & 4	Units 5 & 6	Units 7 & 8				

Units will report to the Kitchen at 10:00 P.M. the night before, for contexting

ONE DAY WONDER ASSIGNMENT RATIONALE

DAY UNIT	Mon. 2nd	Tues 3rd	Wed 4th	Thurs 5th	Fri 6th	Sat 7th	Sun 8th	Mon 9th	Tues 10th	Wed 11th	Thurs 12th	Fri 13th	Sat 14th
1	8 a	6 b	2 b	10 a	6 a	2 a	4 c	9 b	5 b	1 b	9 b	5 a	1 a
2	10 b	4 a	4 a	8 c	4 c	12 c	12 b	7 a	3 a	11 a	7 b	3 b	11 b
3	17 b	13 b	21 b	17 a	13 a	21 a	16 a	22 b	18 b	14 b	22 a	18 a	14 a
4	23 b	19 b	15 b	23 a	19 a	15 a	24 a	20 b	16 b	24 b	20 c	16 c	24 c
5	30 a	26 a	34 a	30 b	26 b	34 b	27 b	29 a	25 a	33 a	29 b	25 b	33 b
6	36 c	32 c	28 c	36 b	32 b	28 b	35 b	36 a	32 a	28 a	35 a	31 a	27 a
7	43 b	41 b	37 b	45 a	41 a	37 a	39 a	42 a	38 a	46 a	42 b	38 b	46 b
8	45 b	39 b	47 b	44 a	40 a	48 a	47 a	48 c	44 c	40 c	48 b	44 b	40 b

GUILD I

CADRE A

CADRE B

T
E
A
M
1
U
N
I
T
a
Cock, John
Swift, Bev
Bahner, Barb
Taylor, Jean
Dooley, Fr. Joseph
Seery, Jenny
Tresise, John

T
E
A
M
3
U
N
I
T
a
Poole, Mark
Loy, Ann
Dyson, Frank
Haman, Doug
Loring, Marion
Sahm Rao, Rajesh
Bauknight, Kathy

U
N
I
T
b
Tolman, Geri
Battershell, Robert
Caldwell, Charles
Cox, Lilly
Knutsen, Lester
Perri, Laurel
Moore, Ellen

U
N
I
T
b
Forbes, Gary
Hoshiko, Barbara
Cordes, Sandra
Huck, George
Jeszensky, Ilona
Moore, Marilyn

U
N
I
T
c
Slicker, Joe
Jamieson, Gail
Walters, George

U
N
I
T
c
Griffee, Dale
Lord, Martha
Porter, Diann
Slicker, Bill

T
E
A
M
2
U
N
I
T
a
Rafos, Sandy
Slater, Harold
Bacerra, Loel
O'Rourke, Linda
Paulin, Gartrelle
Toth, George

T
E
A
M
4
U
N
I
T
a
Pierce, Joe
Stowers, Betty
Abel, Carolyn
Decius, Nancy
McAdam, John
McCall, Catherine
Meison, Lauri

U
N
I
T
b
Dougherty, Jim
Scott, Barbara
Landrum, Charles
Oden, Gail
Richardson, Larry
Zunkel, Leah

U
N
I
T
b
Wheeler, Jo
Moeller, George
Harrington, Steve
Jeanneau, Sr. Marie
Odrick, Eleso
Wismar, Barbara
Wood, Emily

U
N
I
T
c
Jenkins, Maureen
Epps, John
Hopkins, Don
Ramsey, Marge

U
N
I
T
c
Gilles, Jack
Henriques, Emily
Blauvett, Gordon
Burge, James
Dressler, Nicki
Wiley, Bob
Wood, David

GUILD II

CADRE C

CADRE D

		CADRE C			CADRE D
T E A M 5	U N I T a	Rafos, Bob Palmer, Beth Howard, Helen Reid, Betty Saws, Dale Shanklin, Lynette Slicker, Joanne	T E A M 7	U N I T a	Tolman, Warren McQuire, Fred Dressler, Jody Loeppke, Rhonda Robertson, Bruce Salmon, Bev Sedgley, Kitty
	U N I T b	Long, Stan Moeller, Elaine Bacerra, Marilyn Gooch, Dawn Hallman, Thomas Kinsey, Rita Wilcox, John Mark		U N I T b	Park Shin Won Slater, Karen Baumgarth, Susan Dettman, Luella Kinsey, Robert Landrum, Betty
	U N I T c	Lush, Tim Stephens, Kaye Weigel, Judy		U N I T c	Anderson, Jim Bailey, Lyn Hughes, Carol
T E A M 6	U N I T a	Hanson, Jean Ogren, David Brummel, Craig Pratt, Ginny Thomas, Patrea Yamashita, Katsu	T E A M 8	U N I T a	Pierce, Carol Howell, John McClelland, Terry Buchanan, Marcella Hunter, Gene Williams, Melcina
	U N I T b	Boivin, Gene Dougherty, Betty Barton, Kathy Caruso, Ray Frink, Richard Spersted, Roberta Fenton, Bill		U N I T b	Taylor, Eddie Tomlinson, Marg Bournonville, Ann Grimmel Valerie Knutsen, Bernard Ringsby, Connie
	U N I T c	Elliott, David Craddock, Paula Gilbert, Ken Emerson, Marion		U N I T c	Tomlinson, Gary Anderson Gary Burrows, Janey Flear, Charlotte Wilson, Priscilla Winterowd, K.B.

GUILD III

CADRE E

CADRE F

		CADRE E			CADRE F
T E A M 9	U N I T a	Clark, Don Gooch, Bill Carter, Steve Carvalho, Patricia Valesquez, Procoro Sanio, Marie St. Claire, Kathy	T E A M 11	U N I T a	Sham Rao, P.D. Wood, Anne Dettman, John Kivimaki, Karen Persichetti, Donald Hightshoe, Helen
	U N I T b	Johnston, Joyce Mueller, Theo Fruek, Nancy Hahn, Marsha Lyman, Helen Stephens, Carl		U N I T b	Norton, Maxine Hudson, John Beutke, Annie Klatt, Marilyn Newkirk, Jim Rinn, Peter Williams, Cheryl
	U N I T c	Lush, Kay Convey, Kathy Moffett, Mary Warren Pesek, Betty		U N I T c	Packard, Keith Feldmanis, Atis Knowlton, Nancy St. John, Shirley
T E A M 10	U N I T a	Bauknight, Bruce Parker, Bev Baumbach, Jim Chung, Helen Goldberg, John Peterson, Joanne	T E A M 11	U N I T a	Walters, Carol Johnston, John Avant, Diane Battershell, Thelma Caswell, Tim Hawkinson, Tom Osterling, Pauline
	U N I T b	Smith, Art Noyes, Jenny Flutsh, Elvira Gilbert, Allen Griffin, Clare Moll, June		U N I T b	Jenkins, Harry Howell, Melinda Mitchell, Laurie Moll, Roland Thomas, Kerry Parker, Roger Uggenmeyer, Ann
	U N I T c	Morrill, Justin Hayes, Kaye Tuecke, Linda		U N I T c	Epps, Ann Stracener, Wayne Dressler, Len McDonald, Clesson Phillips, Laverne St. Claire, Bob Stodola, Steve Wilson, Rod

GUILD IV

CADRE G

CADRE H

T E A M 13	U N I T a	McCleskey, David Wiltse, Peggy Crane, Tim Donnelly, Barbara Emmanuel, Cecilia Psisperer, Anthony Scott, Frances	T E A M 15	U N I T a	Wheeler, Glen Fenton, Sally Bonnell, Bill Knowlton, Ken Sessions, Linda Sistrunk, Janice Turk, Ruth
	U N I T b	Wright, Alice Benson, Charles Harris, Rita Lindstrom, John Neill, Alice Richards, Rusty Johnson, Robert		U N I T b	Vaughan, Sacra Black, Ralph Best, Nancy Morrill, Eileen Noah, Paul White, Zan Wilson, Robert
	U N I T c	Jones, Rich David, Marj Deines, Dixie Macomber, Bruce		U N I T c	Rettig, Doug Dickson, Marilee Green, Richard Rosenkrance, Dan
T E A M 14	U N I T a	White, Kathleen Downs, John Caperton, Elizabeth Chadbourn, Bonnie Kim Han Ok McKnight, Joseph Townley, Laura	T E A M 16	U N I T a	Erskine, Lane Francis, Mary Ann Harmer, Sr. Rosalie Horton, Fran Romero, David Rowe, Annie Wisman, Lin
	U N I T b	Ripple, Rod Dyer, Doris Baublitz, Mary Evans, Deloris Nixon, Geoff Thigpen, JoAnn		U N I T b	Mann, Mary Ann Hohstadt, Tom Arthur, Helen Buck, Marsha Everett, Doris Roland, Jim Bentley, Phil
	U N I T c	Weigel, Jim Convey, Bob Macomber, Pam Palmer, Frank		U N I T c	Morton, David Liggett, Walt Burrows, Andy Hubbard, Dennis Hopkins, Mary Thomas, Jan Paul Willers, Vern