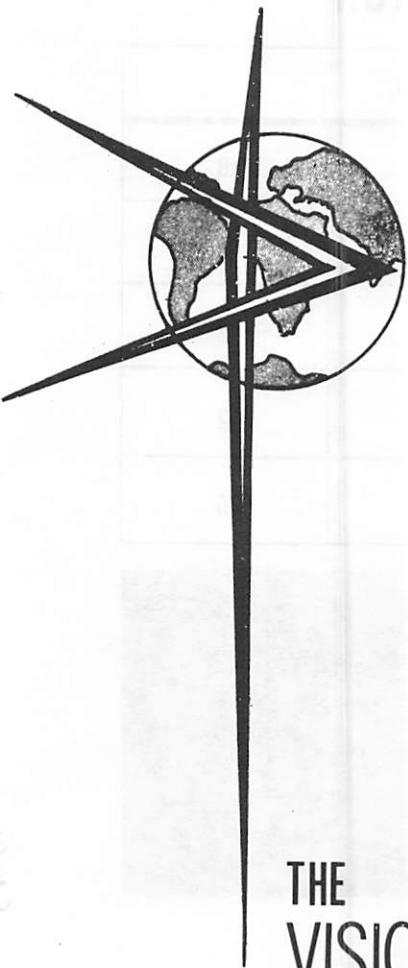


THE TASK BEFORE US NOW IF WE CAN SHAKE OUR AN  
CIENT PREJUDICE IS TO BUILD THE EARTH -CHARDIN THE  
TASK BEFORE US NOW IF WE CAN SHAKE OUR ANCIEN  
PREJUDICE IS TO BUILD THE EARTH -CHARDIN THE TASK  
BEFORE US NOW IF WE CAN SHAKE OUR ANCIEN PRE  
JUDICE IS TO BUILD THE EARTH -CHARDIN THE TASK BEF  
ORE US NOW IF WE CAN SHAKE OUR ANCIEN PREJUDI  
GE IS TO BUILD THE EARTH -CHARDIN THE TASK BEFORE  
US NOW IF WE CAN SHAKE OUR ANCIEN PREJUDICE IS  
TO BUILD THE EARTH -CHARDIN THE TASK BEFORE US NO  
NOW IF WE CAN SHAKE OUR THE ANCIEN PREJUD  
ICE IS TO BUILD THE EARTH INTERNATIONAL  
THE TASK BEFORE US NOW IF WE CAN S  
AKE OUR ANCIEN PREJUDICE TRAINING WE CAN S  
LD THE EARTH -CHARDIN THE T INSTITUTE IS TO BUI  
NOW IF WE CAN SHAKE OUR 1973 BEFORE U  
IS TO BUILD THE EARTH -CHARDIN THE TASK BEFORE US

**THE ANCIEN PREJUD  
INTERNATIONAL  
TRAINING WE CAN S  
INSTITUTE IS TO BUI  
1973 BEFORE U  
ANCIENT PREJUDI**

THE TASK BEFORE US NOW IF WE CAN SHAKE OUR AN



# THE INTERNATIONAL TRAINING INSTITUTE

THE  
VISION  
THE  
WISDOM  
THE  
METHOD



INTERNATIONAL TRAINING INSTITUTE: MANILA 1973

BAGUIO CITY: AUGUST 12 - SEPTEMBER 1, 1973

... TO BUILD THE EARTH

# THE SOCIOLOGICAL COMPOSITION

GEOGRAPHICAL		
PHILIPPINES	LUZON	50
	VISAYAS	44
	MINDANAO	36
HONG KONG		22
TAIWAN		16
JAPAN		4
KOREA		3
OTHER		5

SOCIAL	
BUSINESS	28
GOVERNMENT	26
EDUCATION	48
SOCIAL WELFARE	52
CHURCH	26



# PARTICIPANTS

## ... IMPRESSIONS

"I am happy to have met fellow Asians, knowing that we share the gifts that are needed for the renewal of Southeast Asia. I am greatly impressed with its methodical approach to the chaotic problems of the world today. We have to scientific, and must have an orientation towards the technological world, with due respect for our cultural heritage" — Mindanao

"My brain power has been utilized to the maximum, but my spirits glow. The program injects confidence, gives a definite aim to my life, and provides opportunities to see into the depth issues of life. The communication among our fellow members from different places widens our vision and encourages us to accept others." — Hong Kong

"I was much fascinated by the workshops. The work was done in a planned and regular way; the miracle that came out at the end was most astonishing." — Taiwan

## ... PLANS

"It was the greatest experience I have ever seen regarding leadership training. I will wholeheartedly apply what I have learned in our school for the betterment of our standard." — Cebu City

"If we could use the same methods they are using around the world, I believe that we can give an effective form to the human resurgence that is now happening in our nation." — Davao

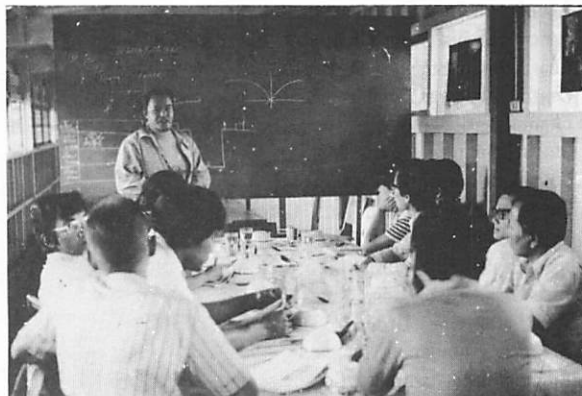
". . .has opened the future wide open for vast possibilities for renewal and restructuring in our local community. We are hoping to hold a mini-I.T.I with in the future for our own local leaders." — Mountain Province

"I am especially interested in community reformulation which is a systematic way of organizing the resources and taking care of the needs of the parish. What the I.T.I. has given us is the vision and systematic way of going about our work. I have always tried the hit and miss method, but I cannot afford to do this any more." — Iloilo City

# THE THREE WEEK CONSTRUCT

	WEEK 1 THE VISION OF THE RENEWED GLOBE		WEEK 2 THE RESURGENCE OF THE LOCAL COMMUNITY		WEEK 3 THE DEMONSTRATION OF RESPONSIBLE LEADERSHIP	
HUMAN MOTIVATION	AUTHENTIC SELFHOOD		CORPORATE CARES		DISCIPLINED MANHOOD	
ACADEMIC CURRICULUM	THE CULTURAL REVOLUTION	THE THEOLOGICAL AWAKENING	THE PRIMORDIAL HUMANNESS	THE RENEWED COMMUNITY	THE GLOBAL HERITAGE	THE MISSIONAL FAMILY
PEDAGOGY TUTORIALS	CORPORATE CONVERSATION LEADING		SEMINAR LESSON PLANNING		DRAMATURGICAL LECTURE BUILDING	
METHODS CURRICULUM	IMAGINAL EDUCATION LABORATORY		COMMUNITY REFORMULATION LABORATORY		TACTICAL PLANNING LABORATORY	
WEEKLY HAPPENINGS	URBAN IMPACT TOUR		GLOBAL HUMANNESS CELEBRATION		MISSIONAL RESEARCH TRIP	

## ... IMPLEMENTATION



### LOCAL TRAINING

Over 60 seminars and short courses are now scheduled for the coming year, taught by I.T.I. graduates and faculty. Practical methods of community education, social development and depth human motivation will be offered to local community groups and potential leaders across the country.

### THE LENS SEMINAR

LENS (Living Effectively in the New Society), is a think tank seminar with a unique approach to practical issues. It is an edge training instrument, dealing with the inclusive concerns of the global economic community. It is a seminar about effective social involvement, a laboratory in effective corporate methodologies, and an exercise in effective means of generating human motivity. LENS will be available to a select group fo government, business and civic leaders during the coming year.

### THE MANILA HOUSE

The Manila House is the ongoing program of the Institute faculty. Its corporate experience is available for consultation, training, research and program development. The faculty is international, drawn from a broad range of disciplines and backgrounds. The faculty is self-supporting; funds donated to the Institute go directly into missional programs.

### RESEARCH AND DEMONSTRATION

Building on 12 years of practical experience in community development, several target areas are being selected for pilot demonstration projects in comprehensive community reformulation. Uniting the resources and wisdom of public and private agencies with the manpower and motivation of local residents, these projects will test and model effective methods for total economic, political and cultural development.

# ITI: MANILA 1973 FINANCIAL REPORT

INCOME	
CORPORATIONS	P 38,700
FOUNDATION GRANTS	48,800
SCHOLARSHIP GIFTS	14,800
INDIVIDUAL SPONSORS	23,745
PARTICIPANT FUNDING	61,992
<b>TOTAL</b>	<b>P188,037</b>

EXPENDITURES	
TRANSPORTATION	P 84,140
FACILITY	48,444
MATERIALS	8,160
ADMINISTRATION	12,311
ASIAN FACULTY TRAINING & TRANSPORTATION	35,826
<b>TOTAL</b>	<b>P188,037</b>

## CONTRIBUTORS

A. Chan Sugar Corporation  
 Ramon Aboitiz Foundation  
 Ala-ala Foundation  
 C. Alcantara & Sons, Inc.  
 American Wire and Cable Co., Inc.  
 Banco Filipino Savings and Mortgage Bank  
 Board of Investments, R. P.  
 Central Azucarera Don Pedro  
 Champion Glue, Inc.  
 China Banking Corporation  
 Colgate-Palmolive Philippines, Inc.  
 Consolidated Bank and Trust Corporation  
 Dangwa Transportation Co., Inc.  
 Esso Eastern Chemicals, Inc.  
 Esso Standard of Hong Kong, Ltd.  
 F.G.U. Insurance Group  
 Filipinas Foundation, Inc.  
 Filipinas Life Assurance Co.  
 Iglesia Filipina Independiente  
 Insular Life Assurance Co., Ltd.  
 IBM Philippines, Inc.  
 Jesuit Fathers, Philippine Province  
 Jockey Club of Hong Kong  
 Joint Council, Philippine Episcopal/  
 Philippine Independent Church  
 Mabuhay Vinyl Corporation  
 Makati Leasing Corporation  
 Marikina Dairy Industries, Inc.  
 Marcopper Mining Corporation  
 The Maryknoll Fathers  
 National Social Action Council  
 Negros Navigation Co., Inc.  
 Ortigas and Co., Ltd.  
 Pepsi-Cola Bottling Co. of  
 the Philippines, Inc.  
 Philippine Appliance Corporation  
 Philippine Airlines, Inc.  
 Philippine Central Conference, U.M.C.  
 Board of Missions  
 Philippine Duplicators, Inc.  
 Philippine Long Distance  
 Telephone Company  
 Philippine Sugar Committee, Inc.

Philippine Trust Company  
 Printer's Art  
 Peerless Supply Co., Inc.  
 Republic Flour Mills, Inc.  
 Reynolds Philippine Corporation  
 San Miguel Corporation  
 Santa Clara Lumber Company  
 Scott Paper Philippines, Inc.  
 Seven-Up Bottling Co. of the Philippines  
 Shell Chemical Co. (Phils), Inc.  
 Silver Swan Manufacturing Co.  
 Squibb Philippines, Inc.  
 Standard Cardinal Insurance Companies  
 Sugar Industry Foundation, Inc.  
 Sweet Lines, Inc.  
 Sycip, Gorres, Velayo and Co., Inc.  
 Theo H. Davies and Co., Far East, Ltd.  
 La Tondeña, Inc.  
 Trans World Trading Co., Inc.  
 Union Sales Marketing, Inc.  
 United Methodist Women's Work Foundation  
 Wander (Phils), Inc.  
 Wiggins Teape Overseas Sales Limited  
 Mr. Alberto T. Abaya  
 Miss Laura Luz Bacerra  
 Mr. Norman G. Barton  
 Mrs. Betty Go Belmonte  
 Judge and Mrs. Feliciano Belmonte Sr.  
 Mrs. Olga M. Brady  
 Mr. Gerardo Cabochan  
 Mrs. Aurea del Carmen  
 Mr. Paul Chan  
 Mr. Cheu Su Lam  
 Mr. Stephen Chua  
 Mr. Fred J. Elizalde  
 Rev. Henry von Engelen, M.S.C.  
 Bishop Paul Granados  
 Mr. Pedro B. Manayon  
 Mr. John L. Manning Sr.  
 Miss Juliette Orzal  
 Don Ernesto D. Rufino  
 Mrs. Consuelo Stewart  
 Mr. and Mrs. David Sycip