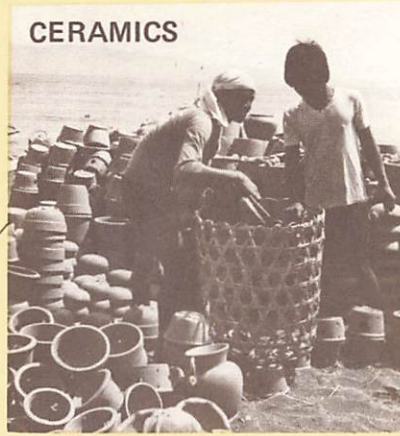


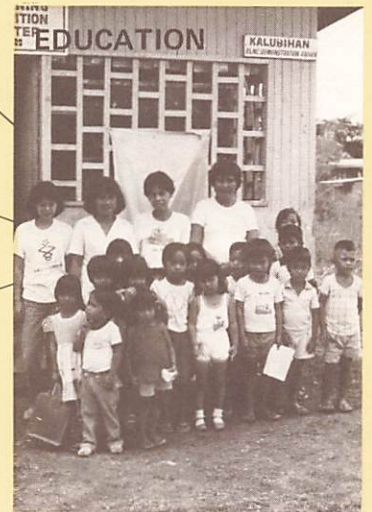
CERAMICS



PUTSAN



MACTAN 24



LANGUB CLUSTER

ROCK



AGRICULTURE



The Institute of Cultural Affairs



THE MACTAN TWENTY-FOUR

Twenty-four villages, one in each barangay of Mactan Island, Cebu, were chosen in 1979 as sites for the expansion of selected development programs started in the pilot demonstration village of Sutonggan. Beginning in 1976 the Sutonggan villagers began experimenting with Social and economic programs that might eventually be relevant across the whole of Mactan Island. Those early dreams are now a reality as rock cutting, vegetable cultivation, pre-schools and health clinics are now developing in the Mactan Twenty-Four.



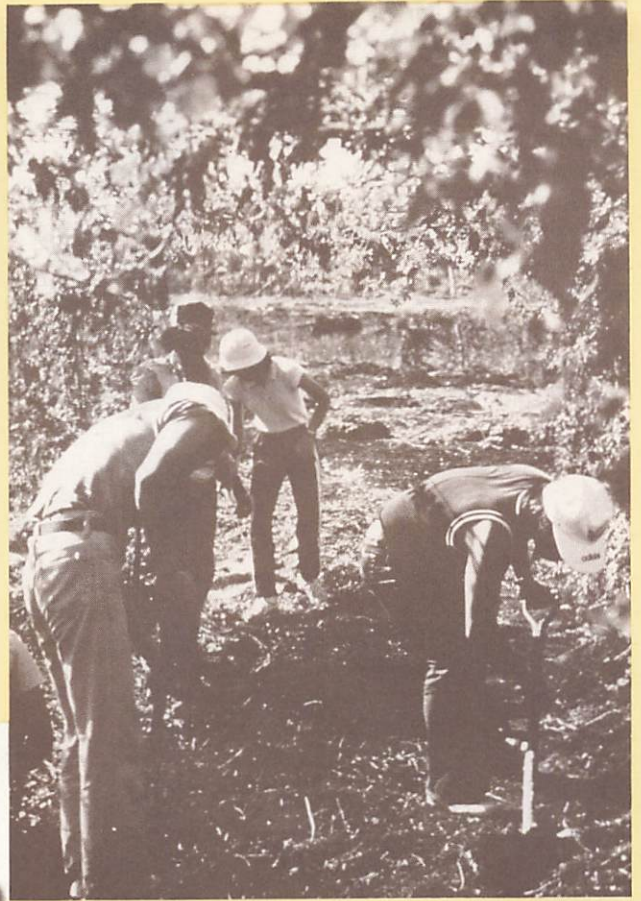
ROCK-THE NEW RESOURCE

The once submerged coral limestone rock that covers Mactan was for years considered the greatest hindrance to local development because it prevented any significant agricultural activity from developing. Now, a thriving stone cutting industry employs two hundred forty local residents. The shaping of rock pieces into decorative facing stones was pioneered in Sutonggan and now involves five villages. The expanding market in Cebu and Manila promises to involve many more residents, each of which can make as much as forty pesos in one day.



VEGETABLES — THE KEY TO NUTRITION AND PROFITS

The cultivators of seven ampalaya farms and vegetable plots across Mactan have followed the lead of the Sudtonggan demonstration farm in the growing of special variety vegetables amongst the rock outcroppings. String beans, squash and ampalaya are the major profit-makers and are accompanied by a host of other nutritious varieties grown for home consumption. The winning village in a recent island-wide vegetable growing contest boasts thirty community vegetable plots.



HEALTH CLINICS — GRASSROOTS PRIMARY HEALTHCARE

Two new health clinics now accompany the original Sudtonggan Clinic in the campaign for health consciousness and primary care at the barangay levels. A resident-staffed family caretaker network interfaces with the city health services in a partnership that has attracted ministerial level attention both nationally and internationally.

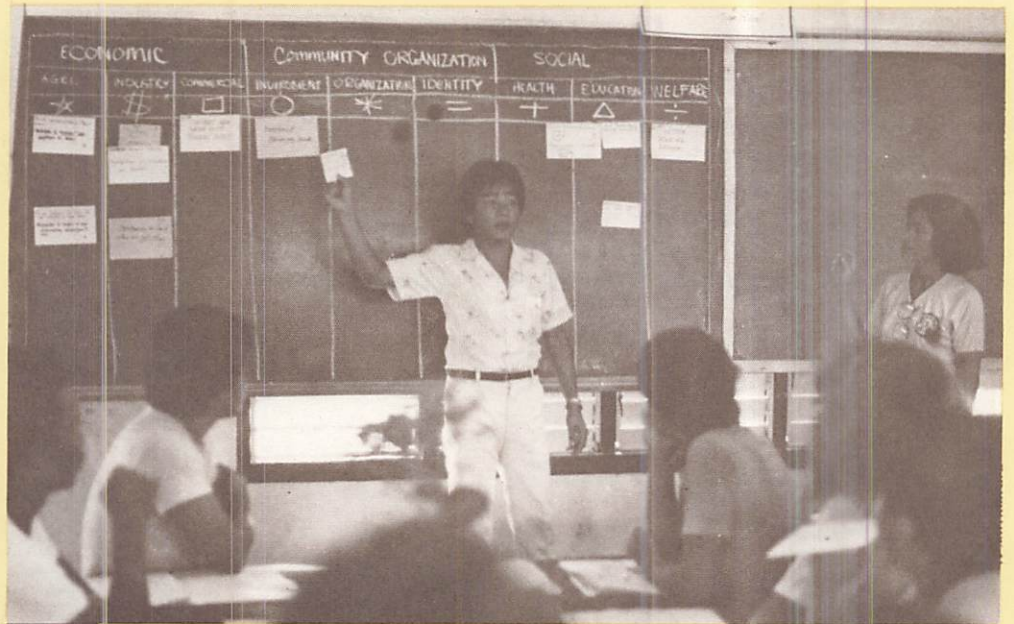


PRESCHOOLS — EARLY LEARNING NUTRITION CENTERS

The first expansion program to reach all twenty-four villages has been the preschool program. Nearly all '25' have a newly constructed classroom building; many with an added water pump and toilet. Two trained staff from the barangay function as nutrition workers — providing a daily nutritional snack and as preschool teachers — providing the foundations for later education.

THE PUTSAN HUMAN DEVELOPMENT PROJECT

Putsan village lies on a narrow stretch of land between the sea and a clay-rich mountain. Located in Tiwi, Albay it is within view of famous Mayon volcano. Geothermal operations have transformed the area all around Putsan but not within. Now, Putsan, as a pilot village development demonstration for the Bicol region, looks to the sea and clay with new eyes.



THE CONSULTATION—DIALOGUE AND ACTION

Three hundred Putsan residents gathered daily and nightly for five days to build a two year development plan for the village. But, while the talking was going on, the action had begun; a new preschool building had already been built.

THE CLAY POTS — DEVELOPING A CERAMICS INDUSTRY

The traditional craft of Putsan has been the making of clay pots from locally available materials. People had been making the pots in exactly the same fashion as their ancestors had been over 200 years ago. One of the key decisions of the consultation was to upgrade the method and tools used in making the pots.



Putsan Human Development Project				
THE PUTSAN 17 ACTUATING PROGRAMS				
ECONOMIC PROGRAMS		ENHANCING COMMUNITY LIFE PROGRAMS	SOCIAL PROGRAMS	
Commerce and Industry A	Cooperative Agriculture B		Functional Education D	Public Well Being E
Modernized Ceramics Industry 1	Fishing Industry 5	Beautified Public Areas 8	Adult Skills Training 11	Community Health Project 14
Village Products Markets 2	Raw Material Concession 6	Regular Community Meetings 9	Educational Facilities Expansion 12	Family Planning Campaign 15
Year-Round Employment 3	Family Agriculture 7	Community Symbols 10	Early Learning Nutrition Center Program 13	Public Utilities 16
Capital Funding Scheme 4				Sanitation System 17

THE PROGRAMS — MOUNTING A TWO YEAR TOTAL DEVELOPMENT CAMPAIGN

The outcome of the consultation resulted in — programs to be implemented by the Putsan residents. It became obvious that every dimension of the community's life required action. Thus, an integrated comprehensive plan emerged that deals with all the issues and involves all the people.



CACAO

Nearly every farmer in the cluster planted cacao two years ago. This year they are starting to bear fruit and income is beginning to flow.

LANGUB MOUNTAIN CLUSTER — THE DAVAO PROJECTS

CLINIC

The Langub Health Clinic conducts regular weighing of children and mothers classes. Recently fourteen residents were trained in government health programs.

PRESCHOOLS

The cluster preschools average fifteen to twenty students each. They not only serve nutritious snacks but provide cooking demonstrations for the students' mothers.



The Davao pilot project Langub along with Carmen, La Paz and Magtuod are working together to demonstrate self-reliance development in the mountains of Mindanao. Facing geographical isolation and agricultural limitations they, nevertheless, maintain a system of four preschools, four general stores and four demonstration farms.

SEWING

A sewing industry involving 30 women makes and sells dusters and ready-to-wear clothes at Davao markets and fiestas.



THE COMMUNITY PARTICIPATION

The Sudtonggan Community Training Center serves as a center point for raising barangay issues and forging creative solutions. Over 1000 local community residents participate in daily programs and residential seminars yearly. They return to their barangays equipped with methods that allow maximum participation in the local development process.



THE HUMAN FACTOR

Village development begins with care for one's neighbour. Community spirit brings this care to consciousness and nurtures it.

THE PUROK DEVELOPMENT

The focus of every program is the purok — the smallest organisational unit of the village. Every purok has its own leaders, its own meetings and its own plan for beautifications and development.



THE CONTRIBUTORS

- R. Aboitiz Foundation Inc.
A. H. Robins
Alcantara & Sons, Inc.
American President Lines
American Wire & Cable Co.
Amoco Philippines Inc.
Asia Industries Inc.
Atlantic, Gulf & Pacific Co.
Atlas Copco (Phil) Inc.
Australian Embassy
Bacnotan Consolidated
Bank of America
Beautifont by Avon
Boehringer-Ingelheim
Bristol Labs (Phil) Inc.
C.F. Sharp Co.
California Mfg. Company Inc.
Caltex (Phil) Inc.
Cathay Pacific Airways Ltd.
Cebu City Savings
Cebu Magellan Lions Club
Cebu Oxygen
Cebu Shipyards & Eng. Works
China Banking Corporation
Ciba Geigy
Citibank
City Trust Banking Corp.
City of Davao
City of Lapu Lapu
Clavano Printers
Coca-Cola Export Corp.
Colgate-Palmolive Phils. Inc.
Crown Travel Corp.
Cummins Diesel Sales Serv. Corp.
Daily Harvest Mft & Mktg Corp.
Davao Food Terminal
Davao Motors
Dow Chemicals Phils.
Dow Corning Asia Ltd.
DuPont Far East Inc.
Dupro Philippines Inc.
E. & G. Inc.
E. R. Squibb & Sons Phil. Inc.
Engineer Equipment Inc.
Far East Bank & Trust Co.
Filipino Federation of Chinese C of C
FF Cruz & Co.
FNCB Finance
Frontino, Inc.
Gaisano's Davao
General Motors Philippines Inc.
Globe-MacKay Cable & Radio Corp.
Goodyear Tire & Rubber Co. of Phil.
Hooven Comalco Industries
Ingersoll-Rand Phils. Inc.
Insular Bank of Asia & America
J. Walter Thompson Co. (Phils)
J. Cunanan & Co.
Johnson & Johnson (Philippines) Inc.
Kodak Phils Ltd.
Koppel, Inc.
Lapu Lapu Nutrition Council
La Tondeña
Lepanto Consolidated Mining Co.
Luzon Theaters Inc.
Manila Peninsula Hotel
Marcopper Mining Corp.
Marinduque Mining & Industrial Corp.
Mead-Johnson (Phils) Inc.
Mellon Bank N.A.
Meralco
Metropolitan Bank & Trust Co.
Mobil Oil Phils. Inc.
Mondragon Industries
NCR Corporation
Otis Elevator
PBSP
Philippine Long Distance Telephone Co.
Parke-Davis & Co. Ltd
Pfizer Philippines
Philippine Appliance Corp.
Philipp-Bros. Oceanic Inc
Philippine Coconuts Producers Fed. Inc.
Philippine Match Co.
Philippine Standard Corp.
Pilipinas Shell Petroleum Corp.
Philippine Trust Co.
Pillsbury-Mindanao Flour Milling Co.
Planters Products Corp.
Procter & Gamble Phil. Mfg Corp.
Red V Coconut Products Ltd
Republic Glass Corp.
Roche Pharmaceuticals Inc.
San Miguel Corp.
S. C. Johnson & Sons
Sabena Mining Corporation
Sea Transport
Schering Corporation
Scott Paper Phil.
S.G.V. & Co.
Singer Sewing Machine Co.
Smith-Bell Co.
Roxas Y Cia
Total Oil
Traders Royal Bank
Union Oil Foundation of California
United Laboratories Inc.
U.S. Agency for International Development
Victorias Milling Co.
Winthrop-Stearns
Wrigley (Phils) Inc.

The Institute of Cultural Affairs is a global service organization whose purpose is to motivate cooperative action for social involvement within local communities.

The Institute's approach to human development is based on the conviction that hope takes root where people effectively participate in directing the course of their own future and that of their family, their work place and their community. ICA programs seek to address the underlying causes of social problems and allow people to see that they can take charge of their own lives. ICA methods help people realize that they can be instrumental in bringing about positive social and economic change in their neighborhood or situation.

ICA: Manila
128 Lopez-Rizal
Mandaluyong
Metro Manila
78-62-54

ICA: Legaspi
Putsan HDP
Tiwi
Albay
Legaspi

ICA: Cebu
Sudtonggan HDP
Lapu Lapu City 6427
Cebu

ICA: Davao
Langub H.D.P.
Talomo District
Davao City 9501