

# SOUTH CAROLINA METHODIST STUDENT CONFERENCE

October 14-16, 1960  
AT CAMP HARMONY

## *The Call . . .*

In a world which seems meaningless,  
in which tensions and the threat of destruction have become commonplace  
in which we of the academic community find lack of purpose for our lives because  
we know neither who we are nor what we are for,

We call our contemporaries  
to examine with us the Gospel—the Good News from God in Jesus Christ  
to seek  
· some word of meaning for ourselves, our campus, our world,  
a covenant in which we can give our lives and through which power, strength  
and community may come,  
some reawakening to the mission of the Church in our World.

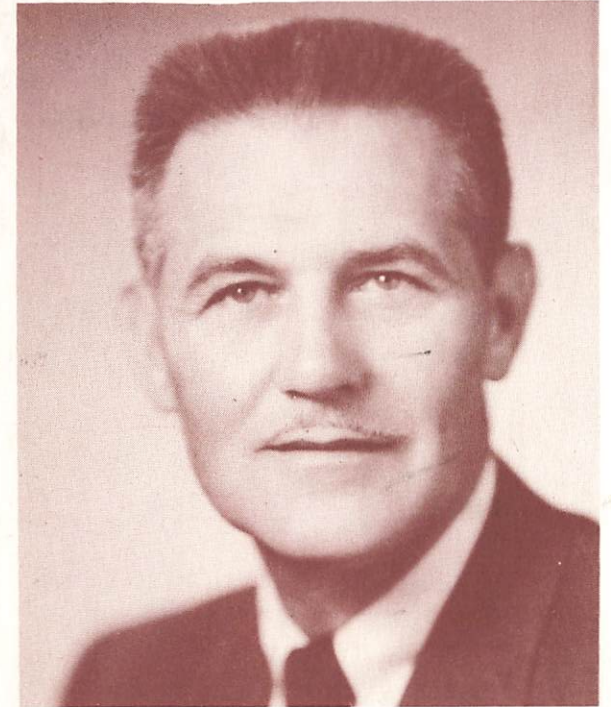
To this end we call the members of the Methodist Student Movement to convene, Oc-  
tober 14-16, 1960, for the annual state conference of the South Carolina Metho-  
dist Student Movement, on the theme: "*The Christian Student Confronts the World  
on Campus*".

## FIRESIDE LEADERS

The MSM on Campus

Politics & World Affairs

## PLATFORM SPEAKER



DR. JOSEPH W. MATHEWS  
Director of the Christian Faith  
and Life Community  
University of Texas

WHO IS THE  
CHRISTIAN STUDENT?

HOW DOES HE CONFRONT  
THE WORLD ON CAMPUS?

PROGRAM FEATURES:



THE REV. ARTHUR BRANDENBURG  
Methodist Chaplain, Duke University



DR. HARRY HARVIN  
Professor, Consolidated Presbyterian College

### Social Concerns



THE REV. RALPH CANNON  
Pastor of Bethune Methodist Church

### The Academic Community



THE REV. O. Z. WHITE  
Chaplain, Erskine College

- Platform Speaker
- Fireside Chats
- Panel discussion
- Small group discussion
- Recreation
- Worship

### OTHER INFORMATION

See your President or Counselor for registration card.

Please bring bed linen, towels, etc.

Registration cost \$8.00.

Camp Harmony sleeps only 140. When all spaces are filled registration will be closed.

*Send Registration to Miss Kay Dantzler, % The Methodist Board of Education, 1420 Lady St., Columbia, S. C.*