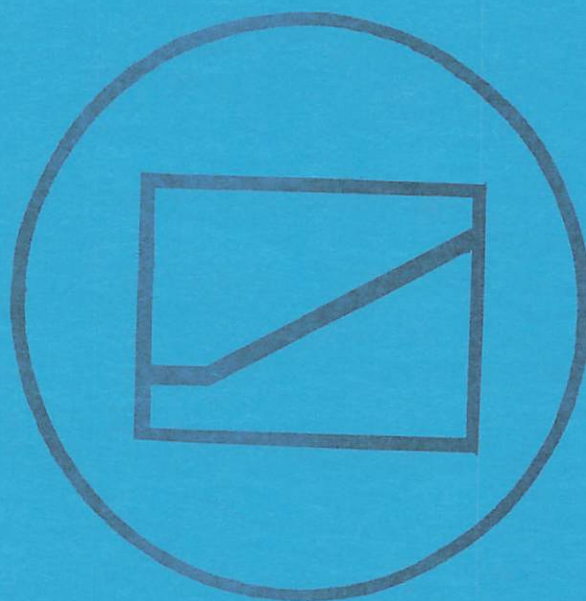


# HUMAN DEVELOPMENT TRAINING SCHOOL: FIFTH CITY

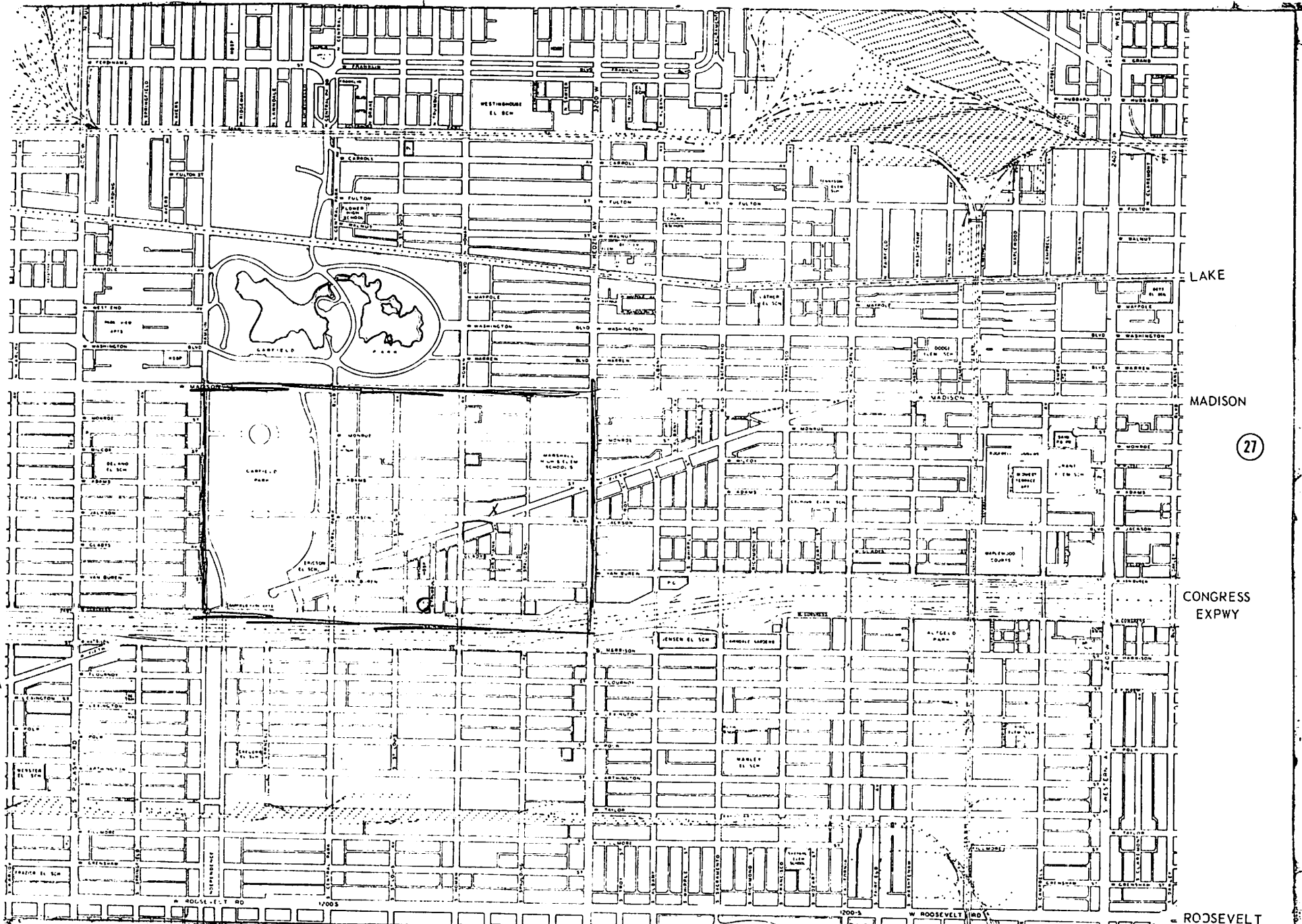


## Student Manual

## TABLE OF CONTENTS

FIFTH CITY

CONTENT	PAGE
Table of Contents	1
5th City Map	2
Curriculum Design	3
Social Process Triangles	4
Programmatic Chart	5
Organizational Chart	6
E., C. & P. Principles	7
Qualities of Profound Humanness	8
Daily Time Design	9
The Daily Ritual	10
Readings For The Daily Ritual	11
Common Life Rituals	12
Breakfast Procedures	13
Participant Services	14
Floor Plan: Community Center	15
Floor Plan: Administration Bldg.	16



27

LAKE

MADISON

CONGRESS  
EXPWY

ROOSEVELT

ECONOMIC DEVELOPMENT

*COURAGE* Week 1

*IMAGES*

SOCIAL DEVELOPMENT

*FRAMING* Week 2 *B 1/2 OF*

CULTURAL DEVELOPMENT

*CORPNESS* Week 3 *LIFELONG*

CYCLE

LAB

CYCLE

LAB

CYCLE

LAB

GLOBAL CONTEXT

UR IMAGES

DESTINAL INDICATIVES

ECONOMIC

H  
E  
R  
I  
T  
A  
G  
E

Imaginal

R  
E  
F  
L  
E  
C  
T  
I  
O  
N

SOCIAL

U  
R  
B  
A  
N

Community

R  
E  
F  
L  
E  
C  
T  
I  
O  
N

CULTURAL

A  
R  
T

Profound

C  
O  
M  
M  
I  
S  
S  
I  
O  
N  
I  
N  
G

Ldrship Training - AFM

Ldrship Training *W/S*

Ldrship Training *Misc*

Education

Forum

Humanness

CYCLE

CYCLE

CYCLE

ROUNDTABLE

LAB

ROUNDTABLE

LAB

ROUNDTABLE

LAB

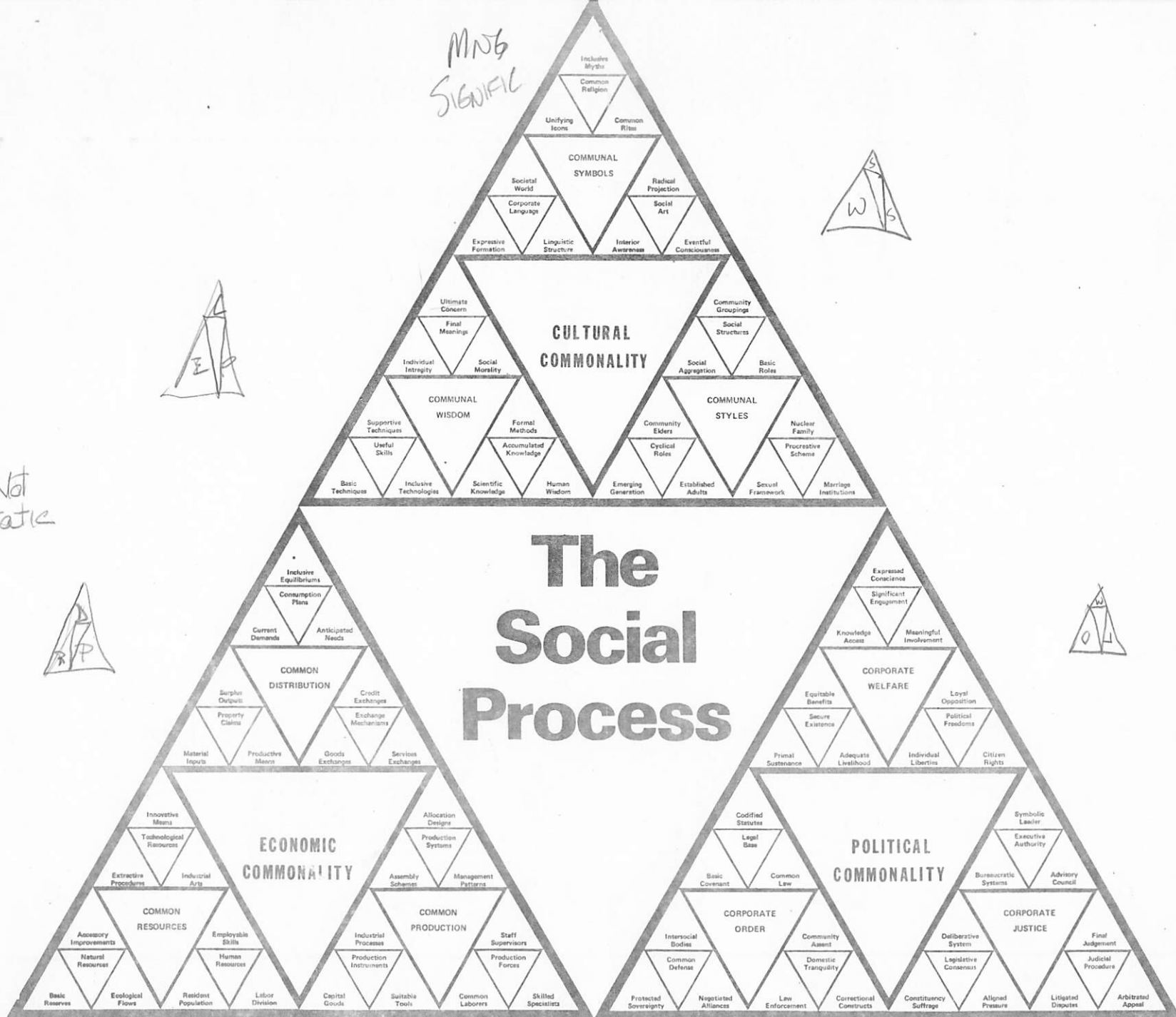
MING  
SIGNIFIC



Not  
Static



# The Social Process



FOUND'L  
Sustains

RELAT'L  
Orders



# PROGRAMMATIC CHART

Toward the Actuation of Comprehensive Human Development Projects on the Local Level

thirty six programs — nine structures — three dynamics — one project

**A**  
**ECONOMIC DEVELOPMENT**  
LOCAL PRODUCTIVITY  
—toward self-sustenance

**B**  
**HUMAN DEVELOPMENT**  
LOCAL MOTIVITY  
—toward self-confidence

**C**  
**SOCIAL DEVELOPMENT**  
LOCAL SOCIALITY  
—toward self-reliance

Enabling local—

### COOPERATIVE AGRICULTURE

- 1 expanded cultivation
- 2 intensified production
- 3 water delivery
- 4 equipment pool

Reconstructing local—

### LIVING ENVIRONMENT

- 13 domestic housing
- 14 public facilities
- 15 village design
- 16 essential services

Creating local—

### PREVENTIVE CARE

- 25 intermediate sanitation
- 26 total nutrition
- 27 systematic immunization
- 28 primary treatment

Developing local—

### APPROPRIATE INDUSTRY

- 5 cottage production
- 6 agro-business
- 7 processing plants
- 8 ancillary industry

Catalyzing local—

### CORPORATE PATTERNS

- 17 total engagement
- 18 community commons
- 19 consensus assemblies
- 20 corporate workdays

Establishing local—

### FUNCTIONAL EDUCATION

- 29 early learning
- 30 formal schooling
- 31 youth training
- 32 adult education

Initiating local—

### COMMERCIAL SERVICES

- 9 common marketing
- 10 local merchandising
- 11 savings & loans
- 12 basic transport

Recovering local—

### IDENTITY SYSTEMS

- 21 community self-story
- 22 symbol systems
- 23 corporate rituals
- 24 village celebrations

Instituting local—

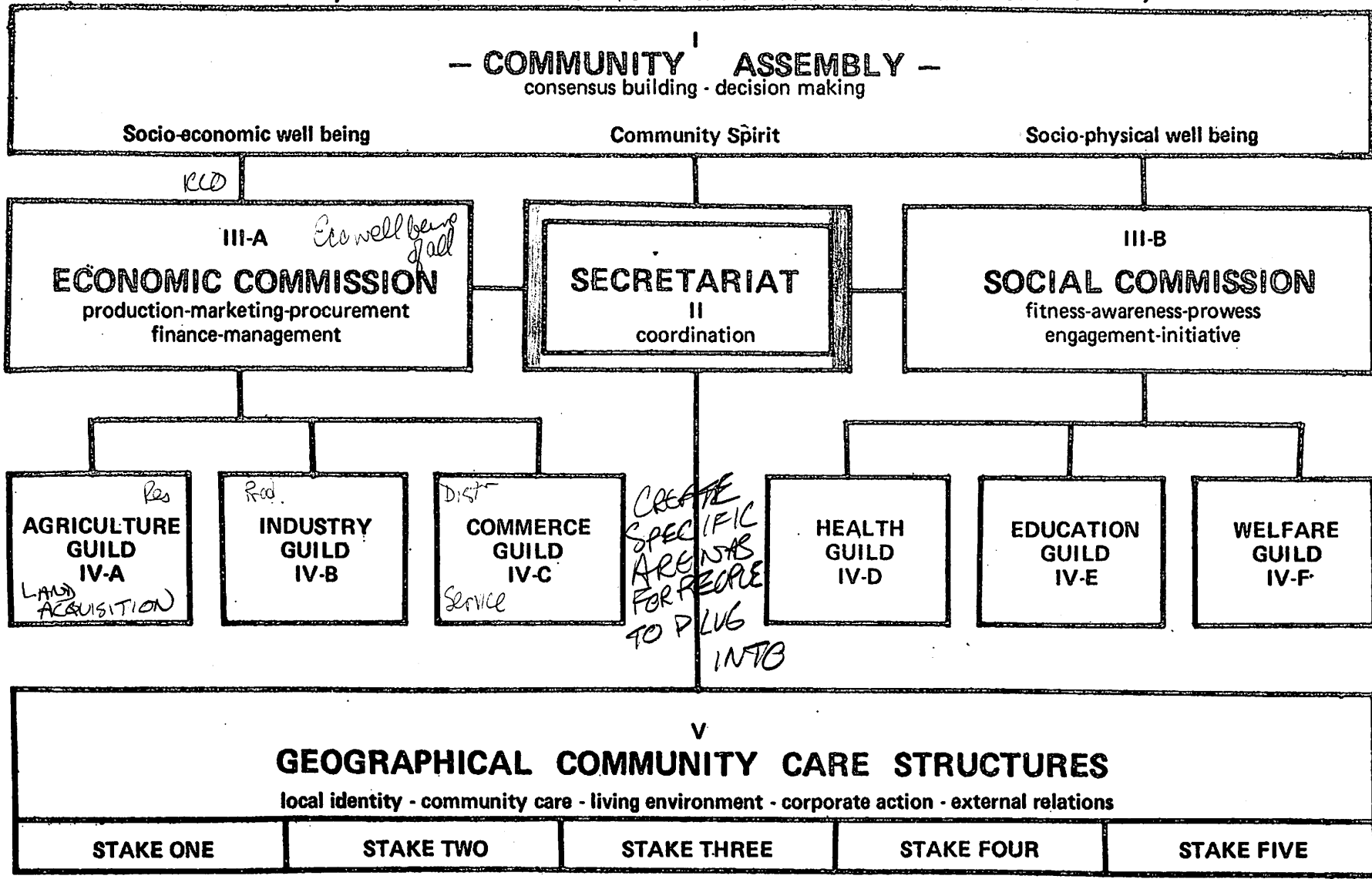
### COMMUNITY WELFARE

- 33 family development
- 34 women's advancement
- 35 youth task-force
- 36 elderly engagement

# ORGANIZATIONAL CHART – toward the actuation of comprehensive HUMAN DEVELOPMENT PROJECTS – on the local level



I. The Assembly - II. The Secretariat - III. The Commissions - IV. The Guild Network - V. The Stake System



ECONOMIC, CULTURAL AND SOCIAL PRINCIPLES

ECONOMIC PRINCIPLES

- 1. Autonomous Unit *Isolated Unit*
- 2. Monetary Input *Bring Money In*
- 3. Monetary Retention *Keep it In*
- 4. Monetary Circulation *Circulate it*
- 5. Global Relatedness *Relate Out*

CULTURAL PRINCIPLES

- GLAZE* 1. Rapid expansion of consciousness
- CLAIM* 2. Expand interior space *SPACE*
- EXPENDITURE* 3. Extend interior time *STORY*
- RELATIONSHIPS* 4. Diversify human relationships
- MISSION* 5. Expansion of corporate engagement

SOCIAL PRINCIPLES

- 1. Delimited Geography
- 2. All Problems
- 3. All People
- 4. Depth Issue
- 5. Symbol is Key



TRANSPARENCY

THE QUALITIES OF PROFOUND HUMANNESS

Civilization is the continual discovery of (profound) humanity.

learning

CENTER

INTERNAL STATES OF BEING

HISTORY  
PHILOSOPHY  
ART  
HUMANITIES  
RIVER

Existentialists

SANCT

JUSTIFIED

LAND

SCIENCE

RETURN

EXTERNAL MANIFESTATIONS

I

STYLE

II

Social LOVE

III

RELATIONALITY

PROFOUND CONSC.

IV

EVENT

Image of Society  
SOCIETY

ART/Reflect  
ACTION

SUN TZU  
GOVERNANCE

DECLARATION

HISTORY

Experience of Decision  
FREEDOM  
EXISTENCE

unexpected intrusion  
altered situation  
immediate response  
decisional appropriation

appropriate deeds  
representational engagement  
decisional victory  
manifest intentionality

continual exposure  
visible sign  
constant interpretation  
public accountability

audacious creation  
destinal resolve  
incarnate freedom  
societal transvaluation

AWAKENING

Humiliation  
Weakness  
Resistant  
Suffering

DN

MYSTERY

Image of Universe  
SCIENCE

GLOBE  
TOTALITY

CHARDIN  
KAZANTZAKIS

CREATIVITY

PHILOSOPHY ex  
CARE

Experience of Mundanity  
Suffering  
- Dislocation  
- Ineffectivity  
- Isolation  
- Unfulfillment

mundane transparentization  
disclosed unknownness  
nameless fear  
dreadful fascination

historical responsibility  
encompassing unity  
limitless commitment  
infinitesimal detail

universal relativity  
historical engagement  
decisional impact - COURAGE  
sociological creativity

overwhelming reality  
impassioned detachment  
universal service  
perpetual expenditure

EMERGENT

LM

MOONSHINE  
CARE

CONSCIOUSNESS

IMAGE OF MAN  
PSYCHOLOGY

CORPORATENESS

PRESENCE

ART

Experience of Change  
Revolution

EFFULGENCE

illuminated relationship  
impactful imagery  
paradigmatic insight  
transrational interpretation

focused power  
covenantal collegiality  
profound fellowship  
decisional obedience

inescapable selfhood  
enigmatic archetype  
internalized affirmation  
transparent signification

endless affirmation  
unlimited power  
paradoxical abundance  
restless tranquility

SERVICE

TCOY

Ghostliness  
Ceaselessness  
Nothingness  
Presentness

SEA OF  
TRANQUILITY

X  
BOVA  
NEB

D  
BUST

TILLICH  
B

DAILY TIME DESIGN

5th City

	DISCIPLINE	TIME	EVENT
MORNING	WAKE UP RITE	5:15-6:00	Rising and preparing for the day
	SCHOOL BREAKFAST	6:00-6:20	Opening Ritual
		6:30-7:30	Breakfast Collegium
		7:30-8:15	Individual/Space Care
	CYCLE/ LABORATORY	8:15-8:30	Journey to Community Center
8:30-9:30		Contextual Discourse and Interchange	
9:30-11:30		Morning Snack Field Session/Lab Workshop	
AFTERNOON	TRAINING	11:30-12:15	Mid-day Interlude
		12:15-1:45	Leadership Lunch
		1:45-2:00	Break
CYCLE/ LABORATORY	2:00-5:00	Field Session/Lab Workshop	
	5:00-5:15	Journey to Residential Building	
EVENING	ROUNDTABLE	5:15-6:15	Preparation for Roundtable
		6:30-7:15	Dinner/Conversation
7:15-8:00		Seminar	
8:00-8:30		Sodality	
		8:30-9:30	Informal Interchange
	PHYSICAL RESTORATION	9:30-5:15	Sleep and Recreation

## READINGS FOR THE DAILY RITUAL

Monday: Where the mind is without fear and the head is held high;  
Where knowledge is free;  
Where the world has not been broken up into fragments by narrow domestic walls;  
Where words come out from the depth of truth;  
Where tireless striving stretches its arms towards perfection;  
Where the clear stream of reason has not lost its way into the dreary desert sand of dead habit;  
Where the mind is led forward by thee into ever-widening thought and action;  
Into that heaven of freedom, my father, let my country awake.

Tuesday: Each individual has his self-love. Therefore his brute instinct leads him to fight with others in the sole pursuit of his self-interest. But Man has also his higher instincts of sympathy and mutual help. The people who are lacking higher moral power and who therefore cannot combine in fellowship with one another must perish or live in a state of degradation. Only those peoples have survived and achieved civilization who have this spirit of cooperation in them. So we find that from the beginning of history men had to choose between fighting with one or of combining, between serving their own interest or the common interest of all.

Wednesday: Hold thy faith firm, my heart, the day will dawn.  
The seed of promise is deep in the soil, it will sprout.  
Sleep, like a bud, will open its heart to the light,  
and the silence will find its voice.  
The day is near when thy burden will become thy gift,  
and thy sufferings will light up thy path.

Thursday: Put new heart into the people so that they can build for themselves. Teach them the value of cooperative action so they may put forward their united strength. Do not expect fame or praise in the undertaking. It will need patience, love and silent striving, but let one single minded resolution sustain you in all your work: the resolve that you will make it your life's mission to share in the sufferings of those who are the most afflicted in the land, and through participation in their sorrows, find remedies that will destroy the very roots of their misery.

Friday: When I sit by the roadside, tired and panting,  
When I spread my bed low in the dust,  
Let me ever feel that the long journey is still before me,  
Let me not forget for a moment,  
Let me carry the pangs of this sorrow in my dreams and in my wakeful hours.

Saturday: Be ready to launch forth, my heart!  
And let those linger who must.  
For your name has been called in the morning sky.  
Wait for none.

# The Daily Ritual

*(Let the Community stand and sing first two verses of the song, "Creation")*

## Creation

*ENTRY (Verses 1 and 2)*

A time to set forth a new demand,  
A time to look into the past,  
For without "what has been"  
There is no "yet to be;"  
Nothing that we do, then could last.

*Refrain*

We stand beyond our life and see,  
We stand beyond our death and really see  
What's required of those who give their  
death to history;  
And it is now that we must do  
What other ones have always longed to see,  
To discover what's required to set all people free.

No more must we live in poverty  
No more in strife and disarray  
For when Those Who Care create all the earth,  
That shall be the new day.

*EXIT (Verses 3 and 4)*

In those who choose to be all there is  
Pain and misery are past;  
Transformed because they bring forth human life;  
New life never comes but through a death.

*Refrain*

The global task now has claimed our lives,  
Who knows where our bodies they shall find.  
But with us, anew, now the Mystery appears,  
The meaning of the life of all Mankind.

*Refrain*

*Leader:* Let us stand before life as those who care  
for the world.

*Community:* Be it so.

**ACT I:** L: Life is never the way we want it.  
C: We refuse to accept its promise.  
L: Nevertheless we are free to live.  
C: Be it so.

*(Let the community be seated)*

## Reading for the Day

*(Let the community stand)*

**ACT II:** L: This is the day we have on our hands.  
C: We give thanks for the life we have.  
L: This is our decision.  
C: Be it so.

L: Let all the joy mingle in my last song.

*Community Left:* The joy that makes the earth flow  
overjoyous excess.

*Community Right:* The joy that sets the twin brothers, life  
and death dancing,

*Community Left:* The joy that sweeps in the tempest,  
waking all life with laughter,

*Community Right:* The joy that throws everything it has  
upon the dust.

*(Let the community be seated)*

## Address for the Day

*(Let the community stand)*

**ACT III:** L: We stand before the world and its need.  
C: Let us give ourselves to the task.  
L: It is to build the Earth.  
C: Be it so.

L: Let me not pray to be sheltered from dangers,

C: But to be fearless in facing them.

L: Let me not beg for the stilling of my pain,

C: But for the heart to conquer it.

L: Let me not look for allies in life's battlefield,

C: But to my own strength.

L: Let me not crave, in anxious fear to be saved,

C: But hope for the patience to win my freedom.

*Leader:* Let us go forth to enact our care for the world.

*Community:* Be it so.

*(Let the community stand and sing last two  
verses of the song, "Creation")*

COMMON LIFE RITUALS

WAKE-UP

L: Run into the future, run.  
 C: Run into the rising sun.  
 L: Men who run create the world.  
 C: Be it so.

MORNING

L: Run into the future, run.  
 C: Run into the rising sun.  
 L: Men who run create the world.  
 C: Be it so.

L: Let us eat this meal on behalf of . . . . .  
 L: Let us feast!

NOON

L: We are ones set free to embrace the world.  
 C: We are ones compelled all to give.  
 L: Right?  
 C: Right!

L: Let us eat this meal on behalf of . . . . .  
 L: Let us feast!

DINNER

L: Those who care march on to build a new tomorrow.  
 C: Theirs is the mission never done.  
 L: Right?  
 C: Right!

L: Let us eat this meal on behalf of . . . . .  
 L: Let us feast!

CLOSING

L: March into the future, march.  
 C: Dance over the dark abyss.  
 L: Iron men create the world.  
 C: Be it so!

## BREAKFAST PROCEDURES

5th City

THE DAILY RITUAL

Gathering around the table set for breakfast, begin the Daily Ritual, beginning with "Let the community stand."

SINGING

Host: Let us turn to page \_\_\_\_\_ and sing \_\_\_\_\_.

ACCOUNTABILITY

Host: Let the 5th City Human Development Training School, stand accountable for its presence at breakfast by Teams. Let the Team Leaders stand. Team One.

Team Leader: Team One assumes responsibility for the care of its members and reports \_\_\_\_\_ on special assignment, \_\_\_\_\_ is ill and checked on, \_\_\_\_\_ is absent and checked on. All others are present.  
(Team 2, 3, 4, etc.)

(Symbolic Accountability: Team One reports that all are present or accounted for.)

ABSOLUTION

Host: Word of Absolution

RITUAL

Host: Run into the future, run.

Community: Run into the rising sun.

Host: Men who run create the world.

Community: Be it so. (Team leaders may be seated.)

Host: Let us eat this meal on behalf of .... (someone or some group who is doing something relative to the day's work.)  
Introduction of guests.  
Let us feast!

JOURNAL READING/NEWS CONVERSATION

1. Read the quote (may need to read quote more than once.)
2. What word, phrase caught your attention?
3. In what situation might someone say this?
4. What real life situation does this quotation bring to mind?
5. What is the truth about life this passage intends to communicate?
6. Under what circumstances would you want to share this? with whom?

1. What recent news event altered your understanding of the world?
2. Which one should be talked about? (May need to get out additional data.)
3. What is the significance of this in the globe? for us?

Sing a song to set the context for Collegium.

COLLEGIUM

ANNOUNCEMENTS (include rubrics for the day)

SEND OUT

Host: I sent you out to \_\_\_\_\_ (task of the day) \_\_\_\_\_.

RITUAL

Host: March into the future march.

Community: Dance over the dark abyss.

Host: Iron men create the world.

Community: Be it so!

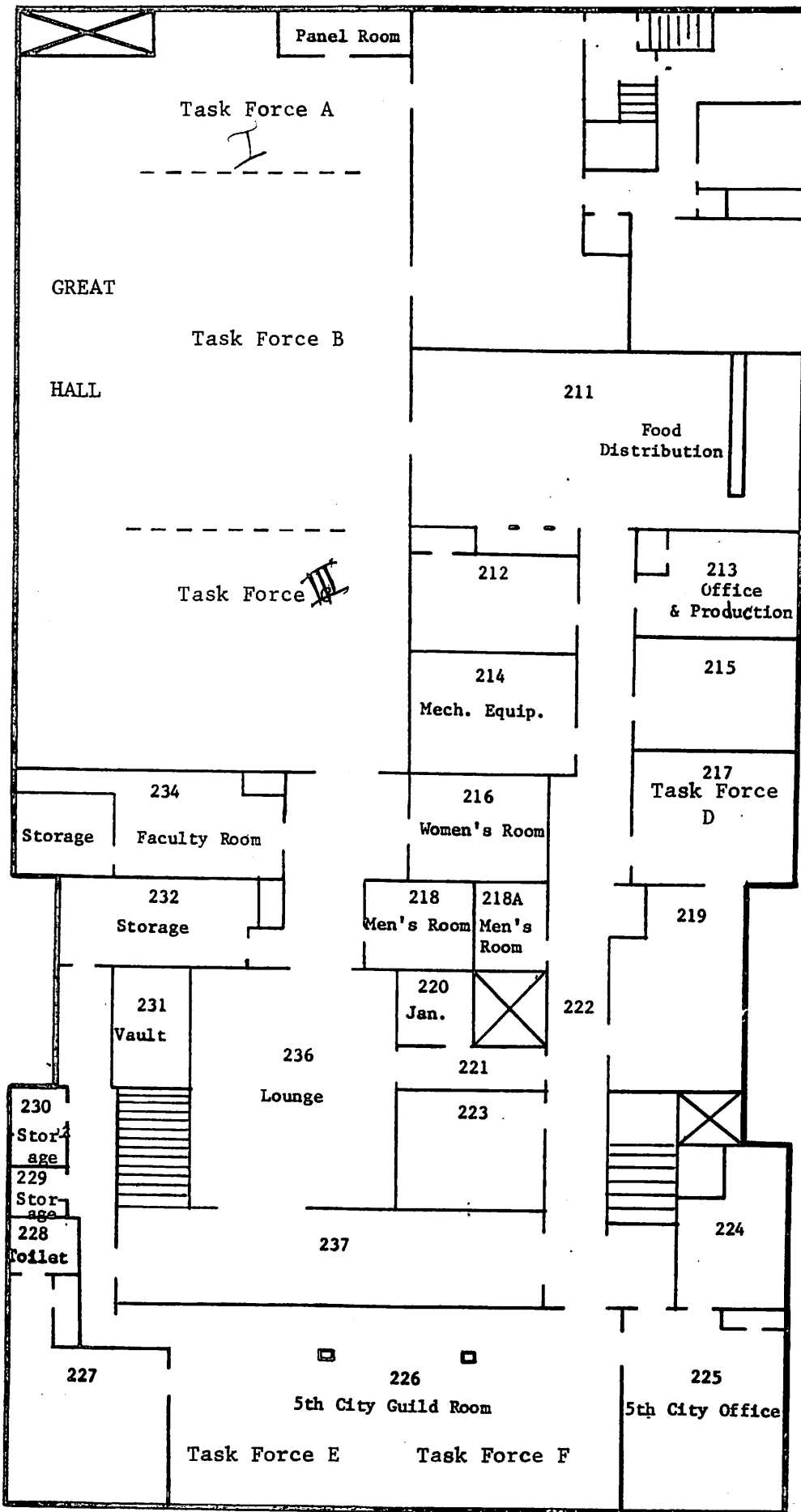
(ASSIGNMENT: Team makes assignments for liturgist, host, read'g, address, Jrn'l/News.)

PARTICIPANT SERVICES

5TH CITY

Communications	Mail
<p>There is one public phone in the Community Center and one on the 3rd floor of the residential hall for use by HDTS participants. All other phones are ICA business phones reserved for ICA business. Calls on ICA lines will be logged and charged accordingly. Messages will be taken on the faculty phone no. 312/722-1221 and will be posted in the mail room no. 209.</p>	<p>Incoming mail for HDTS participants will be delivered to room 209. For security purposes this room will be open during break times and until 11:00 pm. Outgoing mail will be picked up at 8:30 am. The mailing address is:                      Your Name                      c/o HDTS                      410 S. Trumbull                      Chicago, Ill. 60624</p> <p><i>{BE SURE TO INCLUDE THIS}</i></p>
Banking	Health
<p>An assigned banker in the HDTS will cash cheques Tues, Thurs. &amp; Fri, assigned time. Please make cheques payable to HDTS: 5th City for no more than \$20.00. Cashied cheques will be distributed through assigned task force bankers. Change can also be made available through the banker.</p>	<p>First Aid supplies are kept in the faculty offices. The nearest emergency health care is at Rush Presbyterian St. Luke's Hospital, 1753 W. Congress. Arrangements to see a doctor can be made with the Bethany Community Health Center, 3455 W. 5th Ave., tel. 265-8750.</p>
Residential Building	Transportation/Cars
<p>The Residential Building is also the Chicago ICA office and staff residence. Floors 2 and 4 are residence floors for HDTS participants. The lower level will serve as HDTS and ICA meeting space. The first floor is reserved for ICA and 5th City offices and the HDTS is requested not to use this space so that ongoing activities can continue uninterrupted.</p>	<p>The city of Chicago maintains an excellent public transportation system. The nearest el-train stop is reached from the Homan bridge over the Eisenhower Expressway, just south of the Community Center. 60¢ will take you anywhere in the city with a 10¢ transfer (35¢ + 10¢ on Sundays). Only buses require exact change. Arrangements for parking cars should be made with the HDTS office.</p>
Laundry	Security
<p>Stanley's Laundromat is conveniently located across from the Community Center in the 5th City Shopping Plaza for laundry and dry cleaning services at reasonable prices. A washer and dryer are available upon request for emergency use in the Residential Building.</p>	<p>BE STREET WISE, walk in groups                      Keep away from abandoned buildings                      Constantly survey your surroundings                      Walk in the street when possible                      Don't carry expensive valuables, credit cards                      Do carry at least \$5.00.                      Keep your room locked                      Don't leave valuables unattended                      If accosted:                      Don't fight                      Give up your valuables</p>

The staff of the HDTS is available to assist you in any way they can make your stay more comfortable. The HDTS offices are located between the lounge and the Great Hall in the Community Center and in room 208 in the Residential Center.



5TH CITY COMMUNITY CENTER 2ND FLOOR  
3350 W. Jackson Blvd.



HDTS

November-December 1979

5th City

ADMINISTRATION BUILDING  
LAYOUT

