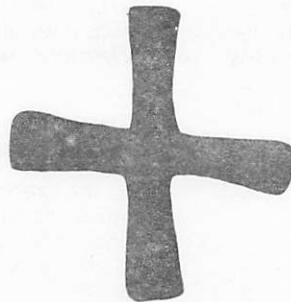


GLOBAL PRIORS COUNCIL

MEMORIALS ACCOUNTABILITY

JULY 1979



Memorial 1

ENLISTING MOVEMENTAL FORCES

In the arena of engaging the forces, it is the intent of the Order to maximize movemental engagement through expanding and formalizing opportunities for training, short-term and long-term assignments and participation in reflective constructs.

Movemental Forces participated for long and short-term training and engagement in Global Social Demonstration and Global Community Forum campaigns. Guardians from across the globe spent a month in Maharashtra. Regional colleagues enlisted for circuits and orchestration in Town Meetings. The Religious Houses received many sojourners. Six hundred indigenous troops after training in Human Development Training School are presently engaged in Human Development Projects in India and another hundred in the Philippines. This Memorial was implemented.

Memorial 2

STRUCTURING LOCAL INTERCHANGE

In the arena of the Global Repository, it is the intent of the Order to structure effective interchange among Human Development Projects and between the projects and outside resources, through Global Operations Centrum in each Nexus.

Effective interchange was structured among the Human Development Projects through the exchange of letters, briefs and leadership. In North America, Africa, Latin America, SEAPAC, Europe and Sub Asia meetings of Project Directors were held. In every location a self-conscious body of expertise and authorization personnel was linked to the Projects. Strike Forces from Areas and Centurms catalysed and maintained momentum. This Memorial was implemented.

Memorial 3

FOCUSING SPIRIT EDGE

In the arena of common spirit edge, it is the intent of the Order to refine and experimentally use a retreat construct for the grounding of Profound Humanness and the New Reality.

The Retreat construct was developed and effectively used in five North American locations. The work was informed by a corporate study of The Way of All the Earth by John Dunne. Parts of the construct were used in Quarter Four Ecclesiolas and evaluative comments documented. It was refined at the Global Research Assembly. This Memorial was implemented.

Memorial 4

INTENSIFYING THE AWAKENMENT CAMPAIGN

In the arena of geographic coverage, it is the intent of the Order to intensify the Global Community Forum campaign through moving to the next phase in all activated and projected areas and experimenting with saturation maneuvers.

The Global Community Forum Campaign was intensified through saturation maneuvers at the national, state, regional and city levels. One quarter of a million people participated in 3,600 events. The Mississippi 200, the Mac-tan 222 and the Maharashtra 232 victories symbolize a new position of advantage in 37 nations. This Memorial was implemented.

Memorial 5

FOCUSING NETWORK IMPACT

In the arena of impact intensification, it is the intent of the Order to focus strategically on the three primary targets of selected networks, project geography and urban centers through the combined use of all impact tools.

Intensified impact on selected networks and urban centers was made through conducting LENS, Global Women's Forum and Community Youth Forum in selected pivot cities, especially in North America and Europe. Human Development Projects acted as regional and metro bases to stage 176 GWFs, 217 CYFs, 36 LENS, 66 Assemblies and 20 RS-1s. This Memorial was implemented.

Memorial 6

FRAMING GLOBAL STRATEGY

In the arena of global authorization, it is the intent of the Order to intensify our global and local framing through creating framing maneuvers in various councils and through establishing and maintaining a Global Authorization Index system.

Global and local framing was intensified through continuous work on the public and private sectors in all aspects of our work, signalled by breakthroughs with the European Economic Community and Washington funding. The Global Film was used successfully as an authorization tool. The Global Authorization Index was initiated and maintained through regular reports from the Development Centurms. Framing maneuvers were used in continental, area and house councils. This Memorial was implemented.

Memorial 7

ACCELERATING LOCAL DEVELOPMENT

In the arena of global funding, it is the intent of the Order to increase the local funding base, through every house and development centrum designing and actuating coordinated areal maneuvers and transrational circuit schedules.

The local funding base was expanded through areal and centrum maneuvers which set funding targets for each house. Development circuiters and house members worked together effectively to boost metro and regional funding. Grassroots mailings were re-instituted out of Chicago Nexus. The transrationality of Development circuits was intensified by regular metro and regional circuits. This Memorial was implemented.

Memorial 8

PHASING PROJECT ACTUATION

In the arena of public visibility, it is the intent of the Order to transrationalize project actuation through anchoring enduring visible signs in each programmatic arena, establishing community structures and ensuring strong local leadership all in relationship to the emerging understanding of project phasing.

Project phasing was transrationalized through the use of acceleration treks to catalyze Keystone completion. Significant breakthroughs in the establishment of Local Economic Vehicles were made in the two rings of Human Development Projects. Community Development Associations were launched in the 25 District projects in Maharashtra. Local community leadership was developed through involvement in saturation maneuvers, in the Training Schools and through village interchange. This Memorial was implemented.

Memorial 9

COMPLETING MAHARASTRA INITIATION

In the arena of Maharashtra demonstration, it is the intent of the Order to initiate the next phase of the replication through completing the initiation of the first 232 villages, polishing the 25 district villages, launching the Advance Training School and experimenting with the form of the 2500.

One Human Development Project was launched in every taluka in the State of Maharashtra, completing the first phase of the replication scheme. Twenty five district villages were polished, the Advanced Command School was launched, the Sikror buffer Project in Area Delhi was initiated and systems were put in place to do the 2500. This Memorial was implemented.

Memorial 10

PHASING PROJECT EXPANSION

In the arena of social demonstration, it is the intent of the Order to implement the emerging global and continental strategies by launching additional Human Development Projects around the globe.

Human Development Projects were launched in Areas Lima, Edmonton, Suva, Singapore and Delhi. Two satellite clusters of four Projects each have sprung off the existing Projects of Sudronggan and Langub in Area Hong Kong. A critical factor was the key participation of the residents of the parent villages. This Memorial was implemented.

Memorial 11

CONDUCTING TRAINING SCHOOLS

In the arena of training auxiliary staff, it is the intent of the Order to hold commonly designed Human Development Training Schools, located at selected project sites, to serve the needs of replication and expansion strategies.

Human Development Training Schools were held in the Continents of Africa, North America, Sub Asia and SEAPAC. In the twelve schools 800 people were trained and consequently enabled the launching of the expansion Projects and Replication Schemes. This Memorial was implemented.

Memorial 12

INTENSIFYING CENTRUM INTERCHANGE

In the arena of effective global interchange, it is the intent of the Order to formalize and structure interchange and service to the three campaigns through deploying additional troops to Bombay, Singapore, Hong Kong and Brussels and holding necessary Band Meetings.

Intensive Centrum interchange served the three Campaigns through the holding of global Centrum Band meetings. Global Operations Centrum, Global Management Centrum and Global Development Centrum met in Brussels Nexus during Quarter Three and Global Research Centrum met in Chicago Nexus in Quarter Four. Systems linking the Religious Houses and Nexus were put in place. This Memorial was implemented.

Memorial 13

EMPOWERING RELIGIOUS HOUSES

In the arena of intensifying the local mission, it is the intent of the Order to provide a demonstration of authentic corporate life through turning each Religious House into a visible sign of profound care for geography, through intensifying common life structures, creating nodes of campaign activity and increasing the number of House members.

Intensified emphasis on the demonstration of authentic corporate life empowered the Religious Houses. This was effected through the self-conscious structuring of Evenings at the Institute, the Panchayat visitation to every House, through underlining the significance of the Ecclesiola and through Regional Campaigns which focussed upon the Religious Houses as nodes of activity. This Memorial was implemented.

Memorial 14

ENSURING ORDER SUSTENANCE

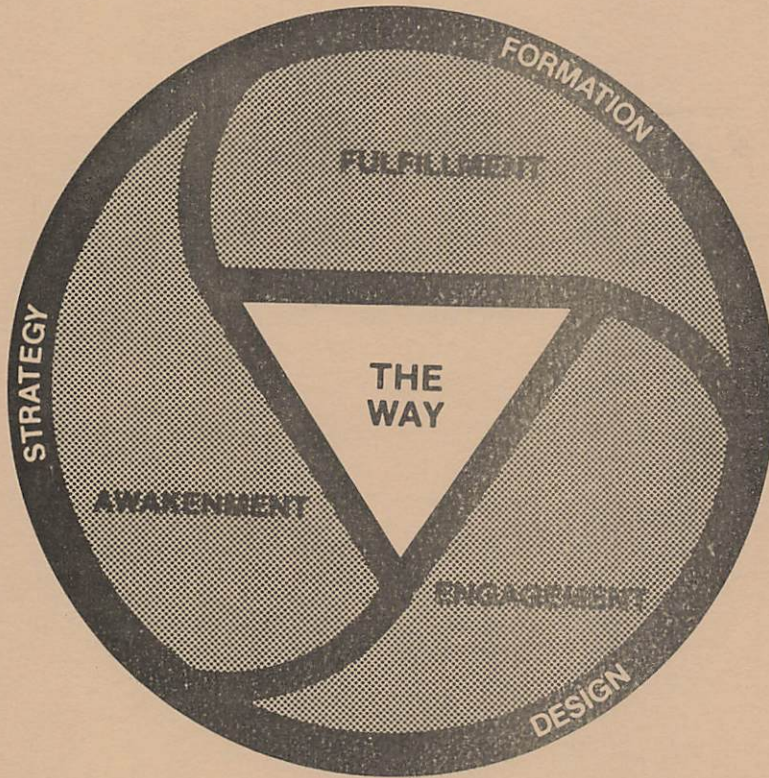
In the arena of demonstrating self-sufficiency, it is the intent of the Order to ensure a sustenance base globally through the re-empowerment of the local unit as responsible for its own self-support, the recovery of the profound function of permeation and the implementation of appropriate logistical structures.

The Order sustenance base was empowered globally through collegiums recapitulating the self-support principle, and by making signal breakthroughs in well-paying permeation placements. A second Training Inc. venture was successfully initiated, and is ready for expansion. A global Strike Force on self-support was set up and operated effectively in monitoring and enabling permeator placements and ensuring global self-support for the year. A procedural manual for obtaining high-paying jobs was produced and used with effect. This Memorial was implemented.

THE ORDER: ECUMENICAL



MEMORIALS



GLOBAL PRIORS COUNCIL
JULY, 1979

THE MEMORIALS OF THE GLOBAL ORDER 1979-80

1. Symbolizing Fifty-Four Areas
2. Creating the Four-Year Plan
3. Positioning the Mass Awakening
4. Clustering the Awakened Communities
5. Expanding Demonstration Campaigns
6. Actuating Replication Experiments
7. Transisting the Global Twenty-Four
8. Formulating the New Movement
9. Developing Urban Strategy
10. Relating to the Religions
11. Documenting the Human Factor
12. Researching New Mythology
13. Activating Research Network
14. Intensifying Spirit Practices
15. Documenting Phase I Experiment

In the arena of total global service, it is the intent of the Order to develop an inclusive penetration scheme towards active responsibility for all 54 areas of the globe through initiating houses in three new areas and programmatic probes or exploratory research on the twenty-two uninitiated areas.

RECOMMENDATIONS:

1. It is recommended that each unopened area be designated as either
a) new house b) programmatic probes or c) exploratory research.
2. It is recommended that Area Madrid, Area Stockholm and Area Douala be opened with houses this year.
3. It is recommended that impact and training events be offered in areas where continental strategy, framing and authorization indicate need for broadening active support.
4. It is recommended that exploratory research be conducted on each unopened area to gather data on geo-social conditions, trends, network and contacts for presentation at Council, 1980.
5. It is recommended that a new operational grid be designed that reflects current geo-social reality.
6. It is recommended that Europe grid presented at the 1979 Council be accepted.
7. It is recommended that Europe be assigned to redesign the Eurasia grid.
8. It is recommended that the underlying tension of Sphere East, and proposed changes in the SEAPac and China grids and an appropriate name for continent China be analyzed and presented by SEAPac.

In the arena of the new four year plan, it is the intent of the Order to corporately prepare its 1980-84 strategic objectives through receiving input from every house in each area, which will be presented at the Global Priors Council in 1980 and worked into a comprehensive plan.

RECOMMENDATIONS:

1. It is recommended that the 5 year vision from the 1979 Council be published and distributed to every house.
2. It is recommended that PSU's be held in every house, area and continent, to bring into view the four year picture for the Global Council in 1980, using common procedures to be designed by Global Research Centrum.

In the arena of mass awakening campaign, it is the intent of the Order to accelerate the awakening campaign in every continent through creation of strategies and maneuvers built on actual advantages in each location in tension with the continental phasing scheme.

RECOMMENDATIONS:

1. It is recommended that the continents position themselves in the following phasing categories by June, 1980. (Note page 12, M.A.P. Strategies)

North America	Actuation
SEAPac	Demonstration
Sub-Asia	Demonstration
Latin America	Demonstration
Africa	Demonstration
Europe	Demonstration
NAME	Initiation
Eurasia	Initiation
China	Preparation

2. It is recommended that each continent will complete a four-year phasing plan down to the metro level by June, 1980.

In the arena of mass awakening, it is the intent of the Order to dramatically intensify this campaign's impact through launching experiments in orchestrating emerging demonstration towns into clusters to intensify their signal value and accelerate campaign participation.

RECOMMENDATIONS:

1. It is recommended that pilot clusters be launched where such communities have emerged and are strategic to the continental and areal campaigns, such as in Area Houston (Mississippi - Pace), Area Madras (Nadlapur), Area New York (Loisaida).
2. It is recommended that where the experiment is launched, the guidelines for establishing the clusters be used.
3. It is recommended that Global Operations Centrum monitor the experiment.

In the arena of demonstration expansion, it is the intent of the Order to radically accelerate the signs of rapid socio-economic development through expanding the project cluster experiment and initiating globally consensed expansion projects.

RECOMMENDATIONS:

1. It is recommended that the Philippine Cluster Experiment be expanded with government and World Bank support. The Mactan Cluster will be expanded to include a total of 21 villages. The Cebu Mountain cluster of 4 villages will be launched in conjunction with government efforts. The Iloilo cluster will be initiated with 4 villages in conjunction with the World Bank.
2. It is recommended that Area Singapore demonstrate authentic village development in Indonesia by systematically working with the national and provincial structures to establish 6-village clusters in North Sumatra out of Bubun, and in East Java, and move into position for similar clusters in South Sulawesi (Bontoa) and West Java (Kelapa Dua).
3. It is recommended that Area Tokyo participate significantly in Korea's New Village Movement by launching 10 stronghold communities from Kwang Yung Il Ri on Jeju Island, and 10 stronghold communities from Kuh Du E Ri in Chuncheon Province.
4. It is recommended that Area Kinshasa (Zambia) establish 4 satellite villages around the Kapini project.
5. It is recommended that Area Cairo (Egypt) establish 4 satellite villages around the Bayad project.
6. It is recommended that Area Madras establish 4 satellite villages around the Nadlapur project.
7. It is recommended that additional HDP's be initiated in area Singapore (Surabaya), Area Montreal, and Area Pokyo.

In the arena of global social demonstration, it is the intent of the Order to expand mass replication through moving from Phase II to Phase III in Maharashtra and to initiate nation-wide village development in Kenya with seven new projects.

RECOMMENDATIONS:

1. It is recommended that Area Bombay strengthen repositories, deepen the frame, and provide advanced training for existing troops and village leadership in Maharashtra.
2. It is recommended that Area Bombay experiment with the "Block" model in Maharashtra.
3. It is recommended that Area Nairobi launch human development projects in the six divisions of Machokos District of Kenya, and another demonstration project in an additional province in preparation for the next phase.

In the arena of the initial band of 24 Global Social Demonstrations, it is the intent of the Order to mark the local communities' assumption of full responsibility for its own leadership and continued demonstration and expansion role in the campaign through the holding of a transitional consult event in each of the 24 communities which would conclude the role of the House as local, residential auxiliary.

RECOMMENDATIONS:

1. It is recommended that each project hold a "consultation" based on the Nadlapur model. This would be designed by Global Operations Centrum.
2. It is recommended that areas in dialogue with local leadership and project staff, schedule these transition events globally in the context of maneuvers and configurations which would use the event a) to intensify the community's involvement in awakenment and engagement programs in surrounding communities, b) ensure ongoing linkages with regional support networks and c) to symbolize the assignment of the auxiliary house to its new task.
3. It is recommended that each of the 24 houses would be reassigned to one or a combination of the following tasks in actuating the awakenment and demonstration projects and clusters, conducting urban research, actuating training and support programs, and implementing continental and areal strategy.
4. It is recommended that selected houses would implement their new assignment from their current location (B) and others would be located elsewhere in their region (A).

(A)		(B)		
Rapid City	Tulsa	Berlin	Lagos	Lusaka
Halifax	Kuala Lumpur	Nairobi	Cairo	
Sapporo	Rome	London	Washington	
Darwin	Majuro	Jakarta	Chicago	
Hong Kong	Winnipeg	Cebu	Bombay	
Kaohsiung		Jeju	Caracas	

5. It is recommended that Global Operations Centrum construct management skills schools and whatever other tools or maneuvers are required to ensure the economic viability and stability of local structures necessary to such a transition.
6. It is recommended that this transition of the 24 be commonly symbolized and publicized in celebrative events and public documents.

In the arena of forces mobilization for campaign engagement, it is the intent of the Order to formulate the movement through local formulation, training and interchange maneuvers using a variety of training and formation constructs such as field modules, the Voyage, the global film and the HDTI's.

1. It is recommended that practical field modules be held in the nine programmatic arenas.
2. It is recommended that modules be created in arenas such as management, development, framing, sanitation, economic development, etc.
3. It is recommended that HDTI's be comprehensively scheduled.
4. It is recommended that a global program calendar be printed.
5. It is recommended that the forces mobilization experiments in locations such as Maharashtra and Latin America be continued.
6. It is recommended that the global film be distributed and used more extensively.
7. It is recommended that short-term, massive impact maneuvers which involve new colleagues be implemented.

In the arena of caring for all human settlements, it is the intent of the Order to develop an urban strategy for the globe through a coordinated series of year-long urban probes.

RECOMMENDATIONS:

1. It is recommended that comprehensive coverage of selected cities be initiated with impact programs as determined by area and continental councils.
2. It is recommended that previous work in urban awakenment, demonstration and framing be documented.
3. It is recommended that a Chicago Urban Task Force be initiated to function as a laboratory to document essential strategy and framing for awakenment and demonstration in the urban areas.
4. It is recommended that a Practical Research Post of Global Research Centrum shall be the locus for coordination of experimental probes, compilation of urban learnings and design of urban strategy.

In the arena of religious structures permeation, it is the intent of the Order to intentionalize and intensify our relationship with the historic religions through providing opportunities for training and engagement in the resurgence of local communities.

RECOMMENDATIONS:

1. It is recommended that files be pulled together of contacts with historical religious bodies.
2. It is recommended that relations with the Roman Catholic Church in Rome be intensified through Brussels Nexus and the Rome House.
3. It is recommended that contact be made with structures of classical religious traditions.
4. It is recommended that strategic ecumenical and denominational meetings be attended.
5. It is recommended that ITI's and impact events be strategically scheduled to include historic religious bodies.

In the arena of documenting the human factor, it is the intent of the Order to portray to the world the fact of human resurgence in local communities through creating and using effective documentary instruments.

RECOMMENDATIONS:

1. It is recommended that documentation of HDP initiation, actuation and replication be done in relation to the principles, processes and formulas of human demonstration.
2. It is recommended that documentation be done of the Accomplishments and Learnings of the Band of 24 HDP's in statistical and imaginal form.
3. It is recommended that Social Philosophy writings on the ideologies, methodologies and curricula be compiled.
4. It is recommended that Primal Community Learnings be compiled in the arenas of globality, formulation and mythology.
5. It is recommended that documentation be done of both community forums and human development projects by continents, especially in Africa, North America and Indonesia. Global Research will distribute by Quarter II a common screen for this purpose
6. It is recommended that Global Research Centrum continually collect data and create evaluations of events such as Evenings at the Institute and showings of the global film and slide shows.
7. It is recommended that Global Research Centrum distribute the GRA 79 work on documentation.

In the arena of new mythology, it is the intent of the Order to describe the transparent dynamics and forms of profound living in primal community through work on the Way in every location.

RECOMMENDATIONS:

1. It is recommended that myth conversations be conducted with the House, collegial occasions and community events.
2. It is recommended that various dramatic and celebrational art forms be used experimentally.
3. It is recommended that houses investigate the profound social and cultural basis of the Urs through constructs employing screens like the Profound Humanness Chart, studying books and papers and through Ur events which highlight the gifts of each.
4. It is recommended that constructs will be provided and learnings gathered and distributed by Research Centrum.
5. It is recommended that stories be found of the journeys of communities.

In the arena of global research interchange, it is the intent of the Order to engage the total order as a research network through catalyzing our common profound and futuristic thinking on the pluriform order, unpenetrated areas, global trends and the seven revolutions.

RECOMMENDATIONS:

1. It is recommended that Global Research Centrum serve the coordinating function and experiment with new ways to increase the effective participation of every house in the research task.
2. It is recommended that multiple Global Research Assemblies be held this coming year of common design, theme and task to maximize participation of colleagues around the globe.
3. It is recommended that a transrational global assignment scheme be created for the 1980 Global Priors' Council.

In the arena of Order symbolic life it is the intent of the Order to commonly experiment with new Order forms which express human resurgence while guarding common participation in existing symbolic and ritual forms such as the Daily Office and other rituals.

RECOMMENDATIONS:

1. It is recommended that the Daily Office is the daily ritual of the Order and is celebrated in all locations. "The Daily Office of the Ecumenical Institute" is the form of the office used by the Order. When strategic considerations warrant, houses may be assigned to use an alternate form.
2. It is recommended that common experimentation at a different time be continued toward a ritual for primal community based on the classical wisdom of the human spirit.
3. The Order experiment with the fast using common constructs (to rehearse our unity and to serve the struggle for depth symbolic life in primal community

In the arena of Phase One care, it is the intent of the Order to intensify its care for Phase One through careful documentation of the six-year experiment and the creation of the high school and post-high school journey.

RECOMMENDATIONS:

1. It is recommended that Phase One staff, in consultation with Research Centrum, publish the construct and learnings of the experiment.
2. Operations Centrum distribute basic Phase One curricula to the houses.
3. Student House, high school and post-high school models be refined.
4. Post-high school Phase One will dialogue with the assignments commission by July 15 regarding their decision to be under assignment.