



Entrance Sign to Town

DEMONSTRATION COMMUNITY

The community of Indiahoma is located in Southwestern Oklahoma, 20 miles west of Lawton in Comanche County. The town is surrounded by rolling wheat and cattle country and lies on the southern edge of the Wichita Mountains.

Indiahoma gets its name from a combination of the words "Indian", from the Comanche and Kiowa tribes who settled in the area, and "Oklahoma", the state in which the town is located.

During the early 1900's the town grew as the railroad came through providing service and transportation. By 1911, Indiahoma was a thriving town of 1000 people. The town was the center for a cotton ginning industry along with nearly 40 other businesses. Railroad service decreased with the coming of age of the automobile. With the loss of the bank and the highway rerouted north of town, businesses closed and civic organizations disbanded. Residents have come to depend upon Lawton and other towns as sources from which to meet their daily needs.

The Institute of Cultural Affairs has been working in Oklahoma since 1970. Over 150 communities throughout the state have participated in the Town Meeting Program. After three community meetings the City of Indiahoma decided to become the Indiahoma Human Development Project inviting the Institute of Cultural Affairs to work with its citizens for two years with a resident staff of four people. Indiahoma was selected because the town had potential for development, its plight was typical of other small southwestern towns on the economic decline and most of all, there was a group of interested residents.



300 people attend opening Consult Feast

INDIAHOMA HUMAN DEVELOPMENT PROJECT

INDIAHOMA, OKLAHOMA
FIRST YEAR REPORT-JUNE 1979



Showplace Boulevard Welcome Banner

COMMUNITY CONSULT

A week long community meeting or "Consult" was held June 19-24, 1978. Over 150 Indiahoma residents and 26 non-resident consultants participated in the planning. Every household in town was visited to insure everyone's input into the plans. The citizens outlined their vision for the community. They then discerned the challenges that were blocking that vision and built a set of practical proposals for dealing effectively with the challenges. Next they created tactics by which the proposals could be realized. Finally 13 Actuating Programs were decided upon by the community. A comprehensive two year plan for community programs and economic development was created. The Consult gave the community a vision of possibility and a practical plan of action. The residents have deep community pride and exhibit a deep resolve to work together for the revitalization of Indiahoma.

SHOWPLACE OF

"Grand Year Of A



Community Workday on Main Street

ECONOMIC HIGHLIGHTS

- COMMUNITY DEVELOPMENT CORPORATION LAUNCHED
- CAFE OPENS AUGUST 1978
- NEW FEED AND SEED SUPPLY BUSINESS
- \$120,000 EDA GRANT APPROVED FOR COMMUNITY MARKET
- NEW CITY ORDINANCES APPROVED
- PUBLIC WORKS AUTHORITY SET-UP
- EPA SEWERAGE EXPANSION STUDY

- \$105,000 HUD GRANT FOR WATER STORAGE FACILITY
- ROAD REPAIR AND MAINTENENCE
- TECHNICAL ASSISTANCE CONFERENCES

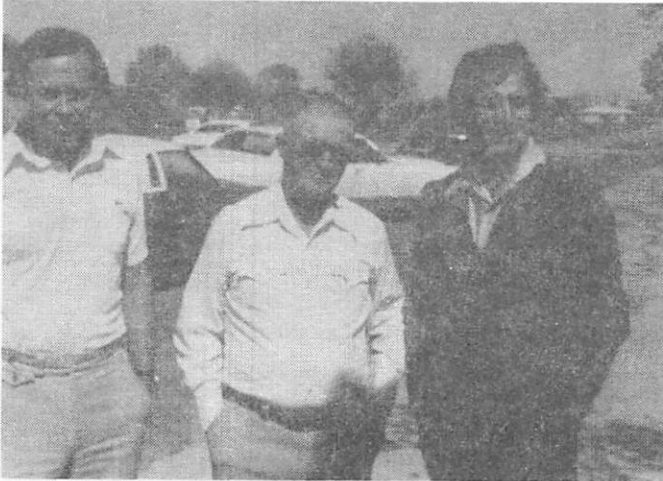


Governor Boren Visits

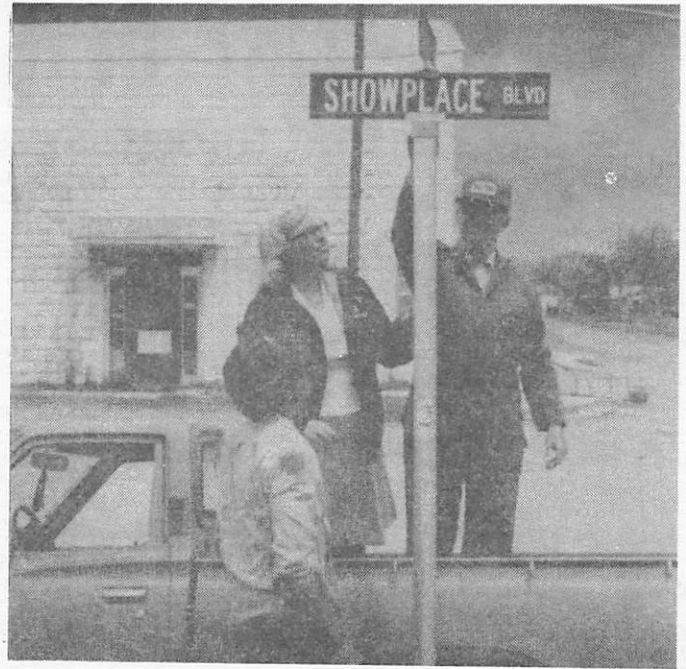
Indiahoma Human Development Project ICA Consultants		THE THIRTEEN ACTUATING PROGRAMS Comprehensive Community Reformation in Indiahoma					June 1978 Consult Plate 5A			
ONE TOWARD THE BUILDING OF ECONOMIC SELF-SUFFICIENCY IN INDIAHOMA			TWO TOWARD THE BUILDING OF COHESIVE STYLE IN INDIAHOMA		THREE TOWARD THE BUILDING OF SOCIAL SELF-RELIANCE IN INDIAHOMA					
LOCAL COMMERCE A		ESSENTIAL SERVICES B	C		HUMAN ENVIRONMENT D		RESIDENT CARE E			
APPROPRIATE BUSINESS ENTERPRISE I	Shopping Mart 1 Program	CITY UTILITY SERVICE IV	Roadway Improvement Program 13	COMMUNITY ENGAGEMENT NETWORK VI	Civic Forum 21 Program	TOWN BEAUTIFICATION CAMPAIGN IX	Work Days Program 33	RURAL LIFE INSTITUTE XI	Comprehensive Pre-school 41 Program	
	Family Restaurant 2 Program		Water Supply Program 14		Work Force 22 Program		Building Improvement Program 34		Management Skills 42 Program	
	Personal Services 3 Program		Sewage Expansion Program 15		Organizational Involvement 23 Program		Systematic Greening Program 35		Local Apprenticeship 43 Program	
	Business Expansion 4 Program		Utility Board Program 16		Neighborhood Club 24 Program		Neighborhood Showplace Program 36		Leadership Methods 44 Program	
SMALL INDUSTRY COMPLEX. II	Auxiliary Manufacturing 5 Program	INDIAHOMA 2000 PLAN V	Unifying Theme Program 17	COMMUNITY IDENTITY PROJECT VII	Heritage Recovery 25 Program	RESIDENTIAL HOUSING DEVELOPMENT X	Preventive Care 45 Program	COMPREHENSIVE HEALTH CARE XII	Emergency Service 46 Program	
	Welding Shop 6 Program		Comprehensive Zoning Program 18		Inclusive Symbol 26 Program		Home Renovation Program 37		Health Caretakers 47 Program	
	Meat Processing 7 Program		Town Expansion Program 19		Celebrational Events 27 Program		New Construction Program 38		Resident Protection 48 Program	
DEVELOPMENT ASSISTANCE AGENCY III	Industrial Facility 8 Program		INDIAHOMA 2000 PLAN V	Planning Council Program 20	COMMUNITY CENTER FACILITY VIII	Ambassador Corps 28 Program	RESIDENTIAL HOUSING DEVELOPMENT X	Facilities Construction 49 Program	RECREATIONAL PARK SYSTEM XIII	Activities Coordination 50 Program
	Technical Assistance 9 Program			Town Expansion Program 19		Information Exchange 29 Program		Self-help Housing Program 39		Park Development 51 Program
	Capital Funding 10 Program			Planning Council Program 20		Resource Bank 30 Program		Construction Company Program 40		Youth Center 52 Program
	Development Corporation 11 Program	Planning Council Program 20		Project Coordination 31 Program						
	Indiahoma Promotion 12 Program			Center Preparation 32 Program						

THE SOUTHWEST

Accomplishments"



Senator Terrill opens Health Center



Street Signs GO UP!

COMMUNITY LIFE

- MAJOR COMMUNITY WORKDAYS
- HERITAGE PLAZA CREATION
- REGULAR WEEKLY PLANNING MEETINGS
- NEIGHBORHOOD GATHERINGS AND COMMUNITY ASSEMBLIES
- SMALL TOWN OPRY CELEBRATION
- NEW STREET SIGNS
- BI-MONTHLY NEWSLETTER PUBLICATION
- LEADERSHIP TRAINING NIGHTS
- COMMUNITY CENTER RESTORATION
- TOWN ENTRY WAY SIGNS
- INDIANOMA VISITATION DAY



Heritage Plaza Planter get Flowers

SOCIAL INITIATIVES

- HEALTH CENTER OPENS
- MONTHLY COUNTY NURSE VISITS
- HEALTH FAIR SEPTEMBER '78
- MAST EMERGENCY SERVICE ESTABLISHED
- 3 to 8 WEEK FIRST RESPONDER COURSE
- CPR AND FIRST AID TRAINING DAYS
- OVER 30 HOMES RENOVATED BY OWNERS
- PLANS COMPLETED FOR DEERISAW PARK
- LITTLE LEAGUE ACTIVITIES
- SATURDAY NIGHT AT THE MOVIES
- YOUTH DELIVER NEWSLETTER



Lt. Governor Bernard & Rep. Harper

COMMUNITY ON THE MOVE!

LIST OF SUPPORTERS

Inkind Goods, Services & Contributions to the

INDIAHOMA HUMAN DEVELOPMENT PROJECT

Ada-	Ray James-Glen Childers, Architects & Associates, Inc.	Lawton-	Dupler's Plumbing & Heating Eddy's Signs Extension Service FmHA Fort Sill Food Services Fowler's Paint, Glass & Floor Covering Co. Frisco Railroad Gene's Meat Gibson Discount Center Gillian Paint & Wallpaper Gordon Plumbing Great Plains Coliseum Great Plains Community Foundation, Inc. Harrison Lighting Herb's Discount Home Plumbing IBM Corporation Internation House of Pancakes Jerry's Tree Service Johnson's Bakery K-Mart Kan Haul Service Kelly-Moore Paint Co. Ken's Pizza Kennedy & Co. KSWO TV Lawton Chamber of Commerce Lawton Constitution Lawton Custom Draperies Lawton Industrial Development Service Lew Johnson's Restaurant Long John Silver's Mead Foods, Inc. Montego Bay Montgomery Ward Mt. Scott Foods, Inc. Multi-Purpose Center of Lawton Salas Little Mexico Pepsi-Cola Bottling Company Phillips Furniture & Carpet Pittsburgh Paints Pizza Hut Ramon's Flowers & Gifts Ratcliffe Book & Office Supply	Rosemont Dairy Roy Rogers Restaurant Sears, Roebuck & Company Sesco Electric Supply Company Shakey's Pizza Southwest Stationery & Bank Supply T.G.&Y. Taliaferro Mental Health Center Underwoods Wilson Wholesale Candy Company
Apache- Altus-	Sexton School Supply Altus Electric Associated Builders C & J City Electric Fagan Plumbing MOCO Electric Supplies Rounds & Porter Co. Sherwin Williams Young Electric of Oklahoma, Inc.			Oklahoma City- Big Al's Butler Paper Company Cardinal Paper Company Carpenter Paper Company Duncan Bindery Service EDA Ed-Be, Inc. EPA First National Bank & Trust Grand Central Station Restaurant HUD IBM Kraft Foods Liberty National Bank & Trust Lindsey's Speedy Print Melton Company Midwest Paper Products, Inc. Morton Foods Oklahoma City Clinic Oklahoma Physicians Supply Co., Inc. OU Health Sciences Center Olivetti Corporation Rainbow Bread Sonic, Inc. Spraudling, Stagner, Alpern Friot and Jones Western Paper Company Wilson Foods, Inc. Wm. E. Davis & Sons, Inc. Xerox Corporation
Cache-	Atlas-Tuck Concrete Co. First State Bank of Cache			
Chicago-	Amoco Chemical Corporation			
Duke-	Republic Gypsum Co.			
Duncan-	ASCOG			
Frederick-	Kellwood, Inc.			
Geronimo-	Mallow's Grocery			
Indiahoma-	Town Board of Indiahoma Country Mart Frazier's Meat Processing Indiahoma Lumber Company Indiahoma Schools L & L Cafe Shamrock Grocery Treasure Lake Job Corps			
Lawton-	American National Bank Amfac Ansley Paper & Chemical Company Ashton, Ashton, Wisener & Munkacsy, Inc. Billingslea Lumber Company Cagle's Wholesale Grocery Cameron University Carpet Showplace City of Lawton Coca Cola Bottling Comanche County Commissioner Western District Comanche County Health Department Comanche Lumber Company Comanche Roofing & Sheet Metal Co. Conway & Hale Burger King Der-Wienerschnitzel Dodd Plumbing			

THE INSTITUTE OF CULTURAL AFFAIRS

The Institute of Cultural Affairs is a research, training and demonstration group concerned with the human factor in world development. It has worked for twenty-five years to devise and demonstrate practical methods for comprehensive local renewal. The Institute's emphasis is on methods which enable local residents to plan and implement socio-economic change in their own communities. Local self-sufficiency, self-reliance and self-confidence are the aims of ICA programs.

Two programs are primary to the Institute's work. The **Human Development Program** is a global network of pilot projects in socio-economic community development. At present 149 projects are located across the world. Each is intended as a demonstration model for its region or nation. The **Community Forum Program** offers communities a lively 'town meeting' format which encourages participation in solving local problems. The Town Meeting is a celebrative event involving all ages and sectors of the community. Over 5,000 Town Meetings have been held in 32 nations including one in every county of the United States. Other Institute programs range from management seminars for business and agency leaders to eight-week training schools in human development methods.

The Institute of Cultural Affairs is a not-for-profit private voluntary organization working in 32 nations. It has over 100 field offices served by coordination centers in Bombay, Brussels, Chicago, Hong Kong and Singapore. The work of the Institute's staff is complemented by an international network of voluntary consultants representing a wide range of expertise. Consultants donate both time and resources to assist in the planning and implementation of Institute programs.

The Institute of Cultural Affairs is supported by foundations, corporations, church and service organizations and concerned individuals. Specific programs have been funded by government agencies. Originally, the ICA operated as a program division of The Ecumenical Institute. In 1973 it was incorporated and now works as a separate, yet coordinate, group with the parent organization. — **Indiahoma Human Development Project, P.O. Box 87, Indiahoma, Oklahoma 73552, (405) 246-3360.**

*First Year Report Printing Contributed by Speedy Print, Inc., Lawton, Ok.
Paper Donated by Carpenter Paper Company, Oklahoma City, Ok.*