

December 31-January 6, 1970

II-B-2

WEEKLY REPORT: DEPLOYED ORDER

Almighty and everlasting God, who dost govern all things in heaven and earth; Mercifully hear the supplications of thy people, and grant us thy peace all the days of our life; through Jesus Christ our Lord. Amen.
(The Book of Common Prayer; the Collect for 2nd Sun. after Epiphany.)

GLOBAL WEST

NORTH United States

Religious House: Chicago - South

External: Good Regional Faculty meeting on Saturday where we pushed the God Lecture and Bultmann paper in terms of the shift in times of the decade.

Internal: One-in-three House quarter planning session here after Regional Faculty meeting highlighted by seriousness of Move 222. "If the Movement stops is Southeast Asia.... It stops in Chicago...."

Contradiction: Stopping the movement in Chicago at beginning of teaching quarter while putting all time into Move 222.

Chicago - North

External: New Year's Eve celebration at House showed possibilities for missional entertainment of guests.

Internal: Thirty six hours of prayer and work for Move 222 provided a great new experience of corporateness.

Contradiction: Concentration of effort of Move 222 while maintaining ongoing mission of House.

Chicago - Rockford

No Report

Religious House: Cleveland

No Report

EAST Religious House: Boston

External: "12 Day of Christmas" forces released in 3-day "Roman Catholic Reconnaissance" via 2 man teams for visitation of 61 parish priests in the Archdiocese of Boston -- 4 will attend PLC January 6-8. Regular visitation in Boston regional metros and Rochester region underway for the quarter.

Internal: 12 Day of Christmas friary experiment enacted from 12/22/69 - 1/1/70 involved 6 regional families in mendicant enablement, monastic rubrics of C/M/P and celebration of Xmas and the New Year.

Contradiction: Re-imagining possibility of Move 222; weekend (Jan. 16-18) and mid-week (Jan. 20-22) odyssey preparation, including recruitment of adults and planning of separate children's curriculum.

Religious House: Washington

External: Total House participation with Region in 2 1/2 day Local Church Lab beginning noon New Year's Day.

Internal: Most of House travels into past (Christmas with relatives) and returns alive. Great Discontinuity.

Contradiction: Continuing necessary structures in midst of discontinuity and absences of Christmas.

WEST

Religious House: Los Angeles

External: Saturday of recruiting with 17 people calling in Riverside.

Internal: Marianna has job in lumber yard. High celebratory season closed with burning of Christmas tree and a flaming dessert.

Contradiction: Difficult to get hold of shift in missional model.

Religious House: Seattle

External: Total House participation in 2 day Regional Faculty meeting. Penetration trips to Portland.

Internal: Following the Odyssey, Christmas celebration, New Year's Celebration, and first quarter evaluation, we outdid ourselves in planning for the Winter quarter. Welcomed Cathy Schuler, our first monk-for-a-month.

Contradiction: Creating the timelines to pull off our plans for the Winter Quarter.

Religious House: San Francisco

No Report

SOUTH

Religious House: Atlanta

No Report

Religious House: Oklahoma City

External: Forty-three total participants from the Oklahoma City, Houston, and Kansas City Regions attended the first House Odyssey (Jan. 2-4).

Internal: Received two college sojourners - Terry Bergdahl (Oklahoma City University) and Tom Schlenker (Antioch College) for the month of January.

Contradiction: How in the midst of preparing practically for the Odyssey one disciplines the Spirit.

GLOBAL EAST

Australia

Religious House: Sydney

External: Summer programme in Melbourne with 47 adult participants and 56 children. Going well - depth pedagogy very powerful. Deeply addressing gathered spirit colleagues from all over Australia.

Internal: Juanette, Kaye, Elsie in children's programme at Summer '70; David, Donna, Jim, Isobel, Rod, Russ in adult.

Contradiction: Darwin summer programme begins Jan. 17th; still not finally nailed down.

Malaysia

Religious House: Kuala Lumpur/Singapore

External: First RS-I course of the quarter in L.K. and cadre meetings in Singapore and K.L.

Internal: Beginning this week with new early morning format - Mon., collegium; Tue., seminary; Wed., college; Thur., sodality; Fri., collegium. Marilyn Crocker began teaching in the International School in Singapore.

Contradiction: Setting up of Assignment, Training and Nurturing Structure for Regional pedagogues.

Western Samoa

Religious House: Samoa

External: Sue Phillips is here! (from Australia)

Internal: We won back the house from all the creatures who moved in during our two-week trip to Savaii, with a week-end cleaning extravaganza.

Contradiction: Planning a term of school in the midst of a still prevalent holiday mindset.

GLOBAL SOUTH

Barnes Family

No Report

ORDER BASE

External: Quarter goals for all six divisions.

Internal: New Year's eve family buffet followed by late night celebration recapping the decade past and claiming promises for the coming year.

Contradiction: New contacts and battle plans for Move 222.



January 7-January 14, 1970

II-B-3

WEEKLY REPORT: DEPLOYED ORDER

Almighty and everlasting God, mercifully look upon our infirmities, and in all our dangers and necessities stretch forth thy right hand to help and defend us; through Jesus Christ our Lord. Assen. (The Book of Common Prayer; the Collect for 3rd. Sunday after Epiphany)

GLOBAL WEST

NORTH United States
Religious house: Chicago - South

External: If the Movement stops in Southeast Asia, it stops in Chicago. Regional calls suspended to allow full thrust for Move 222 resulted in Regional Colleagues picking up the money raising task as well.

Internal: Consumed by Move 222 deepened sense of corporateness as one house in three as well as in our own House.

Contradiction: Beginning of Ecclesiola structures with over half the House out on teaching and Move 222 assignments.

Religious House: Chicago - North

External: All House adults were assigned to be full participants in Local Church cadres.

Internal: Frozen plumbing necessitated temporary relocation of Religious House.

Contradiction: Winter quarter schedule had to be adopted after the activities of the quarter had already begun.

Chicago - Rockford

External: Regional Colleagues picked up significantly on additional PLC recruitment while House focused on Move 222.

Internal: Struggle with prayer concretized in Prayer Vigil with writing a prayer for someone and then writing a letter asking his participation in Move 222.

Contradiction: Trying to keep enough cars running in sub zero weather to meet the needs of Move 222, formulation, and college finals.

Religious House: Cleveland

No report

EAST Religious House: Boston

External: Visitation completed last week in Rochester region as vehicle for PLC recruitment, continuing this week in Portland (Me.), Manchester (N.H.) and Springfield (Mass.) metros of Boston Region; national assignments to Baltimore RS-I, Cleveland CS-I, and State College (Pa.) Move 222.

Internal: Completed 36 hour marathon "NOVENA" for Move 222, 6 p.m. Fri. to 6 a.m. Sun., intensifying and objectifying spirit struggle of House members with global demand of the Movement and practical work of exercising catalytic role of House in fund raising.

Contradiction: Move 222 practices, weekend Odyssey 1/16-18, Midweek Clergy Odyssey 1/20-22, and Regional Practices Colloquy 1/23-24.

Religious House: New York
No Report

Religious House: Washington

External: Continued visitation and calling to recruit in preparation for beginning of the Winter Teaching Quarter.

Internal: Planning for quarter after new division assignments and Move 222 Prayer and Letter-writing vigil.

Contradiction: To concretely intensify doing the tasks set before us in the midst of a dispersion of forces.

WEST Religious House: Los Angeles

External: First course of winter quarter, pedagogy, penetration task force born!

Internal: 20 Day Prayer period -- Move 222

Contradiction: Lack of manpower to pick up all the possibilities.

Religious House: San Francisco

(for Dec. 30 - Jan 6) - misplaced by Base

External: First Odyssey in House to open New Year and new decade in Region.

Internal: Recreated time and space as New Year journey celebration - Daily Office held at 12:01 A.M., January 1, 1970.

Contradiction: Struggle with fund raising (Move 222), recruitment, enablement with few troops.

(for Jan. 7 - 13)

External: First Regional dinner guest arrived establishing still another dynamic of our relationship with the Region.

Internal: Bruce Muma's birthday and the first wedding anniversary to be celebrated in the S. F. House called to consciousness our unique family relationships as a people in mission.

Religious House: Seattle

External:

External: Sent House representative to Federal Way Ministerial Alliance meeting to wrap up recruitment for Jan. 13-15 PLC in Portland, Oregon. That encounter, plus the Ecclesiola experiment has breathed new life into our local church assignments.

Internal: Planned and used weekend construct for those not assigned out to get on top of 5th City Project. Scanned mountains of models, Voice's, I.E.'s etc. and can now retell the story of 5th City to the Great Northwest.

Contradiction: How to coordinate and train 20 micronet callers and track down and visit 250 RS-I grads with teaching quarter in full swing.

SOUTH Religious House: Oklahoma City

External: House participated in region recruitment blitz (Sat., Jan. 10) with nine teams in Oklahoma City and Lawton Metros and one in Houston Region. Over 50% contacted responded with registration form and check.

Internal: After eating over 80 pounds of rice during the Odyssey, the House celebrated the purchase of a side of beef (from recent RS-I grad's ranch) with steaks for all at House Church.

Contradiction: How to sustain House in mission without heat or transportation in 2 degree weather.

Religious House: Atlanta

No Report

GLOBAL EAST

Australia

Religious House: Sydney

No Report

Malaysia

Religious House: Kuala Lumpur / Singapore

External: Sent George Halcombe and John Orjifham (Reg. Ped.) on a webbing trip to Bangkok for 10 days. Two well received presentations by the Crookers at Singapore Wesley W.S.C.S.

Internal: Beginning of new quarter Junior Structures which includes weekend curriculum and Monday afternoon Jr. collegium. David David Dharmalingam had his first by-line in the Malay Straits Time.

Contradiction: Regional staff for expanded quarter course schedule.

Western Samoa

Religious House: Samoa

External: Tropical storms Bonnie and Claire blew over Samoa and gave us a look at the Pacific's power to destroy.

Internal: We've spent the week writing a lengthy report on the past quarter.

Contradiction: The discontinuity of writing a quarter report begins to fade about the fourth day.

GLOBAL SOUTH

Kenya

Barnes Family:

External: Finally clarity on Move 222 which has been a mystery to us until the recent letter explaining it.

Internal: No report.

Contradiction: Moving "Move 222" by the day before yesterday.

ORDER BASE

External: New Week 2nd construct began with category of (1) Movement Mission including Continental Penetration, Children's Academy, Course Enablement, Order Work; (2) Order Training including Pedagogical Development, Graduate Training, Problem Solving Units, Missional Discontinuity.

Internal: First Ecclesiola meeting with College, Seminary, Sodality all in one evening

Contradiction: Finishing necessary constructs to continue broad quarter plans.

Reference

Reference: 2/10/52

Reference

Reference

Reference: 2/10/52

Reference: 2/10/52

Reference: 2/10/52

Reference: 2/10/52

Reference

Reference: 2/10/52

Reference: 2/10/52

Reference: 2/10/52

SECRET

Reference

Reference

Reference: 2/10/52

Reference: 2/10/52

SECRET

Reference: 2/10/52

Reference: 2/10/52



January 14-20, 1970

II-Start

WEEKLY REPORT: DEPLOYED ORDER

O God, who knowest us to be set in the midst of so many and great dangers, that by reason of the frailty of our nature we cannot always stand upright; Grant to us such strength and protection, as may support us in all dangers, and carry us through all temptations; through Jesus Christ our Lord. Amen. (The Book of Common Prayer; the Collect for 4th Sunday after Epiphany)

GLOBAL WEST

NORTH United States

Religious House: Chicago - South

External: Spent weekend making Move 222 forays into 4 different micros. The impact on all our regional colleagues can probably be best illustrated by the Naperville cadre's participation in a prayer vigil and their raising \$1,050 in 2 weeks; the positive effect on regional colleagues is more important than the money raised.

Internal: The power of making Move 222 calls constantly amazes us and pushes us to new depths of decision about our own lives.

Contradiction: Completion of Move 222 calling in the midst of Ecclesiola structures and weeknight school teaching.

Chicago - North

External: Sober exhilaration on going over the top for 222.

Internal: Experience of new liveliness in Daily Office following workshop on corporate symbolic life.

Contradiction: Time design for Ecclesiola in light of assignment to care meetings.

Chicago - Rockford

External: First PLC ever held in Rockford metro - 19 in attendance.

Internal: Ecclesiola experiment fully initiated.

Contradiction: Possible recruits for Base PLC were not pushed this last week in light of teaching and Move 222.

Religious House: Cleveland

(for Jan. 7 - 13) - misplaced by Base

External: Beginning of teaching quarter brought almost total House participation, with exciting results. Don Cramer and Lane Erskine sent to the West Coast to develop sources of money for Move 222.

Internal: Beginning of Ecclesiola experiment causes many shifts in time design.

Contradiction: Create NSV charts in Sedality out of the future and not out of the past.

(for Jan. 14-20)

External: Move 222 and Odyssey recruitment proceed together. Sub-sector coordinators training meetings at the House promise new decisions of new and old colleagues to pick up the Micro-net.

Internal: The children have decided to participate in Move 222 by after-school work and are excited to see the money accumulate.

Contradiction: Implement plan for total House-Local church participation, develop stance and style toward cadres and congregations.

EAST

Religious House: Boston

External: Weekend Odyssey completed with 32 participants; midweek clergy odyssey postponed to April as a sign of responding to Move 222. Planning underway for RPG at the House, 1/23 and 24.

Internal: Total mission energy of the House poured into broad-based regional visitation of movement families for gifts to Move 222.

Contradiction: Re-imagining the House in catalytic role of bringing into being the demand on particular regional families to be the new "global grassroots."

Religious House: New York

External: House extends itself in 4 directions: 222 Airraid calling, Rochester Region PLC recruitment, Long Island pre-penetration weekend, and Secular/Religious Discipline for NY Region established.

Internal: Complete College manual produced.

Contradiction: Nurture of key local churches.

Religious House: Washington

External: Visits within 4 of six metros with visits set for other 2.

Internal: Hosted first "Friar for a Fortnight."

Contradiction:

WEST

Religious House: Los Angeles

External: Mountains moved in Riverside. Region on edge of new poverty style (222)

Internal: Big Garage Sale -- a sign of stripping for action, relative to 222.

Possibility: Turning negotiable junk into hard cash.

Religious House: San Francisco

No Report

Religious House: Seattle

External: Total weekend, total house move on Regional colleagues- Purpose: Move 222.

Internal: Welcomed University of Washington's Ithaca Project colleagues to collegium. They presented models for their internal House structuring and external missional structuring. Overwhelmed by their presence; intimidated and excited by their model building capacity; confused at how to break loose their struggle with university/local church -- guilding/cadreing.

Contradictions: Move 222 Micronet calling. Keeping formulation from getting muddled up by fund raising; yet, knowing cruciality of involving our colleagues financially or we won't be here to enable the formulation, penetration and permeation.

SOUTH

Religious House: Atlanta

External: A new PLC graduate secured approval from his Board to use BI curriculum as a basic program at the Presbyterian camp which he directs.

Internal: Normal weekly structures were suspended to enable the full time and energies of the House to be expended in extensive regional phoning and visitation to raise over \$3,000 for Move 222.

Contradiction: Maintaining the total missional thrust of the House in the midst of continued all-out efforts on 222.

Religious House: Oklahoma City

External: Somewhat reluctant House development mendicants found spirit colleagues throughout the region in Amarillo, Tulsa, and Drumright willing to risk all (loans, insurance policies, etc.) for the sake of supporting the global spirit movement.

Internal: First corporate study weekend enabled interns and sojourners to incorporate the lives of the saints into the common memory through Nigg study.

Contradiction: Trying to stay on quarter missional timeline in spite of dissemination of forces on Move 222 Regional Blits.

GLOBAL EAST

Australia

Religious House: Sydney

External: Endings and Beginnings: (a) Summer '70 Melbourne finished with strong affirmation of emphases on NRM and Local Church. (b) Darwin 1 1/2 day course began with 38 enrolled: 22 Aboriginal and 16 White. David McCloskey, Russell Campbell, Kaye Hayes, and 3 Australians are faculty. (c) Preschool launched in Paddington with Jeanette Marks as supervisor.

Internal: Major evaluation and reconstruction of models of internal life. Signals Children's consensus to get rid of cat.

Contradictions: Space to accommodate expected new arrivals, and budget prediction that more than half of us might need to work out.

Malaysia

Religious House: Kuala Lumpur/Singapore

External: Return of team from Bangkok with grids, problemats and good news of many doors opened. Singapore cards and mailing up to date with contacts over 500 now. First weeknight course of quarter in Klang started off with Regional Pedagogue Dennis Dutton teaching.

Internal: New internal time schedule of two days in one working well as it becomes more of our every day life style. Another step was taken in our enablement plans as Wanda had her first day of substitute teaching in the International School in K. L.

Contradiction: Newly formed cadres moving on their own.

Western Samoa

Religious House: Samoa

No Report

GLOBAL SOUTH

Kenya

Barnes Family:

External: We attended (and taped for Bass) a lecture on African traditional religion given by Prof. John Mbiti who seems to be the current expert on the subject.

Internal: No report

Contradiction: Trying to plan coming 12 month with insufficient data.

ORDER BASE

External: Perkins School of Theology 10 day (5 "weeks") course offering their students 2 hours credit, pulling curriculum from the PLC, Church Hist., N.T., O.T., Ur images, Intellectual and Social Methods, with a strong emphasis on the Local Church. Exciting course at every point.

Internal: First full dress Ecclesia meeting of the quarter using the new one night construct; began Lachmann book; started trying to discover what a sodality is; and worked with category of "care" again in College.

Contradiction: How to organize and utilize Move 222 wisdom.

January 21-28, 1970

II-B-5

WEEKLY REPORT: DEPLOYED ORDER

O Lord, who hast taught us that all our doings without charity are nothing worth; Send thy Holy Ghost, and pour into our hearts that most excellent gift of charity, the very bond of peace and of all virtues, without which whosever liveth is counted dead before thee. Grant this for thine only Son Jesus Christ's sake. Amen. (The Book of Common Prayer; the Collect for the Sunday next before Lent)

GLOBAL WEST

NORTH United States

Religious House: Chicago - South

External: Completed another weekend foray for Move 222. The Chicago metro has been really penetrated these last few weeks.

Internal: Celebrated our House Church in Rockford, topping the goal for Move 222 a week early. We all have a new sense of seriousness about the task in the region after our close contact for Move 222.

Contradiction: Breaking open new areas while keeping old micros going with limited number of staff.

Chicago - North

External/Internal: Initiated new time design with Seminary/Sodality/College on Wednesday, celebrating our first guest night with a Red Ur meal during the College.

Contradiction: Conflict of evening cadre assignments with Division assignments.

Chicago - Rockford

No Report

Religious House: Cleveland

External: Week spent in recruitment of Odyssey and course participants and completion of Move 222.

Internal: Odyssey preparation demands total expenditure of all House members.

Contradiction: Maintaining Ecclesiola experiment in midst of overwhelming demands.

EAST Religious House: Boston

External: Weekend Regional Practices Colloquy dramatized new depths of extended collegiality. 14 metro coordinators forged penetration and formulation grids for the Region, course practices, and a new vehicle of Region's participation in the global movement, i.e. commitment to Move 222. Regional House visitation circuit continues in Portland, Manchester and Springfield metros. National teaching assignment to Milwaukee RS-1.

Internal: Final assault model in effect for Move 222 in the midst of re-establishing normal House structures.

Contradiction: Last lap 222.

Religious House: New York

External: Regional penetration of Long Island on Saturday by 11 Regional colleagues, 6 House colleagues, and one visitor from the San Francisco Region.

Internal: Implementation of children's curriculum with assignment of 3 Dorm-masters and 3 Pedagogues.

Contradiction: Pressure of physical plants and urgency of Regional mission continue to put creative strain on House personnel.

Religious House: Washington

External: Second week where visitation of 4 out of 6 metros accomplished; 25 guests to Saturday Fireside.

Internal: Divisions present goals, strategies, timeline to Collegium; children participate in Seminary/Sodality/College dynamics via meal structures and conversations.

Contradiction: To create the tactics necessary to bring off all time lines.

Simms Family: Boston

External: Attended the weekly cadre meeting of the Framingham parish and House Church of the Boston Religious House (which we are assigned by Base House to attend on a monthly basis).

Internal: Temporarily moved in with Johnston family, Framingham. Patricia has taken a few steps.

Contradiction: Harrison's college scholarship from a foundation is tied up in school legalities.

WEST Religious House: Los Angeles

External: Move 222 vast mailing to Region--giving all the possibility to participate.

Internal: Elaine begins job. Move 222 catalyst for grounding poverty chart.

Contradiction: House on verge of new transparent style relative to Region.

Religious House: San Francisco

No Report

Religious House: Seattle

External: Event of the week was total House meeting with Ithaca Project, a Movement Student Cadre which has been taking regional leadership in the Seattle area since its birth last July.

Internal: After four weeks, we have worked out most of the "bugs" in the Ecclesiola experiment and are ready to push on in depth to make it a viable experiment on behalf of the Local Congregation.

Contradiction: Maintaining regional relations and structures in the face of personnel demand for Move 222.

SOUTH Religious House: Atlanta

External: A meeting of Charlotte Metro leadership with 2 House members has established that metro as the focal point of Regional Development.

Internal: Implementation of the first section of an 8 weekend curriculum for House children, utilizing one adult and one teenager as pedagogues.

Contradiction: Shifting into RS-1 recruitment and enablement, while continuing Move 222 in full swing.

Religious House: Oklahoma City

No Report

GLOBAL EAST

Malaysia

Religious House: Kuala Lumpur/Singapore

External: Completion of first of two Pedagogy courses this quarter and an RS-1 in Johore Bahru.

Internal: Continued to hold internal structures in midst of consuming external assignments.

Contradiction: Getting new spirit deeps into our internal life and external thrust.

Australia

Religious House: Sydney

External: A week of reports and preparation. House briefing on Australian Movement in National, Regional, Metro, and Local Arenas. An evaluation of Summer '70 was held and report written. Our children began permeation of Australian school system. Rippel boys became first Americans to enroll in Paddington school and the eleventh nationality to be represented there!

Internal: We celebrated the arrival of the first Australian intern, Brian Stanfield, and Sojourner, Nicky Thompson. This made our workday of room and space shifting especially relevant.

Contradiction: Budget review shows House self-sufficiency requires 9 adults working to free 3 full time! Move 222 too!

GLOBAL SOUTH

Kenya

Barnes Family:

No Report

ORDER BASE

External: Sent Morrills and Oylers out to Japan. 5th City Board of Managers and 5th City Development raised \$1,000 on Friday to pay salaries.

Internal: University students purchased 1958 Cadillac hearse for daily trips to Circle Campus, etc; borrowed same for airport taxi for lively pedagogues who reported uncommon stance of distance on part of skycaps.

Contradiction: Moving beyond 222 for immediate and long range development.



January 28 - February 3

II-B-6

WEEKLY REPORT: DEPLOYED ORDER

Almighty and everlasting God, who hatest nothing that thou hast made, and dost forgive the sins of all those who are penitent; Create and make in us new and contrite hearts, that we, worthily lamenting our sins and acknowledging our wretchedness, may obtain of thee, the God of all mercy, perfect remission and forgiveness; through Jesus Christ our Lord. Amen (The Book of Common Prayer; the Collect for the first day of Lent/Ash Wednesday)

GLOBAL WEST

NORTH United States

Religious House: Chicago - South

External: Weeknight schools continue to the excitement of pedagogues; this being due to the seriousness of the participant's concern for the church and the course.

Internal: Went to House Church at Base to celebrate the end of Move 222. The whole House was addressed by our Order's ability to celebrate.

Contradiction: Keeping the micronet going, this week when all but one person is assigned to the Odyssey or working out.

Chicago - North

No Report

Chicago - Rockford

External: Spent last weekend in Penetration thrust in a Reorganized Church of Latter Day Saints congregation and found great openness and excitement particularly among "The Priesthood". They were especially excited to encounter a body of people who grounded scripture in a 20th Century context.

Internal: Mood was high after celebrating Move 222 going over the top at Base with the Order and North Shore and Chicago Houses. Move 222 really pushed us to see fund raising as spirit care for colleagues.

Contradiction: With Move 222 over, pulling off 8 weeks of penetration and formulation in 4 weeks remaining in the teaching quarter.

Religious House: Cleveland

External: Two visitation teams were sent out over the weekend while our second Odyssey was held at the House. Both thrusts were successful.

Internal: The push into the N.S.V. charts becomes more exciting after the Odyssey re-grounded in us the N.R.M. char's.

Contradiction: Creating an ordered House design in the midst of the discontinuities of the winter quarter.

EAST Religious House: Boston

External: Ongoing visitation in Boston and Hartford with special push on recruitment for Framingham RS-1; National teaching in Imaginal Education-Milwaukee, RS-1-Toronto, PIC-Syracuse, and Area East Consultation in N.Y.C.; Local Church Formulation Week in Methodist congregation in Gardner, Mass.

Internal: 222 wrap-up of final receipts, conversions, and dinner invitations to all visited; House units intentionalizing solitary office, college conversation, study and pedagogy constructs.

Contradiction: Re-construction of Framingham Sector College experiment; preparation for Spring Friars; and visioning for Spring Quarter in the Region.

Religious House: New York
No Report

Religious House: Washington

External: Guesting of two Buddhist monks and return visit and attendance at their service of worship.

Internal: Significant final session with Duncan book and experimentation with children's time design and conversation constructs.

Contradiction: Sending more troops out to work while maintaining intensified doing in the Region.

WEST

Religious House: Los Angeles

External: Spirit Pioneers (Regional women) began second quarter of struggle with image of a new woman.

Internal: New decor went up for the Tuesday night Secular/Religious Discipline. Rettigs celebrated 5th anniversary and Jessica begins to walk.

Contradiction: How to perk up and channel the lucidity of the clergy.

Religious House: San Francisco

External: Massive PLC recruitment plus Move 222 Blitz broke House and Region loose for radical intensification of missional activity.

Internal: House Church with 30 people present to celebrate Move 222 - ALL IS POSSIBLE!

Contradiction: How to radicalize formulation and permeation? How to create a vision beyond June 15, 1970? How to practically assign troops in midst of economic demands to sustain mission? How to sail calmly toward the abyss?

Religious House: Seattle

External: Total House worked with Regional colleagues on RSTIIC recruitment blitz. 18 teams out calling all day Saturday, reporting to "central control" hourly, and completing the day with a spaghetti supper celebration in the "war room" reporting a 40% positive response--31 paid registrations in hand--course is in three weeks.

Internal: Welcomed David home after 3 weeks at mini-academy in Detroit--all shared his team's enthusiasm--great to have House operating at full strength again.

Contradiction: Finding space for all the people who want to attend our second Odyssey, February 6-8.

SOUTH

Religious House: Atlanta

External: Total House involvement in weekend RS-1 recruitment as part of a comprehensive push on the Atlanta Metro, a mid-week Metro consult in Columbia, and a report on community activities and trends in the youth culture by the 12th Gate Cadre signaled a push to deepen grassroots regional leadership.

Internal: House 222 celebration marked the decision to receive the gift and burden of Movement finances as "fate" that becomes "meaningful destiny."

Contradiction: Changing the image of recruitment from "getting enough bodies to fill a course" to seeing that recruitment is building the global Movement.

Religious House: Oklahoma City
No Report

GLOBAL EASTAustralia

Religious House: Sydney

External: 45 attended Local Congregation Consultation at Scot's church as follow-on to Engleman's visiting pastorate.

Darwin: 14-day course ended well, promising colleagues for Jack Goodluck in Movement development of North Australia. George Winunguj operating strongly as Aboriginal staff member.

Internal: Month-long planning sessions for year begin simultaneously with Mendicant Mercenary Month in which all members work out. James and Bronwen Monro have arrived for one year stay.

Darwin: Kaye Hayes and Russell Campbell now settled in Darwin as the House-In-Extension over 2,500 miles.

Contradiction: Region/Metro/Macro/Local Formulation. Exciting intuitions, great possibilities, but no models yet.

Malaysia

Religious House: Kuala Lumpur/Singapore

External: Sending out of Joe Crocker and Kjell Knutsen to Indonesia and an RSIIIA in Penang.

Internal: Experiencing pain of sending out first Asian Intern David Dahrmlingem.

Contradiction: Keeping Regional structures moving while engaged in extra Regional Penetration in Indonesia.

Western Samoa

Religious House: Samoa

External: School has begun again with all its accompanying struggle and chaos.

Internal: A surprise shift in housing assignments moved Doug to another part of the campus and radically altered our corporate living situation.

Contradiction: Outside of teaching school, the possibilities for mission are still not at all evident.

DEPLOYED FAMILIESKenya

Barnes Family: No Report

Boston

Simms Family: No Report

ORDER BASE

External: Finished 10 day course at Pius the Twelfth, Religious Education Center-Detroit and 3 day course (66) at Iliff School of Theology-Denver; a course at Toronto; 3rd weekend at Winnipeg.

Internal: 222 celebration at House Church usurped all other regular events; consisting of a report-\$227,684.16 raised; toasting at 10 key dates and events through 222.

Contradiction: How to sustain the financial momentum of Move 222.



February 4 - 10

II-B-7

WEEKLY REPORT: DEPLOYED ORDER

Almighty God, who seest that we have no power of ourselves to help ourselves; Keep us both outwardly in our bodies, and inwardly in our souls; that we may be defended from all adversities which may happen to the body, and from all evil thoughts which may assault and hurt the soul; through Jesus Christ our Lord. Amen. (The Book of Common Prayer; the Collect for the second Sunday in Lent)

GLOBAL WEST

NORTH United States

Religious House: Chicago - South
No Report

Chicago - North

External: Massive penetration weekend; excellent pedagogical training method for both House members and regional colleagues as well as excellent recruitment method.

Internal: The corporate decision and action of the House in bringing off Guest night holding up the gift of the Youth in the conversation.

Contradiction: Seeing the need for recruitment and the situation of troops otherwise engaged.

Chicago - Rockford

External: RS-1 follow-up in Peoria.

Internal: Celebration of Ash Wednesday. What does it mean to push into the wilderness for 40 days meeting the 3 temptations?

Contradiction: What to do with children with everyone working out?

Religious House: Cleveland

External: Sent out weekend recruitment team to Columbus and participated in local cadre structures on Tuesday night after intensive preparation.

Internal: Preceded House Church this week with a cocktail hour and celebrated our decision to say yes to the nitty gritty demands.

Contradiction: To enable Cleveland Metro to see itself totally responsible and not collapse into parochialism.

EAST Religious House: Boston

External: Local Church Formulation Week completed with Saturday's celebration in Gardner, Mass. with burning of various League documents and local artifacts. Regular visitation circuit continuing in Portland, Manchester and Springfield; national teaching of PLC and RS-1 in Up-state N.Y.

Internal: Tuesday evening dinner guests received in 222 follow-up moves; week long coordinated children's curriculum initiated by unit assignments; and interior discipline of House members enabled thru solitary office and specific accountability models.

Contradiction: 222 wrap-up; House Friary, Odyssey and Spring quarter recruitment; Framingham parish formulation planning.

Religious House: New York

No Report

Religious House: New York
No Report

Religious House: Washington
No Report

Simms Family: Boston
No Report

WEST Religious House: Los Angeles
External: First meeting of Secular/Religious Discipline with six new Regional colleagues participating.
Internal: Pre-lent House cleaning model actualized - we cleaned the yard.
Contradiction: Re-activating many old clergy grads.

Religious House: San Francisco
External: Sent House visitation team on week trip to redwood country: Chico, Redding, Eureka, Ukiah for penetration/formulation. Courses beginning to systematically come off.
Internal: Initiated separate weekend construct: regional visitation, metro formulation, micro permeation, House (n)ablement, and youth education. Shirley McCabe Sejourning and John Wainwright read Old Testament in Daily Office.
Contradiction: Recruiting interns for Base and Houses for 1970-71. Brooding on Summer Regional Construct.

Religious House: Seattle
External: Apartment manager assigned painters to scrape House all day Saturday of Odyssey; recovering from that, we worked at Regional Presidium on Monday afternoon on PIC recruitment model and planning for Regional Council.
Internal: As Odyssey participants were leaving and the children were returning from their Odyssey, our new York/Month, Bernice Hecker (from Ithaca Project, U of W) arrived--just in time to "break down" a dorm and set up her room.
Contradiction: Micro net care for colleagues "east of the mountain" plus continued effort in Seattle metro.

SOUTH Religious House: Atlanta
External: Intensified RS-1 recruitment out of metro grid along with trips to Alabama and S.C. provided research data for preliminary work on a more comprehensive recruitment model.
Internal: College meal with 3 adults present, intensification of push into Duncan and creation of Sodality rituals brought greater self consciousness to Ecclesia.
Contradiction: To meet the demands upon the House, to enable course recruitment by being present across the region while not collapsing House structures.

Religious House: Oklahoma City
External: Were present for 3 day lecture series at Perkins ministers week in Dallas where we attended 7 conference receptions, 1 banquet, made 8 visits, 25 telephone calls, and shook hands with 500 people. Emerged with new possibilities in Texas, Oklahoma, and Arkansas.
Internal: 11 cadremen from First Christian Church in Tulsa visited House-College and delved into spirit deeps.
Contradiction: Determining priorities between course recruitment and ecclesiastical permeation.

GLOBAL EAST

Australia

Religious House: Sydney
External: First 5 am meeting with Movement colleagues explored nature of Extended Covenant for regular weekly meeting. Our contact with local churches includes weekly attendance

by assignment at four congregations for public worship, and 2 congregational cadres; we have heard of two churches in this metro developing the extended Sabbath.
Internal: Missional planning brought exciting insights into Australia's "Spirit Topography" and into the possibilities of a net of signal local congregations.
Contradiction: Handling immediate demands while annual plans are being worked out.

Malaysia

Religious House: Kuala Lumpur/Singapore
External: Continuation of penetration trips to Indonesia, Medan and Bangkok.
Internal: House celebration of Chinese New Year.
Contradiction: Enabling regional leaders to plan and recruit for Regional meeting the middle of February.

Western Samoa

Religious House: Samoa
No Report

Hong Kong

International Team: Fischels/Vances
External: Have completed first of a long string of courses extending the month of February.
Internal: It's a long flight-but you can make it if your digestive capabilities hold out. Hong Kong cadre family worship structure holding team in the corporate pole.
Contradiction: Complexity of task in Hong Kong not yet resolved into a series of motivating images.

Japan

International Team: Morrills/Oylers
External: Increasing number of courses being set up for both Western and Japanese communities covering student, church laymen, and clergy; Morrills calling on key contacts in Tokyo and preparing for courses with "latent" cadre while Oylers doing same in Kobe-Osaka area-visit to Nagoya produced three Japanese courses.
Internal: Celebrated Japanese cultural life by experiencing historic Japan thru 5 1/2 hours of Kabuki Theatre and the secular urban world of Japanese today with visit to the entertainment district of Shinjuku.
Contradiction: Maintaining corporateness in the midst of diverse living arrangements and the dispersion of the team.
Signs: Japanese and Western Spirit men picking up the task of formulating the movement here.

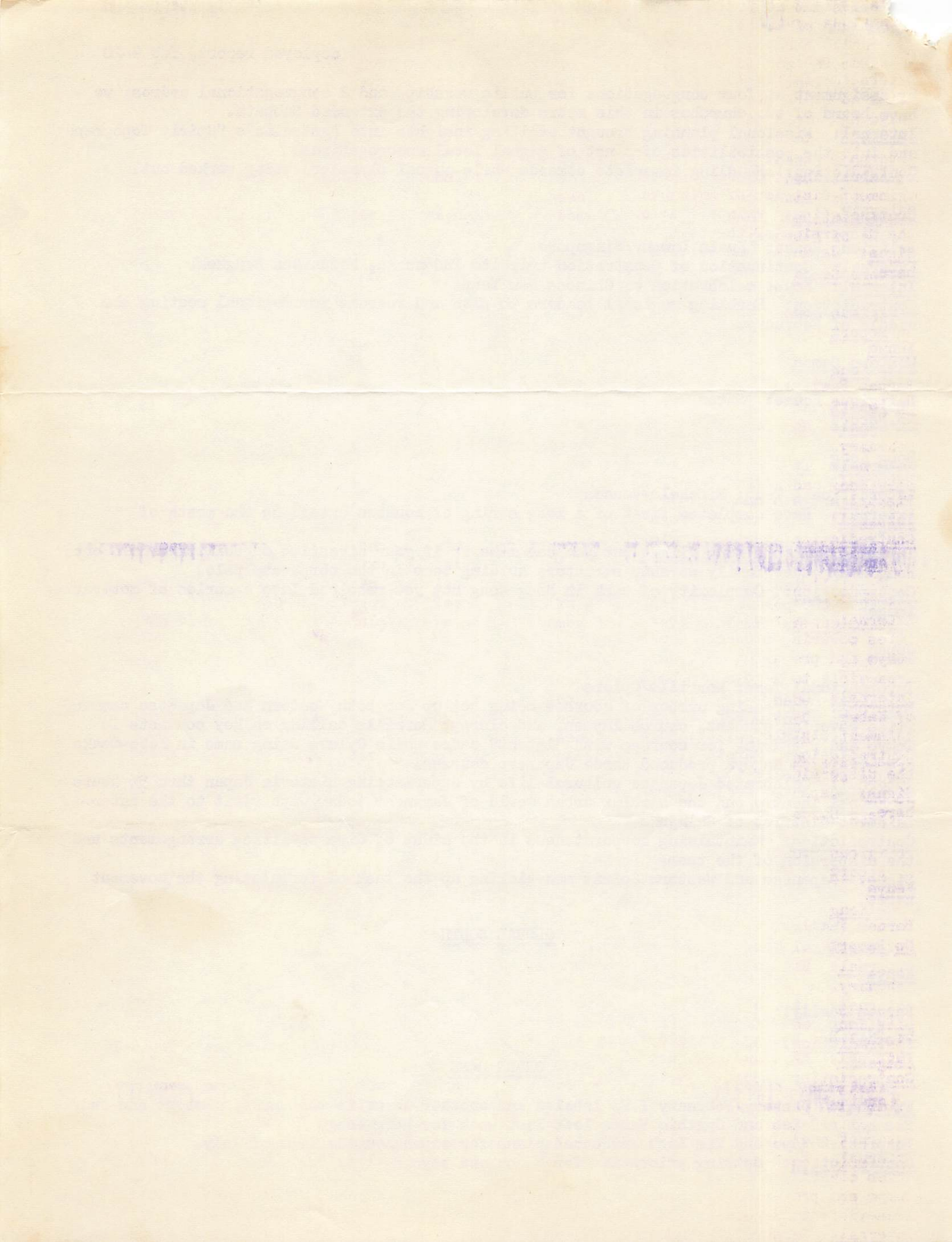
GLOBAL SOUTH

Kenya

Barnes Family:
No Report

ORDER BASE

External: January/February I.E. labeled and another issue in the works. Robert and Judy Fischel and Bob and Cynthia Vance left last week for Hong Kong.
Internal: Kaye and Tim Lash announced plans for expansion the last of July.
Contradiction: Setting priorities for March and beyond.



February 11 - 17

II-B-8

WEEKLY REPORT: DEPLOYED ORDER

We beseech thee, Almighty God, look upon the hearty desires of thy humble servants, and stretch forth the right hand of thy Majesty, to be our defence against all our enemies; through Jesus Christ our Lord. Amen. (The Book of Common Prayer; the Collect for the third Sunday in Lent)

GLOBAL WEST

United States

Religious House: Chicago - South

External: Started new micronet calling team in micro S4 by discovering lost colleagues.

Internal: Spent weekend studying China and saw movie "Z". We were pushed to see the revolution needs to be speeded up and requires our death.

Contradiction: Catching up to complete division timelines for the quarter which were put aside during Move 222.

Chicago - North

External: Recruitment call on the study group at Evangelist Covenant Church in Winnetka using informal conversation techniques.

Internal: Spirit Valentine celebration/elementary children have become accomplished 6th liturgists.

Contradiction: Lack of follow-up procedures for 2nd calls on clergymen.

Chicago - Rockford

External: With great rejoicing we welcome Barbara Mardis, our first regional pre-school trainee who is now teaching in the House with House children five days a week/8:30-4:30.

Internal: Marge Davis began working with the Dept. of Children and Family Services licensing children's institutions and agencies.

Contradiction: Transportation becoming block with all cars over 90,000 miles and needing major repairs.

Religious House: Cleveland

External: Odyssey follow-up initiated new grads into the Secular Religious Discipline. Massive penetration push into Columbus promises exciting breakopen course.

Internal: Children's Collegium experimented with creation of NSV by participating in a town meeting and assuming roles of leadership.

Contradiction: Intentional time rhythm of continuity in midst of discontinuity of radical engagement with the nitty gritty.

Religious House: Boston

External: Preparation for February Friary, metro co-ordinators meeting, local church formulation week in Mystic, Conn., and regional and national Presidiums in March. Nat'l. teaching assignments to Springfield, Mass., Youngstown, Ohio and Camden, N.J./RS-1s and PIC.

Internal: Report from Bob Johnston on local church tactics model recently formulated in Chicago; House education involves significant reflection on nature and dynamics of religious house resulting in a new mission model.

Contradiction: Friary/Odyssey recruitment; 222 follow-up.

Religious House: New York
No Report

Religious House: Washington, D.C.
External: Intensification of knowing highlight--Imaginal Ed. course with 32 participants; intensification of doing--continue visitation in 3 metros every week.
Internal: High excitement in House 2-session study of Imaginal Education paper written in Summer '69; children's trip to Capitol addresses guards at Senate and House of Representatives (permeation troops in training?).
Contradiction: How to intensify intensification of K and D in the midst of anticipated discontinuity.

Simms Family: Boston

External: Harrison has been asked to lecture in the Political Science and the French departments.

Internal: Obtained 2 1/2 room graduate married students apt. (Address/176 Curtis St., Somerville, Mass. 02144, Phone: 617-776-2388).

Contradiction: Finding Nancy a job and corresponding child care structures for Patrice.

WEST

Religious House: Los Angeles

External: House participated in Regional calling day in Oxnard.

Internal: House anxiously awaiting delayed Move 222 celebration.

Contradiction: Planning and recruiting an Odyssey.

Religious House: San Francisco

External: Revolutionary romanticism transformed into revolutionary power via CSIXIC and "Easy Rider".

Internal: Tim Stewart and John Wainwright now RS-1 grads.

Contradiction: Decision to live at level 3 - ie interiorization of the Word of Jesus Christ.

Religious House: Seattle

External: Regional Faculty Pedagogy Guild in Seattle plus income mission assignments left some troops in this weekend for Sunday night House Church. Others made it back through snowstorm from Pasco by lam, just before the pass was closed, and in time to open the door for Don who was returning from RS-1 at Graceland College in Iowa.

Contradiction: Maintaining all systems "Go" while intensifying micronet.

SOUTH

Religious House: Atlanta

External: Formulation trips to the Savannah metro picked up men who are willing to set up and recruit for courses in 3 cities.

Internal: The weekend was marked by the departure of the Henry regional intern family and the assigning of all but one House adult to national and regional teaching and regional formulation.

Contradiction: Picking up an increased demand for regional formulation in 4 metros, while preparing for an Odyssey on the 8th weekend.

Religious House: Oklahoma City

No Report

GLOBAL EAST

Australia

Religious House: Sydney

External: Phone accountabilities this week from Auckland, Perth, Melbourne, Adelaide, Broken Hill, with letters from Brisbane and George Winungun visiting from Darwin give promise and demand of year's formulation. Local cadre meetings of mega, metro, and congregation.

Internal: Isobel Bishop started work in office of large bronze foundry. In Darwin Geneva and conversation at breakfast intrigues other inmates of the Baptist Hostel
Contradiction: Existential question: Which meeting is this and am I wearing the right hat?

Malaysia

Religious House: Kuala Lumpur/Singapore

External: Return of Medan and Bangkok teams/outstanding job done by Rev. C.A. Watson in Medan teaching 40 Batak Churchmen. PLC in Bangkok of Seminarists, priests, nuns, and missionaries plus visitation opened up other doors for April penetration there. In K.L., Marge Knutsen spoke to the Methodist Girls School Assembly on "The New Woman".

Internal: House celebration of "Hari Raya Haji" with regional colleagues included children riding an elephant.

Contradiction: Beefing up of K.L. and Singapore to push into the last half of quarter's courses.

Western Samoa

Religious House: Samoa

No Report

Hong Kong

International Team: Fishels/Vances

External: 4 courses completed...CSI/Ur Images/Pedagogy/Community and Polis. Good work done on H.K. 5 cities traits. Anticipate 7 Chinese and 7 Westerners in next weeks PLC.

Internal: Depth conversations preceding inauguration of experiment in Religious House. Tong move into Shum Oi Church tomorrow.

Contradiction: Many complexities to be explored in midst of hard teaching.

Japan

International Team: Morrills/Oylers

External: Formulation concentrated in the area of recruitment in Kobe (2 cadre meetings) and Tokyo (all day meeting of 13 people at Quimby's). Morrills left for Sendai for 3 days to meet with Toeda and recruit.

Internal: Team as whole met only 2 days these past 2 weeks because of special trips.

Contradiction: Question of housing: Need base of operations but also anxious about how long to remain in colleagues homes.

Signs: Scheduled contacts and consultations this week, both in Sendai and Tokyo, are almost entirely with Japanese.

GLOBAL SOUTH

Kenya

Barnes Family:

No Report

ORDER BASE

External: 27 courses across the country.

Internal: Beginning to feel at home with the 3-in-1 Ecclesiola meeting.

Contradiction: How to finance and man the global demands.

February 18 - 24

II-8-9

WEEKLY REPORT: DEPLOYED ORDER

We beseech thee, Almighty God, look upon the hearty desires of thy humble servants, and stretch forth the right hand of thy Majesty, to be our defence against all our enemies; through Jesus Christ our Lord. (The Book of Common Prayer; the Collect for the third Sunday in Lent)

GLOBAL WEST

NORTH United States

Religious House: Chicago - South

No Report

Chicago - North

External: Addition of regional children to weekend RS-1 course for children of 3 houses/ enabled parent's participation in Odyssey.

Internal: Participation in one in three House Church at Rockford.

Contradiction: Odyssey exposed inadequacy of secular/religious discipline creating demand for a new structure.

Chicago - Rockford

External: Odyssey in Rockford for 20 regional colleagues with all 6 metros well represented.

Internal: Children's RS-1 here for our children and regional colleagues who were at Odyssey. Found children know all the pat answers and need to be pushed to ground.

Contradiction: Follow-up model for weeknight schools which end this week.

Religious House: Cleveland

External: Participation in local church cadres adds new dimensions to our experiment in Ecclesiola and time design. Last Sunday two intern families transferred membership to their new "local" church.

Internal: Duncan grounded in struggle of House in area of obedience of children and creation of children's discipline model.

Contradiction: Planning for March evaluation and discontinuity.

EAST Religious House: Boston

External: National teaching assignments to Area South RS-1 and PLC; regional visitation in Portland, Manchester and Springfield Metros; planning meeting for local church formulation week in Mystic, Conn.; and preparation for Boston Regional Council, March 7.

Internal: Permeation Division completes initial model to hold an analysis by House members of their employment situations. 3 new families received into the corporate body at House Church Sunday: the Carroll Kell family as new interns and the Charles Benson and Fred Bourjelais families as friars/(10 adults and 6 children). Study of Luekman and Gospel of John begun. Enablement assignments re-gestalt and distributed to units.

Contradiction: Odyssey recruitment; penetration of Providence Metro; and signal ecum. parishes in region.

Religious House: New York

External: House participates in radical deployment to New York City RS11A, Montreal RS-1, Indianapolis RS-1, Chicago Base PSU, Philadelphia recruiting blitz, and Conn. local churches: at same time.

Internal: Greg Pierce serves as symbolic head of House during part of weekend.

Contradiction: March Calendar.

Religious House: Washington, D.C.

External: Odyssey weekend highlighted by participation of 3 colleagues from Pittsburgh; deep and serious struggle and also exciting creativity in Myth, Rite, Symbol on P-C-O charts.

Internal: Children's Odyssey in Baltimore complete with radical time design and monk's bowls; also House celebration which include movie "Z". We urge all Movement colleagues to see it!

Contradiction/Imperative: To create necessary Myth, Rite and Symbol to enable chastity-singleminded thrust in response to radical, intensified demands.

Simms Family: Boston

External: Harrison attended meeting of Black Students Alliance, Y. Social Alliance, S.D.S.

Internal: Began family 13 week curriculum.

Contradiction: How develop colleagues in liberal and pseudo-revolutionary atmosphere of University and how maintain patience in the meantime.

Religious House: Los Angeles

No Report

Religious House: San Francisco

No Report

Religious House: Seattle

No Report

Religious House: Atlanta

External: Finalization of arrangements for Seminary Administrators' dinner. Team on three day trip to Raleigh Metro for nurture - visitation trip to emerging recruiters. Imaginal Education course at Oxford, Ga.

Internal: Visit by David Scott and David Zhart with reports on activities in N.Y. City and Boston Regions. Tribal resettlement for single family units including most of teen's. Multi-person family units now have two rooms!

Contradiction: How to avoid escaping into immediacies in order to hide from the impossible demands of an overwhelming Universe.

Religious House: Oklahoma City

No Report

GLOBAL EAST

Australia

Religious House: Sydney

No Report

Malaysia

Religious House: Kuala Lumpur/Singapore

External: Regional meeting in K.L. - planning for next quarter, worked on 10 point plan for the Renewal of the Church/National and Local, and an emerging demand to represent the whole region. Return of Indonesian team - reporting on initial penetration begun in the

deployed report, feb 18-24

3 regions/Medan, Djakarta, and Manado with the completion of five courses (110 total participants with help of two ITI grads teaching). Formation of a new cadre in Johore Bahru.

Internal: House hosting of Thelma Williams, Christian Education Director of the International Church in Bangkok - a key leader of course recruitment there.

Contradiction: Model for implementing the cadre care plan of all the cadres in Malaysia/Singapore by the K.L. cadre which came out of the Regional Meeting.

Western Samoa

Religious House: Samoa

No Report

Hong Kong

International Team: Fishels/Vancea

Report below.

Japan

International Team: Morrills/Oylers

External: Both ITI graduates committed to teach with team in courses for Japanese. One teaching in Sendai and one in Nagya.

Internal: Celebrated House Church with two Tokyo families who are colleagues--new experience of intentional life and new vision of accountability.

Contradiction: Demand for a new story for the missionary and an adequate story for the western business community through which to articulate their role as churches in a foreign culture.

Sign: Dawning realization on the part of Japanese colleagues of the possibility of a net-work of spirit collegiality.

GLOBAL SOUTH

Kenya

Barnes Family:

No Report

ORDER BASE

External: Move 222 records wrapup, key punching/etc. finished through Jan. 31, through massive interdivision efforts.

Internal: Another announcement of an Order addition - a la the Ron Cluts family - in Aug.

Contradiction: March planning.

Hong Kong:

External: PIC completed with 19 in attendance - 8 Chinese. 3rd Assembly of Hong Kong Ecumenical Renewal Movement released to history with 64 in attendance - 20 Chinese.

Internal: Cynthia shopping in broken Cantonese learns difference between ancient eggs and chicken eggs! House life and life questions are global in scope. Humanness is the (Un)-common denominator! Praise God.

Sign: A short visit to a refugee villiage to meet the dying remains of the K.M.F. army. Old men now, with a dead vision of a missed revolution. Perhaps Gene Mars is right when he insists about the once-and-for-all-ness of that "sometimes" in the March paper.