

If you live according to my laws, if you keep my commandments and put them into practice, I will give you the rain you need at the right time; the earth shall give its produce and the trees of the countryside their fruits; you shall thresh until vintage time and gather grapes until sowing time.
Leviticus 26:3-5

SPHERE SOUTH

LATIN AMERICA
CARACAS

Religious House: Caracas

BLACK AFRICA
NAIROBI

Religious House: Nairobi

External: An encouraging letter from a contact in West Africa arrives (he is doing teacher training and is concerned to upgrade training for church leadership) and dinner with Catholic priest who is ready to go to the Academy in Chicago hold the continental/regional poles of mission

Internal: Week II was spent preparing a proposal for the Nairobi International School and becomes an exercise in rehearsing how much we really do know about education and what it means to engage the secular structures.

Contradiction: Our timelines all say yesterday or today; most people's timelines say tomorrow or next week. What is the Lord's?

SPHERE EAST

SUB-ASIA
BOMBAY

Religious House: Bombay

External: Ahmedabad RS-I with 21 participants creates a great sign for newly formed Regional cadres wrestling with "doing it right now that we have decided to awaken the church." Bombay cadre includes accountability for 23 colleagues as new mood of confidence takes over.

Internal: Operation New Day takes the promise of the figure 100,000 being materialised as letters begin to flow out of House as the consequence of 'watching' on Week II.

Contradiction: Now that we have all got jobs how do we focus our energies and spirits on catalyzing Bombay especially in the arena of penetration

MADRAS

Religious House: Hyderabad

External: Two priors sent out on 3-week and 2-week treks to recruit one course, teach three others and nurture the grads in the Area.

Internal: A week of guests, whenever we turned around, culminated in an RS-I planning PSU with regional colleagues. House celebrates the birth of Rachel Pandita Holmes, 7 lbs. 8 oz, on July 28, 1973.

Contradiction: Daring to paint a bold enough vision for our colleagues so their hovering is transformed into radical life engagement

DELHI

Religious House: Delhi

External: Uncovered an old RS-I grad, new resident in the unpenetrated region of Agra, who provided meals and lodging for the trekking faculty and a Baptist mission jeep for RS-I recruitment. Site for Week 8 Delhi residential RS-I confirmed. House shifts into high gear.

Internal: The send-out celebration for the six-member Bruce Martin family fills the empty spaces with awe as the Martins continue their trek homeward to Australia en route from Edinburgh. House finds Tillich's sermon "Escape from God" helpful imagery for journey of week.

Contradiction: Now that we've expanded to vacant apartment across the street, how do we get the maximum missional use out of our space?

SEAPAC
HONG KONGReligious House: Hong KongReligious House: Manila

External: Sunday night phone call from Davao region raises ITI participant registrations in-hand to 152. Development team visits sugar baron in Bacolad with sweet leads to large gift. Decor production night and day concretizes the fact that Aug. 12 is in two weeks.

Internal: The Quimby family returns non-stop from Brussels. Ecclesiola takes House and 9 guests to Europe via Irish stew, conversation, and workshop and as consciousness is stirred so is the offence of going global. House delighted to find referendum day breakfast on patio adding a touch of celebration to serious business at hand.

Contradiction: Finding ourselves deeply addressed by the wonder of ITI preparation, we become aware that regional grads are missing a chance of a lifetime and ask why we haven't built more structures to engage their time and energy and electric saws.

Religious House: Davao

External: Visit to Nabunturan catalyzes meeting of former ITI grads with future ITI grads. Complete financial battleplan with Nabunturan recruits to Basic ITI.

Internal: Guest celebrant at House Church (fifth consecutive week) is former bishop of UCCP for Davao region (Mindanao island). Self-consciousness deepens with study of "Christ in History."

Contradiction: Not letting the 'no's' said determine the future.

Religious House: Cebu

External: This week represents breakthroughs in ITI: Manila recruitment as ecumenical relationships in various metros are enhanced.

Internal: Representatives of the House visit the family of Fr. Ramon Pet, who was in attendance at S'73 from the Cebu region, to represent the Order on the occasion of his father's death.

Contradiction: Orchestrating final count-down for the Manila ITI to ensure realizing all target figures.

Religious House: Taipei

External: Unexpected contribution of \$300 to ITI programs reminds us of unlimited resources as we are in final steps of getting Manila ITI participants off to the Philippines

Internal: Numerous contacts made, including 6 embassies and 10 religious

Religious House: Taipei (continued)

orders, finally nets an adequate facility for Taipei Religious House. More excitement when House member offered teaching position at Roman Catholic School with American salary scale.

Contradiction: Coordinating and expediting red tape to get participants off to Manila.

Religious House: Tainan

SINGAPORE

Religious House: Singapore

External: Joe Thomas and Jim Oberg develop ITI development strategy for the Area through new breakopens and visits to Kuala Lumpur. House celebrates with regional colleagues the Chinese wedding of Newman and Nancy Tew.

Internal: The House celebrates the birth of a daughter to the Huang Hsing Peng family, born Friday 27 July, 7 pounds 11 oz.

Contradiction: Seeing the possibility of doing necessary PLC groundwork in midst of full time ITI demands.

Religious House: Kuala LumpurReligious House: Jakarta

External: Last of the colleagues to the Advanced ITI from Jakarta sent off. Preparation for Basic ITI in KL underway.

Internal: Being a travel agent for colleagues and preparing the inn for intransit participants.

Contradiction: Maintaining accountability with only one person.

SYDNEY

Religious House: Sydney

External: The minister of Aboriginal Affairs of the Australian government invited us to lunch and said an unqualified 'yes' to our participation in a project in North Australia. Twenty-five people from 6 congregations attended a pre-galaxy meeting. Sydney galaxy is set.

Internal: In the midst of power restrictions and beer strike House celebrated quarter with an other world cabaret.

Contradiction: Not being convinced that the Academy will come off and that now is the time to throw down our gauntlets and engage the giant

Religious House: Brisbane

External: First penetration foray this year into Southport polis discovers prospects who have been waiting and grads who have been watching for the call to rise again.

Internal: Reflections on priors' spins, hosting 3 guests at Ecclesiola and discovering the particular address of the GOD lecture for Queenslanders in pedagogy push our understanding of being signal collegueship embracing all time and all space.

Contradiction: Finding the pitch that allows men to risk within the context and on behalf of the structures that sustain i.e. what are the signs that evoke the decision to leave the land of Goshen.

Religious House: Darwin

External: Area news of postponed Academy means return of first prior from trek. Possibilities: Alice Springs, RS-I; Tennant Creek, RS-I request and Anglican parish council consult; Kathrine all day worksho

Religious House: Darwin(continued)

Internal: Extensive planning strategies and tactics to pull off future courses including LENS. Participated in first of St. John studies. Also, Week II study SK's 'Purity of Heart is to Will one Thing' gave whole new grasp of dynamics of sanctification and radical engagement
Contradiction: Having taken the time to think ourselves through, now we have the clarity that urgent tactics should have been done yesterday.

Religious House: Perth

External: Sent RS-I and PLC brochures to printer. Announced change in Academy dates, releasing prospective Participants' energy for quarter course recruitment.
Internal: Landlord's suggestion that the House may be sold caused abandoning plans for total house repainting; yet painting of mission room walls and main floor woodwork and doors shifting the use of common rooms, and creating gigantic region grid and Resurgence banner, mark House's decision to be the presence of possibility in Perth region.
Contradiction: Beginning to believe the Church's story that nothing can come off in Perth, hence we are increasingly reluctant to trust our own quarter timeline, and failing to do advance set-up, thus producing last minute scramble.

Religious House: Adelaide

Religious House: Melbourne

Religious House: Majuro

SUVA

Religious House: Apia

External: Hierarchy letters from Tonga and Fiji expressed a collegial stance toward EI and interest in this year's ITI. Guest night send out of grad and wife who are assigned to a Samoan congregation in Long Beach, California.
Internal: Experienced absolution and were awed by the journey of the movement during the past year as we spent Week II reflecting on the state of the movement in the South Pacific.
Contradiction: Being the style that allows fellow staff members to face their everyday problems without collapsing.

TOKYO

Religious House: Tokyo

External: Discovered 70 new prospects for ITI recruitment in old friends of the movement, and sent off six Japanese to the Advanced ITI in Hong Kong. Possibility also exploded in the receiving of new development resources, and cash in hand.
Internal: Ten-hour celebration in which we explored the mystery of old Japan in the Asakasa temple/"downtown" entertainment area, sped down the Sumida River in two motorboats through central Tokyo, ate dinner at the top of a new "uptown" office/shopping building, and saw a samurai movie where the Ronin wins with an unlikely piece of wood.
Contradiction: Enabling 3-week seminar decisions 2 weeks before the ITI in a country where things are always scheduled in advance.

Religious House: Sendai

External: Finished teaching in two-week English training camp with 21 college students speaking 'the global language' and several interested in future courses or ITI.

Internal: Guests continue to flow in, participating eagerly in anything that is going on. Regional colleague gives us one-month youth sojourner as he entrusts his son, Shinichiro Sasaki, to our care while he goes to ITI.

Contradiction: In the midst of last minute ITI preparations how to push beyond August 12 to the fall.

Religious House: Seoul

External: House celebrates the miracle of a three-year multiple passport granted Rev. Kang Byoung Hoon.

Internal: Bob and Carol Johnston join House for Week II while picking up Japanese visa in Seoul and report on the progress of ITI; Fukuoka for guests gathered at House Church

Contradiction: Economic tyranny that gobbles resources needed for cross-cultural nurture.

Religious House: Fukuoka

External: Trip to Nagasaki, strongest Christian city in Japan, yields fresh ITI prospects, and signals the emergence of the region's sole ITI grad, an active metro coordinator. Exploration and analysis of ITI site yields harvest of college student cook for two weeks.

Internal: Key missionary couple for guest night increases collegiality and authorization by the international community. Largest House Church takes place with 11 present, as Don McClain presents the Religious House with the Iron Cross.

Contradiction: Finding the key to enable contacts to re-decide about their summer plans in order to attend the ITI.

Religious House: Osaka

External: Intensive week of ITI calling sees visits with men from all 6 metros. "Yesses" "I'll clear my schedule" and promises for 2 fall PLC's results. (one a clergy course, the other for laymen)

Internal: New job - teaching English to a bakery - opens in-kind contributions possibility.

Contradiction: Immediate recruitment crisis has blocked vision of ITI as whole strategy, including funding.

SPHERE WEST

EUROPE
LONDON

Religious House: LondonReligious House: Manchester

NORTH AMERICA
WINNIPEG

Religious House: Winnipeg

External: House prior commissioned to preach in local galaxy church while pastor is away, Galaxy marks step on journey by gathering while House members are at S'73; Galaxy church boat ride with parish glimmerings of Ecumenical Parish.

Religious House: Winnipeg (continued)

Internal: Area Winnipeg meeting draws self-consciousness to areal relationships, House celebrates with S'73 cabaret, floors sparkle with new paint and varnish as House returns en masse from S'73 compliments of regional colleagues

Contradiction: How to shift gears and mindset from S'73 journey to practical implementation and course recruitment within the context of the historical church.

Religious House: Anchorage

External: Implementing summer formulation models with 11 guests at House Church, steering one towards CSIIIA fall, and hearing a report on the first two weeks of S'73.

Internal: Once again the media of man stirs excitement 3500 miles from the actual happening: Galaxy and House listen to tape on Summer program sent back by colleague.

Contradiction: Holding the missional context before us at all times during economic intensification and simultaneously blending in the ability to keep singing and dancing.

Religious House: Saskatoon

External: Celebrated at Ecclesiola from start to finish with 7 guests from Prince Albert, one of whom brought the globe right to the hors d'ouerves table with news from colleagues in Bombay. S'73 poet sucks us into a series of awefilled happenings.

Internal: House Church members grew each time we picked up the telephone until guests were in the majority - we're coming down the home stretch in building the local congregation practicum manual.

Contradiction: We find that we're building on the Lord's victory while Satan whispers sweet nothings in our ears about deserving a rest time after such continuous hard work.

SAN FRANCISCO Religious House: San FranciscoReligious House: San JoseReligious House: SacramentoReligious House: Los Angeles

External: Visited returned S'73 colleague about sojourning; she came to Ecclesiola next night with plan worked through to carry off an ecumenical parish and guild in Los Angeles.

Internal: Had to set up the extra tables for House Church with returned S'73 participants. It was good to have to rub elbows again.

Contradiction: In the midst of always advancing, never retreating or merely holding, being lulled by the step by step

Religious House: PhoenixReligious House: Denver

External: Our two Korean guests, Park Shin Won and Kim Han Ok, livened up our Ecclesiola and gave us an existential sense of globality. "Scarecrow" at the Galaxy movie celebration burend with resurgence awareness.

Religious House: Denver (continued)

Internal: People back from Summer '73 are 'strange creatures' but give us a hint of what went on. Campbells' "Inward Journey" turns into a powerful trip and Jewish food on Thursday night helps us appreciate Jewish mothers.

Contradiction: Harnessing S'73. We're ready to do a cabaret but we know we're not ready to do a cabaret.

Religious House: Billings

External: Nine-hour drive to Kalispell for Mobile Ecclesiola where 20 adults representing 4 metros were impacted, climaxed by fantastic cabaret led by regional colleague, John Lowell.

Internal: Welcomed 7 short-term sojourners during week, and Sid Copenhagen as sojourner for indefinite time. Ecclesiola highlighted by viewing movie "Death of a Salesman"

Contradiction: Where will the 250 RS-I prospects needed for fall come from?

Religious House: Rapid CityReligious House: Seattle

HOUSTON

Religious House: HoustonReligious House: New Orleans

External: Intensified preparation for Week II LDP recruitment as we build presentation 4x4's for Roman Catholic, conservative protestant and liberal protestant clergy.

Internal: Sign of resurgence raised with Harlan family - Harry and Kathleen's announcement of Kathy's pregnancy. The world's new Harlan expected in Jan. '74.

Contradiction: Internal struggle obscures external mission as we struggle with what it means to care for the individual in the midst of a corporate body.

Religious House: MiamiReligious House: MemphisReligious House: Oklahoma City

External: Metro colleague takes on the role of spurring future interns and gets positive response on first try. Their question is "We might consider it, how much do they pay?"

Internal: Received new context for the historical meaning of Watergate when regional guardian, lawyer Del Stagner, leads Wednesday collegium on the issue. Pastor family drops in for Ecclesiola and asks if they can come every Thursday night.

Contradiction: Continuing the push toward fall knowing half our body is being replaced within a month.

Religious House: Tulsa

External: Manual for module prior completed. Visit with newly arrived local pastor who responds, "Where have you been? We've been looking all over for you."

Internal: House and guests at Ecclesiola experience St. John of the New Testament afresh as top 40 record "One Tin Soldier" from movie Billy Jack is played to paraphrase First John 3:12.

Contradiction: Financial skies darken as we lose our land-clearing project in Missouri. During a recent thunderstorm, a bolt from the blue burned the whole area to ashes.

Religious House: Amarillo

External: Ten guests for Ecclesiola (3 non-grads) who spun images and events into mottos for life. Our phase IV colleague capsulized the evening with her motto "The future is open."

Internal: Three black furry sojourners died on the doorstep from lack of food - no one told us that felines don't care for grits.

Contradiction: How to turn the "yes" into visible response.

NEW YORK

Religious House: New York

External: House senses its global responsibility when Bombay ITI grad is discovered in part of its "postage stamp." Capt. Shah, retired Indian army officer visiting in U.S., responds to late evening drop-in call with Brown man hospitality and authentic Indian cuisine.

Internal: Resurgence breaks in with return of Howells from S'73 and gives impetus to decisional kind of resurgence needed to bring off 2 celebrational events - stroll across Brooklyn Bridge with picnic on promenade and baseball game.

Contradiction: How to keep moving at effective highway speeds which result in actual course registrations when one finds prospects on facation and summer callers untrained.

Religious House: New Haven

External: The first tactics of summer strategic design in Stamford yields affirmative response from grads to participate in fall quarter advanced courses.

Internal: Return of emerging generation from New Day Nation and S'73 participants bring new discipline, songs and images as sign of resurgence.

Contradiction: Battling the demons that say "August is the time when everyone goes to the cottage in New Hampshire or Vermont or the cape or...No recruiting possible."

Religious House: Garden City

External: PLC and cluster visits reveal clergy's mood of anticipation in eagerness to talk about their congregations. Galaxy sees Jolson movie "Hallelujah, I'm a Bum" followed by 1930's newsreel. Jolson as Central Park tramp finds an angel, gives her up to her true lover

Internal: Return of S'73 participants brings rumblings of distant thunder and breaking clouds that herald summer's rain.

Contradiction: The penetration story that says summer's preparation and model-building is over and we are waiting for permission to move on needs to be replaced by song of new beginning: Summer Penetration Phase III

Religious House: BostonReligious House: PortlandReligious House: ManchesterReligious House: Rochester

External: The Wayside Inn image, similar to the inn in Man of LaMancha, is realized in return celebration for S'73 participants in backyard of Religious House. First time in three years the back yard and carriage house have been used.

Internal: Return of Jeanette Orr, Ken Truran and Bob White from S'73. Played poker at Ecclesiola sodality to explore the possibility for the missional use of "poker face." Third floor decorated with circus posters for return of emerging generation. House painting outside

Contradiction: How to elicit regional participation in many internal House structures.

Religious House: Pittsburgh

External: Entire House journeys to Chicago for final plenary sessions and cabaret.

Internal: Culture night sing-along at local pizza joint shows signs of resurgence, as people grappling with history and the Mystery point to how much the secular world already knows of what we're talking about.

Contradiction: How to maintain colleague nurture and gridding momentum in the midst of cabaret after-awe and impending discontinuity and sendouts.

Religious House: Washington

External: Sunday pedagogy continues to be key tactic for pushing colleagues into pedagogue role as our 3rd and 4th level tracks participation increases. The cabaret is beautiful and welcomed home our S'73 participants while exposing regional colleagues to the dynamic.

Internal: Five 3-week potential permeators return from Chicago. Praise the Lord.

Contradiction: The cabaret reminds us that every man is given the chance to dance and we continue to scream "Find another partner."

Religious House: PhiladelphiaReligious House: MontrealReligious House: Toronto

External: Last minute decision of colleague to join the trek to Chicago for the closing of S'73 begins under the rubric of "I want to go and see what I've missed" and becomes the context-exploding event which enables new decisions regarding sojourning and internship.

Internal: House experiences Week II of discontinuity as members journey to Centrum for Council VIII and cabaret, to discover the combination of depth collegiality and global visioning to be a healing experience

Contradiction: Continuing to sustain spiritual globality while engaging in the ever increasing demands of local tasks.

MONTREAL

CHICAGO

Religious House: ChicagoReligious House: Milwaukee

External: Summer sojourn call model produces first sojourn family.

Internal: The House celebrates the birth of son Joshua Joseph to Larry and Dianne Greenwald. Twelve metro colleagues join House for collegium. S'73 reflection spins reveal collage of pain, glory, insight, and demand.

Contradiction: Clinging to June "Exodus" enablement, finances, penetration, and formulation models proves inadequate for August return.

Religious House: Madison

External: Awefilled guest night with 20 around the table to send out Paige Fisher to India. Reports on Global Odyssey and Uptown 5 and cabaret add depth and feast including two enormous desserts add weight.

Internal: Visit to Chicago gives us new eyeglasses to see Uptown resurgence and own local gifts and accomplishments of summer. We deliver 2-year old order member Rita Feldmanis back to her parents and partake of the cabaret.

Contradiction: Dominance of the economic means absence from structures for all but one House member. That absence leads to living in the now, not anticipating and battleplanning the fall.

Religious House: RockfordReligious House: PeoriaReligious House: Champaign

External: Momentum of PLC recruitment for fall quarter builds as trip to Watseka polis yields data on untouched churches and as introductory letters are sent to key clergy across the metro.

Internal: House study of "The Source" by Michener pushes deeper brooding on what it means to be the remnant which acts on behalf of all men. Completion of the sojourner model and manual gives House permission to invite the world to sojourn here.

Contradiction: The sheer weight of tons of immediate demands on few troops puts strain on the initial decision to will one thing for the summer quarter.

Religious House: Minneapolis

External: Regional celebration at the signing of final papers for new 50-man RH (a facility worthy of the Bishop's reception.) Already 18 new interns plan to great move for Sept. 1, Total House figures stand at 35 souls with more coming in daily.

Internal: Colleagues from Winnipeg, Boston, Pittsburgh, and the Minneapolis regions stop in on return trips from Research Assembly, making the Wayside Inn a 24-hour non-stop reality. Initial dread turns to ecstasy as permeator's bosses get excited about global assignments and hold jobs open for new House members.

Contradiction: Enabling clergy colleagues to see their participation as one corporate thrust rather than individual stabs.

Religious House: Kansas City

External: First Topeka Metro Ecclesiola impacts colleagues as well as House members with resurgence workshop called "Possibility-mat".

Internal: Return of children and drop-in of traveling colleagues "awaken" House and give us a feel for the experience of the Research Assembly.

Contradiction: Reluctance to "do the region" with reassignment time close at hand.

Religious House: Lincoln

External: First group recruitment starts the fall penetration effort.

Member of hierarchy raises Scarlet Pimpernel question in relation to polis ecclesiola after attending House Church, prefaces accountability answer with "I just want to say what a joy it is to have someone ask 'Have you been faithful?'"

Internal: "Remnant" pushes painting and fire escape installation in preparation for return of colleagues from camp and summer program and arrival of sojourner Ingrid Kraus. Globality of mission driven home by visit of Rev. Park Shin Won and Rev. Kim Han Ok of Seoul.

Contradiction: When we go to the closet to dig out our models for the teaching year we discover it full of skeletons; can these bones rise again with the new flesh of new models needed for the new demands of this year?

Religious House: WichitaReligious House: St. Louis

External: Penetration foray to Springfield Mo. yields a series of excited "yes, that's the kind of programs that we need here" from local clergymen.

Internal: House brims with life as we number between 25-35. Extended family and old colleagues visit and Milan Hamilton family moves into begin intern year.

Contradiction: Caught in time warp as our images tell us that we ought to begin new year before it is here.

Religious House: ClevelandReligious House: IndianapolisReligious House: Cincinnati

External: Sparse troops keep all the wheels spinning in the metro; Onawali's sojourn brings global dynamic to the House.

Internal: Darryle Havens establishment haircut symbolizes the current trend and total engagement in the task.

Contradiction: Enabling cluster colleagues to grasp the value of the symbolic.

Religious House: Detroit

External: House celebrates the completion of a two-thousand piece PLC mailing - the largest, the earliest, and the first ever with a year's PLC dates.

Internal: Detroit House joins forces with Washington House to deliver an emergency drug to Caracas colleagues in less than twenty-four hours. It really is one world.

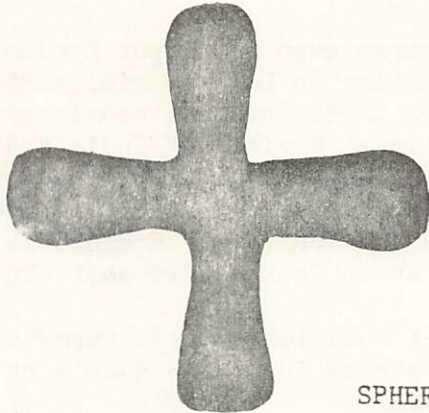
Contradiction: Both Ecclesiolas continue to operate as largely one-congregation groups, blunting the vision of the new ecumenical spirit community.

BASE CENTRUM

External: Sent out Walter Baker to Hong Kong, Ed and Mimi Shinn to Area Sydney, Nancy McPhaul to Area Paris, and Paige Fisher to Bombay. Two billboards erected by Uptown Laboratory proclaiming the time of resurgence and "Uptown is a great place to be alive" deeply addressed the neighborhood and the Research Assembly.

Internal: Part One of Order Council ended after initial perusal of summer work and area planning meetings. Priors returned to Religious Houses to prepare for fall quarter and new assignments. Camp New Day Nation, 6th grade Trek of Resurgence and 8th grade Work Project completed activities, and sun-tanned youth and children returned to families. Most seemed to have leaped a thousand miles over the summer. The order rejoices in the births of a daughter to Huang Hsing Peng and Mo Chi, July 27, RH:Singapore; Rachel Pandita to Duncan and Heidi Holmes, July 28, RH:Hyderabad; and Joshua Joseph to Larry and Diane Greenwald, July 30, RH:Milwaukee. Eleven children and infants were baptized at Daily Office on August 3.

Contradiction: Massive funding for continental and global explosion of the movement.



if you are innocent and upright,
then indeed will he watch over you
and see your just intent fulfilled.
Then, though your beginnings were humble,
your end will be great.

Job 8:6-7

SPHERE SOUTH

LATIN AMERICA
CARACAS

Religious House: Caracas

BLACK AFRICA
NAIROBI

Religious House: Nairobi

External: Week II work on continental development model for year reveals new dimensions to possibilities for Africa. Friendly conversation with Bishop Stephen Neill (retired Bishop of the Church of South India) opens more doors into the Dept. of Religion, Univ. of Nairobi.

Internal: Singing of resurgence songs finds us borrowing tapes and records from neighbors to relearn forgotten tunes and leaves them wondering why we want those tunes.

Contradiction: Absence of an "on the road" planning model as corporate time continues to melt away under the fire of missional demands.

SPHERE EAST

SUB-ASIA
BOMBAY

Religious House: Bombay

External: Wonderfilled week of breaking new ground with 90 participants in family course all from Roman Catholic parish of Chembur, Bombay; three-day initial visit to regional city Bhopal yielding access to two pulpits and RS-I possibility. Preaching mission beings at Christ Church CNI, Byculla Parish.

Internal: House impacted by "Flight from God" seminary in Ecclesiola, and welcomed Liz Banks en route to Delhi.

Contradiction: The resurgence in all regional centres of Area Bombay consumes remaining assets facing us with resources gap until Operation New Day produces necessary results.

MADRAS

Religious House: Hyderabad

External: First and second priors out on course teaching assignments, and Ashram treks while the rest of the Ashram is involved in cadre visiting in the Hyderabad region.

Internal: The awareness of our mission is intensified with a hard push on cadre planning and a development spirit vigil which saw 30 letters sent off with 3 more per week timelined through December.

Religious House: Hyderabad (continued)

Contradiction: Creating a pulsing caring dynamic in the region from an "interested" group of people.

DELHI

Religious House: Delhi

External: Week of unexpected as first course ever in Jaipur Region opens with 48 participants, recruitment calling in Lucknow visits Miss E. Shipstone, 1 of 5 Methodist delegates to the central committee of WCC, and Liz Banks permeates exciting National Seminar of India Medical Association and uncovers lucid concern and many LENS prospects.

Internal: Expanded House created new space design with Ecc/Collegium in prime space and decored just in time for arrival of Ecclesiola guests and Liz Banks on self support Exploration Trek-amidst shift-10 guests received during week.

Contradiction: The expansion of missional relationships in terms of both numbers of people and space demands streamlining our models of penetration and formulation for the area.

SEAPAC
HONGKONGReligious House: Hong KongReligious House: Manila

External: Miracles in ITI development assure that ITI Manila is paid for and that monies needed for India can be raised in Manila. Filipinas Foundation grants 25,000 pesos and 3 participants in mountain parish raise 2,500 pesos. Registrations begin to finalise and are holding solid

Internal: Quimbys return from Europe and House is blessed with Joyce's two-hour report on the Academy she attended in Chicago. We journey on in the global indicative to Latin America during Ecclesiola and are impacted with the profound possibility of us "locals" going global.

Contradiction: How many are really coming?

Religious House: Davao

External: Excellent response from previously unvisited metro as 9 people sign up for the basic ITI. Amazed by Basic ITI registrants willingness and enthusiasm in using model for raising registration money. Ten participants, operating corporately, make over 100 contacts in 2 days.

Internal: First ecclesiola guest from Davao, Purita Morala, impacts House with concrete manifestation of the spirit movement on the local level. Wayside inn dynamic manifests itself as House recieved numerous visitors including Bishop Serina of the United Church of Christ in Philippines.

Contradiction: Collapse of holding tnesion between enabling ITI participants with personal development for ITI registration overagainst straight development for ITI.

Religious House: CebuReligious House: TaipeiReligious House: Tainan

SINGAPORE

Religious House: Singapore

Religious House: Kuala LumpurReligious House: Jakarta

SYDNEY

Religious House: Sydney

External: Life bubbles in variety of arenas as recruiting for RSI/PLC produces first registration from important inner-suburban congregation; regional colleague Mike Chapman accepts week-long assignment to Darwin to help initiate LENS set-up.

Internal: Following "sophistication" spin, House initiates new style of presence at guest night in which three RC priests and one nun (all non-grads) fully participate. Newly acquired records flood House with music of OW and Guild songs.

Contradiction: Deciding to win on all fronts in midst of exploding demands whilst maintaining the engaged nonchalant style.

Religious House: Brisbane

External: Hitting the hard rock of Toowoomba Metro and discovery of alive colleagues in Ipswich Polis calls forth renewed effort in penetration, while RSI follow-up meeting in key local church marks a shift in formulation tactics to local church focus.

Internal: Geo-social grounding of Christ lecture and review of "Profound Function" releases awe of particular mission intime and space while mountain trip renews our awareness of the primordial awe of creation.

Contradiction: Pitching prospects in their reduced contexts rather than daring to set the comprehensive context allows "next time" affirmations that don't get "this time" recruited.

Religious House: Darwin

External: 14-week LENS recruitment campaign launched as discussions with leaders of 2 biggest unions in North Australia elicit resounding affirmation from "local man." Local Anglican and Lutheran clergy visit House to hear of our work and raise possibility of clergy guild and RSI.

Internal: Head of influential women's electoral lobby and her husband attend weekly guild research night and add their "pucker power" as we whistle at the reformulated local community pressure point.

Contradiction: Opening tactic of special LENS recruitment team to do all visits leaves majority of House with inadequate missional assignments - are daily House prayer meetings missional?

Religious House: Perth

External: Breaking new ground - 7 new prospects yield 1 paid registration, clergy visiting uncovers clergy ready to move, House worship at RC cathedral symbolizes decision to recruit among Catholics, two LENS course sites being held (it's great to have a choice.)

Internal: First regional guests for Ecclesiola initiate formulation strategy and confirm worth of newly created guest reception room.

Contradiction: Fighting the Tempter who is trying to seduce us into free-wheeling awhile with stories that: RSI is too close and too small and LENS and the PLC are a long way away, so relax.

Religious House: Adelaide
External: Regional PSU pushes our intentionality in arena of grad care by gridding pols to micros to include priority churches. Mood of era gone by set closing celebration on to plain of giddiness.
Internal: House moved to uncontrollable laughter (we could have cried) as we studied Universal Benevolence in Seminary. We found that was the absolute necessary for our week.
Contradiction: As one after another pressing concern consumes the body, the temptation to hope someone else will pick up recruitment finds us out when someone else is operating out of the same stance and nothing happens.

Religious House: Melbourne

External: Speaking engagement with a local church mothers' Union reminds us that there are many and wondrous ways of cultivating the historic church. Emphasis on RSI recruiting with two people recruited in one night, begins to show up the possibility of an intensified net.
Internal: Four new warboards go up on the wall the end of Tuesday collegium. Two regional families at Ecclesia are deeply addressed by St. John of the Cross.
Contradiction: Deciding the battle we are out to win, and knowing that's where the key victory will be.

SUVA

Religious House: Majuro

External: Rev. Jude Samson arrives in Majuro for his new conference assignment at the District Center Church, Uliga Protestant Church, the same week that the \$450,000 loan application is delivered in Guam.
Internal: Week of homecomings as the Montgomerys return from the Hong Kong IIT, Michael Hoff touches base after a week's swing through Ponape and Truk following up on IIT recruitment and gathering education data, and Leah Farly is back after week's follow-up on Ebye.
Contradiction: Sustaining passion in the completion of many small details when the major accomplishments have been realized.

Religious House: Apla

External: House Church celebration and send out of delegates to KL IIT and Toritana Tanielu (IIT HK'70) to Princeton Theological College, Toritana was also the House Church celebrant. National Sports Day for schools on Friday ended a week of celebration which included a send out feast and fistia for Principal Duncan Morris on Tuesday.
Internal: Week II of reading Journey to the East gives House distance on week of watching and waiting relative to House assignment to IIT. Life is a cabaret, and in the midst of trying to understand what that means, realized that every grad gathering we have is exactly that dynamic.
Contradiction: Releasing everyone to participate in corporate grad meeting regardless of weather or disappointment relative to not being assigned to attend an IIT.

TOKYO

Religious House: Tokyo

External: This week was characterized by continued visits for ITI recruitment and development. Materials were sorted, manuals were printed, decor was made for ITI Fukuoka. Seats on already full planes were obtained as permeation contacts paid off.

Internal: There were joyful moments as we shared ITI preparation with a sojourner from the Fukuoka region, Miss Kuniko Musuda and with our itinerate colleague Don McClain; and there were tense moments as we temporarily "lost" because of a language barrier, all the boxes that we had just shipped to Fukuoka.

Contradiction: Separating our mood from the external situation.

Religious House: SendaiReligious House: SeoulReligious House: FukuokaReligious House: Osaka

External: Finished recruitment for ITI gathering bonus of yesses for fall PLC. Having closed in on \$5,000 for pre-ITI funding, we turn to second \$5,000

Internal: The search for RH site in downtown Osaka launched with one key possibility discovered. House finishes assigned decor work for ITI.

Contradiction: Struggle to affirm significance of our participation in ITI.

SPHERE WEST

EUROPE
LONDONReligious House: LondonReligious House: ManchesterNORTH AMERICA
WINNIPEGReligious House: Winnipeg

External: Wearing Order blue garb in recruitment call lends credibility with historical church and draws a new response while allowing recruiter to adopt new stance.

Internal: House discovers corporateness is key to enabling people to climb the mountain of Summer '73 documents in collegium room. After whole House participates in Summer '73, we celebrate acquiring 2 new jobs.

Contradiction: Deciding to pour life and energy into this space after having made mental shift to fall assignment in another space.

Religious House: Anchorage

External: House Church blossoms again as formulation tool in the midst of the symbolic life of the House with 19 guests -- 6 returnees from S'73 give reports on the guild.

Internal: Who was that masked man?????? In the midst of Economic intensification, yard of Religious House gives in to weeds. House returns late one eve to find flower garden weeded and in full bloom, bushes trimmed, sidewalks and driveway swept and lawn mowed. "Ah sweet mystery of life."

Contradiction: Prayer life has become dry and so has our work.

Religious House: Saskatoon

External: House and region colleagues lay planning base for metro reporting reflection happenings so as to get launching gear set for fall program. Keep our collective finger on the regional pulse by a swing through the metros with a particular eye to fall penetration.

Internal: Camping in an abandoned log dwelling in Northern Saskatchewan actualizes "Singing in the Rain." Everyone touched by the creation of sheer discontinuity while listening to tapes of S'73 cabaret.

Contradiction: An open, nonchalant response to the urgency of our situation is a companion to our urge to dabble in the new without pushing to the depths.

SAN FRANCISCO Religious House: San FranciscoReligious House: San JoseReligious House: SacramentoReligious House: Los Angeles

External: The Summer '73 Research Assembly report and debriefing invitations have been sent, and colleagues have gathered to plan the event. The summer has greatly impacted us in that our regional colleagues are volunteering, even those who didn't go to S'73.

Internal: Influx of globality, Loel and Marilyn Bacerra and Rev. Kim have toured through Los Angeles; Sushila Joshi sojourned adding extra energy insight and second teaching Tillich in a local church Sunday school class.

Contradiction: Satan sits on our shoulder and says "You don't really have enough preparation to win."

Religious House: Phoenix

External: Telephoned 1964-68 course grads many of whom said "Oh yes. I would be glad to visit with you again." Visited colleagues in El Paso and Tucson who are excited about the Religious House and the LENS course

Internal: House bubbling with resurgence as troops return from S'73. Irwin and Nancy Carroll and children begin a week's sojourn and report 5 a.m. rising time and Daily Office is a daily miracle for them.

Contradiction: Haven't cracked the wall leading to full employment for House troops.

Religious House: Denver

External: Regional Presidium with 18 people (four metros) explodes the possibilities for the fall quarter. Meeting in church near regional geographical center, Steamboat Springs, Colorado, pushes Presidium to be responsible for whole region. Movie, The Seven Faces of Dr. Lao, provides an exciting context for S'73 celebration as magic everywhere.

Internal: Adding the cabaret dynamic to the Wayside Inn brings guests to the House for four of five Wk. I nights, including Galaxy pastor and wife overnight stay to complete "extended order." Loel and Marilyn Bacerra highlight week with singing and reporting on the Philippines.

Contradiction: Consciousness of new assignments results in looking over horizon for circus to join, thereby fumbling juggling balls and forgetting magic words of present circus.

Religious House: Billings

External: Objectified state of region and carved out directions for fall quarter.

Internal: House relives Research Assembly through First Prior's report and is awed by uncertainty of future. Recruited and planned Bar-B-Que for Billings polis.

Contradiction: How do you insure that the momentum generated during summer quarter is maintained during the "passing of the baton?"

Religious House: Rapid City

External: With the return of participants from S'73 and Global Odyssey we have a full table again. For Week 4 seminar we went to see the movie Camelot and were both overwhelmed and exhilarated as we encountered the style of people about the task of creating a civilization.

Internal: Addressed by the demands of the future in the struggle to make life timelines. As the battle moved to the home front, it became clear the face of the enemy was my own. The promise of two new jobs beginning next week is cause for celebration.

Contradiction: Finding we need to have next quarter's battleplan already done so we can deal comprehensively with all the fantastic possibilities that are all of a sudden falling into our lap.

Religious House: Seattle

External: Priors return from Chicago to be thrust immediately into a pedagogy weekend that was concluded with a spin on the summer program and its implications for the future. House began operating out of four missional units for August.

Internal: Three new intern decisions announced at House Church. Sent out two families for the first rotation of discontinuity.

Contradiction: Metro structures have fizzled out during the summer - how to rebuild with new wisdom.

HOUSTON

Religious House: Houston

External: 54 colleagues from the five active metros attended the House Trel sharing the impact of the summer. The awe center in the back yard created the weekend and set the stage for the emphasis on space, and the cabaret affirmed that structure is the key to releasing spirit.

Internal: Received new interns Bill, Patsy and Randy Riley and John Lindstrom and Patsy lands a job in four days. House began study of the S'73 documents and preparation of records and files for next year begun.

Contradiction: Our limited imagination in dealing with clergy stands in the way of a full and replicating galaxy.

Religious House: New OrleansReligious House: MiamiReligious House: Atlanta

External: Regional coordinator and family stop by House on way home from vacation and gather up all the documents of the summer so that they can get on top of them by regional council.

Religious House: Atlanta (continued)

Internal: Image of Wayside Inn is grounded as crew from Miami stop over on way home from S'73, and Tony Moore from Texarkana, Texas sojourns while in Atlanta on business, thus keeping the list of summer guests growing.

Contradiction: What is the story that sustains the body as mission to the world in the absence of significant external action?

Religious House: Memphis

External: Fred Hess's winter quarter groundwork pays big dividends as signal meeting is held in Little Rock. Present at the meeting were Bishop Eugene Frank (Methodist), Rev. James Rainwater (Disciples) and Msgr. James O'Connell. Bishop Christoph Keller (Episcopal) and Bishop Andrew McDonald (RC) sent official representatives.

Internal: Xavierism is grounded for all of us as Jean Barringer and Jim and Isobel Bishop visit en route to New Orleans and report on Area Seapac. House hunting continues as present possibilities begin to fade.

Contradiction: Pushing through authorization to registrations.

Religious House: Oklahoma City

External: Carry on "ear to the ground" posture as tremors of the resurgence vibrate around us.

Internal: Thursday evening Ecclesiola and Sunday evening House Church emerge as the center attractions and prove to be the binding glue of the movement through the month of transition.

Contradiction: Guarding the purity of heart while both inhaling the summer research and pouring the foundation for the fall formulation.

Religious House: Tulsa

External: We welcomed back metro and order colleagues from Summer '73 and the Global Odyssey with the coming together of the Galaxy and metro for a celebrative meal, Summer '73 reports and a cabaret. All (the cast and colleagues) were caught up and whirled to the center.

Internal: Along with preparing ourselves for the cabaret with quick memorization and bursts of creative thinking we workshopped what every radical churchman needs to know and to begin to plant in his memory when arriving at a new Religious House.

Contradiction: How awareness of the cabaret continues with the lights out and no one left on stage.

Religious House: Amarillo

NEW YORK

Religious House: New York

External: Focus on fall quarter continues as RSI and PLC calling remains major push of summer and preparations for regional brochure mailing are completed.

Internal: Close of summer programs creates wave of new life at Religious House: House Church hosts Phoebe Reynolds and David Broadfoot en route from Global Odyssey, Ken and Judy Ellison en route from S'73, 3 regional colleagues, and sojourner Beth Skillman.

Contradiction: Building insights of S'73 into already operative model for fall.

Religious House: New HavenReligious House: Garden City

External: Meeting of auxiliary and galaxy priors to plan rest of summer quarter, PLC and cluster calls, and House workshops on problems and strategic objectives integrates summer quarter as part of new long range vision.

Internal: Appropriating the gathered wisdom of the summer in document study, song conversations sets House spinning on being servants to this particular geographic area.

Contradiction: Getting the strategic objectives down to tactics and timeline in cluster model.

Religious House: BostonReligious House: PortlandReligious House: Manchester

External: Galaxy celebrates with exciting proposition - a new cabaret experiment of improvisational theatre.

Internal: House renewal marches on; returning troops welcomed "with open arms and a joyous heart."

Contradiction: Not moving in anticipation of crunch; or the signs of resurgence have paralyzed the will.

Religious House: Rochester

External: On the Wk. II, House visits Buffalo and Syracuse metros to secure course sites for next year and visit old grads. Binghamton clergy collegium begins meeting again after July discontinuity.

Internal: Saturday evening the emerging generation rehearse and celebrate their stay at Camp New Day Nation and impact House with their seriousness about the cirucs. Received Steve Poyser and Karen Muehlhauser as sojourners for August. Study of Amy Vanderbilt (white western etiquette) and Soren Kierkegaard Training in Christianity impact House

Contradiction: Design for summer calls for all courses to be located for the year by now and the fall schedule isn't even completed.

Religious House: Pittsburgh

External: Break open in West Virginia metros awakens old colleagues, finds new colleagues ready for fall, and shows great possibility for further penetration. Fantastic happening in Altoona as grads and clergy gather for common meal and future visioning.

Internal: House impacted by presence of 4 clergymen at House Church. Prior returns to lead House study of Summer '73 papers and provides new context for penetration for coming year.

Contradiction: How to honor those who have been holding the fort in each metro while at the same time moving out into new areas of metro development.

Religious House: Washington

External: Baltimore colleague runs ahead of bulk trash pick-up truck and "Presto" many "treasures" are secured for regional garage sale.

Internal: Study of Community paper reminds us that "wish dream demon slaying" is continual. Academy recruitment visit turns into intern possibility for metro colleague in Baltimore - prayer really does change things.

Contradiction: Deciding now and not next month is the time to recruit for Academy and CSIIIA (Wk. 1 of fall quarter.)

Religious House: Philadelphia

External: Signal regional leadership at the regional review of the summer clearly indicates trained priorship already in the region and the need to hold that in movemental covenant.

Internal: Whirlwind week of reviewing the summer, which was led by rejuvenated first priors, is whipped into a hurricane as the House battleplans for the coming year.

Contradiction: Operating as though there were no rush to get interns while in less than a week half of the House will be gone.

MONTREAL

Religious House: MontrealReligious House: Toronto

External: Collegium room overflows as colleagues gather to hear David and Ann Patterson report on their encounters on the Global Odyssey, at House Church where Rev. Bill Patterson, father of the family and veteran of the region celebrates the common meal.

Internal: "Week of the Return" lives up to its name, as priors and Summer '73 participants are welcomed home from the Research Assembly, while Brenda Black makes it the week of the beginning of her internship.

Contradiction: Penetration back-up is "all systems go" yet still awaits the creation of the model which will inform us where to put the first step forward.

CHICAGO

Religious House: ChicagoReligious House: Milwaukee

External: Full complement of eight teams enable collegial visits. Nurture calls reveal great history of old metro grads from 10-12 years ago. House and Galaxy attend "Godspell." Unusual silence has followed after Great Conversation.

Internal: Largest House Church all summer as people keep coming in unannounced. House spiritized by 45 adults and 14 emerging generation. Economic demon gets punch in stomach as 3 summer travelers pick up their responsibility for the House.

Contradiction: New corporate body demands new corporate stance in the midst of the overwhelmed ness that the possibilities of the summer offer.

Religious House: Madison

External: A mood of excitement and bubbling is created by seminar orchestration workshop, song conversation, and the new solitary office format with 16 guests present, and it is clear as metro wife refuses three times to show her husband her day's reflection chart that sacred space has been discovered.

Internal: The House studies the Summer '73 thirty-two document symopses, alternates between overwhelmed-by-possibility sleepiness and outbursts of resurgence giddiness, and is thereby enabled to grapple creatively with the twelve priorities of the movement.

Contradiction: Uncertainty about the difference between the smell of sulphur and the musk of missionality creates the desire to hesitate in the face of deciding priorities rather than wait upon the Lord.

Religious House: RockfordReligious House: PeoriaReligious House: Champaign

External: Anticipation of summer quarter metro council builds as invitations are sent out across metro and Galaxy decides to participate as part of Wk. II structure

Internal: House welcomes family of Roger Marsh as weekend guests and sends Kirsch and Hughes families out on discontinuity. House study of "The Source" makes us painfully clear about what it means to be on the long march.

Contradiction: Having some House members away on discontinuity pushes remaining troops to make new decisions about holding the continuity.

Religious House: Minneapolis

External: Regional picnic to celebrate return of colleagues from S'73 demonstrates that those who didn't attend Research Assembly are part of the same family.

Internal: Everybody back home in time for signal metro Ecclesiola/Galaxy Sodality, looking forward excitedly to fall push with fear and fascination.

Contradiction: How to create story about S'73 and its implications, that will last 20 years.

Religious House: Kansas CityReligious House: LincolnReligious House: WichitaReligious House: St. Louis

External: Received a resounding "yes" to sponsorship of breakopen RSI in Springfield, Mo., from executive director of local Council of Churches and ministerial alliance. Signal workshop on new year battleplan.

Internal: New interns chooses between two \$10,000+ jobs. Obedience to God grounded by renewing our memory of "Samuel" from Report to Greco.

Pedagogy tutorial reveals deep decision to teach.

Contradiction: Wishing we did not have the vision we have produces a sense of moving into the future kicking and screaming.

Religious House: Cleveland

Religious House: Indianapolis

Religious House: Cincinnati

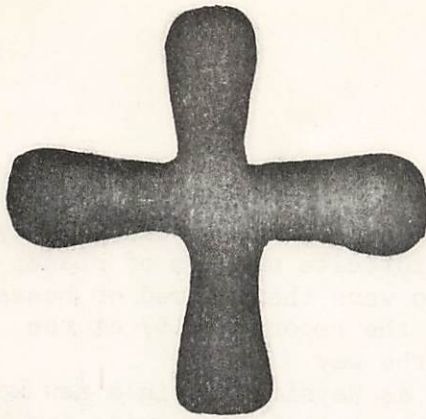
Religious House: Detroit

SYMBOLIC CENTRUM

External: Welcomed to Centrum Korean colleagues Mr. Koh Eul Soon and Miss Park Myoung Joon. After 2 short days in Chicago, sent them out to visit Religious Houses, along with Ng Yaw Fong from Malaysia. LENS planning and report continued full pace.

Internal: Printing of summer documents, Caracas ITI, and LENS materials keeps printshop going full tilt.

Contradiction: Holding tension between anticipating future and maintaining momentum from Summer when neither is obvious in present.



Go and ask the cattle,
ask the birds of the air to inform you,
or tell the creatures that crawl to teach you,
and the fishes of the sea to give you
instruction.

Who cannot learn from all these
that the Lord's own hand has done this?
(Does not the ear test what is spoken
as the palate savours food?
There is wisdom, remember, in age,
and long life brings understanding.)

Job 12:7-11

SPHERE SOUTH

LATIN AMERICA
CARACAS.

Religious House: Caracas

BLACK AFRICA
NAIROBI

Religious House: Nairobi

External: Staff training proposal for Nairobi International School accepted and consult set-up for September. Doors open wider to international community.

Internal: Rupert secures 9600 dollar a year job. Has to resign from job he already had and pull out of a possible university post.

Contradiction: House hunting as rents sky rocket and time runs out on present property.

SPHERE EAST

SUB-ASIA
BOMBAY

Religious House: Bombay

External: The ripening of time is witnessed in response of the Chembur Rotary Club of Bombay to an address on motivity and community reformulation. "Isn't it time we stopped supporting this or that thing with no visible results and back one project that does everything?"

Internal: Operation New Day bolstered by loans saves us from the bastille. Three at Daily Office symbolizes the dispersion of the house into four regions in one week. In Bombay metro the tanks of water and spirit are overflowing.

Contradiction: In all of Area Bombay there are only four clergy regularly involved in movement activities. In the midst of great

internal ferment we have yet to find a way of catalyzing the clergy awakening.

MADRAS

Religious House: Hyderabad

DELHI

Religious House: Delhi

SEAPAC
HONGKONG

Religious House: Hong Kong

Religious House: Manila

External: ITI foremost in everyone's mind and time schedule as Advanced ITI participants return from Hong Kong. Faculty arrives and is sent to Baquio-and seemingly infinite numbers of planes and boats met to pick up participants who were then placed on buses and sent to Baquio. The week ended with the report of 157 at the opening meal of the ITI and more on the way.

Internal: The house experiences itself as Wayside Inn in a new way as we borrow sheets and dishes from nearby hotels to provide for large numbers of overnight guests enroute to Baquio. The house was also excited to learn that intern Eunice Miclat is teaching in the ITI in Fukuoka.

Contradiction: With the ITI in Baquio and the house in Manila, the data needed seems never to be where it is needed.

Religious House: Davao

External: Elizondo and Soderlind return from two week trek to northern metros. Now have 30 definite yeses to ITI, 8 maybes; at least one participant from each metro. Most signal event: participants themselves raise over 5,000 toward funding ITI.

Internal: ITI prospect comes to Ecclesiola for second week; wayside inn dynamic continues with prospective ITI participants dropping by with applications, checks, and acting as couriers (it is faster than mail) between Davao and all points.

Contradiction: Discerning the key to move funding beyond old fears and past suspicions.

Religious House: Cebu

Religious House: Taipei

External: Joe Hsu and family visit with house and colleagues on Joe's return from S'73; left us all excited about the summer and plans to return for depth discussion. Months of preparation culminate in send-out dinner for 12 Manila congregaton ITI participants attended by previous grads from region. Became wayside inn dynamic in hosting James Cha, Singapore, Advanced ITI grad, and wife Maggie on trip to Japan.

Internal: We move into new Taipei Religious House! Location is central accesible, and anticipates growth of city. Decision to affirm urban life style with apartment addresses colleagues and nets bonus of roof top view of entire city. Regional and SEAPAC colleagues help us celebrate first House Church. Basil returns from Hong Kong ITI staff. Jane receives second job offer and accepts Home Economics

position at Taipei American School-doubling house income.
 Contradiction: Creating models and timelines to focus energies on
 task clearly demanded.

Religious House: Tainan

SINGAPORE

Religious House: Singapore

Religious House: Kuala Lumpur

Religious House: Jakarta

SYDNEY

Religious House: Sydney

External: First LENS brochure printed and distributed while P.L.C.
 recruitment leads to contacts with Salvation Army Command. Galaxy
 Council excitement as shift from old images of programme centered
 activities to grasping tactical implementation and genuine possi-
 bilities thus opened. Responded one clergyman: "I have never before
 seen the local church taken so seriously."

Internal: Community Reformulation project staff Ed and Mimi Shinn with
 Doug and Julie McCauley gather in Sydney for initial planning in
 preparation for going to Oombulgurri at invitation of Aboriginal
 people and Commonwealth Government to lead a composite team.
 Robert Yallop sent out to K.L. ITI and Simon Chapman sojourns for
 week II.

Contradiction: Forging a response that releases the courage to be
 engaged in midst of instability in society with its accompanying lack
 of trust and shrinking back.

Religious House: Brisbane

External: PLC recruiting intensifies and signal Toowoomba cadre
 meeting launches fortnightly ecclesiola in that Metro; LENS looms
 and we begin site research, publicity models, project lists, and
 researching possible sponsorship.

Internal: The possibility of being both Churchmen and Guildsmen
 exploded in a weekend webbed with Acts study and guild readings.
 Charles Jago returns for a second sojourn period during university
 holidays.

Contradiction: Not discerning a viable alternative to wooing yet
 perceiving that wooing is not calling forth decisions.

Religious House: Darwin

External: Extensive visitation blitz on Darwin's key secular leaders
 launched with aid of Sydney regional colleague Mike Chapman. Tactic
 to get sponsors for LENS course. Great visits included, the Mayor,
 Senator, head of Waterside Workers Union, Apex, Rotary, Station
 Owners, etc. Darwin's R.C. parish priest to dinner-spent 19 years
 on missions and gave us history of the territory and his Order.

Internal: External visits throw us into internal reflection, over-
 whelming realization that the next 20 years demands hardheaded
 realism and revolutionary methods-the last 20 is nothing compared
 to the next 20.

Contradiction: Timing crucial to success of early LENS tactics and we're behind.

Religious House: Perth

Religious House: Adelaide

Religious House: Melbourne

SUVA

Religious House: Majuro

External: Dispersion across Micronesia for ITI followup, education research and business put the House on Ebeye, Ponape, Truk and Jajuro, as well as Hong Kong. Discovery of the week, in the immediacy of getting a complex loan application ready to take to Guam, is the Marshallese word "Keyeh!" gets quick action, where "its urgent" or even "now!" got only a smile and a long wait.

Internal: Dispersion brought new significance to the solitary dimension intensifying consciousness of the tension of standing alone as part of a corporate body--driven home by the arrival of the largest boat yet seen at Majuro dock. A self-contained part of society, we are dependent upon it for supply, yet it would have no purpose without or need of it. The awe in the mundane strikes again.

Contradiction: In the midst of insular, 19th century setting and style, experiencing a more than vague intrusion of the 20th century when there is no immediate source of daily news.

Religious House: Apia

External: House sends off the Samoan delegation to the Basic ITI with house prior. High excitement over the assignment of regional colleague Fofoa Temese to the staff of the K.L. ITI. School choir which is directed by regional colleague Seilala Mapusua (ITI Seoul) participates in the National High School Music Festival. House spends week II getting out newsletter to 90 grads throughout the South Pacific.

Internal: In the midst of getting out the newsletter the House spends an evening spinning on how the Academy construct is the local school of the future, now. Finish St. John of the Cross with new impetus to study it as it continues to illumine out journey.

Contradiction: Failing to anticipate the manifestations of our colleagues spirit struggle in order to enable their journey.

TOKYO

Religious House: Tokyo

External: ITI began - with - last minute printing from micro-film copies of Gaely and Knox; anxiety of getting participants off before they changed their minds; and hassle over transportation as thousands of Japanese used the planes and trains for vacations and religious holidays.

Internal: Guests - Mrs. Lee Song Joo enroute to Manila ITI, Charles Rhee, enroute to Korea from Hong Kong ITI, Elisabeth Banks, "enroute," and Jim and Barbara (nee Hamje) Tokyo residents.

Contradiction: Fall planning while house is empty and regional colleagues away.

Religious House: Sendai

External: Development for ITI continues with a local businessman giving 10 more possibilities to use with his name for backing. Bruce and sojourner sent to Fukuoka for ITI enablement.

Internal: Summer tutoring brings house well over budget. In-kind sack of potatoes and watermelon feed house for a week. Workshop yields step plan for LENS recruitment model.

Contradiction: Maintaining house in location and house in dispersion as one thrust.

Religious House: Seoul

External: Sent out delegates to all three basic ITI's and enabled Korean government to allow an additional 19 delegates to attend the Area ITI in Fukuoka.

Internal: House Church is made up of couple for first time as Rev. Hong Jong Taik reports on Hong Kong ITI and faculty member Rev. Lee Jae Joon and wife visit house for first time.

Contradiction: Not receiving news on new staff arrivals blocks resettlement plans.

Religious House: Fukuoka

External: The energies focused toward ITI preparation. Received yeses to invitations for opening ceremonies from R.C. Bishop, Seiko Kae Bishop, and moderators of Lutheran, Baptist, Kyodan, and Korean Church of Japan.

Internal: House participation fluctuates greatly as ITI approaches. Sent out Filipkes to Manila ITI. Enablement staff-Winifred Willoughby, Bruce Williams, Shinichero Sasaki, and Mark and Matthew Reames sent out to site. Received and sent out Don McClain and ITI faculty, Harry and Mary Ann Wainwright, James Addington and Joe Iida. Filipkis land jobs for fall.

Contradiction: How to detach selves from ITI and redirect energies to fall recruitment.

Religious House: Osaka

External: Send out of Rev. Suzuki from Himeji to the ITI. Mr. and Mrs. David Schlesinger visit Rev. Akira Nishihara, key regional colleague and send him and his wife to ITI.

Internal: Visitors coming from Hong Kong ITI exude corporate spirit. House sends 3 to Fukuoka ITI.

Contradiction: Fresh ITI financial model not forthcoming.

SPHERE WEST

EUROPE
LONDON

Religious House: London

Religious House: Manchester

NORTH AMERICA
WINNIPED

Religious House: Winnipeg

External: PLC recruitment took us into 4 Metros and resulted in first registrations. House spiritizes Galaxy Church with (1) musical quintet that leads the Worshipping Congregation and (2) House Prior who pinch hits for the pastor while he is away on assignment.

Internal: House attends lecture by Dr. Jean Vanier and finds 20th Century St. Francis kissing the leper as the Church once more shows up caring for the outcasts of society. The entire house is walking on air with: (1) prewedding celebration for Marion McQuaker and Douglas Hilton, (2) welcoming Marie Sainio from Thunder Bay, Ontario, and (3) New Resurgence Decor.

Contradiction: Decision to be in Winnipeg forever, whether we are assigned here next year or not, without all the assigned families present, thus enabling practical planning to bring Summer's vision into actual concrete missional form.

Religious House: Anchorage

External: Coming around the last lap to arriving home, first prior visits Sitka and Juneau polis' planning Fall penetration and formulation strategies.

Internal: Experience the great "pay-off" as new projections point to rising from the abyss of the "red" to possibly well over into the "black" due to a new house "enterprise".

Contradiction: Reprogramming our image of a Religious House from a band of wild money hustlers to a team of structural revolutionaries.

Religious House: Saskatoon

External: While reporting and reflecting on Summer '73 we stated our move to the metro, unearthed a pedagogical treasure and searched for the cabaret at two local night spots.

Internal: Redecoring the House signals move to sophisticated secularity and receives the following words from guest colleague "Somebody wake me up or tomorrow I'll find out that this was all a dream." Finding ourselves up to our eyebrows in Summer '73 implications we really were wondering whether the Summer stopped on July 28th.

Contradiction: As we move toward the Metro knowing what is required we manifest benign shadism by refusing to pray constantly about fleshing out the structural skeleton.

SAN FRANCISCO

Religious House: San Francisco

External: Park Shin Won and Kim Hon Ok, Dorean colleagues, address San Francisco and Oakland Galaxies respectively and explode the Global significance of the LCX.

Religious House: San Francisco (continued)

Internal: House Council on Wk. II breaks loose grasp of what happened in the Summer through study of the documents, workshops and Spirit Spins. Park Shin Won and Kim Hon Ok impact council with Global presence at House Church with over 50 colleagues present.

Contradiction: Moving potential interns from clarity to decision.

Religious House: San Jose

External: Galaxy sodality and House members participate in spinning of Global Odyssey report by Wendell Clutz.

Internal: House membership jumps from 4 to 18 as priors return and sojourners participate in house life.

Contradiction: Enabling both planning and discontinuity to reconstitute all.

Religious House: Sacramento

Religious House: Los Angeles

External: Planning meeting for Summer '73 celebration birthed forth into Cabaret dynamic as we discover clarity like never before in summer documents. The Clements youth Peter, Paul, and Claire arrive from SEA PAC on way to Mexico but even tears can't convince the airline officials to let them go on to Mexico alone.

Internal: The House is back to full strength plus one with sojourner Robin White. Clergy collegium planning assigned troika priorship for fall.

Contradiction: It takes a lot of homework to fill full space with spirit.

Religious House: Phoenix

External: Park Shin Won and Kim Han Ok whistlestop thru to remind the House we've already gone global, to invigorate the region with the necessity for RS-I and PLC's everywhere, and to jolt several prospective galaxy churches with honor and awe and the living presence of all mankind. Meanwhile our PLC recruitment continues a pace with further victories from the Roman and Episcopalian Churches. We were startled to learn Fr. Jim Dougherty (Epis.) of Tucson prays for the E.I. daily at his evening mass!

Internal: Preparation for Phoenix's first Cabaret keeps us excited as we bubble through the August heat on to the celebration. Key event clearly is the return of the Bell's with spins from the summer and Uptown 5.

Religious House: Denver

External: Region experiences the New direction of Summer '73 as two breakfasts are held with one for businessmmn and educators and the other for doctors, nurses, and hospital personel to initiate sponsors for the fall LENS courses. Both meetings turn out to be fantastic strategizing sessions in which one executive finally offered up his boss, "He'll go".

Internal: House turns full blast towards preparing for the fall with evaluation of this year and projection for next year plus examining S'73 documents bringing house alive with things to be done this month. Sr. Mary Ann Schiller sojourns for a week and

battleplans with house on how to work with Roman Catholic Church.
 Contradiction: Experience difficulty of keeping before us our self story as we continually switch our decor to be one day the Institute of Cultural Affairs and the next day the Institute of Religious Affairs.

Religious House: Billings

Religious House: Rapid City

External: Celebrative send out and steak for a "Go--to San Jose" party for Pat Jones. Fourteen at House Church starts week and the study of the 32 documents and year and quarter planning are chief activities of the week.

Internal: "What can we do now?" was the question of 36 recent 5th City Indian/White visitors. The answer came in the form of a proto-guild type: metro colleagues battle plan a meeting with the group which ends up a 6 hour supper workshop. Product: the first miracle makings in a Saturday work day transforming a city landmark. Authorization comes from the City Mayor. In-kind contributions of trucks, equipment and paint. Souvenir--19 rose plants to decorate the wall.

Contradiction: Fish and Bean Development Day at Black Hills Lake turns into Galaxy nurture when calling model does not get actualized.

Religious House: Seattle

External: Signal PLC set up trip to Spokane includes visit to the R.C. Bishop. Preparation for Summer Spirit Trek shows 35 people ready to experience the dynamics of S'73.

Internal: One half of the house was sent out on 6 days of discontinuity. The North Cascades Highway is a fantastic journey. Rehearsal for Spirit Trek Cabaret has house spinning all week.

Contradiction: How to build to necessary structures to break open the conservatism of a Metro like Spokane.

HOUSTON

Religious House: Houston

External: The cleaned and updated regional mailing list begun last September with OMM was completed this weekend. 25 tactics for getting 8 churches into the LCX by Oct. 1st have been put on a timeline and assignments begun for follow through.

Internal: A spontaneous trip to Galveston Beach to celebrate file completion included a roaring fire, marshmallows, a dip in the gulf, waltzing on the sand, and numerous singing ensembles.

Contradiction: An adequate structure for continuity of planning for the fall.

Religious House: New Orleans

Religious House: Miami

External: Regional colleagues joined with House in planning sessions: evaluated past year; set goals, discerned contradictions, and established strategic objectives.

Internal: Complete new House decor and set up; guest flow begins;

reasonable rates offered for missional discontinuity...
 Contradiction: Discovering the key that will mobilize the clergy, and then creating the PLC recruiting story that will turn the key.

Religious House: Atlanta

Religious House: Memphis

External: Candidate for Mayor, George Weltner of Atlanta agrees to fly to Little Rock for key clergy meeting there; article on the PLC comes out in the "Guardian" newspaper of Little Rock Diocese-circulation 10,000.

Internal: Week of bustling fall preparation as we revise and update our mailing list, grid 3 micros to parish level and list 40 target churches with battleplan for each.

Contradiction: How to symbolize last year as what the Lord required so as to move with chastity on planning for next year.

Religious House: Oklahoma City

External: Preparation for Regional Council through Cabaret rehearsals. Evaluation of mission formation during last year and battleplanning the Fall and year. S'73 document review. Gridding to parishes.

Internal: Many guests at Ecclesiola and House Church. Received print of Michaelangelo's "Creation of Man" as a gift from Global Odyssey V.

Contradiction: Getting paradigm shifted from "recruiting" LENS to "marketing" it.

Religious House: Tulsa

Religious House: Amarillo

External: Continued Tuesday Men's and Thursday Women's Luncheons as regular features of Wayside Inn to bring Grads and non-Grads together in preparation for fall. Past week II PSU on Amarillo, first step toward Ecumenical Parish, included one Congressman and representatives from Spanish, Black and White communities.

Internal: Summer Ecclesiola format focusing on the Times, saw ten adults and six children building a new City out of boxes during Sodality, and enjoying it immensely.

Contradiction: How to build "Hi-Octane" nurture structure sufficient to sustain penetration momentum during House absence.

NEW YORK

Religious House: New York

Religious House: New Haven

Religious House: Garden City

External: Regional penetration day in Newark, N.J. and S'73 report at Garden City R.H. brought together old and new metro and R.H. colleagues from entire region to experience day-long Cabaret.

Internal: The last joint House Church of three current houses after S'73 event celebrates the rendering up of a year and a summer as a gracious gift.

Contradiction: No rationale for deciding cluster churches that must be

recruited this summer for fall courses to be.

Religious House: Boston

External: Regional colleagues join together in week II presidium defining and focusing the four major thrusts for the coming year. JoAnn Hopson was baptized at Union United Methodist Church as a sign of taking seriously engagement in the local church.

Internal: Clean white space is turned into sacred space. The presidium participates in the hanging of decor. Sojourners of the week were the Norburg family, the Liggetts, M. Corcoran, C. Doyle, S. Crawford. The Ecclesiola sodality dynamic reveals new facts about the south end of Boston as we visit with SEAPAC around the corner-SQ. END Project Action Committee. Some 43 nationalities are present here amidst numerous social service projects.

Contradiction: Still at the strategizing level for fall while history demands tactics.

Religious House: Portland

External: New excitement breaks loose as house does a second reflection on the past year in order to plan for the next and discovers this years contradictions are way down the road from last year's. Penetration battle plans are all ready contacting prospects.

Internal: House produces document for new prior's that tells the 10 year story of movement in each polis and marks the route for the next 10.

Contradiction: Imaging new assignments when the present demands chaste faithfulness.

Religious House: Manchester

Religious House: Rochester

External: Wayne Ellsworth family arrive at house church to announce that they have taken Monday off to update grad records for region. Locations firmed up for fall RSIs with possibility that all courses for year will be made by regional council.

Internal: 46 at House Church to welcome the return of the Hickeys Study of Yellow Man Ettiquette at sodality deeply addresses house with male/female roles. Gridding region to parish is spirit happening for house. Front of House all painted.

Contradiction: Gridding region to parish without the expertise of locally grounded grads.

Religious House: Pittsburgh

Religious House: Washington

Religious House: Philadelphia

External: With a minimum of house catalysis, regional colleagues light the fuse and launch the rocket of the Allentown PLC blitz with a highly successful weekend of phoning.

Internal: The house welcomes three dynamic black sojourners, one of

who decides to intern.

Contradiction: Carrying on the tasks of the Religious House while the two of us journey 25 grads for interning before our new priors come.

MONTREAL

Religious House: Montreal

Religious House: Toronto

External: Cabaret dynamic catches on as new-found regional colleague throws a party to announce her decision to attend fall Academy.

Internal: Civic Day Holiday provides a valuable opportunity to begin getting on top of S'73 documents, and starts the ball rolling for intensive reflection and planning for the Toronto Region.

Contradiction: The realization of a region brimming full with new possibilities produces an initial reaction of spirit paralysis to be overcome in order to release the new.

CHICAGO

Religious House: Chicago

Religious House: Milwaukee

Religious House: Madison

External: LENS promises to be global-local happening as metro colleague just returned from Global Odyssey takes charge of LENS marketing. Permeation becomes guiding as RSI recruitment model is modified for use of hardware role shows recruiters. Ecclesiola and House Church boom with guests who exhibit increasing willingness to engage, and demonstrate collegiality by staying hours after structures are over, at home in "their" Religious House.

Internal: House member improves her typing skill by 20 words per minute and immediately gets job. The house completes gridding of Ecumenical parish target area to the parish level and art forms super-web, much intrigued by a system adequately complex to match the complexity of the 20th century world.

Contradiction: How to transform contentment over summer guests night dynamic into burst of recruitment fervor for RSI, PLC, advanced courses, Academy, LENS, and Galaxy prep!

Religious House: Rockford

Religious House: Peoria

Religious House: Champaign

External: Preparations for week III Metro Council continue apace including a 9 x 5' geological map of the metro in preparation for gridding to parishes. House mood soars in response to the intensified sense of perspective.

Internal: Breakthrough in interpretation of the "alien contemplations" provides a sociological frame for interpreting the mood of interior house life. S'73 Resurgence songs for the first time become a means of Spirit release, during Metro Council

preparations.

Religious House: Minneapolis

External: First prior journeys to Green Bay to find the metro fully ready for the demands of a full penetration schedule. Metro colleagues host Regional celebration of endings and beginnings, as the Steven Redfield family, of the Philadelphia Region are welcomed.

Internal: David Elliott sent out to attend opening of the World Council of Churches session in Geneva. Week II PSU on the New Face of the Movement held, as cooperative effort with Madison and Indianapolis Houses. Neighbor impacted by singing heard from house and came to the door to invite herself to the next Ecclesiola, in hopes it would be "like the prayer meetings" she goes to downtown.

Contradiction: Now to sustain the on-going fall penetration thrust while experiencing the departure and arrival of troops on the way to new assignments.

Religious House: Kansas City

External: House takes visit to the "other World" as we attend "The Greatest Show on Earth." We are awed by the transparency of discipline and expenditure as performers "dance" over the abyss and sing "Happiness is a Point of View."

Internal: Entrance to house now beckons visitors to sit down and have a chat and 54 area cities expand our consciousness at collegium as a result of a decor weekend.

Contradiction: A moralistic stance in relation to celebration blocks colleagues' participation, reflecting the danger of floating through celebrations and not grasping the humanness revealed therein.

Religious House: Lincoln

External: The coming year begins to become a definite reality rather than a vague mirage as house builds its yearly battleplan. Formulation trip to Sioux City causes extensive brooding in the category of Mobile Religious House.

Internal: Summer 73 document study during morning collegium catches the whole house in trends for future. "Religious House Commonality" causes a dreadful wonder over the direction of the Order.

Contradiction: Giving form to the clarity from last years' reflection in order to move us into the fall.

Religious House: Wichita

External: Local churches begin to utilize house for fall planning. Sunday schedule: 11:00 a.m., preach at Pleasant Valley Baptist; 3:00 p.m., lawn party at house of member of St. Paul's Lutheran to introduce RSI to congregation; 5:30 p.m., address Council of Ministries at Pleasant Valley United Methodist on ways the movement can serve that church.

Internal: House personnel return from S'73 with glowing reports of Cabarets, songs of resurgence, Uptown 5, Guild, Ecumenical Parish, etc., etc., etc. At House Church, celebrate the life and death of

prior's Bishop, His Grace, the Bishop of Houston, Kenneth W. Copeland.

Contradiction: Maintaining the momentum through discontinuity, priors' trip to Chicago, on into the Fall.

Religious House: St. Louis

External: Discover recent PLC grad has built year's battleplan with congregation-wants to get together with other PLC grads to discuss RSI. Created permanent active card file from OMM cards and recent course records.

Internal: Hosted 2 traveling youth groups totalling 65 including 40 from across Nebraska, and 25 from Galaxy and other churches in Tulsa. Collegiums on S'73 papers.

Contradiction: Paralyzed in no man's land between last year's focus and next year's focus.

Religious House: Cleveland

External: Planning proceeds in areas of polis teams, clergy collegium and "advanced PLC." Preparation of clergy, penetration design aided by visit of Washington Galaxy pastor.

Internal: Lease signed for new R.H. on university campus-moving date set for August 25. House Church of 30 celebrates Karpoff family's decision to remain in Order for 2nd year. Hungry night visitor evokes impromptu prayer vigil and new security measures.

Contradiction: Self-story of long hot summer.

Religious House: Indianapolis

Religious House: Cincinnati

External: Metro Urban Summer celebration in park calls forth creativity of all as the products of summer research come alive in song, dance and drama. Old mood chickens out on high wire while new mood also on high wire jumps over broomstick and maintains balance. Saturday breakfast evaluation of women's forum projects great possibilities. Galaxy studies E.P.X. document and projects fall battleplan. Metro guardians pray over financing of new R.J. location.

Internal: Breakfast at Pancake House celebrates scattered and gathered experiences of summer.

Contradiction: Rehearsing destinal context to remove block of plateaued missional decisions.

Religious House: Detroit

External: Summer formulation work bearing fruit as the three polis Ecclesiolas gain in spirit and strength.

Internal: House impacted by living in a Wayside Inn as many guests enter freshly painted entrances: Mr. Koh Eul Soon and Miss Park Myoung Joon from Seoul, and 9 guests for House Church. Week II P30 on area finances excited House members about the new possibilities that will be birthed within the area dynamic.

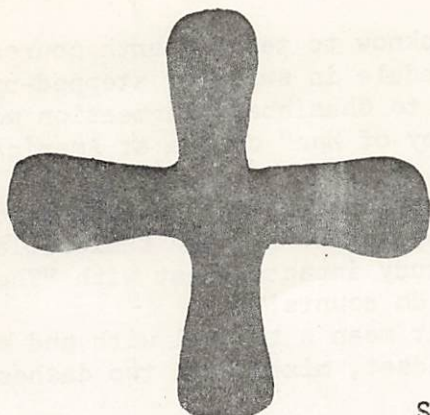
Contradiction: We experience attacks of anxiety as metro colleagues forge ahead with year plans before we have brooded through all the issues and implications raised by the S'73 Research Assembly.

SYMBOLIC CENTRUM

External: George and Rose West sent to Latin America to prepare for Caracas ITI, Rick Loudermilk and Steve Allen sent out to SEAPAC to begin fall LENS marketing, and David and Mary Jane Elliot sent to Germany to begin formulation.

Internal: Archana Mandal from India arrived from Area London and preparation begun for Order Council and Area Priors arrival.

Contradiction: Operating out of the image of preparing for the coming year when the year is already upon us and we are overwhelmed by the mystery of it all.



For look! my witness is in heaven;
 there is one on high ready to answer for me.
 My appeal will come before God,
 while my eyes turn again and again to him.
 Job 16:19-20

SPHERE SOUTH

LATIN AMERICA

CARACAS

Religious House: Caracas

BLACK AFRICA

NAIROBI

Religious House: Nairobi

External: Presbyterian minister who is an Addis ITI grad says YES to going to Chicago for the Academy in January.

Internal: North American neighbors leave to return to the U.S. resulting in our first large in-kind gift--meeting most of our practical needs.

Contradiction: Seeking the "right" house that will be adequate for years to come and yet is in our price range and available now.

SPHERE EAST

SUB-ASIA

BOMBAY

Religious House: Bombay

External: Jabalpur RSI comes off with 25 participants as newly established cadre signals its decision to renew the church. Two more to go with Poona and Bombay gathering momentum as people phone and ask if there is still more room.

Internal: House attends the Byculla Ecumenical Council's Independence Day (August 15) worship celebration and meets churchmen of the polis where the House is situated.

Contradiction: With the House spread over four regions in one week and jobs and schools beginning at different times the centre is obscured. Decide again the symbolic focus of each day.

MADRAS

Religious House: Hyderabad

External: Colleague arriving at Ashram for pedagogy ends up recruiting 6 for coming RSI. Hyderabad cadre meeting consisting for first time primarily of youth, gives push to RSI recruitment. Cadre impacted by powerful visioning by Indian colleague Vinod Parekh returning from S'73

Internal: Independence Day celebrated with special Daily Office, the hoisting of the flag on the roof and a luncheon address by A.M. Joseph. The Enthronement of the Sacred Heart of Jesus brings 40 guests and RC cathedral administrator to Ashram. Shoba Rozario sojourns for week.

Religious House: Hyderabad (continued)

Contradiction: How not to be consumed by the immediacy but stand before long range task and do the radical deed of intensifying RSI recruitment by mobilizing the cadre fully.

DELHI

Religious House: Delhi

External: Four House members sent to Lucknow to teach fourth course of quarter as it comes off right on schedule in swirl of stepped-up Delhi RSI recruitment and formulation trip to Ghaziabad. Permeation moves another notch as House begins "Journey of Man" course at American Embassy school

Internal: Send Ashoka Shaw family back to local church after one month sojourn. Celebrated India's 26th Independence Day and Ecclesiola in a week of heavy monsoons. Ecclesiola study impacts guest with "The way life is involved with life" - what I do counts!

Contradiction: Gaining clarity on what it means to deal with and minister to an ungrounded and literalistic mindset, mixed with two dashes of pioussity.

SEAPAC
HONG KONGReligious House: Hong KongReligious House: ManilaReligious House: Davao

External: Celebrative despedida (sendout party) three hours before seeing off 16 from Davao metro to ITI. An additional 15 participants from the other 5 metros planned to "take off" the same day. One trio from a mountain village raise ₱2100 in three weeks toward ITI funding.

Internal: House spends week confirming travel plans and preparing for despedida. Friend from NCCP (National Council of Churches in the Philippines) drops by unexpectedly and joins in sending out Davao participants to ITI; also drops by again for Sunday noon meal.

Contradiction: Not confusing sea of molasses (turpidity) for Sea of Tranquility.

Religious House: CebuReligious House: Taipei

External: Letter inviting LENS grads to planning meeting for fall courses launches move for 100 man course. House "roof-top" gathering captures imagination of guests as we spin transportation economicist into LENS prospect for NA course.

Internal: Basic House structures are being cranked out as we move from the fullness of the desert to the fullness of the vision. Liz Banks, scouting SEAPAC employment situation, spins us on movement role in Asia and India. House gets second offer from Taipei American School.

Contradiction: How to use entertaining possibilities for maximum address on guests without being eaten up by pull-off chores.

Religious House: Tainan

SINGAPORE

Religious House: Singapore

External: Development focus continues. PLC packet mailed for October PLC. Singapore's geographical gift is rehearsed again as we are contacted by Dr. Pajaro, here from the Philippines to do a concert, and Lionel Muthial and family visiting from Sibu (Kota Kinabalu Region).

Internal: Received sojourners for 3 weeks George, Rena and Vanessa Varghees and sojourner for 4 days Elizabeth Moriarity. Elizabeth is a Roman Catholic in Japan assigned by RH Tokyo to visit Religious Houses in SEAPAC and report. Welcomed Don Raschke from the Kuala Lumpur House.

Contradiction: Resisting the urge to relax once the last ITI participant is on the train to Kuala Lumpur.

Religious House: Kuala LumpurReligious House: Jakarta

External: Several trips to several offices to clear the path for exit visas for participants to ITI:Kuala Lumpur.

Internal: Hosted 6 ITI participants at the House and expect two more tonight

Contradiction: The government structures and the easiest path through them remain enigmatic.

SYDNEY

Religious House: Sydney

External: Area Galaxy consultations in Sydney and Adelaide affirm discoveries of the quarter and confirm training quarter construct and strategy. Cadre building workshops create renewed stance to the local congregation. Initial planning for Oombulgurri Aboriginal Project completed.

Internal: Welcomed Canon Nakayama (PLC grad from Canada) who addressed House on "The Joy of Life " exploding another Phase IV's witness on the unique and unrepeatable gift of "my life." Sent out Edwin and Mimi Shinn to Oombulgurri as first section of the team.

Contradiction: Intensifying the journey that gives permission for "yes" to the particular possibility for THIS RSI.

Religious House: BrisbaneReligious House: Darwin

External: Eventful week, newspaper release on LENS, received nod from service organizations, recruiting of a honorary host committee. Visits include Govett Letts, leader of the Country Party, and Bill and June Tapp, station owners and vocal community leaders.

Internal: Collegium spin on Revelations and the day-to-day experience of sanctification.

Contradiction: Incomplete honorary host committee, blocking us from seeking financial backing and sending out first mass mailing.

Religious House: Perth

External: Regional leaders pick up major symbolic functions at fortnightly cadre meeting. Arrival of LENS brochures from Sydney and Chicago boost House mood and spiritise site search which turns up four to choose from.

Internal: House mid-quarter celebration includes seeing "Lady Sings the Blues" which allows reflection on man's perpetual aloneness and the need for corporateness to hold accountability and maintain a global context

Contradiction: RSI, PLC, LENS, and the LCE demand thinking big and moving with sophistication; we think small and clumsy and fit for 1 of the 4.

Religious House: Adelaide

External: Internal and External mission interwoven as radical experiment with time enables RSI phoning to go on for 11 hours of the day, with all troops participating in all areas. Colleagues who met at RSI announce their engagement. Week II trek to Pirie metro with colleagues.

Internal: New job obtained. Ecclesiola study spins people off into the world of being our Being during study of Friend of God.

Contradiction: Seeing our human frailty as a gift that can be used.

Religious House: Melbourne

SUVA

Religious House: Majuro

External: Series of conversations concerning Uliga School, the relocation of the Religious House to large brick structure on lagoon side set for November, reports to KITCO board and employees, not to mention the arrival of the LENS fall schedule, reveal all systems are go!

Internal: A week of planning and workshopping for the year is highlighted by an Education PSU dealing with the major thrust of the work in image-education at Rong Rong this year: Setting the Style of the Urban Man in Micronesia. Montgomerys return from Hong Kong in record time.

Contradiction: Creating contentless screens that leave open space to be filled with wisdom.

Religious House: Apia

External; A flurry of activities in the school marks the ending of another school term. House hosts movement colleagues Ioritana and Lonise Tanielu and their daughter Helen before sending Ioritana to Princeton Theological Seminary for his Master's degree, and hosts A'aoge Kovati.

Internal: House completed study of St. John of the Cross and are excited by its relationship to House study books: Journey to the East and Bonhoeffer's Temptation

Contradiction: A'aoge said "Just give me the address of the Religious House in Hawaii..." how do we nurture solitary grads over vast distance?

TOKYO

Religious House: Tokyo

External: Global network of international businessmen continue to remind us of our formulation tool - development.

Internal: Regional colleagues from Singapore, James and Maggie Chia, gave opportunity for Wayside Inn dynamic on a trip after ITI and globality of the order impacted us through Australia colleague Lis Banks on her "Orient Express" in search of medical employment opportunities.

Contradiction: My, aren't there a lot of manhole covers left open this time of year.

Religious House: Sendai

External: Trip by remaining House members to visit colleagues in Aomori metro capped by a House Church with 11 around the table sending greetings to 7 at ITI: Fukuoka, Manila, and KL.

Internal: Continued impacting our businessmen English students with the global language and in conversation practice a build-up towards fall LENS participation. Began planning for Regional Council.

Contradiction: Building and activating the model to enable moving from individual colleague and metro cadre activity to coordinated regional activity.

Religious House: SeoulReligious House: Fukuoka

External: Korean churchmen, all 19 of them, arrive on Friday at ITI - miracle of miracles. Still looking for four Islanders. Local RC church hosts ITI. Mass co-celebrated by Fr. Ito from Fukuoka, Fr. Mun from Korea and Fr. Tehan from Ireland and Tokyo. Entire ITI invited to celebration following mass.

Internal: House transformed as repairs done and drapes go up. Cuts across the "just passing through" image. Day spent in Hiroshima holds us over against our heritage.

Contradiction: The great gift of having key Asian colleagues at ITIs has the demon of slowing down fall course recruitment.

Religious House: Osaka

External: Began contacting grads not seen this year.

Internal: House becomes centre of activities with visits from Mr. and Mrs. Chia (Singapore, ITI vacationers) Rev. and Mrs. Kim An Hong (international intern prospects); Rev. and Mrs. Walker (House Church guests) and 7 Sumitomo businessmen (LENS possibilities).

Contradiction: How not to be victimized as tasks extend deadline.

SPHERE WEST

EUROPE
LONDON

Religious House: LondonReligious House: Manchester

NORTH AMERICA
WINNIPEG

Religious House: Winnipeg

External: Stmmer '73 methodology of 14 Actional Steps enables long range vision of regional penetration intensification to become focused quickly into yearly and quarterly practical models. Regional mailings are in full scale implementation stage.

Internal: Sixth missional family brought into being in Winnipeg! Highlight of Douglas and Marion Hilton nuptials is corporate vows conversation and celebration. Fr. Sean Cahill drove from Virden (150 miles away) to attend.

Contradiction: While nonchalantly "Whistling a happy tune" at the foot of the mountain of care, suddenly there looms an avalanche which is headed for 40 Eastgate.

Religious House: Anchorage

External: Collegial visits on return from summer illuminate intern possibilities.

Internal: House engaged in appropriating first prior's solos on resurgence songs (until we learn them) and documents with demands like 1000 guilds by 1975, produce fears as we gaze in the face of the mystery of that calling.

Contradiction: With Order Council only one week away, why can't the Lord just let us finish our summer tasks nice and easy instead of calling us to go 2nd, 3rd, 4th, 5th mile of reenforced missional engagement - all in one week.

Religious House: SaskatoonSAN FRANCISCO Religious House: San FranciscoReligious House: San JoseReligious House: SacramentoReligious House: Los Angeles

External: The planning of the year of the guild and the celebrating of the summer of the guild was an ecstatic happening closing with 50 gathered for the region's first cabaret. All of those present and those not present are anxiously awaiting regional council.

Internal: We are dancing, singing, humoring our way into the dark contemplation of the fall with selfconsciousness on the cabaret dynamic.

Contradiction: Beezelbub sits down exhausted and says "You can't really maintain momentum through the Order council and change of priors."

Religious House: PhoenixReligious House: DenverReligious House: BillingsReligious House: Rapid CityReligious House: Seattle

External: Intensification of recruitment for regional courses and academy forces House to learn new style of dancing. Mileage mounts as members journey to regional outposts to sustain colleagues in their decision to be the Ecclesiola in Bellingham and Portland.

Internal: House impacted by welcoming the Jim Boone family and Bruce Robertson as sojourners who have announced decision to intern. Movie "King of Hearts" provides images of "incognito, the circus, cabaret and shows House members some strategies of living in the secular world.

Contradiction: How to maintain the summer spirit dynamic in the midst of missional discontinuity, prior send outs, and an explosion in new family arrivals.

HOUSTON

Religious House: Houston

External: Clergy LENS recruitment begun in San Antonio with clergy guild and secular LENS marketing team has 3-hour training session with Ben Ball before he moves to Pittsburgh. Galaxy church hosts Korean colleagues Park and Kim while mailing gets underway to total mailing list.

Internal: Weekend PSU on intensifying the Houston metro was deepened by reading Teresa at meals. Sunburned returnees from discontinuity, five metro colleagues, two Korean interns, and a Welsh order member make for a spirited House Church.

Contradiction: Getting into objective forms and files what we operate out of intuitively so that the change in priorship can be a take-off rather than slow down.

Religious House: New Orleans

Religious House: MiamiReligious House: AtlantaReligious House: Memphis

External: PLC calling goes on, and we are deeply excited by the response. PLC grad and deep colleague agrees to PO as well as utilize his church as host.

Internal: People, people, people, dropping in for discontinuity enlivens and enriches our interior life. Signal collegium on Uptown 5 by George Holcombe concretizes possibility.

Contradiction: Being constantly pursued (and occasionally caught) by the awful, apathetic, August aardvark. How do we turn and fight, conquer, and create the plan for the coming year?

Religious House: Oklahoma City

External: Invitations continue to colleagues for Ecclesiola and closing celebration. Battleplans emerging in all aspects: Galaxy, penetration, formulation, LENS, guild, preparation for Regional Council underway.

Internal: Mini-cabaret at Ecclesiola sparks imaginations relative to full-scale show at Council. Celebrated the baptism of Michael Paul Macomber, who received the sacrament at Base during Priors Council.

Contradiction: Still struggling with the subtle paradigm shifts involved in moving directly on the secular.

Religious House: TulsaReligious House: AmarilloReligious House: New York

External: Regrouping and repermissioning of troops after summer program as region first gathers in Newark metro to put out 3500-piece regional fall brochure mailing and to do gridding to parish level; and then, moves to Garden City metro for celebrative S'73 reporting event.

Internal: Intensification of knowing and being with collegiums spent corporately writing resolution which pushes wisdom of past year and with Thursday night corporate ride on Coney Island roller coaster that create new sense after time and space and allows stoics to decide.

Contradiction: Immediate task of fall recruitment and long-range model for year's battleplanning are not meshing gears.

Religious House: New Haven

External: Summer climaxes with metro Ecclesiola celebration of sukiyaki dinner cooked in wok pan, resurgence songs, summer reports, and promises for the new year.

Internal: Creating year's battleplan rehearses victories and losses of past and holds forth promises to claim in the future; in-kind contribution of 3 gigantic bluefish supplements House diet.

Contradiction: With grid changes, current penetration plan is thrown askew and exposes unknown quality of the metro.

NEW YORK

Religious House: Garden City

External: Third congregation says yes to fall cluster recruitment.

Internal: Whole week spent in doing our House resolution, preparation for a metro recruitment weekend, and our battleplan, packing for Chicago, and Galaxy training all done by a prior couple, a sojourner, 2 international intern visitors (Tim Casswell and Rose Hull) 1 intern, and 2 interns from the NY House.

Contradiction: The metro has another timeline for August other than ours.

Religious House: Boston

External: Regridding of the region gives witness to the reality of a new movement coming into being. Four Galaxy churches are gridded out of the old Boston metro laying fresh claim on the necessity of serious penetration of churches in Boston.

Internal: Week II was spent on the year that was, creating records of local church cultivation and grad journeys.

Contradiction: We see the road that must be traveled to the December LCX training school - can we travel fast enough to get there?

Religious House: PortlandReligious House: ManchesterReligious House: Rochester

External: Hickeys in region for Week I recruiting interns for 73-74. House experiences Week II Ecumenical Parish lab as context expanding; 22 participants.

Internal: Daily Office in new experimental form impacts House with new sense of awe, Wayside Inn actualized with 10 guests dropping in for overnight, negotiations begun with local seminary toward new Religious House location, sent Karen Muelhauser to Philadelphia RH sojourn.

Contradiction: Parish gridding moving at snail's pace as House deals with territory we've never been to.

Religious House: PittsburghReligious House: WashingtonReligious House: Philadelphia

External: After seeing the vision of brochures and invitations as pure penetration vehicles, we decided to revolutionize our Summer Regional Council invitations, using as cover "Peaceable Kingdom" by Edward Hicks on gray, french-folded apper with olive green ink color-coordinated.

Internal: Pull together of 50-page document with no one present because all were experiencing discontinuity. House Church held with one House member present. Rev. Ed Higgins, celebrant, on route to Chicago and Sacramento.

Contradiction: How do two House interns create the miracles which allow regional colleagues to be the movement and prepare to greet new priors

MONTREAL

Religious House: Montreal

Religious House: Toronto

External: Fall quarter penetration heralded with PLC visit to pastor of Korean Presbyterian church and consultation in Burlington (London region) to enable a congregation to plan a retreat weekend. Envelopes for fall mailing arrive in resplendent resurgent colours.

Internal: House celebration across the water to Toronto Island breaks loose in song and dance, which catalyzes others to join in and raises the question "Are you some singing group?" Sojourners John and Lily Cox, Anne Drummond and Linda Hoffos held swell troop strength.

Contradiction: Turning prospective galaxy clergy's vacation schedules into vocational timelines.

CHICAGO

Religious House: Chicago

External: Fifth City Jets spent "40 days" in the wilderness of a Boy Scout camp - built an altar, discovered themselves as a community; rituals and songs became essential and life giving.

Internal: Feasted together as a House celebrating the coming marriage of Deborah Garrison and James Mosley.

Contradiction: Maintaining believable image of ourselves as a mighty army while a small rotating band is carrying the task during discontinuity.

Religious House: Milwaukee

External: Impossibly complex area PSU becomes miraculous, meaningful flesh as metro and House do 6-hour workshop in 3! Galaxy churches again impacted by the global as international guests Miss Park and Mr. Koh visit.

Internal: Welcomed Willers family to sojourn. Pastor Ng Yaw Fong's witness at House Church impacts the House as he charges the absolved ugly Americans to be the beautiful Americans.

Contradiction: Deciding to mount the charge without having first located the best steed.

Religious House: Madison

External: Staff of local pre-school recognizes Fifth City songs as House member goes with guitar to sing for children. In midst of numerous visits to clergy this week, an especially friendly Roman Catholic church is discovered on north side of town

Internal: House experiences the awe of a changing universe this week as it receives two new interns, two guests from Korea, an old friend and her daughter, and a family of seven - especially honored by the presence of Korean colleagues Mr. Koh and Miss Park.

Contradiction: Tension between wanting to be rescue service in the face of immediate contingencies and pursuing the appointed model raises question "How does the free man maintain his integrity with no justification?"

Religious House: RockfordReligious House: PeoriaReligious House: Champaign

External: Champaign Metro Council attended by 21 people, including House personnel, to hear Summer '73 report/spin, undertake the gridding of the metro to parishes, and do preliminary preparation for LENS recruitment.

Religious House: Champaign (continued)

Internal: House is graced by presence of Pablo and Blandina Calverio of the Philippines, and more lately, Majuro, on their "working tour" of several Religious Houses on North America. They added concretion to the concept of acting "on behalf of all" at Metro Galaxy church meeting.

Contradiction: Getting on top of the wealth of new data input as the result of the gridding to parishes, for the fall recruitment effort.

Religious House: Minneapolis

External: Ng Yaw Fong impacts House and Metro/Galaxy Ecclesiola, after visiting area key clergy in potential Galaxy churches.

Internal: House sees "Scarecrow" and in it finds a new way to talk about the summer. Joe and Audrey Ayres visit House on way to family discontinuity at colleague's lake camp. Hosted June Seery and daughter Kate. Sent out Mary Jane Elliott en route to Brussels to join David.

Contradiction: How is it, while waiting for the new prior, that everyone sees self as totally responsible for the on-going-ness of the region:

Religious House: Kansas City

External: Meeting with Conference Lay Activities leader nets approval and request for training of 500-600 Methodist Laymen in 73-74. Next step, writing a sophisticated proposal. Fall brochures coming off the press push us to be more serious in our battleplan PSUs.

Internal: House crowded as sojourners and wayfaring colleagues come and go. Garage cleaned out to prepare for coming families. Emerging Generation has great time sorting through junk and a skit on recruitment with great props and costumes emerges from heap.

Contradiction: Saying mañana catches up with us as we run out of mañanas.

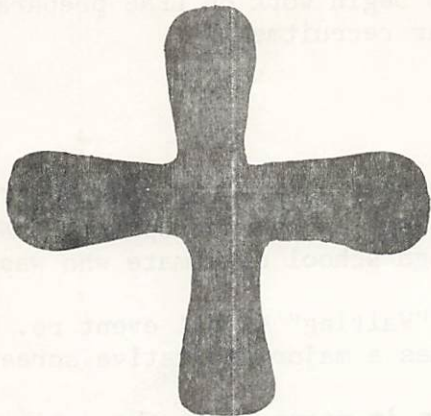
Religious House: LincolnReligious House: WichitaReligious House: St. LouisReligious House: ClevelandReligious House: CincinnatiReligious House: IndianapolisReligious House: Detroit

BASE CENTRUM

External: Sent out Elizabeth Hughes to London and Inger Bartram to Brussels. Welcomed incoming global priors including Kang Byoung Hoon, Jim Campbell.

Internal: Preparation continued for Order Council. Panchayat selections were announced: beginning Quarter 4 Justin Morrill, proxy Tim Lush; beginning Quarter 1 Kay Hayes, proxy Charles Lingo.

Contradiction: Maintaining long-term funding during short term crises.



Would he exert his great power to browbeat me?
 No; God himself would never bring a charge against me
 There the upright are vindicated before him,
 and I shall win from my judge an absolute discharge.
 Job: 23:6-7

SPHERE SOUTH

LATIN AMERICA
 CARACAS

Religious House: Caracas

BLACK AFRICA
 NAIROBI

Religious House: Nairobi

External: Visit to Nairobi International School "Fun Night" gets enthusiastic response to staff training proposal from a "nice guy" who turns out to be the head of the Faculty Senate.

Internal: House work on report of our year in Africa reveals a continent in Resurgence in spite of the mood of despair and cynicism of the general populace.

Contradiction: Our first PLC is on our doorstep and the response of the hierarchy is still conjecture.

SUB-ASIA
 BOMBAY

SPHERE EAST

Religious House: Bombay

MADRAS

Religious House: Hyderabad

External: Signal cadre meeting of 30 people sends out Holmes family to their new assignment. One night recruitment blitz by 21 cadre members produces 15 registrations for coming RSI.

Internal: The whole Ashram attends the World Council of Churches 25th anniversary service, and results in a visit of Archbishop Arrulappa to the House. Received Satya Kumar as an intern. Tribal resettlement produces a miracle with living quarters available for 41 people.

Contradiction: How to do the intensive priorship training necessary to enable comprehensive spirit formulation of the Area. How to enable extended families to work through the decision and practices of internship.

DELHI

Religious House: Delhi

HONG KONG

Religious House: Hong Kong

External: Thirteen congregations represented at Shum Oi lay training school as teaching staff prepare for 2nd phase of model building consultations with participants in their local churches.

Internal: Global resurgence songs and reformed corporateness highlight pre-fall workshops as Walter Baker arrives from Global Research Assembly and Bill Ragsdale arrives to begin work on LENS preparation.

Contradiction: Continuity in LENS seminar recruitment.

Religious House: ManilaReligious House: Davao

External: Guest speaking engagement at Rotary Club catalyzed by ITI participant proves to be key contact re. future development, LENS recruitment, and former elementary/high school classmate who was there a key to future tutoring jobs.

Internal: Ecclesiola study of Tillich's "Waiting" signal event re. charting methodology, grounding, and becomes a major meditative screen for House members.

Contradiction: Putting concretion of what it means to be the actively patient ones.

Religious House: CebuReligious House: TaipeiReligious House: Tainan

SINGAPORE

Religious House: Singapore

External: House was visited by Rev. Canon Gordon Goi Chi Nakayama, "retired" Anglican Priest from Canada who is continuing to serve a church on the condition that he be given time off to do evangelism around the world; attended PLC last spring in Western Canada.

Internal: Received Karen Raschke from Kuala Lumpur Religious House to join her husband in the Singapore Religious House, pending the working through of a new visa strategy for Malaysia.

Contradiction: Deciding that we know how to be sophisticated enough to impact the top-level Singapore business community with the need for them to be at the LENS course.

Religious House: Kuala LumpurReligious House: Jakarta

SYDNEY

Religious House: Sydney

External: McCauley family sent out to Oombulgurri to join Shinns as second order family. Galaxy consult with Ellen Addington and Brian Robins sent out Galaxy pastor Dean Eland to SouthEast Asia Odyssey with 17 people from inner city parish.

Internal: Liz Banks returns from recent job hunting trip through India and SE Asia, and reports on Movement explosion in two continents. New possibilities of small adjacent buildings shift emphasis of house hunt while still looking for that 75 person facility.

Contradiction: Deciding not only that we are going to win, but that we are winning, and communicating that decision to be the ones.

Religious House: Brisbane

External: Flairs popping all week as 1st PLC in over a year is held, Toowoomba Metro Ecclesiola comes off, and LCE Field Visit gathers strategic clergy and lay from 5 denominations.

Internal: House is impacted with the power and possibility of corporateness in a week that calls for bilocation of all members and we celebrate the doing of the impossible at Mama Luigi's.

Contradiction: Operating out of a universe of dual contexts (ours vs. theirs) as opposed to the ONE comprehensive context that sets men free

Religious House: Darwin

External: First "official" visit with RC Bishop O'Loughlin goes well and opens door to working with RC church across the Territory; 14 key political, business, and rural leaders now on LENS honorary host committee with 10 more to go. We have lift-off!

Internal: Ed and Mimi Shinn sojourn a day, getting on top of Darwin Region and our enablement role, as they take up assignment to Oombulgurri Aboriginal Reformulation Project in Wyndham. Mid-year written report to global priors fills us with awe over the Lord's victories.

Contradiction: We have the distinct intuition we are at a critical turning point in LENS recruitment, but wild momentum prevents us from thinking through the minute orchestration.

Religious House: Perth

External: Encountered victory on all fronts. Clergy visitation nets first paid registration for Nov. PLC; minister's guild assumes responsibility for LCP and sets Field Visit follow-up meeting; House consensus on site and 2 more affirmative responses to host committee for LENS

Internal: School holidays and paid vacation for one permeator begin with send-out of youth to Mowanjum and emerging generation work-day to transform the kitchen. Wk. II PSU on regional strategies allows Quarter to be seen as one chaste thrust to call all men to engagement.

Contradiction: Maintaining tactical rhythm as the pace quickens.

Religious House: Adelaide

External: Overnight switch from RSI recruitment to Regional Council planning demonstrates diverse demands of the region and need for colleague nurture. Inkind gifts, from a horse saddle to venetian blinds roll in for the extension of the mission.

Internal: School holidays see deployed youth travelling between houses, and emerging generation visiting extended families. Liz Banks shares mysteries of the East at Monday collegium report of India-Seapac tour. Churches of Christ pastor is celebrant at his first House Church.

Contradiction: How to pick up the imperatives and dance when timelines fall and new demands snatch at our time and energy.

Religious House: Melbourne

External: Ed and Mimi Shinn visit occasions deep reflection among region colleagues in relation to the power of the movement across the globe and the possibilities of the Melbourne region within the total model. Galactic Interchange Wk. II takes place in country farm-house.

Internal: Saturday night at the movies proves to be a spirit occasion after a hard week of recruiting. New decor in collegium room, including a tailor made blackboard takes us a step nearer our 3-month sophistication plan.

Religious House: Melbourne (continued)

Contradiction: Building the Region Council agenda sufficiently comprehensive and flexible to enable a thorough evaluation and radical replanning.

SUVA

Religious House: Majuro

External: Visit of banker (the loanee) to KITCO, new audit obtained, new year at Rong Rong high school underway with week of orientation for more students than expected.

Internal: Received Rick Loudermilk as guest in Majuro Metro with news of the North American continent and the world and LENS, recreated space at Rong Rong station outpost a few boards, nails and imagination while donning the white, green and purple vestments.

Contradiction: Timelines and battleplans call for a million tactics-- articulating the one single tactic that explodes the remainder.

Religious House: Apia

External: Tuesday night guest night expanded by unexpected arrival of Steve Allen who was here for two days on LENS set up trek. Seilala and Eline Mapasua join us Wednesday night to learn about marketing LENS. Ended term 2 of school with a class party at the House..

Internal: House impacted by reality of LENS coming to the South Pacific Quarter 2. Collegiums on LENS clarify what is demanded to market the course and also spell out the care needed to bring a secular course to an overtly religious country. Thursday night House celebration.

Contradiction: Enabling administration to act out of comprehensive picture relative to students and not immediate frustration or anger.

TOKYO

Religious House: Tokyo'Religious House: Sendai

External: Set up the development machinery for further ITI development.

Internal: David Willoughby arrived from Tokyo to be an additional enabler in time to help celebrate the second August birthday in the House.

Two guests for House Church.

Contradiction: Enabling the region to build the fall quarter when many are at ITI and those remaining are still engaged in ITI development.

Religious House: SeoulReligious House: FukuokaReligious House: Osaka

External: Visits with a Catholic University president and a Nagoya grad yield many names for future visits. Rev. John Yamane (Bishop's secretary) joins us for Wk. II calling and House Church.

Internal: Kitty Cole returns with report and decor. E.G. celebration for the whole House highlights corporateness and creativity.

Contradiction: How to hold the tension of waiting for the return of ITI grads and getting fall machinery underway.

SPHERE WEST

EUROPE
LONDONReligious House: London

NORTH AMERICA
WINNIPEG

Religious House: Manchester

Religious House: Winnipeg

Religious House: Anchorage

Religious House: Saskatoon

SAN FRANCISCO

Religious House: San Francisco

External: House completed its basic constructs for regional mission for the coming year and fall quarter in preparation for the Regional Priory and Regional Presidium's battleplanning and concensus on objectives.

Internal: Sent Wegners and Henry Seale to visit extended family on way to Priors Council. Received John Vance back from Honolulu LENS marketing trip. Priors of three regional houses met to prepare for Order Council. Kit and Margaret (Prather) Krauss show off grandson

Contradiction: Resolve necessary for replication of one old Galaxy in order that a new Galaxy may begin is blocked by continued interest of key congregations in their own individual efficiency.

Religious House: San Jose

Religious House: Sacramento

Religious House: Los Angeles

External: Task forces for fall quarter in process of creation - and first meetings. The year of the guild has begun in concretion.

Internal: Packed 11 souls into the U-Haul and celebrated the end of the body of the House of year 72-73 in the park. Each person had a promise claimed for him and more people will be making the same trip before this time next year.

Contradiction: With the fall quarter off to a resurgent start, relaxing our guard against Satan.

Religious House: Phoenix

Religious House: Denver

Religious House: Billings

Religious House: Rapid City

External: The Community Action program and Indian Brotherhood, the Indian leadership of Rapid City, initiated a cooperative task force with members of the Galaxy and Religious House to create a sign of hope by transforming a city landmark at Sioux Sanatorium.

Internal: First prior family returns to the House after being gone for the quarter, and finds that the tribal resettlement put the children in "just the room(s) I wanted" in preparation for the arrival of two new prior families of the Troika.

Contradiction: Keeping our balance internally while the external is making demands upon us for which models have not been built; or "How do you keep them on the reservation after they've seen 5th City?"

Religious House: Seattle

HOUSTON

Religious House: Houston

External: LENS officially authorized by Houston Metropolitan Ministers and League of Women Voters, and Holiday Inn in Nasa acquired as site. RH hums with activity as regional presidium wrestles with issues of House interns, ecumenical parish, courses and upcoming council.

Internal: The new face of the Houston House begins to emerge as Larry and Rhonda Loeppke are welcomed as interns and RH sends out priors and Sharry Bryan to Base, Richard Lear to Austin to finish his degree, and the Randy Johnston family to be the secular face of the Movement through the Guardians.

Contradiction: Quickly communicating movement memory to new interns while they already must carry the external task, whose success depends upon comprehensiveness.

Religious House: New OrleansReligious House: Miami

External: House members enlivened cabaret spirit at Diamond Horseshoe Saloon "Roaring 20's Review" - the discovery of the week at Disney World.

Internal: Prior dictates 5 hours of notes to regional colleague (secular secretary) for new prior; House Church sombre/gala occasion as Prior reminds us our whole life is demanded, numerous individual and family celebrations among House members and regional colleagues present.

Contradiction: Gun has sounded for start of race, House still putting on its track shoes.

Religious House: AtlantaReligious House: Memphis

External: Letters--we get letters--from all over the Mid South. Excitement is building for the Little Rock PLC and we anticipate a miracle.

Internal: Re:house hunting - the kairotic moment is yet to arrive, but there are prospects abounding. A local colleague is working hard raising a down payment, and is enlivened by the expenditure required.

Contradiction: Deciding to celebrate the ending of this year with a bang and not a whimper.

Religious House: Oklahoma CityReligious House: TulsaReligious House: Amarillo

NEW YORK

Religious House: New York

External: Sidewalks of New York divided into 217 parishes in preparation for guilds, Galaxies, and Ecumenical Parishes. Clerics in 22 of parishes visited during Wk. II.

Internal: House celebrates end of year with night in Manhattan and sentimental stop at Jack Dempsey's Broadway bar. Metro collegiums join battleplanning collegiums and experience along with House confusing but amusing session of clumping.

Religious House: New York (continued)

Contradiction: Story that says first mates can't plot out course when most of captains on shore duty.

Religious House: New Haven

External: New Haven regridded with the addition of the Waterbury polis.

Internal: House memorial and battleplans completed.

Contradiction: Reassignment of priorship team leaves House with no continuity of memory as metro shifts gears into new quarter and year.

Religious House: GardenCity

External: House explodes into a whirlwind of activity as Week II is filled with Galaxy pedagogy, gridding the diverse Garden City metro to parishes, and a Common Meal celebration bringing together Galaxy, metro and two Religious Houses.

Internal: Send out of colleagues to new global assignments leaves small-but-mighty remnant to prepare for the second year of this House. Metro family moves in during priors' absence, symbolizing the reality that the Religious House belongs to the whole metro.

Contradiction: Maintaining the marching rhythm toward regional council and fall penetration in the midst of troop sendouts which seem to give permission to "fall out" and be "at ease."

Religious House: Boston

External: Regional presidium completes regridding of all metros to the parish level. A precluster meeting in Andover to create an RSI in the fall turns into a discussion of creating a Galaxy there.

Internal: The past year is celebrated gloriously with the House on location at Longfellow's Wayside Inn (the oldest operating Wayside Inn on the continent) and with 47 participating in the final House Church of the year where John Chaffee and Stewart and Jean Stowell are received as interns.

Contradiction: In the midst of a hard battleplan on religious structures we have not thought ourselves through on marketing LENS with a hard battleplan to impact the secular structures.

Religious House: PortlandReligious House: ManchesterReligious House: Rochester

External: Region ready to say yes, symbolized by the decision of five families to intern starting Sept. 1, and 21 at Regional Presidium which spent 3/4 of time dealing with serious metro priorship. Decision to meet Academy quota symbolized as House send off 200+ list.

Internal: High spirit mood of House continues. Ecclesiola study on Training in Christianity releases new insights and dancing as experimental sodality releases incredible creativity and spirit. First Episcopal Priest is celebrant at House Church.

Contradiction: Parish gridding not done as we struggle with population distribution and what will totally care for every individual in the Region.

Religious House: Pittsburgh

External: Presence of 55 adults and 15 children around the table at House Church impacts us with new sense of possibility for the coming quarter. In that light, plans are made for the regional meeting, and recruitment tactics are worked, including griding of metro to parish

Internal: Nightly study of Summer '73 documents continues, and cleaning and renovation work on the physical plant begins. Fantastic House celebration of the send-out of the Zervigons, Johnsons, Betontes, Bill Lowe, and Tim Busa to new assignments.

Contradiction: How to hold the external vision in this transitional period of internal chaos.

Religious House: WashingtonReligious House: Philadelphia

MONTREAL

Religious House: MontrealReligious House: Toronto

CHICAGO

Religious House: ChicagoReligious House: MilwaukeeReligious House: MadisonReligious House: RockfordReligious House: PeoriaReligious House: Champaign

External: The LENS recruiting process has begun through preliminary meetings in Danville. Diwahr Oniwale, colleague from Area Bombay, addresses Galaxy church adult Sunday School class and produces humor, fear and fascination. Metro colleagues preliminary grid to parish.

Internal: Diwakar secures invitation to be first international student of agriculture at Champaign's Parkland College. Shift to fall assignments begins for Carol Hughes, Dick West and the Joseph Kirsches.

Contradiction: Image: a small group of House members, seated around a table pronouncing in unison the ancient formula "We got the whole metro."

Religious House: Minneapolis

External: House members attend "Cabaret" evening in Green Bay metro with 55 metro colleagues in attendance and listen awe-struck to a report on the summer by a non-RSI grad. Also celebrated decisions of two families to intern. Sent out Bascom, Miesen, Toth and Gergen families to new assignments.

Internal: House attended Minnesota State Fair where one member came away with a new spirit analogy from the Ferris Wheel. Final handshakes on new Religious House on Friday met with fear and fascination. Twenty members of Saskatoon and Winnipeg RH drop by.

Contradiction: We are finding ourselves unable to look beyond the demands of changing the Religious House facility and staff when monsoon-strength penetration and formulation lie just around the corner.

Religious House: Kansas City

External: Pastor colleague drops by on packing day asking for clues on working with 3 other pastors in his parish who are asking him for methods. First LENS marketing PSU held in preparation for Week 7 course--facility secured (hotel) with great financial model.

Internal: Hillcrest (LCP) cadre of 25 attended House Church and participated in ritual of receiving two new intern families (one of which was a Hillcrest family) and in ritual of sending out Order youth to their fall assignments. Cabaret dynamic and reflections on the year.

Contradiction: Human community demon creeps in on spirit community as we forget that the Word alone sustains, and colleagues begin wish-dreaming that the Order wouldn't move its people.

Religious House: LincolnReligious House: WichitaReligious House: St. LouisReligious House: ClevelandReligious House: IndianapolisReligious House: CincinnatiReligious House: Detroit

External: Grand Rapids-Lansing Metro leadership representing eight local congregations meet to grid their metros, celebrate the summer quarter and plan for the coming teaching year.

Internal: Fifty one people present at House Church for the send out of Order families and colleagues demonstrating globality and symbolizing the shift to the new missional year.

Contradiction: Advanced preparation, troop strength and formulation behind what is required to meet demands of fall quarter.

SYMBOLIC CENTRUM

External: Order Council reconvened with some 800 Order members from all across North America and around the globe. Work was intensified in Religious House commonization, missional priorities, Ecumenical Parish experiment, and was highlighted by intensive area planning and ; Priorship Training School.

Internal: Park Shin Won and Kim Han Ok sent out for extended return to Seoul. Preparations for departure to Religious Houses of North America, Europe, and Seapac accelerates.

Contradiction: Maintaining intensity of the spirit over the next 6 months.