

Blessed be God's name from age to age,  
for all wisdom and power are his.  
He changes seasons and times;  
he deposes kings and sets them up;  
he gives wisdom to the wise  
and all their store of knowledge to the men who know;  
Daniel 2:20-21

## SPHERE SOUTH

LATIN AMERICA  
CARACASReligious House: Caracas

External: Regional celebration explosion with welcoming back Bunker and Fr. Bede Hornung from ITI trip through South America; list of 60 ITI sponsors; a Maryknoll financial grant for the ITI; and a foundation proposal for ITI sent to Inter-American Foundation.

Internal: End Pentecost quarter with the excitement of shifting into journey of spirit intensification to enable task of metro formulation, regional spirit nurture, continental pedagogy, and global ITI.

Contradiction: How to live so many roles in the immediate implementation of tasks while at the same time looking beyond the ITI.

BLACK AFRICA  
NAIROBIReligious House: Nairobi

External: Final draft of West Africa letter symbolizes our concrete caring for a "huge" continent.

Internal: Potential colleagues "dropping in" frequently hold us before the wayside inn dynamic in religious houses.

Contradiction: No promising development prospects on the horizon with exorbitant continental travel expenses facing us in the near future.

## SPHERE EAST

SUB-ASIA  
BOMBAYReligious House: Bombay

External: Regional cadres established in Bombay, Ahmedabad and Pune in first round of Prior's regular visits. Strategised with Joe Buckles in Pune on the authorization dynamic. Bombay RS-I recruitment underway in the midst of completing quarter goals and timeline.

Internal: Raymond Spencer and Vinod Parekh sent out to Summer '73 Chicago. First jobs secured with YMCA and Bombay Oil. Received sojourners Keve Joseph and Tara Sukare from Nagpur.

Contradiction: Pulling the diverse strands of Bombay formulation into a single missional thrust over against sense that the Ashram will do it all.

MADRAS

Religious House: Hyderabad

External: An exciting cadre meeting held in Hyderabad with 20 ITI and RS-I grads launches a week of intensive RS-I recruitment (60-70 visits made by cadre and House). Ashram regional treks begin with small cadre meeting in Bangalore deciding to visit 70 grads in 2 weeks

Internal: House set up continues punctuated by drop in visits and key colleagues participating in House Church.

Contradiction: In the midst of the battlefield with booby traps and land mines going off, we are clear we are winning the battle but do not know if we are strategically winning the war.

DELHI

Religious House: Delhi

External: Delhi area impacted by first of bi-weekly treks, as Delhi, Jaipur and Agra colleagues are visited, and 3 RS-I courses set up for the coming quarter. A grad luncheon at House sends out 15-year old and new colleagues with a renewed sense of engagement as colleagues.

Internal: House transformed as Wk. II on decor creates new bedroom, new collegium room, and all space is ordered for the mission. House joins the Menon family for wedding anniversary feast and presents "other world" paintings symbolizing the journey of the marriage covenant.

Contradiction: Quickly expanding prospect list for an RS-I eleven days away.

SEAPAC  
HONG KONGReligious House: Hong KongReligious House: Manila

External: ITI recruitment moves on with trip to Baguio metro and 40 more invitations sent. We attended a meeting of NCCP (National Council of Church in Philippines) and established improved relationships. A mobile ecclesiola with 30 present yields an invitation to come back.

Internal: Loel and Marilyn Bacerra sent to Research Assembly after 3 days of miracles getting travel clearance. Lilia Garibay visits from Davao House. Ecclesiola study on sanctification addresses us deeply - especially the radical integrity pole.

Contradiction: Waking up to the fact that we are still recruiting while the need is to concentrate on development.

Religious House: Davae

External: Elizondo and Soderlind sent to Samboanga metro for ITI recruitment and development - grad formulation. First major trip outside of Davao metro invokes high excitement in region where travel in 3 metros is bracketed. Eagerly anticipate report.

Internal: Dan Nebres, UCCP pastor, is first guest House Church celebrant. With almost half of House dispersed, corporate House cleaning done in record time. House learning many "new" songs and in process of translating one into Filipino.

Contradiction: Deciding that we are wise enough to discern difference between blocks that need to be bracketed and blocks that need to be dealt with head-on.

Religious House: Cebu

External: Moving into high gear for the ITI's with Advanced ITI participants finalizing passport and exit clearances and Basic recruitment in Bacolod metro firming up.

Internal: House meeting in Manila with 3 Houses present (including surprise drop-in by Fishel) to articulate current contradiction and redirection of work.

Contradiction: Continuing missional context in a time when the spirit is "busting out all over."

Religious House: Taipei

External: Make visits to generate development names as ITI prospects turn up much of their share of ITI. Maryknoll Fathers plan to send their new Regional Coordinator to ITI.

Internal: Sharps arrive from Tainan. Two good House possibilities fall through and we are back at "Go without \$200."

Contradiction: Tension of necessity to find suitable facility immediately for sake of summer and long range, and slow process of locating possibilities.

Religious House: Tainan

SINGAPORE

Religious House: SingaporeReligious House: Kuala Lumpur

External: The Penang Development trip brought the promise of \$1600, Malaysian. In the KL metro twenty-seven pitches were made for ITI development, requesting \$7000 Malaysian.

Internal: The ITI War Room dynamic is completed and in full operation. The ITI materials from Centrum are unpacked, and reported to Hong Kong. Received Doris Morris and Mark Phillips for Week II troop expansion. The House received the Selvaraj Daniel family for sojourn of 6 months.

Contradiction: In the midst of many wanting to make small contributions, how to open the door for large contributions in face of the immediate need to raise \$30,000.

Religious House: Jakarta

SYDNEY

Religious House: Sydney

External: Basic Training School follow-up clergy visiting reveals decisional readiness as preparation for Sydney Galaxy moves ahead in preparation of the first sodality meeting.

Internal: Quarter III planning in full swing. Two guests of the Ross Smiths and two Roman Catholic regional colleagues arriving for an evening meal point to the Way Station role of the House in the Region.

Contradiction: Seemingly unbridgeable gap between programme plans and personnel availability.

Religious House: Brisbane

External: In a week of hard prayer miracles occur - RS-I and PLC sites procured when none are available, sleeping grads push back the ropes and peer forth with promise of new involvement, and registration calls fall from unlikely limbs of the prospect tree after the harvesters move on.

Religious House: Brisbane (continued)

Internal: House reaches full employment as Nancy Vosler starts social worker job and two House members get raises; and sustained involvement of regional colleagues in House structures proves to be a nurturing dynamic - for us.

Contradiction: Unsureness that we share a common context with Regional colleagues, viz. that the demands of history upon the Movement are the demands of history on the local church, blocks common perception of the nitty gritty.

Religious House: Darwin

External: First concrete invitation from the church came from visit to Lutheran pastor, with invitation to lead a Bible study program. Two drop-in visits from Davys on route to Canberra and a South Australia grad visiting Darwin, occurring in midst of moving House.

Internal: Third move = adequate House location close downtown, and two doors from the pub. Evaluation and planning continues.

Contradiction: House in pioneering in secular society discovers struggle with the decision to live, as Paul, out of the demand to be "bold before princes and kings."

Religious House: Perth

External: Week II RSIIB recruitment yielded five firm yesses and turned course from doubtful to highly probably. Invitation to polis catalytic cadre revealed movement's renewed seriousness relative to assuming comprehensive care for the region.

Internal: Week of detailed tactical planning releases House's vision of regional structures for the future.

Contradiction: The region has fired the gun to start Quarter 3 and the House still has one week of quarter 2 left.

Religious House: Adelaide

External: Recruiting push by House and region for RS-I Wk. I of quarter 3. First meeting of Galaxy for planning the training quarter. Highlight of Adelaide Metro Cadre was study of Campbells' Schizophrenia, lead by local clergy.

Internal: Odyssey at House shared by four regional colleagues. North American colleague Martha Durffy gives Wk. I time to House and gets files and mailing list corrected. Report to House from priors council and BTS. Metro colleague holds House accountable through Metro Care Net

Contradiction: How total planning is concretized in structures to enable total external thrust.

Religious House: Melbourne

External: A hard push on Academy recruitment takes us on outer metro trips to Hobart and Ballarat. Garnet Banks arrives for Development and confronts us afresh with global perspectives. The region colleague wrestle with the importance of Academy recruiting.

Internal: Quarter 3 planning goes along steadily beneath the demanding external task. A Saturday night workshop on new style in the collegium room produces a new vision for the possibility for the House, and gives way to much merriment and celebration.

Contradiction: An ineffective plan for the total use of troops.

SUVA

Religious House: Majuro

External: After reviewing the KITCO books, new resolve is sounded as management calls board meeting to signal the fresh start.

Internal: LENS-Guam follow-up report, House study of indicative ethics paper, new decorating and space re-creation as well as the Wk. II PSU on missional arenas 4x4x4x4 results in "I thought I saw a style shift. I did, I did and I am one.

Contradiction: Absentee management and dispersal of troops, raises questions of how to keep all the plates spinning simultaneously while the jugglers are assigned elsewhere.

Religious House: Apia

External: Metro Council was held with 14 present. Weekend spent working on year goals and strategies. Had an exciting session gridding the Apia polis to micros. The council was ended with a movie and conversation and feast.

Internal: House was impacted anew by the Order timelines, looking at where we've been and where we will be in the future.

Contradiction: Colleagues not having an image of the Spirit Movement beyond RS-I's and ITI's.

TOKYO

Religious House: Tokyo

External: One-day trip to Seoul produces positive results on the Korean visa situation; Area Presidium demonstrated the appropriateness of our rythm - Area-wide colleagues joined in depth remotivation for ITI enablement (recruitment and development).

Internal: Received Joe Thomas on development calls from Hong Kong; received Yamashita children from grandmothers; sent out Mark and Barbie Willoughby to Kobe for summer children structures. In the midst of comings and goings, we're still solvent.

Contradiction: Unifying tactics which focus the one task - ITI SEAPAC.

Religious House: Sendai

External: Prior and 2 from region journey to Area Presidium. Mailed out Development letters and Pentecost cards.

Internal: Eight guests show up for Thursday non-grad guest night to participate with grads in art form conversation, study of Kazantzakis and creation of decor.

Contradiction: Creating endless tactics to maintain the momentum of ITI funding and recruitment.

Religious House: SeoulReligious House: FukuokaReligious House: Osaka

External: Visits by Don McClain (recruitment) and Joe Thomas (development) stir up life in our ITI work (examples: visits with people at Matsushita Electric and with an Urban Evangelism group in Himeje)

Internal: Summer E.G. structures for Order Youth begin here...Schlesinger and Reames to Order planning in Tokyo.

Contradiction: Positive decision on ITI recruitment not yet articulated by Regional colleague.

## SPHERE WEST

EUROPE  
LONDONReligious House: London

External: A flurry of trips to Area London airports mark the sending out of Summer '73 participants from the British Isles.

Internal: New insights and images continue to flow from persistent study of John of the Cross and give keys to spirit format of London summer training program.

Contradiction: Gaining enough clarity on autumn to be able to select from a side variety of content possibilities the properly focused model for London summer training program.

Religious House: ManchesterNORTH AMERICA  
WINNIPEGReligious House: Winnipeg

External: Social shows tactical possibility of new "indirect" style - "Yes, people in the Religious House really do enjoy themselves" Sent out S'73 colleagues and served as a Wayside Inn for S'73 travelers from Edmonton and Saskatoon.

Internal: Tribal resettlement and painting transform Religious House into sophisticated showpiece.

Contradiction: Trapped in a "present" time machine stuck between the past and the future.

Religious House: Anchorage

External: Felt the first tremor of the fall explosion as first RS-I registration arrives by mail before course schedules are even firmed up.

Internal: Spring RS-I grads moving to new metro leave House in-kind donations and \$100 for development. House recasts the drama of the summer priorities in light of new demand for extra jobs.

Contradiction: Looking for a well defined assignment for the summer rather than deciding priorities which will enable us to move out in the tension between need for direct missional thrust and taking on extra jobs.

Religious House: Saskatoon

External: Knockout week II demonstrating a coming together of the Historical and Movemental dimensions of the Church as House and Galaxy do Modification One, celebrate on the town, and experience part of Tactic 9, Religious House, being fired as the Balmoral-St. Mark auxiliary partake in House Church.

Internal: Sophistication showing that we're truly mobile, looks like 7 adults plus 2 infants climbing into one car to have the weekly meeting and traveled to the railroad station to welcome a guest, Ora Henan, a Baptist Deaconess who guested with us for a few hours.

Contradiction: As we move with quiet resolution to win the victory our contextual screen is filtering out much of that which is beyond our own back yard.

SAN FRANCISCO Religious House: San Francisco

External: Sixty attend regional House Church, followed by Cabaret, bringing to a close day of Summer '73 celebration and work on cabaret planning. House church celebrates announcement of key metro colleagues to attend Summer '73.

Internal: House refurbishment in full swing; living room transformed and preparation for painting and wallpapering other rooms completed. House hosts regional and House colleagues from Sacramento and San Jose for champagne breakfast Sunday to celebrate beginning of S'73.

Contradiction: Balancing needed shoring up of internal life to nurture and train troops over against undiminished external demand and increased excitement over engagement in metro and polis formulation.

Religious House: San JoseReligious House: SacramentoReligious House: Los Angeles

External: The pioneering dynamic of LA Region gathered at the House on the 4th and built a model for key movement leadership, their journey during the next year, finishing the day off with a workday, cook-out, and watching fireworks with thousands on the beaches.

Internal: We are ready to hit the beach of the Summer quarter with totally completed tactical timeline.

Contradiction: Training selves in sophistication and un lethargic servanthood.

Religious House: Phoenix

External: House is invited to use home of Episcopal Vicar in Sidona, Arizona for planning weekend. Amidst the majesty of red cliffs and towering rock monuments the Phoenix Region is charted for rebirth: a year's courses battleplanned, Galaxies and outposts timelined.

Internal: We are excited again by the practical use of methodology as two hours of driving time is spent in workshops, yields a prioritized list of tactics. As the wheels slide to a stop, the AMEN to the send-out blows dust out the windows.

Contradiction: While dribbling twelve balls at once how to be but one thing: a concrete sign of resurgence.

Religious House: Denver

External: Summer '73 send-out celebration turns into an exhilarating demonstration of art, music, poetry and dance Guilds at work. A Galaxy "Elizabethan Meadowlark" quarter-end celebration was another kind of wildness with heretofore undiscovered Shakespeare acting talent.

Internal: Eleven unexpected drop-in guests give us a chance to practice our flexible Wayside Inn model. Oklahoma visitor creates a back-yard rock garden during a 4-day visit.

Contradiction: In the midst of maintaining missional purposefulness, fighting off the death urge out of a crabgrass mentality.

Religious House: Billings

Religious House: Rapid City

External: "They're real" the children exclaimed when the camels appeared during the Passion Play produced in the Black Hills area near Spearfish, S.D. The House participated in the Galaxy celebration that went to the play.

Internal: The (Great)Turn Inn has been busy as 16 youth on the Regional Odyssey stopped by on their way to the Other World, and four Seattle people stopped by on their way to Summer '73. Pat Jones has a new job as the director of the preschool at a Galaxy church.

Contradiction: There is a wild feeling of having summer begin before the timeline says summer should begin.

Religious House: Seattle

External: Region celebrates launching into Summer '73 with the Mad Hatters Ball at the "Hollow Whole" Costumes reflect decision of colleagues to participate with their lives.

Internal: House shifts to Summer structures (4 for Daily Office) with the sending out of the Emerging Generation and Summer '73 adult participants. Ecclesiola sodality was the experience of the Seattle Center amusement rides and finding ourselves in the middle of the set-up for shooting a scene from "Cinderella Liberty" a real flick.

Contradiction: Follow-up structures end in Portland and leave interested colleagues hanging in midair controlled by the prevailing wind of "cutting out" for summer.

HOUSTON

Religious House: Houston

External: A week of sober realism mixed with small breakthroughs as small Regional Council (43) has 5 of 6 metros present and 4 of the 5 have new people representing them; San Antonio is second metro to host a Global Resurgence Report by Ben Ball.

Internal: Dan Chamberlin is released from the hospital in time for his 18th birthday, Brian Griffith is received as University Intern, young churchmen pick up House enablement, and a midnight House Church climaxes a Sunday of '73 recruitment and celebrates Pentecost.

Contradiction: Late start on S'73 recruitment outside the Houston metro

Religious House: New OrleansReligious House: Miami

External: Attended exciting and awe-filling ordination of Percival Brown into the Episcopal ministry. Many regional colleagues attended and participated in ceremony.

Internal: Celebrated first House Church in new location. Three families show up on July 4 uninvited just to see if they can help in any way with the remodeling or cleaning.

Contradiction: Building the spirit that will sustain us for 20 years into the nittiest and grittiest of models.

Religious House: Atlanta

External: House plays host role for the official opening of the Charles Weltner for Mayor campaign headquarters, discovering that the political is as nitty gritty as the religious.

Internal: Learning how to do the Daily Office with 5 as Sacra and Scott are sent out to Summer Program and Emerging Generation off to New Day

Religious House: Atlanta (continued)

Nation Camp. Participated in July 4th urban picnic (inside) as grass was too long to go out.

Contradiction: Finding ourselves disengaging when the obvious imperative is to re-engage.

Religious House: Memphis

External: Readiness and enthusiasm of regional colleagues symbolized by "yes first" stance - to being priest at House Church, and to being metro coordinator.

Internal: Sent out Frank Powell and Judith Hess to Summer '73. Decided to start the journey of discovery of what it means to be a tiny Religious House with the operating image for summer quarter "St. Francis and his Fearless Four"

Contradiction: Combatting the image of "there are no foes for me to face"

Religious House: Oklahoma City

External: Metro shifts as clergy changes bring new clergy friends (one wife pointing to Fall Academy) and PSU breaks through on the catalytic role of those who will provide endorsement for friends recruitment.

Internal: Deeply impacted by priors spins and the potential gift of Church transforming embarrassment, relief, and remorse into humility, gratitude, and compassion. Young adult non-grads call forth our clearest statements of secular acceptance and absolution.

Contradiction: To be other than "Oklahoma Crude" - not caught up in securing our own future but to expend self on behalf of the globe.

Religious House: TulsaReligious House: AmarilloReligious House: New York

External: Regional PSU on RS-I recruitment story dramatizes decision to do summer recruitment. First call following PSU nets 1 RS-I registration, 2 yesses to S'73 and 1 PLC appointment.

Internal: Week of celebration and internal planning regroups troops after S'73 send-outs. House spiritizes self with "spiritizes tomato juice" at Central Park picnic and performance of As You Like It on outdoor stage while individuals use July 4th discontinuity.

Contradiction: How to deal with hang-on S'73 possibilities in midst of shift into summer quarter penetration.

Religious House: New HavenReligious House: Long Island

External: Regional PSU on "Penetration Story" that articulates the three clear questions that each of the world and the church are asking, whirls us over the bridge into the awareness that the new age is already upon us. House experiences this as absolution from spring.

Internal: Gridding yard space in preparation for Regional work party, we became conscious of global space and space in time with names Mao Tse Tung Border, Kazantzakis Rock Garden, or Eisley's Pool.

Contradiction: Discerning the common operating myth and model of the necessary that will inject into the penetration task our fresh decision and new ability to laugh at ourselves

NEW YORK

Religious House: BostonReligious House: Portland

External: Enthusiastic new grads response to follow-up contacts continue to point toward new demands for care amid resurgence.

Internal: Experimented with variations in evening time design and use of music to allow for completion of special tasks during Week I.

Contradiction: Harmonizing summer tasks with limited available time.

Religious House: Manchester

External: Bi-polis cabaret begins, setting a new excitement spinning in old and new grads alike.

Internal: Discontinuity of sending out 9 people to summer research assembly and points west-east-north and south, and finding ourselves now four; transforming 19th century wallpapered walls into 19th century pink and white marbelized plaster.

Contradiction: Holding the corporate style when but two or three can meet together once a day.

Religious House: Rochester

External: Summer sojourn and local lab recruitment reaps 10 people who decide for some time in House in July. Regional folk sent out to S'73 Saturday night.

Internal: Receive in Ken Truran as intern and send him and Roses to S'73. Charles and Ann Taylor decide to attend Daily Office and breakfast every morning during July. Second annual July 4th carriage house cleaning and picnic/celebration at State Park.

Contradiction: Finding a way to tell ourselves that S'73 recruitment is still priority, in midst of pulling off local church lab and sojourn weeks.

Religious House: Pittsburgh

External: Forays into Clarksburg and Altoona Metros--foot in door for new polis penetration. Actualize summer colleague nurture model. New metro initiated structures show metros further down the road than predicted. Two clergy family in Altoona decide to make circuit ride.

Internal: July 4th celebration with assigned solitary meditation and writing, corporate celebration, and discontinuity. Wayside Inn transformed into Monticello for afternoon as House entertains Thomas Jefferson who shared with us corporate writing psu on Declaration.

Contradiction: Need for pushing beyond immediacies and parochialism to expand vision to global.

Religious House: Washington

External: Representatives of all three poles of the regional dynamic gather at the Religious House for gala S'73 send out of nearly everybody.

Contradiction: The illusion looms that "it is all happening up there" when in reality it continues to be where we are.

Religious House: Philadelphia

External: Shocked by the lack of July 4th celebration in the city which birthed American freedom, the Religious House affirmed the clear need in these times for the cabaret dynamic.

Religious House: Philadelphia (continued)

Internal: The regional mailing, which includes the dates and locations of the PLC's for the entire year and the news of summer cabarets, becomes our constant, undergirding task for the week, and the week culminates in 24 gathered at the House Church table.

Contradiction: Making 500 contacts to recruit the fall PLC's.

## MONTREAL

Religious House: Montreal

External: Our shrinking House is swelling with visitors - Fr. Lawrence Soldana, Lahore, Pakistan, a youth group from Galaxy Church Summerhill UMC, New Haven, Connecticut, the Baggett family's grandparents, Raleigh, NC., and a lay preacher from England who celebrated his 81st birthday with us, all in the midst of completing S'73 recruiting.

Internal: The long weekend gave us time to do an in-depth evaluation of our penetration system including an analysis of trouble spots in the system, in preparation for recruiting fall courses. After local Church assignments House members met at a sidewalk cafe for lunch.

Contradiction: Discovering how to lay foundations for an effective penetration system for fall when the lazy, hazy days of summer have lured everyone to country cottages, lake fronts, parks, concerts, street dances, etc.

Religious House: Toronto

External: Yet another transformation of the House as Summer '73 send out is celebrated in cabaret style, with our own Joel Gray bewitching his audience and a wall-high resurgence symbol made out of montages.

Internal: The doors of the Wayside Inn: Toronto are opened as S'73 participants arrived en route from London to Chicago, and five Japanese guests descend upon us. Passed the quarter mark on missional income intensification.

Contradiction: Holding the global context while the particulars stretch our expenditure to its limits, often under the guise of the economic.

## CHICAGO

Religious House: Chicago

External: Contact is maintained with grads and clergy through a weekly newsletter on Summer '73.

Internal: House intensifies Job Task Force with delivery of 10 tons of phone books door to door experiencing multi-lingual and cultural aspects of Chicago. Great training for fall recruitment.

Contradiction: Need new ways to deal with the summer shut-everything-down mentality as move on setting up course prospects for the fall.

Religious House: MilwaukeeReligious House: Madison

External: Metro colleagues say "yes yes yes" to helping summer superfluity sale four Saturdays this month, bringing their deluxe rummage and buying other's fancy junk. Thursday guest night has many guests, with CLG's incorporated for the summer and worknight clearing yard.

Internal: Readings of letters from heaven and hell (Mark Twain and C.S. Lewis) illumine this world. Pedagogy session on July 4 precedes row-boat trip to picnic site, fireworks display.

Contradiction: The mission to be a fastidious wayside inn and raise funds with rummage harder to discern than the mission during teaching quarte

Religious House: RockfordReligious House: PeoriaReligious House: ChampaignReligious House: MinneapolisReligious House: Kansas City

External: House prior plays role of railroad switchyard operator as House sends out staff for Regional Camp and S'73 participants.

Internal: Clean out of garage is great event as belongings of Order members now scattered across the globe are sorted for a series of garage sales.

Contradiction: Deciding to be the mission when the expenditure required to hold down two full time jobs is so attractive.

Religious House: Lincoln

External: Experienced life as radical change and celebration as 14 of our 15 children left for Indiana and 14 different children arrived for the KC regional camp (one day of total silence between). Lincoln polis Ecclesiola meeting and spirit filled galaxy celebration.

Internal: Celebration was the dynamic internally also, beginning with a large gathering at House Church, punctuated by a fantastic July 4th celebration (half day of hard work, half day of collegiality at a colleague's air-conditioned apartment), finalized by Ecclesiola.

Contradiction: Small numbers leave us struggling with the decision to take ourselves seriously relative to task and mission, both internal and external. Or "Are you sure we're not on vacation?"

Religious House: Wichita

External: S'73 sendout at Ecclesiola, symbolized with promise boxes and "bubbly" toasts, delights regional colleagues by the grounding of secular-religious style.

Internal: We have tasted the "cabaret" at send-out of House elders and E.G.'s to Summer '73. Highlighted by "waitresses" bursting through swinging doors singing "Shocking" and professional performances on violin, flute, guitar, and recorder.

Contradiction: Incomplete battleplan for metro development of galaxy churches.

Religious House: St. Louis

External: Two register for S'73 that we didn't know about. RS-I follow up visitation reveals colleagues where we did not expect them. A week of showers of blessings.

Internal: The Ronin and Jesus team up on us in college to provide a spirit breakloose. Linda Busby and Jennifer move in to begin intern year.

Contradiction: Getting it said to ourselves that "I am the one" when it is clear that it should be someone else.

Religious House: Cleveland

Religious House: Indianapolis

Religious House: Cincinnati

Religious House: Detroit

#### SYMBOLIC CENTRUM

**External:** Thirty-three participants in the Research Assembly from Areas outside North America, including Bombay, Madras, Hong Kong, Rio, Singapore, Sydney, Suva, Tokyo, and London, bring consciousness of the need for universal models of the guild. LENS laboratory summarized documents from spring courses (the results will be sent to all spring LENS participants) as well as building fall schedule for the globe and investigating new marketing techniques.

**Internal:** Saturday evening the Assembly experimented with doing cabaret and experienced it as a direct tactic of the guild which can bring about sociological healing. Emphasis on the team construct produced radical corporateness which will sustain the spirit in the time of sanctification.

**Contradiction:** After talking about the Great Turn for a year, we find we have made it; the question is how.

#### New Day Nation

**External:** The third great Old Testament festival was held enacting the Land of Milk and Honey, with milk and honey showered over all. The day concluded with a feast on the field of Shiloh at which each of the 12 tribes presented their banner and song. There are 5 curriculum arenas each day for Wk. I, including art, basic, Old Testament, field sports and boating, and swimming.

**Internal:** Yahweh is King, not mosquitos. The 12 tribes are Reuben, Levi, Simeon, Judah, Zebulon, Isachar, Dan, Gad, Ashar, Naphtali, Joseph and Benjamin.

**Contradiction:** Communicating the image of the weak yet strong People of God

#### Trek of Resurgence

**External:** Rugged 15 mile hike around Butternut Lake allows imaginal engagement in the swamps of the Land, the streams of the River, the steepness of the Mountain and the tranquil churning waters of the Sea.

**Internal:** Radical corporateness intensified as campsite invaded by forest creatures invited by the smell of hot popcorn grease: one bear, two wolves, and numerous raccoons.

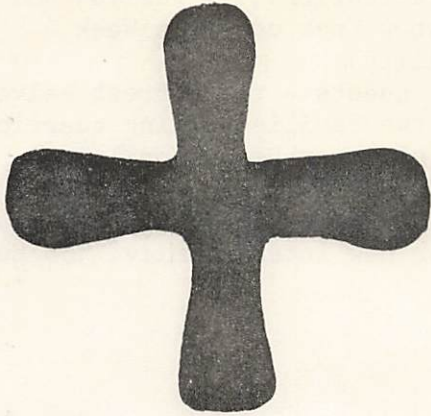
**Contradiction:** Emergence of stoical understanding of the Word which says only "I can live my life in any situation."

#### Work Project

**External:** Experienced work camp dynamic on Monday as 8 full hours of work

**Internal:** Camp established. Initiation came as swinging on rope in barn.

**Contradiction:** Relating to given situation.



When he addressed me, I stood up trembling and he said, 'Do not be afraid, Daniel, for from the very first day that you applied your mind to understand and to mortify yourself before your God, your prayer has been heard, and I have come to answer them.

Daniel 10:12

SPHERE SOUTH

LATIN AMERICA

CARACAS

Religious House: Caracas

BLACK AFRICA

NAIROBI

Religious House: Nairobi

External: Dinner with principal of Nairobi International School (American) nets offer of use of all facilities and request for a detailed proposal of how we can work with them.

Internal: Doing tutoring and lecturing evening classes at the University as second jobs help with the finances and hold promise of permanent increase in our total income.

Contradiction: How do we keep the fascinated people fascinated until we are ready to turn that to decision and move this continent.

SPHERE EAST

SUB-ASIA

BOMBAY

Religious House: Bombay

External: Five of six regional cadres begin swirling with two week area trek model picking up spiritual velocity. House member Victor Babu spins Bombay cadre into the centre tranquil with shocking presentation of polis socio-spirit analysis of metro Bombay.

Internal: With totally new space and epical Great Hall, Ashram becomes full blown oasis in the middle of the monsoon, constantly serving tea and spirit to thirsty travellers. House strength up to 11 and 4 new jobs secured in one week.

Contradiction: In spite of doing the impossible relative to employment, we are desperately struggling to keep afloat while awaiting operation New Day (Move 222) to bring results.

MADRAS

Religious House: Hyderabad

External: In Hyderabad the weekly cadre meeting with battleplanning and daily recruiting brings in 20 paid registrations this week, with House members covering the far fronts at Guntur and Cocchin along with local speaking engagements at Mar Thoma and CSI churches.

Internal: Robyn joins the teachers working out daily, all return in time for afternoon tea where 28 drop-in visitors were entertained this week.

Religious House: Hyderabad (continued)

Contradiction: In the midst of many demands to be totally involved, the need to be on top of the comprehensive area situation lingers behind.

DELHI

Religious House: Delhi

External: 71 contacts produce 13 paid registrations; 12 yesses, and 10 considering for Delhi Wk. I RS-I. Lucknow Trek confirms Week 6 RS-I at Cappucian Retreat Centre (free facility).

Internal: People continue to drop in - 10 guests - to "refresh selves at Oasis." Two sojourners confirmed and two families asking questions about interning. After much searching all over Delhi for larger quarters, found facility across the street vacant.

Contradiction: Synchronizing troop assignments in face of complex demands of mission, sojourner program, prep for new intern family, job hunting as we move into Week I RS-I.

SEAPAC  
HONG KONGReligious House: Hong KongReligious House: Manila

External: Micro Ecclesiola held in Tangos. Development continues at a good pace with funding from United Methodist Church for 2 ITI participants. Applications with money coming from 4 Rural Missionary Sisters, and a 4-team inkind blitz on Saturday morning.

Internal: The quarter ends with 9 guests at Ecclesiola helping us evaluate and plan for the coming quarter Ecclesiola construct - with great enthusiasm, seeing the application of this to their own situation. Judy and John Montgomery arrive from Majuro en route to Hong Kong.

Contradiction: Allowing advanced participants to win on their decision to fund the ITI and raise a sign to basic participants.

Religious House: DavaoReligious House: Cebu

External: Continuing ITI recruitment, with 20 firm yesses, including the rector of the Archdiocesan Seminary, and the Archdiocesan President of the Catholic Women's League. Development floodgates open with 30 free boat tickets to the ITI and 3 full scholarships.

Internal: House meeting with all present to do evaluation and planning reveals the need to catalyze ITI participant funding across the region

Contradiction: Getting ITI practices spinning without missing a beat in recruitment and development

Religious House: Taipei

External: Advanced ITI participants cleared to attend. Renewed relationship with old colleague brings promise of full participation by region in the fall quarter.

Internal: Sent out Basil to Hong Kong as faculty for advanced ITI. Possibility of lucrative jobs brightens areal budget picture.

Contradiction: Ordering the context for creating the common thrust into the future.

Religious House: Tainan

## SINGAPORE

Religious House: SingaporeReligious House: Kuala Lumpur

External: ITI development and recruitment activity buzzed as numbers of invitations and number of visits tripled. During visit to Penang for the Ecclesiola meeting two "no's" become "yesses" for attending ITI.

Internal: House spirit soars as area colleagues begin arriving as troops for ITI enablement. Mark Phillips arrived from Jakarta and Doris Morris from Singapore and began measuring space at the ITI site almost immediately.

Contradiction: Lack of a contingency model for transportation blocks full steam ahead in both recruitment and development.

Religious House: Jakarta

## SYDNEY

Religious House: Sydney

External: First Galaxy Sodality held with 4 congregations represented including unexpected presence of Roman Catholic priest and layman giving priority (with approved absence) over Priests Convocation.

Internal: Launched into exciting quarter internal structures prioritized and planned in Wk. 12 to free us for external mission including the assignment of 11-month old Rachel to Day Nursery. First Ecclesiola brings forth 2 neighboring Little Sisters of Jesus

Contradiction: Deciding the required specific movements of each troop out of comprehensive and tactical strategy as clarity comes on moving on all fronts with intensity now.

Religious House: Brisbane

External: Quarter is launched with an RS-I of 15, calling us to claim the promise of larger and strategically recruited courses that raise up the troops for the LCP and movement formation.

Internal: End of one quarter and beginning of another gives sense of being caught between explosions that's held in celebration through dining and dancing.

Contradiction: How do we enable regional colleagues to discern that which is felt as authentic demand in the particular so as to rehearse spirit decision before the comprehensive.

Religious House: Darwin

External: Wisdom of Elders insight that Area: Sydney will lead secular breakloose verified as open house barbecue hosts 53 secular non-grads. Guests, including state and local politicians, town planning head, television personalities, teacher, and businessmen, spin on resurgence.

Internal: New central location capable of housing 25-30 transformed for open house (previous occupant a Chinese gambler). First prior's assignment to Area Academy forces resignation from ABC news, but head journalist hands it back and offers more responsibility for 8 weeks.

Contradiction: Facing quarter with 3 in House to deal with flood of secular and church possibilities catches us without adequately gestalted "summer" battleplan.

Religious House: Perth

External: Received two "unexpected" yes responses from RSIIIB from members of potential Galaxy churches.

Internal: House pace slowed with 40% of adults in bed with 3-day flu, all recovered by House end-of-quarter celebration and discontinuity Week 11.

Contradiction: We face sheer possibility and the fear of touching anything outweighs the fascination.

Religious House: Adelaide

External: Metro trip to Whyalla for RS-I recruiting and intensified Adelaide RS-I recruiting and clearing the brush around Academy recruiting.

Internal: Establishing House internal plan that holds House to the reality of the historical indicative without fear of internal collapse

Contradiction: Seeing a way clear to turn a prospect into a participant for the Academy.

Religious House: Melbourne

External: Week 2 Academy blitz with region colleagues yields 12 good prospects. Garnet Banks, here for Development, stimulates creative reflection in relation to style and presence in the Region, and deepens the commitment of many colleagues

Internal: 23 people at House Church enable us to experience again the power of that celebration. The entire emerging generation learn the 54 areas of the globe by heart, and one of them astounded the local education structure with his comprehensive vision.

Contradiction: Building strong missional families.

SUVA

Religious House: Majuro

External: Twelve weeks of financial analysis and proposals culminate in 2-day event, KITCO board meeting in Majuro in which the board assumed unprecedented responsibility and gave a nod for the company's fresh start.

Internal: The four transcription of prior's comments relative to the style of the turn and sophistication affirm our everyday experiences and struggles as "guests" in Micronesia.

Contradiction: Having the nod been given, how do we squeeze a 2-month timeline and procedures for loan funding to four weeks.

Religious House: Apia

External: As a result of the week of Prayer for Christian Unity, clergy and key laymen of the English speaking congregations met and decided to have monthly worship and monthly study together with the stated premise that "If we as churchmen are going to meet the needs here, we've got to learn to work together."

Internal: Hana and Ula, the youth of the House, are continually picking up more responsibility in House structures surprising us with their depth.

Contradiction: Not getting enough big donations often enough to meet our development goal on time.

## TOKYO

Religious House: TokyoReligious House: SendaiReligious House: Seoul

External: Visit to bureaucratic heads smooths way for 40 passports for ITI participants.

Internal: House joyfully celebrates arrival of first interns, the Rev. Kim Song Hwan family, wife Yoon Kee; son Kyun Yui, daughters Hyang Suk, Chung Won and Chi Won.

Contradiction: Only-a-few-will-be-allowed-to-get-passports mindset.

Religious House: Fukuoka

External: House and region rejoice over first PLC in region in over a year, setting the stage for ITI recruitment in Fukuoka metro. The arrival of the ITI enablement team symbolizes how far we are down in the chute.

Internal: Still more tutoring jobs secured. Area colleague Lee Sung Joo sojourns for a few days, pushing recruitment down the line.

Contradiction: Devising the strategies to field more colleagues in the region for the necessary recruitment job.

Religious House: Osaka

External: Fukuoka ITI host committee now includes: Bishop Yasuda, Osaka diocese (RC), Bishop Uoike, Osaka Diocese (Anglican), Rev. Akira Niohara, Osaka District (United Church of Christ in Japan, Kyodan) and Rev. Kim Duk Song, Chariman of Evangelism, Korean Christian Church in Japan, completing major denomination authorization.

Internal: House sent out Mark Reames to enable coordination of ITI in Fukuoka.

Contradiction: State of yesses to ITI not consistent with regional goals.

## SPHERE WEST

EUROPE  
LONDONReligious House: LondonReligious House: Manchester

External: Continuing push of recruitment for "Area London" programme with only 3 weeks to go.

Internal: House sees production of Mystery Plays as produced by medieval guildsmen of York - the salvation story from Creation to Doomsday.

Contradiction: People don't realize how many summer holidays it will cost to renew the church.

NORTH AMERICA  
WINNIPEGReligious House: Winnipeg

External: Galaxy study comes alive as pastor becomes pedagogue. A year after a PLC a 68-year old retired priest decides to go back into active duty in the Parish. House assists by moving his 2 suitcases.

Internal: Area Winnipeg fellowship and common memory grows by leaps and bounds as Winnipeg and Saskatoon Religious Houses rendezvous for Wk.II wilderness camp under the stars at the common edge of both regions, and look to the future as the possibilities of Galaxy meeting.

Contradiction: How do you keep a clear long range vision when you are wearing summer "vacation" dark glasses?

Religious House: Anchorage

External: Fall scaffolding going up - addressed envelopes for first PLC mailing of 73-4 courses, metro colleague, and recent PLC grad agrees to begin PLC recruiting and Nome clergy writes to say that Nome is ready for an RS-I.

Internal: Even in the midst of economic intensification, detailed models for formulation, penetration and PLC recruitment for summer quarter are created. Movement friend, Loren Lewis, Madison Metro celebrates House Church and, one hour after being sent out to find 2nd job, Dorothy Green calls to say she's been hired and won't be home til 12:00

Contradiction: Second jobs are necessary - how do you not use that as an escape from the mission.

Religious House: Saskatoon

External: Quiet persistence rises to the surface through telephone calls of long standing colleague who continually raises new possibilities and the appearance of Mrs. Molly Glass of Edmonton, Alberta at the House after tracking us down through a movement guardian.

Internal: Joint Winnipeg-Saskatoon House retreat in the woods around Viden Manitoba finds us tracing House journies, claiming promises about the future, celebrating Mass on Saturday evening and campfire cabaretting to the tune of a multitude of old songs.

Contradiction: As we find ourselves continually being called upon and on call as the stagehands in history, on occasion just watching the show occupies our time.

SAN FRANCISCO Religious House: San Francisco

External: House builds image of methodological resource through pulpit supply to local church and workshop leadership for Galaxy cadre in absence of pastor. Workshop results in decisions of four to sojourn as part of tertiary tactic. Travelling cabaret launched in polis.

Internal: House buzzes with sojourners as new corporate solitary, St. John of the Cross study, RS-I pedagogy, and secular research are launched. Summer House Church returned to Religious House threatens to outgrow House space again after just one week.

Contradiction: Sense of need for authentic sociological healing in Cabaret outdistances practical formulated tactics for pushing high spirits through to transparency.

Religious House: San Jose

External: Galaxy struggles with Mod one while being enabled by sojourner family.

Internal: House number increase with first sojourner family in the House: one adult and 4 children.

Contradiction: Getting beyond making lists of things to do to enabling spirit.

Religious House: Sacramento

External: Formulation visit turns into penetration call as parents of grad ask about fall courses. New means of communication was needed when we called on an 80-year old grad only to discover she can no longer speak, can hardly hear, has arthritis, but knows of Mathews.

Internal: House Church continues to be great formulation tool as House hosts 18 guests at House Church. Sojourner Jeff Gilster is sent out to Scout camp at a celebration beginning at 10p.m. with singing.

Religious House: Sacramento (continued)

Contradiction: Trying to structure a new day by relying on old day models

Religious House: Los Angeles

External: Find summer opportunity to encourage Presidium to be long range on thinking and potential interns/sojourns to be serious about the near future. Fall PLC recruitment begun.

Internal: PLC recruiting and Ecclesiola Guest Night model more powerful than model builders anticipated, exciting all who attended.

Contradiction: Taking time to tell the story from the engagement.

Religious House: Phoenix

External: Contacts with clergy in South Central micro, uncovers great spirit men and excites vision of ecumenical parish.

Internal: House discontinuity together with initial enactment of new quarter timeline aptly symbolize the ending and beginning of quarters.

Contradiction: While "everyone" goes on "vacation" the Lord is still at work - i.e., falling plaster, bills, course brochures, and recruitment appointments needing immediate attention.

Religious House: Denver

External: A missionally discontinuous trip to Salt Lake over the 4th produces one more S'73 registration plus firmed-up plans for the fall including the program for the first ministerial alliance meeting of the year in September.

Internal: Galaxy meets at the Wayside Inn with all summer House people attending. Wednesday night decor workshop gets us into the mood of the Research Assembly and surprises us with the delight of our own creativity.

Contradiction: Grounding the external mission in internal structures.

Religious House: Billings

External: Continued formulation-penetration visits around the city as an on-going nurture structure for grads and "cultivated prospects."

Internal: House impacted by 2-day visit by 15 children, youth and 2 adults in the form of the children's odyssey (enablement structure for S'73). Ecclesiola continues as key nurture structure for metro colleagues and prospects

Contradiction: Maintaining the structures with passion with 3 in House and permeation eating away at corporate time.

Religious House: Rapid City

External: Formulation model fills our table continually. Pastors from 2 potential Galaxy churches come for House Church bringing with them grads and friends. Comment of Father Pates, Priest of Indian RC Church "I think St. Paul would have liked this."

Internal: House attended a fantastic Black Hills Playhouse production of "One flew over the Cuckoo's Nest" Took Galaxy pastor's mother with us. We were all awe-filled at the impact of McMurphy embracing his absurd situation and 'kindling the life quality where it was not.'

Contradiction: Refusing to accept failures as gifts and thus not daring to embrace the wild possibilities of the future.

Religious House: Seattle

External: First summer pedagogy creates RS-I dynamic through seminar building and surfaces as formulation tool for spring grads. Metro ecclesiola attended move "Paper Moon" and found key question to be around amle and female ontology.

Internal: Great Hall floor impacted by corporate "spirit" refinishing.

Contradiction: Lack of decision to expand the edge of formulation beyond regional events.

## HOUSTON

Religious House: HoustonReligious House: New Orleans

External: LENS grad elected mayor of Biloxi, Mississippi. First new paint for the "emerging sophisticated" Religious House: New Orleans was applied on the 4th of July. Praise the Lord.

Internal: 'Lost Horizons' gave us new images abundant of what it would mean to "Be the sign of Hope" and "live the fulfilled life" even here.

Contradiction: Need to send out clergy mailing yesterday but have inadequate mailing list pulled together.

Religious House: Miami

External: Held first of a series of workshops to polish the workbook on congregational recruitment our region has been building this spring.

Internal: Workday with 14 people surprise. everyone since "everybody" is supposed to be in Chicago. Signal decor: "order blue" front door.

Contradiction: Expanding our colleague list beyond a few faithfuls.

Religious House: AtlantaReligious House: Memphis

External: Sandy Powell preaches sermon on resurgence at McLemore Christian Church. Came away with new sense of resurgence and elders understanding of it.

Internal: Last St. John study of the quarter taught by regional colleague Tom Hannon. The image for our internal structures summer quarter is training and sustaining the guild.

Religious House: Oklahoma City

External: Practice wind sprints as we see how fast we can get out of the blocks and try at least one hurdle of calling forth the movemental base for the 20-year march of resurgence.

Internal: "Warming up" for the big race - setting the blocks, eying your competition, both friend and foe as 300 man accountability chart is readied.

Contradiction: To decide if this is a 50-yard dash of a four-mile run. Or to run the marathon with the all out thrust of the 50 yard sprinter.

Religious House: Tulsa

Religious House: Amarillo

External: Before work, over lunch and late hour preparation this week for Panhandle geo, social, spirit analysis PSU Week. II.

Internal: Miracle of miracles - the Lord sent a Baptist Hospital Chaplain to the Religious House. He is new in town and had heard of E.I. - wants to become a "regular" at House/ Metro events.

Contradiction: Building an economic base while intensifying the collegial base for fall. Bi-location would be a useful skill.

NEW YORK

Religious House: New YorkReligious House: New Haven

External: Summer of Resurgence begins appropriately with polis visitation and metro myth creation and first Metro Ecclesiola that embraces the Metro, Galaxy, and Religious House in a common weekly happening.

Internal: Decor "with taste" transforms 2nd floor apartment into Religious House. New address: 230 W. Hazel, New Haven 06511.

Contradiction: Prospect/grad count by micro reveals incomplete card deck and live deserts in the midst of heavily populated micros.

Religious House: Garden City

External: Two Galaxy church members who were guests at beach cook-out celebration, participate in Tuesday sodality, revealings that the invitation into celebration functions as the release from lethargy to do the task.

Internal: NY region Houses pulled and pushed together to restore gardens to civilized condition; then with the tables set on the front lawn the cabaret exploded as duos, trios, and quartets sang the love songs of the 30's and 40's. Doing the task released new powers of celebration.

Contradiction: While internalizing our common penetration story, striving to release the cabaret within that thrust, how do we intensify summer celebration as prayerfully gathering prospect names, old grads, interns

Religious House: Boston

External: Galaxy recreates "the divine necessity" of creating anew nation in a study of the Declaration of Independence. We sense after the same crimson line trod by Bonhoeffer, Luther, our forefathers and many after they strove to deal with the suffering many others only endured.

Internal: House struggles with the practices of creating a new country as symbolized in the conquering three unclaimed spaces in our House. House spends Wk. II in creating our response to the divine necessity of summer quarter in doing our summer quarter manual.

Contradiction: Isn't it enough to have landed on the world - must we also civilize it?

Religious House: Portland

External: Mailing of letters to PLC prospects and completion of comprehensive chart of data relative to recruitment and local church experiment farther groundwork for fall quarter.

Internal: Early morning study of Passion in Pedagogy was highlight of a day of celebration and launched us in depth into summer study timeline

Contradiction: Expenditure of time in planning is inversely proportional to time expended concretizing plans.

Religious House: ManchesterReligious House: Rochester

External: Continuous visitation of metros reveals the gift of the summer - to formulate long-forgotten grads.

Internal: House becomes Wayside Inn with sojourners, worshippers, guests, continuously. Use of Other World solitary from Washington House and priors spins enable House to reflect on journey. Received secret messages from New Day Nation Camp telling of wonderful time.

Contradiction: With adequate troops in House this summer, we are not enabling metro people to pick up task of formulation.

Religious House: PittsburghReligious House: Washington

External: Praise the Lord - Sent out 20 more to summer program Friday night, bringing total sent out to 51.

Internal: Weekly 3-hour Sunday afternoon pedagogy sessions creating Iron Men first, second, third and fourth teachers for fall courses.

Contradiction: What we tell ourselves is "It's those other people out there who operate out of the summer vacation mindset."

Religious House: Philadelphia

External: The sending out of nine strong regional colleagues to S'73 Research Assembly leaves us with the possibility of laying fresh demands on old grads to raise them from the tomb. The discovery of one of the founders of the World Council of Churches puts us in touch with our roots.

Internal: The House celebrates the completion of the first PLC blitz of the new quarter with a croquet cabaret and resurgence songs by the Schuylkill River

Contradiction: Recruiting black clergy in Philadelphia to a PLC as a key to formulation of black grads.

## MONTREAL

Religious House: Montreal

External: House participates in Galaxy pastor's wedding by providing enablement and hosting. Local Church assignments serve as a reminder of historic mission and haven of rest.

Internal: Sojourner Sandra Anderson and one regional colleague sent out to first part of Summer '73 with more to follow. Bridal wedding breakfast at House attended by women aged 22 to 70 years.

Contradiction: Deciding on common thrust when tendency is to let summer situation decide it for us.

Religious House: Toronto

External: Reflection on "penetration as a life dynamic" opens up new vistas for fall quarter planning and reveals the fact that the religious always dare to articulate what the secular intuitively know.

Internal: Regional colleague Kwong Bok Park sent out to Summer '73 and Brenda Black welcomed back to sojourn for a fortnight en route to Chicago. The old old story that the Lord gives and the Lord takes is retold as windfall dollars arrive and old debts depart.

Contradiction: In the midst of apparent proficinecy in the weekly routines of House life, daring to take the plunge into radically serious visioning for the next quarter and the future.

## CHICAGO

Religious House: ChicagoReligious House: Milwaukee

External: Wayside Inn image on target as two black youth literally drop in for House Church and return for Ecclesiola with 2 more friends.

Summer care structure of collegial visits going strong. Seven clergy from all 7 actualizing churches in two galaxies sign up for S'73.

Internal: Visitors in the form of Religious House colleagues from Washington DC and Lincoln Religious Houses. Summer Ecclesiola begins with new faces, wild trip with Campbell and secular mythology, and guests lingering to chat for an hour afterward.

Contradiction: Thunderheads of demands obscure the clouds of glory.

Religious House: Madison

External: Guest night formulates and spiritizes as 9 people (outnumbering House 2 to 1) bring their food contributions, rummage for our weekly sale, go to the deeps. Subject appropriate: Poverty muse.

Internal: Daily Office and enablements symbolic and practical continue with style despite only four adults present; one colleague gets third job beyond his independent studies.

Contradiction: Two demons are the attitudes "The movement will carry on without me: and "we'll do it all" both blocks to expenditure and corporateness.

Religious House: Rockford

External: The House plus several metro families ushered our 6 S'73 participants to Chicago after a sendout feast. While at Symbolic Centrum we participated in the first plenary and returned with new excitement and new vision on the work being done.

Internal: The House celebrated the arrival of additional troops from Pasadena, California: the three Jesop youth who are helping the enable the Rockford Metro while their parents attend the Research Assembly.

Contradiction: Allowing the nitty-gritty to take priority over the task of metro formulation thus losing sight of our vision for Rockford and ending off with feeling of "getting nothing done."

Religious House: Peoria

External: Recruitment for Summer '73 reveals a number of colleagues ready to be the Movement in Peoria Metro during the coming quarter and are asking for further engagement in the movemental mission.

Internal: Landed six new jobs, and every House member is now working two jobs. Cathleen Smart recruits for S'73 from her hospital bed by phone. Received as new intern Linda McClintick who transforms House with style of faith.

Contradiction: Keeping focus on External Mission with House finances as priority.

Religious House: Champaign

External: Trip to Gibson City gets out crucial data on local church and clergy and helps to lay groundwork for fall PLC recruitment. Letter to grads in Kankakee signals beginning for formulation meetings there.

Internal: House joins community in celebrating July 4th at annual fire works and guests join House at Ecclesiola for reflection on RS-I.

Contradiction: Not seeing that picking up individual assignment areas gives permission to care for every area.

Religious House: Minneapolis

External: Up-coming Billy Graham Crusade in Minneapolis sparks conversation between House permeator and fellow employees on how it is that the church gets the Word said in the 20th century. Result: decision of one hospital pharmacy staff to become intentional corporate thrust into history.

Internal: Send-out of E.G. to New Day Nation and youth and adults to Summer leaves 3 adults to be the "prophetic remnant" who continue Daily Office. Receive Alice Keyes as 2-week sojourner, maintain steady permeation, and actualize fall visioning.

Contradiction: Planning for the future, while not knowing what emphasis this summer will produce.

Religious House: Kansas CityReligious House: Wichita

External: Putting the House battleplan on a timeline in the midst of courting local congregations, pastor families and RS-I grad families; carrying out our decision never to have a House Church or Guest Night without guests.

Internal: Permeation strips House of personnel while proposed yard sale blossoms. Prior spins from S'73 and John of the Cross sustain the troops. A colleague calls and asks could we use a lodge with a pool and we allow as how we just might come up with a model.

Contradiction: Seeing the intensification of the economic as something other than the mission.

Religious House: Lincoln

External: Galaxy meets at House for tactical modification; work is done early enough for mid-afternoon Common Meal and send-out. Two more - a House member and a regional colleague - leave for Chicago and S'73.

Internal: Week II study of Chardin's "How I Believe" plunges House members into depth reflection on eternity and super-personalization. Phase 4 guest at Ecclesiola impacts House with the gifts of elders that cry out to be harnessed.

Contradiction: How do you break loose insight into the gifts of having only 6 permeators left in the House rather than letting yourself fall victim to the changed dynamics of 6 instead of 31.

Religious House: St. LouisReligious House: ClevelandReligious House: Indianapolis

External: Week II was spent in training metro colleagues and House in popular preaching dynamics and then manifested as we visited the local business community and offered them ways to participate in the summer with in-kind contributions.

Internal: Songbooks have begun to explode as never before as we have experimented with conversations every morning using lines from the song and pushing ourselves to gain new clarity on what we sing.

Contradiction: How to operate with chaotic work schedules that do not allow for time to participate in the internal House structures and still maintain and rehearse our missional thrust this summer.

Religious House: CincinnatiReligious House: Detroit

External: Local park transformed into a Mexican fiesta in 30 minutes as all four life phases participate in Warren polis Ecclesiola celebration

Internal: New team meeting format recovers the spirit care dimension in the midst of preparing team members for carrying their enablement assignments throughout the week.

Contradiction: Less contact with our regional colleagues has resulted in dimming of the vision.

## SYMBOLIC CENTRUM

External: A dozen yellow buses transported entire Research Assembly to Ravinia for historic performance of the original Benny Goodman Quartet. Singing during the return trip spiritized many passers-by. The plenary Sunday celebrated the end of the first half of the Assembly with the completion of 4 weeks' work in two weeks, and sent its congratulations to the opening of the Hong Kong Advanced ITI, also opening on the 15th. Monday morning's plenary opened the second part of the Research Assembly which shifted from theoretical research to PSU's. Kathleen White was sent out to Majuro where she will join Larry. Laboratory units create instant park on corner of parking lot, transforming rubble into grass and trees in a one-day demonstration of possibility.

Internal: Saturday night saw all engaged in a new Cabaret with new acts, jokes, and dances created during the past week. Restructuring for the Assembly resulted in Plenaries, Paraguilds, guilds, protoguilds and teams. Each member of the Assembly was assigned a chapter of the Bible for continuing work during the two weeks, at the end of which time the entire Bible will have been covered. The new participants arriving from around the globe, including Manila and Caracas, remind us again we are a global movement. The Order celebrates the birth of Stephen Edward Vance to Neil and Faith, born Tuesday July 17, 7 pounds 4 ounces.

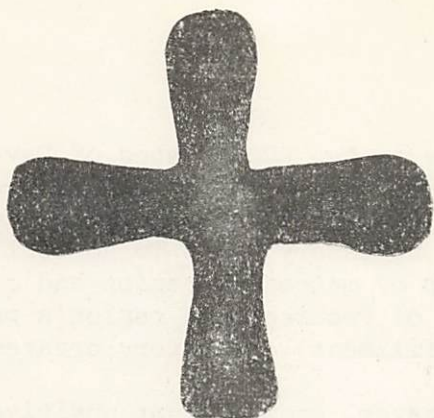
Contradiction: In the midst of our experiencing the expansion of the Spirit Movement how do we create the trained troops to keep up with it.

Trek of Resurgence

External: Nearby lake yields total camp feast of 69 fish under the relentless power of our trek fishermen. Nature's revenge is acted out as second catch of 56 fish is ripped off by a shady raid of raccoon bandits on our fish cooler during the night.

Internal: Campfire conversation over St. John's burning log image radically grounded both by art form of burning logs and by a mother turtle dove who continued to walk around the around the group searching futilely for its lost baby who wandered from its nest and died in our campsite.

Contradiction: Having received a yes to particular situation of trek and comprehensive situation of the order, staff finds themselves immobilized in awe in seeking to find concrete ways to engage the decisions.



The Lord the God of heaven has given me all the kingdoms of the earth, and he himself has charged me to build him a house at Jerusalem in Judah.  
Ezra 1:2

## SPHERE SOUTH

LATIN AMERICA  
CARACASReligious House: Caracas

External: First quarter Ecclesiola brings together 16 regional colleagues to study Sartre's "No Exit"; regional PSU on nurture and formulation gives depth insight to 22 colleagues on nurture as concrete, personal possibilities of involvement in the Spirit Movement.

Internal: House celebration took us by cable car over the Mountain of Care (Pico Avila) and down to the Sea of Tranquility (Mar Caribe) for a meal, a walk on the beach and a slide into the new quarter. Planning for quarter Religious House structures, time design and assignments.

Contradiction: What is the story that will allow people to intern in the Religious House in the fall?

BLACK AFRICA  
NAIROBIReligious House: Nairobi

## SPHERE EAST

SUB-ASIA  
BOMBAYReligious House: Bombay

## MADRAS

Religious House: Hyderabad

External: First residential RS-I course for Hyderabad with 45 around the table. Ashram trek to Cochin Region breaks open affirmation from Catholic and Orthodox hierarchy.

Internal: Mailing of 200 invitations for "Open House."

Contradiction: Maintaining our external thrust in midst of no immediate courses and enabling House dynamic to come off.

## DELHI

Religious House: Delhi

External: First residential RS-I in Delhi with 22 new people including four couples - all full time. Jaipur and Agra Treks establish course nights and enables key local people and forty recruiting contacts.

Internal: In the midst of pushing 100% on the Delhi RS-I, internal life takes on structures for quarter and House experiences collegiums, solitary office and first Ecclesiola as spiritually sustaining. House Holds first children's RS-I with 7, and completes blue "garb" for all.

Religious House: Delhi (continued)

Contradiction: Designing battleplan for formulating Delhi metro on the other side of great RS-I and emerging movemental momentum.

SEAPAC  
HONG KONG

Religious House: Hong KongReligious House: ManilaReligious House: Davao

External: Overwhelming positive response in two RC parishes of Davao polis: Sr. Madeleine says "yes" and volunteers to recruit two key laymen from parish; 7 from cathedral parish of San Pedro take initiative and do workshop on how to raise necessary funds to go to ITI.

Internal: House works on images for each of metros of region and creates name that holds regions's past (Land of Promise) and region's present which claims the future (Land of Fulfillment). The story creates the event.

Contradiction: Being men of incessant prayer, knowing that positive response is but the commencement of journey to ITI; miracles still require crucifixion of resurrected men.

Religious House: Cebu

External: Signal breakthroughs in development for ITI's with ₱2,800 in cash and ₱2,100 in kind free travel (boat) and ₱6,000 solid promises along with paid registrations in hand steadily increasing.

Internal: First full Cebu House meeting in several weeks provides opportunity for rebuilding battleplans and timelines according to new data and current situation for ITI.

Contradiction: Holding radical tension between necessary task - recruitment and development - and keeping finances down.

Religious House: Taipei

External: Korean advanced ITI participants spend 2 days enroute to Hong Kong hosted by regional colleagues: reveals that nurture goes both ways. Development goal met with pledges to take it over.

Internal: Intensified house hunt is on as we see all structures geared to finding an adequate facility to meet missional demands.

Contradiction: Fall quarter planning demands in midst of intensive house hunt compete with development and ITI nurture models.

Religious House: Tainan

SINGAPORE

Religious House: SingaporeReligious House: Kuala LumpurReligious House: Jakarta

External: Put 4 Indonesians on the plane to Advanced ITI: Hong Kong. Still working on travel papers for 3 more. Preparing to send out 2 House members for 1 month of teaching in teacher training school.

Internal: Arranging a million last minute details to enable external activities.

Contradiction: International travel blocked by extraordinary bureaucracy.

SYDNEY

Religious House: SydneyReligious House: Brisbane

External: Christian Education consult with 15 participants in potential Galaxy church excited all with methods for corporateness and mission.

Internal: First Ecclesiola of quarter signals several shifts as old grad not seen in two years drops by and we launch St. John of the Cross construct for college, seminary, and sodality.

Contradiction: Finding the contact point between the comprehensive social vision and colleagues' particular arenas of passion that releases the needed surge of Academy and PLC registrations.

Religious House: Darwin

External. Consultations with head of Northern Territory Department of Aboriginal Affairs closes with mutual pledge to coordinate work and methods in community reformulation and Aboriginal training. Head of ABC in N. Australia comes to guest night. Enable Combulgurri community with air freighting of saddles, bridles for cattle mustering.

Internal: Began experimenting with guild construct to implement mission planning and action.

Contradiction: Locomotive of church and secular momentum running ahead of practical vision track-laying process.

Religious House: PerthReligious House: Adelaide

External: First Galaxy meeting for the training quarter held: Complete RS-I recruiting. Spot key Academy prospects. Started PLC phoning for course in Week 5.

Internal: Planning and manual printed for quarter. Two Catholic sisters from a local teaching order visit Ecclesiola guest night. Shift to new teams and House assignments.

Contradiction: No adequate models to deal with the chaos of seemingly insufficient time and troops in the midst of ever increasing diversity and demand of mission.

Religious House: Melbourne

SUVA

Religious House: Majuro

External: Deployed ITI recruitment/development team reports 3 for Basic ITI (with 4 more possible) and 4 for Advanced ITI. Others continue raising their money and processing visas.

Internal: Summer Ecclesiola construct and design is initiated with study of St. John of the Cross, gridding Rita Ward, and participating in Micronesian Day Concert (The band's first number was "When Iron Men Go Marching in.")

Contradiction: Maintaining corporateness, missional continuity and momentum as House is sent out for numerous July trips.

Religious House: Apia

External: Development picks up as we receive the largest contribution so far. Thirteen regional colleagues join House to send out our advanced ITI delegation to HK in a great House Church feast. Proxies stand up for our Tongan and Fijian delegates.

Religious House: Apia (continued)

Internal: Practics taken care of in order to prepare to send the advanced ITI delegates. Put into operation the new models for House internal life for Quarter. Entertained school curriculum director and family on guest night. Attended the funeral of grad's father.  
Contradiction: As the demands keep expanding while intensifying, trying to hold the tension between school and movement work.

TOKYO

Religious House: Tokyo

Religious House: Sendai

External: Japanese doctor and ITI contributor suggests Nixon attend ITI. With the purchase of a car by a regional colleague, we now have 3 cars at our disposal. Visit with ITI host committee member, Dr. Tai Akagi in Hirosaki, finds an enthusiastic supporter for EI and movement.  
Internal: Regional colleague cooks at House and shares his mother recipe. Built summer time line pushing details for next few weeks of spring and summer goals. Increased summer tutoring to more than equal one person's full time monthly salary at 1/2 the time.  
Contradiction: Removing English facility as the block to attending ITI.

Religious House: Seoul

Religious House: Fukuoka

Religious House: Osaka

SPHERE WEST

EUROPE  
LONDON

Religious House: London

External: Experience participation in global movement through reports of summer plans from Base and plans of the Australian movment through the Bruce Martin family during their 2-weeks sojourn in the London House.  
Internal: House impacted by movie "Across 110th Street" as it is pushed to deal with the role of the audience as participants in the drama and mediators of the Word through the promise of restructuring violent society.  
Contradiction: Getting firm bearing on course ahead while compass needle spins in proximity to so many possibilities.

Religious House: Manchester

WINNIPEG

Religious House: Winnipeg

Religious House: Anchorage

External: House and Galaxy send out young farm couple from Wasilla to spend honeymoon at last 2 weeks of Research Assembly.  
Internal: \$40-\$50 brought home nightly from the phone solicitors (for selling Fireman's Circus tickets.) It is the latest of the Thornton's "high-wire" achievements.  
Contradiction: Keeping all the plates spinning when one of the plates (the economic) requires both hands 95% of the time.

Religious House: Saskatoon

External: New possibilities open up for future as we send 3 to Summer '73 celebrate the life and death of a colleague's husband and engage in a conversation in which there is considerable interest in being a Guardian.

Internal: Experienced life at the fair during Pioneer Days as something that the whole city had waited for during the rest of the year. Pushed lucidity about God's dominion and man dominion as we lived in the cabaret through collegium and a drive-in movie.

Contradiction: As we find ourselves becoming the cabaret there are those occasions when we treat life as a rehearsal for cabaret when the audience is watching all the time.

SAN FRANCISCO Religious House: San FranciscoReligious House: San JoseReligious House: SacramentoReligious House: Los Angeles

External: Firmed up sojourner, lined up a weekend festival in Santa Barbara metro and found ourselves accomplishing all we laid out to do with 25% fewer troops.

Internal: Second week of heavy emphasis on priorship training with each individual having leadership role in collegium - resulting participation from side of table increases surprisingly.

Contradiction: Catering to anticipation anxieties rather than trusting the models.

Religious House: PhoenixReligious House: Denver

External: The Regional Mission clarified in Week 2 PSU; Salt Lake City Metro meeting a huge success in spite of "Denver's absence" because of cancelled transportation. Galaxy meeting especially spirited with 26 present.

Internal: Teresa Wednesday morning and Amos on Thursday evening made the spirit life a powerful experience. Blessed with a surprise overnight sojourner from Montana who just wanted to know "what it is you are about." Dillinger family reunion brought guests to House Church.

Contradiction: Sudden realization that the race you thought was a 220 is really a mile.

Religious House: Billings

External: Continued concretizing of Kalispell Mobile Ecclesiola through phone calls, letters and reflection on Ecclesiola model.

Internal: House Church highlighted by 6 guests, 4 from Black AME Church. Maintained Wayside Inn dynamic as we hosted S'73 "returnees", the Dennis Hubbard family (Denver region.)

Contradiction: Maintaining corporate discipline when accountability almost comes as one-to-one relationships.

Religious House: Rapid City

External: Rev. Russell Pierce, new pastor at South Maple UMC was celebrant at House Church, his first contact with the movement in 6 years; he wants to come back and bring his family. Fifteen guests joined us for a picnic in the park and the band concert there and dessert afterwards.

Internal: Received as guests the Dennis Hubbard family on their way home from the first two weeks of S'73. We had great times with the new songbooks. Spent part of Wk. II getting clarity on the struggles with the demons; first through St. John's images of the journey, and papers.

Contradiction: Model not complete for Development event on eve of having to invite guests.

Religious House: Seattle

External: 1200 mile foray to Boise metro more like weekend odyssey to the land of mystery. Saturday afternoon clergy calls proved to be effective contact and we found clergy willing to talk and receptive to movement courses next year.

Internal: Ecclesiola visited the Peking Opera and encountered the archaic Chinese culture in the midst of cacophonous sounds and wild acrobatics. Another world assailed our senses.

Contradiction: How to be global men when we can't stand the cultural shock.

## HOUSTON

Religious House: Houston

External: Sent out 4 from the House and 8 more from the region to S'73.

First work weekend on redecorating the RH brings several regional colleagues in and is enabled by sojourners Jim Shiffer and Betty Moritz.

Internal: In-kind contribution of 60 gallons of paint enables summer work weekends.

Contradiction: Planning for the trek on Summer '73 must be done by those not attending S'73.

Religious House: New OrleansReligious House: Miami

External: Regional newsletter mailed weekly to 60 close colleagues continues to be most helpful tactic. Even when visiting, etc. is at a standstill "everyone" knows all that is going on at the summer and around the world.

Internal: Special House Church with Fugina family of Tampa as guests and Fr. Donald Ireland as guest celebrant with special sophisticated style.

Contradiction: Keeping stoicism at arm's length.

Religious House: AtlantaReligious House: MemphisReligious House: Oklahoma CityReligious House: Tulsa

Religious House: Amarillo

External: Two pronged formulation model activated to engage new and old colleagues. Provided new images and concrete tools through one-day Imaginal Education pedagogy - first of scheduled one-day summer events

Internal: Exciting Ecclesiola using Kaiser aluminum paper in seminary, with conversation and sodality related - released colleagues to create songs that captured depth struggle of 20th century man in fantastic poetry.

Contradiction: Getting clear about who we need to be at this stage in the journey of the metro.

## NEW YORK

Religious House: New York

External: Exciting week of penetration as manuals go to press, decor for penetration office completed, new prospect names begin to flow in, and 2 register for a PLC 5 months in advance.

Internal: New illustrations for God lecture in collegium pedagogy spin allows House to authenticate new mood column. "Assault of being" category becomes House's interpretive theological screen for week.

Contradiction: Penetration charts and timelines are on wall; question is, how do we internalize them such that they inform day-to-day prayer life?

Religious House: New Haven

External: Tuesday evening Ecclesiola sparkles with excitement as work is finished on microgrid of new polis, Carol Peterson is sent out to Summer '73, and word is received that Tony Psisperer will remain in Chicago for second two weeks (originally planning only first two).

Internal: House experiences resurgence of Wayside Inn with everyone assigned on Saturday to man lawnmowers, brooms, rakes, etc. resulting in very tired troops at days-end and a renewed landscape. Resurgence created on Sunday with Galaxy pastor Dick Wiborg celebrant at House Ch

Contradiction: With penetration models all ordered and everyone straining at the leash to move toward implementation, the demand to be the structural revolutionaries who act only within the context of a disciplined timeline severely test out ability to watch and wait.

Religious House: Garden City

External: The review and updating of PLC grad cards illuminates the cluster and group recruitment possibilities and clarifies the focus of summer events.

Internal: Foray into Hempstead polis (Jones Beach) acts as research trip for future summer polis event as well as setting us atingle with the discovery of sophistication amidst the roller-skating rink, and resurgence music of the dance band.

Contradiction: Holding the long term vision of penetration while seeing the need for moving to overcome summer lethargy.

Religious House: BostonReligious House: Portland

External: Touched bases with metro colleagues regarding ongoing work of the summer and preparation for fall quarter.

Internal: Another second job in permeation began as eight Week II sojourners arrived who demonstrated that the sojourner program is readily adaptable to Houses with reduced number of servants.

Religious House: Portland (continued)

Contradiction: We have yet to develop a sojourner jodel which effectively impacts with the external mission, despite enabling facets of the present model.

Religious House: Manchester

External: Experimentation with the cabaret dynamic at bi-polis level yields intrigue, suspense - and a good turnout for summer "vacation" schedules. Once again: attrition is not a way of life

Internal: Layer upon layer of historical past peel away to reveal raw material from which the future will be created. Paper off - let's paint

Contradiction: The mountain is heavy and the bearers few. Maintain the work, maintain the spirit, be held in the tension.

Religious House: Rochester

External: Local Church lab, a Wk. II construct, held in House with 10 regional people (8 from Albany), 6 Galaxy people and 4 House members. Reforged a new relationship to the naive passion that began the LC experiment. Plan another LC lab on Wk. 6.

Internal: Broke through style of sophistication in midst of sojourner falling downstairs during Ecclesiola Thursday night. Sojourner was taken to hospital and Ecclesiola went on. Next day sojourner reengaged in House structures. Summer stock play "Summer and Smoke" addresses.

Contradiction: How to formulate grads who see the local church as one possibility for their lives and have not decided to renew it. We've got grads and prosepcts and the rest of the world.

Religious House: PittsburghReligious House: Washington

External: Region receives 8 participants back from first two weeks of S' 73. The dynamics of the guild, cabaret and circus begin to intensify the summer's missional swirl. Three Ecclesiola, 2 clergy collegiums serve as both the spark and fuel for intensified formulation.

Internal: The corporate spirit journey touches the enigmatic other as the Religious House stands present to the residue of the sanctification lectures, First John, St. John of the Cross, all from the summer program.

Contradiction: To grasp once again that a bit of moral difficulty and a new life demand do not collapse the vocational thrust or practical mission.

Religious House: Philadelphia

MONTREAL

Religious House: MontrealReligious House: Toronto

## CHICAGO

Religious House: Chicago

External: Prophetic remnant of the Galaxy is spinning all the tactics while at the same time spending every spare moment to paint and decor the Galaxy room before colleagues return from Summer '73.

Internal: Celebrated the end of delivering 10 tons of telephone books by going to see "Don't Bother Me, I Can't Cope". Saw life protrayed and had it given back to us.

Contradiction: Walking the fine line of "in but not of" relationship to Summer '73.

Religious House: Milwaukee

External: While 32 old hands at Summer '73, the Lord calls forth 5 teams for collegial visits. Fifty-five year old Galaxy pastor witness on 2 weeks of S'73: "I found myself in Church last Sunday with a style and stance I have been reaching for for the last 10 years."

Internal: Receive Scott Chamberlain as sojourner. Internal Collage manifested by painting and cleaning two houses, collegial visits, sojourn calls, creation of world collage, permeation, and study for Wisconsin bar exam.

Contradiction: Our passionate search for effective financial models is not yielding passionate responses.

Religious House: MadisonReligious House: RockfordReligious House: PeoriaReligious House: ChampaignReligious House: Minneapolis

External: Returning S'73 participants bring new excitement into the region as we send out more colleagues to the Research Assembly, bringing total participants from region to 40.

Internal: Welcome visit from George Packard and Carlos Ollison on development from Centrum pushes House number up to 5. Sanctification further grounded by seeing movie High Plains Drifter.

Contradiction: Symbolic life in the month of July switches from that of the Church to that of vacation.

Religious House: Kansas City

External: Week heralded by second wave of sendouts as large number of Galaxy members sent out for Summer '73.

Internal: House welcomes return of prior's wife from S'73. We begin to struggle with tunes of new Resurgence songs. Four permeators now employed at one local hospital - coffee breaks look strangely like collegium.

Contradiction: We think summer is about balancing books or formulation when it's about living in the awe.

Religious House: Lincoln

External: Regional colleagues nearly outnumber House people at House Church - guests include two non-grads who say that after their House Church experience they're eager to get to a fall RS-I. Youth and a staff member from Kansas City regional camp also join us for House Ch.

Internal: Morning and evening studies, Week II CS-I pedagogy session continue to push us into the depths of ourselves and the world we relate to. Youth from regional camp join House members for collegiums.

Contradiction: How do you keep from getting antsy about planning and recruitment for the fall in the midst of the journey to the center we keep throwing anxious glances in the direction of the Not Yet.

Religious House: WichitaReligious House: St. Louis

External: Sent team to Springfield Missouri to begin breaking open for first RS-I ever held in metro. Continued nurture visits of old and new colleagues in St. Louis metro. Sent off 6 more to summer program.

Internal: Priorship training continues with reflection on priors spin on pushing to transparency. Collegium on imaginal education impacts House and sparks decor at 18" level in children's collegium room.

"Escalator" installed in back stairs - for wheelchairs only.

Contradiction: Urge to be somewhere else - anywhere.

Religious House: ClevelandReligious House: IndianapolisReligious House: CincinnatiReligious House: Detroit

## SYMBOLIC CENTRUM

External: Summer '73 PSU's wrap-up writing and model building as Assembly shifts into Global Council during final two days. Fr. Stephane Valiquette arrived for last week of Assembly. Uptown businessmen participated in exciting LENS course and follow-up breakfast. The first visible sign of our work in Uptown, the Car Park Cafe in the Institute parking lot, attracted nearly 1000 people who were deeply impacted by new life bubbling forth within their own neighborhood. Rev. Park Shin Won and Rev. Kim Han Ok from Seoul hosted a dinner for 16 of their Korean pastor friends, using it as a PLC recruitment tool.

Internal: Entire Assembly participated in Sanctification Course which pulled into focus spirit clarity on the 20-year decision. Spectacular production of "Desert Song" by participants and the movie "The Scarlet Pimpernel" revealed the power of disguise as the Red Shadow and Pimpernel employed their tactics, incognito, against social injustice. Cabaret continues with daily performances of music, satire and comedy at breakfast. The Order rejoices in the birth of Miriam Elizabeth, 8 lbs. 4 oz., to John and Thea Patterson, July 18. Dr. Ted Johnson, Presbyterian Church of Canada, visited his new grandson Stephen, and stayed for three days of the Research Assembly.

Contradiction: Ending research assembly when next 20 years' work has just begun.

New Day Nation

External: Prophet of Doom festival brings doom, then merciful repentance to the Nation. Sea of Tranquility ride on the Dixielander, Indiana's largest paddle steamer, brings delight. Fifth graders on 2-night camp out 20 miles away creates enduring Iron Man rite of passage.

Internal: Three rainy days affords abundance of in-tent solitary time.

Contradiction: How pack tempestuous wind up curriculum into short time available.

8th Grade Work Project

External: The Global Migrants follow the crops as we shift from corn fields to soybeans. Bending for weeks can produce interesting effects in the back.

Internal: Shift in jobs requires the dividing of the group into 3 work guilds in 3 locations.

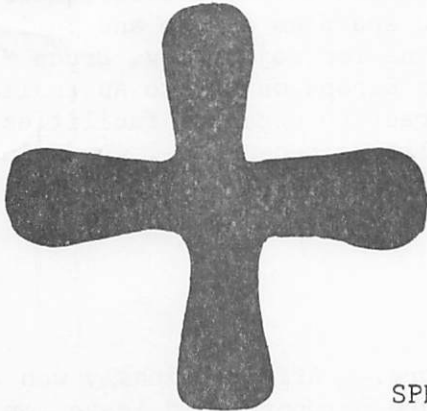
Contradiction: Keeping the vision before us as we continue in the fields.

Trek of Resurgence

External: Thirty-mile, 3-day cross-country hike brings forth sign of the depth of the camp's discipline and corporate power as group decides to hike all night in order to finish last 10-mile leg.

Internal: Wilderness cabaret unfolds as three feasts (Pancakes, Peanut butter, and Hamburgers), skits, dancing, ballet, jokes and staff impersonations are dramatized in wild abandon, eliciting the uninhibited passion of entire group. Background music provided by our own 'Sounds of the Wilderness', Leenhouts, loons, and coyotes.

Contradiction: Longings and anticipation of return to city life distract thoughts and mood from the weight of the rite of passage into adulthood before existential affirmation has thoroughly taken place.



But I answered them, "The God of Heaven will give us success. We, his servants, are making a start with the rebuilding."

Nehemiah 2:20

SPHERE SOUTH

LATIN AMERICA  
CARACAS

Religious House: Caracas

BLACK AFRICA  
NAIROBI

Religious House: Nairobi

External: Week II visit to up-country pastor who is Addis ITI grad reveals a solid colleague serving 15 congregations (who ever said one prior can't do 4 galaxies) using methods from the ITI with his most successful congregations.

Internal: Acting as hosts while Global Odyssey V encountered Black Africa, multiple signs of resurgence and swelled movement troops on continent from 4 to 53 for three days (they pulled off their permeation assignment)

Contradiction: Holding the tension of being employed by the hierarchy and living under the image of service to the grassroots.

SPHERE EAST

SUB-ASIA  
BOMBAY

Religious House: Bombay

External: Second round of prior's treks confirms regional expectations and gives form to five strong cadres in five of the six regions. Imaginal education course at Sir Jacob Sassoon School stirs the imagination of key educators in Bombay and authenticates us in both secular and religious

Internal: Area priors gather for planning and evaluation and shed blessings on the whole House. The Ashram welcomes a constant stream of visitors as more churchmen hear about the Ashram.

Contradiction: Deciding to trust models to sustain us economically in the mission to the point of fully implementing them.

MADRAS

Religious House: Hyderabad

External: Hyderabad Regional Cadre plans 8 weeks of sodality, intentionalising their decision to be the cadre dy amic.

Internal: Ashram transformed in preparation for Open House, with 75 colleagues and friends dropping in for tea and samosas, followed by a sojourner weekend with 19 colleagues going on a journey.

Contradiction: How to create fascination for the Ashram into concrete decision to intern.

DELHI

Religious House: Delhi

External: House moves on strengthening the authorization dynamic as leading Hindu business man provides first permeation breakthrough with his decision to come to the House three times a week for English lessons. Three treks to Allahabad/Lucknow, Jaipur and Jullunder City.

Internal: House imploded with people and space as Ashoka and Sumita Shaw and two children arrive from Patna for sojourning. Bruce Martin family of 6 arrive as sojourners from Europe on way to Australia. Three ashram families move across street to expanded facilities.

Contradiction: Increasing task of formulating recent RS-I grads in midst of pushing penetration into new regions.

SEAPAC

HONG KONG

Religious House: Hong KongReligious House: Manila

External: The Battle at Department of Foreign Affairs finally won as last 6 Advanced ITI participants secure passports and leave for Hong Kong 2-5days late. All energy now on Basic with 3 weeks to go; 108 registrations, 40 additional yesses, and 70 unknown for Manila ITI.

Internal: The Wayside Inn knows its globality in new ways as 5 advanced ITI participants from Fiji and Samea stop for dinner Monday night en route to Hong Kong and address us in the Philippines with their sense of the Church's role relative to emerging political forms.

Contradiction: Development machinery geared up to make \$100 at a time when we need 5 gifts of \$2,000 now.

Religious House: CebuReligious House: Davao

External: Trip to Nabunturan nets 3 yesses to ITI. Penetration/formulation trip to Zamboanga and Cagayan metros uncovers unanticipated possibilities. Two applications for ITI in Davao polis.

Internal: House Church focus of high celebration as 2 penetrators return from trips, Fr. Mabayra is guest celebrant and is sent out to Advanced ITI in Hong Kong.

Contradiction: Turning yesses and possible yesses into flesh and blood participants.

Religious House: Taipei

External: Wealth of contacts with Roman Catholic orders, especially Jesuit Provincial, creates interest in our work and requests for more contact before the fall.

Internal: From checking Chinese newspapers to consulting church elders - regional colleagues are invaluable in house hunt.

Contradiction: Deciding that being in ambiguity is the way the Lord loves us and holds us over against our anxieties of the moment.

Religious House: Tainan

External: Sent Joseph Wen off to Advanced ITI Hong Kong.

Internal: Symbolized the beginning of the moving of the House to Kaohsiung as Pamela Johnson arrives from Base after a month in Hong Kong.

Contradiction: How to begin a Religious House when your first prior is in Chicago and your second prior is in Hong Kong.

## SINGAPORE

Religious House: SingaporeReligious House: Kuala Lumpur

External: ITI preparation spinning as development blitz continues and two site visits heighten the excitement of the resident sisters.

Signal event for the week is confirmations for all regions in area, showing filled quotas in all of Indonesia and Suva.

Internal: House welcomed Loh Gaik Sim as a sojourner for two weeks.

First prior's church in Seremban covered by House as Don Raschke steps in. House Church an event with 15 around the table and Reverend Ng Ee Lin officiating.

Contradiction: Discovering the way to the opening to the large contributions needed to the ITI.

Religious House: Jakarta

External: Running interference with airlines, government and tax structures to enable send-out of ITI participants.

Internal: Visited by Liz Banks on job seeking trek. Experimenting with one-man Religious House.

Contradiction: Locating the key to unlock hierarchy to enable ITI participation.

## SYDNEY

Religious House: Sydney

External: Astronomer colleague's spin on Andromeda galaxy with large photo, set context for Canberra metro's catalytic cadre first full dya planning event. Prior and Catholic priest colleague travelled to Cudgegong to firm up two courses recruited by one metro family.

Internal: Merry-go-round with air line companies as ITI participants from Samoa and Fiji pass through in transit; Pat Ualesi guest at House. Imagination set loose as prepare to move to new location by study of "Spacial Presence."

Contradiction: Grasping firmly the nettle of the spread-thiness of troops to implement tactical models to completion.

Religious House: Brisbane

External: Formulation turns a corner with a regional net PSU of Iron Men who rehearse the history of the Brisbane Region and grasp their election to be pillars of the movement. Recruitment on all fronts is boosted by first registrations for October courses in Townsville.

Internal: Ecclesiola St. John study guides House into dark night to glimpse the mercy of painful purgation; some and Regional colleagues view lady sing the Blues and spin on the hell of refusing one's givenness.

Contradiction: How enable those who see the vision of the renewed church to see the divine joy as well as the divine burden and so take the next step on their journey.

Religious House: Darwin

External: Sent out prior on regional trek on-route to the Academy Sydney. First clergy breakfast held, an event in spite of 5 confirmed yesses and only two showing up - the two being the Anglican Bishop and a worker priest.

Internal: Welcomed back nomadic House member Steve Rhea for 1 weeks stay - on route to new geological site. Re-ordering of internal space with creation of front room as a mystery room with tropical plants and SE Asian decor. Rewriting and expanding of regional tract.

Contradiction: Caught again underestimating the northern territory malaise, even among clergy, of saying what people want to hear rather than responding authentically.

Religious House: Perth

External: RSIIB held with 7 participants plus 6 in emerging generation programme allows revitalizing of old grads, some of whom had had no courses since initial penetration of 1968. Regional colleagues created and taught emerging generation and house youth enabled adult.

Internal: Landlord's representative inspects building, doing major repairs and providing \$150 for interior painting.

Contradiction: Maintaining chastity; RS-I recruitment necessary but a lot of other "good ideas" look easier and more rewarding in the short run.

Religious House: Adelaide

External: A busy and divers week II with an RS-I Whyalla metro, penetration and formulation trip to Pirie metro and first Local Church Project Week II Council.

Internal: Planning an Adelaide Metro PSU on penetration and formulation, and PLC recruiting. Seminary study of RS-I and the New Course a happening.

Contradiction: The struggle in the midst of the need to discern the time design and priorities of the external mission and intensifying time.

Religious House: MelbourneReligious House: Majuro

External: Members of House dispersed in Saipan, Guam, Ebeye and Majuro as new money, new suppliers, new goods, and new space begin to take form in one arena of the mission. Meanwhile requests from we really don't-know-who come by mail for invitations to ITI.

Internal: Three month timeline is created revealing the need for surgeon's care on a thousand miracles.

Contradiction: How do you take troops who've fought a losing battle for four years to fight the biggest battle of their lives, when there is no sign or assurance of what is to come.

Religious House: Apia

External: Methodist Church Conference of Samoa assigns Lalomilo Kamu, former principle and ITI grad (Singapore '69) back to Methodist High School as a teacher. Development continues as we seek last donations from business before sending off our ITI delegation to Kuala Lumpur.

SUVA

Religious House: Apia (Continued)

Internal: House spends Week II in CSI pedagogy in anticipation of advanced courses scheduled for Quarter 2. We also spent time preparing school lesson plans to clear the way for Manila ITI teaching assignment.

Contradiction: Principal leaving in three weeks with no replacement in sight.

TOKYO

Religious House: TokyoReligious House: Sendai

External: Continued development for ITI with \$40 at a time pace. Visit to metro city proves rewarding and may lead to active participation of RC pastor. Active summer begins with new ways to teach English.

Internal: House impacted with global demand with the 3-day ITI recruitment and development visit of Don McClain.

Contradiction: Imaging recruitment going right up to Aug. 12.

Religious House: Seoul

External: Six - all six - delegates to the advanced ITI receive passports and are sent off to Hong Kong with great expectations.

Internal: Prior sent out to ITI Fukuoka preparation in Japan. (L.G. learns "Grace and Peace" in English for the occasion.)

Contradiction: Wall limiting Won flow out of Korea appears to have too few holes for amount of ITI funds we need to convert.

Religious House: FukuokaReligious House: Osaka

External: Matsushita Electric Company contributes major gift to ITI as support by Asian companies continues. Concentrated calling effort yields two more registrations for the Fukuoka ITI, bring Osaka to half its quota with 3 weeks to go.

Internal: Area EG structures continue to celebrate the gifts of the city with a visit to the transportation museum in Osaka. Current collegium study on the construct of the Religious House recontextualizes why we're doing all these things. One comment "This sounds like something we could have written."

Contradiction: Concretely tapping hierarchical support fast enough to release ITI participation.

SPHERE WEST

EUROPE  
LONDONReligious House: London

External: Recruitment and other preparations for summer program now in full swing.

Internal: London participation in global network of movement collegiality sets new high as Mark and Melissa Heim sojourn, Newcastle pastor Bill Elliott visits, Minneapolis Galaxy pastor Fred Atkinson joins us for Summer Training program and House Church guests include Indian ITI grads Alobe and Srena Dutt and friend M. Roy, South African Sree and Loretta Ncobo and Oakland Galaxy pastor couple Bud and Kathleen Tillinghurst

Contradiction: House bursting its seams both in time and space with PLC on the continent, Global Odyssey and Summer program yet to come.

Religious House: Manchester

External: Drop in visit to Newcastle colleagues strengthens the sense that to fulfill its destiny the local church needs the movemental church.

Internal: Reading Area Priors' spins releases courage and hope into our consciousness and style.

Contradiction: Being ready to bless the social fabric by celebrating the spirit as the North East of the British Isles booms in oil and European consciousness.

NORTH AMERICA  
WINNIPEG

Religious House: WinnipegReligious House: AnchorageReligious House: Saskatoon

SAN FRANCISCO Religious House: San Francisco

External: Consults with Japanese local church group in San Mateo and seminarians in Berkeley promise fall quarter RS-I and Academy registrations. Speaking engagement with local church cadre results in battle plan to get House sojourn on cadre members' timelines for next year.

Internal: Sojourners and metro one-day wonders continue to enable House refurbishing. Metro colleagues join House secular research field trip to "Earthquake McGoon" nightclub and "Top of the Mark." Reflection points to role of mystery in cabaret dynamic. Rousing House Church.

Contradiction: Excitement over daily signs of resurgence obscures need for long-range battle planning for fall quarter and next year.

Religious House: San JoseReligious House: SacramentoReligious House: Los Angeles

External: Experienced the global local agent in the form of the development team, gratefully enabling their presence after a long absence. Had House member sing a solo at a funeral at graveside and experience popular preaching power of the invitation.

Internal: Received 93-year old father for a week's sojourn and viewed cabaret for a common context and imaginal pictures of cabaret. It all makes much more sense now.

Contradiction: Casting out demon which is trying to convince us that S'73 is going to save our situation.

Religious House: Phoenix

External: In the midst of planning regional trips, a colleague returns from S'73 and is described as "sheer walking agape" and "The room not big enough to hold her spirit."

Internal: Massive reordering of House files experienced as sociological healing, receipt of decor and materials from S'73 create continual spirit events, i.e. impromptu songfest in the late hours of evening as soon as the bags were off the plane, hearing the new song books.

Religious House: Phoenix (continued)

**Contradiction:** Overwhelmed by long range picture - as a day-by-day time design seems increasingly harder to build and "waiting on RS-I brochures" to be printed holds up building a common recruitment model.

Religious House: Denver

**External:** A weekend PSU in the Cheyenne Metro produces plans for the fall, revives spirits of colleagues and allows time for a spectacular hike through mountains, discovery of wild mushrooms and visits with local pastors. A neighborhood block party surprises all of us.

**Internal:** Ecclesiola with 11 guests experienced the intensity of the Charismatic movement through a guest speaker who provided both intellectual perspective and a demonstration of the power work through this movement.

**Contradiction:** Disobedience which rises out of short-range visioning.

Religious House: Billings

**External:** House participated in Black AME Church picnic in mountains, actualizing our tactic to penetrate-formulate key prospects. Great collegiality great festivities!

**Internal:** House Church dinner prepared and brought to House by metro colleagues Val Rigg and Helen Brogan. Put finishing touches on Mobile Ecclesiola model.

**Contradiction:** Deciding that self-discipline is the necessary deed in the midst of summertime mindset that says it's time to take it easy.

Religious House: Rapid City

**External:** Trying to explain what we're about to a group of international students from France, Austria, and Switzerland (whose commonality was a limited speaking knowledge of English) proved to be not much more difficult than it is to local people.

**Internal:** Mundane "this world" activities i.e. cutting trees in the backyard, repairing doors, screens, and windows became necessary. In the midst of that the St. John study is beginning to really come alive Halleluia!

**Contradiction:** Finding the time to contact and visit with local pastors and, developing models to use all time in effective missional engagement.

Religious House: Seattle

**External:** Pedagogy weekend continues to bring forth new faces. Pedagogues grounded lectures with absurd life events which turned day into joyful affirmation.

**Internal:** House Ecclesiola attended stage presentation of "One Flew over the Cuckoo's Nest"; 3 hours of intensified passion and embodiment of the word reminded us that we odn't have a monopoly on the passion button.

**Contradiction:** Life style of summer escaping blocks the corporate mission.

## HOUSTON

Religious House: Houston

External: House receives in-kind gift of 30 gallons of paint and 65 railroad ties for transformed into Wayside Inn.

Internal: Total House begins to reflect Cabaret style with splashes of pink, yellow, white, and new decor throughout. Keith Johnston is welcomed back from camp as he spins Indian stories.

Contradiction: Missional dog acts out of non-missional stance by biting neighborhood youth. How to get "teeth" out of our neighbors and into the summer activities.

Religious House: New Orleans

External: Renewed vision of power of E.G. curriculum as Galaxy E.G. Head Mistress dynamic takes root and begins to grow.

Internal: Entire House - and neighbors too - awed by House transformation as front of House with fancy "gingerbread" trim is completed.

Contradiction: Having been in summer structures for five weeks now, realizing that it is really only Week 3 and a lot of summer work still lies ahead.

Religious House: MiamiReligious House: Atlanta

External: Exciting sign of possibility - Galaxy sends out Jim Mallory to last two weeks of Summer '73. House receives invitation to Unification Church (neighbors) for Japanese meal of squid, tempura vegetables, and sea weed soup.

Internal: Summer Ecclesiola begins with fantastic celebration at Wits End Cabaret theatre; long time colleague Hoyt Oliver celebrates House Church and is impacted by Deployed Order Report; Fr. Charles Caldwell stays over Monday night and does Tues. collegium with a report on S'73.

Contradiction: How do you allow the lack of external doing to enable your journey rather than cramp your vision.

Religious House: Memphis

External: Exciting new fall brochure on its way to the printers.

Internal: John Lindstrom en route from summer program sojourns 1 1/2 days; relaxed fun at Ecclesiola; tribal resettlement elicits wonder at the transformation of space.

Contradiction: In the midst of a stance of nonchalant urgency relative to house hunting, we've lost the urgency.

Religious House: Oklahoma City

External: Devil fascinates with visions of exploding possibilities by questions flooding in - when is Academy, when is PLC, when is Odyssey, what can we participate in at House?

Internal: Sojourner Bill Mattox returns from Summer '73 and fascinates House with stories of Research spirit.

Contradiction: Mind set "none of these things happen until fall" lulls us into vacation image.

Religious House: TulsaReligious House: Amarillo

External: Welcomed Hohstadt family back from S'73 Assembly filled with cabaret and guilding images that will be used in PSU's and teacher training days scheduled for August, as metro formulation continues to prepared colleagues for fall quarter.

Internal: Have uncovered two possible second job income sources, turned the Amarillo Wayside Inn into a global experience inside via new Ur decor and transformed the exterior "weed patch" into a symmetry of high plains beauty complete with rocks, cactus and yucca.

Contradiction: How to enable spirit vitality with half completed projects beckoning the demon of overwhelmedness.

NEW YORK

Religious House: New York

External: Exciting week of intensive penetration creates new gestalt of New York and Newark metros. New York shifts self-image as names like New Rochelle and Scarsdale appear on new micro grid. Newark reestablishes priorities and begins to move for first time on mother city with PLC call

Internal: Revisioning comes as Galaxy clergy family uses Wayside Inn to see New York, reports on his church's 4 years with the movement in Los Angeles, and brings exciting news of cabarets, circuses, and sociological love from first two weeks of S'73.

Contradiction: Locked in somewhere between comprehensive procurement plan and actual card file full of RS-I prospect names.

Religious House: New Haven

External: Typing of prospect list mailing labels completed and anticipation mounts as regional brochure edges closer to the printing press. Metro Ecclesiola grounds itself in preparation for PLC recruitment by rehearsing the pluriform gifts of the church.

Internal: The House witnesses and participates in the celebration of the "101st Fife and Drum Corps" ... Deep River, Connecticut. The songs and marches of the Continental Army are experienced as signs of a resurgence of the spirit struggle that enabled the founding of a nation.

Contradiction: Holding the tension of a fully developed recruitment model and the summer black season on New England.

Religious House: Garden City

External: The implementation of cluster model for congregational leadership development program (Miami model) reveals powerful tool that gives passionate permission for responsible clergy and congregation care.

Internal: The Presence of Rev. Denis Dutton, pastor of large Methodist church in Kuala Lumpur. With his relaxed, interior-disciplined style, he calls us to new awareness of need to be the contemplative ones, and to be of the same spirit as those for whom we care.

Contradiction: The need to release spirit power (serious joy) to enable us to implement models as happenings in every particular.

Religious House: Boston

**External:** In our Week II visitation of clergy and old colleagues in the 5 projected key ecumenical parishes of the Boston metro, we discover that those churches are ready to move. One priest already has 8 people he's begun to recruit for a cluster-sponsored RS-I.

**Internal:** The House was impacted this week with continental representation as the Gessip family from the Los Angeles Region sojourn with us for 3 days, and as Duane Day from Houston stops for House Church. For solidarity of Ecclesiola the House views "Oh Lucky Man" and is pushed hard.

**Contradiction:** In the midst of "stable" internal structures, how is it that we become disciplined in terms of spiritizing every situation in which we find ourselves through passion in our style.

Religious House: PortlandReligious House: ManchesterReligious House: Rochester

**External:** Rochester Metro Presidium meets Week II and decides to contact all grads regarding up-coming metro council; first attempt on one year by metro to structurally care for grads in the metro. Regional fast invitations are sent out to 150 regional families.

**Internal:** Mary and Scott Gantt and Steve Poyzer sojourn for Week II, Steve sent to S'73. Spent evening experimenting with our first Cabaret. Carol Boland from Detroit region visits our Ecclesiola and is impacted by style workshop. Work on metro notebooks enables region to see seriousness

**Contradiction:** Regional colleagues who have covenanted to sojourn have either shortened their stay or decided not to come.

Religious House: PittsburghReligious House: Washington

**External:** Religious House pushes Week II Academy recruitment into all 6 metros on half troop strength. Inter-American agency calls and wants to know who they could talk to concerning \$30,000 donation to Caracas ITI. Clergy collegiums and Ecclesiola continue to direct colleagues.

**Internal:** Religious House intensifies its search and seizure moonlight program. One more full-time body on the permeation front serves as sign of the possible. Cabaret dynamic authenticates engagement for Religious House members.

**Contradiction:** In midst of wild vision and hope for fall, not operating to actualize the vision.

Religious House: Philadelphia

**External:** Reentry into Scranton metro is signalled by three PLC registration out of 11 visits.

**Internal:** Our mood of the week was dark, but transparency broke in as we saw that our painful endurance was a necessary step towards the light and sanctification.

**Contradiction:** Keeping up the momentum for the next weekend PLC blitz so that 10-15 ministers will register for the fall PLC at the blitz.

## MONTREAL

Religious House: Montreal

**External:** We did a little geographically long range recruiting for fall RS-I.

Secured two yesses for the Atlanta region from Yvonne Stringham's sister and friend while they visited Montreal and participated in House activities. Continue work on creating a filing system that is comprehensive.

**Internal:** House celebrates our region's primary culture with trip to Quebec City. We were impacted with the depths of history, thousands of people thronging the narrow streets of the old city, yet no one seeming hurried, the "foreign tourists" and multi-national ocean liners.

**Contradiction:** How create a new time myth which would release us from thinking we don't have enough time to get all the background structure and plans built, yet operating as though we had plenty of time before the teaching quarter begins.

Religious House: Toronto

**External:** Role of House Church celebrant continues to be valuable grad nurture tactic as PLC grad and wife from a course three years back in Peterborough accepts the invitation and is over-awed with his visit to the House. Third newsletter of the quarter is sent out to the region.

**Internal:** Sojourner Leslie Sagara comes "like a thief in the night" and impacts the House with her quiet-but-felt presence. St. John conversation and study, RS-I pedagogy, and the new corporate solitary construct become valuable reflective tools for spirit sustenance.

**Contradiction:** Looking at our gifts in unwrapped packages and wondering whether to open them for fear of the great wonder that might be revealed even priorship.

## CHICAGO

Religious House: Chicago

**External:** Fifth City demonstrated care for community with lot clean-up of the "Are You Buggy" building.

**Internal:** Care for space manifested with painting of 60 exterior window sills of 341 - great chance for acrobatics practice from the 3rd floor ledges.

**Contradiction:** In the midst of hourly shifting contexts, House experienced no focus of activity which allowed the immediacies to win.

Religious House: Milwaukee

**External:** Sojourn possibilities arise out of collegial visit model. Galaxy Church decides to burn the midnight oil doing TA's after all others have gone home.

**Internal:** Studying paper on France holds the global vision and acts as a sustaining force for the metro during Ecclesiola. Car wash finally discovers a location that yields cars - the search goes on for a city the yields fair weather!

**Contradiction:** We stand before a haze of indecision waiting for someone else to be the first to step outside their neuroses.

Religious House: Madison

**External:** Third deluxe rummage sale, with bakers, live music, refreshments, nets almost four times the yield of sale #1, including a large contribution. Publicity, build-up and poor weather are our allies.

**Internal:** Four level charting collegium and Bultmann section II of RS-I paper study session with two House members insure the continuance of the

Religious House: Madison (continued)

dynamic when troops are low; gala guest night and feast in midst of a town worried about food prices: pot luck and careful shopping do wonders.  
 Contradiction: Brainstorming ways the metro can take more responsibility for the metro in the fall and developing continuity of nurture with just us chickens.

Religious House: RockfordReligious House: PeoriaReligious House: Champaign

External: Week II expenditure doing PLC calling in Watseka symbolizes intentionality in dealing with outlying polises. Comment of one grad attending Kankakee church leadership guild is "this is meat and potatoes for me."

Internal: Eighth grade youth swirl through bean-walking jobs and House for 10 days in Champaign and then take off for St. Louis. Use of Kansas City model for Ecclesiola expands House awareness and skill in use of methodologies.

Contradiction: Deciding to be 10-talent men in a 10-talent possibility when desire to be 5-talent man in a 10-talent possibility.

Religious House: Minneapolis

External: Recruitment packet mailed to Minot, North Dakota at request of metro colleague - a first for Minot.

Internal: Wayside Inn dynamic gets a new twist as regional colleague drops in and takes House out to an Ur meal. Viewing the movie 'The Day of the Jackal' leaves us standing in awe of what a person living an intentional life-style can do and we see that possibility for every man.

Contradiction: Can see ahead 1,000 years but not clear about what next week looks like.

Religious House: Kansas CityReligious House: Lincoln

External: A flurry of lost and found cars anchors us in regional care and in relating to the care structures of the community. House feels a direct participation in S'73 as O'Boyle is called into Chicago to pipe for the dance of resurgence. Regional camp invites House to taco supper.

Internal: Collegium that showed up "leaderless" results in helpful spin that reveals corporate methods we have and use to enable the mission. House collegiality images expanded as Kansas City colleagues, including youth, on regional camp staff plug into collegium and study structures.

Contradiction: Learning to be flexible in response to situations that arise and tempt us to respond out of archaic images.

Religious House: WichitaReligious House: St. Louis

External: After hearing stories about the global movement, old grad asks "when can I take RS-I again?"

Internal: House explodes with new birth of enthusiasm as 8th grade work project has final 2 days and nights of wild celebration.

Religious House: St. Louis (continued)

Contradiction: Learning how to live out of what we know in our interior deeps rather than what we feel on the exterior.

Religious House: ClevelandReligious House: IndianapolisReligious House: CincinnatiReligious House: Detroit

External: Summer '73 impact beginning to be felt in region as colleagues return and give great witnesses at Galaxy and House Church.

Internal: As we immerse ourselves in clergy care via a 1000 piece PLC prospect mailing, a Galaxy pastor demonstrates collegiality by showing up on our doorstep every morning at 4:30 a.m. for worship and collegium.

Contradiction: Our summer plan is not yet detailed enough to avoid the corporate anxiety which comes from the buzzing of many unnamed, unprioritized demands. Result: great loss of momentum.

## SYMBOLIC CENTRUM

External: Research Assembly ends with 32 PSU reports completed on the practical plans of the movement. The promise of the future was held in the common understanding that there is one movement, one order. Global Council received reports of the Movement by colleagues from Seapac, India, Europe, and Latin America. Dr. Paul Jan Thomas was sent out to his assignment in Seoul, Korea. Forty-nine Global Odyssey participants (12 from Centrum) returned after visiting 15 cities, conversing with Mother Theresa in Calcutta and receiving a briefing from African Church leaders, Dr. Okyllu Provost of the Episcopal Cathedral in Nairobi and Dr. Hustis Renner, Director of Education for the AACC.

Internal: Final cabaret of the summer program incorporated widely varied talents of participants and freed the Assembly to return to the missional task in the regions. Order Council, nearly four-hundred people, began with reflection on the summer and the next steps of the movement.

Contradiction: Prioritizing and timelining the next steps of the movement.