

Go down at once and attack the camp, for I have delivered it into your hands. If you are afraid to do so, then go down first with your servant Purah and listen to what they are saying. That will give you courage to go down and attack the camp.

Judges 7:9-11

LONDON

Religious House: Glasgow

Religious House: Bristol

External: Impacted local residents with who we were and what we are doing as we tried to get their houses and made contact with key metro colleagues

Internal: House arrived by way of Stonehenge and found a location at 18 Duchess Road, Clifton, Bristol, BS8 2LA.

Contradiction: Internalizing the compression of our timeline, now that we've so quickly set up House, in order to swing into autumn penetration.

Religious House: Manchester

External: LENS marketing moves into full throttle, 25 stalwart souls gather in Teesside for House Church, cadre meetings scheduled in Sheffield and Manchester.

Internal: Preparing to move into a 37-toilet, 12 bathtub stopgap House in Manchester.

Contradiction: Keeping aim steady with excitement of job hunting, LENS marketing, and House hunting.

Religious House: London

PARIS

Religious House: Paris

BRUSSELS

Religious House: Brussels

External: The House opened its doors Saturday as open house guests from Belgium, England, France, Germany, Flanders, Holland, Kenya, Philippines and United States brought us gifts of flowers, wine, patisseries and useful household items in response to hand-written invitations.

Internal: The House awaits the arrival of Jan Latham, as Jacqueline Tennant, John Latham and Jim Rowland arrive from England, Philippines and U.S.

Our ten-fireplaced, marble-floored mansion has been transformed into a Religious House with Resurgence swirl, quotations and Other World decor.

Contradiction: Our need to create an image of our priorities commands our energy and imagination so that necessity is the rule.

FRANKFURT

Religious House: Frankfurt

NAIROBI

Religious House: Nairobi

External: The General Secretary of the Presbyterian Church of East Africa offers to send out, on his letterhead, a PLC endorsement with registration card to all his pastors.

Internal: Painting in the evenings to prepare new House is wonder-filled by singing and dancing at the Hindu temple next door as they participate in the nine-day Navratri celebration (Truth defeats evil in Heavenly battle)

Contradiction: Keeping the contractor working on the House demands full time attention but course set-up is at a crucial stage--priorities shift day to day.

BOMBAY

Religious House: Bombay

External: Additional LENS course secured for Tata Industries. Preparations for 2nd Quarter's circuit rides to all regions completed.

Internal: Sent out Parekhs and received Cramers from Centrum. House journeys to Ixtlan for its quarter's retreat and planning.

Contradiction: Bringing sophistication to symbolic life in order to allow whole House to cross the river of one phase to another in terms of mission and consciousness.

DELHI

Religious House: Delhi

External: 120 piece mailing sent out initiating quarter 2 schedule of bi-weekly metro cadre meetings. Circuit riding manual completed in time for first trip out Wk. 13.

Internal: Knox's Event and Story weaves pattern through a tapestical week of new images and vision reporting of continental priors meeting, the arrival of Spencer and Cramer for LENS set-up and Vinita Clifford received as intern. House shifts cut living space in half.

Contradiction: Intensifying penetration thrust (eight courses) when House has decided to emphasize guilders and new House facilities search.

MADRAS

Religious House: Hyderabad

External: Cadre sent out Parekhs to year's internship at Symbolic Centrum.

Two courses for Quarter 2 set up during trek for Bangalore and Tiruvalla.

Internal: Celebrated the arrival of first Kerala family, M.G. Varughese, his wife Gracie and daughter Beena, to begin their internship. Received Raymond Spencer and exciting reports from Summer '73 and sent out three priors to priors' meeting in Bombay.

Contradiction: How to enable the decision of the total body to assume full responsibility for every aspect of the mission.

SINGAPORE

Religious House: Kuala Lumpur

External: Engaged with colleagues in three metros in battleplanning strategies and tactics for courses, Metro Ecclesiolas, and ITI development continuation in the context of SEAPAC strategies concensed on by Hong Kong Advanced ITI Congregation.

Internal: Hosted gathering of KL-Metro ITI grads to celebrate the past and claim promises for the future.

Contradiction: Not to allow the global vision to collapse under the pressure of the localized, particular day-to-day demands.

Religious House: Singapore

Religious House: Jakarta

HONG KONG Religious House: Hong Kong**Religious House: Kaohsiung**

External: Kaohsiung Regional Council held on Friday with 24 present including all but one ITI grad and great local leadership emerged making the future look exciting for everyone there.

Internal: The whole House simultaneously celebrated the end of Quarter 1 and the beginning of the Kaohsiung Religious House with a great Chinese feast at a luxurious, classic Chinese hotel. The prior families are diligent students of the local language with Chinese lessons everyday.

Contradiction: Getting the high excitement of Regional Council transferred into concrete, tactical plans and timelines.

Religious House: Manila

External: Conversation with Secretary-General of National Social Action Council (LENS grad) secures sponsorship for 4th LENS course for December and opens major local funding prospects, both government and private, for year's work.

Internal: Team structure launched with full force as team PSU's forge out a all constructs for external and internal mission for the quarter and year.

Contradiction: When the Lord opens a crack in history for you to break through into the future, and possibility is the only thing around you, how to get our imaginations pushed out far enough into the future and into the deeps to discern where the primary contradictions are.

Religious House: Taipei

External: Second LENS grad meeting impresses all with our knowledge of what it takes to get a decision from someone in a recruiting visit. Regional Council mailing and 70% of first LENS mailing (first mailing is 1000) are finished.

Internal: Visit by colleagues enroute - Fishel and Ellsions - brings helpful reports on S'73 and Priors Council. Focuses our thinking on commonality of Area in relation to commonality of Order.

Contradiction: Expanding the circle of those who have decided to be the Movement renewal forces. How to communicate the vision even though we stutter.

Religious House: Cebu**Religious House: Davao**

External: Visit to local congregation turns up future LENS grad; ITI grads call House about job contacts for Cebu region and to find out when next Ecclesiola is.

Internal: House evaluation and phase I of Quarter 2 planning launched by trip to 25th century and ends with Quarter celebration. Three guests come to House Church, including two ITI grads, and House celebrates receipt of first letter from youth of intern family currently in freshman year of college in Wichita Metro ,

Contradiction: Maintaining the tension between waiting upon the Lord and preparing for the battle now.

TOKYO

Religious-House: Seoul

Religious House: Fukuoka

External: Sent Ken Filipski and Hakari Goto to Area Presidium. Following Presidium, House attended Order Council in Tokyo.

Internal: Neighborhood permeation for LENS recruitment maintained by visits with Japanese-German family.

Contradiction: Allowing secondary strategies to succeed while the primary strategy demands all the effort.

Religious House: Osaka

External: Grad follow-up from ITI and speaking engagement with Catholic lay leader's group reveal new possibilities. House prior met Rev. Calvin Marsh, Moderator of United Presbyterian Church USA at a meeting hosted and attended by several grads.

Internal: Work on House internal time design followed by participation in Area Council revealed global consensus as indicative. Found selves saying "oh yes, oh yes."

Contradiction: Picking up on pushing on the momentum for the mission ahead.

Religious House: Tokyo

External: Tokyo Regional Council hears ITI reports from all congregations and also concenses on quarter regional calendar. RH hosts representatives from 5 regions for 2-day Area Council to look at thrust of next year 73-74. Entire Area celebrates as Lee Sung Joo is able to free his schedule to be at the Caracas ITI.

Internal: In midst of welcoming Raschkes, Griffees, Ellisons, Jane Clare Teller and Peggy Anderson to Tokyo, the Religious House was repainted and facilities were expanded to include 2 new rooms. Also began the adventure of locating a new Religious House-Conference Centre.

Contradiction: In midst of the increasing job availability, how to discern the permeation net that will both penetrate the secular structures as well as maximize "optimum" missional time.

Religious House: Sendai

External: Regional Council held with 13 around the table. Don Raschke impact the region with the demand to live on behalf of the whole globe. Area Council held in Tokyo.

Internal: Jane Clare Teller arrives from Chicago! Orientation workshop held to enable new troops to enter another culture transparently. White wall behind world grid becomes the Sea of Tranquility, with the aid of some blue cloth and regional colleagues Lee Sung Joo and Mr. Sasaki.

Contradiction: How to transform a large group of 3rd and 4th teachers into 1st and 2nd teachers to meet the immediate demand.

SYDNEY

Religious House: Perth

Religious House: Darwin

Religious House: Oombulgurri

External: Our communication-transport boat Arlagu is launched with two successful trips in its log, and is now ready to enable the great Oombulgurri migration. Our barren primary school will be furnished in good working order with the equipment and educational materials left behind by children moving to Oombulgurri.

Internal: The full staff-auxiliary went away for the weekend for our first full blown planning meeting. Our four year vision became commonized and we built a corporate three-month and four-week plan.

Religious House: Oombulgurri (continued)

Contradiction: Finding the means to build a corporate auxiliary team with separation of both space and context.

Religious House: Adelaide

External: Metro cadre and House struggle together with RSI recruiting strategies to find the necessary new style and story. Local Church solidarity celebrates training quarter by viewing "Poseidon Adventure". Saturday evening recruitment foray results in first registration for Oct.

Internal: House spins under impact of global commonality as Barry Oakley returns from Area Priors meeting, hearing name plaques and shares wisdom from Global Order Priors. Highlight is five metro colleagues coming for Ecclesiola meal and share the global dynamics of the movement.

Contradiction: Internalizing the fear and fascination of global area priors report and building the strategies for Quarter our of the many first priorities.

Religious House: Melbourne

External: LCP Numerkah trip confirms auxiliaries' decision to catch up and to start tactical actualization in October - a helpful preliminary meeting to work out details of our planning consultant role in an upcoming meeting with one suburban congregation. Metro cadre impacted by report.

Internal: Priors council report, new song books, first prior's return released a spirit breakloose and a calm of trust in external mission thrust in spite of some changes. Hosted Sydney metro coordinator and galactic auxiliary Ted Yallop for three days as well as returning priors.

Contradiction: Getting planning done by Thursday, Week 13 to include a way to move on to subtactics and detailed battleplan at the same time implementation begins.

Religious House: SydneyReligious House: Brisbane

External: Social permeation and geographical penetration hold the sec/rel thrust of House mission as we dine and dance and sing and recruit. Townsville RSI secured and Cairns penetration effected by 2-week stay in the Northlands.

Internal: Prior's return with report on global and area priors meetings underlines global commonness and swirls us into evaluation and planning culminating with celebration of the launching of the Ecumenical Parish at which artifacts from the 4 corners of the West End Parish were present.

Contradiction: Discerning how we reveal to skeptics that they carry the arrows that kill the demons of skepticism--arrows called "deciding to risk" and "seizing possibility."

SDVA

Religious House: Majuro

External: Kathleen and Lee to Ebeye to join Larry for BENS preparation and KITCO board meeting, where the board approved the loan. KITCO inventory continues and finally the "Mystery of Majuro" (a 15x6 foot rock enclosure) has been revealed as a flower box. Chamber of Commerce says yes to LENS demonstration deminar next week.

Internal: Week II of Week 13 had "almost full house" with Montgomerys in from Rong Rong. House impacted with conversations on Kaz. Sanctification quote of the week from the "Ballad of Cable Hogue" - he found water where thar warn't none!"

Religious House: Majuro (continued)

Contradiction: The story that history is created by someone else, somewhere else, doing something else, and at some other time.

Religious House: Apia

External: Preparation for open house with returned ITI delegates giving their reports to Apia Metro enables spirit-filled evening for 40 friends and grads, including the first ITI delegate from Samoa, Lalomilo Kamu (ITI Singapore). This year's grads demonstrate pedagogical prowess.

Internal: Entertain RSI grad and school faculty member, Rev. Elisara Laulu and his wife during guest night. Morning collegium on House financial projection sets our minds reeling as we grasp the picture of program and extensions costs relative to our current income.

Contradiction: Being the spirit giants in the midst of collapsing school administration and "too busy" colleagues.

SAN FRANCISCO Religious House: San Francisco

External: Cadre formulation signaled by consults which established four metro cadres in San Francisco and Oakland metros. Galaxy and clergy collegium colleagues comprised the core as these picked up the penetration task as that which will expand the local and create Ecumenical Paris

Internal: Received two sojourners on their way to Academy - Karen Muelhauser and Jeff Gilster, and sent out intern Charlene Herrick to Academy with stopover in Denver.

Contradiction: LENS marketing vs. 1-to-1 recruitment without base of local authorization.

Religious House: San JoseReligious House: Sacramento

External: First RSI registrations in hand; send out metro cadre convenor to Academy who in his great comprehensiveness left no stone unturned as he passes the baton.

Internal: The Year-of-the-Guild House Council accented with attendance at Renaissance Faire, an authentic Medieval "gild" faire. Three-and-a-half jobs secured.

Contradiction: Expecting someone else to be the guru dynamic.

Religious House: Seattle

External: Massive penetration troops harvest 17 in Portland. Key was a letter sent to people from Roman Catholic priest. Bellingham polis holds meeting for 8 hours to do two quarters of planning - 15 present. Seattle metro cell increased in size from 2 to 8 as they shift meeting time.

Internal: Overnight House retreat creates operational image for the year, mythology for the quarter, and missional divisions complete tactical model. In the midst of the worst gasoline shortage in the Pacific NW, House travels over 4,000 miles.

Contradiction: Not having necessary authorization and long range plan that will slowly allow penetration to happen in Spokane and Vancouver BC.

Religious House: Los Angeles

Religious House: Phoenix

7

Religious House: Billings

External: PLC calling continues with pastor driving 250 miles to recruit in Billings for the day. Present new faces of the House to pastors at the Ministerial Alliance breakfast. First foray into Butte metro and found prospects and colleagues waiting. Young woman picks up metro responsibility

Internal: A sign of real community celebration is witnessed by the children as they attend with 6,000 others the Herbstfest festival. Two full time jobs secured, making financial matters less pressing.

Contradiction: Letting go of our past images and offering up to history new creations for operational models in order to move into the future.

Religious House: Denver

Religious House: Rapid City

External: Chuck Poorthunder comes to the House for a sendout to Academy and he is impacted by a song conversation (though music isn't his bag). Fr. Pates and Fr. O'Conner also come for the meal and send-out; though neither have been to a course nor to the House before.

Internal: Celebrate the life and death of Mary Catherine Coffman and at the same time celebrate having David Coffman home from the hospital, knowing he is going to need to recuperate. The extended family of William Salmon spends a few days visiting for the first time.

Contradiction: The metro has yet to take seriously the fact that RSI is just two weekends away.

WINNIPEG

Religious House: Anchorage

External: Fantastic week...6 LENS, 3 PLC and 13 RSI registrations, LENS location nailed down, Knutson returns from 2-week fly around region and brings back new picture of region with new demands.

Internal: Wayside Inn comes alive as guests take part in activities of week. Particularly addressed by Lyn Jamieson, Juneau metro and his report on trip to Se. Paul Island, Alaska.

Contradiction: Lack of self-consciousness about reflective and evaluative time needed to keep quarter battleplan current, effective and in operation.

Religious House: Saskatoon

External: Forays into cities and surrounding areas of Prince Albert, North Battleford, Calgary, Moose Jaw, Regina have resulted in 11 registrations for Oct. 22 PLC, while Galaxy celebration and practicum planning indicate additional possibilities out of our accelerated impact.

Internal: Regional colleagues volunteer selves and goods for Ecclesiola and House Church while in kind secured 16 beds and pillows and a truck for their transportation.

Contradiction: Finding ourselves running into the quarter without yet having concretized an internal time and space design to accommodate external total mobility and fluctuating jobs.

Religious House: Winnipeg

External: Manifestations of resurgence and new openness in the Church come in the form of Ukrainian Catholic priests and old PMC grads who are anxious to hear what we have to say.

Religious House: Winnipeg (continued)

Internal: Rehearse the urgency of RSI as our central focus when the House holds demonstration RSI with four regional colleagues present.

Contradiction: As the image of obedient servanthood begins to become actualized, Satan is calling for us to drop the tension and put all our eggs in the economic basket.

HOUSTON

Religious House: Amarillo

External: The corporate power of Area Houston is focused through the priors of the area meeting in New Orleans demonstrating the seriousness of the decision to move by areas.

Internal: Amarillo RH assigned to Area research project in the sociology of Area Houston as a way of enabling the fulfillment of the prophecy - "this is the year."

Contradiction: Unfocussed practical battleplans.

Religious House: Oklahoma CityReligious House: TulsaReligious House: Houston

External: The explosion of the region into a new day was dramatized by the prior's 6M6D trek, six metro meetings in 6 days (Oct. 1-6) launching six metro cadres and creating a new mythology about the power and possibility of the Houston Region.

Internal: House began a series of common memory studies, completed more "this is the year" decor, and were spun into a LENS oriented ecstasy by a guardian at ecclesiola sodality.

Contradiction: With a powerful net of vision and spirit cast over 600,000 square miles of region, how to summon and train sufficient troops to keep it from breaking or slipping out of our grip.

Religious House: New Orleans

External: Showers of blessings, nine PLC registrations arrive in the last two days, including the Provincial and Vice-Provincial of the Marists Religious Order and the complete pastoral staff of two large churches, each with 4,000 parishioners.

Internal: All the men of the House armed with sharp new black briefcases and new blue suits. Quarter celebration includes an impressive cast of local actors and actresses, including a sad, carrot-eating comedian who was master of ceremonies.

Contradiction: Walking on water with incomplete models and grasping not that someday we will be the ones, but that we are the ones.

Religious House: Memphis

External: House pedagogy weekend witnesses great emergin teachers for the regional faculty. Registrations from Rector, Winn, Barryville, Bentonville, Ark. are in for the Little Rock PLC - talk about tertiary penetration!

Internal: We celebrate the completed life of Teilhard Ignatius Harlan, son of Harry and Kathy, born 12:00 non, October 1, 1973, died 12:40 p.m. October 1, 1973. His fleeting existence deeply grounds us in our own, and we are humbled before the Almighty.

Religious House: Memphis (continued)

Contradiction: A deep sense of impotence in the face of external events which blinds us to the promise of the present.

Religious House: AtlantaReligious House: Miami

External: The Zervigons and regional colleagues attended and addressed the annual ecumenical meeting of several churches in West Palm Beach on Sunday evening. We were introduced as the foundation of all the other programs and groups introduced that night.

Internal: In the mist of confusion, we experienced the global network by sending Carlos to staff ITI Caracas.

Contradiction: Keeping a suddenly complex region ordered.

CHICAGO

Religious House: Wichita

External: Kansas City and Lincoln colleagues brave tornados and flood water to join us for three intense days of PLC recruitment.

Internal: We receive Han and Ann Ziegenmier as interns, with daughters Sheri Beth, Christin, and Lauri. E.G. forces now number 8 girls and 1 boy.

Contradiction: We have a good paper model for cluster RSI recruitment, but have not discovered the key to its implementation.

Religious House: LincolnReligious House: Kansas City

External: Latest Academy registrant dramatizes that colleagues are waiting for us to pick up their registrations; both Kansas City and Topeka clergy collegium set to go with five-session construct for the quarter.

Internal: Study of Nigg's St. Teresa addresses the House that mediocrity won't do it.

Contradiction: Glitches in the back-up systems contributes to unrevolutionary dependence on individuals, person memories, suspicions, rumors, etc.

Religious House: Minneapolis

External: Mobile Religious House in action with all trips to all metros clocking 4,000 miles.

Internal: Fifty guests for open house Sunday afternoon follow 75 at wedding reception Saturday.

Contradiction: Dealing with immediate demands while not having a system to organize data for the whole quarter's recruitment.

Religious House: St. Louis

External: Cedar Rapids RSI blitz yields 13 registrations in one morning. First Week 6 LENS registration of a 6-block with money creates signal for quarter.

Internal: Walt and Jean Epley with 2 young children and one on the way (maybe next week) are received as interns, bringing House total to 29 including 12 E.G.

Contradiction: Holding the tension of the symbolic power of a clean house over against the immediacies of the external mission.

Religious House: Peoria

External: Began Week I with meeting with metro colleagues in Morton to initiate recruitment strategizing - need for metro recruiters is great and many possibilities emerge. The clergy couple sponsoring WK. 2 RSI register for Wk. 3 Indianapolis PLC with funds raised by congregation.

Internal: Radical transformation of space in House resettlement and decor creation brings into being the concrete spirit form of RH Peoria 73-74. Two more souls now bringing in steady income.

Contradiction: Pulling together the wisdom to hold the tension of recruiting for the "next" RSI and building the penetration structure as radically strategic and longterm nurture in the midst of the imbalance of the metro dynamic as the metro is almost completely made up of Galaxy members.

Religious House: Madison

External: LENS recruitment for Wk. 2 course has reached the 50 mark and the Mayor of Madison will attend and says at least 6 from city government will attend. The call has gone out to metro colleagues to join in the search for a new house.

Internal: House intrigued by worship style of combined black Baptist and ALC Lutherna service - two churches in the potential ecumenical parish. Created group recruitment format that turns out to be the art form method Ladies from the metro do in-house e.g. and metro phoning-weekday mornings

Contradiction: Articulate for ourselves, prospects, and metro colleagues the urgency of engagement in the time of resurgence.

Religious House: Rockford

External: Intensification of penetration enabled by transformation of House Metro node into imaginably organized sacred space for systematic geographic recruitment. Three metro colleagues and one intern sent to Academy.

Internal: Week is highlighted by receipt of inkind lunchmeat, Reading Chapter 1 of Journey to Ixtlan, creation of new metro banner. Seriousness of metro toward the future marked by decision to intern of 2 more colleagues

Contradiction: Succumbing to missional crunch and shortness of vision exposed in the realization that the care of metro is being done by House instead of metro giants.

Religious House: Champaign

External: Formulation visits and LC assignment workshops turn up exciting new possibilities and old grad visit turn up "unknown" business contact for LENS.

Internal: House impacted by Teresa study with Trappist monk (who studied under Thomas Merton) while he is captured by novelty of Castenada.

Contradiction: Creating the levers that allow you to pick up the phone knowing every call turns abstract possibility into concrete crosses for the quarter.

Religious House: Milwaukee

Religious House: Chicago

External: Clergy luncheons prove effective as means of telling the "new" story of the movement as well as actual PLC recruitment.

Internal: House joined by metro colleagues for work day to prepare facilities for Quarter 2 courses.

Contradiction: Articulating the new myth which will release the explosion of creativity that Chicago is.

Religious House: Indianapolis

External: Excited by the report that 50% of the clergymen receiving follow-up visits after attending a pre-course climate-setting event have registered for PLC!

Internal: Charles Moore visits the bi-metro with tourist's eyes and freshens our vision of possibility for this geography.

Contradiction: In the midst of visiting for PLC, we begin to find ourselves sharing the victimage of local pastors. How do you submerge yourself day after day in the sea of despair without drowning?

Religious House: Cincinnati

External: Broadened Guardian commitment, local church decision to send 10 people to RSI, and PLC registrations 6 weeks before course release excitement and awe over the reality of resurgence.

Internal: "It's a circus world" that's what the ringmaster of the "greatest show on earth" sang to us as we experienced the magic of the circus from our seats as high as the trapeze artists and tightrope walkers. It was an exciting and awesome event, the first House celebration of the year.

Contradiction: Re-imagining and embodying the style of the "new movement" as fast as the spirit breaks loose all around us.

Religious House: Detroit

External: Week of planning and recruiting. Trips to Lansing to set up course site unearths live RC educator, and to Grand Rapids for a day recruiting blitz. Detroit Metro cadres meet and plan their common quarter plan which will include coming to the House for 5 sessions of work on the EPX.

Internal: Permeation job hunting continues, Joseph Deblas of Uptown in overnight guest, discovery of power of singing in local pub, sanctification collegiums, and children in school at last set House up for quarter planning on Week II.

Contradiction: With the back broken on model building discover we haven't decided which to drop so we can do the key priorities.

Religious House: Cleveland

External: PLC calling signs up a pastor of the Antiochian Orthodox Church and uncovers a community of Marionist Brothers two doors from the House.

Internal: Huge spaces being filled with life as sojourner families fill extra apartments and colleagues make full our weekday collegiums and Sunday House Church as we plan Thanksgiving and Christmas treks, clergy collegiums, a PLC and family course. We eye the mansion next door.

Contradiction: The liveliness surrounding comes as surprise rather than the gift of the new day.

Religious House: Rochester

External: Eighty Kiwanians addressed by LENS possibility as prior is featured speaker at annual banquet in Binghamton. Maplewood Community Assembly preparation rapidly reaching goal of 500 people for one day convocation—thus begins the guild.

Internal: Sent out David DeVoe after a month's sojourn, preparing for new interns to arrive by building new rooms while negotiating with Roman Catholic Seminary for large convent.

Contradiction: Finding ourselves urgently pulling off RSI courses and not enabling metro colleagues to develop the sense of primary responsibility for the success of courses.

Religious House: Richmond

External: RSI recruitment surges with 15 registered this week, money in hand CSIIIA sits at 22. PLC recruitment takes on amplified note of seriousness as appointments thin out due to clergy cancellations.

Internal: Two permeation stations secured doubling House income. Resident intern artist produces \$300 worth of church art. 4' x 6' blackboard plus warboard bring intentionality to penetration and study life.

Contradiction: Deciding to run full steam ahead but rely on warm fuzzies and cheap Messiahs for sustenance.

Religious House: Washington

External: Gridding and futuric projections focus us in the present—new potency and decisiveness are the result. We know where to move and the "how" is becoming clear. Fourteen page grid manual of metro, 24 page penetration manual for recruiters.

Internal: Receive 6 fellows and 10 interns at House Church. Team becoming "heart" of House.

Contradiction: As make transition to strategic recruitment and formulation operate as if we have excuse for not winning this quarter.

Religious House: Baltimore

External: Had very exciting celebration after House Church with guest Chester Davis playing the guitar and leading asongfest. The Clergy Collegium was a small but enthusiastic group as an eight week model was laid out, and clergy wives are anxious to join their husbands in the mission.

Internal: Whole House elated over the arrival of sojourners Bob and Hannah Dexter with arrival of intern family expected Oct. 15. The lights shone brighter and we go lighter as we levitated to our chairs for singing and listened to Bob Dexter's taped resurgence songs.

Contradiction: Being afraid to confront people with the radical decision of changing their life style slows intern recruitment.

Religious House: Philadelphia

External: Week 13 was preparation for hitting the ball field running; Academy sendouts in the midst of LENS sponsors dinner and RSI blitzing.

Internal: Three stations workshops all in the field of recruitment and the explosion of new House decor with new circus colored 54 areas and tall wine glasses.

Contradiction: Cadre journey prayers are VW vintage when what is needed is SST sophistication.

Religious House: New York

Religious House: Garden City

External: PLC recruitment tactic of clergy breakfast was highlighted by Joe Crocker's spin on the movement from the beginning to the Ecumenical Parish Experiment. Interest was high as evidenced by the reluctance of several clergy to leave after the closing.

Internal: The Regional House Council combining three Houses demonstrated a comprehensive decision to be part of a common style held by 84 global houses. Internal House Manual produced as a sign of corporate consensus of style and mission.

Contradiction: Inadequate engagement of metro colleagues in the common thrust.

Religious House: New Haven

External: Circuit ride to Poughkeepsie Metro yielded 4 PLC registrations. Colleagues participate in painting and readying RH for Wk. 13 open house.

Internal: Attended regional House Council in New York which culminated in celebrating our responsibility for the church and world, with dining and dancing at the Americana Hotel and midnight walk to Times Square.

Contradiction: Releasing power of the metro colleagues for PLC and RSI recruiting.

Religious House: ManchesterReligious House: Boston

External: Week I Mobile Religious House in Hartford involves twenty colleagues in creating a new vision for the future; Week II brings first Ecumenical Parish PSU (16 souls) in which demonstration signal parish is gridded to wards while a force recruits RSI in Portland.

Internal: House preparation continues around the edges with 2 new chaneliers, curtains, and 150 pounds of inkind apples.

Contradiction: Building a net of recruiters, not recruiting a course.

Religious House: Portland

External: Cluster training model implemented as five clergymen in Portland micro say yes.

Internal: Renovation takes leap forward as sojourner and landlord remove 70 years of wallpaper and paint two rooms and front porch. Five guests at House Church impacted by the fruit of their labors.

Contradiction: We haven't figured out how to translate yesses into concrete tactical plans as congregations move ever so slowly towards serious recruitment.

MONTREAL

Religious House: Toronto

External: Speaking engagement at Anglican churchmen's breakfast followed by preaching at harvest thanksgiving service, augur well for increasing rapprochement between the movement and the historic church.

Internal: Australian prior travels to Chicago to obtain status as an American resident in order to be able to reside in Canada. Lynda Hoffos welcomed as a new intern, while Leslie Sagara is sent out to Academy.

Contradiction: The degree of risk involved in and the delicate handling called for by selected-micro penetration, tests our decision to trust God and go with out model.

Religious House: OttawaReligious House: Montreal

External: Decision to create the EPX as Galaxy decides on replication, and visitors from our parish, Little Burgundy (also targeted for EPX site) invite us to "be involved" in their community programs because "we can help you" and "you can do us a lot of good."

Internal: Welcomed Luyuse Groulx our first French Catholic intern. Wayside Inn dynamic intentionalized as formulation systems are created in the form of the first of regional monthly newsletters and the quarter's invitation model.

Contradiction: Seeing that the House is the key formulation structure discloses our unreadiness to internalize the style of the Wayside Inn.

CARACAS

Religious House: Caracas

External: Reviving flagging spirit of development team to see the importance of the ITI so that the necessary funds will be on hand; Ecclesiola finished study of Kaz with a broad context of our action.

Internal: Time spent on revising battle plans, creating models, and reflection on the ITI gathers our wisdom for the future of the spirit movement in Latin America.

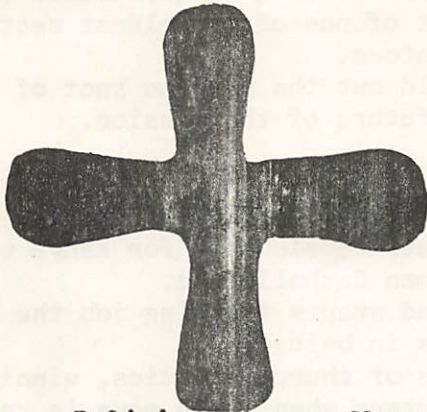
Contradiction: Absence of large number of participants projected from Venezuela and Caracas city gives us the priority for use of our troops, but how do we get the troops for all the last minute push and practices.

BASE CENTRUM

External: As Quarter II, 1973-74 gets underway, the Turn to the World is embodied at Centrum. The 5th Year of the Academy begins with 78 and the primordial "Snout" is finally contained. Momentary nervousness prevails as Centrum realizes that we play host to the Uptown Police Steering Committee. Donor circuit goes to Lincoln, Pittsburgh, Rochester, and Cleveland. The first PLC of the quarter is held; Little Rock is hosted by the Bishops and Executive Secretaries of 3 denominations, and by the Roman Catholic Church. LENS Wk. II pedagogy, printing, and collating.

Internal: Centrum celebrated the wedding of Mary Katherine Flowers and Henry Warren on October 6 at Daily Office. At House Church the 4 congregations and 3 centrumms were commissioned. Twenty-three Canadians and 3 turkeys assault the image of when and what Thanksgiving is all about.

Contradiction: Grasping that authorization is not for the sake of the mission it is the mission - in the turn to the world.



After this the Israelites said to Gideon, 'You have saved us from the Midianites; now you be our ruler, you and your son and your grandson.' Gideon replied, 'I will not rule over you, nor shall my son; the Lord will rule over you.'

Judges 8:22-23

LONDON

Religious House: Glasgow

Religious House: Bristol

External: First steps of local authorisation completed with visit to key Jesuit priest in city centre and received permission to work with Metro cadre based in his congregation.

Internal: Key tactic of face lifting House front guarantees neighborhood acceptance and affirmation while the internal space is transformed with resurgence blue collegium room in preparation for first meeting with metro cadre.

Contradiction: Bridging the gap between the immediate demands of establishing a House and moving full force into the quarter's missional activities.

Religious House: Manchester

External: Rushed to brink of Quarter II amid flurry of cadre meetings, visitations, tactical systems creation.

Internal: Rejoiced in presence of Toronto colleague at House Church.

Contradiction: How keep feet on ground while levitating between Teesside and Manchester.

Religious House: London

External: A week of recruiting, organizing the quarter and visiting old grads and bringing them up to date on the summer.

Internal: London House experiences first week of regular structures as Glasgow House leaves.

Contradiction: How we see victorious skirmishes win the war.

PARIS

Religious House: Paris

External: Completed visitation of English speaking congregations with development of a systematic recruitment plan for Week 3 RSI.

Internal: Establishment of Religious House in English Methodist Church and the completion of plans for Ecclesiola and weekly guest night indicate our readiness to begin fall quarter.

Contradiction: Discerning the tactics that allow the movemental dynamic to appear in the midst of a culture firmly rooted in the gifts of the past.

BRUSSELS Religious House: Brussels

FRANKFURT Religious House: Frankfurt

External: Received report from European Area Priors meeting held in Brussels where common focus was given to the mission in Europe.

Internal: Frankfurt House celebrates the signing of the lease and moves into the new Religious House (6 Frankfurt am Main, Textorstrasse 80). It is located in Sachsenhausen in the heart of one of the oldest sections of the city, only a ten minute walk to downtown.

Contradiction: Developing models which would cut the gordian knot of moving into a society without endangering the future of the mission.

NAIROBI Religious House: Nairobi

External: Calls on the General Secretary of the Catholic Secretariat for Kenya and the Secretary for Lay Apostolate Development for Kenya went well and bring us a step closer to a Roman Catholic nod.

Internal: Cliff Stocking arrives one day and starts teaching job the next day; structures built and Quarter Two is in being.

Contradiction: How we move through the maze of church politics, winning the necessary support from all powerful quarters when every move is known.

BOMBAY Religious House: Bombay

External: All regions visited as prelude to the new quarter and regular circuit riding for the regional cadres. Imaginal education course commences with ORT Foundation opening way for regular consultative work in education with remunerative benefits.

Internal: Discontinuous time schedule allows finesse to be brought to Quarter 2 planning.

DELHI Religious House: Delhi

External: Morning of Ghandi's birthday spent spinning with key Hindu colleague on political situation and cruciality of LENS which results in appointment with ex-Member of Parliament leading to sale of three blocks for that course. First circuit rider of Quarter 2 sent out to 5 regions.

Internal: Week of LENS and Summer '73 spinning as Spencer and the Cramers lead House collegiums. LENS team impacted by India, Indian businessmen and key colleagues. House pushed through quarter evaluation and Quarter 2 planning during with of Hindu 'Dussehra' festival.

Contradiction: Ensuring key area colleagues at RSI pedagogy Wk. II in five days so that continental faculty training is effectively sent spinning down the road.

MADRAS Religious House: Hyderabad

External: Quarterly cadre celebration "Rooftop Fiesta" held on the roof of the Ashram is a great event for 30 cadre members. Intensive all-day recruitment blitzes enable over 70 visits to be made for the coming RSI. Unearthed old grad who becomes key contact in Vijayawada.

Internal: Received Monsi George from Kerala, as Ashram sojourner. Permanent worship room is completed, and its presence has profound impact on the symbolic life of the Ashram.

Contradiction: Providing the adequate training tools for every member in the spirit life, and building the missional models.

SINGAPORE Religious House: Kuala Lumpur

Religious House: SingaporeReligious House: Jakarta

External: Consensus in three metros yields tentative course calendar and tactics for actualization.

Internal: Experiencing high excitement about being teachers on the other side of corporate dreams about what a model school would look like and what it would take for ours to be one.

Contradiction: Optimistic signs in several areanas, but the big picture not yet in sharp focus, imaginably or actually.

HONG KONG Religious House: Hong KongReligious House: Kaohsiung

External: Possibilities explode all over as authorization visits reveal hierarchical friendliness and visits with colleagues reveal an eagerness for corporate responsibility.

Internal: Quarter gets under way with new structures, Daily Office in new setting (a role for everyone) and a visit from Laura Townley.

Contradiction: In midst of 'all is possible' mood how do we 'strike while the iron is hot' but with the indirect style of the yellow ur and with spirit precision.

Religious House: Manila

External: Conversation with Secretary-General of National Social Action Council (LENS grad) secures sponsorship for 4th LENS course for December and opens major local funding prospects, both government and private, for year's work.

Internal: Team structure launched with full force as team PSU's forge out all constructs for external and internal mission for the quarter and year

Contradiction: When the Lord opens a crack in history for you to break through into the future, and possibility is the only thing around you, how to get our imaginations pushed out far enough into the future and into the deeps to discern where the primary contradictions are.

Religious House: TaipeiReligious House: Cebu

External: Grad visitation in the Cebu Metro reveals deep collegiality and readiness to enable the future. One day encounter with Cebu City provides data for initial grid and journeys the House from 600 BC (Taoist temple) to 1300-1700 AD (St. Nino Basilica) to the 20th century (supermarkets).

Internal: First job landed and more on the fire! One day miracle by House and metro colleagues cleans the House (coconut husk polished floors) and the yard area in 4 hours.

Contradiction: Double timing the establishment of the quarter and yar. Full speed ahead on both external mission and internal ordering and support necessary and seemingly only enough time for one or the other.

Religious House: Davao

TOKYO

Religious House: Seoul

External: General Assembly of Presbyterian Church of the Republic of Korea was held and attended by Rev. Kim Sung Hwan. Rev. Kim Han Ok received back from Academy and Summer '73.

Internal: First prior, the Rev. Kang Byoung Hoon, returns from Order Council in Chicago and preaching mission in Guam.

Contradiction: Adequate House facilities for 10 families and 50 colleagues participating in House program.

Religious House: Fukuoka

External: Securing of YMCA job for future maintains the symbol of secular authorization.

Internal: Development of recruitment prayer chart tools us for year-long recruitment visits. Peggy Anderson arrives and steps into English teaching position.

Contradiction: Discerning which tactics will locate adequate new facilities for Religious House soon.

Religious House: OsakaReligious House: Tokyo

External: House meets with Japanese cadre to make teaching assignments for all courses in the Area. Pedagogy thrust begins as new pedagogy manual is completed in time for first pedagogy session of the quarter. Sent Rev. Park to Korea, Rev. Kim An Hok to intern in Chicago.

Internal: House honored as Mrs. Takeda, wife of the President of the Seminary brings us special rice cakes to celebrate the 15th anniversary of the Chapel where we do Daily Office everyday. House completed the re-invention of all internal structures in order to be ready for quarter start

Contradiction: Inventing the permeation structure that will legally support us as well as enable us to spend optimum time in the direct mission.

Religious House: Sendai

External: Pedagogy held in Sendai with RSI overview as highlight. Cadre workshop gives iron men permission to begin visioning.

Internal: House impacted by visit from Lee Song Joo and Kenn Ellison. Orientation to the culture model actualized with visit to hotel for Japanese food and hot springs bath. Grids of region, area and globe allow new perspective of the mission.

Contradiction: How to establish visit net that will care for all metros.

SYDNEY

Religious House: Perth

External: First LENS reservation paid in full. Lord Mayor of Perth gives his attention to LENS.

Internal: End Quarter celebration and barbeque at Serpentine Dam. Vincent Bear starts bus training school.

Contradiction: How to discover clergy and key churchmen who do believe it possible to give weekend to a course, and find them quick.

Religious House: Darwin

External: First LENS registrations begin to come in. First prior leaves for Katherine, Tennant Creek and Alice Springs for speaking engagement and registration push. Total of 5 speaking engagements this week. A 'register no' mass mailing is out.

Religious House: Darwin (continued)

Internal: Receiving of the House name plate and symbolic artifacts. Garnet Banks arrives to help recruit LENS.

Contradiction: Landing the LENS fish with 44 seriously considering and 35 coming.

Religious House: Oombulgurri

External: Set up House at Oombulgurri and set out to physically prepare the community for established operation. Spirit is high and people are almost savoring hard work. Decision to "beat the sun" and begin work at 6:00am snatched us from our breakfast at 5:50 with the declaration that "everybody ready!" There are 54 of us now.

Internal: The whole team initiated the House by spending two nights here and participating in all initiating events and meetings of the community.

Living with the contingencies (sleeping on the cement floor and carrying water in buckets) was a great spur to our Wyndham colleagues to find beds

Contradiction: How to give adequate symbolic form to the life designs of a people far ahead of where we expected them to be; we are fighting to stay on top of the wave of resurgence.

Religious House: Adelaide

External: Intensive LENS penetration push as Steve Allen and Barry Oakley talk with key prospects, including Managing Director of Local Australian Institute of Management who indicates representatives will be there. Renewed push for RSI recruitment results in 5 new registrations.

Internal: Recommendations from Area Priors has meant rethinking our time designs and rationales to conform to global Religious House commonality. The flip from Quarter 3 to new Quarter 2 has increased our global awareness.

Contradiction: Deciding to live in the tension of starting a new quarter while already running in 15 different directions at once.

Religious House: MelbourneReligious House: Sydney

External: Galaxy completes training quarter with splendid celebration and preparing for tactical actualisation. Second LENS trip to Canberra initiates new political contacts and receives nod to talk with 37 departments of Public Service Board.

Internal: House move completed and Week 2 decor transforms former Guest House into sophisticated spacial presence.

Contradiction: LENS, RSI and PLC require immediate concentrated attention with Qtr. II planning incomplete.

Religious House: Brisbane

External: In the midst of exciting LENS contacts, key grads assume responsibility for the coming RSI, and youth group speaking engagement in key church demonstrates the power of the recovery of Scripture with conservative churchmen.

Internal: House makes the turn from Quarter 1 to Quarter 2 by completing internal life constructs and assignments, and researching secular cabaret at the National Music Hall Revue.

Contradiction: Discerning which contacts will be most effective when we suddenly find ourselves blessed with four weeks of calls to make in 1 wk.

SUVA

Religious House: Majuro

External: Sponsorship of the Majuro LENS by Chamber of Commerce. Year at Uliga Protestant Elementary School announced by Rev. Jude Samson as an educational experiment.

Internal: Beginning of Fall Quarter signaled by first Ecclesiola with Seminary study of "Resurgence and the Religious" and Sodality explosion of the guild. Writing of report to the Guardians brings Sanctification categories home.

Contradiction: Concretizing Radical Integrity in ocean of possibility; the sufficient response when you're given the King's business to do.

Religious House: Apia

External: Began new effort of intentionally recruiting for weekly pedagogy, Ecclesiola and House Church with the decision to have regional colleagues present at all of those structures every week this quarter. Lalomila (ITI: Singapore) and Donna Kamu re-engaged in movement here after 3 years

Internal: Wk. 13 Wk II produces the models for the quarter and a comprehensive Internal Life Manual.

Contradiction: With uncertain authorization for MHS, how do we get invitations for more staff next year?

SAN FRANCISCO

Religious House: San FranciscoReligious House: San Jose

External: In midst of tertiary actualization and Galaxy preparation, Galaxy clergy image as true revolutionaries by organizing into weekly clergy recruitment net focused on EPX and future replication needs. Metro cadre dynamic in full swing, generating 200 new RSI prospect names.

Internal: House impacted by the secular as sojourner David Crampton participates fully in House structures; on his first recruitment call recruits key metro colleague's 70 year old mother, and during send out announces his decision to bend already planned vacation to Guardian's meeting.

Contradiction: Multitude of possibilities dazzle eyes and obscure the day-by-day battleplan needed to accelerate the reeling in of registrations for Week 3 PLC and RSI.

Religious House: SacramentoReligious House: Seattle

External: Signal regional House Church of 96 people fills Wayside Inn to overflowing. Recruitment trip into unformulated out-lying metro begins advance on unpenetrated metros.

Internal: New decor and radically re-ordered kitchen gives House a face-lifting that convinces us we are ready for the battle.

Contradiction: Denominational parochialism that blocks PLC from being necessary training.

Religious House: Los Angeles

External: Metro cadres burst into being around the region, with the signal event being the San Diego metro cadre meeting Tuesday night after a day of PLC calling and LENS recruiting, resulting in 2 paid LENS registrations; another regional colleague goes LENS calling on his own 3 nights.

Internal: 30 at House Church as House swings into new quarter with pantry reordered and evening meals being celebrative events all week.

Contradiction: Transforming "being realistic" into "being revolutionary."

Religious House: PhoenixReligious House: BillingsReligious House: Denver

External: House warming was a success, timeline demolished, as was five layers of wallpaper in collegium and living rooms, recently renamed the Denver room and Ogden room respectively; the decision not to do a hurry-up job, but do a thorough job of re-decoring the House

Internal: PSU preparing Quarter 2 structures precipitated a Fast and produced House manual.

Contradiction: Excitement about being a House for one month is looking for a way of being expressed other ways than in permeation.

Religious House: Rapid City

WINNIPEG

Religious House: Anchorage

External: Resurgence roars through the House this week as we pull in course registrations and call on old grads who are anxious to plug into the structures plus uncover 4 8-week Academy prospects and one family decides to intern this spring.

Internal: Everybody and everything dancing as Marilyn Thornton begins working-in, increasing House capabilities 100%. House hears motivating report from Eugene Buck on their week-end trek to Chicago for LENS pedagogy session and their model on how the Anchorage LENS course is to come off.

Contradiction: Things are happening so fast in the Region that we find ourselves struggling to keep up.

Religious House: SaskatoonReligious House: Winnipeg

External: Extra Saturday battleplanning session results in model for rebuilding Galaxy corporateness enabling members to pick up responsibility and demonstrate power of assignment. Two priors sent off to begin new Metro Cadres in Kenora and Thunder Bay. Quarter begins with colleagues.

Internal: Odyssey gears up House for Victory Dance before the battle. We celebrate Canadian Thanksgiving by redecoring whole House highlighting each room as a part of an intentional 'pathway' for our increasing number of secular-religious visitors. First in-kind food arrives this week.

Contradiction: Acceleration to speed of light occasions loss of resolve in radical step necessary from knowing and doing battleplan to being battleplan.

WINNIPEG
WINNIPEG

Religious House: Los Angeles

External: Metro cadres burst into being around the region, with the signal event being the San Diego metro cadre meeting Tuesday night after a day of PLO calling and LEMS recruiting, resulting in 2 paid LEMS registers; another regional colleague goes LEMS calling on his own 3 nights; 30 at House Church as House swings into new quarter with pantry reordered and evening meals being celebrative events all week.
Contradiction: Transforming "being realistic" into "being revolutionary."

Religious House: Phoenix

Religious House: Billings

Religious House: Denver

External: House warming was a success, timeline demolished, as was five layers of wallpaper in collegium and living rooms, recently renamed the Denver room and Ogden room respectively; the decision not to do a hurry-up job, but do a thorough job of re-decorating the House.
Internal: PSU preparing Quarter 2 structures precipitated a fast and produced House manual.
Contradiction: Excitement about being a House for one month is looking for a way of being expressed other ways than in recreation.

Religious House: Rapid City

Religious House: Anchorage

External: Response team through the House this week as we pull in course preparations and call on old grads who are anxious to dig into the structures of an uncover 8-week Academy prospects and one family decides to intern this spring.
Internal: Everybody and everything dancing as Marilyn Thornton begins work-in-the-house increasing House capabilities 100%. House hears motivating report from Eugene Buck on their week-end trek to Chicago for LEMS pedagogy session and their model on how the Anchorage LEMS course is to come off.
Contradiction: Things are happening so fast in the region that we find ourselves struggling to keep up.

Religious House: Saskatoon

Religious House: Winnipeg

External: Extra Saturday battleplan session results in model for rebuilding the Galaxy cooperatives enabling members to pick up responsibility and demonstrate power of assignment. Two unions sent off to begin new Metro Cadres in Kenora and Thunder Bay. Quarter begins with colleagues.
Internal: Obyssey runs up House for Victory Dance before the battle. We celebrate Canadian Thanksgiving by rededicating whole House highlighting each room as a part of an intentional 'pathway' for our increasing number of secular-religious visitors. First in-kind food arrives this week.
Contradiction: Acceleration to speed of light occasions loss of resolve in radical step necessary from morning and being battlemat to being battle plan.

Religious House: New Orleans

External: In Area Houston, this is the year. Thirty registered from Spring Hill Presbyterian in Mobile for RSI. House working as a consultant for a week-long pastoral methods course for the priests of the New Orleans diocese. Fr. Ignatius Roppolo sent to Caracas to teach in ITI.

Internal: House in the chute. Assignments made to Wk. I and Wk. II task forces. Greene and Richardson sent out on first of eight 1,000 mile weeks of metro visits. Arthur Nathanael Greene born, 7-1/2 pounds, 20 inches, October 9.

Contradiction: Setting a standard of effectiveness for sophisticated mission

Religious House: Memphis

External: Nashville blitz is a happening in that it reveals new demand and possibility for group recruiting, and requires that we create new models.

Internal: Ecclesiola celebration holds the common meal in memoriam for Teilhard Ignatius Harlan, and then moves to celebrate the heroes of this region in the movie "Walking Tall" - it's got something to do with tactical chastity.

Contradiction: Creating the myths, rites, and symbols that break through our paralysis relative to job hunting and penetration.

Religious House: Atlanta

External: Thirty-five clergy in Chattanooga all fill out PLC registration forms at a meeting; then indicate whether they are strong, mediocre or weak in their decision to attend. (The majority confessed to being "strong.")

Internal: Guest night introduces six colleagues to our newly renovated House; David Walters from Andaloosia, Alabama drops in to renew ties to the Movement; and Bob Johnston (Japan) refers a potential intern couple to us who are newly returned to Atlanta from Japan.

Contradiction: Pausing to gaze over the already proven fertile field of formulation possibilities, and thus diluting our all-out penetration/formulation effort.

Religious House: Miami

CHICAGO

Religious House: Wichita

External: First clergy collegium meets with 18 present. Dawson united Methodist sends 16 to House for dinner and RSI pitch. Nine ready to go to course.

Internal: House divides into 3 stations: External mission, Ecumenical Parish and Corporate Style, all systems go.

Contradiction: Maintaining both faces of the movement 100% of the time.

Religious House: Lincoln

External: Development trip explodes the category of authorization to undreamed of level. Penetration models, particularly PLC, drawn to hit our 3-metro geography comprehensively.

Internal: Boulding's IMAGE pushes the whole House to a new level of awareness of man's capacity to order data and to relate to life. The House attunes this House (not last year's House) to this year's task.

Contradiction: Having re-evaluated our models in context of this House, we have not yet identified all the new models needing to be built.

Religious House: Kansas City

External: Wk. I RSI gets off the ground with Galaxy enablement and self-assignments. Area battleplan activated in Kansas City para-metro as Kansas City Clergy Collegium meets and plans quarter construct and Topeka Metro Cadre becomes a reality.

Internal: Newly decored House receives 42 at House Church and 23 at Ecclesiola to begin Quarter 2.

Contradiction: Fascination for formulation leaves us hustling to catch up in penetration.

Religious House: Minneapolis

External: LENS luncheon opens door to Ministry of Highways and to Superintendents of Education for 7 counties metropolitan area.

Internal: House recreated for RSI course as internal space molded to external mission.

Contradiction: LENS course 2 weeks away has many loose leads but little tied down.

Religious House: St. Louis

External: E.P. research discovers 'rock in the middle of the road' at Broadway and 8th, a street-stomping notetaking brings awesome concretia to the task.

Internal: Emerging generation are dispatched to see actual 3-ring circus as the artform for their RSI. Internal Life manual was completed and issued.

Contradiction: Giving comprehensive attention to each and every penetration demand, the world keeps saying YES.

Religious House: Peoria

External: Recruitment full time focus and brings forth 5 paid registrations. Nurture and recruitment of clergy and metro brings key metro colleagues to House Church after long absnece. Not with same colleagues, metro coordinator and wife plan quarter tactics.

Internal: Quarter II begins full swing with new structures. Ecclesiola great event with Castenada, a review of the Ladder of Love, and the Sodality focus around the EPX

Contradiction: Building the context that will recruit recruiters and enable full participation of metro and galaxy in midst of demand to be on recruitment road without fail.

Religious House: MadisonReligious House: Rockford

External: First week of Quarter II off to a flying start with metro catalytic cadre writing their covenant, 8 metro colleagues signing up for quarter-long recruitment and 5 LENS registrations, 10 RSI registrations, and 19 adults at House Church.

Internal: Enter St. Teresa: a most interior-esting study this quarter. Worries about gap of people after Academy send-out erased by several metro colleagues staying over in the Wayside Inn instead of returning home after evening structures.

Contradiction: Missional urgency being transposed into family immediacies, thus blocking the embodiment of the long-range vision.

Religious House: Champaign

External: Black church recruitment becomes real option as international sojourner makes his enthusiastic presence felt in Sunday School speaking engagement. Formulation, RSI and LENS recruitment calls begin to assume structural rhythm, along with 'hot phone' non-stop calling system.

Internal: House begins to take on the feel of the 'Wayside Inn' as visitors become the normal thing at all House Church and Ecclesiola gatherings. Permeation job with a poultry farm yields daily in-kind (scrambled) eggs.

Contradiction: RSI and PLC prospects display open affirmation of the vision, but refuse commitment to course experiences; how to break through the fog of possibility-bombardment induced lobotomies to yield an active hopefulness.

Religious House: MilwaukeeReligious House: Chicago

External: Talk up and down 5th Avenue of new life in community as a result of 5th City Cabaret held in Great Hall with 300 attending.

Internal: Same Week II as Cabaret saw the wedding of Anthony Betonte and Hilde Smith and the recognition of order classes, including the reception of Ed and Jan Ames, George McNeil and Jay Philips as interns as well as Scott Chamberlain, Terri Neff and the Ray Caruso family as sojourners

Contradiction: Implementing the shift from internal ordering to external intensification in the creation of Quarter II.

Religious House: Indianapolis

External: Trips to South Bend and Louisville free movement forces to move ahead on mission.

Internal: Decision to radically transform the yard in spite of a downpour grounds for the House that 'the external situation is never our problem.' Galaxy pastor Bill Dennis sojourns while his wife attends the Academy.

Contradiction: How to break open well-paying jobs so that the priority can shift to course recruitment.

Religious House: Cincinnati

External: Pastor impacts congregation and unpacks following a dynamic PLC encounter. A long time standing local pastor had made the decision prior to PLC to can his ministry to the point of having bags packed. The worms of impossibility were transformed into a flower of new possibility.

Internal: Honoring and feeling the pulse of the established church was occasioned as House member represents the EI at United Methodist Women's National Convention, Ecumenical Day.

Contradiction: Bridging the gap between our impatient desires for direct recruitment involvement out of old style while seeing the necessity of trusting the mystery through our new approach to penetration.

Religious House: Detroit

External: RSI mailing out to region prospects and grads. Recruiting underway in Ann Arbor, and Flint with a consult held in Toledo with an ecumenical group of prospects. Galaxy Council on Wk. II and total House attendance at a neighborhood church symbolizes our stance for the coming quarter.

Internal: One more job landed! Three to go. Guests at our quarter-launching House Church include a Galaxy pastor, colleague from Kalamazoo, intern's extended family members and sojourner prospect met that morning at church

Religious House: Detroit (continued)

Contradiction: Weaving into one credible battleplan all the directions needed.

Religious House: Cleveland

External: A 3-course meal served by resident waiters sets the mood of celebration in the midst of the week. Galaxy Council, Painesville RSI, and Cleveland PLC focus our passion.

Internal: Daily Office intensified by reference to Galaxy manuals page on the office, and creation of new altar space, and shifting the East to herald the rising of the new dawn. Collegium recovered as consensus dynamic by including metro colleagues and dealing with edge issues.

Contradiction: The possibility of the quarter has come upon us before the potential power of many colleagues is effectively focused.

NEW YORK

Religious House: Pittsburgh

External: Regional pedagogy weekend uncovers skills we never knew we had, as colleague from Altoona leads powerful Tillich seminar, the one section of her RSI which she was not present for! We are catapulted into Quarter II with the arrival of Development team Sunday and LCX team Monday.

Internal: Deborah English and Toby Talkington sent out to the Academy in Chicago. At House Church, celebration of the birth of Kirk David Weygant and decision of the Ronald Talkington family to intern at Centrum.

Contradiction: How to shake our fist at the demon who tells us we are too sick to carry on our assigned tasks, and still prepare ourselves physically for the quarter ahead.

Religious House: Rochester

External: House mobilizes four recruitment teams while enabling Galaxy recruits RSI.

Internal: E.G. symbolizes their decision to participate in the new quarter by making own enablement model and concensing on assignments.

Contradiction: In midst of doing routine enablement, still struggle to expand prospect list for cluster recruitment.

Religious House: Richmond

External: House and metro colleagues wrap up final recruitment for Wk. I courses, RSI with 24 and CSIIIA with 28. PLC recruitment takes a jump with inclusion of DC knight on penetration squad. The LCX begins to take form as 13 local clergymen say yes to prolonged and intensive review.

Internal: House Church takes on the style of sophisticated trans-establishment with 7 guests present representing local churches or the business community. House hunt intensifies as we are reminded of our temporal state when landlady asks "Are you still here?"

Contradiction: Remembering that intentionality is a tool for dealing with chaos; it does not eliminate it.

Religious House: Washington

External: The Church is renewed: EP clergy collegium of 12 begins with fervor - participants include Freewill Baptist, Nazarene, Southern Baptist, UCC, UMC, Episcopal. Two Galaxy churches create parish signs with festivals: in aristocratic Georgetown several thousand impacted-hosted by Congressman McCloskey (California).

Religious House: Washington (continued)

Contradiction: Needed 25 'first' priors last week - creating training model to develop not recruiters but consultants.

Religious House: Baltimore

External: Participation in 2-1/2 hour worship service at local Baptist church reveals new form to story: confession, praise and dedication, confession, praise and dedication, confession, praise and dedication. Seven pastors experience powerfully, along with House members, Kierkegaard

Internal: Columbus Day celebrated by naming rooms of House and visit to Ft. McHenry where Star Spangled Banner was written. Mountain moved as wall becomes doorway to let interns enter.

Contradiction: "Let Joe do it" syndrome in follow-up structure produces large hole in caring net.

Religious House: Philadelphia

External: Regional discovering life through expenditure as 5th metro cadre holds first meeting and pedagogy weekend with 17 culminates in Philadelphia's first covenanted, assigned regional faculty.

Internal: Week I experienced as 'awe-full' as we initiate Daily Office experimentation, published 'circus theme' House manual, and plunged into Don Juan, Teresa and the Cabaret.

Contradiction: Looking down the ravine with its river of the year, knowing that the fall alone will kill you but still worrying about the swim.

Religious House: New YorkReligious House: Garden City

External: PLC on 3-day holiday weekend finds 14 members from one church training to be corporate pastorate. RSI mailing to old prospects invites their participation. Four clusters contribute new prospects in RSI recruitment strategy. Every church in metro gridded to parish.

Internal: Painting area House creates regional event. Wayside Inn dynamic welcomes Bill Herrick as he intentionally participates in both Garden City and New Haven Religious Houses.

Contradiction: Malaise of clergy evident in PLC recruitment where one step forward throws you two steps back.

Religious House: New Haven

External: Open House proved to be key formulation tool as 50 colleagues from New Haven, Poughkeepsie and Garden City metros visit transformed House with 20 staying for House Church.

Internal: Jay and Ann Antonen, colleagues from Cincinnati metro, arrived in time for Ecclesiola. The combination of Castaneda, Teresa, and cabaret was a spiritizing and healing experience.

Contradiction: Maintaining PLC grad nurture and strategic recruitment models to complete galaxy while needing to fill Week 6 RSI.

Religious House: Manchester

External: Tuesday night Galaxy celebration is a roaring success! Guests present from 3 polises included Fr. L. Hughes, coordinator of Religious Education for the Diocese of Manchester. His presence represents crucial and exciting step toward RC and hierarchial authorization.

Internal: Insights relative to our sojourner program came as unanticipated gift out of the preparation of the House operations manual.

Contradiction: Catalyzing the necessary successes so that we all operate out of confidence rather than doubt.

Religious House: Boston

External: A Week of Miracles - Open House of 135 people from all metros, 8 states, 2 of 9 Boston City Councilmen, a state Representative; 3 sent to Academy; 38 participants in 3 Mobile Religious Houses; 6 registered for PLC; vacant lot next to the House cleared.

Internal: Formally received Joanne Henjum for her intern year; received 7 sojourners during the week for a few days; all fully employed who are assigned including a \$2500 raise; 30 page House manual completed; cleared and finished painting the entire House.

Contradiction: An adequate battleplan for LENS.

Religious House: Portland

External: Formulation of clergy begins to produce RSI registrations and solid LENS prospects.

Internal: 3 out of 5 jobs secure and new model of minor miracles created to quash the image that we cannot be self-sustaining and fully missionally engaged at the same time. Collegium education for all colleagues in Maine and New Hampshire intensified.

Contradiction: We've been letting too many moose decide how we expend ourselves.

MONTREAL

Religious House: Toronto

External: Clergy nurture spearheaded by summer reporting session at the House, and by pastoral visit which reveals that a stance of humility not only releases ungrounded hostility but results in offers for us to participate in church activities.

Internal: Thanksgiving dinner - Canadian style - recapitulates the year's showers of blessings and brings down the curtain on Quarter 1. Lynda Hoffos received as intern at House Church.

Contradiction: Keeping the distinction between honouring the situation and submitting to it.

Religious House: Ottawa

External: Week 1 finds entire House walking the streets of Ottawa searching for the house that the Lord has need of. Week 2...we found it!

Internal: RE-gridding Ottawa nets region one actualizing 'Seaway' Galaxy with first sodality scheduled next week.

Contradiction: Building the story of the '3-week miracle' that has been the Ottawa Religious House to enable the 4-year miracle ahead.

Religious House: Montreal

External: Priority remains ITI recruitment with development, acquisitions, and practices coming up close behind. A trip to Puerto Ordaz shows possibilities for the future and immediate probability for several participants for ITI.

Internal: Lots of long workshops on beyond the ITI pushes us to see the 20-year march as a daily reality in our planning and projections.

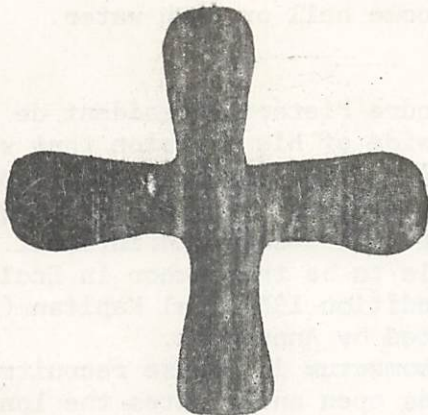
Contradiction: Hot to spiritize the nitty gritty, so that the overwhelming demands and the few troops don't drown but sail calmly toward the abyss

BASE CENTRUM

External: The LENS teaching teams, Nancy Loudermilk, Rod and Priscilla Wilson Sheldon and Betty Hill, and Jim and LaVerne Phillips were sent out by the Guardians. The Quarter II meeting of the Guardians was a great event for everybody. The Hunter-Warrior image was present with prospects for future authorization and LENS teaching scheduled. Uptown LENS will have key area people in it with 46 already registered. The Caracas ITI with 75 participants present began as Msgr. Justin Ortiz from Manila addressed the participants. He visited Centrum and 5th City later in the week. LC field visits and Consults continue to confront the churches with their decision of the future role of the church with visits to two area Wk. II

Internal: The new experiment of the Task Force Team was a part of WK. II in preparing for the Guardians. The Task Force working in study plans of Teresa experienced a shift in their interior space as another sign of sanctification. With the image of the circus already present, the Student House and the E.G. attended the circus through an in-kind gift of tickets. The Order celebrated the birth of Arthur Nathanael to Herman and Joy Greene in New Orleans on Oct. 8, of Teilhard Ignatius Harlan to Harry and Kathleen Harlan on Oct. 1 in Memphis, and of Gretchen Jayanti Wegner in San Francisco on Oct. 11. The Order celebrated the completed life of Teilhard Ignatius Harlan on Oct. 1.

Contradiction: Exterior systems and thrust are not matched with interior unified images.



God saw all that he had made, and it was very good. Evening came, and morning came, a sixth day. Thus heaven and earth were completed with all their mighty throng.

Genesis 1:31-2:1

LONDON

Religious House: Glasgow

External: Entire House working on intensive LENS recruitment.

Internal: Whole House present - battle plans and internal life construct being forged out.

Contradiction: A strategy that allows a small group to penetrate and formulate the region simultaneously.

Religious House: Bristol

External: Meeting with metro cadre results in invitation to hold regular metro Ecclesiola and a recruitment workshop.

Internal: Battleplanning session turns the consciousness of the House towards the practical task of recruiting two RSI's and one PLC, nurturing metro cadres and planning the Regional Council. Phone installed within 7 days (not 7 weeks), number: 0272-30487.

Contradiction: In the midst of recruiting, appearing to be operating out of a long established comprehensive battleplan while in the process of building it.

Religious House: Manchester

External: LENS recruitment by cabaret secures 9 registrations, colleagues in Brimingham region move ahead with plans and recruitment for RSI week 6.

Internal: Moved in to rather large facility in Manchester with enough hot water and central heating for 150 interns; took some time deciding which Great Hall to do Daily Office in. Address for the time being: 28 Alexandra Rd. South, Manchester, England.

Contradiction: House moving makes it easy to will 100 things instead of one.

Religious House: London

External: Laid groundwork for 2 metro cadres made recruitment and visitation calls in three metros for RSI and advanced courses.

Internal: Began Ecclesiola night in seeing the film "The Hireling". Built partitions to make two rooms out of one for the youth and began preparing the Workman's room.

Contradiction: Overcoming cautiousness with responsible passion.

- PARIS** Religious House: Paris
 External: Follow-up visits made on all English speaking pastors. Initiated LENS marketing with several appointments with international firms.
 Internal: Established 4 Rue Roquepine, Paris 8e, as House address. Telephone #265 8099 and 265 7162.
 Contradiction: Deciding to hold the RSI come hell or high water.
- BRUSSELS** Religious House: Brussels
 External: Extraordinary visit with Dr. Andre Pieters, President de L'Eglise Protestante de Belgique on the other side of his decision that we should be related structurally (consultative) to the denomination and offer a program officially through his office. Secured first part-time job.
 Internal: House works through its quarter time design and internal life model with St. Teresa's Interior Castle to be the anchor in Ecclesiola. Belgian plates arrive for our mint-condition 1963 Opel Kapitän (big, 6-passenger) gift car originally solicited by Anne Wood.
 Contradiction: Creating and maintaining momentum in course recruitment at the same time we be sure the plan holds open and creates the long-run future.
- FRANKFURT** Religious House: Frankfurt
 External: Attending worship service at St. Boniface's Roman Catholic church on the corner indicates to us that we're in the middle of a budding Ecumenical Parish. Meanwhile letters of introduction are sent to the hierarchy as preparation for appointment.
 Internal: Iron Cross the the Frankfurt House was hung at the opening House Church with major House decor well underway. Celebrated the miracle of everyone having secured employment in the same week.
 Contradiction: Developing a model to get the story told to ourselves about why we're here and what we're out to do, when there are so few movemental colleagues in the city.
- NAIROBI** Religious House: Nairobi
 External: Chairman of the Bishops Commission on Ecumenicity (Roman Catholic) gives informal nod to courses and ends visit by talking about what "we" need to do to set up courses.
 Internal: Linda's part-time work ends as a well-paying job as an administrative assistant to Director and office manager for large ad agency is secured. All Hands Fully Employed!
 Contradiction: Announcement of a ten-day celebration of Kenya's ten years of independence calls for new decision about courses scheduled for same time period.
- BOMBAY** Religious House: Bombay
- DELHI** Religious House: Delhi
- MADRAS** Religious House: Hyderabad
- SINGAPORE** Religious House: Kuala Lumpur
Religious House: Singapore
Religious House: Jakarta

HONG KONG Religious House: Hong Kong

Religious House: Kaohsiung

External: Week of secular impactment as House members traveled to Taipei to aid LENS recruitment and kept engagements with both Jaycees and Toastmasters groups in Kaosiung.

Internal: Impacted with the discontinuous as we experience typhoon which strands 3 who become guests at the Wayside Inn, and which also comes in midst of celebrating Taiwan Independence Day (Double Ten Day).

Contradiction: Clarity that internal structures are for sake of external mission not vice versa as we struggle to be enablers of the mission and hold at bay the demon of frantic activism.

Religious House: Manila

Religious House: Taipei

External: Mailed Regional Council reports to 70 colleagues. Visited 20 corporations for LENS recruiting. LENS is becoming conversation piece among businessmen.

Internal: House celebrates "Double 10" (October 10), anniversary of the founding of the Republic of China, by marching and participating in massive rally through typhoon rains. Guests at House Church and Ecclesiola stay on and on...to talk.

Contradiction: Deciding we are the marketing experts who know how to turn interest into sales of LENS.

Religious House: Cebu

Religious House: Davao

External: Intern Lilliosa Garibay impacts Christian Education Conference of East Mindanao District (UMC) with use of art form methodology in Scripture study.

Internal: Quarter battleplan and timeline built. Seven guests for House Church--the largest number ever--highlighted by celebrating birthday of recent ITI grad.

Contradiction: Missional demands exceed financial backup system with no clear vision of where to go next.

TOKYO

Religious House: Seoul

External: Experienced the awe of movemental intensification as 132 invitations were sent out for Regional Council, Kenn Ellison arrives on his first visit as Area Prior, attending the 68th anniversary of the Methodist Theological School and Meeting Dr. Harold Hong, MTS President.

Internal: Experienced the glory of our servant role by beginning the quarter with Wk. I/Wk. II-Day I/Day II common order time design; turned Thursday night Ecclesiola into a sodality dynamic with year/quarter planning, sending out Rev. Kim Sung Hwan to active duty as Capt. Kim.

Contradiction: Sudden changes and new possibilities demand careful detailed planning for visas and House facilities.

Religious House: Fukuoka

External: Full week of year's strategy decisions spent with regional prior Hikari Goto - kickoff with two days of visits in company with area prior with RC Bishop Hirata of Fukuoka, other major churchmen and key business figures for LENS.

Religious House: Fukuoka (continued)

Internal: Mapped region down to polis in huge art form grid for office.
 Contradiction: Living out of permission to fully recruit while holding full jobs.

Religious House: Osaka

External: Visit to General Conference of Korean Church in Japan as Park Shin Won spoke on the Academy in Chicago, a telegram from International Intern Kim An Hong was read, while Area Prior was introduced to Conference. Meetings with regional leaders initiate metro cadre dynamic in Osaka clergy collegium.

Internal: Area prior's visit capped with special geisha-served sukiyaki dinner.

Contradiction: Quarter's momentum is one step behind anticipating necessary activity.

Religious House: Tokyo

External: Guildler discovers a key Japanese translation company who requests to recruit its associate companies and contacts to LENS as well as do simultaneous translation for all the Tokyo Area courses. Area teaching assignments made.

Internal: First Teresa study reopens the doors to the castle and allows House and region to plumb the spirit deeps. Sodality addresses the House as colleagues from the region talk through the geo-social aspects of our grids in first attempts to look for ways to focus the metro cadre

Contradiction: What structurally will release the new mythology that will enable the transformation of current cadre systems into the new dynamics of the metro cadre.

Religious House: Sendai

External: Family expeditions to metro and polis cities give us a good start in metro analysis as we look towards the ecumenical parish. We discover new lands in the midst of old ones.

Internal: Area prior begins our week with sanctification lecture and we continue with a day of planning during the Physical Culture Day holiday topped off by a visit to a local festival and sophistication practice with local doctor in new western hotel restaurant.

Contradiction: How to create the model to recruit two courses 18 hours away by train utilizing only newly emerging leadership.

SYDNEY

Religious House: PerthReligious House: Darwin

External: Eight LENS registrations secured; 112 people coming or seriously considering. Sent out Garnet Banks as prior returns from LENS regional recruitment trip.

Internal: Continuing preparation for LENS consumes most details of internal life. Expenditure sustains.

Contradiction: Internal structures beginning to float away in a sea of LENS demands.

Religious House: OombulgurriReligious House: Adelaide

Religious House: Melbourne

External: LENS recruitment begins to gather momentum with Garnet Banks assisting for the week. Melbourne metro cadre decide a 13-week Ecclesiola construct with 4 Week II PSU's. Noble Park Presbyterian Church mission committee invites Robins and Addington to consult with them.

Internal: Work with James Addington re. Roman Catholic Church enables planning breakthrough into that denomination. New Ecclesiola construct allows the dialogue with St. John of the Cross to continue, and we produce an astounding commentary of the first 4 verses of 1John 1.

Contradiction: Finding the ways to effectively engage all the troops to win the battles on all fronts.

Religious House: Sydney

External: Sam and Elkin Embagai, Mowanjum colleagues call by House en route to Jakarta where they will represent Australian Aboriginal people at an Exhibition. During their six weeks stay want to contact as many grads as possible. Jim Addington sent to Melbourne to lead a consult.

Internal: Industrial chaos in Sydney lead to postponement of LENS to week 8, regional colleague Ted Yallop leads collegium as we probe the depths of what is really going on; received permission in midst of power restriction to run printing equipment.

Contradiction: Getting ready when the front line battle began yesterday.

Religious House: Brisbane

External: Widely scattered forces participate in the excitement of 1st Townsville metro RSI, Brisbane pedagogy, and on-going LENS march.

Internal: St. Teresa and 1st John launch us into spirit vortex of Quarter 2; Week II allows practice run of full House with every bed filled.

Contradiction: Enabling colleagues to perceive that the demands of "Thus saith the Lord" are more inclusive than simply dealing with the practical necessities that the Lord has given.

SIVA

Religious House: MajuroReligious House: Apia

External: Weekly pedagogy started with ITI grad in attendance. House hosts Apia Protestant Church pastor and family at guest night further cultivating his support for our work in Samoa.

Internal: Week spent working on House Manual in midst of the celebration of Children's Sunday at ITI grad's church. House starts quarter with daily Solitary Office of Naming the Day and finds the exercise an address

Contradiction: Enabling grads to say yes to increased involvement in the movement when feeling the impingement of other areas of involvement.

SAN FRANCISCO Religious House: San FranciscoReligious House: San Jose

External: Four RSI prospect speaking engagement during the week culminate in a three-ring circus Friday night as House scatters to simultaneously field a metro cadre recruitment workshop, a recruitment dinner with 33 around the table, and a coffee with three potential galaxy families.

Internal: House celebrates first of anticipated miracles as Tim and Sue Wegner are sent out to recruit at a colleague's home and return 3 days later with Gretchen Jayanti Wegner, 7 lbs. 4 oz. born Oct. 11 4:06 p.m.

Religious House: San Jose (continued)

Contradiction: How to mend the holes in metro recruitment net while at the same time not allowing the multitude RSI possibilities to get by us.

Religious House: Sacramento

External: Metro picks up recruitment with formation of three new metro cadres each taking responsibility for different geographical areas while galaxy gets foothold on new church with workshop on goals and contradictions.

Internal: End of unfinanced Week 1 with House Manual unfinished but House still functioning as a life-time illusion is burst when stick shifting and typing are conquered within 24 hours. Back-packing trip for youth ends in radical awareness that in the midst of preparation God impinges.

Contradiction: Thinking that a tire cannot be rolled down the road without being filled with air.

Religious House: Seattle

External: Intern advanced to position of administering the training of thousands of employees for a multi-national bank whose boss has the vision that the bank needs to assume corporate responsibility for the community.

Internal: Spiritized Ecclesiola begins Journey to Ixtlan and welcomes St. Teresa and Don Juan as our quarter's guests. Secure free hot lunches for all our school age children.

Contradiction: With two RSI's recruited and going full steam ahead, no tracks laid to go over the mountain with the new grads into the Ecumenical Parish.

Religious House: Los Angeles

External: Decisional recruitment wins for LENS! While Las Vegas metro is blitzed, recruiters decide to stay put until the registration is secured

Internal: House trek transforms the yard and House exterior as it pushes the spirit depths, signified by radical style at Daily Office; Collegium study of Kazantzakis' Saviors of God and the "State of Seige" seen in Ecclesiola are signal events for entire House.

Contradiction: Sustaining the cabaret style and putting on the make-up of the "Courageous Clowns of History" everyday.

Religious House: Phoenix

External: RSI pedagogy this last weekend has reminded us once again of that old saw: (paraphrase) "The best way to ground RSI is to teach it." PLC and RSI recruiting in Tucson served as a reminder of all of us "north of the Gila" that our whole region is filled with local churchmen.

Internal: The Wayside Inn dynamic has been very active this week, as colleagues from around the region have 'dropped in for the evening' and stayed for breakfast. Jim Brooks presented us with the details of his trip to Chicago for the Guardians meeting.

Contradiction: Not really believing that 'those who wait on the Lord' does not mean that the Lord will recruit the next PLC course.

Religious House: Billings

External: Mission keeps House on toes in dealing with pastor of St. Andrews church in the area of PLC, RSI and LCX while recruiting Butte RSI with the help of 3 local laymen (2 of which are registered) lending helpful hand.

Internal: The unexpected gift and response of House Church celebrant (new minister asking to participate) real witness to excitement of House.

Contradiction: getting RSI recruited when resurgence has turned people from the theological to the sociological as basic area of struggle.

Religious House: Denver

External: 3 signal events bring excitement to Wk. II, and RSI pedagogy with 31 attending, an RSI in SLC with 42 new colleagues, and a Roman Catholic sister's Council with main topic "Being the signs of life and death in religious orders"

Internal: Wk. II brings an internal whirlwind of events also, as the past is scraped away in the recreation of sacred space in the Denver Room and adds layer of the new day in "Resurgence" blue (paint.) First evening House Church is celebrated, and St. Teresa is launched with 20.

Contradiction: External thrust postponed by concentration on the internal, or spinning the internal plates while external ones wobble.

Religious House: Rapid City

External: Heavy RSI recruitment in all polises of the Rapid City metro. First clergy collegium on the quarter held, pastors impacted by Community paper. Uncovering old grads who have been sustained for years by RSI.

Internal: House studies JWM's "Two Faces of the Movement" and grounds the team dynamic. One House member laid off job and finds new job at twice the pay the same day. Coffman returns to battleline.

Contradiction: How to unblock metro's failure in recruitment. All their friends are recruited and they are reluctant to recruit strangers.

WINNIPEG

Religious House: Anchorage

External: Two PLC teams sent out in opposite directions; R. Knutson to Nome and Thorntons on 2-day trip down the Kenai Peninsula. Discovered Iron Clergy everywhere. Just when we thought all channells had been explored for RSI and PLC, the portal opened and registrations started.

Internal: After weekend of recruiting, House is addressed by Cool Hand Luke and then stays up all night to decor the Religious House with new battledress for the coming year.

Contradiction: No model for constant rehearsal of common vision, as opposed to operating out of 6 different visions.

Religious House: Saskatoon

Religious House: Winnipeg

External: Priorship teams make areal trip to care for solitary colleagues in Calgary outpost, Moose Jaw and Edmonton. Galaxy Church elder breaks summer quarter image that tactical system is complicated. House actualizes first phase of long-range metro formulation with polis scouting

Internal: New excitement as House struggles to ground Se. Teresa. Guests keep arriving unannounced for House Church, worship and collegium and show response of great hope at holy life visioning by areal prior. We

Religious House: Winnipeg (continued)

await the magic word of Dr. Lao to transform House for Open House Sat.
 Contradiction: Refusing our greatness by story that when priors are out on forays we cannot maintain corporate discipline.

HOUSTON

Religious House: Amarillo

External: After sanctificationspin with Southern Baptist on Firday, he introduced priors to congregation and announced that his church would be working closely with the movement. Likewise a Methodist pastor declared that it was time he got serious about the local church and movement.

Internal: St. Teresa and the "fulfilled life" paper spins House to new clarity on the spirit edge. Quarter 2 structures begin to focus missional passion.

Contradiction: When the Lord surprises us by signs of victory, how do you shift from long march to strategic charge?

Religious House: Oklahoma City

External: PLC recruitment intensifies as metro circuit rides bring us face to face with grads and new prospects. Second 'yes' to be on journey to BTS; Phil Ball of Lexington-Noble UMC charge wants both points to be included in the Galaxy.

Internal: Whiff of 'Journey to Ixtlan' spins Ecclesiola into wild excitement. Sherwood Shankland's business trip impacts us with global mobile servanthood force and one more job reduces 'in house' to one. Managers question "Can a Christian lady be hard nosed on phone to make collections?" answer "Folbw Marianna Bailey a little while and see."

Contradiction: Now that we're solvent, how do we get maximum utilization of time and troops to mount the offensive in the bi-metro.

Religious House: Tulsa

External: Two out of 200 returned from the movement Guardian meeting with story of 'ready to risk all' with LENS, followed by Guild lunch and full report to colleagues at the close of Wk. II Galaxy Council. Galaxy and House join for RSI recruitment blitz, capped by celebration.

Internal: IX the midst of continuing 'signal job' search, while maintaining 11-7 shifts, the House experienced a break-open week with 320 tactics from quarter's battleplanning on a timeline, stations assigned and accountability structures determined.

Contradiction: Not wanting the job search to be first priority, but experiencing lying in a single-sized missional bed with an oversized economic schmoo.

Religious House: Houston

External: This is indeed the year! The galaxy doubles in size through the decision of a Lutheran and Episcopal Church to join forces. Wk. I RSI held at the Ecumenical Institute Training Center (Religious House) with 23 adults and 20 children. This marks the first orbit course of quarter

Internal: Jane Truran returns to sojourn after 3 days back in the world "Movement News" is sent weekly to 144 colleagues.

Contradiction: Being Pecos Bill riding the whirlwind while trying to complete the operational models that will tell us how to win.

Religious House: New Orleans

External: Breakthrough in Local Church penetration. Thirty committed from Mobile Presbyterian Church to RSI, while a Lutheran, a Catholic, a Methodist and an Episcopalian congregation independently ask for future RSIs. Twenty participants begin and complete week 2' PLC.

Internal: House rejoices in the Ixtlan call to 'let your spirit shine.' Priest from Caracas, Venezuela visits to 'find out about the work in New Orleans...' then we sent him out to take part in the last three weeks of the ITI.

Contradiction: Calling forth radical life decisions to strengthen the Order dynamic.

Religious House: Memphis

External: Week II blitzes in Nashville and Knoxville turn up great possibilities and deepened our understanding of the spirit struggle of our time. Clergy collegium pledges 80 to mass recruitment happenings!

Internal: House battleplanning for a miracle is a miracle in renewing our decision to win and creating the tactics to do it.

Contradiction: Creating the ways to sustain and actualize the movemental sense of possibility and determination to win relative to recruitment.

Religious House: Atlanta

External: In Area Houston, this is the year. Week 3 RSI is beginning to sound like a global happening with registrations flowing in from Athens and Rome. Initial contact is made with 87 year old Methodist pastor who runs a 'service' chapel in the mansion across the street.

Internal: Five families attend Ecclesiola, with one (Coltharps, recently of Japan) hanging around until midnight sharing hilarious life happenings. Our man in Columbia, Paul Schwobel, arrived just as they were leaving, to continue his Wk. II assignments with us.

Contradiction: Looking for the action in some other place and some other time rather than the here and now, and viewing penetration as 'one of the things I do' rather than the expression of my whole life.

Religious House: Miami

External: PLC grad tells his ministerial concerning RSI: "If we want people to give up a weekend of their lives for this then we ought to be willing to give up far more of ours to see that it happens." Introduced by a non-grad to his congregation as people who train local congregations and who will be training theirs (much to our surprise).

Internal: New eternal flame burns in our entry reminding us always of that which goes far beyond our immediacies.

Contradiction: Somehow it seems incredible that anyone will ever say 'yes'; paralysis takes over; can't bring ourselves to dial the phone one more time.

CHICAGO

Religious House: Wichita

External: Recruit, recruit, recruit is the trinity of the week as prospective Galaxy churches begin to amass their people for the Week 4 RSI. Vickers Petroleum agrees to send 28 to Week 8 LENS.

Internal: Ecclesiola becomes a signal happening through Journey to Ixtlan, a study of summer documents and rehearsal of secular liturgies and discontinuity

Contradiction: Grounding the secular graces in our own style as innkeepers at the Wayside Inn.

Religious House: LincolnReligious House: Kansas City

External: Fall harvest time continues in para-metro as fruits of the labor are gathered in form of Clergy Collegium beginning in Iola, Kansas (pop. 6400) with local pastors taking leadership roles. First RSI completed with participants vocalizing plans for participation in movement.

Internal: Spirit well of the House continues to be filled by Don Juan and Teresa as waters are constantly drawn by colleagues in metro through their increased participation in Ecclesiola, House Church, Daily Office and morning collegium.

Contradiction: How to ground fact that we are a single mission in midst of increasing numbers of seemingly divergent demands.

Religious House: Minneapolis

External: House experiences full force of the Wayside Inn dynamic as it hosts Week One RSI, two grads stay for House Church and are joined by other guests, the development team arrives at the back door as guests leave by the front, LENS luncheon for 16 hosted in the World Room.

Internal: Monday morning cabaret releases all to participate in a week when obediences began, the university guild gathered to look at their quarter timeline, four mobile Religious Houses went to the metros and the third transportation model is lost to outrageous fortune and a dead battery.

Contradiction: Balancing immediacy and the quarter timeline has the corporate Atlas teetering on the brink of illness.

Religious House: St. LouisReligious House: PeoriaReligious House: Madison

External: Tri-metro collegueship intensifies as we gang up on the recruiting and the Week 3 RSI goes over the top and 2 new lists of prospects are given to us. Pastor in Portage suggests we add an RSI course there "I think we can get the people if you can get the staff."

Internal: Livery stable returns our mustang with straightened frame. Sodality night sees bathroom wall torn down and usable closet created. Three year old House member gets 2/3 scholarship to Univ. of Wisconsin (pre-school). Collegium on the pedagogy you don't get in pedagogy.

Contradiction: As we coax, plead and push active mission to begin to walk, it decides to run; now keep up and hold direction.

Religious House: Rockford

External: Wk II opens with amen said to metro cadre covenant and metro cadre assignments to advanced courses; 10 participants sent to LENS and the first RSI group recruitment call.

Internal: Day II charting of Day I adds new dimension to brooding over space and time and St. Teresa makes interior space seem as big as all outdoors, as House and metro move into Ecumenical Parish and secular objectifying of spirit life.

Contradiction: Penetration "prospecting machine" running on a fuel supply of limited prospect sources

Religious House: Champaign

Religious House: Milwaukee

External: Cross-metro penetration began with people from Milwaukee and Rockford to Madison. Recruitment is all there is! Began inservice training with community day care center.

Internal: New House on our hands, new decor, new paint, new carpet, new life, new future, new people, i.e. the Collins family to intern, all 6 of them.

Contradiction: Resorting to immediacy instead of following established battleplan.

Religious House: Chicago

External: Recruitment under full swing as saturation model yields scores of new names and newly spiritized grads in response to strategic neighborhood calling.

Internal: Publication of Day II Quarter assignments enable structural care for House members to express chastity as planned engagement in total day

Contradiction: Last minute prioritizing as rule of thumb indicates a need for comprehensive battleplan for Quarter II.

Religious House: IndianapolisReligious House: CincinnatiReligious House: Detroit

External: House cancels Odyssey to scatter into the region to assist with recruitment of the Lansing courses. PLC calling during the week reveals interest in Roman Catholic clergy.

Internal: Steve Townley sent out to Centrum Two House members find temporary work with business convention. Highlights in the study of the book of Hebrews and Passion in RSI Recruiting paper. First House internal Ecclesiola in several quarters functions as Room E for polis Ecclesiola.

Contradiction: Creating a realistic battleplan for recruitment of PLC, RSI and LENS in the time left over from being out recruiting these pressing events.

Religious House: Cleveland

External: Punch bowl tactic launches RSI and PLC with sophistication. House location for PLC proves great gift.

Internal: Gift of '62 Cadillac complements the new Religious House in providing an image of sophistication.

Contradiction: How to gracefully pick up the plates dropped to enable the PLC and get them spinning again.

NEW YORK

Religious House: PittsburghReligious House: RochesterReligious House: Richmond

External: Preparation for Wk. I courses in the Richmond House-Training Center gives ample opportunities to manifest strength of spirit deeps. CSIIIA and RSI great spirit explosions despite 12 paid cancellations, all within last 24 hours.

Internal: Casteneda flips House into new dimensions of the mystery - several House members wanted to stay on the swamp. New House member Wayne

Religious House: Richmond (continued)

Young arrives on time to enable courses. Micro grids key to penetration, LCP, and EPX development.

Contradiction: Taking a new look at ourselves and what we are about, we tend to shrink in fear.

Religious House: Washington

External: Continue to be surprised as colleagues covenant to metro cadre structures. Region has 12 at Guardian meeting. Send Shaw to Philadelphia to train and return as full-time LENS marketer.

Internal: Journey to Ixtlan conversations and cactus plants, reformulating interior. House shifts drastically to train ourselves to prior in the emerging metro structures.

Contradiction: As 'move toward' operating the metro out of the local church and metro cadres, no clear transitional battleplan.

Religious House: Baltimore

External: Our hearts bellowed like a calf when on Monday morning local ministerium asks if we put on a retreat for them that has "Spirit!" and on Wednesday morning 2 new ministers arrive for clergy collegium, one a Baptist and the other a Lutheran and ask if they can come back.

Internal: Our cup runneth over - introduction to don Juan Matus, the Spirit Man, fills the House with fear and fascination as possibility looms before us. House member not only secures great job, also gets promotion before starting and three new interns arrive on the same day.

Contradiction: Deciding to die our death today instead of I can do it sometime in the next forty years.

Religious House: Philadelphia

External: Visited with a member of Cardinal's Commission on Human Relations and unveiled old movemental cadre member, met with much openness to future movement participation and a list of key parishes to contact.

Internal: Community image impacted by corporateness lecture and Bonhoeffer paper. Welcomed sojourner Mike Shaw from Washington House, as assigned to learn all there is to know about LENS course operations.

Contradiction: The need for a tactical system which injects each metro cadre meeting with an overflowing of spirit.

Religious House: New York

External: Creation of intensive penetration model emerging from House Council with primary emphasis on Newark polis and NY metro; gathering of colleagues at House to deal with PLC pitch and story; presentation to Presbyterian Synod's Committee on Church and Race.

Internal: Cabaret dynamic in midst of the painting of 17 rooms (48 to go) regional guest comments that it looks like a professional job; received 4 year-old 8-week sojourner from Boston region.

Contradiction: Vision of resurgence temporarily blinds us relative to adequate models of engaging in new demand.

Religious House: Garden City

External: Wall journey chart of all RSI grads is completed. Wantagh Memorial UCC sets the pace for cluster recruitment as 9 grads develop model for recruiting 150 members of congregation this year and move immediately with 50 for this quarter.

Internal: House completes decor of global collegium room with 8x12 global grid and 54 areas around the ceiling. Local pastor calls us to stand before the sign of community that we are and witnesses to the impact which it has on his life.

Contradiction: Lack of long range strategic models for prioritized areas hinders authentic engagement in the immediate mission.

Religious House: New Haven

External: Penetration effort intensified as 2 RSIs and a PLC grow near.

Called on an Episcopal priest, Fr. Joseph Mathews, who offers the possibility of 60 people going to RSI from his church this quarter. Wk II blitz results in discovering heretofore unknown and unseen part of micro

Internal: House Church and Ecclesiola are found to be useful formation tools as unexpected guests take advantage of open door policy as well as a spirit happening for all.

Contradiction: Systematic nurturing and recruitment in galactic and potential galactic churches does not yield sufficient RSI registration, therefore requiring enactment of a new battleplan for Wk. 3.

Religious House: Manchester

External: Two clergy collegiums held Wk. I are spirited by Galaxy leadership. Ten new clergy are excited about the future. First PEX PSU of the Quarter designates signal parish after metro analysis. First metro mailing complete.

Internal: First House Church of the quarter is a great collegial thrust with eleven guests around the tables and a galaxy pastor as celebrant. Shifting of collegium room from 1st to 3rd floor allows creation of a war room removed from public gaze, and establishment of a refectory.

Contradiction: With the first course (RSI) of the quarter 3 weeks away, we are building a prospect list while clergy formulation is still in early stages.

Religious House: Boston

External: Week One saw 3 clergy breakfasts in 3 metros with a total of 35 in attendance. Week Two sent 4 teams RSI recruiting and into strategic local church attendance.

Internal: Had great Teresa study with section out of Nigg; 2 sojourners from Cincinnati during Week One; received gift of a Dennison copier from Harvard.

Contradiction: The necessary PLC to make replication a real possibility.

Religious House: Portland

External: Visits with clergy reveal deep despair and resignation to an unintentional life style. House discovers reserves of spirit energy to care for those men.

Internal: Guests impacted by new decor in collegium room as major renovation is completed. Inexpensive home-care for preschoolers finally secured, freeing House for guilding and clergy nurture.

Religious House: Portland (continued)

Contradiction: How to keep the principle "Give up a little now to get much later" imaged as the cruciform principle.

MONTREAL

Religious House: Toronto

External: The first micro coordination meeting is highlighted by the drop-in visit from Winnipeg Galaxy minister, Rev. Ron McCullough, who leaves us with new insights and contacts for working with United Churchmen and discloses the possibility of great bi-areal exchange across Canada.

Internal: Respect for the raw mystery of life, recalled with the Ecclesiola reading from Castenada, is grounded in the unexpected appearance of a large cat, which, having entered an open collegium room window during Daily Office, was impelled by the singing of "Oh Sweet Mystery of Life" to exit with a mighty leap toward the same window, only to find it closed and bring down the entire social process triangle in flight.

Contradiction: In the face of a new drive to embody the style of servant to the local congregation, receiving "a polite honouring" of our presence by clergymen who don't want to see us for at least another six months because "we're too busy."

Religious House: Ottawa

External: A third Galaxy church with a trained clergy couple arrives at first Sodality symbolizing their decision to be in the experiment. Question is - who told them when and where we were meeting? Guests at Ecclesiola and House Church and a consults request signals contact

Internal: Moved into new house - 447 Daly Ave. Ottawa K1N 6H6, phone 613/235-3921 in the quiet hours after midnight as we unpacked our truck without waking our landlord on the second floor. House celebrates with an evening of live theatre within our parish.

Contradiction: Thinking we need to have our battleplan all laid out before we encounter the world.

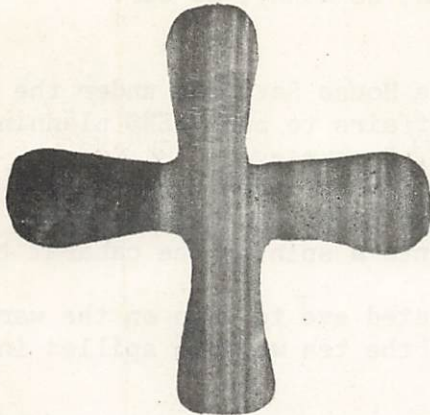
Religious House: Montreal

BASE CENTRUM

External: Four LENS courses total 229, including 46 in Chicago: Uptown. Task force completes Uptown Services Survey. Another Task Force works on 5th City Social Model for second 10 years. Signal PLC in New Orleans and 37 in RSI in Salt Lake City point to exciting penetration quarter.

Internal: Task forces engage in practical work on E.G. curriculum and evaluation and summary of Guardian meeting. Sent out Ann Slicker, and Sheldon and Betty Hill on LENS trek. Welcomed to Base new interns Ron and Toby Talkington and 3 children, David and Jacqueline Speicher, Bob Hummer, and Frank Wherry. Student House had demonstration RSI, an address to both staff and participants.

Contradiction: Recreating intentionality of time as symbolic of decision to grasp the diverse structures we find ourselves engaged in.



Those that bless you I will bless,
 those that curse you, I will execrate.
 All the families on earth
 will pray to be blessed as you are blessed.
 Genesis 12:3

LONDON

Religious House: Glasgow

External: 24 regional colleagues (including 6 full clergy family units) plus 8 emerging generation present for a great CSIIIA course in Glasgow. Also met with the newly formed Carlton cadre and the Flemings from Edinburgh who have 60 slides from S'73.

Internal: Whole House excitedly views building owned by Church of Scotland that may very well become the Glasgow Religious House (three floors and full basement, 18 rooms). First necessary key contacts made with the church toward its becoming our space.

Contradiction: Living in dispersion, job hunting and house hunting have kept the focus on one metro instead of six.

Religious House: BristolReligious House: Manchester

External: Visiting back and forth across the northeast and northwest meeting with warmth, hospitality and readiness for LENS in Liverpool, Manchester, New Castle, York, Middlesborough.

Internal: Closing in on the job market, experiencing the gift of the city as we 'acculturate' in Ecclesiola and discuss Britishness with Kazantzakis and William Blake.

Contradiction: In danger of becoming over-nonchalant about the precariousness of our situation.

Religious House: London

External: Continental/Area teaching assignments completed and mailed as teaching quarter gains momentum with 29 member CSIIIA course in Glasgow.

Internal: House journeys to Heathrow International Airport to observe and contrast the 'intentional dress' style of departing and arriving passengers and hosts four regional colleagues for House Church.

Contradiction: Demon which says 'you can't really make all this a single corporate thrust.'

Religious House: Paris

External: Active recruitment of first RSI in Paris finally produces 8 registrations one week before course. Second meeting of metro catalytic cadre with 18 present.

Internal: House entertains guests at Tuesday guest night and Thursday Ecclesiola

Contradiction: Deciding to affirm no men, no money, no car.

Religious House: Brussels

External: Six colleagues gathered at the House Saturday under the auspices of the Institute of Cultural Affairs to push LENS planning into a battleplan and timeline for our Wk. 6 course.

Internal: Ecclesiola was off to a sophisticated start after a hard push to create the House Ecclesiola manual and guest Ecclesiola Guide. Ixtlan hunter-warrior swirled with Teresa into a spin on the cabaret that is our daily life.

Contradiction: We must develop a calculated eye to keep on the warships of Satan on the horizon, rather than the tea we have spilled in our lap.

Religious House: Frankfurt

External: House rejoices in very successful visits with Probst Trautevein and Oberkirchenrat Beckmann, key church leaders, which establishes basic authorization for the missional work in Frankfurt, plus giving us introductions to key churchmen in the hierarchy.

Internal: Final decor hung to complete guest room one hour before unexpected first guest arrives - Jim Rowland from Brussels.

Contradiction: Making initial breakopen contacts to locate key prospects for permeation in the international community.

Religious House: Nairobi

External: Moved in one evening amidst continued painting, repairs and with little furniture, without missing a beat.

Internal: Week Two spent planning LENS marketing and PLC recruitment down to sub-tactic level leaves us confident that the humanly impossible is going to happen this quarter.

Contradiction: Prioritizing time and energy demands relative to LENS/PLC course models.

BOMBAY

Religious House: Bombay

DELHI

Religious House: Delhi

External: Two circuit riders sent out to 3 regions to spiritize the metro cadres and finalize preparations for 3 courses Weeks 3, 4, and 5.

Internal: House attends Spencer-Townley wedding in Bombay (first Order wedding on Sub-Continent) followed by fantastic reception which found many LENS grads in attendance. "Puja" (worship) room set up.

Contradiction: With half of House assigned out of Delhi and half of week consumed with biggest Indian festival of the year, yet this is the week of decision for LENS and PLC.

MADRAS

Religious House: Hyderabad

SINGAPORE

Religious House: Kuala Lumpur

Religious House: SingaporeReligious House: Jakarta

External: "ITI Power" felt in new way as grads organize meeting in Jakarta and eight hour consult with 20 churchmen in Surabaya.

Internal: Internal life highlighted by writing of yearly report, initiation of House RSI pedagogy, and rediscovering that there are a lot of places in Sumatera that we've never heard of. Visit by Jim Oberg from Singapore gives new 'oomph' to corporate structures.

Contradiction: Not having model for what it will take to enable and nurture colleagues who are spread out over several thousand miles.

HONG KONG

Religious House: Hong Kong

External: Shum Oi Ecclesiolas begin with ITI grads Tuesday evenings and clergy and laity from 8 congregations on Thursday evening with inclusive team assignments rationale which includes all participants. Kwok Nai Wang, Rose Wu, and Lee Chi Cheong take leadership roles in staff training Wk. II at United Christian Hospital.

Internal: Visits from Robert Fishel, Ken and Judy Ellison and Laura Townley signal fluidity in midst of Movement thrust for Quarter 2 in Seapac.

Contradiction: Context building in secular structures.

Religious House: Kaohsiung

External: Missional intensification occurs as first regional leadership collegium is held at the House, LENS recruitment yields first money in hand, and RSI battleplan is initiated.

Internal: Religious House flexibility demonstrated as Ecclesiola is held on Thursday morning from 7 to 9 to enable all members to be present and on Saturday the House welcomes 20 Chinese students for Beginning-of-Term celebration.

Contradiction: How do you always discern one focus in midst of exploding missional demands or how do you stand calmly in midst of overwhelming ambiguity?

Religious House: ManilaReligious House: TaipeiReligious House: Cebu

External: Metro by metro battleplan reveals the time is right to elicit total engagement from metro cadres across the region. Key cultivation visits with church and business sectors open the door to authorization and LENS marketing.

Internal: First Ecclesiola was bottomless event as Rev. Marcos Berame again demonstrates the vital futuricity of the church in the Philippines. Job possibilities multiply as House and movement colleagues discern major societal trends and create jobs to push the edge.

Contradiction: Maintaining the momentum generated by the impact of the ITI, while broadening the scope of movement participation.

Religious House: Davao

External: Trip to Nabunturan paves way for 5th Week RSI. First draft translation of all RSI papers into Cebuano completed by Nabunturan colleague, Nabayra.

Internal: Week of beginnings: First job interview relative to intensification of self-support, first Ecclesiola of Quarter with Kazantzakis exploding both hearts and minds, first guest comes to both Ecclesiola and House Church.

Contradiction: Moving into the unknown firmly with plans in hand.

TOKYO

Religious House: Seoul

External: Regional Council is the biggest yet, 55 in all. Ken Ellison visits for one week. Rev. Kim Chong Man assigned to Chicago for one-year international internship. The Religious House Quarter - Kim Sung Hwan, Kim Yoon Kee, Paul Thomas and Mary Ann Wainwright - helped celebrate the 17th anniversary of Yang Kwang Methodist Church.

Internal: Held our first Ecclesiola with song conversation, Teresa, and cabaret with regional colleagues making commitment to attend every week. Week II PSU laid out the quarter in a step by step plan - it's all come clear now. Rev. Kang assigned two people to locate a new "religious house" at 10 a.m. and by 11 a.m. it had been found.

Contradiction: With a new house in the works and quarter plans clearly made, we need four more families in order that four additional persons can be assigned to penetration and formulation.

Religious House: Fukuoka

External: Trip to Oita lays firm base for PLC at end of quarter with formal support of Kyodon church. Secular authorization firmed up through YMCA with acquisition of two jobs.

Internal: Regional prior family gives fantastic celebration of welcome for Smith family with special Fukuoka dish of "mizutaki." Investigation of new Religious House begins.

Contradiction: Uncertainty on immediate strategic steps to formulate grads with long-range models objectively built.

Religious House: Osaka

External: Metro cadre visitation reveals group in Nagoya ready to begin regular meetings.

Internal: Four troops in four metros plus movement guests through House Church and Ecclesiola while collegium study of Theresa renews us all.

Contradiction: Intensifying creative energy to speed up slow course recruitment.

Religious House: Tokyo

External: House experiences the 'vertical' or 'layered' city in Week II gridding session and is impacted by a style of space that enfolds one in many dynamics and functions simultaneously. Guild dynamic actualized as head of future planning of All Nippon Airways makes LENS visits to other companies inviting them to LENS.

Internal: Ellison welcomed back from 2 week trek to all the Area Houses. House experiences crunch of Japan's paper shortage as we search for a place that will supply us with enough paper for even our basic Area needs.

Contradiction: Tactical time lines for quarter not adequate to focus the journey that the quarter must be.

Religious House: Sendai

External: Trip to two metros, Aomori and Sapporo, reveals colleagues asking key questions about the future while busy laying the ground for three courses and a pedagogy weekend. Ecclesiola in two metros with 18 around the tables.

Internal: House rolling on all wheels with four crucial workshops completed, Week II participation in school festivals and a welcome to colleague guardian for his first House Church.

Contradiction: Running fast enough to stay ahead, or just behind regional colleagues.

SYDNEY

Religious House: Perth

External: Major mining company places reservations for two town-site planners, moving LENS to 4 paid and 21 yes. Clergy guild of 3 finds new edge in Bonhoeffer then assumes responsibility for PLC recruitment. Preaching engagement moves 1 more church closer to Galaxy.

Internal: Sent Vincent Bear back to Mowanjum to drive the school bus. Exciting Ecclesiola sodality on geo-social analysis of Perth metro draws whole House into site selection for demonstration project. Landlord informs us we have 6 more weeks at our present rate.

Contradiction: It seems easier to 'win' businessmen than churchmen, but affirming businessmen turn out to be churchmen - how do we interrelate RSI, PLC and LENS recruitment.

Religious House: Darwin

External: Hard push for LENS registrations. Move into final phase, characterized by drop in visits with spin on priorities to deal with the basic excuse - family.

Internal: Quarter II internal life models built and implemented. First study on journey to Ixtlan signal event. House experienced third wind as we push towards LENS target.

Contradiction: How to establish a position of trust in the community, yet at the same time be a radical address on the lives of LENS prospects.

Religious House: Oombulgurri

External: First week of guilds produces six quarter timelines. Community welcomes a visit from Wyndham Aborigines' Progress Movement women and welfare worker. Anthropologist from Derby comes to check on land rights and leaves impressed. David Mowaljurli from Mowanjum shares stories.

Internal: Great inspiration to talk with David Mowaljurli. He shared with us his struggle to carry on and rebuild the work at Mowanjum. He was also very helpful with his insight into building Oombulgurri. Corporate staff was separated by broken boat propeller.

Contradiction: Immediate demand to begin industrial guilds catches us short of adequate perspective of the whole task, leaving shallow symbolic life and inadequate structure.

Religious House: Adelaide

External: First fully paid LENS registered for this region gives incentive for further push for appointments. Methodist Conference grants permission for 3 clergy families to continue to work with EI. Meeting night of Adelaide Metro Cadre changed to enable more to participate.

Internal: Tribal resettlement enables disposal of unwanted articles, while Steve Allen's reorganization of the storage shed gave us all a vision of space possibilities.

Religious House: Adelaide (continued)

Contradiction: No comprehensive corporate model to deal with multitude of demands and tasks.

Religious House: Melbourne

External: LENS marketing went to Institute of Industrial Engineers, one established training organization and spoke to top men. Wk. II LCP Council I for Quarter 2. Prep for clergy guild next week. Metro cadre into second week of 13 week Ecclesiola construct.

Internal: Wk. II completed internal structures planning. Youth meeting planned the study for school this quarter. New construct for Solitary Office. Accountability ritual for teams and units now common with global rubrics. E.G. to Numerkah - discovered the smelly end of cows.

Contradiction: Deciding to trust our plans and going ahead with implementation but without losing the image of totality of mission while doing specific tasks.

Religious House: SydneyReligious House: Brisbane

External: Secular and religious man sense real possibility of building the earth through speaking engagements at Galaxy church ladies group, University SCM group, and downtown Roateract.

Internal: Reception of internal life manual and of Jim Meyers after a month in Townsville allow us to symbolize that we've 'been given the chance' to live the full shove of the Yes that's in the midst of the pain-filled No.

Contradiction: Moving people beyond the demand for the sign when the sign's already been given and they're it.

SUVA

Religious House: Majuro

External: LENS course held highlighted by four participants from one company and the presence of non-western participants (half the group). LENS team stay includes visit and dinner with Rev. Jude and Diana Samson.

Internal: UN Day celebration occasions the presence of the Montgomerys and much stewing on the Education Station's thrust.

Contradiction: The completing of major models delays strategizing over present indicatives.

Religious House: Apia

External: 13 Metro colleagues gathered with total House in first Metro meeting of the quarter. Plans were made for RSI and Pedagogy guilds. The Prime Minister warmly greets Temese on his return from the ITI's.

Internal: House addressed by the difference in the grads this year; the same people but transformed in their seriousness and lucidity about the one task.

Contradiction: Finding all the leaks in the boat before the floods come.

SAN FRANCISCO Religious House: San Francisco

External: SS-I PSU. Forty-two colleagues from Galaxies and the Religious Houses participated in a 4-session PSU on the Sanctification course. Major spirit events occurred in the lectures on Integrity and the Religious People, and the seminar on the pains.

Religious House: San Francisco (continued)

Internal: House celebrated the birth of Christopher John Vance to John and Kathy Vance in Vancouver where Kathy is assigned to school; the announcement of the intended marriage of David Romero and Margarita Torres; the present of Prior Bill Newkirk and his collegium on edges of RH mission.

Contradiction: Maintaining revolutionary effectiveness in the midst of bureaucratic necessities.

Religious House: San JoseReligious House: SacramentoReligious House: SeattleReligious House: Los Angeles

External: LENS course solidifies at 60 with one week to go.

Internal: Deineses sent out to attend Rick's mother's funeral in Cheyenne House preparation after Ecclesiola Thursday evening transforms the Bishop's room with new decor, and the entrance hall with a resurgence blue light globe.

Contradiction: How to keep our feet firmly planted when we're all giddy about the successful LENS course coming up.

Religious House: Phoenix

External: One regional colleague to LENS in L.A.; metro penetration with evening trip by regional colleagues to speak to Tucson's Catalina Methodist's Board of Ministries, and formation of troica dynamic to be responsible for scheduled courses.

Internal: Four House members attend sanctification course in San Francisco. Re-creation of Great Hall brings new awesome impact to Daily Office; Wayside Inn with Father Bill Carter staying for dinner after helping plan Field Visit and neighborhood priest, Fr. Bishop to Eccl.

Contradiction: Contextual unclarity makes us reluctant missionaries.

Religious House: BillingsReligious House: Rapid City

External: Small but fruitful RSI yields 2 strong spiritmen. They have been to visit the House within the first week after the course. Clergy collegium is impacted with a brief exposure to congregation methods.

Internal: House throws full force into Odyssey preparation. Both Rapid City and Billings children together have RSI pedagogy to prepare them to teach RSI.

Contradiction: Holding the long range global vision in the midst of consuming particulars and immediacies.

Religious House: DenverReligious House: Anchorage

External: RSI wins new colleagues, PLC comes off as House Prior enables participation by taking over participant's paper route. LENS marketing has prospective participants deeply excited; we find our clients spreading the word about our visits as we find people are expecting us

Religious House: Anchorage (continued)

Internal: Globality grounded again as we receive report from colleagues Justin Morrill and Wanda Holcombe on what's happening at and through Centrum, and Wendell Clutz family arrives for PLC, field visit and consult. Fantastic new decor (huge 9' x 6' earthrise) takes shape.
Contradiction: Our long range perspective gets clouded over when we get trapped in immediate due to lack of model building at the nitty gritty level.

Religious House: SaskatoonReligious House: Winnipeg

External: Event of the week if our plaque hanging open house for the movement in Winnipeg region. Symbolizing the turn to the world is Galaxy pastor's global witness and colleague's image of the Ecumenical Parish as five people pushing a car out of the ditch.
Internal: St. Theresa study gives us interior strength for the external mission. Spent Saturday afternoon performing miracle of decor, cleaning and cooking for Wayside Inn open house. To top it off, Easter lily is blooming in October in front yard.
Contradiction: Actualizing movemental forces acting out of depth socio-spirit analysis with a long-range ongoing model aimed at structural revolution.

HOUSTON

Religious House: Amarillo

External: LENS visits disclose the deep concern over the future on the part of community establishment which is indicated in 'yes' to LENS thrust. But the journey from 'yes' to registration seems endless.
Internal: Ecclesiola is deep refreshment for spiritually tired troops.
Contradiction: Convincing the city that we are here to care for its future.

Religious House: Oklahoma CityReligious House: TulsaReligious House: Houston

External: House experiences continuous expansion of space with its 10th trip to Dallas in 5 weeks and 25 regional colleagues under Wk. II assignment.
Internal: House prepares itself for the world by completing an internal life guide and by tentatively selecting an ecumenical parish to be the focus of our cabaret planning in sodality.
Contradiction: Planning from moment to moment blocks future concretions of mission.

Religious House: New OrleansReligious House: Memphis

External: A sensational week - 23 registered for Wk. 4 RSI, 17 in one night from one church! And blitz in Knoxville which produces 5 yesses to providing RSI 'scouting parties' and \$240 in scholarships.

Religious House: Memphis (continued)

Internal: Experienced the spiritual refreshment of Teresa's two fountains Journey to Ixtlan and the solitary office, as the fall ecclesiola construct comes into being.

Contradiction: Sense of passionless expenditure reveals the fact that we've reduced life to individual universes, struggles, and druthers.

Religious House: AtlantaReligious House: Miami

External: Reclaiming of space in RH: Miami continues with transformation of closet into office by addition of light fixture. Intern prospect list created with those most needing the context setting prioritized.

Internal: Penetration stepped up with Morrisons sent to Tampa Metro for Wk. II recruitment and cadre nurture. Recruitment calls and battling in Miami for Wk. 6 RSI.

Contradiction: In the midst of the need for more action, we find ourselves attacked by the venomous creatures of the mansions.

CHICAGO

Religious House: WichitaReligious House: Lincoln

External: Penetration becomes major focus and results in 16 registrations in 3 evenings of calling. Clergy luncheon held for first time.

Internal: Power of House Church demonstrated to us once again with large gathering of both colleagues and visitors. New jobs secured. "The Christ of History" pushes consciousness of whole House.

Contradiction: With the creation of powerful clergy luncheon model, the first week of activation indicated inadequate invitations.

Religious House: Kansas City

External: Week of intense gathering and dispersing of metro with nine sent out to General Assembly of Christian Church (Disciples of Christ) one to Global Missions Conference in New Orleans and one to Denver consult; LENS rescheduled.

Internal: House/metro Ecumenical Parish PSU regrid Kansas City metro down to parish while strategizing on key parishes for penetration and demonstration.

Contradiction: Not wanting to continue mission when task becomes nitty gritty.

Religious House: Minneapolis

External: PLC luncheon program launched and first course in 2 years held in Fargo metro.

Internal: A week of study (3 papers) climaxed with a cleaning miracle in decor closet.

Contradiction: Discerning the one thrust in middle of PLC, LENS and RSI penetration.

Religious House: St. Louis

External: The Lord continues to nudge us in the ribs as recruitment continues despite 8-hour delay on road with mysterious car trouble. Re-vamping card deck reveals exciting potential.

Internal: The House and Order celebrate the birth of Jason Alexander Epley to Jean and Walter on Monday, Oct. 15 at 8:21 a.m., weighing in at 9 pounds, 8 ounces. That makes 29 souls in the House.

Contradiction: Insuring internal structures are flexible enough for external mission demands and yet remain as structures.

Religious House: Peoria

External: Metro colleagues see vision on ongoing recruitment in the context for Wk. II blitz. Depth probing daily on how one's decision to attend RSI is sustained until participation as each participant's journey is anticipated.

Internal: Eight guests from metro and Galaxy make House Church a happening. Ecclesiola Day study of the RSI rational objective and existential aim in each session in collegium and Teresa in Seminary leave House with question of how to be the Religious when you are the Relig.

Contradiction: In midst of possibility of even fully paid registrations cancelling, what does it mean to make a commitment and how does recruitment enable one in that final decision in the face of eternal possibility of other demands.

Religious House: MadisonReligious House: Rockford

External: Wk. II Galaxy childwatch enables metro penetration efforts to yield 9 paid registrations for RSI as the metro experiences an explosion in registration for Wk. 4 RSI.

Internal: Week highlighted by 23 guests at House Church including Rev. Cho Shang Wan and his wife Sue with 5 children from Seoul. Began social spirit analysis on Rockford metro as part of preparation for metro cabaret.

Contradiction: Individual data systems for penetration not corporately concensed, allows registrations to fall temporarily through cracks.

Religious House: Champaign

External: Penetration and formulation show the effects of global network participation as local establishment representatives receive national church references as permission to give permission - to metro development. First six LENS registrations, backed with hard cash, arrive.

Internal: House reaches full employment after long, sometimes desperate struggle. Week II planning, after defining the missional contradiction proves double effective. Metro colleagues greeted with fresh decor.

Contradiction: Redeciding after spirit damage is inflicted by reducing the mission from the task of being the religious to the task of simply getting a job done.

Religious House: Milwaukee

External: First RSI of quarter brought off although only 3 registrations on Monday through decision of metro to stand over against despair of world.

Internal: Brian Stanfield does collegium and illuminates struggle in Canada. Sent out Patrick Martini after month's sojourn.

Contradiction: In midst of raising question "How much will my care cost?" we have been unable to move in the future.

Religious House: Chicago

External: RSI and PLC came off with power, especially for phases III and IV.

Internal: Presence of sojourners and new order member, Anna Elizabeth Graham, born Oct. 23, 1973, add to high spirit of the House.

Contradiction: Accelerating the decision making process on the lives of key families considering internship.

Religious House: IndianapolisReligious House: CincinnatiReligious House: Detroit

External: Clergy luncheon in Toledo with 16 PLC prospects with spirited singing and conversation. Eighteen blue song books missing after meeting! Interview with the head of HUD in Detroit results in his verbalizing his intention to attend LENS and also some of his staff.

Internal: House welcomes visit of Susan Kraver for an evening and Scott Barr for week end sojourn. Week II inaugurates E.G. curriculum in both House and Galaxy and sees Galaxy decision to take full responsibility for their children's Week II's.

Contradiction: How to keep all our accomplishments from being merely breakthroughs for the future.

Religious House: Cleveland

NEW YORK

Religious House: PittsburghReligious House: Rochester

External: House swirls during Week II as first RSI is held. Lloyd and Virginia Noyes from Cleveland join Justin Morrill and Wesley Kersh from Centrum for the Binghamton field visit (32 present), and the Rochester Local Church Consult while House hosts 31 E.G.

Internal: Space re-creation of 'catacombs' produces family space for 9 while carriage house is transformed into an art studio. House bursting at seams as interns David Dewey, Paul and Toni Noah with 2 sons, Sandra Henderson and sojourners Lee and Karen Herman fill the spaces.

Contradiction: Cancellation of two RSI's point up the need for new recruitment models, adequate and accurate lists, trained troops and cluster recruitment immediately.

Religious House: Richmond

External: Wk. II blitz on Lynchberg uncovers mighty spirit. Micro tactics implemented. Priorship from House assigned to micros pushes all harder than we wanted (Samuel, Samuel, Samuel...). Circuit ride through Roanoke metro snaps 2 PLC and 4 RSI registrations, paid.

Internal: House and metro celebrates with 21 attending Shriners Circus. Awefilling conversation follows. Twenty-eight attend House Church, 2 interns received, one sent immediately to Academy. Regular Ecclesiola attendance by metro takes shape with the invitation of Interior Castle study. Community festival draws hundreds through our front yard

Contradiction: Remembering that as the world permanently settles heavily on our shoulders, we do have the power to balance and continue the dance.

Religious House: Washington

External: RSI course results in three intern decisions. Areal consciousness realized as 5 from region join Manhattan 2-day PLC blitz and 1 learns LENS marketing for 10 days in Philadelphia.

Internal: Formation of Metro Cadres force House to radicalize priorship formal training to 10 hrs/wk. Tolman addresses House Church: Hope Order doesn't need me next year, for giving it all to Atlanta this year."

Contradiction: Knowing but not knowing that the very best 'paper' models do not revolutionize - it still takes the blood of martyrs.

Religious House: BaltimoreReligious House: PhiladelphiaReligious House: New York

External: Two day blitz on the New York metro enabled by area and regional colleagues, occasioned authorization by city clergymen and symbolized a new seriousness relative to breaking loose the urban centers of the globe. Week 3 LENS overflow initiated registration for Qtr. 3.

Internal: In the presence of 17 regional and areal colleagues, 18 NUTSS, and 9 children of LENS participants blew the bottom out of Wayside Inn dynamic. The study of The Christ of History signalled an awe-filling event relative to grasping the authenticity of yearning.

Contradiction: Thinking that thinking about tactics is tactical thinking.

Religious House: Garden City

External: RSI recruitment task force sent out blitzing metro. House joins area House in participating in 2-day clergy visits in NYC. Discover revolutionary aspects of subway and feet.

Internal: Ecclesiola hosts first metro guest for first cabaret discovery night on Long Island. Gift of added troops for Veterans Day holiday gives needed extra breath in the race.

Contradiction: Finding the keys that will unlock the many doors of possibility to the future.

Religious House: New Haven

External: Board of Deacons and Deaconesses at prospective church unanimously approve RSI recruitment in the congregation as a result of a speaking engagement. RSI/PLC recruitment push continues to be the white hot center.

Religious House: New Haven (continued)

Internal: Three Yale students guest at House Church including Sampron from Nigeria who first heard of the movement that morning.

Contradiction: Capitalizing on breakloose in penetration in time for RSI course.

Religious House: Manchester

External: RSI recruitment call to waiting 'colleague' reaffirms everyman is waiting for RSI. Galaxy Church reports 6 yesses for Week 5 RSI.

Internal: Eleven guests welcomed at House Church - an occasion for decision to sojourn until the RSI for metro youth. Welcomed as sojourner the wife of Galaxy pastor who is attending Academy.

Contradiction: Penetration tactics doing great formulation deeds, but penetration lags.

Religious House: Boston

External: The second demonstration project PSU with 16 in attendance firmed up ward boundaries and revealed that in our target parish of 20,000 people there are 30 churches from 14 denominations, over 100 social structures and over 500 businesses.

Internal: In response to written invitations 10 guests from 3 metros attend House Church, including movement colleagues of 7 years. Galaxy announces tertiary that will find much needed stove for the House.

Contradiction: How to recover a sense of urgency among people who are "very busy" in church activities so that RSI becomes their top priority.

Religious House: Portland

External: RSI prayer list expands as each visit yields a yes for RSI later this quarter.

Internal: \$11,000 job secured by responding to newspaper ads with imagin- al resume and using art form method in personal interviews (Employment agencies projected \$8,000 for this person).

Contradiction: We're still listening to victim stories instead of miracle stories, and consequently acting like victims rather than miracle workers.

MONTREAL

Religious House: Toronto

External: Weekly micro coordination meeting gives permission to continue our penetration strategy, and builds a clergy visitation construct which embodies both absolution and fascination.

Internal: A filled-full collegium room for House Church reveals our many guests including Jeanette Stanfield's family from Chicago, Stan Gibson from the London House, and the Stitler family from the Rochester Galaxy, as well as a number of old and new Toronto faces.

Contradiction: In the search for ecclesiastical authorisation, finding ourselves afraid of the myriad possibilities opening up before us, because we are not prepared for them or they are not exactly the ones we envisaged.

Religious House: Ottawa

Religious House: Montreal

External: New possibilities witnessed in the church with a luncheon for pastors and the talk of a Roman Catholic Galaxy and new contacts within the structures of the church.

Internal: Ecclesiola was an impact from start to finish with death on our left side, the presence of Sister Teresa, and the viewing of a story on Jesse James. We welcomed home Paul Stephen Jeszenszky, born to Nick and Susan.

Contradiction: We experience a gap, between our knowing and our doing, evidenced in a reluctance to hit the pavement on the other side of receiving an invitation.

CARACAS

Religious House: Caracas

BASE CENTRUM

External: Globality and diversity of our mission was grounded again as we hosted Rev. In Ha Lee, Moderator of Korean Presbyterian Church in Japan and Mr. and Mrs. Russell Vance of Montana, sent task force to 5th City for workday and model building, sent 3 from Centrum to General Assembly of the Christian Church (Disciples of Christ) in Cincinnati. Development received \$10,000 check from Wk. 1 RSI grad.

Internal: The Ecclesiola Manual is printed and ready for use. Task forces updated the Order roster, prepared for donor circuits and did seasonal maintenance on the Kemper building. The Order celebrated the birth of Anna Elizabeth to John and Judy Graham of RH: Chicago, of Paul Stephen to Nicholas and Susan Jeszenszky of Montreal, and of Jason Alexander to Walter and Jean Epley of St. Louis. John Rosenes stopped by on leave from Order assignment in Israel. Week's collegiums dealt with depth issues behind Presidential controversy.

Contradiction: How does the responsible man hold tension between time and space without allowing one or the other to be tyrant and thereby warping our grasp of what we're about.