

Here is my servant, whom I uphold,
 my chosen one in whom I delight,
 I have bestowed my spirit upon him,
 and he will make justice shine on the nations.
 Isaiah 42:1

LONDON

Religious House: Glasgow

External: ITI recruitment yields 4 registrations Wk. 3 through a continuous round of appointments, dinners and calls. Roman Catholic authorization moves ahead through Sisters of Notre Dame, Ursuline Sisters, Chaplain at Glasgow University and reporter for Catholic Press.

Internal: Hosted Margaret Richardson, mother of Andrea Boyer, Winnipeg regional colleague. Castenada and Sainthood anchor our meditative councils while Kung-fu TV show intrigues us with power of images.

Contradiction: Continuing to generate enough solid prospects for the ITI until we reach recruitment goal.

Religious House: Bristol

External: Good initial response to presence of House and news of the ITI - Methodist Theological college principle exclaims "We have been discussing this kind of thing but had no idea it was actually going on!" - second run through begins. Development produces side product of 3 possible spring courses.

Internal: House triples for Ecclesiola with everyone present having read Castenada. Benedictine spends night and day as sojourner - is addressed by style of House and is seriously considering ITI.

Contradiction: How do we care for fresh grads - nurturing them and sustaining momentum of their ITI recruitment so they are sure to experience victory.

Religious House: Manchester

External: Visiting in Coventry reveals power of cathedral as symbol of renewal and colleagues.

Internal: ITI vigil draws together roving recruitment anxieties.

Contradiction: How not to lose balance in the wild proliferation of apparently uncontrollable possibility.

Religious House: London

PARIS

Religious House: Paris

External: All dimensions of the mission intensify with the structuring of ITI recruitment. A luncheon meeting with seven French priests, and a LENS coffee for six couples held in one of their living rooms.

Internal: Decision that there is a Green Mill between the Champs-Elysees and the Louvre - sodality becomes a search for it.

Contradiction: Finding a way to accomplish the immediate goals for LENS, ITI, PLC, RSI while at the same time doing the long range groundwork intensified by the language barrier.

BRUSSELS

Religious House: Brussels

External: House decides go ahead on LENS and calls in a countess who lends names of her friends in the 100 top corporations of Belgium. Consult with 100 American Protestant youth in Europe planned out in Cologne. One hundred and seven women dance to the Psalms as six-week study begins.

Internal: Brussels House welcomes 4 sojourners from Den Haag for 2-day stay. Two half time jobs secured as proofreaders for CPA firm in Brussels.

Contradiction: Acquiring new juggling skills to keep up with the Grand Manager of this vaudeville show who continues to deliver the plates.

FRANKFURT

Religious House: Frankfurt

External: Visit with Bishop Sommers, head of the Methodist Church in Germany opens up a world of possibilities as we discover that he is on the Board of Directors for Brot fur die Welt, the largest church-sponsored 3rd World Foundation. RH Brussels and RH Frankfurt meet in Bonn to lead a consult with youth leadership of the Europe American Protestant church.

Internal: Pastor Bernhardt registers for the PLC and throws in a bonus of an electric stove as a way to physically care for the Frankfurt House.

Contradiction: Discovering new ways of breaking through the busy weekend schedule of pastors to allow for more Week II appointment possibilities.

NAIROBI

Religious House: Nairobi

External: Week II trip 'upcountry' to visit Roman Catholic and Anglican Bishops and attend Ecumenical services nets authorization nod for course participation.

Internal: Gridding Nairobi down to parishes proves to be an engaging spirit exercise - This is our town.

Contradiction: Continual revision of authorization time line as we find hierarchy willing but locked into their systems.

BOMBAY

Religious House: Bombay

External: Systematic visitation of all Protestant clergy in Bombay metro reveals affirmation and interest in the ITI and fascination with the Ashram. Anglican founder of historic Christa Seva Sabgha Ashram in Poona Rev. Jack Winslow (aged 91) met on his return to India.

Internal: The Ecclesiola takes the Obedience seminary and creates a dance, a witness, a montage and a news event to awe Dr. Amina Bose (a visitor) into the other world and back again.

Contradiction: Establishing the familiarity which fosters trust with the church at large.

DELHI

Religious House: Delhi

MADRAS

Religious House: Hyderabad

External: Intensive Hyderabad cadre 'ironmen visitation' for relaunching of cadre in new location with new image for 1974.

Internal: Ashram is host to 700 guests for marriage reception of one of ITI colleague's daughters. Poverty meals impact House as spirit-filled encounter and enable temporary financial crisis.

Contradiction: Fully executing circuit ride and recruitment course models and maintaining long-range vision, in face of perpetual financial ambiguity.

SINGAPORE

Religious House: Kuala LumpurReligious House: Singapore

External: Continued visiting for Feb. RSI. Finalized plans for Ecclesiola to begin next week and sent out invitations.

Internal: House was visited by regional colleague, Rev. Toeda, from Japan. Accepted numerous invitations from regional colleagues to celebrate Chinese New Year in their homes. Began Chinese New Year festivities with traditional feast in the Religious House: welcome the Year of the Tiger.

Contradiction: Allowing regional colleagues to see that they are responsible for both the great happenings in the Church in Singapore which have occurred and the future of the church and the society of the future.

Religious House: Jakarta

External: Situation again altered as newspapers are banned and intellectual arrested in government's response to domestic upheaval.

Internal: We are emotionally crushed by the response of 120 million people to their pain. Finish St. John; and discuss the riots in light of our reading.

Contradiction: How do we keep our eye on the twenty-year goal while in the middle of a restructuring of the contemporary scene.

HONG KONG

Religious House: Hong Kong

External: House puts into action recruitment plans for 2nd RSI of the quarter. Signal gathering of regional colleagues at Shum Oi hear Alan Chan dramatically call for renewal forces to be engaged in renewing the parish. Visit with Regional Superior of Maryknoll Fathers opens door.

Internal: Opening pedagogy session becomes an event as sojourner leads a lively RSI church conversation. Guest from guestnight returns the same week for House Church.

Contradiction: System that adequately uses limited time of sojourners where use of Chinese is a necessity.

Religious House: Kaohsiung

External: PLC recruitment is continued as discontinuity trip to Taitung metro on the East Coast includes one day of visiting key colleagues.

Internal: House experiences high celebration of Lunar New Year with feast and then three days of discontinuity from which all returned with new life.

Contradiction: In the midst of honoring single-mindedness of people relative to Lunar New Year, how keep PLC recruitment from being pushed completely aside.

Religious House: Manila

External: Charles Morrissey addresses conference of Catholic bishops in the Philippines. Miclat helps finalize Dagupan PLC set-up. Vergara invited as consultant to sit with WCE Com. on ecumenical sharing of personnel. Toeda, ITI grad from Sendai, pays House a visit.

Internal: House welcomes Fr. Morrissey. Solitary Office construct meets continuing demand for House members' care. Wk. II children's structure now includes a clubhouse.

Contradiction: Vision of penetration of Philippine social system outdistance House's preparation to do battle.

Religious House: Taipei

External: Commitments by four key LENS grads brings host committee to nine. Second English training session with unexpected return of wives. First Taipei region pedagogical training begins with five regional colleagues present.

Internal: "Man of LaMancha" reminds us again that the world is what we create. Hanging of quarter timeline and setting of high altar release the awe of liturgy and missional demands.

Contradiction: Being ready to move full scale on LENS and finding practical groundwork as time consuming as before.

Religious House: Cebu

External: LENS follow-up with course certificates in hand. "I have many problems, but I solve them easily now since LENS," PLC recruitment at Philippine Independent Church Diocesan clergy meeting. Regional teachers exchange -Teresa Lingafelter to Davao region, Butuan metro for RSI.

Internal: Teams planning on development, LENS, courses, metro visitation, ITI's. Job Hunter-Warriors come in first and second on shipping company job placement exam.

Contradiction: Jobs available, but the open assignments are in other cities

Religious House: DavaoReligious House: SeoulReligious House: Fukuoka

External: While Ken Filipski teaches PLC in Korea, coinciding Fukuoka PLC brings forth first strong metro colleagues' attendance at ecumenical morning prayer meeting enhances future contacts with surprise presence of key permeation figure.

Internal: Two successful visa alterations are celebrated when Peggy Anderson meets Osaka House member unexpectedly on ferryboat returning from Korea.

Contradiction: All indicatives are for Galaxy in Hiroshima but recruitment remains low.

Religious House: Osaka

External: Gridding Osaka taken over by enthusiastic and knowledgeable colleagues who spent Week II at the House. Direct RSI visiting gives new life to colleagues and House.

Internal: Eleven people sojourn for gridding Wk. II ending with House Church.

Contradiction: Model for digesting research data.

TOKYO

Religious House: Tokyo

External: Authorization is clearer through visits of Ellison and Charles Morrissey to Roman Catholic Bishop of Tokyo, and dinner at the invitation of the acting Papal Nuncio.

Internal: In the midst of Tokyo's first snow in two years, training for 4 jobs is begun. Most on-target Ecclesiola in 2 quarters. Reflection on sainthood is deepened through college conversation on a reading from Kazantzakis' biography.

Contradiction: Discerning the priority and dynamic of metro cadre/clergy collegium within the demonstration thrust.

Religious House: Sendai

External: Well-attended RSI follow-up meeting occasions the definition of much needed symbolic leadership roles.

Internal: One of the most strategically important and uncertain dinner guests of the quarter brings us the rare gifts of honesty and searching relative to our vision and 'American style' reflection about our task and current tactics in Japan.

Contradiction: How to harness the power of expanding thrust from the deeper commitments that are being made.

SYDNEY

Religious House: PerthReligious House: Darwin

External: Phoning and visiting secures 8 survey volunteers. Received letters from Dept. of Northern Territory giving official backing to survey, and agreeing to cover the costs involved. Celebrated the Year of the Tiger by sending Kit Krauss to a Chinese New Year celebration.

Internal: Kit Krauss arrived on one-month assignment while employed by Australia-wide town planning consultant firm. Send-out of John Telford and Jean Loomis to area troika meeting in Sydney.

Contradiction: Having great visions of external mission for the next two quarters but no wheels under the buggy while in transitional suspension awaiting assignments.

Religious House: Oombulgurri

External: As newspaper prints article on the Kimberly as future key to the world's agricultural needs, whole community plants by hand four acres of experimental peanuts supplied by the Agricultural Department.

Internal: House creates flywire kitchen-collegium room at one end of our "airy barn." Decor in community homes indicates House decor has an impact

Contradiction: How to create the tactical system which allows direct impact while catalyzing from behind the scenes.

Religious House: AdelaideReligious House: MelbourneReligious House: SydneyReligious House: Brisbane

SUVA

Religious House: Majuro

External: Guardian network active with letter from Cebu requesting export information; the Magistrate of Arno requesting Imaginal Education for the teachers on Arno; Guam colleagues preparing to hold reception for the 20 Year Projection team; and our favorite banker (KITCO loan) offering additional credit for a truck and revolving credit.

Internal: Sodality on ICA public image spins us into new directions: indicative battleplan ready for Centrum action.

Contradiction: Balancing rhythms of time, space, activity and relationships to enable maximum power and motivation.

Religious House: Apia

External: Great corporate happening as whole school works all week registering students and renovating staff houses. Transformation of compound results.

Internal: Exhausting labor with staff colleagues throws us over against our expenditure and gives hope for new staff corporateness. Housing shifts change one of our residences providing a Samoan fale (house), an Umu (ground oven) and space for permanent worship set up.

Contradiction: Time consumed with school work blocks necessary battleplanning.

SAN FRANCISCO Religious House: San Francisco

External: The primal guild experiment plans 3 parish signs in Mission 5. Youth RSI recruitment launched for a Week 4 youth course. The 20 programs strategies are implemented through the Mobile Religious House in Modesto and Reno.

Internal: Slicker's paper on Sainthood key study in Ecclesiola while awaiting Segundo books. Malcolm and Mildred Walters (parents of George Walters) sojourn for 3 weeks. Also 3 international colleagues sojourn at different times during last week.

Contradiction: Solitary assignments where armies are needed to fulfill possibilities call for intensified corporate resolve.

Religious House: San Jose

External: Past speaking engagements begin to pay off as Week 8 RSI begins to climb; Galaxy church recruits whole Sunday School staff; daughter of auxiliary couple decides to attend RSI; 3 key laymen and key clergy from prospective Galaxy parish church recruited to RSI and PLC respectively.

Internal: First among equals Jim McCabe sent out for 2-1/2 week business trip; the Schafers, solid colleagues and Academy grads from Monterrey (imports from Phoenix) discover the House and participate in ecclesiola and recruitment celebration: Meen Gaikwad from Bombay sojourns.

Contradiction: Galaxy pastor's struggles with the decision to be a prior in the Experiment weakens the thrust of course recruitment and Galaxy expansion.

Religious House: Sacramento

External: Monk's walk grounds five metro "stout monks" decision to care for the Sacramento polis. Three RC religious take to the air as they wing to another region, Los Angeles, for their PLC.

Religious House: Sacramento (continued)

Internal: Creation of world montage and actualization of all three penetration forces operating out of long-range comprehensive timelines spark a new joyful image of recruitment.

Contradiction: Depending upon this world external manifestations of winning for pseudo-spiritual sustenance.

Religious House: Seattle

External: Complete initial analysis of parish and now have data book. LENS recruitment gets first registration from Boeing, the builder of the famous 747 and the largest employer in Seattle.

Internal: International colleague An Hong Kim and friend he met in bus station Hiroshi Hashizume and regional colleague Arlene Edwards come for Week II visit exploding Wayside Inn dynamic. House Ecclesiola holds open house in House and is impacted by uniqueness of decor of family rooms.

Contradiction: PLC recruitment lacks LENS sophistication.

Religious House: Los AngelesReligious House: Phoenix

External: Enabling metro penetration with 9th regional trek and short scout to Tucson. Search for parish sign enabled by extended order; seek authentic engagement of RC through appointment with Bishop McCarthy.

Internal: Full employment, hallelujah! Segundo becomes grounding and expanding factor in our lives.

Contradiction: Image of 'doing' rather than 'bubbling' and enabling engagement.

Religious House: Billings

External: Top flight job as city coordinator of child care centers procured by House member nets 'ins' to guild work plus fat salary. Visits to clergy turn up overwhelming response to field visit. Used Wayside Inn dynamic to a regional colleague to draft letter to obtain regional data.

Internal: Wk. II of Wk. 4 spent in building guild battleplan for our parish and find it fun.

Contradiction: With the shift to tactics other than continued blitzing, the landmarks disappear leaving us unsure of where we are, not knowing if that's on target but sensing that we might be on the right road to winning, anyway.

Religious House: Denver

External: LENS week II with 58 participants, representing 4 states and 8 occupational arenas. Frank Ishischi from parish gives 3 hour talk to metro core; Japanese minister with 14 years experience in black churches with sentinel advise to 'go naked in the world, leave pretensions on the doorstep.' Denver metro calls House to participate in RSI recruiting.

Internal: Rev. Kim Chong Man exposes our parochialism, reminds us of our global citizenship and assures us that the global impact is well and happening. All major meetings happen on Tuesday night and House interior life is stretched by participation in Galaxy, metro core, and 3 meetings.

Contradiction: Maintain ongoing while moving to new areas, concern for follow-up eclipsed RSI recruitment.

Religious House: Rapid City

External: First PSU on the parish analysis with community participants ends with them ready to help in any way. One person said "This is the first time I've sat down with Indians and not argued." Another impacted by our initial grid of the parish said "This is the first map of Rapid City that didn't leave off Sioux Addition."

Internal: Guests at Ecclesiola who are not grads are impacted by the saints and anxious to get The Community Called Church as soon as our order gets here. We have some new jobs with promises of more money, though some still have to work evenings.

Contradiction: Abundance of cynicism and lack of trust among local churchmen uses much of our recruitment time.

WINNIPEG

Religious House: Anchorage

External: Just when 'cabin fever' was starting to set in, colleagues like Donna McClesky, George Lawson, Bill Alerding, and the Barber family (Milwaukee) flew in to do such things as development, a L.C. consult, and an RSI in Nome - enabling us to push our context out beyond the immediate.

Internal: The House received Phase IV sojourner, Louise Rude, and with so many colleagues in and out of the House this past week, we have experienced a delightful problem: traffic jams coming out of Daily Office, etc

Contradiction: An unrealistic LENS model that has not been dialogued with.

Religious House: Saskatoon

External: Caring for our immediate situation and for the creation of the future through a five denomination clergy luncheon, calling for courses, and colleagues joining the House for a fantastic cabaret celebration.

Internal: Areal reassignments call for trailer blitz, wrestling with immigration in the midst of which an extensive land use map arrived from city hall reminding us that we are the primal guild experiment.

Contradiction: Trying to live out of the story that we are in an in-between stage while things are still popping around us.

Religious House: Winnipeg

External: Local Church consultation held at Morden, Manitoba with four denominations present. Galaxy church holds spirit Annual meeting which deals deeply with grassroots consensus. Area Prior journeys to implement timeline for new Edmonton House and LENS course.

Internal: Guild initiation, congregational training and areal development centrums are go. Colleagues join us in creating missional task force posts within Centrums.

Contradiction: Focusing all 20 programs aimed at the primary contradiction

HOUSTON

Religious House: Amarillo

External: Development team of Reese and Booher make key authorization visits, opening door for local follow-up. Field Visit impacts clergy and metro colleagues with singing, scripture conversation and powerful stories of transformation in first Christian Galaxy church from Boulder, Co.

Internal: In midst of arrival of Hamptons, development and Field Visit teams, Ecclesiola study of Segundo grounds universal-particular dimension of church.

Contradiction: Re-experienced paradox of local movemental consciousness without corporate movemental care.

Religious House: Oklahoma CityReligious House: Tulsa

External: Penetration/formulation given new surge of life with quarter's troubador treks begun this Wk. I/WK.II with focus on RSI/PLC. Discover clergy PLC grad and RSI grad education-director in Miami church who point to the courses as the shift in their ministry.

Internal: Mod. session Mon. A.M. on Quarter battleplan calls forth depth wisdom and strategy from every House member after Sunday night Task Force prep; New York Times collegium creates new consciousness of resurgence; 3 a.m. fire drill from smoke-filled House over forgotten bean pot.

Contradiction: Finding and naming the fascination in being the movement that releases grads to fill metro leadership roles.

Religious House: Houston

External: Champaign House becomes Dallas House, Rockford House becomes San Antonio House as 100 people at Houston House Church, on behalf of Area Houston, receives 13 interns and send out 29 souls to be the Order in the 8th and 12th largest cities in the United States. This is the Year!

Contradiction: Being now able to focus on Houston and Austin, the prospect of intensifying our care is mysterious and paralyzing.

Religious House: New Orleans

External: Recruit hotel manager to LENS on visit to set up hotel arrangements. Baton Rouge RSI goes from 8 to 18 in three days. Joe Slicker, Maureen Jenkins, and Sr. Lucille Tessier in for consult with the Sisters Council of New Orleans.

Internal: Received Jim Stovall for long-term sojourn. Uptown (New Orleans is called Uptown up the river and Downtown down the river) PSU creates grid and symbol.

Contradiction: Moving into future with new model on other side of aborted PLC.

Religious House: Memphis

External: The Galaxy discovers that it was born tactical, often to the point of acting without the necessary planning. As one fellow said "We were doing our doing without knowing what we were doing with our being." Jess Bradshaw attends the Cedar Rapids PLC - plane fare raised by Galaxy

Internal: Study of the "Stoic-Gnostic-Man of Faith" paper impacts all of us stoic-gnostic, struggling men of faith, not to mention one unsuspecting, unexpected, timid non-grad guest!

Contradiction: Our only base of colleagues is in the LCX, and we have no models for changing the situation.

Religious House: Atlanta

External: CSIIIA and RSI at East Lake UMC (in our parish) produce new crop of intern possibilities. Participants astonished to see House engaging at full tilt in various enablement roles, then ecstatically playing basketball and frisbee though physically tired.

Internal: Missional corporateness seeps into every corner of our lives as family night buffet breaks into card game of hearts, and 'blue shirt' collegium distributes blue shirt to every male (the women begin planning sewing time)

Religious House: Atlanta (continued)

Contradiction: Abounding in clergy situations, abasing in appropriate models.

Religious House: Miami

External: Visit to local church and presence of non-grad clergyman at House Church unearths 2nd cluster of churches in this metro who see themselves as "ecumenical parish" council and the 20 programs begin to explode in mid-air!

Internal: Battleplans are built to "hire new dancers, tightrope walkers" etc. as House take new look at status of region (colleagues) and the cabaret goes into act II.

Contradiction: How do you stand present to whole show without getting sucked into one act?

CHICAGO

Religious House: Wichita

External: Week II penetration effort secures 14 additional registrations for upcoming courses. Saturday night celebration claims the victory though the battle rages on until Sunday afternoon.

Internal: Richard Lear arrives to begin assignment to Wichita troika.

Contradiction: The parish is ready but we still have not concretized our modification of the 26-week timeline, resulting in "Now what do we do Monday morning?"

Religious House: Lincoln

External: Wk. II PSU on gridding the Lincoln micro to parishes explodes our imaginations relative to the community we have. Colleague from KC joins with Galaxy pastors in PLC calling. Odyssey registrations rolling in for Wk. 4 Odyssey.

Internal: Additional jobs move on economic. Odyssey preparation shifts into high gear.

Contradiction: How maintain external vision when in the midst of necessary but immediate demands.

Religious House: Kansas City

External: Word of the week is authorization as articles on us appear in two RC diocesan newspapers and a Presbyterian newsletter meanwhile watching a course pull itself together in St. Joseph polis with a phoned-in request for 60 additional registration forms.

Internal: House and local theologian swept into Segundo study with the comment being made that "Some of the most exciting stuff around is coming out of Latin America lately!" Welcomed new priors the Browns from Minneapolis (via Tulsa, Oklahoma).

Contradiction: As time slips by do we give our tactical system the big push down the rails or finish building the rudder first?

Religious House: Minneapolis

External: LENS recruitment and guild authorization suddenly explode as we visit our state representative and our alderman - and the Minneapolis Board of High School Superintendents buy a block of 8. The Episcopal bishop's right-hand man comes to a PLC luncheon, sits very quietly for a long time, and then at a strategic moment (and much to our surprise) announces that the PMC he had many years ago was the most significant training event of his career.

Religious House: Minneapolis (continued)

Internal: The internal make-up of our House shifts some, as Robert and Kathleen St. Clair are welcomed; Kathy Fenton arrives from Madison; and Russell and Barbara Brown are sent out to be the global order in Kansas City. A secretarial position at the State Legislature is secured.

Contradiction: Trapped in our specific tactics - to the exclusion of a sense of responsibility for the total, long-range mission.

Religious House: St. LouisReligious House: Peoria

External: Life giving RSI in Champaign; decision of Peoria metro colleague to become cadre/cell dynamic followed by recontacting and discovering old grads; Mary Beth Condill sent to to Academy as Champaign planned 5-hour workshop for long term vision.

Internal: RH hosted Wk. II Galaxy Council and e.g. course simultaneously in House that "doesn't look this big on the outside." Signal event of week - Segundo study; how is his question our own life question; followed by endless singing of camp songs, with popcorn in kitchen.

Contradiction: As excitement deepens in metros with regular cadre meetings still no concrete practical vision, timeline or models to illuminate ongoing task.

Religious House: MadisonReligious House: RockfordReligious House: ChampaignReligious House: Milwaukee

External: House impacted with more possibilities as new PLC grad in Madison metro asks for 6 to 8 teams to recruit in his congregation so that a Galaxy auxiliary will be ready for the spring training quarter. Metro leadership gathers and struggles with how to be the new metro dynamic.

Internal: Excitement flows in Ecclesiola as two lay leaders from parish churches confirm previously gathered data and explode images of the future of our parish.

Contradiction: How to hold corporateness under the large umbrella of tasks or how to move as the gathered church even though you show up as the scattered church.

Religious House: Chicago

External: First 2-year license granted to 5th City Preschool sustains the stance of mission possible.

Internal: More people than ever take notes during collegium on methods for Scripture-news. Fred Gealy "Dialogue and Encounter" was the highlight and continues to be treasured by House members.

Contradiction: How to give priority time to focusing the comprehensive for the whole House.

Religious House: New York (continued)

Internal: Theme of radical expenditure exploded by reading about Xavier, study of Passion in Pedagogy, and Segundo. Celebrated journeys of House members by marking high school graduation of Nan Bailey and announcement of engagement of Jana Greenburg

Contradiction: Ecclesiola Sodality, Mod II tactics energise and focus task forces for Wk. I but energy and missional focus dissipate by WK. I due to communications breakdown and tendency to linger on Wk. II accomplishments and miracles.

Religious House: Garde City

External: Weekly newsletter keeps metro colleagues informed of week's key events and outlines week to come. Brooklyn pastor and wife visit Tuesday sodality meeting with 18 other colleagues. What a discovery to find that the Metropolitan of the Russian Orthodox Church of N.A. lives in our parish. And holding down the secular, Mort Drucker of Mad Magazine is too.

Internal: Brooklyn birthday guest, House Church celebrant reflects that this is certainly more meaningful than having a friend invite you out for Scotch.

Contradiction: How to focus priorities to crystal clarity while out of tune with actual job situation.

Religious House: New HavenReligious House: Manchester

External: Second EPX-PSU discerns sign for parish and initiates tactics. Celebrated ethnic variety of parish with Greek cafe. Unexpected Galaxy pastor arrives with 5 registrations for CSIIIA and 4 for RSI.

Internal: House builds intense study/pedagogy into quarter model. This week Indicative Ethics and Segundo impact House on the same day.

Contradiction: Maintaining missional focus in midst of multitudinous tactics

Religious House: Boston

External: A phenomenal primal guild PSU with 23 from parish, metro and House reviewed the South End Parish grid, social analysis and first draft of the story and also laid out detailed plans for LENS blitz and luncheon all three signs and Community Convocation.

Internal: John Foote welcomed back from Academy to do Honors thesis for his degree. House attended slide presentation on history of South End parish.

Contradiction: How to enable all our many friends to become colleagues.

Religious House: Portland

External: Power of impact tool realized as House leads a group of 50 churchmen in a Sunday evening celebrative meal that occasions awe and new decisions to be the church. Almost as an afterthought RSI registrations received after the meal.

Internal: First session with Segundo in Ecclesiola renews vision of church universal.

Contradiction: Blocked by having recruiters present with no list of prospects.

Religious House: Richmond

External: LENS winning, soars with 60 confirmed registrations for Wk. 6 course. Pre-sigr prep is hard to keep up with as donations of boulder, 4 tons of gravel, truck and services of landscape architect roll our way RSI jeopardized with 11 paid registrations cancelled.

Internal: Worship rehearsal brings to self-consciousness corporate dynamic of our Daily Office. Segundo and Bonhoeffer 'Community' prove to be vital events in study life. Workshop on common family apartment decor brings single thrust of community to surface.

Contradiction: Remembering that purgation is 1 of the signs of God's love for us.

Religious House: Washington

External: Exploding LENS pre-registrations forces us to change facility with 6 days to go. Indicative battleplanning brings out of earth intentional metro operations' staff structure. UHN Center (alias RH) facility procurement reaches new heights of possibility.

Internal: Finally got the quarter started - after 5 weeks of 3 moves - with Internal Life Manual. The press runs again. Mod II, etc. of indicative battleplan is a many-splendored thing. "Old yellow" songbook is deep refreshment, especially "A Mighty Fortress."

Contradiction: Metro catalysis has become necessary, not optional. Symbolically and structurally still have not really begun to operate out of "Let George (metro colleague) do it."

Religious House: Baltimore

External: Authorization begins to take shape as leading Lutheran pastor gives nod to our presence in the parish after visit by Lutheran Galaxy pastor and first local leader, a Catholic community organizer stops by to leave off registration and check for LENS.

Internal: Father Coyne, our landlord, drops by during Segundo study in Ecclesiola and decides to stay and participate in "Necessity of Church" section.

Contradiction: The global thrust keeps disappearing in our global/local mission as we find ourselves wrapped up in the primal guild implementation and the LCX.

Religious House: Philadelphia

External: Third metro PSU of 26 week timeline particularized our own care for the quarter; sponsorship of 2nd parish LENS is in view, through assurances from local corporation and possibility of foundation funding.

Internal: Present House and movement colleagues to Cardinal's commission on Human Relations staff, who had an opportunity to lay out thier work. Then at Ecclesiola host Fr. Powell s.v.d., assistant to Cardinal on Urban Ministries, who works with us on Segundo.

Contradiction: 26 Week PGX laser beam turns into 26-week disconnected bursts of energy.

Religious House: New York

External: The leadership training task force laid groundwork for intensifying Local Church progress in Newark metro by sending five urban pastors from the Oranges to the PLC. Social Demonstration activated its four major tactics by holding clergy collegiums in New York and Newark.

Religious House: Indianapolis

External: Supper clubs punctuate the third Week II PSU and the metro realizes that a whole new life is bubbling in the movement.

Internal: Landed two new jobs and began the third. The 'new' piano was delivered as a step in taking the cabaret seriously.

Contradiction: We have failed to do the kind of long-term nurture that is necessary to create the kind of PLC the Lord demands.

Religious House: Cincinnati

External: All pastors in parish contacted and invited to a Friday evening dinner. Protter & Gamble consult by Tomlinson and McClesky yields excellent prospects for authorization, indirect guild funding, and special guild project within PPG. Dayton followup meetings continue to bubble.

Internal: House and Galaxy journey to the deeps in pedagogy weekend. Plenums continue to be spirit happenings.

Contradiction: Maintaining the kind of detachment that allows us to see through to the bottom of any issue before deciding how to deal with it.

Religious House: Detroit

External: House holds 2nd PSU on Primal Guild with strong regional participation. Mrs. Johnson, Highland Park's latent Lela Mosely, talks about H. P., contextualizing parish analysis and research work. Work is climaxed by symbolic hanging of ICA and Detroit House plaques. Awe is released when final nail is punctuated by single bolt of lightning and only thunder clap of the storm!

Internal: New House member, Norma Weaver, formerly of Rockford House, received with joy. Three guests at House Church, including celebrant and Karen Kivimaki on way to Portland House from Champaign House.

Contradiction: PLC recruitment is getting squeezed out as we await RC decision on sponsorship.

Religious House: Cleveland

External: Launched first week of operations on tactical design. Depth planning and actualization found to be healing expenditure. LENS mailing to 200 social service, health and education agencies marks decision to win.

Internal: Received Slotta family as sojourners for month of February. Found mailman to be Summer '67 grad as he asks what we're all about anyway. Authorization call for PGX elicits welcome to parish.

Contradiction: What is holy space in the midst of a parish which is already holy space for the metropolitan area.

NEW YORK

Religious House: PittsburghReligious House: Rochester

External: Adding the dimension of the meal to recruitment of clergy has stirred up new interest in the Local Church Project in 4 out of 6 metros.

Internal: The House welcomes a new intern family. Jack, an engineer at IBM brings his finesse as a third phase business man, as well as his vivacious wife Mary Lois, their highschool daughter Martha and 5th grade son. Timothy.

Contradiction: Intensified metro team involvement has brought good results, but there still seems to be no methodology for metros doing own recruit't

MONTREAL

Religious House: Toronto

External: The Year of the Tiger comes upon us in the form of attendance at Chinese community celebrations in the parish, stepped-up LENS and RSI visitation, and new breakthroughs in clergy relations, with the invitation from a Mennonite clergyman to preach at his church.

Internal: Arrival of Segundo's Community Called Church and our decision to study Canadian writer Margaret Attwood's "Survival" are capped off by going to see a midnight show of "A Man for All Seasons."

Contradiction: Need to find ways of expanding the scope of possible contacts as well as baptizing on the given situation.

Religious House: Ottawa

External: House participates in areal LENS thrust, deploying LENS marketer to Montreal to assist in corporation calling and exchange methodological wisdom. Special Services prepares community analysis consult for Seaway church, as primal guild preparation gets under way.

Internal: Symbolic completion of battleplanning, with creation of Ronstrum Wall (bigger than life) quarter timeline, surprises us with discovery that all tactics are well into the chute. Niebuhr helpfully regrounded and reflected upon through study of Irish paper in seminary.

Contradiction: Building the prayer charts which will sustain the passion for building the new movement in the Ottawa Region.

Religious House: Montreal

CARACAS

Religious House: Caracas

External: Recruitment for LENS underway.

Internal: Moved into new temporary Religious House facilities

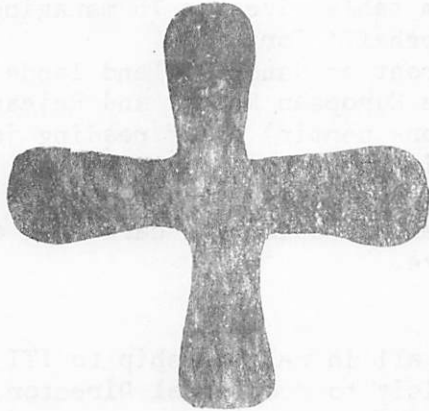
Contradiction: RSI and PLC recruitment breakloose.

BASE CENTRUM

External: Welcomed Joe Thomas to quick stopover for LENS briefing. Academy ended first 4 weeks with grand cabaret MC'ed by Wes Workman of London, England. Second 4 weeks began, welcoming among others Fung Suk Yee and Kwok Tat Chiu of Hong Kong. Uptown held first Galaxy Council. Signal course of week was Nome RSI - the closest course to the Arctic Circle - and the closest to USSR so far. The Order at Centrum celebrated the moving of the Champaign, Madison, and Rockford Houses to new locations in Dallas, SanAntonio and Edmonton.

Internal: Development celebrated the initiation of global centruns with assignment of Joe Thomas and John Pat'erson as Development Centrum: Hong Kong. Student House had signal CSIIIA course, grounding the reality of the family in the given situation. Public areas sparkle anew with Wk. II paint, new warboards and decor including elevator. Second floor lobby features Polynesian drum and large tapa - the latter a gift from the Tupos in Samoa.

Contradiction: Objectifying our comprehensive vision, our revolutionary principles, and the complex of programs in the turn to the world so that every particular task is done in the context of the whole.



Then I myself will come to gather all nations and races
and they shall come and see my glory;
and I will perform a sign among them.
Isaiah 66:18

LONDON

Religious House: Glasgow

External: Four metros on the move Wk. 4: trip to Dundee contacts grads from 1969 Dunblane PLC and sets course for spring. Dumfries speaking engagement yields endorsement for spring course, first meeting of Edinburgh metro cadre, and Glasgow yields three more yesses for ITI.

Internal: A widely dispersed House maintains wayside inn dynamic hosting ITI prospects and 20/80 recruiters. Discontinuous Ecclesiola with film "Mackintosh Man" for sodality.

Contradiction: Setting signals for Quarter IV without distracting anyone's attention from pushing toward victory in ITI recruitment goal.

Religious House: Bristol

External: Welsh regional colleague Stephen Evans spends first full day of recruitment for the ITI in Wales as all strategies continue intensive contacting and follow-up.

Internal: Affirming the promise that "wherever two or three are gathered together in my name I will grant their request" - as House members scattered across Continent to Luxembourg PLC and Area Development planning.

Contradiction: At this point in the battle, with one of three strategies still turning up new contacts, how do we see that our 35 possibilities yield a high proportion of the ITI quota required?

Religious House: ManchesterReligious House: London

PARIS

Religious House: Paris

External: Fifteen RSI grads begin Sunday evening RSIIIA with high tea on Sunday. Image selves for first time as cadre dynamic.

Internal: People stop and stare as eight people pile out of one small Fiat in search of the Green Mill - acting out of blessed madness.

Contradiction: Keeping your nonchalance in the midst of pressure to get concrete sign ups for LENS, ITI, RSI.

BRUSSELS

Religious House: Brussels

External: The ontological reality that European nobility is and the clue to why European history was, impacts the House as the Countess Marie-Caroline d'Ursel comes for lunch (we bought saucers) and stays until 8 pm and without rising from the collegium table gives us 75 managing directors and presidents to write 'on her behalf' for LENS.

Internal: Some relief on the economic front as Nancy Rowland lands full-time economic journalist job with the European Report and Rejean Idzerda and Jan Latham begin part-time (no work permit) proof reading job at local CPA office to improve English in the firm's reports.

Contradiction: Lack of French and Dutch speaking 1st teachers (two years is too long) to be and to ripen a movement of spirit to care for, and recognize LENS presence and initiative.

FRANKFURT

Religious House: Frankfurt

External: House breathes, eats and sleeps all in relationship to ITI as intensive calling continues with key visit to Ecumenical Director of the Methodist church at request of Bishop Sommer.

Internal: Style of House fundamentally important as we host a wide variety of guests - including local pastors, a friend returning from a year in Bali - plus first visitors from the DDR (East Germany).

Contradiction: Developing explosive new contact base for ITI while at the same time building necessary individual follow-up tactics to bring prospects to front door in Manchester.

NAIROBI

Religious House: Nairobi

External: Continued visitation for authorization nets widening number of nodes and active enablement for course recruitment by church leaders.

Internal: First 'formal movement' guest night with course grads surprises us as it goes better than we dared hope and reveals again how ready the grassroots church in Africa is to move.

Contradiction: ITI timeline presses but we have more work to do on the foundation before moving to ITI creation.

BOMBAY

Religious House: Bombay

External: Extended 6-week circuit ride begins via Jabalpur while rest of House hosts the signal CSI for 30. Vegetarians reminded us of the Hindu presence.

Internal: Ecclesiola sodality walks us down Sankli Street reminding us that Sheikh Hafizuddin Marg is its new name. The spin on what was once jailbirds' row and its future and use fills House with awe.

Contradiction: The sense of distance from the established church despite the friendly nodes; Bombay treated like a far country.

DELHI

Religious House: Delhi

External: House circuit rides three regions. In one week recruiting RSI, RSIIIA, S'74, and ITI; and finds the red carpet of resurgence rolled out...27 yesses for the ITI still 16 weeks away.

Internal: Collegium on the 'healing' of the cabaret, and Ecclesiola NRM meditation study opens doors to the light of our present situation, overwhelming House and guests with new images for living one great life! House Church celebrant stays on to spin his vision of spirit movement in India.

Religious House: Delhi (continued)

Contradiction: Organizing ourselves to maximize expenditure as we encounter demand to model build and coordinate in an increasing host-of possibility

MADRAS

Religious House: Hyderabad

External: Shift in decision of key cadre leadership, as cadre picks up task again with discovery that Ashram is not 'in charge.'

Internal: House joins with cadre in a great RSIIIA weekend. Financial situation pushes House to reduce the number of circuit rides, and discovers planning and impact are radically sharpened.

Contradiction: How best to enable regional colleagues to pick up the task, with ITI 9 weeks away, and little ITI spade-work done in the regions.

SINGAPORE

Religious House: Kuala Lumpur

External: Twenty churchmen, representing 4 denominations, from Kuala Lumpur and Seremban metros participated rigourously in a great RSI at the Holy Infant Jesus Convent. History was made in Malaysia when a Roman Catholic priest, an Anglican vicar, and a Methodist minister (2 of whom are PLC grads) co-celebrated the Eucharist in a service of youth celebration.

Internal: In the midst of a hectic RSI recruitment drive which kept the whole House busy calling and visiting the address of 1st John sustained the spirits. Welcomed Loh Gaih Sim (Miss) of Seremban as a new intern in the House.

Contradiction: Trusting our intuition and models when colleagues in Penang and Ruanton seem too "at peace," with RSI courses only 2-3 weeks away and no registrations are in hand.

Religious House: Singapore

External: First Ecclesiola of the quarter held with regional colleagues present from almost every major denominational group in Singapore. Sent faculty members to assist in the RSI in Kuala Lumpur - the first of five consecutive RSI's schedule for Singapore and Malaysia regions.

Internal: Regional colleagues assist House members to pin down new facility and obtain release from some of the conditions of our present contract. Regional colleague Chen I An gives his landlord notice that he is moving out to move into the Religious House.

Contradiction: Allowing regional colleagues to see that they are responsible for both the great happenings in the Church in Singapore which have occurred and the future of the church and the society of the future.

Religious House: Jakarta

External: After repeated postponements the first Ecclesiola was held with the Jakarta cadre with the Phillips in attendance. LENS reporting, studying of church paper, move-up of next scheduled meeting were dealt with in mood of enthusiasm and typical Indonesian intimacy.

Internal: House energies directed to need for care structures for JES administrators. Experienced shock of recognition in study of relationship of PEX.

Contradiction: Demand for immediate action relative to JES troop allocation blocked by our unclarity relative to reserves and needs.

HONG KONG

Religious House: Hong Kong

External: Sojourners' decision to go late into the night to do the necessary deed in getting out a mailing - House address and folds and sings. Traditional Chinese New Year visiting becomes occasion for new recruits for the next RSI. Forty youth gather at Shum Oi to share vision for parish.

Internal: House Church guest announces his intention to sojourn and proceed to bring in and unpack his bags. House experiences the Chinese New Year - the Year of the Tiger, through celebrations, feasts, family visit, Lucky money, colleagues hiked to Kowloon Peak.

Contradiction: The need to concern ourselves with more permanent quarters at a time of intensified missional engagement.

Religious House: Kaohsiung

External: Excitement bubbles in PLC recruitment with new names appearing from all directions as recruiters travel to Pin Tung and House hosts Leadership Training Day with local clergy.

Internal: Experience "Happiness" breaking through as we welcome Jwo Ming-Yun, Annie Hsu's nephew, as sojourner, send out 3 to Taipei who return bearing spiritizing gifts, have information celebration Saturday night, and then a fantastic 'happening' at House Church.

Contradiction: How, when the demand is seen, do we get the yes said?

Religious House: Manila

External: Key break open with Catholic clergy at Dagupan PLC. Weekend PSU on Catholic penetration as preparation for ITI recruitment and authorization. House member received 12 votes for Episcopacy in Methodist Central Conference.

Internal: Sent out Mrs. Brunkow to Sandwich, Illinois after a month of sojourning. Regional colleague Father Naas and Garibay family visited and sojourned at the House. Ecclesiola addressed Filipino consciousness and cabaret workshop gave two sisters permission to dance.

Contradiction: More handles appearing as real possibilities, and decision to take one.

Religious House: Taipei

External: Host committee for LENS finalized at 13. Spring seminar reaches point of no return as we tie down site and go to press. Invite LENS grads to guild meeting.

Internal: Excitement of 3 Roman Catholic guests at Ecclesiola as they experience the awe, awes us. The Other World breaks through again. Edge struggle with the Guild breaks through to clarity as we discover again we know how to evoke decisions.

Contradiction: How to move LENS grads through excitement over LENS toward sustaining relationship with Guild. What element of Guild will sustain that decision.

Religious House: Cebu

External: Four PLC recruiting teams out Week II with significant event from each of the four polises. Metro circuit visitation to Iloilo, Bacolod, Dumaguete and Ecclesiola in Iloilo. Metro coordinator created seminar room for intentional planning, teaching and working.

Religious House: Tokyo (continued)

Contradiction: How to give form to post-S'73 images in order to engage colleagues in the demonstration task.

Religious House: Sendai

External: Both Protestant and Catholic clergy affirm RSI and PLC during teaching assignments and pedagogy session in Aizuwakamatsu and Sendai.

Internal: Tactically enabling our permeation contacts to encounter the House, impacts us with possibility.

Contradiction: How to increase the speed and create the winning story in the midst of the race to the end of the quarter.

SYDNEY

Religious House: PerthReligious House: Darwin

External: Alderman LENS grad chosen by city council to act as Mayoress to host visiting royal family in March. Community survey as first 'temple sign' of Ecumenical Parish nears readiness as more local residents volunteer for canvassing.

Internal: Received Terry and Jean Loomis and John Telford back from area troikas meeting.

Contradiction: Having to meet immediate tactical commitments while finding time to recontact the mission following the "Incredible Summer of '74" Area Research Assembly.

Religious House: Oombulgurri

External: A fruitful week of work, highlighted by a new sense of corporateness in the leadership, culminated in a great celebration with arrival of Catholic and Anglican priests to perform a joint worship service. The public health sister makes her last check before arrival of Order nurse.

Internal: Study of summer community reformulation paper gives a new burst to our vision from old wisdom. Formal ecclesiola with dress dinner and post sodality waltzing transforms our image of a 'bush' assignment.

Contradiction: Finding the tactics to release the symbolic for the total community.

Religious House: AdelaideReligious House: MelbourneReligious House: Sydney

External: Colleagues gather from all regions for Area Research Assembly. As entire Assembly pushes meaning of guild, discovers itself playing role of metro cadre and miracles start to happen: Ecumenical Parish called into being in inner city Galaxy parishes; clergy breakfast with 11 clergy including 4 orthodox meet together for the first time; NSV day-long consult set up and recruited in 4 days; 40 local people produce exciting document of community issues and resolves; cabaret.

Internal: 48 E.G. invade House as work-out guilders move to Assembly site and print shop guilders take refuge in printshop and keep Assembly requirements rolling.

Contradiction: Amazed by receptiveness of the Ecumenical Parish, we stand open mouthed and looking around wildly for troops.

Religious House: Cebu (continued)

Internal: Ecclesiola: Dance-rhythmic beat-excitement; Don Juan, inaccessible
The group continued to discuss even after. Collegium emphasis on parish and Guild experimnt on Mactan Island.

Contradiction: Actualizing the initial models and plans for the Guild Experiment.

Religious House: Davao

External: First RSI in history of Butuan metro held with 42 participants; signal among many signals is strong decision of 2 ITI grads to be pedagogues. Alleluia!

Internal: House participates in Week of Prayer for Christian Unity in both Davao and Butuan metros - climaxed in Butuan metro with the RSI. ITI grad, also assistant parish priest, joins House as guest celebrant for House Church.

Contradiction: Creating the structures which will give emerging regional consciousness permission to be perpetual engagement.

TOKYO

Religious House: Seoul

External: PLC held in Kangnung metro with 20 persons in attendance. Represented were 6 local congregations. Seven were from the Methodist District Superintendent's local congregation. Over half of the participants were key laymen attending with their pastors.

Internal: All of the House ladies appeared at House Church in Order blue symbolic garb designed by Mrs. Kang and Mrs. Kim including a "Teresa butterfly" belt buckle. On Saturday night the first "Guardians Dinner" was held in honor of Mr. Kim Jin Uk of Citizen's National Bank of Korea.

Contradiction: Need long range practical projection of regional formation in order to organize and prioritize all the possibilities now in front of us.

Religious House: FukuokaReligious House: Osaka

External: Aki Maeda travels to Aizuwakamatsu - 9 hours one way - for PLC. Rev. Sugiyama, head of Rural Evangelism Centre, Hyogo Prefecture, visits Religious House with Rev. Akira Nishihara

Internal: With Fr. Ludo Goossens (Belgium) sojourning, pedagogy WK. II gave House a new push into RSI recruitment and Qtr. work as RSI happened in 12 hours. Ecclesiola saw six nations of RC priests and Kyodan clergy gathered for Ixtlan/Teresa/spirit analysis, with excitement on methods.

Contradiction: Lots of excitement clouds need for structure for Japanese clergy.

Religious House: Tokyo

External: Four local church clergy, 2 Japanese, 2 English from the Shibuya area decide to attend the PLC together. One of these is the regional Superior of the Dominican Order. Penetration into Phase IV of several old missionary Religious Orders finds deep openness to renewal.

Internal: Ecclesiola continues to be the signal happening of internal life; in particular the Saints conversations has drawn forth a new indicative

Religious House: Brisbane

SUVA

Religious House: MajuroReligious House: Apia

External: First week of school ends with a team given for all teachers in the Methodist schools by the Conference president and Education Committee. Week II is spent in spinning and battleplanning for demonstration station seeing the crucial relationship to movement authorization in Samoa.

Internal: House spends evening structures creating necessary internal models to sustain the House in Quarter III as the new school year begins.

Contradiction: Authorization demands full presence in demonstration sign while grads need nurture.

SAN FRANCISCO Religious House: San Francisco

External: Twenty programs dynamic becomes visible in week when impact has 30 in Youth RSI, 50 participate in LCX Continental Consult, 67 show up for Parish LENS recruitment luncheon, first Guild Consult held with Chicago Guild Post, Mobile Religious Houset set up three consults.

Internal: The San Francisco House relocates into the Mission District Parish, February 1, but must remain incognito while mortgage clears and House is vacated of its remaining tenants.

Contradiction: Running to keep up with possibilities often leaves nitty gritty practices uncared for.

Religious House: San Jose

External: Speaking engagements continue to break loose registrations...one woman signs up after two-minute pitch given as she was getting in her car. Priest from oldest church (1874) in San Jose flies to LA for PLC.. 7 youth (2 from Galaxy churches) attend Youth RSI.

Internal: Celebrated David Marshall's graduation from high school Began Segundo study with guests asking for their own copy. Three House members returning from speaking engagement experience amazing trip to Other World - passengers return, car doesn't.

Contradiction: Last minute continental assignment finds House without model to maintain recruitment momentum with existing troops.

Religious House: SacramentoReligious House: SeattleReligious House: Los Angeles

External: This week the LA region held its first PLC in two years with 17 participants despite 7 cancellations the day before. Beginning to see results of hierarchy calls as authorization flows through denominational structures. Two Wk; II blitzes plus speaking engagement bring in 20 RSI.

Internal: Welcomed Joe Clift, Seattle RH and David McCleskey, Research Centrum, in the midst of reelecoring the corporate spaces. Guild Consult led by McCleskey drew many key colleagues to Ecclesiola, and a pedagogy collegium on Bonhoeffer paragraph 3 gives further clarity.

Contradiction: Keeping on the 26-week timeline while not being physically located in the Echo Park Parish.

Religious House: Phoenix

External: A week in which the EPX, Metro Cadre and House emerged as a full dynamic - beginning with our first parish sign (painting Big Jim's Bar-B-Q), seeing Dr. Lao, and holding a pre-guild meeting with recent and old LENS grads. Preparations for Field Visit underway.

Internal: Mounting our parish grid in seven colors transforms our context - a week of Odyssey prep, and Field Visit planning - Ecclesiola is addressed by Segundo as metro colleague does fine teaching job - a corporate income-tax figuring and mailing excites us with vision.

Contradiction: Having read the signs of the times, we have kept a few crucial appointments with destiny, only to be caught with no breakloose plan for the immediate demands upon our 'little flock.'

Religious House: Billings

External: Trek through parish helps determine pulse of Magic City 5; call and visit from metro colleagues shows deep interest in parish reformulation project. Valentines Day Field Visit begins to shape up as fantastic demonstration of love of church.

Internal: Further Ecclesiola study with Segundo, the Saint, and centrum reflection reveals three power punches in a row; guest rocked by the deeps. Priorship spins House 'round and 'round. For sale: 2 copy machine make your own copies now - cheap!

Contradiction: Feeling of being on a flying 747 without anyone at the controls.

Religious House; Denver

External: Galaxy church (6 people) covers 3 local church events over North American continent - Amarillo, Rapid City, San Francisoc. Neither rain sleet nor... as 13 of 16 metro core appear amidst blizzard that cancels 90% of other city events.

Internal: Richardson family comes down from the mountain and received as interns. House decor party starts by symbolizing our experience of the dark night with a dark night banner and ends with the emerging of the hunter warrior as the sustaining style.

Contradiction: Allowing sanctified time to clutter sacred space thus preventing our being sacred space in the region.

Religious House: Rapid City

External: "This is the quarter" one colleague exclaimed. Penetration/formulation does its job in PLC (17 new grads) LENS (anticipating 45 guildsmen), RSI (best course ever shaping up) along with a clergy collegium, consult, field visit and parish guild experiment.

Internal: Candlelight and drinks - invitation extended to Woodie Allen who, we found out, is a sleeper. If was an off beat event that provided release of pressure.

Contradiction: All out penetration effort slights other missional and spirit spirit issues.

WINNIPEG

Religious House: Anchorage

External: Most northern and most western RSI comes off in Nome. Because of the high cost of food in Nome, all food was purchased in Anchorage and flown up with teachers. What a sight when they arrived at airport with 16 pieces of luggage and found some overweight, being resourceful they shifted some as passengers watched chickens, etc being packed.

Religious House: Anchorage (continued)

Internal: Fellowship begins to break open again after collegium spin on "where have we been and where are we going?"

Contradiction: Strong rally, no way for external to inform internal resulting in collapse of both

Religious House: EdmontonReligious House: Saskatoon

External: Ongoing recruitment is boosted by Week II blitz and Week 5 RSI goes over the top. Meanwhile a cadre sponsored public information meeting raises interest in Prince Albert RSI and attending a session of United Church Ministerial Conference helps authorization move forward.

Internal: Collegium on discipline impacts us, then our troops were suddenly doubled as rest of relocated troika arrives. Hallalulia!

Contradiction: A waltz is what is necessary even when we think a snappy polka is required.

Religious House: Winnipeg

External: Ecumenical Parish grid finished while 15 parish leaders decide to trek to 5th City and Uptown 5. Clergy luncheons prove effective follow-up strategy to individual recruitment visits. Area Prior on three-week areal jaunt.

Internal: Area/regional priorship shifts demonstrate that disciplined spirit men are able to pass and pick up many batons in the midst of whirlwind of missional demands.

Contradiction: While engaged in moving toward parish, we experience a need for a radical parish demonstration that comes as: "I'm willing to carry the Cross up Golgotha, but I'd just as soon put someone else on it."

HOUSTON

Religious House: AmarilloReligious House: San AntonioReligious House: Oklahoma City

External: Gravitational pull of all recruitment strategies produces centrifugal force breaking crest for strong RSI of young searchers. Primal guild briefing is formulation tactic calling colleagues old and new out of woodwork. Proctor and Gamble "buys" 5 places for LENS.

Internal: Philippine grads resident now in Oklahoma provide 4 more guests for House Church - including Carmello San Diego, Manila ITI and 3-month sojourner there. Hunter Warrior, residing in kitchen decor, assists in food enablement.

Contradiction: The prayer model which will yield clarity on the parish sign needed to spin out the focus on the primal guild.

Religious House: DallasReligious House: TulsaReligious House: Houston

External: 150 "Top of Houston" posters appear in Northline 5; 50 attend Tuesday metro meeting which includes the LCX; 55 decor packets distributed by NWE to Metro families.

Religious House: Houston (continued)

Internal: SK on defiance and faith and Segundo on love and faith intensify spirit struggles and journeys.

Contradiction: The exploding magnitude of the task, experienced as beyond our ability to handle, requires new forms of structural absolution which allow the faithful to bear the cost of the Turn.

Religious House: New Orleans

External: First RSI of the quarter signals metro cadre strength and resolve in Baton Rouge. Eight LENS registrations come in the day before the course resulting in amazingly 'strategic' participation of business, educational, governmental, political, and local communities.

Internal: New surge of guests constantly flowing through Ecclesiola and House Church every week this quarter, leaving us all pinching ourselves to see if we are real! Ecclesiola sodality break loose in wild excitement and depth anticipation over upcoming Mardi Gras Trek: The World Invited!

Contradiction: New eagerness to be comprehensive mission in metro cadres, is blocked by no vehicle built to train our colleagues in indicative battleplanning and long range strategies.

Religious House: Memphis

External: Memphis RSI held and comes off well- follow-up reveals already deeply committed auxiliary troops. CSIIIA recruitment begins with new resolve to contact old grads.

Internal: Trip to Chinese restaurant in our parish provides pleasant discontinuity. Segundo begun with anticipation, and sodality allows continued reflection on parish make-up - now all we have to do is find a house in our parish.

Contradiction: We stumble on selves as deeply victimized by no broadbased collegiality except for Galaxy and with deep questions as to future strategies.

Religious House: Atlanta

External: Atlanta clergy collegium (potentially 3 ecumenical parish Galaxy) has dynamic first meeting. Metro Cadre Prior's Assembly finds "Old Man River" a powerful salve for old wounds. Parish sign #1, picket fence, impacts community: "Best this place has looked in 30 years."

Internal: Couple who took CSIIIA Week 3, sojourn Week 5 announcing decision to intern by June 1st; then phone in Week 6 to ask us to have room ready by March 1st. Stanley Crow (Washington House) visits our land of no actualizing Galaxy and sharpens our vision of the LCX.

Contradiction: Among all the possibilities for creating signs; prioritizing within the given limits and choosing the sign that will have the same impact as if all were done.

Religious House: Miami

CHICAGO

Religious House: Wichita

External: RSI, CSI and Children's RSI have 80 souls in the metro gathered around tables on the same Wk. II. Development team turns up new money, new guardians and new LENS prospects.

Internal: Area Prior (we call him Bishop Moore) makes his first visit to Wichita. His address after House Church spins the House and metro colleagues into a new awareness of the implications of going global.

Religious House: Wichita (continued)

Contradiction: In the midst of calling forth spirit breaklooses en masse, we have not decided to spend the time required to build the journey models on the other side of the impact.

Religious House: LincolnReligious House: Kansas City

External: Week 3 LENS sanctifies 36. High points were the Guardians doing 100% of the recruiting and enablement for the course and the participant who approached the pedagogues afterwards and told them that he had been working on what would fill out the blank middle of the Triangle.

Internal: House re-grounded in chosen-ness as 24-hour virus wipes out all but one in 48 hour time span. Meanwhile decisional facade of 18 full-time secretaries and 6 teams of callers sags not an inch! Child care enablement and phoning by metro colleague saves our skins.

Contradiction: In the midst of setting EPX, RSI, LENS AND LC authorization plates spinning, unclarity on which battlefield we are called to die on.

Religious House: Minneapolis

External: 15 new participants given back their vocation in a whole new way in exciting PLC in Minneapolis. Development team makes signal authorization calls to presidents of American Lutherna Church and Control Data.

Internal: Galaxy pastor from Saskatoon, Jerry Steele, visits for a few days while in town on business. House is winning the mid-winter battle with Virgil Virus.

Contradiction: How to enable courses in Fargo and Sioux Falls to come off without pouring a totally disproportionate amount of time and energy into them, over against other missional demands.

Religious House: St. Louis

External: Breakthrough in sociological clergy recruitment creates 16-man PLC in Cedar Rapids, Iowa, allowing the launching of clergy collegiums in 3 metro cities - Des Moines, Cedar Rapids and the Quad Cities. A signal happening in St. Louis of a 16-man PLC held in the House.

Internal: Housing the PLC called for signal recreation of space to offer new mood of collegiality to all participants. In midst of PLC House grounds globality by hosting Kim An Hong and attending E.G. cabaret: Glorious Galactic Globality.

Contradiction: On other side of the external, who gives a darn.

Religious House: Peoria

External: First cell meeting with 7 present. Serious plans made for metro cadre battleplanning. Recruitment explodes outside Peoria polis - Bloomington, Champaign, and Elmwood.

Internal: Highlight is Shake It All Out evening of dancing after recruitment. Two new jobs secured. Collegium on group recruitment and presence of new intern Roger Marsh and 3 guests have week dancing too.

Contradiction: Radical unclarity on objectives and methods of group recruitment, in midst of very low number of troops and serious need for greater number of contacts.

Religious House: Milwaukee

External: Metro colleagues say yes to recruiting advanced courses through polis. Twenty-two inch snow allows Galaxy to focus attention to recruitment.

Internal: House encounters fear and fascination as we receive graphic picture of parish power structure via metro colleague. In House quadruples as Milwaukee shuts down over record snowstorm.

Contradiction: Potential paralysis in face of understanding parish power structures must be turned from victimization to victory.

Religious House: Chicago

External: Move to Community Center, 3350 W. Jackson, accomplished by 5th City with high spirits, some snowball fights, and generally delightful clamor.

Internal: First floor hallway transformed appropriately for a new day. Robert and Carol Wiley from Wilmette participated as sojourners.

Contradiction: Grounding the fact that corporate space is missionally created rather than strategically given.

Religious House: IndianapolisReligious House: CincinnatiReligious House: Detroit

External: Ecclesiola in Warren makes decision to move toward becoming a metro cadre. Galaxy Continental Consult held providing spirit uplift and revelation into imbalances of Local Church. Galaxy created children's structures and accompanying manual introduced by children's notebooks.

Internal: The long-awaited Greg Walden arrives, 2nd new intern in 2 weeks. Spin in station breaks loose new insights into metro structure. House Ecclesiola turns ecstatic with combination of participating guests, Mrs. Leora Johnson (parish churchwoman, community leader) and Jim McCabe.

Contradiction: Deciding to take time to stand back to look at overall strategy of House when stations already experience not enough time and quarter is well down the road.

Religious House: Cleveland

External: Newsletter off the press. Metro PSU on replication, PLC marketing and formulation.

Internal: Struggle to intensify operational corporateness reveals gap between images of necessity and spirit will.

Contradiction: Penetration depending on worn out systems fails.

NEW YORK

Religious House: Pittsburgh

External: Two separate Galaxies cared for at ends of region, including 25 present at Altoona Galaxy meeting. Largest ever in Region.

Internal: Full House working 2 jobs, one member 3 jobs, as a key tactic in slaying economic tyrant. Receive Robert Kline and Patrick Sunseri as interns.

Contradiction: Establishing the new style of corporateness in the face of extreme dispersion.

Religious House: Rochester

External: The Field Visit team deeply addressed both new and old colleagues and willingly repeated their performance in Buffalo the next day at a luncheon for clergy, returning 30 minutes before the Rochester consult began.

Internal: The arrival of the Shepp and Ulangca families as interns leaves the Binghamton metro ready for new leadership and fills the last two rooms in the House.

Contradiction: The clergy luncheons will not yield a large Week 6 PLC and have left us short sighted as to their potentiality for spring quarter.

Religious House: Richmond

External: Overnight miracle created in parish on trash-strewn vacant corner as lot is cleaned and mini-park rock garden is created in 8 hours. Family living next to lot volunteers to keep it clean and 75 to 100 people came to see what's going on. Corporateness of the day capped by movie on corporateness, The Sting.

Internal: Authorization initiated with new President of Methodist Board in charge of our building when she and other come to make inventory of furnishings. Micro-penetration workshop intensifies indicative for recruiters to become priors.

Contradiction: Remembering that God's love of us is not contingent upon His loving our models.

Religious House: Washington

External: Eighty-six around table in LENS - quite an impact on us when we considered cancelling course 3 weeks before with 3 registrations. Spring LENS will be marketed by these participants. We believe in LENS! Bishop Forbes (Free Will Baptist) of Faith Temple #2 challenges parish clergy collegium to get with it and meet weekly.

Internal: Teams finally bring off intentional week of 4:50 am beginning. Evaluation form for every up-front assignment adds excellence. Segundo thunders the sanctification question: "Is love worth it?" and calls us to be the "Body of Signs."

Contradiction: Still "doing" rather than "catalyzing."

Religious House: Baltimore

External: One recruiting team makes forty calls on Week II, setting the pace for the rest of the metro. Segundo study in clergy collegium adds new life as pastors jump into seminar with both feet.

Internal: The House welcomes Mary Baublitz and Elizabeth Sands back from Academy and introduces them to Segundo at Ecclesiola. Regional Troika meeting gets all Houses focused on Regional Council and metro presidiums.

Contradiction: Cancelling PLC calls attention to our own defeatism, which we haven't broken through.

Religious House: PhiladelphiaReligious House: New York

Religious House: Garden City

External: Metro Cadre builds tactical battleplan for businessmen's lunch, primary LENS tactic thus enabling clarity on the actualization of the Primal Guild Experiment in the parish of Locust Valley/East Norwich/Oyster Bay. Families assigned to visit parish churches for worship.

Internal: First sojourner of '74 celebrated with champagne and prompts another family to decide for March. Centrum visit from "Marsha's Mother" brings us up to date on global news.

Contradiction: Grounding metro cadre in parish so it is the focus for the overlay of sociological love.

Religious House: New Haven

External: Speaking engagements to three congregations at Stivewart Air Force Base impact metro, House, and congregations with diversity of our contacts and scope of our work. Visitation to parish clergy, community leaders and parish grads is in full swing.

Internal: Ecclesiola is celebrative event with presence of area prior and beginning of Segundo study.

Contradiction: There is a gap between the indicative of the 26-week timeline and our colleagues' readiness to bring it off.

Religious House: Manchester

External: Metro Presidium shifts meeting place from House to Gilford, Community Church. LENS registrations begin rolling in. Nine to regional CSIIIA.

Internal: Movie "Walking Tall" awes the House with demonstration of problemless living. Other World chart is hand-lettered by House member.

Contradiction: Locating the second stage button for RSI recruitment.

Religious House: Boston

External: CSIIIA with 28 around tables (only 2 from House) and a series of local congregation victories: spoke to Black Baptist Alliance in parish about RSI; spent an evening with the head of the RC Ecumenical Commission; a church in the parish borrowed 48 Daily Offices for an evening (and returned only 36.) Talked with parish Council of St. Stephens Episc.

Internal: Almost everything of matter fell apart - cars, dishwasher, finances...we think they were converted to spirit!

Contradiction: How to get all those LENS yesses and seriously considering onto registrations.

Religious House: Portland

External: Six congregations say yes to Field Visit as long months of toil begin to bear fruit.

Internal: Work begins on transforming House for Odyssey - need for spirit exercises becomes apparent as we wade into the basement chaos.

Contradiction: Having trouble telling the difference between spinning tactics and spinning wheels.

MONTREAL

Religious House: Toronto

External: Wooing the establishment occurs by way of a visit to an Anglican Dean, playing Bishop to a young United Church clergyman, a dinner at the House for a Presbyterian minister and his wife and ongoing LENS visitation which nets our first registration.

Religious House: Toronto (continued)

Internal: Wayside Inn continues to be a key tactic with anight of Canadian readings, a teenage party, and ever-enlarging House Churches, while House impacts a commercial wayside inn, Frier's Tavern and transforms the singer who plays all 'our songs.'

Contradiction: Operating out of the story "If we have an RSI" rather than when we have it.

Religious House: Ottawa

External: LENS appointment making with Ottawa and Seaway Valley businesses initiated with total of 27 appointments set up and 7 visits completed. Signal visit with company in Galaxy Church parish points toward parish guild possibilities as the Lord continues to shorten our timeline.

Internal: House contexted an LENS calling through report on Montreal foray; explodes new possibilities of resurgence style. Continued pushing on practical vision of bringing off ITI Ottawa through battleplanning and setting up regional PSU to mobilize forces for recruitment.

Contradiction: Creating images that will communicate the resurgence style of winning.

Religious House: Montreal

External: Week of "obtaining signal commitments" grounded by Galaxy engaging in first WK. II council Decision by Galaxy clergy to recruit RSI, formation of 4th church auxiliary, clergy prospects open to luncheon exploratory meeting and first LENS registrations received.

Internal: House explores style of sex in Canada - some people thought research was dull! Ecclesiola refreshment via Beirut areal feast.

Contradiction: What is the strategic instrument for moving colleagues from getting their feet wet into depth colleagues prepared for the next 20 years.

CARACAS

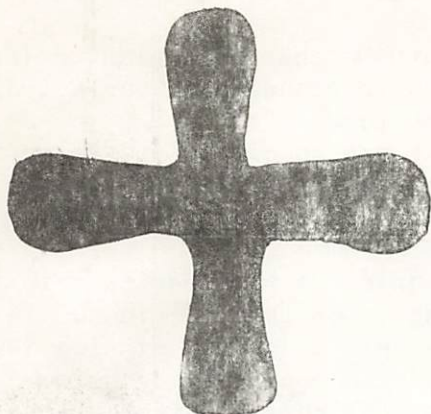
Religious House: Caracas

BASE CENTRUM

External: Hearts and Flowers Ball is main event of week for 400 Uptown elders (500 total present) as they waltz and jitterbug at the Aragon. Joe Thomas and John Patterson are sent out as Development Centrum: Hong Kong. Special 4-week Task Forces start work on Local Community Convocation, Secular Piety Study, and Social Methods School. Signal RSI in Ypsilanti has 42 new participants mostly recruited from one church by PLC-grad pastor. February IE is printed and ready to mail.

Internal: New Panchayat selctions are announced for next 4 quarters: Qtr. II, George Walters, Proxy James Weigel; Qtr. III, Doris Hahn, Proxy David McClesky; Qtr. IV Frank Hilliard, Proxy Lyn Mathews; Qtr. I Joe Crocker, Proxy George Holcombe. The commissions were also announced: Finance, Internal Life, Mission, and Assignment.

Contradiction: Discern the necessary distinct impact of each of the three new programs to be launched next month.



Go to it then, eat your food and enjoy it, and drink your wine with a cheerful heart; for already God has accepted what you have done.

Ecclesiastes 9:7

LONDON

Religious House: Glasgow

External: Trinity Seminary provides fertile ground for ITI recruitment yielding one more registration. Enablement and planning with Carlton and Edinburgh cadres provides primary focus while visits with Sisters of Charity and Lesser Ursalines confirm openness of orders.

Internal: Final work permit received bringing House to full employment. Wayside Inn continues to serve steady stream of guests and we host first overnight guest, Philip Wren from London region.

Contradiction: Turning all yesses into registrations, all maybes into vesses and find 5 more for ITI.

Religious House: Bristol

External: Focussing on delimited number of ITI possibilities as we build our timeline and set deadlines for concrete results. ITI visit gives possibility of working with Anglicans Salisbury Diocesan Committee on Unity and Home Missions and with its Ecumenical Committee.

Internal: Ecclesiola continues to sustain regional colleagues. After studying Castaneda on "The Last Battle" two colleagues spend Week II recruiting in Aberystwyth (Wales) and getting practical data on how to get to the Summer Research Assembly and Academy.

Contradiction: How to build the structures to maintain chastity in recruiting the ITI right up to the wire, while reaping the harvest of course possibilities for next quarter.

Religious House: Manchester

External: PLC in St. Cuthbert's provides signal event for Newcastle cadre, new forces in new places and new courage.

Internal: Transcripts from Centrum widen the sky. Profoundly addressed by Decade of Miracles and Mayor Daley's speech.

Contradiction: How transform the benevolent applause we're getting for visits and speeches into active support.

Religious House: London

PARIS Religious House: Paris

BRUSSELS Religious House: Brussels

External: Seventeen participants in RSI making penetration a reality in American Protestant, Irish Catholic, English Catholic, youth from American Protestant Church-Bonn, British Catholics from Amsterdam with continental faculty.

Internal: Four sojourners: including two youth Dutchmen who plan coming in July for one year international training with Academy and our Guardian couple from The Hague, David and Ellen Rehstock.

Contradiction: If the indicatives of our task are so clear (and never have they been clearer) then why are the imperatives so elusive?

FRANKFURT Religious House: Frankfurt

External: Global consciousness radically expanded as penetration trip to Vienna uncovers direct contacts to the East. Joe Thomas joins us in an appointment with director of Brot für die Welt and their mission development board reveals concrete possibility of Europe funding Asia.

Internal: House Church marks highlight of week as guests Father Schopping, RC pastor in our Ecumenical parish reveals decision to be co-sponsor for spring Frankfurt PLC and Helga Wacker says 'yes' to March ITI.

Contradiction: Keeping left eye focused on continuing to create Quarter III while the right eye shifts focus to Quarter IV planning.

NAIROBI Religious House: Nairobi

External: Visit to leading Anglican Bishop news nod and permission to recruit in his Diocese; pastors from December PLC continue to sign up for advanced course in April and to recruit parishers for other courses.

Internal: Rose Mary Porter and children from the Anchorage region stop over at the House for an afternoon as they visit Nairobi on the East Africa Safari.

Contradiction: Get beyond the 'yes' (which is well meant) to a concrete commitment by local church pastors without any push.

BOMBAY Religious House: Bombay

External: RSI in Jabalpur comes off despite curfews, bandas (strikes) and limits on gatherings of people. The Ashram hosts the Bombay Christian Fellowship and amazes members with scripture quotes (from 1 John).

Internal: Ecclesiola continues to fascinate a stream of visitors including recent CSI grads.

Contradiction: The imaginary gap between the historic Church and the Movement in the minds of regional colleagues calls forth a more telling story.

DELHI Religious House: Delhi

External: Uncovering good ITI and LENS course sites releases new energies for formulation and recruitment. Treks to Allahabad and Lucknow, and RSIIIA lay and clergy visitation reveals growing movemental solidarity.

Internal: House welcomes sojourner Feodora Mattos and increasing numbers of regular House Church and Ecclesiola guests. Witnessing the spirit growth of our regional colleagues pushes us to intensify the hunt for a larger House.

Contradiction: Discovering endless joy in daily, intensified expenditure, rather than expecting fulfillment at quarter's end.

MADRAS

Religious House: Hyderabad

SINGAPORE

Religious House: Kuala LumpurReligious House: Singapore

External: Held second RSI of the quarter in Singapore (it was 2nd of 5 consecutive courses in Singapore and Malaysia.) Held second Ecclesiola with many new faces around the table.

Internal: Firmed up detail of plan to move next week II to a new facility-- address: 24 Sea Avenue, Singapore, 15. Colleagues from the region volunteer their help for the move.

Contradiction: Allowing more colleagues to see that they are responsible for both the fantastic things which have happened in the Church in Singapore and the future of the Movement here.

Religious House: Jakarta

HONG KONG

Religious House: Hong Kong

External: House sojourners catalyze colleagues with a new urgency of RSI recruitment through mailings, calls and personal visits. Beginning to see the results and new possibility of extended recruitment force.

Internal: Celebrate new arrivals to the House - Cheng Sei Leung and Baker children, Paul, Meg and Craig. Hear report from Base Centrum.

Contradiction: Sustaining focused and concrete engagement with a variety and time design and limited corporate time together for work sessions.

Religious House: Kaohsiung

External: Student RSI held with 20 around the table and registrations for Week 7 PLC now stand at 15 definite with more coming everyday.

Internal: House experiences continual growth from all sides as James Elliot son of Dick and Marilyn, arrives, bringing the total present for House Church to 14. Welcomed Mrs. Hsu, Joseph's mother, to House Church.

Contradiction: Amidst total possibility in terms of penetration and formulation how refocus troop strength to find out what we should do?

Religious House: ManilaReligious House: TaipeiReligious House: CebuReligious House: Davao

External: First regional mailing completed as 200 letters mailed or delivered to all grads. Visit to local parish priest for RSI recruitment results not only in prospects from his parish, but the offer of his church and school for course site.

Internal: House joyously welcomes Purita Morala, SEAPAC ITI grad, for intern year in the Order at House Church. Radical encounter with the Mystery as House studies Contemplation paper in Ecclesiola.

Contradiction: With the intensification of penetration, find ourselves caught without systematic formulation structures for movement in outlying metros and polises.

TOKYO

Religious House: Seoul

External: PLC held in key central metro of Taejon for 26 persons: highlights--intensive faculty training with faculty of 8 colleagues, 2 future PLC requests emerge and strong request for a metro Religious House made by local leadership.

Internal: Lunar New Year celebrated with "Global Guild Yoot Game"; Ken Filipski and Jane Clare Teller return to Japan.

Contradiction: All 3 Academy trained Korean speaking regional pedagogues unable to teach in Taegu PLC scheduled for 50 points up lack of 1st teachers to draw from.

Religious House: Fukuoka

External: Penetration trip to symbolic city of Hiroshima 'returns' key authorization from religious orders and insight into House's restatement of malaise of the church in Japan.

Internal: Recent grad, key Canadian missionary of Korean urban church, attends House Church with family. Walking through new PLC manual during pedagogy raises question of "How would you be an ITI Dean?"

Contradiction: Keeping balance between 100% commitment to recruiting forthcoming courses and 100% commitment to future comprehensive vision.

Religious House: OsakaReligious House: Tokyo

External: Asian Productivity Organization gives approval of \$20,000 proposal to sponsor LENS in 14 countries in Asia, the Sub-Continent and the Middle East. Countries include Iran, Shri-lanka, Indonesia and Thailand. All rejoice as the Roman Catholic Bishop of Tokyo indicates that he will attend the PLC Week 8.

Internal: Internal battleplan sees the House emerge with 10 priorities for the year and 400 tactics ordered by weeks to cover the next 4 quarters. Andrew Hashiba sent to teach his first course in English, in region Osaka.

Contradiction: Now that we have completed our tactics system, what is the symbol that will enable us to shift our operating procedures and begin making a new system workable.

Religious House: Sendai

External: Recent course grad joins long established cadre producing ecumenical and global effect.

Internal: House discovers that three simultaneous events in House is a cabaret not a contradiction.

Contradiction: Trying to find significant action in a time that is marked for waiting.

SYDNEY

Religious House: Perth

External: House Church celebrated in home of regional colleagues 50 miles from the city, enables imaging of the next two quarters with key colleagues. Sojourner assigned to United Nations Women's meeting is startled by the evident resurgent signs and takes names for LENS recruiting.

Internal: House now in new location: 12 Surrey Street, DIANELLA, Western Australia, 6062. Reassigned families have been arriving one by one all the week. Three Mowanjum youth arrive and commence school.

Religious House: Perth (Continued)

Contradiction: Focussing missional anxieties into the missional thrust, while holding the standard of excellence in the set up of the new House.

Religious House: Darwin

External: Secured central city office as signal community node and headquarters for Primal Guild activities. Excited response from LENS grads to invitation for Sat. night proto-guild planning and LENS marketing followed by barbecue. Attended community leaders meeting.

Internal: Celebrated arrival of Margaret and Joshua Krauss and Peter Duffy. Hosted Ed Shinn, spinning Area Research Assembly miracle stories, on way to Oombulgurri, and nurse Betty Gowers headed in same direction.

Contradiction: Skiing before the avalanche of church and secular authorization demands immediate tactical action while sensing the need to plan where we're headed.

Religious House: OombulgurriReligious House: Adelaide

External: Week II PSU representing 3 metros, finds excitement rising as worked on cabaret. Galaxy decides to take responsibility for the Ecumenical Parish. Lunch with Dominican Priory reveals deep concern for revitalizing the spirit depths.

Internal: As we decor new collegium room, we rediscover Sunday School songs. Cadre meet in own private room at House. Push through the visioning for the next 18 months.

Contradiction: Giving form to our intuitions about the present to free us to seek wider horizons.

Religious House: Melbourne

External: Metro cadre presents data from initial research into 5 inner city areas and experiences awe and passion as Ecumenical Parish is chosen.

Internal: Job research yields unexpected possibilities with one already secured. External and internal planning with House resettlement in the midst sets us up for a wild new-look quarter symbolized by reception lounge and ICA office. House Church sends out Rhonda Robins to Perth, and receives announcement that Refior family expects to change to trio.

Contradiction: Holding the tension between getting palnning to required state of perfection of detail and launching into the tactical action for the quarter.

Religious House: SydneyReligious House: Brisbane

External: Everyone tries to recover balance as floodwaters recede and clarity out of Area Summer Research Assembly is appropriated; one Galaxy church gets catalyzed by flood-relief role and leaps toward launching of the training quarter.

Internal: Anne Edwards, Dierdre Heath and Charles Jago (with establishment haircut) received as interns.-

Contradiction: Tidal wave of possibility paralyzes with demand to be everywhere doing everything while pressure point research is just begun.

SUVA

Religious House: Majuro

External: Wuts (flower garlands which symbolize honor) worn by 40 employees and friends in KITCO, church and government complex, create Saint Valentine's Day on Majuro as a celebration of hope.

Internal: Emphasis on parish preparation allows Education PSU to focus a year of brooding and articulate image contradictions in the Marshalls and new structural possibility of impacting them is revealed in Sodality workshop on cabaret dynamics.

Contradiction: Embodying and sharing the reflective tools which allow a catalytic signal to emerge as a reformulated structure.

Religious House: Apia

External: House hosted the high school staff-plus (32 in all) for a celebration to launch the new school year! One longtime staff member declared it 'the best ever!' Bi-monthly Newsletter sent to all S. Pacific grads. Plans drawn up for a sign for MHS.

Internal: First Ecclesiola with Journey to Ixtlan and St. Teresa. In the midst of a strategizing PSU puzzling over how to break loose grads to see that they can stop by the House any time without waiting for Metro meetings, etc, a grad drops by unexpectedly to introduce his wife.

Contradiction: Doing the comprehensive, in depth planning that was needed weeks ago.

SAN FRANCISCO Religious House: San Francisco

External: CSIIIA is significant occasion for number of old colleague families in the region. LENS luncheon of 67 from Primal Guild Experiment followed up by establishment of the ICA office and visit battleplan at coffee breaks, athletic clubs, happy hours, and dinner clubs.

Internal: San Francisco House puts its new roots down in the Ecumenical Parish (The Mission District) and the Mission 5 Primal Guild Experiment in 23 room old victorian mansion, at 955 South VanNess, zip 94110. phone: 285-1391. First Ecclesiola at Silver Star Mexican Restaurant.

Contradiction: The loss of sacred space in the transition of locations loses depth spirit struggles otherwise held in check.

Religious House: San JoseReligious House: Sacramento

External: Local Church consults in Reno and Stockton are 'filling up' with reservations. First LENS grad luncheon had 100% participation of all Sacramento grads.

Internal: Youth impacts House with hidden talents in telephone style which secures higher percentage clergy appointments than anyone else.

Contradiction: Having difficulty believing in our own miracles.

Religious House: Seattle

External: The first mobile Religious House in the region was experienced in Portland Week II with an explosion in RSI recruiting and imaging of a Portland Religious House for the near future. Opened up new area for RSI in the speaking appearance at an Education Committee meeting.

Internal: Received new sojourner and realized the impact of a new face and creative mind in the internal House operations. Witnessed poverty, chastity and obedience of piano dual team at elegant open House.

Religious House: Seattle (continued)

Contradiction: Living amidst the demands of 20 programs of the movement while still operating out of the old style of recruiting RSI one to one.

Religious House: Los Angeles

External: Three Field Visits in Santa Barbara, Los Angeles, and San Diego metros have 100+ in attendance, recruitment in RSI continues in San Diego despite gas rationing. Guardians in L.A. are 'off the ground' in Jim Reed's airplane for an aerial view of the region.

Internal: House style shift seen in enabling the field visits and hosting Justin Morrill and John and Anita Gibson from Rapid City Galaxy Church. Children celebrate Valentine's Day with a party and valentines for all. Segundo is highlight of Ecclesiola.

Contradiction: Focusing on the mission as 'one thing' while split between the exciting Field Visit follow up and the major push to acquire new facilities and push toward the Parish.

Religious House: Phoenix

External: Fifty participants for LENS April 19 promised by LEAP as result of two of that's organization's grads recommendation. Tenth trek with the metros, El Paso and Santa Fe recruiting RSI.

Internal: Decisional Odyssey with subsequent great E.G. Odyssey may well be the internal highlight of the quarter. Tom Reemtsma 'fellow' journey celebrated with assignments of hosting for House Church and 1st liturgist for Daily Office.

Contradiction: Fear of abyss in Parish Guild Experiment creates paralysis in all programs.

Religious House: Billings

External: Sobering Field Visit happens in Billings! Local clergy and laymen get first big taste of who we are and what gut level expenditure might taste like. Immense amount of loose ends are tied up in arenas of penetration, formulation, and Guild Experiment as Regional Newsletter goes to press.

Internal: Continuous loosing up old images in relationship to Community Called Church spins the House and individuals on down the road to grasping the mission we see our lives as.

Contradiction: Finding out there is a real possibility that we can move mountains...if we're willing to do it with a teaspoon.

Religious House: Denver

External: Continental consult includes Galaxy and Metro or parish core with rediscovery they are both the church. Ray Caruso from Chicago drops in just in time for guardians meeting where LENS follow-up is planned and a task force assigned to remodel Religious House.

Internal: Real live concerned judge, Cloyd Clark, sojourns. Justin Morrill here for consult, given global report at House Church and kicks off week with global emphasis at collegium. Fifty Odyssey manuals prepared for Wk. 7

Contradiction: Walking thin line between winning yet daring to risk failure

Religious House: Rapid City

External: PLC, Field Visit and LENS come off in great shape. One LENS grad says "Think I'll quit my job and join that outfit."

Internal: "With a song in their heart" Steve Allen and Bob Avant impact the House harmoniously as development comes to formulate troops. Sanctification collegium series gets underway.

Contradiction: Developing a plan to effectively plug in the troops.

WINNIPEG

Religious House: Anchorage

External: Breakthrough in RSI recruitment with new monologue spin call model. First calls on key church in the Inlet Parish uncovers scores of committed churchmen ready to move.

Internal: Phone call from colleagues in remote polis of Bethel announcing their coming to House Church brings new life and reminds us of our Regional responsibility. House experiences "Harold and Maude" and resurgence at same time and surprised when we all identified with Har.

Contradiction: We find ourselves operating out of what is natural not what is possible.

Religious House: EdmontonReligious House: Saskatoon

External: First Galaxy Sodality meeting has 35 participants plus priorship from the House. House finds itself being the sustaining church as news of the death of colleague's father comes in midst of E.G. structure in her home. RSI nets total success

Internal: House is converted into training center for RSI as area and Centrum priors visit in the midst of settling in by new troika couples. External thrust is refocused and new Academy reports at House Church

Contradiction: In midst of all the goings-on how to hold the tension between immediate and long range without falling off either side.

Religious House: Winnipeg

HOUSTON

Religious House: Amarillo

External: Drab neighborhood transformed into blaze of color as first Ecumenical Parish awakenment signs go up on lamp posts, telegraph poles and store windows. Regular visits to outlying polises result in 3 more registrations for RSI.

Internal: Nancy Graves and children and Richard Jarvis, Academy grads from Portales N.M. attend House Church. Initiation of teaching guild uncovers old Denton cadre member and excites top administrator who gives Fred Lamphear permission to write his own training needs.

Contradiction: How to receive the ambiguity that the Lord gives seriously (as possibility) and not cynically (as defeat).

Religious House: San Antonio

External: Clergy visits net 5 local congregation consultations to context church leadership in RSI and comprehensive training program. First House Church becomes major metro event as table is full.

Religious House: Memphis (continued)

Internal: Ecclesiola welcomes Brent Pruett and Don and Fran Blankenship who own the store where we buy our House Church supplies. Segundo proves to be an 'artichoke study' - every week revealing new levels of understanding and relevance.

Contradiction: What is the exciting, workable, necessary formulation structure, when are we going to have time to build it?

Religious House: AtlantaReligious House: Miami

External: Metro cell does final planning for first parish miracle. Great possibility for RSI open in contacting student at community college who gets credit for course. Clergy councils held in Orlando solidify May PLC

Internal: Radical House cleaning and preparation for RSI at House. Week to sign construction.

Contradiction: How to engage colleagues in midst of the excitement over concrete work in parish.

CHICAGO

Religious House: WichitaReligious House: Lincoln

External: Week of authorization includes both secular and ecclesiastical breaklooses: development calls with city fathers and lecture given at large city Methodist church on the Ecumenical Movement

Internal: Saint readings from Nigg on Tuesday and Wednesday night provide renewal of context in nitty-gritty tasks. New E.G. song book produced and smooths out some deep ruts.

Contradiction: Internal life running smoothly as external focus blurred.

Religious House: Kansas City

External: Penetration begins to widen in scope as registrations and promises flood in for Wk. 7 RSI and clergy visitation in Atchison, Kansas finds pastors there ready and willing. Galaxy couple tries out a Geneva based liturgy on us that they'll be using at annual minister's conference

Internal: House images of Westport Parish stirred up again with PSU that develops short-course models and congregational files on all our parish churches. Same weekend we are invited to sit on a meeting of all neighborhood social service agencies.

Contradiction: The longer we stare at the imaginal gap between penetration and formulation, the wider it becomes, with the question always looming "How is it that the movement is authentically sustained?"

Religious House: Minneapolis

External: New colleagues are created by Green Bay RSI and Minneapolis PLC. Strong clergymen from Whittier Parish among grads. Many visitors (Chicago, Saskatoon, Winnipeg and elsewhere) impact the House and region.

Internal: Very quiet mood as all hands at the PLC or on LENS calls. Childrne's cabaret keeps spirits high.

Contradiction: Having passion for every bit of the mission all at the same time.

Religious House: San Antonio (continued)

Internal: Lease signed on building for Religious House and major renovation begins to recover the sacred space of an old rectory in Mexican-American community. In-kind visits win business interest and open LENS doors.

Contradiction: Seeing time as the enemy.

Religious House: Oklahoma City

External: RSI with 25 nets Task Force help for Galaxy, Primal Guild and potential intern. Five Conoco executives spin into other world as they seek resources to train their top 100 research and engineering men. Ada anticipates RSI over 30.

Internal: Economy publishing renews history by employing someone from the House (4th person in 5 years).

Contradiction: No structure to enable the focusing of the individual efforts of metro leadership.

Religious House: DallasReligious House: Tulsa

External: RSI, RSI, RSI focus of Wk. II troubador treks to Ft. Smith and Tulsa micros and Week I recruitment; door opens wider into spring quarter with guild lunches in being and kick-off Galaxy/New Women's Forum/Metro Cadre and House (monthly Tuesday night structures) meets enthusiasm.

Internal: Living room recruitment as House is visited unexpectedly by two neighborhood churches, recruiting membership. Segundo study - "transparent, fantastic"...

Contradiction: In midst of constant encounter with response to "I'm ok; you're ok" in RSI recruitment, articulating the depth hook that allows a man to sign up rather than saying "yes" but not right now.

Religious House: Houston

External: Metro focus on local church sharpens; addressed 60 excited church school teachers; lead Sunday school class of 12 excited key adults in a Northline 5 church; Galaxy pastors host 7 excited clergy for lunch.

Internal: Segundo!! The new war cry!

Contradiction: Holding our short term anxieties in check as we build long term victory.

Religious House: New Orleans

External: RSI follow-up in Baton Rouge skyrockets metro cadre to 17 souls overnight (including fantastic Southern Baptist family). Region holds signal LENS as the first step toward establishment marketing for spring.

Internal: Breakthrough in style of mailing, with the House writing a brochure, in 'concrete simpel secular language' to give witness to the unformulated grads.

Contradiction: Clergy care system incomplete resulting in unmovementalized grads and cancelled Mobile RSI.

Religious House: Memphis

External: CSIIIA recruitment puts faces on print-out names and pushes us to new creativity relative to a data system. Galaxy Council welcomes an RSI grad of one week ago, who later in the week decides to donate a \$600 copier. Sodality swells from 14 to 19 in a matter of minutes.

Religious House: St. LouisReligious House: Peoria

External: Recruitment workshop in Champaign-Urbana Saturday and decision to celebrate rebirth of metro cadre: Peoria evidence new vision. Five to Regional Galaxy consult and PLC grad in Champaign promises 5 to Field Visit. Three Black clergy positive (Signs of Parish Galaxy?)

Internal: Wayside Inn bubbles with flow of movement through doors with guests Ken Gilbert and 5th City development team seeking hospital residency and funds for 5th City, and House Church swells again with 4 guests.

Contradiction: As long march of winter quarter clarifies reality of mission, constantly releasing ever-present mystery behind mundanity of world at hand to all too-lucid metro cadres.

Religious House: Milwaukee

External: Week II Galaxy Consult of 80 people met for the Regional Continental consult. Businessmen pull off first LENS in model of one LENS course per quarter for the next 20 years. Next stop May.

Internal: Hammond, Indiana clergy couple visit House and register for PLC. Ecclesiola brings deepened sense of gifts of city and parish once you've dealt seriously with the new morality for our time (via Segundo).

Contradiction: Not daring to ask people for more than they are willing to give.

Religious House: Chicago

External: The House practically experiences its global relatedness as Takashi Oda is sent to Japan to continue his studies and as Anthony Chika Aguanunu arrives from Nigeria for a brief sojourn as he enters Roosevelt University. Charles Moore returns from Area Houston where he participated in the opening of the Dallas and San Antonio Houses.

Internal: House experiences Ecclesiola as being the spirit glue as Segundo indicative morality for the church gets grounded in its practical life.

Contradiction: Learning Don Juan's lesson of detachment from routine.

Religious House: Indianapolis

External: First course ever held in Terre Haute comes off in fine style, creating many new colleagues. Formulation banquet held for a Galaxy church has more than half of the grads in the congregation in attendance

Internal: Pam Wampler checks in to begin her sojourn of several weeks.

Study of Irish's paper on Niebuhr's thinking on the church raises answers and questions that go beyond the Niebuhr seminar of RSI.

Contradiction: A last minute scramble to pull off a course has again delayed our long range planning and strategizing.

Religious House: Cincinnati

External: Weekend finds Cincinnati metro in swirl of activities as we have at one time our Regional Consult and meeting with local pastor for his initial look at Ecumenical Institute. Weekend closes with House-Guardians- and Galaxy being represented at our overnight parish sign.

Internal: We received an intern family and installed a fellow family in on night which also sees as a result a pastor that had previously said no to PLC changing his mind and signing up for upcoming course.

Contradiction: Cincinnati struggling to keep local movement one movement.

Religious House: Detroit

External: Ypsilanti Local Church RSI held with 51 around table; reveals Phase IV as people of iron. Same weekend has Region PSU #3 doing indicative planning pushing to signs needed in community. Painful demands celebrated in ecstatic laughter. Region-staffed office day initiated.

Internal: Pard Keyser, local Presbyterian clergyman and family are guests and Celebrant at House Church. Leora Johnson attends Ecclesiola second time in a row saying "I feel like I've known you people all my life, I feel so at home." Segundo study continues to be high point of struggle.

Contradiction: No concrete plan for PLC or LENS recruitment.

Religious House: Cleveland

NEW YORK

Religious House: Pittsburgh

External: Two great RSI's happen with power as new decisions emerge to do the metro. Having located the new Pittsburgh House in the middle of the target parish, building and enabling the financial models that will give us freedom to move on existing regional consensus are crucial.

Internal: Second and third jobs for all House members push us to a watch schedule that holds us symbolically in being over against the reality that there is no moment that everyone is 'in.'

Contradiction: Deciding that the role of comprehensive model-builder is everyone's assigned role.

Religious House: Rochester

External: The Binghamton RSI cut over against the image "Nothing good can come out of Oxford," as the Oxford cadre picked up the enablement with pride that their small town was hosting such an event. The PLC was held in our prospective home location - St. Bernard's seminary.

Internal: After looking one week, one third phase intern found employment and 'began working' for the first time in 25 years. Prior to that she just raised 5 children and one Galaxy in Binghamton. Two job promotions make the bank account swell.

Contradiction: Metro team structures, while allowing us the detailed continuity in the metros has subtly caused parochialism relative to cross regional consciousness, for example "That's not my responsibility."

Religious House: RichmondReligious House: WashingtonReligious House: Baltimore

External: Power of local man is demonstrated as spirit black churchwomen and LCX layman register for RSI and PGX. LENS grad decides to get 30 from parish to next LENS.

Internal: Tension between universal and particular experienced as House celebrates at Jade East and as extending discussion turn individual struggles into a corporate journey.

Contradiction: Seeing mission through screen of self-importance fails to allow for free self-giving.

Religious House: Philadelphia

External: The work with the LENS course spins us through the political triangle and find ourselves visiting the Councilman of our district who says "Yes I'll come to the next course" as well as Court of Common Pleas judge who is in a prospective Galaxy Church.

Internal: Morning LENS pedagogy excites House to a firmer and clearer understanding of LENS and its address to participants, a perpetual astonishment overwhelms us when we go visiting.

Contradiction: Trusting that your glass marble is a diamond.

Religious House: New York

External: Two RC sisters and a woman pastor from Harlem represent the New York metro at the Rochester PLC. The Galaxy exhibits iron resolve as they brave one of the year's worst snowstorms to meet at the House for Wk. II Sodality. The House hosts Bishop Joshi and Kim Jefferson of the Board of Global Missions of the United Methodist Church.

Internal: Snowballs, hot buttered rum and singing on Friday night and the exploding of the significance of House Church reporting as symbolic and imaginal events turn our Wk. II into a dance. The House discovers that eating on 12¢ a meal can be fun.

Contradiction: Rehearsing and celebrating the "day after dayness" of the task as a gift rather than a burden in the midst of the time and space shift that's required.

Religious House: Garden CityReligious House: New Haven

External: Plans sown in Quarter II reap joyful harvest of RSI registrations as spirit-filled colleagues participate in Poughkeepsie blitz. Telephone calls and visitations to some 30 grads in the parish (many from Black Heritage courses in 1968) disclose colleagues and ground us in geography.

Internal: House finds Segundo like a tornado: when it touches ground, all power breaks loose.

Contradiction: Discovering the key that will release the power of the metro.

Religious House: Manchester

External: Our RSI happens! The metro and Galaxy wanted it passionately so they worked hard for it. As a result, the Galaxy claims to families as auxiliaries. Preparation underway for Parish sign by Wk. II task force.

Internal: 24 around the House Church table includes key RSI prospects, newest RSI grads, and returned Galaxy pastor celebrates with renewed vigor.

Contradiction: With all the steam calliopes playing (LENS, RSI, EPX, etc) how do we keep the steam up in the PLC boiler.

Religious House: Boston

External: In our first "overnight" sign of possibility, 15 people from House and metro make 92 personal visits in a one-day LENS blitz in the parish - over 20 people agree to come to a luncheon to hear about LENS. Current parish LENS registrations include the executive directors of Goodwill Industries in Boston and South End Neighborhood Action Program.

Religious House: Boston (continued)

Internal: House member selected "Queen of the Missionary Society" of a parish church; House Church includes seven guests including a couple from the parish.

Contradiction: Holding both poles - with the guild experiment moving forward, how to keep fires under LCX, RSI, and PLC.

Religious House: Portland

MONTREAL

Religious House: TorontoReligious House: OttawaReligious House: Montreal

CARACAS

Religious House: Caracas

External: LENS promotion reaching peak. RSI recruitment intensifies.

Internal: House begins to take shape.

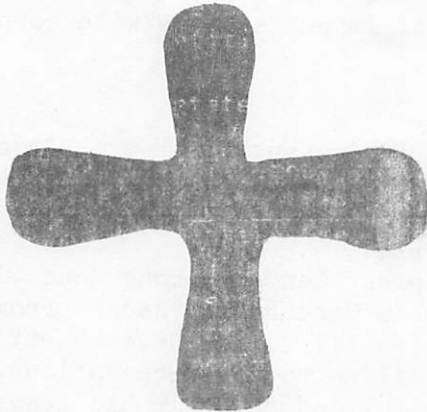
Contradiction: Nurture and system for ITI grads.

BASE CENTRUM

External: Bishop Joshi of Bombay is welcomed at Temple House Church and addresses Monday morning plenum. Send out LENS advance teams Bob and Sandra Rafos, Sheldon Hill and Steve Allen. Projected ITI assignments are given. Uptown LENS has 30 including American Indians from Winnipeg. Academy celebrates with a Ball and moves into Ur Image course.

Internal: Task forces include 3rd floor painting and space expansion to include program for 45 infant-mini-pre-and kinder schoolers; order funds are reviewed; Vatican II documents studied with bonus of two Oblates who drop in to see Charles Morrissey (now in Manila) and stay to participate in Task Force. Order celebrates the baptism of Jan Damien Rozendal. End of quarter celebrations abound with many sectors and teams viewing The Sting. Wk. II pedagogy continues depth study of Neibuhr's Meaning of Revelation

Contradiction: Given the increased consciousness of the need to objectify social repentance which has been revealed particularly this year, how do we intensify the celebration of Lent while at the same time standing present to the secular symbolic journey.



Hate evil and love good;
enthroned justice in the courts;
it may be that the Lord the God of Hosts
will be gracious to the survivors of Joseph.
Amos 5:15

LONDON

Religious House: Glasgow

External: Three nights in a row in Edinburgh metro move cadre and reveal willingness of grads to provide authorization. Stories by Christine Kennedy about Summer '73 amaze other guests and help build movement memory. Presence of House at speech by Fr. Dan Berrigan helpful with RC.

Internal: Smallest Ecclesiola turns out to be longest with push from Don Juan and the Saints. Saturday battleplanning for Edinburgh cadre formulation and spring course calendar releases deep excitement as we see how far we've come and how far we can go.

Contradiction: Sitting on our amazement over how much else ITI recruitment has broken loose long enough to finish ITI recruitment.

Religious House: Bristol

External: Beginning to reap abundant harvest of past six weeks' work as recent grad signs up for ITI and several others come closer to a firm decision. Foray into Cardiff metro on Week II strengthens relationships with Anglican Church in Wales.

Internal: Shifting gears in Week II workshop to enable us to handle both short term (ITI) and long range (spring courses) goals; signalled by renewed intentionality in our symbolic life, missional fastidiousness and House decor.

Contradiction: Building the practical design for bringing off the winter quarter goals while preparing the ground for the spring quarter.

Religious House: Manchester

External: Infiltrated European Christian Conference with hardnosed ITI recruiter; began to create movemental church in unlikely places; enjoyed abrasive encounters with recalcitrant cadres.

Internal: An indeterminate number of denominations and 4 races gather for lively Ecclesiola in the sodality of which the real issue of the current general election was discovered to be freedom.

Contradiction: Going into overdrive on ITI and low gear on spring courses simultaneously, a la Don Genaro whilst planning to move House.

Religious House: London

PARIS

Religious House: Paris

External: Intensified formulation with visits and second grad training seminar while continuing cultivation of French church.

Internal: Entire House went to see a modern Cinderella play - Cold Duck - and after lengthy discussion decided original Cinderella was better.

Contradiction: Sustaining the momentum of impact systems with corporate series of structures.

BRUSSELS

Religious House: Brussels

External: ITI, LENS and RSI recruitment in Brussels, Antwerp, Brugge, Rotterdam, Europort, the Hague, Utrecht and Amsterdam. Tentative move by Dutch Reformed congregation, Amsterdam, to release 800 seat sanctuary and parish house for us at no rent.

Internal: Future foreshadowed as Development Centrum: Hong Kong (Joe Thomas, John Patterson) raised money in Utrecht and Aachen from Dutch and German church authorities for Asian ITI's, did Development and 5th City collegium for House. LENS mailing to 250 corporations.

Contradiction: A few interns in a House full of priors would leave less time for priors to dialogue with Satan.

FRANKFURT

Religious House: Frankfurt

External: Qtr. IV schedule begins to fill up as follow-up calls with PLC grads result in RSI week 5. Excitement for Qtr. IV PLC Frankfurt grows as site is reserved. Contact with Prof. Frany von Hammerstein, director of Action Reconciliation, Berlin, leads to 4 ITI possibilities.

Internal: Hitting the pavement every day is no longer a problem as public transportation strikes. Impact of sodality comes anew as House begins indicative battleplanning at Ecclesiola.

Contradiction: Lately, every time we shoot to hit a rabbit we hit a deer. How are we going to catch all those rabbits still running loose?

NAIROBI

Religious House: Nairobi

External: Visit with presiding Bishop of the Methodist Church of Kenya brings enthusiastic nod and PLC recruits.

Internal: The Barnes children arrive, things take on a new look.

Contradiction: Seeing how the nod we have at present is expanded to ITI permission.

BOMBAY

Religious House: Bombay

External: The extended circuit ride team hits Nagpur after great authorisation breakthroughs in Jabalpur and anticipates repeating the miracles. First paid ITI registration received.

Internal: Spirit flows through indicative battleplanning workshops relative to Byculla and future guild prospects.

Contradiction: Like the horse and rider halting at the abyss - deciding to leap into a new phase.

DELHI

Religious House: Delhi

MADRAS

Religious House: Hyderabad

External: Bangalore consultation of 25, including 5 sisters, 5 clergy, an Archbishop and Bishop of the Roman Catholic and CSI churches - produces 13 strong ITI prospects.

Religious House: Hyderabad (continued)

Internal: "Cabaret Ecclesiola" releases Ashram spirit and marks a new era in Ecclesiola style. Received ITI grad Luther Jacob from Vijayawada Region on one-week Ashram sojourn.

Contradiction: Keeping the ITI, Summer and RSI wheels spinning, and all moving in the same direction.

SINGAPORE

Religious House: Kuala LumpurReligious House: Singapore

External: Held final Ecclesiola in old location. Jim Oberg continues penetration and formulation work in Kuala Lumpur Region. Preparations finalized for trips to Medan and Jakarta Region.

Internal: Welcomed interns Chen I An, Chen Kheng Lan, and their two children and sojourner Kheng Joo (Kheng Lan's brother) and guest Chen Tsueh Yen (I An's mother). Sue Oberg returns from Kuala Lumpur region. Religious House now located at 24 Sea Avenue, Singapore, 15.

Contradiction: Enabling more of our colleagues to realize that they are responsible for the fantastic things which have happened to the church in Singapore as well as the future of the movement here.

Religious House: Jakarta

HONG KONG

Religious House: Hong Kong

External: Week focuses around ITI as we contact past ITI grads, discover that one grad (clergy) has quietly enabled his church to budget for ITI and decide to send 4-5 participants.

Internal: Formed Task Forces to deal with practical edge of House - recruitment for RSI and ITI, and Development. Daily Office witness transformed chained-up, half-burnt mangy dog we pass every day into symbol of the burden of the suffering soul.

Contradiction: How do you create a filing system and keep the data correct on all grads (ITI, RSI, LENS) in 2 languages?

Religious House: Kaohsiung

External: We received with exceeding joy the gift of the possibility of overflowing our course facility with PLC registrations, with many recruited and personally sent by the Moderator of the Presbyterian Church and the Vicar General of the Roman Catholic Church.

Internal: Blessings abound as the Bishop of Kaohsiung honors us by stopping in for afternoon tea and all of Phase I return to school after a long winter's vacation.

Contradiction: Finding solid ground to stand on before jumping into the abyss while the Lord plays "shift the universe" with us.

Religious House: Manila

External: Tri-regional meeting on ITI authorization strategy attended by priors; hard work culminates with a nod and a workshop with Cardinal Rosales. NCCP Exc. Comm. is addressed on context of EI and ITI. Consults on programming held with YMCA and YWCA.

Internal: Ecclesiola vows us again. We tie the study and cabaret together which is the key. "Children's Bible Group" (naming yourself is hazardous) formed in midst of Week II structures.

Religious House: Manila (continued)

Contradiction: Keeping on working while waiting for that "crucial" response.

Religious House: Taipei

External: Shift of pedagogy and English training away from House enables colleagues to pick up more responsibility for pull off. First day of LENS marketing nets 2 yesses and 5 organizations to distribute information.

Internal: Weekly study of Lin Yu Tang's My Country and My People reminds us of the wealth of Chinese images and stories available to ground TWLI. Charting of the week continues to hold us before our own journey

Contradiction: Enabling colleagues to see that living life and being the church are the same.

Religious House: Cebu

External: Signal RSI in Iloilo metro with 42 including 27 Roman Catholic, 4 polises, 2 wives of ITI grads demonstrates anew the power of metro cadre formulation. Marathon battleplanning with Fr. Charles Morrissey results in launching of authorization tactics with key visits to Julio Cardinal Rosales, Archbishop of Cebu, Bishop Mascarinas of Tagbilaron.

Internal: Besides Father Morrissey, guests included Fishel, Bacera, Vergara and Elizondo, straining guestrooms to glorious limits. Cabaret-sodality features Lapu Lapu City song writing and reenactment of Magellan's Last Stand. First of 3 primal guild PSU's gathers basic data

Contradiction: When new aspect of God's will is disclosed in mid-quarter, how to reorganize all components of our missional thrust without missing a step.

Religious House: Davao

External: Movemental consciousness heightened as House sends forth members to two other regions relative to employment possibilities and promoting work with the established church.

Internal: Poetry reading in pedagogy reveals hidden and humorous talents. Fear/fascination strikes again, this time in study of McClesky's report on "the Guild Experiment." Study of poverty paper in Ecclesiola is an address on all.

Contradiction: Being confronted with many different demands, how to hold one vision so that we are willing one thing.

TOKYO

Religious House: Seoul

External: First PLC held in Taegu metro with 27 key churchmen from Methodist, Presbyterian and Holiness traditions. RSI held in Seoul metro with 11 participants hosted at the Religious House.

Internal: Ecclesiola continues to be depth spirit care with Hunter-Warrior conversations and Teresa paraphrases.

Contradiction: Our penetration schedule is operating at full capacity yet our lack of work-in troops has blocked our metro Ecclesiola schedule begun last quarter.

Religious House: Fukuoka

External: Implementation models for metro formulation take form as House builds detailed metro information handbooks. Recent course grads requesting further contact with course participants opens gate for ITI recruitment.

Internal: PLC Times/God lecture at pedagogy gives House new impetus in creation of key illustrations from its experience of Japanese culture. Finance model and image enables House to see again stark reality of permeation role as key demonstration arena.

Contradiction: Resettlement of key regional family to remote area calls for revising iron man battleplan.

Religious House: Osaka

External: First PLC held in Religious House produces corporate explosion of six nationalities and five denominations with Mrs. Nishihara cooking the closing feast. Week II of gridding in Osaka discloses 3-level local social structure network

Internal: Received Sandra Clout as fellow in the Global Order, received and sent out Miss Shikata as Wk. II sojourner, received Fr. Ludo Goossens CICM for one month sojourn, and Ken Filipski, Father Sasaki and Andrew Hashiba for post-PLC evaluation and visiting.

Contradiction: Have not found a way to expose 'the urgency' to necessary Japanese Roman Catholic and Anglican priests.

Religious House: TokyoReligious House: Sendai

External: St. Valentine's Day provides occasion for great celebrative evening with business and professional people of Fukushima. Hunger for the deeps was overwhelming. Recent RSI grad uses charting to teach new medical insurance requirements to hundred of fellow doctors.

Internal: Five day sojourn of high school senior during her examinations to enter Sakura no Seibo Junior College opens our eyes to style shifts needed for interns.

Contradiction: How to simultaneously push form for the secular and spirit for the religious.

SYDNEY

Religious House: PerthReligious House: Darwin

External: Proto-guild of 15 celebrates decision to market 150 man LENS with 'traditional' buffalo steak and beer barbecue. Resurgence decorated parish node hosts continual stream of guildsmen and intrigued visitors.

Internal: Hosted Doug McCauley on one-day Oombulgurri enablement visit. Three mission stations consensed and in operation after summer reflection.

Contradiction: Having cleared final authorisation and tactics to launch signal survey, find other arenas of regional mission screaming for immediate attention - miracle demanded.

Religious House: Oombulgurri

External: This week witnessed the arrival of new intern and Oombulgurri nurse Betty Gowers, which has given a new sense of stability to the community. School opened with 12 in the Kindy, 30 in the lower primary and the commencing next week of the upper primary with 20.

Internal: Our internal life was highlighted by the weekend auxiliary which reunited our team in common visioning after prolonged separation

Contradiction: We have not found a way to symbolize long range planning and hence lack motivity to proceed with necessary intensive practical visioning.

Religious House: AdelaideReligious House: MelbourneReligious House: Sydney

External: Meeting with Catholic colleagues begins a new beat on RC authorization. Began to build models with movement colleagues to initiate parish cell, metro cadre dynamic to forming a proto-guild this quarter. Format for Authorization completed.

Internal: Area House stations assigned and functioning following the summer programme of Priors Council. Mike Chapman, colleague from Dubbo metro visits for strategising. David Mowaljarlai, colleague from Mowanjum sent out after 3 days of strategizing.

Contradiction: In relation to missional objectives financial base is insufficient.

Religious House: Brisbane

External: Fifteen colleagues gather for metro cadre/Ecumenical Parish PSU and receive reports on Summer '74, Area Movement Council, and Oombulgurri.

Internal: Arrivals more abound as Robert Yallop and Walter Hughes are received into House structures and Mary Meyers is sent to Perth; structures roll on in the midst of intensified demands that catalyze awesome depths in conversations and study.

Contradiction: Discerning what we know is there and haven't seen that will uncover strategic leadership in the local parish.

SUVA

Religious House: MajuroReligious House: ApiaSAN FRANCISCO Religious House: San Francisco

External: A community miracle day is set as the Mission Five clean-a-thon is planned and prepared for February 23. The Garfield Park will be renewed and cleaned. Parish LENS course recruitment going well with 54 registrations in hand.

Internal: Pre-wedding celebration for Pat Newkirk and David Kaufman showers the couple to be with gifts for the "missional family" (i.e. the kind that fits into two suitcases).

Contradiction: The strain of living in two houses and corporate life in a third saps needed energies and time needed for intensification of galaxies and guild experiment.

Religious House: San Jose

External: Galaxy pastor obtains appointment with Mayor of San Jose (member of his church), two councilmen and two city planners to hear 5th City story and LENS recruitment pitch - met with positive response and possible LENS authorization. Speaking engagement model along with clergy authorization make powerful duo as RSI registrations come in.

Internal: House hosts many visitors who remind us of our various mission-al arenas - development team Betty Hill and David Reese have some fine visits with metro colleagues, civic leaders and key business men.

Recent PLC grad, a local priest, drops in unexpectedly three times.

Contradiction: Willing one thing while fielding 20 programs all at once.

Religious House: SacramentoReligious House: SeattleReligious House: Los AngelesReligious House: Phoenix

External: Follow-up meeting with 2 Denver LENS grads yields battleplan to recruit 50 people from their organization for spring LENS in Phoenix. The metro has scheduled and is recruiting 3 luncheons for different groups of businessmen in the Ecumenical Parish.

Internal: Segundo study has excited House and metro colleagues, so that colleagues are urging non-movement friends to study book so they will know what we are talking about.

Contradiction: Discovering that long range demonstration strategy does not have penetration plan as an essential component and having to operate out of immediacies.

Religious House: BillingsReligious House: DenverReligious House: Rapid City

External: RSI recruitment blitz in Spearfish and Sturgis nets registration for Wk. 7 course. Sanctification study impacts clergy collegium.

Internal: Colleague donates House 50 lbs of beef to enable stretched food budget.

Contradiction: Jobs take crucial time away from other missional activities and the economic contradiction is still not handled.

WINNIPEG

Religious House: Anchorage

External: One fourth of RSI recruited by registrations coming in from people visited last year and all we did was mail them a brochure this time around. LENS course now a 2-hour for credit course at Alaska Methodist University and ICA gets 75% of the tuition fee back.

Internal: As we approach our first Odyssey in the region, House gets overwhelmed by what it takes and ends up in a state of giddiness.

Contradiction: Those who go searching for breakthroughs only make manifest their own breakthroughlessness...

Religious House: Edmonton

Religious House: Saskatoon

External: Local Church consult and shift in priorship in both Galaxies and cadres creates new excitement for future possibilities.

Internal: Reorganization of team and individual responsibilities and collegiums on gifts/contradictions of area, region, metro and parish, acquaint both new and continuing families to the demands and possibilities of the mission here. Visiting consult team joins House.

Contradiction: We are down the track doing 90 miles an hour but the long-range begins to fade. We're stoking the boiler with immediate responses not knowing where the track has been laid.

Religious House: Winnipeg

HOUSTON

Religious House: AmarilloReligious House: San AntonioReligious House: Oklahoma City

External: Ten congregations represented at EPX briefing; 35 at the table

Internal: Prepare for briefing and PSU weekend by waxing floors, adding new decor to bathrooms, hanging parish banner.

Contradiction: Creating effective way to journey clergy to the possibility that is his - being the new man.

Religious House: Dallas

External: Initiated Dallas Religious House orientation and articulation of history of metros received from metro colleague. RSI recruiting from orbit plan churches continues. Assumed responsibility for recreating Midland Metro.

Internal: Prepared, painted and then moved in 11 adults and 3 children, received new intern and 3 sojourners.

Contradiction: Searching the slopes and sensitizing as to timing re. the whistle points. Need to get all structures spinning and ready so metro can move with power.

Religious House: Tulsa

External: First gathering of 3-fold movemental dynamic - metro cadre, Galaxy and Religious House for journey conversation, visioning, and futuristic workshop, which recreates the vision and comprehensive relationship to the 'one task'. Galaxy and permeation job impacted.

Internal: House preparation for CSIIIA, coming from metro requests rather than quarter design, breaks loose new image as we see the House transformed into a training center, sleeping 20 easily.

Contradiction: Shifting the Ft. Smith course to Ada due to insufficient registrations, and experiencing the need for radical new tactics and style relative to RSI recruitment, to begin now.

Religious House: HoustonReligious House: New OrleansReligious House: Memphis

External: Long range vision given new concretion as the Galaxy participates in its first continental consult and hosts George Lawson of

Religious House: Memphis (continued)

Centrum and Bob and Jean Hansen of Milwaukee. A deep excitement is experienced by all! Four pastors from Knoxville going to Atlanta PLC.
 Internal: New decor including Guild symbols and 3-dimensional NRM charts enlivens not only the external situation but the internal relationship as well, even in the midst of the prayer for new facilities!
 Contradiction: CSIIIA recruitment push reveals friendly but 'content-where-we-are' grads; how do we reveal that what's going on is beyond what they can imagine?

Religious House: Atlanta

External: Parish metro cell lawyer and prior visit key community leader-pastor, and receive green light response at every point. The visit-after-the-fantastic-field-visit - colleagues hang around 2 more hours to hear Cramer's LENS stories.
 Internal: Seminarian non-grads flock to House Church and Ecclesiola - Segundo study and parish workshop leaves them asking for more. Family finances workshop sets the stage for more effective conning of the economic tyrant.
 Contradiction: Never have we been so spiritually ready to recruit courses; never have we been so void of practical penetration models.

Religious House: Miami

External: Parish calling intensifies and the response to LENS and guild is intrigue. A really fine sign is created by a very small cell.
 Internal: Four 'new' 18"x8' tables acquired for RSI course transform the collegium room House goes out for seafood dinner.
 Contradiction: Finding ways to allow the call to be the church to be heard before the burden paralyzes.

CHICAGO

Religious House: Wichita

External: The Mobile Religious House foray to polis city - Salina, journey charts on 150 colleagues and a formulation visit with Bishop Davidson of the Episcopal Diocese of Western Kansas, reveals the awesome vision of actually moving on the whole church.
 Internal: The House becomes the petitioner for the self-conscious church re. radicalizing the journey of colleagues' servanthood, while rehearsing the individual and corporate call through Ancient of Days, a Wednesday night prayer meeting, and Segundo Chapter 5.
 Contradiction: We can take colleagues to the edge of the promised land but we don't have a missional battleplan created to the polis level so he knows he can join in the march to Jericho.

Religious House: Lincoln

External: Galaxy refreshes its vision as area prior visits on Tuesday sodality.
 Internal: House Mardi Gras provides Wk. II celebration in preparation for Lent.
 Contradiction: Objectifying stance in the 26-week timeline.

Religious House: Kansas City

Religious House: Minneapolis

External: Duluth metro continues to build in strength as signal RSI is followed immediately by 17-man Ecclesiola. Some extremely promising LENS calls reinforce what we already know--that large corporations are hungry for significant engagement in their work and community.

Internal: E.G.s go to jail and write letters from prison, as part of Wk. II Bonhoeffer curriculum. Area elder visits House and fills us with a sense of history in special memory collegium.

Contradiction: Refusing to shift our tactics before the Lord finds it necessary to shift them for us.

Religious House: St. LouisReligious House: Peoria

External: Small, life-giving RSI held for the Lord, many from church now carry new hope. CSIIIA recruitment rolls on - deep address to recruiters who have not had course.

Internal: Mystery of life, depth freedom and address of being the church manifestel, to name only a few, in the fish tank in Bishop's room recreated by colleague Ed Henry, unexpected non-grad guests at House Church, study of Segundo and Niebuhr pedagogy, representation in LENS

Contradiction: Screams about collapsed courses and structures are because of loss of opportunity for own spirit nurture rather than concern for those souls who will not get RSI, etc.

Religious House: Milwaukee

External: Parish PSU brings into being East Town, symbol, song, story and battleplan. RSI happening yields Galaxy, Religious House and Academy prospects.

Internal: Task Forces (Parish, metro, Galaxy) beckons House to focus its passion in a particular arena with guild room creation as a key symbol.

Contradiction: March through parish, slogged in the marshes, demands a waltz.

Religious House: Chicago

External: Fifth City Valentine Ball with 200 attending in the Community Cneter evidenced local sophistication. The hosting of groups from Winnipeg, Louisville, and Danville accelerated the extension of community spirit.

Internal: Ecclesiola sodalities brought exciting new clarity on the areal role of the Chicago House.

Contradiction: Holding the tension between internal and external activities through constant and specific contexts.

Religious House: IndianapolisReligious House: CincinnatiReligious House: Detroit

External: Galaxy Wk. II study of Segundo pushes into depths. PLC mailing to all Highland Park pastors represents first step in comprehensive recruiting of local parish clergy.

Religious House: Detroit (continued)

Internal: Ecclesiola with 5 guests reveals power of in-House Ecclesiola as spiritizing event. RSI follow-up/formulation PSU becomes opportunity for discovering struggle with and unclarity on journey of grads.

Contradiction: Haven't broken loose Regional network for recruitment of LENS, PLC, RSI.

Religious House: Cleveland

External: Metro cadre mobilizes task forces for spring PLC: 9 new tactics set in motion. Lorain polis team sets spring course date and invites key clergy to breakfast to market course sponsorship. Allegheny College (Pittsburgh region) agrees to write authorization letter

Internal: Mis-collated Poverty paper with Chastity cover forces us to integrate the focus of the charts. Ecclesiola occasions awe through Segundo study and sodality focusing on Cleveland's ministry to the innocent suffering of the world.

Contradiction: Complexity of mission diffuses parish focus.

NEW YORK

Religious House: PittsburghReligious House: Rochester

External: The last metro to find success in the clergy luncheon was Watertown this past Wk. II, making it the 6th and final metro to use that tool. Buffalo has sprung to life with two clergy collegiums.

Internal: The public school chose the week of the Odyssey to give our 13 children a mid-winter break, and we are experiencing preparation as a never-ending process.

Contradiction: We have not yet grounded our vision of the Guild and have therefore not internalized the Turn.

Religious House: Richmond

External: Fifty-five at 1st LENS in metro is great spirit happening with participation from 2 states and the District of Columbia, including laborers, educators, bankers, and business executives. RSI recruitment and LCX churches yield 10 registrations for Wk. 8 course.

Internal: Collegium lecture on pressure and whistle points pulls together work of S'73 and illuminates the relationship between the direct and indirect tactical system of the NSV. One man decor blitz intentionalizes kitche, office and collegium room.

Contradiction: Maintaining one movemental thrust in the midst of many diverse activities.

Religious House: Washington

External: Wk II PLC best of last 2 years in participation and results - Development trip yields over \$4000 in 3 days. Parish clergy guild convenants to 3 hours weekly; participants - Pentecostal, Church of God, 2 UMC, Presbyterian, FreeWill Baptist, Black Baptist, Southern Baptist - all Black except one who is Galazy pastor.

Internal: Closer to seminary (12 years old) lease. Four teams intensity external thrust using 18-week battleplan on one page. Excellent E.C. manual presented. Crocker visits and fleshes 'servant' image with Segundo's image of 'self-giving.'

Contradiction: Forgot again that we deal with existence structurally.

Religious House: Baltimore

External: "Give your life and it will be given back to you" is found to be true as House members recruit a Week 8 RSI. One recruiter gains spirit momentum as she encounters local churchmen who see all kinds of possibility for their local church.

Internal: The value of housecleaning was revealed as the House experience intense corporateness during an all-out attack on corners, crevices, and cracks. Financial picture looking brighter as intern secures job.

Contradiction: Waiting for a Messiah to get us going when we know we are it.

Religious House: Philadelphia

External: Regional Odyssey "New Beginnings" sets fire to Wk. 7 preparation of major events as local church project participation increased in size for third week in row.

Internal: LENS pedagogy sparkles with intern doing first half of cultural lecture. House continues to shine spirits as spirits shine House.

Contradiction: Embodying story that has us serving success rather than having success serve us.

Religious House: New YorkReligious House: Garden CityReligious House: New Haven

External: An elegant dinner for grads in the parish calls forth old movement colleagues eager to hear the guild story.

Internal: House turns with activity as ten guests arrive for House Church and stay to talk about metro and parish activities.

Contradiction: LENS looms big and we are presently without an adequate timeline and recruitment model.

Religious House: Manchester

External: LCP consult succeeds in intriguing pastor and congregation of host church (not in experiment...yet). Metro colleagues are honored and excited at invitation to participate.

Internal: Two sojourners for Wk. II. OW chart hung at top of stairs. Our weekly spirit trek from a study Thurs. morning to Segundo on Thurs. night and finally a visioning session on Friday morning leaves us spinning with the encounter of so much power.

Contradiction: No clear picture of where we are going with all these events.

Religious House: Boston

External: Break-open 3 session consultation with 32 clergy and wives of the New England District of the Missouri Synod Lutheran Church; 33 attend regional local Church Consultation; 22 RSI in Hartford; 15 come to a parish LENS luncheon including a realtor, bike repairman et

Internal: Guests from everywhere: 16 for House Church after receiving 6 others during the week including the Stowells' son Jim, Vance Engleman from Utah, Tim Lush from Centrum, Garland and Elaine Pollard from the New York Galaxy and Steve Shuler from New York.

Religious House: Boston (continued)

Contradiction: How to build up the base of troops, and over 20 are considering internship and need to be moved to that decision.

Religious House: Portland

External: Metro colleagues and House rejoice as 23 clergy and laymen participate in a local church Field Visit. Plans for bringing a Galaxy into being are in high gear.

Internal: House welcomes Karen Kivimaki and Douglas Clithero to their new assignments in Portland. Karen secures employment within first week.

Contradiction: Do we have the nerve to embrace all the possibility that has been released through the Field Visit?

MONTREAL

Religious House: Toronto

External: Overflowing House Church and 'chez nous' guest night keep front doors swinging as Wayside Inn becomes key penetration dynamic for clergy, laity, and future guildsmen. Fifth PSU of the Spadina Parish series workshops three internal signs and strategic objectives.

Internal: Saint Valentine's Ecclesiola, Margaret Atwood's Survival and missional terror reach the intestinal level and the sickness demon takes over.

Contradiction: Not waiting on the Lord and expecting too much too soon for LENS.

Religious House: Ottawa

External: LENS appointment-making and calling continue with new break-open thrust into government agencies. Galaxy Council bursts into song out of struggle with new contradiction methodology. High excitement over preliminary plans to hold Regional Council at Patterson Church.

Internal: Rubber hits the road, as new probe into finance battleplan possibilities reveals indicated courses of action. Canadian study of Lotz's Northern Realities impacts us anew with utility of social process triangles in focusing data of particular geosocial situation.

Contradiction: Finding the single thrust that will enable us to integrate the various demands of LENS, Galaxy nurture, metro cultivation, and House finances.

Religious House: Montreal

CARACAS

Religious House: Caracas

External: Published a newsletter for grads of ITI and courses.

Internal: Furnishing the Religious House with donations.

Contradiction: Establish adequate nurture system to nurture grads.

BASE CENTRUM

External: Largest teaching Wk. II of quarter is hazarded by blizzard closing O'Hare, but all course come through (one film arrived 9 pm on Saturday). Joe Slicker, Bill and Nancy Crow and Fred Hess sent out in first wave of ITI staff to London, along with the camera as LENS team. Meanwhile at Centrum reservations were made for House troops to come to Chicago for March Council; and special SMC task force continued meeting to prepare course for same, including an all-morning meeting with JWM which broke open new images.

BASE CENTRUM Internal: Shrove Tuesday celebration with crepes, costumes and 4-floor mardi gras for young and old alike prepared for Season of Repentence with traditional Ash Wednesday worship. Preschool held Open House in new space, and E.G. visited incredibly fine Japanese puppet show on Wk. II. Birth of Donald Aaron Bushman was celebrated February 25; son of Don and Mary Laura weighed 8 lbs. 6 oz. Banns were read for Adam Thomson and Joanna Gayle Wright to be married March 2, and for David Paul Marley and Caroline Sue White, David Walter Broadfoot and Sherry Lynn Bryan, David Austin Coffman and Patricia Susan Newkirk, and Robert Gregory Shropshire and Conna Sue Compton to be married March 10.

Contradiction: Necessity for practical form on March without clarity on the happening March needs to be relative to the summer and thereafter