

This is the plan prepared for the whole earth,
 this the hand stretched out over all the nations,
 For the Lord of hosts has prepared his plan:
 who shall frustrate it?
 His is the hand stretched out, and who shall turn it
 back?

Isaiah 14:27

LONDON

Religious House: Glasgow

External: Advent card mailed followed three days later by ITI brochure to every grad. Priors meeting at Area House launches extensive 3-pronged ITI strategy.

Internal: Entire House travels to London for Area Council which creates designs for next quarter's task. Gifts, singing and feasting highlight first Area Christmas celebration.

Contradiction: Building a model that carefully allocates troops and time to initiate the whole quarter's model in the first week of Quarter III.

Religious House: Bristol

Religious House: Manchester

External: Momentum begins to build toward the recruitment of the first European ITI as the quarter unfolded in area planning session and Week 13 regional gathering moved in under ITI umbrella.

Internal: Christmas was celebrated in London with Christmas Eve cabaret and discontinuity. The week was highlighted by a conversation on male and female roles and the celebration of two anniversaries.

Contradiction: How to move into the new year with shaking knees dancing while forming diverse arenas into single thrust.

Religious House: London

PARIS

Religious House: Paris

BRUSSELS

Religious House: Brussels

FRANKFURT

Religious House: Frankfurt

External: House scatters to experience Christmas story and spread movement story through different parts of Germany, Finland, and the United States.

Internal: Christmas feast negotiated between different nationalities and languages intensifies awareness of universality of the Noel happening. New job secured with the American military and including all related privileges celebrated.

Religious House: Frankfurt (continued)

Contradiction: Reluctance to dare out of the eye of the hurricane of at least 5 major universes swirling about us.

NAIROBI

Religious House: Nairobi

External: Visits with Anglican PLC grads in Nairobi finds them interested and wanting to know about future course plans; General Secretary of the Presbyterian Church is glad to hear a good report on the PLC and opens new doors for work with his church.

Internal: Linda Barnes' brother arrives from Europe for holidays as we both corporately and as family units celebrate the miracle of Christmas

Contradiction: The Church is calling on us to work closely with them-- how do we do this as the movement?

BOMBAY

Religious House: Bombay

DELHI

Religious House: Delhi

MADRAS

Religious House: Hyderabad

External: Received nod from CSI and RC bishops in Bangalore to do 50-man clergy-lay Consult in February. Invitations to attend YMCA, YWCA, Mar Thoma and Islamic Studies Christmas functions.

Internal: Hosted 25 guests to secular Christmas tea party for conversational English classes. Intensive week of evaluation and planning for ITI and coming quarter.

Contradiction: Walking the tightrope of conducting RSI courses and recruiting ITI with limited staff.

SINGAPORE

Religious House: Kuala LumpurReligious House: Singapore

External: ITI grad Eddie Thuraisingam is elected president of the Tamil provisional Conference of the Methodist Church in Singapore and Malaysia.

Internal: Area planning meeting in Seremban, Malaysia with representation from Kuala Lumpur, Jakarta, and Singapore Religious Houses in attendance.

Contradiction: Lack of radical decision to leave everything behind and move to the future rather than to do harder and faster what is already being done.

Religious House: Jakarta

HONG KONG

Religious House: Hong Kong

External: Move to new location and redecoring accomplished by Christmas Eve. Experienced on Christmas Day a fire that destroyed surrounding community. A slightly damaged House provides shelter for 15 families in the front rooms as they await resettlement. Occasion provides new contact with Maryknoll Fathers and Sisters.

Internal: Signal House Church at new location attended by colleagues from 3 congregations, as we celebrated the entrance of 3 new Chinese sojourners. All impacted by grids created by new sojourners.

Contradiction: Communications sorely hampered without a telephone while time-consuming repairs require immediate attention

Religious House: KaohsiungReligious House: ManilaReligious House: Taipei

External: Fascinated LENS grads meet at Saturday luncheon to discuss the prospects of a Taipei Guild and the next course. Christmas mailings sent to religious and secular colleagues.

Internal: Participating as House in Christmas dinner at International Church, singing carols in local church Christmas program, viewing "Brother Sun, Sister Moon," feasting and discontinuity grounds fact that intentionally celebrating the expectation of the birth of the Word brings the consciousness that it has already come.

Contradiction: Pulling spirit wisdom of this quarter together into thrust of renewed engagement.

Religious House: Cebu

External: Dumaguette metro RSI planning meeting raises radical sign of corporate responsibility. Iloilo metro ITI grad Gerry Jimenez sent out to teach in Manila LENS. LENS follow-up visit puts two from team and 2 from House in one room with Archbishop (PLC grad), Bishop and parish priest (ITI grad) for a solid hour of story spinning and visioning.

Internal: Painting, walling and construction of 6' x 8' world grid in preparation for Christmas open House. House welcomes new sojourner Adelbert Batoca from Tacloban metro.

Contradiction: Creating more space in small House so region will still feel the need to fill it up.

Religious House: Davao

External: Visit with our local parish priest after "Missa de Gay" uncovers RSI site and prospect possibilities.

Internal: House celebrates Quarter II by seeing "Man of La Mancha" and cleaning House and yard from stem to stern.

Contradiction: Without a vision related to the reality of the future, all the people perish.

TOKYO

Religious House: Seoul

External: Scored 100% with 3 visas for Area Pedagogy in Tokyo while bagging 1974 Seoul ITI site 6 months in advance - Hankook Theological (Presbyterian) Seminary - after 5 minute interview with the President.

Internal: Week of discontinuity with many Christmas celebrations: Kenn Ellison arrives from Seapac Area priors meeting in Hong Kong; Christmas Day celebrated with snow, Korean dress (Han bok), 11 am service at Yang Kwang Church and lunch with elders; men attend Korean cabaret; Ellisons sent out; House goes to Space Odyssey 2001.

Contradiction: With Quarter III rushing down on us like the cold wind from Mongolia we awake from the warm dreams of discontinuity and discover regional pedagogy 7 days away.

Religious House: FukuokaReligious House: OsakaReligious House: Tokyo

Religious House: Sendai

External: House celebrates Christmas at Sakura as Seibo Mass said in Japanese by a German priest. House attends four local churches for Christmas services.

Internal: Grand Christmas dinner celebration begins discontinuous days in which contacts with Japanese friends spur new possibilities for future recruitment and regional engagement. End of discontinuity on the Top of Hotel Tatsumiya overlooking Fukushima metro and imaginally all of Sendai region.

Contradiction: In the midst of several days of Japanese New Year festivities, we're tempted to work as if Wk. I of Quarter III were Wk. 14 of Quarter II.

SYDNEY

Religious House: PerthReligious House: Darwin

External: Received official 'yes' on the survey called "Darwin Community Attitudes Survey" from Department of the Northern Territory; concrete way to actualize our servant role within the community and provide the establishment with much needed information on Darwin's residents.

Internal: Brother Ron (Anglican Bush Brother) from Tennant Creek spends Christmas with us and flies out next day for London and Europe with addresses of European Houses. Five House documents completed and collated on the year's work and future projections, sent off with 1st prior to Area Sydney priors meeting and Summer '74.

Contradiction: Limited library and research facilities available and research a major thrust for month of January.

Religious House: OombulgurriReligious House: AdelaideReligious House: MelbourneReligious House: SydneyReligious House: Brisbane

SUVA

Religious House: Majuro

External: KITCO \$500,000 loan, largest in Micronesian history, finalized on New Year's Eve: Board of Directors signed papers after the president rehearsed the terms in Marshallese using triangles and charts on board, and employees, House, Board and guests like Dwight Heine (Special Consultant to the Trust Territory High Commissioner) and Judge Kabua Kabua celebrated the new year and fresh start for KITCO with roast pig, etc.

Internal: Preparation of winter quarter Ecclesiola construct and internal life guide with whole House present all week.

Contradiction: Seeing demonstration activities like KITCO and the loan as goals rather than tactics.

Religious House: ApiaSAN FRANCISCO Religious House: San Francisco

Religious House: San JoseReligious House: SacramentoReligious House: Seattle

External: Initiated PLC luncheon as first step in clergy cultivation and Galaxy replication. LENS marketing is raising up colleagues. Top of the World supper club planted primal guild tree on the corner and will be evergreen. Signal Galaxy Wk. II council consenses on replication.

Internal: House experiences indicative battleplanning as healing preparation for Quarter III. Sent Tim Crane to sojourn at Centrum. In-kind gift of drapery materials.

Contradiction: Struggle with whether to swirl around the contradiction of the quarter or do RSI recruiting.

Religious House: Los Angeles

External: Quarter III courses begin to take shape as Santa Barbara RSI facilities for Wk. 6 are confirmed and Wk. 4 PLC recruits itself with folks calling RH and asking to participate.

Internal: House is impacted by the style of its families' traditions in celebrating Christmas Day during discontinuity. Entertain super secular Guam LENS grad Joe Barcinos.

Contradiction: Lack of comprehensive battleplan that would turn and incorporate new corporate wisdom and strategies.

Religious House: Phoenix

External: Metro PSU on Primal Guild held, further field research in Ecumenical Parish, LENS recruitment visits, RSI followup meeting in Tucson. Church visitations begun in target area, sent two colleagues off to Academy.

Internal: After a great family and House Christmas celebration, prepared New Years and launching of the Guild - 34 colleagues join us for fantastic evening of global fellowship. Received 5 sojourners, Ellen Moore back from Academy.

Contradiction: With more timelines and tactics that we 've ever had before how do we make one thrust forward with the few troops we have.

Religious House: Billings

External: Colleagues from region join in trek that designated and gridded the parish and initiated the guild experiment. We all experience the power the guild will have as a sign to the region.

Internal: Mood of excitement is seeing you can win and how you can do that evidenced in New Year's Eve celebration, job procurement, House transformation, and indicative battleplanning - experience problemlessness at the center.

Contradiction: Having to move into the quarter knowing that the structures that will enable the quarter to happen are still being built.

Religious House: Denver

Religious House: Rapid City

External: Egg nog initiated the holiday season and metro colleagues dropped in for a quiet evening. The new year was blasted out by a task force weekend on PGX analysis, celebration and a general mailing.

Internal: Kissin' hello and wavin' goodbye characterized the House as Pat Newkirk came to visit Dave Coffmann, George Emerick was sent to a wedding in Florida, and Christmas discontinuity scattered us each in various ways.

Contradiction: Holiday events leave us tired and overwhelmed at the unfocused possibilities that demand a more broadly based consensus.

WINNIPEG

Religious House: Anchorage

External: During Yuletide trek we witnessed the gifts of the region as regional colleagues lead movement forces in regridding the Anchorage Region and EPX selection, topped off by a survey of the selected turf. Trek closed New Years Eve with 25 at the "Top of the World" supper club.

Internal: Received first sojourners (Diane Morrison and 2 children) who arrived for 3-week stay. In the midst of demanding weekend, 4 House members "laid low" by flu.

Contradiction: To build the necessary nurturing structure to arm us for the intensified demand which faces us in the new quarter.

Religious House: Saskatoon

External: Show comes back on road at the New Year celebration with replication of Metro Catalytic Cadre.

Contradiction: Keeping self story that task is getting done when it is, but your feelings tell you that troop drainage and 47° below zero weather mean it couldn't be getting done.

Religious House: Winnipeg

External: House roars back from Christmas discontinuity and plunges into full scale preparation for the New Year's Trek, which began with a fabulous New Year's celebration. Colleagues came from all over, including Archana Mandal from India, for the Trek.

Internal: The Smilianov family of four and Pam McDonald began sojourning in the House. House in full swing every day with the New Year's Trek and preparation for our Odyssey this coming Week II.

Contradiction: While spinning the plate of immediate nurture of colleagues on their spirit journey, no hands left to spin all the other plates of the quarter's mission.

HOUSTON

Religious House: Amarillo

External: New Year's Trek is enabled by the journey of Ronstrom (Ancient of Days) as we struggle with a decision to be builders of the Ecumenical Parish. Comprehensive tactical system is complete, ready to focus our expenditure

Internal: Space transformation miracle is pulled off on January 1, and celebrated with a cabaret in a pizza parlor.

Contradiction: No clear way to push for colleague commitment as we decide we are not enough.

Religious House: Oklahoma City

Religious House: Tulsa

External: New Year's Eve celebration at sophisticated Top of the World Club House finds large gathering of colleagues launching the Guild with cabaret/hunter-warrior style and 2 am trek to historic parish landmark. This IS the year.

Internal: In-House PSU and Ecclesiola sodality with 30-year resident and Tulss University's first black graduate present breaks open 26-week timeline and plans metro PSU-I.

Contradiction: How to unveil 26-week timeline as an expression of every man's deep yearning to care and not something superimposed from somewhere else.

Religious House: Houston

External: Fifty-five at Sunday PSU and 85 at New Year's Celebration launch Northline 5, a protent of the space city's future; the Sinclairs, LCX pastor family, receive 17-month sabbatical for global Order assignment.

Internal: Q. III Indicative BP built in Wk. II PSU; Cooper family of 4 and Hays family of 3 received as interns; Fr. Davila of Caracas and Virginia Kirsh of Minneapolis visit; big push on to defy the economic tyrant.

Contradiction: Q. III symbolism operating at half power while waiting for new dimensions to emerge.

Religious House: New Orleans

External: New Year's trek initiates parish guild experiment with community gridding, story building, and a front yard transformation from masses of elephant leaves to a fine row of camellia bushes. Surprise guests for supper club were George and Elaine Moeller.

Internal: Indicative battleplanning explodes House's creativity in planning Qtr. III. Received the Hutcheons family as fellows and Valerie Greimel as an intern. Alleluia!

Contradiction: New quarter beginning without metro cadre model and new decor.

Religious House: Memphis

External: Low-key New Year's celebration with regional colleagues exactly what was needed to evoke anticipation of the new quarter. Galaxy pastor decides to attend clergy meeting in Knoxville (350 miles away) on a day's notice and in an ice storm!

Internal: Discontinuity brings relaxation and reflection time to gird us for a busy winter - all return filled with dread-full hope.

Contradiction: Relating to the coming quarter as something we're doomed to do rather than as an opportunity for creative expenditure - our dread is outrunning our anticipation.

Religious House: AtlantaReligious House: Miami

Chicago

Religious House: WichitaReligious House: Lincoln

External: A gala celebration ushered out the old year and welcomed in the new, with 18 colleagues as guests, music, dancing, toasts to the events of the past and promises claimed for the future, a 2 sent out to Academy.

Religious House: Lincoln(continued)

Internal: Heavy economic pressure, combined with a decision to win, reveal 5:30 p.m. as a great time for collegium (and all can be present then too). The new quarter starts to take shape.

Contradiction: It's always here before you 're ready, but it's hard to tell what's really needed until it's here.

Religious House: Kansas CityReligious House: Minneapolis

External: Record Ecclesiola sends 13 regional colleagues to Chicago for Academy. Battleplanning week II launches '74 LENS and PLC recruitment trip to Fargo hears 6 people say "yes" to courses.

Internal: New Year's Eve celebration comes amid 24 hours of bringing in New Year around the globe. Reordering of House space shifts children's area and creates Guild Room.

Contradiction: Everything going but inertia from story that winter quarter has not started makes accelerating painfully slow

Religious House: St. LouisReligious House: PeoriaReligious House: MadisonReligious House: Rockford

External: Launching of Guild Experiment in metro is heralded by celestial New Year's Eve celebration attended by 25 colleagues under the ever-present portent of Kohoutek decor.

Internal: Indicative battleplanning introduced in Wk. II House Council as method for relating area battleplan to metro needs for Qtr. III.

Contradiction: Finding the time to put implementaries into Qtr. III time design in the midst of the momentum of discontinuity and celebration.

Religious House: ChampaignReligious House: Milwaukee

External: External mission focused on New Year's Eve celebration preparations keyed to involve metro, Galaxy, and House in celebrating movement life in '73 while pointing to '74.

Internal: Religious House receives numerous guests as travelers arrive from Minneapolis, Centrum Development team is hosted, Guardians prepare LENS "kick-o-f" and engages in missional discontinuity enabling family recreation while having extended family guest including order youth.

Contradiction: Quarter III models needed now! for implementation while still in process of design.

Religious House: Chicago

External: Christmas tide trek with metro colleagues opened radically new possibilities for family participation in global mission.

Internal: Total tribal resettlement reminded the House of the absurd necessity of rehearsing intentional mobility and nonchalant detachment.

Contradiction: Operating as revolutionaries financially without experiencing the silence of disconnected telephone.

Religious House: IndianapolisReligious House: CincinnatiReligious House: DetroitReligious House: Cleveland

External: Indicative battleplanning enables metro cadre 4-day trek to forge the context for mission by creating a tactical system aimed at the contradictions in the arenas of impact, training, research and demonstration. On-going cabaret, after-hours cafe and New Years Eve celebration punctuate the journey.

Internal: Emphasis on the recovery of sacred space as we re-design the collegium room, shifting its direction, hanging a new banner and re-hanging the Other World Chart and the NRM charts. Emerging Generation headquarters carpeted with in-kind donation.

Contradiction: Indicative battleplanning enables us to operate in response to the spirit cry but requires of us risking new strategies. Our anxieties tempt us to operate out of the old program orientation.

NEW YORK

Religious House: Pittsburgh

External: Follow-up and new LENS calls net several key prospects for next week's course. House receives the Weygandts as sojourners for Qtr. III

Internal: An intensive weekend PSU on indicative battleplanning pushes House to see the need for more work that needs to be done to pull for the region. A hard day's labor transforms collegium room into swank supper club for New Year's Eve celebration.

Contradiction: Putting all the tasks from the battleplan into the first two weeks of the quarter.

Religious House: Rochester

External: The emergence of the Rochester metro Ecclesiola as the leader recruiting for the 1st week RSI is a sign of the new cooperation between Galaxy and House, and evidence of new decision on the metro's part to lead in the impact arena.

Internal: Transformation of House into "Top of the World" supper club with posting of House plaque, decorating E.G. area and foyer with saints, leave all spinning in guild orbit around earth.

Contradiction: Discontinuity affords great celebration that tends to blut our vision to the daily task of recruiting and planning for Quarter III assault.

Religious House: RichmondReligious House: Washington

External: Massive House hunting becomes best authorization tool yet: congressman, a foundation, government agencies, church hierarchy, local pastors, business community, parish residents, and old and new colleagues all actively participate in finding the Institute temporary and long range facilities.

Internal: Third move in 3-1/2 weeks. Jesus, Hunter-Warrior and Papillon become our saints as the march drastically intensifies our consciousness, our depth of community, and priorship training. Our cups overflow

Religious House: Washington (continued)

Contradiction: The greatest prolonged running and blocking a team has ever done - but all of it behind the line of scrimmage.

Religious House: Baltimore

External: BTS attendance by LCP prospects enables possibility of even greater New Year's Eve celebration.

Internal: House Christmas celebration highlighted by gift of beautiful gong from Seoul House member.

Contradiction: Excitement over long range vision wanes as external mission is reduced for two weeks.

Religious House: Philadelphia

External: New Year's Eve celebration brings the primal guild experiment into being. Participants reflect the new movement bursting forth in midst of old as 60% of people present are new grads.

Internal: House break open new images and excitement as we try our hand with indicative battleplanning for the winter quarter.

Contradiction: Need for continual reminder that the parish we live in and are caring for has concrete suffering going on to bring seriousness to our planning.

Religious House: New YorkReligious House: Garden City

External: The metro gathered at our "VIII Million Club" for New Year's Eve celebration around comets and M.C. "Mr. Kohoutek." Comment of the evening: "I wouldn't spend NY Eve anywhere but at the Religious House!" Battleplanning for metro PSU produced workshops and contexts.

Internal: Guilding grounded at nightly 11:00 meetings as intensified job hunting accountability and battleplanning continues. One job in hand results and untold wealth in the bushes uncovered.

Contradiction: How to be chaste to the PLC recruitment model in count-down of 9 days.

Religious House: New Haven

External: Bi-metro indicative battleplanning, Hunter-Warrior and Saints conversations, and ecstatic New Year's Eve celebration marked journey of Kohoutek trek attended by colleagues from New Haven and Poughkeepsie metros. Clergy recruitment breakfast and full day of PLC calling in Hartford metro heralded cooperation between Boston and New York regions.

Internal: House transformed into two floor cabaret to welcome new year and rehearse decision to do the guild.

Contradiction: PLC and LENS approaching shortly with recruitment not yet in high gear.

Religious House: ManchesterReligious House: Boston

External: Strenuous Week II indicative battleplanning for next year includes celebration at half way point with special candlelight feast followed by attending famous piano bar where we entertained guests by singing 24 movement songs. Hailed the new year with the 24-hour vigil.

Religious House: Boston (continued)

Internal: House members returned from Christmas discontinuity refreshed and with new insights on the spirit mood of North America.

Contradiction: Creating a battleplan to engage clergy tottering on the decision to prepare for the LCX.

Religious House: Portland

External: Eleven people gather to grid Portland micro to parishes, walk every street in the Munjoy (Mount of Joy) parish, begin compilation of Munjoy Parish data book, and launch weekly meetings of the pre-guild.

Internal: House begins new experiment in dramaturgy with Daily Office, and begins battleplanning for Quarter III.

Contradiction: Weak contexts are yielding weak decision.

MONTREAL

Religious House: TorontoReligious House: OttawaReligious House: Montreal

CARACAS

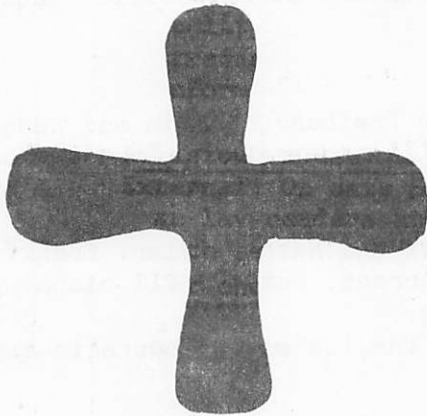
Religious House: Caracas

BASE CENTRUM

External: Academy begins for Quarter III 1973-74 in original location (now Chicago Area House). Uptown Guild meets again. The Uptown Galaxy has begun with first meeting of Galaxy churches. John Wandimi welcomed for Academy from Area Nairobi. Order attends funeral of James Carter in 5th City.

Internal: Order celebrates wedding of William and Phyllis Petrie Slicker and baptism of Michael David Convey. Dillingers arrive from Kansas City House en route to Area Hong Kong. Quarter launched with four emphases: newly created management centrum, newly created guild post, continuing push on development, and self-support (21 new work-out assignments in decision to balance amount Order is now in red). E.G. has Wk. II spirit trek.

Contradiction: New battleplan method absorbs time and interest while ongoing activities demand immediate attention.



I have called you my servant,
 have chosen you and not cast you off:
 fear nothing, for I am with you;
 be not afraid, for I am your God.
 I strengthen you, I help you,
 I support you with my victorious right hand.
 Isaiah 41:10

LONDON

Religious House: Glasgow

External: Ten Quarter III priorities named and battleplanned. Cadre contacts renewed by first footing, dinners, and cadre meeting where pedagogy manuals and transcripts of 3 NRM lectures were distributed.

Internal: New station assignments show how quarter battleplan can be done. New Year's celebration highlighted by being named caretakers of our temporary residence and by visit of Mr. and Mrs. Kelso, parents of Jean Smith in Sydney House.

Contradiction: Practically gearing movement colleagues into the Scotland model for ITI recruitment.

Religious House: BristolReligious House: Manchester

Internal: Received intern Rose Hull with cello and created glorious new spaces; celebrated New Year.

Contradiction: How to keep from calling on the same colleagues all the time for all the different strategies.

Religious House: London

PARIS

Religious House: Paris

External: Dinner with 7 families at rue Roquepine in honor of the LeNoury family to initiate decision to the leadership of the rue Roquepine congregation.

Internal: Participation in the global call in the midst of the New Year's Eve celebration reminded us once again that we are not an isolated reality.

Contradiction: Seeing that it is the significance of the past quarter that informs the next quarter.

BRUSSELS

Religious House: Brussels

External: On same Sunday morning in Brussels one prior couple both serve as lay readers at American Catholic congregation, another prior couple both serve as liturgists with clergy for communion at American Protestant church and another prior couple speak to Anglicans about RSI.

Religious House: Brussels (continued)

Internal: Decor flourish, quarter European history study plan and continental planning on Week II resulted in discovery that we are surrounded by all the Areas of the world, and colleagueship broke out like measles.
Contradiction: Simple but searingly effective accountability occasion and style for tactical actualization.

FRANKFURT

Religious House: Frankfurt

External: Three metro cadre meetings in Freiburg, Berlin and Dusseldorf prepares Area Frankfurt for Quarter III penetration. In addition 2 RSIs and RSIIIA set up for Quarter IV, also 6 strong ITI prospects and 8 PLC prospects appear. Trip to East Europe arranged.
Internal: joyfully receive Sarah Elliott and Nathan Oyler. Frankfurt explodes with New Year's fireworks barrage. Quarter III planning completed to intensify penetration thrust.
Contradiction: Just touched the tip of the iceberg of contacts and possibilities in mission.

NAIROBI

Religious House: Nairobi

External: Rev. John Wandimi, Presbyterian pastor and Addis ITI grad leaves Kenya for Chicago and the Academy. The General Secretary of the Presbyterian Church helps to send him out at the airport.
Internal: The new quarter begins with intense planning in all areas, new enablement structures set up, and a sense that this is going to be the Quarter of the Year!!
Contradiction: The timeline that is necessary for the next six months calls for enabling the establishment to move at a faster pace than they are used to--how do we enable their decision-making processes?

BOMBAY

Religious House: Bombay

External: Completion of Quarter III battleplan includes design to refocus Bombay with circuit rides within Bombay metro. Total House works on ITI models as regions set quotas. Jabalpur region sets the pace demanding 20 places.
Internal: Tara Sukare and Keve Joseph received as interns. Corporate guru-ing at sunset spins the Ashram on Sainthood.
Contradiction: Trusting the fact that our models can call forth the financial resources to cover the past and the future.

DELHI

Religious House: Delhi

External: New Years Eve celebration with regional colleagues, and attending Dr. and Mrs. Mathews farewell dinner at Free Church (Who leave for Kuala Lumpur and are colleagues), together with mailings sent out as feelers for ITI site, brings the week to a fruitful conclusion.
Internal: House fills with burning awareness as we push our clarity on Primal Guild Initiation and the Turn of the Church. Sainthood is revealed in our midst in spinning red "Saints" book around meals, and late-night Christ of History study. Vinay Jacob received as fellow.
Contradiction: Coordinating continental and areal battleplans for ITI while both are being created in different places at same time.

MADRAS

Religious House: Hyderabad

External: Another week of speaking engagements sets us up well for Quarter III's RSI and ITI recruitment.

Internal: Celebrated New Year with a grand breakfast and reflections on the past year and promises for the new year. Received Spencers for a few days and hosted Daphne Spencer and Michael Dowling from Australia.

Contradiction: Letting the spirit loose at every moment in the midst of economic crisis, and creating the miracles that demonstrate 'we are never victim to finances.'

SINGAPORE

Religious House: Kuala LumpurReligious House: Singapore

External: Planning continued on RSI, LENS and ITI. Meeting with regional colleagues to plan Quarter III Ecclesiola. Evenings and Week II concentration on calling for RSI to be held in two weeks.

Internal: New Year's celebration highlighted by montage of year and "Year of the Global Guild" announcement calls to and from Singapore. New facility possibility excites House and regional colleagues.

Contradiction: More of our Singapore colleagues must be allowed to see that they are responsible for both the fantastic things which have happened to the Church in Singapore and for the future of the movement here.

Religious House: Jakarta

External: Cautious metro Ecclesiola design moves closer to launch as curriculum is consensed upon and key colleagues sign up for pedagogy roles.

Internal: Christmas vacation is a time for traveling as House members disperse to Bali, Central Java, and Singapore, touching base just long enough to welcome Garnet Banks on his return to Adelaide, and give instructions to painters whose efforts give new face to entire house.

Contradiction: Groundwork needs to go on now for future LENS and ITI needs

HONG KONG

Religious House: Hong Kong

External: Colleagues decision to spend New Year's Day from 9:00 am to 10:00 pm in planning for the new quarter demonstrates the renewed church. Sent out Maryknoll Sister to return to Order Center in New York to enable preparation for Global Council of their order.

Internal: House focuses its mission through exciting week of planning for the new quarter and begins to impelment its plan by ordering data and addressing cards to all Hong Kong ITI grads.

Contradiction: Not yet having the structure which enables corporate planning of all the movemental forces.

Religious House: Kaohsiung

External: New Year's Eve celebration with colleagues present breaks loose into abandonment as the old year is pronounced complete and the new year is claimed.

Internal: House experiences Victory as quarter manual receives last staple only minutes before deadline, and Awe as we attend Joseph Hsu's brother wedding and behold the massive symbology that the Yellow Man has created to buttress the family.

Contradiction: How do we 'gear up' for the quarter when China is 'gearing down' for a huge chunk of discontinuity (Lunar New Year)

Religious House: Manila

External: Manila regional dynamic spins demands of next 6 months and next 5 years and struggles with the question, the answer of which is "I am the one."

Internal: House celebrates the new quarter, 1974, the inauguration of the Global Guild and the baptism of Maria Christina, youngest Vergara.

Contradiction: Effective signal actions; to answer the nagging doubts that arise when one is caught between restarting the old machine and creating the new model, is what is needed now.

Religious House: Taipei

External: Regional colleagues join with us to celebrate the completion of a quarter and the year, and the start of the Year of the Guild.

Internal: All of us, students and teachers, return to school. Collegium focuses on internal life evaluation and planning. Large altar pieces, newly acquired, remind us of the role of the symbolic in releasing the awe.

Contradiction: Deciding to be intentional and disciplined in use of time in the face of coming quarter.

Religious House: Cebu

External: First Regional Council for the Cebu region creates the decision to be the movement with 21 present from 5 metros. Griding the region to the polis and creating the Quarter Calendar locates the council in futuristic time and space, and seeing the movie Westworld.

Internal: Harvesting our white radishes adds special zest to New Year's celebration and split bamboo allows complete fencing of the compound. House gains new understanding of "I am the One" as teams create the missional constructs for the quarter and are commissioned.

Contradiction: Full calendar of courses and "happenings" lacks overarching image to focus energy and imagination to the one task.

Religious House: Davao

External: After 8 months of the desert, the House secures first fulltime employment as Edith becomes the administrator of one of Davao's major hospitals.

Internal: House rejoices in the holiday season with regional colleagues through local Methodist Christmas eve program, midnight mass, the "media noche" feast, climaxed with Daily Office, ham dinner (home cured) and opening of House and family presents on Christmas Day.

Contradiction: Is it really necessary to die to live?

TOKYO

Religious House: SeoulReligious House: Fukuoka

External: Area sojourning pedagogy commences with 5 key regional colleagues, 2 were PLC grads of one month. External planning gives good picture of one year's demands that all require attention this quarter.

Internal: "Presbytery" for internal life structuring begins to open up more necessities for this quarter with more possibility of dealing with demands.

Contradiction: Facing this quarter with solid image of all the necessities but without this quarter's timeline laid out. Someone said "It's only a question of priorities."

Religious House: Osaka

External: Quarter schedule mailed to all contacts and grads.

Internal: House and some regional colleagues spend week II battleplanning the quarter followed by the global New Years celebration.

Contradiction: How not to lose mountain of battleplanning and celebrations during Shogatsu (New Years) holidays.

Religious House: Tokyo

External: Four day Area pedagogy brings 32 colleagues from the far reaches of Area Tokyo to a local R.C. Church for faculty training. Tutorials explode as all are surprised to discover they actually get to teach in this session. Poseidon Adventure grounds RSI again as a life dynamic.

Internal: Week II finds House welcoming Ellison back from Hong Kong and then all journey to Ubaru, a fishing village on the ocean for Quarter III planning. Council concludes with House celebration of New Years at Meiji Shrine. Japanese and English PLC manuals are printed.

Contradiction: Visa holdups are blocking the receiving of required authorization to receive income. New strategies need to be invented to deal with immigration.

Religious House: Sendai

External: Signal event was area pedagogy followed immediately by regional pedagogy in Sendi! Potential guardian made three visits to the House with his family, 1 RSI call to local pastor, and invited whole House for a New Year dinner.

Internal: Qtr. was prepared for with intensive model building. The New Year was brought in with a celebration highlighted by a walk around the neighborhood at 12:00 am. We were the Wayside Inn to a number of Japanese, who came dressed formally on their New Year's calling route.

Contradiction: Unclarity in relationship to structure to move from holding courses to concrete local church formulation.

SYDNEY

Religious House: PerthReligious House: Darwin

External: Research contradiction solved by excited response from local librarian and promise of help in researching soc/eco analysis of the territory. Day to day tactics built to enable recruitment of 20 volunteers, for "Darwin Community Attitude's Survey."

Internal: New Years Eve Red Man feast celebrating the passing of the old year and symbolizing the new with a midnight call launching the global guild. New Years day trip to House to Marrakai Plains game reserve to picnic amid water buffalo, geese, cockatoos, and wallabies.

Contradiction: Contacting businessmen, with participant LENS evaluation reports and recruiting survey volunteers when over 10% of population has gone south on holiday.

Religious House: Oombulgurri

External: The community planning of and participation in Christmas celebration swells the spirit to elation. The building and signing of the Oombulgurri Covenant by the Mawaba and the Community marks a new stage in the development of Oombulgurri which is reminiscent of the children of Israel and the Ten Commandments.

Religious House: Oombulgurri (continued)

Internal: Ed Shinn travels to Sydney for the Priors meeting and the summer program. The House celebrates the arrival of a new mechanic, Lawrence Stokes, and sojourner Deirdre Heath.

Contradiction: Rebuilding the sustaining structures in the face of a lapse into looseness through the holiday period.

Religious House: Adelaide

External: Colleagues respond willingly to request for scholarship money for Summer '74. Weekend PSU does needed planning work for next LENS trek, and summer follow-up PSU in Week 5.

Internal: Begin planning the use of space in new House. The style of ICA kept in mind as we plan use of space and decor in our new House at 51 Le Fevre Tce., North Adelaide; we move into stables behind new house.

Contradiction: How to get the House priorities articulated in terms of the major contradiction of the Movement, rather than in terms of keeping the pots boiling.

Religious House: Melbourne

External: Summer '74 final push with intensive care brings registrations. Work on course calendar for 1974 puts RSI earlier than expected, with increased anticipation. January external mission for House continuum comes into focus alongside Area Research Assembly.

Internal: New Year's Eve celebration launches the guild with the claiming of promises for the year ahead with the move on Ecumenical Parish.

Wayside Inn is bubbling as people stop by on way to Research Assembly. Sent outs of the troops to Summer claim promise of miracles.

Contradiction: Turning attention of the region from Summer '74 push to Quarters III and IV.

Religious House: SydneyReligious House: Brisbane

External: House and regional colleagues participate in launching of the guild via global phone net; 5 Galaxy churchmen sent out to Summer '74 on Guild and Ecumenical Parish; work on journey charts for regional colleagues begins to give clues as to demands for future.

Internal: Jim and Mary Meyers and Anne Tracy Vosler sent out to Summer '74; David Freeland begins one month sojourn; Luke readings impact with the style of prayer and real Knowledge.

Contradiction: Discerning the strategic happenings to focus the myriad possibilities for Quarter III and the whole year.

Religious House: Majuro

External: Montgomerys return to Rong Rong after two weeks of celebration and missional projection with the House on Movement and Parish strategies as well as Education. M/V Militobi docks after outer islands circuit with largest sales volume in KITCO history.

Internal: Castenada on "Losing Self Importance" brings knowing smiles in midst of knowing we needed to have it said for us.

Contradiction: Bringing into being the symbol that will be to Majuro what the Iron Man is to 5th City.

Religious House: Apia

External: Week 12 spent working flat out preparing for Regional Council scheduled for 3-5 January. Discovered that Tongans are restricted from coming to Samoa!

Internal: Two guests join us for Christmas Eve feast and afterwards we all attend the Midnight Service at the Anglican Church. Joined Pastor and family of the Apia Protestant Church for Boxing Day dinner (26 Dec). Cleaning and gardening transforms House and prepares us for any Bishop.

Contradiction: Deciding to move ahead in the midst of ambiguity over our housing and assignments.

SAN FRANCISCO Religious House: San FranciscoReligious House: San Jose

External: With the Guild as our focus, metro and Galaxy colleagues join House in day-long battleplanning session ending with royal Epiphany Eve celebration - beckoning us to be the Kings who perform the miracles and wonders of Quarter III.

Internal: Sojourn week brings new RSI grad who is impacted by House style. Metro colleagues 'drop in' at 5:00 am and for the evening sessions to "see what's happening." New global grid covering one collegium room wall addresses all who enter in.

Contradiction: Discovering the story that will enable the shift from demanding blocks of time from metro colleagues to demanding their lives

Religious House: Sacramento

External: Continued bubbling-up of Roman Catholic authorization in Stockton. Despite weekend closing of gas stations, six carloads of metro colleagues traveled to San Francisco for New Years Eve.

Internal: Week 13 Ixtlan Journey with 10 metro sojourners brings new consciousness of the power of corporateness.

Contradiction: Not deciding to anticipate another year.

Religious House: Seattle

External: Colleagues flock in for Saturday morning LENS battleplanning and fill every nook and cranny of newly decored Guild Room. LENS marketing is now going full steam. Fifteen clergy come for lunch and low-key enticement for Field Visit and PLC.

Internal: New Bulletin board surprises us with its imaginal impact and helpfulness in enabling us to have a comprehensive grasp of our every day assignments in the midst of our global mission. Ecclesiola conversation and study intensifies our struggle with daring to be sainthood.

Contradiction: Pouring energy into Seattle demonstration shifts our priorities away from the outer untouched edges of the region.

Religious House: Los AngelesReligious House: Phoenix

External: Our week is filled with preparation for EPX. The Guild Initiation document was mailed to Centrum.

Internal: Our first week of new teams includes a new Ecclesiola construct. Youth send-out is completed, and Ellen Moore returns to complete sojourn which was suspended by Academy. Tom Reemtsma is received as fellow.

Religious House: Phoenix (continued)

Contradiction: From indicative battleplan we find that we are hiding in the fog of dispassionate rescusitation rather than living the ambiguity of strategic engagement.

Religious House: Billings

External: House Council used indicative battleplanning to create quarter tactics and follow-up representational tactic building indicated a new stance toward the new quarter. Donna Monro family sojourn and regional participation increases.

Internal: Preparing the House to receive a new employer symbolizes having to be mission through the permeation work. Awe broke through in Ecclesiola in Saint conversation and the decision to dance.

Contradiction: Allowing broken bits of time from job hunting and tactics to conquer us.

Religious House: Denver

External: House sends emissary to metro meeting who is run down from behind as he looked over his left shoulder to make a turn. Region sends a dozen to metro core for parish guild and continues to keep their other plates spinning. LENS registration over 30.

Internal: Ecclesiola experience secular method of experiencing the Word by seeing the movie Papillon.

Contradiction: We have a clear picture of missional tasks. Also a clear picture of financial responsibility. Haven't decided to handle financial responsibility and feel reluctant to go full steam on mission.

Religious House: Rapid CityReligious House: Anchorage

External: Tensions and spirits are high the first night of new Galaxy training as a 4th church plus 4 new Auxiliary members join us around the Sodality table...a new depth look at our actual situation was enabled by the participation of regional colleagues in our weekend of planning.

Internal: House experienced a fulfilled (filled full) week. Began Quarter III with an exercise in absolution or indicative battleplanning. House member lands government job with GS5 and to cap off week, a feet on the table spin of how to begin to release colleagues.

Contradiction: After indicative battleplanning we have a clearer context than ever for embarking on a new quarter, yet the concrete models for actualization are not built.

Religious House: Saskatoon

External: Quarter under way with intensified activities, PLC calling, MCC, Galaxy Wk. II, Area prior visit yet seems matter of course.

Internal: New image, enthusiasm, fascination shows up through sojourner, people traveling 90 miles in 40° below for Ecclesiola is enabled by studying "Northern Realities."

Contradiction: Thinking long range strategy doesn't matter if it doesn't come off this quarter.

WINNIPEG

Religious House: Winnipeg

External: New Years Trek, Odyssey and Kohoutek herald in the Year of the Guild. The Galaxy is off with a great start as members participate in the Odyssey, montage new warboards, recruit for RSI and as 60 gather at the House for a special Epiphany House Church celebration.

Internal: House goes on with the New Year's trek which ends with the Odyssey and begins with a grueling session on the 26-week timeline and battleplanning.

Contradiction: How to orchestrate the Primal Guild initiation, House planning and RSI and PLC recruitment for Quarter III in the face of pressing immediate demands.

HOUSTON

Religious House: Amarillo

External: Possibility overwhelms metro colleagues at first pre-guild meeting. Tactical system completed to Mod I brings rational clarity to quarter.

Internal: "Thought of Niebuhr" paper is depth address in Ecclesiola. Visit of the Hamptons from Houston brings news from areal center.

Contradiction: Maintaining comprehensive thrust in the midst of fascination with guild possibilities.

Religious House: Oklahoma CityReligious House: Tulsa

External: Religious House: Galaxy and metro colleagues gather at the House for full Wk. II PSU doing research, parish exploration and final gridding of the Council Oak Parish - named after the first human settlement that built its fire under the oak tree 5 blocks from the House.

Internal: House pushes indicative battleplan toward completion in every spare moment. Begins resurgence news conversations, asking of every event "where is the resurgence in that event?"

Contradiction: Need to complete the quarter's battleplan for the comprehensive picture out of which to move in the midst of telling the story.

Religious House: Houston

External: Week II: 5 metro cells meet to create indicative battleplans with total of 49 participating;

sodality meets with 31 adults and 15 children; Houston metro cadre create 7 task teams involving 55; 12 guardians meet to lay out 19 wk. t/1 to corporation LENS/Houston's top Teamster promises Union support throughout Area Houston.

Internal: George and Elaine Moeller received as interns; House population rises to 42 with sojourners; 8 new jobs secured; missionized teams created for Qtr. III

Contradiction: House tactical battleplan lacks the focus of 5 sharp strategic objectives.

Religious House: New Orleans

External: Breakthrough into the Protestant church - minister of 6th largest AME church in continent pays in full for PLC and two of his laymen call the House about the RSI info. Green and Hutcheons initiate 3M3D model (3 metros in 3 days) launching new image of the global discipline

Religious House: New Orleans (continued)

Internal: Power of the troika dramatized in shifting a troika member into the Galaxy experiment with Herman. Five painfilled glorious days creating a week by week tactics model off of our contradictions.

Contradiction: Got the motor of the quarter battleplan racing, but the wheels don't seem to be moving (how to catalyze forces strategically)

Religious House: MemphisReligious House: Atlanta

External: Metro cell meets for contexting on the next 26 weeks and responds with unanimous 'yes' with two of the cell immediately dropping long-loved recreational activities that would have blocked their participation. Says one "This is what I've been waiting for all my life."

Internal: Lutheran seminarian John Rhyne received as intern. His seminary president writes thanking us for materials we left, saying "The Saint booklet is what I've been looking for. I think that the void in seminary education could be helped with training in sainthood."

Contradiction: Chastity required by new station assignments goes astray - we fall into trap of thinking we need to know what other stations are doing.

Religious House: MiamiReligious House: Wichita

External: Eighteen gather for first Local Church Sodality of Quarter III with three churches present (an addition of 2). Cluster recruitment reaches a peak with 8 group meetings set and sponsored by local church grads.

Internal: New sense of corporateness is experienced by whole House as we go from 2 to 3 teams. Study of JWM paper "Saints in This World" at first Ecclesiola reveals the indicative of Sainthood to the House and guests.

Contradiction: A spiritual tiredness has set in as though this were the end rather than the beginning of the quarter, leaving all battleplan implementation slightly behind schedule.

Religious House: LincolnReligious House: Kansas City

External: Media breakthrough with 30-minute ICA interview followed by favorable response; week of clergy visitation with focus on Kansas City polis and Westport parish, where we discover congregation serving community since 1837, beginning in a log cabin.

Internal: Quarter battleplanning lays out the 16 tactical arenas of the quarter; House sends one to Academy (two others from metro) and Ed and Marilyn Dillinger family out to take global assignment.

Contradiction: Great possibilities rising up on all fronts have not been nailed down to produce the intended results.

Religious House: Minneapolis

CHICAGO

Religious House: St. Louis

External: Development team visits and holds us accountable to the mission in all its aspects. The result is an exciting launch into the 26-week quarter, with visits to key city bankers who are guildsmen even though we haven't told them yet.

Internal: New teams and team priors are brought into being, and this affirms the power of the team dynamic. The team is where it's at. Freezing rain and ice storms allow the effectiveness of the rump as a cushioning dynamic to be reappropriated.

Contradiction: Contexting everybody on the 26-week timeline who needs to be contexted, and leaving time for planning.

Religious House: Peoria

External: Well-planned first blitz with metro reaps rewards - 11 registrations, 8 yesses for RSI, proven pitch for serious recruitment. Nearly 100% success in calling metro colleagues for meeting.

Internal: Job shift enables a more tangible collegium block, a delightful and relieving change. Galaxy pastor couple decides to spend the night each week after sodality and participate in breakfast collegium and Daily Office.

Contradiction: Self-story that visiting prospects is fruitless paralyzes us and blocks vision of possible recruitment models.

Religious House: Madison

External: Quarter III is off to a roaring start as fledgling metro core group bring more to the GAM meeting to take responsibility for the metro. The assignments were handed out and enthusiastic troops girded up. Samegroup plus 8 discuss bi-metro operations in workshop.

Internal: Suspicious House members comb new grad print-out with fine teeth only to find 2 duplications and 3 omissions. New prioritized contact list is the result. Into high gear with morning and evening structures.

Contradiction: Maintaining full steady thrust as rumors spread panic and activate cross-metro dialing fingers.

Religious House: RockfordReligious House: ChampaignReligious House: Milwaukee

External: Galaxy 3 is on its way to impact the world as all 3 Galaxies meet for training quarter. First Odyssey in 2 years raises to self-consciousness the journey this quarter will be.

Internal: Welcome to LeBlancs to sojourn and telephone call yields mysterious intern possibility. Jay Fenton impacted by assignment as staff to Confirmation RSI.

Contradiction: Moving from the problem to the tactics without looking at contradictions and proposals.

Religious House: Chicago

Religious House: Indianapolis

External: New Year's Eve cabaret was a phenomenal success! We are amazed by its impact on the bimetro, the implications it holds for our being the guild, and the latent talent we found in ourselves.

Internal: Sent out Kip May to Centrum with toasting celebration.

Welcomed the rest of the Eddie Taylor family (6 more!) to the Indianapolis metro to join Eddie in sojourning until their house is ready to move into.

Contradiction: Controlling our missional anxieties over the coming quarter so that we can do the crucial groundwork that is needed for the parish guild experiment.

Religious House: Cincinnati

External: Desires and visions are preview to the Launching of Primal Guild Experiment, as 3 youth and 3 E.G. register in local schools (desires) while first contact with community organizer and citizens group become concretion of our vision. We're off.

Internal: Moving in of new intern family (Gribble family - Guardian and Galaxy) just in time for weekend Trek which produced major decisions by key metro families as a prelude to gigantic New Year's celebration of 75 participants.

Contradiction: Releasing methods of structuring ourselves that will release total body relative to shift in engagement in intensified external mission while embracing prior commitments both corporate and individual, relative to local church.

Religious House: Detroit

External: Gala supper club initiates Parish Guild in transformed House. Colleagues gather from across the region to participate, many linger for New Year's day brunch of Chinese fried rice.

Internal: Station battleplanning engages House in preparation for the new quarter. Attendance at Galaxy Church and Ypsilanti Baptist portend two of the 3 foci for winter. Colleague from West Michigan fills freezer with 300 lbs. of frozen vegetables (no green beans).

Contradiction: Post-turn excitement, pre-turn vision.

Religious House: Cleveland

External: Indicative battleplanning forges out missional context for Qtr. III as metro cadre 1-day Trek creates the vision of the quarterly retreat. Workshops, Saints conversations, gridding, cabaret, and After Hours Cafe punctuate the weekend, ending in ushering in the New Year.

Internal: Focus on recreating sacred space, Other World and NRM charts rehung in re-designed collegium room.

Contradiction: Indicative battleplanning provides contradiction-focussed missional direction and requires of us a new mode of procedure - the temptation is to return to familiar tried and true but non-effective way

NEW YORK

Religious House: PittsburghReligious House: RochesterReligious House: Richmond

Religious House: Washington

External: LENS battleplanning and House procurement consume us in the present and the spins-off from the same consume our future. Pick up 20 LENS registrations during Week. May have key to unlocking Jaycees "Can we set up our own course of 100-200 and you just teach it?"

Internal: You're Lucky Ducky, new book by Dr. Seuss, is great Hunter-Warrior book for children and especially adults. Team experiment working remarkably. The mission and priors are bursting forth.

Contradiction: Have not picked our parish.

Religious House: Baltimore

External: House finds PGX is right around the corner as an ongoing indicative battleplanning results in inviting metro colleagues to collegium and Ecclesiola to get out LENS prospect list consisting of grands and key parish contacts.

Internal: In the midst of all the overwhelming demands of the mission, House experiences a crunch as two are sent out to Academy and one of the troika attends an area priors meeting in New York. Elizabeth Sands and Mary Baublitz sparkled with enthusiasm as they prepared for journey

Contradiction: Getting trapped into being satisfied that we are doing enough with our lives just living in a Religious House and forgetting that the purpose of being here is to carry out our decision to renew the globe.

Religious House: Philadelphia

External: Allentown trip net 11 Lutheran and 1 UCC pastor as sponsors for two RSI, one a presentational RSI for the winter and then a sponsored RSI in Spring.

Internal: Travel resettlement proves again to be a "stopping the world" event as new intentionality is brought to House. Read marriage banns for House prior George Toth and Elizabeth Ann Smith of the Minneapolis House.

Contradiction: With House manual and battleplan for 13 weeks done, we find ourselves not sure of how to use it.

Religious House: New York

External: The New Year's Eve celebration occasions the possibility of transforming familiar space into elegant dinner club and includes wining, dining and enticing by regional colleagues with violins, singing and piano serenades.

Internal: Indicative battleplan sharpens focus on the impossibility of the task at hand and like Ronstrom in Ancient of Days we decide "we will build."

Contradiction: Operating principle that we must hold all our courses makes for antsiness as we pen-ultimate battleplan in Wk. 13.

Religious House: Garden City

Religious House: New Haven

External: Fish scales begin to fall from the eyes as the Primal Guild Experiment begins with a clergy breakfast in a nearby parish church and the preliminary parish boundaries are established.

Internal: Swinging out over the abyss can be exciting if one does not get entangled in the clinging clutches of chaos. Work continues on quarter battleplan 'around the edges' of telephoning, PSU planning, etc. with schools closed two days out of five.

Contradiction: Dodging the dunes of depression in the face of mega possibilities and dozens of necessary deeds with an embryonic battleplan.

Religious House: Manchester

External: Collegial and festive celebration welcomes the new year and the primal guild experiment. Signal meeting is held with pastor and grads of R.C. church in Andover, Mass. It is the first meeting of the experiment for one of our new replication churches.

Internal: House struggles deeply with new planning and battleplanning methodologies.

Contradiction: How do we integrate the programs of the movement into one clear timeline accompanied by tactics applied to our particular situation.

Religious House: Boston

External: Celebrated New Years Eve with 40 people in attendance. The South End Parish grid was revealed as we feasted on the many kinds of food regional colleagues brought. Mobile Religious House in Hartford with 19 colleagues present and 14 clergy in attendance at breakfast.

Internal: Sent out sojourner John Foote to the Academy in the midst of work on files, kitchen reorganization, and Qtr. III House manual.

Contradiction: Making sure the initial foundational thrust of the next three weeks comes off so tha the rest of the quarter's events can happen

Religious House: Portland

External: Power of IBP revealed as first scheduled event for Qtr. III yields RSI registration from Munjoy parish, and imaginal calendar is mailed to metro colleagues.

Internal: The Qtr. III battleplan is printed and the House internal life guide is prepared for printing in a spirit-filled Week II.

Contradiction: The flu bug bites just as we begin battleplan implementation.

MONTREAL

Religious House: Toronto

External: New Year's celebration launches the guild in grand style of casino and supper club, followed two days later by dinner of 40 community leaders led by galaxy pastor, which surpasses our wildest dreams.

Internal: Several days of intense wrestling with indicative battleplanning produces a 'wooboard' of tactics, and is punctuated by periodic outbursts of the discontinuous, as prior stands on his head, a collegial dog takes his seat at the table, and 1-year old begins to walk.

Contradiction: Moving into the quarter with our arenas of action lacking the necessary thought-through procedural steps to start actualization immediately.

Religious House: Ottawa

External: New Year's trek with Top of the World supper club, combines wild celebration with sober reflection as Galaxy and region combine with House to consense on guild initiation. Week II Galaxy Council stirs with excitement as 4 churches struggle with contradiction.

Internal: Sober excitement prevails in initial application of indicative battleplanning methodology to winter quarter planning. Week II publishing of newsletter ends with welcoming Area prior family for their first visit to Ottawa.

Contradiction: Fear of expenditure required to radicalize our missional thrust.

Religious House: Montreal

External: The New Year's celebration surprised and challenged us as well as our regional colleagues as we participated in the initiation of the primal guild. Experimentation with the supper club was a great event.

Internal: Week was the occasion for indicative battleplanning for the quarter and for naming the Quarter, months, and weeks. The weekend was spent creating a 40-page House manual describing the logistical back-up and the spirit foundations that will sustain us.

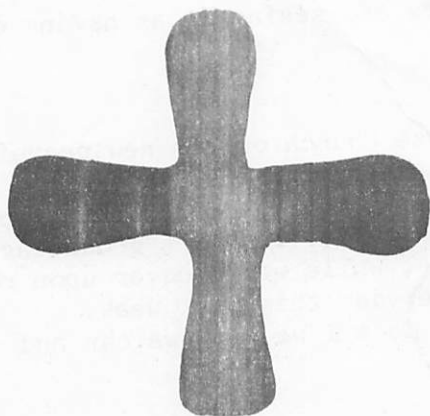
Contradiction: With out sense of the vision clearer than ever before we must discern how to make grads 'an offer they can't refuse' that will elicit their engagement and allow them to weld their own vision with ours.

BASE CENTRUM

External: Launched first courses of the quarter highlighted by a 45 plus RSI in Milwaukee consisting of Galaxy Church youth. Missional assignments for the quarter made and the establishment of Management Centrum celebrated by the moving of the printing presses. Charles Morrissey sent out for authorization in the Philippine Islands. Staff and Student House both addressed by weekend CSI course.

Internal: Internal life concretized with revised team assignments and new sodality construct; Centruns continue palnning at the sector level with new lunchtime constructs initiated. The order treated to goodies provided by Development Centrum to celebrate a quarter of a million dollar record month; in-kind has banner week with the arrival of a truck load of green beans (the first of many) and a carpet company donation provides astro-turf for the front lobby.

Contradiction: In the midst of our emphasis on the team dynamics (Congregation teams, Wk. II Task Forces, and Wk. I posts), the dynamics of corporateness within scattered engagement in the guild have not been revealed.



By my life I have sworn,
I have given a promise of victory,
a promise that will not be broken,
that to me every knee shall bend
and by me every tongue shall swear.

Isaiah 45: 23

LONDON

Religious House: Glasgow

External: The boundaries of possibility expand again as we are luncheon guests of Lord George MacLeod, founder of the Iona Community, who agrees to visit the ITI in March. Three speaking engagements contact 24 clergy and set up one local church evening involving 3 congregations.

Internal: House begins quarter with power as 1 new job is begun, another work permit secured after speech in House of Commons by local MP asking why these take so long! Missional decor goes up and we are all addressed by seeing 5th City "Decade of Miracles" materials.

Contradiction: Empowering all three ITI recruitment strategies for simultaneous operation.

Religious House: Bristol

External: Marketing ITI throws profile skyhigh - with favourable results. 20/80 meeting turns grads and non-grads alike afire re: ITI and produces decision to meet again to sustain them in recruitment. Secular recruitment is off the ground.

Internal: House numbers double the Ecclesiola. Regional colleague at birthday celebration refuses to divulge age because he's "dropped his personal history."

Contradiction: How to immediately broaden range of ITI recruitment so that strategies are realistically capable of arriving at goal set.

Religious House: Manchester

External: ITI quotas coming in on time amidst tremendous visiting, traveling, telephoning, letterwriting, watching, praying activity. Basis of the Movement is rapidly expanding.

Internal: Good kick-off for winter quarter with regional colleagues at Ecclesiola with Anatomy of Britain, Journey to Ixtlan, Ortega-Kuhn-Boulding symposium and the nine facets of the saint.

Contradiction: How get sober on strategies while getting drunk on tactics.

Religious House: London

External: Recruitment and formulation on all fronts as 51 visits and 5 20/80 groups start in each metro.

Religious House: London (continued)

Internal: Regional colleagues meet at House and have fantastic Saba Chinese meal from Ng Yaw Fong. Began study of Anatomy of Britain and second time through Ixtlan.

Contradiction: How to fight many faceted wars and seeing it as having one front.

PARIS

Religious House: Paris

External: Penetration station reports at House Church on the new recruiting work in Lyon. Rue Roquepine congregation analysis brings to light hidden indicatives, while LENS recruitment is now cruising at top speed.

Internal: First Ecclesiola of quarter began with St. Teresa's grounding of the reality of humility in everyman's life, while we discover upon reflection that cabaret has broken forth everyday this past week.

Contradiction: Trusting resurgence enough to do all we know we can and need to do this quarter.

BRUSSELS

Religious House: Brussels

FRANKFURT

Religious House: Frankfurt

External: Three colleagues from Freiberg metro participate in Week II at House becoming acquainted with Spirit Movement as well as planning the future of their local congregation in Schopfheim. Quarter III begins with sinking salons into the penetration-formulation whole.

Internal: As Freiberg colleagues return home after Week II they presented us with a gift they thought we could use - a 1971 creamy-yellow Renault 4 automobile. New telephone installed: 0611-688629. Give us a ring.

Contradiction: Overcoming inertia of beginning missional activities of new quarter.

NAIROBI

Religious House: Nairobi

External: One day foray up country to visit a young African Roman Catholic Bishop reveals an old acquaintance, a spirit colleague and a more than friendly supporter.

Internal: The teachers return to school and Quarter III tactical actualization launches us with a rush into a new quarter.

Contradiction: Weaving innumerable possibilities into our design for movemental preparation over the long haul.

BOMBAY

Religious House: Bombay

External: Continental priors meeting sets guidelines for 1974 ITIs and spurts us into site searching in Poona. House participates in CASA (Churches Auxiliary for Social Action) Seminar and helps to widen local authorisation.

Internal: Hosted continental priors meeting while commencing new quarter's House design with Ecclesiola reclaimed as the highlight, the NRM at the centre. Key regional colleague James Thomas married in Kerala, House participates as William travels for 5 days.

Contradiction: "How can you forget that Bombay is there when that's where you live?" - not having it imaged as the priority.

DELHI

Religious House: Delhi

MADRAS

Religious House: Hyderabad

SINGAPORE

Religious House: Kuala Lumpur

External: Participated in two New Year Eve Church services, and an Ecumenical reception for local leaders of Buddhist, Hindu and Muslim communities, in Seremban. Rejoiced in the election of Rev. Eddie J. Thoraisingam as President of the Tamil Provisional Annual Conference. (Seoul ITI and ITI advanced and KL Faculty '73)

Internal: Addressed by the global telephone "chain" New Year's A.M. Sent out the Selvaraj Daniels upon the completion of their six-month sojourn. Created BP for Quarter III, including three RSIs and 3 metro Ecclesiolas.

Contradiction: Prioritizing local church demands with regional demands.

Religious House: Singapore

External: Week spent recruiting for upcoming RSIs. More regional colleagues directly involved in recruiting than we have experienced here before. Work continued on plan for Ecclesiola which begins Week IV.

Internal: House experiences the excitement of moving into a new quarter and new year with revised team and missional rationale and new time design.

Contradiction: Allowing grads to see that the corporate thrust of the movement happens only when individuals commit their lives to discerning the Movement of God in our time and take responsibility for that Movement.

Religious House: Jakarta

HONG KONG

Religious House: Hong Kong

External: Global vision strengthened through reports by colleagues on recent trips to South Vietnam and Mainland China, while local intensification occurs through first RSI of the quarter.

Internal: House impacted by a new understanding of the Word through Bonhoeffer study and enabled to engage energies through new quarter's structures.

Contradiction: Catalyzing regional engagement of scattered colleagues.

Religious House: Kaohsiung

External: Trip to Tainan nails down pedagogy plans, secures location for PLC, and includes fantastic authorization visit with Tainan Bishop.

Internal: House welcomes Lu Yu-Wen as first Chinese sojourner and is excited by promise of Ecclesiola study of Teresa.

Contradiction: How enable colleagues to see that they can decide how they will use the time they have.

Religious House: ManilaReligious House: Taipei

External: Recent PLC grads and wives come to House and cook Chinese feast to kick off weekly English training sessions in preparation for ITI. Prepared report on LENS grad meeting to sent to grads. Saturday battle plan session creates LENS marketing model for 150 at 2 courses.

Internal: Send out celebration for sojourner Hsieh Min-chuan who announces he will preface his graduate work in NA with Academy.

Religious House: Taipei (continued)

Contradiction: Decision to use telephone to compel people to come to the feast.

Religious House: Cebu

Religious House: Davao

External: Quarter launched with intense engagement as 3-day, 9-session pedagogy tutorial/guild, with 12 regional participants, breaks loose into spirit happening. Signal local church assigns two members to teach in Week 3 RSI in adjoining metro.

Internal: Quarter begins with troika dispersed. Three strange angels, in the form of ITI grads, knock at door unexpectedly for House Church. Admit them! Admit them!

Contradiction: Creating a timeline which takes into account both dealing with the present and also the preliminary steps which will deliver us the future.

TOKYO

Religious House: Seoul

External: Sent out 3 key men representing 3 metroes and 3 denominations to Area Pedagogy in Tokyo; Yang Kwang Church orders its worship in the 3 acts on behalf of Nok Bun Dong ecumenical Parish.

Internal: New Year's Eve celebrated with yoot, Han bok and listening to the 14th century Seoul bell rung 33 times and New Year's Day with much bowing; welcomed Dale Griffee from Tokyo for visa work and regional pedagogy; held special New Year's ecclesiola.

Contradiction: The local church project - which will give concrete mission-al focus to penetration.

Religious House: Fukuoka

External: External quarter's planning completed into the image of centrum's switchboard with 5 major missional arenas and all their extensions and 5 outside lines to plug in. The call of the PLC gave us 6 yesses registered without dialing.

Internal: House member returns from Korea on visa renewal mission with brass gong and altar set decor in hand.

Contradiction: Having enough participants at the next course 1 week away.

Religious House: Osaka

External: 5th City lecture to 160 university students produces group asking "How can we help?" Recruitment planning session soars with Rev. Akira Hishihara making assignments for calls and visits to himself, the Religious House and colleagues.

Internal: Signal Ecclesiola held colleagues late into the evening with sodality focused on regional problemat, with one guest spending the night.

Contradiction: Building and sustaining the passion to win in course recruitment and demonstration research.

Religious House: Tokyo

External: Bishop Viall, the Provincial General of the Anglican Church of Japan, attends opening session of area pedagogy as his last act in this world. His death the next day is celebrated by the Church and he is hailed "as having done ecumenical work up to the very last."

Religious House: Tokyo (continued)

Internal: Colleagues abound as House priors and area colleagues stay over to do initial ITI planning and timeline. Celebration of Joseph Tida's birthday at Blue Grass nightclub turns into movement cabaret as we go from place to place in high celebration of the greatness of the mission.

Contradiction: No structural focus to give form to our decision to locate our demonstration parish.

Religious House: Sendai

External: Secured three missionally convenient and pleasantly lucrative jobs which give enabling contacts with business and higher education and require only limited time.

Internal: Planning 'gold edged invitations' for intern prospects by preparation of intern brochure.

Contradiction: Meeting the spirit stance to belong in the tension in the midst of exploding possibilities and to use that stance of faith to enable metro cadres to struggle with us.

SYDNEY

Religious House: PerthReligious House: Darwin

External: Continued business men visits with LENS evaluation report. Phone call from area House says our research in Darwin is part of the Area Summer Research of the task and function of the guild.

Internal: Jade green decor transforms Marmuragal Room (guest, in Aboriginal) emphasizing our relationship to S.E. Asia. First 16 book screens on N.T. research completed.

Contradiction: Bureau of Census and Statistics says mathematical analysis of data takes 6 months - we have only one week, how to expand our understanding and apply our methods to a social survey.

Religious House: Oombulgurri

External: House hosts New Year's celebration with community. Work begins anew in the midst of daily rain which makes all our labors fruitful although more difficult.

Internal: Doug McCauley and Bert Dobell return in time for full staff planning weekend in which 4-year and 1-year goals are revised and this quarter's goals are laid out.

Contradiction: How to guide the growth of a community which is beginning to assume responsibility for initiating its own direction-

Religious House: AdelaideReligious House: Melbourne

External: PLC file system evaluation and new card system started. Nurtured colleagues by phone and visit.

Internal: Large House Church with old colleague as celebrant turned into a banquet feast followed by a 'fireside chat.' Reports of Summer '74 raise anticipation of Guild and Ecumenical Parish. Having gotten ourselves fairly well structured for January, we are intruded upon by don Juan.

Contradiction: The extraneous is taking time from the 3 major strategies we have for January.

Religious House: Sydney

Religious House: Brisbane

External: Regional colleagues gather for meal and night-at-the-movies; LENS letter brooding signals decision to win again.

Internal: Guests abound as Trekilcock family stops by for tea, and two overnight guests ring up and invite themselves; collegium study of "The Two Faces of the Movement" renews decision to BE who we are.

Contradiction: In the midst of exciting future possibilities, seeing that what we do in the nitty gritty now is the participation in the new future.

SUVA

Religious House: Majuro

External: Problem solving curriculum begun at KITCO management collegiums; Rong Rong department heads begin regular meetings and informal staff gatherings are impacted by the Ronin; Atoll congregations assume responsibility for feeding 350 Rong Rong students when food doesn't come.

Internal: Internal Life Guide for Quarter III is completed.

Contradiction: Transforming the Marshallese myth that says that "No ordinary person would dare to reach in her (the great Mother Eel's) mouth and take out some of the aao (a rainbow rising over a person, a special glow.)

Religious House: Apia

External: The Lord moves in mysterious ways as Tongan ITI grad comes to Samoa when the government isn't issuing visas. Regional Council is held with representatives from Samoa and Tonga who worked to create battleplan for the South Pacific.

Internal: Sojourner at Religious House participates in House structures as we prepare for Regional Council.

Contradiction: Maintaining a high profile at school while working 100% on Regional Council.

SAN FRANCISCO Religious House: San FranciscoReligious House: San Jose

External: Gridding to parish and plotting churches focuses recruitment, and gives us whole new areas of possibility. Three speaking engagements set up in one hour phone blitz, appointments made with key Catholic clergy in the parish.

Internal: At the end of a day of recruitment, Guild decor making and battleplanning, House decides to celebrate by going out for pizza and experiencing the Great Con in the movie "The Sting."

Contradiction: Making of a tactics warboard for the quarter objectifies demands and reveals need for zeroing in on whistle points.

Religious House: SacramentoReligious House: Seattle

External: Exciting day of recruiting during an ice storm in Portland nets 7 registrations for Wk. 8. course. Metro PSU grids parish and begins first penetration of Capital Hill parish with 54 units to parish businessment.

Internal: The 'big time' con man style grounded in the movie "the Sting" gives pointers for recruiting LENS and penetrating the parish.

Religious House: Seattle (continued)

Contradiction: How is it we transmit a continually expanding vision to movemental troops so that we catalyze the movement to do the mission and not fall into "we'll just do it ourselves."

Religious House: Los Angeles

External: Calling on pastors in the Echo Park Parish, obtaining sites for 3 Field Visits, setting up a meeting for the Guardians, and visiting the hierarchy of the historical Church, including His Eminence Timothy Cardinal Manning, furthered the work of the Religious Training.

Internal: Celebrated the birth of Robert Shane Trussell, and received 4 sojourners, including 2 from continent Asia. With the singing troubador wake-up, the beginning of a study of The Community Called Church, and the singing of 'Holy, Holy, Holy' at Daily Office, centered on methods.

Contradiction: Internalizing the authorization that both the church and the world have given to the task.

Religious House: Phoenix

External: Began quarter III treks following clergy collegium Monday a.m. We worshipped at Mass in proto-parish 3 which was celebrated by Bishop McCarthy of Phoenix Diocese.

Internal: Completed timelines for House, region and PGX. Attended gala dance and feast at Hungarian Cultural Center in pp 1. House honored by one-day visit of Kim An Hong, international intern from Korean Church in Osaka Japan.

Contradiction: We found ourselves dancing with If Only's instead of Brother Death.

Religious House: Billings

External: Initial authorization visits for guild begun and local churches in the parish area visited renewing and making new contacts. Tactical warboard completed and newsletter to region written and mailed.

Internal: Received two tables in-kind, created a wall and new war-room. Sent out sojourner family with a meditative council game that pushed to the deeps and a sanctification study tha melted excuses, then had a guest for Ecclesiola who proclaimed it the high point of the week.

Contradiction: Concern for listing the contents on the label instead of spelling out the instructions on how to use it.

Religious House: Denver

External: Parish Guild is being actualized through metro core enthusiasm, 11 out of 16 going to LENS, and the decision to meet every Tuesday night and at least every other weekII. Parish calls include 4 lawyers, the new mayor of Boulder and 2 signal churches.

Internal: A combination of physical work, Parish research data, and the creation of new study habits dramatizes the role of the youth in the 21st century.

Contradiction: Excitement and priority of Parish Guild overshadows our other foundational responsibilities, i.e. RSI, PLC, Odyssey.

Religious House: Rapid CityReligious House: Anchorage

Religious House: Saskatoon

External: The House penetration forces well occupied with visiting and preparation for PLC, RSI, LENS and the new Prince Albert Galaxy.

Internal: House experienced first Wk. II PSU on Primal Guild formation while E.G. spun into quarter with new Wk. II curriculum on the North; after which the day's building of the future culminated in seeing past builders in the movie The New Land. Celebrated Allan's Fellow-hood.

Contradiction: Indecision over dying for task today not because of unclarity but because of clarity.

Religious House: Winnipeg

External: The Movement, like a sleeping giant, wakes and begins to stand with its feet firmly planted in Winnipeg as movemental colleagues recruit for RSI, register for RSI pedagogy, grid the parish designated for Guild Experiment, and Galaxy Church gains unanimous authorization.

Internal: A week of the Mystery running to breathe surprise into the air, highlighted by the Area Prior's visit to Saskatoon House, and with face set for Calgary and Edmonton, was backed into an RSI in Minneapolis. Thunder Bay colleagues drives through and remembers House Church.

Contradiction: Creating or sustain the separation between our planning and our activity substitutes falling through the gap for unified thrust.

HOUSTON

Religious House: Amarillo

External: Metro cadre discovers excitement of modifying tactics at weekly meeting and getting the whole job done: RSI and PLC registrations are coming in according to plan and 3-day trip to Lubbock uncovers an old grad pastor from Abilene who wants to get moving.

Internal: Last room at House renovated in preparation for PLC and RSI courses. Work schedules complicate assignments for Guild, Local Congregation consults, and PLC recruiting all at once.

Contradiction: Keeping the right amount of tension on the boxcar we are pulling up hill with a rubberband.

Religious House: Oklahoma City

External: Primal Guild experiment catalyzes new participation from outlying polises of the metro, a clergy yes to Quarter IV PLC battleplan, and 25 men PSU with metro embracing unit assignments.

Internal: John Kersh arrives from Peoria as reassigned intern, secures one of two jobs. An avalanche of working decor holds quarter tactics, weekly battleplan. Deeply addressed by Bonhoeffer on Community in Ecclesiola, reaffirm thankfulness for the blessings we experience.

Contradiction: How to focus the whole task to open the possibility of others participating in all arenas of impact.

Religious House: Tulsa

External: Cell dynamic becoming real as House, Galaxy and Metro Cadre members meet for 2nd Week II PSU pushing further parish research and battleplanning. Report late Sunday night to account for polis common meal as part of ongoing movementalization thrust for '74.

Internal: Indicative battleplanning completed with great joy - experiencing the gift of methodologies - "the most concrete gift for the globe we have." Assignments made for the quarter out of the image of "task force" with the House operating as a team.

Religious House: Tulsa (continued)

Contradiction: Experiencing "If I can stand back far enough, I can move the earth" see the need to step back from battleplan and prioritize and build the detailed models for actualization.

Religious House: Houston

External: 15 page research document completed on Northline 5; 5 strong metro cells created as the House works in 5 metros on Wk. II and in 4 metros in WK. I; .

Internal: House finances get boost as 10 people work corporately on one job Wednesday evening; House experiences heavy traffic flow of sojourners, meetings, PSU's, etc.

Contradiction: Exploding complexity creates difficulty in keeping the strategic focus.

Religious House: New OrleansReligious House: Memphis

External: Memphis held its very first-ever-in-history-real life Galaxy meeting! The miracles was summed up by layman who stated succinctly: "Last week we wasn't and this week we is!" (Could be a long year!) Pastor just out of surgery sends wife to meeting saying "I'll be in pain whether you're here or there, and you need to be there."

Internal: Relaxed House council proves to be great absolution as we discern the 7 major contradictions (int/ext) and create tactics for dealing with them.

Contradiction: Creating structures/methods, happenings which sustain our new resolve relative to the future.

Religious House: Atlanta

External: Energy crisis offers new possibility: PLC 'drop in' strategy out of the story "we were in the neighborhood and didn't want to waste gas" net immediate invites to sit and chat for a while. Bus rides through parish are gift in gathering PSU data.

Internal: A week of firsts: 2 permeation jobs secured on same day, church in the parish lets us use their phones for penetration work and Carl Garrison (sent by Cramer) drops in for an evening.

Contradiction: Establishing station battleplan for quarter, then getting trapped watching how the other troops are doing; thus missing our own signals.

Religious House: MiamiReligious House: Wichita

External: Week II Metro PSU writes intent and implementation paragraphs and does local modification of 27-week Guild timeline. "Towne East" is a great place to be alive!!!"

Internal: House reaches full employment with the last one getting her first paying job after only 10 days of looking. New altars appear all over the House as if from nowhere.

Contradiction: Appropriating the fact that 'willing one thing' does not mean 'doing one thing,' and thereby finding ways to get all plates spinning without twirling them one by one.

CHICAGO

Religious House: LincolnReligious House: Kansas City

External: First bi-metro newsletter symbolizes implementation of Quarter III tactics - Westport parish is gridded to stakes and meeting with Westport Council of Ministries, Inc. yields 3 LENS recruits for Wk.3.

Internal: Guild room is transformed by paint and furniture provided by new intern family Roberta and Cal Hoss.

Contradiction: Holding the immediate momentum until strategies begin to spin.

Religious House: Minneapolis

External: Clergy luncheons continue to spark interest in PLC and give new dimension to House as Wayside Inn. Conference call takes Mobile Religious House dynamic to Waussau when cars grounded by snowstorm.

Internal: Tribal resettlement creates new space for sojourn week and for new interns Bob and Kathleen St. Clair.

Contradiction: Unwillingness to ground the story that laying demands on colleagues is nurture.

Religious House: St. Louis

External: PLC recruitment letter mailed to all mainline clergy in region nets 8 registrations in 2 weeks - on strength of letter alone (abetted by the Holy Spirit of course). The Lord has his own way of solving the gasoline crisis. Weekend PSU for Guild battleplan yields 16 tactics.

Internal: Ecclesiola dynamic returns with full force as we engage in study of The Community Called Church and we study engagement in the Parish Guild Experiment (sodality). We sense the mission caring for us as we do the Solitary Office

Contradiction: Ensuring all troops are au fait with the latest reports from the fronts as they come in briefly from hitting the pavements.

Religious House: Peoria

External: Celebrate renewed and emerging metro strength with 26 at meeting to lay context of continental shifts; 2 signal PLC registrations for Indianapolis.

Internal: Shift to Qtr. III is whirlwind newness with new intern designs, new \$10,000 job, E.G. Chinese parade for nation and world council, well-studied Irish paper and receiving of set of China from great metro colleagues.

Contradiction: Lingering tendency to rely on internal task forces for recruiting troops while colleagues ready but unclear about how to engage and new bi-metro territory indicates penetration demands intensify.

Religious House: MadisonReligious House: RockfordReligious House: Champaign

Religious House: Milwaukee

External: Confirmation RSI held with 57 new participants from seven local churches as group recruitment comes into its own.

Internal: Barber family received to sojourn for the quarter. New Ecclesiola format initiated as Segundo electrifies our Niebuhr grid.

Contradiction: It is easier to die with an old model for recruitment than to risk with a new one.

Religious House: Chicago

External: New 5th City brochure telling the incredible story of last 10 years and climaxing the in-kind contribution of many which made the publication possible.

Internal: Presence of Academy on West Campus lends excitement and mission-al focus to forces.

Contradiction: Developing revolutionary mindset which allows priorities to shift creatively and sometimes suddenly.

Religious House: Indianapolis

External: Terre Haute gives an exciting sign of authorization as the Religious Education Department of the Roman Catholic Church there contributes \$100 toward the RSI and the Church Federation decides to sponsor the course and send people to it.

Internal: Sent out Sister Judith Albers from a week's sojourn. Meanwhile Life is a cabaret, old chum! New acts are popping up unexpectedly all the time as we gear up and learn secular spirit remotivation.

Contradiction: We have not pulled together all the separate battleplans into one comprehensive one that will hold all the strategies needed for the quarter.

Religious House: CincinnatiReligious House: DetroitReligious House: Cleveland

External: Metro Catalytic Cadre consenses on University Circle as location for the launching of the primal guild experiment standing in awe of the possibility of a parish which can draw upon the resources of 3 museums, 5 major health care facilities, and a university.

Internal: Welcome Jeff and Francis Roper as interns. Ecclesiola provides vision of the renewed church as we pharisaically keep to time construct to allow the release of power of each section and consequently the power of the whole. Ringing of a bell provides needed reminder.

Contradiction: Awareness of the comprehensive demand fogs clarity on particular focus of mission.

NEW YORK

Religious House: PittsburghReligious House: Rochester

External: We are impacted by the interior shift from the imperative to the indicative. The whole region is transformed into possibility - the signs being an RSI in Rochester Week I, 7 registrations in Albany in 3 hours of recruiting, beginning of clergy luncheons, 4-day PSU. in Binghamton metro with \$700 offered to cover expenses.

Religious House: Rochester (continued)

Internal: The reordering of our external life in metro teams has brought necessary internal life shift as we experience weekly pedagogy and the reordering of our war room.

Contradiction: Quarter timeline for metro teams must be objectified in order to keep the immediacies from gobbling us up.

Religious House: Richmond

External: First metro PSU for Guild Initiation does preliminary parish survey, sets parish boundaries, names the major contradiction; and celebrates with the movie "Papillon." Movie conversation reveals the problemless living of a vocated man.

Internal: In one week's time Academy prospect says not possible to go to Chicago for 8 weeks, decides to intern in House and leave for Academy.

Contradiction: In midst of overhwleming mission sometimes forgetting that creating Christian community is what will sustain missional engagement.

Religious House: Washington

External: New Galaxy begins with 6 churches in training - 25 present - no children, already doing own enablement. Replication Galaxy under Chessnut pledges \$150 per month per church to global experiment. LENS keeps rolling with 32 preregistered with money during week.

Internal: Finished indicative battleplan with 260 implementaries timed and offered up at House Church. Received Craver family as fellows. Ten guests at House Church from 1 polis, one of whom is 82 years old lady who manages 1200 accountants for government.

Contradiction: Intern prospect list growing and temporary cramped House makes us think it's not possible.

Religious House: Baltimore

External: 34 adults and 7 children attend Galaxy kickoff. House is elated as 4 out of 9 ministers give strong affirming testimonies to this kind of training.

Internal: LENS pitch workshop allows us to get beyond our anxieties and make LENS a personal tool.

Contradiction: Not pushing to the bottom every moment as meaning-filled.

Religious House: Philadelphia

External: Week II PSU on the Guild sets the framework for week as we find in our parish an ITI grad from the first Singapore ITI, George Wu, attend a community meeting, and find our first community sponsor for LENS.

Internal: Indicative battleplanning on Thursday night and parish grid decor give the Housing an address and excite it to grapple with the next week's mission.

Contradiction: The temptation to spurt with big steps when our model is designed to take systematic precise steps.

Religious House: New York

External: Concrete signs of possibility explode the consciousness of New York as the Perez family decides to attend Academy, two Roman Catholic clergy recide to recruit PLC in a predominantly Catholic city and 6 churches participate in Galaxy sodality for training quarter.

Religious House: New York (continued)

Internal: House Church celebrates new momentum as eight souls join the disciplined journey bringing total to 38: Cheryl Bess, Norma Bess, Ollie Mahone, Elizabeth Radford, Joel Radford, Alice Wright, Joel Wright, Stuart Wright.

Contradiction: Overtime work on operational timeline justifies both not being present to symbolic life and 'scheduled' collapse.

Religious House: Garden City

External: Wk II sees PSU as 'event of the year' with 25 metro colleagues deciding to embrace the impossible task - caring for 8 million people. First metro cadre/sodality meeting talks with St. Bernard from Warriors of God about the kinds of spirit giants needed in the 20th century.

Internal: House celebrates first week when all adults are employed and arrival of an in-kind Gestetner. House manual for Qtr. III base on putting on the armour of God through saints.

Contradiction: Not having any concrete way to get out of the door into the parish.

Religious House: New Haven

External: Circuit rider blazes through the Poughkeepsie metro putting 5 PLC notches (registrations) on his guns within 24 hours as well as getting sights on 10 strong prospects and establishing two clergy breakfasts for the coming week. Roundup of potential Galaxy churches intensify

Internal: Impacted by vision for the new church as House studied JWM's "Saints in theWorld" Second PSU begins to clarify how the House needs to impact the parish.

Contradiction: Need for trained iron troops in the front lines intensifies as battleplan begins to break loose on new arenas.

Religious House: Manchester

External: Replication Galaxy (3 new churches) joins in sodality for first time. PSU on Ecumenical Parish held during snow storm attracts 5 guests from the north country.

Internal: House Church this week saw just the Religious House folk around the table for the first time since last summer. House complete indicative battleplanning.

Contradiction: The amount of time it takes to create a consensus over against the necessity of having models built.

Religious House: Boston

External: An RSI for black churchmen is tentatively being scheduled by several local churches; 11 registrations for CSIIIA in one day; a long series of calls on metro colleagues re. the Guild PSU; House visits 7 different churches on a Sunday.

Internal: A snow day and determination allows House to complete over Wk. II manuals for internal existence and quarter battleplan and clean thoroughly all the files. An intern replies to a quest that "we are working harder and enjoying it more."

Contradiction: The courage to trust that battleplan especially in secular realm of LENS calling

Religious House: Portland

External: Actualization of Quarter III plan blows our minds; 3 CSIIIA registrations come in, clergy recruitment is launched and LENS prospect uncovered.

Internal: New time/space design enables House to steal time for the Lord's work while maintaining permeation responsibilities. American Graffiti conversation breaks loose new insight on struggle of youth today.

Contradiction: Overwhelmed with the possibility we've demonstrated to ourselves through implementation of detailed battleplan - dare we try it again next week?

MONTREAL

Religious House: Toronto

External: First guild PSU of the quarter led by Galaxy pastor and core colleagues, names and grids Spadina parish, is appropriately concluded by a visit to view Kohoutek at the Science Center.

Internal: All hands on deck as station assignments give everybody responsibility for a particular arena of the mission. Irish's paper on Niebuhr pushes us to a new edge in our understanding of the church.

Contradiction: Stage 11 LENS rocket refusing to come unstuck, at least the way we had planned.

Religious House: Ottawa

External: Speaking engagement with student group and battleplanning with metro coordinator afterward bring needed clarity to missional thrust for Kingston metro. Galaxy rounds out Mod I weekend, and House is represented at area LENS marketing session in Montreal.

Internal: Week of dispersed troops to Cardinal, Brockville, and Watertown NY does not halt continued push on indicative battleplanning for quarter. Weekend PSU on House Manual emerges with revolutionary assignment constructs and time design to deal with the realities

Contradiction: Crystallizing quarter battleplan in midst of radically shifting images of the mission.

Religious House: Montreal

External: Quarter III launched as areal LENS marketing meeting reveals that the Area is the 'right' unit to do sociological penetration. Proposals for areal marketing and pitch workshop signal that Area Montreal is one thrust.

Internal: The Life Abundant was grounded as we celebrated Ecclesiola in a cafe across the from Eifel Tower in Area Paris and completed Wayside innkeeping evening with Holy Life Hootenanny. Welcomed new troop, Sarah Black, from the Portland House.

Contradiction: Re-charting direction of LENS marketing on the other side of week one midcourse correction.

CARACAS

Religious House: Caracas

External: Regional Council delineates strategic objectives in a 5x4x4.

Internal: Struggle with ambiguity of deciding that future without knowing all the facts.

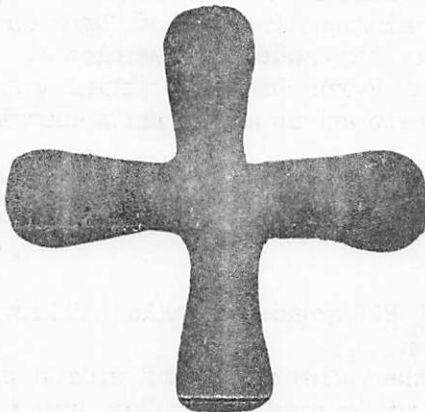
Contradiction: Locating property for Religious House.

BASE CENTRUM

External: Monday Plenum explodes with images as report on WK. II calling to Houses for Guild Experiment timeline comes down on the inter-relatedness of 20 programs. Ten foot high chart objectifies 26-week march to experiment. Uptown Galaxy meets again; Order attends annual Uptown Chicago Commission meeting in old Aragon ballroom. Centrum hosts Dr. Johannes Coetzee. Fifth City development booklet finished. Consult in New Orleans with Religious Orders promises future consult of 125 Ursulines.

Internal: Centrum structures reflected in space as newly created Management Centrum creates new space for its collegium room. Color quads prepared for solitary. Collegiums on comprehensive thinking bolster indicative mindset. Order celebrates the birth of Robert Shane Trussell to Rhodes and Liz of Los Angeles on January 14. E.G. 5th, 6th, and Student House 7th graders take most of school's Science Fair awards. Newly arrived at Centrum since Christmas discontinuity: Phyllis Slicker, James and Caroline Dibert, Bob and Jane Booher, Kip May, Debbie Steiner, Betty Frazier, David Broadfoot, and Alan Herbert.

Contradiction: Coordinating the 20 programs when they are in such individually varied stages of actualization.



Enlarge the limits of your home,
 spread wide the curtains of your tent;
 let out its ropes to the full
 and drive the pegs home;
 for you shall break out of your confines right and left
 your descendants shall dispossess wide regions,
 and re-people cities now desolate.

Isaiah 54:2-3

LONDON

Religious House: Glasgow

External: All three ITI recruitment systems move into high gear as first yesses for ITI come forth, Edinburgh metro cadre establishes itself, and the Secretary of the Ecumenical Commission (RC) gives us his nod and a letter of introduction.

Internal: House hosts 12 members of the Glasgow cadre for Ecclesiola and movement strategizing. The combination of sainthood, Castanada, and New Anatomy of Britain sends us all spinning.

Contradiction: Tactics for spiritually undergirding a young movement that is slowly intensifying and risking in a dramatic way.

Religious House: Bristol

Religious House: Manchester

External: This has been a week of widening publicity with many meetings and interviews, including Radio Manchester and Bishop John Robinson.

Internal: All kinds of new and old friends at Ecclesiola and House Church. Anxieties begin to bleet "too many" rather than "too few."

Contradiction: In a superabundance of tactics how do you pick the winners and forget the rest.

Religious House: London

External: In-roads into the two great universities of Cambridge and Oxford made, with formation of old grads meetings held, and significant visitation for new and future courses scheduled.

Internal: Guests and House alike impacted by looking at the teaching techniques of Don Juan at Thursday Ecclesiola.

Contradiction: Molding one image out of a many-sided war.

PARIS

Religious House: Paris

External: A luncheon with church-related business leaders and pastors of international churches increases potential forces for LENS recruitment.

Internal: A week of intense tactical planning and the restructuring of the stations is experienced by the House as unceasing prayer.

Contradiction: Create the structures to allow local movmental participation in the global mission.

BRUSSELS

Religious House: Brussels

FRANKFURT

Religious House: Frankfurt

External: Strong sense of the 'consultation' and familiarity strategy breaking through this quarter as meetings with the Board of Missions of the German Protestant Church, representatives of the American Protestant Church in Bonn, and the training director of Deutschebank.

Internal: Qtr. III opens with full gas as the sodality section of Ecclesiola takes us to see the "Hunchback of Notre Dame." Initial images of how to create global citizens are developed as children's curriculum is designed.

Contradiction: Though joyously overloaded with demands from the church and the world, the winter quarter as of yet has no firm RSI sponsors.

NAIROBI

Religious House: Nairobi

External: Continued visits to Quarter II PLC grads reveals willingness to recruit for Quarter III and IV courses.

Internal: The Second Mansion pulls together wide range of spirit matter, including everything from "Take Care of Yourself" to Don Juan.

Contradiction: Long range authorization time line and ITI authorization timeline are not meshing at the point of securing ITI authorization now!

BOMBAY

Religious House: Bombay

External: Systematic implementation of missional models focused in grad prospect and clergy visiting in Colaba polis; first circuit ride to Pune Region and ITI financial and recruitment models ready to roll.

Internal: The Ashram becomes transformed space as radical shift in space design includes tribal resettlement. The mystery was restored as large chunks of space were cut down to explosive size.

Contradiction: The final recipe for the ITI is perfect but no meat for the pot.

DELHI

Religious House: Delhi

External: Week of spirit analysis and story writing enables the House to create recruitment battleplan for 3 RSI's, 1 RSIIIA, S'74: India, and ITI:Delhi.

Internal: Ecclesiola study of Obedience paper holds House's struggle with corporateness, while finalizing quarter battleplan when everyone is anxious to get on the road with incomplete tactics, and allows House to embrace chastity.

Contradiction: Find ourselves with no alternative battleplan when quarter battleplan is built on maximum financial flow, which is not proving to be true.

MADRAS

Religious House: Hyderabad

External: House receives 5 pre-registrations for Summer '74 and ITI'74.

Internal: New quarter's Ecclesiola impacts House and cadre colleagues, with St. John and global gridding sodality being the highlights. House celebrates with A.M. Joseph family and 50 guests a grand Indian initiation ceremony of 12 year old daughter, Rakhini.

Contradiction: With no financial resources, still deciding to recruit the RSIIIA, and make the Ashram life a spirit happening, while building necessary tools and models.

SINGAPORE

Religious House: Kuala Lumpur

External: Getting in high gear with RSI recruitment in 4 metros may exhaust our bodies, but spirits were refreshed and surprised by colleagues response. Week climaxed by 7 KL colleagues participating in Ecclesiola with 4 more committed to join from next week.

Internal: Paraphrasing 1st John experienced as deep address, revealing the timeliness and relevancy of the scriptures for our lives and situation.

Contradiction: A model that would enable two bodies to be in three places at the same time.

Religious House: Singapore

External: Held RSI with 15 first time participants present on a weekend when everyone was supposed to be busy with Chinese New Year preparations

Internal: Hosted Daphney Spencer and friend on their way back to Australia from a visit to India. Attended a Hindi film with several of our colleagues on Saturday night.

Contradiction: More of our Singapore colleagues must be allowed to see that they are responsible for both the fantastic things which have happened to the Church in Singapore and for the future of the Movement here.

Religious House: Jakarta

External: Violent demonstrations against the growing gap between rich and poor have us reflecting deeply about the economic-political malaise confronting human beings in this part of the world. Curfew postpones metro Ecclesiola meeting.

Internal: Quiet and sober mood as House assumes low, in-doors profile.

Contradiction: External situations raises internal crisis. Life question "What do I?" is escaped by hoping someone else can illuminate the necessary deed.

HONG KONG

Religious House: Hong KongReligious House: Kaohsiung

External: Whole House engages in PLC recruitment as four trips into three metros are made and top leadership troika of one Presbytery participates in recruiting another. Sign: Moderator of Presbytery is stopped on his motorcycle in country-side and 'pitched' in midst of rice planting on all sides. We offer 3 brochures, he asks for 10.

Internal: Internal life reaches cruising speed for quarter as study of "Filiality" (Confucius) begins, depth House pedagogy sessions are launched, and the mysteries of the coming Chinese lunar New Year celebration (1/23) are explored.

Contradiction: Discerning the One Thing this quarter is about in midst of multi-faceted demands and possibilities.

Religious House: Manila

External: Trip to Daguapan City to set up PLC course with regional colleagues Lim Baribay sent out to Davao region. Fishel met Asian Productivity Organization representative. Twelve registered to House pedagogy

Religious House: Manila(continued)

Internal: Philbrook is doing fine after major operation. Formal invitations have been printed and sent out for House Ecclesiola on Thursdays. Two in a row great House Church witnesses impacted life of the whole House. Had Avery Manchester from United Methodist Church Board of Global Ministry as guest at House Church. Elvira Monson sojourns.
Contradiction: Long range vocational struggle.

Religious House: TaipeiReligious House: CebuReligious House: DavaoReligious House: Seoul

External: Regional pedagogy held at the House with 20 colleagues present. Assignments made for 2 RSIs, 1 CSI and 6 PLCs.
Internal: Concluded the week with cabaret celebration and report from the Wainwrights.
Contradiction: Needed models for priorship training in global mission.

Religious House: FukuokaReligious House: OsakaReligious House: Tokyo

External: Asian Productivity Organization approves LENS proposal now opening possibility of LENS being marketed by them in 14 Asian countries. Japan is first country to say yes to the proposal. Sixteen Christian groups at Rikkyo University decide to hold RSI (150 man).
Internal: House visits 3 Japanese churches and finds 3 goldmines. All were invited to dinner and to work further with the churches. Sister Elizabeth Moriarty comes to House Church to celebrate her new assignment to do training with Asian Churches.
Contradiction: With many local churches requesting our structural aid, what is the holding pattern to initiate while we spend the quarter researching our social demonstration site and geography.

Religious House: Sendai

External: Foundation building first meeting of Sapporo metro cadre with the globalizing accomplished by a Korean New Year's feast prepared by Mrs. Lee.
Internal: Roman Catholic cultivation exploded by the enthusiastic participation of local R.C. priest in Ecclesiola and the spiritizing visit of Fr. Charles Morrissey to the local R.C. Church, Sakura no Seibo Convent (Our Lady of the Cherry Blossoms) and House Church with 7 guests.
Contradiction: How to unify our thrust relative to the various Christian bodies in the region.

Religious House: Perth

TOKYO

SYDNEY

Religious House: Darwin

External: Began survey volunteer recruitment, with excited response from initial contacts. Week 11 implosion and mind expansion occurs as we think through the interrelationships between survey questions and create gestalt methods for the data.

Internal: Colleague Julie McCauley drops in with the two McCauley girls on route to Oombulgurri. In the midst of continual rain since Christmas and the one road south cut by floods, the 'Iron Man' begin a 10-day course of swimming lessons at the local pool.

Contradiction: Lack of individual recruitment assignments and loose accountability means wasted time and lost opportunity.

Religious House: Oombulgurri

External: Mawaba labors over one-year goals. Excitement erupts over recall of Djaruk (decision-making process) and accompanying stories of tribes coming in over a period of days, great feasts, and fierce battles.

Internal: House welcomes the return of Julie, Georgina, and Josephine McCauley and sends out Dierdrie Heath to resign from her job in Brisbane. Staff broods over the formation of a Wyndham Guild.

Contradiction: How to keep up with the immediacies while setting the vision of possibility and the comprehensive demands.

Religious House: Adelaide

External: Preparation for first regional event for new year continues with compiling of phoning list.

Internal: Key clergyman Brian Phillips celebrates House Church with our depleted numbers. Continued to rejuvenate the face of the House, painting front fence and creating internal decor.

Contradiction: Keeping corporate thrust in view whilst skating over the thin ice of individualism.

Religious House: Melbourne

External: Raising money for Summer '74 from colleagues at home reveals development possibilities and colleagues' willingness to participate. Past church hierarchy clergy colleague helps us rewrite PLC letter in light of the established church's perspective in Australia.

Internal: Pastel green transforms the space and the image of one of our public areas - a large passageway into the collegium room. Two members called to Sydney for Area meeting halves House continuum.

Contradiction: Going ahead with external mission while "holding" on several issues until colleagues return from S'74.

Religious House: SydneyReligious House: Brisbane

External: Return of Whitlocks from Summer '74 and Dierdre Heath from Oombulgurri explode House and regional colleagues with new images of the awesome demands and possibility of caring; Galaxy pastor sent to BTS; congregation data pull-together reveals concrete ways to move.

Internal: House Church becomes high celebration of returning giants; Guild Experiment paper impacts with fear and fascination of the future House cleaning lifts spirits and prepares for the whirlwind that's coming and here.

Religious House: Brisbane (continued)

Contradiction: Keeping before ourselves the knowledge that the power for the region comes not from making one fire bigger but in sparking and nurturing the smouldering hundred small fires across all 6 metros.

SUVA

Religious House: Majuro

External: A real life audit completed on KITCO gives first dependable picture of the financial position of the company with loans in place.

Internal: Sodality spin on our public image reveals that KITCO employees (and therefore most of the community) have our time design down pat starting with 5 a.m. gong.

Contradiction: Harnessing our vision.

Religious House: Apia

External: School orientation with new staff from New Zealand and Peace Corps welcomed to MHS. Reception room created out of paint and re-distribution of furniture. School symbol designed and approved by staff which sees its potentiality as a sign for the school.

Internal: Indicative battleplanning exercise during collegium rehearses old methods and new as we struggle to articulate the dynamics going on in MHS.

Contradiction: House sign at school motivates other teachers but not the administration.

SAN FRANCISCO

Religious House: San Francisco

External: Mobile Religious Houses on the move in Reno and Modesto while W.Q.T.S. of 85 completes Week 2, and Guild PSU in the signal parish launches marketing for a combined grassroots/executive level LENS in Wk. 8.

Internal: Received John Neff from 5th City; located facility for RH in the signal parish as 2 Catino families announce their decision to join the House.

Contradiction: Keeping comprehensive focus on the 20 programs when demonstration breakloose of the Guild, LCX, and UHN require major attention

Religious House: San JoseReligious House: Sacramento

External: Mobile RH hits jackpot in Reno; metro Ecclesiola, LENS marketing lunch, and clergy consult all in the 'pot.' Metro colleague delays job actualization to spend all of Week I, Week II in Stockton, recruiting, recruiting.

Internal: Welcome Jan Hood for 3-month sojourn, and new member of troika, Marilyn Lesslie.

Contradiction: Dealing with contradictions as intellectual liberals and not as structural revolutionaries.

Religious House: SeattleReligious House: Los Angeles

External: Following RSI blitz weekend Wk. II and an avalanche of PLC calls, the PLC receives much interest and some registrations, including the setting up with the Center for Theological Studies in Thousand Oaks the inclusion of E.I. courses on their schedule of classes.

Internal: The visit of a Korean pastor, Rev. Kim Chong Man, to the House the creation of a news montage of South America and Africa by the Emerging Generation, and the call on an ITI sponsor bring globality forcefully into our consciousness.

Contradiction: Keeping momentum of Echo Park Parish Guild Experiment whirling and deepening by marking it by events to hold and anchor the experiment throughout the region.

Religious House: Phoenix

External: Development team Hill and Kroeger break open new turf; grid of Ecumenical Parish fleshed out with housing, businesses and industries, churches and public buildings and properties noted in color code. What a revelation!

Internal: Global Wayside Inn dynamic alive with Kim Chong Man, Korea; "Jeff" from New Zealand; and John Lane, Galaxy pastor, San Francisco all present in 24 hours.

Contradiction: Intellectualized our timeline and tactics rather than symbolized and internalized our decisions, causing misplaced passion in bringing off insignificant immediacies.

Religious House: Billings

External: This was a week of stepping out as we use permeation assignments as tools for formulation and field visit invitations net positive results.

Internal: We rejoice in taking charge as total House is employed and we still have someone in the war room organizing our prospect files.

Contradiction: Feeling that the flow of implementing tactics will carry us through rather than deciding to focus corporate intentionality on each event.

Religious House: Denver

Religious House: Rapid City

Religious House: Anchorage

Religious House: Saskatoon

External: Seemingly instant regional response to Ecclesiola bids, PLC, RSI, and LENS recruiting is really the result of many previous weeks' work. Excitement in metros as results begin to show.

Internal: We are celebrating the newness of life; one new intern, Sandra Scott; a gift from the regional colleagues of new cutlery and dishes; new decor including a revised area grid banner; and new prospect and grad file system.

Contradiction: Sometimes the response is so overwhelming that we want to just stop and stare when we should be moving on the next set of dynamics.

Religious House: Winnipeg

External: St. Andrew's Elgin United Church of Canada gives glowing report of the Local Church Project at prestige United Church. St. Andrew's pastor expects only small group to respond and 25 show up! Highlight is claiming promises for "Sister" Church.

WINNIPEG

Religious House: Winnipeg (continued)

Internal: "Top of the World" timeline really enabled our first two courses of 1974 to come off with a bang. First regional pedagogy course ever, resulting in solid decisions to stand up and risk being counted as People of God.

Contradiction: Still planning our 26-week guild initiation with no focused coordination.

HOUSTON

Religious House: Amarillo

External: PLC recruitment moves into second phase as decisions become concretized in registrations and news of who is attending calls forth new interest. Pre-guild plans the four initial signs of parish awakening and grassroots leadership agrees that this is the year.

Internal: Whitneys are sent out to begin the new House in San Antonio and Hamptons are received from Houston.

Contradiction: Moving ahead when there are few and narrow openings in the line.

Religious House: Oklahoma City

External: Clergy briefing on Primal Guild/Ecumenical Parish Reformulation indicates we are tailoring a construct which will fit all shapes and sizes. Second clergy collegium of week calls for return to Ponca City to battleplan continuing clergy structure.

Internal: Rev. Carlton Garrison, Central Christian, El Paso, Texas visits daughter in House. First session with Segundo tells us this is very timely.

Contradiction: Right rope walking (learning to trust the tactics) in shift from all energy on recruiting to creating the primal guild.

Religious House: Tulsa

External: Bartlesville Cadre holds first polis Ecclesiola with House member leading Bonhoeffer study - develop quarter calendar with focus on training and penetration. Troubador Trek to Bartlesville and Claremore finds clergymen ready for PLC.

Internal: Baileys visit House on Regional Trek, spinning imagery uncovered in indicative battleplanning that holds the next 20 years and Qtr. III. First modification session early Mon. a.m. with Task Forces pushing on Qtr. battleplans.

Contradiction: Not having created self-consciously the mythology that holds penetration/formulation/LCX and bi-metro in the context of the PGX as the edge.

Religious House: Houston

External: An exciting week of movemental activity included: House presence in Dallas, San Antonio, and Houston on both Weeks I and II, a 40-man sodality meeting, plus intensive Week I visitation and research in the Northline Five Ecumenical Parish.

Internal: House secured 3 new jobs, and 2 job upgrades, experienced the impact of 55 people at House Church, and received with great enthusiasm the sojourning of community reformulators Zan White of Texarkana, Texas, and Jerry Annand, of Natchitoches, Louisiana.

Contradiction: In the midst of a whole flurry of miraculous doing, the radical significance of the movement's activities have not yet fully impacted ourselves and our colleagues.

Religious House: New Orleans

External: LENS registrations Mobile paid in full registration of Assistant V.P. Highway Department., Chairman of Board of Engineering Process equipment. Old colleague will see boss about LENS.

Internal: First PSU of quarter involving metro participation. Did decorating on Wk. II. Guests to House Church and Ecclesiola.

Contradiction: How involve metro colleagues in mission.

Religious House: Memphis

External: First Galaxy Week II Council held revealing both the deep fear and the deep resolve surrounding the decision to participate. Trip into Nashville and Knoxville nets appointments with key men.

Internal: Ecclesiola with oodles of guests including children makes for a lively evening - the Saint continues to impact each of us - with both the demand and the promise to love the mundane.

Contradiction: Finding the time to build the battleplans that release the most impact from the least people in the house that God built.

Religious House: Atlanta

External: At Wk. II PSU establishing East Lake Parish boundaries and initial problemat, guildsman Tyson Baisden announces the relocation of his law office into the parish. Penetration effort more than doubles size of Week 3 RSI course and establishes need for another RSI

Internal: Area priors, the Clarks, come early to teach CSIIIA and visit House. First Segundo study 'quickens' our intellectual life. Broke ground for monastic vegetable garden and built landscaping plan for House and its new role in East Lake Parish. Discovered House phone number on touch tone = "Jesus Loves Me."

Contradiction: As Atlanta metro comes alive, allowing colleagues in other metros to live out of comprehensive myth and experience weaning as nurture in the mission.

Religious House: Miami

External: Out of this week we have two new keys which open doors. One was the planning for RSI over four quarters. The other key was a speaking engagement for the Miami Lake Churches which opened new possibilities.

Internal: The Trumans arrived! House collegium is doubled.

Contradiction: How to create the image of parish engagement overagainst the good life story.

CHICAGO

Religious House: Wichita

External: Group recruitment methodology finally hits paydirt as 32 for 2 courses are registered in one week without a single one-to-one call. Twenty-three clergy (including 6 of the 14 in the Towne East Parish) meet for two hours on Thursday morning to hear of the Primal Guild.

Internal: House initiates new depth reflection through reading - Ancient of Days, planned for 8 weeks of reading, is read by almost everyone the first week. The Community Called Church proves to be far less dreadful and much more fascinating than first anticipated.

Contradiction: IN the midst of external victories, the 'death urge' comes around, causing us to collapse certain aspects of our symbolic life.

Religious House: LincolnReligious House: Kansas CityReligious House: MinneapolisReligious House: St. LouisReligious House: Peoria

External: Headed for signal course of Champaign metro as 11 more registrations netted in 2 days - result of serious continuous penetration.

Internal: Celebrated sendout of Champaign RH to become Dallas RH at House Church. Welcomed 4 children of Dick and Dianna Best - reassigned from Rockford (1 week after moving in!) .E.G population doubled in 1 day.

Contradiction: Story of impossibility rears its defiant head in 2 arenas: "we've tried it before and it probably won't work" (metro) and "We're such a small number of troops for 2 whole metros!"

Religious House: Madison

External: Bimetro auxiliary meeting held showing great possibilities for the future. Metro auxiliary then met 6 a.m. Wednesday to mail the 1st newsletter, hold accountability for RSI recruitment, set up calling for bimetro planning council this Week II, and clergy calls intensify.

Internal: Former House member here from centrum on Wk. II assignment for final goods sorting and helps us with unknown grads on the list. Massive sorting and House rearrangement go on around external activity and we attend gymnastics meet and witness striving for perfection.

Contradiction: Never let the clouds of winning block the glorious sun above.

Religious House: Rockford

External: While metro gears up for final "recruitment countdown" toward Wk. IV RSI, the House makes final preparation for relocation to San Antonio. Final House Church with 25 present includes awesome removal of House Iron Cross by Charles Moore for transfer to Texas.

Internal: The two last-to-leave families make gallant and frantic effort to tie up loose ends so House can be vacated after final House Church celebration.

Contradiction: Metro battleplan in full swing while still entertaining the notion that the metro Religious House is crucial to the mission in the metro.

Religious House: ChampaignReligious House: Milwaukee

External: Parish comes alive as we self-consciously encounter everything from "George Webb's" hamburger parlor to St. John's Cathedral.

Internal: New arrival Paul Appenfelder welcomed. Ecclesiola hosts two Lutheran sisters, one Roman Catholic Sister recent RSI grads and others as both House and guests responded to Segundo study from the vantage point of their own heritage.

Contradiction: Hesitancy to move on future in midst of the ambiguity is creating a cynicism about the present.

Religious House: Chicago

External: RH hosts 2 PLCs, one with 30 students from Capital College of Columbus, Ohio, the other with 20 clergy from Chicago metro (clergy luncheons are paying off!). Both courses were concluded with a tour of 5th City and an art form conversation.

Internal: House fills as the Bigelows arrive from Madison and the Druckemillers arrive from Rockford (infant count now totals 5) and 2 new interns, Marilyn Shoemaker and Kay Schuznlein are received at House Church.

Contradiction: Symbolizing the new demand of ecumenical parish for the whole House.

Religious House: Indianapolis

External: Initiated weekly clergy collegium for clergy grads in the area. Held an exciting RSI and primal guild PSU on Week II.

Internal: Johnson Reynolds lands new job as vocational rehabilitator for retarded adults at more than twice the salary he got previously. House studies and grounds "The Declaration of the Spirit Movement" and is struck by the continuing relevance of that document.

Contradiction: We have let ourselves be blocked by immediacies that prevented us from moving on getting the needed authorization.

Religious House: CincinnatiReligious House: Detroit

External: Two Primal Guilds tactics carried out with attendance at citizens meeting on City Charter and ordination of Brian Reid, assuming rectorship of Episcopal Church 2 blocks away. Sunday morning Consult held at Highland Meth. Church SS and speaking at Ypsilanti Baptist.

Internal: Highlight of week is Ecclesiola as Saint conversation sends us spinning and study of paper on Neibuhr allows us to pull together S'73 and Great Turn implications and our relation to the Church and World. Completed Internal Life Manual.

Contradiction: Pulling together the work of 3 stations as one thrust so that priorities will hold when the 1000 demands start chopping away.

Religious House: Cleveland

External: Indicative battleplanning process objectifies futuristic thrust of the research, training, and demonstration aspects of the mission, enabling colleagues to intensify their engagement out of new images - 5 a.m. metro cadre collegium meetings forge out station dynamic.

Internal: "The week of launching out on the shake down cruise" reveals the power of having built consensus and undergirding structures

Contradiction: Seeing our parish to be the eye of the hurricane that is Cleveland, we're without practical images of reformulation.

NEW YORK

Religious House: PittsburghReligious House: Rochester

Religious House: Richmond

External: Wk. II indicative battleplanning PSU proves great tool for forming consensus and building missional community. Body decides to work late into the night to get the job done. LENS marketing stands at 44 committed as Best Products Co. says they would want to be able to do it in all 31 of their locations on the East Coast.

Internal: House Church becomes spirit filled celebration as 10 guests join 11 House members for largest House Church ever. Community paper grounds once again that God's grace is merciful in smashing our wish dreams.

Contradiction: Metro PSU reveals the need for all to take responsibility and it is dreadfilling.

Religious House: Washington

External: LENS at 70 and still rising - finding it very easy and fun to sell - companies, government, and associations paying for employees make the endorsement snowball a reality. Indicative battleplanning has drastically intensified our spectrum of engagement.

Internal: Segundo is event. Our cactus blossomed and our Crown of Thorns bush sprouted and we know that we of course can fly but we do have to shake off our cocoons.

Contradiction: Maintaining order and deep breathing in the midst of one "helluva" missional thrust.

Religious House: BaltimoreReligious House: New York

External: Sign of possibility as local church sodality expands to 30. One Galaxy pastor, solid Academy prospect, pushes beyond "I am angry" comment to say that what he needs is authentic intellectual dialogue and daily corporate community to move from his present plateau.

Internal: Plates spin as House experiences hum of being an Area symbol with teams and task forces implementing operational timeline, new structure of accountability Day I, Day II, sophisticated decor and pedagogy "here, there, and everywhere"

Contradiction: Story of "I'm an energy crisis" issues forth as operational battleplan not being implemented soon enough to bring off scheduled course.

Religious House: Garden City

External: First metro cadre meeting including Galaxy and metro colleagues consensus on 26-week timeline for PGX. Metro colleagues Ats and May Matsuoka open avenue to financial community using 5th City story.

Internal: Spirited House Church with more guests than House members, followed by 5th City presentation. Stations assigned in two arenas: LCX - Training Institute; PGX - Religious House Location.

Contradiction: Temptation to pull into the spin of possibility without marching on the straight and narrow path of actualization.

Religious House: New Haven

External: Perpetual penetration pervades. Third parish PSU provides pertinent data during strategy workshop and parish "walkabout." TheGalactic Council enables one of the churches to make plans for the quarter at a congregational retreat.

Religious House: New Haven (continued)

Internal: Collegiums focused on indicative battleplanning and concrete tactical planning. House Church celebrated by Methodist D.S. who was highly intrigued by the House. Weekend E.G. curriculum comes alive with study of Bonhoeffer.

Contradiction: Finding the key to release metro colleagues to engage in the parish experiment.

Religious House: Manchester

External: LENS calling pregressing rapidly. Three metro colleagues lead local church retreat doing future planning and contradiction. Three decide to be under assignment for Wk. II.

Internal: Decor task force makes major strides in imaging the shift of the quarter. Finishes large color quad for collegium room, area grid, 54 areal cities.

Contradiction: There is little passion for RSI recruitment this quarter. We are unfamiliar with new models and are hesitant to experiment.

Religious House: Boston

External: CSIIIA registrations top 20 with many long-time key colleagues; 11 colleagues gather in Hartford for indicative battleplan for the next year; over 40 metro colleagues visited re. the LGC and the week 3 PSU; first Presidium has representatives from all but 2 metros.

Internal: Fifteen House Church guests remind us of the power of the larger dynamic; two exciting studies this week in Ecclesiola and Sunday vision collegium (Theses on the Other World).

Contradiction: How to build the prospect lists and the recruitment net to keep PLC and RSI as the backbone of the movement.

Religious House: Portland

External: Pastor grad of largest Baptist church in Portland was so moved by House Church that he invited House to co-host with him his year-end congregational meal.

Internal: As the dust clears in the permeation skirmish, we look around to discover that three of the four of us have jobs without time clock-- great potential for stolen in-House time.

Contradiction: How to develop eyes that discern the most minute signs of hope. They are there!

MONTREAL

Religious House: Toronto

External: Visits to corporation executives and to key parish leadership reveals deep readiness amongst "secular" and "religious" alike for LENS course.

Internal: A relaxed Ecclesiola is sobered up by a re-viewing of Cabaret, confronting us again with the fact that there is only a slight inflection between the divine and the diabolical. House welcomes Doug and Marion Hilton to swell the ranks.

Contradiction: Finding the point of leverage that will release people to say 'yes' without their being overwhelmed by the demand.

Religious House: Ottawa

External: LENS marketing thrust gets on the road with week of intensive battleplanning, followed by equipping "one sharp LENS marketer" for his first foray into the secular world. Initial arrangements made for facilities for seminar in early May at the Chateau Laurier.

Internal: ICA office established with mail box, telephone, and an IBM typewriter. New early morning time design to maximize participation in House visioning and battleplanning deepens House spirit through opening solitary to chart previous day.

Contradiction: Unclarity on all the demands and values to be meshed into quarter calendar.

Religious House: Montreal

CARACAS

Religious House: Caracas

External: Arranged site and data and global confirmation for LENS course

Internal: Concretizing Latin American strategic thrust with particular emphasis on creating movemental strongholds and nurturing movemental support systems.

Contradiction: Religious House site.

BASE CENTRUM

External: Uptown has 2 Wk. II community PSUs on Housing and Elders. Experimental first Guild Field Visit to Proctor & Gamble in Cincinnati. Three full-size PLCs and heavy schedule of development circuits has suitcases flowing through lobby.

Internal: Collegiums on global analysis shapes excitement of congregations as we look again at geo-social grids and current trends. Quarter emphasis on Centrum experiment continues as JWM meets daily with priors and Ecclesiola sodality builds indicative battleplans. Segundo study continues to excite. Centrum welcomes Isobel Bishop's father Mr. Milne for week long visit, and Bev Parker and Cathy Smilianov come from Winnipeg to study preschool methods.

Contradiction: Getting a practical operating model to focus complexity of Day I/Day II, Wk. I/Wk.II, Centrum assignments, congregational assignments, and missional demands that cut across existing structures