



And he said to me, Listen carefully, man, to all that I have to say to you, and take it to heart. Go to your fellowcountrymen in exile and speak to them. Whether they listen or refuse to listen, say, 'These are the words of the Lord God.'

Ezekiel 3:10-11

LONDON RELIGIOUS HOUSE: GLASGOW

External: A week of signaling the future as another Local Church evening is held with 4 clergy and 22 laymen present and Graham Mac Sporrán (Bishopton cadre) is 'baptized' as a regional pedagogue. The Glasgow cadre meets, 2 intern prospects store their belongings in the House for the summer, and Fiora Willock journeys to London for month's sojourn.

Internal: The practicalization of our globality and our corporateness are envisioned and concretized in London as the elders address us and the future right and left. The economic, political and cultural dimensions become transparent.

Contradiction: Tying all the individual journeys to colleagues into bringing off continent Europe. (Wk. 9)

RELIGIOUS HOUSE: BRISTOL

External: First PLC in Cardiff metro gives needed authorisation and base for autumn recruitment.

Internal: House journeys to London to join colleagues from across Europe for Global Council and Elders visit; addressed by the reality of area operations and strategies as way of renewing the globe.

Contradiction: No clear picture of coming quarter as region and area. (Wk. 9)

RELIGIOUS HOUSE: MANCHESTER

External: New Castle cadre decides to send 7 to regional council. Three registered for S'74.

Internal: We found that what we had expected to be the elders trip turned out to be a Global Council with the entire European continent.

Contradiction: Moving into the 'off quarter' with troops shooting out in all directions while setting up the fall quarter. (Wk. 9)

RELIGIOUS HOUSE: LONDON

External: Along with a CSHIA in Manchester and an RSI in London, an area House PLC with 12 regional ministers is the main highlight of the past week.

Internal: In the midst of heavy course enablement, preparation for the Elders trip gets underway.

Contradiction: The necessities of the summer press heavily upon us as we journey through a spring quarter already overfilled with demands. (Wk. 7)

PARIS RELIGIOUS HOUSE: PARIS

External: Participation in Global Council: London deepens global vision and grounds it in 21-point programs for area and continent.

Internal: Elders visit occasions profound reflection on past year, with the completion of comprehensive House report.

Contradiction: Weaving together newly revealed spiritual and practical wisdom into a tactical plan for the future. (Wk. 9)

BRUSSELS RELIGIOUS HOUSE: BRUSSELS

External: A great week with the Elders. Called upon the received subtle but perceptible nod from Leo Joseph Cardinal Suenens, Primate of Belgium. Forty-two present for area gathering at which JWM. spoke and David and Ellen Rebstock present the House the keys to their Renault.

Internal: Seventy-four order members in Europe met to celebrate Pentecost with the Elders in first time ever global council to build 21-point plan for the continent of 10 Houses. House announced: 12 bedrooms and a Great Hall, located 3 blocks from city's economic, cultural and political center.

Contradiction: The terror of life in the rain forest of blessings. (Wk. 9)

FRANKFURT RELIGIOUS HOUSE: FRANKFURT

External: PLC calling in Berlin produces a strong commitment on the part of our colleagues to take responsibility for the PLC. RSI follow up in Schopfheim brings together 20 grads, an exciting beginning for a metro cadre. Elders visit occasions the first Area Council held in Frankfurt with 21 present for lecture and battleplanning.

Internal: Great excitement as we prepare for and experience the Elders visit. Especially excited by the task of love as social demonstration. Sent out LENS team to Nairobi and Chicago.

Contradiction; Discerning the appropriate symbol of globality that enables the unification of the movement in Germany. (Wk. 8)

NAIROBI RELIGIOUS HOUSE: NAIROBI

External: LENS follow up begins as participants call us and stop by the House; key Presbyterian Church leader gives nod to the ITI.

Internal: Sheldon Hill spins us talking about the global guild in sodality.

Contradiction: Seeing the gestalt that holds the next several months as one reality. (Wk. 9)

BOMBAY RELIGIOUS HOUSE: BOMBAY

External: Last minute visits on all ITI registrants reveal many obstacles to be overcome to ensure participation. Circuit ride indicates that registration is holding at 40.

Internal: House and ITI practices transformed with Robin Hutchinson coming from Hyderabad to work decor miracles.

Contradiction: In the face of nation wide transportation strike and economic paralysis, overall 'it's simply impossible' mindset has to be shattered. (Wk. 5)

DELHI RELIGIOUS HOUSE: DELHI

External: House symbolizes completion of resettlement by hanging 'The Delhi House' plate. Elders are sent to Bombay and regional guests continue to 'drop by' in increasing numbers to new accessible locations.

Internal: Telegrams sent to regional coordinator as rail and postal strikes force us to rethink landing model for ITI participants. Completing ITI decor cements activities for the week, and is enabled by regional colleague.

Contradiction: Daily rebuilding of models to enable participants to decide again that ITI is crucial and possible, the midst of assumed 'impossibilities' of national rail and postal strikes.

MADRAS RELIGIOUS HOUSE: HYDERABAD

External: IRA Sub-Asia concludes, leaving in its wake a deeply committed group of about 20 colleagues made of steel, such as the Sub-Continent has never seen before. These men and women are ready to go! on the guild and EPX and a high percentage have interning on their immediate timeline.

Internal: Ashram including children and youth is geared into shifting gears and preparing for the 3 ITI's as members are sent across the Sub-Continent to gather in the participants in light of rail strike.

Contradiction: How to ensure that all participants arrive in time for the opening feast of ITI on Sunday night. (Wk. 7)

SINGAPORE RELIGIOUS HOUSE: KUALA LUMPUR

External: Concluded the fantastic 10-day Indonesia trek with the 3 regions having 86 fine participants ready for the 50 places for ITI. Much to our surprise, 18 strong adult churchmen were registered for RSI by our Manado colleagues who joined in the teaching and simultaneously produced the papers.

Internal: Great to have visit and report from Australia movement colleagues who initiated Oombulgurri, Jan and Stan Davey.

Contradiction: Enabling our regional colleagues to see that what they are about is exactly what we are about. (Wk. 8)

RELIGIOUS HOUSE: SINGAPORE

External: Two RSI's taught in Singapore and Malaysia with 4 Asian faculty members and 2 Western faculty members doing the teaching. David Scott sent to Hong Kong on IRA set up and Sue Oberg sent to Kuala Lumpur to begin the set up of the KL ITI. Singapore Area joins in the development push to enable the ITIs in India; US \$1000 sent. House hosts Jim and Laverne Phillips.

Internal: Bans read at House Church for Willard Westre and Sheila Mathews. Jim and LaVerne Philips leave to teach Bangkok LENS course. Regional family plans to sojourn during the ITI.

Contradiction: Enabling more of our colleagues to realize that they are responsible for both the fantastic things which have happened in the Church in Singapore and the future of the movement. (Wk. 8)

RELIGIOUS HOUSE: JAKARTA

External: Fruitful visit to 3 metros in preparation for ITI:KL.

Internal: Anticipated arrival of new family. Job secured for the summer.

Contradiction: How do you sense after the time to uncork the bottle? (Wk. 9)

HONG KONG**RELIGIOUS HOUSE: HONG KONG**

External: Area battleplan and budget in history signal new directions for corporate thrust as International Research Assembly prep staff arrive to begin count down.

Internal: New Religious House location enables missional structuring of forces for Development Centrum, IRA, and Religious House: Hong Kong. New address: 3 Norfolk Road, Kowloon Tong, Kowloon, Hong Kong, phone 3-382780.

Contradiction: Image of Quarter IV puzzle in order to make all the pieces fit and walk through the open doors. (Wk. 6)

RELIGIOUS HOUSE: KAOHSIUNG

External: House sends out team to win with exit procedure process in Taipei only to find process is a snap, as preparation continues for ITI.

Internal: Pentecost arrives during a week of rain which saw guests at Ecclesiola and 'Purpose of the Church' studied during nedagovv

Contradiction: How do you tell the financial story that will achieve our quota, hold area commonness as well as release participants to pay the maximum rather than the minimum? (Wk. 9)

RELIGIOUS HOUSE: MANILA

External: 'Greatest Ecclesiola in 2 years' brings 10 parishes into House to consider sending their leadership to ITI, LENS rolls on, development resolves and resolves.

Internal: Joe Thomas, Hale Prather, Epps, Betty Pesek, 2 Elizondo young enliven House. Youth's Barrio Feasta closes out summer vacation.

Contradiction: Nitty gritty of details not done coagulate into the contradiction as implementaries are not pushed far enough. (Wk. 8)

RELIGIOUS HOUSE: TAIPEI

External: Send 20 names to Korea for letters of invitation to ITI.

Internal: Dillingers arrive with news of Centrum and North America. George Chiang returns to continue sojourn. Joe Thomas excites us on SEAPAC possibilities in regard to authorization and development network.

Contradiction: We have the model, they have the money. (Wk. 8)

RELIGIOUS HOUSE: CEBU

External: E. Aboitiz endorses LENS to all his department heads. Yes already to our IRA quota. Hale to Manila for a 5-day LENS marketing and Ely to preach mission in parish. Cebu LENS reached 8 blocks before Wk. II and Lapulapu reveals economic network.

Internal: House visitors reached 9 during the week, with Addie in the hospital for appendectomy operation. Minischool curriculum now down to week level for 1st semester. Battle planning board completed.

Contradiction: Our own ITI corporate planning and metro visits in the midst of compacted activities, and a story to hold comprehensive thrust. (Wk. 8)

RELIGIOUS HOUSE: DAVAO

External: First RSI in Davao polis for year and a half signal event for all, especially House. Prior returns from circuit ride highlighted by extended visit with Archbishop Cronin of Cagayan metro.

Internal: Two strange angels appear in midst of rainstorm. House rejoices in arrival of Elizondo children. Wayside Inn swells to bursting point with all RSI staff housed in every nook and cranny.

Contradiction: Creating the powerful self-story that perpetually moves against failure mentality and hidden suicide, in all their forms. (Wk. 9)

TOKYO RELIGIOUS HOUSE: SEOUL

External: Launched 3 new formulation structures involving 31 colleagues: clergy collegium signalled the beginning of LCX in Korea; Ladies Collegium focused on global language training and Ecclesiola preparation; and Children's Global Language Institute continued training of Religious House and colleague children.

Internal: Welcomed Sandra Clout for visit from Osaka House. Park Kwang Bok celebrates with colleagues his wedding to Kim Eun Sook, and send them out to Toronto. Segundo highlights Ecclesiola.

Contradiction: No breakloose on development. (Wk. 9)

RELIGIOUS HOUSE: FUKUOKA

External: Regional circuit for IT' recruitment push involves luncheon with R.C. Bishop who says 'Your work must go on.' LENS marketing for fall uncovers collegial Christian businessman who promises to introduce us to heads of major industries in Kyushu.

Internal: 'In House guild meeting' plans 8-week design to explore our own dynamics to enable S'74 research and local job authorization.

RELIGIOUS HOUSE: FUKUOKA (continued)

Contradiction: Inventing tactics to catalyze ITI interest into solid decision with ITI only 6 weeks away. (Wk. 9)

RELIGIOUS HOUSE: OSAKA

External: Forty-five priests and sisters from 9 orders including 7 Provincials (Maryknoll, Franciscan, Scheut, Oblates, Jesuits, Scarboro, Xavierian, Passionist, Maryknoll Srs.) participate in Kyoto LENS. Mr. Kato, Managing Director of Kansai Economic Federation, hosts dinner party for priors, Joe Thomas and Kitty Cole, announcing 'I will support you and your work.' Ten in PLC include 20-year long friend of Cardinal Taguchi, who says, 'This is the first practical training I've ever had.'

Internal; Sojourner Tetsuko Yamazaki arrives for 2-3 week sojourn following PLC.

Contradiction: ITI recruitment blocked by apparent closed doors in expected entry points. (Wk. 8)

RELIGIOUS HOUSE: TOKYO

External: Kyoto LENS hails as a first as 45 Catholic priests representing 7 orders, including 5 provincials gather around Lake Biwa. Three colleagues decide to attend S'74. Japanese colleague, Paul Murayama, takes new job after promise of every summer off to do ITI and research.

Internal: Signal House Church of quarter gathers 25 colleagues to celebrate Andrew Hashiba's reception as an intern in the Order. Joseph Iida gives spirit witness on the death of his father last week. Celebrated birthdays of Mark Willoughby and Tim Lush, Ellison wedding anniversary and announcement of expectant birth January 1, 1975.

Contradiction: Maintaining momentum of ITI nitty-gritty with the temptation to do strategic visioning. (Wk. 9)

RELIGIOUS HOUSE: SENDAI

External: Gratifying ITI funding by local businessmen, key laymen, and a local congregation.

Internal: Blessed by Roman Catholic order participation in the form of sending Sister Giroux out to visit European Religious Houses on her way to Base Centrum and her Order's Mother House in Montreal and of Sister Imaizumi's translation into Japanese and then back to English of 'The Saint' conversation.

Contradiction: In the race to ITI, how to enable recruitment to catch up with development. (Wk. 9)

SYDNEY RELIGIOUS HOUSE: PERTH

External: ITI visiting continues; RSI registrations keep coming in. One prospect greets team at the door with 'Yes, I'm coming. But what is the Ecumenical Institute?' Anglican clergy prospect phones to ask what he would need to do to hold a PLC.

Internal: Battleplanning continues. We're beginning to see images of the implementaries for the unblocking tactics. Transportation possibilities increase by two wheels.

Contradiction: In the midst of the multitude of demands, the building of a corporate thrust that cuts over against parochialism at all levels. (Wk. 8)

RELIGIOUS HOUSE: DARWIN

External: Portents from the turn come flooding in: Parap 5 committee consenses local signs and plans one-day Community Convocation; weeknight RSI launched including 2 clergy and 3 LENS grad key laymen; results of community survey released on TV programme bring flood of inquiries; on our consultation tourist association launches campaign to make Darwin a duty-free port.

Internal: Marmungal (guest) room continuously occupied as Mike Chapman and father pass through on missional tour, and Stan and Jan Davey bring news of SEAsia on return to Oombulgurri.

Contradiction: Completing new internal life design while busy with implementaries. (Wk. 9)

RELIGIOUS HOUSE: OOMBULGURRI

External: Mowaljarlai's visit deepens sense of awe in recovery of aboriginal heritage. Symbol guild impact community as they catch new vision of small industry possibility. Hilton Gore, community elder, assumes responsibility for training of young men. Agricultural dept. advisor excited about experimental peanut crop and offers loan of tractor and digging equipment.

Internal: Auxilliary boat speeds up river on first trip. School teachers visit Wyndham and Kununurra schools for observation and guild cultivation.

Contradiction: Fear of holding each other accountable for past and future leads to breakdown of structures for symbolizing corporateness and maintaining individualism in Mawaba and community. (Wk. 9)

RELIGIOUS HOUSE: ADELAIDE

External: Guest night phoning gives good response, 60% yesses. Expansion of context of galaxy occurs with spin on EPX and receiving global galactic interchange.

Internal: Still feeling reverberations of tidal wave (Area Prior Rob Duffy) as continue on the journey of building area missional concerns. (Second tidal wave just about to arrive - House prior).

Contradiction: Holding reins on galloping horse. (Wk. 9)

RELIGIOUS HOUSE: MELBOURNE

External: Two day trek through Ballarat Metro and speaking engagement with Roman Catholic parish council yield firm prospects for next quarter's PLC and RSI. Acceptances of invitations to pre-ITI luncheons, film and guest nights swell as phoning model implemented.

Internal: As landlord removes stored belongings, House moves into vacated 40' x 20' collegium room with visions of 50-man RSIs and grand balls. Refior family farewelled at supper party at the Trak 'Upper Crust' restaurant.

Contradiction: Changing the interesting and worthwhile conversations about ITI to addressing the word that will secure registrations. (Wk. 9)

RELIGIOUS HOUSE: CANBERRA

External: Bishop Arthur visits new House 2 hours before our arrival and leaves note of welcome indicating his intention to visit. Welcomed personally by presiding Anglican Bishop of Canberra and Goulburn. Canberra colleagues offer hospitality and assistance in locating and setting up House.

Internal: Lis takes over an established medical practice and Banks family eagerly awaits arrival of rest of House, delayed in Sydney. Mailing address G.J. Banks, Box 82 PO ACT, 2601, Australia. Phone (062)470 586.

Contradiction: How best sustain local enthusiasm while discerning profile of Australia capital territory. (Wk. 9)

RELIGIOUS HOUSE: BRISBANE

External: Week 7 RSI breaks open many fronts with participation from Galaxy Church, prospective Galaxy Church, and Aboriginal community, and yield strong prospects for ITI.

Internal: Wayside Inn dynamic continues unabated; Mike sent to Townsville for ITI recruitment; Segundo again has us dancing with the weight and affirmation of who we are.

Contradiction: In the midst of opening doors and grand Yes's, seeing ITI recruitment not as 'one more task' but as the global context to focus the total thrust. (Wk. 9)

SUVA RELIGIOUS HOUSE: MAJURO

External: Uliga and Rong Rong rehearse graduation exercises; 6 more Rong Rong students accepted to college bringing total to 10, an all time high; accounting trainee is hired under new government grant; Early's market LENS on Guam; ITI delegation materializes.

Internal: First 'Pot Luck' Ecclesiola promises to fire those who have been coming for seminary and locality to participate in college as well.

RELIGIOUS HOUSE: MAJURO (continued)

Contradiction: Iron clad context and story that makes free, indicative action the vehicle for a tactical battleplan. (Wk. 9)

RELIGIOUS HOUSE: APIA

External: First ITI development call nets 50 tala. School term ends smoothly with staff celebration and sports day for students. Sent First Among Equals out to week's circuit through Fiji and Tonga to do necessary ITI, IRA recruitment and development.

Internal: House celebrated end-of-term one night with mountainous banana splits and another night by seeing 'The Last Picture Show.'

Contradiction: Grads only showing surface commitment. (Wk. 8)

RELIGIOUS HOUSE: SAN FRANCISCO

SAN FRANCISCO External: S'74 mini-cabaret at Mission Church nets 3 registrations and 2 probables for S'74. Ten Galaxy churches and 2 guardians financially sponsor the LCC for Wk. 9. Three-hundred 'The Mission is a great place to live' signs in 4 languages (Spanish, Tagalog, English, Chinese) put up in signal ecumenical parish.

Internal: We found a 1933 San Francisco Examiner newspaper with Roosevelt headlines while digging up and preparing to pour cement in our basement, and planted a 1974 Examiner for the future. Celebration for graduating House senior becomes corporate event.

Contradiction: Haven't shifted from working on 20 programs as isolated entities to comprehensive strategy. (Wk. 8)

RELIGIOUS HOUSE: SAN JOSE

External: RSI with 30 around the table. Signal course with all ages, 4 Urs and 90% from Galaxy churches. During lunch hour empty downtown store windows are transformed with window size posters with San Jose skyline reading 'In any language Central San Jose is a great place to be alive.'

Internal: Sunday House Church a great happening with guest colleagues Joe Clift and the Stuarts, who joined us in celebration of the week's events. New House decor thrusts us into preparation for LCC and S'74.

Contradiction: Battleplans and timelines created call for 'needed to be done two weeks ago.' (Wk. 8)

RELIGIOUS HOUSE: SACRAMENTO

External: Both Galaxv and guild consults come off the boards. Presence of Isabel Bishop allows new global vision for many.

Internal: Metro colleague's house provides roof while mortgage for Norte 5 house travels the channels. E.G.'s first sewing project wins 4H prize, the monetary award being contributed to the House.

Contradiction: Ignoring the economic tyrant: ourselves. (Wk. 8)

RELIGIOUS HOUSE: SEATTLE

External: S'74 prayer vigil raises total registration to 6. Continued push on LCC with mass mailing, newspaper announcements, and TV appearances.

Internal: Three day fast with study of Kaz intensifies missional focus and gives home spirit event it has not had in a long time.

Contradiction: Dark night of the soul keeps threatening our decision to be the hunter warrior. (Wk. 8)

RELIGIOUS HOUSE: LOS ANGELES

External: Region becomes 'relentless strategists' as Galaxy creates warboards, Metro core views 'The Sting' for second time and decor and song creation reinforces Parish Guild decision.

Internal: Collegium study of Transpodane Christianity rings true in midst of parish guild creation.

RELIGIOUS HOUSE: LOS ANGELES (continued)

Contradiction: Spinning stories and strategies that enable us to walk through the fear and fascination of the parish toward the creation of the guild. (Wk. 9)

RELIGIOUS HOUSE: PHOENIX

External: Swirl of RSI recruitment pulls off RSI for Galaxy Church. Clergy calling in PGX turns up new colleagues. Secured site, sponsorship, funding and initiated publicity for LCC. RSI follow up in Santa Fe births bi-metro cadre, recruitment for S'74 launched in calls and 2 mailings.

Internal: All internal life focused on RSI/LCC/Guild Field visit as we host the PGX guild in House. Time design intensifies as we rise at 4:00 to get in needed time of reflection and 10-year visioning and battleplanning.

Contradiction: Not wanting to be the delimited troops we are in the face of all these spinning plates and amazing possibilities. (Wk. 8)

RELIGIOUS HOUSE: BILLINGS

External: Two teams travel 2000 miles in WK. II trek around the region in search of S'74 participants, rediscovering outlying geography of region, and activating old colleagues.

Internal: With the help of several clergy colleagues, we moved families from camping out in 1240 to camping out in 407 and began House transformation from within.

Contradiction: The task of making the House a sign and authorization is overwhelming and raises the question of 'Where to start?' (Wk. 8)

RELIGIOUS HOUSE: DENVER

External: Regional colleagues and House take on phone call blitz for Regional Council. In Boulder clergy study turns from argument to dialogue with author, and in newly formed cadre new grads assume all symbolic roles.

Internal: Former state legislator attends House Church and asks vocational question. Development team puts new demand on local house preparation for site visit - the Sting. Hatching S'74 participants by sitting on prospect list taped to worship chairs.

Contradiction: Transforming mundane to the other world. (Wk. 8)

RELIGIOUS HOUSE: RAPID CITY

External: Elders celebration held at the Paha Sapa Community Service Center in the parish, celebrating the gifts of the Yellow Ur. Sixty elders were served chop suey and signal event of the day was dancing done by 3 Japanese women from our local air base.

Internal: Discontinuous Ecclesiola held as we feast on special of all the barbecued ribs you can eat for a dollar at local restaurant.

Contradiction: We've sown the seeds for a season and the harvest looks like a potted plant. (Wk. 9)

WINNIPEG RELIGIOUS HOUSE: ANCHORAGE

External: All hands have been on deck for the last lap in LCC preparation. We have appeared on TV, announced the LCC on a flashing marque downtown, handed out 1500 brochures on the street and telephoned those who were mailed letters.

Internal: Job upgrade brings in \$231 more a month, but then the action of God deepened our humility as Daily Office was interrupted by a fire in the kitchen (appraised damage was \$730, but House uses a little elbow grease and makes \$500 on the whole thing.)

Contradiction: Insidious 'end of spring quarter, we're almost done' mindset shows up as individualism and lack of care for the corporate thrust. (Wk. 9)

RELIGIOUS HOUSE: EDMONTON

External: Indicative battleplanning wins again! Three registrations for Odyssey, 4 applications for S'74, and pre-LENS grad leade 4½ hour company workshop at critical stage of expansion and wins.

Internal: Saints conversation, Segundo clarification 3, and social process visioning just what battle-weary troops need. Ecclesiola revitalizes us all and rebuilds interior resources for intensified thrust toward the summer.

Contradiction: 'Doing our homework' pushing, pushing to the bottom which produces necessary context to give regional colleagues permission to be movemental dynamic. (Wk. 9)

IRELIGIOUS HOUSE: SASKATOON

External: Two hundred contacts in 1 day of face to face future visioning tells us that local man can become excited about his own possibilities once more. Twenty-three man RSI in House, key LCC visits, development leaves with \$4600 cash and \$2000 committed in week. Fifth City brochure to Governor Hall.

Internal: Dinner theater performance of 'Oklahoma' gives House second wind for last week dash to LCC while calling forth the 'I can't say no' response from the community.

Contradiction: Sprinting through Week 9 with no plan laid for Wk. 10 and beyond. (Wk. 9)

RELIGIOUS HOUSE: WINNIPEG

External: Key leaders at LENS weekend leave very excited and asking 'What next?' while one offers his facility for Convocation. Local Church Training sessions send couple through RSI and they're ready to move.

Internal: House dances with immense complexity and recruitment. Guildmaster Ken Gale escorts the House to 'You're a Good Man, Charlie Brown' starring Eileen Morrill as Lucy. Guests at House Church seem to outnumber residents, and again Guildmaster Gale is enabler.

Contradiction: Forgetting the number of contacts necessary and continuous nurture before courses and meetings necessary to bring them off. (Wk. 8)

HOUSTON RELIGIOUS HOUSE: AMARILLO

External: Visit of Matt Revelas, a Chicano leader, spins metro cadre on possibilities of authentic human care in a local community. Local Parish community centers respond to LCC with a big yes. Lubbock weekly pre-cadre gathering excited by 'Times' workshop of Social Methods School.

Internal: Evelyn Hunter received as an intern, the 2nd intern family this quarter; a new momentum is experienced. Sodality of Ecclesiola reveals something of Amarillo's uniqueness in the cultural triangle: common symbols is the tyrant, communal style the ally and communal wisdom the collapsed pole.

Contradiction: Holding the ambiguous tension between enticing decisions and pushing people's hand for decisions. (Wk. 8)

RELIGIOUS HOUSE: SAN ANTONIO

External: New decisions by key pastors allow projections for a lucrative fall quarter. Guild formulates proposals for parish and many new doors are opened.

Internal: In-House Odyssey an extreme success, Segundo study again objectifies struggle with established church.

Contradiction: How to move to a long range vision after breakdown of orbit recruitment model. (Wk. 8)

RELIGIOUS HOUSE: OKLAHOMA CITY

External: Successful consult with Conoco technicians indicates time is ripe for motivity methodology and corporate skills. Six to Tulsa PLC enables journey to LCX.

Internal: All systems 'go' for LCC with last RSI in chute. Segundo laying out the economic captivity of the church.

Contradiction: Trapped in the 'next event' malaise blinds us to building the long range colleague journey model. (Wk. 8)

RELIGIOUS HOUSE: DALLAS

External: Large international House Church gathering with Rev. and Mrs. Koshy from India, Rev. and Mrs. Vergara of the Philippine Islands, and Rev. and Mrs. Yeon of Singapore. A new RSI grad entered the Religious House as a sojourner.

Internal: Significant breakthrough into corporateness by metro and Religious House colleagues during bi-metro Presidium as bi-metro Council and Local Community Convocation were being planned.

Contradiction: The vision of metro colleagues is more than they have decided to pick up. (Wk. 8)

RELIGIOUS HOUSE: TULSA

External: Climax of Qtr. IV: RSI releases House-interested grads; PLC prepared 18 new colleagues including 3 clergy couples. Pedagogues report amazing new seriousness and commitment to the local church; Continental Oil Co. conference on motivity allows engineers and research division to experience (!) motivity through corporate methods.

Internal: New shuttle service required as metro is impacted by arrival of priors from across the continent. House struggles with Segundo study, left excited and unclear about naming that group that catalyzes the Church and the secular dialogue.

Contradiction: Downshifting the gears and moving tactically to respond to request for LCX consults sessions and LCC signal in the parish. (Wk. 7)

RELIGIOUS HOUSE: HOUSTON

External: A wild week of marketing and recruiting as we move towards a 2-LENS, 1 RSI weekend; a midnight poster raid announces the LCC.

Internal: Sunday afternoon and evening celebration at the beach, with good food and a bonfire.

Contradiction: New leadership emerging requires a formulation plan that presents endless occasions for participation. (Wk. 8)

RELIGIOUS HOUSE: NEW ORLEANS

External: RSI was great event for region, with 4 people deciding to go to S'74.

Internal: Celebrated quarter of miracles by going to Theater of Performing Arts to special concern in honor of Duke Ellington.

Contradiction: Finances, finances, finances. (Wk. 9)

RELIGIOUS HOUSE: MEMPHIS

External: An unexpected visitor in the person of John Strong, a recent grad of an RSI in Dallas, calls and attends House Church. This kind of little surprise seems to be happening with ever-increasing frequency.

Internal: John Strong brings his father Jim (who was in Charles Moore's first church in Carthage, Tx) to Ecclesiola and along with other guests and House is impacted by regional colleague Tom Hannan's Segundo study.

Contradiction: Embodied absolutism is the style required, and yet we perpetually show up proud of our ability to hold accountability. (Wk. 8)

RELIGIOUS HOUSE: ATLANTA

External: TV newswoman spends Monday filming and interviewing the parish, then broadcasts 5 news reports on East Lake 5 Community meeting. Eight churches in parish hand out brochures and register people. In-kind 300 hamburgers, 200 pieces of fish, 100 pieces fried chicken, all the bread, drink and snacks we need. On local man signs up 47 neighbors in one night.

Internal: Deep mood of excitement permeates everything we do as we go door to door breaking through the isolation of burglar bars and watch dogs to discover a parish ready to move.

RELIGIOUS HOUSE: ATLANTA (continued)

Contradiction: Doubting that we can transform ourselves from this fantastic 100-yard sprint into the 40-year around the globe cross country run. (Wk. 9)

RELIGIOUS HOUSE: MIAMI

External: Local realtor and local lawyer work with House on condominium consult wine press plans.

Internal: Wk. II of study and work followed by Memorial Day speech, party and cookout.

Contradiction: In midst of overwhelming Latin response how to shake loose Anglo and Black minority in the parish. (Wk. 8)

CHICAGO RELIGIOUS HOUSE: WICHITA

External: Creation of parish symbol by metro colleagues from Hays polis pushes us into the community showing demand for RSI as House and colleagues work to make Saline RSI move. LENS comes off with flying colors as grads leaving ask 'What do we do next?'

Internal: Miracle stories relayed in spin after prior returns from 10 day teaching trek, releasing new decisions about RSI.

Contradiction: Upon completion of time line for quarter IV it is set aside and House suddenly sees itself four weeks behind. (Wk. 6)

RELIGIOUS HOUSE: LINCOLN

External: Galaxy Consult and Guild Field Visit refresh the vision of our demonstration signs. CSI attacks the subtle moralisms around us.

Internal: Ecclesiola happens as wildly celebrative and deeply reflective event reminding us of the mutation 20th century man is. We gain new clarity in depth about Wayside Inn and cabaret dynamics.

Contradiction: As the teaching quarter and year draws to end, we tend to watch it end rather than participate in its end. (Wk. 7)

RELIGIOUS HOUSE: KANSAS CITY

External: Community impacted by secular happenings as LENS is held with strong community participation, first parish Guild Consult occurs which results in Westport parish song, and Social Methods consult held for United Methodist clergymen in Kansas City, Kansas.

Internal: Study of Gogarten's Christ the Crisis in Ecclesiola gives House new understanding of the principle of cruciformity, or what it means to take on the 'sentence of doom' for all men, which frees House for new radical engagement.

Contradiction: Being able to continue passionate engagement in RSI penetration, while experiencing need for equally passionate engagement in parish work and LENS marketing. (Wk. 7)

RELIGIOUS HOUSE: MINNEAPOLIS

External: Signal event of the week is the in-kind donation of a billboard in the parish to promote the LCC. We are properly awed by a clergy collegium of 15, and RSI of 30. Parish colleague assigned with House members to 5th City work weekend.

Internal: The big con of the week: PLC team holds PLC luncheon for House at breakfast collegium, complete with spaghetti. Michael Harrington's book gives us perspective on a part of our past that we had not found a way to talk about before.

Contradiction: The turn toward summer finds us wanting to disengage temporarily, instead of making a fast shift into new roles. (Wk. 6)

RELIGIOUS HOUSE: ST. LOUIS

External: Three PLC follow up luncheon meetings in Springfield, Ill, Springfield, Mo., and St. Louis. Regional colleague gives vacation day for LENS calling. Battleplan built for Local Community Convocation.

RELIGIOUS HOUSE: ST' LOUIS

Internal: Hosted clergy luncheon; E.G. cleaned yard and erected the kind of tire swing you always wanted when you were a kid, but had a hard time getting it away from adults 'testing' it. House finances battleplan built.

Contradiction: Coordinating regional formulation, LENS, Local Community Convocation, Summer '74 recruitment, 5th City Development timelines while handling our financial deficit before June 15. (Wk. 7)

RELIGIOUS HOUSE: PEORIA

External: We are deeply impacted with uniqueness of our parish as flyers for LCC are taken door to door; long-inactive grad spends 2 hours after S'74 and LCC pitch listing (with a friend) people and agencies who need to hear of LCC.

Internal: Penetrating questions from a radio reporter (who received our news release) re. LCC and ICA resulted in a remarkably on-target editorial to be aired, within the week; Qtr. IV '74 Academy grad Gordon Blauvelt is welcomed home and secures a job within the week.

Contradiction: Still not living in the parish to be the sign. (Wk. 9)

RELIGIOUS HOUSE: MILWAUKEE

External: As the rest of the world gears down for summer, the metro council creates a concrete model for passionate summer engagement. It will be the most exciting summer ever. Madison Galaxy Consult is a demonstration of new auxiliaries coming into being overnight.

Internal: LCC, sleep, eat, drink, breathe, LCC, oops - no sleep. Inkind circus tickets for E.G. as well as Dr. Lao film spin E.G. into new worlds.

Contradiction: We looked around and we were it. (Wk. 9)

RELIGIOUS HOUSE: CHICAGO

External: House and regional colleagues conclude planning for coming LCC. Eighteen recruited by phone for CSIIIA. Lela Mosley is on the move and staggers the imagination at Peoria speaking engagement.

Internal: Memorial Day celebration and feast of pit-baked lamb and chicken leaves everyone under nearest shade tree. The Sea of Tranquility is here.

Contradiction; Trying to ride the crest of the wave rather than plunging headlong into the Sea of Tranquility. (Wk. 8)

RELIGIOUS HOUSE: INDIANAPOLIS

External: New images of impact emerge in 2 guest nights and mass media for the LCC, which points to the Metro's readiness for renewing Local Community.

Internal: House celebrates Memorial Day Wk. II with a Tan Man feast, LCC planning and intensifying House internal life to allow the external to explode.

Contradiction: How to forge multi-level tactics to allow all that needs to happen to happen on time, i.e. LCC, guest night, Odyssey, etc. (Wk. 9)

RELIGIOUS HOUSE: CINCINNATI

External: Cincinnati House becomes task force in 5th City for weekend and combined this happening with brief sessions with old colleagues. Community person impacted by the House made trip to 5th City and was impacted again there by the Men's Club. He also will attend a course along with his parole officer and his religious advisor.

Internal: Expenditure of the week's work creates spirit and illuminates tension.

Contradiction: Articulation and appropriation of what happens in face of possibility. (Wk. 8)

RELIGIOUS HOUSE: DETROIT

External: Meeting with colleagues in Toledo sparks enthusiasm for recruiting LCC. Galaxy holds planning day. Their struggle and decision about budget reveal their serious commitment.

RELIGIOUS HOUSE: DETROIT

Internal: Two jobs secured. Community LENS grad brings guest to Ecclesiola and they both plunge into LCC planning taking on responsibility. Regional colleagues join us on Memorial Day, accomplishing carpet cleaning, LCC decor work, and a fantastic picnic to boot.

Contradiction: Assuming that we can not deal with finances and 'the mission' together. (Wk. 9)

RELIGIOUS HOUSE: CLEVELAND

External: Akron RSI finishes our course schedule as we move full steam into the parish. At week's end the result is many exciting, hope filled contacts, sore feet and holes in our socks. The Karpoffs return from Academy just in time.

Internal: Pentecost House Church is a spirit happening with 80 participants overflowing the collegium room. We welcome Marty and Gerry Lapka and Virginia Packard as sojourners, and Marilee Dickson and her Girl Scout colleagues as guests while they attend a conference in Cleveland.

Contradiction: Our interiors say surely 8 weeks is enough, as we face no time off with Community Convocation, 5th City Elders visit, and S'74 recruitment. (Wk. 9)

RELIGIOUS HOUSE: PITTSBURGH

External: In the parish, 150 posters were distributed to and displayed by merchants in a single morning. An 8th Week PLC transforms the lives of all present: one participant offered the pedagogue a \$19,000 per year job.

Internal: Memorial Day picnic and football game leaves PLC enablers with sprained ankles and stiff necks. House receives Robert Kline from Academy Sunday night.

Contradiction: Long range models are quickly becoming the present models with us racing into a hazy future. (Wk. 9)

RELIGIOUS HOUSE: ROCHESTER

External: Clergy collegium gather at Charles Taylor's home for elegant evening celebration and the last of 13 collegiums comes reluctantly to an end with the men eagerly marking down summer events on their calendars and ready to regroup for direct study of the Local Church Experiment in the fall.

Internal: With eyes fixed steadily on another House in the parish and a potential buyer for the present House, we've managed in a week to transform the interior with plaster and paint.

Contradiction: We're sending 22 regional colleagues on a Global Odyssey with the Dewey Avenue Presbyterian Church, leaving us with 8 so far to the summer program and a need to restore our stance toward a quota of 40. (Wk. 9)

RELIGIOUS HOUSE: RICHMOND

External: Thousand leaflets on trees and tower pole. Fifty shots with large posters, 3800 handbills and brochures climax core work on LCC. Two cadres form in LCX bringing 22 grads together for fellowship, training and planning.

Internal: Day I, Day II and Day III internal life devoted to decorating LCC Great Hall and 4 seminar rooms.

Contradiction: Remembering that the Word of Jesus Christ sustains in the midst of total risk. (Wk. 9)

RELIGIOUS HOUSE: WASHINGTON

External: Regional RSI with 47 around the table delivers 5 new auxiliaries for Galaxy. Very strong, coordinated structures in parish change our operating images and strategies. Training center continues to intensify mission.

Internal: Memorial Day work day and movie. New newsletter strategy implemented. Rethink our priorities.

Contradiction; Honoring methodologies we know work. (Wk. 8)

RELIGIOUS HOUSE: BALTIMORE

External: House members and parish leaders travel to Washington for LENS where they are impacted by Justin Morrill's guild discourse. South Baltimore Ministerial Association takes keen interest in Local Community Convocation.

Internal: Development team member brings excitement to Ecclesiola with 'The Sting' Summer '74 recruitment spin. Two days after participating in LENS seminar, grad comes and asks if she can intern.

Contradiction: Seeing our situation is no RSI names, we need to realize the great possibility for new prospects. (Wk. 8)

RELIGIOUS HOUSE: PHILADELPHIA

External: Convocation assumes priority, with 3500 brochures distributed to the parish door to door and a mass mailing to regional colleagues, all done with their help. A great Memorial Day celebration followed for the 15 already registered LCC participants.

Internal: Pedagogy in New York pushes our RSI 'Edges' deeper and Harrington lays out the facticity that model building and spirit deeps go together.

Contradiction: Saving up our energy for when the crunch looks imminent rather than decisionality as to when and where our emphasis is. (Wk. 9)

RELIGIOUS HOUSE: NEW YORK

External: Regional pedagogy and CSIIIA become areal events; spirit breaks loose in saints conversation at clergy luncheon; LCC funding proposal completion reminds us that miracles are not blocked by short lead time.

Internal: House Memorial Day celebration reveals lilac trees in the heart of town after cleaning 4 stories of windows; in-kind (renamed TNT) nets 15000 sheets of paper. Ron Griffith and Jana Greenberg sent out to Centrum as Dick Ripley is received as sojourner; a future Betonte announced as anticipated.

Contradiction: Symbols supporting sustained faithfulness to the nitty gritty capitulate in presence of multiple cases of springtime spirit virus. (Wk. 8)

RELIGIOUS HOUSE: GARDEN CITY

External: Galaxy Continental Consult impacts new and old Galaxy churches of new possibilities through indicative battleplanning. Guild consult catalyzes plans for summer. Quarter I battleplans completed.

Internal: House clam dig on Memorial Day in 50 degree bay water nets 2 clams and 1 snail. Participated in parish Memorial Day Parade. E.G. obtained summer home of Galaxy pastor in Poconos for weekend.

Contradiction: Living out of 'what is expected of us' story does not allow the indicative to be accomplished. (Wk. 8)

RELIGIOUS HOUSE: NEW HAVEN

External: House is involved in a whirl of activities as continental and guild consults, S'74 and LCC planning spin us into expenditure for all, and causes recognition of the gifts of colleagues.

Internal: House experiences the internal renewing of discontinuity on Monday of Memorial Day weekend. With half of House out at Guild meeting, those remaining feel again the power of Segundo in Ecclesiola. Teaching assignments nearly empty the House this Wk. III House welcomes new intern Tim Karpoff, recent recipient of Yale's top athletic prize, the Mallory award.

Contradiction: Holding a tension between trusting the wisdom of our colleagues and responding to immediacies. (Wk. 8)

RELIGIOUS HOUSE: BOSTON External: LENS held with 43 around the table, 10 come from a Maine Indian reservation, 6 from parish and 5 staff from Digital and the Federal Energy Office to investigate it for future possibilities. Invitation sent out for fund raising dinner sponsored by Guardians.

RELIGIOUS HOUSE: BOSTON (continued)

Internal: Put up fence in back yard (looks like a stockade) and were outnumbered again at House Church with 16 guests present.

Contradiction: Having a comprehensive holding image for all the practices and subtlety of the LCC. (Wk. 9)

RELIGIOUS HOUSE: PORTLAND External: Twenty-four present at metro council that sets context for a new metro dynamic. Ten from Maine Indian education come back from LENS demanding immediate follow up.

Internal: Mary Cookingham, Frank's mother, visits House and engages fully in the disciplined style. House moves into half its former space as part of new finance model.

Contradiction: Weak knees underneath bold voices. (Wk. 8)

MONTREAL RELIGIOUS HOUSE: TORONTO

External: After 3 empty quarters, two courses held in 2 weeks, with a small number of participants attending first RSI since May '73. Preparation for LCC continues.

Internal: House study includes indicative battleplanning paper. Kim Sung Hwan joins us for study of Segundo and transformation of Galaxy pastor's rectory into RSI dormitory. Past Galaxy pastor celebrates House Church.

Contradiction: With a great future blowing in our faces, blurring our vision, what steps take us from here to the guild? (Wk. 9)

RELIGIOUS HOUSE: OTTAWA

External: Encountered a new spirit colleague visiting a Catholic Vicar General. Also the staff of a nationwide community agency became excited at the prospect of a Canadian 5th City demonstration amongst northern Indians. Strategic guidelines for the areaget formulated in a Victoria Day PSU as we joined Montreal and Toronto.

Internal: House hosts a Galaxy church's confirmation class for House Church and movie conversation of 'The Sting.'

Contradiction: Catching our breath in the midst of a whirlwind of possibilities to allow the refocusing dynamic to happen. (Wk. 8)

RELIGIOUS HOUSE: MONTREAL

External: Going Public - press releases in French and English went out to radio, TV and newspapers and we printed and distributed a bi-lingual handbill saying 'Come build the earth': 'Venez construire la terre!'

Internal: The excitement and new work generated by the preparation for the Community Methods Lab (LCC) turns all House structures over to preparation time, yet Wayside Inn hosted 2 boarders, 2 visiting relatives and 2 on a wedding trip. Vive the Life Abundant!

Contradiction: How do you say 'self-conscious movement' in French? (Wk. 9)

CARACAS RELIGIOUS HOUSE: CARACAS External: Twenty-six people assisted at Ecclesiola. Highlight was professional musical entertainment from a '73 RSI grad. Rose and George West sent out Thursday at 3 a.m. to visit the '73 ITI grads in South America and to start promotion for '75 ITI.

Internal: Spirit nurture provided by Other World spins and visits and Journey to Ixtlan, as House prepares for journey through South America.

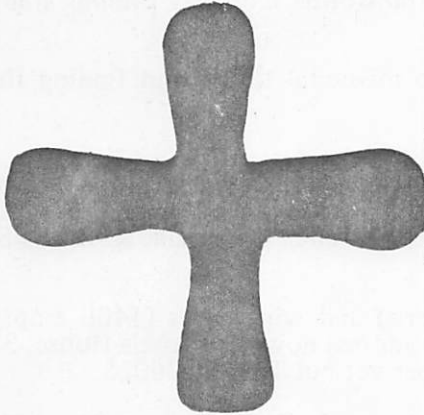
Contradiction: How to symbolize the corporate when one man is alone in the House. (Wk. 9)

BASE CENTRUM

BASE CENTRUM External: Local Community Convocation captures imagination of total Centrum as 54 leave to lead LCC's, telegrams and messages pour in, and total direct participants reaches 3088. Tactics used in Uptown, such as mass distribution of flyers and loudspeaker announcing the event, suggest total impact for external imagination. Summer promotion phoning blitz rivets our attention to the future, Camp New Covenant reports 90 tents up, and development circuits continue.

Internal: We recognize again that we are a family order as we join the Memphis House in celebrating the birth of Felicia Feldmanis, daughter of Atis and Sharon; baptize Amos Paul and Philip Daniel Gaige and Donald Aaron Bushman; and celebrate the Montreal wedding of David and Gay Kennedy Flowers, the college graduation of Marcella Buchanan and Richard Mackay, and 8th grade graduation of Student House members. We welcome Krysten Latham and children from Australia, Kjell, Marge and Raymond Knutsen from Kuala Lumpur, and Marshall and Kathy Jones from North Carolina. Returning from global travel are the LENS teams of Rafoses, Epps, Sheldon Hill, Phillips and Allens, and the global elders trip of Mathews and Vance. Global Odyssey and Camp New Covenant prepare to leave by getting inoculations. The 'Sing the New Earth' record album arrives. Morning plenum reflects on Bishop Joshi's ITI address.

Contradiction: Channeling the passion manifest in LCC into S'74 recruitment and preparation. (Wk. 9)



The word of the Lord came to me: Man, they are your brothers, your brothers and your kinsmen, this whole people of Israel, to whom the men who now live in Jerusalem have said 'Keep your distance from the Lord; the land has been made over to us as our property.

Ezekiel 11:14-15

LONDON RELIGIOUS HOUSE: GLASGOW

External: Edinburgh cadre sets up two courses for the autumn quarter and decides to meet more often (weekly) and a RC laywoman sends in a paid registration for S'74 in Chicago.

Internal: Whole House addressed by revolutionary theater as the 784 players announce 'The Game's a Bodey' and allow us to see more clearly the innocent suffering of Glasgow and Scotland. Our car 'Oxford' is stolen, wrecked, and returned in the same week a recent grad offers House a washing machine.

Contradiction: Continuing to intensify the local movementally until the journey bursts through to the comprehensive. (Wk. 10)

RELIGIOUS HOUSE: BRISTOL

External: Intern of 6 weeks returns to Oxford for graduation and recruits fourth participant for S'74 Chicago, raising to selfconsciousness the 'old boy' network strategy. Beleaguered by 3 more eager grads arranging time off work to go to Chicago.

Internal: Experience accountability of oughts in the midst of indicative battleplanning. Income miracle story: House member wins second raise and major promotion to head of manufacturing accounts department after only 8 months.

Contradiction: When context is blown open to embrace global, how to take first step in direction of doing local globally. (Wk. 10)

RELIGIOUS HOUSE: MANCHESTER

External: Regional Council, with good cross-metro representation and representatives from Birmingham, has as signal event the sending of the Casswells to India; region experiences cost of its care.

Internal: House senses new day coming as S'74 quotas fill and solvency operations get underway.

Contradiction: How insure against danger of static euphoria in the happy discovery that all is possible. (Wk. 10)

RELIGIOUS HOUSE: LONDON

External: S'74 recruitment intensifies while attention is turned to summer programme for continent of Europe.

Internal: House rejoices in 4-day Global Council with all the European Houses present.

Contradiction: Plans for summer quarter are found to be inadequate for the purpose of launching us into the next year. (Wk. 10)

PARIS RELIGIOUS HOUSE: PARIS

External: Vision for continent and area is pushed to a new level of practicality with the continuation of contradictory battleplanning initiated during the Elders visit, and the completion of a report on LENS and the parish for the Rue Roquepine congregation.

Internal: Presence of Sr. Joan Giroux on her way to Canada from Sendai, and European colleagues Jim Rowland and James Moffat fills space and transforms Thursday evening study of Tillich's paper on the future of religions.

Contradiction: Focusing new images of the continent to missional thrust and finding the critical tactics which release the local. (Wk. 10)

BRUSSELS RELIGIOUS HOUSE: BRUSSELS

External: Bid Godspeed to 2 Guardian families in Area Brussels returning to live in the States: David and Ellen Rebstock (Union Church treasurer, RSI, LENS, ITI) moving from Den Haag to Milwaukee LCX; Mark and Minnie Baldwin (Union Church Council Chairman, RSI, LENS) and she is French, moving from Brussels to Denver LCX.

Internal: Digging deep into cellars (2 garage loads of debris) and wine caves (1400 empty bottles) we begin to see a House emerging for Brussels. The address now is: Brussels House, 33 Rue Capouillet, 1060 Brussels, Belgium. No telephone number yet but Telex is 26025.

Contradiction: Being and doing and knowing radically and practically and comprehensively and corporately. (Wk. 10)

RELIGIOUS HOUSE: FRANKFURT

FRANKFURT - External: Area colleague, Karl-Ludwig Simon, returns home after area meeting with the Elders, and visits his bishop who is excited enough to request a visit to the House in Sept. The second local church cadre begins in Schopfheim with 22 of the 32 that attended the course.

Internal: Houe celebrates new member Alisa Lynn Oyler, born May 30th at 3370 grams to John and Marilyn Oyler. Hospital reached with 20 minutes to spare. House prepares for London Global Order Council with great expectation.

Contradiction: In a land of possibility, coordinating the movemental systems towards effective mass penetration. (Wk. 10)

NAIROBI RELIGIOUS HOUSE: NAIROBI

External: LENS follow up begins as participants call us and stop by the House; key Presbyterian Church leader gives nod to the ITI.

Internal: Sheldon Hill spins us talking about the global guild in sodality.

Contradiction: Seeing the gestalt that holds the next several months as one reality. (Wk. 9)

BOMBAY RELIGIOUS HOUSE: BOMBAY

External: Last minute visits on all ITI registrants reveal many obstacles to be overcome to ensure participation. Circuit ride indicates that registration is holding at 40.

Internal: House and ITI practices transformed with Robin Hutchinson coming from Hyderabad to work decor miracles.

Contradiction: In the face of nation wide transportation strike and economic paralysis, overall 'it's simply impossible' mindset has to be shattered. (Wk. 5)

DELHI RELIGIOUS HOUSE: DELHI

External: House symbolizes completion of resettlement by hanging 'The Delhi House' plate. Elders are sent to Bombay and regional guests continue to 'drop by' in increasing numbers to new accessible locations.

Internal: Telegrams sent to regional coordinator as rail and postal strikes force us to rethink landing model for ITI participants. Completing ITI decor cements activities for the week, and is enabled by regional colleague.

Contradiction: Daily rebuilding of models to enable participants to decide again that ITI is crucial and possible, the midst of assumed 'impossibilities' of national rail and postal strikes. (Wk. 6)

MADRAS RELIGIOUS HOUSE: HYDERABAD External: IRA Sub-Asia concludes, leaving in its wake a deeply committed group of about 20 colleagues made of steel, such as the Sub-Continent has never seen before. These men and women are ready to go! on the guild and EPX and a high percentage have interning on their immediate timeline.

Internal: Ashram including children and youth is geared into shifting gears and preparing for the 3 ITI's as members are sent across the Sub-Continent to gather in the participants in light of rail strike.

Contradiction: How to ensure that all participants arrive in time for the opening feast of ITI on Sunday night. (Wk. 7)

SINGAPORE RELIGIOUS HOUSE: KUALA LUMPUR

External: First KL:ITI registration confirmed. Regional happening brings together 13 who list 50 ITI prospect names and over 40 development contacts, each with the name of a colleague who is an entre.

Internal: House has revolving door image as Jim Oberg in and out from Singapore to do travel discount prospecting with airlines in prep for Hong Kong IRA and KL:ITI. Received Loh Gaik Sim to KL House internship in midst of visits by colleagues to House. Sendout of Knusenss to Chicago via Norway after 24 years in Malaysia celebrated again and again with much feasting and wellwishing.

Contradiction: Need plan for sustaining enthusiasm of regional colleagues through to ITI quota filling, 20 from KL and M\$12,000 (\$4800 US). (Wk. 10)

RELIGIOUS HOUSE: SINGAPORE

External: Four Asian and 2 Western faculty teach 2 RSI's. David Scott sent to Hong Kong on IRA set up and Sue Oberg sent to Kuala Lumpur to begin the set up of the KL ITI. Singapore Area joins in the development push to enable the ITIs in India; US \$1000 sent. House hosts Jim and Laverne Phillips.

Internal: Bans read at House Church for Willard Westre and Sheila Mathews. Jim and LaVerne Philips leave to teach Bangkok LENS course. Regional family plans to sojourn during the ITI.

Contradiction: Enabling more of our colleagues to realize that they are responsible for both the fantastic things which have happened in the Church in Singapore and the future of the movement. (Wk. 8)

RELIGIOUS HOUSE: JAKARTA

External: Fruitful visit to 3 metros in preparation for ITI:KL.
Internal: Anticipated arrival of new family. Job secured for the summer.

Contradiction: How do you sense after the time to uncork the bottle? (Wk. 9)

HONG KONG

RELIGIOUS HOUSE: HONG KONG

External: Area battleplan and budget in history signal new directions for corporate thrust as International Research Assembly prep staff arrive to begin count down.

Internal: New Religious House location enables missional structuring of forces for Development Centrum, IRA, and Religious House: Hong Kong. New address: 3 Norfolk Road, Kowloon Tong, Kowloon, Hong Kong, phone 3-382780.

Contradiction: Image of Quarter IV puzzle in order to make all the pieces fit and walk through the open doors. (Wk. 6)

RELIGIOUS HOUSE: KAOHSIUNG

External: English RSI kicks off special ITI preparation sessions with 20 around table and sign of the future emerges as 11 people pay the full \$300 US ITI fee.

Internal: Celebrated Sz Gi and Sz Ping Hsu's birthdays with a great House Church meal served on new set of Chinese dishes. Sent George McDonald out to enable IRA in Hong Kong.

RELIGIOUS HOUSE: KAOHSIUNG (continued)

Contradiction: After weeks of anxiety and hard work we still do not have Hsu cleared for exit to IRA and faculty preparation begins immediately (Wk. 10)

RELIGIOUS HOUSE: MANILA

External: 'Greatest Ecclesiola in 2 years' brings 10 parishes into House to consider sending their leadership to ITI, LENS rolls on, development resolves and resolves.

Internal: Joe Thomas, Hale Prather, Epps, Betty Pesek, 2 Elizondo young enliven House. Youth's Barrio Feasta closes out summer vacation.

Contradiction: Nitty gritty of details not done coagulate into the contradiction as implementaries are not pushed far enough. (Wk. 8)

RELIGIOUS HOUSE: TAIPEI

External: Exit procedures for ITI are clarified as we do a trial run. Begin development push with names, visits and first gift. Mailed information letters to ITI prospects.

Internal: Week II sojourn with 7 colleagues includes Ecclesiola, planning, house hunt, and corporate sermon on Prodigal Son.

Contradiction: Enable participants to decide they can develop money for ITI. (Wk. 10)

RELIGIOUS HOUSE: CEBU

External: Two LENS courses back to back impact Cebu City and Lapulapu City community with power of corporate methods and rearticulated stories. Key participants included workmates, key block from Aboitz & Co., Auxiliary Bishop of Cebu, and 2 December grads who brought their wives to the opening session.

Internal: As whirlwind of LENS, hosting the team, calling, visits, and a Great Trek to Buyong Beach blows over, House engages in planning final countdown on IRA and ITI, then sends Hale Prather and Jose Cartegena to Manila for development and practics tasks, recruitment team to Dumaguete, and everybody else back to work.

Contradiction: Given the tight money situation and close timing, how to release the care of the business community to fund grass roots training. (Wk. 10)

RELIGIOUS HOUSE: DAVAO

External: Prior sent out on circuit ride. Nabunturan micro intensifies pedagogical prowess with tutorial and guild scheduled in between 2 Visayan RSIs. Self-conscious goal is 5 pedagogues birthed out of each course.

Internal: Gogarten shocks and delights again. Wayside Inn dynamic includes colleagues from Manila and Cebu regions plus UCCP pastor from 'untouched' polis who drops in and stays for 2 hours.

Contradiction: Creating the time design that will maximize and intensify non-job and around the edges time. (Wk. 10)

TOKYO RELIGIOUS HOUSE: SEOUL

External: PLC on Cheju Island for laymen, clergy and their wives, opened by the provincial police chief. Attended 88th anniversary of Ewha Girls' High School. Held preaching mission in Taejon. Much printing and many invitations for ITI. Preached in Rev. Han Kyung Soo's church.

Internal: Impacted by Segundo's 'sign-bearing morality.' Welcomed new intern Mr. Han Sang Shin, a seminary student in Seoul. Celebrated Park Jae Eun's (Mrs. Kang) birthday at Ladies Collegium. House celebrated the Williams' residence certificate, Phyllis Mielke becoming a Fellow, and the Work family's announcement of a January 1, 1975 birthday.

Contradiction: No beachhead in foreign business financial support. (Wk. 10)

RELIGIOUS HOUSE: FUKUOKA

External: PLC follow up and cadre development in Hiroshima. Penetration breakopen in Kagoshima capped off with RC Bishops recommendation of ITI to key lay leaders in Diocese. LENS grads follow up opens up best LCP prospect in city. ITI scholarship funds come in.

RELIGIOUS HOUSE: FUKUOKA (Continued)

Internal: Sent Anne Filipski to area Global Language Training Program PSU in Osaka. Nine week penetration guilding timeline put into action at Tuesday collegium.

Contradiction: Discerning methodology to bring 'high' LENS grads to see the necessity of RSI. (Wk. 10)

RELIGIOUS HOUSE: OSAKA

External: PLC grads in Ikuno Ku meet and lay plans for being parish cadre.

Internal: Initiated massive ITI recruitment.

Contradiction: All doors seem shut on ITI. (Wk. 10)

RELIGIOUS HOUSE: TOKYO

External: Director of Boeki Kenshu Center in Shinuoka metro, which trains businessmen being sent abroad, says global consciousness is the world's greatest need, and requests LENS next fall.

Internal: Week II submersion in ITI. Paul Murayama sees his role reversed as he sends Kenn Ellison out to ITI, while he himself prepares to go to Chicago Research Assembly.

Contradiction: If to lick the economic and to keep the push on ITI, everyone is out of the House, how to keep momentum in ITI and area coordination. (Wk. 10)

RELIGIOUS HOUSE: SENDAI External: Regional Council spiritized by Castenada conversation and the Saint and by Aomori cadre's Japanese translation of 'All Life is Oper' and the 'Vision.' Bi-metro coordinators consensed upon.

Internal: Sakura no Seibo Junior College and the House hosted future penetration prospect for Alaska and sent Kate Ward to Osaka for a PSU in preparation for S'74.

Contradiction: Enabling great regional leadership to see the necessary images of the revolutionary as one who visions the possible in the midst of the impossible. (Wk. 10)

SYDNEY RELIGIOUS HOUSE: PERTH

External: ITI visiting continues; RSI registrations keep coming in. One prospect greets team at the door with 'Yes, I'm coming. But what is the Ecumenical Institute?' Anglican clergy prospect phones to ask what he would need to do to hold a PLC.

Internal: Battleplanning contineus. We're beginning to see images of the implementaries for the unblocking tactics. Transportation possibilities increase by two wheels.

Contradiction: In the midst of the multitude of demands, the building of a corporate thrust that cuts over against parochialism at all levels. (Wk. 8)

RELIGIOUS HOUSE: DARWIN

External: Portents from the turn come flooding in: Parap 5 committee consenses local signs and plans one-day Community Convocation; weeknight RSI launched including 2 clergy and 3 LENS grad key laymen; results of community survey released on TV programme bring flood of inquiries; on our consultation tourist association launches campaign to make Darwin a duty-free port.

Internal: Marmungal (guest) room continuously occupied as Mike Chapman and father pass through on missional tour, and Stan and Jan Davey bring news of SEAsia on return to Oombulgurri.

Contradiction: Completing new internal life design while busy with implementaries. (Wk. 9)

RELIGIOUS HOUSE: OOMBULGURRI

External: Mowaljarlai's visit deepens sense of awe in recovery of aboriginal heritage. Symbol guild impact community as they catch new vision of small industry possibility. Hilton Gore, community elder, assumes responsibility for training of young men. Agricultural dept. advisor excited about experimental peanut crop and offers loan of tractor and digging equipment.

RELIGIOUS HOUSE: OOMBULGURRI (continued)

Internal: Auxilliary boat speeds up river on first trip. School teachers visit Wyndham and Kununurra schools for observation and guild cultivation.

Contradiction: Fear of holding each other accountable for past and future leads to breakdown of structures for symbolizing corporateness and maintaining individualism in Mawaba and community. (Wk. 9)

RELIGIOUS HOUSE: ADELAIDE

External: ITI recruiting becomes full time occupation as 20 clergy as seen in 4 days and House opens doors to many old grads.

Internal: House prepares for Regional Council, creating new decor, including large turn montage, 'On the Street where You Live,' which transforms the House. House prior sojourns for a week.

Contradiction: How to 'stop the world' to insure we don't drown in the flood of possibilities of ITI, courses LENS, Galaxy and outer metros. (Wk. 10)

RELIGIOUS HOUSE: MELBOURNE

External: Two day trek through Ballarat Metro and speaking engagement with Roman Catholic parish council yield firm prospects for next quarter's PLC and RSI. Acceptances of invitations to pre-ITI luncheons, film and guest nights swell as phoning model implemented.

Internal: As landlord removes stored belongings, House moves into vacated 40' x 20' collegium room with visions of 50-man RSIs and grand balls. Refior family farewelled at supper party at the Trak 'Upper Crust' restaurant.

Contradiction: Changing the interesting and worthwhile conversations about ITI to addressing the word that will secure registrations. (Wk. 9)

RELIGIOUS HOUSE: CANBERRA

External: Initiated contacts with old colleagues.

Internal: Bronwyn Rees arrived. Tables and chalkboards ready, E.G. in uniforms enter school.

Contradiction: Style of invisible religious in midst of a very secular face. (Wk. 10)

RELIGIOUS HOUSE: BRISBANE

External: Week highlighted by the relaunching of clergy guild with 2 metros represented; 4 metros visited reveals a readiness to move on the secular; 2 more ITI yesses move us closer to recruitment goal.

Internal: House celebrates the full absurdity of the contingency of mortal models and the perversity on inanimate objects, as the revolution marches on.

Contradiction: Seeing through the immediate obstacles to the permission to build the models which enable us to risk all and then trust the Lord's timeline. (Wk. 10)

SSUVA RELIGIOUS HOUSE: MAJURO

External: Grassroots drive for awareness and engagement manifested: 24 copies of 'Micronesia at the Crossroads' by Micronesian Carl Heine sell in one day; church lay leaders Rhine Brain and assistant pastor Diem Tamon and 2 ready intern families add Ecclesiola to their weekly timelines; KITCO management does ITI development; Rong and Uliga graduations point to the future.

Internal: Shift to summer configuration and indigenization of the House become radical indicative as battleplanning and interns who are still guests reveal the necessary forms.

Contradiction: Immediate space to concretize and symbolize the indigenization of The Majuro House for the community. (Wk. 9)

RELIGIOUS HOUSE: APIA

External: Trip to Tonga and Fiji reveals continued friendliness and interest in the Ecumenic Institute among Roman Catholic, Methodist and Anglican hierarchy. House makes new school banner which all of the MHS students were proud to march behind in the National Parade on Independence Day.

Internal: House rocked by the number of requests coming to us. Segundo study is best ever.

Contradiction: Looking for a crystal ball to know what the immediate future holds in order to make decisions now. (Wk. 10)

SAN FRANCISCO**RELIGIOUS HOUSE: SAN FRANCISCO**

External: The Local Community Convocation saw factions of the Mission Community working together with apssion for the community. Sponsors for the LCC come alive with excitement. Four guilds produced very practical and concrete reports.

Internal: A reception (S'74 recruitment scheme) for the newly returned Academy grads received 30 guests from the community. House reports one new job for Jeff Gilster, as restaurant manager.

Contradiction: Practics for planning for summer events with no clear image of the rhythm. (Wk. 10)

IRELIGIOUS HOUSE: SAN JOSE

External: LCC is a great happening. Key community people participate with movement colleagues. Buffet luncheon and entertainment; key happening was 2 elders playing the mandolin from the neighborhood senior center and 3 youth from local high school on guitar.

Internal: Movement colleagues drop in during the week to help with LCC prep. Sojourner Brenda Herren comments that it was great participating in a week so full of life. She is now considering attending S'74.

Contradiction: S'74 recruitment still not up to quota with only 3 weeks to go. (Wk. 10)

RELIGIOUS HOUSE: SACRAMENTO

External: Both Galaxy aand guild consults come off the boards. Presence of Isabel Bishop allows new global vision for many.

Internal: Metro colleague's house provides roof while mortgage for Norte 5 house travels the channels. E.G.'s first sewing project wins 4H prize, the monetary award being contributed to the House.

Contradiction: Ignoring the economic tyrant: ourselves. (Wk. 8)

RELIGIOUS HOUSE: SEATTLE

External: LCC and regional celebration after was a significant event, missionalizing life of the movement this qu rter.

Internal: Third full Ecclesiola of quarter begins study of Robinson's 'The Difference in Being Christian Today.'

Contradiction: Summer regional structures appear invisible in S'74 sunlight. (Wk. 10)

RELIGIOUS HOUSE: LOS ANGELES

External: Region becomes 'relentless strategists' as Galaxy creates warboards, Metro core views 'The Sting' for second time and decor and song creation reinforces Parish Guild decision.

Internal: Collegium study of Transpodane Christianity rings true in midst of parish guild creation.

Contradiction: Spinning stories and strategies that enable us to walk through the fear and uncertainty of the parish toward the creation of the guild. (Wk. 8)

RELIGIOUS HOUSE: PHOENIX

External: Local community iron men like Estus Brigham make LCC a great event. Social agency planning session calms their anxiety relative to PGX. Assistant Police Chief is delighted by ICA story.

Internal: Furniture from old country club comes to House through pre-Galaxy priest. We celebrate end of quarter and sendouts of youth, E.G. and first among equals with cookout and claiming of promises.

Contradiction: We find ourselves 'safely' planning, rather than 'riskily' doing. (Wk. 10)

RELIGIOUS HOUSE: BILLINGS

External: House participates in Rapid City's LCC and sees local man glimpse his community in a new way.

Internal: Hosting the Sanders family continues to provide great feasts and radical transformation of the House.

Contradiction: Run-down building (our new house) possesses many challenges we could pour out our energy there without seeing that the parish is even bigger. (Wk 10)

RELIGIOUS HOUSE: DENVER External: Regional colleagues and House take on phone call blitz for Regional Council. In Boulder clergy study turns from argument to dialogue with author, and in newly formed cadre new grads assume all symbolic roles.

Internal: Former state legislator attends House Church and asks vocational question. Development team puts new demand on local house preparation for site visit - the Sting. Hatching S'74 participants by sitting on prospect list taped to worship chairs.

Contradiction: Transforming mundane to the other world. (Wk. 8)

RELIGIOUS HOUSE: RAPID CITY

External: Elders celebration held at the Paha Sapa Community Service Center in the parish, celebrating the gifts of the Yellow Ur. Sixty elders were served chop suey and signal event of the day was dancing done by 3 Japanese women from our local air base.

Internal: Discontinuous Ecclesiola held as we feast on special of all the barbequed ribs you can eat for a dollar at local restaurant.

Contradiction: We've sown the seeds for a season and the harvest looks like a potted plant. (Wk. 9)

WINNIPEG RELIGIOUS HOUSE: ANCHORAGE

External: Awed by the power of secular evangelism as displayed through LCC. New City Manager shows up at end saying 'I came to get uplifted' and proceeds to claim promise that Anchorage will become a global model for all cities. Regional Council highlighted by presentation of myth based on ancient Eskimo symbol Inukshuk, our 'Silent sentry of the past, portent of the future.'

Internal: House Churches emerging as great events as potential Galaxy pastor wows us with his intentionality in being celebrant. House year end celebrating great success as we view 'A Thousand Clowns' at surprise showing.

Contradiction: Not having long range battleplan to engage us through the quarter, we end up creating lists of things we 'can' do. (Wk. 10)

RELIGIOUS HOUSE: EDMONTON

External: Indicative battleplanning wins again! Three registrations for Odyssey, 4 applications for S'74, and pre-LENS grad leads 4½ hour company workshop at critical stage of expansion and wins.

Internal: Saints conversation, Segundo clarification 3, and social process visioning just what battle-weary troops need. Ecclesiola revitalizes us all and rebuilds interior resources for intensified thrust toward the summer.

RELIGIOUS HOUSE: EDMONTON (continued)

Contradiction: 'Doing our homework' pushing, pushing to the bottom which produces necessary context to give regional colleagues permission to be movemental dynamic. (Wk. 9)

RELIGIOUS HOUSE: SASKATOON External: In the midst of LCC activities, such as going on radio for a one-hour show, securing TV coverage, doing group presentations, the 2 Galaxies met together for the first time for a spectacular continental consult. After consult, Saskatoon Galaxy attends Pentacost House Church en masse.

Internal: We understand that the discontinuous month means intensifying in other directions as we finalize summer plans, red Pentacost color appears, Duddy Kravits comes to Ecclesiola, and the winds of LCC scatter us in all directions everyday; it is glorious.

Contradiction: Red hot need for cold cash coldly illuminates burning need for allowing colleagues to see that this is their Religious House to train in and move in. (Wk. 10)

RELIGIOUS HOUSE: WINNIPEG

External: LCC demonstrated methods which allow man to stand concretely before his care and participate in shaping the thrust of his energy; native Indian Tom Jackson gives sophistication in musing as he tells the journey of his race, disclosing all races participate in the workshops and left commenting 'I'm pleased to be here.'

Internal: Sojourn of regional colleague Anthony Ahle keeps House honest as it struggles with decision to assume areal fiscal responsibility by holding double jobs in 3 different places on the continent.

Contradiction: Struggle with embodying style of John Paul Getty and Francis Xavier. (Wk. 10)

HOUSTON RELIGIOUS HOUSE: AMARILLO

External: Leadership from all segments of 'El Barrio al Este de Amarillo' represented at LCC. Thursday after LCC 18 met for guild initiation and followup. Original 'core' group took leadership role in the meeting as task was articulated 'to enable local people to move beyond failure to decide now is the time.'

Internal: Lana Mies sojourns for a week, helps enable LCC, attends LCC and announces she is registering for S'74. Quarter Ecclesiola celebration held with global feast at local restaurant.

Contradiction: In midst of possibilities deciding to sit on our anxieties. (Wk. 10)

RELIGIOUS HOUSE: SAN ANTONIO

External: House celebration becomes an effective impact tactic and S'74 recruitment event.

Internal: Half of the House goes through the trauma of packing for the trip to Chicago and camp as everyone writes his story of the House's journey last quarter.

Contradiction: Deciding to do what we discover ourselves doing. (Wk. 10)

RELIGIOUS HOUSE: OKLAHOMA CITY

External: Successful consult with Conoco technicians indicates time is ripe for motivity methodology and corporate skills. Six to Tulsa PLC enables journey to LCX.

Internal: All systems 'go' for LCC with last RSI in chute. Segundo laying out the economic captivity of the church.

Contradiction: Trapped in the 'next event' malaise blinds us to building the long range colleague journey model. (Wk. 8)

RELIGIOUS HOUSE: DALLAS

External: House and metro colleagues combined to lay formal claim to the territory of Live Oak 5. Summer timeline aimed at pulling off fall course events is completed, and authorization meeting with combined Trinity and Covenant Presbyteries is set up for fall. S'74 recruitment goes into high gear.

Internal: House wades into mountain of grad, 'friend' and '?' files from past years to discern actual troop strength for future engagement, in the midst of polishing summer timeline and

RELIGIOUS HOUSE : DALLAS (continued)
preparing work on 'Dallas Training Center.'

Contradiction: House experiencing the sensation of having pursued a Road-Runner named 'Mission' off the end of the cliff at the end of the timeline, and in need of regearing into the new rhythm of the summer timeline. (Wk. 10)

RELIGIOUS HOUSE: TULSA

External: Full turn made toward S'74 recruitment. RSI and PLC follow up exciting happenings. Ecclesiola night used for RSI follow up; Galaxy pastor leads and Gogarten paper leaves participants in awe.

Internal: Bad news: flash floods cover House area with water and mud. Good news: House member makes front page of the Sunday edition of Tulsa 'World' cleaning out drains in front of House.

Contradiction: Constantly emerging network of relationships in parish and city causes us to step back: hard to be Gondorf when you're not sure who's in the room with you. (Wk. 10)

RELIGIOUS HOUSE: HOUSTON

External: Houston Metro: 2 LENS courses (Community Fri. - Sun. at the House; Executive, Sun. - Tues. at the Marriott) Austin Metro: RSI at San Jose Church.

Internal: Celebrated completion of first 2 months of second jobbing \$2700 to the good; concluded stipend stretch with contribution of April checks totalling \$2125. Great new lounge created.

Contradiction: Conceiving the global-local style as transforming power rather than burdensome tension. (Wk. 10)

RELIGIOUS HOUSE: NEW ORLEANS

External: LCC at which Warren Tolman and Shirley Porter were presented honorary citizen's awards and key to the City by welcoming speaker Jack Nelson shifted us into a week of major emphasis on S'74 recruitment.

Internal: Three new jobs secured and begun lend base for planning for the summer months. Despite frequent shifting of financial picture in other jobs.

Contradiction: All our time is being claimed by focus on S'74, preventing advance reflection on what is needed here in addition to S'74. (Wk. 10)

RELIGIOUS HOUSE: MEMPHIS

External: Regional Council signals the move into the parish with 3 hours spent gridding the parish on foot, marking churches, social agencies and the like, and the rest of the day sorporately writing and creating a symbol, song and slogan. LCC dynamic held with Sandy Powell's journey to Kansas City and report that West port is also a great place to be alive.

Internal: We rejoice in the birth of Felicia Robin Feldmanis, 6 lb. 10 oz. daughter of ATis and Sharon, on June 8, 1974.

Contradiction: Courageously assaulting the dread of planning the summer. (Wk. 10)

RELIGIOUS HOUSE: ATLANTA

External: Larry Ward and Isobel Bishop lead 200+ community meeting at EAsT Lake Elementary School in 'the most exciting day Blacks and Whites have had in Atlanta really looking at our community.' House was bursting seams as many came to evening evaluation, and we kept adding chairs Tuesday night as they showed up again to 'get down to work.' TV news: 'Local community people workshopping their own future, not waiting for experts.'

Internal: City Directory service hires 2 to go door to door in the parish gathering census information, and pays us for it. We've expanded the questionnaire a bit.

Contradiction: Paralysis in the face of unprecedented possibility; we're all bruises from going around saying 'Pinch me, I don't believe it's real.' (Wk. 10)

RELIGIOUS HOUSE: MIAMI

External: Local realtor and local lawyer work with House on condominium consult wine press plans.

Internal: Wk. II of study and work followed by Memorial Day speech, party and cookout.

Contradiction: In midst of overwhelming Latin response how to shake loose Anglo and Black minority in the parish. (Wk. 8)

CHICAGO RELIGIOUS HOUSE: WICHITA

External: In the wake of Lela Mosley's impacting visit to Wichita, a significant group of parish leadership convened to discover that the lectures and methodologies of the LCC demonstrated new depth and comprehensiveness in dealing with the spirit issues of the community.

Internal: House is clear that summer means intensification and prepares by implementing a new time design and pushing the celebrative with 11 guests at House Church.

Contradiction: Acting out the intensification of corporateness, priorship and guruship to match the intensification of the mission. (Wk. 10)

RELIGIOUS HOUSE: LINCOLN

External: Galaxy Consult and Guild Field Visit refresh the vision of our demonstration signs. CSI attacks the subtle moralisms around us.

Internal: Ecclesiola happens as wildly celebrative and deeply reflective event reminding us of the mutation 20th century man is. We gain new clarity in depth about Wayside Inn and cabaret dynamics.

Contradiction: As the teaching quarter and year draws to end, we tend to watch it end rather than participate in its end. (Wk. 7)

RELIGIOUS HOUSE: KANSAS CITY

External: Demonstration signs for the bi-metro begin to flourish as House attends Galaxy quarterly celebration and send out two of the Galaxy pastors with over 50 adults in attendance, and the Westport Community Council, the Westport Parish coalition of neighborhood organizations gives a firm yes to the LCC and the work in the parish.

Internal: Quarter ends with 10 guests at House Church and impromptu dance following allowing House members to appropriate the fact that victory is a decisional matter.

Contradiction: Deciding that our story for parish work can embody the story and style of the secular-religious. (Wk. 10)

RELIGIOUS HOUSE: MINNEAPOLIS

External: Signal event of the week is the in-kind donation of a billboard in the parish to promote the LCC. We are properly awed by a clergy collegium of 15, and RSI of 30. Parish colleague assigned with House members to 5th City work weekend.

Internal: The big con of the week: PLC team holds PLC luncheon for House at breakfast collegium, complete with spaghetti. Michael Harrington's book gives us perspective on a part of our past that we had not found a way to talk about before.

Contradiction: The turn toward summer finds us wanting to disengage temporarily, instead of making a fast shift into new roles. (Wk. 6)

RELIGIOUS HOUSE: ST. LOUIS

External: Sixty attend Local Community Convocation including Robert Osborn, the mayor's assistant who came to do the welcoming speech, stayed all day, came along to the celebration at the House and finally left at 2:00 a.m. Six metro clergy collegiums met.

Internal: Regional colleagues come and go at the Wayside Inn, helping to enable the LCC.

Contradiction: LCC attendance from all over city prevented formulation of concrete parish tactics by the few people in attendance from our parish, Murphy-Blair. (Wk. 10)

RELIGIOUS HOUSE: PEORIA

External: We are deeply impacted with uniqueness of our parish as flyers for LCC are taken door to door; long-inactive grad spends 2 hours after S'74 and LCC pitch listing (with a friend) people and agencies who need to hear of LCC.

Internal: Penetrating questions from a radio reporter (who received our news release) re. LCC and ICA resulted in a remarkably on-target editorial to be aired, within the week; Qtr. IV '74 Academy grad Gordon Blauvelt is welcomed home and secures a job within the week.

Contradiction: Still not living in the parish to be the sign. (Wk. 9)

RELIGIOUS HOUSE: MILWAUKEE

External: Community elder stops House member 3 days after LCC and asks 'What next?' Elder cabaret brings new life to a nursing home and an elder parish social center. Galaxy celebration set the tone for the summer: the church does not go on vacation.

Internal: Our own sophistication and ability to create elegance surprises us and pleases us as we celebrate Lester Knutsen and Linda Newkirk's upcoming wedding. Congregation dinner is the radical celebration of the missional family as 2 order families and representatives from 6 Religious Houses and Centrum gather.

Contradiction: Creating a story for converting 'maybe's' and 'I do not want to's' into 'Yesses' (Wk. 10)

RELIGIOUS HOUSE: CHICAGO

External: Ninety-two local and regional guests arrive for the first 5th City Community LENS course held in the new 5th City Community Center; it was a major victory. A week of inspection by City officials fails to reveal a single violation in the operation of the 5th City Preschool, another first that opens new arenas of authorization and funding.

Internal: House receives new life; the birth of Catherine Patricia Stewart, and receives the Al Roberts family from Detroit. Four new souls more to come.

Contradiction: Supporting the weight of having won in order to build the tactics to win again. (Wk. 10)

RELIGIOUS HOUSE: INDIANAPOLIS

External: The radical shift from LCC to summer is demonstrated by 37 personal visitation appointments and 12 paid registrations two weeks before S'74.

Internal: House welcomes new intern Lucille Hunt from Pleasant Union Missionary Baptist Church of our Galaxy. Indicative battle planning creates exciting new possibilities for bi-metro summer engagement.

Contradiction: Termination of 4 jobs. (Wk. 10)

RELIGIOUS HOUSE: CINCINNATI

External: Local employer after context from House member feels he is helping the community by employing one of us. He was impressed by the fact that her children were being taken care of by someone who was trained in one of the two best pre-schools in the country.

Internal: The Iron Man and the world grid along with the local grid still has great impact on the local man in Walnut Hills.

Contradiction: As we recruit for S'74 we find metro people sorry the teaching year is over and asking about courses in the fall. (Wk. 10)

RELIGIOUS HOUSE: DETROIT

External: 'I didn't believe it could be done!' (Sociology professor) and from 2 community residents: 'This is the most exciting meeting I've ever been to' and 'The next one of these you have, I'm going to make sure all my friends come.'

Internal: Guests from Hong Kong lead exciting collegium on Hong Kong movement and Academy experience. They are sign of globalness to community guest. Work on decor and LCC

RELIGIOUS HOUSE: DETROIT (continued)

preparation fills week. Post LCC celebration extends from evaluation conversation on Saturday to fantastic Sunday spin with colleagues and Gene Boivin.

Contradiction: Immediacy wins again; focus on LCC consumes us with no summer planning to date. (Wk. 10)

RELIGIOUS HOUSE: CLEVELAND

External: Akron RSI finishes our course schedule as we move full steam into the parish. At week's end the result is many exciting, hope filled contacts, sore feet and holes in our socks. The Karpoffs return from Academy just in time.

Internal: Pentecost House Church is a spirit happening with 80 participants overflowing the collegium room. We welcome Marty and Gerry Lapka and Virginia Packard as sojourners, and Marilee Dickson and her Girl Scout colleagues as guests while they attend a conference in Cleveland.

Contradiction: Our interiors say surely 8 weeks is enough, as we face no time off with Community Convocation, 5th City Elders visit, and S'74 recruitment. (Wk. 9)

NEW
YORK**RELIGIOUS HOUSE: PITTSBURGH**

External: LCC in East Liberty Parish provides occasion for local leadership to affirm the possibility of community reformulation. The 60 participants included 30 regional leaders and 30 local citizens who sang together 'East Liberty Points the Way' S'74 registrants at 3; 17 to go.

Internal: House acquires a new car through inkind donation by a regional colleague.

Contradiction: Turning colleague's imaginations about the IRA from 'I'll consider it' to 'I need to go, sign me up.' (Wk. 10)

RELIGIOUS HOUSE: ROCHESTER

External: The LCC was highlighted by the energetic presence of Charles Joseph, a black IBM engineer from Binghamton who reflected 2 days later that he came away on a 'high' and is seriously considering attending the summer program.

Internal: A picnic in the park climaxed the LCC as regional colleagues experienced fellowship in the midst of skits about the quarter events.

Contradiction: To risk passionate planning again after remembering last quarter's struggle with the indicative battleplanning and affirming the pain of being the guinea pigs for new models. (Wk. 10)

RELIGIOUS HOUSE: RICHMOND

External: Thousand leaflets on trees and tower pole. Fifty shots with large posters, 3800 handbills and brochures climax core work on LCC. Two cadres form in LCX bringing 22 grads together for fellowship, training and planning.

Internal: Day I, Day II and Day III internal life devoted to decorating LCC Great Hall and 4 seminar rooms.

Contradiction: Remembering that the Word of Jesus Christ sustains in the midst of total risk. (Wk. 9)

RELIGIOUS HOUSE: WASHINGTON

External: LCC is a great happening as 75 people participate including a city councilman, who plans to come for 15 minutes and stays 3 hours, representatives of Northeast Coordinating Committee. Highlights include Northeast Is a Great Place to Live banner and singing of Paula Brenneke.

Internal: Week is filled with sendouts and guests. Send out Cocks to S'74 prep and Shaws to Camp New Covenant. Ecclesiola sees 3 possible interns plunge into seminary and sodality. Daily Office is transformed as Galaxy clergy join with us while on a clergy retreat.

Contradiction: Wanting to wait until after S'74 to see new direction clearly while knowing we must lay groundwork for next fall in the next months. (Wk. 10)

RELIGIOUS HOUSE: BALTIMORE

External: The LCC she was beautiful. The LCC decor she is beautiful and also ready for LENS. South Baltimore Community she is beautiful. LCC confirms suspicions as community council president asks when can we have another one, and pledges four times as many there.

Internal: House members and colleagues celebrate LCC with festive dinner at a Greek restaurant and an evaluation which confronts all with the wide open future.

Contradiction: Fear of giants keeps us from seeing the circus. (Wk. 10)

RELIGIOUS HOUSE: PHILADELPHIA

External: Local Community Convocation becomes explosion of unseen care and possibility as nearly 100 people, 75% being parish members, demonstrate their love for where they live. Highlights were an ex-gang that showed up Friday night to help set up, the noon time comedy appearance of a local ex-middle weight champion Gil Turner, and the overwhelming response of local businessmen with in-kind lunch contributions.

Internal: Having to write an evaluation of our past quarter in depth enabled us to shake off the stunning blow of having accomplished our Convocation feat, and turn our faces toward directing the future of Westwedge.

Contradiction: How do we communicate the excitement of S'74: (Wk. 10)

RELIGIOUS HOUSE: NEW YORK

External: Ninety five from New York metro participate in Wk. 8 courses with RSI setting record for Newark participants and CSIIIA representing all 4 phases. Commitment of LCC/LENS funding from banks and private business, 240 cans of in-kind beer and a rock band show the many forms of local support.

Internal: House participates in search and find mission to relocate Garden City House in Brooklyn. Rewriting a song is easy when the first line points to a street in the parish: Give My Regards to Broadway.

Contradiction: Panic before the storm (Wk. 10)

RELIGIOUS HOUSE: GARDEN CITY

External: Metro engages in final teaching quarter of 1973-74 year by engaging 7 metro colleagues in CSIIIA and 6 in RSI while metro teams prepare for regional celebration and S'74 send out local church leadership consults.

Internal: Oyster Bay 3 parish visited through the eyes of the Great Gatsby as House celebrates on the Long Island Sound.

Contradiction: Discerning what the 'now' is in the midst of what's necessary for the future. (Wk. 10)

RELIGIOUS HOUSE: NEW HAVEN

External: S'74 recruitment receives an extra push as metro colleagues cruise the Hudson and afterwards participate in House Church and picnic at Point Ponds Park. Celebrations abound as Galaxy sees movie 'Claudine' and entire House attends backyard barbecue at colleague's home on family night.

Internal: House Church overflows into 2 rooms and 2 metros with Galaxy prospects, rediscovered grads, and old colleagues present. House battleplan for Quarter I and study of Transpodane Christianity brings objectivity to the task.

Contradiction: Placing other priorities before S'74 recruitment. (Wk. 10)

RELIGIOUS HOUSE: MANCHESTER

External: LCC, with 40 metro colleagues present, a fantastic happening opening the vision of the future in Manchester for people like Hugh Morris, Pres. of Retirement Council who still sees himself as an engaged human being.

RELIGIOUS HOUSE: MANCHESTER (continued)

Internal: Acceleration of LCC preparation spirited by team effort in telephone calls, in-kind contributions and decor workshops all carried on while whole House is double jobbing.

Contradiction: With authorization emerging as fact, what is next step to direct engagement in community? (Wk. 10)

RELIGIOUS HOUSE: BOSTON

External: staff from Digital and the Federal Energy Office to investigate it for future possibilities. Invitation sent out for fund raising dinner sponsored by Guardians.

Internal: Put up fence in back yard (looks like a stockade) and were outnumbered again at House Church with 16 guests present.

Contradiction: Having a comprehensive holding image for all the practices and subtlety of the LCC. (Wk. 9)

RELIGIOUS HOUSE: PORTLAND

External: Twenty-four at metro council that sets context for a new metro dynamic. Ten from Maine Indian education come back from LENS demanding immediate follow up.

Internal: Mary Cookingham, Frank's mother, visits House and engages fully in the disciplined style. House moves into half its former space as part of new finance model.

Contradiction: Weak knees underneath bold voices. (Wk. 8)

MONTREAL RELIGIOUS HOUSE: TORONTO

External: Wetting our feet in the community with Local Community Convocation nets permission to form the Guild. Closing of meeting gives rise to demand to meet again.

Internal: Wayside Inn visited by global guests Kwok Tat Chu and Fung Suk Yee, and doors swing back and forth as we host dozens of Beaconsfield Rover Crew.

Contradiction: Where do we go from here to create the Guild? (Wk. 10)

RELIGIOUS HOUSE: OTTAWA

External: LCC tape is key in spirit breakloose for Saturday a.m. breakfast guests, and produces commitment to do parish research. Grad visit trek in Seaway Valley finds seeds sown over a year ago bearing fruit of local church involvement and missional family development.

Internal: House singing 'June is Busting Out All Over' with new fervor with aid of Pentecost red worship room and Segundo's vision of a transformed world.

Contradiction: Creating images for June and Quarter I that are neither a continuation, nor an escape from the 'usual push.' (Wk. 10)

RELIGIOUS HOUSE: MONTREAL

External: 'Viens avec moi' was both the breakthrough song and the image of the day as our Community Methods Lab (LCC) symbolized embracing the sociality of this region. Miracle after miracle of collegial expenditure and the aid of a translation service enabled the day to be an experience of graciousness and power.

Internal: Our French-speaking intern's decision to bracket permeation for a week and engage many old friends in the dawn to dark work was a sign to all of us of the price of taking this geography seriously.

Contradiction: With initial contacts made now, what is the appropriate form of an on-going training structure that will train us and community leaders to work effectively with the grassroots? (Wk. 10)

CARACAS RELIGIOUS HOUSE: CARACAS External: Twenty-six people assisted at Ecclesiola. Highlight was professional musical entertainment from a '73 RSI grad. Rose and George West sent out Thursday at 3 a.m. to visit the '73 ITI grads in South America and to start promotion for '75 ITI.

RELIGIOUS HOUSE: CARACAS (continued)

Internal: Spirit nurture provided by Other World spins and visits and Journey to Ixtlan, as House prepares for journey through South America.

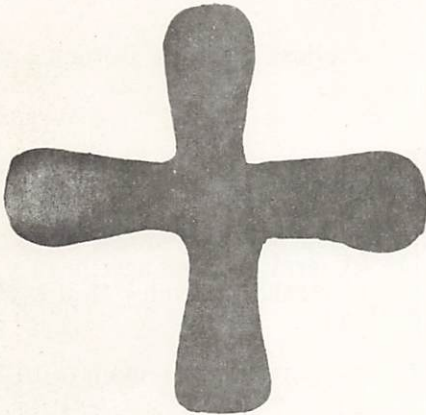
Contradiction: How to symbolize the corporate when one man is alone in the House. (Wk. 9)

BASE CENTRUM

BASE CENTRUM External: IRA in Hong Kong begins with Larry and Nadine Ward sent out at last possible minute to join staff. Joel and Alice Wright join Paris House. Global Odyssey settled at 34, with shots and Ur study proceeding alongside practices. Order welcomed visitors s, Archbishop Ortiz and Dr. Aelian Fernando, Director of U.S. Education Commission of Sri Lanka, and former Vice President of Wesley College, Colombo. Area priors arrive to intensify summer planning.

Internal: First order wedding in which both bride and groom were 'second generation' order, as we celebrated the covenanting of the Lester and Linda Newkirk Knutsen family. Bride, groom and both parents, as well as 3 brothers or sisters are Religious House priors. Welcomed many returning priors including Desmond Avery, Kjell and Marge Knutsen and Jim Kilgore. E.G. sent out for summer camp, renamed Crimson Covenant, and anticipate September with deployment to 4 Centruns (Hong Kong, Bombay, London, and Sydney) each with 4 parishes. All out readiness for S'74 demonstrated by work nights of cleaning and reordering, and by temple plenums on program arenas.

Contradiction: How do we structurally enable everyone to engage fully in the summer?



You are my flock, my people, the flock I feed, and I am your God. This is the very word of the Lord God.

Ezekiel 34:31

LONDON RELIGIOUS HOUSE: GLASGOW

External: Priorship of metro cadres in Glasgow and Edinburgh challenged and strengthened during meetings to lay plans for next year. Area London priors meet to strategize Quarter I and plan for Continent '74 Wk. 3.

Internal: The world drops in on Glasgow Wayside Inn as guests from Zurich, Seattle and other parts of Scotland outnumber House members. collegium using comprehensibility chart offers another glimpse of practical globality.

Contradiction: External battleplan that juggles priorities, troops and the discontinuity of summer. (Wk. 11)

RELIGIOUS HOUSE: BRISTOL

External: Three more register for S'74 Chicago.

Internal: Indicative battle planning on next year reaches tactics level. Participate in Wk. II summer planning.

Contradiction: How to think big enough. (Wk. 11)

RELIGIOUS HOUSE: MANCHESTER

External: Regional Council, with good cross-metro representation and representatives from Birmingham, has as signal event the sending of the Casswells to India; region experiences cost of its care.

Internal: House senses new day coming as S'74 quotas fill and solvency operations get underway.

Contradiction: How unsure against danger of static euphoria in the happy discovery that all is possible. (Wk. 10)

RELIGIOUS HOUSE: LONDON

External: S'74 recruitment intensifies while attention is turned to summer programme for continent of Europe.

Internal: House rejoices in 4-day Global Council with all the European Houses present.

Contradiction: Plans for summer quarter are found to be inadequate for the purpose of launching us into the next year. (Wk. 10)

PARIS RELIGIOUS HOUSE: PARIS

External: S'74 recruitment among members of Rue Roquepine congregation reveals a new vision and a new willingness to participate in its implementation.

Internal: Indicative battleplanning finally yields a marvellously imaginal form for holding the coming year (a triangle) - impact, authorization, and demonstration.

Contradiction: Securing local authorization and doing local tactical planning in such a way that the global is held. (Wk. 11)

BRUSSELS RELIGIOUS HOUSE: BRUSSELS

External: Three more registrations for S'74 (2 Dutch, 1 Hoosier American) to total 6. Prior is asked to preach at American Protestant Church (Union) in Brussels in July.

Internal: New Brussels House number (322)537-8304. The 12 bedroom new house begins to give up its treasures as we shovel, clean and wipe to restore its tarnished dowager beauty. A secret trap door uncovers another bedroom and a box of old clothes provides House with workshirts and a long winter coat stylishly tailored for Steve Hamje.

Contradiction: What does summer in Europe mean when the obvious answers remain just that. (Wk. 11)

FRANKFURT RELIGIOUS HOUSE: FRANKFURT

External: Phone call to Berlin confirms a recruited PLC for Wk. XI. Visit with Dr. Erhardtter from Vienna, who is general secretary of all pastoral institutes in Austria reveals concrete ways for us to make direct contact with the East.

Internal: Sister Joan Giroux of Fukushima spins stories with the House about the movement in Sendai. Sister proves to be the 'in' for us to visit Ursula Melchior, a key figure in ecumenical work in Frankfurt.

Contradiction: Creating momentum for blast off relative to the weight of the summer, fall and winter schedule. (Wk. 11)

NAIROBI RELIGIOUS HOUSE: NAIROBI

External: Association of Sisterhoods of Kenya and Religious Superiors Association of Kenya (men) send ITI mailing; trip to Western Province Bishops opens ITI sponsorship and recruitment.

Internal: Methodist seminarian spends half-term as first sojourner; definite intern possibility.

Contradiction: ITI facilities are still only a promise. (Wk. 11)

BOMBAY RELIGIOUS HOUSE: BOMBAY

External: Last minute visits on all ITI registrants reveal many obstacles to be overcome to ensure participation. Circuit ride indicates that registration is holding at 40.

Internal: House and ITI practics transformed with Robin Hutchinson coming from Hyderabad to work decor miracles.

Contradiction: In the face of nation wide transportation strike and economic paralysis, overall 'it's simply impossible' mindset has to be shattered. (Wk. 5)

DELHI RELIGIOUS HOUSE: DELHI

External: House symbolizes completion of resettlement by hanging 'The Delhi House' plate. Elders are sent to Bombay and regional guests continue to 'drop by' in increasing numbers to new accessible locations.

Internal: Telegrams sent to regional coordinator as rail and postal strikes force us to rethink landing model for ITI participants. Completing ITI decor cements activities for the week, and is enabled by regional colleague.

Contradiction: Daily rebuilding of models to enable participants to decide again that ITI is crucial and possible, the midst of assumed 'impossibilities' of national rail and postal strikes.

MADRAS RELIGIOUS HOUSE: HYDERABAD

External: IRA Sub-Asia concludes, leaving in its wake a deeply committed group of about 20 colleagues made of steel, such as the Sub-Continent has never seen before. These men and women are ready to go! on the guild and EPX and a high percentage have internalized their immediate timeline.

Internal: Ashram including children and youth is geared into shifting gears and preparing for the 3 ITI's as members are sent across the Sub-Continent to gather in the participants in light of rail strike.

Contradiction: How to ensure that all participants arrive in time for the opening feast of ITI on Sunday night. (Wk. 7)

SINGAPORE RELIGIOUS HOUSE: KUALA LUMPUR

External: First KL:ITI registration confirmed. Regional happening brings together 13 who list 50 ITI prospect names and over 40 development contacts, each with the name of a colleague who is an entre.

Internal: House has revolving door image as Jim Oberg in and out from Singapore to do travel discount prospecting with airlines in prep for Hong Kong IRA and KL:ITI. Received Loh Gaik Sim to KL House internship in midst of visits by colleagues to House. Sendout of Knusenss to Chicago via Norway after 24 years in Malaysia celebrated again and again with much feasting and wellwishing.

Contradiction: Need plan for sustaining enthusiasm of regional colleagues through to ITI quota filling, 20 from KL and M\$12,000 (\$4800 US). (Wk. 10)

RELIGIOUS HOUSE: SINGAPORE

External: House shifts entire missional focus to IRA and ITI. IRA faculty and participants sent out to Hong Kong.

Internal: House celebrates the marriage of Willard Westre and Sheila Mathews on June 15. Sojourner Connie Widyatma received from Jakarta. House welcomes Tim and Kay Lush on assignment to Area Singapore, John Patterson from Development Centrum Hong Kong and Mark Phillips from Jakarta. House welcomes its youngest member Rebecca Jean Morris, born June 3, and sends out its oldest member Mrs. Chen to Taiwan.

Contradiction: Enabling more of our colleagues to realize that they are responsible for not only the fantastic things which have happened to the Church in Singapore but for the future of the Movement. (Wk. 11)

RELIGIOUS HOUSE: JAKARTA

External: Sent out the Clemsons to the U.S. and House member to Singapore and KL for ITI prep.

Internal: School is out and the push on ITI practics has begun.

Contradiction: Meshing the short range tactics with the long range objectives. (Wk. 11)

HONG KONG**RELIGIOUS HOUSE: HONG KONG**

External: Area battleplan and budget in history signal new directions for corporate thrust as International Research Assembly prep staff arrive to begin count down.

Internal: New Religious House location enables missional structuring of forces for Development Centrum, IRA, and Religious House: Hong Kong. New address: 3 Norfolk Road, Kowloon Tong, Kowloon, Hong Kong, phone 3-382780.

Contradiction: Image of Quarter IV puzzle in order to make all the pieces fit and walk through the open doors. (Wk. 6)

RELIGIOUS HOUSE: KAOHSIUNG

External: IRA will happen: we send out Hsu to faculty and Sister Pulcheria to participate. Two more participants 'in the chute.' Development forges ahead and we pass the halfway mark. Participant funding promises to be a major victory with every participant paying the full fee.

Internal: Largest House Church ever as guests from Kaohsiung, Johnsons from Taipei and Joseph Hsu's sister all come to grace our table.

Contradiction: What is the best tactic when one of your IRA participants is waiting for his baby to be born? (Wk. 11)

RELIGIOUS HOUSE: MANILA

External: 'Greatest Ecclesiola in 2 years' brings 10 parishes into House to consider sending their leadership to ITI, LENS rolls on, development resolves and resolves.

Internal: Joe Thomas, Hale Prather, Epps, Betty Pesek, 2 Elizondo young enliven House. Youth's Barrio Feasta closes out summer vacation.

Contradiction: Nitty gritty of details not done coagulate into the contradiction as implementaries are not pushed far enough. (Wk. 8)

RELIGIOUS HOUSE: TAIPEI

External: Exit procedures for ITI are clarified as we do a trial run. Begin development push with names, visits and first gift. Mailed information letters to ITI prospects.

Internal: Week II sojourn with 7 colleagues includes Ecclesiola, planning, house hunt, and corporate sermon on Prodigal Son.

Contradiction: Enable participants to decide they can develop money for ITI. (Wk. 10)

RELIGIOUS HOUSE: CEBU

External: Two LENS courses back to back impact Cebu City and Lapulapu City community with power of corporate methods and rearticulated stories. Key participants included workmates, key block from Aboitz & Co., Auxiliary Bishop of Cebu, and 2 December grads who brought their wives to the opening session.

Internal: As whirlwind of LENS, hosting the team, calling, visits, and a Great Trek to Buyong Beach blows over, House engages in planning final countdown on IRA and ITI, then sends Hale Prather and Jose Cartegena to Manila for development and practics tasks, recruitment team to Dumaguete, and everybody else back to work.

Contradiction: Given the tight money situation and close timing, how to release the care of the business community to fund grass roots training. (Wk. 10)

RELIGIOUS HOUSE: DAVAO

External: Sent Purita Morala, Lina Tinio and Fr. Jose Sison to Manila for final exit procedures to attend the SEAPAC IRA in Hong Kong. First two registrations with pre-registration fees turned in for SEAPAC ITI: Manila congregation. Circuit ride to Cotabato metro.

Internal: House youth secures Wk. II job. Shift from Gogarten to Segundo in Ecclesiola. Ecclesiola sodality highlight as House pantomines famous and infamous personages.

Contradiction: How to stand conscious to 'It's sooner than you think' and not fall into the trap of ansy action, i.e. keep the implementaries going. (Wk. 11)

TOKYO RELIGIOUS HOUSE: SEOUL

External: Sent out 5 iron men to the Hong Kong Research Assembly representing 4 denominations. ITI preparation intensifies with new brochure, centrum models, decor and food planning, printing, and mailing recruitment packets to metro and polis coordinators.

Internal: Sent out Wainwright to Hong Kong for Research Assembly. Held send out dinner for the IRA delegates. A record 18 in Children's Global Language Institute this week.

RELIGIOUS HOUSE: SEOUL (continued)

Contradiction: Money for IRA and ITI is somewhere between the battleplan and the bank. (Wk. 11)

RELIGIOUS HOUSE: FUKUOKA

External: PLC follow up and cadre development in Hiroshima. Penetration breakopen in Kagoshima capped off with RC Bishops recommendation of ITI to key lay leaders in Diocese. LENS grads follow up opens up best LCP prospect in city. ITI scholarship funds come in.

Internal: Sent Anne Filipski to area Global Language Training Program PSU in Osaka. Nine week penetration guiding timeline put into action at Tuesday collegium.

Contradiction: Discerning methodology to bring 'high' LENS grads to see the necessity of RSI. (Wk. 10)

RELIGIOUS HOUSE: OSAKA

External: PLC grads in Ikuno Ku meet and lay plans for being parish cadre.

Internal: Initiated massive ITI recruitment.

Contradiction: All doors seem shut on ITI. (Wk. 10)

RELIGIOUS HOUSE: TOKYO

External: EDUCO PSU in Osaka in preparation for S'74 pooled area data on English teaching, and informed demonstration images.

Internal: David Willoughby, 13, leads seminary on Segundo in blue suit and vest. Visit of Wendell and Margaret Rbfior on their way to Chicago left us new tales in the SEAPAC story.

Contradiction: Having no task timeline check, the telephones rules our expenditure. (Wk. 11)

RELIGIOUS HOUSE: SENDAI

External: Lunch and after dinner meeting with the head of the state education center, and an evening with university students opened new possibilities and vision of global language training.

Internal: Initiated discontinuous month timeline with Other World happenings. 'The Way We Were' comes to us as the way we are, as the House sees 'From Here to Eternity,' 'The Way We were,' and reads 'Our Town.'

Contradiction: Unclear relationship to area needs in language instruction and movement training that will support the structure for the coming year, therefore blocked in deciding whether to emphasize permeation or penetration. (Wk. 11)

SYDNEY**RELIGIOUS HOUSE: PERTH**

External: One prospect greets team at the door with 'Yes, I'm coming. But what is the Ecumenical Institute?' Anglican clergy prospect phones to ask what he would need to do to hold a PLC.

Internal: Battleplanning continues. We're beginning to see images of the implementaries for the unblocking tactics. Transportation possibilities increase by two wheels.

Contradiction: In the midst of the multitude of demands, the building of a corporate thrust that cuts over against parochialism at all levels. (Wk. 8)

RELIGIOUS HOUSE: DARWIN

External: Portents from the turn come flooding in: Parap 5 committee consenses local signs and plans one-day Community Convocation; weeknight RSI launched including 2 clergy and 3 LENS grad key laymen; results of community survey released on TV programme bring flood of inquiries; on our consultation tourist association launches campaign to make Darwin a duty-free port.

Internal: Marmungal (guest) room continuously occupied as Mike Chapman and father pass through on missional tour, and Stan and Jan Davey bring news of SEAsia on return to Ombulurri.

RELIGIOUS HOUSE: DARWIN (continued)

Contradiction: Completing new internal life design while busy with implementaries. (Wk. 9)

RELIGIOUS HOUSE: OOMBULGARRI

External: Week of emerging initiative with Health Committee insisting on posting Camp Care notice, aboriginal teacher agreeing to take class on her own and Symbol Guild collecting cohere and bamboo for sale. Groups of people arrived and gave their services, sometimes unexpectedly.

Internal: Mike and Hugh Chapman arrived and knocked out doorways, fixed school chairs. General incorporation of visitors into life of the House. Rob Duffy on priors trek around area.

Contradiction: Creating forms for patterning continuous responsibility over a broad base of people. (Wk. 11)

RELIGIOUS HOUSE: ADELAIDE

External: Regional Council experiences new spirit of corporateness. Manual written on the spot with the aid of Indicative Battleplanning. Sixty people through House in 3 days, guest night, regional council. First hand report on Oombulgarri.

Internal: Prior finishes 1 week sojourn, sent out White family to North America at House Church. Welcomed. Garnet Banks. Movement colleagues blow open images of area models.

Contradiction: Getting ITI into driver's seat for the next 4 weeks. (Wk. 11)

RELIGIOUS HOUSE: MELBOURNE

External: Regional Council commences with sendout feast for Refiors to Chic. o, and concludes with 26 week battleplan for region. Cistercian monk leaves clergy luncheon clutching copy of Image on the 'Solitaires' and set of Other World charts.

Internal: Sydney colleagues Hugh and Mike Chapman stay overnight on last leg of their Australian Walkabout and delight us with account of their week at Oombulgarri. Recapturing spirit conversations refreshes everyone in House.

Contradiction: The tactics look good, the response is great, 'Lord, grant that we neither faint nor fail.' (Wk. 11)

RELIGIOUS HOUSE: CANBERRA

External: Initiated contacts with old colleagues.

Internal: Bronwyn Rees arrived. Tables and chalkboards ready, E.G. in uniforms enter school.

Contradiction: Style of invisible religious in midst of a very secular face. (Wk. 10)

RELIGIOUS HOUSE: BRISBANE

External: Regional Council spins on indicative battleplan method and lays out Q1 and Q2 timeline; Galaxy struggles deeply with contradictions and strategic objectives creation releasing new vision of possibility for the local church.

Internal: Sent out Vosler for ITI recruitment trek. Presidium, and priors council; new time schedule maximizes collegium time for 26-week battleplanning, House celebration viewing 'save the Tiger' impacts us with the struggle of secular man for significant engagement.

Contradiction: Creating the image and battleplan that gestalt and prioritize the 20 whirlwinds (programmes) that are our life. (Wk. 11)

SUVA

RELIGIOUS HOUSE: MAJURO

External: Arrival of Earlys and accounting trainee catalyzes creation of 4 apartments in the KITCO Employee Housing Compound and a first on Majuro: 'rabellies' living between Marshallase. Agana LENS with 16 from the Trust Territory government and 7 companies represented

Internal: The joy and burden of living in a glass house is shared: KITCO employees and the

RELIGIOUS HOUSE: MAJURO (continued)

District Administrator, Oscar DeBrum, drop in to welcome Lee home; we welcome Paul and Helen Sparks, the first Order parents (Judy Montgomery's) to visit Majuro; the wife of one of our regular Ecclesiola guests finally joins us; we prepare to receive our first interns.

Contradiction: Concretizing actual responsibility and completing battleplanning while in necessary mode of dispersion. (Wk. 11)

RELIGIOUS HOUSE: APIA

External: First 2 ITI registrations in from Tonga. Methodist Church in SAMoa has affirmative stance towards ITI as it takes its proposed delegates to standing committee. School classrooms decorated for Term Two.

Internal: Irish study at Ecclesiola is exciting finale to Qtr.'s study. Discontinuous Wk. II, before Term Two starts, leaves us roaring to go.

Contradiction: No ITI development calls made in week of intensified engagement in school. (Wk. 11)

SAN**FRANCISCO RELIGIOUS HOUSE: SAN FRANCISCO**

External: Registrations for S'74 climbing as 6 from EPX sign up this week. Proposal drawn up for Bank of America, through their representative who attended the Local Community Convocation, for S'74 scholarships. First samples of merchandise to be marketed for Cebu House arrive.

Internal: House celebrates in annual picnic and football game. International guests this week included Loel Bacerra from Manila and the Clemsons from Jakarta. Something Concrete happened: we poured the basement floor. Sent our 11 children out at midnight for the summer.

Contradiction: No imaginal picture to hold the task amidst major shifting roles and responsibility in internal structures. (Wk. 11)

RELIGIOUS HOUSE: SAN JOSE

External: After RSI follow up evening at the House, grad comments that 'there is nothing like corporate study. This has been a great evening.' S'74 registrations double in 1 week. House hosts community leaders at open house following LCC to talk about S'74.

Internal: Fantastic House Church celebration with 35 around the table; reports on the whole year amaze everyone, cabaret skits on S.74 followed by ice cream sundaes at 'Foster's Ice Cream Parlor' in the House hallway transformed into 'The Street Where you Life.'

Contradiction: With 8 signed up for S'74 still along way to go to our goal of 20. (Wk. 11)

RELIGIOUS HOUSE: SACRAMENTO

External: Both Galaxy and guild consults come off the boards. Presence of Isabel Bishop allows new global vision for many.

Internal: Metro colleague's house provides roof while mortgage for Norte 5 house travels the channels. E.G.'s first sewing project wins 4H prize, the monetary award being contributed to the House.

Contradiction: Ignoring the economic tyrant: ourselves. (Wk. 8)

RELIGIOUS HOUSE: SEATTLE

External: Newest Galaxy church Lacey Community impacts Galaxy with 50% of people at meeting for their church.

Internal: Missional family planning workshop manual pasted out and walked through at Ecclesiola impacts lives of all families in House.

Contradiction: Not seeing the possibility of sending 25 people to summer program has allowed us to slow down our summer recruitment tactics. (Wk. 11)

RELIGIOUS HOUSE: LOS ANGELES

External: LCC opens the door to 5 new community agencies in Global City 3 as regional colleagues make S'74 decisions pushing our number to 12.

Internal: Training facility is officially dedicated in ceremony highlighted by House tours, intentional short courses, folk dancing and pinata for the children, and a 55 man House Church. Ten Global City 3 residents attended.

Contradiction: Determining the parish pressure points to enable quarter I guild development. (Wk. 11)

RELIGIOUS HOUSE: PHOENIX

External: S'74 recruitment visits continue, our first registrant being Elrito, New Mexico colleague, Veronica Medina. LEAP planning meeting and guild meeting invite participants to S'74.

Internal: Gala House Church sends Emerson family out to Global Odyssey. Three-hour visit by bi-centennial commission employee heightens his interest in attending S'74.

Contradiction: Summer is like swimming through putty. We need to create our own momentum, intensify the pace, or get stuck on the top step of the swimming pool. (Wk. 11)

RELIGIOUS HOUSE: BILLINGS

External: Colleagues join us for House Church, after moving into an extra apartment in building. Calling for S'74 continues.

Internal: Moving, moving, moving, moving...relocating kitchen and collegium room. This is a true Religious House: we need a plumber and electrician.

Contradiction: Having tactics for the summer. (Wk. 11)

RELIGIOUS HOUSE: DENVER

External: Sixty one people (¾ from the community) transformed 9000 sq. ft. of weeds to 4 flower gardens, planted 11 trees, built a rock walkway and park benches and picnic table in 4 hours. Quoted one neighbor, 'This is the best day of my life.'

Internal: Furnished apartments, 3rd floor, best rates in town and a built in wake up. Wayside Inn comes alive with international and continental guests en route to Chicago.

Contradiction: Redirecting our propensity to dwell on the problems to all the possibilities before us. (Wk. 11)

RELIGIOUS HOUSE: RAPID CITY

External: Galaxy meeting looks almost new when new summer priorship, House and Galaxy, assumes leadership. Last goodbyes are said to the Gibsons as they leave to intern at Centrum.

Internal: The garage plan now boasts of 4 rooms as the House plans for expansion to that facility in the hopes of 'looking empty' and have that yearning feel for interns.

Contradiction: The dark night deepens for House members left to man the ramparts; without a story to remind them the dark night is the Lord's love. (Wk. 11)

WINNIPEG RELIGIOUS HOUSE: ANCHORAGE

External: Awed by the power of secular evangelism as displayed through LCC. New City Manager shows up at end saying 'I came to get uplifted' and proceeds to claim promise that Anchorage will become a global model for all cities. Regional Council highlighted by presentation of myth based on ancient Eskimo symbol Inukshuk, our 'Silent sentry of the past, portent of the future.'

Internal: House Churches emerging as great events as potential Galaxy pastor wows us with his intentionality in being celebrant. House year end celebrating great success as we view 'A Thousand Clowns' at surprise showing.

RELIGIOUS HOUSE: ANCHORAGE (continued)

Contradiction: Not having long range battleplan to engage us through the quarter, we end up creating lists of things we 'can' do. (Wk. 10)

RELIGIOUS HOUSE: EDMONTON

External: Second Edmonton LENS happens with 43 around the table, including the president and two vice presidents of a large engineering firm.

Internal: Edmonton House makes the decision again to enable the Winnipeg area financially and we begin to look for overtime opportunities and second jobs.

Contradiction: Galloping off in 3 or 4 directions with a weak common vision. (Wk. 11)

RELIGIOUS HOUSE: SASKATOON

External: In the midst of LCC activities, such as going on radio for a one-hour show, securing TV coverage, doing group presentations, the 2 Galaxies met together for the first time for a spectacular continental consult. After consult, Saskatoon Galaxy attends Pentacost House Church en masse.

Internal: We understand that the discontinuous month means intensifying in other directions as we finalize summer plans, red Pentacost color appears, Duddy Kravits comes to Ecclesiola, and the winds of LCC scatter us in all directions everyday; it is glorious.

Contradiction: Red hot need for cold cash coldly illuminates burning need for allowing colleagues to see that this is their Religious House to train in and move in. (Wk. 10)

RELIGIOUS HOUSE: WINNIPEG

External: LCC demonstrated methods which allow man to stand concretely before his care and participate in shaping the thrust of his energy; native Indian Tom Jackson gives sophistication in musing as he tells the journey of his race, disclosing all races participate in the workshops and left commenting 'I'm pleased to be here.'

Internal: Sojourn of regional colleague Anthony Ahle keeps House honest as it struggles with decision to assume areal fiscal responsibility by holding double jobs in 3 different places on the continent.

Contradiction: Struggle with embodying style of John Paul Getty and Francis Xavier. (Wk. 10)

HOUSTON RELIGIOUS HOUSE: AMARILLO

External: Metro cadre (Amarillo) assumes responsibility for the bi-metro as 2 metro people travel to Lubbock to recruit S'74. Two new and promising S'74 prospects revealed. In 'El Barrio' neighborhood youths form a neighborhood youth corps, whose task is 'social demonstration' (clean up, parish projects, etc.)

Internal: House received Han Yong Sang, international visitor as guest for a couple of days, reaffirming an old and lost Amarillo image from trailblazing days as 'Crossroads of the World.'

Contradiction: No firm direction for summer in House or Guild, causes ineffective spinning around. (Wk. 11)

RELIGIOUS HOUSE: SAN ANTONIO

External: House celebration becomes an effective impact tactic and S'74 recruitment event.

Internal: Half of the House goes through the trauma of packing for the trip to Chicago and camp as everyone writes his story of the House's journey last quarter.

Contradiction: Deciding to do what we discover ourselves doing. (Wk. 10)

RELIGIOUS HOUSE: OKLAHOMA CITY

External: Successful consult with Conoco technicians indicates time is ripe for motivity methodology and corporate skills. Six to Tulsa PLC enables journey to LCX.

RELIGIOUS HOUSE: OKLAHOMA CITY (continued)

Internal: All systems 'go' for LCC with last RSI in chute. Segundo laying out the economic captivity of the church.

Contradiction: Trapped in the 'next event' malaise blinds us to building the long range colleague journey model. (Wk. 8)

RELIGIOUS HOUSE: DALLAS

External: Three new practical tools created for use: a 'data sheet' for use when visiting local congregations and two manuals for methods demonstration consults with local congregational leaders.

Internal: The House impacted by the joyful visit of two Korean colleagues; Rev. Kim Dong Hyung and Mr. Han Yong Sang. May they live forever.

Contradiction: It is a struggle to adjust to the new pace of the summer quarter and to communicate excitement over the Summer to metro colleagues. (Wk. 11)

RELIGIOUS HOUSE: TULSA

External: LCC provides a great gift in giving way to enter local community and establishment. New and old grads engage with transformed enthusiasm. Full 4-week registration for S'74 comes in at the end of the day. This is the year!

Internal: LCC climaxed with worst storms in Tulsa history. With tornados dropping in around us, House spends night in the basement and LCC participants return for the 'follow up.' Daily office band sent out to Camp New Covenant.

Contradiction: Sense of floundering without a clear battle plan for the fall and the summer. (Wk. 11)

RELIGIOUS HOUSE: HOUSTON

External: Bi-metro council provides a great spirit framework for the LCC, ending with a wild 'Sting' party in which several million dollars (play money) change hands; Metro summer quarter planning meeting draws parish guildsmen, 2 of whom register for Wk. 10 Odyssey.

Internal: Brian Griffith received as fellow; 2 collegiums devoted to the summer battleplan.

Contradiction: The intensification of Q. IV and the demand of S'74 has revealed certain key old-time colleagues as tired liberals who 'need a summer vacation.' (Wk. 11)

RELIGIOUS HOUSE: NEW ORLEANS

External: Summer registrations begin to come in. House sends out jets in brown envelopes to take all the prospects to Chicago.

Internal: Week spent evaluating the spring quarter and preparing for the thrust of a new year in New Orleans region.

Contradiction: Discerning the kind of mission that is needed in summertime. (Wk. 11)

RELIGIOUS HOUSE: MEMPHIS

External: Local cab driver stops by to visit former boarder at the House (in the days when it was a boarding house) and winds up helping us with the parish research. Galaxy church creates sign by decision to get up for 5:00 a.m. Sunday meeting to do fall course recruitment planning.

Internal: Welcome Bob Sebastian, Kathy Harlan's brother, as summer sojourner, a great addition. Also welcome overnight visitors from San Antonio on their way to Camp New Covenant. Spend structured time doing indicative battleplanning relative to the summer, and find both accountability and absolution in doing so.

Contradiction: Fully articulating the absolution of the year to date and claiming the promise of the summer. (Wk. 11)

RELIGIOUS HOUSE: ATLANTA

External: Larry Ward and Isobel Bishop lead 200+ community meeting at East Lake Elementary School in 'the most exciting day Blacks and Whites have had in Atlanta' looking at our community.' House was bursting seams as many came to evening evaluation, and we kept adding chairs Tuesday night as they showed up again to 'get down to work.' TV news: 'Local community people workshopping their own future, not waiting for experts.'

Internal: City Directory service hires 2 to go door to door in the parish gathering census information, and pays us for it. We've expanded the questionnaire a bit.

Contradiction: Paralysis in the face of unprecedented possibility; we're all bruises from going around saying 'Pinch me, I don't believe it's real.' (Wk. 10)

RELIGIOUS HOUSE: MIAMI

External: Impact on Episcopal Church continues as grads meet at Cathedral for lunch time study of 'Purpose of the Church' following last week's lecture on 'Sickness unto Death.'

Internal: Elder Ed Reames (RSI grads) family visits House and May interns Ed, Rita and Eddie Reames. Double jobs begin in earnest with breakloose into sale of fire alarm systems.

Contradiction: How recruit Research Assembly when consumed with the means of living. (Wk. 11)

CHICAGO RELIGIOUS HOUSE: WICHITA

External: Re-timelining S'74 tactics in the light of the guild charts enables additional registrations. And 'the parish must go on' as corner house emerges from tall grass and weeds during block clean up.

Internal: With the send out of 1st prior and a 6th grade youth, teams begin to experience the crunch of no troops and realize that S'74 has really begun.

Contradiction: Losing edge on Wk. II effectiveness by articulating strategies late in week. (Wk. 11)

RELIGIOUS HOUSE: LINCOLN

External: House focuses on S'74 recruitment as telephoning turns to visiting prospects throughout Nebraska. Florizelle Foy of 5th City explodes metro to possibility of community reformulation.

Internal: After a week of S'74 focus and house repairs, the House delights unexpectedly in a night of 'no guests' Ecclesiola and has a happening on itself.

Contradiction: Not allowing the 105 degree weather to dictate our context and our mood. (Wk. 11)

RELIGIOUS HOUSE: KANSAS CITY

External: Demonstration signs for the bi-metro begin to flourish as House attends Galaxy quarterly celebration and send out two of the Galaxy pastors with over 50 adults in attendance; and the Westport Community Council, the Westport Parish coalition of neighborhood organizations gives a firm yes to the LCC and the work in the parish.

Internal: Quarter ends with 10 guests at House Church and impromptu dance following allowing House members to appropriate the fact that victory is a decisional matter.

Contradiction: Deciding that our story for parish work can embody the story and style of the secular-religious. (Wk. 10)

RELIGIOUS HOUSE: MINNEAPOLIS

External: Participants at LCC follow up meeting wonder why no one has knives out, because they see every warring reaction of the community represented. Trips to Fargo and Sioux Falls entice more S'74 participants.

RELIGIOUS HOUSE: MINNEAPOLIS

Internal: Great clean up as trash hauled away, war room apinted. Battleplanning completed for next quarter, and visits from Paul and Jennifer Seery and Priscilla Woo. Mail man asks for copy of O.W. chart.

Contradiction: With half the House on summer assignments already, realizing that not all people can get everything done. (Wk. 11)

RELIGIOUS HOUSE: ST. LOUIS

External: Eleven signed for S'74 with 2 more considering, one of which is St. Louis mayor's assistant.

Internal: \$850 profit on garage sale, 3 people now working night jobs. After last summer influx of 254 guests on way to and from summer program, are now readying to again ground the Wayside Inn image.

Contradiction: Logistics of coordinating number of jobs, keeping region in being with available transportation. (Wk 11)

RELIGIOUS HOUSE: PEORIA

External: Metro grads gathered for House Church and Ecclesiola in anticipation of hearing the latest news of the S'74 Research Assembly and new life breaks forth when an Academy grad of Fall '71 (unknown to the Peoria metro) announces plans to go to all 4 weeks of S'74, having already talked over the possibility with 3 supervisors and throwing in her stored up vacation money.

Internal: House journeys to Chicago for the wedding of Linda Newkirk and Lester Knutsen, and in the midst of wild celebration receives the call to attend a Chicago regional House meeting. New life urgency burst forth to fill whole week with S'74 recruitment passion.

Contradiction: Not recognizing a 'no' as a cry for help as we find ourselves seeking friends rather than risking offense. (Wk. 11)

RELIGIOUS HOUSE: MILWAUKEE

External: Accelerator floored on S'74 recruitment vehicle, as bi-metro, Galaxy, and the House turn full attention toward quota of 60.

Internal: House is gruested by Archana Mandal who globalizes summer recruitment and by development team who sets us singing and marching. House receives Sandy Bode and children as sojourners. House celebrates the order wedding of Lester Knutsen and Linda Newkirk as the total body attends the ceremony.

Contradiction: We find ourselves running first after one immediacy and then another while the symbolic slides. (Wk. 11)

RELIGIOUS HOUSE: CHICAGO

External: Entire House felt as if they were sent out through a 5th City Elders trip to Cleveland and 5 people assigned continentally to LCCs.

Internal: House celebrated end of teaching quarter by going to see Blazing Saddles and realizes that the movie exposes the comic situation of 20th century man. Laughter releases House to reengage.

Contradiction: S'74 recruitment task is not backed up by seriousness necessary for that task. (Wk. 11)

RELIGIOUS HOUSE: INDIANAPOLIS

External: S'74 moves ahead with Day I and Day II visitations, culminating in a Thursday night metro movie celebration with the Israeli film Kazablan.

Internal: House attends the Hayden wedding in Cincinnati only to return to the reality of intensive job hunting, with 1 job secured at the end of the week. John Church from Louisville is welcomed as a sojourner while Lucille Hunt is received as an intern, our first black intern working in the renewal of the black community.

Contradiction: Shifting from head-on missional engagement to dealing with missional enablement and financial sustenance. (Wk. 11)

RELIGIOUS HOUSE: CINCINNATI

External: Community Convocation held in large church near community node, exposes the variety of gifts of local man. The city watches through TV news coverage of the event, which appears on the evening news. Small businesses in the parish sponsored the event and people we never heard of before showed up to distribute 6000 flyers.

Internal: Hayden-Suggs wedding dinner, shower and bachelor party a memorable event for all. Debbie Drown returns from Academy and the Walton family is sent out to intern in Chicago House.

Contradiction: Getting all the LENS and convocation passion re-engaged in S'74 recruitment. (Wk. 11)

RELIGIOUS HOUSE: DETROIT

External: Galaxy transforms RH befitting theme of 'Nomads in the Oasis'. Galaxy pastor leaves church and to auxiliary's delight, new minister is course grad. YWCA consult (LCC location) reveals eagerness for application of our methods to their situation.

Internal: To-be 'mini' study of Segundo turns out to be full study and a roaring wrap up. S'74 planning sessions converts urgency into action.

Contradiction: The old region has passed away leaving us with no plan as to how the new region will be birthed. (Wk. 11)

RELIGIOUS HOUSE: CLEVELAND

External: Week I visiting results in miraculous demonstration of a local community meeting with 120 participants. The Sting becomes a reality on Friday night as a Catholic School bingo hall is transformed with new images, while back at the House 5th City Elder are welcomed.

Internal: The House is in the eye of the hurricane, as preparations for the LCC and elders' visit combine with House members dispersing as camp counselors and new permeators.

Contradiction: As one LCC participants asks, 'What's next?' we internally struggle with how to hold the interest and engage the passion of community meeting grads through the summer. (Wk. 11)

NEW YORK RELIGIOUS HOUSE: PITTSBURGH

External: LCC in East Liberty Parish provides occasion for local leadership to affirm the possibility of community reformulation. The 60 participants included 30 regional leaders and 30 local citizens who sang together 'East Liberty Points the Way' S'74 registrants at 3; 17 to go.

Internal: House acquires a new car through inkind donation by a regional colleague.

Contradiction: Turning colleague's imaginations about the IRA from 'I'll consider it' to 'I need to go, sign me up.' (Wk. 10)

RELIGIOUS HOUSE: ROCHESTER

External: Community Festival II ('Maplewood on the Move for All the World') climaxes weeks of work by the guild; spirits high for fair, evening international cabaret in spite of rain which began pouring after parade viewed by Rochester's mayor and vice-mayor.

Internal: As House adults go from 20 to 12 in 4 days of sendouts, realtor calls and says, 'The prospect for buying your house must come to see it tomorrow;' home on The Day to ready 3 floors of missional chaos are 2 adults, 1 youth and 8 children (on a rainy day).

Contradiction: Exciting summer tactics lure us as summer recruitment remains top imperative. (Wk. 11)

RELIGIOUS HOUSE: RICHMOND

External: Thousand leaflets on trees and tower pole. Fifty shots with large posters, 3800 handbills and brochures climax core work on LCC. Two cadres form in LCX bringing 22 grads together for fellowship, training and planning.

RELIGIOUS HOUSE: RICHMC MD (continued)

Internal: Day I, Day II internal life devoted to decorating LCC Great Hall and 4 seminar rooms.

Contradiction: Remembering that the Word of Jesus Christ sustains in the midst of total risk. (Wk. 9)

RELIGIOUS HOUSE: WASHINGTON

External: LCC is a great happening as 75 people participate including a city councilman, who plans to come for 15 minutes and stays 3 hours, representatives of Northeast Coordinating Committee. Highlights include Northeast Is a Great Place to Live banner and singing of Paula Brenneke.

Internal: Week is filled with sendouts and guests. Send out Cocks to S'74 prep and Shaws to Camp New Covenant. Ecclesiola sees 3 possible interns plunge into seminary and sodality. Daily Office is transformed as Galaxy clergy join with us while on a clergy retreat.

Contradiction: Wanting to wait until after S'74 to see new direction clearly while knowing we must lay groundwork for next fall in the next months. (Wk. 10)

RELIGIOUS HOUSE: BALTIMORE

External: Personalized pitch building PSU helps as S'74 recruitment turns up several new key prospects and one Galaxy pastor who says he'll go with the prior.

Internal: House leaves for a great weekend of missional discontinuity and returns to pantry filled with cereal and beans and grits and soup - manna from heaven.

Contradiction: Still looking for the perfect solution to come from out there instead of going with what we know and building our own story. (Wk. 11)

RELIGIOUS HOUSE: PHILADELPHIA

External: Local Community Convocation becomes explosion of unseen care and possibility as nearly 100 people, 75% being parish members, demonstrate their love for where they live. Highlights were an ex-gang that showed up Friday night to help set up, the noon time comedy appearance of a local ex-middle weight champion Gil Turner, and the overwhelming response of local businessmen with inkind lunch contributions.

Internal: Having to write an evaluation of our past quarter in depth enabled us to shake off the stunning blow of having accomplished our Convocation feat, and turn our faces toward directing the future of Westwedge.

Contradiction: How do we communicate the excitement of S'74: (Wk. 10)

RELIGIOUS HOUSE: NEW YORK

External: S'74 recruitment thrust fills consciousness of House and is highlighted by regional celebration at Garden City House to launch week long blitz calling.

Internal: Collegium on the 36 guild arenas provides new story about S'74 and our missional engagement in the practical demonstration of sociological love.

Contradiction: Appropriating role as last passengers on a 747, manning the ship with captain and crew missing. (Wk. 11)

RELIGIOUS HOUSE: GARDEN CITY

External: Garden City announces its relocation to 178-40 137th St., Jamaica, NY 11434, Brooklyn metro. Leaving done in downpour and Great Gatsby style, no big plates dropped; Galaxy Council spun into move.

Internal: Quarter's House celebration at Smorgasbord and send out of prior and 3 youth to Chicago.

Contradiction: Style shift necessary for new urban parish impacts in form of street sounds of fire crackers, speeding cars and children playing. (Wk. 11)

RELIGIOUS HOUSE: NEW HAVEN

External: Metro colleagues and entire House attend regional celebration at Garden City Religious House. Bob and Karen Priest decide to attend the summer, bringing our registrations to 5. Galaxy continues building its tactical model for expansion. Metro point Guild/Galaxy/House dynamics show up in same location to do planning work.

Internal: Past week, morning noon and night, spent in intensive summer planning on all fronts as House wrestles through sojourn program and metro study program as key support tactics for summer quarter.

Contradiction: In the midst of planning and the swing into the summer, House struggles to see how all the tactics get done. (Wk. 11)

RELIGIOUS HOUSE: MANCHESTER

External: House disperses for Wk. II to visit S'74 prospects in 4 states covering all of metro.

Internal: Young churchmen prepare for summer camp experience by spending week end at Galaxy pastor's summer cottage. House welcomes Annette Scott as summer sojourner.

Contradiction: How do you direct a conversation to the spirit deeps while talking about the mundanity of life. (Wk. 11)

RELIGIOUS HOUSE: BOSTON

External: Several events occur that relate the long range mission of the region; 1. close up look at Hartford relative to parish possibilities, 2. presentation to clergy association at St. Julia's RC in Weston, 3. International visitors from Hong Kong teach in parish preschool and Acton Elementary School using imaginal education methods.

Internal: House hosts international trainees Kwok Tat Chiu and Fung Suk Ye who treat House to a home cooked Chinese feast. Two members in House secure \$1,700 raise, and House catches breath during Wk. II discontinuity.

Contradiction: Conquering the New England summer mindset within our own imaginations as well as in our colleagues. (Wk. 11)

RELIGIOUS HOUSE: PORTLAND

External: Ten from Maine Indian education come back from LENS demanding immediate followup.

Internal: Mary Cookingham, Frank's mother, visits House and engages fully in the disciplined style. House moves into half its former space as part of new finance model.

Contradiction: Weak knees underneath bold voices. (Wk. 8)

MONTREAL RELIGIOUS HOUSE: TORONTO

External: Region, Guild, Local Church and Religious House symbolically wed as House members Bill Jackson and Beth Moore are married in Anglican Galaxy Church using Daily Office. Quarter battleplanning in late nights and early mornings. Priors sent out for the summer program.

Internal: Flurry of excitement all week long impacts parish as hundred of guests participate in all the dinners, the shower, the wedding and the reception. House honored by both families from Montreal, Minneapolis and the Yukon.

Contradiction: Entire quarter and intensified week of local grounding is suddenly confronts with S'74 global demand. (Wk. 11)

RELIGIOUS HOUSE: OTTAWA

External: Parish task force enthused by researching parish and seeing power of corporate work.

Internal: In midst of quarter evaluation, House is surprized how strategies were 'on key,' and is pushed to spell out strategies a level deeper for the summer.

RELIGIOUS HOUSE: OTTAWA (Continued)

Contradiction: Nailing down openness to S'74 registrations. (Wk. 11)

RELIGIOUS HOUSE: MONTREAL

External: Manager in permeation job (v.i.p.) attends the LCC, was very excited by the methods, especially the social process triangles, and in the next few days decided to go to Chicago for a week in July and to set up an inHouse consult similar to LCC.

Internal: The House celebration to end the quarter occurred without causing to miss a beat. We went out for pizza, relaxed and then came back to work.

Contradiction: Unclear images of the total scope and strategic design of the CRP allows our tactical action to be unfocused and disjointed. (Wk. 11)

CARACAS

RELIGIOUS HOUSE: CARACAS External: Cadre meeting with 3 iron men maintain the regional dynamic while all House members are on mission assignments outside Caracas. Contacts for ITI promotion in Venezuela, Ecuador, and Colombia are made. The Wests on ITI follow up and promotion in Porto Alegre, Uruguay, and Buenos Aires.

Internal: House members on mission assignment with no one in House

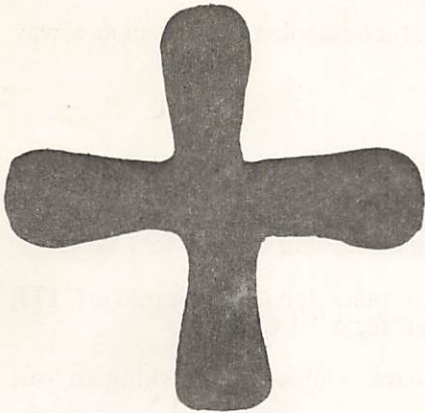
Contradiction: How to hold corporateness when only one person is in the House. (Wk. 11)

**BASE
CENTRUM****BASE CENTRUM**

North American priors arrive to intensify preparation for S.74. Decor and practices take form while special task forces deal with time design, spirit life, and program form. Program participants arrive including Aeto Bantol from Majuro, Joseph Barcinas from Guam, Frank Little, Stephen Evans, and Michael Neat from Manchester England, and Global Odyssey participants. Bishop James Mathews welcomed, and addresses plenum. Special task force begins several months work on E.I. audit.

Internal: Global Elders trip reports on the state of the global movement, global polity and global finances. Order celebrates the birth of Alisa Lynn Oyler to the John and Marilyn Oyler family in Frankfurt, and of Rebecca Jean Morris to the Scott and Doris Morris family in Singapore. Rich Mackay and Marcella Buchanan graduate from University of Illinois. John McCabe and Bob and Alice Walton arrive to begin intern year. Welcome Wendell and Margaret Refior from Melbourne and Jean Baringer from Paris.

Contradiction: Maintaining control of every particular detail and specific task necessary to the global movement while retaining the comprehensive overview.



I will give you a new heart and put a new spirit within you;
I will take the heart of stone from your body and give you
a heart of flesh.

Ezeiel 36:26

LONDON RELIGIOUS HOUSE: GLASGOW

External: Continental dynamics spin as we send prior to Brussels House rehab and priors meeting. Formulation continues with visits to Edinburgh, dinner in Glasgow and meeting of Glasgow cadre priors to plan August meeting. Office files enjoy a radical reordering.

Internal: A week of joining the local enthusiasm of watching Scotland go down undefeated in the World Cup. Travel to Edinburgh for production of Jesus Christ Superstar directed by recent grad who is S'74 participant.

Contradiction: Tactics to guarantee a powerful continent '74 and effective recruitment while troops are scattered all over the continent and beyond. (Wk. 12)

RELIGIOUS HOUSE: BRISTOL

External: Final arrangements made for 7 S'74 participants. Continent '74 brochure design completed.

Internal: Sent out Frank Little, Stephen Evans and Michael Neat to S'74 and international training programme. Welcome Mrs. Helen Hughes, extended family visitor from North Carolina.

Contradiction: Maintaining the comprehensive vision of next autumn's strategies while doing intensive short range recruitment for Continent '74. (Wk. 12)

RELIGIOUS HOUSE: MANCHESTER

External: Regional Council, with good cross-metro representation and representatives from Birmingham, has as signal event the sending of the Casswells to India; region experiences cost of its care.

Internal: House senses new day coming as S'74 quotas fill and solvency operations get underway.

Contradiction: How unsure against danger of static euphoria in the happy discovery that all is possible. (Wk. 10)

RELIGIOUS HOUSE: LONDON

External: S'74 recruitment intensifies while attention is turned to summer programme for continent of Europe.

Internal: House rejoices in 4-day Global Council with all the European Houses present.

Contradiction: Plans for summer quarter are found to be inadequate for the purpose of launching us into the next year. (Wk. 10)

PARIS RELIGIOUS HOUSE: PARIS

External: S'74 recruitment among members of Rue Roquepine congregation reveals a new vision and a new willingness to participate in its implementation.

Internal: Indicative battleplanning finally yields a marvellously imaginal form for holding the coming year (a triangle) - impact, authorization, and demonstration.

Contradiction: Securing local authorization and doing local tactical planning in such a way that the global is held. (Wk. 11)

BRUSSELS

RELIGIOUS HOUSE: BRUSSELS

External: More than 40 European movement and order members gathered in Brussels representing all the Houses for a workfest of painting and cleaning the new Brussels House. We all lived together without hot water and non-experts David Elliott and Richard Kitney produced a local painter's work called 'Starry Night' measuring 8 feet and 20 feet long.

Internal: European priors of all Houses met in Brussels to plan Jan. '75 Frankfurt ITI, November LENS Europe, and to report 40 Europeans registered for S'74 Chicago.

Contradiction: Cannot get past the summer quarter nor the back wall without risking an 'out of control' spin. (Wk. 12)

FRANKFURT

RELIGIOUS HOUSE: FRANKFURT

External: Phone call to Berlin confirms a recruited PLC for Wk. XI. Visit with Dr. Erhardter from Vienna, who is general secretary of all pastoral institutes in Austria reveals concrete ways for us to make direct contact with the East.

Internal: Sister Joan Giroux of Fukushima spins stories with the House about the movement in Sendai. Sister proves to be the 'in' for us to visit Ursula Melchior, a key figure in ecumenical work in Frankfurt.

Contradiction: Creating momentum for blast off relative to the weight of the summer, fall and winter schedule. (Wk. 11)

NAIROBI RELIGIOUS HOUSE: NAIROBI

External: All key Kenyan Church leaders endorse and sponsor ITI, recruitment moves as MEETING OF GRADS DECIDES TO gt 2 from each of their parishes.

Internal: Jim Addington arrives from Asia as ITI advance man; 4 birthdays in House celebrated with feasting.

Contradiction: Forging the timeline which holds 3 months ITI work in 6 weeks. (Wk. 12)

BOMBAY RELIGIOUS HOUSE: BOMBAY

External: Last minute visits on all ITI registrants reveal many obstacles to be overcome to ensure participation. Circuit ride indicates that registration is holding at 40.

Internal: House and ITI practices transformed with Robin Hutchinson coming from Hyderabad to work decor miracles.

Contradiction: In the face of nation wide transportation strike and economic paralysis, overall 'it's simply impossible' mindset has to be shattered. (Wk. 5)

DELHI RELIGIOUS HOUSE: DELHI

External: House pulls together after participating in 3 ITI's and Order Council, and begins intensive planning for next quarter. Charles Morrissey arrives to do authorization visits with Catholic hierarchy.

Internal: Order Council in Hyderabad is dramatic witness to growing strength of Order in Sub-Asia with 62 adults assigned to 4 Houses. Vinay Jacob sent to new Calcutta House, and Selvena Francis received from Hyderabad. House welcomes Addington en route to Nairobi ITI and Morrissey on authorization trip.

RELIGIOUS HOUSE: DELHI (continued)

Contradiction: Having decided that this is the quarter of self-support, getting clarity on employment and development tatties in order to prioritize area penetration and formulation strategies (Wk. 12)

MADRAS RELIGIOUS HOUSE: HYDERABAD

External: Over 15 people from Area Madras stayed after ITI for Order Council.

Internal: Send out of Brian Williams to Calcutta and A.M. Joseph and Monica to Chicago and Robin Hutchinson to Chicago for S'74.

Contradiction: Recontexting and gaining clarity relative to next month's key demands of the mission (WK. 12)

SINGAPORE

RELIGIOUS HOUSE: KUALA LUMPUR

External: Recruitment trip to Panaun g, Klang and in combination with preaching in Seremban Wesley Church gets promises from colleagues to facilitate leave requests, struggle with decisions of wives to ITI. Regiona troops met with ITI taks force to concretize enablement plans.

Internal: Rejoicing over arrival of Tim Lush, Mark Phillips, Connie Widyatma, our Indonesian colleagues assigned to ITI task force. Hosted Westres on way back to Singapore from honeymoon. House attends Pesta, a Malaysian cross between a state fair and a science and industry exhibit.

Contradiction: Getting quickly with 20 days to go to all the people who have to make decision to attend ITI or contribute, enable or to lean on friends and colleagues. (Wk. 12)

RELIGIOUS HOUSE: SINGAPORE

External: ITI recruitment and development continues. Proposal drafted for Ministry of Eudcation to send 10 teachers to ITI. Development network disclosed as colleagues lead us to key contacts.

Internal: Received sojourners George and Rena Vargheese and their daughter VANessa. Bill and Sheila Westre return from a one-week honeymoon. Hosted Gene and Marsha Buck from Alaska on an Asian tour. Began studying Segundo's book.

Contradiction: Enabling more of our colleagues to realize that they are responsible for both the fantastic things which have happened in the Church in Singapore and the future of the Movement. (Wk. 12)

RELIGIOUS HOUSE: JAKARTA

External: Two IRA Hong Kong participants enabled to obtain exit permits and visas in record time.

Internal: Celebrated the solitary nature of the House by going to see 'The Sting.'

Contradiction: Holding in an adequate tension the western efficiency and the eastern patience. (Wk. 12)

HONG KONG

RELIGIOUS HOUSE: HONG KONG

External: Area battleplan and budget in history signal new directions for corporate thrust as International Research Assembly prep staff arrive to begin count down.

Internal: New Religious House location enables missional structuring of forces for Development Centrum, IRA, and Religious House: Hong Kong. New address: 3 Norfolk Road, Kowloon Tong, Kowloon, Hong Kong, phone 3-382780.

Contradiction: Image of Quarter IV puzzle in order to make all the pieces fit and walk through the open doors. (Wk. 6)

RELIGIOUS HOUSE: KAOHSIUNG

External: Sent James Chi out to IRA:Hong Kong, experienced major development victories all week, and received news that a top priority Chinese priest has not only cleared the way for ITI:Seoul participation, but is being 'sent' by both his Bishop and his Order with full expenses paid.

Internal: Great excitement as we send Annie (Mei-cho) Hsu out to Research Assembly in Chicago. Meanwhile English tutoring load for summer nears capacity for depleted troops.

Contradiction: How do we complete a quarter and begin a new quarter when our troops are in Areas Chicago, Tokyo, Hong Kong, and Singapore? (Wk. 12)

RELIGIOUS HOUSE: MANILA

External: LENS team spun out toward Guam. Development rolls into high gear we hope not too late.

Internal: House becomes centrum for IRA exit clearance as many from Cebu and Davao House and regions come to stay and work.

Contradiction: The wires are beginning to overload; got to cool the equipment down enough to let the juice flow. (Wk. 12)

RELIGIOUS HOUSE: TAIPEI

External: Quarter IV successes are symbolized by 20 around the table at ITI orientation and Regional Council and LENS grad Lucy Chang, who is also going to Seoul ITI, releases snag in exit procedures by visit to high level official. We sent out David Huang to Hong Kong IRA.

Internal: House becomes regional node as 11 guests (actually colleagues) step through its doors, including first Chinese House Church celebrant in Taipei, Chang Hou Chi and family, 2 Taiwan U. graduates for Ecclesiola and informal visitors.

Contradiction: New mountain range comes into view as each peak is reached and fog clears to see new objective. (Wk. 12)

RELIGIOUS HOUSE:CEBU

External: Three ITI forays to Iloilo/Bacolod bi-metro, Tacloban/Calbayog bimetro and Tagbilaran polis visits 4 bishops, net 11 committed participants at full cost, filling quota outside of Cebu.

Internal: Blue placemats signal IRA opening in Hong Kong. House and yard transformed (again) Welcome guests including Joe Thomas and a host of friends and extended family. Bonhoeffer Community and workshop listing 50 accomplishments of quarter amaze us all with the possibility of incredible gratitude.

Contradiction: Keeping pace with the world's demands in our planning, programs and tactics, while finding ways not to leave our colleagues in the historical church behind, bewildered and resentful. (Wk. 12)

RELIGIOUS HOUSE: DAVAO

External: Rejoice with SEAPAC colleagues the beginning of the IRA:Hong Kong. Send our prior on second round of region for ITI recruitment.

Internal: Celebrate Independence Day with tribal resettlement and house cleaning.

Contradiction: Necessity to continually create and recreate the story that links one to the globe. (Wk. 12)

TOKYO RELIGIOUS HOUSE: SEOUL

External: 5th City research with Kang making official tour of the government's New Community Movement, visiting 8 villages and many factories. Received strong authorization nod from RC Bishop William McNaughton, Chairman of Ecumenical Affairs. Filipski presents \$1200 ITI development miracle money at House Church.

RELIGIOUS HOUSE: SEOUL (continued)

Internal: Held dinner for director and wife of World Population Council in Korea. Welcomed Filipski for ITI prep.

Contradiction: The deep resolve of the movement to do the impossible in fund raising is still being wrestled through. (Wk. 12)

RELIGIOUS HOUSE: FUKUOKA

External: Awe seeps into the mission as sizeable ITI scholarship received and one more ITI registration arrives by mail. Sent out head of the Theology Dept. St. Sulpice Catholic Seminary on 6-month world sabbatical. Recent SJ grad presents 3-hour talk to total Society of Jesus Diocese.

Internal: Sent out Ken Filipski to ITI prep and PLC's in Seoul. Regional perplexities enlightened global priorities in sodality workshop on regional battleplan. Celebrated Wk. II in House workday.

Contradiction: The perplexity lies in the intentionalizing of time, with the shift in manpower to all House working to maintain the ongoing momentum of ITI development and recruitment. (Wk. 12)

RELIGIOUS HOUSE: OSAKA

External: Maryknoll leaders Jerry Beausoleil and Tom Mantica met with RH to plan fall follow up and further LENS for religious orders in Japan. Development work reaps Taeji Textile Company scholarships for Seoul ITI.

Internal: We finally saw 'The Sting.' House celebration wildly lived the necessary style for it all.

Contradiction: Long range strategies look unbelievably promising while short range tactics fall short of projected accomplishments for ITI and development. (Wk. 12)

RELIGIOUS HOUSE: TOKYO

External: A meeting, at his invitation, with the First Secretary to the Papal Nuncio to plan a PLC for the fall.

Internal: House Church with Hikari Goto as witness and celebrant celebrates birthday, ordination, and receives sojourners John Yoshida and Keiko Kasamoto. Sent out David Willoughby to North American summer camp training. Key event was the send out of Rev. John Hikari Goto, Rev., Akira Miyazaki, and Fr. Thomas Tehan to the first SEAPAC IRA with the consciousness of being Movement history makers.

Contradiction: While shifting to Qtr. I, summer tactics already written await timelining. (Wk.12)

RELIGIOUS HOUSE: SENDAI External: Ecclesiola dynamic was made transparent and secular through 'Our Town' and folksinging.

Internal: A radio evangelist visited House Church followed by the beginning of a week sojourning for Joshiki and Hikoko Toeda from Sendai.

Contradiction: Moving toward a summer with time and troops, choosing among the six options the two or three that are strategic. (Wk. 12)

RELIGIOUS HOUSE: PERTH

External: Visits of grads breaks loose ITI scholarship possibilities and a good response of ~~to come see Dr. Lao.~~ Tom Sutton (Anglican clergy non-grad) drops by and wants to bring his Deacon to talk.

Internal: Jonathon Barker stops overnight enroute from Bombay and shares with House the happening in India. Thursday's local eclipse spins House Ecclesiola before we even start with Don Juan.

Contradiction: Enabling self conscious realization that spirit nourishment and demand are synonymous. (Wk. 12)

RELIGIOUS HOUSE: DARWIN

External: Months of model-building with Darwin Tourist Association and Chamber of Commerce culminate in launching campaign to make Darwin a duty-free port, with wild round of news interviews, national television coverage, lunch with mayor and head of Territory, and proposals sent to Prime Minister. Parap 5 Shopping Centre transformed with help of local residents.

Internal: 7000 mile trek preparation, internal life manual completed, and Segundo arrives. Key town planner visits to get our wisdom on future of Darwin.

Contradiction: Unclarity on relationship of guild and LENS grad forces catches us stumbling in the midst of gathering momentum of the waltz. (Wk. 12)

RELIGIOUS HOUSE: OOMBULGURRI

External: Community discussions with mining company resulted in elders taking helicopter trips to look at cattle and places of importance in heritage. Symbol Guild completes first bark paintings and continues work on other artifacts.

Internal: Visit from 2 members of Darwin House enabled quick regional discussion. Time design rearranged to concentrate on indicative battle planning.

Contradiction: Facing the decision to bear the pain of the revolutionary posture of forcing corporate vision of the future so that we don't become victim to security of immediacies. (Wk. 12)

RELIGIOUS HOUSE: ADELAIDE

External: ITI recruitment gets a boost as cadre assume responsibility. CSIIIA and RSIIB flyer is printed and ready to go.

Internal: Experience ourselves quite concretely as wayside inn, as Loomis and Robins arrive from across the desert en route to Sydney. Oakley family spends few days here in preparing for India. Dr. Lao becomes a household word as invitations are drafted, printed and sent out.

Contradiction: Little decisions standing in the way of big decisions. (Wk. 12)

RELIGIOUS HOUSE: MELBOURNE

External: Fred Hess speaks to largest clergy luncheon of the year with Greek Orthodox, RC, Anglican, Methodist and Church of Christ clergy present. Three guest occasions including House Church in same week II opens new contacts and reestablishes contact with colleagues from original Melbourne cadre.

Internal: Suspecting from morning phone call that our spirits were low, Elletts drove 170 miles (290 KM) to cheer us up and joined in guest dinner. Received Fred Hess on flying trip as House attempts to adjust to finding itself host for ITI.

Contradiction: Decision to shift from making good contacts to actually recruiting registered participants for ITI. (Wk. 12)

RELIGIOUS HOUSE: CANBERRA

External: Cadre worked through area program report from area presidium and priors meeting with illustrations from Terry Loomis on local gronding.

Internal: Medical practice now set up. First patient is Assistant to Federal Treasurer and Economic Advisor to Prime Minister is second.

Contradiction: Screen for researching and contacting important contacts. (Wk. 12)

RELIGIOUS HOUSE: SYDNEY

External: Phoning for Regional Council and Guest Night finds Maria Megan waiting to hear from us. Metro cadre colleagues assign themselves to ITI mailing sent to Guardians.

Internal: Bronwyn Rees sent to Canberra. Restructuring meals to begin with ITI participants comments. Looked at the journey of the spirit through the study of Transpodane Christianity. Received Pentecost gift of red candles from Sister Brenda Lee.

RELIGIOUS HOUSE: SYDNEY (continued)

Contradiction: How to manage to keep the one thrust of the mission when in the vacuum being caught up with the nitty gritty. (wk. 12)

RELIGIOUS HOUSE: BRISBANE

External: Regional Council spins on indicative battleplan method and lays out Q1 and Q2 timeline; Galaxy struggles deeply with contradictions and strategic objectives creation releasing new vision of possibility for the local church.

Internal: Sent out Vosler for ITI recruitment trek, Presidium, and priors council; new time schedule maximizes collegium time for 26-week battleplanning, House celebration viewing 'save the Tiger' impacts us with the struggle of secular man for significant engagement.

Contradiction: Creating the image and battleplan that gestalt and prioritize the 20 whirlwinds (programmes) that are our life. (Wk. 11)

SUVA

RELIGIOUS HOUSE: MAJURO

External: Week of 'history making' events. Rev. Jude and Dinah Samson honor Judy's parents and House at breakfast; District Administrator guarantees new house lease and says 14 yesses when asked for 3 nods; Nilitobi brings largest copra haul at highest price since 1950; Larry, John and Jack sent to Ebeye to do coop audit; radio call to Jaluit UCC pastor reaps immediate yes to ITI.

Internal: House rejoices as first intern family moves in: Jack and Neibaj Silk, their 3 month old daughter Cathy and Neibaj's sister Neijamak Rithen.

Contradiction: Chastity in acting out what we know: that doing key catalytic tactics excellently in the microcosm causes waves of life in the macrocosm. (Wk. 12)

RELIGIOUS HOUSE: APIA

External: First 2 ITI registrations in from Tonga. Methodist Church in SAMoa has affirmative stance towards ITI as it takes its proposed delegates to standing committee. School classrooms decored for Term Two.

Internal: Irish study at Ecclesiola is exciting finale to Qtr.'s study. Discontinuous Wk. II, before Term Two starts, leaves us roaring to go.

Contradiction: No ITI development calls made in week of intensified engagement in school. (Wk. 11)

SAN

RELIGIOUS HOUSE: SAN FRANCISCO

FRANCISCO External: Five cars ready to make the 2300 mile trek to S'74 from San Francisco region. Regional Presidium presents image '100 colleagues for 100 churches' pointing to a strategy for the summer which will lay groundwork for recruitment in fall.

Internal: 26 guests for House Church 'Philippine Feast.' Welcomed Marilyn Bacerra from Manila. House hosts the Johnsons from Denver, Marion Emerson from Phoenix, and David Willoughby from Japan.

Contradiction: Final commitments from S'74 participants in the Mission. (Wk. 12)

RELIGIOUS HOUSE: SAN JOSE

External: After RSI follow up evening at the House, grad comments that 'there is nothing like corporate study. This has been a great evening.' S'74 registrations double in 1 week. House hosts community leaders at open house following LCC to talk about S'74.

Internal: Fantastic House Church celebration with 35 around the table; reports on the whole year amaze everyone, cabaret skits on S.74 followed by ice cream sundaes at 'Foster's Ice Cream Parlor' in the House hallway transformed into 'The Street Where you Life.'

Contradiction: With 8 signed up for S'74 still along way to go to our goal of 20. (Wk. 11)

RELIGIOUS HOUSE: SACRAMENTO

External: Both Galaxy and guild consults come off the boards. Presence of Isabel Bishop allows new global vision for many.

Internal: Metro colleague's house provides roof while mortgage for Norte 5 house travels the channels. E.G.'s first sewing project wins 4H prize, the monetary award being contributed to the House.

Contradiction: Ignoring the economic tyrant: ourselves. (Wk. 8)

RELIGIOUS HOUSE: SEATTLE

External: First rainy day in two weeks fails to dampen spirits for region quarterly celebration picnic held in great hall where 13 people were sent out to the summer program.

Internal: Thursday night Ecclesiola takes visit to the other world, the land of mystery, and illuminates the states of being.

Contradiction: In sinking the mine shaft into the parish experiment we've decided to use picks and shovels instead of dynamite. (Wk. 12)

RELIGIOUS HOUSE: LOS ANGELES

External: Held first guild meeting with guardian leading workshop and participation from key community agency, Community Care Development Services. Fourteen signed up for S'74 with 6 more still smiling.

Internal: House experiences the economic thrust with Mission Control securing 2 new jobs, all those presently employed working overtime and youth now out of school find extra jobs to enable the global movement.

Contradiction: Looking toward the fall programmatic demands and having to ask who's still on the march. (Wk. 12)

RELIGIOUS HOUSE: PHOENIX

External: LENS follow up for LEAP (community organization) attended by 60 grads recreated mini-LENS experience and was followed by enthusiastic celebration at home of grad in PGX area. Authorization for 3 LEAP workers to attend S'74 back up by personal contribution of \$75 from LEAP executive.

Internal: Global-local dynamic actualized as Korean colleagues Rev. Kim Dong Hyung and Han Yong Song visit House as well as Mary Lou Evitts and Ron Blum, physician friends of John and Carla Reed.

Contradiction: Have lost sight of vision in midst of immediacies because like House members, stick-to-it-iveness of House decor has been melted by summer heat and blown down by air conditioning. (Wk. 12)

RELIGIOUS HOUSE: BILLINGS

External: Colleagues join us for House Church, after moving into an extra apartment in building. Calling for S'74 continues.

Internal: Moving, moving, moving, moving...relocating kitchen and collegium room. This is a true Religious House: we need a plumber and electrician.

Contradiction: Having tactics for the summer. (Wk. 11)

RELIGIOUS HOUSE: DENVER

External: Sixty one people (¾ from the community) transformed 9000 sq. ft. of weeds to 4 flower gardens, planted 11 trees, built a rock walkway and park benches and picnic table in 4 hours. Quoted one neighbor, 'This is the best day of my life.'

Internal: Furnished apartments, 3rd floor, best rates in town and a built in wake up. Wayside Inn comes alive with international and continental guests en route to Chicago.

Contradiction: Redirecting our propensity to dwell on the problems to all the possibilities before us. (Wk. 11)

RELIGIOUS HOUSE: RAPID CITY

External: We know that we are really dealing with local man when we have the community battle-axe present and vocal at follow up meeting for convocation.

Internal: David Coffman finds daytime, 40-hour a week job that pays same as previous night time, 60 hour job. Summer quarter plan done with exciting plan for changing the garage into 4 apartments for intern expansion in the fall.

Contradiction: Effectively juggling time between penetration, guild and Galaxy. (Wk. 12)

WINNIPEG RELIGIOUS HOUSE: ANCHORAGE

External: Mailed out a 13-week calendar for Quarter I with instructions to hang on refrigerator doors, Continued to throw out nets into the sea of S'74 prospects. Received phone call from Walter Hickel, Jr., P.R. man at exclusive Anchorage hotel, saying if we want to have our LENS course there in the fall, we need to make reservations now.

Internal: Prepared for quarter by building internal time design that allows full time second jobs, plus the external mission of the House, to take place. We sense ourselves as a region, not a metro, as colleague from Bethel comes 400 miles for House Church.

Contradiction: With no corporate structure to daily objectify and orchestrate the perplexity of demands, we find ourselves engaged in an anxiety-ridden discussion of every issue all the time. (Wk. 12)

RELIGIOUS HOUSE: EDMONTON

External: The focus on S'74 is grounded in another foray to Calgary whil corporation guild formation accelerates with all-day workshop at Phillips Cables and planning workshop at Stanley Associates.

Internal: Exciting unearthing of active grads from the Arctic Circle, Cameron McGregor and Tommy Francis. CID gets off the ground as we corporately wash a burned-up building.

Contradiction: Enabling our LENS grads and Guardians to embrace the tension between global and local context as corporation guild formation and S'74 recruitment intensifies. (Wk. 12)

RELIGIOUS HOUSE: SASKATOON

External: In the midst of LCC activities, such as going on radio for a one-hour show, securing TV coverage, doing group presentations, the 2 Galaxies met together for the first time for a spectacular continental consult. After consult, Saskatoon Galaxy attends Pentacost House Church en masse.

Internal: We understand that the discontinuous month means intensifying in other directions as we finalize summer plans, red Pentacost color appears, Duddy Kravits comes to Ecclesiola, and the winds of LCC scatter us in all directions everyday; it is glorious.

Contradiction: Red hot need for cold cash coldly illuminates burning need for allowing colleagues to see that this is their Religious House to train in and move in. (Wk. 10)

RELIGIOUS HOUSE: WINNIPEG

External: LCC demonstrated methods which allow man to stand concretely before his care and participate in shaping the thrust of his energy; native Indian Tom Jackson gives sophistication in musing as he tells the journey of his race, disclosing all races participate in the workshops and left commenting 'I'm pleased to be here.'

Internal: Sojourn of regional colleague Anthony Ahle keeps House honest as it struggles with decision to assume areal fiscal responsibility by holding double jobs in 3 different places on the continent.

Contradiction: Struggle with embodying style of John Paul Getty and Francis Xavier. (Wk. 10)

HOUSTON RELIGIOUS HOUSE: AMARILLO

External: Summer battleplan forged out by a metro cadre PSU followed by a yellow ur celebration. Metro colleague impacted the cadre with a comprehensive spin on the implications of S'74.

Internal: Metro colleagues join House 2 mornings for collegium; impacted by the study of 'The Revolutionary as Indicative Battleplanner.'

Contradiction: Ambiguity of missional alternatives results in indecision about engagement. (Wk. 12)

RELIGIOUS HOUSE: SAN ANTONIO

External: Summer '74 recruitment nets 3 registrations from unexpected places.

Internal: House Church with 34 present builds momentum which 2 sojourners sustain throughout the week.

Contradiction: Keeping our nerve in the parish as we struggle with the tension between moving quickly and moving smart. (Wk. 12)

RELIGIOUS HOUSE: OKLAHOMA CITY

External: S'74 recruitment occasions vital colleague nurture. Midnight journey to Ada finds colleagues thirsting for participation in the global resurgence.

Internal: Hot line from Chicago sustains internal tension. India comes to Oklahoma City in the form of Ashrita Parekh for the month of July. World Whorl decor fascinates sojourn possibility.

Contradiction: Nailing down S'74 registrations. (Wk. 12)

RELIGIOUS HOUSE: DALLAS

External: Strong penetration fo community structures made through supportive visits.

Internal: Decision to lease and remodel training center facilities enabled effective hard workday with metro colleagues to prepare facilities.

Contradiction: Uncovered Pandora's box of emotional forces in community and we thought serious battleplanning could hold until fall quarter. (Wk. 12)

RELIGIOUS HOUSE: TULSA

External: S'74 recruitment stops at Ecclesiola send out and an Xray technician, a grocery store manager, an organist and an oil company employee begin an advneture in loving the world. Community residents join in Religious House yard clean up. Galaxy and House celebrate quarter with dinner and theatre.

Internal: Quarter I workshopped and manual well on way to completion. Ann Dunegan moves into the House to enable the mission. Mike Beebe resigns oil company and moves into House on way to S'74 program.

Contradiction: With 2 new people in House and 2 more knocking (one out of 4 with RSI) going into the wild months of double jobbing, reassignments, no courses and uncertain structures. (Wk. 12)

RELIGIOUS HOUSE: HOUSTON

External: A week of unexpected decisions finds 18 from Austin attending RSI follow up in San Antonio, and 6 parish youth joining the parish task team to plan a youth week at House.

Internal: First of a series of 'special' Ecclesiolas has 6 metro guests and kicks off S'74 with send out and claiming of promises.

Contradiction: Thinking we can 'eat the whole thing' ourselves rather than drawing on all available resources for summer plans. (Wk. 12)

RELIGIOUS HOUSE: NEW ORLEANS

External: Summer registrations begin to come in. House sends out jets in brown envelopes to take all the prospects to Chicago.

Internal: Week spent evaluating the spring quarter and preparing for the thrust of a new year in New Orleans region.

Contradiction: Discerning the kind of mission that is needed in summertime. (Wk. 11)

RELIGIOUS HOUSE: MEMPHIS

External: Local cab driver stops by to visit former boarder at the House (in the days when it was a boarding house) and winds up helping us with the parish research. Galaxy church creates sign by decision to get up for 5:00 a.m. Sunday meeting to do fall course recruitment planning.

Internal: Welcome Bob Sebastian, Kathy Harlan's brother, as summer sojourner, a great addition. Also welcome overnight visitors from San Antonio on their way to Camp New Covenant. Spend structured time doing indicative battleplanning relative to the summer, and find both accountability and absolution in doing so.

Contradiction: Fully articulating the absolution of the year to date and claiming the promise of the summer. (Wk. 11)

RELIGIOUS HOUSE: ATLANTA

External: At the 11th hour, Southern Bell decides to send its head of training for the State of Georgia to S'74 at a cost of \$50/day, self-consciously providing scholarship money for others. One colleague drops by out of the blue, decides to go to S'74 and helps plan the send out celebration. Internal: First honest to goodness 'East Lake 5' guild meeting takes place, with community leadership, and does initial planning for the August miracle of a Community Festival.

Contradiction: Depending on burst of excitement to motivate people rather than creating and rehearsing the depth vision, to go along with that authentic excitement. (Wk. 12)

RELIGIOUS HOUSE: MIAMI

External: Impact on Episcopal Church continues as grads meet at Cathedral for lunch time study of 'Purpose of the Church' following last week's lecture on 'Sickness unto Death.'

Internal: Elder Ed Reames (RSI grads) family visits House and May interns Ed, Rita and Eddie Reames. Double jobs begin in earnest with breakloose into sale of fire alarm systems.

Contradiction: How recruit Research Assembly when consumed with the means of living. (Wk. 11)

CHICAGO RELIGIOUS HOUSE: WICHITA

External: S'74 celebration becomes parish event as volleyball net is borrowed from parish professor, cheering section is bolstered by next door neighbor, and moonlight serenade is crooned in back yard.

Internal: House experiences impromptu celebrations every night of the week as we know a new kind of collegiality in our anticipation of the Summer Assembly.

Contradiction: Thinking that S'74 recruitment is over now that we have had the send out celebration. (Wk. 12)

RELIGIOUS HOUSE: LINCOLN

External: Galaxy gathers for celebration and send outs to S'74 research program. Symbolizes ability to carry on with less troops by creating and playing a baseball game without a regular baseball, gloves or a diamond.

Internal: Hosted Don and Mary Hopkins family from Rapid City as they stopped by for House Church on their way to summer program. Whole House amazed at what a transformation can result in one Wk. II engaged in house repairs.

RELIGIOUS HOUSE: LINCOLN (continued)

Contradiction: Seeing that we are carrying on with reduced forces but not believing it makes cynicism a serious temptation. (Wk. 12)

RELIGIOUS HOUSE: KANSAS CITY

External: Galaxy and House combine for summer quarter sodality with Galaxy troika assuming priorship responsibilities. House joins Guardians for weekly breakfast at Sambo's and is excited by talk given by recent LENS grad about the cruciality of eliciting grassroots care.

Internal: Meal enablement sees no let up as we host just about as many guests as we have sent out for the summer program: Terry Wachob and Mark Baysinger as sojourners and Sherri Lachman missional permeator and the Salmon children.

Contradiction: A dangerous naivete creeps in as we struggle with what it would mean to embrace the region this summer on a limited supply of troops. (Wk. 12)

RELIGIOUS HOUSE: MINNEAPOLIS

External: Regional PSU creates manuals for local church consults and guild meets for third time and consenses on Whittier Day tactic as first tactic on community. Lunch with Sen. Keefe hears 'I knew you were religious.'

Internal: Week long battleplanning breaks paralysis of June by refocusing on region. Flowers transform face of House.

Contradiction: Laying the tracks for the guild from the cowcatcher at 60 mph. (Wk. 12)

RELIGIOUS HOUSE: ST. LOUIS

External: Eleven signed for S'74 with 2 more considering, one of which is St. Louis mayor's assistant.

Internal: \$850 profit on garage sale, 3 people now working night jobs. After last summer influx of 254 guests on way to and from summer program, are now readying to again ground the Wayside Inn image.

Contradiction: Logistics of coordinating number of jobs, keeping region in being with available transportation. (Wk 11)

RELIGIOUS HOUSE: PEORIA

External: S'74 commitments double as 3 more colleagues plan to spend part or all of July at the Research Assembly in Chicago.

Internal: House Church goes mobile and global as Religious House travels to the other symbolic center of the bi-metro, Champaign, IL, and holds House Church at the newest Galaxy church there, Faith Methodist.

Contradiction: Implementing tactics before the battleplan is on the drawing board shorts out hot prospects and turned on grads with reduced vision of their possibilities. (Wk. 12)

RELIGIOUS HOUSE: MILWAUKEE

External: Accelerator floored on S'74 recruitment vehicle, as bi-metro, Galaxy, and the House turn full attention toward quota of 60.

Internal: House is gusted by Archana Mandal who globalizes summer recruitment and by development team who sets us singing and marching. House receives Sandy Bode and children as sojourners. House celebrates the order wedding of Lester Knutsen and Linda Newkirk as the total body attends the ceremony.

Contradiction: We find ourselves running first after one immediacy and then another while the symbolic slides. (Wk. 11)

RELIGIOUS HOUSE: CHICAGO

External: Fifth City, House, and Galaxy turn on a full blitz that brings to 24 from the bimetro for S'74. GED course graduates 9 including Ola. Test results will be in in 3 weeks.

RELIGIOUS HOUSE: CHICAGO (continued)

Internal: House falls deeply in love with Chicago as we send out 10 good women and 10 bad men to Day II and Week II jobs. Chicago responds with enough inkind furniture to redo the community center and enough left over to loan the House.

Contradiction: With House almost giddy over miracle of possibility for the summer, how do you focus high spirits into the summer. (Wk. 12)

RELIGIOUS HOUSE: INDIANAPOLIS

External: The Religious House catapulted its troops off a Sunday afternoon tactics planning session into a Wk. 12 of total full time engagement in S'74 recruitment. Climaxing the week was a Thursday night Guest Night, and an increase of S'74 registrations to 13 with more to come.

Internal: In the midst of transforming the Religious House exterior in preparation for the summer, we received into our body John Church of Louisville to initiate his intern year and landed a job with the American Red Cross.

Contradiction: In the midst of full engagement in S'74 recruitment, how to keep the other areans of the missional task spinning. (Wk. 12)

RELIGIOUS HOUSE: CINCINNATI

External: First Guild meeting held at the House with 2 persons bearing gifts, a planter and a box of candy, much to the delight of the House members. All the participants were those who previously attended the Local Community Convocation.

Internal: We celebrated the covenanting of the marriage of Ethel Jo Suggs and Harold Guy Hayden on Saturday June 15th. This was the first order wedding in the Cincinnati House. Sent all the children off to summer camp at 3:am. All were awake on time for sendout.

Contradiction: Giving permission to say yes to S'74 as a training and visioning tool for the coming year in the midst of the world situation. (Wk. 12)

RELIGIOUS HOUSE: DETROIT

External: Colleague sets up LENS luncheon in Toledo with several executive level businessmen and foots bill. Ann Arbot gathering on S'74 nets 4 out of 5 considering. Rod Rippel speaks at Optimist Club, giving LCC lecture, and gets enthusiastic response.

Internal: Week.II external planning begins with creative spin and naming of secular/religious categories (We each become dept. heads). All day planning Saturday at park yields great summer quarter plans and discontinuity and allows childrens' structures to take place without losing an adult.

Contradiction: With no 'in house' and small House numbers, therefore heavier individual responsibility, what will be adequate accountability structure? (Wk. 12)

RELIGIOUS HOUSE: CLEVELAND

External: University Circle Neighbors (Guild) formed as 6 LCC participants show up for Tuesday meeting. They decide on 3 key tactics for the summer: Community newsletter, monthly picnics, and political forum, and make assignments to themselves. House continues recruiting for S'74.

Internal: House Church of 90 adults, 35 children sends out the S'74 participants with 7 new decision made on the spot. Louise and Sara Albright sent out to the Global Odyssey and 2 Galaxy clergy families, the Pooles and the Lapkas, are sent out to the global order.

Contradiction: We keep expecting the crunch to go away. Wk. 12)

NEW YORK RELIGIOUS HOUSE: PITTSBURGH

External: LCC in East Liberty Parish provides occasion for local leadership to affirm the possibility of community reformulation. The 60 participants included 30 regional leaders and 30 local citizens who sang together 'East Liberty Points the Way' S'74 registrants at 3; 17 to go.

RELIGIOUS HOUSE: PITTSBURGH (continued)

Internal: House acquires a new car through inkind donation by a regional colleague.

Contradiction: Turning colleague's imaginations about the IRA from 'I'll consider it' to 'I need to go, sign me up.' (Wk. 10)

RELIGIOUS HOUSE: ROCHESTER

External: Ken Franz, spring RSI grad registers for the summer, saying, 'You mean I CAN go for less than a month.'

Internal: The House celebrates 'The great year that was' in sending out the emerging generation and welcoming Paul Benson.

Contradiction: In the midst of demand for clear objectives for weekly House engagement, the summer demons whisper 'You have plenty of time; you deserve a rest; eat drink, and be merry for tomorrow the E.G. will return.' (Wk. 12)

RELIGIOUS HOUSE: RICHMOND

External: S'74 blitz on 284 prospects through 150 phone calls and 90 visits nets 2 more for first 2 weeks of Research Assembly. One mother decides to attend 48 hours before needing to leave. LCX sodality meets for first time with members from one LC cadre. State Farm Prison cadre continues to be excited by possibility of being the church right where they are.

Internal: Regional/House beach party turned into S'74 recruitment blitz as call from the globe reveals necessity of new faith relative to our decision to recruit the Research Assembly.

Contradiction: Deciding to risk our power in driving out the corporate demons. (Wk. 12)

RELIGIOUS HOUSE: WASHINGTON

External: LCC is a great happening as 75 people participate including a city councilman, who plans to come for 15 minutes and stays 3 hours, representatives of Northeast Coordinating Committee. Highlights include Northeast Is a Great Place to Live banner and singing of Paula Brenneke.

Internal: Week is filled with sendouts and guests. Send out Cocks to S'74 prep and Shaws to Camp New Covenant. Ecclesiola sees 3 possible interns plunge into seminary and sodality. Daily Office is transformed as Galaxy clergy join with us while on a clergy retreat.

Contradiction: Wanting to wait until after S'74 to see new direction clearly while knowing we must lay groundwork for next fall in the next months. (Wk. 10)

RELIGIOUS HOUSE: BALTIMORE

External: Personalized pitch building PSU helps as S'74 recruitment turns up several new key prospects and one Galaxy pastor who says he'll go with the prior.

Internal: House leaves for a great weekend of missional discontinuity and returns to pantry filled with cereal and beans and grits and soup - manna from heaven.

Contradiction: Still looking for the perfect solution to come from out there instead of going with what we know and building our own story. (Wk. 11)

RELIGIOUS HOUSE: PHILADELPHIA

External: S'74 week combines work in the parish and region to explode all possibilities. House is awestruck with the possibility to send 5 from Westwedge through the aid of banks and Philadelphia partnership, a local business foundation.

Internal: A week of sendouts and welcomes: House prior to Chicago with a steak, eggs, and champagne breakfast, and host Carola Toth and David Beer from Minneapolis region visiting for a week.

Contradiction: What is the next 26 week model, which frames our activity, the region's and the Galaxy's? (Wk. 12)

RELIGIOUS HOUSE: NEW YORK

External: Momentum builds for S'74 as registrations increase from 6 to 16 in one week, including Charles Acker, a non-grad, who 'Just stopped by the House to see where the methods used in our prison program come from.'

Internal: House Church celebrated by newly ordained House member in his first official role as clergyman. Festive Ecclesiola, a scavenger hunt for symbols of the 36 programs of the Summer, ends in Tavia style dance by Arthur Solanky, a Jabalpure ITI grad.

Contradiction: Our other world theme for the week, 'Don't be deterred by an excess of riches' rings true again as many remain uncontacted or unconfirmed for the summer. (Wk. 12)

RELIGIOUS HOUSE: GARDEN CITY

External: Thirty six arenas of the summer program catalyze new decisions and time commitments for colleague participation. Galaxy celebration experiences to the depths the fullness of a Greek restaurant.

Internal: Space of new facility claimed as boxes cleared away and decor put up.

Contradiction: How to enable the bimetro colleagues to participate with the House in planning and action. (Wk. 12)

RELIGIOUS HOUSE: NEW HAVEN

External: Summer quarter before us very literally as timeline and assignments made for implementary filling out the Galaxy and the battleplan for the parish completed. Historic church continues to be impacted, particularly as one member attends two Roman Catholic masses and interests clergy.

Internal: House refines the summer sojourning program further by focusing in closely on 'Ancient of Days' study and creation of 'Build the Earth' flyers to be sent to colleagues.

Contradiction: Being caught in between responses for the whole community and depleted troops to actualize summer plans. (Wk. 12)

RELIGIOUS HOUSE: MANCHESTER

External: Two Galaxies, metro Presidium, and RH celebrate the quarter with a square dance and old fashioned social supper at historic Bedford Town Hall.

Internal: House ends quarter by celebrating in Boston at Charles St. Playhouse and dessert afterward at Durgin Park. Sent out S'74 participants at House Church.

Contradiction: How do we use summer discontinuity tactically? (Wk. 12)

RELIGIOUS HOUSE: BOSTON

External: Johnson family (pastor family of Galaxy church) sent out in a commissioning ceremony to summer program and internship in the Order. Guardians' dinner held to raise scholarship funds for South End 5 residents to come to the summer program.

Internal: Formally received Robert Booth as an intern in the Order, sent out sojourners Rob and Eleanor Bartlett to move into new home in Dorchester. Sent out Cynthia Vance to celebrate her mother's college graduation. Sent out Stu and Jean Stowell to Chicago to prepare for Global Odyssey.

Contradiction: How to make the elephant called S'74 real so that the blind man can see him. (Wk. 12)

RELIGIOUS HOUSE: PORTLAND

External: A year of cultivation yields a self-conscious corporate pastorate in a Portland congregation, and a week long workshop with Maine Indian Education sets the context for future guilds on the reservations.

Internal: Summer battleplanning and internal models completed, and final preparation for trek to Chicago underway.

Contradiction: Intensive summer recruitment produces decisions for S'75 but not for S'74. (Wk. 12)

MONTREAL RELIGIOUS HOUSE: TORONTO

External: Three Asian colleagues drop in for supper, and show Spadina 5 is the front door/back door to the globe in Toronto. China Consult sponsored by the Canadian Council of Churches is attended by House members. Newsletter mailed.

Internal: More guests than staff at House Church. Priors in Chicago reveal the House priorship developed over the year.

Contradiction: How to operate with intensified complexity yet hold the style of the discontinuous quarter. (Wk. 12)

RELIGIOUS HOUSE: OTTAWA

External: ICA presentation at Algonquin Community College introduces us to broad base of local community contacts, laying the foundation for a fall LENS.

Internal: Four colleagues join the House for a parish walkabout and experience the excitement of exploring the community, revealing again the power of having new faces around the table.

Contradiction: Enabling the whole region to see themselves responsible for bringing off a parish demonstration sign in Ottawa. (Wk. 12)

RELIGIOUS HOUSE: MONTREAL

External: Manager in permeation job (v.i.p.) attends the LCC, was very excited by the methods, especially the social process triangles, and in the next few days decided to go to Chicago for a week in July and to set up an inHouse consult similar to LCC.

Internal: The House celebration to end the quarter occurred without causing to miss a beat. We went out for pizza, relaxed and then came back to work.

Contradiction: Unclear images of the total scope and strategic design of the CRP allows our tactical action to be unfocused and disjointed. (Wk. 11)

CARACAS RELIGIOUS HOUSE: CARACAS External: Cadre meeting with 3 iron men maintain the regional dynamic while all House members are on mission assignments outside Caracas. Contacts for ITI promotion in Venezuela, Ecuador, and Colombia are made. The Wests on ITI follow up and promotion in Porto Alegre, Uruguay, and Buenos Aires.

Internal: House members on mission assignment with no one in House

Contradiction: How to hold corporateness when only one person is in the House. (Wk. 11)

BASE CENTRUM

External: S'74 began Sunday night with 700 dining at our supper club with opening address by JWM. We welcomed to Centrum many priors and participants including global priorship families Basil and Marie Sharp, Annie (Mei-cho) Hsu, Ann Avery and Larry White among many others. Uptown had a grand Intercultural Festival Saturday night in the parking lot, with the neighborhood restaurants providing food, local talent the entertainment, and singing by all.

Internal: Centrum buzzed with preparation for S'74 with cleaning, waxing, washing, and preparing rooms and designing the procedures, while the participants chose the guild they would like to work in, and room and team assignments were done by computer. Development has been hard at work bringing in \$200,500 this month.

Contradiction: Shoving through the practical and imaginal blocks to enable 2 weeks work to be done in eight days.

CAMP CRIMSON COVENANT

External: Launched vocational guild construct for skills development along with first dramatic productions of the Global Troupe.

Internal: Received 70 new residents within the 25 demonstration parishes of the Area Cities of London, Bombay, Hong Kong, Sydney and Chicago. Sent out Trek of the Spirit Warriors to 4 weeks of wilderness camping.

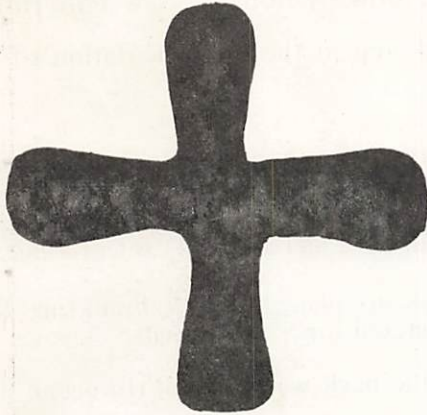
Contradiction: Having forged the structures and designs to hold the comprehensive program, we are hesitant to engage to provide the needed depth.

STUDENT HOUSE AT TIMBUKTU POINT

External: The staking out of a model designed to be a new social form by grounding a curriculum of corporate action, solitary brooding, and wilderness odyssey in and through camp rehabilitation, physical expenditure, student house lab and intentional encounters with the lake and woods.

Internal: The discovery that 36 young women together for 3 weeks in the north woods was the way to release female winsomeness and to encourage solitary spirit reflection, colleague responsibility and actual awareness of the social contradiction standing before the world.

Contradiction: In the midst of structures of care, tasks accomplished, and great fun, finding that the upagainstness is the radical demand for a globally reduplicable model of responsible Phase I summer recreation.



Blessed be God's name from age to age,
for all wisdom and power are his.
He changes seasons and times;
he deposes kings and sets them up;
he gives wisdom to the wise
and all their store of knowledge to the men who know;
he reveals deep mysteries;
he knows what lies in darkness,
and light has its dwelling with him.

Daniel 2:20-22

LONDON RELIGIOUS HOUSE: GLASGOW

External: A fantastic sendout of Europe's S'74 participants holds the promise of new colleagues and pivots us toward the future. Autumn course schedule is set, the core of new Edinburgh Metro CADre sets 26-week timeline which includes weekly meeting and 3/4 of House pick up assignment to plan and staff Continent '74 program Wk. 3.

Internal: A 'continental' sendout to S'74 for Margaret Piper also celebrates the end of the quarter. Hosting family guest provides an opportunity to enjoy the historical richness of Edinburgh's Castle, Royal Mile and John Knox's house.

Contradiction: How can Continent '74 (Wk. 3) be a whistlepoint event that relates to the urgency of autumn courses and the ITI in January. (Wk. 13)

RELIGIOUS HOUSE: BRISTOL

External: Seven participants seen on their way to S' 74. Wk.II spent, areally, in concrete planning for Continent '74 and Qtrs. I-IV 1974-1975.

Internal: House celebrates another new job/promotion and celebrates accomplishment of '73-'74 areally.

Contradiction: Recruiting 8 to Continent '74 when summer plans have been set for months. (Wk. 13)

RELIGIOUS HOUSE: MANCHESTER

External: Mailed news letter to all colleagues and grads in the region and sent out 3 clergy and 2 laity to S'74. Recruitment for Continent '74 in full swing.

Internal: Sent out Timothy and Rosemary Casswell to India. Rev. Ross Smith with his children and Monica Whitmore attended the House Church.

Contradiction: How to be fully involved in fulfilling the mission of the region with 3/4 of the House assigned out elsewhere. (Wk. 13)

RELIGIOUS HOUSE: LONDON

External: EC in Berlin opens future wide for future movement activity. Priors and all meet in Brussels to discuss Continent '74 and work on fabulous new Brussels House.

Internal: House hosts the Zan White family and the Joel Wright family on their way to Paris in the midst of making final arrangements for participants in S'74.

Contradiction: Pulling together the resultant complexity of four quarters of enormous activity while battleplanning for the coming quarter. (wk. 13)

PARIS

RELIGIOUS HOUSE: PARIS

External: Parish research in the form of walks in the stakes yields deep excitement with initial glimpses of depth-story and contradiction of this particular geography. Symbolic first happening in the progression to fall LENS occurs in a long call with one of top 10 French corporations.

Internal: Income intensification decision yields one new job and a strategy for finding more. Troops increase with the arrival of Joel and Alice Wright, formerly from the New York House.

Contradiction: How to symbolize each day as a critical step in the implementation of the vision. (Wk. 13)

BRUSSELS

RELIGIOUS HOUSE: BRUSSELS

External: More than 40 European movement and order members gathered in Brussels representing all the Houses in a workfest of painting and cleaning the Brussels House; all lived together without hot water and non-experts David Elliott and Richard Kitney produced a local painter's work called 'Starry Night' measuring 8 feet and 20 feet long.

Internal: European priors of all Houses met in Brussels to plan Jan. '75 Frankfurt ITI, November LENS Europe, and to report 40 Europeans registered for S'74 Chicago.

Contradiction: Cannot get past the summer quarter nor the back wall without risking an 'out of control' spin. (Wk. 12)

FRANKFURT

RELIGIOUS HOUSE: FRANKFURT

External: Week revolves around a fine PLC in Berlin with delegations from 3 key organizations and several prospective interns and ITP participants taking part. Course followed with a brief image shattering visit to East Berlin with colleagues from London and send out of Margarete Pfaff from Schopflheim to S'74 and ITP.

Internal: ITI planning with London colleagues here and continental planning and new house creation in Brussels signal a year of corporate power for the continent of Europe.

Contradiction: During the summer with its incongruities, building financial stability and getting ITI and LENS done at the same time. (Wk. 13)

NAIROBI

RELIGIOUS HOUSE: NAIROBI

External: ITI development launched and recruitment moves ahead.

Internal: All structures of House revolve around ITI preparation; members of Linda Barnes' family arrive for their 'African Safari.'

Contradiction: Turning interest into commitment to ITI now. (Wk. 13)

BOMBAY

RELIGIOUS HOUSE: BOMBAY

External: Revised course schedule to meet new demands on time and troops while an impromptu cadre meeting in Jabalpur turns into a songfest as 15 new ITI grads turn out to share reflections on ITI and plan quarter activities for that region.

Internal: House reels with excitement as a constant flow of visitors moves through and we prepare to receive 18 new troops. Dispatched the Fisher family and Robyn Hutchinson to S'74. Hosted Bishop Joshi, the Caswell family enroute to Hyderabad and many others. Welcome the Paul family (with 6 boys) and Carol Fernandes into the fold.

Contradiction: Climbing to heights anticipating the future and discovering we are intimidated by the new face of the Movement. (Wk. 13)

DELHI

RELIGIOUS HOUSE: DELHI

External: House pulls together after participating in 3 ITI's and Order Council, and begins intensive planning for next quarter. Charles Morrissey arrives to do authorization visits with Catholic hierarchy.

Internal: Order Council in Hyderabad is dramatic witness to growing strength of Order in Sub Asia with 62 adults assigned to 4 Houses. Vinay Jacob sent to new Calcutta House, and

RELIGIOUS HOUSE: DELHI (continued)

Selvena Francis received from Hyderabad. House welcomes Addington en route to Nairobi ITI and Morrissey on authorization trip.

Contradiction: Having decided that this is the quarter of self-support, getting clarity on employment and development tactics in order to prioritize area penetration and formulation strategies. (Wk. 12)

MADRAS RELIGIOUS HOUSE: HYDERABAD

External: Over 15 people from Area Madras stayed after ITI for Order Council.

Internal: Send out of Brian Williams to Calcutta and A.M. Joseph and Monica to Chicago and Robin Hutchinson to Chicago for S'74.

Contradiction: Recontexting and gaining clarity relative to next month's key demands of the mission. (Wk. 12)

SINGAPORE RELIGIOUS HOUSE: KUALA LUMPUR

External: ITI excitement increases as development team of Oberg and Patterson join House and regional forces for site preparation and recruitment. Teams sent to Kuantan and Medan to confirm commitments, see Methodist Bishop, school authorities and a company wanting to buy a plane load of Holstein cows.

Internal: House image shifts with new decor and the creation of charts, models, graphs, accountability and prayer lists of countdown for ITI. Study of Segundo pushes us as we rehearse for ourselves 'Why ITI is crucial.'

Contradiction: Wrenching final commitment out of those who said yes, secondary blocks having been raised as the time draws near. (Wk. 13)

RELIGIOUS HOUSE: SINGAPORE

External: ITI recruitment and development intensified with double last year's participants recruited already to go to ITI's in Kuala Lumpur, Manila and Seoul.

Internal: Jim Oberg goes to Kuala Lumpur on development trip and returns with John Patterson remaining in KL to work with Mark Phillips and Tim Lush to follow up the leads which have been disclosed. Bill and Sheila Westre return from honeymoon to full engagement in the mission of the Singapore House. Bucks call again on their return from a trip to Bali.

Contradiction: Enabling more of our colleagues to realize that they are responsible for both the fantastic things which have happened in the Church in Singapore and the future of the Movement. (Wk. 13)

RELIGIOUS HOUSE: JAKARTA

External: Two IRA Hong Kong participants enabled to obtain exit permits and visas in record time.

Internal: Celebrated the solitary nature of the House by going to see 'The Sting.'

Contradiction: Holding in an adequate tension the western efficiency and the eastern patience. (Wk. 12)

HONG KONG**RELIGIOUS HOUSE: HONG KONG**

External: Area battleplan and budget in history signal new directions for corporate thrust as International Research Assembly prep staff arrive to begin count down.

Internal: New Religious House location enables missional structuring of forces for Development Centrum, IRA, and Religious House: Hong Kong. New address: 3 Norfolk Road, Kowloon Tong, Kowloon, Hong Kong, phone 3-382780.

Contradiction: Image of Quarter IV puzzle in order to make all the pieces fit and walk through the open doors. (Wk. 6)

RELIGIOUS HOUSE: KAOHSIUNG

External: Miracles continue to happen as last participant pays full \$300 US fee for ITI:Seoul, and development from Taiwan businesses passes \$1,000US.

Internal: Summer vacation allows new classes in English to begin as House finalizes English tutoring model that will see us through the summer and the first classes begin.

Contradiction: How do we build models for Quarter I that will allow us to see it as Quarter I. (wk. 13)

RELIGIOUS HOUSE: MANILA

External: LENS team spun out toward Guam. Development rolls into high gear we hope not too late.

Internal: House becomes centrum for IRA exit clearance as many from Cebu and Davao House and regions come to stay and work.

Contradiction: The wires are beginning to overload; got to cool the equipment down enough to let the juice flow. (Wk. 12)

RELIGIOUS HOUSE: TAIPEI

External: Exit procedures continue with permission to resubmit 3 of 5 not approved on initial application. In Clergy Guild, local pastor witness to effectiveness of battle planning with explanation 'I tried it with my youth group and it works!'

Internal: Miracles abound as Annie Hsu leaves for S'74 on schedule. House Church guests include indigenous celebrant and Gene and Marsha Buck, who bring personal reports of global happenings. Two jobs secured, making total of 4 teachers at Taipei American School from House for coming year.

Contradiction: Decision to participate in ITI lacks decision to financially support. (Wk. 13)

RELIGIOUS HOUSE:CEBU

External: Three ITI forays to Iloilo/Bacolod bi-metro, Tacloban/Calbayog bimetro and Tagbilaran polis visits 4 bishops, net 11 committed participants at full cost, filling quota outside of Cebu.

Internal: Blue placemats signal IRA opening in Hong Kong. House and yard transformed (again) Welcome guests including Joe Thomas and a host of friends and extended family. Bonhoeffer Community and workshop listing 50 accomplishments of quarter amaze us all with the possibility of incredible gratitude.

Contradiction: Keeping pace with the world's demands in our planning, programs and tactics, while finding ways not to leave our colleagues in the historical church behind, bewildered and resentful. (Wk. 12)

RELIGIOUS HOUSE: DAVAO

External: Rejoice with SEAPAC colleagues the beginning of the IRA:Hong Kong. Send our prior on second round of region for ITI recruitment.

Internal: Celebrate Independence Day with tribal resettlement and house cleaning.

Contradiction: Necessity to continually create and recreate the story that links one to the globe. (Wk. 12)

TOKYO RELIGIOUS HOUSE: SEOUL

External: 5th City research with Kang making official tour of the government's New Community Movement, visiting 8 villages and many factories. Received strong authorization nod from RC Bishop William McNaughton, Chairman of Ecumenical Affairs. Filipski presents \$1200 ITI development miracle money at House Church.

Internal: Held dinner for director and wife of World Population Council in Korea. Welcomed Filipski for ITI prep.

Contradiction: The deep resolve of the movement to do the impossible in fund raising is still being wrestled through. (Wk. 12)

RELIGIOUS HOUSE: FUKUOKA

External: House attended two memorial services for deaths in missionary community. Both addressing us in the vocational commitment in being the church. Visitation to regional coordinator family in far away Miyazaki enables and intensifies comprehensive collegiality.

Internal: Worked on summer model for maintaining House income. Continued ITI push.

Contradiction: How best to intensify ITI momentum across region when visitation is limited by employment commitments. (Wk. 13)

RELIGIOUS HOUSE: OSAKA

External: Met with Mr. Ohne, LENS grad and personnel mgr. of Sumitome Chemical Co., to discuss use of LENS and heard his 3-year plan to train execs in English and LENS methods. Welcomed returning ITP participant Kim An Hong.

Internal: 26-week indicative battleplan timeline completed by building a warboard for 26 implementation programs. Sent Ruth Reames out to 4 weeks of S'74.

Contradiction: Regional colleagues self-image of 'helpers' vs. 'managers' of the movement. (Wk. 13)

RELIGIOUS HOUSE: TOKYO

External: A meeting, at his invitation, with the First Secretary to the Papal Nuncio to plan a PLC for the fall.

Internal: House Church with Hikari Goto as witness and celebrant celebrates birthday, ordination, and receives sojourners John Yoshida and Keiko Kasamoto. Sent out David Willoughby to North America summer camp training. Key event was send out of Rev. John Hikari Goto, Rev. Akira Miyazaki and Fr. Thomas Tehan to the first SEAPAC IRA.

Contradiction: While shifting to Qtr. I, summer tactics already written await timelining. (Wk. 12)

RELIGIOUS HOUSE: SENDAI

External: Trip to Aizuwakamatsu opens up past as future with encounter with Rev. Endo, the inspiration of much missionary activity of the past. Trip also opened up new possibilities for Seoul ITI recruitment.

Internal: House impacted by the style of sojourning family and possibility of catalysis relative to other regional colleagues.

Contradiction: How to decide the next quarter's plan with next 3 quarters a reality on our hands. (Wk. 13)

SYDNEY RELIGIOUS HOUSE: PERTH

External: Visits of grads breaks loose ITI scholarship possibilities and a good response of colleagues to come see Dr. Lao. Tom Sutton (Anglican clergy non-grad) drops by and wants to bring his Deacon to talk.

Internal: Jonathon Barker stops overnight enroute from Bombay and shares with House the happenings in India. Thursday's local eclipse spins House Ecclesiola before we even start with Don Juan.

Contradiction: Enabling self conscious realization that spirit nourishment and demand are synonymous. (Wk. 12)

RELIGIOUS HOUSE: DARWIN

External: Parap 5 proposal writing workshop to City Council for funds for next fiscal year, launches regional parish pre-guild meetings. Parap 5 t-shirts printed with symbol and sold at cost by local shops. LENS grad uses social process model and imbalances as basis for talk to Aboriginal mission staff; response by one Aboriginal 'It's clear our gift is our culture.'

Internal: First among equals returns from 7500 mile trip bringing symbolic rock from Cararvon (space tracking station) at extremity of region.

Contradiction: The indicative to depend and blow spirit into the 21 programmes, shows up our unwillingness to risk and make life demands on those we encounter. (Wk. 13)

RELIGIOUS HOUSE: OOMBULGURRI

External: The community organizes a dance in Wyndham as the debut for the Oombulgurri Bank, the Tel Stars. A trip is undertaken by boat to check out indications of cattle rustling on Oombulgurri property. Community women and children celebrate opening of new health clinic.

Internal: Continued indicative battle planning involves the whole auxiliary. Received Mimi Shinn returning from priors and Presidium meeting in Sydney.

Contradiction: How to enable the community to make decision which we are making at the moment. (Wk. 13)

RELIGIOUS HOUSE: ADELAIDE

External: ITI recruitment gets a boost as cadre assume responsibility. CSIIIA and RSIIB flyer is printed and ready to go.

Internal: Experience ourselves quite concretely as wayside inn, as Loomis and Robins arrive from across the desert en route to Sydney. Oakley family spends few days here in preparing for India. Dr. Lao becomes a household word as invitations are drafted, printed and sent out.

Contradiction: Little decisions standing in the way of big decisions. (Wk. 12)

RELIGIOUS HOUSE: MELBOURNE

External: Final clergy luncheon of series brings total number who have been in the House to 15 and penetration and authorization webs filling out. Letters and visits to Roman Catholic Order Houses open new doors of possibility for ITI and for future.

Internal: ITI practics team, Ian Daw and Christine Heap arrive from Adelaide and begin wielding paint brushes. Phil Adkins and Dixie Ford sojourn, boost ITI practics and make possible early mailing for quarter I RSI. Cadre and House study of '10 Considerations in Community Reformulation'.

Contradiction: Being aware of where people's spirits are so that our story touches the nerve centre in such a way as to give them permission to risk. (Wk. 13)

RELIGIOUS HOUSE: CANBERRA

External: Bishop Arthur, Anglican Bishop, gives welcoming address to House at first House Church. Twenty-one people present at great celebration including 2 guardians, Bishop and Mrs. Arthur and colleagues from Sydney, India and Chicago. Send Garnet to Adelaide on development trip for ITI.

Internal: House becomes metro gathering point as colleagues assist in the creation of decor. and a huge banquet of food for the first House Church. Ray Richmond stays for 2 days and reports on ITI: Bombay.

Contradiction: How to focus thrust in order that all activities are seen as global. (Wk. 13)

RELIGIOUS HOUSE: SYDNEY

External: Dr. Lao's magic, hidden to the eyes of the professional social workers but manifestly obvious to the little old ladies and to the lucid businessman provided depth and glory to indicative battle planning for the next 26 weeks of the guild. Guild prior and 2 others sent to Research Assembly.

RELIGIOUS HOUSE: SYDNEY (continued)

Internal: Morning collegiums catching up on order memory in 'Care for Everyman' giving globality screen for Ecumenical Parish planning.

Contradiction: Demand of dealing with the mechanics of our life together diffused effective reimagining of the mission over against 1968-69 images. (Wk. 13)

RELIGIOUS HOUSE: BRISBANE

External: Regional Council spins on indicative battleplan method and lays out Q1 and Q2 timeline; Galaxy struggles deeply with contradictions and strategic objectives creation releasing new vision of possibility for the local church.

Internal: Sent out Vosler for ITI recruitment trek, Presidium, and priors council; new time schedule maximizes collegium time for 26-week battleplanning, House celebration viewing 'save the Tiger' impacts us with the struggle of secular man for significant engagement.

Contradiction: Creating the image and battleplan that gestalt and prioritize the 20 whirlwinds (programmes) that are our life. (Wk. 11)

SUVA

RELIGIOUS HOUSE: MAJURO

External: The formation of 'SEAPAC Enterprises' a wholly owned subsidiary, is authorized by KITCO board; ITI development fishing in monsoon rainstorm nets \$4.50 and a great H.C. dinner.

Internal: House welcomes Steve and Rachel Dribo from Ebeye as sojourners and receives Silk family as interns at House Church; Sent out Larry to Chicago and Lee go Guam via Ebeye and Truk for send out of Micronesian delegation to ITI; Seoul.

Contradiction: Turning yesses into bodues in Seoul. (Wk. 13)

RELIGIOUS HOUSE: APIA

External: Seven confirmed ITI delegates this week from Samoa. President-elect of Methodist Conference agrees to be a sponsor. A great sign locally; a Congregational Church elder in this year's delegation and F. Temese will be on the staff again.

Internal: House finishes 90 page manual on the Imaginal Education experiment in W. Samoa. We were greatly impacted while attending the church-organized wedding of President-elect of the Methodist Conference. He was a widower but had to marry in order to hold office.

Contradiction: Still no word from Fiji. (Wk. 13)

SAN FRANCISCO RELIGIOUS HOUSE: SAN FRANCISCO

External: Sent out 5 carloads of people on 2300 mile trek to S'74. San Francisco Galaxy feasts and participates in folk dancing at Wk. 12 celebrations.

Internal: We loaded 16 tons of dirt and what did we get? An Electrical inspector. Women prove to be signal diggers as the excavation and rebuilding work goes on in the basement floor of the House. Guests passing through on way to S'74 include Dean Eland from Sydney and Rev. Kim from Seoul Korea.

Contradiction: Although House practics for 9 are much simpler during the summer, they are stretched to cover the tasks of the 20 programs. (Wk. 13)

RELIGIOUS HOUSE: SAN JOSE

External: After RSI follow up evening at the House, grad comments that 'there is nothing like corporate study. This has been a great evening.' S'74 registrations double in 1 week. House hosts community leaders at open house following ICC to talk about S'74.

Internal: Fantastic House Church celebration with 35 around the table; reports on the whole year and everyone, cabaret skits on S.74 followed by ice cream sundaes at 'Foster's Ice Cream Parlor' in the House hallway transformed into 'The Street Where you Live.'

Contradiction: With 8 signed up for S'74 still along way to go to our goal of 20. (Wk. 11)

RELIGIOUS HOUSE: SACRAMENTO

External: Operation summer mobilization releases both participants and funding for S'74. Regional presidium lays groundwork for summer sting by naming the players in PLC recruitment.

Internal: Income intensification symbolized by spiritual fires set forth in actual sales of fireworks in Galaxy church parish for 7 days.

Contradiction: Affirming action will remove the doubt that theory cannot solve. (Wk. 13)

RELIGIOUS HOUSE: SEATTLE

External: Local Church battleplan created for Summer Quarter. Bellingham cadre raises up 4 local church cadres in preparation for Galaxy replication. The times and trends workshop broadens context for creating summer battleplan.

Internal: House refurbishment began as parish sign. Collegium study of New Human lecture from LCC articulates spirit mood for summer. Staggering around in the other world creates great paragraphs of states of being.

Contradiction: Getting vision rounded up and particularized in order to move missionally through the summer. (Wk. 13)

RELIGIOUS HOUSE: LOS ANGELES

External: One of the community participants in the LCC spent her vacation in Chicago only to fly home to L.A. and have her boss at the Community Care and Development Services assign her to spend the last 3 weeks at the summer program. Back on that plane!

Internal: Over half of the House's June food check is on its way back to Chicago as income. Our in-kind food donation phase of our economic intensification made it possible. The Leroy Philbrook family announced that they are expecting an addition to the family next January.

Contradiction: That significant engagement for the House this summer means merely sustaining itself and keeping the House structures operating. (Wk. 13)

RELIGIOUS HOUSE: BILLINGS

External: 'Stones being raised up' became a reality in sparse grad country, when 25 permeation contacts expended themselves on a community workday at the House.

Internal: House moves into Quarter I during Wk. 12, as first time design alteration is made and studies reacquaint us with 'old' friends on our meditative council.

Contradiction: We've borrowed a hand truck twice and still haven't found the strength to move the refrigerators. (Wk. 13)

RELIGIOUS HOUSE: DENVER

External: Sixty one people (¼ from the community) transformed 9000 sq. ft. of weeds to 4 flower gardens, planted 11 trees, built a rock walkway and park benches and picnic table in 4 hours. Quoted one neighbor, 'This is the best day of my life.'

Internal: Furnished apartments, 3rd floor, best rates in town and a built in wake up. Wayside comes alive with international and continental guests en route to Chicago.

Contradiction: Redirecting our propensity to dwell on the problems to all the possibilities before us. (Wk. 11)

RELIGIOUS HOUSE: RAPID CITY

External: We know that we are really dealing with local man when we have the community battle-axe present and vocal at follow up meeting for convocation.

Internal: David Coffman finds daytime, 40-hour a week job that pays same as previous night time, 60 hour job. Summer quarter plan done with exciting plan for changing the garage into 4 apartments for intern expansion in the fall.

Contradiction: Effectively juggling time between penetration, guild and Galaxy. (Wk. 12)

WINNIPEG RELIGIOUS HOUSE: ANCHORAGE (bountiful) OINOTIA NAS :H2UOH 2UOJLUD 9
External: House returns from 3 week trip to the Orient, phone House during 18 hour
layover, then leaves for the summer program.

Internal: Exciting breakthrough as our filing system is organized to meet our practical
information needs rather than some abstract gestalt.

Contradiction: In the midst of honoring the heavy emphasis on the local story of 'We are the
Gateway to the North' it is easy to reduce leading businessmen as global revolutionaries to being
just responsible businessmen. (Wk. 13)

RELIGIOUS HOUSE: SASKATOON
External: In the midst of LCC activities, such as going on radio for a one-hour show, securing
TV coverage, doing group presentations, the 2 Galaxies met together for the first time for a
spectacular continental consult. After consult, Saskatoon Galaxy attends Pentacost House
Churchmen's retreat.

Internal: We understand that the discontinuous month means identifying other directions
and the mid-October season appears. Dudley Kovacs comes to Ecclesiola,
and the mid-October season appears.

Contradiction: Red hot need for cold cash, cold illumination burning need for allowing
colleagues to see a bit of their own reflection. (Wk. 10)

RELIGIOUS HOUSE: WINNIPEG
External: LCC demonstrated methods which allow man to share his energy, native Indian Tompkins gives sophistication
and left commenting 'I'm pleased to be here', disclosing all races participate in the workshops
and left commenting 'I'm pleased to be here', disclosing all races participate in the workshops

Internal: House read with interest during the spring quarter evaluating the spring quarter
followed by a celebrative feast. The encounter with the lives of the saints, as well as the
spiritual exercise of the fast allowed us to relate anew to our limited gifts.

Contradiction: Struggle with embodying style of John Paul Getty and Francis Xavier. (Wk. 10)

HOUSTON RELIGIOUS HOUSE: AMARILLO
External: Metro radio, radio, break loose as they corporately study the indicative
battleplanning paper.

Internal: House read with interest during the spring quarter evaluating the spring quarter
followed by a celebrative feast. The encounter with the lives of the saints, as well as the
spiritual exercise of the fast allowed us to relate anew to our limited gifts.

Contradiction: Deciding to lay out full summer battleplan with
13)

RELIGIOUS HOUSE: AMARILLO
External: Received first PLC registration for fall by mail. Fifteen year old mailing list
new friends in formulation visits.
and continue the planning for the

RELIGIOUS HOUSE: SAN ANTONIO (continued)

Internal: House participated in Global Odyssey as we met colleagues at airport for a picnic during 2 hour layover.

Contradiction: Underestimating our colleagues' readiness to move. (Wk. 13)

RELIGIOUS HOUSE: OKLAHOMA CITY

External: Fantastic world whirl S'74 send out celebration; every yr celebrated with food, decor and dance; Floyd Blackbear spins us into awe with red man myth; Carmela San Diego leads us in Phillipino folk dance.

Internal: Massive decor shift occasioned as Mary Meyer begins 2 month sojourn. We march through history in Ecclesiola as we study "The Edge of History" by Thompson. July 4 celebration has us reflecting on the style of past revolutionaries.

Contradiction: Summer is 1/3 over, yet we are not 1/3 of the way through battleplan. (Wk. 13)

RELIGIOUS HOUSE: DALEAS

External: Strong penetration to community structures made through supportive visits.

Internal: Decision to lease land and remodel training center facilities enabled effective hard workday with metro colleagues to prepare facilities.

Contradiction: Uncovered Pandora's box of emotional forces in community and we thought serious battleplanning could hold until fall quarter. (Wk. 12)

RELIGIOUS HOUSE: TULSA

External: Metro enthusiastically responds to steak celebration as Farrars are sent out to Malaysia and radical global reimagining is done.

Internal: Ann Dunnagan is formally received at House Church for 3 months sojourn. OKC House spurs WK. II economic push, manning House sale and putting creativity to altar-creation for sale at S.74. End of the quarter reflection and meal throws us spinning toward '75.

Contradiction: In midst of economic push, celebrations, moving in and out, letting summer external thrust slip into state of limbo. (Wk. 13)

RELIGIOUS HOUSE: HOUSTON

External: Six men from development hit Houston for model building, visits and proposal writing, and the city feels the reverberations.

Internal: House celebrates 4th at community center and with swimming at the home of C.A. Clements, and is later surprised to find nearly all of Houston turning out for firework display, jamming traffic so bad we couldn't get there.

Contradiction: Thinking summer will last forever has tempted into not tightening up the timeline. (Wk. 13)

RELIGIOUS HOUSE: NEW ORLEANS

External: Summer registrations begin to come in. House sends out jets in brown envelopes to take all the prospects to Chicago.

Internal: Week spent evaluating the spring quarter and preparing for the thrust of a new year in New Orleans region.

Contradiction: Discerning the kind of mission that is needed in summertime. (Wk. 11)

RELIGIOUS HOUSE: MEMPHIS

External: Regional colleagues stop by to enable further House renewal by cleaning up garage and hauling junk. Galaxy celebrates the end of the quarter with steak, corn on the cob and all the trimmings plus swimming for a great evening.

Internal: We welcome Lyn Yarber as a summer sojourner, and continue the planning for the myriad of demands that face us.

RELIGIOUS HOUSE: MEMPHIS (continued)

Contradiction: Planning our freedom relative to the summer calls forth the Bonhoeffer time demons, and there's no one objective enough to shout 'OUT'. (Wk. 13)

RELIGIOUS HOUSE: ATLANTA

External: At the 11th hour, Southern Bell decides to send its head of training for the State of Georgia to S'74 at a cost of \$50/day, self-consciously providing scholarship money for others. One colleague drops by out of the blue, decides to go to S'74 and helps plan the send out celebration. Internal: First honest to goodness 'East Lake 5' guild meeting takes place, with community leadership, and does initial planning for the August miracle of a Community Festival.

Contradiction: Depending on burst of excitement to motivate people rather than creating and rehearsing the depth vision, to go along with that authentic excitement. (Wk. 12)

RELIGIOUS HOUSE: MIAMI**RELIGIOUS HOUSE: MIAMI**

External: Trip to Tampa metro to raise funds nets \$150 for local pastor to attend S'74 from church. Planning committee formed from Spring '74 LENS grads meets every week to work on fall LENS. Recruitment timeline and spring follow up letters finished already.

Internal: Sent Mark Fugina to Minneapolis for month to receive job training and month's salary. House celebrates 4th in true Florida style at Beach.

Contradiction: Rearticulating the vision so that people believe it after years of seeming 'failure.' (wk. 13)

CHICAGO

RELIGIOUS HOUSE: WICHITA

External: Metro and House join at retreat planning session in colleagues country cabin in order to timeline the summer quarter in the arenas of parish, formulation and penetration.

Internal: Mennonite pastor is celebrant at House Church and comments 'What a great way to begin a day.' House is finding team and symbolic structures effectively sustaining in spite of reduced numbers.

Contradiction: With full Galaxy as the rationale for penetration, one Galaxy church withdraws as new pastor reserves judgement on experiment. (Wk. 13)

RELIGIOUS HOUSE: LINCOLN

External: With our response to development's coming (almost immediately after 5th City Development) as 'They won't get anything, don't send them,' development team defies all the odds and leaves with \$1700 in hand.

Internal: Wk. II pedagogy was coupled with hosting 30 transits on their way to S'74. Garage sale preparation continues with metro colleagues participating, donating better goods than ours. House celebrates the quarter on the 4th, as everyone in the House was off at least one of their jobs that day.

Contradiction: Making sure that 'consensus making' has been going on before trying 'consensus taking.' (Wk. 13)

RELIGIOUS HOUSE: KANSAS CITY

External: Summer '74 sendout proves to be magical moment as 4 people not previously on the prospect list show up and announce their plans to attend. Article in local paper and follow up visitation reveals excitement and real grassroots authorization of ICC.

Internal: Week night session of RSI pedagogy absolves us after a quarter without RSI and reinvigorates summer engagement. House Church spill over collegium room as guests (including Barbara Friskine from Centrum) outnumber House members.

Contradiction: Ambiguity on financial status confuses S'74 participation and hampers momentum in the metro. (Wk. 13)

RELIGIOUS HOUSE: MINNEAPOLIS

External: Guild meetings continue to build momentum. 'Whittier Day' dates established. Senator Keefe says he thinks it will be fun and he will run a booth.

Internal: Wayside Inn receives 43 - 40 6th graders for 4 days, Terry and Al Loomis, and Rev. Lee Sung Kwan from Korea. Five youth have jobs in addition to school.

Contradiction: Maintaining corporate missional thrust in the midst of summer time job schedules. (Wk. 13)

RELIGIOUS HOUSE: ST. LOUIS

External: Eleven signed for S'74 with 2 more considering, one of which is St. Louis mayor's assistant.

Internal: \$850 profit on garage sale, 3 people now working night jobs. After last summer influx of 254 guests on way to and from summer program, are now readying to again ground the Wayside Inn image.

Contradiction: Logistics of coordinating number of jobs, keeping region in being with available transportation. (Wk 11)

RELIGIOUS HOUSE: PEORIA

External: Sent 4 to S'74. Five more colleagues committed to attending the last 2 weeks.

Internal: Completed House manual which has released our serious consideration on sojourner possibilities. House celebrated quarter with a parish walkabout, dining and dancing at Le Chateau, and claiming promises instead of kisses to reimagine Lover's Lookout on Fondulac Drive.

Contradiction: Vague image of summer thrust allow for jumping into any particular without consulting the comprehensive picture. (Wk. 13)

RELIGIOUS HOUSE: MILWAUKEE

External: Three Galaxies move into the summer quarter by meeting as one body. Last minute registrations for S'74 surprise even the man of faith. New and old colleagues are impacted by their own sophistication as 60 are sent into the summer quarter.

Internal: Welcome David Jensen as sojourner on our one-a-week sojourn plan. Lester Knutsen returns with more than guild on his mind as he and wife Linda arrive from honeymoon.

Contradiction: Here I am, Lord, send them. (Wk. 13)

RELIGIOUS HOUSE: CHICAGO

External: Summer quarter goes into high gear as 5th City celebrates return of 5th City development circuit rider, then 5th City choir sings at Uptown. Start of Jet programs with 28 NYC youth means strong young people working everywhere.

Internal: In the battle for economic survival 5 new jobs secured, and Richart sold \$24,000 worth of calculators. Whole House goes to opening plenary of S'74 and then to the Dunes for 4th of July celebration.

Contradiction: How to create missional continuity in the midst of everything being discontinuous. (Wk. 13)

RELIGIOUS HOUSE: INDIANAPOLIS

External: This Wk. 13 marked the sending out of the Jackson E.G. and youth to camp a mere 26 hours after their return from Europe, the sending out of 2 other House E.G. to camp, the sending out of 2 House adults and 3 metro colleagues to IRA in 1 colleague car.

Internal: The House celebrated the 4th of July by participating in the heritage of the nation in which it shows up with a day at the park for swimming and frisbee and an evening at Ft. Benjamin Harrison for band concert and fireworks.

Contradiction: Due to economic demands of the summer, no troops in House during Day 1 to carry on particularly the mission into the community. (Wk. 13)

RELIGIOUS HOUSE: CINCINNATI

External: Wednesday July 3 the guild meeting saw community people using new corporate methods, with enthusiasm. Sent out 4 colleagues to S'74.

Internal: Debra Drown received as intern. House participated in an insane July 4 celebration, with great food, fun and colleagues. From the dust arose the Guild Room.

Contradiction: With the dispersement of the House, we've lost sight of the image that S'74 recruitment is an ongoing task; and therefore have failed to care completely for people's lives. (Wk. 13)

RELIGIOUS HOUSE: DETROIT

External: Development team nurtures House and lifts Lansing rock, discovering potential cadre. S'74 recruitment continues to reveal new decision as people are able to break loose from jobs.

Internal: Celebrative style manifested throughout week as House ends qtr. with Chinese meal and movie, finishes internal manual in 1 day and hosts 22 S'74 and camp pilgrims from Toronto, Boston, and Portland. Galaxy clergy priors and guests fill room for otherwise small House Church.

Contradiction: How to be catalyst to enable region's decision to corporately work in pulling off region during summer quarter. (Wk. 13)

RELIGIOUS HOUSE: CLEVELAND

External: University Circle Neighbors (Guild) formed as 6 LCC participants show up for Tuesday meeting. They decide on 3 key tactics for the summer: Community newsletter, monthly picnics, and political forum, and make assignments to themselves. House continues recruiting for S'74.

Internal: House Church of 90 adults, 35 children sends out the S'74 participants with 7 new decision made on the spot. Louise and Sara Albright sent out to the Global Odyssey and 2 Galaxy clergy families, the Pooles and the Lapkas, are sent out to the global order.

Contradiction: We keep expecting the crunch to go away. Wk. 12)

NEW YORK RELIGIOUS HOUSE: PITTSBURGH

External: LCC in East Liberty Parish provides occasion for local leadership to affirm the possibility of community reformulation. The 60 participants included 30 regional leaders and 30 local citizens who sang together 'East Liberty Points the Way' S'74 registrants at 3; 17 to go.

Internal: House acquires a new car through inkind donation by a regional colleague.

Contradiction: Turning colleague's imaginations about the IRA from 'I'll consider it' to 'I need to go, sign me up.' (Wk. 10)

RELIGIOUS HOUSE: ROCHESTER

External: Ken Franz, spring RSI grad registers for the summer, saying, 'You mean I CAN go for less than a month.'

Internal: The House celebrates 'The great year that was' in sending out the emerging generation and welcoming Paul Benson.

Contradiction: In the midst of demand for clear objectives for weekly House engagement, the summer demons whisper 'You have plenty of time; you deserve a rest; eat drink, and be merry for tomorrow the E.G. will return.' (Wk. 12)

RELIGIOUS HOUSE: RICHMOND

External: S'74 blitz on 284 prospects through 150 phone calls and 90 visits nets 2 more for first 2 weeks of Research Assembly. One mother decides to attend 48 hours before needing to leave. LCX sodality meets for first time with members from one LC cadre. State Farm Prison cadre continues to be excited by possibility of being the church right where they are.

RELIGIOUS HOUSE: RICHMOND (continued)

Internal: Regional/House beach party turned into S'74 recruitment blitz as call from the globe reveals necessity of new faith relative to our decision to recruit the Research Assembly.

Contradiction: Deciding to risk our power in driving out the corporate demons. (Wk. 12)

RELIGIOUS HOUSE: WASHINGTON

External: LCC is a great happening as 75 people participate including a city councilman, who plans to come for 15 minutes and stays 3 hours, representatives of Northeast Coordinating Committee. Highlights include Northeast Is a Great Place to Live banner and singing of Paula Brenneke.

Internal: Week is filled with sendouts and guests. Send out Cocks to S'74 prep and Shaws to Camp New Covenant. Ecclesiola sees 3 possible interns plunge into seminary and sodality. Daily Office is transformed as Galaxy clergy join with us while on a clergy retreat.

Contradiction: Wanting to wait until after S'74 to see new direction clearly while knowing we must lay groundwork for next fall in the next months. (Wk. 10)

RELIGIOUS HOUSE: BALTIMORE

External: Bombs bursting in air over Ft. McHenry - birthplace of Star Spangled Banner.

Internal: All were dancing at fantastic regional S'74 Grand Ball.

Contradiction: How not to be satisfied with 'once in a while miracles.' (wk. 13)

RELIGIOUS HOUSE: PHILADELPHIA

External: Galaxy churches work through an intensive sodality session in the Qtr. I planning of 144 tactics. House also plans Qtr. I, continues work on S'74 for Wk. 3 and 4 participants, and created a sign of hope for July 4th, in a late night blitz of mowing, pulling weeds, and decorating of the 'lot.'

Internal: Amidst internal life planning, the House finds the opportune chance for July 4th experience (with regional colleagues) in old New Jersey community with parade, speech in the park, and day of festivities.

Contradiction: How to invite a 'summering' region into the 'realities' of fall. (Wk. 13)

RELIGIOUS HOUSE: NEW YORK

External: Momentum builds for S'74 as registrations increase from 6 to 16 in one week, including Charles Acker, a non-grad, who 'Just stopped by the House to see where the methods used in our prison program come from.'

Internal: House Church celebrated by newly ordained House member in his first official role as clergyman. Festive Ecclesiola, a scavenger hunt for symbols of the 36 programs of the Summer, ends in Tavia style dance by Arthur Solanky, a Jabalporé ITI grad.

Contradiction: Our other world theme for the week, 'Don't be deterred by an excess of riches' rings true again as many remain uncontacted or unconfirmed for the summer. (Wk. 12)

RELIGIOUS HOUSE: GARDEN CITY

External: Manual for mobile Religious House produced and excitement of colleagues encountered in preparation for first stop in Orient New York (farthest point East of the bi-metro). Sent out 3 from sodality to S'74 including Galaxy elder Mildred Lloyd Davies.

Internal: July 4 becomes 3 days in 1 with renewed RH floors, decor and manual production, and discontinuity of Jones Beach and dinner with colleagues.

Contradiction: Enabling global vision and commitment from trained colleagues who have their passion in the local. (Wk. 13)

RELIGIOUS HOUSE: NEW HAVEN

External: Colleagues sent to visit Roman Catholic priest returns with contents of rectory refrigerator as a spontaneous gift in gratitude for colleagues who affirm the local church and care for the parish. Guild task force member requests permission to invite others to participate

RELIGIOUS HOUSE: MANCHESTER

External: Metro Presidium and RH celebrate with a square dance and old fashioned social supper at historic Bedford Town Hall.

Internal: House ends quarter by celebrating in Boston at Charles St. Playhouse and dessert afterward at Durgin Park. Sent out S'74 participants at House Church.

Contradiction: How do we use summer discontinuity tactically? (Wk. 12)

RELIGIOUS HOUSE: BOSTON

External: S'74 calling continues to elicit new decisions. A Saturday morning gala breakfast sends out House and regional colleagues to Chicago and claims promises for S'74. Regional Presidium projects creation of the new Hartford Religious House.

Internal: Qtr. I internal life manual includes focusses on local Bicentennial history and parish issues. Bob Booth is welcomed as a new intern and begins rewiring the House.

Contradiction: The regional tactical implementing are finds itself suddenly very long and very thin, and operating in the midst of a prevalent notion that summer is not the time for intensification. (Wk. 13)

RELIGIOUS HOUSE: PORTLAND

External: A year of cultivation yields a self-conscious corporate pastorate in a Portland congregation, and a week long workshop with Maine Indian Education sets the context for future guilds on the reservations.

Internal: Summer battleplanning and internal models completed, and final preparation for trek to Chicago underway.

Contradiction: Intensive summer recruitment produces decisions for S'75 but not for S'74. (Wk. 12)

MONTREAL RELIGIOUS HOUSE: TORONTO

External: Miracles abound! Unknown colleagues phone in their registrations for the summer program. Summer House parties are part of the tangential recruitment strategy. Parish walks become significant in reflective conversations.

Internal: Catering, cabaretting, and caravanning swirls House in recruitment and formulation parties and in nightly representation to city-wide multi cultural celebrations, several of which are right in Spadina Parish. Jacksons welcomed back from honeymoon.

Contradiction: Trying to collapse tension between concrete community engagement and global priorities. (Wk. 13)

RELIGIOUS HOUSE: OTTAWA

External: Seaway Galaxy travels to Ottawa to help celebrate the selection of Ottawa Parish, Parkdale 5, and the nod from city hall to engage in the community there.

Internal: New faces visit the House and are impacted by how much can be done under a 'one man at home at one time' House operation.

Contradiction: Finding ourselves still shaking dust from our feet when the situation calls for running ahead with the beginnings of a new movement. (Wk. 13)

RELIGIOUS HOUSE: MONTREAL

External: Manager in permeation job (v.i.p.) attends the LCC, was very excited by the methods, especially the social process triangles, and in the next few days decided to go to Chicago for a week in July and to set up an inHouse consult similar to LCC.

RELIGIOUS HOUSE: MONTREAL (continued)

Internal: The House celebration to end the quarter occurred without causing to miss a beat. We went out for pizza, relaxed and then came back to work.

Contradiction: Unclear images of the total scope and strategic design of the CRP allows our tactical action to be unfocused and disjointed. (Wk. 11)

CARACAS

RELIGIOUS HOUSE: CARACAS External: Cadre meeting with 3 iron men maintain the regional dynamic while all House members are on mission assignments outside Caracas. Contacts for ITI promotion in Venezuela, Ecuador, and Colombia are made. The Wests on ITI follow up and promotion in Porto Alegre, Uruguay, and Buenos Aires.

Internal: House members on mission assignment with no one in House

Contradiction: How to hold corporateness when only one person is in the House. (Wk. 11)

CENTRUM BASE CENTRUM

External: It was a week of hard work for the 36 guilds ending Friday afternoon with four Congregational plenums. Friday night the Assembly gathered at People's Church to see the movie Cromwell. Saturday the 12 Master Guilds worked as labs on the Ignatian Retreat. Arrivals and sendouts continued all week, as program participants continue to flock in.

Internal: Behind the S'74 scene development is hard at work with 4 development teams working in Chicago and 6 other teams in other U.S. locations. A first draft of the '76 BiCentennial proposal for 5000 town meetings was done, and talks are being held with national business and political leaders. Inkind is dancing with inkind gifts of paint and paper, beef and beverages, maps and medical supplies and much more to the tune of \$5176.00 for the first week of S'74.

Contradiction: At least 100 new families are needed to particularize our globality.

CAMP CRIMSON COVENANT

External: Launched Global Troupe with song and dance creation.

Internal: Received new Student House staff and sent boys to Point Timbuktoo.

Contradiction: Muggy weather invites demon of sluggishness.

STUDENT HOUSE AT TIMBUKTOO POINT

External: Completed research on initial curriculum models, concluding the Odyssey, action and brooding constructs with three days of strategizing and then moving 36 young women to Camp Crimson Covenant as we received 39 young men, all of whom traveled across Lake Michigan by night.

Internal: Entertained for dinner 15 guests with cabaret and singing as S'74 songbooks are received to augment our awareness of the concerns of the Research Assembly.

Contradiction: Completing and recreating models in the transition of the switch of females and males over 1000 miles in 36 hours.