



Come, let us return to the Lord;  
for he has torn us and will heal us,  
he has struck us and he will bind up our wounds;  
after two days he will revive us,  
on the third day he will restore us,  
that in his presence we may live.

Hosea 6:1-2

LONDON

Religious House: Glasgow

External: The arrival of ITI faculty in Manchester and the presence of Bill Grow here for 2 days intensify final recruitment tactics. A workday, dinner, baptism, and speaking engagement all provide collegial occasion for expanding images of local possibility.

Internal: A week of awesome changes as we mark the start of Lent with ashes and purple and joyously move into our 18-room House celebrated by kebabs at new Turkish restaurant in our parish.

Contradiction: After accomplishing the long-awaited move into the House and with the ITI in the chute, turning to the strategic objectives and tactical priorities for the next 4 quarters.

Religious House: Bristol

External: Beginning the final ITI recruitment push finds us confronting all kinds of 'unlikely' prospects and netting 2 more registrations.

Internal: Visit by Don Cramer of the ITI team is the occasion of great missional excitement as House and region hear front line reports of LENS, the Guild and the Ecumenical Parish at Ecclesiola. Week II finds whole House plus 2 sojourners in Manchester transforming matter into spirit in the ITI facilities.

Contradiction: Need to create model that enables us to treble our effectiveness rather than just double it so that we can maintain ITI recruitment and sustain spring quarter preparations now already a week behind.

Religious House: Manchester

External: Final ITI recruitment push nets 5 participants.

Internal: With a surge of corporate spirit 40 people from all European Houses and centrum transform unused areas of the Religious House into the setting for the ITI. Reading of banns for Rosemary Hull and Timothy Caswell, to be wed 6 April.

Contradiction: How to be a Religious House in the midst of an ITI, to stand present to the gifts and demands of that and to carry on the work of the region.

Religious House: London

## PARIS

Religious House: Paris

External: Week 8 RSI yields colleagues, ITI prospects, and renewed vision of movemental responsibility for Area Paris.

Internal: Began March House Council with purple altars, individual purple-covered work packets, and a workshop on the key events of the quarter.

Contradiction: Finding the one-degree turn of the dial that will bring our own rational clarity to the international community, the milieu in France, and the formulation of the movement.

## BRUSSELS

Religious House: Brussels

External: The Mardi Gras celebration invented in 1649 by Mary of Hungary, Gov.-Gen'l of the Low Countries, turned out to be the finest example of community reformulation yet seen. From dawn until hours after midnight 700 men in elaborate, identical costumes each throw 300 oranges at visitors symbolizing welcome and plenty before Lent.

Internal: The House received Steve Allen to do LENS, David Elliott to be ITI faculty and the Karl-Ludwig Simons to consider the future. Steve Hamje and Valerie Smith reported with genuine awe that event of trip to help prepare Manchester facility for ITI was all signs in English.

Contradiction: Gathering the pre-doing spirit and calculation while focusing the post-deed spirit and anticipation but refusing the myth that miracles are magic.

## FRANKFURT

Religious House: Frankfurt

External: A Week II of indicative battleplanning and strong interest in the possibility of an RSI in our parish next fall focus our eyes awesomely into the future while last ITI push keeps hands occupied in the present.

Internal: Wild parade and evening of song, drink and dance at the local gardeners' club reveal the abounding of cabaret in Sachsenhausen (our parish) as the Fasching season (Nov 11 at 11 am to midnight before Ash Wednesday) comes to a close. Hosted Simon family from Freiburg.

Contradiction: Molding ourselves as an effective team for the huge tasks of the coming quarter; we sense ourselves rolling down the super-highway at high speed - but in second gear.

## NAIROBI

Religious House: Nairobi

External: LENS mailing gone; LENS contacts and strategies ready to move.

Internal: We turn to March by celebrating Shrove Tuesday with feasting and Ash Wednesday with ashes.

Contradiction: Local business training is intensive but practical, job oriented; how do we break through to let them see the value of LENS.

## BOMBAY

Religious House: Bombay

External: Marathon circuit ride team touches base and reports Nagpur Region has authorization breakthrough and new collegial self-consciousness built around IRA and ITI recruitment. In Bombay Catholic teachers guild request series of imaginal education courses for 100 school

Internal: Comings and goings. Robyn Hutchinson comes for PSU on conversational English classes. Safraz Rana completes two months sojourning. Spencers sent to Calcutta LENS set up. Circuit rider Kontz makes awe-ful appearance.

Contradiction: Retelling our story to a church with a compound heritage sensitive yet compelling

DELHI

Religious House: Delhi

MADRAS

Religious House: Hyderabad

External: Small RSI of 10, predominantly RC, is one of the liveliest courses of quarter, as participants affirm vision of the Church renewed, and seriously raise the question of practical implementation. Completed circuit ride to Vijayawada Region reveals that the harvest is ripe and strong ITI prospects are plentiful.

Internal: As teaching quarter comes to an end, gears are shifted in internal structure and external mission for a clear run to the ITI and IRA.

Contradiction: Faced with the possibility of participation in the Global Guild, we find ourselves with models unprepared to involve all sections of the community.

SINGAPORE

Religious House: Kuala LumpurReligious House: Singapore

External: Several LENS grads visited during the short visit of Bob and Sandy Rafos. Well-attended Ecclesiola impacts colleagues with the depth address of the Psalms. Roman Catholic Brother in charge of the spirit life of his community is particularly addressed by the possibility of bringing new life to the daily Psalm reading which his charges find dull.

Internal: ITI grads Rev. Newmann and Nancy Tew sojourn for 6 days prior to their departure to a new church assignment in Malacca, Malaysia. House impacted by LENS plans and reports.

Contradiction: Enabling more of our colleagues to realize that they are responsible for both the fantastic things which have happened in the Church in Singapore and the future of the Movement here.

Religious House: Jakarta

HONG KONG

Religious House: Hong KongReligious House: Kaohsiung

External: ITI imaginal breakloose occurs as decision to go for 20 and 6 is made and battle plan for winning is completed and as social structure of authorization begin to reach out to embrace us.

Internal: House shifts from being kings of Epiphany to pilgrims of Lent with all-day Mardi Gras celebration (banana splits for breakfast) ending with hanging of Lenten banner.

Contradiction: How do we find the ones chosen by God to go to ITI and also embody the ITI vision before their eyes in such a way that they want to pay for the trip.

Religious House: ManilaReligious House: Taipei

External: Excitement of pedagogy participants when they self-consciously decide they can teach in the forth-coming PLC. PLC calling in Hsinchu metro gets nod from Roman Catholic Bishop of the diocese and reveals sensitive clergy.

Internal: Symbolized the beginning of Lent with one-day fast which heightens self-consciousness of Lent, fasting and the decisions these hold before us. Arrival of Lee Early as LENS advance man.

Religious House: Taipei (continued)

Contradiction: While operating a variety of programs to keep aware that we are about one thing and one thing only.

Religious House: Cebu

External: RSI recruitment teams call on ITI and RSI grads in Cebu and Lapulapu to help establish contacts with RSI prospects. Invitations for Regional Council on March 7-8 are mailed to the metro coordinators in the Visayas. Charles Morrissey drops in at the Cebu House on Saturday, 23 February after a trip to Mindanao and Vaislan.

Internal: The Braganzas (a friend of the Armases) visit the House and attend House Church. The 3 single families and jobs in the same week. Preschool plans are laid out. Export book finally done and sent to Japan to begin long-range financial base.

Contradiction: Need to increase number of House people to accomplish complexity of tasks, particularly the ITI development.

Religious House: Davao

External: First RSI in history taught in Cebuano, the dialect of Davao Region, with 29 around the table. This is the first translation of RSI into a Philippine dialect.

Internal: Purple is the color as House symbolizes shift into the Lenten season with the distribution of ashes at Daily Office on Ash Wednesday being a highlight. Study of Chastity paper at Ecclesiola addresses House. House celebrates the completed life of Bishop Rodriguez, first UCCP bishop of Mindanao, whose passion was in relating theology to life.

Contradiction: No self-conscious metro cadre dynamic in home metro.

TOKYO

Religious House: SeoulReligious House: Fukuoka

External: PLC demonstrates the first radical sign of possibility for the local church in Hiroshima since the atomic bomb. Region-wide attendance now completes the movement's penetration into all of the strong holds in Japan first evangelized by St. Francis Xavier.

Internal: An "all religions" House Church is attended by key local church pastor, local Superior of the Oblate Fathers and two sisters, one an ITI grad, the other her Superior. They are impacted by the Other World spaciousness of this world's very small house.

Contradiction: Keeping our authorization.

Religious House: Osaka

External: Akira Nishihara, moderator of the United Church of Christ in Japan (the Kyodan) in Osaka, taught first seminar, the Niebuhr paper, in key Hiroshima course. Demonstration Research sent five teams into Osaka wards and initiated background research on apparent problems.

Internal: Everything goes.

Contradiction: No concrete imagination of planning month as one big thrust instead of extended fragmented doing.

Religious House: Tokyo

Religious House: Sendai

External: Regional Council pre-planning attended by leaders of three metros.

Internal: House Church in Japanese is a harvest happening when the hostess is a LENS, RSI grad who spiritizes the whole evening and our first long-term sojourner reads the Global Order report in Japanese.

Contradiction: Deciding how to be transparent servants at Regional Council in order to enable young region that is moving from adolescence to maturity.

SYDNEY

Religious House: Perth

External: First clergy collegium discovers Don Juan as a colleague, and listens intently to the Ecumenical Parish concept. Preparatory talks with LENS grads/guildsmen shows eagerness to begin recruiting the next seminar. Week II PSU launches the metro cell.

Internal; All adults save one now have jobs. Mowanjum youth build time-lines and budgets for quarter. Discover that our lovely garden is infested with red-back spiders, and are soberly reminded that the established order is to be tackled with leather gloves.

Contradiction: Seeing through the tension of the multiple thrust to the one needed thing tomorrow, the next day and the day after.

Religious House: Darwin

External: PGX signs and authorization break loose in a flood. United Church consult finalizes cooperative signal parish mission, including congregational training catalysis. Community survey launched with 20 local volunteers. Guildsmen launch LENS marketing and begin by reserving new Travelodge hotel.

Internal: Sunday am collegium on future of the Order in the New Society puts us all "in charge" and burdened.

Contradiction: In the midst of breaklooses in the PGX, planning weekend imperative.

Religious House: OombulgurriReligious House: Adelaide

External: LENS and PLC and ITI recruitment successfully initiated - State Managing Director of ICL computers provides introductions and contacts as well as making time available for mailing lists, etc. on demonstration machines; Anglican, Church of Christ and Roman Catholic clergy assume responsibility for recruiting within their traditions.

Internal: All assigned to Adelaide are now employed - newest intern Ann Edwards secures teaching appointment in demonstration primary school within 24 hours of arrival in Adelaide. Now have 2 teachers and one student in school within most likely Ecumenical Parish.

Contradiction: Orchestrating the inds and outs of all House members to create a missional melody.

Religious House: Melbourne

External: LENS blasted off the launching pad with 10 key business appointments made on the first day of phoning. Response from one man from a top national firm "I need to be at that." Crucial contacts opened doors when we took two preaching appointments in an important Presbyterian Parish where there are a large number of old grads.

Religious House: Melbourne (continued)

Internal: Sheldon Hill and Garnet Banks arrive to inaugurate LENS marketing. Week II readings of The Scarlet Pimpernel that blows sophistication through the House and study of Roman Catholic documents that read like Research Assembly papers combined with Ecclesiola study  
 Contradiction: Creating an adequate marketing system and locating the key to unlock the floodgates when the city is ready to receive us.

Religious House: Sydney

External: LENS marketing gathers momentum with 20 interviews and luncheon speaking engagement with Rotary Club from the Ecumenical Parish. First Proto-guild meeting is held in Ecumenical Parish. Visit to Canberra metros uncovers an IBM 1620 computer available at no charge.  
 Internal: Bronwyn Rees is sent out on special assignment to Australian National University; Grace Umbagai sent out to new assignment in Brisbane House. Ecclesiola remains high point as St. John of the Cross continually deepens and sharpens our awareness of life's way.  
 Contradiction: Revised House budget reveals our financial contradiction is unresolved and seriously threatens our missional thrust.

Religious House: Brisbane

External: Two-fold LENS strategy of in-depth participation by key businesses in several polises and geographically based companies in Ecumenical Parish call forth affirmation of possibility as local alderman warms to vision.  
 Internal: Ash Wednesday launches intensified Lenten worship experiment undergirding secular breakloose; Anne Edwards sent out to Adelaide, while House welcomes Grace Umbagai. Sheldon Hill arrives for LENS prep  
 Contradiction: Response to possibilities of moment takes form of reducing battleplan rather than redoing it.

SUVA

Religious House: Majuro

External: Hawaiian Mission Board hosted by Uliga Protestant Church - with House members establishing firm contacts by participating in several activities, especially all day trip to Rong Rong.  
 Internal: Feet-on-the-table sessions spin intensified Day I activity into capsules of energy and open future to new edges.  
 Contradiction: Finding the touchstones of time and activity that ground a mode of fluidity, intuition and indicative tight-rope walking.

Religious House: Apia

External: PTA approves our plan for a large school sign to be posted at the road.  
 Internal: Week II pedagogy guild concentrates on the Christ section of RSI  
 Contradiction: Grounding with colleagues the solitary and perpetual revolutionaries boxes in the Church lecture.

SAN FRANCISCO Religious House: San Francisco

External: Parish LENS with 54 launches second phase of guild formulation. Completion of third Clergy Consult in Modesto explodes movemental task of the local church with lecture by Robert Prather, 30 years an Elder in the Presbyterian Church. Don Cunningham returns from Academy.

Internal: Arrival of Neva Forbes to complete quatern. Week of signal Daily Offices with contexts on symbols, sacraments and liturgical extension and witness on the Saints.

Contradiction: Simple operational image has not been given which internally releases external mission.

Religious House: San Jose

External: Metro spins as 87 people participate in Week 8 Wk II structures 44 people at key RSI with 12 from Galaxy Churches and 7 from potential Galaxy Churches, 8 attend SF LENS. Galaxy Council great spirit happening as all 3 churches finish work Saturday at 3:30.

Internal: House Church great celebration as Bob Porter gives witness and shares global miracle stories, then joins priors for reflection on quarter's happenings.

Contradiction: Shifting gears from recruiting and teaching to evaluation and formulation reminds us that new models and plans still in the making, were needed yesterday.

Religious House: Sacramento

External: Excitement generated by creating timeline for quarter IV for RSI, LENS, and PLC courses.

Internal: New image added to Regional Council this quarter in the form of a "live" band. Band practice added new dimension to Ecclesiola Sodality.

Contradiction: Being victimized by the economic tyrant.

Religious House: Seattle

External: RSI in Portland has nine in it from one Methodist congregation. Forty Christian educators from 7 churches attend an all-day Saturday Imaginal Education Workshop in Brunerton.

Internal: New time design finds all adults at breakfast four days in a row. Experienced new images of world's impact on church and the requisite response in study of Segundo, Chapter 5. Ecclesiola shared with E.G. turns Thursday evening Happy Hour into chaotic humanizing.

Contradiction: Still groping with follow-up model for laymen and clergy who attended our local church dinner (Field Visit)

Religious House: Los Angeles

External: Covenant with 13 clergymen relative to pre-Galaxy training quarter, an RSI with 25 participants from 2 metros, creation of bi-metro modules, and inviting regional colleagues to Regional Council are signs of the continuing resurgence in LA.

Internal: Mardi Gras (Fat Tuesday) marked by pancake eating contest, followed by 6:00 a.m. observance of Ash Wednesday at Catholic service and a day of fasting. Ecclesiola celebrates the quarter with The World Turned Upside Down steakhouse and Chez Joi nightclub.

Contradiction: In the midst of the resurgence in the region, we have to create models to train and sustain troops in anticipation of future demands.

Religious House: Phoenix

External: LENS recruitment explodes as key community action group earmarks \$2000 to underwrite 50 participants from their organization, while reserving \$1000 to underwrite a followup they have entitled a "convocation."

Internal: RSI pedagogy weekend is a happening which renews our power as E.G. experience power during the week-end in the desert with Don Juan.

Contradiction: So many Phoenix City leaders want to go to LENS that we seem to have a city guild coming before the parish guild; hence we wish to run.

Religious House: Billings

External: Secular guest night explodes with excitement as guests set conversation spinning, express delight at first encounter with charting methodology, and end evening by suggesting they bring pot-luck dinners next week for another session.

Internal: House hunting continues amid struggle with strategic location, adequate size and financing. Current finances get a boost as House members figure tax returns in corporate session, then get loans on refunds to help pull us out of the hole.

Contradiction: Feeling that a hesitation step could cause the entire dance to halt even though we know we're the best on the floor.

Religious House: Denver

External: Regional presidium held in Colorado Springs. Galaxy finds central meeting place, Lakewood Presbyterian Church, which is showing signs of being 4th church in Galaxy. Two Academy grads return as a sign to the region.

Internal: House Church setting for celebration by House members and Yost family of the announcement of plans for marriage of Rebecca Moon and David Yost. Freida Elliott returns from Academy and joins her family Don, Cindy and Tom, in sojourning until summer.

Contradiction: Bound by previous recruitment models rather than accepting absolution and open future.

Religious House: Rapid City

External: Air Force Captains at Ellsworth Air Force Base finish 4th session of clergy collegium - all asking for programs to be used for lay people - BTS, SMS and Academy recruitment becomes a major thrust. Galaxy Week II builds yearly contradiction and is excited with new manual and methodology.

Internal: Eggs Benedict for breakfast celebrated the Coffman/Newkirk wedding and House send out to Chicago. Wednesday am/pm Lenten acts and fast begins the Lenten season.

Contradiction: Financial situation sapping strength and resolve.

WINNIPEG

Religious House: Anchorage

External: After a great RSI Week 7, we had a signal follow-up with 75% returning to ask "How can we participate further." Sent Prior to Fairbanks Metro for ITI recruitment and began nitty gritty planning for first Regional Council to be held in the Anchorage metro.

Religious House: Anchorage (continued)

Internal: Two grads return from Academy, move into House, and one finds job in two days. Transferred regional mailing list from worn-out cards to a computer, and made decision to symbolize Lent by fasting on every Wednesday until Easter.

Contradiction: With the ITI staring us in the face, what is the story that will break people loose to participate.

Religious House: Edmonton

External: Signal forays for LENS course March 29-31 in midst of ongoing visits; one 400 miles away at Proctor & Gamble in Grande Prairie, Alberta, and the other at Department of Northern Development.

Internal: Order: Ecumenical Symbolic ceremonies conducted at House Church: Hanging of Iron Cross, reception of Art and Dolly Rowe, and of Mrs. Lionel Rowe, Art's mother, as a new Phase IV intern

Contradiction: We can become turn into the world, not on behalf of the world.

Religious House: Saskatoon

External: Last Week II of teaching quarter jammed full with adult RSI, E.G. RSI, Galaxy Council and Regional Presidium; meanwhile House members also participate in World Day of Prayer service and Town Council Meeting

Internal: Region moves toward greater participation in House activities as brand new RSI grads stay for Presidium and House Church. Galaxy E.G. join with House E.G. for morning preschool 3 days per week. New Lenten decor rehearses the journey of the Cross.

Contradiction: Increasing participation by regional grads reminds us once more that we should use our catalytic style instead of our do-it-yourself kit.

Religious House: Winnipeg

External: Week of urgent prayer culminates in Winnipeg's first LENS with all phases represented and half of the participants grounded in the parish.

Internal: One day a Religious House, the next day a Training Centre requires flexibility of House members.

Contradiction: Deciding that qualitative depth as well expansiveness is required when we'd prefer to be overcome by winter doldrums.

HOUSTON

Religious House: Amarillo

External: Follow-up meeting for 5 RSI grads from Clovis polis spirals into 20 as old grads and clergy join them. First Guild orientation meeting with core leadership from parish elicits affirmative response

Internal: House reluctantly concludes study of Segundo by creating exciting holding chart of whole book. Winning school spelling bee shifts from excitement to dread as Bruce Lanphear realizes he bears responsibility of representing school in County contest.

Contradiction: Shifting response from 'yes' in the context of other priorities to 'yes, come hell or high water.'

Religious House: San Antonio

**External:** Preliminary parish contacts, PLC calling for quarter, and Regional Council prep kept the House focussed on the mission. Key colleague decides to attend BTS.

**Internal:** Laid plans for housing 65 at new facility, continued the push toward achieving the style needed to be a sign to the bi-metro in House preparation. A week without gas and hot water.

**Contradiction:** Almost getting sucked into the quicksand of House preparation forever.

Religious House: Oklahoma City

**External:** All plates spinning as 60 are at RSI tables in Ada - 34 for adult structure, 26 for E.G.; 19 gather for PSU to designate first parish sign and take practical assignments; 26 Central City Parish clergy gather at luncheon (8 denominations) and request follow-up mtg.

**Internal:** First among equals engaged as planning consultant by Conoco executives anticipating May executive refresher (provides significant new income for undetermined period.)

**Contradiction:** To build strategic plan which will actualize Metro Task Force.

Religious House: Dallas

**External:** Key RSI happened in Midland Metro with 22 around the table.

Systematic clergy visitation begins in earnest, and brings the discovery of a number of old friends.

**Internal:** House decor jumps ahead apace and we begin to look like a real Religious House, with the assistance of a work team from Houston. Massive painting of the halls and entry way of our building make a significant community sign of its new occupancy.

**Contradiction:** Need for corporate strategizing to assure that tactical approach to authorization conveys servanthood style, but without taint of any kind of apology.

Religious House: Tulsa

**External:** LENS marketing workshop brings to the House for the first time a powerful group including doctors, lawyers, and businessmen. Depth issues uncovered and battleplan initiated for quarter IV LENS. Regional Council gives reason for broad base calling and story telling.

**Internal:** Third consecutive week II with House clearly operating as Way Side Inn, playing host to regional priorship, Galaxy couple from Chicago, regional colleagues and Centrum guest as Regional Galaxy Council takes place. Intern room preparation and kitchen painting point future

**Contradiction:** As we dig into the PGX how to give time, focus and missional direction to grad groups already in being some distance from the parish.

Religious House: Houston

**External:** Metro/LCX meeting begins training of local congregation (Locon) teams for new penetration emphasis; pre-guild has its first meeting with 7 parish people present.

**Internal:** Gift of 13 new 18" teak finish tables transforms collegium room; Mike Reilly received as intern and David Ogren sent out to finish PhD as he completes his internship.

Religious House: Houston (continued)

Contradiction: Finding the courage to commit ourselves fully to the new models and methods as the life-giving hope of the future before they have proved themselves trustworthy.

Religious House: New Orleans

External: Two signal events mark the direction for the future: 1) we receive our first formal endorsement by the Executive Director of the Mississippi Religious Leadership Conference and 2) significant businessman, a new LENS grad, says firm yes to first guild meeting.

Internal: In the midst of intensive nitty gritty regional council preparation, the spirit of the House breaks loose in wild singing, extemporaneous cabaret acts, and deep healing laughter - "Who can explain it, who can tell you why?"

Contradiction: While in Baton Rouge the mood of fascination at being the movement has swept the countryside, in Mobile and New Orleans grads remain trapped in 'fear' of the demand: How can we ignite fascination?

Religious House: Memphis

External: Galaxy warboards begin to take shape, emerging with as much uniqueness as the churches they represent. Our spring Academy recruit signs her money-on-the-line, and will be the first Galaxy member to attend Academy.

Internal: We begin preparation for March planning month, with detailed time line of events as part of the long-range visioning, and more immediately plan the Regional Council. We were not happy to see Segundo come to an end, and so we included him in our March spirit life.

Contradiction: Frantic doing without the necessary visionary planning leads to passionless expenditure--we concur with Brussels' image of needing less time to talk with Satan.

Religious House: Atlanta

External: Parish Guild Core meets and sends East Lake 5 parish brochure to the printer. Atlanta clergy collegium continues with a predominance of Catholics and Blacks. First Charlotte/Raleigh bi-metro meeting includes Don Quixote, Don Juan and Moses as distinguished guests.

Internal: Doug and Vi Walters begin their intern year amidst flurry of Regional Council preparation and House resettlement. Odyssey preparation in final stages as both Tolman and Norton are assigned to continental teaching. Two registrants sojourn Week II.

Contradiction: Waiting for the orders of the day to descend.

Religious House: Miami

External: Tampa holds Week 8 RSI breaking open Methodist Church of PLC grad apstor already in Metro Cadre. IRM takes step forward at Miami Dade Community College with two presentations around sanctification triangles, social process triangles, and spinning on Hunter-Warrior.

Internal: House falls below danger point financially but builds strategies to enable adequate missional engagement through spring LENS and PLC before turning on afterburners. Mark Fugina family decides to intern.

Contradiction: How to release engagement in the face of white hot lucidity about cruciformity.

## CHICAGO

Religious House: Wichita

External: Parish Guild work is intensified as the cell has its first meeting to begin LENS marketing strategy and House extends collegium to 90 minutes of practical work on the Guild. Research on Wichita exposes early churchmen to have been the "hardest drinking and deadest shots, and deeply committed to the faith."

Internal: Received the Sutterer family; Larry, Linda and Luke as new interns; bringing number of souls to 22. Advance on financial contradiction sends out 5 on second jobs for at last next 5 weeks.

Contradiction: Building the story which allows the whole metro to stand present to the guild experiment on its own.

Religious House: Lincoln

External: With Galaxy Auxiliary, began serious look at Omaha re-gridding and analysis during Week 9 metro council.

Internal: Sent Turner children out as the Turners return from 8 weeks of Academy. New void in internal life.

Contradiction: Throwing selves into the coming quarter without commonly held battleplan.

Religious House: Kansas City

External: Follow-up on 30-man Wk. 7 RSI finds willing and excited (and fresh) colleagues ready to continue meeting for next 4 Sunday afternoons in a row. Lesson was that when you recruit, enable and teach RSI well, colleagues will fly to the fore.

Internal: VISTA volunteers in Westport come to House and spin about efforts with elderly, revealing to us that one-fourth of Kansas City's elderly live in Westport. When asked what their major problem was, the response was "...people's images." Sent out Dillinger children.

Contradiction: What do we do so that the discontinuity month isn't experienced as the "same old grind" with a different name.

Religious House: Minneapolis

External: Whittier parish has its first guild dinner, with small but excited community representation. Prospective Galaxy clergy and Auxiliary couples are nibbling at BTS with one auxiliary team already on the hook.

Internal: House welcomes Ruth Tickner from Saskatoon and we begin to look forward to the weddings in Week 10. A splendid mardi gras with metro, Galaxy and House sends us into Lent.

Contradiction: How to be the glue that holds together the thrust of the Movement in the region.

Religious House: St. Louis

External: A violent thunderstorm turns Parish Sign (painting the fence) into a direct demonstration of the Way Life Is as paint goes down the gutter.

Internal: Battleplan built to prepare House for ICA open house Week 12.

Contradiction: Discontinuous month coming in the middle of 26-week timeline tempts us to slacken our pace.

Religious House: Peoria

External: Champaign Galaxy becomes one radically corporate body as all auxiliaries work on one church's tactics, contradiction, and strategic objectives to catch them up to date.

Internal: Largest House Church of year celebrated with 27 seated, later welcoming Dick and Diane Best as new intern family from Rockford metro via the Academy.

Contradiction: Faced with reality of endless possibility but miracles are work - stance of doing 'just enough' and clear it's not enough.

Religious House: Milwaukee

External: End teaching quarter with a flourish: RSI - CSI - LENS follow-up - Metro Council - Parish PSU; leaving the House with Jerusalem in full view.

Internal: Lenten journey continues with Journal writing at breakfast, witnesses with common theme at Daily Office. Send out male Academy participant, he returns with 5 females - new recruitment tactic for House interns.

Contradiction: End of quarter still does not yield adequate model for minimizing course dropout - 28 registered on Thursday, 14 show up on Friday night.

Religious House: Chicago

External: RSI with 50 first time participants brought up images of the West Side with nostalgia and anticipation.

Internal: An evening of evaluational reports from stations to the whole House resulted in an exciting sense of one movemental task.

Contradiction: Maintaining the detachment of Lent in a swirl of celebration and work.

Religious House: Indianapolis

External: The journey of the spirit continues as an RSI follow-up in Louisville finds new colleagues, the metro catalytic cadre enters into a formal covenant and divides into task forces, and the Odyssey once again proves to be the tool that catalyzes concrete decisions.

Internal: Global consciousness is awakened by colleague Luz Bacerra from the Philippines attending House Church, Charles Moore spinning on the history of the movement in collegium; and an announcement of decision to intern by metro family.

Contradiction: Once the world gets stopped how do you get it spinning again.

Religious House; Cincinnati

External: Regional Council pushes at the spirit edge by pushing the turn as a sociological trend.

Internal: Visit from area prior Charles Moore recasts our images of the journey of the movement and focuses our eyes upon 1976.

Contradiction: Is it time to begin another quarter?...now?

Religious House: Detroit

External: Primal Guild sign is accomplished as striking posters appear up and down Highland Park's main corridors declaring "Highland Park - a Great Place to Be Alive!"

Religious House: Detroit (continued)

Internal: House self-consciously moves into Lent with Shrove Tuesday celebration at Chinese restaurant and Ash Wednesday celebration during Daily Office, and decision to have grits for breakfast during Lent. Spiritized collegium on RSI poetry brings us to exciting awareness of possibilities in choosing style. Ecclesiola Segundo review.  
 Contradiction: No breakthrough in where needed LENS day time visiting teams are going to come from.

Religious House: Cleveland

External: Polis team visits Galaxy to witness the renewed church - one member remarking that he had seen the ultimate. Four parish priests join East Side clergy collegium to study Segundo; one comments that he's not studied in depth since seminary.  
 Internal: Charles Moore addresses Ecclesiola with overview of movement history, enabling us to place ourselves in the 20-year march.  
 Contradiction: Task forces blocked by "planning" mindset - operating images don't release passionate action.

NEW YORK

Religious House: Pittsburgh

External: A PGX PSU and regional council both give new grounding to the Movement's vision and push timelines of crucifixion for Quarter IV.  
 Internal: The Order wedding of Michael Bellamy and Barbara Wismar enable deep celebration of all the covenants in which we find ourselves.  
 Contradiction: In midst of hectic preparations for the Council and wedding we are caught with our "models down" relative to effectively operating in the discontinuous month.

Religious House: Rochester

External: A LENS course of 50 addressed Regional and Galaxy colleagues deeply, and made initial inroads into Xerox and Kodak. A clergy collegium begins with 5 clergy grads, 2 Presbyterian, a Baptist, a United Methodist and a Lutheran covenanting through May.  
 Internal: Abe Ulangca returns from Academy to join his wife in a year of internahsip and finds us fasting, feasting, evaluating and planning.  
 Contradiction: LENS has now run its course through regional and Galaxy colleagues and in the spring we are faced with total participation of the parish community non-movemental people.

Religious House: Richmond

External: Week 8 RSI great success with 32 around seminar table. Twelve of these were from LCX churches. Development team turns on full steam visiting recent LENS grads.  
 Internal: Ecclesiola workshop on penetration and formulation with metro colleagues a spirit happening. Pedagogues and "risk" lab signal new decisions in caring for the other.  
 Contradiction: Remembering that it is impossible to hide from the way life is.

Religious House: Washington

External: Turn move (4th in a series) into 12-year-old Victorian Seminary into Regional Council and parish sign of miraculous impact. Visited 10 immediately neighboring families to get their "permission" to be there. Consulted with 25 key leadership of key Baptist Congreg.

Internal: The Lord has smashed old operating images of religious housing with the answered prayer of new facility - the pain and joy of the new creation happening. Three new sojourners and intern are part of fruit of Regional Council at new facility.

Contradiction: Living out of the fear and pain of our exploded situation rather than the fascination of our exploding missional dreaming.

Religious House: Baltimore

External: Having the RSI in the House made it all the more 'real' as thank you notes popped up in our rooms.

Internal: The Feast and Fast of Shrove Tuesday and Ash Wednesday intensified consciousness of the dynamics of feast and fast in every day life. House wants another RSI added next quarter after the great one this weekend.

Contradiction: Seeing RSI as a course to be looked forward to rather than an ongoing dynamic in our lives.

Religious House: Philadelphia

External: As sign of the future, Wk 3 RSI has all four Galaxy Churches represented as well as members from parish.

Internal: House pauses to reflect on where it is and has been both corporately and individually grounding facticity of hope. House makes necessary arrangements for massive shift to Order Council.

Contradiction: Draining troops by sending everyone to SMS in midst of planning one-day convocation.

Religious House: New York

External: Newark RSI course of 35 includes 2 key Galaxy Church couples and 22 staff members of Northside forces, Paterson, NJ; Academy grad returns claiming he'd been given back his life in 8 weeks. PGX and LCE dynamics catalyze emergence of Puerto Rican and Black movement potential in Lower East Side and Harlem.

Internal: Ten day trek intensifies time and space as 17 regional colleagues sojourn and dramatize inkeeper/servant roles; Ted Pederson received as sojourner; 12-foot truckload of in-kind furniture arrives from 5th Avenue apartment.

Contradiction: Shifting gears into planning and evaluation without losing missional momentum or focus on what the world needs.

Religious House: Garden City

External: Spirit events of Odyssey, RSI and regional Council preparation climax end of teaching quarter and build the momentum for Otr.IV.

Internal: Economic pole bends as House member breaks loose \$22,000 job releasing more troops to claim the promise of Quarter IV.

Contradiction: PGX demands pull us from strategic penetration design

Religious House: New Haven

External: Authorization and LENS recruitment continue to bat 1000 with a big nod from a parish alderman and the head of a powerful neighborhood organization. Poughkeepsie circuit ride produces two PLC probables including pastor of a strong AME church and an RSI site for spring. New Haven field visit sees a wild kind of joy burst forth.

Internal: House guildsman astounds employer by learning all operations on assembly line and advancing to line inspector in first two weeks of employment.

Contradiction: We need a story that tells us that we have all that's needed to deal with business and political leaders in the parish.

Religious House: Manchester

External: Leadership luncheon discovers potential colleagues as they respond "What do we do?" Regional LENS excites people that are critical to the community and the church including a Galaxy lay leader.

Internal: Sr. Helen brings her own guest to House Church this week, and afterwards they lead in resurgence songs. Both of the Sisters celebrated their years of service to the church - 50 total. House celebrates Ash Wednesday by attending early Mass at the Cathedral.

Contradiction: Discovering the methods that allow cautious New Englanders to move after RSI or LENS.

Religious House: Boston

External: The first LENS course in a year brings together 48 colleagues from all 6 metros including 7 participants from the signal parish - an exciting and crucial event for all concerned; a parish clergyman donates \$100 for LENS scholarship from the parish.

Internal: House Church brings together 16 guests - 8 of whom are from the parish. Segundo study completes five exciting weeks of delving into this crucial book. Ash Wednesday service an important event for the House.

Contradiction: With all the attention and focus on the House in the parish (House Church guests, etc.) how do we maintain a low profile or what is the secular religious anyway?

Religious House: Portland

External: Follow-up of new RSI grads promises new recruiters for Week 2 RSI - penetration momentum beginning to build.

Internal: Major internal models reworked for nonteaching month - new time design recovers in-depth corporate study and respiritizes every arena.

Contradiction: We now have many gifts we didn't anticipate.

## MONTREAL

Religious House: Toronto

External: Clergy visitation reveals a Roman Catholic priestly iron pillar in the desert about the same task as us, while Wk. II guild PSU works out the Six Honest Serving Men for 3 parish signs, revealing the need for a node and large blank wall.

Internal: Ash Wednesday reminds us again of our death and the passingness of all things emphasized by new urgency in the hunt for a new house for 50 people for 40 years in the most difficult real estate city in North America

Religious House: Toronto (continued)

Contradiction: Searching for a new house while intensifying the external mission at the same time.

Religious House: Ottawa

External: Local authorization gained by demonstration of social methods in community analysis workshop, participation of key Lutheran layman in regional Council and visit to United Church clergyman who reveals himself to be a spirit colleague.

Internal: Seeing what appeared to be a constriction of operations become radical possibility as arrangements are made for attendance at Priors Council, new job opportunities open up, and our landlady is wooed to a reduction in rent.

Contradiction: Need to develop a clear presentation of movement resources that beckons rather than frightens old colleagues and new contacts.

Religious House: Montreal

External: Galaxy RSI evaluation and LENS call backs coax a second crop of registrations on ground we've been sowing for nearly two quarters.

Internal: House ICA caller nets a five-figure job as Program Director at Canada's largest and more international bank and during first week encounters the executive from a company on whom she'd called relative to LENS.

Contradiction: What image qualifies our discontinuous month not as a lessening of efforts but as a shift in the form of our expenditure?

## CARACAS

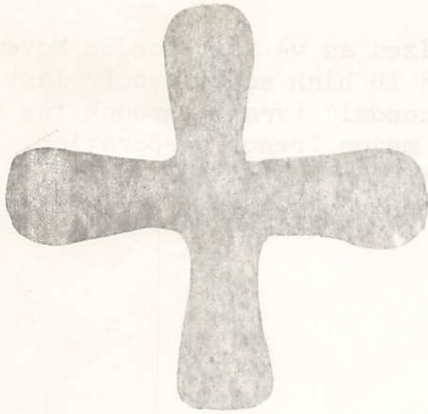
Religious House: Caracas

## BASE CENTRUM

External: History-making Priors Council opens with evening of song, and spin by JWM on Transpadane Christianity and the state of the global movement. The first Social Methods School (SMS) is launched with participants from Areas Madras, Bangkok, Hong Kong and Tokyo as well as all areas of North America; decor of parish grids from all localizes and globalizes the movement. Global trip team of JWM, Joe Crocker, Neil Vance and Rod Wilson depart to be joined by others along the way including Kemper building contractor Axelrod.

Internal: The Order shared in the creation of the David and Sherry Bryan Broadfoot family, the David and Patricia Newkirk Coffmann family, the David and Caroline White Marley family, and the Robert and Conna Compton Shropshire family. Emerging Generation moved to 3rd floor for ten days of marching "The Crimson Line." JWM homily impacts service of Remembrance of Ruth Haman. Welcomed back to Centrum after post-Academy visiting Fung Suk Yee and Kwok Tok Chiu of Hong Kong.

Contradiction: In the midst of almost overwhelming collegiality and sense of missional engagement, the temptation is to ignore the burden we know total responsibility to be.



I will not come with threats like a roaring lion.  
 No; when I roar, I who am God,  
 my sons will come with speed out of the west.  
 They will come speedily, flying like birds out of  
 Egypt,  
 like pigeons from Assyria,  
 and I will settle them in their own homes.  
 Hosea 11:10-11

## LONDON

Religious House: Glasgow

External: Last minute ITI Europe recruitment tactics yield one more 24 hours before. House members travel to Manchester to do enallement for opening. Edinburgh and Calton cadres meet continuing study of NSV and Imaginal Education.

Internal: Morning collegiums on long range strategy sets context for evenings painting rooms of new Wayside Inn. Send out Hockley to ITI as sign to region that you can take 3 weeks off from work.

Contradiction: Creating a real run at next quarter now.

Religious House: Bristol

External: Two more registered for ITI in last week. Participants and regional recruiters join with House members in celebrating the past 10 weeks of recruitment in a cabaret of song, mime and unforgettable skits. Participants commissioned and sent out by the Region.

Internal: Whole time and energy focussed on clinching last minute ITI prospects.

Contradiction: How to turn a vague invitation for a course in January 1975 into a definite commitment for RSI in May 1974.

Religious House: ManchesterReligious House: London

External: ITI London has fantastic opening, with some sixty people from Area Paris, Frankfurt, Brussels and London. Opening addressed by Joseph Slicker and Bishop Theodore Wickham, Bishop of Middleton, Church of England.

Internal: Guests received from Chicago Centrum, Australia, Canada and many regional colleagues. House celebrates at Greek restaurant to symbolize the turning of attention towards a 30-course schedule with a don't-fail principle operating.

Contradiction: Building corporate mindset in relationship to geographical and sociological battleplans.

PARIS

Religious House: Paris

External: Speaking engagements at an English-speaking Catholic school parent teacher organization and a French business college open possibilities for penetrating the educational establishment and the Roman Catholic Church.

Internal: Wayside Inn dynamic is dramatized as we host London Movement colleagues Jeff and Marge Parsons and 16 high school youth last Wk. II. One battle won in the war with the economic tyrant through the securing of an executive secretary job with a major French corporation.

Contradiction: How internalize the screen that holds all arenas of the mission and the next 40 years and informs day-to-day activities.

BRUSSELS

Religious House: Brussels

FRANKFURT

Religious House; Frankfurt

NAIROBI

Religious House: Nairobi

BOMBAY

Religious House: Bombay

DELHI

Religious House: Delhi

External: RSI in Allahabad strengthens Roman Catholic authorization and recruits the Bishop's top educationalist to LENS. ITI Delhi looking more like movement training school as 4 more registrations fees are secured.

Internal: Hong Kong Development Centrum concept becomes clearer for House as Joe Thomas, John Patterson arrive in Delhi, celebrate House Church, and spin on ITI funding.

Contradiction: Maximum use of House in minimum amount of time to obtain maximum number of ITI registrations with minimum of cost to create the necessary sign.

MADRAS

Religious House: Hyderabad

SINGAPORE

Religious House: Kuala LumpurReligious House: Singapore

External: Regional Council held with key regional leaders in attendance. Decision made to intensify the focus of regional leadership on corporate spirit analysis of the church in Singapore and the application of corporate problem-solving methods to assist the regional leadership.

Internal: Joe Thomas and John Patterson arrive to push the area development machinery into high gear. David Scott returns with exciting reports on his Indonesia trip. The House focuses on section planning and intentional decor of the new Singapore House.

Contradiction: Enabling more of our colleagues to realize that they are responsible for both the fantastic things which have happened in the Church in Singapore and the future of the Movement here.

Religious House: Jakarta

HONG KONG

Religious House: Hong KongReligious House: Kaohsiung

Religious House: Manila

**External:** Teams return from teaching trips with reports of the largest course ever: CSI/Im. Ed for 232 in Sagada, and a total of 392 in four courses, including 2 PLC's.

**Internal:** Meanwhile, back at the ranch, Philbrook led a fantastic 2-day workshop for more than 200 faculty and guests at the International School; and we had the smallest Ecclesiola of the year as nearly everyone was out pedagoging.

**Contradiction:** How to keep LENS recruitment and ITI development together but distinct when we are asking money of the same people

Religious House: TaipeiReligious House: Cebu

**External:** Invitation for breakfast at the Catholic Chinese Parish opened doors with 25 key Chinese families and produced 50 pesos and a promise of 150 pesos more for development. Regional Council celebrated Lapulapu 5 with ITI and RSI grads - and opened with a cabaret.

**Internal:** Msgr. Ortiz with 4 other priests and companions visited the House. Jaime Vergara from Manila and Rudy Mayol from Tacloban metro joined us for council. Upstairs bathroom renovated and concrete walk land from the gate to House now named the "Ortiz pathwalk."

**Contradiction:** Holding the tension between responding to immediate demand and doing the depth brooding to discern primary contradictions blocking new breakthrough, especially in relation to new intern families

Religious House: Davao

**External:** Week marked by first regional council to be held in the Davao region.

**Internal:** Excitement of in-kind contribution of one dozen chairs symbolizes possibilities for future in-kind development.

**Contradiction:** Building next quarter's battleplan while meshing several pending timelines without having all the data related to them.

TOKYO

Religious House: Seoul

**External:** PLC held in Seoul had 28 participants and included one clergy couple and 3 Holiness pastors. For the first time a movie was used in the PLC when all went out to see "The Poseidon Adventure." Sent out Harry Wainwright to Tokyo to teach in a PLC.

**Internal:** We began Lent with a collegium on the church year context and celebrated Ash Wednesday with the hanging of a new purple reredos. The collegium room now has a set of colored Other World charts with the corresponding montages along the bottom.

**Contradiction:** The small number of work-in troops who have been totally engaged in teaching 10 courses this quarter has blocked us in LENS marketing, ITI set up, recruitment, and development, and holding our scheduled 14-metro Ecclesiolas.

Religious House: Fukuoka

**External:** Hiroshima PLC follow-up opens up possibility of three future courses, secures blessing of two Bishops and founds metro cadre in Hiroshima City.

Religious House: Fukuoka (Continued)

Internal: Collegium on Area research breaks loose initial 1200 year time line of history of Christianity in Japan.

Contradiction: Discerning what avenues fully open up Fukuoka metro to penetration.

Religious House: Osaka

External: Return follow-up on Nagoya PLC last March affirmed support and cleared way for further action with Roman Catholic priests. Regional Council continues strategic objective planning.

Internal: Planning month time design adds pedagogy as weekly dynamic while sojourners add helpful insights and new electric lightbulbs.

Contradiction: Everything is breaking loose and we're terrified of planning anything that might stop it.

Religious House: Tokyo

External: Held Tokyo RSI and PLC, host LENS advance team (Rafoses and Early) to finalize dates, set up LENS for Maryknoll Fathers. In ITI Week II PSU with Harry Wainwright, ITI memory becomes our story and recruitment and development machinery is built and mailed to Area.

Internal: In the midst of experimenting with assignments to 4 centrums and increased permeation, House welcomes sojourner Gav Williams. Sent Kenn Ellison to Seoul and Singapore. Ixtlan conversations during Week II's guide us in the search for personal power.

Contradiction: Definition of arenas, organization design, and assignments for each centrum that particularize collegial nurture of region.

Religious House: SendaiReligious House: Perth

External: Region comes into clearer focus as missional families assume responsibility for Regional Council phoning, clergy grads are "spotted" on micro grid of Perth Metro, and LENS calls reveal deep concern of grad for Guild formation.

Internal: "Day of the Jackal" impacts us with the carefulness, precision and thorough pre-thinking required for tactical action; collegium exploration of our parish reveals EPX potential; last-minute cancellation of guests gives occasion for practice run on meal sophistication.

Contradiction: Pulling together our colleagues depth knowledge of the region and our grasp after the Turn in order to expedite moving to actual signs of the the Local Church Project and Ecumenical Parish Experiment.

Religious House: Darwin

External: TV appearance, weekly seminar steering committee meetings, and public statements of support by three key LENS grads launch promotional marketing in fine style. Leading businessmen and ICA staff prepare to spin visiting Prime Minister Goff Whitlam on future development.

Internal: Sent out geologist Steve Rhea to 1-month mineral exploration foray around Oombulgurri prior to impacting the Houston region.

Contradiction: Amidst frayed spirits and quick-draw tactics, how to get the most out of a Week II Regional Council dynamic that should last three weeks.

PERTH

Religious House: Houston (continued)

Contradiction: Haven't decided to trust indicative in the midst of the demand to shift style to work more intensely with local church and parish.

Religious House: New OrleansReligious House: Memphis

External: Three participants in first SMS in Chicago from the Memphis Region and return excited. Regional Council signalled by discovery that we had deep colleagues around the table, not interested friends.

Internal: Sent out troika to Continental Presidium and signed lease for new house in the parish to be ready for occupancy on May 1.

Contradiction: Have not yet created the revolutionary strategy to overcome our economic victimization and win the battle of financial stability.

Religious House: AtlantaReligious House; Miami

CHICAGO

Religious House: WichitaReligious House: Lincoln

External: The House has its authorization ties reaffirmed as Merel Zook, District Superintendent for the Lincoln district celebrates our House Church.

Internal: Presentation on Reinhold Niebuhr pushes House's consciousness in social morality. Arrival of new dishwasher welcomed by entire House.

Contradiction: Troop drain provides easy excuses.

Religious House: Kansas City

External: Explosion of events signals beginning of discontinuous month as Metro Council does parish pre-sign. St. Joseph holds RSI, follow-up structures continue for both LENS and RSI grads.

Internal: With priorship sent out to continental meetings, remaining House troops pull themselves into task teams in anticipation of final teaching quarter.

Contradiction: Formulation demands of this quarter tempt us to spend all our time tying up the loose ends and slide into next quarter's penetration tasks with quarter III's leftover prospects.

Religious House: Minneapolis

External: Incredible Regional Council with 70 in attendance. Several special guests (our eager alderman and a recent foundation contact) heighten the excitement. On the spot decisions by four people to attend BTS and SMS.

Internal: Preparation for double wedding welds the House together in corporate miracle creation.

Contradiction: How to hold the discontinuous nature of March, and still do the job that our 26-week timeline tells us we need to be about.

Religious House: St. Louis

Religious House: PeoriaReligious House: Milwaukee

External: RSI follow-up yields hot Galaxy auxiliary as 14 grads from one church attend. Regional Council explodes new possibility as people decide to participate in Academy and Summer '74.

Internal: First a local policeman drops in, the United Methodist Bishop arrives unexpectedly with Galaxy pastor and the House experiences the awe of a "Public Yes."

Contradiction: Experience ourselves as few (as troops attend SMS, BTS, and priors council) when actually we are many.

Religious House: Chicago

External: Closing of Pack 2 celebrated by 5th City which will enable the rehabilitation of 4 buildings with 58 units, amounting to over \$1 million

Internal: Spring cleaning by the whole House refurbishes Faculty West in preparation for spring quarter.

Contradiction: Continuing to pretend there is going to be planning time when we know that planning will get done in the midst of the momentum.

Religious House: IndianapolisReligious House: Cincinnati

External: LENS course held with many participants from parish as a tactic from 26-week timeline. Many left at end of course at colleagues.

Internal: House Church with many guests including 2 business women from parish. Also the House participated in a fast. Beginning Tuesday evening with a Mardi Gras, a delightful celebration attended also by sojourner and extended order family. Daily Office Wednesday morning started our sombre spirit journey on Ash Wednesday.

Contradiction: Pulling off our task within 26-week timeline calls us to decide sometimes on immediacy pole.

Religious House: Detroit

External: PLC recruitment continues in Highland Park is first registration is received from Toledo. Regional Council held with "On the Street where you live" theme. Charles Moore Area Prior address, Galaxy Band performance, and decor are highlights.

Internal: Charles Moore's presence and spinning with House brings the reality of global commonness once again. Week II celebration brings cabaret dynamic to pub as singing continues from Regional Council. Bill Lowe sent out to Pittsburgh to participate as best man in wedding.

Contradiction: Knowing our contradiction is still LENS, still have not created model for effective recruitment.

Religious House; Cleveland

External: New Women's Forum and 3 clergy collegiums rolling with momentum. Grad priest comments "This is what I've been looking for for 10 years" Groundwork being laid for replication - RSI and core curriculum mailing out for spring courses.

Internal: House experiences having more children than adults while House and metro members in Chicago - parish sign poster created during Ecclesiola sodality. Jack Gilles sent out to market LENS across North America.

Religious House: Cleveland

Contradiction: Waiting for answers from Chicago while there's much to do at home.

NEW YORK

Religious House: PittsburghReligious House: RochesterReligious House: Richmond

External: Metro makes trip to Washington DC and participates with 75 other colleagues in all day parish sign on the exterior and interior of the new regional House. Community story for third PGX pre-sign ready for Wk. II distribution. Recent RSI grad couple come to LCX sodality saying they see RSI everywhere.

Internal: House rejoices in the birth of Peter Nelson Ballard (the rock, and bold champion of the church) March 10, 1974. Intern changes job and comes up with better pay and better hours. Collegium on 1st John paraphrase allows Scriptures to come alive in our lives.

Contradiction: Remembering that new possibility is always the occasion for new life.

Religious House: Washington

External: Seven sojourners come to House while 12 from House attend Chicago events. Already the new UHN center serves Galaxy, Sodality, Metro cadres, and Galaxy Priors meetings.

Internal: In-kind push is on for bunks, tables, chairs, and desks. Receive hundreds of dishes from government.

Contradiction: Did not trust our timeline for being in new facility and therefore an intern lag.

Religious House: Baltimore

External: House participates in spirit-filled Regional Council in which parish sign is created, great corporateness is experienced, and two new metro colleagues stand out as spirit signs.

Internal: House welcomes Vinod Parekh and Ed Dillinger from Development who lead two helpful and meaningfilled collegiums. House sends out the Newkirks to their daughter's wedding and along with Fred Leonard to the SMS and priors council.

Contradiction: Despair over a lack of 'results' rather than facing up to our givenness, being thankful for it, and struggling with it.

Religious House: PhiladelphiaReligious House: New YorkReligious House: Garden CityReligious House: New Haven

External: Participated in neighborhood meeting on educational and crime problems in the parish. Prospective Galaxy pastor and wife came for House Church and stayed two hours discussing LCX.

Internal: House sends two priors off to priors council, and holds House celebration by seeing "The Sting." Found movie extremely addressing and releasing.

Religious House: New Haven (continued)

Contradiction: Maintaining missional thrust with no one "in house" during Day I and unclarity about what shifts are necessary for Quarter IV preparation.

Religious House: Manchester

External: Metro Regional Council high point was Ecumenical Parish report which created a sense of excitement for the 60 people present.

Internal: House Church with Boston people present - 16 adults, 7 children.

Contradiction: What's the next step for journeying people who are men of iron?

Religious House: Boston

External: A deeply exciting Regional Council brought together 58 souls to hear detailed reports on the South End 5 Parish, the Queen City Parish and the Munjoy Parish, ending in a great celebration in the evening; a field visit in Hartford metro for 33 persons; a 13-page Quarterly report on the South End 5 parish.

Internal: The exciting preparation for all of the above events.

Contradiction: How to triple the intensity and troops in the parish.

Religious House: Portland

## MONTREAL

Religious House: Toronto

External: Blast-of visit to ministerial of 15 gains permission for RSI speaking engagements. Follow-up to ministerial anticipated as booster launching. Sister stip is Regional Council where most guests come as family units.

Internal: House celebrates swirling the swirl of the past quarter by dancing and dining in a revolving roof-top restaurant. James LaTrobe received from Academy as sojourner, and Presbyterian deaconness ends visit of a few days.

Contradiction: How to break through our safari guides (realtors) image of white elephants (50-man religious houses) as extinct in this part of the jungle (Toronto).

Religious House: OttawaReligious House: Montreal

## CARACAS

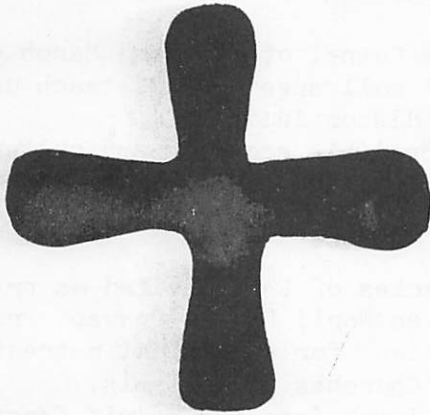
Religious House: Caracas

## BASE CENTRUM

External: Social Methods School concluded. The largest Basic Training School ever held in March had 175 participants. Continental Presidium had reports and informal but intense workshopping of 4 key arenas of concern. E.G. Crimson Line had carnival for Presidium and Student House had open house serving banana splits with money earned by student jobs. The moving of 3 Houses from Area Chicago to Edmonton, San Antonio and Dallas was symbolized and the new priorship commissioned.

Internal: "Our Town" celebration is highlighted by names and songs of parishes. Order celebrates with the Jack and Louise Ballard family the birth of their son Peter Nelson Ballard on March 10. Emerging generation moved back to congregation floors, and the congregations

reassembled for work night.  
Contradiction: As we wait for miracles from Development, economic decisions are made in the context of most immediate demand.



All peoples may walk, each in the name of his god,  
but we will walk in the name of the Lord our God  
for ever and ever.

Micah 4:5

LONDON

Religious House: Glasgow

External: First meeting of team and unit priors of Glasgow cadre signals increasing seriousness and broadening leadership in Glasgow. Seven from cadre join Saturday paint party as House takes shape and 2 copies of Castenada picked up at noon are bought by regional colleagues by 4.

Internal: Experience globality as we spend evening with Ross and Jean Smith just arrived from Sydney; receive letter from Mary Pitman, Wichita RSI grad studying in Scotland asking to sojourn. Victory as we win battle with telephone company to list House phone without paying \$150 deposit.

Contradiction: Tactics to slay demon that later is always better and to find sponsors for each Quarter IV course providing local rootage and recruitment.

Religious House: Bristol

External: Local church Ecclesiola scheduled to begin Week 12.

Internal: Transition from ITI to spring quarter marked by visit of area prior and redecor of House.

Contradiction: Creating models which allow us to shift from one thing to doing a multiplicity of tasks as one thrust.

Religious House: Manchester

External: Three leaders of a mature cadre in Newcastle journey 200 miles to demonstrate to an old fellowship group in Manchester what a cadre meeting might look like.

Internal: The House members are impacted by the awareness of many potential colleagues we had forgotten as we rediscover names and notes in mailing the 4-language European Lent card.

Contradiction: Forging a holding image out of a mass of strategies and tactics for marketing spring courses.

Religious House: London

## PARIS

Religious House: Paris

External: Second trip to Strasbourg yields concrete possibility for spring RSI in Region Geneva, Area Paris. Continental Centrum dynamic comes alive as Stan Gibson comes through on development and raises \$2800 for the Globe.

Internal: Daily Office, work with the Gospel of Mark and March evaluation construct in the midst of external full speed ahead, teach us something of the real significance of discontinuity.

Contradiction: Giving form to the incredible economic and cultural power of the Area in order that it become a sign to itself and to the world.

## BRUSSELS

Religious House: Brussels

External: Began Area Brussels 40 Miracles of Lent invited as preacher in Anglican pulpit as Brussels observes World Day of Prayer. Prior couple serve as 2 of 3 Protestant theologians for ecumenical retreat of American Catholic-American Protestant Churches of Brussels.

Internal: Forty Miracles turned Wed. lunch into NRM spirit feast as seven key women initiated first of 24 such events. House mails the "European Lenten card" in English, Dutch, French and German to 310.

Contradiction: The strong lighting, heavy cosmetics, special acrobatics and superman suits assumed to be ready at any time for occasions of double stress and duty fail for lack of regular exercise in peacetime drill.

## FRANKFURT

Religious House: Frankfurt

External: Week of intensive LENS work with Steve Allen concludes with leads into the Ministry of Economics as the high point. Mailing of invitations to Frankfurt and Berlin PLC's in May and June plus breakfast send out of ITI participants leaves us sensing ourselves in Qtr. 4

Internal: Inger Bartram joins ITI staff in Manchester of 14-hour notice. Collegiums devoted to evaluation of Qtr. III. Way station dynamic proves to be of material as well as spiritual value as guests leave refrigerator and stove upon finding themselves a new apartment.

Contradiction: Packing power into Week II's while still going full speed in Week I.

## NAIROBI

Religious House: Nairobi

External: LENS and PLC registrations continue to come in.

Internal: Work to prepare and transform a "garage" to Great Hall consumes Week. II.

Contradiction: Transforming all the 'very good' responses to concrete yes and support.

## BOMBAY

Religious House: Bombay

External: ITI planning meeting sends out team to recruitment circuit ride, bringing in 5 paid registrations from Nagpur and more to come Pune and Bombay recruitment intensified.

Internal: Return of circuit riders - briefly. Welcomed Joy Thomas with Ajit Fisher.

Contradiction: There are many things to do while walking in the one direction toward Jerusalem.

DELHI

Religious House: Delhi

External: Whole House on the road as priors gather in Bombay, circuit ride to Jaipur, return, regroup, pick up the E.G. and journey to the ITI site in the mountains. ITI and LENS gain momentum as key colleagues register and priority institutions sponsor people requested.

Internal: House Church celebrated with old colleague who adds LENS to his ITI and IRA decisions. House impacted by vision of the SIR article and spins on resurgence and the guild.

Contradiction: Enabling priority colleagues to register an affirmative decision for ITI, IRA and LENS within our timeline.

MADRAS

Religious House: Hyderabad

SINGAPORE

Religious House: Kuala Lumpur

External: Week of celebration as colleagues in Seremban Metro Ecclesiola and the Regional Council experience the releasing vision of RSI as the answer to the needs of the local church.

Internal: Wednesday Lenten celebration gives new context for the struggle with the Solitary Office, and decorating for the Regional Council re-emphasizes the power of symbols.

Contradiction: How to permeate all metros with the new burst of missional excitement experienced at the Regional Council.

Religious House: Singapore

External: Development wheels begin rolling as Centrum personnel accompany James Oberg on Kuala Lumpur development trip. Priors arrive from Sydney, Tokyo and Hong Kong Areas.

Internal: New House is transformed as everyone in the House works on the yard, decor building, and construction of new rooms. Walter and Myra Morris, parents of Scott Morris, arrive on a 2 1/2 week trip to Singapore, just in time to get involved in the transformation of the House.

Contradiction: Enabling more of our colleagues to realize that they are responsible for both the fantastic things which have happened in the Church in Singapore and the future of the Movement here.

Religious House: Jakarta

HONG KONG

Religious House: Hong KongReligious House: Kaohsiung

External: Visits with two Bishops who respond with excitement to ITI plan and visit with key colleague in Chang Hua metro who says yes, reveal promise of the future as hierarchy and grassroots seem ready to move.

Internal: Kenn Ellison exictes us with report on Tokyo Area, especially with the promise of ITI Seoul and Korean authorization possibilities.

Contradiction: How do you decide to expend life in nitty gritty without sacrificing corporateness or globality?

Religious House: Manila

External: Fishel and Morrissey seeking ITI sites as Fishel prepares for Singapore meeting.

Internal: Grace Bacerra celebrates her tenth birthday. Working on a church school curriculum to meet Linda Istrella's ordination requirements gives House a corporate task.

Contradiction: Knowing we should be doing something about ITI, while waiting for results of Singapore meeting.

Religious House: TaipeiReligious House: Cebu

External: Father Morrissey's team swings through Iloilo firming up the Manila ITI authorization and leads the priests there with a recollection. House engages in Week II problematting of the Lapulapu 5 Guild project situated around the Religious House.

Internal: After building intern prayer chart a cable is received the next day with an inquiry from an intern we had weak hopes for. Second employed intern brings home first pay. Built model for Philippine Houses' travel pool to the elders' visit.

Contradiction: Doing tactical planning for impact courses next quarter and doubling the size of the House.

Religious House: DavaoReligious House: Seoul

External: Regional Council held with 39 colleagues in attendance planning for 11 courses with 4 more requested. Received a report from Rev. Hong Jong Taik, pastor of Sudaemoon Methodist Church, on the application of the methods of the spirit movement in worship and the style of family.

Internal: Ecclesiola was held with 27 colleagues to welcome Lee Early for LENS marketing and Kenn Ellison for one-year planning.

Contradiction: It all feels like Quarter IV is here and we have no battle plans or timelines.

Religious House: Fukuoka

External: Initial contacts made with several authorization figures with eye to spring penetration calendar.

Internal: Grand celebrational House Church symbolizes reassignment of the John Hikari Goto family to Kagoshima metro. House evaluates past quarter and initiates sojourning dynamic as the Art Bezanson family stops en route to Pochtella, Idaho.

Contradiction: Modeling the tension of needing to move now on fronts where the overall models are unclear.

Religious House: Osaka

External: Osaka Catholic priests and laymen take part in two strategy sessions planning the future for their churches, Orders and Region.

Internal: Charting was reengaged as life method when Fr. Gossens taught Tillich in House pedagogy. He was then sent out after one month sojourning to use the methods in his local church.

Contradiction: Key Japanese clergy blocked by last minute "situations" from participating in regional strategy meeting.

TOKYO

Religious House: Tokyo

External: The Regional Council, the regular meeting of the Tokyo Metro cadre and a special meeting of Japanese movement 'elders' (all held this week) points to a new relationship of House to Region especially in the arena of visitation.

Internal: The war board gestalts our tactics and the new centrum assignments enable us to hold the missional complexities together as one thrust.

Contradiction: Coordination between Day I and Day II troops so that the mission is continuous.

Religious House: Sendai

External: Jane Clare Teller goes to call on local priest in Koraima, gets lost and bumps into a nun from Boston who is key to extending our work there. Instant collegiality!

Internal: Do particularly helpful quarter evaluation in one 24-hour period, along with 3 job interviews, one open house visit, and two English classes.

Contradiction: How to keep the gifts of the present and past, making the necessary image shifts to move to the new indicative.

SYDNEY

Religious House: Perth

External: Phoning colleagues for attendance at Regional Council offers opportunity for 'meeting and depth conversation with those not previously met. LENS grad visits begin to open up sponsorship possibility

Religious House: Perth (continued)

Internal: New house proves allergic to masking tape and drives us to consider a more sophisticated method of fastening decor. A student moves us to depth issues in a sanctification lecture, and enables us to see that it has been a week of divine benevolence.

Contradiction: Doing adequate backup preparation to allow the region and metro to experience miracles like they have never known.

Religious House: Darwin

External: House awed by presence of Prince Phillip and Lord Mountbatton at key church worship service. Phillip reads "pick up your bed and walk" passage and then tours PGX area. All LENS systems 'go' as guilds men marketing meeting fills out file of 600 prospects and House invites 185 to Elders visit barbecue.

Internal: Consolidated forces into two stations to add power to LENS - authorization and PGX. Regional Council dynamic sees completion of 18-month projection and Quarter IV plan.

Contradiction: Clarifying assignments of all troops, in and out of House, to impact arenas for maximum effectiveness.

Religious House: OombulgurriReligious House: AdelaideReligious House: Melbourne

External: Metro cadre decides to take primary responsibility for RSI and PLC recruitment and engages in detailed planning to launch recruitment Week of LENS phoning and marketing confirms decision to aim at top level management as proposal mailing goes out and vessels come in.

Religious House: Melbourne (continued)

Internal: Move to new location completed with colleague assistance, and we are impacted by shift in image of House as gracious space. One colleague comments during meal "It's quicker to go to the store than the kitchen." Morning education collegium led by youth is highlight.

Contradiction: Having a story that tells us we can still go to the church when the encounter with the world is so exciting.

Religious House: Sydney

External: Area LENS coordination continues as Sheldon Hill, Rod Andrews, Garnet and Lis Banks are sent out to Melbourne, Adelaide and Brisbane. Signal happening in Brisbane as large mining company sponsors a 3-hour LENS appreciation for management of several large companies.

Internal: House lists 82 Movement happenings across the globe since July in a signal collegium. Radical alteration of external presence as the historical accretion of the years is removed from the grounds. Internal life manual for quarters III and IV published.

Contradiction: Immediacies assume missional priority when gaps appear in battleplans relative to time and troops required.

Religious House: Brisbane

External: Regional Council anticipates Week 13 Dr. Lao circus of Field Visit, Metro Cadre celebration, clergy breakfasts, BTS and NSV consult Mailing breakloose in every direction; and LENS recruitment focuses on 24 follow-up proposals and an outback breakfast.

Internal: House roll call constantly turns up new bodies, as Metro and Areal troops focus on Regional Council, LENS recruitment and Week 13 preparation; St. John releases us to climb the ladder rather than the walls.

Contradiction: Waiting for orderedness to emerge out of the wild diversity of our missional engagement, rather than embracing the role of being the perpetual orderers.

SUVA

Religious House: Majuro

External: Signs of 'agreement' are everywhere as Marshallese leadership and grassroots are released by JWM sermon at the Temple Protestant Church. The sermon declared that to praise God in the 20th century means to reappropriate the ancient memory, to develop the economy, to reformulate the community and to claim a million square miles of "Ocean Continent" as the new Marshallese nation - on behalf of mankind

Internal: House members are declared to be "New Marshallese" by Rev. Jude Samson at a dinner where some 50 Deacons of the church honored the elders team with gifts, songs, and a cabaret of introductions. Needles to say, space expansion and intern cultivation become our focus as we send Elders and Larry on to Singapore.

Contradiction: Giving radical enough form to the 'yes' that is being said to enable the necessary creative leap into the future.

Religious House: Apia

External: Continued focus on staff nurture as House visits various teachers on Tuesday evening. Staff welcomes David Swanson to Methodist High School as he takes over classes vacated by the appointment of new headmaster.

Religious House: Minneapolis (continued)

Internal: House celebrates the marriages of Steve Harrington and Ruth Tickner; George Toth and Elizabeth Smith. Clergy from five different denominations (Southern Baptist to High Episcopal) officiate.

Contradiction: Standing accountable for the whole mission when it's only possible to stay on top of a small part of it any given time.

Religious House: St. LouisReligious House: Peoria

External: Stories humming from those on return from SMS, BTS, Presidium and Council. Intern Rev. Gordon Blauvelt installs minister in First Christian in Bloomington with charge to pastor.

Internal: Many new jobs acquired, most are #2 and economic intensification begins to pay off. Shifts in team and time design both enable and intensify corporate life.

Contradiction: With increasing demand for all tasks to be done 'par excellence' find ourselves and colleagues dangerously close to perversion of professionalism - and then paralysis.

Religious House: Milwaukee

External: Metro RSI group recruitment training brings forth the melding of old and new grads yielding forty excited spirit colleagues ready to sign up as well as recruit. The House servant role is diversely manifest in ways such as cadre participation, preaching and teaching.

Internal: House celebrates coming of Academy grad, Pauline DiMaggio as sojourner. Parish task force does unblocking exercise, shifts image of what it means to be engaged in the parish.

Contradiction: Need of one comprehensive battleplan to cover all missional arenas.

Religious House: Chicago

External: limosines with police escorts bring several dignitaries to view the 5th City Health Outpost facilities on Tuesday. Dr. Malcolm Todd, President of the American Medical Association and Mr. Ervin France, Administrative Assistant to Mayor Daley and the Executive Director of Model Cities were among the visitors. They came for a 10-minute drop-in visit and stayed for over an hour.

Internal: Station lines were erased as everyone met at 5th City station one night, as penetration station the next night and as management station the third night. The signal event was a 4-hour Phone Power seminar in which the whole House was instructed on use of the phone.

Contradiction: Expanding our structural response in the ecumenical parish fast enough to greet the possibilities in the areas of youth, family and education, all jumping out of Pandora's box at once.

Religious House: IndianapolisReligious House: CincinnatiReligious House: Detroit

Religious House: Cleveland

External: St. Louis clergy Consult construct provides grist for meeting of Galaxy pastors who review and prepare to put into action at 5 meetings of clergy set up for Week 12. We're grateful for practical wisdom exchange that happens at priors council.

Internal: Chicago returnees provide boost with new context, embodied in models, songs and workshop results from SMS. Workshop on charting the last 15 years provides a new perspective of our times and enables depth reflection after viewing WWII movie.

Contradiction: The roadblocks that were removed by last quarter's tactics have resulted in an avalanche of possibilities that are needing to be met with immediacy rather than with the depth that battleplanning enables.

NEW YORK

Religious House: Pittsburgh

External: A trek into the parish reveals gifts and contradictions and pushes us to promise claiming for Liberty 5. Exploration of Galaxy possibilities continues.

Internal: Ecclesiola celebrates the return of House members from Social Methods School, BTS, Presidium and Priors Council. Reports call forth question after question about our edge and the future; answers set excitement and awe loose around the table.

Contradiction: How do we discern what demonstration sign will speak powerfully to the parish?

Religious House: Rochester

External: Watertown clergy luncheon nets excited response. One clergyman said "There are four of us. That should be enough for a Galaxy." Five Syracuse clergy covenant for four weeks.

Internal: House experienced new prioritizing dynamic as all 6 troika journeyed to Centrum for the week of Council.

Contradiction: Little time for planning Quarter IV creates anxiety as the calendar looms over us with luncheons, collegiums, courses.

Religious House: Richmond

External: Community elders catalyzed by ICA singing cabaret and community story distribution during intermission at Senior Citizens Dance. Twenty at LENS field visit with David McCleskey from Research Centrum provides spirit burst that self-consciously initiates the core dynamic.

Internal: Visioning collegium by David McCleskey on the future of the Movement immediately and long range excites House about dealing seriously with releasing of 50 families for the globe.

Contradiction: Deciding to give more when you'd thought you'd really given it all.

Religious House: Washington

External: Metro cadre dynamic intensifies as Northern Virginia cadre reviews vision and recognizes the same old demand. New Annacosta cadre is freed up by doing a timeline of the 60's. Parish research excites us as we learn there are 100 Order Houses within 2 miles of the House.

Internal: We continue settling into building as the sector offices are decored and new songbooks covered with plastic. Wednesday evening sess Galaxy, metro cadres and House meeting in different rooms in a fascinating swirl of metro dynamics.

Religious House: Washington (continued)

Contradiction: As the new tension of doing parish and entire metro becomes part of our lives, we find we are still doing rather than catalyzing others.

Religious House: BaltimoreReligious House: Philadelphia

External: Empty House and Region of leaders as we travel to BTS, SMS and Continental Presidium, which allows people to make new decisions about Academy, internship and S'74.

Internal: House spends week nights in the metro visiting recent RSI/LENS grads with the image of a relaxing night out on the town.

Contradiction: How to pull together all the possibilities.

Religious House: New York

External: Demonstration goes full blast as the priors are in Chicago while the region participates in LENS marketing training. Parish intensification brings one PLC call in Spanish that led to speaking date with Bronx Catholic clergy group.

Internal: The House set awirl in midst of St. Patrick's day parade, children sent to jail, social methods school debriefing, decor, team celebration, new sojourner (Laurel Seacord) new songs, Malay government official signs up for LENS, PSUs, whew!

Contradiction: How to be self-conscious of structures while maintaining the nonchalance necessary for exhilarating engagement.

Religious House: Garden City

External: Metro Cadre impacted with report of SMS; excitement was high in reflecting on the actual use of methodology. Penetration tactics actualized through US Post Office (mass mailing) and clergy calls involving the "whole church" approach.

Internal: House youth, Laura Ennis participates in high school musical extravaganza, "Fiddler on the Roof" and appropriates that story in her contexts.

Contradiction: Confusion still very apparent in our choice of story and style to approach the Oyster Bay 3 Parish.

Religious House: New Haven

External: Metro and House representatives attend LENS marketing session at New York area House.

Internal: Troika members return from Chicago with new insights and models for impacting the parish.

Contradiction: Reminding ourselves that our task is always accomplished regardless of the number of troops.

Religious House: ManchesterReligious House:--Boston

External: Nine sent out from House and region to Social Methods School with copies of the parish report on the South End 5 parish and the New Castle Square Child Development Center brochure; sent out mailing with a quarter report and next quarter's brochure. Three lined up for Academy.

Religious House: Boston (continued)

Internal: Had a small but exciting Ecclesiola which included a secular saint conversation and watching Anna and the King of Siam on TV; spring cleaning prepares us for planning and moving into Quarter IV.

Contradiction: Clear new images of bringing off the PLC and RSI.

Religious House: Portland

External: When our first choice says no, our second choice proves to be ready and eager to gun RSI follow-up in her congregation.

Internal: House has a chance to experience radical responsibility taking as three of six adults leave for Priors Council.

Contradiction: How do we all become seasoned, experienced, skilled revolutionaries - right now - to meet the demand?

## MONTREAL

Religious House: TorontoReligious House: Ottawa

External: LENS visits which break new ground in Canadian government departments and Galaxy pastor's decision to attend Social Methods School reveal reality of the church in one world.

Internal: Celebration of three new jobs secured this week herald decision to slay the financial demon, while Galaxy decision to assume responsibility for child care, enables House members participation at priors council.

Contradiction: How to lay dynamite charges to blast a frozen river, to transform underlying consciousness into visible action.

Religious House: Montreal

External: We send out six to BTS, one to Presidium including two new Galaxy clergy couples.

Internal: Our Canadian study book exposes to us that our criteria for success in Montreal in the past has been survival.

Contradiction: Continuing to risk for success when finances would have us pull back and insure survival.

## CARACAS

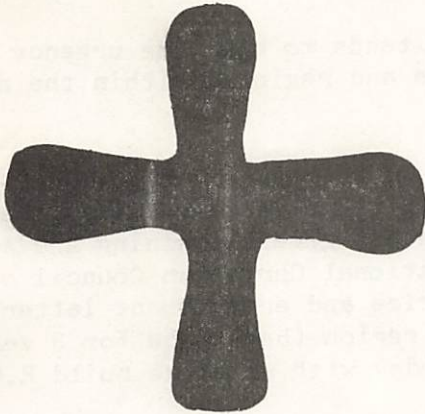
Religious House: Caracas

## BASE CENTRUM

External: Summer planning and recruitment begins in earnest with short term assignments to recruitment team. Development 'stings' with "An Evening with Henry Gondorff" telephoning continentally and is promised \$15,700 in one evening. Friends and colleagues visit including a visit from Ford Foundation executives and from Centennial parish in Winnipeg. Elders report first stops in Majuro and in Singapore with area priors.

Internal: Week II is exciting event as demonstration LENS lets all experience Impact Program. Quarter planning by Centrum begins. Banns are read for Richard Eugene West and Gail Jamieson to be married March 30. Major construction begins on 5th floor as materials are hoisted in window by 20-ton crane. Dick Talbott and Dawn Lingo graduate. Four families celebrate anniversaries in one week, including Morrills' 20th.

Contradiction: Radicalizing images and practical structures of global centrum relative to use of time, troops and finances.



Plv the sickle, for the harvest is ripe;  
 come, tread the grapes,  
 for the press is full and the vats overflow;  
 great is the wickedness of the nations.  
 The roar of multitudes, multitudes, in the Valley of  
 Decision!  
 The day of the Lord is at hand  
 in the Valley of Decision.

Joel 3:13-14

LONDON

Religious House: Glasgow

External: Signal week highlighted by a "houseful" of colleagues on Wk. II as area prior from London and colleagues from Manchester and Paris gathered for initial brooding on ITI follow-up, logistics for the area's 30 courses this quarter IV and Summer '74 recruitment.

Internal: A week of painting and ordering the House in preparation for Wk. II guests and the quarter ahead. Signal celebration with guests Saturday as we feast on Greek kebabs and have our first look at "The Sting" (everybody's got to see this one.)

Contradiction: Moving rapidly and tactically to complete getting the sponsors for Quarter IV events.

Religious House: Bristol

Religious House: Manchester

External: New colleague, an ITI participant, agrees to co-sponsor an RSI course in Week 7.

Internal: Visit to Glasgow House excites us about the possibilities of that facility, especially as we anticipate imminent move in Manchester. Viewing "The Sting" challenges our prowess as strategists. Driving through England's Lake District elicits the awe.

Contradiction: Molding the long term vision to inform the plans for the next 2 quarters.

Religious House: London

PARIS

Religious House: Paris

BRUSSELS

Religious House: Brussels

External: Forty Miracles of Lent highlighted by presence of a princess (House of Hapsburg) at NRM luncheon and addition of special CSI course in Brussels, and return of 32 for Amsterdam Scots Pres. Ecclesiola.

Internal: Work party transforms back garden and the windows to see it through Dutch Reformed pastor and wife are guests.

Contradiction: Anticipating the Miracle spin-offs in order that their effect be maximum.

## FRANKFURT

Religious House: Frankfurt

External: Lenten mailing and breakopen, search-em-out trips to Heidelberg, Mannheim, Darmstadt, Wiesbaden and Giessen on Week II begin self-conscious contact and cultivation with the "fringe" and the "friends" dynamics of the Movement.

Internal: European consciousness intensified as Jim Rowland from Brussels spends Wk. II calling with us and research on Europe historical timeline begun.

Contradiction: Mood of discontinuity tends to blur the urgency of getting to the "gaps" (unpenetrated metros and regions) within the next few weeks.

## NAIROBI

Religious House: Nairobi

External: Kenya Institute of Management (business training), Kenya National Council of Social Services, The Management Training and Advisory Centre (United Nations) and the National Christian Council of Kenya (to all training leaders) send out notice and endorsement letter for LENS.

Internal: Colleague from New Orleans region (been here for 3 years working with the R.C. church) spends Saturday with us as we build R.C. penetration and authorization model.

Contradiction: Turning great support and interest into confirmed reservations.

## BOMBAY

Religious House: Bombay

External: Extended circuit riding team reports to base and gets sent to Ahmedabad and Bhopal regions. Hosted tea for the Women's World Day of Prayer at the Ashram. Becoming a community node! ITI recruitment hots up while search continues for a site.

Internal: Welcomed Joe Thomas and John Patterson, delivering to them a collegium that recontexted development. It could happen here.

Contradiction: The vital step beyond good relations to revolutionary collegiality involves revolutionary tactics.

## DELHI

Religious House: Delhi

External: Visits with four Protestant Bishops produce reaffirmation and permission for clergy to take off 3 weeks for ITI and IRA, as registrations continue to steadily come in from top priority prospects across Areas Delhi and Calcutta.

Internal: Visitors Joy Thomas (en route to Hong Kong) and Mrs. Eleanor Lovett (Philadelphia LCE/EPX) report to House on London ITI and North America LCE-EPX. Subcontinent priors meet in Bombay for accountability on IRA/ITI recruitment, set up and practice planning and coordinating.

Contradiction: With House continually on the train recruiting throughout India and the April/May programme thrust less than 2 weeks away, how do you enable the corporate reflection on the implications of April/May so that we are prepared for the Lord's gifts in June?

## MADRAS

Religious House: Hyderabad

External: In 10 days of ITI/IRA recruitment, we moved from 3 registrations paid to 40. Recent RSI grad reveals his power to raise a hospitalized friend to life with "Your past is approved, get out of bed and go home" He did just that. Now he wants to continue his activities at the community level. Arrangements to teach 25 Jaycees conversational English.

Internal: In the midst of intensified ITI recruitment Ixtlan and complete redecoring of House provide the necessary interior strength to continue pounding the pavement.

Contradiction: We are still 20 people short for the ITI as set-up and program preparations begin to steal time from the necessary recruitment strategies.

## SINGAPORE

Religious House: Kuala LumpurReligious House: Singapore

External: Guild meeting with Elders and LENS grads present kicks off a series of appointments with Singapore grads assuming an increasing responsibility for the marketing of the May course. ITI planning force pushed hard in the areas of global comprehensiveness and area responsibility.

Internal: Singapore House greatly impacted by experiencing the House as full-to-overflowing with colleagues from Symbolic Centrum, Hong Kong Development Centrum, LENS marketing, Extended Order, and Areas Suva, Tokyo, Hong Kong and Sydney.

Contradiction: Enabling more of our colleagues to understand that they are responsible for both the fantastic things that have happened to the Church in Singapore and the future of the Movement here.

Religious House: Jakarta

## HONG KONG

Religious House: Hong Kong

External: Imaginal Education Course at Shum Oi Church with 60 participants entire staff of 2 schools, explores new possibilities for teachers and reinforces the power of demonstration school at Shum Oi.

Internal: Move to new temporary location accomplished in one day. Structure created to maintain corporateness while experiencing scatteredness.

Contradiction: Breaking through to new international business contacts that will release LENS recruitment.

Religious House: Kaohsiung

External: Authorization visits to Bishop of Chia Yi and to Tainan Presbyterian Moderator relative to ITI continues to uncover interest. Regional Council preparation takes place for the biggest one yet.

Internal: NRM lectures as means of intensifying the journey through Lent every week and Sodality on the Continents with emphasis on China this week reveal spirit deeps and global consciousness.

Contradiction: How do you get image across that ITI participation is on behalf of whole region...to those who attend and to those who stay in the region?

Religious House: ManilaReligious House: Taipei

External: Saturday AM PLC recruitment with all House and sojourners out on visits nets 4 registrations and 12 promises. Block marketing of LENS begins to pay off as first time and repeat corporations indicate their intention to send several men.

Internal: Depth spirit journey occurs as 4 colleagues spend Thursday night through Saturday at first Sojourn weekend. Decisions are significant as they make plans for the coming quarter.

Contradiction: During time of internal intensification we find mission intensifying and accelerating.

Religious House: Cebu

External: Teams sent to Dumaguete and Tacloban metros for development, intern prospecting and Quarter IV metro penetration planning. Third preaching mission of quarter in Lapu Lapu micro conducted with United Church youth group.

Internal: Collegiums and evenings spent in evaluation and planning. Wk. II PSU pulls together trends and contradictions for world, church and movement in region, in preparation for Elders' visit and Quarter IV tactical planning. Guests for House Church include extended family.

Contradiction: With Quarter IV only two weeks away, and Elders' visit in between, how to transform our indicative wisdom into practical tactics for penetration formulation and development.

Religious House: Davao

External: House assign members to MISSA (Mindanao-Sulu Secretariat for Social Action) to help prepare for the Pastoral Conference of all the Roman Catholic dioceses of Davao Region, strengthening relationships with key Maryknoll, Jesuit, and archdiocesan contacts.

Internal: Journey of past quarter and 1st year of Davao House told through evaluation session. House steps into another world as celebration is held with dinner at the Insular Hotel, Davao's plushest, and an afternoon on the beach at the Maryknoll House.

Contradiction: What needs to happen does not have the financial undergirding.

TOKYO

Religious House: Seoul

External: Received our first ITI development contribution \$100 from the Korean United Methodist Church in Chicago. Dr. Kang Won Yong agrees to be chairman of the ITI host committee. Trip to Taejon metro for a meeting of the Southern Conference of the Methodist Church sets up 4 courses and two potential Religious Houses.

Internal: Sent Rev. Kim Sung Hwan to Toronto and Chicago for ITP with colleague dinner, Poseidon Adventure, and family dinner. Received Judy Ellison, Sandra Clout, and Don Raschke and sent out Lee Early to Tokyo.

Contradiction: Major battleplanning and quarter IV assignments still on hold with first ITI less than 13 weeks down the road.

Religious House: FukuokaReligious House: OsakaReligious House: Tokyo

External: A visit by Japanese and English calling team arranges for YMCA sponsorship of PLC through ITI grad in Yokohama.

Internal: Japanese historical timeline reveals cyclical response to social contradictions, and gives a basis for story and vision for Japan.

Contradiction: Rehearsing the story that implementing a corporate appointment making and calling system is the form of colleague nurture that wins ITI grads and gives shape and substance to the surfacing demonstration.

Religious House: Rapid City

External: Walking through the fiery pit took place at Galaxy celebration. House and Galaxy joined for a horse-drawn hayrack ride in the Black Hills. Symbolic events: Being detached (threw songbook in fire) being engaged (singing and eating) singleness of purpose.

Internal: Galaxy and House throws Chavari for Coffmanns - community recognition and participation in their marriage. Wheelbarrow trip through town capped the event.

Contradiction: External demands straining corporate expenditure.

## WINNIPEG

Religious House: Anchorage

External: Blind Phase IV grandmother begins forming a metro cadre around upcoming RSI and takes on responsibility of course coordinator. Metro PSU discerns parish sign and mass impact "flyer" to be distributed to quarter of parish.

Internal: With one new higher paying job and another on horizon, House feels lightening of economic tyrant. Signal House Church as we formally receive Otto/Iseler family as interns.

Contradiction: All guns loaded for next quarter but no one will pull the trigger.

Religious House: Edmonton

External: The week for firsts. The first LENS is now actually coming off; the first penetration trip to Kamloops (Vancouver Region) and the first clergy consult using the St. Louis model in Calgary.

Internal: Ecclesiola guest: Missouri Synod Lutheran pastor of our key guardian colleagues. Collegiums this week catch up with the Edge of the Movement as we re-enact the drama of the Priors Council.

Contradiction: With the mountain of mass impactment before us, the old methods of one-to-one look safer.

Religious House: SaskatoonReligious House: Winnipeg

## HOUSTON

Religious House: Amarillo

External: Preguild celebrates the emergence of the parish guild core and decides to become the metro cadre. In Portales, N.M. a skeptical LENS participant (a department chairman of Eastern New Mexico Univ) requests the LENS course for the faculty and administration.

Internal: Ecclesiola celebration - House joined by 5 metro colleagues for quarter and movie conversation, which continued for an hour after it was officially ended.

Contradiction: Holding the revolutionary context in the midst of dealing with the establishment on its own terms.

Religious House: San Antonio

External: Mailed 600 invitations to colleagues and friends, visited key congregations, initiated clergy collegium, and set up R.O.C.; 9 businesses in parish gave authorization nod, all ground the House in the 20 programs of the movement.

Internal: Work on Quarter IV indicative battleplanning focuses ongoing activity and concretizes the mission. Received gifts of dishwasher and carpet. Spanish lessons for whole House begun.

Religious House: San Antonio (continued)

Contradiction: Succumbing to impatience with colleagues' spectator mindset.

Religious House: Oklahoma City

External: Executives of Urban League, Agency for Christian Cooperative Ministry decide to cosponsor luncheon to acquaint key parish and city leadership with the primal guild experiment. Six parish clergy lay battleplan for 20 parish clergy to Week 5 PLC including going again.  
 Internal: Seven mobiles cause PGX grids to dance over the collegium room, Shrine circus impacts us with the twin poles of corporate tactical action and style of 'All the Way' commitment. Intern Robt. Heard obtains new job as University Hospital technician in training.  
 Contradiction: Structures to achieve the peak performance which is required in the daily circus arenas in order to provide "a continual transformation of society and a constant reinterpretation of its priorities (Jerry Irish on Niebuhr).

Religious House; DallasReligious House: Tulsa

External: House acts with new intensity on the issue of calling local servanthood force by raising question before each step: Now who needs to be enabled to do that? The punch line is "Building Covenants is key"  
 Internal: Indicative battleplanning comes easier this time thanks to pioneering by 5th City colleagues. Mission Control Center (revamped war room) now ready for launching Quartre IV.  
 Contradiction: Difficult to narrow in on the programs necessary for Qtr. IV and still do all 20.

Religious House: HoustonReligious House: New OrleansReligious House: Memphis

External: First two Summer '74 registrations in! We have great visit with resulting strong endorsement from the president of Memphis Theological School - he agrees to sign letter to all Memphis clergy informing them of upcoming PLC and clergy luncheons - his signature along with two Galaxy pastors and their two lay leaders.  
 Internal: House takes library trek to do research on our parish and on Memphis and come back ecstatic! We have signed the lease and arrived at the financial battleplan necessary to do all that needs to be done.  
 Contradiction: Getting it said that we will be in Memphis forever and building the timeline which will put this coming quarter in that context.

Religious House: AtlantaReligious House: Miami

External: Held consult with Diocesan Education CCD committee on their long-range education plans. Tampa cadre decides to be the movement in the Miami Region by assuming responsibility for PLC and LENS in other metros.

Religious House: Sendai

External: Three regional colleagues who have participated most intensively in House structures assume responsibility for Ecclesiola celebration and create the cabaret with startling style.

Internal: The whole House is overwhelmed by a visit to Nikko, site of psychedelic, festive temples built over 400 years ago as an example of one man's decision to use the cultural as the key to political unity.

Contradiction: How to catalyze motivity of region relative to ITI so that it moves locally on behalf of the globe.

SYDNEY

Religious House: PerthReligious House: Darwin

External: The Mystery sticks his tongue out as revised Elders schedule necessitates last minute phoning of 75 to shift barbacue celebration, and reveals more people able to attend alternate evening. One registration and 5 committed on first day of LENS marketing.

Internal: Evening news workshop on foreign relations and international business explodes future role of Movement research. Order youth Peter Duffy demonstrates Olympic potential with 2 seconds in swimming competition.

Contradiction: Worst floods in history limit us to one sector and jeopardize crucial formulation plans.

Religious House: OombulgurriReligious House: Adelaide

External: Catholic Galaxy Church adapts NSV 1-day consult model to local situation and hold parish consultation for 80 people; 10 promises for LENS.

Internal: In depth news conversations provide vital data for cadre spins.

Contradiction: Tactically releasing every ounce of energy.

Religious House: Melbourne

External: We began set-up of strategic group recruitment coffees and luncheons for PLC, aimed toward development of Ecumenical Parishes. Clergy grads offered their time for PLC recruiting. Concentrated LENS marketing continued, with Area troop support.

Internal: Chuang Tzu, remarkably similar to Don Juan, was spirit enabler for Wk. II. Sent out Prior to receive JWM in Sydney.

Contradiction: Having the story and strategy to open new doors for clergy recruitment.

Religious House: SydneyReligious House: Brisbane

External: Radical 'yes' breaks loose as NSV Consults calls net 13; Ipswich cell plans Quarter IV penetration; Brisbane Clergy Breakfast and Ipswich Clergy Breakfast replies; LENS registrations continue and local churchmen struggle anew with Covenant Family consult.

Internal: Ecclesiola enables 'yes' to fear and fascination of radical demands as Christine Hughes nets Ecumenical Parish job. Mike Vosler sent out to Priors/Elders meeting. Vic and Wendy Chapman sojourn

Contradiction: Lack of adequately integrated battleplan leads to paralysis as in the midst of complexity of critical demands.

SUVA

Religious House: MajuroReligious House: Apia

SAN FRANCISCO

Religious House: San Francisco

External: Speaking engagement in Watsonville to 75 American Association of University Women reveals power of human resurgence mission. Sent 8 to Chicago for Social Methods School and Basic Training.

Internal: Cortez family and Rosa Avelar join Religious House. House Church report on Social Methods School given in Spanish.

Contradiction: We have been spinning external mission so fast that any slow down is experienced as collapse.

Religious House: San Jose

External: San Jose Galaxy and House joint councils enable experiencing power of spinning LCX and UHN dynamics in close proximity as all auxiliaries complete warboard tactic cards, the PGX quarter timeline is revised and a fantastic parish story and song are created.

Internal: House experiences transformation of space as 50 parish grids are created to border the collegium room world grid and the basement worship area is changed from a dark to sacred space. Lenten journey is intensified with nightly readings from Ancient of Days.

Contradiction: Worrying about old colleagues' journeys while possibilities with new ones are at the door.

Religious House: SacramentoReligious House: SeattleReligious House: Los AngelesReligious House: Phoenix

External: Many visits to businesses begin to net scholarships for grass roots LENS participants. Held leadership celebration at House for potential guildsmen - LENS registrations roll in through mail 8 or 10 at a time. Secured official project status for Capitol 5.

Internal: Week of reflection and evaluation of Quarter III and reading of Ancient of Days. Received Dr. John and Carla Reed as interns and celebrate having two substantial jobs to slay the economic tyrant.

Contradiction: No clear strategy for being sure we remain the transestablishment in the midst of such complete acceptance by a powerful establishment.

Religious House: BillingsReligious House: Denver

External: Auxiliaries struggle with decision to be the Galaxy and Religious House members engage in indicative battleplanning at Wk. II Council. Feast of fools is theme of end of quarter celebration of Galaxy, Metro cadres, metro Core and House.

Internal: Swirling during indicative battleplanning elicits passionate participation.

Contradiction: Avoiding ineffectiveness of moralism and keeping at task of basic planning

Religious House: Miami (continued)

Internal: Indicative battleplanning internalized as Week II structures blossoms into clear picture of indicatives of the quarter.

Contradiction: Making implementaries clear re: follow up including point at which decision about attending a course is made.

## CHICAGO

Religious House; Wichita

External: Wonders never cease. Not only does it snow the first day of spring, but the Clergy Collegium members decide to invite wives to collegium and schedule meetings accordingly. Parish churches are "GO"

Internal: Arrival of "First Among Equals" from Priors Council signified by amazing gift of the SMS layout which releases the House to see Wk. 12 Parish PSU as major breakthrough.

Contradiction: "Good luck" using "Seat of the pants" timeline in parish obscures necessity for seriousness re. models and timelines.

Religious House: Lincoln

External: Academy claims focus of Week 11 while we welcome many CSI registrations. RSI machinery begins to crank up again.

Internal: Surprise breakloose in financial picture allows us to lessen job load and increase work in efforts.

Contradiction: Taking definite steps into the coming quarter without a self/conscious plan for the quarter as a whole.

Religious House: Kansas City

External: Impact of multiplicity of missional thrust dramatized by shifts in space use of House and personel assignment as one night sees a dinner in the collegium room for 40 LENS grads to battleplan next seminar, penetration teams in 3 locations.

Internal: House celebrates quarter with some lip-smackin', charcoal broiled T-bones, Boy Scout Special Peach Cobbler and finished off the evening by viewing "On the Waterfront" on a sheet hung in the collegium room. Sent out Connie Bush to Chicago Area House.

Contradiction: Recognizing and naming authentic "groundwork" when our anxieties tell us that its "the old stall."

Religious House: MinneapolisReligious House: St. Louis

External: Write-up of parish in Post-Dispatch invokes the decision to call our parish the historic name "Murphy-Blair" rather than Northtown. Hosted 32 guests to open house for neighborhood.

Internal: Assigned all families to Week II of completing family documents away from the House without their children. Hosted area meeting of 16 priors and key colleagues from all regions in Chicago.

Contradiction: Key parish people did not cross old imaginal barrier of Florissant Avenue to attend open house.

Religious House: PeoriaReligious House: Milwaukee

Religious House: Chicago

External: Fifth City G.E.D. program begins with Preschool teacher Sheila Smith as part of staff.

Internal: New station assignments reimage station thrust with an increased emphasis on the clergy and authorization.

Contradiction: The dial moving toward Quarter IV at a rate faster than battleplanning is being completed.

Religious House: IndianapolisReligious House: Cincinnati

External: It looks as if we have at least three new congregations in our local polis spinning and they all have cadres. Another key black church is sending a layman to Academy next week. Authorization with Episcopal Church leapt out of hiding as Arthur Tucker liked what he saw at House

Internal: Can you imagine what happens to the House emerging generation when Week II sojourners appear that happen to be school mates. The symbolic life of emerging generation needs to be carefully contexted as several friends from school participate for first time.

Contradiction: The needed accountability structures to sharpen the many facets of task forces and teams operating on the one single mission keeps eluding our grasp.

Religious House: Detroit

External: Wk. II PSU puts LENS and PLC in high gear with several commitments to set up clergy luncheons. Week of registration firsts - PLC, CSI, LENS and Academy. Visitor Rev. Fred Lenore of Paris provides LENS leads as he pursues his interest in Detroit industrial missions.

Internal: Reports from SMS, Presidium, Order Council bring spirit boost, and break loose possibilities in PLC and LENS recruitment. We symbolize our seriousness in the search of new RH location with first appointment

Contradiction: Procrastination in setting up needed in-house office dynamic revealed by the many appointments set up as result of temporary in-house time from loss of job.

Religious House: ClevelandReligious House: Pittsburgh

External: LENS and PLC battleplan for metro mobilization created and distributed. Altoona Galaxy celebrates end of first quarter and turn to quarter II T/A, while Pittsburgh Galaxy holds its last sodality before splitting into the Pittsburgh and Clarksburgh Galaxies.

Internal: Indicative battleplan for Quarter IV programmed into collegium time slot. We found out that we had done more implementing last qtr. than we initially thought.

Contradiction: Keeping the Galaxy, Urban House and metro cadres all dancing to the same tune of one mission.

Religious House: Rochester

External: The Buffalo luncheon turned into a 5-week covenanted collegium out of which we anticipate a Galaxy within a year. Development team rekindles several old social activists colleagues with their story about the guild experiment in Rochester.

NEW YORK

Religious House: Rochester (continued)

Internal: Continually amazed at Indicative battleplanning and experiencing corporate excitement on the heels of corporate slumping.

Contradiction: The priority of indicative battleplanning crowds the heavy Qtr. IV schedule, and demands flexibility in the structuring of events.

Religious House: Richmond

External: LCX experienced first overnight Wk. II in Religious House and liked it. Weekly 3-ring circus takes form as LCX sodality, RSI grads and metro colleguss - 55 people in all - meet at same time for 2 different meetings.

Internal: House collegium springs to life with RSI pedagogy and world religions lecture both led by interns. House prior concretizes Qtr. IV penetration demand from across the parametro. Metro colleagues leads Ecclesiola workshops.

Contradiction: Our task is research, demonstration, training and impact and our operating image is penetration and formulation.

Religious House: Washington

External: Brookland 5 research, authorization and marketing begins to delight the soul. Fifty-five metro colleagues, including House, do 44 hour indicative battleplanning, and marvel at its genius. Black clergy comes to set up consult and decides to sojourn.

Internal: Largest House Church indicates new style. Inkind push on for furnishings. Study of "New Evangelism" paper (S'73) indicates new style.

Contradiction: Have not embraced our overwhelmedness resulting from the new life set loose by new facility.

Religious House: Baltimore

External: Finishing touches were put on our battleplan for the actualization of the PGX by revamping our timeline and pacing off our postage stamp park. Taking responsibility for all of Baltimore begins to take form as 4 clergymen decide to recruit 18 to upcoming PLC.

Internal: The gift of deploying troops away from the local scene is the great vision gained of the global happenings, through stories, reports and decor when they return.

Contradiction: Our refusal to take seriously the dreams we have dared to dream leaves us without a model of what the future really can look like.

Religious House: New YorkReligious House: Garden CityReligious House: New HavenReligious House: Manchester

Religious House: Boston

External: The Castle Square Child Development Center brochure is printed and distributed throughout the South End Parish; Academy mailing to try to increase the number beyond 3.

Internal: Katy Myhr received as a fully employed new intern; inkind brings back beans and stuff from Chicago; deeply refreshing discontinuity during Week II.

Contradiction: Parish lag - how to maintain the appropriate momentum all the time.

Religious House: Portland

External: Week II explodes possibility as metro colleague announces decision to attend Academy and guardian announces plan to join Elders trip in Hyderabad and Kenya, a fool-proof RSI battleplan is created out of concerns that had been blocking metro recruitment, key clergy decides to sponsor an ecumenical study series .

Internal: SMS continues to impact House as we complete the analysis phase of quarter IV planning.

Contradiction: Pulling out of the whirlpool created by the Week II into a course straight for the Promised Land.

## MONTREAL

Religious House: Toronto

External: Awesome battleplanning session with four regional colleagues results in 20-foot timeline with thousands of beautiful nitty gritty implementations.

Internal: Pressure on house-hunting relieved by awesome possibility. See next week's thrilling installment.

Contradiction: How to execute awesome moving procedures without losing the missional beat.

Religious House: Ottawa

External: Breaking new ground in both Galaxy and guild arenas symbolized by the action of Galaxy auxiliary member who, having worked for over 20 years with her company, is asked her reflections on current training resources and becomes an on-the-spot LENS marketer.

Internal: Pearl Fisher, mother of order members Ken and Brian, drops by with an in-kind donation of chinaware and becomes the transmitter of movement news from Areas London and Bombay.

Contradiction: Out of the sea of possibility that is the region, creating the story that will enable the one thrust to break loose the Ottawa metro.

Religious House: Montreal

External: New Galaxy clergyman returns from BTS and tells his cadre that the local church tactics are 36 ways to "die for Christ."

Internal: Week II PSU on a one year's detailed timeline for the area breaks loose new imperatives for the region in the coming quarter.

Contradiction: How do we swirl the tension of long and short term demand into a unified quarter battleplan?

## CARACAS

Religious House: Caracas

## BASE CENTRUM

External: LENS national faculty meets to commonize pedagogy for Quarter IV. Academy preparation is top priority as set-up and decor are done a week in advance of opening, and Academy staff sent out to Chicago Area House to complete set-up, teacher training, and to enable the 8-week spirit intensification that Academy is. Second Evening with Henry Gondorf releases more funds and reveals missional value of maintaining regular contact with extended family and old friends. Lenten mailing including Saints booklet is stuffed and prepared for mailing. Centrum hosts guests including team of missionaries. Spectacular fire in nearby apartment building provides possibility of direct participation by Uptown 5 sector as key staff offer help and one burned-out family spends night at Kemper.

Internal: Order celebrates wedding of Richard and Gail Jamieson West at Daily Office March 30, followed by breakfast banquet. Series of plenums highlight the intense brooding going on: historical missional timeline of Order laid out by David McCleskey, Order financial intensification by Dr. Ken Gilbert and Elders trip report by Rod Wilson who was on the first leg of the trip. Centrum evaluate and revise Qtr. III indicative battleplans.

Contradiction: Radically risking ourselves in Quarter IV with raw depth of uncertainty as to what should go on.