

'Do not urge me to go back and desert you,'
Ruth answered.
'Where you go, I will go, and where you stay,
I will stay.
Your people shall be my people, and your
God my God.
Where you die, I will die, and there I will be
buried.
I swear a solemn oath before the Lord
your God:
nothing but death shall divide us.'

Ruth 1:16-18

LONDON

RELIGIOUS HOUSE: LONDON

External: Four Cadre meetings in three Metros plus additional meeting with group of old colleagues in central London. The ITI grads in each of these meetings demonstrate radical address of programme. RS-IIIA for Oxford colleagues held at House.

Internal: Ecclesiola provides spirit glue through Heilbroener's helping us focus on the radicalness of futuristic demands and illuminating dynamic of Word.

Contradiction: Weaving the explosions of possibility in such a manner that the snowball continues to avalanche. (Wk.5) ,ration should be formed. (Wk.4)

RELIGIOUS HOUSE: GLASGOW

External: CS-I, marketed by cadreman, brings 36 youth and community service students from two colleges in two Metros to weekend of power. Cadre priors assume new financial responsibility for mission.

Internal: Arrival of Quarter III Ecclesiola manual greatly enables internal life. Scotland's delegation to ITI:Frankfurt returns filled with stories and new resolve to lead the way.

Contradiction: Making effective contact with 40 PLC prospects to insure Week 8 course. (Wk.5)

RELIGIOUS HOUSE: BRISTOL

External: City Centre ecumenical workshop group 'social gathering' involves clergy from every city centre parish signals victory for the Metro Cadre dynamic.

Internal: Bi-location becomes a living reality as regional colleagues stop by at both locations of House during transition.

Contradiction: Seeing ourselves free to move on to other Metro cadres now that the House Metro is done. (Wk.4)

RELIGIOUS HOUSE: MANCHESTER

External: Canon Naylor of Liverpool Cathedral (Church of England) agrees to market large PLC for autumn quarter.

RELIGIOUS HOUSE: MANCHESTER (cont.)

Internal: Week of local parish guests including Gerald Garbett, Anglican vicar and Father Wheelan, Roman Catholic rector.

Contradiction: Attempting to redo comprehensive images and battleplan for rest of the year while on the run with immediate recruitment and cadre demands. (Wk.5)

PARIS

RELIGIOUS HOUSE: PARIS

External: Closing of ITI and the return of French participants pushes us to claim the promise of authentic collegueship.

Internal: Weekly pedagogy session continues to emphasis cruciality of re-thinking and re-looking at the RS-I format and 'common memory' papers as they articulate the European context.

Contradiction: Perceiving and uncovering the network so configuration of events are part of the 'whole' scheme calling for investment in the future here and now. (Wk.4)

RELIGIOUS HOUSE: ROME External: A week of prayer over forthcoming PCTS field visit reveals interrelatedness of all aspects of the mission and culminates in extending first invitations.

Internal: Being at the disposal of the world symbolised with long awaited installation of a telephone (492.863). Ecclesiola materials arrive just in time to enable powerful evening.

Contradiction: Developing practical means to gauge far-reaching implications of every move. (Wk.4)

BRUSSELS

GLOBAL CENTRUM: BRUSSELS

External: Receipt of ITI report from faculty and review of grad journey, reveals new strength in Europe with demand upon us to enable the engagement of these new colleagues in global social demonstration.

Internal: Nexus hosted returning ITI faculty: A.M. and Monica Joseph, Joseph Slicker, Bill Grow, Steve Busa. Sent out the Josephs on trek to Paris, Rome, and Bombay.

Contradiction: Rehearsing fact that miracles emerge from day to day actions, rather than scheduled explosions of discontinuous 'doing.' (Wk.5)

RELIGIOUS HOUSE: BRUSSELS

External: Closing of Frankfurt: ITI after having one Bishop in attendance for first week and another for third: Anglican Bishop, Rt. Rev. Ted Wickam (Middleton, England) and Catholic Bishop, Rt. Rev. Jan van Cauwelwert I.C.M. (formerly Zaire, now Belgium).

Internal: Arrival of intern family sent by Brooklyn Metro, long-time Local Church galaxy strength, the Atsumu Matsuoka family. Great Week II for first exploration of Avenir Cinq-Joekomst Vijf (PCE).

Contradiction: In midst of increased momentum in the mission, need for RS-I registrations holds us in the tension. (Wk.5)

RELIGIOUS HOUSE: AMSTERDAM

External: RS-I becomes priority as economist-churchman from ministry of Economics signs up along with others and Den Haag meeting points toward a second course.

Internal: Another week of the unexpected as in-kind furniture continues to appear, along with promise of in-kind food for course, a fourth job landed by Audrey Colvin undergirds our economy, and John Latham returns from ITI.

Contradiction: How do we provide structures of engagement in midst of social avalanche happening around us without our being rolled over? (Wk.5)

FRANKFURT

RELIGIOUS HOUSE: FRANKFURT

External: House celebrates the end of ITI

RELIGIOUS HOUSE: FRANKFURT (cont.)

Holy Communion open door to the American Military Community.

External: First study on Hope becomes great event at Ecclesiola. Study on educational system of Berlin is preparation for Imaginal Education.

Contradiction: Create a focus for long-range work to let German pastors see urgency to recruit RS-I Week 8. (Wk.5)

RELIGIOUS HOUSE: BERLIN

External: House celebrates end of ITI with report by Allan Gammal. Invitation to help distribute Holy Communion open door to American Military community.

Internal: First study on Hope becomes great event at Ecclesiola. A study on educational system of Berlin is the preparation for Imaginal Education.

Contradiction: Create a focus for long-range work to let German Pastors see urgency to recruit the RS-I, Week 8. (Wk.5),

NAIROBI

RELIGIOUS HOUSE: NAIROBI

External: First guest night of the quarter brings key members of Religious orders, local church pastors and two-time LENS grad to House for evening.

Internal: Sodality work on Pressure Points and Social Demonstration starts us spinning on what is the context for Social Demonstration here.

Contradiction: Work on LENS set up slows at crucial time as key people are out of town for two weeks. (Wk. 4)

BOMBAY

GLOBAL CENTRUM: BOMBAY

External: 6-week training manual for Primal Community experiment completed. Internal: Numbers doubled with return of the PLC group.

Contradiction: Maintaining in-but-not-of relationship as Gnat in the Elephant ear of Ashram. (Wk.4)

RELIGIOUS HOUSE: BOMBAY

External: PLCC of 32 clergy and lay participants at prestigious Roman Catholic seminary has key hierarchy authorization and Rs.3000- is paid to Centrum for full course costs.

Internal: Whole House participates as youth, Moses Paul, sets up making and mailing of Byculla 5 cards to Global Order. Received Reg Kontz and his reports from two-week circuit ride and sent him out for further two weeks.

Contradiction: How to engage whole House in the planning and participating in the one thrust for the week. (Wk.5)

DELHI

RELIGIOUS HOUSE: DELHI

External: Visit with Bishop Nasir, Moderator of Church of North India, elicits affirmation for working with his clergy--frees House to work on tactics for clergy nurture.

Internal: Tuesday Guest Nights launched with key couple from Parliament Street CNI Church present, with affirmation of singing as articulation of the human struggle and the glory of living it.

Contradiction: Establishing momentum of self-support while deciding to do RS-I recruiting, LENS marketing and Metro cell nurture by walking everywhere and sitting on anxieties for regional structures Grad meeting reveals overwhelming need for conteting new images relative to INSTITUTE and significant trianing (Wk. 3)

MADRAS

RELIGIOUS HOUSE: HYDERABAD

External: Cadre decides to give all food 'in-kind' for next RS-I and gives possibility of residential course with no overhead expenses.

Internal: Week of high power recruitment and Primal Community Experiment PSU is sustained by intensive corporate morning and evening meal celebrations.

Contradiction: While transforming immediate affirmation into concrete participation, how do you harvest your daily bread and keep a long-range vision. (Wk.5)

CALCUTTA

RELIGIOUS HOUSE: CALCUTTA

External: Leading colleague takes responsibility for Community LENS recruitment by 'booking in' block of 40 seats for reservations. Circuit rides for Quarter III begin.

Internal: House struggles with Asanol RS-I as possibility of residential course diminishes. House hears Geo Paul's report at collegium and then honours historical church and his family by attending the first communion of his youngest daughter. Explored the possibilities of import/export.

Contradiction: With a time-resource-troop squeeze, how to stand as the faithful in the midst of frustrating ambiguities while concretizing the quarter's miracles? (Wk.3)

SINGAPORE

GLOBAL CENTRUM: SINGAPORE

External: Operations completed Priors' announcement sheet, Ecclesiola, ITI systems, and assignments and course schedule mailings, initiating regularized system of contact. Completing Development pitch for all courses.

Internal: More applicable time design created for Thursday Ecclesiola. Nexus impacted by first study on 'Hope'. Heilbruner study on prospects for future set helpful context for study on Hope. Four year long employment visas received last week.

Contradiction: How do you get feedback from the field? (Wk.5)

RELIGIOUS HOUSE: SINGAPORE'

External: House and Region experience new unification as James Chia concretizes the regional participation in program decisions by picking up role of course coordinator.

Internal: House Church Key happening as for second week in a row regional colleagues prepare the meal, providing the food themselves.

Contradiction: We know where our parish is but still tell ourselves we don't have enough data to make a decision. (Wk.5)

RELIGIOUS HOUSE: KUALA LUMPUR

External: Authorization visits for ITI find key Christian Leaders alive to crucial need to train churchmen. First steps toward Local Church Exp. taking shape. Imaging Imaginal Education and CS-I as secular seminars opens up whole new field of untouched recruits.

Internal: Surprised by unexpected collegiality as first sojourner of the Quarter and 4 Ecclesiola guests from ELCM Church turn up.

Contradiction: How to sustain the pace set in Wk.3 out of the 'Hit the road' image. (Wk.4)

RELIGIOUS HOUSE: JAKARTA

External: House clarifies 26 week trip calendar; prepares for 2800 mile trek to Manado and Surabaya metros during weeks 5 & 6; serves as Wayside Inn for 2 East Java colleagues.

Internal: Finding a printer who produces quality movement materials plus purchasing a well-running ditto machine increases our striking capacity.

Contradiction: How to maintain global dimension as key colleagues push hard to Indonesinization of movement. (Wk.5)

HONG KONG GLOBAL CENTRUM: HONG KONG

External: First field visit for P'C:E' held in Taipei with 73 present. Centurms functioning in full swing within first twenty hours of electricity as D. McCleskey & J. Addington join us for P'S'U' on SEAPAC GRA/ITIs. and R. S. joins us to hear report of Sydney Area GRA.

Internal: Moved into new facility by candlelight, with own ten-ton crane outside collegium window. (16 Kimberly Road, Champagne Court, 4th Floor, Flat A & C (Tele: 3-677695). Kowloon, Hong Kong.

Contradiction: In light of all possibilities revealed in events of first four weeks, we need to modify Battleplanning and refocus strategies to reach long-range vision. (Wk.5)

RELIGIOUS HOUSE: HONG KONG

External: House joins in session with Centrum as David McCleskey spins on Primal Community Experiment giving new images for actualization. Host Committee for ITI secured and PLC follow-up brings new grads together.

Internal: Wong Pak Yeung and wife Lina present for House Church and report on ITP experience. House rearranges space after move of Centrum intensifying Wayside dynamic. Pat DeSpain from Kaohsiung enlivens House by her style.

Contradiction: Developing the story and the signal event that will break open concrete images of the Primal Community Experiment in thinking of House and colleagues. (Wk.5)

RELIGIOUS HOUSE: KAOHSIUNG

External: Teachers RS-I recruitment explodes to nearly 30 as timing during Winter vacation pays off. Women's Guild scheduled and recruited for Week 7.

Internal: Sent Pat Despain out to Hong Kong for visa renewal. House RS-I impacts us all again with power of RS-I.

Contradiction: Looking beyond PLC to ITI has resulted in PLC recruitment crisis. (Wk.5)

RELIGIOUS HOUSE: MANILA

External: Metro trips set up RS-I in Tarlac, and clears authorization with Columban Order in Olongapo. PCS exploding with first Clergy Guild & clergy-lay visitation for Wk. 7 RS-I.

Internal: Enabling the economic: New job teaching English; window box salad garden planted; 2 ducks end 6 wks. sojourn as special guests on House Church table. Bishop Ramento re-establishes old friendship following keynote address at peace conference in India.

Contradiction: Caught in eye of hurricane---everything whirling out there, but cannot quite bring it into focus. (Wk.5)

RELIGIOUS HOUSE: TAIPEI

External: Clergy Collegium assumes deeper responsibility as it meets for first time as Taipei Metro Cadre and plans Field Visit and related activities.

Internal: House experiences internal expansion with Rafos' visit from Hong Kong. Ecclesiola 'Hsiao Ching' study with ten Chinese guests from Region.

Contradiction: Trying to raise Development funds in midst of realizing we are in first stage of telling the story. (Wk.4)

RELIGIOUS HOUSE: CEBU

External: Letters and brochures for upcoming courses in Tacloban and Calbog--two relatively unpenetrated metros--ready for delivering.

Internal: Parents attend mini-school Parent meeting at House in mini-school. A 'Model' shipment of fish sent out after 'every stone unturned' kind of research on how to keep fish alive in transit. Contact set with sponsor of Cebu RS-I.

Contradiction: We are good on short-range tactics but systems implementation escapes us. (Wk.5)

RELIGIOUS HOUSE: DAVAO

External: After a day and half of awaiting vacant seat on plane, prior leaves for Area teaching assignment in Cebu Region PLC. Internal: Two colleagues from Tagum polis join us for Ecclesiola and stay overnight. Battleplanning for next 26 weeks ablaze; key image is keeping eternal flame burning.

Contradiction: How to implement battleplan in midst of creating it--or, creating story that releases recognition and not asking for permission. (Wk.2)

TOKYO**RELIGIOUS HOUSE: TOKYO**

External: Fr. Joseph Iida, chaplain at Rykkio University and prior of regional movement accompanies Kenn Ellison on Seoul, Korea segment of Area Prior's trek.

Internal: Quarter III Ecclesiola construct actualizes care and nurture for Order in Tokyo.

Contradiction: We have created miracles vehicle, but have not yet tested the engine. (Wk. 5)

RELIGIOUS HOUSE: SEOUL

External: Third RS-I of quarter held for 25 students at Presbyterian Education Center. Translation task force of nine improved all RS-I seminar papers and worship translations. Cadre meetings were held in Daegu and Taejon.

Internal: First Ecclesiola of quarter exploded vision of hope in midst of H. Richard Niebuhr and 'Skin of Our Teeth'. New motivity for mission of region emerges in Week II PSU deciding the miracles of Quarters III and IV. Region welcomes visit from Japan of Joseph Iida and Kenn Ellison.

Contradiction: Cancellation of Daegu PLC reveals current inability of movement to transcend highly ambiguous national situation. (Wk.5)

RELIGIOUS HOUSE: FUKUOKA

External: House dinner out with LENS sponsor and calls (in two metros) yield strong affirmation of penetration schedule.

Internal: Actualization of Primal Community Experiment symbolized in office hanging of bold black and white silhouettes of movemental parishes across globe. Added income realized through new teaching position with Time-Life.

Contradiction: Transforming hot interest into cold registrations for upcoming PLC. (Wk.5)

RELIGIOUS HOUSE: OSAKA

External: Set four demonstration labs for Global Language School. Use of Japan Management Services offered for ICA/GLS work on an indefinite basis. City Hall comprehensive planning department welcomes us and asks for more copies of model-building methods paper. House hosted a meeting of Roman Catholic and Union Church pastors to discuss the mission of international churches in Japan.

Internal: Mr. Kashiwagi shares difficulty in communicating awe in Ecclesiola seminary .

Contradiction: Projected deficit demands additional income/budget cuts when we want more troops freed. (Wk.5)

RELIGIOUS HOUSE: SENDAI

External: One of first recruits for upcoming RS-I course is graduate of first GLOBE consult in December.

Internal: House impacted by imaginal expansion created in collegium room when old chalkboard is replaced with one twice its size.

Contradiction: Sensing necessary tension between full-speed ahead with Primal Community Experiment and caution which even a short 26-week journey needs to embody. (Wk.5)

SYDNEY**RELIGIOUS HOUSE: SYDNEY**

External: Sydney House taken over by Summer '75 Emerging Generation Programme while House prepares back-up systems for Post-Summer '75.

Internal: Received Zahrts, and sent out Grace Umbagai to Chicago. Spencers pass through on return to Bombay and Court family from Adelaide add sparkle to first Ecclesiola.

Contradiction: Planning must go on despite most of house at Summer '75, creating a new context. (Wk.2)

RELIGIOUS HOUSE: PERTH

External: Ground work laid for three LCC's as director and two staff from local theatre guild come to tea and spin about Victoria Park; group of grads from outer Metro request help with secular engagement; and Anglican clergy couple from another outer Metro register for PLC and request LCC.

Internal: Sent out Rhonda Robins to Area Council and Peter and Geoff to assignments for school year; outer Metro clergy couple on holidays celebrate House Church; work done to get E.G. manual prepared for Week 5 start.

Contradiction: How enable grads to see program tactics as not just individually beneficial, but as crucial to history now. (Wk.4)

RELIGIOUS HOUSE: DARWIN

External: Parap-Fannie Bay Resident Council meets for second time in week, divides into six task forces; Four resident councils now in being as we establish consultative relations Forum I5 model for town meetings. Darwin Advisory Committee with ICA representation meets to view initial plans for reconstruction.

Internal: Wayside Inn dynamics unabated; first of movement catalytic force Yvonne Meyers to arrive soon; local guildsman Gary Havens begins sojourn.

Contradiction: How to build troop strength quickly to move on all fronts in depth. (Wk.4)

RELIGIOUS HOUSE: OOMBULGURRI

External: Return of Summer '75 participants has enabled Oombulgurri to see itself related to world in significant way, while at home, community stages a grand farewell party for Bakers.

Internal: Baker family sent out after sojourn which saw the installation of electricity at Oombulgurri. Auxiliary joins Wyndham associates for wild release of Spirit at party in town.

Contradiction: Ensuring auxiliary shadow roles cover all work areas to do necessary tactical planning to bring off quarter objectives. (Wk.5)

RELIGIOUS HOUSE: ADELAIDE

External: Yvonne Myers spends week in Darwin and Development raises nearly \$500 for two others to go.

Internal: Sam Umbagai and David Mowaljarli stopped through after successful trip to Canberra and catalyzed decision to make this a year of story telling.

Contradiction: We have a long-range timeline but lack ways to shift region's image and release troop involvement. (Wk.5)

RELIGIOUS HOUSE: MELBOURNE

External: Regional manual for 1975 completed and functioning. Regional colleagues give great boost to S'75 in-kind Development and attend opening as both participants and guests.

Internal: Sent out Don Baker to open garage in Majuro en route to Chicago; also Telfords to Summer with their children to visit grandparents in New Zealand. New House search moves into high gear.

Contradiction: Decision to be the House in undecored villa in suburbia. (Wk.1)

RELIGIOUS HOUSE: CANBERRA

External: Banks and Elaine Telford carry news of S'75, when they come to Canberra for proposals for government departments to fund aboriginal scholarships--initial response was 'No reason we can't go ahead with this' from all three departments.

Internal: Dinner with Arch Deacon Harris and his wife open up new possibilities for working with Anglican Church, and advanced college of education (of which he is a member of the administration.)

Contradiction: How to decide what are most important priorities out of everything important, with one person in House during Summer '75. (Wk.3)

RELIGIOUS HOUSE: BRISBANE

External: Interest and support of Aboriginal Office of Department of Education signalled in self-initiated telephone call requesting report of Summer '75. Quarter mailings out; Movement participates in two clergy induction services.

Internal: Massive re-ordering of files completed, heralding return of Summer participants with report that projects mission intensification in all arenas.

Contradiction: How transform a few burning trees into a signal forest fire. (Wk.5)

SUVA

RELIGIOUS HOUSE: MAJURO

External: House journeys to Molik's Islands to explore ancient village and tourist 'broodening'(a perfect spot) and returns to naming 31 miracles for Quarter III. Sheldon Hill arrives to makemake low-cost housing models and spins us into fantastic 1/4 mile of urban center creation.

RELIGIOUS HOUSE: MAJURO(cont.)

Internal: Elders Elmo Alling and Walkup Silk, colleagues Fred Narruhn and Abuit Samson come for breakfast and talk of survey trip planning. House impacted by arrival of Joanne Henjum.

Contradiction: Building the dynamics which will encourage corporate decision-making in complex swirls of Marshalls Human Development Project. (Wk.5)

RELIGIOUS HOUSE: APIA

External: Rev. and Mrs. J. Sands of Napier, New Zealand leave Samoa thankful they have learned about Ecumenical Institute.

Internal: Guests fill Wayside Inn as new teachers from Australia and former MHS teacher from New Zealand come over for dinner.

Contradiction: Need for absolution of pain and brokenness of past year to make way for future. (Wk.5)

SAN
FRANCISCO

RELIGIOUS HOUSE: SAN FRANCISCO

External: Meeting with state Bi-Centennial representative in Sacramento reveals enthusiasm for Town Meeting '76. Church School Training Institute brings 70 teachers from 24 churches to discover gifts, learn Local Church is key to Primal Community. \$260 raised for ITI scholarships; 15 faculty from SFO galaxies, 4 California Religious Houses discover their life is renewed.

Internal: House continually spiritized with weekly youth cabaret collegiums, 'It Had To Be LENS.' Galazies move toward key training for Town Meeting '76. Sent out Akino Komosaki (sojourner) to study English and Hendrick Idzerda to family in San Francisco.

Contradiction: Where to assign troops in midst of numerous strategic arenas. (Wk.5)

RELIGIOUS HOUSE: SAN JOSE

External: Lively excitement in Watsonville as local community group decides that 'Town Meeting' Bi-Centennial celebration is just what they need to do. House Church of 40 people with ten new faces lifts every spirit, makes many new friends.

Internal: Steady work on LENS recruiting gets us into places we've never been before. Ecclesiola study provides sustaining spirit resource.

Contradiction: It is getting colder and we're running out of chairs to burn. (Wk.5)

RELIGIOUS HOUSE: SACRAMENTO

External: Miracle Day in Norte 5 Demonstration Parish keeps 28 community volunteers working all day and culminates in feast with singing and miracle conversation.

Internal: Four families sojourn in House for week including the principal of a parish school who reports on education in the community.

Contradiction: Not yet internalized Bicentennial '76 as the Revolutionary Deed. (Wk. 4)

RELIGIOUS HOUSE: SEATTLE

External: Clergy and lay representatives from six congregations in Lake Oswego, Oregon vote to sponsor and recruit an April 1975 RS-1 course from their congregations. 37 around table in Bremerton for RS-1.

Internal: Regional colleague Terry Holm sent to Academy and Chicago Nexus for global order assignment. William Suggs and William Kroeger (6th graders) attend RS-1.

Contradiction: How do we ground ourselves in the catalytic role called for while responding to the demands to deal with all the new souls who have participated in movement programs this quarter. (Wk. 5)

RELIGIOUS HOUSE: LOS ANGELES

External: Widespread ITI calling discovers Prince of Tonga at Claremont School of Theology and Betty Stowers sent to Academy.

Internal: New prayer wheel created by youth tells us that intercessory prayer is a global demonstration.

Contradiction: Mission calling for new forms of discipline but we seem to be stuck in old images. (Wk.5)

RELIGIOUS HOUSE: PHOENIX

External: RS-I recruited by PLC grads in their churches offers possibility for Galaxy. Meeting with Methodist Bishop Carlton in Albuquerque.

Internal: Experience of poured-outness throughout week culminating with accelerated journeys by enabling and teaching RS-I, Mark Poolle's mother arrives for a month's visit.

Contradiction: Not having decided that the one thing we are about is getting the Town Meeting on board. (Wk.5)

RELIGIOUS HOUSE: SALT LAKE CITY

External: Spectacular RS-I recruiting: nineteen prepaid with one week to go. Clergy collegium begins with eight present.

Internal: Primal Community Consult helps focus clarity where we are.

Contradiction: Corporateness within House and Metro is getting bodies on line; how? (Wk.4)

RELIGIOUS HOUSE: BILLINGS

External: Twenty man guild meeting.

Internal: Send-out of two to Academy. Battleplanning Wk. II builds 8 major miracles.

Contradiction: Finding ourselves dispersing troops and at the same time seeing extremely increasing local demands. (Wk.1)

RELIGIOUS HOUSE: DENVER

External: City councilman decides to attend full day of LCC. Boulder Bi-Centennial Committee gives official approval for Town Meeting.

Internal: Rev. Kim's visit concretizes awe of Korean church as revolutionary sign.

Contradiction: To move boldly into the New---listening and responding to the Lord's voice. (Wk.5)

RELIGIOUS HOUSE: RAPID CITY

External: Twenty paid registrations when the enablement left for PLC.

Internal: House impacted by 'Skin of Our Teeth.' Susan arrived and sent off to PLC.

Contradiction: How to practically enable the harvesting of our work in recruiting: gathering prospect names, preparation for recruitment nights. (Wk.4)

EDMONTON

RELIGIOUS HOUSE: EDMONTON

External: Twenty clergy and Religious contexted for PCE in six-days push to PLC.

RELIGIOUS HOUSE: EDMONTON (cont.)

Internal: House addressed, re-directed by 'Christ of History' in morning, Bultmann's 'Faith' at Ecclesiola and Prayer Conversation at evening meals. Rejoice in Flowers' assignment.

Contradiction: Anxiety about future almost causes cancellation of plans in order to plan for something 'down the road.' (Wk.4)

RELIGIOUS HOUSE: ANCHORAGE

External: Journey to Juneau for Town Meeting 76 authorization, to Bethel for RS-IIC recruitment while netting 15 registrations in Anchorage.

Internal: Week of 'highlights': Ecclesiola explodes with play, North Slope interlude features slides and report from Fred Gruner after two weeks on pipeline. Reenacted Boston Tea Party with grits to celebrate Town Meeting kick-off.

Contradiction: Getting objectivity on where we are in relation to where we need to move next. (Wk.5)

RELIGIOUS HOUSE: SASKATOON

External: Regional colleagues gather at House to brainstorm and research for Community Forum Canada; meanwhile information packets from municipalities and chambers of commerce pour in.

Internal: Following CFC meeting, House enjoys an evening of movies depicting Canada and Saskatchewan's heritage and present possibilities, emphasized by the creation of an original 'movie' produced, directed and illustrated by the emerging generation.

Contradiction: In the midst of meagre responses to our beckonings, how do we and our colleagues be the regional Atlas. (Wk. 5)

RELIGIOUS HOUSE: WINNIPEG

External: Recruitment by parish walks, visiting nodes, posters and all other offers. In midst of changing dates and unsure locations, a decision to carry on.

Internal: Tally Ho. Off on a sleigh ride to enjoy Manitoba Winter weather.

Contradiction: How carry ball without alternate quarterbacks. (Wk.5)

HOUSTONRELIGIOUS HOUSE: HOUSTON

External: Area Prior sent out on Area Bicentennial trek. Bicentennial trip to state capitol (Austin) results in open door for state endorsement of local endorsement for Town Meeting 76. Clergy LENS telephone screening zeros in on 90 dealing seriously with course registrations and nine Yesses.

Internal: 'In-kind-by-Phone' nets three weeks worth of sweet rolls, a paper folding machine and possible 'all under one roof' interim housing. Moeller & St. Clair families received as fellows.

Contradiction: Just at point where you feel you're 'back on top of the mission' you wake up to catch the last member of your Meditative Council sneaking away from the table. (Wk.5)

RELIGIOUS HOUSE: AMARILLO

External: Elders task force initiated in swirl of excitement. One man stated, 'I've been waiting for this all of my life.'

Internal: Four guests; colleagues participated in House Ecclesiola. Two drove 120 miles from Lubbock. Indirect intern recruitment done as questions raised about Order.

Contradiction: Daring not to look down while passing over abyss with overwhelming possibility. (Wk.5)

RELIGIOUS HOUSE: SAN ANTONIO

External: Religious House becomes the 'possession' of the Metro Cadre as House keys are distributed at House Church and Cadre begins assigning House for Week II Task Team work.

Internal: Celebrative send-outs at intern year-end produces three-adult House, which in turn prompts octogenarian colleague to canvass her Metro colleagues: 'We're not going to let this happen, are we?'

Contradiction: Is the facility large enough for the coming House? (Wk.5)

RELIGIOUS HOUSE: OKLAHOMA CITY

External: Two LCCs stand as portent of the future; 75 participate in Oklahoma City, and 263 in Ada, including the State Bicentennial chairman.

Internal: Ecclesiola empowers our life together as we struggle with (gasp) no Hope. Guests from Tulsa, Los Angeles, Memphis and Chicago flow through the Wayside Inn. Wild Mexican celebration follows LCCs.

Contradiction: The Bicentennial backup machinery is not yet set up. (Wk.5)

RELIGIOUS HOUSE: DALLAS

External: House covered from first to third floor on Tuesday night as House and Metro begin to operate practically, signalling intensified missional responsibility at team level, or 'I am the one.'

Internal: Loss of Hays family to Miami last week intensifies job search by House this week and creates context for presentation of budget to Metro Cadre Tuesday night, enabling whole Cadre to pick up financial responsibility for Mission through the House.

Contradiction: Quarter timeline still undone, as House and Metro get swallowed by immediacies and seek for spirit care dynamic in new, smaller groups. (Wk.3)

RELIGIOUS HOUSE: TULSA

External: State-wide planning weekend at Oklahoma City House forges the tactical systems that will be needed in order to do Town Meeting 76 with inexplicable joy and delight.

Internal: Completed 21 Point Plan for our Practical Vision for the year. Also are ready to redesign our space so as to recapture seriousness of the Wayside Inn.

Contradiction: How to deal imaginatively with one's space design in the House. (Wk.5)

RELIGIOUS HOUSE: NEW ORLEANS

External: Arrangements made to travel around the state with Bi-Centennial Director. Quarter March of Miracles completed--first miracle done: regional mailing.

Internal: Collegium takes on more significance as it is only place we are all together at once. One person working 17 hours a day--we only see her at House Church.

Contradiction: Time reduction with Parish Project as Bi-centennial possibilities explode. (Wk.2)

RELIGIOUS HOUSE: MEMPHIS

External: Contact made with Tennessee Bicentennial Director, who directs us to the Committee for Humanities as a funding source. Odyssey fast developing into key Movement event of quarter.

Internal: Jobs again become focal point as layoffs and job freezes become present reality. Received Brent Pruett as an intern and prepare for a new sojourner after the Odyssey.

Contradiction: With best earning job laid off, and facing Bicentennial with three cars for over 100,000 miles, how to transcend practical issues and move mountains. (Wk.5)

RELIGIOUS HOUSE: ATLANTA

External: First of three Community Reformulation luncheons held with participants asking for fourth session to build timeline and implementation model (3 or 4 key parish churches represented.) Holders are first Atlanta regional colleagues to sign up for Majuro.

Internal: In-kind 'H. Salt Esquire fish' with all the trimmings arrives for 'after Ecclesiola' impromptu celebration as colleague drops by end-of-day leftovers. Shirley Heckman (Chicago region) sojourns three days while in town on job and demonstrates expenditure as what life is all about.

Contradiction: Creating sense of immediacy, demand, and responsibility that allows people to see East Lake 5 with same kind of fascination Majuro elicits. (Wk.5)

RELIGIOUS HOUSE: MIAMI

External: Bicentennial reception attended by 50 colleagues, friends, government officials, and parish who birthed the Wynwood Guild core following Tuesday night. Third Centruy Grants man works 12 hours with us to write proposal for 53 Town Meetings in Dade County, and Jon Rossman speaking at the Non-Comm. Prayer Breakfast at Homestead AFB.

Internal: Bicentennial PSU with Area prior finding House interchange most helpful. Hosted Marshal Jones and Frances Coker from Development and Bicentennial Post. Finance Committee holds two collegiums as House moves toward building Regional Budget.

Contradiction: Attachment to past operating images when new images are demanded. (Wk.5)

CHICAGO**GLOBAL CENTRUM: CHICAGO**

External: Five courses built in University 13 and forty-eight proposals created for Majuro in one weekend. Uptown Guild and Post engage in the practical: sweeping snowy streets and walkways of Uptown, eliciting the response, 'Now that is a great thing for people in our community to do--like we used to rake leaves in the fall.' Emerging generation performed skits for four Uptown Elders' Homes. Heard reports of ITI: Caracas and Frankfurt--with every area of each continent represented, solid authorization as back-up, and new breakloose of spirit witnessed.

Internal: Week I of Hope symbolized with Kiergaard providing an exceptional happening in the study life of the ecclesiolas, and a collegium on Hope the next morning offering new clarity on the total dynamic. Week II of Faith symbolized in Task Force conversations come at indirectly through conversations on songs, readings, memories, and reflections on Social Demonstration.

Contradiction: Working through the practical implications of new self-image of being a teaching, serving and contemplative Order. (Wk. 5)

RELIGIOUS HOUSE: CHICAGO RELIGIOUS HOUSE: CHICAGO

External: Church which hosted weeknight RS-I in 1968 invites us back for great HRM--the spirit is still at work. G.E.D. planning marathon: students and teachers prepare curriculum for coming quarter. PLC with 23 around the table hosted at the House.

Internal: 'Meet me at the Casba': House inticed into Ecclesiola by colored lights, dancing, and rearranged space.

Contradiction: Prioritizing missional systems accountability: It is not helpful to find five skeletons in a foxhold joyously entwined in each others arms, having a great internal life, when what you're looking for is how to do self-support of a global mission. (Wk.5)

RELIGIOUS HOUSE: WICHITA

External: Topeka guardian lends enthusiastic support for search for statewide Town Meeting authorization; local pastor offers financial backing plus troops for rehabilitation of parish center.

Internal: House holds grand taffy pull and six hour game of Aggravation (it was aggravating!) for Saturday Night celebration. Collegium on worship dynamics breaks loose new seriousness in Daily Office.

Contradiction: How use Day Care problem (two infants) to break loose Metro engagement in a new way. (Wk.5)

RELIGIOUS HOUSE: OMAHA

External: RS-I recruitment during the week enables multi-activity Week II with adult RS-I Children's RS-I, and Galaxy Council. Work during the week relating to Town Meeting. The Northside means there's no turning back now.

Internal: Ecclesiola study on Hope seems to be on target for us. New pastors who came to House Church for first time have been ready and anxious to be asked again.

Contradiction: House internal ordering hasn't caught up with the external 'Turn'; that was made three weeks ago. (Wk.5)

RELIGIOUS HOUSE: KANSAS CITY

External: Primal Community Consult lays low images of 'my church my parish' and pushes through the demand for 25 iron men in each location of the Experiment. Next day the Galaxy postpones battle-planning Week II and asks to join House in recruitment.

Internal: Ecstatically giddy/somberly sober celebration with Primal Community consultant Morrill Saturday night clarifies the Cross; and morning fix-up Collegium deals with the major rough edges.

Contradiction: Hoping there's some other way to care for colleagues than the Word. (Wk.5)

RELIGIOUS HOUSE: MINNEAPOLIS

External: Signal meeting with the Council of Churches. Leader with the Lutheran Council keeps meetings going with questions and statements like, 'We need a new mythology.' 32 registered for RS-I. Guild works on Town Meeting and Valentines Ball. All gun assignments outside the House.

Internal: One job secured, war room reordered, Council of Churches meeting here, E.G. workshop, and first step in Whittier Community Organization battleplan have us all swirling. Bob Miller sent to last four weeks of Academy.

Contradiction: Focusing three miracle systems into one thrust. Ship has been christened, but navigation chart is hard to read as we chart future. (Wk.5)

RELIGIOUS HOUSE: ST. LOUIS

External: Second HRM Mission Sunday held at Transfiguration Lutheran Church, locally staffed by House and congregation grads. Iowa Bicentennial Commission endorses Town Meeting 76. Sojourn week planned and launched. Charles Sensel to Academy from Springfield Metro.

Internal: International visitor, Pastor Kim from Seoul, Korea, welcomed.

Contradiction: By Week 5 of the Quarter we are needing new strategic and tactical battleplans in four major dimensions of the task. (Wk.5)

RELIGIOUS HOUSE: PEORIA

External: RSI comes off with great success netting new colleagues and creating a sign to old colleagues. Preparation for Town Meeting 76 PSU.

Internal: Gogarten study impacts us with Hope as a foundational Christian category.

Contradiction: How to strategically juggle all the priorities for effective impact. (Wk.5)

RELIGIOUS HOUSE: GREEN BAY

External: 500 LENS brochures mailed and a PLC recruited.

Internal: Internal Life manual completed.

Contradiction: Keeping on the Long March when transparency of servanthood does not produce visible successes and cheering crowds. (Wk.5)

RELIGIOUS HOUSE: MILWAUKEE

External: Recruitment blitz secures 15 possibilities each for RSI and CSIIIA.

Internal: Week II recruitment task force impacted by seeing 'The Longest Yard' and conversing about strategic catalysis of social demonstration.

Contradiction: Raising physical signs of resurgence in our demonstration parishes. (Wk.5)

RELIGIOUS HOUSE: INDIANAPOLIS

External: Penetration and formulation engage House and Metro in RS - 1 recruitment, LENS in Louisville for thirty-five people. House Church with more guests than House members and Metro Ecclesiolas in Lafayette, Indianapolis and Louisville.

Internal: \$1000 worth of sleeping bags, clothing and house wear received from Galaxy grad. Long March/Dark Night conversations subjectify internal struggles in midst of health and transportation crises.

Contradiction: External marches on while internally we experience ourselves wallowing in the Dark Night. (Wk. 5)

RELIGIOUS HOUSE: CINCINNATI

External: Three events held this week with three RS-I teachers sent to Columbus from House, two black pastors present to break open authorization from community black clergy, Primal Community Cadre moves location from Religious House to Galaxy Church for sake of corporate.

Internal: Second-floor node, created as part of 13-week miracle system for Wayside Inn signalled the creative care for space that is spiritizing on the Long March.

Contradiction: Providing context to release Metro Cadre to accept comprehensive responsibility for Tuesday evening Sodality. (Wk 3)

RELIGIOUS HOUSE: DETROIT

External: Our commitment to proceed with Town Meeting 76 without support if necessary allows Head of State Horizons Committee to say he would spearhead our presentation to the Committee.

Internal: Three collegiums on Order Study including JWM's 'Long March, Dark Night', Marshall's Order Training, and Shinn's Order Training and Spirit Journey followed by Gogarten study at Ecclesiola highlight the week for us.

Contradiction: Shifting balance of Region and House roles leaves us unsure how to exercise comprehensive responsibility. (Wk.5)

RELIGIOUS HOUSE: CLEVELAND

External: Cadre back-up structure in the form of Bi-Metro priorship team and communications task force enables intensification of six Cadres that meet weekly and once monthly as one Metro catalytic Cadre. Monthly 'Temple' meeting provides context and spirit breakloose.

Internal: UR Image course provides needed context for the future and proves to be effective House training weekend. Contradiction: Training weekend exposes our context for planning and decision-making to be the immediate or 'long-range' rather than the eternal. (Wk.5)

NEW YORK**RELIGIOUS HOUSE: NEW YORK**

External: Recent Community LENS grads keep coming back for more, invitation comes to lead workshop for seven agencies on Lower East Side, parish welfare leaders claims, 'I can't move in yet but you'll be seeing a lot of me.'

Internal: Collegium given to plotting jobs of our Permeators on the Social Process triangles brings new insights for strategic roles.

Contradiction: How release from victimization block of story that I can't decide to act until I have more clarity. (Wk.5)

RELIGIOUS HOUSE: PITTSBURGH

External: Primal Community Consult which almost didn't happen turns into a miracle for those in attendance. Don Francis sent out to celebrate life and death of Carlisle Sheldson, father of colleague Joyce McKnight.

Internal: Clergy family, recently reassigned from Altoona Metro to Pittsburg Metro, joins us for House Church and Ecclesiola, where we celebrate the anniversary of his ordination.

Contradiction: Lack of any covenantal structure through which we can hold colleagues accountable for their decisions. (Wk.5)

RELIGIOUS HOUSE: ROCHESTER

External: Key people sign up for forthcoming RSI and grad from six years ago shows up for Binghamton Metro Cadre meeting.

Internal: Four Academy participants return to region and two families end intern year with decisions to engage in Metro structures.

Contradiction: Finding a way to intensify journies of advanced colleagues yet unwilling to intern. (Wk.5)

RELIGIOUS HOUSE: RICHMOND

External: Opportunities Unlimited Parish is named and gridded at the first Virginia State Farm Pre-Guild meeting, involving six inmates and two prison staff. Week 11 PSU builds battleplan for 60-man Community LENS in Week 8.

Internal: Onehouse member nets two jobs as job search continues. Office decor sparkles with two new grids, one of Bi-Metro and one of Region, drawn on road maps. House impacted by signal first lecture--the Christ Event/Story--by house intern.

Contradiction: Maintaining intensified mission in midst of intensified permeation. (Wk.5)

RELIGIOUS HOUSE: WASHINGTON

External: An explosion of style as 50 LENS participants are awakened with 'Good morning, would you like a cup of coffee?' Group greatly addressed by presence of all four phases from 11 to 75 years, but particularly by comment from one of the four elders: 'I may have lost my sight but not my vision!'

RELIGIOUS HOUSE: WASHINGTON (cont.)

Internal: To symbolize intensified decision to not be victimized by the economic, both gas and electricity consumption cut in 1/2, and i n-kind food model implemented--among other items, 60 loaves of the 'Cadillac of breads' per week (Pepperidge Farm).

Contradiction: Seeing the vision clearly, how do we prioritize demands and catalyze both old and new leadership. (Wk.5)

RELIGIOUS HOUSE: BALTIMORE

External: Visits to State and Baltimore ARBC are exciting as vocal endorsement pushes us for written proposals.

Internal: After Neibuhr--Bruner comes as joyful relief and Mr. Antrobus sucks us all in. More! More!

Contradiction: Waiting for own intuition to turn into the rational. (Wk.4)

RELIGIOUS HOUSE: PHILADELPHIA

External: Registrations for Town Meeting 76 demonstration weekend secured. Best wishes for success of demonstration weekend from Governor's Office along with promised representative. Thirteen week Parish PCE training design begins and includes Imaginal Education for teachers.

Internal: Three ICA consulting positions initiated (two within one family, relating to elders) shattering our image of 'tight money'. Jim Slotta, Cleveland Guardian, sojourns for first of three Week 11's.

Contradiction: Keeping the motivity and seriousness up when something is eight months away. (Wk. 5)

RELIGIOUS HOUSE: NEWARK

External: PLC comes off as signal included Roman Catholic hierarchial representations and local pastor ready for Galaxy. Submitted additional funding proposals for Primal Community Experiment.

Internal: Received Bob Baldwin as fellow; wild celebration follows space transformation: new lineoleum in four rooms (gift of Metro family), and functional kitchen.

Contradiction: When you burn the candle at both ends, how do you keep from getting soft at the center? (Wk.5)

RELIGIOUS HOUSE: BROOKLYN

External: Key visits with R.C. clergy secure authorization from the vicar in Greenpoint parish and the diocesan director of Ecumenical Affairs for the Bishop. Two more congregations agree to sponsor RS-1 by sending ten participants.

Internal: Daily Office is experienced as intrusion of new life rhythms and is seen to reflect the decision, in a time of hope against hope, to intensify our missional expenditure.

Contradiction: Concretion in our models projects us only through 'next steps,' but has us 'waiting to see' where to go beyond that, and thus the victim of anticipated responses. (Wk.5)

RELIGIOUS HOUSE: HARTFORD

External: In wake of field visit with 61 participants, and decision of 14 organizations in Seaford to sponsor LCC, we discover new colleagues in form of individuals and institutions.

Internal: In confrontation with fasting and feasting and Gogarten's 'N.T. Eschatology,' discover and ground that cruciformity is not something tagged onto life, but is life itself.

Contradiction: concentration in non-strategic geography of troop deployment across metro, though not prohibiting miracles, dims visibility. (Wk.5)

RELIGIOUS HOUSE: MANCHESTER

External: First impact of Manchester--1% received LENS letter (980 letters mailed): thus first phone call (LENS), first two registrations.

Internal: Roy Chamberlin sent to Boston to 3rd teach PLC; George Warner (key local clergy) as House Church celebrant--both House and celebrant impacted by style.

Contradiction: 'thinking that guarantees are necessary rather than trusting in the Mystery.' (Wk.5)

RELIGIOUS HOUSE: BOSTON

External: PLC with 20 attending is culmination of quarter push with 0 drop-out rate---LENS luncheon with 23 attending turns our attention to parish and Town Meeting 76.

Internal: Day of Fasting calls us to consciousness of globality of Order and decision to be about prayer and fasting which gives distance on our local engagement. Hartford House move demonstrates areal corporateness and House Church becomes powering dynamic for three recent RS-I grads.

Contradiction: 'We found George now how do we let him do it?' (The interest has been sparked, how catalyze it into fire) or how to push eight-sided war into consensus operation. (Wk.5)

MONTREAL**RELIGIOUS HOUSE MONTREAL**

External: Proto-guilds began to emerge as St. Henri Parish experienced for first time in its history worship service involving French and English bilingual service followed by discussion groups on building future of Parish. Group in Frontenac Parish enrolled in Primal Community SMS.

Internal: Primal Community Continental Consult revealed that tactically we are in mid-stream in relationship to movemental context for social demonstration. New prayer room and study of 'Adventure in Prayer' greatly invigorated our even prayer service.

Contradiction: Having run through quarter's time line in one month, having to operate out of our intuitions. (Wk.5)

RELIGIOUS HOUSE: TORONTO

External: Trial run of Community Forum Canada in community node demonstrates the construct has got what it takes.

Internal: House and guests study Heilbroner paper and work on CFC pedagogy. Sixth Grade Rite of Passage brings Jennifer Ross into Youth status.

Contradiction: Developing the operational models to move fast on many different fronts at the same time. (Wk.4)

RELIGIOUS HOUSE: OTTAWA

External: This was a week of unstopable yesses as we get a facility for the Parish Community Forum Canada, several clergy to the Week 2 Clergy Collegium, guests for dinner, Marijesiola, and House Church. One of the guests had learned problematting from us in 1968.

Internal: Hosted the Area Council with pedagogy on Community Forum Canada and Human Resurgence Mission, a real live English Pub celebration. Mary gets a 10% cost of living raise, and we welcome Nancy Fraser, newly arrived from Chicago Nexus.

Contradiction: How to control new fast, streamlined, LRR (Light Rapid Region) when we have only been driving Model T's. (Wk.2)

CARACAS

RELIGIOUS HOUSE: CARACAS

External: Metro Ecclesiola heard global reports from Jaime Vergara and Kamala Parekh following ITI.

Internal: Time of feet on table reflection and reclaiming space.

Contradiction: Finishing ITI report. (Wk.5)

GLOBAL CENTRUM
QUARTER III 1974 - 75

THE GLOBAL ORDER CENTRUM REPORT
FOR WEEK 5

BRUSSELS
BOMBAY
SINGAPORE
HONG KONG
CHICAGO

GLOBAL
DEVELOPMENT
CENTRUM

Development gears in on proposals. Hong Kong works on proposal back-up sheets. Chicago writes and sends off to Washington forty-eight Majuro proposals in three days' time. Brussels discovers new proposal arenas and network of sources through work on donor list and first hand contact with contributors at close of Brussels RS-1. Bombay works on proposals for five major companies. Singapore intensifies sophistication with printed business reply envelopes and updated pitches. Treks held in Manila, Cebu, Taipei, Singapore, Bombay, Brussels, San Jose, Ft. Worth/Dallas, Topeka, Columbus, and Hartford, with major funding in New York. The Contradiction is in creating the needed strategies and operating practices that allow effectiveness in realizing the global vision and thus allowing a 'yes' to be pronounced on both the immediate and the long range.

GLOBAL
MANAGEMENT
CENTRUM

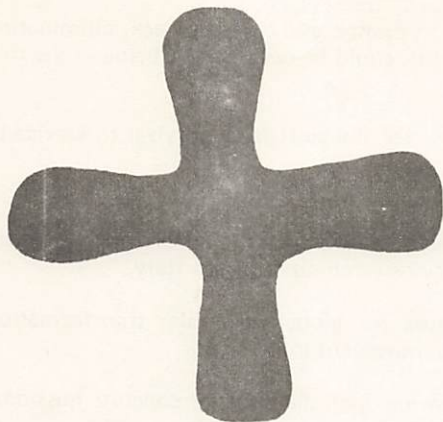
Legalization and legitimization of Nexus sites proceed with identification certificates and work permits for House members being worked on in midst of financial consolidation and stabilization. Singapore receives new Sydney Development account checkbook with money already on deposit, and sends Sydney checks out on schedule. Hong Kong cleans, fixes and moves into new facility location in downtown Kowloon, and initiates Phase I of financial consolidation with Taiwan funds being transferred to Hong Kong. Chicago accelerates residential construction in midst of necessitated ongoing tribal resettlement. Brussels completes one more step of legalization thru meetings with local officials to secure identity cards. Bombay completes financial accountability and builds structures for finances. The contradiction is in maintaining a proper balance of practically dealing with current crisis in relation to the total missional enablement of the centrum.

GLOBAL
OPERATIONS
CENTRUM

Teaching and training form focus of work around the globe. Brussels and Singapore refine course reporting and feedback system and complete first teacher packets. Bombay intensifies pedagogue training and nets Rs. 300 on PLC. Hong Kong offers revised teaching assignment recommendations for SEAPAC GRA/ITI's. Chicago welcomed back returning faculty from Frankfurt ITI, and heard reports on the ITI's, Frankfurt and Caracas, and made Centrum assignments to International Training Program participants returned from Religious House Treks, Miss Lim Kyung Soon, Rev. Kim Chan Ho and Mr. Yoshiki Toeda. The contradiction is in working through procedures to actualize full potential impact of tactics and miracles.

GLOBAL
RESEARCH
CENTRUM

Participation of all Nexus locations in Ecclesiola study plans actuates the global band of Research while the Primal Community Experiment initiates Field Visits beyond North America: The Primal Community Experiment is one Social Demonstration located in 154 places. Brussels nails down 9 out of 10 field visits for European houses; while Bombay and Singapore express deep excitement about the initiation of parish work. Hong Kong has its first Field Visit in Taipei with 73 present, providing practical data on how to modify construct for releasing motivity of local man. In other arenas, Chicago hears Majuro team report highlighting impact and implications for opening the other 23 Global Social Demonstrations. The contradiction is in the eagerness to have anticipated results actualized hampers active waiting for disclosure of God's time to move.



I know that whatever God does lasts for ever;
to add to it or subtract from it is impossible.
And he has done it all in such a way that men
must feel awe in his presence.

Ecclesiastes 3: 14.

LONDON

RELIGIOUS HOUSE: LONDON

External: Canterbury RSI with 30 was held on main street of the holy seat of Church of England while Oxford Cadre report additional people planning to attend PCTS in Brussels and Fulham metro cadre has parish day.

Internal: Ecclesiola a happening as the dramatic talent of house members whirls the 'Skin of Our Teeth' and recent I.T.I. grad attends and spins on the reality of HOPE.

Contradiction: Designing the form that helps break the sound barrier. (Wk. 6)

RELIGIOUS HOUSE: GLASGOW

External: Penetration systems swirl as entire Edinburgh cadre assigns itself to courses, pedagogy grapples with lecture building, more PLC letters go out and 14 regional colleagues decide to teach or P.O. in the next 3 weeks.

Internal: With everyone back from ITI, Marshall and Heilbrunner papers invite us to see how 'hope appeareth'. House PSU on Saturday outlines next 12 months strategy. Celebrate it all with Chinese meal and Russian play.

Contradiction: Swirl of events and guests in House dramatize importance of this facility at a time when pressure to secure the facility is mounting rapidly. (Wk. 6)

RELIGIOUS HOUSE: BRISTOL

External: Fixing up the new facility swirls regional colleagues into excited Week II expenditure with a 'work hard' spirit and crucial house furnishings.

Internal: A week of struggles with coal, paraffin oil, electricity and furniture culminates in fantastic House Church celebration.

Contradiction: Re-orienting ourselves relative to practical footholds for effective behind the lines activities. (Wk. 6)

RELIGIOUS HOUSE: MANCHESTER

External: Initial meeting and covenanting celebration of the Speke and Aintree Cadres in Liverpool.

Internal: Assault of the future as we read Heilbrunner paper in Ecclesiola, and Steve Busa returns from Frankfurt ITI to report on the new shape of the movement in Europe.

Contradiction: Making decisions that matter while groping after the future. (Wk. 6)

PARIS

RELIGIOUS HOUSE: PARIS

External: A sense of 'Protestant authorization complete' comes with the internal 'yes' from the Vice President of the Eglise Reforme de France, and a 'yes' to PLC attendance from resident theologian, Andres Dumas.(author of book on Bonhoeffer: 'A Theology of Reality').

Internal: We experience that we are actually on the edge here in France, and the past week, illuminating that with pedagogy sessions, key appointments and the field visit, could be described as being in the ring with Mohamed Ali!

Contradiction: Practical systems for strategic events that allow for the shift from survival to service to take place. (Wk. 6)

RELIGIOUS HOUSE: ROME

External: Returning from Frankfurt, Rome's ITI staff meet in Milan with Waldensian, Anglican, Reformed, Jesuit and Consolata churchmen, continuing primary research on northern Italy.

Internal: Acquisition of decor and equipment prepares House for global host role? transformation intensified as ITI staff report on what amounts to a new global movement in Europe.

Contradiction: As authorization doors continue cordially to swing open the need for concrete missional programme image intensifies. (Wk. 6)

BRUSSELS

GLOBAL CENTRUM: BRUSSELS

External: Visit from Amsterdam colleague highlight work in Parish and give us a first hand picture of of happening.

Internal: Every one working out on PCE or Development on Thursday and Friday of the week.

Contradiction: Facility Prep for PCT'S.

RELIGIOUS HOUSE: BRUSSELS

External: Brussels Area has its first RSI in Religious House with movt. colleagues furnishing blankets, pies & cookies. RSI LORE DEPT: Marcia Lewison, Jewish 4th teacher replied to Catholic friend reluctant to attend due to early rising, 'If I can say 'Christ is risen,' you can get up.'

Internal: Paul Schrijnen, Catholic from the Hague begins his 'formal' intern year after Summer 74, Fall Academy, and Frankfurt ITI. His inkind work netted free weekend use of movie projector from old family friend.

Contradiction: Allowing some early registrations (6) prevent comprehensive recruitment follow through for the Quarter. (Wk. 6)

RELIGIOUS HOUSE: AMSTERDAM

First course of the year a miraculous happening for 6 participants representing three major denominations of the Netherlands and three age phases; one participant becomes ill during Bonhoeffer and goes home, only to return on Sunday morning. Internal: We find small house can still be wayside inn as we house teaching staff for course, as well as enablement; first House Church guests include one RSI participant who stays on, and clergy couple from the major Dutch denomination, the Dutch Reformed Church.

Contradiction: Where are the formulation models for grad and nongrad clergy? (Wk. 6)

RELIGIOUS HOUSE: FRANKFURT

External: Bishop Heidland of Baden travels to Frankfurt for a visit, tells us 2-3 years will be too late for a social demonstration project in Mannheim, and suggests in presence of one of his pastors his initiation of a PCX in 6 months with establishment of a new Religious House there.

Internal: Ulrich Sodencamp begins a 6-month sojourn as one of the first Europeans from the 'Continent' to do so. Discovery of great house possibility in parish excites us as house-hunting continues.

Contradiction: In the midst of many tasks and limited people and time, finding the king pin that will release many little ones. (Wk. 6)

RELIGIOUS HOUSE: BERLIN

External: Prospects for bilingual RSI excited to come.

Internal: Firstguest night used as intentional strategy. Play at Ecclesiola becomes great happening.

Contradiction: How not to be scared by too many possibilities. (Wk. 6)

NAIROBI

RELIGIOUS HOUSE: NAIROBI

External: Second grad meeting held to lay out study and meeting plans for next two quarters? LENS possibilities continue to open for May '75.

Internal: Sodality continues to push us to exciting practical possibilities and enlivens the 9 pressure points.

Contradiction: As LENS possibilities keep coming our way, how to relate the continental priorities to the global priorities. (Wk. 6)

BOMBAY

GLOBAL CENTRUM: BOMBAY

External: All developers on the road full time.

Internal: 'Skin of Our Teeth' reading portrayed absurdity of human pride which exposed Hope.

Contradiction: Long tradition of non-residential courses. (Wk. 6)

RELIGIOUS HOUSE: BOMBAY

External: Securing site of nearby Christ Church School for community LENS, plus four well-known local leaders as sponsors reveals hitherto hidden yearning for authentic community involvement.

Internal: Ecclesiola continues to be hilarious and intriguing as play readers unfold plot of 'By the Skin of Our Teeth'. Breakfast collegium on whole House participation in self-support opens up intriguing possibilities for all members.

Contradiction: How to hold fast to internal House structures and individual care while external mission demands time and attention. (Wk. 6)

DEHLI

RELIGIOUS HOUSE: DELHI

External: Circuit rides to three regions break open possibilities for three HRM's and two Imaginal Education consults.

Internal: Collegium by Jenkins on PCE/Metro Cell; Ecclesiola seminary studies participation in 'Watch 222'; and 15 replies to English conversation ad intensifies sense of urgency.

Contradiction: Releasing resources (rupees & people) for RSI's, HRM's, and I.E. consults while engaged in fierce hand-to-hand combat with the financial dragon. (Wk. 6)

MADRAS

RELIGIOUS HOUSE: HYDERABAD

External: Leading tobacco company in India, Vazir Sultan, buys block of 5 seats in first Hyderabad LENS.

Internal: The first two school concerts 'Thisworld' which Rs800, and influx of TOEFL (Test of English as a Foreign Language) students, indicate that these are crucial aspects of work of 'Globalarts'. House impacted by 'Watch 222' development letter writing vigil.

Contradiction: How to push recruitment systems way beyond the 'possible', while maintaining self-support as number one. (Wk. 6)

CALCUTTA

RELIGIOUS HOUSE: CALCUTTA

External: Leading colleague takes responsibility for Community LENS recruitment by 'booking in' block of 40 seats for reservations. Circuit rides for Quarter III begin.

Internal: House struggles with Asanol RS-I as possibility of residential course diminishes. House hears Geo Paul's report at collegium and then honours historical church and his family by attending the first communion of his youngest daughter. Explored the possibilities of import/export.

Contradiction: With a time-resource-troop squeeze, how to stand as the faithful in the midst of frustrating ambiguities while concretizing the quarter's miracles? (Wk.3)

SINGAPORE

GLOBAL CENTRUM: SINGAPORE

External: A consultation on demonstration took place in Perth with the training committee of the Dept. of Aboriginal Affairs (and the committee's new director) resulting in the submission of a proposal to train 35 govt. personnel in social methods to enable the replication of Oombulgurri.

Internal: Jim Oberg secures US\$1700/month job as inspection engineer for an Australian company, Metlab Mapel, who subleases for Shell Oil Co.; Barbara Alerding completes 4-day course on management problemsolving and makes 'This Week in Singapore'; nexus is now on a common march of miracles during Week II's.

Contradiction: The regularization of Order finances being blocked by piecemeal reporting and 'We're a special case' attitude challenges us to create an effective communications system and accountability structure with absolutism built in. (Wk. 6)

RELIGIOUS HOUSE: SINGAPORE

External: House and region experience new unification as James Chia concretizes the regional participation in program decisions by picking up role of course coordinator.

Internal: House Church Key happening as for second week in a row regional colleagues prepare the meal, providing the food themselves.

Contradiction: We know where our parish is but still tell ourselves we don't have enough data to make a decision. (Wk.5)

RELIGIOUS HOUSE: KUALA LUMPUR

External: Careful yeses received from many colleagues in many arenas - authorization, Local Church Consults, CS-I recruitment and participation, particularized in Klang pre-consult with follow-up planned, R. and Lutheran clergy visits, LENS follow-up, CS-I recruitment at Am. Assoc. Women's group of 70, and in govt. office with colleague.

Internal: Centrum Nexus presence by McClesky holds us accountable to task and pushes to focus on Medan and ITI, and blows open global context with Australia report. Titus begins work!

Contradiction: Sustaining the momentum with increased activity promised for the future in the midst of deciding how a week of Chinese New Year holiday can work for us, not be a block. (Wk. 6)

RELIGIOUS HOUSE: JAKARTA

External: Send out of two house members on a trip to Manado Region for ITI recruitment and grad nurture.

Internal: Jolm Yayah and his fiancee guests at Ecclesiola study.

Contradiction: Enabling Javanese movemental participation. (Wk. 6)

HONG KONG GLOBAL CENTRUM: HONG KONG

External: Field Visit in Cebu. Griffin on Davao, Cebu, Manila trek. PSU with Religious House on ITI brochure. An exciting call on a recent RSI grad, releases possibility of LENS and development.

Internal: Muriel Griffin starts teaching at St. Mary's Canossian College. Wk. II conversations on Chinese myths surrounding Lunar New Year uncover the symbolism of the Hare (This is the Year of the Hare) related to the sacrificial life style.

Contradiction: Financing our missional tasks. (Wk. 6)

RELIGIOUS HOUSE: HONG KONG

External: House joins in session with Centrum as David McCleskey spins on Primal Community Experiment giving new images for actualization. Host Committee for ITI secured and PLC follow-up brings new grads together.

Internal: Wong Pak Yeung and wife Lina present for House Church and report on ITP experience. House rearranges space after move of Centrum intensifying Wayside dynamic. Pat DeSpain from Kaohsiung enlivens House by her style.

Contradiction: Developing the story and the signal event that will break open concrete images of the Primal Community Experiment in thinking of House and colleagues. (Wk.5)

RELIGIOUS HOUSE: KAOHSIUNG

External: Teachers RS-I recruitment explodes to nearly 30 as timing during Winter vacation pays off. Women's Guild scheduled and recruited for Week 7.

Internal: Sent Pat Despain out to Hong Kong for visa renewal. House RS-I impacts us all again with power of RS-I.

Contradiction: Looking beyond PLC to ITI has resulted in PLC recruitment crisis. (Wk.5)

RELIGIOUS HOUSE: MANILA

External: Metro/regional event--18 attend Ecclesiola-plus House! Development proposal writing breakthrough--they are working! Metro colleagues assume full responsibility for RSIs in Weeks 7 & 8.

Internal: House impacted by TV program 'Pageant of Philippine History and Culture' and First Lady's visit to China. Office cleaning uncovers valuable study papers and 1968 N. grid placemats.

Contradiction: Experience need of catalysis in many arenas - like being a millionaire in a phone booth without a dime. (Wk. 6)

RELIGIOUS HOUSE: TAIPEI

External: PLC recruitment trip to Miaoli and Taichung reveals open reception by both Presbyterian and Roman Catholic clergy and elicits promotion by grads and old friends.

Internal: House experiences role of student in Ecclesiola study of Hsiao Ching (filial piety) with 8 Chinese guests.

Contradiction: Increasing leadership demands leave us without effective models to allow colleagues to say yes. (Wk. 6)

RELIGIOUS HOUSE: CEBU

External: Mini-school receives funding for remainder of school year: 20,000 P or \$280 for Feb., March. Same foundation, Aboitz, says O.K. to funding Primal Community Experiment for one year: 75,000 Pesos.

RELIGIOUS HOUSE: CEBU (cont.)

Internal: New Ecclesiola format for Quarter III addresses all with struggle of Hope and look at Philippine history and gifts. Master list of all course grads is completed.

Contradiction: Unwillingness to rehearse and recontext ourselves during this stage of The Long March in relationship to symbolic life, all time is assigned time, etc., etc., etc.. (Wk.7)

RELIGIOUS HOUSE: DAVAO

External: Monthly newsletter off the 'press'. 'Obrero 5' card complete and SEAPAC cards mailed. OLE! House spins with visitors from 'outer space': Griffin on Development trek, immediately followed by visit from Area Prior. First LENS grad dinner held with singing, feasting, and remembering.

Internal: House Church celebrates completion of Purita Morala's intern year and receives her as Fellow for second year. House celebrates great week of Wayside Inn-ing with dinner at the International (Chinese) and dancing at El Alhambra.

Contradiction: Christening ready to go but baby not yet born. (Wk. 6)

TOKYO

RELIGIOUS HOUSE: TOKYO

External: Miracle tactic implementation includes corporate writing of articles on Majuro, Seoul demonstration school, Tokyo AMS and Global Language School for Area News Letter to inform Area of global social demonstration. Tokyo serves global demonstration as Majuro connection.

Internal: Colleagues abound as Father Joseph Iida returns from Seoul Prior's trek. House, Regional colleagues plan Week II Japanese language intensification.

Contradiction: Internal structures not implemented in time to make maximum use of personnel in scheduling servanthood visits. (Wk.7)

RELIGIOUS HOUSE: SEOUL

External: Third RS-I of quarter held for 25 students at Presbyterian Education Center. Translation task force of nine improved all RS-I seminar papers and worship translations. Cadre meetings were held in Daegu and Taejon.

Internal: First Ecclesiola of quarter exploded vision of hope in midst of H. Richard Niebuhr and 'Skin of Our Teeth'. New motivity for mission of region emerges in Week II PSU deciding the miracles of Quarters III and IV. Region welcomes visit from Japan of Joseph Iida and Kenn Ellison.

Contradiction: Cancellation of Daegu PLC reveals current inability of movement to transcend highly ambiguous national situation. (Wk.5)

RELIGIOUS HOUSE: FUKUOKA

External: Expected unexpected possibilities in week of speaking engagements and visitation open up PLC registration, translation of Other World materials, and Summer '75 registration.

Internal: Quarter's decor model clicks into place with completion of office, entryway, collegium and worship room.

Contradiction: Practically bridging our single focus into imaginal care for the region. (Wk. 6)

RELIGIOUS HOUSE: OSAKA

External: Set four demonstration labs for Global Language School. Use of Japan Management Services offered for ICA/GLS work on an indefinite basis. City Hall comprehensive planning department welcomes us and asks for more copies of model-building methods paper. House hosted a meeting of Roman Catholic and Union Church pastors to discuss the mission of international churches in Japan.

RELIGIOUS HOUSE: OSAKA (cont.)

Internal: Mr. Kashiwagi shares difficulty in communicating awe in Ecclesiola seminary .

Contradiction: Projected deficit demands additional income/budget cuts when we want more troops freed. (Wk.5)

RELIGIOUS HOUSE: SENDAI

External: Prefectural Education Center teachers create cabaret with transparent help of House.

Internal: Wednesday task forces work on key religious event (RSI) in one room and key secular event (GLOBE) in the other.

Contradiction: How to infuse the religious with the motivity of the secular. (Wk. 6)

SYDNEY

RELIGIOUS HOUSE: SYDNEY

External: Sydney House taken over by Summer '75 Emerging Generation Programme while House prepares back-up systems for Post-Summer '75.

Internal: Received Zahrts, and sent out Grace Umbagai to Chicago. Spencers pass through on return to Bombay and Court family from Adelaide add sparkle to first Ecclesiola.

Contradiction: Planning must go on despite most of house at Summer '75, creating a new context. (Wk.2)

RELIGIOUS HOUSE: PERTH

External: Summer '75 reports evoke commitments of colleagues for Oombulgurri and Darwin projects.

Internal: Intern family received, Betty Gowers visits from Oombulgurri, David Mowarjarli and Sam Umbacai pass through from summer programme to Mowanjum. Proposal written for Dept. of Aboriginal Affairs.

Contradiction: Area council decisions demand modifications to models already well down the shute. (Wk. 6)

RELIGIOUS HOUSE: DARWIN

External: Signal City Project begins to swirl. Parap-Fannie Bay PCE fills in most of stage grid with leaders, launches first 3 community programs. PCE planning workshop prepares government proposal on suburb design. Results of 75-man federal policy seminar sent to Canberra. Duty-free port possibility sparks speedy preparations to prepare proposals.

Internal: Troops from other regions join in House Church filled with wine-assisted spirit and Ian Ogilvey's childhood recollections. PSU on mission reveals avalanche we are in.

Contradiction: Delay in final approval of \$20,000 proposal from federal government and funds from nexus curtails mission effectiveness. (Wk.7)

RELIGIOUS HOUSE: OOMBULGURRI

External: Return of Summer '75 participants has enabled Oombulgurri to see itself related to world in significant way, while at home, community stages a grand farewell party for Bakers.

Internal: Baker family sent out after sojourn which saw the installation of electricity at Oombulgurri. Auxiliary joins Wyndham associates for wild release of Spirit at party in town.

Contradiction: Ensuring auxiliary shadow roles cover all work areas to do necessary tactical planning to bring off quarter objectives. (Wk.5)

RELIGIOUS HOUSE: ADELAIDE

External: Primal Community Experiment thrust intensifies as galaxy council sets times for two quarterly councils and initial affirmative responses received for one-day clergy consult about education in the Church.

Internal: Finished quarterly planning---finally---and received the two Duffy boys during week of Sweltering heat.

Contradiction: Although the week seems to require full speed tactical action, summer heat, the first week of public school and the diversifying journeys of the summer, leave us still struggling to name the Quarter's single thrust. (Wk.7)

RELIGIOUS HOUSE: MELBOURNE

External: Received Sue Chapman, Dale Carroll and Don Gibbons as interns and sent Sue and Don to Darwin, and Dale to Perth, also regional colleague Ian Ogilvy sent to join Darwin task force. Established contacts with leaders of Darwin evacuees in Melbourne and attended first local meeting.

Internal: David Scott announces Telford family as new first among equals in Melbourne House. John Telford spends 2 days in Canberra with Jim Oberg to launch business LENS planning. Jammed telephone in corner booth gives free calls while we await installation in new house.

Contradiction: Several task teams demand signal leadership to call forth metro responsibility for one thrust. (Wk. 6)

RELIGIOUS HOUSE: CANBERRA

External: Unknown Brigidine nun, Sister Christina, phones Liz's surgery and to ask if Banks will address first co-ed group of R.C. Daramalan College boys and Braddon girls on 'Relationship of Man To the World.' In same week Commission for Human Relations rings for appointment to discuss community reconstruction.

Internal: House welcomes back Banks, Mimi Shinn (en route to Oombulgurri), Bruce Donnelly on development, E.G. from Sydney, celebrates happenings of Summer 75 Melbourne, and children's camp Sydney 75. Greetings come from Singapore, as Richard and Ruth Ong stay over after conference in Melbourne.

Contradiction: Time and numbers really do count. (Wk.7)

RELIGIOUS HOUSE: BRISBANE

External: Interest and support of Aboriginal Office of Department of Education signalled in self-initiated telephone call requesting report of Summer '75. Quarter mailings out; Movement participates in two clergy induction services.

Internal: Massive re-ordering of files completed, heralding return of Summer participants with report that projects mission intensification in all arenas.

Contradiction: How transform a few burning trees into a signal forest fire. (Wk.5)

SUVA

RELIGIOUS HOUSE: MAJURO

External: Sheldon Hill, Orvis Agee work side by side in creating images of 'Magnificent Quarter Mile' Majuro downtown area unification plan--Marshallese colleagues in awe over how the center can look, say, 'Yes, how do we do it?'

Internal: Decision to be service to community takes new dimensions when house is rich with repair skills, crisis tactics--rescue missions for Korean fishing vessels lodged on reef, emergency refrigeration calls, VIP typing services.

Contradiction: Hard-headed planning and models for phasing out ICA staff in the two-year timeline Human Development Project intensification. (Wk.7)

RELIGIOUS HOUSE: APIA

External: School opened, but closed for week when hurricane threatened, giving needed time for finishing preparations for new school year.

Internal: Gridded Polis down to micros and parishes. Consensed on eventual signal parish, Taufusi 5.

Contradiction: Marking time with itchy feet. (Wk.7)

SAN
FRANCISCO

RELIGIOUS HOUSE: SAN FRANCISCO

External: Support of ITI and Bicentennial continues. Fresno foray reveals serious ITI prospects and 'Sing to the Lord a New Song' (new E'G' songbook) goes likt wildfire! Meeting with Kent Williams, Reg. Director Bicentennial very affirmative: 'You have my unqualified endorsement.'

Internal: Visits of Rodney Wilson and Katy Muir (Boston House) reveals consensus of Global Mission--they plug right in to what is necessary. Wk. 5 Tactical Modification is found to be crucial step in 'Mid-Course Correction Visioning Process.'

Contradiction: Discerning strategy from moving from courses to mass impact tools. (Wk.7)

RELIGIOUS HOUSE: SAN JOSE

External: Twenty-one from Bi-Metro attend one-day 'Church School Training Institute' in San Francisco that causes great excitement about further participation.

Internal: Ecclesiola continues to be great event. Development team brings eye-witness reports on global demonstrations to enliven collegiums.

Contradiction: LENS cancellation points out need to implement comprehensive marketing strategy. (Wk.7)

RELIGIOUS HOUSE: SACRAMENTO

External: Second-line leadership begins to pick up the task in in-king, development, office, recruitment. All exemplified by galaxy pastor who substituted in metro office for his sick wife, and coordinated RS-I launching.

Internal: RS-I E.G. forces throw great birthday party and dance for Marily Teresa Lesslie's 27th birthday.

Contradiction: Discerning key social demonstrations for engaging the troops ready to move. (Wk.7)

RELIGIOUS HOUSE: SEATTLE

External: Breakloose in RS-1 penetration with 39 for Wk. 4; twelve for Wk. 6; seven for Wk. 7. Lacey City Council proclaims February 1 as Town Meeting Day.

Internal: Ecclesiola study allows us to see how our story of present is our story for future. Why didn't you say so in the first place?' is inadequate response to everyday ambiguity.

Contradiction: Turning a positive response to Executive LENS into thirty paid registrations. (Wk.4)

RELIGIOUS HOUSE: LOS ANGELES

External: Widespread ITI calling discovers Prince of Tonga at Claremont School of Theology and Betty Stowers sent to Academy.

Internal: New prayer wheel created by youth tells us that intercessory prayer is a global demonstration.

Contradiction: Mission calling for new forms of discipline but we seem to be stuck in old images. (Wk.5)

RELIGIOUS HOUSE: PHOENIX

External: Town meeting task force established with consultants identified. Two more PLC registrations bring total to 20.

Internal: Thirty and ½ gallons milk promised in writing for ITI by small local dairy. Team dynamic intensified by twilight kickball contest, space renewal assignments. New job as community worker at \$500 monthly.

Contradiction: With everybody out all day, who answers the phone when ARBA calls. (Wk.7) s

RELIGIOUS HOUSE: SALT LAKE CITY

External: Metro cadre grids Central City 5. Visit to Bishop Federal of Salt Lake R.C. Diocese nets nod.

Internal: RS-I yields eight Ecclesiola visitors and four House Church visitors.

Contradiction: Lack of detailed plans for parish leadership luncheon. (Wk.7)

RELIGIOUS HOUSE: BILLINGS

External: Twenty man guild meeting.

Internal: Send-out of two to Academy. Battleplanning Wk. II builds 8 major miracles.

Contradiction: Finding ourselves dispersing troops and at the same time seeing extremely increasing local demands. (Wk.1)

RELIGIOUS HOUSE: DENVER

External: City councilman decides to attend full day of LCC. Boulder Bi-Centennial Committee gives official approval for Town Meeting.

Internal: Rev. Kim's visit concretizes awe of Korean church as revolutionary sign.

Contradiction: To move boldly into the New--listening and responding to the Lord's voice. (Wk.5)

RELIGIOUS HOUSE: RAPID CITY

External: Galaxy plays catch up by doing 18 tactics of Primal Community Tactical Systems. It was also used as pedagogy training. One colleague was heard saying, 'How time flies when you are having fun.'

Internal: Mummy King and Ballet Dancer Queen reign over Mardi Gras, prelude to receiving ashes and fasting next day. Small miracles transform war-room so that suddenly it invites your presence to engage in battle.

Contradiction: Having decided to walk forward, we sense need for all centrums to have 26-week timeline. (Wk.7)

EDMONTON

RELIGIOUS HOUSE: EDMONTON

External: Colleagues in Vancouver grid primal community and name it Strathcona-5. Primal Community is in heart of Vancouver in viddle of 200,000 strong Chinese community.

Internal: Two regional colleagues attend OOdyssey and are transformed into spirit giants.

Contradiction: Allowing ourselves to be victimized by survival image in 35 degree below zero of frozen North. (Wk.7)

RELIGIOUS HOUSE: ANCHORAGE

External: Fantastic RS-IIC with 27 people present finds new colleagues around table by Sunday afternoon. Town Meeting 76 proposal manual completed, ready for two key presentations.

RELIGIOUS HOUSE: ANCHORAGE (cont.)

Internal: J'Bishop and J'Bell arrive for weekend course and development while house is still spinning following morning collegium presentation on Anchorage and its future by head of city-wide planning department, a LENS grad.

Contradiction: Impending deadlines for Town Meeting 76 keep us off balance as to adequate preparation. (Wk.7)

RELIGIOUS HOUSE: SASKATOON

External: Regional colleagues hold selves accountable for CS-III A by recruiting, enabling, E.G. teaching.

Internal: Beginning journey of Lent is celebrated as North Park Parish Cadre joins House for Shrove Tuesday.

Contradiction: Grappling with decision to risk and expend without falling into busy-ness. (Wk.7)

RELIGIOUS HOUSE: WINNIPEG

External: Recruitment by parish walks, visiting nodes, posters and all other offers. In midst of changing dates and unsure locations.

Internal: Tally Ho. Off on a sleigh ride to enjoy Manitoba Winter weather.

Contradiction: How carry ball without alternate quarterbacks. (Wk.5)

HOUSTON

RELIGIOUS HOUSE: HOUSTON

External: Breakfast meeting with Executive Director of Texas Committee for Humanities explores promising sources of major funding for Town Meeting 76.

Internal: 'Do Your Income Tax' Workshop with Guardian CPA shows probability of \$4,000 in refunds and gets several returns safely in mail.

Contradiction: Continuing temporary housing allows valuable time to leak out around edges just when every moment is needed in order to win simultaneously in several arenas. (Wk.7)

RELIGIOUS HOUSE: AMARILLO

External: Guild task-force decides to hold four hour (6 a.m.-10 a.m.) Sunday meeting to pull off student counselling 'Career Day' miracle.

Internal: One more House member employed at TST. As 'Special Programs Development Specialist' Experience the immediacy when more cars are out of commission than running.

Contradiction: Deciding the cruciality of the 20 programmes relative to the March of Miracles and the long term vision.

RELIGIOUS HOUSE: SAN ANTONIO

External: Religious House becomes the 'possession' of the Metro Cadre as House keys are distributed at House Church and Cadre begins assigning House for Week II Task Team work.

Internal: Celebrative send-outs at intern year-end produces three-adult House, which in turn prompts octogenarian colleague to canvass her Metro colleagues: 'We're not going to let this happen, are we?'

Contradiction: Is the facility large enough for the coming House? (Wk.5)

RELIGIOUS HOUSE: OKLAHOMA CITY

External: The Guild takes the data from two LCC's and begins to build a social model, while the Jets conducted a Town Meeting, thus becoming a concrete sign of New Community.

RELIGIOUS HOUSE: OKLAHAMA CITY (cont.)

Internal: Continental, areal, regional collegial missional effort explodes the Town Meeting 76 Battleplan.

Contradiction: Needing a concrete picture of authorization to know what we have when we have it. (Wk.7)

RELIGIOUS HOUSE: DALLAS

External: Three key colleagues in Bartlesville assume responsibility for bringing off Town Meeting in that city, decide to re-convene Bartlesville Cadre by inviting thirty other colleagues to planning meeting.

Internal: Beginning of House renovation sees floors sanded, re-varnished, three rooms painted, We discover entirely new space on our hands.

Contradiction: What miracle will begin march of miracles that permits us to re-create space and spirits while sustaining momentum toward first Town Meeting. (Wk.7)

RELIGIOUS HOUSE: TULSA

External: State-wide planning weekend at Oklahoma City House forges the tactical systems that will be needed in order to do Town Meeting 76 with inexplicable joy and delight.

Internal: Completed 21 Point Plan for our Practical Vision for the year. Also are ready to redesign our space so as to recapture seriousness of the Wayside Inn.

Contradiction: How to deal imaginably with one's space design in the House. (Wk.5)

RELIGIOUS HOUSE: NEW ORLEANS

External: PCE Consult sparks new decision to be the experiment. Mardi Gras trek produces Town Meeting battleplan and regional committee.

Internal: House perched up on a six foot perch participates in Mardi Gras. Secular man still knows how to celebrate. Regional couple sojourns for three days--boy, what a breath of fresh air. Sandra lands a job singing with night club group: 'The Lady and the Tramps'.

Contradiction: How do we do more than one thing with only one person working in--and even that well? (Wk.6)

RELIGIOUS HOUSE: MEMPHIS

External: Discovered while on 'modern' circuit ride: PLC grad with felt-sewn banner over his desk (his grid of North Rock Hill 3). Relative to parish: couples clubs, birthday parties and pinochle games overw helm us as old 'revolutionary' images are re-shaped.

Internal: Neighbors begin coming by to pick up overflow of in-kind varnish and pastries. S.K. study 'Love hopes all things...' comes as radical surgery and we're left immediately healed.

Contradiction: Having become comfortable in our unfocused state; we see any attempt the Lord makes to 'focus' us as a threat. (Wk.7)

RELIGIOUS HOUSE: ATLANTA

External: First of three Community Reformulation luncheons held with participants asking for fourth session to build timeline and implementation model (3 or 4 key parish churches represented.) Holders are first Atlanta regional colleagues to sign up for Majuro.

Internal: In-kind 'H. Salt Esquire fish' with all the trimmings arrives for 'after Ecclesiola' impromptu celebration as colleague drops by end-of-day leftovers. Shirley Heckman (Chicago region) sojourns three days while in town on job and demonstrates expenditure as what life is all about.

Contradiction: Creating sense of immediacy, demand, and responsibility that allows people to see East Lake 5 with same kind of fascination Majuro elicits. (Wk.5)

RELIGIOUS HOUSE: MIAMI

External: Concept of 'region' grows as trip to Jacksonville (350 mi.) is accomplished in six hours and registrations for RSI there come in from Miami people. Lenten mailing continues collegial communication.

Internal: The impact of Lent is symbolized by ashes from palm fronds and fast on Ash Wednesday, followed by a particularly festive Ecclesiola with UR image decor.

Contradiction: Half-way through Quarter, the lack of intentional battleplan modification leaves us with unfocused vision. (Wk.6)

CHICAGO

GLOBAL CENTRUM: CHICAGO

External: Computer program of 256 skills through which to view Guardians is created. Elders LENS course completed in Uptown, and enablement plans being made for next one to be held following week. Sent out Carlos and Kathy Zervigon to Manila, David and Gay Flowers to Edmonston, and Andrew Hashiba back to Tokyo.

Internal: Nexus profoundly addressed on Week II as Friday night spin and conversation on world-wide hunger reveals 32 countries facing crucial shortages; and Professor Jack Harlan talks next day on China's organizational structure and agricultural research, exciting us with an example of social demonstration through structural form. World Events conversation experiment during morning collegium, using data from Global Order reports of previous week from across the globe. Congregation collegium focuses on the TTeam.

Contradiction: Orchestrating images that structurally deal with Guardians' meeting, Town meeting planning, and Primal Community launch. (Wk.6)

RELIGIOUS HOUSE: CHICAGO

External: RSI with new participants from around the Area. Sent George Walters out on Area trek to gather data on our preparation for Town Meeting 76. 5th City launches new Jets program, and Adult Education Center begins new semesterr with enrollment doubled.

Internal: A group of rather large, passionate elves paint through the night to transform the 1st floor hallway, and are never seen by the course participants inhabiting that space during the day. Sophisticated new decor and new floor on ground level have us walking around awe-struck.

Contradiction: Many demands on the time and energy of the galaxy/guild have been allowed to dissipate the focus of that body away from the primary task of implementing the social demonstration in the parish. (Wk. 6)

RELIGIOUS HOUSE: OMAHA

External: Intensive work in anticipation of Local Community Convocation pushes House to examine in depth what our long range vision is for the Northside Primal Community. In-kind billboards and flyer provide signs for the future.

Internal: Metro cadre held at House holds us over atainst our decision to be the Wayside Inn, in wild celebrative meeting.

Contradiction: Showing up behind on all our task force timelines, with no concrete plans for catching up. (Wk.7)

RELIGIOUS HOUSE: WICHITA

External: Toeeka guardian lends enthusiastic support for search for Statewide Town Meeting authorization; local pastor offers financial backing plus troops for rehabilitation of Parish Centre.

Internal: House holds grand taffy pull and 6 hour game of Agggravation for Saturday Night Celebration. Colleguim on on worship dynami= cs breaks loose new seriousness in Daily Offi= ce.

Contradiction: How to use Day Care problem (2 infants) to break loose Metro engagement in a new way.

RELIGIOUS HOUSE: KANSAS CITY

External: Primal Community Consult lays low images of 'my church my parish' and pushes through the demand for 25 iron men in each location of the Experiment. Next day the Galaxy postpones battle-planning Week II and asks to join House in recruitment.

Internal: Ecstatically giddy/somberly sober celebration with Primal Community consultant Morrill Saturday night clarifies the Cross; and morning fix-up Collegium deals with the major rough edges.

Contradiction: Hoping there's some other way to care for colleagues than the Word. (Wk.5)

RELIGIOUS HOUSE: MINNEAPOLIS

External: Whittier Community Organization secures use of foyer in Mpls. Inst. of Art for elders Valentine's Ball. Pillsbury Co. donates \$200 for the band, a local caterer donates cups and napkins, community people bake cookies and elders call requesting rides. Guild builds 21 point program, leading the way to structural care for the neighborhood. RSI with 28 new participants including our State Representative and 7 LENS grads.

Internal: House plans for area Bicentennial meeting. Makes plans for quickly submitting proposals to state committee as an extra \$40,000 is uncovered to be dispersed immediately.

Contradiction: How to release the passion that is in everyone as our fragmentation keeps us from being the catalytic role. (Wk. 6)

RELIGIOUS HOUSE: ST. LOUIS

External: Second HRM Mission Sunday held at Transfiguration Lutheran Church, locally staffed by House and congregation grads. Iowa Bicentennial Commission endorses Town Meeting 76. Sojourn week planned and launched. Charles Sensel to Academy from Springfield Metro.

Internal: International visitor, Pastor Kim from Seoul, Korea, welcomed.

Contradiction: By Week 5 of the Quarter we are needing new strategic and tactical battleplans in four major dimensions of the task. (Wk.5)

RELIGIOUS HOUSE: PEORIA

External: RSI comes off with great success netting new colleagues and creating a sign to old colleagues. Preparation for Town Meeting 76 PSU.

Internal: Gogarten study impacts us with Hope as a foundational Christian category.

Contradiction: How to strategically juggle all the priorities for effective impact. (Wk.5)

RELIGIOUS HOUSE: GREEN BAY

External: Received letter of authorization from Brown County Bicentennial Committee heartily approving Town Meeting.

Internal: Religious House hosted Primal Community Consult.

Contradiction: How to care for interior life in midst of getting external mission accomplished. (wk. 6)

RELIGIOUS HOUSE: MILWAUKEE

External: First Town Meeting 76 schedule by Cudahy Bicentennial Commission for September. Cadre consult enables bi-metro to revision the primal community experiment in Milwaukee.

Internal: Ecclesiola continues to be key internal event of the week, with S.K. paper being the highlight. Jonah Paul born to Frank and Marsha Cookingham during Cadre Consult, providing new impetus to find a larger house.

Contradiction: Challenge is to build a movement on structural foundations rather than on charismatic personalities. (Wk.7)

RELIGIOUS HOUSE: INDIANAPOLIS

External: Penetration and Formulation engage house and Metro in RSI recruitment, Lens in Louisville for 35 people. House Church with more guests than House members and Metro Ecclesiola's in Lafayette, Indianapolis and Louisville.

Internal: \$1,000 worth of sleeping bags, clothing and House wear received from Galaxy grad. Long March/Dark Night conversations subjectify internal struggles in midst of health and transportation crises

Contradiction: External marches on while internally we experience ourselves wallowing in the Dark Night.

RELIGIOUS HOUSE: CINCINNATI

External: LENS recruitment nets Community authorization with Elder's breakloose of 12 registrations, while Metro Cadre celebrates second Primal Community gridding of North Fairmount.

Internal: Thursday evening Ecclesiola is transformed to corporateness symbol as House is readed to receive LENS teaching team and men are sent out to Community 'Town Meeting,' all resulting in corporate power and motivity.

Contradiction: A beckoning form which will enable LENS grads to local engagement, after exploring the world with LENS. (Wk.7)

RELIGIOUS HOUSE: DETROIT

External: As letters go out to region on Town Meeting pedagogy Week II of Week 7 and Chrysler is invited to participate by putting a car at our disposal, we receive word of state support through Horizons to tune of \$5,000 to do 3 demonstration Town Meetings.

Internal: Emerging generation treats adults at Ecclesiola interlude focusing attention on Seapac with refreshments, dance and song and decor.

Contradiction: Reluctance to concretize the where and when the first Town Meeting should be held. (Wk.7)

RELIGIOUS HOUSE: CLEVELAND

External: Cadre back-up structure in the form of Bi-Metro priorship team and communications task force enables intensification of six Cadres that meet weekly and once monthly as one Metro catalytic Cadre. Monthly 'Temple' meeting provides context and spirit breakloose.

Internal: UR Image course provides needed context for the future and proves to be effective House training weekend. Contradiction: Training weekend exposes our context for planning and decision-making to be the immediate or 'long-range' rather than the eternal. (Wk.5)

NEW YORK**RELIGIOUS HOUSE: NEW YORK**

External: Recent Community LENS grads keep coming back for more, invitation comes to lead workshop for seven agencies on Lower East Side, parish welfare leaders claims, 'I can't move in yet but you'll be seeing a lot of me.'

Internal: Collegium given to plotting jobs of our Permeators on the Social Process triangles brings new insights for strategic roles.

Contradiction: How release from victimization block of story that I can't decide to act until I have more clarity. (Wk.5)

RELIGIOUS HOUSE: PITTSBURGH

External: Trips to Fairmount & Morgantown W.Va. with regional coordinator yields six on-the-spot LENS registrations from cities Bicentennial Commissions; Hankin's family decision to be Church once again impacts region with celebration of life and death of Rochelle Henkins, 13-yr. old colleague.

Internal: Pushing ahead on House proposal for facility in Parish during morning collegium with help of Carlos Zerbigon breaks open new possibilities; House does Ecclesiola with four around table, a versatile reading of 'Skin of Our Teeth' by 2 of 4 present.

RELIGIOUS HOUSE: PITTSBURGH (cont.)

16.

Contradiction: Lucid colleagues being called upon to engage their lives now have not participated in recent miracles which allow them to live out of the 'glory' of bygone miracles. (Wk.7)

RELIGIOUS HOUSE: ROCHESTER

External: Modified H.R.M. gains authorization in prospective experiment congregation for Town Meeting or anything else. Town Meeting contacts in Binghamton metro, Norwich Polis excite local radio station and newspaper.

Internal: The Fast intensifies own consciousness of expenditure--only thing that motivates is your care-ful-ness.

Contradiction: Town Meeting set up awaits comprehensive battleplanning while time hastens by. (Wk.7)

RELIGIOUS HOUSE: RICHMOND

External: Opportunities Unlimited Parish is named and gridded at the first Virginia State Farm Pre-Guild meeting, involving six inmates and two prison staff. Week II PSU builds battleplan for 60-man Community LENS in Week 8.

Internal: One hose member nets two jobs as job search continues. Office decor sparkles with two new grids, one of Bi-Metro and one of Region, drawn on road maps. House impacted by signal first lecture--the Christ Event/Story--by house intern.

Contradiction: Maintaining intensified mission in midst of intensified permeation. (Wk.5)

RELIGIOUS HOUSE: WASHINGTON

External: Catalyzation collegiums bring results! Member of D'C' Bicentennial Commission agrees to be on local sponsorship committee and takes responsibility to organize a particular Town Meeting while Metro Cadre colleagues shift toward assuming key leadership roles in many task forces and workshops.

Internal: In midst of celebrating the fast (in front of fireplace with snow falling outside) our Tunisian boarder offers us a tray of his native delectables.

Contradiction: Living out of the 'We/They' stance as 'we' delegate more responsibility to 'them' (colleagues living outside House) and at same time neglecting to do catalytic model building necessary to sustain new recruits. (Wk.7)

RELIGIOUS HOUSE: BALTIMORE

External: RS-I happens and also our first Metro Cadre meeting outside House.

Internal: Fast Day came as a first time for this Bi-Metro and was real address in arena of 'On Behalf Of.'

Contradiction: More Leo's (metro colleague) are needed. (Wk.7)

RELIGIOUS HOUSE: PHILADELPHIA

External: Registrations for Town Meeting 76 demonstration weekend secured. Best wishes for success of demonstration weekend from Governor's Office along with promised representative. Thirteen week Parish PCE training design begins and includes Imaginal Education for teachers.

Internal: Three ICA consulting positions initiated (two within one family, relating to elders) shattering our image of 'tight money'. Jim Slotta, Cleveland Guardian, sojourns for first of three Week II's.

Contradiction: Keeping the motivity and seriousness up when something is eight months away. (Wk.5)

RELIGIOUS HOUSE: NEWARK

External: Seven, eight churches enter into six-week training program leading toward replication of the Primal Community Experiment.

Internal: Task forces are functioning more smoothly (responsibly) with help of several metro colleagues.

RELIGIOUS HOUSE: NEWARK (cont.)

Contradiction: Wondering how long we can bracket an all-out blitz on decoring new House when we know that symbolic is key. (Wk.7)

RELIGIOUS HOUSE: BROOKLYN

External: Special RSI brochures are created for each of 5 sponsoring congregations, leading the way to catalyzing RSI marketing rather than doing RSI recruitment. Town Meeting 76 contacts and demands continue to mount.

Internal: Sunday morning session with John Epps, following PCC, sheds light on symbolic and practical inadequacies, and leads to new insights on ways to enable total Bi-Metro to take responsibility for total mission. 'Everything becomes everyone's business.'

Contradiction: Models are geared to Day I, Week I demands, but do not take seriously that the troop availability is primarily Day II, Week II. (Wk. 6)

RELIGIOUS HOUSE: HARTFORD

External: Clergy Collegium initiated at Blue Hills Baptist Church with old colleagues & Fall PLC grads present. First Monday & Daily Office in new house signals participation in global fasting. Wayside Inn actualized care for development team, Nancy Eggert from Milwaukee, PLC staff, community resident.

Internal: Moved into new location at Daughters of the Holy Spirit convent with help from Manchester, Boston, New York. New sojourner, Mike Pocalcko, RS-I recruitment receives registration from wife of Fall PLC grad & couple from congregation.

Contradiction: Prayers for parish not actualized--how to be catalytic sign to bring in new troops. (Wk.7)

RELIGIOUS HOUSE: MANCHESTER

External: One thousand LENS letters mailed (1% of Manchester population; three lay people participate in Metro Cadre; Global Odyssey presentation in St. Johnsbury, Vt., to ecumenical community gathering by Ken & Dorcas Rose of Rochester, N.Y. Galaxy.

Internal: In-kind breakloose results in gas stove, real milk, donuts, assorted potted plants; Paul & Margaret Schreiber family celebrate anniversary with ceremony of reaffirming wedding covenant in Galaxy Church; Bruce Harrington, high school junior, participates in Guild Night with great excitement.

Contradiction: Lack of formal symbolization of consensus results in foggy image of expenditure. (Wk.7)

RELIGIOUS HOUSE: BOSTON

External: Productive foray to Fall River brings registration total for Week 7 RS-I to 17 and demonstrates catalyzing the catalyzers.

Internal: Three generations of Seacord family attend House Church as Joan Seacord, her 81-yr. old mother celebrate birthdays, Ecclesiola study makes clear what it means to give up your giving up.

Contradiction: Living out of the illusion that regional colleagues are self-sustaining or 'not enough committed troops for task before us. (Wk.7)

MONTREAL

RELIGIOUS HOUSE MONTREAL

External: Proto-guilds began to emerge as St. Henri Parish experienced for first time in its history worship service involving French and English bilingual service followed by discussion groups on building future of Parish. Group in Frontenac Parish enrolled in Primal Community SMS.

Internal: Primal Community Continental Consult revealed that tactically we are in mid-stream in relationship to movemental context for social demonstration. New prayer room and study of 'Adventure in Prayer' greatly invigorated our even prayer service.

Contradiction: Having run through quarter's time line in one month, having to operate out of our intuitions. (Wk.5)

RELIGIOUS HOUSE: TORONTO

External: Landmark Wk. II course recruitment nets dozen yesses. Parish Hall of Galaxy church packed to celebrate Mardi Gras. LENS has great appeal to city planners.

Internal: In-kind donations at another peak with fish, fruit, paper. House studies Gogarten on Hope. Sister Marguerite LePage from Ottawa consults with Anglican order, Sisters of the Church.

Contradiction: Getting five RS-I's, ten LENS registrations. (Wk.7)

RELIGIOUS HOUSE: OTTAWA

External: Going to meetings, selling Community Forum Canada; many yesses to forthcoming CFC as we contact numerous parish businessmen; meet with Bernard Daly and non-Governmental Organizations; attend two local church annual meetings, one clergy wives group, host another clergy collegium.

Internal: Bi-Task Force Wk.II on CFC as Clutzes join us to work on national proposal as rest of House hits road recruiting. Nancy journeys to Nova Scotia to celebrate completion of life of her grandfather.

Contradiction: How do we combat sleepiness in old colleagues so that we can catalyze movemental edge, which is unclear to us. (Wk.7)

CARACAS**RELIGIOUS HOUSE: CARACAS**

External: Sent two persons to Trinidad on last minute ITI recruitment; 12 new registrations for ITI pushes total close to projected goal.

Internal: Study weekend designed to research for ITI and movement memory. Cadre celebrates Christmas in members home.

Contradiction: Acquiring materials, supplies for ITI. (Wk.7)

GLOBAL CENTRUM
QUARTER III 1974 - 75

THE GLOBAL ORDER CENTRUM REPORT
FOR WEEK

BRUSSELS
BOMBAY
SINGAPORE
HONG KONG
CHICAGO

GLOBAL
DEVELOPMENT
CENTRUM

Report sent by Hong Kong to ITI '74 donors and sponsors results in gifts for ITI '75. Bombay reports an important meeting with Mr. Bajaj, a key industrial executive and relative of Gandhi, and the completion of its Development portfolio for the Byculla parish work, along with five proposals for funding. Chicago creates computer program with 256 skills through which to view Guardians, and holds key collegium laying out the style of Development in terms of areal care, comprehensive story and corporate teamwork. Singapore reports verbal approval of A\$20,000 government proposal on consultation to Darwin's reconstruction using ICA staff to enable participation of evacuees and residents in the planning; and, in thinking through their Lenten card, attempt to discover the primal image honoring the ancestors, Aboriginal mythology, and the Christian understanding of Lent. Brussels creates Lenten card and letter emphasizing the Primal Community in effort to raise funds. Development trips were made to Cebu, Manila, Davao, Anchorage, Seranton, Charlotte, Albuquerque, Des Moines, Pasco, and Washington D.C. The challenge is that of enabling development at the \$5,000 level with new images and methods, and the struggle with writing adequate proposals.

GLOBAL
MANAGEMENT
CENTRUM

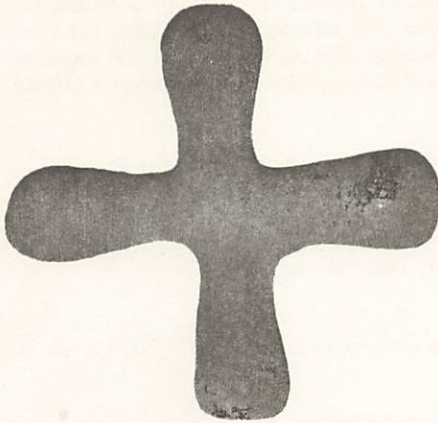
The Centurms across the globe concentrate on establishing basic facilities, financial coordination, and other services for their Areas and their Houses. Hong Kong grapples with practical planning for immediate and long-range needs as it deals with a total publishing house image, and initiates research and calling for equipping of the Publishing House. Its rational timeline for facility preparation, decor model, and the actual decorating of its new facility, relieves anxiety about amount of work needing to be done, thus releasing a turn to other missional tasks. Singapore coordinates its financial analysis, operation, and bookkeeping, and seeks to regularize communication in each area, as well as pushing for more financial communication between the Nexus locations. Brussels, as it works through adequate analysis of the financial arena, considers how each House can assume financial responsibility for the ITI. Bombay prints ITI brochures and reports increasing self-support. Chicago discovers a trend building toward a new concept of Congregation and Centrum care, and renovates the bathrooms in all residential floors. The challenge is that of creating missional, sophisticated permanent decor.

GLOBAL
OPERATIONS
CENTRUM

Brussels celebrates 40-person CSI in Glasgow; finds self able to move beyond issues of teaching assignments and coordination. Bombay turns attention to ITIs with Calcutta chosen for location of ITI site for Areas: Calcutta and Delhi, and printing of ITI brochure. First Community LENS of India held in Byculla includes visit by city councilman. Singapore completes workshop procedures for Regional Analysis and sends out in Priors' Packet, now a regular weekly event. Hong Kong's task force of Religious House and Nexus plans SEAPAC ITI brochure and rationale for ITI/GRA enablement. Chicago PSU builds functional statement and proposed contents rationale for Priors' Packet; Religious House photographs received from across globe are mounted on decor boards. PLCs in Cheshire, Green Bay and Liverpool; RSIs in Saginaw, Baltimore, Esparto, Canterbury, Indianapolis, Chicago, Brussels, Hartford, Amsterdam, Asanol, Hyderabad, Bellingham, Wichita, and Kansas City; RSIIIC in Anchorage; CSIIIA in Omaha and Saskatoon; CSI in Glasgow and Kansas City; and LENS in Bombay, Lubbock and Uptown. The challenge is creating a genuine interchange system between Nexus/Nexus, and Nexus/Houses.

GLOBAL
RESEARCH
CENTRUM

Hong Kong holds PSU on Primal Community Training School manual, collegiums on accelerating the Primal Community Experiment, and reports field visits in Cebu and Taipei. Brussels has first Primal Community Experiment field visits in Paris and Rome and experiences difficulties of creating their office in train, bus, plane and car. Singapore plans meeting with colleagues to determine input for GRA content and ITI revision; has report on Australian Summer '75 with reflection on the services the Centrum can provide. Bombay's Byculla parish work is getting increasing authorization. Chicago's Uptown reports the ninth Elders' Community LENS now completed, and a Week II PSU on Housing held with thirteen community people present. University 13 completes work on eleven courses, with Week 6 emphasizing Art, Philosophy, and the Human Vocations Lab. Primal Community Consults held in Atlanta, Darwin, Winnipeg, Richmond, San Jose, Green Bay, St. Louis and Omaha. The challenge is that of discerning the next strategic move in a local Primal Community Experiment as integral to global Social Demonstration.



It was I who withheld the showers from you while there were still three months to harvest. I would send rain on one city and no rain on another; rain would fall on one field, and another would be parched for lack of it. From this city and that, men would stagger to another for water to drink, but would not find enough; yet you did not come back to me.. This is the word of the Lord.

AMOS 4:7 8

LONDON

RELIGIOUS HOUSE: LONDON

External: While cadre meetings continue to break ground with Fulham members working on Summer '75 recruitment stories and North London analyzing issues in British education, colleague stops by House to report receipt of government grant for housing programme for Ugandan refugees.

Internal: Mardi Gras celebration, Ash Wednesday conversations context week on Social Demonstration.

Contradiction: Creating images of real roles before troops in quick succession. (Wk.7)

RELIGIOUS HOUSE: GLASGOW

External: A signal week of impactment and collegial formulation. Strong RSI of sixteen held in House with regional pedagogues David Fleming, Maggie Lunan and Alan Smart doing well; emerging generation RSI taught by Hockley family including pedagogue Matt; letter inviting forty-five regional families to participate in our fast day sent out.

Internal: Wilder and Bultmann continue our Ecclesiola journey relative to where 'hope appeareth', Sherry Van Boskirk's work permit comes through, and eight regional colleagues drop-in to chat during Week II.

Contradiction: Tactics that enable both us and the Region to move more directly toward the Primal Community Experiment. (Wk. 7)

RELIGIOUS HOUSE: BRISTOL

External: First Imaginal Education course held in Bristol. Meeting to strategize ways of enlarging Metro Cadre succeeds in turning to the task of the Region.

Internal: Week of rejoicing as car returns from shop. Ecclesiola highlighted by Kierkegaard study and image of not giving up on any man.

Contradiction: Courses having been completed for the Quarter we find ourselves lacking images to push us into the future. (Wk. 7)

RELIGIOUS HOUSE: MANCHESTER

External: Farewell party at St. Alban's Vicarage gives opportunity to meet Bishop Wickham, Salford clergy as we begin to move into St. Alban's--new location of Manchester Religious House.

Internal: Father Whelan calls and leaves in-kind heater. Susan Cohen, for night sojourner arrives.

Contradiction: Unclear on immediate steps requires long-range planning. (Wk.7)

PARIS

RELIGIOUS HOUSE: PARIS

External: Contacted 110 persons in city of Naples and were invited to (a) start an Ecumenical House for Franciscans if they made a house available to us, (b) join Jesuits, (c) talk to Cardinal Ursi, (d) start House in Greece, (e) apply for scholarship to New Theology School. Whole House and one regional colleague spend day in Naples doing geo-social analysis. Held good conversation with Monsignor Ortese on his brief visit to Rome from Philippines.

Internal: Participation in four-day Martedi Grasso festivities while bank officials line up for Global Language lessons; Pope retires for Lent to prepare himself for exertions of Easter in Holy Year; House switches to purple.

Contradiction: Encouragement to be heightened: strategic certainty depends on it. (Wk.7)

RELIGIOUS HOUSE: ROME

External: Wild week of breakloose highlighted by twenty people around table for PCTS Field Visit as culmination of solid week of global development calling.

Internal: New excitement with full staff in Rome for first time this Quarter. Close of ITI also brings A.M. Joseph family for two days: imaginal explosion of wayside inn dynamic.

Contradiction: In trying to ride the wave of ITI and Field Visit find question of the action appropriate to Rome brand new. (Wk. 7)

BRUSSELS

GLOBAL CENTRUM: BRUSSELS

External: Three Primal Community Field Visits (Brussels, Rome, Amsterdam) generate excitement over PCTS and parish possibilities, while Nexus focuses attention on colleague nurture through Lenten card and letter creation.

Internal: Celebration of Mardi Gras provides great context for the deep address of beginning the second wave of global fast on fourth day of Lent.

Contradiction: Turning excitement over PCE into registrations for PCTS. (Wk. 7)

RELIGIOUS HOUSE: BRUSSELS

External: Brussels Area has its first RSI in Religious House with movt. colleagues furnishing blankets, pies & cookies. RSI LORE DEPT: Marcia Lewison, Jewish 4th teacher replied to Catholic friend reluctant to attend due to early rising, 'If I can say 'Christ is risen,' you can get up.'

Internal: Paul Schrijnen, Catholic from the Hague begins his 'formal' intern year after Summer 74, Fall Academy, and Frankfurt ITI. His inkind work netted free weekend use of movie projector from old family friend.

Contradiction: Allowing some early registrations (6) prevent comprehensive recruitment follow through for the Quarter. (Wk. 6)

RELIGIOUS HOUSE: AMSTERDAM

External: An unusually large Field Visit (sixteen participants, twenty-three around the table) holds promise for future of PCX; new RSI grad, a Nestle's executive sends names of forty prospects and says 'RSI really does change lives.' The first of two weeks of preaching at English Reformed Church.

Internal: While being impacted by radicality of hope illuminated by Gogarten, House receives welcome but unexpected visit from colleague Jim Rowland of Brussels House.

Contradiction: Time for quick revision of battleplan to provide for development and intensified PCX work in addition to penetration. (Wk. 7)

FRANKFURT RELIGIOUS HOUSE: FRANKFURT

External: First entry into parish Sachsenhausen with Field Visit invitations uncovers local excitement and our confidence to ride the wild buck.

Internal: Ecclesiola study of Heilbrunner's article The Human Prospect shockingly affirms our unarticulated intuitions about the future. New team and station assignments release House for corporate action.

Contradiction: What is the decision that is the revolutionary responsible deed? (Wk. 7)

RELIGIOUS HOUSE: BERLIN

External: Principal of bi-lingual John F. Kennedy School nods OK for LENS course for teachers. Five people recruited in one day for RS-I Week 8.

Internal: Intensifying internal structure to allow participation of all House members. House worked on tactics for 'Education' LENS to be held in Week 3, Quarter IV.

Contradiction: How to create tactical timeline to allow all planned events transformed into miracles. (Wk.7)

NAIROBI RELIGIOUS HOUSE: NAIROBI

External: Four day trip to Mombasa sets up PLC for next Quarter with the four key churches in that region.

Internal: Guest night brings two Sisters, who run training centre for African Sisters used by all the religious orders in East Africa, to the House and firm up our being a part of their programme later in the year.

Contradiction: The need for long range financial projection concrete enough to enable long range missional decisions needed now. (Wk. 7)

BOMBAY GLOBAL CENTRUM: BOMBAY

External: Indian companies giving cheques with promises of more to come. Triple tactics executed when Dr. Preston and Mrs. Bradley hosted with Bishop Joshi and others for tea. Locating

Internal: a facility that we can afford.

Internal: Ash Wednesday celebration at Daily Office.

Contradiction: Meshing the beginning Development momentum to the demands of the ITI-GRA.

RELIGIOUS HOUSE: BOMBAY

External: Byculla 5 Community LENS becomes a first for the continent. Receive gift of detailed forty feet to the one inch map of Byculla 5 made to order by municipal officer. LENS follow-up meeting shows intentionality and initiative of key local people as decision is made to commence six week training model.

Internal: Receive A.M. and Monica Joseph direct from Frankfurt ITI, rejoice in their assignment to this Area, and send them to Hyderabad for family reunion. House experiences Community LENS as two faculty, five participants, and three enablement. House also impacted by symbolism of Ash Wednesday Daily Office.

Contradiction: How to hold tension of broad comprehensive planning and recruiting for ITI and GRA and impulse to run exclusively with PCE. (Wk. 7)

DELHI RELIGIOUS HOUSE: DELHI

External: Circuit rides to three regions break open possibilities for three HRM's and two Imaginal Education consults.

Internal: Collegium by Jenkins on PCE/Metro Cell; Ecclesiola seminary studies participation in 'Watch 222'; and 15 replies to English conversation ad intensifies sense of urgency.

Contradiction: Releasing resources (rupees & people) for RSI's, HRM's, and I.E. consults while engaged in fierce hand-to-hand combat with the financial dragon. (Wk. 6)

MADRAS RELIGIOUS HOUSE: HYDERABAD

External: Second fully residential RSI in Hyderabad with significant breakopen in 'in-kind' contributions. LENS visitation breakthrough with dinner invitation from managing director of IDL Chemicals.

Internal: A.M. Joseph family returns and teaches RSI during their discontinuity.

Contradiction: Finding way of structuring day to allow for grasping hold of all possibilities. (Wk. 7)

CALCUTTA RELIGIOUS HOUSE: CALCUTTA

External: Week II Community LENS blitz yields eight paid and fifteen yesses. Development is again a signal happening with proposals being lodged with ten companies. The business community has shown itself very receptive to our plans for Circus 5.

Internal: The interior of House was re-shaped creating new worship space and guest room. Collegium space was re-decorated to dramatize our focus on social demonstration.

Contradiction: Struggle to secure adequate ITI site points to inadequacy of our Area authorization net. (Wk. 7)

SINGAPORE GLOBAL CENTRUM: SINGAPORE

External: Securement of Oberg's employment beginning February 24 enables assigning him to two-week trek in Area Sydney for LENS marketing, enabling marketing of LENS on zonal basis as centrum activity rather than Areal one.

Internal: Nexus facilities transformed during holiday weekend by decorating lounge with curtains and Ur symbols and completion of global warboard which holds tensions between global and local, imaginal and functional. A big empty house becomes centrum with sophistication.

Contradiction: Vision of being global, contributing factor within geosocial arenas of Sino culture has laid upon us the task of being structural revolutionaries in less than 50 years when these structures require being woven into ancient fabric composed of carefully nurtured relationships. (Wk.7)

RELIGIOUS HOUSE: SINGAPORE

External: Gridding of local parish (New Town Parish) completed. Map showing every building in parish obtained from Housing development Board office.

Internal: Collegium focussed on children's structures. Week II spend on expanding insights on recruitment, hearing report from David McCleskey on Australian Summer Program, GRA planning meeting.

Contradiction: Telling story that will release local colleagues to become House Priors, Galaxy leadership, Guild leadership. (Wk.7)

RELIGIOUS HOUSE: MEDAN

Internal: I am the Lord your God, who brought you out of the land of Egypt, out of the house of bondage.

RELIGIOUS HOUSE: KUALA LUMPUR

External: All out for recruitment in K.L., Klang, Penang with break-open into International School; ITI visiting finds solid support where unexpected; visit with Rev. John Bryant, Sydney, broadens context and illuminates network effectiveness.

Internal: Week highlighted by religious (Ash Wed.) and secular (Chinese New Year) celebrations, and Marshall's paper on Hope which helps to articulate where struggles are.

Contradiction: How to build up momentum to encompass all areas to cover balance of 13 week 1/1 rather than coast the rest of the way (Wk.7)

RELIGIOUS HOUSE: JAKARTA

External: Meeting with special church committee, ITI grads in East Java sets up consultation with Lay Academy in Malang, firms up monthly metro cadre meetings in Surabaya. Visit with head of Economic Section of US Embassy begins authorization for Quarter IV LENS.

Internal: House celebrates by viewing 'The Great Gatsby' and holding conversation at top of Nusantara building--the 'Sears Tower' of Jakarta--overlooking city of six and a half million people.

Contradiction: As collegial relationships intensify on many fronts, how do you ensure that everyone's journey is moving forward? (Wk.7)

HONG KONG GLOBAL CENTRUM: HONG KONG

External: Development report of possibility in Philippines, first development trek to Fukuoka. Use 3-day holiday for PSUs on Asian Development Brochure, PCE constructs, ITI brochure.

Internal: Celebrate Chinese New Year with attending party at R.H., midnight walk through flower fair, utilization of other cultural gifts of Hong Kong.

Contradiction: Embodying miracle dynamic as life style of Nexus in all ongoing tasks, not just Week II task forces. (Wk.7)

RELIGIOUS HOUSE: HONG KONG

External: Two recent PLC grads recruit 20 Chinese to March RSI--how many will other grads deliver!? Visits for Primal Community Experiment 'field dinner' continue as possible ITI location is seen in Macao. Eight nationalities sat around table for Ecclesiola as recent PLC grads participate.

Internal: Young colleague holds Chinese New Year's Eve party in House and impresses all. PLC grad comes to share our 'poor fare,' declares we are more strict than Trappists, stays till midnight! Pat DeSpain solves visa problems in one day, does major decor job in preparation for Ecclesiola.

Contradiction: Launching Chinese New Year with many possibilities but difficulty in weaving one story. (Wk.7)

RELIGIOUS HOUSE:KAOHSIUNG

External: Celebration of national Lunar New Year with holidays, decor, special food, many fireworks.

Internal: Intensive planning for three days produced timelines, battleplans for next 20 weeks.

Contradiction: Moving on models, battleplans with SPIRIT and not just getting things done! (Wk.7)

RELIGIOUS HOUSE: MANILA

External: Two visits to Chamber of Commerce of Philippines (Development, LENS) prove fruitful; Two Carmelite nuns sent by Primal Community Experiment pastor are among nine guests for Ecclesiola. Strategy meeting with Rev. Gunte Reese, German-Lutheran pastor from Hong Kong produces prospects for RS-I, PLC, LENS.

Internal: Sent Msgr. Ortiz to Rome to visit R.H. and Vatican. Shrove Tuesday, Lunar New Year celebrated with feast, dragon, prayers for world.

Contradiction: Pushing in one thousand directions rather than practically living one thrust. (Wk.7)

RELIGIOUS HOUSE: TAIPEI

External: RS-I with 20 participants grounds strategy of training local faculty as three local Chinese colleagues teach with Chen I-an from Singapore.

Internal: House expands as 5-member Regional clergy family, Singapore colleague begin sojourn amidst enablement of key RS-I.

Contradiction: Discerning priority target areas amidst multiplicity of possibilities and demands. (Wk.7)

RELIGIOUS HOUSE: CEBU

External: First meeting of Pre-Guild; Mini-school staff goes to Bohol to make arrangements for Pre-School trip, including parents, on March 1, this effort being enabled by 2,160 pesos proposal received last week from Aboitz Foundation.

Internal: Ecclesiola Heilbronner study shocks us into Doom/Destiny of future and its parameters.

Contradiction: Internalizing priorities is not same as mentioning them occasionally, we confess. (Wk.7)

RELIGIOUS HOUSE: DAVAO

External: Complete regional mailing (mostly personalized delivery service; House Transformation Day (Phase I) ignites 'parish sign.' ITI grad drops by to stay overnight on way to Butuan Metro (first time happening).

Internal: Shrove Tuesday, Ash Wednesday celebration culminated with delivery of water (our first) while we initiate participation in Order commonness of 'Dark Night' security watch.

Contradiction: Continually being demonstration that turtle-stepping wins War--not antxy action. (Wk.7)

TOKYO**RELIGIOUS HOUSE: TOKYO**

External: GLS moves into high gear as negotiations begin for full 3-week course for staff of NHK and educators from Sendai region. House does curriculum building for 6-wk. Lenten study at Rikkyo Univ. Chapel.

Internal: House set aswirl by appropriation of Japanese culture: Mrs. Hashiba presents Kateri Elizabeth Ellison with ceremonial doll set to celebrate Momo No Sekko, the Girl's Day Peach Festival. Fr. Joseph Iida Reports on Seoul Prior's trek at House Church and regional colleagues lead day-long language training session at House.

Contradiction: Telescoping of long range, short range scheduling results in out-of-focus doing. (Wk.7)

RELIGIOUS HOUSE: SEOUL

External: Week of Beginnings as first Social Work Consult held, International School of the Sacred Heart symbolizes Lunar New Year with All-school Assembly, beginning of Lent with Mass and new decor, Week II sees beginning of work on creating spiral curriculum.

Internal: After sending Kenn Ellison back to Japan, House found itself engaged in fasting and feasting as Lunar New Year, Shrove Tuesday fall on same day, followed by Ash Wednesday, also Republic of Korea referendum day.

Contradiction: In midst of unsettled situation, deciding to wait patiently. (Wk.7)

RELIGIOUS HOUSE:FUKUOKA

External: Five colleagues meet for the day at House in company with Area and Centrum priors to plan application of six-week Primal Community training model. Bishop of neighboring diocese says 'Let's make an ensemble'.

Internal: Hosing of Centrum and Area priors give us great three days of telling miracle stories.

Contradiction: Cutting through multiple new strategic demands with present manpower. (Wk. 7)

RELIGIOUS HOUSE: OSAKA

External: Set four demonstration labs for Global Language School. Use of Japan Management Services offered for ICA/GLS work on an indefinite basis. City Hall comprehensive planning department welcomes us and asks for more copies of model-building methods paper. House hosted a meeting of Roman Catholic and Union Church pastors to discuss the mission of international churches in Japan.

Internal: Mr. Kashiwagi shares difficulty in communicating awe in Ecclesiola seminary.

Contradiction: Projected deficit demands additional income/budget cuts when we want more troops freed. (Wk.5)

RELIGIOUS HOUSE: SENDAI

External: Used Valentine's Day celebration to dramatize different parts of missional task as single thrust in parish and metro.

Internal: After day of working in task forces, House with colleagues experience gift of healing in movie 'The Yakuza.' Sent out Toshiaki Ishiguro at completion of his intern year.

Contradiction: Finding secular/religious story about Primal Community Experiment that releases full participation in both arenas. (Wk.7)

SYDNEY

RELIGIOUS HOUSE: SYDNEY

External: Sydney House taken over by Summer '75 Emerging Generation Programme while House prepares back-up systems for Post-Summer '75.

Internal: Received Zahrts, and sent out Grace Umbagai to Chicago. Spencers pass through on return to Bombay and Court family from Adelaide add sparkle to first Ecclesiola.

Contradiction: Planning must go on despite most of house at Summer '75, creating a new context. (Wk.2)

RELIGIOUS HOUSE: PERTH

External: Trip to Kalgoorlie symbolizes decision to care for that metro on regular basis results in two key 'Yesses' for LENS.

Internal: David Scott (Singapore Centrum) pushes our analysis of Primal Community Experiment to new depths and Mowanjum youth use indicative battleplanning to build study model.

Contradiction: Pushing analysis of church and region to new depths while keeping ourselves grounded in hope beyond hope. (wk.7)

RELIGIOUS HOUSE: DARWIN

External: Group of fifteen young men meet with auxiliary member to discuss future plans, reveal eagerness for many more to be sent out for training and demand we begin night school immediately.

Internal: Return of Summer '75 participants brings fresh use of methodology, makes auxiliary planning for 21-point priorities as much fun as it was awesome responsibility.

Contradiction: Mission compartmentalized into tasks eats away sense of corporate responsibility for whole community. (wk.7)

RELIGIOUS HOUSE: OOMBULGURRI

External: Return of Summer '75 participants has enabled Oombulgurri to see itself related to world in significant way, while at home, community stages a grand farewell party for Bakers.

Internal: Baker family sent out after sojourn which saw the installation of electricity at Oombulgurri. Auxiliary joins Wyndham associates for wild release of Spirit at party in town.

Contradiction: Ensuring auxiliary shadow roles cover all work areas to do necessary tactical planning to bring off quarter objectives. (Wk.5)

RELIGIOUS HOUSE: ADELAIDE

External: Cadre meetings in four metros, Adelaide House, Galaxy auxiliary and Metro Cadre meet together, making twenty-person spirit happening and increasing tactical boldness.

Internal: Ned Baker and family return from Oombulgurri. House and region test out new constructs for Ecclesiola and Galaxy Sodality.

Contradiction: Tying down loose ends to ensure RS-I and PLC actually happen. (Wk.7)

RELIGIOUS HOUSE: MELBOURNE

External: RS-I recruiting gives exciting start to next quarter's course. Business LENS authorization base laid in Sydney. New contacts in two new locations in Sale Metro. Regular treks force church to take new relationship to us.

Internal: Wayside Inn doors keep swinging with visits from Gene Bosworth and Jim Oberg. John and Gwenda Rees send out to begin ITP with first stop London. Ecclesiolas on Hope are right on target.

Contradiction: Created grids and timelines which hold need for tactical engagement instead of programmatic. (Wk.7)

RELIGIOUS HOUSE: CANBERRA

External: Most visas confirmed for U.S. assignments by Immigration Department after five months of negotiations. Citizens Advisory Committee of Darwin refugees in Canberra nominate ICA representative to committee and begin using our methods toward reconstructing, future planning of Darwin.

Internal: Jim Oberg from Singapore, John Telford from Melbourne stay two days, planning for executive LENS marketing.

Contradiction: Holding the tension between Areal and Local. (wk.7)

RELIGIOUS HOUSE: BRISBANE

External: Conversations with Regional priory occasion significant reflections on state of Movement, future imperatives; implementation of Summer '75. Darwin REconstruction proposal continues in gathering of evacuees in Brisbane to receive first-hand information, signalling participation in planning the future.

Internal: Decision to cover Region pushes models for practically enabling that feat--or, what [vehicular, yet to be obtained, will most effectively assure completion of 4,000 mile treks.

Contradiction: Finding story that releases Movement leadership for dramatic sign of corporate engagement. (Wk.7)

SUVA

RELIGIOUS HOUSE: MAJURO

External: Sheldon Hill, Orvis Agee work side by side in creating images of 'Magnificent Quarter Mile' Majuro downtown area unification plan--Marshallese colleagues in awe over how the center can look, say, 'Yes, how do we do it?'

Internal: Decision to be service to community takes new dimensions when house is rich with repair skills, crisis tactics--rescue missions for Korean fishing vessels lodged on reef, emergency refrigeration calls, VIP typing services.

Contradiction: Hard-headed planning and models for phasing out ICA staff in the two-year timeline Human Development Project intensification. (Wk.7)

RELIGIOUS HOUSE: APIA

External: Pastor introduces our song book as one of greatest examples of modern hymn writing to church study group.

Internal: Rebuilding our battleplan after daring to look at first half of quarter.

Contradiction: How move ahead by pushing through present weariness into a new future. (Wk.7)

SAN FRANCISCO RELIGIOUS HOUSE: SAN FRANCISCO

External: Disciples of Christ Church executive, Dr. Karl Irvin agrees to send people to ITI and to come himself! Micro Analysis Probe investigates readiness of cities for Town Meeting '76 by interviewing colleagues in five micros. Regional House Church and Council, Galactic Modification clarifies 'focus.' Valentines Ball in Mission District great success while raising scholarship funds for Community LENS course.

Internal: Alleys are bowled over as House celebrates Shrove Tuesday. Ash Wednesday Work Day celebrates bathroom shower being transformed to hold abundant ITI House In-Kind, while five captured mice are informed that half of Kitchen is moved downstairs.

Contradiction: How to hold tactical thinking in light of strategic planning. (Wk.7)

RELIGIOUS HOUSE: SAN JOSE

External: Twenty-one from Bi-Metro attend one-day 'Church School Training Institute' in San Francisco that causes great excitement about further participation.

Internal: Ecclesiola continues to be great event. Development team brings eye-witness reports on global demonstrations to enliven collegiums.

Contradiction: LENS cancellation points out need to implement comprehensive marketing strategy. (Wk.7)

RELIGIOUS HOUSE: SACRAMENTO

External: Former Sacramento mayor's wife wowed by Town Meeting concept, offers crucial contacts, suggests that Town Meeting be held on excursion boat on Sacramento River.

Internal: Three-House House Church in San Francisco brings Region together.

Contradiction: Learning to believe in reality of Movement in every man. (Wk.7)

RELIGIOUS HOUSE: SEATTLE

External: House participates as leadership in Capitol Hill Prayer Symposium, leading two workshops on classical prayer writing (a la The Odyssey). The event becomes strong authorization from parish churches for our work.

Internal: Bruce Robertson and Sharon Fisher announce plans to marry in June. New 54 Areas up in Collegium room.

Contradiction: How do we be a local presence on Capitol Hill while doing Global Social Demonstration? (Town Meeting, LENS, ITI)?

RELIGIOUS HOUSE: LOS ANGELES

External: Registrations come in: Denver sends five for ITI, Korean pastor registers from L.A. and three RS-I confirmations sent.

Internal: Clesson McDonald attends Ecclesiola, Primal Community Experiment celebrates Shrove Tuesday in all three locations.

Contradiction: Focusing ITI expenditure on future, not just April. (Wk 7)

RELIGIOUS HOUSE: PHOENIX

External: Colleague Paul Berg from Cincinnati, Jackie cook from Athens, Greece show up ready for assignment. Town Meeting Task Force meets in Casa Grande and Olabe with local committees.

Internal: New Regional grid to Polis level offered for brooding. Creation of Global Lounge, outside desert landscape.

Contradiction: Deciding how to formulate new grads. (wk.7)

RELIGIOUS HOUSE: SALT LAKE CITY

External: External: Metro cadre grids Central City 5. Visit to Bishop Federal of Salt Lake R.C. Diocese nets nod.

Internal: RS-I yields eight Ecclesiola visitors and four House Church visitors.

Contradiction: Lack of detailed plans for parish leadership luncheon. (Wk.7)

RELIGIOUS HOUSE: BILLINGS

External: Twenty man fuild meeting.

Internal: Send-out of two to Academy Battleplanning Wk. II builds 8 major miracles.

Contradiction: Finding ourselves dispersing troops and at the same time seeing extremely increasing local demands. (Wk.1)

RELIGIOUS HOUSE: DENVER

External: Quad-Metro registrations for regional ITI up to eight. Third Primal Community Consult of quarter schedule for Pueblo. Cannon City churches, in absence of local Bi-Centennial Commission, schedule, assume responsibility for Town Meeting May 7.

Internal: '57 Volkswagen 'totalled' second time in year charges on in Long March (insurance profit: \$500) Ping-pong table releases new spirit dynamic for youth. Forty gather for House Church (including Colorado Springs youth group) to celebrate George Yost family's 29 years as Mission from God to history. Collegium room bulges for Cadre-gunned Shrove Tuesday pancake dinner.

Contradiction: As meat falls onto hopeful 'bones of 'successful' missional events, how do you keep it from turning to despair relative to what next? (Wk.7)

RELIGIOUS HOUSE: RAPID CITY

External: Galaxy plays catch up by doing 18 tactics of Primal Community Tactical Systems. It was also used as pedagogy training. One colleague was heard saying, 'How time flies when you are having fun.'

Internal: Mummy King and Ballet Dancer Queen reign over Mardi Gras, prelude to receiving ashes and fasting next day. Small miracles transform war-room so that suddenly it invites your presence to engage in battle.

Contradiction: Having decided to walk forward, we sense need for all centurms to have 26-week timeline. (Wk.7)

EDMONTON RELIGIOUS HOUSE: EDMONTON

External: Waded into Implementaries for first Community Forum Canada in two places: Ft. McMurray, Calgary.

Internal: House/Metro PSU on Community Forum Canada; Flowers were sent on Valentines Day; Father Ken Stevens was our celebrant at House Church (St. Alphonsius Church), stayed over, asked to be allowed to 'participate' in Sunday evening Prior's meeting.

Contradiction: Unfocussed vision produces blindspotty blue rather than kaleidoscope of comprehensiveness in relationship to practical strategies. (Wk.7)

RELIGIOUS HOUSE: ANCHORAGE

External: Push into Region with Bethel trip for Week 8 RS-I recruitment and Juneau trip to seek authorization from State American Revolution Bi-Centennial Association for Town Meeting '76; authorization does not come immediately.

Internal: Parish Cadre celebrates Gene Buck's participation in Anchorage Region, send him out to Majuro planning with Alaska King Crab feast. House participates as observers in Anchorage Fur Rendezvous with huge outdoor parade, dog sled races, Eskimo blanket toss.

Contradiction: Feeling no urgency in the mission results in our present condition of a screen full of holes and living like moles; We pray for a focus of vision

RELIGIOUS HOUSE: SASKATOON

External: Regional colleagues hold selves accountable for CS IIIA by recruiting, enabling, E.G. teaching.

Internal: Beginning journey of Lent is celebrated as North Park Parish Cadre joins House for Shrove Tuesday.

Contradiction: Grappling with decision to risk and expend without falling into busy-ness. (Wk.7)

RELIGIOUS HOUSE: WINNIPEG

External: Recruitment by parish walks, visiting nodes, posters and all other offers. In midst of changing dates and unsure locations.

Internal: Tally Ho. Off on a sleigh ride to enjoy Manitoba Winter weather.

Contradiction: How carry ball without alternate quarterbacks. (Wk.5)

HOUSTON

RELIGIOUS HOUSE: HOUSTON

External: Breakfast meeting with Executive Director of Texas Committee for Humanities explores promising sources of major funding for Town Meeting 76.

Internal: 'Do Your Income Tax' Workshop with Guardian CPA shows probability of \$4,000 in refunds and gets several returns safely in mail.

Contradiction: Continuing temporary housing allows valuable time to leak out around edges just when every moment is needed in order to win simultaneously in several arenas. (Wk.7)

RELIGIOUS HOUSE: AMARILLO

External: Steady groundwork laid in churches by course grads during quarter brings in RS-I registrations by mail and phone following quick visits this week by House and Metro Cadre; PLC registrations continue to increase.

Internal: Landed consulting job at state university in Continuing Education with fulltime offer for May, while, in meantime, on-the-side consulting work being encouraged and enabled; Kelly Girls provide needed back-up.

Contradiction: House of three adults represents so much future-possibility for Metro Cadre internship obscuring and relativizing present demand. (Wk.7)

RELIGIOUS HOUSE: SAN ANTONIO

External: Religious House becomes the 'possession' of the Metro Cadre as House keys are distributed at House Church and Cadre begins assigning House for Week II Task Team work.

Internal: Celebrative send-outs at intern year-end produces three-adult House, which in turn prompts octogenarian colleague to canvass her Metro colleagues: 'We're not going to let this happen, are we?'

Contradiction: Is the facility large enough for the coming House? (Wk.5)

RELIGIOUS HOUSE: OKLAHOMA CITY

External: Many happenings receive authorized use of State Bicentennial Logo; Ada decides to follow through with Town Meeting proposals; Jets initiate a drill team; in-kind food and materials flow in; and have thirty-four registered for RSI with a week to go.

Internal: Table center-pieces created for State Bicentennial Committee, while new Bicentennial decor begins to appear around the House.

Contradiction: Holding the global in the midst of the national celebration. (Wk. 7)

RELIGIOUS HOUSE: DALLAS

External: Feverish energy directed toward Town Meeting '76 temporarily and helpfully channeled into Parish project reflection and visioning as Bob Porter was welcomed by twenty-one Metro Cadre people around the table.

Internal: Town Meeting catalyzes long needed work on mailing list updating and stimulates House Church and Ecclesia invitation procedures as by product.

Contradiction: Primal Community Consult impresses upon us all the need for sustained work on inclusive Metro and Parish practical vision. (Wk. 7)

RELIGIOUS HOUSE: Tulsa

External: Bartlesville Town Meeting on its way: recruit persons interested in doing the Town Meeting; reserve Professional Building conference room for meeting; visit chairmen of Bartlesville Bicentennial Commission; and compile Town Meeting '76 document for use at meeting.

Internal: Continuing House care sees another hardwood floor rejuvenated for new worship room. With three House adults present receive three guests for House Church, two unexpected.

Contradiction: Clarifying missional priorities so we see how to successfully juggle cannon ball (Bartlesville) and feather (Tulsa). (Wk. 7)

RELIGIOUS HOUSE: NEW ORLEANS

External: PCE Consult sparks new decision to be the experiment. Mardi Gras trek produces Town Meeting battleplan and regional committee.

Internal: House participates in Mardi Gras. Secular man still knows how to celebrate. Regional couple sojourns for three days--boy, what a breath of fresh air. Sandra lands a job singing with night club group: 'The Lady and the Tramps'.

Contradiction: How do we do more than one thing with only one person working in--and even that well? (Wk.6)

RELIGIOUS HOUSE: MEMPHIS

External: RSI penetration blitz sees sixteen register for Week 8 course, bringing total to twenty-two with two weeks to go. Regional Odyssey held at House releases decision of three families to intern over next two Quarters.

Internal: Entire House in Knoxville for Week 11 with colleagues present for House Church there.

Contradiction: The 'When - Then' demon strikes again. When: we are fully employed again, when we get those three intern families, when the RSI gets recruited, when the bicentennial brochures arrive...Then... (This kind of demon is only exercised with much prayer and fasting). (Wk. 7)

RELIGIOUS HOUSE: ATLANTA

External: PCE Consult attended by key non-grad parish couple among others, is capped off with significant 'Iron Man pinning' commissioning five East Lake 5 Iron Men. The next Tuesday seventy-one year old 'Iron Man' Mamie Rouse misses her ride and walks five blocks in pouring rain to be at PCE meeting.

Internal: Development team rounds out House troops as two go out on North and South Carolina circuit ride this week. In-kind symphony tickets used to good advantage as first three families called could not use them, and fourth gratefully accepted offer.

Contradiction: The desire to set aside our own commissioning as we commission others. (Wk. 7)

RELIGIOUS HOUSE: MIAMI

External: Jacksonville guardian prospect drops in for over-night sojourn. House carpool spots 'for rent' sign while going to work, check with owner about in-kind facility for new Religious House; vice president of shipping company (building owner) takes interest in work of E.I./I.C.A. and talks to company president about giving facility.

Internal: Parish woman drops by during Ecclesiola asking: (1) Are you a Christian community, (2) Do you teach courses, (3) When is your next course: Extended Order family elder asks us to do Ecclesiola in her home and then decides to come to House Church and sojourn.

Contradiction: In midst of winning-haven't decided to be winners. (Wk. 7)

CHICAGO

GLOBAL CENTRUM: CHICAGO

External: Chicago Nexus participates in electoral process by providing space for Alderman rally. Connie Widyatma, International Training Program participant, sent out for Jakarta teaching assignment and possible European assignment. Uptown creates visible signs to shift image of Uptown: building displays to put in nodal areas with pictures, slogans and symbols. Intensification of wards and stakes through proposal writing for University 13, Elders' Node, Pre-school, Guild Hall.

Internal: Ecclesiola billows into great happening with Norman Cousins' 'History's Necessity' which catalyzed intuitive leaps in creativity. Honored by visit from Monsignor Ortiz en route to Manila, during which he remarked that he needs to visit here every six months to keep up with all that's going on. Congregational Collegium on style of Post-Modern Man drawn through and built on ancient, medieval, modern styles.

Contradiction: Confronted with the needs of a suffering world, knowing the servanthood required for supportive systems of Global Order, and realizing inner 'shoring-up' demanded by our own yearning, how does one pray? (Wk. 7)

RELIGIOUS HOUSE: CHICAGO

External: Community LENS held at House with sixty-four participants. Good cross-section of people demonstrates broad applicability of methods. ICA executive luncheon with Ben Ball as guest speaker gives new vision for role of business corporation in the future.

Internal: Preparation for hosting LENS course pushes us to plunge into major rehabilitation in the Administration Building. Highlight is new 'lounge you'd love to lounge in' on the first floor.

Contradiction: 'If I immerse myself in issues and contradictions of my own post, how can I possibly stand present to anything more?' (Like globe, region, whole House). (Wk. 7)

RELIGIOUS HOUSE: OMAHA

External: Free printing of 20,000 flyers for Northside Community Convocation gets us down the road for March First meeting. Town Meeting '76 strategy meeting in Kansas City objectifies our own planning for Nebraska.

Internal: S.K.'s categories of Hope and Fear very enabling to House journey.

Contradiction: Immediate concerns corrode long range thinking. (Wk. 7)

RELIGIOUS HOUSE: WICHITA

External: RSI signals shift in Metro Cadre dynamic; Town Meeting possibilities amaze us...there are so many 'colleagues' under those rocks!

Internal: Temple House Church comes off in spite of paralyzing winter storm; Elaine Dahlke, here for RSI, does a collegium workshop on key world events.

Contradiction: Embracing the demand to strip ourselves of static images of the Movement when we are so embedded in these images. (Wk. 7)

RELIGIOUS HOUSE: KANSAS CITY

External: Primal Community Consult lays low images of 'my church my parish' and pushes through the demand for 25 iron men in each location of the Experiment. Next day the Galaxy postpones battle-planning Week II and asks to join House in recruitment.

Internal: Ecstatically giddy/somberly sober celebration with Primal Community consultant Morrill Saturday night clarifies the Cross; and morning fix-up Collegium deals with the major rough edges.

Contradiction: Hoping there's some other way to care for colleagues than the Word. (Wk.5)

RELIGIOUS HOUSE: MINNEAPOLIS

External: Whittier Community Organization secures use of foyer in Mpls. Inst. of Art for elders Valentine's Ball. Pillsbury Co. donates \$200 for the band, a local caterer donates cups and napkins, community people bake cookies and elders call requesting rides. Guild builds 21 point program, leading the way to structural care for the neighborhood. RSI with 28 new participants including our State Representative and 7 LENS grads.

Internal: House plans for area Bicentennial meeting. Makes plans for quickly submitting proposals to state committee as an extra \$40,000 is uncovered to be dispersed immediately.

Contradiction: How to release the passion that is in everyone as our fragmentation keeps us from being the catalytic role. (Wk. 6)

RELIGIOUS HOUSE: ST. LOUIS

External: Town Meeting '76 endorsed by Linn County Bicentennial Commission. One-day Planning Consult with First Methodist Church in Des Moines attended by 35 established leaders of the congregation. Primal Community Consult in St. Louis refocuses on parish.

Internal: 'Lenten Retreat' sojourn week launches themes of struggle with temptation and preparation for crucifixion. Amos Scott, early colleague in formation of Region, leads in House Church celebration.

Contradiction: Lack of in-depth parish strategy ripples fog through everything else. (Wk. 7)

RELIGIOUS HOUSE: PEORIA

External: Peoria City Council primary election finds half of elected candidates grads of Movement programs. Open doors walked through in Kankakee and LaSalle with Town Meeting and Local Church Field Visits scheduled.

Internal: House attends local production of play 'J.B.' by Archibald MacLeish and is impacted with further insight into category of Hope. Ecclesiola 'Unamuno' study further pushes insights.

Contradiction: Holding onto blocks while trends want to sweep us into future. (Wk.7)

RELIGIOUS HOUSE: GREEN BAY

External: Research completed on proposal for Wisconsin State Bicentennial. Completed six week galaxy training. Metro Cell meeting grids to polis and micro, and makes team assignments.

Internal: Ecclesiola celebration includes wine, women, and song. Friday night has movie with dancing afterwards. House Church guests number sixteen.

Contradiction: Desire for specific assignments blocks creativity in getting job accomplished in life giving style. (Wk. 7)

RELIGIOUS HOUSE: MILWAUKEE

External: Concentrated on CSIIIA calling, netting eleven registrations.

Internal: House Relocation PSU reveals many possible parish sites and inspires us to begin intensive search for permanent facility across the city.

Contradiction: Bringing the future into being while responding to needs of the present. (Wk.7)

RELIGIOUS HOUSE: INDIANAPOLIS

External: Louisville and Manchester polises send ten to RSI. Indianapolis Metro Cadre takes financial and enablement responsibility for RSI. Priors attend Bicentennial meeting in Detroit.

Internal: Mardi Gras celebration followed by special Ash Wednesday service at House, where ashes were imposed by Fr. Joseph Dooley. Promotion of Maxine from staff nurse to clinical instructor boosts budget.

Contradiction: Edge Movement vision dim as troops spread thin. (Wk. 7)

RELIGIOUS HOUSE: CINCINNATI

External: LENS recruitment nets Community authorization with Elder's breakloose of 12 registrations, while Metro Cadre celebrates second Primal Community gridding of North Fairmount.

Internal: Thursday evening Ecclesiola is transformed to corporateness symbol as House is readed to receive LENS teaching team and men are sent out to Community 'Town Meeting,' all resulting in corporate power and motivity.

Contradiction: A beckoning form which will enable LENS grads to local engagement, after exploring the world with LENS. (Wk.7)

RELIGIOUS HOUSE: DETROIT

External: Detroit Bicentennial Committee meeting puts us in touch with Fr. Kerney, key symbolic leader of grassroots Latino population of Corktown. Region moves on location of PCE with Task Force to research House and parish experiment location and PSU to consense on parish experiment in galaxy. Cleveland and Detroit Regions meet with Area Priors and Steve Allen for updating on Town Meeting and building frame for each region.

Internal: Collegium study 'Small is Beautiful' by Shumacher has our recommendation. Regional House Church has Rev. Cleon Abbott as Celebrant, honored guest Opal McGregor, twenty-eight adults, ten children, two birthday celebrations, one wedding anniversary, and naming of Lincoln Parish as Galaxy PCE.

Contradiction: How to be detached and relaxed in midst of intensification as transit from being the only troops to being regional centrum dynamic. (Wk. 7)

RELIGIOUS HOUSE: CLEVELAND

External: House becomes training center as RSI participants fill all available sleeping space. Social agency impact given impetus through weekly imaginal education workshops for day care and head-start.

Internal: Family morning replaces family night and the Late Night (10:30) Dinner recreates the Ecclesiola dynamic as we re-design time to enable second jobs. Two jobs secured, three to go. Receive Bowman family as interns.

Contradiction: Experimentation with time exposes comfort with old patterns - riding loose in the saddle is key. (Wk. 7)

NEW YORK**RELIGIOUS HOUSE: NEW YORK**

External: Recent Community LENS grads keep coming back for more, invitation comes to lead workshop for seven agencies on Lower East Side, parish welfare leaders claims, 'I can't move in yet but you'll be seeing a lot of me.'

Internal: Collegium given to plotting jobs of our Permeators on the Social Process triangles brings new insights for strategic roles.

Contradiction: How release from victimization of story that I can't decide to act until I have more clarity. (Wk. 5)

RELIGIOUS HOUSE: PITTSBURGH

External: Trips to Fairmount & Morgantown W.Va. with regional coordinator yields six on-the-spot LENS registrations from cities Bicentennial Commissions; Hankin's family decision to be Church once again impacts region with celebration of life and death of Rochelle Henkins, 13-yr. old colleague.

Internal: Pushing ahead on House proposal for facility in Parish during morning collegium with help of Carlos Zervigon breaks open new possibilities; House does Ecclesiola with four around table, a versatile reading of 'Skin of Our Teeth' by two of four present.

Contradiction: Lucid colleagues being called upon to engage their lives now have not participated in recent miracles which allow them to live out of the 'glory' of bygone miracles. (Wk.7)

RELIGIOUS HOUSE: ROCHESTER

External: Recruit seven more for Week 8 RSI while also recruiting the Third Annual Maplewood Assembly.

Internal: Rochester Metro Cadre tri-locates for Ash Wednesday worship services, and we welcome sojourners Steven Carson from Albany and Mike Ford from Rochester.

Contradiction: Handle on Town Meeting '76 slippery as time for chopping draws near. (Wk. 7)

RELIGIOUS HOUSE: RICHMOND

External: Town Meeting '76 moves on two fronts as five key leaders in Hanover County (home of Patrick Henry) say yes and begin to build support. Chaplain, guard, counselor, and school principal at the Virginia State Farm begin building proposal for prison Town Meeting.

Internal: Spirit deeps pushed by Sunday morning Collegium led by Bob Porter on the Being dimension of our existential struggle as humans; Lenten meat fast grounds us in globe and pushes creativity of menu planner!

Contradiction: In midst of decreasing in-house troops, shifting montage of missional model to one-in-house image. (Wk. 7)

RELIGIOUS HOUSE: WASHINGTON

External: Catalyzation collegiums bring results! Member of D'C' Bicentennial Commission agrees to be on local sponsorship committee and takes responsibility to organize a particular Town Meeting while Metro Cadre colleagues shift toward assuming key leadership roles in many task forces and workshops.

Internal: In midst of celebrating the fast (in front of fireplace with snow falling outside) our Tunisian boarder offers us a tray of his native delectables.

Contradiction: Living out of the 'We/They' stance as 'we' delegate more responsibility to 'them' (colleagues living outside House) and at same time neglecting to do catalytic model building necessary to sustain new recruits. (Wk.7)

RELIGIOUS HOUSE: BALTIMORE

External: First PCE clergy collegium held and study of Ten Considerations for Community Reformulation highlight the morning.

Internal: Parish Grid postcards continue to arrive and expand our vision of globality.

Contradiction: Those miracles are our journey marks not our goals. (Wk. 7)

RELIGIOUS HOUSE: PHILADELPHIA

External: Development team visits furthest/least formulated Metro uncovering rich rabbi who has 'all the money in town' in his synagogue and who wants Town Meeting '76 for his people.

Internal: Hope against hope begins to be self conscious experience for House and Movement colleagues through Marshall and Unamuno papers; Movement is inviting itself to House Ecclesiola for first time.

Contradiction: Staying caught in a vision when we find ourselves waiting to meet establishment's criteria in order to tap unlimited funds and authorization. (Wk. 7)

RELIGIOUS HOUSE: NEWARK

External: Twenty new RSI registrations with money with two weeks still to go; all eight congregations present for replication of the Primal Community Experiment.

Internal: A bi-House mundanity Trek brings discontinuity without disengagement; while wayside inn dynamic intensifies with future grad showing up for Shrove Tuesday breakfast with four children and two lucrative job offers.

Contradiction: Can RSI course sites wait until we have the course recruited? (Wk. 7)

RELIGIOUS HOUSE: BROOKLYN

External: Seatagh Parish, Long Island, holds LCC with 140 present, including state assemblyman, Hempstead Township presiding supervisor (equivalent mayor) and 88 year old elder. Primary issue named as suburban isolationism and multi-family housing proposed. Picture and write-up appear on front page of Long Island Press.

Internal: Post-LCC celebration and evaluation cements new collegiality across bi-metro, and reveals that Town Meeting dynamic effects all nine Pressure Points.

Contradiction: One victory does not a revolution win. Follow-up models tend toward activism (let's do something) or naivete (let's don't do anything). (Wk. 7)

RELIGIOUS HOUSE: HARTFORD

External: RSI course with no cancellations signals key shift in recruitment as participants were from key congregations and parish; children's RSI held with children eight months to five years. First course in our new facility.

Internal: House participated in Ash Wednesday service at parish Episcopal church. Open House preparation begins for March 9. Three hundred and fifty meals served in Week II. Boarder (who works at Archdiocese office) attends RSI .

Contradiction: Enabling Metro troops in everyday tasks as means of practical care for globe and parish. (Wk. 7)

RELIGIOUS HOUSE: MANCHESTER

External: One hundred LENS appointments set up and kept.

Internal: Continuing breakthroughs with in-kind: receive two cases of cream.

Contradiction: Showing up as jugglers spinning plates, but not sure where the audience is located. (Wk. 7)

RELIGIOUS HOUSE: BOSTON

External: Registrations from Fall River Churches show catalytic model operational as total recruitment done by local pastors. Second LENS luncheon shows utility of model for professional people working in community. Second regional committee of 18 meeting consenses on eighteen month model, elicits decision for whole committee to be at Philadelphia kick-off.

Internal: Shrove Tuesday celebration with Metro Cadre and Ash Wednesday service at parish Episcopal church signals our entry into Lenten season.

Contradiction: Presenting our story so clergy and agency hierarchy participate in creation of Primal Community in the South End. (Wk. 7)

MONTREAL**RELIGIOUS HOUSE MONTREAL**

External: Getting tentative dates with community people for Community Forum Canada in May in Halifax and Montreal gives us two of three we are responsible for.

Internal: The Lenten season begins with day of fasting, followed by early morning communion service on Ash Wednesday at the Anglican Cathedral, closing with receiving the ashes at Prayers.

Contradiction: Mission going fine because we are scattered, but still struggle with image that success is measured by the gathered. (wk. 7)

RELIGIOUS HOUSE: TORONTO

External: House penetrates key networks: Metropolitan and Religious Orders. PSU held on first three pilots of Community Forum Canada.

Internal: Study of Transparent Doing and Hope prepare us for Lent. Fast Day falls on Ash Wednesday. Andrew Hashiba of Tokyo is Week II guest.

Contradiction: Enabling people to engage in structures to nurture and mold them. (Wk. 7)

RELIGIOUS HOUSE: OTTAWA

External: Going to meetings, selling Community Forum Canada; many yesses to forthcoming CFC as we contact numerous parish businessmen; meet with Bernard Daly and non-Governmental Organizations; attend two local church annual meetings, one clergy / wives group, host another clergy collegium.

Internal: Bi-Task Force Wk.II on CFC as Clutzes join us to work on national proposal as rest of House hits road recruiting. Nancy journeys to Nova Scotia to celebrate completion of life of her grandfather.

Contradiction: How do we combat sleepiness in old colleagues so that we can catalyze movemental edge, which is unclear to us. (Wk.7)

CARACAS**RELIGIOUS HOUSE: CARACAS**

External: Burst of opportunities result from signal ITI (71 participants from 20 countries and 9 religious traditions); the Wests do one-day speaking engagement on island of Antigua with entire Methodist conference of Caribbean and Rafael Davila does day-long retreat for forty nuns in Maracay, Venezuela.

Internal: Internal life takes major shift as we completely change House decor, are addressed by movie The Demons, and take a few days discontinuity.

Contradiction: Tactics to enable the cadre to win in RSI recruitment. (Wk. 7)

GLOBAL
DEVELOPMENT
CENTRUM

Singapore's followup to a two-week Development blitz during S/75 program pays all outstanding bills, and two proposals receive 'Yeses' all the way through bureaucratic system of Australia. Bombay receives first installment of gift from General Electric. Hong Kong reports trip to Manila results in overwhelming business 'Yes', commitment of large sum from the Ramon Aboitiz Foundation, and an introduction to Jose Soriana, major wealth in the Philippines. Brussels reports an authorization net in Roman Catholic Orders is emerging through contacts in Rome. Chicago creates guidelines for Bicentennial funding clarifying responsibility for various tasks, and makes significant authorization contacts with Sen. McGovern and Rep. Brademus in most recent Washington D.C. trip. Development treks made to Manila, Fukuoka, Osaka, Portland, Ore., Jacksonville, Fla., Cleveland, Toronto, Dallas, Philadelphia, and Altoona. Contradiction is in need for transnational structure which will utilize Majuro and Bicentennial to undergird global funding, and for strategy to break loose funds and authorization across the globe.

GLOBAL
MANAGEMENT
CENTRUM

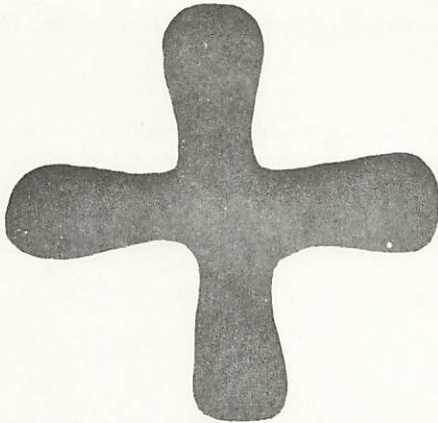
LENS marketing intensifies as Hong Kong sends out Rafos to Japan and Singapore sends out Oberg to Australia, other marketeers are trained, and we cultivate the sophisticated economic giants of North East and South East Asia. The 'march' this week is characterized by preparation, attention, and decor of the various Nexus facilities in special preparation for Primal Community Training School, Area Priors' Councils, and Town Meeting battleplanning. A full set of RSI papers, in French has been printed now in Brussels. Continuous contexting on the Global Financial model is releasing Houses to participate fully in the corporate model. Bombay finds itself with a 6-month facility offered free by a LENS grad. Chicago projects a March timeline of practical sophistication in facility care. The contradiction has to do with the construction of a future image for all international training facilities in each Nexus.

GLOBAL
OPERATIONS
CENTRUM

ITI systems and recruitment being worked on around the globe as Hong Kong's meeting with the Religious House results in coordination and practics guidelines for ITI planning, Bombay experiences intensification of GRA and ITI preparation, and recruitment in North America actualizes more registrations for the ITI in Los Angeles. Singapore's 6 x 7 Global Warboard holds a four-year period from Preparatory Research and Pilot Projection to Expanded Experimentation and Established Programs, covering all 15 regions with all 20 programs. Brussels participates in symbolizing the work of a unified Centrum as it intensifies Development. Chicago hosts International Training Program participants to an afternoon tea, and arranges interviews regarding several international school appointments. LENS courses in Hyderabad, Toronto, Billings, Bombay, Chicago, and with Uptown Elders. A PLC held in Phoenix; RSIs in Oklahoma City, New Orleans, St. Louis, Cleveland, New York, Manchester, Fall River, Asanol, and Hyderabad; CSIIAs in Milwaukee, and Omaha, and Imaginal Ed Consult in Seoul. The contradiction is that of discerning the creative use of being in the tension of unfocused and multi-faceted demands.

GLOBAL
RESEARCH
CENTRUM

In preparation for an SMS Hong Kong completes teaching manual and gains experience in the conversations. Reflection on Chinese customs and traditions reveals possibility of authentic forms of depth human care being recaptured and refocused for the 20th century. Singapore recommends the Global Research Assembly be held in Manila where Mandaluyang Parish can be signal lab for participants from across whole continent. Bombay's ICA brochure printed and ready to go. Chicago completes Town Meeting Actualization Manual for local set-up; and rejoices in breakthrough with invitation to participate in development of the National Catechetical Directory of the Roman Catholic Church--the only non-Roman Catholic group to be so invited. Brussels reflects on the Primal Community Experiment, moving from 'ought' to 'is,' and announces Field Visits and Consults held in Rome, Melbourne, Los Angeles, Billings, Amarillo, Oklahoma City, Houston, Peoria, Washington D.C., New York, Newark, and Hartford. LCCs held in Philadelphia, Denver, and Seaford. The contradiction is in seeing the singular thrust in the midst of being unfocused.



A time is coming, says the Lord,
when the ploughman shall follow hard on the vintager,
and he who treads the grapes after him who sows the seed.
The mountains shall run with fresh wine,
and every hill shall wave with corn.
I will restore the fortunes of my people Israel;
they shall rebuild deserted cities and live in them,
they shall plant vineyards and drink their wine,
make gardens and eat the fruit.
Once more I will plant them on their own soil,
and they shall never again be uprooted
from the soil I have given them.
It is the word of the Lord your God.

Amos 9:13-15

LONDON

RELIGIOUS HOUSE: LONDON

External: Two RSI's in House at same time culminating week of visits to four Metros, setting up RSI in one virtually untouched Metro.

Internal: House internal life reaches peak after painting, experiencing fasting, feasting dynamic, while struggle with Kierkegaard's 'Love Hopes All Things' was key event. Experience globality again with visit by Rees from Melbourne House enroute to Chicago.

Contradiction: Raising question of the next step after completing year's timeline in less than three quarters. (Wk. 8)

RELIGIOUS HOUSE: GLASGOW

External: Signal week of impactment and collegial formulation. Strong RSI of 16 held in House with regional pedagogues David Fleming, Maggie Lunan and Alan Smart doing well; emerging generation RSI taught by Hockley family including pedagogue Matt; letter inviting forty-five regional families to participate in our fast day sent out.

Internal: Wilder and Bultmann continue our Ecclesiola journey relative to where 'hope appeareth', Sherry Van Boskirk's work permit comes through, and eight regional colleagues drop-in to chat during Week II.

Contradiction: Tactics that enable both us and the Region to move more directly toward the Primal Community Experiment. (Wk. 7)

RELIGIOUS HOUSE: BRISTOL

External: Week of recruitment and preparation for PCE Field Visit intensified by two meetings with Metro Cadre members.

Internal: Local Carmelite Father is Ecclesiola guest for lively Gogarten seminar, space begins to be reclaimed with Week II decor party involving Cadre members.

Contradiction: Spinning comprehensive self stories to web fragmented regional activity into a common thrust. (Wk. 8)

RELIGIOUS HOUSE: MANCHESTER

External: Mailing invitations to PCE Field Visit and creation of large imaginal decor piece of 101 parishes refocuses our mission.

Internal: Bishop Ted Whycham of Middleton and his wife come to Ecclesiola Thursday night and enjoy 'Skin of Our Teeth'. He spins with House on history of church renewal in Britain and vision for the future.

Contradiction: Forced to think again about what is necessary style of persuasion in British Isles. (Wk. 8)

PARIS**RELIGIOUS HOUSE: PARIS**

External: ERF (Eglise Reformee de France) Consistory meeting invites a presentation from the Ecumenical Institute. Affirmative reception of that presentation by some fifty representatives across Paris opens brand new doors relative to PCE.

Internal: First visiting House Church celebrant of the year symbolizes depth of the Movement in Paris.

Contradiction: Experience of knowing you would do things differently next time, but here you are in the middle of this time. (Wk. 8)

RELIGIOUS HOUSE: ROME

External: Wild week of breakloose highlighted by twenty people around table for PCTS Field Visit as culmination of solid week of global development calling.

Internal: New excitement with full staff in Rome for first time this Quarter. Close of ITI also brings A.M. Joseph family for two days: imaginal explosion of wayside inn dynamic.

Contradiction: In trying to ride the wave of ITI and Field Visit find question of the action appropriate to Rome brand new. (Wk. 7)

BRUSSELS**GLOBAL CENTRUM: BRUSSELS**

External: Notification received of first major funding grant. Rank-Xerox decides to provide scholarships for ITI Frankfurt. Win is tied to key ITI grad who works in London borough of Camden.

Internal: Week II blitz on property preparation for Primal Community Training School is highlighted by reading Journey to the East at meals. Everyone re-experiences Odyssey and power of corporate reflection.

Contradiction: Turning PCTS interest into PCTS registrations. (Wk. 8)

RELIGIOUS HOUSE: BRUSSELS

External: First regional PLC, third course of Quarter.

Internal: Enablement marathan of PLC-RSI including children's RSI. Ecclesiola guest bishop recently returned from ITI Frankfurt suggests that he follow-up on PLC by telephoning participants.

Contradiction: Standing before perpetually new horizons, how follow up rapidly enough on new potential to pull together all troops into formation for Spring Quarter thrust. (Wk. 8)

AMSTERDAM RELIGIOUS HOUSE: AMSTERDAM

External: Week of penetration highlighted by visit of head of Church and Society Commission for Dutch Reformed Church, and by community development man with Dutch government; Nigerian man signs up for Week 8 course, and a fellow Nigerian may go along with him.

Internal: Kierkegaard holds us in being by the 'skin of our teeth.' Wayside Inn hosts thirteen guests, including Hahn and Raedeke on their way from Brussels to Paris.

Contradiction: How cash in on numerous course prospects this week rather than next quarter. (Wk. 8)

FRANKFURT

RELIGIOUS HOUSE: FRANKFURT

External: Parish work gathering momentum - House requested to staff English Conversation Club of parish Roman Catholic Church, and visits, both locally and in area, net twenty-four yeses to Field Visit.

Internal: Ecclesiola highlighted by ITI grad as guest, with evening ending showing slides of ITI. Possibility of moving into larger facilities allows advertising house for rent, disclosing interest of pizzerias to move in.

Contradiction: Tactics and structures that will put iron in colleagues and grads spread thin over Area. (Wk. 8)

RELIGIOUS HOUSE: BERLIN

External: Send David Elliott to Brussels to teach PLC, PCE Field Visit and RSI registrations growth symbolized by call from Evangelical Sister to ask for participation.

Internal: Nocke visits House for report on his work in his Parish, offers opportunity for concrete work there (Krenzberg). Superintendent of local Evangelical Church attends House Church.

Contradiction: How to make Miracle Happenings of RSI and PCE Field Visit amongst loads of other details. (Wk. 8)

NAIROBI

RELIGIOUS HOUSE: NAIROBI

External: Church hierarchy okays calender; it is mailed. Kenya Institute of Management with 250 corporations and 800 individual members accepts sponsorship of May businessmen's LENS.

Internal: Final Sufi study and study of all Bultmann paper deepen grasp of common foundation of Other World.

Contradiction: Translating verbal support to active collegueship now. (Wk. 8)

BOMBAY

GLOBAL CENTRUM: BOMBAY

External: Business LENS in Hyderabad creates good response from participants representing major Indian companies.

Internal: S. K. study grounds Hope for first time with combined House and Centrum at Ecclesiola.

Contradiction: How to focus on GRA/ITI without losing other programme events. (Wk. 8)

RELIGIOUS HOUSE: BOMBAY

External: Byculla 5 Community LENS becomes a first for the continent. Receive gift of detailed forty feet to the one inch map of Byculla 5 made to order by muncipal officer. LENS follow-up meeting shows intentionality and initiative of key local people as decision is made to commence six week training model.

Internal: Receive A.M. and Monica Joseph direct from Frankfurt ITI, rejoice in their assignment to this Area, and send them to Hyderabad for family reunion. House experiences Community LENS as two faculty, five participants, and three enablement. House also impacted by symbolism of Ash Wednesday Daily Office.

Contradiction: How to hold tension of broad comprehensive planning and recruiting for ITI and GRA and impulse to run exclusively with PCE. (Wk. 7)

DELHI

RELIGIOUS HOUSE: DELHI

External: Strengthening of Roman Catholic authorization with visit to Archbishop Fernandez, education consult with sixty teachers from top Roman Catholic Boy's School, and attendance at Holy See (Vatican Embassy) National Day cocktail party.

RELIGIOUS HOUSE: DELHI (cont.)

4

Internal: Four 'guests' from Bombay Nexus, two from Agra Metro Cadre, and Williams from Calcutta bring us news from Sub-continent; Ecclesiola seminary continues to be spirit peak of week.

Contradiction: Riots and curfew in PCE area have limited the number of people contacted for Week 8 Community LENS. How guarantee 75% of 'I'll probably come's' to be around the table Friday night. (Wk. 8)

MADRAS

RELIGIOUS HOUSE: HYDERABAD

External: Second fully residential RSI in Hyderabad with significant breakopen in 'in-kind' contributions. LENS visitation breakthrough with dinner invitation from managing director of IDL Chemicals.

Internal: A.M. Joseph family returns and teaches RSI during their discontinuity.

Contradiction: Finding way of structuring day to allow for grasping hold of all possibilities. (Wk. 7)

CALCUTTA

RELIGIOUS HOUSE: CALCUTTA

External: Week 11 sees House on second community LENS blitz netting eight paid registrations and six definite yesses. Authorization takes a leap as the house members attend dinners given by Canon Biswas, Rotary Club president and the managing-director of a large heavy equipment company.

Internal: Celebrated the second four figure salary in two weeks as Thomson secures job as production manager. In midst of community LENS blitz finally discovered Summer '74 brochure 'street where you live' location. It was just down the street.

Contradiction: Holding momentum of community LENS recruitment in the face of development and continuing self-support demands. (Wk. 8)

SINGAPORE

GLOBAL CENTRUM: SINGAPORE

External: Guests invited to celebrational opening of Centrum facilities prove to be new face of Movement in Singapore Region: Indian. educators, sophisticated, strategically relevant, and servants of society.

Internal: Collegiums of week are visionary nurture: illuminating state of being Development report from Sydney; a visit to Endlessness; an analysis by Symond Kock of what Mao has preserved and what discarded in Confucian culture.

Contradiction: Vision of relevant missional servant task in predominantly Sino-dominated culture challenges us to out practicalize the most practical people in the world with deeds of wonder. (Wk. 8)

RELIGIOUS HOUSE: SINGAPORE

External: Recruiting in Singapore promised at least twenty for Week 8 CSI, while House personnel Huang Hsing Ping and Symond Kock travel to Kuala Lumpur to teach CSI. House and Centrum host Dr. and Mrs. Preston Bradley.

Internal: Welcome Bob and Theresa Lingafelter enroute from Philippines to assignment in Oombulgurri.

Contradiction: Taking the 'right' next step on the New Town Parish. (Wk. 8)

RELIGIOUS HOUSE: KUALA LUMPUR

External: In secularly marketed CSI, it was religious who showed up, persisted, and were excited by new vision of world participation. Three assigned by Society of St. Vincent de Paul ready to engage.

Internal: Regional Council brooding raises whole issue of what dynamic is needed for this Region. Titus to Singapore, after celebrating entry to Phase III. Welcome Singapore House and Centrum for CSI and House Church.

Contradiction: Overall strategy for Quarter IV too fuzzy to get clear image of Regional Council. (Wk. 8)

RELIGIOUS HOUSE: JAKARTA

External: Meeting with special church committee, ITI grads in East Java sets up consultation with Lay Academy in Malang, firms up monthly metro cadre meetings in Surabaya. Visit with head of Economic Section of US Embassy begins authorization for Quarter IV LENS.

Internal: House celebrates by viewing 'The Great Gatsby' and holding conversation at top of Nusantara building--the 'Sears Tower' of Jakarta--overlooking city of six and a half million people.

Contradiction: As collegial relationships intensify on many fronts, how do you ensure that everyone's journey is moving forward? (Wk.7)

HONG KONG**GLOBAL CENTRUM: HONG KONG**

External: Japan trek reports on key consultations, model building sessions with Houses and key colleagues including Joe Iida. Hong Kong trek includes key authorization visits. Workshops with House releases ITI models, new images of guild formation, as well as development strategy.

Internal: Cut out maps of North East Asia land masses on fifteen foot collegium wall put us in midst of our arena of responsibility.

Contradiction: Building models that hold complexity and diversity of present demands and propel us into the future. (Wk. 8)

RELIGIOUS HOUSE: HONG KONG

External: Ten key people in strategic positions meet with House for Social Demonstration dinner at which consensus emerged on where Primal Community really is.

Internal: House impacted by several edge papers read during Week II gatherings. S. K.'s paper on Hope enabled House to probe stance towards those we are working with.

Contradiction: Getting clarity on contradiction for Hong Kong society and creation of a story that will unleash passion of the Movement. (Wk. 8)

RELIGIOUS HOUSE: KAOHSIUNG

External: Recruitment for the first all-Taiwan PLC touches six Metros and three bishops with total registration approaching 30 while LENS followup visit reveals company using LENS methods throughout its management structure.

Internal: Awed by late night visit to Parish Buddhist temple (Sodality Structure) and its comprehensive symbology. We welcome Dale Griffie from Centrum.

Contradiction: How to blend all the excitement and possibility we are now blessed with into longrange gains and indigenous structures. (Wk. 8)

RELIGIOUS HOUSE: MANILA

External: Presentation to Philippine-American Clergy-Lay Association in Olongapo. Nancy Prather comes from Cebu to teach RSI, in which all but two participants are from Mandaluyong 5!

Internal: Zervigons arrive and are welcomed by feast in Primal Community hosted by Core. Lingafelters sent out to Oombulgurri as Ecclesiola moves to Primal Community, hosting of the Despedida (send-out) by Core.

Contradiction: Short corporate memory plus just executing the practices, overwhelm and inundate missional accomplishment. (Wk. 8)

RELIGIOUS HOUSE: TAIPEI

External: Week 'on the road' as Development and LENS calls go hand in hand with PLC and ITI calls. Net NT5000 in Development.

RELIGIOUS HOUSE: TAIPEI (cont.)

Internal: Welcome Margaret Ho from Singapore as sojourner. Spinning to discern spirit edge gives new image, the Evergreen Heart', of relationships.

Contradiction: Moving on models, battleplans with Spirit, and not just getting things done. (Wk. 8)

RELIGIOUS HOUSE: CEBU

External: Further authorization of Minischool: trip to Bohal for closing year celebration with boat lines reducing fares fifty percent; mayor of Lapu Lapu agrees to raise fifty pesos for the entire group's luncheon (50 to 60 people).

Internal: Prior's trip to half of Region - Dumaguete, Bacolod, Iloilo. Remainder of House attends celebration of Cardinal Rosales, Archbishop of Cebu, twenty-five years anniversary, silver jubilee. Member of the House kissed the ring and presented him a red copy of The Saint.

Contradiction: Unclear in regard to engagement of troops - who should go to Regional Council, SMS, Who should go to GRA and who to ITI. How does the Macton 5 Pre-Guild fit in. (Wk. 8)

RELIGIOUS HOUSE: DAVAO

External: Complete regional mailing (mostly personalized delivery service); House Transformation Day (Phase I) ignites 'parish sign.' ITI grad drops by to stay overnight on way to Butuan Metro (first time happening).

Internal: Shrove Tuesday, Ash Wednesday celebration culminated with delivery of water (our first) while we initiate participation in Order commonness of 'Dark Night' security watch.

Contradiction: Continually being demonstration that turtle-stepping wins War--not antsy action. (wk.7)

TOKYO

RELIGIOUS HOUSE: TOKYO

External: Planning for Summer Program accomplished in meeting with Father Joseph Iida, Global Centrum: Hong Kong representative, and Area Movement colleagues. Included recommendations pertaining to ITI and GRA locations and suggested priors' attendance at each.

Internal: Great rejoicing as lease for new house is signed and regional colleagues and House members battleplan practices of the move.

Contradiction: Necessity for long range planning underscored by pedagogue non-availability resulting from courses scheduled during university exam week and shortage of translated Movement materials to present at servanthood visits. (Wk. 8)

RELIGIOUS HOUSE: SEOUL

External: Highlights of week are Pusan PLC with representatives of five denominations attending, and Preaching Mission in Wonju which impacts 8,500 people.

Internal: ICA PSU spends Week II writing annual report for 1974 and visioning 1975 for both LENS and Consults. Miss Lee Sun Sook receives Master's Degree in Music Education from Yonsei University.

Contradiction: Necessity to take time to discern spirit reality in order to plan new tactics. (Wk. 8)

RELIGIOUS HOUSE: FUKUOKA

External: Groundwork laid in cross-regional effectiveness by completion of translation of Other World Charts. PLC recruitment push promises needed new troops.

Internal: Permeation advancement and training extends to fully-paid trip to Osaka and adds fresh opportunity to dialogue with the sophisticated and the Secular.

Contradiction: While involved in many tactics, how decide when new job and housing deadlines must be nailed down. (Wk. 8)

RELIGIOUS HOUSE: OSAKA

External: LENS club meeting affirms decision to continue meeting regularly, sets next date. Development PSU builds story and brochure needed. House hosts PLC with representatives from three Metros.

Internal: Intensified House hunt engages colleagues. House welcomes Bob Rafos and Kenn Ellison who share Saturday night celebration.

Contradiction: Prioritizing strategies to turn colleagues yeses into concretion. (Wk. 8)

RELIGIOUS HOUSE: SENDAI

External: RSI held in midst of biggest February snowstorm in six years with participants and P.O.s who were nurtured in House structures for previous year.

Internal: Sent out guardian to weekend trip to Taipei.

Contradiction: How to be Secular-Religious when attempts to blend the two end several times in grinding of gears. (Wk. 8)

SYDNEY

RELIGIOUS HOUSE: SYDNEY

External: Planning of three simultaneous congregational planning retreats opens door to penetration in outlying Metro, and gives breadth and depth leadership to two PCE congregations. At conclusion of 6 week' preaching engagement at Pitt St. Congregational church comes possibility of presenting model for future to avert closing congregation doors.

Internal: Kierkegaard allows examination of conscience on the 'risk nothing' and 'giving up' syndromes and provides healing. House celebrates completed lives of Raymond Carnegie Bishop aged 79 and Mrs. Oberg aged 64 years.

Contradiction: To summon the proper combination of humility and audicity to present the Sydney PCE story to Church hierarchy and Uniting Church practitioners as an indication of our determination to love the church as she is, and our capability of being genuine servants to her, as she faces the future. (Wk. 8)

RELIGIOUS HOUSE: PERTH

External: Trip to Kalgoorlie symbolizes decision to care for that metro on regular basis results in two key 'Yesses' for LENS.

Internal: David Scott (Singapore Centrum) pushes our analysis of Primal Community Experiment to new depths and Mowanjum youth use indicative battleplanning to build study model.

Contradiction: Pushing analysis of church and region to new depths while keeping ourselves grounded in hope beyond hope. (wk.7)

RELIGIOUS HOUSE: DARWIN

External: First Parap-Fannie Bay leaders dinner hears 5th City story, ICA-EI-Order background, and consenses on basic procedures for community reformulation. Result: great weekly residents meeting decides to launch housing co-op, trade fair, children's program. Loomis returns from national information tour for Advisory Committee.

Internal: Recent evidence that several groups are moving into community development field with 'experts' catalyzes weekend document-writing on 'Building the Human City' and ICA pamphlet for launching intensive authorization next week.

Contradiction: Shift to document writing enables thinking through tactics and timeline, but puts crucial actions on baack burner at inopportune moment. (Wk. 8)

RELIGIOUS HOUSE: OOMBULGURRI

External: Night school classes for young men begin in high spirits; Housing Association for planning new village elected with woman chairman; store has facelift with new shelves and door erected.

Internal: Week of intensive planning produces youth and replication models, is punctuated by explosion which gets auxiliary boat 'off the ground'.

Contradiction: Building corporateness amongst individualist leadership calls for tactical undergirding of polity process. (Wk. 8)

RELIGIOUS HOUSE: ADELAIDE

External: Cadre meetings in four metros, Adelaide House, Galaxy auxiliary and Metro Cadre meet together, making twenty-person spirit happening and increasing tactical boldness.

Internal: Ned Baker and family return from Oombulgurri. House and region test out new constructs for Ecclesiola and Galaxy Sodality.

Contradiction: Tying down loose ends to ensure RS-I and PLC actually happen. (Wk.7)

RELIGIOUS HOUSE: MELBOURNE

External: RS-I recruiting gives exciting start to next quarter's course. Business LENS authorization base laid in Sydney. New contacts in two new locations in Sale Metro. Regular treks force church to take new relationship to us.

Internal: Wayside Inn doors keep swinging with visits from Gene Bosworth and Jim Oberg. John and Gwenda Rees send-out to begin ITP with first stop London. Ecclesiolas on Hope are right on target.

Contradiction: Created grids and timelines which hold need for tactical engagement instead of programmatic. (Wk.7)

RELIGIOUS HOUSE: CANBERRA

External: Banks returns from Sydney having completed good LENS authorization calls with Telford and Oberg to Chamber of Commerce, Chamber of Manufacturers, Employees Federation and Australian Institute of Training and Development, all of whom will advertise LENS in their journals. Lis Banks again asked to edit national literature to 'International Womens Year'.

Internal: Emerging Generation quarter celebration at circus discloses dynamic of the miraculous only happens out of the mundane.

Contradiction: While working in 36 external arenas, files stuffed in many different holes and boxes. How keep from being capsized when data is urgently required. (Wk. 8)

RELIGIOUS HOUSE: BRISBANE

External: Guild core emerges in midst of flow of participation from various sectors of community; Community LENS site secured, providing optimum combination of price and space.

Internal: Singapore colleague Abraham Matthews shows up on doorstep and opens doors to new contacts in Brisbane International community.

Contradiction: Moving beyond the House being both Director and chief actors, to being catalytic presence in all arenas of the task. (Wk. 8)

SUVA

RELIGIOUS HOUSE: MAJURO

External: Sheldon Hill, Orvis Agee work side by side in creating images of 'Magnificent Quarter Mile' Majuro downtown area unification plan--Marshallese colleagues in awe over how the center can look, say, 'Yes, how do we do it?'

RELIGIOUS HOUSE: MAJURO (cont.)

Internal: Decision to be service to community takes new dimensions when house is rich with repair skills, crisis tactics--rescue missions for Korean fishing vessels lodged on reef, emergency refrigeration calls, VIP typing services.

Contradiction: Hard-headed planning and models for phasing out ICA staff in the two-year timeline Human Development Project intensification. (Wk.7)

RELIGIOUS HOUSE: APIA

EXternal: House battle planning for Region reveals insights into Pacific strategy.

Internal: Shrove Tuesday Feast and Bible readings mark beginning of forty days of fasting of Lent.

Contradiction: Trying to create grace rather than receiving its coming. (Wk. 8)

**SAN
FRANCISCO****RELIGIOUS HOUSE: SAN FRANCISCO**

External: Six teams return from Micro Analysis Probe (MAP) an investigation into seventeen micros for readiness for Town Meeting '76. Good visit with Nevada State Bicentennial Director, Vicky Nash. Five key ITI registrations come in from Bi-Metro. Important speaking presentation before North California Ecumenical Council(50 key representatives from many denominations) on ITI.

Internal: Spiritizing effect of reports from MAP levitates House with anticipation and yearning for first pilot Town Meeting. Which micro will hold first one?

Contradiction: Holding in tension the planning of first Town Meeting and preparing to do all thirty-six. (Wk. 8)

RELIGIOUS HOUSE: SAN JOSE

External: The three Houses of SF Region meet Monday to work through plans for rest of quarter. PCE Consult in Watsonville. Town Meeting interest generated in Watsonville, Fresno and Santa Cruz.

Internal: Two/fifths of adults and all of youth sent out leaves slimmed-down version of House troops. Excellent Ecclesiola.

Contradiction: How know what we're looking for in sifting through ashes of Battleplans. (Wk. 8)

RELIGIOUS HOUSE: SACRAMENTO

External: Sixty registrations for LENS.

Internal: Signal parish family, Don and Clara Leonard, invite whole House to magnificent spaghetti feast.

Contradiction: While at full gallup, how to mount a new steed, 'Town Meeting '76', while having successfully expended our trusty old steeds 'RSI' and 'LENS'. (Wk. 8)

RELIGIOUS HOUSE: SEATTLE

External: Priors' Trek to three Cadres reveals new decisions to journey local congregations. ITI firm commitments up to four with two new good possibilities. PSU on parish engagement creates tactics to launch both Guild and Galaxy on Capitol Hill.

Internal: Wayside Inn receives gratuity of twelve pounds delicious roast beef from guest. All assigned to work now employed as Sharon Fisher becomes Underwriter for life insurance company.

Contradiction: How to capitalize on momentum of past quarter and move into spring. (Wk. 8)

RELIGIOUS HOUSE: LOS ANGELES

External: Registrations come in: Denver sends five for ITI, Korean pastor registers from L.A. and three RS-I confirmations sent.

Internal: Clesson McDonald attends Ecclesiola, Primal Community Experiment celebrates Shrove Tuesday in all three locations.

Contradiction: Focusing ITI expenditure on future, not just April. (Wk. 7)

RELIGIOUS HOUSE: PHOENIX

External: Town Meeting Task Force met with Casa Grande, Scottsdale Bicentennial commissions. Insights gained on needed style of presentations.

Internal: Miraculous space transformation just in time for several regional PLC participants who stayed over.

Contradiction: Now that we know we can do RSI and PLC, what's really required for the future. (Wk. 8)

RELIGIOUS HOUSE: SALT LAKE CITY

External: Metro Cadre walk through Parish completes spirit analysis of Central City 5 in preparation for April LCC.

Internal: Ecclesiola draws new grads as guests - five adults and five children. Area cities appear as border of Collegium room.

Contradiction: With decision to hold LCC, where is model for entire Metro to engage in Parish. (Wk. 8)

RELIGIOUS HOUSE: BILLINGS

External: Twenty man guild meeting.

Internal: Send-out of two to Academy. Battleplanning Wk. II builds 8 major miracles.

Contradiction: Finding ourselves dispersing troops and at the same time seeing extremely increasing local demands. (Wk.I)

RELIGIOUS HOUSE: DENVER

External: LCC happens in City Park West; 100 - 125 residents, broadly representative of cultural diversity in the community, envision and celebrate future of parish.

Internal: All hands involved in LCC preparation, presses rolling, brochures passed out and posted all over parish, in-kind and direct contributions sought out.

Contradictions: Having crossed over LCC bridge, how to discern which arrow points to God's future. (Wk. 8)

RELIGIOUS HOUSE: RAPID CITY

External: Metro Cadre RSI PSU creates beginning battleplan for training quarter recruitment.

Internal: Four birthdays (three local and one historical) leave us pitted against a cherry pie.

Contradiction: Inadequate battleplan produces undefined tactics resulting in last minute changes and excuses. (Wk. 8)

EDMONTON**RELIGIOUS HOUSE: EDMONTON**

External: Waded into Implementaries for first Community Forum Canada in two places: Ft. McMurray, Calgary.

Internal: House/Metro PSU on Community Forum Canada; Flowers were sent on Valentines Day; Father Ken Stevens was our celebrant at House Church (St. Alphonsius Church), stayed over, asked to be allowed to 'participate' in Sunday evening Prior's meeting.

Contradiction: Unfocussed vision produces blindspotty blue rather than kaleidoscope of comprehensiveness in relationship to practical strategies. (Wk.7)

RELIGIOUS HOUSE: ANCHORAGE

External: Segundo study at Clergy Collegium causes pastor to remark: 'I feel like I'm stepping off the mountain with my eyes open'; later in the week he gives commitment for fifteen for RSI.

RELIGIOUS HOUSE: ANCHORAGE (cont.)

Internal: Valuable evening of 'feet on the table' reveals to us the deep issues of RSI recruitment and allows us to move out again with hope. Primal Community weekend of data gathering in newly gridded parish.

Contradiction: What is the Lord telling us with 'No's' we get, before launching in new directions. (Wk. 8)

RELIGIOUS HOUSE: SASKATOON

External: Clergy travels ninety miles to celebrate House Church and stays on twenty-four hours to discuss state of the church.

Internal: In-House RSI Pedagogy digs behind fundamentals; Area Prior visit integrates the universal into the particular.

Contradiction: How to act on movemental 'yesses' and still honor forms and structures of church and society. (Wk. 8)

RELIGIOUS HOUSE: WINNIPEG

External: Recruitment by parish walks, visiting nodes, posters and all other offers. In midst of changing dates and unsure locations.

Internal: Tally Ho. Off on a sleigh ride to enjoy Manitoba Winter weather.

Contradiction: How carry ball without alternate quarterbacks. (Wk.5)

HOUSTON**RELIGIOUS HOUSE: HOUSTON**

External: Twenty-four Lenten Trek, midnight Friday to midnight Saturday; Primal Community Consult analyzes three PCE Parishes; Don Moffet visit spins Exxon, Shell, Gulf, S.W. Bell, and others, including luncheon at Petroleum Club.

Internal: After four months in total of twenty-seven residences, the House is in one house temporarily! Feels good!

Contradiction: Unity in incredible complexity feels right, the mission is one, but battleplanning never keeps pace with the battle. (Wk. 8)

RELIGIOUS HOUSE: AMARILLO

External: New financial model of twenty families for \$200/month implemented as families respond by sending checks. Model received well, as if 'Why didn't this happen before?'

Internal: Income supplemented by delivery of telephone books; discovered this is a great way to grid entire city. House Church held in Lubbock following LENS; clergy participant Rev. Don Coleman celebrant.

Contradiction: As activities increase with more participation, new follow up model required that cares for all colleagues. (Wk. 8)

RELIGIOUS HOUSE: SAN ANTONIO

External: Extremely fine, young priest, parish next to ours, registers for PLC.

Internal: Metro family decides to care for local congregation by waiting for their pastor to attend next week's PLC, before moving into House.

Contradiction: How keep dispersion of missional task from dissipating unified thrust. (Wk. 8)

RELIGIOUS HOUSE: OKLAHOMA CITY

External: Many happenings receive authorized use of State Bicentennial Logo; Ada decides to follow through with Town Meeting proposals; Jets initiate a drill team; in-kind food and materials flow in; and have thirty-four registered for RSI with a week to go.

RELIGIOUS HOUSE: OKLAHOMA CITY (cont.)

Internal: Table center-pieces created for State Bicentennial Committee, while new Bicentennial decor begins to appear around the House.

Contradiction: Holding the global in the midst of the national celebration. (Wk. 7)

RELIGIOUS HOUSE: DALLAS

External: Feverish energies directed toward Town Meeting '76 temporarily and helpfully channeled into Parish project reflection and visioning as Bob Porter is welcomed by twenty-one Metro Cadremen around the table.

Internal: Town Meeting catalyzes long needed work on mailing list updating and stimulates House Church and Ecclesiola invitation procedures as by-product.

Contradiction: Primal Community Consult impresses upon us all the need for sustained work on inclusive Metro and Parish practical vision. (Wk. 7)

RELIGIOUS HOUSE: TULSA

External: Twenty-five colleagues and non-grads meet in Bartlesville, as resurrected cadre becomes committee of 18 for Town Meeting '76. Chairman of Bartlesville Bicentennial Commission gives okay to Town Meeting.

Internal: New candlelit worship hall lends great power to Daily Office. Ecclesiola celebrates end of teaching quarter; House views 'The Front Page'; addressed by stance of missional integrity. Four guests remind us that House Church is still powerful impact structure.

Contradiction: Unleashing the story of possibility for Bartlesville in midst of increasing demands from myriad of other arenas. (Wk. 8)

RELIGIOUS HOUSE: NEW ORLEANS

External: Miracle RSI of twenty-seven emerges through quota system. New Orleans Bicentennial Commission endorses Town Meeting.

Internal: House transformed by creating montages for Stations of the Cross. Sandra has opening night-RSI faculty get to hear.

Contradiction: With full steam ahead in the economic, we still seem to be taking water. (Wk. 8)

RELIGIOUS HOUSE: MEMPHIS

External: RSI penetration blitz sees sixteen register for Week 8 course, bringing total to twenty-two with two weeks to go. Regional Odyssey held at House releases decision of three families to intern over next two Quarters.

Internal: Entire House in Knoxville for Week II with colleagues present for House Church there.

Contradiction: The 'When - Then' demon strikes again. When we are fully employed again, when we get those three intern families, when the RSI gets recruited, when the bicentennial brochures arrive...Then... (This kind of demon is only exorcised with much prayer and fasting). (Wk. 7)

RELIGIOUS HOUSE: ATLANTA

External: PCE Consult attended by key non-grad parish couple among others, is capped off with significant 'Iron Man pinning' commissioning five East Lake 5 Iron Men. The next Tuesday seventy-one year old 'Iron Man' Mamie Rouse misses her ride and walks five blocks in pouring rain to be at PCE meeting.

Internal: Development team rounds out House troops as two go out on North and South Carolina circuit ride this week. In-kind symphony tickets used to good advantage as first three families called could not use them, and fourth gratefully accepted offer.

Contradiction: The desire to set aside our own commissioning as we commission others. (Wk. 7)

RELIGIOUS HOUSE: MIAMI

External: Unexpected RSI registrations bolster Week 8 course at last minute as stranger calls asking, 'Can I come to RSI?', and registers with \$10 deposit.

Internal: RSI registrant attends Ecclesiola the night before course is excited by reading of 'Skin of Our Teeth'. Dr. Roger Vogelsanger, psychognosis researcher and co-worker with Madame Curie's son and Dr. Joseph Campbell, anchors boat for week in front of House, comes over asking for Ecumenical Institute and is guest at Thursday morning collegium.

Contradiction: Pouncing on shadows. (Wk. 8)

CHICAGO

GLOBAL CENTRUM: CHICAGO

External: Uptown Housing planning group engages landlord and tenants in building needed Spring Housing PSU to build comprehensive housing plans for Uptown -- key to future funding. Report on recent Washington, D.C. trip highlighted breakthroughs in authentic authorization and funding for Majuro.

Internal: Nexus rejoices as six assigned Order are sent out to Australia after five months of negotiating for visas. Student House enables wild congregational celebration as whole Nexus symbolizes quarter's work and shift in time design to the discontinuous month.

Contradiction: Determining priorities and use of troops in shift from 'known' structures to preparation for the discontinuous month and the North American Prior's Council. (Wk.8)

RELIGIOUS HOUSE: CHICAGO

External: House hosts lively RSI of 21 participants. 5th City sends out Lela Mosley and Florizel Foy to an LCC in Winnipeg, to share the experience of over a decade of experimentation in Primal Community creation.

Internal: House and Galaxy refresh their spirits with prayer and fasting in Lenten Trek. Received sojourner Linda Vernoy, recent Academy grad. Sent out Scott Chamberlain to new assignment in Los Angeles House and Stan Duncan to temporary assignment in San Francisco House.

Contradiction: How do corporation planning and evaluation when still need to be 'hitting the road.' (Wk.8)

RELIGIOUS HOUSE: WICHITA

External: Parish breakfast program opens with more kids than there are tables, and parents offer to help. Comprehensive screen created for Town Meeting.

Internal: Final Ecclesiola great event as we reflect on Hope studies; Measles outbreak and smashed car experienced as radical intrusion in busy week.

Contradiction: Allowing irrationality of spinning many plates at once to make sense in long range. (Wk.8)

RELIGIOUS HOUSE: OMAHA

External: Billboards for Community Convocation go up. HRM in Galaxy Church opens door to congregation skeptics. Coca-cola provides sign with large inkind for LCC.

Internal: Guest House Church celebrant catalyzes our decision to be Wayside Inn dynamic.

Contradiction: Needing to look beyond Week 8 LCC.(Wk.8)

RELIGIOUS HOUSE: KANSAS CITY

External: Fifty-four souls through programs this past Week II as RSI and CSI explode Parish Cadre and generate deep excitement. Town Meeting '76 marches on with favorable reaction from president of Topeka Jaycees, and team being hailed down to Floor from visitors' gallery at Missouri legislature to talk to some representatives. Key man on State Bicentennial commission turns out to be business acquaintance of K.C. LENS grad.

RELIGIOUS HOUSE: KANSAS CITY (cont.)

Internal: House celebrates quarter with real loolapalooza. Steaks and wine dinner, then dancing all night at Top of the Crown.

Contradiction: Stance of 'soul, take thine ease, thou hast stored up many missional accomplishments.' (Wk.8)

RELIGIOUS HOUSE: MINNEAPOLIS

External: Valentine's Ball honoring community elders indicated life and energy as yet untapped in Whittier. Wednesday night Guild meeting has people asking for the blue song book, the better to sing 'Shocking' with. Meeting in North Dakota with Bill Salmon and former District Superintendent for Methodist Church sets up North and South Dakota Bicentennial network. Whittier Town meeting in shute, with great inkind results.

Internal: The Skin of our Teeth and Norman Cousins explode Ecclesiola as both Metro and Guild colleagues show up for evening.

Contradiction: Sustaining momentum without allowing any particular event to overshadow vision. (Wk.8)

RELIGIOUS HOUSE: ST. LOUIS

External: Town Meeting '76 endorsed by Linn County Bicentennial Commission. One-day Planning Consult with First Methodist Church in Des Moines attended by 35 established leaders of the congregation. Primal Community Consult in St. Louis refocuses on parish.

Internal: 'Lenten Retreat' sojourn week launches them s of struggle with temptation and preparation for crucifixion. Amos Scott, early colleague in formation of Region, leads in House Church celebration.

Contradiction: Lack of in-depth parish strategy ripples fog through everything else. (Wk. 7)

RELIGIOUS HOUSE: PEORIA

External: PCC impacts House and Bi-Metro colleagues by drawing together the one thrust of mission and the methodological ease of discerning major contradictions. One Champaign colleague remarked, 'I should have been there,' upon hearing about the happening it was.

Internal: Collegiums on contradictory analysis in relation to the Movement in this Bi-Metro has revealed fresh approach and more real analysis.

Contradiction: How direct enthusiasm for Town Meeting and Local Church Consults into strategic planning. (Wk.8)

IRELIGIOUS HOUSE: GREEN BAY

External: LENS, first one in Metro, happens, with 32 participants.

Internal: Old grad comes to House Church and leaves with enthusiastic decision to recruit 12 people to next RSI.

Contradiction: Need for intentional care of the spirit and the corporate life for the fulfillment of external mission. (Wk.8)

RELIGIOUS HOUSE: MILWAUKEE

External: Fourteen colleagues from Detroit to Green Bay present at CSIIIA. Proposal for Town Meeting 76 funding completed for Wisdonsin ARBC.

Internal: House relocation PSU builds comprehensive tactic system for finding house in next month. Ten guests join us for spirit-filled Ecclesiola, and eleven join us for House Church.

Contradiction: How keep fear of failure and fear of success from paralyzing Movemental forces. (Wk.8)

RELIGIOUS HOUSE: INDIANAPOLIS

External: Louisville and Manchester polises send ten to RSI. Indianapolis Metro Cadre takes financial and enablement responsibility for RSI. Priors attend Bicentennial meeting in Detroit.

RELIGIOUS HOUSE: INDIANAPOLIS (cont.)

Internal: Mardi Gras celebration followed by special Ash Wednesday service at House, where ashes were imposed by Fr. Joseph Dooley. Promotion of Maxine from staff nurse to clinical instructor boosts budget.

Contradiction: Edge Movement vision dim as troops spread thin. (Wk. 7)

RELIGIOUS HOUSE: CINCINNATI

External: LENS recruitment nets Community authorization with Elder's breakloose of 12 registrations, while Metro Cadre celebrates second Primal Community gridding of North Fairmount.

Internal: Thursday evening Ecclesiola is transformed to corporateness symbol as House is readied to receive LENS teaching team and men are sent out to Community 'Town Meeting,' all resulting in corporate power and motivity.

Contradiction: A beckoning form which will enable LENS grads to local engagement, after exploring the world with LENS. (Wk.7)

RELIGIOUS HOUSE: DETROIT

External: With half House adults assigned out for Week II, Region is impacted with Town Meeting pedagogy with twenty around the table. Husband of LENS grad excited by methods is great asset to weekend. Highlights include readings on historical figures, extemporaneous interludes, symbols workshop.

Internal: House reaches full employment again with two new jobs secured. Impacts and is impacted by four guests at Ecclesiola (two old colleagues, two potential colleagues) through study of Cousins Two Editorials.

Contradiction: Losing head over Town Meeting at expense of other missional activity (Wk.8)

RELIGIOUS HOUSE: CLEVELAND

External: House becomes training center as RSI participants fill all available sleeping space. Social agency impact given impetus through weekly imaginal education workshops for day care and head-start.

Internal: Family morning replaces family night and the Late Night (10:30) Dinner recreates the Ecclesiola dynamic as we re-design time to enable second jobs. Two jobs secured, three to go. Receive Bowman family as interns.

Contradiction: Experimentation with time exposes comfort with old patterns - riding loose in the saddle is key. (Wk. 7)

RELIGIOUS HOUSE: NEW YORK

External: Our many faces come more into focus as move ahead in several arenas: PC Consult and RSI held in adjoining rooms ten yards apart; initial nod given Town Meeting by Pawling Bicentennial Commission; editorial page writer of The Daily News (largest circulating newspaper in America) joins Town Meeting committee, takes copious notes.

Internal: House impacted by Regional House Church (sixty-five present) where we receive two new House members, entertain international guest from Tokyo, hear Connie Widyatma report that on return to Jakarta she will be accepting assignment to Brussels, and we dine on entire in-kind meal.

Contradiction: Our capacity to reflect has not caught up with our ability to do. (Wk. 8)

RELIGIOUS HOUSE: PITTSBURGH

External: Trips to Fairmount & Morgantown W.Va. with regional coordinator yeilds six on-the-spot LENS registrations from cities Bicentennial Commissions; Hankin's family decision to be Church once again impacts region with celebration of life and death of Rochelle Henkins, 13-yr. old colleague.

Internal: Pushing ahead on House proposal for facility in Parish during morning collegium with help of Carlos Zervigon breaks open new possibilities; House does Ecclesiola with four around table, a versatile reading of 'Skin of Our Teeth' by 2 of 4 present.

RELIGIOUS HOUSE: PITTSBURGH (cont.)

Contradiction: Lucid colleagues being called upon to engage their lives now have not participated in recent miracles which allow them to live out of the 'glory' of bygone miracles. (Wk.7)

RELIGIOUS HOUSE: ROCHESTER

External: Third annual Maplewood Assembly excites one hundred community residents - including local bishop, local, county, and state legislators - with vision of twelve miracles done over next year.

Internal: New sojourners decide to stay longer than planned.

Contradiction: Phone calls from Centrum and Area House raise question of next quarter's courses and reveal need of clearer picture. (Wk. 8)

RELIGIOUS HOUSE: RICHMOND

External: Town Meeting '76 moves on two fronts as five key leaders in Hanover County (home of Patrick Henry) say yes and begin to build support. Chaplain, guard, counselor, and school principal at the Virginia State Farm begin building proposal for prison Town Meeting.

Internal: Spirit deeps pushed by Sunday morning Collegium led by Bob Porter on the Being dimension of our existential struggle as humans; Lenten meat fast grounds us in globe and pushes creativity of menu planner!

Contradiction: In midst of decreasing in-house troops, shifting montage of missional model to one-in-house image. (Wk. 7)

RELIGIOUS HOUSE: WASHINGTON

External: Impacted with 70 Elders for their monthly meeting and celebration of 73rd birthday of Metro colleague. LENS miracle: Grad leads task force just using methods, in eight hours arrives at four contradictions. Later, classified report reveals same four in 1½ year study by professionals. Social Demonstration PSU creates grids to parish level. Authorization for Town Meeting in Fairfax received.

Internal: Welcomed Gene Buck from Region Anchorage for the week and couple considering interning. Relocation of prayer room to worship area. EG complete weekend RSI with two Jets helping teach after which Jets and EG impact elder LENS grads with spirit songs in return for story spins about D.C.

Contradiction: Discovering how to straddle two stallions - one: the ever expanding, all consuming task and two: to train and formulate troops to carry on that task. (Wk. 8)

RELIGIOUS HOUSE: BALTIMORE

External: Frederick Jaycee President, who is also Bicentennial Chairman, promises us a chairman for Town Meeting and wants four Town Meetings at one time. Held first meeting of Committee of 18.

Internal: Inkind yields 14 dozen day-old doughnuts with promise of more to come.

Contradiction: Activating structure that will get most mileage out of colleagues' affirmative stances. (Wk.8)

RELIGIOUS HOUSE: PHILADELPHIA

External: Town Meeting '76 explodes comprehensive as Scranton is visited three times in two weeks (untouched for year) and a State Bicentennial contact sets up a Local Church Consultation.

Internal: Cruciality of Wayside Inn dynamic revealed as House enables colleague relocated by Airlines to deal with recession through House sojourning.

Contradiction: With vast number and size of upcoming events find selves short on indicative planning and therefore long on worrying. (Wk.8)

RELIGIOUS HOUSE: NEWARK

External: First Global Primal Community Consult was held in North Ward 5 Parish with 6six of eight churches present, marking the longest period of time ever spent in Newark for Metro colleagues, who embrace the role of being the PCE.

Internal: George Washington's birthday space recreation blitz with colleagues from New York House moved on common decor in preparation for Primal Community Consult. Community paper is event in life of House, with regular guests for occasion.

Contradiction: Tendency to procrastinate and rely on personal gifts rather than create revolutionary methodology that could be replicated in any part of globe. (Wk. 8)

RELIGIOUS HOUSE: BROOKLYN

External: RSI recruitment foray to the point of Long Island nets 11 registrations in one Saturday. Task force made up of two from House, two from Metro Cadre, and four from Local Congregation sponsoring course.

Internal: Three pre-schoolers placed in New York City day care program, releasing one more troop for direct engagement. Our \$22,000-a-year man back on payroll after 7-week company shutdown.

Contradiction: With spirit breakloose from quarter's victories resounding around Metro, how make sure existing structures go deeply enough to give necessary form and order. (Wk.8)

RELIGIOUS HOUSE: HARTFORD

External: PCE Consult great happening with seven new grads attending from RSI and PLC. Clergy Collegium breaks loose with excitement over indicative battleplanning and new spirit over clergy relationships to their congregation. State authorization received for Town Meeting 76 in Wallingford, Ct. (completely funded.)

Internal: Sojourner announces decision to intern march 1. Henschen sent to Boston to do employment workshop with Boston and Manchester houses. SMS lectures studied in Collegium enables clarity on social methods.

Contradiction: How to significantly engage new colleagues in the many tasks before us. (Wk.8)

RELIGIOUS HOUSE: MANCHESTER

External: Four out of six polis's represented with six from the Portland Polis in Manchester Training Center.

Internal: Ecclesiola study by Kirkegaard impacts House to RSI; Signal Parish Church impacted with gridding workshop and House participates in regional permeation workshop.

Contradiction: How keep many facets of task leading to comprehensive responsibility. (Wk.8)

RELIGIOUS HOUSE: BOSTON

External: RSI Course in Fall River with 20 new participants primarily recruited by Fall River Council of Churches.

Internal: General Foods Sales representative becomes Inkind miracle man by assuming responsibility for 80 percent of House food budget through his contacts. House sees play, 'Skin of our Teeth.' Impacted by its being on target for quarter.

Contradiction: Imaginal block of shifting vision from getting people to static structures rather than empowering a dynamical force. (Wk.8)

RELIGIOUS HOUSE MONTREAL

External: Four participants were sent to Toronot LENS--two of whom were from Primal Community.

Internal: First Prior's birthday occasioned great celebration for both Metro and community colleagues.

Contradiction: Having made contact with many people with whom we feel collegiality, how begin to engage them missionally. (Wk.8)

RELIGIOUS HOUSE: TORONTO

External: LENS held at Scarborough Foreign Mission with key people, social animators, present. Development passes through on circuit. Community Forum Canada visit paid to president of Junior Chamber of Commerce.

Internal: House studies two papers: Doxiadis (The City of Man) and Unamuno.

Contradiction: How to set our sails to catch the winds of possibility, released by the events of this past week. (Wk.8)

RELIGIOUS HOUSE: OTTAWA

External: Going to meetings, selling Community Forum Canada; many yeses to forthcoming CFC as we contact numerous parish businessmen; meet with Bernard Daly and non-Governmental Organizations; attend two local church annual meetings, one clergy wives group, host another clergy collegium.

Internal: Bi-Task Force Wk.II on CFC as Clutzes join us to work on national proposal as rest of House hits road recruiting. Nancy journeys to Nova Scotia to celebrate completion of life of her grandfather.

Contradiction: How do we combat sleepiness in old colleagues so that we can catalyze movemental edge, which is unclear to us. (Wk.7)

RELIGIOUS HOUSE: CARACAS

External: Yeses from all sides: Advertising agency does ITI mock-up for free; scholarship money for January ITI still comes in, contacts from two ITI grads yield requests for Caribbean ITI and confirmation of one-week retreat for all sisters of Carmelite Order in Caribbean; RSI recruitment 'over hump' with two prospective new House facilities offered.

Internal: Recovery of spirit exercises a powerful address to both House and Cadre as we participate in special Ash Wednesday Daily Office and Friday Fast day on behalf of Social Demonstration.

Contradiction: Clearing up lingering ITI wrap-up demands so forces can concentrate on LENS and new Religious House location in Caracas. (Wk. 8)

GLOBAL CENTRUM
QUARTER III 1974 - 75

THE GLOBAL ORDER CENTRUM REPORT
FOR WEEK 8

BRUSSELS
BOMBAY
SINGAPORE
HONG KONG
CHICAGO

GLOBAL DEVELOPMENT CENTRUM	<p>Authorization has taken place on many fronts around the Globe. In Hong Kong a visit with Dr. K'L' Ding resulted in an invitation to the Hong Kong House to do demonstration at grass roots community, the very community for which key authorization was needed. Corporations around Europe have been visited. Rank Xerox is a great name to have on the contribution List.</p> <p>Hong Kong has participated in strategies in Japan and in workshopping clarified the need for \$350,000. Strategic social dinner engagement with key Rotarians was held in Bombay. In Washington a highly successful visit with Chairman of the Senate Committee on Interior, Senator Henry Jackson highlights the strategy: when you play with live ammunition, deal with the man who holds the artillery. Reformed Majuro Program budgets for submission to the Government reveals the total 1st year cost at \$3,981,405:00.</p> <p>Funds have been received for ITI scholarship from Rank Xerox, Brussels reports. Weekly contributions for small givers total over \$300 US for January and February from Hong Kong and a New Jersey patron mails a check for \$25,000 to Chicago. The contradiction is implementing the necessary steps that allow us to move with force on Authorization, Program funding and Troop effectivity.</p>
GLOBAL MANAGEMENT CENTRUM	<p>The season of Lent, facility innovation and finances are arenas of activity of Global Management Centrum this week. Both Brussels and Chicago Nexus have been at the presses on Lenten card mailings as well as facility renovation. All twelve houses of the Singapore Nexus have sent Order funds to Centrum establishing a financial rhythm there, and all financial data for Quarter 11 from Hong Kong is in. Decor and facility renovation moving ahead in Hong Kong, Brussels and Chicago. Bombay has been authorized to have a bank account- representing a first on that continent. Hong Kong used social methods in a major 5-day management training course for regional officers from Malaysia and Indonesia. Chicago increasingly discovers the direct relationships between concrete practical vision, naming the contradiction and accomplishing miracles. The contradiction is in building of financial systems and solvency continuing to consume time and energy needed elsewhere, with progress, however, being made in this foundational dimension of Order life and mission.</p>
GLOBAL OPERATIONS CENTRUM	<p>The International Training Institute and Global Research Assembly are focus of attention in Chicago, Hong Kong, Bombay, Singapore as recruitment packets are delivered to all of the area houses in the Sub Continent. Hong Kong holds a workshop on recreation of story of program's relation to contradiction; Week 11 PSU in Chicago breaks through on practical steps; Singapore deals with ITI 'whole package,' using last year's back up systems. Impact through courses: 60 Roman Catholic teachers in Imaginal Education Course in New Dehli. RS-1's taught in Manila, Brussels, London, Glasgow, Kaohsiung, Taipei, Los Angeles, Brooklyn, Newark, Chicago, Rochester, Ashville, Kerrville, Knoxville, Jacksonville, Caracas. PLC in Osaka and Brussels. LENS in San Francisco, Sacramento and Hyderabad. Winter Academy in Chicago sent out 96 participants. Advanced courses in Kuala Lumpur, Duluth, Philadelphia, Bristol. Brussels initiated new phones with round -the-continent calls, bringing to life War Board Dynamic. Singapore War Board design and method for reproduction sent to Seapac South Religious Houses. The contradiction is changing gait without losing step as we move into discontinuous month.</p>
GLOBAL RESEARCH CENTRUM	<p>Social Methods proved effective when used in Hong Kong's five day Management Training course for Malaysian and Indonesian regional banking officers. Montreal Social Methods School of 15, North American Local Community Convocation of over 100 in Brooklyn, Omaha, Denver, Social work consult of 24 in Seoul. Key event in Social Demonstration was securing significant United States senate authorization for Majuro. New breakthrough's in Primal community: Singapore sees realistic possibility of Galaxy in Kuala Lumpur with Primal Community Experiment Consults in Klang and Sentul; Bombay initiated six week training model in Byculla 5; North American completes 48 consults this quarter, Brussels prepares for Continental Primal Community Training School with a pre-guild meeting held in Hong Kong. Significant new Global Language School strategizing emerges with staff consult in Tokyo. The contradiction is living out of the practical revolutionary stance without succumbing to local cultural traps.</p>