

My people were lost sheep, whose shepherds let them stray and run wild on the mountains; they went from mountain to hill and forgot their fold. Whoever found them devoured them, and their enemies said, "We incur no guilt, because they have sinned against the Lord, the Lord who is the true goal and the hope of all their fathers."

Jeremiah 50: 6

## LONDON

## RELIGIOUS HOUSE: LONDON

External: HRM consult for Canterbury colleagues preparing event for ancient Methodist village circuit culminates week of daily visits and workshops with people going to Summer '75.

Internal: House mobilizes for second jobs and 5,600 circulars get door to door delivery while youth intensify preparation for exams.

Contradiction: Keeping pace with responding to the many changing faces of Europe. (Wk. 7)

## RELIGIOUS HOUSE: GLASGOW

External: The Edinburgh Metro Cadre holds its first local Church evening with 24 around the table and 4 members teaching, while the Glasgow Metro Cadre holds its first PSU on the PCX and Community Reformulation workshop completes its final session at Jordanhill College.

Internal: A week of castlevisiting and christening as Constantinople is a winner and the whole House creates and brings off a christening service for Kate Elizabeth, daughter of Edinburgh colleagues David and Rosemary Fleming.

Contradiction: How do we create tactics that insure an adequate number of participants at Wk. 8 RSI ? (Wk. 7)

## RELIGIOUS HOUSE: BRISTOL

External: Summer 75: Chicago follow-up practice includes securing visas and passports for registered participants who seem to be stopping by House more and more often.

Internal: Further employment intensification yields two pub jobs, our first brass-rubbing order from Algeria and possibility for marketing antiques. Vaughn O' Halloran sent out to Brussels to meet with Global Panchayat Trek.

Contradiction: Sustaining ourselves and maintaining regional programmes while employment intensification cuts into valuable blocks of time. (WK. 9)

## RELIGIOUS HOUSE: MANCHESTER

External: A two week holiday from school teaching enables an extended Summer '75 recruitment trek throughout Region. A training session is planned for local community leaders who will be leading workshops in the LCC.

## RELIGIOUS HOUSE: MANCHESTER (cont.)

Internal: Financial solvency is in sight. 4 members of House now employed at 'The Great American Disaster' Restaurant--mixing American style cocktails, cooking food, waiting on tables and washing dishes. Another 2 members employed part-time at 'Pips Disco'. Mrs. Todd, Cynthia's mother, arrives from U.S.A. to visit and Mrs. Taylor, Jean's mother arrives from New Castle metro.

Contradiction: How to shift gears and throw our energy into LENS marketing and recruitment for Continent 75. (Wk. 9)

## PARIS

## RELIGIOUS HOUSE: PARIS

External: The PCE is given new depth as two local congregations in Parish meet to discuss E.I. history and method-centered training.

Internal: Plan for 'Paris Trek' symbolizes taking Wayside Inn seriously.

Contradiction: Forming details of Summer so that it becomes an effective time for the Movement in Paris. (Wk. 9)

## RELIGIOUS HOUSE: ROME

External: First PLC to be taught in Rome comes off with 18 participants: four vicar generals (Xaverian Brothers, Brothers of the Holy Cross, Marist Fathers, and Sacramentalist Fathers), representation from the Generalate Houses of 12 other Orders (including a Franciscan from Assisi), an Anglican priest's wife, and one Czechoslovakian refugee. In evaluation session, they asked when they could meet again and how to get further training and what would it take to get the course taught in Italian.

Internal: House bulges at the seams with continual stream of visitors from across the globe. Signal visit over breakfast with Global Panchayat Team.

Contradiction: Having made the speech "...friends, Romans, countrymen--lend me your ears", what is the most strategic direction to move in relation to all of the many different kinds of ears we have been lent? (WK 9)

## BRUSSELS

## GLOBAL CENTRUM: BRUSSELS

External: Field Visit in Vienna with top Protestant leaders marks first program activity in Austria.

Internal: Vienna visit triggers Week II mealtime reflection on Eastern Europe, creating new images and filling in data on Area: Budapest.

Contradiction: Securing funds needed to assure ITI's in India. (Wk.5)

## RELIGIOUS HOUSE: BRUSSELS

External: International Ecumenical Fellowship invited to hold their monthly meeting at Brussels House after supper with us. A French speaking group, our translators were in full gear. The evening flew on and what was to be their own meeting resulted in our giving them a meeting.

Internal: INCOME II, our model to reverse our 'en rouge' financial situation, pulls in two more full time jobs and three part time jobs, consisting of Saturday gardening and a clean up of a Youth Center. Grad family is to clean their basement on our behalf and pay us.

Contradiction: To move on from wild immediate success to order long range goals. (Wk. 7)

## RELIGIOUS HOUSE: AMSTERDAM

External: House prior hears M.M. Thomas, President of World Council of Churches speak in Rotterdam. Key grad impacts House at PCE Consult. Friend of Paul Schrijnen decides for ITP beginning in September.

Internal: Space transformed with another wall. Maria Schrijnen attends Ecclesiola.

Contradiction: How use LCC as impact tool and as momentum-builder. (Week 8).

**RELIGIOUS HOUSE: FRANKFURT**

External: RS-I held in German with mainly Mennonites, including one from East Berlin. The House receives the Colonel Adicks Family on guestnight with celebrative meal.

Internal: LENS grads attend House Church. House member sent out to teach Frankfurt diction: Finding ways of releasing people to participate in RSI and LCC in short amount of time. (WK.8)

**RELIGIOUS HOUSE: BERLIN**

External: RS-I held in German with mainly Mennonites attending, including one from East Berlin. The House receives the Colonel Adicks Family on Guestnight with celebrative meal.

Internal: LENS grads attend House Church. House member sent out to teach Frankfurt RS-I.

Contradiction: To be like the squirrel that jumps gracefully and swiftly from tree to tree over thin branches. (Wk. 9)

**NAIROBI****RELIGIOUS HOUSE:NAIROBI**

External: Continuing to undergird the ITI with in-kind donations and nod from key churchman.

Internal: Vision of possibility for House exploded by Global Panchayat Trek.

Contradiction: Finding the key which will unlock money for the ITI here in Africa. (Wk. 9)

**BOMBAY****GLOBAL CENTRUM: BOMBAY**

External: GRA completed in Hyderabad. ITI materials received and cleared. Study plan completed.

Internal: Sent out P.T.James and T.Patterson to Calcutta, and receive Judy Hess for ITI.

Contradiction: Operating images needed to manifest globality and oneness of Spirit Movement. (Wk.5)

**RELIGIOUS HOUSE: BOMBAY**

External: Three ITI complete exciting first week with total of 174 attending. Reports persist of emerging pedagogical giants among both old and new participants.

Internal: Preparations for arrival of Panchayat teams and return of Bishop Joshi create profound anticipations.

Contradiction: Planning Quarter I in middle of three ITIs and the Global Priors meeting. (WK.8)

**DELHI****RELIGIOUS HOUSE: DELHI**

External: ITI registration from Agra gives us registrations from 4 of 6 regions as recruitment effort is intensifies.

Internal: Marle Paul sent out to GRA, children to grand-mothers for summer; House troops drop from 9 adults to 5 in 2 weeks.

Contradiction: Finalizing ITI recruitment and guaranteeing goal of 36. (WK. 4)

**MADRAS****RELIGIOUS HOUSE: HYDERABAD**

External: Gunfoundry 5 Workday Miracle: ITI participants assist in completely transforming one of the worst eyesores in Parish--this strengthens the Guild, uncovers new leading potential guildsmen and marks a definite shift in seriousness of Guild.

Internal: House of one continues to provide back-up system for ITI practices, maintain self-support, and be Wayside Inn dynamic. Hosted Slicker and M. Bailey of Panchayat Trek and all attend ITI celebration.

Contradiction: Falling into an 'ITI' and an 'after ITI' mindset.

**RELIGIOUS HOUSE: CALCUTTA**

External: Calcutta ITI begins with 63 around table (45 new participants) including those from Area Delhi. Bishops College, the ITI faculty, proves to be strong built in authorization.

Internal: All House members except one assigned to the continental ITIs. House moves to Bishops College, leaving the question of where to go after the ITI utterly open.

Contradiction: Building models which use ITI as a tool in global strategy as opposed to seeing the ITI as an end in itself. (Wk. 7)

**SINGAPORE****GLOBAL CENTRUM: SINGAPORE**

External: Ten New Town teachers spend informal evening with Nexus and engage in corporate reflection on trends in education today as preparation for their attendance at GRA:Manila. First international Town Meeting exploration visit to Secretary of Cultural Affairs at U.S.Embassy in Singapore receives favorable response.

Internal: Nexus spends Week preparing for Global Panchayat visit by midnight shopping tour, May Day celebration, sprucing up facilities, and pulling together the accomplotat, challenges, and projections of each Centrum.

Contradiction: Location of Nexus demands fantastic creativity and ingenuity in securing authorization in order to concretize direction by focusing Global Order toward some particular demonstration sign in this situation. (Wk.5)

**RELIGIOUS HOUSE: SINGAPORE**

External: House reviews entire file of grads to contact all about RSI and ITI. Development Centrum does collegium on Development with the House and we prepare for a Week 7 thrust on the Singapore Development Circuits.

Internal: House hosts Stovers en route from Australia to their new assignment. Most House members attend all or part of Global Panchayat meeting at Nexus. Kang Byong Hoon visits Singapore House.

Contradiction: Getting on top of the real contradictions in Area/Region Singapore (Wk. 7)

**RELIGIOUS HOUSE: KUALA LUMPUR**

External: Final countdown and actualization of LENS with 55% Chinese, 35% Malay, 10% other-- participants leave deeply thoughtful. ITI invitations out, progress report to Host Committee, and GRA delegates prepare to leave.

Internal: LENS team--Lou and Ginny Pierce, Ann Wood, Bob Rafos-- open up perspective on Movement around globe with Guardians Meeting report, etc. Priors sent to Area Singapore meeting.

Contradiction: Re-ordering time/task assignments and tactics as result of mid-course correction. (Wk. 9)

**RELIGIOUS HOUSE: JAKARTA**

External: House sends two people to Manado Region to teach 30-man RSI and another House member sent to K.L. International School to help develop curriculum.

Internal: LENS team sees Jakarta offer completion of fantastic course, before going on to Singapore.

Contradiction: In midst of meeting quotas for ITI/GRA, how to enable development of the Movement and just increase grads. (WK.8)

**HONG KONG****GLOBAL CENTRUM: HONG KONG**

External: Curriculum for English-teaching permeators finished. Duncan sent to GRA to coordinate in Manila. Elliotts do Development and LENS calls while Griffin does Development in Cebu.

Internal: Fred McGuire arrives. Elliotts do collegium on Guardians' meeting. Kaye Hayes sent out to Brussels Nexus with celebration of Hong Kong.

Contradiction: Society's story that Movement is only about training, but wants tangible evidence of effectiveness. (WK.8)

**RELIGIOUS HOUSE: HONG KONG**

External: Singal PLC of quarter in configuration of Roman Catholic clergy, religious and laity, exchange faculty from Manila and Hong Kong Movement colleagues as host and closing meal pitcher.

Internal: New slant on American scene with Wittenberg analysis of collapse of rationality in the West.

Contradiction: Tightening the reins on ITI recruitment in midst of scattered recruiters. (WK.8)

**RELIGIOUS HOUSE: KAOHSIUNG**

External: GRA quota full and clear to leave. ITI quota full and all participants promise to pay full amount. Development goal met and passed.

Internal: As we prepare for reduced troops we move out of our auxiliary apartment and reduce costs for summer. Impacted by great concluding study of Martin and receive Cho Ming Yun's mother and brother for a brief visit.

Contradiction: How to build vision of the summer in Kaohsiung without knowing how many troops will be here when? (Wk.9)

**RELIGIOUS HOUSE: MANILA**

External: Two more metro trips for GRA/ITI recruitment. Metro colleagues working round-the-clock on practics and decor for GRA which begins in one week. In-kind procures copier, mimeo, stencils, ink, and army truck. Development contacts ask to attend GRA.

Internal: GRA decor the major thrust. Go on expedition to recommended new house in PCE parish. Guests continue--every evening we have at least twice the number who really 'live' in the house.

Contradiction: Finalizing and enabling GRA participation with one week to go and two people from our region presently planning to attend. (Wk. 9)

**RELIGIOUS HOUSE: TAIPEI**

External: Parish Lab with 10 churchmen gives practical form to research methods. Send out; Yeh, Chwun Yung to ITP, Chicago and House member to Kaohsiung RSI. Mailings for LENS Guild, RSI and Grassroots development point tactically toward PCE.

Internal: Addressed by global vision, style, and spirit edge through Area Priors' visit while team and post assignments solidly ground us in local expenditure.

Contradiction: Adequate model to hole nitty-gritty decision to keep the pace. (WK.8)

**RELIGIOUS HOUSE: CEBU**

External: Firming up GRA and ITI recruitment with one hand, and preparing to receive 45 preschool children with the other hand.

Internal: Receive Nancy Rabor as sojourner while she teaches in our preschool and prepares for ITI.

Contradiction: Relative to ITI/GRA, transforming "Yes, I want to go" into "I'll raise the money". (Wk. 9)

**RELIGIOUS HOUSE: DAVAO**

External: Second PLC of the quarter--was requested and recruited by Episcopal Bishop Manguramas who attended and then decided to go to ITI with his wife. Rally of ITI prospects does brainstorm of how 'we' fund GRA/ITI participants from Region.

Internal: Wayside Inn dynamic continues to swirl and bubble with ITI prospects. Into the Land of Mystery with Ecclesiola study "Angor Wat". House celebrates Cotabato City PLC victory by seeing "Chinatown".

Contradiction: Sustaining bubbling and at the same time transfiguring bubbles into hard cash. (Wk.9)

## TOKYO

## RELIGIOUS HOUSE: TOKYO

External: Luncheon meeting with Mr. Doi of Nanyo Boeckl, supplier of parts to Majuro, briefs him before his second sales trip to Majuro in Quarter. Visit with Director of Nomura Research Institute to discuss development possibilities for Majuro, using Japanese resources, equipment and capital, proves extremely fruitful and gives us new ways to be back-up system for Social Demonstration and release Japanese technical resources and expertise to globe.

Internal: Ecclesiola evening on the Long March and Pekin, gives depth to our struggle to discern the new creative future for Japan.

Contradiction: A great tactical system and Battleplan lacks a new assignment rationale to adequately implement it. (WK.6)

## RELIGIOUS HOUSE: SEOUL

External: Sent out Ewha Girls' High School Principal, Helen Hee Kyung Chung, to receive honorary doctorate at Ohio Northern. Press covered speech 'New Hope from a History of Suffering.' Global Language School creates 12 perfect -speakers. Two House members attend Holston Girls' High School Founders' Day, a participant school in the Global Demonstration School network.

Internal: Ecclesiola Seminary on New Castle continues to impact House. Sodality on area key groups occasions awe as analysis reveals we are now working deeply with the only inter-area groups we could think of. Fred McGuire sent to Hong Kong. House sends M.Robertson Work family to Chicago Centrum.

Contradiction: How to occasion the depth vocational commitment to the future that the new clarity on our future mission demands. (WK.8)

## RELIGIOUS HOUSE: FUKUOKA

External: Regional Co-ordinator leads recruitment teams in PLC/ITI setup calls in two metros. Sent out English teacher from Region to attend Summer 75 in Chicago.

Internal: A 'workday' week II enabled miraculous preparation of House for Open House Party. Front lounge transformed into sophisticated image.

Contradiction: Nailing down ITI commitments. (Wk.9)

## RELIGIOUS HOUSE: OSAKA

External: The Osaka House moved in Parish. Our new address: I-17 Sanno 1 chome Nishinari-Ku Osaka 7557 Tel. 06 633 7660

Internal: Regional colleagues participate round-the-clock in moving us in. House celebrates its presence in Parish at first House Church in new facility.

Contradiction: Keeping all fronts going as necessary in midst of heavy, practical demands. (Wk.9)

## RELIGIOUS HOUSE: SENDAI

External: House teaches 20 teachers for 3 days at Prefectural Education Center, climaxing the event with a Spaceship Alpha party at HOUSe.

Internal: Concluded teaching quarter with last reflections on 'The New Castle' with the religious, and an evening in metro city with the secular.

Contradiction: Regional leadership shifted at key time moving from the image of those who are especially chosen to Everyman participation. (Wk.9)

## SYDNEY

## RELIGIOUS HOUSE: SYDNEY

External: Four churches decide to participate in 6-week PCE training program in Hurstville polis.

**RELIGIOUS HOUSE: SYDNEY (cont.)**

Internal: Peru, Indiana climaxes Quarter Ecclesiola with guests, Tom and Candy Wilson of Washington State and Pitt Street Congregation Church pastor John Bryant. Melinda McFarlane, daughter of Rev. Dick McFarlane (graduate of pioneer course January '67) interns. House worships at Pitts Street Church on occasion of baptism of Christopher Barker.

Contradiction: Moving beyond key strategies to recruit ITI to systematic visitation of 'busy' churchmen. (Wk.9)

**RELIGIOUS HOUSE: PERTH**

External: Country treks continue this week and researching of Victoria Park history excites initial preparation for great Victoria Park signs.

Internal: Ecclesiola study this week of Peru, Indiana, grounds other Castle studies for us firmly in this Century. G.S.CARMP M.P. strikes again, kidnaps 2 for GRA: Manila.

Contradiction: Pushing thru 'common knowledge' to the depth story that releases the 'yes' to engage in the Parish and Region and Area and Globe. (WK. 9)

**RELIGIOUS HOUSE: DARWIN**

External: Loomis appointed Executive Officer of Tourist Association and ICA named development consultants. Intense political and bureaucratic battle for positions of authority and jobs in reconstruction finds authorization weak and occasions visits to key supporters.

Internal: Three-week house hunt turns up one facility ready to live in. Exploring all avenues of finance reveals few possibilities with five weeks till vacate hour.

Contradiction: Cruciality and interrelationship of moving hard on both local authorization and demonstration programs stretches us thinn. (WK.8)

**RELIGIOUS HOUSE: OOMBULGURRI**

External: Possibility of feeding community takes solid form as first 50 of 500 chickens arrives and 'chook' yard and incubators are built; Community vegetable garden of beef. In midst of hard work community celebrates with a barbeque, freshly painted store and noon-time collegiums.

Internal: Corporate power turned to proposal writing, miracle planning and implementation intensifies auxiliary presence in community.

Contradiction: Dealing with too little equipment, preparation, and troops so that some miracles do not turn work projects rather than great revelations of new possibility. (WK.8)

**RELIGIOUS HOUSE: ADELAIDE**

External: Regional colleague, Phil Kitto, arrives in time to participate as faculty in an exciting Odyssey. Phone calling for ITI recruiting reveals a new openness in local clergy.

Internal: Oombulgurri emissary, Ian Gore, is welcomed to the House and Don Reynolds, also from Oombulgurri stays overnight on his way back to Snowtown.

Contradiction: Deciding the nitty gritty tasks are important to whole Mission. (WK.9)

**RELIGIOUS HOUSE: MELBOURNE**

External: Parish leaders emerge with power from RSI and immediately lend support to LCC preparation. Indirect tactics like mass leaflet handout in main street result in steady stream of LCC registrations.

Internal: Mystery, depth and greatness of Emerging Generation emerges through Emerging Generation RSI. Youth create 'Pahran' a great place to be alive, banner for LCC.

Contradiction: After two consecutive weekends of great events, what is ongoing structure to concretely engage new grads in Mission. (WK.9)

**RELIGIOUS HOUSE: CANBERRA**

External: Roman Catholic Order request consultation; probable closer association in our common Mission.

Internal: Creation of Quarter I miracles, already for implementation.

Contradiction: Responding to the immediate demands while dealing with long-range care design of raising up an army. (WK.9)

**RELIGIOUS HOUSE: BRISBANE**

External: Recent PLC grad enables Galaxy pastor's redecision for PCE week of guardian visiting to set up Week 10 Area Meeting reveals affirmation of that role.

Internal: Intensified brooding on Quarter's wins and losses occasions deep spirit collegiality with regional priory, as new directions are planned.

Contradiction: Challenge of balancing efforts to maintain momentum on all fronts, while focusing on ITI recruitment. (WK.9)

**SUVA****RELIGIOUS HOUSE: MAJURO**

External: Island Survey Trip named; dates pinned down- leaves Majuro, June 14 and survey translated into Marshallese.

Internal: House welcomes George Ensinger from Samoa for week visit.

Contradiction: Creating a single tactical system. (WK. 9)

**RELIGIOUS HOUSE: APIA**

External: Pentecost United Worship service at APC features a play. House organizes the play and finds new colleagues and 'avenues'. House participates with country in celebrating life and death of Mataofa by attending his burial. Conversations with Dr. Knight, moderator of the Presbyterian Church of N.Z.

Internal: Term break plans coming into focus as two colleagues say they want to see Majuro. House deeply addressed and awed by events and aspects of custom surrounding. Have begun through planning and conversations with grads to seriously consider possibility of PCE in W. Samoa.

Contradiction: How pull off ITI recruitment in Fiji. (Wk.9)

**SAN FRANCISCO****RELIGIOUS HOUSE: SAN FRANCISCO**

External: State conference of 500 Bicentennial Chairmen is a great event as they visit our 3-dimensional display and show serious interest in T/M 76. Regional RSI of 51 people is a profound experience for all, including pedagogues, who re-set the table 5 times as more and more people came in Friday night.

Internal: Giddiness erupts as intensity builds in preparation for RSI and Display for State Bicentennial Conference.

Contradiction: With new breakloose from Historical Church and Bicentennial Committees across State -- How to re-set our priorities. (WK.9)

**RELIGIOUS HOUSE: SAN JOSE**

External: California State Bicentennial Commissions meeting in Fresno gives us intensified authorization and public image. RSI of 50 in San Mateo includes 18 from the San Jose/Fresno Bi-Metro.

Internal: Ecclesiola continues to be key event of internal life as Witenberg helps us push through rational.

Contradiction: Summer still awaits our decision on what to do to make it come alive. (WK.9)

**RELIGIOUS HOUSE: SACRAMENTO**

External: Favorable visit to Government Brown's office presenting him with invitation to Town Meeting 76. Opening of Parish T/M office in County Welfare Department.

Internal: Visiting Charles Lingo reports to House on Phase I Summer 75 model.

Contradiction: How do you get owners of vinyards to see that it is time to pick the grapes. (WK.9)

**RELIGIOUS HOUSE: SEATTLE**

External: PCE singing-RSI follow-up Week II PSU on Neighborhood Human Resources Commission coupled with re-look at the locus of our Parish arrangement was enabled by two former Galaxy Pastor thereby spinning new vision of future

Internal: Ecclesiola study grounds movement of spirit and recent grad returns for second visit with fresh insights as well as desire to return next week.

Contradiction: How to tell our story to clergy again. (WK.9)

**RELIGIOUS HOUSE: PHOENIX**

External: Region impacted with six showings of 5th City film. Colleague visits five more polises and lays foundation in New Mexico for T/Ms.

Internal: Gift of In-kind 1963, white cadillac from colleague. Send out John and Carla Reed from year of internship.

Contradiction: Focusing in on and pulling through to completion necessary models rather than trying to do it all on the surface. (WK.9)

**RELIGIOUS HOUSE: SALT LAKE CITY**

External: Primal Community Consult; importance of daily office to consult; dynamic of new people other than 'regulars'; release of group looking at objectified vision through gridding.

Internal: The struggle between Vietnamese and American Indian issues to be area Social Demonstration. Presence of two sojourners changes internal dynamic.

Contradiction: Shift from teaching two months to discontinuous third month and trusting battleplan we made at beginning off quarter. (WK.9)

**RELIGIOUS HOUSE: BILLINGS**

External: Visit to Newman Center produces registration by Guildler and signals Week of RSI recruiting.

Internal: Denver House Prior stays three days beyond T/M 76 for T/M reflection and work with House.

Contradiction: Conquering fear of old ghosts in putting on E.I. hat when credibility is strongest under ICA banner. (WK.8)

**RELIGIOUS HOUSE: DENVER**

External: T/M receives city of Denver Horizons endorsement; next 4 years illumined as quad Metro battleplans 48 future PCEs--Parish Guildsmen present a global consult for first time.

Internal: House Church with Church of Brethren guests includes Shirley Heckman family and Brethren pastor as celebrant; first floor stripped and varnished--60 year old floors reborn. Larry Greenwald returns from Academy.

Contradiction: Impact tools we have become dull without constant polishing (follow-up is critical, but forms need yet to be discerned and created).

**RELIGIOUS HOUSE: RAPID CITY**

External: With funds and sight found, Spearfish T/M committee begins to recruit. Galaxy included in Summer GRA; Women Society planning and creates Indian Sun-Shade for community celebration and found the community beginning to care for the community.

Internal: 60% of House now assigned ,In-House' with the school year ended.

Contradiction: Being sustained in Summer shift with T/M two weeks away. (WK.9)

**EDMONTON****RELIGIOUS HOUSE: EDMONTON**

External: HRM held in First Christian Church. House visits innisfail, Rocky Mountains. House and red decor for CFC initiation and camrose for colleague nurture.

Internal: House goes over CFC workshops in depth during Collegiums. Leah Dufresne sojourns and registers for Fall Academy.

Contradiction: How to keep confidence with general strategies from obscuring multitude of practical issues. (WK.8)

**RELIGIOUS HOUSE: ANCHORAGE**

External: Parish Cadre celebrates memorial Day with progressive picnic and send out of 2 metro families.. Vivits with pastors to schedule fall HRMs; Regional Council, Summer recruitment has begun with exciting responses. United Methodist Bishop reminds us that total expenditure is all that is required.

Internal: Experience of abundant life overwhelms us with 52 at House Church, arrival of In-Kind food and dishes, arrival of Charles Benson III for Summer work and Joan Knutson returning from Academy. A few more drivers on road as youth acquire licenses and upsurge of creativity when we are one of 24 Social Demonstrations.

Contradiction: Despite impressive list of missional events, our internal mood is 'we are not engaged significantly.' (WK.9)

**RELIGIOUS HOUSE: SASKATOON**

External: High quality mailings continue to remind colleagues that caring comes in many forms; as CFC advocacy letters and regional letters of coming events are sent out.

Internal: Rahner and Rome give rationale for running around region.

Contradiction: When long awaited 'yesses' come, having our models not ready. (WK.9)

**RELIGIOUS HOUSE: WINNIPEG**

External: Pentecost House Church celebrated in Key R.C. church. Ethnic node in Centennial 5 many denominations present. First issue of Centennial 5 newspaper fully funded by local community committee. Transcona CFC committee has first plenary.

Internal: Preparation for Pentecost House Church includes eliciting statements on spirit edge from many congregations and compiling them into a report for House Church and a broad mailing. Youth sent out on Northern 'survival' trip with school.

Contradiction: Grope for context to make Summer a realistic, enticing and healing possibility. (WK.8)

**HOUSTON****RELIGIOUS HOUSE: HOUSTON**

External: Church School Training Institute introductory luncheons indicate 39 churches will attend in August with 229 participants; Houston and Horizon's chairman says T/M is so great whole Commission should stand behind it.

Internal: Operation Crimson Line 75 (earning \$6,000 extra in 2 months) nets \$1,253 first week.

Contradiction: Discovering where it is strategic to lose in order to win. (WK.9)

**RELIGIOUS HOUSE: AMARILLO**

External: T/M receives support of Ministerial Alliance, the Advocacy of Amarillo Human Relations Council, and the sponsorship of AAVW. RSI once again releases power of both old and new participants.

Internal: House disperses for Ecclesiola, new job for member of House (Don Catcher becomes social worker). Memorial Day celebration holds nitty-gritty work on LaVoy and T/M in midst of which House feasts on picnic lunch prepared by Emerging Generation. House and Metro Cadre shocked by Perie study in combination with '2001' conversation as it pushed us into Sodality.

Contradiction: Finding fascinating images to move growing support to commitment. (WK.8)

**RELIGIOUS HOUSE: SAN ANTONIO**

External: For first time, we are able to offer RSI as service to local churchmen through clergy recruiters. New struggle with parish continues with Parish tour to proto-parished. Imaginal Education workshop follow-up brings the Roman Catholic parish priest to House.

Internal: Last two assigned permeators land jobs in psychiatrist's office and total employment secured brings us within 'shootin-range' by end of August.

Contradiction: Wearing ICA shoe on one foot; E.I. shoe on the other and keeping best foot forward. (WK.8)

**RELIGIOUS HOUSE: OKLAHOMA CITY**

External: 22 Jets stage a wild Mexican Festival; excitement runs high in Guild as Tuesday Sodality is used to plan Community festival with theme 'Spring in Central City 5' - involves world.

Internal: Last Session of 'New Castle' leaves us with a vision of The Vision, and experience of being on edge of humanness.

Contradiction: Grounding Summer 75 recruitment. (WK.9)

**RELIGIOUS HOUSE: DALLAS**

External: RSI opens with 35 around table, straining House training center facilities to limit. Continued LENS prospecting produces undreamed of short and long-range possibilities for Social Demonstration.

Internal: Preparation of House for a fully equipped LENS facility, along with recruitment, totally consumes House energies.

Contradiction: How to create adequate follow-up models to take advantage of startling and unexpected recent successes. (WK.9)

**RELIGIOUS HOUSE: TULSA**

External: Lt. Governor of area's Civitan contacted and contracted to do T/Ms. Jaycees foray initiated - looks good.

Internal: Meet House budget for month. Labitha Stewart sent out with her grandmother.

Contradiction: How to continue one thrust of movement in midst of diversity of tasks. (WK.9)

**RELIGIOUS HOUSE: NEW ORLEANS**

External: Last minute trip to Mobile produces largest Regional Council of year and Sr. Angela assigned to Order: Ecumenical for Fall and Summer 75.

Internal: Summer 75 decor goes up; new Troika member arrives from Oklahoma. prompting a trip to French Quarter. House out-numbered by guests at House Church for third week.

Contradiction: A Religious House is a Social Demonstration, where do people need to be assigned to see that whole dynamic (ext/int) comes off. (WK.9)

**RELIGIOUS HOUSE: MEMPHIS**

External: Regional CSI held in Nashville-first course in Nashville in 2 years and first advanced course in region in more than 2½ years. In one week, we received endorsement of both Tennessee ARBC and Arkansas ARBC-South may be slow, but both were unanimous.

Internal: Ellen Addington visited House after the CSI and became the impact of global, with collegium spin on Philippines and a family nite meal. New Castle mural completed on kitchen wall; and last job procured, bringing House to full employment for first time.

Religious House: Memphis (continued)

Contradiction: The story we ain't got no special problems. (WK.9)

#### RELIGIOUS HOUSE: ATLANTA

External: City of Atlanta Department of Cultural Affairs calls up to ask for consultation on what we think needs to happen in Atlanta, then ask our permission to be present at East Lake T/M. In-Kind miracles galore after initial 'Nos' when given T/M pitch.

Contradiction: How to hone up sponsorship mechanism for T/M, so it won't require as much of our energies--even if in different activities. (WK.9)

#### RELIGIOUS HOUSE: CHARLOTTE

External: Clergy Luncheon in Charlotte results in request for regular meetings with training format. House attends institution of Episcopal Bishop Weinhower in Asheville and is embraced and warmly welcomed by him.

Internal: In-kind explodes as receive 25 gallons of paint (various sources). Colleagues arrive from Asheville, Greensboro, S.C. and Raleigh, one staying overnight for Ecclesiola. Collegium room emerges as first transformed space.

Contradiction: Not allowing struggle for corporate action to dissipate in midst of swirl of activities and breakthroughs. (WK.8)

#### RELIGIOUS HOUSE: MIAMI

External: Guardians Scott Stahr and Ed Reames assigned to Tampa to work on T/M. T/M in Dade County begins to click.

Internal: Eight guests at House Church including Guardian family, international visitors, and orthodox woman who presents Icon of St. Herman of Alaska to House.

Contradiction: The rest of the world is slowing down in prep for Summer and our own internal response is to slow down, too. (WK.8)

#### CHICAGO

#### GLOBAL CENTRUM: CHICAGO

External: Task force continues work of renovation and Summer Planning deals with 'Phenomenological Hope' as Spirit Life of the summer is thought through. Eight T/M '76 scheduled for Week 11; 4 were held last week. Students are returning in preparation for Summer Camps, and Summer Promotion reports 11 coming Seoul Region for the Summer program.

Internal: Celebration of the marriage of Al Roberts and Sharon Smith took place this Week 11. Collegiums have provided time for reflection on what's going on in the Social arenas relative to states of being such as "dislocation, urgency and unfocusedness."

Contradiction: Building a comprehensive picture of the Summer to enable initiating practical implementation, such as camp staff assignments.

#### RELIGIOUS HOUSE: CHICAGO

External: Committee of '76 for '76 in Chicago is shaping up. Clergy Convocation PSU Week 10 claims future for PCE. The EG pass out flyers on T/M at Beverly Bicentennial parade.

Internal: Open House Cabaret for S'75 is planned. Spontaneous sports events preview House celebration.

Contradiction: Finding self on point where you decided to be and expecting to have something to stand on. (Wk.8)

#### RELIGIOUS HOUSE: WICHITA

External: First metro newsletter mailed to all grads; participation in Oklahoma City PCC creates courageous images for the future.

Internal: The move into discontinuous time signalled by special evening symbolic life.

Contradiction: Creating a story about Summer '75 that reveals it as catalytic for next year. (Wk. 9)

**RELIGIOUS HOUSE: OMAHA**

External: Summer 75 takes priority over all things. Metro cadre in Omaha wrestles with deciding corporately about Summer participation.

Internal: House finishes Ecclesiola study of the 'The New Castle'. Reflection on book pushes to the practical implications.

Contradiction: Sensation of 'hanging around' after intensive push of 3 courses in 3 weeks. (Wk. 9)

**RELIGIOUS HOUSE: KANSAS CITY**

External: In-kind development for T/M breaks open with cash and merchandise donations from local merchants totaling over \$700. Shopping center donates its marquee; T/M 76 sound truck cruises and amuses and a cross-reference phone blitz of the parish helps to announce the happenings of town meeting.

Internal: House concludes Pekin study with visit to the Chinese exhibit of recent archeological discoveries and is re-impacted with the historical resolve of the people of China.

Contradiction: Relative to T/M 76—caught between necessity of being catalytic and tendency to be back-seat drivers when procedural questions arise. (Wk. 9)

**RELIGIOUS HOUSE: MINNEAPOLIS**

External: Minnesota State Bicentennial Commission approves T/M with \$16,400 funding. Political Guardian suggests asking all state senators for LENS and T/M funding. Garage fills up for coming Guild sale.

Internal: House hosts Development team for 2nd week as they find it impossible to leave opened Minnesota treasure-chest. Two from T/M Post wander in, as well, and week is one of celebrating collegiality.

Contradiction: Doing immediate tasks with precision in order to accomplish many long-range schemes which we have "down pat".

**RELIGIOUS HOUSE: ST. LOUIS**

External: St. Louis Community LENS happens with solid residential participation from the parish. T/M 76 in Cedar Rapids averages 100 with solid core of 75. Second response back in mail from T/M mass mailing.

Internal: PCE core enables LENS with effectiveness and style.

Contradiction: On the other side of completing our tactical actions for the teaching months of the quarter, we have not reformulated our practical vision. (Wk.9)

**RELIGIOUS HOUSE: PEORIA**

External: Finished proposal for six TMs in Peoria for presentation to ARBA and city council. Two Council members endorse project: one says city might appropriate funds.

Internal: With House fully employed (by common definition), entire Troika nevertheless turns up at lunch on three days and has helpful strategy sessions.

Contradiction: 5th City trip, key event for both TM and Southside social demonstration, blocked by illness of two key contacts sponsoring event. Challenges us to develop more creative breakopen tactics. (Wk.3)

**RELIGIOUS HOUSE: GREEN BAY**

External: Followup to Green Bay T/M yields consensus on practical action.

Internal: House attends Regional Council in Minneapolis.

Contradiction: Economic crunch around the action has called for extraordinary resourcefulness to carry on the mission. (Wk. 9)

**RELIGIOUS HOUSE: MILWAUKEE**

External: House Church with 38 guests celebrates the shift in churches of 2 galaxy pastors the sendout of 2 clergy families to Chicago Nexus for assignment. RS-I followup Ecclesiola host 10 new grads who are looking for ways to engage.

Internal: Two new jobs and one raise continue to enable us to conquer our finances Collegiums on priorship evoke serious brooding over life decisions.

Contradiction: Deciding to intensify Summer recruitment particularly among our secular colleagues. (Wk. 9)

**RELIGIOUS HOUSE: INDIANAPOLIS**

External: HRM at Louisville spiritizes Church of long-time colleagues. PCE in Indianapolis gets burst of new life as Metro troops gather to study Rahner and work on T/M '76. State legislators, Mayor's office, and Governor's office confirm plans to attend T/M.

Contradiction: Remembering that evening Prayers and actualizing tactical models depend upon each other. (Wk.7)

**RELIGIOUS HOUSE: CINCINNATI**

External: Leadership luncheon as kickoff to Walnut Hills festival. Religious House plays invisible catalyst within major structures. HRM blossoming--first one scheduled June 1 in St. Teresa of the Little Flowers. State Kiwanis President endorses T/M '76. T/M Pedagogy gives Guardians concrete images of movement leadership.

Internal: Catalyzed by Development team who "pitched right in" and a Presbyterian here for their general assembly. CS-111A includes people from five other Houses. Memorial Day picnic soccer game symbolizes passionate engagement--disjointed toes, sprained ankle and one broken foot.

Contradiction: How carry impact of Spring through Summer and into Fall in midst of T/M, HRM, and Guild miracles while dealing with complexity of partial covenants. (Wk.8)

**RELIGIOUS HOUSE: DETROIT**

External: Two demonstration T/M raise for two Michigan communities the question of what authentic bicentennial celebration is.

Internal: Intentional regional paint-up/fix-up cares for the street where we live which releases neighbors to do the same.

Contradiction: Creating images for the summer and a fall schedule. (Wk.9)

**RELIGIOUS HOUSE: CLEVELAND**

External: Primal Community Consult gives us new sense of direction and power of the spirit in Parish. Painesville T/M demonstrates the power of local man's decision and polis cadre's power to move catalytically and seals our turn to practical engagement in the world.

Internal: Rugs shampooed and dormitory painted for LENS. EG return from "Sound of Music" singing Do Re Me to PCC participants. Pause for Memorial Day retreat and reflection on Quarter. Celebrate termination of three months of double jobs with progressive dinner launched at midnite.

Contradiction: Imagining our shift into Summer as shifting back to "normal" while holding the tension between moving on the 24 Parishes we projected right away and planning more time for research. (Wk.8)

**NEW YORK****RELIGIOUS HOUSE: NEW YORK**

External: Primal Community Consult gives us new possibility for dealing with our masses. West Point indicates interest in T/M.

Internal: Memorial Day comes as great gift as we engage in recruitment blitz, closet cleaning, and hosting Area Priors' PSU.

Contradiction: How to shift to catalytic tactics. (Wk.8)

**RELIGIOUS HOUSE: PITTSBURGH**

External: Bellamy travel to New York for Priors PSU, first meeting of T/M sponsorship committee: Charleston is held, with City Planner explaining the T/M 's gifts to PLC grad. Two regional families present Extended Order Covenant letters at House Church.

Internal: Reed family from Omaha, Minneapolis, and Chicago regions arrives bearing T/M stories. A 'no' from the bank to finance house sale results in a weekend of repairs.

Contradiction: Giving covenantal form to commitment asked of the Region. (Wk.9)

**RELIGIOUS HOUSE: ROCHESTER**

External: Syracuse RS-I held. Maplewood Festival III held, marking the point at which the community makes it their festival.

Internal: Mike Ford completes Academy and begins Intern year. Carol Morton of Utica sent out to Chicago Nexus. Nick Mas returns from Academy and puts himself under assignment to House.

Contradiction: Maintaining intensified expenditure as Summer approaches, while varying rhythm of constant care. (Wk. 9)

**RELIGIOUS HOUSE: RICHMOND**

External: State Farm of Virginia held a T/M and more than 100 came, including more than 10% of the resident population. Highlights: Inmates serenade guards with 'I don't know why...' song; excellent news coverage; guards on walkie-talkies concerned about 'cultural challenge I'. All work from promotion to decor done by staff and inmates.

Internal: E.G. impacted by own T/M. Development team opened up many untapped collegial contacts. Many colleagues bring great impact to T/M.

Contradiction: What happens next?

**RELIGIOUS HOUSE: WASHINGTON**

External: 35 T/M workshop leaders trained, 11 accept assignments to upcoming T/M's. Burger Chef came through with 1200 hamburgers, 1200 fruit pies. Inkind also netted 60 reams of paper, coffee for all T/M, bread and lunchmeat, and foam cups. Radio and newspaper coverage of T/M.

Internal: Local Post Office, deluged with T/M mail, pleads that we use downtown Post Office. Welcomed guests from Hartford, Newark, Binghamton, Albany, Chicago, Richmond, and Baltimore. Summer '75 conversation pushes us to broader marketing.

Contradiction: Immediacy push blocks our imaginal use of troops.

**RELIGIOUS HOUSE: BALTIMORE**

External: Nine Metro colleagues and all House members sent to enable Washington T/M, resulting in 19 well trained T/M staffers.

Internal: Study of second lecture in T/M construct addresses us.

Contradiction: Thinking it is easier to ride on someone else's risk rather than do our own risk. (Wk. 9)

**RELIGIOUS HOUSE: PHILADELPHIA**

External: Vinland T/M and a great PCC gives us momentum to begin to set up steering committees for 12 T/M in the Fall and 20 others for Winter and Spring.

Internal: House experiences strange excitement as one-day Regional Trek gives permission to the darkest journey, preparing the way for fantastic spin on the year and the future.

Contradiction: Fall quarter looms like a great monster, overwhelming our attempts to do comprehensive planning. (Wk.9)

**RELIGIOUS HOUSE: NEWARK**

External: Sent a T/M grad to an RS-I in Boston. Sent Scott Westall to Washington, D.C. to help with T/M prep.

Internal: E.G. RS-I releases colleagues to participate in training events. Metro colleague prepares house church meal while House is dispersed to other assignments.

Contradiction: Our refusal to trust our method of catalysis.

**RELIGIOUS HOUSE: BROOKLYN**

External: T/M 76 task force moves on key resource people in Brooklyn and Queens and turns up immediate access to advocacy networks for Committee of 76 in New York City.

Internal: Whole House (adults and Emerging Generation) see 'Alice Doesn't Live Here Any More' and experiences authentic celebration in context of Hope against hope.

Contradiction: Becoming sign and demonstration to whole Bi-Metro of free obedience to radical, total, unconditioned demand placed upon us all by the Summer. (Wk.8)

**RELIGIOUS HOUSE: HARTFORD**

External: Community LENS with participation from many cultures from across the Area. LENS recruitment and contacts broke loose entry into community groups and guilding dynamic. Canton T/M 76 written up in Farmington Paper.

Internal: In-kind for LENS-typewriters from Yale University, printing equipment and paper from Gestetner. LENS enablement crew fasted on Saturday. Tim Karpoff begins Fellow year.

Contradiction: How to use Summer to build Metro Base for Fall. (Wk.9)

**RELIGIOUS HOUSE: MANCHESTER**

External: CS-IIIa Held after being postponed for two quarters. Two metro clergy teach in Boston PLC.

Internal: Stove finally arrives. Youth invite guest to Guild meeting and House Church. Metro colleague Sister Lucille celebrates last year of Phase II at House Church.

Contradiction: Building corporateness that will guard and bring off the mission. (Wk.9)

**RELIGIOUS HOUSE: BOSTON**

External: Powerful PLC and Rs-I come off in the midst of accelerated preparation for T/M. 8000 flyers printed (in-kind) by Parish printing firm and cooking and decor promised by Salvation Army.

Internal: Collegium provides critical cues in the midst of development, in-kind, Regional Council, etc. and radicalizes T/M thrust as the Peru sieve shakes away.

Contradiction: Creating adequate comprehensive plan that will allow total effectiveness. (Wk.9)

**MONTREAL****RELIGIOUS HOUSE: MONTREAL**

External: We experience the power of catalysis as colleagues catalyze signal events: Fete Dieu Mass symbolized existence of Frontenac community, attended by 300 people and brought off by Parish clergy; LENS grad arranges CFC to be the highlight of 300th year community anniversary celebration; Guardian sets up Consult with local school board as a tactic toward Fall CFC.

Internal: Week II finds House scattered during daytime. Create new use of early morning time-go to bed early Friday night and do 4 hours of long-range strategizing early Saturday morning.

Contradiction: Inventing new forms of corporateness that will hold us as one movement in midst of local autonomy of metro cadre teams. (Wk.9)

**RELIGIOUS HOUSE: TORONTO**

External: Consult with more people than expected results in strategic phasing models for 2 metros. \$20,000 cheque from Interchurch body provides opportunity to see Development Centrum's global link in the Region. Summer 75 recruitment continues with zany tactics.

**Religious House : Toronto (Continued)**

**Internal:** Wittenburg study shatters old images of Protestant piety and gives new significance to Reformation. McQuakers from Winnipeg hosted on 4 day visit.

**Contradiction:** How to enable planning that will make Summer and Fall happen. (Wk.9)

**RELIGIOUS HOUSE: OTTAWA**

**External:** Galaxy member, Ann Yee, announces her decision to enter Theological College for the Presbyterian Ministry amid many congratulations. Ottawa LENS with several of its grads attending Guild meeting next Tuesday to help plan the Community Festival. Request for a French LENS in the Fall.

**Internal:** Whole House has a restocked bag of images after attending the LENS. Community Animator impacts the House by writing a song about the Parish.

**Contradiction:** After the Festival, then what? (Wk. 9)

**CARACAS****RELIGIOUS HOUSE: CARACAS**

**External:** Signal CS-I with 20 participants representing 5 churches. Guardian considers renovating summerhouse as retreat center for weekend courses.

**Internal:** Pedagogy breakthrough--cadre member does Spirit lecture that catalyzes exciting images of possibility. Guardian drops by House to get job application form from House member and ends up staying to sign up for CS-I.

**Contradiction:** Developing a systematic strategy for continental net nurture. (Wk . 9)

GLOBAL CENTRUM  
QUARTER IV 1974 - 75

THE GLOBAL ORDER CENTRUM REPORT  
FOR WEEK

BRUSSELS  
BOMBAY  
SINGAPORE  
HONG KONG  
CHICAGO

GLOBAL  
DEVELOPMENT  
CENTRUM

Chicago reports paying 90-day principles for 9 months in a row and motivation and excitement emerges as we create the practical picture of sources of income for June through September to reach the Summer's goal of \$807,000. Singapore reports David Wood and Development Centrum visits Dr. Plank, Superintendent of SAS, Methodist Men of Wesley Methodist Church and our lawyer, Winston Chin, who is working on our incorporation. Local calls with aid of regional colleagues begins to show progress with affirmative responses. Bombay sent leadership from Centrum and Hyderabad House to Conference on Health and Poverty in India. The contradiction is holding common thrust in the midst of necessary tasks which heighten motivity and increases tendency to shoot off in many directions, such as rationalizing our task, dealing only with the immediate, and etc.

GLOBAL  
MANAGEMENT  
CENTRUM

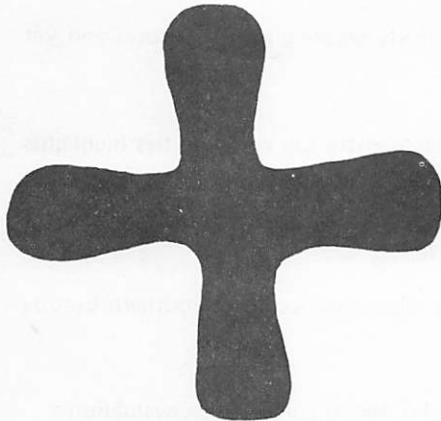
Renovation of Kemper continues as reports are that all doors are up, all sheet rock up, 80% of baseboard on, and plaster done, as a result of expanded number of troops. Major services sees the walk-in freezer set-up and the Auditors participate in the shift to discontinuous time with wine and tour of the first floor. Printers print 104,000 "News". Global Management breakthrough sees their experiences bring the edge to decision-making to mission. Bombay supplies needs of ITIs and secures meeting place for Global Priors. Singapore sends \$50 per participant to Chicago to pay for 3 LENS courses that yields 94 new grads. Cutting living expenses and reassigning all missional funds toward Operation "turn-on" Area: Singapore is a painful squeeze, but possible and adequate. Hong Kong prioritizing LENS audiences in different nations for Quarter II for 1975-76. Completion of Band letter. Past intensification fell on individual pole at expense of centrum consensus.

GLOBAL  
OPERATIONS  
CENTRUM

ITP Academy participants return from Academy and celebrate with picnic. International Training Program has doubled it s numbers of participants from 29 to 56, and already 26 have registered for Fall Quarter. Operations moved into Summer Assignments with combining Post work to that of "Continium" for the Summer. ITIs in Nairobi, Lagos, and Seoul are scheduled for August 10, 1975. Hong Kong brings order to penetration and communications in Hong Kong, Suva, Tokyo and Operations Centrum. Singapore implementation of Operation: "Turn on Area Singapore" signaled week of planning and creating "master-design" of Trek to Region Medan. Metro Cadre Trek occupies movement minds as visits into Metros are systematic and reveal real possibilities. The contradiction is exploding images of the total task of Operations.

GLOBAL  
RESEARCH  
CENTRUM

Chicago Nexus celebrated first anniversary of the Town Meeting (formerly the LCC) and noted that in the last year, 76 Town Meetings were held. At recent TM '76, songs were written to the tunes of "Silent Night", "Amazing Grace", and "Joy to the World". Clergy PSU will deal with building a construct for clergy consults. Singapore designs an 8-week tactical system for 36 Metro Cadre Treks and discovers that corporate, missional, and spirit power are key in demonstrating effectiveness to the world and the Church. Second call to market Town Meeting is well received by Chairman of the Bicentennial Committee who was surprised to see the official logo on the brochure. Hong Kong reports GRA in Manila and Global Language School in Korea with format built to teach English to businessmen. Bombay ITI workday in Byculla 5 a miracle to all. Brussels makes plans to initiate the Global Language School. The contradiction is creating models of engagement which catalyze troops across the globe.



You must speak my words to them, whether they listen or not. But you, man, must listen to what I say and not be rebellious like them.

Ezekiel 2:7

## LONDON

## RELIGIOUS HOUSE: LONDON

External: HRM consult for Canterbury colleagues preparing event for ancient Methodist village circuit culminates week of daily visits and workshops with people going to Summer '75.

Internal: House mobilizes for second jobs and 5,600 circulars get door to door delivery while youth intensify preparation for exams.

Contradiction: Keeping pace with responding to the many changing faces of Europe. (Wk. 7)

## RELIGIOUS HOUSE: GLASGOW

External: Joint Glasgow-Edinburgh Education Guilds meet on Curriculum as regional interchange. Two families move into Glasgow, signalling their seriousness about the city. One more recruit shows up for Summer and Academy.

Internal: Pekin Study following a slide session on China impacts House with the global. House finishes series of Collegium spins on the state of the Movement in the Glasgow Region.

Contradiction: With next Autumn and the Summer imminent, our focus is still on grounding ourselves in the local-both in house location and PCE. (Wk. 10)

## RELIGIOUS HOUSE: BRISTOL

External: Summer 75: Chicago follow-up practics includes securing visas and passports for registered participants who seem to be stopping by House more and more often.

Internal: Further employment intensification yields two pub jobs, our first brass- rubbing order from Algeria and possibility fo marketing antiques. Vaughn O' Halloran sent out to Brussels to meet with Global Panchayat Trek.

Contradiction: Sustaining ourselves and maintaining regional programmes while employemnt intensification cuts into valuable blocks of time. (WK. 9)

## RELIGIOUS HOUSE: MANCHESTER

External: RS-I in New Castle entirely recruited by the New Castle Cadre. Another GRA: Chicago registration brings total to 11 with several still seriously considering.

Internal: Kaye Hayes drops in on way from Hong Kong Centrum to Brussels Centrum and leads LCC leadership training workshop in Liverpool. She reports to House in the morning on miracles in Continent SEAPAC.

Contradiction: How to explode the full missional power of the discontinuous month and Quarter I.(Wk.10)

## PARIS

## RELIGIOUS HOUSE: PARIS

External: A signal visit with the Secretary General of Union of Superior Generals of all the women's Orders in France--she plans to tell the Superior Generals about the E.I. at their meeting this week.

Internal: The Wayside Inn dynamic is in full swing as we host 3 Coloradans and 1 Alaskan who are touring Europe. House is honored to host Rev. Kang and Joe Thomas. Report on the movement in Korea has the whole House dancing.

Contradiction: How to care for one another in new ways by quickly creating new structures and yet keep spinning at the same time. (Wk. 10)

## RELIGIOUS HOUSE: ROME

External: Intensive on-the-ground research into possible Social Demonstration communities highlights the pressing demand for the PCE in Rome.

Internal: Signal spin on India's social context by Bombay LENS grad and wife grounds cruciality of Social Demonstration. Six in-kind mattresses and beds from Cenacle.

Contradiction: How to discern the appropriate strategy to enable representation from Southern Europe at GRA: Chicago. (Wk. 10)

## LAGOS

## RELIGIOUS HOUSE: LAGOS

External: Met with important Ghanaian Methodist friend Dr. John Agbeti, currently on evaluation tour of West African theological colleges.

Internal: Prior of Dominican community in Ibadan drops by to ask if we are going to run any leadership training programmes that his 19 seminarians can attend. Complete and run off grassroots health care workshop manual, made most timely by imminent government takeover of 'mission' hospitals.

Contradiction: Finding the right buttons to push for shift to nearby Lagos. (Wk. 10)

## BRUSSELS

## GLOBAL CENTRUM: BRUSSELS

External: Biggest week II of the quarter with 5 RSI's and great PLC in Rome keeps system in high gear as Panchayat trek preparation continues.

Internal: Three sojourners arrive and are immediately plugged in to teams for nexus refurbishing for Panchayat team meeting. Welcome Kaye Hayes from Hong Kong and immediately send her to Liverpool for LCC preparation meeting.

Contradiction: Sustaining emphasis on LCC's and town meetings planned for Wk. 9 and 10 while being gobbled up by immediacies. (Wk. 10)

## RELIGIOUS HOUSE: BRUSSELS

External: International Ecumenical Fellowship invited to hold their monthly meeting at Brussels House after supper with us. A French speaking group, our translators were in full gear. The evening flew on and what was to be their own meeting resulted in our giving them a meeting.

Internal: INCOME II, our model to reverse our 'en rouge' financial situation, pulls in two more full time jobs and three part time jobs, consisting of Saturday gardening and a clean up of a Youth Center. Grad family is to clean their basement on our behalf and pay us.

Contradiction: To move on from wild immediate success to order long range goals. (Wk. 7)

## RELIGIOUS HOUSE: AMSTERDAM

External: Cross-regional RS-I comes off with participants from Rotterdam, The Hague, and Amsterdam. Bishop Th. Zwartkruis of Diocese of Haarlem, which includes Amsterdam, agrees to do welcoming speech for ITI: Amsterdam.

Internal: Tom Butler, movement colleague from London, teaches RS-I and is first guest celebrant for House Church. Reporting on Panchayat Trek catches us up on global movement and our role in it.

Contradiction: Nurturing grads to fulltime movemental expenditure. (Wk. 10)

**FRANKFURT RELIGIOUS HOUSE: FRANKFURT**

External: LCC held entirely in German turns into a grand event combining the efforts of many Sachsenhausen citizens.

Internal: House serves as movie house, translation center and Wayside Inn for streams of visitors. Meeting in Brussels with Panchayat Trek provides fresh breeze of the globe and a sense of identity with spirit state of global movement.

Contradiction: Obtaining metropolitan church authorization in city of Frankfurt. (Wk. 10)

**RELIGIOUS HOUSE: BERLIN**

External: RS-I and LENS grads come alive as one sponsors a signal street festival in her local community and another organizes a reunion of RS-I participants, which is transformed into a recruitment technique for GRA: Chicago.

Internal: House welcome Joe Slicker and Kang Byoung Hoon. Feodora Mattos is received as intern at House Church.

Contradiction: Creating 'spirit stew' that will unleash passion to recruit wildly for Europe 75. (Wk. 10)

**LAGOS****RELIGIOUS HOUSE: LUSAKA**

External: ITI grad, Catholic priest, provides introduction to Archbishop of Malawi, conducts tour of missions and elects 'eagles' as song to sing during evening workshops.

Internal: Visit to Malawi's new capital, moved to center of country, astounds as planned city of 500,000 rises out of rolling hills of Africa.

Contradiction: Getting said to ITI grad that money is not a problem and believing it so about other missional needs. (Wk. 10)

**NAIROBI****RELIGIOUS HOUSE: NAIROBI**

External: PLC in Mombasa was small but opens doors for further penetration in that region.

Internal: Neighbours in back of House move out and open up 5 more rooms for House use.

Contradiction: Creatively using the short time left for ITI recruitment. (Wk. 10)

**BOMBAY****GLOBAL CENTRUM: BOMBAY**

External: GRA completed in Hyderabad. ITI materials received and cleared. Study plan completed.

Internal: Sent out P.T. James and T. Patterson to Calcutta, and receive Judy Hess for ITI.

Contradiction: Operating images needed to manifest globality and oneness of Spirit Movement. (Wk. 5)

**RELIGIOUS HOUSE: BOMBAY**

External: Three ITI complete exciting first week with total of 174 attending. Reports persist of emerging pedagogical giants among both old and new participants.

Internal: Preparations for arrival of Panchayat teams and return of Bishop Joshi create profound anticipations.

Contradiction: Planning Quarter I in middle of three ITIs and the Global Priors meeting. (WK. 8)

**DELHI****RELIGIOUS HOUSE: DELHI**

External: ITI registration from Agra gives us registrations from 4 of 6 regions as recruitment effort is intensifies.

Internal: Marle Paul sent out to GRA, children to grand-mothers for summer; House troops drop from 9 adults to 5 in 2 weeks.

Contradiction: Finalizing ITI recruitment and guaranteeing goal of 36. (WK. 4)

**MADRAS****RELIGIOUS HOUSE: HYDERABAD**

External: Gunfoundry 5 Workday Miracle: ITI participants assist in completely transforming one of the worst eyesores in Parish--this strengthens the Guild, uncovers new leading potential guildsmen and marks a definite shift in seriousness of Guild.

**RELIGIOUS HOUSE: HYDERABAD (continued)**

Internal: House of one continues to provide back-up system for ITI practices, maintain self-support and by Wayside Inn dynamic. Hosted Slicker and M. Bailey of Panchayat Trek and all attend ITI celebration.

Contradiction: Falling into an 'ITI' and an 'after ITI' mindset.

**CALCUTTA RELIGIOUS HOUSE: CALCUTTA**

External: ITI completes first week with participants grasping new role as the church in midst of new world. Sixty-three present at the tables. Dean of ITI commended to preach Pentecost sermon at CNI Cathedral by Bishop Amritanend.

Internal: Symbolic Reports by participants indicate great journey from being overwhelmed by long hours and rigorous study to deep confidence in ITI as structure to allow depth living.

Contradiction: Shifting permission to teach the ITI to radical revolutionary posture in participants. (WK.10)

**SINGAPORE GLOBAL CENTRUM: SINGAPORE**

External: Area Council builds 10 year timeline which gives visionary meaning to the Guild, LENS followup, and ITI/GRA recruitment. Madras RSI comes off with 23 participants. ITI/GRA registrations rise to 14 paid.

Internal: Birthday celebration of wife of intending intern family is key event for whole House as they talk about Christ event of RSI for whole family. Receive first Hindu Guild colleague, Shanta Ram, as sojourner.

Contradiction: Deciding to 'win' hands down in a month! (Wk..10)

**RELIGIOUS HOUSE: SINGAPORE**

External: RSI held with all teachers from Singapore House. Key Roman Catholic Order sends two sisters to attend.

Internal: House reviews history of the Order and Movement at Collegium. All continue to be addressed by Sanctification articles and Formulation workshops of Ecclesiola.

Contradiction: Making the decision that all courses will have at least 20 participants and will pay for themselves. (Wk.3)

**RELIGIOUS HOUSE: KUALA LUMPUR**

External: Final countdown and actualization of LENS with 55% Chinese, 35% Malay, 10% other--participants leave deeply thoughtful. ITI invitations out, progress report to Host Committee, and GRA delegates prepare to leave.

Internal: LENS team--Lou and Ginny Pierce, Ann Wood, Bob Rafos-- open up perspective on Movement around globe with Guardians Meeting report, etc. Priors sent to Area Singapore meeting.

Contradiction: Re-ordering time/task assignments and tactics as result of mid-course correction. (Wk. 9)

**RELIGIOUS HOUSE: JAKARTA**

External: Four to GRA: Manila--Eka Dharmaputra and Daniel Hugroho from Jakarta, Hein Kaunung and Joseph Saruan from Manado. House participates in PSU in Singapore to launch 'Great Visitation' for Area Singapore.

Internal: Rev. Joseph Widyatmaja, 74 ITI grad from Central Java, spends night at House and fascinates us with collegium talk on 'Love is practical, it is caring for the poor and the powerless.'

Contradiction: Creating ongoing, sturdy movemental structures. (Wk. 10)

**HONG KONG GLOBAL CENTRUM: HONG KONG**

External: ITI materials for Sydney and Kuala Lumpur leave by boat. Jon Jenkins sent to GRA in Manila. Centrum participates in Hong Kong Regional Council.

Internal: Hosting dynamic explodes as Anne Wood, Ed and Mimi Shinn, and Kenn Elison stop-over at Centrum. Extensive report on Oombulgurri gives new grist for development and authorization calling.

Contradiction: Systematic nurture of authorization channels for developing funds. (Wk. 10)

**RELIGIOUS HOUSE: HONG KONG**

External: Telephone and shoes worn out as House prepares for Regional Council, ITI, and PLC grads dinner.

Internal: Week II conversations are highpoint--World News Events and Paravocation capture the spirit of engagement.

Contradiction: Keeping recruiters on Long March which requires their engagement in many strategies. (Wk. 10)

**RELIGIOUS HOUSE: KAOHSIUNG**

External: Visas arrive from RP just in time and two delegates sent out to GRA:Manila. Prior set to teach RS-I in Taipei.

Internal: A week of pain and joy as we celebrate the sendout of the McDonald family to GRA: Chicago and a year in North America and the sendout of Marilyn and James Elliott to North America.

Contradiction: Tremors reveal that we have much rather urgent work to do in arena of authorization, but where to begin? (Wk. 10)

**RELIGIOUS HOUSE: MANILA**

External: GRA in SEAPAC launched with representatives from every area except, Bangkok-a promise is claimed for next year's completion of continent. PCE organizes shuttle from airport to Antipolo(GRA site) and plans for two Saturday miracles.

Internal: This Wayside Inn feels like it has a revolving door on it as colleagues come through from around globe. We selcome Fred and Judith Hess after India ITI's, Ed Shinn stops briefly en route to Nairobi, and John Patterson for ..Development.

Contradiction: Staying fresh to vision that transforms road to next town where you buy chickens cheap into Road to Glory. (WK.10)

**RELIGIOUS HOUSE: TAIPEI**

External: Collegium workshop breaks open Summer Development Lens Guild member (PO in Lens Seminar) and decides to visit Global Centurms: Chicago, this Summer.

Internal: Thursday Collegium study; China history, Ecclesiola study, New Castle, and movie, Man of La Mancha, journey House on Long March.

Contradiction: How to celebrate and not let your guard down. (WK. 10)

**RELIGIOUS HOUSE: CEBU**

External: Firming up GRA and ITI recruitment with one hand, and preparing to receive 45 preschool children with the other hand.

Internal: Receive Nancy Rabor as sojourner while she teaches in our preschool and prepares for ITI.

Contradiction: Relative to ITI/GRA, transforming "Yes, I want to go" into "I'll raise the money". (Wk. 9)

**RELIGIOUS HOUSE: DAVAO**

External: Second PLC of the quarter--was requested and recruited by Episcopal Bishop Manguramas who attended and then decided to go to ITI with his wife. Rally of ITI prospects does brainstorm of how 'we' fund GRA/ITI participants from Region.

Internal: Wayside Inn dynamic continues to swirl and bubble with ITI prospects. Into the Land of Mystery with Ecclesiola study "Angor Wat". House celebrates Cotabato City PLC victory by seeing "Chinatown".

Contradiction: Sustaining bubbling and at the same time transfiguring bubbles into hard cash. (Wk.9)

## TOKYO

## RELIGIOUS HOUSE: TOKYO

External: Consult using TM 76 format held at Fugitsu Ltd. with members of Japan American Institute of Management Science, finds business struggling to find practical ways to demonstrate Globality and effective care and engagement.

Internal: Religious House gathers photographs from last year and presents to Okauchi 'family journey board' which highlights in colour, all the events in the mission they have been a part of over last year.

Received Paul Nomura as intern.

Contradiction: How to give practical form to covenant in the arena of 'all time is assigned time.' (WK.10)

## RELIGIOUS HOUSE: SEOUL

External: Dr. Helen Chung returns from being honored at Ohio Northern University for celebration of Ewha High School's 89th. Anniversary. House joins with colleagues and parishoners in work-day in Mun Jong Bong to help in construction of their new church.

Internal: New Intern, Miss Lee Sun Sook, is formally received at House Church. Han Sang Shin celebrates his transition from intern to fellow and House joins with Park Jae Eun (Mrs. Kang Byoung Hoon) in celebrations of her 42nd. birthday.

Contradiction: Creating new models to unblock current visa snags standing in way of global training. (WK.10)

## RELIGIOUS HOUSE: FUKUOKA

External: Regional Co-ordinator leads recruitment teams in PLC/ITI setup calls in two metros. Sent out English teacher from Region to attend Summer 75 in Chicago.

Internal: A 'workday' week II enabled miraculous preparation of House for Open House Party. Front lounge transformed into sophisticated image.

Contradiction: Nailing down ITI commitments. (Wk.9)

## RELIGIOUS HOUSE: OSAKA

External: Galaxy pastors decide dates for pulpit exchange tactic-Paul Murayana (Tokyo) visited LENS grads in Osaka. Head of Neighborhood Association introduces us into Community.

Internal: A week of repairing and cleaning the facility. Time design workshop launches planning month.

Contradiction: Inventing a detailed flow model that will clarify just what is the next job required. (WK.10)

## RELIGIOUS HOUSE: SENDAI

External: House host Regional Council, which rewrote story of region, made four quarter projection, and celebrated 100,000yen ITI development gift.

Internal: Sent out mailing for educators conference at end of June and began plans for July 4, celebration.

Contradiction: Enabling concrete plans in Quarter I to accomplish key penetration in Quarter II. (WK.10)

## SYDNEY

## RELIGIOUS HOUSE: SYDNEY

External: Four churches decide to participate in 6-week PCE training program in Hurstville polis.

Internal: Peru, Indiana climaxes quarter Ecclesiola with guests, Tom and Candy Wilson of Washington State and Pitt Street Congregation Church pastor John Bryant. Melinda McFarlane, daughter of Rev. Dick McFarlane (graduate of pioneer course January 67) interns. House worships at Pitt Street Church on occasion of baptism of Christopher Barker.

Contradiction: Moving beyond key strategies to recruit ITI to systematic visitation of 'busy' churchmen. (Wk. 9)

**RELIGIOUS HOUSE: AMARILLO**

External: Barrio Guild core plays catalytic as well as an authorization role in visit with Mayor relative to TM 76' and spins on his experience in PCE

Internal: Academy participants and staff return with new spirit energy and enliven Ecclesiola as we look at the New Castle.

Contradiction: What is appropriate way to be catalytic relative to TM '76 and keep visibility needed to do job. (WK.10)

**RELIGIOUS HOUSE: SAN ANTONIO**

External: For first time, we are able to offer RSI as service to local churchmen through clergy recruiters. New struggle with parish continues with Parish tour to proto-parish. Imaginal Education workshop follow-up brings the Roman Catholic parish priest to House.

Internal: Last two assigned permeators land jobs in psychiatrist's office and total employment secured brings us within 'shootin-range' by end of August.

Contradiction: Wearing ICA shoe on one foot; E.I. shoe on the other and keeping best foot forward. (WK.8)

**RELIGIOUS HOUSE: OKLAHOMA CITY**

External: PCC builds 4-year plan for replication of PCE and signals return of Metro Cadre.

Internal: Quarters evaluation and spirit reflection zero in on servant style.

Contradiction: Get Summer's plan out that involves and sustains Metro colleagues and Social Demonstration.(WK.10)

**RELIGIOUS HOUSE: DALLAS**

External: RSI opens with 35 around table, straining House training center facilities to limit. Continued LENS prospecting produces undreamed of short and long-range possibilities for Social Demonstration.

Internal: Preparation of House for a fully equipped LENS facility, along with recruitment, totally consumes House energies.

Contradiction: How to create adequate follow-up models to take advantage of startling and unexpected recent successes. (WK.9)

**RELIGIOUS HOUSE: TULSA**

External: Meet with Tulsa Metropolitan Jaycees; gracious acceptance of TM 76. Held Regional Council in Oklahoma City.

Internal: Phyllis' parents arrive, Charles and Ruth Texley, for a week of visiting. Did planning for Summer.

Contradiction: Create one image of missional thrust in working out the particular tactics. (WK.10)

**RELIGIOUS HOUSE: NEW ORLEANS**

External: House travels to Baton Rouge in preparation of the initiation of the 4-year Social Demonstration timeline. PCC attended by galaxy and regional colleagues gives direction to ready colleagues.

Internal: Colleagues continue to participate with House in Ecclesiola as both are impacted by 'New Castle' study.

Contradiction: Moving 'stamped past approved', (Is it really time to move into the future.)(WK.10)

**RELIGIOUS HOUSE : MEMPHIS**

External: Regional CSI held in Nashville-first course in Nashville in 2 years and first advanced course in region in more than 2½ years. In one week, we received endorsement of both Tennessee ARBC and Arkansas ARBC-South may be slow, but both were unanimous.

Internal: Ellen Addington visited House after the CSI and became the impact of global, with collegium spin on Philippines and a family nite meal. New Castle mural completed on kitchen wall; and last job procured, bringing House to full employment for first time.

## RELIGIOUS HOUSE: MEMPHIS (cont'd)

Contradiction: The story we ain't got no special problems. (Wk.9)

## RELIGIOUS HOUSE: ATLANTA

External: City of Atlanta Department of Cultural Affairs calls up to ask for consultation on what we think needs to happen in Atlanta, then ask our permission to be present at East Lake T/M. In-Kind miracles galore after initial 'Nos' when given T/M pitch.

Contradiction: How to hone up sponsorship mechanism for T/M, so it won't require as much of our energies--even if in different activities. (WK.9)

## RELIGIOUS HOUSE: CHARLOTTE

External: Clergy Luncheon in Charlotte results in request for regular meetings with training format. House attends institution of Episcopal Bishop Weinhower in Asheville and is embraced and warmly welcomed by him.

Internal: In-kind explodes as receive 25 gallons of paint (various sources). Colleagues arrive from Asheville, Greensboro, S.C. and Raleigh, one staying overnight for Ecclesiola. Collegium room emerges as first transformed space.

Contradiction: Not allowing struggle for corporate action to dissipate in midst of swirl of activities and breakthroughs. (WK.8)

## RELIGIOUS HOUSE: MIAMI

External: Gainesville Kiwanis Club requesting TM '76 appointment and very excited about possibility. Tampa Guardian decides to be TM Coordinator in that Metro and Miami Guardian's registers for Student Work Farm.

Internal: Week of contact with old friends in region and new decor going up in preparation for Regional Council.

Contradiction: Maintaining level of sophistication required to get TM '76 set up in face of on-going struggle for solvency. (WK.10)

## CHICAGO

## GLOBAL CENTRUM: CHICAGO

External: Panchayat Trek addresses Nexus with stories of 8 Social Demonstration sites for 75-76. Rev. Kang's witness on Movement in Korea renews and deepens vision of Long March.

Internal: New arrivals from Australia, Nelson and Elaine Stover, Father Patrick Jackson and Marilyn and James Elliott from Koahsiung are welcomed. Student House celebrates its 2nd. year of pioneering in phase I education and style.

Contradiction: Focusing troops to do abundant nitty-gritties in prep for GRA: Chicago. (WK.10)

## RELIGIOUS HOUSE: CHICAGO

External: Committee of 76 for '76 in Chicago is shaping up. Clergy Convocation PSU Week 10 claims future for PCE. The EG pass out flyers on T/M at Beverly Bicentennial parade.

Internal: Open House Cabaret for S'75 is planned. Spontaneous sports events preview House celebration.

Contradiction: Finding self on point where you decided to be and expecting to have something to stand on. (Wk.8) prehensive vision--one thrust. (Wk.7)

## RELIGIOUS HOUSE: WICHITA

External: First metro newsletter mailed to all grads; participation in Oklahoma City PCC creates courageous images for the future.

Internal: The move into discontinuous time signalled by special evening symbolic life.

Contradiction: Creating a story about Summer 75 that reveals it as catalytic for next year. (Wk. 9)

**RELIGIOUS HOUSE: OMAHA**

External: Geneva TM held in Exurban Nebraska. Omaha, Lincoln, Sioux City Metro Council is major happening as many new and old faces spend evening reporting and visioning for future.

Internal: House goes out for an evening together in celebration at Dinner Theatre.

Contradiction: 'Dislocation' received as excuse rather than gift. (WK.10)

**RELIGIOUS HOUSE: KANSAS CITY**

External: In-kind development for T/M breaks open with cash and merchandise donations from local merchants totaling over \$700. Shopping center donates its marquee; T/M 76 sound truck cruises and amuses and a cross-reference phone blitz of the parish helps to announce the happenings of town meeting.

Internal: House concludes Pekin study with visit to the Chinese exhibit of recent archeological discoveries and is re-impacted with the historical resolve of the people of China.

Contradiction: Relative to T/M 76--caught between necessity of being catalytic and tendency to be back-seat drivers when procedural questions arise. (Wk. 9)

**RELIGIOUS HOUSE: MINNEAPOLIS**

External: Country Club offers use of computer service to organize our files. Local law firm gives us an offset press. Guild completes first 4-year battleplan. Secure Washington appointment with congressional delegations in Minneapolis, North Dakota and South Dakota. Celebrate return of Pierces from LENS Trek.

Internal: House celebrates return of academy participants. Dorothy Roof received as intern. Salesman delivers coffee and notices unusual smell: We've cleaned House. We are catapulted in future with last chapter of 'New Castle'.

Contradiction: Securing 'yeses' from enthusiastic prospective sponsors for TM '76. (WK10)

**RELIGIOUS HOUSE: ST. LOUIS**

External: Consultation with staff of Lutheran Family and childrens' Services. Summer '75 brainstorm with PCE Parish core. Set up underway for Midtown Social Agency Consult through meeting with Executive committee.

Internal: Discontinuity week. In-kind contributions of bacon, ham, pork chops, tomatoes and tomato juice. Two more air-conditioners secured.

Contradiction: Need for a Summer '75 recruitment strategy which integrates every level and dimension of our missional work. (WK. 10)

**RELIGIOUS HOUSE: PEORIA**

External: Finished proposal for six TMs in Peoria for presentation to ARBA and city council. Two Council members endorse project: one says city might appropriate funds.

Internal: With House fully employed (by common definition), entire Troika nevertheless turns up at lunch on three days and has helpful strategy sessions.

Contradiction: 5th City trip, key event for both TM and Southside social demonstration, blocked by illness of two key contacts sponsoring event. Challenges us to develop more creative breakopen tactics. (Wk.3)

**RELIGIOUS HOUSE: GREEN BAY**

External: Followup to Green Bay T/M yields consensus on practical action.

Internal: House attends Regional Council in Minneapolis.

Contradiction: Economic crunch around the nation has called for extraordinary resourcefulness to carry on the mission. (Wk. 9)

**RELIGIOUS HOUSE: MILWAUKEE**

External: House Church with 38 guests celebrates the shift in churches of 2 galaxy pastors the sendout of 2 clergy families to Chicago Nexus for assignment. RS-I followup Ecclesiola host 10 new grads who are looking for ways to engage.

Internal: Two new jobs and one raise continue to enable us to conquer our finances Collegiums on priorship evoke serious brooding over life decisions.

Contradiction: Deciding to intensify Summer recruitment particularly among our secular colleagues. (Wk. 9)

**RELIGIOUS HOUSE: INDIANAPOLIS**

External: HRM at Louisville spiritizes Church of long-time colleagues. PCE in Indianapolis gets burst of new life as Metro troops gather to study Rahner and work on T/M'76. State legislators, Mayor's office, and Governor's office confirm plans to attend T/M.

Contradiction: Remembering that evening Prayers and actualizing tactical models depend upon each other. (Wk.7)

**RELIGIOUS HOUSE: CINCINNATI**

External: Leadership luncheon as kickoff to Walnut Hills festival. Religious House plays invisible catalyst within major structures. HRM blossoming--first one scheduled June 1 in St. Teresa of the Little Flowers. State Kiwanis President endorses T/M '76. T/M Pedagogy gives Guardians concrete images of movement leadership.

Internal: Catalyzed by Development team who "pitched right in" and a Presbyterian here for their general assembly. CS-III A includes people from five other Houses. Memorial Day picnic soccer game symbolizes passionate engagement--disjointed toes, sprained ankle and one broken foot.

Contradiction: How carry impact of Spring through Summer and into Fall in midst of T/M, HRM, and Guild miracles while dealing with complexity of partial covenants. (Wk.8)

**RELIGIOUS HOUSE: DETROIT**

External: First TM scheduled for Fall; week of appointments with potential TM sponsors.

Internal: Wednesday Collegium on Common Worship with full House for first time this quarter; Regional Council planned with handful turns into great spiritizing event.

Contradiction: Clouded vision of future blocks coordinated action in immediate. (WK.10)

**RELIGIOUS HOUSE: CLEVELAND**

External: Primal Community Consult gives us new sense of direction and power of the spirit in Parish. Painesville T/M demonstrates the power of local man's decision and polis cadre's power to move catalytically and seals our turn to practical engagement in the world.

Internal: Rugs shampooed and dormitory painted for LENS. EG return from "Sound of Music" singing Do Re Me to PCC participants. Pause for Memorial Day retreat and reflection on Quarter. Celebrate termination of three months of double jobs with progressive dinner launched at midnite.

Contradiction: Imagining our shift into Summer as shifting back to "normal" while holding the tension between moving on the 24 Parishes we projected right away and planning more time for research. (Wk.8)

**NEW YORK RELIGIOUS HOUSE: NEW YORK**

External: Primal Community Consult gives us new possibility for dealing with our masses. West Point indicates interest in T/M.

Internal: Memorial Day comes as great gift as we engage in recruitment blitz, closet cleaning, and hosting Area Priors' PSU.

Contradiction: How to shift to catalytic tactics. (Wk.8)

**RELIGIOUS HOUSE: PITTSBURGH**

External: Regional Council elicits decision of regional colleagues to continue momentum through the Summer by participation in Summer '75 and Week II House structures.

Internal: Great Ecclesiola. We share 'New Castle' with Metro colleagues and Barbara Bellomy's parents-Wismars.

Contradiction: Hanging on to old structures when we know time is now to risk leaping into future to create the new. (WK.10)

**RELIGIOUS HOUSE: ROCHESTER**

External: Albany TM'76 ready to go with 130 pre-registered so far and 360 in-kind contributions of Yankee- Doodle hot dogs arrive.

Internal: Regional Council at Eisenhower College highlighted by leaderships of new colleague . Mel Knappa and presence of new 78 year-old Gladys Johnson from Chenango Forks.

Contradiction: With 4 registered for Summer 75, the quota of 50 is tending to paralyze 'single-shot' recruitment. (WK10)

**RELIGIOUS HOUSE: RICHMOND**

External: State Farm of Virginia held a T/M and more than 100 came, including more than 10% of the resident population. Highlights: Inmates serenade guards with 'I don't know why...' song; excellent news coverage; guards on walkie-talkies concerned about 'cultural challenge I'. All work from promotion to decor done by staff and inmates.

Internal: E.G. impacted by own T/M. Development team opened up many untapped collegial contacts. Many colleagues bring great impact to T/M.

Contradiction: What happens next?

**RELIGIOUS HOUSE: WASHINGTON**

External: Visit with chairman of City Council by the Committee of '76. Two Tm held: 1-suburban, 1 urban. with great news coverage projecting more to come. 2 Councilmen, Metro colleagues, and Bicentennial Chairman sang new song at City Council in Fairfax. Soul singer transforms 'God Bless America' in Midcity TM.

Internal: Began week with great exercise of Fast, as we were joined by 'Angels' 2 from New York, 1 Baltimore, and 2 from Chicago. Anniversaires and birthday celebration galore. Celebrated TM with sponaneous 'Cabaret' with new singing groups: Chloe, by 'Dreadful Awfuls', and Love Potion 9, by 'Mop Rocks'.

Contradiction: Creating a story about glories of being one. (WK.10)

**RELIGIOUS HOUSE: BALTIMORE**

External: Nine Metro colleagues and all House members sent to enable Washington T/M, resulting in 19 well trained T/M staffers.

Internal: Study of second lecture in T/M construct addresses us.

Contradiction: Thinking it is easier to ride on someone else's risk rather than do our own risking. (Wk. 9)

**RELIGIOUS HOUSE: PHILADELPHIA**

External: Vinland T/M and a great PCC gives us momentum to begin to set up steering committees for 12 T/M in the Fall and 20 others for Winter and Spring.

Internal: House experiences strange excitement as one-day Regional Trek gives permission to the darkest journey, perparing the way for fantastic spin on the year and the future.

Contradiction: Fall quarter looms like a great monster, overwhelming our attempts to do comprehensive planning. (Wk.9)

**RELIGIOUS HOUSE: NEWARK**

External: Regional meeting highlighted by a boat ride around the island of Manhattan. Tour guides talk for 3 hours, pointing out previous Social Demonstration projects in New York City. Three new regional songs created.

Internal: Academy participant returns to House and gives show-stopping report at House Church. First House Church with whole House present.

Contradiction: Our self story about GRA: Chicago is not clear and strong enough to precipitate decisions of our Metro colleagues to participate. (Wk. 10)

**RELIGIOUS HOUSE: BROOKLYN**

External: T/M 76 task force moves on key resource people in Brooklyn and Queens and turns up immediate access to advocacy networks for Committee of 76 in New York City.

Internal: Whole House (adults and Emerging Generation) see 'Alice Doesn't Live Here Any More' and experiences authentic celebration in context of Hope against hope.

Contradiction: Becoming sign and demonstration to whole Bi-Metro of free obedience to radical total, unconditioned demand placed upon us all by the Summer. (Wk.8)

**RELIGIOUS HOUSE: HARTFORD**

External: Regional Council was a new dynamic as we did TM'76 training. PCE six week training model completed with congregations ready for HRM and Galaxy in September.

Internal: Shifting from study dynamic to practical work in task forces during Ecclesiola time. 24 neighborhood businesses, organizations, and churches support upcoming "Park Day". LENS grad from neighborhood brings boss to lunch at the House and tells of her report on LENS to the Citizens' Assembly.

Contradiction: What is strategy to enable people to articulate their decision to go to GRA? (Wk. 10)

**RELIGIOUS HOUSE: MANCHESTER**

External: CS-IIIa Held after being postponed for two quarters. Two metro clergy teach in Boston PLC.

Internal: Stove finally arrives. Youth invite guest to Guild meeting and House Church. Metro colleague Sister Lucille celebrates last year of Phase II at House Church.

Contradiction: Building corporateness that will guard and bring off the mission. (Wk.9)

**RELIGIOUS HOUSE: BOSTON**

External: 21 Parish churches announce TM'76 during Sunday services. Regional Council does TM76 pedagogy which illuminates the new style of the movement and releases the vision and spirit of Regions. TM'76 flyers produced in 4 languages: Chinese, Greek, Spanish, and English.

Internal: Address of Houston Area Prior releases new vision of TM'76 and puts South End TM in global perspective.

Contradiction: Creating the back-up systems to the back-up systems. (Wk.10)

**MONTREAL RELIGIOUS HOUSE: MONTREAL**

External: Frontenac Guild helps Community Branch Bank celebrate its second anniversary with Open House and skits. PCE people are so impacted by recent Guild training, they have requested pedagogical training in French to teach LENS and are developing a growing interest in GRA: Chicago.

Internal: House is delighted with many informal, drop-in visits to the House by PCE leaders requesting consults and methods for dealing with community problems.

Contradiction: Maintaining adequate communications between House and Metro colleagues in face of deep engagement in PCE and CFC work. (Wk. 10)

## RELIGIOUS HOUSE: TORONTO

External: Week II PSU discloses new direction for Parish and CFC sponsorship.

Internal: Quarter IV celebration takes form of indoor picnic with carnival games-- reminding us that life is a game.

Contradiction: Finding ways to release YES to CFC sponsorship. (Wk. 10)

## RELIGIOUS HOUSE: OTTAWA

External: In the Festival shute! 3 young businessmen help to obtain a \$1000 co-sponsored ad by 30+ businesses for the festival. Huge announcement nailed to door of local tavern.

Internal: House turns into a boxfactory, novelty store, as inkond boxes, prizes, pies and flowers flowin. Guild sings its new Festival song.

Contradiction: We have our anchors so firmly into the present miracles in the parish that the past and future look dim. (Wk. 10)

## RELIGIOUS HOUSE: CARACAS

External: Broke back on ITI mailing of 4000 letters, sentout GRA mailing to continent and continued House search. Met with Banco Royal Venezulano at their invitation to talk about the community branch banking experiment in Canada.

Internal: Song-writing session in Ecclesiola following study of Paz paper on 'Fiesta'. Spirit happening when took a Latin American tune and wrote song on Dark Night and Long March.

Contradiction: Clarifying priorities and values in relation to strategic House location. (Wk. 10)

GLOBAL CENTRUM  
QUARTER IV 1974 - 75

THE GLOBAL ORDER CENTRUM REPORT  
FOR WEEK 10

BRUSSELS  
BOMBAY  
SINGAPORE  
HONG KONG  
CHICAGO

GLOBAL  
DEVELOPMENT  
CENTRUM

Asian funding is prayed, planned, and strategized over all Centurms. Priors from Singapore, Bombay, and Hong Kong meet to concretize plans for funding. Hong Kong receives total of \$2620 U.S., in ITI gifts. Kang Byoung Hoon and Vinod Parekh aid development push in Brussels. Chicago reports grassroots blitz using 18 WATS lines. Sacramento church sale yields \$75,000 major funds. The Social Demonstrations story of 8 sites in 75-76 empowers circuit pitches. Contradiction is creating clear picture of funding sources, locales, and schedules for Quarter I.

GLOBAL  
MANAGEMENT  
CENTRUM

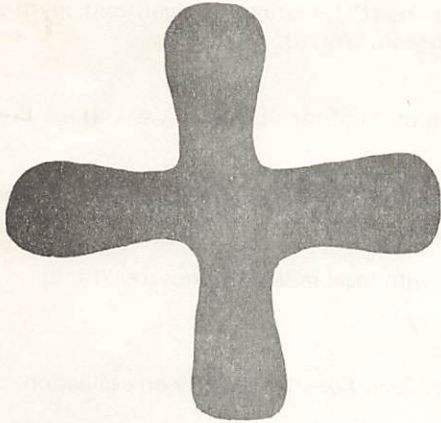
Hong Kong receives all materials for Hong Kong, Kuala Lumpur and Sydney ITI's and completes the Band letter. With Operation Area Turn On, Singapore Area Priors cut living expenses in half and redirect all possible funds toward the mission, especially in order to fund air travel in Medan and Manado. Brussels completes full report on all E.I. and Order finances to date. Both Singapore and Chicago report that in-kind is increasingly cutting expenses. Eight Social Demonstrations indicate to Management Centrum that there will be 8 monetary systems in which to work. Contradiction is maintaining adequate financial procedures and records that are accurate and comprehensive.

GLOBAL  
OPERATIONS  
CENTRUM

Hong Kong reports a 44-man LCC in the Philippines' 'war-zone' attended and sponsored by the Episcopal Bishop, complete with tanks, helicopters, and chickens in the yard. Two from Hong Kong sent to GRA: Manila. Singapore implements Metro Cadre Treks. Brussels and Chicago pull together quarterly and annual summaries of the 20 Programs. The contradiction has to do with ways to catalyze the 'home stretch' of ITI recruitment.

GLOBAL  
RESEARCH  
CENTRUM

Brussels reports Liverpool and Frankfurt LCC's that generate excitement in local communities, the first concrete sign that this tactic will work across Europe. Hong Kong heard report on Oombulgurri by the Shinnis and gave report on global/areal state of movement to Hong Kong Regional Council. Singapore reports that corporation consult in Brisbane Mt. Isa Mines LENS grad reveals need for practical screen of actual social processes in large corporation. Chicago posts move into task force work for GRA: Chicago. PCE completes quarter I Cadre manual and Uptown builds models for an expanded impact during quarter I. The contradiction is adding practical social methods to training journey of movemental teaching staff.



Man, He said, the Israelites say the vision you now see is not to be fulfilled for many years far off. These are the words of the Lord God: No word of mine shall be delayed. Even as I speak it shall be done.

Ezekiel 12:26

## LONDON

## RELIGIOUS HOUSE: LONDON

External: HRM consult for Canterbury colleagues preparing event for ancient Methodist village circuit culminates week of daily visits and workshops with people going to GRA:Chicago.

Internal: House mobilizes for second jobs and 5,600 circulars get door to door delivery while youth intensify preparation for exams.

Contradiction: Keeping pace with responding to the many changing faces of Europe. (Wk. 7)

## RELIGIOUS HOUSE: GLASGOW

External: Week of great missional surprises; 2 registrations finalized for GRA:Chicago. Key colleagues appear on guest night. 2 cadres meet. Edinburgh Education Guild sets up 3 curriculum consults for autumn and Elaine Hockley helps lead Britains first LCC in Liverpool.

Internal: Week of dispersion and participation in Global Panchayat Trek in Brussels and London. Expands our vision and context and relates Scotland in a new way to global possibilities before us all.

Contradiction: Decisions need to be made in order to relate all global possibilities to Scotland's passion and future. (Wk II)

## RELIGIOUS HOUSE: BRISTOL

External: Week of focusing through and action on Europe 75 and next year of Social Demonstration through Global Panchayat Trek.

Internal: Economic intensification project continues with addition of paper route. Fantastic evening of depth reflection with Metro Cadre prior as late night celebration is catalyzed with home-made wine and cheese.

Contradiction: Maintaining total missional thrust in midst of ongoing economic intensification. (Wk. II)

## RELIGIOUS HOUSE: MANCHESTER

External: 'Orrell Park is a great place to be alive' as 160 people gather in Orrell Park, Liverpool for first TM in British Isles.

Internal: Symbolic power of Global Panchayat Trek sweeps over House as Joe W. Mathews pays us a visit. Bishop Whycham is guest at Ecclesiola.

Contradiction: How to tie up all loose ends involved in getting GRA:Chicago participants off to Chicago. (Wk. II)

## PARIS

## RELIGIOUS HOUSE: PARIS

External: Metro circuits to Strasbourg and Lyon Metros swirl new possibilities for Quarter II: HRM in Strasbourg, RSI in Lyon, and an invitation to Barcelona by Jesuit interested in RSI and ITI.

Internal: Ecclesiola comes as refreshing oasis as New Castle Jerusalem study leaves us with our mouths agape and our spirits so high that the sodality is a sheer delight of laughter.

Contradiction: Seeing that your one task is to 'stand in the desert', creating the significant myth that allows you to dispense milk and honey in every task you engage in. (Wk. II)

## RELIGIOUS HOUSE: ROME

External: PLC followup takes us to Assisi and the spirit of St. Francis fills a week II of Primal Community research.

Internal: Colleague Wienus Roeten on retreat from New Orleans presides at House Church bearing fabulous artifacts of scorching avatar, having also visited Assisi.

Contradiction: Permeation as symbol of globality in conflict with local missional pressure. (Wk. II)

## LAGOS

## RELIGIOUS HOUSE: LAGOS

External: met with important Ghanaian Methodist friend, Dr. John Agbeti, currently on evaluation tour of West African theological colleges.

Internal: Prior of Dominican community in Ibadan drops by to ask if we are going to run any leadership training programmes that his 19 seminarians can attend. Complete and run off grassroots health care workshop manual, made most timely by imminent government takeover of 'mission' hospitals.

Contradiction: Finding the right buttons to push for shift to nearby Lagos. (Wk. 11)

## BRUSSELS

## GLOBAL CENTRUM: BRUSSELS

External: Development takes leap forward with Rev. Kang Byoung Hoon and Vinod Parekh visits with key funding sources. LCC in Liverpool (Manchester) is great community happening, a portent of future of LCC's across Europe.

Internal: Hosting Panchayat team and priors of continent Europe.

Contradiction: Building adequate model to force whole of Nexus to be focused on Development task of immediate funds for ITI's in India and Africa. (WK.10)

## RELIGIOUS HOUSE: BRUSSELS

External: Development call on LENS grads raises \$1000 for ITI-India; Town Meetings in principal adopted by Federation of European-American Organisations.

Internal: Continental forces meet for Global Panchayat Trek; whole House enabled and participated: so 21 Points are doubly valuable. Full income continues.

Contradiction: Moving beyond planning to plan when this is the planning month. (Wk. II)

## RELIGIOUS HOUSE: AMSTERDAM

External: First LCC in Netherlands with 16 present, including local residents and Metro colleagues; all are excited by Gerhard van Keulen's dramatic reading of the Amsterdam story as closing finale.

Internal: New friend, Wayne Brunquist from Anchorage, sojourns a week after strange encounter with Panchayat on a train which introduces him to movement.

Contradiction: Filling Europe '75 quota with only five weeks to go. (Wk. II)

**FRANKFURT****RELIGIOUS HOUSE: FRANKFURT**

External: Area Council with 4 Regions represented and Kirchentag juxtaposed upon one another regard past relationships and break loose new possibilities for next year's mission.

Internal: Dr. Lao's 4 room tent expands and houses 23 people during the days of the Kirchentag. Neighbor moving out of our apartment building suddenly appears at our door and asks us to take all of his furniture off his hands.

Contradiction: Re-focusing attention from immediate, short-term events to recruiting people for GRA, ITP, and ITI. (Wk. II)

**RELIGIOUS HOUSE: BERLIN**

External: Off on the Europe'75 recruitment push with mailing to colleagues in Berlin. Response of colleagues attending Kirchentag shows great promise for creating next year.

Internal: House impacted anew with secular prayer conversation and closes the week with outdoor picnic celebration.

Contradiction: Thinking big enough while planning Quarter I and II to encompass radical possibilities present. (Wk. II)

**KINSHASA****RELIGIOUS HOUSE: LUSAKA**

External: Methods are key --regular sessions with ITI grad builds "leadership seminar" format and timeline for clergy of Blantyre. Funds arrive during the week from AACC.

Internal: Safari into Malawi backcountry locating old gravesites of Dr. Livingstone's traveling companions and the cataracts that stopped him turned him in new directions.

Contradiction; Borders closing and independence struggles hinder trip to Mozambique and Rhodesia. (Wk. 11)

**NAIROBI****RELIGIOUS HOUSE: NAIROBI**

External: Calls on Hierarchy for ITI nod go very well, recruitment mailings out and week II Parish Consult up-country arouses interest in ITI participation.

Internal: Ed Shinn arrives to begin work on ITI set-up, many birthdays this month cause for celebration.

Contradiction: Finding the elusive low cost facility for ITI. (Wk. II)

**BOMBAY****GLOBAL CENTRUM: BOMBAY**

External: GRA completed in Hyderabad. ITI materials received and cleared. Study plan completed.

Internal: Send out P.T. James and T. Patterson to Calcutta, and receive Judy Hess for ITI.

Contradiction: Operating images needed to manifest globality and oneness of Spirit Movement. (Wk.5)

**RELIGIOUS HOUSE: BOMBAY**

External: Three ITI complete exciting first week with total of 174 attending. Reports persist of emerging pedagogical giants among both old and new participants.

Internal: Preparations for arrival of Panchayat teams and return of Bishop Joshi create profound anticipations.

Contradiction: Planning Quarter I in middle of three ITIs and the Global Priors meeting. (WK.8)

**DELHI****RELIGIOUS HOUSE: DELHI**

External: ITI registration from Agra gives us registrations from 4 of 6 regions as recruitment effort intensifies.

Internal: Marle Paul sent out to GRA, children to grand-mothers for summer; House troops drop from 9 adults to 5 in 2 weeks.

- Contradiction: Finalizing ITI recruitment and guaranteeing goal of 36. (WK. 4)
- MADRAS** RELIGIOUS HOUSE: HYDERABAD  
 External: Whole House attends Order Council including Guildsman Mally Balm who spins Council into Practical Era of Vision of Social Demonstration with report on Gunfoundry Miracle Day.  
 Internal: Week of discontinuity for whole Houses concludes with arrival of Kiran Ruth, one month old adopted Indian daughter of John and Robyn Hutchinson.  
 Contradiction: Saddling up while Guild is chaffing at the bit. (Wk. II)
- CALCUTTA** RELIGIOUS HOUSE: CALCUTTA  
 External: Calcutta ITI begins with 63 around table (45 new participants) including those from Area Delhi. Bishops College, the ITI faculty, proves to be strong built in authorization.  
 Internal: All House members except one assigned to the continental ITIs. House moves to Bishops College, leaving the question of where to go after the ITI utterly open.  
 Contradiction: Building models which use ITI as a tool in global strategy as opposed to seeing the ITI as an end in itself. (Wk. 7)
- SINGAPORE** GLOBAL CENTRUM: SINGAPORE  
 External: Operation Turn On: Area Singapore, is launched by sending out colleagues to Madan, Manado, and Kuala Lumpur, colleagues from Bombay to SEAPAC, and 12 GRA participants to Manila.  
 Internal: GRA send out at Nexus brings total guest list in last month over 50 and colleague's 6-hour visit tops them all as he heads for ITI: Nairobi.  
 Contradiction: 8 visits a day in Metro Treks in Singapore Region alone nears heaven itself since the clergy (50% of all visits) are 'Never In'. (WK. II)
- RELIGIOUS HOUSE: SINGAPORE  
 External: 1 House member in GRA: Manila as faculty, 2 as participants. 4 Regional participants attending from New Town pre-guild. House focus on development of Metro Cadres in all 6 Metros, plus the Jahore Metro of the Kuala Lumpur Region. Exciting responses coming from all visits.  
 Internal: House invites Centrum Mexus for joint House Church to celebrate 2 wedding anniversaries and 1 birthday. Having 2 people in-House, one for 3 week local school holiday and one for 3 month American school holiday, gets Metro Cadre Trek launched in full gear.  
 Contradiction: Finding free facility and other ways to enable assignment of fewer people to permeation to allow sufficient work-in staff to insure that the Metro Cadre intensification continues through the year. (Wk. II)
- RELIGIOUS HOUSE: KUALA LUMPUR  
 External: ITI registrations begin to come in from distant corners of SE Asia. Always farthest come first. Deep brooding and ordering to put into effect during Week 10 and 8 week trek which will make us a familiar sight and movement a constant presence for our colleagues in every Metro. Regional Council focused on our Parish with new data about its make-up and problems from an old parish leader, in fact two of them. Sunday preaching assignment in Parish allowed additional impact.  
 Internal: Like someone continually turning up furnace and air conditioner as Augusta leaves for GRA and we get our two delegates off; Barbara Donnelley comes to help gun ITI practics. Emerging Generation participate by helping wash our transportation on Saturday morning.  
 Contradiction: Keeping a global perspective so that calling and enablement does not become just a meaningless mass of givens. (Wk. 11)
- RELIGIOUS HOUSE: JAKARTA  
 External: The 'Great Visitation' gets underway with visits and ecclesiolas in Semarang and Jogjakarta Metros plus Great Visitation team sent for 2 weeks to Manado Region, with first visits in Ambon and Ujung Pandang Metros set for this week.

## RELIGIOUS HOUSE: JAKARTA (continued)

Internal: Breakfast for Mark and Sarah Phillips marks the week as a time of transition.

Contradiction: Discerning what is next strategic move in midst of many options. (Wk. II)

## HONGKONG

## GLOBAL CENTRUM: HONG KONG

External: ITI materials for Sydney and Kuala Lumpur leave by boat. Jon Jenkins sent to GRA:Manila. Centrum participates in Hong Kong Regional Council.

Internal: Hosting dynamic explodes as Anne Wood, Ed and Mimi Shinn, and Ken Ellison stop-over at Centrum. Extensive report on Oombulgurri gives new grist for development and authorization calling.

Contradiction: Systematic nurture of authorization channels for developing funds. (Wk. 10)

## RELIGIOUS HOUSE: HONG KONG

External: Regional Council celebrates work of quarter with reports from all 6 metros, highlighted by ITI Task Force report whereby colleagues assume responsibility for enablement. Internal: In midst of PLC follow-up meeting and Regional Council Planning-created Regional Council decor that impacts colleagues.

Contradiction: Seeing new possibilities for ITI recruitment after exhausting initial strategies and contacts. (WK.II)

## RELIGIOUS HOUSE: KAOHSIUNG

External: Re-tooling for Quarter I in midst of finishing touches on ITI recruitment. Two extended "consultations" with local pastors on movement issues reach new depth and reveal incredible collegiality.

Internal: Journey to Tainan to celebrate Dragon Boat Festival is highlight of week focused heavily on final exams--we are all either teachers or students.

Contradiction: How to hold together both 'Low Profile' and 'Work like Hell' images. (Wk. II)

## RELIGIOUS HOUSE: MANILA

External: Development and processing of 70 Philippine passport applications for Hong Kong ITI and I2 for Seoul ITI consume our energies.

Internal: Independence Day is celebrated by watching festivities and a barbeque. Lee Jae Joon and Kim Chung Man arrive for GRA and participate in Saturday night catch-up study of Wittenburg. Gerry Jimenez gets passport to Chicago.

Contradiction: Keeping distance to see vision while engaged in concretizing the vision. (Wk. II)

## RELIGIOUS HOUSE: TAIPEI

External: Twenty regional colleagues and families gather at House for huge Chinese feast to send out 3 to GRA: Manila and 2 to GRA: Chicago. First English RS-I in over a year brings 14 to House --9 of whom will go to ITI.

Internal: Final prep for GRA. End of school for 4 teachers and 6 E.G. Peter Wang begins sojourn.

Contradiction: Shifting gears without losing speed. (Wk. II)

## RELIGIOUS HOUSE: CEBU

External: Sent out 8 to GRA: Manila (4 from Mactan 5, 3 from House and 1 from Region). First full week of Mactan 5 minischool with 48 children accepted and 55 still waiting to get in. We're still raising money and completing forms for ITI programs.

Internal: House celebrates at Chinese restaurant and sees film 'The Mean Machine' to celebrate arrival of new intern Erlene Martinez and new sojourner Josie dela Serna. 4-year old Sandy Armos arrives for 3 week stay. II ITI prospects and colleagues pass through the Wayside Inn.

Contradiction: Keeping our models current so that key tactics and key tasks don't slip through our fingers. (WK. II)

**RELIGIOUS HOUSE: DAVAO**

External: Second PLC of the quarter was requested and recruited by Episcopal Bishop Manguramas who attended and then decided to go to ITI with his wife. Rally of ITI prospects does brainstorm of how 'we' fund GRA/ITI participants from Region.

Internal: Wayside Inn dynamic continues to swirl and bubble with ITI prospects. Into the Land of Mystery with Ecclesiola study "AngkorWat". House celebrates Cotabato City PLC victory by seeing "Chinatown".

Contradiction: Sustaining bubbling and at the same time transfiguring bubbles into hard cash. (Wk.9)

**TOKYO****RELIGIOUS HOUSE: TOKYO**

External: We formally celebrate our move to Shibuya 5 with Open House in conjunction with Regional Council at House. Great mobile decor is built by colleagues to illustrate and celebrate events of past 3 quarters.

Internal: Summer Ecclesiola model is built with emphasis on Movement common memory. Paul Evans initiates model by great study on Bonhoeffer, grounding us afresh in tension and ambiguity of glorious life of spirit man.

Contradiction: Getting summer operating machinery off the drawing board so that gap is closed in external mission. (Wk. II)

**RELIGIOUS HOUSE: SEOUL**

External: PLC in Incheon is held with promises for future as House intern translates and teaches for first time. 'Korea is a Beautiful place' is the theme of Korean Culture Day at International School of Sacred Heart.

Internal: Tribal resettlement and work on House Decor makes way for new sojourner family and adds new dimension to spirit life.

Contradiction: How to discern and nurture colleagues(globally and locally) in deep spiritual turmoil. (WK. II)

**RELIGIOUS HOUSE: FUKUOKA**

External: Over 80 guests attend Sunday afternoon 'Open House'. Mix of secular and religious, grad and non-grad symbolize presence of both Region and Parish. The many gifts to House include a sum of money from Passionist Fathers.

Internal: Week of all out work to decor and prepare for 'Open House' Event catalyzes a team of Japanese women who procure necessary materials, gunned through kitchen preparations and left House elegantly decorated with traditional Japanese flower arrangements.

Contradiction: Objectifying intuitional miracles onto a time-line. (WK. II)

**RELIGIOUS HOUSE: OSAKA**

External: Pre-galaxy meets in new House for first time and corporately writes sermon to be delivered in exchange services at Sakai Roman Catholic Church and Shimanonchi Church. Internal: We set House with furniture and carpets and begin to discover gift of new location as we host English classes and galaxy meeting.

Contradiction: Building momentum for re-engaging beyond limited arena of setting-up new facility. (WK. II)

**RELIGIOUS HOUSE: SENDAI**

External: Hirosaki raises sign of power of grassroots development by collecting 37,000 yen during planning session for raising 200,000 yen. House participated in 2 education consults.

Internal: House impacted with colleagues training as we experience wave conversation. Research night with local doctors takes another step towards guild actualization.

Contradiction: Focusing 10,000 possibilities into single thrust. (Wk. II)

## SYDNEY

**RELIGIOUS HOUSE: SYDNEY**

External: Send 5 participants and 2 faculty to GRA: Manila. Donnelly and Banks come in for development and we beat our target for this week. Completion of Inner City Study Group. Regional planning done by House and PCE.

Internal: Rahner study in Collegium impacts House and we again experience ourselves as Wayside Inn as colleagues and guests come in.

Contradiction: Cementing connection between existing programmatic life of Region and fulfilling ITI recruitment so that last minute push on recruitment builds new resolve in long time movement colleagues and releases passion to recruit brand new prospects. (Wk. 11)

**RELIGIOUS HOUSE: PERTH**

External: PCE visits to early residents (turn of century), city councilman, state representative, and others result in great enthusiasm for upcoming community festival. Arrangements made to ship boar and 4 sows (in-kind) to Oombulgurri.

Internal: A stage play at Patch Theatre excites us with future role of drama in PCE. Brian Robins and Richard Pether are sent out to GRA: Manila.

Contradiction: Finding key that transforms great excitement about future into life expenditure that turns dreams into reality. (Wk. 10)

**RELIGIOUS HOUSE: DARWIN**

External: Loomis appointed Executive Officer of Tourist Association and ICA named development consultants. Intense political and bureaucratic battle for positions of authority and jobs in reconstruction finds authorization weak and occasions visits to key supporters.

Internal: Three-week house hunt turns up one facility ready to live in. Exploring all avenues of finance reveals few possibilities with five weeks till vacate hour.

Contradiction: Cruciality and interrelationship of moving hard on both local authorization and demonstration programs stretches us thin. (WK.8)

**RELIGIOUS HOUSE: OOMBULGURRI**

External: Possibility of feeding community takes solid form as first 50 of 500 chickens arrive and 'chook' yard and incubators are built; Community vegetable garden of beef. In midst of hard work community celebrates with a barbeque, freshly painted store and noon-time collegiums.

Internal: Corporate power turned to proposal writing, miracle planning and implementation intensifies auxiliary presence in community.

Contradiction: Dealing with too little equipment, preparation, and troops so that some miracles do not turn into work projects rather than great revelations of new possibility. (Wk. 11)

**RELIGIOUS HOUSE: ADELAIDE**

External: Regional Methods School involves 12 adults in preliminary research on Community Forum concept in Australia. An awe-filled encounter with Australian heritage is experienced. First and last minute context on GRA: Manila results in radical decision of Parish colleague, Judy Lawrie, to attend with only 3 days notice.

Internal: House experiences its Regional context with the presence of Phil Kitto from Whyalla and Yvonne Trelevan from Broken Hill, at Regional Methods School Adelaide colleague Jim Mayfield stops by for House Church.

Contradiction: Building the spider's web of context and motivity between large number of Movement opportunities and large number of grads and colleagues. (Wk. 10)

**RELIGIOUS HOUSE: MELBOURNE**

External: Largest Metro Council in 12 months meets at House for briefing on state of the movement, projecting coming quarter's training events. Capped evening off with pizza party stretching into night in tandem with prep for next day's HRM. Doors open with authorization in Anglican Church as HRM comes with power to potential parish galaxy church, engaging 45 people from start to finish.

**RELIGIOUS HOUSE: MELBOURNE (continued)**

Internal: Celebrated Neil Rees 12th birthday with 3 peers. Change of quarter time rhythm incorporated TV documentary on the origin of the Australian aboriginal .

Contradiction: Moving from a quarter of sheer awakenment to one of both awakenment and training. Excuse has no use anymore! (Wk. II)

**RELIGIOUS HOUSE: CANBERRA**

External: Metro Council, with 34 participants, signals launching of new Metro Cadre. This is followed up by development trek for ITI on following day.

Internal: House hosts Donnelly from Singapore Centrum for Metro trek and development and key lunch with old colleagues from Kuala Lumpur, Dr. Robyn and Bronwyn Pryor.

Contradiction: Getting breakloose of Metro Cadre into practical 'do-able' tactics. (Wk. II)

**RELIGIOUS HOUSE: BRISBANE**

External: LENS consult with chief of Public-Service Organization-and-Training opens doors to future authorization and LENS participation; Week II LCC pedagogy pushes House and Regional Priority to struggle role of secular guru.

Internal: Business consult at House occasions massive cleaning, re-ordering and redecoring, shifting image to secular training facility; presence of McCleskey enables brooding on guild and on global Social Demonstration.

Contradiction: Relative to priorities, relating explicit story and actual operation. (Wk. II)

SUVA

**RELIGIOUS HOUSE: MAJURO**

External: Imagination of whole community captured by Island Survey Trip with last minute preparations for June 17 departure. Participant list grows and includes representation from every level of society.

Internal: Four (Elementary age) Emerging Generation depart Majuro with Judy Fishel on KITCO field trip ship, the 'Militobi', for 2 week (or 1 month) trip to 5 atolls of the Marshalls (complete with name -- Camp Marshalls, banner and song.)

Contradiction: Making sure that tugs and pulls on all lines that extend from the core don't pull any loose. (Wk. II)

**RELIGIOUS HOUSE: APIA**

External: Participated in 13th Anniversary of Western Samoa's Independence celebration. Bill Laski, son of founder of Paramount Studios, impacted APC with story of his conversion. ITI delegate preparing for Sydney.

Internal: Ecclesiola for quarter finished with very helpful push on Hope. Order Study Wk. II helps us renew our vision. Week of emphasis on care of House, yard, and car as many small miracles occurred.

Contradiction: Keeping ahead of bush in our yard transformation project. (Wk. II)

SAN  
FRANCISCO**RELIGIOUS HOUSE: SAN FRANCISCO**

External: Major advance into 3 key womens organizations gives positive responses to TM'76. Mini-Town Meeting at Parish Elders Guild confirms their decision to have TM in Fall. Thirty from S.F. attend first California TM in Sacramento to prepare for setting up their own town meetings in S.F. neighborhoods in the Fall.

Internal: Rev. Kang Byoung Hoon's report of Global Panchayat Trek is deep address both to House and Clergy Forum as he passionately calls us to intensify Mass Evangelism and the 8 Social Demonstrations as signs of hope around the globe.

Contradiction: Creating an adequate rhythm to continue missional intensification during absence of some for GRA: Chicago. (Wk. II)

**RELIGIOUS HOUSE: SAN JOSE**

External: Fifteen Metro and House colleagues and one San Jose Bicentennial Commission member journey to Sacramento for California's first TM. 260 people make it a great happening and launch great enthusiasm for TM in San Jose-Fresno Bi-Metro. House hosts 17 downtown clergy for their monthly breakfast meeting.

Internal: Twenty colleagues join house for Bi-Metro House Church and hear exciting reports on GRA:Chicago and TM-a great spirit happening. Martha Denny, Phase IV Metro colleague, sent out to Japan as she begins her retirement teaching at University in Tokyo, surprises everyone by announcing that she intends to explore possibility of sojourning at Tokyo House.

Contradiction: Creating Enthusiasm for GRA:Chicago and TM that will bring necessary decisions for GRA attendance. (Wk. II)

**RELIGIOUS HOUSE: SACRAMENTO**

External: The greatest town meeting in history happens 350 plus in attendance, all food paid for by four Robin Hoods. Local and professional entertainment, numerous dignitaries: global, national, state, and local.

Internal: Regional House Church with reports from 3 Houses, and celebrations including 1 birthday, 2 anniversaries, and 2 new interns from Norte 5 Parish.

Contradiction: Moving through immediate passion and excitement to establish long-range commitment. (Wk. II)

**RELIGIOUS HOUSE: SEATTLE**

External: Five team blitz of Region made to invite colleagues to GRA:Chicago participation bears new possibilities. Chicago development team exceed Regional goal.

Internal: New job secured by Sharon Fisher, Bruce Robertson receives new position at Bank as Management Development Programmer. Kathy Fenton graduates from high school.

Contradiction: Deciding which plates to spin during Quarter I and which to glue to the sticky end. (Wk. II)

**RELIGIOUS HOUSE: LOS ANGELES**

External: Speaking engagement with Jr. Women's Clubs group representing 50 other clubs throughout L.A. symbolizes acceleration of TM activity.

Internal: 'Miss August'(Playboy Magazine) visits House and Emerging Generation visit Playboy mansion and meet Hugh Hefner as result of having House member employed as private driving instructor.

Contradiction: Re-tooling our own minds with possibility offered by image of 'consultants' (WK.I0)

**RELIGIOUS HOUSE: PHOENIX**

External: Potluck dinner with state of movement spin and GRA:Chicago conversation leaves us and Regional colleagues struggling with what is possibility for the future and where do I need to be this summer?

Internal: Send out Fred Karpoff and Carol Poole to the 6th grade trek.

Contradiction: Seeing practical possibility for 20 people from Phoenix Region to GRA:Chicago. (Wk. II)

**RELIGIOUS HOUSE: SALT LAKE CITY**

External: Favorable talks to Kiwanis and Jaycee networks about Town Meeting '76. Key Metro family decides to attend GRA:Chicago.

Internal: Ecclesiola Thursday night, House and Metro together deciding what is to happen during Quarter I with large contingent on other assignments.

Contradiction: Getting imaginations around what to do this summer with fewer troops, and creating a model to rehearse consistently. (Wk. II)

**RELIGIOUS HOUSE: BILLINGS**

External: Southside Street Repair Project enlists dozens of parish residents in great day of creating sign of grassroots care for all of Billings; Extended Town Meeting Trek initiated, as well as Week II treks closer home.

Internal: Town Meeting warboard created; McGuire, Albright youth embark for Chicago; School's Out Excitement topped only by opening of neighborhood pool; exciting Ecclesiola complete with guests and birthday celebration; planting of Bicentennial petunias in reclamation of front yard.

Contradiction: Finding and turning key to steadfastness as Diaspora of Quarter I begins, with Quarter I plans incomplete. (Wk. II)

**RELIGIOUS HOUSE: DENVER**

External: Elliott's slides and narrative of SEAPAC LENS Trek fascinate 40 at Metro Cadre meeting; Parish Guild and TM task force both meet at Urban House Saturday morning, dramatically revealing reality of ICA.

Internal: House does Parish battleplanning of Quarter I; new job puts us in range of meeting budget.

Contradiction: Breaking loose local excitement for TM'76 and Church Consults without obscuring decision that GRA:Chicago is top movement priority. (Wk. II)

**RELIGIOUS HOUSE: RAPID CITY**

External: Week II publicity blitz on Spearfish businesses created excitement about TM'76, while a phase 4 Town Crier proclaimed "Come one, come all to the Town Meeting. What's a Town Meeting? I don't know, come anyway."

Internal: Study of paper on The Order: Ecumenical and discovery that Wittenberg was a movement of the spirit push us to see that this is the time and we are the people.

Contradiction: How to use our time and energy most effectively and comprehensively to stay chaste with TM'76 and unblock people's schedules. (Wk. IO)

**EDMONTON****RELIGIOUS HOUSE: EDMONTON**

External: Drumheller has sponsors meeting, Kiwanis in Calgary ready to launch CFC'S after slide presentation to 80 members, and follow-up meeting in Bridgeland-Riverside releases a decision to hold another forum in Quarter II.

Internal: Summer Celebration with elaborate feast and much singing held in David & Adelle Pogue's home to mark sending out of Bell's to GRA:Chicago and launching of Quarter I in Edmonton.

Contradiction: Finding ways to cut over against images that say nothing happens in the summer when the Movement needs many things to happen. (Wk. II)

**RELIGIOUS HOUSE: ANCHORAGE**

External: Parish Cadre celebrates and sends out Knutsons. HRM secured for Quarter II. Letters arrive thanking us for Bi-Centennial picnic from key Roman Catholic; and Atlantic Richfield sends \$200 to Hope Cottage Fund as a result of our transforming city lot. Proposal to oil company goes in for TM'76 travel.

Internal: House celebrates youth send out with mountain climbing, glacier exploration and softball. Harriet Taylor of Evanston (M. Stoner's sister) arrives for week visit.

Contradiction: Maintaining intentionality and creating the symbolic undergirding that will nurture Region in preparation for Quarter II. (Wk. II)

**RELIGIOUS HOUSE: SASKATOON**

External: Parish celebration of 50th anniversary of the United Church in Canada includes an array of activity--potluck dinner, street dance with a 10 piece band, Sunday morning services with 350 people of phases participating.

Internal: The past figures in our present as we study AngkorWat; celebrate and evaluate the past nine months of our work.

**RELIGIOUS HOUSE: SASKATOON (continued)**

Contradiction: Maintaining the momentum of the past quarter with reduced number of troops and Summer imaged as 'slower'. (Wk. 10)

**RELIGIOUS HOUSE: WINNIPEG**

External: Letter from member of Parliament - advocacy for CFC plus \$ support for Centennial 5 publications; Wk. 11 trek opens door to Kenora ministerial and surprise luncheon with TWC of Kenora; Luncheon to celebrate 30 year ordination of R.C. priest opens door to Parish church; Transcona clergy visited for CFC; task force miracle - paint local node; ongoing requests for Centennial 5 newspaper. down track when 2 of its key leaders attends House Church.

Contradiction: Invitation to participate in community structures reveals again the unclarity of catalytic role. (WK.10)

**HOUSTON****RELIGIOUS HOUSE: HOUSTON**

External: Exxon USA and Prudential calls indicate probable TM'76 sponsorship; Houston Bicentennial Commission endorsement received; plans finalized for July 25-27 TM'76 weekend for 500 Key Club youth.

Internal: Economic push nets 13 preaching invitations for Quarter I.

Contradiction: With House troops diminishing rapidly in favor of GRA:Chicago, the catalytic leadership indicative gets clearer daily. (Wk. 11)

**RELIGIOUS HOUSE: AMARILLO**

External: Mayor proclaims June 17th as 'Town Meeting Day' and promises to attend.

Internal: Two Bi-Metro colleagues announce their decisions to intern. 'Plants In the Landscape' by Frederick Lamphear is published and on sale.

Contradiction: Shifting gears from immediacy of TM'76 to getting people to GRA:Chicago. (Wk. 11)

**RELIGIOUS HOUSE: SAN ANTONIO**

External: For first time, we are able to offer RSI as service to local churchmen through clergy recruiters. New struggle with parish continues with Parish tour to proto-parished. Imaginal Education workshop follow-up brings the Roman Catholic parish priest to House.

Internal: Last two assigned permeators land jobs in psychiatrist's office and total employment secured brings us within 'shootin-range' by end of August.

Contradiction: Wearing ICA shoe on one foot; E.I. shoe on the other and keeping best foot forward. (Wk.8)

**RELIGIOUS HOUSE: OKLAHOMA CITY**

External: Guildsmen, excited about the GRA:Chicago, say 'We need to get a bus'. Metro Council songfest rehearses Summer Programs back to 1965.

Internal: Formed plan for study of common memory papers and pedagogy.

Contradiction: Transforming fascination for GRA:Chicago into concrete plan, packing suitcases, and buying tickets. (Wk. 11)

**RELIGIOUS HOUSE: DALLAS**

External: LENS Seminar opened with 35 around the table. Typical reponses - from an E. Dallas landlord, 'This seminar is like soul food'; from a recent convict, 'This is the first sign of hope I've seen since I got out of 8 years of prison'. Primal Community Consult pushes the Bi-Metro Cadre vision for House and colleagues. LENS follow-up with 15 around the table, all not wanting to go home.

Internal: Bob Schotte joins the House as university intern. 15 of 60 member touring youth choir experience House Wayside Inn dynamic. Athens/Dallas House Church with 20 around table. Quarter celebration at Dos Gringos turns Metro Cadre into 25 stuffed enchiladas.

Contradiction: Locating tools to relate us to the heritage of the Church, and over-against new sense of seriousness on part of all our Metro colleagues, we need to create motivity to actually live the impossible dream. (Wk. 11)

**RELIGIOUS HOUSE: TULSA**

External: Meet with Tulsa Metropolitan Jaycees; gracious acceptance of TM'76. Held Regional Council in Oklahoma City.

Internal: Phyllis' parents arrive, Charles and Ruth Texley, for a week of visiting. Did planning for Summer.

Contradiction: Create one image of missional thrust in working out the particular tactics. (Wk.10)

**RELIGIOUS HOUSE: NEW ORLEANS**

External: House travels to Baton Rouge in preparation of the initiation of the 4-year Social Demonstration timeline. PCC attended by galaxy and Regional colleagues gives direction to ready colleagues.

Internal: Colleagues continue to participate with House in Ecclesiola as both are impacted by 'New Castle' study.

Contradiction: Moving 'stamped past approved', (Is it really time to move into the future?)(Wk. 10)

**RELIGIOUS HOUSE: MEMPHIS**

External: Second 4 hour training session held in preparation for Nashville TM'76 with 16 present. South Central Bell donates thirty phones to be used by senior citizens for community phone blitz, and elders passionately tackle phone list. Two state senators register, as door-to-door and mass mailing are punctuated by TV and Radio appearances. Both newspapers contribute excellent articles as day is less than a week away. Internal: Riverboat ride and picnic provide relaxing House celebration. Received Wayne and Debby Beard and daughters, Michelle and Jackie, from Birmingham to begin their intern year. House facility now pushed almost (never completely) to its limits.

Contradiction: Moving into our next edge in catalytic role releasing Metro Cadres to be passionate for their Polis cities. (Wk. II)

**RELIGIOUS HOUSE: ATLANTA**

External: TM'76 in East Lake (PCE) inspires both community residents and Bi-Centennial officials as Exec. Dir of Atlanta Bi-Centennial Commission shows up, takes a tour, and calls Atlanta chairman saying 'Come by--they've got everything here;' social agency representatives and residents impacted by in-kind success saying 'How do you do it? We've been trying for years.' in face of food and drink abounding.

Internal: House begins to reel with possibilities of Social Demonstration Projects through collegium on Global Panchayat Trek by Jim Bishop (here on development trip).

Contradiction: Building a serious, practical battleplan for Quarter I that moves in tactical arenas and is open to new wisdom from GRA:Chicago (Wk. II)

**RELIGIOUS HOUSE: CHARLOTTE**

External: TM'76 framing in Charlotte leaps and bounds as Marshall Jones joins in meeting the establishment. Colleagues come in to plan first Carolinas Metros Council, a huge success the next day... parents waited for children to get ready to go! And we discover 5 guardians actively present. Received calls asking about TM'76 from Davidson County and Lexington Kiwanis Club; paper man offers to deliver flyers for us anytime.

Internal: Claiming of space continues as collegium room is transformed to permanent worship room, in-kind continues as new collegium room is carpeted and lighted, and \$1.00 bid at auction results in enough left-over wallpaper to do the entry, office, stairs, and bathrooms; Wayside Inn dynamic is grounded as colleagues drop-in all week to help with the decorating, and two Youth begin two-week sojourn the day after high school graduation. Jaime Vergera's collegium explodes our imaginations and reminds us we're out to do the globe.

Contradiction: Sustaining the movemental corporateness that emerged during the Council now that the Task Forces are dispersed. (Wk. II)

**RELIGIOUS HOUSE: MIAMI**

External: Guardian Scott Stahr flies team to Gainesville for luncheon with Kiwanis Club and Chamber of Commerce members.

## RELIGIOUS HOUSE:MIAMI (continued)

Internal: Sent children and 1st prior to camp and Chicago. Miami Region celebrates life and death of Malcolm Walters in Tampa, father of George Walters.

Contradiction: Getting the car counters down before traffic has passed. (Now that we've catalyzed everyone, they won't wait up for us.) (Wk. II)

## CHICAGO

## GLOBAL CENTRUM:CHICAGO

External: Arrival of area priors catalyzes GRA:Chicago recruitment and general planning. Guest list of 86 from other continents leaves us breathless.

Internal: Everyone is singing a new song in midst of installing in-kind walk-in freezer and final renovations ; Moffet family sent-out to Baltimore and Phase I sent out to Camp New Castle, Sixth Grade Trek, and summer work projects. Welcome the arrival of Aaron Paul to Wayne and Jo Nelson, and David Joel to Joel and Betsy Radford.

Contradiction: Building flexible temporal models while final decisions on GRA:Chicago are still in the works. (Wk. II)

## NEW CASTLE COMMUNITY

External: Camp New Castle Community erupts into existence near Cromwell, Indiana, with 5 guilds located in Jeju, Isle of Dogs, Trastevere, Kwangware, and Taj Gunj.

Internal: The motto 'I'd run a mile for a miracle' has enabled both the obvious daily curriculum events and physical care miracles.

Contradiction:Transforming 'How many more staff are coming tomorrow?' to 'We are The Ones!' (Wk. II)

## RELIGIOUS HOUSE: CHICAGO

External: Committee of 76 for '76 in Chicago is shaping up. Clergy Convocation PSU Week 10 claims future for PCE. The Emerging Generation pass out flyers on TM'76 at Beverly Bicentennial parade.

Internal: Open House Cabaret for GRA:Chicago is planned. Spontaneous sports events preview House celebration.

Contradiction: Finding self on point where you decided to be and expecting to have something to stand on. (Wk. 8)

## RELIGIOUS HOUSE: WICHITA

External: Emerging Parish authorization and funding are miracles. Lyons Chamber of Commerce President registers for GRA;Chicago.

Internal: Evening Symbolic Life centers around TIME magazine's Bicentennial edition; Quarter Celebration a time of release as we symbolize doing 'something you've never done before'.

Contradiction: Finding stories to catalyze excitement of old colleagues about GRA:Chicago. (Wk. II)

## RELIGIOUS HOUSE: OMAHA

External: Geneva TM held in Exurban Nebraska. Omaha, Lincoln, Sioux City Metro Council is major happening as many new and old faces spend evening reporting and visioning for future.

Internal: House goes out for an evening together in celebration at Dinner Theatre.

Contradiction: 'Dislocation' received as excuse rather than gift. (Wk.10)

## RELIGIOUS HOUSE: KANSAS CITY

External: In-kind development for TM breaks open with cash and merchandise donations from local merchants totaling over \$700. Shopping center donates its marquee; TM'76 sound truck cruises and amuses and a cross-reference phone blitz of the parish helps to announce the happenings of town meeting.

Internal: House concludes Pekin study with visit to the Chinese exhibit of recent archeological discoveries and is re-impacted with the historical resolve of the people of China.

## RELIGIOUS HOUSE: KANSAS CITY (continued)

Contradiction: Relative to TM'76 --caught between necessity of being catalytic and tendency to be back-seat drivers when procedural questions arise. (Wk. 9)

## RELIGIOUS HOUSE: MINNEAPOLIS

External: Blitz on Capitol Hill secures TM'76 endorsements from three State Congressional delegations. Prepare slide show for presentation at League of Municipalities convention. 3 days spent in booth at Hilton Hotel promoting TM'76.

Internal: Regional Council with representation from every segment of the Movement is a first. Celebrate the return of the Pierces from LENS Trek. Celebrate the marriage of Mary and Lynn Broughten at Ecclesiola.

Contradiction: Going for broke on GRA:Chicago recruitment, while securing 'Yeses' from excited potential TM'76 sponsors. (Wk. II)

## RELIGIOUS HOUSE: ST. LOUIS

External: Colleagues returning to Kansas City House join us in St. Louis for quarter's PCE celebration. PCE moves to recruit GRA:Chicago. Galaxy pastor attends Clergy Consult in Chicago. Contacted Optimist International for TM'76 advocacy. Attend Chicago Area Praesidium.

Internal: House maintenance for Quarter I, better security measures. Emerging Generation preschool room completed.

Contradiction: Maintaining 'professional-consultative' posture in context of revolutionary intent. (Wk. II)

## RELIGIOUS HOUSE: PEORIA

External: Finished proposal for six TMs in Peoria for presentation to ARBA and city council. Two Council members endorse project: one says city might appropriate funds.

Internal: With House fully employed (by common definition), entire Troika nevertheless turns up at lunch on three days and has helpful strategy sessions.

Contradiction: 5th City trip, key event for both TM and Southside social demonstration, blocked by illness of two key contacts sponsoring event. Challenges us to develop more creative breakopen tactics. (Wk.3)

## RELIGIOUS HOUSE: GREEN BAY

External: Received letter from Mayor commending TM'76 and asking for more.

Internal: Local physician and accomplished pianist comes to House Church and leads fantastic sing-a-long with piano. Fr. Robert Rank sent out to six months sabbatical to include GRA:Chicago and Academy. Extended Order family receives contributions from relatives and friends to go on Global Odyssey.

Contradiction: Using the gift of a small House to catalyze the Bi-Metro. (Wk. II)

## RELIGIOUS HOUSE: MILWAUKEE

External: Dinner for TM'76 Advocates in the City of Milwaukee produces an overwhelming response.

Internal: International colleague, Lim Kyung Soon, visits with House for 4 days and addresses everyone with her spin on the movement at collegium.

Contradiction: Fighting temptation to reduce selves to one battle - TM'76. (Wk. II)

## RELIGIOUS HOUSE: INDIANAPOLIS

External: HRM at Louisville spiritizes Church of long-time colleagues. PCE in Indianapolis gets burst of new life as Metro troops gather to study Rahner and work on TM'76. State legislators, Mayor's office, and Governor's office confirm plans to attend TM.

Contradiction: Remembering that evening Prayers and actualizing tactical models depend upon each other. (Wk.7)

**RELIGIOUS HOUSE: CINCINNATI**

External: President of Cincinnati Bell says 'Yes' to TM'76 with kick-off in Walnut Hills, while first gift of \$1,000 comes in. HRM follow-up at 'Little Flower' Parish generates HRM's for future.

Internal: Korean Global colleague explodes our cultural awareness as we sing the Global Language school Song of South Korea.

Contradiction: Trusting the Lord as we build models which will beckon necessary interns. (Wk. II)

**RELIGIOUS HOUSE: DETROIT**

External: TM'76 contacts for Quarter II picking up; evaluation with State Bicentennial officials on Wednesday; work begun on statewide press release for mailing to future TM'76 prospects.

Internal: Wee Irish lass enhances House while in Detroit on Winston Churchill fellowship; planning for Quarter I done in mood of high celebration.

Contradiction: Grasping solidly missional thrust while demon of 'summer good life' pervades. (Wk. II)

**RELIGIOUS HOUSE: CLEVELAND**

External: Hitting GRA:Chicago promotion trail with individual calls and corporate meal celebrations with TM'76 participants, old movement warhorses and university students.

Internal: Baptism of Samuel Joseph Roper at Daily Office by Fr. Ray Holland.

Contradiction: Implementing our well-thought-through Parish miracle strategies in midst of over-balance of activity on other fronts. (Wk. II)

**NEW YORK****RELIGIOUS HOUSE: NEW YORK**

External: GRA:Chicago recruitment goes on but with a new style and tactics. Visiting Bi-Metros reveals new contacts and an overwhelming 'yes' to TM'76.

Internal: House impacted by new life and hope...The birth of David Radford to Joel and Betsy on June 18th and phenomenology of hope at Collegium by Jim Addington which grounded the sociology of our own experience.

Contradiction: Finding the context which will enable fast vocational decisions and release 'Yes' to GRA:Chicago with as much enthusiasm as the 'Yes' to TM'76. (Wk. II)

**RELIGIOUS HOUSE: PITTSBURGH**

External: PCE Pastor Harry Jenkins is sent out to new assignment in Huntington at galaxy meeting, and Clarksburg auxiliary re-affirms its 4 year history in Experiment, deciding to continue as Regional demonstration sign.

Internal: After a weekend of hard planning for Quarter I, we prove that a whiffleball, a downtown park, and 5 people are all you need for a fantastic celebration.

Contradiction: Naming avenues of Regional participation during Quarter I that capitalize on discontinuity image. (Wk. K. II)

**RELIGIOUS HOUSE: ROCHESTER**

External: TM'76 in Albany happens as planned, with 3 members of local sponsoring groups doing 'up front' roles.

Internal: House Church guests outnumber House members. Colleague Ellis Stock creates 5 fantastic songs and surprises us by appearing to sing at morning collegium.

Contradiction: Turning 'Yes, I'm planning to be at GRA:Chicago' into firm registrations. (Wk. II)

**RELIGIOUS HOUSE: RICHMOND**

External: TM'76 thrust expands as sponsorship 'Yeses' emerge in Newport News, Appomattox, and in East Henrico County. East Henrico TM'76 gunner catalyzes sponsorship over phone while lying flat in bed with strained back. House and colleagues journeyed to Washington D'C' Regional Council to celebrate nine town meetings held in Region.

**RELIGIOUS HOUSE: RICHMOND (continued)**

Internal: Ecclesiola experiences evening of sophisticated Southern style, as we begin with mint julips, then journey for grand meal to lobby balcony of Hotel Jefferson, which contains the 'Gone with the Wind' staircase.

Contradiction: Discerning what's really needed when so much is required. (Wk. II)

**RELIGIOUS HOUSE: WASHINGTON**

External: Visit with chairman of City Council by the Committee of '76. Two TM held: I-suburban, I urban. with great news coverage projecting more to come. 2 Councilmen, Metro colleagues, and Bicentennial Chairman sang new song at City Council in Fairfax. Soul singer transforms 'God Bless America' in Midcity TM.

Internal: Began week with great exercise of Fast, as we were joined by 'Angels' 2 from New York, 1 Baltimore, and 2 from Chicago. Anniversaries and birthday celebration galore. Celebrated TM with spontaneous 'Cabaret' with new singing groups: Chloe by 'Dreadful Awfuls', and Love Potion 9, by 'Mop Rocks.'

Contradiction: Creating a story about glories of being one. (Wk. 10)

**RELIGIOUS HOUSE: BALTIMORE**

External: Fantastic Bi-Metro celebration with crab feast, singing, records out of the 40's and many colleagues discovered or revitalized by recent TM'76 activities. GRA:Chicago recruitment tactic of participation in Washington, D.C. town meetings surprises us with several 'yeses'.

Internal: Other World chart beautifully mounted on poster board by Metro colleague and hung in foyer brings new life to sagging decor.

Contradiction: Shifting from practical engagement of many colleagues in 8 Washington, D.C. town meetings to more intense engagement in the Baltimore Bi-Metro. (Wk. II)

**RELIGIOUS HOUSE: PHILADELPHIA**

External: In midst of massive state-wide advocacy push with Kiwanis, United Way, State Bicentennial, and Episcopal Church have first TM'76 consult for sponsors with 25 present.

Internal: House deepens struggle with vocation and modern technology through the book 'Zen and the Art of Motorcycle Maintenance'.

Contradiction: Pushing the cruciality of GRA:Chicago. (Wk. II)

**RELIGIOUS HOUSE: NEWARK**

External: GRA:Chicago recruitment push intensifies as wine and cheese parties are set up, clergy sign up and Bi-Metro farewell party becomes both direct and indirect push.

Internal: Wayside Inn welcomes 2 travelers this week, Scott Stahr from Miami and Claudine Ripley, mother of Richard, from England. House is impacted by Scott's collegium on TM'76.

Contradiction: Locating: Where have all the GRA:Chicago prospects gone? (Wk. II)

**RELIGIOUS HOUSE: BROOKLYN**

External: Old, inactive colleagues spring to new life and register for GRA:Chicago. Bicentennial chairman of New York District Kiwanis is paid a two-hour visit and agrees to arrange TM'76 booth at the District Convention in August.

Internal: Rational decided for redecorating House with theme of Mystery in Mundanity (or, that's the way life is, and it's good.) Regional Council takes boat excursion down Hudson River and up East River with 4 of 6 metros in clear view.

Contradiction: Taking all verbal 'yeses' that are being said and turning them into acts of care. (Wk. II)

**RELIGIOUS HOUSE: HARTFORD**

External: Blue Hills Baptist Church decides to hold HRM Quarter II. New Metro Cadre continues in Greenfield, Mass. Men of House attend Men's Breakfast at Horace Bushnell UCC and prior gives sermon at Sunday A.M. worship. Green Park Day raises a sign of hope as strategic city park is transformed in one day. Metro colleagues and community see new life and leadership emerge. City assigned man to help, all plants donated, plus news coverage.

Internal: House celebration in Board Room of Last National Bank, a restaurant in the old vault of the Connecticut Trust Company.

Contradiction: Sustaining the momentum during Quarter I. (Wk. II)

**RELIGIOUS HOUSE: MANCHESTER**

External: CS-IIIA held after being postponed for two quarters. Two metro clergy teach in Boston PLC.

Internal: Stove finally arrives. Youth invite guest to Guild meeting and House Church. Metro colleague Sister Lucille celebrates last year of Phase II at House Church.

Contradiction: Building corporateness that will guard and bring off the mission. (Wk.9)

**RELIGIOUS HOUSE: BOSTON**

External: Impossible happens as TM'76 with over 200 participants is held in South End after community leadership felt it could never happen. Boston Globe article entitles the day as 'Democracy in Action'.

Internal: Wayside Inn dynamic intensified as steady flow of guests and sojourners push facilities beyond its capacity. Julie Wilson ordained as deacon by New York Conference UMC.

Contradiction: Deciding what happens now that the town meeting has happened... (Wk. II)

**MONTREAL****RELIGIOUS HOUSE: MONTREAL**

External: Frontenac Guild helps Community Branch Bank celebrate its second anniversary with Open House and skits. PCE people are so impacted by recent Guild training, they have requested pedagogical training in French to teach LENS and are developing a growing interest in GRA: Chicago.

Internal: House is delighted with many informal, drop-in visits to the House by PCE leaders requesting consults and methods for dealing with community problems.

Contradiction: Maintaining adequate communications between House and Metro colleagues in face of deep engagement in PCE and CFC work. (Wk. 10)

**RELIGIOUS HOUSE: TORONTO**

External: High Rise Stake meeting - discovered amongst colleagues saying, 'We want to see social demonstration in action', that there were those saying, 'Yes, we'll go to Chicago this summer.'

Internal: Workshop on direction and issues for next two quarters; completion of 'New Castle' gives Region new vision of journey of 'Dislocation'; Metro person does House Church witness.

Contradiction: Releasing passion of interested friends. (Wk. II)

**RELIGIOUS HOUSE: OTTAWA**

External: Ottawa West Guild produces 4 act drama of 1) decision to hold parade and Festival in rain, 2) exciting parade, dignitaries, and others strike up awe on Parish main street to the pealing of church bells, 3) Mayor judges pie-eating contest and meets Ottawa West Muslim Auxiliary, and newly married couple is brought by Capuchin Father to be sent-out by the neighborhood, and 4) Guild holds post-Festival corporate celebration in House garage. Furthest polis penetrated for 1st time. Delightful calls on old Academy Grads.

Internal: Alan Herber sent out to Toronto Religious House and visit by David Woodbury. Nancy Frasier assigned by employer to Day I French lessons for a year. House stunned by House Church witness on Long March and One Great Life by White Father in 28th year of order covenant. (Where were you in 1948?)

Contradiction: Pulling into drydock at end of teaching quarter to scrub barnacles, untie knots, and patch sails, without falling into gap of non-being. (Wk. II)

CARACAS

RELIGIOUS HOUSE: CARACAS

External: Regional Council of 27 including 10 new grads becomes spirit event as it focuses on Resurgence, report to GRA, and reports from cadres in other parts of Latin America. Pilot TM set up for Wk 2 of Quarter I in Los Teques with Consejo Municipal (City Hall.) ITI mailing of 2,500 causes major happening at post office. Rev. George Archer (ITI:Curacao) spends a day with House reporting on work with his congregation and catching up on movement edge.

Internal: House member gets new job offer to work for one of the guardians. 200I story causes indigestion and awe at the same time.

Contradiction: Getting a clear design and image of our strategic thrust for the year. (Wk. II)

GLOBAL CENTRUM  
QUARTER IV 1974 - 75

THE GLOBAL ORDER CENTRUM REPORT  
FOR WEEK 11

BRUSSELS  
BOMBAY  
SINGAPORE  
HONG KONG  
CHICAGO

GLOBAL  
DEVELOPMENT  
CENTRUM

Global Development Band gears up for a heavy Quarter I push for funding ITI's and Social Demonstrations by designing 40 Urban Circuits for July in Chicago; designing enabling decor in Singapore and assigning a special development task force out of GRA:Manila to work for ITI funds in the Philippines. Proposals have been submitted to General Electric (\$20,000) in Chicago and Dow Corning, Lykes Line Agency and the Ambassador Hotel in Hong Kong. Gifts and promises for \$11,125 received this week. Brussels received gift of a boat now docked in Hong Kong Harbor, symbolizing our increased corporateness and coordination and complexification in the task. Contradiction is continuing to plant and harvest at same time.

GLOBAL  
MANAGEMENT  
CENTRUM

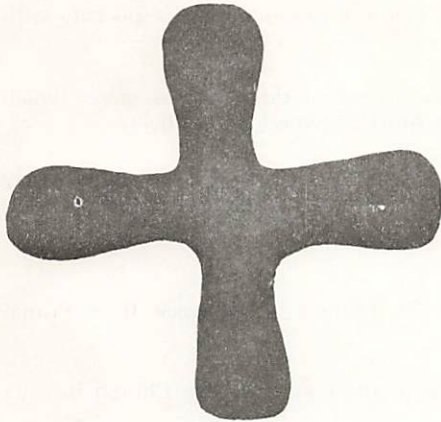
Global Management Centrum marks major victories with in-kind goods which underwrite the functions of printing, food services at Chicago plus \$100,000 worth of computer services; full stipends were paid in Bombay, and books are now available. In Singapore, chaos has been minimized with the placing of all books in one pair of hands. Now the Brussels Centrum turns to processes for legalization and general need is felt for simplified structures and models that keep money flow open to needs of GRA's and ITI's.

GLOBAL  
OPERATIONS  
CENTRUM

1975-76 begins to take priority in Centrum Band's planning and brooding as models are created to link PCE and Development circuits with teaching schedules in Bombay. The catalytic role of the Operations Centrum is seen as Seal Beach Town Meeting in California boasts the largest number to date, making Quarter IV the largest impact quarter. Letter writing proves an effective recruitment and nurture tool in Hong Kong and Brussels. Operation 'Turn-On' in Singapore produces guest night and Open House and promises of Metro Cadres. ITI enablement in Hong Kong goes on despite many practical blocks. Contradiction is building long-range models while dealing with immediate practices.

GLOBAL  
RESEARCH  
CENTRUM

Global Research Centrum continues to focus on Town Meeting and PCE in formerly 'discontinuous quarter'. Town Meetings point to possibilities galore across Europe and Rural America. Chicago Centrum mailed the PCE Quarter I Manual to all Houses. GRA:Manila rejoices in the presence of Eke Dharmaputra, ITI:69 and newly elected President of his denomination in Java, and announces the successful completion of the first week of the Social Methods School. The challenge lies in discerning the spirit edge and catalysing from afar.



But I will remember the covenant I made with you when you were young, and I will establish with you a covenant which shall last forever.

Ezekiel 16:61

## LONDON

## RELIGIOUS HOUSE: LONDON

External: HRM consult for Canterbury colleagues preparing event for ancient Methodist village circuit week of daily visits and workshops with people going to GRA:Chicago.

Internal: House mobilizes for second jobs and 5,600 circulars get door to door delivery while youth intensify preparation for exams.

Contradiction: Keeping pace with responding to the many changing faces of Europe. (Wk. 7)

## RELIGIOUS HOUSE: GLASGOW

External: Sent out mailings to Region to invite to PCE PSU week 11, Europe '75 and last minute call for GRA:Chicago. Another mailing invites participation of Region in third Fast/Feast of year. Edinburgh Cadre builds week by week plan for Quarter II and recent clergy grad asks them to help him build local church cadre.

Internal: Angkor Wat Ecclesiola a turning point as a few Regional colleagues see themselves as 'regulars', bringing their beer steins for Wittenburg next week. The celebrational dynamic spins as House attends Galloway's end of term party, Matt Hockley completes year of school in Glasgow, and further Global Panchayat Trek reports fill us with visions of social demonstration.

Contradiction: Making sure everyone has a great summer especially key clergy families who are keeping distance from summer programs. (Wk. 12)

## RELIGIOUS HOUSE: BRISTOL

External: Week of focusing through and action on Europe 75 and next year of Social Demonstration through Global Panchayat Trek.

Internal: Economic intensification project continues with addition of paper route. Fantastic evening of depth reflection with Metro Cadre prior as late night celebration is catalyzed with home-made wine and cheese.

Contradiction: Maintaining total missional thrust in midst of ongoing economic intensification. (Wk. II)

## RELIGIOUS HOUSE: MANCHESTER

External: Core continues to mushroom as end of teaching quarter reveals troops have doubled. Phoning discloses that 12 out of 13 GRA:Chicago participants already have their visas.

Internal: Welcome back Stan Gibson from extended development trip. Experience abounding as we receive gift of car, and in-kind steak for House Church.

## RELIGIOUS HOUSE: MANCHESTER (continued)

Contradiction: Creating a time design that will enable whole House to participate in symbolic life and planning for Quarter I. (Wk. 12)

## PARIS

## RELIGIOUS HOUSE: PARIS

External: Europe '75 recruitment workshop explodes new possibilities that we had not imagined, while circuits in Marseilles and Rennes Metros unearth surprising Religious Order networks, especially with Franciscans and Dominicans.

Internal: Grad of recent course lends us car for summer. House attends wedding of two grads, which spans three continents: SEAPAC (her), Europe (him), and North America (where they'll live).

Contradiction: Building longer range models as House remodeling job of recent weeks is suddenly inadequate and we find space again a crucial issue with many guests and possible new intern in July. (Wk. 12)

## RELIGIOUS HOUSE: ROME

External: PLC followup takes us to Assisi and the spirit of St. Francis fills a week II of Primal Community research.

Internal: Colleague Wienus Roeten on retreat from New Orleans presides at House Church bearing fabulous artifacts of scorching avatar, having also visited Assisi.

Contradiction: Permeation as symbol of globality in conflict with local missional pressure. (Wk. II)

## LAGOS

## RELIGIOUS HOUSE: LAGOS

External: Forty-four doctors, nurses, tutors, and other health workers from four Regions create proposals for catalysing 'whole man' care in community health workshop.

Internal: Experience diversity of Nigeria as we travel north across the Niger River into Hausaland and Fulaniland.

Contradiction: Picking up threads of ITI recruitment now that we have received word that it is on. (Wk. 12)

## BRUSSELS

## GLOBAL CENTRUM: BRUSSELS

External: Major funding in Spain and Urban Circuit in Amsterdam intensifies Development.

Internal: Discover subtle audacity of Rahner in Thursday evening study.

Contradiction: Keeping Europe '75 preparation, Management intensification and Development intensification all spinning full force. (Wk. 12)

## RELIGIOUS HOUSE: BRUSSELS

External: First European celebration with TM'76 as American Bicentennial occasion. Belgians present write stunning New Story as forty-four test town meeting for Europe with Belgian baron, American managers, and U.S. Embassy represented in test of complete format, (including Kentucky Fried Chicken in-kind of course.)

Internal: Transformed House with decor and in-kind activity, (19 'yeses' out of 20 requests.)

Contradiction: Moving blind pessimism and simple enthusiasm for TM'76 into pure strategy for Belgian LCC'77. (Wk. 12)

## RELIGIOUS HOUSE: AMSTERDAM

External: Two 'yeses' for Europe '75. Urban Circuit Development goals exceeded as new guardian possibilites uncovered and others journeyed toward being the movement. Professor Dr. H. Berkhof of Netherlands Reformed Church lends name to ITI Amsteerdam recruitment effort.

Internal: Internal life construct created and directed toward task of building the movement. Wayside Inn hosts Tom Grayshock during one week Urban Circuit and guest from Alaska here to witness Amsterdam's 700th birthday. Discover that RH13 has a surplus at the end of Quarter IV.

## RELIGIOUS HOUSE:AMSTERDAM (continued)

Contradiction: Structuring ourselves for recruitment in the outer Metros. (Wk. 12)

## FRANKFURT RELIGIOUS HOUSE: FRANKFURT

External: Europe'75 recruitment gets strong start as two RS-I grads say 'yes' and want to bring two PCE core has three 'yesses' with three more considering.

Internal: Searching for jobs related to the PCE mission has the House excited about next year.

Contradiction: Pushing our vision into tactical action rather than just speculating on possibilities. (Wk. 12)

## RELIGIOUS HOUSE: BERLIN

External: Off on the Europe'75 recruitment push with mailing to colleagues in Berlin. Response of colleagues attending Kirchentag shows great promise for creating next year.

Internal: House impacted anew with secular prayer conversation and closes the week with outdoor picnic celebration.

Contradiction: Thinking big enough while planning Quarter I and II to encompass radical possibilities present. (Wk. II)

## KINSHASA RELIGIOUS HOUSE:LUSAKA

External: Letter from Roman Catholic Archbishop in Lusaka 'Welcoming the idea of another ITI' and sending four registrations.

Internal: Half-day teaching positions open up private tutoring as lucrative 'double-job' at \$12 per hour.

Contradiction: Finding ways to release people to take advantage of opportunities for further training to answer the unfulfilled yearnings uncovered in recent ITI'74 grad visits in Malawi and Zambia. (Wk. 12)

## NAIROBI RELIGIOUS HOUSE: NAIROBI

External: Visits with hierarchy for ITI draw good support and open other doors for training programmes.

Internal: Send-out Nairobi House Intern David Sithole to GRA:Chicago and Academy.

Contradiction: Locating free ITI facility as time narrows. (Wk. 12)

## BOMBAY GLOBAL CENTRUM: BOMBAY

External: GRA completed in Hyderabad. ITI materials received and cleared. Study plan completed.

Internal: Send out P.T. James and T. Patterson to Calcutta, and receive Judy Hess for ITI.

Contradiction: Operating images needed to manifest globality and oneness of Spirit Movement. (Wk.5)

## RELIGIOUS HOUSE: BOMBAY

External: Three ITI complete exciting first week with total of 174 attending. Reports persist of emerging pedagogical giants among both old and new participants.

Internal: Preparations for arrival of Panchayat teams and return of Bishop Joshi create profound anticipations.

Contradiction: Planning Quarter I in middle of three ITIs and the Global Priors meeting. (WK.8)

## DELHI RELIGIOUS HOUSE: DELHI

External: Order Council in Bombay with 60 plus present symbolizes the beginning of a new era in India as indicative battleplanning for Sub-Asia is finalized and social demonstration miracles are charted over the next 26 weeks.

**RELIGIOUS HOUSE: DELHI (continued)**

Internal: House members fan out across India for a week of discontinuity.

Contradiction: Engaging in building the tactics that will guarantee Quarter I launching without having our energies consumed by heat, dust storms, House resettlement, ITP, and GRA:Chicago preparation. (Wk. 12)

**MADRAS RELIGIOUS HOUSE: HYDERABAD**

External: Whole House attends Order Council including Guildsman Mally Balm who spins Council into Practical Era of Vision of Social Demonstration with report on Gunfoundry Miracle Day.

Internal: Week of discontinuity for whole Houses concludes with arrival of Kiran Ruth, one month old adopted Indian daughter of John and Robyn Hutchinson.

Contradiction: Saddling up while Guild is chaffing at the bit. (Wk. II)

**CALCUTTA RELIGIOUS HOUSE: CALCUTTA**

External: Calcutta ITI begins with 63 around table (45 new participants) including those from Area Delhi. Bishops College, the ITI faculty, proves to be strong built in authorization.

Internal: All House members except one assigned to the continental ITIs. House moves to Bishops leaving the question of where to go after the ITI utterly open.

Contradiction: Building models which use ITI as a tool in global strategy as opposed to seeing the ITI as an end in itself. (Wk. 7)

**SINGAPORE GLOBAL CENTRUM: SINGAPORE**

External: Area Council builds 10 year timeline which gives visionary meaning to the Guild, LENS followup, and ITI/GRA recruitment. Madras RSI comes off with 23 participants. ITI/GRA registrations rise to 14 paid.

Internal: Birthday celebration of wife of intending intern family is key event for whole House as they talk about Christ event of RSI for whole family. Receive first Hindu Guild colleague, Shanta Ram, as sojourner.

Contradiction: Deciding to 'win' hands down in a month! (Wk. II)

**RELIGIOUS HOUSE: SINGAPORE**

External: 1 House member in GRA:Manila as faculty, 2 as participants. 4 Regional participants attending from New Town pre-guild. House focus on development of Metro Cadres in all 6 Metros, plus the Jahore Metro of the Kuala Lumpur Region. Exciting responses coming from all visits.

Internal: House invites Centrum Nexus: for joint House Church to celebrate 2 wedding anniversaries and 1 birthday. Having 2 people in-House, one for 3 week local school holiday and one for 3 month school holiday, gets Metro Cadre Trek launched in full gear.

Contradiction: Finding free facility and other ways to enable assignment of fewer people to permeation to allow sufficient work-in staff to insure that the Metro Cadre intensification continues through the year. (Wk. II)

**RELIGIOUS HOUSE: KUALA LUMPUR**

External: Treks continue in Kuala Lumpur, Seremban and Kuantan to activate 'operation turn on'. First ITI 'paid-in-full' registration, call for 200 more brochures from Medan, and Regional colleagues - grad and non-grad - put new life into first decor night miracle.

Internal: International School year completed releasing Gail to full time ITI preparation. Emerging Generation now full strength in regular House enablement and loving it.

Contradiction: Systematic follow-up of ITI 'considering' which will bring in registrations with money by end of week. (Wk. 12)

## RELIGIOUS HOUSE: JAKARTA

External: The 'Great Visitation' gets underway with visits and ecclesiolas in Semarang and Jogjakarta Metros plus Great Visitation team sent for 2 weeks to Manado Region, with first visits in Ambon and Ujung Pandang Metros set for this week.

Internal: Breakfast for Mark and Sarah Phillips marks the week as time of transition.

Contradiction: Discerning what is next strategic move in midst of many options. (Wk. II)

## HONG KONG GLOBAL CENTRUM: HONG KONG

External: ITI materials for Sydney and Kuala Lumpur leave by boat. Jon Jenkins sent to GRA:Manila. Centrum participates in Hong Kong Regional Council.

Internal: Hosting dynamic explodes as Anne Wood, Ed and Mimi Shinn, and Ken Ellison stop-over at Centrum. Extensive report on Oombulgurri gives new grist for development and authorization calling.

Contradiction: Systematic nurture of authorization channels for developing funds. (Wk. 10)

## RELIGIOUS HOUSE: HONG KONG

External: An ITI decor party, attended by Regional colleagues highlights the week in the midst of ITI development push.

Internal: Taurence Cheung, former soldier of Chinese army visits House while week II readings from Hesse's 'The War Goes On' give spirit push to House.

Contradiction: Pushing through remaining scattered ITI possibilities to a definite form and concrete tactics. (Wk. 12)

## RELIGIOUS HOUSE: KAOHSIUNG

External: Re-tooling for Quarter I in midst of finishing touches on ITI recruitment. Two extended "consultations" with local pastors on movement issues reach new depth and reveal incredible collegiality.

Internal: Journey to Tainan to celebrate Dragon Boat Festival is highlight of week focused heavily on final exams--we are all either teachers or students.

Contradiction: How to hold together both 'Low Profile' and 'Work like Hell' images. (Wk. II)

## RELIGIOUS HOUSE: MANILA

External: Participant brings first 100 peso contribution beyond registration fee in participant corporate push to raise total travel cost for Manila delegates to ITI:Hong Kong.

Internal: Send-out John Patterson after two week development trek. Small number left in House during GRA:Manila experience interior shift.

Contradiction: Orchestrating eagerness to engage and overwhelming demand in such a way as to get 70 people to Hong Kong in two weeks. (Wk. 12)

## RELIGIOUS HOUSE: TAIPEI

External: Week of focusing on ITI with planning ITI send-out, mailing ITI orientation meeting letters, and exit matters.

Internal: Johnsons sent out to GRA:Chicago and Dillingers to ITI:Hong Kong. Peter Wang sojourns.

Contradiction: Shifting style to relaxed intensification of summer. (Wk. 12)

## RELIGIOUS HOUSE: CEBU

External: Pre-Guild training held in House with 30 people singing and learning in the rain (tropical style rain). Continue firming up ITI participants. Minischool teachers training during Independence Day holiday.

## RELIGIOUS HOUSE: CIBU (continued)

Internal: House impacted with Ecclesiola study of Rome. Office ordered for missional effectiveness. Work begins on intern/sojourn context sheet for prospective resident trainees.

Contradiction: Raising necessary funds for all ITI participants to attend in midst of so many necessary deeds. (Wk. 12)

## RELIGIOUS HOUSE: DAVAO

External: House present at Investiture of two priests, both ITI grads, with rites done by the Bishop, a PLC grad.

Internal: House member operated on by the husband of LENS grad. Share in celebration of passing-the-bar by brother of permeation colleague.

Contradiction: Remaining nonchalant in eye of hurricane. (Wk. 12)

## TOKYO

## RELIGIOUS HOUSE: TOKYO

External: We formally celebrate our move to Shibuya 5 with Open House in conjunction with Regional Council at House. Great mobile decor is built by colleagues to illustrate and celebrate events of past 3 quarters.

Internal: Summer Ecclesiola model is built with emphasis on Movement common memory. Paul Evans initiates model by great study on Bonhoeffer, grounding us afresh in tension and ambiguity of glorious life of spirit man.

Contradiction: Getting summer operating machinery off the drawing board so that gap is closed in external mission. (Wk. II)

## RELIGIOUS HOUSE: SEOUL

External: A trip to Jeju secures ITI site at the New Community Movement Training Center. Eight people agree to be ITI sponsors, including Gov. Lee Seung Tail, who will be Honorary Chairman. The Venerable Dr. Seo Kyung Bo, President of Il Bong Zen Buddhist Association also agrees to be sponsor. The International School of the Sacred Heart celebrates the end of school with graduation, parties and faculty luncheon. Send-out Rev. Kim Chong Man and Rev. Lee Jae Joon to GRA:Manila.

Internal: House welcomes the Rev. Kang Shin Chul family with their 2 children as sojourners. Wk II PSU draws together past year with the writing of the International School of the Sacred Heart Annual Report.

Contradiction: Discovering the overwhelming gap between the established Church and the established social structures as we turn full face to serve the world. (Wk. 12)

## RELIGIOUS HOUSE: FUKUOKA

External: Over 80 guests attend Sunday afternoon 'Open House'. Mix of secular and religious, grad and non-grad symbolize presence of both Region and Parish. The many gifts to House include a sum of money from Passionist Fathers.

Internal: Week of all out work to decor and prepare for 'Open House' Event catalyzes a team of Japanese women who procure necessary materials, gunned through kitchen preparations and left House elegantly decorated with traditional Japanese flower arrangements.

Contradiction: Objectifying intuitional miracles onto a time-line. (WK. II)

## RELIGIOUS HOUSE: OSAKA

External: Pre-galaxy meets in new House for first time and corporately writes sermon to be delivered in exchange services at Sakai Roman Catholic Church and Shimanonchi Church. Internal: We set House with furniture and carpets and begin to discover gift of new location as we host English classes and galaxy meeting.

Contradiction: Building momentum for re-engaging beyond limited arena of setting-up new facility. (WK. II)

## RELIGIOUS HOUSE: SENDAI

External: Thursday nights used for demonstrating methods useful to various groups. This week great success with story, art form, and 'TV' presentation.

Internal: House implements discontinuous month's 'special guest night' with Fukushima University professor and his wife, and discovers new possibilities in working with educators.

Contradiction: Holding needed first priority of ITI recruitment and development while wanting to create great visions of the future. (Wk. 12)

## SYDNEY

## RELIGIOUS HOUSE: SYDNEY

External: Send five participants and two faculty to GRA:Manila. Donnelly and Banks come in for development and we beat our target for this week. Completion of Inner City Study Group. Regional planning done by House and PCE.

Internal: Rahner study in Collegium impacts House and we again experience ourselves as Wayside Inn as colleagues and guests come in.

Contradiction: Cementing connection between existing programmatic life of Region and fulfilling ITI recruitment so that last minute push on recruitment builds new resolve in long time movement colleagues and releases passion to recruit brand new prospects. (Wk. 11)

## RELIGIOUS HOUSE:PERTH

External: PCE visits to early residents (turn of century), city councilman, state representative, and others result in great enthusiasm for upcoming community festival. Arrangements made to ship boar and 4 sows (in-kind) to Oombulgurri.

Internal: A stage play at Patch Theatre excites us with future role of drama in PCE. Brian Robins and Richard Pether are sent out to GRA: Manila.

Contradiction: Finding key that transforms great excitement about future into life expenditure that turns dreams into reality. (Wk. 10)

## RELIGIOUS HOUSE: DARWIN

External: Loomis appointed Executive Officer of Tourist Association and ICA named development consultants. Intense political and bureaucratic battle for positions of authority and jobs in reconstruction finds authorization weak and occasions visits to key supporters.

Internal: Three-week house hunt turns up one facility ready to live in. Exploring all avenues of finance reveals few possibilities with five weeks till vacate hour.

Contradiction: Cruciality and interrelationship of moving hard on both local authorization and demonstration programs stretches us thin. (WK.8)

## RELIGIOUS HOUSE: OOMBULGURRI

External: Possibility of feeding community takes solid form as first 50 of 500 chickens arrive and 'chook' yard and incubators are built; Community vegetable garden of beef. In midst of hard work community celebrates with a barbeque, freshly painted store and noon-time collegiums.

Internal: Corporate power turned to proposal writing, miracle planning and implementation intensifies auxiliary presence in community.

Contradiction: Dealing with too little equipment, preparation, and troops so that some miracles do not turn into work projects rather than great revelations of new possibility. (Wk. II)

## RELIGIOUS HOUSE: ADELAIDE

External: Regional Methods School involves 12 adults in preliminary research on Community Forum concept in Australia. An awe-filled encounter with Australian heritage is experienced. First and last minute context on GRA: Manila results in radical decision of Parish colleague, Judy Lawrie, to attend with only 3 days notice.

**RELIGIOUS HOUSE ADELAIDE (continued)**

Internal: House experiences its Regional context with the presence of Phil Kitto from Whyalla and Yvonne Trelevan from Broken Hill, at Regional Methods School Adelaide colleague Jim Mayfield stops by for House Church.

Contradiction: Building the spider's web of context and motivity between large number of Movement opportunities and large number of grads and colleagues. (Wk. 10)

**RELIGIOUS HOUSE: MELBOURNE**

External: Focus on ITI in creating decor and in visits. Preparation for Metro indicative battleplanning and Quarter I Courses.

Internal: Telford completes week-long circuit embracing Adelaide Guardians meeting, Sydney Prior's meeting and Canberra ITI push. Public holiday time effectively used in planning and execution of kitchen and collegium room miracles.

Contradiction: Locating the pushers when the snowball is already rolling. (Wk. 12)

**RELIGIOUS HOUSE: CANBERRA**

External: Metro Council, with 34 participants, signals launching of new Metro Cadre. This is followed up by development trek for ITI on following day.

Internal: House hosts Donnelly from Singapore Centrum for Metro trek and development and key lunch with old colleagues from Kuala Lumpur, Dr. Robyn and Bronwyn Pryor.

Contradiction: Getting breakloose of Metro Cadre into practical 'do-able' tactics. (Wk. 11)

**RELIGIOUS HOUSE: BRISBANE**

External: Two treks to Rockhampton Metro in one week symbolize decision to care for whole Region.

Internal: Dispersal of House through permeation assignment, Metro trek, and GRA:Manila leaves two at House, who host Geoff Oakley passing through.

Contradiction: Following-up tactics to turn interest in ITI to registrations and presence in 3 weeks time. (Wk. 12)

SUVA

**RELIGIOUS HOUSE: MAJURO**

External: Imagination of whole community seized by preparations for and departure of the Island Survey Trip. As the ship, 'Robert DeBrum', pulls out of port with 30 participants on board, a 9 foot sign unfurls on the side announcing, 'Irujimmon an Ailing Kein' ('Surprising Awakement for All the Islands')

Internal: Arrival of Joseph Mathews and Pat Moriarty and the naming of the Eight Social Demonstrations occasions deep fear and fascination. Rev. Kang Byong Hoon impacts House with his descriptions of the plans for the projects, in particular Jeju Do, Korea, and with the reality of what the future requires of us.

Contradiction: Avoiding the temptation to scramble to the safety of the 'routine' (Wk. 12)

**RELIGIOUS HOUSE: APIA**

External: First combined service with English speaking and Samoan congregations came off during week of Prayer for Christian Unity.

Internal: Getting to know a great couple working here to set-up a school for the blind in Apia.

Contradiction: Using and not getting caught up in the inefficiencies of the Pacific's communication and transportation systems. (Wk. 12)

SAN  
FRANCISCO**RELIGIOUS HOUSE: SAN FRANCISCO**

External: First car sent-off to GRA:Chicago. Two staff sent to Seal Beach TM'76 - 412 participants recover in our own imagination the ready servant force of elders in North America. PCE battleplanning emphasized TM'76 work.

**RELIGIOUS HOUSE: SAN FRANCISCO (continued)**

Internal: The Wayside Inn dynamic starts for four month duration as San Francisco becomes way station for those going to and from GRA:Chicago and other Houses. The first 'mini-quarter' begins with great expectations. Received Laura Westbrook from Korea for Quarter I.

Contradiction: Building concrete tactics to get pilot TM'76 going for Quarter II. (Wk. 12)

**RELIGIOUS HOUSE: SAN JOSE**

External: TM'76 nurture continues in Watsonville as AAUW representatives and two House people meet with Mayor, City Manager and President of Chamber of Commerce. Mayor promises to attend and welcome participants.

Internal: House planning for Quarter I is completed in one day; relaxed style at key downtown church is impacting; House celebrates baptism of Elizabeth Ann Reese by her father at Palo Alto First Christian Church.

Contradiction: Building a mosaic of Quarter I events so priorities stand out clearly. (Wk. 12)

**RELIGIOUS HOUSE: SACRAMENTO**

External: Guild Core evaluates TM'76 and creates global manual.

Internal: House PSU plans Quarter I. Students arrive for summer work camp - prepare by 'in-kinding', two House Youth return, and many global arrivals.

Contradiction: Developing the method to articulate Quarter I Assignments. (Wk. 12)

**RELIGIOUS HOUSE: SEATTLE**

External: Five team blitz of Region made to invite colleagues to GRA:Chicago participation bears new possibilities. Chicago development team exceed Regional goal.

Internal: New job secured by Sharon Fisher, Bruce Robertson receives new position at Bank as Management Development Programmer. Kathy Fenton graduates from high school.

Contradiction: Deciding which plates to spin during Quarter I and which to glue to the sticky end. (Wk. II)

**RELIGIOUS HOUSE: LOS ANGELES**

External: Participation of 412, primarily elders, at Seal Beach-Leisure World TM'76 is concrete sign to Region of possibilities and demands of the future, particularly the role of Reverend Franklin Clutz and others at Leisure World as symbols to us about what it means to be community.

Internal: Time of reflection and concrete planning in the Region as Quarter I approaches, we send-out Deines' and colleagues to GRA:Chicago, and build models for coming Quarter.

Contradiction: Knowing new demands and required shifts, deciding to actualize those in the necessary concrete forms now, and to be the trusting catalyst. (Wk. 12)

**RELIGIOUS HOUSE: PHOENIX**

External: Statewide Demonstration TM'76 in Coolidge, Arizona, sponsored by Coolidge Jaycees, 150 turn out. Afterwards watched the CBS News coverage along with evaluation and tour of city buildings and steak dinner.

Internal: Send-out Mark and John Poole to GRA:Chicago and Angela and Aaron Boone to camp.

Contradiction: Cutting across the Phoenix summer mindset of 'siesta time' with temperatures over 105. (Wk. 12)

**RELIGIOUS HOUSE: SALT LAKE CITY**

External: Metro-led indicative battleplanning weekend calls for breakthrough in warboard methodology that enhances sense of vision and sense of flow. Conversation with Latter-Day Saints leadership reveals good prospects for a nod to TM'76 at their June quarterly conference.

## RELIGIOUS HOUSE: SALT LAKE CITY (continued)

Internal: Key clergy from Parish leads House Church as first among equals goes to GRA:Chicago. House sensing need for a more corporate responsibility for income model. Excitement rising over GRA:Chicago.

Contradiction: Caring corporately for House internal life as second jobs impinge on usual corporate structures. (Wk. 12)

## RELIGIOUS HOUSE: BILLINGS

External: 'On the Road' two weeks, 1750 miles, TM'76 trek highlighted by Southside Billings Guildsman pitching College of Great Falls faculty gathering and cinching sponsorship. Hand deliver invitations to 300 businessmen for Businessmen's Luncheon in Parish.

Internal: House experiences many overnight guests including the Marshalls, Jean Blackledge's parents, Rapid City House members, Don Hopkins family and Guilders of Southside. Regional event pronounces absolution on past year, and projects TM'76 and PCE as corporate endeavors.

Contradiction: Staving off the DREAD that threatens to overwhelm as picture of Quarter I (staff at minimum, community leaders on vacation, 24 TM'76 in Quarter II) comes into focus. (Wk. 12)

## RELIGIOUS HOUSE: DENVER

External: Intensive planning for Quarter I engagement in Church, (Demonstrating Life Methods), TM'76, (Enlivening Local Policy), and Parish, (Glorifying Particular Community), signals historic shift in intensity of Quarter I engagement. Second edition of City Park West 'Town Crier' off the presses. Metro Task Force works through Imaginal Education at weekly breakfasts in preparation for Quarter II Church Education Consults.

Internal: House experiences catalytic role in 'on behalf of' Parish battleplanning for Quarter I activation of miracles. Larry Ware completes high school. Denise Daniels announces decision to sojourn Quarter I and intern beginning Quarter II. First two waves of summer travelers pass through.

Contradiction: Solving the critical need for Day I troop time with work of parish accelerating. (Wk. 12)

## RELIGIOUS HOUSE: RAPID CITY

External: Outdoor Daily Office on Suicide Point begins the Regional Council in Billings which ends with planning and a new grid for the Region and TM'76.

Internal: Two children of June Wright finish two weeks of sojourning and join the Emerging Generation Trek to Yellowstone Park.

Contradiction: Building the training quarter and planning for Quarter I in the midst of TM'76 blues and summer troop dispersal. (Wk. 12)

## EDMONTON

## RELIGIOUS HOUSE: EDMONTON

External: Edmonton Area CFC office hums along setting up appointments and producing Area news report. John and Gerta Hayenburg covenant to regular House Church, Ecclesiola attendance, and Week II assignments during Quarter I.

Internal: House sends-out Caroline Marley to GRA:Chicago. David Flowers lands new, improved job, and House holds picnic in Collegium room during rain storm.

Contradiction: Marking trees for a road through the Canadian forests with large decisions resting on corporate wisdom of one or two man teams. (Wk. 12)

## RELIGIOUS HOUSE: ANCHORAGE

External: Regional directors of National Bicentennial from Idaho, Washington, and Alaska meet in Anchorage and invite us to bring them up to date on TM'76. (Administrator from Washington, D.C. also present) Quarter I visitation underway and Marcia Buck leaves for GRA:Chicago.

Internal: House send-out Paul Gruner, Michael Benson, Kim Gruner and Anita Morrill to their assigned Quarter I structures and Fred Gruner back to North Slope. House receives 11 in-kind salmon and we continue planning for Quarter I. Children awaken at 12 midnight for Summer Solstice celebration.

**RELIGIOUS HOUSE: ANCHORAGE (continued)**

Contradiction: Finding ways to combat heavy feet and spirits surrounded by black clouds in the Land of the Midnight Sun when the Lord provides light and opportunity almost 24 hours a day. (Wk. 12)

**RELIGIOUS HOUSE: SASKATOON**

External: Yorktown mayor persuaded to set up group advocacy presentation for CFC.

Internal: Longer days, new Quarter I House rhythm, and decisions to attend GRA:Chicago propel House into new quarter in grand style.

Contradiction: Making Quarter I come alive when key people are on holidays. (Wk. 12)

**RELIGIOUS HOUSE: WINNIPEG**

External: Recruitment continues with wine and cheese party, luncheons, and a funding model to help people get off to GRA:Chicago to look into CFC. Second issue of 'Centennial 5 Speaks Out' off to printers.

Internal: Three-fourths of House gone as we disperse to Global Odyssey VII, England, camp, and GRA:Chicago. Remainder left to hold fort.

Contradiction: Developing new story about GRA:Chicago and summer assignments to overcome story of anticipation that allows less than 100% passion in the here and now. (Wk. 12)

**HOUSTON****RELIGIOUS HOUSE: HOUSTON**

External: Exxon USA and Prudential calls indicate probable TM'76 sponsorship; Houston Bicentennial Commission endorsement received; plans finalized for July 25-27 TM'76 weekend for 500 Key Club youth.

Internal: Economic push nets 13 preaching invitations for Quarter I.

Contradiction: With House troops diminishing rapidly in favor of GRA:Chicago, the catalytic leadership indicative gets clearer daily. (Wk. II)

**RELIGIOUS HOUSE: AMARILLO**

External: Amarillo TM'76 comes off with 140 present including Mayor John Drummond and the media. A comment from one workshop leader, 'This was the best practice session we've had, now we know what it's all about'.

Internal: Experiencing 'Wiley Coyote' dynamic relative to GRA:Chicago; four Emerging Generation sent-out to camp; visit during flooding storm finds 'natural' colleague in TM'76 participant; House transformed from TM'76 depository to Spirit Inn.

Contradiction: Discovering how it is that the Movement comes off as catalyst instead of leadership. (Wk. 12)

**RELIGIOUS HOUSE: SAN ANTONIO**

External: For first time, we are able to offer RSI as service to local churchmen through clergy recruiters. New struggle with parish continues with Parish tour to proto-parished. Imaginal Education workshop follow-up brings the Roman Catholic parish priest to House.

Internal: Last two assigned permeators land jobs in psychiatrist's office and total employment secured brings us within 'shootin-range' by end of August.

Contradiction: Wearing ICA shoe on one foot; E.I. shoe on the other and keeping best foot forward. (Wk.8)

**RELIGIOUS HOUSE: OKLAHOMA CITY**

External: Recruit 40 people from Bi-Metro in one night to hear Global Trek Report. Guild enables Central City 5 Festival with global cuisine and in-kind donations.

Internal: Marianna Bailey returns from Global Trek and reports on future of Social Demonstration and TM'76.

**RELIGIOUS HOUSE: OKLAHOMA CITY**

Contradiction: Grounding the 'yesses' for GRA:Chicago with money. (Wk. 12)

**RELIGIOUS HOUSE: DALLAS**

External: Demonstration TM'76 held with 131 participants in White Rock with enablement handled 100% by sponsoring Kiwanians. Athens cadre makes TM'76 their project. Locally, 3,000 packets collated for distribution in parish Block Club initiation.

Internal: Whole House feasts in Filipino meal prepared by the Vergara family. Guest room is full as Marion Vergara is welcomed for the summer. House Church continues to be an event for parish and metro colleagues.

Contradiction: Discovering how to make catalytic use of the bursting human potential we find on our hands. (Wk. 12)

**RELIGIOUS HOUSE: TULSA**

External: Calling of colleagues for GRA:Chicago continues.

Internal: Heavy traffic through House: Phyllis Slicker returns, Ann and Tabitha Stewart sent-out to GRA:Chicago, and Rory Gowers, visiting from Australia en route to GRA:Chicago, holds collegium on Oombulguri and makes recruitment calls. Job picture changes again.

Contradiction: Building story to adequately keep us in being as we concretize and make shift into 'the summer'. (Wk. 12)

**RELIGIOUS HOUSE: NEW ORLEANS**

External: House travels to Baton Rouge in preparation of the initiation of the 4-year Social Demonstration timeline. PCC attended by galaxy and Regional colleagues gives direction to ready colleagues.

Internal: Colleagues continue to participate with House in Ecclesiola as both are impacted by 'New Castle' study.

Contradiction: Moving 'stamped past approved', (Is it really time to move into the future?)(Wk. 10)

**RELIGIOUS HOUSE: MEMPHIS**

External: Pilot TM'76 for the Region held in Nashville with 200 participants. Regional Council with 5 Metros represented, schedules TM'76 forays and paint jobs for the House.

Internal: Wayside Inn utilized as Sherwood Shanklin and 5 youths stop on way to Chicago. Send-out Frank Powell to pick onions (with the youth camp) in California. House celebrates receiving of intern Lynney Arber and the selling of Beard's house in three days - a garage sale has become indicative as the garage will hold contents of one 24 foot truck, but not of two.

Contradiction: Finding ways to hold the tension between intentionality and discontinuity in the sweltering summer months. (Wk. 12)

**RELIGIOUS HOUSE: ATLANTA**

External: TM'76 booth at Kiwanis International Convention is great event for promotion.

Internal: Hosting Christina Clark, John Rossman, and Joe Pierce for week during Kiwanis International Convention brings exciting reports on GRA:Chicago preparation. Shift to GRA:Chicago type breakfast is great event as House experiences new demands on old images of corporateness.

Contradiction: Re-imagining shifts in demands of task as grand possibilities rather than as burdens. (Wk. 12)

**RELIGIOUS HOUSE: MIAMI**

External: Guardian Scott Stahr flies team to Gainesville for luncheon with Kiwanis Club and Chamber of Commerce members.

Internal: Sent children and 1st prior to camp and Chicago. Miami Region celebrates life and death of Malcolm Walters in Tampa, father of George Walters.

**RELIGIOUS HOUSE:MIAMI (continued)**

**Contradiction:** Getting the car counters down before traffic has passed. (Now that we've catalyzed everyone, they won't wait for us.) (Wk. 12)

**RELIGIOUS HOUSE:CHARLOTTE**

**External:** GRA:Chicago visitation blitz takes House to four corners of the Carolinas. Guardian colleague is hostess of clergy luncheon at House with clergy colleague leading meeting. Guests from Charleston and other cities are great occasion of collegiality.

**Internal:** Send-out Wes Kersh to GRA:Chicago preparation Jon Rossman, sent-out to Kiwanis International Convention in Atlanta, comes back with great report and many contacts to follow-up in the Carolinas. Two job offers in one week promise full employment soon, (one a signal job with the State).

**Contradiction:** Seeing through the changing directions of actuation of TM'76 and PCE to keep moving forward without going off the tract, while preparing for a burst of miracles in Quarter II. (Wk. 12)

**CHICAGO****GLOBAL CENTRUM: CHICAGO**

**External:** Receive Religious House Priors of North America. Cry of 'The British Are Coming' is realized in busload of 33 in one swoop for GRA:Chicago. Host church hierarchy from East and West Germany en route to synod meetings in Minneapolis. Welcome David Sithole from Nairobi for International Training Program.

**Internal:** Last of Emerging Generation sent to Montana, Indiana, and California sites for summer. Whole nexus turns energies to complete renovation, decor, and program planning for GRA:Chicago and miracles abound.

**Contradiction:** Coordinating multiplicity of designs for complex timelines and task forces in anticipation of launching 1975-76 projections. (Wk. 12)

**GLOBAL ODYSSEY VII**

**External:** Adventure began immediately for Global Odyssey VII as they departed Saturday A.M. for Mexico City via Chicago Public Transportation to O'Hare, carrying all their luggage with them.

**Internal:** Building assignment rationale that meshes both warp and woof.

**Contradiction:** Getting on top of practics in order to experience the culture. (Wk. 12)

**EMERGING GENERATION CAMP:NEW CASTLE COMMUNITY**

**External:** Five stores erected in five minutes on the Miracle Mile on Majuro Social Demonstration Day.

**Internal:** Campfire event occasions profound consciousness.

**Contradiction:** Ordering the chaos in spite of the strong call of the wild. (Wk. 12)

**SIXTH GRADE TRIP**

**External:** Build cable bridge over Rapid Creek outside Rapid City.

**Internal:** Great hike through Black Hills and work detail at campsite.

**Contradiction:** Rebuilding models when four feet of water on the Montana ranch necessitates slow down of Trek. (Wk. 12)

**SACRAMENTO WORK FARM**

**External:** Send-out six to pick aprocots upon arrival.

**Internal:** Arriving at our site after 1500 mile trip across the country.

**Contradiction:** Finding other employment until the crops ripen. (Wk. 12)

## STUDENT MOBILIZATION PROJECT

External: Set-up farm house, picket strawberries, and turned to urban Benton Harbor for additional employment.

Internal: 'In-kinding' results in: 30 dozen eggs, whole milk, and a freezer full of pork chops and ice cream.

Contradiction: Engaging the berry-pickers when the strawberries have already been picked (Wk. 12)

## RELIGIOUS HOUSE: CHICAGO

External: Committee of 76 for '76 in Chicago is shaping up. Clergy Convocation PSU Week 10 claims future for PCE. The Emerging Generation pass out flyers on TM'76 at Beverly Bicentennial parade.

Internal: Open House Cabaret for GRA:Chicago is planned. Spontaneous sports events preview House celebration.

Contradiction: Finding self on point where you decided to be and expecting to have something to stand on. (Wk. 8)

## RELIGIOUS HOUSE: WICHITA

External: Emerging Parish authorization and funding are miracles. Lyons Chamber of Commerce President registers for GRA;Chicago.

Internal: Evening Symbolic Life centers around TIME magazine's Bicentennial edition; Quarter Celebration a time of release as we symbolize doing 'something you've never done before'.

Contradiction: Finding stories to catalyze excitement of old colleagues about GRA:Chicago. (Wk. II)

## RELIGIOUS HOUSE: OMAHA

External: Northside Guild decides to actively enlist representatives from community groups to plan community Festival. Tri-Metro picnic enjoys hearty game of football.

Internal: Youth House impacts community with its presence for two days - while bus gets fixed.

Contradiction: Deciding to risk diving into Quarter I's task to overcome tendency to 'get by' or 'get away'. (Wk. 12)

## RELIGIOUS HOUSE: KANSAS CITY

External: Primal Community Experiment PSU completes Indicative Battleplanning Methodology in one day - a great sign for the Metro that 'the methods work'.

Internal: Intensive three day publishing PSU produces two 100 page dissertations and prepares two House members to take final exams for Ph.D's. Ecclesiola study about the Wittenburg castle leaves House with sense of poking our heads out of a window to get a clearer view and becoming engrossed in a mirror that is reflecting what we are standing on.

Contradiction: Discarding recruitment story for GRA:Chicago that talks about convenience and 'isn't it nifty', rather than total demands of the mission on one's life. (Wk. 12)

## RELIGIOUS HOUSE: MINNEAPOLIS

External: Blitz on Capitol Hill secures TM'76 endorsements from three State Congressional delegations. Prepare slide show for presentation at League of Municipalities convention. 3 days spent in booth at Hilton Hotel promoting TM'76.

Internal: Regional Council with representation from every segment of the Movement is a first. Celebrate the return of the Pierces from LENS Trek. Celebrate the marriage of Mary and Lynn Broughten at Ecclesiola.

Contradiction: Going for broke on GRA:Chicago recruitment, while securing 'Yeses' from excited potential TM'76 sponsors. (Wk. II)

**RELIGIOUS HOUSE: ST. LOUIS**

External: Quarter I battleplan completed by PCE. Midtown Gateway Center consult with 25 present enthusiastically received. Presented TM'76 to Illinois County Clerk Association.

Internal: Seven overnight guests enroute to other Houses dramatize Wayside Inn dynamic.

Contradiction: Handling our anxiety about the coming quarters which is causing us some hesitancy in action. (Wk. 12)

**RELIGIOUS HOUSE: PEORIA**

External: Finished proposal for six TMs in Peoria for presentation to ARBA and city council. Two Council members endorse project: one says city might appropriate funds.

Internal: With House fully employed (by common definition), entire Troika nevertheless turns up at lunch on three days and has helpful strategy sessions.

Contradiction: 5th City trip, key event for both TM and Southside social demonstration, blocked by illness of two key contacts sponsoring event. Challenges us to develop more creative breakopen tactics. (Wk.3)

**RELIGIOUS HOUSE: GREEN BAY**

External: Record attendance at Metro Cadre meetings in both Duluth and Merrill.

Internal: Metro Praesidium creates Parish Sign with '½ Day Wonder' of painting and planting around Religious House, which climaxes in backyard picnic with neighbors invited.

Contradiction: Naming the unnamed idols behind unexamined fears that are keeping much needed forces locked into old lifestyles. (Wk. 12)

**RELIGIOUS HOUSE: MILWAUKEE**

External: Five Guardians impact Metro Council by participation in total weekend structures.

Internal: Shift to Quarter I structures by receiving William Newkirk, sending-out the Emerging Generation to camp, and operating out of new timeline.

Contradiction: Finding ways to deal with a House wedding, GRA:75 recruitment, and Metro celebration all in one week. (Wk. 12)

**RELIGIOUS HOUSE: INDIANAPOLIS**

External: Attended Governor's Conference of Indiana ARBA representatives. Sent-out six from House and Metro to GRA:Chicago.

Internal: Judith Albers sent-out to London as Global Intern. Marian Emerson and children from Phoenix and Tabitha Stewart from Tulsa attend House Church enroute to Camp New Castle Community.

Contradiction: Building bridges so we don't get caught with our structures down in week of transition. (Wk. 12)

**RELIGIOUS HOUSE: CINCINNATI**

External: President of Cincinnati Bell says 'Yes' to TM'76 with kick-off in Walnut Hills, while first gift of \$1,000 comes in. HRM follow-up at 'Little Flower' Parish generates HRM's for future.

Internal: Korean Global colleague explodes our cultural awareness as we sing the Global Language school Song of South Korea.

Contradiction: Trusting the Lord as we build models which will beckon necessary interns. (Wk. II)

**RELIGIOUS HOUSE: DETROIT**

External: TM'76 contacts for Quarter II picking up; evaluation with State Bicentennial officials on Wednesday; work begun on statewide press release for mailing to future TM'76 prospects.

**RELIGIOUS HOUSE: DETROIT (continued)**

Internal: Wee Irish lass enhances House while in Detroit on Winston Churchill fellowship; planning for Quarter I done in mood of high celebration.

Contradiction: Grasping solidly missional thrust while demon of 'summer good life' pervades. (Wk. II)

**RELIGIOUS HOUSE: CLEVELAND**

External: Hitting GRA:Chicago promotion trail with individual calls and corporate meal celebrations with TM'76 participants, old movement warhorses and university students.

Internal: Baptism of Samuel Joseph Roper at Daily Office by Fr. Ray Holland.

Contradiction: Implementing our well-thought-through Parish miracle strategies in midst of over-balance of activity on other fronts. (Wk. II)

**NEW YORK RELIGIOUS HOUSE: NEW YORK**

External: GRA:Chicago recruitment goes on but with a new style and tactics. Visiting Bi-Metros reveals contacts and an overwhelming 'yes' to TM'76.

Internal: House impacted by new life and hope...The birth of David Radford to Joel and Betsy on June 18th and phenomenology of hope at Collegium by Jim Addington which grounded the sociology of our own experience.

Contradiction: Finding the context which will enable fast vocational decisions and release 'Yes' to GRA:Chicago with as much enthusiasm as the 'Yes' to TM'76. (Wk. II)

**RELIGIOUS HOUSE: PITTSBURGH**

External: PCE Pastor Harry Jenkins is sent out to new assignment in Huntington at galaxy meeting, and Clarksburg auxiliary re-affirms its 4 year history in Experiment, deciding to continue as Regional demonstration sign.

Internal: After a weekend of hard planning for Quarter I, we prove that a whiffleball, a downtown park, and 5 people are all you need for a fantastic celebration.

Contradiction: Naming avenues of Regional participation during Quarter I that capitalize on discontinuity image. (Wk. II)

**RELIGIOUS HOUSE: ROCHESTER**

External: TM'76 in Albany happens as planned, with 3 members of local sponsoring groups doing 'up front' roles.

Internal: House Church guests outnumber House members. Colleague Ellie Stock creates 5 fantastic songs and surprises us by appearing to sing at morning collegium.

Contradiction: Turning 'Yes, I'm planning to be at GRA:Chicago' into firm registrations. (Wk. II)

**RELIGIOUS HOUSE: RICHMOND**

External: TM'76 thrust expands as sponsorship 'Yeses' emerge in Newport News, Appomattox, and in East Henrico County. East Henrico TM'76 gunner catalyzes sponsorship over phone while lying flat in bed with strained back. House and colleagues journeyed to Washington D'C' Regional Council to celebrate nine town meetings held in Region.

Internal: Ecclesiola experiences evening of sophisticated Southern style, as we begin with mint julips, then journey for grand meal to lobby balcony of Hotel Jefferson, which contains the 'Gone with the Wind' staircase.

Contradiction: Discerning what's really needed when so much is required. (Wk. II)

**RELIGIOUS HOUSE: WASHINGTON**

External: Celebrate completion of ninth TM'76 in Region with 100 present, 40 plus from local steering committees. All nine TM'76 songs sung by local participants and committee representatives. Representatives of six Quarter III Metro TM'76's say 'yes' to launching eight week-six guild 'galaxy' training model Quarter I.

## RELIGIOUS HOUSE: WASHINGTON (continued)

Internal: House celebrates 'We Made It' with all day picnic/swim/sunbath(burn) at Fairfax Lake. Emerging Generation Jets sent-out to camp after four days of packing/cleaning/packing/cleaning, etc. Thomas Healy sent to Chicago as 'master carpenter' to help Kemper renovation for GRA:Chicago.

Contradiction: Discerning the model for TM'76 to actually be done by the local steering committee. (Wk. 12)

## RELIGIOUS HOUSE: BALTIMORE

External: Receive \$400 for demonstration TM'76 from the State Bicentennial Commission and \$400 from City of Baltimore Bicentennial Commission.

Internal: Plan emphasis for House Quarter I including six visitation treks, TM'76 training, and PCE research. Lisa Newkirk graduates from 6th grade.

Contradiction: Preparing persons and stories for TM'76 presentations and treks. (Wk. 12)

## RELIGIOUS HOUSE: PHILADELPHIA

External: Planning for TM'76 goes on with steering committee meeting in Lansdale, meeting with Deputy Mayor of Camden, and decision in Vineland, New Jersey for two TM'76 Quarter II.

Internal: Last Ecclesiola of Quarter and GRA:Chicago send-out with House outnumbered two to one by Regional colleagues, is great celebrative event.

Contradiction: Moving ahead with small numbers when possibilities of quality/care reveal numbers are not the problem. (Wk. 12)

## RELIGIOUS HOUSE: NEWARK

External: Second mural in PCE 'North Ward Five' goes up and elicits stream of responses from community.

Internal: End of quarter celebration abounds with steaks and movie, 'Alice Doesn't Live Here Anymore'.

Contradiction: Converting interest and 'Yes, if...' into GRA:Chicago commitment. (Wk. 12)

## RELIGIOUS HOUSE: BROOKLYN

External: Two hour lunch with Brooklyn pastor reaps: registration and check for GRA:Chicago, Advent Sunday HRM date, RS-I sponsorship with 10 from his congregation, agreement to go with us to potential TM'76 sponsors, date for training consult with Sunday School teachers Quarter II, and Quarter III Academy on calendar in red letters.

Internal: Word reaches House in dead of night that consult dates are set for Eight Social Demonstrations around the globe, building new motivational fire under our push for GRA:Chicago and Quarter I. Mosaic montage transforms kitchen into sacristy.

Contradiction: Laying the groundwork for Quarter I before GRA:Chicago so that Research Assembly mobilizes our troops for specific tasks and seals the responsibility for same. (Wk. 12)

## RELIGIOUS HOUSE: HARTFORD

External: Bi-Metro Council gathers to plan Quarter I, includes new RS-I grad from Greenfield Polis and Park Street 5 citizens we got to know at Park Day. Day concludes with backyard Bar-B-Que and celebration in Rose Garden. First scheduled TM'76 set for Quarter IV, '75-76 in Canton, Connecticut. TM'76 proposals presented to: Hartford Neighborhood Coalition, Enfield Bicentennial Commission, Springfield Chamber of Commerce.

Internal: Patricia Henschen sent-out to Wilderness Trek, Bob Hanson to GRA:Chicago. House repair and lawn care blitz in preparation for Bi-Metro Council.

Contradiction: Keeping momentum going in the midst of Quarter I assignments. (Wk. 12)

## RELIGIOUS HOUSE: MANCHESTER

External: GRA:Chicago recruitee list jumps from 2 to 7 and is still rising.

Internal: Quarter I battleplanning occasions new openness and objectivity towards planning parish events in relation to TM'76 and cadre form.

Contradiction: Expanding vision that is seeing individual 'missions' as The Mission, which has been blocking corporate and assigned operation. (Wk. 12)

## RELIGIOUS HOUSE: BOSTON

External: Throwing out the GRA:Chicago fishing net and collecting fish from Worcester, Providence, and Boston Metros.

Internal: Send-out Prior to GRA:Chicago and Youth to Montana, Michigan, and California. House takes on new life as new decor and collegium on Eight Social Demonstrations bring new vision.

Contradiction: Enabling colleagues to embrace success story rather than rehearse ALL of our failures. (Wk. 12)

## MONTREAL RELIGIOUS HOUSE: MONTREAL

External: Giant steps taken in Quebec City as five parishes in Limoilou zone decide to sponsor Community Forum Canada and to hold weeknight Social Methods School Quarter II. The Provincial Superior of the Capuchins publically invites us to send ten staff to assist their work in Chad, in the African drought zone.

Internal: Area Troika meets and identifies Area mythology of change through evolution as opposed to revolution, with implications for our tactical style - collaborative rather than direct pedagogy.

Contradiction: Holding the comprehensive while operating within Quebecoise cultural nationalism. (Wk. 12)

## RELIGIOUS HOUSE: TORONTO

External: Hold Week II PSU on educational structures of Parish; request from 'Interact', a global research and development net, to do article for their global newsletter.

Internal: Produced document on Toronto Region in celebration of those who came before, to pass on to those who follow. Sixth grader sent-out to 6th Grade Trip carrying pack twice as big as herself.

Contradiction: Shifting emphasis to Day II and Week II to raise troops in preparation for Quarter I. (Wk. 12)

## RELIGIOUS HOUSE: OTTAWA

External: Ottawa West Guild produces 4 act drama of 1) decision to hold parade and Festival in rain, 2) exciting parade, dignitaries, and others strike up awe on Parish main street to the pealing of church bells, 3) Mayor judges pie-eating contest and meets Ottawa West Muslim Auxiliary, and newly married couple is brought by Capuchin Father to be sent-out by the neighborhood, and 4) Guild holds post-Festival corporate celebration in House garage. Furthest polis penetrated for 1st time. Delightful calls on old Academy Grads.

Internal: Alan Herber sent out to Toronto Religious House and visit by David Woodbury. Nancy Frasier assigned by employer to Day I French lessons for a year. House stunned by House Church witness on Long March and One Great Life by White Father in 28th year of order covenant. (Where were you in 1948?)

Contradiction: Pulling into drydock at end of teaching quarter to scrub barnacles, untie knots, and patch sails, without falling into gap of non-being. (Wk. II)

**CARACAS RELIGIOUS HOUSE: CARACAS**

External: Primary thrust centered on one year plan for 1975-76, and clarifying the need to deepen movemental base as well as broaden it. Two new grads begin participation in Cadre meetings.

Internal: House and Cadre participate in Fast, impacted by indicative to be mission in all facets of one's life and the globality of its context. House goes on city Scavenger Hunt, ('Find four cultural centers, etc.') ending up at Flamenco dance witnessing detachment and engagement of dance. Guardian donates new typewriter for House office use.

Contradiction: Bringing together all the practics for the Continental Trip to make it a happening across the continent. (Wk. 12)

GLOBAL CENTRUM  
QUARTER III 1974 - 75

THE GLOBAL ORDER CENTRUM REPORT  
FOR WEEK 12

BRUSSELS  
BOMBAY  
SINGAPORE  
HONG KONG  
CHICAGO

GLOBAL  
DEVELOPMENT  
CENTRUM

Australian Guardian meeting planned for August 10-15 consult on Oombulguri, plans in motion to raise \$100,000 for Asian ITI's. Chen Kheng Lan's development for GRA:Chicago begins to pay off. Urban circuits in Europe pick up pace indicating a new willingness on part of the Movement and friends to give financial support. Twenty new 'Developers' from North American Religious Houses assigned for Quarter I to Urban Circuits:Chicago. And June finishes with \$144,000 deposited as goal called for. Question now is building the breadth and depth of commitment that circumnavigates holidays and formal introductions.

GLOBAL  
MANAGEMENT  
CENTRUM

Brussels and Singapore focus troop strength to win with Singapore Area 'Turn On' and with general financing, publications, and legalization in Europe. Global property celebrates the completion of Kemper renovations and the friendly commitment of Brussels landlord to complete renovations there before Europe:75. Management functions being carried off by GRA:Chicago participants allows the usual Management staff to participate fully in the program. Role of magician still called for across the band as airline cuts off credit two weeks before ITI:Sydney, demands for ITI materials, brochures, Quarter II course materials, etc. increase.

GLOBAL  
OPERATIONS  
CENTRUM

Program scheduling revealed as 52 week a year reality as mailings go out reminding Houses that 'Summer is Europe:75' and joint teams from House and Nexus work Day II to visit grads and contacts securing 10 ITI applications, and Operations:Chicago enables travel of more than eighty international colleagues from 16 nations and seven continents to GRA:Chicago. Chicago finds consolidation of space and limiting of staff reveals complex inter-relatedness of tasks and requires more effective record systems and models to hold commonality while being flexible to local demands.

GLOBAL  
RESEARCH  
CENTRUM

Busy weekend at Chicago Centrum as 800 sign in for opening feast and Uptown Festival draws 2000 including close to 30 local entrepreneurs who indicate willingness to carry the leadership role next time around. Highlight was a 70 man drum and bugle corps from the West Side that brought Uptown flocking to doors and windows with wide welcoming smiles. Simplified interim PCE report holds symbol of primal community that has no vacation. Town Meeting in Europe evaluated while active marketing of TM'76 in American community, Singapore receives affirmative nod from Bicentennial Committee and invitation to submit proposal.