

Come, let us return to the Lord;  
for he has torn us and will heal us,  
he has struck us and he will bind up our wounds;  
after two days he will revive us,  
on the third day he will restore us,  
that in his presence we may live.

Hosea 6: 1.2.

## LONDON

## RELIGIOUS HOUSE: LONDON

External: Two RSI's in House at same time culminating week of visits to four Metros, setting up RSI in one virtually untouched Metro.

Internal: House internal life reaches peak after painting, experiencing fasting, feasting dynamic, while struggle with Kierkegaard's 'Love Hopes All Things' was key event. Experience globality again with visit by Rees from Melbourne House enroute to Chicago.

Contradiction: Raising question of the next step after completing year's timeline in less than three quarters. (Wk. 8)

## RELIGIOUS HOUSE: GLASGOW

External: Signal week of impactment and collegial formulation. Strong RSI of sixteen held in House with regional pedagogues David Fleming, Maggie Lunan and Alan Smart doing well; emerging generation RSI taught by Hockley family including pedagogue Matt; letter inviting forty-five regional families to participate in our fast day sent out.

Internal: Wilder and Bultmann continue our Ecclesiola journey relative to where 'hope appeareth', Sherry Van Boskirk's work permit comes through, and eight regional colleagues drop-in to chat during Week II.

Contradiction: Tactics that enable both us and the Region to move more directly toward the Primal Community Experiment. (Wk. 7)

## RELIGIOUS HOUSE: BRISTOL

External: Field Visit for Primal Community Experiment held with 15 present. Initial Summer '75 mailing sent.

Internal: Rees's enroute to Academy and Summer '75 from Australia explode sodality for cadre members with power of global movement with spins on the Movement in Australia and Majuro.

Contradiction: Creating the time to image long range programmes while not losing momentum on short range building events. (Wk. 9)

**RELIGIOUS HOUSE: MANCHESTER**

External: Mailing invitations to PCE Field Visit and creation of large imaginal decor piece of 101 parishes refocuses our mission.

Internal: Bishop Ted Whycham of Middleton and his wife come to Ecclesiola Thursday night and enjoy 'Skin of Our Teeth'. He spins with House on history of church renewal in Britain and vision for the future.

Contradiction: Forced to think again about what is necessary style of persuasion in British Isles. (Wk. 8)

**PARIS****RELIGIOUS HOUSE: PARIS**

External: RSI course this weekend tapped the Paris international community: six nations participating: people from Argentina, Ireland, America, Spain, Scotland, Frenchmen.

Internal: New world space is opened for us as we discover spaces in House we never knew we had! 23 people participating in Emerging Generation RSI held in the House with help from space in other parish church.

Contradiction: Temptation to yield to 'things being finished' with Week eight RSI over: yet on the horizon are PCTS, PLC, LENS. (Wk. 9)

**RELIGIOUS HOUSE: ROME**

External: Housing search takes concrete form via the 'framing method': four strategic/practical systems created: monitoring, enlisting, investigating, and scheming.

Internal: Lenten journey intensified thru decor shifts, Unamuno study, and Week II reading of DHL poetry (specifically 'Ship of Death', 'Quetzacoatl', and 'The Snake'). Breakthru in terms of specially assigned task forces as a way to at least double the amount of work possible in a weekend.

Contradiction: How to bear the symbolic burden that comes with the actual weight of the responsibility for being the priest and the servant of the religious. (Wk. 9)

**BRUSSELS****GLOBAL CENTRUM: BRUSSELS**

External: Field Visit of 20 plus in both Frankfurt and Berlin highlight a week of momentum building for the Primal Community Training School.

Internal: Ecclesiola wrap-up leaves us in deep gratitude for the dynamic and for edge spirit sustenance that 'Hope' seminaries were.

Contradiction: How to merge demands for PCTS recruitment and preparation with full employment. (Wk. 9)

**RELIGIOUS HOUSE: BRUSSELS**

External: First regional PLC, third course of Quarter.

Internal: Enablement marathan of PLC-RSI including children's RSI. Ecclesiola guest Bishop recently returned from ITI Frankfurt suggests that he follow-up on PLC by telephoning participants.

Contradiction: Standing before perpetually new horizons, how follow up rapidly enough on new potential to pull together all troops into formation for Spring Quarter thrust. (Wk. 8)

**RELIGIOUS HOUSE: AMSTERDAM**

External: Fourth parish PSU with two from local church, one Nigerian man who will return to Lagos. Penetration thrust uncovers possibilities for next quarter.

Internal: Continuing stream of guests through House, including two nuns from houseboat on canal in parish: one exclaims at Ecclesiola 'Hallelujah!' Discover our December newspaper article made its way to Connie Widyamata via Rotterdam friend. 'International intern in Academy now visiting us'.

Contradiction: How to effectively engage grads and friends in long range task. (WK. 9)

**FRANKFURT****RELIGIOUS HOUSE: FRANKFURT**

External: Area bristles with new life as Field Visits in Hamburg (with 20 people) and Frankfurt (with 29, including eleven from three churches in Sachsenhausen) convince us that Indicative Battleplanning is what people need and want.

Internal: Corporateness intensified in the gathering and scattering caused by Field Visit events and sending of four House members to Berlin RSI.

Contradiction: Forging the arsenal that will bring Movemental form to the Area in Quarter III. (Wk. 9)

**RELIGIOUS HOUSE: BERLIN**

External: Twenty person Fieldvisit and RSI with participants from seven parishes: in two seminars 'four German, four English' explodes local bases of the movement in Berlin.

Internal: Michael Paul Elliott awaits the end of the Fieldvisit to arrive on February 28, 1975.

Contradiction: How to create the follow up style creating movemental decisions. (WK. 9)

**NAIROBI****RELIGIOUS HOUSE: NAIROBI**

External: Visit with Church Hierarchy ensures full support for course schedule.

Internal: Four day happening includes attending play 'Dedan Kimathi' story of Kenyan Freedom Fighter struggle with the authentic role in the revolution, guest night with Mother Superior of leading African Religious Order, and a day of fasting and feasting ends Week eight.

Contradiction: Turning verbal promises into course recruitment reality. (WK. 9)

**GLOBAL CENTRUM: BOMBAY**

External: Fourth consecutive LENS course completes LENS circuit of all four Areas in as many weeks.

Internal: Received keys to new facility.

Contradiction: Communications vacuum among roaming Centrum personnel introduces floundering where high precision and growing momentum are required. (Wk. 9)

**BOMBAY****RELIGIOUS HOUSE: BOMBAY**

External: While House colleague rides the outer regions and is assigned to teach Jabulpur RSI, the main thrust of House is around the table and produced ITI story and 6x6 movement story, Global Research Assembly story. Mailing to begin intensified recruitment.

Internal: We welcome A.M. Joseph as he joins the Bombay House after family and missional engagement in Hyderabad. Eight Week Ecclesiola Construct swirls to a close as we are caught up in last act of 'By the Skin of Our Teeth'.

Contradiction: How to get the wheels turning under Global Research Assembly and International Training Institute recruitment in Bombay. (WK. 9)

**RELIGIOUS HOUSE: DELHI**

External: Strengthening of Roman Catholic authorization with visit to Archbishop Fernandez, education consult with sixty teachers from top Roman Catholic Boy's School, and attendance at Holy See (Vatican Embassy) National Day cocktail party.

Internal: Four 'guests' from Bombay Nexus, two from Agra Metro Cadre, and Williams from Calcutta bring us news from Sub-continent; Ecclesiola seminary continues to be spirit peak of week.

Contradiction: Riots and curfew in PCE area have limited the number of people contacted for Week 8 Community LENS. How guarantee 75% of 'I'll probably come's' to be around the table Friday night. (Wk. 8)

## MADRAS

## RELIGIOUS HOUSE: HYDERABAD

External: Exciting breakthrough in Madras with upcoming RSI with 19 registered and two weeks to go, and an invitation for an ITI to be held in Gurukul Theological Seminary in 1976.

Internal: Three volunteer office staff (two Hindu and one Christian) turn matter into spirit for us.

Contradiction: How to mobilize the forces for ITI/GRA recruitment and development. (Wk. 9)

## CALCUTTA

## RELIGIOUS HOUSE: CALCUTTA

External: First full fledged Community LENS on Sub-continent held in Calcutta with seven from Circus 5 and sixteen from near the parish. House clergyman preaches in Circus 5 Marthoma Syrian Church. Completed first Area Calcutta circuit ride to all regions except Nepal. Roman Catholic Bishops give nod, C.N.I. Bishop Mohanty will sponsor course in Orissa State. Met Mother Theresa, exchanged miracle stories.

Internal: House/Nexus staff get development appointment with president of Indian Chamber of Commerce. Conversational English classes started by telephone. Thompsons attend British High Commission party.

Contradiction: LENS has broken loose Circus 5, but how do we move ahead step by step and how do we do all the ITI tactics so that vision of renewed Calcutta becomes demonstration in Circus 5. (Wk. 9)

## SINGAPORE

## GLOBAL CENTRUM: SINGAPORE

External: Secular penetration in Area Singapore continues and deepens as non-movement, non-grad CSI with 15 new participants is held in Kuala Lumpur; Imaginal Education course held with new group of teachers in the facilities of New Town Secondary School in Queenstown 5, Singapore.

Internal: Centrum directly impacted from Chicago as Preston Bradley and wife arrive on the Queen Elizabeth II. All Centrum hands in town at once for one of few times; addressed by signal reports from Manila, Area Sydney Metro formulation and presentation on Chinese culture by Chen I An.

Contradiction: Turn to world challenges us with only one doorway: secular spirit proficiency within secular world requiring practical means of transparentizing global cultures and engaging local man as the Spirit Movement and the Order. (Wk. 9)

## RELIGIOUS HOUSE: SINGAPORE

External: Recruiting in Singapore promised at least twenty for Week 8 CSI, while House personnel Huang Hsing Ping and Symond Kock travel to Kuala Lumpur to teach CSI. House and Centrum host Dr. and Mrs. Preston Bradley.

Internal: Welcome Bob and Theresa Lingafelter enroute from Philippines to assignment in Oombulgurri.

Contradiction: Taking the 'right' next step on the New Town Parish. (Wk. 8)

## RELIGIOUS HOUSE: KUALA LUMPUR

External: Repercussions from CSI open up many new avenues for penetration from participants and those who couldn't make it this time: Malaysian Educators (primary and secondary). YMCA and Kindergarten Teacher Training Seminar. Now they're calling us.

Internal: Launching soybean project and preparation for planting has numerous implications: puts us in touch with top government officials, visa becomes more secure, unlimited consultation possibilities with better access to nation's agriculture money.

Contradiction: LENS untouched with only thirteen weeks to go. (Wk. 9)

## RELIGIOUS HOUSE: JAKARTA

External: Week highlighted by securing LENS facility and key calling. Visited Elsa Dharmaputra, old ITI grad.

Internal: House guest from Singapore Centrum at Ecclesiola study of Bultmann paper.

Contradiction: Discerning where it is strategic to move and where it is strategic to wait. (Wk. 9)

**HONG KONG****GLOBAL CENTRUM: HONG KONG**

External: Mrs. Bradley visits Canton and Dr. Bradley preaches to full House at Shum Oi Church. Centrum newsletter to Houses and ITI/GRA story, ITI practices, and brooding on course rational out as backup for Regional Councils.

Internal: Decor blitz enables world grid, new March of Miracles chart and Guernica to transform space.

Contradiction: Saying the strategic Yes and Nos that create spirit, in the midst of increasing nitty gritty. (WK. 9)

**RELIGIOUS HOUSE: HONG KONG**

External: Address before Board of New Community Health project points to trends toward total community care.

Internal: Dr. Preston Bradley visits Hong Kong, preaches at Shum Oi and stands as a sign of the global spirit.

Contradiction: Creating an 'end of the teaching quarter shift' that revitalizes momentum. (WK. 9)

**RELIGIOUS HOUSE : KAOHSIUNG**

External: Recruitment for the first all-Taiwan PLC touches six Metros and three bishops with total registration approaching 30 while LENS followup visit reveals company using LENS methods throughout its management structure.

Internal: Awed by late night visit to Parish Buddhist temple (Sodality Structure) and its comprehensive symbology. We welcome Dale Griffee from Centrum.

Contradiction: How to blend all the excitement and possibility we are now blessed with into longrange gains and indigenous structures. (Wk. 8)

**RELIGIOUS HOUSE: MANILA**

External: CSIIIA in signal parish coincides with parish priest deciding major thrust of PCE in near future needs to ge GRA preparation and locating adequate facility for Religious House within parish.

Internal: Three day national holiday around referendum on President Marcos' program gives task forces an opportunity to push thru arenas. Quarter ends with guests for Ecclesiola every week.

Contradiction: Creating structures that are adequate for engaging the troops. (Wk. 9)

**RELIGIOUS HOUSE: TAIPEI**

External: Region continues spinning as Week nine PLC recruiting ends and ITI/GRA recruiting begins with prospects first saying, 'yes' and then asking practical questions. LENS grads decide to meet monthly and be the LENS GUILD'

Internal: Sojourn week-end for the laity nets twelve Regional participants, who along with four guests and House Church with twenty adults, explode vision of the future.

Contradiction: Utilizing the interest and decisions of key colleagues such that the Spirit Movement becomes their priority. (Wk.8)

**RELIGIOUS HOUSE: CEBU**

External: Further authorization of Minischool: trip to Bohal for closing year celebration with boat lines reducing fares fifty percent; mayor of Lapu Lapu agrees to raise fifty pesos for the entire group's luncheon (50 to 60 people).

Internal: Prior's trip to half of Region - Dumaguete, Bacolod, Iloilo. Remainder of House attends celebration of Cardinal Rosales, Archbishop of Cebu, twenty-five years anniversary, silver jubilee. ARepresentative of House kissed the ring and presented him a red copy of The Saint.

Contradiction: Unclearly in regard to engagement of troops - who should go to Regional Council, Sms, Who should go to GRA and who to ITI. How does the Macton 5 Pre-Guild fit in. (Wk. 8)

**RELIGIOUS HOUSE: DAVAO**

External: Authorizatioj contacts and positive response from local leadership in first penetration trip to Marawi City polis, as well as re-establishing contacts in Cagayan and Iligan Metros. House member preaches at Tagum UCCP church.

Internal: House completes transformation (in and out); paint enables miracle.

Contradiction: The saddle's ready, but no horse in sight. (Wk. 9)

**RELIGIOUS HOUSE: TOKYO**

External: Local colleagues translate 180 mailing labels while Area newsletter is being submitted to other colleagues for translation into Japanese.

Internal: Rev. and Mrs. Pentti Karikoski and family, Finnish Lutheran missionaries, add another global dimension as they participate in House Church with Rev. Karikoski as celebrant. Retired non-movement couple from New York spend time at House on way to Taiwan assignment with service organization. Professional mover estimates House goods at sixteen tons, whatever happened to 'two-suitcase' model?

Contradiction: How to constantly remind ourselves that executing miracle battleplan needs to be catalytic action involving Regional colleagues rather than House action. (Wk. 9)

**RELIGIOUS HOUSE: SEOUL**

External: Highlights of week are Pusan PLC with representatives of five denominations attending, and Preaching Mission in Wonju which impacts 8,500 people.

Internal: ICA PSU spends Week II writing annual report for 1974 and visioning 1975 for both LENS and Consults. Miss Lee Sun Sook receives Master's Degree in Music Education from Yonsei University.

Contradiction: Necessity to take time to discern spirit reality in order to plan new tactics. (Wk. 8)

**RELIGIOUS HOUSE: FUKUOKA**

External: Groundwork laid in cross-regional effectiveness by completion of translation of Other World Charts. PLC recruitment push promises needed new troops.

Internal: Permeation advancement and training extends to fully-paid trip to Osaka and adds fresh opportunity to dialogue with the sophisticated and the Secular.

Contradiction: While involved in many tactics, how decide when new job and housing deadlines must be nailed down. (Wk. 8)

**RELIGIOUS HOUSE: OSAKA**

External: Welcomed Dr. and Mrs. Bradley. Mrs. Bradley visited Rev. Nishihara's church and a ladies group. Dr. Bradley spoke at luncheon with Rev. Nishihara. Globe marketing makes eight calls. Completed the development brochure and delivered it to the translator.

Internal: Mr. Honguchi, Mr. Miyajima and Rev. Nishihara agree to help us negotiate for the new Religious House. Held planning session for planning month time design.

Contradiction: Financial situation demands more jobs than we thought we needed. (WK. 9)

**RELIGIOUS HOUSE: SENDAI**

External: Dancing with both secular and religious as pedagogy weekend pushes hard on need for better teaching and affirms essential role of indigenous bilingual pedagogues in that development while next crucial steps are taken for Global Language School ten day session.

Internal: Priors trek reveals great readiness in Region for moving deeper both in spirit and practices.

Contradiction: How to enable us to relate to urgent need to recruit and train troops in order to move from rational clarity to doing the mission. (Wk. 9)

**SYDNEY****RELIGIOUS HOUSE: SYDNEY**

External: Planning of three simultaneous congregational planning retreats opens door to penetration in outlying Metro, and gives breadth and depth leadership to two PCE congregations. At conclusion of 6-week preaching engagement at Pitt St. Congregational church comes possibility of presenting model for future to avert closing congregation doors.

Internal: Kierkegaard allows examination of conscience on the 'risk nothing' and 'giving up' syndromes and provides healing. House celebrates completed lives of Raymond Carnegie Bishop aged 79 and Mrs. Oberg aged 64 years.

Contradiction: To summon the proper combination of humility and audacity to present the Sydney PCE story to Church hierarchy and Uniting Church practitioners as an indication of our determination to love the church as she is, and our capability of being genuine servants to her, as she faces the future. (Wk. 8)

**RELIGIOUS HOUSE: PERTH**

External: This has been a week of moving hard on secular breakopen with community LENS recruitment in full swing and the building of links with Oombulgurri especially the placing of a student emissary with regional family.

Internal: House bulges at the seams as we receive two high school students from Oombulgurri, joining three from Mowanjum, and we host three guests from Oombulgurri.

Contradiction: Finding a way to hold the 26 Week indicative in tension with immediate demands that come as new doors open before we knock. (WK. 9)

**RELIGIOUS HOUSE: DARWIN**

External: Sophisticated ICA/EI booklet and 40 Page social reconstruction proposal prepared over extended week II to launch authorization blitz. PCE residents group announces plans for city wide trade fair, a local building coop and launches two day care centers. Tourist association holds first meeting since cyclone and reaffirms long range vision for Darwin.

Internal: PSU preparing crucial missional documents extends Week II design in to Wednesday of the next week. Guild colleague Carol Borovic drops in after return from evacuation, points out pre cyclone indicative battleplan was right and asks 'Where do I start.'

Contradiction: How to relate internal models and external mission so as not to experience continuing dropins by people at all hours of the day night as 'catching us in the act'. (WK. 9)

**RELIGIOUS HOUSE: OOMBULGURRI**

External: Night school classes for young men begin in high spirits; Housing Association for planning new village elected with woman chairman; store has facelift with new shelves and door erected.

Internal: Week of intensive planning produces youth and replication models, is punctuated by explosion which gets auxiliary boat 'off the ground'.

Contradiction: Building corporateness amongst individualist leadership calls for tactical undergirding of polity process. (Wk. 8)

**RELIGIOUS HOUSE: ADELAIDE**

External: Human Research Mission banners sent to all Houses, prior sent to Clare for LENS recruiting, taking newly printed brochures for Area's first exurban LENS, two people ring Friday morning to ask if they might come to tonights RSI.

Internal: Ian Daw quits work to begin university studies. Neighbour lady come to Ecclesiola to inquire about interning.

Contradiction: Getting visual images which hold the coming quarter and spark imaginal decor. (WK. 9)

**RELIGIOUS HOUSE: MELBOURNE**

External: Mailed 200 regional newsletter and Open House invitations for Week 10, Prahan five residents impacted by team effort as Emerging Generation and adults line street painting wrought iron fence, role of catalyst in Darwin Resident Action Committee gains support of colleague Jack Goodluck.

Internal: House Church celebrant Keith Braithwaite witnesses to role of Church today in creation of Primal Community: Ecclesiola study of 'Faith' addresses House and colleagues through grounding in painting of fence as sign.

Contradiction: Dealing with immediate sign without letting momentum slip on other long term objectives. (WK. 9)

**RELIGIOUS HOUSE: CANBERRA**

External: Banks returns from Sydney having completed good LENS authorization calls with Telford and Oberg to Chamber of Commerce, Chamber of Manufacturers, Employees Federation and Australian Institute of Training and Development, all of whom will advertise LENS in their journals. Lis Banks again asked to edit national literature to 'International Womens Year'.

Internal: Emerging Generation quarter celebration at circus discloses dynamic of the miraculous only happens out of the mundane.

Contradiction: While working in 36 external arenas, files stuffed in many different holes and boxes. How keep from being capsized when data is urgently required. (Wk. 8)

**RELIGIOUS HOUSE: BRISBANE**

External: Local minister's fraternal launches their journey toward guildsmanship as they officially assume the name 'Kurilpa Ministers' Fraternal': Community LENS brochure to printer signals new gearing up for major impact on the local community.

Internal: Guardian backup system enables House to deal with the practice of meeting the demand to care for the vastness of Regional geography.

Contradiction: How catalyze the doing of that which is essential, knowing that doing it ourselves is both impossible and not what's demanded. (WK. 9)

**SUVA****RELIGIOUS HOUSE: MAJURO**

External: Sheldon Hill, Orvis Agee work side by side in creating images of 'Magnificent Quarter Mile' Majuro downtown area unification plan--Marshallese colleagues in awe over how the center can look, say, 'Yes, how do we do it?'

Internal: Decision to be service to community takes new dimensions when house is rich with repair skills, crisis tactics--rescue missions for Korean fishing vessels lodged on reef, emergency refrigeration calls, VIP typing services.

Contradiction: Hard-headed planning and models for phasing out ICA staff in the two-year timeline Human Development Project intensification. (Wk.7)

**RELIGIOUS HOUSE: APIA**

External; A real sense of fellowship and collegiality has begun to bubble up in the group of expatriots, whom we have been nurturing for several months.

Internal: A breath of fresh air blows through the House as several expatriot families have begun to affirm our style and EI's role here.

Contradiction: How to effectively breakloose the Samoan community. (Wk.9)

**SAN FRANCISCO RELIGIOUS HOUSE: SAN FRANCISCO**

External: ITI Development nets 35 cases of canned products from major food companies moving us towards the goal of cutting the ITI food budget in half. LENS course of 46 is great spirit happening especially with the sophisticated food service provided by nine distinguished Guardians, now on demand from three major international hotels.

**RELIGIOUS HOUSE: SAN FRANCISCO (cont.)**

External: The LENS Course -- the interior journey of again relating the local thrust to world needs creates awe and releases motivity to engage one's life again.

Contradiction: TM-76 Jet is fueled and ready for take off -- but doesn't have a 'Pilot.'

**RELIGIOUS HOUSE: SAN JOSE**

External: Church School Training Institute scheduled for Saturday of Week 10 already has 50 registrations. People are calling us asking, 'How many can we send?' Downtown clergy with house member as host begin Cable TV series on 'Lent in America's Bicentennial Era.'

Internal: Another job! Half time as Interim pastor helps ease the economic pinch. Work on slide show presentation to Fresno Citizens' Group is completed.

Contradiction: Focusing on the possible among all the challenges. (Wk.9)

**RELIGIOUS HOUSE: SACRAMENTO**

External: LENS happens with 46 around the table: four phases represented plus four urs.

Internal: House welcomes Rosemary Kennedy, parish social worker, into House as sojourner.

Contradiction: How to quickly movementalize the latent transestablishment. (WK. 9)

**RELIGIOUS HOUSE: SEATTLE**

External: Capitol Hill Guild meets for first time with five around table. Lacy Twon meeting followup sees 31 around table deciding to meet again to examine Town Meeting methods for local application: RSI followup in two metro cities show renewed interest in local church renewal. Spirit Odyssey is deep address for the 13 around table.

Internal: Odyssey prep of House enabled by the old 'broomstick trick': Two House youth sent to Chicago Centrum to do three week research project for high school.

Contradiction: How to keep the fire burning under new grads and potential cooleagues without burning them up. (WK. 9)

**RELIGIOUS HOUSE: LOS ANGELES**

External: Fifty people participate in training events, Church School Training Institute and an RSI. American Baptist Seminary offers credit for any participant in ITI.

Internal: Assigned time demonstration culminated in 25 coulleagues on full Week two assignment and late night House Church to celebrate the month of expenditure.

Contradiction: Authorization gained through current ITI visiting must be used on behalf of global movement, how to best offer that up. (WK. 9)

**RELIGIOUS HOUSE: PHOENIX**

External: Three congregations represented by two clergy families and a son of clergy at Prinal Community Experiment.

Internal: House Church witness and troika meeting spin catylize decision of House to be married to Phoenix and Capitol Verse is till. death do us part.

Contradiction: How to create concrete plan to catalze parish and metro troops. (WK. 9)

**RELIGIOUS HOUSE: SALT LAKE CITY**

External: Ken Ball - head of Chamber of Commerce gives strong nod to Bicentennial.

Internal: Ecclesiola enables key metro people to BE Ecclesiola. Father Frank Mannon is guest at Ecclesiola.

Contradiction: Keeping comprehensive in midst of many deeds. (Wk.9)

## RELIGIOUS HOUSE: BILLINGS

External: On heels of week of deep excitement following 55 man LENS, one participant from Guild celebrates LENS at House Church describing LENS as 'a paradigm of creation itself'

Internal: We are still dazed and in a haze on the other side of the course pedagogues said was 'the best recruited LENS I've ever been in'

Contradiction: What now? 55 new colleagues. (Wk.9)

## RELIGIOUS HOUSE: DENVER

External: Receive five phone calls on Tuesday after Town Meeting requesting membership on school Budget Board and copies of proposals, asking 'When do we meet next?' Pueblo church leadership consult raises possibility of PCE in predominantly Chicano parish.

Internal: 100 letters sent out for Town Meeting follow-up. Non-grad guest prepares Scottish meal for Ecclesiola, returns Sunday night with pizza and pop.

Contradiction: How to smash the demon of visionary dreaming in midst of receiving all we've ever wanted. (Wk.9)

## RELIGIOUS HOUSE: RAPID CITY

External: Visit with Director of North Dakota Bicentennial Commission assures appropriation for Town meetings, requests more meetings than planned. PCC identifies two major contradictions to our moving into parish.

Internal: RS-I battleplan for Quarter IV enables spirit analysis of metro and House.

Contradiction: Division of labor keeps us divided into so many directions that we cannot see our effective thrust. (Wk.9)

## EDMONTON

## RELIGIOUS HOUSE: EDMONTON

External: Bob Becker from Edmonton goes to Vancouver for Ecclesiola and walks colleagues through Community Forum Canada models and manuals.

Internal: Midcourse correction on Week II enables new decisions relative to Primal Community Experiment and Community Forum Canada launching. New stance reflected in new House decor. All goes swiftly, easily with Flowers' immigration procedures.

Contradiction: How to maintain tension between refining models that will release effective action and getting on the road as immediate necessary deed. (Wk.9)

## RELIGIOUS HOUSE: ANCHORAGE

External: Three years of careful journeying of clergy in Anchorage show signs of spirit moving history as clergy respond to clergy collegium and covenant for six more weeks, recently their sermons are taking on new sense of risk and show deep concern for congregation, authentic struggle regarding vocation.

Internal: Ecclesiola with guest is significant happening as we draw curtain on 'Skin of Our Teeth' and study 'Two Editorials' by Cousins. RS-I mailing is ready to be sent out, Regional Council is well on its way.

Contradiction: In midst of a dispersed array of thrusts (Town Meeting '76, RS-1, Parish, Clergy), How do we effectively schedule the events of Quarter IV that will hold us to one task. (Wk.9)

## RELIGIOUS HOUSE: SASKATOON

External: Nurture call to Tisdale clergy colleague indicates that RS-1/PL-C flows from pulpit every Sunday.

Internal: CFC research continues with circuit rides, town research, music, culture. Key contact made with provincial environment representatives.

Contradiction: Paper models will fly--but not very far or long. (Wk.9)

**RELIGIOUS HOUSE: WINNIPEG**

External: Recruitment by parish walks, visiting nodes, posters and all other offers. In midst of changing dates and unsure locations.

Internal: Tally Ho. Off on a sleigh ride to enjoy Manitoba Winter weather.

Contradiction: How carry ball without alternate quarterbacks. (Wk.5)

**HOUSTON****RELIGIOUS HOUSE: HOUSTON**

External: \$4200 Town meeting proposal submitted to Texas Committee for Humanities; May Demonstration Meeting in Bryan/College station gathers momentum with Jaycee and school superintendent endorsements.

Internal: Final insurance settlement leaves \$17,000 in bank and firm \$60,000 offer for burned property, a real estate 'profit' of \$77,000 in four years!

Contradiction: Achieving worldly sophistication that can maintain momentum while wandering in political briarpatch, and chastity while in midst of chaos of loose ends. (Wk.9)

**RELIGIOUS HOUSE: AMARILLO**

External: The March of Miracles in El Barrio al Este de Amarillo continues as Career Day, El Futuro Esta Aqui comes off in great style with participation of Chicano students, large number of Chicano professionals, teachers, counselors, calling forth inkind contribution from city initiating Education guild: clergy collegium in response to church involvement taskforce deciding clergy is crucial to parish.

Internal: Searching for new ways to use excess hot dogs when there is no freezer: Cabaret prep for the bimetro council becomes key to internal life of House: Pooles family visit on way to Chicago as colleagues stop in on trek to California.

Contradiction: How to deal with pots on the back burners while pots on front are boiling over. (WK. 9)

**RELIGIOUS HOUSE: SAN ANTONIO**

External: Metro Cadre begins work on Week II celebrative, contextualizing Council for old and new grads, battleplanning to be done beforehand by old hands. Response to PLC is sign of possibility and pain in taking up rold of Church in depth.

Internal: Faith, hope, love lecture from Primal Community Consult comes as fantastic construct for brooding on current spirit deeps. Reluctant landlord comprimises on new lease. Nan Grow's ITI Caracas report explodes images of Latin America as monolith.

Contradiction: How to make present formulation structures catalyze movemental dynamic rather than enlist help. (Wk.9)

**RELIGIOUS HOUSE: OKLAHOMA CITY**

External: Central City 5 Galaxy and Guild simultaneously host RS-I and PCC; Ada Town Meeting Follow-up draws excited crowd of 46; new galaxy names itself Canadian River 5.

Internal: Gloom of Income Tax is countered by Hope of Ecclesiola.

Contradiction: Meshing (vs. grinding) two gears of Town Meeting 76 and Primal Community Experiment. (Wk.9)

**RELIGIOUS HOUSE: DALLAS**

External: Old East Dallas 'story' brochure draft created with help of community leadership in Week II PSU, provokes invitation for House personnel to join dallas City Bicentennial sub-committee to promote 'Town Meetings,' while Metro cadre perceive mercy of Lord in His judgment to postpone two quarters' RS-I's.

Internal: Wayside Inn becomes virtually full time occupation as overseas teaching job applicants from Chicago and Seattle interview educators' association conventioners amid Dallas' quadrennial snow fall.

Contradiction: Maintaining active momentum while corporately and structurally engaged in mission. (Wk. 9)

## RELIGIOUS HOUSE: TULSA

External: Second meeting of Bartlesville colleagues workshops tactics for holding Town Meeting in that city. Work continues to secure site for Town Meeting. Tulsa Bicentennial contacts include ex-Mayor who is on State Bicentennial Commission, and professor of American History at University of Tulsa.

Internal: Wayside Inn explodes: Tom Huffman begins sojourn and Joe Hess passes through having completed Winter Academy. Space recreation continues with one room becoming two (lounge and office.)

Contradiction: Fitting into shoes of giant that ICA has become in Tulsa Bi-Metro. (Wk.9)

## RELIGIOUS HOUSE: NEW ORLEANS

External: Miracle RSI of twenty-seven emerges through quota system. New Orleans Bicentennial Commission endorses Town Meeting.

Internal: House transformed by creating montages for Stations of the Cross. Sandra has opening night-RSI faculty get to hear.

Contradiction: With full steam ahead in the economic, we still seem to be taking water. (Wk. 8)

## RELIGIOUS HOUSE: MEMPHIS

External: RS-1 in Knoxville has 30 around table and represented the participation of 5 metros. Signal Regional Council held in Knoxville as all are excited and overwhelmed by Town Meeting '76 prospects. Council decided to fund travel pool fee to send two to Chicago Week 9 and sends out three to Spring Academy.

Internal: Third person this quarter is permanently laid off, one week after once again getting within one of achieving full house employment.

Contradiction: How to plan effectively when the economic car has already been running longer than it should have been able to on only two wheels. (Wk.9)

## RELIGIOUS HOUSE: ATLANTA

External: Church children's group in parish becomes task force of forty and excitedly distributes 'East Lake 5, A great place to be alive' bumper stickers throughout parish. RS-1 course in Asheville, N.C. toally recruited and enabled by local people.

Internal: Future intern family sojourns for Week II, create parish sign by spring cleaning front yard and House, and their children did not want to leave on Sunday. Metro colleagues WATS line put to good use as we contact 100 + grad families for Regional Council.

Contradiction: Ordering our time and space in such a way as to be obedient to God rather than our 'druthers.' (Wk.9)

## RELIGIOUS HOUSE: MIAMI

External: After RSI in Jacksonville letters begin to arrive from grads to their clergy praising the course.

Internal: Use of demonstrator Gestetner is a spirit event to enables regional council prep. In the absence of regular grocery shopping, House packs spirit lunches, proving ,man does not live by bread alone.

Contradiction: How to enable spiritizing dynamic to care for colleagues in becoming a corporate missional body. (WK. 9)

## CHICAGO

## GLOBAL CENTRUM: CHICAGO

External: Focusing on Town Meetings and the Primal Community, the North American Priors' Council opens with an informal 'open house' reception on completed remodeled fifth floor. The profundity of Town Meetings disclosed as Joe Pierce spins in Collegium on Ideology and Polity merging with local mass impactment. First Quarterly issue of 'Voice of Uptown Five' printed and available for distribution through Ward-Stake Care Network and distributed to 2,500 households.

Internal: The Order celebrates the marriage of Nancy Karpoff and Jeff Clithero . Discontinuous month launches March '76, a miracle a day preparation for the Priors' Council, enabling Congregation and other corporate spaces of the building to be transformed.

GLOBAL CENTRUM: CHICAGO (cont.)

13.

Contradiction: Catalyzing a consensus for the home run. (Wk.9)

RELIGIOUS HOUSE: CHICAGO

External: A great Global Guardians Dinner and Dance signals the beginning of a new phase in our preparation for Town Meeting '76. Metro presidium highlighted by a spin on the missional family.

Internal: Stations begin evaluation and indicative battleplanning for Quarter 1W. Gary and Judy Prichard, and daughter Anna, are received as interns.

Contradiction: Pushing through sleepy weakness in the face of the on-going and up-coming mission.

RELIGIOUS HOUSE: WICHITA

External: Parish gridding and newsletter distribution: Primal Community Consult with two parishes represented. Positive visit with state Bicentennial Director with appointment to speak before commission.

Internal: Image of March created. Consult team here for Primal Community Consult and do Monday collegium on the state of the Primal Community Experiment.

Contradiction: Living with the awkward marriage between task and time.(WK. 9)

RELIGIOUS HOUSE: OMAHA

External: Over 125 people attend Northside Community Convocation (experts told us no one would come, particularly the blacks). We now have miracle stories to tell for long time.

Internal: Internal structure bracketed as we focus every night on Door to Door canvass for Town Meeting.

Contradiction: How sustain momentum from the Mountain Top. (Wk.9)

RELIGIOUS HOUSE: KANSAS CITY

External: Unanimous vote by Westport Community Council to sponsor demonstration Town Meeting in Westport. President remarks later, 'This is exactly what we've been waiting 5 years for in Westport.'

Internal: People going here and there dramatize again K.C.'s centrality--hosted Poole's from Phoenix enroute to Chicago), Carla Reed (Phoenix) in town for conference, and Bain Davis and Gene Buck en route to Hawaii and Majuro.

Contradiction: Enamoured by Lord's decision to let us win a couple, we failed to see the Great Enchanter sneaking up with his treacherous wand. (Wk.9)

RELIGIOUS HOUSE: MINNEAPOLIS

External: Valentine[s] Ball honoring community elders indicated life and energy as yet untapped in Whittier. Wednesday night Guild meeting has people asking for the blue song book, the better to sing 'Shocking' with. Meeting in North Dakota with Bill Salmon and former District Superintendent for Methodist Church sets up North and South Dakota Bicentennial network. Whittier Town meeting in shute, with great inkind results.

Internal: The Skin of our Teeth and Norman Cousins explode Ecclesiola as both Metro and Guild colleagues show up for evening.

Contradiction: Sustaining momentum without allowing any particular event to overshadow vision.(Wk.8)

RELIGIOUS HOUSE: ST. LOUIS

External: Hosted as guests in Missouri State Legislature by Rep. Stan Piekarski of St. Louis. In depth parish analysis begun, including expanded grid. New RS-I grads jump head-on into Primal Community Experiment.

## RELIGIOUS HOUSE: ST' LOUIS (cont.)

Internal: Study of Cousins on 'Two Editorials' powerful address on House. Hosted visiting parents of Epley family over the weekend.

Contradiction: Haven't yet figured out how to do all the work of catalyzing colleagues in all six Metros while maintaining serious parish demonstration at same time. (Wk.9)

## RELIGIOUS HOUSE: PEORIA

External: PCC impacts House and Bi-Metro colleagues by drawing together the one thrust of mission and the methodological ease of discerning major contradictions. One Champaign colleague remarked, 'I should have been there,' upon hearing about the happening it was.

Internal: Collegiums on contradictional analysis in relation to the Movement in this Bi-Metro has revealed fresh approach and more real analysis.

Contradiction: How direct enthusiasm for Town Meeting and Local Church Consults into strategic planning. (Wk.8)

## RELIGIOUS HOUSE: GREEN BAY

External: 11 Metro Colleagues to Minneapolis Demonstration Town Meeting. Key clergy couple attend Metro Cadre in Duluth.

Internal: Decision to reflect on Internal Life during Quarter 1V Collegiums and to create Internal Life Manuals for next Quarter.

Contradiction: An intentional rhythm of detachment in the midst of awesome engagement. (Wk. 9)

## RELIGIOUS HOUSE: MILWAUKEE

External: Town Meeting '76 authorization is boosted as appointment secured with Executive Director of Wisconsin Bicentennial Commissions and Justice and Peace Center for Roman Catholic Church offers endorsement to centers across Continent. Madison Metro celebration spins 36 friends and colleagues around the world from Social Demonstration to Social Demonstration.

Internal: House Church guests represent Belgium, Atlanta, and Chicago.

Contradiction: How to create self stories that are assets. (Wk.9)

## RELIGIOUS HOUSE: INDIANAPOLIS

External: Louisville and Manchester polises send ten to RSI. Indianapolis Metro Cadre takes financial and enablement responsibility for RSI. Priors attend Bicentennial meeting in Detroit.

Internal: Mardi Gras celebration followed by special Ash Wednesday service at House, where ashes were imposed by Fr. Joseph Dooley. Promotion of Maxine from staff nurse to clinical instructor boosts budget.

Contradiction: Edge Movement vision dim as troops spread thin. (Wk. 7)

## RELIGIOUS HOUSE: CINCINNATI

External: LENS recruitment nets Community authorization with Elder's breakloose of 12 registrations, while Metro Cadre celebrates second Primal Community gridding of North Fairmount.

Internal: Thursday evening Ecclesiola is transformed to corporateness symbol as House is readied to receive LENS teaching team and men are sent out to Community 'Town Meeting,' all resulting in corporate power and motivity.

Contradiction: A beckoning form which will enable LENS grads to local engagement, after exploring the world with LENS. (Wk.7)

## RELIGIOUS HOUSE: DETROIT

External: With half House adults assigned out for Week II, Region is impacted with Town Meeting pedagogy with twenty around the table. Husband of LENS grad excited by methods is great asset to weekend. Highlights include readings on historical figures, extemporaneous interludes, symbols workshop.

## RELIGIOUS HOUSE: DETROIT (cont.)

Internal: House reaches full employment again with two new jobs secured. Impacts and is impacted by four guests at Ecclesiola (two old colleagues, two potential colleagues) through study of Cousins Two Editorials.

Contradiction: Losing head over Town Meeting at expense of other missional activity. (Wk. 8)

## RELIGIOUS HOUSE: CLEVELAND

External: House becomes training center as RSI participants fill all available sleeping space. Social agency impact given impetus through weekly imaginal education workshops for day care and head-start.

Internal: Family morning replaces family night and the Late Night (10:30) Dinner recreates the Ecclesiola dynamic as we re-design time to enable second jobs. Two jobs secured, three to go. Receive Bowman family as interns.

Contradiction: Experimentation with time exposes comfort with old patterns - riding loose in the saddle is key. (Wk. 7)

## NEW YORK

## RELIGIOUS HOUSE: NEW YORK

External: Our many faces come more into focus as move ahead in several arenas: PC Consult and RSI held in adjoining rooms ten yards apart; initial nod given Town Meeting by Pawling Bicentennial Commission; editorial page writer of The Daily News (largest circulating newspaper in America) joins Town Meeting committee, takes copious notes.

Internal: House impacted by Regional House Church (sixty-five present) where we receive two new House members, entertain international guest from Tokyo, hear Connie Widyatma report that on return to Jakarta she will be accepting assignment to Brussels, and we dine on entire in-kind meal.

Contradiction: Our capacity to reflect has not caught up with our ability to do. (Wk. 8)

## RELIGIOUS HOUSE: PITTSBURGH

External: Trips to Fairmount & Morgantown W.Va. with regional coordinator yeilds six on-the-spot LENS registrations from cities Bicentennial Commissions; Hankin's family decision to be Church once again impacts region with celebration of life and death of Rochelle Henkins, 13-yr. old colleague.

Internal: Pushing ahead on House proposal for facility in Parish during morning collegium with help of Carlos Zervigon breaks open new possibilities; House does Ecclesiola with four around table, a versatile reading of 'Skin of Our Teeth' by 2 of 4 present.

Contradiction: Lucid colleagues being called upon to engage their lives now have not participated in recent miracles which allow them to live out of the 'glory' of bygone miracles. (Wk.7)

## RELIGIOUS HOUSE: ROCHESTER

External: Twenty three people covenant to be 'Metro Minutemen' for Town Meeting 76 and 30 people at RSI feed new life into congregations.

Internal: Seventeen guests at House Church signals a new openness on our part to entertain the establishment and disestablishment at dinner.

Contradiction: Town Meeting 76 requires grassroots sponsorship with two months before demonstration very little sponsorship as yet. (WK. 9)

## RELIGIOUS HOUSE: RICHMOND

External: Shift into Qtr 1V made early as we initiated a program of Systematic Visitation in the Parish. Building Towards Community PSU, RSI, LENS .for Qtr 1V.

Internal: Week of Celebration: 'Lenny' the M'C' artformed in Ecclesiola and Weekend of engagement with Supper Club Celebration and 1st birthday party for Peter Ballard.

Contradiction: Maintaining the Missional Momentum in midst of intensified permeation.(Wk.9.)

**RELIGIOUS HOUSE: WASHINGTON**

External: Impacted with 70 Elders for their monthly meeting and celebration of 73rd birthday of Metro colleague. LENS miracle: Grad leads task force just using methods, in eight hours arrives at four contradictions. Later, classified report reveals same four in 1½ year study by professionals. Social Demonstration PSU creates grids to parish level. Authorization for Town Meeting in Fairfax received.

Internal: Welcomed Gene Buck from Region Anchorage for the week and couple considering interning. Relocation of prayer room to worship area. EG complete weekend RSI with two Jets helping teach after which Jets and EG impact elder LENS grads with spirit songs in return for story spins about D.C.

Contradiction: Discovering how to straddle two stallions - one: the ever expanding, all consuming task and two: to train and formulate troops to carry on that task. (Wk. 8)

**RELIGIOUS HOUSE: BALTIMORE**

External: Extensive Town Meeting 76 authorization including offer of Baltimore City! Jaycee's to sponsor all Baltimore Town Meetings and support of Mayor's Council in Eastern Shore City St. Salisbury.

Internal: Exciting collegium on embodying radically different roles and celebrative Ecclesiola with reflections on Quarter were best symbolized by huge banana splits with a cherry on the top.

Contradiction: Maintaining momentum with new Exposed thrust.(Wk .9)

**RELIGIOUS HOUSE: PHILADELPHIA**

External: Town Meeting 76 explodes comprehensive as Scranton is visited three times in two weeks (untouched for year) and a State Bicentennial contact sets up a Local Church Consultation.

Internal: Cruciality of Wayside Inn dynamic revealed as House enables colleague relocated by Airlines to deal with recession through House sojourning.

Contradiction: With vast number and size of upcoming events find selves short on indicative planning and therefore long on worrying. (Wk.8)

**RELIGIOUS HOUSE: NEWARK**

External: A 25 man RSI enabled and operated mostly by metro colleagues.

Internal: Spending whole day on creating new decor for the Religious House as sacred space.

Contradiction: How to shift our operating image of what our first priority is relative to the new emphasis on Town Meeting 76. (WK. 9)

**RELIGIOUS HOUSE: BROOKLYN**

External: Yeses from seven Bicentennial officials for Philadelphia demonstration Town Meeting 76 come in one week. RSI with 21 present and consult with five congregations and 125 people on Staten Island keeps congregation dynamic.

Internal: Discontinuous collegium model has us pushing more on the global pole in our visioning. Arena of our prayers take on global awareness and point to expanded vision.

Contradiction: To decide a time for depth quarter battleplanning in order to give the next quarter its own momentum. es go deeply enough to give necessary form and order. (Wk.8)

**RELIGIOUS HOUSE: HARTFORD**

External: St. Thomas Roman Catholic Church Parish Council from West Hartford includes lay, religious clergy, 25 have retreat workshop where they did indicative battleplanning for the year, saw Dr.Lao and conversation, all were non grads, leadership from three House staff, Monsieuer Mullen called Bishop on phone and said 'this is great', Roman Catholic Authorization key. Event was held at House.

Internal: Preparation for open House continues, collegium room is transformed when Week six RSI grad 'an interior decorator' donates labor and papers room, House paints trim. Large woen turn symbol made and part of new decor. Showing of Dr. Lao after House Church a great happening with 27 present.

Contradiction: Catalyzing the decisons of metro colleagues to be movemental ordering dynamic. (WK. 9)

**RELIGIOUS HOUSE: MANCHESTER**

External: Sent seven to Boston LENS. President of Manchester Federation of Churches decides to market RSI AND CS111a package deal for his congregation.

Internal: House celebrates first employment upgrade of \$100 a month. In-kind secures 7 cases of dairy products.

Contradiction: Comprehensive vision for renewal of the whole Local church as we experience fear in our role. (Wk. 9)

**RELIGIOUS HOUSE: BOSTON**

External: Metro Cadre has capacity crowd of old colleagues and new grads.

Internal: Objective of 80% of food budget through in kind nudged as 50% of food budget reached.

Contradiction: The broad vision is clear, but intermediate steps still hazy. (WK. 9)

**MONTREAL****RELIGIOUS HOUSE MONTREAL**

External: The Primal Community Methods School was attended, in its forth session, by two city councilmen, provincial congressman, city official, who wanted Communitiy Forum Canada in his suburban community.

Internal: The House move is very much a reality as the metro cadre has created value screens to direct its House finding taskforce and as practical moving model has been developed.

Contradiction: Now that it appears that a Guild has come into existance through the Social Methods Training School we need images of how forces and people can be structured to enable the development of Primal Community. (WK. 9)

**RELIGIOUS HOUSE: TORONTO**

External: Development calling uncovers Community Forum Canada network possibilities businessmen's luncheon

Internal: Power of corporateness revealed again as two 4000 word essays reasearched written, almost, in Week II. Quarter celebration with dinner, theater. Hilton family welcomed to Wayside Inn.

Contradiction: What forms will allow corporate direction of several individual decisons. (WK. 9)

**RELIGIOUS HOUSE: OTTAWA**

External: Going to meetings, selling Community Forum Canada; many yesses to forthcoming CFC as we contact numerous parish businessmen; meet with Bernard Daly and non-Governmental Organizations; attend two local church annual meetings, one clergy wives group, host another clergy collegium.

Internal: Bi-Task Force Wk.II on CFC as Clutzes join us to work on national proposal as rest of House hits road recruiting. Nancy journeys to Nova Scotia to celebrate completion of life of her grandfather.

Contradiction: How do we combat sleepiness in old colleagues so that we can catalyze movemental edge, which is unclear to us. (Wk.7)

**RELIGIOUS HOUSE: CARACAS**

External: Key RSI held in Caracas with 16 participants representing two areas. Two participants flew in from Curacao from ITI pastors church and another ITI grad flew 800 miles to course in Caracas.

Internal: House attends 'Corrida de Toros' (Bullfight) at Nuevo Circo, leaving indelible mages of rishing one's life in our consciousness. Work book for inductive battleplanning completed as well as several other 'Brother Francis' miracles during the RSI weekend.

Contradiction: Maintaining LENS recruitment in the midst of a week of heavy indicative battleplanning. (WK. 9)

GLOBAL CENTRUM  
QUARTER III 1974 - 75

THE GLOBAL ORDER CENTRUM REPORT  
FOR WEEK 9

BRUSSELS  
BOMBAY  
SINGAPORE  
HONG KONG  
CHICAGO

GLOBAL  
DEVELOPMENT  
CENTRUM

Tightening the story with data and concrete programs such as Aboriginal Scholarships, Town Meetings' statistical workup and Primal Community Experiment along with focus on target cities and audiences gives motivity extra boost. Singapore receives final 'yes' from Canberra for Aboriginal scholarship to summer program which enables summer to break even financially. First Area Singapore course money sent to Centrum. Brussels reports receiving first grassroots returns from Week 8 Lenten card mailing and arrival of inkind program materials, and Guernica from Athena Productions - London. Initial visits made to Koahsiung. Prioritizing and naming contacts in 15 target Hong Kong companies initiated. Circuits in Hyderabad and Calcutta, with a visit to the personal secretary to Nizam of Hyderabad, opens new promises of possibilities. The contradiction is how to be diplomatic in raising money.

GLOBAL  
MANAGEMENT  
CENTRUM

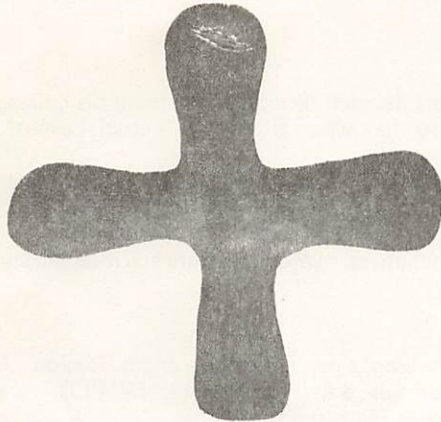
Breakthroughs in finances were reported from Brussels, Bombay and Singapore with machinery running with all 12 Religious Houses. Singapore reports areadying to pick up pace with new capacities for course financing. Bombay has an intensive push and pull together for Quarter's financial report. Brussels has exciting conversations with houses as continent moves towards full participation in global financial model. Chicago streamlines preparation and whole Nexus partici= pates in one night stuffing with mailing within 24 hours of 53,000 Lenten cards. Hong Kong reports a clarifying of Global Centrum role as airline scheduling with discount up to 50%, are co-ordinated with Chicago by Telex. Singapore authorization calls break open possibilities for Australian LENS marketing as Troika prepares to gun it in Melbourne. Bombay's workday miracle prepares new location in half a day and the migration begins. The contradiction is the tracking down and keeping up of facilities that are adequate for our broad range demands.

GLOBAL  
OPERATIONS  
CENTRUM

Completion of teaching quarter with largest and key weekends in Paris, Berlin, Kuala Lumpur and Singapore. Hong Kong experiences breakthroughs in rationality on course schedules and Brussels receives growing consensus among the Houses to establish course size criteria. Singapore has built a region profile for weekly support systems in order to focus mailing, visitations and consultations. Systems operating for ITI and GRA as Bombay reports printing and distribution to recruiters of the GRA brochure and completion of sophisticated ITI recruitment picture album, and Singapore continues contacting Houses in relation to ITI phases and completion of a rough draft for ITI brochure. Chicago focuses preparation for North American Priors Councils and GRA construct preparation. The challenge is to find where the objective data and screen mesh and enable day to day decisions to reflect futuric thrust.

GLOBAL  
RESEARCH  
CENTRUM

Brussels reports three field visits --- Berlin, Frankfurt, Bristol --- in preparation for PCE training quarter. Hong Kong reports work done in developing the PCE back-up system. Bombay actualized back-up system by completing visit to all four PCE projects and reports incredible miracles: Community LENS, a Node in Hyderabad community, and proposals by Guild, and a speech written for key authorization figure at International Women's Year. Singapore does an in-depth reflection on Sino way of life and the means of working as catalyst. Chicago reports significant Community Congress held in Uptown, with roles enacted by local Guilders. Powerful Imaginal Education tool released as first 'Voice of Uptown Five' is distributed. Local Community Convocation in signal parish of Winnipeg ward, with Lela Moseley as leader. The contradiction is discerning a Global Movemental rhythm adequate for complexity and increased practical engagement.



Turn back all of you by God's help;  
practise loyalty and justice  
and wait always upon your God.

Hosea 12:6

## LONDON

## RELIGIOUS HOUSE: LONDON

External: Two RSI's in House at same time culminating week of visits to four Metros, setting up RSI in one virtually untouched Metro.

Internal: House internal life reaches peak after painting, experiencing fasting, feasting dynamic, while struggle with Kierkegaard's 'Love Hopes All Things' was key event. Experience globality again with visit by Rees from Melbourne House enroute to Chicago.

Contradiction: Raising question of the next step after completing year's timeline in less than three quarters. (Wk. 8)

## RELIGIOUS HOUSE: GLASGOW

External: Exciting Regional Council has 45 strong and ready colleagues. Last ten days filled with RS-I, PLC, Imaginal Education courses all held at house. Nine regional colleagues help with teaching and enablement. Glasgow Cadre studies 'Waves of NSV.'

Internal: Presence of John and Gwenda Rees of Melbourne en route to ITP broadens our global context\* Fiona Willock receives \$500 grant from local government to enable participation in ITP, April through September. Cadres demonstrate eagerness to participate in search for new House location.

Contradiction: How to focus mission on innocent suffering rather than domestic problems. (Wk. 10)

## RELIGIOUS HOUSE: BRISTOL

External: Bristol Metro becomes self-sufficient as key colleague leads church group in symbol creation. House is freed to work in more distant metros.

Internal: Metro analysis and prioritizing of Twenty Programmes on Area Warboard creates new vision of external mission.

Contradiction: How to maintain momentum in all Metros while pushing time and energy into prioritized areas. (Week. 10)

**RELIGIOUS HOUSE: MANCHESTER**

External: Mailing invitations to PCE Field Visit and creation of large imaginal decor piece of 101 parishes refocuses our mission.

Internal: Bishop Ted Whyham of Middleton and his wife come to Ecclesiola Thursday night and enjoy 'Skin of Our Teeth'. He spins with House on history of church renewal in Britain and vision for the future.

Contradiction: Forced to think again about what is necessary style of persuasion in British Isles. (Wk. 8)

**PARIS****RELIGIOUS HOUSE: PARIS**

External: Pastor of parish church (only PLC grad in France!) decided to send letter to all his colleagues recommending PLC and asking them to clear their calendars so they wouldn't miss this crucial event!

Internal: Key conversation about struggle with vocation and 'hope against hope' allows us to see our quarter's work and 26-week timeline in new context: That of the Long March and global mission.

Contradiction: How do you, when thrown out over missional abyss, avoid corporate spiritual paralysis? (Wk. 10)

**RELIGIOUS HOUSE: ROME**

External: Exciting Regional Council held with concrete presence of colleagues from Region. New regional, movemental consciousness if catalyze, as planning is done for Quarter IV PLC, further authorization strategizing done, and first actual Regional celebration is held.

Internal: Shift to discontinuous month dramaticall symbolized by beginning four-week Lenten Odyssey. NRM and Other World charts come as deeply illuminating in context of current Social Demonstration edge. Finance task force completes work after two-week marathon. Books now in order, projections for year stabilized.

Contradiction: How to be about both priorities of finding new housing, launching PLC at same time without losing necessary 100% in each arena. (Week 10)

**BRUSSELS****GLOBAL CENTRUM: BRUSSELS**

External: Field Visit of 20 plus in both Frankfurt and Berlin highlight a week of momentum building for the Primal Community Training School.

Internal: Ecclesiola wrap-up leaves us in deep gratitude for the dynamic and for edge spirit sustenance that 'Hope' seminaries were.

Contradiction: How to merge demands for PCTS recruitment and preparation with full employment. (Wk. 9)

**RELIGIOUS HOUSE: BRUSSELS**

External: First regional PLC, third course of Quarter.

Internal: Enablement marathan of PLC-RSI including children's RSI. Ecclesiola guest Bishop recently returned from ITI Frankfurt suggests that he follow-up on PLC by telephoning participants.

Contradiction: Standing before perpetually new horizons, how follow up rapidly enough on new potential to pull together all troops into formation for Spring Quarter thrust. (Wk. 8)

**RELIGIOUS HOUSE: AMSTERDAM**

External: Trip to outlying Metro cities enlists support for work in Utrecht, Nijmegen, and yields more contacts. ITP pays off nicely as Paul Schrijnen's sister, Connie Widyamata's friend, goes to PCTS. Dr. Verkuijl, prominent Dutch theologian, visits house. First Regional Council held.

Internal: Fourteen guests pass through House, most due to whirlwind created by Connie Widyamata. Post-Council celebration highlighted by Indonesian feast and film, 'Murder on Orient Express.'

Contradiction: Seeing demand for social demonstration, how do we know so much while we develop patience and many trained troops? (Wk. 10)

## FRANKFURT

## RELIGIOUS HOUSE: FRANKFURT

External: Area bristles with new life as Field Visits in Hamburg (with 20 people) and Frankfurt (with 29, including eleven from three churches in Sachsenhausen) convince us that Indicative Battleplanning is what people need and want.

Internal: Corporateness intensified in the gathering and scattering caused by Field Visit events and sending of four House members to Berlin RSI.

Contradiction: Forging the arsenal that will bring Movemental form to the Area in Quarter III. (Wk. 9)

## RELIGIOUS HOUSE: BERLIN

External: Follow-up on RS-I brings positive reports, which is enabling as we set up course calendar for Quarter IV.

Internal: Week II devoted to Indicative Battleplanning for next quarter, highlighted by being guests at celebrative dinner and play at American Air Force Officer's Club.

Contradiction: Transforming affirmative nods into active participation in the Movement. (Wk. 10)

## NAIROBI

## RELIGIOUS HOUSE: NAIROBI

External: Registration for RS-I comes in; key Nairobi pastors attend grad meeting; Government Commissioner responsible for all social work, community development, adult education in Kenya says 'Yes' to May LENS for his staff; ITI facility secured.

Internal: Two sessions of reflecting on past two quarters, visioning future launch month of planning; Mr. Christian of India received as sojourner.

Contradiction: When everyone says 'Yes,' how do we discern the crucial points relative to the future? (Wk. 10)

## BOMBAY

## GLOBAL CENTRUM: BOMBAY

External: Fourth consecutive LENS course completes LENS circuit of all four Areas in as many weeks.

Internal: Received keys to new facility.

Contradiction: Communications vacuum among roaming Centrum personnel introduces floundering where high precision and growing momentum are required. (Wk. 9)

## RELIGIOUS HOUSE: BOMBAY

External: Depth pushing on Cadre models, ITI and GRA recruitment as colleagues at Area Council reveal great wisdom and commitment for region care. House colleague brings in first ITI and GRA Registrations and grass roots donations from circuit rides.

Internal: Week 9. Celebration filled Ecclesiola as Centrum rejoice over new site- Oakley family share 21st Anniversary of marriage- and we begin Journey To Ixtland and Kazantzakas study. House and Area Council view Movie Handhi (storm) and experience freedom and obedience struggle for the free man.

Contradiction: Laying the trucks for GRA and ITI train far enough ahead so it will arrive at the train station on time. (Wk. 10)

## DELHI

## RELIGIOUS HOUSE: DELHI

External: LENS Seminar of 25 ends with great excitement about PCE, follow-up meeting at House.

Internal: Week of LENS as the Jenkins do collegium, LENS conversation pedagogy, and five from House PO LENS.

Contradiction: How to do necessary circuit rides for GRA/ITI recruitment when all troops need to be full time on Self-Support and Development. (Wk. 10)

## MADRAS

## RELIGIOUS HOUSE: HYDERABAD

External: GRA/ITI recruitment in full force with four visiting teams from Cadre. John Patterson does whirlwind development trip, opens up exciting possibilities as well as cultivating established secular contacts.

## RELIGIOUS HOUSE: HYDERABAD (cont.)

Internal: Guild and Cadre at the House so often, the 'House' and the 'Colleagues' almost indistinguishable.

Contradiction: With half of House deployed, how do you create miracle structure that allows us to do work of ten men? (Wk. 10)

## CALCUTTA

## RELIGIOUS HOUSE: CALCUTTA

External: Imaginal Education taught to 60, entire staff of most prestigious school in city. Development nets 7,500 rupees last week in Calcutta. One advertisement brings fifteen requests, five confirmations for conversational English classes.

Internal: Arrivals and departures of special development, teaching teams from Bombay and Hyderabad swell Ashram to eleven troops. Relaxing celebration marks end of teaching quarter.

Contradiction: How to run 1,000 miles per hour while juggling a dozen eggs. (Wk. 10)

## SINGAPORE

## GLOBAL CENTRUM: SINGAPORE

External: Secular penetration in Area Singapore continues and deepens as non-movement, non-grad CSI with 15 new participants is held in Kuala Lumpur; Imaginal Education course held with new group of teachers in the facilities of New Town Secondary School in Queenstown 5, Singapore.

Internal: Centrum directly impacted from Chicago as Preston Bradley and wife arrive on the Queen Elizabeth II. All Centrum hands in town at once for one of few times; addressed by signal reports from Manila, Area Sydney Metro formulation and presentation on Chinese culture by Chen I An.

Contradiction: Turn to world challenges us with only one doorway: secular spirit proficiency within secular world requiring practical means of transparentizing global cultures and engaging local man as the Spirit Movement and the Order. (Wk. 9)

## RELIGIOUS HOUSE: SINGAPORE

External: Regional Council held with five members of New Town Guild (Teachers at New Town Secondary School) and one person from Singapore Ministry of Education present as well as Regional course coordinator, Centrum representation.

Internal: House focuses for the week on creating new secular and religious decor for House. Exciting transformation of space happens. Bob Lingafelter shares news of Movement in Philippines at collegium.

Contradiction: In midst of many exciting possibilities, how do you choose one necessary deed, focusing energy and passion to enable the deed to happen? (Wk.10)

## RELIGIOUS HOUSE: KUALA LUMPUR

External: Possibility galore on all fronts: Movement takes first step into Parish at Regional Council through exploration and creation of grid, celebration in Sental; 23 get a taste of what it means to be the Church through Niebhur at Klang meeting; 20 Government people attend Soybean Field Day.

Internal: Gusts bring new life; Centrum comes for week of Development authorization, proposal submitting, Regional Council, ITI site visit; Darlington's sojourn for week: welcomed Kjell Knutsen at House Church; Fr. Lui and Fr. Garland drop in.

Contradiction: Finding the way to enable Klang group to realize they are the Church and its possibilities. (Wk. 10)

## RELIGIOUS HOUSE: JAKARTA

External: Prepared for Surabaya (East Java) Metro meeting Week 9 and excitedly created Practical Vision for Education Manifesto. Prince Sihanouk's letter to America's congressional leadership.

Internal: House overjoyed with colleagues en route to and from Australia, David McCleskey, Tim and Sue Wegner, swelling House Church to largest ever.

Contradiction: In time of demonstration, how do you do intensive formulation? (Wk. 10)

## HONG KONG

## GLOBAL CENTRUM: HONG KONG

External: Mrs. Bradley visits Canton and Dr. Bradley preaches to full House at Shum Oi Church. Centrum newsletter to Houses and ITI/GRA story, ITI practices, and brooding on course rational out as backup for Regional Councils.

Internal: Decor blitz enables world grid, new March of Miracles chart and Guernica to transform space.

Contradiction: Saying the strategic Yes and Nos that create spirit, in the midst of increasing nitty gritty. (WK. 9)

## RELIGIOUS HOUSE: HONG KONG

External: Address before Board of New Community Health project points to trends toward total community care.

Internal: Dr. Preston Bradley visits Hong Kong, preaches at Shum Oi and stands as a sign of the global spirit.

Contradiction: Creating an 'end of the teaching quarter shift' that revitalizes momentum. (WK. 9)

## RELIGIOUS HOUSE: KAOHSIUNG

External: As we wound up recruiting PLC our key Parish pastor tells us he told his Presbytery that if they wanted to renew the Church they had to go to PLC! Results: Eight registrations at once. Women's Guild meets second time and are excited about their possibilities.

Internal: Colleague from Global Centrum: Hong Kong leads exciting collegium on state of SEAPAC. Reviewed and revised Station assignments to accomplish missional tasks for next 20 weeks. Team celebrations ranging from Kung Fu to Ping Pong revitalize our life.

Contradiction: Being so excited about great week catches us up with excitement of the now, while need to move on. (Wk.10)

## RELIGIOUS HOUSE: MANILA

External: Proto-Guild self-consciously forms itself, works out implementaries for creating Guild. Manila Metro colleague goes on bus trip with Zervigon and Armas to northern mountain Metro. Result: PLC and RS-I for Quarter IV.

Internal: House celebrates with Fred and Marian Karpoff wedding of Nancy Karpoff and Jeff Clithero by holding candlelight dinner on patio.

Contradiction: Transforming timely but rough-edged story into finely honed cutting tool that releases collegial passion. (Wk.10)

## RELIGIOUS HOUSE: TAIPEI

External: Lin I-Hong joins Joe Hsu in 35 'round the table' PLC. Development 'keys' week as Centurms: Hong Kong joins us for 19 visits and lay RS-I grad gives NT1000 for scholarships, then sojourns a night. Women's Global Language kicked off on National Women's Day, becomes sign of increased missional involvement of families.

Internal: Guests abound with eight for Ecclesiola, four sojourners, two from Hong Kong. Office decored becomes Week II miracle of conquering.

Contradiction: How imaginably step back in discontinuous month while battle heats up. (Wk. 10)

## RELIGIOUS HOUSE: CEBU

External: As breakthrough event, the Mactan 5 Mini-school took all parents and children on miraculous all-day trip to Chocolate Hills of Bohol! They travelled by Jeepney, Bus, boat to the next-down island.

Internal: Cebu Regional Council pushed through with four Metros represented in completing its indicative battleplan learning new methods.

Contradiction: With massive demands, how to overcome severe lack of troops by setting new context with prospective interns. (Wk. 10)

**RELIGIOUS HOUSE: DAVAO**

External: This was week of Regional Council to plan Quarter IV, ending with Cabaret of feasting (bar-b-que style), singing, dancing.

Internal: Phase II of House transformation launched. New high-paying job leads open up. Dr. Ordunez, Manila LENS grad, visits House.

Contradiction: With many programs to juggle, how to synchronize backup systems? (Wk. 10)

**TOKYO****RELIGIOUS HOUSE: TOKYO**

External: House sends out Regional colleague, Father Tom Tehnen, on six-month visit to Ireland with stops at Religious Houses in Philippines and Australia on the way.

Internal: Arrival of Choi Seong Bong from ITP enroute to Incheon, Korea, and return of Ellison from Area Prior's trek, Andrew Hashiba from ITP in time for House Church are cause for great celebration as Regional colleagues stay after House Church to plan move to new House.

Contradiction: Preparation for house move saps strength required to implement 26-week miracle time line. (Wk. 10)

**RELIGIOUS HOUSE: SEOUL**

External: Three courses held: two Imaginal Education at Ewha High School with 47 and 50 faculty members, and Seoul Ecumenical PLC at Benedict House sponsored by the Most Rev. William J. McNaughton, M.M., with 18 in attendance, including the Dean of the Catholic Seminary, and the Director of Institute of Catechetical Studies.

Internal: Rob Work assigned to Global Language School in Tokyo. House made pilgrimage to Jae Am Methodist Church near Suwon after visiting Shrines of Chong No Bell and Pagoda Park to celebrate martyrdom of the Saints of the Samil Movement.

Contradiction: Past Images blocking development of new strategy and tactics needed for long range future. (Wk. 10)

**RELIGIOUS HOUSE: FUKUOKA**

External: Attendance of large number of laity from key congregation underlines strong 'yes' to Clergy Collegium participation. Trek through region leads to scheduling HRM in Jesuit parish and enlists unengaged grads to LENS manual translation network.

Internal: House income assault continues with the completion of flip chart manual on employment procurement in Japan, and leads opening up with corporations in near-by cities.

Contradiction: Developing patience which 'waits on God's time' for unravelling already launching key strategies. (Wk. 10)

**RELIGIOUS HOUSE: OSAKA**

External: Welcomed Dr. and Mrs. Bradley. Mrs. Bradley visited Rev. Nishihara's church and a ladies group. Dr. Bradley spoke at luncheon with Rev. Nishihara. Globe marketing makes eight calls. Completed the development brochure and delivered it to the translator.

Internal: Mr. Honguchi, Mr. Miyajima and Rev. Nishihara agree to help us negotiate for the new Religious House. Held planning session for planning month time design.

Contradiction: Financial situation demands more jobs than we thought we needed. (WK. 9)

**RELIGIOUS HOUSE: SENDAI**

External: Regional Council in parish with participation in graduation at junior college dramatizes that PCE is for local and local is global. Sent out Toshifumi Aso to pastorate in Tokyo, Sister Tawaraya as Superior in Oita, and celebrated Rev. Miyazaki as new regional coordinator.

Internal: Experiment with 'no-party' party as means of deepening continuing relationships with secular colleagues.

## RELIGIOUS HOUSE: SENDAI

Contradiction: Journeying secular and religious at same time in same arenas while honouring both global and their internal time design. (Wk. 10)

## SYDNEY

## RELIGIOUS HOUSE: SYDNEY

External: Three fronts open as prospective Galaxy in Newcastle Metro looks bright on authorization and responsive congregations; historic city church chooses to remain in being after our proposals for future, and Confraternity of Christian Doctrine sponsors curricula from Archdiocese of Chicago based on the religious/cultural studies curriculum.

Internal: Week 11 RSI Pedagogy surprises youth of House with RSI's power, and special guest night journeys to the Philippines, Africa, and New Guinea.

Contradiction: Deciding to live with consequences of crucial decisions. (Wk. 10.)

## RELIGIOUS HOUSE: PERTH

External: This has been a week of moving hard on secular breakopen with Community LENS recruitment in full swing and the building of links with Oombulgurie, especially the placing of a student emissary with regional family.

Internal: House bulges at the seams as we receive two high school students from Oomulgurri, joining three from Mowanjum, and we host three guests from Oombulgurri.

Contradiction: Finding a way to hold the 26 Week indicative in tension with immediate demands that come as new doors open before we knock. (Wk. 9)

## RELIGIOUS HOUSE: DARWIN

External: Sophisticated ICA/EI booklet and 40 Page social reconstruction proposal prepared over extended Week 11 to launch authorization blitz. PCE residents group announces plans for city wide trade fair, a local building co-op and launches two day care centres. Tourist association holds first meeting since cyclone and reaffirms long range vision of Darwin.

Internal PSU preparing crucial missional documents extends Week 11 design to Wednesday the next week. Guild colleague Carol Borovic drops in after return from evacuation, points out pre cyclone indicative battleplan was right and asks 'Where do I start.'

Contradiction: How to relate internal models and external mission so as not to experience continuing drop-ins by people at all hours of the day and night as 'catching us in the act'. (Wk. 9)

## RELIGIOUS HOUSE: OOMBULGURRI

External: Send-out celebrations for youth to Perth and Adelaide for highschool and further training demonstrate community's ability to organize its own occasions and host visitors--an Anglican clergyman and local Aboriginal pastor. Community shows new initiative in projecting their future as first teacher leaves her family to go to Darwin for training. Guild leader takes it into his own hands to organize completion of peanut planting.

Internal: Visit of colleague from Global Centrum: Singapore enables rethinking of steps toward replication and reveals possibility of meshing inter-tribal 'djaruk' with proposal writing for Australian government.

Contradiction: Recreating context of building Oombulgurri on behalf of the globe, to transform individual bursts of initiative into corporate activity. (Wk.10)

## RELIGIOUS HOUSE: ADELAIDE

External: RSI course of 15(1/3 Catholics) taught and enabled House provides new enthusiasm for the religious, new lecture introductions enterweave theme of 'acting out everyman's care for the world.'

Internal: New role for House embodied as Order member's mother calls to ask that we pray in Daily office for her sick husband, she then came to evening prayers herself, that same day he took a big turn for the better.

Contradiction: Putting solid support and courageous action behind imaginative ideas. (WK. 10)

**RELIGIOUS HOUSE: MELBOURNE**

External: Mailed 200 regional newsletter and Open House invitations for Week 10, Prahran five residents impacted by team effort as Emerging Generation and adults line street painting wrought iron fence, role of catalyst in Darwin Resident Action Committee gains support of colleague.

Internal: House Church celebrant witnesses to role of Church today in creation of Primal Community. Ecclesiola study of 'Faith' addresses House and colleagues through grounding in painting of fence as sign.

Contradiction: Dealing with immediate sign without letting momentum slip on other long term objectives. (Wk.9)

**RELIGIOUS HOUSE: CANBERRA**

External: House is amazed when we discovered the wife of the Treasurer for all Darwin Reconstruction funding sitting across the table at the local pub.

Internal: The Nortons arrive after 7 mos./25 hrs. 'waiting list' on the plane and 5 hours on the train.

Contradiction: Creation of inclusive time,task,troop design. (WK. 10)

**RELIGIOUS HOUSE: BRISBANE**

External: Three Metros impacted with Metro Cadre meeting, Guild meeting, ITI site research and PLC recruitment in Brisbane; Trek into Toowoomba metro and visit from concerned secular company secretary from Townsville.

Internal: In the midst of radical dispersement of troops, discovered again that corporate rehearsal of Daily Office is the which sustains.

Contradiction: How to shift from image of 'attending metro cadre meetings' to corporately being about the one mission. (WK. 30)

**SUVA****RELIGIOUS HOUSE: MAJURO**

External: Five new members join TASC since 'ship came in' 17 around the table for TASC meeting with SBA representative who 'wants in' to Majuro business excitement. Ceta funding releases monies for hiring of 10 shark fishermen, 10 demonstration farmers, 8 MIBS trainees, and sidewalk crew for the Magnificent Quarter Mile. Social area opens up possibilities for unblocking \$90,000 for Marshalls District. Apprenticeship program underway.

Internal: Study on Love, Hope and Faith right on beam as Hoff returns from Chicago, Bob Miller arrives, and the King (our next door neighbor) allows us to fill up our water catchment.

Contradiction: Logistics move: how transport 280,000 tons of goods over 275 miles of water(Wk. 10)

**IRELIGIOUS HOUSE: APIA**

External: Guest night with new and old colleagues helps weave net of a fellowship of concerned churchmen.

Internal: Great Ecclesiola celebration charts the quarter and objectifies our corporate journey as a poem.

Contradiction: How to allow people to see that churches working together is a blessing to embrace rather than a burden to run from. (Wk.10)

**SAN FRANCISCO RELIGIOUS HOUSE: SAN FRANCISCO**

External: Sacramento/S.F. joined together in 2,000 mile trek throughout Nevada for Bicentennial visiting 25 people in 10 cities. Two more are sent out to Fresno to wind up ITI recruitment and call on 8 cities for Bicentennial. One Town meeting set up and 6 more possible. Church School Training Institute (CSTI) held in parish school with 25 in attendance.

Internal: House participates in mini celebration as we reflect on the journey movement, House and individuals have been on this teaching quarter. Join local Church pastor in House warming. Bicentennial now has its own office in the House.

Contradiction: Putting force behind the foot we've got in the Bicentennial door. (WK. 10)

**RELIGIOUS HOUSE: SAN JOSE**

External: Church School Training Institute scheduled for Saturday of Week 10 already has 50 registrations. People calling us asking, 'How many can we send?' Downtown clergy with house member as host begin Cable TV series on 'Lent in America's Bicentennial Era.'

Internal: Another job! Half time as Interim pastor helps ease economic pinch. Work on slide show presentation to Fresno Citizens' Group completed.

Contradiction: Focusing on the possible among all the challenges. (Wk.9)

**RELIGIOUS HOUSE: SACRAMENTO**

External: Five day Nevada Town Meeting Trek visits 25 people while traveling 1745 miles.

Internal: House sends out James and Debra Durst to Global Order assignment.

Contradiction: How to reimage ourselves from individual recruitment to mass impactment. (WK. 10)

**RELIGIOUS HOUSE: SEATTLE**

External: Two polis metro cadres hold continuing RSI follow-up meetings with increased interest by new grads; Town Meeting cry comes from over the mountain by old grad in Othello, Washington.

Internal: Ecclesiola night study reveals new levels of corporate spirit journey.

Contradiction: How to put form on this quarter's operational frame in order to build base for implementing next quarter's tactics. (Wk.10)

**RELIGIOUS HOUSE: LOS ANGELES**

External: Fifty people participate in training events, Church School Training Institute and an RSI. American Baptist Seminary offers credit for any participant in ITI.

Internal: Assigned time demonstration culminated in 25 colleagues on full Week two assignment and late night House Church to celebrate the month of expenditure.

Contradiction: Authorization gained through current ITI visiting must be used on behalf of global movement, how to best offer that up. (WK. 9)

**RELIGIOUS HOUSE: PHOENIX**

External: Two people sent to Las Vegas to meet colleagues from Sacramento and San Frans. Houses to do Bicentennial authorization calling. Get nod from Vegas and Clark county committee chairmen.

Internal: March 9th. House Church hosts two local clergymen, one as celebrant and the other brings guest from congregation.

Contradiction: Intentionalizing and concretizing the decision to live the cruciformed life style. (WK. 10)

**RELIGIOUS HOUSE: SALT LAKE CITY**

External: Leadership luncheon to develop colleagues for future Local Community Consult' impacted 45 representatives from central city agencies, most of whom had never meet each other, with a new sense of corporateness and vision of needs of the future.

Internal: Leadership Luncheon enablement revealed journey in corporateness of House/Metro dynamic, as a result the luncheon came off as series of planned mini miracles.

Contradiction: How to complete 10 warboards and file systems necessary to enable the corporate mind in the corporate thrust. (WK. 10)

**RELIGIOUS HOUSE: BILLINGS**

External: Glendine Town Meeting assured with meetings and commitments from key leaders.

Internal: Battleplan punctuated by Guildmen dropping in all day and celebrating with a fiesta Brasilero--70 year old Guildsman setting the pace on the dance floor. Week's sojourner takes special interest in Guild.

Contradiction: As we see the 20 year March coming to us as a solitary 'Walk About' we need clarity on what is important symbolically to hold the Community together. (Wk.10)

**RELIGIOUS HOUSE: DENVER**

External: Fifteen (seven community elders) gathered Saturday morning for first Local Community Consult follow up. In two hours, 36 tactics are gestalted into five concrete tactics for next 30 months and wild visions for future. Group meeting weekly to get things going 'while the water's hot.'

Internal: Exterior Wayside Inn image cultivated in clean up and garden prep.

Contradiction: Deciding integrity of one's covenant is not endangered by ambiguous missional focus. (WK. 10)

**RELIGIOUS HOUSE: RAPID CITY**

External: Town Meeting set up meeting for demonstration Town Meeting held. Sisters of Charity spend two hours visiting about their work and ours. Guild Meeting decides it is crucial to have people present at community events.

Internal: Finished 'Skin of our Teeth' and looking forward to seeing High School production. Great vision lectures from members of House. House went to see 'The Sting' to rehearse our calling model.

Contradiction: Deciding that thinking 'grass is greener on other side of stall' will not make finding prospects any easier. (Wk.10)

**EDMONTON****RELIGIOUS HOUSE: EDMONTON**

External: Sent two to enable Winipeg Community Forum Canada while four cities; Van Couver, Calgary, Lethbridge and Abbotsford CFC's are oriented.

Internal: Experience miracle of flowers landing 'created' job with Queen's Printer one day after receiving working permit and start work next day. Canadian heroes come to Ecclesiola alias House member and guest.

Contradiction: Struggling with covering ground amidst shifting priorities. (WK. 10)

**RELIGIOUS HOUSE: ANCHORAGE**

External: Two regional colleagues decide to go to Chicago for Town Meeting 76. One academy registration received. RSI recruitment continues and regional council is spirit happening; poverty muse to splendorous Greek Celebration.

Internal: New House model begun as individual reading and brooding time is found to be refreshing. Sent out John Karpoff to Chicago for sisters wedding and first prior family to priors' council.

Contradiction: How to overcome reluctance to go through the struggle necessary to gettourselves engaged in the external mission. (WK. 10)

**RELIGIOUS HOUSE: SASKATOON**

External: Prince Albert cadre collects full financial support for one to attend Social Methods School.

Internal: House Church of eleven guests is hosted with one adult and two children in the House and Jacksons arrival bolsters adult forces.

Contradiction: Maintaining spirit life of tenuous colleagues.(WK. 10)

## RELIGIOUS HOUSE: WINNIPEG

External: Recruitment by parish walks, visiting nodes, posters and all other offers. In midst of changing dates and unsure locations.

Internal: Tally Ho. Off on a sleigh ride to enjoy Manitoba Winter weather.

Contradiction: How carry ball without alternate quarterbacks. (Wk.5)

## HOUSTON

## RELIGIOUS HOUSE: HOUSTON

External: Bi-Metro Council builds 26 week entry plan for new House parish; experiences great slide/narrative show on four Texas cultures and feast on barbeque; 11 registered for Week II RSI.

Internal: House sings at Oaks Presbyterian service in Thanks for extensive use, since the fire, of their building.

Contradiction: How to broaden clarity on the complexity and ambiguity of the real situation without paralysis of planning. (Wk. 10)

## RELIGIOUS HOUSE: AMARILLO

External: The March of Miracles in El Barrio al Este de Amarillo continues as Career Day, El Futuro Esta Aqui comes off in great style with participation of Chicano students, large number of Chicano professionals, teachers, counselors, calling forth in kind contribution from city initiating Education guild: clergy collegium in response to church involvement taskforce deciding clergy is crucial to parish.

Internal: Searching for new ways to use excess hot dogs when there is no freezer: Cabaret prep for the bimetro council becomes key to internal life of House: Pooles family visit on way to Chicago as colleagues stop in on trek to California.

Contradiction: How to deal with pots on the back burners while pots on front are boiling over. (WK. 9)

## RELIGIOUS HOUSE: SAN ANTONIO

External: Metro Cadre begins work on Week II celebrative, contextualizing Council for old and new grads, battleplanning to be done beforehand by old hands. Response to PLC is sign of possibility and pain in taking up rold of Church in depth.

Internal: Faith, hope, love lecture from Primal Community Consult comes as fantastic construct for brooding on current spirit deeps. Reluctant landlord compromises on new lease. Nan Grow's ITI Caracas report explodes images of Latin America as monolith.

Contradiction: How to make present formulation structures catalyze movemental dynamic rather than enlist help. (Wk.9)

## RELIGIOUS HOUSE: OKLAHOMA CITY

External: Many plates continue to spin: Week II PSUs produce the Central City 5 promotional booklet and metro council celebration model; a guardians' breakfast focuses on Town Meeting and Ada continues to struggle with the revolutionary 'how to's of implementing Town Meeting Proposals.

Internal: Received a pen and ink landscape from galaxy auxiliary artist; celebrated guild couple's anniversary and discovered he knew Tom Washington while serving in Patton's army.

Contradiction: Focusing activities into one movement. (WK. 10)

## RELIGIOUS HOUSE: DALLAS

External: House member acted to testify before city council by local parish leaders.

Internal: House Church of 20 include first group from the parish, deeply impressed and appreciative.

Contradiction: How to overcome strong temptation to become involved in infinite variety of parish immediacies, neglecting the global vision. (WK. 10)

## RELIGIOUS HOUSE: TULSA

External: Town Meeting breaks loose all over; Bartlesville core group experiences radical collegiality as they plan promotional events and schedule authorization visits; grad couple from outlying polis writes for details of Town Meeting; non-grad college student visits saying she wants to go to Summer 75.

Internal: The Wayside Inn hosts colleagues from Tulsa and Bartlesville for worknight/guest night which sees pantry/store room transformed into spirit hallway. Bill Slicker and David Stewart sent out to Chicago Priors Council. House members journey to OKC regional council. The economic dragon receives another volley as we find our tenants for our apartment.

Contradiction: Discerning and sustaining our one thrust in the midst of our yearly timeline, the movement's directions and the momentous events the Lord continues to unload on us. (WK. 10)

## RELIGIOUS HOUSE: NEW ORLEANS

External: Miracle RSI of twenty-seven emerges through quota system. New Orleans Bicentennial Commission endorses Town Meeting.

Internal: House transformed by creating montages for Stations of the Cross. Sandra has opening night-RSI faculty get to hear.

Contradiction: With full steam ahead in the economic, we still seem to be taking water. (Wk. 8)

## RELIGIOUS HOUSE: MEMPHIS

External: Metro Cadre in Knoxville pulls off largest RSI in history of region with 24 new participants, five metros represented and course makes a profit. Hear report from new academy grad, Elizabeth Goode, 'Lucid Liz' and rejoice at first RSI registration for next quarter.

Internal: Week of welcoming includes Rich Michael and Bill Ragsdale from development and six guests at Ecclesiola., two of whom were totally unexpected.

Contradiction: Relieving that all is possible, but wishing someone else would embody it. (WK.10)

## RELIGIOUS HOUSE: ATLANTA

External: Church children's group in parish becomes task force of forty and excitedly distributes 'East Lake 5, A great place to be alive' bumper stickers throughout parish. RS-I course in Asheville, N.C. toally recruited and enabled by local people.

Internal: Future intern family sojourns for Week II, create parish sign by spring cleaning front yard and House, and their children did not want to leave on Sunday. Metro colleagues WATS line put to good use as we contact 100 + grad families for Regional Council.

Contradiction: Ordering our time and space in such a way as to be obedient to God rather than our 'druthers.' (Wk.9)

**RELIGIOUS HOUSE: MIAMI**

External: Regional Council held in Jacksonville, 350 miles from House with 17 around table; enabling five RSI grads from past weekend to internalize the movement and the metro cadre dynamic in one leap.

Internal: Fantastic regional council celebration sparks the dance that thrusts us into a week of mailings including a comprehensive regional council report to our regional colleagues with the newsletter and an Odyssey mailing in preparation for Easter weekend Odyssey.

Contradiction: Living out of old story that economic responsibility does not allow risk for action demanded in future. (WK. 10)

**CHICAGO****GLOBAL CENTRUM: CHICAGO**

External: Honored by presence of representative of ARBA and Committees of Eighteen as Priors' Council culminated in exciting 'Kemper City' Town Meeting demonstration, followed by two days of practical planning of Areas toward the Town Meeting and Community Forum in North America. Moved down the road considerable distance in sign of authentic engagement of local man, and discovery of Town Meeting as a secular exposure of the spirit deeps.

Internal: Sent out Jesse, Mollie, and Claire Clements to Bombay; and Oscar, Sr.(O.J.) Roberta, Tor, and Kirshna Sperstad to Majuro (Oscar will follow later). Born to David and Mary Jane Elliott, of Frankfurt, a son, Michael Paul, February 28.

Contradiction: Discerning what shifts will be demanded in Centrum tasks as a result of Priors' Council decisions and Town Meeting timeline. (WK. 10)

**RELIGIOUS HOUSE: CHICAGO**

External: A great Global Guardians Dinner and Dance signals the beginning of a new phase in our preparation for Town Meeting '76. Metro presidium highlighted by a spin on the missional family.

Internal: Stations begin evaluation and indicative battleplanning for Quarter 4. Gary and Judy Prichard and daughter Anna, are received as interns.

Contradiction: Pushing through sleepy weakness in the face of the on-going and up-coming mission. (WK. 9)

**RELIGIOUS HOUSE: WICHITA**

External: Parish gridding and newsletter distribution; Primal Community Consult with two parishes represented. Positive visit with state Bicentennial director with appointment to speak before commission.

Internal: Image of March created. Consult team here for Primal Community Consult and do Monday collegium on the state of the Primal Community Experiment.

Contradiction: Living with the awkward marriage between task and time. (WK. 9)

**RELIGIOUS HOUSE: OMAHA**

External: Tri-Metro Council consensus on four implementary Timelines of four task forces for next quarter to intensifying 'network' of colleagues for RSI, Town Meeting 76, Academy, and Northside 5, emphases.

Internal: Celebrate at Ecclesiola to final episode of 'Skin of Our Teeth' with Egg Foo Jung from farm, fresh eggs (gift of 12 dozen came from out-state colleague).

Contradiction: If fear paralyzes change and hope releases caring, what's the question when we're so visible in the community. (WK. 10)

**RELIGIOUS HOUSE: KANSAS CITY**

External: BiMetro Council puts on hat of parish cadre and battleplans the Primal Community. Old and new colleagues alike excited by indicative battle-planning propting one new grad to say, 'It's just like we were talking about my community, but using a different name.'

Internal: Another 'Doing' collegium sees all altars in the House changed in an hour. Sent out Priors to Chicago for Council, but managed to fill the empty places with sojourners. Work begun on Town Meeting banner '76.

Contradiction: How to provide context for and break loose spirit in total movement amid profound shifts. (WK. 10)

#### RELIGIOUS HOUSE: MINNEAPOLIS

External: Valentine's Ball honoring community elders indicated life and energy as yet untapped in Whittier. Wednesday night Guild meeting has people asking for the blue song book, the better to sing 'Shocking' with. Meeting in North Dakota with Bill Salmon and former District Superintendent for Methodist Church sets up North and South Dakota Bicentennial network. Whittier Town meeting in shute, with great inkind results.

Internal: The 'Skin of Our Teeth' and Norman Cousins explode Ecclesiola as both Metro and Guild colleagues show up for evening.

Contradiction: Sustaining momentum without allowing any particular event to overshadow vision (WK. 8)

#### RELIGIOUS HOUSE: ST' LOUIS

External: Hosted as guests in Missouri State Legislature by Rep. Stan Piekarski of St. Louis. In depth parish analysis begun, including expanded grid. New RSI grads jump head-on into Primal Community Experiment.

Internal: Study of Cousins on 'Two Editorials' powerful address on House. Hosted visiting parents of Epley family over the weekend.

Contradiction: Haven't figured out how to do all the work of catalyzing colleagues in all six Metros while maintaining serious parish demonstration at same time. (WK. 9)

#### RELIGIOUS HOUSE: PEORIA

External: Movement colleague in Champaign conducts Local Church planning workshop using indicative battleplanning methodology and receives enthusiastic congregational response.

Internal: Final confirmation received on negotiations for a House within the Southside Parish. We will soon be residents of our local parish community.

Contradiction: How to be the catalytic agent with movement forces unable to grasp already apparent hope. (WK.10)

#### RELIGIOUS HOUSE: GREEN BAY

External: II Metro Colleagues to Minneapolis Demonstration Town Meeting. Key clergy couple attend Metro Cadre in Duluth.

Internal: Decision to reflect on Internal Life during quarter 4 Collegiums and to create Internal Life Manuals for next quarter.

Contradiction: An intentional rhythm of detachment in the midst of awesome engagement. (WK.9)

#### RELIGIOUS HOUSE: MILWAUKEE

External: Town Meeting 76 authorization is boosted as appointment secured with Executive Director of Wisconsin Bicentennial Commissions and Justice and Peace Center for Roman Catholic Church offers endorsement to centers across Continent. Madison Metro celebration spins 36 friends and colleagues around the world from Social Demonstration to Social Demonstration.

Internal: House Church guests represent Belgium, Atlanta, and Chicago.

Contradiction: How to create self stories that are assets (WK. 9)

#### RELIGIOUS HOUSE: INDIANAPOLIS

External: Louisville and Manchester polises send ten to RSI. Indianapolis Metro Cadre takes financial and enablement responsibility for RSI. Priors attend Bicentennial meeting in Detroit.

## RELIGIOUS HOUSE: INDIANAPOLIS (cont.)

Internal: Mardi Gras celebration followed by special ASH Wednesday service at House where ashes were imposed by Fr. Joseph Dooley. Promotion of Maxine from staff nurse to clinical instructor boosts budget.

Contradiction: Edge Movement vision dim as troops spread thin. (WK. 7)

## RELIGIOUS HOUSE: CINCINNATI

External: LENS recruitment nets Community authorization with Elder's breakloose of 12 registrations while Metro Cadre celebrates second Primal Community gridding of North Fairmount.

Internal: Thursday evening Ecclesiola is transformed to corporatenesssymbol as House is readied to receive LENS teaching team and men are sent out to Community Town Meeting; all resulting in corporate power and motivity.

Contradiction: A beckoning form which will enable LENS grads to local engagement after exploring the world with LENS. (WK. 7)

## RELIGIOUS HOUSE: DETROIT

External: Meetings with heads of Michigan Kiwanes and Jaycees about Bicentennial received enthusiastic response. Receive first 'yes' to Town Meeting, ready to set the date.

Internal: As House has fun with a self directed search continuing Ecclesiola construct and takes seriously the Emerging Generation in a Friday eve Collegium. The E.G. transforms their corporate space with a coat of paint.

Contradiction: How to be the revolutionary thrust while assignment to House Parish holds up image of community development. (WK. 10)

## RELIGIOUS HOUSE: CLEVELAND

External: House becomes training center as RSI participants fill all available sleeping space. Social agency impact given impetus through weekly imaginal education workshops for day care and head-start.

Internal: Family morning replaces family night and the Late Night (10:30) Dinner recreates the Ecclesiola dynamic as we redesign time to enable second jobs. Two jobs secured, three to go. Receive Bowman family as interns.

Contradiction: Experimentation with time exposes comfort with old patterns-riding loose in the saddle is key. (WK. 7)

## NEW YORK

## RELIGIOUS HOUSE: NEW YORK

External: Our many faces come more into focus as move ahead in several arenas: Primal Community Consult and RSI held in adjoining rooms ten yards apart; initial nod given Town Meeting by Pawling Bicentennial Commission; editorial page writer of The Daily News (largest circulating newspaper in America) joins Town Meeting committee, takes copious notes.

Internal: House impacted by Regional House Church(sixty-five present) where we receive two new House members, entertain international guest from Tokyo, hear colleague report that on return to Jakarta she will be accepting assignment to Brussels, and we dine on entire in-kind meal.

Contradiction: Our capacity to reflect has not caught up with our ability to do.(WK.8)

## RELIGIOUS HOUSE: PITTSBURGH

External: Regional Council is a great event, as we hold first one in wild, wonderful West Virginia. Guild's first major project, a booklet detailing all agencies and services available in the parish is presented to president of Chamber of Commerce. Harry Jenkins appears on T.V. to promote Clarksburg Town Meeting and Daughters of the Confederacy cancel their meeting in order to attend.

Internal: Possibility of two Academy grads moving to Pittsburgh and sojourning at House. Fantastic decor created during preparation for Regional Council, including huge rational montage/calendar for Quarter 4.

Contradiction: How to enable the House, with thin troops, to decide to be the kind of catalyst which enables regional leadership to be catalyst as well. (WK. 10)

**RELIGIOUS HOUSE: ROCHESTER**

External: Twenty three people covenant to be 'Metro Minutemen' for Town Meeting 76 and 30 people at RSI feed new life into congregations.

Internal: Seventeen guests at House Church signals a new openness on our part to entertain the establishment and disestablishment at dinner.

Contradiction: Town Meeting 76 requires grassroots sponsorship with two months before demonstration very little sponsorship as yet. (WK. 9)

**RELIGIOUS HOUSE: RICHMOND**

External: Shift into Quarter 4 made early as we initiated a program of Systematic Visitation in the Parish. Building towards Community PSU,RSI,LENS for Quarter 4.

Internal: Week of Celebration, Lenny, the M.C. artformed in Ecclesiola and Weekend of engagement with Supper Club Celebration and first birthday party for Peter Ballard.

Contradiction: Maintaining the Missional Momentum in midst of intensified permeation. (WK. 9)

**RELIGIOUS HOUSE: WASHINGTON**

External: Possibility of \$48,000 w/proposal for 36 Town Meetings from D.C. BiCentennial Commission; D.C. Federation of civic associations voted to be advocates to 44 Town Meetings; Coca-Cola will furnish coke for T.M. of 200-300 people; Bishop James Mathews and Joseph Mathews and Don Cramer visits with Mayor Washington ending with his comment 'Don, I want you to keep me informed on this!' D.C. board of zoning turned down proposal of only viable purchaser of House facility.

Internal: Wayside Inn dynamic explodes into centrum dynamic with multiplying calls from Europe and the Hill'. Global Development Centrum Majuro team continues working with Congress. Metro Cadre picks up Day 1 task while priors are in Chicago. Revolutionary notekeeping kept in 'Big Blues' (notebooks). Welcome colleague from Chicago for the week.

Contradiction: Temptation to collapse catalyzation and do it ourselves. (Wk. 10)

**RELIGIOUS HOUSE: BALTIMORE**

External: Extensive Town Meeting 76 authorization including offer of Baltimore City Jaycees to sponsor all Baltimore Town Meetings and support of Mayor's Council in Eastern Shore City, St. Salisbury.

Internal: Exciting collegium on embodying radically different roles and celebrative Ecclesiola with reflections on Quarter were best symbolized by huge banana splits with cherry on the top.

Contradiction: Maintaining momentum with new exposed thrust. (WK. 9)

**RELIGIOUS HOUSE: PHILADELPHIA**

External: Series of Bicentennial 'nods' gives us needed shove on first Town Meeting 76. Approval of ARBA logo use, Philadelphia 76 approval, Governor's appointee on long range planning agrees to do Welcoming, and Mayor of Trenton says 'yes' to coming.

Internal: House operates as airport terminal for three post academy area families; celebrates teaching quarter with movie 'Scenes from a Marriage' and dinner.

Contradiction: Allowing your self to be sucked up in particular major event so that it comes off with force. (Wk 10)

**RELIGIOUS HOUSE: NEWARK**

External: The three bi-metros make 55 calls on clergy at Regional Council all day Saturday to recruit area clergy LENS. All of Newark appointments made by Metro colleagues. One Town Meeting presentation to Episcopale Church's Bicentennial chairwoman, leads to another (Morris County Bicentennial committee.

## RELIGIOUS HOUSE: NEWARK (cont.)

Internal: Day long quarter celebration begins with banana splits and singing and ends with Rex Harrison and Julie Harris on Broadway.

Contradiction: Multitude of external events on the horizon with no image to hold them all or practical methods to expedite them. (WK. 10)

## RELIGIOUS HOUSE: BROOKLYN

External: Clergy LENS blitz with regional colleagues nets six people from the bi-metro to say yes. Four people sent out to Chicago for Priors' Council and Town Meeting 76.

Internal: Reflections on the past quarter at regional council discloses the extent of breakloose in the bi-metro.

Contradiction: The struggle to keep our context in the comprehensive, historical and beyond the immediate flush and anticipation of the secular impact events. (WK. 10)

## RELIGIOUS HOUSE: HARTFORD

External: Open House on Sunday afternoon welcomes many guests, grads and community residents, Boston, Manchester and New York Houses with special guests, two Sisters from Daughters of Holy Spirit and the North America council (eight Sisters). Over 100 at House Church. Key contacts made for Town Meeting 76.

Internal: Open House preparation transforms house: decor painting, new curtains, large wooden turn Symbol and grid constructed and a complete wall. Bulletin Board with parish map and area cities completing collegium room. Cleaning and floor polishing add final touch!

Contradiction: Keeping a broad base of penetration and the movementalizing of grads while bringing off own Meeting 76. (WK. 10)

## RELIGIOUS HOUSE: MANCHESTER

External: Bi-Metro Council held in Portland with many new and old colleagues present highlighted by movie 'Welcome To Hard Times' and spontaneous spirit spin on history and family relations in the Movement.

Internal: Economic tyrant attacked on two fronts as 4% raise secured and weekly in-kind pick-up at dairy begins supplying House with milk, cottage cheese, sour cream, and cream (turned into homemade butter). Discontinuous Ecclesiola spiritized by watching 'Love Among The Ruins on T.V.

Contradiction: How to actualize time-lined Parish events in midst of being geographically ungrounded with decision to care unfocused. (Wk. 10)

## RELIGIOUS HOUSE: BOSTON

External: Rehearsal of Town Meeting construct at metro council helps catalyze formation of 18 Town Meeting locations.

Internal: Fullness of House with three visitors and two sojourners pushes us anew to a new site.

Contradiction: How to use the abundance of new course grads concretely next quarter. (Wk.10)

## MONTREAL

## RELIGIOUS HOUSE MONTREAL

External: The Primal Community Methods School was attended, in its forth session, by two city councilmen, provincial congressman, city official, who wanted Community Forum Canada in his suburban community.

Internal: The House move is very much a reality as the metro cadre has created value screens to direct its House finding taskforce and as practical moving model has been developed.

Contradiction: Now that it appears that a Guild has come into existence through the Social Methods Training School we need images of how forces and people can be structured to enable the development of Primal Community. (WK. 9)

## RELIGIOUS HOUSE: TORONTO

External: Preparation for Community Forum Canada gets into full swing; movement Guardians, Galaxy colleagues and recent LENS grads gather to strengthen authorization and sponsorship models and extract pearls of wisdom on human settlement from Canadian culture. Forays to Kitchener, Waterloo. Eight Scarborough break ground for CFCs in London and Toronto regions.

Internal: Jackson family sent to join Saskatoon troika. House and galaxy inspect and approve facility in Primal Community; negotiations underway to put Toronto 'Galactic' House under one roof in early April.

Contradiction: Finding all the new threads of Community Forum Canada and getting them woven together before they get tangled or dropped. (WK. 10)

## RELIGIOUS HOUSE: OTTAWA

External: Going to meetings, selling Community Forum Canada; many yesses to forthcoming CFC as we contact numerous parish businessmen; meet with Bernard Daly and non-Governmental Organizations; attend two local church annual meetings, one clergy wives group, host another clergy collegium.

Internal: Bi-Task Force Wk.II on CFC as Clutzes join us to work on national proposal as rest of House hits road recruiting. Nancy journeys to Nova Scotia to celebrate completion of life of her grandfather.

Contradiction: How do we combat sleepiness in old colleagues so that we can catalyze movemental edge, which is unclear to us. (Wk.7)

## CARACAS

## RELIGIOUS HOUSE: CARACAS

External: Key RSI held in Caracas with 16 participants representing two areas. Two participants flew in from Curacao from ITI pastor's church and another ITI grad flew 800 miles to p.o. the course.

Internal: House attends 'Corrida de Toros' (Bullfight) at Nuevo Circo, leaving indelible images of risking one's life in our consciousness. Work book for inductive battleplanning completed as well as several other 'Brother Francis' miracles during the RSI weekend.

Contradiction: Maintaining LENS recruitment in the midst of a week of heavy inductive battleplanning. (WK. 9)

GLOBAL CENTRUM  
QUARTER III 1974 - 75

THE GLOBAL ORDER CENTRUM REPORT  
FOR WEEK 10

BRUSSELS  
BOMBAY  
SINGAPORE  
HONG KONG  
CHICAGO

GLOBAL  
DEVELOPMENT  
CENTRUM

Circuits and authorization emerge as most significant happenings during the past week across the globe, with circuits completed in Calcutta, Kuala Lumpur, Taipei, Hong Kong, San Francisco, Boulder, Birmingham, Louisville, Pittsburgh, and Newark. Chicago reports favorable responses to the Marshallese Human Development Project as 23 Congressmen, including Senators Hatfield and Jackson are contacted in Washington D.C. A continental web for funding and authorization emerges as Town Meeting '76 pushes demand for new stance in Development. Singapore prepares for major funding in the Singapore Region. Hong Kong, as it builds linkage for major funding, reports experiencing key doors open from businessmen to make introductions and seeks now to also make the short-range contacts necessary for immediate funds. Brussels receives first grassroots return from Week 8 Lenten Card Mailing and In-Kind goods from London. Bombay receives promising possibilities in Hyderabad during circuit ride. The contradiction is the need for trusting present structures and broad strategies as most effective to get the most dollars in the face of new demands.

GLOBAL  
MANAGEMENT  
CENTRUM

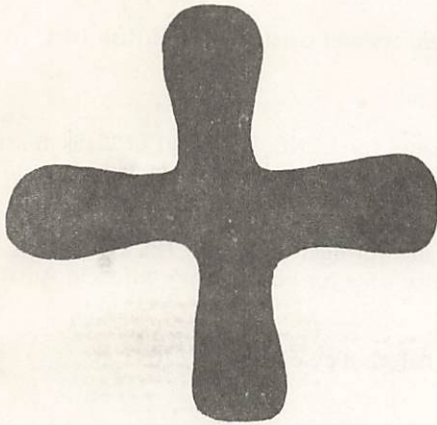
A LENS booklet of 16 pages is sent to printers in Singapore. Area Sydney picture of finances finally resolved; a regular monthly finance report is ready for all twelve houses - showing the yearly summary. In Chicago, the North American priors did the first evaluation of the new fund system and made common adjustments that project "coming out" at the end. EIFIN is building new common code of accounts for product expense and programs, thereby facilitating invoicing, disbursements, and realistic missional projections. Hong Kong establishes Publishing House with excellent second-hand mimeograph machine, supplies and cabinets, and also intensifies preparation of facilities in anticipation of the Area Priors' Council. Hong Kong also hosts Victor Ordonez of Manila; and struggles in the midst of innumerable demands with the necessity to build tactics and implementaries to deal with each weekly contradiction. Bombay pulls together Quarter's financial report. Brussels moves toward all houses in full participation in global financial model. The contradiction is that of experimenting with the new model and communicating globally the current results.

GLOBAL  
OPERATIONS  
CENTRUM

Singapore sends Global Research Assembly brochure to Global Centrum: Hong Kong Nexus as it coordinates ITI/GRA brochures and assignments between the two Nexus locations. Working to get foundation complete for ITI systems which will enable regions to get at job of recruitment. Hong Kong brings together many diverse strands such as the Religious House books and First Teacher Packets in preparation for Area Priors' Council. Hong Kong also lays out time design for discontinuity weeks 9 through 13 to include Spirit Odyssey. While carrying on on-going necessities, Chicago attends Western Hemisphere Priors' Council. Pictures of the Religious Houses of the globe begin to appear on special board in centrum space, and the telex board is moved out of hidden "corner" to central traffic node, fascinating all who pass by. Brussels reports consensus continues to build to establish course size criteria. Bombay continues preparation for the Global Research Assembly. PLC of 35 held in Chaunghua (Taipei), CS-1 in Singapore, and Imaginal Education courses in Calcutta and Singapore. The contradiction is discerning anew the profound function of Global Operation Operations Centrum with the multiplying complexity of the mission.

GLOBAL  
RESEARCH  
CENTRUM

In the midst of feeling much fragmentation, the Centrum begins to see relationships between various programs which indicate the supportive dimension -- the emergence of the fact that we are one thrust. Brussels continues preparation for the PCE' training quarter. Hong Kong broods on construct for the SMS in preparation of Quarter IV consultation at the City District Office; and has a workshop with Taipei, providing new images of moving Galaxy and Guild toward Parish engagement. Bombay actualizes the PCE backup system. Singapore reports the possibility of Town Meeting for United States citizens. McCleskey visits Oombulgurri; and a pre-consult is held in Klang (Kuala Lumpur Region). Town Meeting model tested in Chicago among 436 people at "Kemper City" with 94 colorful grids of the PCE parishes across the globe covering the walls of the Guild Hall;.. Uptown 5 Guild creates new basis of consensus. And Chicago also prepared Rahner's book, The Shape of the Church to Come, for corporate Order study during evenings of Week 11. The contradiction is that of holding the dynamics of practical social engagement and edge brooding in the midst of intensified program demands, such as Town Meeting.



I will assemble you, the whole house of Jacob;  
I will gather together those that are left in Israel.  
So their leader breaks out before them,  
and they all break through the gate and escape,  
and their king goes before them,  
and the Lord leads the way.

Micah 2: 12.13.

## LONDON

## RELIGIOUS HOUSE: LONDON

External: Two RSI's in House at same time culminating week of visits to four Metros, setting up RSI in one virtually untouched Metro.

Internal: House internal life reaches peak after painting, experiencing fasting, feasting dynamic, while struggle with Kierkegaard's 'Love Hopes All Things' was key event. Experience globality again with visit by Rees from Melbourne House enroute to Chicago.

Contradiction: Raising question of the next step after completing year's timeline in less than three quarters. (Wk. 8)

## RELIGIOUS HOUSE: GLASGOW

External: Exciting Regional Council has 45 strong and ready colleagues. Last ten days filled with RS-I, PLC, Imaginal Education courses all held at house. Nine regional colleagues help with teaching and enablement. Glasgow Cadre studies 'Waves of NSV.'

Internal: Presence of John and Gwenda Rees of Melbourne en route to ITP broadens our global context. Fiona Willock receives \$500 grant from local government to enable participation in ITP, April through September. Cadres demonstrate eagerness to participate in search for new House location.

Contradiction: How to focus mission on innocent suffering rather than domestic problems. (Wk. 10)

## RELIGIOUS HOUSE: BRISTOL

External: Bristol Metro becomes self-sufficient as key colleague leads church group in symbol creation. House is freed to work in more distant metros.

Internal: Metro analysis and prioritizing of Twenty Programmes on Area Warboard creates new vision of external mission.

Contradiction: How to maintain momentum in all Metros while pushing time and energy into prioritized areas. (Week. 10)

## RELIGIOUS HOUSE: MANCHESTER

External: Mailing invitations to PCE Field Visit and creation of large imaginal decor piece of 101 parishes refocuses our mission.

Internal: Bishop Ted Whycham of Middleton and his wife come to Ecclesiola Thursday night and enjoy 'Skin of Our Teeth'. He spins with House on history of church renewal in Britain and vision for the future.

Contradiction: Forced to think again about what is necessary style of persuasion in British Isles. (Wk. 8)

## PARIS

## RELIGIOUS HOUSE: PARIS

External: RSI site secured by local pastor, more participants for LENS, RS-I grad of Week 8 attends PCTS in Brussels, attendance at I.E.F. (Ecumenical Fellowship) weekend issues forth with three to four yeses to May course.

Internal: Experiencing explosion of Global/Local colleagues through John and Glenda Reese's visit, In-kind dishes from recent RSI grad, E.G. baking of birthday cake for host pastor's wife and Australian Bishop's blessing on the work.

Contradiction: Deciding what to do with excited RSI grads before they decide. (Wk.II)

## RELIGIOUS HOUSE: ROME

External: Exciting Regional Council held with concrete presence of colleagues from Region. New regional, movemental consciousness if catalyze, as planning is done for Quarter IV PLC, further authorization strategizing done, and first actual Regional celebration is held.

Internal: Shift to discontinuous month dramaticall symbolized by beginning four-week Lenten Odyssey. NRM and Other World charts come as deeply illuminating in context of current Social Demonstration edge. Finance task force completes work after two-week marathon. Books now in order, projections for year stabilized.

Contradiction: How to be about both priorities of finding new housing, launching PLC at same time without losing necessary 100% in each arena. (Week 10)

## BRUSSELS

## GLOBAL CENTRUM: BRUSSELS

External: PCTS of 56 representing four areas and nine countries with 29 Europeans, held at Nexus. Precision, timeliness and power of PCTS construct releases new visions of PCE in Europe.

Internal: Physical expenditure on preparation of Nexus for PCTS reveals spirit deeps and drives stake of continental sign as all areas participate in miraculous transformation of Nexus property.

Contradiction: Discerning practical forms of sustaining the momentum of PCTS and servicing breakloose the PCTS occasioned. (Wk.II)

## RELIGIOUS HOUSE: BRUSSELS

External: First regional PLC, third course of Quarter.

Internal: Enablement marathan of PLC-RSI including children's RSI. Ecclesiola guest Bishop recently returned from ITI Frankfurt suggests that he follow-up on PLC by telephoning participants.

Contradiction: Standing before perpetually new horizons, how follow up rapidly enough on new potential to pull together all troops into formation for Spring Quarter thrust. (Wk. 8)

## RELIGIOUS HOUSE: AMSTERDAM

External: Trip to outlying Metro cities enlists support for work in Utrecht, Nijmegen, and yields more contacts. ITP pays off nicely as Paul Schrijnen's sister, Connie Widyamata's friend, goes to PCTS. Dr. Verkuyl, prominent Dutch theologian, visits house. First Regional Council held.

Internal: Fourteen guests pass through House, most due to whirlwind created by Connie Widyamata. Post-Council celebration highlighted by Indonesian feast and film, 'Murder on Orient Express.'

Contradiction: Seeing demand for social demonstration, how do we know so much while we develop patience and many trained troops? (Wk. 10)

## FRANKFURT

## RELIGIOUS HOUSE: FRANKFURT

External: Heidelberg penetration trip sets up consult for four English speaking congregations and secures two 'yesses' to RSI.

Internal: House sends out three to Brussels for PCTS and Priors' Meeting. Guitar lesson turns into recruitment pitch, and Cousin's paper gives insight into German despair and hope.

Contradiction: Strategic use of Guest Night as penetration tactic while maintaining full functioning of Religious House. (Wk.II)

## RELIGIOUS HOUSE: BERLIN

External: Follow-up on RS-I brings positive reports, which is enabling as we set up course calendar for Quarter IV.

Internal: Week II devoted to Indicative Battleplanning for next quarter, highlighted by being guests at celebrative dinner and play at American Air Force Officer's Club.

Contradiction: Transforming affirmative nods into active participation in the Movement. (Wk. 10)

## NAIROBI

## RELIGIOUS HOUSE: NAIROBI

External: Week II RSI course comes off with participants from two Metros all recruited by Metro colleagues.

Internal: Week consumed with external mission as we prepare for RSI and continue work toward April PLC and May LENS.

Contradiction: Transforming interest and support into commitment relating to participation in training structures. (Wk.II)

## BOMBAY

## GLOBAL CENTRUM: BOMBAY

External: Four Area councils held, RSI in Madras, and Continental Priors' Meeting held.

Internal: Three families move to new temporary facility in suburban location. Transformed empty space to fully equipped and decored Council facility in 36 hours.

Contradiction: Nexus personnel dispersed to Calcutta, Bombay, Colombo, Dacca and Hyderabad during time when corporate planning needed. (Wk.II)

## RELIGIOUS HOUSE: BOMBAY

External: Depth pushing on Cadre models, ITI and GRA recruitment as colleagues at Area Council reveal great wisdom and commitment for region care. House colleague brings in first ITI and GRA registrations and grassroots donations from circuit rides.

Internal: Week 9 celebration fills Ecclesiola as Centrum rejoices over new site, Oakley family shares 21st anniversary of marriage, and we begin Journey to Ixtlar and Kazantzakas study. House and Area Council view Movie 'Handhi'(Storm) and experience freedom and obedience struggle for the free man.

Contradiction: Laying the trucks for GRA/ITI train far enough ahead so it will arrive at the train station in time. (Wk.I0)

## MADRAS

## RELIGIOUS HOUSE: DELHI

External: LENS Seminar of 25 ends with great excitement about PCE, follow-up meeting at House.

Internal: Week of LENS as the Jenkins do collegium, LENS conversation pedagogy, and five from House PO LENS.

Contradiction: How to do necessary circuit rides for GRA/ITI recruitment when all troops need to be full time on Self-Support and Development. (Wk. 10)

## RELIGIOUS HOUSE: HYDERABAD

External: Area Council builds ten year timeline which gives visionary meaning to the Guild, LENS followup and ITI/GRA recruitment. Madras RSI comes off with 23 participants.

RELIGIOUS HOUSE: HYDERABAD (cont.)

4.

Internal: House Church becomes great event as colleagues who have spent much of their week working at the House rehearse a natural collegiality.

Contradiction: Seizing opportune moments to plan, rather than waiting. (Wk.II)

CALCUTTA

RELIGIOUS HOUSE: CALCUTTA

External: Second Area circuit ride completed bringing back Yes to Calcutta:ITI from Orissa State C.N.I. Area Superintendent=old regional colleague Kalyan Biswas is first paid registration for GRA. Rediscover the Lord decides, not us, who is the Movement, as unexpected colleagues turn up for fantastic Area Council. ITI recruitment well under way in one region as 6 paid registrations and request for 10 more application forms arrive in one day. Internal: House pools together

Internal: House pools together ITI/GRA stories and images, recruitment models to put GRA/ITI recruitment in high gear. Day of Fasting makes us aware of cruciality of intentional spirit life. Landlord motivated to fulfill promises when he finds out we control purse strings.

Contradiction: How actualize GRA/ITI recruitment with two weeks to go and only one registration and one Yes for Bombay: GRA out of quota of nine. (Wk.11)

SINGAPORE

GLOBAL CENTRUM: SINGAPORE

External: Secular penetration in Area Singapore continues and deepens as non-movement, non-grad CSI with 15 new participants is held in Kuala Lumpur; Imaginal Education course held with new group of teachers in the facilities of New Town Secondary School in Queenstown 5, Singapore.

Internal: Centrum directly impacted from Chicago as Preston Bradley and wife arrive on the Queen Elizabeth II. All Centrum hands in town at once for one of few times; addressed by signal reports from Manila, Area Sydney Metro formulation and presentation on Chinese culture by Chen I An.

Contradiction: Turn to world challenges us with only one doorway: secular spirit proficiency within secular world requiring practical means of transparentizing global cultures and engaging local man as the Spirit Movement and the Order. (Wk. 9)

RELIGIOUS HOUSE: SINGAPORE

External: As all members of all three Houses gather in Area Council in Singapore the Centrum pulls together first complete financial picture for whole zone; simultaneously the international school teachers from Jakarta and Singapore share results of their first PSU.

Internal: First grid from Area:Singapore to be done by Regional Council and involving people from the Sentul Parish now is a part of the Centrum Nexus' collegium room decor.

Contradiction: Challenge of future clearly exposed to be the production of a significant demonstration sign in the Singapore Region coincidental with legal registration and incorporation. (Wk.II)

RELIGIOUS HOUSE: KUALA LUMPUR

External: Possibility galore on all fronts: Movement takes first step into Parish at Regional Council through exploration and creation of grid, celebration in Sentul; 23 get taste of what it means to be the Church through Nieburh at Klang meeting; 20 government people attend soybean field day.

Internal: Guests bring new life: Centrum comes for week of development authorization, proposal submitting), Regional Council, ITI site visit; Darlington's sojourn for week; welcoming of Kjell Knutsen at House Church; Fr. Lui and Fr. Garland drop in.

Contradiction: Finding the way to enable Klang group to realize they are the Church and its possibilities. (Wk.I0)

RELIGIOUS HOUSE: JAKARTA

External: House travels to Singapore for Area Council and is impacted by corporate strength of Area; awed by distance we've traveled in Quarter III; and excited as pieces of demonstration fall into place.

RELIGIOUS HOUSE: JAKARTA (cont.)

5.

Internal: First International Training Program intern, Connie Widyatma, returns to South East Asia to liven up Area council and sojourn in Jakarta House.

Contradiction: Need the powerful tactic that unlocks depth passion of Christian Churchmen in Indonesia. (Wk.II)

HONG KONG

GLOBAL CENTRUM: HONG KONG

External: Second Development trek to Manila and Cebu this quarter. Centrum participates in APC preparation by creating, typing, printing, and collating Area forms and PCE screens. Printing and distribution of ITI and GRA brochures completed.

Internal: First Open House of Centrum with 30 colleagues from APC, inspiring recreation of space with four-foot circular prayer wheel and a 4 x 6 foot PCE grids/montage.

Contradiction: Intentionalizing checklist that includes both brooding screen and revolutionary eyeglasses, which will allow praying time and breathing space before models are presented or published.(Wk.II)

RELIGIOUS HOUSE: HONG KONG

External: Address before Board of New Community Health project points to trends toward total community care.

Internal: Dr. Preston Bradley visits Hong Kong, preaches at Shum Oi and stands as a sign of the global spirit.

Contradiction: Creating an 'end of the teaching quarter shift' that revitalizes momentum. (WK. 9)

RELIGIOUS HOUSE: KAOHSIUNG

External: ITI planning meeting on Monday, somewhat of a reunion meeting of ITI grads, was first such meeting that was totally Chinese and under total Chinese leadership and responsibility. A real signal for Kaohsiung Region.

Internal: With Hsu and Elliott at Area Priors' Council had opportunity to have guest celebrant for House Church, with fresh view of relationship with clergy colleague and his family.

Contradiction: As end of Lent approaches must decide whether to continue on to Jerusalem-- move into new unfamiliar territory--or stay where it is comfortable and sure (i.e. Development, ITI recruitment, emergence of Chinese leaders, etc. etc. etc.) (Wk.11)

RELIGIOUS HOUSE: MANILA

External: Proto-Guild self-consciously forms itself, works out implementaries for creating Guild. Manila Metro colleague goes on a bus trip with colleagues to northern mountain Metro. Result: PLC and RS-I for Quarter 1V.

Internal: House celebrates with the Karpoffs wedding of Nancy Karpoff and Jeff Clithero by holding candlelight dinner on patio.

Contradiction: Transforming timely but rough-edged story into finely honed cutting tool that releases collegial passion. (Wk.10)

RELIGIOUS HOUSE: TAIPEI

External: Taipei Region moves down the road with Regional colleagues gathering and deciding to assume responsibility for RSI teaching.

## RELIGIOUS HOUSE: TAIPEI (cont.)

Internal: Wayside Inn image concretized as Regional colleagues continue to come and go using the House as a base of operation. Dr. Victor H Ordonez, ITI sponsor in Asia, drops by and spends two hours talking about the movement in Asia.

Contradiction: How to create our time during discontinuous month as a reminder of our missional needs (Wk. 11)

## RELIGIOUS HOUSE: CEBU

External: Invitation to teach Imaginal Education to 5000 Elementary School Teachers.

Internal: Battleplanned for ITI/GRA recruitment.

Contradiction: Location of sites for upcoming courses. (Wk.11)

## RELIGIOUS HOUSE: DAVAO

External: This was week of Regional Council to plan Quarter IV, ending with Cabaret of feasting (bar-b-que style), singing, dancing.

Internal: Phase II of House transformation launched. New high-paying job leads open up. Dr. Ordonez, Manila LENS grad, visits House.

Contradiction: With many programs to juggle, how to synchronize backup systems? (Wk. 10)

## TOKYO

## RELIGIOUS HOUSE: TOKYO

External: Incredible week of collegial hosting as Paul and Gerry Evans host Dr. and Mrs. Preston Bradley at famous Japanese restaurant; ITI sponsor Victor Ordonez delivers Manila ITI brochures and regional colleagues engage in radical tactics to prepare new Religious House.

Internal: Concretion of tactical thinking dramatized in 'Great Box Hunt' which finds House learning special Japanese to get Inkind boxes and colleague Okochi delivers 50.

Contradiction: How to focus and maximize energies in relation to discontinuous Permeation schedules. (Wk.II)

## RELIGIOUS HOUSE: SEOUL

External: Highlight of week was week-long preaching mission in Incheon, reaching 6,000 people. House journeyed to Incheon for final service.

Internal: Week II work day sees Regional Council decor and preparation finished with a flair: the theme--The Local Church The Body of Christ The Hope of the World.

Contradiction: The Long March experience of unfulfillment calls vocation into question and we decide to patiently wait on the Lord. (Wk.II)

## RELIGIOUS HOUSE: FUKUOKA

External: Attendance of large number of laity from key congregation underlines strong 'yes' to Clergy Collegium participation. Trek through region leads to scheduling HRM in Jesuit parish and enlists unengaged grads to LENS manual translation network.

Internal: House income assault continues with completion of flip-chart manual on employment procurement in Japan, and new leads opened up with corporations in near-by cities.

Contradiction: Developing patience which 'waits on God's time' for unraveling already launched key strategies. (Wk.I0)

## RELIGIOUS HOUSE: OSAKA

External: First Global Language Seminar held in Region with business and professional community participants. Osaka Galaxy pastors built practical vision statement. Four hour consult held at Kawaguchi Episcopal Church with pastor and 20 laymen. House hunting continues to engage House and colleagues.

Internal: Miss Fujiwara welcomed as House Guest for one month.

Contradiction: Uncovering jobs, locating housing in the time we have been given. (Wk.II)

## RELIGIOUS HOUSE: SENDAI

External: Regional coordinator's move to new region enables grassroots leadership to arise in Metro and regions.

Internal: Ongoing journey of secular evangelism symbolized in send-outs of Michio Oikawa and Yukata Fujitani from Ecclesiola and the arrival of the global staff for Global Language School preparation.

Contradiction: Internalizing 20th Century story in ourselves and our recruitment-- the Shinkansen doesn't wait and neither does life's demands. (Wk.II)

## SYDNEY

## RELIGIOUS HOUSE: SYDNEY

External: Metro Council bursts at the seams as planning explodes with projected replication in Sydney and Hurstville polises while total Metro and region intensifies. Denominational Authorization for Pitt Street City Church encourages evaluation based on two years work rather than one.

Internal: Received and sent out Lingafelters to Oombulgurri. Great send out of the four Darwin children who were evacuated at Christmas as colleagues pass through.

Contradiction: While swamped with immediacies which way to safeguard future priorities. (WK 11)

## RELIGIOUS HOUSE: PERTH

External: Increase our engagement in the mission through Treks to two outer Metros, and a intensification of LENS marketing in Perth.

Internal: Quarter IV external mission plan finished. Whole House attends Celebration 75 inauguration in Edgely Centre along with 7,500 Anglicans. Mowanjum sfor English through using Movement wisdom.

Contradiction: Being corporate and holding a common vision midst the scatteredness that mission is requiring. (WK. 11)

## RELIGIOUS HOUSE: DARWIN

External: Sophisticated ICA/EI booklet and 40 Page social reconstruction proposal prepared over extended Week 11 to launch authorization blitz. PCE residents group announces plans for city wide trade fair, a local building co-op and launches two day care centres. Tourist association holds first meeting since cyclone and reaffirms long range vision of Darwin.

Internal: PSU preparing crucial missional documents extends Week 11 design to Wednesday the next week. Guild colleague Carol Borovic drops in after evacuation, points out pre cyclone indicative battleplan was right and asks 'Where do I start.'

Contradiction: How to relate internal models and external mission so as not to experience continuing drop-ins by people at all hours of the day and night as 'catching us in the act'. (Wk.9)

## RELIGIOUS HOUSE: OOMBULGURRI

External: One boy and two girls commence High School in Perth. Community leaders assemble children daily for school. Traditional ceremonial preparations for Djaruk, as visitors gather. Community boat Arlago in service again after repairs, as community prepares proposal for improved transport services.

## RELIGIOUS HOUSE: OOMBULGURRI (cont.)

Internal: Slide night for community held in House. New auxiliary boat purchased. Letter writing for global research trip. Auxiliary works on transport proposal. Bob and Theresa Lingfelder welcomed to Oombulgurri.

Contradiction: Finding a way of transforming actual situation to reveal a way to move. (WK. 11)

## RELIGIOUS HOUSE: ADELAIDE

External: Regional Council (20 people) draws Iron men from two Metros, whose eager participation gave much needed support for Movement's turn to the world. House welcomed colleagues from Oombulgurri; introduces them to Guardians and others.

Internal: Emerging Generation demonstrate unlimited passion for creativity by spending day making decor for Regional Council Celebration.

Contradiction: Initiating programs such as LENS in midst of crucial end of quarter reflection and planning. (Wk 11)

## RELIGIOUS HOUSE: MELBOURNE

External: Forty guests to Open House representing local church, local community. Metro education structures and old grads; one grassroots woman exclaims 'I thought I d lost you.' Contact with local Anglican priest in 'team ministry' results in preaching invitation.

Internal: Night out to see 'The Golden Legion of Cleaning Woman' by theatrical group shows possibility of any man taking responsibility for the global revolution. Guests' gifts undergrid Wayside Inn dynamic.

Contradiction: With exciting possibilities opening up in various arenas, how use Metro grids and framing to help decide priorities. (WK. 11)

## RELIGIOUS HOUSE: CANBERRA

External: Groundwork for Galaxy in Canberra North Primal Community Experiment intensifies as congregation of St. Phillips Anglican Church (pastored by son of Bishop Garnsey) elects Banks to be on the Parish Council.

Internal: As part of our authorization scheme, House attends the opening of Australia 75, the first annual arts festival in Canberra.

Contradiction: Realization dawns that every House has areal responsibility as possibility of Week 12 LENS teaching assignment conflicts with Canberra Primal Community Experiment planning. (WK. 11)

## RELIGIOUS HOUSE: BRISBANE

External: Swirl of new possibilities signalled by Roman Catholic intrigue that anticipates PLC participation and Ecumenical Parish Experiment Anglican pastor 'finally' visiting and affirming Galaxy Sodality.

Internal: House member discovers profitable second job in midst of first job as one hour lectures net \$12./hour.

Contradiction: Finding the sand and cement in the proper quantities that once injected into the sandy soil of old decisions forms a new foundation for renewed decisions that welcome the Dark Night and the Long March of Love. (WK. 11)

APIA

## RELIGIOUS HOUSE: MAJURO

External: New Industry 1- actualizes with ten fishermen starting to work; 100 Majuro pre-schoolers and mothers picnic; and a huge tree grows in the KITCO store accompanied by new shelving, new personnel and new customers TASC members send representative employees on Ralik Ratak to trans-ship large volume buying orders.

## RELIGIOUS HOUSE: MAJURO (cont.)

Internal: Corporateness of the House is intensified in hot planning sessions in collegiums. Five additional members arrive: O.J., Robbie, Thor, and Crishna Spearsted and Becky Travis. Elder Walkup Silk suggests they need to sleep at this house since rooms are bound to be full at the Majuro House.

Contradiction: Pushing transparency of the mundane to the limits and enabling Marshallese colleagues to participate in occasions of depth consciousness. (Wk.11)

## RELIGIOUS HOUSE: APIA

External: Wednesday Lenten study group remains signal weekly event. First corporate staff activity of year transforms staff room at MHS. United worship service radio broadcast with ecumenical theme includes House members and others singing two Movement songs..

Internal: Signal priors' meeting occurs as we stop to examine what has happened to us during Fast.

Contradiction: Finding a way to move people from anger over what doesn't happen to making something happen. (WK. 11)

## SAN FRANCISCO RELIGIOUS HOUSE: SAN FRANCISCO

External: The Bicentennial has fully grasped us missionally and imaginally. First, treks with colleagues to Chicago to scout out advocacy and sponsorship possibilities; secondly, the designing, painting and decorating of Town Meeting '76 office with Executive desk, files a d emerging sophisticated presence.

Internal: Many guests, sojourners and colleagues spiritize House in Sunday morning painting and decorating blitz and culminating in festive interlude before awe-filled House Church.

Contradiction: Having seen the possibilities of being one movement, how to actualize this anew by recreating the bimetro structures. (WK. 11)

## RELIGIOUS HOUSE: SAN JOSE

External: Church School Training Consult in local church attracts 60 Sunday School teachers and Religious Education Directors. Primal Community Parish is represented by several churches.

Internal: Two sent to Prior's Council. Church School Training Faculty stays at House as they prepare to impact our parish with consult.

Contradiction: How to evaluate many possibilities, pointing to a need for sense of priorities. (Wk.11)

## RELIGIOUS HOUSE: SACRAMENTO

External: The great Guild explodes again: Community residents begin inviting other community residents.

Internal: Re-encountered with the contingency of all things as House cat, 'The Dark Night,' is killed by car.

Contradiction: Spiritually combating the deepening decisions not to care so much. (WK.11)

## RELIGIOUS HOUSE: SEATTLE

External: Capitol Hill Guild contributes two of eight members of the Community Human Resources Committee.

Internal: Week II spring cleaning transforms outdoor and indoor space. 'The Waltons' addresses House on Ecclesiola night.

Contradiction: No concrete plan to penetrate Capitol Hill Churches. (WK.11)

**RELIGIOUS HOUSE: LOS ANGELES**

External: Miss Lim Kung Soon visits house and witnesses to Seoul ITI. In process recruits Yong Young Choi to Los Angeles ITI.

Internal: Decor week-end yields HUGE world grid, construct and time design for ITI. Stan Duncan received as house member.

Contradiction: Forming the sponsorship frame for Town Meeting '76. (Wk. 10)

**RELIGIOUS HOUSE: PHOENIX**

External: Task Team decision and enablement of two people to Town Meeting Council in Chicago.

Internal: Sense of strength in midst of small numbers around Ecclesiola table.

Contradiction: No clear plan from here to Town Meeting, May 17. (WK. 11)

**RELIGIOUS HOUSE: SALT LAKE CITY**

External: In-kind, Warshaw's Food Market manager, who has been through 5th. City offers to supply food needs for upcoming Local Community Consult.

Internal: House out numbered at Ecclesiola during Prior's Council. Remaining House members assume responsibility for whole week and more training adequate.

Contradiction: Lack records on what calls have been made and what work needs to be done.(WK.11)

**RELIGIOUS HOUSE: BILLINGS**

External: Community leaders call us for luncheon appointment and are excited by application of LENS methodologies to community planning.

Internal: Ecclesiola sums up quarter while Week II cleans up yard: whole House prys up frozen debris and creates 'new look' for House exterior space.

Contradiction: How do you train the horses (Guildsmen) after they are already hitched to the plow.(WK.11)

**RELIGIOUS HOUSE: DENVER**

External: Twenty participants in second Town Meeting follow-up from three task forces for implementing Newsletter, Community Fair and Community Workday. Mayoral Proclamation that next Saturday is Boulder Town Meeting Day.

Internal: Experience Wayside Inn with sojourner and guest, development team and Tuesday night guardians meeting.

Contradiction: The Proto guild is here with its tactics in hand and our comprehensive battleplanning is scheduled for Week 13. (WK. 11)

**RELIGIOUS HOUSE: RAPID CITY**

External: PLC follow-up and authorization trip to Mitchel.

Internal: Office re-aligned, Quarter 4 battle planning begins and the House sees 'The Sting'. A representative from the House attends the funeral of John Gibson's mother.

Contradiction: Hve yet to find the door to open up RSI prospects. (WK 11)

## EDMONTON

## RELIGIOUS HOUSE: EDMONTON

External: Father Sterzer, our man in Calgary, has met with Lions Club and Roman Catholic teachers to launch CFC while we write for appointments in Nelson, B.C. five hundred miles away.

Internal: In one evening entire House settles into new space model--all in one location.

Contradiction: In midst of seeking to wrap up entire model, how do we wait (with impinging timeline) instead of risking uncertain tactics? (WK. 11)

## RELIGIOUS HOUSE: ANCHORAGE

External: Eskimo town of Bethel will be having Town Meeting '76 as its Lion's Club agrees to sponsor it. Gene Buck family welcomes RS-I registration paid in full under the door and Gene home from month's trip for Majuro proposals.

Internal: Spirit of House is high as youth leads Ecclesiola study which drives us to the deeps and we travel out into parish on night trek for sodality. Friday evening supper club brings Gold Rush Rush days to life; E. G. celebrate with pizza outing, Chinese kite clinic.

Contradiction: Provide TM76 context as tactic for parish renewal and operating image of all. (Wk.11)

## RELIGIOUS HOUSE: SASKATOON

External: Sophisticated Spring trek and Spirit Odyssey invitations designed and mailed.

Internal: Collegiums held on Prior's Council, CFC, Region's History. New house members job Hunting, and and whole body studies Certitude and Sainthood and Kierkegaard paper on Hope.

Contradiction: Grabbing hold of loose ends of life and weaving them into a tapestry of one mission. (Wk. 11)

## RELIGIOUS HOUSE: WINNIPEG

External; received strong verbal CFC support in legislative gathering with Labour Minister and Attorney General. Metro colleagues gather to brood on movement edge shift relative to the Winnipeg Region.

Internal: Regional colleague joins us for day each week for in-house force. House has new life with return of Academy Pedagogues and Grads. New painted rooms bring freshness to space possibilities and care.

Contradiction: How do we hold the tension between PCX, CFC engagement as shifting time reminds us we stand on jello. (Wk. 11)

## HOUSTON

## RELIGIOUS HOUSE: HOUSTON

External: Bi-Metro Council builds 26 week entry plan for new house parish; experiences great slide/narrative show on four Texas cultures and feast on barbeque; 11 registered for Week 11 RS-I.

Internal: House sings at Oaks Presbyterian service in Thanks for extensive use, since the fire of their building.

Contradiction: How to broaden clarity on the complexity and ambiguity of the real situation without paralysis of planning. (Wk. 10)

## RELIGIOUS HOUSE: AMARILLO

External: Guild Core decides to pick up primary sponsorship of Town Meeting to demonstrate their care for whole city of Amarillo.

Internal: After week-long preparation for Odyssey, we discovered we were in midst of Odyssey all along and were ready for deep push that Odyssey was. Sent sojourner Ray Seward to Chicago for construction building.

Contradiction: Forming the journey to give fundamental churchmen of metro permission to participate in Odyssey without giving fundamental hang-ups with NRM symbology. (WK. 11)

**RELIGIOUS HOUSE: SAN ANTONIO**

External: Metro Cadre begins work on Week II celebrative, contextualizing Council for old and new grads, battleplanning to be done beforehand by old hands. Response to PLC is sign of possibility and pain in taking up role of Church in depth.

Internal: Faith, hope, love lecture from Primal Community Consult comes as fantastic construct for brooding on current spirit deeps. Reluctant landlord compromises on new lease. Nan Grow's ITI Caracas report explodes images of Latin America as monolith.

Contradiction: How to make present formulation structures catalyze movemental dynamic rather than enlist help. (Wk.9)

**RELIGIOUS HOUSE: OKLAHOMA CITY**

External: Bi-Metro celebration impacts fifty colleagues from both Metros, two Galaxies, two Guilds, plus recent RS-I grads with the globality and unified thrust of the Movement.

Internal: Wayside Inn hosts three Methodist clergy. Studied creation of Religious House space in anticipation of moving to new facility.

Contradiction: Being Argus with a hundred eyes, watching back burners so they do not go out. (Wk. 11)

**RELIGIOUS HOUSE: DALLAS**

External: Within unique week characterized by Metro meeting at Glen and Pat Miller's home, Metro created 39-week parish battleplan and timeline, conducted first Clergy Collegium of series with North Dallas Ministerial Association.

Internal: Out of onslaught of measles, permeation assignments that further decreased House hands and transformation with new decor, comes new life! E.G. takes up 6th Liturgist role and drum at Daily Office with great style.

Contradiction: As we experience ambiguous backwash of current quarter, face of onrushing wave of next quarter looms not far away. (WK. 11)

**RELIGIOUS HOUSE: TULSA**

External: Key advocacy letter from 'Goals for Bartlesville' approving Town Meeting '76. Also set up P. R. campaign kick-off for next week.

Internal: Sixteen guests for House Church introduces week of Indicative Battleplanning for next 26 weeks. Two new and higher paying jobs acquired by House.

Contradiction: Maintaining ongoing mission in midst of spiritual void weight and one more job to be secured. (WK. 11)

**RELIGIOUS HOUSE: NEW ORLEANS**

External: Miracle RSI of twenty-seven emerges through quota system. New Orleans Bicentennial Commission endorses Town Meeting.

Internal: House transformed by creating montages for Stations of the Cross. Sandra has opening night-RSI faculty get to hear.

Contradiction: With full steam ahead in the economic, we still seem to be taking water. (Wk. 8)

**RELIGIOUS HOUSE: MEMPHIS**

External: First Regional Council held outside of Memphis signals new breakthrough in Regional participation with seven new faces present.

Internal: Loss of job enables House member to join three others from House in Chicago, which leaves us with working force of three adults, three E.G., and two of four cars in working condition.

Contradiction: How to stand present to demand of three major events that are still weeks away. (WK. 11)

**RELIGIOUS HOUSE: ATLANTA**

External: Trek to Fifth City with eight East Lake 5 Guildsmen journeys through Walnut Hills (Cincinnati), Northwest 5 (Indianapolis) on way to Chicago. John Shipley (Dallas House) visits while here on business trip.

Internal: Jay Antenen, Gary Nix move into House, Martin family makes decision to intern. Jeanine Murphy, parish galaxy pastor, is celebrant at House Church during week of her birthday. .great celebration for her. Bullet of unknown caliber or origin passes through collegium room window, lodges in Long March/Dark Night chart. .puts new edge on 'Up Front' roles.

Contradiction: How to live out of 'Rest and Recreation' images during discontinuity month without succumbing to subtle demon of waiting for the Messiah 'next quarter.' (Wk. 11)

**RELIGIOUS HOUSE: MIAMI**

External: Regional Council held in Jacksonville, 350 miles from House with 17 around table; enabling five RSI grads from past weekend to internalize the movement and the metro cadre dynamic in one leap.

Internal: Fantastic regional council celebration sparks the dance that thrusts us into a week of mailings including a comprehensive regional council report to our regional colleagues with the newsletter and an Odyssey mailing in preparation for Easter weekend Odyssey.

Contradiction: Living out of old story that economic responsibility does not allow risk for action demanded in future. (WK. 10)

**CHICAGO****GLOBAL CENTRUM: CHICAGO**

External: Reflective collegiums following Prior's Council deal with implications of the Town Meeting in relation to issues of Guardians' Consult and Summer '75 raising in particular our catalytic role, leadership training, historical concerns, ect., Development Centrum engages us in River City's expectations by using 'Music Man's' persuasive methods during Week 11 plenaries focuses on Town Meeting funding.

Internal: Exciting Temple study of Rahner's book, 'The Shape of the Church to Come' on target with turn to the world. Tom, Patricia, Mathew, and Nathaniel Broersma and Colleen Gleason sent out to San Antonio; James Newkirk to Brisbane; and Fred Hess to the GRA/ITI's in India and Seapac. 'Music Man' movie great family happening with appropriation of multi-catalytic roles for 'winning'.

Contradiction: Breaking through paralysis to awareness that complexity is permission to totally engage. (Wk 11.)

**RELIGIOUS HOUSE: CHICAGO**

External: T.M. advocacy circuit rides throughout state. Fantastic luncheon meetings with regional ARBA director and executives gives us leads on funding and authorization. 5th. City hosts many, many visitors, as groups from all over the continent come by to see 'the original Primal Community Experiment'.

Internal: Quarterly House celebration highlighted by conversation on movie 'Harry and Tonto'- a new montage of Phase IV. Faculty East gets face lift with new paint and decor while in the meantime preparing for and hosting several groups of people at the Wayside Inn, including the global priors.

Contradiction: Leaping over anxieties about particular task to 1000 year path we see stretching out before us. (WK. 11)

**RELIGIOUS HOUSE: WICHITA**

External: Parish gridding and newsletter distribution; Primal Community Consult with two parishes represented. Positive visit with state Bicentennial director with appointment to speak before commission.

Internal: Image of March created. Consult team here for Primal Community Consult and do Monday collegium on the state of the Primal Community Experiment.

Contradiction: Living with the awkward marriage between task and time. (WK 9)

**RELIGIOUS HOUSE: OMAHA**

External: Tri-Metro Council consensus on four implementary Timelines of four task forces for next quarter to intensifying 'network' of colleagues for RSI, Town Meeting 76, Academy, and Northside 5, emphases.

Internal: Celebrate at Ecclesiola to final episode of 'Skin of Our Teeth' with Egg Foo Jung from farm, fresh eggs (gift of 12 dozen came from out-state colleague).

Contradiction: If fear paralyzes change and hope releases caring, what's the question when we're so visible in the community. (WK. 10)

**RELIGIOUS HOUSE: KANSAS CITY**

External: BiMetro Council puts on hat of parish cadre and battleplans the Primal Community. Old and new colleagues alike excited by indicative battle-planning prompting one new grad to say, 'Its just like we were talking about my community, but using a different name.

Internal: Another 'Doing' collegium sees all altars in the House changed in an hour. Sent out Priors to Chicago for Council, but we managed to fill the empty places with sojourners. Work begun on huge Town Meeting 76 banner.

Contradiction: How to provide context for and break loose spirit in total movement amid profound shifts. (WK. 10)

**RELIGIOUS HOUSE: MINNEAPOLIS**

External: Whittier Town Meeting with Alderman as M.C. is great event. Set up in two hours and taken down in one hour has guilders and school janitor amazed. Guild sees T.V. film clips of T.M. promotional film produced by House student.

Internal: Visits of two Belgian Priests and a lady who heard about us from a friend (she came and stayed five days and wants to sojourn) keeps us mindful of our globality in midst of very particular activity in the parish. Bob Miller sent out to Majuro.

Contradiction: Comprehensive thrust / particular demand; how we push community concern through to care for the world. (WK.11)

**RELIGIOUS HOUSE: ST: LOUIS**

External: Four attend continental Town Meeting. American Legion sponsors T.M.: Cedar Rapids. Recruitment task force plans quarter's RSI.

Internal: New decor sparks House. Parish grid shows actual housing analysis.

Contradiction: How avoid running out to fight the latest fire. (WK.10)

**RELIGIOUS HOUSE: PEORIA**

External: Champaign Metro T.M. Circuit ride stimulates excitement of formerly burned-out colleagues and a Local Church Consultation renews old colleagues formerly of Milwaukee. Sent out mailing for community leader regarding a trip she is planning to 5th City and Uptown.

Internal: Montage shift occur with establishment of separate offices for E.I. and ICA centering focus on T.M. '76, enabling House to grasp fuller significance of mass impact as revolutionary tactic.

Contradiction: How enable Movement to believe adequacy of their story and context for doing the necessary deed. (WK.11)

**RELIGIOUS HOUSE: GREEN BAY**

External: Metro Council zooms to new level of excitement in battleplanning and experiences power of Metro colleague leadership. Bicentennial advocacy by neighborhood organizations for T.M. '76. Bi-Metro Exchange Newsletter mailed out to over 200 grads.

Internal: Ecclesiola and Metro Council celebrations prove to be healing exercises in radical abandonment. Celebration of Life and Death of Anita Gibson's mother.

Contradiction: How to include 'in' and creatively engage new colleagues in the mission. (WK.11)

**RELIGIOUS HOUSE: MILWAUKEE**

External: Town Meeting 76 authorization is boosted as appointment secured with Executive Director of Wisconsin Bicentennial Commissions and Justice and Peace Center for Roman Catholic Church offers endorsement to centers across Continent. Madison Metro celebration spins 36 friends and colleagues around the world from Social Demonstration to Social Demonstration.

Internal: House Church guests represent Belgium, Atlanta, and Chicago.

Contradiction: How to create self stories that are assets (WK. 9)

**RELIGIOUS HOUSE: INDIANAPOLIS**

External: Bi-Metro Council in Louisville celebrates quarter and renews ties with old colleagues. Crucial groundwork done in three Louisville suburbs for T.M.

Internal: Priors sent to T.M. and Priors' Council in Chicago. House beautification including T.M. decor; pedagogy-RSI, LENS, Spirt Methods and Imaginal Ed., focus of morning collegiums.

Contradiction: Being convinced that we have internal problems. (WK. 10)

**RELIGIOUS HOUSE: CINCINNATI**

External: LENS recruitment nets Community authorization with Elder's breakloose of 12 registrations while Metro Cadre celebrates second Primal Community gridding of North Fairmount.

Internal: Thursday evening Ecclesiola is transformed to corporatenes symbol as House is readied to receive LENS teaching team and men are sent out to Community Town Meeting; all resulting in corporate power and motivity.

Contradiction: A beckoning form which will enable LENS grads to local engagement after exploring the world with LENS. (WK. 7)

**RELIGIOUS HOUSE: DETROIT**

External: Meetings with heads of Michigan Kiwanis and Jaycees about Bicentennial received enthusiastic response. Receive first 'yes' to Town Meeting, ready to set the date.

Internal: As House has fun with a self directed search continuing Ecclesiola construct and takes seriously the Emerging Generation in a Friday eve Collegium. The E.G. transforms their corporate space with a coat of paint.

Contradiction: How to be the revolutionary thrust while assignment to House Parish holds up image of community development. (WK. 10)

**RELIGIOUS HOUSE: CLEVELAND**

External: House becomes training center as RSI participants fill all available sleeping space. Social agency impact given impetus through weekly imaginal education workshops for day care and head-start.

Internal: Family morning replaces family night and the Late Night (10:30) Dinner recreates the Ecclesiola dynamic as we redesign time to enable second jobs. Two jobs secured, three to go. Receive Bowman family as interns.

Contradiction: Experimentation with time exposes comfort with old patterns-riding loose in the saddle is key. (WK. 7)

**NEW YORK****RELIGIOUS HOUSE: NEW YORK**

External: Regional Council spent as recruitment day, major breakthrough in this is the demonstration that Saturday appointments can be made and kept by clergymen. Advocacy tactical system initiation results in T.M. '76 endorsement from Sen. James Buckley.

## RELIGIOUS HOUSE: NEW YORK (cont.)

Internal Excitement sparked through series of collegiums on T.M. '76 which followed Week 11 of intensive battleplanning for Primal Community Experiment culminating in a 'Midnight at the Oasis' Celebration. In-kind enabled sophisticated style as city of New York hosted Regional Council.

Contradiction: Allowing missional engagement to determine time patterns rather than time patterns determining missional engagement. (Wk. 11)

## RELIGIOUS HOUSE: PITTSBURGH

External: Metro colleagues decision to bring off LENS results in new brochure, letters written and necessary phone calls made, and the decision to send six to Chicago for T.M.'76 Methods School.

Internal: Miracle event was painting guest room, fire engine red, a tranquil green. Development team draws forth old colleagues breaking them open for participation in T.M.

Contradiction: Getting beyond the abstract in our decision to be the catalytic agent in the Region. (WK. 11)

## RELIGIOUS HOUSE: ROCHESTER

External: Sixteen colleagues journey to Chicago for Priors' Council T.M. and return prepared to do what's necessary to catalyze 36 T.M.

Internal: Study of Social Methods School Framing paper gives clear picture of how to move strategically on T.M.

Contradiction: Reduced troops in Ecclesiola due to external missional assignments presents question of practical care for oneself in order to care for the world. (WK. 10)

## RELIGIOUS HOUSE: RICHMOND

External: Shift into Quarter 4 made early as we initiated a program of Systematic Visitation in the Parish. Building towards Community PSU,RSI,LENS for Quarter 4.

Internal: Week of Celebration, Lenny, the M.C. artformed in Ecclesiola and Weekend of engagement with Supper Club Celebration and first birthday party for Peter Ballard.

Contradiction: Maintaining the Missional Momentum in midst of intensified permeation. (WK. 9)

## RELIGIOUS HOUSE: WASHINGTON

External: Possibility of \$48,000 w/proposal for 36 Town Meetings from D.C. BiCentennial Commission; D.C. Federation of civic associations voted to be advocates to 44 Town Meetings; Coca-Cola will furnish coke for T.M. of 200-300 people; Bishop James Mathews and Joseph Mathews and Don Cramer visits with Mayor Washington ending with his comment 'Don, I want you to keep me informed on this!' D.C. board of zoning turned down proposal of only viable purchaser of House facility.

Internal: Wayside Inn dynamic explodes into centrum dynamic with multiplying calls from Europe and the Hill'. Global Development Centrum Majuro team continues working with Congress. Metro Cadre picks up Day I task while priors are in Chicago. Revolutionary notekeeping kept in 'Big Blues' (notebooks). Welcome colleague from Chicago for the week.

Contradiction: Temptation to collapse catalyzation and do it ourselves. (Wk. 10)

## RELIGIOUS HOUSE: BALTIMORE

External: In midst of extensive T.M.'76 contacting we were contacted by the Mayor's office and invited to thoroughly discuss it. Prospects of declaring Baltimore City T.M. day now good. Micro task team continues with miracle week event.

Internal: Micro teams intensify calling and visitation with discontinuity schedule of four consecutive week nights. PSU with Emerging Generation provides new perspectives and contexts for missional engagement.

Contradiction: Keeping ahead of penetration deadlines in comprehensive, steady pace while T.M.'76 has us galloping in all directions. (WK. 11)

**RELIGIOUS HOUSE: PHILADELPHIA**

External: House does intense In-Kind blitz for March 22 T.M.'76. Local merchants support event with pizza, 90 yards of material, produce, doughnuts, etc. Mrs. Newbolt, powerful woman in Philadelphia, decides to speak at Town Meeting as recruitment continues.

Internal: Sent out priors and Region to T.M. Training School, leaving sojourner in House to direct In-Kind process, House runs on.

Contradiction: In spite of having clear image of T.M.'76 on March 22, massive amounts of details test corporate will and stick-to-itiveness. (WK. 10)

**RELIGIOUS HOUSE: NEWARK**

External: Penetration or impact task force experiences largest contingent of troops yet from 30 miles outside Newark coming to the House Tuesday nite to battleplan.

Internal: Ecclesiola highlighted by return of Ethel and Dick Nsyres from their trip to Africa bearing gifts of African mask, the viewing of Future Shock and the building of 'Hope' montages.

Contradiction: Enabling colleagues to experience shift to T.M.'76 as the present thrust of Movement which underlies and permeates the other aspects of missional engagement. (WK.10)

**RELIGIOUS HOUSE: BROOKLYN**

External: A cocktail party for key people in the 12 T.M.'76 target areas, and contact of 120 clergy for Week 1 clergy LENS emphasize necessity and possibility to swirl tactics so as to catalyze secular/religious and religious/secular at same time.

Internal: Gearing ourselves for low, but public, profile of EI/ICA as we re-do office space and decor; put up new NRM charts along with T.M.76 posters and begin answering phone with, 'Good morning, the Institute,' leaving caller to decide which Institute he wants.

Contradiction: Necessity of building battleplans on the basis of being catalyzers of the deed rather than the doers of the deed. (Wk. 11)

**RELIGIOUS HOUSE: HARTFORD**

External: Recent RSI grad participates in planning session for T.M. 76 in Chicago, while at home; ICA staff attends two Bicentennial Commission meetings in Wallingford and Hartford.

Internal: House receives 'eleventh hour' call from two Metro families asking to come to Ecclesiola. House and Metro experience excitement and new insights on Freedom during study of 'Children of Light-Children of Darkness'.

Contradiction: Utilizing a whirlwind of activity to catalyze decision and engagement of colleagues. (WK.10)

**RELIGIOUS HOUSE: MANCHESTER**

External: Bi-Metro Council held in Portland with many new and old colleagues present highlighted by movie 'Welcome To Hard Times and spontaneous spirit spin on history and family relations in the Movement.

Internal: Economic tyrant attacked on two fronts as 4% raise secured and weekly in-kind pick-up at dairy begins supplying House with milk, cottage cheese, sour cream, and cream (turned into home made butter). Discontinuous Ecclesiola spiritized by watching 'Love Among The Ruins' on T.V.

Contradiction: How to actualize time-lined Parish events in midst of being geographically ungrounded with decision to care unfocused. (Wk.10)

**RELIGIOUS HOUSE: BOSTON**

External: Building of comprehensive penetration strategies for Quarter IV pulls all the wisdom of Metro.

Internal: Unamund paper 'Tragic Sense of Life' impacts House as we experiences the journey of life and responsibility of everyday life.

Contradiction: Explosion of possibilities dramatizes need for teaching center. (WK.11)

## MONTREAL

## RELIGIOUS HOUSE: MONTREAL

External: Superior of Capuchin Fathers for Province of Quebec attends FRONTENAC Community Methods Training School. He says at the end 'Your French is not a problem for the Holy Spirit is speaking in the midst of what you are doing here'.

Internal: Prior's Council attendance and reports reveal House struggles to be movemental while preparation discovers more detachment than we suspected.

Contradiction: Form and Timing full acknowledgement of EI/ICA in relation to Community Forum Canada and Primal Community Experiment. (Wk. 10)

## RELIGIOUS HOUSE: TORONTO

External: Preparation Three local chinese and galaxy member journey to Chicago to visit 5th. City preschooling Institute. Also get to experience T.M. demonstration, Uptown Guild meeting, 5th City board with Lela Mosley; all are impacted by power of corporateness, especially in discerning necessary task, building the model, resolving issues and planning implementation all in one meeting.

Internal: House witnesses Christ Event Story in Jewish synagogue as members attend theatrical performance of 'One Flew Over The Cuckoo's Nest; Newsletter gets through Post Office hours before pickets halt mail once again.

Contradiction: Re-adjusting troop strength to welcome, but unexpected new challenges, and refocusing vision of the missional task. (Wk. 10)

## RELIGIOUS HOUSE: OTTAWA

External: Going to meetings, selling Community Forum Canada; many yesses to forthcoming CFC as we contact numerous parish businessmen; meet with Bernard Daly and non-Governmental Organizations; attend two local church annual meetings, one clergy wives group, host another clergy collegium.

Internal: Bi-Task Force Wk.II on CFC as Clutzes join us to work on national proposal as rest of House hits road recruiting. Nancy journeys to Nova Scotia to celebrate completion of life of her grandfather.

Contradiction: How do we combat sleepiness in old colleagues so that we can catalyze movemental edge, which is unclear to us. (Wk.7)

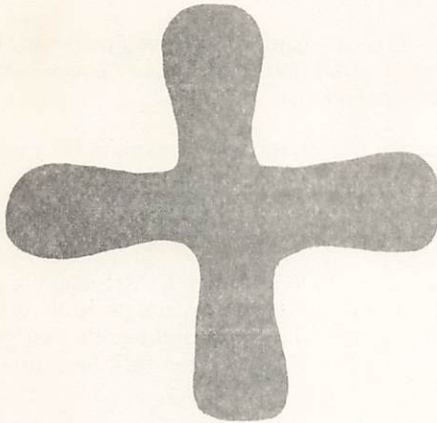
## CARACAS

## RELIGIOUS HOUSE: CARACAS

External: Regional Council with 24 participants includes grads from Week 8 RSI and faces not seen for a long time. Week 8 RSI grad invites entire Council to RSI follow-up session at his house. Second Spanish retreat (on Dark Night of the Soul) given to 50 Sisters who work in the Maracay diocese, with comment like, 'this was a real break through for the Sisters'.

Internal: Spent evenings on indicative battleplans modification for Quarter 1V. House and cadre celebrate after Regional Council with movie 'American in Paris' shown at the house.

Contradiction: Necessity to create a week of miracles relative to LENS recruitment. (Wk.9)



Rally to each other's help, all you nations round  
about.  
Let the weakling say, 'I am strong',  
and let the coward show himself brave.  
Let all the nations hear the call to arms  
and come to the Valley of the Lord's Judgement;

Joel 3: 11. 12.

## LONDON

## RELIGIOUS HOUSE: LONDON

External: Two RSI's in House at same time culminating week of visits to four Metros, setting up RSI in one virtually untouched Metro.

Internal: House internal life reaches peak after painting, experiencing fasting, feasting dynamic, while struggle with Kierkegaard's 'Love Hopes All Things' was key event. Experience globality again with visit by Rees from Melbourne House enroute to Chicago.

Contradiction: Raising question of the next step after completing year's timeline in less than three quarters. (Wk.8)

## RELIGIOUS HOUSE: GLASGOW

External: Key Metro Cadre happenings find Glasgow Cadre of 30 studying Nyerere and 'Doing' and Edinburgh Cadre of 10 celebrating 'going-continental' with fantastic Greek meal and quarterly review and projection. House meets with Bishopton Cadre to plan Week 3 consult for Local Church faculty and Week II planning PSU looks at next 26 weeks. Previous week entire House dispersed across land as four attended fantastic PCTS and Priors' Council in Brussels, and three attend Glasgow Corporation Youth and Community Staff meeting at Stirling University.

Internal: Emerging Trinity Theological College Cadre at Glasgow University meets in House. Whole House regroups after PCTS and Priors' Meeting and we find ourselves cared for as Week II meals and conversations focus on 'Loving the Mystery's Cause.'

Contradiction: Tactics that allow us to relate regional colleagues' restlessness to specific programmatic thrusts and to the continental and global vision. (Wk.12)

## RELIGIOUS HOUSE: BRISTOL

External: Follow-up visit to Quarter III PLC grad reveals that he is already working on the 'social model' we presented in the seminar. City centre passion mime catalyses Lent reflection for whole city.

Internal: Return of prior with miracle stories from Primal Community Training School fires imaginations for coming Council and Quarter IV. Bonhoeffer continues to impact our lives around the meals.

Contradiction: Anticipating a signal Quarter culminating a year's momentum with the necessity of every one working two jobs.

**RELIGIOUS HOUSE: MANCHESTER**

External: Colleagues from New Castle Cadre attend PCTS in Brussels. LCC set up for next quarter in New Town of Skelmersdale.

Internal: Search begins for second jobs and sources of supplementary income. Goal: financial solvency before Quarter I.

Contradiction: How to build new time design and structures to accommodate new financial thrust. (Wk.12)

**PARIS****RELIGIOUS HOUSE: PARIS**

External: RSI follow-up luncheon nets decision of grads to meet again for day-long planning session.

Internal: Week II of battleplanning reveals need of practical community and Church engagement and renewed urgency to catalyze miracles which will focus this engagement.

Contradiction: How to come down from fourth floor perch and effectively communicate models of community renewal through practical engagement. (Wk.12)

**RELIGIOUS HOUSE: ROME**

External: Superiors of Salvatorians and Atonement Brothers come to lunch and ask, 'Are you the people who are doing something in Majuro? Exciting meeting with provincials and generalate staff of White Sisters of Africa, in Rome for general chapter meeting, opens interest and possibilities for Nairobi ITI. As housing push continues and begins to focus on ten priorities (all religious order facilities), interest in possibility of PLC mounts.

Internal: Week-end PSU on religious orders shifts montage of priorities for work here. Serious question of weekend, 'Can it be that we need to design an R.O.E. (Religious Order Experiment) to enable rebuilding of a missional foundation for the religious life of these times? Visit of Rees family enroute to Area: Chicago from Melbourne expands vision and deepens decision in relation to importance of social demonstration. Reports from Paris Region, Brussels PCTS, and the Long March of Europe throw brand new light on our operations as we move with deep anticipation into Holy Week.

Contradiction: Timing on PLC, HRM, LCC, UHN, when best available wisdom keeps restating 'Gradually build up support, patiently, slowly.' (Wk.12)

**BRUSSELS****GLOBAL CENTRUM: BRUSSELS**

External: Keying off of the excitement of Priors. Council, the Nexus spent very productive week of planning for Quarter IV.

Internal: Prior's Council completed on Monday with great send out celebration, marking full occupancy of Nexus and taking advantage of St. Patrick's Day for theme. Hosted Mollie Clements on her way through to Bombay.

Contradiction: Integration of sub-systems not spinning yet into major systems that are off the ground and running. (Wk. 12)

**RELIGIOUS HOUSE: BRUSSELS**

External: First regional PLC, third course of Quarter.

Internal: Enablement marathon of PLC-RSI including children's RSI. Ecclesiola guest Bishop recently returned from ITI Frankfurt suggests he follow-up on PLC by telephoning participants.

Contradiction: Standing before perpetually new horizons, how follow up rapidly enough on new potential to pull together all troops into formation for Spring Quarter thrust. (Wk.8)

**RELIGIOUS HOUSE: AMSTERDAM**

External: Penetration trip to South brings total of 14 out of 18 Metros visited this year; one considering ITP after visit from colleague. ITI patron wants to distribute Bishop Wickham's opening speech to his Consistory. Article on EI written by us appears in newspaper of local Catholic seminary.

Internal: House full with colleagues. Recent PCTS grad drops in to hold accountability. Palm Sunday celebrated by attendance at impressive thousand person agape meal in important parish church.

Contradiction: How to prioritize and organize time/task in order for six people to do everything including pulling off the miracles. (WK. 12)

## FRANKFURT

## RELIGIOUS HOUSE: FRANKFURT

External: Spring Eurail penetration and formulation trek begins with visits to strong colleagues in southern Germany and Basel to firm up decision for Quarter 1V RSI pedagogy.

Internal: Australian colleagues Rees family and Korean colleague, Rev. Kim, visit and introduce us to our neighbors. Initiates our contact with 1,000 member Korean Community in Frankfurt.

Contradiction: Structuring in adequate corporate time for planning new quarter. (Wk.12)

## RELIGIOUS HOUSE: BERLIN

External: Within two days, Mennonite clergy and Parish pastor decide to sponsor two RSI's for Quarter IV.

Internal: Week marked by visit of Rev. Kim on way to Seoul. He introduces us to Dr. Chung of Korean community who turns out to have written articles on 5th City, and knows Kang Byung Hoon.

Contradiction: Getting enough wheels spinning before Easter to carry the many miracles of Quarter IV. (Wk.12)

## NAIROBI

## RELIGIOUS HOUSE: NAIROBI

External: Second round of letters for PLCs sent, Nairobi grads meet, ten-day trip to Kisumu and Eldoret Metros begun.

Internal: Preparation for Quarter IV begins as four PLCs, four LENS, a new baby, visiting parents, Australian visitors, and ITI preparation form part of the tip of the iceberg.

Contradiction: Need for radical obedience to priorities increases as demands multiply. (Wk.12)

## BOMBAY

## GLOBAL CENTRUM: BOMBAY

External: Decision to hold GRA, as PCE and Impact programmes gain momentum.

Internal: Move to temporary Nexus facility over two-week period completed, and electricity comes on, much to the surprise of everyone!

Contradiction: Embracing the practices of the GRA while meeting by candlelight and cooking meals on a kerosene burner. (Wk.12)

## RELIGIOUS HOUSE: BOMBAY

External: With GRA a few weeks off intensify circuit ride recruitment by sending House members to Poona, Nagpur, Ahmedabad, and Goa, and search out contacts in Bombay and Metro cities. Circuit ride accomplishments--A.M. Joseph returns from Goa and reports that more 20th Century Xaviours needed for Goa. Narendra Paul at Nagpur sends report of two registrations and six firm Yes's for ITI.

Internal: Host continental Priors as they reach Bombay for Week 10 meeting. Intensive workshop and planning for internal structure building to enable House to function fully as pressure of GRA and ITI consumes time and energy. Ecclesiola Kazantzakis study rocks us with authenticity of the spirit struggle.

Contradiction: How to ground mission in the Megalapolis with the mobility and pace of Bombay life. (Wk.12)

## DELHI

## RELIGIOUS HOUSE: DELHI

External: LENS Seminar of 25 ends with great excitement about PCE, follow-up meeting at House.

Internal: Week of LENS as the Jenkins do collegium, LENS conversation pedagogy, and five from House PO LENS.

Contradiction: How to do necessary circuit rides for GRA/ITI recruitment when all troops need to be full time on Self-Support and Development. (WK. 10).

## MADRAS

## RELIGIOUS HOUSE: HYDERABAD

External: Area Council builds ten year timeline which gives visionary meaning to the Guild, LENS follow-up and ITI, GRA recruitment. Madras RSI comes off with 23 participants.

Internal: House Church becomes great event as colleagues who have spent much of their week working at the House rehearse a natural collegiality.

Contradiction: Seizing opportune moments to plan, rather than waiting. (WK. 11)

## CALCUTTA

## RELIGIOUS HOUSE: CALCUTTA

External: Second Area circuit ride completed bringing back 'Yes' to Calcutta ITI from Orissa State C.N.I. Area Superintendent, old regional colleague, Kalyan Biswas is first paid registration for GRA. Rediscover the Lord decides, not us, who is the Movement, as unexpected colleagues turn up for fantastic Area Council. ITI recruitment well under way in one region as six paid registrations and request for ten more application forms arrive in one day.

Internal: House pools together ITI/GRA stories and images, recruitment models to put GRA/ITI recruitment in high gear. Day of Fasting makes us aware of cruciality of intentional spirit life. Landlord motivated to fulfill promises when he finds out we control purse strings.

Contradiction: How actualize GRA/ITI recruitment with two weeks to go and only one registration and one 'Yes' for Bombay:GRA out of quota of nine. (WK. 11)

## SINGAPORE

## GLOBAL CENTRUM: SINGAPORE

External: Secular penetration in Area Singapore continues and deepens as non-movement, non-grad CS-I with 15 new participants is held in Kuala Lumpur; Imaginal Education course held with new group of teachers in the facilities of New Town Secondary School in Queenstown 5, Singapore.

Internal: Centrum directly impacted from Chicago as Preston Bradley and wife arrive on the Queen Elizabeth II. All Centrum hands in town at once for one of few times; addressed by signal reports from Manila, Area Sydney Metro formulation and presentation on Chinese culture by Cen I An.

Contradiction: Turn to world challenges us with only one doorway: secular spirit proficiency within secular world requiring practical means of transparentizing global cultures and engaging local man as the Spirit Movement and the Order. (WK.12)

## RELIGIOUS HOUSE: SINGAPORE

External: Strategizing continued following Area Council for upcoming RS-I, CS-I, CS-III A, LENS courses as well as ITI and GRA. CS-I, CS-III A brochures designed.

Internal: Area Council held at Singapore House with all Kuala Lumpur and Jakarta House members present plus Singapore Regional colleague James Chia. Centrum-Singapore Nexus joins Council for House Church bringing all Order members in Area: Singapore together in one celebration. Symond Kock sent to ITP program.

Contradiction: Breaking open issues of practics (staff, facility, faculty, materials) for the ITI to allow focus on recruitment, along with ICA office, E.G. structures and parish work. (WK.12)

## RELIGIOUS HOUSE: KUALA LUMPUR

External: Begin to push on Odyssey recruitment along with Quarter IV courses - I.E., CS-I, LENS, and a move toward GRA/ITI.

Internal: Whole House treks to Singapore to participate in Area Council and make plans for Quarter IV after having Fast Day in preparation for it.

Contradiction: How to hold the long range without getting sucked up in immediacies. (WK.12)

## RELIGIOUS HOUSE: JAKARTA

External: House travels to Singapore for Area Council and is impacted by corporate strength of Area; awed by distance we've traveled in Quarter III; and excited as pieces of demonstration fall into place.

## RELIGIOUS HOUSE: JAKARTA (cont.)

Internal: First International Training Program intern, Connie Widyatma, returns to South East Asia to liven up Area council and sojourn in Jakarta House.

Contradiction: Need the powerful tactic that unlocks depth passion of Christian Churchmen in Indonesia. (WK.12)

## HONG KONG

## GLOBAL CENTRUM: HONG KONG

External: Ongoing planning meetings with Hong Kong Area priors after the APC; Manila development trek brings home \$3,000 pesos; and as a result of Hong Kong LENS, a visit with the City District Commissioner to present a model for the SMS for city officers.

Internal: Scavenger hunt and gridding party in our parish gives new images of the uniqueness of Centrum's location while a Week II Spiritual Exercise (modified Odyssey) illuminates the Dark Night/Long March/Hope categories.

Contradiction: Developing forms and systems to exchange data and information that explode the global network. (WK. 12)

## RELIGIOUS HOUSE: HONG KONG

External: Address before Board of New Community Health project points to trends toward total community care.

Internal: Dr. Preston Bradley visits Hong Kong, preaches at Shum Oi and stands as a sign of the global spirit.

Contradiction: Creating an 'end of the teaching quarter' shift that revitalizes momentum. (Wk. 9)

## RELIGIOUS HOUSE: KAOHSIUNG

External: Development passes \$1000 U.S. First ITI recruitment mailing goes out.. Holy Week Trek recruited.

Internal: Ecclesiola Sodality writes a great Parish song with a Chinese tune.

Contradiction: Not being registered blocking big gifts in Development push. (Wk. 12)

## RELIGIOUS HOUSE: MANILA

External: Return of Priors from Area Priors' meeting in Hong Kong. Important Parish Guild Training Workshop.

Internal: Thursday guest Ecclesiola ends with workshops on coming Philippine National Meeting in Cebu Wk. 13. Intensify preparations for expanding Japanese-English classes.

Contradiction: Need for the practical organization which intermeshes implementation of missional demands, at the same time dealing with the financial crisis. (Wk. 12)

## RELIGIOUS HOUSE: TAIPEI

External: Women's Global Language explodes as attendance jumps from seven to 23 churchwomen with three denominations represented. Enthusiastic response from Taipei American School faculty participating in workshop led by House member.

Internal: House experiences new demands and possibilities in Quarter III and Quarter IV battleplan modification. Don Quimby calls on the House between business appointments.

Contradiction: Discerning real ambiguity we need to live with and our own dullness we need to push through. (WK.12)

## RELIGIOUS HOUSE: CEBU

External: Invitation to teach Imaginal Education to 5000 Elementary School Teachers.

Internal: Battleplanned for ITI/GRA recruitment.

Contradiction: Location of sites for upcoming courses. (WK.11)

**RELIGIOUS HOUSE: DAVAO**

External: This was week of Regional Council to plan Quarter IV, ending with Cabaret of feasting (bar-b-que style), singing, dancing.

Internal: Phase II of House transformation launched. New high-paying job leads open up. Dr. Ordonez, Manila LENS grad, visits House.

Contradiction: With many programs to juggle, how to synchronize backup systems. (WK.10)

**TOKYO****RELIGIOUS HOUSE: TOKYO**

External: Incredible week of collegial hosting as Paul and Gerry Evans host Dr. and Mrs. Preston Bradley at famous Japanese restaurant; ITI sponsor Victor Ordonez delivers Manila ITI brochures and regional colleagues engage in radical tactics to prepare new Religious House.

Internal: Concretion of tactical thinking dramatized in 'Great Box Hunt' which finds House learning special Japanese to get Inkind boxes and colleague Okochi delivers 50.

Contradiction: How to focus and maximize energies in relation to discontinuous Permeation schedules. (WK.II)

**RELIGIOUS HOUSE: SEOUL**

External: Regional Council opened by Bishop McNaughton with 77 present heralds new day in Korea as participation by laymen and women play crucial role: of 20 reports given, 10 by laity and 5 by women. Region impacted by visit of Dr. Victor Ordonez, Dean of La Salle Graduate School in Manila who is host at ICA dinner party for 17. Celebrate Rev. Oh Kwang Sup's installation as Holiness pastor. Daegu PLC provides research for creating 21 Point Program and Polis Priority Chart.

Internal: Week II of intense work on spiral curriculum pushes us far down road. Emerging Generation Global Language Training begins again and House sees 'Jesus Christ Superstar' as journey through Lent intensifies.

Contradiction: How to work present operating image of the 'Evangelistic Church for global service to the secular society. (WK.12)

**RELIGIOUS HOUSE: FUKUOKA**

External: Image of our regional capital shifts from that of secluded city to one of national import as new bullet train line links it directly to Tokyo. The six-week training model for Primal Community has its first session, with nine Fukuoka clergy in attendance and regional colleague teaching. House attendance at ordination ceremonies at Roman Catholic Seminary rehearses our presence to the historic grandeur of the church, and gives us an opportunity to honor the Bishop.

Internal: Successfully completed negotiations on new house and packed the entire office as our symbol. Income shoots up with a \$200 month raise given in strategic YMCA position. Exciting talk by permeation colleague on her trip to Indonesia and Bali.

Contradiction: Difficulty in getting recruitment material and facility in Japanese blocks our LENS thrust. (WK.12)

**RELIGIOUS HOUSE: OSAKA**

External: Authorization visit gets nod from Mr. Fujita, head of social welfare department on K-Saki PCX. Galaxy group turns from contradictions to proposing joint PLC and planning weekend for lay leadership. House hunt opens up both House possibility and key community contacts in K-Saki.

Internal: Three new job offers cut into projected deficit. Planning-evaluation shows initial coagulation of Movement forces in past quarter.

Contradiction: Job and House possibilities not yet 'right' with decision deadlines approaching. (WK.12)

**RELIGIOUS HOUSE: SENDAI**

External: Global Language School demonstrates area solidarity with pedagogues Fred McGuire from Hong Kong, Rob Work from Seoul, and Pat Jones from Osaka beginning ten-day GLOBE lab. Regional coordinator Rev. Miyazaki helps write curriculum.

## RELIGIOUS HOUSE: SENDAI (cont.)

Internal: House guardian Dr. Itabashi telephones from business trip in another prefecture on eve of GLS GLOBE lab to inquire about its progress. House welcomes Momie Nakamura from Hirosaki Cadre as an intern.

Contradiction: Having spirit courage without tactical wisdom to spin secular guild and local church into one story that is accepted by the entire community. (Wk. 12)

## SYDNEY

## RELIGIOUS HOUSE: SYDNEY

External: Metro Council bursts at the seams as planning explodes with projected replication in Sydney and Hurstville polises while total Metro and region intensifies. Denominational Authorization for Pitt Street City Church encourages evaluation based on two years work rather than one.

Internal: Received and send out Lingafelters to Oombulgurri. Great send-out of the four Darwin children who were evacuated at Christmas as colleagues pass through.

Contradiction: While swamped with immediacies which way to safeguard future priorities. (WK.11)

## RELIGIOUS HOUSE: PERTH

External: Increase our engagement in the mission through Treks to two outer Metros, and an intensification of LENS marketing in Perth.

Internal: Quarter IV external mission plan finished. Whole House attends Celebration 75 inauguration in Edgely Centre along with 7,300 Anglicans. Mowanjum for English through using Movement wisdom.

Contradiction: Being corporate and holding a common vision midst the scatteredness that mission is requiring. (WK.11)

## RELIGIOUS HOUSE: DARWIN

External: Sophisticated ICA/EI booklet and 40 Page social reconstruction proposal prepared over extended Week 11 to launch authorization blitz. PCE residents group announces plans for city wide trade fair, a local building co-op and launches two day care centres. Tourist association holds first meeting since cyclone and reaffirms long range vision of Darwin.

Internal: PSU preparing crucial missional documents extends Week 11 design to Wednesday the next week. Guild colleague Carol Borovic drops in after evacuation, points out pre-cyclone indicative battleplan was right and asks 'Where do I start.'

Contradiction: How to relate internal models and external mission so as not to experience continuing drop-ins by people at all hours of the day and night as 'catching us in the act.' (WK.9)

## RELIGIOUS HOUSE: OOMBULGURRI

External: In spite of cyclone and flood, 15 bright orange and blue newly in-kind tents pop up and task force on horseback bring back special beef in time for the beginning of a ten-day Djaruk during which five young men will be initiated into the law and manhood. Mowanjum colleagues join in awesome singing and dancing.

Internal: Insurance assessor arrives for two-hour inspection of deceased boat and stays for two days, deeply impacted. Whole House works on common local wisdom and memory amid floods and trips to repair water pump. Saturday night songfest a fine event.

Contradiction: Holding the tension between the long-range vision and today's necessity: How can the community glue itself together during the long struggle to recover the Law. (WK.12)

## RELIGIOUS HOUSE: ADELAIDE

External: Consult for 100 social work students and faculty at the Institute of Technology demonstrates workability of social methods in all situations and yields offer from Housing Trust to assist in other planning ventures.

Internal: House sends team to prepare for first LENS outside a major city and devotes Ecclesiola sodality to preparing E.G. curriculum for LENS.

Contradiction: Whirlwind of new possibilities and the need for discontinuity time make detailed planning both necessary and difficult. (WK.12)

**RELIGIOUS HOUSE: MELBOURNE**

External: Forty guests to Open House representing local church, local community. Metro education structures and old grads; one grassroots woman exclaims 'I thought I'd lost you. Contact with local Anglican priest in 'team ministry' results in preaching invitation.

Internal: Night out to see 'The Golden Legion of Cleaning Woman' by theatrical group shows possibility of any man taking responsibility for the global revolution. Guests' gifts undergird Wayside Inn dynamic.

Contradiction: With exciting possibilities opening up in various arenas, how use Metro grids and framing to help decide priorities. (WK.11)

**RELIGIOUS HOUSE: CANBERRA**

External: Exploring job possibilities with local Governmental agencies and working the Darwin Citizens Association disclose a network of concerned public servants and social workers, a self-conscious 'club' of those concerned about the future. They are awaiting LENS and the discovery that the club is world-wide.

Internal: Preparing to gun key community LENS in Adelaide.

Contradiction: Designing the internal practices that will undergird the external thrust. (WK.12)

**RELIGIOUS HOUSE: BRISBANE**

External: Regional polity shift signalled in broadened priory which meets to focus missional priorities; in midst of hard push on PLC recruitment, we discover Sr. Betty Moriarty (once thought to be dying in Bombay) alive and well and determined to be at the PLC.

Internal: Presence of Regional colleague Wendy Chapman underlines cruciality of maintaining House structures in midst of missional dispersement.

Contradiction: Struggle to find the context that holds House and Movement present to local manifestations of global thrust 7 days a week. (WK.12)

SUVA

**RELIGIOUS HOUSE: MAJURO**

External: Joined in 35-man painting team at MCAA to transform two buildings. Huge TASC order arrives in Kwajalien and is transhipped to Majuro--with whole house stevedoring effort to unload.

Internal: Roberta Sperstad begins working with Majuro pre-school just in time to participate in Easter 'party' complete with TV--new this week in Majuro) games, eggs, and a feast. House completes Lenten ramen for breakfast fast with a liquid fast on Good Friday. Sent out Orvis Agee with KITCO reception.

Contradiction: Initiating new programs before equipment, staff and funding that is needed, is available. (WK.12)

**RELIGIOUS HOUSE: APIA**

External: Prior is sent out on authorization and nurture trip to Fiji.

Internal: During Week II, meal conversations using Samoan proverbs help us to grasp the gifts of this UR.

Contradiction: Deciding to see past the contradictions to the gifts of this culture to enable others to build the necessary models. (WK.12)

SAN FRANCISCO **RELIGIOUS HOUSE: SAN FRANCISCO**

External: The Bicentennial consumes all--Ten Churches in Livermore show great enthusiasm for Town Meeting '76. Executive Secretary full time is secured for Bicentennial Office. Bi-metro Council shifts major tactics for next year--geared toward Town Meetings.

Internal: The paper, The American Bicentennial for Medication (from Centrum) provides new images and vision for doing Town Meeting '76 as we struggle with our forefathers in creating a Demonstration Nation.

Contradiction: The Reality of the task before us is even more overwhelming than the Ambiguity we once dwelled in. (WK.12)

**RELIGIOUS HOUSE: SAN JOSE**

External: Key Galaxy church picking up major responsibility as tactics for next quarter nearing completion, including tactics related to Galaxy expansion of churches in Center City 5. Results of Church School Training Institute include letters of appreciation and requests for RS-I.

Internal: House heads for Santa Cruz Mountains Methodist Camp site for day of planning for next quarter--find methodology of TM very exciting as 'on target' proposals created. Celebration in great Mexican restaurant concludes day. Bicentennial decor and office reordering, including red, white, and blue filing system, remind us of the shift. Bi-Metro House Church with reports from Chicago Priors' meeting and TM excite all.

Contradiction: Finding way to hold corporate thrust of Bi-Metro through fragmented time schemes. (WK.12)

**RELIGIOUS HOUSE: SACRAMENTO**

External: Fifty Guild members visit convalescent homes for singing festival and post-LENS celebration.

Internal: House receives reports from Chicago Priors' Council on Town Meeting.

Contradiction: How to trust that we can deal with depth issues out of a totally secular mode. (WK.12)

**RELIGIOUS HOUSE: SEATTLE**

External: A great week of breaking open Town Meeting Advocacy in Idaho, working with the Salt Lake City House. New ITI prospects emerge in Portland, while PCE quarter battleplanning exposes the dual role required to do both the parish and the region.

Internal: Sharon Pilliot, Robert Knutson, and Doris Lee Dimick are guests. House Ecclesiola finds us leaping from high places, racing furiously, and plunging to the deeps as we go swimming at nearby pool. E.G. attempt (unsuccessful) walk on water in local marsh.

Contradiction: How to put a workable, enabling form on the operating designs for the PCE/regional centrum for Quarter Four. (WK.12)

**RELIGIOUS HOUSE: LOS ANGELES**

External: Stan Duncan arrives and immediately has two Town Meeting sites: Santa Fe Springs and Leisure World, a retirement village.

Internal: House sees 'Scarecrow' for seminary dynamic and returns to spaghetti dinner and conversation.

Contradiction: Putting a well running car into 'passing gear' to cover all arenas plus an ITI. (WK.12)

**RELIGIOUS HOUSE: PHOENIX**

External: Task Team decision and enablement of two people to Town Meeting Council in Chicago.

Internal: Sense of strength in midst of small numbers around Ecclesiola table.

Contradiction: No clear plan from here to Town Meeting, May 17. (WK.11)

**RELIGIOUS HOUSE: SALT LAKE CITY**

External: Joint work with Seattle House opens up advocacy for TM '76 in Idaho. Contacted State Bicentennial Chairman and others. Preparation for LCC yields in-kind ice cream. Kent Finn Schneider sent to Omaha.

Internal: Ecclesiola impacted by Bonhoeffer's 'Life Together,' 'The Day Alone,' and incorporating TV documentary into the evening.

Contradiction: Indicative battleplanning catalyzes troops but still need plan for organizing people strategically. (WK.12)

**RELIGIOUS HOUSE: BILLINGS**

External: Community leaders call us for luncheon appointment and are excited by application of LENS methodologies to community planning.

**RELIGIOUS HOUSE: BILLINGS (cont.)**

Internal: Ecclesiola sums up quarter while Week II cleans up yard: whole House prys up frozen debris and creates 'new look' for House exterior space.

Contradiction: How do you train the horses (Guildsmen) after they are already hitched to the plow. (WK.11)

**RELIGIOUS HOUSE: DENVER**

External: First regional Town Meeting '76 is held in Boulder with city and state Bicentennial Commission approval, 100 in attendance, and workshops ably gunned by four guardians of Notre Region.

Internal: House Church of 25 includes four local church pastors who dramatize breadth of their care with reports of 100 at Lenten study on faith; rebuilding from a church leveled by fire; and discerning the healing Word for Korean cultural disorientation in Denver.

Contradiction: Divining which of the horde we've stirred up are good for honey and which should be quietly avoided. (WK.12)

**RELIGIOUS HOUSE: RAPID CITY**

External: Recruitment blitz in Spearfish nets three registrations and some good possibilities, and cleans out a few old prospects.

Internal: Half-way through everyone employed. Quarter IV battleplanning. E.G. found the place in the skull in Wyoming. Priors Council report on task for next few years.

Contradiction: Penetration prospects and TM development leaves us thinly spread three states wide and RS-I deep. (WK.12)

**EDMONTON****RELIGIOUS HOUSE: EDMONTON**

External: Community Forum Canada initiation calls in Nelson, B.C., meetings set with information officer for the Northwest territories, Drumheller Federal Prison and sponsorship groups in Calgary.

Internal: Sent out Shirley Bell to Cleveland House. Welcomed three House members back from Chicago and sent Jim Bell out to West coast.

Contradiction: Dealing with resentment of corporate struggle which erupts with newness of mass impact strategy. (WK.12)

**RELIGIOUS HOUSE: ANCHORAGE**

External: Juneau Chamber of Commerce Director shows great interest in TM '76. Thirteen signed up for RS-I four weeks before course.

Internal: Five metro and House people return from various places with new insights that cause deeper commitment to TM '76 and Global demonstration. New parish grid symbolizes new depth seriousness about working with the parish.

Contradiction: Need for model which will engage new troops to replace many of the seasoned troops who will soon be sent out to engage in Movement elsewhere in the globe. (WK.12)

**RELIGIOUS HOUSE: SASKATOON**

External: CFC Regional actuation keeps moving with visits to Metro colleagues in two towns and House participates in Provinces. Initial steering committee for Habitat '76.

Internal: House Church guests outnumber House two to one, many colleagues remain to engage in visioning session for coming quarter. Preparations intensify for week 13 trek of expenditure and Odyssey.

Contradiction: How to enable people in particular struggles through structures rather than becoming a counselling service. (WK.12)

**RELIGIOUS HOUSE: WINNIPEG**

External: House and colleagues start immediate follow-up on Centennial 5 Town Meeting and get reports to all participants and other interested people.

Internal: Quarterly evaluation and course timeline done followed by troops leaving for Priors Council and CFC leaving those remaining to plan miracles for Wk II.

Contradiction: It's like we are stuck in the middle of a bridge, knowing the certainty of the future flow, and being hesitant deciding which way to go. (WK.12)

**HOUSTON****RELIGIOUS HOUSE: HOUSTON**

External: Four-hour visit with Bicentennial Chairman of 450 Clubs-Texas/Oklahoma Kawanians District indicate RM '76 will be accepted as their Bicentennial Project with sponsorship training offered at 2,000 member District Convention in August.

Internal: Great guest, Kaz's version of 'Last Supper' and fine food highlight the Pascal Feast and initiate two and a half day fast.

Contradiction: With things going exceedingly well, the habit of continually glancing over one's shoulder watching stealthily disaster limits forward perception and creates its own disastrous probability. (WK.12)

**RELIGIOUS HOUSE: AMARILLO**

External: YMCA of Amarillo stands behind Demonstration TM on March 17 with their name and one represented in TM task-force.

Internal: E.G. spends holidays in Palo Duro Canyon. Joyce Shenk from Houston Region stops by our door to say she was available for work. Bob McKay from Austin takes advantage of Wayside Inn dynamic.

Contradiction: Who will the Lord elect to fill the void, as both Metro Coordinators leave for the Academy? (WK.12)

**RELIGIOUS HOUSE: SAN ANTONIO**

External: Metro Cadre begins work on Week II celebrative, contextualizing Council for old and new grads, battleplanning to be done beforehand by old hands. Response to PLC is sign of possibility and pain in taking up role of Church in depth.

Internal: Faith, hope, love lecture from Primal Community Consult comes as fantastic construct for brooding on current spirit deeps. Reluctant landlord compromises on new lease. Nan Grow's ITI Caracas report explodes images of Latin America as monolith.

Contradiction: How to make present formulation structures catalyze movemental dynamic rather than enlist help. (WK.9)

**RELIGIOUS HOUSE: OKLAHOMA CITY**

External: Duncan, Oklahoma says yes to hosting May 10 TM '76. Canadian River 5 places HRM on Quarter IV calendar. Jet Drill Team performs for Central City 5 Guild and Jet parents.

Internal: Addressed by 1966 JWM Church lecture, and by report from prior's council of many miracles.

Contradiction: Doing Guild Practical Vision with everyone working on TM '76. (WK.12)

**RELIGIOUS HOUSE: DALLAS**

External: Within unique week characterized by Metro meeting at Glen and Pat Miller's home, Metro created 39-week parish battleplan and timeline, conducted first Clergy Collegium of series with North Dallas Ministerial Association.

Internal: Out of onslaught of measles, permeation assignments that further decreased House hands and transformation with new decor, comes new life! E.G. takes up 6th Liturgist role and drum at Daily Office with great style.

Contradiction: As we experience ambiguous backwash of current quarter, face of onrushing wave of next quarter looms not far away. (WK.11)

## RELIGIOUS HOUSE: TULSA

External: Vinita, Oklahoma letter requesting TM '76 with a chairman already designated. Proclamation by mayor of Bartlesville, designating May 10th as 'Bartlesville Town Meeting '76 Day.' Development finally found their long lost circuit.

Internal: Celebrated fully employed House.

Contradiction: Inadequate phasing T/L Warboard of the necessary strategies and tactics relative to doing TM '76 across state.

## RELIGIOUS HOUSE: NEW ORLEANS

External: Miracle RS-I of twenty-seven emerges through quota system. New Orleans Bicentennial Commission endorses Town Meeting.

Internal: House transformed by creating montages for Stations of the Cross. Sandra has opening night--RS-I faculty get to hear.

Contradiction: With full steam ahead in the economic, we still seem to be taking water. (WK.8)

## RELIGIOUS HOUSE: MEMPHIS

External: First Regional Council held outside of Memphis signals new breakthrough in Regional participation with seven new faces present.

Internal: Loss of job enables House member to join three others from House in Chicago, which leaves us with working force of three adults, three E.G., and two of four cars in working condition.

Contradiction: How to stand present to demand of three major events that are still weeks away. (WK.11)

## RELIGIOUS HOUSE: ATLANTA

External: Tuesday evening PCE meeting bursts out of confines of meeting space, as 25 show up to report (and hear the report) of the 5th City Trek; as well as to plan for the East Lake 5 report to Mayor Jackson's representative next Friday (Commissioner of Community Development).

Internal: Sent team out for Week I in-kind development for new Charlotte House, they secured lounge furniture dishes, tables, chairs, etc. Atlanta Catholic Diocesan educational director says, when asked to do House Church Celebrant role, 'It's about time you asked me, I've been feeling left out.'

Contradiction: Deepening the commitment of the guild is a journey of purging which we are loathe to take; 'Can't we just have giddy fun-filled meetings and cool that hard work,' is what Satan whispers to us. (WK. 12)

## RELIGIOUS HOUSE: MIAMI

External: Regional Council held in Jacksonville, 350 miles from House with 17 around table; enabling five RSI grads from past weekend to internalize the movement and the metro cadre dynamic in one leap.

Internal: Fantastic regional council celebration sparks the dance that thrusts us into a week of mailings including a comprehensive regional council report to our regional colleagues with the newsletter and an Odyssey mailing in preparation for Easter weekend Odyssey.

Contradiction: Living out of old story that economic responsibility does not allow risk for action demanded in future. (WK. 10)

## GLOBAL CENTRUM: CHICAGO

External: Catalytic action revealed as powerful demonstration through consensus-building as we celebrate reports of Town Meetings in Boulder, Philadelphia, Washington D.C., and Clarksburg. Telephoning blitz focuses on Seed money for T.M. as we dine and dial friends and colleagues in Town Square to tune of 'Music Man'. The Charlotte House commissioned at House Church with the sending out of Wesley and Barbara Kersh, and Wendell, Margaret, and Tiffany Refoir. ITI preparation intensified as Kamela Parek Jaime Vergara, James Patterson, and Bill Grow sent out to Los Angeles.

**GLOBAL CENTRUM: CHICAGO (Cont.)**

Internal: During morning collegiums colleague explodes spirit edge through articulating struggles, relationships, and responses of last quarter. Easter celebration reflects indicative calm and stillness in our midst. Nexus welcomes new International Training participants: Symond Kock from Singapore, and John and Guenda Rees from Melbourne. Reported during Week 11: birth of Elizabeth Theresa, to Mark and Elaine Bowman of Cleveland; and wedding of Emily Tompkins and Gary Heath, of Minnesota.

Contradiction: Admidst swirl and enaagement of the task, recognizing and utilizing catalytic events. (Wk.12)

**RELIGIOUS HOUSE: CHICAGO**

External: Another PCE concretely launched as whole House joins Oak Park Guild in creation of geo-socio analysis for that community. Everyone deeply excited by the method and results as reflected in the gala celebration at Carusos' after the workshop.

Internal: House experiences a phenomenal Holy Week as cruciformity and resurrection are grounded over and over in our being. Highlights were the special D.O. scriptures and witnesses, Maundy Thursday celebration, Easter morning House Church and study of Resurrectional Man paper.

Contradiction: Spring Quarter looms before us like a huge cake as big as a room. Where do we begin to eat. (Wk. 12)

**RELIGIOUS HOUSE: WICHITA**

External: Liberal Kiwanis and County Bicentennial Chairman and delighted with T.M. possibility. Authorization and support for Community Convocation pours in from parish businesses and churches.

Internal: Supper Club with pantomines from 'Scenes of American History' is a rollicking Quarter Celebration; T.M. office completed, painted in tasteful red, white and blue.

Contradiction: Being obedient to global demands (such as Academy recruitment) while honoring the strategy needed in the local situation. (WK. 12)

**RELIGIOUS HOUSE: OMAHA**

External: Signal authorization for T. M. as two more cities have local Bicentennial committee endorse their up coming meeting.

Internal: Wrestle with being Wayside Inn dynamic in preparation for Easter.

Contradiction: Cranking up the machinery for coming Quarter in light of last Week's Priors' Meetings in Chicago. (WK. 12)

**RELIGIOUS HOUSE: KANSAS CITY**

External: Colleagues popping up all over, armed and ready to do battle. RS-I follow-up ends with Parish Cadre commitments and Trek registrations. Advocacy visits again reveal deep social passion wherever we turn.

Internal: Town Meeting '76 office painted, equipped and staffed. Hosted guest from Denver, Bill Fenton, for the week. We concretized our decision to do Town Meetings by calendering twelve replication Town Meetings and getting authorization through leadership visitation.

Contradiction: Sinks, tubs and toilets all overflowing--how to discern and focus on main valve rather than running around adjusting all individual valves. (WK.12)

**RELIGIOUS HOUSE: MINNEAPOLIS**

External: Emily Tompkins/Gary Heath wedding brings spirit to House as all guests show up at In-House meeting, asking for assignments in preparation for reception and dance with live band. 300 fill House (almost). Nine semester credits secured by House intern for Spring Academy: three educational, three religious, three social. Visit 13 cities on TM treks.

## RELIGIOUS HOUSE: MINNEAPOLIS (cont.)

Internal: TM finances looked at by Guild. Only comments is, 'We spent it together, we pay it together.' Planned garage sale turns into a two-day auction. Have eight signed up for 5th City visit. TM files created, LENS mailing, Academy mailing, and PLC Model building accomplished with help of Metro colleagues as we find ourselves with one In-House person.

Contradiction: Study of the 'Frame' paper reveals need for more adequate frame, for releasing funding and authorization for long-range community reformulation project. (WK.12)

## RELIGIOUS HOUSE: ST. LOUIS

External: Regional Metro battleplanning reveals continuing presence of long-range contradictions. RS-I recruitment story and timeline intensified at Tuesday Sodality. Colleague reports on continental Town Meeting at 'Kemper City' in Chicago.

Internal: Major decor re-designed and created for first floor training centre rooms, including parish map with detailed locations of people, community groups and churches, vacant lots, commercial districts. Host Chicago House E.G. for Week 11.

Contradiction: How to catalyze events into miracles for all engaged. (Wk.12)

## RELIGIOUS HOUSE: PEORIA

RS-I Recruitment Structure created by Champaign Metro Cadre brings new life to their movemental stance. Frank Renner and Erma Davis finalized plans for 5th City-Uptown trip for community leaders and Movement colleagues lend financial support.

Internal: House impacted by Hamje's paper on world hunger crisis and St. Mary's Cathedral Maundy Thursday Mass.

Contradiction: How to catalyze events into miracles for all engaged. (WK.12)

## RELIGIOUS HOUSE: GREEN BAY

External: Kiwanis Club Presidents and neighborhood organization give positive nod to TM sponsorship.

Internal: Internal Life Battleplan completed and Internal Life Manual underway.

Contradiction: Interior confusion of finishing the Battleplan with finishing the Battle breeds premature relaxation. (WK. 12)

## RELIGIOUS HOUSE: MILWAUKEE

External: Week II Council produces warboards and planning manuals for two Galaxies and two Training Institutes.

Internal: Collegium catalyzes ten-year vision of community reformulation for Bi-Metro. Another job secured after long search filled with many disappointments.

Contradiction: Catalyzing the catalyzers. (WK. 12)

## RELIGIOUS HOUSE: INDIANAPOLIS

External: Bi-Metro Council in Louisville celebrates Quarter and renews ties with old colleagues. Crucial groundwork done in three Louisville suburbs for T.M.

Internal: Priors sent to T.M. and Priors' Council in Chicago. House beautification including T.M. decor; pedagogy RSI, LENS, Spirit Methods and Imaginal Education, focus of morning collegiums.

Contradiction: Being convinced that we have internal problems. (WK. 10).

## RELIGIOUS HOUSE: CINCINNATI

External: Third metro cadre begun in Dayton, T.M. advocacy at State level, Woody Hayes' visit a victory for our team. Guardians' dinner with 35 present firm decision for T.M., while local demonstration-Walnut Hills Guild hosts Atlanta Guild (East Lakes 5) and prepares for Initiating miracles of spring 'Miracle on McMillan'.

Internal: Two Belgian Priests stop off in Cincinnati and provide spirit re-motivation for House and six Roman Catholic Priests at Clergy Collegium. A safe and fruitful journey to Jose de Fruyt and Ludo Goosens.

Contradiction: Deciding to be self-starters in the midst of a corporate thrust. (WK. 12)

## RELIGIOUS HOUSE: DETROIT

External: With official nod of Horizons Committee and \$5,000 to do three Stration T.M.s, Town Meeting Clinton looms on the horizon May 24.

Internal: Care for ourselves that we care for others showed up in property improvement, Quarter II visioning and planning, Thursday night foray on Parish ice cream parlor, common memory studies; PSU on House Parish location, and House Church with 36 from Region.

Contradiction: With T.M. workers on the Region vineyard; need foremen to step forward. (WK. 12)

## RELIGIOUS HOUSE: CLEVELAND

External: Painesville City Council decides to give Town Meeting task force office space in the City Hall and calls for local service clubs to pick up sponsorship of Town Meeting.

Internal: Holy Week was a powerful demonstration of corporateness and symbolization, the reality of the Cross-Tomb-Resurrection event as the House added the full processional to Daily Office, held 'stations of the Cross' readings at the late night dinner, read the Passion story, and fasted from Good Friday until the Easter morning feast.

Contradiction: Being caught between quarter assignments gives rise to a last ditch effort to protect old modes and preserve old ways. (WK.12)

## NEW YORK

## RELIGIOUS HOUSE: NEW YORK

External: In the swirl of excitement of RM training in Philadelphia, two Roman Catholic colleagues from Japan assist in recruiting LENS soliciting new authorization in the Roman Catholic church.

Internal: New passion for Academy recruitment is occasion in House Collegium.

Contradiction: How to avoid allowing measurable success in 20 programs to blur the vision of what kind of ongoing care is equally required by this local situation. (WK.12)

## RELIGIOUS HOUSE: PITTSBURGH

External: Town Meeting in Clarksburg with 100 present including the city mayor, the coordinator of the state Bicentennial Committee as well as representatives from other Bicentennial committees, catalyzes at least six additional T.M.s.

Internal: Dona Duncan secures job. House prepares for new quarter by reordering internal space.

Contradiction: Keeping the Region on top of and fully participating in the 20 programs and continually changing thrust of the Spirit Movement. (WK.12)

## RELIGIOUS HOUSE: ROCHESTER

External: Forty colleagues from the Region journey to Philadelphia TM '76. Several Bicentennial officials from Rochester and Buffalo plus local secular folks are excited about doing one in their home towns.

**RELIGIOUS HOUSE: ROCHESTER (cont.)**

Internal: The filling out of the Rochester Galaxy to four churches after five years now pushes us to a new catalytic function.

Contradiction: How to train old colleagues before their blase stance eats them alive. (WK.12)

**RELIGIOUS HOUSE: RICHMOND**

External: Shift into Quarter IV made early as we initiated a program of Systematic Visitation in the Parish. Building toward Community PSU, RS-I, LENS for Quarter IV.

Internal: Week of Celebration, Lenny, the M.C. artformed in Ecclesiola and weekend of engagement with Supper Club Celebration and first birthday party for Peter Ballard.

Contradiction: Maintaining the Missional Momentum in midst of intensified permeation. (WK.9)

**RELIGIOUS HOUSE: WASHINGTON**

External: Possibility of \$48,000 w/proposal for 36 Town Meetings from D.C. Bicentennial Commission; D.C. Federation of civic associations voted to be advocates to 44 Town Meetings; Coca-Cola will furnish coke for TM of 200-300 people; Bishop James Mathews and Joseph Mathews and Don Cramer visit with Mayor Washington ending with his comment, 'Don, I want you to keep me informed on this!' D.C. board of zoning turned down proposal of only viable purchaser of House facility.

Internal: Wayside Inn dynamic explodes into centrum dynamic with multiplying calls from Europe and the 'Hill.' Global Development Centrum Majuro team continues working with Congress. Metro Cadre picks up Day I task while priors are in Chicago. revolutionary notekeeping kept in 'Big Blues' (notebooks). Welcome colleague from Chicago for the week.

Contradiction: Temptation to collapse catalyzation and do it ourselves. (WK.10)

**RELIGIOUS HOUSE: BALTIMORE**

External: House dispersed with key Bimetro Bicentennial colleagues to all three Areal Town Meetings '76; Shortly thereafter House receives word that state has endorsed and will fund TM '76.

Internal: House celebrates Seder Passover Commemoration on Maundy Thursday and moves into traditional Christian footwashing with sense of Judaic heritage that links both religions.

Contradiction: How to be chaste to decision to battleplan in midst of overwhelming external demands and pending discontinuity. (WK.12)

**RELIGIOUS HOUSE: PHILADELPHIA**

External: Philadelphia TM '76 of 218 demonstrates nationwide Town Meeting happening in America today as participants arrive from Miami, Chicago, Cleveland, Washington, New York, Schenectady, Pittsburg, Albany, Richmond, New Hampshire, Boston, etc.

Internal: House sends out five Regional week-long sojourners and picks up 'Fanny and Zooey' for a week-long study of the tension between spirit nurture and wild engagement.

Contradiction: Have to discern new ways to demarcate time for a new movement. (WK.12)

**RELIGIOUS HOUSE: NEWARK**

External: The decision of Metro and Galaxy colleagues to participate in the Philadelphia and Washington D.C. Town Meetings stimulates total participation by House, and significantly impacts all participants..

Internal: Major breakthrough in turning chaos into missional space for Town Meeting office as the count down begins for Parish work day and celebration, along with the Open House.

Contradiction: Unclearly on how to engage community in miracle of community work day for creating sacred space. (Wk. 11)

**RELIGIOUS HOUSE: BROOKLYN**

External: Seventeen colleagues from the Bi-metro journey to Philadelphia for the demonstration Town Meeting '76 and the Inauguration in Congress Hall, and come back ready to go. The decision is made to deal with the realities of state boundaries re: TM '76.

Internal: Our evaluation of the past quarter is a spirit happening which reveals our deficiencies and effectiveness, has us reflecting in depth on the dynamic function of the symbolic order, and leaves us refreshed for Quarter IV.

Contradiction: The enthusiasm to 'get on with it' in the metro is out-distancing our pace at providing practical models and guidelines for effective engagement, which if not dealt with, could result in a lot of burnt-out colleagues. (WK.12)

**RELIGIOUS HOUSE: HARTFORD**

External: House attends TM '76 in Philadelphia. Along with Metro colleague, Jim Stewart. Congregational church in Springfield, Mass. Will come to Urban House for Church Council Planning Retreat in April.

Internal: House Church continues to be key event as Metro colleagues and guests outnumber House. Many attend every week. Easter trek and Odyssey preparation continues.

Contradiction: Inadequate story and structures to get people engaged in TM '76. (WK.12)

**RELIGIOUS HOUSE: MANCHESTER**

External: Week of formulation as LENS sponsorship meeting is held with key Roman Catholics in Parish, and Groveton UMC lead through Congregation Workshop, creating story and song. Parish Grad dinner held with decision to continue meeting regularly.

Internal: Daily Office as 'given,' and gives new life as radical decision to be present is enacted; Wednesday evening corporate struggle dramatizes decision to be responsible for and embody consensus. Philadelphia TM '76 highlights week.

Contradiction: In midst of many activities, need for symbol of our one direction. (WK.12)

**RELIGIOUS HOUSE: BOSTON**

External: Participation of 40 from Boston Region in kick-off Town Meeting in Philadelphia.

Internal: Collegium on Primal Community Experiment evaluation discloses our own unclarity yet pushes us to see what is necessary and possible in next Quarter.

Contradiction: Not getting caught in the paralysis of possibility. (WK.12)

**MONTREAL****RELIGIOUS HOUSE: MONTREAL**

External: P.C. group, after having completed seven weeks SMS makes the decision to become a core and to continue to care for that community. Area prior makes visit to Halifax region for CFC planning and consultation with Community Council.

Internal: Metro Cadre visits two Catholic institutions which have been offered as facilities for new Montreal Religious House. House journeys to Toronto to participate in Area Odyssey, during which under the rubric of Contemplation the Art Gallery of seven Canadian Artists was visited.

Contradiction: Multiplicity of the faces of the mission blurs our over-all focus. (WK.12)

**RELIGIOUS HOUSE: TORONTO**

External: What began as a humble tactic of surveying a group of school children about a recreation centre leads to request from Parish alderman and city planner for the 'Spadina 5' group to catalyze a community corporation that will assume complete responsibility for converting synagogue building to recreation centre.

Internal: Toronto urban house hosts other area houses for spirit trek, and shares McMichael collection of Canadian art, encounter with raw mystery held in those paintings plants Harris, Carr, Jackson, and others of 'Group of Seven' firmly on the mediative Council of many.

Contradiction: Releasing the passion of the Other to be Xavier, by systematic demonstration. (WK.12)

RELIGIOUS HOUSE: OTTAWA

External: Going to meetings, selling Community Forum Canada; many yesses to forthcoming CFC as we contact numerous parish businessmen; meet with Bernard Daly and non-Governmental organizations; attend two local church annual meetings, one clergy wives group, host another clergy collegium.

Internal: Bi-Task Force Wk. II on CFC as Clutzes join us to work on national proposal as rest of House hits road recruiting. Nancy journeys to Nova Scotia to celebrate completion of life of her grandfather.

Contradiction: How do we combat sleepiness in old colleagues so that we can catalyze movemental edge, which is unclear to us. (WK.7)

CARACAS

RELIGIOUS HOUSE: CARACAS

External: Twenty-one in attendance at RS-I follow-up dinner at RS-I grad's house. Deep address in witness of grads as to transformation the course was in their lives. One grad comes following Saturday to assist in parish gridding in preparation for House relocation.

Internal: House and Cadre work on RS-I illustrations grounding course in Latin American reality. Addressed by universality of the course as it speaks through particular cultural forms.

Contradiction: How keep from allowing immediate missional demand to blur the many fronts we need to do battle on and prepare for. (WK.12)

GLOBAL CENTRUM  
QUARTER III 1974 - 75

THE GLOBAL ORDER CENTRUM REPORT  
FOR WEEK 12

BRUSSELS  
BOMBAY  
SINGAPORE  
HONG KONG  
CHICAGO

GLOBAL  
DEVELOPMENT  
CENTRUM

Hong Kong trek of Manila contacts 22 businesses, yields 3,000 pesos in hand (U.S. \$450); Ramon Absitiz Foundation's 75,000 pesos (U.S.\$11,000) is in hand awaiting final steps of ICA incorporation in Manila. Bombay promised R.S. 5,000 from French Bank, and completes seven more major funding proposals. Begins in-kind launch as tea is contributed for GRA/ITIs'. In major funding visits by Singapore Global Development web emerges. 'Resurgence right here in River City' telephoning event of two nights nets \$8,700. Participation in government agency conference reveals growing cooperation between government bureaucracy and private voluntary agencies in global socio-economic development. Intensification of Centrum Band dynamic occurs as Brussels completes Quarter IV battleplan, revealing needed thrust of interchange and communication system. The contradiction is that of creating a story which enables local man to see that funding initiation of Town Meeting program is just as crucial as funding a particular local event.

GLOBAL  
MANAGEMENT  
CENTRUM

Hong Kong sends out financial authorization letter to Religious Houses. Brooding for employment for next year allows best opportunities to be realized now rather than waiting until they have passed. Bombay concentrates on setting up internal systems that will work by themselves. In preparation for Priors' council Brussels completes six-month financial report; and sees its Publishing House becoming nearly full operative dynamic in the Nexus. Singapore works on brochure and starts first round of visits for LENS. Morning Collegium in Chicago rehearses story of revolutionary financing and financial sophistication now required with our turn to the world; preparation for it by Centrum allowed global reflection on the futuric rather than immediate concerns. Chicago also reports that arrival of new dishwasher is answer to one of the 'earthly hopes.' Contradiction is that of planning and procurement of short and long-range equipment to keep pace with multiplying program demands across the globe.

GLOBAL  
OPERATIONS  
CENTRUM

Circuit rides and ITI/GRA recruitment strategy explodes in Bombay as all Houses and all available troops on road to metro and regional cities. Brussels devises flexible program scheduling board and comprehensive assignment sheets for courses, consults, field visits, and development. GRA/ITI assignments completed for India: Hong Kong publishes pitch and mails to Houses and submits faculty recommendations for Seapac GRA/ITI. Backup systems deepen as teaching assignments are made for the first time, published with calendar, and pedagogues are coordinated in interchange between nations. Singapore's Area Council re-aligns ITI participant quota and staff rationale. Chicago finalizes course schedule for North America, and enables launch of Los Angeles ITI by blitzing 300 ITI manuals and sending out the faculty. Community LENS taught in Adelaide Region, a Community Training School held in Frontenae (Montreal) and a Spanish-speaking retreat for 50 in Caracas. The contradiction is that of being a flexible interchange system that holds details and unblocks us in the practical vision of the future.

GLOBAL  
RESEARCH  
CENTRUM

Brussels has Think-Tank on the Primal Community Experiment in Europe that gives shape to first year's phasing chart. Bombay assigned to assist in Byculla 5 Guild meeting in servant role, and watches Guild meetings assume stance of local care. Hong Kong city District Commissioner says 'yes' to Social Methods School consult as follow-up to LENS. His plan is to raise four city districts as signs; Centrum's task is to see to it the four communities participating could open up this opportunity. Singapore excited over Van Leer Foundation visit for possible demonstration sign. Receipt in Chicago of printed material from Primal Community Training School in Brussels, and Imaginal Education constructs excites Centrum with fact we are on target in creating a global social demonstration. Reorganizes Town Meeting Post and Centrum to increase focus on global social demonstration. The contradiction is prioritizing requests and being prepared to deal with hesitancy in total engagement.