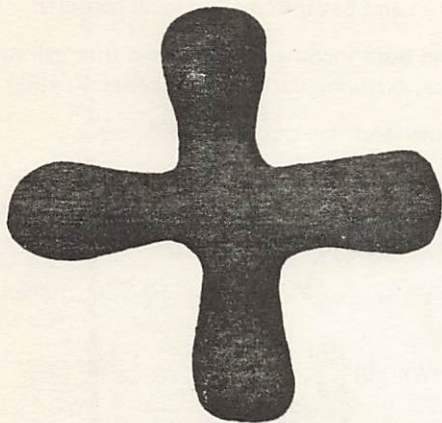


GLOBAL ORDER REPORT



The Lord shall appear above them, and his arrow shall flash like lightning: the Lord God shall blow a blast on the horn and march with the storm-winds.

--Zechariah 9:14

LONDON

RELIGIOUS HOUSE: LONDON

External: Isle of Dogs Consult opens with standing room only in newly created collegium room at Bridge House. Consult closes on boat doc led in front yard with multiple testimonies by local residents.

Internal: Transparent enablement construct releases maximum troops into direct consult work.

Contradiction: Discerning forces and time configurations that get Isle of Dogs Consult Document written and published in less than seven days. (Wk 12)

RELIGIOUS HOUSE: GLASGOW

External: Five from region and four from House attend Consult in Isle of Dogs. Receives first RS-I registration. Three consultants from Edinburgh decide to be assigned to Maliwada in September.

Internal: Peter Whitney arrives. Eighteen month timeline of Global Social Demonstration indicates that Glasgow needs to begin to get ready.

Contradiction: Regrounding in PCE (Isle of Dogs) that which reinforces need to move. (Wk 13)

RELIGIOUS HOUSE: BRISTOL

External: All consultants for Isle of Dogs are packed and ready to go.

Internal: Sends prior family to Manchester to teach RS-I while rest of House works at Bridge House, new facility secured through the Catholic Church.

Contradiction: Building comprehensive model to deal with finances for rest of year. (Wk 11)

RELIGIOUS HOUSE: MANCHESTER

External: Six additional yeses brings Imaginal Education at Salford to 13 and RS-I at Durham reaches 10 registrations.

Internal: Completes Six Speeches paper by JWM. Experiences excitement over moving deeper into Salford.

Contradiction: Deciding difference between rising and cutting off neck, financially. (Wk 13)

PARIS

RELIGIOUS HOUSE: PARIS

External: Types, stencils and marks over 100 letters in three forms, announcing upcoming LENS course.

Internal: Experiences beginning of spring with sending five people to Isle of Dogs Consult, cleaning of house, and continuing of community research.

Contradiction: Enabling all to be experts quickly while experiencing all experts have gone. (Wk. 13)

RELIGIOUS HOUSE: ROME

External: Two participate in Isle of Dogs Consult as others write and begin to market local consults.

Internal: Three cover a 24 hour private nursing job, altering both income situation and internal structures. Emerging Generation claims spotlight with school open house, birthday party and space reclamation miracle.

Contradiction: Activating parish tactics with available time and troops. (Wk. 13)

LAGOS

RELIGIOUS HOUSE: LAGOS

External: Sir Louis Mbanefo invites House to fill temporarily post of General-Secretary of only national body of practical ecumenical cooperation. Post carries considerable authorization.

Internal: Begins to make use of General-Secretary's flat and car in Lagos, but most operating models did not anticipate attempted coup and subsequent curfew.

Contradiction: Finding manpower for ITI recruitment. (Wk. 9)

BRUSSELS

GLOBAL CENTRUM: BRUSSELS

External: Centrum dynamics move to Isle of Dogs Consult.

Internal: Sends out Judy Ellison and receives Judy Raedeke to Nexus.

Contradiction: Coordinating Nexus bi-location. (Wk. 12)

RELIGIOUS HOUSE: BRUSSELS

External: First-time visitor to House becomes transformed to colleague while translating Global Community Forum materials.

Internal: Odd-job search suddenly pays off with more job offers than have troops. Permeation contact network does hunt for us producing one part-time job. Joan Weeks is hired by restaurant across street from Belgian landmark and gets House invited to restaurant's opening celebration.

Contradiction: Keeping eyes and ears open to coordinate external and internal needs. (Wk. 13)

RELIGIOUS HOUSE: AMSTERDAM

External: Newly ignited Dutch guardian couple return from Isle of Dogs Consult spreading spirit-filled stories.

Internal: Connie Widyamata of Jakarta House makes second annual visit to Amsterdam following Isle of Dogs Consult, trading stories with House. Week II decor blitz dramatizes social demonstration and expands internal space.

Contradiction: Catalyzing people to be demonstration of care here. (Wk. 13)

FRANKFURT RELIGIOUS HOUSE: FRANKFURT

External: Meeting with leaders of Baden Evangelische Church results in request to lead Missiontag as precursor to several local Gemeindetag's (HRM's) in the fall.

Internal: Sends out Ingar Bartram to Berlin after PCC and Wolf-Deiter Friebel, John and Marilyn Oyler to London for Isle of Dogs Consult. Hosts and hears talk by former Angolan government worker now refugee.

Contradiction: Maintaining momentum of mission and planning for next quarter when three are away. (Wk. 12)

RELIGIOUS HOUSE: BERLIN

External: Key "local man" couple involved in PCE is sent out to Isle of Dogs Consult. Send out priors to London with brief outline of four potential Global Social Demonstration sites. Positive report about 70-man RS-I in district church news magazine covering 1/12 of city opens doors to 10 new churches being approached to sponsor courses in future.

Internal: Enablement style jumps to higher orbit of intensity as three are sent to Isle of Dogs Consult and children of participating couple join House. Painting House stairwell cuts month's rent by 2/3.

Contradiction: Organizing internally to insure Quarter IV program set-up with only intern working in House. (Wk. 12)

KINSHASA RELIGIOUS HOUSE: LUSAKA

External: Great timeline covering internal and external events through August goes up on office wall. Secures LENS site at university of Zambia. Grads drop by for battleplanning sessions.

Internal: Week of celebrating: Mardi Gras, Ash Wednesday, trip to Zambian freedom statue, and minister of cultural affairs address; local church with sermon by ITI grad.

Contradiction: Securing jobs in ambiguous situation. (Wk. 11)

NAIROBI GLOBAL CENTRUM: NAIROBI

External: Rides first development circuit outside Nairobi; holds guild meeting with 60 in attendance; Kawangware Business Association nominates officers; paints Naivasha Road store fronts; seasonal rains begin.

Internal: African Continental Council with all houses represented ends with fine Saturday evening celebration.

Contradiction: Fulfilling centrum and programme demands which were dramatized by Continental Council. (Wk. 13)

RELIGIOUS HOUSE: NAIROBI

External: Local galaxy clergy reaffirms PCE in Bahati.

Internal: Week of evaluation and planning ends in miracle timeline which reveals priority on circuit rides, formulation and development with penetration and PCE done with left hand.

Contradiction: Discerning what is indicative for next weeks to fulfill promise of Quarter IV in midst of needing tactics and sub-tactics now. (Wk. 11)

BOMBAY GLOBAL CENTRUM: BOMBAY

External: Construction of first nallah bund (creek dam) begins signalling start of water-conserving programme. Maliwada Human Development Project document is put in hands of Indira Gandhi during five-minute interview with auxiliary representatives and villager from Maliwada.

Internal: Maliwada receives one-day visit from George Chellappa, chairman of ICA:India board of directors. Guests include five ministers of Parliament, touring India to see implementation of 20-point programme. Receives American guardian, Roger Guissing, to help build creek bunds.

Contradiction: Securing resources to shift from imaginal to practical miracles. (Wk. 11)

RELIGIOUS HOUSE: BOMBAY

External: Continental Priors' Meeting at Maliwada strategically shifts ITI to Bangalore enabling House to radically gear into ITI/GRA recruitment. Secures accommodation to headquarter Charles Morrissey at Cardinal Gracious Fox Church Development.

Internal: Wayside Inn dynamic keeps all rooms and balcony full. Unexpected impact of "Our Town" continues to mount illuminating indicative reality of primal community. Settles six months financial imbalances with Global Management Centrum.

Contradiction: Seeing one vision that will sustain PCE and ITI recruitment for troops scattered over area. (Wk. 13)

RELIGIOUS HOUSE: DELHI

External: Area Council focuses House and regions on ITI and GRA.

Internal: Evening Niebuhr paper study comes alive for House as Maliwada Demonstration project grounds paragraph five.

Contradiction: Engaging House in ITI, GRA recruitment with dates and sites still unsettled. (Wk. 11)

MADRAS**RELIGIOUS HOUSE: HYDERABAD**

External: Special ITI/GRA logistics task force swings into operation. ITI/GRA intensifies recruitment-- begins by doubling circuits and all House is on road.

Internal: Participates in Hindu festival of Holi. Grounds Order in profound function of community festival that crosses all religious and social barriers that brings new hope for community.

Contradiction: Keeping momentum generated by PCE Consult while intensifying summer programme recruitment. (Wk. 13)

CALCUTTA**RELIGIOUS HOUSE: CALCUTTA**

External: Creates English/Bengali brochure for Circus 5 Consult. Circuit ride recruitment for ITI/GRA is in full swing with Patna (six yeses to ITI including Jesuit rector), Ranchi (two yeses and bi-weekly meeting now weekly at their request), Bhubaneswar (one yes), and Purulia (two interested), are discovering that those interested in ITI just assume they should go to GRA too.

Internal: Telegram from priors' meeting intensifies urgency of ITI/GRA recruitment. Emerging Generation plays critical role in Daily Office as "in" goes to three.

Contradiction: Deciding to be catalyst in midst of extreme scatteredness of troops. (Wk. 12)

SINGAPORE**GLOBAL CENTRUM: SINGAPORE**

External: Visits sites for Global Social Demonstration.

Internal: Global team and all Area Singapore priors add fresh impetus to local work.

Contradiction: Focusing possibilities that fly across the horizon. (Wk. 10)

RELIGIOUS HOUSE: SINGAPORE

External: Fifty gather at House for festive Maliwada report where whole group is impacted by effectiveness of Global Social Demonstration model. Singapore continues research on rural kampongs.

Internal: Sends out Wayside Inn guests, David McChesneys, back to Joint Embassy School in Jakarta with new baby, Michael Fitzgerald, and Maggie and James Chia are sent to Majuro and GSD and receives two Chia girls, Selena and Christine as Order youth.

Contradiction: Nailing down ITI site. (Wk. 13)

RELIGIOUS HOUSE: KUALA LUMPUR

External: PCE members meet during discontinuous month in members' homes, working in teams to create decor for next quarter. Massive recruitment push on all fronts for LENS and ITI in Kuala Lumpur, Medan, Penang and Ipoh Metros.

Internal: Spends week with many guests, one guest relative to Imaginal Education for staff of Agro-Industrial School and another relative to visas.

Contradiction: Nailing down ITI site. (Wk. 13)

RELIGIOUS HOUSE: JAKARTA

External: Visits two more villages for Global Social Demonstration site with Mrs. Dasutron, head of National Council of Social Services. Development visits with Bruce Donnelly and enables raising of funds and renewal of contacts with guardians from Hong Kong and Seoul.

(RELIGIOUS HOUSE: JAKARTA)

Internal: Bruce Donnelly, from Global Centrum Singapore, joins in celebrating Fat Tuesday, Ash Wednesday, and fast day, shares collegium on development. New decor is hung and more is on way.

Contradiction: Deciding to trust aut-ization when would like to move faster than sponsor is ready to move. (Wk. 12)

HONG KONG GLOBAL CENTRUM: HONG KONG

External: Area Priors Councils in Cebu and Jeju gather all House troikas (40 in Cebu and 39-80 in Jeju). Hosts 45 participants in Primal Community Training School in Cebu.

Internal: Global Management Centrum: Chicago arrive in form of Roxana Harper, on first stop of all Seapac Houses to build common global finance systems. She continues trek with Robert Porter to Kaohsiung and Taipei. Hears collegium reports on Area Priors Council in Cebu and Jeju.

Contradiction: Planning for Quarter IV fast enough to get hold of steering wheel. (Wk. 12)

RELIGIOUS HOUSE: HONG KONG

External: The Order: Ecumenical representative is seated in dignitaries section behind high altar at Ordination of Bishop of Macau. TM '76 net woven stronger with calls at consulate. Schedules Global Community Forum pre-sponsors meeting in resettlement estate. Harvest of intensive LENS sowing begins.

Internal: Scheduled discontinuity becomes all too real with two late night rush trips to hospital: one Jenny Morton now recovering and Clare and William Bonnell who proudly announce birth of Suyin Bonnell, daughter, born March 24, 1976, at 5 ½ pounds.

Contradiction: Doing calmly two weeks worth of work in one week with half troops to get Quarter IV ready to roll. (Wk. 13)

RELIGIOUS HOUSE: KAOHSIUNG

External: Receives 24 commitments to LENS with three marketing groups sending five each. Three registrations return in two days after PLC mailing.

Internal: Holds week collegium design on common memory. Secures first tutoring job at U.S. salary.

Contradiction: Maintaining momentum. (Wk. 13)

RELIGIOUS HOUSE: MANILA

External: Key authorization visit to Department of Local Government and site location puts wheels under Quarter IV LENS.

Internal: Welcomes Walter Blackledge. House Council rehearses accomplishments and contradictions of Quarter III's task forces engagement and gives objectivity to release planning for future. Corporate discontinuity to beach celebrates quarter.

Contradiction: Focusing energy needed in four program areas to launch Quarter IV while House Council battleplanning continues. (Wk. 13)

RELIGIOUS HOUSE: TAIPEI

External: Development nets NT\$20,000 check from China Airlines and NT\$5,000 from local hotel. Grassroots development blitz yields three more pledgers plus ITI and PLC prospects.

Internal: Welcomes sojourner Victoria Lin for one month stay and sends Norman Kao to Chicago for International Training Program.

Contradiction: Building ITI "Recruitment machine" (has 6 wheels, runs on 20:1 spirit:money mixture) before it really hits road. (Wk. 13)

RELIGIOUS HOUSE: CEBU

External: Land in Sudtunggan village is donated by community to Lapu-Lapu Human Development Project for site of new House. Activates financial support for consult and guild decides to support Global Social

(RELIGIOUS HOUSE: CEBU)

Demonstration. Iloilo/Bacolod circuit returns with word of two sojourn requests for month of May.

Internal: Everyone in House visits village and are introduced to key residents. Reorganizes troops into task forces and builds pre-consult Quarter IV battleplan, concluding with celebration at Dolphin Island.

Contradiction: Bridging gap in framing between decision and implementation relative to getting materials for LHDP. (Wk. 13)

RELIGIOUS HOUSE: DAVAO

External: Prepares for Regional Council in Butuan, first ever. Eighteen drop in for PCE meeting, eight for first time. In-kind bus tickets enable transportation to Council.

Internal: Sends out Soderlind to Manila in high style at Insular Quarter Evaluation with metro colleagues astounded.

Contradiction: Being 100% self-supporting and 100% missionally engaged in all that history demands to happen now. (Wk. 11)

TOKYO**RELIGIOUS HOUSE: TOKYO**

External: Schedules eight visits to present Jeju cultural gifts to prior development donors and discuss ITI. Receives encouraging "Yes" to LENS from training director of All Nippon Airways.

Internal: Week-long sojourn of Rev. Norman Kao of Taiwan on way to International Training Program, results in discovering another possibility for relocation of House and broadens horizons concerning Church and Movement in Taiwan.

Contradiction: Framing that releases House relocation. (Wk. 13)

RELIGIOUS HOUSE: JEJU

External: Kwangyung Education Guild prepares to launch preschool next week through making decor, buying supplies, setting up village hall and receiving 250,000 won in development; Japanese horticulturalist visits village.

Internal: Sends out Porter, Wainwright and Lee Jae Joon; welcomes Maryann and Sue from Seoul for Week II preschool decor making.

Contradiction: Discerning existing social patterns of village within which to work informally. (Wk. 13)

RELIGIOUS HOUSE: SEOUL

External: Local Church Collegium hears Lee Sung Joo spin on movement in Japan. Preparations and send outs take place to Area Priors Council in Kwangyung.

Internal: Week II Imaginal Educatic PSU begins to break loose images of possibilities of mass education. Sends out Teresa Kim to Isle of Dogs Consult.

Contradiction: Moving with full power now in practices of engaging in local. (Wk. 13)

RELIGIOUS HOUSE: FUKUOKA

External: Sets up Global Community Forum for April in Nagasaki. LENS registrations continue to come in. Guild does critical tactics in Yoshizuka PCE.

Internal: Roxana Harper works with House in globalizing bookkeeping.

Contradiction: Working out of practical implications for upcoming sojourn program. (Wk. 13)

RELIGIOUS HOUSE: OSAKA

External: Saturday community celebration potluck dinner points to continuing relations with local family.

Internal: Two-thirds of House participate in Area Priors Council in Kwangyung model village of Jeju. House is cared for by colleagues dropping in to talk and work. Community Day Care Center accepts Elizabeth Schlesinger.

Contradiction: Needing to hear news of latest miracles, as unreported events mean working in fog with colleagues. (Wk. 12)

HOUSTON RELIGIOUS HOUSE: HOUSTON

External: "Chronicle" reports two TMs '76 on same day under headline "Area Turns to Town Meetings"; one of which is in small black community attended by 17% of population.

Internal: Sends out four to Dallas for sub-area meeting of OK City and Houston Regions; obtains new \$1000 per month job.

Contradiction: Enabling every consultant to be empowered with corporate expertise. (Wk. 13)

RELIGIOUS HOUSE: AMARILLO

External: Sub-area Priors' Council sparks creativity in Quarter IV battleplan modification; sets plan for one full-time circuiter and assigns permeaters to practical circuit plan.

Internal: Contemplative brooding over "Liberal Heresy" paper explodes in ecclesiola with "re-declaration of independence" is splendidly celebrated with cruise to see "One Flew Over The Cuckoos Nest".

Contradiction: Daring to speed skate on thin ice of "I have never done this before." (Wk. 13)

RELIGIOUS HOUSE: SAN ANTONIO

External: Five citizens of Corpus Christi take four hours of workshop training for Town Meeting and schedule another session.

Internal: Whole House descends upon Corpus Christi colleagues overnight. Discontinuous time continues with 8:00 p.m. House Church.

Contradiction: Spreading Town Meeting preparation work beyond sponsor committee. (Wk. 13)

RELIGIOUS HOUSE: OKLAHOMA CITY

External: Presents Law Enforcement Assistance Association (LEAA) proposal to TM participants and sponsors. Group is persuaded that Community Issues Forum is embodiment of TM proposal actuation.

Internal: Building models for yard care and ecclesiola and sodality assignments illuminate cruciality and interrelationship of time spent on internal life and external task.

Contradiction: Creating and catalyzing objective structures into which excited people can engage. (Wk. 13)

RELIGIOUS HOUSE: DALLAS

External: Demonstration "East Dallas Town Meeting" gets excellent TV coverage. Mayor Adlene Harrison welcomes crowd of 150 with 250 experiencing event over course of day with significant black participation.

Internal: Impact of Daily Office as foundational dynamic of care and sustenance intensifies with participation of colleagues from six Texas-Oklahoma Houses, gathered to discuss Town Meeting and finances.

Contradiction: Keeping head of steam so that no possibility is dropped. (Wk. 13)

RELIGIOUS HOUSE: TULSA

External: Tulsa TM '76 moving and gathering steam marked by key civic endorsements.

Internal: Working overtime to keep self-support in good shape.

Contradiction: Operating in immediate priorities without keeping long strategy in perspective. (Wk. 13)

RELIGIOUS HOUSE: NEW ORLEANS

External: Vice President of Montgomery AL Jaycees on looking at task force brief, comments, "Well, you know we could really do this."

Internal: External appearance moves up to "decent" again as work out swapping edger with lawnmower with colleague up street. Infant Alison Powell gets dressed for first time as leaves intensive care.

Contradiction: Bridging gap between demonstration phase Town Meetings and replication phase, having second string ready to move. (Wk. 13)

RELIGIOUS HOUSE: MEMPHIS

External: Blitz part of Arkansas which had not been seen before and was thought to be "dead" country.

Internal: Thursday morning Booher model study brings consciousness about The Way Life Is.

Contradiction: Being intentional in midst of being overwhelmed by demands. (Wk. 6)

RELIGIOUS HOUSE: ATLANTA

External: Attends Jaycee meeting in Cedartown, obtaining their immediate, direct involvement, as they help change flat tire to get two-woman team back to Atlanta late at night. N. E. Cobb Steering Committee holds its meetings in TM facility--coordinator takes decor box home with him, assuming it is his for meetings--right!

Internal: Submits proposals for TM funding and in-kind slide projector. Three travel to Florida for State Jaycee meeting, others involved in various evening meetings and some overtime permission--hard to find two for supper conversation.

Contradiction: Remembering to run to keep ahead of watching the phenomenon while tending to stand back in awe as snowball momentum builds. (Wk. 13)

RELIGIOUS HOUSE: CHARLOTTE

External: Entire House participates in Week I and Week II circuits, as plan for five "Mecklenburg Horizons" Town Meetings is launched with positive reception from local citizens and city power figures, and affirmation from two communities.

Internal: Six guests attend House Church. Kathy and Marshall Jones from Chicago Centrum stop by for lunch.

Contradiction: Calling for new style as catalytic skills get sharpened. (Wk. 13)

RELIGIOUS HOUSE: MIAMI

External: Initiates talk with Commander of Coast Guard who was also Kendall Town Meeting M-C and toastmaster sponsor, regarding ferry vessel for Majuro.

Internal: Jaycee Convention manuals complete with all materials in kind, first tomatoes from backyard garden ripen; sends John Lindstrom to Academy amidst birthday celebration at colleague's backyard pool.

Contradiction: Developing models to sustain "doing" of new-found TM colleagues, in midst of discovering "doing" is sustained through "knowing". (Wk. 13)

CHICAGO**GLOBAL CENTRUM CHICAGO**

External: Hosts TM Assembly of Chicago Metro. Global Movement Academy begins with grand opening feast.

Internal: Order celebrates births of Aiden Leonard to Kenneth and Paige Fisher April 2, and Søren Kent to Kenneth and Ann Filipski April 5, and Suyin to William and Clare Bonnell March 24. Welcomes back from Isle of Dogs Consult Jim and Judith Wiegel, Joseph and Marilyn Crocker, Elaine Hockley and Gary and Margie Tomlinson. Welcomes International Training Program participants David and Rose Simfukwe from Lusaka, Sister Betty McGee from Canberra, and Norman Kao from Taipei.

Contradiction: Creating the necessary 10th Guardian Consult. (Wk. 13)

RELIGIOUS HOUSE: CHICAGO

External: Three more Town Meetings happen this week: Hoffman Estates/Shauberg, South Holland, East Side, with 785 participants. Sends out Tom and Lucille Liles to Isle of Dogs from 5th City.

Internal: Restructures troops in preparation for Consult prep. Joe Ayres, accountant, spends part of vacation on House Finance records. Five Marshallese and 20 Mennonite guests visit.

Contradiction: Reorganizing energies without losing momentum in all campaigns. (Wk. 12)

RELIGIOUS HOUSE: WICHITA

External: Salina circuit ride catalyzes scheduling of TM pitches to Jaycees.

Internal: All systems are go; all fronts are covered.

Contradiction: Getting production going as machinery is humming. (Wk. 13)

RELIGIOUS HOUSE: OMAHA

External: Sev Sorenson, agriculture professor for 30 years, from Nebraska City, decides to go to Jeju.

Internal: Spends collegium time to battleplan mid-course intensification. Ecclesiola is celebrated with showing of "One Flew Over Cuckoos Nest".

Contradiction: Engaging people's passion when and where it happens. (Wk. 10)

RELIGIOUS HOUSE: KANSAS CITY

External: Receives Academy registration. Community Issues Forum: Law Enforcement Assistance Association sponsors and steering committee are identified. Major Kansas City leadership are excited by concept.

Internal: PSU battleplans quarter. Ecclesiola hears Ertel's Isle of Dogs Consult report. Collegiums focus on doing the 5,000.

Contradiction: Daring to be selective when setting up steering committees. (Wk. 13)

RELIGIOUS HOUSE: MINNEAPOLIS

External: Preparations for Women In the Future forum next week lead to 55 registrations. Wagoner, SD, asks to have consult for town which is experiencing great tensions between whites and Native Americans. Work with Community Education network opens up terrific TM '76 sponsorship possibilities.

Internal: Ash Wednesday fast intensifies the religious stance and lends perspective to our efforts. Mid-quarter correction Week II allows for consensus articulation and tactics for the next seven weeks. Decision to intensify Whittier experiment, Last Temptations of Christ illuminate week end.

Contradiction: Standing on mountains surveying clouds rather than getting down and cutting grass. (Wk. 10)

RELIGIOUS HOUSE: ST. LOUIS

External: Town Meetings happen in Carbondale and Quincy, IL with local workshop leaders. MO Jaycee Region V projects invitation to 38 chapters for St. Charles TM. People from two steering committees attend Quincy TM.

Internal: Emerging generation deeply impacted by visit to Cahokia Mounds, especially green snake found there.

Contradiction: Making effective and operational decision to do 216 TMs at 5,000 level in St. Louis Region in midst of unarticulated tactical system and warboard. (Wk. 13)

RELIGIOUS HOUSE: PEORIA

External: "Softly and tenderly communities are calling, calling to do TMs." In attempt to gracefully disband, Arthur Committee decides to form themselves into community care core.

Internal: Quarterly planning challenges to discern issues and enables long-range visioning.

Contradiction: Juggling all avenues of mission while continuing the Town Meeting focus. (Wk. 13)

RELIGIOUS HOUSE: GREEN BAY

External: Catalyzing Jaycee network in WI, and Upper peninsula of MI. Native Americans are responding to TM in Oneida and Marquette.

Internal: Watching enthusiasm in new colleagues move toward action in Tuesday PCE; PCE pastor's House

(RELIGIOUS HOUSE: GREEN BAY)

Church witness grounds sanctification in sociological givenness. Concrete battleplan for Gateway 5 TM is begun.

Contradiction: Enabling civilizing process through programs rather than enabling programs through other programs. (Wk. 13)

RELIGIOUS HOUSE: MILWAUKEE

External: TM authorization spreads as Johnson Wax Co. donates box lunches and servers for Racine County TM. Sends out David Rebstock and Mary LeBlanc to Academy; hears Isle of Dogs Consult report. McDonalds support TM '76 with 300 hamburgers for E. Madison TM. Colleague donates credit card and enables new circuit.

Internal: Observes setting up of printing press and getting it operable by David Newkirk as he also works on GED exams. Parlor elegantly furnished with antique Persian Rug, a colleague grant.

Contradiction: Internalizing fact that training and spirit care happen when the rubber hits the road. (Wk. 13)

RELIGIOUS HOUSE: INDIANAPOLIS

External: Draws plans for "After the Fire" house restoration. Backs into quarter planning.

Internal: Receives Darrell Marley from Hartford. Creation of centerpiece brings order and beckons spirit in office. Stolen car returns after month of wandering.

Contradiction: Deciding to risk not having a TM to get firm yes or not from local troikas. (Wk. 13)

RELIGIOUS HOUSE: CINCINNATI

External: TM '76 is practically set up in one day as bank executive puts his calls on hold, calls in others, turns his office over to troika team during foray visit.

Internal: House Church is event that focuses passion, builds collegiality, as total House and many metro colleagues stand before global demand and celebrate engagement.

Contradiction: Focusing vision on the future in midst of immediate demand of the now. (Wk. 12)

RELIGIOUS HOUSE: DETROIT

External: Five of six metros are represented at Regional Council to face contradictions head on. Sponsors meetings ground TM '76's as unprecedented gift. Questions about follow-up are raised as Pontiac calls city council meeting to discuss proposals from TM '76 and invites all participants. Inner city sponsorship committee meets for four long hours to firm up commitments for upcoming TM '76 on April 3, the first in city of Detroit.

Internal: Study of "Sophistication" paper shows way for presencing TM '76 in an appropriate style. Raising question of intern possibilities pushes decision to strengthen internal life. House celebrates with world famous chicken dinner.

Contradiction: Enabling covenant without causing schism between House and region. (Wk. 12)

RELIGIOUS HOUSE: CLEVELAND

External: Spin-off of development contacts and new TM sites from double TM weekend amazes all and solidifies Cleveland.

Internal: Collegium battleplanning for Quarter IV off of TM program chart is built using social demonstration method.

Contradiction: Tapping talents and time of TM grads while not missing circuit beat. (Wk. 13)

NEW YORK RELIGIOUS HOUSE: NEW YORK

External: Discovery of institutional church as significant presence in community in city. Schedules TMs in five out of eight pressure point communities in NY City as part of Big City strategy. Westchesten, Tarrytown is

(RELIGIOUS HOUSE: NEW YORK)

first yes. (Sleepy Hollow wakes up.)

Internal: Income tax night with guardian consultant CPA is typical of passionate expenditure of week.

Contradiction: Dealing with consensed movement training programs in midst of intense missional maneuvers. (Wk. 13)

RELIGIOUS HOUSE: PITTSBURGH

External: West Virginia circuit enables long-time colleague to pick up responsibility for seven more TMs in four county area--dates set for two of these.

Internal: Ecclesiola conversation on "Fiddler on the Roof" and paper "Town Meeting Context" push fear and fascination of standing over abyss of life.

Contradiction: Relying on past events and methods to carry into future. (Wk. 13)

RELIGIOUS HOUSE: ROCHESTER

External: Holds three TM '76's, two in black communities; eleven new workshop leaders participate. Sets up troika luncheon and other speaking engagements.

Internal: Three people cover Daily Office assignments all week demonstrating holding structures is key, not how many people attend.

Contradiction: Building major strategies to engage more people for bigger job. (Wk. 12)

RELIGIOUS HOUSE: RICHMOND

External: Big week for circuits as team visits nearest points of Richmond Metro, eight towns in all.

Internal: Sweet and sour pork and charades on Other World Chart sparks ecclesiola. Hosts Cheryl Truman's parents for delightful few days.

Contradiction:: Building practical models for engaging colleagues. (Wk. 13)

RELIGIOUS HOUSE: WASHINGTON

External: District Jaycees Chapter and Mayor's Committee on Police Community Relations decides to sponsor Community Issues Forum (Law Enforcement Assistance Association); U Street celebrates one year since publishing 50-page community service booklet; Garfield TM steering committee spins off catalytic team to set up Manasas TM before July.

Internal: Remnant of four attend ecclesiola; blitz kitchen for sodality. Collegium trains House on technological revolution: how to operate electrostatic copier.

Contradiction: Trusting back-up system will take care of itself if keep external whirlwind whirling. (Wk. 13)

RELIGIOUS HOUSE: BALTIMORE

External: Three TMs take solid form with one date set and steering committee meeting, one core meeting and one commitment to core meeting. Decision to form a Maryland team with Baltimore and Washington D.C. teams together catalyzes great momentum for breaklooses.

Internal: Planning Week II with Washington House team. New job results in full employment.

Contradiction: Coordinating manpower scholarship in order to ensure quality TM set up in midst of diverse workshop schedules. (Wk. 13)

RELIGIOUS HOUSE: PHILADELPHIA

External: Town Meeting participants' celebration underway with first 12 steering committees reporting to each other while PA Jaycees pave way of future in giving TM "Active Status".

Internal: Concretizes decision to be ICA 'style' in first four week study of Peter Drucker's book, "Management" and building development files and charts.

(RELIGIOUS HOUSE: PHILADELPHIA)

Contradiction: Discovering questions to enable grasping significance of TM when natural question is, "How many were there?" (Wk. 13)

RELIGIOUS HOUSE: NEWARK

External: Newark's second sponsor meeting with 15 organizations present generates more excitement over prospect of five demonstration TMs '76 in city. Next meeting is at Ward level.

Internal: Experiments with short form ecclesiola using 49-cent steak ending Week I of inkinding everything on list plus eggs prior to discontinuous Week II. Studies Order Letter.

Contradiction: Using self-consciously ICA office network model for each polis. (Wk. 13)

RELIGIOUS HOUSE: BROOKLYN

External: Wine and cheese bring together recent Town Meeting participants at House, which sparks highly constructive dialogue between suburban and urban residents on likenesses and differences of ways to approach the two settings.

Internal: House's new decor on inside addresses guest and us. Reaches full employment with securing two new jobs, one as secretary to executive director of U.S. Olympic Committee.

Contradiction: Embodying stylistically and practically that we have shown up at the right time, in the right time with the right tools. (Wk. 12)

RELIGIOUS HOUSE: HARTFORD

External: Receives endorsement of TM '76 by Hartford Bicentennial Committee and for So. End meeting. Republican Town Committee also endorses. Hartford No. End planning meeting with 20 present gets news coverage. Urban circuit team visits colleagues. Canton steering committee meets with plans well underway.

Internal: Sends out Darrell Marley out to Indianapolis House. Hosts urban circuit team. Two House members attend 15th orination anniversary of Fr. Michael Marrett at historic black Episcopal parish in New Haven, St. Luke's.

Contradiction: Laying groundwork for future by covering geography and setting TM '76 dates. (Wk. 13)

RELIGIOUS HOUSE: MANCHESTER

External: Portland Core meeting is set for March 30, with police department as initiators using LEAA. Keene State College students work toward college TM '76 for May 8.

Internal: Sends out Rose Worden, borrowed for two weeks from Area House, back to New York. Area enablement for TM '76 circuit is great happening.

Contradiction: Finding snowball strategies to capitalize on recent momentum. (Wk. 12)

RELIGIOUS HOUSE: BOSTON

External: Six TMs happen in one day, five in Rhode Island impact State at all levels including special declaration from President Gerald Ford. Weymouth had first TM in 1623. Holds first TM '76 in town with TM form of government with TM moderator as emcee.

Internal: Memorial services for Mark Day, 16 year old son of guardian Duane Day impacts House as family demonstrates what it means to care with your style to celebrate completed life. George Howard announces decision to intern.

Contradiction: Taking committed troops and pushing them into Boston and Framingham multiple launch. (Wk. 13)

MONTREAL RELIGIOUS HOUSE: MONTREAL

External: Realizes its decision to take on consultant role as it commences a Social Methods Training Series, produces Global Social Demonstration position paper and catalyzes decision for CFC in St. Agathe.

Internal: Another \$140 in-kind food gift boosts budget. Deep satisfaction over use of Social Methods Training

(RELIGIOUS HOUSE: MONTREAL)
 Programme for seminary at ecclesiola.

Contradiction: Getting clear picture of openings along with impingements so can make realistic troop allocations. (Wk. 13)

RELIGIOUS HOUSE: TORONTO

External: Begins work on document to make available what we have learned about circuits and warboards this quarter.

Internal: Concluding sessions on 'Our Town' Global Social Demonstration seminars and Foundation of Religious Piety document intensify on-going reflections on who Order: Ecumenical is and what its unique role in history is.

Contradiction: Sustaining present momentum throughout next quarter by tying up all loose ends to allow everyone to be on top of mission. (Wk. 13)

RELIGIOUS HOUSE: OTTAWA

External: Sudbury confirms businessmen's consult to improve communications in downtown Sudbury.

Internal: Celebration is mid-push with dining and dancing at Chateau Laurier. Montreal colleagues pack House for Area printing PSU.

Contradiction: Making the switch from breakopen circuiters to spirit trainers with five events scheduled. (Wk. 12)

CARACAS

RELIGIOUS HOUSE: CARACAS

External: Regional Council gathers for barbeque and to hear report on '76 ITI. Sends LENS mailing to grads and prospects. Translates ITI report into Spanish for continental mailing of report. Late ITI scholarship check arrives through Fr. Bede Hornung's development efforts with family in Europe. Rafael Davila visits with ITI grads in Lima. Guardian Jamil Dunia reports 10 paid registrations for Rotary LENS and long list of considering.

Internal: Rev. George Archer (ITI '75) drops through on visit and reports Caribbean Conference of Churches' interest in EI programs for future. Sends Rafael Davila to Maryknoll meeting in Lima. House goes on city trek using Other World categories and discovers mystery and depth of Caracas.

Contradiction: Catalyzing edge of thrust instead of doing it. (Wk. 11)

GLOBAL CENTRUM
QUARTER III, 1975-76

THE GLOBAL ORDER CENTRUM REPORT
FOR WEEK THIRTEEN

BRUSSELS
NAIROBI
BOMBAY
SINGAPORE
HONG KONG
CHICAGO

GLOBAL
DEVELOPMENT
CENTRUM

Singapore reports gift from Kentucky Fried Chicken. Nairobi Continental Council decides that every man can do development in Africa and East African circuit demonstrates by brining cash from up country. As Kwangware Human Development Project blossoms with miracles, local man's decision to move sets continually altering context for development in Africa. Chicago Nexus initiates new funding systems post for systematizing major funding backup and total development effort. All major corporation data is now computerized. President Ford signs \$2 Million federal grant for Marshall Human Development Project. The contradiction lies in the arena of bringing simplicity to all elements of tactical brilliance available.

GLOBAL
RESEARCH
CENTRUM

Brussels reports the Isle of Dogs Consult held with guardians from 10 nations. Cebu has Primal Community Training School and Hong Kong prepares for Global Research Assembly. Chicago mails Lenten Card. Breakthroughs and trends involve the use of concrete engagement opportunities as training vehicles. The contradiction lies in the arena of moving it with the in-built inertia of social structures.

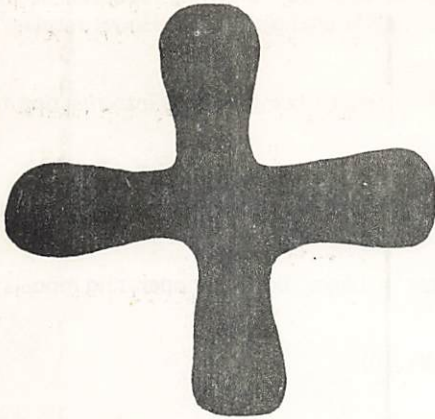
GLOBAL
OPERATIONS
CENTRUM

The African Continental Council held in Nairobi is attended by all houses and centurms. Programs include TMs in Week 12 in Farmington, New York Mills, Joliet, Carbondale, Quincy, Omaha, Oak Park (Chicago), Covington, Bloomington, Woonsocket, Warwick, South Kingston, Warren, Coventry, Weymouth, Wissahickon Valley, Martinsburg, Dallas; and in Week 13 in Steger, Milwaukee, St. Peter, Claver, Beatrice, Plainview, Wilma, Plymouth, St. Joseph, Wilmington, Cambridge, Walters; Community Forum in Cardinal; and RS-I Pittsburgh. Contradiction lies in the arena of discerning continental practical common form that is key.

GLOBAL
MANAGEMENT
CENTRUM

Nairobi reports a completed six-month statement of condition for E.I. and O.E. for the African Continent. Chicago moves into battleplanning for the new quarter, discovering early, implementaries, and seeing with new eyes the demands of the quarter. Breakthroughs came in seeing financial commonness enabled by the Continental Council in Africa and in Chicago using the miracle method of quickness, mass impact and "moving it" to get a job done. The contradiction lies in the arena of use of tropp strength on a 24-hour basis.

GLOBAL ORDER REPORT



I will take back part of that same spirit which has been conferred on you and confer it on them, and they will share with you the burden of taking care for the people;

--Numbers 11:17

LONDON

RELIGIOUS HOUSE: LONDON

External: Isle of Dogs Consult opens with standing room only in newly created collegium room at Bridge House. Consult closes on boat docked in front yard with multiple testimonies by local residents.

Internal: Transparent enablement construct releases maximum troops into direct consult work.

Contradiction: Discerning forces and time configurations that get Isle of Dogs Consult Document written and published in less than seven days. (Wk. 12)

RELIGIOUS HOUSE: GLASGOW

External: Experiences spring avalanche as two cadres request Town Meetings in Quarter IV bringing total to three.

Internal: Lyn Mathews and Jane McClain begin Global Trek in Glasgow. Elaine Hockley stops by to visit with old friends and tells stories of Global Centrum:Chicago. Sends Margaret Piper to Canterbury TM.

Contradiction: Beginning to dig in with small troop force as doubts and fears assail while looking at avalanche. (Wk. 1)

RELIGIOUS HOUSE: BRISTOL

External: All consultants for Isle of Dogs are packed and ready to go.

Internal: Sends prior family to Manchester to teach RS-I while rest of House works at Bridge House, new facility secured through the Catholic Church.

Contradiction: Building comprehensive model to deal with finances for rest of year. (Wk. 11)

RELIGIOUS HOUSE: MANCHESTER

External: Six additional yeses brings Imaginal Education at Salford to 13 and RS-I at Durham reaches 10 registrations.

Internal: Completes 'Six Speeches' paper by JWM. Experiences excitement over moving deeper into Salford.

Contradiction: Deciding difference between risking and cutting off neck, financially. (Wk. 13)

PARIS

RELIGIOUS HOUSE: PARIS

External: Calling colleagues for Isle of Dogs Consult report nets 20 coming in two days.

Internal: Study of paper, 'Six Speeches' demonstrates power of presence of blue; welcomes Bill and Carol Henshaw, guardians from Seattle Region. Jerry Murray visits for three weeks.

(RELIGIOUS HOUSE:PARIS)

Contradiction: Having new universe in midst of retaining 'old' blocks. (Wk. 1)

RELIGIOUS HOUSE: ROME

External: International Schools Association of Rome (RISA) contacts House about possibility of doing an Imaginal Education Consult for International Schools. Visit to Torino in search of possible International Training Institute (ITI) facility and spring quarter course.

Internal: Welcomes Bill and Nan Grow as stop on way to India and hears inspiring report on Isle of Dogs Consult. Ecclesiola reveals Global Social Demonstration (GSD) is life changing event. House receives in-kind refrigerator.

Contradiction: Getting beyond maintaining selves in midst of all energy being poured into meeting financial responsibilities. (Wk. 1)

LAGOS**RELIGIOUS HOUSE: LAGOS**

External: Sir Louis Mbanefo invites House to fill temporarily post of General-Secretary of only national body of practical ecumenical cooperation. Post carries considerable authorization.

Internal: Begins to make use of General-Secretary's flat and car in Lagos, but most operating models did not anticipate attempted coup and subsequent curfew.

Contradiction: Finding manpower for ITI recruitment. (Wk. 9)

BRUSSELS**GLOBAL CENTRUM: BRUSSELS**

External: Quarter IV planning produces nexus plans with region emphasis on global development, which looks like a quarter of 'move it!'.

Internal: Completes Quarter IV internal life models in record time of one day.

Contradiction: Creating tactics to fill full over-all models for quarter, especially in Global Development Centrum. (Wk. 1)

RELIGIOUS HOUSE: BRUSSELS

External: RS-I mailing is out; two Nigerians visit and decide to plug into programs; five have already been recruited for RS-I; Spanish Ecumenical Affairs priest from Madrid drops in on tour of Belgium at suggestion of Franciscan prior to invite House to International Ecumenical Fellowship Convention. Friends ask Papal Nuncio if he can get candlesticks for worship hall.

Internal: Bread cast out on water (money sent to New Orleans from scrapping old car) is returned in form of car donated to House by guardian returning to states. Welcomes back six from Isle of Dogs Consult and are impacted by reports. "One Flew Over The Cuckoo's Nest" and children's school play highlight quarter celebration. Odd jobs in one weekend nets \$250.

Contradiction: Realigning for next year with one hand while other hand is dealing with immediate question of holding tension between program and finances. (Wk. 1)

RELIGIOUS HOUSE: AMSTERDAM

External: House and colleagues capture moment of high enthusiasm as list grows for great consultants' report on "Isle of Dogs Night."

Internal: Spirit-filled indicative battleplanning for Quarter IV follows in wake of priors' reports on the Isle of Dogs Consult.

Contradiction: Allowing for release of troops for mission at time when 'moving it' is a clear and exciting indicative. (Wk. 1)

FRANKFURT**RELIGIOUS HOUSE: FRANKFURT**

External: Receives 500 deutsche mark contribution for Global Social Demonstration from Gustav Adolf Foundation.

Internal: Week II of evaluation and planning refocuses mission as House members return from Isle of Dogs Consult with reports of social demonstration acceleration in Europe.

Contradiction: Needing to move twice in next six months looms as albatross. (Wk. 1)

RELIGIOUS HOUSE: BERLIN

External: "Open House" Saturday afternoon sponsored by PCE Guild attracts 30 local people. Participates in writing Isle of Dogs Consult document and celebrates successful event. Receipt of new criteria for Global Social Demonstration causes flurry of activity in selecting site.

Internal: Prepares House for international guests and paints stairway for 'Gelt' (money). Sends Feodora Mattos to Academy. Welcomes back David Elliott from Isle of Dogs Consult. Painting stairwell brings House closer to collecting 1500 deutsche mark bounty.

Contradiction: Getting beyond paralysis of previous battleplan for new quarter in midst of preparation for possible GSD. (Wk. 1)

KINSHASA**RELIGIOUS HOUSE: LUSAKA**

External: Grads drop by regularly to plan August International Training Institute (ITI); receives signal breakthrough as grad locates generous supply of paper in-kind.

Internal: Sends out Rev. and Mrs. Simfukwe with gala metro celebration. Sends out priors for cross-Area meeting in Nairobi. Sojourn couple, ITP, charm House with stories of village life 20 years ago. Landlord agrees to proposal that past six months rent be used for scholarships and further agrees to substantial reduction on future months rental price.

Contradiction: Shifting images now for thrust of 1977 while practically engaged in implementation of 1976 thrust. (Wk. 1)

NAIROBI**GLOBAL CENTRUM: NAIROBI**

External: First Community Council with 60 present impacts community as reports given by local leaders on programme arenas indicate overwhelming affirmation of entire project.

Internal: Nexus moves into top two floors of Ndwaru's Bar and Restaurant, site of November Consult, as owner decides to get out of bar business and have House use building.

Contradiction: Getting settled, planning quarter, and keeping all programmes moving. (Wk. 1)

RELIGIOUS HOUSE: NAIROBI

External: Completes Area battleplanning for coming quarter. Invitation from By Wasiki of Embale, Uganda, helps launch first circuit ride in Week 13 into Uganda since 1969.

Internal: Holds Global Priors' Council: Africa in Nairobi. One continent in three Areas decides to "Turn on Africa". Key decisions are: to hold one International Training Institute (ITI) in three locations; to hold one continental Global Research Assembly (GRA) in January to launch three PCEs; to do inter-area teaching assignments. Celebrates week of planning and sending out of Kitneys with seeing movie "One Flew Over The Cuckoo's Nest".

Contradiction: Enabling metro colleagues to go on circuit rides to participate in total missional thrust in midst of dispersing troops adequately across continent. (Wk. 1)

BOMBAY**GLOBAL CENTRUM: BOMBAY**

External: First work on well drilling begins; negotiates loans with bank for 37 farmers.

Internal: Week II task forces create decor and symbolic life stressing secular images and rituals.

Contradiction: Creating life-changing events that are now hidden in midst of total engagement in immediate demands. (Wk. 1)

RELIGIOUS HOUSE: BOMBAY

External: Experiences guests flowing in and out. Hears Joseph W. Mathew's report stressing awareness in care and replication of Maliwada. Pune grids and claims responsibility for their city. Methodist leaders go on field trip to Maliwada village.

Internal: After wonderful 50-man Nagpur Primal Community Experiment (PCE) steering committee meeting, cadre asks for three-week PCE training. Sponsorship granted by Methodist Bishop for ITI and GRA.

Contradiction: Spending all time brooding, praying and simultaneously spending all time on road. (Wk. 1)

DELHI

RELIGIOUS HOUSE: DELHI

External: International Training Institute/Global Research Assembly (ITI/GRA) recruitment blitz to all six regions allows for great visits with old grads and shows high level of interest in GRA, but grounds difficulty of ITI recruitment.

Internal: Long string of visitors: development team; Roger Geysinger, Miss Misoko, J.S. Oethe, George Chellappa, and Vivian Paul returning from International Training Participant (ITP) program provide powerful response and global contexting.

Contradiction: Breaking mindset of 'impossibility' undermining possibility in ITI recruitment. (Wk. 1)

MADRAS

RELIGIOUS HOUSE: HYDERABAD

External: Intensification of circuit design allows recruitment and nurture to take place as three separate circuits begin and end during week and all House on road in Hyderabad for International Training Institute/Global Research Assembly recruitment.

Internal: Ecclesiola focuses on Gunfoundry Primal Community Experiment (PCE) reflection and Mario family is received as interns at House Church. Narrendra Paul family arrives for family visit.

Contradiction: Creating sustaining methods and structures for colleagues who are not necessarily of Christian context, to practically assume responsibility for Long March. (Wk. 1)

CALCUTTA

RELIGIOUS HOUSE: CALCUTTA

External: International Training Institute/Global Research Assembly recruitment intensifies in Calcutta and Patna Regions. Circus 5 Primal Community Experiment (PCE) Consult recruitment continues with visits to cross section of whole community.

Internal: Satya Kumar arrives on new assignment to Calcutta House. Dolly Rowe is discharged from hospital for convalescence. Sees "Man From La Mancha". Crispin Clements visits on way to Hong Kong and Consult Team arrives for visit.

Contradiction: Being trusted by local community as authentic effective caring group. (Wk. 1)

SINGAPORE

GLOBAL CENTRUM: SINGAPORE

External: Completes visits of Global Social Demonstration (GSD) sites. List of 20 patrons for ITI:Penang are typeset ready for new letterhead. Development trip to Kuala Lumpur breaks loose major funding and \$5,000.

Internal: Alerding leaves on three-week trek for Community Meeting Australia (CMA). Holds quarter celebration. Attends reception of V.P. Rockefeller on lawn of U.S. Ambassador to Singapore.

Contradiction: Getting participants to say yes to ITI:Penang from Singapore Region. (Wk. 1)

RELIGIOUS HOUSE: SINGAPORE

External: Fifty gather at House for festive Maliwada report where whole group is impacted by effectiveness of Global Social Demonstration model. Singapore continues research on rural kampongs.

Internal: Sends out Wayside Inn guests, David McChesneys, back to Joint Embassy School in Jakarta with new baby, Michael Fitzgerald, and Maggie and James Chia are sent to Majuro and GSD and receives two Chia girls, Selena and Christine as Order youth.

Contradiction: Nailing down ITI site. (Wk. 13)

RELIGIOUS HOUSE: KUALA LUMPUR

External: Major development team using Global Social Demonstration (GSD) story for International Training Institute (ITI) nets in good money. Primal Community Experiment (PCE) get excited over plans to send six couples to ITI, each doing own funding.

Internal: Celebrates end of Quarter III with barbecue and beer.

Contradiction: Deciding on site for ITI in midst of its recruitment. (Wk. 1)

RELIGIOUS HOUSE: JAKARTA

External: ITI treks visit four cities in Central Java, while Global Social Demonstration site hunting goes on in

RELIGIOUS HOUSE: SACRAMENTO

External: Commander Parker, Naval Air Station Chaplain, reports to House everything is shipshape and plans to report weekly, while Jim Lynch, Chico Chamber of Commerce Director recruits half of steering committee meeting without being asked to.

Internal: Bright yellow paint inside and outside signals reformulation of neighborhood while rites of spring are celebrated with clean-up, fix-up and paint-up.

Contradiction: Believing that experience of primal community is in Town Meeting '76 as it was in Norte 5 Guilding. (Wk. 1)

RELIGIOUS HOUSE: SEATTLE

External: Spring ushers in new joy in midst of intensified engagement with circuit in East. WA/OR Othello Methods Lab with folks from Spanish and Anglo communities, two consults at Sea-First Bank and five TM sponsors meetings happen.

Internal: Cleans and repairs long ailing fountain that is now bubbling forth, while collegium blackboard is renewed, signaling decision to embrace new quarter.

Contradiction: Exploring all strategies and discovering one strategy that will break loose TM in Oregon before fall season. (Wk. 1)

RELIGIOUS HOUSE: LOS ANGELES

External: High intensity push into core of L.A. reveals great complexity of urban situation and difficulty of using Bicentennial theme in urban core.

Internal: Participates in Area Council, a grand circus within which objectivity and strategy play major roles amidst a mood of collegiality in mission. The Area joins in celebration of completed lives of Kim and Tim Overall.

Contradiction: Dealing with intensity of engagement and anxiety for quick results. (Wk. 1)

RELIGIOUS HOUSE: PHOENIX

External: Tempe steering committee is highlighted by Jaycee enthusiasm; Week 13 strategy session breaks loose with practical vision for 10 circuits, following conversation on "Generalship" paper.

Internal: Celebrates Week 13 with metro, including rousing volley ball tournament, in-kind ribs. Experiences Jericho dynamic as eight souls become four teams!

Contradiction: Keeping the ball in the air. (Wk. 1)

RELIGIOUS HOUSE: SALT LAKE CITY

External: Heads of Rotary and Kiwanis say yes to Town Meeting in Ogden, UT. State Planning Coordinator declares Utah Community Progress program is threatened and TM '76 is OK.

Internal: Journies to Denver for mini-council. Gains new perspective on journey of quarter and new insights into how to formulate steering committees.

Contradiction: Insuring both metro and House internal battleplanning gets done fast enough to accelerate marketing momentum in midst of Week 11 activities, especially Town Meetings. (Wk. 1)

RELIGIOUS HOUSE: BILLINGS

External: Presents TM at Fort Belknap Indian Reservation.

Internal: Serious concern for appearance of House occurs.

Contradiction: Continuing to use yesterday's models instead of creating new models to meet today's needs. (Wk. 13)

RELIGIOUS HOUSE: DENVER

External: Forty-five participants from Billings, Rapid City, Salt Lake City and Denver engage in reflective conversation over strategy, troops, and steering committee development that triggers profound vocational brooding and new commitment to implementing tactics in Global Community Forum (GCF) campaign.

(RELIGIOUS HOUSE: DENVER)

Internal: Letter arrives during Area Council to regional guardian from steering committee for which he is consultant and dramatizes to all emerging form of consultant role.

Contradiction: Building phasing model that is clear and complete and reveals forthcoming gap in continuing momentum. (Wk. 1)

RELIGIOUS HOUSE: RAPID CITY

External: Steering committee sets date for North Rapid Cultural Festival, a tactical step toward a TM for North Rapid.

Internal: Study of RS-I papers at collegium renews foundation. Whole House travels to Denver for Area Council.

Contradiction: Keeping focus amidst all details of launching new quarter. (Wk. 1)

EDMONTON**RELIGIOUS HOUSE: EDMONTON**

External: Lays groundwork for follow-up of Southwest Edmonton Forum as two of coordinating committee meet at House to name others who need to be told about Community Forum Canada (CFC).

Internal: Preparation for Area Council includes re-creating own story for GFC. Sends out Rebecca Nichols to celebrate life and death of her mother.

Contradiction: Getting on top of urban strategy. (Wk. 1)

RELIGIOUS HOUSE: VANCOUVER

External: Jaycees invite ICA to give presentations at Central B.C. District Convention at Williams Lake and at British Columbia and Yukon Convention in Cranbrook.

Internal: Brian Griffith lands good-paying job. Wayne Miller from Winnipeg stops by Wayside Inn for two days.

Contradiction: Going with tentative possibilities in towns rather than waiting for something definite, without stepping on toes. (Wk. 1)

RELIGIOUS HOUSE: ANCHORAGE

External: Creates TM prayer list from population census of all towns over 400 people.

Internal: Accomplishes tribal resettlement in one night; creates discontinuity.

Contradiction: Keeping fear that snowball might trap us in immobility at time when full acceleration is necessary. (Wk. 1)

RELIGIOUS HOUSE: SASKATOON

External: Regional Council enables corporate struggle over new Community Forum Canada strategies and elicits new resolve.

Internal: Includes snow shoveling, domestic help and child care on House agenda to boost sagging self-support.

Contradiction: Catalyzing local incentive in CFC steering committees through formal and informal leadership. (Wk. 13)

RELIGIOUS HOUSE: WINNIPEG

External: Travels to Saskatoon for Week II Council.

Internal: Quaker Oats gives House 250 pounds of pancake flour to add to previous gift of 16 cases of puffed wheat.

Contradiction: Devising practical methods of interchange and coordination of Global Community Forum (GCF) activities. (Wk. 1)

HOUSTON**RELIGIOUS HOUSE: HOUSTON**

External: Ten steering committees meet; six are new; 50 turn up for Primal Community Consult (PCC) dinner party at guardian's house; key state representative participates in four ICA events in one week.

Internal: Two slide shows impact House; pictures are from first Black TM and Jim Bambach's Majuro pictures;

(RELIGIOUS HOUSE: HOUSTON)

new time design shifts tactical modification and metro cadre to Sunday evening.

Contradiction: Holding comprehensive picture through coordinated teamwork in midst of dispersed troops, hectic calendars and hit or miss support systems. (Wk. 1)

RELIGIOUS HOUSE: AMARILLO

External: Permeators Week II circuit breaks loose TM penetration in Perryton.

Internal: Changes sweep House as furniture, files, office are rearranged; transforms collegium room into tent for ecclesiola Arabian Feast; Hcuse schedules 97 TMs during new version of monopoly.

Contradiction: Doing the in-house with everybody out-house. (Wk. 1)

RELIGIOUS HOUSE: SAN ANTONIO

External: Five citizens of Corpus Christi take four hours of workshop training for Town Meeting and schedule another session.

Internal: Whole House descends upon Corpus Christi colleagues overnight. Discontinuous time continues with 8:00 p.m. House Church.

Contradiction: Spreading Town Meeting preparation work beyond sponsor committee. (Wk. 13)

RELIGIOUS HOUSE: OKLAHOMA CITY

External: Three new committees are initiated making six now in operation. Visits made to Mayor, Chief of Police and Criminal Justice Council to tell story of Community Issues Forum (CIF), as newly established CIF steering committee begins sponsor recruitment for May 8 event.

Internal: Lawn care model gets actualized. Phyllis Slicker continues sojourn to provide infant care for John Joseph Slicker who is doing well.

Contradiction: Needing to expand images of how to move key people from excitement over great program to concrete action in local community. (Wk. 1)

RELIGIOUS HOUSE: DALLAS

External: Demonstration "East Dallas Town Meeting" gets excellent TV coverage. Mayor Adlene Harrison welcomes crowd of 150 with 250 experiencing event over course of day with significant black participation.

Internal: Impact of Daily Office as foundational dynamic of care and sustenance intensifies with participation of colleagues from six Texas-Oklahoma Houses, gathered to discuss Town Meeting and finances.

Contradiction: Keeping head of steam so that no possibility is dropped. (Wk. 13)

RELIGIOUS HOUSE: TULSA

External: Tulsa TM '76 set-up meeting explodes with excitement of stock exchange floor as VIP advisory board gets created and important letters of endorsement roll in.

Internal: Saturday night home-made pizza spices up quarter's end celebration, after week of flu, chicken pox..

Contradiction: Making sure planning is contentless, to serve local man rather than try to organize thinking for him. (Wk. 1)

RELIGIOUS HOUSE: NEW ORLEANS

External: Governor of Mississippi, when asked to proclaim April 10th Town Meeting Day, proclaims this Town Meeting Year in Mississippi.

Internal: Second floor renovation chalks up one more room ready for occupancy; three finished and four to go. Fr. Winus Rooten shows up to celebrate House Church with three bags of groceries that overflow from rectory pantry.

Contradiction: Keeping engaged in catalyzing all other Town Meetings around region, when need all hands on New Orleans. (Wk. 1)

RELIGIOUS HOUSE: MEMPHIS

External: Blitz part of Arkansas which had not been seen before and was thought to be "dead" country.

Internal: Thursday morning Boohe. Model study brings consciousness about The Way Life Is.

Contradiction: Being intentional in midst of being overwhelmed by demands. (Wk. 6)

RELIGIOUS HOUSE: ATLANTA

External: TM '76 is a 50-point project for Florida Jaycees. Receives in-kind slide projector from GAF Corporation. Cedartown, GA sets May 22 TM date while Savanna circuit is revisited including Frogmore.

Internal: While men are at State of FL Jaycee Planning meeting, women celebrate House Church. Planning for Bi-Area Council motivates reclamation of space and new paint, decor, furnishings, etc. and creation of new large meeting room. Generalship lecture reading sets myriad of new images whirling.

Contradiction: Keeping abreast of all possibilities, especially in arena of steering committee nurture. (Wk. 1)

RELIGIOUS HOUSE: CHARLOTTE

External: Receives yeses from local coordinator of Charlotte TM (Eastern Airlines Management Council executive) and North Charlotte Community Association for five city-wide TMs; Kingston sets May 22 TM date and names coordinators and task forces.

Internal: Terry Weygandt family from Cleveland arrives at House. Does TM '76 quarter battleplanning, complete with interlude and local House talent; designs and prints Lenten/Easter greeting.

Contradiction: Enabling local coordinators to pick up snowball. (Wk. 1)

RELIGIOUS HOUSE: MIAMI

External: TM steering committee finds location in Key West. Steering committee date set and coordinator chosen for Law Enforcement Assistance Association (LEAA) Community Issues Forum. Have put names on 144 TMs.

Internal: Sends House member in Cadillac to Guardian's Consult. Emerging Generation are impacted by guest who sojourns while father attends Guardian's Consult. Priorship attends Area meeting in Atlanta.

Contradiction: Using models comprehensively so that snowball does not become avalanche. (Wk. 1)

CHICAGO**GLOBAL CENTRUM CHICAGO**

External: Tenth Global Guardians Meeting assembles, creates practical constructs including large assignment chart for Guardian participation in Global Development, Global Social Demonstration Consults and Global Community Forum.

Internal: Student House become elegant servers for Guardians meals. Sends out 26 from Chicago Centurms to Fifth City Social Demonstration Consult. Welcomes back Joseph Mathews and Neil Vance. Sends out Frank and Marsha Cookingham to Jeju, Jane Miller to Denver; Mary Beth Graham to New Orleans, Mary Warren Moffett to Seapac LENS trek and Dick Stanley to Australia CMA set-up. Welcomes Shirley Porter of Hong Kong enroute to 5th City Consult.

Contradiction: Catalyzing acceleration of Global Community Forum. (Wk. 1)

RELIGIOUS HOUSE: CHICAGO

External: Three more Town Meetings happen this week: Hoffman Estates/Shauberg, South Holland, East Side, with 785 participants. Sends out Tom and Lucille Liles to Isle of Dogs from 5th City.

Internal: Restructures troops in preparation for Consult prep. Joe Ayres, accountant, spends part of vacation on House Finance records. Five Marshallese and 20 Mennonite guests visit.

Contradiction: Reorganizing energies without losing momentum in all campaigns. (Wk. 12)

RELIGIOUS HOUSE: WICHITA

External: Experiences wonder and pain in calling forth old and new colleagues; old colleague participates in strategy session for possible New Hill TM; new colleague strategizes for TM in South City.

Internal: Director of South City Community Action Association Office attends ecclesiola and remarks "This (movement methodologies) is exactly what we need". House celebrates Quarter III and TM with viewing of Barry Lyndon.

Contradiction: Effecting models on other side of battleplanning. (Wk. 1)

RELIGIOUS HOUSE: OMAHA

External: Northside TM '76 with 350 registered is well represented by Black, White, and American Indian with real community leaders; is great day for Primal Community Experiment (PCE). Northside Community Council formed one week after TM '76 capturing imagination of city news media. Lincoln Metro does wild ping pong celebration of Turn to World as decision to do TM '76 gets passed study stages.

Internal: Tri-Metro House Church is attended by 40 colleagues, three metros plus 1/3 of Iowa. Victory is experienced as all report on different phases of decision to do TM '76. John Green gives witness at House Church sharing feature article on TM '76 which came out three weeks after one in his Nebraska City.

Contradiction: Maintaining gumption. (Wk. 1)

RELIGIOUS HOUSE: KANSAS CITY

External: Receives Academy registration. Community Issues Forum: Law Enforcement Assistance Association sponsors and steering committee are identified. Major Kansas City leadership are excited by concept.

Internal: PSU battleplans quarter. Ecclesiola hears Ertel's Isle of Dogs Consult report. Collegiums focus on doing the 5,000.

Contradiction: Daring to be selective when setting up steering committees. (Wk. 13)

RELIGIOUS HOUSE: MINNEAPOLIS

External: Four TMs in Week II use all staff plus. Intensity of experience allows direction of TM to breakthrough. Preparation for Wagner, SD Consult takes place. Treks to SD, MN, IA.

Internal: Sends out Ruth Dyhr to Academy. Welcomes Paul Dyhr as sojourner. Fantastic celebration is experienced with all orchestrators and workshop leaders.

Contradiction: Shifting into new quarter when TM and other activities do not flow with rhythm of time designs. (Wk. 1)

RELIGIOUS HOUSE: ST. LOUIS

External: Holds Columbia TM Workshop Leader Training Session with excellent participation by local people. Treks to Davenport and Bettendorf, IA. Steering committee people from TMs already held are inquiring about ICA and guardians.

Internal: Many job shifts and upgrades create turmoil in daily transportation and coordination. Creates new 18-month warboard (through July 4, 1977) to facilitate comprehensive strategizing for 216 TMs across three states.

Contradiction: Building overall operating strategy to do 216 TMs. (Wk. 1)

RELIGIOUS HOUSE: PEORIA

External: Two more towns set dates for TM. Development teams release new possibility in metro grads.

Internal: Gathers to plan and strategize next quarter's plans and models.

Contradiction: Allowing metro care for task be symbolized through movemental engagement. (Wk. 1)

RELIGIOUS HOUSE: GREEN BAY

External: Marquette and Stevens Point TM training sessions have success. TV covers TM in upper peninsula MI from Marquette.

(RELIGIOUS HOUSE: GREEN BAY)

Internal: Sends out Dorothy Baines and Gerhardt Kirsch to Academy and Steve and Jackie Smith to Guardians' Consult and 5th City Consult. Two children sojourn while mother in Academy.

Contradiction: Building catalyzing model to assure LENS course, which would build new leadership in Gateway 5 Primal Community Experiment (PCE). (Wk. 1)

RELIGIOUS HOUSE: MILWAUKEE

External: TM authorization spreads as Johnson Wax Co. donates box lunches and servers for Racine County TM. Sends out David Rebstock and Mary LeBlanc to Academy; hears Isle of Dogs Consult report. McDonalds support TM '76 with 300 hamburgers for E. Madison TM. Colleague donates credit card and enables new circuit.

Internal: Observes setting up of printing press and getting it operable by David Newkirk as he also works on GED exams. Parlor elegantly furnished with antique Persian Rug, a colleague grant.

Contradiction: Internalizing fact that training and spirit care happen when the rubber hits the road. (Wk. 13)

RELIGIOUS HOUSE: INDIANAPOLIS

External: Lilley Foundation joins other businesses in sponsoring Mapleton-Fall Creek TM; most churches in parish also join in. Week I trek in Kentucky meets Cincinnati metro colleague.

Internal: Metro quarter celebration writes "Come and Hear" TM set-up song. Prepares for 'After the Fire' painting party and tribal resettlement.

Contradiction: Maintaining spirit life in midst of scatteredness. (Wk. 1)

RELIGIOUS HOUSE: CINCINNATI

External: Top of the hill affluent community goes to bottom of hill community (Heinold) and pulls off TM that shifts defeat story.

Internal: House troops are strengthened and enlivened by two metro sojourners, one goes out on circuit while other works in ICA Office.

Contradiction: Focusing vision on the future in midst of immediate demands of the now. (Wk. 1)

RELIGIOUS HOUSE: DETROIT

External: Five of six metros are represented at Regional Council to face contradictions head on. Sponsors meetings ground TM '76's as unprecedented gift. Questions about follow-up are raised as Pontiac calls city council meeting to discuss proposals from TM '76 and invites all participants. Inner city sponsorship committee meets for four long hours to firm up commitments for upcoming TM '76 on April 3, the first in city of Detroit.

Internal: Study of "Sophistication" paper shows way for presencing TM '76 in an appropriate style. Raising question of intern possibilities pushes decision to strengthen internal life. House celebrates with world famous chicken dinner.

Contradiction: Enabling covenant without causing schism between House and region. (Wk. 12)

RELIGIOUS HOUSE: CLEVELAND

External: Spin-off of development contacts and new TM sites from double TM weekend amazes all and solidifies Cleveland.

Internal: Collegium battleplanning for Quarter IV off of TM program chart is built using social demonstration method.

Contradiction: Tapping talents and time of TM grads while not missing circuit beat. (Wk. 13)

NEW YORK**RELIGIOUS HOUSE: NEW YORK**

External: 'Corner Cabaret' of local slides on street corners highlights Lower East Side Town Meeting promotion plan. They also send two to Academy.

Internal: Collegium breaks loose images on training for future.

Contradiction: Doing dynamical modification while holding to model. (Wk. 1)

RELIGIOUS HOUSE: PITTSBURGH

External: West Virginia circuit enables long-time colleague to pick up responsibility for seven more TMs in four county area--dates set for two of these.

Internal: Ecclesiola conversation on "Fiddler on the Roof" and paper "Town Meeting Context" push fear and fascination of standing over abyss of life.

Contradiction: Relying on past events and methods to carry into future. (Wk. 13)

RELIGIOUS HOUSE: ROCHESTER

External: Holds three TM '76's, two in black communities; eleven new workshop leaders participate. Sets up troika luncheon and other speaking engagements.

Internal: Three people cover Daily Office assignments all week demonstrating holding structures is key, not how many people attend.

Contradiction: Building major strategies to engage more people for bigger job. (Wk. 12)

RELIGIOUS HOUSE: RICHMOND

External: Big week for circuits as team visits nearest points of Richmond Metro, eight towns in all.

Internal: Sweet and sour pork and charades on Other World Chart sparks ecclesiola. Hosts Cheryl Truman's parents for delightful few days.

Contradiction: Building practical models for engaging colleagues. (Wk. 13)

RELIGIOUS HOUSE: WASHINGTON

External: Receives endorsement of DC city-wide TM by key political officials: Congressman Fauntroy, Chairman of City Council, Sterling Tucker and Councilman-at-large Marion Berry. Four new steering committees started with dates set before July in Maryland suburbs. Roanoke, VA announces emcee to be U.S. Congressman, requests 75,000 brochures for inserting in phone bills; rents circus tent for childrens' TM.

Internal: Holds quarterly-end costume beach party indoors and claims new promise for what it means to be Fools of God, as are joined by development crew from Chicago, Egyptian Sheik Patrick Moriarty and his companion Jeffita (Jeff Nixon). Barbecued steaks and chicken are everywhere. Receive Mike Whorley into House and sends to Academy with Vannathayan Swamikannu (Madras) house renter and colleague.

Contradiction: Initiating action for events three months down road in midst of concern for day-to-day. (Wk. 1)

RELIGIOUS HOUSE: BALTIMORE

External: State Jaycees endorsement opens doors in yet another city considering TM '76. Receives invitation to address Easton, MD Jaycees and good response from club. Third Baltimore city location opens up as Hanspden holds core meetings and schedules steering committee meeting.

Internal: New job schedules break loose Day I troops while surprise announcement by Joseph Sebastian, native of Bangalore, that he would like to intern, provides another helping hand. Evaluations prove very enlightening and encouraging.

Contradiction: Standing in tension between completing dates thrust and launching new quarter. (Wk. 1)

RELIGIOUS HOUSE: PHILADELPHIA

External: Pre-Town Meeting steering committee core of five swells to become post-Town Meeting task force of 15 to do proposals; another TM city newspaper titles full page of pictures with "Town Meeting has People Asking for More".

Internal: Generalship paper gives new images as troops are dispelled to new external and internal assignments. (Find playing with buttons, playing battleship and waking up to reveille helpful.)

Contradiction: Concentrating one thing at hand and keep clear focus on future in midst of conversation going in five directions at same time. (Wk. 1)

RELIGIOUS HOUSE: NEWARK

External: Poughkeepsie blitz by House bolsters confidence of local colleague. Regional framing event girds to be sociological magicians who flick wrist and cast out demons that resist TM.

Internal: Grad quarterly celebration includes seeing musical "Chicago" in NY followed by elegant steak dinner.

Contradiction: Believing we have time to train new troops who are ready to go. (Wk. 1)

RELIGIOUS HOUSE: BROOKLYN

External: Canarsie, Brooklyn, decides to do Community Issues Forum through Law Enforcement Assistance Association signaling possibility of new 'rider' after Bicentennial and effectiveness of Foray 21-6.

Internal: Region is pulled together at NY Regional 'Event' to pool its wisdom on TM '76 framing and to celebrate work of Quarter III.

Contradiction: Finding ways to accelerate TM set-up via framing. (Wk. 1)

RELIGIOUS HOUSE: HARTFORD

External: Battleplanning for Quarter IV focuses attention on next steps for 84 TMs in 14 polises. Three cadres melt together to reflect on past and coming quarters.

Internal: Studies "Small Is Beautiful" at collegium after task force creates eight-session study plan. Attends regional meeting in Boston while one member teaches RS-I in Pittsburgh.

Contradiction: Laying groundwork for future by covering geography and setting TM '76 dates. (Wk. 1)

RELIGIOUS HOUSE: MANCHESTER

External: Laconia sponsor meeting opens at 7:30 am with TM songs. Portland, ME group meets to look at Community Issues Forum for May.

Internal: Tribal resettlement enables claiming space for Quarter IV. Week II discontinuity refreshes and Boston Region House Church spiritizes. Sends out Mike Bellamy from House and Fr. Dick Chagnon from metro to Academy.

Contradiction: Organizing reduced troop number for maximum Quarter IV effectiveness. (Wk. 1)

RELIGIOUS HOUSE: BOSTON

External: Cambridge TM prompts Addressograph-Multigraph salesman to request assignment for all TMs in his area. Harvard and MIT participate in Cambridge TM. Fourteen requests for TMs received by Rhode Island coordinator in week following five Rhode Island TMs.

Internal: Regional House Church gives time to share and reflect upon quarter and to affect healing and disclose possibility for Quarter IV.

Contradiction: Deciding to handle the Week I suddenly upon us. (Wk. 1)

MONTREAL**RELIGIOUS HOUSE: MONTREAL**

External: Social Methods Training and new format for mass marketing of Community Forum Canada (CFC), opens doors in grassroots participation, network catalysis and consultation possibilities.

Internal: Week II miracle reorderings happen with Campaigns Room which holds image-shift necessary to emphasize intensification of CFC circuiting, Emerging Generation space and time design that gives image of continuous learning centre.

Contradiction: Developing programme, momentum while an outsider to the social interaction. (Wk. 1)

RELIGIOUS HOUSE: TORONTO

External: Twenty-one adults participate in first Regional Council in two years, outline broad missional task for quarter, and decide to continue meeting throughout quarter in six groups covering all of both regions.

Internal: Writes 20-page report to Regional Council describing CFC set-up and warboard planning. Sends out Doug Hilton to Academy.

(RELIGIOUS HOUSE: TORONTO)

Contradiction: Discerning priority implementaries appropriate to mission, that honor intent of consensus of two regions when missional designs are foggy. (Wk. 1)

RELIGIOUS HOUSE: OTTAWA

External: Sudbury downtown businessmen request consult on downtown issues. Steering committee for Ottawa West Forum picks up leadership roles.

Internal: Wall comes tumbling down to make new collegium room, out of two small spaces. Capucins visit House to celebrate Saturday night.

Contradiction: Dealing with Ottawa in particular as have dealt with region. (Wk. 1)

CARACAS**RELIGIOUS HOUSE: CARACAS**

External: Completes first Global Social Demonstration research weekend. Reviews movemental wisdom on GSD in preparation for further work next quarter. Monthly metro ecclesiola with 23 attending focuses on scripture conversation methods and recreating significance of Lent. Completes E.I. finance books. Hosts Cannon Hammond Moore, Advisor on Foreign Relations to Archbishop of Canterbury. Arranges meeting with Archdiocesan Commission on Ecumenism and Bishop Morales. Recent RS-I grads hold dinner party for prospects which turns into real happening. Holds second GSD research weekend. Meets with Fr. Alberto Micheo. Jesuit sociologist to discuss future of Venezuela and attends exposition on next five years of development in Venezuela.

Internal: Rafael Davila and George West return from separate trips to Lima and Caribbean. Spins on course requests and possibilities and strategies for continued cadre nurture in these countries. Continues to build corporate lesson plan for Tillich and is addressed by wealth of corporate wisdom. Rose West returns from Caribbean bringing back House to full strength for first time in four weeks. Continues work on corporate lesson plan for Tillich.

Contradiction: Restaging local momentum and intensifying engagement. (Wk. 1)

GLOBAL CENTRUM
QUARTER IV, 1975-76

THE GLOBAL ORDER CENTRUM REPORT
FOR WEEK ONE

BRUSSELS
NAIROBI
BOMBAY
SINGAPORE
HONG KONG
CHICAGO

GLOBAL
DEVELOPMENT
CENTRUM

Hong Kong quadruples quarterly goals to \$14,000. Brussels makes Scandinavian trek for Global Social Demonstration. India Corporation gifts open doors to African Continent. Visit from Dr. Marble of United Methodist Church Overseas Relief results in immediate check of 25,000 Rs for India. Manila trek results USD2,000 in hands and USD8,500 in commitments as Lapu Lapu GSD takes hold. Kuala Lumpur blitz of corporations results in USD3,000 in hand, USD3,000 committed, USD10,000 asked for in proposals. Seventy-one guardians sign up to be assigned to development locally at the Tenth Guardians Consult. The contradiction lies in the arena of including funding in everyday forms of local corporateness.

GLOBAL
RESEARCH
CENTRUM

Brussels prepares six month timeline for European Global Social Demonstration. Singapore visits member of Parliament. Hong Kong secures Chueng Chau Island for Global Research Assembly site. Chicago reports great battleplanning session as centrum and prepares for 5th City Consult with assignment of 30 from nexus. Maliwada creates secular symbolic life rituals for Quarter IV. The contradiction lies in the arena of devising methods for practical implementation of marching orders for the global movement.

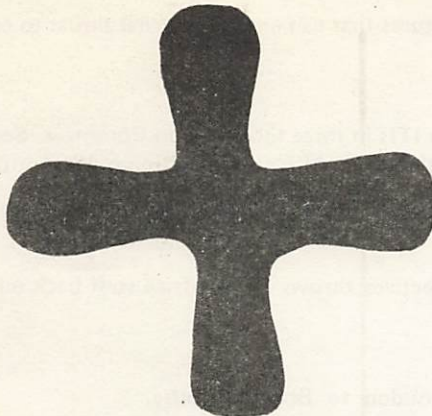
GLOBAL
OPERATIONS
CENTRUM

Brussels attends Town Meeting in Canterbury England towards harmonizing Global Community Forum in Europe; also, sets GRA:Europe for July 1976 and January 1977 for International Training Institute (ITI) in Europe. Bombay receives list of first ITI prospects. Hong Kong publishes first draft of Quarter IV teaching assignments. Singapore sends Alerding to join Dick Stanley on Australia CMA set-up. Programs include LENS in Caracas; TMs in Macomb, Marquette, Corpus Christi, Brownsville, Hamlin-Midway, Jackson, Price, Coronado, Chatfield and CFC in Ottawa. The contradiction lies in the arena of holding the comprehensive when ITI recruitment, set-up and effective program assignment impinge with immediacy.

GLOBAL
MANAGEMENT
CENTRUM

Brussels reports first week of Global Finance trek takes Lyn Mathews and Jane McClain to Glasgow. Comprehensive report of 12 houses and nexus, Order and EI/ICA finances is prepared in Singapore. Bombay reports Ambassador guild helps decor collegium space. In Hong Kong in-kind becomes an established dynamic as Houses report receiving items from noodles to plywood. Significant breakthrough happens as coordination of Houses and Centrum establish in-kind airfreight. The contradiction lies in the arena of many possibilities in immediate in-kind in midst of need for long-range large gifts.

GLOBAL ORDER REPORT



In front of them all, speak to the rock and it will yield its water. Thus you will produce water for the community out of the rock.

--Numbers 20:7-8

LONDON

RELIGIOUS HOUSE: LONDON

External: Isle of Dogs Consult opens with standing room only in newly created collegium room at Bridge House. Consult closes on boat docked in front yard with multiple testimonies by local residents.

Internal: Transparent enablement construct releases maximum troops into direct consult work.

Contradiction: Discerning forces and time configurations that get Isle of Dogs Consult Document written and published in less than seven days. (Wk. 12)

RELIGIOUS HOUSE: GLASGOW

External: Nineteen excited by movement story at clergy consult, promising use of Ecumenical Institute resources. Town Meeting prep in full swing as steering committees are sought in Glasgow and Edinburgh by cadres.

Internal: Launches intensive parish-by-parish girdding in Glasgow as site search gets under way in prep for Global Social Demonstration. Visit by Andrea Boyer from Vancouver brings news from North America.

Contradiction: Creating interior story that enables all to begin prep for GSD. (Wk. 2)

RELIGIOUS HOUSE: BRISTOL

External: Continues thrust in development.

Internal: Prior family returns from Isle of Dogs Consult. Receives and sends out Crockers, Elaine Hockley and Global Finance Trek.

Contradiction: Being in Quarter IV still thinking in context of Quarter III. (Wk. 2)

RELIGIOUS HOUSE: MANCHESTER

External: Six additional yeses brings Imaginal Education at Salford to 13 and RS-I at Durham reaches 10 registrations.

Internal: Completes 'Six Speeches' paper by JWM. Experiences excitement over moving deeper into Salford.

Contradiction: Deciding difference between risking and cutting off neck, financially. (Wk. 13)

PARIS

RELIGIOUS HOUSE: PARIS

External: Receives LENS registration in mail from Munich in response to House mailing.

Internal: House Church is happening celebrating birthday of colleague from Ghana and wedding anniversary of John and Gesina Perry, pastor family of Methodist Church. Receives guests Odette and Roger Elliot from Newcastle, England and Mark Porte from London House.

(RELIGIOUS HOUSE: PARIS)

Contradiction: Initiating effective recruitment schemes for LENS course which is one month away. (Wk. 2)

RELIGIOUS HOUSE: ROME

External: ICA calling results in teaching English to Arthur Anderson Company employees.

Internal: Week with global intrusions: reports from America by the Grows, sojourning of a Chilean, reports from Isle of Dog Consult and its local implications, and fasting indicative battleplanning weekend ending with the quarter's end celebrative feast outside on Rome's most beautiful piazza: piazza S. Maria de Trastevere.

Contradiction: Building practical and imaginal in-house structures that can enable external thrust to come off. (Wk. 2)

LAGOS**RELIGIOUS HOUSE: LAGOS**

External: Continental Priors Council re-affirms decision to do ITIs in three locations on Continent. Sees afresh need for powerful three-stronghold capability, particularly with half of African population in West Africa.

Internal: Receives new grasp of Africa after single Continental thrust. Kwangware Human Development Project impacts House.

Contradiction: Articulating freshly continental missional objectives throws all of Africa staff back on to issue of staffing Lagos. (Wk. 2)

BRUSSELS**GLOBAL CENTRUM: BRUSSELS**

External: Finance trek stops by centrum enroute from London to Brussels House.

Internal: Celebrative occasion enables task as finance trek and nexus spend evening together.

Contradiction: Embodying Xavier principle as troops on home front number three. (Wk. 2)

RELIGIOUS HOUSE: BRUSSELS

External: RS-I mailing is out; two Nigerians visit and decide to plug into programs; five have already been recruited for RS-I; Spanish Ecumenical Affairs priest from Madrid drops in on tour of Belgium at suggestion of Franciscan prior to invite House to International Ecumenical Fellowship Convention. Friends ask Papal Nuncio if he can get candlesticks for worship hall.

Internal: Bread cast out on water (money sent to New Orleans from scrapping old car) is returned in form of car donated to House by guardian returning to states. Welcomes back six from Isle of Dogs Consult and are impacted by reports. "One Flew Over The Cuckoo's Nest" and children's school play highlight quarter celebration. Odd jobs in one weekend nets \$250.

Contradiction: Realigning for next year with one hand while other hand is dealing with immediate question of holding tension between program and finances. (Wk. 1)

RELIGIOUS HOUSE: AMSTERDAM

External: Seventeen gather to hear spins and miracle stories from Dutch guardians about Isle of Dogs Consult and Human Development Project. Excitement rose as new contacts and long-time colleagues see fresh possibility for depth engagement. Isle of Dogs Human Development Project (IHDP) consultants seriously considering participation in Jakarta Consult.

Internal: Experiences practical globality as Lyn Mathews and Jane McClain arrive on Global Management Trek. Spins on generalship and profound function of Church in time of doing brings depth awareness of necessary style as House pulls tactical systems into four great thrusts for quarter.

Contradiction: Launching thrusts which will allow people to significantly engage as colleagues in global movement when current tactical systems succeed in nurturing movement friends. (Wk. 2)

FRANKFURT RELIGIOUS HOUSE: FRANKFURT

External: Receives 500 deutsche mark contribution for Global Social Demonstration from Gustav Adolf Foundation.

Internal: Week II of evaluation and planning refocuses mission as House members return from Isle of Dogs Consult with reports of social demonstration acceleration in Europe.

Contradiction: Needing to move twice in next six months looms as albatross. (Wk. 1)

RELIGIOUS HOUSE: BERLIN

External: Local residents gather for weekend of miracle planning for PCE and completes second edition of community newspaper. Continuing Global Social Demonstration site visitation with appointments with number of authorization figures in potential areas.

Internal: Receives Lyn Mathews and Jane McClain of Global Finance trek sees increased practicality of globality within financial systems around world.

Contradiction: Holding tension between regularly scheduled program events and practical necessity of getting GSD off ground. (Wk. 2)

KINSHASA**RELIGIOUS HOUSE: LUSAKA**

External: Grads drop by regularly to plan August International Training Institute (ITI); receives signal breakthrough as grad locates generous supply of paper in-kind.

Internal: Sends out Rev. and Mrs. Simfukwe with gala metro celebration. Sends out priors for cross-Area meeting in Nairobi. Sojourn couple, ITP, charm House with stories of village life 20 years ago. Landlord agrees to proposal that past six months rent be used for scholarships and further agrees to substantial reduction on future months rental price.

Contradiction: Shifting images now for thrust of 1977 while practically engaged in implementation of 1976 thrust. (Wk. 1)

NAIROBI**GLOBAL CENTRUM: NAIROBI**

External: Second apprenticeship programme begins. Second 7th grade tutorial begins.

Internal: Beginning of transformation from brothel to global centrum begins for new building while battleplanning goes on in midst. Receives Joseph and Lucy Thariki and children Wanjiru and Kibuthi as intern family.

Contradiction: Determining how to symbolically mark time for House and Kawangware as jet stream of activity begins to seem like an unending monotone. (Wk. 2)

RELIGIOUS HOUSE: NAIROBI

External: First circuit ride since 1969 into Area Kampala (Uganda) results in PLC for Week 7 under sponsorship of Church of Uganda (Anglican). Launches Bahati 5 Guild with 25 around table.

Internal: Holiday English and school subject tuitions boost self-support income radically.

Contradiction: Symbolizing corporate thrust in midst of diversified. (Wk. 2)

BOMBAY**GLOBAL CENTRUM: BOMBAY**

External: Joseph Mathews and Neil Vance visit Maliwada and head up five-man development blitz on Indian government and foreign aid agencies after receiving O.K. from Maharashtra Chief Minister, Y.B. Chavan.

Internal: Auxiliary participates in village celebration of Hindu New Year in four-day festival including drama, walking on hot coals, and wrestling matches.

Contradiction: Discerning role of Maliwada in continental strategy and thereby giving Houses and PCEs concrete, practical way of relating to it. (Wk. 2)

RELIGIOUS HOUSE: BOMBAY

External: Experiences guests flowing in and out. Hears Joseph W. Mathew's report stressing awareness in care and replication of Maliwada. Pune grids and claims responsibility for their city. Methodist leaders go on field trip to Maliwada village.

Internal: After wonderful 50-man Nagpur Primal Community Experiment (PCE) steering committee meeting, cadre asks for three-week PCE training. Sponsorship granted by Methodist Bishop for ITI and GRA.

Contradiction: Spending all time brooding, praying and simultaneously spending all time on road. (Wk. 1)

- DELHI** **RELIGIOUS HOUSE: DELHI**
 External: Picks up one more ITI and one more GRA registration on trek to Lucknow Metro.
 Internal: Development team visits, including Joseph Mathews and Neil Vance. Awe of story of Maliwada replication and collegiums on ITI, PCE and GRA sustain vision in Long March.
 Contradiction: Sustaining vision of ITI when all excitement is directed toward GRA. (Wk. 2)
- MADRAS** **RELIGIOUS HOUSE: HYDERABAD**
 External: Intensification of circuit design allows recruitment and nurture to take place as three separate circuits begin and end during week and all House on road in Hyderabad for International Training Institute/Global Research Assembly recruitment.
 Internal: Ecclesiola focuses on Gunfoundry Primal Community Experiment (PCE) reflection and Mario family is received as interns at House Church. Narrendra Paul family arrives for family visit.
 Contradiction: Creating sustaining methods and structures for colleagues who are not necessarily of Christian context, to practically assume responsibility for Long March. (Wk. 1)
- CALCUTTA** **RELIGIOUS HOUSE: CALCUTTA**
 External: Follow-up meeting of Circus 5 Consult results in group staying until 11:00 p.m. to translate proposals into Urdu.
 Internal: House Church rituals impact children with no English when they attend with their parents. House celebrates one day of discontinuity to end Quarter III.
 Contradiction: Deciding to pull off ITI in midst of major authorization blocks. (Wk. 2)
- SINGAPORE** **GLOBAL CENTRUM: SINGAPORE**
 External: Hosts Womens Society of Christian Service form local congregation to make Lenten banners and at same time gain key civic authorization visits through same congregation.
 Internal: Visits by Global Social Demonstration produces GSD site in Area Singapore located near Jakarta, namely Kelapa.
 Contradiction: Resolving to emphasize ITI as source of troops for GSD, PCE, Global Community Forum (GCF) through translation into practical implementation. (Wk. 2)
- RELIGIOUS HOUSE: SINGAPORE**
 External: Fifty gather at House for festive Maliwada report where whole group is impacted by effectiveness of Global Social Demonstration model. Singapore continues research on rural kampongs.
 Internal: Sends out Wayside Inn guests, David McChesneys, back to Joint Embassy School in Jakarta with new baby, Michael Fitzgerald, and Maggie and James Chia are sent to Majuro and GSD and receives two Chia girls, Selena and Christine as Order youth.
 Contradiction: Nailing down ITI site. (Wk. 13)
- RELIGIOUS HOUSE: KUALA LUMPUR**
 External: Area Bangkok trek reveals Global Social Demonstration Consult prospect and four yeses to ITI:Penang. Two PCE groups reveal deepened collegial stance as each sets targets to corporately develop six full scholarships for ITI.
 Internal: House and PCE colleagues plan Quarter I tactics in House Week II PSU, capped with Charlie Chaplin's "The Great Dictator", a powerful demonstration of profound role of humor.
 Contradiction: Actualizing PCE's tactics for ITI funding and recruitment to keep groups focus outward while still low profile. (Wk. 2)
- RELIGIOUS HOUSE: JAKARTA**
 External: ITI treks visit four cities in Central Java, while Global Social Demonstration site hunting goes on in Jakarta Metro.
 Internal: Co-pastor and husband in PCE church visit for ecclesiola where ITI reports are artformed.
 Contradiction: Calling forth local colleagues who are ready to move into GSD. (Wk. 1)

HONG KONG**GLOBAL CENTRUM: HONG KONG**

External: Imaginal Education course of 40 with Canossian Sisters launches Quarter IV: Locates potential Global Research Assembly (GRA) site.

Internal: Specially prepared in-house Chinese meal and floor show with dancing at Gloolden Crown brings down curtain on great Quarter III.

Contradiction: Creating nexus priorities out of many diverse demands. (Wk. 1)

RELIGIOUS HOUSE: HONG KONG

External: LENS happens in Hong Kong! Exciting course includes participants from eight companies representing major banks, industry and diplomatic corps. First ever dual translation regional newsletter overcomes many obstacles is published and mailed on timeline.

Internal: "I will give you strength sufficient for the task", or how did so few people get so much done? Internal mission occasions internal excitement with candlelight interlude providing healing pause.

Contradiction: Sustaining simultaneous attacks on many fronts, while wanting to take breather after so many successes. (Wk. 2)

RELIGIOUS HOUSE KAOHSIUNG

External: Receives 24 commitments to LENS with three marketing groups sending five each. Three registrations return in two days after PLC mailing.

Internal: Holds week collegium design on common memory. Secures first tutoring job at U.S. salary.

Contradiction: Maintaining momentum. (Wk. 13)

RELIGIOUS HOUSE: MANILA

External: Key calls on National Economic Development Administration and National Department of Social Welfare add momentum to LENS set up.

Internal: Completes House Council with tactical model for Quarter IV and new confidence in indicative battleplanning method. Welcomes Roxana Harper on Global Finance trek.

Contradiction: Discerning key networks for LENS recruitment in midst of changes in process within government structure. (Wk. 1)

RELIGIOUS HOUSE: TAIPEI

External: Development nets NT\$20,000 check from China Airlines and NT\$5,000 from local hotel. Grassroots development blitz yields three more pledgers plus ITI and PLC prospects.

Internal: Welcomes sojourner Victoria Lin for one month stay and sends Norman Kao to Chicago for International Training Program.

Contradiction: Building ITI "Recruitment machine" (has 6 wheels, runs on 20:1 spirit:money mixture) before it really hits road. (Wk. 13)

RELIGIOUS HOUSE: CEBU

External: The Lapu Lapu Human Development Program first miracle workday repairs Early Learning School Building and builds 200 meter road by harvesting cassava crop, cutting trees, breaking rocks, etc. and feeding more than half community at noon, celebrating. Day begins with community responding to emergency health need by donating blood. Sixty-five parents (aged 16-70) attend Early Learning School.

Internal: New team assignments and first ecclesiola studies Maliwada document. Ecclesiola guests include key metro guardian/project engineer.

Contradiction: Meeting project timeline relative to construction and inking materials for building new 30-man Religious House before May 23rd Human Development Project Consult. (Wk. 2)

RELIGIOUS HOUSE: DAVAO

External: Gains signal breakthrough with United Church of Christ in the Philippines (UCCP) as House member is invited to lead Bible study for Lay Training Conference.

Internal: Battleplanning for Quarter IV reveals new clarity on centrality of Primal Community Experiment (PCE) and Global Social Demonstration.

(RELIGIOUS HOUSE: DAVAO)

Contradiction: Finishing battleplan in midst of necessary tactical preparation. (Wk. 1)

TOKYO**RELIGIOUS HOUSE: TOKYO**

External: TM '76 visits win nod of approval from American ambassador and consideration by U.S. military installations in Japan. Mrs. Edwin O. Reischauer, wife of former U.S. ambassador to Japan, is impacted by "TM '76 Day" conducted by class taught by House permeator in international school in Tokyo.

Internal: Signal lease for House in Sanya parish and moves first three loads to new site, facilitated by metro cadre financial support and assistance in actual move.

Contradiction: Actualizing metro circuits. (Wk. 2)

RELIGIOUS HOUSE: JEJU

External: Kwangyung preschool holds opening celebration with 58 children enrolling for first full week in colorful building; agricultural guild makes two trips researching bee keeping, piggery, medicine plant farming; all five guilds meet workshopping next crucial steps; architect makes first blue print for model house; preaches at Presbyterian Church of 450 members.

Internal: Whole House visits two famous piggeries and tangerine farms; are hosted at luncheon by Jeju City YWCA Board chairman.

Contradiction: Implementing agricultural breakopen miracle. (Wk. 1)

RELIGIOUS HOUSE: SEOUL

External: Prepares for shift to Quarter IV with shift to using global finance model April 1. Completes first draft of ICA registration document.

Internal: Teams celebrate end of Quarter III and Week II PSU; prepares Quarter IV Grassroots Development System. Welcomes Theresa Kim back from Isle of Dogs Consult, Boston, Chicago, San Francisco and Los Angeles.

Contradiction: Creating adequate implementaries for actuating global programs. (Wk. 2)

RELIGIOUS HOUSE: FUKUOKA

External: Goes full steam ahead as experiences four-pronged attack this week. Guild does specific research in Yoshizuka while House has guardians over for Jeju slide-show, writes letters back home as global development tactic, and holds LCC in Nagasaki.

Internal: Internal life issues workshop allows House to deal seriously with necessary issues while study of "Community" paper begins to re-create context.

Contradiction: Enabling and training people, when training is translated or is in 'second language' in midst of knowing task is to be catalytic. (Wk. 2)

RELIGIOUS HOUSE: OSAKA

External: Consultation with Nagoya colleagues focuses on Primal Community Experiment (PCE) methods and HRM initiation with presence of three orders: School Sisters of Notre Dame, Augustian and Scarboro Foreign Mission Society. Receives yes from Daiwa Bank for LENS.

Internal: Finance visit by Roxana Harper excites House. Treks to historical and symbolic sites in Japan: Kobe, Kyoto, Hiroshima and Tokyo. Completes internal life design. Emerging Generation holds three Town Meetings in three countries in Saturday night celebration.

Contradiction: Getting clarity on quarter's design. (Wk. 1)

RELIGIOUS HOUSE: SENDAI

External: Accomplishes first step in PCE journey this quarter by four-day geo-social analysis in Fukushima Metro.

Internal: Establishes regional care net through weekly regional report sent to colleagues.

Contradiction: Continuing to intensify PCE while maintaining GSD emphasis and development when two groups are necessarily same. (Wk. 2)

SYDNEY

RELIGIOUS HOUSE: SYDNEY

External: Board of Education Diocese of Armsdale of Anglican Church affirms role of being training resource for them in Church and community.

Internal: Visitors to House come seeking methodological directions and present opportunities for local congregation and secular groups impact during week in which Global Operations Centrum:Singapore visits Area on Community Meeting Australia (CMA) and International Training Institute (ITI).

Contradiction: Phasing quarter while opportunities rush in and could become flood of immediacies. (Wk. 1)

RELIGIOUS HOUSE: PERTH

External: Slide presentation to Gnowangerup Rotary and visit to Agricultural School Farm provides exciting possibility for Oombulgurri Emissary Program. Sends Guardian, Danby, to Area meeting. Galaxy and regional colleague gather for workshop leadership training for CMA.

Internal: Celebrates quarter end at local Chinese restaurant. Pauline Chia joins us for first ecclesiola of quarter. Bill Aldering brings Global Operations Centrum:Singapore to Perth Region.

Contradiction: Making sure all necessary authorization doors are knocked on before making winning move. (Wk. 2)

RELIGIOUS HOUSE: DARWIN

External: Visit from centrum colleague enables ITI recruitment. Creates local ICA brochure for development contacts.

Internal: Continues as wayside crossroads as Bill Aldering visits from Global Operations Centrum:Singapore and Olive Evans, Mark Mitchell and Bob Lingafelter come through on way to City 5 Consult and Area Guardians' Meeting.

Contradiction: Finalizing major strategies in order to complete implementaries to allow all to be fully engaged on all fronts. (Wk. 2)

RELIGIOUS HOUSE: OOMBULGURRI

External: Attends housing consult with architects; is fantastic happening with Kit Kraus, town planner, and Bob Harvey, builder, as house design is finalized, new roads marked and slashed, sites for new houses marked, and families decide on size of their homes. Representatives of Aboriginal Legal Service, Department of Aboriginal Affairs, Department of Social Security, Director of Office of the North-West, entire Aboriginal Lands Trust, and local Wyndham teacher visit, ask questions, offer assistance, and seek to participate in development of Oombulgurri.

Internal: Animal doctor, Willis Pfaff, arrives ahead of wife. Ray Richmond returns with in-kind report. Consultants enliven corporate life during week as screening and raising 26 week timeline of tactics and implementaries takes place.

Contradiction: Relaxing in state of excitement over heavy decision which relate to building permanence. (Wk. 2)

RELIGIOUS HOUSE: ADELAIDE

External: Evaluation of Port Pirie 200 person Community Meeting Australia (CMA) confirms a really great day. Regional priors gather at House to plan Port Pirie CMA celebration for Week 13. Bruce Martin conducts collegium and focuses on engaging new and re-engaging old colleagues in corporate mission.

Internal: Rees family's presence is received as great gift to Adelaide House. Members attend wedding of Rodney Rees and Janine Hall. Collegium on relationship between Global Social Demonstration (GSD) and RS-I course is highly illuminating.

Contradiction: Intensifying and doing all three campaigns at same time after throwing body and soul into miracle of Port Pirie CMA. (Wk. 1)

RELIGIOUS HOUSE: MELBOURNE

External: Metro cadre in action: Vanne Trompf, Melbourne Architect, returns after week in Oombulgurri; Lisa Tod sends personal letters to bring colleagues up to date on development and Community Meeting plans; Richard Pether wants to set up CMA in Portland.

(RELIGIOUS HOUSE: MELBOURNE)

Internal: Receives Jim White as Week II sojourner for Quarter IV. Richard Pether drops by on way back to Isle of Dogs Consult and Community Day in Canterbury, England. Internal life manual enables students and Emerging Generation to carry major load.

Contradiction: Intensifying missional demands of Oombulgurri Development and CMA launch to enable intern recruitment. (Wk. 2)

RELIGIOUS HOUSE: CANBERRA

External: Receives three phone calls requesting Oombulgurri speaking engagements while Community Meeting Australia (CMA) trek to Goulburn finds health commission very affirmative and ready with assistance.

Internal: Experience full House as receive Yvonne Myers from Adelaide as an intern.

Contradiction: Being able to move it Week I with House having been dispersed for evaluation and planning. (Wk. 1)

RELIGIOUS HOUSE: BRISBANE

External: Regional colleagues meet to check signals, in preparation for Area Council. Northern trek completes Townsville and five weeks "out", heads back south. First meeting of Kurilpa Caretakers launches stake care dynamic in PCE; six-week northern trek ends adding another troop to first Community Meeting Australia push, with two weeks to go. Kangaroo Point CMA lays foundation for story that CMA is for every community. Apex and Rotary speaking engagements open new doors for both CMA and Development.

Internal: Dierdre Dowsett drops in from Oombulgurri. Vosler is sent to Area Priors' Council. Cannery job brings House to full employment. Spontaneous regional celebration is catalyzed by Ramages' visit from Oombulgurri. Presence of Global Operations Centrum gives direction for common global models.

Contradiction: Getting overview that enables real decision about what is absolutely necessary in plethora of possibility and demand. (Wk. 12)

RELIGIOUS HOUSE: MAJURO

External: Marshalls Apprentice Night School (MANS) begins with 25 in attendance. Chips are mass produced --700% increase. First sale of coconut lumber and order placed for first coconut lumber house.

Internal: Small Industry Program collegium starts re-imaging job of task as making money. Walkup Silk tells Marshallese myth and James Chia gives Singapore report to ground ecclesiola.

Contradiction: Seeing difference between action of one living out of image of wage earner as contrasted to money maker affects beginning of more small industries. (Wk. 1)

RELIGIOUS HOUSE: APIA

External: First Suva Area Council is held in Apia Week II of Week 12 producing four year timeline for Area Suva and parade of guild pins around Apia as metro cadre members are presented with pins.

Internal: Symbolizes participation in local man dynamic as all participate in flu epidemic and work to build metro cadre dynamics out of global wisdom.

Contradiction: Building in needed discontinuity without breaking rhythm of action. (Wk. 2)

RELIGIOUS HOUSE: SAN FRANCISCO

External: Week of TM breakthroughs: Napa sets date, June 5; Palo Alto, 50 senior adults sign up for TM at senior luncheon including working out transportation model; Marin City, all black suburban community reports all major segments of community involved in TM prep. Oakland American Association of United Women (AAUW) shows interest in TM.

Internal: Sends 13 from Bi-metro to Guardians' Meeting. Thursday ecclesiola dynamic continues to be spirit happening for House each week.

Contradiction: Getting models built to keep up with accelerated possibilities. (Wk. 2)

RELIGIOUS HOUSE: SAN JOSE

External: Mountain View steering committee schedules first meeting. Meets with several Jaycee Chapters.

Internal: Gets regrouped in fact that it is TM all the way at Area Council and coming home renewed in that conviction.

Contradiction: Regrouping to encompass all demands of TM and House practices with present troops. (Wk. 13)

SUVA

SAN
FRANCISCO

RELIGIOUS HOUSE: SACRAMENTO

External: Commander Parker, Naval Air Station Chaplain, reports to House everything is shipshape and plans to report weekly, while Jim Lynch, Chico Chamber of Commerce Director, recruits half of steering committee meeting without being asked to.

Internal: Bright yellow paint inside and outside signals reformulation of neighborhood while rites of spring are celebrated with clean-up, fix-up and paint-up.

Contradiction: Believing that experience of primal community is in Town Meeting '76 as it is in Norte 5 Guilding. (Wk. 1)

RELIGIOUS HOUSE: SEATTLE

External: Metro cadre plans for Quarter IV with 15 around table. Portland TM leaders training includes one Jaycee and four more workshop leaders ready to go.

Internal: Evaluation and planning using evaluative consult methods impacts all with depth complexity and transrationality of mission. "All The Presidents Men" seen through eyes of generalship, team dynamic and strategy building.

Contradiction: Giving form to geographic assignments of House and cadre troops. (Wk. 2)

RELIGIOUS HOUSE: LOS ANGELES

External: Finds spirit woman to coordinate one TM and possibility breaks out for another, both critical to breaking open Community College network and center city core.

Internal: Further gridding of urban metros gives insight which breaks loose circuiting and phasing.

Contradiction: Entering new quarter faced with crisis in management producing 13 Xaviers. (Wk. 2)

RELIGIOUS HOUSE: PHOENIX

External: Albuquerque meeting at City Hall results in high interest for Law Enforcement Community Issues Forum. Phoenix Post-TM endorsement letters include those from Chicanos Por la Causa and City Councilman.

Internal: Guardian gift of Landcruiser enables trade for two Pintos for circuit riding. Movie "All the President's Men" reminds House of cruciality of solid homework.

Contradiction: Catalyzing TMs that are required to break loose avalanche. (Wk. 2)

RELIGIOUS HOUSE: SALT LAKE CITY

External: Heads of Rotary and Kiwanis say yes to Town Meeting in Ogden, UT. State Planning Coordinator declares Utah Community Progress program is threatened and TM '76 is OK.

Internal: Journeys to Denver for mini-council. Gains new perspective on journey of quarter and new insights into how to formulate steering committees.

Contradiction: Insuring both metro and House internal battleplanning gets done fast enough to accelerate marketing momentum in midst of Week II activities, especially Town Meetings. (Wk. 1)

RELIGIOUS HOUSE: BILLINGS

External: Primal Community Consult with Butte core expands vision of local man's participation in "life and death" issues of his community.

Internal: Internal life structures set in one session; House Church welcomes formally two new House members, after week of orientation to circuits and parish.

Contradiction: Engaging House, guild, metro troops in TM circuits in midst of constant on-the-road strategizing by all. (Wk. 2)

RELIGIOUS HOUSE: DENVER

External: Forty-five participants from Billings, Rapid City, Salt Lake City and Denver engage in reflective conversation over strategy, troops, and steering committee development that triggers profound vocational brooding and new commitment to implementing tactics in Global Community Forum (GCF) campaign.

Internal: Letter arrives during Area Council to regional guardian from steering committee for which he is consultant and dramatizes to all emerging form of consultant role.

Contradiction: Building phasing model that is clear and complete and reveals forthcoming gap in continuing momentum. (Wk. 1)

RELIGIOUS HOUSE: RAPID CITY

External: Steering committee sets date for North Rapid Cultural Festival, a tactical step toward a TM for North Rapid.

Internal: Study of RS-I papers at collegium renews foundation. Whole House travels to Denver for Area Council.

Contradiction: Keeping focus amidst all details of launching new quarter. (Wk. 1)

EDMONTON**RELIGIOUS HOUSE: EDMONTON**

External: Area Council in Saskatoon refocuses thrust and produces inter-change system that is working. Southwest Edmonton forum coordinators decide to do serious follow-up.

Internal: New quarter assignments and time design give attention to city and to research for Global Social Demonstration.

Contradiction: Finding image that allows potential and actual sponsors to see summer as opportunity for real accomplishment. (Wk. 2)

RELIGIOUS HOUSE: VANCOUVER

External: Jaycees break through: Invites ICA to give CFC presentation to District Conference where National President will be in attendance being signal of network across Canada.

Internal: Evaluation of quarter and plans for next two quarters gives new insights to include regional colleague and return of circuiters brings new data to affect whole region.

Contradiction: Learning how to train for CFC calling in midst of stumbling to develop effective teams necessary for target areas. (Wk. 2)

RELIGIOUS HOUSE: ANCHORAGE

External: Experience week of trekking as being in four places at once. Dillingham postpones its TM one week to enable full participation of its native population.

Internal: Trek scheduling workshop reveals no summer slowdown. Katherine Sinclair visits for week. Eskimo movie made in native dialect serves as training as prepare for initial contacts in next level of villages.

Contradiction: Overwhelming summer demand as excitement of "I Am The One" becomes the Dark Night/Long March of "I Am The One." (Wk. 2)

RELIGIOUS HOUSE: SASKATOON

External: Metro colleague, Tom Martin, decides to represent Area Edmonton at Global Guardians' Meeting.

Internal: Spring fever manifests itself in recreation of children's space.

Contradiction: Transforming story of farming rhythm to "now is the time for CFC". (Wk. 2)

RELIGIOUS HOUSE: WINNIPEG

External: Completes Quarter IV timeline.

Internal: Gets into quarter with new internal structures for adults and Emerging Generation.

Contradiction: Enabling colleagues and House to take part fully in new quarter. (Wk. 2)

HOUSTON**RELIGIOUS HOUSE: HOUSTON**

External: Community Issues Forum (CIF) becomes part of Oak Forest TM follow-up. Houston Chamber of Commerce head, plus state representatives, county commissioner, city councilman, district judge, two school principals, sheriff and police department representatives, three pastors and others are part of sponsor's committee.

Internal: Easter House Church is largest in two years despite eight inches of rain in five hours.

Contradiction: Sighting challenge that breaks loose momentum. (Wk. 2)

RELIGIOUS HOUSE: AMARILLO

External: Week II circuits to Plainview and Perryton break loose new contact possibilities.

Internal: Week full of coming and going as Stuart Stowell goes on circuits and then to Global Guardian's Meeting.

Contradiction: Maintaining whole House Week II circuit momentum during one-man Week I circuit. (Wk. 2)

RELIGIOUS HOUSE: SAN ANTONIO

External: First Town Meetings approaching, two in one week, keeps all busy getting feet wet twice as fast in Corpus Christi and Brownsville.

Internal: Battleplans in nearby town and celebrates at Floores Country Store, country-western dance hall in Helotes.

Contradiction: Seeing through complexity of discovering those who care in dozens of places. (Wk. 2)

RELIGIOUS HOUSE: OKLAHOMA CITY

External: Nine percent of population of Walters, OK attends Walters TM '76. Intensive Community Issues Forum (CIF) promotion involves 20 contacts with concerned community organizations.

Internal: Sends out Phyllis Slicker and son John to Tulsa via special medical entourage. Working relationship is finally developed with United Parcel Service enabling House to receive packages even when no one is home.

Contradiction: Activating people to do TM '76, which comes to them as merely another good idea, by enabling new way of grounding care through participatory experience. (Wk. 2)

RELIGIOUS HOUSE: DALLAS

External: Demonstration "East Dallas Town Meeting" gets excellent TV coverage. Mayor Adlene Harrison welcomes crowd of 150 with 250 experiencing event over course of day with significant black participation.

Internal: Impact of Daily Office as foundational dynamic of care and sustenance intensifies with participation of colleagues from six Texas-Oklahoma Houses, gather to discuss Town Meeting and finances.

Contradiction: Keeping head of steam so that no possibility is dropped. (Wk. 13)

RELIGIOUS HOUSE: TULSA

External: Okmulgee and Holdenville TMs '76 skyrocket under their own power as they see significance of TM '76.

Internal: After battleplanning for quarter, House sees movie "All the President's Men" in midst of crowd that voted heavily in favor of Nixon.

Contradiction: Establishing rhythm of circuits to keep pressure on key towns in deciding about TM '76. (Wk. 2)

RELIGIOUS HOUSE: NEW ORLEANS

External: Jackson, MS TM burst into history, by proclamation of both mayor and governor and under able MC-ship of State Senator Con Maloney. All Jacksonians who did not come are regretting it. Two front page articles on Sunday and Monday proclaim worth and excitement of TM '76.

Internal: Third New Orleans troika family, Mary Beth Graham, stops in Jackson for TM on way to new assignment.

Contradiction: Moving when on other side of major goal. (Wk. 2)

RELIGIOUS HOUSE: MEMPHIS

External: Blitz part of Arkansas which had not been seen before and was thought to be "dead" country.

Internal: Thursday morning Booher model study brings consciousness about The Way Life Is.

Contradiction: Being intentional in midst of being overwhelmed by demands. (Wk. 6)

RELIGIOUS HOUSE: ATLANTA

External: Georgia Jaycees name TM '76 as 100-point project for next year at meeting House did not attend. Holds Area Houston: East Priors' Council, great re-creational event.

Internal: Builds TM phasing chart seven out of eight for next quarter scheduled with steering committees operating (Week 1 of Quarter IV not yet over) and planning goes on with Quarter I.

Contradiction: Defending individually-thought-through plans when team engagement time absorbs reflection time. (Wk. 2)

RELIGIOUS HOUSE: CHARLOTTE

External: Sends out TM mailings through North and South Carolina Jaycees mass mailings; Blacksburg, S.C sets TM date; two circuit teams are on road. Sends out sister of metro colleague to Academy with 24-hour context.

Internal: Enjoys fresh green onions and asparagus from surprise garden. Welcomes guest celebrant for House Church. Colleagues receive Lenten/Easter mailing within days.

Contradiction: Breaking loose new images for standing present to Carolinas infantry to move into action. (Wk. 2)

RELIGIOUS HOUSE: MIAMI

External: TM steering committee finds location in Key West. Steering committee date set and coordinator chosen for Law Enforcement Assistance Association (LEAA) Community Issues Forum (CIF). Have put names on 144 TMs.

Internal: Sends House member in Cadillac to Guardians' Consult. Emerging Generation are impacted by guest who sojourns while father attends Guardians' Consult. Priorship attends Area Meeting in Atlanta.

Contradiction: Using models comprehensively so that snowball does not become avalanche. (Wk. 1)

CHICAGO**GLOBAL CENTRUM: CHICAGO**

External: Global Social Demonstration Consult calendar for next four years takes form with 8, 12, 16, 24 as acceleration rate.

Internal: Sends out Margaret Griffie to Billings. Welcomes Mark Mitchell and Olive Evans of Oombulgurri Human Development Project for visit following participation in 5th City Consult. Begins brooding on Summer '76.

Contradiction: Discovering possibility of operating effectively with fewer troops in direct nexus tasks. (Wk. 2)

RELIGIOUS HOUSE: CHICAGO

External: Three more Town Meetings happen this week: Hoffman Estates/Shauberg, South Holland, East Side, with 785 participants. Sends out Tom and Lucille Liles to Isle of Dogs form 5th City.

Internal: Restructures troops in preparation for Consult prep. Joe Ayres, accountant, spends part of vacation on House Finance records. Five Marshallese and 20 Mennonite guests visit.

Contradiction: Reorganizing energies without losing momentum in all campaigns. (Wk. 12)

RELIGIOUS HOUSE: WICHITA

External: Prepares for presentation to Jaycees convention. Inkinds 40 pillows for 5th City Consult.

Internal: New ecclesiola construct well received, exactly what is needed.

Contradiction: Finding balance of efforts that will meet economic needs and create TM breakthroughs. (Wk. 2)

RELIGIOUS HOUSE: OMAHA

External: Northside TM '76 with 350 registered is well represented by Black, White and American Indian with real community leaders; is great day for Primal Community Experiment (PCE). Northside Community Council formed one week after TM '76 capturing imagination of city news media. Lincoln Metro does wild ping pong celebration of Turn to World as decision to do TM '76 gets passed study stages.

(RELIGIOUS HOUSE: OMAHA)

Internal: Tri-Metro House Church is attended by 40 colleagues, three metros plus 1/3 of Iowa. Victory is experienced as all report on different phases of decision to do TM '76. John Green gives witness at House Church sharing feature article on TM '76 which came out three weeks after one in his Nebraska City.

Contradiction: Maintaining gumption. (Wk. 1)

RELIGIOUS HOUSE: KANSAS CITY

External: Receives Academy registration. Community Issues Forum: Law Enforcement Assistance Association sponsors and steering committee are identified. Major Kansas City leadership are excited by concept.

Internal: PSU battleplans quarter. Ecclesiola hears Ertel's Isle of Dogs Consult report. Collegiums focus on doing the 5,000.

Contradiction: Daring to be selective when setting up steering committees. (Wk. 13)

RELIGIOUS HOUSE: MINNEAPOLIS

External: Four TMs in Week II use all staff plus. Intensity of experience allows direction of TM to breakthrough. Preparation for Wagner, SD Consult takes place. Treks to SD, MN, IA.

Internal: Sends out Ruth Dyhr to Academy. Welcomes Paul Dyhr as sojourner. Fantastic celebration is experienced with all orchestrators and workshop leaders.

Contradiction: Shifting into new quarter when TM and other activities do not flow with rhythm of time designs. (Wk. 1)

RELIGIOUS HOUSE: ST. LOUIS

External: Two networks catalyze inquiries from towns in MO and IL on TM '76. Two steering committee members become new guardians. St. Charles, MO holds workshop leader training session. St. Louis TM '76 date for May 5, 1976 for 200 high school students from Soldan High.

Internal: House member leaves for 5th City Global Social Demonstration Consult. Receive two new job upgrades. Sends representatives to Guardians' Consult.

Contradiction: Keeping on crest of wave of TM replication, which involves discerning shape, size, depth and speed of wave itself. (Wk. 2)

RELIGIOUS HOUSE: PEORIA

External: McClean County TM follows up with proposal for county-wide community action task force. Pekin Bicentennial Commission endorses TM on Wednesday night with sponsors meeting on Thursday noon. Danville after much wrestling and prayer sets its date for June 5, giving House two TMs '76 on the June 5 to care for.

Internal: Symbolizes shift to Quarter IV by gala movie "The Sunshine Boys" and dinner out. Shift to circuit design to cover all areas of geography effectively shifts image of geographic and foray possibilities. Might movemental minister, Dale Catlin, presides at House Church, brings his secretary and she brings her husband.

Contradiction: Breaking open small towns in order to assure trans-geographical coverage. (Wk. 2)

RELIGIOUS HOUSE: GREEN BAY

External: Sends out eight to Guardians Consult (5 new) and three to 5th City Consult.

Internal: Four new Emerging Generation enliven House and become transparent presence of Academy and global mission assignments.

Contradiction: Strengthening LENS marketing story in midst of GCF priorities cutting into motivity. (Wk. 2)

RELIGIOUS HOUSE: MILWAUKEE

External: First Federal Savings and Loan commit funding and leadership for all Madison, WI TMs; printing press dedicated at House by metro colleagues; Northside TM has strong black male leadership and coordinator decides to attend 5th City Consult.

Internal: Rebstock family sojourns while David is attending Academy. New quarter and ecclesiola resumes, in midst of tribal resettlement and new circuit assignments. Three year old goes gridding in neighborhood and makes favorable contact with police station.

Contradiction: Perceiving vacuum of establishment structures as something to be filled by TM methods (Wk. 2)

RELIGIOUS HOUSE: INDIANAPOLIS

External: TM date set in Owensboro, KY. Jaycees external vice presidential candidates (running unopposed), in Indiana and Kentucky lay plans for 100 to 150 TMs.

Internal: Loan of Catherine Welch from Chicago House enables Jaycee breakloose. Assigns Darrell Marley to 5th City Consult; creates metro program support plan.

Contradiction: Developing air traffic controller in midst of needing to have all plans out all the time. (Wk. 2)

RELIGIOUS HOUSE: CINCINNATI

External: Cincinnati Association of Certified Life Underwriters (CALU) selection intensifies significance of network selection.

Internal: New quarter shifts assignments, giving time for reflecting on skills and necessary tasks.

Contradiction: Creating structures to sustain intensifying engagement of bi-metro colleagues in midst of strategies built for snowball. (Wk. 2)

RELIGIOUS HOUSE: DETROIT

External: Five of six metros are represented at Regional Council to face contradictions head on. Sponsors meetings ground TM '76 as unprecedented gift. Questions about follow-up are raised as Pontiac calls city council meeting to discuss proposals from TM '76 and invites all participants. Inner city sponsorship committee meets for four long hours to firm up commitments for upcoming TM '76 on April 3, the first in city of Detroit.

Internal: Study of "Sophistication" paper shows way for presenting TM '76 in an appropriate style. Raising question of intern possibilities pushes decision to strengthen internal life. House celebrates with world famous chicken dinner.

Contradiction: Enabling covenant without causing schism between House and region. (Wk. 12)

RELIGIOUS HOUSE: CLEVELAND

External: Spin-off of development contacts and new TM sites from double TM weekend amazes all and solidifies Cleveland.

Internal: Collegium battleplanning for Quarter IV off of TM program chart is built using social demonstration material.

Contradiction: Tapping events and time of TM grads which not missing circuit beat. (Wk. 2)

NEW YORK**RELIGIOUS HOUSE: NEW YORK**

External: 'Corner Cabaret' of local slides on street corners highlights Lower East Side Town Meeting promotion plan. They also send two to Academy.

Internal: Collegium breaks loose images on training for future.

Contradiction: Doing dynamical modification while holding to model. (Wk. 1)

RELIGIOUS HOUSE: PITTSBURGH

External: In midst of intensive push in West Virginia and breakthrough with Community Action Program (CAP) network, metro colleague sends 22 college students to Pittsburgh for regional RS-I which occasions vocational brooding on part of all. Colleague in Cory, PA decides to go with TM '76 and sets date for one two weeks away and returns to Cory to set up steering committee and training workshops within week.

Internal: Transformation of House into regional training center as successfully spread out small troops to cover setup, RS-I pedagogues, enablement, Emerging Generation, permeation, TM and regional workshop training session. Brooding and conversation over M.C. through battleplanning brings key breakthrough to doing three campaigns.

Contradiction: Maintaining PCE dynamic in midst of doing TM. (Wk. 2)

RELIGIOUS HOUSE: ROCHESTER

External: Project Possibility Schenectady TM follow-up sign of hope, draws nearly 100 people to decorate vacant downtown store windows with each sponsoring organization's global mission. Changes main street from sign of death to sign of life.

Internal: Sends out Mike Ford to City Five Global Social Demonstration for quarter.

Contradiction: Looking at whole and determining which models and tactics to do first that will spring loose necessary deed. (Wk. 2)

RELIGIOUS HOUSE: RICHMOND

External: Big week for circuits as team visits nearest points of Richmond Metro, eight towns in all.

Internal: Three people cover Daily Office assignments all week demonstrating holding structures is key, not how many people attend.

Contradiction: Building major strategies to engage more people for bigger job. (Wk. 12)

RELIGIOUS HOUSE: WASHINGTON

External: District of Columbia city wide steering committee designs three-day "DC Horizons: Signalling 3rd Century"; in 10 days five different committees in VA and MD set TM dates, three of which called ICA in past week--first contacts!

Internal: Andrew Craver gets first two teeth. Ecclesiola materials arrive "Just in Time".

Contradiction: Relaxing over victories when battle is not yet complete. (Wk. 2)

RELIGIOUS HOUSE: BALTIMORE

External: Law Enforcement Assistance Association:Community Issues Forum, LEAA:CIF, establishes Eastern Terrace community, May 29 target; presentation of CIF spawns interest in Fifth City. Martinsburg TM evaluation exposes wide spread interest through metro.

Internal: Quarter planning finds indicative battleplanning becoming more helpful as focusing tool.

Contradiction: Finding structures and ways to use structures to enable individuals' actions to be corporate thrust. (Wk. 2)

RELIGIOUS HOUSE: PHILADELPHIA

External: Invites 1000 block captains to No. Philadelphia TM '76 while contacting four key broad casters as M.Cs across city.

Internal: July 4th celebration shows up on doorstep as four guests appear: collegium by Harry Bliss explodes image of guardians, reflection on color proofs of workbook and monthly campaign building with Joe Slicker builds future.

Contradiction: Acting out consistently intentional engagement in midst of alternating frenzied complexity and detached simplicity. (Wk. 2)

RELIGIOUS HOUSE: NEWARK

External: Poughkeepsie pre-sponsorship meeting is sparked by presence of Jaycee representative. Bi-metro Council evaluates past quarter and builds next quarter's plan in record seven and half hours.

Internal: Area Houston guardian Jim Kelbaugh drops by for ecclesiola. First "Jesus Principle" conversation and "Generalship" study make ecclesiola hit for all.

Contradiction: Keeping all sponsorship committees meeting and circuiters circuiting without momentum. (Wk. 2)

RELIGIOUS HOUSE: BROOKLYN

External: Gets go ahead for two Community Issues Forums in NY City and schedules one for Brooklyn under leadership of 69th Precinct Community Council, covering Canarsie, East Flatbush, Flatlands and Brownsville.

Internal: Holds ecclesiola at 6:00 a.m. Friday. Finds construct and Schumacher to be best ever. A "Dozen Roses" to Global Research Centrum or whoever, for being on target.

Contradiction: Discerning constant updating of practical methods for saturating city with TM '76. (Wk. 2)

RELIGIOUS HOUSE: HARTFORD

External: TM committee in parish receives in-kind brochures. Plainville forms steering committee. Sends three to Guardians' Consult, including co-chairman of Greenfield TM. Creates bi-weekly newsletter.

Internal: Dinner is event-filled ranging from passing pots to sword play by candlelight. Children go to see pets on parade.

Contradiction: Preparing troops for snowball seen on horizons. (Wk. 1)

RELIGIOUS HOUSE: MANCHESTER

External: Claremont, N.H. sets TM date for June 12. Portland Chamber of Commerce executive offers to take lead of steering committee for LEAA.

Internal: Creates Quarter IV warboard and projects TM dates for all 36 micro cities.

Contradiction: Calling forth boldness to win with Town Meetings in Manchester and Nashua before July 4th. (Wk. 2)

RELIGIOUS HOUSE: BOSTON

External: Cambridge TM prompts Addressograph-Multigraph salesman to request assignment for all TMs in his area. Harvard and MIT participate in Cambridge TM. Fourteen requests for TMs received by Rhode Island coordinator in week following five Rhode Island TMs.

Internal: Regional House Church gives time to share and reflect upon quarter and to affect healing and disclose possibility for Quarter IV.

Contradiction: Deciding to handle the Week I suddenly upon us. (Wk. 1)

MONTREAL**RELIGIOUS HOUSE: MONTREAL**

External: Receives two CFC decisions. Collaboration with local St. Vincent de Paul Society shifts understanding of community care.

Internal: Reorganizes CFC circuit model with total House participation catalyzes CFC decisions.

Contradiction: Being able to name contradiction so people can make depth decision. (Wk. 2)

RELIGIOUS HOUSE: TORONTO

External: Aurora-Barrie Metro Cadre holds first meeting and selects five priority towns for CFC marketing.

Internal: Global Community Forum disperses House across continent.

Contradiction: Using Easter week to plan ahead so won't let opportunities slip by. (Wk. 2)

RELIGIOUS HOUSE: OTTAWA

External: Sudbury downtown businessmen request consult on downtown issues. Steering committee for Ottawa West Forum picks up leadership roles.

Internal: Wall comes tumbling down to make new collegium room, out of two small spaces. Capucins visit House to celebrate Saturday night.

Contradiction: Dealing with Ottawa in particular as have dealt with region. (Wk. 1)

CARACAS**RELIGIOUS HOUSE: CARACAS**

External: Week II model building designs global social demonstration weekends for Quarter IV. Recruitment task force holds first RS-I luncheon at cadre member's house for United Christian Church prospects.

Internal: Week II conversations on songs are great hit as House members blend harmony and rattle walls.

Contradiction: Maintaining catalytic edge in face of temptation to do one or two things well. (Wk. 2)

GLOBAL CENTRUM
QUARTER IV 1975-76

THE GLOBAL ORDER CENTRUM REPORT
FOR WEEK TWO

BRUSSELS
NAIROBI
BOMBAY
SINGAPORE
HONG KONG
CHICAGO

GLOBAL
DEVELOPMENT
CENTRUM

Visit to official of Kenya Film Corporation insures raising of \$10,000 for Kawangware. More rupees raised past four months in India than ever before as result of Maliwada. Kuala Lumpur circuit follow-up releases M\$1500 more. Four teams blitz London for Isle of Dogs seed money. Single thrust of "The Development Trip" focused on 7 cities in North America. Approval from Indian Government for fund-raising, donor net in Kenya, GSD site selections, and transrational schedules signal trends for development's story. Contradiction lies in the arena of risking new tactics necessary to enable the building of a global funding net, while holding tension with in-handing cash.

GLOBAL
RESEARCH
CENTRUM

Global Social Demonstration is focus of band with Nairobi working on troop training, Bombay re-engaged in radical face-lifting in Maliwada, Brussels looking for ways to move parishes toward GSD, Singapore locating the GSD in Jakarta and Chicago holding the 5th City Consult with 300 people participating from 8 nations. The 5th City Consult was experienced as relating anew to the local after a decade of emphasizing the global. PCCs were held in Calcutta and Berlin with dates for the first 18 being set for North America. The contradiction lies in the arena of focusing energy in a "Jesus style" that creates maximum catalysis.

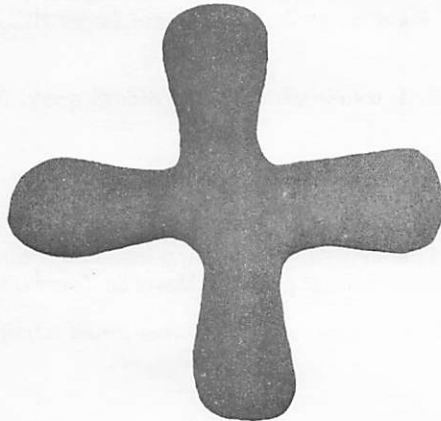
GLOBAL
OPERATIONS
CENTRUM

International Training Institute preparations begin in Nairobi with visit to Bishop of Uganda and common set-up procedures begin for ITIs in Africa. Bombay reports double-time circuit rides in all Areas makes possible recruiting of ITI in four weeks. Brussels gathers data of circuits and cadres via Global Finance Trek. Twenty patrons give their names for ITI:Penang letterhead. Programs include LENS in Hong Kong. The contradiction lies in the arena of orchestrating troop use to most effectively catalyze program emphasis of Global Community Forum (GCF) and ITI.

GLOBAL
MANAGEMENT
CENTRUM

Inkind marches on with donation of 6 sewing machines and \$1000 USD worth of books in Nairobi and ITI material flown free of charge from Chicago to New York. Global Finance Trek catalyzes model changes in Singapore and Brussels. A global trend is the movement toward the clarification of legal and structural relationships. Hong Kong reports Taipei sets up in-kind Air Freight for ITI materials from Chicago to Taipei.

GLOBAL ORDER REPORT



Do not call yourself a child; for you shall go to whatever people I send you and say whatever I tell you to say.

--Jeremiah 1:7

LONDON RELIGIOUS HOUSE: LONDON

External: Two hundred twenty five attend Isle of Dogs Consult in Great Hall and in five task team rooms of London House. Holds closing celebration on upper deck of in-kind boat dock at house pier. Sending out of consultants to Germany, France, Netherlands, Belgium, Italy, Korea, Indonesia, United States, Australia, Canada and Hong Kong is great event for local participants. Canterbury Community Day is attended by 250, including Lord Mayor of city and local member of Parliament, who gives welcoming talks and remains for entire day. Archbishop of Canterbury is among sponsors.

Internal: Completes renovation just hours before Consult begins. House and United Kingdom guardians celebrate at International Guardians' Meeting with representatives from 10 countries. Produces Isle of Dogs document totally in-kind with key assistance from British Petroleum and Gestetner. Dr. Schumacher, author of "Small is Beautiful" impacts Isle of Dogs document writing group with spin of his work.

Contradiction: Restructuring total task load to keep ahead of momentum. (Wk. 3)

RELIGIOUS HOUSE: GLASGOW

External: Visits to four communities discloses new possibilities for Global Social Demonstration in Glasgow. Two more yeses said to Town Meeting.

Internal: New ecclesiola construct demonstrates care for self while on the run.

Contradiction: Getting sufficient detachment from internal limitation in order to respond to external indicatives. (Wk. 3)

RELIGIOUS HOUSE: BRISTOL

External: Development visit to co-partner in largest shoe factory in Britain proves to be positive event. First mailing from new House for house-warming in Week 11.

Internal: Receives four sojourners of extended family of House member, plus cat, gerbil, and washing machine. Receives Stuart Wright's school pet guinea pig, Sammy. Intensifies symbolic life with emerging generation House Church with six around table.

Contradiction: Utilizing resources of new troops. (Wk. 3)

RELIGIOUS HOUSE: MANCHESTER

External: Six additional yeses brings Imaginal Education at Salford to 13 and RS-I at Durham reaches 10 registrations.

(RELIGIOUS HOUSE: MANCHESTER)

Internal: Completes "Six Speeches" paper by Joseph W. Mathews. Experiences excitement over moving deeper into Salford.

Contradiction: Deciding difference between risking and cutting off neck, financially. (Wk. 13)

PARIS**RELIGIOUS HOUSE. PARIS**

External: Receives LENS registration in mail from Munich in response to House mailing.

Internal; House Church is happening celebrating birthday of colleague from Ghana and wedding anniversary of John and Gesina Perry, pastor family of Methodist Church. Receives guests Odette and Roger Elliot from Newcastle, England and Mark Porter from London House.

Contradiction: Initiating effective recruitment schemes for LENS course which is one month away. (Wk. 2)

RELIGIOUS HOUSE: ROME

External: ICA calling results in teaching English to Arthur Anderson Company employees.

Internal: Week with global intrusions: reports from America by the Grows, sojourning of a Chilean, reports from Isle of Dog Consult and its local implications, and fasting indicative battleplanning weekend ending with the quarter's end celebrative feast outside on Rome's most beautiful piazza: piazza S. Maria de Trastevere.

Contradiction: Building practical and imaginal in-house structures that can enable external thrust to come off. (Wk. 2)

LAGOS**RELIGIOUS HOUSE. LAGOS**

External: Continental Priors Council re-affirms decision to do ITIs in three locations on Continent. Sees afresh need for powerful three-stronghold capability, particularly with half of African population in West Africa.

Internal: Receives new grasp of Africa after single Continental thrust. Kwangware Human Development Project impacts House

Contradiction: Articulating freshly continental missional objectives throws all of Africa staff back on to issue of staffing Lagos. (Wk. 2)

BRUSSELS**GLOBAL CENTRUM. BRUSSELS**

External: After two weeks with three people holding home front, most troops return for continent planning.

Internal: Fine Nexus celebration is highlighted by seeing Global Social Demonstration slides and dinner right next to Grand Place.

Contradiction: Objectifying quarter's development images, while everyone is out doing development. (Wk. 3)

RELIGIOUS HOUSE BRUSSELS

External: RS-I mailing is out; two Nigerians visit and decide to plug into programs; five have already been recruited for RS-I. Spanish Ecumenical Affairs priest from Madrid drops in on tour of Belgium at suggestion of Franciscan prior to invite House to International Ecumenical Fellowship Convention. Friends ask Papal Nuncio if he can get candlesticks for worship hall.

Internal: Bread cast out on water (money sent to New Orleans from scrapping old car) is returned in form of car donated to House by guardian returning to states. Welcomes back six from Isle of Dogs Consult and are impacted by reports. "One Flew Over The Cuckoo's Nest" and children's school play highlight quarter celebration. Odd jobs in one weekend nets \$250.

Contradiction: Realigning for next year with one hand while other hand is dealing with immediate question of holding tension between program and finances. (Wk. 1)

RELIGIOUS HOUSE: AMSTERDAM

External: Development and metro cadre battleplans provide focus for journeying movement friends toward collegial engagement.

Internal: Experiences Holy Week as time of brooding on revolutionary style with collegiums on liberal heresy and House financial systems.

Contradiction: Discovering story and strategies to form interested contacts into missionally engaged colleagues. (Wk. 3)

FRANKFURT RELIGIOUS HOUSE: FRANKFURT

External: Receives 500 deutsche mark contribution for Global Social Demonstration from Gustav Adolf Foundation.

Internal: Week 11 of evaluation and planning refocuses mission as House members return from Isle of Dogs Consult with reports of social demonstration acceleration in Europe.

Contradiction: Needing to move twice in next six months looms as albatross. (Wk. 1)

RELIGIOUS HOUSE: BERLIN

External: Local residents gather for weekend of miracle planning for PCE and completes second edition of community newspaper. Continuing Global Social Demonstration site visitation with appointments with number of authorization figures in potential areas.

Internal: Receives Lyn Mathews and Jane McClain of Global Finance trek sees increased practicality of globality within financial systems around world.

Contradiction: Holding tension between regularly scheduled program events and practical necessity of getting GSD off ground. (Wk. 2)

KINSHASA RELIGIOUS HOUSE: LUSAKA

External: Grads drop by regularly to plan August International Training Institute (ITI); receives signal breakthrough as grad locates generous supply of paper in-kind.

Internal: Sends out Rev. and Mrs. Simfukwe with gala metro celebration. Sends out oriors for cross-Area meeting in Nairobi. Sojourn couple, ITP, charm House with stories of village life 20 years ago. Landlord agrees to proposal that past six months rent be used for scholarships and further agrees to substantial reduction on future months rental price.

Contradiction: Shifting images now for thrust of 1977 while practically engaged in implementation of 1976 thrust. (Wk. 1)

NAIROBI GLOBAL CENTRUM: NAIROBI

External: Second apprenticeship programme begins. Second 7th grade tutorial begins

Internal: Beginning of transformation from brothel to global centrum begins for new building while battleplanning goes on in midst. Receives Joseph and Lucy Thariki and children Wanjiru and Kibuthi as intern family

Contradiction: Determining how to symbolically mark time for House and Kawangware as jet stream of activity begins to seem like an unending monotone. (Wk. 2)

RELIGIOUS HOUSE: NAIROBI

External: First circuit ride since 1969 into Area Kampala (Uganda) results in PLC for Week 7 under sponsorship of Church of Uganda (Anglican). Launches Bahati 5 Guild with 25 around table.

Internal: Holiday English and school subject tuitions boost self-support income radically.

Contradiction: Symbolizing corporate thrust in midst of diversified. (Wk. 2)

BOMBAY GLOBAL CENTRUM: BOMBAY

External: Visit by representative of Bombay Dyeing Co. ensures continued use of vehicles loaned by them and possibility of more.

Internal: Begins quarter long experiment with totally secular symbolic life. Quarter evaluation and planning gives footing for Quarter IV.

Contradiction: Reworking framing network to support 25,000 villages instead of one (Wk. 3)

RELIGIOUS HOUSE: BOMBAY

External: Experiences guests flowing in and out. Hears Joseph W. Mathew's report stressing awareness in care and replication of Maliwada. Pune grids and claims responsibility for their city. Methodist leaders go on field trip to Maliwada village.

Internal: After wonderful 50-man Nagpur Primal Community Experiment (PCE) steering committee meeting, cadre asks for three-week PCE training. Sponsorship granted by Methodist Bishop for ITI and GRA.

Contradiction: Spending all time brooding, praying and simultaneously spending all time on road. (Wk.

DELHI**RELIGIOUS HOUSE: DELHI**

External: Recruitment turns to Global Research Assembly and wins in Agra with 15 paid registrations in one day.

Internal: Final reading of "Watership Down" crystalizes urgency of global communities in India. Completes week with grand cleaning and prep for Holy Week.

Contradiction: Clarifying sense of urgency amidst movement that will move 'interested' to 'paid' with GRA five weeks away. (Wk. 3)

MADRAS**RELIGIOUS HOUSE: HYDERABAD**

External: Authorization blitz to six bishops and 18 orders reveals great affirmation and desire to work with House in social demonstration and training. ITI intensification of recruitment through 24-hour prayer vigil sparks all-out effort as ITI and GRA fast approach. Area mailing on GRA includes Maliwada press release to 300 colleagues. Two circuits leave to cover all regional cities as recruitment is stepped up for ITI/GRA. Guild appoints ward captains.

Internal: Twenty-four hour prayer vigil expands time and releases passion for mission, in wake of great quarter's end candlelight dinner celebration for House and metro cadre. "The Sting" reveals revolutionary principles renewing church.

Contradiction: Moving with full circuits and PCE actualized in midst of eight weeks of major summer programming in Area. (Wk. 3)

CALCUTTA**RELIGIOUS HOUSE: CALCUTTA**

External: International Training Institute/Global Research Assembly Hyderabad Area 3-man/3-day blitz gets eight yeses; Bishop Mohanty offers ocean emerging generation camp site in Orissa; Circus Five Guild meeting brings business executive together with bustee iron men.

Internal: Newest House family, Kumars, add baby girl; send Williams and Gayle Thomson to ITI Hyderabad; Gwen Rowe does Krishnagar circuit ride with father.

Contradiction: Maintaining missional corporateness as scattered House is swallowed by separate tasks. (Wk. 3)

SINGAPORE**GLOBAL CENTRUM. SINGAPORE**

External: Hosts Womens Society of Christian Service from local congregation to make Lenten banners and at same time gain key civic authorization visits through same congregation.

Internal: Visits by Global Social Demonstration Task Force produces GSD site in Area Singapore located near Jakarta, named, Kelapa.

Contradiction: Resolving to emphasize ITI as source of troops for GSD, PCE, Global Community Forum (GCF) through translation into practical implementation. (Wk. 2)

RELIGIOUS HOUSE SINGAPORE

External: Contacts prospects for ITI. Global Social Demonstration story and Maliwada night catalyze request to attend consults from Sarawak for "Maliwada Night" by two local church groups and dinner invitations for serious vocational conversation, ITI letters and stationery listing 20 patrons is printed. Converse with Joseph W. Mathews during two stopovers in three days. Mails second Maliwada night, prints and mails ITI stationery to Australia and Apia.

Internal: Continues juggling act with GSD research, preparation for Global Finance Trek, intensification of ITI recruitment, preparation of Area Council and hosting colleagues. Ecclesiola manuals arrive by mail.

Contradiction: Turning lots of authentic interest, excitement and yeses relative to ITI:Penang into paid registrations, quickly (Wk. 3)

RELIGIOUS HOUSE. KUALA LUMPUR

External: Area Bangkok trek reveals Global Social Demonstration Consult prospect and four yeses to ITI:Penang. Two PCE groups reveal deepened collegial stance as each sets targets to corporately develop six full scholarships for ITI.

Internal: House and PCE colleagues plan Quarter I tactics in House Week II PSU, capped with Charlie Chaplin's "The Great Dictator", a powerful demonstration of profound role of humor.

Contradiction: Actualizing PCE's tactics for ITI funding and recruitment to keep groups focus outward while still low profile. (Wk. 2)

RELIGIOUS HOUSE: JAKARTA

External: ITI treks visit four cities in Central Java, while Global Social Demonstration site hunting goes on in Jakarta Metro.

Internal: Co-pastor and husband in PCE church visit for ecclesiola where ITI reports are artformed.

Contradiction: Calling forth local colleagues who are ready to move into GSD. (Wk. 1)

HONG KONG**GLOBAL CENTRUM: HONG KONG**

External: Imaginal Education course of 40 with Canossian Sisters launches Quarter IV. Locates potential Global Research Assembly (GRA) site.

Internal: Specially prepared in-house Chinese meal and floor show with dancing at Gloolden Crown brings down curtain on great Quarter III.

Contradiction: Creating nexus priorities out of many diverse demands. (Wk. 1)

RELIGIOUS HOUSE: HONG KONG

External: LENS happens in Hong Kong! Exciting course includes participants from eight companies representing major banks, industry and diplomatic corps. First ever dual translation regional newsletter overcomes many obstacles is published and mailed on timeline.

Internal: "I will give you strength sufficient for the task", or how did so few people get so much done? Internal mission occasions internal excitement with candlelight interlude providing healing pause.

Contradiction: Sustaining simultaneous attacks on many fronts, while wanting to take breather after so many successes. (Wk. 2)

RELIGIOUS HOUSE: KAOHSIUNG

External: Visit to Roman Catholic Archbishop Lokuang results in hundreds of open doors and lowered cost for ITI facility. Grassroots giving for Week One reaches \$125 USD.

Internal: Launches quarter with Internal Life Manual published. Builds tactical models and another move is made within same apartment building.

Contradiction: Needing "day-stretcher" to enable five calls a day for LENS, PLC, RS-I and development. (Wk. 3)

RELIGIOUS HOUSE: MANILA

External: Key calls on National Economic Development Administration and National Department of Social Welfare add momentum to LENS set up.

Internal: Completes House Council with tactical model for Quarter IV and new confidence in indicative battleplanning method. Welcomes Roxana Harper on Global Finance trek.

Contradiction: Discerning key networks for LENS recruitment in midst of changes in process within government structure. (Wk. 1)

RELIGIOUS HOUSE: TAIPEI

External: Circuit to Keelung and Taoyuan involves young colleague, non-Christian and never had a course, but finds she can tell story very well. School vacation allows regional blitz touching every metro. Results include ITI registrations, PLC registrations and development prospects.

Internal: First intern family arrives with welcoming at House Church: Sung Family-John, Peggy and their three children Shao Yuan, Kuang Kuang, and Shao Kuang. Has 17 in House now. Ecclesiola has 16 around table, with most of House out. Two PLC grads and wives come to House Church; one says he is going to ITI.

Contradiction: Continuing momentum toward ITI when 1000 details are always present. (Wk. 3)

RELIGIOUS HOUSE: CEBU

External: Early Learning Center begins with 98 students and 12 teacher assistants. Largest workday lays House

(RELIGIOUS HOUSE: CEBU)

foundation. Cebu shipyard loans wheelbarrows and tools. Mr. Angel Amistoso, community leader, leads songs and dances at celebration. Receives 300 bags cement in-kind with trucking, storage and shipping. First Cebu Metro Cadre meeting has eight attending asking for continuity.

Internal: Global Finance Trek arrives in form of Roxana Harper and Robert Porter. Ecclesiola study of Maliwada Consult vision and Palm Sunday development letter writing see possibility of raising total program needs for rest of year.

Contradiction: Designing time/task in midst of appropriate observation of Holy Week. (Wk. 3)

RELIGIOUS HOUSE: DAVAO

External: Gains signal breakthrough with United Church of Christ in the Philippines (UCCP) as House member is invited to lead Bible study for Lay Training Conference.

Internal: Battleplanning for Quarter IV reveals new clarity on centrality of Primal Community Experiment (PCE) and Global Social Demonstration.

Contradiction: Finishing battleplan in midst of necessary tactical preparation. (Wk. 1)

TOKYO**RELIGIOUS HOUSE: TOKYO**

External: Public affairs officer for U.S. Military Forces in Japan writes endorsement letter for TM '76 to each military service. Metro circuit appointments made for Niigata, Shizuoka, and Utsunomiya Metros. Presents EI story with emphasis on Movemental Order as Maundy Thursday Lenten program at St. Albans Anglican Episcopal Church; creates interest, excitement, and favorable response.

Internal: Moves to Sanya Parish, enabled by in-kind supply of trucks and drivers; labor done by old movement colleagues and by new colleagues from parish, including 'drop-in' neighbor who unloads truck at 11:00 P.M. Eija Karikoski begins two-week sojourn.

Contradiction: Keeping momentum going in midst of language shortcomings and three-day total Japan-wide transportation strike. (Wk. 3)

RELIGIOUS HOUSE: JEJU

External: Bus is in-kind for island trip of 60 Kwangyung elders, preschool teachers begin intensive global language classes. Holds credit union membership campaign. Rev. Kang Byoung Hoon meets with Governor Chang and is invited for visit to the Blue House.

Internal: Welcomes Jeju intern, Miss Hur Myung Hee, sent by her local Presbyterian Congregation in Jeju City to Kwangyung; at Governor's request telephone is installed in ICA auxiliary office. House members, Choe Jong Shik, Hannah Dexter, Kim Chong Man and Gil Woltjer return from Seoul assignments. House elder's family enjoys excitement, surprises and picnic with Kwangyung elders.

Contradiction: Predicting immediate consequences of Seoul authorization. (Wk. 3)

RELIGIOUS HOUSE: SEOUL

External: Prepares for shift to Quarter IV with shift to using global finance model April 1. Completes first draft of ICA registration document.

Internal: Teams celebrate end of Quarter III and Week II PSU; prepares Quarter IV Grassroots Development System. Welcomes Theresa Kim back from Isle of Dogs Consult, Boston, Chicago, San Francisco and Los Angeles.

Contradiction: Creating adequate implementaries for actuating global programs. (Wk. 2)

RELIGIOUS HOUSE: FUKUOKA

External: Goes full steam ahead as experiences four-pronged attack this week. Guild does specific research in Yoshizuka while House has guardians over for Jeju slide-show, writes letters back home as global development tactic, and holds LCC in Nagasaki.

Internal: Internal life issues workshop allows House to deal seriously with necessary issues while study of "Community" paper begins to re-create context.

Contradiction: Enabling and training people, when training is translated or is in 'second language' in midst of knowing task is to be catalytic. (Wk. 2)

RELIGIOUS HOUSE: OSAKA

External: Consultation with Nagoya colleagues focuses on Primal Community Experiment (PCE) methods and HRM initiation with presence of three orders: School Sisters of Notre Dame, Augustian and Scarboro Foreign Mission Society. Receives yes from Daiwa Bank for LENS.

Internal: Finance visit by Roxana Harper excites House. Treks to historical and symbolic sites in Japan: Kobe, Kyoto, Hiroshima and Tokyo. Completes internal life design. Emerging Generation holds three Town Meetings in three countries in Saturday night celebration.

Contradiction: Getting clarity on quarter's design. (Wk. 1)

RELIGIOUS HOUSE: SENDAI

External: Geo-social analysis and field visitation in Sendai City reveals again that PCE is about style resurgence, new possibility and life style for any local man.

Internal: Celebrates Holy Week through litany, fasting, and local church participation.

Contradiction: Holding tension between doing geo-social analysis and ever increasing demands of contacting new people for development and ITI marketing. (Wk. 3)

SYDNEY**RELIGIOUS HOUSE: SYDNEY**

External: Eight of nine towns represented at CMA at Canterbury Municipality (106 present). Guardians' meet and plan backup for Oombulgurri, CMA, and Global Social Demonstration Consults.

Internal: Full hosue for four days with more colleagues from elsewhere than from Sydney House: four from Canberra, four from Singapore, one from Cincinnati. Sends out Geoffry Oakley to continue university studies.

Contradiction: Turning holiday mindset into missional thrust. (Wk. 3)

RELIGIOUS HOUSE. PERTH

External: Guardian returns from Area meeting revitalized for Oombulgurri support through region. Regional newsletter communicates total mission and invites increased engagement.

Internal: New 16 room house on 1/2 acre block, with Italian gardener located, with theme, 'move out, move in, then move it'. House commences quarter battleplanning by seeing "One Flew Over The Cuckoos Nest" highlighting styles of miracle worker, general and Jesus principle.

Contradiction: Using house shift and three consecutive public holiday weekends as gift rather than block to mission. (Wk. 3)

RELIGIOUS HOUSE: DARWIN

External: Visit from centrum colleague enables ITI recruitment. Creates local ICA brochure for development contacts.

Internal: Continues as wayside crossroads as Bill Alerding visits from Global Operations Centrum:Singapore and Olive Evans, Mark Mitchell and Bob Lingafelter come through on way to City 5 Consult and Area Guardians' Meeting.

Contradiction: Finalizing major strategies in order to complete implementaries to allow all to be fully engaged on all fronts. (Wk. 2)

RELIGIOUS HOUSE: OOMBULGURRI

External: Attends housing consult with architects; is fantastic happening with Kit Kraus, town planner, and Bob Harvey, builder, as house design is finalized, new roads marked and slashed, sites for new houses marked, and families decide on size of their homes. Representatives of Aboriginal Legal Service, Department of Aboriginal Affairs, Department of Social Security, Director of Office of the North-West, entire Aboriginal Lands Trust, and local Wyndham teacher visit, ask questions, offer assistance, and seek to participate in development of Oombulgurri.

Internal: Animal doctor, Willis Pfaff, arrives ahead of wife. Ray Richmond returns with in-kind report.

(RELIGIOUS HOUSE: OOMBULGURRI)

Consultants enliven corporate life during week as screening and raising 26 week timeline of tactics and implementaries takes place.

Contradiction: Relaxing in state of excitement over heavy decision which relate to building permanence. (Wk. 2)

RELIGIOUS HOUSE: ADELAIDE

External: Evaluation of Port Pirie 200 person Community Meeting Australia (CMA) confirms a really great day. Regional priors gather at House to plan Port Pirie CMA celebration for Week 13. Bruce Martin conducts collegium and focuses on engaging new and re-engaging old colleagues in corporate mission.

Internal: Rees family's presence is received as great gift to Adelaide House. Members attend wedding of Rodney Rees and Janine Hall. Collegium on relationship between Global Social Demonstration (GSD) and RS-I course is highly illuminating.

Contradiction: Intensifying and doing all three campaigns at same time after throwing body and soul into miracle of Port Pirie CMA. (Wk. 1)

RELIGIOUS HOUSE: MELBOURNE

External: Metro cadre in action: Vanne Trompf, Melbourne Architect, returns after week in Oombulgurri; Lisa Tod sends personal letters to bring colleagues up to date on development and Community Meeting plans; Richard Pether wants to set up CMA in Portland.

Internal: Receives Jim White as Week II sojourner for Quarter IV. Richard Pether drops by on way back from Isle of Dogs Consult and Community Day in Canterbury, England. Internal life manual enables students and Emerging Generation to carry major load.

Contradiction: Intensifying missional demands of Oombulgurri Development and CMA launch to enable intern recruitment. (Wk. 2)

RELIGIOUS HOUSE: CANBERRA

External: New face in immigration acclaims contentless methods.

Internal: Development workshop launches funding for Area's trippled budget.

Contradiction: Focusing course having thrown throttle wide open. (Wk. 3)

RELIGIOUS HOUSE: BRISBANE

External: Regional colleagues meet to check signals, in preparation for Area Council. Northern trek completes Townsville and five weeks "out", heads back south. First meeting of Kurilpa Caretakers launches stake care dynamic in PCE; six-week northern trek ends adding another troop to first Community Meeting Australia push, with two weeks to go. Kangaroo Point CMA lays foundation for story that CMA is for every community. Apex and Rotary speaking engagements open new doors for both CMA and Development.

Internal: Dierdre Dowsett drops in from Oombulgurri. Vosler is sent to Area Priors' Council. Cannery job brings House to full employment. Spontaneous regional celebration is catalyzed by Ramages' visit from Oombulgurri. Presence of Global Operations Centrum gives direction for common global models.

Contradiction: Getting overview that enables real decision about what is absolutely necessary in plethora of possibility and demand. (Wk. 12)

SUVA

RELIGIOUS HOUSE: MAJURO

External: Marshalls Apprentice Night School (MANS) begins with 25 in attendance. Chips are mass produced--700% increase. First sale of coconut lumber and order placed for first coconut lumber house.

Internal: Small Industry Program collegium starts re-imaging job of task as making money. Walkup Silk tells Marshallese myth and James Chia gives Singapore report to ground ecclesiola.

Contradiction: Seeing difference between action of one living out of image of wage earner as contrasted to money maker affects beginning of more small industries. (Wk. 1)

RELIGIOUS HOUSE: APIA

External: Metro cadre makes Quarter IV timeline working until 11:30 in mood of high celebration. Local guardian offers employment to enable staff to participate in ITI pedagogy. Lions Club promises \$100 for ITP enablement. Roman Catholic newspaper prints Easter edition on center spread of House Lenten Card in Samoan and English.

Internal: House moves to new location: House owned by local guardian family. Move brings huge refrigerator, stove, Gestetner and first phone ever to Apia House. After one day occupancy local Roman Catholic priest blesses House and participates in nailing up placque.

Contradiction: Appropriating time lag between situations and communication. (Wk. 3)

SAN FRANCISCO**RELIGIOUS HOUSE: SAN FRANCISCO**

External: Two workshop training sessions for Palo Alto and Daly City bring representatives from three other TMs—all excited. Church Women United in Oakland invite TM '76 to participate in May city-wide meeting. Jaycee clubs in San Rafael and Napa taking things in own hands and plans for TM.

Internal: Tom Price and Donna Monroe participate in 5th City Consult. House experiences three days of discontinuity in midst of preparing for quarter with eight TMs already set—gathers for great Easter House Church with colleagues.

Contradiction: Keeping all plates spinning at once—the already existing TM plates and new TM plates—without dropping any of them. (Wk. 3)

RELIGIOUS HOUSE: SAN JOSE

External: Call-backs to check projected TM dates secures three tentative and one sure dates. Working with police forces regarding LEAA and CIF, San Jose is set.

Internal: Ushers in Easter discontinuity by looking at "Small is Beautiful" during collegium and with visiting Sacramento priors' collegium.

Contradiction: Finding right string in tangle of possibilities to open wide and release motivity of colleagues in taking on TM as their task. (Wk. 3)

RELIGIOUS HOUSE: SACRAMENTO

External: Del Paso Heights sets June 19, 1976 Town Meeting date. Senior Durst family returns from Majuro Consult and decides to plug into TM '76.

Internal: New office volunteer pledges Saturday mornings as well as office supplies for TM '76 campaign. Holds discontinuity. Sends out McCabes to Springfield, MA on job-training assignment.

Contradiction: Keeping people motivated. (Wk. 3)

RELIGIOUS HOUSE: SEATTLE

External: Rev. Bob Lester, Renton TM coordinator, stops by House and says "as soon as we've finished our TM, we'll be ready to work with others".

Internal: Celebrates Holy Week with traditional mutton and readings from "The Last Temptation of Christ" on Maundy Thursday and sends House out into Easter discontinuity. Receives Garnett Kroeger from Rochester Region as guest.

Contradiction: Moving on an exciting quarter battleplan before quarter moves in on House. (Wk. 3)

RELIGIOUS HOUSE: LOS ANGELES

External: Finds spirit woman to coordinate one TM and possibility breaks out for another, both critical to breaking open Community College network and center city core.

Internal: Further gridding of urban metros gives insight which breaks loose circuiting and phasing.

Contradiction: Entering new quarter faced with crisis in management producing 13 Xaviers. (Wk. 2)

RELIGIOUS HOUSE: PHOENIX

External: Holds TM with high school students at camp sponsored by Phoenix Boys' Club. Tempe steering committee creates solid promotion campaign.

Internal: Study of Ernest Schumacher impacts House at ecclesiola. Richard Beck arrives to sojourn. Carol Poole and Jennifer Ross visit from Student House. Reminder of who is in charge as two cars acquired Week One break down in Week Two.

Contradiction: Learning to waltz pillar of salt as time for Grand Ball to begin is short. (Wk. 3)

RELIGIOUS HOUSE: SALT LAKE CITY

External: Journey to Grand Junction Metro confirms progress toward TMs in Grand Junction and Montrose, and breaks open hitherto unvisited Craig County. Return and reports of four guardians impact all.

Internal: House Church celebrates completed lives of Tom and Kim Overall, seven and six, children of Jim and Kitty Overall. Home struggles to articulate edge in decor and publish Quarter IV internal life structures.

Contradiction: Getting everyone plugged into geography in time to reap TMs in Quarter I. (Wk. 3)

RELIGIOUS HOUSE: BILLINGS

External: Holds Town Meeting Consult with 45 key grassroots leadership from 31 towns.

Internal: Study of common memory papers at collegium during Holy Week reveals key paper being "Sickness Unto Death" taught by local clergy colleague. Seder meal at Episcopal Church followed by prayer vigil service of Tenebrae at Billings House.

Contradiction: Getting back on circuits: meaning every House member to geography. (Wk. 3)

RELIGIOUS HOUSE: DENVER

External: Preparation for two TM '76 on April 24, takes form of training eight community people (including state legislator) for workshop leaders in Laramie, Wyoming. Take trek to Sterling circuit to issue special guest invitations.

Internal: Holds discontinuous Easter Week II while team circuit assignments release intensified engagement in metro cadre.

Contradiction: Doing tactical implementation needed to build for acceleration rather than keeping program going. (Wk. 3)

RELIGIOUS HOUSE: RAPID CITY

External: Hedding troika meets and plans for 20 organizations to be represented at May 5, meeting. Women in Future (Women's Forum) holds core planning session with six community women represented.

Internal: "Intermediate Technology" seminary study with extended order creates great expectations for quarter's ecclesiola model. "Generalship" paper study focuses quarter's priorities. Week II discontinuity provides journey in reflection.

Contradiction: Moving it...and keeping the rolling ball rolling. (Wk. 3)

EDMONTON RELIGIOUS HOUSE: EDMONTON

External: Blackfoot Reservation Forum poses challenge in finding appropriate ICA consultants and Indian background information. Begins Bullseye, 50-mile radius from city circuit.

Internal: New messages infiltrate image screens: Rory Gowers returns from Isle of Dogs Consult, new quarter charts focusing corporate energies, and special Holy Week exercises, reading of Passion from three gospels.

Contradiction: Shaping sponsor's group when forum date is named for fall. (Wk. 3)

RELIGIOUS HOUSE: VANCOUVER

External: Jaycee letter of authorization from National Vice President notes how Jaycee network can become catalysts in community in having CFC.

Internal: Ditto machine arrives. Experiences practical holiness as workshops with colleagues continues all week in prep for next two quarters as teams break new ground.

Contradiction: Laying tracks as go is slow and painful but no one else knows route. (Wk. 3)

RELIGIOUS HOUSE: ANCHORAGE

External: Dillingham (population 1500) TM for Week 4 is on way with eight workshop leaders trained. Task forces have new life.

Internal: Celebrates wedding of David Sinclair and Susan Niven on Easter Sunday, with Mrs. Kathryn Sinclair joining House from Corringan, TX. Holds focus for week of fasting and feasting, hard work and celebration, and impacts witnesses to the covenanting ceremony with male-female singing of "All Creatures of Our God and King".

Contradiction Building practical models and story that give scattered activity corporate focus. (Wk. 3)

RELIGIOUS HOUSE: SASKATOON

External: Metro colleague, Tom Martin, decides to represent Area Edmonton at Global Guardians' Meeting.

Internal: Spring fever manifests itself in recreation of children's space.

Contradiction: Transforming story of farming rhythm to "now is the time for CFC". (Wk. 2)

RELIGIOUS HOUSE: WINNIPEG

External: Activates steering committee in the Pas; high school principal in Thompson agrees to serve on steering committee after 15 minute context.

Internal: Fresh paint transforms collegium room. Bannister finally emerges from under six coats of paint.

Contradiction: Enabling steering committee to see that community forum is their responsibility. (Wk. 3)

HOUSTON**RELIGIOUS HOUSE: HOUSTON**

External: Community Issues Forum (CIF) becomes part of Oak Forest TM follow-up. Houston Chamber of Commerce head, plus state representatives, county commissioner, city councilman, district judge, two school principals, sheriff and police department representatives, three pastors and others are part of sponsor's committee.

Internal: Easter House Church is largest in two years despite eight inches of rain in five hours.

Contradiction: Sighting challenge that breaks loose momentum. (Wk. 2)

RELIGIOUS HOUSE: AMARILLO

External: Circuit continues during Holy Week with key presentation.

Internal: Spirit depths exploded during Holy Week as House studys "Uniqueness of Jewish History", celebrates Maundy Thursday Seder Meal, and journeys through Week II Odyssey ending with in-kind Easter Feast.

Contradiction: Exemplifying new religious in midst of secular thrust of Town Meeting. (Wk. 3)

RELIGIOUS HOUSE: SAN ANTONIO

External: First Town Meetings approaching, two in one week, keeps all busy getting feet wet twice as fast in Corpus Christi and Brownsville.

Internal: Battleplans in nearby town and celebrates at Floores Country Store, country-western dance hall in Helotes.

Contradiction: Seeing through complexity of discovering those who care in dozens of places. (Wk. 2)

RELIGIOUS HOUSE: OKLAHOMA CITY

External: Suburban Warr Acres sets June 12, date for TM '76 while Central City 5 CIF steering committee rolls onward, gathering involvement of Work Release Center, and official city agencies.

Internal: Creates battleplan and late night ecclesiola construct which allows entire House to participate without neglecting on the road appointments.

Contradiction: Moving strategically in Quarter IV in order to release more TM '76 possibilities in Quarters I and II. (Wk. 3)

RELIGIOUS HOUSE: DALLAS

External: Demonstration "East Dallas Town Meeting" gets excellent TV coverage. Mayor Adlene Harrison welcomes crowd of 150 with 250 experiencing event over course of day with significant black participation.

Internal: Impact of Daily Office as foundational dynamic of care and sustenance intensifies with participation of colleagues from six Texas-Oklahoma Houses, gather to discuss TM and finances.

Contradiction: Keeping head of steam so that no possibility is dropped. (Wk. 13)

RELIGIOUS HOUSE: TULSA

External: Tulsa Bicentennial Commission endorses Tulsa TM '76 scheduled for June 5, 1976.

Internal: Celebrates Easter with feast fit for Kings in Oklahoma City.

Contradiction: Keeping in "Black" relative to self-support. (Wk. 3)

RELIGIOUS HOUSE: NEW ORLEANS

External: Jackson, MS TM burst into history, by proclamation of both mayor and governor and under able MC-ship of State Senator Con Maloney. All Jacksonians who did not come are regretting it. Two front page articles on Sunday and Monday proclaim worth and excitement of TM '76.

Internal: Third New Orleans troika family, Mary Beth Graham, stops in Jackson for TM on way to new assignment.

Contradiction: Moving when on other side of major goal. (Wk. 2)

RELIGIOUS HOUSE: MEMPHIS

External: Blitz part of Arkansas which had not been seen before and was thought to be "dead" country.

Internal: Thursday morning Booher model study brings consciousness about The Way Life Is.

Contradiction: Being intentional in midst of being overwhelmed by demands. (Wk. 6)

RELIGIOUS HOUSE: ATLANTA

External: Holds first meeting of East Lake steering committee for May 29th LEAA Community Issues Forum. Two newspaper articles published this week, both written by steering committees. Co-coordinator of Jacksonville TM is waiting on doorstep when circuit team rides into town.

Internal: Guardian returns from Chicago with exuberant report on Guardians' Consult. "Small is Beautiful" intrigues House.

Contradiction: Experiencing being blinded by dazzle of gung-ho steering committees and not seeing comprehensive caring which is needed for other communities. (Wk. 3)

IRELIGIOUS HOUSE: CHARLOTTE

External: Sixteen are present at core meeting for Mecklenburg Horizons 5; Rock Hill, SC sets date for first meeting, while York, SC says "Yes" to TM; House joins signal church in celebration of Maundy Thursday.

Internal: Completes quarter battleplan using edge program method. Local guardian debriefs House on recent Consult. Sends out Schreiber family to Milwaukee House.

Contradiction: Enabling practical response to new "Yes". (Wk. 3)

RELIGIOUS HOUSE: MIAMI

External: TM steering committee finds location in Key West. Steering committee date set and coordinator chosen for Law Enforcement Assistance Association (LEAA) Community Issues Forum (CIF). Have put names on 144 TMs.

Internal: Sends House member in Cadillac to Guardians' Consult. Emerging Generation are impacted by guest who sojourns while father attends Guardians' Consult. Priorship attends Area Meeting in Atlanta.

Contradiction: Using models comprehensively so that snowball does not become avalanche. (Wk. 1)

CHICAGO**GLOBAL CENTRUM: CHICAGO**

External: Uptown Work Day (in midst of spring showers) prepares parks for planting in two weeks and creates miracle mile of cleaned sidewalks. Town Meeting '76 Commemorative Workbooks arrive Thursday night.

Internal: Order celebrates the birth of Samuel Guy to Dave and Gay Flowers on April 23 in Edmonton and birth of a daughter to Satya and Kumari Kumars on April 10 in Calcutta. Student House senior fellow wins four-year (\$3000 per year) scholarship from National College of Education.

Contradiction: Building catalytic back-up schemes for Global Community Forum and Global Social Demonstration. (Wk. 3)

RELIGIOUS HOUSE: CHICAGO

External: Three more Town Meetings happen this week: Hoffman Estates/Shauberg, South Holland, East Side, with 785 participants. Sends out Tom and Lucille Liles to Isle of Dogs from 5th City.

Internal: Restructures troops in preparation for Consult prep. Joe Ayres, accountant, spends part of vacation on House Finance records. Five Marshallese and 20 Mennonite guests visit.

Contradiction: Reorganizing energies without losing momentum in all campaigns. (Wk. 12)

RELIGIOUS HOUSE: WICHITA

External: Preparation for Governor's Council on Aging opens doors to TM '76 in many communities.

Internal: Ecclesiola model impacts House as just exactly what is needed.

Contradiction: Using elders' excitement about Governor's Council on Aging TM '76 for eliciting yeses to TM '76 across state. (Wk. 3)

RELIGIOUS HOUSE: OMAHA

External: Downtown Optimists provide broad based support of Omaha-wide TM '76.

Internal: Sends out John Reynolds to enable 5th City Consult. Easter House Church in Lincoln after week with Emerging Generation home and Week II prep for second half of year. Sends Dr. Fred Catlett to 5th City Consult. Sends out TM sponsor to Academy.

Contradiction: Getting TM dates set. (Wk. 3)

RELIGIOUS HOUSE: KANSAS CITY

External: Wichita and Kansas City ICA consultants meet with Health, Education and Welfare (HEW) officials to plan expansion of TM through all counties in Kansas. Sends Rhoda Ertel out to 5th City Consult.

Internal: Experiences almost overwhelming nostalgia after having first ecclesiola in four months. Sends Druckenmillers to Chicago to enable Consult. Remaining members participate in Pascal supper with PCE colleagues.

Contradiction: Discerning necessary catalytic events between Town Meetings. (Wk. 3)

RELIGIOUS HOUSE: MINNEAPOLIS

External: Four TMs in Week II use all staff plus. Intensity of experience allows direction of TM to breakthrough. Preparation for Wagner, SD Consult takes place. Treks to SD, MN, IA.

Internal: Sends out Ruth Dyhr to Academy. Welcomes Paul Dyhr as sojourner. Fantastic celebration is experienced with all orchestrators and workshop leaders.

Contradiction: Shifting into new quarter when TM and other activities do not flow with rhythm of time designs. (Wk. 1)

RELIGIOUS HOUSE: ST. LOUIS

External: Guardians' Meeting in Chicago returns two TM coordinators to Region with decision to do 30 TMs, which this week became an operational reality. Town of Ina, IL (pop. 352) broken open to TM through Cooperative Extension Service in southern IL.

Internal: Quarter III celebration includes movie, "Duchess and the Dirtwater Fox" and conversation over fondu. Multi-purpose 'war room' beginning to take shape with six quarter timeline on wall.

(RELIGIOUS HOUSE: ST. LOUIS)

Contradiction: Holding tension between bringing intentionality and quality support to TMs already scheduled and breaking new towns head on and through networks. (Wk. 3)

RELIGIOUS HOUSE: PEORIA

External: Morton steering committee dons Bicentennial dress for county newspaper article and workshop leaders get trained.

Internal: With two permeators on vacation circuits and one at 5th City Consult, House maintains full pace with three House members and extended family member who does Daily Office roles.

Contradiction: Maintaining intensified missional push both on the road and in House. (Wk. 3)

RELIGIOUS HOUSE: GREEN BAY

External: Metro guardians, Steve and Jackie Smith, participate in 5th City Consult.

Internal: Change in Daily Office space and style of sophistication of Daily Office necessitated by need for emerging generation to have room. Bill Gooch helps with enablement of Consult.

Contradiction: Specifying implementaries for all troops at all times. (Wk. 3)

RELIGIOUS HOUSE: MILWAUKEE

External: Three workshop training sessions in three different cities take place. Town Meeting sponsorship meeting ends with smelt fishing. TM sign on bus greets circuiter on arrival in city.

Internal: Easter feast and Schreibers arrival makes for great event. Emerging Generation refuse discontinuity and show up for Daily Office and breakfast. Printing press creates visible sign of internal technology.

Contradiction: Putting clarity on vision of where plan to by by July in midst of great stories of accomplishment. (Wk. 3)

RELIGIOUS HOUSE: INDIANAPOLIS

External: TM date set in Owensboro, KY. Jaycees external vice presidential candidates (running unopposed), in Indiana and Kentucky lay plans for 100 to 150 TMs.

Internal: Loan of Catherine Welch from Chicago House enables Jaycee breakloose. Assigns Darrell Marley to 5th City Consult; creates metro program support plan.

Contradiction: Developing air traffic controller in midst of needing to have all plans out all the time. (Wk. 2)

RELIGIOUS HOUSE: CINCINNATI

External: Cincinnati Association of Certified Life Underwriters (CALU) selection intensifies significance of network selection.

Internal: New quarter shifts assignments, giving time for reflecting on skills and necessary tasks.

Contradiction: Creating structures to sustain intensifying engagement of bi-metro colleagues in midst of strategies built for snowball. (Wk. 2)

RELIGIOUS HOUSE DETROIT

External: Five of six metros are represented at Regional Council to face contradictions head on. Sponsors meetings ground TM '76 as unprecedented gift. Questions about follow-up are raised as Pontiac calls city council meeting to discuss proposals from TM '76 and invites all participants. Inner city sponsorship committee meets for four long hours to firm up commitments for upcoming TM '76 on April 3, the first in city of Detroit.

Internal: Study of "Sophistication" paper shows way for presencing TM '76 in an appropriate style. Raising question of intern possibilities pushes decision to strengthen internal life. House celebrates with world famous chicken dinner.

Contradiction: Enabling covenant without causing schism between House and region. (Wk. 12)

RELIGIOUS HOUSE: CLEVELAND

External: Spin-off of development contacts and new TM sites from double TM weekend amazes all and solidifies Cleveland.

Internal: Collegium battleplanning for Quarter IV off of TM program chart is built using social demonstration material.

Contradiction: Tapping events and time of TM grads while not missing circuit beat. (Wk. 2)

NEW YORK RELIGIOUS HOUSE: NEW YORK

External: Visit to League of Women Voters head in New York, who sees Town Meeting as crucial to LWV organization. Realignment of eight pressure point communities in which to have signal TM is happening. One TM approaches in Lower East Side as demonstration of bilingual TM in hopeless neighborhood.

Internal: Send outs to 5th City Consult, Washington, and Global Development Centrum are key to sustaining by reminding all of global responsibility.

Contradiction: Saying yes to unorthodoxy. (Wk. 3)

RELIGIOUS HOUSE: PITTSBURGH

External: In midst of intensive push in West Virginia and breakthrough with Community Action Program (CAP) network, metro colleague sends 22 college students to Pittsburgh for regional RS-I which occasions vocational brooding on part of all. Colleague in Cory, PA decides to go with TM '76 and sets date for one two weeks away and returns to Cory to set up steering committee and training workshops within week.

Internal: Transformation of House into regional training center as successfully spread out small troops to cover setup, RS-I pedagogues, enablement, Emerging Generation, permeation, TM and regional workshop training session. Brooding and conversation over metro cadre through battleplanning brings key breakthroughs to doing three campaigns.

Contradiction: Maintaining PCE dynamic in midst of doing TM. (Wk. 2)

RELIGIOUS HOUSE: ROCHESTER

External: Project Possibility Schenectady TM follow-up sign of hope, draws nearly 100 people to decorate vacant downtown store windows with each sponsoring organization's global mission. Changes main street from sign of death to a sign of life.

Internal: Sends out Mike Ford to City Five Global Social Demonstration for quarter.

Contradiction: Looking at whole and determining which models and tactics to do first that will spring loose necessary deed. (Wk. 2)

RELIGIOUS HOUSE: RICHMOND

External: Big week for circuits as team visits nearest points of Richmond Metro, eight towns in all.

Internal: Three people cover Daily Office assignments all week demonstrating holding structures is key, not how many people attend.

Contradiction: Building major strategies to engage more people for bigger job. (Wk. 12)

RELIGIOUS HOUSE: WASHINGTON

External: Major breakthrough for D.C. city-wide Town Meeting: Mayor Washington endorses "D.C. Horizons Festival '76" designed by TM steering committee that assigns Bicentennial Director Knighton Stanley to work directly with committee on five elements of weekend, promises funding, will write proclamation. Elements include TM '76 (planning for 1,000) and Saturday night cabaret celebrating New Citizen and Century 3.

Internal: Melinda Howell arrives to coordinate Area Council prep; breaks loose in-kind possibilities. Holds spring house cleaning. Studies Charles Bush lecture.

Contradiction: Building rational models for task when resurgence is running over you like a steam roller. (Wk. 3)

RELIGIOUS HOUSE: BALTIMORE

External: Law Enforcement Assistance Association:Community Issues Forum, LEAA:CIF, establishes Eastern Terrace community, May 29 target; presentation of CIF spawns interest in Fifth City. Martinsburg TM evaluation exposes wide spread interest through metro.

Internal: Quarter planning finds indicative battleplanning becoming more helpful as focusing tool.

Contradiction: Finding structures and ways to use structures to enable individuals' actions to be corporate thrust. (Wk. 2)

RELIGIOUS HOUSE: PHILADELPHIA

External: First 11 steering committees gather Saturday for great three hours of TM evaluation and celebration that allows all to turn to seven May TMs by initiating 15 minutes battleplanning during each a.m. collegium. Corporation funding of TM breaks loose by major bank shouldering cost of one TM.

Internal: Releases all for engagement in experience of depth of accountability through daily battleplanning and assignment, presence of guests, and symbolically in standing accountable by teams and units.

Contradiction: Allowing nothing to distract anyone from total concentration on TMs. (Wk. 3)

RELIGIOUS HOUSE: NEWARK

External: Poughkeepsie pre-sponsorship meeting is sparked by presence of Jaycee representative. Bi-metro Council evaluates past quarter and builds next quarter's plan in record seven and half hours.

Internal: Area Houston guardian Jim Kelbaugh drops by for ecclesiola. First "Jesus Principle" conversation and "Generalship" study make ecclesiola hit for all.

Contradiction: Keeping all sponsorship committees meeting and circuiters circuiting without momentum. (Wk. 2)

RELIGIOUS HOUSE: BROOKLYN

External: Launches two new steering committees for Brooklyn Metro - Canarsie (CIF) and Maspeth (Queens) for first Town Meetings to occur in that metro, adding to New York City total.

Internal: Easter Area Council in Washington D.C. builds practical vision of summer as best and busiest ever.

Contradiction: Creating troop deployment scheme: having right people with right tools at right place, all the time. (Wk. 3)

RELIGIOUS HOUSE: HARTFORD

External: TM committee in parish receives in-kind brochures. Plainville forms steering committee. Sends three to Guardians' Consult, including co-chairman of Greenfield TM. Creates bi-weekly newsletter.

Internal: Dinner is event-filled ranging from passing pots to sword play by candlelight. Children go to see pets on parade.

Contradiction: Preparing troops for snowball seen on horizons. (Wk. 1)

RELIGIOUS HOUSE: MANCHESTER

External: Intensive visitation push in Nashua catalyzes core (troika dynamic) with clergy colleague taking responsibility.

Internal: Area Council impacts House and celebrates Washington, D.C. location for Global Social Demonstration. Welcomes Shirley Bell for visit.

Contradiction: Beating demon that would keep House from mobilizing forces to implement Area TM '76 phasing plan. (Wk. 3)

RELIGIOUS HOUSE: BOSTON

External: Boston informational meeting with 60 people representing economic, political and social dimensions of Boston launches eight projected TMs. At Rhode Island follow-up (champagne toasting) steering committee

(RELIGIOUS HOUSE: BOSTON)

says we will go anywhere to set up TM. Precious evening of tri-metro planning claims quarter's worth of committees, TMs, presentations and circuits; as catalytic demonstrations: kick off of State of RI, break loose of Worcester Metro, launching of City of Boston TMs.

Internal: Area Council preparation and Area meeting in Washington hold reflection of quarter and vision of future. Internal life evaluation and planning refills House gas tanks for coming quarter.

Contradiction: Holding tension between Holy Week demanding reflection time and City of Boston TM set-up demanding constant actions. (Wk. 3)

MONTREAL RELIGIOUS HOUSE: MONTREAL

External: Receives two CFC decisions. Collaboration with local St. Vincent de Paul Society shifts understanding of community care.

Internal: Reorganizes CFC circuit model with total House participation catalyzes CFC decisions.

Contradiction: Being able to name contradiction so people can make depth decision. (Wk. 2)

RELIGIOUS HOUSE: TORONTO

External: Guardian who is unknown to House but recruited by local patron phones to say he knows all about House and Forum and needs to know how he can work together with House.

Internal: Discontinuity arrives as welcome three generations of Bishop family, reorder space, make candles, and summarize humble dwelling.

Contradiction: Turning methods and broad images into detailed practical plans. (Wk. 3)

RELIGIOUS HOUSE: OTTAWA

External: Sudbury downtown businessmen request consult on downtown issues. Steering committee for Ottawa West Forum picks up leadership roles.

Internal: Wall comes tumbling down to make new collegium room, out of two small spaces. Capucins visit House to celebrate Saturday night.

Contradiction: Dealing with Ottawa in particular as have dealt with region. (Wk. 1)

CARACAS RELIGIOUS HOUSE: CARACAS

External: Holds signal Rotary LENS with 28 around table including past governor and next governor of Venezuelan Rotary and president of sponsoring club. Cadre begins study of Kawangware documents. Welcomes back Bede Hornung from Europe who reports on additional 500 deutsche marks for ITI:Caracas and spins ITI:Amsterdam reports. Holds luncheon with new LENS grads reveals excitement and interest in GSD and LENS pedagogy. Global Community Forum pedagogy is kicked off with Week Six Foro Comunitario Venezuela (GCF) fast approaching.

Internal: Guardian Jamil Dunia invites House and LENS faculty to celebrate success of LENS seminar with exquisite buffet dinner. Rick Loudermilk from LENS faculty spins on GSD. Drives to historic La Victoria and up mountain dirt road to Colonia Tovar (small German community) during Easter. Repaints hall and collegium room.

Contradiction: Following up RS-I to insure promising course. (Wk. 3)

GLOBAL CENTRUM
QUARTER IV, 1975-76

THE GLOBAL ORDER CENTRUM REPORT
FOR WEEK THREE

BRUSSELS
NAIROBI
BOMBAY
SINGAPORE
HONG KONG
CHICAGO

GLOBAL
DEVELOPMENT
CENTRUM

Bombay, Brussels and Chicago all working on new funding systems to strategically engage all the "yeses" that are in front of us. Bombay reports securing all necessary medicines, vitamins and health foods for the Maliwada clinic and community kitchen. Brussels adds to its circuit schedule a troop with contacts in arrival of Charles Morrissey. New edge emerging out of Guardians' Consult in North America is creation of guardian funding task forces. Guardian meetings have occurred in Los Angeles, San Francisco and Phoenix to launch the work with (General) Rodney Wilson visiting and contexting work of the task forces. The contradiction lies in the arena of the transitional scheme that strategically structures and tactically engages the troop power of movement and the contacts of movement.

GLOBAL
RESEARCH
CENTRUM

Brussels reports receiving set of Global Social Demonstration slides. Recent visits in Bombay Area with top government officials gets the O.K. and creates enthusiasm for massive replication of Maliwada Human Development Project. Fifth City Consult held in Chicago with 160 regularly participating, 76 of whom were local folks, was great happening as resolve was made to do new industrial development. The auxiliary and community sat down together and articulated the new implementaries many of which have already begun to happen. The contradiction lies in the arena of getting a large gift of funds for GSD that will catalyze other large gifts, as need is seen to fund all demonstrations rather than project by project.

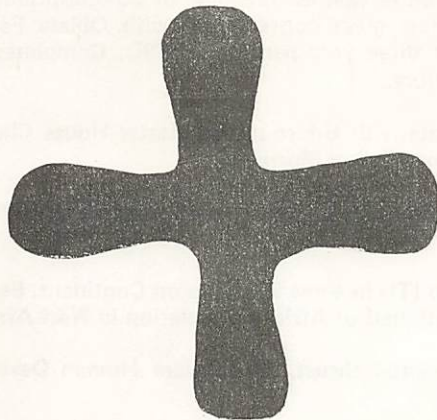
GLOBAL
OPERATIONS
CENTRUM

Bombay creates 75% Indian staff assignments for ITI. Brussels reviews future implications of Town Meeting data across continent. Programs include TM '76 in Bainbridge Island, Bemidji, Bollin g brook, Bryan, Clear Lake, Columbia, Cor y, Daly City, East Madison, Fairmont, Framingham, Imperial Valley, Laramie, Madison, Madison Heights, New Orleans, New York City, Palo Alto, Park Ridge, Payson, Scranton, Shawnee, Silver Valley, Sterling, Stevens Point, Sudbury, and Syracuse; Community Issues Forum in Lawton and CMA in Canterbury. The contradiction lies in the arena of discerning the pattern of programs and intra global movement activities that releases massiveness in GCF and depth in ITI and precision in GSD.

GLOBAL
MANAGEMENT
CENTRUM

Brussels pulls together records for the Isle of Dogs Consult; works on 10th monthly report. Bombay reports on creation of new office space design model rationale. In Chicago, 100,000 new four-color Town Meeting commemorative workbooks are off the press! Some breakthroughs are that for the first time, published in four colors; inked 100,000 of any item; and had documents professionally prepared. The contradiction lies in the arena of creating systems of self-sufficiency for Global Community Forum programs to be turned over to the world en masse.

GLOBAL ORDER REPORT



If you invoke me and pray to me,
I will listen to you: when you seek
me, you shall find me;

-- Jeremiah 29:12-14

LONDON

RELIGIOUS HOUSE: LONDON

External: Consult participant from Isle of Dogs is quoted in local newspaper as stating that he has taken his name off the list to move from the Island (Isle of Dogs). Guild meetings are launched with two task forces preparing for miracle event:

Internal: Easter weekend comes alive with Isle of Dogs families participating in garden cleanup. House members make Easter Sunday trek to the seaside.

Contradiction: Restructuring of internal tasks that must constantly keep pace with momentum of GSD which is continuing to move at explosive rate. (Wk. 4)

RELIGIOUS HOUSE: GLASGOW

External: Holds RS-I with three local pedagogues picking up major teaching roles.

Internal: Collegium on "Six Speeches" reminds all that RS-I is what all task is about.

Contradiction: Getting sufficient detachment from internal limitation in order to respond to external indicatives. (Wk. 4)

RELIGIOUS HOUSE: BRISTOL

External: Gives affirmation of House for Bristol Region as 70+ attend open house celebration; metro cadre decides to assume leadership and claim symbolic reporting "space" during House Church for accountability to task.

Internal: Receives Ann Swallow as intern at House Church where people are impacted by celebrativeness and report from Kawangware. Assigns priors to weekly 5-day assignment to London calls everyone into new roles.

Contradiction: Caring for obvious while searching for extended possibility. (Wk. 4)

RELIGIOUS HOUSE: MANCHESTER

External: First Huddersfield Cadre meeting with 10 present comes alive with workshop on local parish.

Internal: Builds realistic financial model which would close financial year in the black. In-House numbers rise to 9 with Easter Holidays for teachers and youth.

Contradiction: Giving power to quarter priorities in midst of holding pattern on GSD. (Wk. 4)

PARIS

RELIGIOUS HOUSE: PARIS

External: LENS recruitment nets registrations which show broad interest in course. Entire House joins local congregation, St. Hippolyte, in its celebration of Maundy Thursday and is introduced to congregation by priest who had invited us to attend.

(RELIGIOUS HOUSE: PARIS)

Internal: Visit of Lyn Mathews and Jane McClain provides House with refreshing picture of "what's happening" around globe, plus very helpful practical tools for finances. Welcomes new intern, Anne Marie Bonnet.

Contradiction Locating acceptable ITI site. (Wk. 4)

RELIGIOUS HOUSE: ROME

External: All thrusts going full speed. Launches RS-I recruitment; speaking engagements set up in Torino and Firenze, San Gennaro social demonstration research in Napoli as well as spreading of 25 questionnaires and English Language Institute posters in Trastevere. Experiences great conversation with Oblate Fathers on practical details of assigning groups of religious for two or three year periods to GSD. Completes quarter battleplan. Makes LENS calls on Holiday Inn and General Motors.

Internal: Lyn Mathews and Jane McClain arrive and celebrate with House sunrise Easter House Church and share futuric financial directions in historical context. Welcomes Father Morrissey.

Contradiction: Deciding which of million potential accomplishments are ones to go for broke on. (Wk. 4)

LAGOS**RELIGIOUS HOUSE: LAGOS**

External: Continental Priors Council re-affirms decision to do ITIs in three locations on Continent. Sees afresh need for powerful three-stronghold capability, particularly with half of African population in West Africa.

Internal: Receives new grasp of Africa after single Continental thrust. Kwangware Human Development Project impacts House.

Contradiction: Articulating freshly continental missional objectives throws all of Africa staff back on to issue of staffing Lagos. (Wk. 2)

BRUSSELS**GLOBAL CENTRUM: BRUSSELS**

External: Global Research Assembly: Europe Week II task force takes comprehensive look at summer and produces battleplan.

Internal: Jane McClain returns from Management Global Finance Trek. Centrum hosts Anja Bos and Sandra Lamphear en route to Netherlands and Nairobi respectively.

Contradiction: Combining creatively centrum work and nexus task forces to meet programming complexities of Quarter I. (Wk. 4)

RELIGIOUS HOUSE: BRUSSELS

External: During Community Development Day, British residents of Belgium give their consultants' report to metro. Friend of Schumacher in Brussels phones to find out about GSD here in Belgium.

Internal: Odd job finds us working for regional director of European Common Market (EEC) who decides to lend us hand in GSD. New intern, Sandy Sanderson, arrives. Hosts Taylor family. Task forces signal corporate thrust. Vacationing Emerging Generation pick up heavy load on meal enablement as work out push intensifies.

Contradiction: Orchestrating adequately first movement of GSD Project when second movement must be led by a Belgian. (Wk. 4)

RELIGIOUS HOUSE AMSTERDAM

External: Religious Order trek through Netherlands yields new friends and brings new clarity about situation of the religious in Netherlands.

Internal: Launches research on local communities across country. Starts one new job and lands one new job.

Contradiction: Finding strategic action that will demonstrate radical human care in most 'cared for' nation in the world. (Wk. 4)

FRANKFURT**RELIGIOUS HOUSE: FRANKFURT**

External: Bi-lingual newsletter, with articles by German colleagues and reports on ITI, Isle of Dogs, and other events impacts Area.

Internal: Hosts guests from three different executive branches of Sperry-Univac at three different times. Global Finances Trek introduces new bookkeeping model. Tribal resettlement and Easter discontinuity bring

(RELIGIOUS HOUSE: FRANKFURT)

fresh feel to space and time.

Contradiction: Getting immediate monies while focusing development efforts on long-range government and foundation strategizing. (Wk. 4)

RELIGIOUS HOUSE: BERLIN

External: Local city official expounds two hours to Order members as to why his community should be chosen for GSD site.

Internal: "Small is Beautiful" breaks open new possibilities for economic miracles in developed country. Welcomes Charles Hahn for week of development.

Contradiction: Creating most effective model to catalyze movement, thus preparing GSD troops. (Wk. 4)

KINSHASA**RELIGIOUS HOUSE: LUSAKA**

External: Church hierarchy during Malawi circuit insist on ITI, "nothing less than 10 days", and offers to cover room and board. Rev. and Mrs. Simfukwe of American Methodist Episcopal Church (AME) leave for ITP. Continued affirmation by business community for LENS Week 7 as 50 in course looks good. Secures PLC for Week 4.

Internal: Peter Malaba, ITI grad, begins internship. Tactics for Quarter IV on wall, continuing quarter thrust through Movement, Establishment and Support stations. Sodality HRM lecture work focuses House toward upcoming event. Week II task forces, guild structure and Sunday plenary sharpens time and edge work.

Contradiction: Moving on immediate tasks with gun while giving push that will break open way to development and in-kinding. (Wk. 4)

NAIROBI**GLOBAL CENTRUM: NAIROBI**

External: Exports first French bean crop. Public Works Corp keeps ditches flowing in spite of rains. Sixty-two women begin sewing class with only six machines. Holds first special event of quarter as community celebrates presence of Lyn Mathews with traditional dancing and singing, and nexus receives special invitation to plant tree on National Tree Planting Day.

Internal: Lyn Mathews visits on Global Management Trek, spins stories from globe. Thuo wa Thongo completes two-week sojournship, and regular weekly intern training begins.

Contradiction: Creating style that holds new image of having established selves as entity in society and still gets job done. (Wk. 4)

RELIGIOUS HOUSE: NAIROBI

External: Completes battleplan for ITI recruiting. Engage in direct service to church as teach course for Anglican Church Army in PCE site to 15 students and course for National Council of Churches in Kenya (NCKK) in Mombasa.

Internal: Dispersed House gathers to new ecclesiola construct; Schumacher study creates excitement about Kawangware Human Development Project and developing guardian network. Godfrey Mwereria sojourns in House for two weeks. Celebrates Easter morning with nexus at House Church.

Contradiction: Catalyzing imaging of ITI as tactic to local churchmen in light of PCE and creating movement recruiting network. (Wk. 4)

BOMBAY**GLOBAL CENTRUM: BOMBAY**

External: Full-time residential nurse (Miriam Paul) saves life in village two days after her arrival. Tractor is operating on 24-hour schedule to complete ploughing before monsoon.

Internal: Dr. Kurian (Mary's father) visits Maliwada and spends day in Health Clinic.

Contradiction: Transforming good ideas into visible signs. (Wk. 4)

RELIGIOUS HOUSE: BOMBAY

External: Final circuit ride and fish landing sends 12 from Bombay Area to Hyderabad ITI. House uses Bombay contacts to bottle, label and sell RS450 (100 jars) of Maliwada peanut butter. Ahmedabad circuit reveals six possibles for GRA from previously barren region; GRA invitations are mailed to all regions.

Internal: Francis D'Cruz sojourns for two weeks on way to ITI. House celebrates Easter with special House Church and discontinuity. Sends out one ITI participant, one staff, one P.O. and two Youth to Hyderabad. House remnant celebrates ecclesiola with movie and kitchen reset.

Contradiction: Keeping moving with one thrust of mission and not just practics in midst of troops widely dispersed. (Wk. 4)

DELHI**RELIGIOUS HOUSE: DELHI**

External: Finalizes ITI recruitment and shifts emphasis to GRA with 17 confirmation letters of paid registrations.

Internal: Sends five House members to ITI: Vivian and Mariam Paul as faculty and intern, Charles Innis, and sojourners, Ramesh Agarwal and Samuel Gill as participants.

Contradiction: Battleplanning that includes sense of urgency to enable key metro colleagues to decide now about ITI. (Wk. 4)

MADRAS**RELIGIOUS HOUSE: HYDERABAD**

External: All Area circuits return. House enables ITI set-up and participates in opening feast of 13th ITI on subcontinent. Feast is attended by 100 participants and colleagues. Authorization from Municipal Corporation paves way for ITI/PCE miracle work day.

Internal: Attends Easter Passion Play and is impacted by drama of man, Jesus; life and death and offense of the Word. Host guests as arrive for ITI. Welcomes Mano Joseph to House.

Contradiction: Finding spirit tools and structures that will enable every task to get done. (Wk. 4)

CALCUTTA**RELIGIOUS HOUSE: CALCUTTA**

External: Five pay and one says yes for GRA:Hyderabad recruitment intensifies; late night Saturday meeting of Circus Five Guild decides to do May Day Miracle cleanup of whole length of Backbagan Row, main street.

Internal: Gopalpur-on-the-sea is confirmed as Emerging Generation camp site (Camp Kalinga); House corporately attends Easter sunrise communion service at St. Paul's Cathedral; investigates possible new house location in parish.

Contradiction: Changing GRA recruitment models into GRA registrations. (Wk. 4)

SINGAPORE**GLOBAL CENTRUM: SINGAPORE**

External: Hosts Womens Society of Christian Service from local congregation to make Lenten banners and at same time gain key civic authorization visits through same congregation.

Internal: Visits by Global Social Demonstration Task Force produces GSD site in Area Singapore located near Jakarta, named, Kelapa.

Contradiction: Resolving to emphasize ITI as source of troops for GSD, PCE, Global Community Forum (GCF) through translation into practical implementation. (Wk. 2)

RELIGIOUS HOUSE: SINGAPORE

External: Contacts prospects for ITI. Global Social Demonstration story and Maliwada night catalyze request to attend consults from Sarawak, for "Maliwada Night" by two local church groups and dinner invitations for serious vocational conversation, ITI letters and stationery listing 20 patrons is printed. Converse with Joseph W. Mathews during two stopovers in three days. Mails second Maliwada night, prints and mails ITI stationery to Australia and Apia.

Internal: Continues juggling act with GSD research, preparation for Global Finance Trek, intensification of ITI recruitment, preparation of Area Council and hosting colleagues. Ecclesiola manuals arrive by mail.

(RELIGIOUS HOUSE: SINGAPORE)

Contradiction: Turning lots of authentic interest, excitement and yeses relative to ITI:Penang into paid registrations, quickly. (Wk. 3)

RELIGIOUS HOUSE: KUALA LUMPUR

External: Two big building blocks for GSD go up into place as Human Development Project dinner invitations go out to mixed business and government group of Malay, Chinese, Indian and "Assorted European" potential guardians with RSVP names to contact at bottom of invitation representing each of three major local cultural groups. Mohn Shah bin Tan Sri Kadir, son of Minister of Laws and sponsor of Dick's work permit and LENS grad, has become important ICA advisor.

Internal: Sends KL House members to Jakarta for Easter Area Council to share in fear and fascination of initiation plans for Jakarta GSD, Kelapa Dua. Roxana Harper and Kathryn Zervigon bring global gracious presence of Global Finance Trek.

Contradiction: Thinking that financial and recruiting successes are sign rather than means of bringing off sign of GSD in Malaysia. (Wk. 4)

RELIGIOUS HOUSE: JAKARTA

External: Joseph Mathews and Neil Vance visit and Kelapa Dua is chosen as village site for GSD.

Internal: Mathew's spin on Jesus, The Man, and Vance's reflection on Maliwada breathes spirit into collegiums. House celebrates Quarter III with fun, feasting, fear, and fascination as realize wildest hopes have been fulfilled.

Contradiction: Clearing fog about first concrete step into village. (Wk. 4)

HONG KONG**GLOBAL CENTRUM: HONG KONG**

External: Mary Warren Moffatt does Woman's Consult with all Order women, in Hong Kong and spins new role of guardians as seen in Guardians' Consult. Development treks in Taipei and Seoul, with visit to Jeju with USAID visitors. Visits to Minister of Home Affairs in Korea and Archbishop in Taipei moves registration procedures.

Internal: Schumacher study continues providing fresh insights to mission. Easter holidays provide opportunity to intensify centrum work.

Contradiction: Maintaining trust in methods in atmosphere of transition. (Wk. 4)

RELIGIOUS HOUSE: HONG KONG

External: Town Meeting '76 will happen in Hong Kong! Much rejoicing as investigating committee votes unanimously to turn itself into steering committee for July 17th American Community TM '76.

Internal: Goodies and treats mark week of celebration; House member finds new excellent paying job and brings home cream puffs for everyone, and U.F.C. (Unidentified Furry Creature) hides baskets and eggs all over collegium room.

Contradiction: Seriously engaging regional colleagues maintains mission on edge of recent gains and resists temptation to pull back in an attempt to consolidate. (Wk. 4)

RELIGIOUS HOUSE: KAOHSIUNG

External: Visit to Roman Catholic Archbishop Lokuang results in hundreds of open doors and lowered cost for ITI facility. Grassroots giving for Week One reaches \$125 USD.

Internal: Launches quarter with Internal Life Manual published. Builds tactical models and another move is made within same apartment building.

Contradiction: Needing "day-stretcher" to enable five calls a day for LENS, PLC, RS-I and development. (Wk.3)

RELIGIOUS HOUSE: MANILA

External: Participates in parish celebration of Holy Week including sunrise stations of the cross procession and 24 hour singing of the Passion. Workshop leaders training session for LCC translates social process triangles into Philippino. Guildsmen and metro colleagues manifest seriousness about Global Community Forum by turning out in force for first workshop leaders training session for Ugnayon '76.

Internal: Order celebrates birth of Alvaro Senturias III, son of Al and Linda Senturias. Finally getting implementaries on timeline chart frees us from paralysis and propels us into eventful and exciting quarter. The 'Bob and Roxana Show' liberates entire House from victimization to finances.

Contradiction: Executing multiple actions on immediate demands of LENS, development and LCC in midst of ambiguity with haste and precision. (Wk. 4)

RELIGIOUS HOUSE: TAIPEI

External: Circuit to Keelung and Taoyuan involves young colleague, non-Christian and never had a course, but finds she can tell story very well. School vacation allows regional blitz touching every metro. Results include ITI registrations, PLC registrations and development prospects.

Internal: First intern family arrives with welcoming at House Church: Sung Family-John, Peggy and their three children Shao Yuan, Kuang Kuang, and Shao Kuang. Has 17 in House now. Ecclesiola has 16 around table, with most of House out. Two PLC grads and wives come to House Church; one says he is going to ITI.

Contradiction: Continuing momentum toward ITI when 1000 details are always present. (Wk. 4)

RELIGIOUS HOUSE: CEBU

External: Early Learning Center begins with 98 students and 12 teacher assistants. Largest workday lays House foundation. Cebu shipyard loans wheelbarrows and tools. Mr. Angel Amistoso, community leader, leads songs and dances at celebration. Receives 300 bags cement in-kind with trucking, storage and shipping. First Cebu Metro Cadre meeting has eight attending asking for continuity.

Internal: Global Finance Trek arrives in form of Roxana Harper and Robert Porter. Ecclesiola study of Maliwada Consult vision and Palm Sunday development letter writing see possibility of raising total program needs for rest of year.

Contradiction: Designing time/task in midst of appropriate observation of Holy Week. (Wk. 3)

RELIGIOUS HOUSE: DAVAO

External: Holy Week metro circuits confirm two courses. First metro circuit of quarter sends prior and Thai sojourner, Charoen Laosirisathian, to Butuan City.

Internal: Troika is complete with arrival of Joey Armas; landlord OK's renovation plans for House; sunrise Easter celebration at parish "Salubungan" procession (unveiling the Virgin Mary as she meets the risen Lord). Fantastic cultural night event explodes House as PCE celebration center. Guests include Robert Porter, Roxana Harper, George Packard and visitors from unpenetrated polis.

Contradiction: Deciding to celebrate small victories in midst of cynicism. (Wk. 4)

TOKYO**RELIGIOUS HOUSE: TOKYO**

External: Enthusiastic welcoming of House by people in Sanya parish during and after move impacts House. Fascinating watchers and neighbors greet all graciously, often using English phrases.

Internal: Three-day national rail strike prevents permeation activities but affords welcome time for ordering and decorating new House.

Contradiction: Knowing scheduled PCTS, for Week 6 is key to parish PCE, in midst of being preoccupied with House relocation. (Wk. 4)

RELIGIOUS HOUSE: JEJU

External: Bus is in-kind for island trip of 60 Kwangyung elders; preschool teachers begin intensive global language classes. Holds credit union membership campaign. Rev. Kang Byoung Hoon meets with Governor Chang and is invited for visit to the Blue House.

(RELIGIOUS HOUSE: JEJU)

Internal: Welcomes Jeju intern, Miss Hur Myung Hee, sent by her local Presbyterian Congregation in Jeju City to Kwangyung; at Governor's request telephone is installed in ICA auxiliary office. House members, Choe Jong Shik, Hannah Dexter, Kim Chong Man and Gil Woltjer return from Seoul assignments. House elder's family enjoys excitement, surprises and picnic with Kwangyung elders.

Contradiction: Predicting immediate consequences of Seoul authorization. (Wk. 3)

RELIGIOUS HOUSE: SEOUL

External: Prepares for shift to Quarter IV with shift to using global finance model April 1. Completes first draft of ICA registration document.

Internal: Teams celebrate end of Quarter III and Week II PSU; prepares Quarter IV Grassroots Development System. Welcomes Theresa Kim back from Isle of Dogs Consult, Boston, Chicago, San Francisco and Los Angeles.

Contradiction: Creating adequate implementaries for actuating global programs. (Wk. 2)

RELIGIOUS HOUSE: FUKUOKA

External: Goes full steam ahead as experiences four-pronged attack this week. Guild does specific research in Yoshizuka while House has guardians over for Jeju slide-show, writes letters back home as global development tactic, and holds LCC in Nagasaki.

Internal: Internal life issues workshop allows House to deal seriously with necessary issues while study of "Community" paper begins to re-create context.

Contradiction: Enabling and training people, when training is translated or is in 'second language' in midst of knowing task is to be catalytic. (Wk. 2)

RELIGIOUS HOUSE: OSAKA

External: Forty representatives of 10 nations at LCC (TM '76) sponsors meeting. Pre-sign poster project for community by community leaders establishes base for future pre-signs. Leaders witness to speech of implementation following decision. ICA is unanimously asked to join semi-public organization of social agencies in community. Kyoto Catholic Catechetical Center schedules eight hour planning event for churchmen in Kyoto area.

Internal: Discovers new restaurant near parish for celebration. "Small is Beautiful" provokes insight-filled conversation.

Contradiction: Swimming up waterfall to ITI registrations. (Wk. 4)

RELIGIOUS HOUSE: SENDAI

External: Exploration for PCE site continues to affirm key role of economic in Japan, as House announces Global Care Dinner with benefits to development.

Internal: Collegiums are highlighted by historical-geographical overview of Hokkaido, widening horizons and perspective on two metros.

Contradiction: Intensifying regular thrust for PCE, GRA, after initial excitement in two of six metros. (Wk. 4)

SYDNEY**RELIGIOUS HOUSE: SYDNEY**

External: Eight of nine towns represented at CMA at Canterbury Municipality (106 present). Guardians' meet and plan backup for Oombulgurri, CMA, and Global Social Demonstration Consults.

Internal: Full house for four days with more colleagues from elsewhere than from Sydney House: four from Canberra, four from Singapore, one from Cincinnati. Sends out Geoffry Oakley to continue university studies.

Contradiction: Turning holiday mindset into missional thrust. (Wk. 3)

RELIGIOUS HOUSE: PERTH

External: Visit of Richard Stanley focuses thrust of CMA. Regional task force mails newsletter and invitations to quarter's events.

(RELIGIOUS HOUSE: PERTH)

Internal: In midst of impact of global visitors, including Area prior, Roxana Harper lays out global bookkeeping method. New House locates in parish. Regional and parish colleagues offer assistance in moving.

Contradiction: Trusting that doing CMA is catalyzing whole mission. (Wk. 4)

RELIGIOUS HOUSE: DARWIN

External: Guardians visit to Oombulgurri is firmed up with in-kind contribution of light airplane to make trip.

Internal: Self-conscious articulation of relationship to CMA and GSD is left to forefront with visit of Richard Stanley (CMA) and Ray Richmond (GSD, Oombulgurri).

Contradiction: Trusting models created, and institutions that release practical engagement. (Wk. 4)

RELIGIOUS HOUSE: OOMBULGURRI

External: Sends out cattle guild to do horse purchase and cattle yard repairs; school work day transforms external space and Week II miracle creates sports oval. Blood counts show majority of children normal. Easter clothes sale at Kitco takes place. Garden pump repaired for trickle irrigation system.

Internal: Hosts Mr. John Toohy, Aboriginal lawyer and Peter Dowding, legal aid lawyer, who talked to council concerning land mine leases. Dowding had met Schumacher and asked if we had heard of him. Welcomes Tanya Pfaff from two week orientation in Perth.

Contradiction: Getting beyond uncertainty about quarter's financing and funds allocation and unregularized supply lines for animal feed, machinery parts, etc. as need exists. (Wk. 4)

RELIGIOUS HOUSE: ADELAIDE

External: Regional meeting results in 20 families assigned to three campaigns task forces. Strong development task force is formed with four guardians as members and promises intensification of Global Social Demonstration.

Internal: Entire House, including emissaries Ian Gore and Michael Martin, journeys in early wee hours to Oombulgurri Whyalla for picnic with emissaries Sylvia Smith and Julie Rex, their families and friends on Easter Monday.

Contradiction: Moving three campaigns down road while fanning flames of regional decision to be involved in creation of strategy as well as moving this resolve toward action. (Wk. 4)

RELIGIOUS HOUSE: MELBOURNE

External: Portland Easter circuit locates CMA troika and Prahran Apex says yes to Prahran CMA. Campaign '76 (\$75,000 development) gets off to good start with \$500 cheque from H.C. Sleigh Co.

Internal: Adult population booms with arrival of Donnelly, Yallop and Richmond on development effort. Telford trio spend Easter holidays in Warragul as final touches on House redecoration (including painting front of house) are complete.

Contradiction: Putting this quarter's form on three campaigns to release burst of motivity needed now. (Wk. 4)

RELIGIOUS HOUSE: CANBERRA

External: New face in immigration acclaims contentless methods.

Internal: Development workshop launches funding for Area's tripled budget.

Contradiction: Focusing course having thrown throttle wide open. (Wk. 3)

RELIGIOUS HOUSE: BRISBANE

External: Community Meeting Australia brooding with Richard Stanley releases new images of directions and strategies; trip to Nambour helps firm up Week II pre-sponsors meeting.

Internal: Week begins with severe sewerage problems, making plumbers of priests, and ends with gift of automatic washing machine.

(RELIGIOUS HOUSE: BRISBANE)

Contradiction: Building comprehensive picture that releases risking action in relation to subsequent priorities. (Wk. 4)

SUVA**RELIGIOUS HOUSE: MAJURO**

External: Marshalls Apprentice Night School (MANS) begins with 25 in attendance. Chips are mass produced--700% increase. First sale of coconut lumber and order placed for first coconut lumber house.

Internal: Small Industry Program collegium starts re-imaging job of task as making money. Walkup Silk tells Marshallese myth and James Chia gives Singapore report to ground ecclesiola.

Contradiction: Seeing difference between action of one living out of image of wage earner as contrasted to money maker affects beginning of more small industries. (Wk. 1)

RELIGIOUS HOUSE: APIA

External: Two House members sent to Fiji for LENS marketing while metro cadre member picks up LENS marketing in Samoa. Metro cadre establishes parish boundries and discusses possible participation in nation wide youth program.

Internal; Easter break provides time for long awaited exploration of Upolu. Arrival of Quarter IV Ecclesiola Manual excites House after quarter of making do without needed study resources.

Contradiction: Maintaining 20-20 vision in midst of being hampered by kalidoscopic world. (Wk. 4)

SAN FRANCISCO**RELIGIOUS HOUSE: SAN FRANCISCO**

External: Two Town Meetings one day, Palo Alto and Daly City, have key city officials attend and participate in workshops. San Francisco Police Department Chief Gains is visited and okays CIF for May 29th with promise of officers assigned to support it.

Internal: Experiences Buddhist Economics--"Small is Beautiful" as great timely study. Celebrates movement's 10th year in San Francisco Region at House Church; first Parish Ministers Colloquy (PMC) and RS-I held in April, 1966.

Contradiction: Promoting in suburbia to get 400 to TM. (Wk. 4)

RELIGIOUS HOUSE: SAN JOSE

External: Disperses to culminate week of TM activities with orchestration and attendance at three TMs.

Internal: With one House member gone all week, impossible tasks get done, completely denying story that problem is not enough troops.

Contradiction: Keeping intentional facade intact as the Mystery picks pockets. (Wk. 4)

RELIGIOUS HOUSE: SACRAMENTO

External: Sponsorship base for downtown TM '76 saying yes, paves way for impacting 29 other communities, metropolitan Sacramento, through its networks.

Internal: Intermediate technology steals the show in first ecclesiola of quarter.

Contradiction: Maintaining iron hand in velvet glove touch. (Wk. 4)

RELIGIOUS HOUSE: SEATTLE

External: In attendance at Silver Valley TM '76 are 273 people including Governor Cecil Andrus giving key note address and 212 attend Bainbridge Island TM where decision is made to form emerging core in Seattle Region.

Internal: Carrots, beets, beans and lettuce are planted in new House garden by children. Publishing House paper explodes new images for external functions.

Contradiction: Continuing to set-up TMs and consensing on circuit schedule for quarter, while carefully watching over sponsor journeys for already scheduled TMs. (Wk. 4)

RELIGIOUS HOUSE: LOS ANGELES

External: Finds spirit woman to coordinate one TM and possibility break out for another, both critical to breaking open Community College network and center city core.

Internal: Further gridding of urban metros gives insight which breaks loose circuiting and phasing.

Contradiction: Entering new quarter faced with crisis in management producing 13 Xaviers. (Wk. 2)

RELIGIOUS HOUSE: PHOENIX

External: Development experiences breakopen with banks; State Bicentennial Director offers to fly ICA staff to metros to set up TMs plus offers use of State Wats. South Phoenix steering committee decides to steer.

Internal: Sisters of Precious Blood visit from neighboring Yacqui Village and collegueship is established through Sister Mary Ann of Denver Region.

Contradiction: Embracing necessary intensification to pull off TM, development and social demonstration research. (Wk. 4)

RELIGIOUS HOUSE: SALT LAKE CITY

External: Town Meeting '76 in Payson, UT grounds power of GCF to change lives, re-images community, and speaks to any religious background.

Internal: Presence of orchestration at celebration following TM enables reflection in Mormon participation in GCF.

Contradiction: Unblocking implementation of other supporting systems in midst of excitement and momentum of engagement in TM. (Wk. 4)

RELIGIOUS HOUSE: BILLINGS

External: Three members of House are out on TMs and circuiting; visits Indian reservation; has great fantastic workday put on by task force with House support; House attends environmentalist council on strip-mining.

Internal: Receives new member, George (hamster). Uses Emerging Generation models throughout House structures.

Contradiction: Communicating House decisions when made on behalf of those engaged in other tasks. (Wk. 4)

RELIGIOUS HOUSE: DENVER

External: Town Meetings in Laramie, WY and Sterling, CO come off in model style as more participants remain throughout the day.

Internal: Move to new internal teams and Thursday night time design by metro cadre explodes new possibility of engagement.

Contradiction: Having immediate strategies of utilizing newly emerging and emerged continental core to catalyze other TMs. (Wk. 4)

RELIGIOUS HOUSE: RAPID CITY

External: Secures seven ethnic groups for North Rapid Cultural Festival. Mail is out for "Women in Future". Covers four circuits.

Internal: Reading and conversation on "Dune" provide spirit reflection all have been looking for as see secular and religious are one.

Contradiction: Making use of corporate wisdom to be prepared and operating 24 hours a day. (Wk. 4)

EDMONTON**RELIGIOUS HOUSE: EDMONTON**

External: Southwest Edmonton follow-up meeting is reminiscent of cadre in consensus to do whole city. Bulls-eye model is implemented with three new cities contacted with affirmative responses in two out of three.

Internal: Celebrates birth of Samuel Guy Flowers to Gay and David Flowers, April 23, 4:18 a.m., 6 lbs. 13

(RELIGIOUS HOUSE: EDMONTON)

ozs. "Intermediate Technology" paper looks to be edge study paper.

Contradiction: Maintaining reflective consensus in midst of intuitive action resulting from necessary dispersions. (Wk. 4)

RELIGIOUS HOUSE: VANCOUVER

External: Doug and Marge Allan begin three-week trek to British Columbia (B.C.) coastline and throughout N. Western B.C.

Internal: Emerging Generation begins learning swimming skills. Builds quarter collegium rationale. Holds Easter discontinuity. Studies RS-I papers and does CFC training.

Contradiction: Working effectively with limited time and troops as long-range regional network takes form yet no concrete CFC dates to which to point. (Wk. 4)

RELIGIOUS HOUSE: ANCHORAGE

External: Dillingham (population 1500) TM for Week 4 is on way with eight workshop leaders trained. Task forces have new life.

Internal: Celebrates wedding of David Sinclair and Susan Niven on Easter Sunday, with Mrs. Kathryn Sinclair joining House from Corrigan, TX. Holds focus for week of fasting and feasting, hard work and celebration, and impacts witnesses to the covenanting ceremony with male-female singing of "All Creatures of Our God and King".

Contradiction Building practical models and story that give scattered activity corporate focus. (Wk. 3)

RELIGIOUS HOUSE: SASKATOON

External: Primal Community Experiment goes public with invitation of CFC calls.

Internal: Experiences excitement over quarter study, "Small is Beautiful" as see many implications for small Saskatchewan towns.

Contradiction: Ensuring decisions for fall CFC are maintained throughout summer. (Wk. 4)

RELIGIOUS HOUSE: WINNIPEG

External: Continues contact with agriculture and regional development corporations. Social Demonstration Research is begun and House people are nominated to community committees.

Internal: Studies of intermediate technology and Jesus Principle are impacting. Rips out front entry and paints back steps in half an evening.

Contradiction: Learning to live with new form of movement while colleagues are still in old form. (Wk. 4)

HOUSTON**RELIGIOUS HOUSE: HOUSTON**

External: Core meeting in E. Austin almost falls apart as liberal social worker "bows out" but Black elder declares "We'll do it by ourselves" and catalyzes entire group to pick it up.

Internal: Guardians invite Mr. Watanabe of Mitaubishi Corporation to lunch in response to Hong Kong Centrum suggestion only to discover that they are entertaining the wrong Mr. Watanabe, who knows nothing of ICA, but is pleased to meet ICA.

Contradiction: Believing presence pulls off TMs and thereby holding back. (Wk. 4)

RELIGIOUS HOUSE: AMARILLO

External: Odessa TM spin-offs continue with Odessa follow-up task forces, Perryton TM presentation meeting set up, and Parkway Council of Social Agencies decides to sponsor East Lubbock TM. Circuit team retreats to storm shelter amid tornado and golfball-size hail.

Internal: Phone report of quarter's first new steering committee sends House out on impromptu celebration. New ecclesiola model and Daily Office rubrics collegiums continue to impact.

Contradiction: Sending one circuit rider to two places to do three things at once. (Wk. 4)

RELIGIOUS HOUSE: SAN ANTONIO

External: First Town Meetings approaching, two in one week, keeps all busy getting feet wet twice as fast in Corpus Christi and Brownsville.

Internal: Battleplans in nearby town and celebrates at Floores Country Store, country-western dance hall in Helotes.

Contradiction: Seeing through complexity of discovering those who care in dozens of places. (Wk. 2)

RELIGIOUS HOUSE: OKLAHOMA CITY

External: On-the-street gridding of Greater Oklahoma City into 36 parishes opens new possibilities of city steering committee and guild participation.

Internal: Tulsa House visits OK City for Easter as celebrate sunrise House Church with traditional breakfast of fish and loaves.

Contradiction: Grounding and actualizing good ideas. (Wk. 4)

RELIGIOUS HOUSE: DALLAS

External: Demonstration "East Dallas Town Meeting" gets excellent TV coverage. Mayor Adlene Harrison welcomes crowd of 150 with 250 experiencing event over course of day with significant black participation.

Internal: Impact of Daily Office as foundational dynamic of care and sustenance intensifies with participation of colleagues from six Texas-Oklahoma Houses, gather to discuss TM and finances.

Contradiction: Keeping head of steam so that no possibility is dropped. (Wk. 13)

RELIGIOUS HOUSE: TULSA

External: Tulsa Chamber of Commerce, Community Relations Commission and Greater Tulsa Council endorse Tulsa TM '76.

Internal: "Small is Beautiful" sparks after-eclesiola vigorous typing on new in-kind electric typewriter. Celebrates Easter with wine, bread and baked salmon at OK City.

Contradiction: Building creative tension between move-it-move-it and detached stance. (Wk. 4)

RELIGIOUS HOUSE: NEW ORLEANS

External: Jackson steering committee decides to continue meeting and doing TMs. Uptown New Orleans holds second TM highlighted by predominance of elders, bicentennially costumed. Creates registrars and 300 Burger King Whoppers.

Internal: Seventeen people show up almost spontaneously Thursday night to see TM slides. Welcomes Alison Powell home from hospital. Mikio Watanabe (Japanese student-colleague), Global Development team, and Paul Schwobel (enroute Miami-Houston) are all caught in 14 ring circus which enables New Orleans TM.

Contradiction: Articulating priorities of next steps. (Wk. 4)

RELIGIOUS HOUSE: MEMPHIS

External: Blitz part of Arkansas which had not been seen before and was thought to be "dead" country.

Internal: Thursday morning Booher model study brings consciousness about The Way Life Is.

Contradiction: Being intentional in midst of being overwhelmed by demands. (Wk. 6)

RELIGIOUS HOUSE: ATLANTA

External: Northeast Cobb steering committee experiences last minute (one week away) panic and provides all GCF troops with invaluable training.

Internal: Model sharing intensifies so that where two or three are gathered, copy needs to be made of notes to share with circuiters of moment.

Contradiction: Providing necessary spin-off model that is going to get 5000 TMs done. (Wk. 4)

IRELIGIOUS HOUSE: CHARLOTTE

External: At Mecklenburg Horizons steering committee meeting, community organization vice president (a roofer) articulates TM as method "to ignite the latent spark" in local man; Rock Hill Core meets, and second common memory packet is sent to polis leadership.

Internal: Guests at Easter House Church double size of House; re-appropriates study of "American Revolution for Meditation".

Contradiction: Maintaining transparency in avoiding old images and issues, as well as not inhibiting resurgence forms of local man. (Wk. 4)

RELIGIOUS HOUSE: MIAMI

External: Development team uncovers new mood in positive response to major funding.

Internal: House is back to normal as troops return from TM and consult assignments. There are now more adults than Emerging Generation.

Contradiction: Trying to hold stability that House provides while colleagues decide life roles in midst of mission. (Wk. 4)

CHICAGO**GLOBAL CENTRUM: CHICAGO**

External: Uptown Businessmen come for evening dinner and tour of ICA facility.

Internal: Order celebrates birth of Alvaro the third to Al and Linda Senturias in Manila. John Epps reports on United Methodist General Conference in Portland, OR. Sends out Joseph Mathews, Neil Vance and Joseph Slicker on Global Social Demonstration trek enroute to Lapu Lapu Consult.

Contradiction: Providing resource pool for Global Community Forum and Global Social Demonstration. (Wk. 4)

RELIGIOUS HOUSE: CHICAGO

External: Produces Fifth City Human Development Project (FHDP) document; auxiliary, community and consult team devise more self-conscious procedures for implementation; enabled by nexus and House priors; experiences extraordinary celebration; all auxiliary begins to engage 5th City people: 10 stakes, 40 quadrants, 160 sectors; miracles catalyze and engage beyond expectation; does two TMs.

Internal: Reassigns selves to FHDP; cannot tell difference between external and internal life. TM '76 being picked up quickly by colleagues, gunned by two full-time guardians. three other guardians doing FHDP full-time.

Contradiction: Trusting miracles to actuate project in entirety within first month. (Wk. 4)

RELIGIOUS HOUSE: WICHITA

External: Two elders decide to attend Kansas Governor's Council on Aging, weaving together two networks toward claiming promise of Newhill TM '76.

Internal: Celebrates Easter with sunrise breakfast and continues Week 3 with two miracles: 1) wins support of Continental Baking Co. with agreement for reduced rates on bread and 2) wins guardian support with use of equipment.

Contradiction: Putting all eggs in one basket. (Wk. 4)

RELIGIOUS HOUSE: OMAHA

External: Downtown Optimists provide broad based support of Omaha-wide TM '76.

Internal: Sends out John Reynolds to enable 5th City Consult. Easter House Church in Lincoln after week with Emerging Generation home and Week II prep for second half of year. Sends Dr. Fred Catlett to 5th City Consult. Sends out TM sponsor to Academy.

Contradiction: Getting TM dates set. (Wk. 3)

RELIGIOUS HOUSE: KANSAS CITY

External: Wichita and Kansas City ICA consultants meet with Health, Education and Welfare (HEW) officials to plan expansion of TM through all counties in Kansas. Sends Rhoda Ertel out to 5th City Consult.

Internal: Experiences almost overwhelming nostalgia after having first ecclesiola in four months. Sends Druckenmillers to Chicago to enable Consult. Remaining members participate in Pascal supper with PCE colleagues.

Contradiction: Discerning necessary catalytic events between Town Meetings. (Wk. 3)

RELIGIOUS HOUSE: MINNEAPOLIS

External: Four TMs in Week II use all staff plus. Intensity of experience allows direction of TM to breakthrough. Preparation for Wagner, SD Consult takes place. Treks to SD, MN, IA.

Internal: Sends out Ruth Dyhr to Academy. Welcomes Paul Dyhr as sojourner. Fantastic celebration is experienced with all orchestrators and workshop leaders.

Contradiction: Shifting into new quarter when TM and other activities do not flow with rhythm of time designs. (Wk. 1)

RELIGIOUS HOUSE: ST. LOUIS

External: Columbia TM '76 breaks open central Missouri for acceleration of project. Circuit visits in Muscatine signals beginning of set-up for fall TMs. St. Louis Community Issues Forum moves into final practical implementation.

Internal: Ecclesiola provides helpful mid-week vehicle to care for selves in midst of an ever-accelerating task engagement. House member assigned to 5th City Consult returns home after 10 days in Chicago.

Contradiction: Training local people in cities and towns across region to appropriate an entirely new discipline and competence in social methods. (Wk. 4)

RELIGIOUS HOUSE: PEORIA

External: Morton steering committee dons Bicentennial dress for county newspaper article and workshop leaders get trained.

Internal: With two permeators on vacation circuits and one at 5th City Consult, House maintains full pace with three House members and extended family member who does Daily Office roles.

Contradiction: Maintaining intensified missional push both on the road and in House. (Wk. 3)

RELIGIOUS HOUSE: GREEN BAY

External: Metro catalyzes TM in great style.

Internal: Guardian couple reports on 5th City Consult to old and new colleagues at House Church.

Contradiction: Getting clarity in adequate follow-up models relative to TMs and guardians returning from consults and social demonstrations. (Wk. 4)

RELIGIOUS HOUSE: MILWAUKEE

External: Holds East Madison TM during four inches of rain and steering committee decides to do four more in Madison.

Internal: New decor on stairway of TM posters of TMs held in bi-metro. Lord decides to keep troops in Milwaukee through tool of car accident.

Contradiction: Holding tension between being catalyzers and making sure task gets done. (Wk. 4)

RELIGIOUS HOUSE: INDIANAPOLIS

External: TM date set in Owensboro, KY. Jaycees external vice presidential candidates (running unopposed),

(RELIGIOUS HOUSE: INDIANAPOLIS)

in Indiana and Kentucky lay plans for 100 to 150 TMs.

Internal: Loan of Catherine Welch from Chicago House enables Jaycee breakloose. Assigns Darrell Marley to 5th City Consult; creates metro program support plan.

Contradiction: Developing air traffic controller in midst of needing to have all plans out all the time. (Wk. 2)

RELIGIOUS HOUSE: CINCINNATI

External: Cincinnati Association of Certified Life Underwriters (CALU) selection intensifies significance of network selection.

Internal: New quarter shifts assignments, giving time for reflecting on skills and necessary tasks.

Contradiction: Creating structures to sustain intensifying engagement of bi-metro colleagues in midst of strategies built for snowball. (Wk. 2)

RELIGIOUS HOUSE: DETROIT

External: Toledo moves from local interest to tentative TM date during week of vacationing for cadremen.

Internal: Celebrates Easter with sunrise service and breakfast at parish church and dinner at House of metro prior.

Contradiction: Creating visional planning for fall in midst of spring engagement. (Wk. 4)

RELIGIOUS HOUSE: CLEVELAND

External: Spin-off of development contacts and new TM sites from double TM weekend amazes all and solidifies Cleveland.

Internal: Collegium battleplanning for Quarter IV off of TM program chart is built using social demonstration material.

Contradiction: Tapping events and time of TM grads while not missing circuit beat. (Wk. 2)

NEW YORK**RELIGIOUS HOUSE: NEW YORK**

External: Preparation for Lower East Side Town Meeting, bilingual meeting, has been significant. Work with Economic Development Council of NYC breaks open new possibilities.

Internal: Area Council is spirit care as it indicates total area support to GSD in Washington, and united area effort towards 1200 TMs. Ecclesiola gives new look at Schumacher. Small is debatable.

Contradiction: Discerning follow-up in parish to journey colleagues there toward creating sociological sign in NY. (Wk. 4)

RELIGIOUS HOUSE: PITTSBURGH

External: In midst of intensive push in West Virginia and breakthrough with Community Action Program (CAP) network, metro colleague sends 22 college students to Pittsburgh for regional RS-I which occasions vocational brooding on part of all. Colleague in Cory, PA decides to go with TM '76 and sets date for one two weeks away and returns to Cory to set up steering committee and train workshops leaders within one week.

Internal: Transformation of House into regional training center as successfully spread out small troops to cover setup, RS-I pedagogues, enablement, Emerging Generation, permeation, TM and regional workshop training session. Brooding and conversation over M.C. through battleplanning brings key breakthrough to doing three campaigns.

Contradiction: Maintaining PCE dynamic in midst of doing TM. (Wk. 2)

RELIGIOUS HOUSE: ROCHESTER

External: A third timer steering committee member sojourns in House for week and catalyzes two Black TMs in Rochester. University TM and community forum on housing happen as follow-up for TM is held.

(RELIGIOUS HOUSE: ROCHESTER)

Contradiction: Going ahead without quarterly plan being complete. (Wk. 4)

RELIGIOUS HOUSE: RICHMOND

External: Area Council on Easter weekend allows all to stand before the 5,000 and breaks open network of Community Action Program area-wide.

Internal: Metro teams ground metro cadre's care for bi-metro. School vacation creates air of discontinuity for House and metro.

Contradiction: Discovering how to catalyze actuation of TMs. (Wk. 4)

RELIGIOUS HOUSE: WASHINGTON

External: Hosts NY Area Council with 90 guests, for major one year planning timeline, TMs, GSD in Washington, summer; highlights include report on Isle of Dogs Consult and Guardians' Consult by Don Moffett, guardianship lecture by Joyce Ollison. City-wide steering committee sets budget of \$33,000 to facilitate major spirit event for D.C.-Horizons Festival '76; D.C. Bicentennial chairman promises \$5000 as start.

Internal: Melinda Howell comes to set up Area Council; inkind intensifies as receive 100 reams paper, lots of food; House Jet, Kevin Woodward (6th grader) is confirmed in church.

Contradiction: Planning tactically how to do TMs where it becomes apparent steering committees have not decided to carry it out. (Wk. 4)

RELIGIOUS HOUSE: BALTIMORE

External: ICA attends four state Community Action Agency (CAA) conferences: Pittsburgh, Richmond, Washington, DC and Baltimore and nets 10 TM requests from 10 districts.

Internal: Swells to 12 with representatives from other Houses; Daily Office is great event.

Contradiction: Maintaining intensity to build momentum of quarter. (Wk. 4)

RELIGIOUS HOUSE: PHILADELPHIA

External: Area Council is great happening as imaginations stretch to think thorough summer and fall quarters allowing to roll into the spring.

Internal: Abelson-Frankl Advertising Executive comes to do last minute fine tuning in publishing new TM workbooks; stays overnight impacting all with role of hosting someone who has almost no knowledge of ICA.

Contradiction: Switching from doing set-up, doing TM, doing set-up, doing TM, to doing both simultaneously. (Wk. 4)

RELIGIOUS HOUSE: NEWARK

External: Holds TM '76 at Drew University with three new guardians signed up.

Internal: Peter Roland Fraser is baptized.

Contradiction: Determining and appropriating catalyzer style of consultant. (Wk. 4)

RELIGIOUS HOUSE: BROOKLYN

External: Launches two new steering committees for Brooklyn Metro - Canarsie (CIF) and Maspeth (Queens) for first Town Meetings to occur in that metro, adding to New York City total.

Internal: Easter Area Council in Washington D.C. builds practical vision of summer as best and busiest ever.

Contradiction: Creating troop deployment scheme: having right people with right tools at right place, all the time. (Wk. 3)

RELIGIOUS HOUSE: HARTFORD

External: Parish is covered by flyers for first TM '76 program in State of CT by committee. Workshop leaders are ready; they have their last session this Wednesday.

Internal: Hosts Amy Lou Bridgham and Dr. James Steward. Priest from Caracas drops in, knows movement well, says mass next door at St. Peter's. Karpoff is on radio 30 minutes for TM. Celebrates Martha Fulkerson's 28th birthday.

Contradiction: Creating story for those enabling all to stand as TMs start rolling on in bi-metro. (Wk. 4)

RELIGIOUS HOUSE: MANCHESTER

External: Intensive visitation push in Nashua catalyzes core (troika dynamic) with clergy colleague taking responsibility.

Internal: Area Council impacts House and celebrates Washington, D.C. location for Global Social Demonstration. Welcomes Shirley Bell for visit.

Contradiction: Beating demon that would keep House from mobilizing forces to implement Area TM '76 phasing plan. (Wk. 3)

RELIGIOUS HOUSE: BOSTON

External: Framingham TM '76 draws more people than TM in largest town in U.S.

Internal: Collegiums on implications from Area Council have immediate impact with Phoebe Reynolds assigned by Area to initial research team for social demonstration. Receives George Howard as intern.

Contradiction: Launching timeline for Boston in midst of city strife, calling into question its practicability and illuminates its necessity. (Wk. 4)

MONTREAL**RELIGIOUS HOUSE: MONTREAL**

External: Areal PSU on Global Social Demonstration targets seven communities in Eastern Canada that typify major social contradictions while key leaders in old experienced town of Iberville (original property of founder of New Orleans) decide to hold CFC. Four communities say yes to week to having CFC presentation and local St. Vincent de Paul Society plans stake celebration.

Internal: Hosts 10 for Area PSU and finds space by sending Marce Clutz to Sudbury for Businessmen's Consult and Brian Robins to Halifax Region on CFC circuit. Disciples scatter after Last Supper; House emerges newly created on Easter Day.

Contradiction: Contexting missional thrust one level to general for passionate engagement of potential colleagues out of specific intentional contexts. (Wk. 4)

RELIGIOUS HOUSE: TORONTO

External: Community Forum Canada and GSD pick up momentum with area guardian committee discussing values of area, GSD location, polis circuit forces; articulates willingness to plug in to activities; National Survival Institute approaches ICA to lead community workshops.

Internal: Symbolic takes on new power with new cross and chalice for Daily Office and new covers for songbooks.

Contradiction: Maximizing practical engagement through effectively minimizing pre-planning. (Wk. 4)

RELIGIOUS HOUSE: OTTAWA

External: Sudbury downtown businessmen request consult on downtown issues. Steering committee for Ottawa West Forum picks up leadership roles.

Internal: Wall comes tumbling down to make new collegium room, out of two small spaces. Capucins visit House to celebrate Saturday night.

Contradiction: Dealing with Ottawa in particular as have dealt with region. (Wk. 1)

CARACAS**RELIGIOUS HOUSE: CARACAS**

External: Holds signal Rotary LENS with 28 around table including past governor and next governor of Venezuelan Rotary and president of sponsoring club. Cadre begins study of Kawangware documents. Welcomes back Bede Hornung from Europe who reports on additional 500 deutsche marks for ITI:Caracas and spins ITI:Amsterdam reports. Holds luncheon with new LENS grads reveals excitement and interest in GSD and LENS pedagogy. Global Community Forum pedagogy is kicked off with Week Six Foro Comunitario Venezuela (GCF) fast approaching.

Internal: Guardian Jamil Dunia invites House and LENS faculty to celebrate success of LENS seminar with exquisite buffet dinner. Rick Loudermilk from LENS faculty spins on GSD. Drives to historic La Victoria and up mountain dirt road to Colonia Tovar (small German community) during Easter. Repaints hall and collegium room.

Contradiction: Following up RS-I to insure promising course. (Wk. 3)

GLOBAL CENTRUM
QUARTER IV 1975-76

THE GLOBAL ORDER CENTRUM REPORT
FOR WEEK FOUR

BRUSSELS
NAIROBI
BOMBAY
SINGAPORE
HONG KONG
CHICAGO

GLOBAL
DEVELOPMENT
CENTRUM

Mobil Oil indicates they have approved a grant for the Kawangware Preschool, and that they hope to continue their support as the project grows. USAID visit to Kwangyung II is positive and impacting. Chicago books closed at \$164,000 for April with little reliance on major grants. Bombay reports site visits continue to pay off, every visit so far a winner. ITI pitch is beginning to show results in Hong Kong. North American guardians call centrum to offer development help. Development band effort combines practical on-site knowledge of Rupert Barnes (Kawangware) with Brussels efforts to produce great Kawangware in-kind requirements (pumps). The contradiction lies in the arena of how to move comprehensively when you need more data, yet cannot wait for it, to turn positive signs into cash that pays bills.

GLOBAL
RESEARCH
CENTRUM

Training and consult preparation are the two arenas of Research Centrum work. In Nairobi Wednesday evening intern training begins an intensive rehearsal of common memory. Bombay reports visit with educational authorities results in recognition of preschool for 200 children and possibility of grant-in-aid. In Brussels and Hong Kong GRA planning and recruitment occasion new ways of looking at available forces and systems in order to tap practical expertise. In Chicago, Uptown's "Night With ICA" for businessmen and agencies confirms the fact that they are ready to work as a community. The Town Meeting Assembly is emerging as a tool for intensification of the number of Town Meetings being set up. Key contradictions are emerging in budget and recruitment plans for the GRAs.

GLOBAL
OPERATIONS
CENTRUM

ITI opens in Hyderabad Easter Sunday with 100 at opening feast. Hong Kong expands teaching base with new first and second teachers. Brussels pulls together training memo and sends priors' packets to European Houses. Nairobi reports new internal assignments reshape activities as sense cruciality of visible signs of programs around world through Finance trek reports. Programs include TM '76 in Anadarko, Avondale, Bozeman, Brookfield, Chisholm, Columbus, Dillingham, Elmhurst, Elyria, Hartford, Institute, Itasca, Jackson, Morton, Oklahoma City, Park Ridge, Syracuse, Tri-City; CMA in Kangaroo Point; LCC in Manila and Tokyo; Imaginal Education in Hong Kong; RS-Is in Brisbane, Glasgow, San Jose, Barat College, and Davao; PLC in Seoul. The contradiction lies in the arena of establishing continental communication systems and inter-continental brooding issue systems.

GLOBAL
MANAGEMENT
CENTRUM

Completion of Finance Treks in Hong Kong and Continent Europe rehearses common models. Task Forces in Nairobi enables the immediate tasks to happen. Prioritizing to allow finances to serve us, not we serving the funds. Bombay reports that ICA: India books set up according to requirements. One hundred sixty thousand Town Meeting '76 flyers and 80,000 quotes printing in-kind. Three thousand cases of green beans in-kind. Brother Lawrence begins a new dimension of care of the Chicago Nexus. Integrate Student House into three campaigns with assignment of troikas to Management posts. Transportation in-kind begun with Greyhound committing four Ameripasses free. The contradiction lies in the arena of the gap between practical proposals and daily routines leaves all functioning out of immediacies.