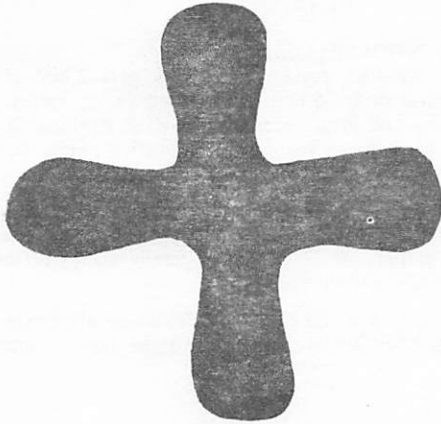


# GLOBAL ORDER REPORT

WEEK ONE

APRIL 3—APRIL 9, 1977



## LONDON

### RELIGIOUS HOUSE: LONDON

External: IHDP holds open day to celebrate first year of Project and issues special newsletter hosting 70 in five locations. Pug shoes Company sends shipment to Guardians Consult in North America and sends marketers to Amsterdam to break open European market. TM is set in Stapleford Abbots for July 16. Wincheap Community Day has 70 present. Guild meeting is set for follow-up. Manchester training week end for TM orchestrators has 6 present from London House who then attend PSU on GCF campaign for area.

Internal: Battleplanning for the quarter is assisted by Joel and Alice Wright of Bristol. House hosts Boivins and 12 Youth from Kreuzberg HDP. Sends out Louise King on completion of eight weeks work on Euro pan GSD on behalf of her parish.

Contradiction: Creating revolutionary tactics that enact the hows of urban GSD. (Wk. 1)

### RELIGIOUS HOUSE: GLASGOW

External: A call from a man who hears about TM results in a core meeting one week after initial visit.

Internal: Five House members attend Area London consultant training weekend in Manchester during which phone call to Oklahoma occasions celebration of Oklahoma 100.

Contradiction: Ensuring quality of first TMs while struggling through initial set-up pains. (Wk. 1)

### RELIGIOUS HOUSE: BRISTOL

External: Schedules first TM for Wales in Ferndale for May. Porth, Bridgewater hold core promises. Cyfarfod Tref: Ewrop brochures are printed.

Internal: Receives check for Week 2 Systems Analyst job. Dydd Sant Dafydd is celebrated with Welsh cakes, cheese and

They will call my name, and I will answer them. I will say, "They are my people"; and they will say, "The Lord is my God."

Zacharias 13:9

leek pie, with decor of daffodils and the red dragon.

Contradiction: Not being taken over by spring fever. (Wk. 11)

### RELIGIOUS HOUSE: MANCHESTER

External: Frames 10 communities for Foray 200 preparation; 19 young adults attend Newcastle RS-1.

Internal: Excitement and confusion alternate as Tao ecclesiola model is implemented.

Contradiction: Creating ways to keep symbolic life finely tuned so external machine runs smoothly. (Wk. 11)

## PARIS

### RELIGIOUS HOUSE: PARIS

External: Sends 70 invitations to Global Womens Forum. Is represented at the National Ecumenical Conference in Chantilly at the invitation of secretary for Christian Unity.

Internal: Quarter planning reveals surprising victories for the last quarter and exciting proposals for the coming quarter.

Contradiction: Finding House. (Wk. 1)

### RELIGIOUS HOUSE: ROME

External: Hot pursuit of the socio-economic transformation factor uncovers industrial subsidies, agricultural subsidies and fractions and a new universe.

Internal: Flying Wedge touches in between Tel Aviv and Chicago, and sets minds racing on the instrument for socio-economic cooperative.

Contradiction: Keeping the future blowing wildly in our faces while being tempted to live from day to day, since models stand for such a short time. (Wk. 1)

## LAGOS

### RELIGIOUS HOUSE: LAGOS

External: Land clearing begins and sign goes up on Ijede

**(RELIGIOUS HOUSE: LAGOS)**

Community I . . . while Ijede Children's Institute begins with preschoolers outfitted in bright orange uniforms and volunteer teachers, including local government councillor's wife. Visits seventh State Ministry beginning registration of co-op.

Internal: The last room in the House is electrified.

Contradiction: Going beyond the current operation models in midst of possibility of moving it fast. (Wk. 13)

**BRUSSELS**

**GLOBAL CENTRUM BRUSSELS**

External: Holds first continental Board of Guidance meeting at Notre Dame du Cenacle retreat center, launching European guardians with hard-headed task force work in economic acceleration, program marketing and advocacy.

Internal: Guests from four GSD projects find that stopover in Brussels involves them in practical funding and strategizing, not only for their project, but for the globe and covering all three campaigns, revealing another aspect of the Wayside Inn dynamic.

Contradiction: Creating clear victories to celebrate while continent is running on momentum. (Wk. 13)

**RELIGIOUS HOUSE: BRUSSELS**

External: Holds first Week II TM staff training in Manchester with Isle of Dogs citizens in attendance.

Internal: First week of full employment finds all turning down two further jobs.

Contradiction: Building the troop deployment model that will provide new equipment and supplies for GSD projects in three corners of Europe. (Wk. 1)

**RELIGIOUS HOUSE: AMSTERDAM**

External: Pre-core meeting in Alkmaar reveals strong Buurtdag possibility. Week II Quarter 4 planning objectifies the task in front.

Internal: Serious RH-13 collegium followed by two job offers within two hours of each other impacts all. Third job follows the next day, bringing full employment.

Contradiction: Seeing to it that the nitty gritty does not get in the way of organization. (Wk. 1)

**FRANKFURT**

**RELIGIOUS HOUSE: FRANKFURT**

External: Circuits north to Wesel and south to Heidelberg move closer to two more core meetings for setting up two Gemeindeforums.

Internal: Irons out a transrational trek schedule to cover all the bases while David Marshall stops by for the weekend.

Contradiction: Finding the access and networks into the German communities. (Wk. 1)

**RELIGIOUS HOUSE: BERLIN**

External: Guild reflects upon the events and accomplishments in each of the 13 programs; first elders meeting held in the Communications Centrum; open windows during German class nets 15 people standing outside and listening - five of whom come in to register! Radio showman comes for an interview and does a ten minute spot on the show over KHDP; Six are sent to guardians meeting in Brussels; in-kind miracles every day net wash basins, dishes,

posters, and 100 DM worth of children's art supplies.

Internal: Diakonisches Werk is caring for House culture life by supplying it with tickets for Philharmonie. House participates in frustrations of inner city as finally, after three weeks, it has water (but not hot), in kitchen apartment.

Contradiction: Keeping people motivated when a project is blocked or there are no clear future steps. (Wk. 12)

**KINSHASA**

**RELIGIOUS HOUSE: LUSAKA**

External: Windfall development week gets 2,800 in and in-kinds tractor for Shantumbu. Zambia's top seeded rally driver pledges all future winnings to SHDP. Regional Council plans six PLCs in six metros for replication preparation; 20 grads sign up for circuits and pedagogy.

Internal: Intern sent for month of study in Hungary and other intern married in solemn splendor after week of intensive preparation. The Machisi family stands before the shield, the fire, and the stars.

Contradiction: Attending to detail follow up after exploding the possibilities in development and the three campaigns. (Wk. 12)

**CAIRO**

**RELIGIOUS HOUSE: EL BAYAD**

External: Preschool attendance jumps to 70; 300 people gather for showing of first movie in Bayad's history. Representatives from the World Council of Churches visit, accompanied by Coptic Bishop Samuel, and are excited by project.

Internal: Receives Shaw family, David, Margaret and Gerald, from Area London. House celebration is a camel-back trip into the desert, providing occasion for reflection. Sends out Busses and Boivins to Global Priors Council in Brussels.

Contradiction: Forming images of next major thrust that gives all a way to comprehensively envision the future. (wk. 13)

**NAIROBI**

**GLOBAL CENTRUM: NAIROBI**

External: Twenty-five community programme leaders join KHDP auxiliary for full Week II planning for Quarter IV, with on-time, every session presence, full participation astounding all. Archbishop of Lusaka leaves KHDP to tell Zambia that it works.

Internal: Nexus is impacted by 25 community people this Week II present KHDP quarterly planning. Sends out Peter Ndwari, Kawangware resident, businessman, to Bayad Consult and Global Guardians Meeting.

Contradiction: Taking raw discipline and decision and change quickly into effective operating discipline and methodological skill. (Wk. 1)

**RELIGIOUS HOUSE: NAIROBI**

External: Circuit team splits - one on foot setting date for VM at first contact while other half sets two more dates, making a total of six VMs for 12 days. Sojourner pulls off spirited mini-VM at committee meeting, all in Swahili. First Nairobi VM is held in Kariobangi, one of the worst Nairobi neighborhoods, with two councillors, two choirs and the local school players. Opens authorization in the city with invitation to work in other wards.

**(RELIGIOUS HOUSE: NAIROBI)**

Internal: James Lempke wins first in backstroke at school. House under repairs; landlady visits to give gardening lessons. Phone is installed and all are hoping for a connection. Ecclesiola comes alive with "accepting disgrace and misfortune". Marshall Jones enlivens House's awareness of Order symbols. Boss's US\$13,000 automobile is entrusted to Geri's care while he goes on extended business trip.

Contradiction: Moving from fascination to doing tactics. (wk. 13)

**BOMBAY**

**GLOBAL CENTRUM: BOMBAY**

External: India's Republic Day celebrated with morning parade of school children in new clothes with bright faces, flag hoisting, and afternoon nail brushing and weight checking at just two of the exciting Health Fair booths. An inter-guilds "Kobadi" match. All State Bank of India staff drop by with greetings after getting 101 new accounts opened earlier in the week and a commitment to open a branch here.

Internal: Internal life for Quarter II is kicked off with barbeque celebration on Saturday night while receiving ecclesiola manual for the quarter which provides context for study of the yellow Ur and a celebrative Chinese feast.

Contradiction: Getting methods of tapping technical expertise available in India in order to sustain Maliwada economically and build the thrust for economic self-sufficiency. (Wk. 12)

**RELIGIOUS HOUSE: BOMBAY**

External: Chikale Consult ends. Replication consults are combined where consult is held, document is completed and programs begin all in eight days and for 8,000 rupees, US\$1,000.

Internal: House explodes from two to 30 as Chikale Consult ends and Ambadi begins. Kumar family arrives.

Contradiction: Regrouping the troop lines in the midst of dress parade. (Wk. 13)

**RELIGIOUS HOUSE: VAVIHARSH**

External: Begins main road paving as the first visible sign. Holds informal guild meetings. Makes public and private sector, development and authorization visits to Nasik, Ghoti, and Igatpuri.

Internal: Sends out two Social Method School graduates to the Kendur Human Development Project, and a couple to the Quarter III SMS in Maliwada. Has first birthday celebrations for two auxiliary members.

Contradiction: Utilizing available expertise from the public and private sectors to concretize tactics estimates, in order to tap the abundant resources. (Wk. 7)

**RELIGIOUS HOUSE: TASGAON**

External: Tasgaon comes alive with large attendance at Shramdan (workday) on repairing old temple steps, cleaning out mud filled tank, building sample of cobblestoned road and cleaning streets. Rotary Club speaking engagement and visit to the collector gains solid support from Satara (district capital city.) Completes village census and land map and secures records from Talati.

Internal: House set-up with furniture from Gram-Panchayat, village high school and in-kind paint. Demonstration kitchen garden prepared and toilets dug and extra room constructed

for living space. Project director, Jasper James arrives in time for Sunday Shramdan.

Contradiction: Chanelling some of raw enthusiasm and energy to procuring materials and other input that will transform work into solid effectivity. (Wk. 1)

**DELHI**

**RELIGIOUS HOUSE: DELHI**

External: Mails 60 letters to regional colleagues. Joseph Mathews arrives in India; goes on village visits and recruitment for GRA Consults and HDP Training Schools. Goes on circuits to Allahabad, Lucknow and Chandigarh. Cadre meeting in Delhi brings area colleagues around to present focus on HDP Training School and Consult recruitment.

Internal: Clear missional timeline and implementaries allow for fluidity in internal movements. New team assignments meet future troop demands. New decor transforms House. Celebrates with Shish Kabobs and drinks. Creates intensive study hall for EG in the face of exams. Metro colleagues join us at House Church.

Contradiction: Getting the money and transforming the masses into troops as GSD replication increases. (Wk. 1)

**MADRAS**

**RELIGIOUS HOUSE: HYDERABAD**

External: Receives two members for auxiliary from Ambadi. House is busy preparing decor for the Consult.

Internal: Chairman Joe Mathews meets chairman R. K. Atol of Vazir Sultan Tobacco factory and finalizes funding and sponsorship for NHDP.

Contradiction: Shifting the Area House within three weeks to auxiliary House NHDP (Nadlapur Human Development Project). (Wk. 13)

**CALCUTTA**

**RELIGIOUS HOUSE: CALCUTTA**

External: Calcutta companies show heightened interest as proposals for doing Village Demonstration, like Maliwada, in Eastern India, are presented. Two companies want to sponsor a village each.

Internal: Paul George Thomson is born to Adam and Gayle on March 18, 1977 at 4:20 P.M. - their first born - in Calcutta. Local community reminds House of custom of handing out sweets and letting off firecrackers (two for a boy, three for a girl) to celebrate the event.

Contradiction: Honoring principle of self-support in midst of continental assignments. (Wk. 1)

**SINGAPORE**

**RELIGIOUS HOUSE: SINGAPORE**

External: Completion of Area ITI maneuver sends teams to five regions. Secures ITI site in Bandung, Indonesia, and secures host of church officials for patrons' committee.

Internal: Sends Jalawai Amba, first Iban intern from Sarawak, to Sungei Lui-Kuala Lumpur. Hayes family returns before going on to Sungei Lui HDP. Four guardians visit.

Contradiction: Doing development. (Wk. 13)

**RELIGIOUS HOUSE: KUALA LUMPUR**

External: Sends consultants to Consult in Sungei

**(RELIGIOUS HOUSE: KUALA LUMPUR)**

External: Lui Experiences life as overwhelmed by response to inkind and consultant recruitment.

Internal: Welcomes Jalawai Ambas, a graduate of the 1976 ITI from Cebu, to begin her internship.

Contradiction: Deciding key tactics to use in the village before the Consult. (Wk. 13)

**RELIGIOUS HOUSE: JAKARTA**

External: Receives positive encouragement from all sectors - Social Department, US AID, General Baustion, Colonel Nasution, on national level; the Lurah and Bupait, regional officials; agronomist from private sector, David Barnes; and villagers of three kampungs. Prepares to send five villagers to Sungei Lui Consult in Malaysia. Secures three inkind tickets. Youth finish extending the soccer field. Crowd of 150 watch TV coverage of badminton finals from England. PCE decides to fund and send people to ITI.

Internal: Sends out Lush, La'ya, Connie, and Ruthe Yost to Sungei Lui preparation. Ibu Sukanto goes to centra Java on family business. Roy Stansbury from Canberra arrives to boost development thrust for a while. Mudjiatmo's brother from central Java visits.

Contradiction: Supporting the expansion of the project as well as the demands of the global Movement. (Wk. 1)

**HONG KONG**

**GLOBAL CENTRUM: HONG KONG**

External: Staff residence is near completion; service corps begins building House before document completion; 70 children at preschool party Saturday afternoon signals the yes already there. Work day begins with two and ends with 50 villagers preparing the entry way to the village. Global Language School continues with the age range from 6 years to 70 years. Preschool teacher training continues with 20+ teachers every night. Farmers Guild begins with 20 men plus teachers every night. Celebration Saturday night includes everyone. Purple crepe paper put over school lights creates celebrative atmosphere. Western music provides impetus to the Hakka men to show off their skill in dancing as well as manners as they ask each auxiliary woman to dance. House building began again Sunday morning.

Internal: Katy Moon arrives from Korea to help with preschool. Fuk Wah Tsuen GCF participant begins his sojourn in Nam Wai with plans to stay; Paul Law. Warboard is completed with dimension of 6 feet by 14 feet and still more things to go on it.

Contradiction: Bringing into being stake and guild structures and advisory board in order to alleviate dependance on one particular group and to channel enthusiasm. (Wk. 1)

**RELIGIOUS HOUSE: KAOHSIUNG**

External: Visit to Chief Executive of Ping Tung County, site of Nan Ping, discovers the executive to be handsome, vital and young and fluent in English. He gives his full support, authorization and hosts a traditional 'Feast of Kings'. Chinese pastor and wife arrange schools for their children so that they can aid pre-consult activities. Minnie Li is nursing her mother into health so Minnie can move in.

Internal: Ecclesiola is a happening with Chen I An and an excited group of 1976 ITI grads present.

Contradiction: Making the move to the village without losing momentum in other arenas. (Wk. 1)

**RELIGIOUS HOUSE: MANILA**

External: Circuiting continues as major emphasis with two to four circuits out for ITI, Global Woman's Forum and GCF, everyday in Manila, as well as completing the regional circuit to Tuguegarao/Baguio and beginning the regional circuit to Legaspi. Development receives P5,000 submits nine proposals for a total of P32,5000.

Internal: Week of celebrations sends out Dedenia Nones and Edward Vergara to Academy, and welcomes Tuguegarao Circuit Team, marked Don Quimby's 25th anniversary with Union Carbide with paper hats and a fancy cake, and culminate the week's work with a free movie - Westside Story. Receives Manny Lagass from Davao as sojourner and host Sharon Feldmanis and three children enroute to Sudtonggan.

Contradiction: Falling into the world's pace rather than getting a jump on the situation during the first half of Holy Week. (Wk. 1)

**RELIGIOUS HOUSE: TAIPEI**

External: Schedules two businessmen's workshops as part of economic intensification.

Internal: Double impact of CS-1 Plus reports on Nan Ping from traveling Nam Wei consultants Wheery, Jeffries, and Hu give new images to local colleagues.

Contradiction: Holding the comprehensive image before the possibility of the future. (Wk. 1)

**RELIGIOUS HOUSE: CEBU**

External: Receives 700 meter fishing net for the fishing guild's 43 foot boat; training in deep sea fishing will now begin. Doctora Estrella comes for once a month prenatal care program and sees all 16 pregnant mothers. ELC closing exercises for this school year excites 500 plus with the accomplishments of 125 children. Great workday with 120 cleaning road and lining sides with whitewashed rockd for 250 meters.

Internal: Welcomes back Lester Knutsen from Nam Wai consult, Prior's Council and ITI recruitment. Geni Philbrook stops overnight on way to Davao following same assignment with Lester. Receives slide projector and school materials from those who care in Vermont, California and Hong Kong.

Contradiction: Reporting the quarter in the midst of world maneuvers. (Wk. 1)

**RELIGIOUS HOUSE: DAVAO**

External: Visits Bishop Reagen concerning ITI and he will talk to his priests. Also visits eight communities for GCF as part of north SEAPAC Foray 400.

Internal: Welcomes Geni Rhilbrook back from Nam Wai consult and ITI recruitment task force in Area.

Contradiction: Pushing through for practical symbol of commitment. (Wk. 1)

**TOKYO**

**RELIGIOUS HOUSE: TOKYO**

External: Hong Kong Centrum inspects one of several proposed GSD sites, and was satisfied that one in Hokkaido met basic requirements, including authorization.

Internal: Holds Quarter III celebration complete with Finnish sauna and spaghetti. Wayside Inn flourishes at three meals with moreguests than House members.

**RELIGIOUS HOUSE: OMAHA**

External: Three unique neighborhoods in Omaha hold TMs on April 2, initiating month of TMs in Omaha.

Internal: Hosts six orchestrators Saturday night and is impacted by Inyan Wakagapi report from Amelia Kroeger following Sunday evaluation.

Contradiction: Making use of momentum from three TMs in carrying on the awakening of the entire city. (Wk. 1)

**RELIGIOUS HOUSE: KANSAS CITY**

External: Completes Missouri statewide sector registration schedule involving Jaycees and mayors, holds first of Spring of TMs in Independence and has three key people attend Guardian's consult.

Internal: Dan DeCarlo arrives to implement Missouri Tm. Whole House attends KCMO registration meetings. Involves EG in Oklahoma and Nebraska TMs and hydroponic garden is in operation.

Contradiction: Modifying structures allowed to impair maximum use of time and troops relative to telephone cost. (Wk. 1)

**RELIGIOUS HOUSE: MINNEAPOLIS**

External: Expands engagement statewide in Minnesota Future Day:Second State Advancement Committee Meeting. In-kinds brochure and all needed printing. Community registrations set up resulting in second TM in East Grand Forks. Whittier PCX of 20 delegates on City Planning and District Committee Action Council and Whittier storefront receives face lifting.

Internal: Legal trek report awakens House to global legal complexities and gets said that there are no national boundaries for GCF. Tao is peak of the week.

Contradiction: Capitalizing on statewide Minnesota Future Day decision and momentum to engage necessary forces. ( Wk, 1)

**RELIGIOUS HOUSE: ST. LOUIS**

External: Sends five to OK:100. Belleville sector (East Metro) moves toward simultaneous implementation of 10 communities through mailing to 100 mayors and 80 network people.

Internal: EG journies under rubric of the Explorer; House member raising funds and preparing for Lorne de L'Acadie.

Contradiction: Working at the local somehow through intersecting networks in state-wind maneuvers. Very trial and errorish at what doing. (Wk. 1)

**RELIGIOUS HOUSE: PEORIA**

External: Quad Cities luncheon seats 32 around the table to map out TMs for possible 20 communities.

Internal: Five students from Student House travel to Des Moines to help in setting up new Des Moines House. Division South strike force works out of Peoria this week in-kinding paper, printing, 60 hour materials and letter blitz. Sends out James Higgins to the army.

Contradiction: Holding the tension between urgency and momentum. (Wk. 11)

**RELIGIOUS HOUSE: GREEN BAY**

External: Dickinson County TM closes registrations one week before the big day due to unexpected avalanch of pre-registrations the overtax facility. Visits 15 towns with 10 showing a promising interest.

Internal: Sends Anita Gibson to OK as orchestrator. Sight reads second act of Shaw's "Man and Superman" for discontinuous ecclesiola.

Contradiction: Getting timeline for TMs to coincide with local consensus. (Wk. 13)

**RELIGIOUS HOUSE: MILWAUKEE**

External: Metro meeting at SAM battleplan for immediacy regarding registering towns for TM Wisconsin:100.

Internal: EG participates in readathon for multiple sclerosis. Development team adds people to House morning structures.

Contradiction: Having the models for daily work to enable people to put their passing on Wisconsin 100. (Wk. 1)

**RELIGIOUS HOUSE: INDIANAPOLIS**

External: Holds sponsors' organization meeting in Marion, Indiana, core meeting in Newburgh, Kentucky, CIF planning in Louisville. Speaking engagement in Evansville, Indiana, awakens dormant polis. Academy recruitment gets amazing results and 15 colleagues spend Week II at House in Imaginal Education workshop with emphasis on tactics for PCE in Louisville's Parkhill area.

Internal: Beginning to turn the tide on self-support as earned income exceeds budget for the first months this year. Crucial maney tactic is actualized as every House member completes filing of all federal and state income tax returns.

Contradiction: Insuring broad participation in Guardians Meeting Week 13. (Wk. 12)

**RELIGIOUS HOUSE: CINCINNATI**

External: Secures the new consultant force for TM:Ohio Day well underway with yes from TM grads.

Internal: Large in-kind food donation arrives just in time to cover absent House check.

Contradiction: Pushing TM:Michigan strategies to actualize corporate planning and service coordination. 10)

**RELIGIOUS HOUSE: DETROIT**

External: In corporation blitz, visits 57 corporations. Meeting with 27 Detroit leaders held relative to Detroit TMs, Archdiocese says yes. Big Boy Restaurants agree to in-kind meals for circuiters.

Internal: House celebrates ecclesiola by going to see Academy Award winner 'Rocky'.

Contradiction: Keeping the lid on catch of local coordinators while at the same time they are leaking out the bottom of the box. (wk. 1)

**RELIGIOUS HOUSE: CLEVELAND**

External: TM:Ohio moves into second major phase with Consultant Training for over 100 new consultants in seven districts.

Internal: Birth of Justin David Bushman to Donald and Mary Laura Bushman happens on February 25.

Contradiction: Gearing selves up for passing the baton to new consultants that will be doing the 88 TMs. (Wk. 12)

**NEW YORK****RELIGIOUS HOUSE: NEW YORK**

External: Two TMs, South Bronx and Lower East Side, initiates by local community core groups, both in New York

**(RELIGIOUS HOUSE: NEW YORK)**

City neighborhoods. Mathews, Vance, Thomas and Ollison arrives for Andrew Young visit.

Internal: Wedge collegium by Joseph Mathews and on the town celebration are fitting transitions from Quarter III to Quarter IV.

Contradiction: Getting a running start into the new quarter and an area strategy without a monitoring center. (Wk. 1)

**RELIGIOUS HOUSE: PITTSBURGH**

External: Using direct tactics in steering committee journeying results in new decisions in Bradck and Moorefield West Virginia.

Internal: Engagement by sojourners John Maslove and Robert Hedges results in Academy registration and new job.

Contradiction: Creating tactical implementation after model is built, especially when structural routine sets in. (Wk. 12)

**RELIGIOUS HOUSE: ROCHESTER**

External: Binghamton Metro Cadre doubles in size with steering committee members, enabling two GSD nights to be planned. They all plan to return weekly.

Internal: Reports and brooding from area priors meeting enables everyone to get a handle on next quarter, initiating individual brooding and deciding the victory.

Contradiction: Changing backyard context into Area context in order to release troops and time for urbanstrategies. (Wk. 13)

**RELIGIOUS HOUSE: RICHMOND**

External: Through collegiums and reflection on the Area battleplan, arrives at local understanding and concensus about significance of an Area victory.

Internal: Local guardian is on her toes and finds sixty square yards of used in-kind carpet; in-kind squid brings corporateness in it's rejection.

Contradiction: Opting to be martyrs instead of winners. (Wk. 1)

**RELIGIOUS HOUSE: WASHINGTON**

External: Ivy City Council thrust out of Ivy City and into the world through Neil Vances's report on the 24 social demondstrations and Ivy City's own Lawrence Glacoe's report on the Cano Negro Consult.

Internal: House global consciousness bumped via collegium on Wedge report and week presence of Neil Vance, Kathy Bauknight, and Mark Welsh.

Contradiction: Firming back up system: economics, structures, and training. (Wk. 4)

**RELIGIOUS HOUSE: BALTIMORE**

External: Area Council redirects focus as we participate in Ivy City preparation and send two to Oklahoma 100.

Internal: Roy and Josephine Kauer wedding happens. Entertains family from Seattle and New Jersey. Hanna Dexter as guest at ecclesiola spins stories of Kwangyung II.

Contradiction: Enabling individuals to turn their excitement into yes from a larger group. (Wk. 13)

**RELIGIOUS HOUSE: PHILADELPHIA**

External: New Jersey state strategizes for 58 TMs in 13 weeks. Re-contexts whole region on why doing TMs.

Internal: Jenkins do great morning collegium on edge of GSD. Altons announce the expectation of new family

member in November.

Contradiction: Putting minds to one great deed this quarter. (Wk. 1)

**RELIGIOUS HOUSE: NEWARK**

External: Dover TM coordinator greets orchestrators with final payment on the \$1200.

Internal: The GCF campaign: profound awakening paper proves timely with New Jersey:58 beginning. Chafees announce forth coming birth of a new revolutionary.

Contradiction: Relating OK:100 strategy to urban New Jersey 58. (Wk. 1)

**RELIGIOUS HOUSE: BROOKLYN**

External: Bi-metro TM quarterly council releases enthusiasm and structurally makes the turn to focus on New Jersey 58.

Internal: House study of Bonhoeffer's community paper reawakens gratitude for colleagues and turf at hand.

Contradiction: Graciously embracing reality of in-house troops and structurally covering all fronts. (Wk. 1)

**RELIGIOUS HOUSE: HARTFORD**

External: Gives HDP slides and presentation at University of Harford grad. Has class in Public Planning and Development Meetings in Barre, Vermont and Bridgeport, New Haven held to initiate steering committees. Architect in New Haven writes \$50 check at steering committee meeting. His associate has been to Korea and visits HDP in JeJu. ends Bob Hanson to Schenectady 10 and returns with catalyzing stories regarding the consultant force there.

Internal: Five House members able to participate in RS-I course as George Howard from Boston House is enablement and child care. Fred McNutt is hired by National Typewriter Co., Inc. Presentation given to the Daughter's of the Holy Spirit at St. Anne's in Park Street 5 on the three campaigns and life as a family order. They will be coming to House Church soon.

Contradiction: Holding mass impact/local momentum-coordination of assignments. (Wk. 1)

**RELIGIOUS HOUSE: ALBANY**

External: First press conference for Schenectady Meets brings TMs to attention of Capital District, with news coverage by two TV stations and three papers. Area assigns two to Schenectady for development and in-kind.

Internal: One House member returns from OK 100 and another returns from Ivy City.

Contradiction: Coordinating county-wide and community thrusts for Schenectady Meets. (Wk. 1)

**RELIGIOUS HOUSE: BOSTON**

External: TM workshop leaders, old colleagues and new from four New England states gathered in Hartford to attend RS-I.

Internal: The structures of the House receives special attention when only two are there to operate them.

Contradiction: Keeping small House a missional not self-sustaining unit. (Wk. 1)

**MONTREAL**

**RELIGIOUS HOUSE: MONTREAL**

External: Experiences its function as Area House with grassroots mailing across Canada, coordination for Lorne and sending Robins to Vancouver for CFC and then Edmonton for area meeting.

Internal: Has tribal resettlement after send-out of Lorne

**(RELIGIOUS HOUSE: MONTREAL)**

troops, and visit of Slotta family to investigate immigration, permeation and schooling.

Contradiction: Moving the consultant yeses into engagement and cash in hand. (Wk. 13)

**RELIGIOUS HOUSE: TORONTO**

External: Swirl of CFC and Lorne consultant visits and phone calls result in first four paid consultants for Lorne.

Internal: With half the adults in Lorne, the remaining troops work on Lorne consultants, guardians meeting and the rest of the mission.

Contradiction: Keeping the story, vision and the future beyond Lorne before and within us in the swirl with few troops. (Wk. 13)

**RELIGIOUS HOUSE: OTTAWA**

External: Hawkesburg trek is enabled by new driver's license.

Internal: Part-time job is won at Catholic Health Association of Canada where ICA led national consultation in November.

Contradiction: Embodying effective priorship style with drastic reduction in resources. (Wk. 13)

**RELIGIOUS HOUSE: HALIFAX**

External: Lorne citizens provide 75 pounds of potatoes per day for each day of consult; 10 Lorne community people form task force in preparation for consult and produce and distribute first Lorne "Voice" to every home, while four teams on the road. The Maritimes net \$4,000 worth of in-kind; 12 are seriously considering consultants, ready for Lorne de l'Acadie Consult. Sets four more CFC dates and opens doors up for development across New Brunswick.

Internal: Bob Porter and Forest Craver conduct area Legal Trek as 26 area troops, including all House priors, gather in Lorne for HDP set-up.

Contradiction: Maintaining chaste attention to specific priorities in midst of a deluge of demands to get advance auxiliary team set-up on site in Lorne and the preconsult miracle initiated. (Wk. 12)

**CARACAS**

**RELIGIOUS HOUSE: CARACAS**

External: Colgate-Palmolive donates \$1000 to Cano Negro. Prepares community garden seed bed and seeds arrive for planting. Community installs tanks into latrine holes dug last week. Sector/stake meetings continue attendance of over 30% of the community present. Clears land for auxillary housing to be built this week.

Internal: House sees 'Bad News Bears' and raises question of what does it really mean to win.

Contradiction: Getting pump installed to insure the symbol of water for the village with water well drilled. (Wk. 1)

**THE GLOBAL ORDER CENTRUM REPORT**

**BRUSSELS  
NAIROBI  
BOMBAY  
CANBERRA  
HONG KONG  
CHICAGO**

**WEEK ONE**

**GLOBAL  
DEVELOPMENT  
CENTRUM**

Global Development Centrum reports appointments with Jewish community in Paris, marking a new opening in that circuit. They also found bargain basement prices on vehicles with German government for Bayad HDP. Canberra launched a three-week follow-up campaign to cover Quarter II budget, with business and professional patron networks indicating willingness to float ICA. Development Centrum:Chicago Nexus reconstitutes itself into the Fourth Campaign during a Week II planning session involving Wedge, Area Extension teams and Chicago-based troops. All 50 people are divided into five patrols: systems, circuit, areal, capitals and Wedge, with each group creating its maneuvers for the quarter. The challenge is in daring to embody the new circle of development it is becoming.

**GLOBAL  
RESEARCH  
CENTRUM**

Global Research Centrum inaugurated Town Meeting planning Week II in Area Lond for training of all ICA staff in TM methods. Integration of the three campaigns was sensed as Isle of Dogs staff and residents breakloog from IHDP events occurred, holding training Week II event. Canberra set the date for the Eleventh Guardian Consult, getting the invitations to the printer. A mechanic volunteers for ten days at Oombulgurri. Centrum Chicago sent troops on the road for funding of Global Women's Forum. Exciting morning collegiums on what we learned in Oklahoma 100 relative to state campaigns were heard all week. Academy began with over 70 participating. Quarter III battleplanning started. The contradiction lies in the arena of maintaining the Centrum dynamic.

**GLOBAL  
OPERATION  
CENTRUM**

Global Operations Centrum in Canberra reports CMA breakloose is happening as evidenced by House requesting materials faster than they are able to print them. A new CMA brochure is printed and distributed to the Houses. Brussels reports the creation of a TM post, generating updating of filing system that spreads through all files. TM:Europe Shorts becomes bi-weekly publication with March 30 issue. The Twelfth Guardians Consult hosted over 200 guardians who pledged their support of the Kwangyung II Worlds Fair and their expertise in the arenas of the Committee of 5,000, major development funding, campaign maneuvers, TM orchestration and many others. Tom Whitsett returned to give exciting report on TM Rally held simultaneously in Oklahoma City, reporting over 60% of the towns were represented. The contradiction lies in the arena of enabling the upcoming state maneuvers in TM.

**GLOBAL  
MANAGEMENT  
CENTRUM**

Belgian government co-financing of Maliwada replication calls for new account and administration procedures. Paint-up, fix-up, brighten-up of Chicago kitchen lifts all Nexus spirits while all new General's Club and Global Conference Center on the sixth floor buoy guardians. Canberra management work hand-in-hand with development to raise \$17,500 USD. The contradiction lies in the arena of transrationalization of operating modes and global interchange.

**(RELIGIOUS HOUSE: MIAMI)**

Internal: Celebrates marriage of interns, Katie Bedsworth and David Burnite. Guests Mr. and Mrs. Jones, parents of Judith Gaige, visit in Miami and stay at the House.

Contradiction: Bracketing central Florida due to present priority being in Oklahoma and absence of Day I troops. (Wk. 12)

**CHICAGO**

**GLOBAL CENTRUM: CHICAGO**

External: Sends out circuit teams to Michigan and Wisconsin. Student House heads out for Lorne de l'Acadie. Develops promotional films from African GSD and Oklahoma TM. Pushes fund raising by personally calling those who will give to the sum of \$80,000 for the replication school in India to be added to \$240,000 from Belgium.

Internal: Colleagues passing through to El Bayad and Ijede receive. send out on their way. Ecclesiola focuses on maneuvers as the most difficult part of winning a war and what this looks like in relation to the TM maneuvers.

Contradiction: Raising \$80,000 for the Belgium \$240,000 for funding the Indian Replication School. (Wk. 2)

**RELIGIOUS HOUSE: CHICAGO**

External: Iron Man Plaza begun by City Community Development Commission. Renovation of 321 S. Trumbull into five apartments and Men's Club space begun. Meeting with City Commissioner completes political framing of city and gains authorization for Fifth City redevelopment plans to become the city's plan. Second class of Fifth City Commercial School begins with full enrollment. Forty Blocks Environmental Campaign launched with major clean-up day reaching 20 block; several block club signs erected.

Internal: Sends Marilyn Whiting and John Lindstrom to Lorne de l'Acadie. Vida Melissa Welch baptized.

Contradiction: Creating orchestration dynamic to maintain and increase momentum of Forty Blocks Campaign. (Wk. 2)

**RELIGIOUS HOUSE: WICHITA**

External: South Witchita follow-up committee hosts candidates afternoon at major shopping center. Sponsorship meeting in Salina, Kansas has 35 around the table.

Internal: Hubert Fulkerson sent out to Ijede. Evening ends with rehearsal of the 'Paul' story of his life as preparation for new assignment.

Contradiction: Using the happenings to build on the momentum of a renewed campaign. (Wk. 2)

**RELIGIOUS HOUSE: OMAHA**

External: Request for coordinator's manuals for Nebraska (150) turns into a response of 10,000 for the whole nation form Rapid Printers, Omaha.

Internal: Views Rocky in shifts and pulls together Maundy Thursday conversation after common meal and shining one another's shoes.

Contradiction: Building and funding model for TMs using primarily people available Day II and Week II. (Wk. 2)

**RELIGIOUS HOUSE: KANSAS CITY**

External: 450 TM set-up makes phone call to 200 Missouri communities.

Internal: Missouri/Kansas holds Easter TM reporting and planning with fish, honey and leaves celebration.

Contradiction: Discerning the strategic pressure points to hone in on during the last month of the countdown.

**RELIGIOUS HOUSE: MINNEAPOLIS**

External: Expands engagement statewide in Minnesota Future Day: Second State Advancement Committee Meeting. In-kinds brochure and all needed printing. Community registrations set up resulting in second TM in East Grand Forks. Whittier PCX of 20 delegates on City Planning and District Committee Action Council and Whittier storefront receives face lifting.

Internal: Legal trek report awakens House to global legal complexities and gets said that there are no national boundaries for GCF. Tao is peak of the week.

Contradiction: Capitalizing on statewide Minnesota Future Day decision and momentum to engage necessary forces. (Wk. 10)

**RELIGIOUS HOUSE: ST. LOUIS**

External: Moves into countdown phase on implementation of Spring of Town Meetings in Missouri.

Internal: Sends Mary Lou Jinks to Lorne de L'Acadie for two week.

Contradiction: Forging daily pattern of corporate thrust which constantly adapts to the immediate demands while holding the long-range context and perspective on the task. (Wk. 2)

**RELIGIOUS HOUSE: PEORIA**

External: Quad Cities luncheon seats 32 around the table to map out TMs for possible 20 communities.

Internal: Five students from Student House travel to Des Moines to help in setting up new Des Moines House. Division South strike force works out of Peoria this week in-kind paper, printing, 60 hour materials and letter blitz. Sends out James Higgins to the army.

Contradiction: Holding the tension between urgency and momentum. (Wk. 11)

**RELIGIOUS HOUSE: GREEN BAY**

External: Dickinson County TM closes registrations one week before the big day due to unexpected avalanche of pre-registrations the overtax facility. Visits 15 towns with 10 showing a promising interest.

Internal: Sends Anita Gibson to OK as orchestrator. Sight reads second act of Shaw's "Man and Superman" for discontinuous ecclesiola.

Contradiction: Getting timeline for TMs to coincide with local consensus. (Wk. 13)

**RELIGIOUS HOUSE: MILWAUKEE**

External: Metro meeting at SAM battleplan for immediacy regarding registering towns for TM Wisconsin:100.

Internal: EG participates in readathon for multiple sclerosis. Development team adds people to House morning structures.

Contradiction: Having the models for daily work to enable people to put their passing on Wisconsin 100. (Wk. 1)

**RELIGIOUS HOUSE: INDIANAPOLIS**

External: Holds sponsors' organization meeting in Marion, Indiana, core meeting in Newburgh, Kentucky, CIF planning in Louisville. Speaking engagement in Evansville, Indiana, awakens dormant polis. Academy recruitment gets amazing results and 15 colleagues spend Week II at House in Imaginal Education workshop with emphasis on tactics for PCE in Louisville's Parkhill area.

**(RELIGIOUS HOUSE: INDIANAPOLIS)**

Internal: Beginning to turn the tide on self-support as earned income exceeds budget for the first months this year. Crucial money tactic is actualized as every House member completes filing of all federal and state income tax returns.

Contradiction: Insuring broad participation in Guardians Meeting Week 13. (Wk. 12)

**RELIGIOUS HOUSE: CINCINNATI**

External: Secures the new consultant force for TM:Ohio Day well underway with yes from TM grads.

Internal: Large in-kind food donation arrives just in time to cover absent House check.

Contradiction: Pushing TM:Michigan strategies to actualize corporate planning and service coordination. (10)

**RELIGIOUS HOUSE: DETROIT**

External: Decides to call 500 Michigan communities to dig for TM interest, three county TMs secured in one day. 125 communities to be seen in the next two weeks.

Internal: Celebrates Judeo-Christian heritage with traditional Jewish Seder to celebrate opening of Passover.

Contradiction: Seeking out the goal seen on the horizon, while keeping hand on the plow, knowing if you look back you will turn into a pillar of salt. (Wk. 2)

**RELIGIOUS HOUSE: CLEVELAND**

External: TM:Ohio moves into second major phase with Consultant Training for over 100 new consultants in seven districts.

Internal: Birth of Justin David Bushman to Donald and Mary Laura Bushman happens on February 25.

Contradiction: Gearing selves up for passing the baton to new consultants that will be doing the 88 TMs. (Wk. 12)

**NEW YORK**

**RELIGIOUS HOUSE: NEW YORK**

External: Two TMs, South Bronx and Lower East Side, initiates by local community core groups, both in New York City neighborhoods. Mathews, Vance, Thomas and Ollison arrives for Andrew Young visit.

Internal: Wedge collegium by Joseph Mathews and on the town celebration are fitting transitions from Quarter III to Quarter IV.

Contradiction: Getting a running start into the new quarter and an area strategy without a monitoring center. (Wk. 1)

**RELIGIOUS HOUSE: PITTSBURGH**

External: Using direct tactics in steering committee journeying results in new decisions in Bradck and Moorefield West Virginia.

Internal: Engagement by sojourners John Maslove and Robert Hedges results in Academy registration and new job.

Contradiction: Creating tactical implementation after model is built, especially when structural routine sets in. (Wk. 12)

**RELIGIOUS HOUSE: ROCHESTER**

External: Has send out banquet for three people going to Lorne consult, attended by 30 persons and occasion kicks off the TM:Buffalo campaign in great style.

Internal: Anita Morrill's eighteenth birthday party starts Quarter IV ecclesiolas off in grand style.

Contradiction: Capitalizing on current opportunity when tempted to wait because of old colleagues who have set past images which don't allow their engagement in TM. (Wk. 2)

**RELIGIOUS HOUSE: RICHMOND**

External: While Oklahoma was meeting, Fredericksburg held a strong steering committee meeting, the House and colleagues participated in the opening of the Ivy City Community Center, and held first GSD night, all in one Week II.

Internal: The last week of the quarter shifted montage as Truman and son Michael were gone to Oklahoma and preparations were made for Holy Week. Both Metro Cadre and ecclesiola mares the quarter's end with celebration.

Contradiction: Reducing images of in-kind sources and movemental support keep from exploding all possibilities. (Wk. 2)

**RELIGIOUS HOUSE: WASHINGTON**

External: Ivy City Council thrust out of Ivy City and into the world through Neil Vance's report on the 24 social demonstrations and Ivy City's own Lawrence Glascoe's report on the Cano Negro Consult.

Internal: House global consciousness bumped via collegium on Wedge report and week presence of Neil Vance, Kathy Bauknight, and Mark Welsh.

Contradiction: Firming back up system: economics, structures, and training. (Wk. 4)

**RELIGIOUS HOUSE: BALTIMORE**

External: Completes external battleplan, prints and completely revises in the same week. Received Fred Leonard back from Guardian's meeting. New Jersey 58 campaign underway with one troop from Baltimore House assigned for the duration The Jim and Mary Meyers sent out to Lorne de l'Acadie HDP consult.

Internal: Internal battleplan complete with 12 page document printed. Seder study and supper celebration kicks off Easter discontinuity.

Contradiction: Honoring local consensus on local needs when area consensus for a state by state TM campaign takes priority. (Wk. 2)

**RELIGIOUS HOUSE: PHILADELPHIA**

External: TM:New Jersey jumps off paper as orchestrators return from Oklahoma 100 full of models and passion.

Internal: Eastertide and TM:New Jersey decor capture excitement of being born again.

Contradiction: 'Standing ready' under assignment from Area and troops are fainting during the inspection. (Wk. 2)

**RELIGIOUS HOUSE: NEWARK**

External: Visits 143 communities in three days, 58 affirmation responses give invitation and asks to come back and pursue this further.

Internal: Six Houses in the area move in and quadruple size.

Contradiction: Maintaining circuit momentum and initiating massive support systems. (Wk. 2)

#### RELIGIOUS HOUSE: BROOKLYN

External: Metro colleagues designs new consultant training construct embodying the shift from geography to New Jersey 100.

Internal: As journey intensifies, new quarters thrust launches in writing newsletter and celebrating Easter bi-regional House Church.

Contradiction: Ensuring troops for New Jersey campaign while sustaining authentic local engagement. (Wk. 2)

#### RELIGIOUS HOUSE: HARTFORD

External: Gives HDP slides and presentation at University of Hartford grad. Has class in Public Planning and Development Meetings in Barre, Vermont and Bridgeport, New Haven held to initiate steering committees. Architect in New Haven writes \$50 check at steering committee meeting. His associate has been to Korea and visits HDP in JeJu. ends Bob Hanson to Schenectady 10 and returns with catalyzing stories regarding the consultant force there.

Internal: Five House members able to participate in RS-I course as George Howard from Boston House is enablement and child care. Fred McNutt is hired by National Typewriter Co., Inc. Presentation given to the Daughter's of the Holy Spirit at St. Anne's in Park Street 5 on the three campaigns and life as a family order. They will be coming to House Church soon.

Contradiction: Holding mass impact/local momentum-coordination of assignments. (Wk. 1)

#### RELIGIOUS HOUSE: ALBANY

External: Total of 300 reams of paper in-kind for Schenectady 10 TM; 40 to 50 people show up for a Mini TM for Niskayuna and Union St./Stockade TMs.

Internal: Planning session Saturday impacts House with the image of Gandhi as consultant.

Contradiction: Organizing key issues in Schenectady set-up in the midst of intensive creativity. (Wk. 2)

#### RELIGIOUS HOUSE: BOSTON

External: Steering committees continue towards April and June TMs.

Internal: Easter preparations intensify with Seder meal done by Jewish colleagues. Student House stops by for a little sleep and showers on way to Lorne. Ron and Marcie Clutz visit for weekend and Easter House Church with announcement of engagement by George Howard and Eileen Morrill.

Contradiction: Holding the tension between what needs to happen in Boston tri-metro and the area with all Day 1 troops assigned to area maneuvers. (Wk. 2)

### MONTREAL

#### RELIGIOUS HOUSE: MONTREAL

External: Experiences its function as Area House with grassroots mailing across Canada, coordination for Lorne and sending Robins to Vancouver for CFC and then Edmonton for area meeting.

Internal: Has tribal resettlement after send-out of Lorne troops, and visit of Slotta family to investigate immigration, permeation and schooling.

Contradiction: Moving the consultant yeses into engagement and cash in hand. (Wk. 13)

#### RELIGIOUS HOUSE: TORONTO

External: Swirl of CFC and Lorne consultant visits and phone calls result in first four paid consultants for Lorne.

Internal: With half the adults in Lorne, the remaining troops work on Lorne consultants, guardians meeting and the rest of the mission.

Contradiction: Keeping the story, vision and the future beyond Lorne before and within us in the swirl with few troops. (Wk. 13)

#### RELIGIOUS HOUSE: OTTAWA

External: Three campaigns get moved on through Cardinal with GSD consultant send out, sharing of plans to enable nearby Iroquois to continue CFC follow-up, and further opportunity to enable Kingston to bring off a Forum.

Internal: Breakdown of car pushes to create miracles in Ottawa and to concretize opportunities to deal with in-kind cars aor area.

Contradiction: Spiritizing the nitty-gritty in order to build anticipation for the new quarter. (Wk. 2)

#### RELIGIOUS HOUSE: HALIFAX

External: Lorne citizens provide 75 pounds of potatoes per day for each day of consult; 10 Lorne community people form task force in preparation for consult and produce and distribute first Lorne "Voice" to every home, while four teams on the road. The Maritimes net \$4,000 worth of in-kind; 12 are seriously considering consultants, ready for Lorne de l'Acadie Consult. Sets four more CFC dates and opens doors up for development across New Brunswick.

Internal: Bob Porter and Forest Craver conduct area Legal Trek as 26 area troops, including all House priors, gather in Lorne for HDP set-up.

Contradiction: Maintaining chaste attention to specific priorities in midst of a deluge of demands to get advance auxiliary team set-up on site in Lorne and the preconsult miracle initiated. (Wk. 12)

### CARACAS

#### RELIGIOUS HOUSE: CARACAS

External: Colgate-Palmolive donates \$1000 to Cano Negro. Prepares community garden seed bed and seeds arrive for planting. Community installs tanks into latrine holes dug last week. Sector/stake meetings continue attendance of over 30% of the community present. Clears land for auxiliary housing to be built this week.

Internal: House sees 'Bad News Bears' and raises question of what does it really mean to win.

Contradiction: Getting pump installed to insure the symbol of water for the village with water well drilled. (Wk. 1)

THE GLOBAL ORDER CENTRUM REPORT

BRUSSELS  
NAIROBI  
BOMBAY  
CANBERRA  
HONG KONG  
CHICAGO

WEEK TWO

GLOBAL  
DEVELOPMENT  
CENTRUM

Global Development Centrum reports appointments with Jewish community in Paris, marking a new opening in that circuit. They also found bargain basement prices on vehicles with German government for Bayad HDP. Canberra launched a three-week follow-up campaign to cover Quarter II budget, with business and professional patron networks indicating willingness to float ICA. Development Centrum:Chicago Nexus reconstitutes itself into the Fourth Campaign during a Week II planning session involving Wedge, Area Extension teams and Chicago-based troops. All 50 people are divided into five patrols: systems, circuit, areal, capitals and Wedge, with each group creating its maneuvers for the quarter. The challenge is in daring to embody the new circle of development it is becoming.

GLOBAL  
RESEARCH  
CENTRUM

Global Research reviewed 16mm footage from Kawangware with whole nexus. Subsequent reflection conversation illuminated the fantastic potential for this type of media tool. Training for Global Woman's Forum intensifies as treks prepare for departure. Thoughts on the summer program are beginning to emerge. The contradiction lies in arena of discerning the gift of Global Community Forum growing pains.

GLOBAL  
OPERATIONS  
CENTRUM

Global Operations in Hong Kong mailed Nam Wai HDP documents. Brussels sent ~~Bevin~~ off to Cairo after a week of development and Continental Council. They also put together an equipment package to ship with the convoy of trucks going to Bayad HDP. Hong Kong demonstrated effective use of outside expertise to catalyze Nam Wai preschool and Global Language School. Canberra discovered a new combination of tools and models to be critical in the success of Salisbury and Gawler CMAs. In Chicago, the Agricultural Acceleration Team met and the Economic Team prepares to leave. The contradiction is in the arena of coordinating the three campaigns over the next quarter in all program locations.

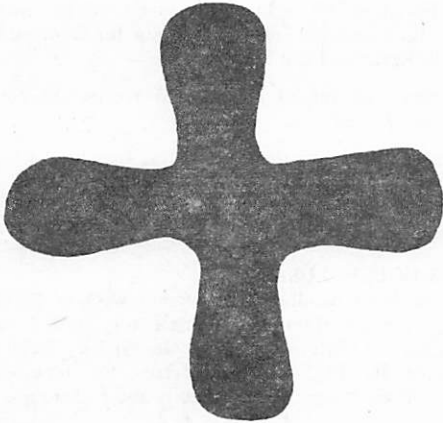
GLOBAL  
MANAGEMENT  
CENTRUM

Global Management continues to cross the hurdles fo becoming an established legal entity around the globe and reinforcing its public image by bringing into focus ICA/EI accounts, completing the on-site audit at Chicago Nexus, moving thru required steps for tax-exempt status, updating financial records involving constant retrieval of conditions for each Nexus thus moving toward possibility of a global report. of operating modes and global interchange.

## GLOBAL ORDER REPORT

WEEK THREE

APRIL 18—APRIL 24, 1977



### LONDON

#### RELIGIOUS HOUSE: LONDON

External: IHDP holds open day to celebrate first year of Project and issues special newsletter hosting 70 in five locations. Pug shoes Company sends shipment to Guardians Consult in North America and sends marketers to Amsterdam to break open European market. TM is set in Stapleford Abbots for July 16. Wincheap Community Day has 70 present. Guild meeting is set for follow-up. Manchester training week end for TM orchestrators has 6 present from London House who then attend PSU on GCF campaign for area.

Internal: Battleplanning for the quarter is assisted by Joel and Alice Wright of Bristol. House hosts Boivins and 12 Youth from Kreuzberg HDP. Sends out Louise King on completion of eight weeks work on European GSD on behalf of her parish.

Contradiction: Creating revolutionary tactics that enact the hows of urban GSD. (Wk. 1)

#### RELIGIOUS HOUSE: GLASGOW

External: TM regional consultant phones to report 380 pre-registrations for Lochee TM on April 16.

Internal: Sends out Rhonda Wiltse to new assignment in Boston.

Contradiction: Redesigning overtaxed machinery to do five TMs by June and ten by October. (Wk. 3)

#### RELIGIOUS HOUSE: BRISTOL

External: Formulates new role as TM coordinator for Great Britain.

Internal: House is gracious presence to guests from Paris, Watchet, Isle of Dogs and Manchester. Wrights return from two week continental assignment to Isle of Dogs.

Contradiction: Orchestrating maneuvers that actualize Quarter IV tactical steps for TM. (Wk. 3)

Behold, I have put my words in your mouth. I have sent you this day over nations and over kingdoms.

Jeremiah 1:9-10

#### RELIGIOUS HOUSE: MANCHESTER

External: Communities that are reluctant to pick up TM discover that they can not lay it down either as Lower Broughton reschedules sponsorship meeting and Clifton asks to be convinced again. Quarter plan lays effective harness on six horse team, first furrow drawn in Partington, Edgeley and West Yorkshire. Sends orchestrator and three from House to attend Lochee TM, Dundee, Scotland.

Internal: Bishop Wickham spends collegial evening at House, lending helpful lucidity to the shape of the three campaigns.

Contradiction: Locating the effective tension between having TMs quickly and having a sound foundation for those called into being. (Wk. 3)

### PARIS

#### RELIGIOUS HOUSE: PARIS

External: Sends 70 invitations to Global Womens Forum. Is represented at the National Ecumenical Conference in Chantilly at the invitation of secretary for Christian Unity.

Internal: Quarter planning reveals surprising victories for the last quarter and exciting proposals for the coming quarter.

Contradiction: Finding House. (Wk. 1)

#### RELIGIOUS HOUSE: ROME

External: Hot pursuit of the socio-economic transformation factor uncovers industrial subsidies, agricultural subsidies and fractions and a new universe.

Internal: Flying Wedge touches in between Tel Aviv and Chicago, and sets minds racing on the instrument for socio-economic cooperative.

Contradiction: Keeping the future blowing wildly in our faces while being tempted to live from day to day, since models stand for such a short time. (Wk. 1)

## LAGOS

### RELIGIOUS HOUSE: LAGOS

External: First group of coop farmers meet and clear four acres for community farm. Sets up inkind training program with Lagos company to train community resident as cement block company manager. Preschool is expanded to 80 and visited on first day by American Women's Club, including Mrs. Easum, wife of the American ambassador. AWC commits 1600 USD to preschool. Steering committee for Ijede reconstruction day April 30 holds first meeting.

Internal: Corporate walk through community again and study of Wedge Report sets all clearly before real situation. Quarter's celebration at Lagos' Holiday Inn ends the first eight weeks of IHDP.

Contradiction: Shifting the story from "if its's not perfect, let's not do it" to "whatever we do is perfect". (Wk. 2)

## BRUSSELS

### GLOBAL CENTRUM: BRUSSELS

External: Holds TM training session for Area Brussels with Nexus in attendance.

Internal: Celebrates the completion of March with full employment - one job for UPI, two with NATO.

Contradiction: Building the financial action plan that allows three campaign support when concentrating effort on major funding for GSD campaign. (Wk. 2)

### RELIGIOUS HOUSE: BRUSSELS

External: Global Women's Forum advocacy call provides introduction to Belgian elite. Trains new circuiter. Sets three TM core dates, with one TM date set.

Internal: Battleplanning for quarter is climaxed with "Raid on Entebe". Discovers shift in contradiction rationale for all conversatoris, collegiums and Week IIs. All four children enter school.

Contradiction: Knowing how to set the cores to have a victory on hands: right people, right time, right context. (Wk. 2)

### RELIGIOUS HOUSE: AMSTERDAM

External: English speaking circuit to Bergen, Holland has interesting conversation with a group of elders, one of whom only speaks English; she is 90 and learned to speak English when she was 80.

Internal: House returns from Week 11 in Brussels after enlightening Consultant Training weekend and in the midst of gastric bug initiates Quarter IV with Hunter Warrior and 'Working' conversations. Holds fine Maundy Thursday Common Meal before the House goes on missional discontinuity.

Contradiction: Grounding exciting possibilities to total self-support into firm Yeses. (Wk. 3)

## FRANKFURT

### RELIGIOUS HOUSE: FRANKFURT

External: Metro rallies together to translate a 12-page proposal for funding SMS in India quickly while visits are made with American Women's Club for Glovabal Women's Forum, with the Language Association in Mainz for Kreuzberg for Global Language School funding, while the area-wide TM Materials Task Force prepares the translated coordinator's manual and the Area Newsletter.

Internal: Celebrates Holy Week with Maundy Thursday Common Meal, internal House planning and Week II discontinuity. Welcomes sojourner, Stephanie Franz.

Contradiction: Grooming European orchestrateors for Town Meeting. (Wk. 3)

### RELIGIOUS HOUSE: BERLIN

External: Seventeen present at first session of third English course, overflowing the classroom. Third edition of community newspaper, Kreuzberg Ost Laterne, makes profit. First two meetings of steering committee for Gemeinde Forum (TM) held. Two major Berlin Hotels donate furniture for Caf . Plans drawn up for refurbishing park space in Kreuzberg Ost in April.

Internal: Space and model creation to receive 22 youth coming for work week.

Contradiction: Setting up the situation so that local people win after having decided to participate. (Wk. 3)

## KINSHASA

### RELIGIOUS HOUSE: LUSAKA

External: Celebrates windfall development week of \$2,800; gets tractor for Shantumbu. Zambia's top seeded rally driver pledges all future winnings to SHDP. Regional Council plans six PLCs in six metros for replication preparation; 20 grads sign up for circuits and pedagogy.

Internal: Sends intern for month study in Hungary. Other intern is married in solemn splendor after week of intensive preparation. The Machishi family stands before the shield, the fire and the stars.

Contradiction: Attending to detail follow up after exploding the possibilities in development and the campaigns. (Wk. 2)

## CAIRO

### RELIGIOUS HOUSE: EL BAYAD

External: Twenty-five children and three village men visit childrens' club in Beni Suef and have a great time; come back with new images; 25 women attend beginning sessions of health classes. Workday cleans streets and carries fertile soil to vegetable garden in one operation. Two pediatricians visits to begin program of specialist consultants for health. Firming of project activities by Joneses adds new self-consciousness.

Internal: Whole House visits old pyramid and ruins of Greek city near oasis of Fayoum extending consciousness of history. Fish and chips dinner celebrates presence of British in midst.

Contradiction: Engaging village in planning and actuation to spin new tactics. (Wk. 2)

## NAIROBI

### GLOBAL CENTRUM: NAIROBI

External: Sends out community person to Maliwada Replication School (Napoleon Mwithiga); Cannon Assurance Company presents check with press coverage; Lions launch nation wide raffle (first prize a car) to raise money for Kawangware Health clinic.

Internal: George Wambugu leaves with community resident for Maliwada Replication School; Easter weekend discontinuity signals shift to new quarter and new tactical timeline.

Contradiction: Continuing on geographical focus in midst

**(GLOBAL CENTRUM: NAIROBI)**  
of tactical actualization unclarity. (Wk. 3)

**RELIGIOUS HOUSE: NAIROBI**

External: As three are on circuit to the coast and doing final week's consultation for first Village Meeting on the coast (in village of 800 people), regional colleague drops by House with letter he had received from up-country home requesting a Village Meeting in another village there.

Internal: Guard dogs give friendly welcome to thief who drops by one day and leisurely selects the items which will sell for the most shillings on the street corners, an incident which gives all new awareness that no possession is finally ours and that "naked we came . . .". School vacations release teachers and students to new vistas of task engagement for three to four weeks.

Contradiction: Developing the networks which will financially support the Village Meetings and, at the same time, allowing villages to discover the new power of raising their own portion of the funds rather than being content with the age-old hand-out which cripples. (Wk. 2)

**BOMBAY**

**GLOBAL CENTRUM: BOMBAY**

External: India's Republic Day celebrated with morning parade of school children in new clothes with bright faces, flag hoisting, and afternoon nail brushing and weight checking at just two of the exciting Health Fair booths. An inter-guilds "Kobadi" match. All State Bank of India staff drop by with greetings after getting 101 new accounts opened earlier in the week and a commitment to open a branch here.

Internal: Internal life for Quarter II is kicked off with barbeque celebration on Saturday night while receiving ecclesiola manual for the quarter which provides context for study of the yellow Ur and a celebrative Chinese feast.

Contradiction: Getting methods of tapping technical expertise available in India in order to sustain Maliwada economically and build the thrust for economic self-sufficiency. (Wk. 12)

**RELIGIOUS HOUSE: BOMBAY**

External: Sends truckload of inkind goods with chairs, edible oils, plastic sheeting, well piping, bed sheets and office stationery, including 60 reams of paper, to Maliwada for HDTS. Bon voyages Sushila Joshi's nephew, Sunil, to HDTS.

Internal: Completes new song books for the continent with complete cost inkinded as the last phase comes from a Philadelphia consultant. Hosts Marshall and Kathy Jones, movie-making for GSD.

Contradiction: Giving form to the shift that is taking place of Area responsibility from the House alone to the first village demonstration of each district. (Wk. 2)

**RELIGIOUS HOUSE: VAVIHARSH**

External: Traders secure another contract to supply rides to a Nasik company while village women make experimental industry. Farmers launch the vegetable garden with sowing of 1/2 acre of bendis (ladies finger). Local architects from Giants Club visit Maliwada prior to designing Vaviharsh village layout.

Internal: Auxiliary experiences itself stretched thin; 13 members are sent out on special assignments, including the setting up and conducting of the Nadlapur Human Development Project Consult.

Contradiction: Creating a systematized inkind development plan to channel needed resources from Nasik, and Bombay into Vaviharsh. (Wk. 2)

**RELIGIOUS HOUSE: KENDUR**

External: Farmers get set for soil survey and ground water survey. Doctors guild extends health care to surrounding hamlets.

Internal: Sends out Durgaiyah family to Nadlapur and sends Ankush and Kulkarni to third Human Development Training School. Celebrates the end of the quarter with a grand celebration.

Contradiction: Getting the support system for KHDP fully engaged and moving. (Wk. 3)

**RELIGIOUS HOUSE: TASGAON**

External: Tasgaon comes alive with large attendance at Shramdan (workday) on repairing old temple steps, cleaning out mud filled tank, building sample of cobblestoned road and cleaning streets. Rotary Club speaking engagement and visit to the collector gains solid support from Satara (district capital city.) Completes village census and land map and secures records from Talati.

Internal: House set-up with furniture from Gram-Panchayat, village high school and in-kind paint. Demonstration kitchen garden prepared and toilets dug and extra room constructed for living space. Project director, Jasper James arrives in time for Sunday Shramdan.

Contradiction: Chanelling some of raw enthusiasm and energy to procuring materials and other input that will transform work into solid effectivity. (Wk. 1)

**DELHI**

**RELIGIOUS HOUSE: DELHI**

External: Reports on village consults and school inspires Delhi cadre meeting. House participates in all three campaigns, with members on circuits, consults and Human Development Training School.

Internal: Focuses on EG studies as final exams threaten in one week. Fans installed as temperature hits 101. Enlivens House Easter celebration by cadre member Mary Partick's biyam which she cooks over an open fire.

Contradiction: Calling forth people to total expenditure. (Wk. 3)

**MADRAS**

**RELIGIOUS HOUSE: HYDERABAD**

External: Receives two members for auxiliary from Ambadi. House is busy preparing decor for the Consult.

Internal: Chairman Joe Mathews meets chairman R. K. Atol of Vazir Sultan Tobacco factory and finalizes funding and sponsorship for NHDP.

Contradiction: Shifting the Area House within three weeks to auxiliary House NHDP (Nadlapur Human Development Project). (Wk. 13)

**CALCUTTA**

**RELIGIOUS HOUSE: CALCUTTA**

External: Local Moslem colleague visits House with friend considering the possibility of attending a village consult.

Internal: Battleplanning the quarter happens in the midst of rehearsing the Christ story with the celebrations of Holy Week, the highlight was the Holy Saturday fast and the Easter morning House Church feast.

**(RELIGIOUS HOUSE: CALCUTTA)**

coContradiction: Creating the story to enable the prioritising of materials and time to maximize troop effort. (Wk. 3)

**SINGAPORE**

**RELIGIOUS HOUSE: SINGAPORE**

External: Completion of Area ITI maneuver sends teams to five regions. Secures ITI site in Bandung, Indonesia, and secures host of church officials for patrons' committee.

Internal: Sends Jalawai Ambas, first Iban intern from Sarawak, to Sungei Lui-Kuala Lumpur. Hayes family returns before going on to Sungei Lui HDP. Four guardians visit.

Contradiction: Doing development. (Wk. 13)

**RELIGIOUS HOUSE: KUALA LUMPUR**

External: Five villagers, some of whom had never been to Jakarta or seen an airplane, return from Malaysian Sungei Lui Consult with imaginations exploded and full of excitement about possibility for Kelapa Dua. Development moves to two teams daily. Marshall and Kathy Jones arrive to put all on film. Governor of Northern Sulawesi writes official letter inviting HDP in Manado, Northern Sulawesi, for next year.

Internal: Three staff return from Sungai Lui Consult; five more remain there for writing.

Contradiction: Channeling and capitalizing on the enthusiasm of the returning villagers into appropriate structures so that entire project moves. (Wk. 4)

**RELIGIOUS HOUSE: JAKARTA**

External: Receives positive encouragement from all sectors - Social Department, US AID, General Baustion, Colonel Nasution, on national level; the Lurah and Bupait, regional officials; agronomist from private sector, David Barnes; and villagers of three kampungs. Prepares to send five villagers to Sungei Lui Consult in Malaysia. Secures three inkind tickets. Youth finish extending the soccer field. Crowd of 150 watch TV coverage of badminton finals from England. PCE decides to fund and send people to ITI.

Internal: Sends out Lush, La'ya, Connie, and Ruthe Yost to Sungei Lui preparation. Ibu Sukanto goes to centra Java on family business. Roy Stansbury from Canberra arrives to boost development thrust for a while. Mudjiatmo's brother from central Java visits.

Contradiction: Supporting the expansion of the project as well as the demands of the global Movement. (Wk. 1)

**HONG KONG**

**GLOBAL CENTRUM: HONG KONG**

External: Development treks on road in Tokyo, Taipei and Hong Kong. GCF trek in Davao also continues. Global Health Acceleration Team (GHAT) arrives and goes to Nam Wai for Advisory Week. EI/ICA reports for January and February 1977 completed.

Internal: GHAT collegium reports on GSD projects visited and shapes screen for analyzing progress of projects. HDP decor grounds the world grid with photos from various projects.

Contradiction: Focusing in on positive images relative to development story to put in the punch and urgency. (Wk. 3)

**RELIGIOUS HOUSE: HONG KONG**

External: Nam Wai consenses on week following the consult to have the project and provide staff housing which

culminates a week of launching at least eight of the programs, writing and turning in the English document. Nam Wai Service Corps prepares and hosts bi-areal Council celebration in the consult tent just before taking it down.

Internal: Auxiliary and Global Team move into village school and Youth center while Service Corps builds staff House.

Contradiction: Keeping the planning ahead of the contradiction. (Wk. 12)

**RELIGIOUS HOUSE: KAOHSIUNG**

External: Two visits to Ping Tung County chief exective result in two days of site search after Nan Ping is blocked by harbor development, culminating in landing ovation at mayor's offer of new village.

Internal: Carl Johnson arrives from Taipei to assist in village search and House and ecclesiola colleagues are excited as search team returns just in time to report on new village discovery and openness.

Contradiction: Moving it while waiting for final concensus on new site, Sha Liao. (Wk. 2)

**RELIGIOUS HOUSE: MANILA**

External: Key authorization obtained for Global Women's Forum with a visit to socially prominent author and educator, Mary Hohlensteiner. Circuits to Legaspi and Lucena pitches ITI and GCF and brings in six for ITI, five maybes and 12 considering.

Internal: Family discontinuity for Thursday, Friday and Saturday is followed by Easter morning House Church. During discontinuity House hosts one of the stations of the cross and the singing of the Pabasa.

Contradiction: Getting the maybes and considerings to yeses. (Wk. 3)

**RELIGIOUS HOUSE: TAIPEI**

External: Completes six metros for Foray 400 with several possibilities for GCF seen.

Internal: Sung family completes intern year and decides to spend another year in Taiwan HDP.

Contradiction: Backing up authorization to release local permission for GCF. (Wk. 3)

**RELIGIOUS HOUSE: CEBU**

External: Signal work day with more than 300 working finalizes campaign to line main road with rocks painted white and flowering plants. Rope craft shipment is sent to Houston, Texas. First manager's meeting of leadership of community industries with auxiliary meets to signal coordinated industry tactic. Carabao (water buffalo) moves to Purok 4 to continue plowing for Mactan plantation. Purok leaders meeting with ecclesiola/Sun Tzu construct gets all leaders talking. Language School classes begin on Monday.

Internal: Sends out Lester Knutsen to two metros for ITI recruitment and search for self-support. Welcomes two sojourners from Cebu, Heidi Calunsag and Myrna Narvasa. Does internal assignments for quarter using research, development, operations and management motifs.

Contradiction: Adding methods skills and depth to community leaders' decisions to be generals. (Wk. 3)

**RELIGIOUS HOUSE: DAVAO**

External: Celebrates intensified church relations with Palm Sunday, Good Friday and Easter Sunday visits and speaking engagement at parish church, neighboring Methodist church and the Philippine Independent Episcopal church. ITI

**(RELIGIOUS HOUSE: DAVAO)**  
recruitment continues.

Internal: Welcomes Bruce Robertson. Has three-day Easter weekend discontinuity. Sends Bruce out on GCF circuit with Roy Philbrook.

Contradiction: Redistributing the load when half of troops are out on circuits, yet the House Front keeps intensifying. (Wk. 4)

## TOKYO

**RELIGIOUS HOUSE: TOKYO**

External: Finalizes Urawa GCF date; mayor says yes.

Internal: Sudden death of Mr. Saito, a key leader in the Sanya Community Meetings, pulls closer together the entire Sanya task forces.

Contradiction: Transplanting the dynamic of victory in the local community into comprehensive success in all campaigns. (Wk. 3)

**RELIGIOUS HOUSE: JEJU**

External: Health trek completes stay with fair, commissioning of health workers and initiation of bath house construction. Community elects new English-speaking leadership; dump truck arrives.

Internal: Comings and goings of troops reflects project's role as key training center.

Contradiction: Carrying out priorities in midst of changing leadership. (Wk. 2)

**RELIGIOUS HOUSE: SEOUL**

External: President of Honam Oil (Caltex), former Minister of Health and Social Affairs and Dr. Helen Chung agree to be on host committee for the GSD World's Fair in Kwangyung II this June 25. Sends out representative to Guardians Meeting in Chicago to plan World's Fair; receives promise of three scholarships for Kwangyung ladies to sewing school; opens postal account for grassroots pledging system.

Internal: Welcomes Don and Joan Baker and sends them on to Kwangyung II. Sends out Dr. Frank Wherry to Chicago. Experiences discontinuous quarter planning ending with family celebrations. Ecclesiola writes an English song to a Korean tune with the words and wisdom of Lao Tzu.

Contradiction: Coordinating troops on multi-purpose maneuvers. (Wk. 2)

**RELIGIOUS HOUSE: FUKUOKA**

External: Foray 400, a two-week GCF maneuver in areas Tokyo and Hong Kong, gets to flying start as House visits 19 communities in five metros during first week. Sponsors committee meets and begins implementing plans for upcoming Global Womens Forum.

Internal: House studies first session of Bonhoeffer's "Community".

Contradiction: Turning mild interest into steering committee strength for GCF. (Wk. 2)

**RELIGIOUS HOUSE: OSAKA,**

External: Initiates five circuits on GCF with House/colleague calling teams. Nara colleague builds plan and sets visits for Nara high rise bedroom town.

Internal: Celebrates Holy Week with Maundy Thursday breakfast Common Meal.

Contradiction: Ensuring a win instead of repeating with more from last quarter. (Wk. 3)

**RELIGIOUS HOUSE: SENDAI**

External: Sees "A Star is Born" with local bankers as secular Good Friday observance. Continues research for GSD in mining communities of Hokkaido. Ecclesiola climaxes discontinuous weeks by writing a brochure in Japanese describing GCF.

Internal: Celebrates the potential effectiveness of task forces in the zone by sending Sharon Feldmanis to Sudtonggan and Atis Feldmanis to Nan Ping. Celebrates end of quarter with ecclesiola picnic in a snow storm.

Contradiction: Encouraging the leap from knowing to doing relative to GSD and GCF. (Wk. 2)

## SYDNEY

**RELIGIOUS HOUSE: SYDNEY**

External: Newcastle circuit results in phoning blitz to set up steering committee. After return from Newcastle another colleague calls to say that a steering committee meeting is set up in another community for May 4. Major funding circuit in Sydney results in decision by Freedom From Hunger. Projects officer to visit OHDP to release grant.

Internal: House celebrates and claims promise of quarter IV victories with Bar BQ. Maundy Thursday House Church sends out Peter Robins to Lorne de Lal'Acadie.

Contradiction: Finding the key that releases care into Lorne de l'Acadie action. (Wk. 3)

**RELIGIOUS HOUSE: PERTH**

External: Speaking engagement with two Apex Clubs on consecutive days and Community Development Officer wanting to set up CMA before end of June all from a two day circuit.

Internal: Celebrates Easter with Maundy Thursday service at local church, house vigil, painting collegium room, putting new engine in car, dawn House Church feast and family discontinuity.

Contradiction: Breaking through the atmosphere of No that everywhere hangs over CMA. (Wk. 3)

**RELIGIOUS HOUSE: DARWIN**

External: Has speaking engagement with Darwin Rotary Club on GSD and Oombulgurri. Top End Air Express does its first inkind flight to Oombulgurri.

Internal: Sends out colleague from region, Lucy Cooper, to U.K. for holiday with Isle of Dogs address and order for pug shoes.

Contradiction: Recreating the vision that focuses brokenness into a solid plan of action. (Wk. 2)

**RELIGIOUS HOUSE: OOMBULGURRI**

External: New dairy building starts to emerge as columns and trusses are erected. Monthly stake meetings continue and are received as welcome community celebrations.

Internal: Arrival of Linda Zahrt as second public health nurse adds to auxiliary strength.

Contradiction: Maintaining services essential to community operations while releasing troops to create new miracles. (Wk. 12)

**RELIGIOUS HOUSE: ADELAIDE**

External: Two Community Meetings on one day in Adelaide Metro is SEAPAC's first double GCF event. The state Minister for Community Welfare sends letter of support and personal contribution toward Mitchell Park

**(RELIGIOUS HOUSE: ADELAIDE)**

Community Meeting. Oombulgurri trio, Robert Roberts, Olive Evans and Trevor Morgan have private interview and afternoon tea with Sir Douglas and Lady Nicholls, South Australian governor and first Aboriginal to hold that position.

Internal: Four colleagues from Brisbane, Sydney, Canberra and Melbourne lead the Salisbury and Gawler CMAs.

Contradiction: Shifting from the big blitz approach in the various arenas to integrated implementation of the Three Campaigns. (Wk. 3)

**RELIGIOUS HOUSE: MELBOURNE**

External: Inkind electrical goods for five Houses at Oombulgurri. Invitation mailing for April 30th open house includes many Rotarians.

Internal: House disperses over Easter to rural, beach and city locations after participating in historical Church at Maundy Thursday service.

Contradiction: Girding up loins for the battle on all fronts. (Wk. 3)

**GLOBAL CENTRUM CANBERRA**

External: Talk with Michael Gordon Smith, son of guardian who wants to work at site for a year in India excites all.

Internal: Ecclesiola study and plotting and cross gestalting of activities on Sun Tzu chart are helpful in analysis of Movement's strong and weak points. Celebration of Easter is highlighted with readings, fish feast and hot cross buns.

Contradiction: Fitting priorities in with needs of the areas. (Wk. 3)

**RELIGIOUS HOUSE: BRISBANE**

External: Meets with Toowoomba Jaycees. Inkind tyre and chickens, first contribution of the quarter. Kurilpa 5 visits and Inala CMA newspaper article highlight the three campaigns; 43 say yes to Inala CMA for June 25 at first sponsors committee meeting.

Internal: Youth are in charge of House Thursday night as all adults are assigned out. Nancy Vosler returns from Adelaide CMA and allows House to tap new corporate wisdom on et-up and orchestration.

Contradiction: Shifting contexts from personal and immediate frames of reference to vocational decision about the corporate task. (Wk. 2)

**SUVA**

**RELIGIOUS HOUSE: MAJURO**

External: The Majuro Lumber Company did drafting for the first commercial building completely out of coconut lumber; completed the first piece of furniture out of breadfruit lumber, and received a contract to build a bar for the Eastern Gateway tourist hotel. The local aalele shop (women's handicraft) sent baskets to the Denver Museum. Eight in-kind sewing machines catalyze prominent woman leader to start a womens sewing industry to meet local demand and with solid export potential.

Internal: Sends out Don Hinkleman (after two years) to a new project and Rich Michael for one months assistance to the Korean GSD Worlds Fair. Launched quarter planning with Marshallese colleagues present throughout. Re-did House decor around montages on the three campaigns.

Contradiction: Writing and staffing the necessary maneuver for catalytically implementing the quarter plan just created. (Wk. 3)

**IRELIGIOUS HOUSE: APIA**

External: Children of the Taufuse community under supervision of two neighborhood men dig all the fence postholes while the women dig the ditch. Local guardian comes to help with the fence.

Internal: Holy Week preparations done in morning collegium on House Fast Day. Fast impacts sojourner with the pain of hunger for the first time (stomach ache) giving her opportunity to appropriate the human suffering of the world. House attends Palm Sunday service picking palm leaves on the way.

Contradiction: Engaging larger Taufusi community through stake calling in preparation for the next phase. (Wk. 2)

**SAN FRANCISCO**

**RELIGIOUS HOUSE: SAN FRANCISCO**

External: Town Meeting: San Francisco plan moves ahead at top speed: 664 letters from the Mayor sent to organizations and key people; secures lunches for 12 TMs. Checks all locations and lines up top entertainment

Internal: Jim Bell visits House on development trek and celebrates birthday at Finochios.

Contradiction: Winning with locally based organizations as city-wide campaign moves to the neighborhoods. (Wk. 1)

**RELIGIOUS HOUSE: SAN JOSE**

External: Drive for raising \$80,000 matching funds in a matter of hours. Area Council is a great happening; serious work accomplished through relaxed easy style and ending with a celebration of a boat trip to Sausalito and dining in a sophisticated 'restaurant' at San Francisco House. David in Fresno puts five TMs in motion.

Internal: Ecclesiola topic (maneuvers) on target people leaving for fund raising calling. Jon's birthday an exciting event for EG.

Contradiction: Switching the \$80,000 fund raising enthusiasm to grassroots pledging dynamics. (Wk. 3)

**RELIGIOUS HOUSE: SACRAMENTO**

External: First steering committee in Sacramento meets. Teichaut coConstruction Co. gives \$3000 gift to PACE.

Internal: Two Suva area Houses here for Thursday night unexpected gathering with Jim and Debbie Durst who showed Majuro sides and Ann Higgings arrives from Apia.

Contradiction: Discerning the concrete tasks for those ready to move with TM. (Wk. 11)

**RELIGIOUS HOUSE: SEATTLE**

External: Walla Walla, Washington TM proves local workshop leaders can be trained in three hours. Decision to do a cluster of ten TM on June 4.

Internal: Quarter IV ecclesiola launched with candle light and wine, construct is right on target.

Contradiction: Needing to particularize assignments into task arenas. (Wk. 3)

**RELIGIOUS HOUSE: LOS ANGELES**

External: Holds workshop training in two communities. Oriental Mission Church gives \$150 for work in Kwangyung HDP.

Internal: Plans the quarter through the first set of maneuvers in California valley small towns. Illness takes toll in energy.

**(RELIGIOUS HOUSE: LOS ANGELES)**

Contradiction: Figuring out the implications of the Oklahoma strategy on more complex Suburban communities of geography. (Wk. 3)

**RELIGIOUS HOUSE: PHOENIX**

External: Capitol View Core Meeting of four meets and decides on May 21 date. Lake Havasu City steering committee has posters and flyers all over the city.

Internal: Treks to San Francisco for Area Council. Reassigns Pooler to Egypt.

Contradiction: Appropriating new assignments and new operating images as a gift that releases TM. (Wk. 3)

**RELIGIOUS HOUSE: SALT LAKE CITY**

External: Launches two pronged attack at West Emery County TMs, the first prong to submit proposals for \$4800 to coal companies and the second in three days on the road have six towns on the way to TMs with new quick set up model.

Internal: Put wheels under new model by creating instant materials and training to be living word for every town.

Contradiction: Flying by the seat of pants as do county wide TMs in West Emery County and try to forge what this means relative to doing the state. (Wk. 3)

**RELIGIOUS HOUSE: BILLINGS**

External: Miles City TM has 20 people at follow-up meeting. Helena steering committee has \$1000 committed for April 23 TM date. TM Bill passes out of House Appropriations Committee to be voted by whole House during Legislative session.

Internal: Holds internal TM for House evaluation and planning for coming for coming quarter. Has roast beef celebration at The Spur.

Contradiction: Stripping all available House and personal funds for circuits, but still have miles to go. (Wk. 1)

**RELIGIOUS HOUSE: DENVER**

External: Area Council of 60 present outlines Spring maneuvers. Inyan Wakagapi Summer Acceleration with h work Task Forces and Quarter IV model of Revolutionary Finances.

Internal: Receives new intern. Completes renovation of shower and two bathrooms.

Contradiction: Implementing new models and troops to transform former indifference and former nos in communities into TMs this quarter. (Wk. 2)

**RELIGIOUS HOUSE: CANNON BALL**

External: Community hosts visiting architects from Fargo and businessman from Mandan, actualizing consultant dynamic in community design and retail business. Executive Committee of Project Board meets to delineate community issues. Shopping Center moves ahead with furnace system repaired.

Internal: Quarterly planning illuminates new aspects of social contradiction, common memory of Soren Kierkegaard's introspective man and Saturday celebration with campfire and inkind steaks give new grounding in particular sociality.

Contradiction: Shifting the story of "the public agencies will take care of it" to "we can do it." (Wk. 3)

**EDMONTON**

**RELIGIOUS HOUSE: EDMONTON**

External: Tickners go to Saskatoon for first week of

inter-area Prairie Forum day planning and maneuvers.

Internal: Area baby exchange enables global care across provinces.

Contradiction: Maneuvering area troops creates urgency to weld isolated yeses into a strike force. (Wk. 1)

**RELIGIOUS HOUSE: VANCOUVER**

External: North Vancouver Forum followup continues as Lynn Valley citizens form a permanent committee with a ten man board of directors. House and metro colleagues participate in Seattle RS-I.

Internal: House celebrates Easter with a traditional fish, bread and honey feast and a trip to Nairn Falls.

Contradiction: Nurturing Metro colleagues to keep the region going full speed while House is left with no in-House troops. (Wk. 2)

**RELIGIOUS HOUSE: ANCHORAGE**

External: A miracle a day happens as Fairview pulls off fantastic TM on Saturday and Governor endorses TM on Sunday.

Internal: The Fairview TM occasions happenings as House delivers flyers door to door in parish; Area prior comes to orchestrate, and Saturday night TM celebration takes place at the House which reverberates with excitement and stories.

Contradiction: Accelerating timeline. (Wk. 3)

**RELIGIOUS HOUSE: SASKATOON**

External: Nipawin Chamber of Commerce calls to request meeting for CFC. Holds first Prairie Forum Day set up meeting with two other towns setting dates for their first meeting.

Internal: Duncan Holmes parents arrive from British Columbia for Easter holidays. Area Prairie Forum Day task force finalizes maneuvers. Sends four to Lorne de l'Acadie consult. 'Paper Wheat', a play about the beginning of the cooperative movement in Saskatchewan, provides images for Prairie Forum Day story.

Contradiction: Maintaining sensitivity to where forums are breaking open while following the models created. (Wk. 3)

**RELIGIOUS HOUSE: WINNIPEG**

External: Provincial and local visits give initial nod to Vogar HDP.

Internal: Creates HDP war room by moving general's lounge.

Contradiction: Having several alternate routes available rather than sequential. (Wk. 3)

**HOUSTON**

**RELIGIOUS HOUSE: HOUSTON**

External: Two TMs held in Houston; one for the downtown community, the other in the new parish- the Binz. Total attendance near 400 with key authorization and funding.

Internal: House reunites after OK:100 sharing wond rous stories before all driving to Mississippi for Area Council at Delta Pace.

Contradiction: Insuring that the recent TMs catalyze five more neighborhood TMs this quarter. (Wk. 2)

**RELIGIOUS HOUSE: AMARILLO**

External: Oklahoma 100 impacts West Texas. Hereford steering committee coordinator, Jose Greigo and Trini

**(RELIGIOUS HOUSE: AMARILLO)**

Bustemonte with House staff attends Oklahoma TM Assembly.

Internal: All troops return from Area assignments. All House members present for House Church, the second time this quarter.

Contradiction: Keeping all plates spinning when newly spinning plates just appear. (Wk. 1)

**RELIGIOUS HOUSE: SAN ANTONIO**

External: Governor Briscoe signs TM letter after much strategizing and patient maneuvering.

Internal: House and metro colleagues lay out quarter battleplan with House permeators, designing strategy to bring off five great TMs, two urban, two rural and one institution.

Contradiction: Implementing first step now that the plan has been designed by hitting the road while keeping before all the comprehensive campaign. (Wk. 3)

**RELIGIOUS HOUSE: OKLAHOMA**

External: Holds 12 TMs in Oklahoma City high schools on Thursday. House battleplan for Quarter 4 begins to put form on the ambiguities of what to do on the other side of state awakening.

Internal: Sends out the last of the OK:100 task force, and prepares to receive development team. Spends week cleaning up and returning items borrowed for OK:100 and State Assembly. Area prior, Don Clark, brings area presence for kick-off of Quarter IV battleplanning.

Contradiction: Dealing with the fact that as the Lord increases the obligations, he decreases staff numbers. (Wk. 4)

**RELIGIOUS HOUSE: DALLAS**

External: Area Houston Council - Pace decides on TM East Texas 25 and 5th maneuver in which each House gets five TMs. East Texas 25 initiates 24 hour later with \$1200 grant from Gulf States United Telephone and their development director assigned full time as TM circuiter.

Internal: Sends out Francis Roper to Lorne de l'Acadie consult. House prepares for receiving East Texas development team for quarter.

Contradiction: Brooding thru TM strategy to the point fo clarity on every particular assignment in order that all are engaged on front line. (Wk. 2)

**RELIGIOUS HOUSE: PACE**

External: Prices for cups of worms, number of worms per cup and the delivery times are being negotiated with potential customers along a 400 mile route. Pace hosts Area Council of 80 guests. Community Garden is now staked out by name of 30 families. The Day Care Center now reaches 12 children. Journey to Starkville and has long consultation with staff in regard to their participating in the comprehensive space plan for Pace. The Delta Pace Community Association bank account is now opened.

Internal: Area Council EG are guests at Panrhmnan Penitentiary for Easter Egg Hunt. The Council celebration is a grand Bar B-Q at Mississippi River State Park family style.

Contradiction: Regularizing rhythm of visible miracles in relation to community space. (Wk. 2)

**RELIGIOUS HOUSE: NEW ORLEANS**

External: Lake Charles plans seven follow-up TMs throughout city, stemming from first TM in 1976. Three

people in Thilodeaux step out of nowhere and decide to be a steering committee.

Internal: A dynamic Area Council lays out the pattern for next quarter. Having whole House in allows all to truly take one role during House Church.

Contradiction: Creating the development victory that will undergird the program victories. (Wk. 3)

**RELIGIOUS HOUSE: MEMPHIS**

External: Two of the May 21 TMs in Memphis take form as Memphis TM Committee meets with MEA, Memphis Educators' Association for delightful mini TM, as 60 gather in Cooper-Young neighborhood to meeting lead by their president, a metro colleague. Naming the four contradictions helps move on city.

Internal: New space arrangements, decor, springtime in Memphis bring new anticipation to Quarter IV.

Contradiction: Bringing the fresh fascinated troops on board the campaign to strengthen and build the tactics that win. (Wk. 3)

**RELIGIOUS HOUSE: ATLANTA**

External: Sees that five TMs in Atlanta are realistic as contacts reveal targets are O.K.

Internal: Experiences agro-business as garden is planted.

Contradiction: Operating out of new post Oklahoma wisdom relative to TM set-up. (Wk. 3)

**RELIGIOUS HOUSE: CHARLOTTE**

External: Week II Foray into the Sandhills region of North Carolina gives a picture of doing TMs in rural communities. Steering committee in Shelby going strong in week II and still looking for a co-ordinator.

Internal: Celebrates Week II Foray with barbeque on newly exposed patio. Reading and reflections on prayer, obedience, and doing speeches at dinner are deep address in mist of Lent.

Contradiction: Pacing for moving it in North Carolina with a battleplan that is grounded in its unique social reality. (Wk. 1)

**RELIGIOUS HOUSE: MIAMI**

External: Sends first prior to work with preparation for 240 TMs in Oklahoma. Has local meetings to talk about TM renewed, specializing on local parish.

Internal: Celebrates marriage of interns, Katie Bedsworth and David Burnite. Guests Mr. and Mrs. Jones, parents of Judith Gaige, visit in Miami and stay at the House.

Contradiction: Bracketing central Florida due to present priority being in Oklahoma and absence of Day I troops. (Wk. 12)

**CHICAGO**

**GLOBAL CENTRUM: CHICAGO**

External: Gathers global development troops in for another week end of creating the fourth orbit of the new face of development. Gathers Friday evening for Campaign News guardian mailing folding blitz, enabling 3,800 copies to hit the area over week end.

Internal: Sends troops to join circuiters in Wisconsin, Michigan and Ohio. Student House travels to Indianapolis for lawn renovation and cave exploring. Sends Mark Johnson to Ijede. Hears great collegium reports on

**(GLOBAL CENTRUM: CHICAGO)**

circuiting, doing development among ethnic groups, and what the summer might look like for the Student House.

Contradiction: Giving form to the new trends relative to the summer and development. (Wk. 3)

**RELIGIOUS HOUSE: CHICAGO**

External: Fifth City beautification campaign begins with major trash pick-up by city after extensive cleanup weekend. Illinois Extension Service offers expertise on spring planting; the Forestry Department agrees to seed Jackson Boulevard. Illinois Landscape Association says yes to loaning rototillers. Ecumenical Martin Luther King Memorial Service with six community churches represented designates offering to 5th City Safe Streets Patrol. Fifth City community leaders host Congresswoman Cardiss Collins in site visit to all program of demonstration. HUD agrees to release \$64,000 to cover Pak II construction deficits. Seven towns confirm for second Community Registration Meeting for TM involvement.

Internal: Isle of Dogs colleagues observe 5th City Preschool and report at collegium on news from their demonstration.

Contradiction: Honing in on tactical approach now that commitment of people to engage exceed models. (Wk. 3)

**RELIGIOUS HOUSE: WICHITA**

External: Preparation for Information Meetings, quarter battleplan and meeting with Kansas City, Omaha and St. Louis Houses helps see the long haul and look to summer and next year in terms of TM phasing.

Internal: Sends out Jim Fenton to Michigan for several weeks to work on TM campaign; 2/5 of House celebrates April 12 birthdays.

Contradiction: Holding tension between the protracted campaign as a losing one and knowing its a long march. (Wk. 4)

**RELIGIOUS HOUSE: OMAHA**

External: Request for coordinator's manuals for Nebraska (150) turns into a response of 10,000 for the whole nation form Rapid Printers, Omaha.

Internal: Views Rocky in shifts and pulls together Maundy Thursday conversation after common meal and shining one another's shoes.

Contradiction: Building and funding model for TMs using primarily people available Day II and Week II. (Wk. 2)

**RELIGIOUS HOUSE: KANSAS CITY**

External: 450 TM set-up makes phone call to 200 Missouri communities.

Internal: Missouri/Kansas holds Easter TM reporting and planning with fish, honey and loaves celebration.

Contradiction: Discerning the strategic pressure points to hone in on during the last month of the countdown. (Wk. 2)

**RELIGIOUS HOUSE: MINNEAPOLIS**

External: Expands engagement statewide in Minnesota Future Day: Second State Advancement Committee Meeting. In-kinds brochure and all needed printing. Community registrations set up resulting in second TM in East Grand Forks. Whittier PCX of 20 delegates on City Planning and District Committee Action Council and Whittier storefront receives face lifting.

Internal: Legal trek report awakens House to global legal

complexities and gets said that there are no national boundaries for GCF. Tao is peak of the week.

Contradiction: Capitalizing on statewide Minnesota Future Day decision and momentum to engage necessary forces. (Wk. 4)

**RELIGIOUS HOUSE: ST. LOUIS**

External: Obtaining and typing of twenty mailing lists onto labels for invitations to 2000 people in St. Louis metropolitan area to attend TM registration meetings goes out.

Internal: Does helpful review in ecclesiola of Sun Tzu on overall book relative to strengths and weaknesses in the art of war.

Contradiction: Doing immediate tasks without the perspective of a comprehensive, winning strategy for accelerated TM set-up. (Wk. 3)

**RELIGIOUS HOUSE: PEORIA**

External: Quad Cities luncheon seats 32 around the table to map out TMs for possible 20 communities.

Internal: Five students from Student House travel to Des Moines to help in setting up new Des Moines House. Division South strike force works out of Peoria this week in-kind paper, printing, 60 hour materials and letter blitz. Sends out James Higgins to the army.

Contradiction: Holding the tension between urgency and momentum. (Wk. 11)

**RELIGIOUS HOUSE: GREEN BAY**

External: Dickinson County TM closes registrations one week before the big day due to unexpected avalanche of pre-registrations the overtax facility. Visits 15 towns with 10 showing a promising interest.

Internal: Sends Anita Gibson to OK as orchestrator. Sight reads second act of Shaw's "Man and Superman" for discontinuous ecclesiola.

Contradiction: Getting timeline for TMs to coincide with local consensus. (Wk. 13)

**RELIGIOUS HOUSE: MILWAUKEE**

External: Metro meeting at SAM battleplan for immediacy regarding registering towns for TM Wisconsin: 100.

Internal: EG participates in readathon for multiple sclerosis. Development team adds people to House morning structures.

Contradiction: Having the models for daily work to enable people to put their passing on Wisconsin 100. (Wk. 1)

**RELIGIOUS HOUSE: INDIANAPOLIS**

External: Holds sponsors' organization meeting in Marion, Indiana, core meeting in Newburgh, Kentucky, CIF planning in Louisville. Speaking engagement in Evansville, Indiana, awakens dormant polis. Academy recruitment gets amazing results and 15 colleagues spend Week II at House in Imaginal Education workshop with emphasis on tactics for PCE in Louisville's Parkhill area.

Internal: Beginning to turn the tide on self-support as earned income exceeds budget for the first months this year. Crucial maney tactic is actualized as every House member completes filing of all federal and state income tax returns.

Contradiction: Insuring broad participation in Guardians Meeting Week 13. (Wk. 12)

#### RELIGIOUS HOUSE: CINCINNATI

External: Secures the new consultant force for TM:Ohio Day well under way with yes from TM grads.

Internal: Large in-kind food donation arrives just in time to cover absent House check.

Contradiction: Pushing TM:Michigan strategies to actualize corporate planning and service coordination. (10)

#### RELIGIOUS HOUSE: DETROIT

External: Decides to call 500 Michigan communities to dig for TM interest, three county TMs secured in one day. 125 communities to be seen in the next two weeks.

Internal: Celebrates Judeo-Christian heritage with traditional Jewish Seder to celebrate opening of Passover.

Contradiction: Seeking out the goal seen on the horizon, while keeping hand on the plow, knowing if you look back you will turn into a pillar of salt. (Wk. 2)

#### RELIGIOUS HOUSE: CLEVELAND

External: TM:Ohio moves into second major phase with Consultant Training for over 100 new consultants in seven districts.

Internal: Birth of Justin David Bushman to Donald and Mary Laura Bushman happens on February 25.

Contradiction: Gearing selves up for passing the baton to new consultants that will be doing the 88 TMs. (Wk. 12)

### NEW YORK

#### RELIGIOUS HOUSE: NEW YORK

External: Two TMs, South Bronx and Lower East Side, initiates by local community core groups, both in New York City neighborhoods. Mathews, Vance, Thomas and Ollison arrives for Andrew Young visit.

Internal: Wedge collegium by Joseph Mathews and on the town celebration are fitting transitions from Quarter III to Quarter IV.

Contradiction: Getting a running start into the new quarter and an area strategy without a monitoring center. (Wk. 1)

#### RELIGIOUS HOUSE: PITTSBURGH

External: Using direct tactics in steering committee journeying results in new decisions in Bradck and Moorefield West Virginia.

Internal: Engagement by sojourners John Maslove and Robert Hedges results in Academy registration and new job.

Contradiction: Creating tactical implementation after model is built, especially when structural routine sets in. (Wk. 12)

#### RELIGIOUS HOUSE: ROCHESTER

External: House Youth sends out 100 development letters with money beginning to come in.

Internal: Sends out the Stovers and Sister Regina to Lorne Consult.

Contradiction: Deciding what is needed on home front to enable and sustain the Edge. (Wk. 3)

#### RELIGIOUS HOUSE: RICHMOND

External: While Oklahoma was meeting, Fredericksburgh held a strong steering committee meeting, the House and colleagues participated in the opening of the Ivy City Community Center, and held first GSD night, all in one week.

Internal: The last week of the quarter shifted montage as Truman and son Michael were gone to Oklahoma and preparations were made for Holy Week. Both Metro Cadre and ecclesiola mares the quarter's end with celebration.

Contradiction: Reducing images of in-kind sources and movemental support keep from exploding all possibilities. (Wk. 2)

#### RELIGIOUS HOUSE: WASHINGTON

External: Ivy City Council thrust out of Ivy City and into the world through Neil Vances's report on the 24 social demonstrations and Ivy City's own Lawrence Glacoe's report on the Cano Negro Consult.

Internal: House global consciousness bumped via collegium on Wedge report and week presence of Neil Vance, Kathy Bauknight, and Mark Welsh.

Contradiction: Firming back up system: economics, structures, and training. (Wk. 4)

#### RELIGIOUS HOUSE: BALTIMORE

External: Mails Campaign Newsletter and GSD report and invitations. Sends one person to help in New Jersey:58 set-up.

Internal: Ecclesiola is a great happening as we discover the impact of Sun Tzu on present TM campaign.

Contradiction: Pushing to find ways of extending the invitation to metro colleagues for engagement in areal thrust in a way that deepens their commitment beyond the local. (Wk. 3)

#### RELIGIOUS HOUSE: PHILADELPHIA

External: TM New Jersey, in the second week of impact, reports that 153 communities have been visited with 78 yeses. Trenton, state capitol, and mayor agree to write state proclamation and give ICA open door to whole city as well as state.

Internal: Celebrates the send out of sojourner, Jane Bliss. First grassroots mailing nets first of many surprise return gifts. (Wk.3)

#### RELIGIOUS HOUSE: NEWARK

External: Visits 143 communities in three days, 58 affirmation responses give invitation and asks to come back and pursue this further.

Internal: Six Houses s in the area moves in and quadruples size.

Contradiction: Maintaining circuit momentum and initiating massive support systems. (Wk. 2)

#### RELIGIOUS HOUSE: BROOKLYN

External: Launches new phase of local consultant training while sending out troops to three area targets.

Internal: Discovers new interior resources as all enablement systems collapse and have to be rebuilt. With no in-House troops, the sink breaks, permeators' only care breaks down and child care model collapses.

Contradiction: Maintaining momentum of backup systems in midst of nonkairotic events. (Wk. 3)

#### RELIGIOUS HOUSE: HARTFORD

External: Steering committee in Wooster Square, goes ahead for June 4 TM in New Haven. Participation in Schenectady Promotion Day is great event for all. Money comes for Bridgeport South End meeting as well as response from another community interested in TM.

**(RELIGIOUS HOUSE: HARTFORD)**

Internal: Mark Whitney helps at a parish church with a dance for the Home and School Association. Russell and Randell White spend part of Week II with metro families. Receives pledges from RS-1 participants. LENS mailings go out of Houses in Area New York and to 100 individuals.

Contradiction: Sharing wisdom across the area so all can prepare for statewide campaigns in the Fall. (Wk. 3)

**RELIGIOUS HOUSE: ALBANY**

External: Week's events include 12 steering committee meetings, 10 in Schenectady County plus Glens Falls and Guilderland, three workshop leader training sessions, 75,000 flyers printed in-kind, over \$1500 cash raised, 2000 Pepsi Colas, 200 dozen rolls and \$650 worth of food certificates given.

Internal: Sends out David Rose to Lorne Consult. Tiffany Refior has chicken pox, and festive Easter House Church hosts two metro colleagues and their wives.

Contradiction: Creating solid steering committees for two of Schenectady 10. (Wk. 3)

**RELIGIOUS HOUSE: BOSTON**

External: Steering committees continue towards April and June TMs.

Internal: Easter preparations intensify with Seder meal done by Jewish colleagues. Student House stops by for a little sleep and showers on way to Lorne. Ron and Marcie Clutz visit for weekend and Easter House Church with announcement of engagement by George Howard and Eileen Morrill.

Contradiction: Holding the tension between what needs to happen in Boston tri-metro and the area with all Day 1 troops assigned to area maneuvers. (Wk. 2)

**MONTREAL**

**RELIGIOUS HOUSE: MONTREAL**

External: One person holds fort in Montreal while rest of House enables and participates in Lorne Consult. Development treks are carried out in Montreal as consult goes on in Lorne.

Internal: Internal life shifts as entire House participates in Lorne Consult for varying lengths of time. Wayside Inn hosts entire area on way to Lorne.

Contradiction: Creating the model that involves donors and consultants to Lorne HDP. (Wk. 3)

**RELIGIOUS HOUSE: TORONTO**

External: Swirl of CFC and Lorne consultant visits and phone calls result in first four paid consultants for Lorne.

Internal: With half the adults in Lorne, the remaining troops work on Lorne consultants, guardians meeting and the rest of the mission.

Contradiction: Keeping the story, vision and the future beyond Lorne before and within us in the swirl with few troops. (Wk. 13)

**RELIGIOUS HOUSE: OTTAWA**

External: Lorne HDP gets off to an explosive start with 550 local people to 100 outsiders.

Internal: Job with post office department stabilizes dependable income.

Contradiction: Moving effectively into the new quarter. (Wk. 3)

**RELIGIOUS HOUSE: HALIFAX**

External: Lorne citizens provide 75 pounds of potatoes per day for each day of consult; 10 Lorne community people form task force in preparation for consult and produce and distribute first Lorne "Voice" to every home, while four teams on the road. The Maritimes net \$4,000 worth of in-kind; 12 are seriously considering consultants, ready for Lorne de l'Acadie Consult. Sets four more CFC dates and opens doors up for development across New Brunswick.

Internal: Bob Porter and Forest Craver conduct area Legal Trek as 26 area troops, including all House priors, gather in Lorne for HDP set-up.

Contradiction: Maintaining chaste attention to specific priorities in midst of a deluge of demands to get advance auxiliary team set-up on site in Lorne and the preconsult miracle initiated. (Wk. 12)

**CARACAS**

**RELIGIOUS HOUSE: CARACAS**

External: Colgate-Palmolive donates \$1000 to Cano Negro. Prepares community garden seed bed and seeds arrive for planting. Community installs tanks into latrine holes dug last week. Sector/stake meetings continue attendance of over 30% of the community present. Clears land for auxiliary housing to be built this week.

Internal: House sees 'Bad News Bears' and raises question of what does it really mean to win.

Contradiction: Getting pump installed to insure the symbol of water for the village with water well drilled. (Wk. 1)

**THE GLOBAL ORDER CENTRUM REPORT**

**WEEK THREE**

**BRUSSELS  
NAIROBI  
BOMBAY  
CANBERRA  
HONG KONG  
CHICAGO**

**GLOBAL  
DEVELOPMENT  
CENTRUM**

Global Development Centrum in Hong Kong reports treks continue to be on the road. Canberra makes a chart of donors and authorization figures to enable follow-up in the midst of sending out guardian invitations. In Chicago, the second reconfiguration of troops takes place, pushing insights of the week before, setting the amount of \$164,000 per month as the money that the five areas need to raise with 50 troops. Plans continue to utilize seven or eight nexus troops each week to fill slots. The contradiction lies in the arena of maintaining momentum to keep the money flowing in.

**GLOBAL  
RESEARCH  
CENTRUM**

Global Research in Hong Kong initiates and completes advisory week in Nam Wai. Trek in Davao culminates with GCF held in Butuan. In Canberra, the receipt of Global Women's Forum brochure and request for slides of GSD women creates the first link with this program in Australia. The Global Women's Forum group begins its trek to Eruope. Summer brooding in collegiums begins. Academy holds its first TM. Views the first results of the photo trek filming done in Kawangware. The Student House returns from Lorne. The contradiction lies in the arena of capturing in a form or structure the dynamics toof Research so that it can be implemented globally across the whole band.

**GLOBAL  
OPERATIONS  
CENTRUM**

Global Operations Centrum in Hong Kong met and looked at how to best use troops to catalyze GSD events and projects this quarter. Centrum Canberra reports a delivery of 2,000 CMA workbooks. Chicago Centrum sends to to Lagos and two to El Bayad. The Lorne Consult is completed with a grand closing celebration. Social Demonstration holds a Week II PSU on agro-businesses for the upcoming Agriculture Trek. The Campaign News goes out to 3,800 guardians. The contradiction lies in the arena of redistributing forces relative to the trends and breakthroughs of the three campaigns.

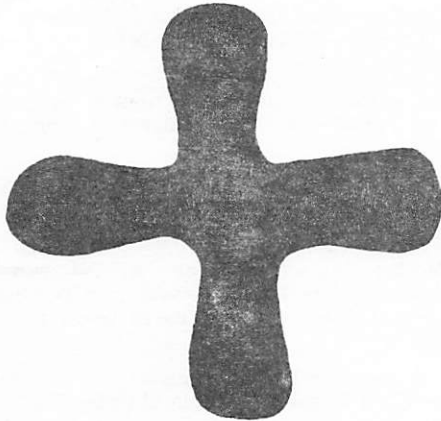
**GLOBAL  
MANAGEMENT  
CENTRUM**

Global Management Centrum in Chicago experiences dispersion with three assigned to development and two on Town Meeting circuits, with one in Lorne; holds a celebration to send Joyce Carlton to Boston House. Hong Kong and Canberra report that financial reports are completed! The contradiction lies in juggling the vendors while raising \$80,000 matching funds.

# GLOBAL ORDER REPORT

WEEK FOUR

APRIL 25—MAY 1, 1977



## LONDON

### RELIGIOUS HOUSE: LONDON

External: "Yackity Yac" Youth Forum writes song and proposals for quarter under Youth workshop leadership. Pug shoes production peaks 100 quota for week; six managing directors pledge attendance at June working party on Island industrial development.

Internal: Youth of area trek to London for Easter and redecorate bathroom. Enables pug shoes and preschool and takes tour of city. Experiments with campaign meeting as daily preparation and sets up financial commission.

Contradiction: Creating common image and master strategy for maneuvering the tactics of the quarter. (Wk. 4)

### RELIGIOUS HOUSE: GLASGOW

External: TM regional consultant phones to report 380 pre-registrations for Lochee TM on April 16.

Internal: Sends out Rhonda Wiltse to new assignment in Boston.

Contradiction: Redesigning overtaxed machinery to do five TMs by June and ten by October. (Wk. 3)

### RELIGIOUS HOUSE: BRISTOL

External: Formulates new role as TM coordinator for Great Britain.

Internal: House is gracious presence to guests from Paris, Watchet, Isle of Dogs and Manchester. Wrights return from two week continental assignment to Isle of Dogs.

Contradiction: Orchestrating maneuvers that actualize Quarter IV tactical steps for TM. (Wk. 3)

### RELIGIOUS HOUSE: MANCHESTER

External: Burst of enthusiasm at Litherland core meeting as excited core members spin on possibilities of TMs for new community.

Internal: Sends out fresh batch of Campaign News to colleagues along with invitation to TM training week end.

Stand at the gate of the Lord's house and there make your proclamation: Listen to the words of the Lord all you men of Judah who come in through the gates to worship him.

Jeremiah 7:1-2

Contradiction: Holding the broad picture of TM campaign in the region, whilst struggling to get the first two or three quickly launched. (Wk. 4)

## PARIS

### RELIGIOUS HOUSE: PARIS

External: Initiate new phase of programmes by holding the first Global Womens Forum with 23 participating.

Internal: The ICA is now a legally registered association under the law of 1901 in France.

Contradiction: Deciding to be victimized by something not around. (Wk. 4)

### RELIGIOUS HOUSE: ROME

External: European Task Force site selection identifies a priority social demonstration site—a small agricultural village in the Abruzzo.

Internal: Bob Rank arrives—daily office has 6 people. Sun Tsu looks different on the other side of the past 6 months and the method is helpful.

Contradiction: Looking for the yes from top to bottom relative to authorization and money. (Wk. 4)

## LAGOS

### RELIGIOUS HOUSE: LAGOS

External: First group of coop farmers meet and clear four acres for community farm. Sets up inkind training program with Lagos company to train community resident as cement block company manager. Preschool is expanded to 80 and visited on first day by American Women's Club, including Mrs. Easum, wife of the American ambassador. AWC commits 1600 USD to preschool. Steering committee for Ijede reconstruction day April 30 holds first meeting.

Internal: Corporate walk through community again and study of Wedge Report sets all clearly before real situation. Quarter's celebration at Lagos' Holiday Inn ends the first eight weeks of IHDP.

**(RELIGIOUS HOUSE: LAGOS)**

Contradiction: Shifting the story from "if it's not perfect, let's not do it" to "whatever we do is perfect". (Wk. 2)

**BRUSSELS**

**GLOBAL CENTRUM: BRUSSELS**

External: Holds TM training session for Area Brussels with Nexus in attendance.

Internal: Celebrates the completion of March with full employment - one job for UPI, two with NATO.

Contradiction: Building the financial action plan that allows three campaign support when concentrating effort on major funding for GSD campaign. (Wk. 2)

**RELIGIOUS HOUSE: BRUSSELS**

External: Global Women's Forum advocacy call provides introduction to Belgian elite. Trains new circuiter. Sets three TM core dates, with one TM date set.

Internal: Battleplanning for quarter is climaxed with "Raid on Entebe." Discovers shift in contradiction rationale for all conversations, collegiums and Week IIs. All four children enter school.

Contradiction: Knowing how to set the cores to have a victory on hands: right people, right time, right context. (Wk. 2)

**RELIGIOUS HOUSE: AMSTERDAM**

External: Development team push for ICA support and is enabled by colleague from Oombulgurri. Key insight: Dutch people prefer to give regular donations.

Internal: The Ecclesiola sodality has impacted this house relative to its "on targetness". Thursday night sees the table full with participating guests.

Contradiction: Believing that there is no time to do colleague formation for Buurtdag calls because we are too busy doing Buurtdag calls. (Wk. 3)

**FRANKFURT**

**RELIGIOUS HOUSE: FRANKFURT**

External: Global Woman's Forum promotion and recruitment zoom ahead with visits to leaders of women's groups, a poster campaign, and a third round of invitations with reservations already beginning to come in. Four Metro colleagues attend Gemeindeforum Training weekend. Holds after Easter-Reentry battleplanning Gemeindeforum.

Internal: One from the Black Forest, 2 from Cologne, 2 from Berlin, 3 from Brussels and 1 from Maliwada gather for Town Meeting training which is a great event for all!

Contradiction: Maintaining the tension between focusing on new communities and intensifying communities already in preparation for Gemeindeforum. (Wk. 2)

**RELIGIOUS HOUSE: BERLIN**

External: Seventeen present at first session of third English course, overflowing the classroom. Third edition of community newspaper, Kreuzberg Ost Laterne, makes profit. First two meetings of steering committee for Gemeinde Forum (TM) held. Two major Berlin Hotels donate furniture for Cafe. Plans drawn up for refurbishing park space in Kreuzberg Ost in April.

Internal: Space and model creation to receive 22 youth coming for work week.

Contradiction: Setting up the situation so that local people win after having decided to participate. (Wk. 3)

**KINSHASA**

**RELIGIOUS HOUSE: LUSAKA**

External: Celebrates windfall development week of \$2,800; gets tractor for Shantumbu. Zambia's top seeded rally driver pledges all future winnings to SHDP. Regional Council plans six PLCs in six metros for replication preparation; 20 grads sign up for circuits and pedagogy.

Internal: Sends intern for month study in Hungary. Other intern is married in solemn splendor after week of intensive preparation. The Machishi family stands before the shield, the fire and the stars.

Contradiction: Attending to detail follow up after exploding the possibilities in development and the contradictions. (Wk. 2)

**CAIRO**

**RELIGIOUS HOUSE: EL BAYAD**

External: Moving on several fronts as 2nd well is completed. Learning center hosts preschool, primary school, and jets at educational cinema and Bayad tailors sew 60 uniforms at no cost.

Internal: House celebrates Sham El Nassim (smell the spring air day) in midst of sandstorm. Welcomed visitors Karl and Doreen Ayed from Brussels and 5 students from the American University of Cairo.

Contradiction: Pumping out hard, visible miracles that spark winning motivity. (Wk. 2)

**NAIROBI**

**GLOBAL CENTRUM: NAIROBI**

External: Holds TM focused on health held in Muslim village with over 200 participants. Secures plot for construction of a model murrum house.

Internal: Sends the four Nexus Youth to Kenya coast for four days of missional discontinuity. Begins using collegiums for work on Order studies.

Contradiction: Taking the new structures which are being created continually and turning them into operational structures which can be maintained with minimum troops. (Wk. 4)

**RELIGIOUS HOUSE: NAIROBI**

External: Border-toborder circuit team created as Jacob Owiti (from Ahero in western Kenya) travels with team to Mombasa, and Ali Mohammed Juma (from Mobasa, Eastern Kenya) comes back with them to Nairobi in preparation for next week's circuit to Ahero. Steering committees in Nairobi benefits from the exchange as both men advise them on their VM set up plans. Mwon-guga Village Meeting is rained out, with impassable roads via Toyota... oh, for a Land Rover.

Internal: Marcella finally finds her way back across closed border from Tanzania (via airplane) with stories of strategic possibility. School teacher, Thuo wa Thonga, sojourns again and decides to begin his intern year at the end of the school term.

Contradiction: Being blinded by dazzling future vision rather than daily implementing the tactics which will realize the vision. (Wk. 4)

**BOMBAY**

**GLOBAL CENTRUM: BOMBAY**

External: India's Republic Day celebrated with morning parade of school children in new clothes with bright faces, flag hoisting, and afternoon nail brushing and weight checking at just two of the exciting Health Fair booths. An

**(GLOBAL CENTRUM: BOMBAY)**

inter-guilds "Kobadi" match. All State Bank of India staff drop by with greetings after getting 101 new accounts opened earlier in the week and a commitment to open a branch here.

Internal: Internal life for Quarter II is kicked off with barbeque celebration on Saturday night while receiving ecclesiola manual for the quarter which provides context for study of the yellow Ur and a celebrative Chinese feast.

Contradiction: Getting methods of tapping technical expertise available in India in order to sustain Maliwada economically and build the thrust for exonomic self-sufficiency. (Wk. 12)

**RELIGIOUS HOUSE: BOMBAY**

External: Sends truckload of inkind goods with chairs, edible oils, plastic sheeting, well piping, bed sheets and office stationery, including 60 reams of paper, to Maliwada for HDTs. Bon voyages Sushila Joshi's nephew, Sunil, to HDTs. (Human Development Training School)

Internal: Completes new song books for the continent with complete cost inkinded as the last phase comes from a Philadelphia consultant. Hosts Marshall and Kathy Jones, movie-making for GSD.

Contradiction: Giving form to the shift that is taking place of Area responsibility from the House alone to the first village demonstration of each district. (Wk. 2)

**RELIGIOUS HOUSE: VAVIHARSH**

External: Began first steps to increase village land under cultivation for this coming monsoon by negotiating with the State Bank for providing comprehensive credit facilities to Vaviharsh farmers.

Internal: A two day planning session for the next 13 weeks saves us from the demon of immediacy and gives us a clear picture of our priorities and maneuvers for this quarter.

Contradiction: How to turn on the power of the village leadership to enable effective actuation of tactics and allow the auxiliary to play the auxiliary role. (Wk. 4)

**RELIGIOUS HOUSE: KENDUR**

External: Farmers get set for soil survey and ground water survey. Doctors guild extends health care to surrounding hamlets.

Internal: Sends out Durgaiah family to Nadlapur and sends Ankush and Kulkarni to third Human Development Training School. Celebrates the end of the quarter with a grand celebration.

Contradiction: Getting the support system for KHDP fully engaged and moving. (Wk. 3)

**RELIGIOUS HOUSE: TASGAON**

External: Tasgaon comes alive with large attendance at Shramdan (workday) on repairing old temple steps, cleaning out mud filled tank, building sample of cobblestoned road and cleaning streets. Rotary Club speaking engagement and visit to the collector gains solid support from Satara (district capital city.) Completes village census and land map and secures records from Talati.

Internal: House set-up with furniture from Gram-Panchayat, village high school and in-kind paint. Demonstration kitchen garden prepared and toilets dug and extra room constructed for living space. Project director, Jasper James arrives in time for Sunday Shramdan.

Contradiction: Chanelling some of raw enthusiasm and energy to procuring materials and other input that will trans form work into solid effectivity. (Wk. 1)

**DELHI**

**RELIGIOUS HOUSE: DELHI**

External: Reports on village consults and school inspires Delhi cadre meeting. House participates in all three campaigns, with members on circuits, consults and Human Development Training School.

Internal: Focuses on EG studies as final exams threaten in one week. Fans installed as temperature hits 101. Enlivens House Easter celebration by cadre member Mary Partick's biyam which she cooks over an open fire.

Contradiction: Calling forth people to total expenditure. (Wk. 3)

**MADRAS**

**RELIGIOUS HOUSE: HYDERABAD**

External: Receives two members for auxiliary from Ambadi. House is busy preparing decor for the Consult.

Internal: Chairman Joe Mathews meets chairman R. K. Atol of Vazir Sultan Tobacco factory and finalizes funding and sponsorship for NHDP.

Contradiction: Shifting the Area House within three weeks to auxiliary House NHDP (Nadlapur Human Development Project). (Wk. 13)

**CALCUTTA**

**RELIGIOUS HOUSE: CALCUTTA**

External: Consultant recruitment calls and follow-up reveal possible interest in a village project in Area Calcutta.

Internal: A Week II of House Refurbishing and old colleagues drop by; sent Adam Thomson to Tasgaon Consult and Liz Marques returns from Nadlapur Consult.

Contradiction: How to structure time for getting the task done and telling a story that enables follow through. (Wk. 4)

**SINGAPORE**

**RELIGIOUS HOUSE: SINGAPORE**

External: Ten attend first TM workshop. Workbooks format taken from GRA Hong Kong 1976. Visit peoples association on work proposal for TM.

Internal: House hosts consult team members, five villagers and five staff from Kelapa Dua and three Australian staff all on their way to Sungai Lui HDP. Celebrates end of quarter with steak dinner out and welcomes Bob O'Keefe as sojourner.

Contradiction: Doing development. (Wk. 4)

**RELIGIOUS HOUSE: KUALA LUMPUR**

External: Mung beans harvested and seed distributed to village farmers. Marshall Jones family spends week filming village happenings. Solution to rice problems found. Fifty at Guild meeting to hear the report of five villagers who just returned from Sungai Lui consult, a great happening for Kelapa Dua.

Internal: Ipung, third daughter of Shnardi family arrives. Ibu Mien's mother, sisters, and brother visit. Staff members return from Sungai Lui consult.

Contradiction: Changing the momentum created by villagers returning from Sungai Lui into visible action. (Wk. 4)

#### RELIGIOUS HOUSE: JAKARTA

External: Receives positive encouragement from all sectors - Social Department, US AID, General Baustion, Colonel Nasution, on national level; the Lurah and Bupait, regional officials; agronomist from private sector, David Barnes; and villagers of three kampungs. Prepares to send five villagers to Sungei Lui Consult in Malaysia. Secures three inked tickets. Youth finish extending the soccer field. Crowd of 150 watch TV coverage of badminton finals from England. PCE decides to fund and send people to ITI.

Internal: Sends out Lush, La'ya, Connie, and Ruthe Yost to Sungei Lui preparation. Ibu Sukanto goes to centra Java on family business. Roy Stansbury from Canberra arrives to boost development thrust for a while. Mudjiatmo's brother from central Java visits.

Contradiction: Supporting the expansion of the project as well as the demands of the global Movement. (Wk. 1)

### HONG KONG

#### GLOBAL CENTRUM: HONG KONG

External: Development treks on road in Tokyo, Taipei and Hong Kong. GCF trek in Davao also continues. Global Health Acceleration Team (GHAT) arrives and goes to Nam Wai for Advisory Week. EI/ICA reports for January and February 1977 completed.

Internal: GHAT collegium reports on GSD projects visited and shapes screen for analyzing progress of projects. HDP decor grounds the world grid with photos from various projects.

Contradiction: Focusing in on positive images relative to development story to put in the punch and urgency. (Wk. 3)

#### RELIGIOUS HOUSE: HONG KONG

External: Nam Wai consenses on week following the consult to have the project and provide staff housing which culminates a week of launching at least eight of the programs, writing and turning in the English document. Nam Wai Service Corps prepares and hosts bi-areal Council celebration in the consult tent just before taking it down.

Internal: Auxillary and Global Team move into village school and Youth center while Service Corps builds staff House.

Contradiction: Keeping the planning ahead of the actualization. (Wk. 4)

#### RELIGIOUS HOUSE: KAOHSIUNG

External: Two visits to Ping Tung County chief exective result in two days of site search after Nan Ping is blocked by harbor development, culminating in standing ovation at mayor's offer of new village.

Internal: Carl Johnson arrives from Taipei to assist in village search and House and ecclesiola colleagues are excited as search team returns just in time to report on new village discovery and openness.

Contradiction: Moving it while waiting for final concensus on new site, Sha Liao. (Wk. 2)

#### RELIGIOUS HOUSE: MANILA

External: Big ITI recruitment push happens through Tuguegarao, Cavite, Lucena, and Manila circuits, participation in NASAK conference and UCCP conference which turns out to be actually an ITI conference. Guardian Meeting prep committee has second meeting (this is a tremendous source for solidifying images of what guardian

engagement needs to look like as well as what the implications are for replication.)

Internal: House welcomes Bill and Nan Grow for ITI set up, Paul and Ruth Osborne from Italy (now stationed in Manila) plus regional colleagues for a total of 20 guests at House Church, emerging generation attends Alvero Senturio's birthday party.

Contradiction: Keeping the possibility open for everything to get done that's needed. (Wk. 4)

#### RELIGIOUS HOUSE: TAIPEI

External: Seminar for 25 managers (one da, LENS) is well received.

Internal: Sun Tzu study in Chinese is one hour of awe relative to being indirect.

Contradiction: Keeping head above water in daily nitty-gritty in midst of . . . momentoue missional activities. (Wk. 4)

#### RELIGIOUS HOUSE: CEBU

External: Signal work day with more than 300 working finalizes campaign to line main road with rocks painted white and flowering plants. Rope craft shipment is sent to Houston, Texas. First manager's meeting of leadership of community industries with auxiliary meets to signal coordinated industry tactic. Carabao (water buffalo) moves to Purok 4 to continue plowing for Mactan plantation. Purok leaders meeting with ecclesiola/Sun Tzu construct gets all leaders talking. Language School classes begin on Monday.

Internal: Sends out Lester Knutsen to two metros for ITI recruitment and search for self-support. Welcomes two sojourners from Cebu, Heidi Calunsag and Myrna Narvasa. Does internal assignments for quarter using research, development, operations and management motifs.

Contradiction: Adding methods skills and depth to community leaders' decisions to be generals. (Wk. 3)

#### RELIGIOUS HOUSE: DAVAO

External: The GCF ball is rolling now in northern Mindanao with the second GCF in two weeks; no details have been reported back yet, but more than 200 were anticipated at the Agoho GCF in Camiguin Island.

Internal: Sends out Jack and Nancy Callum to the faculty of the Manila ITI and Christine Perez out to participate in the same ITI. Repeated attempts to break into the House during the night results in a 24 hour security system set up with much corporateness between the House and neighbors also suffering from burglaries.

Contradiction: Keeping the continuous things continuous while time schudule is so discontinuous with troops shifting in and out constantly. (Wk. 4)

### TOKYO

#### RELIGIOUS HOUSE: TOKYO

External: Sends Hickey, Karikoski, Emura as Area task force to Yubari and secures invitations from local leadership and mayor and free facilities for the consult and auxiliary. Thirty women registered for Global Women's Forum.

Internal: Sends out Joyce Quimby and Jim Oberg after celebrative miracle of common operational file system across zone.

Contradiction: Converting many who are interested into the committed. (Wk. 4)

**RELIGIOUS HOUSE: JEJU**

External: Health trek completes stay with fair, commissioning of health workers and initiation of bath house construction. Community elects new English-speaking leadership; dump truck arrives.

Internal: Comings and goings of troops reflects project's role as key training center.

Contradiction: Carrying out priorities in midst of changing leadership. (Wk. 2)

**RELIGIOUS HOUSE: SEOUL**

External: Global Health Acceleration Team spends week evaluating and marks the beginning of the march toward Global World's Fair. Kitty Cole and her father visit as Global Woman's Forum strategy is forged for Korea. Team sets up Town Meeting in Choongju and holds HRM in Taegu.

Internal: Colleagues share evening in El Bayad and Kwangyung II slides. Send out Kil Chung Sook and children to join Kang Shin Chul in Kwangyung II. The House celebrated with the Robert True's their decision to adopt a daughter.

Contradiction: New swirl of events demanding broader authorization blocked by needed methods to shorten timeline in obtaining that authorization. (Wk. 4)

**RELIGIOUS HOUSE: FUKUOKA**

External: Foray 400, a two-week GCF maneuver in areas Tokyo and Hong Kong, gets a flying start as House visits 19 communities in five metros during first week. Sponsors committee meets and begins implementing plans for upcoming Global Womens Forum.

Internal: House studies first session of Bonhoeffer's "Community".

Contradiction: Turning mild interest into steering committee strength for GCF. (Wk. 2)

**RELIGIOUS HOUSE: OSAKA**

External: Area consensus to send staff to Yubari GSD site. Awoji TM intro meeting forms steering committee with assignments for next meeting in two weeks.

Joyce Quimby drops by to talk about GWF and development in Manila and Tokyo. Akira Nishihara participates in House Church giving external report and absolution.

Contradiction: Molding the complex activities for corporate understanding. (Wk. 4)

**RELIGIOUS HOUSE: SENDAI**

External: Banker's guild assumes responsibility for May development party. Ecclesiola continues enthusiastic participation in Sun Tzu study. Excitement about GSD in Hikkaido grows as prospects crystallize.

Internal: With two people in the House, all internal events become external.

Contradiction: Capitalizing on the signs of resurrection that are exploding everywhere rather than allowing them to overwhelm us. (Wk. 4)

**SYDNEY****RELIGIOUS HOUSE: SYDNEY**

External: Jim Thomson and Ted Yallop decide to hold two guardian functions to recruit for Guardians Meeting and to expand new networks. Newcastle circuit enabled by Sister Betty McGee, secures people for GSD promotion night,

CMA blitz plus \$200 in hand.

Internal: Evening time design re-arranged to allow viewing of Roots. Jay Zahrt sent on nine hour train journey to school camp. Bill Norton joins House for two weeks and provides only male dynamic.

Contradiction: Renewing external momentum through CMA and development. (Wk. 4)

**RELIGIOUS HOUSE: PERTH**

External: \$140 development in hand. CMA push begins at District levels with service club District Governors and shire council presidents and mayors with immediate invitation to Apex district convention and article in Lions District Governor's newsletter.

Internal: Pick up 3 part time jobs. Deluge of wedding anniversaries and birthdays (2 of each) celebrated at House Church breaks long drought. Welcome Ramage's returned from Africa and receive Danny Taylor from Oombulgurri.

Contradiction: In time of high unemployment, getting enough jobs to get house finances in the black and still maintain 3 campaigns. (Wk. 4)

**RELIGIOUS HOUSE: DARWIN**

External: Has speaking engagement with Darwin Rotary Club on GSD and Oombulgurri. Top End Air Express does its first inkind flight to Oombulgurri.

Internal: Sends out colleague from region, Lucy Cooper, to U.K. for holiday with Isle of Dogs address and order for pug shoes.

Contradiction: Recreating the vision that focuses brokenness into a solid plan of action. (Wk. 2)

**RELIGIOUS HOUSE: OOMBULGURRI**

External: Enid Smith sent as Oombulgurri representation to Maliwada Replication School. New water pump installed and water starts to flow again on Easter Sunday after 10 days without water. Kitco reports week of highest cash sales this year: \$2,500 during 6 days of trading.

Internal: House hosts 9 overnight visitors during week. West Australian State Museum Curator leads collegium spin on Aboriginal Sacred Sites. Dr. Graham Heap and daughter Elizabeth visit from Canberra. 5 day Easter celebration shifts time design and interior mood.

Contradiction: Launching the quarter in the midst of holidays and visitors. (Wk. 4)

**RELIGIOUS HOUSE: ADELAIDE**

External: Action group formed following Gawler CMA. Salisbury coordinator visits Mitchell Park steering committee meeting. Sixty committed to attend Mitchell Park Community Meeting. 129 organizations and 46 individuals still to check back with.

Internal: House CMA Easter Monday handles quarter's planning. E.G. (Elizabeth, 1-1/2 and Gretchen 3) hold challenges workshop and create mural holding quarter's Week II curriculum on the theme of the Oombulgurri 18 Programmes. Thirty year old Roneo machine resurrected.

Contradiction: Dealing with mountain of practics to release new momentum for circuits. (Wk. 4)

**RELIGIOUS HOUSE: MELBOURNE**

External: Three Jaycee Districts write in to request ICA participation in their special regional seminar on Rural Youth in the Future plus their Annual Conference. Geelong Grammar School schedules Oombulgurri Speaking Engagement for May. Georgetown CMA Steering Committee begins 8 week count-down even though consultant tied up in airplane cancellations.

**(RELIGIOUS HOUSE: MELBOURNE)**

Internal: Bill and Maxine Norton return from Sungai Lui H.D.P. Consult full of stories of village life in Malaysia. Our two high school students star in "Goliath" jazz show.

Contradiction: Making actual contact with people already waiting for CMA, GSD consults, etc. (Wk. 4)

**CANBERRA**

**GLOBAL CENTRUM: CANBERRA**

External: Apia House sends word ready to do Town Meeting with local company. Steady flow of replies to invitations to 7th Guardian Consult.

Internal: Planning for Quarter IV spirit life.

Contradiction: Figuring out safe-guard system for posted mail (particularly money) which doesn't arrive at its destination. (Wk. 4)

**RELIGIOUS HOUSE: BRISBANE**

External: Inala Journal continues to give front page feature status to CMA; development brings in dollars and in-kind typewriter.

Internal: Second car accident in a month means two down, none to go--leading to in-kind car push; Easter discontinuity provides opportunity for inter-Region presence.

Contradiction: Finding the way of expanding people's context to the comprehensive, for deciding necessity. (Wk. 4)

**SUVA**

**RELIGIOUS HOUSE: MAJURO**

External: The recently indecisive Kitco Board decides to send a task force to the outer Islands to raise new equity capitol from the 700 stockholders. Thirteen new children enroll in the demonstration preschool. Receives an in-kind air conditioner for the new sewing industry. Lumber operation sells first large order of bread fruit lumber and reports the completion of the first building on the outer island completely from coconut lumber. Successfully recruited Marshallese woman to become director of the demonstration pre-school. In-kind cloth for pre-school uniforms arrives along with toys, books, and magazines from a congregation in Honolulu.

Internal: Robert Fishel returns from the guardians meeting in the states with many globalizing and spiritizing stories for all.

Contradiction: Becoming enabling shadows to Marshallese colleagues versus visible program guns. (Wk. 4)

**RELIGIOUS HOUSE: APIA**

External: In the midst of land dispute, a sign of determination is raised by dismantling the playground in one day and celebrating its relocation.

Internal: Easter Week II launched with pre-brooding on missional engagement highlighted by a wide variety of church activities and grounded in the practical with a badly needed house clean-up day, all done in the midst of a Tualoa (windstorm).

Contradiction: Turning defeat into victory with cadre embodying global catalytic style. (Wk. 4)

**SAN FRANCISCO**

**RELIGIOUS HOUSE: SAN FRANCISCO**

External: Town Meeting: San Francisco plan moves ahead at top speed: 664 letters from the Mayor sent to

organizations and key people; secures lunches for 12 TMs. Checks all locations and lines up top entertainment.

Internal: Jim Bell visits House on development trek and celebrates birthday at Finochios.

Contradiction: Winning with locally based organizations as city-wide campaign moves to the neighborhoods. (Wk. 1)

**RELIGIOUS HOUSE: SAN JOSE**

External: Drive for raising \$80,000 matching funds in a matter of hours. Area Council is a great happening; serious work accomplished through relaxed easy style and ending with a celebration of a boat trip to Sausalito and dining in a sophisticated 'restaurant' at San Francisco House. David in Fresno puts five TMs in motion.

Internal: Ecclesiola topic (maneuvers) on target people leaving for fund raising calling. Jon's birthday an exciting event for EG.

Contradiction: Switching the \$80,000 fund raising enthusiasm to grassroots pledging dynamics. (Wk. 3)

**RELIGIOUS HOUSE: SACRAMENTO**

External: Visits twenty plus communities with ten core meetings set up in Valley area. Bob Vance reports \$2500 worth of inkind for the next five weeks in motels and restaurants.

Internal: Has a spirited Friday night strategy and debriefing session with a large number of metro colleagues.

Contradiction: Insuring that troops don't lie down and die in midst of operating on "death ground". (Wk. 4)

**RELIGIOUS HOUSE: SEATTLE**

External: Local citizens lay down their lives for Kennewick TM as bodies spell out TM on street with TV and press coverage from roof of Ranier bank.

Internal: Ecclesiola wins for all with full participation by House, metro and EG. Welcomes Marie Sharp from 13 days on road. EG study of biographies of explorers creates anticipation for move.

Contradiction: Releasing metro colleagues and House to pull off ten TMs on June 4 through story and context. (Wk. 4)

**RELIGIOUS HOUSE: LOS ANGELES**

External: Holds workshop training in two communities. Oriental Mission Church gives \$150 for work in Kwangyung HDP.

Internal: Plans the quarter through the first set of maneuvers in California valley small towns. Illness takes toll in energy.

Contradiction: Figuring out the implications of the Oklahoma strategy on more complex Suburban communities of geography. (Wk. 3)

**RELIGIOUS HOUSE: PHOENIX**

External: Lake Havasu City Town Meeting-Metro backed us with troop power. Capitol View TM has 16 sponsors.

Internal: Parish ice cream social attended by whole house and return to house for Ecclesiola; study JWM's Guardian address on GSD.

Contradiction: Living in the illusion we can do our 10 the "old way"; organization of time, troop and tasks does not equal 10 Town Meeting dates. (Wk. 4)

**RELIGIOUS HOUSE: SALT LAKE CITY**

External: Launches two pronged attack at West Emery County TMs, the first prong to submit proposals for \$4800 to coal companies and the second in three days on the road

**(RELIGIOUS HOUSE: SALT LAKE CITY)**

have six towns on the way to TMs with new quick set up model.

Internal: Putting wheels under new model by creating instant materials and training to be living word for every town.

Contradiction: Flying by the seat of pants as do county wide TMs in West Emery County and try to forge what this means relative to doing the state. (Wk. 3)

**RELIGIOUS HOUSE: BILLINGS**

External: Two TM's held: Helena, state capital, and Chinook, the first TM's in Great Falls Metro. Two teams in North Central Sector of Montana nets TM for May 21, core meeting in another town and nurture for Chester TM June 11. Appointments set for development in Great Falls.

Internal: Implementation of on going weekly energy saving tactic (candlelight Ecclesiola, lights in only one room and no radios Thurs. eve.) is experienced as religious exercise in poverty.

Contradiction: Using social methods to be those who seriously deal with social blocks in TM promotion and internal care. (Wk. 4)

**RELIGIOUS HOUSE: DENVER**

External: Northern Colorado maneuver of 11 visits nets five core meetings, \$1000 grant from Colorado Humanities moving towards June 11 date.

Internal: Ecclesiola with 20 around the table. Sends out House member and metro colleague Richard Gieseler to Nyan Wakagapi to utilize skills as a mechanic.

Contradiction: Translating ecclesiola and TM excitement into daily practical engagement for TM set up and followup. (Wk. 4)

**RELIGIOUS HOUSE: CANNON BALL**

External: Project Board of Directors drafts resolutions to hire 5 local managers for shopping center complex and to request funding from Tribe for parks and recreation construction. Both resolutions receive unanimous endorsement from District Council. North fence of rodeo grounds is installed in record 4 hours.

Contradiction: Generating a critical mass of corporate, visible, significant, symbolic activity which occasions a profound community happening. (Wk. 3)

**EDMONTON**

**RELIGIOUS HOUSE: EDMONTON**

External: Tickners go to Saskatoon for first week of inter-area Prairie Forum day planning and maneuvers.

Internal: Area baby exchange enables global care across provinces.

Contradiction: Maneuvering area troops creates urgency to weld isolated yeses into a strike force. (Wk. 1)

**RELIGIOUS HOUSE: VANCOUVER**

External: Call backs to Forum participants reveals readiness for a Forum in North Vancouver City. Development push gets pledges for over \$1000.

Internal: EG gets fish. House commission salesmen pull off a super month in self support. Great Saturday night at the movies.

Contradiction: Creatively using the gifts of hundreds of new colleagues. (Wk. 4)

**RELIGIOUS HOUSE: ANCHORAGE.**

External: The globality and the practicality of GSD shown through the Habitat slides captures those present at an Evening with the Institute. State-wide TM Steering Committee being formed has 13 yeses of 13 invitations to serve on it.

Internal: House celebrates by having a backyard picnic with games and hotdogs roasted on a fire. Corporate power wins in ball game. \$200 in hand for Maliwada. Another job obtained.

Contradiction: Finding the winning strategy that keeps the momentum spinning all summer while syndrome is to drop everything. (Wk. 4)

**RELIGIOUS HOUSE: SASKATOON**

External: Prairie Forum Day maneuvers visits 20 towns setting meetings for June 4 and October.

Internal: House Church of 15 in midst of 2/3 of House out on assignments. Sends Heidi to orchestrate South West Edmonton Forum and Duncan to Vogar HDP planning meeting in Winnipeg.

Contradiction: Winning in the midst of having what previously imaged as less than minimum troops. (Wk. 4)

**RELIGIOUS HOUSE: WINNIPEG**

External: Area troops spends Week II in Winnipeg to continue Vogar HDP planning, see Ijede HDP slides and celebrates the six towns who are meeting this coming week to seriously consider Prairie Forum Day.

Internal: Re-affirming corporateness as struggle with Vogar and Prairie Forum maneuvers assignments when there are not as many troops as want.

Contradiction: Holding the tension between boldness and appropriate timing in relationships with the community in Vogar. (Wk. 4)

**HOUSTON**

**RELIGIOUS HOUSE: HOUSTON**

External: Two TMs held in Houston; one for the downtown community, the other in the new parish-the Binz. Total attendance near 400 with key authorization and funding.

Internal: House reunites after OK:100 sharing wondrous stories before all driving to Mississippi for Area Council at Delta Pace.

Contradiction: Insuring that the recent TMs catalyze five more neighborhood Tms this quarter. (Wk. 2)

**RELIGIOUS HOUSE: AMARILLO**

External: Oklahoma 100 impacts West Texas, Hereford steering committee coordinator, Jose Greigo and Trini Bustemonte with House staff attends Oklahoma TM Assembly.

Internal: All troops return from Area assignments. All House members present for House Church, the second time this quarter.

Contradiction: Keeping all plates spinning when newly spinning plates just appear. (Wk. 1)

**RELIGIOUS HOUSE: SAN ANTONIO**

External: Governor Briscoe signs TM letter after much strategizing and patient maneuvering.

Internal: House and metro colleagues lay out quarter battleplan with House permeators, designing strategy to

**(RELIGIOUS HOUSE SAN ANTONIO)**

bring off five great TMs, two urban, two rural and one institution.

**Contradiction:** Implementing first step now that the plan has been designed by hitting the road while keeping before all the comprehensive campaign. (Wk. 3)

**RELIGIOUS HOUSE: OKLAHOMA CITY**

**External:** In circuits around the state and in the city learn that activity is beginning to bubble-many communities begin implementing proposals, plan more TMs and CIFs.

**Internal:** Sent out 2 to East Texas maneuvers and North Carolina. Ecclesiola held at Pancho's with in-kind meal.

**Contradiction:** A few troops again take on the giant task (of enabling awakened communities this time-much like Gulliver and the Lilliputians). (Wk. 4)

**RELIGIOUS HOUSE: DALLAS**

**External:** All troops for East Texas front arrive, begins circuit and sets first core meeting for East Texas 25. Battleplan fifth maneuver, pick target towns and conceive plan for TMs in school district. Leonard, Texas is first to say yes to East Texas 25. Holds East Texas kickoff celebration in grand style with whole catered Bar-B-Q meal in-kind. Letters of authorization for East Texas 25 return signed from Governor Briscoe, Mayor Taylor of Troup and Kiwanisan Lieutenant Governors to all East Texas Kiwanis.

**Internal:** Receives Frances Roper back from Lorne de L'Acadie and reports with slides. Hosts fourth development team in two weeks and prepares to receive the fifth.

**Contradiction:** Being the snake that coils such that it can strike on several fronts. (Wk. 4)

**RELIGIOUS HOUSE: PACE**

**External:** Day Care Center building secured (a mobile classroom at the Elementary School). Meetings held with 5 of the 8 top advisors to the Governor with all pledging support-some have already begun active assistance. Key work day held with mayor visible, clean-up events followed by 3 softball games. Regular meeting formats introduced to community meetings meet with enthusiastic reception.

**Internal:** Regular collegium rationale settled on, emphasizing Common Memory. Radical Monotheism paper and Corporateness lecture kick off the quarter in fine style. Fronts redefined and auxiliary generals assigned to insure continuity.

**Contradiction:** Deciding, timelining, and battleplanning the "hard" miracles in the economic arena and then breaking loose the troops to see that they happen. (Wk. 4)

**RELIGIOUS HOUSE: NEW ORLEANS**

**External:** Begin saturation of Washington Parish in which Bogalusa is the largest city. Two towns say a yes on the Saturday maneuver.

**Internal:** Send Tim Busa out to North Carolina campaign.

**Contradiction:** Forging ahead with one plan for the quarter in the midst of many other possibilities. (Wk. 4)

**RELIGIOUS HOUSE: MEMPHIS**

**External:** Delta Days plan emerges for the quarter. Meeting with retired Memphis TM participant blooms into core

meeting set with 7 churches and local communities. Contact at Shelby Co. Penal Farm sets core meeting at downtown high rise apartment.

**Internal:** Mark Johnson gets job offer (\$300 per week) for Lagos (Ijede) assignment 2 hours before leaving Memphis. Welcomes Jay Antenen for Delta Days Campaign. Campaign decor enlivens space and mood of the quarter.

**Contradiction:** Moving from avenue penetration to group meetings focused on their Town Meetings. (Wk. 4)

**RELIGIOUS HOUSE: ATLANTA**

**External:** Two meetings with South DeKalb Mall and a meeting with Bill Parker of Pointer Ridge demonstrate excitement of local man caring for community.

**Internal:** Atlanta sets maneuvers in motion by sending Jay A. to Mississippi, Ike P. to North Carolina and setting up the Atlanta 5th Maneuver Command Post in House. Jan and Dennis Rice guests at House Church.

**Contradiction:** Not enough groundwork done to ensure 5 Town Meetings this quarter. (Wk. 4)

**RELIGIOUS HOUSE: CHARLOTTE**

**External:** The N.C. Committee for Town Meetings was formed with 20 key state and local contacts and high-lighted by a letter and proclamation from Governor Jim Hunt.

**Internal:** Making room for additional area troops requires a more intentional design and use of space.

**Contradiction:** Sustaining ourselves over-against the contradictions that exist in State. (Wk. 4)

**RELIGIOUS HOUSE: MIAMI**

**External:** Eleven people from the Miami Region are prepared to orchestrate Town Meetings having completed training and placed themselves under assignment.

**Internal:** Miami House celebrates House Church at the home of Ronald G. Nixon, 1733 Kudza Rd. West Palm Beach, who has consented to hold the Religious House dynamic in Miami while all assigned house personnel are deployed during Qtr. 4.

**Contradiction:** Knowing how to put the missional vehicle in holding pattern without running out of fuel. (Wk. 4)

**CHICAGO**

**GLOBAL CENTRUM: CHICAGO**

**External:** Sends objective presence to state campaigns in Wisconsin, Ohio and to Kansas City to train workshop leaders. North American developers return for week end consultation relative to the new orbit. Schedules orchestrators for 24 TMs.

**Internal:** Welcomes back Sushila Joshi from Maliwada and hears awe-filled collegium on her experiences. Receives the Morton family on new Centrum assignment, as well as Isabel Bishop. Saturday Fast enlivens Week II dynamic amidst Academy celebration and cabaret. Phase I return to classes after week's vacation..

**Contradiction:** Juggling what needs to be juggled in order to catalize the three campaigns. (Wk. 4)

**RELIGIOUS HOUSE: CHICAGO**

External: HUD allocates \$2000 per month for Pak 1 Housing which permit hire of bookkeeper, purchase of storm windows, and maintenance man. 20 enroll for Imaginal Education and Infant Development course assuring new consultant fee from Malcomb X College. Preschool board looks to future with models of policy statements, job descriptions, and salary scales. Department of Public Aid funds hiring of additional staff. Two trucks inked for 40 Blocks Campaign.

Internal: Insurance renewal inspection is cause for major housecleaning which occasions gratitude for the civil structures which give us the opportunities for which we never have time.

Contradiction: Escaping in immediacies from the task of coordinating all the possible troops to do the entire task. (Wk. 4)

**RELIGIOUS HOUSE: WICHITA**

External: As a medium sized city in Central Kansas, Salina Town Meeting was a strategy for state campaign. Small town circuits are finding success.

Internal: Redesigning yard with flower beds and stone pathway presents a new face to community.

Contradiction: How to get a large number of towns on board before the summer. (Wk. 4)

**RELIGIOUS HOUSE: OMAHA**

External: A people that was no people discovers its selfhood at North Loop Town Meeting; while 17 communities are visited across Nebraska in 4 days while Sarpy-Douglass Suburban Steering Committee is unlocked by 93rd Birthday Celebration of "H. H."

Internal: 42 colleagues new and old, gather to participate in "Movement Update" on the 3 Campaigns, catalyzing immediate response to HDP presentation by K.B. Winterowd.

Contradiction: Finding methods, time and resources to provide long range sustenance for Those Who Care in midst of Town Meeting busyness. (Wk. 4)

**RELIGIOUS HOUSE: KANSAS CITY**

External: Lieutenant Governor Phelps agreed to be chairman of Spring of Town Meetings- Missouri and release 300 volunteer leadership.

Internal: Carl Miller decides to sojourn and be a 'telephone operator' while wearing a cast.

Contradiction: Standing between theoretical strategies for Spring of TM Missouri and 300 untrained volunteers. (Wk. 4)

**RELIGIOUS HOUSE: MINNEAPOLIS**

External: Expands engagement statewide in Minnesota Future Day: Second State Advancement Committee Meeting. In-kinds brochure and all needed printing. Community registrations set up resulting in second TM in East Grand Forks. Whittier PCX of 20 delegates on City Planning and District Committee Action Council and Whittier storefront receives face lifting.

Internal: Legal trek report awakens House to global legal complexities and gets said that there are no national boundries for GCF. Tao is peak of the week.

Contradiction: Capitalizing on statewide Minnesota Future Day decision and momentum to engage necessary forces. ( Wk. 10)

**RELIGIOUS HOUSE: ST. LOUIS**

External: Visit with Lt. Governor of MO confirms his participation as chairman of MO State Advisory Committee for Town Meeting, as well as his commitment to turn over the 5000 volunteers in the state to Town Meeting campaign. Town Meeting in Illinois state capital, Springfield, moves Illinois strategy down the road.

Internal: House members assigned to Salina, KS. and Springfield, Ill. Town Meetings; others return from 3 weeks in Missouri TM Campaign in Kansas City and 2 weeks in Canadian HDP Consult in Lorne de L'Acadie. Major cleaning of House and backyard.

Contradiction: Knowing how to pull off Town Meeting acceleration without creating a sinkhole. (Wk. 4)

**RELIGIOUS HOUSE: PEORIA**

External: Quad Cities luncheon seats 32 around the table to map out TMs for possible 20 communities.

Internal: Five students from Student House travel to Des Moines to help in setting up new Des Moines House. Division South strike force works out of Peoria this week in-kinding paper, printing, 60 hour materials and letter blitz. Sends out James Higgins to the army.

Contradiction: Holding the tension between urgency and momentum. (Wk. 11)

**RELIGIOUS HOUSE: GREEN BAY**

External: Dickinson County TM closes registrations one week before the big day due to unexpected avalanche of pre-registrations that overtax facility. Visits 15 towns with 10 showing a promising interest.

Internal: Sends Anita Gibson to OK as orchestrator. Sight reads second act of Shaw's "Man and Superman" for discontinuous ecclesiola.

Contradiction: Getting timeline for TMs to coincide with local consensus. (Wk. 13)

**RELIGIOUS HOUSE: MILWAUKEE**

External: This week over the state visit more than 100 communities as Wisconsin 100 is aired on Milwaukee TV and many local radio stations, and corporation funding visits resume. Fred Gruner and Dick LeBlanc return from Lorne de L'Acadie and Dick goes into hospital with bleeding ulcer.

Internal: Meets in Green Bay for state strategy meeting and celebrating John Gibson's 44th birthday.

Contradiction: Sustaining many troops when timeline is short, battles are final, and courage is challenged. (Wk. 4)

**RELIGIOUS HOUSE: INDIANAPOLIS**

External: Two Evansville, Indiana colleagues emerge. set up

**(RELIGIOUS HOUSE: INDIANAPOLIS)**

two GDS slide shows and ask when for TM and RS I in Evansville. Mapleton-Fall Creek businessman's Association forms as a result of last year's TM, while neighborhood wide beautification and clean-up actualizes a second proposal with Mayor Bill Hudnutt of Indianapolis present at both. Sent 9 to Guardians Meeting and Mig Wildhack to serve on Academy faculty. Marion, Ind; Newburgh, Ky and Louisville CIF all continue count-down.

**Internal:** A week of intensified corporateness and solitude is highlighted by the work of 25 from Student House who join House and Regional colleagues in spring cleaning of total yard. Gratefully receives Jackie Cress and Bobby and Beth from Louisville as interns and immediately sends them to Academy and Student House for the quarter.

**Contradiction:** Enabling ourselves as a House and regional colleagues to pick up new roles and responsibilities as the mission expands and intensifies both across the globe and throughout the Bi-metro. (Wk. 4)

**RELIGIOUS HOUSE: CINCINNATI**

**External:** Secures the new consultant force for TM:Ohio Day well underway with yes from TM grads.

**Internal:** Large in-kind food donation arrives just in time to cover absent House check.

**Contradiction:** Pushing TM:Michigan strategies to actualize corporate planning and service coordination. (Wk. 10)

**RELIGIOUS HOUSE: DETROIT**

**External:** Decides to call 500 Michigan communities to dig for TM interest, three county TMs secured in one day. 125 communities to be seen in the next two weeks.

**Internal:** Celebrates Judeo-Christian heritage with traditional Jewish Seder to celebrate opening of Passover.

**Contradiction:** Seeking out the goal seen on the horizon, while keeping hand on the plow, knowing if you look back you will turn into a pillar of salt. (Wk. 2)

**RELIGIOUS HOUSE: CLEVELAND**

**External:** TM:Ohio moves into second major phase with Consultant Training for over 100 new consultants in seven districts.

**Internal:** Birth of Justin David Bushman to Donald and Mary Laura Bushman happens on February 25.

**Contradiction:** Gearing selves up for passing the baton to new consultants that will be doing the 88 TMs. (Wk. 12)

**NEW YORK**

**RELIGIOUS HOUSE: NEW YORK**

**External:** New York participates in Ivy City Workday which catalyzes 1st community beautification day. Circuiting in the New Jersey statewide campaign yielded 116 yeses and 284 community visits.

**Internal:** Guests from around the globe participate in workday and report on Shantumbu, Ivy City, Isle of Dogs, and Lorne de L'Acadie.

**Contradiction:** Revisions of Quarter IV Battleplan are in content of implementaries not method of implementaries. (Wk. 4)

**RELIGIOUS HOUSE: PITTSBURGH**

**External:** Using direct tactics in steering committee journeying results in new decisions in Bradck and Moorefield West Virginia.

**Internal:** Engagement by sojourners John Maslove and Robert Hedges results in Academy registration and new job.

**Contradiction:** Creating tactical implementation after model is built, especially when structural routine sets in. (Wk. 12)

**RELIGIOUS HOUSE: ROCHESTER**

**External:** House Youth sends out 100 development letters with money beginning to come in.

**Internal:** Sends out the Stovers and Sister Regina to Lorne Consult.

**Contradiction:** Deciding what is needed on home front to enable and sustain the Edge. (Wk. 3)

**RELIGIOUS HOUSE: RICHMOND**

**External:** Able to scrape funds together and get our second Virginia Newsletter ready to go and printed this week, still waiting for funds to mail them.

**Internal:** Temporary job this week gave us one week of full employment and landed us a bag of inkind groceries, an infrequent happening in Richmond.

**Contradiction:** Standing in the tension of permeation jobs and Wk. II Town Meeting orchestration assignments. (Wk. 4)

**RELIGIOUS HOUSE: WASHINGTON**

**External:** Ivy City Council thrust out of Ivy City and into the world through Neil Vances's report on the 24 social demonstrations and Ivy City's own Lawrence Glacoe's report on the Cano Negro Consult.

**Internal:** House global consciousness bumped via collegium on Wedge report and week presence of Neil Vance, Kathy Bauknight, and Mark Welsh.

**Contradiction:** Firming back up system: economics, structures, and training. (Wk. 4)

**RELIGIOUS HOUSE: BALTIMORE**

**External:** Mails Campaign Newsletter and GSD report and invitations. Sends one person to help in New Jersey:58 set-up.

**Internal:** Ecclesiola is a great happening as we discover the impact of Sun Tzu on present TM campaign.

**Contradiction:** Pushing to find ways of extending the invitation to metro colleagues for engagement in areal thrust in a way that deepens their commitment beyond the local. (Wk. 3)

**RELIGIOUS HOUSE: PHILADELPHIA**

**External:** TM New Jersey, in the second week of impact, reports that 153 communities have been visited with 78 yeses. Trenton, state capitol, and mayor agree to write state proclamation and give ICA open door to whole city as well as state.

**Internal:** Celebrates the send out of sojourner, Jane Bliss. First grassroots mailing nets first of many surprise return gifts. (Wk.3)

**RELIGIOUS HOUSE: NEWARK**

External: Forty "volunteers" for Week II aid in circuiting and coordination of Town Meeting: New Jersey. New brochures picked up, posterboard and design inked, New Jersey Business and Industry Association endorses statewide program.

Internal: Baseball game around Town Meeting Selection Phase highlight of weekend celebration; legal consultant accepted bribe to win game.

Contradiction: Moving into a new phase - Preparation, and shifting gears without losing momentum. (Wk. 4)

**RELIGIOUS HOUSE: BROOKLYN**

External: House does two GSD Presentations as part of TM follow-up and participates in New Jersey 100 Campaign during Week II.

Internal: First evening Ecclesiola of the Quarter is festive occasion.

Contradiction: Turning symbolic yeses to participate in New Jersey 100 to active engagement. (Wk. 4)

**RELIGIOUS HOUSE: HARTFORD**

External: Steering committee in Wooster Square, goes ahead for June 4 TM in New Haven. Participation in Schenectady Promotion Day is great event for all. Money comes for Bridgeport South End meeting as well as response from another community interested in TM.

Internal: Mark Whitney helps at a parish church with a dance for the Home and School Association. Russell and Randell White spend part of Week II with metro families. Receives pledges from RS-I participants. LENS mailings go out to Houses in Area New York and to 100 individuals.

Contradiction: Sharing wisdom across the area so all can prepare for statewide campaigns in the Fall. (Wk. 3)

**RELIGIOUS HOUSE: ALBANY**

External: Week's events include 12 steering committee meetings, 10 in Schenectady County plus Glens Falls and Guilderland, three workshop leader training sessions, 75,000 flyers printed in-kind, over \$1500 cash raised, 2000 Pepsi Colas, 200 dozen rolls and \$650 worth of food certificates given.

Internal: Sends out David Rose to Lorne Consult. Tiffany Refior has chicken pox, and festive Easter House Church hosts two metro colleagues and their wives.

Contradiction: Creating solid steering committees for two of Schenectady 10. (Wk. 3)

**RELIGIOUS HOUSE: BOSTON**

External: Boston/Rochester bi-region participates in last minute count down as entire House travels to Schenectady for final promotion blitz one week prior to "Schenectady Meets-10 Town Meetings!".

Internal: House size doubles as we welcome Joyce Carlton as staff and Rhonda Wiltse for the summer and host colleagues from Montreal and Newark bringing news from Lorne Consult and New Jersey Campaign.

Contradiction: Releasing ourselves to build implementaries for remainder of quarter which will allow us to care for

Boston Tri-metro. (Wk. 3)

**MONTREAL**

**RELIGIOUS HOUSE: MONTREAL**

External: One person holds fort in Montreal while rest of House enables and participates in Lorne Consult. Development treks are carried out in Montreal as consult goes on in Lorne.

Internal: Internal life shifts as entire House participates in Lorne Consult for varying lengths of time. Wayside Inn hosts entire area on way to Lorne.

Contradiction: Creating the model that involves donors and consultants to Lorne HDP. (Wk. 3)

**RELIGIOUS HOUSE: TORONTO**

External: Bobcaygeon CFC is great event and several colleagues visited for a new impetus to the 3 campaigns while most of the house in Lorne.

Internal: Jim Ross leads EG in great enablement caring so 2 adults can work and carry on mission.

Contradiction: Finding the futuristic way to channel all the enthusiasm in colleagues after Lorne and another CFC. (Wk. 4)

**RELIGIOUS HOUSE: OTTAWA**

External: Regional net emerges when Hearst Steering Committee member opens consultation possibility with the association of franco-ontarian teachers, (AEFO).

Internal: Begin new quarter with new team and commission assignments and a new up-to-date prayer wheel which includes Vogar, Manitoba.

Contradiction: Trusting that the internal and logistical support will enable us to win in the external. (Wk. 4)

**RELIGIOUS HOUSE: HALIFAX**

External: Lorne citizens provide 75 pounds of potatoes per day for each day of consult; 10 Lorne community people form task force in preparation for consult and produce and distribute first Lorne "Voice" to every home, while four teams on the road. The Maritimes net \$4,000 worth of in-kind; 12 are seriously considering consultants, ready for Lorne de l'Acadie Consult. Sets four more CFC dates and opens doors up for development across New Brunswick.

Internal: Bob Porter and Forest Craver conduct area Legal Trek as 26 area troops, including all House priors, gather in Lorne for HDP set-up.

Contradiction: Maintaining chaste attention to specific priorities in midst of a deluge of demands to get advance auxiliary team set-up on site in Lorne and the preconsult miracle initiated. (Wk. 12)

**CARACAS**

**RELIGIOUS HOUSE: CARACAS**

External: Auxiliary and villagers concentrate on Community Center and pour base and pedestals for columns and tie all steel for forms. Cano Negro supplies water for Tapipa as Tapipa's well pump burns out; water tanks arrive all day. ITI registrations come from Guatemala Recife and Caribbean.

**(RELIGIOUS HOUSE: CARACAS)**

tanks arrive all day. ITI registrations come from Guatemala Recife and Caribbean.

Internal: Guild nite celebration of Holy Week deep impact on Cano Negro. Dr. Alejandro Lara, Pres. of FIVECA, and several staff visit site and promise help to get steel beams for community center. House celebrates Easter with sunrise service in open air of Cano Negro.

Contradiction: Finishing community center. (Wk. 4)

THE GLOBAL ORDER CENTRUM REPORT

WEEK FOUR

BRUSSELS  
NAIROBI  
BOMBAY  
CANBERRA  
HONG KONG  
CHICAGO

GLOBAL  
DEVELOPMENT  
CENTRUM

Global Development Centrum reports continuing the search for a transnational design that will order the new fourth orbit.. Teams return with gifts of \$5000 from International Paper, \$1,000 from a Rochester religious Order, \$5000 from a Canadian bank, signaling new-found ways into financial institutions, and a large gift from the Winnetka Presbyterian Church. Clarity was gained on the role of the Samurai, Gurka and Immortal. A visit with the United Nations Development program was aided with clout from Henry Cabot Lodge and Jeff Coolidge. The experiment continues on the use of troops and covering geography. The contradiction lies in the arena of creating long-range funding strategies.

GLOBAL  
RESEARCH  
CENTRUM

Global Research reports continuing activities in summer designs relative to the GRA and Phase I. Constructs were prepared for the seminar with Bishop Mathews. Two teams of Global Womens Forum were sent out to North East Asia and India. The global Panchayat begins research on what is required in this moment in history. The contradiction lies in the arena of solidifying images for the summer as soon as possible.

GLOBAL  
OPERATION  
CENTRUM

has found this week a giant push continentally on the OK: 100. Twenty persons were sent Global Operations Centrum received a map of Inyan Wakagapi with street names. Scheduled 24 TMs, the largest number since Oklahoma 100. Lorne participants return with miracle stories. "Uptown, You're Beautiful" campaign begins. Uptown now has a new shoe repair facility called "The Uptown 5 Shoe Repair", marking impact in the community: 4,000 Campaign News hit the North American continent. New Jersey report 85 dates set for state campaign of TMs. The contradiction lies in the arena of altering operating images to match the reality of troops in dispersion most of the time.

GLOBAL  
MANAGEMENT  
CENTRUM

Legal trek in Hong Kong works on ICA registration while Chicago Nexus moves down the road Global Management Centrum welcomes the arrival of Betsy Morton to pick up vacant helm of Personnel Post. Inkind victories include 30,000 workbooks, including everything from the paper to the printing, 1.5 tons of soup base. Receives first financial reports for Nairobi Nexus. The contradiction lies in the arena of keeping the internal machine well oiled while keeping the motor cranked and on the road.