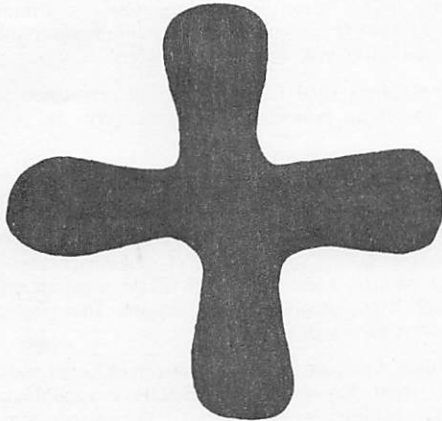


GLOBAL ORDER REPORT

Week 5

January 31 - February 6, 1977



LONDON

RELIGIOUS HOUSE: LONDON

External: Submits four funding proposals to London Borough of Tower Hamlets; Gen. Secretary of Docker's Union (NASDU) pledges support of Industrial Development Advisory Board. Nine local men signals new leadership by agreeing to help teach vehicle maintenance.

Internal: Hosts Health Trek, Legal Team and David Scott.

Contradiction: Finding the particular practical form of engagement for islanders. (Wk. 4)

RELIGIOUS HOUSE: GLASGOW

External: First visit to Port Glasgow nets 50% core recruitment. Record-breaking attendance at cadre brings three towns into focus in Edinburgh Metro for TM. Rank Xerox donates 200 copies of coordinators manual.

Internal: Sends Steve to teach first youth RS-I since 1974 in Newcastle.

Contradiction: Making sure TM wagoners always wear a kilt over their GCF shorts. (Wk. 5)

RELIGIOUS HOUSE: BRISTOL

External: Rediscovered that collegialship is shown in participation as regional colleagues all agree to take part in Foray 200.

Internal: Visits Chris Boiven's school for Parents Evening, and Laura Caruso has opportunity to see her father enroute to Nigeria.

Contradiction: Heightening disciplined action in order that Foray 200 may start effectively with power. (Wk. 5)

RELIGIOUS HOUSE: MANCHESTER

External: Conducts framing and research visits to eight communities and four metros for TM Foray.

Internal: In wake of ITI preparation, organizes for TM campaign of 30 communities.

Here is my servant, whom I uphold, my chosen one in whom I delight, I have bestowed my spirit upon him, and he will make justice shine on the nations.

Isaiah 42:1

Contradiction: Getting done what needs to get done outside, while getting done what needs to get done inside, without getting turned inside out. (Wk. 4)

PARIS

RELIGIOUS HOUSE: PARIS

External: Goes on GCF circuits to Marseille, Orange, Quimper, Brest, Daoulas and Chambon-sur-Lignon. Orange represents the first time we have visited a town without knowing anyone there.

Internal: Holding ecclesiola on Saturday evening allows all to participate and culminates the week in a helpful way.

Contradiction: Strategies for acquisition of a car. (Wk. 5)

RELIGIOUS HOUSE: ROME

External: Participation in inter-confessional liturgy for week of prayer for Christian unity at invitation of local parish builds local authorization with us being cited as example of Christian unity.

Internal: Week II punctuated by "cutting up an ox" Ecclesiola and generalship as portrayed in the film "Cassandra Crossing".

Contradiction: Maintaining the balance between the three campaigns when temptation is to ride the one with the most demands. (Wk. 5)

LAGOS

RELIGIOUS HOUSE: LAGOS

External: Begins Ijede Community Hall renovation with the help of \$1500 worth of paint and \$1000 worth of cement. Week's development yields \$2500 in hand.

Internal: Consult team arrives from Shantumbu. Completes concrete floors in auxiliary house enabling assignment of family space.

Contradiction: Creating timeline and priority rationales to deal with unlimiting scope of task and possibility. (Wk4)

BRUSSELS

GLOBAL CENTRUM: BRUSSELS

External: Translations of ICA brochure completed and ready for typesetting.

Internal: Charitable trust papers translated for Belgium Board of Trustees.

Contradiction: Coordinating inkind possibilities for paper and printing across continent. (Wk. 5)

RELIGIOUS HOUSE: BRUSSELS

External: Area newsletter goes out to 100 colleagues and regional colleagues sign up to do Foray 200 circuits. Second WIF consult in Brussels. LENS PSU breaks open European Marketing for spring quarter.

Internal: Elizabeth Loudermilk lands job at NATO complete with box number and telex privileges. Ecclesiola continues to impact both guests and House as the very everyday turns into wonderland.

Contradiction: Needing one big TM to show Benelux many are possible. (Wk. 5)

RELIGIOUS HOUSE: AMSTERDAM

External: Foray 200 circuit calendar places Dordrecht Buurtdag (TM) in perspective of 29 other towns across the country.

Internal: Mary Warren Moffett and Kay Townley visit to do work on WIF. At cadre night, has an exciting conversation about the impact and possibilities of "Woman in the Future" and does Foray 200 planning with colleague.

Contradiction: Breaking loose regional colleagues to be the presence of the blue in the Netherlands. (Wk. 5)

FRANKFURT

RELIGIOUS HOUSE: FRANKFURT

External: Pushes Guardian development in Vienna and concretizes plans for volunteers engaging in third world HDPs. Miss Chang Seng Moi on her way from Vienna to Maliwada for two years.

Internal: Sends more than 50 letters and acquires new car in preparation for Foray 200. Welcomes David Scott enroute from Maliwada to Chicago.

Contradiction: Enlisting coordination and maneuvering of troops for Foray 200. (Wk. 5)

RELIGIOUS HOUSE: BERLIN

External: Thirteen week report is printed and distributed to European guardian and development contacts. Visit with head of youth services obtains a promise of use of funds and materials for afterschool program. New breakthrough in Saturday celebrations as both community and auxiliary receive assignments to bring off the event: meal, film and dancing.

Internal: Ecclesiola continues to be highly relevant and impactful. Movie at Saturday night celebration proved that a widespread group of ages (8-82) could have a great celebrative event together.

Contradiction: Building models and practical plans that allow people immediately see how they are needed and to plug in. (Wk. 5)

KINSHASA

RELIGIOUS HOUSE: LUSAKA

External: Preschool staff presents detailed survey and registration request to Ward Development Committee and receives unanimous yes. Hosts 20 at first Guardians meeting prompted by legal treks arrival. District Governor welcomes Institute to work in his district in major authorization victory.

Internal: House decored and reception lounge painted. Trustees come in for series of working sessions. Inkinds over \$1500 of vehicle repair. Work day improves public image celebrated with "All the Presidents Men".

Contradiction: Taking final few steps to full permission for releasing all forces on project development. (Wk. 5)

CAIRO

RELIGIOUS HOUSE: EL BAYAD

External: More than 100 years without a well ends with test pump producing first six hours of crystal clear water at 108 liters per minute, twice estimated village requirements, and 50 village men spend all day digging first leg of watermain trench to village.

Internal: Medical Acceleration Team arrives in Cairo and is cut off from Bayad by demonstrators' roadblocks. Spend first day planning under curfew in Guardian's home.

Contradiction: How to be the answer needed when the doing seems several mountains of very immovable care, or being now global social demonstration in Egypt. (Wk. 5)

NAIROBI

GLOBAL CENTRUM: NAIROBI

External: Nexus decides to raise \$21,212 in month of January. In Week 1 raises \$3,634, which is more than raised in previous month of development. The Kawangware Company Operative Society, Ltd. has 50 members and \$1,600..

Internal: Celebrates New Years Eve with Continental Council. In-kinds everything for celebration except napkins. Names money raising campaign 'Launch 77' and every man a developer becomes a concrete reality.

Contradiction: Keeping KHDP accelerating while moving full steam ahead on 'Launch 77'. (Wk. 3)

RELIGIOUS HOUSE: NAIROBI

External: Maringo community in Nairobi becomes fifth date set for Village Meeting. Tanzania circuit has Lutheran Bishop request an ITI in Tanzania.

Internal: Wedge report and visit and report by legal trek provides discontinuity in midst of accelerated task force activity.

Contradiction: Next Phase of Village Meeting is upon us needing to utilize participants in set up and leadership while our efforts are entrapped in initiation phase methods. (Wk. 5)

BOMBAY

GLOBAL CENTRUM: BOMBAY

External: Second Human Development Training School starts with 80 participants. Poultry farm expands with the arrival of 400 chicks from Poona. Belgium Economist visits

(GLOBAL CENTRUM; BOMBAY)
and State Bank of India decides to open new branch in Maliwada.

Internal: New quarter starts with the whole House taking part in tribal resettlement. Gets a new grip on finances.

Contradiction: Making models that are replicable without too much experimentation with high demands on economic development. (Wk. 4)

RELIGIOUS HOUSE: BOMBAY

External: Sends truckload of in-kind and five trainees to the Training School. Pune circuit rider finds second Gram Sabha already in the chute with a 20-man guild and steering committee meeting excited about the new site and keynote speaker.

Internal: Facelift present facility in midst of writing proposal for a new facility, with four exquisite guest rooms prepared.

Contradiction: Establishing structures that hold ground already won in midst of responding to new demands to win more. (Wk. 4)

DELHI

RELIGIOUS HOUSE: DELHI

External: Holds first Delhi regional cadre meeting emphasizing GSD replication and most particularly replication in a Delhi village.

Internal: Reorienting images relative to living in a village.

Contradiction: Creating the plan for and maintaining intentionality in months of selecting and initiating a GSD site amidst numerous complications and ambiguities. (Wk. 5)

MADRAS

RELIGIOUS HOUSE: HYDERABAD

External: Discovers many new interns on the horizon as HDP looms on the horizon. Pulls together pre-consult preparation and checklist onto one sheet.

Internal: House serves as an oasis of care as colleagues from Maliwada and guest from region attend House Church. Revises battleplan amidst great assignment in terms of the Nadlapur HDP endorsed by Chief Minister of Andhra Pradesh.

Contradiction: Seeing the possibility of doing the area and the project simultaneously. (Wk. 5)

CALCUTTA

RELIGIOUS HOUSE: CALCUTTA

External: TM in convent school setting brings Roman Catholics and community of Giridih alive. Circuit rides with emphasis on research for Social Demonstration site possibilities in Area Calcutta begin.

Internal: House prior humiliated by confinement to House with bad attack of chickenpox. Job search intensifies as the economic facts of life come crashing in.

Contradiction: Deciding to articulate and move in the missional thrust in midst of seemingly irrelevant nitty-gritty. (Wk. 5)

SINGAPORE

RELIGIOUS HOUSE: SINGAPORE

External: Finalizes writing and gathers illustrative material for 1976 ITI Report, a major development tool for ITI Jakarta 1977.

Internal: Invites colleagues home for dinner and tops off evening with a sing along of old favorites around the piano. Finds collegiums on the Wedge Report exciting and challenging.

Contradiction: Maintaining momentum on GCF. (Wk. 4)

RELIGIOUS HOUSE: KUALA LUMPUR

External: Visiting villages Kampong Ketuas (Headmen) with Malay colleague finds doors wide open.

Internal: Moves way down the road as study Forging Social Philosophy paper, which is helpful screen for making final village selection and experiment with secular rituals in preparation for village entry.

Contradiction: Conveying urgency so that companies who are interested and say yes actually give money. (Wk.4)

RELIGIOUS HOUSE: JAKARTA

External: 1977 begins with new power as deep bore well crew arrives to start the well and hits water bearing sand at 48 meters, moving water distribution timeline up by four weeks. TV and movies enliven community node during the evening and Friday night Guild meeting attendance tops 60 adults with a bold new mood.

Internal: Mrs. Nugroho celebrates 30 birthday and project staff plans an action packed quarter of over 200 events and major tactics covering all 16 programs.

Contradiction: Structuring the constant training dynamic into, under, around and through every event and sentence to assure the rapid development of responsible leadership. (Wk. 4)

HONG KONG

GLOBAL CENTRUM: HONG KONG

External: Three treks to Japan and Korea with the Wedge, development in Manila and Hong Kong while Nexus/House task forces work on Fuk Wah consult prep and in-kind nets 70 pounds of coffee and bed linens.

Internal: Sue Oberg achieves full professional position at International School along with substantial raise. Collegiums and studies focus on Hong Kong revealing that this is fascinating piece of turf.

Contradiction: Creating means for releasing resources and troops for the Global Tasks. (Wk. 4)

RELIGIOUS HOUSE: HONG KONG

External: Participates in week of preparation for a GCF in Fuk Wah Tsuen. The pedagogy group decides to concentrate on GCF training, trains workshop leaders for the January nine GCF, brochures for the GCF were distributed house to house in Fuk Wah Tsuen, and prints the newly translated workbook. :

Internal: Following a refreshing discontinuity, celebrates the New Year with centrum.

Contradiction: Enabling the nods of yes in the business and governmental sectors to be backed up with needed actions. (Wk. 3)

RELIGIOUS HOUSE: KAOHSIUNG

External: Visit to JCI National President opens new GCF doors while village research and Wedge preparation excites old colleagues about social demonstration possibility.

Internal: Ecclesiola discovers more Chinese quotes for GCF campaign- "Watch, look, and take care of your community."

Contradiction: Having to continue to look for a village in the midst of economic uncertainty. (Wk. 4)

RELIGIOUS HOUSE: MANILA

External: Holds first ITI Steering Committee meeting. Committee assumes full responsibility for ITI. Three weeks of development culminates in 35 proposals for 202,000 pesos. Visit to Kiwanis District Governor yields speaking engagement at District Conference four days later. Return of Legaspi Circuit reports possibility of two GCFs.

Internal: Holds first Ecclesiola with the poetry of Lao Tzu. Sends out to assorted missional assignments this week James Chia, James Oberg, George Packard, Hale Prather and Frank Soderlind. Completes ITI inventory.

Contradiction: Having broken the ice, keeping the pace. (Wk. 5)

RELIGIOUS HOUSE: TAIPEI

External: PLC circuit to Hualien and GCF circuit to Taichung precede Wedge trek to southern Taiwan for site selection visits.

Internal: Eliade study of symbols and collegium on Mon-Tze (Mencius) punctuate Area Prior's lecture and Peter Hu's birthday celebration (70).

Contradiction: Locating feasible demonstration site. (Wk. 5)

RELIGIOUS HOUSE: CEBU

External: Two health workers teach mothers infant feeding. Boat motor arrives from Manila and 23 rabbits arrive from Heifer Project-Cavite. Installs electric light at Buri factory.

Internal: Sends out Jack and Nancy Callum to Davao. House celebrates Francis Coker's birthday Thursday night.

Contradiction: Moving full speed ahead while shifting program and staff assignments. (Wk. 5)

RELIGIOUS HOUSE: DAVAO

External: Steering Committee, appointed by the Mayor, for the Nabunturan GCF/PCTS meets in "full committee" for the first time and divides into task forces.

Internal: Davao House welcomes the Jack and Nancy Callum family.

Contradiction: Effectively engaging all the troops all of the time. (Wk. 5)

TOKYO**RELIGIOUS HOUSE: TOKYO**

External: Local leadership emerges in Sanya community meeting and local man offers to go to Miyata and to put himself under ICA leadership.

Internal: At Ecclesiola, local Japanese colleague teaches parts of Lao Tzu from his copy of the text in Chinese language.

Contradiction: Staying open to project site selection in spite of the apparent selection of Miyata. (Wk. 5)

RELIGIOUS HOUSE: JEJU

External: Guilds takes responsibility for their quarter plans with the leaders meeting every morning to lay out the day and then move it. Signs of the new activity include the building of foundation forms for the Training Center staff house, decor of the village tea house and the first women luncheon and Elders meeting.

Internal: Transforms office space and decor for the quarter to create larger table space to accommodate our constant stream of villagers and guests and two new sojourners during the two month university break: Miss Hyon In Sook and Mr. Chung Hong Ju.

Contradiction: Dealing with the sense of victimism to achieve a breakthrough in the mindset that we always need experts from outside. (Wk. 3)

RELIGIOUS HOUSE: SEOUL

External: Holds local church collegium and Seoul Ecumenical Presidium meeting. GCF set up trek goes to Kwangju, Taegu and Pusan. One-half ton tri-calcium phosphate shipped to Jeju. Sends Rev. Won and Lee to Chicago. Principal Lee Chul Kyung goes to Kwangyung II and meets JWM.

Internal: Area prior goes to Miyata to prepare for consultation. House celebrates arrival of Tracey Jean, eight months, to Paul and Pam Thomas. Work and Park go to Kwangyung II for visit of JWM. International School begins again.

Contradiction: Doing GCF set up. (Wk. 5)

RELIGIOUS HOUSE: FUKUOKA

External: Wedge team visits prospective GSD site in Miyata.

Internal: Hosts Area priors and Regional coordinator as do intensive frame for GSD.

Contradiction: Insuring momentum in all programs as attention turns to GSD. (Wk. 3)

RELIGIOUS HOUSE: OSAKA

External: Amag/Gobo preliminary meetings for TM set up. Amagasaki has five yeses from Lions Club, Youth Club, Elder Citizens, Jaycees and Rotary for developing sponsors committee and steering committee. Development brings in \$100 from womens orders and childrens adoption home. Prints initial TM workbook in Japanese with inkind paper, typesetting, at the value of \$600.

Internal: Holds nine person translation task force on TM work and development calls. Hosts TM coordinators meeting with more Japanese than Western faces.

Contradiction: Putting time into large development proposals instead of immediate needs. (Wk. 5)

RELIGIOUS HOUSE: SENDAI

External: Discovers again the intense interrelatedness of Japan as a gift in that research on Miyata (Southern Japan) can be done through key contacts in Northern Japan.

Internal: The initiation of the quarter ecclesiola model reveals deep excitement in the four translations of the Tao.

Contradiction: Shifting the troops from knowing to doing. (Wk. 5)

SYDNEY**RELIGIOUS HOUSE: SYDNEY**

External: Sends out Oakley and Gil Woltjer to Brisbane CTC and allots to join development team in Brisbane to trek North-East of Australia.

Internal: Becomes Wayside House between everywhere and Brisbane and hosts Dettman's from Deluth and the Kincaids from San Antonio. Landlord paints front of House and catalyzes two neighbors to do same.

Contradiction: 'Moving it' in the midst of month long Festival of Sydney. (Wk. 3)

RELIGIOUS HOUSE: PERTH

External: Development appointments net \$50. WA Arts Council request a meeting. Two CMAs move along under own steam in Bunbury and East Victoria Park.

(RELIGIOUS HOUSE: PERTH)

Internal: Dalwallinu clergy couple are celebrants at House Church. Youth vegetable garden begins to supplement House food.

Contradiction: Finding new development referrals and clinching a higher rate of appointments from phone calls. (Wk. 4)

RELIGIOUS HOUSE: DARWIN

External: Christmas Parade details finalized and trek and CTC mailing out.

Internal: Bill Senton call in on way home from Ombulgurri. Christanna Betonte celebrates first birthday. EG participate in YMCA holiday activities.

Contradiction: Sustaining the momentum, especially in Development, with no in-house. (Wk. 12)

RELIGIOUS HOUSE: OOMBULGURRI

External: Weekend renovation enables new Kitco image of sophistication with turnstyle, self-service, and short order window. Begin ploughing 100 acres for sorghum. Everyone lends a hand to pull off fine Christmas feast. Celebrates the completed life and death of Numa Horace, garden guild leader and elder.

Internal: John Burbidge returns from Perth in-kind assignment to be sent out to Maliwada replication in Kendur.

Contradiction: Enlisting the troops needed to do the whole job now. (Wk. 2)

RELIGIOUS HOUSE: ADELAIDE

External: Final CMA activity before holidays nets statewide Girl Guide authorization and an expanded Salisbury Steering Committee. House car plows through 80 kilometres of locusts on way to Area Council.

Internal: First set of grandparents, Dettmanns of Duluth Metro, arrive for Christmas from America in the midst of House finishing two floors and a car paint job. Trims tree and shares slides of colleagues' Oombulgurri trip at Christmas prep ecclesiola. Paul Duffy secures 2:00 AM bakery job.

Contradiction: Maintaining Area push on other side of regional wrap up. (Wk. 13)

RELIGIOUS HOUSE: MELBOURNE

External: Alcoa (Australia) sends \$500 for Oombulgurri. New Year's barbecue introduces all to new network of future support for Three Campaigns.

Internal: Hosts Tim and Sue Wegner's parents, the Dettmans from Duluth, and Stuart and Mary Hampton's parents, the Kindaids from San Antonio. Deploy the Telfords north to CTC and the EG go to the country.

Contradiction: Laying necessary groundwork for the quarter newly at hand. (Wk. 2)

GLOBAL CENTRUM CANBERRA

External: Handles international flight arrangements and domestic airport interchanges.

Internal: Holds first ecclesiola of quarter with Bar-B-Q highlighted by send out of Becky Banks for school year to Frankfurt, Germany.

Contradiction: Building quarter momentum yet being true to yearly models. (Wk. 4)

RELIGIOUS HOUSE: BRISBANE

External: Money requested several months ago comes in unexpectedly; preparation for Summer CTC intensifies on all fronts.

Internal: Christmas discontinuity abounds, while CTC anticipation more abounds.

Contradiction: Releasing SEAPAC participation in CTC. (Wk. 1)

SUVA

RELIGIOUS HOUSE: MAJURO

External: Secures contract and loan for the first coconut wood house, 16' x 20'. Mills 62 logs in one week and the first 2 x 4s planed with a power planer (Public Works) for test marketing through the retail establishment (present importers of weed). All-Marshallese preschool board of directors decides to build a coconut preschool from the ground up. Fund raising plans are underway.

Internal: James Chia returns after two months in Singapore Region. One House E.G. runs own newspaper business and earns more than an adult monthly stipend in one week. Pam Blood returns from the Yap district in time to greet her parents, just arrived from the U.S. for a visit.

Contradiction: Making concrete decisions and moving on them with a sense of urgency. (Wk. 4)

RELIGIOUS HOUSE: APIA

External: With authorization furthered by Rotary speaking engagement, working on Lion's Faleaulupo clinic benefit, Labor Department director asks for proposal for Youth Task Force. Hear national radio announcement regarding metro cadre celebration of past and future plans.

Internal: Study of Year of Canada and Sun Tzu impacts all with greatness of generalship as exemplified by action and tactics.

Contradiction: Continuing to function out of own model and not somebody else's with many missional possibilities and demands. (Wk. 4)

SAN FRANCISCO

RELIGIOUS HOUSE: SAN FRANCISCO

External: Powerful Bay area consultant force has city on the move: four core meetings are set in San Francisco in one week and fifth TM is scheduled in Oakland.

Internal: News from all parts of globe arrives through ITP visitors, Rev. Lee and Rev. Won, the Don Elliot family with slides from El Bayad, Rich Wampler, colleague from Oregon and Rory Gowers who has joined the Development extension team for the month. Week is climaxed with a surprise party for Milan Hamilton's 48th birthday which includes the movie "Rocky".

Contradiction: Holding the tension between shifting into high gear too quickly or breaking down, so acceleration can proceed at a proper rate. (Wk. 5)

RELIGIOUS HOUSE: SAN JOSE

External: Cupertino sets date. Los Gatos TM workshop training begins. Merced Seroptomists considering.

Internal: Ecclesiola a great event: happy and relaxed mood while art form method enlivens Tao study. Inkind success in vegetables makes table look sumptuous. Tony Bell arrives. Paints two rooms.

(RELIGIOUS HOUSE: SAN JOSE)

Contradiction: Avoiding the decision to win over the tyranny of the economic by developing network of support. (Wk. 5)

RELIGIOUS HOUSE: SACRAMENTO

External: Mr. Economic Sacramento says he would like to go to Pace. Two waves of visitors find northern California receptive to TM. Nevada reports four TMs set up and steering committees activated. Arranges two Evenings at the Institute.

Internal: Week of House bursting at the seams, culminating with all four Houses meeting over Week II to face follow through of California 200 campaign in midst of huge area demands.

Contradiction: Doing transformation needed on steering committee and coordinator as community yeses come easy. (Wk. 5)

RELIGIOUS HOUSE: SEATTLE

External: Writes, lays out, prints and mails TM-Washington '77 in one week.

Internal: Launches new emerging generation structures. New people attend ecclesiola and 26 at House Church.

Contradiction: Creating models that elicit leaders' decision to take responsibility for TM in their community. (Wk. 5)

RELIGIOUS HOUSE: LOS ANGELES

External: Two TM dates set. Story created to bypass having the TM voted on by Chamber or other board: that the board has nothing concrete to respond to at this point, because they think they have to do it; when the community decision is there, the board can decide their role.

Internal: Planning session in the mountains removes all physically from the all-consuming office, releasing insights. Rev. Kwon, Rev. Choi and Rev. Lee visit, Bronwyn Rees sent to Fifth City and Charles McDermott sojourns. Ecclesiola study strangely helpful to putting form on maneuvers.

Contradiction: Resolving the situation in many communities so that we can move to an active continuum dynamic in light of state and area demands. (Wk. 5)

RELIGIOUS HOUSE: PHOENIX

External: Sets two TM dates, five steering committees after first week of maneuver.

Internal: Journeys through week with 'Roots'.

Contradiction: Jelling possibilities into firm commitment of TM dates. (Wk. 5)

RELIGIOUS HOUSE: SALT LAKE CITY

External: Tooele sets TM date; American Association of Retired Persons offers contacts in all targeted towns and Utah state report completed.

Internal: House bundles up as incredible electric system fails again. 'Roots' captures attention of whole House.

Contradiction: Coordinating and timelining all troops and tasks for the 1001 things to do for maneuver weeks. (Wk. 5)

RELIGIOUS HOUSE: BILLINGS

External: East Helena steering committee with 14 present is led by three members of Whitehall steering committee. Seven hundred newsletter envelopes labelled by four EG and one Youth.

Internal: House experiences Wayside Inn dynamic.

Contradiction: Accelerating TM marketing and organization by TM grads in order to do 40 TMs this year. (Wk.11)

RELIGIOUS HOUSE: DENVER

External: Circuits Nebraska Panhandle and Southern Colorado and holds Fort Collins meeting the first of the quarter.

Internal: Sends one person to the Arizona maneuver.

Contradiction: Moving rapidly from initiation to acceleration in the two metros with no TM momentum. (Wk. 5)

RELIGIOUS HOUSE: CANNONBALL

External: Previously split District Council votes unanimously to send a resolution to the Tribal Council to approve the 22 member Project Board. Community responds positively to the model peace pipe sign constructed and placed outside the House, saying Inyan Wakagapi Human Development Project.

Welcomes Heather Kern, reporter from United Tribes. Discovers that everyone can do finances as Bauknight conducts Global Finance workshop. Celebrates one month with a night in Bismarck dining and seeing The Front.

Contradiction: Shifting to practical does from the community. (Wk. 4)

EDMONTON

RELIGIOUS HOUSE: EDMONTON

External: Saturday blitz by House to field proves that initial CFC meeting with core can be set up the same afternoon. First annual meeting of newly registered ICA appoints key regional colleagues to board of directors. Millwoods housewives transformed into CFC recruitment commando force.

Internal: Blitzers return to southern Cross Club to discover it has been replaced by Fuk Wah Tsuen Restaurant with same midget waiters. Area prior stops by on way to Saskatoon GSD site trek.

Contradiction: Turning possibilities into the possible deeds. (Wk. 5)

RELIGIOUS HOUSE: VANCOUVER

External: Explores possible GSD sites in central British Columbia. House plans Week II Forum maneuvers in rural areas of Vancouver Metro and sends out Patrick Chu to Hong Kong and Kuala Lumpur.

Internal: Sends out area prior and development team after a Saturday night cabaret in the Attie Restaurant.

Contradiction: Using the gifts of having few troops to expand image of who colleagues are and leap into a wider orbit of operations. (Wk. 5)

RELIGIOUS HOUSE: ANCHORAGE

External: ICA office goes public as people come for appointments. Receives two endorsement/introduction letters.

Internal: Week II ecclesiola study becomes a "happening". House attends wedding and home celebration of Charles Benson III and Jill Burnmeister.

Contradiction: Sustaining story of vision and care. (Wk. 5)

RELIGIOUS HOUSE: SASKATOON

External: Visits with grads, the Wheel Pool and the Board of Trade in Saskatoon turned up three possible consultants.

Internal: Regular inkind pickups established cutting 15% of food budget. Viewing the movie "Victory at Entebbe" with colleagues and conversation afterwards causes reflection over the elements of a maneuver and freeing the 85%.

Contradiction: Using what we already have to awaken the province. (Wk. 5)

RELIGIOUS HOUSE: WINNIPEG

External: Goes on twenty-one development calls on religious orders, corporations and individuals, including key contact in Hudson's Bay Co.

Internal: Two roomers decide to move in allowing their rent to cover house payment.

Contradiction: Producing immediate cash through giant strides in development. (Wk. 5)

HOUSTON

RELIGIOUS HOUSE: HOUSTON

External: Organizes Downtown Steering Committee; \$1400 already pledged by corporation sponsors; and holds core meetings in four towns.

Internal: Corporate packing moves into high gear in preparation for January 29th move to 4207 Chartres Street, Houston 77004 (Telephone: 713-522-7933).

Contradiction: Getting more towns to hold core meetings so that more TM decisions can be made. (Wk. 5)

RELIGIOUS HOUSE: AMARILLO

External: Amarillo House ends inter-house feud by winning the Oklahoma Panhandle, no mans land as two towns prepare for Oklahoma:100 Coordinator Training Session.

Internal: Creates first visit and Coordinator training 4 x 4 and receives two traffic tickets on Week 11 maneuvers.

Contradiction: Getting from core to Steering Committee. (Wk. 4)

RELIGIOUS HOUSE: SAN ANTONIO

External: Three Charles - Hahn, Watson, Lingo - show up for development with lively stories from the globe. State-wide steering committee letter typed and ready for posting inviting a selected number of people to serve on the Texas State-wide Steering Committee for TM.

Internal: Re-evaluates space and prepares for regalia of people for Open House.

Contradiction: Walking in backwards, we need to create the winning story for the maneuvers. (Wk. 5)

RELIGIOUS HOUSE: OKLAHOMA

External: In midst of treacherous snow and ice, Oklahoma:100 maneuver teams visits 150 communities in two weeks.

Internal: Sixteen people on the road this week while two adults and three EG hold down the fort. Sun Tzu car conversations enable sociological perspective for maneuver teams.

Contradiction: Designing structures and tactics for next month to carry the hodge podge of journeying communities through the many stages of decision to do TM. (Wk. 3)

RELIGIOUS HOUSE: DALLAS

External: Activates cores in Palestine, Whitehouse, Carthage, Sulphur Springs, and Richardson. Three set dates for April 2nd declared TM day in East Texas. Plumber, John Chapman decides to go to Pace for a month between contracts. Cadre begins study of Lao Tzu's Tao Te Ching with wild conversation on naming the nameless.

Internal: Dallas sends troop to Houston for weekend move to new Area House. House participates in watching 'Roots', the most watched and discussed movie in TV history. House is at full employment as Ashleigh Norment secures job with university computing company who consulted with ICA in one day event last year.

Contradiction: Being as wise as a Texas coyote and as sly as a weasel with every step take while strong propensity is just to do it, or assume someone else will do the brooding. (Wk. 5)

RELIGIOUS HOUSE: PACE

External: Kosciusko schedules TM for March after one visit. Twenty-seven men show up Saturday in 15 degree weather to tear down a house to get lumber for the consult center. Sixty people show up for committee meetings to prepare for the consult, and two community residents bring home their first inkind victory of decor materials. Inkind begins to move with ceiling insulation committed, an inkind mimeograph, the weekly printing of Delta Pace Voice (by State representative) and \$150 in materials from a hardware store.

Internal: Receives Mark Harvey as sojourner from Oklahoma. Wilbur Leatherman reports on his research on cooperatives at exciting collegium.

Contradiction: Equipping selves to insure the profundity in every visit to release the vocational response to inkind, development and TM. (Wk. 5)

RELIGIOUS HOUSE: NEW ORLEANS

External: Metro maneuver Saturday in Louisiana sets two core meetings on Tuesday night. Gets back in the swing of things again with core, steering or development meeting every night of the week.

Internal: The great mystery of plumbing crisis has been solved. Walter Duerr, ITP on House trek, visits. Tim Busa spends his second full week in House since his reassignment in late November '76.

Contradiction: Doing the financial sustenance of the mission in the midst of total engagement in the mission itself. (Wk. 5)

RELIGIOUS HOUSE: MEMPHIS

External: Actuating TM set up model of going first to the symbolic power and creating a box of authorization wins across Mississippi fronts. One meeting pulled together by Chamber in Kosciusko, Mississippi, results in headlines in local paper about decision and date for TM - and we were not even sure they had said yes.

Internal: Watching 'Roots' keeps all on top of the TV show that is the talk of the town. Metro colleague assumes role of pledge base coordinator.

Contradiction: Webbing House, metro and road troops into one team with a common timeline of tactics. (Wk. 5)

RELIGIOUS HOUSE: ATLANTA

External: Key contacts in several communities mark the continuing Southeast suburb front. Sumter County steering committee sets date.

Internal: Zero-degree weather and unheated porch encourages "new briskness" of Daily Office liturgy...the wine froze.

Contradiction: Moving communities from strategizing to count-down with TM. (Wk. 5)

RELIGIOUS HOUSE: CHARLOTTE

External: Sets two TM dates as "hills are taken" in Lexington and Rutherfordton. Six development appointments set for Week 1 of 2 week area maneuver.

Internal: Metro colleague comes over to plan for maneuver celebration.

Contradiction: Holding tension in maneuver prep between accomplishment and arranging for accomplishment to happen. (Wk. 5)

RELIGIOUS HOUSE: MIAMI

External: Receives many yeses to TM by key people in local parish of Allapattah.

Internal: Experiences spacial corporateness around the fireplace, as only heat in the house during deep freeze. Maintains fire with newspapers, orange crates and trash barrels. Discovers that mango limbs and palm logs do not burn.

Contradiction: Creating the story that enables extended order families to give financial help. (Wk. 5)

CHICAGO**GLOBAL CENTRUM: CHICAGO**

External: Valentine Ball planning continued with a steering committee meeting with 30 present, representing twenty different groups and agencies in the community. Inkinds over \$600 worth of TM logo paper. Prepares for the annual audit.

Internal: Hosts guests from Scandinavia: Pastor Olli Lehtipuu from Finland, Pastor Halldorson from Sweden, Pastor Eck from Iceland, Pastor Hermanson from Denmark, and Pastor Taklo from Norway. Welcomes international Order visitors John and Judy Tresise, Ellen Addington, Dick Mark, Don Cramer and Joe Mathews Jr. as well as the return of the Cano Negro Consult team. Hears exciting reports on the GSDs.

Contradiction: Using wisdom from Consults and treks to gain new understanding of local economics. (Wk: 5)

RELIGIOUS HOUSE: CHICAGO

External: Celebrates first \$10,000 plus day in FHDP with five checks. FHDP Graphic Arts Center is planned, Craftsmen Center is set up in basement Project House, new Preschool Board meets, FHDP core room is constructed out of old library, Emerging Generation suite is ready for beginning of Infant Care Program initiation. TM launches move on 100 suburban corporations.

Internal: Vida Melissa Welch is born-- only EG girl. Receives Bronwyn Rees from Oombulgurri for preschool training. 'Roots' captures House.

Contradiction: Maintaining extraordinary eventfulness in midst of essential routine. (Wk. 5)

RELIGIOUS HOUSE: WICHITA

External: Mayor of Wichita sends fine letter of support to all corporation contacts as surprising victories appear in setting TM Kansas Committee.

Internal: 'Roots' provides depth artform experience and reflection that we have not had for awhile.

Contradiction: Keeping the campaign moving in the midst of unclarity at this time about where we stand in relationship to our support and funding. (Wk. 5)

RELIGIOUS HOUSE: OMAHA

External: First core meeting is signal demonstration for sector as 25 community leaders take responsibility for 15 neighborhood TMs in Omaha with \$675 in hand from individuals and corporations.

Internal: House transformed as new guest room is created, kitchen floor gets face lift and tribal resettlement enables new corporate space.

Contradiction: Enabling the emerging TM '76 leadership to do the Omaha 15. (Wk. 5)

RELIGIOUS HOUSE: KANSAS CITY

External: Signal authorization from political figures in Missouri and Kansas; imaginal power seen in map locating CIF participants.

Internal: End of quarter Christmas celebration with metro colleagues.

Contradiction: Pushing at maximum speed right up to New Years Eve. (Wk. 1)

RELIGIOUS HOUSE: MINNEAPOLIS

External: 'Whittier Globe' recognized by 'Minneapolis Star' and 'Tribune' as one of the most professional community papers in Twin Cities. Southside News offers to merge. All fronts activated. Northern plains trek in South Dakota, research for Minnesota victory and first steering committee for urban CIFs.

Internal: Plan for 26 week. Exploding the third century of the USA entails four major explosions for Quarter II and III.

Contradiction: Looking for a story from outside of our own experience. (Wk. 2)

RELIGIOUS HOUSE: ST. LOUIS

External: Division South strike force hits Illinois and Kansas with economic blitz as remnant in St. Louis creates management information systems and visits 12 more corporations. Mayor of Rockford reports anxious to serve on Illinois State TM committee.

Internal: EG illness stretches Day I care model and first week of The Tao stretches treeop consciousness toward the unknown unknown.

Contradiction: Remembering the cruciality of maintaining the support systems. (Wk. 3)

RELIGIOUS HOUSE: PEORIA

External: The division south strike force completes economic blitz of visiting over 550 corporations in a five state area and the money is starting to come in that week with over \$2,000 in hand. Shift now to political statewide maneuvers of political support visiting with two governors and state representatives and senators.

Internal: Day II troops intensify engagement in external as new collegium and meal rationale enable troop effort.

(RELIGIOUS HOUSE PEORIA)

Contradiction: Building the models that will keep all the troops effectively engaged in training over 4,000 workshop leaders and coordinating 450 TMs. (Wk. 5)

RELIGIOUS HOUSE: GREEN BAY

External: State-wide meeting of Wisconsin 100 in Madison with number of troops present and promise of more. Inkinds song books for state meeting from Addressograph Multigraph.

Internal: Initial use of the entire ecclesiola construct was a great spirit event as Ecclesiola was celebrated with metro colleagues.

Contradiction: Being "on top of" the whole picture of needed tactics, hence keeping alive the decision to win rather than compromising the victory. (Wk. 5)

RELIGIOUS HOUSE: MILWAUKEE

External: TM:Wisconsin 100 funding aided by call to Kansas City and three day trip to Minneapolis to participate in their models. Brochure is at the printers. Jim Seales, father of Barbara Keller, becomes TM:Wisconsin 100 State Committee treasurer.

Internal: House Church sees 18 around the table and ecclesiola continues to attract many guests despite the continued cold, snowy, windy weather.

Contradiction: TM:Wisconsin 100 activities are moving so fast that broad participation in planning becomes more critical and yet more difficult to bring off. (Wk. 5)

RELIGIOUS HOUSE: INDIANAPOLIS

External: Holds RS-I with 23 around the table in spite of 13 cancellations due to extreme weather. Four polis cadres set GSD slide show dates for weeks 6,7,8 and 9.

Internal: House prepares space for RS-I in midst of contingencies.

Contradiction: Getting GCF to move as well as IGM and GSD. (Wk. 5)

RELIGIOUS HOUSE: CINCINNATI

External: Kentucky Lt. Governor Thelma Stovall gives nod to Kentucky TM in August with Jaycees playing major set up and funding role. Consultant training of 20 begins strategy for expanded consultant force.

Internal: New internal life guides clarifies corporate life style. Youth and EG pick up food services for quarter.

Contradiction: Initiating structures which fully engages and sustains five consultant teams as solitary movement force while forging new model of massive coordinator training. (Wk. 3)

RELIGIOUS HOUSE: DETROIT

External: Invitation to George Romney to be honorary chairman to TM Focus: Michigan Week. Submits two funding proposals for TMFNW funding.

Internal: Ecclesiola conversation on Tao demonstrates superabundance of life in midst of being on fast.

Contradiction: Moving ahead on faith is wearing thin in midst of scanty undergirding by few dollars. (Wk. 3)

RELIGIOUS HOUSE: CLEVELAND

External: Kicks off consultant training in four locations for every Saturday. Consultant teams care for the 32 TMs. All adults get pedagogical push with responsibility for training four to twelve consultants.

Internal: Winterproofs House as miracle of facility task force. EG task force creates Quarter III curriculum.

Contradiction: Ability to train people with no TM experience as consultants for State of Ohio push. (Wk. 4 4)

NEW YORK

RELIGIOUS HOUSE: NEW YORK

External: Gives a sign of the possibility of developed and program income with receipts from GSD nite with minus three steering committee receipts of \$500 with another promising their three \$500s next week and a patron gift of \$3000.

Internal: House keeping around the edges keeps colleagues and contributing guests in the Wayside Inn. Health Trek, Bi-regional task force and development all descend on us at once, and participate in a Saturday Eve celebration seeing NETWORK.

Contradiction: Keeping eye on the Interglobal movement formation as an integral part of the three campaigns rather than a separate set of tactics. (Wk. 4)

RELIGIOUS HOUSE: PITTSBURGH

External: Effective consultant training in weekly sessions, consultants working almost full-time and three steering committees.

Internal: Sharpening the House as mission by reaching 80% of food budget in in-kind, re-imagining internal and external teams as guilds, re-claiming common memory in Christ of History study.

Contradiction: Discovering that short-term operation planning allows plans according to what seems possible at the time. (Wk. 2)

RELIGIOUS HOUSE: ROCHESTER

External: TM in Westfield raises \$400 in one day from local businesses.

Internal: The completion of tactical systems allows real assignments to be made - finally.

Contradiction: Turnign interest into dates. (Wk. 5)

RELIGIOUS HOUSE: RICHMOND

External: Holds District 4 TM 76 in Richmond; \$1200 in hand and replication strategy built. TV shorts by steering committee for South West Richmond.

Internal: Saturday's TM results in many people looking for jobs for House. Total new office reorganization and changes assignment rationale for quarter.

Contradiction: Being chaste to at least three different things at once. (Wk. 4)

RELIGIOUS HOUSE: WASHINGTON

External: Ivy City Council thrust out of Ivy City and into the world through Neil Vances's report on the 24 social demonstrations and Ivy City's own Lawrence Glacoe's report on the Cano Negro Consult.

Internal: House global consciousness bumped via collegium on Wedge report and week presence of Neil Vance, Kathy Bauknight, and Mark Welsh.

Contradiction: Firming back up system: economics, structures, and training. (Wk. 4)

RELIGIOUS HOUSE: BALTIMORE

External: Discovers life underneath snowed in steering committee; development spurs new impetus for GSD night.

(RELIGIOUS HOUSE: BALTIMORE)

Internal: Jo Riley lands \$17,000 year job.

Contradiction: Focusing on key communities without losing impetus elsewhere. (Wk. 4)

RELIGIOUS HOUSE: PHILADELPHIA

External: Bi-regional meeting in New York sharpens to a fine point the 'One-plus-four' TM replication model.

Internal: GSD is swirling in all directions as House studies consult documents and sends David Derr to Ijede consult.

Contradiction: Day by day battleplanning without long range picture. (Wk. 4)

RELIGIOUS HOUSE: NEWARK

External: Week culminates with \$100 from Dover (to secure their date), a Development PSU and kick-off celebration of TM, New Jersey, 1977 with new colleagues present.

Internal: Ecclesiola celebrates Steve Stodola's return from Cano Negro and initiation of the facility task force.

Contradiction: Engaging the most people in the circuit design for the quarter. (Wk. 5)

RELIGIOUS HOUSE: BROOKLYN

External: Forty-five attend second steering committee meeting in Brooklyn's Sunset Park.

Internal: House, fast, TV show 'Roots' and Lao Tzu in Ecclesiola share house interest.

Contradiction: Keeping economic dimension from slowing TM wagon. (Wk. 5)

RELIGIOUS HOUSE: HARTFORD

External: Participation in the Boston 218 maneuver calls forth eight core meetings. Development mailing to 1,721 persons. Presentation at Plainville Conference of Churches to set up GSD night.

Internal: Fred McNutt returns from Cano Negro with great report; 35,680 is our development objective for Quarter III. Guild member leads ecclesiola study and all watch 'Give 'em Hell, Harry' as postlude.

Contradiction: Moving all fronts at once through careful planning and implementaries. (Wk. 4)

RELIGIOUS HOUSE: ALBANY

External: Steering committee meeting held four days after core meeting and all say yes, with county legislative chairman giving best TM context heard and two GSD nights attract 70 people.

Internal: Crisp one page resumes distributed by Schenectady consultants core. Linda Brock arrives for ecclesiola from New York House with gift.

Contradiction: Securing larger living space for expansion. (Wk. 4)

RELIGIOUS HOUSE: BOSTON

External: Despite a major snowstorm, development signals are go with urban circuits. Area development trek and GSD presentations to local churches and business group at the Harvard club including Henry Cabot Lodge.

Internal: Experiences an explosion of practical images and possibilities in thorough development battleplanning for Quarter III. Wayside Inn intensified with urban circuit team area prior and Wainwright in transit to Chicago Centrum.

Contradiction: Pushing the breaklooses and visions of the past two weeks to implementaries and timeline. (Wk. 4)

MONTREAL

RELIGIOUS HOUSE: MONTREAL

External: Death of Bishop Joshi.

Internal: Announces GSD site in Area Montreal, a village in New Brunswick.

Contradiction: Deepening research without losing momentum in external mission. (Wk. 3)

RELIGIOUS HOUSE: TORONTO

External: Addressograph Multigraph of Canada gives warm yes to request to attend any Community Forum within 70 miles of their offices and prints document.

Internal: Circuit scene looks brighter with new troop deployment and recent inkind car.

Contradiction: No definite plans (only bright ideas) for expanding the engagement of troops into the acceleration which has already begun. (Wk. 5)

RELIGIOUS HOUSE: OTTAWA

External: Ivan Lemieux, local colleague and member of Social Planning Council, agrees to be orchestrator for Hearst Forum (90% French). ICA consultants training initiated in Seaway. One-half House circuits in central Ontario with Toronto House member in Week II.

Internal: Joint planning between Ottawa and Toronto House member nets model which allows whole House to plan for overall geography in two sessions.

Contradiction: What is the shock to shake the winter doldrums into an avalanche? (Wk. 5)

CARACAS

RELIGIOUS HOUSE: CARACAS

External: Representative from federal skills training program attends whole week and seeks assignment to work with the HDP. Ministry of Education officials visit the project on their own initiative and offer to open a kindergarden. Brief continental council held with area representatives who attended the HDP consult.

Internal: Caracas House is transformed overnight from six to Cano Negro HDP auxiliary of 15.

Contradiction: Obtaining cash funds. (Wk. 5)

THE GLOBAL ORDER CENTRUM REPORT

WEEK 5

BRUSSELS
NAIROBI
BOMBAY
CANBERRA
HONG KONG
CHICAGO

GLOBAL
DEVELOPMENT
CENTRUM

Brussels celebrates the long-awaited Caritas, Austria, check and submits \$10,000 worth of proposals. Chicago closes the month also in celebration by breaking the January barrier: the first time in remembered history that the goal was made in January. Experienced breakthroughs in circuit follow-up and planning teams made money by systematic follow-up of past circuit committed monies. The contradiction lies in breaking open new arenas of monies which produce immediate cash.

GLOBAL
RESEARCH
CENTRUM

The focus is on guardian activation in Brussels as new strategizing on LENS marketing occurs, journal article on the profundity of local human development is in early production stage in Chicago, the Academy brochure is created and a re-articulation of Academy aims and objectives in light of metamorphosis is written. Discerning the edge challenges and issues within each of the Centrum bands points new directions of Research as cross-Centrum consultant dynamic. The contradiction is image of function as the long-range, "not-much-related-to-the-present-issue" thinking.

GLOBAL
OPERATION
CENTRUM

Welcomed back the Consult team from Caño Negro as well as the completed document in Spanish and English. Visit from Don Cramer from Isle of Dogs raises whole question of local economics in the urban HDP. TMs now number through 612. Sends out team to Oklahoma to assess situation of OK:100. Holds a PSU on the new form of TM while receiving calls from many commenting on President Carter's new plan to do TMs throughout the nation. Uptown work continues on the Valentine Ball. Brussels mails quarter program calendar with an exciting variety of events: Dordrecht, the Netherlands, sets first TM date for quarter. The contradiction lies in the arena of providing troops from the global calendar of events of GSDs, TMs and Consults.

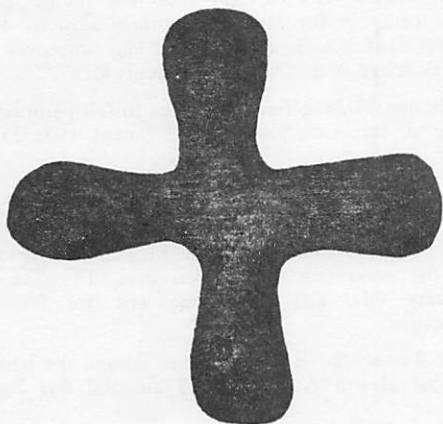
GLOBAL
MANAGEMENT
CENTRUM

Cost-cutting is the theme as we save \$50 for every hour of preparation for the audit. The \$164,000 chart keeps all within budget, with savings over \$600 with the inking of paper for re-printing the TM logo. Emphasis is on using the computer terminals with three in constant use to update the Order roster to include all assignment changes and the input of all contributors for 1976. Reports came in of repairing many frozen pipes during the sub-zero weather and the reprinting of the HDP bulletins. The contradiction lies in the arena of coordinating inkind possibilities for paper and printing across all continents.

GLOBAL ORDER REPORT

Week 6

February 7 - 13, 1977



For everything its season, and for every activity under heaven its time: a time to be born and a time to die; a time to plant and a time to uproot.

Ecclesiastes 3:1-2

LONDON

RELIGIOUS HOUSE: LONDON

External: Submits four funding proposals to London Borough of Tower Hamlets; Gen. Secretary of Docker's Union (NASDU) pledges support of Industrial Development Advisory Board. Nine local men signal new leadership by agreeing to help teach vehicle maintenance.

Internal: Hosts Health Trek, Legal Team and David Scott.

Contradiction: Finding the particular practical form of engagement for islanders. (Wk. 4)

RELIGIOUS HOUSE: GLASGOW

External: Lochee core decides to hold pre-steering committee meeting within two weeks. Partick Cadre decides to participate in "Humaness is . . ." research.

Internal: Rhonda Wiltse takes top honors in private school English exams.

Contradiction: Intensifying the practical activities of the regional cadres while significating and focusing those activities toward the three global campaigns. (Wk. 6)

RELIGIOUS HOUSE: BRISTOL

External: Holds fine Week II meeting with colleagues to initiate Foray 200.

Internal: Intensifies internal life with study of "Community" paper and Tao Te Ching.

Contradiction: Tying up loose ends which stand in the way of getting out on the road for Foray 200. (Wk. 6)

RELIGIOUS HOUSE: MANCHESTER

External: Foray 200 begins in north of England with 61 visits resulting in four probable TMs.

Internal: House hosts three guests from ITI Birmingham.

Contradiction: Moving from general community interest to locating the troika. (Wk. 6)

PARIS

RELIGIOUS HOUSE: PARIS

External: Goes on GCF circuits to Marseille, Orange, Quimper, Brest, Daoulas and Chambon-sur-Lignon. Orange represents the first time we have visited a town without knowing anyone there.

Internal: Holding ecclesiola on Saturday evening allows all to participate and culminates the week in a helpful way.

Contradiction: Strategies for acquisition of a car. (Wk. 5)

RELIGIOUS HOUSE: ROME

External: Teams out on three circuits turn up lively possibilities for Incontro Di Quartier in Firenze and Tivoli and a letter of introduction from Lions International district governor to the national "vicegerente" comes in from Rome. Site selection journey with Joe Pierce makes for priorities consensus.

Internal: Prepares for Christmas by setting eight development appointments for the week before Christmas.

Contradiction: Tunneling through the mountain even more quickly to come out in the right place in June (TM and GSD). (Wk. 6)

LAGOS

RELIGIOUS HOUSE: LAGOS

External: Begins Ijede Community Hall renovation with the help of \$1500 worth of paint and \$1000 worth of cement. Week's development yields \$2500 in hand.

Internal: Consult team arrives from Shantumbu. Completes concrete floors in auxiliary house enabling assignment of family space.

Contradiction: Creating timeline and priority rationales to deal with unlimiting scope of task and possibility. (Wk. 4)

BRUSSELS

GLOBAL CENTRUM: BRUSSELS

External: Compiles the European Board of Consultants. Prepares the Spring quarter Woman in the Future schedule. Completes House condition report for the continent. Meets monthly development budget for third consecutive month.

Internal: Works on archives and files for data retrieval. Prepares authorization packet for mailing.

Contradiction: Creating comprehensive circuit rationale. (Wk. 6)

RELIGIOUS HOUSE: BRUSSELS

External: Continues steady support of all House, including El Bayad with new publications, resources, and troops from the Nexus.

Internal: Holds EEC grant celebration.

Contradiction: Doing Foray coordination and support at the front lines. (Wk. 6)

RELIGIOUS HOUSE: AMSTERDAM

External: Foray 200 circuit calendar places Dordrecht Buurtdag (TM) in perspective of 29 other towns across the country.

Internal: Mary Warren Moffett and Kay Townley visit to do work on WIF. At cadre night, has an exciting conversation about the impact and possibilities of "Woman in the Future" and does Foray 200 planning with colleague.

Contradiction: Breaking loose regional colleagues to be the presence of the blue in the Netherlands. (Wk. 5)

FRANKFURT

RELIGIOUS HOUSE: FRANKFURT

External: Gemeindeforum visits in Loenigstactden, Ruesselsheim, Darmstadt, Leichlingen and Preungesheim. Official launching of bi-weekly community forum task force with 19 around the table for slides and reports.

Internal: The Foray Flu is out to conquer the House, but has not won yet! Preparations for Foray 200 keep House busy. New decor for Foray almost finished. Use House as meeting place for nine groups preparing for the Kirchentag in June.

Contradiction: Riding into battle without proper ammunition - heading into Foray 200 without sufficient materials. (Wk. 6)

RELIGIOUS HOUSE: BERLIN

External: Week of the Move to the Street as renovation on future Communication & Education facility draws people into weekday workdays and Saturday workdays. Beginning of education guild is seen as members of various education services meet at House. Authorization continues to lead ahead: mayor calls for more documents and two architects drop by to see ideas in urban planning. Citywide newspaper prints excerpts from thirteen week report.

Internal: Ecclesiola attending a play given at local church explodes as sign of power of corporate action. David Marshall drops in.

Contradiction: Getting the materials on hand to accomplish the many avenues open. (Wk. 6)

KINSHASA

RELIGIOUS HOUSE: LUSAKA

External: Preschool staff presents detailed survey and registration request to Ward Development Committee and receives unanimous yes. Hosts 20 at first Guardians meeting prompted by legal treks arrival. District Governor welcomes Institute to work in his district in major authorization victory.

Internal: House decorated and reception lounge painted. Trustees come in for series of working sessions. Inkind over \$1500 of vehicle repair. Work day improves public image celebrated with "All the Presidents Men".

Contradiction: Taking final few steps to full permission for releasing all forces on project development. (Wk. 5)

CAIRO

RELIGIOUS HOUSE: EL BAYAD

External: Stake 3 calls its own meeting, first of its kind, to recruit for watermain digging workday. ITT telex arrives announcing their gift of enough wire for full Bayad electrification.

Internal: Twenty-three people gather around the table with six Global Health Acceleration Team and five Egyptian interns.

Contradiction: Dealing with complexities of GSD in midst of economic breakthroughs. (Wk. 6)

NAIROBI

GLOBAL CENTRUM: NAIROBI

External: A visit from the British High Commissioner pays off with the presentation of a pump for irrigating the demonstration farm. "Launch '77" development blitz comes to an end with a celebration after collecting sum of 64,000 shilling (US\$8,000.00) in hand, with more committed.

Internal: Creates new songs from "Launch '77". Holds internal Town Meeting with House and Nexus. Two more Youth are enrolled in school.

Contradiction: Changing back to KHDP programs as main emphasis at the same time maintaining the present development momentum. (Wk. 6)

RELIGIOUS HOUSE: NAIROBI

External: Sends out largest circuit team of five for South Nijanza province maneuver. Village Meeting proposal recipient, Deputy Commissioner of Social Services, makes site visit to Kawangware. Nairobi city councilor says yes to February 12 VM.

Internal: Holds demonstration VM at House, ending with 50 people at House Church in back yard under the stars. Printer insists on donating glossy covers to VM workbook and having staff check Swahili translation accuracy after giving half price quote for printing.

Contradiction: Getting advance edge program money to initiate VMs before the program pays for itself. (Wk. 6)

BOMBAY

GLOBAL CENTRUM: BOMBAY

External: India's Republic Day celebrated with morning parade of school children in new clothes with bright faces, flag hoisting, and afternoon nail brushing and weight checking at just two of the exciting Health Fair booths. An inter-guilds "Kobadi" match. All State Bank of India staff drop by with greetings after getting 101 new accounts opened earlier in the week and a commitment to open a branch here.

Internal: Internal life for Quarter III is kicked off with barbecue celebration on Saturday night while receiving Ecclesiola manual for the quarter which provides context for study of the yellow ur and a celebrative Chinese feast.

Contradiction: Methods of tapping technical expertise available in India in order to sustain Maliwada economically and build the thrust for economic self-sufficiency. (Wk. 6)

RELIGIOUS HOUSE: BOMBAY

External: Works on three new village documents. Has second consecutive month of success for Gram Sabha in Pune. Pre-registers 256 and 100% show up plus.

Internal: John Poole stops on way to Maliwada and Crispin Clements arrives.

Contradiction: Creating care structures for all six regions. (Wk. 6)

RELIGIOUS HOUSE: VAVIHARSH

External: Preschool begins with over 50 students present. Vaviharsh Traders Corporate bags first sales order. Rice and wheat selling gets Rs. 2000 profit on first deal and puts 50% for wages for road building work force. Doctors conduct three day scabies eradication drive with miracle results. Stake leaders meet and consense on stake divisions.

Internal: Collegium room created with stone floor, inkinded white wash and furniture. Chief Engineer of Maharashtra visits from local dam project and authorizes weekly doctor visits.

Contradiction: Implementing guild training in the midst of doing the programs. (Wk. 6)

DELHI

RELIGIOUS HOUSE: DELHI

External: Holds first Delhi regional cadre meeting emphasizing GSD replication and most particularly replication in a Delhi village.

Internal: Reorienting images relative to living in a village.

Contradiction: Creating the plan for and maintaining intentionality in months of selecting and initiating a GSD site amidst numerous complications and ambiguities. (Wk. 5)

MADRAS

RELIGIOUS HOUSE: HYDERABAD

External: Discovers many new interns on the horizon as HDP looms on the horizon. Pulls together pre-consult preparation and checklist onto one sheet.

Internal: House serves as an oasis of care as colleagues from Maliwada and guest from region attend House Church. Revises battleplan amidst great assignment in terms of the Nadapur HDP endorsed by Chief Minister of Andhra Pradesh.

Contradiction: Seeing the possibility of doing the area and the project simultaneously. (Wk. 5)

CALCUTTA

RELIGIOUS HOUSE: CALCUTTA

External: Participates in opening of primary school entirely initiated by bustee(slum) dwellers for their own children.

Internal: Memorial service for Bishop Joshi held at Thoburn Methodist Church, Calcutta, with Anglican Bishop officiating, assisted by Baptist theologian and Methodist heirarchy, symbolizing the progress toward church unity that Bishop Joshi strove for.

Contradiction: Taking self-support models seriously. (Wk. 6)

SINGAPORE

RELIGIOUS HOUSE: SINGAPORE

External: Trek to Sarawak, East Malaysia, includes a long House visit, home of key colleague, Jerry Rabu, president of Iban Conference of Methodist Church. Visit with state government officials who pave way for religious study program and future GSD project raises question of how many can we send to Kuala Lumpur Consult. They settle on six.

Internal: Gail Fray from Melbourne, Australia, visits with teacher friend from Portland, Australia, and after the inevitable "What is ICA?" question recalls excitedly the CMA held in Portland recently.

Contradiction: Needing trained colleagues and interns to handle multi-faceted breakloose of possibility. (Wk. 6)

RELIGIOUS HOUSE: KUALA LUMPUR

External: Holds second GCF in Malaysia as part of course called "Community Leadership Training" where citizens learn how to set up GCF and then hold one all in two days.

Internal: Sherwood Shankland returns to Malaysia to follow up on development contact and to help brood through possible designs for a new facility.

Contradiction: Using the crest of the wave to get leverage on needed authorization. (Wk. 6)

RELIGIOUS HOUSE: JAKARTA

External: Deep bore well hits good water at 64 meters. Women's luncheon is attended by 28 women from stakes. Community leadership is excited over prospects of village attendance at Hong Kong and Malaysia Consult; 53 attend guild meeting. Community tractor used by village farmers from 7:00 a.m. to 1:00 a.m. is great time saver. Community in Stake 2 completes pathways.

Internal: Wawan, brother of Suhardi, sojourns to raise total number of adults to 20. Dan Tuecke returns from Cano Negro Consult. Shanklin returns from development in Kuala Lumpur. Tim Lush goes to Malaysia for GSD preparation; Ibu Sukanto and George Yost go to East Java as representatives at Lai'ya's wedding.

Contradiction: Moving many separate programs into one socio-economic thrust. (Wk. 6)

HONG KONG

GLOBAL CENTRUM: HONG KONG

External: Wedge trek occasions intense evaluation of GSD site and releases comprehensive search for urban/rural village. Hears reports from Japan, Korea, Taiwan and around the world.

Internal: Hosts House and Wedge team and adapts structures to meet radical demands of week's timeline.

(GLOBAL CENTRUM: HONG KONG)

Contradiction: Keeping all revolutionary principles in mind while operating under intense time pressure. (Wk. 6)

RELIGIOUS HOUSE: HONG KONG

External: Participates in week of preparation for a GCF in Fuk Wah Tsuen. The pedagogy group decides to concentrate on GCF training, trains workshop leaders for the January nine GCF. Brochures for the GCF were distributed house to house in Fuk Wah Tsuen, and prints the newly translated workbook.

Internal: Following a refreshing discontinuity, celebrates the New Year with centrum.

Contradiction: Enabling the nods of yes in the business and governmental sectors to be backed up with needed actions. (Wk. 3)

RELIGIOUS HOUSE: KAOHSIUNG

External: Visit to JCI National President opens new GCF doors while village research and Wedge preparation excites old colleagues about social demonstration possibility.

Internal: Ecclesiola discovers more Chinese quotes for GCF campaign: "Watch, look, and take care of your community."

Contradiction: Having to continue to look for a village in the midst of economic uncertainty. (Wk. 4)

RELIGIOUS HOUSE: MANILA

External: ITI steering committee launches ITI recruitment and development. Circuit to Mololos, Tuguegarao, Cabonatuan reproduces three possible GCFs. Development for week brings in 1,200 pesos cash with 15 appointments for eight proposals totaling 35,000 pesos.

Internal: In midst of economic intensification, shifts wake up time to 4:30 wake up, which doubles attendance at second half of collegium. Signs up new English student and has two more group classes waiting in wings.

Contradiction: Allowing complexity and ambiguity to be enemies which produce anger, frustration and immobilization. (Wk. 6)

RELIGIOUS HOUSE: TAIPEI

External: Wedge and legal treks complete 1-2 Taipei and Kaohsiung punch, with key results being registration breakthrough and Hong Kong Chinese funding appointment and naming of GSD village, Nan Ping. Du Pont gives \$250.

Internal: Between Sartre, Sun Tzu, and "Water" spirit life, elder statesman David Wood demonstrates style of first two and adds own spirits to latter.

Contradiction: Implementing prescribed course of action when guardians are pulling on reins. (Wk. 6)

RELIGIOUS HOUSE: CEBU

External: Two health workers teach mothers infant feeding. Boat motor arrives from Manila and 23 rabbits arrive from Heifer Project-Cavite. Installs electric light at Buri factory.

Internal: Sends out Jack and Nancy Callum to Davao. House celebrates Francis Coker's birthday Thursday night.

Contradiction: Moving full speed ahead while shifting program and staff assignments. (Wk. 5)

RELIGIOUS HOUSE: DAVAO

External: Weekly circuits to Nabunturan continue, with second steering committee held, financial models hammered out, and training plans made for Week 6 GCF and PCTS.

Sets Butuan City GCF date for April 16.

Internal: First of series of ITI orientation seminars is held with six present and interested. Inkind one bag of rice from Mayor of Nabunturan and four kilos of nails from local hardware store, enabling sustenance and recreating training center.

Contradiction: Expending maximum energy on minimum return jobs for self-support while still looking for the "big one". (Wk. 6)

TOKYO

RELIGIOUS HOUSE: TOKYO

External: The Sanya Chiiki Kondankai Task Force consenses on plan for elders.

Internal: Eija Karikoski is sent to Fukuoka House to help set up Miyata Consult.

Contradiction: Creating GCF circuit model. (Wk. 6)

RELIGIOUS HOUSE: JEJU

External: Legal trek visits. Visit with Teresa Kim continues the push for establishing the community co-operative. Holds first Farmers Forum, Home Living Skills Class and week long intensification class of English. Decors the new beauty shop. Also a week of celebrations with the presentation of a movie projector by Mrs. Lee Chul Yong, followed by a presentation of guild hats by JWM.

Internal: Collegiums on "GSD Financial Guidelines" undergird the push on development and inkind. Experience global images as met with Wedge team and participated in four village weddings in one day.

Contradiction: Accelerating the project while maintaining both care for the details and support of local leadership. (Wk. 6)

RELIGIOUS HOUSE: SEOUL

External: Announces GSD World's Fair in Kwangyung II. JWM meets Minister of Health and Social Affairs and receives nod for registration of ICA:Korea; also met with General Yu of Korea Oil, President Kim of Korea Explosives Group, four oil executives, guardians and presidium breakfast and visits Sae Maul Institute in Suwon.

Internal: Welcomes Wedge team and the Holcombes. Experiences deep impact of Lao Tzu at ecclesiola.

Contradiction: Creating global story now blocked by personal and parochial images. (Wk. 6)

RELIGIOUS HOUSE: FUKUOKA

External: Local grassroots support for Miyata Human Development Project continues to broaden with extensive visitation. Jaycees are enthusiastic about Consult participation and inkind assistance.

Internal: Lao Tzu study impacts us with simple, straightforward revelation of the Way It Is.

Contradiction: Focusing upon major contradiction in weekly battleplanning rather than immediate irritants. (Wk. 6)

RELIGIOUS HOUSE: OSAKA

External: Ashiya meeting to set up TM sponsors committee. Rotary member will set up calls. Wood meets Attorney Yamamoto to strategize incorporation in Japan.

Internal: Initial translation on TM brochure complete.

Contradiction: Discerning the local lever for sponsoring TM. (Wk. 6)

RELIGIOUS HOUSE: SENDAI

External: House goes over monthly development goal for first time in year.

Internal: Gets ready for Global Care Development Party in the guise of St. Valentine.

Contradiction: Going over monthly development goal and discovering its last years! (Wk. 6)

SYDNEY**RELIGIOUS HOUSE: SYDNEY**

External: Seventy-five pairs of shoes inkinded to begin eradication of hook-worm in Oombulgurri. Community Training Consultation is first summer program to come out in the black. Battleplanning results in realistic circuit model using colleagues, and a donor rationale to meet the program budget.

Internal: Whole House goes to Brisbane to Council following CTC. Receives Karen, Michael and Kerry Warne and Lisa Smith to make full House complement within one week of assignments. Pauline Chia and friend stay on way around Australia.

Contradiction: Creating timeline and external missional assignments to unblock focused and immediate effort. (Wk. 6)

RELIGIOUS HOUSE: PERTH

External: Receives invitation by Rockingham councillor to attend a steering committee meeting for a Community Forum that she has already scheduled.

Internal: Community Training Consultation participants, John Rees and Ross Smith, return from Brisbane via Oombulgurri, and collect Andrew Duncan to begin the school year.

Contradiction: Maintaining the ongoing thrust while simultaneously picking up two major pushes on inkind and development. (Wk. 6)

RELIGIOUS HOUSE: DARWIN

External: Christmas Parade details finalized and trek and CTC mailing out.

Internal: Bill Senton call on way home from Oombulgurri. Christanna Betonte celebrates first birthday. EG participate in YMCA holiday activities.

Contradiction: Sustaining the momentum, especially in Development, with no in-house. (Wk. 12)

RELIGIOUS HOUSE: OOMBULGURRI

External: Steel arrives for new houses; lawn mowing creates sense of victory in community. Link with the world with a radio telephone, the first in the Kimberleys. The farm guild completes wet season planting of sorghum, corn, broom millet, peanuts and stylo.

Internal: Begins the Tao study which is very refreshing to everyone. Hosts colleagues John Rees, Rose Smith and Margaret Halloran returning to Perth.

Contradiction: Building community consensus about guild assignments and their implementation. (Wk. 6)

RELIGIOUS HOUSE: ADELAIDE

External: Five House adults plus eleven regional colleagues return from Community Training Consultation (GRA) to two CMA engagements in first two days after return.

Internal: Paul Duffy as sole House member present in January maintains facility in fine style. Others return to garden bursting with fine tomatoes.

Contradiction: Contexting troops not at CTC rapidly for super acceleration in CMA and development tactics. (Wk. 6)

RELIGIOUS HOUSE: MELBOURNE

External: Troops return from CTC to immediately cover three speaking engagements. B. Sinton accompanies R. Roberts, T. Morgan and R. Lingafelter to visit Massey Ferguson here regarding apprenticeship for Trevor. Roberts receives first telephone call from Oombulgurri with great rejoicing!

Internal: Welcomes friends from Oombulgurri on their Australia trek.

Contradiction: Organizing the maneuvers that will coordinate the three campaigns that are already moving in this summer quarter. (Wk. 6)

GLOBAL CENTRUM CANBERRA

External: Whole Nexus participates in development blitz in Canberra.

Internal: Celebrates Australia day at the lake with a picnic and House members swim collectively over five miles. Week II begins as hit the ultimacy in economy and sophistication with happy hour at Zorba's, highlighted with a Malaysian feast prepared by Nason.

Contradiction: Maintaining the breadth of our relationship to three areas. (Wk. 6)

RELIGIOUS HOUSE: BRISBANE

External: Trek team in Mt. Isa after more than a year, signals decision to bring presence of blue to whole Region. Receives free freight for inkind chickens and typewriter to Oombulgurri.

Internal: Warne family leaves for Sydney assignment. Betonte family begins to arrive. Readies jobs, House, and files for missional engagement in wake of Summer CTC.

Contradiction: Embodying untested models for doing the three campaigns. (Wk. 6)

SUVA**RELIGIOUS HOUSE: MAJURO**

External: Secures contract and loan for the first coconut wood house, 16' x 20'. Mills 62 logs in one week and the first 2 x 4s planed with a power planer (Public Works) for test marketing through the retail establishment (present importers of weed). All-Marshallse preschool board of directors decides to build a coconut preschool from the ground up. Fund raising plans are underway.

Internal: James Chia returns after two months in Singapore Region. One House emerging generation runs own newspaper business and earns more than an adult monthly stipend in one week. Pam Blood returns from the Yap district in time to greet her parents, just arrived from the U.S. for a visit.

Contradiction: Making concrete decisions and moving on them with a sense of urgency. (Wk. 4)

RELIGIOUS HOUSE: APIA

External: With authorization furthered by Rotary speaking engagement, working on Lion's Faleaulupo clinic benefit, Labor Department director asks for proposal for Youth Task Force. Hear national radio announcement regarding metro cadre celebration of past and future plans.

Internal: Study of Year of Canada and Sun Tzu impacts all with greatness of generalship as exemplified by action and tactics.

(RELIGIOUS HOUSE: APIA)

Contradiction: Continuing to function out of own model and not somebody else's with many missional possibilities and demands. (Wk. 4)

SAN FRANCISCO

RELIGIOUS HOUSE: SAN FRANCISCO

External: Incredible story of TM in San Francisco expressed by Bay Area consultants in their own song, story and symbol workshop. Colleague from San Francisco's China Town decides to attend the Hong Kong consult. Alameda TM brings out 350, including City Council and Congressman Pete Stark. Core Meetings set for Pacifica, Pleasant Hill and four San Francisco neighborhoods.

Internal: Dean "Picasso" Ellis catalyzes young de Vinci's into youth artist guild. Karen Reese begins apprenticeship as printer. Great style and spirit brought to EG structures as David St. John takes on the challenge of EG coordinator.

Contradiction: Eroding vision for Bay Area in midst of solid plan for urban TMs. (Wk. 6)

RELIGIOUS HOUSE: SAN JOSE

External: Afternoon at the Institute in Watsonville refreshes new colleagues and replenishes confidence in corporate methods. Cupertino steering committee begins work with three people from last year's event and MC will be former mayor.

Internal: Diane Best receives third pay raise in a year. Plans for regular Tuesday Evenings with metro colleagues focus missional energy.

Contradiction: Creating long-range vision that releases creative use of energy. (Wk. 6)

RELIGIOUS HOUSE: SACRAMENTO

External: Sacramento Guardian attends Alameda TM. Sets up Redding steering committee; forms Marysville steering committee of 40.

Internal: Transforms House with new decor.

Contradiction: Keeping three TM universes (Sacramento, Northern California and Nevada) with all auxiliary troops returning home. (Wk. 6)

RELIGIOUS HOUSE: SEATTLE

External: Receives Governor's endorsement - Office of Commerce and Economic Development - calling its regions on TMs behalf to set up core meetings for maneuver teams. Eighteen set up so far.

Internal: Maneuver office set up with new maps, tracking chart and calling models. Begins maneuver with victory dance in shadow of Space Needle.

Contradiction: Moving vision from our minds to minds of community leadership. (Wk. 6)

RELIGIOUS HOUSE: LOS ANGELES

External: Women's Forum meeting plans task and format for next five months of meetings. Eighty-one communities visited within 100 miles of Los Angeles in the last maneuver.

Internal: House sees "Rocky" in inked celebration: conversation reveals impact of discipline and living the mundane. (It's Philadelphia and it's snowing!) Sojourner Charles McDermott announces decision to intern after Academy.

Contradiction: Creating the story that allows us to come to terms with the actual situation we have in grassroots development and clinching TMs. (Wk. 6)

RELIGIOUS HOUSE: PHOENIX

External: On the other side of maneuver three TM dates are set, five cores in being and two steering committees. The interweaving of development and TM gives major endorsement from Western Savings and gift of \$2,700 from Salt River Project.

Internal: Inked of 150 pounds ready made hamburgers and 40 pounds of cheese. Has week of spontaneous celebrations, including shuffleboard championship tournaments. Many guests are in and out.

Contradiction: Preventing evaporation, maintaining push, being effective capitalists. (Wk. 6)

RELIGIOUS HOUSE: SALT LAKE CITY

External: Tooele sets TM date; American Association of Retired Persons offers contacts in all targeted towns and Utah state report completed.

Internal: House bundles up as incredible electric system fails again. 'Roots' captures attention of whole House.

Contradiction: Coordinating and timelining all troops and tasks for the 1001 things to do for maneuver weeks. (Wk. 5)

RELIGIOUS HOUSE: BILLINGS

External: East Helena steering committee with 14 present is led by three members of Whitehall steering committee. Seven hundred newsletter envelopes labelled by four EG and one Youth.

Internal: House experiences Wayside Inn dynamic.

Contradiction: Accelerating TM marketing and organization by TM grads in order to do 40 TMs this year. (Wk. 11)

RELIGIOUS HOUSE: DENVER

External: Women's luncheon with 15 women from key positions around the city nets nine for the Advisory Committee and two TM prospects.

Internal: Our awakening journey is intensified through Soren Kierkegaard study on the forms of despair while our engagement is deepened through sending Phil Devor on a consultation trip to Majuro and participating in the Vances' visioning collegium on the next 18 months.

Contradiction: Discerning the imaginative strategies to move networks from a static, linear plateau to a deep commitment for TM. (Wk. 6)

RELIGIOUS HOUSE: CANNON BALL

External: Twenty-four foot peace pipe sign designed, built and installed by community on state highway. Tribal Council unanimously votes resolution to incorporate the project.

Internal: Harry and Lillian Fast Horse participate in ecclesiola second week in a row.

Contradiction: Moving on tactical steps that mobilize the shadows into engagement and commitment. (Wk. 6)

EDMONTON

RELIGIOUS HOUSE: EDMONTON

External: Significant activity in each campaign seen in GSD trek to Slave Lake, CFC visits and presentations in Tofield and Redwater, newsletter mailed to all regional colleagues, and workshop leadership training session held in Millwoods.

Internal: House search initiated in earnest as tactic in growing self-support campaign. Moti Mahal, great Indian restaurant strangely located on site of transformed Fuk Wah Tsuen, refreshes House with global images after intensity of local engagement.

(RELIGIOUS HOUSE: EDMONTON)

Contradiction: Catalyzing campaign affirmation into committed action. (Wk. 6)

RELIGIOUS HOUSE: VANCOUVER

External: Follow-up visit to Williams Lake combines CFC and GSD thrusts, opens up provincial government funding possibilities, network endorsements, and leads to sojourn decision from Forum grad family of seven.

Internal: This week's inkind victories include automatic washer and dryer, printing subsidies, and long term loan of slide projector. Ecclesiola continues to be great discontinuous highlight of mid-week.

Contradiction: Collapsing the tension between long-range strategies and day to day maneuvering, both of which are crucial and complementary. (Wk. 6)

RELIGIOUS HOUSE: ANCHORAGE

External: ICA office goes public as people come for appointments. Receives two endorsement/introduction letters.

Internal: Week II ecclesiola study becomes a "happening". House attends wedding and home celebration of Charles Benson III and Jill Burmeister.

Contradiction: Sustaining story of vision and care. (Wk. 5)

RELIGIOUS HOUSE: SASKATOON

External: Visits with grads, the Wheat Pool and the Board of Trade in Saskatoon turned up three possible consultants.

Internal: Regular inkind pickups established cutting 15% of food budget. Viewing the movie "Victory at Entebbe" with colleagues and conversation afterwards causes reflection over the elements of a maneuver and freeing the 85%.

Contradiction: Using what we already have to awaken the province. (Wk. 5)

RELIGIOUS HOUSE: WINNIPEG

External: Inkinds 22,000 sheets of paper for coordinators' manual.

Internal: Week II GSD consultant training winds up in celebration at Chinese restaurant.

Contradiction: Operating out of mindset that allows putting items and people "on hold" rather than moving it. (Wk. 6)

HOUSTON

RELIGIOUS HOUSE: HOUSTON

External: House focuses its entire attention in creating the new missional center, but manages to get a suitcase packed from the moving van and fly to North Carolina. Development team scores big with money and corporateness in Oklahoma.

Internal: House moves at last to 4207 Chartres, using 70 feet of inkind van complete with movers. Submits proposal to the South Main Center Association for a salary to do work in new parish, Binz.

Contradiction: Building a TM strategy that takes all beyond plodding from town to town to town. (Wk. 6)

RELIGIOUS HOUSE: AMARILLO

External: One third of North Heights TM participants show up for follow-up PSU in which proposals are polished and scheme is laid out for greater voter participation in Black precincts. East Lubbock sets core meeting as formal after dinner event with key black leaders sending invitations.

Hereford steering committee is formed and Coordinator training session date is set. House participates in areal inkind blitz for Delta Pace, inking all janitorial equipment and coffee.

Internal: House shifts ecclesiola to Friday night and struggles with ancient ur poetry. Grounds pressure points in TV movie "Roots" and natural gas crisis. In studying the Tao, rationalism is pushed and we get a glimpse of the "Other World".

Contradiction: Continuing to accelerate as all resources are spread thinner. (Wk. 6)

RELIGIOUS HOUSE: SAN ANTONIO

External: Two cores are at the door in Texas hill country. Inkind march not only acquires printing but 10,000 sheets of paper secured for TM Texas State-wide Steering Committee brochure.

Internal: Ecclesiola offers new insights in the midst of renewed situation. Receives two new House guests: Shirley Henschen from Houston for the Alamo maneuver and Troy Jarvis from Big Spring.

Contradiction: Generating within each troop the confidence to generate the sign necessary to move local man forward. (Wk. 6)

RELIGIOUS HOUSE: OKLAHOMA

External: First training session for local workshop leaders produces ten new workshop leaders from Panca City and Tonkawa.

Internal: Presence of development team for second week keeps House in high spirits. Bridget Crane's tuition has been lowered at day care center.

Contradiction: Keeping on top of the multitude of levels of decision going on in Oklahoma towns regarding TM:Oklahoma 100. (Wk. 6)

RELIGIOUS HOUSE: DALLAS

External: Palestine sets date for TM without any consultants at the meeting. Regional Council of Governments say, "We have no way of allowing for citizen involvement; therefore how many TMs can we do?"

Internal: New decor has revolutionized atmosphere and intentionality of Daily Office, emerging generation and office rooms.

Contradiction: How to lay out objectively what the task is: Pace inking, TM development and House activities so that structurally we may all plug in. (Wk. 6)

RELIGIOUS HOUSE: PACE

External: Inkind received mounts up: \$200 in office supplies, 2½ tons of ceiling installation, 300 loaves of bread, 4,000 cokes and 100 pounds of flour. Thirty-five turned out all day Saturday to work on the Consult Center and old town hall becomes Delta Pace HDP Office. Second addition of "Delta Pace Voice" is huge success.

Internal: Daily Office finds new permanent location in attic.

Contradiction: Quickly converting existing passion for Consult Center renovation into passion for full time participation for a large segment of the community. (Wk.6)

RELIGIOUS HOUSE: NEW ORLEANS

External: Metro maneuver Saturday in Louisiana sets two core meetings on Tuesday night. Gets back in the swing of things again with core, steering or development meeting every night of the week.

(RELIGIOUS HOUSE: NEW ORLEANS)

Internal: The great mystery of plumbing crisis has been solved. Walter Duerr, ITP on House trek, visits. Tim Busa spends his second full week in House since his reassignment in late November '76.

Contradiction: Doing the financial sustenance of the mission in the midst of total engagement in the mission itself. (Wk. 5)

RELIGIOUS HOUSE: MEMPHIS

External: Decisions to move to the next step toward TMs found in Hueytown, Alabama and Alexander City, Ripley and Hernando, Mississippi. Day II gains new colleague as Memphis steering committee workshop leader visits ICA office to strategize for next follow-up meeting and next Memphis TM.

Internal: Drop in on David Scott's cousin, Charles Dawson, in Scottsboro, Alabama, turns into depth conversation about caring for the South and in particular how to win with a Scottsboro TM. Powell's Pace stories elicit metro colleagues' plans to take over inkind responsibilities.

Contradiction: Using the power of 25 Mississippi TMs yet continuing to work each town thoroughly and comprehensively. (Wk. 6)

RELIGIOUS HOUSE: ATLANTA

External: Beginning development push for Delta Pace Consult elicits involvement of metro colleagues as they take assignments for procuring products and cash donations. State Senator Barker's authorization letter evokes responses from key persons saying "Yes" to TM.

Internal: Procurement of firewood occasions impromptu fireside songfest with the emerging generation bongo band.

Contradiction: Turning authorization into catalyzed TMs. (Wk. 6)

RELIGIOUS HOUSE: CHARLOTTE

External: Sets two TM dates as "hills are taken" in Lexington and Rutherfordton. Six development appointments set for Week 1 of 2 week area maneuver.

Internal: Metro colleague comes over to plan for maneuver celebration.

Contradiction: Holding tension in maneuver prep between accomplishment and arranging for accomplishment to happen. (Wk. 5)

RELIGIOUS HOUSE: MIAMI

External: Central Florida maneuver follow-up. House member on board of YMCA.

Internal: House member gets salaried full time job. As the cold leaves, we move back to "Florida Room" for collegiums. Lao Tzu continues to impact at Ecclesiola.

Contradiction: Enabling communities to see TM as a way to rediscover their own "roots". (Wk. 6)

CHICAGO

GLOBAL CENTRUM: CHICAGO

External: Thirty-six Whitewater staff and students initiate conference center dynamic and add to self-support image. Participation in Chicago and Oklahoma maneuvers.

Internal: Saturday lunch with Wedge report on four new social demonstration sites in SEAPAC.

Contradiction: Creating the cobra strike that is needed one minute before it is needed. (Wk. 6)

RELIGIOUS HOUSE: CHICAGO

External: Celebrates first \$10,000 plus day in FHDP with five checks. FHDP Graphic Arts Center is planned. Craftsmen Center is set up in basement Project House, new Preschool Board meets, FHDP core room is constructed out of old library, Emerging Generation suite is ready for beginning of Infant Care Program initiation. TM launches move on 100 suburban corporations.

Internal: Vida Melissa Welch is born— only EG girl. Receives Bronwyn Rees from Oombulgurri for preschool training. 'Roots' captures House.

Contradiction: Maintaining extraordinary eventfulness in midst of essential routine. (Wk. 5)

RELIGIOUS HOUSE: WICHITA

External: Building the sector implementation model and beginning implementation in the St. Louis Chanute and Salina sector demonstrating urban, medium urban and rural sector implementation.

Internal: Significant job upgrade, Carter's talk about "Town Hall meetings across the nation" and the strike force in for a couple of nights.

Contradiction: Building structures to engage day II and metro troops while the maneuver is on. (Wk. 6)

RELIGIOUS HOUSE: OMAHA

External: Article by Ralston Mayor on TM'76 and its significance for community involvement published in Nebraska League of Municipalities.

Internal: Consultants assigned to five city sectors to enable coordinator recruitment and care of steering committees.

Contradiction: Creating in ourselves and new colleagues a life and death commitment through seeing TM as a crucial timely tool for community renewal rather than another program. (Wk. 6)

RELIGIOUS HOUSE: KANSAS CITY

External: Division South strike force hits cultural and political with enforcement of ten legislators in Kansas and Missouri. Economic blitz moves on. A Sears store agrees on sponsorship Friday and receive their check Monday.

Internal: Kansas City finds itself as host of 35 soldiers of the Division South strike force. -

Contradiction: Getting permission for branch company support of TM. (Wk. 6)

RELIGIOUS HOUSE: MINNEAPOLIS

External: Four TM dates set in North Dakota including Fargo /Moorhead, a bi-city, county, state forum. Visits to 120 Minneapolis businesses in two weeks for Minnesota Future Day support.

Internal: Receives enough food to feed 100 - development celebration at Chinese restaurant. Seven development strike colleagues sent out. Six metro colleagues engage in Minnesota Future Day development blitz.

Contradiction: Solidifying two month model to catalyze Minnesota Future Day 100 and Old West 100. (Wk. 6)

RELIGIOUS HOUSE: ST. LOUIS

External: Division South strike force hits Illinois and Kansas with economic blitz as remnant in St. Louis creates management information systems and visits 12 more corporations. Mayor of Rockford reports anxious to serve on Illinois State TM committee.

(RELIGIOUS HOUSE: ST. LOUIS)

Internal: EG illness stretches Day I care model and first week of The Tao stretches treep consciousness toward the unknown unknown.

Contradiction: Remembering the cruciality of maintaining the support systems. (Wk. 3)

RELIGIOUS HOUSE: PEORIA

External: The division south strike force completes economic blitz of visiting over 550 corporations in a five state area and the money is starting to come in that week with over \$2,000 in hand. Shift now to political-statewide maneuvers of political support visiting with two governors and state representatives and senators.

Internal: Day II troops intensify engagement in external as new collegium and meal rationale enable troop effort.

Contradiction: Building the models that will keep all the troops effectively engaged in training over 4,000 workshop leaders and coordinating 450 TMs. (Wk. 5)

RELIGIOUS HOUSE: GREEN BAY

External: Metro colleague receives endorsement and money from one of State's largest corporations: Employers Insurance of Wausau. Radio Talk Show interviewer for local TM warms up to the subject and becomes advocate to 25,000 listening audience.

Internal: Ecclesiola scores again as sustaining dynamic with discontinuous food, collegiality, and stimulating study.

Contradiction: Trusting our methods and building back up models at the same time. (Wk. 6)

RELIGIOUS HOUSE: MILWAUKEE

External: Visit to Governor for letter and signature brings support from three more congressmen. First meeting of state steering committee sets forth bold objectives as 35 members from across the state brave the freezing weather.

Internal: Mary Bolin gives vivid detailed report of Cano Negro. New stationary and calling cards arrive just in time for funding blitz.

Contradiction: Discovering means of harnessing and channeling released missional excitement as territory of engagement is expanded. (Wk. 6)

RELIGIOUS HOUSE: INDIANAPOLIS

External: Kentucky TM campaign advances as Lt. Governor Thelma Stovall agrees to write letters to heads of 20 statewide networks asking for participation on statewide steering committee. Use of network mailings, endorsement and local chapters to help with TM set up. Cadres build models for four GSD slide shows and GSD consultant training using Friday night/Saturday morning format. Urban circuits raises \$1,900 in Louisville and Indianapolis.

Internal: Finance collegiums elicit decision to win the economic war. Even though all are broke, whole House celebrates via Master Charge with a great Chinese feast as Ruth Landmann secures a full-time teaching position, Federal and State tax forms are completed for a generous return and Darrell secures a four day paint job at \$60 a day.

Contradiction: Keeping tactics moving in all three campaigns simultaneously, particularly relative to TM in Indiana. (Wk. 6)

RELIGIOUS HOUSE: CINCINNATI

External: Kentucky Lt. Governor Thelma Stovall gives nod to Kentucky TM in August with Jaycees playing major set up and funding role. Consultant training of 20 begins strategy for expanded consultant force.

Internal: New internal life guide clarifies corporate life style. Youth and EG pick up food services for quarter.

Contradiction: Initiating structures which fully engages and sustains five consultant teams as solitary movement force while forging new model of massive coordinator training. (Wk. 3)

RELIGIOUS HOUSE: DETROIT

External: Everything pointing to TM FOCUS: MICHIGAN WEEK: identifying corporations, preparing for development blitz, completion of a 60-member state committee for week, including Honorable John Conyers, U.S. Congressman.

Internal: Having House ecclesiola with Phase I, combining elements of hot chocolate, popcorn and favorite TV program. Energy crisis combined with cold weather finds us with thermostat lowered three degrees.

Contradiction: Recruiting troops for development and community blitz still lagging. (Wk. 6)

RELIGIOUS HOUSE: CLEVELAND

External: TM OHIO receives several booster shots with the inkind contributions of an IBM selectric typewriter and 200 breakfasts for the state network presidents at the Hospitality Inn and hosted by the Lieutenant Governor.

Internal: Ecclesiola and Saturday night celebrations are highlighted by Lao Tzu and viewing "Network".

Contradiction: Keeping track of all the plates in funding, consultant recruitment and community set up in midst of the overwhelming excitement of TM OHIO. (Wk. 6)

NEW YORK

RELIGIOUS HOUSE: NEW YORK

External: Gives a sign of the possibility of developed and program income with receipts from GSD nite with minus three steering committee receipts of \$500 with another promising their three \$500s next week and a patron gift of \$3000.

Internal: House keeping around the edges keeps colleagues and contributing guests in the Wayside Inn. Health Trek. Bi-regional task force and development all descend on us at once, and participate in a Saturday Eve celebration seeing NETWORK.

Contradiction: Keeping eye on the Interglobal movement formation as an integral part of the three campaigns rather than a separate set of tactics. (Wk. 4)

RELIGIOUS HOUSE: PITTSBURGH

External: Effective consultant training in weekly sessions, consultants working almost full-time and three steering committees.

Internal: Sharpening the House as mission by reaching 80% of food budget in in-kind, re-imaging internal and external teams as guilds, re-claiming common memory in Christ of History study.

Contradiction: Discovering that short-term operation planning allows plans according to what seems possible at the time rather than build the models to accomplish the necessary. (Wk. 2)

RELIGIOUS HOUSE: ROCHESTER

External: TM in Westfield raises \$400 in one day from local businesses.

Internal: The completion of tactical systems allows real assignments to be made - finally.

Contradiction: Turning interest into dates. (Wk. 5)

RELIGIOUS HOUSE: RICHMOND

External: West End, Midlothian, Fredericksburg, and North Side TMs have heard the gun and are off the starting line.

Internal: Part-time job brings us a half step closer to self-support.

Contradiction: Current TM consulting methods call for more doing activities than we can afford in order to intensify replication. (Wk. 6)

RELIGIOUS HOUSE: WASHINGTON

External: Ivy City Council thrust out of Ivy City and into the world through Neil Vances's report on the 24 social demonstrations and Ivy City's own Lawrence Glacoe's report on the Cano Negro Consult.

Internal: House global consciousness bumped via collegium on Wedge report and week presence of Neil Vance, Kathy Bauknight, and Mark Welsh.

Contradiction: Firming back up system: economics, structures, and training. (Wk. 4)

RELIGIOUS HOUSE: BALTIMORE

External: Two GSD nights with 23 total despite blizzard conditions.

Internal: Rev. Kang Shin Chul brings several Korean colleagues.

Contradiction: Moving it when every thing is frozen in. (Wk. 6)

RELIGIOUS HOUSE: PHILADELPHIA

External: Week II development PSU results in \$650 in immediate pledges as colleagues who have never given drop by, see names on list, and affirm their support. Two GSD nights in one week reveal this tool as break open tactic for all three campaigns.

Internal: Decision to send prior to India for consult shocks whole House with ease of decision. Snowstorm brings sudden guest in transit from Rhode Island who attests in collegium that our struggles regarding TM models are duplicated even in Rhode Island.

Contradiction: Deciding with all three campaigns finally running on equal footing, do you juggle the hats, or stack them, or put them on the shelf and delegate them equal time?(Wk. 6)

RELIGIOUS HOUSE: NEWARK

External: Week culminates with \$100 from Dover (to secure their date), a Development PSU and kick-off celebration of TM, New Jersey, 1977 with new colleagues present.

Internal: Ecclesiola celebrates Steve Stodola's return from Cano Negro and initiation of the facility task force.

Contradiction: Engaging the most people in the circuit design for the quarter. (Wk. 5)

RELIGIOUS HOUSE: BROOKLYN

External: TM grad assumes creative leadership role in weekly consultant training construct.

Internal: House impacted by ecclesiola Lao Tzu.

Contradiction: Sustaining intensification of TM as self-support and development becomes equal priority. (Wk. 6)

RELIGIOUS HOUSE: HARTFORD

External: An ICA Advisory Board for the State of Connecticut is formed with 20 persons from economic, political and cultural involvement. Consultant Training Day enables 25 colleagues (most from TMs) to catalyze and consult TMs in 19 western New England towns.

Internal: Self-support for area gets closer as Carolyn Browning gets job with State of Connecticut, Social Welfare Department, Jean Hanson gets job as secretary for the Connecticut Association for Retarded Citizens. Fred McNutt salesman - total take home pay approximately \$1,800 per month.

Contradiction: Discerning structures and discipline for sustaining the engagement of new consultants as we move into new areas. (Wk. 6)

RELIGIOUS HOUSE: ALBANY

External: Steering committee meeting held four days after core meeting and all say yes, with county legislative chairman giving best TM context heard and two GSD nights attract 70 people.

Internal: Crisp one page resumes distributed by Schenectady consultants core. Linda Brock arrives for ecclesiola from New York House with gift.

Contradiction: Securing larger living space for expansion. (Wk. 4)

RELIGIOUS HOUSE: BOSTON

External: Boston Metro colleagues give TM witness to two core meetings.

Internal: Conversation on "Roots" demonstrates how to operate out of a vision. Inkind success and consultant engagement demonstrates that people are willing and ready to participate.

Contradiction: Daring to risk the question of engagement to everyone encounter. (Wk. 6)

MONTREAL

RELIGIOUS HOUSE: MONTREAL

External: Work in New Brunswick accelerates as staff quarters for Lorne de l'Acadie are donated, six forums are set, and federal framing begins with two proposals submitted and key visit in Ottawa.

Internal: Financial onslaught is intensified as house picks up one more salary and the Fergusons arrive to work on area development.

Contradiction: Putting form on the difference between catalyzing and being on the front lines. (Wk. 6)

RELIGIOUS HOUSE: TORONTO

External: South Oshawa Forum is a powerful event, completely run by local people, articulating pain and pointing the way to a new identity and clarity about political resolve.

Internal: Three day fast illuminates powerful solitary resolves in midst of being a newly disciplined people and gives us a sense of commonality with the world's 85%.

Contradiction: Discerning the form which builds the movemental corporate mind, and does the doing, all as one thing, from planning through implementaries to accountability. (Wk. 6)

RELIGIOUS HOUSE: OTTAWA

External: Team sent to Amprior on Week II sets up core in one afternoon (three calls) and designs the "Amprior model" for initial calls.

Internal: Area inkind strike force acquires stationery supplies. Printing press sent to Area House in the midst of mixed feelings.

Contradiction: Nurturing local colleagues along to at least double missional effectivity. (Wk. 6)

CARACAS

RELIGIOUS HOUSE: CARACAS

External: Installs shelving and paints walls for opening of Health Clinic. Clears land for water well drilling. Burns off two hectares of land for community garden and bulldozer secured to pull stumps. Preschool finishes first week with 35 children in attendance, and adult literacy also completes first week with 15 participants. Afterschool club opens for elementary school youth. Men assign themselves to taskforces to create a continuous work force during the entire week. Development visits total 20 requesting a total of \$34,000 with \$2,500 in hand. General Electric donates two refrigerators, a washing machine and TV. INCE (government training agency) offers to begin training programs in construction, agriculture and fish farms.

Internal: Iron Cross formally moved to Cano Negro rehearses decision to be planted firmly in the local. Sends last of consultant team out for next consult.

Contradiction: Getting the wheels under the small industry complex. (Wk. 6)

THE GLOBAL ORDER CENTRUM REPORT

**BRUSSELS
NAIROBI
BOMBAY
CANBERRA
HONG KONG
CHICAGO**

WEEK

**GLOBAL
DEVELOPMENT
CENTRUM**

Global Development around the world is meeting successfully with governments and private associations for funding. Hong Kong Nexus reports that within the past four weeks they have submitted 78 proposals. In Perth, so Canberra reports, government monies have been freed up funding housing and water for Oombulgurri. Brussels Nexus has recently made a bank deposit of \$32,000, the first draw from EEC. Choruses of success in making monthly budget is becoming commonplace now for all the Global Band.

**GLOBAL
RESEARCH
CENTRUM**

Chicago works on TM replication plans (including the state-wide TM rally design), GRA band planning, strategic vision for Woman in the Future seminar and Academy metamorphosis in relation to Quarter IV construct. Brussels compiles Board of European Consultants. Canberra sends mailing to Houses regarding future consults and staffing needs. Hong Kong reports two GCFs in Korea. The task of research is getting more practical and more concrete as the "catalytic cobra strikers" of the various Nexuses. The contradiction is in the arena of symbolizing our responsibility for continually pushing the creative edge of the three campaigns.

**GLOBAL
OPERATION
CENTRUM**

Wedge site selection team confirms Nan Ping in Taiwan (one hour from Kaohsiung) and Miyata in Japan; anticipates replication of Jeju this year. Brussels reports Spring Quarter schedule for Women in the Future ready. Canberra seeks concrete tactics for acting out its care for the three areas it serves when the one it is in seems to consume most of its time.

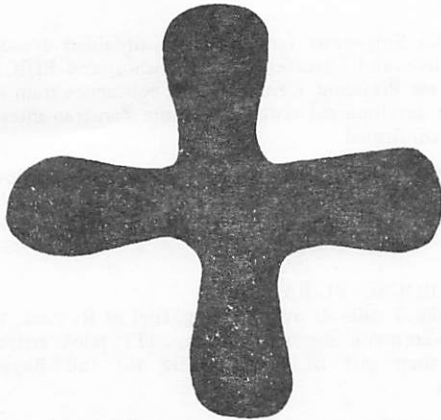
**GLOBAL
MANAGEMENT
CENTRUM**

Global Management Centrum deals with the treasure of economy by closing out 1976 accounts in six currencies in Hong Kong, completing house condition reports in Brussels and sending out stipends in Canberra. Legal Trek completes work in northern SEAPAC and turns to southern SEAPAC, Sub-Asia and Europe. Continued work is done in arena of conference center as Chicago hosts 36 freshmen from Whitewater, Wisconsin. The contradiction is in holding in focus the total scope of Management responsibility.

GLOBAL ORDER REPORT

Week 7

February 14-20, 1977



LONDON

RELIGIOUS HOUSE: LONDON

External: Second meeting of Industrial Development Advisory Board on Local Economic Contradiction Analysis includes government officials and local industry as well as representatives from major London companies. Valentines fancy dress preschool benefit ball becomes carnival.

Internal: William Kanyembo, ITP grad and Zambian pastor, sojourns for week preaching at local church. House ITI staff and grads return and other ITI grads sojourn briefly. Five urs at breakfast. Christian Vigelius lands a job after three hours search.

Contradiction: Meshing the spinning gears of creativity in three campaigns into one movemental thrust. (Wk. 7)

RELIGIOUS HOUSE: GLASGOW

External: Key leadership of region meets to refocus the Movement's direction relative to the three campaigns.

Internal: House has new address: 5 Beechwood Avenue, Rutherglen, Glasgow G73 (Tel: 647-0592).

Contradiction: Recreating a three-campaign regional story over against demand to intensify one campaign. (Wk. 7)

RELIGIOUS HOUSE: BRISTOL

External: Visits six towns in first week of Foray 200 resulting in two core meetings scheduled and two other towns showing interest.

Internal: Writes verse to "Song in the Night" during colleague training for Foray 200. Laura visits with father on return from Ijede Consult.

Contradiction: Turning models into concrete community decision to do TM:Europe. (Wk. 7)

RELIGIOUS HOUSE: MANCHESTER

External: Foray 200 begins in north of England with 61 visits resulting in four probable TMs.

Internal: House hosts three guests from ITI Birmingham.

Send your grain across the seas, and in time you will get a return. Divide your merchandise among seven ventures, eight maybe, since you do not know what disasters may occur on earth.

Ecclesiastes 11-6

Contradiction: Moving from general community interest to locating the troika. (Wk. 6)

PARIS

RELIGIOUS HOUSE: PARIS

External: Goes on GCF circuits to Marseille, Orange, Quimper, Brest, Daoulas and Chambon-sur-Lignon. Orange represents the first time we have visited a town without knowing anyone there.

Internal: Holding ecclesiola on Saturday evening allows all to participate and culminates the week in a helpful way.

Contradiction: Strategies for acquisition of a car. (Wk. 5)

RELIGIOUS HOUSE: ROME

External: Castelgrande residents (150) attend meeting chaired by mayor to hear about Castelgrande Human Development Project, and give standing ovation to project idea. TM presentation in Tivoli gets enthusiastic support. Receives 300,000 lire from school Sisters of Notre Dame.

Internal: Development team spends week with House and visits Castelgrande.

Contradiction: Covering all the areas of activity. (Wk. 7)

LAGOS

RELIGIOUS HOUSE: LAGOS

External: Begins Ijede Community Hall renovation with the help of \$1500 worth of paint and \$1000 worth of cement. Week's development yields \$2500 in hand.

Internal: Consult team arrives from Shantumbu. Completes concrete floors in auxiliary house enabling assignment of family space.

Contradiction: Creating timeline and priority rationales to deal with unlimiting scope of task and possibility. (Wk. 4)

BRUSSELS

GLOBAL CENTRUM: BRUSSELS

External: ICA brochures in Dutch, French and Flemish are printed and ready for use in TM Europa circuiting. Goes on development, GSD consultant recruitment in Europe, as Foray 200 enters second week.

Internal: Two intern candidates at ecclesiola maintain stream of guests through joint Nexus/House ecclesiola.

Contradiction: Identifying centrum response when all the work belongs to all the people. (Wk. 7)

RELIGIOUS HOUSE: BRUSSELS

External: First week of Foray 200 nets yeses from six communities to hold core meetings; sets two TM dates. Liege commissioner returns from Ijede and agrees to give French and English report evenings. Kortrijk core sets December 11 TM date. Every development call is a victory.

Internal: Sends Kay Townley to Amsterdam and The Hague for Woman in the Future set up. Assigns new Amsterdam troops. Ramona Gilmour returns from hospital. Hosts 25 guardians for El Bayad Evening at the Institute led by guardian consultant.

Contradiction: Operating Foray 200 to set up TMs and allow colleagues to blossom. (Wk. 7)

RELIGIOUS HOUSE: AMSTERDAM

External: Visits seven communities and 18 people, setting up two core meetings in first week of Foray 200.

Internal: Pushes potential guardian couple to make decision about board of trustees.

Contradiction: Discerning the limits to shortcutting research and framing in the press for core meeting date. (Wk. 7)

FRANKFURT

RELIGIOUS HOUSE: FRANKFURT

External: Contacts 38 people in seven communities for Gemeindeforum in first week of Foray 200, resulting in one core meeting.

Internal: "Foray flu" reduces troops to one part-time team, but does not stop the Foray. Begins new Global Language School Wednesday evenings. Strips and waxes floors, transforming collegium and office floors.

Contradiction: Ensuring initial contacts in new communities through networks. (Wk. 7)

RELIGIOUS HOUSE: BERLIN

External: Kinderklub moves to Monday as result of meeting of various community children's programs so that there are now programs available every weekday. VHS will pay the ICA to conduct English classes and two hotels tell project to "bring your list" of inkind needs for cafe and communications center. Volunteers are beginning to seek ICA as local business man comes to Saturday family celebration to see how he can work with us.

Internal: Ecclesiola study grounds dynamics of changing history. Signal collegium on street beautification demonstrates consensus building dynamic.

Contradiction: Creating management techniques to deal with the conflicting priorities, and the style to deal with the experience of being ineffective. (Wk. 7)

KINSHASA

RELIGIOUS HOUSE: LUSAKA

External: Four are full time development. Holds meetings with Cabinet Minister who welcomes ICA to Central Province and Archbishop Liho asks for next HDP. Four other requests come from chiefs, ward counselors, etc. Twenty more acres come under the plow. Institute has new Zambian face with national figure, Mr. W.K.Sikalumbi as first chairman.

Internal: Jones Sinyanewe family interns, ordained deacon of AME Church, and chauffers visiting Bishop and EI/ICA chairman to see President Kaunda. Eight colleagues train at ecclesiola for development visits. Two more Zambian intern decisions are confirmed.

Contradiction: Authorization project demands overshadow other global programs. (Wk. 7)

CAIRO

RELIGIOUS HOUSE: EL BAYAD

External: Stake 3 calls its own meeting, first of its kind, to recruit for watermain digging workday. ITT telex arrives announcing their gift of enough wire for full Bayad electrification.

Internal: Twenty-three people gather around the table with six Global Health Acceleration Team and five Egyptian interns. Assigns Judy and John Tresise to Chicago to recuperate.

Contradiction: Dealing with complexities of GSD in midst of economic breakthroughs. (Wk. 6)

NAIROBI

GLOBAL CENTRUM: NAIROBI

External: A visit from the British High Commissioner pays off with the presentation of a pump for irrigating the demonstration farm. "Launch '77" development blitz comes to an end with a celebration after collecting sum of 64,000 shilling (US\$8,000.00) in hand, with more committed.

Internal: Creates new songs from "Launch '77". Holds internal Town Meeting with House and Nexus. Two more Youth are enrolled in school.

Contradiction: Changing back to KHDP programs as main emphasis at the same time maintaining the present development momentum. (Wk. 6)

RELIGIOUS HOUSE: NAIROBI

External: Holds second VM with 300 villagers from community around Friends' (Quaker) Mission in western province. Sets up first VM coordinating committee on Mount Kenya. Utilizes workshop leaders and participants from first VM in Kenya for South Nyanza province maneuver which sets up 12 VMs for Week 12. Priest in Machakos calls for VM set-up.

Internal: "Humaness Is . . ." is new graffiti chart for continuing individual and corporate brooding.

Contradiction: Balancing eagerness of villagers to have VMs and ability to gather large numbers of villagers for the day with raising funds and pulling off practices. (Wk. 7)

BOMBAY

GLOBAL CENTRUM: BOMBAY

External: India's Republic Day celebrated with morning parade of school children in new clothes with bright faces, flag hoisting, and afternoon nail brushing and weight checking at just two of the exciting Health Fair booths. An inter-guilds "Kobadi" match. All State Bank of India staff drop by with greetings after getting 101 new accounts opened earlier in the week and a commitment to open a branch here.

Internal: Internal life for Quarter III is kicked off with barbecue celebration on Saturday night while receiving Ecclesiola manual for the quarter which provides context for study of the yellow ur and a celebrative Chinese feast.

Contradiction: Methods of tapping technical expertise available in India in order to sustain Maliwada economically and build the thrust for economic self-sufficiency. (Wk. 6)

RELIGIOUS HOUSE: BOMBAY

External: Receives 5,000 rupees from General Electric International, box of medicine from German Remedies Ltd. Revises Gram Sabha manual to print 50,000. Vaviharsh document is off the press.

Internal: Uses new global materials in first ecclesiola of quarter. Once started, we could not stop: four bedrooms, lounge and hall are painted at cost of two rupees.

Contradiction: Structuring time so as to successfully tell the story to do both Area House and hub of replication tasks. (Wk. 7)

RELIGIOUS HOUSE: VAVIHARSH

External: Begins main road paving as the first visible sign. Holds informal guild meetings. Makes public and private sector, development and authorization visits to Nasik, Ghoti, and Igatpuri.

Internal: Sends out two Social Method School graduates to the Kendur Human Development Project, and a couple to the Quarter III SMS in Maliwada. Has first birthday celebrations for two auxiliary members.

Contradiction: Utilizing available expertise from the public and private sectors to concretize tactics estimates, in order to tap the abundant resources. (Wk. 7)

DELHI

RELIGIOUS HOUSE: DELHI

External: Holds first Delhi regional cadre meeting emphasizing GSD replication and most particularly replication in a Delhi village.

Internal: Reorienting images relative to living in a village.

Contradiction: Creating the plan for and maintaining intentionality in months of selecting and initiating a GSD site amidst numerous complications and ambiguities. (Wk.5)

MADRAS

RELIGIOUS HOUSE: HYDERABAD

External: Conducts long trek of south. Attends ICA directors' meeting. Receives 2,000 rupees for printing expenses for NHDP. Prepares Nadlapur citizens to come to Maliwada.

Internal: Prepares for Nadlapur Gram Sabha. Recruits metro cadre for village Gram Sabha. Translates Gram Sabha workbook in Telugu, the "Italian of the East". Study of moral covenant and corporate discipline impacts all and demands new sense of responsibility to be the Order.

Contradiction: Doing the area and keeping the pot boiling in the village of Nadlapur. (Wk. 7)

CALCUTTA

RELIGIOUS HOUSE: CALCUTTA

External: Launches corporate research for GSD site location in Area Calcutta at the National Library in Calcutta. Main task is sifting an overwhelming amount of information, but now the crystal ball is coming clearer.

Internal: Secures one job, prepares tuition space for another. Large maps of parts of India start dominating decor.

Contradiction: Creating corporate self-story to go out and risk the deed. (Wk. 7)

SINGAPORE

RELIGIOUS HOUSE: SINGAPORE

External: Trek to Sarawak, East Malaysia, includes a long House visit, home of key colleague, Jerry Rabu, president of Iban Conference of Methodist Church. Visit with state government officials who pave way for religious study program and future GSD project raises question of how many can we send to Kuala Lumpur Consult. They settle on six.

Internal: Gail Fray from Melbourne, Australia, visits with teacher friend from Portland, Australia, and after the inevitable "What is ICA?" question recalls excitedly the CMA held in Portland recently.

Contradiction: Needing trained colleagues and interns to handle multi-faceted breakloose of possibility. (Wk.6)

RELIGIOUS HOUSE: KUALA LUMPUR

External: Holds second GCF in Malaysia as part of course called "Community Leadership Training" where citizens learn how to set up GCF and then hold one all in two days.

Internal: Sherwood Shankland returns to Malaysia to follow up on development contact and to help brood through possible designs for new facility.

Contradiction: Using crest of the wave to get leverage on needed authorization. (Wk. 6)s,4)s,df

RELIGIOUS HOUSE: JAKARTA

External: Deep bore well hits good water at 64 meters. Women's luncheon is attended by 28 women from stakes. Community leadership is excited over prospects of village attendance at Hong Kong and Malaysia Consult; 53 attend guild meeting. Community tractor used by village farmers from 7:00 a.m. to 1:00 a.m. is great time saver. Community in Stake 2 completes pathways.

Internal: Wawan, brother of Suhardi, sojourns to raise total number of adults to 20. Dan Tuecke returns from Cano Negro Consult. Shanklin returns from development in Kuala Lumpur. Tim Lush goes to Malaysia for GSD preparation; Ibu Sukanto and George Yost go to East Java as representatives at Lai's wedding.

Contradiction: Moving many separate programs into one socio-economic thrust. (Wk. 6)

HONG KONG

GLOBAL CENTRUM: HONG KONG

External: Wedge returns to Hong Kong and Order consenses on Nam Wai Human Development Project. Authorization visit obtains full private and public sector support. Legal trek reports on zone and collects Nexus data.

(GLOBAL CENTRUM: HONG KONG)

Internal: House, Nexus, Wedge, and legal trek celebrate the Nam Wai victory with a fourteen course szechuan dinner, complete with corporate songs and reflection.

Contradiction: Isolating the key maneuvers that will focus the total expenditure that has been released. (Wk. 7)

RELIGIOUS HOUSE: HONG KONG

External: Participates in week of preparation for a GCF in Fuk Wah Tsuen. The pedagogy group decides to concentrate on GCF training, trains workshop leaders for the January 9 GCF, brochures for the GCF were distributed house to house in Fuk Wah Tsuen, and prints the newly translated workbook.

Internal: Following a refreshing discontinuity, celebrates the New Year with centrum.

Contradiction: Enabling the nods of yes in the business and governmental sectors to be backed up with needed actions. (Wk. 3)

RELIGIOUS HOUSE: KAOHSIUNG

External: Visit to JCI National President opens new GCF doors while village research and Wedge preparation excites old colleagues about social demonstration possibility.

Internal: Ecclesiola discovers more Chinese quotes for GCF campaign—"Watch, look, and take care of your community."

Contradiction: Having to continue to look for a village in the midst of economic uncertainty. (Wk. 4)

RELIGIOUS HOUSE: MANILA

External: Goes on three circuits to Gabunatuan, Legaspi, Manila-San Felipeneri. Produces GCF workbook for Nabunteran, Davao del Norte; holds ITI steering committee meeting. Fr. Santa Ana receives new assignment. Miracle workbook production begins.

Internal: Wedge trek intensifies global consciousness. Basketball backboard is mounted — contradiction is no basketball. Receives 9000 pesos in development with 2000 more on Friday to be deposited.

Contradiction: Reorienting ourselves to meet area needs, not just regional. (Wk. 7)

RELIGIOUS HOUSE: TAIPEI

External: Visits with Pastor Chi and Pastor Lin to set up CSIIIA course with local congregations.

Internal: Chi Hwa-Guan sojourns as Lao Tzu study begins while working on a series of brochures.

Contradiction: Waiting for Jaycees to sponsor GCF and inking brochures. (Wk. 7)

RELIGIOUS HOUSE: CEBU

External: Two health workers teach mothers infant feeding. Boat motor arrives from Manila and 23 rabbits arrive from Heifer Project-Cavite. Installs electric light at Buri factory.

Internal: Sends out Jack and Nancy Callum to Davao. House celebrates Francis Coker's birthday Thursday night.

Contradiction: Moving full speed ahead while shifting program and staff assignments. (Wk. 5)

RELIGIOUS HOUSE: DAVAO

External: Mayor Santos of Davao City asks ICA to be advisors on city's Human Settlement project, dealing with relocation of 2,000 homeless fire victims.

Internal: Japanese businessman calls House to ask for tutoring in English.

Contradiction: Focusing troop strength on PCTS and still keeping all other plates spinning. (Wk. 7)

TOKYO

RELIGIOUS HOUSE: TOKYO

External: Visits to four cities in greater Tokyo show promise for GCF.

Internal: Keio University Professor of Economics visits House and offers to have students accompany House personnel on GCF visits. Martha Taylor arrives from New York to sojourn.

Contradiction: Adapting GCF to Japan, requiring restoring critical nature of GCF for selves and for Japan. (Wk. 7)

RELIGIOUS HOUSE: JEJU

External: The common mill and village treasury solicitation of the community by guild leaders focuses the future as a visit from assemblyman from Jeju supports efforts as the primary school opens after January vacation with a new kitchen serving a hot lunch of noodles. Preschool postpones opening a week for teachers to travel to Seoul for a week's training.

Internal: Ecclesiola breaks loose spirit. Inkind peanut butter and jelly and crackers.

Contradiction: Undergirding economic self-support. (Wk. 7)

RELIGIOUS HOUSE: SEOUL

External: Holds GCF in Yul Mun Ri of 80 and U Do Dong of 120 and HRM in U Do Dong of 80, all in Chuncnon City, where ITI will be held. David Wood, on legal trek, meets with guardians, registration lawyer, goes to Kwangyung II and makes development calls. Launches inkind development; meets with Bishop McNaughton about new House facility.

Internal: Welcomes David Wood and John Slicker to Seoul for visits.

Contradiction: Needing long-range training model for colleagues and the style which catalyzes the doing of colleagues. (Wk. 7)

RELIGIOUS HOUSE: FUKUOKA

External: Conversation with chairman of Miyata city council indicates all the official nod needed on the local level to begin HDP project.

Internal: Battleplanning shifts from securing authorization to consult countdown. Receives Eija Karikoski as new intern.

Contradiction: Building a comprehensive context for those who serve as go-betweens in critical introductions. (Wk. 7)

RELIGIOUS HOUSE: OSAKA

External: Ashiya meeting to set up TM sponsors committee. Rotary member will set up calls. Wood meets Attorney Yamamoto to strategize incorporation in Japan.

Internal: Initial translation on TM brochure complete.

Contradiction: Discerning the local lever for sponsoring TM. (Wk. 6)

RELIGIOUS HOUSE: SENDAI

External: Sends 85 development letters to local culture group under sponsorship of colleague.

Internal: Sees movie "Cassandra Crossing" with conversation at House. St. Valentine becomes vehicle for a GSD development party.

Contradiction: Keeping wheels of implementing GCF at same pace as colleague's absorption rate. (Wk. 7)

SYDNEY**RELIGIOUS HOUSE: SYDNEY**

External: Seventy-five pairs of shoes inkinded to begin eradication of hook-worm in Oombulgurri. Community Training Consultation is first summer program to come out in the black. Battleplanning results in realistic circuit model using colleagues, and a donor rationale to meet the program budget.

Internal: Whole House goes to Brisbane to Council following CTC. Receives Karen, Michael and Kerry Warne and Lisa Smith to make full House complement within one week of assignments. Pauline Chia and friend stay on way around Australia.

Contradiction: Creating timeline and external missional assignments to unblock focused and immediate effort. (Wk. 6)

RELIGIOUS HOUSE: PERTH

External: Robert Roberts addresses North Perth Rotary Club and first inkind consignment for 1977 shipped to Oombulgurri.

Internal: Youth and emerging generation commence school year. Hosts Robert Roberts and Joanne Moore. Joanne is an emmisary student enroute from Oombulgurri to Dalwallinu host family to commence first year high school.

Contradiction: Particularizing general affirmation so as to tie down development appointments. (Wk. 7)

RELIGIOUS HOUSE: DARWIN

External: Christmas Parade details finalized and trek and CTC mailing out.

Internal: Bill Senton call in on way home from Ombulgurri. Christannia Betonte celebrates first birthday. EG participate in YMCA holiday activities.

Contradiction: Sustaining the momentum, especially in Development, with no in-house. (Wk. 12)

RELIGIOUS HOUSE: OOMBULGURRI

External: Building boom occurs as columns go up on Model House and young men and education guild remodel school interior.

Internal: Complete auxiliary is present at the same time, enabling intensification of push on guild work arenas.

Contradiction: Creating the tactics to enable the community council to play a strengthened role in the building of the community. (Wk. 7)

RELIGIOUS HOUSE: ADELAIDE

External: Five House adults plus eleven regional colleagues return from Community Training Consultation (GRA) to two CMA engagements in first two days after return.

Internal: Paul Duffy as sole House member present in January maintains facility in fine style. Others return to garden bursting with fine tomatoes.

Contradiction: Contexting troops not at CTC rapidly for super acceleration in CMA and development tactics. (Wk. 6)

RELIGIOUS HOUSE: MELBOURNE

External: Hobart circuit of quarter will speak to Rotary Club while inkind team locates exquisite art supplies and sewing equipment. First \$300 givers located. Two guitars loaned to Nesan and Trevor for special music for the Movement.

Internal: Tribal resettlement allows for guest housing for two development teams. Two Chinese ladies visiting on way to Hobart and Perth and the receiving of the Roger Ross family to the Melbourne House.

Contradiction: Organizing troops to be at right time, right place as New Year momentum accelerates. (Wk. 7)

GLOBAL CENTRUM CANBERRA

External: Whole Nexus participates in development blitz in Canberra.

Internal: Celebrates Australia day at the lake with a picnic and House members swim collectively over five miles. Week II begins as hit the ultimacy in economy and sophistication with happy hour at Zorba's, highlighted with a Malaysian feast prepared by Nason.

Contradiction: Maintaining the breadth of our relationship to three areas. (Wk. 6)

RELIGIOUS HOUSE: BRISBANE

External: Trek team in Mt. Isa after more than a year, signals decision to bring presence of blue to whole Region. Receives free freight for inkind chickens and typewriter to Oombulgurri.

Internal: Warne family leaves for Sydney assignment. Betonte family begins to arrive. Readies jobs, House, and files for missional engagement in wake of Summer CTC.

Contradiction: Embodying untested models for doing the three campaigns. (Wk. 6)

SUVA**RELIGIOUS HOUSE: MAJURO**

External: Economic Acceleration Team of Vance, Devore and Galbraith arrive. Mary Warren Moffet and the "Women of the Future" consult kick off the first of four with 30 present and the social process triangles are translated into Marshallese in preparation. The first rain since Christmas eases water shortage.

Internal: This was the week of "circuit overload" as things spin like a kaleidoscope with intensification on all fronts while half the House is sick.

Contradiction: Creating structural outlet for the rising self-consciousness of local man to allow him to participate in deciding the direction of the future. (Wk. 7)

IRELIGIOUS HOUSE: APIA

External: With authorization furthered by Rotary speaking engagement, working on Lion's Faleaulupo clinic benefit, Labor Department director asks for proposal for Youth Task Force. Hear national radio announcement regarding metro cadre celebration of past and future plans.

Internal: Study of Year of Canada and Sun Tzu impacts all with greatness of generalship as exemplified by action and tactics.

Contradiction: Continuing to function out of own model and not somebody else's with many missional possibilities and demands. (Wk. 4)

SAN FRANCISCO

RELIGIOUS HOUSE: SAN FRANCISCO

External: Major Bay area TV station prepares editorial on TM. Encouraging visit with mayor's aide opens more doors for promotion and funding.

Internal: Revamps structures to enable intensification.

Contradiction: Finding a way to weave together funding, promotion and set-up so each promotes the other for maximum intensification. (Wk. 7)

RELIGIOUS HOUSE: SAN JOSE

External: Resort town of Los Gatos holds 250-person TM. David Reese spends 3 1/2 days in central valley on maneuvers with colleagues. Initiates quarter training model with first bi-monthly Tuesday night session.

Internal: Purchases car to replace one wrecked in December accident. In-kinds 1/3 of asking price. Sartre's philosophy of revolution displays impact of revolutionary power in midst of reactionary criticism.

Contradiction: Learning how to anticipate traps set by the enemy so as to capitalize on strange gifts of the mystery. (Wk. 7)

RELIGIOUS HOUSE: SACRAMENTO

External: Sacramento Guardian attends Alameda TM. Sets up Redding steering committee; forms Marysville steering committee of 40.

Internal: Transforms House with new decor.

Contradiction: Keeping three TM universes (Sacramento, Northern California and Nevada) with all auxiliary troops returning home. (Wk. 6)

RELIGIOUS HOUSE: SEATTLE

External: Makes over 100 contacts by phone and visits 28 communities, netting 9 yeses in five days.

Internal: Impacted by possibilities and demands of local situations around the globe as revealed in letters from HDP sites.

Contradiction: Transferring decision to have TM from initial core to coordinator team. (Wk. 7)

RELIGIOUS HOUSE: LOS ANGELES

External: San Pedro sets date and key woman in Yorba Linda turns Soroptomist luncheon into core meeting with great excitement for doing TM.

Internal: Experiences new motion in the region: four guests for ecclesiola, four strong prospects for spring Academy and three registered for Delta Pace Consult.

Contradiction: Standing in gulf between past strategies not working and no believable images for future directions. (Wk. 7)

RELIGIOUS HOUSE: PHOENIX

External: Hard push on development sees beginning of breakthrough with \$1,000 from Western Savings, \$1,000 from utilities and \$100 from 100 citizens.

Internal: Has spontaneous celebration with movie "Rocky". Celebrates life and death of Ellen Addington's father.

Contradiction: Building the base that supports the 72 TMs. (Wk. 7)

RELIGIOUS HOUSE: SALT LAKE CITY

External: Names coordinator for Brigham City TM at

with the mayor. Kiwanis Club state officer offers to send letter to his constituency and counterparts in other parts of the state.

Internal: Following three days blitz on mass mailing of TM state report to 50 towns in Utah, celebrates with candlelight steak dinner.

Contradiction: Laying the track two feet at a time with the locomotive coming full speed down the track. (Wk. 7)

RELIGIOUS HOUSE: BILLINGS

External: East Helena steering committee with 14 present is led by three members of Whitehall steering committee. Seven hundred newsletter envelopes labelled y four EG and one Youth.

Internal: House experiences Wayside Inn dynamic.

Contradiction: Accelerating TM marketing and organization by TM grads in order to do 40 TMs this year. (Wk. 11)

RELIGIOUS HOUSE: DENVER

External: Create Advisory Committee of 20 prominent Colorado Citizens for new brochure.

Internal: Twelve metro colleagues involved in maneuvers: new people at monthly workshop training session.

Contradiction: Creating a new objectivity of doing TM set up. (Wk. 7)

RELIGIOUS HOUSE: CANNON BALL

External: First meeting of IHDP board meets and elects officers. Holds first aid course in Cannon Ball with 18 participants representing five reservation districts. Meeting of security forces and community leaders concretizes images of the security force role in the community.

Internal: Recreates space with construction of cottonwood patio and gravel fill for mudholes in driveway.

Contradiction: Using our corporate power to actuate all the tactics effectively. (Wk. 7)

EDMONTON

RELIGIOUS HOUSE: EDMONTON

External: GSD trek from Grouard to Kikino focuses the search on three very different communities as possibilities.

Internal: Sends out regional colleague David Dewey to New York Region from "Castelgrande Ristorante" - Indian waiters have learned Italian in one week. Collegium on Academy recruitment discloses greater possibilities for historic church engagement.

Contradiction: In blitzing: continuing to float like a butterfly, while trusting experience to reveal how to sting like a bee. (Wk. 7)

RELIGIOUS HOUSE: VANCOUVER

External: District Council of North Vancouver endorses CFC March 12th and social planner for city of Vancouver drops in, talks about future possibilities and sees GSD slides.

Internal: Philosophy of Revolution brings new breakloose to us. Selling of car frees us to purchase one for longer circuits. Father Sterzer drops in the midst of breakthrough in how to maneuver in thisis geography.

Contradiction: Learning how to watch and wait for the right moment to move. (Wk. 7)

RELIGIOUS HOUSE: MILWAUKEE

External: Milwaukee/Green Bay launches two week TM funding blitz with 70 visits and \$1575 in hand the first week and endorsement letter on its way from Governor Lucey and a proclamation when we are ready for it. Inner-city West Side Milwaukee paves the way for all is possible with \$900 in hand the week before the TM.

Internal: Emerging Generation transforms collegium room with newly painted tables and funding blitz creates shift in spirit life as great hall becomes "Room E", with "Bob and Ray" coming in on the radio nightly and new time design calls forth hours of miracle stories.

Contradiction: Symbolizing the end and start of phases without diminishing the victory. (Wk. 7)

RELIGIOUS HOUSE: INDIANAPOLIS

External: Kentucky TM campaign advances as Lt. Governor Thelma Stovall agrees to write letters to heads of 20 statewide networks asking for participation on statewide steering committee. Use of network mailings, endorsement and local chapters to help with TM set up. Cadres build models for four GSD slide shows and GSD consultant training using Friday night/Saturday morning format. Urban circuits raises \$1,900 in Louisville and Indianapolis.

Internal: Finance collegiums elicit decision to win the economic war. Even though all are broke, whole House celebrates via Master Charge with a great Chinese feast as Ruth Landmann secures a full-time teaching position, Federal and State tax forms are completed for a generous return and Darrell secures a four day paint job at \$60 a day.

Contradiction: Keeping tactics moving in all three campaigns simultaneously, particularly relative to TM in Indiana. (Wk. 6)

RELIGIOUS HOUSE: CINCINNATI

External: Kentucky Lt. Governor Thelma Stovall gives nod to Kentucky TM in August with Jaycees playing major set up and funding role. Consultant training of 20 begins strategy for expanded consultant force.

Internal: New internal life guides clarifies corporate life style. Youth and EG pick up food services for quarter.

Contradiction: Initiating structures which fully engages and sustains five consultant teams as solitary movement force while forging new model of massive coordinator training. (Wk. 3)

RELIGIOUS HOUSE: DETROIT

External: Envisions 14,000 TM Focus with Michigan Week brochures printed "inkind". Ford helps develop a yes that will break loose both funding and a car. George Romney says "Yes" to being honorary state chairman of TM Focus: Michigan Week.

Internal: Two day concentrated effort by House and regional colleagues enables mailing of 2500 TM Focus: Michigan Week brochures (6000 left to go).

Contradiction: Creating time and troops to finish all mailings, update lists, other office administration, all in the midst of needing to blitz corporations for funding. (Wk. 7)

RELIGIOUS HOUSE: CLEVELAND

External: TM OHIO receives several booster shots with the inkind contributions of an IBM electric typewriter and 200 breakfasts for the state network presidents at the Hospitality Inn and hosted by the Lieutenant Governor.

Internal: Ecclesiola and Saturday night celebrations are highlighted by Lao Tzu and viewing "Network".

Contradiction: Keeping track of all the plates in funding, consultant recruitment and community set up in midst of the overwhelming excitement of TM OHIO. (Wk. 6)

NEW YORK**RELIGIOUS HOUSE: NEW YORK**

External: Gives a sign of the possibility of developed and program income with receipts from GSD nite with minus three steering committee receipts of \$500 with another promising their three \$500s next week and a patron gift of \$3000.

Internal: House keeping around the edges keeps colleagues and contributing guests in the Wayside Inn. Health: Trek, Bi-regional task force and development all descend on us at once, and participate in a Saturday Eve celebration seeing NETWORK.

Contradiction: Keeping eye on the Interglobal movement formation as an integral part of the three campaigns rather than a separate set of tactics. (Wk. 4)

RELIGIOUS HOUSE: PITTISBURGH

External: Three TMs develop rapidly. Two development projects meeting fruition and responses to newsletter point to building momentum.

Internal: Don Francis returns from Ijede consult. International guests at House Church. Job possibilities open up and new job as "Supply Minister" secured by Ed Miller.

Contradiction: Dabbling in momentum blocks building the new Movement. (Wk. 7)

RELIGIOUS HOUSE: ROCHESTER

External: Charles and Helen Perrine return from Cano Negro with a sobered stance toward the demand of the 85% and six rolls of film.

Internal: Sends Bob and Judi White out to Oombulguuri. Youths paint five rooms with inkind paint while they are out of school for the week due to the gas shortage.

Contradiction: Rethinking own role in local community building and global story in order to do development and motivate direct participation in social demonstration. (Wk. 7)

RELIGIOUS HOUSE: RICHMOND

External: Fredericksburg steering committee, consisting of the mayor and the towns bankers commits entire \$1200 at first meeting.

Internal: Sends Dick Galbreath to Majuro on economic trek, as other guardians consult with steering committees and activate development battleplan.

Contradiction: Replicating TMs without spending 50 hours with a coordinator. (Wk. 7)

RELIGIOUS HOUSE: WASHINGTON

External: Ivy City Council thrust out of Ivy City and into the world through Neil Vances's report on the 24 social demonstrations and Ivy City's own Lawrence Glacoe's report on the Cano Negro Consult.

Internal: House global consciousness bumped via collegium on Wedge report and week presence of Neil Vance, Kathy Bauknight, and Mark Welsh.

Contradiction: Firming back up system: economics, structures, and training. (Wk. 4)

RELIGIOUS HOUSE: BALTIMORE

External: Two GSD nights with 23 total despite blizzard

(RELIGIOUS HOUSE: BALTIMORE)
conditions.

Internal: Rev. Kang Shin Chul brings several Korean colleagues.

Contradiction: Moving it when every thing is frozen in. (Wk. 6)

RELIGIOUS HOUSE: PHILADELPHIA

External: Initiates South Central Pennsylvania "metro cadre" with two teams: Global Social Demonstration and TM replication.

Internal: David Kerr returns from Ijede Consult. Maureen and Jon Jenkins spend Week II and give great report on Cano Negro.

Contradiction: Weaving the story together of TM and GSD that allows a new movement to form. (Wk. 7)

RELIGIOUS HOUSE: NEWARK

External: Emergence of the state story releases local funding as N.J. Bell commits \$300 to the Elizabeth TM, matching the Dodge Foundation grant dollars. Eleven out on Week II circuit is climaxed by closing celebration with slides from Cano Negro, homemade sangria and pizza.

Internal: Collegium on "The Moral Issue of Our Time" results in decision for new symbolic decor of 85%/15% by a chart of statistics revealing the gap and a chart of the names for GCF around the world.

Contradiction: Designing the circuit rhythms for the next seven weeks to ensure establishing the TM campaign as a N.J. reality. (Wk. 7)

RELIGIOUS HOUSE: BROOKLYN

External: Calls set up by metro colleague and great celebration after weekly consultant training meeting releases bi-metro to pick-up the situation again after week of set backs.

Internal: Fantastic mid-course Bi-Regional meeting enables all to face the situation squarely, affirms deep brooding about the mission and throws all back out to struggle with the task.

Contradiction: Persevering in the task and standing before the symbols that sustain the victory stance in the midst of set backs. (Wk. 7)

RELIGIOUS HOUSE: HARTFORD

External: Holds Bi-regional meeting in Keene, New Hampshire all day Saturday to plan strategy and report to one another in midst of the New Hampshire maneuver where TM work is done in eleven towns during the first week.

Internal: Guardian recently settled in Hartford area volunteers her services in the office (which is now vacant with everyone working and on the road).

Contradiction: Coordinating work with an expanding consultant force in terms of training and coordinating assignments and calls. (Wk. 7)

RELIGIOUS HOUSE: ALBANY

External: Schenectady Development Week promises \$2000 with \$480 in hand. TM group meetings in Mattydale, Eastwood, East Greenbush, Rensselaer and Glens Falls. Chamber of Commerce President in Glens Falls says "Yes". TM consultant does development call and asks if he can do more.

Internal: Appointment with R.C. Diocese gives permission to develop a plan to use St. Anne's School. Global Development Team has great week. Metro Cadre Ecclesiola meeting Friday night attracts new Albany colleagues.

Contradiction: Locating methods for obtaining jobs lags behind our methods for TM set up. (Wk. 7)

RELIGIOUS HOUSE: BOSTON

External: New Movement takes form with major participation of TM grads and old movement in ecclesiola, House Church, Bi-Regional Council and New Hampshire maneuver.

Internal: Experiences newly born power of strategizing and tactical dynamic of Bi-region.

Contradiction: Asking the right question to discern what people are willing to do to build the movement. (Wk. 7)

MONTREAL

RELIGIOUS HOUSE: MONTREAL

External: Holds first of the Acadian Trail CFCs with federal and provincial representation.

Internal: Concludes three day Area Fast over sign of Lome de l'Acadie with great feasting. Experiences explosion on ecclesiola night with ecclesiastical and key economic figures from Montreal dining and workshopping with House to breakloose \$2,000,000 miracle.

Contradiction: Discerning the form that effectively engages whole House and region troops in CFC and development. (Wk. 7)

RELIGIOUS HOUSE: TORONTO

External: Visits twelve towns, new look at all targets and new perspective on story produces new vision of where and how to move.

Internal: New life surprises us with emerging generation juggling show created by colleague after House Church. Collegium's on training and common memory. Bruno Jacoangeli arrives to live.

Contradiction: Encouraging local groups with need for CFC while increasing momentum in practices and task. (Wk. 7)

RELIGIOUS HOUSE: OTTAWA

External: Hearst Forum of 185 plus emerging generation est une signe de cooperation entre French and English. Regional colleague who returns from orchestrating turns on core meeting in following week.

Internal: Three day fast symbolizes Halifax House opening. Sends out prior to orchestrate Tracadie (New Brunswick) Forum. House member lands job in contract administration.

Contradiction: Being ready with models that are sensitive to real state of preparedness of communities. (Wk. 7)

CARACAS

RELIGIOUS HOUSE: CARACAS

External: Installs shelving and paints walls for opening of Health Clinic. Clears land for water well drilling. Burns off two hectares of land for community garden and bulldozer secured to pull stumps. Preschool finishes first week with 35 children in attendance, and adult literacy also completes first week with 15 participants. Afterschool club opens for elementary school youth. Men assign themselves to taskforces to create a continuous work force during the entire week. Development visits total 20 requesting a total of \$34,000 with \$2,500 in hand. General Electric donates two refrigerators, a washing machine and TV. INCE (government training agency) offers to begin training programs in construction, agriculture and fish farms.

Internal: Iron Cross formally moved to Cano Negro rehearses decision to be planted firmly in the local. Sends last of consultant team out for next consult.

Contradiction: Getting the wheels under the small industry complex. (Wk. 6)

THE GLOBAL ORDER CENTRUM REPORT

WEEK SEVEN

**BRUSSELS
NAIROBI
BOMBAY
CANBERRA
HONG KONG
CHICAGO**

**GLOBAL
DEVELOPMENT
CENTRUM**

Global Development around the world is meeting successfully with governments and private associations for funding. Nexus Hong Kong reports that within the past four weeks, they have submitted 78 proposals. In Perth, so Canberra reports, government monies have been freed up for funding housing and water for Oombulgurri. Brussels Nexus has recently made a bank deposit of \$32,000, the first draw from EEC. Choruses of success in making the monthly budget is becoming commonplace now for all the Global Band. The contradiction is in the arena of overcoming the tendency to reduce the funding image in face of the demand to fund the globe.

**GLOBAL
RESEARCH
CENTRUM**

Chicago works on TM replication plans (including the state-wide TM rally design), GRA band planning, strategic vision for Woman in the Future seminar and Academy metamorphosis in relation to Quarter IV construct. Brussels compiles Board of European Consultants. Canberra sends mailing to Houses regarding future consults and staffing as the "catalytic cobra strikers" of the various Nexuses. The contradiction is in the arena of symbolizing our responsibility for continually pushing the creative edge of the three campaigns.

**GLOBAL
OPERATIONS
CENTRUM**

Global Operations Centrum has found this week a giant push continentally on the OK:100; 20 persons were sent from Chicago, plus several from each area to forge ahead the continental and global model for Global Community Forum. Promotion is being reenforced with creations for newspapers, radio, TV and posters. Brussels reports that the first week victories of Foray 200 are 18 core meetings set. Hong Kong reports that key authorization is secured for Nam Wai HDP, with area enablement-support staff for the Consult assigned by the area prior. Delta Pace HDP Consult begins with over 500 present at the opening feast. The contradiction lies in the arena of expanding present momentum of Order members to Movement forces.

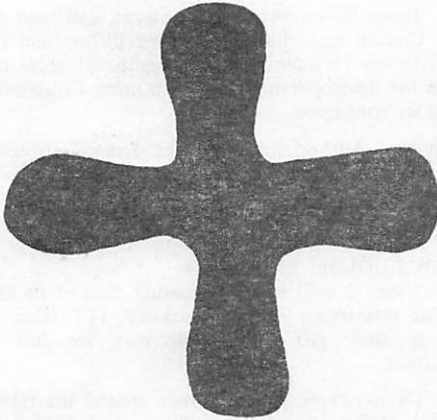
**GLOBAL
MANAGEMENT
CENTRUM**

Global Management Centrum in Chicago begins the march toward the March 15 audit. Brussels is finding grant administration to be a major support service as European nations respond to Third World needs. New from the Hong Kong Nexus is that David Wood visits with a Hong Kong lawyer, facilitating ICA registration. The contradiction lies in the arena of prioritizing the key support services needed to enable program acceleration.

GLOBAL ORDER REPORT

Week 8

February 20 - 27, 1977



LONDON

RELIGIOUS HOUSE: LONDON

External: Second meeting of Industrial Development Advisory Board on Local Economic Contradiction Analysis includes government officials and local industry as well as representatives from major London companies. Valentines fancy dress preschool benefit ball becomes carnival.

Internal: William Kanyembo, ITP grad and Zambian pastor, sojourns for week preaching at local church. House ITI staff and grads return and other ITI grads sojourn briefly. Five urs at breakfast. Vigelius lands a job after three hours search.

Contradiction: Meshing the spinning gears of creativity in three campaigns into one movemental thrust. (Wk. 7)

RELIGIOUS HOUSE: GLASGOW

External: Bishopton cadre re-images Christian aid to community wide third world development. Edinburgh colleagues decide to be GCF and GSD consultants.

Internal: Legal Trek Europe begins in Scotland. Recreation of interior space turns "suburban villa" into Religious House.

Contradiction: Designing victories for regional colleagues that illumine and unify the battle front. (Wk. 8)

RELIGIOUS HOUSE: BRISTOL

External: Community framing continues as one team participates in a pub birthday celebration and transrational tactics come into play.

Internal: Builds emerging generation curriculum and sends youth back to school. Holds ecclesiola with report on El Bayad progress.

Contradiction: Creating a model which interweaves all the tasks necessary to start Foray 200. (Wk. 8)

RELIGIOUS HOUSE: MANCHESTER

External: Foray 200 begins in north of England with 61 visits resulting in four probable TMs.

Seek good and not evil, that you may live, that the Lord the God of hosts may be firmly on your side, as you say he is. Hate evil and love good and enthrone justice in the courts; it may be that the Lord the God of Hosts will be gracious to the survivors of Joseph.

Amos 5:14 - 15

Internal: House hosts three guests from ITI Birmingham.

Contradiction: Moving from general community interest to locating the troika. (Wk. 6)

PARIS

RELIGIOUS HOUSE: PARIS

External: Holds meeting to set date and start set up of Woman in the Future. Sets date for core meetings (GCF) in Epernay in the heart of Champagne country and metro colleague goes on the circuit.

Internal: Evening conversation on singing and "participation" renews things taken for granted.

Contradiction: Finding a free car and a free house while circuiting full time. (Wk. 8)

RELIGIOUS HOUSE: ROME

External: Castelgrande residents (150) attend meeting chaired by mayor to hear about Castelgrande Human Development Project, and give standing ovation to project idea. TM presentation in Tivoli gets enthusiastic support. Receives 300,000 lire from school Sisters of Notre Dame.

Internal: Development team spends week with House and visits Castelgrande.

Contradiction: Covering all the areas of activity. (Wk. 7)

LAGOS

RELIGIOUS HOUSE: LAGOS

External: Begins Ijede Community Hall renovation with the help of \$1500 worth of paint and \$1000 worth of cement. Week's development yields \$2500 in hand.

Internal: Consult team arrives from Shantumbu. Completes concrete floors in auxiliary house enabling assignment of family space.

Contradiction: Creating timeline and priority rationales to deal with unlimited scope of task and possibility. (Wk.4)

BRUSSELS

GLOBAL CENTRUM: BRUSSELS

External: ICA brochures in Dutch, French and Flemish are printed and ready for use in TM Europa circuiting. Goes on development, GSD consultant recruitment in Europe, as Foray 200 enters second week.

Internal: Two intern candidates at ecclesiola maintain stream of guests through joint Nexus/House ecclesiola.

Contradiction: Identifying centrum response when all the work belongs to all the people. (Wk. 7)

RELIGIOUS HOUSE: BRUSSELS

External: Movement ICA consultants begin to flourish in Vlaanderen and Wallon, double groups strength and momentum on Foray 200: another four core meetings in the works.

Internal: Welcomes Columbian ITI grad back to Belgie in ecclesiola and sends out Belgian Scheutist ITI grad back to parish in Haiti.

Contradiction: Recognizing the dawning of victory in the 100 miracles each day. (Wk. 3)

RELIGIOUS HOUSE: AMSTERDAM

External: Visits seven communities and 18 people, setting up two core meetings in first week of Foray 200.

Internal: Pushes potential guardian couple to make decision about board of trustees.

Contradiction: Discerning the limits to shortcutting research and framing in the press for core meeting date. (Wk. 7)

FRANKFURT

RELIGIOUS HOUSE: FRANKFURT

External: Second week of Foray 200 comes to a close with 1,000 Gemeindeforum brochures printed in kind by Addressograph-Multigraph, ten communities visited and 49 people contacted about Gemeindeforums, the first core meeting held and a second set up. Two HRMs are set up as a kind of side benefit.

Internal: Holds Community Forum task force and Night at the Institute in the House. Welcomes Tim Dissmeyer after ITI and Foray 200 treks and hosts guest Laurel Boyd and Jean Arnold on their way back from ITI Birmingham.

Contradiction: Gathering armory of materials and stories about TM and TM set up. (Wk. 8)

RELIGIOUS HOUSE: BERLIN

External: Teacher for German Language School volunteers her time; Week II task force sets up the new GLS classroom. Second edition of Latern has a Turkish translator and a local person writing an article. Audio visual equipment for GLS is also in-kind. Local residents launches Week I renovation work on cafe. Berlin government will fund Isle of Dogs trip transportation for Youth.

Internal: Sends out Louise King on tour on way to Isle of Dogs and celebrates her many gifts. Also has Laura Caruso from Bristol participate in project for the week.

Contradiction: Creating the new story that allows all to structure ways for developing local people to take charge. (Wk. 8)

KINSHASA

RELIGIOUS HOUSE: LUSAKA

External: Four are full time development.

Holds meetings with Cabinet Minister who welcomes ICA to Central Province and Archbishop Liho asks for next HDP. Four other requests come from chiefs, ward counselors, etc. Twenty more acres come under the plow. Institute has new Zambian face with national figure, Mr. W.K.Sikalumbi as first chairman.

Internal: Jones Sinyanewe family interns, ordained deacon of AME Church and chauffeurs visiting Bishop and EI/ICA chairman to see President Kaunda. Eight colleagues train at ecclesiola for development visits. Two more Zambian intern decisions are confirmed.

Contradiction: Authorization project demands overshadow other global programs. (Wk. 7)

CAIRO

RELIGIOUS HOUSE: EL BAYAD

External: Stake 3 calls its own meeting, first of its kind, to recruit for watermain digging workday. IIT telex arrives announcing their gift of enough wire for full Bayad electrification.

Internal: Twenty-three people gather around the table with six Global Health Acceleration Team and five Egyptian interns. Assigns Judy and John Tresise to Chicago to recuperate.

Contradiction: Dealing with complexities of GSD in midst of economic breakthroughs. (Wk. 6)

NAIROBI

GLOBAL CENTRUM: NAIROBI

External: Local government officials voice support of KHDP at area development committee meeting. General Manager of East African Power and Lighting (former mayor of Nairobi) visits KHDP and presents the book. Breeder rabbits from University arrive to start "rabbits for research institutions" industry.

Internal: New assignments for KHDP, Centurms and teams start. Ecclesiola study of "The Prolegomena to the Rule of the Order" impacts all troops.

Contradiction: Expansion of activities of KHDP calls for new "shadows" and staff time for their training and care. (Wk. 8)

RELIGIOUS HOUSE: NAIROBI

External: Wundanyi sets March 26 for its Village Meeting to become seventh VM in the march to 50. Mombasa Anglican Bishop authorizes and publishes blug for VM while Kisauni (Mombasa neighborhood) development committee decides three VMs are right for their situation.

Internal: Campaign News (Jan. 26) is loaded with news, spiritual sustenance and material for edge brooding and provides a happening just reading it at collegium. Arrival of Quarter II manual sea mail simultaneously with Quarter III's manual provides us with mini ecclesiola for Tuesday and Wednesday evenings. Marshall Jones celebrates House Church and brings concern for future symbolic forms.

Contradiction: Getting time for new shadows and staff's training and care. (Wk. 8)

BOMBAY

GLOBAL CENTRUM: BOMBAY

External: India's Republic Day celebrated with morning parade of school children in new clothes with bright faces, flag hoisting, and afternoon nail brushing and weight checking at just two of the exciting Health Fair booths. An inter-guilds "Kobadi" match. All State Bank of India staff drop by with greetings after getting 101 new accounts opened earlier in the week and a commitment to open a branch here.

Internal: Internal life for Quarter III is kicked off with barbecue celebration on Saturday night while receiving Ecclesiola manual for the quarter which provides context for study of the yellow ur and a celebrative Chinese feast.

Contradiction: Methods of tapping technical expertise available in India in order to sustain Maliwada economically and build the thrust for economic self-sufficiency. (Wk. 6)

RELIGIOUS HOUSE: BOMBAY

External: One thousand revised Gram Sabha documents are completed and off the press as well as the first copy of the Vaviharsh Human Development Project Consultation document.

Internal: The guest book log reveals that representatives from all four village projects visited this week as well as Sam Hanson from the Legal Trek and Helen Lyman enroute from Rome to Hong Kong for the consult there. Special visitors were the Casswell sisters from Britain to see Rose, Tim and Jessica.

Contradiction: Living with a battle plan created for a House while in fact activating centrum-type tactics. (Wk. 8)

RELIGIOUS HOUSE: VAVIHARSH

External: Begins main road paving as the first visible sign. Holds informal guild meetings. Makes public and private sector, development and authorization visits to Nasik, Ghoti, and Igatpuri.

Internal: Sends out two Social Method School graduates to the Kendur Human Development Project, and a couple to the Quarter III SMS in Maliwada. Has first birthday celebrations for two auxiliary members.

Contradiction: Utilizing available expertise from the public and private sectors to concretize tactics estimates, in order to tap the abundant resources. (Wk. 7)

DELHI

RELIGIOUS HOUSE: DELHI

External: Development trip to Agra and Tucknow yields good authorization from business community for area Delhi village development.

Internal: Ordering office and decorating corporate releases spirit.

Contradiction: Living with ambiguity. (Wk. 8)

MADRAS

RELIGIOUS HOUSE: HYDERABAD

External: Recruits six people in the area trek for GRA. Eleven citizens from Nadlapur villages visiting Maliwada are greatly impacted. Nadlapur Gram Sabha fully prepared. For the first time India prepares Gram Sabha in Telugu language.

Internal: House rehearses new Telugu song for Nadlapur Gram Sabha "Thandana". The whole community gets

invigorated. Redge Kontze prepares himself as bridegroom as per Indian customs and tradition and is sent out to Bombay to meet his bride, Crispin Clements.

Contradiction: Recruiting of more Gram Sabhas to create a reservoir of human resources towards 1,000 participants for GRA. (Wk. 8)

CALCUTTA

RELIGIOUS HOUSE: CALCUTTA

External: Launches corporate research for GSD site location in Area Calcutta at the National Library in Calcutta. Main task is sifting an overwhelming amount of information, but now the crystal ball is coming clearer.

Internal: Secures one job, prepares tuition space for another. Large maps of parts of India start dominating decor.

Contradiction: Creating corporate self-story to go out and risk the deed. (Wk. 7)

SINGAPORE

RELIGIOUS HOUSE: SINGAPORE

External: Trek to Sarawak, East Malaysia, includes a long House visit, home of key colleague, Jerry Raby, president of Iban Conference of Methodist Church. Visit with state government officials who pave way for religious study program and future GSD project raises question of how many can we send to Kuala Lumpur Consult. They settle on six.

Internal: Gail Fray from Melbourne, Australia, visits with teacher friend from Portland, Australia, and after the inevitable "What is ICA?" question recalls excitedly the CMA held in Portland recently.

Contradiction: Needing trained colleagues and interns to handle multi-faceted breakloose of possibility. (Wk. 6)

RELIGIOUS HOUSE: KUALA LUMPUR

External: Selects Kampong (village) Sungei Lui as KDP site with strong authorization from member of Parliament from that constituency.

Internal: Reports of Wedge team, Area and Centrum give bird's eye view of movement across the globe and a glimpse of directions for the next year.

Contradiction: Holding the tension between immediate and strategic action. (Wk. 8)

RELIGIOUS HOUSE: JAKARTA

External: Deep bore well hits good water at 64 meters. Women's luncheon is attended by 28 women from stakes. Community leadership is excited over prospects of village attendance at Hong Kong and Malaysia Consult; 53 attend guild meeting. Community tractor used by village farmers from 7:00 a.m. to 1:00 a.m. is great time saver. Community in Stake 2 completes pathways.

Internal: Wawan, brother of Suhardi, sojourns to raise total number of adults to 20. Dan Tuecke returns from Cano Negro Consult. Shanklin returns from development in Kuala Lumpur. Tim Lush goes to Malaysia for GSD preparation; Ibu Sukanto and George Yost go to East Java as representatives at Lai'y a's wedding.

Contradiction: Moving many separate programs into one socio-economic thrust. (Wk. 6)

HONG KONG

GLOBAL CENTRUM: HONG KONG

External: Wedge returns to Hong Kong and Order consenses on Nam Wai Human Development Project. Authorization visit obtains full private and public sector support. Legal trek reports on zone and collects Nexus data.

Internal: House, Nexus, Wedge, and legal trek celebrate the Nam Wai victory with a fourteen course szechuan dinner, complete with corporate songs and reflection.

Contradiction: Isolating the key maneuvers that will focus the total expenditure that has been released. (Wk. 7)

RELIGIOUS HOUSE: HONG KONG

External: Joseph Mathews comes back from Sudtonggan and meets with chairman of Rural Committee and District Officer. Hong House, area, Nexus and Wedge consense on Nam Wai and Global Demonstration site.

Internal: House consensus on shifting ecclesiola to consult task force preparation.

Contradiction: Telling stories about shifting the GSD site to different section of people in order to get support. (Wk. 8)

RELIGIOUS HOUSE: KAOHSIUNG

External: Chooses Nan Ping, fishing village on the west coast, as GSD site and consensus of whole movement is unanimous.

Internal: Six guests pack House during Wedge visit. Lao Tzu study impacts House and Chinese colleagues. Emerging Generation are home for long Lunar New Year holiday.

Contradiction: Waiting on registration transforms the mundane into the really mundane. (Wk. 8)

RELIGIOUS HOUSE: MANILA

External: Chairman of the Chinese Chamber of Commerce wants to give ICA 20,000 pesos and 500,000 pesos later. The first ITI registrations in, two from Taipei. Received 2,375 GCF workbooks, 3,000 ITI brochures and 1,000 sheet of ITI stationary. Brochures enroute to Houses.

Internal: House hosts 50 youth for Fatima Church meeting. Celebrates the baptism of Marie Armas with a special buffet dinner provided by family and friends. Forty-eight can of inkind pineapple juice received. Fresh paint and good light bring new office.

Contradiction: Deepening responsibility in particular area while being able to orchestrate the myriad of demands into creative happening. (Wk. 8)

RELIGIOUS HOUSE: TAIPEI

External: Circuit to Taichung sets up steering committee meeting for GCF.

Internal: House members out numbered two to one as ecclesiola studies Lao Tzu. Sends Sims out to enable Hong Kong consult. In-House CSIIIA occasions reflection on style of missional family.

Contradiction: Honoring relationships and still demanding the necessary deed at the same time. (Wk. 8)

RELIGIOUS HOUSE: CEBU

External: Frst newspaper of Sudtonggan, "Sudtonggan Voice" comes off the press. Adult education increases in numbers. Sewing class, Sr. Theresa donates materials.

Internal: Wedge Team, Legal Team and Centrum visits Sudtonggan. Quimby visits and Kjell Knutsen is sent out.

Contradiction: Catalyzing new staff to back up the maneuver the next eight weeks. (Wk. 8)

RELIGIOUS HOUSE: DAVAO

External: PCTs Basak, Nabunturan, 400 for GCF, 250 stay for training school and 25 government agencies participate.

Internal: Reflections with area prior; held House Church in Nabunturan with 21 present.

Contradiction: Capturing momentum while continuing to accelerate. (Wk. 8)

TOKYO

RELIGIOUS HOUSE: TOKYO

External: GCF maneuvers yield set up dates in Urawa and Karvasaki.

Internal: Emura-san, from Sanya parish, decides to sojourn.

Contradiction: Setting up GCF systematically and simultaneously. (Wk. 8)

RELIGIOUS HOUSE: JEJU

External: The common mill and village treasury sollicitaion of the community by guild leaders focuses the future as a visit from assemblyman from Jeju supports efforts as the primary school opens after January vacation with a new kitchen serving a hot lunch of noodles. Preschool postpones opening a week for teachers to travel to Seoul for a week's training.

Internal: Ecclesiola breaks loose spirit. Inkind peanut butter and jelly and crackers.

Contradiction: Undergirding economic self-support. (Wk. 7)

RELIGIOUS HOUSE: SEOUL

External: Wonju PLC has 24 participants. Kwangyung II preschool teachers visit Seoul. HRM has 85 participants. Inkind breaks open as 2½ ton truck inkind in Busan is shipped inkind, and a farmer and a stone cutter are turned up for a week. The victory is the sign created when the deed for the land in Kwangyung was transferred, an act of faith in the ICA.

Internal: Regional financial PSU creates models to ensure global commonality as well as the decision to create General Ledger for ICA Korea.

Contradiction: Dawning clarity on financial picture shows need for comprehensive models. (Wk. 8)

RELIGIOUS HOUSE: FUKUOKA

External: Former city councilman of 20 years decides to go on key authorization appointment as verification of local invitation to begin Miyata Human Development Project.

Internal: Kikari Goto joins the House in brooding through next strategical moves on initiating the Miyata Human Development Project.

Contradiction: Following intuitions rather than anxieties. (Wk. 8)

RELIGIOUS HOUSE: OSAKA

External: Continues calling in Ashiya Kabe. TM. Development calling on Religious Orders continues.

Internal: Colleagues refine TM brochure in Japanese. PCE cultural studies in English focuses on India.

Contradiction: Getting first yes for steering committee (Wk. 8)

RELIGIOUS HOUSE: SENDAI

External: Visits cadres of people in a bank and school and are presented with money in both cases for GSD.

Internal: American high school sojourner Marty Taylor impacts House and colleagues as she journeys through area on her way to Miyata.

Contradiction: Gathering momentum for GCF with ourselves and colleagues not clear which directions the motivity needs to go. (Wk. 8)

SYDNEY**RELIGIOUS HOUSE: SYDNEY**

External: Seventy-five pairs of shoes inkinded to begin eradication of hook-worm in Oombulgurri. Community Training Consultation is first summer program to come out in the black. Battleplanning results in realistic circuit model using colleagues, and a donor rationale to meet the program budget.

Internal: Whole House goes to Brisbane to Council following CTC. Receives Karen, Michael and Kerry Warne and Lisa Smith to make full House complement within one week of assignments. Pauline Chia and friend stay on way around Australia.

Contradiction: Creating timeline and external missional assignments to unblock focused and immediate effort. (Wk. 6)

RELIGIOUS HOUSE: PERTH

External: Robert Roberts addresses North Perth Rotary Club and first inkind consignment for 1977 shipped to Oombulgurri.

Internal: Youth and emerging generation commence school year. Hosts Robert Roberts and Joanne Moore. Joanne is an emmissary student enroute from Oombulgurri to Dalwallinu host family to commence first year high school.

Contradiction: Particularizing general affirmation so as to tie down development appointments. (Wk. 7)

RELIGIOUS HOUSE: DARWIN

External: In-kind push yields 1300 feet of roofing timber and 320 feet of ridge capping for Oombulgurri housing.

Internal: Secures another permeation job inside two weeks - record.

Contradiction: Releasing images to see that Oombulgurri is a key to the development of the north. (Wk. 8)

RELIGIOUS HOUSE: OOMBULGURRI

External: Building boom occurs as columns go up on Model House and young men and education guild remodel school interior.

Internal: Complete auxiliary is present at the same time, enabling intensification of push on guild work arenas.

Contradiction: Creating the tactics to enable the community council to play a strengthened role in the building of the community. (Wk. 7)

RELIGIOUS HOUSE: ADELAIDE

External: In one 24 hour period Salisbury initiates seven week CMA countdown and affirms March 26 date, Gawler forms final steering committee and affirms April 2 CMA date, Marion forms steering committee and affirms April 30 CMA date, and Blackwood strategizes for Saturday's public meeting on CMA. Regional development is \$1500 in hand for the quarter.

Internal: Ted Clover visits from Sydney Region. House welcomes Yallop for donor circuit and Robert Roberts for Oombulgurri trek. Karen Clover received as intern and

Richard Charles received as sojourner at House Church.

Contradiction: Releasing circuits while caring for seven steering committees. (Wk. 8)

RELIGIOUS HOUSE: MELBOURNE

External: Development team breaks open major donor networks with average gift this circuit of \$266. GSD slide show impacts new visitors with possibility of new vocation. TNT (nationwide truckers) agrees to ship inkind parcel to Oombulgurri free bi-weekly.

Internal: Creates new circuit design while job search initiated. Student task force creates corporate study space.

Contradiction: Allowing new support systems to emerge to handle increased level of responses. (Wk. 8)

GLOBAL CENTRUM CANBERRA

External: Break open in Inaza community anticipates Community Meeting breakthrough. One hundred fifty chickens bound for OHDP given reprieve by air controllers as they cancel strike.

Internal: Hilde and Annia Betonte arrive, bringing House to full complement.

Contradiction: Finding the style that is global presence that invites rather than intimidates local participation. (Wk. 8)

RELIGIOUS HOUSE: BRISBANE

External: Trek team in Mt. Isa after more than a year, signals decision to bring presence of blue to whole Region. Receives free freight for inkind chickens and typewriter to Oombulgurri.

Internal: Warne family leaves for Sydney assignment. Betonte family begins to arrive. Readies jobs, House, and files for missional engagement in wake of Summer CTC.

Contradiction: Embodying untested models for doing the three campaigns. (Wk. 6)

SUVA**RELIGIOUS HOUSE: MAJURO**

External: Economic Acceleration Team of Vance, Devore and Galbraith arrive. Mary Warren Moffet and the "Women of the Future" consult kick off the first of four with 30 present and the social process triangles are translated into Marshallese in preparation. The first rain since Christmas eases water shortage.

Internal: This was the week of "circuit overload" as things spin like a kaleidoscope with intensification on all fronts while half the House is sick.

Contradiction: Creating structural outlet for the rising self-consciousness of local man to allow him to participate in deciding the direction of the future. (Wk. 7)

RELIGIOUS HOUSE: APIA

External: Three House members go on a 120 mile trek around the island of Savaii as part of a management consultant team for Nelsons Ltd. Cadre task force sets count down timeline for parish community miracle.

Internal: Wedge study gives House fresh feel for movemental edge and reaffirms struggle with question of Samoa being a demonstration nation.

Contradiction: Executing tactical maneuvers with previously named programs that move through the programs and beyond. (Wk. 8)

SAN FRANCISCO**RELIGIOUS HOUSE: SAN FRANCISCO**

External: Mayor Moscone commends Town Meeting program in statements for TM:San Francisco brochure.

(RELIGIOUS HOUSE: SAN FRANCISCO)

Internal: Marriage of Jim Beebe and Roberta Hoss is celebrated at House Church.

Contradiction: Using all of our "know-how" to accelerate urban TM set up and still have community feel they are doing own TM. (Wk. 8)

RELIGIOUS HOUSE: SAN JOSE

External: Follow up at Los Gatos reveals the "RSI" quality of awakening in TM. Visalia and Cupertino steering committees meet. San Jose Parks and Recreation Community Services Department offers to be catalyst for three and possibly more TMs. Wendell Clutz reports to San Jose State Department of Education group about Cano Negro; they are amazed that someone already is doing what they are now only speculating about.

Internal: Spends afternoon with potential intern family getting their house ready for sale so they can move by March 1. Knox paper, "Event and Story" recalls the necessity for clarity about our "roots".

Contradiction: Developing the "event-creating story" that insures our pace as "winners". (Wk. 8)

RELIGIOUS HOUSE: SACRAMENTO

External: Sacramento Guardian attends Alameda TM. Sets up Redding steering committee; forms Marysville steering committee of 40.

Internal: Transforms House with new decor.

Contradiction: Keeping three TM universes (Sacramento, Northern California and Nevada) with all auxillary troops returning home. (Wk. 6)

RELIGIOUS HOUSE: SEATTLE

External: Fosters and Lockmans depart for Hong Kong Consult. Washington maneuver ends with seven regional colleagues joining to visit core meetings in 50 communities resulting in 20 yesses for TM.

Internal: Movie "Rocky" and conversation provides celebration for those who participated in Washington Maneuver. EG and Youth engage in spring house cleaning of the kitchen. Hosts Danny Ironroad on his way from BWHDP to Hong Kong consult.

Contradiction: Utilizing new possibilities and resources in intensifying the TM campaign to impact the State of Washington's understanding of Primal Community. (Wk. 8)

RELIGIOUS HOUSE: LOS ANGELES

External: Bank of America calls wanting TM and has group all ready to come together. Sends three to Delta Pace consult.

Internal: Four California Houses meet in San Jose to push acceleration phase and come up with exciting holding images for next three quarters. Lenten solitary office gets done as well as Woman's Forum manual.

Contradiction: Strategizing the comprehensive while standing in the pain to keep element of detachment. (Wk. 8)

RELIGIOUS HOUSE: PHOENIX

External: Development push reaches \$4229 with netting of \$500 from Young, Smith and Peacock.

Internal: Mood of high celebration touched at picnic on South Mountains, where recently arrived House member experiences first encounter with the desert.

Contradiction: Delivering TMs immediately. (Wk. 8)

RELIGIOUS HOUSE: SALT LAKE CITY

External: Maneuver set up takes place as mail out 350 state reports to 50 communities, sets up seven groups for maneuvers Week I and grasp that a maneuver is not only appropriate but necessary.

Internal: Whole House celebrates victory before the maneuver starts by going to "Rocky" and having a dinner conversation on it. Larry Philbrook comes home at last and Joy Thomas arrives for area development.

Contradiction: Realizing readiness for battle and now like Rocky deciding what the victory really is while moving into first week of a major maneuver. (Wk. 8)

RELIGIOUS HOUSE: BILLINGS

External: Maneuver sends five teams out on the road across Montana and North and South Dakota.

Internal: One man jumps to five as area maneuver troops arrive and then all are gone the next morning.

Contradiction: Holding the tension between doing a particular key TM and doing all of the Old West 100. (Wk. 8)

RELIGIOUS HOUSE: DENVER

External: Areal maneuvers conclude with three evenings at the Institute in three metros, two new core groups and one new urban steering committee.

Internal: Sends out Ethel Stewart and Ron Slater to Pace consult. EG are on African curriculum journey.

Contradiction: Forgetting that the real messiah is the no messiah as we encounter tired, suspicious and stagnant governmental structures and agencies. (Wk. 8)

RELIGIOUS HOUSE: CANNON BALL

External: Project hosts 10 guardians from Bismarck and Mandan for tour and dinner. Sends out Dan Iron Road to Nam Wai and Robert Many Horses to Pace. Completes agriculture research station and workshop with indoor green houses. Begins GED classes. Hosts Mrs. Martha Williams who arrives from Washington DC for orientation and tour.

Internal: Experiences week of global hosting and edge of the three campaigns with visit and report from area priors on old west statis maneuver and report from Ivy City HDP.

Contradiction: Designing a structural way to sustain community motivity. (Wk. 8)

EDMONTON

RELIGIOUS HOUSE: EDMONTON

External: Experiences revitalization of CFC in Morinville and Devon and breakopen visits in Vilna. Wedge team visits GSD site possibilities. Forum colleague from Drayton Valley takes day off work to spark interest in Redwater for CFC.

Internal: Saturday celebration at 'Bonanza' celebrates beginning of Delta Pace and Nam Wai. Preparation for Lenten event and strategizing historic church engagement rehearses common memory of building movemental base.

Contradiction: Wanting to hold back while moving into the radical turn towards GSD and forum set up while undergirding area self-support. (Wk. 8)

RELIGIOUS HOUSE: VANCOUVER

External: Lillooett Week II blitz unfolds CFC possibility. Provincial Legion meeting gives new insights into national structures. Whole of steering committee in north Vancouver goes through workshop training.

Internal: John Lang and Richard Lee families formerly of Singapore meet with us. Wedge report keeps all up-to-date

(RELIGIOUS HOUSE: VANCOUVER)

on intra global in the midst of Geoff Nixon stopping off for development possibilities.

Contradiction: Discerning the particular regional gifts that will catalize the nation. (Wk. 8)

RELIGIOUS HOUSE: ANCHORAGE

External: Gets helpful responses from visit to Eagle River. PTA presentations in Nunaka Valley expands possibilities of Anchorage metro strategy for TMs across the metro.

Internal: Attends Fur Rendezvous and witnesses the military might and Alaskan character in parade, the grueling competition of sled dog races. Afterwards, works on rewriting TM workbook.

Contradiction: Finding charge to keep all communities spinning toward TM. (Wk. 8)

RELIGIOUS HOUSE: SASKATOON

External: Meetings with Chamber of Commerce, Saskatoon Weekly Newspaper Association, Department of Continuing Education initiates serious encounter provincially for CFC authorization and development.

Internal: Ecclesiola seminary impacts House with simple images that transforms our state of being.

Contradiction: Pushing through data reports to depth significance in order to intensify corporate brooding. (Wk. 8)

RELIGIOUS HOUSE: WINNIPEG

External: Five highest priority GSD sites are narrowed down by area site selection teams.

Internal: Visit to Trappists and writing of Metis story bring to the forefront the issue of disciplined lifestyle.

Contradiction: Keeping TM spinning with GSD in site. (Wk. 7)

HOUSTON

RELIGIOUS HOUSE: HOUSTON

External: Sends five people from House to Pace; holds first core meeting in parish and sets April 2 TM date.

Internal: Holds Chinese New Year's celebration at ecclesiola.

Contradiction: Maintaining a comprehensive mission while tempted by the particular. (Wk. 8)

RELIGIOUS HOUSE: AMARILLO

External: Hereford steering committee journeys to House to get in an extra training session before beginning of countdown. At countdown session meeting date is set and spirit methods break loose group to new kinds of possibility.

Internal: Duane Dirickson is sent out to Delta Pace consult and Jann Barr gets weekend permeation supplement, leaving two in house for Week II maneuver. Contradiction: Sustaining those who care who step out on edge and meet the storm they did not know existed. (Wk. 8)

RELIGIOUS HOUSE: SAN ANTONIO

External: Two new core meetings set in Medina and Universal City. Core meeting held in Fredricksburg and coordinator's training set in South San Antonio.

Internal: Welcomes Shirley Henschen from Houston for continuation of Alamo Maneuver. Ecclesiola aids in Generalship self-story in developing the mature warrior.

Contradiction: Telling the story that we need more authorization in order to create the "winning" of TM set up. (Wk. 7)

RELIGIOUS HOUSE: OKLAHOMA

External: The image of the Oklahoma 100 has shifted as ten people arrive from Centrum to hit the circuits. The week resulted in well over 100 TMs set.

Internal: House sees that awakening through mass impact happens before training in functional epitude.

Contradiction: With registration of well over 100 towns for March TMs, how to build a fail-safe model to assure orchestrators and materials distributed to every site. (Wk. 8)

RELIGIOUS HOUSE: DALLAS

External: Day II troops move on 50-mile radius strategy. Unida and Jacksonville TMs already submit first \$600 each. Second \$600 is on the way. Pace inkind victories include black-eyed peas, paper and Purex products.

Internal: Sends out Jeff Roper and John Chapman to Pace. New categories in restyling warboard sharpens focus on task. Athens sends out Charles Bush, Jr., as new House intern. Allison Roper undergoes successful surgery.

Contradiction: Making sure to follow the model which images all troops as frontline troops. (Wk. 7)

RELIGIOUS HOUSE: PACE

External: Inkind received mounts up: \$200 in office supplies, 2½ tons of ceiling installation, 300 loaves of bread, 4,000 cokes and 100 pounds of flour. Thirty-five turned out all day Saturday to work on the Consult Center and old town hall becomes Delta Pace HDP Office. Second addition of "Delta Pace Voice" is huge success.

Internal: Daily Office finds new permanent location in attic.

Contradiction: Quickly converting existing passion for Consult Center renovation into passion for full time participation for a large segment of the community. (Wk. 6)

RELIGIOUS HOUSE: NEW ORLEANS

External: Metro maneuver Saturday in Louisiana sets two core meetings on Tuesday night. Gets back in the swing of things again with core, steering or development meetings every night of the week.

Internal: The great mystery of plumbing crisis has been solved. Walter Duerr, ITP on House trek, visits. Tim Busa spends his second full week in House since his reassignment in late November '76.

Contradiction: Doing the financial sustenance of the mission in the midst of total engagement in the mission itself. (Wk. 5)

RELIGIOUS HOUSE: MEMPHIS

External: Sector's fifth TM in Mississippi happens in Clarksdale with 60% black in attendance. Day II begins working Arkansas and Tennessee as well as Mississippi. Pace inkind's fruits harvested by House, Metro and Pace inkind team: 30 dozen eggs, chips, nuts, furniture and \$\$\$. Metro travels to Delta Pace for opening feast and travels home with many stories to tell.

Internal: Welcomes sojourner Pat Goad who does not even have time to make the bed before going for Pace enablement. Mark Johnson passes engineering examination (in preparation for Kawangware assignment).

(RELIGIOUS HOUSE: MEMPHIS)

Contradiction: Remembering to stand calmly before all the tasks at hand. (Wk. 8)

RELIGIOUS HOUSE: ATLANTA

External: TM network building is enhanced by receiving carbon copy of State Senator Barker's letter to ten Senators urging them to set up TM in their districts. Establish back-up workshop leaders network for Sumter County TM.

Internal: House is journeyed by "Roots" and impacted by cruciality of story that enables community to live.

Contradiction: Moving communities beyond present energy crisis to future vision of TM. (Wk. 7)

RELIGIOUS HOUSE: CHARLOTTE

External: Endorsement letter received from the President of First Union Corporation.

Internal: Income tax forms filled out corporately provides a symbol of our corporateness in midst of drudgery chore.

Contradiction: Training the co-ordinators in depth so that they become community strategists. (Wk. 8)

RELIGIOUS HOUSE: MIAMI

External: Sends prior to Pace; takes in-kind supplies with her.

Internal: Job opportunities begin to open up a little for House member. House and metro colleague continue to be impacted by Tao. New House member locates job almost immediately upon arrival.

Contradiction: Breaking the back on the economic so it doesn't absorb physical and spiritual energies. (Wk. 8)

- CHICAGO

GLOBAL CENTRUM: CHICAGO

External: Prints and readies for distribution 10,000 "Uptown Voice" newspapers.

Internal: Sends troops to Michigan and Oklahoma for circuiting. Celebrates Mardi Gras Tuesday evening with wild celebration and costumes; celebrates Ash Wednesday with ashes at Daily Office, eating of rice on behalf of 85%. Last ecclesiola of quarter is time for reflection on study.

Contradiction: Tending to global demands amidst vast troop dispersal. (Wk. 8)

RELIGIOUS HOUSE: CHICAGO

External: Celebrates first \$10,000 plus day in FHDP with five checks. FHDP Graphic Arts Center is planned, Craftsmen Center is set up in basement Project House, new Preschool Board meets, FHDP core room is constructed out of old library, Emerging Generation suite is ready for beginning of Infant Care Program initiation. TM launches move on 100 suburban corporations.

Internal: Vida Melissa Welch is born— only EG girl. Receives Bronwyn Rees from Oombulgurri for preschool training. "Roots" captures House.

Contradiction: Maintaining extraordinary eventfulness in midst of essential routine. (Wk. 5)

RELIGIOUS HOUSE: WICHITA

External: Major push as House and Metro beats the bush to get people out for sector information meetings in Salina and Wichita.

Internal: Ecclesiola is significant experience as the seminary takes us off to a different perspective and sodality pushes us to look seriously at our response to the contradictions of our time.

Contradiction: Bridge the gap between the information meetings and steering committees operating on their own. (Wk. 8)

RELIGIOUS HOUSE: OMAHA

External: Article by Ralston Mayor on TM'76 and its significance for community involvement published in Nebraska League of Municipalities.

Internal: Consultants assigned to five city sectors to enable coordinator recruitment and care of steering committees.

Contradiction: Creating in ourselves and new colleagues a life and death commitment through seeing TM as a crucial timely tool for community renewal rather than another program. (Wk. 6)

RELIGIOUS HOUSE: KANSAS CITY

External: Missouri Society of Association executives receives request to share data on "Spring of Town Meetings" by mailing Community Registration Forms and state TM brochure with cover letter from executive; 22 networks: Missouri and nine: Kansas now activated in network Phase of maneuvers.

Internal: Whole House shows up at table. Harry, Fred, and Junior, our electronic sojourners provided by Addressograph- Multigraph, with Russell Wheelock, metro colleague volunteering to print daily after school releases printing crunch for division South.

Contradiction: Being a man of faith while looking down at the water: Knowing 100 TMs will happen but not seeing critical path to fulfillment. (Wk. 8)

RELIGIOUS HOUSE: MINNEAPOLIS

External: General Quarters call brought forth South Dakota victory in Miller TM with 38 workshop leaders trained, 195 adults, 65 children. Minnesota Future Day State Advisory Committee met; man from Corporation Development Blitz shows up on Committee as well as Mayor of St. Paul. Minneapolis Jaycees assume responsibility for four urban TMs.

Internal: Ecclesiola is Samoan night. Aogne Kovati prepares Samoan feast, stories and songs. Effective collegiums enable Minnesota Future Day momentum. Whittier Globe hits the streets.

Contradiction: Maintaining momentum on tight timeline. (Wk. 8)

RELIGIOUS HOUSE: ST. LOUIS

External: Division South strike force hits Illinois and Kansas with economic blitz as remnant in St. Louis creates management information systems and visits 12 more corporations. Mayor of Rockford reports anxious to serve on Illinois State TM committee.

Internal: EG illness stretches Day I care model and first week of The Tao stretches consciousness toward the unknown unknown.

Contradiction: Remembering the cruciality of maintaining the support systems. (Wk. 3)

RELIGIOUS HOUSE: PEORIA

External: Despite weather forecast of -35 degrees, 150 people attended the Decorah TM. Fifteen confirmations for the Iowa TM steering committee.

Internal: Audrey Ayers joins the Des Moines Branch of the House for the next month (at least) as anchor person for Iowa TMs.

Contradiction: Finding time to discern what the "win"

(RELIGIOUS HOUSE: PEORIA)

needs to be before entering the battle. (Wk. 8)

RELIGIOUS HOUSE: GREEN BAY

External: Eleven metro and area colleagues are involved in Wisconsin 100 TM funding calling. Appleton TM steering committee makes written request to President to call them on March 5th since the TM date in Appleton and Open Line to the President coincide.

Internal: Shift in evening timeline and presence of area development personnel adds new life and spirit to the House.

Contradiction: Creating model for operating in deficit finances. (Wk. 8)

RELIGIOUS HOUSE: MILWAUKEE

External: Milwaukee/Green Bay launches two week TM funding blitz with 70 visits and \$1575 in hand the first week and endorsement letter on its way from Governor Ludey and a proclamation when we are ready for it. Innercity West Side Milwaukee paves the way for all is possible with \$900 in hand the week before the TM.

Internal: Emerging Generation transforms collegium room with newly painted tables and funding blitz creates shift in spirit life as great hall becomes "Room E", with "Bob and Ray" coming in on the radio nightly and new time design calls forth hours of miracle stories.

Contradiction: Symbolizing the end and start of phases without diminishing the victory. (Wk. 7)

RELIGIOUS HOUSE: INDIANAPOLIS

External: Lafayette polls cadre experiments with helping to build a global GSD repository using habitat slides on Friday evening and inviting interested new friends and colleagues back to Saturday morning GSD staff/consultant orientation and training. 38 attend slide show, 12 attend Saturday with four yeses to guardians meeting, three consider overseas staff assignments and five say yea to consultant role. Jaycees fully endorse statewide push for 40 TMs and agree to be major network. Louisville's Parkhill guild holds first followup work day from TM and 100 show up. 2000 bumper stickers in-kind with Parkhill symbol. Workshop held on crime and jobs. Submits 30 names for spring Academy invitation.

Internal: Hosts 24 colleagues at House Church. Celebrates inauguration of the Nam Wai GSD and Delta Pace GSD. Gratefully receives Mig Wildhack from Indianapolis as intern.

Contradiction: Providing adequate manpower for Michigan maneuver while keeping the three campaigns moving at home. (Wk. 8)

RELIGIOUS HOUSE: CINCINNATI

External: Kentucky Lt. Governor Thelma Stovall gives nod to Kentucky TM in August with Jaycees playing major set up and funding role. Consultant training of 20 begins strategy for expanded consultant force.

Internal: New internal life guide clarifies corporate life style. Youth and EG pick up food services for quarter.

Contradiction: Initiating structures which fully engage and sustain five consultant teams as solitary movement force while forging new model of massive coordinator training. (Wk. 3)

RELIGIOUS HOUSE: DETROIT

External: Unanimous endorsement of TM Focus:Michigan Week from the Board of Michigan Council of Churches,

with full knowledge of ICA relationship to Ecumenical Institute, resulting in mailing of 2200+ brochures to various churches across Michigan.

Internal: Ecclesiola study on Tao explodes freedom with Japanese-American guest, along with Walter Duerr from Germany (on an ITP trek) and Opus 38 is experienced as a symphonic journey.

Contradiction: The TM wagon is a-leavin' and my bags are not packed! (Wk. 8)

RELIGIOUS HOUSE: CLEVELAND

External: TM Ohio receives several booster shots with the inkind contributions of an IBM selectric typewriter and 200 breakfasts for the state network presidents at the Hospitality Inn and hosted by the Lieutenant Governor.

Internal: Ecclesiola and Saturday night celebrations are highlighted by Lao Tzu and viewing "Network".

Contradiction: Keeping track of all the plates in funding, consultant recruitment and community set up in midst of the overwhelming excitement of TM OHIO. (Wk. 6)

NEW YORK

RELIGIOUS HOUSE: NEW YORK

External: Evening with the Institute at Adolphus Hotel gives opportunity for untouched guardians. Local guardian orchestrates Mineola TM. Send out all Pace people.

Internal: Youth runs House while House is at evening with the Institute. Oldest House member celebrates her 30th birthday.

Contradiction: Making sure all bases are covered without being held up at first. (Wk. 8)

RELIGIOUS HOUSE: PITTSBURGH

External: Three TMs develop rapidly. Two development projects meeting fruition and responses to newsletter point to building momentum.

Internal: Don Francis returns from Ijeda consult. International guests at House Church. Job possibilities open up and new job as "Supply Minister" secured by Ed Miller.

Contradiction: Dabbling in momentum blocks building the new Movement. (Wk. 7)

RELIGIOUS HOUSE: ROCHESTER

External: Charles and Helen Perrine return from Cano Negro with a sobered stance toward the demand of the 85% and six rolls of film.

Internal: Sends Bob and Judi White out to Oombulgorri. Youths paint five rooms with inkind paint while they are out of school for the week due to the gas shortage.

Contradiction: Rethinking own role in local community building and global story in order to do development and motivate direct participation in social demonstration. (Wk. 7)

RELIGIOUS HOUSE: RICHMOND

External: The Fredricksberg steering committee is good and strong in a town that has decided to do a TM as part of their 250th Anniversary.

Internal: The Bi-regional meeting enables a corporate reflection that allows all to see the ability of the mission all along on own turf.

Contradiction: Discerning strategic steps backward rather than inching forward, the ones that will slash the jugular through the chink in the armor. (Wk. 8)

RELIGIOUS HOUSE: WASHINGTON

External: Ivy City Council thrust out of Ivy City and into the world through Neil Vances's report on the 24 social demonstrations and Ivy City's own Lawrence Glascoe's report on the Cano Negro Consult.

Internal: House global consciousness bumped via collegium on Wedge report and week presence of Neil Vance, Kathy Bauknight, and Mark Welsh.

Contradiction: Firming back up system: economics, structures, and training. (Wk. 4)

RELIGIOUS HOUSE: BALTIMORE

External: House hosts citywide CIF Planning Dinner where local manager of major department store chain decides to pull together first steering committee using resources of that store.

Internal: Priors packet collegium with East Indian Guardian's speech and call for Vista staff to Inyan Wakagapi catalyzes House search for staff.

Contradiction: Creating the corporateness that will enable us to move swiftly on the many external tactics in the midst of many varied work schedules. (Wk. 8)

RELIGIOUS HOUSE: PHILADELPHIA

External: Travels to New York to do internal check on external strategies and models.

Internal: Bi-region comes up with perfect game for "Move It" celebration as teams race to put on and take off clothes in suitcase in shortest time.

Contradiction: Getting caught with pants down in development. (Wk. 8)

RELIGIOUS HOUSE: NEWARK

External: Participates with Philadelphia in a framing day for four spin-off TMs for demonstration TM in Pleasantville near Atlantic City. Week II circuit covers five towns.

Internal: Smyres gives guest collegium on New Jersey history. Self support gets \$50 for speaking engagement generated by TM contacts.

Contradiction: Assignment rationale to release comprehensive engagement of metro colleagues. (Wk. 8)

RELIGIOUS HOUSE: BROOKLYN

External: Successful TM two hour promotion day demonstrates on-targetness of methods as word of upcoming TM is spread. Steering committee enthusiasm is catalyzed and old colleagues resurrected.

Internal: 15/85% collegium and Lao Tzu intensify awareness and anticipation of entering Lenten journey.

Contradiction: Holding the tension between the necessary nurture to bring a TM into being and the demand of the world for acceleration of TM. (Wk. 8)

RELIGIOUS HOUSE: HARTFORD

External: Continuing work on development of major funds. Two core meetings held in Vermont with three more being planned. Two letters of endorsement of the first TM in the state of Vermont received from Governor and Community Development office. St. Luke's Episcopal Vestry from New Haven comes to House for a 24 hour retreat, we served as consultants.

Internal: Views Dr. Lao several times as movie is secured for the St. Luke's retreat. In-kind: envelopes, chicken, hamburger. Justin here on development and shares the global picture in a morning collegium reminding all of being trend benders.

Contradiction: Doing the implementaries. (Wk. 8)

RELIGIOUS HOUSE: ALBANY

External: Sends out Judith Lindblad to Delta Pace HDP consult. Guilderland makes transition to steering committee. Participants of previous TMs and newly interested people meet and work in three clusters to prepare for Schenectady 10.

Internal: Sends out Youth to Washington trip.

Contradiction: Needing trained and committed consultants. (Wk. 8)

RELIGIOUS HOUSE: BOSTON

External: The second TM in Roxbury is underway with date, place and coordinators named.

Internal: Collegium on the movement as trend benders impacts all with the role of the Order in the world.

Contradiction: Building the weekly implementaries necessary to enacting the tactical system. (Wk. 8)

MONTREAL**RELIGIOUS HOUSE: MONTREAL**

External: Holds first of the Acadian Trail CFCs with federal and provincial representation.

Internal: Concludes three day Area Fast over sign of Lorne de l'Acadie with great feasting. Experiences explosion on ecclesiola night with ecclesiastical and key economic figures from Montreal dining and workshopping with House to break loose \$2,000,000 miracle.

Contradiction: Discerning the form that effectively engages whole House and region troops in CFC and development. (Wk. 7)

RELIGIOUS HOUSE: TORONTO

External: Visits twelve towns, new look at all targets and new perspective on story produces new vision of where and how to move.

Internal: New life surprises us with emerging generation juggling show created by colleague after House Church. Collegium's on training and common memory. Bruno Jacoangeli arrives to live.

Contradiction: Encouraging local groups with need for CFC while increasing momentum in practics and task. (Wk. 7)

RELIGIOUS HOUSE: OTTAWA

External: National framing proceeds with visits to one cabinet minister and two local MPS for New Brunswick.

Internal: Area priors spin on Lorne de L'Acadie lays context for 20 regional consultant visits for HDP. Wayside Inn is full with area troops.

Contradiction: Building up self-support enough to get a second car and release more troops for the road. (Wk. 8)

CARACAS**RELIGIOUS HOUSE: CARACAS**

External: Weekend collegium reports reveal that over 1/3 of community is participating in the educational and training programs of the project. Aqueductos Rurales strikes good supply of water at 64 meters. Community health clinic testing reveals Cano Negro children have an average of three parasites with highest number having six distinct types. Vicon agrees to donate all construction material for poultry farm. Lavanderia Roma manager says his company will buy all sheets sewing industry can produce.

(RELIGIOUS HOUSE: CARACAS)

Entire community shows up for Saturday clean up removing garbage from eyesore areas.

Internal: Celebrates completed life of cadre member Ruth Miller who suffered heart attack while sewing uniforms for Cano Negro preschool children.

Contradiction: Raising up Community Center and garden as visible signs. (Wk. 8)

THE GLOBAL ORDER CENTRUM REPORT

WEEK EIGHT

**BRUSSELS
NAIROBI
BOMBAY
CANBERRA
HONG KONG
CHICAGO**

**GLOBAL
DEVELOPMENT
CENTRUM**

Nairobi reports the guardian dynamic emerges from an Advisory Panel meeting through focusing on the dynamics of social and economic development. The Nexus and House coordinate an on-going development thrust. Canberra reports 7,000 Malaysian dollars promised for Sungai Lui. Three thousand Australian dollars in in-kind are received in Perth for Oombulgurri. Money for new boat freed up for Oombulgurri. Aboriginal scholarship money released from Western Australia to ICA. Chicago reports new format for grassroots mailing telling the story of social demonstration. Patron flies to Inyan Wakagapi bearing gift of \$10,000. The contradiction lies in the arena of creating winning maneuvers which hold all the detail and allow one to do revolutionay bracketing in order to concentrate fully on one task at a time.

**GLOBAL
RESEARCH
CENTRUM**

Chicago hears report on most recent WIF trek and plans three more treks for the spring. In Oklahoma the Centrum spearheads on-site research for the OK:100 rally. Canberra accelerates consultant recruitment for Sung Gei Lui (KL). Nairobi conducts collegium on GRA issues as part of the Global Centrum bank corporate research. The contradiction is in the arena of defining the priorities for both short-term and long-term research.

**GLOBAL
OPERATION
CENTRUM**

GCF shows up as a global program with 17 being held in various continents almost topping the 25 in North America. Oklahoma now has 144 communities to represent the OK:100 closely approaching March 26. GSD is growing in power as communities show up in various stages of actuation. Pace completes the consult and Lorne de L'Acadie prepares for its consult with a TM along with another GSD site chosen in Canada. Chicago sends two of its elders to Hong Kong to participate in the consult there. IGM as represented with work done in Uptown distributed 10,000 Voices with the aid of Boys Club Youth, resulting in a business man placing an ad in the paper. The contradiction is in the arena of program expansion and troop availability.

**GLOBAL
MANAGEMENT
CENTRUM**

Audit preparation is taking great strides in both Chicago and Canberra Nexus with completion of functionalization designs. In-kind systems via gifts of cement in Nairobi and five rooms of carpet and its installation and 150 cases of paper in Chicago push cost cutting edge toward 10% mark. Canberra balances four out of ten checkbooks. Contradictions lie in the arena of building replicable systems of management that are transformational.