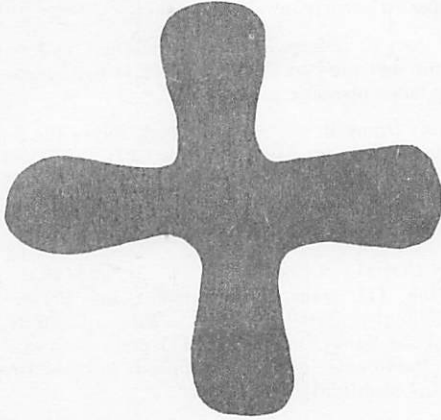


# GLOBAL ORDER REPORT

WEEK THIRTEEN

January 3-- January 9, 1977



## LONDON

### RELIGIOUS HOUSE: LONDON

External: Isle of Dogs has 120 present at TM, with 50 new faces. Powerful local workshop leadership from guilds impacts fire brigade who attend in full uniform and fire truck. Simultaneous Area guardians meeting signals lift off from British TM:Europe. Pre-school in uniform hits front page of local paper. Receives 1,000 pound gift for pug shoes with full-page coverage in press. Industrial development guild selects five trigger industries with feasibility study to be done in-kind by British petroleum. UK director of Schumacher's Intermediate Technology. Development group does intensive consultation on site. ICA receives official charity status number.

Internal: Final Sun Tzu study is very lively.

Contradiction: Building adequate structures for guild participation in battleplanning consensus for Quarter III. (Wk. 11)

### RELIGIOUS HOUSE: GLASGOW

External: Eight of nine target towns visited for TM-2 are framed. Dundee colleague decides to be TM consultant.

Internal: Commissions called and financial report raises issues of immediate futuric and long-range trends. Mark Jewell visits on way back to Chicago after four years in U.K.

Contradiction: Engaging regional leaders in making decisions relative to TM, towns, and assignments. (Wk. 12)

### RELIGIOUS HOUSE: BRISTOL

External: ITI recruitment is still going with one more yes, while arrangements are made for troika meeting with Pontyellun (Wales) on TM. Local foundation releases money for Isle of Dogs.

Internal: Christmas spirit grows with decor in the House

Blessed be God's name from age to age,  
for all wisdom and power are his.

Daniel 2: 20

and Saturday night party given by guardian family. House works hard on guardian report, newsletter, and letter announcing charity status.

Contradiction: Enabling momentum through Christmas so as to be able to move quickly in New Year. (Wk. 12)

### RELIGIOUS HOUSE: MANCHESTER

External: Fourteen colleagues from across region join House in GSD-TM consult weekend and plan the first ten of many TM for the Manchester region.

Internal: Flexibility of House demonstrated with creation of sleeping space for fifteen extra people.

Contradiction: Wanting to move as soon as possible on TM makes ITI seem like a stumbling block rather than the great tool it is. (Wk. 12)

## PARIS

### RELIGIOUS HOUSE: PARIS

External: Holds Forum Communautaire, first French programme in France, and discovers that it works. Has eight trained workshop leaders. Local journalist says that this really has a future.

Internal: Experiences an explosion of collegial support as people arrive from Brussels House and Nexus and from Rome. Libbi Crall, colleague from Brussels, drops everything and comes on one day's notice to help set up. FCF celebration dinner on Saturday evening is great occasion.

Contradiction: Moving from network authorization to network participation relative to getting the FCF set in Marseille while we are in Paris. (Wk. 12)

### RELIGIOUS HOUSE: ROME

External: Two mayors and a Cardinal say very good to TMs in south of Italy.

Internal: One flies out for Paris TM as three fly in from Shantumbu Consult.

**(RELIGIOUS HOUSE: ROME)**

Contradiction: Breaking through illusion of having too much work to do to have time to nurture the people to do it. (Wk.12)

**LAGOS**

**RELIGIOUS HOUSE: LAGOS**

External: Prominent West African surgeon to act as ICA trustee and consultant. Spends week in conversation with Misereor staff discussing aid for Nigeria on permeation assignment.

Internal: More staff is on the horizon.

Contradiction: Getting staff off horizon and on to the ground. (Wk. 10)

**BRUSSELS**

**GLOBAL CENTRUM: BRUSSELS**

External: Holds GSD consultant recruitment meeting with two consultants from El Bayad giving report and presentation. Nets bites for Cano Negro and Kuala Lumpur.

Internal: Has joint meeting with Nexus and Brussels House to finalize decision for House to move into temporary residence in Nexus facility.

Contradiction: Forging the structures to create a Centrum/Area House dynamic as one mission with different aspects. (Wk. 13)

**RELIGIOUS HOUSE: BRUSSELS**

External: Metro colleague picks up assignment to do New Human spin at Paris TM. Development call nets check for \$125; cadre women meet in Gent, first time ever outside of Brussels Metro. Three GSD report nights with three different churches yields four prospective consultants and possibility of continued financial support for GSD projects.

Internal: One hundred phone calls and visits to potential facilities reveal that there really are possible Houses out there.

Contradiction: Creating a story of facility search as missional to avoid collapse into internal preoccupation. (Wk. 12)

**RELIGIOUS HOUSE: AMSTERDAM**

External: Four appointments in Gorinchem lay base for Buurtdag in one day. Internal: Participates in area House moving day.

Internal: Decorates House in preparation for holiday season.

Contradiction: Convincing selves that we are not in the experimental stage with Buurtdag. (Wk. 12)

**FRANKFURT**

**RELIGIOUS HOUSE: FRANKFURT**

External: Tactical systems involving New Woman's Forum grads, Global Language School grads, local church pastors, and the military community for TM set-up begin to jell in Frankfurt Metro as about three or four communities are about ready for core meeting.

Internal: Christmas decor goes up. Reorganizes office and files around TM. Wes and Bobby Geary, (for whom Frank Hilliard was best man at Perkins) are guests at House Church.

Contradiction: Moving through the Christmas molasses to set up local steering groups. (Wk. 12)

**RELIGIOUS HOUSE: BERLIN**

External: Guild makes decorations and puts up nine more Christmas trees on light posts. The full length of Wrangelstrasse is completed with trees. Local merchants are so delighted with quality of ad flyer and its distribution that they agree to pay more than the original price for the ads. Tuesday night visitation locates a large number of residents eager to participate in the project.

Internal: House is addressed by corporateness and battle maneuvers through the play "1776". Week II battleplanning enables long-range planning for KIHP.

Contradiction: Doing in the present which allows the doing in the long-range to come off. (wk. 12)

**KINSHASA**

**RELIGIOUS HOUSE: LUSAKA**

External: Nine ITI grads from Kitwe Cadre decide to attend and enable SHDP Consult. Wife of Mondolo Ecumenical Foundation Director, an ITI grad, has cadre to home for refreshments. Authorization calls disclose strong affirmation for Shantumbu HDP.

Internal: Victor Manchishi, ITI grad, begins intern year. Maybin Simfukwe sojourns. August ITI as \$30,000 paid. HDP Habitat slides enliven ecclesiola and cadre meetings.

Contradiction: Moving into SHDP site with no facility. (Wk. 6)

**CAIRO**

**RELIGIOUS HOUSE: EL BAYAD**

External: Pre-school teacher training impact is reported to stake meeting by Megida, old woman who is a regular, who acts out day's lesson as her report. Well drilling crew begins using new locally fabricated tool to dig into fine water-bearing sand. Minister of Civil Aviation & Tourism attends Cairo development tea. Farmers guild is goin fishing to stock Nile rever telapia in community pond.

Internal: Muslim holiday, El Ayd el Adha, provides unexpected discontinuity as some go to families and rest write program proposals for development initiation and follow-up. Numerous guests visit from Beni Suet and Cairo who pitch in to help with translation and physical work. Finest Week I feast yet with Ronin conversation, contradictions study, and sodality game of war of proposals and contradictions.

Contradiction: Finding effective ways of making detailed arrangements that carry through. (Wk. 12)

**NAIROBI**

**GLOBAL CENTRUM: NAIROBI**

External: Linda Barnes returns from London with handicraft data. Centrum attends the local chief's wedding while KIHP program participants give singing performance. Guardian consultant gives agriculture lecture to KIHP farmers.

Internal: Welcomes Neal Vance and Joe Pierce. Nexus has no water for 48 hours. Receives new intern, Christopher Foya.

Contradiction: Discerning the necessary visible signs and

#### GLOBAL CENTRUM: NAIROBI

economic undergirding that in fact make Kawangware a demonstration for Kenya. (Wk. 11)

#### RELIGIOUS HOUSE: NAIROBI

External: Teachers and students on school holidays allow 2 Village Meeting teams on road full time while prior is hospitalized. Activates eight new committees with two new dates set.

Internal: Sharon Turner visits on way from Shantambu Consult and spiritizes House with new songs. Celebrates traditional Jamhuri Day with landlady providing flowers and neighbors and friends dropping by. Obedy Amatullah lands a job. Intensifies security system with burgular alarm on automobile.

Contradiction: Maintaining momentum of GSD. (Wk. 13)

### BOMBAY

#### GLOBAL CENTRUM: BOMBAY

External: Maliwada HDP Training School participatns have two-day Shram Dan, work day, giving face-lift to entire village.

Internal: Celebrates marriage of Simon D'Soza and Archana Mandal, October 17. Beth and William Jackson arrive.

Contradiction: Mobilizing troops to break through on all battlefronts. (Wk. 5)

#### RELIGIOUS HOUSE: BOMBAY

External: Pune circuit rider finds cadre recruiting second Gram Sabha and three local consultants attending Dendur Consult. Development receives favourable response from industrial houses for funding of new villages.

Internal: Week II sees miracle transformation of collegium room through paint blitz.

Contradiction: Being responsible for the launching pads of seven rockets taking off simultaneously and maintaining intensity of caring for all so there are no misfires. (Wk. 13)

### DELHI

#### RELIGIOUS HOUSE: DELHI

External: Schedules five new colleagues from Delhi to attend Sevigram Consult. Sends out Christmas letters with pitch for Human Development School.

Internal: Sends out Liz Marques to Calcutta House; Mario and wife to HDS and all other mobile House members to Consults.

Contradiction: Overcoming Christmas holiday mindset that you cannot do anything since no one is here. (Wk. 13)

### MADRAS

#### RELIGIOUS HOUSE: HYDERABAD

External: Development calls result in promises from businessmen. Recruits two persons for SMS in Maliwada.

Internal: Receives Josephs from Kendur Consult and are excited about the resurrection of the old Kendur village. Turns old storage room with antiques into a guest room.

Contradiction: Breaking loose the age old mindset of urgency resulting in move it, move it, when money is no problem. (Wk. 13)

### CALCUTTA

#### RELIGIOUS HOUSE: CALCUTTA

External: Development blitz victories: Major funding- 24,000 rupees. Urban Circuits- 1,988 rupees from Asansol. Creates newsletter, grounding three campaigns. Sends out development teams as blitz ends. Human Development training school recruitment for Quarter II is in full swing.

Internal: Begins house hunting and sends Charles Innes to Area Madras for Major Funding development blitz. Development team's pilgrimage to Tagore's house emphasizes meditative council and taking care of yourself.

Contradiction: Holding creative tension between external mission and self-support. (Wk. 10)

### SINGAPORE

#### RELIGIOUS HOUSE: SINGAPORE

External: Methodist clergy House member participates in Methodist conference and witnesses first bishop of Singapore Methodist church, Kao Jih Chung's consecration. Development calls continue. Human Development Bulletin is mailed.

Internal: Experiences week as one of celebration with Christmas tree being trimmed, gifts wrapped and birthday celebrated.

Contradiction: Learning when to be patient, when to anticipate and when to strike like a cobra. (Wk. 12)

#### RELIGIOUS HOUSE: KUALA LUMPUR

External: Open up new possibilities to broaden base of ICA with GSD slide shows to Rotary and Apex Clubs in Ipoh, Penang, Taiping and Kelang. Development and authorization given strong boost with additional troops of Banks and Woltjer.

Internal: Year end celebration with much burning and feasting on the Straits of Melaka beach. Week II conversations on ICA methods and future directions give helpful push relative to where and how to "move it".

Contradiction: Deciding to keep up GSD and development momentum in midst of Area Council and discontinuity. (Wk. 12)

#### RELIGIOUS HOUSE: JAKARTA

External: Two workdays with community produce new irrigation wall and replace House, which was blown over in tornado. Community kitchen serves meals. Industrial Guild decides to "up" production. Agricultural expert calls community plot of soybeans the finest he has seen in Indonesia. Doctor visits three stakes and treats nine people in three-hour period.

Internal: Mudjiatmo decides to intern for one year. Welcomes Laiya back from Army exam and sends out Gil Woltjer to Sydney. Life is brighter with new generator.

Contradiction: Breaking open Kampung Dahung to full participation. (Wk. 12)

### HONG KONG

#### GLOBAL CENTRUM: HONG KONG

External: Sends three trekkers to Manila, Hong Kong and Seoul. Seoul TM in Mun Jung Dong hosts 100 villagers and launches Korea toward 1000 GCF's. Marshalls HDP Eco Intensification report is address on Nexus. ITT receives reports on GSD with incredible positiveness. Week II Quarter III battleplan launches all into a future marked with campaign miracles.

**(GLOBAL CENTRUM: HONG KONG)**

Internal: All eight adults are around the table at House Church for first time in two months. George and Ruthe Yost visit and delight all with their practical care. Fijian colleague from Tokyo LENS arrives in Hong Kong on way to Australia. Puts up sparkling decorations for Christmas.

Contradiction: Committing selves to practical directions that move into the unfamiliar future. (Wk. 13)

**RELIGIOUS HOUSE: HONG KONG**

External: Fuk Wah resident responds to the call of history and becomes GCF coordinator. Lovely ride through countryside uncovers three potential guardians and document writing facilities.

Internal: Intense planning follows return from Area Priors Council. Busy schedule and beautiful weather allow Advent to sneak up on us. Beautiful decoration by Emerging Generation cause reflections on deep meaning of Christmas story.

Contradiction: Allowing Christmas to be the pause that refreshes without losing GCF and consult momentum. (Wk. 13)

**RELIGIOUS HOUSE: KAOHSIUNG**

External: Has dinner with Roman Catholic Vicar General. Two House and 1 metro colleague go to Taipei LENS, resulting in new grads wanting to learn to teach course in Mandarin. Discovers Chien Chen village near Kaohsiung airport; becomes GSD site where least expected, under proverbial noses; begins initial research conversations with colleagues, revealing similar possible locations. GSD training new form as three commit to Fuk Wah Consult.

Internal: House fills with guests as George Packard arrives for priors trek. Metro ecclesiola includes 11 extras as ITI grads come unexpectedly from next city to attend. Hot water arrives at House in time for cooler weather.

Contradiction: Symbolizing focus of mission that releases engagement for GSD. (Wk. 8)

**RELIGIOUS HOUSE: MANILA**

External: Holds GCF training school and Area Priors Council, with in-kind breaklooses of snacks, supplies and balloons printed with Global Community Forum of the Philippines. Does GCF recruitment across region with George Packard on Tuguegarou circuit. Training school includes representatives from all six regions of the Area.

Internal: Creates five rooms to house incoming priors. Peter Morton stars in Marlon Brando movie. Welcomes Bruce and Sharon Robertson. Ecclesiola study of corporate research on New Humaness sparks new ideas and enthusiasm for research. Entire House participates in Area events of training school and GCF.

Contradiction: Moving forward at full speed in the midst of the culture's demand to participate in season's celebrations. (Wk. 13)

**RELIGIOUS HOUSE: TAIPEI**

External: Pedagogy evaluation and planning sets sights on Quarter III PLC. GCF plans permeate quarter battleplanning as national authorization visits are planned with a little help from our friends.

Internal: Christmas dinner and songfest begin discontinuous three days of dinners and programs at colleagues homes and churches. House moves on model to meet self-support release figure.

Contradiction: Doing massive campaign when past years' events have been one at a time efforts. (Wk. 13)

**RELIGIOUS HOUSE: CEBU**

External: Sudtonggan HDP reports that 17 meter-long fishing boat shell is completed; PBSP, Philippine Business for Social Progress, commits to funding SHDP program salaries for community and auxiliary. Preparations for Sudtonggan fiesta begin.

Internal: Gunther Reiser, German Movement residing in Hong Kong, visits with avid interest in the project and teaches pronunciation of Kreuzberg Ost.

Contradiction: Doing quarter's planning delayed due to otehr commitments. (wk. 10)

**RELIGIOUS HOUSE: DAVAO**

External: Holds GCF with 350 in attendance November 30. Sends three people to Area GCF training school in Manila with stopover for Sudtonggan fiesta.

Internal: Welcomes back returnees from Area Council. Report on Area Council is highlighted by new songs. Christmas decor is up.

Contradiction: Orchestrating the two-week gap of Christmas and New Year so it doesn't become an abyss. (Wk. 13)

**TOKYO**

**RELIGIOUS HOUSE: TOKYO**

External: Mr. Watanabe, advisor in Canadian Embassy, gives references to five leading government representatives, including the Population Problem director.

Internal: Sister Sheehy and Mrs. Masukato, both directors of International Schools in Tokyo visit House on successive days.

Contradiction: Maintaining day-to-day engagement without prioritized expenditure. (Wk. 13)

**RELIGIOUS HOUSE: JEJU**

External: Visit by General Yu Jae Hoon, president of Korea Oil Company, occasions great preparations, including uniforms for pre-schools, building a kerosene station, painting a local store, laying staff house water pipeline, a complete village clean-up. At same time, on-going events such as the village Lyceum with local talent, guild meetings and a guild leaders dinner happens. The General's visit confirms to the community that they are visably in the eyes of Korea and the world.

Internal: Sends out Ed Dilinger and Floyd Votaw, is visited by Rob Work and Rev. Kang Pyang Hoon, who bring guardians care package from Dan Waldorf. House member, Chun Sung Hee, starts new job at new hospital. Experiences flood of people at dinnertime as interest increases in village programs. Delights in community's enthusiastic response to introduction of popcorn and homemade cookies.

Contradiction: Creating forms and methods for intensifying engagement of villagers amidst great momentum of community participation. (Wk. 11)

**RELIGIOUS HOUSE: SEOUL**

External: Holds first TM on mainland Korea in Mun Jung Dong, Seoul, with 147 participants. Honam Oil Refinery Company, Caffex joint venture, supports JHDP with 10,000,000 won (US\$20,800) for village common mill.

Internal: House kindergarten students appear in Yang Kwang Kindergarten Christmas program. House members in nightly GCF training.

Contradiction: Doing GCF circuit implementation. (Wk. 13)

**RELIGIOUS HOUSE: FUKUOKA**

External: Has week of regional contact through PLC mailing and holiday (Advent) mailing. Makes valuable new contacts in preparation for GSD in Miyata, particularly former union leader who now is local historian. Takes pictures for GSD brochures.

Internal: Gains new insights into GSD and our role in global development through corporate study of guardian paper on technology.

Contradiction: Creating new arenas for development work. (Wk. 13)

**RELIGIOUS HOUSE: OSAKA**

External: Goes on trek to Gobo for GCF presentation to Rotary, Doctor's club, Widow's Association, Women's Society. Presentations to top officials in Osaka show mounting push towards GCF Japan.

Internal: Thirty community residents and colleagues join in all phases of preparation and clean up for House Christmas party.

Contradiction: Getting money in hand from development strategies. (wk. 13)

**RELIGIOUS HOUSE: SENDAI**

External: Heralded Advent with colleagues at our annual GSD Christmas Party. Colleague speaks to local group on village in Kwangyung II.

Internal: Does IBP and attends Christmas parties. Reads 200 New Years cards for mailing.

Contradiction: Journeying region for major development with colleagues still on another swirl. (Wk. 13)

**SYDNEY**

**RELIGIOUS HOUSE: SYDNEY**

External: Area Troika plus Vosslers and Centrum meet for Area Council and plan two week Community Training Consultation (GRA); Area finance and strategies. Donor circuit to Newcastle nets \$1,000 and CMA penetration. Australian No. 1 company B.H.P. gives inkind to value of \$5,000 for O.H.D.P.

Internal: House experiences new depths as we do five collegiums studies on "Humaness is-----".

Contradiction: Dealing with the gap of where colleagues and contacts are and where they need to be for training, planning and engagement for 1977. (Wk. 12)

**RELIGIOUS HOUSE: PERTH**

External: Receives first firm possibilities for summer CTC. Has two people ready to be consultants. Visits to Institut of Technology produces offer of free radio time for ICA.

Internal: Goes to Haymarket for last of Christmas shopping. Sends Burbidge out to Oombulgurri and India. School ends with excellent reports for Youtand EG.

Contradiction: Disclosing unpreparedness for tasks ahead and not finding holiday mindset. (Wk. 13)

**RELIGIOUS HOUSE: DARWIN**

External: Christmas Parade details finalized and trek and CTC mailing out.

Internal: Bill Senton call in on way home from Oombulgurri. Christannia Betonte celebrates first birthday. EG participate in YMCA holiday activities.

Contradiction: Building the corporate context with everyone participating in the building of it to enable all individuals to participate in all arenas. (Wk. 12)

**RELIGIOUS HOUSE: ADELAIDE**

External: Final CMA activity before holidays nets statewide Girl Guide authorization and an expanded Salisbury Steering Committee. House car plows through 80 kilometres of locusts on way to Area Council.

Internal: First set of grandparents, Dettmanns of Duluth Metro, arrive for Christmas from America in the midst of House finishing two floors and a car paint job. Trims tree and shares slides of colleague's Oombulgurri trip at Christmas prep ecclesiola. Paul Duffy secures 2:00 a.m. bakery job.

Contradiction: Maintaining Area push on other side of regional wrap-up. (Wk. 13)

**RELIGIOUS HOUSE: MELBOURNE**

External: Truck with steel for five houses departs for Oombulgurri. Family trust donates \$500. Further GRA registration received.

Internal: House uses surprising manoeuvres to celebrate multiple birthdays and school victories. Shogun (cockatoo) accompanies Newkirk on first circuit. New insights re: CMA strategies revealed in quarter evaluation.

Contradiction: Creating miracle tactics appropriate to summer mindset which take into account troop deployments. (Wk. 12)

**GLOBAL CENTRUM: CANBERRA**

External: Has development circuits in Sydney and Singapore. Does management and development mailing to Houses.

Internal: Decors new facility for upcoming Open House.

Contradiction: Deciding to celebrate when having no indications that it is in order. (Wk. 13)

**RELIGIOUS HOUSE: BRISBANE**

External: Search for Oombulgurri builder and continued summer recruitment opens up networks we didn't know existed.

Internal: House strength is increased by Area assignment of John Rader and sojourn of David Jago. School vacation provides occasion for Emerging Generation planning workshop and implementation of week's plan.

Contradiction: Occasioning the shift of network priorities while remaining outside those networks, as the catalytic agent. (Wk. 13)

**SUVA**

**RELIGIOUS HOUSE: MAJURO**

External: Durst leaves for Milli Atoll to extend MHDP to outer islands, while Majuro prepares for Christmas with residents of island practicing original songs and skits to be presented at the churches on December 25.

Internal: Physical care occurs as stove and lights are fixed, new locks are installed and package of Christmas food arrives from the Hylands. James Chia is deeply missed.

Contradiction: Allowing the Coming Alive of Marshallese colleagues to expand to a broader and broader group when everything is experienced as something between an irritant and an overwhelming demand. (Wk. 13)

**RELIGIOUS HOUSE: APIA**

External: Youth task force complete first week of work and first meeting of the future Samoan guardians is successful while three village circuits are covered during the week.

Internal: Mr and Mrs Martin Roberts, from Michigan, attend House Church. Tail end of hurricane damages Samoan crops and trees surrounding House.

Contradiction: Giving minimum support necessary to current programmes while initiating still more. (Wk. 12)

**SAN FRANCISCO**

**RELIGIOUS HOUSE: SAN FRANCISCO**

External: City of San Francisco continues TM momentum - second core set up in onw week - Richmond District sets February date. New California Jaycee TM chairman spends morning at House strategizing; Alameda editor of newspaper says yes to steering committee and m.c. role. Gets 15 yesses to statewide steering committee. Area responds overwhelmingly to Inyan Wakagapi with average of over \$200 a day coming in from mailing and phone blitz.

Internal: Collegium room becomes art gallery as we celebrate the completion of Dean Ellis' special assignment to paint; has great art form conversation on five paintings which ground the struggles and glories of what it means to be an artist in the 20th century. Has great Christmas celebration, including trip by E.G. to forest to cut down tree, great turkey buffet dinner, hot Christmas punch and Christmas cookies, carol singing, tree trimming.

Contradiction: Finding the right internal structures that will freight the next phase of campaign. (Wk. 11)

**RELIGIOUS HOUSE: SAN JOSE**

External: Becomes distribution center as 8750 pou method wins through once again.

Internal: Gets ready for and eats 6AM Thanksgiving feast complete with turkey, wine and pumpkin pies which raises that celebration to new levels of thankfulness.

Contradiction: Getting pulled into the whirlpool of We'll think about that tomorrow mindset which threatens to prevent us from doing the necessary tasks. (Wk. 9)

**RELIGIOUS HOUSE: SACRAMENTO**

External: Focuses on development as holds three nites at Institute in conjunction with urban circuit visit and contracts 100 new development prospects.

Internal: Refreshed by opportunity for depth spirit reflection through collegiums on Humaness Is chart and hosting David and Patti Olsen, Billings Region colleagues.

Contradiction: Deciding to use programs to call forth new colleagues instead of hammering old lists. (Wk. 11)

**RELIGIOUS HOUSE: SEATTLE**

External: RS-1 scheduled in Burien. Portland colleague Joann McClarity agrees to consult with four steering committees. \$1,200 raised for Inyan Wakagape.

Internal: Vision of guest night ecclesiolas takes form around first invitation list. Ferguson's return from Prior's Council and Inyan Wakagapi.

Contradiction: Being on tiptoe during Christmas holiday in order to come off the blocks sprinting on Jan. 1. (Wk. 12)

**RELIGIOUS HOUSE: LOS ANGELES**

External: Creation and mailing of newsletter, Campaign Hi-lites, forces us to articulate our story and relate it to colleagues.

Internal: Week II transforms kitchen and laundry room spaces while we experiment with conversations on Tao Te Ching. Mueller children and Kris Knutson arrive for discontinuity.

Contradiction: Keeping momentum going amidst discontinuity-mindset. (Wk. 12)

**RELIGIOUS HOUSE: PHOENIX**

External: Ground work for development of foundation and corporation TM sponsorship.

Internal: Metro colleagues outnumber House members at House Church. Christmas carols sung before meals.

Contradiction: Setting up the state so that a maneuver would win requires shifting gears from area back up staff to Phoenix-Arizona maneuver force. (Wk. 12)

**RELIGIOUS HOUSE: SALT LAKE CITY**

External: One member of the three original pioneer families to settle American Fork, Utah shows up in time for "Story" workshop. Her response after TM was, 'Sure I know a lot of people around here, I'll call them and tell them about TM, you could do a lot of them around here'.

Internal: House spends one morning collegium loading the Overall Camper to the brim with food for Inyan Wakagapi. Broken shocks and two flat tires enroute indicate how full.

Contradiction: Sensing the need for visioning and battleplanning everyweek in order to keep perspective on all three campaigns. (Wk. 12)

**RELIGIOUS HOUSE: BILLINGS**

External: East Helena steering committee with 14 present is led by three members of Whitehall steering committee. 700 newsletter envelopes labelled by four EG and one youth.

Contradiction: Accelerating TM marketing and organization by TM grads in order to do 40 TMs this year. (Wk. 11)

**RELIGIOUS HOUSE: DENVER**

External: New Year's invitations prepared for mailing. Financial statement for ICA completed for Denver Region.

Internal: Receives furniture and TM-stereo set. Sojourner Dave Earnshaw, grad and workshop leader from Laramie holds male dynamic in House.

Contradiction: Waiting on implicaiton for Inyan Wakagapi Consult before going on with TM as usual. (Wk. 11)

**RELIGIOUS HOUSE: RAPID CITY**

External: 750 Christmas cards celebrating the birth of Inyan Wakagapi printed and mailed with TM news to TM grads, development list and movement friends.

Internal: 17 at House Church (only 2 house people left) and 7 metro colleagues stay to complete mailing.

Contradiction: Prepare metro to continue and increase its strength after the House is relocated. (Wk. 12)

**EDMONTON**

**RELIGIOUS HOUSE: EDMONTON**

External: Large food chain gives written confirmation of willingness to financially support any forum in Alberta in 1977. Millwoods' steering committee actualizing key

**(RELIGIOUS HOUSE: EDMONTON)**

promotion tactics over Christmas holiday period.

Internal: Crucial insights gained through discerning trends and contradictions of the quarter. David Woodbury leads collegium study as House is evacuated for Priors Council and development trek.

Contradiction: Resenting the gift of spending necessary time in the temple before the battle. (Wk. 12)

**RELIGIOUS HOUSE: VANCOUVER**

External: Celebrating the quarter with colleagues while continuing to push forward by visiting the president of a large university.

Internal: Hosting development team and preparing for Christmas by buying and decorating tree and sending two people out for discontinuity.

Contradiction: Temptation to let discontinuity happen before the time we had it scheduled. (Wk. 12)

**RELIGIOUS HOUSE: ANCHORAGE**

External: New brochure for TM in 1977.

Internal: Marvelous Christmas celebration..

Contradiction: Now to creatively engage in discontinuity. (Wk. 12)

**RELIGIOUS HOUSE: SASKATOON**

External: Holds House Church in Prince Albert with 36 in attendance. New Year's Eve mailing to 86 initiates celebration prep.

Internal: Decoring for Christmas, Christmas celebration and caroling to colleagues tops the week. Office space recreated. Sends Holmes and Scoville to Priors Council.

Contradiction: Awakening the province instead of doing 20 Forums. (Wk. 13)

**RELIGIOUS HOUSE: WINNIPEG**

External: Social Demonstration slide show for Manitoba conference of religious with request for authorization.

Internal: Christmas celebration with egg nog, roast beef, and presents for the House.

Contradiction: How to take the gifts of the Continental Council, build the comprehensive local plan, in the midst of year-end nitty gritty, and mold it into one powerful thrust. (Wk. 12)

**HOUSTON**

**RELIGIOUS HOUSE: HOUSTON**

External: \$1,000 more from Mississippi; Human Development slide show on the road.

Internal: House readies itself for the Christmas season as it fasts and feasts, invites 250 people to participate in the Twelve Days of Christmas and hears report of Priors Council.

Contradiction: Creating structures to engage old and new colleagues in the mission that is too big for even us. (Wk. 12)

**RELIGIOUS HOUSE: AMARILLO**

External: Secures Midland TM date and sees hew success with Saturday visit strategy.

Internal: Christmas cards and invitations for New Years go out and annual Christmas celebration is held at morning house Church with families presenting symbolic gifts to

House.

Contradiction: Maintaining momentum in midst of seasonal interruptions. (Wk. 11)

**RELIGIOUS HOUSE: SAN ANTONIO**

External: After weeks of grassroots hassling in South San Antonio, mayor pro-tem finds key which unlocks resounding yes in South San Antonio, and also ideal facility for TM.

Internal: In midst of double development blitz on bi-metro from two teams, Charles Watson works some Indian magic to provide delicious Indian curried chicken with all the trimmings for celebrative ecclesiola meal..

Contradiction: Bending small Texas town's social patterns so troops can follow-up lower valley maneuver at five hours distance on week ends. (Wk. 4)

**RELIGIOUS HOUSE: OKLAHOMA CITY**

External: Practical preparation for TM:Oklahoma 100. Maneuver includes decor for training sessions, in-kind of food and housing; paper has been in-kind and sent to Tulsa for printing the Coordinators Manual.

Internal: Baileys return from North American Prior's Council Thursday and report to the House.

Contradiction: Supply routes to the four Field Command Posts are unstable and the Posts are unmanned. (Wk. 12)

**RELIGIOUS HOUSE: DALLAS**

External: Large Thanksgiving celebration held Sunday with House Church and Habitat slides; 70 sit down for first large meal in new facility. TM steering committee member in Troop, Texas wants to be ICA consultant for Mineola, Texas.

Internal: Five coordination of food for Thanksgiving celebration; sends RRopers to Memphis; development continue to use the Wayside Inn.

Contradiction: Tracking and ordering of funding at various levels. (Wk. 9)

**RELIGIOUS HOUSE: TULSA**

External: First statewide steering committee meeting for TM:OK 100 convenes in Oklahoma City; now moves to four sectors as community visitation and maneuver prep take place. Addressograph Multigraph agrees to print TM:OK 100 coordinators training manual.

Internal: Moves toward sector responsibility in TM:OK 100.

Contradiction: Using troops more strategically to accomplish snowballing momentum of TM:OK 100. (Wk. 10)

**RELIGIOUS HOUSE: NEW ORLEANS**

External: Bogalusa coordinator training session with 13 people yields three team leaders as well as initiating practices. Third and last Mississippi maneuver of Quarter II and with an office party of Pennington results in 12 towns having firm dates se with coordinators and plus 20 possibilities.

Internal: Christmas tree brought and decored. Long needed repair accomplished; we have a front door now.

Contradiction: Making a forceful plan in the midst of uncertainty related to the shape of the future. (Wk. 11)

**RELIGIOUS HOUSE: MEMPHIS**

External: Area planning in Chicago of phasing of eleven states sets the tone for Sector III planning in Jackson, Miss.

**(RELIGIOUS HOUSE: MEMPHIS)**

as whole House travels to the Jackson Hilton. Delta Pace staff agrees sector III and IV are one sector and all sense the cruciality of corporateness.

Internal: Colleagues bring 'lean and mean' Christmas tree that experiences creativity of impromptu decor at Christmas party two hours after arrival from Jackson, Miss. planning.

Contradiction: Bridging two weeks before an awesome quarter. (Wk. 12)

**RELIGIOUS HOUSE: ATLANTA**

External: Sumpter Co. (Plains) makes official decision to hold TM on Feb. 19.

Internal: Priors convene in Chicago and return to join House in hosting sector IV and V for Qtr. III planning. E.G. prepares for and serves House at tree trimming event, as welcome home front-line troops-Jay and Ike.

Contradiction: Missional discontinuity affords House major preparatory events in midst of celebrating the New Born. (Wk. 12)

**RELIGIOUS HOUSE: CHARLOTTE**

External: Use of a Phase IV TM colleague provides guru reflection on our own pitch and methods.

Internal: Total in-kindness of Christmas party ingredients, from greens to ice cream.

Contradiction: Designing strategies to train coordinators from various areas with maximum effectiveness. (Wk. 12)

**RELIGIOUS HOUSE: MIAMI**

External: Local guardians upon hearing a report from Kansas guardian, Dave Jackson, about Kansas City CIF of 1200 bagins to think big in strategizing for Miami.

Internal: Patsy Reily is paid \$124 for weekend secretarial job with executive board meeting of International Theatrical Association, chaired by Dave Jackson.

Contradiction: Implimenting new strategy of thinking big in Miami Region while honoring priority of Florida and Mississippi while having troops heavily committed to permeation.. (Wk. 11)

**CHICAGO**

**GLOBAL CENTRUM: CHICAGO**

External: Week of discontinuity finds us busy preparing for ITI send out to Birmingham, GSD consult in Cana Negro, and continued momentum in TM.

Internal: Celebrates the coming in of 1977 in the midst of relooking at internal life models and ecclesiola design. Development reports over \$1,000,000 raised this month.

Contradiction: Doing more with less. (Wk. 13)

**RELIGIOUS HOUSE: CHICAGO**

External: Bartlett does drawing of 5th Ave. revealing 26 concrete projects; 4 abandoned buildings on Homan finally coming down; Auto Center given 3 year projection of \$60,000 profit each year; send out 5th City-Lincoln 100 greeting cards to 500; N.A. prior's council readjusts TM strategies; 200 letters to Ill. Steering Committee.

Internal: Burchell Pierce brings truck load of tools and enters extended sojourn; Dr True finishes residency; House experiments with new way of battleplanning, focusing emphasis on I-BP and adding elements of strategic objective

and maneuver, sensing more dynamic thrust will occur.

Contradiction: Having our next phase and quarter battleplans ready for weekly modification by Jan. 2. (Wk. 12)

**RELIGIOUS HOUSE: WICHITA**

External: Visit to the Governor's Administrative Aid ; introducing the Governor's office to Kansas TM '77 for 100 TM this spring.

Internal: House creates all new Christmas decor and fantastic Christmas tree -result the best Christmas tree in the World.

Contradiction: Deciding to engage in the discontinuous in the midst of unbelievably intensified demands. (Wk. 12)

**RELIGIOUS HOUSE: OMAHA**

External: Visit Your Neighbor Week by Northside Council to tell story and lay groundwork for six TMs in spring. Omaha TM documents to be placed in Gerald Ford Time capsule at his birthplace.

Internal: Study of Community by Bonhoeffer ground the Word the way y it is and that is sustaining force of this quarter.

Contradiction: Focusing generalship to everchanging areas of maneuvers. (Wk. 11)

**RELIGIOUS HOUSE: KANSAS CITY**

External: GSD dinner at Continental Hotel with 55 present; slide report on El Bayad by J. Antonine and four decisions for GSD. Follow up story to CIF was a visit to 90 corporations who attended asking them to fund 80 more. Net \$11000 in one week.

Internal: Quarter celebration with metro colleagues. Reflective conversation reveals life more abundant than had ever been anticipated.

Contradiction: Discovering the strategy which will release political authorization in Kansas and Missouri. (Wk. 11)

**RELIGIOUS HOUSE: MINNEAPOLIS**

External: Sends Bud Philbrook, David Butler, and Sue Laxdal to Inyan Wakagapi. Minnesota Humanities Commission called us after hearing great TM stories all over the state and writes endorsement letter and offers funding TM followup. Sends three people to Northern Division Council. Sam Hanson on development in New York nets \$100,000 victory.

Internal: Welcomes new intern Joel Berger enroute to Maliwada and sojourner Martha Kline from the Whittier community.

Contradiction: Needing spiritizing element to sustain and catalyze motivity while trapped in routine. (Wk. 11)

**RELIGIOUS HOUSE: ST. LOUIS**

External: Mailing to 76 key network people in Illinois completed for consult Jan. 8. Visited Lt. Gov. Phelps in Missouri to begin statewide advocacy. Six proposals for concrete Missouri strategy created by the House. Internal: New strategy decor for both Illinois and Missouri created in collegium room.

Contradiction: Re-integrating our development thrust with concrete signs of victory in Illinois and Missouri TM campaign. (Wk. 12)

**RELIGIOUS HOUSE: PEORIA**

External: TM promotion in Monmouth underway; Iowa circuits and network development continue to build.

Internal: Host St. Louis and Chicago colleagues for Illinois Network dinner by candlelight and workshop; evaluation of Qtr. II full of surprises; send out Christmas cards.

Contradiction: Fuzziness of our image of IGM raises issue of Qtr. III manoeuvres. (Wk. 12)

**RELIGIOUS HOUSE: GREEN BAY**

External: Neighborhood School invites House to use methods in training block captains. New authorization with News Media entre open possibility for sponsorship of Leadership TM.

Internal: Progressive Advent decor model adds daily excitement to the House and builds anticipation for Christmas and New Year's celebrations.

Contradiction: Turning "routine" collegiums into exquisite happenings that build a common vision. (Wk. 12)

**RELIGIOUS HOUSE: MILWAUKEE**

External: Metro Cadre support goes 100% global as all pledge money now goes directly to Area for campaign funding. Barbara Smeltzer and Therese LeBlonc return from Nyan Wagakpi and Bob Rye goes to Shantumbu and Don and Joyce Francis prepare for ljede.

Internal: House adults participate in Priors Council. Fr. Don Richards celebrates his 40th birthday at House Church with many promises claimed for his future.

Contradiction: Readjusting thinking in light of obvious victory. (Wk. 12)

**RELIGIOUS HOUSE: INDIANAPOLIS**

External: New colleague from Louisville raises \$2,500 in three weeks for her participation in 6 months long GSD Health trek. House and Indy polis cadre work on campaign newsletter for bi-metro amidst cleaning and reorganizing house space for Christmas and next quarter.

Internal: Purple, Advent and Christmas begin to move in our beings as House creates 60 gifts for colleagues, a tree is

bought, Christmas decor joins Advent purple in preparation for Christmas celebration while first-among-equals travel to N.A. Prior's Council and report back on GSD breakloose in N.A.

Contradiction: Creating a campaign training and engagement design that fits the Indianapolis-Louisville bimetro and its forces. (Wk. 12)

**RELIGIOUS HOUSE: CINCINNATI**

External: Phase II timeline is updated with Mansfield and Mason polises setting three dates. The road is accomplished by metro teams.

Internal: Hosts the Bi-metro for a Feast of Beginnings with baptism of Ruth Carolyn Richert and receives Walter Kickun as intern.

Contradiction: Preparing to do massive GCF program as state wide project when every community seems ready. (Wk. 13)

**RELIGIOUS HOUSE: DETROIT**

External: Formalization of a decision to do TM Focus: Michigan Week is initiated with submission of proposal to Gerstacker Foundation and ICA si invited to submit a propoosal to Strosacker Foundation (Both resulting for

Midland TM).

Internal: Redesign of sapce allows for new sophistication and endurance at the planning table as collegium room is mov ed and work is begun on the creation of a working warborad. House celebrates return of Ann Andrew and Alice Walton from Academy, once again bringing House to full workin g complement.

Contradiction: Creating the structures necessary for implementation. (Wk. 11)

**RELIGIOUS HOUSE: CLEVELAND**

External: 32 TM plan for completing phase II finalized with 23 consultant teams secured from TM grads. House becomes consultant orchestrators with formats for weekly training of consultants by polis.

Internal: Risk game at ecclesiola grounds strategy for acceleration in Qtr. III and IV. Second TM grad sojourner, Ann Eberhard, moves in. House arrives one day early to move all belongings and is received with a smile.

Contradiction: Practical office support to back up development and TM thrust. (Wk. 12)

**NEW YORK**

**RELIGIOUS HOUSE: NEW YORK**

External: Six begin in grassroots development evening telephone blitz two days prior to Thanksgiving with Pacifica Ur meal and made 75 calls and raised \$75 in initial pledges.

Internal: High Thanksgiving celebration beginning with Macy's parade, processional through the House to Daily Office and Feast with a send out for Sharon Turner to Shantumbu.

Contradiction: Building a practical model for engaging new metro troops. (Wk. 9)

**RELIGIOUS HOUSE: PITTSBURGH**

External: East Northside TM magnetizes community most visibly seen in clergy; Pittsburgh maneuver commences. Frames 11 town and sets cores.

Internal: House triples in size with maneuverParticipates in finance trek; celebrates Cameron Grow's 14th birthday.

Contradiction: Providing forces in midst of Movement transition from House to task. (Wk. 8)

**RELIGIOUS HOUSE: ROCHESTER**

External: Buffalo TM followup meeting decides that what Buffalo needs is more TMs adn they'll be the consultants.

Internal: Push on development begins to succeed with week night telephone which nets \$136.00 promised. House member is laid-off job then re-hired and promoted all within 24 hours.

Contradiction: Developing with what we've got. (Wk. 11)

**RELIGIOUS HOUSE: RICHMOND**

External: Grassroots development letter to over 400 TM grads initiates grassroots development by Bi-metro. Christmas Party for colleagues with Sudtonggan Economic SWAT team slides and story.

Internal: Welcomes maneuver team home; trims tree and does collegium series on quarter reflection which grounds Quarter II in the light of Advent.

**(RELIGIOUS HOUSE: RICHMOND)**

Contradiction: Figuring out how to wait at top speed. (Wk. 13)

**RELIGIOUS HOUSE: WASHINGTON**

External: Annie Wooten and Forrest Craver are sent to Inyan Wakagapi to represent the ICHDP. Buyers Club is launched with 22 putting \$10 on the line as Fred Wilson calls for a symbol of serious commitment to the project.

Internal: New Religious Mode Collegium series and the Area Priors trek bathes the consciousness of the House in wisdom on which we stand and occasions corporate brooding on future directions.

Contradiction: Focusing the new resurgence of spirit that is getting manifested in the House. (Wk. 11)

**RELIGIOUS HOUSE: BALTIMORE**

External: Howie family receives air fare for GSD Consult in Fuk Wah Tsuen from "home" local church. Does one-day blitz for Fairfield TM using shadow dynamic with Fairfield local man, yielding \$250 from major bank, one local business and two international oil companies with tank farms in Fairfield.

Internal: Roy Kauer and Josephine Riley announce engagement at House Church. Thanksgiving celebration draws in metro colleagues for brunch. House meeting on finances yields renewed resolve for a human revolution which can sustain itself.

Contradiction: Pushing ability to expose demand as possibility and challenge. (Wk. 10)

**RELIGIOUS HOUSE: PHILADELPHIA**

External: Area Council in Hartford creates strategies for 1-to-4 replication in 100 towns this quarter.

Internal: A self-support plan with a lower budget was decided in the midst of job upgrading and additional troop assigned out.

Contradiction: Building a story that captures the imagination of local man now that the replication pressure point has been discerned. (Wk. 13)

**RELIGIOUS HOUSE: NEWARK**

External: Movement formation explodes Hanover Township. Coordinator becomes consultant and 4 metro colleagues announce decision to attend GSD consults in coming year.

Internal: Third New Humananness collegium is great spirit happening.

Contradiction: How to launch Qtr. III effectively engaging old and new troops. (Wk. 12)

**RELIGIOUS HOUSE: BROOKLYN**

External: New York Area Council pushes Bi-metro and House to think 'replication' instead of one TM at a time.

Internal: Receiving \$100 from a local church after telling the Maliwada story.

Contradiction: How to maintain the new enthusiasm and intensity from the continental and areal councils thru the holiday discontinuity. (Wk. 12)

**RELIGIOUS HOUSE: HARTFORD**

External: Newport decides to have TM and Clinton calls to request a TM. Christmas cards and New Years Eve invitations include many TM workshop leaders, steering committee members and participants.

Internal: Area Council prep continues with Day II task

forces and Saturday task forces tackling decor and cleaning. Tim Karpoff gets flown to Vermont to help set up Newport and Mark Whitney gets a paper route.

Contradiction: Tying up loose ends for Area Council interns oof set-up following up on Quarter II financial pledges and planning how to operate areally in Quarter III. (Wk. 11)

**RELIGIOUS HOUSE: ALBANY**

External: Capital District maneuver follow-up in full gear. Circuit visit to Syracuse.

Internal: Half the House leaves for N.A. Priors Council while the other half keep appointments in seven different communities. Build two qtr. tracking board.

Contradiction: Keeping track of the multiplicity of details as each TM takes a slightly different route to completion. (Wk. 12)

**RELIGIOUS HOUSE: BOSTON**

External: House participates in claiming of past and future victories thru N.A. Priors Council and Area New York Council; grassroots development calling yields financial and time commitments and calls for second TMs.

Internal: Three jobs down and one to go as George Howard gets new job in the midst of ending Qtr. II, ecclesiola and planning for House Christmas party.

Contradiction: Fear of failure in midst of smell of victory. (Wk. 12)

**MONTREAL**

**RELIGIOUS HOUSE: MONTREAL**

External: Sends four from House to Iroquois CFC, has first in a series of four Advent after House Church happenings for French colleagues giving opportunity for first use of French text for Habitat slides.

Internal: Reflections this week on Advent/Church year, Year of Canada story, Profound Humanness charts and The All Consuming Fire point to power of symbolic dimensions of life enabling and sustaining us to care for the world.

Contradiction: Feasting off self-support and CFC urgency. (Wk. 9)

**RELIGIOUS HOUSE: TORONTO**

External: Colleagues deepen commitments as CFC steering committee meets downtown while colleagues plan for outer sectors upstairs and replication huddle occurs in Hastings.

Internal: Spirits lifted by gift of Christmas tree from colleagues after intensive week of self-support through odd jobs (net \$197 in two weeks), new jobs and paper route.

Contradiction: Realizing old images and abstract demands of missional screens do not produce human increase. (Wk. 13)

**RELIGIOUS HOUSE: OTTAWA**

External: Receive two unsolicited invitations to address potential steering committees in Cornwall and Vanier.

Internal: Area council in Toronto prepares common vision and spirit for N.A. Priors Council.

Contradiction: Slaying self-support dragon while getting a running start on Qtr. III. (Wk. 12)

**CARACAS**

**RELIGIOUS HOUSE: CARACAS**

External: HDP inkind donations-60 beds and

**(RELIGIOUS HOUSE: CARACAS)**

tons of cement, unlimited supply of sand and gravel, 300 meters of cloth for preschool uniforms, wall partitions electrical conduit, lumber. 300 sq. meters of floor tile, and medicine for the health center. Workday in Cano Negro clears and stakes off plaza and area for community center.

Internal: Rose Worden arrives to help with inkind drive. Auxillary situation firmed up with confirmation of 2 teachers and a doctor from Lima, and 4 others from the States. House turns evening meal structures into grand nights of entertainment.

Contradiction: Getting transportation system set up to get inkind good to Cano Negro. (Wk. 12)

THE GLOBAL ORDER CENTRUM REPORT

BRUSSELS  
NAIROBI  
BOMBAY  
CANBERRA  
HONG KONG  
CHICAGO

WEEK

GLOBAL  
DEVELOPMENT  
CENTRUM

*Global Development Centrum reports \$88,000 to El Bayad. Vazir Sultan Tobacco Co. grants \$50,000 for a village project near Hyderabad. The Indian Tobacco Co. grants \$50,000 each for the first three replication villages with the possibility of another \$50,000 each for the next 30 villages. Large multi-national corporations are sensing it is in their best interest to support the ICA, the largest community development organization in the world. The contradiction lies in moving on the global network of corporations with the perspective of the entire Development Band.*

GLOBAL  
RESEARCH  
CENTRUM

*Global Research Centrum finds itself brooding on missional edges such as The Shape of the Church to Come, The Moral Issue of Our Times, The Dimensions of Human Authenticity and the redesign of impact curriculum while simultaneously working full tilt in engagement. SEAPAC begins GRA in Brisbane, Brussels experiments with care constructs, and Hong Kong launches translation of GCF workbook for the Philippines, Taiwan, Korea, Japan and Hong Kong.*

GLOBAL  
OPERATION  
CENTRUM

*Hong Kong reports TM in Seoul solidifies resolve to do 1,000 in Korea. Brussels does push on ITI recruitment and realizes goal. Chicago sends consult team to Cano Negro. Trends lie in the arena of a mood of acceleration of TM in Europe and Australia and the coming of the term saturation as the next phase of the campaign in North America. The contradiction lies in the arena of effective coordination of the three campaigns around the globe.*

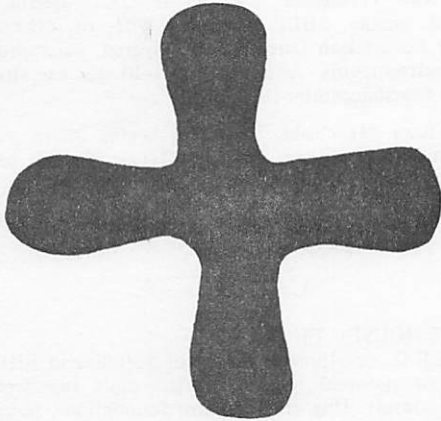
GLOBAL  
MANAGEMENT  
CENTRUM

*"Keeping the home fires burning" during discontinuity, then moving to close books, prepare for the New Year's celebration and Area Extension teams meetings in Chicago. Area Sydney House program checks mailed out for fourth uninterrupted month. Papers in chute for Belgium registration. Regular cycle of continental reporting on House and ICA condition established in Europe. Key meeting with charitable trust in England. Contradiction lies in orchestrating momentum to complete 1976 and launch 1977 on all fronts simultaneously.*

# GLOBAL ORDER REPORT

Week One

January 9 - January 16, 1977



## LONDON

### RELIGIOUS HOUSE: LONDON

External: Isle of Dogs has 120 present at TM, with 50 new faces. Powerful local workshop leadership from guilds impacts fire brigade who attend in full uniform and fire truck. Simultaneous Area guardians meeting signals lift off from British TM:Europe. Pre-school in uniform hits front page of local paper. Receives 1,000 pound gift for pug shoes with full-page coverage in press. Industrial development guild selects five trigger industries with feasibility study to be done in-kind by British petroleum, UK director of Schumacher's Intermediate Technology. Development group does intensive consultation on site. ICA receives official charity status number.

Internal: Final Sun Tzu study is very lively.

Contradiction: Building adequate structures for guild participation in battleplanning consensus for Quarter III. (Wk. 11)

### RELIGIOUS HOUSE: GLASGOW

External: Eight of nine target towns visited for TM-2 are framed. Dundee colleague decides to be TM consultant.

Internal: Commissions called and financial report raises issues of immediate futuric and long-range trends. Mark Jewell visits on way back to Chicago after four years in U.K.

Contradiction: Engaging regional leaders in making decisions relative to TM, towns, and assignments. (Wk. 12)

### RELIGIOUS HOUSE: BRISTOL

External: ITI recruitment is still going with one more yes, while arrangements are made for troika meeting with Pontyclun (Wales) on TM. Local foundation releases money for Isle of Dogs.

Internal: Christmas spirit grows with decor in the House and Saturday night party given by guardian family. House

The Lord may give you bread of adversity and water of affliction, but he who teaches you shall no longer be hidden out of sight, but with your own eyes you shall see him always.

Isaiah 30: 20

works hard on guardian report, newsletter, and letter announcing charity status.

Contradiction: Enabling momentum through Christmas so as to be able to move quickly in New Year. (Wk. 12)

### RELIGIOUS HOUSE: MANCHESTER

External: Fourteen colleagues from across region join House in GSD-TM consult weekend and plan the first ten of many TM for the Manchester region.

Internal: Flexibility of House demonstrated with creation of sleeping space for fifteen extra people.

Contradiction: Wanting to move as soon as possible on TM makes I.T.I. seem like a stumbling block rather than the great tool it is. (Wk. 12)

## PARIS

### RELIGIOUS HOUSE: PARIS

External: Holds Forum Communautaire, first French programme in France, and discovers that it works. Has eight trained workshop leaders. Local journalist says that this really has a future.

Internal: Experiences an explosion of collegial support as people arrive from Brussels House and Nexus and from Rome. Libbi Crall, colleague from Brussels, drops everything and comes on one day's notice to help set up. FCF celebration dinner on Saturday evening is great occasion.

Contradiction: Moving from network authorisation to network participation relative to getting the FCF set in Marseille while we are in Paris. (Wk. 12)

### RELIGIOUS HOUSE: ROME

External: Two mayors and a Cardinal say very good to TMs in south of Italy.

Internal: One flies out for Paris TM as three fly in from Shantumbu Consult.

**(RELIGIOUS HOUSE: ROME)**

Contradiction: Breaking through illusion of having too much work to do to have time to nurture the people to do it. (Wk.12)

**LAGOS**

**RELIGIOUS HOUSE: LAGOS**

External: Prominent West African surgeon to act as ICA trustee and consultant. Spends week in conversation with Misereor staff discussing aid for Nigeria on permeation assignment.

Internal: More staff is on the horizon.

Contradiction: Getting staff off horizon and on to the ground. (Wk. 10)

**BRUSSELS**

**GLOBAL CENTRUM: BRUSSELS**

External: Holds GSD consultant recruitment meeting with two consultants from El Bayad giving report and presentation. Nets bites for Cano Negro and Kuala Lumpur.

Internal: Has joint meeting with Nexus and Brussels House to finalize decision for House to move into temporary residence in Nexus facility.

Contradiction: Forging the structures to create a Centrum/Area House dynamic as one mission with different aspects. (Wk. 13)

**RELIGIOUS HOUSE: BRUSSELS**

External: Slide show presentation to Charleroc Kiwanas. A.P.C. missions committee chairman sends letters inviting many guardians to an El Bayad night for reports and slides.

Internal: G. Lapka home from Zambia for a great Christmas celebration and a new lodging for the Brussels Religious House with the Centrum.

Contradiction: Averting an identity crisis with sharp planning on external mission. (Wk. 1)

**RELIGIOUS HOUSE: AMSTERDAM**

External: Four appointments in Gorinchem lay base for Buurtdag in one day.

Internal: Participates in Area House moving day.

Contradiction: Convincing ourselves this is no longer the experimental stage of Buurtdag. (Wk. 13)

**FRANKFURT**

**RELIGIOUS HOUSE: FRANKFURT**

External: Treks combine TM set-up, HRM follow-up, GSD slide demonstration, and volunteer agency enlistment with a surprising sense of doing one thing.

Internal: Area-wide Week 11 reporting and reflecting releases fresh images of Kreuzberg Ost HDP and Gemeindeforum Europa and plants seeds for next quarter's maneuvers.

Contradiction: Creating the tools for corporate and individual reflection over the next two weeks to ensure the most effective leap into Qtr. III. (Wk. 1)

**RELIGIOUS HOUSE: BERLIN**

External: New Years celebration with 30 present turns into local event as most preparation is done by guild members.

Internal: TM planning at New Years day brings Community Forum Europe into focus. New auxiliary structures and assignments reflect that KHDP is only one half of our task.

Contradiction: Structuring that will allow for broader local engagement in HDP. (Wk. 1)

**KINSHASA**

**RELIGIOUS HOUSE: LUSAKA**

External: Nine ITI grads from Kitwe Cadre decide to attend and enable SHDP Consult. Wife of Mondolo Ecumenical Foundation Director, an ITI grad, has cadre to home for refreshments. Authorization calls disclose strong affirmation for Shantumbu HDP.

Internal: Victor Manchishi, ITI grad, begins intern year. Maybin Simfukwe sojourns. August ITI as \$30,000 paid. HDP Habitat slides enliven ecclesiola and cadre meetings.

Contradiction: Moving into SHDP site with no facility. (Wk. 6)

**CAIRO**

**RELIGIOUS HOUSE: EL BAYAD**

External: E.E.C. development grant of \$50,000 to BHDP, result of our proposal written in first draft two weeks before the consult. Dug chicken barn foundations, bought pipe for village well and pre school numbers rose to 70.

Internal: Stake meeting evaluations, after the return of all to House for dinner by candlelight (there is no electricity in Bayad) and Week I Feast (there is no ecclesiola in Islam). Writing first eight week report great event for all.

Contradiction: Figuring out when shoving is the gift you are to development strategies in any nation. (Wk. 1)

**NAIROBI**

**GLOBAL CENTRUM: NAIROBI**

External: Linda Barnes returns from London with handicraft data. Centrum attends the local chief's wedding while KHDP program participants give singing performance. Guardian consultant gives agriculture lecture to KHDP farmers.

Internal: Welcomes Neal Vance and Joe Pierce. Nexus has no water for 48 hours. Receives new intern, Christopher Foya.

Contradiction: Discerning the necessary visible signs and economic undergirding that in fact make Kawangware a demonstration for Kenya. (Wk. 11)

**RELIGIOUS HOUSE: NAIROBI**

External: Teachers and students on school holidays allow twVillage Meeting teams on road full time while prior is hospitalized. Activates eight new committees with two nedates set.

Internal: Sharon Turner visits on way from Shantumbu Consult and spiritizeHouse with new songs. Celebrates traditional Jamhuri Day with landlady providing flowers and neighbors and friends dropping by. Obedy Amatullah lands a job. Intensifies security system with burgular alarm on automobile.

Contradiction: Maintaining momentum of GSD. (Wk. 13)

**BOMBAY**

**GLOBAL CENTRUM: BOMBAY**

External: Maliwada HDP Training School participatns have

**(RELIGIOUS HOUSE: BOMBAY)**

two-day Shram Dan, work day, giving face-lift to entire village.

Internal: Celebrates marriage of Simon D'Soza and Archana Mandal, October 17. Beth and William Jackson arrive.

Contradiction: Mobilizing troops to break through on all battlefronts. (Wk. 5)

**RELIGIOUS HOUSE: BOMBAY**

External: Pune circuit rider finds cadre recruiting second Gram Sabha and three local consultants attending Dendur Consult. Development receives favourable response from industrial houses for funding of new villages.

Internal: Week II sees miracle transformation of collegium room through paint blitz.

Contradiction: Being responsible for the launching pads of seven rockets taking off simultaneously and maintaining intensity of caring for all so there are no misfires. (Wk. 13)

**DELHI**

**RELIGIOUS HOUSE: DELHI**

External: Schedules five new colleagues from Delhi to attend Sevigram Consult. Sends out Christmas letters with pitch for Human Development School.

Internal: Sends out Liz Marques to Calcutta House; Mario and wife to HDS and all other mobile House members to Consults.

Contradiction: Overcoming Christmas holiday mindset that you cannot do anything since no one is here. (Wk. )

**MADRAS**

**RELIGIOUS HOUSE: HYDERABAD**

External: Development calls result in promises from businessmen. Recruits two persons for SMS in Maliwada.

Internal: Receives Josephs from Kendur Consult and are excited about the resurrection of the old Kendur village. Turns old storage room with antiques into a guest room.

Contradiction: Cracking loose the age old mindset of stagnancy resulting in move it, move it, when money is no problem. (Wk. 13)

**CALCUTTA**

**RELIGIOUS HOUSE: CALCUTTA**

External: Development blitz victories: Major funding-24,000 rupees, Urban Circuits- 1,988 rupees from Asansol. Creates newsletter, grounding three campaigns. Sends out development teams as blitz ends. Human Development Training School recruitment for Quarter II is in full swing.

Internal: Begins house hunting and sends Charles Innes to Area Madras for Major Funding development blitz. Development team's pilgrimage to Tagore's house emphasizes meditative council and taking care of yourself.

Contradiction: Holding creative tension between external mission and self-support. (Wk. 10)

**SINGAPORE**

**RELIGIOUS HOUSE: SINGAPORE**

External: Methodist clergy House member participates in Methodist conference and witnesses first bishop of Singapore Methodist church, Kao Jih Chung's consecration.

Development calls continue. Human Development Bulletin is mailed.

Internal: Experiences week as one of celebration with Christmas tree being trimmed, gifts wrapped and birthday celebrated.

Contradiction: Learning when to be patient, when to anticipate and when to strike like a cobra. (Wk. 12)

**RELIGIOUS HOUSE: KUALA LUMPUR**

External: Open up new possibilities to broaden base of ICA with GSD slide shows to Rotary and Apex Clubs in Ipoh, Penang, Taiping and Kelang. Development and authorization given strong boost with addition of Banks and Woltjer.

Internal: Year end celebration with much burning and feasting on the Straits of Melaka beach. Week II conversations on ICA methods and future directions give helpful push relative to where and how to "move it".

Contradiction: Deciding to keep up GSD and development momentum in midst of Area Council and discontinuity. (Wk. 12)

**RELIGIOUS HOUSE: JAKARTA**

External: Two workdays with community produce new irrigation wall and replace House, which was blown over in tornado. Community kitchen serves meals. Industrial guild decides to "up" production. Agricultural expert calls community plot of soybeans the finest he has seen in Indonesia. Doctor visits three stakes and treats nine people in three-hour period.

Internal: Mudjiatmo decides to intern for one year. Welcomes Laiya back from Army exam and sends out Gil Woltjer to Sydney. Life is brighter with new generator.

Contradiction: Breaking open Kampung Dahung to full participation. (Wk. 12)

**HONG KONG**

**GLOBAL CENTRUM: HONG KONG**

External: Sends three trekkers to Manila, Hong Kong and Seoul. Seoul TM in Mun Jung Dong hosts 100 villagers and launches Korea toward 1000 GCFs. Marshalls HDP Eco Intensification report is address on Nexus. ITT receives reports on GSD with incredible positiveness. Week II Quarter III battleplan launches all into a future marked with campaign miracles.

Internal: All eight adults are around the table at House Church for first time in two months. George and Ruthe Yost visit and delight all with their practical care. Fijian colleague from Tokyo LENS arrives in Hong Kong on way to Australia. Puts up sparkling decorations for Christmas.

Contradiction: Committing selves to practical directions that move into the unfamiliar future. (Wk. 13)

**RELIGIOUS HOUSE: HONG KONG**

External: Fuk Wah resident responds to the call of history and becomes GCF coordinator. Lovely ride through countryside uncovers three potential guardians and document writing facilities.

Internal: Intense planning follows return from Area Priors Council. Busy schedule and beautiful weather allow Advent to sneak up on us. Beautiful decoration by Emerging Generation cause reflections on deep meaning of Christmas story.

Contradiction: Allowing Christmas to be the pause that refreshes without losing GCF and consult momentum. (Wk. 13)

**RELIGIOUS HOUSE: KAOHSIUNG**

External: Newly elected Jaycee International Executive V.P. hires house member as English secretary and becomes interested in Global Community Forum. Invitations are extended and processed for the Fuk Wah consult.

Internal: Colleagues and students give Christmas to the house in the form of Christmas tree, presents, party and rice ball soup (for winter solstice celebration). House receives back Mike Gergen and D. Druckenmiller from Sudtonggan sojourn.

Contradiction: Missional possibility is moving ahead of our practical preparations. (Wk. 1)

**RELIGIOUS HOUSE: MANILA**

External: Holds GCF training school and Area Priors Council, with in-kind breaklooses of snacks, supplies and balloons printed with Global Community Forum of the Philippines. Does GCF recruitment across region with George Packard on Tuguegarou circuit. Training school includes representatives from all six regions of the Area.

Internal: Creates five rooms to house incoming priors. Peter Morton stars in Marlon Brando movie. Welcomes Bruce and Sharon Robertson. Ecclesiola study of corporate research on New Humanness sparks new ideas and enthusiasm for research. Entire House participates in Area events of GCFTS and APC.

Contradiction: Moving forward at full speed in the midst of the culture's demand to participate in season's celebrations. (Wk. 13)

**RELIGIOUS HOUSE: TAIPEI**

External: Development and registration calls are background for Hualien circuit as Peter Hu sees 15 of 18 metro pastors and bishops representative.

Internal: Pedagogy movie and conversation and Christmas ecclesiola evening ground manifestation of the Word in history.

Contradiction: Grasping new direction of edge work. (Wk. 1)

**RELIGIOUS HOUSE: CEBU**

External: Sudtonggan HDP reports that 17 meter-long fishing boat shell is completed; PBSP, Philippine Business for Social Progress, commits to funding SHDP program salaries for community and auxiliary. Preparations for Sudtonggan fiesta begin.

Internal: Guntehr Reiser, German Movement residing in Hong Kong, visits with avid interest in the project and teaches pronunciation of Kreuzberg Ost.

Contradiction: Doing quarter's planning delayed due to otehr commitments. (wk. 10)

**RELIGIOUS HOUSE: DAVAO**

External: Initial planning for follow-up to Community Forum happens in a great reflective and celebrative meeting.

Internal: House celebrates with PCE at midnight mass on Christmas Eve and then returns to House for traditional Noche Buena Feast and gift giving.

Contradiction: Rebuilding momentum (both internally and externally) after the Christmas season. (Wk. 1)

**TOKYO****RELIGIOUS HOUSE: TOKYO**

External: Third month in a row of making program goal as

\$2,400 is raised in December—\$700 this week.

Internal: Christmas party in House receives 60 guests—all bearing gifts ranging from cash to turkey and Cutty Sark.

Contradiction: Getting P.C.E. community core moving from planning to task forces before we launch G.C.F. Japan. (Wk.1)

**RELIGIOUS HOUSE: JEJU**

External: Visit by General Yu Jae Hoon, president of Korea Oil Company, occasions great preparations, including uniforms for pre-schools, building a kerosene station, painting a local store, laying staff house water pipeline, and a complete village clean-up. At same time, on-going events such as the village Lyceum with local talent, guild meetings and a guild leaders dinner happens. The General's visit confirms in the community that they are visibly in the eyes of Korea and the world.

Internal: Sends out Ed Dillinger and Floyd Votaw, is visited by Rob Work and Rev. Kang Pyang Hoon, who bring guardians care package from Dan Waldorf. House member, Chun Sung Hee, starts new job at new hospital. Experiences flood of people at dinnertime as interest increases in village programs. Delights in community's enthusiastic response to introduction of popcorn and homemade cookies.

Contradiction: Creating forms and methods for intensifying engagement of villagers amidst great momentum of community participation. (Wk. 11)

**RELIGIOUS HOUSE: SEOUL**

External: Holds first TM on mainland Korea in Mun Jung Dong, Seoul, with 147 participants. Honam Oil Refinery Company, Caltex joint venture, supports JHDP with 10,000,000 won (US\$20,800) for village common mill.

Internal: House kindergarten students appear in Yang Kwang Kindergarten Christmas program. House members are in nightly GCF training.

Contradiction: Doing GCF circuit implementation. (Wk. 13)

**RELIGIOUS HOUSE: FUKUOKA**

External: Has week of regional contact through PLC mailing and holiday (Advent)-mailing. Makes valuable new contacts in preparation for GSD in Miyata, particularly former union leader who now is local historian. Takes pictures for GSD brochures.

Internal: Gains new insights into GSD and our role in global development through corporate study of guardian paper on technology.

Contradiction: Creating new arenas for development work. (Wk. 13)

**RELIGIOUS HOUSE: OSAKA**

External: Goes on trek to Gobo for GCF presentation to Rotary, Doctor's club, Widow's Association, Women's Society. Presentations to top officials in Osaka show mounting push towards GCF Japan.

Internal: Thirty community residents and colleagues participate in all phases of preparation and clean up for House Christmas party.

Contradiction: Getting money in hand from development strategies. (Wk. 13)

**RELIGIOUS HOUSE: SENDAI**

External: Region's most illustrious economist, Prof. Tazoe

**(RELIGIOUS HOUSE: SENDAI)**

of Fukushima Univ., delivers a 9 page paper in Japanese on Christmas day to House describing for colleagues the importance of GSD in the light of the present political situation and the history of Japan and Korea. The paper will be sent to colleagues as a part of a New Year's development campaign.

Internal: House experiences ecclesiola and Christmas dinner with close colleagues as a time to reflect on the abundance of the past quarter.

Contradiction: Creating the right moment for the year's development push when the entire nation prepares for the long winter's nap of New Year's. (Wk. 1)

**SYDNEY**

**RELIGIOUS HOUSE: SYDNEY**

External: CMA minutes and letters sent to Gawler and Naracoorte and last minute CTC recruitment scores one more participant as knot is tied on 1976 tactics.

Internal: Second extended family, the Kincaids from Texas, arrive for Christmas holiday. House is grand central station for Oakley, Duffy and Robins holiday home-coming. Feast planning, caroling around the piano; and touring our geography build spirit of anticipation as Christmas draws near.

Contradiction: Working out the logistics for getting 17 people to the Community Training Consultation in Brisbane so the machine runs without direct monitoring after New Years. (Wk. 1)

**RELIGIOUS HOUSE: PERTH**

External: CMA letters out in East Vic Park to invite sponsorship. \$250 development check launches end of year push and signifies value of ongoing Rotary club contacts. Dalwallinu colleagues push for concrete ongoing relationship with Oombulgurri and service club contacts explode with loans of club and national directories.

Internal: Laurie Rhodes and the Knowling family visit house and add depth to future mission and vegetables to the kitchen. Qtr. III battleplanning creates concrete proposals that promise great quarter.

Contradiction: Creating the plans for January missional momentum that will dispel sense of forboding caused by reduced manpower during summer CTC. (Wk. 1)

**RELIGIOUS HOUSE: DARWIN**

External: Christmas Parade details finalized and trek and CTC mailing out.

Internal: Bill Senton call in on way home from Oombulgurri. Christanna Betonte celebrates first birthday. EG participate in YMCA holiday activities.

Contradiction: Building the corporate context with everyone participatin in the building of it to enable all individuals to participate in all arenes. (Wk. 12)

**RELIGIOUS HOUSE: OOMBULGURRI**

External: Erects 75 foot radio telephone tower in two days which will link Oombulgurri to the globe for the first time. Processes 50 boilers, once again showing self-sufficiency possibility.

Internal: Sends out Garnet Banks after deep reflection on next economic moves.

Contradiction: Orchestrating next major move. (Wk. 13)

**RELIGIOUS HOUSE: ADELAIDE**

External: Final CMA activity before holidays nets statewide Girl Guide authorization and an expanded Salisbury Steering Committee. House car plows through 80 kilometres of locusts on way to Area Council.

Internal: First set of grandparents, Dettmanns of Duluth Metro, arrive for Christmas from America in the midst of House finishing two floors and a car paint job. Trims tree and shares slides of colleague's Oombulgurri trip at Christmas prep ecclesiola. Paul Duffy secures 2:00 a.m. bakery job.

Contradiction: Maintaining Area push on other side of regional wrap-up. (Wk. 13)

**RELIGIOUS HOUSE: MELBOURNE**

External: Establish contact with Aboriginal Training Foundation of Australia. In-kind toys for Oombulgurri pre-school secured.

Internal: Extended regional family comes to House Christmas Party. Troops disperse to the north and west for Christmas period. Sintons hold Christmas Party at their home and collect \$75 for Oombulgurri.

Contradiction: Seeing beyond Christmas-New Year to next quarter. (Wk. 1)

**CANBERRA**

**GLOBAL CENTRUM: CANBERRA**

External: Has development circuits in Sydney and Singapore. Does management and development mailing to Houses.

Internal: Decors new facility for upcoming Open House.

Contradiction: Deciding to celebrate when having no indications that it is in order. (Wk. 13)

**RELIGIOUS HOUSE: BRISBANE**

External: Money requested several months ago comes in unexpectedly; preparation for Summer CTC intensifies on all fronts.

Internal: Christmas discontinuity abounds, while CTC anticipation more abounds.

Contradiction: Releasing SEAPAC participation in CTC. (Wk. 1)

**SUVA**

**RELIGIOUS HOUSE: MAJURO**

External: Christmas is celebrated until 4 the next morning with singing and dancing, and—watch out—the throwing of Christmas stocking goodies.

Internal: Christmas Eve celebration is highlighted with a lively serenade of Marshallese carols by the junior class of Marshall Islands High School; adapting the Implementing handbook from the summer to quarter planning produces a most practical and workable model for the next 6 months.

Contradiction: Local citizens see themselves as working for the show and do not see that their show is the only one there is. (Wk. 1)

**RELIGIOUS HOUSE: APIA**

External: Youth task force complete first week of work and first meeting of the future Samoan guardians is successful while three village circuits are covered during the week.

**(RELIGIOUS HOUSE: APIA)**

Internal: Mr and Mrs Martin Roberts, from Michigan, attend House Church. Tail end of hurricane damages Samoan crops and trees surrounding House.

Contradiction: Giving minimum support necessary to current programmes while initiating still more. (Wk. 12)

**SAN FRANCISCO**

**RELIGIOUS HOUSE: SAN FRANCISCO**

External: City of San Francisco continues TM momentum—second core set up in onw week—Richmond District sets February date. New California Jaycee TM chairman spends morning at House strategizing; Alameda editor of newspaper says yes to steering committee and m.c. role. Gets 15 yeses to statewide steering committee. Area responds overwhelmingly to Inyan Wakagapi with average of over \$200 a day coming in from mailing and phone blitz.

Internal: Collegium room becomes art gallery as we celebrate the completion of Dean Ellis' special assignment to paint; has great art form conversion on five painting which ground the struggles and glories of what it means to be an artist in the 20th century. Has great Christmas celebration, including trip by E.G. to forest to cut down tree, great turkey buffet dinner, hot Christmas punch and Christmas cookies, carol singing, tree trimming.

Contradiction: Finding the right internal structures that will freight the next phase of the campaign. (Wk. 11)

**RELIGIOUS HOUSE: SAN JOSE**

External: Becomes distribution center as 8750 pou method wins through once again.

Internal: Gets ready for and eats 6AM Thanksgiving feast complete with turkey, wine and pumpkin pies which raises that celebration to new levels of thankfulness.

Contradiction: Getting pulled into the whirlpool of We'll think about that tomorrow mindset which threatens to prevent us from doing the necessary tasks. (Wk. 9)

**RELIGIOUS HOUSE: SACRAMENTO**

External: Focuses on development as holds three nites at Institute in conjunction with urban circuit visit and contracts 100 new development prospects.

Internal: Refreshed by opportunity for depth spirit reflection through collegiums on Humaness Is chart and hosting David and Patti Olsen, Billings Region colleagues.

Contradiction: Deciding to use programs to call forth new colleagues instead of hammering old lists. (Wk. 11)

**RELIGIOUS HOUSE: SEATTLE**

External: The region celebrates the last day of 1976 by participating in battle planning session which will undergird the breakloose in TM. 60 colleagues gather to celebrate 'Under the Big Top' and welcome in the New Year.

Internal: A week of discontinuity sends the House to far reaches of the continent to celebrate Christmas with extended families. ☺

Contradiction: Creating efficient bureaucratic structures to enable the mission hold tension with revolutionary principles of effectivity and motivity. (Wk. 1)

**RELIGIOUS HOUSE: LOS ANGELES**

External: Creation and mailing of newsletter, Campaign Hi-lites, forces us to articulate our story and relate it to

colleagues.

Internal: Week II transforms kitchen and laundry room spaces while we experiment with conversations on Tao Te Ching. Mueller children and Kris Knutson arrive for discontinuity.

Contradiction: Keeping momentum going amidst discontinuity-mindset. (Wk. 12)

**RELIGIOUS HOUSE: PHOENIX**

External: Sunday morning planning for Arizona manuever is initiated by designing the manuever prep tasks.

Internal: Celebrates the big one by watching King Kong then participating in three ring circus with regional colleagues in House.

Contradiction: Securing primary sponsorship for manuevers and House procurement. (Wk. 1)

**RELIGIOUS HOUSE: SALT LAKE CITY**

External: One member of the three original pioneer families to settle American Fork, Utah shows up in time for "Story" workshop. Her response after TM was, 'Sure I know a lot of people around here, I'll call them and tell them about TM, you could do a lot of them around here'.

Internal: House spends one morning collegium loading the Overall Camper to the brim with food for Inyan Wakagapi. Broken shocks and two flat tires enroute indicate how full.

Contradiction: Sensing the need for visioning and battleplanning everyweek in order to keep perspective on all three campaigns. (Wk. 12)

**RELIGIOUS HOUSE: BILLINGS**

External: East Helena steering committee with 14 present is led by three members of Whitehall steering committee. 700 newsletter envelopes labelled by four EG and one youth.

Contradiction: Accelerating TM marketing and organization by TM grads in order to do 40 TMs this year. (Wk. 11)

**RELIGIOUS HOUSE: DENVER**

External: Over 40 revelers sends out old year and brings in new with new slides from Inyan Wakagapi and narratives from three onsite consultants.

Internal: Hostes Walter Duerr from Berlin. House prepares for Quarter III with evaluation and context for New Year.

Contradiction: Building images of how to directly attack issue of TM attendance. (Wk. 1)

**RELIGIOUS HOUSE: CANNONBALL**

External: Held community Christmas party, distributes document to each family in village, publishes first issue of Inyan Wakagapi Voice, stake visitation culminates in Christmas caroling, and first guild meeting held with 19 present.

Internal: House celebrates first week of implementation with night at motel with heated pool. Sent out some staff to 'move' to Cannonball. Orpha Newbreast arrives to stay.

Contradiction: Initiating community structures quickly enough to carry the weight of program implementation. (Wk. 1)

**EDMONTON**

**RELIGIOUS HOUSE: EDMONTON**

External: Large food chain gives written confirmation of willingness to financially support any forum in Alberta in

**(RELIGIOUS HOUSE: EDMONTON)**

1977. Millwoods' steering committee actualizing key promotion tactics over Christmas holiday period.

Internal: Crucial insights gained through discerning trends and contradictions of the quarter. David Woodbury leads collegium study as House is evacuated for Priors Council and development trek.

Contradiction: Resenting the gift of spending necessary time in the temple before the battle. (Wk. 12)

**RELIGIOUS HOUSE: VANCOUVER**

External: Celebrating the quarter with colleagues while continuing to push forward by visiting the president of a large university.

Internal: Hosting development team and preparing for Christmas by buying and decorating tree and sending two people out for discontinuity.

Contradiction: Temptation to let discontinuity happen before the time we had it scheduled. (Wk. 12)

**RELIGIOUS HOUSE: ANCHORAGE**

External: New brochure for TM in 1977.

Internal: Marvelous Christmas celebration.

Contradiction: Now to creatively engage in discontinuity. (Wk. 12)

**RELIGIOUS HOUSE: SASKATOON**

External: Phase II of the Year of Canada launched with planning for the Corridor manoeuvres and the New Year's eve phone call from Area Montreal.

Internal: House transformed and retransformed with New Year's eve celebration. House manual for Quarter III prepared to symbolize our preparedness for a new race.

Contradiction: Discerning how to release Shadows to pick up the total mission. (Wk. 1)

**RELIGIOUS HOUSE: WINNIPEG**

External: Cargill Grain, Ltd. gives \$500 for CFC.

Internal: New Year's celebration launches House into battleplan for Quarter III.

Contradiction: Ensuring steering committees out of maneuvers of next three weeks. (Wk. 1)

**HOUSTON**

**RELIGIOUS HOUSE: HOUSTON**

External: \$1,000 more from Mississippi; Human Development slide show on the road.

Internal: House readies itself for the Christmas season as it fasts and feasts, invites 250 people to participate in the Twelve Days of Christmas and hears report of Priors Council.

Contradiction: Creating structures to engage old and new colleagues in the mission that is too big for even us. (Wk. 12)

**RELIGIOUS HOUSE: AMARILLO**

External: Sector decides to confirm decision made at Priors Council to saturate Texas with 600 TM, hitting the geography from 6 basic regions. West Texas is pushed to the small town, 200 to 2,000 population.

Internal: New Year's Eve under the Big Top brings together small number yet launches monumental journey for all participating. At House Church Margy Knutsen is sent out

to become a member of Delta Pace staff.

Contradiction: Releasing ourselves from the image of steering committees made up of old colleagues to allow ourselves to move with steering committees made up of local nets. (Wk. 1)

**RELIGIOUS HOUSE: SAN ANTONIO**

External: After weeks of grassroots hassling in South San Antonio, mayor pro-tem finds key which unlocks resounding yes in South San Antonio, and also ideal facility for TM.

Internal: In midst of double development blitz on bi-metro from two teams, Charles Watson works some Indian magic to provide delicious Indian curried chicken with all the trimmings for a celebrative ecclesiola meal.

Contradiction: Bending small Texas town's social patterns so troops can follow-up lower valley maneuver at five hours distance on week ends. (Wk. 4)

**RELIGIOUS HOUSE: OKLAHOMA CITY**

External: Oklahoma 100 receives letter of interest from Warner, Okla. House prepares for maneuver circuits by in-kinding rooms, paper and food, and gathering materials packets.

Internal: House welcomes David Morton family and Dennis Jennings. New Years Eve celebration happens around 'Oklahoma 100 Monopoly' (Tulsa=Boardwalk; Stillwater=Park Place).

Contradiction: Passed 'Go', but didn't collect \$200. (Wk. 1)

**RELIGIOUS HOUSE: DALLAS**

External: Bi-metro battleplanning on New Year's day calls forth new commitment to engage in TM saturation.

Internal: Receive Audrey Wagner and Ashleigh Norment as we send out the David Mortons to Oklahoma City to boost Oklahoma 100.

Contradiction: Caring for Bi-metro and maintaining TM momentum while internal systems are being shifted. (Wk. 1)

**RELIGIOUS HOUSE: PACE**

External: First statewide steering committee meeting for TM:OK 100 convenes in Oklahoma City; now moves to four sectors as community visitation and maneuver prep take place. Addressograph Multigraph agrees to print TM:OK 100 coordinators training manual.

Internal: Moves toward sector responsibility in TM:OK 100.

Contradiction: Using troops more strategically to accomplish snowballing momentum of TM:OK 100. (Wk. 10)

**RELIGIOUS HOUSE: NEW ORLEANS**

External: Bogalusa coordinator training session with 13 people yields three team leaders as well as initiating practices. Third and last Mississippi maneuver of Quarter II and with an office party of Pennington results in 12 towns having firm dates set with coordinators and plus 20 possibilities.

Internal: Christmas tree brought and decorated. Long needed repairs accomplished; we have a front door now.

Contradiction: Making a forceful plan in the midst of uncertainty related to the shape of the future. (Wk. 11)

**RELIGIOUS HOUSE: MEMPHIS**

External: Huntsville, Ala. sets March 5, 77 date.

#### **(RELIGIOUS HOUSE: MEMPHIS)**

Appointments are set with Memphis-Shelby-Co. official and with state governmental official in Nashville. Local donor, Exxon, contacts the 10 cities it funded and gets response from Little Rock manager who wants to contact their steering committee. Enablement of Delta Pace begins as Johnson successfully hitch-hikes to Pace to unload first carload for staff.

Internal: Gibson family sent to staff Delta Pace. Metro mechanic rebuilds second engine for one of our cars in prep for this quarter's many miles. Welcome Lynette Pennington to N.Y.'s Eve celebration en route to Delta Pace.

Contradiction: Creating the bold, imaginative, effective proposals that will launch us into the next year. (Wk. 1)

#### **RELIGIOUS HOUSE: ATLANTA**

External: Receives \$1,200 for Atlanta metro TM. Initiated Georgia Committee for TM. Quarterly TM Newsletter sent to grads and contacts. Plains mayor and Co. Commissioner decide to be on Sumter Co. TM steering committee.

Internal Under the global bigtop, New Year's Eve celebrated includes the Womacks from St. Louis. Johnny and Kevin enliven youth dynamic of House.

Contradiction: Deciding to accelerate TM, Intensify development without statewide authorization and solidify TM steering committees for Quarter III. (Wk. 1)

#### **RELIGIOUS HOUSE: CHARLOTTE**

External: Invites colleagues to Christmas celebration which turns into Habitat slide show. Qtr. III battleplanning starts with New Year's celebration. Gastonia, N.C. TM date set for Feb. 26, 1977.

Internal: House plans for Quarter III using TM.

Contradiction: Weaving whole fabric out of 5 million different threads. (Wk. 1)

#### **RELIGIOUS HOUSE: MIAMI**

External: The boss of one of the House members turns out to be a real spirit colleague.

Internal: Two new sojourners arrive: David Burnite and Randy Reily. Two young ladies show interest in sojourning. House welcomed Pat Scott for a 3 day visit and heard a grand report on Maliwada.

Contradiction: The contradiction is not lack of financial support but learning to work with what we have. (Wk. 1)

### **CHICAGO**

#### **GLOBAL CENTRUM: CHICAGO**

External: Sent out staff and set-up people for the Cano Negro consult. Sends out Harold Williams to do TM number 600 for a black community in Amarillo.

Internal: The first ecclesolia of the quarter was a great happening as we spun a fable from Chuang Tzu in the college, discussed Lao Tzu in seminary and dug into the pressure points in the sodality.

Contradiction: Building the models, time lines and tactics both for Chicago Nexus and the Globe.

#### **RELIGIOUS HOUSE: CHICAGO**

External: 175 attend Preschool Christmas Party; receive

additional \$5,000 grant from Urban Renewal and \$1,250 from two corporations for industry; Architect finishes drawings for new single-family housing; TM post does area planning in Kansas City.

Internal: 12 metro colleagues at House Church; send out Townsends to GSD prep trek; send out Trues to Chicago Nexus to prepare for Global Health Trek.

Contradiction: Having our next phase and quarter battleplans ready for weekly modification by January 2. (Wk. 1)

#### **RELIGIOUS HOUSE: WICHITA**

External: Visit to the Governor's Administrative Aid; introducing the Governor's office to Kansas TM '77 for 100 TM this spring.

Internal: House creates all new Christmas decor and fantastic Christmas tree -result the best Christmas tree in the World.

Contradiction: Deciding to engage in the discontinuous in the midst of unbelievably intensified demands. (Wk. 1 2)

#### **RELIGIOUS HOUSE: OMAHA**

External: Week II New Year's sojourn with 11 colleagues pulls all successes into sector battleplan for 10 TM's in the 'Big O' in March. Last minute trek to K.C. for division meeting to concretize maneuvers in corporate fashion to break open 5 states.

Internal: Whites being assigned to Oombulgurri via phone call.

Contradiction: Implementing the Platte River Road strategy while doing maneuvers, securing success of present dates set, and making assignment transition. (Wk. 1)

#### **RELIGIOUS HOUSE: KANSAS CITY**

External: Signal authorization from political figures in Missouri and Kansas; imaginal power seen in map locating CIF participants.

Internal: End of quarter Christmas celebration with metro colleagues.

Contradiction: Pushing at maximum speed right up to New Year Eve. (Wk. 1)

#### **RELIGIOUS HOUSE: MINNEAPOLIS**

External: Three rings of games such as Global Impact, Whittier Walk and Town Meeting Trek enables sixty guests from all ages and walks of life to really engage.

Internal: Plan for 26 weeks. Exploding the third century of USA entails 4 major explosions for Quarter II and III.

Contradiction: How to corporately cobra strike. (Wk. 1)

#### **RELIGIOUS HOUSE: ST. LOUIS**

External: Area Chicago Division South meeting in Chicago at Priors Council gives us the perspective of bringing off TM in five states rather than two. Mt. Sterling, Ill. sets March 19 TM date.

Internal: Advent Season completed with family and House Christmas celebration, accompanied by solitary brooding through of the GCF Campaign assault with the beginning of the new year.

Contradiction: Grasping that our development plan is not independent but integral to the programmatic effort of the TM Campaign. (Wk. 1)

**RELIGIOUS HOUSE: PEORIA**

External: TM promotion in Monmouth underway; Iowa circuits and network development continue to build.

**RELIGIOUS HOUSE: PEORIA**

Internal: Host St. Louis and Chicago colleagues for Illinois Network dinner by candlelight and workshop; evaluation of Qtr. II full of surprises; send out Christmas cards.

Internal: Host St. Louis and Chicago colleagues for Illinois Network dinner by candlelight and workshop; evaluation of Qtr. II full of surprises; send out Christmas cards.

**RELIGIOUS HOUSE: GREEN BAY**

External: II Neighborhood School invites House to use methods in training block captains. New authorization with

Neighborhood School invites House to use methods in training block captains. New authorization with News Media, entire open possibility for sponsorship of Christmas and New Year's celebrations.

Internal: Progressive Advent decor model adds daily Contradiction: Turning routine programs into exquisite happenings that build a common vision. (Wk. 12)

Internal: Progressive Advent decor model adds daily Contradiction: Turning routine programs into exquisite happenings that build a common vision. (Wk. 12)

**RELIGIOUS HOUSE: MILWAUKEE**

External: Santa leaves vintage car for Christmas and E.G. take trip to Northwoods to visit grandparents.

Internal: Four days discontinuity replenish all and borrowed chain saw and axe produce a cord of wood for our two newly discovered fireplaces.

Internal: Four days discontinuity replenish all and borrowed chain saw and axe produce a cord of wood for our two newly discovered fireplaces.

**RELIGIOUS HOUSE: INDIANAPOLIS**

External: Keyre contacts with SDC task for Chamber Mag

Internal: Four days discontinuity replenish all and borrowed chain saw and axe produce a cord of wood for our two newly discovered fireplaces.

Internal: Four days discontinuity replenish all and borrowed chain saw and axe produce a cord of wood for our two newly discovered fireplaces.

**RELIGIOUS HOUSE: CINCINNATI**

External: Development of first corporation gift for future Cincinnati evening through free car lease payment gives House

Internal: New Year's celebration preparation picked up by guardians-leaving House free to do circuit work.

Internal: New Year's celebration preparation picked up by guardians-leaving House free to do circuit work.

Internal: New Year's celebration preparation picked up by guardians-leaving House free to do circuit work.

Internal: New Year's celebration preparation picked up by guardians-leaving House free to do circuit work.

Internal: New Year's celebration preparation picked up by guardians-leaving House free to do circuit work.

Internal: New Year's celebration preparation picked up by guardians-leaving House free to do circuit work.

Internal: New Year's celebration preparation picked up by guardians-leaving House free to do circuit work.

Internal: New Year's celebration preparation picked up by guardians-leaving House free to do circuit work.

Internal: New Year's celebration preparation picked up by guardians-leaving House free to do circuit work.

Internal: New Year's celebration preparation picked up by guardians-leaving House free to do circuit work.

Internal: New Year's celebration preparation picked up by guardians-leaving House free to do circuit work.

Internal: New Year's celebration preparation picked up by guardians-leaving House free to do circuit work.

Internal: New Year's celebration preparation picked up by guardians-leaving House free to do circuit work.

Internal: New Year's celebration preparation picked up by guardians-leaving House free to do circuit work.

Internal: New Year's celebration preparation picked up by guardians-leaving House free to do circuit work.

**RELIGIOUS HOUSE: CLEVELAND**

External: 32 TM plan for completing phase II finalized with 23 consultant teams secured from TM grads. House

Internal: Risk game teams ecclesiastical grounds strategy for becomes consultant orchestrators with formats for weekly

Internal: Risk game teams ecclesiastical grounds strategy for becomes consultant orchestrators with formats for weekly

Internal: Risk game teams ecclesiastical grounds strategy for becomes consultant orchestrators with formats for weekly

Internal: Risk game teams ecclesiastical grounds strategy for becomes consultant orchestrators with formats for weekly

Internal: Risk game teams ecclesiastical grounds strategy for becomes consultant orchestrators with formats for weekly

Internal: Risk game teams ecclesiastical grounds strategy for becomes consultant orchestrators with formats for weekly

Internal: Risk game teams ecclesiastical grounds strategy for becomes consultant orchestrators with formats for weekly

Internal: Risk game teams ecclesiastical grounds strategy for becomes consultant orchestrators with formats for weekly

Internal: Risk game teams ecclesiastical grounds strategy for becomes consultant orchestrators with formats for weekly

Internal: Risk game teams ecclesiastical grounds strategy for becomes consultant orchestrators with formats for weekly

Internal: Risk game teams ecclesiastical grounds strategy for becomes consultant orchestrators with formats for weekly

Internal: Risk game teams ecclesiastical grounds strategy for becomes consultant orchestrators with formats for weekly

Internal: Risk game teams ecclesiastical grounds strategy for becomes consultant orchestrators with formats for weekly

Internal: Risk game teams ecclesiastical grounds strategy for becomes consultant orchestrators with formats for weekly

Internal: Risk game teams ecclesiastical grounds strategy for becomes consultant orchestrators with formats for weekly

Internal: Risk game teams ecclesiastical grounds strategy for becomes consultant orchestrators with formats for weekly

Internal: Risk game teams ecclesiastical grounds strategy for becomes consultant orchestrators with formats for weekly

Internal: Risk game teams ecclesiastical grounds strategy for becomes consultant orchestrators with formats for weekly

Internal: Risk game teams ecclesiastical grounds strategy for becomes consultant orchestrators with formats for weekly

Internal: Risk game teams ecclesiastical grounds strategy for becomes consultant orchestrators with formats for weekly

Internal: Risk game teams ecclesiastical grounds strategy for becomes consultant orchestrators with formats for weekly

Internal: Risk game teams ecclesiastical grounds strategy for becomes consultant orchestrators with formats for weekly

Internal: Risk game teams ecclesiastical grounds strategy for becomes consultant orchestrators with formats for weekly

Internal: Risk game teams ecclesiastical grounds strategy for becomes consultant orchestrators with formats for weekly

Internal: Risk game teams ecclesiastical grounds strategy for becomes consultant orchestrators with formats for weekly

Internal: Risk game teams ecclesiastical grounds strategy for becomes consultant orchestrators with formats for weekly

Internal: Risk game teams ecclesiastical grounds strategy for becomes consultant orchestrators with formats for weekly

Internal: Risk game teams ecclesiastical grounds strategy for becomes consultant orchestrators with formats for weekly

Internal: Risk game teams ecclesiastical grounds strategy for becomes consultant orchestrators with formats for weekly

Internal: Risk game teams ecclesiastical grounds strategy for becomes consultant orchestrators with formats for weekly

Internal: Risk game teams ecclesiastical grounds strategy for becomes consultant orchestrators with formats for weekly

Internal: Risk game teams ecclesiastical grounds strategy for becomes consultant orchestrators with formats for weekly

Internal: Risk game teams ecclesiastical grounds strategy for becomes consultant orchestrators with formats for weekly

Internal: Risk game teams ecclesiastical grounds strategy for becomes consultant orchestrators with formats for weekly

Internal: Risk game teams ecclesiastical grounds strategy for becomes consultant orchestrators with formats for weekly

Internal: Risk game teams ecclesiastical grounds strategy for becomes consultant orchestrators with formats for weekly

Internal: Risk game teams ecclesiastical grounds strategy for becomes consultant orchestrators with formats for weekly

Internal: Risk game teams ecclesiastical grounds strategy for becomes consultant orchestrators with formats for weekly

**THE GLOBAL ORDER CENTRUM REPORT**

**BRUSSELS  
NAIROBI  
BOMBAY  
CANBERRA  
HONG KONG  
CHICAGO**

**WEEK**

**GLOBAL  
DEVELOPMENT  
CENTRUM**

In Quarter III of 1976 the Development Centrum Band raised over \$1,000,000 for the first time in history. Every Nexus has shown a steady rise in the amount of money raised. The contradiction lies in the arena of intensifying this increase in the midst of ever spiraling expenses and the demand to make programs self-supporting.

**GLOBAL  
RESEARCH  
CENTRUM**

Highlights of Global Research Centrum for Week One include an immersion in the pain and glory of GSD as a slide show spontaneously "happens" at breakfast, East Canada site selection team report, and members of Academy faculty go to Cano Negro consult. Contradiction analysis is done on Chicago Nexus issues yields the insight that the contradictions in research and training has to do with eroded practices of bringing consciousness to engagement events. Initial work is begun on the The Shape of the Church to Come with collegiums on the Missional Frame—the Sustainment Frame and the Operational Frame. Ecclesiola manual for Qtr. III is completed and sent to Houses.

**GLOBAL  
OPERATION  
CENTRUM**

The Chicago Nexus works through Quarter III assignment adjustments. One hundred and ninety people are assigned to the Chicago Nexus and fifty-six of these live and work elsewhere. Almost half of the Development Centrum are internationals. Chicago Nexus sends out Bill Grow to be a part of the Birmingham, England ITI staff.

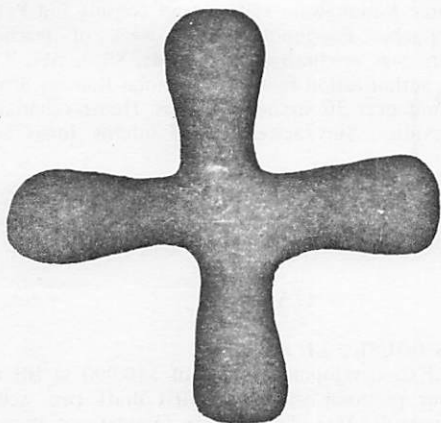
**GLOBAL  
MANAGEMENT  
CENTRUM**

The common event across Management Centrum was the closing out of the fiscal year for the ICA and EI. In Chicago the focus was on making a clean break with deposits and checks written as a part of a move to save \$20,000 on the annual audit. Bombay began submitting monthly financial reports to the Global Order. The contradiction is in designing common grant accounting systems to publicly account for the emerging snowball in Social Demonstration grants.

## GLOBAL ORDER REPORT

Week Two

January 17 -- January 23, 1977



The wretched and the poor look for water and find none, but I, the Lord, will give them an answer; I, the God of Israel, will not forsake them.

Isaiah 41 :17

### LONDON

#### RELIGIOUS HOUSE: LONDON

External: Press photographs core guild leadership on steps of Bridge House as letters to editors go out over their signatures. Authorization figures affirm letters as way to reconcile island factions and build island identity. Pug Shoes (IHDP cottage industry) gets initial order from chain store with outlets in Britain and Holland.

Internal: Receives Vigelius family and sends out Phillips family. Hosted five en route to ITI. Send out Christian and Mallika Vigelius to attend ITI and Carole Johnson and Huang Hsing Peng as staff. Mort Glassner returns after six weeks of inkind set up work for ITI.

Contradiction: Releasing local and regional colleagues to image themselves as generals mobilising troops for two campaigns in the Island and the region. (Wk. 2)

#### RELIGIOUS HOUSE: GLASGOW

External: Eight of nine target towns visited for TM-2 are framed. Dundee colleague decides to be TM consultant.

Internal: Commissions called and financial report raises issues of immediate futuric and long-range trends. Mark Jewell visits on way back to Chicago after four years in U.K.

Contradiction: Engaging regional leaders in making decisions relative to TM, towns, and assignments. (Wk. 12)

#### RELIGIOUS HOUSE: BRISTOL

External: ITI recruitment is still going with one more yes, while arrangements are made for troika meeting with Pontyclun (Wales) on TM. Local foundation releases money for Isle of Dogs.

Internal: Christmas spirit grows with decor in the House and Saturday night party given by guardian family. House works hard on guardian report, newsletter, and letter announcing charity status.

Contradiction: Enabling momentum through Christmas so as to be able to move quickly in New Year. (Wk. 12)

#### RELIGIOUS HOUSE: MANCHESTER

External: Fourteen colleagues from across region join House in GSD-TM consult weekend and plan the first ten of many TM for the Manchester region.

Internal: Flexibility of House demonstrated with creation of sleeping space for fifteen extra people.

Contradiction: Wanting to move as soon as possible on TM makes I.T.I. seem like a stumbling block rather than the great tool it is. (Wk. 12)

### PARIS

#### RELIGIOUS HOUSE: PARIS

External: Sends two participants to ITI:Birmingham. Ebenezer Ni-Amu-Fea-Quao, a student from Ghana who has been sojourning for the past three months and Elizabeth Humphries.

Internal: Quarter planning focuses on FCF and the re-creation of the house with a T.V. lounge enables having old lounge transformed into a gracious place to receive visitors.

Contradiction: Journeying workshop leaders into circuiteers when there is no authority to guide that journey. (Wk.2)

#### RELIGIOUS HOUSE: ROME

External: Two mayors and a Cardinal say very good to TMs in south of Italy.

Internal: One flies out for Paris TM as three fly in from Shantumbu Consult.

Contradiction: Breaking through illusion of having too much work to do to have time to nurture the people to do it. (Wk.12)

### LAGOS

#### RELIGIOUS HOUSE: LAGOS

External: Prominent West African surgeon to act as ICA trustee and consultant. Spends week in conversation with

**(RELIGIOUS HOUSE: LAGOS)**

External: Misereor staff discussing aid for Nigeria on permeation assignment.

Internal: More staff is on the horizon.

Contradiction: Getting staff off horizon and on to the ground. (Wk. 10)

**BRUSSELS**

**GLOBAL CENTRUM: BRUSSELS**

External: Disseminating all Nexus troops to each house on the continent for New Years eve launches T.M. Europe Foray 2 Double O (200) with consultant training and circuit planning.

Internal: Establishing a regulatory for structuring of Brussels House and Nexus as they share common facility but maintain separate dynamics.

Contradiction: Staging Foray and guide production to maintain momentum across continent. (Wk.2)

**RELIGIOUS HOUSE: BRUSSELS**

External: Slide show presentation to Charleroi Kiwanas. A.P.C. missions committee chairman sends letters inviting many guardians to an El Bayad night for reports and slides.

Internal: G. Lapka home from Zambia for a great Christmas celebration and a new lodging for the Brussels Religious House with the Centrum.

Contradiction: Averting an identity crisis with sharp planning on external mission. (Wk. 1)

**RELIGIOUS HOUSE: AMSTERDAM**

External: Four appointments in Gorinchem lay base for Buurtdag in one day.

Internal: Participates in Area House moving day.

Contradiction: Convincing ourselves this is no longer the experimental stage of Buurtdag. (Wk. 13)

**FRANKFURT**

**RELIGIOUS HOUSE: FRANKFURT**

External: Treks combine TM set-up, HRM follow-up, GSD slide demonstration, and volunteer agency enlistment with a surprising sense of doing one thing.

Internal: Area-wide Week II of reporting and reflecting releases fresh images of Kreuzberg Ost HDP and Gemeindeforum Europa and plants seeds for next quarter's maneuvers.

Contradiction: Creating the tools for corporate and individual reflection over the next two weeks to ensure the most effective leap into Quarter III (Wk. 1)

**RELIGIOUS HOUSE: BERLIN**

External: New Years celebration with 30 present turns into local event as most preparation is done by guild members.

Internal: TM planning at New Years day brings Community Forum Europe into focus. New auxiliary structures and assignments reflect that KHDP is only one half of our task.

Contradiction: Structuring that will allow for broader local engagement in HDP. (Wk. 1)

**KINSHASA**

**RELIGIOUS HOUSE: LUSAKA**

External: 15 out of 16 programs going immediately following consult. Preschool has over 76 each day. Nine teachers in training, fresh milk donated daily by South African farmer, 27 acres ploughed for crops, installation of new red pump discovers 169 foot water-filled cavern, roads graded by airport construction company, first aid classes continue and two local health workers deliver completed census. Census of nine villages by Phases reveals 1842 in SHDP.

Internal: Three Kawangware staff attend consult and Peter Njugrena launches Preschool with a week of teacher-training. Christmas celebration honors Mr. Sikalumbi, ICA Trustee and authorization figure. St Nicholas Ramage drops in to hand out over 30 strange packages. House celebrates birth of Davidson Sinyangwe, son of interns Jonas and Grace.

Contradiction: Securing authorization nationally, laying track two feet ahead while moving locomotive full steam down the track. (Wk. 2)

**CAIRO**

**RELIGIOUS HOUSE: EL BAYAD**

External: E.E.C. development grant of \$50,000 to BHDP, result of our proposal written in first draft two weeks before the consult. Dug chicken barn foundations, bought pipe for village well and pre school numbers rose to 70.

Internal: Stake meeting evaluations, after the return of all to House for dinner by candlelight (there is no electricity in Bayad) and Week I Feast (there is no ecclesiola in Islam). Writing first eight week report great event for all.

Contradiction: Figuring out when shoving is the gift you are to development strategies in any nation. (Wk. 1)

**NAIROBI**

**GLOBAL CENTRUM: NAIROBI**

External: Linda Barnes returns from London with handicraft data. Centrum attends the local chief's wedding while KHDP program participants give singing performance. Guardian consultant gives agriculture lecture to KHDP farmers.

Internal: Welcomes Neal Vance and Joe Pierce. Nexus has no water for 48 hours. Receives new intern, Christopher Foya.

Contradiction: Discerning the necessary visible signs and economic undergirding that in fact make Kawangware a demonstration for Kenya. (Wk. 11)

**RELIGIOUS HOUSE: NAIROBI**

External: Amidst discontinuity, two village meeting sponsor committees meet, art work for new V.M. brochure and flyer is ready for printer and first V.M. proposal for 208,000 shillings (26,000 USD) is delivered to ministry of HSG and Social Service.

Internal: Nexus hosts House for discontinuous Christmas Eve feast and carol sing then its back across town again for a week of continental council which includes New Years celebration.

Contradiction: Collapsing the tension between winning as a style not an objective achievement and not giving a h o o t in hell for anybody who loses and laughs. (Wk. 2)

## BOMBAY

### GLOBAL CENTRUM: BOMBAY

External: Experiences guests flowing in and out. Hears Joseph W. Mathew's report stressing awareness in care and replication of Maliwada. Pune grids and claims responsibility for their city. Methodist leaders go on field trip to Maliwada village.

Internal: After wonderful 50-man Nagpur Primal Community Experiment (PCE) steering committee meeting, cadre asks for three-week PCE training. Sponsorship granted by Methodist Bishop for ITI and GRA.

Contradiction: Spending all time brooding, praying and simultaneously spending all time on road. (Wk. 1)

### RELIGIOUS HOUSE: BOMBAY

External: Pune circuit rider finds cadre recruiting second Gram Sabha and three local consultants attending Dendur Consult. Development receives favourable response from industrial houses for funding of new villages.

Internal: Week II sees miracle transformation of collegium room through paint blitz.

Contradiction: Being responsible for the launching pads of seven rockets taking off simultaneously and maintaining intensity of caring for all so there are no misfires. (Wk. 13)

## DELHI

### RELIGIOUS HOUSE: DELHI

External: In midst of HDTs recruitment and participation in Kolambi, development raises Rs75,000 (\$8,500USD) from Canadian High Commissioner. Initiate thinking on house moving to village by July.

Internal: V. Parekh, J. Slicker, and J. Patterson enliven house during New Years Eve celebration on the town in Delhi with 70% of the house at consults or on treks.

Contradiction: Struggling between the need for a systematic plan and the need to 'move it' now. (Wk. 2)

## MADRAS

### RELIGIOUS HOUSE: HYDERABAD

External: Development calls result in promises from businessmen. Recruits two persons for SMS in Maliwada.

Internal: Receives Josephs from Kendur Consult and are excited about the resurrection of the old Kendur village. Turns old storage room with antiques into a guest room.

Contradiction: Cracking loose the age old mindset of stagnancy resulting in move it, move it, when money is no problem. (Wk. 13)

## CALCUTTA

### RELIGIOUS HOUSE: CALCUTTA

External: Development blitz victories: Major funding—24,000 rupees, Urban Circuits—1,988 rupees from Asansol. Creates newsletter, grounding three campaigns. Sends out development teams as blitz ends. Human Development Training School recruitment for Quarter II is in full swing.

Internal: Begins house hunting and sends Charles Innes to Area Madras for Major Funding development blitz. Development team's pilgrimage to Tagore's house emphasizes meditative council and taking care of yourself.

Contradiction: Holding creative tension between external

mission and self—support. (Wk. 10)

## SINGAPORE

### RELIGIOUS HOUSE: SINGAPORE

External: House returns from exciting Area Council in Kelapa Dua. Receives check from Coca Cola for development. Welcomes 1977 with New Year's party with close colleagues and receives fine report from Billie Masillomoney on her trip to London where she participated in the TM at Isle of Dogs.

Internal: House celebrates end of discontinuity with dinner and dance at Hyatt Singapore. Sends James Chia out to Majuro via Manila. Receives Novel on return trip to Kelapa Dua.

Contradiction: Lining up appropriate authorization to support GCF actuation in order to be victorious before the battle. (Wk. 2)

### RELIGIOUS HOUSE: KUALA LUMPUR

External: Open up new possibilities to broaden base of ICA with GSD slide shows to Rotary and Apex Clubs in Ipoh, Penang, Taiping and Kelang. Development and authorization given strong boost with addition of Banks and Woltjer.

Internal: Year end celebration with much burning and feasting on the Straits of Melaka beach. Week II conversations on ICA methods and future directions give helpful push relative to where and how to "move it".

Contradiction: Deciding to keep up GSD and development momentum in midst of Area Council and discontinuity. (Wk. 12)

### RELIGIOUS HOUSE: JAKARTA

External: Two workdays with community produce new irrigation wall and replace House, which was blown over in tornado. Community kitchen serves meals. Industrial guild decides to "up" production. Agricultural expert calls community plot of soybeans the finest he has seen in Indonesia. Doctor visits three stakes and treats nine people in three-hour period.

Internal: Mudjiatmo decides to intern for one year. Welcomes Laiya back from Army exam and sends out Gil Woltjer to Sydney. Life is brighter with new generator.

Contradiction: Breaking open Kampung Dahung to full participation. (Wk. 12)

## HONG KONG

### GLOBAL CENTRUM: HONG KONG

External: All cottages in Fuk Wah Tsuen village receive GCF brochure and personal invitation to the day.

Internal: Nexus-House Three Campaign Circus launches New Year with feasting, song-writing and family skits at New Year's celebration.

Contradiction: Nailing down the Fuk Wah Tsuen plans with concrete names, places and sums. (Wk. 2)

### RELIGIOUS HOUSE: HONG KONG

External: Fuk Wah resident responds to the call of history and becomes GCF coordinator. Lovely ride through countryside uncovers three potential guardians and document writing facilities.

Internal: Intense planning follows return from Area Priors Council. Busy schedule and beautiful weather allow Advent

**(RELIGIOUS HOUSE: HONG KONG)**

to sneak up on us. Beautiful decoration by Emerging Generation cause reflections on deep meaning of Christmas story.

Contradiction: Allowing Christmas to be the pause that refreshes without losing GCF and consult momentum. (Wk. 13)

**RELIGIOUS HOUSE: KAOHSIUNG**

External: Newly elected Jaycee International Executive V.P. hires house member as English secretary and becomes interested in Global Community Forum. Invitations are extended and processed for the Fuk Wah consult.

Internal: Colleagues and students give Christmas to the house in the form of Christmas tree, presents, party and rice ball soup (for winter solstice celebration). House receives back Mike Gergen and D. Druckenmiller from Sudtonggan sojourn.

Contradiction: Missional possibility is moving ahead of our practical preparations. (Wk. 1)

**RELIGIOUS HOUSE: MANILA**

External: Holds GCF training school and Area Priors Council, with in-kind breaklooses of snacks, supplies and balloons printed with Global Community Forum of the Philippines. Does GCF recruitment across region with George Packard on Tuguegarou circuit. Training school includes representatives from all six regions of the Area.

Internal: Creates five rooms to house incoming priors. Peter Morton stars in Marlon Brando movie. Welcomes Bruce and Sharon Robertson. Ecclesiola study of corporate research on New Humanness sparks new ideas and enthusiasm for research. Entire House participates in Area events of GCFTS and APC.

Contradiction: Moving forward at full speed in the midst of the culture's demand to participate in season's celebrations. (Wk. 13)

**RELIGIOUS HOUSE: TAIPEI**

External: Week of full-house battleplanning accented with visits to Archbishop Joint Commission on Rural Reconstruction, and major manufacturing/sales firms with proposals (10,000 USD) for Taiwan HDP. Invitation letters arrive for six to attend Fuk Wah Tsuen Consult. Development visits continue—Gulf Oil will accept proposal to be forwarded to head office.

Internal: Mini-GCF is high point of New Year's celebration. Noon conversations and circuit songs add to symbolic life. LENS pedagogue Paul Wybrant begins sojourn.

Contradiction: Getting colleagues to take initiative when they are only ones who have contacts. (Wk.2)

**RELIGIOUS HOUSE: CEBU**

External: Sudtonggan HDP reports that 17 meter-long fishing boat shell is completed; PBSP, Philippine Business for Social Progress, commits to funding SHDP program salaries for community and auxiliary. Preparations for Sudtonggan fiesta begin.

Internal: Guntehr Reiser, German Movement residing in Hong Kong, visits with avid interest in the project and teaches pronunciation of Kreuzberg Ost.

Contradiction: Doing quarter's planning delayed due to other commitments. (wk. 10)

**RELIGIOUS HOUSE: DAVAO**

External: Initial planning for follow-up to Community

happens in a great reflective and celebrative meeting.

Internal: House celebrates with PCE at midnight mass on Christmas Eve and then returns to House for traditional Noche Buena Feast and gift giving.

Contradiction: Rebuilding momentum (both internally and externally) after the Christmas season. (Wk. 1)

**TOKYO**

**RELIGIOUS HOUSE: TOKYO**

External: New Year's cards in mail to friends and colleagues. Quarter II development totals \$5,298; Redemptorist Fathers contribute for a second time. Regridded region to polis.

Internal: Eija Karikowski becomes intern with her parents and brother present at her welcoming. Rev. Oh Kwang Sup sent out from extended sojournship.

Contradiction: Clearing up Old Year, while New Year is upon us. (Wk. 2)

**RELIGIOUS HOUSE: JEJU**

External: Kwangyung II claims it's future as a community with a week of quarter planning. The Bulletin publishes accomplishments and future proposals; each guild has it's own implementary board. New Year's Eve celebration complete with long life noodles and traditional dances.

Internal: Total house does quarter planning internally--non stop to the implementary board concluding with a fine celebration.

Contradiction: Providing images and practical support in the new turn of leadership by the community. (Wk.2)

**RELIGIOUS HOUSE: SEOUL**

External: New Year provides opportunity to greet guardians and colleagues and to receive grassroots gifts. New Year's Day front page features article on KHDP as sign of Korea's possibility during 1977.

Internal: New Year's Eve provides opportunity for strategic thinking as we conquer the world while playing Risk.

Contradiction: Waiting with wisdom and patience as we sense out national strategy amidst fantastic possibilities for immediate victory. (Wk. 2)

**RELIGIOUS HOUSE: FUKUOKA**

External: Has week of regional contact through PLC mailing and holiday (Advent) mailing. Makes valuable new contacts in preparation for GSD in Miyata, particularly former union leader who now is local historian. Takes pictures for GSD brochures.

Internal: Gains new insights into GSD and our role in global development through corporate study of guardian paper on technology.

Contradiction: Creating new arenas for development work. (Wk. 13)

**RELIGIOUS HOUSE: OSAKA**

External: National launch of GCF: Japan (Chiki Kon Dankai).

Internal: Enablement of national launch meeting while responding to several neighborhood invitations. Community homes host E.G. during launch.

Contradiction: Establishing the daily discipline to undergird all arenas of engagement. (Wk.2)

**RELIGIOUS HOUSE: SENDAI**

External: Development letters written by two regional

**(RELIGIOUS HOUSE: SENDAI)**

colleagues arrive in homes in time for New Year's reflection and action.

Internal: House makes ready for the New Year with baking for colleagues. Colleagues ready for GCF launch in Japan by journeying to Osaka.

Contradiction: Dramatizing the shadows of doubt of strategic colleagues. (Wk.2)

**SYDNEY**

**RELIGIOUS HOUSE: SYDNEY**

External: CMA minutes and letters sent to Gawler and Naracoorte and last minute CTC recruitment scores one more participant as knot is tied on 1976 tactics.

Internal: Second extended family, the Kincaids from Texas, arrive for Christmas holiday. House is grand central station for Oakley, Duffy and Robins holiday home-coming. Feast planning, caroling around the piano; and touring our geography build spirit of anticipation as Christmas draws near.

Contradiction: Working out the logistics for getting 17 people to the Community Training Consultation in Brisbane so the machine runs without direct monitoring after New Years. (Wk. 1)

**RELIGIOUS HOUSE: PERTH**

External: Call from AGNEW mining requests talk on Community Development, a result from LENS experience. Department of Community Welfare sends two staff to Summer CTC.

Internal: Ross Smith and John Rees go to 'Summer' in Brisbane. Dutch New Year celebration at Ligtermoets beach home extends to full weekend.

Contradiction: Sustaining the momentum, especially in Development, with no in-house. (Wk. 2)

**RELIGIOUS HOUSE: DARWIN**

External: Christmas Parade details finalized and trek and CTC mailing out.

Internal: Bill Senton call in on way home from Ombulgurri. Christannia Betonte celebrates first birthday. EG participate in YMCA holiday activities.

Contradiction: Building the corporate context with everyone participatin in the building of it to enable all individuals to participate in all arenas. (Wk. 12)

**RELIGIOUS HOUSE: OOMBULGURRI**

External: Weekend renovation enables new Kitco image of sophistication with turnstyle, self-service, and short order window. Begin ploughing 100 acres for sorghum. Everyone lends a hand to pull off fine Christmas feast. Celebrates the completed life and death of Numa Horace, garden guild leader and elder.

Internal: John Burbidge returns from Perth in-kind assignment to be sent out to Maliwada replication in Kendur.

Contradiction: Enlisting the troops needed to do the whole job now. (Wk. 2)

**RELIGIOUS HOUSE: ADELAIDE**

External: Final CMA activity before holidays nets statewide Girl Guide authorization and an expanded Salisbury Steering Committee. House car plows through 80 kilometres of locusts on way to Area Council.

Internal: First set of grandparents, Dettmanns of Duluth Metro, arrive for Christmas from America in the midst of

House finishing two floors and a car paint job. Trims tree and shares slides of colleague's Oombulgurri trip at Christmas prep eccllesiola. Paul Duffy secures 2:00 a.m. bakery job.

Contradiction: Maintaining Area push on other side of regional wrap-up. (Wk. 13)

**RELIGIOUS HOUSE: MELBOURNE**

External: Alcoa (Australia) sends \$A500 for Oombulgurri. New Year's barbecue introduces us to new network of future support for Three Campaigns.

Internal: Host Tim and Sue Wegner's parents, the Dettmans from Duluth, and Stuart and Mary Hampton's parents, the Kinkaid's from San Antonia. Deploy the Telfords north to C.T.C. and the E.G. to the country.

Contradiction: Laying necessary groundwork for the quarter newly at hand. (Wk. 2)

**CANBERRA**

**GLOBAL CENTRUM CANBERRA**

External: Nexus works two days on GRA curriculum and then sends out one from every centrum to Brisbane for final week of preparation.

Internal: Hosts 12 guests including Adelaide House on way to GRA, plus Mary Hamptons parents from Texas and Sue Wegners parents from Duluth. The Whites from a local church in Adelaide drop by to look in on our new location.

Contradiction: Beginning quarter with loose ends as half the nexus moves out to gun GRA, before the four centurms interweave their quarter battleplans. (Wk. 2)

**RELIGIOUS HOUSE: BRISBANE**

External: Money requested several months ago comes in unexpectedly; preparation for Summer CTC intensifies on all fronts.

Internal: Christmas discontinuity abounds, while CTC anticipation more abounds.

Contradiction: Releasing SEAPAC participation in CTC. (Wk. 1)

**SUVA**

**RELIGIOUS HOUSE: MAJURO**

External: Christmas is celebrated until 4 the next morning with singing and dancing, and—watch out—the throwing of Christmas stocking goodies.

Internal: Christmas Eve celebration is highlighted with a lively serenade of Marshallese carols by the junior class of Marshall Islands High School; adapting the Implementing handbook from the summer to quarter planning produces a most practical and workable model for the next 6 months.

Contradiction: Local citizens see themselves as working for the show and do not see that their show is the only one there is. (Wk. 1)

**RELIGIOUS HOUSE: APIA**

External: O.F. Nelson Christmas party reveals new motivation and loyalty to company during celebration of quarter accomplishments.

Internal: Solosolo village adopts senior Roberts during a three day stay at special Fiafia with Speaker of the House of Western Somoa leading the celebration. House discontinuity marks Christmas as time of Great Beginnings.

Contradiction: Sensing with one quarter's experience in moving on our battleplan, we need to distill our new insights and spike up the plan. (Wk. 2)

## SAN FRANCISCO

### RELIGIOUS HOUSE: SAN FRANCISCO

External: City of San Francisco continues TM momentum—second core set up in onw week— Richmond District sets February date. New California Jaycee TM chairman spends morning at House strategizing; Alameda editor of newspaper says yes to steering committee and m.c. role. Gets 15 yeses to statewide steering committee. Area responds overwhelmingly to Inyan Wakagapi with average of over \$200 a day coming in from mailing and phone blitz.

Internal: Collegium room becomes art gallery as we celebrate the completion of Dean Ellis' special assignment to paint; has great art form converstion on five painting which ground the struggles and glories of what it means to be an artist in the 20th century. Has great Christmas celebration, including trip by E.G. to forest to cut down tree, great turkey buffet dinner, hot Christmas punch and Christmas cookies, carol singing, tree trimming.

Contradiction: Finding the right internal structures that will freight the next phase of the campaign. (Wk. 11)

### RELIGIOUS HOUSE: SAN JOSE

External: California state planning meeting girds up loins for Quarter III.

Internal: Elegant leap into New Year of possibility with celebration and creation of 'instant' internal life guide—just add spirit and stir well.

Contradiction: Facing the dread in deciding to shape the future by building the practical models. (Wk.2)

### RELIGIOUS HOUSE: SACRAMENTO

External: Focuses on development as holds three nites at Institute in conjunction with urban circuit visit and contracts 100 new development prospects.

Internal: Gets ready for and eats 6AM Thanksgiving feast complete with turkey, wine and pumpkin pies which raises that celebration to new levels of thankfulness.

Contradiction: Deciding to use programs to call forth new colleagues instead of hammering old lists. (Wk. 11)

### RELIGIOUS HOUSE: SEATTLE

External: The region celebrates the last day of 1976 by participating in battle planning session which will undergird the breakloose in TM. 60 colleagues gather to celebrate 'Under the Big Top' and welcome in the New Year.

Internal: A week of discontinuity sends the House to far reaches of the continent to celebrate Christmas with extended families.

Contradiction: Creating efficient bureaucratic structures to enable the mission hold tension with revolutionary principles of effectivity and motivity. (Wk. 1)

### RELIGIOUS HOUSE: LOS ANGELES

External: Women's Forum meets to do final preparation and make hostessing assignments for Evenings with the Institute with study of the Stylistic Factors section of the Human Awakening paper in Estimates providing reflection and illuminating the depth role of the Evenings.

Internal: Depth, practical promises are received with the reading of Anticipated Benefits section of Inyan Wakagapi document. Cynthia Hahn sent to new assignment in Billings.

Contradiction: Looming in the horizon is the question of intensification and battleplan restlessness and what is the plan that will do T.M. before the campaign shifts. (Wk.2)

### RELIGIOUS HOUSE: PHOENIX

External: Sunday morning planning for Arizona manuever is initiated by designing the manuever prep tasks.

Internal: Celebrates the big one by watching King Kong then participating in three ring circus with regional colleagues in House.

Contradiction: Securing primary sponsorship for manuevers and House procurement. (Wk. 1)

### RELIGIOUS HOUSE: SALT LAKE CITY

External: One member of the three original pioneer families to settle American Fork, Utah shows up in time for "Story" workshop. Her response after TM was, 'Sure I know a lot of people around here, I'll call them and tell them about TM, you could do a lot of them around here'.

Internal: House spends one morning collegium loading the Overall Camper to the brim with food for Inyan Wakagapi. Broken shocks and two flat tires enroute indicate how full.

Contradiction: Sensing the need for visioning and battleplanning everyweek in order to keep perspective on all three campaigns. (Wk. 12)

### RELIGIOUS HOUSE: BILLINGS

External: East Helena steering committee with 14 present is led by three members of Whitehall steering committee. 700 newsletter envelopes labelled by four EG and one youth.

Contradiction: Accelerating TM marketing and organization by TM grads in order to do 40 TMs this year. (Wk. 1)

### RELIGIOUS HOUSE: DENVER

External: Campaign planning for the fulfillment of the campaigns for the year of 1977.

Internal: New assignments, tribal resettlement and house celebration at movie 'Network' with reflective conversation marks the beginning of the new quarter.

Contradiction: Bursting acceleration is all over the place but formation is still lacking. (Wk.2)

### RELIGIOUS HOUSE: CANNONBALL

External: Project advisory board is ready to meet as sand table for village design workshop nears completion and calls come in from guardians continuing to undergird project.

Internal: Receives two interns. San Francisco House sends Dean Ellis for month's assistance in artwork for project graphics, as groundwork is laid for full employment as project.

Contradiction: Discerning the physical sign that we can do that will be pointed to as the community's own. (Wk.2)

## EDMONTON

### RELIGIOUS HOUSE: EDMONTON

External: New Years celebration with regional colleagues and phorie calls between houses. Work with Royal Bank to initiate new banking accounts and procedures. Millwoods Forum steering committee breaks loose funding possibilities.

Internal: House members return from discontinuity for week of planning and celebration of New Year. Midnight New Year's Eve phone calls launch Phase II of the Year of Canada. Doug Allan shares reports from Montreal Area Council.

Contradiction: Dealing with the fuzzy edges around tactic implementary systems that blur images of engagement. (Wk.2)

### RELIGIOUS HOUSE: VANCOUVER

External: Great New Year celebration marks half way of

**(RELIGIOUS HOUSE: VANCOUVER)**

Year of Canada. Doug Allan assigned by Area Edmonton to Area Montreal Council.

Internal: Region extends contacts in the midst of 'at home' of Chinese colleagues. Welcome George Holmes, long time colleague from Saskatoon region, and Marie Mearns formerly of Ottawa region.

Contradiction: Articulating and symbolizing the corporate thrust of the new quarter to build on the gifts of whats already there.

**RELIGIOUS HOUSE: ANCHORAGE**

External: Trek to South-East sector of Alaska.

Internal: Two new jobs secured. Major breakthrough in decor opens quarter with creativity.

Contradiction: Organizing ourselves to enable external mission. (Wk.2)

**RELIGIOUS HOUSE: SASKATOON**

External: Operation Fire Across the Snow sweeps through the 'corridor' of Saskatchewan and Manitoba setting up CFC's and naming GSD sites.

Internal: Day of in-kind calling net commitment for monthly pickup of meat, fruit, bread, and flour, along with products in hand.

Contradiction: Discerning and illuminating the extras that keep us from having tactical power. (Wk.2)

**RELIGIOUS HOUSE: WINNIPEG**

External: Area maneuvers begin and local maneuvers break loose exciting provincial government contact.

Internal: Exciting self-support consensus emerges and free stove that works arrives.

Contradiction: Learning how to handle many high priority fronts in midst of changing troop resources. (Wk.2)

**HOUSTON**

**RELIGIOUS HOUSE: HOUSTON**

External: Core of Houston TM committee decides to turn on the city again, using Downtown TM in March as the pivot in an overall strategy.

Internal: House expenditures reduced by \$1000 a month as lease is signed on new facility in the Binz neighborhood with patron assuming responsibility for 5/7 of the cost (\$500 a month); income increases by \$2500 a month as two jobs are secured achieving full employment.

Contradiction: Breaking loose local initiative to sustain the budding TM acceleration momentum. (Wk.2)

**RELIGIOUS HOUSE: AMARILLO**

External: The realization of the tired warriors of the Community Core Group, North Heights, that their community is key to a break-loose in Amarillo.

Internal: A new picture of Amarillo revealed through ITP. Walter Duerr's day of riding with police all three shifts. Harold Williams and Doris Thomas, TM orchestrators, spiritize the house.

Contradiction: Preparing self quickly for hard core establishment break through. (Wk.2)

**RELIGIOUS HOUSE: SAN ANTONIO**

External: After weeks of grassroots hassling in South San Antonio, mayor pro-tem finds key which unlocks resounding

yes in South San Antonio, and also ideal facility for TM.

Internal: In midst of double development blitz on bi-metro from two teams, Charles Watson works some Indian magic to provide delicious Indian curried chicken with all the trimmings for a celebrative ecclesiola meal.

Contradiction: Bending small Texas town's social patterns so troops can follow-up lower valley maneuver at five hours distance on week ends. (Wk. 4)

**RELIGIOUS HOUSE: OKLAHOMA CITY**

External: First week of 'TM:Oklahoma 100' maneuver sees 94 towns visited, 29 core meetings held, 30 core meetings set up.

Internal: Metro colleagues Jane Wright, Doris Compton, and Jim Graham join maneuver teams on circuits and do a great job. Successful in-kind of meals proves that maneuver teams can live off the land.

Contradiction: Experiencing selves on Sun Tzu's 'Death Ground' with March 26 fast approaching. (Wk. 2)

**RELIGIOUS HOUSE: DALLAS**

External: Friday cadre/ecclesiola seats 18 around table; Garland and East Texas steering committee meetings net three T.M.'s on February 19th.

Internal: White Knight arrives(our house is clean); internal teams down to two each--Jeff Roper, Ashleigh Norment, and Charles Bush are out. New design for collegium lets burning issues get taken care of.

Contradiction: Using Friday nites in getting people engaged. (Wk. 2)

**RELIGIOUS HOUSE: PACE**

External: The Pace House is operating! 50 people show up at second steering committee meeting for the June 22 Pace T.M. Attend the two white churches in town and find them enthusiastic about having us here. The county newspaper conducts an interview with us and prints three articles the next day to make us known across the county. Receive Memphis and New Orleans Houses for first House Church and three from area for area maneuver for two weeks.

Internal: Receive Lynn, Lynette, Angie and Ryan Pennington into the Order. Tulsa House sends truck full of everything it had. Community already calls us 'The House' and stops in constantly all day long.

Contradiction: Structuring in the authorization and development that are a week overdue and not yet in battleplan. (Wk.2)

**RELIGIOUS HOUSE: NEW ORLEANS**

External: Bogalusa coordinator training session with 13 people yields three team leaders as well as initiating practices. Third and last Mississippi maneuver of Quarter II and with an office party of Pennington results in 12 towns having firm dates set with coordinators and plus 20 possibilities.

Internal: Christmas tree brought and decorated. Long needed repair accomplished; we have a front door now.

Contradiction: Making a forceful plan in the midst of uncertainty related to the shape of the future. (Wk. 11)

**RELIGIOUS HOUSE: MEMPHIS**

External: 23 at Memphis T.M. follow-up plan to see county and city mayors, visit neighborhood for second T.M. and set next time to meet. Franklin, Tenn. T.M. coordinator builds strategy and gears up to be the consultant for Columbia, Tenn. T.M. Huntsville, Arab and Gadsden choose

**(RELIGIOUS HOUSE: MEMPHIS)**

coordinators and begin team work.

Internal: Impromptu ecclesiola proves a winner as four around the table study the Wedge Report. Moving Gibson out and completing tribal resettlement wakes us up to power of new space.

Contradiction: Designing creative, explosive battleplan and tactics to enable breakloose of T.M.'s. (Wk. 2)

**RELIGIOUS HOUSE: ATLANTA**

External: Engages Day I and Day II troops in separate maneuvers that break-open visitation model and move five communities one step closer to T.M.

Internal: 17 men from Erskine College spend 'Evening at the Institute' and are journeyed through the three campaigns by the women of the house and colleague, George McDonald (Men all on maneuvers).

Contradiction: Turning new burst of community interest in T.M. into dates and steering committees. (Wk.2)

**RELIGIOUS HOUSE: CHARLOTTE**

External: Contacts 17 communities toward having 25 set up before February 1st.

Internal: New Year's holiday spent giving a face lift to the files, grounding our practical vision.

Contradiction: Allowing community cores to move from deliberation to implementation. (Wk. 2)

**RELIGIOUS HOUSE: MIAMI**

External: Two invitations to speak at two different communities made from two telephone calls sends whole house out in one night.

Internal: House tours Miami after fine fish dinner on the beach to show Alan Leshner (Cincinnati guardian) the sights.

Contradiction: Moving beyond the but!!!!: The contradiction is not lack of financial support but learning to work with what we have. (Wk. 1)

**CHICAGO**

**GLOBAL CENTRUM: CHICAGO**

External: Excitement over positive response to Area Chicago development scheme, asking for \$300 from each corporation in the area. Phone blitz to all houses in North America results in latest data on GCF dates. Legal Trek team of Fred Emerson and Forrest Craver on their way to Africa.

Internal: Welcome Rev. Lee and Rev. Won from Korea and Bob and Judy White enroute to Oombulgorri. Sends out Geoff Nixon to Edmonton and M.C. and Annie Thomas to Pace. Week II task force charts 12 books dealing with 'The Shape of the Church to Come' and discover our brooding is light years-ahead of present thinking in this arena.

Contradiction: Designing appropriate strategies and tactics to deal with freshly articulated contradictions. (Wk.2)

**RELIGIOUS HOUSE: CHICAGO**

External: 175 attend Preschool Christmas Party; receive additional \$5,000 grant from Urban Renewal and \$1,250 from two corporations for industry; Architect finishes drawings for new single-family housing; TM post does area planning in Kansas City.

Internal: 12 metro colleagues at House Church; send out Townsends to GSD prep trek; send out Trues to Chicago Nexus to prepare for Global Health Trek.

Contradiction: Having our next phase and quarter battleplans ready for weekly modification by January 2. Wk. 1)

**RELIGIOUS HOUSE: WICHITA**

External: Key colleagues grasp hold of the Kansas T.M. plan and say yes to working on it; giving time, cars, etc. at metro leadership meeting.

Internal: Half the house is on the road yet Daily Office and house structures continue to be viable.

Contradiction: Building the kind of economic and other support that will help release a statewide movement for T.M.'s in Kansas. (Wk. 2)

**RELIGIOUS HOUSE: OMAHA**

External: Metro colleagues including two people from Housing and Community Development Department create story and visit model to launch 15 T.M.'s for Omaha.

Internal: Sends out Robert White family to Oombulgorri and receives the John McCabe family.

Contradiction: Believing that the story will generate the resources that make the necessary possible. (Wk. 2)

**RELIGIOUS HOUSE: KANSAS CITY**

External: Signal authorization from political figures in Missouri and Kansas; imaginal power seen in map locating CIF participants.

Internal: End of quarter Christmas celebration with metro colleagues.

Contradiction: Pushing at maximum speed right up to New Year' Eve. (Wk. 1)

**RELIGIOUS HOUSE: MINNEAPOLIS**

External: 'Whittier Globe' recognized by 'Minneapolis Star' and 'Tribune' as one of the most professional community papers in Twin Cities. Southside News offers to merge. All fronts activated: Northern plains trek in South Dakota, research for Minnesota Victory and first steering committee for Urban CIF's.

Internal: Plan for 26 weeks. Exploding the third century of the USA entails 4 major explosions for Quarter II and III.

Contradiction: Looking for a story from outside of our own experience. (Wk. 2)

**RELIGIOUS HOUSE: ST. LOUIS**

External: Area Division South Strike Force hits St. Louis with economic blitz. Visit 120 corporations and receive promises of sponsorship, participation, and up to \$18,000 from firms such as Southwestern Bell, Kroeger Food, Burger Chef, Rexall Drugs, and Western Electric. Mayor of St. Louis agrees to serve on State T.M. Committee.

Internal: House hosts sixteen additional troops from Kansas City, Peoria, Chicago, and Wichita who spend Monday through Friday calling by day and strategizing by night, undaunted by blizzard and fatigue.

Contradiction: Maintaining momentum and equilibrium in a vacuum as the Division forces split to do Kansas and Illinois. (Wk.2)

**RELIGIOUS HOUSE: PEORIA**

External: TM promotion in Monmouth underway; Iowa circuits and network development continue to build.

Internal: Host St. Louis and Chicago colleagues for Illinois Network dinner by candlelight and workshop; evaluation of Qtr. II full of surprises; send out Christmas cards.

Contradiction: Fuzziness of our image of IGM raises issue of Qtr. III maneuvers. (Wk. 12)

**RELIGIOUS HOUSE: GREEN BAY**

External: Several communities with a 'soft' yes and/or a tentative date turn on to the proposal of a state wide 100

**(RELIGIOUS HOUSE: GREEN BAY)**

T.M. emphasis. Sends Jeff Ketcham, recent Academy grad, off to complete University training with completely transformed context.

Internal: Ecclesiola study of 'GCF: Changed Lives' is a happening. House recaptures gift of laughter in corporate attendance of 'The Pink Panther Strikes Again'.

Contradiction: Building signs of victory into maneuver timeline that signals our decision to win. (Wk. 2)

**RELIGIOUS HOUSE: MILWAUKEE**

External: Sends out Mary Bolin for two weeks at Cano Negro; Green Bay and Milwaukee Houses gather New Year's Day for 12 hour Wisconsin 100 planning; two steering committees begin six week countdowns with gusto.

Internal: Governor Randolph of Virginia visits New Year's celebration and comments on the fine T.M. he attended; area self-support results in Mary LeBlanc assigned out to work; and order blue car in Newkirk fleet becomes Green Bay's.

Contradiction: Struggling to mobilize troop imagination that says each person knows what to do. (Wk.2)

**RELIGIOUS HOUSE: INDIANAPOLIS**

External: Key contact with Kentucky Chamber of Commerce's All Cities Competition Area Supervisor Mae Woolum enables foray in Elizabethtown, Ky. to turn solid 'no' into a core meeting with SOM set for Jan 18. Mig Wildhack returns from Academy teaching and Inyan Wakagapi consult to host 25 at the House for evening's report. Colleague from Louisville heads for Chicago to prep before leaving on a 6 month Global Health Trek.

Internal: Four days discontinuity replenish all and borrowed chain saw and axe produce a cord of wood for our two newly discovered fireplaces.

Contradiction: Training for us all for key roles in the three campaigns. (Wk. 1)

**RELIGIOUS HOUSE: CINCINNATI**

External: Development of first corporation gift for future Cincinnati TM's and gift of car lease payment gives House a running start into new year.

Internal: New Year's celebration preparation picked up by guardians-leaving House free to do circuit work.

Contradiction: Preparing consultant force to do 30 TM's in Quarter III. (Wk. 1)

**RELIGIOUS HOUSE: DETROIT**

External: Authorization for T.M. Focus: Michigan Week grows with addition of the Cooperative Extension Service of Michigan State University network...\$1000 received from Burroughs Inc. as a result of Detroit CIF.

Internal: Creates new internal structures to propel us into next quarter; new support given from metro cadre as they aid in preparation.

Contradiction: Struggling with the 'rocks' of inadequate transportation and finances. (Wk.2)

**RELIGIOUS HOUSE: CLEVELAND**

External: Secures twenty of 64 new consultants to do the 32 Quarter III T.M.'s. Training format for 64 consultants built and January 22 is the training day.

Internal: New sojourner family, Bill and Jane Keller, Danny and Laura move into house bringing total of T.M. sojourners to four.

Contradiction: Preparing the five project staff teams to coordinate and train 32 teams. (Wk.2)

**NEW YORK**

**RELIGIOUS HOUSE: NEW YORK**

External: Receives \$100 check from Port Chester steering committee.

Internal: Successful battleplanning.

Contradiction: Discerning how the new day II configurations actualize the Quarters battleplans and enable T.M. replication. (Wk.2)

**RELIGIOUS HOUSE: PITTSBURGH**

External: Effective consultant training in weekly sessions, consultants working almost full-time and three steering committees.

Internal: Sharpening the house as mission by reaching 80% of food budget in kind, reimagining internal and external teams as guilds, reclaiming common memory in Christ of History study.

Contradiction: Discovering that short-term operation planning allows us to plan according to what seems possible at the time rather than build the models to accomplish the necessary. (Wk.2)

**RELIGIOUS HOUSE: ROCHESTER**

External: Buffalo TM followup meeting decides that what Buffalo needs is more TMs and they'll be the consultants.

Internal: Push on development begins to succeed with week night telephone which nets \$136.00 promised. House member is laid-off job then re-hired and promoted all within 24 hours.

Contradiction: Developing with what we've got. (Wk. II)

**RELIGIOUS HOUSE: RICHMOND**

External: Launches area battleplan for January through final prep for S.W. T.M. on the 15th; workshop leader training includes two from other communities.

Internal: House swings into new quarter, appreciative of continuity. Work of week plus six inches of snow make fall quarter seem long ago.

Contradiction: Creating a clear-cut assignment rational that will enable use of all troops effectively. (Wk.2)

**RELIGIOUS HOUSE: WASHINGTON**

External: Over discontinuity the community doesn't slow down and there are people in everyday. The community carols at nearby hospital with an eggnog party afterwards, resulting in a Youth Mobilization Corp meeting where 25 youth organized themselves.

Internal: House experiences awe at Christmas Party when community people drop in and join us making it a great happening.

Contradiction: Having discovered that demonstration has happened-how do we shift from demonstration thru discontinuity to acceleration and what tactics would intensify and move the transition. (Wk. 1)

**RELIGIOUS HOUSE: BALTIMORE**

External: Begin rhythm of Baltimore/Altoona maneuvers with series of visits in Baltimore and sending two to Altoona for two days.

Internal: Week of celebrations-engagement party and New Year's-bring new and old friends into house. Receive Linda Vernoo for two weeks maneuvering.

Contradiction: Finding key images in ongoing mission that create excitement for colleagues and ourselves. (Wk. 2)

**RELIGIOUS HOUSE: PHILADELPHIA**

External: First steering committee of the new year prepares for T.M. on Lincoln's birthday.

Internal: Initiates the New Year by spending great ecclesiolia charting Tao, second guessing the not yet received construct.

Contradiction: Being staggered by the possibility of looking for new jobs, a new house, while doing more T.M.'s than last quarter, with more E.G. in the house while we send people to GSD consults. (Wk.2)

**RELIGIOUS HOUSE: NEWARK**

External: Week-long preparation, including purchase of huge map of New Jersey, yields incredible Week II. Battleplanning with 16 people around table. Red Ur celebration Saturday night explodes as wild fiesta with Hunter Warrior Charades and singing.

Internal: In face of new quarter and sessions on self-support, house experiences new dimension of corporate decision to care for total mission.

Contradiction: Getting T.M. dates for this quarter solidified in midst of initiating whole new thrust relative to implementing strategies to win the state of New Jersey. (Wk.2)

**RELIGIOUS HOUSE: BROOKLYN**

External: Bi-metro council launches new colleague covenant for assuming responsibility for geography as 12 metro colleagues sign up as T.M. consultants, and two are sent out to Cano Negro consult.

Internal: Study of 'Prolegomena to Rule of the Order' impacts house with the articulation of our covenant to be freely bound in a common missional task.

Contradiction: Discovering how to maintain intensity built up during bi-metro council prep for the new consultant training structure. (Wk.2)

**RELIGIOUS HOUSE: HARTFORD**

External: Newington and West Haven continue momentum begun with T.M. Sends out two on 'cluster circuits' in Buffalo and Maine, Builds consultant day training model for end of January. Forge development model and goal during Week II task force. Set consultant dinner in Greenfield, Mass. Phoning campaign for ecclesiola.

Internal: Ecclesiola: 'Plain Speaking' conversation, Lao Tzu study, and creating a montage with the 24 GSD on the time wheel. Send off party: Fred McNutt to Cano Negro. E.G. model for quarter is complete. Job search uncovers promising positions.

Contradiction: Actualizing immediately development and consultant training models. (Wk.2)

**RELIGIOUS HOUSE: ALBANY**

External: Eight new T.M. consultants gather to start training in 13 week design aimed at ten T.M. in that county. GSD Nights (slide show) preparation for Schenectady and Albany both next weekend.

Internal: House does tribal resettlement and creates one new bedroom. Maneuver on jobs breaks open good prospects. Week II house planning remolds structures ad plans for house search maneuver.

Contradiction: Redirecting metro structures and house structures to handle needs for Day I and Day II consultants. (Wk.2)

**RELIGIOUS HOUSE: BOSTON**

External: House participates in claiming of past and future victories thru N.A. Priors Council and Area New

York Council; grassroots development calling yields financial and time commitments and calls for second TMs.

Internal: Three jobs down and one to go as George Howard gets new job in the midst of ending Qtr. II, ecclesiola and planning for House Christmas party.

Contradiction: Fear of failure in midst of smell of victory. (Wk. 12)

**MONTREAL****RELIGIOUS HOUSE: MONTREAL**

External: Sends four from House to Iroquois CFC, has first in a series of four Advent after House Church happenings for French colleagues giving opportunity for first use of French text for Habitat slides.

Internal: Reflections this week on Advent/Church year, Year of Canada story, Profound Humanness charts and The All Consuming Fire point to power of symbolic dimensions of life enabling and sustaining us to care for the world.

Contradiction: Feasting off self-support and CFC urgency. (Wk. 9)

**RELIGIOUS HOUSE: TORONTO**

External: Committee for GCF in 'The Junction' wobbles off course, then recovers balance and decides to stick to January 29 date. House and colleagues attends Area Council in Montreal.

Internal: House earnings exceed \$6800 for month, with three steady jobs and many miracles of odd jobs, cleaning, shovelling snow, etc; deficit is reduced by better than \$5000.

Contradiction: Discovering how house and metro colleagues leap aboard the new, fast moving train that area council swirls have shown us. (Wk. 2)

**RELIGIOUS HOUSE: OTTAWA**

External: Iroquois post-forum celebration attended by House and development team. Begin making plans for follow-up work starting Jan. 13th.

Internal: House welcomes back Ilona Jesenzsky and Brian Fisher and holds a great feast with turkey and all the trimmings.

Contradiction: Building an immediate victory model for self-support in order to bring off CFC and GSD. (Wk. 1)

**CARACAS****RELIGIOUS HOUSE: CARACAS**

External: Villagers work on construction of septic tank for community center. Ministry of Public Works sends 32 truckloads of fill to level land off. Village begins construction of thatched roofed structures for consult meeting rooms. Last of ITI mailing is sent out. Land ready for tents for main consult room.

Internal: Week of troop expansion with arrival of Joe Mathews Jr. and Maria Wilkerson. Consult team arrives to begin consult prep. House celebrates New Year in Cano Negro with all the trimmings.

Contradiction: Insuring adequate back-up and enablement systems for the consult. (Wk.2)

**THE GLOBAL ORDER CENTRUM REPORT**

**WEEK TWO**

**BRUSSELS  
NAIROBI  
BOMBAY  
CANBERRA  
HONG KONG  
CHICAGO**

**GLOBAL  
DEVELOPMENT  
CENTRUM**

In Quarter II of 1976 the Development Band raised over \$1,000,000 for the first time in history. Nexus Brussels secures major symbolic European gift of \$80,000 from the European Economic Community (Common Market). Doctors Gilbert and True join development for a week before setting out on the Health Trek and raise over \$40,000! The contradiction is in the arena of cash flow including dealing with currency exchange regulations and its catalyzing through expansion of the donor base.

**GLOBAL  
RESEARCH  
CENTRUM**

Training for the campaigns pervades the Research Band as work goes on in pedagogy in Brussels, Hong Kong and Canberra GRA. It is perceived to be the first contradiction in Chicago Nexus. The contradiction is in the arena of doing the necessary brooding and planning that will keep us on the edge of being and doing.

**GLOBAL  
OPERATION  
CENTRUM**

GCF planning consumes Operation Band as more GCF's are scheduled for Quarter IV than in all of 1976. Canberra simultaneously launches summer GRA. The contradiction has to do with adequate futuric planning in the absence of concrete data from local sources.

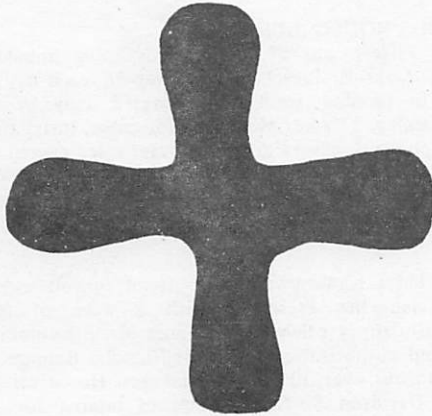
**GLOBAL  
MANAGEMENT  
CENTRUM**

A time of catching up: closing out the financial year and closing out the Global Finance Trek by sending Bruce Bauknight for two weeks to complete Area San Francisco. Preparation for audits is taking priority as Arthur Anderson Co. is engaged to do the Canberra audit and Chicago prepares new data programs to shorten the audit time. Brussels has submitted the ICA German Statutes and expects a January 25th determination. The contradiction is in the arena of consensing and contexting at each point without missing a beat.

## GLOBAL ORDER REPORT

Week Four

January 24 - January 30, 1977



The Lord God has given me the tongue of a teacher and skill to console the weary with a word in the morning; he sharpened my hearing that I might listen like one who is taught.

Isaiah 50 - 4

### LONDON

#### RELIGIOUS HOUSE: LONDON

External: Submits four funding proposals to London Borough of Tower Hamlets; Gen. Secretary of Docker's Union (NASDU) pledges support of Industrial Development Advisory Board. Nine local men signals new leadership by agreeing to help teach vehicle maintenance.

Internal: Hosts Health Trek, Legal Team and David Scott.

Contradiction: Finding the particular practical form of engagement for islanders. (Wk. 4)

#### RELIGIOUS HOUSE: GLASGOW

External: In the midst of four regional colleagues standing up to be consultants for TM, one sets up core meeting for TM 2 in Dundee and another decides TM:Port Glasgow will happen on April 6.

Internal: Colleague sojourns while mother attends ITI: Birmingham. Concrete timeline for locating new facility emerges.

Contradiction: Keeping TM set up moving while strengthening regional alliances for TM campaign. (Wk. 4)

#### RELIGIOUS HOUSE: BRISTOL

External: Serves participants for ITI:Birmingham and receives letter from Addressograph Multigraph confirming indefinite loan of duplicator and platemaker.

Internal: Symbolizes New Year with new teams; begins Shogun; celebrates Patricia Coffman's birthday. Begins last week of Youth Christmas Holiday.

Contradiction: Honoring strict timeline while serving effective data for set up of Foray:200. (Wk. 4)

#### RELIGIOUS HOUSE: MANCHESTER

External: Conducts framing and research visits to eight communities and four metros for TM Foray.

Internal: In wake of ITI preparation, organizes for TM campaign of 30 communities.

Contradiction: Getting done what needs to get done outside, while getting done what needs to get done inside, without getting turned inside out. (Wk. 4)

### PARIS

#### RELIGIOUS HOUSE: PARIS

External: National Secretary for Unity fo Christians is ready to introduce ICA to superiors of religious orders in France to elicit their participation in work.

Internal: New model for consistent cleaning and new decor and the refurbishing of furniture gives a spiritizing face lift to the House.

Contradiction: Having necessary letters of authorization. (Wk. 3)

#### RELIGIOUS HOUSE: ROME

External: Assessore (Minister) of Agriculture and Forestry for Basilicata Region (state) and Mayor of Castelgrande give green light for CHDP. TM circuits continue turning up new possibilities.

Internal: Information and talents flow through with Phillips visit and collegium on GSD, Tongan colleagues assessment to Italian cooperatives, and growing labour force volunteers. Eats out to celebrate victory and global guests.

Contradiction: Dealing with ten TMs and a social demonstration all blooming at once in mid June. (Wk. 4)

### LAGOS

#### RELIGIOUS HOUSE: LAGOS

External: Begins Ijede Community Hall renovation with the help of \$1500 worth of paint and \$1000 worth of cement. Week's development yields \$2500 in hand.

**(RELIGIOUS HOUSE: LAGOS)**

Internal: Consult team arrives from Shantumbu. Completes concrete floors in auxiliary house enabling assignment of family space.

Contradiction: Creating timeline and priority rationales to deal with unlimiting scope of task and possibility. (Wk. 4)

**BRUSSELS**

**GLOBAL CENTRUM: BRUSSELS**

External: Disseminates all Nexus troops to each House on the continent for New Years Eve which launches TM:Europoe Foray 2 Double O (200) with consultant training and circuit planning.

Internal: Establishing a regulatory for structuring of Brussels House and Nexus as they share common facility but maintain separate dynamics.

Contradiction: Staging Foray and guide production to maintain momentum across continent. (Wk. 2)

**RELIGIOUS HOUSE: BRUSSELS**

External: Area task force supplements Amsterdam House and completes framing circuits in 13 towns. Liege circuit contact decides to be consultant in Ijede.

Internal: Sends Lapka family to Ijede and welcomes three guests for Tao study at ecclesiola Mary Waren Moffett circuits for WIF.

Contradiction: Using area colleagues strategically to undergird the mamentum of Foray 200. (Wk. 4)

**RELIGIOUS HOUSE: AMSTERDAM**

External: Week explodes with first steering committee meeting for Buurtdag in Dordrecht; Womens course meeting with Catholic women in the Hague; and six cities research for Foray Two Double O (in two days).

Internal: Brussels Area taskforce doubles House size for Week I calling and triples for Week II quarterly indicative battleplanning.

Contradiction: Digesting the wealth of data battleplanning uncovers and translating it into action Monday morning. (Wk. 3)

**FRANKFURT**

**RELIGIOUS HOUSE: FRANKFURT**

External: Holds its second Women in the Future, the first time as an official ICA program with 33 women around the table from ten nations. Bi-weekly Community Forum task force begins with five metro colleagues.

Internal: Extended task force on management begun with visit from Rick Loundermilk and continued with visit from David Elliott and Igar Bartram from Berlin results in greatly increased clarity on ICA finances. New slide show on Kreuzberg received from Rome already translated into German and debuting in Wesel.

Contradiction: Shifting the commitments of colleagues and ourselves to Foray 200. (Wk. 4)

**RELIGIOUS HOUSE: BERLIN**

External: Starts second round of eight week English language class with promise of local peoples high school to participate in staff funding. Has three appointments with prospective core members for Kreuzberg Ost Community Forum. Drated first ediction of community newsletter with

local business ads to cover costs and AM offering use of their compsetting and printing equipment.

Internal: Celebrates ecclesiola with cleaning up apartment for children's program

Contradiction: Grappling with the language in tension with growing up community base and nurturing leadership now. (Wk. 4)

**KINSHASA**

**RELIGIOUS HOUSE: LUSAKA**

External: Fifteen out of 16 programs going immediately following Consult. Preschool has over 76 each day. Nine teachers in training, fresh milk donated daily by South African farmer, 27 acres ploughed for crops, installation of new red pump discovers 169 foot water filled cavern, roads graded by airport construction company, first aid classes continue and two local health workers deliver completed census. Census of nine villages by Phases reveals 1842 in SHDP.

Internal: Three Kawangware staff attend consult and Peter Njugrena launches Preschool with a week of teacher training. Christmas celebration honors Mr. Sikalumbi, ICA Trustee and authorization figure. St Nicholas Ramage drops in to hand out over 30 strange packages. House celebrates birth of Davidson Sinyangwe, son of interns Jonas and Grace.

Contradiction: Securing authorization nationally, laying track two feet ahead while moving locomotive full steam down the track. (Wk. 2)

**CAIRO**

**RELIGIOUS HOUSE: EL BAYAD**

External: Village crew hits bottom at 35 feet in home dug well. Pump for well and load of pipe arrives for village water system. Villagers play major up front roles in stake meeting.

Internal: Quarter planning and notices upcoming Health Team visit keeps House busy.

Contradiction: Keeping head on in the midst of an explosion of possibility. (Wk. 4)

**NAIROBI**

**GLOBAL CENTRUM: NAIROBI**

External: Nexus decides to raise \$21,212 in month of January. In Week I raises \$3,634, which is more than raised in previous month of development. The Kawangware Company operative Society, Ltd. has 50 members and \$1,600 .

Internal: Celebrates New Years Eve with Continental Council. In-kinds everything for celebration except napkins. Names money raising campaign 'Launch 77' and every man a developer becomes a concrete reality.

Contradiction: Keeping KHDP accelerating while moving full steam ahead on 'Launch 77". (Wk. 3)

**RELIGIOUS HOUSE: NAIROBI**

External: Catching up from discontinuity and sick list toll has one circuit team doing double circuit. Publicity VM held and scheduled has colleagues phoning and writing in to get their village on the list. Now have three with dates set and 15 more in committee stage. Receives favorable responses in initial reviews of VM funding proposals.

Internal: Purity Habuka begins sojourn and leads food team

**(RELIGIOUS HOUSE; NAIROBI)**

on a frugal trip to the wholesale market at 400 AM. Jean Miller submits proposal for Ford Foundation to keep her while she works on her Masters degree. Obedy Amutalah receives sponsorship of National Council of Churches for advance schooling.

Contradiction: Looking for new screens of training effectiveness measurement to go with the new times ( and unproven training methods). (Wk. 4)

**BOMBAY****GLOBAL CENTRUM: BOMBAY**

External: Second Human Development Training School starts with 80 participants. Poultry farm expands with the arrival of 400 chicks from Poona. Belgium Economist visits and State Bank of India decides to open new branch in Maliwada.

Internal: New quarter starts with the whole House taking part in tribal resettlement. Gets a new grip on finances.

Contradiction: Making models that are replicable without too much experimentation with high demands on economic development. (Wk. 4)

**RELIGIOUS HOUSE: BOMBAY**

External: Sends truckload of inkind and five trainees to the HD Training School. Pune circuit rider finds second Gram Sabha already in the chute with a 20-man guild and steering committee meeting excited about the new site and keynote speaker.

Internal: Facelift present facility in midst of writing proposal for a new facility, with four exquisite guest rooms prepared.

Contradiction: Establishing structures that hold ground already won in midst of responding to new demands to win more. (Wk. 4)

**DELHI****RELIGIOUS HOUSE: DELHI**

External: In midst of HDTS recruitment and participation in Kolambi, development raises Rs75,000 (\$8,500USD) from Canadian High Commissioner. Initiate thinking on house moving to village by July.

Internal: V. Parekh, J. Slicker, and J. Patterson enliven house during New Years Eve celebration on the town in Delhi with 70% of the house at consults or on treks.

Contradiction: Struggling between the need for a systematic plan and the need to 'move it' now. (Wk. 2)

**MADRAS****RELIGIOUS HOUSE: HYDERABAD**

External: Development calls result in promises from businessmen. Recruits two persons for SMS in Maliwada.

Internal: Receives Josephs from Kendur Consult and are excited about the resurrection of the old Kendur village. Turns old storage room with antiques into a guest room.

Contradiction: Cracking loose the age old mindset of stagnancy resulting in move it, move it, when money is not a problem. (Wk.13)

**CALCUTTA****RELIGIOUS HOUSE: CALCUTTA**

External: Development blitz victories: Major funding-24,000 rupees, Urban Circuits-1,988 rupees from Asansol. Creates newsletter, grounding three campaigns. Sends out development teams as blitz ends. Human Development Training School recruitment for Quarter II is in full swing.

Internal: Begins house hunting and sends Charles Innes to Area Madras for Major Funding development blitz. Development team's pilgrimage to Tagore's house emphasizes meditative council and taking care of yourself.

Contradiction: Holding creative tension between external mission and self-support. (Wk. 10)

**SINGAPORE****RELIGIOUS HOUSE: SINGAPORE**

External: Finalizes writing and gathers illustrative material for 1976 ITI Report, a major development tool for ITI Jakarta 1977.

Internal: Invites colleagues home for dinner and tops off evening with a sing along of old favorites around the piano. Finds collegiums on the Wedge Report exciting and challenging.

Contradiction: Maintaining momentum on GCF. (Wk. 4)

**RELIGIOUS HOUSE: KUALA LUMPUR**

External: Visiting villages Kampong Ketuas (Headmen) with Malay colleague finds doors wide open.

Internal: Moves way down the road as study Forging Social Philosophy paper, which is helpful screen for making final village selection and experiment with secular rituals in preparation for village entry.

Contradiction: Conveying urgency so that companies who are interested and say yes actually give money. (Wk. 4)

**RELIGIOUS HOUSE: JAKARTA**

External: 1977 begins with new power as deep bore well crew arrives to start the well and hits water bearing sand at 48 meters, moving water distribution timeline up by four weeks. TV and movies enliven community node during the evening and Friday night Guild meeting attendance tops 60 adults with a bold new mood.

Internal: Mrs. Nugroho celebrates 30 birthday and project staff plans an action packed quarter of over 200 events and major tactics covering all 16 programs.

Contradiction: Structuring the constant training dynamic into, under, around and through every event and sentence to assure the rapid development of responsible leadership. (Wk. 4)

**HONG KONG****GLOBAL CENTRUM: HONG KONG**

External: Three treks to Japan and Korea with the wedge, development in Manila and Hong Kong while Nexus/House task forces work on Fuk Wah consult prep and in-kind Nets 70 pounds of coffee and bed linens.

Internal: Sue Oberg achieves full professional position at International School along with substantial raise. Collegiums

**(GLOBAL CENTRUM: HONG KONG)**

and studies focus on Hong Kong revealing that this is fascinating piece of turf.

Contradiction: Creating means for releasing resources and troops for the Global Tasks. (Wk. 4)

**RELIGIOUS HOUSE: HONG KONG**

External: Participates in week of preparation for a GCF in Fuk Wah Tsuen. The pedagogy group decides to concentrate on GCF training, trains workshop leaders for the January nine GCF, brochures for the GCF were distributed house to house in Fuk Wah Tsuen, and prints the newly translated workbook.

Internal: Following a refreshing discontinuity, celebrates the New Year with centrum.

Contradiction: Enabling the nods of yes in the business and governmental sectors to be backed up with needed actions. (Wk. 3)

**RELIGIOUS HOUSE: KAOHSIUNG**

External: Visit to JCI National President opens new GCF doors while village research and Wedge preparation excites old colleagues about social demonstration possibility.

Internal: Ecclesiola discovers more Chinese quotes for GCF campaign—"Watch, look, and take care of your community."

Contradiction: Having to continue to look for a village in the midst of economic uncertainty. (Wk. 4)

**RELIGIOUS HOUSE: MANILA**

External: Development: 17 proposals out this week for a total of P100,000. ITI moves forward with the selection of the Host and steering committees and the in-kindness of the brochure and stationery. Philippine GCF Workbook printing in-kindness Treks to Tuguegarao, Silang, Legasue and Manila for GCF/ITI.

Internal: Joint Commission meeting dealing with current economic situation brings new creativity to meet needs.

Contradiction: Discovering ways to cover costs and expenditures without money. (Wk. 4)

**RELIGIOUS HOUSE: TAIPEI**

External: Colleague GCF, held at House, reveals solid structure of GCF and colleagues do excellent job as MC and workshop leaders.

Internal: Prepares GCF and produces manual. Economic intensification push consume week.

Contradiction: Breaking loose coordinators and local steering committees. (Wk. 4)

**RELIGIOUS HOUSE: CEBU**

External: Introduces soy beans for lunch to volunteer workday of 100 plus people to work on Buri craft sheds, rabbit hutches and generator house.

Internal: Five months of self-support committed from NEDA for doing consultations. Welcomes and send off George Packard for a weekend. Cebu Guardians and other guests visit with goodies to share.

Contradiction: Moving community from task oriented participation to broader participation and responsibility. (Wk. 4)

**RELIGIOUS HOUSE: DAVAO**

External: Nabunturan Steering Committee for GCF and PCTS holds two day battle planning workshop resulting in eight task forces with specific tasks identified and timelined

to accomplish a four week set up miracle including construction of a cement multi-purpose building at the site to sue as a facility.

Internal: Week II PSU designs and implements a comprehensive materials and filing system.

Contradiction: Stretching the troops and the time to accomplish all the tasks. (Wk. 4)

**TOKYO**

**RELIGIOUS HOUSE: TOKYO**

External: Neighbors attend community workshop which is arranged on short notice.

Internal: In the land of sliding doors, experiences the revolving front door with visits from Kang, Rafos, St. John, Rev. Oh and family returning from Korea plus seven others representing five countries and speaking more than seven languages.

Contradiction: Hesitating to prioritize tactical expenditure in midst of clear picture of tactical demand. (Wk. 4).

**RELIGIOUS HOUSE: JEJU**

External: Guilds takes responsibility for their quarter plans with the leaders meeting every morning to lay out the day and then move it. Signs of the new activity include the building of foundation forms for the Training Center staff house, decor of the village tea house and the first women luncheon and Elders meeting.

Internal: Transforms office space and decor for the quarter to create larger table space to accommodate our constant stream of villagers and guests and two new sojourners during the two month university break: Miss Hyon In Sook and Mr. Chung Hong Ju.

Contradiction: Dealing with the sense of victimism to achieve a breakthrough in the mindset that we always need experts from outside. (Wk. 3)

**RELIGIOUS HOUSE: SEOUL**

External: Quarter III begins with a PLC (30) in Chunchon with W50,000 in staff fees and development; 12 TM possibilities emerge out of the PLC for Kang Won Province; Rev. Park Si Won takes government official to Kwangyung II for registration of ICA site visit; locates tro-calcium-phosphate and molasses for Kwangyung II cattle winter feed supplement.

Internal: Spends Week II in GCF PSU planning circuits, materials, etc.; Kim Chong Man family sojourns; ecclesiola with six guests plays RISK to test Sun TZU strategies; celebrates the Paul Thomas family's decision to adopt a baby girl in January.

Contradiction: Engaging in many activities of the three Campaigns creates unclear strategic direction for the quarter's missional thrust. (Wk. 3)

**RELIGIOUS HOUSE: FUKUOKA**

External: Wedge team visits prospective GSD site in Miyata.

Internal: Hosts Area priors and Regional coordinator as do intensive frame for GSD.

Contradiction: Insuring momentum in all programs as attention turns to GSD. (Wk. 3)

**RELIGIOUS HOUSE: OSAKA,**

External: Final decision is Miyata; registration and legal trek are near, as all Houses meet at Miyata.

Internal: Three fifths of House are at Miyata.

**(RELIGIOUS HOUSE: OSAKA)**

Contradiction: Structuring steering committee alternative compositions into our writing so the ways God has chosen can be discerned beyond the quick yes or well do it ourselves. (Wk. 4)

**RELIGIOUS HOUSE: SENDAI**

External: Experiences excitement of GSD possibilities as all eyes focuses on Fukuoka. Celebrates Japan's Adult Day celebration at a party honoring all phases of life.

Internal: Ecclesiola highlights the week with concrete plans for TM:Japan.

Contradiction: Trying to generate three years of enthusiasm for TM with colleagues who just last week learned how to pronounce it in Japanese. (Wk. 4)

**SYDNEY**

**RELIGIOUS HOUSE: SYDNEY**

External: Sends out Oakley and Gil Woltjer to Brisbane CTC and Yallop to join development team in Brisbane to trek North-East of Australia.

Internal: Becomes Wayside House between everywhere and Brisbane and hosts Dettman's from Duluth and the Kincaids from San Antonio. Landlord paints front of House and catalyzes two neighbors to do same.

Contradiction: 'Moving it' is the midst of month long Festival of Sydney. (Wk. 3)

**RELIGIOUS HOUSE: PERTH**

External: Development appointments net \$50. WA Arts Council request a meeting. Two CMAs move along under own steam in Bunbury and East Victoria Park.

Internal: Dalwallinu clergy couple are celebrants at House Church. Youth vegetable garden begins to supplement House food.

Contradiction: Finding new development referrals and clinching a higher rate of appointments from phone calls. (Wk. 4)

**RELIGIOUS HOUSE: DARWIN**

External: Christmas Parade details finalized and trek and CTC mailing out.

Internal: Bill Senton call in on way home from Ombulgurri. Christanna Betonte celebrates first birthday. EG participate in YMCA holiday activities.

Contradiction: Sustaining the momentum, especially in Development, with no in-house. (Wk. 12)

**RELIGIOUS HOUSE: OOMBULGURRI**

External: Weekend renovation enables new Kitco image of sophistication with turnstyle, self-service, and short order window. Begin ploughing 100 acres for sorghum. Everyone lends a hand to pull off fine Christmas feast. Celebrates the completed life and death of Numa Horace, garden guild leader and elder.

Internal: John Burbidge returns from Perth in-kind assignment to be sent out to Maliwada replication in Kendur.

Contradiction: Enlisting the troops needed to do the whole job now. (Wk. 2)

**RELIGIOUS HOUSE: ADELAIDE**

External: Final CMA activity before holidays nets statewide Girl Guide authorization and an expanded Salisbury Steering Committee. House car plows through 80 kilometres of locusts on way to Area Council.

first set of grandparents, Dettmans, of Duluth Metro, arrive for Christmas from America in midst of House finishing two floors and a car paint job. Trims tree and shares slides of colleagues's Oombulgurri trip at Christmas prep ecclesiola. Paul Duffy secures 2:00 AM bakery job.

Contradiction: Maintaining Area push on other side of regional wrap up. (Wk. 13)

**RELIGIOUS HOUSE: MELBOURNE**

External: Alcoa (Australia) sends \$500 for Oombulgurri. New Year's barbecue introduces all to new network of future support for Three Campaigns.

Internal: Hosts Tim and Sue Wegner's parents, the Dettmans from Duluth, and Stuart and Mary Hampton's parents, the Kindaids from San Antonio. Deploy the Telfords north to CTC and the EG go to the country.

Contradiction:Laying necessary groundwork for the quarter newly at hand. (Wk. 2)

**GLOBAL CENTRUM CANBERRA**

External: Handles international flight arrangements and domestic airport interchanges.

Internal: Holds first ecclesiola of quarter with Bar-B-Q highlighted by send out of Becky Banks for school year to Frankfort, Germany.

Contradiction: Building quarter momentum yet being true to yearly models. (Wk. 4)

**RELIGIOUS HOUSE:BRISBANE**

External:Money requested several months ago comes in unexpectedly; preparation for Summer CTC intensifies on all front.

Internal: Christmas discontinuity abounds, while CTC anticipation more abounds.

Contradiction: Releasing SEAPAC participation in CTC. (Wk. 1)

**SUVA**

**RELIGIOUS HOUSE MAJURO**

External: Secures contract and loan for the first coconut wood house, 16' x 20'. Mills 62 logs in one week and the first 2 x 4s planed with a power planer (Public Works) for test marketing through the retail establishment (present importers of wood). All-Marshallese preschool board of directors decides to build a coconut preschool from the ground up. Fund raising plans are underway.

Internal: James Chia returns after two months in Singapore Region. One House E.G. runs own newspaper business and earns more than an adult monthlt stipend in one week. Pam Blood returns from the Yap district in time to greet her parents, just arrived from the U.S. for a visit.

Contradiction: Making concrete decisions and moving on them with a sense of urgency. (Wk. 4)

**RELIGIOUS HOUSE: APIA**

External: With authorization furthered by Rotary speaking engagement, working on Lion's Falealupo clinic benefit, Labor Department director asks for proposal for Youth Task Force. Hear national radio announcement regarding metro cadre celebration of past and future plans.

Internal: Study of Year of Canada and Sun Tzu impacts all with greatness of generalship as exemplified by action and tactics.

Contradiction: Continuing to function out of own model and not somebody elses with many missional possibilities and demands. (Wk. 4)

## SAN FRANCISCO

### RELIGIOUS HOUSE: SAN FRANCISCO

External: Rev. Kang Chin Shul visit key leaders in San Francisco Korean community. North California strategy meeting builds winning story and drafts marching orders as troops prepare to move to front lines.

Internal: Emerging Generation sponsor Game Night, giving all a chance to rest skills. Rev. Kang elicits deep excitement about GSD in Saturday and Sunday night presentations.

Contradiction: Synchronizing all necessary models to get all wheels rolling in high gear. (Wk. 4)

### RELIGIOUS HOUSE: SAN JOSE

External: Maneuver intensification leads to six solid possibilities and San Jose strategy assuming a concrete shape.

Internal: Rev. Kang Chin Shul drops in at an appropriate time, impacting an important visitor with the sign of globality in the Movement. Ecclesiola study of Lao Tzu's Tao is found mystifying.

Contradiction: Synchronizing the resources with possibilities. (Wk. 4)

### RELIGIOUS HOUSE: SACRAMENTO

External: Intensification begins with troops spread out over North California. State-wide development begins in Sacramento while Nevada team prepares to initiate TM:Nevada push.

Internal: Bob and Barbara Prather, Rich Jones and Dorothy Baines move in for California push and Bob Knutsen for Nevada initiation. Passing through are Bruce Bauknight for finance and Rev. Kang Shin Chul of Seoul House on preaching mission. Travels to San Francisco for reflection on first week's work.

Contradiction: Breaking into evaporation syndrome in midst of full-speed ahead intensification. (Wk. 4)

### RELIGIOUS HOUSE: SEATTLE

External: Week II battleplan kicks off campaign initiation designing new Washington state report and identifies the statewide Advisory Committee. Visits 25 corporations and Northern Life says yes to sponsorship.

Internal: Sharps arrive; Basil stays and Marie goes to Arizona Maneuver. Sends Ferguson to new assignment in Montreal.

Contradiction: Focusing troops and tasks to ensure readiness to claim victory of Washington '77. (Wk. 4)

### RELIGIOUS HOUSE: LOS ANGELES

External: The second week of maneuver intensification with three teams out on the road results in over 50 communities being contacted. Breakthrough in one community where local B.P.W. member responds to mayor and city administrator's questions without waiting for us, with "You already know about the issues in eth community, but there are lots of people here who need this opportunity to get theirs heard.

Internal: Celebrates with festive ecclesiola and dancing and watching movie "Give 'Em Hell Harry" which impacts all with style of President. Guest from Japan and Malaysia swell House.

Contradiction: Facing danger in the lions dens of bureaucratic organization procedures without having way to move with them. (Wk. 4)

### RELIGIOUS HOUSE: PHOENIX

External: The Arizona maneuver is underway and running with Statewide Advisory formed including Phoenix Mayor, Councilmen and State legislators. Fine newsletter is readied for mailing; the printed donated by Postal Instant Press.

Internal: A week of giving and receiving: sends out Andrew Knutsen to Billings House via a week of maneuvering in California; sends out Jean Poole to California maneuver and receives the Filipski family from Chicago Centrum. Ecclesiola study of Sarte's Philosophy of Revolution water our roots.

Contradiction: Forming a winning strategy for Arizona maneuver with the overwhelming permission which is already there. (Wk. 4)

### RELIGIOUS HOUSE: SALT LAKE CITY

External: Completes quarter battleplanning with metro cadre and symbolizes shift by moving campaign office from small back room to large front room. Celebrates with movie, ice cream and conversation.

Internal: Global finance trek visits. Two Korean colleagues pass through bringing great newspaper story of Kwangyung II.

Contradiction: Maintaining momentum and interior decision to win through period of troop drain and preparation for maneuvers. (Wk. 4)

### RELIGIOUS HOUSE: BILLINGS

External: East Helena steering committee with 14 present is led by three members of Whitehall steering committee. Seven hundred newsletter envelopes labelled by four EG and one Youth.

Internal: House experiences Wayside Inn dynamic with guests.

Contradiction: Accelerating TM marketing and organization by TM gradsin order to do 40 TMs this year. (Wk. 11)

### RELIGIOUS HOUSE: DENVER

External: Campaign initiation phase includes newsletter mailing, consultant training and metro cadre taking responsibility for office coordination.

Internal: Ecclesiola impacts House and guests with new depth of sociological reflections regarding journey of communities.

Contradiction: Bridging gap between vision of acceleration and structures. (Wk. 4)

### RELIGIOUS HOUSE: CANNONBALL

External: Previously split District Council votes unanimously to send a resolution to the Tribal Council to approve the 22 member Project Board. Community responds positively to the model peace pipe sign constructed and placed outside the House, saying Inyan Wakagapi Human Development Project.

Welcomes Heather Kern, reporter from United Tribes. Discovers that everyone can do finances as Bauknight conducts Global Finance workshop. Celebrates one month with a night in Bismar k. dining and seeing The Front.

Contradiction: Shifting to practical dos from the community. (Wk. 4)

## EDMONTON

### RELIGIOUS HOUSE: EDMONTON

External: Visits ten towns in circuits. Week II blitz on Redwater uses every troop and breaks open three yeses to Forum. Grassroots members of Millwoods core meeting

**(RELIGIOUS HOUSE: EDMONTON)**

decide they must recruit those in community who are not involved.

Internal: Concludes Week II blitz by dining at the Southern Cross Club, the only authentic Australian restaurant in the area with head waiter only seven years old.

Contradiction: Enabling local people to trust possibility in their own town. (Wk. 4)

**RELIGIOUS HOUSE: VANCOUVER**

External: Readies BC Forum presentation piece for printers, receives excellent credit rating and rebate of last year's service charges. House and area development team shows GSD slide show to Anglican Dean O'Driscoll who affirms with introductions to major funding sources.

Internal: Celebrates House Church with Seattle and Bellingham colleagues, has lively collegiums and celebrates ecclesiola with Give 'em Hell, Harry on TV.

Contradiction: Establishing necessary rhythm to deep abreast of the possibilities without feeling rushed off feet and not missing a beat. (Wk. 4)

**RELIGIOUS HOUSE: ANCHORAGE**

External: Sends a letter to Governor Hammond following his sponsorship of TM-like Alaska Public Issues Forum. Adds three new communities to the Anchorage circuit.

Internal: Designs EG curriculum, holds first ecclesiola, and computerizes the mailing list for free.

Contradiction: Gaining the necessary authorization to enable TM:Alaska to be a priority event. (Wk. 4)

**RELIGIOUS HOUSE: SASKATOON**

External: Operation Fire Across the Snow continues to work on GSD site selection and CFC set up. Sets speaking engagement with the Weekly Newspapers Association.

Internal: House Church in Prince Albert with 15 around the table. Colleague spends three evenings around the table pulling mailing list together.

Contradiction: Acting out of long-range models instead of day-to-day. (Wk. 4)

**RELIGIOUS HOUSE: WINNIPEG**

External: Area maneuver team debriefs over Week II; half of team leaves immediately to complete third week of maneuvers while other half pauses for car repairs.

Internal: Regional ecclesiola sends out guardian to Ijeda HDP.

Contradiction: Building development story into basic CGC introduction. (Wk. 4)

**HOUSTON**

**RELIGIOUS HOUSE: HOUSTON**

External: Settles Houston's Downtown TM for April 2 at the historic Rice Hotel; builds follow-up model designating 15 neighborhoods for county wide TM day in May.

Internal: New House preparation begins with two nights of work and much planning, in-kind and purchasing.

Contradiction: Maintaining momentum on allfronts dealing with the of moving the Army's camp to a new location. (Wk. 4)

**RELIGIOUS HOUSE: AMARILLO**

External: Amarillo House ends inter-house feud by winning

the Oklahoma Panhandle, no mans land as two towns prepare for Oklahoma:100 Coordinator Training Session.

Internal: Creates first visit and coordinator training 4 x 4 and receives two traffic tickets on Week II maneuvers.

Contradiction: Getting from core to Steering Committee. (Wk. 4)

**RELIGIOUS HOUSE: SAN ANTONIO**

External: After weeks of grassroots hassling in South San Antonio, mayor pro-tem finds key which unlocks resounding yes in South San Antonio, and also ideal facility for TM.

Internal: In midst of double development blitz on Bi-metro from two teams, Charles Watson works some Indian magic to provide delicious Indian curried chicken with all the trimmings for a celebrative ecclesiola meal.

Contradiction: Bending small Texas town's social patterns so troops can follow up lower valley maneuver at five hours distance on week ends. (Wk. 4)

**RELIGIOUS HOUSE: OKLAHOMA CITY**

External: In midst of treacherous snow and ice, Oklahoma:100 maneuver teams visits 150 communities in two weeks.

Internal: Sixteen people on the road this week while two adults and three EG hold down the fort. Sun Tzu care conversations enable sociological perspective for maneuver teams.

Contradiction: Designing structures and tactics for next month to carry the hodge podge of journeying communities through the many stages of decision to do TM. (Wk. 3)

**RELIGIOUS HOUSE: DALLAS**

External: Walter Duerr speaks at Troup, Texas Rotary about GSD. Receives \$100 from Mineola, promising 1000 attendance. East Texas saturation moves ahead with 10 TMs projected for April 2.

Internal: Walter Duerr impacts House with venturesome spirit; a new job is landed; hosts development team and the celebration moves on as attend wrong movie.

Contradiction: Building the tactics that do everything while focusing everything on Texas. (Wk. 4)

**RELIGIOUS HOUSE: PACE**

External: Pace TM is held with 301 registered and good representation from white community. Meeting is held the next day where five teams form to prepare for the consult.

Internal: Two new rooms are created to house everyone, then we hear about another assignment that leaves one short. MC and Annie Thomas arrive and Wilbur Leatherman visits to research cooperatives. Receive first of regular in-kind pickups of produce, bread and pastries.

Contradiction: Picking the most immediately and critically needed in-kind items and hitting the road-the complete battleplan will emerge in the process. (Wk. 4)

**RELIGIOUS HOUSE: NEW ORLEANS**

External: Day I troops participate in continuing Mississippi maneuver this week. Schedules five, expecting five others working on 1516 and breaking open 15 more towns. Bogalusa at its fifth week has already gathered \$631. On January 25 and 26 at the Mayor's Conference, Mayor Bill Patrick of Laurel will be giving a spin on TM. Mayor Network throughout Mississippi is gaining strides.

Internal: Area troops come in and out with TM, GSD, and development-77's cure for lack of Globality. Plunges into

**(RELIGIOUS HOUSE: NEW ORLEANS**

unstopping drains and lays carpet in collegium room after Sunday Planning session.

Contradiction: Working on new breakopen strategies inspite of image of troop isolation. (Wk. 4)

**RELIGIOUS HOUSE: MEMPHIS**

External: Colleagues as consultants give phone report on state of their fronts. Mississippi maneuver teams discern the nine fronts of state. Mayors of Greenville, Laurel, Meridian and Hattiesburg set up committees. Day II planning session re-grounds team structures and moves on new strategy for Northern Mississippi and Memphis.

Internal: Ecclesiola is profound event with Lao Tzu study of the Tao grounding the wiseman image. Pace development team visits. Receives copy of letter from veterinarian in Jefferson City, who having read article about colleague from Cedar Rapids in Sudtonggan, inquires about ICA and his participation.

Contradiction: Forgetting about gridding and holding the whole geography in planning on maneuvers. (Wk. 4)

**RELIGIOUS HOUSE: ATLANTA**

External: Engages Day I and Day II troops in separate maneuvers that breaks open visitation model and move five communities one step closer to TM.

Internal: Seventeen men from Erskine College spend evening at the Institute and are journeyed throught the Three Campaigns by the women of the House and colleague, George McDonald.

Contradiction: Turning new burst of community interest in TM into dates and steering committees. (Wk. 2)

**RELIGIOUS HOUSE: CHARLOTTE**

External: Confirms Kings Mountain and Durham TM dates. Key steering committee composed of mayor, city manager, newspaper editor, policeman, alderman, head of recreation department and head of youth council.

Internal: Maneuver planning highlights Week II and first of office supplies are in-kind. Horn of plenty continues to overflow with in-kind vegetables and fruit.

Contradiction: Holding tension between massive thrust and doing TM in community one by one. (Wk. 4)

**RELIGIOUS HOUSE: MIAMI**

External: Guardian takes lead in development. Battleplanning produces comprehensive picture of TM for the next six months.

Internal: Receives David Bernite as intern. Sends Barbara to central Florida. Welcomes colleagues Scott, Jan and Bobby Stahr at House Church.

Contradiction: Withstanding paralysis when logistics fall behind. (Wk. 3)

**CHICAGO**

**GLOBAL CENTRUM: CHICAGO**

External: Four teams brave sub-zero temperatures to do visits and distribute Valentine Ball flyers for the upcoming event.

Internal: Hosts guests from Scandinavia. Ecclesiola study of Tao mythifies all.

Contradiction: Doing the detailed planning to provide troops and travel for orchestrators needed for 100 TMs in several states simultaneously. (Wk. 4)

**RELIGIOUS HOUSE: CHICAGO**

External: One hundred seventy five attend preschool Christmas Party; receives additional \$5000 grant from Urban Renewal and \$1250 from two corporations for industry; architect finishes drawing for new single family housing; TM post does area planning in Kansas City.

Internal: Twelve metro colleagues at House Church; sends out Townsends to GSD pre trek; sends out Trues to Chicago Nexus to prepare for Global Health Trek.

Contradiction: Having our next phase and quarter battleplans ready for weekly modification by January 2. (Wk. 1)

**RELIGIOUS HOUSE: WICHITA**

External: Economic Blitz contacts over 60 corporations and receives 24 yeses that may produce \$7200. Mayor of Wichita is writing to all corporations seen in Wichita.

Internal: Celebrates gift of four extra troops in the House this week.

Contradiction: Continuing the economic push while preparing for the blitz on political and cultural. (Wk. 3)

**RELIGIOUS HOUSE: OMAHA**

External: Eighty eight calls made on Omaha, Lincoln and Council Bluffs corporations resulting in 25 giving immediate endorsement while rest chak with boards. Sponsor Witness clinches NW Bell endorsement plus offers to contact Mayor's office.

Internal: Hosts Division South strike force and celebrates fantastic development week with dinner at Spaghetti Works.

Contradiction: Setting rhythm which allows us to drive TM wagon at full speed without being bounced off. (Wk. 4)

**RELIGIOUS HOUSE: KANSAS CITY**

External: Signal authorization from political figures in Missouri and Kansas; imaginal power seen in map locating CIF participants.

Internal: End of quarter Christmas celebration with metro colleagues.

Contradiction: Pushing at maximum speed right up to New Years Eve. (Wk. 1)

**RELIGIOUS HOUSE: MINNEAPOLIS**

External: 'Whittier Globe recognized by 'Minneapolis Star' and 'Tribune' as one of the most professional community papers in Twin Cities. Southside News offers to merge. All fronts activated. Northern plains trek in South Dakota, research for Minnesota victory and first steering committee for urban CIFs.

Internal: Plan for 26 week. Exploding the third century of the USA entails four major explosions for Quarter II and III.

Contradiction: Looking for a story from outside of our own experience. (Wk. 2)

**RELIGIOUS HOUSE: ST. LOUIS**

External: Division South strike force hits Illinois and Kansas with economic blitz as remnant in St. Louis creates management information systems and visits 12 more corporations. Mayor of Rockford reports anxious to serve on Illinois State TM committee.

Internal: EG illness stretches Day I care model and first week of The Tao stretches consciousness toward the

**(RELIGIOUS HOUSE: ST. LOUIS**  
unknown unknown.

Contradiction: Remembering the cruciality of maintaining the support systems. (Wk. 3)

**RELIGIOUS HOUSE: PEORIA**

External: TM promotion in Monmouth underway; Iowa circuits and network development continue to build.

Internal: Host St. Louis and Chicago colleagues for Illinois Network dinner by candlelight and workshop; evaluation of Quarter II full of surprises. Sends out Christmas cards.

Contradiction: Creating new images relative to IGM and Quarter III maneuvers amidst fuzziness. (Wk. 12)

**RELIGIOUS HOUSE: GREEN BAY**

External: Receives letter from metro colleague, Bob Jaecks, in Maliwada and sends out David Blanchard to Ijede Consult.

Internal: Heavily engages permeation troops, youth and circuiters in Day II assignments.

Contradiction: Winning every skirmish along the way to the big battle of 100 TMs in May. (Wk. 4)

**RELIGIOUS HOUSE: MILWAUKEE**

External: State committee for TM:Wisconsin 100 now has 20 yeses. Holds first pilot coordinator training in Madison metro with 24 spirit colleagues from seven TM communities.

Internal: Joseph Keve visits Milwaukee while awaiting his visa to go to Cano Negro; ecclesiola finds 16 adults around table trying to unravel Lao Tzu in fire spirit.

Contradiction: Standing in fascinated, missional paralysis before fast developing TM:Wisconsin 100 that demands close attention to timelines, schedules, quotes, etc. (Wk. 4)

**RELIGIOUS HOUSE: INDIANAPOLIS**

External: Swirl of activities as State remains paralyzed by cold. Louisville, Lafayette and both teams of Indianapolis polis cadres meet to plan TMs, slide shows, RS-I and celebration. Student House sends 23 to demonstrate practical skills as they help transform all four floors of House. Mary Menkhaus of Danville, Illinois walks in to move it on work weekend and asks, 'Is this still the Religious House?' Week II culminates with two House Church celebrations and 32 quests.

Internal: Seventeen month old Alison Bengel points to TM logo and says Town Meeting.

Contradiction: Enabling maneuvers inspite of paralyzing winter conditions. (Wk. 4)

**RELIGIOUS HOUSE: CINCINNATI**

External: Kentucky Lt. Governor Thelma Stovall gives nod to Kentucky TM in August with Jaycees playing major set up and funding role. Consultant training of 20 begins strategy for expanded consultant force.

Internal: New internal life guides clarifies corporate life style. Youth and EG pick up food services for quarter.

Contradiction: Initiating structures which fully engages and sustains five consultant teams as solitary movement force while forging new model of massive coordinator training. (Wk. 3)

**RELIGIOUS HOUSE: DETROIT**

External: Invitation to George Romney to be honorary chairman to TM Focus: Michigan Week. Submits two

funding proposals for TMFNW funding.

Internal: Ecclesiola conversation on Tao demonstrates superabundance of life in midst of being on fast.

Contradiction: Moving ahead on faith is wearing thin in midst of scanty undergirding by few dollars. (Wk. 3)

**RELIGIOUS HOUSE: CLEVELAND**

External: Kicks off consultant training in four locations for every Saturday. Consultant teams care for the 32 TMs. All adults get pedagogical push with responsibility for training four to twelve consultants.

Internal: Winterproofs House as miracle of facility task force. EG task force creates Quarter III curriculum.

Contradiction: Ability to train people with no TM experience as consultants for State of Ohio push. (Wk. 4)

## NEW YORK

**RELIGIOUS HOUSE: NEW YORK**

External: Gives a sign of the possibility of developed and program income with receipts from GSD nite with minus three steering committee receipts of \$500 with another promising their three \$500s next week and a patron gift of \$3000.

Internal: House keeping around the edges keeps colleagues and contributing guests in the Wayside Inn. Health Trek, Bi-regional task force and development all descend on us at once, and participate in a Saturday Eve celebration seeing NETWORK.

Contradiction: Keeping eye on the Interglobal movement formation as an integral part of the three campaigns rather than a separate set of tactics. (Wk. 4)

**RELIGIOUS HOUSE: PITTSBURGH**

External: Effective consultant training in weekly sessions, consultants working almost full-time and three steering committees.

Internal: Sharpening the House as mission by reaching 80% of food budget in in-kind, re-imagining internal and external teams as guilds, re-claiming common memory in Christ of History study.

Contradiction: Discovering that short-term operation planning allows plans according to what seems possible at the time rather than build the models to accomplish the necessary. (Wk. 2)

**RELIGIOUS HOUSE: ROCHESTER**

External: Two former galaxy couples take responsibility for TM in the Buffalo metro by attending steering committee meetings and workshop training on their own initiative.

Internal: Weekends new decor workshop signals new decisions and directions, with a quarter battleplan to go with the new decor followed by a nun attending House Church and announcing her decision to attend the spring Academy and the Westfield TM when none of us had ever seen her before.

Contradiction: Getting new jobs and at the same time intensifying TMs and getting consultants for them. (Wk. 3)

**RELIGIOUS HOUSE: RICHMOND**

External: Holds District 4 TM 76 in Richmond; \$1200 in hand and replication strategy built. TV shorts by steering committee for South West Richmond.

Internal: Saturday's TM results in many people looking for

**(RELIGIOUS HOUSE: RICHMOND)**

jobs for House. Total new office reorganization and changes assignment rationale for quarter.

Contradiction: Being chaste to at least three different things at once. (Wk. 4)

**RELIGIOUS HOUSE: WASHINGTON**

External: Ivy City Council thrust out of Ivy City and into the world through Neil Vances's report on the 24 social demonstrations and Ivy City's own Lawrence Glacoe's report on the Cano Negro Consult.

Internal: House global consciousness bumped via collegium on Wedge report and week presence of Neil Vance, Kathy Bauknight, and Mark Welsh.

Contradiction: Firming back up system: economics, structures, and training. (Wk. 4)

**RELIGIOUS HOUSE: BALTIMORE**

External: Discovers life underneath snowed in steering committee; development spurs new impetus for GSD night.

Internal: Jo Riley lands \$17,000 year job.

Contradiction: Focusing on key communities without losing impetus elsewhere. (Wk. 4)

**RELIGIOUS HOUSE: PHILADELPHIA**

External: Bi-regional meeting in New York sharpens to a fine point the 'One-plus-four' TM replication model.

Internal: GSD is swirling in all directions as House studies consult documents and sends David Derr to Ijede consult.

Contradiction: Day by day battleplanning without long range picture. (Wk. 4)

**RELIGIOUS HOUSE: NEWARK**

External: Holds first consultants meeting of quarter; prints state brief for massive distribution to communities.

Internal: First ecclesiola of quarter exposes depth gifts of yellow man as own depths are renewed.

Contradiction: Narrowing the gap between the interest of many and the decision of a few. (Wk. 4)

**RELIGIOUS HOUSE: BROOKLYN**

External: Consultant training structure, first of weekly series, launches bi-metro journey as study of Meaning of the Meeting sets context for TM strategy by disclosing profundity of TM.

Internal: Saturday bi-metro development PSU creates battleplan and allows House to integrate development with ingoing campaign task.

Contradiction: Doing daily tactics of Tm and development that will persistently carry out the longrange objective. (Wk. 4)

**RELIGIOUS HOUSE: HARTFORD**

External: Participation in the Boston 218 maneuver calls forth eight core meetings. Development mailing to 1,721 persons. Presentation at Plainville Conference of Churches to set up GSD night.

Internal: Fred McNutt returns from Cano Negro with great report; 35,680 is our development objective for Quarter III. Guild member leads ecclesiola study and all watch 'Give 'em Hell, Harry' as postlude.

Contradiction: Moving all fronts at once through careful planning and implementaries. (Wk. 4)

**RELIGIOUS HOUSE: ALBANY**

External: Steering committee meeting held four days after core meeting and all say yes, with county legislative chairman

giving best TM context heard and two GSD nights attract 70 people.

Internal: Crisp one page resumes distributed by Schenectady consultants core. Linda Brock arrives for ecclesiola from New York House with gift.

Contradiction: Securing larger living space for expansion. (Wk. 4)

**RELIGIOUS HOUSE: BOSTON**

External: Despite a major snowstorm, development signals are go with urban circuits. Area development trek and GSD presentations to local churches and business group at the Harvard club including Henry Cabot Lodge.

Internal: Experiences an explosion of practical images and possibilities in thorough development battleplanning for Quarter III. Wayside Inn intensified with urban circuit team area prior and Wainwright in transit to Chicago Centrum.

Contradiction: Pushing the breaklooses and visions of the past two weeks to implementaries and timeline. (Wk. 4)

**MONTREAL**

**RELIGIOUS HOUSE: MONTREAL**

External: Death of Bishop Joshi.

Internal: Announces GSD site in Area Montreal, a village in New Brunswick.

Contradiction: Deepening research without losing momentum in external mission. (Wk. 3)

**RELIGIOUS HOUSE: TORONTO**

External: City alderman assigns staff to work on Forum in neighborhood.

Internal: Reorders space and creates all new decor; gets \$100 in-kind windfall of bent cans.

Contradiction: Waiting for maneuvers plans to crystalize. (Wk. 4)

**RELIGIOUS HOUSE: OTTAWA**

External: CFC is a possibility for Timmens after six months of inactivity. Mayor of Hearst will be consultant for Lome de Lacadie.

Internal: Global maneuvers game turns on House; Youth demonstrates generalship abilities. Montreal permeator uses business trip to lead House in network brooding.

Contradiction: Getting clarity on both the means of war and the maneuver strategy as well. (Wk. 4)

**CARACAS**

**RELIGIOUS HOUSE: CARACAS**

External: Villagers work on construction of septic tank for community center. Ministry of Public Works sends 32 truckloads of fill to level land off. Village begins construction of thatched roofed structures for consult meeting rooms. Last of ITI mailing is sent out. Land ready for tents for main consult room.

Internal: Week of troop expansion with arrival of Joe Mathews Jr. and Maria Wilkerson. Consult team arrives to begin consult prep. House celebrates New Year in Cano Negro with all the trimmings.

Contradiction: Insuring adequate back-up and enablement systems for the consult. (Wk. 2)

THE GLOBAL ORDER CENTRUM REPORT

WEEK FOUR

BRUSSELS  
NAIROBI  
BOMBAY  
CANBERRA  
HONG KONG  
CHICAGO

GLOBAL  
DEVELOPMENT  
CENTRUM

Collects mail worth \$7000. Receives \$4700 for well in Maliwada plus \$15,400 from Texas. Telephone call uncover a guardian who will pay \$1000 monthly as well as the consult fees.

GLOBAL  
RESEARCH  
CENTRUM

Holds PSU on TM orchestrators: who, where, when, and PSU on the metamorphosis of the Academy. Recreates space with colorful charts holding contradictions and proposals for quarter. Phase I space refinement occasions new baby beds built by students plus colorfully painted walls in eating and curriculum rooms. Works on production of Fifth City and Isle of Dogs brochures. Has five guests from Scandinavia join in GRA research.

GLOBAL  
OPERATIONS  
CENTRUM

Troops return from Cano Negro Consult in the midst of Ijede Consult closing to begin document writing. Hears of three new names for GSD sites. TM battleplanning has trend of statewide endorsement of 100. Uptown guild preparing for Valentine Ball by distributing 1500 tickets and flyers announcing the occasion.

GLOBAL  
MANAGEMENT  
CENTRUM

The major focus of the week is on year end reports with Hong Kong preparing ledger for ICA, and Manila's report to the Philippine BIR plus working on taxes in Hong Kong. Canberra closed books on 1977. Chicago has an audit task force. Brussels sets up Belgian Charities Board of Directors for ICA. Canberra is coming out ahead, financially, on the GRA. Chicago packed up and mailed 60 TMs, with a new model which will save 50% on shipping. The contradiction is in replicating transnational systems of community management.