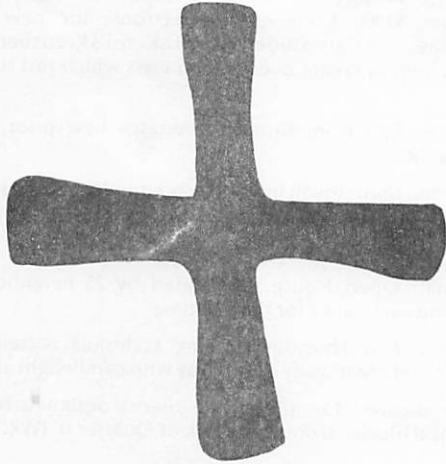


# THE GLOBAL ORDER REPORT

WEEK ONE

OCTOBER 1—OCTOBER 7



## LONDON

### RELIGIOUS HOUSE: LONDON—ISLE OF DOGS HDP

External: House hosts Area Council which sets up Quarter II and celebrates the occasion with a disco aboard the *Tideway* on the Thames.

Internal: Youth sent out Week II to teach RS-I with Don Elliott's youth group.

Contradiction: Marrying the permeation requirements with the Way into a single focus. (Wk. 1)

### RELIGIOUS HOUSE: GLASGOW

External: House builds initial Development calling list as Bank of Scotland manager greets new house members by extending overdraft capacity and expresses interest and support for ICA programs.

Internal: Roger Williams arrives while Joyce Williams stays a few extra days in Brussels to turn over Management systems.

Contradiction: Deciding to act boldly in the midst of ambiguity without comprehensive maneuvers to implement GRA vision. (Wk. 11)

### RELIGIOUS HOUSE: BRISTOL—TAI'R GWAITH HDP

External: Showing of the global film to Institute of Traffic Administration gives House first real inroads into business establishment in Southern England. Inkind fabric continues to arrive and designer is working on patterns of samples Management Board tours potential site for store and strategizes to obtain it at their price.

Internal: Steven Evans joins Bristol contingent at Continental Council and stays to write new brochures.

Contradiction: Maintaining momentum of new leadership initiative while enabling victories on the economic front. (Wk. 1)

### RELIGIOUS HOUSE: MANCHESTER

External: Yorkshire trek, clergy collegium, and Regional Council contacting reveal readiness of a wide network of colleagues and Guardians to move.

*The Lord turned to him and said, 'Go and use this strength of yours to free Israel from the power of the Midianites. It is I that send you.' Gideon said, 'Pray, my lord, how can I save Israel? Look at my clan: it is the weakest in Manasseh, and I am the least in my father's family.' The Lord answered, 'I will be with you, and you shall lay low all Midian as one man.'*

Judges 6: 14-16

Internal: Burglar who breaks in while all are at Continental Council makes off with all symbolic life items.

Contradiction: Getting a handle on the year in the face of so much possibility after polis TM coverage. (Wk. 1)

## MADRID

### RELIGIOUS HOUSE: MADRID

External: Year's board maneuvers for Area Madrid are written, including quarter II's implementation beginning with trip to Rome for Roman Catholic wedge into Spain.

Internal: Manuel Guillot is assigned to Academy as a step on his journey from Paris to Madrid.

Contradiction: Using Church as only vehicle of authorization.

## PARIS

### RELIGIOUS HOUSE: PARIS

External: House hosts M. Nani, Paris Guardian, and M. Schiffers, new contact in rural development, at dinner to update on year's plans. Area Council regrid to polis level, and creates quarter timeline and song with two Nexus representatives.

Internal: Area Council spirit life is filled with birthday celebration for Penny, Manuel's send out to Madrid House assignment, Kazantzakis meal conversations and a stroll on Champs Elysees.

Contradiction: Building maneuvers that are sufficiently wild to win. (Wk. 1)

### RELIGIOUS HOUSE: BRUSSELS NEXUS

External: Douala and Madrid Area Houses launch set-up prep with maneuver writing and significant starts on framing.

Internal: House celebrates Shirley and Robert Porter's 25th wedding anniversary with champagne and roses from whole House and Diane visiting from Rome.

Contradiction: Working at long-range strategy while doing concrete preparation for guardians meeting and creating

corporate constructs that release most energy for Centrum work and enable common thrust in midst of diverse demands of four Centruns. (Wk. 1)

#### **RELIGIOUS HOUSE: BRUSSELS**

External: House plans for Area Council. Alice Dwardin visits to catch up on the basic thrusts for the coming year. House participates in Continental Publications Task Force and creates ICA brochure and new Image piece.

Internal: House creates a quarter battleplan for the Area with keystone maneuvers relating to regular regional circuitry through whole area and movement eventfulness all by doing six regional pilot sets.

Contradiction: Developing structure for consistent Religious House presence while being on the road throughout in the area. (Wk. 1)

### **ROME**

#### **RELIGIOUS HOUSE: ROME—TERMINE HDP**

External: Co-op members take charge of all aspects of operation with purchasing materials, handling office, and solving the latest production crises. Annual festa and creation of positioning maneuvers announce a new time for the ICA and the village.

Internal: New wake-up possibilities emerge as village festival begins the day with four rockets and a brass band marching by each house.

Contradiction: Guarding against the image of impossibility in the face of diminishing time frame. (Wk. 1)

### **LAGOS**

#### **RELIGIOUS HOUSE: LAGOS—IJEDE HDP**

External: The leap is concretized as GRA participants spread the global story more effectively than outside auxiliary, resulting in expectation of support from Northern Trustees and the village chief. The State Military Governor's Office sends 15 for a site visit and the Mushin Catholic Parish of Lagos tours with 48. Officials from the divisional offices of the Ministry of Trade and State Ministry of Works promise support.

Internal: Word from the Ibadan ITI indicates 43 participants and staff, and intern Philemon Ishaya returns after over six weeks absence to vote.

Contradiction: Making the most effective use of new offers of support while not having articulated the key strategy. (12)

### **DOUALA**

#### **RELIGIOUS HOUSE: DOUALA**

External: Appointment with one of the founders of the Institute for Pan African Development in Douala provides entree to it and the Mutualite Cooperative in Douala. Maneuver writing pulls together 13 points of entree to Cameroun and 14 components of international authorization to the Cameroun government and seven elements of a strategy on the Church to quickly establish a movement base throughout the nation, plus 24 African support contacts.

Internal: Hosted by the Paris House and moving to transition residence in Brussels Nexus signals first stage of the move to Area Douala.

Contradiction: Arranging the catalytic chronology of the 26 maneuver components.

### **FRANKFURT**

#### **RELIGIOUS HOUSE: FRANKFURT**

External: While still on the road to Frankfurt requests for TM's during Quarter II flood the House and motivate House even more to jump in car for Brussels after a few days in Frankfurt to help build effective models for future.

Internal: After a great area pre-planning of the Frankfurt and Berlin House three former Berlin House participants finally get out to Frankfurt sending out Berthold Schwaiger to Continental Council prep and receiving Roland Frank as sojourner.

Contradiction: Building long term strategies in face of overwhelming odds and immediacies and in absence of Area Prior as master-strategist. (Wk. 1)

#### **RELIGIOUS HOUSE: BERLIN—KREUZBERG OST HDP**

External: Project inkind new carpet for Treffpunkt and receives \$1300 from Andus Electronic for new printing machine. Linn Cary, student from U.K. visits Kreuzberg Ost and offers help in taking over English class which just started last week.

Internal: Call from Brussels promises new prior, Michael Deloughery.

Contradiction: Involving more community people in the task and reminding them of the on-behalf-of story. (Wk. 1)

#### **RELIGIOUS HOUSE: AMSTERDAM**

External: Open House is attended by 25 neighbors, some meeting each other for the first time.

Internal: First Thursday evening Ecclesiola is held in new House and great study of the Way with candlelight and wine.

Contradiction: Completing the internal designs to release the practical blocks to doing the task of Quarter II. (Wk. 1)

### **KINSHASA**

#### **RELIGIOUS HOUSE: LUSAKA—KAPINI HDP**

External: Guilders festoon car with flowers as Ben Becker, Guardian engineer from Holland, is sent out after one year at KHDP. Mr. Namadula checks out project for ICA donations to be tax exempt. Nineteen youth volunteers and two adults flee from roaring lion whom they encountered along a path at Munda Wanga Zoo.

Internal: Extra cooks keep showing up in the kitchen to assist those assigned, as interest in food hits mysterious peak.

Contradiction: Breaking-loose the economic to balance the social arena. (Wk. 13)

### **CAIRO**

#### **RELIGIOUS HOUSE: CAIRO—EL BAYAD HDP**

External: East Bank village buys Bayad roof sheets for a new cafeteria in prime visibility location.

Internal: Half of internal budget is supplied by one half-time ob teaching English to Egyptian employees of Conoco.

Contradiction: Putting the spotlight on land permission for construction and desert reclamation sites until the battle is won. (Wk. 1)

### **NAIROBI**

#### **RELIGIOUS HOUSE: NAIROBI—KAWANGWARE HDP**

External: Second generation gives birth to third generation on the Demonstration Urban Farm as Hope (Tumieni), daughter of first cow on DUF, named DWF, brings new life into being and symbolizes continuing possibility for Kawangware. Fantastic LENS is held with Firestone and indicates new strategies for breaking open International Companies relative to participation in changing history and involvement in HDPs. Firestone is sending three people full time to Kabiro Consult and is open to submission of a proposal for Kawangware.

Internal: Intensive preparation for Kabiro consult releases all staff to participate in the week of the consultation that is pioneering in caring for the urban by focusing on a stake within one of the 5 urban HDP around the world.

Contradiction: Continually articulating the consensus in order to keep all plates spinning when one of them is enough to engage troops full time. (Wk. 1)

**RELIGIOUS HOUSE: KAMWELENI—KAMWELENI HDP**

External: Pump and pipes are delivered. Standard four classroom walls start going up. Stake leaders play role of auxiliary as forty work on pathways in spite of heavy rain.

Internal: Three day fast culminating in night watch intensifies missional demand.

Contradiction: Mobilizing community effectively with limited staff. (Wk. 12)

## BOMBAY

**RELIGIOUS HOUSE: BOMBAY—MALIWADA HDP**

External: Nexus undertakes massive materials preparation for 60 Consults and Project directors' training for 60 new Projects in advance of division guns and support forces meeting hosted in Bombay.

Internal: Panchayat visits Nexus.

Contradiction: Clarifying strategies to complete, sustain, fund and celebrate the 232 over the next four months with an eye on next year. (Wk. 12)

**RELIGIOUS HOUSE: BOMBAY NEXUS**

External: The second Nadlapur consult documentation is completed in English and Telugu and is presented to the Vizar Sultan Tobacco Company (the adopting company). The consult catalyzes breakthroughs in the village which bring new vision for the future to Nadlapur. First reports from Division Strike Forces proclaim positive response in villages to DOOP (do your own project) modules being held in all 232 villages.

Internal: Nexus hosts Bombay Division Strike Force in between modules and gets first hand reports on module effectiveness.

Contradiction: Holding tension between local and global additional emphasis on centrum and areal priorities. (Wk. 4)

## DELHI

**RELIGIOUS HOUSE: DELHI—SIKROR HDP**

External: Ten buffalo loans are sanctioned by the Bank of India. One more street is bricked with 10,000 new bricks being sanctioned. Fortnightly family planning clinic is set up.

Internal: House does pre-Council planning for the year towards the awakenment of 1,500,000 settlements.

Contradiction: Creating inclusive design that uses troops and time to win on all fronts. (Wk. 12)

## MADRAS

**RELIGIOUS HOUSE: MADRAS—NADLAPUR HDP**

External: Villagers start building a 150 feet stone and cement drain with voluntary labor.

Internal: Auxiliary spends the morning cleaning the house and caps the day with dinner and movie at Sangareddy.

Contradiction: Enabling villagers to make visits to government departments in spite of heavy farm work. (Wk. 11)

## CALCUTTA

**RELIGIOUS HOUSE: CALCUTTA**

External: TELCO (Tata Engineering and Locomotive Company) agrees to sponsor Calcutta Buffer for one year in the amount of US\$30,000. Nexus priors join area team for final negotiations and site selection. Village of Chainpur, 50 percent Adivasis and 50 percent other classes, 38 kilometers from Jamshedpur, is

chosen as demonstration Project. After a meeting with leaders and villagers, decision is made to send five villagers to the HDTs which starts on April 15th.

Internal: Week-long Continental Council in Sevagram Ashram reveals new self-consciousness of operating as a continent and provides fresh motivity for capturing the victory of Quarter IV.

Contradiction: Creating the design of events that focuses power into do-ment of the Project from now until Consult. (Wk. 5)

## SINGAPORE

**RELIGIOUS HOUSE: SINGAPORE NEXUS**

External: All centurms are represented in planning meeting.

Internal: Dinner with Guardian couple highlights year's end.

Contradiction: Appropriating the care provided by the structures of society. (Wk. 12)

**RELIGIOUS HOUSE: SINGAPORE—SERUSUP HDP**

External: Five new chicken houses are built, all chickens are given injections and a chicken manager is hired to get all chickens healthy and over the flu. Floating fish farm takes first prize exhibition at Sabah State New Products Fair. Handycrafts gets offer of new contract that could still use elders' traditional weaving skills as Rotan factory evens off old skilled workers. The official project evaluation for the Chief Minister and other ministers interested in project and form expansion nears completion.

Internal: House settles into August schedule as Muslim fasting month is observed by two national staff so that whole House corporate times are powerful and all involved.

Contradiction: Enabling a consensus between two village groups. (Wk. 10)

**RELIGIOUS HOUSE: KUALA LUMPUR—SUNGAI LUI HDP**

External: The village water committee collects \$3 from each householder (instead of the usual rate of \$.60) in order to maintain the water system and comply with the Sanitation Department requirements for a potable water supply.

Internal: House members begin hunting for a singing job for Terry Fahrenbacher by exploring the night-club scene in Kuala Lumpur.

Contradiction: Finding a way to utilize village readiness to move in new directions after the summer slump. (Wk. 1)

**RELIGIOUS HOUSE: JAKARTA—KELAPA DUA HDP**

External: A pilot DOOP is done in KDHP stakes before 31 government officials arrive for formal presentation by ICA on an overview of KDHP for the past three years, and proposals for year four Phase IV.

Internal: Job offers come in, while American staff visits US Embassey open house and DOOP generals write Indonesian version of V-V-V-Vijay.

Contradiction: Maneuvering KDHP to go beyond itself. (Wk. 1)

**RELIGIOUS HOUSE: MEDAN—BUBUN HDP**

External: Governor says yes to USD 16,000 from Provincial contribution to Bubun Project. Visit to national passenger boat lines produces 16 in kind deck passages to Jakarta Area meeting for ICA auxiliary and villagers. First great Independence Day celebration in Bubun honors 34 years of freedom with a flag ceremony, proclamation reading, hosting of 17 village leaders by ICA auxiliary in report and visioning dinner and prizes for best house improvement, painting, fencing, cleaning and drainage.

Internal: Report on Global Priors Council to auxiliary and 17 village leaders raises great questions about how HDTs will affect Bubun implementation and village life.

Contradiction: Enabling the village consensus to detailed plan of action with guns for six weeks to carry through to Governor's visit with absence of auxiliary and 10 village leaders. (Wk. 12)

**RELIGIOUS HOUSE: UJUNG PANDANG—BONTOA HDP**

External: Bupati (district chief) visits and gives key talk at Town Meeting Assembly pushing Bontoa visibility. This is followed by a decision to form a county-wide Town Meeting team. USAID representatives visit Bontoa to review project and assist staff in setting up a data system.

Internal: House forms new time design.

Contradiction: Setting up new structures wherein the establishment can give impact to Bontoa while continuing projects where the local passion lies. (Wk. 8)

## HONG KONG

**RELIGIOUS HOUSE: HONG KONG NEXUS**

External: House sends out representatives to attend Area Tokyo and Area Hong Kong meetings, while the Nexus hosts Elinor Lovett, a Guardian from Philadelphia. Mayor of Cebu endorses a \$20,000 proposal to Bristol Myers.

Internal: House resettlement gets into full swing as Oberg, Elliott, Nichols, Bell and the Holcombs return to the Nexus.

Contradiction: Sitting on anxieties long enough to get the hard planning accomplished which is required to launch the quarter. (Wk. 13)

**RELIGIOUS HOUSE: HONG KONG—NAM WAI HDP**

External: Stake 2 undergoes tribal resettlement as families move into other villagers homes as demolition begins on a half dozen older houses for new homes to be built. Dental Clinic operations meets with three villagers, including both village representatives. Yearly and quarterly development planning takes place with visit from Development Centrum.

Internal: House welcomes the Alan and Karen Shing family as first village ??????.

Contradiction: Allowing internal dynamics of the village to fill the broader regional demands and vice versa. (Wk. 1)

**RELIGIOUS HOUSE: KAOHSIUNG—HAI OU HDP**

External: YMCA requests TM. Steel bars for House are delivered. Land is cleared and foundation is ready for digging. Penny Tung (past city president) visits and fifteen are impressed by Hai Ou's development.

Internal: Bruce Macomber visits and participates in second anniversary celebration planning.

Contradiction: Getting clear on the practical next steps for expanding Hai Ou enterprises. (Wk. 9)

**RELIGIOUS HOUSE: MANILA**

External: House hosts an afternoon with the Sudtonggan Craft Guild for 20 Japanese women in culmination of a week of marketing Mactan Cluster Products. Development reports month of September goal is in sight.

Internal: House deposits September self-support.

Contradiction: Throwing light on this quarter's destiny through an image of next year. (Wk. 13)

**RELIGIOUS HOUSE: TAIPEI**

External: National Semiconductor Corporation in Taiwan phones in registration of five management personnel for Taipei LENS seminar. New ICA staff for Hai Ou, Taipei and Hong Kong Centrum, arrive to participate in bi-regional planning meeting for Quarter I and the year.

Internal: Saturday workday cleans out storage area in preparation for new floor in renovated ICA office.

Contradiction: Getting strategic clarity on the role of circuits in Taiwan with due consideration for HDP transition, convergence of the awakening campaign, and mobilization of local servant forces. (Wk. 13)

**RELIGIOUS HOUSE: CEBU—SUDTONGGAN HDP**

External: Fifteen Community Forums are initiated in the first week in Cebu mountains by three teams with three people in each team. The Year of the Child comes out as the priority as the Early Learning Nutrition Center is created.

Internal: The week is highlighted with a great celebration when the mountain criers arrive after a five day forum. Nancy Bain is received at Cebu House.

Contradiction: Having a story that utilizes the regional structures. (Wk. 1)

**RELIGIOUS HOUSE: DAVAO—LANGUB HDP**

External: Mountian Cluster Planning Council, with 22 colleagues from four villages, creates years timeline, Quarter II plan, designs modules and celebrates with RISK game. Sewing Guild does contradictions/proposals planning and old buyer maintains contract in midst of struggles of new industry. Generator operates seven nights in a row and more wiring is installed. Over 1000 cacao seedlings are distributed and over 200 kilos of mongo beans are shelled.

Internal: House planning creates renovation and beautification design and purchase workdays have begun.

Contradiction: Tying up last year's loose ends in order to push into the new year. (Wk. 1)

## TOKYO

**RELIGIOUS HOUSE: TOKYO**

External: Mitsui Shipbuilding Company confirms third TM to be held with employees in company housing. Guardian arranges use of ICA staff and method at a national conference of government and academic leaders sponsored by IBM: Japan. Japan Electronics Industry Development Association responds to one day consultation with an invitation for the ICA to continue its role as methods consultant for their research into the 1990's.

Internal: New sojourners and ICA staff begin to experience the pulsebeat of lively community, meaning that people are having fun in the House.

Contradiction: Learning to train Guardians and volunteers fast enough to keep pace with the multiplying opportunities. (Wk. 1)

**RELIGIOUS HOUSE: JEJU—KWANGYUNG IL HDP**

External: Staff visits all preschool parents. New staff meet with village leaders. Auxiliary go on a Jeju Island tour of possible expansion villages.

Internal: House welcomes new staff with a swimming party and Saturday night disco with old and new colleagues.

Contradiction: Building the models for transiting the Project in the midst of setting new regional and area priorities. (Wk. 12)

**RELIGIOUS HOUSE: SEOUL**

External: Recent Academy grads meet and offer help in any arena needed. Lutheran mission group invites House to submit a village funding proposal.

Internal: House creates space in its five rooms for 12 to sleep as it hosts new Jeju staff and the Bergdalls.

Contradiction: Determining the level of chaos that justifies a fresh ordering of the summers imagination. (Wk. 12)

**RELIGIOUS HOUSE: CHUNCHEON—CHUNCHEON HDP**

External: Thirty villagers attend a cooking demonstration of nutritious foods. Also a photographer from the Saemaul Movement takes many pictures of village activities.

Internal: House structures are set up for the quarter.

Contradiction: Choosing the key first step to reach 194TM's by January. (Wk. 1)

**RELIGIOUS HOUSE: KUH DU E RI—KUH DU E RI HDP**

External: Meeting with County Chief uncovers offer to set Town Meetings in each of the 195 country villages as first step in process of selecting 10 for GSD replication.

Internal: La Roche family is sent out to South Carolina and Miss Hur Myung Hee begins passport work for Academy.

Contradiction: Finding the half dozen ways to assure that the project context is the future and not the past. (Wk. 11)

**RELIGIOUS HOUSE: FUKUOKA**

External: House holds signal planning meeting with three regional volunteers.

Internal: House builds collegium rationale for quarter and celebrates Week II with trip to historic Shikanoshima Island.

Contradiction: Discerning correct timing and rhythm of quarter maneuver in relation to year's maneuver plans. (Wk. 1)

**RELIGIOUS HOUSE: OSAKA**

External: Quarter II maneuver plan is completed and circuit design takes form. New circuit recruit sends resume and comes to ICA office for interview, then signs up for three day circuit to Ishikawa. Colleagues work with House to finish community symbols to be used as Town Meeting posters.

Internal: Sojourn model is completed, space is designed, and first sojourner for the new quarter moves in.

Contradiction: Painting a picture for the House of the comprehensive mission that puts the external and internal in focus. (Week 1)

**RELIGIOUS HOUSE: SENDAI—OYUBARI HDP**

External: Four week maneuver results in reconciliation with the Local Development Committee (the informal City Council) which gives new opportunities and authorization for work with Oyubari. Town holds first Annual Sports Day, involving more than 200 participants including ICA staff. Sixty Rikkyo University students from Tokyo participate in 10 day work/study camp in Oyubari.

Internal: Don Clark and Professor Joe Ida from Tokyo come for meeting with Development Committee.

Contradiction: Capitalizing on new opportunities with new models in a new language. (Wk. 1)

## SYDNEY

**RELIGIOUS HOUSE: SYDNEY**

External: State Report for Community Meeting Campaign is printed and ready to mail to 500 people including forum participants, shire clerks, sponsors and Members of Parliament. Barry Oakley and Jay Antenen are sent out to Melbourne on Area Task Force.

Internal: House welcomes Karen Kivimaki as House member and hosts Tippet family and Louise Albright on way through to Adelaide.

Contradiction: Clarifying the quarter in order to set the weeks' priorities and effectively engage new troops. (Wk. 1)

**RELIGIOUS HOUSE: PERTH**

External: House member runs into past authorizing politician who asks what he needs to do to help.

Internal: Flu bug visits the House.

Contradiction: Deciding what encounters will be next. (Wk. 1)

**RELIGIOUS HOUSE: ADELAIDE**

External: Barry Oakley and Jay Antenen lead a three-day

taskforce in evaluating communities for saturation clusters, including site visitations and a meeting with regional colleagues.

Internal: Arrival of Louise Albright completes House roster.

Contradiction: Making a serious start on saturation, framing and Development while still sorting out internal issues. (Wk. 1)

**RELIGIOUS HOUSE: MELBOURNE**

External: Area taskforce enables focusing of quarter's saturation on Pakenham. State government frame begins with visit to House by aide for shadow minister for urban planning.

Internal: Collegium and office are reset to shift focus of use of space.

Contradiction: Using limited time and troops carefully to create spirit frame for Quarter II. (Wk. 1)

**RELIGIOUS HOUSE: CANBERRA — MURRIN BRIDGE HDP**

External: Sir Roger Darvall entertains Banks, Nixon and Burbidge to lunch and encourages Potter Foundation to give \$50,000 to Murrin Bridge, half now and half at Christmas.

Internal: Canberra welcomes Geoff Nixon and John Burbidge.

Contradiction: Moving from the house in the next 16 days while doing Development treks. (Wk. 1)

**RELIGIOUS HOUSE: BRISBANE**

External: Regional mailing of Queensland CMA Report is sent out to 500 including CMA participants, shire clerks, MLA's organizations and businesses. Possible saturation towns are targeted. First of three Way spins from Council are sent out and second one is transcribed.

Internal: Inkind and procurement fill House with carpet, cupboards, wardrobes, freezer, tables, bookcases, incinerator and lamps.

Contradiction: Focusing corporate power on key issues. (Wk. 1)

## SUVA

**RELIGIOUS HOUSE: MAJURO—MARSHALLS HDP**

External: Report on the Area Council gives new images of victory and adds impetus to the TASC institutionalization deadline. The Marshall Islands government announces the great nation-wide celebration date: May 1, 1980 to celebrate one-year under the new Constitution, the successful operation of Tobolar, coconut processing plant, and the opening of the new port.

Internal: Linda returns from Area Council with "mission impossible" component for Agana Region. Rachel is enrolled as youngest child ever in Uliga Preschool.

Contradiction: Swimming rather than drowning in the tidal wave of possibility. (Wk. 1)

**RELIGIOUS HOUSE: APIA—SALANI HDP**

External: The main speaking chief is sent out to Council. Road crew arrives to spend a week in the village building the plantation access road. Materials for the new preschool building arrive in the village after a villager designs a new ventilated roof and offers his skills as a carpenter for construction.

Internal: Auxiliary and Apia Metro colleagues climb up to Robert Louis Stevenson's grave site and the view provides a tool to reflect on the smallest nation that the movement has a project in.

Contradiction: Prioritizing in the midst of tremendous demand and reminding the villagers of consult decisions and possibilities. (Wk. 8)

## SAN FRANCISCO

### RELIGIOUS HOUSE: SAN FRANCISCO

External: Fresno County Campaign ends with 10 saturation events complete including two CYFs, a Special Issues Forum on community safety and TMs. Working with County Supervisor's recommendation is found as helpful advocate. House hosted Mary D'Souza's parents and sister's family with the global film.

Internal: All day year-end evaluation while completing wall of wonder and envisioning the future has House anticipating urban impact and moving massively.

Contradiction: Getting ready for what we don't know. (Wk. 2)

### RELIGIOUS HOUSE: SAN JOSE—RICHGROVE HDP

External: Hard work and sweat all Week II with a variety of miracles including landscaping the plaza with approximately \$400 of inkind plants, arrival of laundromat washers and dryers, education module which produces day camp curriculum for summer, and flea market continues to be Sunday event in the community.

Internal: House self-support begins with Ken Filipski's job at \$14,000 per year and finishes with beginnings of House garden.

Contradiction: Releasing people to take on long-lasting circuit responsibility. (Wk. 9)

### RELIGIOUS HOUSE: SACRAMENTO—CUSICK HDP

External: Hotly contested local City Council election brings out 69% of registered voters during the week of industry research and preparation with visiting task force team, Art Smith and Mark Welch.

Internal: Staff, VISTA and community coordinate external and internal models for region and local community.

Contradiction: Completing winterization in order to be free to focus outward in community. (Wk. 1)

### RELIGIOUS HOUSE: SEATTLE

External: Decision to emphasize networks impact gets off to a running start with GWF appointments set and a week of consultation with Rainier National Bank.

Internal: House lands three month's self-support in one week of exciting but exhausting being on-stage at every moment.

Contradiction: Creating the event with colleagues this week that pushes through the Regional Council to devise the transnational plan of intensive engagement of all. (Wk. 1)

### RELIGIOUS HOUSE: LOS ANGELES

External: Workshop results in the creation of a list of 110 working colleagues. Forays to all six metroes during the week reveals two live Academy prospects and colleagues to attend an all state meeting in Richgrove next weekend to launch the demonstration cluster experiment.

Internal: House receives the first paycheck and secures the second job with an \$1100 monthly salary.

Contradiction: Discerning the real advantages for the first move on bold plans. (Wk. 1)

### RELIGIOUS HOUSE: PHOENIX

External: Region is completely represented at Regional Council event.

Internal: House is rejuvenated and utilized as a launching pad for the campaigns.

Contradiction: Deploying available troops to cover entire region at once. (Wk. 13)

### RELIGIOUS HOUSE: WICHITA—PISINEMO HDP

External: Buffalo Head Community Voice celebrates one year of publication with 15 staff members at the party. First crop of Devils Claw and \$100 worth of cantalope are harvested at the Santa Cruz Demonstration Farm.

Internal: House participates in community feast preparations.

Contradiction: Developing the financial management systems to handle the new economic programs. (Wk. 1)

### RELIGIOUS HOUSE: SALT LAKE CITY

External: The whole week is spent preparing and celebrating the annual Cannon Ball Pow-Wow with two days of clean-up, junk car removal, new space for day care, a \$3800 inventory order delivered to the store and three days of dancing.

Internal: House sends out the two priests from Germany to continue their trek to Pace HDP.

Contradiction: Holding fast to the confusion until it becomes clarity. (Wk. 13)

### RELIGIOUS HOUSE: BILLINGS

External: Twenty-three Development appointments are set with 19 confirmed for the first three days of next week. Thursday evening House visits the South Side Task Force. Friday evening is an informal Evening at the Institute get together with colleagues.

Internal: First full week of working out brings in \$500.

Contradiction: Building the necessary momentum for the upcoming GWF on what seems a very slim base. (Wk. 1)

### RELIGIOUS HOUSE: RAPID CITY—NYNAN WAKAGAPI HDP

External: Last Board Meeting before election is a great event with the introduction of the Druckenmillers. Key item of business is the decision to change name to Cannon Ball Development Corporation.

Internal: House tours reservation on Saturday, and goes on berry picking and duck hunting expedition on Sunday.

Contradiction: Meeting three more deadlines with three less troops. (Wk. 1)

### RELIGIOUS HOUSE: DENVER

External: Twenty-three colleagues gather at the House for a GRA and Prior's Council briefing session and begin exploration of the 1979-80 strategy. Office of Rural Health invites ICA to do TM event at a state health conference in November.

Internal: Week Nine is used to polish the gem that is the House to enable concerted effort toward external focus.

Contradiction: Deciding to move before the Area and Regional Councils happen. (Wk. 11)

## EDMONTON

### RELIGIOUS HOUSE: EDMONTON

External: A week of corporation calling in Edmonton and Calgary nets five working proposals. Documentation on past forums and set up of three more near Drayton Valley progresses.

Internal: Ecclesiola with guest, Annmarie Stuart, gets picture of regional authorization possibilities during sodality.

Contradiction: Moving quickly from "On your mark, get set," to "go". (Wk. 1)

### RELIGIOUS HOUSE: VANCOUVER

External: A week of Development yields \$1200 committed, \$1200 working and several new openings for proposals.

Internal: In-kind yields a crate of broccoli and two crates of corn on the cob.

Contradiction: Moving from one mode of operation for each major strategy to many while sharpening the focus of each day's activities. (Wk. 1)

### RELIGIOUS HOUSE: ANCHORAGE—MINTO HDP

External: A proposal to train workshop leaders for approximately forty native villages in the Tanana Chiefs

Conference is prepared, submitted and encouraged.

Internal: House receives assurance of VISTA salaries from state ACTION director.

Contradiction: Getting systems and actions together into effective rhythms of activity. (Wk. 1)

#### **RELIGIOUS HOUSE: SASKATOON**

External: Gala House Church launches region in *Year of the Harvest* with regional colleagues including celebration of birthday, 20th wedding anniversary for Ross family, and retirement from 40 years of service with Saskatchewan Power.

Internal: Arrival of Elizondo family doubles troop force and catalyzes House tribal resettlement and creation of House Internal Life designs for Quarter II.

Contradiction: Discerning the keystone that will maintain the creative tension between self-support and accelerated missional thrust. (Wk. 12)

#### **RELIGIOUS HOUSE: WINNIPEG—VOGAR HDP**

External: House visits with CBC (Canadian Broadcast Corporation) shifting their image of ICA and the documentary they are producing to be a fair representation.

Internal: House space is transformed as new guest room, office, and worship room are created.

Contradiction: Formulating a story about the year and quarter that gives people permission to engage. (Wk. 1)

### **HOUSTON**

#### **RELIGIOUS HOUSE: HOUSTON**

External: Area Houston holds Area Council producing an integrated strategy for the year, Area Youth Cluster document and feeds 100 people for three days for less than 100 USD.

Internal: House gets internal structures set for quarter reclaiming the space after hosting 10-50 people during Area Council.

Contradiction: Getting the functional systems in place to allow energy to be focused on the city, region and area. (Wk. 13)

#### **RELIGIOUS HOUSE: AMARILLO—INDIAHOMA HDP**

External: Indianhoma begins construction of water tower and appoints a Municipal Judge. Troops meet with architect and Treasure Lake Job Corps concerning construction plans for the mini-mall. Project contacts St. Louis House about inking use of house in Indianhoma owned by St. Louis company.

Internal: House welcomes Ken back from discontinuity.

Contradiction: Bringing into being structures to sustain social development. (Wk. 1)

#### **RELIGIOUS HOUSE: SAN ANTONIO—ASHERTON HDP**

External: Stake meetings are launched. Area Priors, Claudia and Don, do a reflection about *The Way*. Asherton produces second year's plan.

Internal: Anthony Ollison arrives from Ivy City.

Contradiction: Doing effective methods to start Stake Meetings. (Wk. 1)

#### **RELIGIOUS HOUSE: OKLAHOMA CITY**

External: Troops gather baseline data for move on Arkansas as "No Excuse" mobile Religious House heads for New Orleans to aid colleagues in State Campaign.

Internal: Troops are ready to be anywhere on a moment's notice.

Contradiction: Being Religious House while serving the missional needs in three state campaigns. (Wk. 13)

#### **RELIGIOUS HOUSE: DALLAS**

External: First-ever Regional Council for the Dallas Region is held and results in comments such as, "I came because it was time to come to a Regional Council" and "This was the beginning of our regional myth-creation for local man."

Internal: Leah Dunbar lands temporary work while putting irons in fire for permanent job.

Contradiction: Getting the implementaries of regional council into a colleague-engaging strategic thrust. (Wk. 1)

#### **RELIGIOUS HOUSE: TULSA—DELTA PACE HDP**

External: Four TMs are held and 22 TMs are set up for East Central Planning and Development District. (PDD). The southwest PDD is in the set-up stage.

Internal: House experiences itself as four satellites in orbit.

Contradiction: Creating mythology for PDD which allows community to see destinal significance of second wave of awakenment which demands excellence and meeting symbol of mass impact. (Wk. 1)

#### **RELIGIOUS HOUSE: NEW ORLEANS**

External: House does 10 TMs this week and the next 25 are set up. Also 13 TMs for October Lake Charles maneuver are set up. An office is secured with free phone, photocopy and P.O. Box. House creates a new brochure. Operations team breaks open three networks for LENS.

Internal: House welcomes Luigi Persichetti and Bronwyn Rees from Oklahoma City House to Louisiana State Campaign.

Contradiction: Finding the key to turn growing number of part-time volunteers into full-time troops. (Wk. 1)

#### **RELIGIOUS HOUSE: MEMPHIS**

External: Visit to Pat Wyatt, Director of the Governor's Office of Volunteer Servies in Arkansas, by Guardian, Richard Butler and House members nets enthusiastic support of Town Meetings, and a yes to setting up appointments for funding of the state campaign.

Internal: Alpha master filing system is initiated as over 100 names are entered during Week II blitz.

Contradiction: Creating the advantages now that what needs to happen is known. (Wk. 1)

#### **RELIGIOUS HOUSE: ATLANTA**

External: First Regional Council in several years joins colleagues from three metros and a representative from the Miami Region in the creation of the year's regional strategies and a Quarter II timeline for each metro. The Council closes the day's workshop with the creation of a regional symbol, song and slogan: "Gearing into the Globe."

Internal: Closing Regional Council House Church is a major event with 30 around the table, Kang Byoung Hung as celebrant and the celebration of the birth of Jessica Ann Brazen.

Contradiction: Opening new Development doors in order to reestablish a firm constituency base on all fronts, from grassroots to major donors. (Wk. 1)

#### **RELIGIOUS HOUSE: CHARLOTTE—GIBSON HDP**

External: House and Project move with power on September as Positioning for Victory month with Regional Council invitations and TM county coverage follow-up letters are mailed. Z. Smith Reynolds Foundation proposal is submitted for \$125,000. Nine youth representing all stakes, attend Governor's Youth Meeting where CYF was major part of weekend format.

Internal: House initiates and finishes 75% of set-up of alpha system.

Contradiction: Moving rapidly toward next quarter and troop dispersion without major holding images for the myriad of tasks related to transition and convergence. (Wk. 13)

**RELIGIOUS HOUSE: MIAMI**

External: A demonstration Town Meeting with the 11 district directors of Volunteer Services insures local support while steps are taken to acquire state sponsorship. Work on a proposal to do TMs with developmentally disabled continues to reactivate old colleague.

Internal: Area Prior's visit triggers serious work on the new alpha file system and other fine events.

Contradiction: Continuing the maneuver without back up support of planned-for state sponsorship. (Wk. 1)

**CHICAGO****RELIGIOUS HOUSE: CHICAGO NEXUS**

External: The Chicago Nexus hosts a GWF for women from 18 nations now resident in Chicago and celebrates the completion of the first 24 metro circuits with a new miracle song.

Internal: Patrick Moriarty's accident and hospitalization strikes all with the strength of the life force over against contingency and the deep corporateness which the Order is.

Contradiction: Clarifying the vision of North America for the 80's. (Wk. 1)

**RELIGIOUS HOUSE: CHICAGO-FIFTH CITY HDP**

External: Verdell Trice and Ruth Carter act as 5th Citizens Consultants to the HDTs Curriculum Building Taskforce this Week II.

Internal: Rosemary Albright returns to Chicago House after one year special assignment.

Contradiction: Discerning the operating style and framework of the Leadership Committee. (Wk. 1)

**RELIGIOUS HOUSE: OMAHA-LORIMOR HDP**

External: Over 50 attend ground breaking for building site for Mother Lode Co., a cross country ski wear sewing industry, moving to Lorimor. Lorimor Community Development Corporation raises \$35,000 towards financing of the building and the company. More than \$500 is raised for emergency vehicle equipment as picture coupon sales drive tops 100 people.

Internal: House engages in concrete planning for the coming year through Regional Council in Kansas City, working on quarter maneuvers, and making decor.

Contradiction: Getting thought through enough in all arenas in order to move out of a comprehensive picture. (Wk. 1)

**RELIGIOUS HOUSE: KANSAS CITY**

External: Excitement begins to build for the new year with three yeses for Academy. New regional filing system is completed by Kansas City Metro. Six metro colleagues attend Lorimor Watermelon Festival.

Internal: Russell Wheelock is welcomed as Intern.

Contradiction: Turning weak yeses for Academy and regional events into strong commitments. (Wk. 13)

**RELIGIOUS HOUSE: MINNEAPOLIS**

External: Region receives approval for funding of Local Communities on the Move Conference held in June. Governor's policy director visit reinforces the cruciality of keeping public sector aware of programs and build on existing state frame. Thirteen Eau Clair parishes complete two week forum by deciding their calendars and actions for the coming year.

Internal: House and colleagues wield scrapers and paint brushes to complete exterior window trim toward maintaining a fine training center.

Contradiction: Defining the "why" for the Upper Great Lakes Campaign. (Wk. 1)

**RELIGIOUS HOUSE: ST. LOUIS**

External: Showing of *The World of Human Development* excites local community leadership as metro completes building of quarter maneuvers.

Internal: Entire House celebrates Samson May's first week of preschool and the corresponding release of additional adult energies.

Contradiction: Being both the teacher and the student in approaching serious urban engagement. (Wk. 1)

**RELIGIOUS HOUSE: PEORIA—MILL SHOALS HDP**

External: Monday night leadership core meeting prepares for leading the Community Assembly.

Internal: House claims new Emerging Generation space and nursery in time to celebrate Miriam Clithero's first birthday.

Contradiction: Knowing the people in the stakes. (Wk. 1)

**RELIGIOUS HOUSE: GREEN BAY-KINNEY HDP**

External: Kinney Custom Industries makes a bid on Superior, Wisconsin restaurant uniforms. Preschool mothers elect new officers and start the new season. Garden workshop and movies are set-up.

Internal: Regional workday transforms outdoor and indoor stairs.

Contradiction: Discerning again the hopes and dreams of the whole community rather than just the vision of the core colleagues. (Wk. 1)

**RELIGIOUS HOUSE: MILWAUKEE**

External: House sends out George and Virginia Black to Kenya in House Church attended by 45 colleagues from all over Wisconsin.

Internal: House struggles with turning history of the trimetro into the poetry of the myth during a pre-Ecclesiola event.

Contradiction: Clarifying vision of direction. (Wk. 1)

**RELIGIOUS HOUSE: INDIANAPOLIS**

External: Indiana's CYF Campaign is launched with 170 personal invitations mailed for demonstration CYF, Cluster attendance at CYF in Kentucky, CYF training at House and showing of global film with key youth group in Lafayette.

Internal: House and core colleagues leave at dawn to participate in Regional Council in Columbus, Ohio and come home with the regional keystones named.

Contradiction: Ensuring delegations from city schools for demonstration CYF, in midst of the continuing teachers strike. (Wk. 1)

**RELIGIOUS HOUSE: CINCINNATI**

External: House hosts Church pastor and local businessman team up to sell 40 tickets to International Benefit Buffet while other colleagues find international neighbors and friends to help with the global food cooking blitz and a professional Indian dancer agrees to provide entertainment.

Internal: House is outnumbered at Ecclesiola with old and new metro colleagues.

Contradiction: Maintaining intense focus on ticket selling for the International Buffet which means bracketing other urgencies for one week. (Wk. 1)

**RELIGIOUS HOUSE: DETROIT**

External: Seven sent out to Global Research Assembly.

Internal: House outside painted by 20 in one day is seen as parish miracle.

Contradiction: Obtaining the needed authorization for umbrella funding. (Wk. 1)

**RELIGIOUS HOUSE: CLEVELAND**

External: Consensus for neighborhood work in Collinwood emerges from metro planning group, Regional Council and an invitation from a local economic development organization.

Internal: Self-support system is boosted as two in house land jobs.

Contradiction: Creating the story that relates all the quarter's events into one thrust. (Wk. 1)

**NEW YORK****RELIGIOUS HOUSE: NEW YORK**

External: Frame for the P.M.A. comes together. House does strategy planning in working with the networks and past contacts.

Internal: Collegium on polity enables House to understand the importance of emerging trends within the order and the world.

Contradiction: Building internal systems and plans to release House to engage in the mission. (Wk. 1)

**RELIGIOUS HOUSE: PITTSBURGH**

External: Harrisburg Summit I kicks off week of Pennsylvania campaign maneuvering and strategizing.

Internal: Death ground remaneuvers and revolutionary imagery result in plethora of possibility for facility.

Contradiction: Crystalizing the grist of emerging strategies on all fronts. (Wk. 1)

**RELIGIOUS HOUSE: ROCHESTER**

External: Colleague hosts Regional Council in home, keys in on myth factor and creates symbol. Library network says yes to initial CYF that will help them to relate as a part of community they are in.

Internal: As winter weather hits early, consciousness focuses on energy conservation.

Contradiction: Building the key colleague mailing list as an image for ongoing nurture. (Wk. 1)

**RELIGIOUS HOUSE: RICHMOND**

External: House goes on a set up visit to a prison to discuss TM and receives phone call from stranger interested in overseas volunteer work.

Internal: House travels to Washington D.C. for Regional Council and takes time to tour the Capitol and other historical spots.

Contradiction: Creating the construct that gives permission for renewed commitment. (Wk. 13)

**RELIGIOUS HOUSE: WASHINGTON, D.C.—IVY CITY HDP**

External: Signal week as first GWF of year with 36 women is held. Ivy City Congress with 35 key leaders plans next six months. The Ivy City Corporation hosts business supporters at cocktail party as initial step toward strengthening accessibility of advisors and supporters directly to community leadership.

Internal: Resettlement focuses on getting maximum use out of fantastic gift of space.

Contradiction: Winning the critical victories without sacrificing the long range vision. (Wk. 1)

**RELIGIOUS HOUSE: BALTIMORE—WIDEN HDP**

External: All young ladies, ages 3 to 8, in Widen participate in the Little Miss Widen Beauty Pageant. Eighty people watch the judging to choose Little Miss Widen for the Widen float in the County Parade.

Internal: Visit of Area Priors and Operations Centrum, combined with Development circuit into Beckley Metro,

creates dynamic collegium and exciting state campaign strategies.

Contradiction: Building the pillars this fall to insure Project transition and state TM campaign in the Spring. (Wk. 1)

**RELIGIOUS HOUSE: PHILADELPHIA**

External: House members and regional colleagues from Philadelphia and Pittsburgh Regions create a Harrisburg Summit which reveals the next steps toward a Pennsylvania state campaign to be private sector commitment.

Internal: Enthusiastic commitment to do a GWF is birthed in five women from Philadelphia Region who attend GWF training in Ivy City.

Contradiction: Forming the heightened creativity of this particular moment in Philadelphia Region into clear missional directions for Quarter II. (Wk. 1)

**RELIGIOUS HOUSE: NEWARK**

External: Wayside Inn host 51 guest from Australia, Ethiopia, Germany, India, Nigeria, Peru, Philippines, Puerto Rico and Switzerland.

Internal: Two guardian families hold the structures while all others are assigned to Priors' Council.

contradiction: Appropriating discontinuity as missional victory. (Wk. 6)

**RELIGIOUS HOUSE: BROOKLYN—STARKS HDP**

External: Project inkind 140 gallons of paint to paint abandoned corn canning factory which is being turned into an industry site, and location for small businesses by a local Board of Directors. The next four weekends will see cornshop revival workdays transform the factory into a more usable facility.

Internal: Witnesses by Phase IV women from Starks highlight 10 person delegation to Regional Council in Boston.

Contradiction: Keeping the auxiliary and colleagues in Starks focused on the global dimension of life while working hard in the particulars of reviving the cornshop. (Wk. 1)

**RELIGIOUS HOUSE: HARTFORD**

External: Colleagues outnumber House at Regional Council. Visits result in three yeses to endorsement letters. Attendance at South Hartford neighborhood planning meeting provides window on that network.

Internal: House and metro participation in Regional Council interiorizes that dynamic.

Contradiction: Clarifying network web to discern which threads are key. (Wk. 1)

**RELIGIOUS HOUSE: ALBANY-CHARLOTTEVILLE HDP**

External: Regional Council in Binghamton signals move toward new seriousness in dealing with urban upstate New York. Meeting with Albany colleagues impacts House with new statements of covenant including "we are ready to take responsibility for everything the Movement takes responsibility for."

Internal: Week of preparation for the coming year sees a new car researched and purchased.

Contradiction: Operating out of several separate plans that need to be moved into specific manageable tasks. (Wk. 13)

**RELIGIOUS HOUSE: BOSTON**

External: Spirited weekly metro campaign night is launched and house's tasks unfold as quarter's timeline is built. Maine Campaign time design is drawn. RS-1 and CYF events are planned for Western Massachusetts.

Internal: House gets systems in gear to launch Week 13 Development blitz in breakopen metro and makes two key calls on religious network contacts.

Contradiction: Fitting the reaching of the development blitz week goal into overall regional strategy. (Wk. 1)

## MONTREAL

### RELIGIOUS HOUSE: MONTREAL

External: Development and House teams cultivate new ground through three film shows that promise to expand the movemental and funding base in the regions.

Internal: House takes the time to strategize and build maneuvers that push through the actual situation to position region for the year.

Contradiction: Discerning the geographic point of advantage where the awakening keystone will be most catalytic. (Wk. 13)

### RELIGIOUS HOUSE: TORONTO

External: Wednesday is the highlight of the week with meeting in East York Inter-Agency, Development film night and cadre meeting in maneuver task force configuration.

Internal: Inkind fruits and vegetables enable celebration of week.

Contradiction: Getting on top of the mission situations while emphasizing the timing and teams to change strategy into victory. (Wk. 1)

### RELIGIOUS HOUSE: OTTAWA

External: Trip to Sudbury with Operations Centrum reveals four possible LENS courses including Sudbury 2001 and unions.

Internal: First inclusive local Ottawa frame is created and immediately produces great potential for LENS and GWF.

Contradiction: Moving creatively with the media who have most of the advantageous positions. (Wk. 12)

### RELIGIOUS HOUSE: HALIFAX—LORNE DE L'ACADIE HDP

External: Auxiliary watches miracles happen as two truckloads of lumber are sold, community center walls are built and preschool begins new year. Stake visitation introduces new staff and new images of Lorne transition.

Internal: In the midst of self-support thrust, the year's program budgets are planned and weekend of maneuver planning is celebrated with wiener roast at the beach.

Contradiction: Creating models and ways to bring more people into positions of responsibility for community decisions and regional tasks. (Wk. 1)

## CARACAS

### RELIGIOUS HOUSE: CARACAS—CANO NEGRO HDP

External: Metal industry is launched with eager team of six young men. Second Community Forum training is held with 13 around the table and begins to build momentum toward the next 50 in Venezuela.

Internal: Kip May and Mindy Goodhead arrive on tail of Hurricane David.

Contradiction: Discerning clear directions and context for community assembly. (Wk. 1)

## BUENOS AIRES

### RELIGIOUS HOUSE: SANTIAGO—SOL DE SEPTIEMBRE HDP

External: Guardians from Santiago visit daily providing bridge to needed technical assistance in agriculture, sewing, architecture and adult education. Bakery purchases dough rolling machine to speed up bread production and increase volume for community delivery maneuver.

Internal: House celebrates Keith's birthday with slide show presentation on the history of the community.

Contradiction: Focusing on planning while in the middle of national celebration and community events planning. (Wk. 13)

## RIO DE JANEIRO

### RELIGIOUS HOUSE: RIO DE JANEIRO—BANANEIRAS HDP

External: Splendidly painted trash barrels are distributed throughout the community. A week of rain enables local residents and auxiliary to clean the grounds of the health outpost. Home garden at ICA house is planted from transplants out of villagers gardens.

Internal: Quarter battleplanning zeroes in on concrete actions for BHDP and plans to visit the other five unknown regions in Brasil in preparation for staging the awakening campaign in the sleeping giant.

Contradiction: Figuring out troop configuration in the midst of dealing with an HDP and a nation of 120 million people. (Wk. 1)

## HAVANA

### RELIGIOUS HOUSE: KINGSTON—WOBURN LAWN HDP

External: Team pulls together Development picture in preparation for launching Development thrust in area. After 10 days of record-breaking rainfall, the skies clear long enough to get the VOICE delivered in the weekly stake calling.

Internal: House prepares for launching of Quarter II by drafting first Area Newsletter and Caribbean GCF workbook.

Contradiction: Focusing mobilization strategy for all fronts to shift from treading water to moving with force. (Wk. 1)

## MEXICO CITY

### RELIGIOUS HOUSE: GUATEMALA CITY—CONACASTE HDP

External: Community has tremendous celebration of the inauguration of electricity in Conacaste despite heavy downpours. Lights go on as scheduled and people dance through the night in the lit galera.

Internal: Week of single-minded preparation for initiation of light in village is reflected on at House Church.

Contradiction: Claiming time to plan year and quarter in midst of constant onslaught of demands. (Wk. 1)

## LIMA

### RELIGIOUS HOUSE: LIMA—SAN VICENTE DE AZPITIA HDP

External: New life is injected into the Agricultural Guild with the visit of the National Agrarian University to set up the small animal farm with ducks, meat producing guinea pigs and rabbits.

Internal: Completed period of discontinuity brings House back as a whole, refreshed and ready for new challenges.

Contradiction: Creating the self-consciousness of the long march of the project while maintaining timeline of tactics. (Wk. 13)

# THE GLOBAL ORDER CENTRUM REPORT

BRUSSELS  
BOMBAY  
SINGAPORE  
HONG KONG  
CHICAGO

WEEK ONE

## GLOBAL DEVELOPMENT CENTRUM

Global Development Centrum reports two Jesuit Fathers responsible for community programs in America and Asia visit Brussels Nexus. Hong Kong creates Development story with Nam Wai auxiliary. North America launches first of 24 metro circuits that sees 500 people and raises \$50,000. Grassroots and establishment authorization are expanded. The key contradiction lies in the arena of turning contacts into money.

## GLOBAL RESEARCH CENTRUM

Global Research Centrum reports that Band works together in Hong Kong and Singapore to staff HDTS in Bubun. Europe image brochure is being created by continental task force. Chicago prepares three week HDTS curriculum for first world nations and prepares spirit life materials. Lao Tzu is transposed with an imaginal one page art form for each chapter. Library, archives room and centrum workspace are claimed in sophisticated style. Brussels visions how to operate as one continent. The key contradiction lies in the arena of incomplete depth planning methods use producing sense of troop configurations askew and story of task disrelated from the destinal responsibility for the 1980's.

## GLOBAL OPERATIONS CENTRUM

Global Operations Centrum reports Nexus presence is integral part of Area Councils held in Paris and London. Manila and Tokyo Area schedules are pulled together. Chicago GWF with 18 nations represented initiates Chicago Urban Probe. Indicative battleplanning in which LENS lectures are tailored for Operations and reflection on vision and relationships in the tactical system breaks open new focus for Quarter II informing monthly and weekly maneuvers. The key contradiction lies in the arena of building HDTS momentum for the sake of regional empowerment and HDP enlivenment.

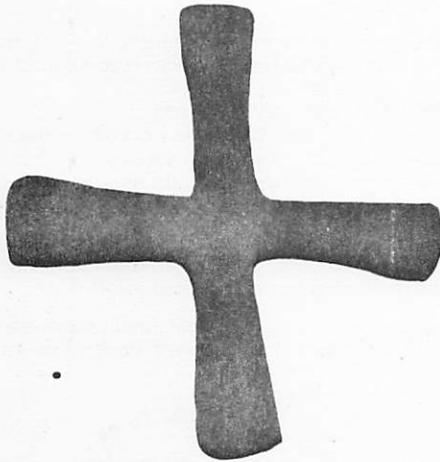
## GLOBAL MANAGEMENT CENTRUM

Global Management Centrum reports Chicago continues with marathon task of bringing the year to a close with financial reports. Media Production organizes systems and training to expand troop usage. Quarter II maneuvers are written across the Global Band. Getting on top of current situation with balances and payables is the current trend. The key contradiction lies in the arena of harnessing the systems to establish the year's rhythm.

# THE GLOBAL ORDER REPORT

WEEK TWO

OCTOBER 8 - OCTOBER 14



## LONDON

### RELIGIOUS HOUSE: LONDON—ISLE OF DOGS HDP

External: House hosts Area Council which sets up Quarter II and celebrates the occasion with a disco aboard the *Tideway* on the Thames.

Internal: Youth are sent out Week II to teach RS-I with Don Elliott's youth group.

Contradiction: Marrying the permeation requirements with the Way into a single focus. (Wk. 1)

### RELIGIOUS HOUSE: GLASGOW

External: A five page Development proposal for 20 companies and one page regional council mailing for 150 are composed, consensed on, printed (inkind), stuffed, sealed and mailed in one 24 hour time frame. Regional colleague phones, inviting House to participate as workshop leaders in a TM event he has set up with science teachers.

Internal: Williams family is sent out to Tai'rgwaith, and House welcomes Sharon Heiges and her son Walter.

Contradiction: Ensuring that massive momentum is still applied to Development and awakenment campaigns in the midst of personnel changes and self-support urgency. (Wk. 2)

### RELIGIOUS HOUSE: BRISTOL—TAI'RGWAITH HDP

External: Michael and Denise Morgan travel with the House to Area Council in London and stay over an extra day to do market research for the sewing industry.

Internal: The House receives Danny O'Neill and Roger and Joyce Williams while sending out Michael DeLoughery to Berlin. Danny lands a job in four days.

Contradiction: Creating rapid visible signs now as new auxiliary arrives needing orientation. (Wk. 2)

### RELIGIOUS HOUSE: MANCHESTER

External: Yorkshire trek, clergy collegium, and Regional Council contacting reveal readiness of a wide network of colleagues and Guardians to move.

*After this the Israelites said to Gideon 'You have saved us from the Midianites; now you be our ruler, you and your son and your grandson.' Gideon replied, 'I will not rule over you, nor shall my son; the Lord will rule over you.'*

Judges 8: 22-24

Internal: Burglar who breaks in while all are at Continental Council makes off with all symbolic life items.

Contradiction: Getting a handle on the year in the face of so much possibility after polis TM coverage. (Wk. 1)

## MADRID

### RELIGIOUS HOUSE: MADRID

External: Year's board maneuvers for Area Madrid are written, including Quarter II's implementation beginning with trip to Rome for Roman Catholic wedge into Spain.

Internal: Manuel Guillot is assigned to Academy as a step on his journey from Paris to Madrid.

Contradiction: Using Church as only vehicle of authorization.

## PARIS

### RELIGIOUS HOUSE: PARIS

External: House hosts M. Nani, Paris Guardian, and M. Schiffers, new contact in rural development, at dinner to update on year's plans. Area Council regrid to polis level, and creates quarter timeline and song with two Nexus representatives.

Internal: Area Council spirit life is filled with birthday celebration for Penny, Manuel's send out to Madrid House assignment, Kazantzakis meal conversations and a stroll on Champs Elysees.

Contradiction: Building maneuvers that are sufficiently wild to win. (Wk. 1)

### RELIGIOUS HOUSE: BRUSSELS NEXUS

External: Nexus is dispersed across the geography in eight locations. Collegium is held to prepare for Guardians meeting as it moves towards being a more self-conscious group.

Internal: James Chia visits on way to Chicago.

Contradiction: Moving away from immediacies and into the year's long-range planning. (Wk. 2)

**RELIGIOUS HOUSE: BRUSSELS**

External: House plans for Area Council. Alice Dwardin visits to catch up on the basic thrusts for the coming year. House participates in Continental Publications Task Force and creates ICA brochure and new image piece.

Internal: House creates a quarter battleplan for the area with keystone maneuvers relating to regular regional circuitry through whole area and movement eventfulness all by doing six regional pilot sets.

Contradiction: Developing structure for consistent Religious House presence while being on the road throughout in the area. (Wk. 1)

**ROME****RELIGIOUS HOUSE: ROME—TERMINE HDP**

External: New circuits begin as House, on the way to Continental Council and back, visits 24 metros, makes Guardians visits, runs out of gas and repairs car breakdown on the way.

Internal: House is reempowered through global visits of Lazears and Montgomerys.

Contradiction: Discerning the rhythm that illumines the task and beckons participation on the Way. (Wk. 2)

**LAGOS****RELIGIOUS HOUSE: LAGOS—IJEDE HDP**

External: International Training Institute: Ibadan, with 44 people around the table, and signal Ghanaian participation, is wrapped up and House prepares for Area Council.

Internal: Saturday night celebraton with stories tops off week of discontinuity, house cleaning, decoring and planning.

Contradiction: Creating the common story to capitalize on sudden emergency in government authorization. (Wk. 2)

**DOUALA****RELIGIOUS HOUSE: DOUALA**

External: Appointment with one of the founders of the Institute for Pan African Development in Douala provides entree to it and the Mutualite Cooperative in Douala. Maneuver writing pulls together 13 points of entree to Cameroun, 14 components of international authorization to the Cameroun government and seven elements of a strategy on the Church to quickly establish a movement base throughout the nation.

Internal: Hosting by the Paris House and moving to transition residence in Brussels Nexus signals first stage of the move to Area Douala.

Contradiction: Arranging the catalytic chronology of the 26 maneuver components.

**FRANKFURT****RELIGIOUS HOUSE: FRANKFURT**

External: While still on the road to Frankfurt requests for TM's during Quarter II flood the House and motivate House even more to jump in car for Brussels after a few days in Frankfurt to help build effective models for future.

Internal: After a great area pre-planning of the Frankfurt and Berlin House three former Berlin House participants finally get out to Frankfurt sending out Berthold Schwaiger to Continental Council prep and receiving Roland Frank as sojourner.

Contradiction: Building long term strategies in face of overwhelming odds and immediacies and in absence of Area Prior as master-strategist. (Wk. 1)

**RELIGIOUS HOUSE: BERLIN—KREUZBERG OST HDP**

External: While Berlin House attends Continental Council in Brussels, community moves ahead with childrens' festival, community newspaper and trash cleaning in the model house for renovation. Guardian donates 2,000 DM for start of new community business organization (Kreuzberg Ost Neighborhood Self-Reliance Ltd.).

Internal: New staff settles in while Frankfurt House leaves Berlin.

Contradiction: Jumping on running project train while maneuvers for Project work are not yet completed. (Wk. 2)

**RELIGIOUS HOUSE: AMSTERDAM**

External: Pre-Continental Council circuit produces one city planner who says, "My own town is jealous that they didn't do a Town Meeting, I think you can do one there," and a youth worker who convinces a referral to see us by plugging, "They have a few drops of Friesian blood in them."

Internal: Open House preparation leads to blowing the main fuse and meeting the power company staff.

Contradiction: Turning the clear implications of European Council into practical operational designs for the region. (Wk. 2)

**KINSHASA****RELIGIOUS HOUSE: LUSAKA—KAPINI HDP**

External: Asbestos for primary school arrives bringing completion into view. Kayosha (orchard) dam is completed, Quarterly KHDP celebration is postponed a week due to funeral and will now coincide with District Governor's visit to KHDP.

Internal: A week of quarter maneuver planning and a PSU on economic development units are followed by House quarterly celebration and discontinuity.

Contradiction: Creating new structure and co-ordinating the battle while keeping momentum going at the same time. (Wk. 2)

**CAIRO****RELIGIOUS HOUSE: CAIRO—EL BAYAD HDP**

External: Local leaders plan and hold stake meetings that announce consensus of watersystems support and results in loan for opening a soap industry in Stake 4 as response to news of soap shortage in Egypt.

Internal: House holds staff Town Meeting fully in Arabic in preparation for hitting the road.

Contradiction: Intensifying corporate power to assure victory on all fronts in final week of Quarter I battleplan. (Wk. 2)

**NAIROBI****RELIGIOUS HOUSE: NAIROBI—KAWANGWARE HDP**

External: Kabiro Consult initiates replication as the Kenyan Wedge moves out in full force to create plan for urban care. Excitement of the week culminates in final celebration with various tribal dances, singing and feasting.

Internal: Global presence takes form in colleagues R. Spencer, Mr. Dethe, N. Vance and Brian Williams who arrive and jump into the local scene along with lcoal staff and replication team in doing Kabiro consult.

Contradiction: Making the time to create and work through framing/replication strategies and tactics to move into a week of authorization and Development calling. (Wk. 2)

**RELIGIOUS HOUSE: KAMWELENI—KAMWELENI HDP**

External: Pump and pipes are delivered. Standard four classroom walls start going up. Stake leaders play role of auxiliary as forty work on pathways in spite of heavy rain.

Internal: Three day fast culminating in night watch intensifies missional demand.

Contradiction: Mobilizing community effectively with limited staff. (Wk. 12)

**BOMBAY****RELIGIOUS HOUSE: BOMBAY—MALIWADA HDP**

External: Nexus undertakes massive materials preparation for 60 Consults and Project directors' training for 60 new Projects in advance of division guns and support forces meeting hosted in Bombay.

Internal: Panchayat visits Nexus.

Contradiction: Clarifying strategies to complete, sustain, fund and celebrate the 232 over the next four months with an eye on next year. (Wk. 12)

**RELIGIOUS HOUSE: BOMBAY NEXUS**

External: The second Nadlapur consult documentation is completed in English and Telugu and is presented to the Vizar Sultan Tobacco Company (the adopting company). The consult catalyzes breakthroughs in the village which bring new vision for the future to Nadlapur. First reports from Division Strike Forces proclaim positive response in villages to DOOP (do your own project) modules being held in all 232 villages.

Internal: Nexus hosts Bombay Division Strike Force in between modules and gets first hand reports on module effectiveness.

Contradiction: Holding tension between local and global additional emphasis on centrum and areal priorities. (Wk. 4)

**DELHI****RELIGIOUS HOUSE: DELHI—SIKROR HDP**

External: Ten buffalo loans are sanctioned by the Bank of India. One more street is bricked with 10,000 new bricks being sanctioned. Fortnightly family planning clinic is set up.

Internal: House does pre-Council planning for the year towards the awakening of 1,500,000 settlements.

Contradiction: Creating inclusive design that uses troops and time to win on all fronts. (Wk. 12)

**MADRAS****RELIGIOUS HOUSE: MADRAS—NADLAPUR HDP**

External: Villagers start building a 150 feet stone and cement drain with voluntary labor.

Internal: Auxiliary spends the morning cleaning the house and caps the day with dinner and movie at Sangareddy.

Contradiction: Enabling villagers to make visits to government departments in spite of heavy farm work. (Wk. 11)

**CALCUTTA****RELIGIOUS HOUSE: CALCUTTA**

External: TELCO (Tata Engineering and Locomotive Company) agrees to sponsor Calcutta Buffer for one year in the amount of US\$30,000. Nexus priors join area team for final negotiations and site selection. Village of Chainpur, 50 percent Adivasis and 50 percent other classes, 38 kilometers from Jamshepur, is chosen as demonstration Project. After a meeting with leaders and villagers, decision is made to send five villagers to the HDTS which starts on April 15th.

Internal: Week-long Continental Council in Sevagram Ashram reveals new self-consciousness of operating as a continent and provides fresh motivity for capturing the victory of Quarter IV.

Contradiction: Creating the design of events that focuses power into do-ment of the Project from now until Consult. (Wk. 5)

**SINGAPORE****RELIGIOUS HOUSE: SINGAPORE NEXUS**

External: Everyone dispersing to area councils enables immediate grounding on the turf.

Internal: Decision to win on all fronts including Singapore registration necessitates temporary relocation to Kuala Lumpur.

Contradiction: Empowering programmatic momentum in the midst of the intrusion of relocation practices. (Wk. 2)

**RELIGIOUS HOUSE: SINGAPORE—SERUSUP HDP**

External: Five new chicken houses are built, all chickens are given injections and a chicken manager is hired to get all chickens healthy and over the flu. Floating fish farm takes first prize exhibition at Sabah State New Products Fair. Handycrafts gets offer of new contract that could still use elders' traditional weaving skills as Rotan factory evens off old skilled workers. The official project evaluation for the Chief Minister and other ministers interested in project and form expansion nears completion.

Internal: House settles into August schedule as Muslim fasting month is observed by two national staff so that whole House corporate times are powerful and all involved.

Contradiction: Enabling a consensus between two village groups. (Wk. 10)

**RELIGIOUS HOUSE: KUALA LUMPUR—SUNGAI LUI HDP**

External: Village begins to stir out of sleep after long hot summer with the reopening of the preschool with three new teachers and new uniforms. Five villagers are recruited for the HDTS in Bubun. An enthusiastic meeting with the headman of the village takes place.

Internal: Initiating the year with three person House structures forces creativity in order to avoid repetition.

Contradiction: Creating the miracle that will stimulate corporate decision process. (Wk. 2)

**RELIGIOUS HOUSE: JAKARTA—KELAPA DUA HDP**

External: Troops go on site selection visits to six villages in preparation for a DOOP (Do Our Own Project) Cluster experiment around Kelapa Dua.

Internal: House has barbeque and treasure hunt to celebrate the 18th birthday of Kathy Rees.

Contradiction: Catalysing firm futuric agreement with West Java that will release Nurada (KHDP) to village mission in the province. (Wk. 2)

**RELIGIOUS HOUSE: MEDAN—BUBUN HDP**

External: Governor says yes to USD 16,000 from Provincial contribution to Bubun Project. Visit to national passenger boat lines produces 16 in kind deck passages to Jakarta Area meeting for ICA auxiliary and villagers. First great Independence Day celebration in Bubun honors 34 years of freedom with a flag ceremony, proclamation reading, hosting of 17 village leaders by ICA auxiliary in report and visioning dinner and prizes for best house improvement, painting, fencing, cleaning and drainage.

Internal: Report on Global Priors Council to auxiliary and 17 village leaders raises great questions about how HDTS will affect Bubun implementation and village life.

Contradiction: Enabling the village consensus to detailed plan of action with guns for six weeks to carry through to Governor's visit with absence of auxiliary and 10 village leaders. (Wk. 12)

**RELIGIOUS HOUSE: UJUNG PANDANG—BONTOA HDP**

External: Villagers and head of Banded, (Rural Development Office) Maros County attend Area Council at Kelapa Dua and came back with fresh visions and excitement over DOOP methods and Town Meeting resolve for South Sulawesi.

Internal: House returns from Area Council after five days of boat travel from Jakarta.

Contradiction: Getting the red-hot core of villagers to move whole village and run 200 mph after a long summer pause. (Wk. 2)

## HONG KONG

**RELIGIOUS HOUSE: HONG KONG NEXUS**

External: Nexus is on the road for Taipei LENS and Development in Hong Kong after intensive planning for the quarter.

Internal: Assignments for Quarter II, weekly time design and special assignments are completed.

Contradiction: Enabling practical operation to move past established internal structured time design. (Wk. 2)

**RELIGIOUS HOUSE: HONG KONG—NAM WAI HDP**

External: Stake 2 undergoes tribal resettlement as families move into other villagers homes as demolition begins on a half dozen older houses for new homes to be built. Dental clinic operations meets with three villagers, including both village representatives. Yearly and quarterly Development planning takes place with visit from Development Centrum.

Internal: House welcomes the Alan and Karen Shing family as first village sojourners.

Contradiction: Allowing internal dynamics of the village to fill the broader regional demands and vice versa. (Wk. 1)

**RELIGIOUS HOUSE: KAOHSIUNG—HAI OU HDP**

External: Two great meetings with village leadership do orientation job with new staff and highlight a week of great do's. Hai Ou is full steam ahead with permeation, visits to the township and county governments, registration with the Army, village visits, and reports from Hai Ou on villagers on their visit to Korea this summer. In the midst of the swirl House discovers that 15 township assembly people plan tour of ICA Projects in Southeast Asia.

Internal: Bruce Macomber visits and participates in second anniversary celebration planning.

Contradiction: Orchestrating quarter's maneuvers so that the keystone is revealed while struggling to acquire a local knowledge base. (Wk. 2)

**RELIGIOUS HOUSE: MANILA**

External: First Manila House built with Mactan rock is completed. Picture taking and publicity tour of beautiful demonstration structure generates great excitement. Local AID Mission officer encourages submission of new proposal for 24 villages.

Internal: House sees film *Voices* and finds it in style of the new responsibility art forms becoming popular.

Contradiction: Looking at long range program in terms of present activity. (Wk. 2)

**RELIGIOUS HOUSE: TAIPEI**

External: General executive LENS is held in Taipei for 22 businessmen from 10 companies and is very well received.

Internal: House resettlement and office construction are completed.

Contradiction: Putting together coordinated maneuvers for Hai Ou transition year, Taiwan circuits, Development and corporation LENS probes in Taiwan. (Wk. 2)

**RELIGIOUS HOUSE: CEBU—SUDTONGGAN HDP**

External: Troops complete second 15 or three week 35 Cebu Mountain Forums, as sponsoring government agency releases second check for Mountain Forums, HDTS and consult package. Mactan Barangay (village) captains participate in 18 cluster site selections and begin to designate two HDTS participants from each site. Cebu Mayor's wife brings United Nations University Trainees to Sudtonggan (from Bolivia, Zambia, Tanzania, Thailand, Bangladesh) while Rotary Club inspects prospective water pump sites in Basak mercado.

Internal: The House does tree planting as the nation-wide celebration (15 million ipil ipil planting by children) for the seventh anniversary of the New Society followed by the celebration of Filipino foods and dance.

Contradiction: Communicating the seriousness of the Island and Mountain projects to the government structures allowing for quick HDTS recruitment. (Wk. 2)

**RELIGIOUS HOUSE: DAVAO—LANGUB HDP**

External: Mountain Cluster Planning Council, with 22 colleagues from four villages, creates years timeline, Quarter II plan, designs modules and celebrates with *RISK* game. Sewing Guild does contradictions/proposals planning and old buyer maintains contract in midst of struggles of new industry. Generator operates seven nights in a row and more wiring is installed. Over 1000 cacao seedlings are distributed and over 200 kilos of mongo beans are shelled.

Internal: House planning creates renovation and beautification design and purchase workdays have begun.

Contradiction: Tying up last year's loose ends in order to push into the new year. (Wk. 1)

## TOKYO

**RELIGIOUS HOUSE: TOKYO**

External: Town Meeting is presented to IBM Symposium as a social technology resource for urban and regional planning. Six hour workshop at the Symposium creates a 23 page interpretive report. Mitsui decides to host the October 27th National Advisors (Guardians) meeting.

Internal: First party of the year celebrates Yumiko Kurihara's 19th birthday.

Contradiction: Finding time to sit and think in a time of motion and action. (Wk. 2)

**RELIGIOUS HOUSE: JEJU—KWANGYUNG IL HDP**

External: Saemaul Section of Provincial Government provides tour of Jeju Do villages and agrees to select 70 as Town Meeting sites.

Internal: Facility renovation transforms weather-worn house into training center.

Contradiction: Bringing into focus the great swirl of old and new colleagues that will do Jeju Island. (Wk. 2)

**RELIGIOUS HOUSE: SEOUL**

External: Recent Academy grads meet and offer help in any arena needed. Lutheran mission group invites House to submit a village funding proposal.

Internal: House creates space in its five rooms for 12 to sleep as it hosts new Jeju staff and the Bergdalls.

Contradiction: Determining the level of chaos that justifies a fresh ordering of the summers imagination. (Wk. 12)

**RELIGIOUS HOUSE: CHUNCHEON—KUH DU E RI HDP**

External: Twenty-four TMs for the next eight days in the neighboring sub-county are set up with one visit to the county leader. He also okays a county man to be scribe to produce and reproduce the TM documents. Two training slide shows are well attended..

Internal: House hosts Larry Greenwald and Steve Leenhouts as Regional Troika meets.

Contradiction: Doing 24 TMs in eight days demands changes in internal structures only dimly realized. (Wk. 2)

**RELIGIOUS HOUSE: FUKUOKA**

External: Community forum in Matsuyama is an impacting event for 75 community leaders. Framing is intensified for two prefecture strongholds in Fukuoka region.

Internal: Promotional letters are prepared for impact events including CYF and GWF in colleges and women's groups.

Contradiction: Discerning the necessary and appropriate form of engagement for the variety of volunteers in the region. (Wk. 2)

**RELIGIOUS HOUSE: OSAKA**

External: Authorization gets the down beat with Don Clark here visiting advisors, having a newspaper interview and getting key regional authorization contacts at an IBM conference. Week II Stronghold PSU brings new consensus and breaks loose possibility for Quarter Two.

Internal: House prepares "Oki Gomi" (big trash) in the rain and celebrates the week with an Indian celebration.

Contradiction: Creating the common mind so that House moves as one even while moving individually. (Week 2)

**RELIGIOUS HOUSE: SENDAI—OYUBARI HDP**

External: Town Meeting is set up in Takikawa through good visit with Father Manfred, a German priest. New village leadership meeting and youth group TM are set for Tuesday.

Internal: Oyubari resident, Miss Nakajima attends Sunday celebration and week's planning meeting.

Contradiction: Ensuring that work in the village supports rather than jeopardizes new won authorization. (Wk. 2)

**SYDNEY****RELIGIOUS HOUSE: SYDNEY**

External: Area task force stimulates framing and visits to Turrumurra as saturation community and enables eight appointments with Catholic orders toward finding a suitable training facility. A one day Development push in Newcastle nets \$500 in hand, \$550 committed and \$800 working and two intern prospects.

Internal: A week of celebration begins with \$1000 up front salary as Karen begins permeation and ends with great quarter celebration of reuben sandwiches, disco, champaign and 2 am guitar jam session.

Contradiction: Discerning that rock in society that, when struck, will gush forth living water. (Wk. 2)

**RELIGIOUS HOUSE: PERTH**

External: Saturday spent with colleagues reveals strength and advantages of past nine months in the region. House is mobilized as car passes registration inspection and is issued with new number plates.

Internal: House strength is doubled with the arrival of Bruce Miller.

Contradiction: Concretizing maneuvers in a sea of ambiguity. (Wk. 2)

**RELIGIOUS HOUSE: ADELAIDE**

External: Ten colleagues gather with House over two evenings to plan quarter's maneuvers, create timeline and decide quarter assignments.

Internal: Fifty dollars worth of inkind paint and food boost house self-support.

Contradiction: Internalizing the story that will get House out on the road. (Wk. 2)

**RELIGIOUS HOUSE: MELBOURNE**

External: Palm Lake Motor Inn volunteers space for month of October to display Murrin Bridge Industries products. Brad Matheson and fiance visit Murrin Bridge and Melbourne newspapers prepare to cover story.

Internal: Don Baker and Debbie Farley are sent to Murrin Bridge to participate in Murrin Bridge Industries marketing PSU.

Contradiction: Focusing quarter's maneuver victories to allow for strategic timing. (Wk. 2)

**RELIGIOUS HOUSE: CANBERRA — MURRIN BRIDGE HDP**

External: Framing visit to State D. A. A. director unblocks regional log-jam and results in on-site meeting with industry leaders to review funding needs. Young mens service corps gets started to do one miracle and keeps on going every day. Community leaders unblock celebration space contradiction and gun community disco.

Internal: Week II rhythm of work and planning focuses House concern and results in Quarter Two plan of five theatre maneuvers.

Contradiction: Creating authentic images of responsible adult leadership. (Wk. 2)

**RELIGIOUS HOUSE: BRISBANE**

External: Visit with May Hancock yields new contacts for authorization. Members of Parliament reply to mailing. National brochure mock up states four year plan thinking.

Internal: Wendy Saegenschnitter gets a job.

Contradiction: Ensuring House doesn't move unwisely before frame and plans are completed. (Wk. 2)

**SUVA****RELIGIOUS HOUSE: MAJURO—MARSHALLS HDP**

External: Report on the Area Council gives new images of victory and adds impetus to the TASC institutionalization deadline. The Marshall Islands government announces the great nation-wide celebration date: May 1, 1980 to celebrate one-year under the new Constitution, the successful operation of Tobolar, coconut processing plant, and the opening of the new port.

Internal: Linda returns from Area Council with "mission impossible" component for Agana Region. Rachel is enrolled as youngest child ever in Uliga Preschool.

Contradiction: Swimming rather than drowning in the tidal wave of possibility. (Wk. 1)

**RELIGIOUS HOUSE: APIA—SALANI HDP**

External: The main speaking chief is sent out to Council. Road crew arrives to spend a week in the village building the plantation access road. Materials for the new preschool building arrive in the village after a villager designs a new ventilated roof and offers his skills as a carpenter for construction.

Internal: Auxiliary and Apia Metro colleagues climb up to Robert Louis Stevenson's grave site and the view provides a tool to reflect on the smallest nation that the movement has a project in.

Contradiction: Prioritizing in the midst of tremendous demand and reminding the villagers of consult decisions and possibilities. (Wk. 8)

## SAN FRANCISCO

### RELIGIOUS HOUSE: SAN FRANCISCO

External: All three House mission teams have signal victories as Urban Pioneers hold first Evening at the Institute with 20 people, Roving Gamblers pull off Valley Cluster Meeting of 35 with Los Angeles and Richgrove, and Gold Miners raise \$3115 in Salt Lake City and close the U.S. Fish and Wildlife deal for \$27,000.

Internal: House station wagon shifts ownership, Martha Denny arrives to shift her boxes and two birthdays shift House members into new year of existence.

Contradiction: Keeping eyes focused on October 15 deadline for actualizing the Seven Sizzling Strategies for San Francisco Region this year. (Wk. 2)

### RELIGIOUS HOUSE: SAN JOSE—RICHGROVE HDP

External: Hard work and sweat all Week II with a variety of miracles including landscaping the plaza with approximately \$400 of inkind plants, arrival of laundromat washers and dryers, education module which produces day camp curriculum for summer, and flea market continues to be Sunday event in the community.

Internal: House self-support begins with Ken Filipski's job at \$14,000 per year and finishes with beginnings of House garden.

Contradiction: Releasing people to take on long-lasting circuit responsibility. (Wk. 9)

### RELIGIOUS HOUSE: SACRAMENTO—CUSICK HDP

External: Cusick slide show presentation of Speaker's Bureau is presented at Colville Chamber of Commerce. Project gains consent for restaurant to fly under Cusick Community Development Association.

Internal: Auxiliary residence, Wike Hall, sports cleared yard as construction on youth center ends with yard clean up day.

Contradiction: Claiming youth center space as staging for other tactics. (Wk. 2)

### RELIGIOUS HOUSE: SEATTLE

External: Decision to emphasize networks impact gets off to a running start with GWF appointments set and a week of consultation with Rainier National Bank.

Internal: House lands three month's self-support in one week of exciting but exhausting being on-stage at every moment.

Contradiction: Creating the event with colleagues this week that pushes through the Regional Council to devise the transnational plan of intensive engagement of all. (Wk. 1)

### RELIGIOUS HOUSE: LOS ANGELES

External: Thirteen colleagues journey to Richgrove on Saturday for demonstration cluster planning with Area San Francisco. One of the highlights of the trip is Spanish lessons during the three hour drive to get all ready to deal with the geography.

Internal: House really comes alive with new decor and Evening Prayers.

Contradiction: Discerning the footholds for the urban probe. (Wk. 2)

### RELIGIOUS HOUSE: PHOENIX

External: An Evening at the Institute with 45 people present brings a fitting climax to a week of circuits in New Mexico, Texas and Arizona and Development week totaling \$1500.

Internal: Regional colleagues do space transformation for the Evening at the Institute while House is on the road.

Contradiction: Discovering self-support strategy that will not slow the circuit momentum. (Wk. 2)

### RELIGIOUS HOUSE: WICHITA—PISINEMO HDP

External: First anniversary invitations are printed and mailed as excitement begins to build for October 21st celebration.

Internal: Walt Epley and Kim Alire announce their engagement.

Contradiction: Laying adequate foundations for 10 more new jobs in the next two weeks. (Wk. 2)

### RELIGIOUS HOUSE: SALT LAKE CITY

External: The whole week is spent preparing and celebrating the annual Cannon Ball Pow-Wow with two days of clean-up, junk car removal, new space for day care, a \$3800 inventory order delivered to the store and three days of dancing.

Internal: House sends out the two priests from Germany to continue their trek to Pace HDP.

Contradiction: Holding fast to the confusion until it becomes clarity. (Wk. 13)

### RELIGIOUS HOUSE: BILLINGS

External: Twenty-three Development appointments are set with 19 confirmed for the first three days of next week. Thursday evening House visits the South Side Task Force. Friday evening is an informal Evening at the Institute get together with colleagues.

Internal: First full week of working out brings in \$500.

Contradiction: Building the necessary momentum for the upcoming GWF on what seems a very slim base. (Wk. 1)

### RELIGIOUS HOUSE: RAPID CITY—INYAN WAKAGAPI HDP

External: Tribal elections bring in a new tribal chairman. Corporation elections return Joe Two Bear to the board and add six new members. Bismarck TV station records the global film on video tape and volunteers use of conference room for showings.

Internal: Development trips to Bismarck and Fargo bring in monies and introduce Doug Druckenmiller to the Guardians.

Contradiction: Becoming familiar with the region in order to concretize regional maneuvers. (Wk. 2)

### RELIGIOUS HOUSE: DENVER

External: Development follows Salt Lake City cadre meeting and all experience victory of \$3100. Martin Acres, targeted demonstration urban community, holds a workday and picnic with 135 residents six months after series of Town Meetings and celebrates accomplishments by ballooning their victories: selling helium balloons for 25¢, writing a different accomplishment on each, and simultaneously setting them off into the sky.

Internal: House St. Bernard proves her watch dog worthiness by informing staff of assault and robbery of neighbor.

Contradiction: Designing House time use rhythm which will nail down corporate and diverse individual schedules to release effective use of power. (Wk. 2)

## EDMONTON

### RELIGIOUS HOUSE: EDMONTON

External: With a demonstration CFC with Warburgs Ag-society and other community leaders a cluster of CFCs scheduled for October is initiated. A member of the Oil wives (a friendship group) in Drayton Valley is intrigued with GWF and will urge the group to sponsor one in November.

Internal: House and colleague, Lois Porter write a proposal for use of the logo, materials and authorization of the 75th anniversary commission initiating the provincial campaign.

Contradiction: Keeping momentum moving in campaigns while other response have immediate cry. (Wk. 2)

**RELIGIOUS HOUSE: VANCOUVER**

External: A week of Development yields \$1200 committed, \$1200 working and several new openings for proposals.

Internal: In-kind yields a crate of broccoli and two crates of corn on the cob.

Contradiction: Moving from one mode of operation for each major strategy to many while sharpening the focus of each day's activities. (Wk. 1)

**RELIGIOUS HOUSE: ANCHORAGE—MINTO HDP**

External: Marketing research is seriously initiated for wood industry with significant leads obtained. Community consensus jells for the laundromat with Chief giving nod for all hands effort.

Internal: Andrew Roberts' operation is successful.

Contradiction: Moving ahead in all arenas before the winter deadline which may come anytime. (Wk. 2)

**RELIGIOUS HOUSE: SASKATOON**

External: Gala House Church launches region in *Year of the Harvest* with regional colleagues including celebration of birthday, 20th wedding anniversary for Ross family, and retirement from 40 years of service with Saskatchewan Power.

Internal: Arrival of Elizondo family doubles troop force and catalyzes House tribal resettlement and creation of House Internal Life designs for Quarter II.

Contradiction: Discerning the keystone that will maintain the creative tension between self-support and accelerated missional thrust. (Wk. 12)

**RELIGIOUS HOUSE: WINNIPEG—VOGAR HDP**

External: Forum training event held with 25 in attendance and start up forum event held in Riverton mark the beginning of the 25 Interlake Forums.

Internal: Margie Tomlinson comes over from Edmonton to work on campaign constructs.

Contradiction: Demanding of regional movement concrete participation in campaign. (Wk. 2)

## HOUSTON

**RELIGIOUS HOUSE: HOUSTON**

External: GWF strategy session opens new possibilities as speaking engagements are set with District B & P W convention and the Deltas.

Internal: Quarter gets off to smooth start as new filing system (Alpha system) begins to enable Houston urban probe and Development.

Contradiction: Discovering regular reflection while going full steam ahead. (Wk. 2)

**RELIGIOUS HOUSE: AMARILLO—INDIAHOMA HDP**

External: Indianhoma begins construction of water tower and appoints a Municipal Judge. Troops meet with architect and Treasure Lake Job Corps concerning construction plans for the mini-mall. Project contacts St. Louis House about inking use of house in Indianhoma owned by St. Louis company.

Internal: House welcomes Ken back from discontinuity.

Contradiction: Bringing into being structures to sustain social development. (Wk. 1)

**RELIGIOUS HOUSE: SAN ANTONIO—ASHERTON HDP**

External: The last project sign goes up for Stake 5. VISTA application for Big Wells is submitted. City Secretary asks Project, "What do the people want?" in preparation for funding proposals to be submitted.

Internal: House sees *The Deer Hunter*.

Contradiction: Training community core and expanding to ensure effective programs and transition. (Wk. 2)

**RELIGIOUS HOUSE: OKLAHOMA CITY**

External: Visiting public and private sectors in Little Rock lays ground work for funding Arkansas state campaign.

Internal: Oklahoma City and Memphis are grounded in corporateness as Houses work together to prepare Memphis House for Area Prior's visit.

Contradiction: Converging the comprehensive vision toward re-establishing contacts to allow House to operate on four fronts. (Wk. 2)

**RELIGIOUS HOUSE: DALLAS**

External: First-ever Regional Council for the Dallas Region is held and results in comments such as, "I came because it was time to come to a Regional Council" and "This was the beginning of our regional myth-creation for local man."

Internal: Leah Dunbar lands temporary work while putting irons in fire for permanent job.

Contradiction: Getting the implementaries of regional council into a colleague-engaging strategic thrust. (Wk. 1)

**RELIGIOUS HOUSE: TULSA—DELTA PACE HDP**

External: Four TMs are held and 22 TMs are set up for East Central Planning and Development District. (PDD). The southwest PDD is in the set-up stage.

Internal: House experiences itself as four satellites in orbit.

Contradiction: Creating mythology for PDD which allows community to see destinal significance of second wave of awakening which demands excellence and meeting symbol of mass impact. (Wk. 1)

**RELIGIOUS HOUSE: NEW ORLEANS**

External: Signal happening is completion of first month of Louisiana State Campaign with 24 TMs done in Lafayette PDD, average of 33 participants, \$150 per week in-kind meals and fine presentation of documented results to sponsoring agencies. Thirty thousand dollars worth of proposals are submitted in first major breakthrough. Changed direction in urban probe target community results in urban probe strategy session with many colleagues around the table.

Internal: Arrival of Joan Priest brings House to full complement and overnight stay by House member's parents highlights Wayside Inn.

Contradiction: Building an operating consensus while troops head out in different directions. (Wk. 2)

**RELIGIOUS HOUSE: MEMPHIS**

External: Ed Davis, Special Assistant to Governor of Arkansas, gives testimony to well-trained Town Meeting workshop leaders before agencies considering funding Arkansas state campaign.

Internal: Study of paper *Thinking on the Way* breaks open creativity for self-support.

Contradiction: Having all green lights and not enough gas to move. (Wk. 2)

**RELIGIOUS HOUSE: ATLANTA**

External: More than 100 contacts are made as House prepares to launch Quarter II with Development calls, HDTs and Academy recruitment and an Evening at the Institute. Community residents from the South DeKalb neighborhood of Metropolitan Atlanta visit Gibson.

Internal: Functional reclamation of office space and remounting the 54 area names around the collegium room prepare House for visit by Area Priors next week.

Contradiction: Insuring a great trip to Gibson HDP next weekend. (Wk. 2)

**RELIGIOUS HOUSE: CHARLOTTE—GIBSON HDP**

External: House and Project move with power on September as Positioning for Victory month with Regional Council invitations and TM county coverage follow-up letters are mailed. Z. Smith Reynolds Foundation proposal is submitted for \$125,000. Nine youth representing all stakes, attend Governor's Youth Meeting where CYF was major part of weekend format.

Internal: House initiates and finishes 75% of set-up of alpha system.

Contradiction: Moving rapidly toward next quarter and troop dispersion without major holding images for the myriad of tasks related to transition and convergence. (Wk. 13)

**RELIGIOUS HOUSE: MIAMI**

External: Authorization gets most attention with a visit to the state capitol where an old colleague, Jon Rossman, guides Joyce and Amy into visits with three divisions of the Governor's office. A later visit with the Chairman of Seminole County Commissioners receives 'yes' to requests for use of his name on a brochure and a letter for use with other county officials. House receives the first RS-1 registration with full fee paid and turns up a potential HDTS participant.

Internal: Jennings celebrate their second wedding anniversary.

Contradiction: Bringing together timelines, plans, resources and troops in order to mesh everything together and maintain the momentum of planning while at the same time expanding authorization and completing self-support. (Wk. 2)

**CHICAGO**

**RELIGIOUS HOUSE: CHICAGO NEXUS**

External: Troops complete the preparation of the fourth floor for Academy. Development in kind a second computer terminal.

Internal: Teams become a new exciting reality as Monday night becomes team gathering night.

Contradiction: Embodying the Gideon's army dynamic by increasing effectivity with a decreased amount of troops. (Wk. 2)

**RELIGIOUS HOUSE: CHICAGO-FIFTH CITY HDP**

External: 5th Citizens of 3400 Adams decide to meet on their own to take responsibility as a Block Club.

Internal: New House experiences the power of its corporateness in clearing out the community center for all scrap metal.

Contradiction: Creating an overarching detailed model to do intensification push on renovating community building. (Wk. 2)

**RELIGIOUS HOUSE: OMAHA-LORIMOR HDP**

External: Ten attend special focus community guild core meeting focusing on expanding involvement and leadership training. Fall Community Assembly targets eight keystones for the year and works on the plans for Quarter II. LENS proposal is submitted to Commission on Aging at their request.

Internal: House joins 350,000 mid-westerners to celebrate Pope John Paul II's historic visit to Des Moines.

Contradiction: Making sure the concrete accomplishments get done this quarter in Lorimor keystone in midst of winterizing house, launching state awakening campaign and participating in HDTS. (Wk. 2)

**RELIGIOUS HOUSE: KANSAS CITY**

External: Excitement begins to build for the new year with three yeses for Academy. New regional filing system is completed by Kansas City Metro. Six metro colleagues attend Lorimor Watermelon Festival.

Internal: Russell Wheelock is welcomed as Intern.

Contradiction: Turning weak yeses for Academy and regional events into strong commitments. (Wk. 13)

**RELIGIOUS HOUSE: MINNEAPOLIS**

External: A group of 30, half ICA staff and half Minnesota state government bureaucrats, from six of the 15 departments, meet for the building of tactics for the two proposals: How to use LENS and how to use TM in a statewide capacity. The meeting indicates an undisputable resolve for creating new and necessary modes of communication through the use of the indicative process.

Internal: The Kroeger family prepares to move to a home in North Minneapolis and are sent out at House Church.

Contradiction: Filling the myth-factor gap which stands between House and the owning of the upcoming Upper Great Lakes Campaign. (Wk. 2)

**RELIGIOUS HOUSE: ST. LOUIS**

External: Showing of *The World of Human Development* excites local community leadership as metro completes building of quarter maneuvers.

Internal: Entire House celebrates Samson May's first week of preschool and the corresponding release of additional adult energies.

Contradiction: Being both the teacher and the student in approaching serious urban engagement. (Wk. 1)

**RELIGIOUS HOUSE: PEORIA—MILL SHOALS HDP**

External: Monday night leadership core meeting prepares for leading the Community Assembly.

Internal: House claims new Emerging Generation space and nursery in time to celebrate Miriam Clithero's first birthday.

Contradiction: Knowing the people in the stakes. (Wk. 1)

**RELIGIOUS HOUSE: GREEN BAY-KINNEY HDP**

External: Kinney Great Scott Preschool holds first session with over half of children there for the first time. House participates in Minneapolis state government guild meeting and does quarterly battleplanning on Saturday.

Internal: All youth and adults get up front in battleplanning session, and Mark Whitney's Contradiction Crackdown is highlight of the morning.

Contradiction: Engaging Kinney beyond the core, who are passionate, but overburdened. (Wk. 2)

**RELIGIOUS HOUSE: MILWAUKEE**

External: Twenty-five colleagues from Detroit, Chicago, Milwaukee, Minneapolis and Kinney create the Upper Great Lakes Campaign and use LENS methodology with historic readings to allow the images of the North Country to inform troops of the new mythology which will herald the success.

Internal: House and metro with a number of new friends are awakened, in fact, awed by the effectiveness of the first night of the roundtable.

Contradiction: Focusing attention to the Upper Great Lakes in the coming year while holding to Milwaukee as the base of operations. (Wk. 2)

**RELIGIOUS HOUSE: INDIANAPOLIS**

External: In spite of the teacher's strike CYF campaign is launched with all House youth teaching in the Forum involving delegates from eight high schools, three youth organizations and in-kind chicken for lunch. First GWF of year gets statewide TV publicity with 15 minute interview on morning talk show. Development circuit breaks open two major insurance companies with \$3000 working.

Internal: Cluster youth engage in full weekend of training, teaching, celebration and maneuver building for CYF programs.

Contradiction: Filling the gaps in internal structures with all the program plates spinning. (Wk. 2)

#### **RELIGIOUS HOUSE: CINCINNATI**

External: International Benefit Buffet yields 100 new contacts, new advantages with the Westwood-Cheviot Neighborhood, entre to the University and international communities, renewed interest of old colleagues, and \$1000 for self-support.

Internal: Total House effort for International Benefit Buffet reinforces power of the team dynamic.

Contradiction: Finding the keystone in the midst of the growing tactic rock pile. (Wk. 2)

#### **RELIGIOUS HOUSE: DETROIT**

External: Seven sent out to Global Research Assembly.

Internal: House outside painted by 20 in one day is seen as parish miracle.

Contradiction: Obtaining the needed authorization for umbrella funding. (Wk. 1)

#### **RELIGIOUS HOUSE: CLEVELAND**

External: Training event actualization explodes as 12 metro colleagues participate in turf research methods, TM training methods are requested, and one person is anxious to participate in the upcoming HDTs.

Internal: Jeffrey Van Wagener, a long time renter at house, is first sojourner of the year.

Contradiction: Planning catch up with rapidly moving impact campaign. (Wk. 2)

### **NEW YORK**

#### **RELIGIOUS HOUSE: NEW YORK**

External: Weekly metro meetings are launched with overwhelming responses as Morristown colleagues discover they are in charge of designing the urban probe, Long Island sets up PLC for 700 member clergy network, and New York resolves to 'Polish the Apple' as they host the Pope.

Internal: Phillips family moves into the House as Regional Fellows for one year.

Contradiction: Moving full speed with circuits in six metros in the midst of foggy frame and hazy targets. (Wk. 2)

#### **RELIGIOUS HOUSE: PITTSBURGH**

External: Area priors and regional guardian join in flushing out state strategy. Visits to state co-chairman of IYC and new provincial of the Holy Ghost Fathers reveal "there ain't no messiah."

Internal: Presence of the Donnellys occasions fondue and wine celebration.

Contradiction: Moving beyond the move. (Wk. 2)

#### **RELIGIOUS HOUSE: ROCHESTER**

External: Urban maneuvers begin Binghamton Jewels and celebrate completion of Development week with a total of \$2155 in hand and \$3600 committed.

Internal: House is visited by area priors, Bruce and Barbara Donnelly.

Contradiction: Calling metro forces to specific assignment priorship. (Wk. 2)

#### **RELIGIOUS HOUSE: RICHMOND**

External: House goes on a set up visit to a prison to discuss TM and receives phone call from stranger interested in overseas volunteer work.

Internal: House travels to Washington D.C. for Regional Council and takes time to tour the Capitol and other historical spots.

Contradiction: Creating the construct that gives permission for renewed commitment. (Wk. 13)

#### **RELIGIOUS HOUSE: WASHINGTON, D.C.—IVY CITY HDP**

External: Signal week as first GWF of year with 36 women is held. Ivy City Congress with 35 key leaders plans next six months. The Ivy City Corporation hosts business supporters at cocktail party as initial step toward strengthening accessibility of advisors and supporters directly to community leadership.

Internal: Resettlement focuses on getting maximum use out of fantastic gift of space.

Contradiction: Winning the critical victories without sacrificing the long range vision. (Wk. 1)

#### **RELIGIOUS HOUSE: BALTIMORE—WIDEN HDP**

External: All young ladies, ages 3 to 8, in Widen participate in the Little Miss Widen Beauty Pageant. Eighty people watch the judging to choose Little Miss Widen for the Widen float in the County Parade.

Internal: Visit of Area Priors and Operations Centrum, combined with Development circuit into Beckley Metro, creates dynamic collegium and exciting state campaign strategies.

Contradiction: Building the pillars this fall to insure Project transition and state TM campaign in the Spring. (Wk. 1)

#### **RELIGIOUS HOUSE: PHILADELPHIA**

External: In an appointment with Pennsylvania's Department of Community Affairs' Director of Policy Planning, the Director surprises House with amount of study he had already done on Town Meetings and also with his astute questions focused on doing a state campaign.

Internal: House Church send out to Academy followed by a celebration celebrates not only the sending of colleagues to Academy but the deepening involvement of other colleagues in the mission.

Contradiction: Orchestrating the support of both the public and private sectors toward a state-wide campaign. (Wk. 2)

#### **RELIGIOUS HOUSE: BROOKLYN—STARKS HDP**

External: While it rained throughout New England the skies cleared over Starks while 35 people from four states participated in a workday to paint 8000 square feet of the cornshop a striking Jefferson Blue.

Internal: The auxiliary fasts all day Wednesday, attends a Starks Enterprises Corporation Meeting in the evening in which the community is up front, then ends the day with a feast in celebration of an auxiliary's birthday.

Contradiction: Keeping the auxiliary and colleagues in Starks focused on the global dimension of life while working hard in the particulars of reviving the cornshop. (Wk. 1)

#### **RELIGIOUS HOUSE: HARTFORD**

External: CYF Pedagogy in Schenectady catalyzes House visit to Charlottesville. Twenty authorization visits open avenues for endorsement letters with one received this week from New Haven Guardian. Internal: Charles Catlett arrives after participation in Detroit LENS and plugs into continuing search for House and self-support.

Contradiction: Integrating all arenas of care into one missional focus. (Wk. 2)

**RELIGIOUS HOUSE: ALBANY-CHARLOTTEVILLE HDP**

External: Regional Council in Binghamton signals move toward new seriousness in dealing with urban upstate New York. Meeting with Albany colleagues impacts House with new statements of covenant including "we are ready to take responsibility for everything the Movement takes responsibility for."

Internal: Week of preparation for the coming year sees a new car researched and purchased.

Contradiction: Operating out of several separate plans that need to be moved into specific manageable tasks. (Wk. 13)

**RELIGIOUS HOUSE: BOSTON**

External: Week 13 Development in new territory breaks loose new contributors and potential Guardians.

Internal: Studying the *Why Work on the Way* paper impacts House as it pulls through history of movement's work on awakenment, engagement and fulfillment.

Contradiction: Giving focus to the thrust in midst of many tasks. (Wk. 2)

**MONTREAL****RELIGIOUS HOUSE: MONTREAL**

External: Clarity on Ottawa Project emerges during Area PSU, empowered by Operations Centrum teams, and February is targeted as the launching month. La Chute Forum Circuit outside Montreal again reveals the readiness within the local French communities in Quebec.

Internal: Self-support push continues with one new job netted and second-job phoning, typing and selling taken on.

Contradiction: Weaving together the self-support and quarter maneuvers into one effective operational plan. (Wk. 2)

**RELIGIOUS HOUSE: TORONTO**

External: *Mame* song kicks off Barrie and Toronto metro circuits and opens up new contacts for program events as well as committed and in-hand money.

Internal: Cadre celebration with wine and treats accelerates quarter strategies with new corporate winning style.

Contradiction: Covering self-support while moving with power into Quarter II. (Wk. 2)

**RELIGIOUS HOUSE: OTTAWA**

External: Trip to Sudbury with Operations Centrum reveals four possible LENS courses including Sudbury 2001 and unions.

Internal: First inclusive local Ottawa frame is created and immediately produces great potential for LENS and GWF.

Contradiction: Moving creatively with the media who have most of the advantageous positions. (Wk. 12)

**RELIGIOUS HOUSE: HALIFAX—LORNE DE L'ACADIE HDP**

External: LEDC struggles with economic contradictions and decides to visit three funding sources to secure support for Woodworking Industry. Youth Program holds Saturday activities and 21 youth participate. House and community spend several evenings stake visiting to expand community's consciousness about possibilities for the coming year.

Internal: Conversations with Guardian from local smelting company nets offer to do company brochure for self-support.

Contradiction: Calling forth the Lorne residents to risk in community investments while formulating operating plan for coming year. (Wk. 2)

**CARACAS****RELIGIOUS HOUSE: CARACAS—CANO NEGRO HDP**

External: Toyota jeep acquired from insurance on stolen vehicle gives House upgraded vehicle with half the mileage. Metal industry receives written contract for 5000 triangles and 100 are produced the first week. First designs are created for satellite village, El Pilar, Community Center, school and chapel.

Internal: Inga Bessin is sent out to Global Development Centrum with community celebration by sectors.

Contradiction: Sharpening leadership orchestration skills as community assembly rapidly approaches. (Wk. 2)

**BUENOS AIRES****RELIGIOUS HOUSE: SANTIAGO—SOL DE SEPTIEMBRE HDP**

External: Week long celebration of Chilean Independence, planned and carried out by the community, includes activities for children, slide show for grandparents, dances, an historical drama and folk singing. New recreation center opens with table games and new setting with enthusiastic crowds.

Internal: Auxiliary enjoys week of discontinuous activity as celebration Latin-style "stops the world" and provides a break before quarter planning begins.

Contradiction: Gearing up the community for planning the next quarter after week long celebration and break in rhythm. (Wk. 2)

**RIO DE JANEIRO****RELIGIOUS HOUSE: RIO DE JANEIRO—BANANEIRAS HDP**

External: Two additional acres are secured in the community for vegetable growing. The EMATER director comes for a site visit and promises aid in agricultural programs. Tires for the playground are inked and equipment built. Local truck farmer visits the Project to work on joint venture in community truck farming. The National Campaign for community schools says yes to site visit and request for help to get a fifth series in Bananeiras. An EMATER man, a villager and an auxiliary go to bee training in anticipation of new village agri-business. Seeds are inked for the year's home garden program.

Internal: Gas and water shortage in same week break loose local man oven in auxiliary backyard, an auxiliary home garden and some much needed lawn work.

Contradiction: Moving soon, but not too quickly, now that momentum is high in agriculture and needed outside services are promising to help. (Wk. 2)

**HAVANA****RELIGIOUS HOUSE: KINGSTON—WOBURN LAWN HDP**

External: Team pulls together Development picture in preparation for launching Development thrust in area. After 10 days of record-breaking rainfall, the skies clear long enough to get the VOICE delivered in the weekly stake calling.

Internal: House prepares for launching of Quarter II by drafting first Area Newsletter and Caribbean GCF workbook.

Contradiction: Focusing mobilization strategy for all fronts to shift from treading water to moving with force. (Wk. 1)

**MEXICO CITY****RELIGIOUS HOUSE: GUATEMALA CITY—CONACASTE HDP**

External: Community has tremendous celebration of the inauguration of electricity in Conacaste despite heavy downpours. Lights go on as scheduled and people dance through the night in the lit galera.

Internal: Week of single-minded preparation for initiation of light in village is reflected on at House Church.

Contradiction: Claiming time to plan year and quarter in midst of constant onslaught of demands. (Wk. 1)

## LIMA

### **RELIGIOUS HOUSE: LIMA—SAN VICENTE DE AZPITIA HDP**

External: New life is injected into the Agricultural Guild with the visit of the National Agrarian University to set up the small animal farm with ducks, meat producing guinea pigs and rabbits.

Internal: Completed period of discontinuity brings House back as a whole, refreshed and ready for new challenges.

Contradiction: Creating the self-consciousness of the long march of the project while maintaining timeline of tactics. (Wk. 13)

# THE GLOBAL ORDER CENTRUM REPORT

**BRUSSELS  
BOMBAY  
SINGAPORE  
HONG KONG  
CHICAGO**

**WEEK TWO**

## **GLOBAL DEVELOPMENT CENTRUM**

Global Management Centrum reports Chicago continues with marathon task of bringing the year to a close with financial reports. Media Production organizes systems and training to expand troop usage. Quarter II maneuvers are written across the Global Band. Getting on top of current situation with balances and payables is the current trend. The key contradiction lies in the arena of harnessing the systems to establish the year's rhythm.

## **GLOBAL RESEARCH CENTRUM**

Global Research Centrum reports intensification of network communications through interchange of packets in Europe, NAME, and Africa. HDTS curriculum work in North America and Hong Kong catalyzes both action and reflection. Documentation for USAID becomes opportunity for gathering of great volumes of significant data and learnings. The trend is toward maintaining band corporate breakthroughs at same time as intensive engagement in serving the particular geographic configuration through the nexus. The key contradiction lies in the arena of creating procedures and timelines to actualize viable corporate planning, actuation, and reflection for eliciting the data and insights of the global and local.

## **GLOBAL OPERATIONS CENTRUM**

Global Operations Centrum reports Nexus presence is integral part of Area Councils held in Paris and London. Manila and Tokyo Area schedules are pulled together. Chicago GWF with 18 nations represented initiates Chicago Urban Probe. Indicative battleplanning in which LENS lectures are tailored for Operations and reflection on vision and relationships in the tactical system breaks open new focus for Quarter II informing monthly and weekly maneuvers. The key contradiction lies in the arena of building HDTS momentum for the sake of regional empowerment and HDP enlivenment.

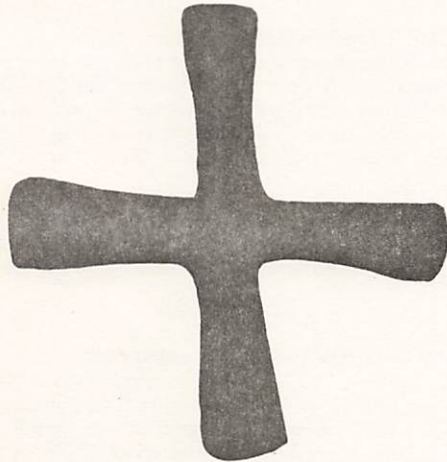
## **GLOBAL MANAGEMENT CENTRUM**

Global Development Centrum reports Hong Kong initiates set up for national authorization shields. Brussels writes year's maneuvers in new Development space and prepares materials for EEC proposal. Chicago closes September with \$225,518 including a \$25,000 patron gift, and inkinds computer terminal to be located in Development Centrum. Necessity of empirical documentation revealed in USAID Exit Conference demands and Brussels maneuvers building is this week's breakthrough. The key contradiction lies in the arena of creating the means of keying new troops into old reservoirs of contacts and moving 'year-end monies' into current receipts.

# THE GLOBAL ORDER REPORT

WEEK FOUR

OCTOBER 22—OCTOBER 28



## LONDON

### RELIGIOUS HOUSE: LONDON

External: The first week of metro circuits nets two "set" set, one each in the London and Oxford metros.

Internal: Five Indonesians pay a visit, as well as two new Island families.

Contradiction: Finding a way to celebrate the chaos of overwhelming issues and accelerating external demands. (Wk. 4)

### RELIGIOUS HOUSE: GLASGOW

External: Regional colleagues meet with new House staff and new area priorship to get plan of events out for coming year. Internal: House shines as Global Priorites, Way Symbol and Map of the Globe go up in the collegium room.

Contradiction: Deciding the winning formula which allows all troops to shift into the new roles which the situation demands. (Wk. 4)

### RELIGIOUS HOUSE: BRISTOL—TAI'RGWAITH HDP

External: The House moves out into the community, region and continent as auxiliary and colleagues participate in community school concert event, Town Meeting set up foray with colleagues in Ferndale and participation in the Brussels Guardian Consult with Tai'rgwaith colleague Micheal Morgan.

Internal: Internal decor moves toward completion and outside and inside facility repair and tidying up is completed.

Contradiction: Beginning to maneuver without the necessary in-depth empirical knowledge of what has gone before and with small knowledge of the ins and outs of local bureaucracy forcing a radical change in troop configuration. (Wk. 4)

### RELIGIOUS HOUSE: MANCHESTER

External: Visit with Bishop Wickham reaffirms his stance as a guardian of the movement, maneuver session defines first two weeks for impact events launch.

Internal: Re-engagement in inkind structure, self support pushing and lounge painting and redecorating begins to solidify House operations for the quarter.

God said, 'This is the sign of the covenant which I establish between myself and you and every living creature with you, to endless generations:

*My bow I set in the cloud,  
sign of the covenant  
between myself and earth.  
When I could the sky over the earth,  
the bow shall be seen in the cloud.*

Genesis 9: 12-14

Contradiction: Holding the tension between local effectivity and geographic coverage. (Wk. 4)

## MADRID

### RELIGIOUS HOUSE: MADRID

External: First on location contacts and appointments are made.

Internal: Madrid House attends Guardians meeting, visits Paris House and is temporarily housed in low cost pensione in Central Madrid.

Contradiction: Getting wayside hacienda in an overcrowded city. (Wk. 4)

## PARIS

### RELIGIOUS HOUSE: PARIS

External: Dominique Mathiot and Edith Howell, after first circuit, report on willingness of local colleagues to participate as consultants to Douala, and in launching two sets of awakening events in Limoges and Grenoble metros, taking the form of four to five TMs, workshop leaders training and a regional assembly involving regional agency representatives. Visit to key man in Union of Business Leaders opens doors for French business contacts here and in Cameroon, LENS marketing, support of TM campaign and self support potential. All area troops gather for remaneuvering Week II, creating implementations for continuing circuit rhythm to care for the sets

Internal: House has week of celebration: Alerding's send-out to Spain on Bill's birthday, area fast day, Howells tenth anniversary and first ecclesiola of the year.

Contradiction: Breaking loose images of time to pull off a set locally with Day II troops. (Wk. 4)

### RELIGIOUS HOUSE: BRUSSELS NEXUS

External: Nexus hosts Guardians meeting of 50 people followed by area priors meeting.

Internal: Core Guardians convened early to help plan

meeting and scheduled a weekend in Quarter III to plan the next meeting.

Contradiction: Creating space designs which enable the hosting of continental events. (Wk. 4)

#### **RELIGIOUS HOUSE: BRUSSELS**

External: House plans for Area Council. Alice Dwardin visits to catch up on the basic thrusts for the coming year. House participates in Continental Publications Task Force and creates ICA brochure and new image piece.

Internal: House creates a quarter battleplan for the area with keystone maneuvers relating to regular regional circuitry through whole area and movement eventfulness all by doing six regional pilot sets.

Contradiction: Developing structure for consistent Religious House presence while being on the road throughout in the area. (Wk. 1)

### **ROME**

#### **RELIGIOUS HOUSE: ROME—TERMINE HDP**

External: New circuits begin as House, on the way to Continental Council and back, visits 24 metros, makes Guardians visits, runs out of gas and repairs car breakdown on the way.

Internal: House is reempowered through global visits of Lazears and Montgomerys.

Contradiction: Discerning the rhythm that illumines the task and beckons participation on the Way. (Wk. 2)

### **LAGOS**

#### **RELIGIOUS HOUSE: LAGOS—IJEDE HDP**

Internal: International Training Institute: Ibadhan, with 44 people around the table, and signal Ghanaian participation, is wrapped up and House prepares for Area Council.

Internal: Saturday night celebration with stories tops of week of discontinuity, house cleaning, decorating and planning.

Contradiction: Creating the common story to capitalize on sudden emergency in government authorization. (Wk. 4)

### **DOUALA**

#### **RELIGIOUS HOUSE: DOUALA**

External: Seven appointments open to Douala funding and authorization support thru French Government, Business, and Agriculture Agencies.

Internal: Wk.II remaneuver launches first trip to West Africa for Authorization and frame.

Contradiction: Attending to Douala self-support frame as carefully as the programme frame. (Wk. 4)

### **FRANKFURT**

#### **RELIGIOUS HOUSE: FRANKFURT**

External: Through walks through Sachsenhausen, the area priors trek and work with the files, House appropriates the turf. By way of a Town Meeting with a womens network in Plettenberg and setting up eight appointments with religious orders House gets on the springboard for the quarter and the year.

Internal: House finally gets not one, but three, washing machines as well as a new used motor into an old car.

Contradiction: Appropriating the victory of being public, effective and recognized through GCF and GSD by daring a four year vision for the area and deciding on the necessary actions now among the many possible ones. (Wk. 4)

#### **RELIGIOUS HOUSE: BERLIN—KREUZBERG OST HDP**

External: More firsts this week as the first issue of the Laterne newspaper done without any auxiliary aid is taken to press and the Project leadership lead the quarter planning totally for the first time.

Internal: Non-stop concentration gets financial management system into full operation in time for area prior couple's project tour and report on Guardians meeting.

Contradiction: Determining the key areas of action so that the work of four has the effect of forty.(Wk. 4)

#### **RELIGIOUS HOUSE: AMSTERDAM**

External: Pre-Continental Council circuit produces one city planner who says, "My own town is jealous that they didn't do a Town Meeting, I think you can do one there," and a youth worker who convinces a referral to see us by plugging, "They have a few drops of Friesian blood in them.

Internal: Open House preparation leads to blowing the main fuse and meeting the power company staff.

Contradiction: Creating new structure and co-ordinating the battle while keeping momentum going at the same time. (Wk 4)

### **KINSHASA**

#### **RELIGIOUS HOUSE: LUSAKA—KAPINI HDP**

External: Asbestos for primary school arrives bringing completion into view. Kayosha (orchard) dam is completed. Quarterly KHDP celebration is postponed a week due to funeral and will now coincide with District Governor's visit to KHDP.

Internal: A week of quarter maneuver planning an a PSU on economic development units are followed by House quarterly celebration and discontinuity.

Contradiction: Creating new structure and co-ordinating the battle while keeping momentum going at the same time.(Wk. 2)

### **CAIRO**

#### **RELIGIOUS HOUSE: CAIRO—EL BAYAD HDP**

External: Local leaders plan and hold stake meetings that announce consensus of water system support and results in loan for opening a soap industry in Stake 4 as response to news of soap shortage in Egypt.

Internal: House holds staff Town Meeting in Arabic in preparation for hitting the road.

Contradiction: Intensifying corporate power to assure victory on all fronts in final week of Quarter I battleplan.(Wk. 2)

### **NAIROBI**

#### **RELIGIOUS HOUSE: NAIROBI—KAWANGWARE HDP**

External: Kabiro holds document presentation ceremony. Frank Levine, marketing manager of Colgate-Palmolive shows up for site visit on Tuesday with visitor from Ivory Coast and again on Sunday during health clinic. Health clinic and dental examinations are major event in Kabiro where 500 residents show up. Dentist who cares, Dr. Desai, examines over 100 people and finds no cavities after promising to give follow-up treatment. Saturation team completes six V.M. and one assembly.

Internal: Convergence of road teams demonstrates the in-out dynamic that is so common these days.

Contradiction: Interlocking the many facets of mission structurally in order to ensure adequate decision making.(Wk. 4)

#### **RELIGIOUS HOUSE: KAMWELENI—KAMWELENI HDP**

External: Farmers Guild celebrates the completion of 64 by 35 ft. poultry house as 200 chickens move in. Community workdays with 100 finish Standard Four class room. Handicraft industry production increases as more orders come in.

Internal: House sends out J.R. Barnes on new assignment.  
Contradiction: Keeping all fronts covered in midst of total mission demands. (Wk. 4)

## BOMBAY

### RELIGIOUS HOUSE: BOMBAY—MALIWADA HDP

External: Nexus undertakes massive materials preparation for 60 Consults and Project directors' training for 60 new Projects in advance of division guns and support forces meeting hosted in Bombay.

Internal: Panchayat visits Nexus.

Contradiction: Clarifying strategies to complete, sustain, fund and celebrate the 232 over the next four months with an eye on next year. (Wk. 12)

### RELIGIOUS HOUSE: BOMBAY NEXUS

External: The second Nadlapur consult documentation is completed in English and Telugu and is presented to the Vizar Sultan Tobacco Company (the adopting company). The consult catalyzes breakthroughs in the village which bring new vision for the future to Nadlapur. First reports from Division Strike Forces proclaim positive response in villages to DOOP (do your own project) modules being held in all 232 villages.

Internal: Nexus hosts Bombay Division Strike Force in between modules and gets first hand reports on module effectiveness.

Contradiction: Holding tension between local and global additional emphasis on centum and areal priorities. (Wk. 4)

## DELHI

### RELIGIOUS HOUSE: DELHI—SIKROR HDP

External: Ten buffalo loans are sanctioned by the Bank of India. One more street is bricked with 10,000 new bricks being sanctioned. Fortnightly family planning clinic is set up.

Internal: House does pre-Council planning for the year towards the awakening of 1,500,000 settlements.

Contradiction: Creating inclusive design that uses troops and time to win on all fronts. (Wk. 12)

## MADRAS

### RELIGIOUS HOUSE: MADRAS—NADLAPUR HDP

External: Villagers start building a 150 feet stone and cement drain with voluntary labor.

Internal: Auxiliary spends the morning cleaning the house and caps the day with dinner and movie at Sangareddy.

Contradiction: Enabling villagers to make visits to government departments in spite of heavy farm work. (Wk. 11)

## CALCUTTA

### RELIGIOUS HOUSE: CALCUTTA

External: House goes to continental priors meeting at Sikror with gridding and maneuvers for the quarter ready. House hosts Geo and Rita Paul.

Internal: J.P. and Shankuntala Shrivastava arrive bringing House to full strength.

Contradiction: Breaking loose imagination to expand and get access to resources to ensure that the quarter's impact campaign comes off. (Wk. 4)

## SINGAPORE

### RELIGIOUS HOUSE: SINGAPORE NEXUS

External: Everyone dispersing to area councils enables immediate grounding on the turf.

Internal: Decision to win on all fronts including Singapore registration necessitates temporary relocation to Kuala Lumpur.

Contradiction: Empowering programmatic momentum in the midst of the intrusion of relocation practices. (Wk. 2)

### RELIGIOUS HOUSE: SINGAPORE—SERUSUP HDP

External: Malaysian Airline Systems agrees to ship handicraft bags to London, enroute to Paris, free of charge for U.N. show. Courtesy visits to two ministers reveal great interest and possibility of strong support in coming year. One year report that documents accomplishments of Project impacts all including the auxiliary.

Internal: Site is sent out to Bubun Training School staff from Singapore, Zabarah is sent out from Serusup to family in Sungai Lui and Elvie Languido arrives from the Philippines to be part of Serusup auxiliary.

Contradiction: Assuring the highest authorization possible in order to plow into impact campaign and expansion to Cluster villages. (Wk. 3)

### RELIGIOUS HOUSE: KUALA LUMPUR—SUNGAI LUI HDP

External: Visit with Nor Ghanie, the Director General of Social-Economic Research for Malaysia, generates much enthusiasm and strategies for framing Malaysia for TM. Villagers continue to move with Stakes I and V painting their mosques and Agriculture and Education Guilds meeting to determine future.

Internal: Rochmat finally arrives and brings along Neil Rees to help plan the quarter as Siti is sent out to Bubun HDTs.

Contradiction: Focusing the many activities in the village into one common thrust. (Wk. 2)

### RELIGIOUS HOUSE: JAKARTA—KELAPA DUA HDP

External: DOOP circuit continues to build momentum as Kampung Asam decides to buy three goats and activates traditional Sudanese plan which will benefit all the kampung people. Three men go to a mountain market to buy the goats and ask that the white staff stay home so that they will get a cheaper price.

Internal: Three new translators, one Muslim, one Christian and one Buddhist, begin their sojourn in Kelapa Dua through a newspaper ad.

Contradiction: Creating a new set of tactics as breakthroughs in national and regional maneuvers exhaust all previous tactics. (Wk. 3)

### RELIGIOUS HOUSE: MEDAN—BUBUN HDP

External: The community, in a whirlwind of implementation, completes its preparations for the governor's visit. To the surprise of all, he arrives early and is halfway to the village center before anyone realizes who he is. The unconventional visit continues as he stops and talks to villagers, enters shops and homes, views demonstration gardens and later, after the speeches, discusses his vision of the village as an inclusive cooperative entity in the presence of a small group of government officials, villagers and staff.

Internal: It is a week of comings and goings as troops are continually shifted and the undergirding of the Great North Sumatra Breakthrough begins.

Contradiction: Maintaining the total village implementation drive catalyzed by the governor's coming now that the event is over. (Wk. 3)

### RELIGIOUS HOUSE: UJUNG PANDANG—BONTOA HDP

External: First anniversary preparation swings into high gear with village committee collecting eggs and cash to cover snack expenses. Workdays continue on mosque renovation. Fish pond guild member calls on cold storage company to explore a cooperative shrimp export venture.

Internal: New decor sparkles in collegium room and Ann Epps arrives to assist on first annual report documentation.

Contradiction: Readjusting the DOOP methods quickly to assure continuity between deciding and acting. (Wk. 4)

## HONG KONG

### RELIGIOUS HOUSE: HONG KONG NEXUS

External: Development treks to Hong Kong and Manila produce \$4,000 in hand, with \$102,000 working. Hilliards visit Nexus and participate in PSU for Nam Wai strategies. All attend a Chinese wedding in the village.

Internal: Week is celebrated Saturday beginning with breakfast in bed and ending with the celebration of two birthdays and the Holcombe's becoming grandparents.

Contradiction: Meshing the function of all four centrums so that clear priorities emerge that can be enabled by thin stream of present resources. (Wk. 4)

### RELIGIOUS HOUSE: HONG KONG—NAM WAI HDP

External: First youth meeting of year decides to continue *Nam Wai Voice* and plans lantern completion for moon festival which is a celebrative highlight in the village. All five stakes hold meetings to elect members to board. Four stakes vote in representatives from Phase II, retaining two incumbents.

Internal: House welcomes Danny and David Chu as sojourners in the house.

Contradiction: Seeing beyond the immediate possibilities to the long range necessities. (Wk. 3)

### RELIGIOUS HOUSE: KAOHSIUNG—HAI OU HDP

External: Concerted thrust to launch the quarter maneuvers nets 13 solid victories including 1000 USD worth in kind of steel, a lively beach party to launch the youth program and the forth creative meeting with the village leadership.

Internal: House welcomes Anne Conroy en-route to Taipei after Development trek in Hong Kong.

Contradiction: Finding the necessary Chinese staff for the present and the future. (Wk. 4)

### RELIGIOUS HOUSE: MANILA

External: First Manila House built with Mactan rock is completed. Picture taking and publicity tour of beautiful demonstration structure generates great excitement. Local AID Mission officer encourages submission of new proposal for 24 villages.

Internal: House sees film *Voices* and finds it in style of the new responsibility art forms becoming popular.

Contradiction: Looking at long range program in terms of present activity. (Wk. 2)

### RELIGIOUS HOUSE: TAIPEI

External: Visit to Hai Ou with centrum and area priors yields final refinements and recommendations for the Project's Quarter II maneuvers, including renewed inkinding and Development thrust toward the completion of the new community center building in the village.

Internal: House holds fine weeknight celebration with Taipei colleagues on the occasion of the 68th anniversary of the founding of the Republic of China, October 10, 1911.

Contradiction: Remaneuvering in the tasks and assignments of Quarter II so that self-support income for the year is secured. (Wk. 4)

### RELIGIOUS HOUSE: CEBU—SUDTONGGAN HDP

External: HDTs recruitment team intensifies pace with addition of Jim Bell visiting all 18 sites this week. New HDTs building completes roof, floor and walling. Demonstration vegetable garden is planted and piggery space is readied for

Training School pigs. Project Directors from the Mactan Cluster gather for 'Cluster Day' to blitz Cebu cottage industries, set up pre-schol field days, and begin creating back-up systems for the 18 new Projects.

Internal: Cebu House sends Herminia Banayo to Indonesia for HDTs and consults and receives Tamara McClelland during ecclesiola.

Contradiction: Broadcasting the public story that is the *public's story* about the Lapu Lapu Early Learning Nutrition Council that will enable agencies to release the program to the local villages. (Wk. 4)

### RELIGIOUS HOUSE: DAVAO—LANGUB HDP

External: Third batch of 2,500 cacao seedlings are germinated as the second batch is distributed to farmers. General store members meeting show that the store has made a 500 percent profit on its initial capital in one and one half years. Connections are completed to new water tank, and the community center has abundance of water.

Internal: House continues renovation and moves into new kitchen with sceneing, sink, cabinets and tables.

Contradiction: Expanding the Industries marketing in the midst of a recession in Davao City. (Wk. 4)

## TOKYO

### RELIGIOUS HOUSE: TOKYO

External: Yokohama Citizens Participation Project, jointly sponsored by the city and Tsukuba University School of Social Engineering, invites ICA to assist with Town Meeting methods. Seiby TM Project moves into Phase Two with the competition of five pilot meetings. Area Prior takes a fast three day trip to Osaka, Fukuoka and Okinawa.

Internal: House celebrates National Sports Day with a picnic in the Park.

Contradiction: Expanding the understanding of structural revolution in order to respond effectively to the openness of the structures. (Wk. 4)

### RELIGIOUS HOUSE: JEJU—KWANGYUNG II HDP

External: Visit to Provincial Governor and Saemaul Chief strengthens public sector frame.

Internal: The Lee family completes two and one half years of work in Kwang Yung II with great celebrations and an award from the government as they head for new assignment.

Contradiction: Finding the indirection to allow consensus of many colleagues to emerge clearly. (Wk. 3)

### RELIGIOUS HOUSE: SEOUL

External: Recent Academy grads meet and offer help in any arena needed. Lutheran mission group invites House to submit a village funding proposal.

Internal: House creates space in its five rooms for 12 to sleep as it hosts new Jeju staff and the Bergdalls.

Contradiction: Determining the level of chaos that justifies a fresh ordering of the summers imagination. (Wk. 12)

### RELIGIOUS HOUSE: CHUNCHEON—KUH DU E RI HDP

External: The entire preschool with mothers goes to town in the back of the community truck for a great picnic. A local bakery pledges support for the preschool with inkind rolls each week.

Internal: Evening meal are a real treat with first ecclesiola of the quarter and two celebrations in village homes including a resident's 60th birthday celebration.

Contradiction: Creating current plans from future demands. (Wk. 4)

**RELIGIOUS HOUSE: FUKUOKA**

External: Okinawa trek to build stronghold network continues through week three. Twenty-fifth anniversary celebration of Shiroyama church in Nagasaki includes album featuring TM story.

Internal: Entire House attends celebration of National Sports Day with Fukuoka nursery schools.

Contradiction: Weaving Development story into stronghold maneuver. (Wk. 4)

**RELIGIOUS HOUSE: OSAKA**

External: Chubu circuit schedules a Town Meeting in an ungolded prefecture as volunteer Kyoko Kadoya goes on her first circuit. Announcement of scheduled RS-I gets a bigger response than anticipated. Friday evening at the Institute attendance continues to grow as Quarter II ecclesiola construct impacts Japanese young adults.

Internal: House fills up as Mali KBAlm family arrives from India, Area Director Don Clark visits and Haruko Ojima begins her sojourn stay.

Contradiction: Creating the models that release the power at the staff and volunteers so that at every moment all sense the fulfillment of participation in Human Development. (Week 4)

**RELIGIOUS HOUSE: SENDAI—OYUBARI HDP**

External: Youth group firms up structures and selects advising commissioners. India report is given at world wide communion Sunday celebration with Sapporo church. Meetings continue with neighborhood, business and core leadership.

Internal: Decisions on national staffing free up self support and missional timelines.

Contradiction: Learning to accomplish the task within Japanese society's decision making system of multiple informal, semi-formal and formal gatherings. (Wk. 3)

**SYDNEY****RELIGIOUS HOUSE: SYDNEY**

External: Collegium inspires colleague to put a 100 name prayer list into everyone's hand. Quarterly calendar is drawn up for mailing.

Internal: Three guests at first ecclesiola acclaim Earthrise seminary while Mike Chapman at colleague engagement collegium pushes us on regular communication.

Contradiction: Winning in the midst of quarterly positioning. (Wk. 4)

**RELIGIOUS HOUSE: PERTH**

External: Visits to Sister of Mercy results in offers of assistance in facility search and backing for December RS-I. Perth businessman offers help with recommendations for State Advisory Board.

Internal: Colleague's car breaks down three times on weekend trip to timber country in south west of the state.

Contradiction: Moving on secure ground while files are still buried and inaccessible. (Wk. 4)

**RELIGIOUS HOUSE: ADELAIDE**

External: Murrin Bridge area as site for saturation campaign is confirmed by visits with colleagues who affirm plans and offer to arrange further appointments. Newsletter brings two responses including \$10 cheque and an offer to re-eta missed Development appointment.

Internal: House transformation continues with new decor, garden beautification, and the initiation of a lounge for the youth cluster.

Contradiction: Honoring by not being intimidated by established individuals and community patterns. (Wk. 4)

**RELIGIOUS HOUSE: MELBOURNE**

External: Murrin Bridge Trade Fair is launched with presence of five community people and two auxiliary who cover four speaking engagements as well as receive \$300 of orders for wood products and cloth prints. Proposal is submitted to Potter Foundation for another \$25,000 for Murrin Bridge and letter is submitted to shire president of Pakenham signed by State Committee member, Bob Luxford, for saturation to begin.

Internal: Maneuver meshing focuses the 12 arenas of missional action into five theater for the next four weeks.

Contradiction: Sustaining the team dynamic while functioning in dispersion. (Wk. 4)

**RELIGIOUS HOUSE: CANBERRA — MURRIN BRIDGE HDP**

External: Economic PSU with Melbourne and Sydney participants comes up with a new plan for Marketing Horizons. They also came up with suggestions for increasing production and getting more creativity into the products. The Minister of DAA visits.

Internal: A barbeque cricket match is held in the bush with Murrin Bridge guardians and the secretary to the Australian Labor Party's shadow Attorney General in Victoria.

Contradiction: Giving local people images to enable them to detect manipulation by bureaucracy and others in order to stand up for their (Wk. 3)

**RELIGIOUS HOUSE: BRISBANE**

External: House has an exciting week of hosting Development teams with \$3,000 committed and \$200 in hand. Utah Foundation first draft is done and initial framing visits are made. West End and Quarter II maneuvers are written.

Internal: Beach trek this week visits Queensland's Miami, a surfer's paradise.

Contradiction: Concretizing and discarding the opening play that will quickly move Quarter's thrust. (Wk. 4)

**SUVA****RELIGIOUS HOUSE: MAJURO—MARSHALLS HDP**

External: TASC staff uses Town Meeting methods to plan the quarter and comes up with seven proposals plus a timeline. Staff also assigns teams for the quarter and holds the first Coordination Committee (translate "priors") meeting to kick off the new quarter.

Internal: First ecclesiola host five guests and all are addressed at the commonality of the Order thinking, particularly in the arena of global awakening.

Contradiction: Arming local colleagues with tools or methods that allow their plans to get implemented. (Week 3)

**RELIGIOUS HOUSE: APIA—SALANI HDP**

External: The second Salani electricity proposal is now in its final stages to send to Canadian High Commission since capital is the keystone for this quarter.

Internal: A House Life manual has been developed and printed on the new inkind machine.

Contradiction: Capitalizing on present relationship with the key village leadership. (Wk. 4)

**SAN FRANCISCO****RELIGIOUS HOUSE: SAN FRANCISCO**

External: All three House mission teams have signal victories as Urban Pioneers hold first Evening at the Institute with 20 people, Roving Gamblers pull off Valley Cluster Meeting of 35 with Los Angeles and Richgrove, and Gold Miners raise \$3115 in Salt Lake City and close the U.S. Fish and Wildlife deal for \$27,000.

Internal: House station wagon shifts ownership, Martha Denny arrives to shift her boxes and two birthdays shift House members into new year, of existence.

Contradiction: Keeping eyes focused on October 15 deadline for actualizing the Seven Sizzling Strategies for San Francisco Region this year. (Wk. 2)

#### **RELIGIOUS HOUSE: SAN JOSE—RICHGROVE HDP**

External: Hard work and sweat all Week II with a variety of miracles including landscaping the plaza with approximately \$400 of inkind plants, arrival of laundromat washers and dryers, education module which produces day camp curriculum for summer, and flea market continues to be Sunday event in the community.

Internal: House self-support begins with Ken Filipski's job at \$14,000 per year and finishes with beginnings of House garden.

Contradiction: Releasing people to take on long-lasting circuit responsibility. (Wk. 9)

#### **RELIGIOUS HOUSE: SACRAMENTO—CUSICK HDP**

External: Cusick slide show presentation of Speaker's Bureau is presented at Colville Chamber of Commerce. Project gains consent for restaurant to fly under Cusick Community Development Association.

Internal: Auxiliary residence, Wike Hall, sports cleared yard as construction on youth center ends with yard clean up day.

Contradiction: Claiming youth center space as staging for other tactics. (Wk. 2)

#### **RELIGIOUS HOUSE: SEATTLE**

External: Decision to emphasize networks impact gets off to a running start with GWF appointments set and a week of consultation with Rainier National Bank.

Internal: House lands three month's self-support in one week of exciting but exhausting being on-stage at every moment.

Contradiction: Creating the event with colleagues this week that pushes through the Regional Council to devise the transrational plan of intensive engagement of all. (Wk. 1)

#### **RELIGIOUS HOUSE: LOS ANGELES**

External: The breaking of new ground sets into motion three swirls; one resulting in circuiting communities which have had Town Meetings and are ready to participate in the Lower Valley Cluster Experiment; second in setting up the film *The World of Human Development* in the homes of colleagues and friends, and finally, circuiting in the Los Angeles and Anaheim Metros.

Internal: Teachers from the Hoover School visit the House and are impacted by decor and show interest in engagement as ecclesiola continues to attract colleagues who are addressed by the study and stimulated by the world of strategy.

Contradiction: Strategizing, as a House, ways of securing program funding through pledges and donations. (Wk. 4)

#### **RELIGIOUS HOUSE: PHOENIX**

External: House takes two new Egyptian friends, who have lived in Phoenix since '67 war, to Pisinemo for Feast of St. Francis, and one decides to assist village with architectural services. House has a new Day I volunteer, as result of recent Evening at the Institute.

Contradiction: Clarifying Quarter II victories. (Wk. 3)

#### **RELIGIOUS HOUSE: WICHITA—PISINEMO HDP**

External: Feast of St. Francis is hosted by Pisinemo for 1,000 people. Five organizations raise funds for social programs.

Internal: First ecclesiola is exciting contextual event.

Contradiction: Yielding to temptation to halt programmatic work to prepare for anniversary celebration. (Wk. 3)

#### **RELIGIOUS HOUSE: SALT LAKE CITY**

External: The whole week is spent preparing and celebrating the annual Cannon Ball Pow-Wow with two days of clean-up, junk car removal, new space for day care, a \$3800 inventory order delivered to the store and three days of dancing.

Internal: House sends out the two priests from Germany to continue their trek to Pace HDP.

Contradiction: Holding fast to the confusion until it becomes clarity. (Wk. 13)

#### **RELIGIOUS HOUSE: BILLINGS**

External: Afternoon meeting with staff of District Seven Human Resources Development Commission sets date and lays plans for a community-wide TM in early November.

Internal: Witerization of house begins with taping up plastic over windows and getting heat turned on in the radiators.

Contradiction: Kepig the momentum going and spirits high when the troops are dispersed. (Wk. 4)

#### **RELIGIOUS HOUSE: RAPID CITY—INYAN WAKAGAPI HDP**

External: Seventeen tons of steel are unloaded for Cannon Ball Industries in one afternoon. Newly elected corporation board members attend installation dinner and Frank Lawrence, tribal chairman, speaks. Pat Druckenmiller attends quarter planning session of Governor's Conference on the Status of Women to follow up their July LENS.

Internal: Phase II of house winterization is completed and celebrated with a movie in Bismark.

contradiction: Building maneuvers that allow a new awakenment campaign to be launched. (Wk. 4)

#### **RELIGIOUS HOUSE: DENVER**

External: As target community funding is secured and revisioning of five geo-social targets for the year happens, the possibility of a new energy rider is uncovered in Wyoming.

Internal: Thief (10 minute sojourner) "opens a new window" but fails to abscond House self-support victory.

Contradiction: Keeping the tactical mobility in the midst of an explosion of anticipated directions. (Wk. 4)

### **EDMONTON**

#### **RELIGIOUS HOUSE: EDMONTON**

External: Five GCFs are scheduled and ten working. Proposal for 75 forums is submitted to the 75th Alberta Anniversary Commission.

Internal: House treks to Vogar for Thanksgiving weekend.

Contradiction: Keeping up the incredible local momentum when permeation, area demands and continental priorities all take their share. (Wk. 4)

#### **RELIGIOUS HOUSE: VANCOUVER**

External: An authorization brochure for CFCs in Squemish and Howe Sound is produced and colleagues are actively engaged in set up Meetings and appointments. Colleagues from both Vancouver and Bellingham volunteer to work further in this arena. Ten development appointments with soe of the top 50 corporations in British Columbia are set up for Week Three.

Internal: Thanksgiving is celebrated with discontinuity on Monday and a splendid feast.

Contradiction: Creating the focus and form of reports to enable all to participate and take responsibility for bringing off all maneuvers. (Wk. 4)

#### **RELIGIOUS HOUSE: ANCHORAGE—MINTO HDP**

External: Fame of Monto Dancers spreads to Anchorage and Kenai as elders perform two shows before 300 people in the King George Hotel, one by popular demand.

Internal: Bi-location get nitty-gritty done in Fairbanks and Minto and word comes of Vista orientation funding confirmed for two positions.

Contradiction: Creating the platform of regular structures that provide base to tell the Minto story. (Wk. 4)

#### **RELIGIOUS HOUSE: SASKATOON**

External: Circuit to Regina finds school principal open to CYF proposal and renews an old contact with a church pastor from Cardinal, Ontario.

Internal: Saturday night ecclesiola comes as breath of fresh air for the week.

Contradiction: Implementing local campaign plans while emerging calendar of area program and continental training obscures troop availability. (Wk. 4)

#### **RELIGIOUS HOUSE: WINNIPEG—VOGAR HDP**

Internal: Five new colleagues participate in orchestration training in Riverton while Development gets \$11,000 working in Winnipeg.

Internal: Nineteen from Edmonton, Saskatoon and Vogar celebrate a tremendous Thanksgiving fest and Week 1 ecclesiola.

Contradiction: Getting the exciting context out that compels people to attend the forums. (Wk. 3)

### **HOUSTON**

#### **RELIGIOUS HOUSE: HOUSTON**

External: Location and date are decided for GWF and commitments for sponsorship are underway. Training session for citywide CYF sparks enthusiasm in high school representatives.

Internal: First Ecclesiola is fine event for House and colleagues.

Contradiction: Finding the keys to unlocking the potential funding for Houston programs. 3)

#### **RELIGIOUS HOUSE: AMARILLO—INDIAHOMA HDP**

External: Indianhoma VISTA volunteers and Community Development Corporation board members create lounge, kitchen meeting area and print shop in the community center, and meet daily for planning and corporate work, Community Development Corporation president Raymond Almanza attends National Congress of American Indians in Albuquerque, CDC board holds three hour meeting to work on details for mini-mall construction and releasing the building of 20 new houses.

Internal: Oklahoma City metro House Church is held at Christ UMC.

Contradiction: Expanding to total community participation in the Community Development Corporation. (Wk. 3)

#### **RELIGIOUS HOUSE: SAN ANTONIO—ASHERTON HDP**

External: City Council is amazed and honored with presentation of fully licensed ambulance and begins plans to form volunteer group to operate it. The high school shows the global film in the Social Studies classes.

Internal: School holiday prompts impromptu inking and business trip to San Antonio, demonstrating that discontinuity is always purposeful.

Contradiction: Broadening local authorization. (Wk. 4)

#### **RELIGIOUS HOUSE: OKLAHOMA CITY**

External: Visiting public and private sectors in Little Rock lays ground work for funding Arkansas state campaign.

Internal: Oklahoma City and Memphis are grounded in corporateness as Houses work together to prepare Memphis House for Area Prior's visit.

Contradiction: Converging the comprehensive vision toward re-establishing contacts to allow House to operate on four fronts. (Wk. 2)

#### **RELIGIOUS HOUSE: DALLAS**

External: Colleagues and House are organized into six metro teams to do research, documentation and events in the quarter.

Internal: Reflection on Ecclesiola speech by Nyerere deepens commitment to care for the rural.

Contradiction: Orchestrating the forward missional thrust that cares for several arenas at once. (Wk. 4)

#### **RELIGIOUS HOUSE: TULSA—DELTA PACE HDP**

External: First demonstration town meeting with Lena, Mississippi asks House to come back for meeting to form LCD and one leader orchestrates Choctaw Nation Town Meeting of 90. CYFs galore are set in southwest Mississippi with TMs also planned for PTAs. Rod Hall and William Bell from Pace drive from House back and forth in evening to help with Choctaw TM.

Internal: Reports from the fronts are heard at regional gathering in Memphis. George and Eileen Howard announce expectancy of their first child.

Contradiction: Weaving demonstration town to the Citizen Participation Months (Town Meetings). (Wk. 4)

#### **RELIGIOUS HOUSE: NEW ORLEANS**

External: Initial week of Lake Charles maneuver sees four TMs held, five more scheduled, seven planning meetings scheduled, plus a CYF and special emphasis TM, with more TMs, a LENS and GWF working.

Internal: House celebrates Alex St.Clair's, Cindy Kellers, & Joan Priest's birthdays at Farrells ice cream party hosted by the Buras family.

Contradiction: Finding a way to beckoning engage fresh troops while maintaining the responsibility for doing quality events at every stage. (Wk. 3)

#### **RELIGIOUS HOUSE: MEMPHIS**

External: Linda Merritt, campaign worker for key Memphis mayoral candidate, attends Evening at the Institute, impacting staff with her lucidity and with steps for working with public and private networks in Memphis.

Internal: The need for Houses and Development Centrum to work "hand in glove" is recognized as Micheal is sent out to Nashville with Development team from Chicago to bring off Memphis Region there.

Contradiction: Converging the comprehensive vision towards reestablishing contacts to allow external operation on four fronts. (Wk. 2)

#### **RELIGIOUS HOUSE: ATLANTA**

External: House initiates first of Atlanta probe strategies in South Dekalb county by taking five community residents to Gibson and holding a global film showing for 13 community leaders which includes the Executive Director of Atlanta Girls Clubs, block club leaders and Economic Opportunity Atlanta (EOA) director from Edgewood. Gibson trip has profound impact in relation to its visible signs and the indicative of corporate action for South DeKalb residents. Framing and development calls include Dorothy Cotton, Region IV Action Director, who wants to send two to HDTS.

Internal: Area Prior's visit occasions reflection 11on the Way, Alpha system and the Urban strategy in Atlanta.

Contradiction: Putting all components in place for South DeKalb probe in the overall urban strategy. (Wk 3)

**RELIGIOUS HOUSE: CHARLOTTE—GIBSON HDP**

External: HUD selects Gibson as one of three new communities for the Rural Initiative Program i.e., HUD Demonstration Community.

Internal: Charlene Powell is sent to Chicago for 10 weeks as HDTs Faculty.

Contradiction: Sharing the news of potential comprehensive housing and infrastructure plan while holding in creative tension the various understanding of plan's impact. (Wk. 4)

**RELIGIOUS HOUSE: MIAMI**

External: In the process of finding a network to work through this quarter's maneuver, House circuiter and Guardian meet with Regional Planning Director, who participated in TM in Carbondale Illinois, who offers his office, mail service, phone and introductory letter.

Internal: House and colleagues use first ecclesiola to write state song and get out a wealth of history and poetry about Florida.

Contradiction: Deciding House has the winning model and moving it. (Wk. 3)

**CHICAGO****RELIGIOUS HOUSE: CHICAGO NEXUS**

External: Total House aids in the launch of the 5th City HDTs. Demonstration LENS is held with Detroit Conference UMC Board. Contradiction Analysis by Guardians, Nexus and Area priors brings clarity to the strategies for North America.

Internal: Nyerere's push in Ecclesiola on rural strategy impacts House as the strategy for the world. House rejoices in the birth of Melisa Lyn Mathews to Joseph and Araceli.

Contradiction: Prioritizing expenditures and creating an anticipated expense schedule. (Wk. 4)

**RELIGIOUS HOUSE: CHICAGO-FIFTH CITY HDP**

External: Six 5th Citizens go to GWF Pedagogy held at Chicago Nexus only to return and battleplan GWFs to teach in Fifth City and throughout the West Side.

Internal: House experiences telling the story with Fifth City leadership to 45 participants at Open House showing Global Film.

Contradiction: Getting on top of Human Development Training School effort locally and continentally. (Wk. 4)

**RELIGIOUS HOUSE: OMAHA-LORIMOR HDP**

External: Rick Loudermilk visits for three days from Operations Centrum to help set up LENS seminars and a state capaign in Iowa. Pioneer Seed Co. gives \$5,000 to ICA. Bee and Honey Extracting Business moving to Lorimor, making two brand new buildings in Industrial Park.

Internal: House sends It to HDTs for four weeks to be on the faculty.

Contradiction: Creating a unifying story for Project and region. (Wk. 4)

**RELIGIOUS HOUSE: KANSAS CITY**

External: The St. Joseph, Mo. Core travels to Lorimor for a day of seeing what's possible, hearing local Lorimorian testimonies and an events workshop for St. Joseph.

Internal: The House celebrates the decision of Julia Hahn to intern and sends out four to the Academy.

Contradiction: Taking the increasing missional opportunities and forming them into a year's transrational model. (Wk. 2)

**RELIGIOUS HOUSE: MINNEAPOLIS**

External: Twelve go the the Guardians meeting from the region. Fifteen youth from the Kinney and Minneapolis Houses and communities spend from 9am-7pm

demonstrating, reviewing and grounding the CYF construct and are stuck with the youth forum not as a forced activity but an opportunity for youth to create their own contexts as well as their own action.

Internal: Virginia Pierce is sent out from Minneapolis to teach the LENS in California and Sam Hanson goes to Washington.

Contradiction: Deciding how to decide on assignments and task configurations which will put wheels under implementaries for the Upper Great Lakes Campaign. (Wk. 3)

**RELIGIOUS HOUSE: ST. LOUIS**

External: Actual possibility of achieving total regional positioning for mass awakening by end of year becomes believable through extended long-range planning and the arrival of Mark Harvey.

Internal: First ecclesiola of the quarter puts House and metro colleagues on the Way.

Contradiction: Absorbing the vast memory of the metro without bracketing the program to do it. (Wk. 3)

**RELIGIOUS HOUSE: PEORIA—MILL SHOALS HDP**

External: Evening at the Institute culminates week's strategy of recruitment of HDTs with \$900 funding raised.

Internal: Preparing for grand event puts House on death ground to transform space and finds new space refreshing.

Contradiction: Grasping the direction of the project and its programs to enable the demonstrating dynamic to happen. (Wk 4)

**RELIGIOUS HOUSE: GREEN BAY-KINNEY HDP**

External: Minneapolis designer recommends Kinney Custom Industries to restaurant owner as "the people who will make your uniform exactly the way you want it." Two House youth and two Kinney youth attend CYF training in Minneapolis, and one Kinney adult goes to Guardians.

Internal: Community man pitches in to help enclose stairwell for winter.

Contradiction: Deciding on potential effective demonstration of corporate action to prove to people once again that it s possible. (Wk. 4)

**RELIGIOUS HOUSE: MILWAUKEE**

External: Twenty-five colleagues from Detroit, Chicago, Milwaukee, Minneapolis and Kinney create the Upper Great Lakes Campaign and use LENS methodology with historic readings to allow the images of the North Country to inform troops of the new mythology which will herald the success.

Internal: House and metro with a number of new friends are awakened, in fact, awed by the effectiveness of the first night of the roundtable.

Contradiction: Focusing attention to the Upper Great Lakes in the coming year while holding to Milwaukee as the base of operations. (Wk. 2)

**RELIGIOUS HOUSE: INDIANAPOLIS**

External: First GWF of year, sponsored by Indianapolis YWCA, is also an area event as 22 women from four states participate in training on Friday night and evaluation after the forum. Of the 12 colleagues attending Guardian's Consult, four are first-timers. RS-1 calling in three polises yields first registrations for November RS-1.

Internal: House has a busy Wayside Inn and conversation late into the night with guests from Illinois, Ohio, Michigan Indiana and Indonesia.

Contradiction: Keystone to enable constant motivity and tactical prowess. (Wk. 4)

**RELIGIOUS HOUSE: CINCINNATI**

External: All old Town Meeting files and documents get

dusted off and researched to find the 100 communities and key persons to visit for the Tri-State Salute to Local Communities on the Move.

Internal: House visits five key Guardian families to elicit covenant for Ecclesiola and House Church participation and to initiate Adopt a Continent plan for Roundtable Research.

Contradiction: Getting 20 metro troops committed for the Salute 100 trek. (Wk. 4)

#### **RELIGIOUS HOUSE: DETROIT**

External: House attends Town Meeting Revisited in Bangor, Michigan where they reviewed the 21 issues from their 1977 Town Meeting and reported on the 16 that had been dealt with, following United States Senator Carl Levin's address.

Internal: House's Quarter II plan is finally gotten down to the implementary level.

Contradiction: Getting Region story focused in a "Steak and egg" title. (Wk. 4)

#### **RELIGIOUS HOUSE: CLEVELAND**

External: Demonstration community probe is moved down the road with a reflection and swirl of the data collected from site visits and put into categories for future reference. A guest speaker from the Urban Studies Department of C.S.U. enlarges screen of the urban situation by answering questions about Cleveland and its neighborhood.

Internal: The Search the Want-Ads Maneuver is completed with the victory of two permanent jobs.

Contradiction: Speeding up systems set up. (Wk. 4)

### **NEW YORK**

#### **RELIGIOUS HOUSE: NEW YORK**

External: Morristown core meeting decides to do a Community Forum in the inner city area to initiate an urba probe there. They also decide to send three people to Ivy City's anniversary celebration. Metro initiative pouts concretion on a core group in Brooklyn.

Internal: The Reames family arrives from Osaka, Japan for two month sojourn.

Contradiction: Standing in the complexities of experimentation and claiming the key victories of Quarter II. (Wk. 4)

#### **RELIGIOUS HOUSE: PITTSBURGH**

External: House participates in cluster consortium of public schools and gains entre into city voluntary and public structures.

Internal: House makes new facility space immediately functional and gracious while phasing long range creative possibility.

Contradiction: Deciding Pittsburgh regional focus while waiting for definitive state campaign strategy. (Wk. 4)

#### **RELIGIOUS HOUSE: ROCHESTER**

External: CYF visits to Episcopal and Ecumenical Organizations go on as Binghamton's Probe maneuver goes on full speed ahead.

Internal: Deann Lindstrom arrives for a one day strike force and heads for Binghamton and the House has another permeator.

Contradiction: Clarifying and creating maneuver which allow for a focus on priorities instead of opportunities. (Wk. 4)

#### **RELIGIOUS HOUSE: RICHMOND**

External: Walking barefoot carefully across the metro coals House finds some heat which bursts into flames of excitement and concern as Betty and David West open up to EW1 and Development PSU. Wilson's women's decision to meet twice a

month and the local PTA warming up its' interest to possibilities to ICA work.

Internal: First permanent job secured releases intentionality of colleagues and House to participate in new and different ways.

Contradiction: Multiplying the corporateness with individual model building. (Wk. 4)

#### **RELIGIOUS HOUSE: WASHINGTON, D.C.—IVY CITY HDP**

External: Ivy City Third Anniversary luncheon is key as 65 gather around the table representing virtually all sectors of support over the last three years and lift up hope Ivy City is as a model that can be used across the District.

Internal: Pat Moriarty is released from hospital, is moved into House and addresses all anew with fragility of life.

Contradiction: Managing the complex swirls of time and space in the region, metro, community and House. (Wk. 4)

#### **RELIGIOUS HOUSE: BALTIMORE—WIDEN HDP**

External: Readying the community offices, the wood manufacturing company, and community public places consumes this week's time budget with community association and 4H club members donating energy and time to get the 4H club meeting spaces in shape for first meeting this week and for community open house next week.

Internal: Water system breakdown and surprise approach of old man winter puts house in practical mood.

Contradiction: Getting real financial commitment and backing from committed colleagues to get House back into the black. (Wk. 4)

#### **RELIGIOUS HOUSE: PHILADELPHIA**

External: Block captains from Harrisburg's Allison Hill community report a signal journey from March's Town Meeting to demonstration community and schedule an ICA leadership training event for November.

Internal: Pittsburgh House visits for a day and assist in clarifying the next four weeks of implementing Pennsylvania State Campaign preparation.

Contradiction: Finding the engagement rhythm that will keep momentum moving towards a clear engaged thrust. (Wk. 4)

#### **RELIGIOUS HOUSE: BROOKLYN—STARKS HDP**

External: Another great workday plus yeses from the Commissioner of the Department of Conservation (Marine), a well-known entertainer, dignitaries and dancing girls build momentum for the grand opening of the cornshop.

Internal: Guardians from the Big Apple visit Project in the wilderness and give everyone a tremendous boost with their business expertise, orders for the Chintz Cottage, and willingness to plunge into the tasks at hand.

Contradiction: Finding the death ground out of the many requirements for the cornship grand opening with its endless practics, detail and statewide visibility. (Wk. 4)

#### **RELIGIOUS HOUSE: HARTFORD**

External: House and three colleagues participate in fantastic work weekend and celebration in Starks, then return to week of strategy reformulation with Area Priors and Development.

Internal: Earliest Hartford snowstorm in history portends winter realities.

Contradiction: Establishing structures that enable diverse time schedules to be gift, not demon. (Wk. 2)

#### **RELIGIOUS HOUSE: ALBANY-CHARLOTTEVILLE HDP**

External: An advisory committee meeting in Binghamton and a Charlotte Valley Firewood strategy meeting in Charlotteville break loose new possibilités, for awakenment and engagement.

Internal: Several visitors enliven the week as the Donnelly visit on Monday and Tuesday, Ben Chapman and Joe Nagy drop through on the way to Academy and Early and Westre help strategize.

Contradiction: Forging ahead in the midst of scattered assignments and ambiguous plans. (Wk. 3)

#### **RELIGIOUS HOUSE: BOSTON**

External: Local Boston Guardians meet to plan strategy for New England Guardians and set December date for Guardian happening which will include part of the Voyage construct.

Internal: House sends three metro colleagues to Starks, winterizes House and works with neighbors to plan park work day for next week.

Contradiction: Expanding House's thrust with shrinking House configuration, as two sojourners are sent to HDTS and fourth mystery staff person has not yet arrived. (Wk. 4)

### **MONTREAL**

#### **RELIGIOUS HOUSE: MONTREAL**

External: Quebec Beacon maneuver is launched with date for Kingsbury Forum to be held in basement of Mayor's home.

Internal: Thanksgiving Day is spent in the Gatineau hills exploring possibilities for future HDP.

Contradiction: Finding ways to sharpen timeline and structures to unify and sustain many thrusts. (Wk. 4)

#### **RELIGIOUS HOUSE: TORONTO**

External: Area Prior visits cadre meeting, urban Probe PSU and brings great news of the Duke of Edinburgh's conference scheduled to visit Lorne in May. Continual presence at bi-weekly inter-agency meetings establishes credibility in East York and breaks open key appointments with Director of Recreation and other service organizations.

Internal: House celebrates Canadian Thanksgiving in London Region with turkey, wine and apple pie.

Contradiction: Weaving together Centrum, Area and Regional teams in order to build corporate momentum for *Autumn Fire Maneuver*. (Wk. 4)

#### **RELIGIOUS HOUSE: OTTAWA**

External: Trip to Sudbury with Operations Centrum reveals four possible LENS courses including Sudbury 2001 and unions.

Internal: First inclusive local Ottawa frame is created and immediately produces great potential for LENS and GWF.

Contradiction: Moving creatively with the media who have most of the advantageous positions. (Wk. 12)

#### **RELIGIOUS HOUSE: HALIFAX—LORNE DE L'ACADIE HDP**

External: Thanksgiving is celebrated with 17 people of Lorne's core leadership. After a hard weekend of self support, working in mudholes and soggy forest grounds, a grand German Octoberfest is held with waltzing and polka, initiated by Lorne residents. HDTS recruitment is established and Phil Devor is sent out to Guardian's meeting in Chicago.

Internal: Last step to complete the construction of the Firehall is done by 20 villagers pouring and polishing the cement floor.

Contradiction: Struggling with extending the circle of persons to be handed over areas of responsibility in the Project, while the pressure of internal issues such as mobility and self-support become intense! (Wk. 4)

### **CARACAS**

#### **RELIGIOUS HOUSE: CARACAS—CANO NEGRO HDP**

External: Quarter I starts off with a bang as three people sign

up for *Foro* circuiting, English/Spanish classes start with 22 students, all 12 members of the newly elected Junta attend the first meeting, and community cleanup workday involves all sectors and ages.

Internal: Phyllis Brown arrives for two weeks from Trinidad just in time to participate in the fast, which builds corporateness and gives insight to the quarter contradiction.

Contradiction: Discerning key happenings within all arenas in order to focus time and troops effectively. (Wk. 4)

### **BUENOS AIRES**

#### **RELIGIOUS HOUSE: SANTIAGO—SOL DE SEPTIEMBRE HDP**

External: Special meal for Anna Marie Urutia signals a new form of Guardian nurture as other Guardians attend and hear of her visit to the states and are excited. Donated garden tractor arrives and is christened *Motor Pig* as it goes to work in the community garden and farmers seedbeds. Advisory group takes on the task of drafting statutes.

Internal: Volunteer, Leslie Smith, decides to expand her context by attending Academy after three months on the Project and is replaced the next day by the arrival of Linda Barrett from Area Rio de Janeiro to begin her second year with a formal decision to intern.

Contradiction: Creating the structure for the new quarter's tactics. (Wk. 4)

### **RIO DE JANEIRO**

#### **RELIGIOUS HOUSE: RIO DE JANEIRO—BANANEIRAS HDP**

External: Superb site visit nets entre into old Brazilian wealth for Project funding. Junior health caretakers meet for the first of 12 sessions. Beautiful park in the plaza is created from 80 varieties of local fauna and inked trees from EMATER. Community and auxiliary combine efforts in weekly garbage collection, unloading the trash at the inked dump. The *Voice* is printed and distributed.

Internal: Heat wave brings radical time design into being with a 4 a.m. wake-up to take advantage of the coolest hours of the day for outdoor work.

Contradiction: Swirling the difficult non-visible miracles amidst great breakloose of visible signs in Bananeiras. (Wk. 4)

### **HAVANA**

#### **RELIGIOUS HOUSE: KINGSTON—WOBURN LAWN HDP**

External: Kingston Development starts week with full schedule of appointments. Week II wedding of leading community family sparks a week of renewed engagement, preschool workday and spirited stake meetings.

Internal: House members celebrate two birthdays with song fest night before and fast on the birthday.

Contradiction: Balancing the tension between careful planning and coordination and immediate signs. (Wk. 3)

### **MEXICO CITY**

#### **RELIGIOUS HOUSE: GUATEMALA CITY—CONACASTE HDP**

External: Week of development work opens new possibilities for funds. Television is set up for community viewing and river is surveyed for water delivery to new irrigation system. One hundred parcela owners are censused.

Internal: Stake leader's daughter's wedding is corporate celebration for auxiliary and community — first marriage in the village in four years.

Contradiction: Building and maintaining momentum under Development push with a multitude of other demands. (Wk. 4)

## LIMA

### RELIGIOUS HOUSE: LIMA—SAN VICENTE DE AZPITIA HDP

External: New life is injected into the Agricultural Guild with the visit of the National Agrarian University to set up the small animal farm with ducks, meat producing guinea pigs and rabbits.

Internal: Completed period of discontinuity brings House back as a whole, refreshed and ready for new challenges.

Contradiction: Creating the self-consciousness of the long march of the project while maintaining timeline of tactics.  
(Wk. 13)

# THE GLOBAL ORDER CENTRUM REPORT

BRUSSELS  
BOMBAY  
SINGAPORE  
HONG KONG  
CHICAGO

WEEK FOUR

## GLOBAL DEVELOPMENT CENTRUM

Global Development Centrum reports Brussels writes Development Maneuvers for the quarter, year and month. Blitz in Manila gets 66 visits and \$4,000 in hand, while Hong Kong gets another \$12,000 working. Extending the Development task to the community and guardians through patron events and business endorsement letters. The key contradiction lies in the arena of intense demand for immediate cash overagainst need for longer range Development planning.

## GLOBAL RESEARCH CENTRUM

Global Research Centrum reports from Brussels on the Global Guardians consult October 5-7 with telex interchange to Chicago Guardians. Hong Kong reports on their visit to Nam Wai which initiated brooding and conversation. Chicago reports on refinement of the Voyage for immediate use and wiring of minds together at the Area Priors meeting. New evidence of strong Guardians leadership arising across the global network and circulation of *Seapac Soundings* as global interchange. The key contradiction lies in the arena of the uncoordinated rhythm to deal with the spirit life as grounded in decor, space and time designs within the local context and situation.

## GLOBAL OPERATIONS CENTRUM

Global Operations Centrum reports a Global Guardians Consult in Europe with 54 around the table. Nam Wai reviews 26 tactics in a strategy PSU and see that nine tactics are done. HDTs in Fifth City, Kawangware and Bubun are launched. Operations is prepared for the future with six states and provinces targeted for GCF campaigns in North America, Guardians preparing for next Guardian Consult in Europe, and documentation in Hong Kong. The key contradiction lies in the arena of enabling areas to move on discerned advantages and consensed on strategies.

## GLOBAL MANAGEMENT CENTRUM

Global Management Centrum reports a trek to Rome initiateing process of establishing global bank accounts with necessary signatures. Hong Kong balances June O:E general ledger on first run. A Guardian in Milan helps establish bank accounts, which signals a breakthrough in Italian authorization. The key contradiction lies in the arena of clarifying the role of management systems in bringing off the year's victories.