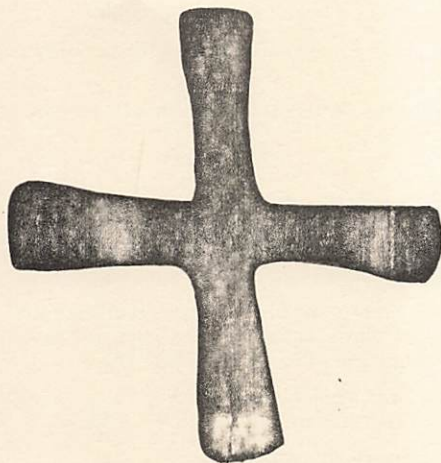


THE GLOBAL ORDER REPORT

QUARTER II WEEK TEN

DECEMBER 1—DECEMBER 7, 1980



God spoke, and these were his words: "I am the Lord your God who brought you out of Egypt, out of the land of slavery. You shall have no other God to set against me. You shall not make a carved image for yourself, not the likeness of anything in the heavens above, or on the earth below, or in the waters under the earth. You shall not bow down to them or worship them; for I, the Lord of your God, am a jealous god. I punish the children for the sins of the fathers to the third and fourth generations of those who hate me. But I keep faith with thousands, with those who love me and keep my commandments."

Exodus 20:1-6

MADRID

RELIGIOUS HOUSE: MADRID

External: Three day trek to Zaragoza Province unearths solid possibilities of "sets" in ten to twelve villages. House attends Family Conference of CARITAS in Salamanca and prepares local colleagues for the two Encuentros there next week II.

Internal: Madrid colleagues excited by charting and artform methods in House's second Saturday methods training program.

Contradiction: Finding the fresh approach that will break open "sets" across Spain. (Wk.9)

LONDON

RELIGIOUS HOUSE: LONDON

External: House and Ed Vergara host and teach 10-participant Training Weekend. Six volunteers for Third World involvement and four Movement colleagues attend. Scott Brader Company has invited proposal for training and planning seminars for entire staff.

Internal: Preparing for In-House 48 hour training weekend catapults staff into another round of refurbishing dormitories and corporate space.

Contradiction: Clarifying the extensive dimension of the external task. (Wk.7)

RELIGIOUS HOUSE: GLASGOW

External: A week of building-releasing construct of forum design for school leavers and mailed to the Youth Christian Workers Movement in Manchester. First Draft of questionnaire-letter to solicit colleague participation for Regional Consult planning and recruitment is written.

Internal: House experiments and approves new roundtable construct and continues to update metro/polis and cadre files.

Contradiction: Seeing the urgency of Regional Consult in the midst of other urgent events. (Wk.9)

RELIGIOUS HOUSE: BRISTOL

External: Regional Consult recruitment push nets 60 yeses. Contact is made with Electricity Board to begin electrification of Terrapin Building. Prabahkar Gurao and Tim Casswell have development calls with British Petroleum, Texaco and Ford to elicit support and consult participation.

Internal: House celebrates by going to movie *Airplane* and viewing EG produced puppet show after great planning weekend.

Contradiction: Hanging loose in the saddle on a horse that has never been ridden before without falling off. (Wk.7)

PARIS

RELIGIOUS HOUSE: PARIS

External: Intensive week of preparation to initiate two weeks annual appeal maneuver is spent setting up appointments, creating materials and cleaning the file system. Seven participants attend weekly Training Academy evening, with one from Peru, one from Morocco, four from Upper Volta and one from France!

Internal: Week II flagstaff initiates major shift in directions, by building corporate internal resolve toward holding the Regional Consult in the Paris Region, having to deal with the urban.

Contradiction: Forming the do-able leap into the next quarter. (Wk.8)

RELIGIOUS HOUSE: BRUSSELS NEXUS

External: Religious order luncheon held in nexus hosts eight from religious orders in Belgium. Guests include the head of all Belgian and European religious orders and head of Belgian female religious orders. Precouncil brooding starts in two collegiums.

Internal: Robert Caulfield hosts Christopher Warry for a week, while his mother is in India, and Fisher family, Ken, Paige, Ajit and Aidan arrive to claim space set aside for them repeatedly during quarter, which brings combined Phase I structures of nexus and house to 10 children.

Contradiction: Getting the Continental Council off the ground in the midst of consults' demands. (Wk.8)

RELIGIOUS HOUSE: BRUSSELS

External: Three film shows are presented in city, neighborhood and in conjunction with Development Centrum. A four hour luncheon is held with religious order leaders from Belgium and Europe. Labor and NGO Conference on economic shifts is attended in Antwerp.

Internal: House welcomes Fishers from Ottawa, and Vanistandael encourages Heylens to "Belgiumize" House.

Contradiction: Integrating and prioritizing multifaceted obligations to globe, Europe, area, metro, region and self support. (Wk.8)

FRANKFURT

RELIGIOUS HOUSE: FRANKFURT

External: Area check-signals brings together representatives of the three Houses, Operations and Development Centrum for coordination of maneuvers and for two mini-PSUs, one on Berlin Urban Human Development Zone and one on structural permeation in post-secondary institutions. Vienna Strike Force leaves for two weeks and is greeted by an order saying they have 9,000 Austrian shillings ready to pick up. Vienna is extremely open to story of the Movement.

Internal: Story of the ICA's care and involvement in the nations of Germany and The Netherlands over the past 12 years and a song written to a tune from *Tales from the Vienna Woods* are highlights of the discontinuous as the Area checks signals.

Contradiction: Trying to bring a relatively underdeveloped region to point of readiness for HDZ with severely limited time and troops. (Wk.6)

RELIGIOUS HOUSE: AMSTERDAM

External: Week II training event, "Profound Creativity Weekend", with house and five Dutch persons present gives a new way to see profound training happening within 40 hour time span that releases context, methods and celebration.

Internal: Job searches, finance collegium and putting together development maneuvers gets staff ready for Thanksgiving as British, German, Dutch and North American cultures come together to celebrate the American tradition with feasting and sharing stories.

Contradiction: Operating out of a "supply the demand" mindset rather than creating the events and programs for training that enable local movemental leadership to emerge. (Wk.9)

RELIGIOUS HOUSE: BERLIN

External: Regional team writes common training brochure for Vienna, Frankfurt and Berlin.

Internal: Management Centrum infuses finances with clarity on missional objectives relative to future possibilities.

Contradiction: Clarifying how to spin awakening events and demonstration methods into the new form of primal community. (Wk.9)

ROME

RELIGIOUS HOUSE: ROME

External: Gift of 500,000 lire from the Christian Brothers Order arrives. Youth Cluster writes report on CYF. Saturday night guests are key forum orchestrators.

Internal: Three are assigned full-time to self-support, two ninth graders are sent to visit relative in Venice for Thanksgiving Holidays and the first piece in a new decor scheme is created.

Contradiction: Positioning the "Team of Three" to move toward established self-support (Wk.8)

STOCKHOLM

RELIGIOUS HOUSE: COPENHAGEN

External: Having finalized a grant for Kenya already this month, Norad receives ICA again for an overall context of the Maharashtra 1980-84 Phase III model, and also offers to help explore SIDA in Stockholm. House is represented at the Copenhagen-International School Board dinner as well as at the Area London, Bristol Regional Consult.

Internal: House celebrates two birthdays with two great movies.

Contradiction: Getting local teams into formation. (Wk.9)

CAIRO

RELIGIOUS HOUSE: GIZA

External: Door-to-door survey, women's meeting and well drilling in Beni Suliman symbolizes the half way point with three villages initiated and three more to go.

Internal: Diesel pump breakdown forces the auxiliary to haul water from cluster village where new well was drilled—evening ends late with a great Indian meal.

Contradiction: Rapidly expanding cluster activities out-running successful framing maneuvers. (Wk.8)

RELIGIOUS HOUSE: ABIDJAN

External: Six Ghanaians, with way paid for by sponsoring organizations, are sent out to the HDTI in Nigeria.

Internal: One year visas are acquired!

Contradiction: Creating workable model to deal with necessity of Francophone staff. (Wk.6)

LAGOS

RELIGIOUS HOUSE: LAGOS

External: A week full of calling results in 700 nyra (equalling US\$1200) in hand, 40 kg. of fish per week, helpful calls with State Water and Electricity Boards, and initial TM set committees in two other states.

Internal: Week two evenings of charting the week and "special spectacular celebration" intensify corporate spirit.

Contradiction: Conquering magnitude of the funding tasks which hinders implementation of the other necessary tasks in launching the HDTS. (Wk.8)

KINSHASA

RELIGIOUS HOUSE: LUSAKA

External: Following Lusaka Regional Consult the document was printed by IBM copy facility, inkind. Major proposals are submitted to FAO and ZIMCO for agriculture and HDTS facility, respectively. Lusaka Metro three-week trek and expansion village circuits go into being.

Internal: The send-out of the Regional Consult team and the Week II RS-I Pedagogy highlight the week internally.

Contradiction: Keeping backup systems in pace with program advances. (Wk.8)

NAIROBI

RELIGIOUS HOUSE: NAIROBI

External: Swirl of end of quarter activities forces missional clarity as staff lays out designs for cluster consult, area council, continental council, Guardians' luncheon and proposals for Global Methods School Quarter III. Highlight of planning is seeing how all can be capped by fantastic New Year's Eve Celebration and wedding.

Internal: House is impacted by the globe and the future as it hears report on Lusaka Regional Consult, reflects on Nairobi consults and up-coming women's forums and completes week with celebration of Nigeria and ourselves through games and Nancy Were's second birthday.

Contradiction: Keeping program activities moving smoothly in midst of overextending resources. (Wk. 8)

RELIGIOUS HOUSE: KAMWELENI

External: All five surrounding villages agree to become part of cluster experiment. Cluster consult starts with 20 people from each village selected and food/enablement set up for each village to host one day of the consult as trucks are inkinded to provide transportation. HDTI digs trenches for water pipes.

Internal: House sends David Wambua to Kituni Consult in Western Kenya and hosts cluster consult team.

Contradiction: Keeping villagers effectively engaged as staff turns to the cluster. (Wk. 8)

RELIGIOUS HOUSE: KALWANI—SHAMALAGO

External: The first handcraft samples of the women's industry are finished and ready for display in the district trade and agricultural show.

Internal: The House receives Ambaji Kambale who opens new possibilities of inkind with the local Asian business community.

Contradiction: Engaging local men in industries that require long periods of time to come up. (Wk. 8)

RELIGIOUS HOUSE: MOMBASA

BOMBAY

RELIGIOUS HOUSE: BOMBAY NEXUS

RELIGIOUS HOUSE: BOMBAY

External: Two weeks of visits with central government and UN agencies confirms the need to share learnings with the world. Three day LEAP (Living Exemplary Ashram Practicum) events launch the ashram New Year (Diwali). Jawale and Chikale begin 15 week Regional Consult countdown.

Internal: Diwali discontinuity marks the New Year of the Hindu calendar and the celebration of the "Festival of Lights."

Contradiction: Turning promises and breakthroughs into spendable units. (Wk. 6)

DELHI

RELIGIOUS HOUSE: DELHI

MADRAS

RELIGIOUS HOUSE: HYDERABAD

External: State Khadi Board sanctions an Ambar Chakar (hand weaving) unit for Nadlapur. Housing colony completion maneuvers accelerate with electric wires up, plastering in finishing stages and drainage stones ready to be laid. Regional Consult team recruits 30 for Symposium.

Internal: Diwali discontinuity has teams still working Day I with shift in time design for Day II; Heidi Holmes is sent to be on faculty of Global Methods School.

Contradiction: Discerning the style that will be a visible demonstration and address on the village all the time. (Wk. 7)

CALCUTTA

RELIGIOUS HOUSE: CALCUTTA

External: First regional circuit to Bhubaneswar yields three day course set with the National Service Scheme (NSS) annual

camp for end of the quarter with representatives from all the 120 colleges across the State of Orissa. Two CYFs, the first set with government schools, combine to signal breakopen of the public sector.

Internal: In the midst of being on the road doing circuits the one team left in Calcutta continues House transformation during Day II.

Contradiction: Discerning the effective configuration and assignment of troops to bring off areal events. (Wk. 8)

SINGAPORE

RELIGIOUS HOUSE: SINGAPORE NEXUS

External: Nexus focuses attention on setup and launching of Medan Regional Consult.

Internal: Staff sends out Richard Kitney with balcony bar-b-que, welcomes Roy back from Jakarta and hosts Sandy Powell on way to Medan Regional Consult.

Contradiction: Nailing down the year's self-support. (Wk. 7)

RELIGIOUS HOUSE: KUALA LUMPUR

External: Introduction to District Officer of Kuala Selangor in the State of Negri Sembilan turns into a four-and-a-half hour "chat" and discovers a new movemental colleague. The region sends out Mark Welch and Mr. Yeoh, a Board Member, to the Medan Regional Consult.

Internal: House comes face-to-face (or hand-to-knee!) with "THE PEEPER" and village leadership aids him in choosing a new evening activity.

Contradiction: Keeping sight of the grand strategy of troop formation in the onrush of day-to-day tactics. (Wk. 7)

RELIGIOUS HOUSE: MEDAN

RELIGIOUS HOUSE: JAKARTA

External: Head of Planning Board in Tangerang suggests that he gets together Kabupaten agencies and departments in order to hear ICA K2 reports and to present future program. Call on Associate Minister for the Role on Women sells her on our methods, brings request for how staff can help her do her program. Pertamina Government Oil Company asks for LENS for PR Department regarding government assigned task of catalyzing community development.

Internal: House decides to fix generator one more time while waiting for responses from three proposals for new one; bureaucratic snarls threaten to hold up self-support work for PTP VI still longer revealing again the task facing the country of renewing those structures.

Contradiction: Using passion for community and government concerns for "their program" to carry them through to comprehensive planning. (Wk. 7)

RELIGIOUS HOUSE: UJUNG PANDANG

External: This is a week of visibility with 200 acacia trees delivered to cluster, preschool decor completed and three villages participating in chicken innoculation for a wild night of sight and sound. Tangkuru preschool continues on its own as Bontoa preschool teachers train and demonstrate to other cluster villages.

Internal: Cluster participates in training night, English lessons and roundtable; chicken innoculation night has many public and private sector guests for fish dinner.

Contradiction: Creating eventfulness in cluster villages without taking self-initiative from emerging village leadership. (Wk. 8)

HONG KONG

RELIGIOUS HOUSE: HONG KONG NEXUS

RELIGIOUS HOUSE: HONG KONG

External: A surprise site visit by the officers of the Hong Kong Optometric Association confirms a New Year's Day village tour by 200 members and obtains a promise of eye examinations for village elders. A translation workshop with Chinese colleagues overcomes a two-week block in obtaining Chinese copy for the Nam Wai brochure.

Internal: Chinese businessman proposes that one of our staff work as his development consultant, thereby strengthening house's self-support, enabling regional research and increasing business and government contacts.

Contradiction: Preparing the Nam Wai Foundation's planning brief in a way that increases village participation and trains board of directors in leadership skills. (Wk. 8)

RELIGIOUS HOUSE: KAOHSIUNG

External: Strategy for researching Home Industry possibilities for Fang Liao Hsiang (Township) is formulated. Implementation begins with letters and visits to friends and contributors, visits to local factories and setting up meeting of interested villagers in one village.

Internal: New decor composed of the tools of everyday work in the village brings fresh look to collegium room and many comments from guests.

Contradiction: Maintaining clear vision of comprehensive human development in the villages while using the economic to get foot in the door. (Wk. 8)

RELIGIOUS HOUSE: TAIPEI

External: Visits to 66 companies in two weeks yields US\$5,000 in commitments and US\$25,000 working for 1980-81; US\$8,500 deposited thus far in November. Taipei staff returns from Hai Ou with good reports on village and government visits concerning the Fang Liao expansion work. Of ten Chinese companies visited for the first time, eight will receive funding requests for the human development program in Taiwan.

Internal: Collegiums focus on planning of Week 9 biregional meeting in Hai Ou, reports from Philippines and Hong Kong, and development projections for the year.

Contradiction: Engaging the private sector in consistent support and catalyzing of village development options without creating a major authorization "wrangle" with the government. (Wk. 8)

RELIGIOUS HOUSE: MANILA

External: Development Trek receives 100 company commitments for 1981 (40% multinational, 60% Filipino) and winds up with one corporation committing 100,000 pesos for 1981. Third annual contributors' luncheon at Peninsula Hotel (during typhoon) hosts significant Filipino, Japanese, Australian and American supporters. LENS held with all top management of Philippine Explosives (subsidiary of ICI).

Internal: Week of collegiums studying book by Lin Yutang on Chinese social patterns addresses House with getting inside the Chinese sense of social conscience and of Confucian image of social glue.

Contradiction: Choosing the one door, from all that are opening, that will be the pivot in building the next 20 years. (Wk. 10)

RELIGIOUS HOUSE: CEBU

External: The first three-week Advanced Training School focuses on Early Learning and Nutrition and graduates 56 teachers. Task forces during the school build signs in the 24 Mactan villages: Creating 16 signboards, drainage systems, benches and cabinets in schools, inking seedlings for preschool gardens, and conducting economic forums and welfare forums. CARITAS donates 240 sacks of soya milk for the preschools.

Internal: Model kitchen and water tank are part of facility rehab; staff's high point is Ur celebration and faculty trip to huge waterfall celebrating the training school.

Contradiction: Orchestrating the future in finding economic basis for component programs in the 24. (Wk. 8)

RELIGIOUS HOUSE: DAVAO**TOKYO****RELIGIOUS HOUSE: TOKYO**

External: Two day Town Meeting on "Community Building" is held with 60 government and community leaders from all over Shizuoka Prefecture. Japan Management Association, No. 1 consulting organization, holds a three hour meeting with ICA to study LENS for national promotion. National Advisors (Guardians) Meeting is highlighted by an assignment workshop to staff nine LENS Seminars.

Internal: Great Thanksgiving feast celebrates both Canadian and American customs to the delight of the House and ten guests.

Contradiction: Orchestrating the national LENS faculty development as a formation strategy mode. (Wk. 9)

RELIGIOUS HOUSE: SEOUL

External: A week of preparation includes a women's meeting to plan New Women's Forum activity and a workshop leaders planning session for an "Old Grads Assembly". HRMs continue as penetration tools, enabling circuiting to Chung Chong Buk Province.

Internal: Self-support picture is emerging with eight sources for this month.

Contradiction: Remaining revolutionary when the public climate seeks order and security. (Wk. 7)

RELIGIOUS HOUSE: KUH DU E RI**RELIGIOUS HOUSE: FUKUOKA**

External: Advisors' meeting begins with workshop on human development in Japan and moves to reports, half of which are given by advisors. Two agree to go to Nagasaki circuit. Staff takes an overview of the Global Language School for the demonstration day.

Internal: Collegium takes on practical edge: India trip, sojourn program, newsletter and circuit.

Contradiction: Following through on maneuvers to break open the new position of advantage. (Wk. 7)

RELIGIOUS HOUSE: OSAKA

External: Director of Training Department at Hankyu Department Store escorts ICA staff to Kyoto for sightseeing trip in order to develop relationships for future work. Tokushima Prefecture Office telephones and requests staff return to set up schedule of activities for 1981. Friday night at the Institute goes to the movies to view *Shogun* and discuss Japan's role in the world today.

Internal: New English classes begin in new neighborhood, in Nara Prefecture and in Nagoya city.

Contradiction: Allowing teaching methods to go beyond the immediate method and be the deep address. (Wk. 8)

RELIGIOUS HOUSE: SAPPORO

External: Don Clark's visit catalyzes planning for Yubari LENS to firm base of support there and lay the groundwork for possible HDZ. Six colleagues join setup planning for Sapporo

LENS in March and TM is held in Akabira with 20 people from many groups. Takikawa roundtable participants are excited by brainstorming the past, present and future of education in Japan and plan to continue the discussion using TM methods.

Internal: Three house members attend Japanese wedding in Urakawa between Youth Club leaders and arranged by the social education director. This unusual opportunity for foreigners symbolizes the high acceptance of ICA in Urakawa.

Contradiction: Matching House style to the dignity of our image in our work. (Wk.7)

SYDNEY

RELIGIOUS HOUSE: SYDNEY

External: Film showing with Sisters of Charity opens up strong LENS/GWF possibilities. Wyong/New Castle circuit increases our knowledge of the region and community possibilities. Region inkind \$300 worth of whiteboards for fully carpeted, newly painted office and completes Summer '81 brochure.

Internal: Hosting nine people from Murrin Bridge makes it a lively week; Australia welcomes Suzanne Heilman, finally—and right in the middle of the fuel strike grounding all airplanes going out.

Contradiction: Reevaluation of budget has not occurred. (Wk.6)

RELIGIOUS HOUSE: MURRIN BRIDGE

External: New material catalyzes new burst in soft-goods, while further experimentation with dress forms continues and Ute-load of mulga wood gathered from Cobar. Community is excited with the seven foot by five foot Aboriginal Language Map of Australia.

Internal: Week-long heat wave climaxed by dry storm with several surrounding grass fires leaves community and auxiliary exhausted.

Contradiction: Creating avenues for encountering authentic, responsible aboriginal leadership. (Wk.8)

RELIGIOUS HOUSE: PERTH

External: First development push of the year happens as Marsha Stansbury is our first Order guest. Staff converts ancient development files into an up-to-date system and visits colleagues with an emphasis on a total commitment picture, not just for dollars.

Internal: Two LENS pedagogy sessions are spirit events as well as teaching events. Saturday afternoon sees whole House transforming yards and garden, celebrating with our own barbecue.

Contradiction: Ensuring the numbers and the focus to bring off the LENS as a great regional event in four days. (Wk.8)

RELIGIOUS HOUSE: ADELAIDE

External: Circuit to the Mt. Gambier Metro reestablishes contact with colleagues from the early 70's, one of whom still wears the guild symbol. Others are anxious to be part of the regional circuit.

Internal: Thanksgiving is celebrated with turkey feast at weekly roundtable; fourteen Australians in attendance (including recent RS-I grads) are impacted by Mayflower Compact and conversation on covenants which ends with toasts and claiming promises for Australia's legacy to the future.

Contradiction: Doing the effective planning that maintains missional thrust in midst of onset of Christmas and summer holiday mindset. (Wk.9)

RELIGIOUS HOUSE: MELBOURNE

External: First metro office established as base for work in Western Districts is key in broad three-metro circuit sweep.

Getting concrete feel of Melbourne Metro continues as dinner appointment to talk through CYF and Annual Subscription strategies. Staff hosts priest from South Melbourne and engages all troops in regional strategies.

Internal: Week II with a difference as whole House travels total 1400 kilometres to town of the Oakley's origin; American colleagues are introduced to Australian farm life and community celebration as Barry plays trumpet at dances and preaches at Ecumenical Service with 600 people present.

Contradiction: Keeping the annual subscription plate spinning. (Wk.8)

RELIGIOUS HOUSE: BRISBANE

External: Film night with 14 guests shows that explosion of colleagues is happening in response to story of future directions. This is also seen as 17 appointments are already set for development week and *Have-A-Go* Gazette copy is written.

Internal: Fourteen attend roundtable at Jago's house and have a great time in six-event "office olympics" after *The Story of Sadat*.

Contradiction: Building the missional thrusts for the teams for Quarter III instead of having images from the Regional Council undigested and unavailable. (Wk.9)

SUVA

RELIGIOUS HOUSE: APIA

External: Attendance at National Nutrition Conference establishes another building block in the Apia frame as ICA is NGO participant organization. Maryknoll grant application is on track with target date of February.

Internal: Appropriate technology wins as walk-in screened pantry is created with automatic door closer and Order Blue screen.

Contradiction: Intensifying the Long March commitment of the Project Guilds already engaged. (Wk.10)

RELIGIOUS HOUSE: AUCKLAND

External: Stronghold emerges in Hawkes Bay as two colleagues decide to attend Area Sydney Research Assembly. YMCA LENS vision workshop and Port Ahuriri CM: NZ give a toehold in Napier, and strong local public support is voiced in several newspapers. Unemployed Community Works Scheme youth see their own possibility during a workshop to create a five-point plan and six-month timeline for starting their own business.

Internal: Two important arrivals: ICA-NZ, Ltd. Certificate of Incorporation and inkind carpet for the main seminar rooms.

Contradiction: Creating new avenues and forms of the catalytic servant role. (Wk.9)

SAN FRANCISCO

RELIGIOUS HOUSE: SAN FRANCISCO

External: Symposium visits are targeted in metro meetings in Sacramento. San Francisco Altrusa Club donates \$150. Methods marketing starts down the road with three good visits.

Internal: In order to deal more effectively with the region and the metro we formed two new teams: One concentrates its energy on the region and the other on the metro; and the Permeation Guild has an exciting conversation on working women which helps create a screen for working in the business world.

Contradiction: Charting the journey of regional colleagues in order that their vocational commitment can be raised anew and addressed. (Wk.7)

RELIGIOUS HOUSE: SEATTLE

External: Seattle team gears up for the Year of the Region and launches calls for appointments for securing Regional Consult sponsorship, authorization and participation.

Internal: House celebrates Thanksgiving as four regional guests join staff for Daily Office with symbolic gifts for the movement followed by a traditional turkey dinner; on Saturday night House sees *Ordinary People* with two colleague couples followed by a thoughtful reflection.

Contradiction: Facing three competing priorities, all requiring full engine thrust. (Wk.9)

RELIGIOUS HOUSE: LOS ANGELES

External: Newsletter goes out to 50 new colleagues after recent Methods Academies and RS-1. Central Park Five launches every Tuesday Job Mart where 60 local applicants successfully meet four employers for real jobs at local trade school. HDTs proposals are written and major appointments made.

Internal: Constant flow of sojourners sees sheets changed on bed four times this week, and brings great liveliness to house, and roundtable in the lounge catalyzes depth conversation over Tagore.

Contradiction: Creating corporate designs that will release individual responsibility for the whole mission. (Wk.8)

RELIGIOUS HOUSE: RICHGROVE

RELIGIOUS HOUSE: PHOENIX

External: Arizona State University consult concludes with one-year and three-month timelines and task forces for the revitalization of public education in Phoenix. Staff and Gary Forbes meet with ten key Indian-related people to initiate framing of Pisinemo HDTs. Guardians host film show and hold development meeting.

Internal: Thanksgiving discontinuity finds staff scattered from Las Vegas to N.E. Arizona mountains; slot machines, as well as pine trees, are contemplative objects.

Contradiction: Developing systems to mesh Guardians and development into one great ongoing thrust. (Wk.9)

RELIGIOUS HOUSE: PISINEMO

External: New village entry sign made of adobe gives village an image of permanence. Meeting in Phoenix with Indian frame launches Pisinemo extension.

Internal: Two returning from assignments bring House to full 15 for day of feasting on Thanksgiving.

Contradiction: Putting program forms on new phase of HDP, after CEM. (Wk.9)

RELIGIOUS HOUSE: BILLINGS

External: Third Development Corporation Board meeting of the month finally produces results. New officers are elected and five employees are hired for "new" farm equipment industry.

Internal: Mary Goodsell, Carole LeMonnier, and Bill Carroll, three new national VISTA staff members, join house as sojourners.

Contradiction: Devoting proper time to both the project's needs and holiday celebration. (Wk.8)

RELIGIOUS HOUSE: DENVER

External: Eventful week finishes Colorado Springs circuit which includes an Ordway High School CYF with 27 participants in Crowley County Cluster Community, a CYF Assembly in Boulder's Fairview High School, the submission of a major funding proposal for the Regional Consult and a LENS presentation resulting in a scheduled LENS for early spring with Mobil Oil Co.

Internal: House enjoys the "plenty" of Thanksgiving feasts on Wednesday and Friday while whole staff engages in discontinuous celebrations with families.

Contradiction: Preparing for the Voyage for week 10 while the House "falls apart" and all troops are gone or doing self-support. (Wk.9)

EDMONTON

RELIGIOUS HOUSE: EDMONTON

External: Structural permeation breakthroughs occur with Fishing Lake Community Forum (Metis Settlement) sponsored by Esso Resources, plus first two Habitat Forums sponsored by the United Church of Canada. Both open doors to future, undergirded by "blue ribbon" film event at the house.

Internal: The future is blowing wildly in our faces, as Margaret Devor goes to Cincinnati, Clare Woodbury to United Church Conference in Vancouver, and the rest of the team prepare to move into the new 12 room facility.

Contradiction: Creating the imaginal designs of time and space that sustain life in these times. (Wk.8)

RELIGIOUS HOUSE: ANCHORAGE

External: Staff attends a college sponsored "Human Services" Conference and runs into some familiar workshop methods short of ICA methods. Contacts for future possible LENS are at conference. Greater part of week is spent sending letters to social service network introducing ICA work, plus a Week II in CS-I update with metro colleagues.

Internal: Despite "flu" bug hitting entire house, staff manages to have one fantastic Thanksgiving feast, complete with gifts from families to house.

Contradiction: Deciding to risk on delimited strategic victories. (Wk.9)

RELIGIOUS HOUSE: VANCOUVER

External: Victoria Metro Circuit involves vision workshop with Nanaimo downtown businessmen and opens possibility of Special Issues Forum or Community Forums. Laura Spencer and Raymonde Tickner spend a week on development and open leads for corporation funding and a church film show.

Internal: Self-support situation brightens as Jackie Cress takes special assignment to Minneapolis and later Alaska to work with Rural Ventures and Elizabeth Neat is notified that she is one of two finalists for the position of Executive Director of the Bellingham YWCA.

Contradiction: Corporately building the year's victory story that will clear foggy vision and motivate effortless regional team engagement. (Wk.7)

RELIGIOUS HOUSE: SASKATOON

RELIGIOUS HOUSE: WINNIPEG

External: LENS three day module with 12 participants representing two metros launches new regional thrust with marketing, pedagogy and strategizing sessions. Thursday evening visioning session excites all with images of regional pedagogues doing LENS across the region. House welcomes development and teams up with centrum colleagues to do LENS marketing calls as well as raise program funds.

Internal: Three job interviews plus resumes are submitted in the on-going self-support maneuver.

Contradiction: Neglecting to create the support systems while attending to immediate priority missional demands. (Wk.8)

HOUSTON

RELIGIOUS HOUSE: HOUSTON

External: New directions for programs take shape including an invitation from Sam Houston State University to do a special forum with faculty and Indonesian students.

Internal: The mystery continues to break in and remind staff of who is in charge as Larry Henschen is taken to the hospital with a ruptured appendix.

Contradiction: Formulating the image and mode of engagement of the new movement. (Wk. 6)

RELIGIOUS HOUSE: ASHERTON

RELIGIOUS HOUSE: DALLAS

External: "Indiahoma Week: Past, Present, Future" (CEM) has put the region and the project into a new position of advantage with extension being requested and enabled by ASCOG (eight county area). Document writing continues all week. Indiahoma leadership schedules a "Town Meeting" to workshop five key issues—extension, grocery store, tornado siren, festival, and Christmas lighting.

Internal: House families celebrate Thanksgiving with extended families in Durant and Omaha.

Contradiction: Building brilliant strategy to do extension through the HDP and build a regional movement in six metros before the Regional Consult. (Wk. 9)

RELIGIOUS HOUSE: MEMPHIS

RELIGIOUS HOUSE: DELTA PACE

RELIGIOUS HOUSE: NEW ORLEANS

External: Two teachers are sent to Houston Region bilingual RS-I. ICA receives \$1,000 from United Methodist Church.

Internal: House hosts Molly's parents with three days of feasting on inkind turkey and trimmings.

Contradiction: Successfully negotiating reversal of decision in Lowndes County to release participation in demonstration events. (Wk. 9)

RELIGIOUS HOUSE: ATLANTA

External: Gibson HDP experiences profound care during the Community Extension Module as structures of the Community Development are clarified. Community receives the mantle of carrying forth its sign of revitalization from representatives of the county frame.

Internal: Doug Allan on Management Trek and Claudia Cramer's visit, reviewing the Panchayat's statement on contradictions, provide opportunity to ground common global procedures and missional concerns.

Contradiction: Moving the House raises the question of who we are and what we are about for the next four years. (Wk. 6)

RELIGIOUS HOUSE: MIAMI

External: International dinner on Thursday night is used to introduce the Regional Consult to friends and colleagues in Orlando Metro. Initial excitement is encouraging. RS-1 last weekend with 20 around table reveals that new spirit analysis is called for.

Internal: Creation of 4 x 4 for Regional Consult story impacts House with consult potential and McCleskey leads workshop on church strategy.

Contradiction: Choosing priorities, phasing them and building maneuvers that will ensure our weekly victories toward Regional Consult. (Wk. 8)

CHICAGO

RELIGIOUS HOUSE: CHICAGO NEXUS

External: Program schedule continues to expand with requests for materials and staff for Evenings at the Institute, Voyage, Town Meeting, and Ethical Presence Symposium.

Internal: Collegium on construct for Women's PSU pushes participants outside themselves to reflect on possibility of seeing through this kind of construct into all the revolutions.

Contradiction: Pulling everything together at once for Continental Council and year end deadlines. (Wk. 10)

RELIGIOUS HOUSE: CHICAGO

External: Community and House bookkeepers join together for course with the Management Team. House members attend LENS pedagogy session at the Nexus and host the nexus and community at an Open House. Thanksgiving is celebrated with the community.

Internal: House is enlightened with new understanding of financial procedures as Management Team leads collegiums.

Contradiction: Having a holding image for Regional Consult which connects all other things the regional team is doing to in a creative edge fashion. (Wk. 9)

RELIGIOUS HOUSE: KANSAS CITY

External: Printer is secured for computer and new VOICE is sent to press.

Internal: Dallas and Donna Ziegenhorn travel to Arkansas for father's surgery; Sue Barkony and Juliette Jayasakera begin school at Lincoln Academy.

Contradiction: Coordinating efforts while team leadership shifts from day to day. (Wk. 7)

RELIGIOUS HOUSE: LORIMOR

RELIGIOUS HOUSE: MINNEAPOLIS

External: Director of RDC (Regional Development Commission) No. 5 agrees to make his region a pilot for whole Upper Great Lakes area of effective citizen participation in decision-making. This follows a demonstration of TM methods to RDC leadership across the state, sponsored by the new Waste Management Board. IBM schedules a December 11 demonstration of the PSU model for work group problem-solving.

Internal: Saturday morning workshop on "Indicative Ethics" reveals the size of the task ahead for those who are seriously committed to creating new social patterns and understandings and allows for greater resolve to take an active role in creating curriculum for ethical decision-making.

Contradiction: Allowing the burden of already-scheduled events to cloud the vision of the long-term needs and the requirements for immediate action to respond to them. (Wk. 8)

RELIGIOUS HOUSE: ST. LOUIS

External: Team sent to closing weekend of Cleveland Regional Consult. Youth Kevin Woodward makes presentation of HDP story to a United Methodist Church.

Internal: Storm windows finished as the first snow appears and youth hold down the fort in weeklong absence of adults.

Contradiction: Covering the self-support deficit. (Wk. 7)

RELIGIOUS HOUSE: DETROIT

External: Small Business Administration two-hour long visit breaks opens possibility of replicable financing model for small industries that could reach Detroit neighborhood through Munising.

Internal: Family expands to regional team which engages all in the great Thanksgiving celebration.

Contradiction: Finding the way to pull our diffused teams together to work out of the same maneuver and enable events to happen. (Wk. 9)

RELIGIOUS HOUSE: CLEVELAND

External: Regional team sends regional newsletter with report on consult and calendar.

Internal: Thanksgiving breakfast—19 around the table includes Jay, Bill and Laurie Fenton and Stuart and Elena Harper.

Contradiction: Learning to use the long and short swords without cutting your arms off. (Wk. 9)

RELIGIOUS HOUSE: INDIANAPOLIS

External: Students and teacher at the Kent School of Social Work, a part of the University of Louisville at Louisville, Kentucky, see the global film and discuss the results of the Regional Consult.

Internal: Thursday, ten people, house staff and guests feast on the traditional fare; one guest provides the turkey; two drive up from Cincinnati. Readings on the Mayflower Compact and The Declaration of Interdependence by Henry Steele Commager prompts a lively discussion.

Contradiction: Naming and honoring a crucial role for everyone on the team. (Wk. 9)

NEW YORK

RELIGIOUS HOUSE: NEW YORK

External: New York Regional Team writes and submits Regional Consult proposal to Newmount Mining for Phoenix Consult through Leonard Harris, a Guardian, from Australia.

Internal: Thanksgiving and Quarter II celebrations with turkey, ham, and steak with all the trimmings, are highlighted by the Macy Parade and a New York theater climax for this quarter.

Contradiction: Involving colleagues in each metro in strategic planning and action toward the Regional Consult. (Wk. 9)

RELIGIOUS HOUSE: PITTSBURGH

External: Regional team has largest development week in recent memory—\$2,500 in hand and \$500 pledged—and two guardians helping get more contacts.

Internal: Storm changes night-on-the-town to night-at-home as the development team is hosted.

Contradiction: Putting together the pieces to build a movement. (Wk. 8)

RELIGIOUS HOUSE: WIDEN

External: Widen slide show is presented to West Virginia Sociologists Convention where academicians are genuinely glad to see that real change is actually going on.

Internal: Whole House gathers for a great Thanksgiving feast.

Contradiction: Telling and retelling the CEM story to evoke participation. (Wk. 9)

RELIGIOUS HOUSE: ROCHESTER

External: Imaginal Education training and "New Family and Individual Retreat" include adjusting one curriculum and building another. Two weeks on the road spent marketing Charlotte Valley Firewood, consulting with Nunda and Albany Boys Club, doing LENS appointment with Rochester Public Library and inking sheet rock for renovation.

Internal: Renovation continues on third floor to prepare for family retreat; Al returns to celebrate birthday at house church and youth report cards are received.

Contradiction: Taking time to reflect, correct and plan for Quarter III. (Wk. 8)

RELIGIOUS HOUSE: PHILADELPHIA

External: First RS-I of year gives impetus to movement formation. PSU at metro colleague's home builds model for a community development proposal.

Internal: Thanksgiving celebration transforms house into a banquet hall as a dozen different, delicious dishes are devoured.

Contradiction: Breaking open a strategy to release development money from Philadelphia Region. (Wk. 9)

RELIGIOUS HOUSE: WASHINGTON, D.C.

External: Fourth Annual Community Thanksgiving Feast serves turkey with all the trimmings to 150 people. Washington Metro and House celebrate super feast with 40 on Thanksgiving Day. Early Learning Center staff in Ivy City takes advantage of holiday for workshop on Imaginal Methods Friday.

Internal: After super Thanksgiving celebration, which includes birthday celebration, House experiences four days of discontinuous activity ending with Advent House Church and housewarming at the Mann's.

Contradiction: Forging out the new structures that will ensure a victorious transition. (Wk. 10)

RELIGIOUS HOUSE: BOSTON

External: Carl Stock conducts Town Meeting with Cambridge Housing Authority and 20 participating agencies which provides for solid planning and elicits requests for methods training.

Internal: What a Thanksgiving! A procession from the fifth floor down to a celebration which includes Starks and Boston Houses, Drew Hill and two friends attending college here and regional colleagues. Congregational dinner on Sunday for Jim and Judy provides occasion for corporate reflection on covenant and the family.

Contradiction: Enabling participation in area and continental councils. (Wk. 9)

RELIGIOUS HOUSE: STARKS

External: S.E.C. president calls special meeting to deal with finances. S.E.C. board takes financial issues on their shoulders. Starks VOICE is done largely by community residents in absence of ICA staff.

Internal: Thanksgiving is celebrated with the Boston House as well as Sunday Feast of Beginnings: Advent House Church, birthday of Louisa Hamachek and congregational dinner for Judy and Jim.

Contradiction: Keeping all the plates spinning with only one staff on site for next two weeks. (Wk. 9)

MONTREAL

RELIGIOUS HOUSE: MONTREAL

External: A core of five women from the Business and Professional Women's Association share in training for next week's workshop, most of them have already experienced ICA methods from as far back as six years ago. The Sisters of St. Anne in Lachine confirm a donation of \$2,000 for local, global program. Fr. Touchette, Redemptorist and Vice-president for Canadian ICA, spends half a day advising staff on continuing relationships with the province's orders.

Internal: The House is prepared for winter with the sealing of all windows and doors as space is rearranged for 20 in preparation for area PSU on Profound Commitment.

Contradiction: Accomplishing the immediate and visible while maintaining the mundane momentum of the long term. (Wk. 8)

RELIGIOUS HOUSE: TORONTO

External: Day-and-one-half strategizing session captures the quarter's victories, advantages and out of six-month anticipations, forges a two-week drive to "Conquer the Regional Marks" by: Setting up the Demonstration

Programmes; Empowering the Training Inc. Team; Manifesting the Seasonal Spirit and Intensifying the Missional Context. Annual Appeal Research Document is mailed to 90 colleagues who were visited. Staff attends area PSU on the Profound Commitment Course, providing the occasion to articulate the life questions being raised today and give form to the course design.

Internal: House dives into regular 30 minute swim schedule at nearby pool and celebrates the great city with donated seats at *The Torontonians*; Jessica Farrer gets a grand clap for excellent report card.

Contradiction: Wedging 48-hour days into 24 in order to conquer the regional marks. (Wk.9)

RELIGIOUS HOUSE: OTTAWA

RELIGIOUS HOUSE: HALIFAX

MEXICO CITY

RELIGIOUS HOUSE: GUATEMALA CITY

External: Visitors from Inter American Development Bank, a bakery oven expert, a basket export marketing agent and irrigation experts from Israel give guilds many opportunities to tell the Conacaste story while touring guests through the village. The preschool has 14 new students due to teachers' Family Visitation Day. The Comite de Reconstrucion, Department of the government, delivers a block machine so that new training center and auxiliary house construction can begin.

Internal: The congregational dinner for Estaban Guch and Odelia Estrada, with 15 family members from Conacaste and Chimaltenango in attendance, presents an occasion to reflect on and celebrate the meaning of the missional family, covenant and symbol for Central America in the 20th Century.

Contradiction: Clarifying coordinated thrusts in relation to weekly maneuvers and the year's objectives. (Wk. 8)

HAVANA

RELIGIOUS HOUSE: KINGSTON

External: Student from Guyana, who is attending the University of West Indies in Kingston, visits village as a part of his field work with the Institute. Team deployed to Caracas reports many manoeuvres working on development and self-support arenas. Social programs enter new phase in light of EEC grant monies designated for that dimension of the Project.

Internal: First use of Japan version of Daily Ritual is "happening" that starts serious brooding about staff's own work on the ritual. Two villagers join House for Roundtable.

Contradiction: Focusing on getting "do's" done rather than turning them into life-changing events. (Wk.7)

LIMA

RELIGIOUS HOUSE: LIMA

External: ICA legalization is confirmed in a visit by Ruth Archibald to the Minister of Justice. Christmas commission involves new residents in planning a vital holiday celebration.

Internal: Roundtable hosts five families from Azpitia for a lively reflection on the style of the general.

Contradiction: Imagining that somebody else must be in charge. (Wk.7)

CARACAS

RELIGIOUS HOUSE: CARACAS

BUENOS AIRES

RELIGIOUS HOUSE: SANTIAGO

External: The Great Week of the CEM is signaled in many ways—launched by arrival of colleagues from Chicago and Venezuela and greatly enhanced by participation of Azpitia colleagues Maria and Nolberto. Document in Spanish and English is completed for final fiesta, benches are built for plaza, five communities are visited by the extension team resulting in six persons from the community of Batuco joining in the festive closing which also included the Peace Corps director and his wife who discover we are related to JWM whom they admired and respected.

Internal: House burns to the ground in middle of CEM; community rallies with support with sweaters, housing for two participants from Azpitia who arrive after the event, breakfast from the kitchenless in the bakery, and donations of money from Bakery and Demonstration Farm to aid the work of rehabilitation.

Contradiction: Taking advantage of all victories in a way that sustains momentum and motivation toward the new future. (Wk.7)

RIO DE JANEIRO

RELIGIOUS HOUSE: RIO DE JANEIRO

External: Plaza and garden cleanup in preparation for Bananeiras Community Fair during CEM. Coca-Cola donates US\$1000 plus two other gifts; Lojas Americanas and Servenco are graciously received. PR brochure is camera ready with Pepsi picking up the tab. Registration with Rio's "Community Chest" ensures essential monies for next year.

Internal: English class with eight students secures self-support maneuver, and proceedings continue in trying to get a telephone for the Rio office.

Contradiction: Nailing down the keystone victory for the quarter while moving on several fronts. (Wk.6)

THE GLOBAL ORDER CENTRUM REPORT

BRUSSELS
BOMBAY
SINGAPORE
HONG KONG
CHICAGO

QUARTER II WEEK TEN

GLOBAL DEVELOPMENT CENTRUM

Global Development Centrum reports that the educational proposal for creating new, comprehensive curriculum was well received with a verbal commitment for funds from U.S. Department of Education and a \$10,000 check from a Guardian as part of private match. New monthly reports to houses provide latest data on pledgers' status. The key contradiction is in the arena of realizing that short-range plans do not enable the shift from individuals and Annual Appeal to corporations and foundations.

GLOBAL RESEARCH CENTRUM

Global Research Centrum reports that 30 participants from four metros in the Atlanta Region attend Ethical Presence Symposium. Research Centrum entertained the Chicago Nexus at Wassail Party at which guests selected quotes for the next Journal. Initial model for the North American Continental Council (with procedures for creating North American strategy) created by Research. Methodist Bishop Dewitt of Northern Illinois visits us at "An Evening With the Bishop", opening possibility of new relations with the Church in Chicago. The Ethical Presence Symposium participants reached a deep level of caring in answering the question of ethical issues. The Symposium is a replicable model for a movement formation tool relative to the Regional Consult. The key contradiction lies in the arena of visioning great quarter accomplishments and encountering conflicting weekly priorities.

GLOBAL OPERATIONS CENTRUM

Global Operations Centrum reports the completion of the Regional Consult manual after the first four Consults and London Lab. Academy modules are readied for the road Quarter III. Phase I rehearses the family as mission through cycle plan. The convergence of multi-training on the road with the formal training provided by the Academy merges the global and the local. The key contradiction is in the arena of program intensification to allow practical faculty development and the creation of the delivery systems.

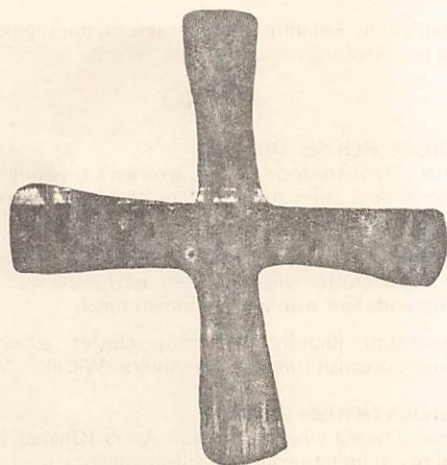
GLOBAL MANAGEMENT CENTRUM

Global Management Centrum Chicago reports that in Chicago, Academy grads swell the ranks in Facility Services in preparation for North America Continental Council while continued Management Module Trek and Bananeiras CEM absorb several "regulars". The corporate Mike and Mary Hoff dynamics survive first week of being on their own with flying colors. Foundational nature of the Economic revealed once again as Management Module opens the door for discussion in many areas beyond the practical aspects of bookkeeping. The key contradiction lies in the arena of developing the spirit bifocals that permit the long-range focus in the midst of intense immediate demands.

THE GLOBAL ORDER REPORT

QUARTER II WEEK ELEVEN

DECEMBER 8—DECEMBER 14, 1980



MADRID

RELIGIOUS HOUSE: MADRID

External: Three day trek to Zaragoza Province unearths solid possibilities of "sets" in ten to twelve villages. House attends Family Conference of CARITAS in Salamanca and prepares local colleagues for the two Encuentros there next week II.

Internal: Madrid colleagues excited by charting and artform methods in House's second Saturday methods training program.

Contradiction: Finding the fresh approach that will break open sets across Spain. (Wk. 9)

LONDON

RELIGIOUS HOUSE: LONDON

External: House and Ed Vergara host and teach 10-participant Training Weekend. Six volunteers for Third World involvement and four Movement colleagues attend. Scott Brader Company has invited proposal for training and planning seminars for entire staff.

Internal: Preparing for In-House 48 hour training weekend catapults staff into another round of refurbishing dormitories and corporate space.

Contradiction: Clarifying the extensive dimension of the external task. (Wk. 7)

RELIGIOUS HOUSE: GLASGOW

External: A week of building-releasing construct of forum design for school leavers and mailed to the Youth Christian Workers Movement in Manchester. First Draft of questionnaire-letter to solicit colleague participation for Regional Consult planning and recruitment is written.

Internal: House experiments and approves new roundtable construct and continues to update metro/polis and cadre files.

Contradiction: Seeing the urgency of Regional Consult in the midst of other urgent events. (Wk. 9)

And Moses prayed, "Show me thy glory." The Lord answered, "I will make all my goodness pass before you, and I will pronounce in your hearing the name YAHWEH. I will be gracious to whom I will be gracious, and I will have compassion on whom I will have compassion." But he added, "My face you cannot see, for no mortal man may see me and live." The Lord said, "Here is a place beside me. Take your stand on the rock and when my glory passes you by, I will put you in a crevice of the rock and cover you with my hand until I have passed by. Then I will take away my hand, and you shall see my back, but my face shall not be seen."

Exodus 33:18-23

RELIGIOUS HOUSE: BRISTOL

External: Regional Consult recruitment push nets 60 yeses. Contact is made with Electricity Board to begin electrification of Terrapin Building. Prabahkar Gurav and Tim Casswell have development calls with British Petroleum, Texaco and Ford to elicit support and consult participation.

Internal: House celebrates by going to movie *Airplane* and viewing EG produced puppet show after great planning weekend.

Contradiction: Hanging loose in the saddle on a horse that has never been ridden before without falling off. (Wk. 7)

PARIS

RELIGIOUS HOUSE: PARIS

External: Film show at Secour Catholic with 30 in attendance is well received and opens doors to depth French framing of non-governmental organizations.

Internal: First roundtable is held in colleague's home, and informal dinner celebration highlights Week II.

Contradiction: Imaging the whole framework of divergent missional thrusts so the power of the regional team comes off. (Wk. 9)

RELIGIOUS HOUSE: BRUSSELS NEXUS

External: Religious order luncheon held in nexus hosts eight from religious orders in Belgium. Guests include the head of all Belgian and European religious orders and head of Belgian female religious orders. Precouncil brooding starts in two collegiums.

Internal: Robert Caulfield hosts Christopher Warry for a week, while his mother is in India, and Fisher family, Ken, Paige, Ajit and Aidan arrive to claim space set aside for them repeatedly during quarter, which brings combined Phase I structures of nexus and house to 10 children.

Contradiction: Getting the Continental Council off the ground in the midst of consults' demands. (Wk. 8)

RELIGIOUS HOUSE: BRUSSELS

External: A training day in Brugge for 18 missionaries from 12 countries, led by Msgr. Vancauwelaert, results in yeses to Formation Fortnight and openings in many countries.

Internal: Continental Council creates exciting set/regional consult fortnight (Primal Community: The Urban Challenge) campaign.

Contradiction: Creating the six-month regular circuit calendar to pull off the whole campaign. (Wk. 10)

FRANKFURT**RELIGIOUS HOUSE: FRANKFURT**

External: Formation continues as people work on Five Year Town Meeting Report, the artpiece for an Advent mailing, a pledge letter, and the history and organizational grid of the Frankfurt and Koblenz Metros. A comprehensive beautiful Vienna package pulls together the victories of the areal strike force Weeks 5 and 6, and sends them to the Panchayat, the Assignment Commission and the areal and continental houses, with claims and possibilities for the past, present and future.

Internal: Remaneuvering session states achievable corporate victories before Christmas in six arenas and claims Advent as a doorway to the new with wreath making, Advent reflections and preparations for the EG Christmas presentation.

Contradiction: Completing the Advent mailing as a powerful tool for formation and development. (Wk. 10)

RELIGIOUS HOUSE: AMSTERDAM

External: Week II training event, "Profound Creativity Weekend", with house and five Dutch persons present gives a new way to see profound training happening within 40 hour time span that releases context, methods and celebration.

Internal: Job searches, finance collegium and putting together development maneuvers gets staff ready for Thanksgiving as British, German, Dutch and North American cultures come together to celebrate the American tradition with feasting and sharing stories.

Contradiction: Operating out of a "supply the demand" mindset rather than creating the events and programs for training that enable local movemental leadership to emerge. (Wk. 9)

RELIGIOUS HOUSE: BERLIN

External: Area team has the first core meeting with Catholics and Protestants in Vienna to discern major contradiction with their parishioners, in order to design a February training program.

Internal: House creates new decor to announce to itself that the upcoming area council will be in Berlin.

Contradiction: Grounding movement future in Berlin after the universe itself has changed. (Wk. 9)

ROME**RELIGIOUS HOUSE: ROME**

External: Development trek is directed towards Rome religious order framing. Saturday guest night that hosts eight focuses on GWF and initiates training core of women.

Internal: House hosts centrum development team, and first self-supporter check arrives as intensified English teaching maneuvers continue.

Contradiction: Breaking loose self-support without losing external momentum. (Wk. 9)

STOCKHOLM**RELIGIOUS HOUSE: COPENHAGEN**

External: New contacts and appointments break open two new metros. World Health Organization offers a contract to initiate and develop a conference on urban care in 1982. Advent mailing drive is launched.

Internal: House participants in fast and feast with second follow up Thanksgiving feast. Youth make kangaroo cookies for several Advent festivities

Contradiction: Relating in practical form the regional needs to the potential movement troops. (Wk. 9)

CAIRO**RELIGIOUS HOUSE: GIZA**

External: Door-to-door survey, women's meeting and well drilling in Beni Suliman symbolizes the half way point with three villages initiated and three more to go.

Internal: Diesel pump breakdown forces the auxiliary to haul water from cluster village where new well was drilled—evening ends late with a great Indian meal.

Contradiction: Rapidly expanding cluster activities out-running successful framing maneuvers. (Wk. 8)

RELIGIOUS HOUSE: ABIDJAN

External: During circuit to region Accra (Ghana) 40 people attend two training sessions in village meeting methods. 28 of these people then form the leadership teams for four simultaneous day-long village meetings in which more than 650 people participate. The meetings are followed by a plenary which draws the village meeting results together into nine cluster programs with 27 components. The circuit ends with the village leadership planning the inauguration of their stakes and guilds.

Internal: House gets together after three weeks and reports on the Accra regional circuit, Andrew's first merit, a tutoring job, and new blue door panels, all of which are celebrated with an Abidjanaise brochette feast, followed by a relaxing evening of live jazz, which initiates the area fast.

Contradiction: Finding the key to opening the Ivory Coast. (Wk. 9)

LAGOS**RELIGIOUS HOUSE: LAGOS**

External: A week full of calling results in 700 nyra (equalling US\$1200) in hand, 40 kg. of fish per week, helpful calls with State Water and Electricity Boards, and initial TM set committees in two other states.

Internal: Week two evenings of charting the week and "special spectacular celebration" intensify corporate spirit.

Contradiction: Conquering magnitude of the funding tasks which hinders implementation of the other necessary tasks in launching the HDTS. (Wk. 8)

KINSHASA**RELIGIOUS HOUSE: LUSAKA**

External: Following Lusaka Regional Consult the document was printed by IBM copy facility, inkind. Major proposals are submitted to FAO and ZIMCO for agriculture and HDTS facility, respectively. Lusaka Metro three-week trek and expansion village circuits go into being.

Internal: The send-out of the Regional Consult team and the Week II RS-I Pedagogy highlight the week internally.

Contradiction: Keeping backup systems in pace with program advances. (Wk. 8)

NAIROBI

RELIGIOUS HOUSE: NAIROBI

External: Swirl of end of quarter activities forces missional clarity as staff lays out designs for cluster consult, area council, continental council, Guardians' luncheon and proposals for Global Methods School Quarter III. Highlight of planning is seeing how all can be capped by fantastic New Year's Eve Celebration and wedding.

Internal: House is impacted by the globe and the future as it hears report on Lusaka Regional Consult, reflects on Nairobi consults and up-coming women's forums and completes week with celebration of Nigeria and ourselves through games and Nancy Were's second birthday.

Contradiction: Keeping program activities moving smoothly in midst of overextending resources. (Wk. 8)

RELIGIOUS HOUSE: KAMWELENI

External: All five surrounding villages agree to become part of cluster experiment. Cluster consult starts with 20 people from each village selected and food/enablement set up for each village to host one day of the consult as trucks are inkinded to provide transportation. HDTI digs trenches for water pipes.

Internal: House sends David Wambua to Kituni Consult in Western Kenya and hosts cluster consult team.

Contradiction: Keeping villagers effectively engaged as staff turns to the cluster. (Wk. 8)

RELIGIOUS HOUSE: KALWANI—SHAMALAGO

External: The first handcraft samples of the women's industry are finished and ready for display in the district trade and agricultural show.

Internal: The House receives Ambaji Kambale who opens new possibilities of inkind with the local Asian business community.

Contradiction: Engaging local men in industries that require long periods of time to come up. (Wk. 8)

RELIGIOUS HOUSE: MOMBASA

BOMBAY

RELIGIOUS HOUSE: BOMBAY NEXUS

External: Assignment and departure of GMS faculty and GWF team catalyzes comprehensive look at remaining quarter's program calendar and assignments.

Internal: The week of departures: Salves go to Taiwan for this year's assignment, eight nexus personnel depart for Maliwada for GMS, leaving the nexus feeling spacious and empty.

Contradiction: Ongoing quarter systems and program require total effort, yet now is the time for space and preparation for what is to come next. (Wk. 7)

RELIGIOUS HOUSE: BOMBAY

External: Two weeks of visits with central government and UN agencies confirm the need to share learnings with the world. Three day LEAP (Living Exemplary Ashram Practicum) events launch the ashram New Year (Diwale). Jawale and Chikale begin 15-week regional consult countdown.

Internal: Diwali discontinuity marks the New Year of the Hindu calendar and the celebration of the "Festival of Lights."

Contradiction: Turning promises and breakthroughs into spendable units. (Wk. 6)

DELHI

RELIGIOUS HOUSE: DELHI

External: Fifty plan Mahatma Gandhi Road Shramdan during village assembly. Village leaders meet with representatives from service clubs at Ghariabad restaurant, and catalyze commitment to preparation for Sikror Open Day, December 15. Norwegian Embassy comes for site visit and writes check for \$4,000 four days later.

Internal: Gautam's cousin, Ghansham Gosavi from Sevagram, spends one week with house and becomes key team member while several auxiliary are away on Diwali discontinuity.

Contradiction: Keeping track of details in midst of all possibilities. (Wk. 8)

MADRAS

RELIGIOUS HOUSE: HYDERABAD

External: State Khadi Board sanctions an Ambar Chakar (hand weaving) unit for Nadlapur. Housing colony completion maneuvers accelerate with electric wires up, plastering in finishing stages and drainage stones ready to be laid. Regional Consult team recruits 30 for Symposium.

Internal: Diwali discontinuity has teams still working Day I with shift in time design for Day II; Heidi Holmes is sent to be on faculty of Global Methods School.

Contradiction: Discerning the style that will be a visible demonstration and address on the village all the time. (Wk. 7)

CALCUTTA

RELIGIOUS HOUSE: CALCUTTA

External: First regional circuit to Bhubaneswar yields three day course set with the National Service Scheme (NSS) annual camp for end of the quarter with representatives from all the 120 colleges across the State of Orissa. Two CYFs, the first set with government schools, combine to signal breakopen of the public sector.

Internal: In the midst of being on the road doing circuits the one team left in Calcutta continues House transformation during Day II.

Contradiction: Discerning the effective configuration and assignment of troops to bring off areal events. (Wk. 8)

SINGAPORE

RELIGIOUS HOUSE: SINGAPORE NEXUS

External: Nexus focuses attention on setup and launching of Medan Regional Consult.

Internal: Staff sends out Richard Kitney with balcony bar-beque, welcomes Roy back from Jakarta and hosts Sandy Powell on way to Medan Regional Consult.

Contradiction: Nailing down the year's self-support. (Wk. 7)

RELIGIOUS HOUSE: KUALA LUMPUR

External: Regional development week puts \$7,000 in the works. Evening calls cultivate key authorization figures while cementing approval of extension proposals (and budgets!) for Kuala Pilah and Kuala Selangor Districts. Construction of new Sungai Lui agricultural complex is begun.

Internal: Brian Townley and Russell White, enroute to Bontoa, and Scott Leggett, via Bubun and enroute to Nurada (Kelapa Dua), are welcomed and immediately put to work digging pits.

Contradiction: Creating the optimal deadline strategy for regional maneuvers. (Wk. 8)

RELIGIOUS HOUSE: MEDAN

RELIGIOUS HOUSE: JAKARTA

External: Head of Planning Board in Tangerang suggests that he gets together Kabupaten agencies and departments in order to hear ICA K2 reports and to present future program. Call on Associate Minister for the Role on Women sells her on our methods, brings request for how staff can help her do her program. Pertamina Government Oil Company asks for LENS for PR Department regarding government assigned task of catalyzing community development.

Internal: House decides to fix generator one more time while waiting for responses from three proposals for new one; bureaucratic snarls threaten to hold up self-support work for PTP VI still longer revealing again the task facing the country of renewing those structures.

Contradiction: Using passion for community and government concerns for "their program" to carry them through to comprehensive planning. (Wk.7)

RELIGIOUS HOUSE: UJUNG PANDANG

External: This is a week of visibility with 200 acacia trees delivered to cluster, preschool decor completed and three villages participating in chicken inoculation for a wild night of sight and sound. Tangkuru preschool continues on its own as Bontoa preschool teachers train and demonstrate to other cluster villages.

Internal: Cluster participates in training night, English lessons and roundtable; chicken inoculation night has many public and private sector guests for fish dinner.

Contradiction: Creating eventfulness in cluster villages without taking self-initiative from emerging village leadership. (Wk.8)

HONG KONG

RELIGIOUS HOUSE: HONG KONG NEXUS

RELIGIOUS HOUSE: HONG KONG

External: A two-day maneuver results in Foundation Board receiving for approval translated paragraphs describing the duties of five proposed subcommittees. Nam Wai brochure victory is lined up with design, translation, paper and printing secured.

Internal: House hosts development team and area priors trek of six from Manila, Cebu, and Davao, pushing imagination beyond the everyday into the unknown; and marks the death of Joe Nagy's father while on the march.

Contradiction: Figuring how to win on two fronts—building support in Hong Kong business community and establishing the community behind the Foundation—while not losing momentum. (Wk.9)

RELIGIOUS HOUSE: KAOHSIUNG

External: Two-day Island Meeting (Taipei and Kaohsiung Regions) produces clarity on Hai Ou strategy, cluster formation circuit rationale and Human Development Orientation Session model, and is highlighted by in-depth SEAPAC report, Maharashtra 232 report and tremendous celebration.

Internal: The occasion of American Thanksgiving gets transformed into great East-West feast involving government and village leaders along with Kaohsiung and Taipei Houses. Entertainment includes songs from the Chinese, Western and Indian cultures and everyone gets involved.

Contradiction: Unlocking the operating mode that will release village initiative to do their own projects. (Wk.9)

RELIGIOUS HOUSE: TAIPEI

External: Visits to 66 companies in two weeks yields US\$5,000 in commitments and US\$25,000 working for 1980-81; US\$8,500

deposited thus far in November. Taipei staff returns from Hai Ou with good reports on village and government visits concerning the Fang Liao expansion work. Of ten Chinese companies visited for the first time, eight will receive funding requests for the human development program in Taiwan.

Internal: Collegiums focus on planning of Week 9 biregional meeting in Hai Ou, reports from Philippines and Hong Kong, and development projections for the year.

Contradiction: Engaging the private sector in consistent support and catalyzing of village development options without creating a major authorization "wrangle" with the government. (Wk.8)

RELIGIOUS HOUSE: MANILA

External: Development Trek receives 100 company commitments for 1981 (40% multinational, 60% Filipino) and winds up with one corporation committing 100,000 pesos for 1981. Third annual contributors' luncheon at Peninsula Hotel (during typhoon) hosts significant Filipino, Japanese, Australian and American supporters. LENS held with all top management of Philippine Explosives (subsidiary of ICI).

Internal: Week of collegiums studying book by Lin Yutang on Chinese social patterns addresses House with getting inside the Chinese sense of social conscience and of Confucian image of social glue.

Contradiction: Choosing the one door, from all that are opening, that will be the pivot in building the next 20 years. (Wk.9)

RELIGIOUS HOUSE: CEBU

External: The first three-week Advanced Training School focuses on Early Learning and Nutrition and graduates 56 teachers. Task forces during the school build signs in the 24 Mactan villages: Creating 16 signboards, drainage systems, benches and cabinets in schools, inking seedlings for preschool gardens, and conducting economic forums and welfare forums. CARITAS donates 240 sacks of soya milk for the preschools.

Internal: Model kitchen and water tank are part of facility rehab; staff's high point is Ur celebration and faculty trip to huge waterfall celebrating the training school.

Contradiction: Orchestrating the future in finding economic basis for component programs in the 24. (Wk.8)

RELIGIOUS HOUSE: DAVAO

TOKYO

RELIGIOUS HOUSE: TOKYO

External: Two day Town Meeting on "Community Building" is held with 60 government and community leaders from all over Shizuoka Prefecture. Japan Management Association, No. 1 consulting organization, holds a three hour meeting with ICA to study LENS for national promotion. National Advisors (Guardians) Meeting is highlighted by an assignment workshop to staff nine LENS Seminars.

Internal: Great Thanksgiving feast celebrates both Canadian and American customs to the delight of the House and ten guests.

Contradiction: Orchestrating the national LENS faculty development as a formation strategy mode. (Wk.9)

RELIGIOUS HOUSE: SEOUL

External: A week of preparation includes a women's meeting to plan New Women's Forum activity and a workshop leaders planning session for an "Old Grads Assembly". HRMs continue as penetration tools, enabling circuiting to Chung Chong Buk Province.

Internal: Self-support picture is emerging with eight sources for this month.

Contradiction: Remaining revolutionary when the public climate seeks order and security. (Wk.7)

RELIGIOUS HOUSE: KUH DU'E RI

RELIGIOUS HOUSE: FUKUOKA

External: GLS Demonstration Day with eight participants is great event — the journey is the happening — and breaks open new possibility for use in the future. Seven people come to do volunteer work.

Internal: Thursday house meeting is held with advisors and friends on housing issues and it turns into a Thanksgiving party with pumpkin pie. Mary Choy from Korea visits.

Contradiction: Getting practical picture for December and next quarter planning. (Wk.9)

RELIGIOUS HOUSE: OSAKA

External: Impex Chemical sets date for LENS (first week in February), and Osaka Open LENS date set for first week in March. LENS training weekend nets one new teacher, Hiroshi Kobori, for the Impex LENS.

Internal: Mally Balm travels to Nagoya to teach at English Academy, Michihiro Shoji joins house as sojourner, and 22 guests join House in celebrating American Thanksgiving Feast cooked by Indian staff.

Contradiction: Finding the key victory of the week in order to unlock the corporate power. (Wk.9)

RELIGIOUS HOUSE: SAPPORO

External: Don Clark's visit catalyzes planning for Yubari LENS to firm base of support there and lay the groundwork for possible HDZ. Six colleagues join setup planning for Sapporo LENS in March and TM is held in Akabira with 20 people from many groups. Takikawa roundtable participants are excited by brainstorming the past, present and future of education in Japan and plan to continue the discussion using TM methods.

Internal: Three house members attend Japanese wedding in Urakawa between Youth Club leaders and arranged by the social education director. This unusual opportunity for foreigners symbolizes the high acceptance of ICA in Urakawa.

Contradiction: Matching House style to the dignity of our image in our work. (Wk.7)

SYDNEY

RELIGIOUS HOUSE : SYDNEY

External: Great victory of \$1,000 of inkind goods for the month includes white board for downtown office and tires for Murrin Bridge Kombi—van. Staff participates in local community meeting on educational issues in key metro shire.

Internal: House celebrates Thanksgiving roundtable in fine style with celebrative Australian meal finishing with pumpkin pie.

Contradiction: Bracketing old priorities and moving on the new. (Wk.9)

RELIGIOUS HOUSE: MURRIN BRIDGE

External: Community celebrates the year in a series of five events, culminating in community lunch where next year's victories are claimed and death ground acknowledged. Community gladly receives word that Institute of Aboriginal Studies will continue work on language in Murrin Bridge next year.

Internal: Lyle Johnson, Rebecca Bishop, Frank and Barry more that double auxiliary force; Thanksgiving celebrated with traditional feast of turkey and Australian beer.

Contradiction: Enabling the bridging of the gap between aspirations and actuation of events. (Wk.9)

RELIGIOUS HOUSE: PERTH

External: First LENS in Australia this year focuses on "Education in the '80s" in Perth. Key participants include the City's Community Recreation Officer and the head of the State Education Department's Community Education Task Force. Seven colleagues either enable, participate or help teach the course.

Internal: Sandy Powell arrives to teach LENS and excites House with news of the Medan Regional Consult.

Contradiction: Moving on LENS momentum in Perth while continuing to circuit to other five metros. (Wk.9)

RELIGIOUS HOUSE: ADELAIDE

External: Circuit to the Mt. Gambier Metro reestablishes contact with colleagues from the early 70's, one of whom still wears the guild symbol. Others are anxious to be part of the regional circuit.

Internal: Thanksgiving is celebrated with turkey feast at weekly roundtable; fourteen Australians in attendance (including recent RS-I grads) are impacted by Mayflower Compact and conversation on covenants which ends with toasts and claiming promises for Australia's legacy to the future.

Contradiction: Doing the effective planning that maintains missional thrust in midst of onset of Christmas and summer holiday mindset. (Wk.9)

RELIGIOUS HOUSE: MELBOURNE

External: Western Districts circuit initiates conversation with principal of Agricultural College and Regional Department of Agriculture regarding LENS methods on viability of small country centers. Old colleagues say "yes" to Annual Subscription drive and this week \$1,000 is committed from three donors.

Internal: "Harbingers of Hope" collegium clarifies understanding of hope beyond hope.

Contradiction: Articulating bottomline for metro victories, prior to Christmas shutdown. (Wk.9)

RELIGIOUS HOUSE: BRISBANE

External: Film night with 14 guests shows that explosion of colleagues is happening in response to story of future directions. This is also seen as 17 appointments are already set for development week and *Have-A-Go Gazette* copy is written.

Internal: Fourteen attend roundtable at Jago's house and have a great time in six-event "office olympics" after *The Story of Sadat*.

Contradiction: Building the missional thrusts for the teams for Quarter III instead of having images from the Regional Council undigested and unavailable. (Wk.9)

SUVA

RELIGIOUS HOUSE: APIA

External: Village Council prepares for CEM and strongly advocates project to the nation. Local ownership gains support as Village Council works on ownership of fishing industry and Women's Committee takes complete responsibility for preschool and assigns two teachers.

Internal: UNO championship is great celebration as the EG beat the adults.

Contradiction: Resolving visa situation so program momentum can be maximal. (Wk.11)

RELIGIOUS HOUSE: AUCKLAND

External: First Global Women's Forum in New Zealand is extremely well received as an on-target globalizing event for New Zealand. Havelock North initiates an Employment Creation Scheme and the Community College assigns one staff member to it fulltime. The high school says yes to

Community Forums with entire student body when school reopens in February.

Internal: Work on New World of Hope lecture is completed for first Speakers Bureau appointments with the Lions and the Jaycees.

Contradiction: Determining the profile we need to take. (Wk. 10)

SAN FRANCISCO

RELIGIOUS HOUSE: SAN FRANCISCO

External: The Sacramento Metro hosts "the best Regional Council since 1973" as 23 participants hear reports on the past year and plan the victories in this year of the Region.

Internal: The House decides to "do something you've never done on Thanksgiving before" and goes bowling in the morning, returning to a feast that includes a 24 pound inkind turkey.

Contradiction: Finding the catalytic event that journeys the region out the door and into the next step toward the consult. (Wk. 9)

RELIGIOUS HOUSE: SEATTLE

External: Seattle team gears up for the Year of the Region and launches calls for appointments for securing Regional Consult sponsorship, authorization and participation.

Internal: House celebrates Thanksgiving as four regional guests join staff for Daily Office with symbolic gifts for the movement followed by a traditional turkey dinner; on Saturday night House sees *Ordinary People* with two colleague couples followed by a thoughtful reflection.

Contradiction: Facing three competing priorities, all requiring full engine thrust. (Wk. 9)

RELIGIOUS HOUSE: LOS ANGELES

External: Newsletter goes out to 50 new colleagues after recent Methods Academies and RS-1. Central Park Five launches every Tuesday Job Mart where 60 local applicants successfully meet four employers for real jobs at local trade school. HDTs proposals are written and major appointments made.

Internal: Constant flow of sojourners sees sheets changed on bed four times this week, and brings great liveliness to house, and roundtable in the lounge catalyzes depth conversation over Tagore.

Contradiction: Creating corporate designs that will release individual responsibility for the whole mission. (Wk. 8)

RELIGIOUS HOUSE: RICHGROVE

RELIGIOUS HOUSE: PHOENIX

External: Arizona State University consult concludes with one-year and three-month timelines and task forces for the revitalization of public education in Phoenix. Staff and Gary Forbes meet with ten key Indian-related people to initiate framing of Pisinemo HDTs. Guardians host film show and hold development meeting.

Internal: Thanksgiving discontinuity finds staff scattered from Las Vegas to N.E. Arizona mountains; slot machines, as well as pine trees, are contemplative objects.

Contradiction: Developing systems to mesh Guardians and development into one great ongoing thrust. (Wk. 9)

RELIGIOUS HOUSE: PISINEMO

External: ASARCO, international mining company, sends representative to meet with Santa Cruz Farm men to plan water harvesting project at the farm, to be paid for by the company.

Internal: Fernando Campos is sent out to Conacaste.

Contradiction: Broadening responsibility within community for locally owned businesses. (Wk. 10)

RELIGIOUS HOUSE: BILLINGS

External: Third Development Corporation Board meeting of the month finally produces results. New officers are elected and five employees are hired for "new" farm equipment industry.

Internal: Mary Goodsell, Carole LeMonnier, and Bill Carroll, three new national VISTA staff members, join house as sojourners.

Contradiction: Devoting proper time to both the project's needs and holiday celebration. (Wk. 8)

RELIGIOUS HOUSE: DENVER

External: Eventful week finishes Colorado Springs circuit which includes an Ordway High School CYF with 27 participants in Crowley County Cluster Community, a CYF Assembly in Boulder's Fairview High School, the submission of a major funding proposal for the Regional Consult and a LENS presentation resulting in a scheduled LENS for early spring with Mobil Oil Co.

Internal: House enjoys the "plenty" of Thanksgiving feasts on Wednesday and Friday while whole staff engages in discontinuous celebrations with families.

Contradiction: Preparing for the Voyage for week 10 while the House "falls apart" and all troops are gone or doing self-support. (Wk. 9)

EDMONTON

RELIGIOUS HOUSE: EDMONTON

External: Meetings with Council at Feching Lake probe new directions for future replication.

Internal: House sends out Gerry O'Donnell (sojourner) to Conacaste as move to new house is celebrated.

Contradiction: Assessing future directions relative to corporate strategies. (Wk. 10)

RELIGIOUS HOUSE: ANCHORAGE

External: Staff attends a college sponsored "Human Services" Conference and runs into some familiar workshop methods short of ICA methods. Contacts for future possible LENS are at conference. Greater part of week is spent sending letters to social service network introducing ICA work, plus a Week II in CS-I update with metro colleagues.

Internal: Despite "flu" bug hitting entire house, staff manages to have one fantastic Thanksgiving feast, complete with gifts from families to house.

Contradiction: Deciding to risk on delimited strategic victories. (Wk. 9)

RELIGIOUS HOUSE: VANCOUVER

External: Victoria Metro Circuit involves vision workshop with Nanaimo downtown businessmen and opens possibility of Special Issues Forum or Community Forums. Laura Spencer and Raymonde Tickner spend a week on development and open leads for corporation funding and a church film show.

Internal: Self-support situation brightens as Jackie Cress takes special assignment to Minneapolis and later Alaska to work with Rural Ventures and Elizabeth Neat is notified that she is one of two finalists for the position of Executive Director of the Bellingham YWCA.

Contradiction: Corporately building the year's victory story that will clear foggy vision and motivate effortless regional team engagement. (Wk. 7)

RELIGIOUS HOUSE: SASKATOON

RELIGIOUS HOUSE: WINNIPEG

External: LENS three day module with 12 participants representing two metros launches new regional thrust with marketing, pedagogy and strategizing sessions. Thursday evening visioning session excites all with images of regional pedagogues doing LENS across the region. House welcomes development and teams up with centrum colleagues to do LENS marketing calls as well as raise program funds.

Internal: Three job interviews plus resumes are submitted in the on-going self-support maneuver.

Contradiction: Neglecting to create the support systems while attending to immediate priority missional demands. (Wk. 8)

HOUSTON

RELIGIOUS HOUSE: HOUSTON

RELIGIOUS HOUSE: ASHERTON

RELIGIOUS HOUSE: DALLAS

External: "Indianahoma Week: Past, Present, Future" (CEM) has put the region and the project into a new position of advantage with extension being requested and enabled by ASCOG (eight county area). Document writing continues all week. Indianahoma leadership schedules a "Town Meeting" to workshop five key issues—extension, grocery store, tornado siren, festival, and Christmas lighting.

Internal: House families celebrate Thanksgiving with extended families in Durant and Omaha.

Contradiction: Building brilliant strategy to do extension through the HDP and build a regional movement in six metros before the Regional Consult. (Wk. 9)

RELIGIOUS HOUSE: MEMPHIS

RELIGIOUS HOUSE: DELTA PACE

RELIGIOUS HOUSE: NEW ORLEANS

External: Two teachers are sent to Houston Region bilingual RS-I. ICA receives \$1,000 from United Methodist Church.

Internal: House hosts Molly's parents with three days of feasting on inkind turkey and trimmings.

Contradiction: Successfully negotiating reversal of decision in Lowndes County to release participation in demonstration events. (Wk. 9)

RELIGIOUS HOUSE: ATLANTA

External: Two months of research and planning culminate in holding a pilot "Symposium on Ethical Presence". Evaluation points to the need to refine construct, but event points to this construct as a viable tool for movement building. Colleagues from five metros are present for Symposium and regional council; 20% of Symposium participants experience first course contact with ICA.

Internal: Every inch of space is used as house overflows with regional, continental and international colleagues as Ann Antenen represents Cleveland Region and Mr. Kim stops through on trek around U.S. following Academy graduation.

Contradiction: Reconfiguring House and region of the other side of the demands and implications of the Symposium and regional council maneuvers. (Wk. 10)

RELIGIOUS HOUSE: MIAMI

External: Evening at the Institute is held with nine present to explain Regional Consult and invite participation. Development raises \$10,000 in United Telecommunications stock as Kamala Parekh visits house.

Internal: Mrs. Yoshikawa visits after Academy and permeator gets promise of raise on January first.

Contradiction: Forming missional purpose out of fluid situation. (Wk. 10)

CHICAGO

RELIGIOUS HOUSE: CHICAGO NEXUS

External: In midst of the focus on the Regional Consult, the 300 participants of the North American Continental Council celebrate the struggles and victories of the US 12 during the past two and a half years. Women's PSU involves 148 women and 12 men on an objective journey through the women's revolution in the context of the seven revolutions.

Internal: The House hosts the Continental Council with a new understanding of what it means to serve the regions.

Contradiction: Designing the necessary responses to the many advantages tempting us to slide. (Wk. 11)

RELIGIOUS HOUSE: CHICAGO

External: Community and House bookkeepers join together for course with the Management Team. House members attend LENS pedagogy session at the Nexus and host the nexus and community at an Open House. Thanksgiving is celebrated with the community.

Internal: House is enlightened with new understanding of financial procedures as Management Team leads collegiums.

Contradiction: Having a holding image for Regional Consult which connects all other things the regional team is doing to it in a creative edge fashion. (Wk. 9)

RELIGIOUS HOUSE: KANSAS CITY

External: Printer is secured for computer and new VOICE is sent to press.

Internal: Dallas and Donna Ziegenhorn travel to Arkansas for father's surgery; Sue Barkony and Juliette Jayasakera begin school at Lincoln Academy.

Contradiction: Coordinating efforts while team leadership shifts from day to day. (Wk. 7)

RELIGIOUS HOUSE: LORIMOR

RELIGIOUS HOUSE: MINNEAPOLIS

External: Director of RDC (Regional Development Commission) No. 5 agrees to make his region a pilot for whole Upper Great Lakes area of effective citizen participation in decision-making. This follows a demonstration of TM methods to RDC leadership across the state, sponsored by the new Waste Management Board. IBM schedules a December 11 demonstration of the PSU model for work group problem-solving.

Internal: Saturday morning workshop on "Indicative Ethics" reveals the size of the task ahead for those who are seriously committed to creating new social patterns and understandings and allows for greater resolve to take an active role in creating curriculum for ethical decision-making.

Contradiction: Allowing the burden of already-scheduled events to cloud the vision of the long-term needs and the requirements for immediate action to respond to them. (Wk. 8)

RELIGIOUS HOUSE: ST. LOUIS

External: Team sent to closing weekend of Cleveland Regional Consult. Youth Kevin Woodward makes presentation of HDP story to a United Methodist Church.

Internal: Storm windows finished as the first snow appears and youth hold down the fort in weeklong absence of adults.

Contradiction: Covering the self-support deficit. (Wk. 7)

RELIGIOUS HOUSE: DETROIT

External: Roundtable reflection on quarter's experiment with roundtable method and dynamics highlights the journey of the regional team.

Internal: A swirl of centrum input and challenge sweeps through the House as Rich Stanley stirs the challenge of future development, Bill Westre and Lee create a whirlwind of revolutionary financing for Munising industry and Doug Allan stirs up management finesse—all in a great mix of collegiality, beer and inkind squash.

Contradiction: Finding the way for everyone on the regional team to get a clear picture of task force workings and an overview of the entire activity. (Wk. 10)

RELIGIOUS HOUSE: CLEVELAND

External: Meeting of regional team in Columbus builds constructs for metro core meetings and January regional council, and builds story of how in doing scheduled programs, the contradictions articulated (at consult) indeed will be addressed. Proposal is delivered to Ameritrust (Bank).

Internal: John Poole returns from Edmonton as House welcomes John Gibson and Doug Allan for Management Trek—OE/ICA books are reviewed and caught up to date.

Contradiction: Articulating marching orders after new context of broad strategies of Regional Consult. (Wk. 10)

RELIGIOUS HOUSE: INDIANAPOLIS

External: Students and teacher at the Kent School of Social Work, a part of the University of Louisville at Louisville, Kentucky, see the global film and discuss the results of the Regional Consult.

Internal: Thursday, ten people, house staff and guests feast on the traditional fare; one guest provides the turkey; two drive up from Cincinnati. Readings on the Mayflower Compact and The Declaration of Interdependence by Henry Steele Commager prompts a lively discussion.

Contradiction: Naming and honoring a crucial role for everyone on the team. (Wk. 9)

NEW YORK**RELIGIOUS HOUSE: NEW YORK**

External: New York Regional Team writes and submits Regional Consult proposal to Newmount Mining for Phoenix Consult through Leonard Harris, a Guardian, from Australia.

Internal: Thanksgiving and Quarter II celebrations with turkey, ham, and steak with all the trimmings, are highlighted by the Macy Parade and a New York theater climax for this quarter.

Contradiction: Involving colleagues in each metro in strategic planning and action toward the Regional Consult. (Wk. 9)

RELIGIOUS HOUSE: PITTSBURGH

External: Regional team has largest development week in recent memory—\$2,500 in hand and \$500 pledged—and two guardians helping get more contacts.

Internal: Storm changes night-on-the-town to night-at-home as the development team is hosted.

Contradiction: Putting together the pieces to build a movement. (Wk. 8)

RELIGIOUS HOUSE: WIDEN

External: Widen slide show is presented to West Virginia Sociologists Convention where academicians are genuinely glad to see that real change is actually going on.

Internal: Whole House gathers for a great Thanksgiving feast.

Contradiction: Telling and retelling the CEM story to evoke participation. (Wk. 9)

RELIGIOUS HOUSE: ROCHESTER

External: Imaginal Education training and "New Family and Individual Retreat" include adjusting one curriculum and building another. Two weeks on the road spent marketing Charlotte Valley Firewood, consulting with Nunda and Albany Boys Club, doing LENS appointment with Rochester Public Library and inking sheet rock for renovation.

Internal: Renovation continues on third floor to prepare for family retreat; Al returns to celebrate birthday at house church and youth report cards are received.

Contradiction: Taking time to reflect, correct and plan for Quarter III. (Wk. 8)

RELIGIOUS HOUSE: PHILADELPHIA

External: First RS-I of year gives impetus to movement formation. PSU at metro colleague's home builds model for a community development proposal.

Internal: Thanksgiving celebration transforms house into a banquet hall as a dozen different, delicious dishes are devoured.

Contradiction: Breaking open a strategy to release development money from Philadelphia Region. (Wk. 9)

RELIGIOUS HOUSE: WASHINGTON, D.C.

External: Kay Lush's spin, "The Spirit Quest", addresses 60 at metro dinner. Ivy City core solidifies around morning collegiums. Key site visit from Mayor's Office adds momentum to drive for lease and occupancy permit and nine representatives attend the New York Guardians' Meeting.

Internal: Collegium on four initial Regional Consults by George Walters and Kay Lush, on return from London enroute for Chicago, impacts House.

Contradiction: Struggling through the immediacies to ensure being overagainst the true contradiction. (Wk. 10)

RELIGIOUS HOUSE: BOSTON

External: Carl Stock conducts Town Meeting with Cambridge Housing Authority and 20 participating agencies which provides for solid planning and elicits requests for methods training.

Internal: What a Thanksgiving! A procession from the fifth floor down to a celebration which includes Starks and Boston Houses, Drew Hill and two friends attending college here and regional colleagues. Congregational dinner on Sunday for Jim and Judy provides occasion for corporate reflection on covenant and the family.

Contradiction: Enabling participation in area and continental councils. (Wk. 9)

RELIGIOUS HOUSE: STARKS

External: S.E.C. president calls special meeting to deal with finances. S.E.C. board takes financial issues on their shoulders. Starks VOICE is done largely by community residents in absence of ICA staff.

Internal: Thanksgiving is celebrated with the Boston House as well as Sunday Feast of Beginnings: Advent House Church, birthday of Louisa Hamachek and congregational dinner for Judy and Jim.

Contradiction: Keeping all the plates spinning with only one staff on site for next two weeks. (Wk. 9)

MONTREAL**RELIGIOUS HOUSE: MONTREAL**

External: A core of five women from the Business and Professional Women's Association share in training for next week's workshop, most of them have already experienced ICA methods from as far back as six years ago. The Sisters of St.

Anne in Lachine confirm a donation of \$2,000 for local, global program. Fr. Touchette, Redemptorist and Vice-president for Canadian ICA, spends half a day advising staff on continuing relationships with the province's orders.

Internal: The House is prepared for winter with the sealing of all windows and doors as space is rearranged for 20 in preparation for area PSU on Profound Commitment.

Contradiction: Accomplishing the immediate and visible while maintaining the mundane momentum of the long term. (Wk. 8)

RELIGIOUS HOUSE: TORONTO

External: Day-and-one-half strategizing session captures the quarter's victories, advantages and out of six-month anticipations, forges a two-week drive to "Conquer the Regional Marks" by: Setting up the Demonstration Programmes; Empowering the Training Inc. Team; Manifesting the Seasonal Spirit and Intensifying the Missional Context. Annual Appeal Research Document is mailed to 90 colleagues who were visited. Staff attends area PSU on the Profound Commitment Course, providing the occasion to articulate the life questions being raised today and give form to the course design.

Internal: House dives into regular 30 minute swim schedule at nearby pool and celebrates the great city with donated seats at *The Torontonians*; Jessica Farrer gets a grand clap for excellent report card.

Contradiction: Wedging 48-hour days into 24 in order to conquer the regional marks. (Wk. 9)

RELIGIOUS HOUSE: OTTAWA

RELIGIOUS HOUSE: HALIFAX

MEXICO CITY

RELIGIOUS HOUSE: GUATEMALA CITY

External: Visitors from Inter American Development Bank, a bakery oven expert, a basket export marketing agent and irrigation experts from Israel give guilds many opportunities to tell the Conacaste story while touring guests through the village. The preschool has 14 new students due to teachers' Family Visitation Day. The Comite de Reconstrucion, Department of the government, delivers a block machine so that new training center and auxiliary house construction can begin.

Internal: The congregational dinner for Estaban Guch and Odelia Estrada, with 15 family members from Conacaste and Chimaltenango in attendance, presents an occasion to reflect on and celebrate the meaning of the missional family, covenant and symbol for Central America in the 20th Century.

Contradiction: Clarifying coordinated thrusts in relation to weekly maneuvers and the year's objectives. (Wk. 8)

HAVANA

RELIGIOUS HOUSE: KINGSTON

External: Regional team event is held at National Commercial Bank Sports Club with 14 colleagues participating in creating Kingston Region timeline for Quarter III. Preschool teachers in Woburn Lawn receive first salary out of EEC Grant monies. RS-I pedagogy is held with ITI grads in Port of Spain Region (Trinidad).

Internal: Charles Hahn is sent out after management trek which focused on house books and cooperative/IDB Grant and Loan Systems; Larry Ward returns from Caracas development trek and Trinidad formation trek.

Contradiction: Creating long-range battleplan that provides vision beyond immediate issues. (Wk. 9)

LIMA

RELIGIOUS HOUSE: LIMA

External: Visit by Minister of Planning and his wife to Azpitia empowers strategy to make Azpitia a pilot demonstration for the government within the year. Two key men in development say yes to speaking and assuring the participation of their agencies in Regional Consult. Roundtable is enlivened with the presence of two key families from the village and the report of the Sol de Septiembre CEM given by Norberto Guerra.

Internal: Week II time design begins with Friday night roundtable, includes Saturday morning training and Saturday afternoon corporate reflection — planning builds corporateness and allows the House to empower its role as myth center, while being a training center and an action centrum.

Contradiction: Coming up with new forms that allow effective energies to be focused on expanding fronts of program activity. (Wk. 9)

CARACAS

RELIGIOUS HOUSE: CARACAS

External: A Guardian from Eastern sphere links with Korean colleagues working for the General Electric in the middle of Southern sphere. Company donates two gas and electric ranges for the training center.

Internal: The Stockings from Area Havana arrive in Caracas for development blitz in Latin America.

Contradiction: Prioritizing maneuver arenas and determining deathground. (Wk. 9)

BUENOS AIRES

RELIGIOUS HOUSE: SANTIAGO

External: Bakery (Panaderia) purchases new refrigerator with profits as first step toward product expansion. Demonstration Farm continues to sell cucumbers at good price in Santiago. Sewing industry receives two contracts thereby opening possibility for donation of another sewing machine.

Internal: Construction of new house continues as concrete floor is laid, internal walls and ceiling are nailed in place; donations of clothes and household items come in; and Maryknoll gives US\$250 toward house emergency fund for rebuilding ICA training Center.

Contradiction: Weaving and focusing breaklooses on many fronts so experienced as victories for total project. (Wk. 9)

RIO DE JANEIRO

RELIGIOUS HOUSE: RIO DE JANEIRO

External: Community Fair in Bananeiras is blessed with a day of sunshine. The T-shirt booth is mobbed and sold out in a matter of minutes. The T-shirts proclaim "Bananeiras — The Future is Ours". Government agencies and private organizations attend to help accelerate the Project.

Internal: First self-support income arrives in hand! English classes increase with more money expected.

Contradiction: Tying up loose ends as programs seemingly become more complex and more invitations come for assistance. (Wk. 9)

THE GLOBAL ORDER CENTRUM REPORT

BRUSSELS
BOMBAY
SINGAPORE
HONG KONG
CHICAGO

QUARTER II WEEK ELEVEN

GLOBAL DEVELOPMENT CENTRUM

Global Development Centrum reports a week of big commitments: Final approval of a US \$55,000 Grant from Divine Word Fathers, US\$15,000 in mail from Fondren Foundation, \$10,000 in stock from a patron on the way. Christmas mailing in U.S. brings in \$4,000 in two weeks. Breakthrough on 12 month visas for non-commonwealth extranationals in India after action by high government officials; U.S. Annual Appeal pledges come in regularly; documentation of 1033 pledgers and \$832,000 pledged with \$266,000 already received. The key contradiction is in the arena of experiencing our effectiveness being reduced by the operational gap between ongoing expansion of funding and framing visits on the one hand and the production of plans, proposals and P.R. materials on the other.

GLOBAL RESEARCH CENTRUM

Global Research Centrum reports that Bombay Research Nexus moves to Chikhale to implement the next phase of the ILO Survey. Chicago Nexus culminates the last month's work by holding the North American Women's Revolution PSU, taking *IMAGE* (quarterly publication) to the printer and distributing next quarter's roundtable construct. Bombay experienced victory in configuring troops so as to be able to meet other demands and still finish this phase of the survey on time. Chicago broke through with creation of PSU format to use with all Seven Revolutions. The key contradiction lies in the arena of operating with an incohesive image of the new research turn and mode amidst shifting bases.

GLOBAL OPERATIONS CENTRUM

Global Operations Centrum reports Continental Councils in Europe, the Subcontinent and North America and reports of the Regional Consults past and future precipitate creative brooding on the forms of the task of Quarter III and IV in the context of the four-year strategies. Bombay reports a grand dinner to send out the Global Methods School faculty for six weeks in Maliwada. The key contradiction lies in the arena of consults for circles and clusters in a form which will build the movement and launch the demonstration.

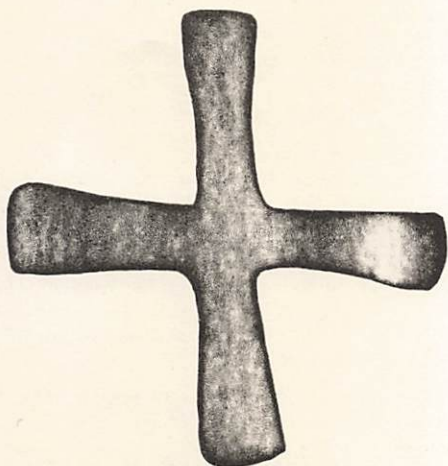
GLOBAL MANAGEMENT CENTRUM

Global Management Centrum Chicago reports from Bombay that the send out for Asaram Rokade to the Global Methods School and the management dinner celebration highlight the ongoing journey and training for all management staff. Bombay auditors appreciate new systems and expect second "true and fair" audit. The key contradiction lies in the arena of finding creative and imaginal tools for enabling regular corporate house finance accountability.

THE GLOBAL ORDER REPORT

QUARTER II WEEKS TWELVE & THIRTEEN

DECEMBER 15—DECEMBER 28, 1980



*Trust in the Lord forever;
for the Lord himself is an everlasting rock.
He has brought low all who dwell high in a towering city;
he levels it to the ground and lays it in the dust that the
oppressed and the poor may tread it underfoot.
The path of the righteous is level,
and thou makest out the right way for the upright.*

Isaiah 26:4-7

MADRID

RELIGIOUS HOUSE: MADRID

External: Three day trek to Zaragoza Province unearths solid possibilities of "sets" in ten to twelve villages. House attends Family Conference of CARITAS in Salamanca and prepares local colleagues for the two Encuentros there next week II.

Internal: Madrid colleagues excited by charting and artform methods in House's second Saturday methods training program.

Contradiction: Finding the fresh approach that will break open sets across Spain. (Wk. 9)

LONDON

RELIGIOUS HOUSE: LONDON

RELIGIOUS HOUSE: GLASGOW

External: Advent greeting cards and letters of participation in the planning and preparation of the Glasgow Regional Consult are mailed to colleagues covering all six metros.

Internal: House prepares materials for the School Leavers Forum and the Hamptons are sent to continental council in Brussels.

Contradiction: Creating imaginative ways in dealing with House celebrations. (Wk. 10)

RELIGIOUS HOUSE: BRISTOL

External: House participates in Clifton parish conference on Third World issues and proposals. Tai'rgwaith Management Committee meets with store fittings company and agree to interior wiring, fittings and wholesale contacts. Green building rented for ICA office and youth centre.

Internal: Housing Commission approves extension of house lease to April 1981, Bill Norton is sent out to Brussels Continental Council, and Maxine starts permeation training in Cardiff.

Contradiction: Designing practical responses to the stories and consequences of national recession to see new advent of hope. (Wk. 10)

PARIS

RELIGIOUS HOUSE: PARIS

External: Film show at Secour Catholic with 30 in attendance is well received and opens doors to depth French framing of non-governmental organizations.

Internal: First roundtable is held in colleague's home, and informal dinner celebration highlights Week II.

Contradiction: Imaging the whole framework of divergent missional thrusts so the power of the regional team comes off. (Wk. 9)

RELIGIOUS HOUSE: BRUSSELS NEXUS

External: Nexus hosts two continents for council and Permeation PSU.

Internal: Council celebration exposes range of talents and sense of timing that has become "second nature" to us.

Contradiction: Determining the few key moves that will keep the mission spinning on all fronts. (Wk. 10)

RELIGIOUS HOUSE: BRUSSELS

External: A training day in Brugge for 18 missionaries from 12 countries, led by Msgr. Vancauwelaert, results in yeses to Formation Fortnight and openings in many countries.

Internal: Continental council creates exciting set/regional consult fortnight (Primal Community: The Urban Challenge) campaign.

Contradiction: Creating the six-month regular circuit calendar to pull off the whole campaign. (Wk. 10)

FRANKFURT

RELIGIOUS HOUSE: FRANKFURT

External: Formation continues as people work on Five Year Town Meeting Report, the artpiece for an Advent mailing, a pledge letter, and the history and organizational grid of the Frankfurt and Koblenz Metros. A comprehensive beautiful Vienna package pulls together the victories of the areal strike force Weeks 5 and 6, and sends them to the Panchayat, the

Assignment Commission and the areal and continental houses, with claims and possibilities for the past, present and future.

Internal: Remaneuvering session states achievable corporate victories before Christmas in six arenas and claims Advent as a doorway to the new with wreath making, Advent reflections and preparations for the EG Christmas presentation.

Contradiction: Completing the Advent mailing as a powerful tool for formation and development. (Wk. 10)

RELIGIOUS HOUSE: AMSTERDAM

External: Week II training event, "Profound Creativity Weekend", with house and five Dutch persons present gives a new way to see profound training happening within 40 hour time span that releases context, methods and celebration.

Internal: Job searches, finance collegium and putting together development maneuvers gets staff ready for Thanksgiving as British, German, Dutch and North American cultures come together to celebrate the American tradition with feasting and sharing stories.

Contradiction: Operating out of a "supply the demand" mindset rather than creating the events and programs for training that enable local movemental leadership to emerge. (Wk. 9)

RELIGIOUS HOUSE: BERLIN

External: Area team has the first core meeting with Catholics and Protestants in Vienna to discern major contradiction with their parishioners, in order to design a February training program.

Internal: House creates new decor to announce to itself that the upcoming area council will be in Berlin.

Contradiction: Grounding movement future in Berlin after the universe itself has changed. (Wk. 9)

ROME

RELIGIOUS HOUSE: ROME

External: Development trek is directed towards Rome religious order framing. Saturday guest night that hosts eight focuses on GWF and initiates training core of women.

Internal: House hosts centrum development team, and first self-supporter check arrives as intensified English teaching maneuvers continue.

Contradiction: Breaking loose self-support without losing external momentum. (Wk. 9)

STOCKHOLM

RELIGIOUS HOUSE: COPENHAGEN

External: Circuit to Odense Metro reveals key contact in Svendborg Department of Social Welfare office. She holds two meetings with other staff, gives referrals in other parts of the island and offers to join a circuit team. Garnet Banks and Andrew Knutsen are sent to continental council.

Internal: Ruth Landman's class arrives at house for Christmas party and Becky Banks joins family and house for two month Christmas holiday.

Contradiction: Moving effectively on new breakopens while carrying on self-support. (Wk. 10)

CAIRO

RELIGIOUS HOUSE: GIZA

External: Door-to-door survey, women's meeting and well drilling in Beni Suliman symbolizes the half way point with three villages initiated and three more to go.

Internal: Diesel pump breakdown forces the auxiliary to haul water from cluster village where new well was drilled—evening ends late with a great Indian meal.

Contradiction: Rapidly expanding cluster activities out-running successful framing maneuvers. (Wk. 8)

RELIGIOUS HOUSE: ABIDJAN

External: The Avenorpeme Village Development Cluster document is published. Two new maneuvers are launched which position the move ahead with the development push and Ivory Coast village development cluster initiation.

Internal: Whole House is invited to celebrate Thanksgiving with great traditional feast with all the trimmings.

Contradiction: Political instability (coups d'etat) threaten area coverage maneuvers. (Wk. 10)

LAGOS

RELIGIOUS HOUSE: LAGOS

External: Great week of funding push brings 1200 nyra (equalling US\$1800) deposited, 4500 nyra (equalling US\$6750) committed, and inkind sugar, milk, paper, food, electrical wiring materials, as well as discount on tables and chairs.

Internal: Inkind turkey (delivered by Marilyn Oyler) is featured as heart of grand Thanksgiving celebration (prepared by John Boone) ending with a grand slam vaudeville show (emceed by Charles Jago).

Contradiction: Conveying context of responsibility for the HDTs to the village leadership. (Wk. 10)

KINSHASA

RELIGIOUS HOUSE: LUSAKA

External: Following Lusaka Regional Consult the document was printed by IBM copy facility, inkind. Major proposals are submitted to FAO and ZIMCO for agriculture and HDTs facility, respectively. Lusaka Metro three-week trek and expansion village circuits go into being.

Internal: The send-out of the Regional Consult team and the Week II RS-I Pedagogy highlight the week internally.

Contradiction: Keeping backup systems in pace with program advances. (Wk. 8)

NAIROBI

RELIGIOUS HOUSE: NAIROBI

External: "Replication Schemes Transposition", global priority Number 6, happens to house in one week as incredible week of our first cluster consult ends with internal implosion happening to staff as a whole new future is blown open to all. Project directors' feet on the table meeting and HDTI staff stew on implications of cluster for replication design.

Internal: Ruby Tribhuvan arrives back after one month GRA trip that turns into 5-month journey through GRA, council, development and Academy.

Contradiction: Deciding when to stop and discern the victories and celebrate as life comes so fast. (Wk. 9)

RELIGIOUS HOUSE: MAIKUU—MUTHUNGUE

External: In the midst of arranging self-support and local equipment availability, the programmatic activity includes carpentry training, youth task force and elders' club artist plans to get 30 chairs and 20 beds locally made.

Internal: New public facility begins to function as health programme structures are started — nutrition classes, infant feeding and family planning — with some visitors from Makindu Sub-District hospital staff.

Contradiction: Focusing on the power of community program volunteers in guilds within advance step thrust. (Wk. 8)

RELIGIOUS HOUSE: KAMWELENI

External: All five surrounding villages agree to become part of cluster experiment. Cluster consult starts with 20 people from each village selected and food/enablement set up for each village to host one day of the consult as trucks are inkinded to provide transportation. HDTI digs trenches for water pipes.

Internal: House sends David Wambua to Kituni Consult in Western Kenya and hosts cluster consult team.

Contradiction: Keeping villagers effectively engaged as staff turns to the cluster. (Wk. 8)

RELIGIOUS HOUSE: KALWANI—SHAMALAGO

External: The first handcraft samples of the women's industry are finished and ready for display in the district trade and agricultural show.

Internal: The House receives Ambaji Kambale who opens new possibilities of inkind with the local Asian business community.

Contradiction: Engaging local men in industries that require long periods of time to come up. (Wk. 8)

RELIGIOUS HOUSE: MOMBASA**BOMBAY****RELIGIOUS HOUSE: BOMBAY NEXUS**

External: Brian Robins and Monu Bhattacharya do presentation of ICA work at Conference of Asian Rural Development in Bangalore. Leaders give images of Maliwada experience in human development and a well-received presentation of the global film.

Internal: House hosts Nancy Maguire on way to Hyderabad for Regional Council and LENS teams on way to Calcutta. Whole nexus joins in LENS pedagogy on Sunday.

Contradiction: Creating the mechanism for consensing on major decisions when troops are perpetually in dispersion across the Sub-continent. (Wk. 9)

RELIGIOUS HOUSE: BOMBAY**DELHI****RELIGIOUS HOUSE: DELHI**

External: In final week of construction, Sikror Community Community Centre becomes the finest, instead of the shoddiest, building in the village. Town planner addresses community core of 15 in preparation for two-day shramdam on 1500-foot village road.

Internal: Baban Gawade is sent out to Hyderabad for Regional Consult, and Berresfords attend reception for Prince Charles (of UK) and meet British High Commissioner.

Contradiction: Expanding self-conscious commitment from core to whole village. (Wk. 9)

MADRAS**RELIGIOUS HOUSE: HYDERABAD**

External: Hyderabad Regional Consult opens possibilities of a statewide development coalition. Participants include the Raylaseema Development Trust (Anantapur Metro), the Multi-purpose Social Service Society of Cuddapah (Cuddapah Metro), the Village Reconstruction Organization (Vijayawada Metro), and the National Service Scheme, the Rural Community Service Society, the Andhra Pradesh Volunteer Health Association, Vazir Sultan Tobacco Company, Block Development Office and District Health Office (all of Hyderabad Metro).

Internal: The women start building a stove with a real chimney. House hosts staff from Bombay, Delhi and Calcutta Areas and two young men show up to sojourn after the consult.

Contradiction: Breaking loose from present level of methodological skill to release the team to more catalytic forms of doing. (Wk. 10)

CALCUTTA**RELIGIOUS HOUSE: CALCUTTA**

External: Acceleration of program results in the set up of ten events in Week 10 for Quarter III with business and educational structures: 6 CYFs (2 with government schools), 2 Imaginal Education Courses and 2 business LENS.

Internal: Contradiction analysis of the sub-continent in LENS pedagogy reveals strategic necessity of LENS.

Contradiction: Building the story that holds the new reality of Area Calcutta for ourselves and the sub-continent. (Wk. 10)

SINGAPORE**RELIGIOUS HOUSE: SINGAPORE NEXUS**

External: PSU engages the nexus and Regional Consult team in midcourse corrections and Regional Consult debriefing.

Internal: Consult team visits the Singapore Nexus and joins in the PSU. Nexus has celebration at the end of the PSU.

Contradiction: Using cross-centrums team to implement the single missional thrust to towards Quarter III. (Wk. 9)

RELIGIOUS HOUSE: KUALA LUMPUR

External: Two LENS calls produce two yeses for Quarter III. Sungai Lui leader participates in roundtable and explores with staff the necessity of the stance of the saint with the day-to-day responsibilities of community leadership. Five visits to Immigration in five days insures yet another month of regional auxiliary continuity.

Internal: Brian shares his Brazilian bamboo expertise and Facoe in the process of getting the house fence repaired. Welches announce "Family Expansion Maneuver" with the expected July arrival of new "troop".

Contradiction: Losing sense of catalytic power as initiators of strategic program activity. (Wk. 9)

RELIGIOUS HOUSE: MEDAN

External: The Medan Regional Consult is completed—over 250 regional colleagues were involved in the Cluster Documentation Module, Symposium and Practicum. The Regional Assembly highlights the year's strategy and promises the opening of four new metros. The closing celebration at the home of the president of the Provincial Chamber of Commerce signals the launching of a regional cadre including some of the most influential figures within the Medan Region.

Internal: The House sends out the global and area teams. The regional tactical plan and implementation timeline are completed.

Contradiction: Following through on the Regional Consult momentum in structuring the new movement. (Wk. 10)

RELIGIOUS HOUSE: JAKARTA

External: The region again experiences the power of the methods as it moves into a new level of understanding and participation. Three Nurada villagers return from Medan Regional Consult with new self-confidence and decision to move it. INCO LENS (International Nickel Indonesia), first inhouse in Jakarta, is opening for further consultation at mine-site community in South Sulewesi, and KADIN (Chamber of Commerce) Secretary General for Indonesia investigates LENS possibilities after participating in Medan Symposium.

Internal: Turkey, trimmings and *Twelfth Night* at Jakarta International School marks celebration of everybody home, visit from Diann McCabe for LENS, two inkinded file cabinets and Pak Salleh, of Nurada, coming to dinner. (Wk. 9)

RELIGIOUS HOUSE: UJUNG PANDANG

External: This is a week of visibility with 200 acacia trees delivered to cluster, preschool decor completed and three villages participating in chicken inoculation for a wild night of sight and sound. Tangkuru preschool continues on its own as Bontoa preschool teachers train and demonstrate to other cluster villages.

Internal: Cluster participates in training night, English lessons and roundtable; chicken inoculation night has many public and private sector guests for fish dinner.

Contradiction: Creating eventfulness in cluster villages without taking self-initiative from emerging village leadership. (Wk. 8)

HONG KONG

RELIGIOUS HOUSE: HONG KONG NEXUS

RELIGIOUS HOUSE: HONG KONG

External: At least 70 people hear the human development story through an Evening at the Institute in which 15 supporters see the global film for the first time. Development trek of 30 calls is highlighted by the director of the Hong Kong Chamber of Commerce saying, "You've gone further in village development than anyone's ever done before," and his offering to feature Nam Wai in the Chamber's magazine. A breakthrough call with the Hong Kong Shanghai Bank opens the way for funding in Hong Kong and India and a possible LENS. (Wk. 10)

Internal: Inkinded linen graces the table for a fine development week celebration; Clancy Mann surprises staff with a one-day visit on his way to Indonesia.

Contradiction: Finding the maneuver which allows the stake representatives and auxiliary to talk with every family about their participation in Nam Wai's development. (Wk. 10)

RELIGIOUS HOUSE: KAOHSIUNG

External: Two-day Island Meeting (Taipei and Kaohsiung Regions) produces clarity on Hai Ou strategy, cluster formation circuit rationale and Human Development Orientation Session model, and is highlighted by in-depth SEAPAC report, Maharashtra 232 report and tremendous celebration.

Internal: The occasion of American Thanksgiving gets transformed into great East-West feast involving government and village leaders along with Kaohsiung and Taipei Houses. Entertainment includes songs from the Chinese, Western and Indian cultures and everyone gets involved.

Contradiction: Unlocking the operating mode that will release village initiative to do their own projects. (Wk. 9)

RELIGIOUS HOUSE: TAIPEI

External: Follow-up of Bi-regional Council focuses in arenas of home industry, staff enlistment, HDTs inking, audit preparation and continuing development work. Pfizer and 3M donations come in totaling US\$2,100.

Internal: Taipei staff returns from Bi-regional Council in Hai Ou Project where program plans for second half of 1980-81 are finalized, including HDTs in Hai Ou from March 29 through April 19, 1981.

Contradiction: Designing and supporting the first HDTs in China so that it will catalyze Chinese leadership and enable village expansion. (Wk. 10)

RELIGIOUS HOUSE: MANILA

External: Development Trek receives 100 company commitments for 1981 (40% multinational, 60% Filipino) and winds up with one corporation committing 100,000 pesos for 1981. Third annual contributors' luncheon at Peninsula Hotel (during typhoon) hosts significant Filipino, Japanese, Australian and American supporters. LENS held with all top management of Philippine Explosives (subsidiary of ICI).

Internal: Week of collegiums studying book by Lin Yutang on Chinese social patterns addresses House with getting inside the Chinese sense of social conscience and of Confucian image of social glue.

Contradiction: Choosing the one door, from all that are opening, that will be the pivot in building the next 20 years. (Wk. 9)

RELIGIOUS HOUSE: CEBU

External: The first three-week Advanced Training School focuses on Early Learning and Nutrition and graduates 56 teachers. Task forces during the school build signs in the 24 Mactan villages: Creating 16 signboards, drainage systems, benches and cabinets in schools, inking seedlings for preschool gardens, and conducting economic forums and welfare forums. CARITAS donates 240 sacks of soya milk for the preschools.

Internal: Model kitchen and water tank are part of facility rehab; staff's high point is Ur celebration and faculty trip to huge waterfall celebrating the training school.

Contradiction: Orchestrating the future in finding economic basis for component programs in the 24. (Wk. 8)

RELIGIOUS HOUSE: DAVAO

TOKYO

RELIGIOUS HOUSE: TOKYO

External: House priors attend the wedding of long-time Guardian Paul Murayama. Another great Town Meeting is held in Saitama prefecture.

Internal: Notice to landlady that we will not renew our lease shifts the search for a larger house into high gear (out on the street in 60 days!); House celebration features *Shogun*.

Contradiction: Designing the leap that will double the size of the House: facility, people and money. (Wk. 11)

RELIGIOUS HOUSE: SEOUL

RELIGIOUS HOUSE: KUH DU E RI

External: Over 700 visitors in four weeks show the power of a demonstration which has caught the imagination and attention of this province. All directors of health and nutrition agencies in this county agree to meet to coordinate a series of health fairs for seven villages of the cluster.

Internal: Three project staff join the Seoul House in a PLC, which is a new experience for four of our regional staff and gives new clarity in living out of the Word.

Contradiction: Seeing beyond transportation and weather issues the glorious sign which is and can be created through larger thinking and planning. (Wk. 10)

RELIGIOUS HOUSE: FUKUOKA

External: Okinawa circuit includes two Town Meetings, six calls, and an Advisors' Luncheon. Iwataya Department Store grants appointment with Training Department.

Internal: David is hired by Gakken Publishing Company and by a Japanese film company to play a small part — an army soldier; he does scene with the star, who is a famous Japanese actress.

Contradiction: Building the regional story of movemental force out of national momentum of advisors. (Wk. 10)

RELIGIOUS HOUSE: OSAKA

External: Friday Night at the Institute hosts a study on Chicago and the influences and gifts of the various cultural and ethnic groups in Chicago, sparking a lively discussion of how the gifts of Japan will influence the globe; 15 persons attend.

Internal: ICA Osaka House has a Nihongo (Japanese) Intensive lasting into late afternoon, with native Nihongo speakers volunteering to prepare and teach the materials.

Contradiction: Being trained and prepared to release creativity. (Wk. 11)

RELIGIOUS HOUSE: SAPPORO

External: First LENS symposium in Sapporo Region is scheduled. Fifteen framing contacts are engaged in LENS planning and English class set-up.

Internal: Roundtable opens with study of *The Third Wave*—everyone admits straight-line and end-of-world thinking in their lives.

Contradiction: Giving new program story to long-lost friends. (Wk. 10)

SYDNEY**RELIGIOUS HOUSE : SYDNEY**

External: Unsolicited money comes in from local convent of Sisters of Charity after global film showing. LENS prospects increase with very positive visit with Sir James Vernon of C.S.R.

Internal: Great inkind victory of two sets of tires, one set for Sydney and one for Murrin Bridge. Sandy arrives home from Indonesia with great stories of the Medan Regional Consult.

Contradiction: Maximizing strategic activity in the holiday season. (Wk. 10)

RELIGIOUS HOUSE: MURRIN BRIDGE

External: Industry Team shows new life as three young men experiment with feasibility of new product and women screen print new designs. Proposal for India submitted to A.D.A.B.

Internal: Dispersion of auxiliary in four different directions occasions reflection on sustaining structures.

Contradiction: Converting the "yesses" into commitment to urgent action. (Wk. 11)

RELIGIOUS HOUSE: PERTH

External: Permeator team on 1200 km. circuit to Kalgoorlie in 40°C. heat turn up old and new metro colleagues. Staff plans "Looking for the Messiah" Advent role-play with local church. Framing and development visits with two religious orders and Quarter III planning move mission into '81.

Internal: Breakfast ensured with inkind coffee and cereal. E.G. claim the season with great Advent decor creation and marigold planting sessions.

Contradiction: Prioritizing use of time and people to pull off the Morawa ECF and Vocational Reflection Day in powerful movement-building style. (Wk. 10)

RELIGIOUS HOUSE: ADELAIDE

External: Selection of facility, creation of letter and brochure allow colleagues to get a handle on Summer '81 Assembly to be held in January and focus it to speak to needs of area and region.

Internal: Arrival of Mike Tippet's parents and daughter from North America is beginning of holiday celebrations for House, signaled by colleagues bringing in champagne "bubbly" and peanuts to welcome them.

Contradiction: Sustaining the missional vision to carry both House and colleagues through a radically discontinuous time. (Wk. 10)

RELIGIOUS HOUSE: MELBOURNE

External: Intentional preparation for use of Saturday precedes whole House presence in designated urban turf for research interviews, visits and reflections on the human needs for that community.

Internal: Marsha and Roy Stansbury bring the good news and documentation of Medan Regional Consult. Adkins family come to House Church and decide to come to January Summer Program.

Contradiction: Eliciting summer engagement miracles that alter people's story. (Wk. 10)

RELIGIOUS HOUSE: BRISBANE

External: House and regional team make 25 calls and do four film events, with \$368 inhand and \$1950 committed. Calling includes Toowoomba and Ipswich Polises. Annual subscription brochures are at printer, and *Have-A-Go Gazette* is in good first-draft form.

Internal: Six around table for seven-hour adaptation of Voyage gives new grasp of our calling to care for profound community in the '80s.

Contradiction: Objectifying regional team structures in order to deal with the strategic swoops of Quarter III. (Wk. 10)

SUVA**RELIGIOUS HOUSE: APIA**

External: Village Council prepares for CEM and strongly advocates project to the nation. Local ownership gains support as Village Council works on ownership of fishing industry and Women's Committee takes complete responsibility for preschool and assigns two teachers.

Internal: UNO championship is great celebration as the EG beat the adults.

Contradiction: Resolving visa situation so program momentum can be maximal. (Wk. 11)

RELIGIOUS HOUSE: AUCKLAND

External: For three nights, as a result of LENS, citizens of Havelock North come to House and spend three hours focusing on new employment possibilities in Havelock North. A further result of LENS was the consensus this week between the retailers, the Borough Council and the town planner for the new design of the village center.

Internal: Making the 7 Revolutions montage breaks loose new images for the "New World of Hope" talk.

Contradiction: Continually trying to interpret ICA as a New Zealand-based training institute rather than an overseas community development agency. (Wk. 11)

SAN FRANCISCO**RELIGIOUS HOUSE: SAN FRANCISCO**

External: The Sacramento Metro hosts "the best Regional Council since 1973" as 23 participants hear reports on the past year and plan the victories in this Year of the Region.

Internal: The House decides to "do something you've never done on Thanksgiving before" and goes bowling in the morning, returning to a feast that includes a 24-pound inkind turkey.

Contradiction: Finding the catalytic event that journeys the region out the door and into the next step toward the consult. (Wk. 9)

RELIGIOUS HOUSE: SEATTLE

External: Five of the regional team go to Continental Council following a roundtable workshop to think through reports and issues.

Internal: Collegium catches staff up on all the interchange packets received in the last two weeks and surprises staff with everything that is happening.

Contradiction: Taking time to do the necessary year-end funding push in the midst of long-range sponsorship planning. (Wk. 11)

RELIGIOUS HOUSE: LOS ANGELES

External: Newsletter goes out to 50 new colleagues after recent Methods Academies and RS-1. Central Park Five launches every Tuesday Job Mart where 60 local applicants successfully meet four employers for real jobs at local trade school. HDTs proposals are written and major appointments made.

Internal: Constant flow of sojourners sees sheets changed on bed four times this week and brings great liveliness to house, and roundtable in the lounge catalyzes depth conversation over Tagore.

Contradiction: Creating corporate designs that will release individual responsibility for the whole mission. (Wk. 8)

RELIGIOUS HOUSE: RICHGROVE

External: Final celebration at House, complete with Mexican dishes, skits, singing and "Pin The Proposal On The Mayor", caps off unbelievable week of work on CEM. Documentation enables community to celebrate victories in every arena.

Internal: House bursts at seams with regional colleagues and Chicago team and also makes room for newly assigned Judy Tresise.

Contradiction: Discerning the core training journey that keeps all systems going in high gear. (Wk. 11)

RELIGIOUS HOUSE: PHOENIX

External: Staff trains VISTA workers in Tuba City in art form and TM with 20 people attend, including the director of VISTA. Participants see great possibility in the art form method.

Internal: Fast context and conversation includes viewing of the movie *Popeye* by the House.

Contradiction: Tightening and intentionalizing structures to deal with all possibilities. (Wk. 11)

RELIGIOUS HOUSE: PISINEMO

External: Laundromat expands with new "superloader" and additional dryer. Farm crew visits University of Arizona Water Harvesting Demonstration.

Internal: House attends wedding of district chairman; visitors from Minnesota include photographer and inventor of farm equipment.

Contradiction: Maintaining business activity in the midst of Christmas social calendar. (Wk. 11)

RELIGIOUS HOUSE: BILLINGS

External: Third Development Corporation Board meeting of the month finally produces results. New officers are elected and five employees are hired for "new" farm equipment industry.

Internal: Mary Goodsell, Carole LeMonnier and Bill Carroll, three new national VISTA staff members, join house as sojourners.

Contradiction: Devoting proper time to both the project's needs and holiday celebration. (Wk. 8)

RELIGIOUS HOUSE: DENVER

External: Eventful week finishes Colorado Springs circuit which includes an Ordway High School CYF with 27 participants in Crowley County Cluster Community, a CYF Assembly in Boulder's Fairview High School, the submission of

a major funding proposal for the Regional Consult and a LENS presentation resulting in a scheduled LENS for early spring with Mobil Oil Co.

Internal: House enjoys the "plenty" of Thanksgiving feasts on Wednesday and Friday while whole staff engages in discontinuous celebrations with families.

Contradiction: Preparing for the Voyage for Week 10 while the House "falls apart" and all troops are gone or doing self-support. (Wk. 9)

EDMONTON

RELIGIOUS HOUSE: EDMONTON

External: Meetings with Council at Feching Lake probe new directions for future replication.

Internal: House sends out Gerry O'Donnell (sojourner) to Conacaste as move to new house is celebrated.

Contradiction: Assessing future directions relative to corporate strategies. (Wk. 10)

RELIGIOUS HOUSE: ANCHORAGE

External: Staff attends a college sponsored "Human Services" Conference and runs into some familiar workshop methods short of ICA methods. Contacts for future possible LENS are at conference. Greater part of week is spent sending letters to social service network introducing ICA work, plus a Week II on CS-I update with metro colleagues.

Internal: Despite "flu" bug hitting entire house, staff manages to have one fantastic Thanksgiving feast, complete with gifts from families to house.

Contradiction: Deciding to risk on delimited strategic victories. (Wk. 9)

RELIGIOUS HOUSE: VANCOUVER

RELIGIOUS HOUSE: SASKATOON

RELIGIOUS HOUSE: WINNIPEG

External: LENS three day module with 12 participants representing two metros launches new regional thrust with marketing, pedagogy and strategizing sessions. Thursday evening visioning session excites all with images of regional pedagogues doing LENS across the region. House welcomes development and teams up with centrum colleagues to do LENS marketing calls as well as raise program funds.

Internal: Three job interviews plus resumes are submitted in the on-going self-support maneuver.

Contradiction: Neglecting to create the support systems while attending to immediate priority missional demands. (Wk. 8)

HOUSTON

RELIGIOUS HOUSE: HOUSTON

RELIGIOUS HOUSE: ASHERTON

RELIGIOUS HOUSE: DALLAS

External: "Indianoma Week: Past, Present, Future" (CEM) has put the region and the project into a new position of advantage with extension being requested and enabled by ASCOG (eight county area). Document writing continues all week. Indianoma leadership schedules a "Town Meeting" to workshop five key issues—extension, grocery store, tornado siren, festival, and Christmas lighting.

Internal: House families celebrate Thanksgiving with extended families in Durant and Omaha.

Contradiction: Building brilliant strategy to do extension through the HDP and build a regional movement in six metros before the Regional Consult. (Wk. 9)

RELIGIOUS HOUSE: MEMPHIS**RELIGIOUS HOUSE: DELTA PACE****RELIGIOUS HOUSE: NEW ORLEANS**

External: Circuit to Mansura prepares staff for regional council, brings in \$400 and breaks in two new circuiters — Robert and Chris MacKay.

Internal: House celebrates embracing the situation at Tony's Place and welcomes Sylvia and Emma Francis back from U.K. and Bristol Consult.

Contradiction: Being on all fronts and the right front, simultaneously. (Wk. 11)

RELIGIOUS HOUSE: ATLANTA

External: Two months of research and planning culminate in holding a pilot "Symposium on Ethical Presence". Evaluation points to the need to refine construct, but event points to this construct as a viable tool for movement building. Colleagues from five metros are present for Symposium and regional council; 20% of Symposium participants experience first course contact with ICA.

Internal: Every inch of space is used as house overflows with regional, continental and international colleagues as Ann Antenen represents Cleveland Region and Mr. Kim stops through on trek around U.S. following Academy graduation.

Contradiction: Reconfiguring House and region on the other side of the demands and implications of the Symposium and regional council maneuvers. (Wk. 10)

RELIGIOUS HOUSE: MIAMI

External: Evening at the Institute is held with nine present to explain Regional Consult and invite participation. Development raises \$10,000 in United Telecommunications stock as Kamala Parekh visits house.

Internal: Mrs. Yoshikawa visits after Academy and permeator gets promise of raise on January first.

Contradiction: Forming missional purpose out of fluid situation. (Wk. 10)

CHICAGO**RELIGIOUS HOUSE: CHICAGO NEXUS**

External: Development maneuvers encompass both discontinuity and fundraising.

Internal: In the midst of Christmas discontinuity the House participates in the West-Wheeler wedding through profound conversation and celebration, hosts many youth and visiting family members, enjoys parties and open houses and serves Christmas dinner to 100.

Contradiction: In the midst of increasing complexity, discerning the life-giving gestalt. (Wk. 13)

RELIGIOUS HOUSE: CHICAGO

External: Community and House bookkeepers join together for course with the Management Team. House members attend LENS pedagogy session at the Nexus and host the nexus and community at an Open House. Thanksgiving is celebrated with the community.

Internal: House is enlightened with new understanding of financial procedures as Management Team leads collegiums.

Contradiction: Having a holding image for Regional Consult which connects all other things the regional team is doing to it in a creative edge fashion. (Wk. 9)

RELIGIOUS HOUSE: KANSAS CITY**RELIGIOUS HOUSE: LORIMOR****RELIGIOUS HOUSE: MINNEAPOLIS**

External: Director of RDC (Regional Development Commission) No. 5 agrees to make his region a pilot for whole Upper Great Lakes area of effective citizen participation in decision-making. This follows a demonstration of TM methods to RDC leadership across the state, sponsored by the new Waste Management Board. IBM schedules a December 11 demonstration of the PSU model for work group problem-solving.

Internal: Saturday morning workshop on "Indicative Ethics" reveals the size of the task ahead for those who are seriously committed to creating new social patterns and understandings and allows for greater resolve to take an active role in creating curriculum for ethical decision-making.

Contradiction: Allowing the burden of already-scheduled events to cloud the vision of the long-term needs and the requirements for immediate action to respond to them. (Wk. 8)

RELIGIOUS HOUSE: ST. LOUIS**RELIGIOUS HOUSE: DETROIT**

External: Roundtable reflection on quarter's experiment with roundtable method and dynamics highlights the journey of the regional team.

Internal: A swirl of centrum input and challenge sweeps through the House as Rich Stanley stirs the challenge of future development, Bill Westre and Lee create a whirlwind of revolutionary financing for Munising industry and Doug Allan stirs up management finesse—all in a great mix of collegiality, beer and inkind squash.

Contradiction: Finding the way for everyone on the regional team to get a clear picture of task force workings and an overview of the entire activity. (Wk. 10)

RELIGIOUS HOUSE: CLEVELAND

External: Meeting of regional team in Columbus builds constructs for metro core meetings and January regional council, and builds story of how in doing scheduled programs, the contradictions articulated (at consult) indeed will be addressed. Proposal is delivered to Ameritrust (Bank).

Internal: John Poole returns from Edmonton as House welcomes John Gibson and Doug Allan for Management Trek—OE/ICA books are reviewed and brought up to date.

Contradiction: Articulating marching orders after new context of broad strategies of Regional Consult. (Wk. 10)

RELIGIOUS HOUSE: INDIANAPOLIS

External: Election of Ambrose Smith to presidency of Mapleton-Fall Creek Neighborhood Association fills house staff with exciting anticipations of activities and human development in our neighborhood.

Internal: Theatre organ music and pizza draw together house staff, development team member Richard Stanley, region prior Gordon Harper, family member Judy Appenfelder, and colleague Paula Craddock for celebration before travel to Continental Council.

Contradiction: Designing the unifying and spiritizing structures for a multitude of missional fronts. (Wk. 11)

NEW YORK**RELIGIOUS HOUSE: NEW YORK**

External: The meeting of the Global Guardians of the New York Area is a nurturing and informing event with first-hand reports on the Cleveland Regional Consult by Cincinnati Guardians Norman and Judy Lindblad and on Africa by past ambassador to Nigeria, Donald Easum. Thirty-eight attend representing all six regions.

Internal: Possible new facility is located as lease on present facility ends in May. Two New York House members are sent to assist the Widen HDP CEM.

Contradiction: Trying to stay in full swing on Regional Consult preparation while experiencing "waiting for Continental Council" and the subsequent decisions that will affect that preparation. (Wk. 10)

RELIGIOUS HOUSE: PITTSBURGH

External: Regional team has largest development week in recent memory—\$2,500 in hand and \$500 pledged—and two guardians helping get more contacts.

Internal: Storm changes night-on-the-town to night-at-home as the development team is hosted.

Contradiction: Putting together the pieces to build a movement. (Wk. 8)

RELIGIOUS HOUSE: WIDEN

External: Development team of three, two from Chicago and one from the regional team, identifies new colleagues with India story and nets over \$25,000 in committed monies. Team now has 150% of Annual Appeal goal.

Internal: Entire regional team attends Continental Council and three stay over for Women's Revolution PSU. Carl Stock is welcomed to region in new relationship as local church pastor.

Contradiction: Enabling the community to get through the rush of Christmas activities with a clear vision of what is needed for the new year. (Wk. 12)

RELIGIOUS HOUSE: ROCHESTER

External: Imaginal Education training and "New Family and Individual Retreat" include adjusting one curriculum and building another. Two weeks on the road spent marketing Charlotte Valley Firewood, consulting with Nunda and Albany Boys Club, doing LENS appointment with Rochester Public Library and inking sheet rock for renovation.

Internal: Renovation continues on third floor to prepare for family retreat; Al returns to celebrate birthday at house church and youth report cards are received.

Contradiction: Taking time to reflect, correct and plan for Quarter III. (Wk. 8)

RELIGIOUS HOUSE: PHILADELPHIA

External: Visit with probation officer and CYF presentation by youth excite House with increased possibility of doing a series of CYFs.

Internal: Collegium on upcoming Women's Revolution PSU with an overview of design in combination with essay by house prior addresses staff with comprehensiveness and intensity of Order's concern for this issue.

Contradiction: Coordinating all of the requests for CYFs so that series of events has impact on the people and communities involved. (Wk. 11)

RELIGIOUS HOUSE: WASHINGTON, D.C.

External: Kay Lush's spin, "The Spirit Quest", addresses 60 at metro dinner. Ivy City core solidifies around morning collegiums. Key site visit from Mayor's Office adds momentum to drive for lease and occupancy permit and nine representatives attend the New York Guardians' Meeting.

Internal: Collegium on four initial Regional Consults by George Walters and Kay Lush, on return from London enroute to Chicago, impacts House.

Contradiction: Struggling through the immediacies to ensure being overagainst the true contradiction. (Wk. 10)

RELIGIOUS HOUSE: BOSTON

External: Carl Stock conducts Town Meeting with Cambridge Housing Authority and 20 participating agencies which provides for solid planning and elicits requests for methods training.

Internal: What a Thanksgiving! A procession from the fifth floor down to a celebration which includes Starks and Boston Houses, Drew Hill and two friends attending college here and regional colleagues. Congregational dinner on Sunday for Jim and Judy provides occasion for corporate reflection on covenant and the family.

Contradiction: Enabling participation in area and continental councils. (Wk. 9)

RELIGIOUS HOUSE: STARKS

External: S.E.C. president calls special meeting to deal with finances. S.E.C. board takes financial issues on their shoulders. Starks VOICE is done largely by community residents in absence of ICA staff.

Internal: Thanksgiving is celebrated with the Boston House as well as Sunday Feast of Beginnings: Advent House Church, birthday of Louisa Hamachek and congregational dinner for Judy and Jim.

Contradiction: Keeping all the plates spinning with only one staff on site for next two weeks. (Wk. 9)

MONTREAL

RELIGIOUS HOUSE: MONTREAL

External: A core of five women from the Business and Professional Women's Association share in training for next week's workshop, most of them have already experienced ICA methods from as far back as six years ago. The Sisters of St. Anne in Lachine confirm a donation of \$2,000 for local-global program. Fr. Touchette, Redemptorist and Vice-president for Canadian ICA, spends half a day advising staff on continuing relationships with the province's orders.

Internal: The House is prepared for winter with the sealing of all windows and doors as space is rearranged for 20 in preparation for area PSU on Profound Commitment.

Contradiction: Accomplishing the immediate and visible while maintaining the mundane momentum of the long term. (Wk. 8)

RELIGIOUS HOUSE: TORONTO

External: Day-and-one-half strategizing session captures the quarter's victories, advantages and out of six-month anticipations, forges a two-week drive to "Conquer the Regional Marks" by: Setting up the Demonstration Programmes; Empowering the Training Inc. Team; Manifesting the Seasonal Spirit and Intensifying the Missional Context. Annual Appeal Research Document is mailed to 90 colleagues who were visited. Staff attends area PSU on the Profound Commitment Course, providing the occasion to articulate the life questions being raised today and give form to the course design.

Internal: House dives into regular 30 minute swim schedule at nearby pool and celebrates the great city with donated seats at *The Torontonians*; Jessica Farrer gets a grand clap for excellent report card.

Contradiction: Wedging 48-hour days into 24 in order to conquer the regional marks. (Wk. 9)

RELIGIOUS HOUSE: OTTAWA

RELIGIOUS HOUSE: HALIFAX

MEXICO CITY

RELIGIOUS HOUSE: GUATEMALA CITY

External: Visitors from Inter-American Development Bank, a bakery oven expert, a basket export marketing agent and irrigation experts from Israel give guilds many opportunities to tell the Conacaste story while touring guests through the village. The preschool has 14 new students due to teachers' Family Visitation Day. The Comité de Reconstrucción, Department of the government, delivers a block machine so that new training center and auxiliary house construction can begin.

Internal: The congregational dinner for Estaban Guch and Odelia Estrada, with 15 family members from Conacaste and Chimaltenango in attendance, presents an occasion to reflect on and celebrate the meaning of the missional family, covenant and symbol for Central America in the 20th Century.

Contradiction: Clarifying coordinated thrusts in relation to weekly maneuvers and the year's objectives. (Wk. 8)

HAVANA

RELIGIOUS HOUSE: KINGSTON

External: Woodwork Industry receives orders for tool handles and electrical outlet bases. Mrs. Thompson of Social Development Commission comes by to report that embroidery training will begin in January. Large order is placed for building materials to finesse preschool building and shopping for classroom materials and supplies begins — all of this possible through EEC grant which is designated for social programmes.

Internal: Two students spend the week at the House at the request of ITI grad Norris Laidley who is their supervisor in a field work project in agriculture. Larry Ward is sent out to attend his grandmother's funeral in Cleveland, Ohio.

Contradiction: Lacking model for "leap-frogging" existing bureaucratic structures in Kingston and village. (Wk. 11)

LIMA

RELIGIOUS HOUSE: LIMA

External: Visitation for Regional Consult reveals colleagues within the public, private and voluntary sectors. Fifty-three show up at sector meetings after all-house visitation to hand out published Annual Report of Azpitia's first year as HDP. Twenty of the 35 community women attend a tea to hear Maria Aburto's report of her experience as the first woman Azpitian to be sent abroad (Sol de Septiembre CEM).

Internal: House congregates in Lima to see *La Violinista Techado (Fiddler On The Roof)* with conversation around coffee and ice cream.

Contradiction: Maintaining visible momentum in Azpitia while Regional Consult explodes the task. (Wk. 10)

CARACAS

RELIGIOUS HOUSE: CARACAS

External: The Year of the Region is marching forward through victory as the George Town Region has been opened by the invitation of the Surinameese Ambassador to Venezuela. Seven days' research gives overwhelming possibilities for training of local leadership. Funding acceleration is on its way with Mr. Malpica's 32 introductory letters to new corporations in order to open up a new orbit in development.

Internal: It is hard to find auxiliary in the house as the team keeps coming in and going out for CEMs in other areas while also covering the region.

Contradiction: Prioritizing "do's" to ensure effective team usage. (Wk. 10)

BUENOS AIRES

RELIGIOUS HOUSE: SANTIAGO

External: Bakery (Panaderia) purchases new refrigerator with profits as first step toward product expansion. Demonstration Farm continues to sell cucumbers at good price in Santiago. Sewing industry receives two contracts thereby opening possibility for donation of another sewing machine.

Internal: Construction of new house continues as concrete floor is laid, internal walls and ceiling are nailed in place; donations of clothes and household items come in; and Maryknoll gives US\$250 toward house emergency fund for rebuilding ICA Training Center.

Contradiction: Weaving and focusing breaklooses on many fronts so they are experienced as victories for total project. (Wk. 9)

RIO DE JANEIRO

RELIGIOUS HOUSE: RIO DE JANEIRO

External: The first Area Rio de Janeiro Guardians' meeting is held with 31 persons present, including two Bananeiras leaders. Plans for the coming year and ways Guardians can participate are presented. The State Secretary of Agriculture is present and indicates Bananeiras is a priority for development.

Internal: CEM team completes module and House celebrates by going to a waterfall. Phyllis Slicker marks another year with a birthday.

Contradiction: Sustaining operations in midst of laying groundwork for major funding. (Wk. 10)

THE GLOBAL ORDER CENTRUM REPORT

BRUSSELS
BOMBAY
SINGAPORE
HONG KONG
CHICAGO

QUARTER II WEEKS TWELVE & THIRTEEN

GLOBAL DEVELOPMENT CENTRUM

Global Development Centrum reports that blocks with the EEC since the beginning of the year are gloriously removed — the Kenya proposal is approved. A partial grant from the Divine Word Fathers arrives in the nick of time for India. Bombay reports that LENS speaks to companies at a time when industrial disputes “strike” methodology is the accepted form of dealing with blocks. LENS looks more and more like probable program funding source for this year. Preparations for Global Development Centrum Band meeting in Chicago, Week 2 of Quarter III, are completed and anticipations are high for a time of intensifying the practical effectivity of the global band. The key contradiction lies in the arena of generating a massive leap in major funding by year end.

GLOBAL RESEARCH CENTRUM

Global Research Centrum reports that a global task force on the Regional Consult produces a 70-page manual with breakthroughs on strategy procedures for Regional Assembly. The Taiwan Bi-regional Council visit enables first draft of HDTs construct for Taiwan. Two hundred copies of *The Cultural Contradictions of Capitalism* by D. Bell are ready for distribution for Quarter III study. Brussels reports seeing that missional unity is founded more upon common methods than upon common programs. The key contradiction lies in the arena of finding ways to enable houses’ participation in evaluation of liturgical and roundtable exeriment.

GLOBAL OPERATIONS CENTRUM

Global Operations Centrum reports that LENS pedagogy in the Hong Kong Nexus with the regional house prepares for the first LENS this year in Hong Kong Week 11. Robert Duffy goes to Tokyo to work with development in marketing LENS. Brussels reports a great council with Continents NAME and Europe. They see the scheduling of Regional consults, sets and the formation fortnight as an integrated campaign rather than a war of attentions. The key contradiction is arranging time and energy for longer range probes and breakthroughs in the midst of an already rugged schedule.

GLOBAL MANAGEMENT CENTRUM

Global Management Centrum reports that Hong Kong Centrum plans SEAPAC Council travel for the zone and Singapore hosts, tickets and gets visas for the Regional Consult team, the Durgiah family, Brian Townley, R. White and S. Elleghat. Singapore achieves up-to-date budget monitoring for nexus and zone. Hong Kong discovers a fragile new approach to fiscal solvency through corporate quarterly budgeting. The European Continental Council creates a model for financing Regional Consults without raising program budgets. The key contradiction lies in the arena of releasing staff to deal with the new year while confronted by solid walls of last year’s leftovers.