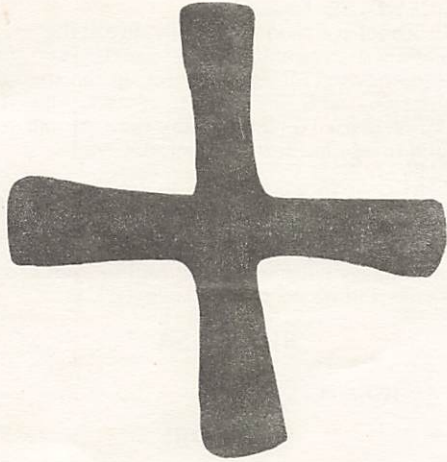


THE GLOBAL ORDER REPORT

QUARTER III WEEK TEN

MARCH 2—8, 1981



*Israel shall again dwell in my shadow
and grow corn in abundance;
they shall flourish like a vine
and be famous as the wine of Lebanon.
What has Ephraim any more to do with idols?
I have spoken and I affirm it:
I am the pine-tree that shelters you;
to me you owe your fruit.*

Hosea 14: 7-8

MADRID

RELIGIOUS HOUSE: MADRID

External: Regional team visits three metros in preparation for Regional Consult. Host Committee meets for first time and decides to meet again the following week. ICA brief and Regional Consult brochure are sent to the printers.

Internal: Lucy Aponte arrives from Lima to join House and immediately goes on circuits; Barbara is sent to Paris Regional Consult.

Contradiction: Developing the tactics that enable 50-100 persons to participate directly in the Regional Consult. (Wk. 8)*

LONDON

RELIGIOUS HOUSE: LONDON

External: The Regional Consult net begins to be woven. The initial design creates great anticipation as letters, brochures, sponsorship committees, facilities and names are swirled and strategised.

Internal: John Patterson brings I.E.R.R. (India Exposition of Rural Reconstruction) into focus at house collegium, and Jean Taylor is sent out on three-week permeation assignment.

Contradiction: Prioritizing troops and area strength to bring off self-support and Regional Consults. (Wk. 7)

RELIGIOUS HOUSE: GLASGOW

External: Symposium story enables strong development push, entry into Glasgow frame, heals old wounds and secures family hosts for practicum week in all six metros.

Internal: Neighbors, two adjoining houses, participate in fine roundtable event for the first time, and space reclamation anticipates influx of troops for the Regional Consult.

Contradiction: Balancing the global/local and futuric/immediate tensions in order to give form to the Spirit Movement. (Wk. 8)

RELIGIOUS HOUSE: BRISTOL

External: Swansea Rotary Club engagement provides opportunity for declaration on human development in the '80s. Steve Evans joins circuit team on Cardiff church visits to lay foundation for future program. Deanna's school prints *Tai'rgwaith Vision*.

Internal: Felicia and Therese join 70 Tai'rgwaith Primary School students in planting 200 trees donated to landscaping scheme by National Coal Board.

Contradiction: Keeping on keeping on through the fog. (Wk. 9)*

PARIS

RELIGIOUS HOUSE: PARIS

RELIGIOUS HOUSE: BRUSSELS NEXUS

External: Fabulous Formation Fortnight facility is found! CARITAS Belgium invites ICA to use its fine centrally located, spacious building in Brussels for the Formation Fortnight in April.

Internal: As house troops shrink to four people, another guest night is held and everything else keeps going.

Contradiction: Overseeing the Fortnight preparation continentally with minimum of troops. (Wk. 8)

RELIGIOUS HOUSE: BRUSSELS

External: The permeation of women's groups in Brussels continues and of N.G.O.s with completion of a conference report and up-to-date correspondence.

Internal: Hosting guests from neighborhood (St. Gilles) in French Immersion evening, House uses learning French as occasion to renew old contacts.

Contradiction: Finding the symbolic glue as House goes off in three different directions. (Wk. 7)

FRANKFURT

RELIGIOUS HOUSE: FRANKFURT

External: Regional Consult preparation intensifies with phoning, visiting, mailing, structural calling and presentations. From a recent CYF, 500 DM arrives in the mail. The typesetting of the Town Meeting report is completed and Regional Consult development proposal is completed and first submission is made.

Internal: Game-playing and space miracles heighten the sense of being on the way along with illuminating collegiums on self-support and the Bell study on the *Cultural Contradictions of Capitalism*.

Contradiction: Concretizing the shadowy images of the existential aim of the Symposium, Practicum and Assembly so that the necessary priorities emerge. (Wk. 9)*

RELIGIOUS HOUSE: AMSTERDAM

External: Three day circuit in Koln Region sets dates for two metro sets in September/October with a planned regional council after that. Circuit nets DM 250 in development money.

Internal: All-day planning with area prior leads to a four tactic maneuver on self-support and a first glimpse of a viable area self-support model which includes possibilities of a job search in Frankfurt and Brussels; the planning closes with a "best ever" Amsterdam canal cruise and dinner at a Chinese-Indonesian restaurant to celebrate.

Contradiction: Working on tactics rather than maneuvers produces a fragmented sense of momentum. (Wk. 9)*

RELIGIOUS HOUSE: BERLIN

External: First Regional Consult in Europe after the pilot is completed with 50 people at the Symposium conducted in German. Nine additional continental staff are trained and the English document is printed.

Internal: The staff experiences profound appreciation for its colleagues as they share in this Regional Consult.

Contradiction: Discerning the concrete actions that move the region from a comprehensive four-year vision into viable initiation steps. (Wk. 7)

ROME

RELIGIOUS HOUSE: ROME

External: The Area Rome legal trek visits two lawyers in relationship to future legal form of ICA and Arthur Anderson about financial responsibilities. In addition, 15 religious orders are visited for the April training seminar.

Internal: The House hosts Sam Hanson and Neil Vance and marks the end of a successful legal trek with an all-house celebration in Trastevere.

Contradiction: Getting enough people registered quickly for Regional Consult to release time for practical focus of facility search and consult preparation. (Wk. 8)*

STOCKHOLM

RELIGIOUS HOUSE: COPENHAGEN

External: Development calls in Copenhagen and Stockholm spread and deepen support base. Swedish Cooperative Center reports on recent trip to Kenya and Atlas Copco expresses interest in India. Pastor Mollerup requests meeting with ICA during his conference in Nairobi in May.

Internal: Brian Williams is imprisoned in exterior bathroom in subzero temperatures because of faulty doorcatch and not noticed missing until evening meal accountability.

Contradiction: Maintaining regular circuits while major hunks of time are being expended outside area. (Wk. 9)*

CAIRO

RELIGIOUS HOUSE: GIZA

ABIDJAN

RELIGIOUS HOUSE: ABIDJAN

LAGOS

RELIGIOUS HOUSE: LAGOS

External: School evaluation by faculty reveals the image shift from demonstration to training is complete. Four grads and auxiliary journey to Ado-Ekiti and set up ten special issues (health) forums with permeation contact. Site visits by University of Lagos continuing education people result in forums and troops for next week's forum set.

Internal: Marj Philbrook returns to North America while Jaime and Mary Lou Vergara, accompanied by Owolala Olutunje, are sent out to Zambia for Kapini HDTS.

Contradiction: Mobilizing two teams of six with a myriad of detailed tasks and no vehicle available. (Wk. 6)

KINSHASA

RELIGIOUS HOUSE: LUSAKA

NAIROBI

RELIGIOUS HOUSE: NAIROBI

External: Major focus is on training movement staff as 41 graduate from Advance Training School and Women Advancement Modules are held in Kalwani-Shamalogo and Kusa. The Health Module is initiated in Kaani Sub-Location. The Village Leaders Institute curriculum is built.

Internal: Regular collegiums on common memory (corporateness) and appropriate technology (bee keeping) stimulates staff in the midst of numerous send outs (Women Advancement Modules, LENS in Nigeria, Cairo Regional Consult and National Project Directors Meeting).

Contradiction: Focusing priorities on the immediate which eliminates needed consensus on future directions. (Wk. 7)*

RELIGIOUS HOUSE: MOMBASA

External: Auxiliary holds village meetings in each of the six villages of the new cluster project, which will open with the Consult the second of February. High village preparation indicates the eagerness and readiness of the villages to create their own future with the cluster project.

Internal: Construction Guild completes cementing the community water tank roof, a major step toward implementing the 25,000 gallon water tank.

Contradiction: Maintaining reasonable internal life in the midst of highly demanding cluster consult. (Wk. 6)

BOMBAY

RELIGIOUS HOUSE: BOMBAY NEXUS

External: The Regional Consult construct is refined and a team is sent to Sevagram for Consult setup. Rs 11,000 are in hand from Nagpur as development team works closely with Consult setup. Maliwada Ashram is secured for a further five years.

Internal: Nexus sends out Sir James and Lady Peggy Lindsay following a great stay on the Sub-Continent; and Heng Tsu Chen, ICA Board member in Malaysia, is sent out after short sojourn.

Contradiction: Keeping the whole continent contexted and focussed in the midst of the continuing complexity of bringing off five Regional Consults. (Wk. 7)*

RELIGIOUS HOUSE: BOMBAY

External: Sevagram completes new community center and does first bakery run with "Seva-bread". Twenty-five Maliwada leaders are sent out to build the circle and four preschools, and Chikhale has strong tangible support from district and county chairmen for circle and block. Jawale's 280-woman GWF Assembly concludes electrifying ten village impact events with 1200 women. Male's Community Development Association on the move constructs new community center.

Internal: A new five-year lease is obtained on Maliwada Ashram (castle), staff of six out of nine ashrams are in new blue dress, and a new three-region song is printed.

Contradiction: Designing hardheaded four-sector leadership commitment and formulation strategies. (Wk. 7)

DELHI

RELIGIOUS HOUSE: DELHI

External: Sikror Open Day is an unforgettable event for the village as the Collector opens new community centre, switches on Sikror's first electric lights and inaugurates 1500-foot entrance road. Among honored guests are past Prime Minister of Norway and the Australian High Commissioner. Twenty-five villagers from emerging circle cluster attend, and Shaharpur delegation demands Gram Sabha the following weekend.

Internal: Sojourner Rajeev Narulla arrives in time to help wash down the community centre floor and says he would be delighted to stay for area council.

Contradiction: Enabling the focused disciplined effort of the Open Day preparations to become the everyday life-style. (Wk. 6)

MADRAS

RELIGIOUS HOUSE: HYDERABAD

External: Three Gram Sabhas and a training session are held for the Rayalaseema Development Trust, an organization doing over 200 villages in four-block programs in Anantapur Metro. The water pipes are in for the Nadlapur water system.

Internal: Auxiliary names English class as the event of the week, and a trip is made to see the "Hyderabad Exhibition" of Indian products.

Contradiction: Enabling leadership to move toward consensus on house repairs. (Wk. 6)

CALCUTTA

RELIGIOUS HOUSE: CALCUTTA

External: Evaluation of Coal India (Government of India corporation) LENS leads to two more seminars plus LENS with Indian Oil Corporation and requests for two training department people to be assigned to LENS faculty. Events set up for Regional Consult continue as dates are confirmed for two CYFs, and two constructs of Imaginal Education are ready for use in schools and with community (bustee) development workers. Imaginal Education and self-support contract for year is secured. Rajarampur village site visit with local chamber of commerce initiates dual strategy thrust (along with LENS) of institutional permeation.

Internal: House collegium on Calcutta widens images of city and state in terms of its historical role and present situation; and arrival of Anil Prasad and Gyan Prakash from Operations sets House in preparation for first Hindi CYFs in the area.

Contradiction: Seeing through the innumerable openings produced by calls to discern the truly catalytic tactics of the master strategies. (Wk. 7)

SINGAPORE

RELIGIOUS HOUSE: SINGAPORE NEXUS

External: Teams are setting up Regional Consults and LENS across the areas.

Internal: Bell and Toffler studies occasion dialogue with future.

Contradiction: Using momentary opportunity of all troops present to unify thrust and to remaneuver for the quarter. (Wk. 8)*

RELIGIOUS HOUSE: KUALA LUMPUR

External: Rescheduling the Regional Consult to a more strategic date is seen by sponsors as an opportunity to provide more assistance. Dr. Arshad, Director-General of the Department of Agriculture, offers to host the first sponsorship committee meeting; and the third steering committee meeting is hosted by one of the ICA: Malaysia Board of Directors. M\$11,200 is deposited — an all-time high for a single week.

Internal: A great week of meeting Gail West's "old friends" is climaxed with a Sunday afternoon tea at Dr. Arshad's home.

Contradiction: Doing the maneuvers that will utilize resources to the strongest advantage. (Wk. 8)*

RELIGIOUS HOUSE: MEDAN

External: Bubun village council meeting begins plans for environmental demonstration and neighborhood leaders are ready to work hard; the Bubun Cluster management team receives bookkeeping training from government and Guardian women's leader prepares to work on cluster industry marketing. Medan Guardians work out team financing for events and prepare for Regional Consult Quarter III, Week 13. Three LENS are set with Aceh University, paid by Mobil Oil.

Internal: After a new face is given to collegium room and decor, a celebration in new collegium room takes House to Termine, Italy, as everyone except the two hosts have spaghetti for the first time and a troubadour serenades complete with costume.

Contradiction: Using existing government structures in villages and subdistrict without diluting participatory methods. (Wk. 8)*

RELIGIOUS HOUSE: JAKARTA

External: First Regional Consult Steering Committee is held and begins the process of nurturing new colleagues. New Mobil president, who has known of our work since Ecumenical Institute days, arrives. LENS calls reveal new eagerness despite new US\$6,000 fee.

Internal: West arrives en route to LENS marketing in Australia after two-month permeation probe in the middle of the jungle; three-hour traffic jam between Jakarta and the village spurs momentum to relocate.

Contradiction: Journeying supporters and interested persons to a deeper and longrange understanding of the whole Regional Consult. (Wk. 7)

RELIGIOUS HOUSE: UJUNG PANDANG

External: Indonesian lessons for cluster village Cambaya has 36 villagers attend for 2 1/2 hours. Women's meeting in Marana organizes for preschool support with a great context by the education department. Second rice-crop planting begins for three villages.

Internal: Celebration with dinner and movie in Ujung Pandang, roundtable with *The Old Man and The Sea*, English lessons for 21 and the welcoming of four high school students for one month all bring new life to House.

Contradiction: Organizing troops effectively with signs of victory just around the corner. (Wk. 8)*

HONG KONG

RELIGIOUS HOUSE: HONG KONG NEXUS

External: The Global Symposium is held February 25 and 26 at the Sheraton Hotel. New people with little or no previous contact, except a special invitation to attend this event, participate effectively and enthusiastically. No one would leave this event until the *Implications* page of the document came off the press.

Internal: The Nexus enables the Global Symposium by housing 22 this week, and imaginations and spirits are addressed by the context and conversation on China led by "Tuesday-night Task Force" participant, Victor Liu.

Contradiction: Imagining the symbolic step that would reground Hong Kong's movemental future and its role in caring for the globe. (Wk. 9)*

RELIGIOUS HOUSE: HONG KONG

External: Regional Consult preparations are accelerated with Tuesday night workshop with Chinese colleagues. Design, translation and printing of flyer, and 25 development appointments are completed. Foundation keystone maneuver is worked through with guardian and District Officer in seven-hour session over Sunday brunch.

Internal: A swirl of research and reflection including collegium on Shanghai and roundtable conversation of *The Third Wave* informs team of opportunities for education and training programs in Chinese culture.

Contradiction: Ensuring that everything is handled in final countdown to Regional Consult through assignments and team configurations, releasing creative brooding. (Wk. 7)

RELIGIOUS HOUSE: KAOHSIUNG

External: Four weeks of English curriculum are created for Hai Ou youth and preschool classes. Information sheet on the upcoming Human Development Orientation session is ready for recruitment use. Chinese staff takes initiative in breaking open individual donations in the R.O.C. Local Hai Ou people take responsibility for hosting visitors from Oyubari and enjoy opportunity to use their Japanese language skills learned during Japanese occupation of Taiwan.

Internal: Highlight of week is special dinner and singing in a local family's home.

Contradiction: Putting into practice what you decide in theory (an old Chinese saying). (Wk. 8)

RELIGIOUS HOUSE: TAIPEI

External: Development intensifies with over 50 visits during the past two weeks. US\$5800 is deposited this month (including US\$1000 from individuals). Control Data agrees to request for inter-active terminal with access to the largest computer in Taiwan.

Internal: Peter Hu beams with announcement of his second grand-daughter (yet to be named), and House accommodations continually shift with in/out visitors from the Philippines, Hong Kong and Japan.

Contradiction: Discerning key next step in the midst of innumerable possibilities. (Wk. 8)

RELIGIOUS HOUSE: MANILA

External: Meeting with Australian Ambassador confirms support for Philippines projects and opens new program possibilities. Board of European Chamber of Commerce views the global film, Australian Women's Association is enthusiastic after ICA presentation and LENS is conducted for RCA with the general manager and 46 top and middle management people. Annual Philippine audit is completed.

Internal: The movie, *Blues Brothers*, addresses the House.

Contradiction: Being prepared for private sector invitations to do specific village development programs. (Wk. 8)*

RELIGIOUS HOUSE: CEBU

RELIGIOUS HOUSE: DAVAO

External: Cluster inventory of cacao trees planted and follow-up reveals astonishing results as follows: Luman HDP reports 2,190 trees doing well, Carman HDP reports 1,273, Valancia HDP reports 1,950, LaPaz HDP reports 813 and Maytwod HDP reports 2,690. Luman HDP also holds PPA meeting, and Langub sewing continues with another order of electric fan covers from Gusino's Department Store.

Internal: Pope John Paul II visits Davao City resulting in great celebration and House discontinuity.

Contradiction: Finding malnourished cacao trees in a few locations. (Wk. 8)*

TOKYO

RELIGIOUS HOUSE: TOKYO

External: Two guardians travel to Osaka to serve as second and third leaders for the Impex Company LENS. Second conference is held to discuss a 1000-person Town Meeting in Tokyo.

Internal: Guarantee deposit is placed on a new 30-room house and all systems are mobilized to move before the end of February.

Contradiction: Ensuring a firm foundation of finance and program under the move to a house that is 1/3 larger than the present facility. (Wk. 7)

RELIGIOUS HOUSE: SEOUL

RELIGIOUS HOUSE: KUH DU E RI

RELIGIOUS HOUSE: FUKUOKA

External: Last training module held for training month of February is huge success with 15 colleagues participating. Imaginal Education workshops focus on the April training design. India coffee is held Sunday afternoon to promote trip. Hiroshima circuit finds LENS openings, increases advisor participation and sets Town Meeting with the city on March 20.

Internal: House takes local train (six-hour, all-night ride) to Nagasaki, stands in a blizzard for three hours with a gathering of 47,000 people at Matsuyama Stadium to greet Pope John Paul II on his trip to Japan. He gave his entire mass in Japanese.

Contradiction: Pulling together a comprehensive campaign thrust while going many directions. (Wk. 9)*

RELIGIOUS HOUSE: OSAKA

External: House holds LENS training with the theme "LENS Promotion in the Osaka Region in 1981" for staff and colleagues to review methods and lead practice workshops. Ms. Tanaka, an advisor/colleague, is one of the key pedagogues. A sushi and beer celebration ends this event and provides reflection time on the new insights.

Internal: House continues to be Wayside Inn presence as FNATI (Friday Night at the Institute) guests, Mrs. Reames and Yoshikawa San, stay overnight for the Saturday LENS training and Jim Oberge stays three nights to aid in LENS recruitment.

Contradiction: Getting distance from the immediacies of the moment so that the underlying human cry is heard and responded to. (Wk. 8)*

RELIGIOUS HOUSE: SAPPORO

External: Three-and-one-half hour LENS appointment with corporation president pushes team's understanding of methods to the limit. LENS-site change is an exercise in house and colleague consensus building.

Internal: House and colleagues participate in ice-skating party at the Sapporo Olympics Ice Arena, and House

welcomes Mr. Tonasaki as transferred staff member from the Tokyo House to the Sapporo House.

Contradiction: Finding the dynamics to work out consensus quickly in two languages and between two cultures. (Wk. 8)

SYDNEY

RELIGIOUS HOUSE: SYDNEY

External: Circuit to Newcastle includes fine *Third Wave* conversation at roundtable. Swirl of development and LENS appointments are completed with \$1800 banked. Amax, Amoco and Qantas are key visits.

Internal: House is bursting with guests from Murrin Bridge, Industry Ladies, Nexus and Dick West; and Roundtable has guests David and Lorraine Otto visiting from Michigan.

Contradiction: Pulling together the rural LENS strategy with a region-wide consensus. (Wk. 8)*

RELIGIOUS HOUSE: MURRIN BRIDGE

External: Twelve thousand dollars is in hand and actually banked after 18 months less three days of negotiating same. Community sparks leave for grape picking for four weeks. Land distribution broadens family's participation in economic base.

Internal: With deployed youth in Adelaide, auxiliary trio returns to Murrin Bridge after regional team meeting in Sydney with self-support maneuvers in mind.

Contradiction: Discerning the appropriate tactics to deal with a dependency mindset and lifestyle. (Wk. 7)

RELIGIOUS HOUSE: PERTH

External: Southern circuit covers two metros, six towns and 15 calls setting up seven Practicum events and receiving a request to do LENS for leaders of rural inland towns. Meanwhile in Perth, a colleague sets up Week 9 development calls and a visit to the aboriginal leader at Nyoongah Community Centre both impacts and absolves team with HDP residue.

Internal: Bright green and dark brown walls are transformed to sparkling white with inkind paint, followed by inkind steak and hot dogs, courtesy of a colleague.

Contradiction: Telling the winning Regional Consult story so that it becomes *their* story and a movement is constantly being built. (Wk. 8)*

RELIGIOUS HOUSE: ADELAIDE

External: Maneuvers for remainder of Quarter III are consensed upon. Another request is received in response to high school youth program mailing.

Internal: Furniture sale and additional permeator's income are first winning steps in special areal maneuver to realize self-support bottom lines.

Contradiction: Embracing ambiguity and delayed action in the midst of enforced house move. (Wk. 8)*

RELIGIOUS HOUSE: MELBOURNE

External: Ann Epps and Roy Stansbury join the House for a great development week, with 11 development calls done and 12 more appointments set for next week. Two-day circuit to the western districts schedules a LENS set-up meeting for March 4. Meeting with a young people's group in Melbourne Metro gives a CYF opening.

Internal: David Dunn's parents visit from Michigan and seven people come for Roundtable and stay on for East Preston core group planning.

Contradiction: Laying the groundwork for Regional Consult in the midst of program set up and development. (Wk. 8)*

RELIGIOUS HOUSE: BRISBANE

External: CYF planning moves ahead with one set in Coondiwindi and set-up meetings with local school principal and Greek Community Leaders.

Internal: Roundtable is held in a colleague's house with regional colleagues taking all on-stage guide roles.

Contradiction: Wiring the team work and images together on a cohesive timeline. (Wk. 8)*

SUVA

RELIGIOUS HOUSE: APIA

External: Major victories include metro steering committee headed by Joe Annandale and Bernie Pereira taking the reins of the Regional Consult. Village Taro Marketing Co-op takes off with second truckload of taro cases in one month. Three major oil company representatives (Mobil, Shell and BP) agree to next steps in major funding plan to secure their "fair share" contribution for whole Apia Region.

Internal: Apia House celebrates visas for one-half of assigned personnel, and Marilyn Whiting captures first self-support job on the island in two years.

Contradiction: Channeling victories wisely to keep team on the tightrope all the way to the Winner's Circle. (Wk. 7)

RELIGIOUS HOUSE: AUCKLAND

External: Week is highlighted by completion of Regional Consult brochure, a presentation of community awareness methods to Form Six of the Iona Girls School and receiving a written affirmation from New Zealand Department of Works concerning the Regional Consult. While visiting a Samoan congregation, regional team is asked to give an up-date of what is happening in Samoa.

Internal: Olga Jones returns from Summer Research Assembly in Australia and gives a great report on Community LENS and how to set them up.

Contradiction: Webbing the four sectors of Hawkes Bay society into one practical focus toward funding. (Wk. 8)

SAN FRANCISCO

RELIGIOUS HOUSE: SAN FRANCISCO

External: Curtains are pulled on the Regional Consult with final typing of two documents and with a night of analyzing the "Metro Accounts" as a way of pulling together the focus of the massive amounts of strategic thinking that has been done during and since the Consult.

Internal: House celebrates with metro the finalizing of work from the Regional Consult and the award of a scholarship by the Seroptomist Club to Jane St. John with inkind wine and cheese.

Contradiction: On the other side of the Regional Consult, discovering the authentic catalytic role of the House in formulating metro cores. (Wk. 9)*

RELIGIOUS HOUSE: SEATTLE

RELIGIOUS HOUSE: LOS ANGELES

External: Bank renews grant for \$5000 to do leadership training in CP-5 in the midst of February development push with 82 corporation contacts. Two continuing education units are secured for Regional Consult as Symposium interviews exceed 100.

Internal: Roundtable celebration marks the past three weeks' development victory and Dolly Mannon's 65th birthday. Peter returns from San Francisco Regional Consult enablement on Monday and is sent out on Friday to launch Cannonball industries marketing.

Contradiction: Discovering the keys to getting people to make commitment beyond great excitement about the Regional Consult. (Wk. 9)*

RELIGIOUS HOUSE: RICHGROVE

RELIGIOUS HOUSE: PHOENIX

External: Regional Consult preparation gains momentum as four teams of Phoenix Guardians meet to plan their trips for taking the "Breakfast Conversation" on the road across Arizona. Ruth Jefferies hosts exciting breakfast meeting on Wednesday. Circuits to New Mexico launch similar events in New Mexico and El Paso.

Internal: Staff sends Alex St. Clair to Youth Presidium on behalf of youth cluster and sends Kate and Bob on ten-day New Mexico-Texas circuit.

Contradiction: Ensuring the development bottomline in the midst of expanding contacts and Guardian missional engagement. (Wk. 7)

RELIGIOUS HOUSE: PISINEMO

External: Completion of improvements at traditional Papago farm and installation of experimental drip-irrigation system at the Santa Cruz farm are accomplished with assistance from Phil Holmes and Harley Wegner, sojourners from Wisconsin.

Internal: House spends Sunday at O'dtham Tash, Indian Days festival in Casa Grande.

Contradiction: Unblocking local participation for RVI trip to Minneapolis and program planning commissions. (Wk. 7)*

RELIGIOUS HOUSE: BILLINGS

External: Six-week marketing strategy gets under way with 2,000 industry brochures sent to area ranchers and dealers. Development Corporation Board meeting settles leasing of cafe, hiring of new store manager trainee and the reduction of post office hours. Cafe is officially opened under new management — Betty and Herman Elk.

Internal: A full-fledged guest drops in from California to visit Carolle for the long weekend.

Contradiction: Focusing resources corporately to allow effective action. (Wk. 8)

RELIGIOUS HOUSE: DENVER

External: Sixteen people in six teams travel to every metro for Regional Consult recruitment. Unsolicited bonus of one scholarship donation is received.

Internal: Richard Stanley arrives to help with Regional Consult preparation, and regional colleagues get a laugh out of invitation to "First Annual Conspicuous Affair — A Celebration of Going Public" — a Regional Consult kick-off celebration.

Contradiction: Making sure that recruits do not start slipping through the cracks as regional team turns towards practices with apparent victory on recruitment. (Wk. 10)*

EDMONTON

RELIGIOUS HOUSE: EDMONTON

RELIGIOUS HOUSE: ANCHORAGE

External: Metro circuit into Fairbanks Metro reaches new people and new possibilities for a future GWF. A core is readying itself for this task. The House along with metro colleagues in Anchorage completes a phasing model for Regional Consult.

Internal: The House sends the Henrys to Dallas and at the same time welcomes Ted Ariel from Chicago, and the circuit team returns to the city.

Contradiction: Keeping the momentum going in all things. (Wk. 7)

RELIGIOUS HOUSE: VANCOUVER

External: Circuit visits Prince George Metro for the first time in three years after a visit to the Kamloops Metro, Williams Lake. In Williams Lake a special Forum is scheduled with the Day Care Centre, and a CYF and a CFC are in the works.

Internal: Observing the Fast Day on the circuit gives a new depth to circuit internal life and sustaining the troops on the road. Inkind accommodation and meals keep costs down and spirits up.

Contradiction: Capitalizing on the myriad of possibilities which are bursting forth across the region. (Wk. 7)

RELIGIOUS HOUSE: SASKATOON

RELIGIOUS HOUSE: WINNIPEG

External: Anthony remains in Vancouver Region a second week for Regional Consult setup. A Week 2, Quarter IV date is set for an RS-I during the Thursday night team meeting. A four-week calendar is laid out to hold team plans for the remainder of this quarter.

Internal: Ben Parker sojourns for week and continues as a Day I troop the following week, the Edmonton House spends a night on their way to Minneapolis for RVI visit, and Roy Philbrook (EG) is reassigned to Dallas to complete the school year.

Contradiction: Clarifying the necessary movemental activity. (Wk. 9)*

HOUSTON

RELIGIOUS HOUSE: HOUSTON

External: Texas Southern University is secured as facility for Symposium with the Continuing Education Department added to co-sponsor group, making a total of eight sponsors. Six thousand dollars is committed to "Houston Neighborhoods on the Move" with checks to be picked up Monday.

Internal: New decor for Regional Dialogue One launches command center and collegium room takes on whole new Texas feel with six armadillos and five cactuses.

Contradiction: Turning Regional Consult into major movement-building event. (Wk. 9)*

RELIGIOUS HOUSE: ASHERTON

External: Community consenses on long-range plans. Team completes local VISTA sponsorship proposal and mails Regional Consult sponsorship confirmation letters.

Internal: First tutoring fee arrives giving self-support a boost, and financial data is prepared for ICA audit.

Contradiction: Turning critical elements of "staff's frame" into the community's frame of the public sector. (Wk. 9)*

RELIGIOUS HOUSE: DALLAS

RELIGIOUS HOUSE: INDIAHOMA

External: Oklahoma City team meets to start Regional Consult interviews and facilitates Tulsa Metro core roundtable. Community holds potluck dinner to send out the Works to Jamaica.

Internal: Work family departs for Jamaica assignment and Jack Gilles arrives to assume House priorship.

Contradiction: Keeping all the fantastic activities moving in the midst of a transition. (Wk. 9)*

RELIGIOUS HOUSE: MEMPHIS

External: Special maneuver gets Regional Consult brochures from printer into mail to 6,000 in two cities with another 2,000 bused to metro cities for network distribution. A goldmine of unexpected contacts comes from colleagues excited by upcoming Symposium.

Internal: Long-time Guardian calls up and asks to sojourn.

Contradiction: Discerning and enabling key people to participate in the Symposium. (Wk. 9)*

RELIGIOUS HOUSE: NEW ORLEANS

External: Beautiful Regional Consult is in hand and fast moving out.

Internal: Mardi Gras intensifies with arrival of Anne Dodge and Gordon Kravet from Hartford, with staff watching and joining parades, returning home draped in beads, while Mollie Clements' attendance at a Quality Circle Seminar in Mississippi reveals booming job opportunities for facilitators at \$22,000-27,000 across the continent.

Contradiction: Exhibiting the same fascination and excitement toward Regional Consult as New Orleans has for Mardi Gras in order to be a magnet for engagement to colleagues. (Wk. 9)*

RELIGIOUS HOUSE: ATLANTA

External: Fear and fascination of the Regional Consult sets in as regional colleagues practice interviewing each other and lay out detailed timeline, covering all fronts, for the Consult.

Internal: The House is full again for "Ur Celebration" where all six urs are represented with food, dress, decor, traditions and songs.

Contradiction: Keeping the "see-saw" moving up and down. (Wk. 6)

RELIGIOUS HOUSE: MIAMI

External: Recruitment for Academy and Guardians meeting is intensified. Roundtable with five guests hears reports on Guatemala and Youth Presidium. Team prepares for Colquitt, Georgia Town Meeting.

Internal: Finance collegium allows House to understand finance situation; Cari returns from Guatemala, Joyce from Dominican Republic and Cameron Grow visits.

Contradiction: Corporately caring for task and creating a timeline for all of the upcoming events. (Wk. 10)*

CHICAGO

RELIGIOUS HOUSE: CHICAGO NEXUS

External: Ed Shinn's collegium on Mexico and projection of a six-month task design provides new holding image for our strategy through the '70s and '80s. Thirty freshmen at Whitewater University (Wisconsin) take part in Voyage as a part of their academic program. Cross-centrum team goes to Rural Venture Inc. for a site visit.

Internal: Gala Mardi Gras celebration with costume theme of the the Other World 64 categories and feast of pancakes with ten topping choices still has staff all *struck dumb by bliss*.

Contradiction: Clarifying individual responsibility in the midst of clear corporate and team tasks in order to utilize available human resources. (Wk. 10)*

RELIGIOUS HOUSE: CHICAGO

External: In the midst of continuing Regional Consult interviews, IYDP Conference (International Year of the Disabled Person) is orchestrated in Milwaukee with 160 in attendance. Final planning for the Harper Community College eight-week course, *Effective Leadership Methods For Community Involvement*, is completed. The first reunion of 5th City Business Careers is held.

Internal: Large mechanical fan is mounted on 20-foot ceiling and Theo Mueller lives to tell the story.

Contradiction: Developing clinching story that will get 20 people to write first draft of Symposium document and ensure private sector participation. (Wk. 9)*

RELIGIOUS HOUSE: KANSAS CITY

External: Colleagues gather in Wichita to discuss implementing the marketing of the Methods Academy and the Regional Consult and to hear the youth report on the Youth Presidium.

Internal: Roundtable muse "I Am I" allows new dialogue, especially with the Kansas City Youth Cluster.

Contradiction: Carrying through to completion the initiated program thrusts. (Wk. 9)*

RELIGIOUS HOUSE: LORIMOR

External: Rural Ventures Inc. exploratory visit includes meeting with 10 key rural development people in our sub-state region and at the state level. Six proposal letters are sent for LENS follow up. Three new businesses open on Lorimor Main Street.

Internal: Jim Swideski and Sam Hanson participated in house structure, and Lata Paul finishes lesson six on her typing training.

Contradiction: Clarifying assignment coordination for the rest of the quarter. (Wk. 9)*

RELIGIOUS HOUSE: MINNEAPOLIS

External: The second all-day session on Structural Permeation yields the first draft of a permeation mandate and the beginning of a timeline for in-depth research. An all-out effort to market programs to service organizations and voluntary sector concerns has yielded a surprising openness in educational structures and one demonstration PSU is already scheduled with St. Paul's, Central High School. MnDOT requests and receives a proposal for eight PSUs and a LENS with a pilot district, to involve maintenance crews and supervisors in problem-solving and to train them in PSU methods.

Internal: Regional team is enticed into going to the opera where *Tosca* is brilliantly supported by a choir in which Dr. Lewis Pierce is a first row participant.

Contradiction: Stimulating the interchange across permeation labs which is crucial to a priority which is late in coming to the forefront. (Wk. 6)

RELIGIOUS HOUSE: ST. LOUIS

External: Regional Consult brochure goes to typesetter and research flurries with lists for mailing. Mill Shoals VISTA proposal for new CAP sponsor is written by local core and submitted; Ivah Warner lands CETA salary in interim. RS-I registrations come in as recruitment intensifies, and Imaginal Education proposal is submitted to Pattonville School District.

Internal: Nadine Addington secures job at Cardinal Glennon Memorial Hospital for Children which is only two blocks from the House, and child care is also secured for job launch.

Contradiction: Orchestrating major activities in a way that weaves missional priorities and practical necessities into one thrust. (Wk. 9)*

RELIGIOUS HOUSE: DETROIT

External: Regional Consult preparation is highlighted by northern and central Michigan circuits. Symposium site is confirmed at Mott Community College with nearby motel agreeing to turn over entire facility at large discount.

Internal: Phone call from Tokyo confirms self-support maneuver of 30 to 50 Japanese students home-stay visit in Detroit area.

Contradiction: Executing the quick strike that wins the key victory while keeping track of the skirmishes on the flanks. (Wk. 9)*

RELIGIOUS HOUSE: CLEVELAND

External: Columbus Metro Circuit yields exciting core meeting and building of corporate imaginal battleplan. Major calls on Cleveland Metro corporations solidify points in frame and elicit overtures for future LENS programs.

Internal: Don Barkony visits for two days, at the end of his 50th birthday trip, and is thoroughly "debriefed" on Cleveland contacts in the four sectors.

Contradiction: Holding screen of comprehensive regional contradictions as metro strategies are continuously revised. (Wk. 9)*

RELIGIOUS HOUSE: INDIANAPOLIS

External: Faculty advisor, Tony Catonese, and student project officer, Bruce Donaldson, impact colleagues from Indianapolis and Lafayette, Cincinnati, with report of DePauw University construction/medical trek to Conacaste. Indianapolis Foundation approves \$12,000 grant to ICA staff for Training, Inc. set-up expenses.

Internal: Kentucky colleagues make report on exemplary GED program at National Conference on Adult Education in Indianapolis and come to House for lunch to meet Indianapolis metro colleagues and hold conversation on the future of education.

Contradiction: Documenting the movement and non-movement demonstrations of futuric human development for interchange. (Wk. 9)*

NEW YORK**RELIGIOUS HOUSE: NEW YORK**

External: Week 9 is highlighted by a Regional Consult task force meeting where the regional team looks closely at finalizing site visits for Community Lab week and the panelists for the Symposium. Week closes with 277 appointments done, 39 registrations paid, 40 yeses and 107 people considering attendance at the Symposium.

Internal: George Ensinger reports on his permeation assignment to the Association of Community Service Center which allows staff to reflect on models and responsibility for permeation in the midst of agencies that are serving New York City.

Contradiction: Ensuring that regional team is in a position to hold an authentic Regional Consult. (Wk. 9)*

RELIGIOUS HOUSE: PITTSBURGH**RELIGIOUS HOUSE: WIDEN**

External: Community Association prepares spaces for revenue-generating activities — archery in the gym basement and electronic games in the Grill backroom. Anthony Paul presents the India story to classes and congregations in Meadville, Pennsylvania.

Internal: Academy tutorial construct releases power of RS-I to small house.

Contradiction: Solidifying enthusiastic participation in major upcoming events — Regional Consult, revenue-generating activities and development. (Wk. 9)

RELIGIOUS HOUSE: ROCHESTER

External: Regional Consult rhythms begin to take shape after metro team meetings in three metros.

Internal: Signal individual events — birthdays, illness and new life-style decisions — mark the week.

Contradiction: Creating the rhythm which calls forth the dancers to the dance. (Wk. 9)*

RELIGIOUS HOUSE: PHILADELPHIA

External: Black Engagement Strategy PSU with 40% of Order's Afro-Americans resolves to create a sign of renewed black engagement in Philadelphia Region and then move on to Washington, Atlanta and the world.

Internal: Youth Cluster returns from Youth Presidium in state of euphoria and dispells all doubt as to their gianthood when they produce a top-notch collegium on short notice.

Contradiction: Structurally breathing hope beyond hope into a society lost in the desert of hopelessness. (Wk. 8)

RELIGIOUS HOUSE: WASHINGTON, D.C.

External: Preschool acceleration continues with a second week of staff training which includes field trip to other day-care centers. Phase I celebrates Valentine's Day with Kiddie Disco with 200 in attendance.

Internal: House hosts Jean Smith, Joel Wright, Elaine Johnson and Ben Rose as it experiences again the dynamics of feast or famine as gigantic truckload of frozen and canned food arrives, resulting in food distribution throughout the community.

Contradiction: Discerning the rhythm pattern within the metro that enables Ivy City engagement and metro corporate care. (Wk. 8)

RELIGIOUS HOUSE: BOSTON

External: Quarterly RS-I has 19 around the table, 15 for the first time including seven Phase One participants. The profound address comes in Tillich, Niebuhr and in the charting method. Three more people register for Quarter IV Academy.

Internal: House Church witness under rubric of Declaration sets theme for "Lenten Declarations" series. House sends representative to area PSU in Philadelphia and gets lead on second inkind car for Starks.

Contradiction: Applying our experience of catalyzing enlivened modes of regional formation to practical proposals for July '81. (Wk. 9)*

RELIGIOUS HOUSE: STARKS

External: Snow falls one day after the Starks Winter Carnival and Starks 186th birthday celebration; but everyone has a good time being involved in sack and three-legged races, baseball throw, darts, beano (bingo), a do-it-yourself art show, crafts on display and for sale, a bake sale and a display of Starks heritage through pictures. The Starks Enterprises Corporation Contradance concludes day of festivities with many attending from near and far. Community youth present reports to House of Youth Presidium in Chicago and the Youth Forum in Starks.

Internal: House hosts Winter Carnival guests — Paul Clements, Bonnie Russell, Donna Dennis, and Rev. and Mrs. George Moore — as corporate battle of the bulge produces a corporate loss of 25 pounds for the week (five people — six days).

Contradiction: Unblocking resources that will further enable telling the victory that is here. (Wk. 9)*

MONTREAL**RELIGIOUS HOUSE: MONTREAL**

External: Monique Dion is sent out to Paris Regional Consult. Youth Forum is set for April 1st in Ste Anne de Beaupre. Teachers from an inner-city high school meet at house to plan faculty forum.

Internal: Collegiums on family options and Bonnell's discourse on the spirit keep all awake; Pearl Fisher visits for two days from Ottawa.

Contradiction: Journeying colleagues from current practical cares into the impracticality of movemental covenant. (Wk. 9)*

RELIGIOUS HOUSE: TORONTO

External: Toronto core celebrates Training Inc. visit to George Brown College and returns to quarter planning for the Symposium. Symposium date and place are confirmed.

Internal: The 1980 books are closed and ready for the auditor.

Contradiction: Moving at a revolutionary pace while depending on establishment authorization. (Wk. 6)

RELIGIOUS HOUSE: OTTAWA

External: House finds itself going in different directions as one-third of House spends most of week on Canadian audit, one-third is on the road making seven Regional Consult contacts and doing two roundtables, and one-third spends the week in self-support.

Internal: Tracking charts for Regional Consult visits are created; self-support bonus check of \$715.00 arrives after a six-month delay.

Contradiction: Framing the clout needed to insure success of Dialogue I Regional Consult. (Wk. 9)*

RELIGIOUS HOUSE: HALIFAX

External: Montreal House, Development Centrum, Lorne Core and Halifax House cover 12 polis in the region, breaking open Regional Consult participation and development possibilities. *Atlantic Potential* brochure is done and nine events are completed or set up during the 12 polis coverage.

Internal: Marge Allan from Development Centrum spends three weeks in Halifax Region focussing House on development and Atlantic Potential strategies and sharing invaluable spirit edges with the House and core. Alan Young, Vice President of Brunswick Mining and Smelting and the host of the Regional Consult, visits Chicago Nexus.

Contradiction: Contexting the targeted constituencies to ensure all sectors are covered and placing all systems on "Go". (Wk. 9)*

MEXICO CITY

RELIGIOUS HOUSE: GUATEMALA CITY

External: All primary school students file through the clinic in one day to have their heads washed with lice shampoo. Daily farmers' meeting is inaugurated and guild meetings swell to over-flowing as people catch a vision of new agriculture production and increased income. Work days on the church and water system are totally planned and carried out by guilds, who even do their own development successfully.

Internal: Three guest rooms of new auxiliary house are ready just in time for guests Carl Boivin of Miami House visiting parents, John Foss of Minneapolis House and the Hart Family of Syracuse, New York, visiting daughter in Conacaste.

Contradiction: Maintaining the momentum with adequate models to sustain full engagement. (Wk. 9)*

HAVANA

RELIGIOUS HOUSE: KINGSTON

External: Team visits eight key frame persons regarding upcoming Regional Consult and discerns deep sense of this being the right time to expand radically ICA services to the nation of Jamaica. Social sub co-op holds first meeting since co-op was registered. Claverty Cottage proposals for truck and coffee land are typed and submitted.

Internal: Richard Kitney arrives to work on CIDA and USAID proposals and to assist with Regional Consult set up.

Contradiction: Revealing how Woburn Lawn's reason for being finds fulfillment in caring for the Region. (Wk. 8)*

LIMA

RELIGIOUS HOUSE: LIMA

External: Office maneuvers secure post office box and push legal proceedings down the road.

Internal: Collegiums in classical forms are given as a result of Saturday order training sessions, and House welcomes George Packard home from Caracas Regional Consult.

Contradiction: Finding tactical path through the bureaucracy that challenges Peru's development progress and our effectivity. (Wk. 8)*

CARACAS

RELIGIOUS HOUSE: CARACAS

BUENOS AIRES

RELIGIOUS HOUSE: SANTIAGO

External: Conserving industry is launched with test batch of delicious cantaloupe marmalade. New enlarged Consejo (Community Board) welcomes five new members with new marmalade samples. Youth Club does new simplified form of Youth Forum (V model) with enthusiasm. Laying-hen project is resurrected as hens start laying again, and Community Kitchen receives donation of potatoes from community family.

Internal: New Tagore ritual is translated in time for House Church, and House holds two collegiums on Master Strategies of Declaration, Manifestation and Formation.

Contradiction: Creating the images, the time and space designs that enable all to move beyond operating out of day-to-day immediacies. (Wk. 6)

RIO DE JANEIRO

RELIGIOUS HOUSE: RIO DE JANEIRO

External: Community sendout from Bananeiras marks a turning point for project. Secretary of Education takes over funding of preschool providing two full teachers' salaries and facility rent. Forum Comunitario Campaign continues!

Internal: Roundtable continues with excitement throughout the House over the conversation; and Rosarios celebrate anniversary amidst great fanfare.

Contradiction: Securing a new house in the midst of carnival atmosphere. (Wk. 8)

THE GLOBAL ORDER CENTRUM REPORT

BRUSSELS
BOMBAY
SINGAPORE
HONG KONG
CHICAGO

QUARTER III WEEK TEN

GLOBAL DEVELOPMENT CENTRUM

Global Development Centrum reports that in Korea Honam Oil (Caltex) gives third major grant, \$8000, for Human Development Extension. Chicago reports area teams project one million dollars already working money for next four months. Regional Consult set-up opens doors for new development prospects with money in-hand in many initial interviews. Program projection for Quarter IV is result of Regional Consult. The key contradiction lies in the arena of prioritizing advantages to get best development strategy out of Regional Consults.

GLOBAL RESEARCH CENTRUM

Global Research Centrum reports from Singapore that ten years of penetration data is retrieved from old files. Chicago reports that Research/Development joint meetings on "Moral Foundations" and "July '81" dramatise effective interchange. Rural Venture, Inc. permeation lab site visit sets the stage for evaluation next quarter. New Essentialism Talking Paper profoundly excites everyone as it is sent on its way to Brussels. The Nadlapur Documentation yields an in-depth analysis of the four-year accomplishments, current situation in the project, and insights on quantitative indicators of social and human change. The key contradiction lies in the arena of assuring broad, effective participation in the "round-the-world" interchange of talking papers.

GLOBAL OPERATIONS CENTRUM

Global Operations Centrum reports that the first combination of Regional Consult and Cluster Consult is held in Nagpur. The Jakarta Advisory Board meets. The Small Business Administration approves guarantee on loan for 5th City auto center — the construction dreamed of for four years starts soon. North American regional program data, as entered into the computer, reveals 51 events since January 1, with 1543 participants, billed for \$16,866. Income so far is \$7,109 and expense to nexus is only \$6,066. The key contradiction lies in the arena of taking advantage of the opportunities of simultaneous events across the zone at the same time as ensuring the interchange dynamic.

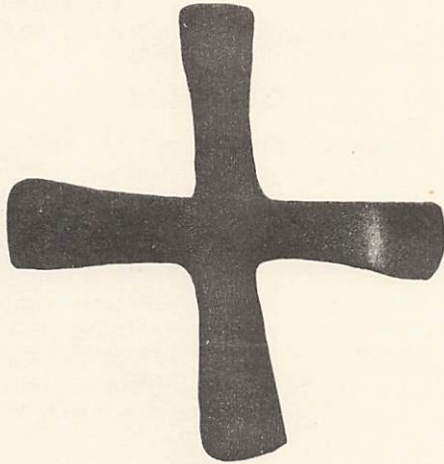
GLOBAL MANAGEMENT CENTRUM

Global Management Centrum reports the successful completion of Canadian ICA audit. Chicago Inkind awaits four and one half tons of Campbell Soup products. Hong Kong sends David Elliot for two-week development-computer research trek to Taiwan. Both the USA and Canada are preparing the financial records ahead and presenting them to the auditors for confirmation, saving time and money. The key contradiction lies in the arena of keeping the long-range vision in the midst of overwhelming immediacies.

THE GLOBAL ORDER REPORT

QUARTER III WEEK ELEVEN

MARCH 9—15, 1981



*He will be judge between many peoples
and arbiter among mighty nations afar.
They shall beat their swords into mattocks
and their spears into pruning-knives;
nation shall not lift sword against nation
nor ever again be trained for war
and each man shall dwell under his own vine,
under his own fig-tree, undisturbed.
For the Lord of Hosts himself has spoken.*

Micah 4: 3-5

MADRID

RELIGIOUS HOUSE: MADRID

External: Visit to Bishop Triesta gives strong affirmation to work of ICA and Regional Consult. Community leaders' panel for Symposium is firmed up. Teams on the road continue metro set-up in all metros. Conference of superiors of male religious orders sends Regional Consult brochures to eighty religious orders in Madrid.

Internal: House sends out Bill to continental council and Glasgow Regional Consult; tactics chart for remaining countdown weeks grows as attention is focused on Regional Consult.

Contradiction: Finding the magic that will turn nods and tacit, though strong, support into fifty or more people around the Symposium table. (Wk. 10)*

LONDON

RELIGIOUS HOUSE: LONDON

External: The Regional Consult net begins to be woven. The initial design creates great anticipation as letters, brochures, sponsorship committees, facilities and names are swirled and strategised.

Internal: John Patterson brings I.E.R.R. (India Exposition of Rural Reconstruction) into focus at house collegium, and Jean Taylor is sent out on three-week permeation assignment.

Contradiction: Prioritizing troops and area strength to bring off self-support and Regional Consults. (Wk. 7)

RELIGIOUS HOUSE: GLASGOW

External: Visits to Iona Community, YMCA Glasgow and the National Youth Advisor for the Church of Scotland break open keen interest in the global film and the use of ICA methods in Scottish situations.

Internal: House inkind projector from local school for special in-house showing of *Requiem For A Heavyweight* and re-affirms the deep wisdom of the RS-I base that threw the outfit around the world.

Contradiction: Building a model which enables the regional momentum already generated by pre-consult activities to continue after the consult has come and gone. (Wk. 10)*

RELIGIOUS HOUSE: BRISTOL

External: Local Councillor, Meg Bochart, agrees to host CEM planning meeting for representatives of various community organizations.

Internal: Bill has first week at work, and Shiela returns from Paris Regional Consult.

Contradiction: Ensuring smooth transition from project to urban regional center. (Wk. 10)*

PARIS

RELIGIOUS HOUSE: PARIS

External: At the Paris Regional Consult, the Symposium timeline workshop surprises participants with the fact that they are people of hope. Six metro circuits set dates for film showings, get invitation to do a set, open new networks, register new guardians, for Formation Fortnight Symposium and enlist a senator for EXPO host committee. A very practical six-month launch plan is created.

Internal: The Regional Consult is experienced as constant eventfulness including birthday party, collegium on three major strategies, transition spirit conversation on the practicum, the arrival of Monique Dion from Canada and the Area Paris fast.

Contradiction: Thinking it will take an army to implement all this — or experiencing the boa who swallowed an elephant. (Wk. 9)*

* NOTE: The * indicates the first printing of a new report.

RELIGIOUS HOUSE: BRUSSELS NEXUS

External: Fabulous Formation Fortnight facility is found! CARITAS Belgium invites ICA to use its fine centrally located, spacious building in Brussels for the Formation Fortnight in April.

Internal: As house troops shrink to four people, another guest night is held and everything else keeps going.

Contradiction: Overseeing the Fortnight preparation continentally with minimum of troops. (Wk. 8)

RELIGIOUS HOUSE: BRUSSELS

External: The permeation of women's groups in Brussels continues and of N.G.O.s with completion of a conference report and up-to-date correspondence.

Internal: Hosting guests from neighborhood (St. Gilles) in French Immersion evening, House uses learning French as occasion to renew old contacts.

Contradiction: Finding the symbolic glue as House goes off in three different directions. (Wk. 7)

FRANKFURT**RELIGIOUS HOUSE: FRANKFURT**

External: Regional Consult preparation intensifies with phoning, visiting, mailing, structural calling and presentations. From a recent CYF, 500 DM arrives in the mail. The typesetting of the Town Meeting report is completed and Regional Consult development proposal is completed and first submission is made.

Internal: Game-playing and space miracles heighten the sense of being on the way along with illuminating collegiums on self-support and the Bell study on the *Cultural Contradictions of Capitalism*.

Contradiction: Concretizing the shadowy images of the existential aim of the Symposium, Practicum and Assembly so that the necessary priorities emerge. (Wk. 9)

RELIGIOUS HOUSE: AMSTERDAM

External: ICA financial statement for 1980 is prepared with Management Centrum's cooperation and is ready for a March Board celebration and informal meeting. The Regional Consult preparation takes a helpful turn with a key citizens' group (Dorpsraad) officer saying yes to moving it into Overijssel Province. A Dutch religious order releases 4692 Geldens (\$2346) for development.

Internal: The House trims the budget again and expands job search with foray to work a day at Board member's house, by setting new job interview appointments and accepting a dinner invitation from a Dutch woman who is intrigued by the self-support story.

Contradiction: Unblocking decisional log-jam created by having 31 flavors of overlapping opportunity and 50 cents worth of immediate resources. (Wk. 10)*

RELIGIOUS HOUSE: BERLIN

External: Regional team sends two to Frankfurt in preparation for Regional Consult. Calls are made on local government to print document.

Internal: Ismael returns from Turkey having successfully completed final university exams, and Amal gets a job to push self-support closer to an end-of-the-year victory.

Contradiction: Maintaining a revolutionary stance while working with established structures grounded again by company's two-year timeline bumping against staff's two-month one. (Wk. 10)*

ROME**RELIGIOUS HOUSE: ROME**

External: The Area Rome legal trek visits two lawyers in relationship to future legal form of ICA and Arthur Anderson about financial responsibilities. In addition, 15 religious orders are visited for the April training seminar.

Internal: The House hosts Sam Hanson and Neil Vance and marks the end of a successful legal trek with an all-house celebration in Trastevere.

Contradiction: Getting enough people registered quickly for Regional Consult to release time for practical focus of facility search and consult preparation. (Wk. 8)

STOCKHOLM**RELIGIOUS HOUSE: COPENHAGEN**

External: Development calls in Copenhagen and Stockholm spread and deepen support base. Swedish Cooperative Center reports on recent trip to Kenya and Atlas Copco expresses interest in India. Pastor Mollerup requests meeting with ICA during his conference in Nairobi in May.

Internal: Brian Williams is imprisoned in exterior bathroom in subzero temperatures because of faulty doorcatch and not noticed missing until evening meal accountability.

Contradiction: Maintaining regular circuits while major hunks of time are being expended outside area. (Wk. 9)

CAIRO**RELIGIOUS HOUSE: GIZA**

External: Great Regional Conference — *Rural Development Conference of North Upper Egypt* — is completed with 102 people graciously hosted by officials in 3 governorates and co-sponsorship by Minia University. The way is open to expand work in Egypt. The Assembly in Bayad Community Center is opened by local council and unit presidents, and it is hosted by community with community kitchen pulling off feast after feast. Arabic-English document is produced.

Internal: Pat Coffman is sent out to Nairobi and Steve Allen to Lagos following Regional Conference document production.

Contradiction: Shifting into the larger-context created by the Regional Conference. (Wk. 11)*

ABIDJAN**RELIGIOUS HOUSE: ABIDJAN****LAGOS****RELIGIOUS HOUSE: LAGOS**

External: Dr. Giwa, Irepodun Local Government Health Officer, authorizes and enables four Health Forums held around Ijede, in Imoto, Igboba, Ibeshie and Ijede with good participation level and which are followed by the immunization truck. The week culminates in a Saturday Health Fair in Ijede, where 300 people from all four villages gather to teach and learn. RT Briscoe (affiliated with the Danish East Asiatic Company) holds LENS course for the 23 top managers.

Internal: Bill Parker, Jane Coe and colleague management consultant Jack Aquaah-Harrison arrive for LENS and their participation in the Roundtable makes it a great event.

Contradiction: Timing the victories of the next four months. (Wk. 8)*

KINSHASA**RELIGIOUS HOUSE: LUSAKA**

NAIROBI

RELIGIOUS HOUSE: NAIROBI

External: Completion of first Village Leaders' Institute with graduation of 40 and first Village Leaders Training Module sparks outpouring of new models and images of the village movement. Seven site visits — E.E.C., F.P.I.A., Ford Foundation, SIDA, Ministry of Co-operatives, Kenya National Federation of Co-operatives and a German professor of co-operatives — push development down the road releasing Swedish money.

Internal: Nigeria LENS and two Women Advancement Module teams return doubling the size of the House after a week of *Small is Beautiful*. Staff celebrates completed life of staff member Ishmael Ithongo Kariuki.

Contradiction: Scheduling time to do reflections and learnings on the multitude of events to discern needed directions for end-of-year push. (Wk. 11)*

RELIGIOUS HOUSE: MOMBASA

BOMBAY

RELIGIOUS HOUSE: BOMBAY NEXUS

External: The presence of J. S. Dethé and Vinod Parekh enables an ICA: India Board of Directors meeting which expands the board by the addition of H. S. Gavai and Miriam Quereshi and appoints Cyprian D'Souza as Secretary of the Board. H. P. Salve, an auditor, visits the nexus and works with Management Centrum on the foreign contributions audit and income assessment. Development picks up checks totaling Rs. 1.9 lakhs (U.S.\$24,000) in one day.

Internal: J. S. Dethé shares a great collegium on Indonesia, and Nexus hosts eight World Community Development Service Volunteers from Oxford, including two who will work with the ICA for six months.

Contradiction: Balancing crucial immediacies over against the long-range necessities of the mission. (Wk. 9)*

RELIGIOUS HOUSE: BOMBAY

External: Sevagram completes new community center and does first bakery run with "Seva-bread". Twenty-five Maliwada leaders are sent out to build the circle and four preschools, and Chikhale has strong tangible support from district and county chairmen for circle and block. Jawale's 280-woman GWF Assembly concludes electrifying ten village impact events with 1200 women. Male's Community Development Association on the move constructs new community center.

Internal: A new five-year lease is obtained on Maliwada Ashram (castle), staff of six out of nine ashrams are in new blue dress, and a new three-region song is printed.

Contradiction: Designing hardheaded four-sector leadership commitment and formulation strategies. (Wk. 7)

DELHI

RELIGIOUS HOUSE: DELHI

MADRAS

RELIGIOUS HOUSE: HYDERABAD

External: Training opportunities break open with six-day training for village reconstruction organization and a *Gram Sabha* (Community Forum) workshop for the voluntary health association. Collector sends letter on the work done in Nadlapur.

Internal: Collegiums that review work of each program and the work of the next four weeks releases motivity of the auxiliary.

Contradiction: Calling into being the structures that will plan the on-going and new developments of the village. (Wk. 9)*

CALCUTTA

RELIGIOUS HOUSE: CALCUTTA

External: Evaluation of Coal India (Government of India corporation) LENS leads to two more seminars plus LENS with Indian Oil Corporation and requests for two training department people to be assigned to LENS faculty. Events set up for Regional Consult continue as dates are confirmed for two CYFs and two constructs of Imaginal Education are ready for use in schools and with community (bustee) development workers. Imaginal Education and self-support contract for year is secured. Rajarampur village site visit with local chamber of commerce initiates dual strategy thrust (along with LENS) of institutional permeation.

Internal: House collegium on *Calcutta* widens images of city and state in terms of its historical role and present situation; and arrival of Anil Prasad and Gyan Prakash from Operations sets House in preparation for first Hindi CYFs in the area.

Contradiction: Seeing through the innumerable openings produced by calls to discern the truly catalytic tactics of the master strategies. (Wk. 7)

SINGAPORE

RELIGIOUS HOUSE: SINGAPORE NEXUS

External: Teams are in all the areas — six out of eleven regions.

Internal: Nexus celebrates both the birth of David Christopher Hoff (7 lbs. 6 ozs.) and Mike Hoff's birthday on February 25, 1981.

Contradiction: Sustaining centrum services through four weeks of anticipated dispersion. (Wk. 9)*

RELIGIOUS HOUSE: KUALA LUMPUR

External: Trek to Kuantan Metro (Kuala Trengganu) yields three key sites for Practicum research and programming. Appointment with Training Coordinator, Kuala Lumpur Hilton Hotel, culminates with his request to get Hilton on board as Regional Consult sponsor. Other sponsors are being lined up.

Internal: The death of Abu Hassan's 28-year-old daughter (Sungai Lui leadership core) — just one month after her wedding celebration — calls staff to stand again before the contingency of their own lives and before the profound impartiality of the Mystery.

Contradiction: Keeping a focus on the key directions for the week, such that our "doing" is inclusive and effective rather than frenzied. (Wk. 9)*

RELIGIOUS HOUSE: MEDAN

External: Cluster celebrates as management team for cluster receives final approval on cluster budget of government money and gains assistance for women's industry through Industry Department. Guardian team takes on momentum as invitation to Mountain District Kabupaten Forum is secured; Guardian letter produces \$3200 from Goodyear Plantation, and Guardians plan first regional council for Quarter III.

Internal: Sham and Ratan Durgyai return home for a visit after first month in school and 50% scholarship; and celebrative meal initiates new "eye-saving" lightness in collegium room color scheme.

Contradiction: Holding momentum in so many arenas all at one time as areal demands indicate troop dispersal. (Wk. 9)*

RELIGIOUS HOUSE: JAKARTA

External: First in-house Pribumi (native Indonesian) LENS is held and is the best thus far. Letter from Bupadi (district officer) is received after three months of trying, approving visas for Katherine and the Rettigs. Modernization hits the

village as poles appear for electricity and glass is received for mosque.

Internal: LENS pedagogy, held for two nights, allows new insights on the Consult; and West returns from LENS marketing in Australia and Gail teaches in LENS.

Contradiction: Refocusing the Regional Consult to be of maximum service and futuristic advantage in the tension of relocation. (Wk. 9)*

RELIGIOUS HOUSE: UJUNG PANDANG

External: Health module begins each day with teachers from district health department, women from the whole desa (average of forty) and lots of laughter, notetaking and driving. H.A. Lathief, head of Parliament, and wife drop in unexpectedly to show Bontoa to the Bupati (district head) of Singai who requests a field visit during the Ujung Pandang Regional Consult. Fifty-seven Bontoa residents meet to consense on electricity support.

Internal: Sherwood Shankland is welcomed home to Bontoa for Regional Consult setup and David Thomas from Washington arrives for a month's stay. H.A. Lathief has all staff to dinner for a spectacular feast.

Contradiction: Using all advantages to create a focus for cluster implementation. (Wk. 10)*

HONG KONG

RELIGIOUS HOUSE: HONG KONG NEXUS

External: The Global Symposium is held February 25 and 26 at the Sheraton Hotel. New people with little or no previous contact, except a special invitation to attend this event, participate effectively and enthusiastically. No one would leave this event until the *Implications* page of the document came off the press.

Internal: The Nexus enables the Global Symposium by housing 22 this week, and imaginations and spirits are addressed by the context and conversation on China led by "Tuesday-night Task Force" participant, Victor Liu.

Contradiction: Imagining the symbolic step that would reground Hong Kong's movemental future and its role in caring for the globe. (Wk. 9)

RELIGIOUS HOUSE: HONG KONG

External: Regional Consult preparations are accelerated with Tuesday night workshop with Chinese colleagues. Design, translation and printing of flyer, and 25 development appointments are completed. Foundation keystone maneuver is worked through with guardian and District Officer in seven-hour session over Sunday brunch.

Internal: A swirl of research and reflection including collegium on Shanghai and Roundtable conversation of *The Third Wave* informs team of opportunities for education and training programs in Chinese culture.

Contradiction: Ensuring that everything is handled in final countdown to Regional Consult through assignments and team configurations, releasing creative brooding. (Wk. 7)

RELIGIOUS HOUSE: KAOHSIUNG

External: HDTS recruitment and inkind are launched in Kaohsiung netting initial victories of one complete celebration inkind and bakery products committed as well as a possible HDTS participant recruited from bakery.

Internal: Taiwan Island staff meeting sets the tone of the coming quarter with collegial meeting based on conversation and reflection that also gets the necessary work done without apparent strain.

Contradiction: Breaking through images that "April is not a good time" in order to release necessary participation for HDTS. (Wk. 9)*

RELIGIOUS HOUSE: TAIPEI

External: February '81 development income closes at US\$5,800, of which US\$2,000 is donated by Control Data Corporation. Final meeting with ICA's auditor results in completed report for ICA Taiwan for 1980.

Internal: Bi-regional meeting for Taipei and Kaohsiung ICA staff yields 1981 tactical plan for Taiwan as a whole, a prototype cluster program plan for Fang Liao Township, HDTS implementation models, Regional Consult projected image for both regions, a plan for 1981-1982 self-support probes and Quarter IV '81 timeline.

Contradiction: Maintaining balanced thrust between program expansion tasks, development and management functions, and positioning for self-support victory in 1981-1982. (Wk. 9)*

RELIGIOUS HOUSE: MANILA

External: House sends three for two-day site visit of villages surrounding Union Oil Geothermal Plant in Luzon. A speaking engagement is held with 60 grad students and professors of the Institute of Mass Communication at University of Philippines, and a follow-up call on Phil Com LENS results in another LENS scheduled for October. USAID impressed by field visits offers data-bank assistance with economic programs, Ministry of Health allocates free food for Mactan Early Learning Nutrition Center, and 1981 brochure is taken to printer.

Internal: Collegium study of Ezra Vogel's book, *Japan No. 1*, expands reflections on effective social vehicle for a small planet; and the House continues reflection on the role of an historical order through study of Rozak article and conversation with dinner guests, two religious, the dean and a theology professor of one of Manila's prestigious women's colleges.

Contradiction: Keeping our gaze on the next 20 years and our roots in the past 20 years while immediate opportunities and victories consume our passion. (Wk. 11)*

RELIGIOUS HOUSE: CEBU

RELIGIOUS HOUSE: DAVAO

External: New Maog HDP in Butan Metro visits for planning and progress reports with preschool, health clinic, farmers' association, adult education and preparation to launch a new cluster with three other villages. Community beautification project begins in LaPas HDP, cooperative store construction begins in Carmen HDP and Magtued HDP sprays mango trees. General store in Langub HDP starts raffle while sewing industry has more orders for shortpants, doctors visit for clinic day and a new entrance sign is created along the highway.

Internal: New pogan for house kitchen enables cooking of meals and hosting of staff from New Maog HDP.

Contradiction: Finalizing the barangay site survey. (Wk. 9)*

TOKYO

RELIGIOUS HOUSE: TOKYO

External: Two Guardians travel to Osaka to serve as second and third leaders for the Impex Company LENS. Second conference is held to discuss a 1000-person Town Meeting in Tokyo.

Internal: Guarantee deposit is placed on a new 30-room house and all systems are mobilized to move before the end of February.

Contradiction: Ensuring a firm foundation of finance and program under the move to a house that is 1/3 larger than the present facility. (Wk. 7)

RELIGIOUS HOUSE: SEOUL

RELIGIOUS HOUSE: KUH DU E RI

RELIGIOUS HOUSE: FUKUOKA

External: Last training module held for training month of February is huge success with 15 colleagues participating. Imaginal Education workshops focus on the April training design. India coffee is held Sunday afternoon to promote trip. Hiroshima circuit finds LENS openings, increases advisor participation and sets Town Meeting with the city on March 20.

Internal: House takes local train (six-hour, all-night ride) to Nagasaki, stands in a blizzard for three hours with a gathering of 47,000 people at Matsuyama Stadium to greet Pope John Paul II on his trip to Japan. He gave his entire mass in Japanese.

Contradiction: Pulling together a comprehensive campaign thrust while going many directions. (Wk. 9)

RELIGIOUS HOUSE: OSAKA

External: House holds LENS training with the theme "LENS Promotion in the Osaka Region in 1981" for staff and colleagues to review methods and lead practice workshops. Ms. Tanaka, an advisor/colleague, is one of the key pedagogues. A sushi and beer celebration ends this event and provides reflection time on the new insights.

Internal: House continues to be Wayside Inn presence as FNATI (Friday Night at the Institute) guests, Mrs. Reames and Yoshikawa San, stay overnight for the Saturday LENS training and Jim Oberg stays three nights to aid in LENS recruitment.

Contradiction: Getting distance from the immediacies of the moment so that the underlying human cry is heard and responded to. (Wk. 8)

RELIGIOUS HOUSE: SAPPORO

External: Three-and-one-half hour LENS appointment with corporation president pushes team's understanding of methods to the limit. LENS-site change is an exercise in house and colleague consensus building.

Internal: House and colleagues participate in ice-skating party at the Sapporo Olympics Ice Arena, and House welcomes Mr. Tonasaki as transferred staff member from the Tokyo House to the Sapporo House.

Contradiction: Finding the dynamics to work out consensus quickly in two languages and between two cultures. (Wk. 8)

SYDNEY

RELIGIOUS HOUSE : SYDNEY

External: Circuits go to Murrin Bridge, Canberra and Melbourne. The key event in Canberra is visiting Margaret Wallner and the future contacts that can come out of that call.

Internal: Alison Powell celebrates her fifth birthday in a spirit of fun and festivity with friends from the community as guests.

Contradiction: Sharpening the signal community pitch into clear images of the future. (Wk. 9)*

RELIGIOUS HOUSE: MURRIN BRIDGE

External: New grass seed is planted on oval after lying fallow 18 months. "Waiting for the grant" syndrome is cracked. Telakaus once again intrude into the "I can't" story as Vaoita gives imaginal lesson at Save the Children Fund Preschool and Paleman confronts elders.

Internal: Staff visits sheep farm to give Otto family (senior), visiting from Michigan, U.S.A., and the Telakaus recently from Samoa some exposure to outback farming as well as Australian intrigue.

Contradiction: Finding the right images to release people to make a new "on behalf of" decision. (Wk. 9)*

RELIGIOUS HOUSE: PERTH

External: Regional Consult victories include venue, keynote speaker, brochure printed and mailed, and 33 development prospects committed or working. Calls on the volunteer sector elicit comments like, "We want to keep on working together after this."

Internal: New living room is decored and waxed in time for Danny Bellamy's third birthday party while Michael is in and out of the hospital.

Contradiction: Weeding out from all the possible Symposium visits the most effective ones now. (Wk. 9)*

RELIGIOUS HOUSE: ADELAIDE

External: Community LENS brochures arrive from printers and are mailed to all regions. Regional team phases research for urban impact.

Internal: Final Roundtable is held in old location as shift to temporary quarters begins; House experiences scattered dynamic as the staff now reside in three locations.

Contradiction: Shifting priorities and recreating images and story for focused thrust. (Wk. 9)*

RELIGIOUS HOUSE: MELBOURNE

External: Fourteen appointments for LENS marketing, company development and National Advisor's update are meshed in a successful five-day maneuver with Dick West, Frank Powell, Ann Epps and the regional staff.

Internal: The visit of David Dunn's parents from Michigan, U.S.A., reminds the House of its global, extended relations and contributes to the swirl of colleagues coming and going.

Contradiction: Creating the strategically focused troop/ task timeline and interchange that allows effective time utilization. (Wk. 9)*

RELIGIOUS HOUSE: BRISBANE

External: Circuiters take off for Goondiundi and hold successful Youth Forum training sessions for six local youth. *The World of Human Development* is shown twice to students at Brisbane State High School.

Internal: Margaret Piper begins course in Social Planning at University of Queensland.

Contradiction: Finding enough edges to get done all the things that need doing "around the edges". (Wk. 9)*

SUVA

RELIGIOUS HOUSE: APIA

External: ICA emerges in nation as consultants to the Subregional Meeting for Pacific Women on the World Conference of the United Nations Decade for Women with Samoan follow-up seminar to the Copenhagen Conference. Community Forum Samoa leads off 1981 with the Aleipata Demonstration District. The Salani Preschool opens new year with all the children arriving before the official village announcement.

Internal: Marilyn Whiting successfully re-enters Western Samoa as college teacher for the Congregational Church Schools with a real work permit and first self-support break on the island in two and a half years.

Contradiction: Moving with power in the nation in a hurry. (Wk. 8)*

RELIGIOUS HOUSE: AUCKLAND

External: Havelock North Economic Task Force decides to meet weekly to develop local employment. Global development team breaks open regional funding possibilities with calls on Union Carbide, Fletcher Industries and others. Regional Consult brochures and invitations are ready to go out to 300 plus people.

Internal: Staff goes to see New Zealand-made movie — *Goodbye Pork Pie* — when you tell the story about the way life is, you always tell the same story.

Contradiction: Keeping all the bases covered with a two-person team. (Wk. 9)*

SAN FRANCISCO

RELIGIOUS HOUSE: SAN FRANCISCO

External: Curtains are pulled on the Regional Consult with final typing of two documents and with a night of analyzing the "Metro Accounts" as a way of pulling together the focus of the massive amounts of strategic thinking that has been done during and since the Consult.

Internal: House celebrates with metro the finalizing of work from the Regional Consult and the award of a scholarship by the Seroptomist Club to Jane St. John with inkind wine and cheese.

Contradiction: On the other side of the Regional Consult, discovering the authentic catalytic role of the House in formulating metro cores. (Wk. 9)

RELIGIOUS HOUSE: SEATTLE

RELIGIOUS HOUSE: LOS ANGELES

External: Several Symposium interview contacts and events help to deepen frame this week with the rural private sector, urban Hispanics and Central Park 5 steering committee. Request of \$10 up-front Symposium preparation on every interview is a winning strategy.

Internal: Lent begins with a bang breaking Mardi Gras ballons and settles to the discipline of silent meals three nights a week with monk's bowls and a reader reading to group from Nigg's *Warriors of God*. Stewart family from Edmonton, Canada, arrive for sojourn.

Contradiction: Making the expanded regional frame visible and self-conscious. (Wk. 10)*

RELIGIOUS HOUSE: RICHGROVE

RELIGIOUS HOUSE: PHOENIX

External: Regional Consult preparation gains momentum as four teams of Phoenix Guardians meet to plan their trips for taking the "Breakfast Conversation" on the road across Arizona. Ruth Jefferies hosts exciting breakfast meeting on Wednesday. Circuits to New Mexico launch similar events in New Mexico and El Paso.

Internal: Staff sends Alex St. Clair to Youth Presidium on behalf of youth cluster and sends Kate and Bob on ten-day New Mexico-Texas circuit.

Contradiction: Ensuring the development bottomline in the midst of expanding contacts and Guardian missional engagement. (Wk. 7)

RELIGIOUS HOUSE: PISINEMO

External: Pisinemo hosts judo tournament for six villages and basketball tournament with local teams and Phoenix Indian Rehab.

Internal: Two attend Rural Venture Inc. site visit in Minneapolis.

Contradiction: Enabling tactical procedures to pull off new community strategies. (Wk. 10)*

RELIGIOUS HOUSE: BILLINGS

External: Six-week marketing strategy gets under way with 2,000 industry brochures sent to area ranchers and dealers. Development Corporation Board meeting settles leasing of cafe, hiring of new store manager trainee and the reduction of post office hours. Cafe is officially opened under new management — Betty and Herman Elk.

Internal: A full-fledged guest drops in from California to visit Carolle for the long weekend.

Contradiction: Focusing resources corporately to allow effective action. (Wk. 8)

RELIGIOUS HOUSE: DENVER

External: Sixteen people in six teams travel to every metro for Regional Consult recruitment. Unsolicited bonus of one scholarship donation is received.

Internal: Richard Stanley arrives to help with Regional Consult preparation, and regional colleagues get a laugh out of invitation to "First Annual Conspicuous Affair — A Celebration of Going Public" — a Regional Consult kick-off celebration.

Contradiction: Making sure that recruits do not start slipping through the cracks as regional team turns towards practices with apparent victory on recruitment. (Wk. 10)

EDMONTON

RELIGIOUS HOUSE: EDMONTON

External: Habitat Festival Forum in Bashaw has 25 present. Woodburys and Saxes try out hymn sing and scripture conversation interlude for church forum design.

Internal: Youth in house celebrates 16th birthday recalling a bike trip to the mountains as pushing his limits; all but two permeators and two youth are in Minneapolis.

Contradiction: Analyzing the spirit of the area and personnel in order to have an "on-target" area council. (Wk. 10)*

RELIGIOUS HOUSE: ANCHORAGE

External: Metro circuit into Fairbanks Metro reaches new people and new possibilities for a future GWF. A core is readying itself for this task. The House along with metro colleagues in Anchorage completes a phasing model for Regional Consult.

Internal: The House sends the Henrys to Dallas and at the same time welcomes Ted Ariel from Chicago, and the circuit team returns to the city.

Contradiction: Keeping the momentum going in all things. (Wk. 7)

RELIGIOUS HOUSE: VANCOUVER

External: Circuit visits Prince George Metro for the first time in three years after a visit to the Kamloops Metro, Williams Lake. In Williams Lake a special Forum is scheduled with the Day Care Centre, and a CYF and a CFC are in the works.

Internal: Observing the Fast Day on the circuit gives a new depth to circuit internal life and sustaining the troops on the road. Inkind accommodation and meals keep costs down and spirits up.

Contradiction: Capitalizing on the myriad of possibilities which are bursting forth across the region. (Wk. 7)

RELIGIOUS HOUSE: SASKATOON

RELIGIOUS HOUSE: WINNIPEG

External: Anthony remains in Vancouver Region a second week for Regional Consult setup. A Week 2, Quarter IV date is set for an RS-I during the Thursday night team meeting. A four-week calendar is laid out to hold team plans for the remainder of this quarter.

Internal: Ben Parker sojourns for week and continues as a Day I troop the following week, the Edmonton House spends a night on their way to Minneapolis for RVI visit, and Roy Philbrook (EG) is reassigned to Dallas to complete the school year.

Contradiction: Clarifying the necessary movemental activity. (Wk. 9)

HOUSTON

RELIGIOUS HOUSE: HOUSTON

External: Texas Southern University is secured as facility for Symposium with the Continuing Education Department added to co-sponsor group, making a total of eight sponsors. Six thousand dollars is committed to "Houston Neighborhoods on the Move" with checks to be picked up Monday.

Internal: New decor for Regional Dialogue One launches command center and collegium room takes on whole new Texas feel with six armadillos and five cactuses.

Contradiction: Turning Regional Consult into major movement-building event. (Wk. 9)

RELIGIOUS HOUSE: ASHERTON

External: Community consenses on long-range plans. Team completes local VISTA sponsorship proposal and mails Regional Consult sponsorship confirmation letters.

Internal: First tutoring fee arrives giving self-support a boost, and financial data is prepared for ICA audit.

Contradiction: Turning critical elements of "staff's frame" into the community's frame of the public sector. (Wk. 9)

RELIGIOUS HOUSE: DALLAS

RELIGIOUS HOUSE: INDIAHOMA

External: Indianhoma Community Development Corporation meeting is highlight of many community meetings and releases burst of activity as tax exempt status is secured. Key LENS call, catalyzed by Oklahoma City Guardians, is held with the president of Liberty National Bank. Regional Consult site is located.

Internal: Roundtable with Assembly of God pastor and wife is a great happening that discloses power of contemporary spirit methods as appreciated by those who care.

Contradiction: Uniting effectively two small regional teams and two strong metro cores for Regional Consult task. (Wk. 10)*

RELIGIOUS HOUSE: MEMPHIS

External: Two WATS lines are inked through a Regional Consult advisor for recruitment phoning. Week's maneuver results in 200 contacted and 44 are "snow-balling". Tupelo visit brings gold mine of new appointments and renewal of 1978 Town Meeting contacts eager to engage.

Internal: Toothless nine-month-old Kathryn Howard is walking!

Contradiction: Enabling the shift from initial images to real situation of Symposium in order to claim victory without apology. (Wk. 10)*

RELIGIOUS HOUSE: NEW ORLEANS

External: Beautiful Regional Consult is in hand and fast moving out.

Internal: Mardi Gras intensifies with arrival of Anne Dodge and Gordon Kravet from Hartford, with staff watching and joining parades, returning home draped in beads, while Mollie Clements' attendance at a Quality Circle Seminar in Mississippi reveals booming job opportunities for facilitators at \$22,000-27,000 across the continent.

Contradiction: Exhibiting the same fascination and excitement toward Regional Consult as New Orleans has for Mardi Gras in order to be a magnet for engagement to colleagues. (Wk. 9)

RELIGIOUS HOUSE: ATLANTA

External: Phone calls *come in* to guarantee the RS-I scheduled for Week 11, with 75% new people.

Internal: Metro colleague Ed Knight and House put "flesh" on American Culture curriculum for 50 Japanese students who will spend three weeks in Atlanta this summer.

Contradiction: Creating a releasing timeline for broader participation in Regional Consult preparation. (Wk. 10)*

RELIGIOUS HOUSE: MIAMI

External: Recruitment for Academy and Guardians meeting is intensified. Roundtable with five guests hears reports on Guatemala and Youth Presidium. Team prepares for Colquitt, Georgia Town Meeting.

Internal: Finance collegium allows House to understand finance situation; Cari returns from Guatemala, Joyce from Dominican Republic and Cameron Grow visits.

Contradiction: Corporately caring for task and creating a timeline for all of the upcoming events. (Wk. 10)

CHICAGO

RELIGIOUS HOUSE: CHICAGO NEXUS

External: Nexus sends four Regional Consult teams to Chicago, Denver, Memphis and New York. Management accomplishes functionalization of 1980 expenditures for upcoming audit. A Week II task force works through procedures for the Twentieth Guardians' Consult in North America.

Internal: Collegium on the Agana Region impacts House with future structural implications for catalyzing TASC journey beyond Majuro.

Contradiction: Keeping the ship moving in the right direction with a skeleton crew. (Wk. 11)*

RELIGIOUS HOUSE: CHICAGO

External: The regional team completes 1137 interviews with at least 12 interviews in each of the 36 polises and begins the process of documenting the conversations with a Week II event involving 30 colleagues including a team summarizing the results from the Chicago Neighborhood Campaign. In addition, the 5th City Business Careers celebrates the arrival of two Apple computers to enhance the word-processing experience and training of its students.

Internal: With the infusion of colleagues for the Week II document writing, the House recreates the 44-hour weekend with a pizza party celebrating Rosemary Albright's 36th birthday.

Contradiction: Identifying and arranging the nitty-gritty detail of the Regional Consult (to begin in 10 days) while keeping an eye on the long-range meaning. (Wk. 10)*

RELIGIOUS HOUSE: KANSAS CITY

External: Colleagues gather in Wichita to discuss implementing the marketing of the Methods Academy and the Regional Consult and to hear the youth report on the Youth Presidium.

Internal: Roundtable muse "I Am I" allows new dialogue, especially with the Kansas City Youth Cluster.

Contradiction: Carrying through to completion the initiated program thrusts. (Wk. 9)

RELIGIOUS HOUSE: LORIMOR

External: Rural Ventures Inc. exploratory visit includes meeting with 10 key rural development people in our sub-state region and at the state level. Six proposal letters are sent for LENS follow up. Three new businesses open on Lorimor Main Street.

Internal: Jim Swideski and Sam Hanson participate in house structure, and Lata Paul finishes lesson six on her typing training.

7 Contradiction: Clarifying assignment coordination for the rest of the quarter. (Wk. 9)

RELIGIOUS HOUSE: MINNEAPOLIS

RELIGIOUS HOUSE: ST. LOUIS

External: St. Louis RS-I has 32 participants representing four metros. Jim Addington is sent out to do Davenport, Iowa circuit. The Harveys attend a Mill Shoals Development Association meeting and stand in awe of the open communication between townspeople.

Internal: Mark Harvey begins job and learns that listening is the key to selling.

Contradiction: Creating the schemes to engage other groups and individuals to take on the interviewing task as their own. (Wk. 11)*

RELIGIOUS HOUSE: DETROIT

External: Munising industrial package is wrapped up and delivered to CPA. Regional Consult recruitment strategies PSU names 15 target communities for special task force setup. Five thousand sheets of paper are inked for Regional Consult brochure.

Internal: Blackledges celebrate David's swimming victories at special swim team dinner. Self-support maneuvers are pushed with preliminary Home-stay program plan sent to Japan and exploratory appointment set for community leadership training proposal and ICA.

Contradiction: Finding ways to pronounce the not-perfect as complete so that the team can move on to the next task. (Wk. 10)*

RELIGIOUS HOUSE: CLEVELAND

External: Regional LENS Marketing Lab is set for Week II of Week 11 at Cowen & Co., an investment company.

Internal: Renovation begins on "sore spots" in house (guest rooms, rugs, and third floor shower are completed) in preparation for LENS weekend and Week 12 wedding of Katherine Fenton.

Contradiction: Integrating guilds imaginably into one thrust. (Wk. 10)*

RELIGIOUS HOUSE: INDIANAPOLIS

External: Eight development calls on religious leaders, including local church pastors, religious order superiors and denominational executives, yield \$8,250 working and revealing acute interest of the Church in Third World development replication technology.

Internal: Swirl of centrum, regional and metro colleagues in and out of House rekindles the vision and creates microcosm of multi-dimensional partnership emerging for human development.

Contradiction: Keeping our focus on both the long range and the short range victories. (Wk. 11)*

NEW YORK

RELIGIOUS HOUSE: NEW YORK

External: New Jersey Bell gives \$500 for Regional Consult, \$185 comes in for scholarships and 46 people are registered for *Dialogue One*.

Internal: Shrove Tuesday is celebrated with movie *All That Jazz*.

Contradiction: Molding the results of 300 interviews and 100 participants into an event which changes the future for the New York Region. (Wk. 10)*

RELIGIOUS HOUSE: PITTSBURGH

RELIGIOUS HOUSE: WIDEN

External: Visits, presentations and development intensify as Regional Consult draws nearer. "One-time-only" giver gives three more scholarships for Regional Consult participants.

Internal: "Great Escapes" collegium marks beginning of Lent for House.

Contradiction: Finding the tactics which turn intrigue into commitments. (Wk. 10)*

RELIGIOUS HOUSE: ROCHESTER

External: Regional Consult rhythms begin to take shape after metro team meetings in three metros.

Internal: Signal individual events — birthdays, illness and new life-style decisions — mark the week.

Contradiction: Creating the rhythm which calls forth the dancers to the dance. (Wk. 9)

RELIGIOUS HOUSE: PHILADELPHIA

External: Basic Methods Pedagogy weekend offered in five independent modules draws educational committee from Tioga and black community leader Mamie Nichols — a fitting launch for the Black Engagement Strategy Team that gathered in Philadelphia this week. They built battleplans with the House, sent out development letters and had three interviews that resulted in two black men accepting assignments to the task force.

Internal: House celebrates the commissioning of Vincente and Wendy Scott as an intern family in the Order, with twenty guests at House Church and a feast of fried chicken, greens, cornbread and sweet potato pie. House resounds for week as Lois Reeves arrives to take up her assignment to the Black Engagement Strategy Team and hold a weeklong celebration of Afro-American month.

Contradiction: Objectifying currently assumed advantages in order to focus the thrust to victory. (Wk. 9)*

RELIGIOUS HOUSE: WASHINGTON, D.C.

External: Regional meeting sets wheels going under preparation for Regional Consult slated for June 12-20. Evening at the Institute in Baltimore and forums in Southern Virginia with Rural Ventures Inc. allow team to get into its turf in new situations.

Internal: Peggy Herbert from Area London visits and Mike Ford arrives in time for his birthday party.

Contradiction: Calling forth practical corporate generalship. (Wk. 10)*

RELIGIOUS HOUSE: BOSTON

External: Impact events with educational institutions include showing Conacaste slides to entire student body at Malden Catholic High School (SSND), slide show and Senior Forum at Northfield-Mt. Hermon Prep School, and meeting with a Yale colleague to plan events at Yale. Registrations for Quarter IV Academy stand at four, with a fifth pending.

Internal: House celebrates Lent with Ash Wednesday service at Fishel's church and with the beginning of a series of House Church witnesses on the theme *Here I Stand*; the PBS documentary on El Salvador commands staff's attention.

Contradiction: Opening new avenues for developed income which empower regional strategy and include long-range planning. (Wk. 10)*

RELIGIOUS HOUSE: STARKS

External: Snow falls one day after the Starks Winter Carnival and Starks 186th birthday celebration; but everyone has a good time being involved in sack and three-legged races, baseball throw, darts, beano (bingo), a do-it-yourself art show, crafts on display and for sale, a bake sale and a display of Starks heritage through pictures. The Starks Enterprises Corporation Contradance concludes day of festivities with many attending from near and far. Community youth present reports to House of Youth Presidium in Chicago and the Youth Forum in Starks.

Internal: House hosts Winter Carnival guests — Paul Clements, Bonnie Russell, Donna Dennis, and Rev. and Mrs. George Moore — as corporate battle of the bulge produces a corporate loss of 25 pounds for the week (five people — six days).

Contradiction: Unblocking resources that will further enable telling the victory that is here. (Wk. 9)

MONTREAL

RELIGIOUS HOUSE: MONTREAL

External: Training session is held for *Cuclesde Fermieres* provincial executive in preparation for provincial leadership meeting. Colleagues and House participate in Ottawa PSU for Regional Consult where they write definitions of ICA and Regional Consult as well as draw a symbol.

Internal: Exemplary House Church hosts 18 participants, including eight young Canadian women in training of West Indian heritage, followed by a conversation on what it means to serve in the developing world.

Contradiction: Symbolizing to the regional team itself that it is working on a long term trajectory toward building a region. (Wk. 10)*

RELIGIOUS HOUSE: TORONTO

RELIGIOUS HOUSE: OTTAWA

External: House finds itself going in different directions as one-third of House spends most of week on Canadian audit, one-third is on the road making seven Regional Consult contacts and doing two Roundtables, and one-third spends the week in self-support.

Internal: Tracking charts for Regional Consult visits are created; self-support bonus check of \$715.00 arrives after a six-month delay.

Contradiction: Framing the clout needed to insure success of Dialogue I Regional Consult. (Wk. 9)

RELIGIOUS HOUSE: HALIFAX

External: Montreal House, Development Centrum, Lorne Core and Halifax House cover 12 polis in the region, breaking open Regional Consult participation and development possibilities. *Atlantic Potential* brochure is done and nine events are completed or set up during the 12 polis coverage.

Internal: Marge Allan from Development Centrum spends three weeks in Halifax Region focussing House on development and Atlantic Potential strategies and sharing invaluable spirit edges with the House and core. Alan Young, Vice President of Brunswick Mining and Smelting and the host of the Regional Consult, visits Chicago Nexus.

Contradiction: Contexting the targeted constituencies to ensure all sectors are covered and placing all systems on "Go". (Wk. 9)

MEXICO CITY

RELIGIOUS HOUSE: GUATEMALA CITY

External: All primary school students file through the clinic in one day to have their heads washed with lice shampoo. Daily farmers' meeting is inaugurated and guild meetings swell to over-flowing as people catch a vision of new agriculture production and increased income. Work days on the church and water system are totally planned and carried out by guilds, who even do their own development successfully.

Internal: Three guest rooms of new auxiliary house are ready just in time for guests Carl Boivin of Miami House visiting parents, John Foss of Minneapolis House and the Hart Family of Syracuse, New York, visiting daughter in Conacaste.

Contradiction: Maintaining the momentum with adequate models to sustain full engagement. (Wk. 9)

HAVANA

RELIGIOUS HOUSE: KINGSTON

External: Team visits eight key frame persons regarding upcoming Regional Consult and discerns deep sense of this being the right time to expand radically ICA services to the nation of Jamaica. Social sub co-op holds first meeting since co-op was registered. Claverty Cottage proposals for truck and coffee land are typed and submitted.

Internal: Richard Kitney arrives to work on CIDA and USAID proposals and to assist with Regional Consult set up.

Contradiction: Revealing how Woburn Lawn's reason for being finds fulfillment in caring for the region. (Wk. 8)

LIMA

RELIGIOUS HOUSE: LIMA

External: Visitors to Aspitia bring promise of help with development of new agriculture-related industry. House plans and launches programming for "generatures" with first week emphasis on Phase I with the launching of Niivos del Sol program and planning for youth activities.

Internal: House experiences the richness of having an auxiliary of six nations including three Latin American countries and cultures.

Contradiction: Moving through bureacatic structures in need of renewal. (Wk. 9)*

CARACAS

RELIGIOUS HOUSE: CARACAS

External: Regional Consult is a stellar success with co-sponsorship by YMCA, INCE: Iglesias, and *Dividendo Voluntario* (United Way). All six metros are visited with members of the local and voluntary sectors on the teams. Assembly focuses on Barlovento Zone as Venezuelan demonstration of extended development.

Internal: Global systems are intensified at the local level with the visit of the Management Trek as two sojourners arrive from the nation of Surinam.

Contradiction: Consensing on cross-maneuver strategies that allow the six-month timeline to be implemented. (Wk. 8)*

BUENOS AIRES

RELIGIOUS HOUSE: SANTIAGO

RIO DE JANEIRO

RELIGIOUS HOUSE: RIO DE JANEIRO

External: New contacts are made in Rio Bonito during Carnival celebration. Documentation of Community Forums and reflection of new leap required for community proposals' actuation engages all. Financial systems are being earnestly set up.

Internal: Carnival season illuminates Brazilian gait and spontaneity, and House members dance the samba and view parades of Rio's famous samba schools.

Contradiction: Maintaining the momentum of the extension programs in the midst of House move. (Wk. 10)*

THE GLOBAL ORDER CENTRUM REPORT

BRUSSELS
BOMBAY
SINGAPORE
HONG KONG
CHICAGO

QUARTER III WEEK ELEVEN

GLOBAL DEVELOPMENT CENTRUM

Global Development Centrum reports that brochures from Chicago and Bombay go to press. Chicago's victory is inking paper and professional services on printing of brochure and folder. Colleagues borrowed from Operations and Research circuit to Chicago, Denver and New York. The key contradiction lies in the arena of finding new money from Regional Consult contacts since the maneuver on corporations does not bring in immediate money but has a built-in time lag.

GLOBAL RESEARCH CENTRUM

Global Research Centrum reports from Bombay a good reaction to the first professional mock-up of the PR piece by the Nexus. Singapore creates a six-project montage and is "blueing in" the Regional Consults around the world. Chicago does debriefing of Permeation Lab with Training Inc. Bombay breaks through with design, flow and context for their PR piece while Singapore creates a new mailing list of grads of the past ten years. Chicago's work on procedures for Guardians Consult on the Four-Sector Coalition breaks through with use of case study approach. The key contradiction lies in the arena of carving out corporate time to focus on the major research tasks that loom bigger and bigger.

GLOBAL OPERATIONS CENTRUM

Global Operations Centrum reports that in Patna (starting place of Gandhi's first march) Calcutta staff lead the first Hindi CYF ever held. Chicago Urban Lab team completes documentation of the Chicago Urban Prob. Chicago Nexus decides to hold this Global Academy under the image of a small, intensive event with focus on curriculum development. The trend in LENS is towards training facilitators within the companies that hold LENS. Three pedagogy sessions preceeded a LENS for Bachries in Medan, and McDonalds' staff facilitate recent LENS in Atlanta and New York for owner-operators, while ICA staff play consultative roles. The key contradiction lies in the arena of regional framing, the futuric contradiction is a disorganized potential resulting in a sense that recruitment for Regional Consults is laborious, even while people are excited about the idea of the consult.

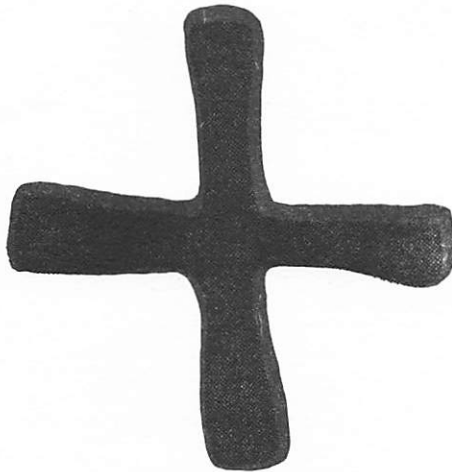
GLOBAL MANAGEMENT CENTRUM

Global Management Centrum reports India Management Trek is completed with a fine collegium. Singapore unblocks backlog of centrum correspondence. Chicago completes February reports. Great strides are made toward getting "on top of" financial picture and facility readiness. The key contradiction lies in the arena of responding creatively to the reality of regional diversity and the need for global systems.

THE GLOBAL ORDER REPORT

QUARTER III WEEK TWELVE

MARCH 16—22, 1981



*What shall I bring when I approach the Lord?
How shall I stoop before God on high?
Am I to approach him with whole-offerings or
yearling calves?
Will the Lord accept thousands of rams or ten
thousand rivers of oil?
Shall I offer my eldest son for my own wrongdoing,
my children for my own sin?
God has told you what is good;
and what is it that the Lord asks of you?
Only to act justly, to love loyalty,
to walk wisely before your God.*

Micah 6: 6-8

MADRID

RELIGIOUS HOUSE: MADRID

External: Visit to Bishop Triesta gives strong affirmation to work of ICA and Regional Consult. Community leaders' panel for Symposium is firmed up. Teams on the road continue metro set-up in all metros. Conference of superiors of male religious orders sends Regional Consult brochures to eighty religious orders in Madrid.

Internal: House sends out Bill to continental council and Glasgow Regional Consult; tactics chart for remaining countdown weeks grows as attention is focused on Regional Consult.

Contradiction: Finding the magic that will turn nods and tacit, though strong, support into fifty or more people around the Symposium table. (Wk. 10)

LONDON

RELIGIOUS HOUSE: LONDON

External: Authorization and commitments to London Regional Consult are gained on the "coat-tails" of enthusiastic response to I.E.R.R. (India Exposition on Rural Reconstruction) by people such as George McCrobie (Intermediate Technology Development Group), John Garnett and Commonwealth Secretariat.

Internal: House schedule requires a Thursday evening "Shrove Tuesday" and Friday morning "Ash Wednesday". Newest self-support projection shows we have closed half the deficit we had projected last December.

Contradiction: Getting the perspective to see and articulate a long-range urban vision when the complexity of urban networks seems determined to swirl over our heads. (Wk. 10)*

RELIGIOUS HOUSE: GLASGOW

External: Concrete victories in inkind, development and recruitment happen through vehicle of Regional Consult. New car is inkinded for Symposium and Practicum week.

Internal: Area prior family visits House to give global/India context and participates in momentum toward Glasgow Regional Consult.

Contradiction: Breaking out from the narrow movement base and recession mindset in order to allow the Regional Consult to breathe new life into the region. (Wk. 9)*

RELIGIOUS HOUSE: BRISTOL

External: Tai'rgwaith community core meets to plan transition events for April including public meeting and village night out.

Internal: Steve Evans comes for Tai'rgwaith community core meeting and fascinates all again with "Tales of Wales"; Sheila Hickey is sent off to Glasgow for Regional Consult Symposium.

Contradiction: Ending Quarter III on an upbeat so that we get a head start on Quarter IV. (Wk. 11)*

PARIS

RELIGIOUS HOUSE: PARIS

External: At the Paris Regional Consult, the Symposium timeline workshop surprises participants with the fact that they are people of hope. Six metro circuits set dates for film showings, get invitation to do a set, open new networks, register new guardians, for Formation Fortnight Symposium and enlist a senator for EXPO host committee. A very practical six-month launch plan is created.

Internal: The Regional Consult is experienced as constant eventfulness including birthday party,

collegium on three major strategies, transition spirit conversation on the practicum, the arrival of Monique Dion from Canada and the Area Paris fast.

Contradiction: Thinking it will take an army to implement all this — or experiencing the boa who swallowed an elephant. (Wk. 9)

RELIGIOUS HOUSE: BRUSSELS NEXUS

External: Week 10 Europe Continent Area Priors check-signals meeting turns out to be amazingly easy to do.

Internal: Week 11 conversations on GRA '81 holds unity in the midst of diverse tasks.

Contradiction: Building the model that utilizes all resources to get a lot done and have fun. (Wk. 11)*

RELIGIOUS HOUSE: BRUSSELS

External: All three rings of the circus are in full swing — film and speaking events in Eastern Belgium, preparations for NGO permeation, job conversations with top officials of General Motors and International Harvester. India guest night nets volunteers to clean Fortnight facility from EEC.

Internal: House receives Mary Quinn, volunteer from Britain for four-six weeks, who begins to bring some order to the order.

Contradiction: Creating decor that symbolizes intent of victorious fortnight recruitment. (Wk. 11)*

FRANKFURT

RELIGIOUS HOUSE: FRANKFURT

External: Ten-week focus on Regional Consult culminates in the opening event — the Symposium — as 28 colleagues attend with the leadership of all sessions in the hands of the movement. Inkind victories surprise staff with their ease and quickness. First contact with groups dealing with foreign residents of Frankfurt result in interest in future cooperation.

Internal: House fills up as numbers swell to 25 over the weekend and Symposium celebration Saturday night maintains a local tradition with a keg (of inkind beer) opening ceremony, fine buffet, music and conversation — master of ceremonies is movement colleague.

Contradiction: Deepening and broadening relationship with colleagues who have been interested but unfocused and unengaged. (Wk. 11)*

RELIGIOUS HOUSE: AMSTERDAM

External: Utrecht urban planner, recommended by Jan Tinbergen, is intrigued with the ICA story and methods and in particular the Urban Challenge Fortnight. His suggestion, "Why don't more people know about this?"

Internal: Three colleagues assist with self-support by engaging the House in spring clean-up/fix-up for pay, and Roundtable with two House members turns into rollicking fun as two more circuiting troops return late with story of amazing success in the midst of intense humiliation — breaking into continuous gales of laughter for the next three days.

Contradiction: Insuring local authorization and participation six weeks from now, when timing of Regional Consult needs to be six months from now. (Wk. 11)*

RELIGIOUS HOUSE: BERLIN

External: Regional team sends two to Frankfurt in preparation for Regional Consult. Calls are made on local government to print document.

Internal: Ismael returns from Turkey having successfully completed final university exams, and Amal gets a job to push self-support closer to an end-of-the-year victory.

* NOTE: The * indicates the first printing of a new report.

Contradiction: Maintaining a revolutionary stance while working with established structures grounded again by company's two-year timeline bumping against staff's two-month one. (Wk. 10)

ROME

RELIGIOUS HOUSE: ROME

External: The Area Rome legal trek visits two lawyers in relationship to future legal form of ICA and Arthur Anderson about financial responsibilities. In addition, 15 religious orders are visited for the April training seminar.

Internal: The House hosts Sam Hanson and Neil Vance and marks the end of a successful legal trek with an all-house celebration in Trastevere.

Contradiction: Getting enough people registered quickly for Regional Consult to release time for practical focus of facility search and consult preparation. (Wk. 8)

STOCKHOLM

RELIGIOUS HOUSE: COPENHAGEN

External: Development calls in Copenhagen and Stockholm spread and deepen support base. Swedish Cooperative Center reports on recent trip to Kenya and Atlas Copco expresses interest in India. Pastor Mollerup requests meeting with ICA during his conference in Nairobi in May.

Internal: Brian Williams is imprisoned in exterior bathroom in subzero temperatures because of faulty doorcatch and not noticed missing until evening meal accountability.

Contradiction: Maintaining regular circuits while major hunks of time are being expended outside area. (Wk. 9)

CAIRO

RELIGIOUS HOUSE: GIZA

External: Great Regional Conference — *Rural Development Conference of North Upper Egypt* — is completed with 102 people graciously hosted by officials in 3 governorates and co-sponsorship by Minia University. The way is open to expand work in Egypt. The Assembly in Bayad Community Center is opened by local council and unit presidents, and it is hosted by community with community kitchen pulling off feast after feast. Arabic-English document is produced.

Internal: Pat Coffman is sent out to Nairobi and Steve Allen to Lagos following Regional Conference document production.

Contradiction: Shifting into the larger context created by the Regional Conference. (Wk. 11)

ABIDJAN

RELIGIOUS HOUSE: ABIDJAN

LAGOS

RELIGIOUS HOUSE: LAGOS

External: Dr. Giwa, Irepodun Local Government Health Officer, authorizes and enables four Health Forums held around Ijede, in Imoto, Igboba, Ibeshie and Ijede with good participation level and which are followed by the immunization truck. The week culminates in a Saturday Health Fair in Ijede, where 300 people from all four villages gather to teach and learn. RT Briscoe (affiliated with the Danish East Asiatic Company) holds LENS course for the 23 top managers.

Internal: Bill Parker, Jane Coe and colleague management consultant Jack Aquaah-Harrison arrive for LENS and their participation in the Roundtable makes it a great event.

Contradiction: Timing the victories of the next four months. (Wk. 8)

KINSHASA

RELIGIOUS HOUSE: LUSAKA

External: Over 100 attend the HDTS opening feast, including 51 participants from ten villages; and Mrs. Mavis Muyunda, Member of Parliament (M.P.) for Katuba Constituency, gives opening address. Touring Bata Shoe Company and conducting village forums highlight the first two weeks. The HDTS is officially opened and the Kayosha Primary School (KHDP) is dedicated on March 1st by the Honourable Mr. Kasuto, Member of the Central Committee for Central Province, the District Governor for Kabue Rural and the M.P. The six-hour event was set up by the M.P. with many guests of public, private and local sectors present. KHDP hosted the day with a site tour and lunch, covered by the two largest Zambia newspapers.

Internal: Pulling off a full-time practice and development unit and making EG a rotating faculty assignment begin to lend focus to the overwhelming task of sustaining HDTS; ongoing development, in-kind and authorization feel strangely like "internal" tasks.

Contradiction: Finding the symbol that will call forth and firmly establish the 12 expansion villages before the consults begin next Wednesday. (Wk. 10)*

NAIROBI

RELIGIOUS HOUSE: NAIROBI

External: A huge swirl of activities begins to form around Women's Advancement Modules (WAM): After finishing Kenya Women's Volunteer Organization LENS and five pilot WAMs, Colgate Corporation decides to fund another 17 and offers to send two of their staff full time. Two Kenya WAM staff are sent to USAID sponsored two-week conference on "Women in Development" which plans to show the global film and do a site visit.

Internal: Great reports include Pat Coffman's spin on El Bayad Regional Consult and report on the rousing success of first Village Leaders' Institute. First conference with auditors reports "All is well" in the midst of mailing out sixth consecutive monthly stipend.

Contradiction: Using network momentum in authorization and funding to get priorities accomplished. (Wk. 12)*

RELIGIOUS HOUSE: MOMBASA

BOMBAY

RELIGIOUS HOUSE: BOMBAY NEXUS

External: Staff is scattered all over the Sub-Continent for a great week of victories — CYFs in Hindi, LENS, Regional Consult completion in Nagpur and Regional Consult set up in Bombay, Pune and Delhi, completion of income tax returns in Delhi, and some key development visits.

Internal: "Yertle the Turtle" catches our imaginations — we are given courage to evict a beggarly cat and everyone has a hair cut!

Contradiction: Planning the moves that will bring the year to an effective conclusion rather than being caught in 1,000 immediacies. (Wk. 11)*

RELIGIOUS HOUSE: BOMBAY

External: Sevagram completes new community center and does first bakery run with "Seva-bread". Twenty-five Maliwada leaders are sent out to build the circle and four preschools, and Chikhale has strong tangible support from district and county chairmen for circle and block. Jawale's 280-woman GWF Assembly concludes electrifying ten village impact events with 1200 women. Male's Community Development Association on the move constructs new community center.

Internal: A new five-year lease is obtained on Maliwada Ashram (castle), staff of six out of nine ashrams are in new blue dress, and a new three-region song is printed.

Contradiction: Designing hardheaded four-sector leadership commitment and formulation strategies. (Wk. 7)

DELHI

RELIGIOUS HOUSE: DELHI

MADRAS

RELIGIOUS HOUSE: HYDERABAD

External: The long-awaited village consensus takes place with the decision to use the Old House Repair Fund to replace all grass roofs with tile. The Saturday meeting of preschool teachers, helpers and auxiliary becomes key problem solving event as issues of space, lice and summer hours are discussed.

Internal: Collegium for July '81 prep gives insights for the global stew, and spelling bee highlights evening dining on the patio.

Contradiction: Making the best use of festival days, when government officers and villagers are occupied, in view of end-of-project goals. (Wk. 10)*

CALCUTTA

RELIGIOUS HOUSE: CALCUTTA

External: Evaluation of Coal India (Government of India corporation) LENS leads to two more seminars plus LENS with Indian Oil Corporation and requests for two training department people to be assigned to LENS faculty. Events set up for Regional Consult continue as dates are confirmed for two CYFs and two constructs of Imaginal Education are ready for use in schools and with community (bustee) development workers. Imaginal Education and self-support contract for year is secured. Rajarampur village site visit with local chamber of commerce initiates dual strategy thrust (along with LENS) of institutional permeation.

Internal: House collegium on Calcutta widens images of city and state in terms of its historical role and present situation; and arrival of Anil Prasad and Gyan Prakash from Operations sets House in preparation for first Hindi CYFs in the area.

Contradiction: Seeing through the innumerable openings produced by calls to discern the truly catalytic tactics of the master strategies. (Wk. 7)

SINGAPORE

RELIGIOUS HOUSE: SINGAPORE NEXUS

External: Teams are in all the areas — six out of eleven regions.

Internal: Nexus celebrates both the birth of David Christopher Hoff (7 lbs. 6 ozs.) and Mike Hoff's birthday on February 25, 1981.

Contradiction: Sustaining centrum services through four weeks of anticipated dispersion. (Wk. 9)

RELIGIOUS HOUSE: KUALA LUMPUR

External: Demands of framing for National Conference (Regional Consult) catalyze ICA Malaysia Board of Directors to take quantum leap in their responsibility for the future of the movement here; e.g., the Board plans a three-prong strategy for neutralizing a long-standing "rock in the road". ESSO approves a M\$10,000 contribution. Symposium invitation visits produce exciting new contacts with universities, embassies, agencies and private corporations.

Internal: Car breaks down again leaving staff stranded in Kuala Lumpur with nowhere to stay after a late board meeting — until despair turns into opportunity and staff spends a delightful over-night with board families.

Contradiction: Keeping cool while complex framing job for National Conference gets handled by public and private sector guardians. (Wk. 10)*

RELIGIOUS HOUSE: MEDAN

External: The Medan guardian team further solidifies their role in sponsoring Medan's first regional council and sends two guardians to staff key National Oil Company (Pertamina) LENS. The fourth cluster village turns on its electricity, opening the village power company.

Internal: House holds LENS pedagogy session to prepare for heavy LENS schedule and sends Neny to help set up Jakarta Regional Consult.

Contradiction: Turning old village defeats into a motivating self-story toward future victories. (Wk. 11)*

RELIGIOUS HOUSE: JAKARTA

External: First in-house Pribumi (native Indonesian) LENS is held and is the best thus far. Letter from Bupati (district officer) is received after three months of trying, approving visas for Katherine and the Rettigs. Modernization hits the village as poles appear for electricity and glass is received for mosque.

Internal: LENS pedagogy, held for two nights, allows new insights on the Consult; West returns from LENS marketing in Australia and Gail teaches in LENS.

Contradiction: Refocusing the Regional Consult to be of maximum service and futuristic advantage in the tension of relocation. (Wk. 9)

RELIGIOUS HOUSE: UJUNG PANDANG

External: Health module begins each day with teachers from district health department, women from the whole desa (average of forty) and lots of laughter, notetaking and driving. H.A. Lathief, head of Parliament, and wife drop in unexpectedly to show Bontoa to the Bupati (district head) of Singai who requests a field visit during the Ujung Pandang Regional Consult. Fifty-seven Bontoa residents meet to consense on electricity support.

Internal: Sherwood Shankland is welcomed home to Bontoa for Regional Consult setup and David Thomas from Washington arrives for a month's stay. H.A. Lathief has all staff to dinner for a spectacular feast.

Contradiction: Using all advantages to create a focus for cluster implementation. (Wk. 10)

HONG KONG

RELIGIOUS HOUSE: HONG KONG NEXUS

External: The Global Symposium is held February 25 and 26 at the Sheraton Hotel. New people with little or no previous contact, except a special invitation to attend this event, participate effectively and enthusiastically. No one would leave this event until the *Implications* page of the document came off the press.

Internal: The Nexus enables the Global Symposium by housing 22 this week, and imaginations and spirits are addressed by the context and conversation on China led by "Tuesday-night Task Force" participant, Victor Liu.

Contradiction: Imagining the symbolic step that would reground Hong Kong's movemental future and its role in caring for the globe. (Wk. 9)

RELIGIOUS HOUSE: HONG KONG

External: Symposium preparation (100 visits) sets the stage for a dynamic Symposium at the Sheraton-Hong Kong Hotel which reveals the sign of the new coalition; 48 participate, the majority Chinese, including government district officers, bank officials, a World Bank consultant, social service representatives from the city and rural, university professors

and Nam Wai villagers, with sponsorship by 12 corporations contributing HK\$25,000. The final week of the Regional Consult launches the four-year mission with teams visiting 100 in every metro, including Macau, developing HK\$35,000 and restoring the original Hong Kong card file system. The Assembly named the four strategic designs for 1981-84: *Equipping the Coalition, Four Sector Impact, Covering the Total Geography, and Strengthening the Nam Wai Foundation.*

Internal: The Nexus and Nam Wai House plus Don Clark from Tokyo and John Howell from the Philippines combine to make up the "King Kong Regional Consult Task Force"; and the Regional Consult celebration dinner is highlighted by a four-year Nam Wai HDP anniversary reflection with colleagues from the Nexus, area and village, followed by skits from metros teams.

Contradiction: Finding the practical way to follow up on all the possibilities and give form to the swirl. (Wk. 10)*

RELIGIOUS HOUSE: KAOHSIUNG

External: House achieves an inkind breakthrough for coming HDTs.

Internal: After three and one half years in Hai Ou Project telephone is installed — 008/782997 — and House celebrates with Indian food.

Contradiction: Recruiting the first HDTs in Taiwan. (Wk. 10)*

RELIGIOUS HOUSE: TAIPEI

External: Goodyear sends 1981 contribution of US\$1,100. HDTs curriculum is prepared for companies that will consider sending staff to the program. Three years of successfully completed audits of ICA finances in Taiwan results in clearance from National Tax Administration after spot check of ICA general ledger. February "Update" is mailed to 225 contributors in Taiwan reporting on sister-village event between Hai Ou and Koh Du I Ri. *China Post* reports on Control Data's US\$2,000 donation to ICA for 1981.

Internal: Staff meets with Yangming Management Development Center concerning English teaching self-support possibilities for 1981-82.

Contradiction: Sustaining intensity of prioritized thrusts on numerous thrusts (external and internal) which have emerged since the Week 9 bi-regional meeting. (Wk. 10)*

RELIGIOUS HOUSE: MANILA

External: House sends three for two-day site visit of villages surrounding Union Oil Geothermal Plant in Luzon. A speaking engagement is held with 60 grad students and professors of the Institute of Mass Communication at University of Philippines, and a follow-up call on Phil Com LENS results in another LENS scheduled for October. USAID impressed by field visits offers data-bank assistance with economic programs, Ministry of Health allocates free food for Mactan Early Learning Nutrition Center, and 1981 brochure is taken to printer.

Internal: Collegium study of Ezra Vogel's book, *Japan No. 1*, expands reflections on effective social vehicle for a small planet; and the House continues reflection on the role of an historical order through study of Rozak article and conversation with dinner guests, two religious, the dean and a theology professor of one of Manila's prestigious women's colleges.

Contradiction: Keeping our gaze on the next 20 years and our roots in the past 20 years while immediate opportunities and victories consume our passion. (Wk. 11)

RELIGIOUS HOUSE: CEBU

RELIGIOUS HOUSE: DAVAO

External: New Maog HDP in Butan Metro visits for planning and progress reports with preschool, health clinic, farmers'

association, adult education and preparation to launch a new cluster with three other villages. Community beautification project begins in LaPas HDP, cooperative store construction begins in Carmen HDP and Magtued HDP sprays mango trees. General store in Langub HDP starts raffle while sewing industry has more orders for shortpants, doctors visit for clinic day and a new entrance sign is created along the highway.

Internal: New Hogan for house kitchen enables cooking of meals and hosting of staff from New Maog HDP.

Contradiction: Finalizing the barangay site survey. (Wk. 9)

TOKYO

RELIGIOUS HOUSE: TOKYO

External: Two Guardians travel to Osaka to serve as second and third leaders for the Impex Company LENS. Second conference is held to discuss a 1000-person Town Meeting in Tokyo.

Internal: Guarantee deposit is placed on a new 30-room house and all systems are mobilized to move before the end of February.

Contradiction: Ensuring a firm foundation of finance and program under the move to a house that is 1/3 larger than the present facility. (Wk. 7)

RELIGIOUS HOUSE: SEOUL

External: The Kuh Du E Ri HDTs sends out 24 graduates and the Community Extension Module begins. Five from the House travel to Chung Ju to set up 26 Town Meetings for the coming week while Hong Kong Development arrives for an intensive week of development.

Internal: A Global Language School, visits from the Area Prior and Hong Kong Development push House accommodation to thirty, about the limit.

Contradiction: Keeping the troops out in front of the tactics. (Wk. 10)*

RELIGIOUS HOUSE: KUH DU E RI

External: On March 1st the two-week model of HDTs graduates 24 new leaders from Kuh Du E Ri, two expansion projects in Kang Won Province, a neighboring village and a village in North Chung Cheong Province. The HDTs, taught by 12 staff including seven interns from the two Korean Houses, is the focus of ITT's movie-making of the HDP the last two days. HDP documentation begins after HDTs with 20% of families interviewed. A "tactic rating" session with village chief, band leader and accountant shows 84% of tactics are started or have been done; and the 1981 plans for new housing and road projects will push upward of 100%.

Internal: House expands to nine members with Russell Jewell from Chicago, Jim Bell from Hong Kong, and Miss Oh and Miss Kim from the Seoul House to work on documentation and help bring off fine celebrations, both in movie viewing and House Church. Lee Nam Soek (intern) returns to college and Mrs. Lee Kang Jin (Lee Kyung Hae) joins House as a bride.

Contradiction: Caring for cluster relationships when all are needed on documentation. (Wk. 10)*

RELIGIOUS HOUSE: FUKUOKA

External: Last training module held for training month of February is huge success with 15 colleagues participating. Imaginal Education workshops focus on the April training design. India coffee is held Sunday afternoon to promote trip. Hiroshima circuit finds LENS openings, increases advisor participation and sets Town Meeting with the city on March 20.

Internal: House takes local train (six-hour, all-night ride) to Nagasaki, stands in a blizzard for three hours with a gathering of 47,000 people at Matsuyama Stadium to greet Pope John Paul II on his trip to Japan. He gave his entire mass in Japanese.

Contradiction: Pulling together a comprehensive campaign thrust while going many directions. (Wk. 9)

RELIGIOUS HOUSE: OSAKA

External: Impex Chemicals schedules their second LENS for the Quarter, with Mr. Kabori, a close colleague and advisor as a facilitator.

Internal: Writing new rituals and meal contexts and Mrs. Yoshikawa's visit at the House provide the refreshment and new style for energetic action.

Contradiction: Training our sensitivities to hear the unspoken Yes and No. (Wk. 11)*

RELIGIOUS HOUSE: SAPPORO

External: Three-and-one-half hour LENS appointment with corporation president pushes team's understanding of methods to the limit. LENS-site change is an exercise in house and colleague consensus building.

Internal: House and colleagues participate in ice-skating party at the Sapporo Olympics Ice Arena, and House welcomes Mr. Tonasaki as transferred staff member from the Tokyo House to the Sapporo House.

Contradiction: Finding the dynamics to work out consensus quickly in two languages and between two cultures. (Wk. 8)

SYDNEY

RELIGIOUS HOUSE : SYDNEY

External: Circuits go to Murrin Bridge, Canberra and Melbourne. The key event in Canberra is visiting Margaret Wallner and the future contacts that can come out of that call.

Internal: Alison Powell celebrates her fifth birthday in a spirit of fun and festivity with friends from the community as guests.

Contradiction: Sharpening the signal community pitch into clear images of the future. (Wk. 9)

RELIGIOUS HOUSE: MURRIN BRIDGE

External: Murrin Bridge discovers that human government bureaucrats do exist after ten bureaucrats visit Murrin Bridge in one day and they offer support for industry marketing and training after 18 months. Community hosts fine lunch for the visitors.

Internal: Ken Otto's parents visit from the U.S.A. and after one week at Murrin Bridge leave with new understanding and blessing of the work.

Contradiction: Finding avenues for sharing methods and learnings while being conscious of the amount of effort needed to break through the dependency mindset in Murrin Bridge. (Wk. 10)*

RELIGIOUS HOUSE: PERTH

External: Colleague David White joins team for 1200 km. circuit to Northam and Geraldton Metros which sets up five practicum events and team has fine visit with Bishop Howell Witt. Midland Toyota sends \$200 and first Symposium registration, plus \$500 annual pledge.

Internal: Management trek occasions reflection on new forms of the order, and Joanne Baker gets new job to be trained in phototypesetting.

Contradiction: Pulling new contacts and networks through the largely untried Regional Consult construct produces crisis of courage. (Wk. 10)*

RELIGIOUS HOUSE: ADELAIDE

External: Community LENS brochures arrive from printers and are mailed to all regions. Regional team phases research for urban impact.

Internal: Final Roundtable is held in old location as shift to

temporary quarters begins; House experiences scattered dynamic as the staff now reside in three locations.

Contradiction: Shifting priorities and recreating images and story for focused thrust. (Wk. 9)

RELIGIOUS HOUSE: MELBOURNE

External: First community LENS is scheduled. A workshop with a colleague who is a local church pastor leads to decision for four events with congregation and community.

Internal: Collegium on local community revolution generates many new images on helpful ways to talk about journey of local community.

Contradiction: Getting out of "the task is limited by the number of troops we have in the House" mindset so that we can accommodate the Yes being said. (Wk. 9)*

RELIGIOUS HOUSE: BRISBANE

External: Strategies and methods appear to be on target as we visit 25 people including Aboriginal senator and small town Anglican clergyman, and then hold CYF with 45 participants. Delivering article on ICA work for this year to *Local Government Digest* for the next issue results in invitation to submit regular articles. Institute participates in local community's comprehensive Women's World Day of Prayer.

Internal: House celebrates Isobel Bishop's birthday at local Lebanese restaurant.

Contradiction: Keeping the communications open and flowing among the three dispersed units of the House. (Wk. 10)*

SUVA

RELIGIOUS HOUSE: APIA

External: Regional Consult falls into place with Symposium registration of Trustee Salamasina Malietoa, Queen of Samoa, Trustee William Keil (Morris Hedstrom manager), representatives of the Methodist Church and panelist Dr. Vio Annandale.

Internal: Mary Laura resigns herself to an overnight stay in the local hospital after an unknown illness hits; and later in the week, the House celebrates the birthdays of Aaron and Justin with a party featuring cake, ice cream and the game Sardines.

Contradiction: Focusing national attention on the Regional Consult Symposium. (Wk. 9)*

RELIGIOUS HOUSE: AUCKLAND

External: First two registrations come in for Regional Consult. Two events take place at the House: The Chapter Presidents of the East Coast Districts of New Zealand Jaycees spend Week II with ICA staff doing workshops and a member of the Prime Minister's Think Tank attends Havelock North's task force on employment.

Internal: The study of *Person/Planet* opens up all kinds of new images for the future.

Contradiction: Discerning the next steps toward obtaining visas and funding. (Wk. 10)*

SAN FRANCISCO

RELIGIOUS HOUSE: SAN FRANCISCO

External: Curtains are pulled on the Regional Consult with final typing of two documents and with a night of analyzing the "Metro Accounts" as a way of pulling together the focus of the massive amounts of strategic thinking that has been done during and since the Consult.

Internal: House celebrates with metro the finalizing of work from the Regional Consult and the award of a scholarship by the Seroptomist Club to Jane St. John with inkind wine and cheese.

Contradiction: On the other side of the Regional Consult, discovering the authentic catalytic role of the House in formulating metro cores. (Wk. 9)

RELIGIOUS HOUSE: SEATTLE

External: Two ten-day circuits in Idaho set up first speaker and practicum event for Regional Conference, visit twenty-two towns and find new funding and sponsorship. Ruth Rawson joins circuit team in north Idaho.

Internal: Dialogue with "Prophetic Imagination" and circuit reports create an exciting Friday Roundtable and encourage engagement of regional team.

Contradiction: Lining up the dominoes for sponsorship and funding, circuits, speakers and conference set up to maximize engagement of an expanding team. (Wk. 11)*

RELIGIOUS HOUSE: LOS ANGELES

External: Regional meeting celebrates six completed weeks of 12-week countdown to Regional Consult with 245 interviews completed and \$1030 pre-registrations in the bank. GWF is set up and funded for Hispanic women to break loose block leadership for Central Park Five.

Internal: Religious practices captivate the House beginning with study of *Common Worship* paper, collegium study of *Chastity* paper and daily readings in silence at dinner of the lives of the saints (from *Warriors of God*) — this week St. Anthony.

Contradiction: Releasing colleagues to do the first interview on their own. (Wk. 11)*

RELIGIOUS HOUSE: RICHGROVE

External: Key Regional Consult visits in Bakersfield Metro reveal those who care in rural valley communities. Major corporation in California offers training course in electronic circuitry for community electronic assembly industry, establishing key future relationship in vocational skills and marketing. Plaza offices undergo facelift in preparation for on-site visit of corporation team.

Internal: House hosts Tom and Cindy Steffen from Bob Stewart's church in Chico en route to Mexico work project near Ensenada and engages their volunteer spirit in community efforts.

Contradiction: Releasing metro colleagues to call forth the region. (Wk. 11)*

RELIGIOUS HOUSE: PHOENIX

External: Regional Consult recruitment and funding roar into high gear as guardians teams visit prospects in Tucson, Casa Grande and Wickenburg and set up lunch for fifty at Central Arizona College. Forty plus major Phoenix firms are phoned for funding appointments, two visits are made, six more are set and there are 30 call-backs! Trip to Pisinemo produces plan for 20 Indian Town Meetings, June HDTS, and funding in hand with \$35,000 CSA grant.

Internal: Team works on Living Environment — House task force transforms front yard with cacti and flowers; backyard vegetable garden is next on list — this is Pisinemo agricultural replication?

Contradiction: Finding the gateway that breaks loose Regional Consult registrations. (Wk. 11)*

RELIGIOUS HOUSE: PISINEMO

External: District voted to build multi-purpose building with meeting space and offices. Large turnout to hear commission reports develops six-month community calendar.

Internal: Dan Jacobs, new with VISTA, arrives from Las Vegas.

Contradiction: Developing practical plans and schedules to complete district office. (Wk. 11)*

RELIGIOUS HOUSE: BILLINGS

External: Six-week marketing strategy gets under way with 2,000 industry brochures sent to area ranchers and dealers. Development Corporation Board meeting settles leasing of cafe, hiring of new store manager trainee and the reduction of post office hours. Cafe is officially opened under new management — Betty and Herman Elk.

Internal: A full-fledged guest drops in from California to visit Carolle for the long weekend.

Contradiction: Focusing resources corporately to allow effective action. (Wk. 8)

RELIGIOUS HOUSE: DENVER

External: Sixteen people in six teams travel to every metro for Regional Consult recruitment. Unsolicited bonus of one scholarship donation is received.

Internal: Richard Stanley arrives to help with Regional Consult preparation, and regional colleagues get a laugh out of invitation to "First Annual Conspicuous Affair — A Celebration of Going Public" — a Regional Consult kick-off celebration.

Contradiction: Making sure that recruits do not start slipping through the cracks as regional team turns towards practices with apparent victory on recruitment. (Wk. 10)

EDMONTON**RELIGIOUS HOUSE: EDMONTON**

External: Four House members drive back to Edmonton from site visits to Control Data Corporation and Rural Venture Inc. in Minnesota and hold collegiums in Winnipeg and Saskatoon Houses on structural permeation and order life.

Internal: Consultations through self-support jobs bring staff into contact with several church congregations and further education council for Northern Alberta, and phone, files and typewriter are pulled into one fine office.

Contradiction: Keeping one thrust in the midst of wonder and pain of transition question. (Wk. 11)*

RELIGIOUS HOUSE: ANCHORAGE

External: Metro circuit into Fairbanks Metro reaches new people and new possibilities for a future GWF. A core is readying itself for this task. The House along with metro colleagues in Anchorage completes a phasing model for Regional Consult.

Internal: The House sends the Henrys to Dallas and at the same time welcomes Ted Ariel from Chicago, and the circuit team returns to the city.

Contradiction: Keeping the momentum going in all things. (Wk. 7)

RELIGIOUS HOUSE: VANCOUVER

External: Circuit visits Prince George Metro for the first time in three years after a visit to the Kamloops Metro, Williams Lake. In Williams Lake a special Forum is scheduled with the Day Care Centre, and a CYF and a CFC are in the works.

Internal: Observing the Fast Day on the circuit gives a new depth to circuit internal life and sustaining the troops on the road. Inkind accommodation and meals keep costs down and spirits up.

Contradiction: Capitalizing on the myriad of possibilities which are bursting forth across the region. (Wk. 7)

RELIGIOUS HOUSE: SASKATOON**RELIGIOUS HOUSE: WINNIPEG**

External: President of the Canadian ICA Board, Area Prior and House Prior meet with local guardian Angus Spense and ask him to stand for nomination on the Canadian ICA Board, which he agrees to do.

Internal: Conversation with the House and team on the state of the region and the future responsibilities marks a turn to practical action with the first step being a RS-I course in Quarter IV.

Contradiction: Identifying and consensing on models that assume a particular future for the region in the midst of great ambiguities. (Wk. 11)*

HOUSTON**RELIGIOUS HOUSE: HOUSTON**

External: There are four new sponsors for the Regional Consult — Gulf Oil (with \$300 contribution), the Houston Council of Human Resources, Casa de Amigo's (of Lubac) and the Archdiocese of San Antonio. Texas State University faculty meeting and interview completes scheduling arrangements for Symposium facility. Ben Reyes, City Councilman, will bring proclamation from the mayor to Symposium opening.

Internal: Claire Clements stuns audience with striking performance in Spring Dance Concert; House hosts celebration of dance reception and Claire's birthday — Claire is one of seven finalists for National Dance Competition.

Contradiction: Thinking of long-range area issues in order to release images and creation of structures for participation. (Wk. 11)*

RELIGIOUS HOUSE: ASHERTON

External: Meeting with L.U.L.A.C. National Executive Board and State of Texas Executive Board produces enthusiasm for Regional Consult and ICA methods among professional Hispanics. Asherton residents and ICA staff work with Mexican-American Cultural Center on migrant farm workers program to impact church and agency personnel.

Internal: Income tax maneuvering (income averaging) turns tax time from a liability to a self-support gain.

Contradiction: Activating networks and contacts into a movemental force to bring off the Regional Consult. (Wk. 11)*

RELIGIOUS HOUSE: DALLAS**RELIGIOUS HOUSE: INDIAHOMA**

External: Indianhoma Community Development Corporation meeting is highlight of many community meetings and releases burst of activity as tax exempt status is secured. Key LENS call, catalyzed by Oklahoma City Guardians, is held with the president of Liberty National Bank. Regional Consult site is located.

Internal: Roundtable with Assembly of God pastor and wife is a great happening that discloses power of contemporary spirit methods as appreciated by those who care.

Contradiction: Uniting effectively two small regional teams and two strong metro cores for Regional Consult task. (Wk. 10)

RELIGIOUS HOUSE: MEMPHIS

External: Two WATS lines are inked through a Regional Consult advisor for recruitment phoning. Week's maneuver results in 200 contacted and 44 are "snow-balling". Tupelo visit brings gold mine of new appointments and renewal of 1978 Town Meeting contacts eager to engage.

Internal: Toothless nine-month-old Kathryn Howard is walking!

Contradiction: Enabling the shift from initial images to real situation of Symposium in order to claim victory without apology. (Wk. 10)

RELIGIOUS HOUSE: NEW ORLEANS

External: Beautiful Regional Consult is in hand and fast moving out.

Internal: Mardi Gras intensifies with arrival of Anne Dodge and Gordon Kravet from Hartford, with staff watching and

joining parades, returning home draped in beads, while Mollie Clements' attendance at a Quality Circle Seminar in Mississippi reveals booming job opportunities for facilitators at \$22,000-27,000 across the continent.

Contradiction: Exhibiting the same fascination and excitement toward Regional Consult as New Orleans has for Mardi Gras in order to be a magnet for engagement to colleagues. (Wk. 9)

RELIGIOUS HOUSE: ATLANTA

External: Phone calls *come in* to guarantee the RS-I scheduled for Week 11, with 75% new people.

Internal: Metro colleague Ed Knight and House put "flesh" on American Culture curriculum for 50 Japanese students who will spend three weeks in Atlanta this summer.

Contradiction: Creating a releasing timeline for broader participation in Regional Consult preparation. (Wk. 10)

RELIGIOUS HOUSE: MIAMI

External: Recruitment for Academy and Guardians meeting is intensified. Roundtable with five guests hears reports on Guatemala and Youth Presidium. Team prepares for Colquitt, Georgia Town Meeting.

Internal: Finance collegium allows House to understand finance situation; Cari returns from Guatemala, Joyce from Dominican Republic and Cameron Grow visits.

Contradiction: Corporately caring for task and creating a timeline for all of the upcoming events. (Wk. 10)

CHICAGO

RELIGIOUS HOUSE: CHICAGO NEXUS

External: Fr. Davila presents profound collegium on the Latin American context. Extended House Meeting is an interchange event which holds happenings in the 88 regions before the House. Round-the-clock task force prepares the *IMAGE* for the printer.

Internal: Inkind couches, lamps, chairs, mirrors and pictures arrive.

Contradiction: Adjusting the focal point of Regional Consults in relation to the massive opportunities for formation. (Wk. 12)*

RELIGIOUS HOUSE: CHICAGO

External: The regional team completes 1137 interviews with at least 12 interviews in each of the 36 polises and begins the process of documenting the conversations with a Week II event involving 30 colleagues including a team summarizing the results from the Chicago Neighborhood Campaign. In addition, the 5th City Business Careers celebrates the arrival of two Apple computers to enhance the word-processing experience and training of its students.

Internal: With the infusion of colleagues for the Week II document writing, the House recreates the 44-hour weekend with a pizza party celebrating Rosemary Albright's 36th birthday.

Contradiction: Identifying and arranging the nitty-gritty detail of the Regional Consult (to begin in 10 days) while keeping an eye on the long-range meaning. (Wk. 10)

RELIGIOUS HOUSE: KANSAS CITY

External: Colleagues gather in Wichita to discuss implementing the marketing of the Methods Academy and the Regional Consult and to hear the youth report on the Youth Presidium.

Internal: Roundtable muse "*I Am I*" allows new dialogue, especially with the Kansas City Youth Cluster.

Contradiction: Carrying through to completion the initiated program thrusts. (Wk. 9)

RELIGIOUS HOUSE: LORIMOR

External: Lens follow up in effort to have LENS set up for Quarter IV. Department of Health LENS is confirmed for April, the first LENS in Iowa state. Lorimore Booster Club decides to include leadership training emphasis next quarter.

Internal: House completes quarter planning and prepares for regional planning.

Contradiction: Clarifying preparation and coordination of necessary tactics. (Wk. 11)*

RELIGIOUS HOUSE: MINNEAPOLIS

External: Third World Weekend held with 40 Christian Youth in Action youth in Green Bay demonstrates LENS is effective with youth as global concerns were translated into local action. Fourth Rural Venture, Inc. rural project is launched with vision and LENS workshops in state of Virginia by Minneapolis and Washington D.C. staff. Executive committee of the Minneapolis Chamber of Commerce contracts for a LENS seminar to be held in April.

Internal: Permeators share use of problem solving methods in their workplace at the regional team debriefing and participants from eight regions in a week of RVI site visits, and order renewal PSU based on the book *Shaping the Coming Age of Religious Life* results in new commitment to order expansion.

Contradiction: Discovering the balance between when to retreat and when to advance. (Wk. 10)*

RELIGIOUS HOUSE: ST. LOUIS

External: St. Louis RS-I has 32 participants representing four metros. Jim Addington is sent out to do Davenport, Iowa circuit. The Harveys attend a Mill Shoals Development Association meeting and stand in awe of the open communication between townspeople.

Internal: Mark Harvey begins job and learns that listening is the key to selling.

Contradiction: Creating the schemes to engage other groups and individuals to take on the interviewing task as their own. (Wk. 11)

RELIGIOUS HOUSE: DETROIT

External: Munising industrial package is wrapped up and delivered to CPA. Regional Consult recruitment strategies PSU names 15 target communities for special task force setup. Five thousand sheets of paper are inked for Regional Consult brochure.

Internal: Blackledges celebrate David's swimming victories at special swim team dinner. Self-support maneuvers are pushed with preliminary Home-stay program plan sent to Japan and exploratory appointment set for community leadership training proposal and ICA.

Contradiction: Finding ways to pronounce the not-perfect as complete so that the team can move on to the next task. (Wk. 10)

RELIGIOUS HOUSE: CLEVELAND

External: Great circuit visits all regional metros and ends with a LENS Marketing Lab in Cleveland with guardians.

Internal: Surprise wedding shower for Kathy Fenton is a fine event.

Contradiction: Knowing where the battle stands when you are gaining on all fronts. (Wk. 11)*

RELIGIOUS HOUSE: INDIANAPOLIS

External: "Account" assignments are completed giving each of staff responsibility for one region. Dates are set for four of the first post-Regional Consult core meetings.

Internal: Week of intense collegiums on the "account" assignments is broken and celebrated with a Mardi Gras celebration of costumes and pancakes.

Contradiction: Stepping into unexperienced, uncharted territory with our post-Consult maneuvers. (Wk. 11)*

NEW YORK

RELIGIOUS HOUSE: NEW YORK

External: New Jersey Bell gives \$500 for Regional Consult, \$185 comes in for scholarships and 46 people are registered for *Dialogue One*.

Internal: Shrove Tuesday is celebrated with movie *All That Jazz*.

Contradiction: Molding the results of 300 interviews and 100 participants into an event which changes the future for the New York Region. (Wk. 10)

RELIGIOUS HOUSE: PITTSBURGH

External: Key visit with Bill Kerr, County Commissioner of Armstrong County, draws on long history with ICA to evoke decisions for Regional Consult.

Internal: House's attention focuses on Consult with office decor (2 locations) and tactics, which yield \$25,000 job application.

Contradiction: Creating creative ways to responsibly deal with financial finitude while simultaneously intensifying massive Consult recruitment. (Wk. 11)*

RELIGIOUS HOUSE: WIDEN

External: Visits, presentations and development intensify as Regional Consult draws nearer. "One-time-only" giver gives three more scholarships for Regional Consult participants.

Internal: "Great Escapes" collegium marks beginning of Lent for House.

Contradiction: Finding the tactics which turn intrigue into commitments. (Wk. 10)

RELIGIOUS HOUSE: ROCHESTER

External: Regional Consult rhythms begin to take shape after metro team meetings in three metros.

Internal: Signal individual events — birthdays, illness and new life-style decisions — mark the week.

Contradiction: Creating the rhythm which calls forth the dancers to the dance. (Wk. 9)

RELIGIOUS HOUSE: PHILADELPHIA

External: Regional team experiences the harvest of last few years Philadelphia Metro development and wedding of network contacts in test run of Thursday afternoon Livingroom Dialogue with black business people, the co-founder of Opportunities Industrial Centers and former Milwaukee Braves player, Bob Malone.

Internal: Livingroom transformed in 24 hours with coat of "candlelight beige" paint and rearranged decore and daily office room relocated to open up additional living space as house expands and becomes focus of missional dialogues.

Contradiction: How to present the dramatic images and catalytic structures that will allow those who care to relate to one another and be the Movement in action. (Wk. 11)*

RELIGIOUS HOUSE: WASHINGTON, D.C.

External: Preschool refurbishing is symbolized with an open house and undergirded by the inking of \$500-\$1000 worth of renovation materials, a major workday and completion of new teacher uniforms. The Regional Consult ball of clay begins to take recognizable shape as it is christened "*Decade 80: A Regional Exchange on Local Development*" and a sleeping space is located and consult location alternatives are identified.

Internal: Special collegium by Tim Lush on the assignment process is key this week.

Contradiction: Symbolizing through the assignment structure the "one ballgame". (Wk. 11)*

RELIGIOUS HOUSE: BOSTON

External: Youth Forum with seniors at Northfield-Mt. Hermon prep school challenges us to respond to the vacuum of images which relate vocation to societal needs and individual action to changing history.

Internal: Metro colleagues lend their expertise to repair wiring and patch plaster essential to maintaining fire insurance. House celebrates at Burmese restaurant and sends out Joni Fleischman and Janet Moltzan to Spring Academy after six weeks work in Starks and Boston on Phase I impact. House begins study of *Shaping the Coming Age of Religious Life*.

Contradiction: Securing placements in HDPs for 3-9 month volunteers coming from Harvard, School for International Training, Tufts, Darmouth, etc. and creating a model for local orientation. (Wk. 11)*

RELIGIOUS HOUSE: STARKS

External: First development trip in 2 years brings in \$380 in hand and over \$1000 working. Starks Town Meeting (official elections and decision making meeting) goes smoothly (first time in 3 years). First RS-1 registration is received for end of April RS-1 in Maine (first to be held in many years).

Internal: House goes from no cars to the needed two cards in one week as colleagues in Portland, Main, and Sudbury, Massachusetts, donate old cars. Pastor family from Dover-Foxcroft, Maine, George, Karen, Danny, and Julie, and Charlie Moore are guests for House Church.

Contradiction: Letting off the brakes when things are complicated so that momentum takes care of issues. (Wk. 11)*

MONTREAL

RELIGIOUS HOUSE: MONTREAL

External: Yearly CICA Audit is complete with all house books checked. Five Canadian Pulp and Paper Association Wives are trained for Toronto Annual Meeting as team circuits to New Brunswick on behalf of Halifax Regional Consult.

Internal: Monique's friend, Luc Delemotte, arrives from France for extended visit to Quebec.

Contradiction: Imagining that the missional focus is other than exactly where we are. (Wk. 11)*

RELIGIOUS HOUSE: TORONTO

RELIGIOUS HOUSE: OTTAWA

External: Creative Week II PSU on Public Relations materials for Regional Consult includes Marnie Ellis, guardian from Montreal, as well as representatives from Toronto and Montreal Houses. Monique Dion, regional colleague, returns from Paris Regional Consult. Using drop-in method, team sees seven potential participants for Regional Consult in one day.

Internal: Ruthe Yost is sent out on two week special assignment — part of which is to experience Chicago Symposium.

Contradiction: Moving the Ottawa Valley potential participants from fascination to commitment. (Wk. 11)*

RELIGIOUS HOUSE: HALIFAX

External: Montreal House, Development Centrum, Lorne Core and Halifax House cover 12 polis in the region, breaking open Regional Consult participation and development possibilities. *Atlantic Potential* brochure is done and nine events are completed or set up during the 12 polis coverage.

Internal: Marge Allan from Development Centrum spends three weeks in Halifax Region focussing House on development and Atlantic Potential strategies and sharing invaluable spirit edges with the House and core. Alan Young, Vice President of Brunswick Mining and Smelting and the host of the Regional Consult, visits Chicago Nexus.

Contradiction: Contexting the targeted constituencies to ensure all sectors are covered and placing all systems on "Go". (Wk. 9)

MEXICO CITY

RELIGIOUS HOUSE: GUATEMALA CITY

External: All primary school students file through the clinic in one day to have their heads washed with lice shampoo. Daily farmers' meeting is inaugurated and guild meetings swell to over-flowing as people catch a vision of new agriculture production and increased income. Work days on the church and water system are totally planned and carried out by guilds, who even do their own development successfully.

Internal: Three guest rooms of new auxiliary house are ready just in time for guests Carl Boivin of Miami House visiting parents, John Foss of Minneapolis House and the Hart Family of Syracuse, New York, visiting daughter in Conacaste.

Contradiction: Maintaining the momentum with adequate models to sustain full engagement. (Wk. 9)

HAVANA

RELIGIOUS HOUSE: KINGSTON

External: Team visits eight key frame persons regarding upcoming Regional Consult and discerns deep sense of this being the right time to expand radically ICA services to the nation of Jamaica. Social sub co-op holds first meeting since co-op was registered. Claverty Cottage proposals for truck and coffee land are typed and submitted.

Internal: Richard Kitney arrives to work on CIDA and USAID proposals and to assist with Regional Consult set up.

Contradiction: Revealing how Woburn Lawn's reason for being finds fulfillment in caring for the region. (Wk. 8)

LIMA

RELIGIOUS HOUSE: LIMA

External: Small industry probes experience contingencies as bee team wars off ants and food preserves test creates a learning experience. Visit to CARE and government development agency move agreement on canal and roadwork along. Funding agency visits fox factory.

Internal: Auxiliary expands with visit of Ray McCloud from Alamogordo, New Mexico, and George Pesek.

Contradiction: Insuring method of selection of key participants for training school. (Wk. 9)*

CARACAS

RELIGIOUS HOUSE: CARACAS

External: Barlovento Zone is intensified with two meetings in La Fila and Las Toro with cores of ten present in each. Bi-monthly ecclesiola is held in Cano Negro with 20 attending, including three guests from the village of Mendoza.

Internal: Management trek ends with a "turning point" session on House budget and the setup of global systems in Area Caracas. Hahn and Talbott sent out to Jamaica.

Contradiction: Empowering the symbolic events in order to activate the priorities consensed upon. (Wk. 9)*

BUENOS AIRES

RELIGIOUS HOUSE: SANTIAGO

RIO DE JANEIRO

RELIGIOUS HOUSE: RIO DE JANEIRO

External: Demonstrating Financial Proficiency is the byword of the week. Managment team from Chicago visits, spending a week re-aligning our financial books. Arthur Anderson will audit 1981 books, along with helping staff to meet the Brazilian legal requirements.

Internal: Collegiums on order foundations and finances are highlight of week, and House celebration at a barbecue truck-stop restaurant delights all.

Contradiction: Responding to immediate and urgent needs while standing in the victory circle of our long-range vision. (Wk. 11)*

THE GLOBAL ORDER CENTRUM REPORT

BRUSSELS
BOMBAY
SINGAPORE
HONG KONG
CHICAGO

MARCH 16—22, 1981

GLOBAL DEVELOPMENT CENTRUM

Global Development Centrum reports that many new resources are found from which to develop funds. Glasgow receives \$1000 which is unprecedented, new donors and corporations on the North American continent open up great new possibilities, and \$15,000 is in the mail from Codell. Concentration of troops on individuals and new corporate contacts opens up new vistas for giving. Knowing that February and March have been unusually dry months, the key contradiction lies in the arena of creating the spring rains which will bring a bounty of golden flowers.

GLOBAL RESEARCH CENTRUM

Global Research Centrum reports the creation of a regional strategy chart and a human factor paper in Singapore. The second *IMAGE* is sent to the printer in Chicago and a public relations piece is finished in Bombay. Chicago and the other four Nexus check signals on 45 research tasks by telephone. The key contradiction lies in the arena of integrating research tasks into one focus.

GLOBAL OPERATIONS CENTRUM

Global Operations Centrum reports that the team of George West, Ed Shinn, Fr. Raphael Davila, Jo Mathews and Geoff Nixon meet in Mexico for human development research trek. Chicago Urban Prob prints a set of brochures on GWF, CYF and GCF in the Chicago Neighborhoods series of past year. Denver, Memphis and New York Regional Consults keep up constant interchange by phone during their Consults. Glasgow and Frankfurt refine assembly procedures. Training PSU in Bombay produces the following a draft of "Towards a comprehensive curriculum", a talking paper on training journey, the program catalogue for the Sub-Continent and a five-session course faculty manual for a new course called "Introduction to Human Development". The key contradiction lies in the arena of forging the methods to release intensive, extensive formation and training modes required in 88 regions through the Regional Assembly orchestration.

GLOBAL MANAGEMENT CENTRUM

Global Management Centrum reports the completion of trek to all houses in India and the first leg of Latin America trek with visits completed to Caracas, Kingston and Rio de Janeiro Houses. Key financial milestones include the presentation of ICA: Belgium to the Board, final submission and approval of ICA: India income tax and the completion of audit preparation for ICA: Illinois. Cross task training and team dynamic make it possible for six management personnel to participate in North America Regional Consults with no interruption in task. The key contradiction lies in the arena of clarifying the ongoing regular procedures in all arenas that will enable comprehensive service and immediate identification of blocks.

THE GLOBAL ORDER REPORT

QUARTER III WEEK THIRTEEN

MARCH 23—30, 1981



MADRID

RELIGIOUS HOUSE: MADRID

External: All systems accelerate for Regional Consult. Highlights are a host committee meeting, eight calls on religious orders, two prospects from different metros calling up and asking to register, Bishop Imesta sending key names from Vallecas, Madrid's poorest section, and the Ministry of Culture providing lists of prospects for four metros, and three colleagues volunteering for visits and set up. Local team doing follow up of Lamego set sends word that all villages are working on projects, from greenhouses and irrigation to calf pens and an agricultural association.

Internal: Development Centrum arrives from Brussels.

Contradiction: Finding the whistlepoint to get 40 full-paying participants around the table. (Wk. 11)*

LONDON

RELIGIOUS HOUSE: LONDON

External: Gilberts visit Oxford to meet with W.C.D.S. (World Community Development Service) — a group which has screened and encouraged a number of U.K. volunteers to work with Nava Gram Prayas in India — and receive first Yes for Formation Fortnight: Brussels: April.

Internal: House hosts and sends out five members of the Glasgow Regional Consult team, including J. Patterson and Liza Tod, and reports that Luke Gilbert and Miriam Patterson are now full-fledged Elfin Ranger members of the Childrens Camping Corps.

Contradiction: Naming the victory symbols at regular intervals of the journey in the midst of "wishes" and "wants" warring for attention. (Wk. 11)*

RELIGIOUS HOUSE: GLASGOW

External: Regional Consult is an outstanding success; a Symposium of 26 participants is led by regional colleagues and held in a fine hotel. Practicum visits are hosted by six metro

*The Lord thunders before his host;
his is a mighty army,
countless are those who do his bidding.
Great is the day of the Lord and terrible,
who can endure it?
And yet, the Lord says, even now
turn back to me with your whole heart,
fast, and weep, and beat your breasts.
Rend your hearts and not your garments;
turn back to the Lord your God;
for he is gracious and compassionate,
long-suffering and ever constant,
always ready to repent of the threatened evil.*

Joel 2: 11-13

families and many new contacts and program possibilities are uncovered. Concrete victories include one confirmed participant in Formation Fortnight, 12 reams of paper and 500 envelopes inked, development commitments, one Youth Forum, and a film show. Regional Assembly at the House creates winning story and strategies for the next six months.

Internal: Michael Shaw beats 26 people to a travel management executive job for self-support victory; and an evening visit to downtown theater showing *Ordinary People* gives a slice of life for Assembly and reminds all of the perpetual task.

Contradiction: Allowing the many great colleagues of the Glasgow Region to claim the overwhelming options of engagement. (Wk. 12)*

RELIGIOUS HOUSE: BRISTOL

External: Masters candidate doing thesis on community development contacts staff at suggestion of colleague Stan Walslow, whose interest in work was renewed during Regional Consult.

Internal: House circuit to Bristol includes rendezvous with the London House furniture inkind team and opportunity to recontext colleagues.

Contradiction: Watching Quarter III's strange angels standing on tiptoes as Quarter IV's saints come marching in. (Wk. 12)*

PARIS

RELIGIOUS HOUSE: PARIS

External: At the Paris Regional Consult, the Symposium timeline workshop surprises participants with the fact that they are people of hope. Six metro circuits set dates for film showings, get invitation to do a set, open new networks, register new guardians for Formation Fortnight Symposium and enlist a senator for EXPO host committee. A very practical six-month launch plan is created.

Internal: The Regional Consult is experienced as constant

eventfulness including birthday party, collegium on three major strategies, transition spirit conversation on the practicum, the arrival of Monique Dion from Canada and the Area Paris fast.

Contradiction: Thinking it will take an army to implement all this — or experiencing the boa who swallowed an elephant. (Wk. 9)

RELIGIOUS HOUSE: BRUSSELS NEXUS

External: Week 10 Europe Continent Area Priors check-signals meeting turns out to be amazingly easy to do.

Internal: Week 11 conversations on GRA '81 holds unity in the midst of diverse tasks.

Contradiction: Building the model that utilizes all resources to get a lot done and have fun. (Wk. 11)

RELIGIOUS HOUSE: BRUSSELS

External: All three rings of the circus are in full swing — film and speaking events in Eastern Belgium, preparations for NGO permeation, job conversations with top officials of General Motors and International Harvester. India guest night nets volunteers to clean Fortnight facility from EEC.

Internal: House receives Mary Quinn, volunteer from Britain for four-six weeks, who begins to bring some order to the order.

Contradiction: Creating decor that symbolizes intent of victorious fortnight recruitment. (Wk. 11)

FRANKFURT

RELIGIOUS HOUSE: FRANKFURT

External: Ten-week focus on Regional Consult culminates in the opening event — the Symposium — as 28 colleagues attend with the leadership of all sessions in the hands of the movement. Inkind victories surprise staff with their ease and quickness. First contact with groups dealing with foreign residents of Frankfurt result in interest in future cooperation.

Internal: House fills up as numbers swell to 25 over the weekend and Symposium celebration Saturday night maintains a local tradition with a keg (of inkind beer) opening ceremony, fine buffet, music and conversation — master of ceremonies is movement colleague.

Contradiction: Deepening and broadening relationship with colleagues who have been interested but unfocused and unengaged. (Wk. 11)

RELIGIOUS HOUSE: AMSTERDAM

External: ICA Board celebration at board president's home is festive event for reports and discussion while the following week of circuits in the south of Holland nets one more for the Urban Challenge Fortnight event, finds many more interested in the event and 4880 Gelders (US\$2440) shows up in development funds.

Internal: The week focuses on guest night preparation and the Thursday night event turns into an engaging discussion of North/South relations catalysed by conversation on *The Seventh Enemy* and a slide show. A religious order of sisters donates two washing machines just in time as the house machine dies.

Contradiction: Building momentum for Regional Consult with no consensus on long-range strategy. (Wk. 11)*

RELIGIOUS HOUSE: BERLIN

External: Regional team sends two to Frankfurt in preparation for Regional Consult. Calls are made on local government to print document.

Internal: Ismael returns from Turkey having successfully completed final university exams, and Amal gets a job to push self-support closer to an end-of-the-year victory.

Contradiction: Maintaining a revolutionary stance while working with established structures grounded again by company's two-year timeline bumping against staff's two-month one. (Wk. 10)

ROME

RELIGIOUS HOUSE: ROME

STOCKHOLM

RELIGIOUS HOUSE: COPENHAGEN

External: A week's work with W.H.O. (World Health Organization) Copenhagen reveals new contacts in many fields across Europe in eastern as well as western block countries. It turns out that W.H.O. librarian lives near the House and is active in local community, and she opens her house to ICA staff for further introductions to W.H.O. personnel over dinners.

Internal: House sends Banks to Brussels for continental council and then on to Regional Consult in Frankfurt, and Andrew Knutsen is sent from Paris Regional Consult to Glasgow Regional Consult via Brussels Regional Consult.

Contradiction: Tying down interested but uncommitted possible participants for the Brussels Formation Fortnight. (Wk. 11)*

CAIRO

RELIGIOUS HOUSE: GIZA

External: Village Meeting in El Alema with 40 people produces three-week plan and assignments to complete water system. A workday places two tanks on new stand in village.

Internal: Women's PSU produces 12-week Women's Guild Format.

Contradiction: Overwhelming possibilities cloud tactics necessary for completion of quarter and procedures for comprehensive move into Quarter IV. (Wk. 13)*

ABIDJAN

RELIGIOUS HOUSE: ABIDJAN

External: The African Development Bank hosts a global film showing for its employees and representatives from finance ministries of various member nations. A Member of Parliament accompanies ICA team on visit to the Volta Regional Minister (Ghana), filling a framing gap in the Avenorpeme Village Development Cluster.

Internal: Senegalese dinner and beach party celebrate the arrival of Dominique Mathiot.

Contradiction: Shifting from extensive "door-opening" to extensive focused accomplishments. (Wk. 10)*

LAGOS

RELIGIOUS HOUSE: LAGOS

KINSHASA

RELIGIOUS HOUSE: LUSAKA

External: Over 100 attend the HDTs opening feast, including 51 participants from ten villages; and Mrs. Mavis Muyunda, Member of Parliament (M.P.) for Katuba Constituency, gives opening address. Touring Bata Shoe Company and conducting village forums highlight the first two weeks. The HDTs is officially opened and the Kayosha Primary School (KHDP) is dedicated on March 1st by the Honourable Mr. Kasuto,

Member of the Central Committee for Central Province, the District Governor for Kabue Rural and the M.P. The six-hour event was set up by the M.P. with many guests of public, private and local sectors present. KHDP hosted the day with a site tour and lunch, covered by the two largest Zambia newspapers.

Internal: Pulling off a full-time practice and development unit and making EG a rotating faculty assignment begin to lend focus to the overwhelming task of sustaining HDTS; ongoing development, inkind and authorization feel strangely like "internal" tasks.

Contradiction: Finding the symbol that will call forth and firmly establish the 12 expansion villages before the consults begin next Wednesday. (Wk. 10)

NAIROBI

RELIGIOUS HOUSE: NAIROBI

External: Cluster consult team tri-locates across Kenya to prepare for Week 13 consults. Three development teams go to cluster sites to intensify cluster coalition cadre work. Rest of House prepares to join consults, pulling out all stops on cluster replicability.

Internal: David Coffman and Sandra Rafos are sent out to Zambia for LENS; and inkind victories include painting and flooring of EG space and a major inkind food source asking for privilege of funding programs.

Contradiction: Moving beyond obscure back-up strategy for next three weeks and for launching Quarter IV. (Wk. 13)*

RELIGIOUS HOUSE: MOMBASA

BOMBAY

RELIGIOUS HOUSE: BOMBAY NEXUS

External: A week of marathons enlivens the night-time hours as the Nexus team prepares for the Bombay Regional Consult, the Nagpur document-writing team types long into the night, and the Operations Band PSU celebrates its training break throughs.

Internal: The Nexus celebrates Brian Robins' 50th birthday and holds up the role of mature Phase III order members, and staff completes the painting of the centrum spaces with a night attack on Management Centrum.

Contradiction: Creating the structures that keep the GRA concerns in our consciousness as we move on many fronts. (Wk. 11)*

RELIGIOUS HOUSE: BOMBAY

DELHI

RELIGIOUS HOUSE: DELHI

External: Gram Sabhas (community forums) are held in last two cluster villages and maneuver culminates in a Cluster Assembly which is also attended by BDO (Block Development Officers) and district officials. Women's meeting in Sikror decides to start a sewing cooperative to manufacture factory uniforms; two machines are inkind and four factories give tentative orders. INALSA, UNICEF, Family Planning Foundation, Abner School, Dutch Embassy, MODI's, a Minneapolis guardian, Mary D'Souza and Faith Vance from Brussels all visit Sikror in a ten-day period.

Internal: House welcomes the Prakash family to their new assignment in Delhi. Inkind typewriter, TV and two motorbikes arrive, and a free taxi is put at our disposal; the old Delhi office is given a facelift with fresh paint inside and out.

Contradiction: Deciding how much to commit staff to in the cluster and how much to leave open to openings of the Regional Consult. (Wk. 11)*

MADRAS

RELIGIOUS HOUSE: HYDERABAD

External: Two Gram Sabhas (community forums) and a training workshop are held for a village development cluster run by the Roman Catholic Church in Cuddapah metro. Two other Gram Sabhas happen near Nadlapur. In new maneuvers out of the documentation work, a stake health education program is pushed and a way to market blankets is found through the Jogipet Wool Cooperative.

Internal: Duncan returns from a Calcutta LENS to find Heidi has been assigned to the Global Academy, Chicago. Collegium on GRA '81 brooding is the internal event of the week.

Contradiction: Seeing that it is often the small things done or undone that make or break the victory and corporateness. (Wk. 11)*

CALCUTTA

RELIGIOUS HOUSE: CALCUTTA

External: LENS for Bata India results in requests for three other LENS with staff from the Sub-Continent. Complete payment (14,000 Rs.) is received within three days.

Internal: Cyprian D'Souza's address to the House clarifies ashram function in relation to the mission; inkind push in the midst of two LENS seminars, metro circuits and Regional Consult preparation keep assigned staff engaged on the road.

Contradiction: Maintaining the momentum in the midst of creating and marking the path that takes us around the rocks. (Wk. 10)*

SINGAPORE

RELIGIOUS HOUSE: SINGAPORE NEXUS

External: Teams are in all the areas — six out of eleven regions.

Internal: Nexus celebrates both the birth of David Christopher Hoff (7 lbs. 6 ozs.) and Mike Hoff's birthday on February 25, 1981.

Contradiction: Sustaining centrum services through four weeks of anticipated dispersion. (Wk. 9)

RELIGIOUS HOUSE: KUALA LUMPUR

External: Penang trek team is royally hosted by Bank Pertanian and Kjell Knutsen as it prepares yet another Practicum site. After several foiled attempts to secure introduction to Penang State Economic Planning Unit Director-General, the trek team takes the risk and calls him direct — only to discover he is an old LENS grad. Kuala Lumpur team augments troop power by combining forces with National Conference Coordination Committee members, who arrange several strategic calls.

Internal: Four-year-old Vida's daily question, "Mommy, where are we sleeping tonight?" epitomizes staff's displaced internal life this past week.

Contradiction: Maintaining essential back-up structures (internal life and colleague nurture) so that we do not inadvertently lose ground. (Wk. 11)*

RELIGIOUS HOUSE: MEDAN

External: The Medan guardian team further solidifies their role in sponsoring Medan's first regional council and sends two guardians to staff key National Oil Company (Pertamina) LENS. The fourth cluster village turns on its electricity, opening the village power company.

Internal: House holds LENS pedagogy session to prepare for heavy LENS schedule and sends Neny to help set up Jakarta Regional Consult.

Contradiction: Turning old village defeats into a motivating self-story toward future victories. (Wk. 11)

RELIGIOUS HOUSE: JAKARTA

External: LENS with Pertamina (National Oil Company), focusing on how the public relations department can launch a p

RELIGIOUS HOUSE: MEDAN

External: The Medan guardian team further solidifies their role in sponsoring Medan's first regional council and sends two guardians to staff key National Oil Company (Pertamina) LENS. The fourth cluster village turns on its electricity, opening the village power company.

Internal: House holds LENS pedagogy session to prepare for heavy LENS schedule and sends Neny to help set up Jakarta Regional Consult.

Contradiction: Turning old village defeats into a motivating self-story toward future victories. (Wk. 11)

RELIGIOUS HOUSE: JAKARTA

External: LENS with Pertamina (National Oil Company), focusing on how the public relations department can launch a program to demonstrate effective human development, signals openings for further consultation with upper level management. Visit with the Director General of the Department of Social Affairs assures DEPSOS sponsorship of the Regional Consult. All four members of the Mobil consultancy team meet to review and update mid-course strategy.

Internal: Evening house search results in a short list of the final six prospects; and creative struggle to maintain internal life generates Roundtable muse and dialogue during the two-hour drive back to Tangerang.

Contradiction: Building futuric image of the ICA through the Regional Consult while engaging the structures which are operating out of inadequate context. (Wk. 11)*

RELIGIOUS HOUSE: UJUNG PANDANG

External: Health module begins each day with teachers from district health department, women from the whole desa (average of forty) and lots of laughter, notetaking and driving. H.A. Lathief, head of Parliament, and wife drop in unexpectedly to show Bontoa to the Bupati (district head) of Singai who requests a field visit during the Ujung Pandang Regional Consult. Fifty-seven Bontoa residents meet to consense on electricity support.

Internal: Sherwood Shankland is welcomed home to Bontoa for Regional Consult setup and David Thomas from Washington arrives for a month's stay. H.A. Lathief has all staff to dinner for a spectacular feast.

Contradiction: Using all advantages to create a focus for cluster implementation. (Wk. 10)

HONG KONG**RELIGIOUS HOUSE: HONG KONG NEXUS**

External: Regional task force meets and looks at products of Regional Consult and plans to meet every Tuesday night in the metros to implement strategies.

Internal: House gets itself re-organized in centurms after intense three weeks in Regional Consult back up.

Contradiction: Structuring PSU's towards next year's planning while being consumed by ongoing program activities. (Wk. 11)*

RELIGIOUS HOUSE: HONG KONG

External: Symposium preparation (100 visits) sets the stage for a dynamic Symposium at the Sheraton-Hong Kong Hotel which reveals the sign of the new coalition; 48 participate, the majority Chinese, including government district officers, bank officials, a World Bank consultant, social service

representatives from the city and rural, university professors and Nam Wai villagers, with sponsorship by 12 corporations contributing HK\$25,000. The final week of the Regional Consult launches the four-year mission with teams visiting 100 in every metro, including Macau, developing HK\$35,000 and restoring the original Hong Kong card file system. The Assembly named the four strategic designs for 1981-84: *Equipping the Coalition, Four Sector Impact, Covering the Total Geography*, and *Strengthening the Nam Wai Foundation*.

Internal: The Nexus and Nam Wai House plus Don Clark from Tokyo and John Howell from the Philippines combine to make up the "King Kong Regional Consult Task Force"; and the Regional Consult celebration dinner is highlighted by a four-year Nam Wai HDP anniversary reflection with colleagues from the Nexus, area and village, followed by skits from metros teams.

Contradiction: Finding the practical way to follow up on all the possibilities and give form to the swirl. (Wk. 10)

RELIGIOUS HOUSE: KAOHSIUNG

External: Foray to Tainan yields recovery of several good colleague contacts, inkind food staples for HDTS, a possible staff assignment to HDTS from YMCA, and a good visit to the Asian Vegetable Research and Development Center.

Internal: Nine Taipei American School students with teacher guide and Lynn Oden visit project for five days and provide miracle cleaning and re-ordering of preschool yard and building.

Contradiction: Maintaining iron decision to have an HDTS as key next step to future even if participation is small. (Wk. 11)*

RELIGIOUS HOUSE: TAIPEI

External: LENS marketing for '81-'82 is initiated. US\$1,750 is received for the week from ongoing development effort. Support work for first HDTS in China — scheduled for Hai Ou Weeks 1-3 of Quarter IV — is underway. Imperial Chemical Industries (ICI) contacts us to arrange visit to consider training possibilities — such as LENS — for their affiliated companies in Taiwan.

Internal: February house finances are completed, and Anne Townley returns from Hong Kong Regional Consult.

Contradiction: Dealing decisively with the ambiguity of the role of the Regional Consult in Taipei and Kaohsiung in relation to the existing four-year strategy for Taiwan. (Wk. 11)*

RELIGIOUS HOUSE: MANILA

External: House sends three for two-day site visit of villages surrounding Union Oil Geothermal Plant in Luzon. A speaking engagement is held with 60 grad students and professors of the Institute of Mass Communication at University of Philippines, and a follow-up call on Phil Com LENS results in another LENS scheduled for October. USAID impressed by field visits offers data-bank assistance with economic programs, Ministry of Health allocates free food for Mactan Early Learning Nutrition Center, and 1981 brochure is taken to printer.

Internal: Collegium study of Ezra Vogel's book, *Japan No. 1*, expands reflections on effective social vehicle for a small planet; and the House continues reflection on the role of an historical order through study of Rozak article and conversation with dinner guests, two religious, the dean and a theology professor of one of Manila's prestigious women's colleges.

Contradiction: Keeping our gaze on the next 20 years and our roots in the past 20 years while immediate opportunities and victories consume our passion. (Wk. 11)

RELIGIOUS HOUSE: CEBU

External: Fifty stake signs are painted and stake leaders' names are indicated on doors. Eight hundred patients are treated in free clinics in all 24 villages, and 229 bags of skim milk are delivered (and cornsoya milk) from regional health office. Sudtonggan sign repair workday is held with snacks, and division meetings highlight preschool graduation preparation.

Internal: Infant baptismal rites are celebrated with House trip to beach.

Contradiction: Gearing up to climb the last peak of the mountain — the economic. (Wk. 12)*

RELIGIOUS HOUSE: DAVAO

External: City of Davao sends trucks of gravel and a grader for Langub road improvement. Carmin HDP holds cooperative store meeting to form two new stores and has the Population Commission conduct family planning day. Cluster Barangay (community) workers attend meeting in Ma-a with district officials.

Internal: House kitchen renovation is completed.

Contradiction: Getting water — newly repaired water pump still does not produce water. (Wk. 11)*

TOKYO**RELIGIOUS HOUSE: TOKYO****RELIGIOUS HOUSE: SEOUL**

External: The Kuh Du E Ri HDTs sends out 24 graduates and the Community Extension Module begins. Five from the House travel to Chung Ju to set up 26 Town Meetings for the coming week while Hong Kong Development arrives for an intensive week of development.

Internal: A Global Language School, visits from the Area Prior and Hong Kong Development push House accommodation to thirty, about the limit.

Contradiction: Keeping the troops out in front of the tactics. (Wk. 10)

RELIGIOUS HOUSE: KUH DU E RI

External: On March 1st the two-week model of HDTs graduates 24 new leaders from Kuh Du E Ri, two expansion projects in Kang Won Province, a neighboring village and a village in North Chung Cheong Province. The HDTs, taught by 12 staff including seven interns from the two Korean Houses, is the focus of ITT's movie-making of the HDP the last two days. HDP documentation begins after HDTs with 20% of families interviewed. A "tactic rating" session with village chief, band leader and accountant shows 84% of tactics are started or have been done; and the 1981 plans for new housing and road projects will push upward of 100%.

Internal: House expands to nine members with Russell Jewell from Chicago, Jim Bell from Hong Kong, and Miss Oh and Miss Kim from the Seoul House to work on documentation and help bring off fine celebrations, both in movie viewing and House Church. Lee Nam Soek (intern) returns to college and Mrs. Lee Kang Jin (Lee Kyung Hae) joins House as a bride.

Contradiction: Caring for cluster relationships when all are needed on documentation. (Wk. 10)

RELIGIOUS HOUSE: FUKUOKA

External: Nagasaki circuit is set by Prefecture and seven towns are visited. Mr. Honda (new volunteer) teams up with Bob Hanson. LENS calls are made in Fukuoka City. GLS with eight participants (includes four Seiryō students and one Senan High School student) is a great event with two more scheduled in April. Two more Town Meetings are set in Okinawa for Week 13.

Internal: David Hutcheons is sent out to USA with a Sayonara breakfast in the Tokyo Hotel. Financial arrangements continue to be made for new facility.

Contradiction: Co-ordinating the move in the midst of programs. (Wk. 12)*

RELIGIOUS HOUSE: OSAKA

External: Tokushima-ken Women's Hometown Culture Study Group Town Meeting deepens relationship with Tokushima Prefecture government. Volunteer Mr. Tajima attends his first Town Meeting as a translator and is impacted by a foreign method that is effective in Japan.

Internal: House scatters across Japan with Mrs. Yoshikawa in Hokkaido and Roger Marsh, Becky Boon and Haruko Ojima going to Shikoku; weekend of quarter discontinuity matches first weekend of spring weather.

Contradiction: Finding what invites the decision to participate for colleagues and staff. (Wk. 12)*

RELIGIOUS HOUSE: SAPPORO**SYDNEY****RELIGIOUS HOUSE : SYDNEY**

External: House receives a \$5,000 contribution from AMAX and schedules first corporation LENS, first "Third Wave" seminar and the first community LENS for City of Darwin with large public sector involvement. Canberra circuit opens new contacts and nurtures old, while second Newcastle Roundtable is great success! Kuringgai launches municipality-wide awakening scheme.

Internal: Powells celebrate eighth anniversary *in absentia*, and House welcomes shift in internal schedule that releases Week II activity.

Contradiction: Using advantages in a few specific communities to build momentum across whole region. (Wk. 11)*

RELIGIOUS HOUSE: MURRIN BRIDGE

External: Industry financial situation over past two and a half years becomes clear as soft goods and woodwork wrestle through the budget of their grant allocations. Decision for quality production becomes apparent as three women adopt a uniform to wear to work. Greg Baslow, Community Health Care Worker, and Scott Kennedy, Industries Chairman, bus to Queensland to join the Brisbane circuit team.

Internal: House is reminded of the cruciality of common rituals and symbolic life when auxiliary is scattered across Australia.

Contradiction: Finding a hundred ways to rehearse the "on behalf of" story. (Wk. 11)*

RELIGIOUS HOUSE: PERTH

External: Colleague David White joins team for 1200 km. circuit to Northam and Geraldton Metros which sets up five practicum events and team has fine visit with Bishop Howell Witt. Midland Toyota sends \$200 and first Symposium registration, plus \$500 annual pledge.

Internal: Management trek occasions reflection on new forms of the order, and Joanne Baker gets new job to be trained in phototypesetting.

Contradiction: Pulling new contacts and networks through the largely untried Regional Consult construct produces crisis of courage. (Wk. 10)

RELIGIOUS HOUSE: ADELAIDE

External: Regional team becomes an extremely mobile force as David White is welcomed back from Perth, Sue White is sent out to Apia and Judi Tippett is sent to Perth to prepare for and participate in the Regional Consults.

Internal: First House Church in new facility celebrates the moving, preparation and the management trek of the week.

Contradiction: Holding the tension between settling in and moving out on the road. (Wk. 11)

RELIGIOUS HOUSE: MELBOURNE

External: The regional team completes first four workshops on setting up the Regional Consult. Oakley returns from circuit in Tasmania with great reports on what happens after CMA's (Community Meeting Australia).

Internal: Regional colleague, who is a local pastor, does sterling rendition of *Horton* for Roundtable.

Contradiction: Building the transrational grid and comprehensive tactical picture that allows the interweaving of Regional Consult preparation, circuiting, corporation LENS marketing, development and urban probe. (Wk. 11)*

RELIGIOUS HOUSE: BRISBANE

External: Global film is shown at two schools in Brisbane and St. George. CYF is set up at St. George as circuit continues.

Internal: House welcomes Teresa Lingafelter for management trek and sojourner Sheila who activates wayside inn dynamic; and Suzanne Heilman pulls off first full-time job for one week with Valley Day Care Centre.

Contradiction: Laying the context for teamhood with "micro" teams in being. (Wk. 11)*

SUVA

RELIGIOUS HOUSE: APIA

External: Cardinal Pio, Cardinal of Western Samoa and the Tokelaus, accepts invitation to be keynote speaker for Regional Consult. ICA women assist National Women's Workshop to write Regional Action Plan for UN Decade of Women as major women figures of Samoa consense on strategies. Community Forum Samoa continues with Aliepata Demonstration Division setting a record with five village forums in three days which include one tropical cyclone and 12 miles of walking.

Internal: Radical dispersion culminates in victorious homecoming as troops return from four missional arenas in four parts of the country.

Contradiction: Pausing in the midst of program momentum to ensure self-support for operating next year. (Wk. 11)*

RELIGIOUS HOUSE: AUCKLAND

External: This week includes recruitment visits for Regional Consult. The New Zealand Ministry of Works gives its permission to allow the Consult to have access to the recently completed Hawkes Bay Planning Study. Radio and newspaper publicity begins.

Internal: The House is joined by the Salvation Army work team as refurbishing of Duart House continues.

Contradiction: Creating effective images of the regional dynamic where there have been no regional structures. (Wk. 11)*

SAN FRANCISCO

RELIGIOUS HOUSE: SAN FRANCISCO

External: Living in A.C. (After Consult) is marked by revolving door of going on appointments, writing and submitting proposals (one to American Indian Center in San Francisco for a five-day consult) and typing up housing workshop report.

Internal: A.C. living is experienced internally through family discontinuity weekend "breather" and EG Consult complete with published document.

Contradiction: Putting the systems in place to sustain long-range momentum of A.C. (Wk. 12)*

RELIGIOUS HOUSE: SEATTLE

External: First Regional Consult countdown week produces brochure logo and format and ties down hotel facilities.

Internal: Circuit team returns from circuit with generous supply of inkind canned fruit.

Contradiction: Living with the time press of having to move on brochure without all the sponsorship/speakers and panelists tied down. (Wk. 13)*

RELIGIOUS HOUSE: LOS ANGELES

External: Interviews are done in 12 polises and six metros this week and now total 319 completed. Judith Hamje flies to Denver to participate in great Regional Assembly. GWF is scheduled and launched for April 4 in Central Park Five.

Internal: Silent dinner meals with readings from *Warriors of God* and Sunday poetry research continue to spark intrigue for writing own daily ritual. Self-support collegium catalyzes cost-saving plumbing repairs.

Contradiction: Expanding contacts with people to discover those who are ready to take active responsibility for the region. (Wk. 12)*

RELIGIOUS HOUSE: RICHGROVE

External: Key Regional Consult visits in Bakersfield metro reveal those who care in rural valley communities. Major corporation in California offers training course in electronic circuitry for community electronic assembly industry, establishing key future relationship in vocational skills and marketing. Plaza offices undergo facelift in preparation for on-site visit of corporation team.

Internal: House hosts Tom and Cindy Steffen from Bob Stewart's church in Chico en route to Mexico work project near Ensenada and engages their volunteer spirit in community efforts.

Contradiction: Releasing metro colleagues to call forth the region. (Wk. 11)

RELIGIOUS HOUSE: PHOENIX

External: Visits, conversations and presentations by guardians and staff in Yuma, Kingmor, Flagstaff and Coolidge, plus another Wednesday breakfast in Phoenix, continue to generate interest, excitement and intentions to attend the Regional Consult. Meanwhile development efforts, including eight corporation visits, submit \$30,000 in proposals and net \$2,000 in hand. Strategic visit to top level Arizona "Town Hall" program chief by two in blue and a Valley Bank friend illustrates the power of "frame in action".

Internal: House welcomes Sandy Cardes back to the Phoenix Region, celebrates St. Patrick's Day with corned beef and cabbage feast, and in collegium looks at community exposure curriculum for potential Arizona State University course, at the simple life, and decides that *The Raging Bull* will never replace *Requiem*.

Contradiction: Turning spirit into matter — enthusiasm into cash-in-hand and paid Regional Consult registrations. (Wk. 12)*

RELIGIOUS HOUSE: PISINEMO

External: Thirteen Reservation Community Workers attend all-day workshop to visit Pisinemo demonstration projects (businesses and farm) and for training in Town Meeting methods. Highlight is discussion of a reservation-wide campaign of Town Meetings set up and orchestrated by the CRP's along with the HDP staff.

Internal: Farm receives third installment of ALC grant at Mesa church service; and Andy St. Clair and Chris Williams return to Phoenix after hard-working spring vacation "on the farm".

Contradiction: Defining effective tactics to promote new forms of farm development. (Wk. 11)*

RELIGIOUS HOUSE: BILLINGS

RELIGIOUS HOUSE: DENVER

External: Sixteen people in six teams travel to every metro for Regional Consult recruitment. Unsolicited bonus of one scholarship donation is received.

Internal: Richard Stanley arrives to help with Regional Consult preparation, and regional colleagues get a laugh out of invitation to "First Annual Conspicuous Affair — A Celebration of Going Public" — a Regional Consult kick-off celebration.

Contradiction: Making sure that recruits do not start slipping through the cracks as regional team turns towards practices with apparent victory on recruitment. (Wk. 10)

EDMONTON**RELIGIOUS HOUSE: EDMONTON**

External: Four House members drive back to Edmonton from site visits to Control Data Corporation and Rural Venture Inc. in Minnesota and hold collegiums in Winnipeg and Saskatoon Houses on structural permeation and order life.

Internal: Consultations through self-support jobs bring staff into contact with several church congregations and Further Education Council for Northern Alberta; and phone, files and typewriter are pulled into one fine office.

Contradiction: Keeping one thrust in the midst of wonder and pain of transition question. (Wk. 11)

RELIGIOUS HOUSE: ANCHORAGE

External: Demonstration Town Meeting with community leaders sparks another in elementary school, initiates one-year plan for Fairview and three other communities and nails them down with passage of block grant proposal (one hurdle to go) and support via school newspaper announcing the events.

Internal: During Spring Cleanup in Anchorage, city dump is focal point of activity for House and colleagues cleaning up for new season.

Contradiction: Needing to develop "up-at-bat" record and a .375 batting average as this bush league is suddenly thrust into the majors. (Wk. 11)*

RELIGIOUS HOUSE: VANCOUVER**RELIGIOUS HOUSE: SASKATOON****RELIGIOUS HOUSE: WINNIPEG**

External: Development visits are made with new contacts, pledges paid and inkind pick-ups. Regional team meets at luncheon to discuss an RS-I. Further plans for an RS-I are laid out at Team Meeting night.

Internal: Breakfast feast sends Anthony Betonte out to Global Academy.

Contradiction: Using our symbolic and practical methods as motivational tools, when we are in the midst of a desert of no sense of urgency or symbolic role. (Wk. 12)*

HOUSTON**RELIGIOUS HOUSE: HOUSTON**

External: Full week of meetings with women's networks across Houston with Kamala Parekh speaking about women's groups in developed nations linking with women in emerging nations. House makes presentation to over 500 persons, including 400 elementary students. Annual Appeal folks get nudge and several do catch-up check writing.

Internal: Claire Clements wins first prize in city-wide dance competition and receives a \$4,000 scholarship for dancing instruction during college from group of Houston supporters of the arts; and Heide Zahrt walks 10 kilometers to raise money for CROP.

Contradiction: Getting beyond the inadequate images of "helping the House" or "giving the ICA a hand" which do not sustain significant engagement or responsibility for doing common mission. (Wk. 12)*

RELIGIOUS HOUSE: ASHERTON

External: Two VISTA people bring food buying co-ops scheme from trip to El Paso. Regional Consult interviews combine with framing visits and reveal this time as a kairotic moment for Regional Dialogue One. Local donations pay for CEM document reprinting.

Internal: Three pick-up truck loads of trash prepare House for move to Houston.

Contradiction: Using established credibility to leapfrog both community and regional movement into new orbits. (Wk. 12)*

RELIGIOUS HOUSE: DALLAS**RELIGIOUS HOUSE: INDIANOMA**

External: Indianoma declares hope in the future as mini-mall land purchase is cleared, over 160 show interest in credit union, 100 reaffirm community water decision and five committees move it on with festival planning format.

Internal: House joins Dallas House and works through finance contradictions and budget readjustments, and corporate decision to win on self-support results in all employed.

Contradiction: Gearing up project extension as a critical component of the Regional Consult. (Wk. 12)*

RELIGIOUS HOUSE: MEMPHIS

External: Two WATS lines are inked through a Regional Consult advisor for recruitment phoning. Week's maneuver results in 200 contacted and 44 are "snow-balling". Tupelo visit brings gold mine of new appointments and renewal of 1978 Town Meeting contacts eager to engage.

Internal: Toothless nine-month-old Kathryn Howard is walking!

Contradiction: Enabling the shift from initial images to real situation of Symposium in order to claim victory without apology. (Wk. 10)

RELIGIOUS HOUSE: NEW ORLEANS

External: Evening blitz on recruitment nets 12 committed to the Symposium, making a total of 70 yeses with good representation from all metros and all sectors. Team starts setting field research appointments with a bang with one meeting for 50 and one Town Meeting.

Internal: Sojourner's arrival and smooth transition into house life and external mission raises the mood of the House and the output of work.

Contradiction: Using available troop strength creatively to allow a massive explosion of key arenas of recruitment and inkind to have actually in-hand 100 registrations and inkind paper goods. (Wk. 13)*

RELIGIOUS HOUSE: ATLANTA

External: Mailing 2000 Regional Consult brochures, attending the Mayor's Conference on Poverty in Atlanta, seeding and harvesting monies for development and conducting interviews all establish an accelerated rhythm as set-up system for Regional Consult calling for interviews and recruitment is launched, filling up the calendar at least a week in advance.

Internal: "Infusion of young blood" (Karen Ellsworth, Joni Fleischman and brother Steve and a friend visiting on Spring Break) nets hundreds of bushels of leaves raked from the yard; and a mid-week fondue party with expected and unexpected troops (Elizabeth Caperton and Charles Lingo) add liveliness to a full week.

Contradiction: Keeping up with the countdown in the midst of an avalanche of referrals for Regional Consult interviews and recruitment. (Wk. 12)*

RELIGIOUS HOUSE: MIAMI

External: Recruitment for Academy and Guardians meeting is intensified. Roundtable with five guests hears reports on Guatemala and Youth Presidium. Team prepares for Colquiti, Georgia Town Meeting.

Internal: Finance collegium allows House to understand finance situation; Cari returns from Guatemala, Joyce from Dominican Republic and Cameron Crow visits.

Contradiction: Corporately caring for task and creating a timeline for all of the upcoming events. (Wk. 10)

CHICAGO

RELIGIOUS HOUSE: CHICAGO NEXUS

External: The Nexus hosts the Chicago Regional Consult Assembly and a class from Adrian College in the midst of the auditors' arrival, Global Academy preparations and launch.

Internal: Audience lives its own journey as Student House presents an original drama of Herman Hesse's *Journey To The East* for end of quarter celebration. House participates in poverty and servanthood by washing dishes by hand while dish room is totally renovated.

Contradiction: Planning for the immediate demands when a fragmented gestalt of priorities blocks the vision of long-range victory. (Wk. 13)*

RELIGIOUS HOUSE: CHICAGO

External: The regional team completes 1137 interviews with at least 12 interviews in each of the 36 polises and begins the process of documenting the conversations with a Week II event involving 30 colleagues including a team summarizing the results from the Chicago Neighborhood Campaign. In addition, the 5th City Business Careers celebrates the arrival of two Apple computers to enhance the word-processing experience and training of its students.

Internal: With the infusion of colleagues for the Week II document writing, the House recreates the 44-hour weekend with a pizza party celebrating Rosemary Albright's 36th birthday.

Contradiction: Identifying and arranging the nitty-gritty detail of the Regional Consult (to begin in 10 days) while keeping an eye on the long-range meaning. (Wk. 10)

RELIGIOUS HOUSE: KANSAS CITY

External: Sales and marketing seminar for regional team gives valuable training in program marketing and sales techniques. Internal: French cuisine and cafe prepared and decorated by youth ends marketing seminar and sets stage for regional team meeting on Sunday.

Contradiction: Coordinating Day I in the face of upcoming Regional Consult. (Wk. 11)*

RELIGIOUS HOUSE: LORIMOR

External: Lens follow up is done in effort to have LENS set up for Quarter IV. Department of Health LENS is confirmed for April, the first LENS in Iowa state. Lorimore Booster Club decides to include leadership training emphasis next quarter.

Internal: House completes quarter planning and prepares for regional planning.

Contradiction: Clarifying preparation and coordination of necessary tactics. (Wk. 11)

RELIGIOUS HOUSE: MINNEAPOLIS

External: Third World Weekend held with 40 Christian Youth in Action in Green Bay demonstrates LENS is effective with youth as global concerns were translated into local action. Fourth Rural Venture, Inc. rural project is launched with vision and LENS workshops in state of Virginia by Minneapolis and Washington D.C. staff. Executive committee of the Minneapolis Chamber of Commerce contracts for a LENS seminar to be held in April.

Internal: Permeators share use of problem solving methods in their workplace at the regional team debriefing and participants from eight regions in a week of RV site visits, and order renewal PSU based on the book *Shaping the Coming Age of Religious Life* results in new commitment to order expansion.

Contradiction: Discovering the balance between when to retreat and when to advance. (Wk. 10)

RELIGIOUS HOUSE: ST. LOUIS

External: St. Louis RS-I has 32 participants representing four metros. Jim Addington is sent out to do Davenport, Iowa circuit. The Harveys attend a Mill Shoals Development Association meeting and stand in awe of the open communication between townspeople.

Internal: Mark Harvey begins job and learns that listening is the key to selling.

Contradiction: Creating the schemes to engage other groups and individuals to take on the interviewing task as their own. (Wk. 11)

RELIGIOUS HOUSE: DETROIT

External: Munitising industry and Regional Consult authorization seem to break loose at the same time with visits that bring strong yeses to Consult participation, network publicity and high-level introductions. Recruitment strategy in targeted communities goes into full swing with local leaders taking charge of getting delegations selected.

Internal: Job possibilities begin to sprout with a Chicago opening to Manpower and colleague introductions to possibilities in community development organizations.

Contradiction: Enabling regional team task force recruiters to get out and experience the victories. (Wk. 12)*

RELIGIOUS HOUSE: CLEVELAND

External: Cleveland neighborhoods prepare for spring as task forces meet and organizations prepare for demonstration forums.

Internal: Kathy Fenton's wedding is great event — all metro colleagues attend and Joe Crocker adds the symbolic context as he officiates.

Contradiction: Enabling people to see through their response of "Lady, I don't have no special problems". (Wk. 12)*

RELIGIOUS HOUSE: INDIANAPOLIS

External: "Account" assignments are completed giving each of the staff responsibility for one region. Dates are set for four of the first post-Regional Consult core meetings.

Internal: Week of intense collegiums on the "account" assignments is broken and celebrated with a Mardi Gras celebration of costumes and pancakes.

Contradiction: Stepping into unexperienced, uncharted territory with our post-Consult maneuvers. (Wk. 11)

NEW YORK

RELIGIOUS HOUSE: NEW YORK

External: New Jersey Bell gives \$500 for Regional Consult, \$185 comes in for scholarships and 46 people are registered for *Dialogue One*.

Internal: Shrove Tuesday is celebrated with movie *All That Jazz*.

Contradiction: Molding the results of 300 interviews and 100 participants into an event which changes the future for the New York Region. (Wk. 10)

RELIGIOUS HOUSE: PITTSBURGH

External: Key visit with Bill Kerr, County Commissioner of Armstrong County, draws on long history with ICA to evoke decisions for Regional Consult.

Internal: House's attention focuses on Consult with office decor (2 locations) and tactics, which yield \$25,000 job application.

Contradiction: Creating creative ways to deal responsibly with financial finitude while simultaneously intensifying massive Consult recruitment. (Wk. 11)

RELIGIOUS HOUSE: WIDEN

External: Visits, presentations and development intensify as Regional Consult draws nearer. "One-time-only" giver gives three more scholarships for Regional Consult participants.

Internal: "Great Escapes" collegium marks beginning of Lent for House.

Contradiction: Finding the tactics which turn intrigue into commitments. (Wk. 10)

RELIGIOUS HOUSE: ROCHESTER

External: A number of groups are in the chute and targeted across the state to experience one-hour symposium method done with Greater Rochester Citizens Action Group. Inkind nets 19 cases of paper, office supplies and low-cost printing in three cities. Panelists, friends in support of Consult, the location, housing and dates are solid for Regional Consult.

Internal: Alice Rose is accepted by university, Carol Poole plans to go to Academy next fall, and Toni Noah has an art show at RIT.

Contradiction: Juggling state-wide event set-up, metro support, development and tracking contacts and data with limited Day I person power. (Wk. 11)*

RELIGIOUS HOUSE: PHILADELPHIA

External: Regional team experiences the harvest of last few years in Philadelphia Metro development and wedding of network contacts in test run of Thursday afternoon Livingroom Dialogue with black business people, the co-founder of Opportunities Industrial Centers and former Milwaukee Braves player, Bob Malone.

Internal: Living room is transformed in 24 hours with coat of "candlelight beige" paint and rearranged decor and Daily Office room is relocated to open up additional living space as House expands and becomes focus of missional dialogues.

Contradiction: How to present the dramatic images and catalytic structures that will allow those who care to relate to one another and be the Movement in action. (Wk. 11)

RELIGIOUS HOUSE: WASHINGTON, D.C.

External: Preschool refurbishing is symbolized with an open house and undergirded by the inking of \$500-\$1000 worth of renovation materials, a major workday and completion of new teacher uniforms. The Regional Consult ball of clay begins to take recognizable shape as it is christened "*Decade 80: A Regional Exchange on Local Development*" and sleeping space is located and consult location alternatives are identified.

Internal: Special collegium by Tim Lush on the assignment process is key this week.

Contradiction: Symbolizing through the assignment structure the "one ballgame". (Wk. 11)

RELIGIOUS HOUSE: BOSTON

External: Youth Forum with seniors at Northfield-Mt. Hermon prep school challenges us to respond to the vacuum of images which relate vocation to societal needs and individual action to changing history.

Internal: Metro colleagues lend their expertise to repair wiring and patch plaster essential to maintaining fire insurance. House celebrates at Burmese restaurant and sends out Joni Fleischman and Janet Moltzan to Spring Academy after six weeks work in Starks and Boston on Phase I impact. House begins study of *Shaping the Coming Age of Religious Life*.

Contradiction: Securing placements in HDPs for 3-9 month volunteers coming from Harvard, School for International Training, Tufts, Dartmouth, etc. and creating a model for local orientation. (Wk. 11)

RELIGIOUS HOUSE: STARKS

External: Starks Enterprises Corporation Board decides to push hard on both funding proposal follow-up for cornshop rehab and launching the spring community planning congress. Family of potters joins S.E.C. and plans to become new tenants of the cornshop. August government guild designs next five weeks methods curriculum and works on invitation list. Contract to do forums with C.A.P. housing agency is set up for salary and expenses.

Internal: Crane leaves spring cleaning to the Kilgores as he heads off to New York for the New York Regional Consult.

Contradiction: Consolidating momentum into single focus. (Wk. 12)*

MONTREAL

RELIGIOUS HOUSE: MONTREAL

External: *Le Cercle de Fermieres* (Women's Institute) forum begins a training journey for women across the province as the regional executive of 75 gathers for a day in Sherbrooke. First experiment in methods training weekend hosts collegiums from Montreal and Lake Placid.

Internal: House stages guest night every night as film is shown three times in the house and once outside.

Contradiction: Restating the corporate thrust in light of demands from the area. (Wk. 11)*

RELIGIOUS HOUSE: TORONTO

RELIGIOUS HOUSE: OTTAWA

External: Creative Week II PSU on Public Relations materials for Regional Consult includes Marnie Ellis, guardian from Montreal, as well as representatives from Toronto and Montreal Houses. Monique Dion, regional colleague, returns from Paris Regional Consult. Using drop-in method, team sees seven potential participants for Regional Consult in one day.

Internal: Ruthe Yost is sent out on two week special assignment — part of which is to experience Chicago Symposium.

Contradiction: Moving the Ottawa Valley potential participants from fascination to commitment

RELIGIOUS HOUSE: HALIFAX

External: Montreal House, Development Centrum, Lorne Core and Halifax House cover 12 polis in the region, breaking open Regional Consult participation and development possibilities. *Atlantic Potential* brochure is done and nine events are completed or set up during the 12 polis coverage.

Internal: Marge Allan from Development Centrum spends three weeks in Halifax Region focussing House on development and Atlantic Potential strategies and sharing invaluable spirit edges with the House and core. Alan Young, Vice President of Brunswick Mining and Smelting and the host of the Regional Consult, visits Chicago Nexus.

Contradiction: Contexting the targeted constituencies to ensure all sectors are covered and placing all systems on "Go". (Wk. 9)

MEXICO CITY

RELIGIOUS HOUSE: GUATEMALA CITY

External: Guild meeting becomes the village social event of the week with guitar and guilds presenting new songs to a packed hall with several standing outside who cannot squeeze in. The Mothers' Group, Teachers Corps, Sport Club, Water League, nutrition demonstrations and newly legalized secretariat keep the Guild Hall busy during the day as well. Enthusiastic receptions from new and old donor contacts require weekly proposal submissions.

Internal: Three auxiliary families move to newly constructed residential training center in a flurry of decorating, painting and constructing furniture. New in-town apartment with phone provides base for development files and overnight accommodation.

Contradiction: Enabling authentic community consensus that moves critical issues toward solid structures. (Wk. 11)*

HAVANA

RELIGIOUS HOUSE: KINGSTON

LIMA

RELIGIOUS HOUSE: LIMA

External: Community Forum in barrio community in Lima provides the opportunity for the Lima team to take responsibility for the metro and for 46 women to project their future. Lima team meets in Union Church to launch its meeting series.

Internal: All day planning projects maneuvers for awakenment campaign and school preparation, and day at the beach re-creates the auxiliary. George Pesek arrives for study project.

Contradiction: Finding ways to dramatize urgency of development to those caught up in bureaucracy. (Wk. 10)*

CARACAS

RELIGIOUS HOUSE: CARACAS

External: Barlovento Zone is intensified with two meetings in La Fila and Las Toro with cores of ten present in each. Bi-monthly ecclesiola is held in Cano Negro with 20 attending, including three guests from the village of Mendoza.

Internal: Management trek ends with a "turning point" session on House budget and the setup of global systems in Area Caracas. Hahn and Talbott are sent out to Jamaica.

Contradiction: Empowering the symbolic events in order to activate the priorities consensed upon. (Wk. 9)

BUENOS AIRES

RELIGIOUS HOUSE: SANTIAGO

RIO DE JANEIRO

RELIGIOUS HOUSE: RIO DE JANEIRO

External: Demonstrating Financial Proficiency is the byword of the week. Management team from Chicago visits, spending a week re-aligning our financial books. Arthur Anderson will audit 1981 books, along with helping staff to meet the Brazilian legal requirements.

Internal: Collegiums on order foundations and finances are highlight of week, and House celebration at a barbecue truck-stop restaurant delights all.

Contradiction: Responding to immediate and urgent needs while standing in the victory circle of our long-range vision. (Wk. 11)

THE GLOBAL ORDER CENTRUM REPORT

BRUSSELS
BOMBAY
SINGAPORE
HONG KONG
CHICAGO

QUARTER III WEEK THIRTEEN

GLOBAL DEVELOPMENT CENTRUM

Global Development Centrum reports that Chikhale hosts Kesaram Cement and the Pune Regional Consult funding is initiated with Rs.10,000 from Vulcan-Laval. The Pope's visit to Japan opens new possibilities with religious orders. North American extraordinary circuit brings home \$17,000. Union Oil is open to funding Human Development and a \$100,000 proposal is being prepared. C. S. Kirloskar commits money for Jawale Training Center. The key contradiction lies in the arena of organizing time and orchestrating troops in order to insure bottom lines for the year are accomplished.

GLOBAL RESEARCH CENTRUM

Global Research Centrum reports the creation of a regional strategy chart and a human factor paper in Singapore. The second *IMAGE* is sent to the printer in Chicago and a public relations piece is finished in Bombay. Chicago and the other four Nexus check signals on 45 research tasks by telephone. The key contradiction lies in the arena of integrating research tasks into one focus.

GLOBAL OPERATIONS CENTRUM

Global Operations Centrum reports that the Symposium in Bombay is followed by Practicum week of consults with Chikhale and ten surrounding villages. Voyage Log and materials, revised lectures for New Testament course, addenda to the Regional Consult procedures, new "Introductions to Human Development" course and Cantonese Town Meeting workbook are produced. Bombay Training PSU documents are shared in Brussels and Chicago. Streamlining the mechanisms for producing multi-consult documents with multi-translations allows the Operations consult team to move into the Bombay Consult with power. The key contradiction lies in the arena of using the Regional and Cluster Consults as a focus for implementing necessary strategies.

GLOBAL MANAGEMENT CENTRUM

Global Management Centrum reports that painting office space in Bombay Nexus brings new look and atmosphere to Management, while Hong Kong Nexus is catching up on O:E reports and producing *first* totally automatic monthly reports. At Chicago Nexus renovating the dishroom and inking very useable furniture are highlights of the week — which is also the first week of the ICA: Illinois audit. Finance troops in Chicago discern a new trend in audit preparation, while Hong Kong realizes that Management is charged with enabling future fiscal foundations. The key contradiction lies in the arena of finding a break in the action which allows consideration of the blocks to move to effective action.