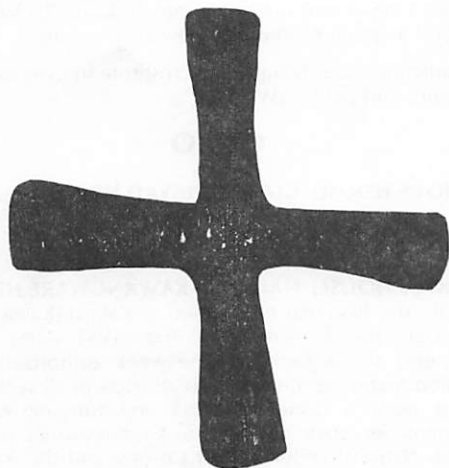


THE GLOBAL ORDER REPORT

QUARTER II WEEK TWO

OCTOBER 6-OCTOBER 12 1980



LONDON

RELIGIOUS HOUSE: LONDON—ISLE OF DOGS HDP

External: A week of daily Isle of Dogs' presence in House is culminated by 13 regional colleagues attending area council.

Internal: Friends, colleagues and staff participate in the first steps of demonstration exemplary House life.

Contradiction: Developing training constructs and engagement modes to serve colleagues ready to move. (Wk. 12)

RELIGIOUS HOUSE: GLASGOW

External: Clergy collegium plans agenda for meeting at the House over the next six months. A new sense of commitment is evident.

Internal: Space is transformed for the new year with all new collegium room decor, two new bedroom spaces created and lounge repainted—as different as darkness and light.

Contradiction: Stretching to handle beckoning engagement, EG and permeation practices and implementation of area events. (Wk. 13)

RELIGIOUS HOUSE: BRISTOL—TAI'RGWAITH HDP

External: Renewed circuit vigour to district and region uncovers strong possibilities for sets in Bristol and Cardiff suburb.

Internal: Global Guardian from Colorado uses house as check-signals point during his UK trip.

Contradiction: Starting fire to project story in order to pave way to CEM in three months time. (Wk. 13)

MADRID

RELIGIOUS HOUSE: MADRID

External: Receive great news that all future "sets" of TMs in Zaragoza Province are confirmed. Fr. Bartolome de Vincens, the king's chaplain, drops by to say he has started making

After this the Israelites said to Gideon, 'You have saved us from the Midianites; now you be our ruler, you and your son and your grandson.' Gideon replied, 'I will not rule over you nor shall my son; the Lord will rule over you.'

Judges 8:22-24

arrangements for a huge three-day youth consult for 100 to 200 youth from across Spain in December, and he wants ICA to lead it.

Internal: Local multinational hires ICA staff to teach four different classes of English with possibilities of two more (Allis Chalmers Co.).

Contradiction: Thinking selves through before antsy action dominates. (Wk. 13)

PARIS

RELIGIOUS HOUSE: PARIS

External: Framing appointments and calls net five new significant names for the Board of Advisors.

Internal: Week II PSU on area assignments configuration, during the global fast, is capped by late night celebration at colleagues' home.

Contradiction: Carefully remaneuvering while new configuration of troops is ready immediately to hit the road. (Wk. 13)

RELIGIOUS HOUSE: BRUSSELS NEXUS

External: 125,000 BF (US\$4000) received in cash (with appropriate spontaneous celebration).

Internal: Participation in global fast day is preceded by mackerel feast.

Contradiction: A great deal of planning remains and we're already "in the chute" for Quarter II. (Wk. 13)

RELIGIOUS HOUSE: BRUSSELS

ROME

RELIGIOUS HOUSE:ROME—TERMINE HDP

LAGOS

RELIGIOUS HOUSE: LAGOS—IJEDE HDP

ABIDJAN

RELIGIOUS HOUSE: ABIDJAN

FRANKFURT

RELIGIOUS HOUSE: FRANKFURT

External: Collegial bonding of the movement happens in three events as movement colleagues travel across several regions to take major roles in major programme events: Three German colleagues, Frieder Theysohn, Gudrun Weber and Gabi Steinbacher do presentation and demonstration TM for Rheinhausen presbytery; 14 roles are played by colleagues in weekend training for Catholic church in Vienna; and Hans Werner of Hamburg comes by house for contexting on leadership role for 25 Ludwigshafen pastors training retreat.

Internal: With area priors in Amsterdam and Vienna, rest of house creates space for two outings: the Opera to celebrate the Maguires' 12th anniversary, and a nearby castle and picnic in the woods for the EG.

Contradiction: Weaving together the external mission and the sustaining internal life systems through the right mix of corporate brooding and individual responsibility. (Wk. 13)

RELIGIOUS HOUSE: BERLIN—KREUZBERG OST HDP

External: First set with Christianskirche in Hamburg includes everyone from kindergarten parents and confirmation classes to senior citizens. Vienna weekend forum is held as demonstration for Caritas: Austria. Week is climaxed by participation in 75th anniversary of neighborhood Taborskirche.

Internal: Quarter II planning for House is followed by celebration in the newly refurbished Bishop's Parlor complete with wine purchased in Austria during the Caritas: Austria set-up.

Contradiction: Moving from the project to an urban awakening without knowing what kind of bridge will hold. (Wk. 13)

RELIGIOUS HOUSE: AMSTERDAM

External: An evening with 39 church leaders in Duisberg, Cologne Region, at Hoch Heide Church, sees ICA presentation with three German colleagues witnessing to their experiences in working in HDPs in South America, Africa and Germany. The evening ends with a two hour Community Forum orchestrated by Ludwigshoven colleague Pastor Theysohn. The group decides to actuate immediately one proposal, then says the Forum method needs to stay in their communities.

Internal: Roundtable goes to colleagues' home as Religious House becomes mobile and is impacting signal of the new style, while on the same day sojourner Jos Willmse leaves for Academy after helping send out the van Es family to Academy.

Contradiction: Having more things to do than time allows leads toward anxiety over achievements rather than concern for historical effectiveness. (Wk. 13)

STOCKHOLM

RELIGIOUS HOUSE: COPENHAGEN

External: Whole week's collegiums focus on geosocial analysis of Area Stockholm in preparation for next round of circuits. Two more team members are added to Vedbaek set, making four, and three Guardians ask for TM facilitator training.

Internal: House as "training centre" undergoes major renovations, as new guest room, house lounge and transformed hall are created.

Contradiction: Holding the tension between circuits and much needed development. (Wk. 13)

KINSHASA

RELIGIOUS HOUSE: LUSAKA—KAPINI HDP

External: Area Council held at YWCA with ITI grads and village guests present gives impetus to new quarter planning. Interlude is "Celebration of the Band of the 24". First Village Forum follow-up circuit as experiment is fine trip to Mumbwa, a forum setting up three community committees and a workday to cut and bring logs to build a bridge.

Internal: Lucy is sent out to Nairobi, followed by Vernon to India and Stephen to Kenya to new assignments.

Contradiction: Clarifying role of Institute in eyes of village, colleagues and public. (Wk. 12)

CAIRO

RELIGIOUS HOUSE: GIZA—EL BAYAD HDP

NAIROBI

RELIGIOUS HOUSE: NAIROBI—KAWANGWARE HDP

External: The first year celebration of Kabiro (Kawangware) symbolized the launching of the NVM (New Village Movement) across Kenya as the week authorization and saturation teams go out to do six districts in all sectors and framing work is done for LENS and funding with the Permanent Secretary of Finance, Commissioner of Social Services, National Federation of Co-ops, and the American Ambassador.

Internal: We move into the new year getting internal framework of exemplary house completed: tribal resettlement, repainting and decorating collegium room, cleaning building, handing out internal manual and the arrival of Robin Rafos and two 1 year sojourners from Germany.

Contradiction: How to elicit from the resources of Kenya the network of support that allows us to do the practices of the NVM. (Wk. 12)

RELIGIOUS HOUSE: KAMWELENI—KAMWELENI HDP

BOMBAY

RELIGIOUS HOUSE: BOMBAY-MALIWADA HDP

RELIGIOUS HOUSE: BOMBAY NEXUS

External: Centurms disburse troops to cover the three regional councils of Area Bombay and the Delhi, Calcutta and Madras area councils. The first draft of a strategy watch is prepared. Rs5,000 (US\$670) comes in from Delhi Tata Trust.

Internal: House experiments with 6'x7' family living spaces, and Operations Centrum recreates space by selling off enough stored paper to buy paint and decor.

Contradiction: Avoiding a protracted war in the midst of a restrictive cash flow in the arena of enabling rapid ashram set-up. (Wk. 12)

DELHI

RELIGIOUS HOUSE: DELHI-SIKROR HDP

MADRAS

RELIGIOUS HOUSE: HYDERABAD-NADLAPUR HDP

External: Meeting of Tahsildar, MLA and Dakur land owners approves right of way for wider road from Dakur to Nadlapur. Area Trek is sent to Madras.

Internal: First area council in several years plans circuits to regions and metros, the initiation of a cluster and Nadlapur transition.

Contradiction: Expanding the context of village and local officials to allow for more rapid delivery system. (Wk. 12)

CALCUTTA

RELIGIOUS HOUSE: CALCUTTA

SINGAPORE

RELIGIOUS HOUSE: SINGAPORE NEXUS

External: Nexus Centrum teams were present at every area council.

Internal: Nexus hosted K.L. House and sent out to Sungai Lui. Dunn family stayed overnight at the nexus on their way to Australia. Nexus welcomes Prabhaker and Hemalatha James with their daughter Kavitha.

Contradiction: Developing the methods that enable thinking through the year in depth as well as getting out on the road with power in a short time. (Wk. 13)

RELIGIOUS HOUSE: KUALA LUMPUR—SUNGGAI LUI HDP

RELIGIOUS HOUSE: JAKARTA-KELAPA DUA HDP

External: Local framing begins with visits to village leadership. Development on two fronts as Achmad and Rochmat seek travel money to India and Egypt. Yallop works the India and Australian connections in Jakarta resulting in \$23,000 proposals submitted.

Internal: With half of House disbursed to other regions, space gets transformed with new regional office and old collegium room painted.

Contradiction: Discerning the single explosive eventfulness that will focus all energy and action. (Wk. 12)

RELIGIOUS HOUSE: MEDAN-BUBUN HDP

RELIGIOUS HOUSE: UJUNG PANDANG-BONTOA HDP

External: Tonasa LENS is a great passionate event with commitment to form a cadre. Shankland and McCabe visit Guardians in U.P. and Coalition meeting does initial consult context.

Internal: All troops return from area council on a two day boat trip and sweep out the House, visit the village and take an urban excursion in Ujung Pandang.

Contradiction: Preparing for the consults in a week. (Wk. 12)

HONG KONG

RELIGIOUS HOUSE: HONG KONG NEXUS

RELIGIOUS HOUSE: HONG KONG-NAM WAI HDP

External: Development week produces 20 calls, raises HK\$76,000 and deposits HK\$12,000 for September, the earliest in many years.

Internal: A great celebration, the first House celebration by the new auxiliary, marks the end of development week with meal of southern fried chicken, wine, cheesecake, and word games.

Contradiction: Orchestrating the symphony with rhythm timing that allows focused efforts on numerous necessary tasks. (Wk. 12)

RELIGIOUS HOUSE: KAOHSIUNG-HAI OU HDP

RELIGIOUS HOUSE: MANILA

External: Corporation LENS held for Mondragon Industries and C.F. Sharp launch the Manila Region's year. A speaking engagement for 100 members of the Association of International College Women expands the service corps possibilities. A two week development trek with 40 visits brings in the month's goal enabling closing by September 15th, submitting P400,000 of new proposals and rejoicing in

the Philippine government's P60,000 for Early Learning Nutrition Center teachers' salaries on Mactan.

Internal: House hosts area council at the Peninsula Hotel.

Contradiction: Imaging next year in order to most effectively release strategic action this quarter. (Wk. 13)

RELIGIOUS HOUSE: TAIPEI

External: Trek to Hai Ou results in visits to local government officials to introduce new Hai Ou staff and establish basic context for ICA work in Taiwan for 1980-81. Individual pledge card prepared for mailing to 300 program grads from Korea-Japan tour with Hai Ou group reporting a tremendous cultural happening for everyone.

Internal: House works on quarter and year tasks and strategy in week II PSU. Internal structures for quarter II drawn up as summer quarter comes to an end.

Contradiction: Maintaining circuits fo Hai Ou while mobilizing all the task fronts in Taipei. (Wk. 13)

RELIGIOUS HOUSE: CEBU—SUDTONGGAN HDP

RELIGIOUS HOUSE: DAVAO—LANGUB HDP

External: All preschools plant demonstration gardens and complete monthly weighing of enrolled children. LaPaz HDP co-operative store completes inventory and pays dividends to all members. New buri industry completes third delivery of furniture.

Internal: Celebration sends out second batch of doctors from Brokenshire hospital after one month stay in Langub.

Contradiction: Firming up the buri market. (Wk. 12)

TOKYO

RELIGIOUS HOUSE: TOKYO

External: LENS with 31 sections managers of Tokyo Boeki Co. scores a major victory. Personnel manager says it's the best seminar he has ever attended. Three Guardian and one ICA staff form the leadership team.

Internal: House hosts 20 visitors from Taiwan for three days at the beginning of their 10 day Japan tour.

Contradiction: Bringing order, rhythm and intentionality into the continually erupting chaos of necessity and possibility. (Wk. 12)

RELIGIOUS HOUSE: SEOUL

RELIGIOUS HOUSE: CHUNCHEON—KUH DU E RI HDP

External: Six villages and Kuh Du E Ri of the HDZ have meetings in 3 days and climax week with a Core Assembly meeting in which all report on the unifying effect of uniting the village treasuries in each village.

Internal: Fun night to relax after busy week with three village colleagues who had helped enable House events.

Contradiction: Determining the bold maneuver which engages all components in bringing off the Human Development Zone. (Wk. 12)

RELIGIOUS HOUSE: FUKUOKA

External: The week ends with the sound of conversation and celebration as 75 advisers and friends come to the house to welcome Lauri, Rachael and Sherine. The staff prepares for regional symposium in week 13.

Internal: The House struggles with systematic strategy, "The Order", collegium and how to articulate the edge of being the order and its new style and presence.

Contradiction: Struggling through and creating the structures that allow for creative, effective human engagement around the region. (Wk. 12)

RELIGIOUS HOUSE: OSAKA

External: LENS symposium in Kyoto accelerates growth of LENS reputation in Japan as four companies indicate interest in in-house LENS. Fifth Town Meeting in Nara Prefecture strengthens stronghold relationships. Colleagues volunteer to lead Friday Night at the Institute as ICA staff prepare to leave for area council in Korea.

Internal: New facility begins to feel like a House as English classes restart and sojourn recruitment begins.

Contradiction: Moving ahead with files still in the packing boxes. (Wk. 12)

RELIGIOUS HOUSE: SAPPORO—OYUBARI HDP**SYDNEY****RELIGIOUS HOUSE: SYDNEY**

External: The year is launched in great style with a modified symposium. *Colloquy: Toward the 80s*, area council which allows for 15 people on the road, 11 permeating and 2 in university by shaving \$23,000 off self-support. Colleagues rally around in an amazing demonstration of one order.

Internal: House given one month's notice on our facility (with no alternatives in sight) while welcoming new folks, hosting Anne Yallop, Bishops and Lingafelters celebrating Jenny's 16th birthday, raising the first \$450 of the \$2222 and job hunting.

Contradiction: Actualizing one regional team re: configuration while tackling six weeks of \$2222 maneuver, new facility, development, regional council prep, self-support and circuits. (Wk. 12)

RELIGIOUS HOUSE: PERTH

External: New House team begins to plant feet in the region with colleague phoning invitations to first Roundtable. Evening highlighted by "mini-colloquy" for Quarter II pre-planning. New development pitch and breakloose October planning session move regional team into Quarter II.

Internal: Internal time and space claimed with life-giving decor and time design creation sessions. Quarter I closes on a winning note with two job offers, inkind bread for the year, and colleague family hosting whole house at barbecue overlooking Perth

Contradiction: Daring to create the new in the region with the memory we have, rather than viewing wisdom as action's only door. (Wk. 13)

RELIGIOUS HOUSE: ADELAIDE

External: Regional teamhood is demonstrated by movement colleagues' decision to participate in facility support maneuver. Invitation is received for CM presentation in outlying metro from local APEX Club.

Internal: Darrell and Sue Marley are welcomed by Adelaide Region at great celebration in colleague and first self-support job is secured.

Contradiction: Creating the one solid victory that lays the foundation for teamhood across the region. (Wk. 12)

RELIGIOUS HOUSE: MELBOURNE**RELIGIOUS HOUSE: CANBERRA—MURRIN BRIDGE HDP**

External: First circuit of the year at Tamworth and Dubbo metros sets up one roundtable and keen interest in LENS. Visit to state DAA head clarifies his role but unwillingness to risk. Industry committee initiates scheduled meeting in renovated community centre.

Internal: Regional team meeting including staff from two locations and regional colleagues works out plan on all fronts. Sojourner from Adelaide is prime mover in space transformation with new paint and tile shower.

Contradiction: Getting community decision to have event for planning next two years. (Wk. 13)

RELIGIOUS HOUSE: BRISBANE

External: Three-week state-wide circuit set to go, with camper van purchased. Quarter's missional timeline is prepared and placed before colleagues for formation of two missional colleague teams.

Internal: Three great victories are won in areal self-support special manoeuvre ("\$2222"): new jobs secured by Margaret, inkind break-open, and first room of three ready for paying guests.

Contradiction: Focusing the power of staff and colleagues into teams within a missional thrust. (Wk. 13)

SUVA**RELIGIOUS HOUSE: AUCKLAND**

External: In the midst of arranging our self-support and legal base to stay in the country, our programmatic activity booms with two CM:NZs, a LENS and a GWF already scheduled this quarter. A steady stream of visitors to the House affirm our programs as on target for New Zealand.

Internal: House grounds area care by sending Rick Jones on first circuit to Agana Region, is immersed in the Auckland Region by gridding to 36 polises, and stands again as the Global Order during the Panchayat collegium, thus creating the tripolar dialogue that puts the local mission in perspective.

Contradiction: Dealing creatively with all the red tape to get the Telekau family and our materials box here. (Wk. 1)

RELIGIOUS HOUSE: APIA—SALANI HDP**SAN FRANCISCO****RELIGIOUS HOUSE: SAN FRANCISCO****RELIGIOUS HOUSE: SAN JOSE—RICHGROVE HDP**

External: Pittsburgh Economic and Housing Development Corporation send representative to Richgrove to present the advantages of being a local development corporation and to offer help in loan packaging. Annual appeal visits in Lindsay bring old acquaintance to life in renewed image of collegiality.

Internal: Pat Goodger joins the House for the weekend for work in Richgrove and Mimi attends her first full week of classes in Cal State Bakersfield.

Contradiction: Building relationships of respect and common endeavor between the basically Chicano town site and the Anglo land holders of the Richgrove area. (Wk. 13)

RELIGIOUS HOUSE: SEATTLE

External: Annual Appeal campaign is launched with arrival of Bill Westre and review of and prioritizing of calls on 213 potential donors in the six metros.

Internal: House year comes to full assigned strength with arrival of the Smiths and return from area council.

Contradiction: Telling ourselves and the colleagues of the region that as the Annual Appeal campaign goes, so go the programs of the Institute. (Wk. 12)

RELIGIOUS HOUSE: LOS ANGELES

External: Launching the Annual Subscription Campaign creates a swirl of activities. Thirty-five people participated in regional council, metro circuits are renewed as long time and new colleagues made commitments for coming year. Regional teams configurations emerged to do practical tasks of the regional strategies.

Internal: Celebrations of Hamje second anniversary and Rob White's 15th birthday set the mood of week.

Contradiction: Swirling campaign victory into forms of new movemental engagement. (Wk. 12)

RELIGIOUS HOUSE: PHOENIX

External: New Mexico Assembly after TM campaign is pulled off by Guardians Jose Griego and Travis Thompson with 90 people present. Development teams make 88 calls with \$20,000 pledged and \$3,523 in hand. Boomerang Team, Bill Bigelow and Curidad Gutierrez, travel across New Mexico and Texas on development and setting up TMs.

Internal: Regional team concept implementation is begun with Pisinemo, Phoenix, and Guardians participating.

Contradiction: Assigning Guardians into teams across the region to cover all the geography. (Wk. 13)

RELIGIOUS HOUSE: WICHITA—PISINEMO HDP

External: VISTA supplementary grant approved for supervisor position, and transportation is approved with last minute maneuvering.

Internal: House doubles in size with the arrival of Fr. George Florindo and Paul Noah and sons.

Contradiction: Signalling the cruciality of the CEM for the community (Wk. 1)

RELIGIOUS HOUSE: BILLINGS—INYAN WAKAGAPI HDP

External: Annual Appeal circuits visit all six metros and cover 3500 miles, netting \$11,700 toward the year's commitment.

Internal: The two-week Montana circuit team returns to Cannon Ball in time for a Standing Rock Core roundtable.

Contradiction: Grounding the regional "bold moves" for Quarter II in concrete strategies that give tactics power and focus. (Wk. 13)

RELIGIOUS HOUSE: DENVER

External: Special issues meeting is held at San Juan housing project in Boulder with tenants, management and board of directors. Annual Appeal reaches halfway mark with \$30,000 committed.

Internal: House ends fast with fantastic Japanese feast prepared by in house experts complete with sake and lowered tables.

Contradiction: Internalizing comprehensive calendar as quarter starts. (Wk. 13)

EDMONTON

RELIGIOUS HOUSE: EDMONTON

RELIGIOUS HOUSE: VANCOUVER

External: Vancouver Regional Team is launched with area council report. Regional council invitations are inked and sent out. Development appointments and circuit rhythm are set with Annual Appeal in motion. Skytop view of the city and great Chinese meal kicks off campaign fortnight.

Internal: Jackie Cress arrives, followed by Doug Allan for Annual Appeal.

Contradiction: Operating within the tension of local immediacies and Global Priorities while operating without consensed regional plan. (Wk. 12)

RELIGIOUS HOUSE: ANCHORAGE-MINTO HDP

External: Celebratins highlight the week with \$4,600/\$16,000 Annual Appeal Celebratin (\$1000 over on each). The whole regional council fasts and feasts. A Mexican food feast welcomes the area prior and sends out Charles Lingo.

Internal: In preparation for regional council the House puts up a new wooden world grid and plans a special day for EG with a movie.

Contradiction: Launching Quarter II with support structures and jobs not in place. (Wk. 13)

RELIGIOUS HOUSE: SASKATOON

RELIGIOUS HOUSE: WINNIPEG—VOGAR HDP

External: Old hands/establishment visits results in pledges, a real affirmatin along with suggestions of inner city work. Imaginal Education date is set with many interested including University of Manitoba, Brandon work activities program, Assinibone C. College and colleagues.

Internal: Quarter planning focus for the week uses 3-1; 3-1; 3-2; rhythm rational and regional engagement of colleagues.

Contradiction: Demonstrating depth of mission beyond work with Metis. (Wk. 13)

HOUSTON

RELIGIOUS HOUSE: HOUSTON

External: Annual Appeal is going full steam with circuits in Brownsville, Corpus Christi, Austin and Houston Metros. Highlight of week is a film event for teachers and students, recruited and lead by youth cluster with global film and reports from Philippines, India, Japan and Australia.

Internal: All House members are finally here and in school.

Contradiction: Getting inside the circle of influence which releases money. (Wk. 12)

RELIGIOUS HOUSE: AMARILLO—INDIAHOMA HDP

External: Annual commitments raise \$16,200 in the Dallas, Fort Worth, Oklahoma City, Tulsa, Amarillo and Tyler metros and Oklahoma City metro core holds first meeting of new year. CEM planning begins with community meeting setting dates for November 14-23, 1980. Local and nationally recruited VISTA volunteers along with local residents assume total responsibility for the Voice.

Internal: House celebrates one birthday and one anniversary, sends two out on the road and holds extended conversations on the future of community extension in the Dallas Region.

Contradiction: Clarifying long-range relationships of metro formation, role of symbolic Order and community extension. (Wk. 13)

RELIGIOUS HOUSE: SAN ANTONIO—ASHERTON HDP

External: FIESTA! Even with a sudden thunderstorm over 5000 participate in the greatest Migrant Fiesta ever—totally brought off by the community.

Internal: Reginal team meeting in Asherton brings together 16 from the two houses for the fiesta to end Quarter I, and quarter/monthly maneuvers to begin Quarter II.

Contradiction: Recreating vision on the other side of the Annual Appeal and the fiesta. (Wk. 13)

RELIGIOUS HOUSE: DALLAS

RELIGIOUS HOUSE: NEW ORLEANS

External: After sending five to Academy, House sits down to RS-I pedagogy to prepare for RS-I in Mobile Week 4.

Internal: Send out and birthday celebration for Joan Priest, Cindy Kellar and Nancy Haskell is followed by House participation in Global Fast Day.

Contradiction: Enabling first big jump into fear/fascination of new universe. (Wk. 13)

RELIGIOUS HOUSE: MEMPHIS—DELTA PACE HDP

External: The second week of the Annual Appeal produces campaign commitments for \$10,000, two-thirds of the bottom line. Circuit visits in four metros show colleague support and strong prospects for leadership advanced training as metro events.

Internal: The total regional team has "homecoming" at Pace HDP for first planning weekend there, creates fine occasion for the feast and Roundtable.

Contradiction: Creating circuit activation when simultaneously finishing the Annual Appeal bottom line and turning the self-support trend positive. (Wk. 13)

RELIGIOUS HOUSE: ATLANTA

External: House celebrates third Annual Labor Day Parade and Family Fun Day with Gibson while hosting keynote speaker Owen Cooper, past president of Southern Baptist Convention, who brought greetings from the president. Cramer's presence occasions visits to adjacent towns for conversations about extension.

Internal: House council sets context and builds timeline for entire year, capped by a backyard BBQ celebrating two more self-support victories.

Contradiction: Building the story that calls people to their freedom. (Wk. 12)

RELIGIOUS HOUSE: MIAMI

External: Two day circuit in Tampa Metro, Dade City Polis, nets: 2 LENS calls, 2 TMs dates set, office acquired at Community Action office, film showing to group of migrants and 5 who say yes to being nucleus of core group.

Internal: House welcomes a new, 10 year old washing machine. Five guests at early evening Roundtable find the format stimulating and several want to be regular guests.

Contradiction: Keeping the missional priority of circuit development while doing adequate self-support and finding a new facility. (Wk. 1)

CHICAGO

RELIGIOUS HOUSE: CHICAGO NEXUS

External: Global Academy opens with 47 people from 15 nations. Nexus PSU on Regional Consult has immediate ramifications for the seven particular regions before December and significant implications for mobilizing troops from the extended, movemental and symbolic order. Chicago Nexus sends representatives from all four centurms and a Panchayat member to Latin American Continental Council in Caracas

Internal: Chicago Nexus changes its face in five hours by changing its space—moving all four centurms to one side of the building; with collegium room and House lounge on other side of building replacing Management and Operations space.

Contradiction: Prioritizing complexity in providing centrum services. (Wk. 1)

RELIGIOUS HOUSE: CHICAGO—FIFTH CITY HDP

External: Twenty-one people attend Fifth City Core planning meeting; Theo Muller is sent out to Lorimor CEM.

Internal: The house cafe is painted, the presense of a boiler engineer on Saturday signals community's decision to have a heated facility this winter, and fire extinguishers and smoke detectors are in place.

Contradiction: Engaging the troops you do not already have to practicalize the vision. (Wk. 1)

RELIGIOUS HOUSE: OMAHA—LORIMOR HDP

RELIGIOUS HOUSE: KANSAS CITY

External: The Annual Appeal breaks loose Guardian leadership as they spearhead, set-up and make calls.

Internal: KC contingent of the regional team has a six hour consensus forming workshop on the internal life for the year.

Contradiction: Consensing on the form of polity for this year. (Wk. 13)

RELIGIOUS HOUSE: MINNEAPOLIS

External: A week of the unexpected, after eight years of building track record. A drop-in on ICA wants to explore working together on Global Education: Minnesota program being developed by the University of MN World Affairs Center and Dept. of Education. The Region 3 meeting to set up the Grand Rapids Governor's Forum has surprise attendance. The staff of Upper Great Lakes Regional Commission and directors of two other state regions affirm TM process.

Internal: A week of PSU's out of missional necessity to rebalance the corporate process triangle—on professional office organization, staff celebrations, house and program finance, and House care units for families and youth.

Contradiction: Creating a rhythm of organization for staff meetings and PSUs that deals with program coordination and on-going practics. (Wk. 1)

RELIGIOUS HOUSE: ST. LOUIS

External: Annual Appeal puts staff in all metros for the first time in three years with many new contacts and card file creation. Mary and Mark invite Mill Shoals citizens and frame to CEM and in return receive Annual Appeal gifts.

Internal: Wayne Ormsby sent out for visa remaneuvering and Jo Richards opens up temporary work assignments.

Contradiction: Overcoming separation of the development task from launching program thrusts and internal rhythms. (Wk. 13)

RELIGIOUS HOUSE: INDIANAPOLIS

External: Contributions in response to the Annual Appeal brings the Cleveland Region total to \$3,000 over the bottom line, making it one of five regions to achieve that victory, largely owing to the extensive involvement of metro colleagues.

Internal: House youth experience their first grand opera, while attending *Aida*, nudging each other when the "Triumphal March" is sung, applauding a member of our neighborhood organization in the lead, Bernice Fraction, and metro colleague, Dennis Kelly as the king of Egypt.

Contradiction: Standing in the tension of trying to transform social commitments to missional advantages. (Wk. 1)

RELIGIOUS HOUSE: DETROIT

External: Second week of Annual Appeal finds House and 12 regional colleagues covering the region from Toledo to lake, to lake, to lake, winning more than the \$20,000 bottom line.

Internal: "Really being out doing regional coverage" was celebrated by House and colleagues with horns, bells, songs, good food and conversation.

Contradiction: Unformulated quarter's timeline which will care comprehensively for the entire region. (Wk. 13)

RELIGIOUS HOUSE: CLEVELAND

NEW YORK

RELIGIOUS HOUSE: NEW YORK

External: A PSU for designing and preparing a Regional Consult was held Week II with area participation. The PSU was marked by very lively discussion and a breakthrough in vision for many regional metro colleagues.

Internal: First roundtable held Friday night finds the timing and model to be on target.

Contradiction: Articulating the story which will engage all regional colleagues in the regional consult preparation. (Wk. 1)

RELIGIOUS HOUSE: PITTSBURGH

External: The region shows up alive and well as three metros gather in council, and Commission on Aging holds LENS. Many old colleagues say yes to Annual Subscription drive.

Internal: Shogun on television impacts House with "give my whole life" style.

Contradiction: Finishing the preparation work so that Quarter II begins with power. (Wk. 13)

RELIGIOUS HOUSE: ROCHESTER

External: The regional team focuses on Binghamton as the Binghamton Directions Conference becomes the significant happening in Binghamton on September 27th. The participants have already begun implementation of the proposals.

Internal: Between EG and youth activities in and after school and adults constantly moving in and out on circuits, the swinging of the doors has created such a vacuum that the furniture has moved two feet closer to the exits.

Contradiction: Creating the symbolic life structures that sustain the regional team (the engaged pluriform order). (Wk. 1)

RELIGIOUS HOUSE: WASHINGTON, D.C.—IVY CITY HDP

External: Week is highlighted with Ivy City Community Congress which is held over dinner for three evenings. George Saduku, a key colleague and political representative in Nigeria brings four other members of the Nigerian National Assembly to Ivy City for a site visit. They are excited about the possibilities Ijeda might have for their nation.

Internal: Collegium on Black strategies brooding and implications for our work on this continent kindles fear and fascination.

Contradiction: Putting symbolic power behind corporate consensus to insure victory. (Wk. 1)

RELIGIOUS HOUSE: BALTIMORE—WIDEN HDP

External: Widen demonstrates community participation in county festival with two floats in parade and a hot-dog stand.

Internal: A fine internal life guide is prepared, printed and passed out.

Contradiction: Reempowering community leadership to make decisions on behalf of the whole community. (Wk. 1)

RELIGIOUS HOUSE: PHILADELPHIA

External: Visiting of colleagues continues out of the momentum from the Annual Appeal campaign covering the possibility of a core in Wilmington Metro.

Internal: The House joins with colleagues from three metros to feast in celebration of the Annual Appeal and the beginning of the quarter with a five course Italian meal.

Contradiction: Releasing time to create the quarter battle plan that will effectively mobilize the regional team. (Wk. 1)

RELIGIOUS HOUSE: BROOKLYN—STARKS HDP

RELIGIOUS HOUSE: BOSTON

External: The Annual Appeal is appealing—pledges received in two weeks equal the total raised from individuals last year. Visits reveal a number of invitations for program across the region. Visits with the Tolmans and the Mortons establish connection and staff discover one regional family that recruited Jack Lewis!

Internal: Tim Crane, Wendy Rose and Kay Lush come down from Starks for a regional team strategy session which provides depth and objectivity.

Contradiction: Providing the essential support for Starks and the Maine campaign from across the region while waiting for assigned auxiliary. (Wk. 1)

MONTREAL

RELIGIOUS HOUSE: MONTREAL

External: Trips to Quebec and Lake Placid open old friends to new possibilities while 99 companies and orders receive annual report in preparation for funding proposals.

Internal: Korean meal cooked by Nan Grow marks final episode of Shogun with second Friday night roundtable.

Contradiction: Discovering the balance that allows everything to go on at once. (Wk. 13)

RELIGIOUS HOUSE: TORONTO

RELIGIOUS HOUSE: OTTAWA

RELIGIOUS HOUSE: HALIFAX—LORNE DE L'ACADIE HDP

External: Annual Appeal kicked off with visit to Bishop Lacroix. LEDC Directors take leap of faith by deciding to personally guarantee Lornecraft to the tune of \$30,000.

Internal: Five days and 12 hours of Shogun on late night TV special puts everyone in the mood for eastern House Church with five guests.

Contradiction: Creating an assignment structure around two while rest are on areal and continental task forces. (Wk. 12)

CARACAS

RELIGIOUS HOUSE: CARACAS—CANO NEGRO HDP

External: Three Foros are set up in Barlovento with Cano Negro villagers telling the story of extension. Two evening sessions of workshop training with Lebanese youth in preparation for the CYF produces ten trained workshop leaders. Maneuvers are created in impact, development and training center with Caracas Cadre participation. Council preparation includes shooting for the moon with inkind coffee, beverages (20 cases) rum, candy, crackers, marmalade, pasta, a live pig and four chickens.

Internal: Youth shine with collegium laying out year's model for study and HDP engagement, and cook great family night feast for Marelynn Quintona's wedding anniversary. Two areas arrive for continental council preparation.

Contradiction: Marching through tactics but sensing the need for a cohesive battleplan. (Wk. 13)

BUENOS AIRES

RELIGIOUS HOUSE: SANTIAGO—SOL DE SEPTIEMBRE HDP

Internal: Two great site visits by key funding and authorization people/groups take place. Monday Dakonia's Executive Director Claudio Zamorra plus three staff members visit and Friday, Wayne Sandvig of Foundation Chile, American-Chilean Chamber, and ITT's Chilean representative visit. He is accompanied by long time friend Ted Kendall of Foundation Chile.

Internal: Celebrative send out of one from House and two from village to Caracao for preparation of continental council at end of Thursday's ecclesiola.

Contradiction: Creating enabling images, methods, and style so village can see their myriad victories as launching ground for moving into area. (Wk. 13)

RIO DE JANEIRO

RELIGIOUS HOUSE: RIO DE JANEIRO—BANANEIRAS HDP

External: Substantial lead in teaching English classes with businessmen begins to materialize for self-support. Contact with agricultural technical agency reopens possibility of agrobusiness assistance for Bananeiras.

Internal: Diann Porter, three youth and Eric Braun arrive to fill out house complement of forces.

Contradiction: Initiating all systems while trying to learn everything at once. (Wk. 12)

HAVANA

RELIGIOUS HOUSE: KINGSTON—WOBURN LAWN HDP

External: Regional newsletter mailing and Voice distribution by youth club signals start-up of this year's written interchange systems. IADB loan monies are lodged in bank and loan applications can now be received and processed! Industry shed complex construction gains momentum as 3,000 blocks arrive on-site and second disbursement of ECUSA monies are in hand.

Internal: House participates in two fasts this week and Tim Casswell leads collegium on village clusters in Indonesia.

Contradiction: Holding the tension between honoring bureaucratic requirements while doing human development. (Wk. 13)

MEXICO CITY

RELIGIOUS HOUSE: GUATEMALA CITY—CONACASTE HDP

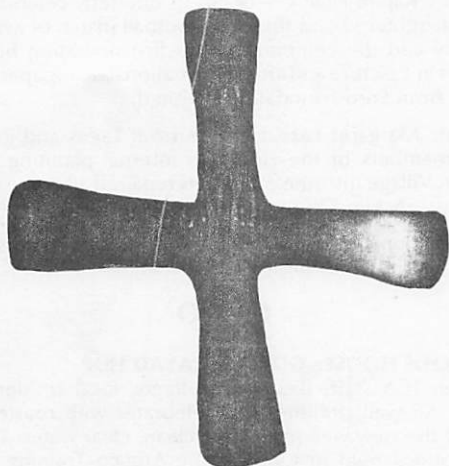
LIMA

RELIGIOUS HOUSE: LIMA—SANVINCENTE DE AZPITIA HDP

THE GLOBAL ORDER REPORT

QUARTER II WEEK FIVE

OCTOBER 27-NOVEMBER 2, 1980



And the two of them went together and came to the place of which God had spoken.

There Abraham built an altar and arranged the wood. He bound his son Isaac and laid him on the altar on top of the wood. Then he stretched out his hand and took the knife to kill his son; but the angel of the Lord called to him from heaven, "Abraham, Abraham." He answered, "Here I am." The angel of the Lord said, "Do not raise your hand against the boy; do not touch him. Now I know that you are a God-fearing man."

Genesis 22:9-12

LONDON

RELIGIOUS HOUSE: LONDON—ISLE OF DOGS HDP

External: Twenty social workers attend guest night event featuring the global film. Twelve U.K. guardians attend Quarter II Guardians Meeting in Brussels.

Internal: Almut Kramm arrives from the Continent in time to accompany House Day outing to Ipswich to visit Anthony Murphy at his new private school.

Contradiction: Transforming unprecedented movemental momentum into actual events. (Wk. 2)

RELIGIOUS HOUSE: GLASGOW

External: Human Development Zone PSU by House and colleagues kicks off practical research events with discussion of collegial roles within the Movemental Order and the discovery that the question of the HDZ is the question calling the Movement to care for the region. A Baptist clergyman, who two years ago sojourned in the Isle of Dogs, uses the services of the ICA in Leeds, Yorkshire — the ICA conducts a four-hour workshop (Town Meeting) with the entire assembly of Yorkshire Baptist Ministers (35 present) including document creation.

Internal: Decision to push on development leads to file sorting, warboard creation and the setting of initial appointments.

Contradiction: Caring for the entire area, while regional demands are intensifying. (Wk. 3)

RELIGIOUS HOUSE: BRISTOL—TAIR'GWAIH HDP

External: Regional PSU engages colleagues from across three metros in designing next five week timeline toward the Regional Consult at end of November. A great "yes is said by all.

Internal: House hosts area team, regional colleagues and Tair'gwaith core for PSU — inkind food enables feast.

Contradiction: Creating model that dovetails project progress and Regional Consult. (Wk. 3)

MADRID

RELIGIOUS HOUSE: MADRID

External: Exciting roundtable conversation on the General is held with newfound colleagues from Valencia Region. A visit from Sr. Olga of Caritas Madrid sets January forum.

Internal: Week II task force prepares circuiting materials for the quarter and organizes filing systems.

Contradiction: Coordinating many spinning plates into a well-orchestrated circus. (Wk. 2)

PARIS

RELIGIOUS HOUSE: PARIS

External: Pilot Wednesday nights training session on the artform conversation demonstrates House as training center. First circuit to Rennes Region introduces ICA to French intelligentsia, and sets up film showing for academic community.

Internal: The Paris House bathroom has a door!

Contradiction: Holding the tension between hitting the road and doing the necessary preparation for victory. (Week 3)

RELIGIOUS HOUSE: BRUSSELS NEXUS

External: India report stirs India vision and passion.

Internal: Roundtable Sukarno reading proves especially apropos with two Indonesians and two recently assigned to Indonesia around the table.

Contradiction: Prioritizing demands from leaking faucets to global frame. (Week 3)

RELIGIOUS HOUSE: BRUSSELS

External: First core meeting in Liege set series is held. Model of sixteen TMs and two-and-one-half day congress on future of the region is well received.

Internal: Tuesday evening becomes regional care night.

Contradiction: Articulating extensive impact strategy in the midst of intensive set maneuvers. (Week 4)

ROME

RELIGIOUS HOUSE: ROME—TERMINE HDP

LAGOS

RELIGIOUS HOUSE: LAGOS—IJEDE HDP

ABIDJAN

RELIGIOUS HOUSE: ABIDJAN

External: Meeting with six Ivoirian businessmen for an ICA orientation ends with their deciding to work toward the initiation of a Human Development Zone.

Internal: Year's planning clarifies the task, mounting global decor turns a house into the Religious House and staff eats first produce from the garden!

Contradiction: Finding the means to get to the heads of corporations. (Week 2)

FRANKFURT

RELIGIOUS HOUSE: FRANKFURT

External: First major program is completed in Bavaria through the Markredwitz set of six forums and the Assembly. Evening forum in local Frankfurt church is opportunity for three colleagues to participate in leadership and documentation. Quarter II maneuvers are completed.

Internal: Sojourner Karen Beckman arrives for month stay prior to going to a Third World HDP; House internal life models gathered into *Guide To Life In The Frankfurt House* and support teams initiate work.

Contradiction: Giving unifying visual form to maneuvers so that priorities are clarified and strategic focus informs. (Week 2)

RELIGIOUS HOUSE: BERLIN—KREUZBERG OST HDP

External: Israeli student group and their German student hosts visit Kreuzberg in search of new perspectives for creatively living in the tension of minority/majority situation, like Arabs and Jews in Israel or Turks and Germans in Kreuzberg.

Internal: Hot pursuit of jobs produces a few small English teaching jobs and the real possibility of a substantial position with the U.S. Air Force.

Contradiction: Experiencing the compulsion to do more awakenment events when we have not yet digested the significance of what has been done in the demonstration phase. Where is the bridge? (Wk. 2)

RELIGIOUS HOUSE: AMSTERDAM

External: Pastors visited during Koln circuit experience relief from the secular/religious tension and plan events in Lerna and Dortmund as staff explains the action factor/myth factor model, and talk about GCF in terms of confession, praise and dedication.

Internal: Roundtable with Dr. Peter Borg is a delight of German foods and conversation; Guardian Sherry Thorson, from Area San Francisco, visits brother during family assigned Week II.

Contradiction: Increasing interchange mechanisms in midst of increasing circuit contacts. (Wk. 3)

STOCKHOLM

RELIGIOUS HOUSE: COPENHAGEN

External: Old colleague from Area Madras, Jesuit Aloysius who attended Maliwada consult, is brought and introduced to House by Danida India Desk representative, affirms development work and asks for follow up in south India.

Internal: New anaesthetics job secured in intensive care hospital for four months shores up chasm in self support.

Contradiction: Putting wheels under first development circuit for year covering Stockholm, Oslo and Copenhagen. (Wk. 3)

KINSHASA

RELIGIOUS HOUSE: LUSAKA—KAPINI HDP

External: Kapini HDP celebrates its quarterly celebration. A pig is slaughtered and there is a football match between the auxiliary and the community. The first operating borehole appears in a picture and article in a national newspaper. Mr. G. Hyden from Ford Foundation is visited.

Internal: Margaret Lazear arrives from Lagos and joins the other members of the House in internal planning for the quarter. Village Institute office gets repaired after fire disaster in August. Ackim Chimusanya gets his passport.

Constadiction: Coordinating plans to make it possible to name quarterly priorities. (Wk. 2)

CAIRO

RELIGIOUS HOUSE: GIZA—EL BAYAD HDP

External: ICA staff, Bayad consultants, local residents and Sheikh Ali well drilling team celebrates with roasted corn around the new well producing clean, clear water. The first area council held in Cairo at the Amoco Training Center produces proposal arena timeline and new external team.

Internal: A candlelight roundtable, staff training in imaginal education and the first Egyptian permeator beginning work signals a new era in internal life.

Contradiction: Breaking the development logjam. (Wk. 2)

NAIROBI

RELIGIOUS HOUSE: NAIROBI—KAWANGWARE HDP

External: Area council is tremendous symbolic event as 77 students graduate for HDTI. Four month trainees are journeyed along with corporate rituals. Eleven projects are recommissioned along side of five projects commissioned and a new cluster team.

Internal: Ramona Meurer arrives for one year sojourn.

Contradiction: Keeping all the balls moving in the face of critical cash flow difficulties. (Wk. 2)

RELIGIOUS HOUSE: KAMWELENI—KAMWELENI HDP

BOMBAY

RELIGIOUS HOUSE: BOMBAY—MALIWADA HDP

External: Maliwada Sukdi factory reopens with a new contract. Work with Brussels and Bombay Nexus completes 25 page, Phase III document which will launch four sector absorption.

Internal: House experiment with nexus with Quarter II strategy watch and collegium suggests calling the daily address, "The Declaration" for the day.

Contradiction: Securing the government commitment to Phase III that will release four sector engagement. (Wk. 2)

RELIGIOUS HOUSE: BOMBAY-NEXUS

DELHI

RELIGIOUS HOUSE: DELHI-SIKROR HDP

External: One hundred people at village assembly welcome new auxiliary and decide four keystones for quarter. Training begins in village on sweater knitting machine for six women

representing three main castes. Community Development Association manager announces need to move outwards to surrounding villages.

Internal: Auxiliary get training in Town Meeting (Gram Sabha) cluster campaign and three villagers attend opening roundtable.

Contradiction: Expanding movement engagement in midst of fast-moving accomplishments. (Wk. 2)

MADRAS

RELIGIOUS HOUSE: HYDERABAD-NADLAPUR HDP

CALCUTTA

RELIGIOUS HOUSE: CALCUTTA

External: Presentation to BATA managers from across India. The Team and Team development elicits possibility of future LENSs.

Internal: Emerging Generation curriculum designed and structures begun, facility search on and in-kind donors revisited to start the Quarter.

Contradiction: Preparing, providing, and procuring in the arena of internal life in such a way as to enable and not block significant engagement in the external mission. (Wk. 2)

SINGAPORE

RELIGIOUS HOUSE: SINGAPORE NEXUS

External: Nexus focuses on LENS set up in Kuala Lumpur.

Internal: First roundtable held with two guests and the House welcomes new photo copier to set up interchange.

Contradiction: Making a formation event out of coming meeting of the Board. (Wk. 2)

RELIGIOUS HOUSE: KUALA LUMPUR—SUNGAI LUI HDP

External: Successful Rubber Research Institute Staff Union three day consultation produces new colleagues. Meetings with Texas Instruments, Colgate-Palmolive, Ready Mix Cement and Bank Pertanian (Quasi-Government Agricultural Loan Agency) produce possibilities for future training events. New tractor part is made and donated to the agricultural Guild.

Internal: A new sojourner from Britain, Oriel Kenny, joins the House, and another future sojourner from Luxemborg, Jean Donven, visits.

Contradiction: Finding physical space to accommodate enthusiastic volunteers, and temporal space to incorporate the myriad of program possibilities. (Wk. 2)

RELIGIOUS HOUSE: JAKARTA-KELAPA DUA HDP

External: Site visit by new businessmen's Yayasan (foundation) puts region one step closer to receiving donation equal to 20% of the area budget. Global film showing continues with Danish women's group at ambassador's home.

Internal: House participation in Global Fast Day imparts to staff the legacy of Gandhi's missional style. The Achmad are off to Bombay, Englai and Aidor from Bubun hosted on their way to years assignment in Bontoa, Barton and Shankland return from Kuala Lumpur LENS and Shankland sent out again to Bubun dramatizes critical role of House in area support.

Contradiction: Locating the key relationship that will catalyze program activity and cement the frame. (Wk. 2)

RELIGIOUS HOUSE: MEDAN-BUBUN HDP

External: Two hour meeting with Health Coalition lays out context for what a coalition is Jaring Halvs, one of the Bubun cluster villages hosts a meeting with Cannat, officials, villagers and ICA, to discuss possibility of their Kecamatan being the site of cluster extension.

Internal: A phone call to Chicago Nexus during Quarter I and II planning session with Sherwood, John Epps, Dick, Gail and Medan House reveals that Chicago Nexus and Indonesia consensed on the same timeline by intuition the night before.

Contradiction: Preparing housing for 80 guests and keeping the marathon movement going in the Bubun Cluster with only 27 days before the regional consult begins. (Wk. 2)

RELIGIOUS HOUSE: UJUNG PANDANG-BONTOA HDP

External: First nighttime workday, held by lamplight involves 40 from all the stakes breaking rocks for meters of village lanes. A week of documenting year II is full of surveys—one shows a 250% increase in school attendance and stories of changed lives.

Internal: Water is still scarce with drinking water having to be brought in daily; Aida and Englai arrive after eight day boat trip completing staff personnel.

Contradiction: Ensuring maximum participation of Bontoa in doing the cluster consults and plans as well as in the second year anniversary. (Wk. 2)

HONG KONG

RELIGIOUS HOUSE: HONG KONG NEXUS

External: Our first evening at the Institute includes Japanese and Chinese guests. New development troops arrive and are immediately on the road. Faculty for the HDTS in Philippines sent out.

Internal: A glorious floating roundtable has whole house on a Sanpan on the bay in front of the House as we celebrate the Cheung Yung Holiday. (Wk. 3)

RELIGIOUS HOUSE: HONG KONG-NAM WAI HDP

External: Second Annual General Meeting of Nam Wai Foundatin elects 28-year-old chairman and sets stage for workdays, government, business, and village calls, and site visits in preparation for grand ICA reception for the new board in week 5.

Internal: Collegium on de Riencourt's "The Soul of China" reveals insights into pillars of Chinese culture and windows through which the Order can glimpse future models of action in Chinese culture.

Contradiction: Ensuring village engagement during critical week of tasks without which the board reception will not happen. (Wk. 3)

RELIGIOUS HOUSE: KAOHSIUNG-HAI OU HDP

RELIGIOUS HOUSE: MANILA

External: U.S.A.I.D. gives grant of US\$125,000 for Mactan 24 and Davao 6, Philippine Government gives grant of US\$10,000 for 60 auxiliary salaries, five corporations give \$2,000 each, making it the largest development month ever in the Philippines.

Internal: First RH-13 shows Philippine self-support in the black. The Philippines celebrates the birth of three babies: Andrea Milagros Knutsen, Simon Orion Leenhouts, Karl Kristopher Reusora.

Contradiction: Maintaining the long view while at the same time orchestrating this year's necessary leaps into the new. (Wk. 2)

RELIGIOUS HOUSE: TAIPEI

External: Hai Ou Project director comes to Taipei for development team work and island coordination. First week of development for 1980-1981 yields commitments of US\$25,000 toward the year's program in Taiwan, which is fully one half of last year's total income. Good indications are received from about 30 companies of willingness to continue annual financial support of human development program in Taiwan.

Internal: Third roundtable of the quarter enables the House in its corporate and individual reflection and first research collegium is held on Lao Tse.

Contradiction: Implementing movement programs such as the HDTS, in a way which move through the social context of the existing cultural, economic and political realities of Chinese society. (Wk.3)

RELIGIOUS HOUSE: CEBU—SUDTONGGAN HDP

External: Electricity poles from mainline to Sudtonggan are erected day after Ben Potot makes deposit. Preschool buildings in Suba Panas and Basak are built in two weekends. Seventeen demonstration toilets are under construction.

Internal: Cebu staff welcomes the ICA Davao Cluster and Manila house staff for a weekend council of villages highlighted by celebrative meal at Tambuli Beach Hotel.

Contradiction: Developing the plan for national extension that takes Mactan and Langub across the Philippines. (Wk. 2)

RELIGIOUS HOUSE: DAVAO—LANGUB HDP

External: Water is sold for 10 centavos per can to help maintain the Langub Water System. LaPaz General Store inventory and profits for September total 9,000. Nine preschools now in full operation across the Mountain with the children weighed monthly and food provided for daily feedings.

Internal: Seven staff attend Council of Villages at Training Center and spend three days in Practical Seminar led by Sudtonggan administrative staff on village incorporation including the training for village bookkeeping.

Contradiction: Extending Langub's three victories—road, water, and electricity—across the mountain. (Wk. 2)

TOKYO

RELIGIOUS HOUSE: TOKYO

External: Five day Area Council at a camp in Seoul features a one day HDZ research trip to Kuh Du E Ri, a meeting with the provincial governor, four new songs, a great Korean meal celebration, and a final night as guests of the Hyatt Regency Hotel.

Internal: National Sports Day is observed with an all day picnic in the park, followed by a shabu-shabu (beef) feast at the house.

Contradiction: Acting tactically while thinking strategically. (Wk. 2)

RELIGIOUS HOUSE: SEOUL

RELIGIOUS HOUSE: CHUN CHEON—KUH DU E RI HDP

External: Life methods filled full the preschool consultant's week. Workshop in Kuh Du E Ri creates one week of curriculum and another in Man Cheon I Ri creates another, with Miss Park Soon OK, teacher in KDER spiritizing both events. Images of releasing the methods throughout the zone are lifted up by colleagues following the second workshop.

Internal: New working decor of 13 week event timeline and newly redrawn Kuh Du E Ri map enables seeing both the details of the village and the weekly requirements to fulfill the decisions for the quarter.

Contradiction: Structuring Guardian relationships to enable fuller participation. (Wk. 3)

RELIGIOUS HOUSE: FUKUOKA

External: The second day of leadership training is held in chiku gun (county), now all the towns have been done and are ready for the next step. Advisors meeting is held with three new people and two of the advisors there for the first time. A youth leadership Town Meeting is held in Saga Perfure with youth 22 to 30 years old.

Internal: House and advisors spend day decorating the fourth floor collegium room to the theme of "The Globe to the Local Building the Region"—the presence of the room is power.

Contradiction: Deciding and creating the form for volunteers and the structures, advisors, women, youth, etc. (Wk. 3)

RELIGIOUS HOUSE: OSAKA

External: First volunteer meeting at the new house shows volunteers eager to schedule service as well as celebration. Friday Night at the Institute has 23 around the table and plans to hold this year's Philippine trip in December.

Internal: Rebecca Boon arrives and house begins four new jobs.

Contradiction: Knowing which opportunities will release the next step. (Wk. 2)

RELIGIOUS HOUSE: SAPPORO—OYUBARI HDP

SYDNEY

RELIGIOUS HOUSE : SYDNEY

External: RS-I is held in House this weekend with strong group of new colleagues, having been set up completely by regional colleagues. John Murchland and Graham Lawrie who attended RS-I ten years ago came to the closing feast to witness to the power of that event.

Internal: Labor Day launches week and house takes outing to Victor Harbor picnicing, climbint on rocks and finding penguin holes in the sand.

Contradiction: Making the shift from preparation to actuation. (Wk. 3)

RELIGIOUS HOUSE: PERTH

External: Perth neighborhood visits help discern a strategic facility location. The fact that the many colleagues in the education structures and the need to get the region fired up about plans for a demonstration LENS focusing on an educational issue in November. The first five people we call, say yes.

Internal: Mike Bellamy and Don Baker demonstrate what a "Bold New Move" is, as they discard the want ads, pick the places they want to work for, walk in cold, and walk out with full-time, immediate start, \$13,000+ created for them on the spot!

Contradiction: Wanting the region to design the circuit with staff when it's going to take a few circuits to convince them they're a region. (Wk. 2)

RELIGIOUS HOUSE: ADELAIDE

External: Development is initiated for the quarter with collegium and phoning and visits to colleagues to sustain and increase the regional support base.

Internal: Collegium rationale for quarter is set in place and collegium room is transformed with new decor to be celebrated with birthday party, a great roundtable and Saturday night house celebration.

Contradiction: Symbolizing the immediate demands as the necessary foundations for the quarter's and year's victories. (Wk. 2)

RELIGIOUS HOUSE: MELBOURNE

External: House sets appointments with both corporations and individual donors to launch development year.

Internal: House finds the right facility in the right location at the right price.

Contradiction: Organizing the House's move in such a way to allow the external mission to move forward. (Wk. 2)

RELIGIOUS HOUSE: CANBERRA—MURRIN BRIDGE HDP

External: LENS marketing is the major thrust engraved on everyone's eyes as the country aim of the Sydney Regional Team markets in Orange, Torbes, Molong, Dubbo and Parkes. Breakthrough occurs in industry marketing with \$1500 order for boomerangs. Soft goods orders for \$300 are dispatched.

Internal: Regional team meeting after 10 day intensive city house search, leaves Ken and Jolu in Murrin Bridge, Debbie assigned to Sydney city permeation and Elaine to Sydney City Team.

Contradiction: Articulating future directions for Murrin Bridge and an aboriginal strategy. (Wk. 3)

RELIGIOUS HOUSE: BRISBANE

External: Circuiters return to House after three weeks on road with great stories of a huge region.

Internal: Regional core does RS-I refresher course.

Contradiction: Putting all the elements of this Quarter together so movement can move. (Wk. 3)

SUVA**RELIGIOUS HOUSE: AUCKLAND**

External: High School Community meeting: NZ sets stage for work with high school for the coming year. In conversation with Speaker of the House, Sir Richard Harrison, he commits himself to handling work permit arrangements to enable future flexibility. Visits from community workers and newspapers and getting the Town Clerks approval for Burrough Council LENS require continual sensitivity and interpretation.

Internal: "The Box" of all House materials from the summer and Majuro finally clears customs.

Contradiction: Engaging people in programs before their imagination runs wild in speculation about who we are and what we do. (Wk. 2)

RELIGIOUS HOUSE: APIA—SALANI HDP

External: Eight Matais visit local produce buyer for advice and leave with other to buy as much Salani taro as the Matais can grow as well as an examination of the Matais Plantation before the week finished.

Internal: Future gets clearer as Marilyn and Margaret obtain visa extensions and Mary Laura lands high paying consulting job.

Contradiction: Integrating the great strategies for the globe, area, region, and project. (Wk. 2)

SAN FRANCISCO**RELIGIOUS HOUSE: SAN FRANCISCO****RELIGIOUS HOUSE: SAN JOSE—RICHGROVE HDP**

External: Planning with forces from Los Angeles and San Francisco for January HDTs releases practical vision and timeline. School Board approves expansion of preschool for migrant children providing 60 more children access to education. A \$52,000 grant will renovate present preschool facilities.

Internal: The assignment of Peter Fuchs from the Los Angeles House to Richgrove for work on the HDTs brochure swell numbers to four as well as expands imagination for the possibilities to Richgrove youth.

Contradiction: Releasing expanded leadership to participation in effective corporate forms. (Wk. 2)

RELIGIOUS HOUSE: SEATTLE**RELIGIOUS HOUSE: LOS ANGELES**

External: Central Park Five task forces are working finding jobs and involving gangs. Richgrove community leadership works with regional colleagues and house people in a PSU for HDTs. Following a SIF (Special Issues Forum) on public transportation. The county created a Transportation Commission.

Internal: Regional colleagues host and celebrate House Church followed by regional team meeting.

Contradiction: Slowing down long enough to create quarter plan. (Wk. 3)

RELIGIOUS HOUSE: PHOENIX

External: The regional swirl of Oktoberfest continues to build as regional team — house and HDP staff and guardians — brings off Elder Town Meeting Training events in Wilcox, Tucson and Yuma for White House Conference with over 150 attending, holds first Albuquerque roundtable with ten, and sets up two global film showings with Navajos for next month. Phoenix guardians meet with development to discuss Annual Appeal completion and work on guardians' covenant.

Internal: House youth hold collegium and hear Alex St. Clair do CYF spin.

Contradiction: Creating system of data accessibility to sustain regional momentum and guardian engagement. (Wk. 3)

RELIGIOUS HOUSE: WICHITA—PISINEMO HDP

External: Tribal Community Development Office requests assistance from Pisinemo to develop alternative housing program.

Internal: House celebrates Keahi Forbes' eighth birthday and Father George Florendo's sendout.

Contradiction: Meshing new interest among church and civic groups in Tucson with forward movement of project programs. (Wk. 3)

RELIGIOUS HOUSE: BILLINGS—INYAN WAKAGAPI HDP

External: All ICS staff on site help out with shopping center facelift as floors and walls are repainted in store and laundromat. Cafe is readied for reopening for the winter. Circuits continue with week of planning.

Internal: House attends John Denver concert to celebrate two October birthdays; at preconcert press conference, ICA staff meet him and present him with Cannon Ball Documents.

Contradiction: Creating the structure for exchanging images and information between the two House teams of region and project (The "Cowboys" and the "Indians"). (Wk. 3)

RELIGIOUS HOUSE: DENVER

External: Weekly regional team meetings enable momentum on all fronts. Guardian coming back from Chicago Guardian Consult, comes straight from airport to meeting and House Church. Two week metro circuit reports film showings and events on timeline.

Internal: Regional colleagues join in roundtable and Saturday morning study of summer talk, *The Corporate Life*.

Contradiction: Coordination relationships between the House and the regional teams that empower both entities. (Wk. 3)

EDMONTON**RELIGIOUS HOUSE: EDMONTON****RELIGIOUS HOUSE: VANCOUVER**

External: Regional team meeting pushes the arenas of training and regional coverage towards models. A report is created. Team assigns Raymond Tickner to Guardians meeting, corporately covering the \$470 airfare.

Internal: Thanksgiving feast launches week of plenty with 20 pounds inkind coffee, two very promising job prospects and the creation of a fine song and symbol for self-support victory.

Contradiction: Eliciting consensus on quarter timeline from entire regional team to release action. (Wk. 3)

RELIGIOUS HOUSE: ANCHORAGE-MINTO HDP

External: Team Meetings for the Anchorage Metro circuit plan a "Walking About" to get to know the metro. The first regional newsletter, *The Voice of the North*, and the second great film event of the quarter for October 28.

Internal: Reorganizing our decor in the collegium room releases one wall for "manuever" temporary decor.

Contradiction: Effectively grounding our quarter manuevers in daily structures to release motivity. (Wk. 4)

RELIGIOUS HOUSE: SASKATOON

RELIGIOUS HOUSE: WINNIPEG—VOGAR HDP

External: House sends out mailing for Week 6 Imaginal Education Seminar and begins set-up procedures. Colleagues and House are creating regional newsletter.

Internal: New colleagues participate in roundtable as we look into the Other World through the transparent life of Sadat. (Wk. 2)

HOUSTON

RELIGIOUS HOUSE: HOUSTON

External: Visits this week with two corporations, one university and an agency reveal a depth collegiality expressed as LENS referrals, sharing global networks, introductions and financial support.

Internal: House swells as Larry returns from two weeks of testing the shuttle and Alfrieda returns from four weeks of shuttling then depletes again as Sue and Ray get admitted to hospitals for repairs and swells again as Joe Crocker joins us for development and Daphne Britain visits for weekend.

Contradiction: Developing practical images of victory for each of the metro's, particularly Houston. (Wk. 2)

RELIGIOUS HOUSE: AMARILLO—INDIAHOMA HDP

External: Annual commitments swell to \$23,000 with Kamala Parekh spending the week in the region ending her stay with a luncheon in Indiahoma with Mayor, VISTA volunteers and other community leaders. Tom Whitsett and Dane and Glenda Adkinson represent the region at continental Guardians meeting in Chicago. Bartlesville sets TM date for November 2 and Indiahoma Park Board begins to form with excitement over dance pavilion.

Internal: House holds CEM PSU, continues office systems creation and enjoys great candlelight roundtable.

Contradiction: Sharing methods of leadership, planning and depth reflection while maintaining distance and indirection. (Wk. 1)

RELIGIOUS HOUSE: SAN ANTONIO—ASHERTON HDP

External: San Antonio Metro meets for first roundtable with ten present; metro leader leads it after first doing an eight-hour workshop with the House on metro focus. Asherton has several widely attended community meetings over the issue of which program gets use of a certain building.

Internal: Eliseo puts in fall garden and House renovates with new decor, paint, cement and electrical wires.

Contradiction: Expanding methods of reflection and planning beyond a few. (Wk. 2)

RELIGIOUS HOUSE: DALLAS

RELIGIOUS HOUSE: NEW ORLEANS

RELIGIOUS HOUSE: MEMPHIS—DELTA PACE HDP

External: Twenty-five participate in East Pasco County TM from all different organizations and companies. Miami Region newsletter is completed and mailed. House impacted by Management visit from Doug Allan.

Internal: The Reeses are sent out to Christian Meeting in Ft. Lauderdale, House celebretes John Scoville's 26th birthday.

Contradiction: Operating according to plan while honoring communities' requests. (Wk. 4)

RELIGIOUS HOUSE: ATLANTA

RELIGIOUS HOUSE: MIAMI

External: Fifteen attend RS-I in Donalsonville, Georgia. \$600 is given by Guardian and \$600 more is promised.

Internal: The weekly roundtable is still a hit with five with five people.

Contradiction: Operating out of corporate model in midst of dispersion. (Wk. 3)

CHICAGO

RELIGIOUS HOUSE: CHICAGO NEXUS

External: McDonalds LENS with 160 participants and 4 symbolic order staff in a faculty of 30 is a great event and demonstrates the catalytic power of the course. National Association of Neighborhoods 30-participant VISTA 5-day training course on sixth floor, and local black catholic school CYF pedagogy in Lumumba Room concretize the image of the nexus as an ongoing training center.

Internal: Sixth graders manning the cockroach extermination campaign, and a fine Student House parents/guardians/faculty dinner reaffirm missional family order structures as being right for the times. North American Area priors are hosted.

Contradiction: Discerning and articulating the corporate Win that brings everything off. (Wk. 5)

RELIGIOUS HOUSE: CHICAGO—FIFTH CITY HDP

RELIGIOUS HOUSE: OMAHA—LORIMOR HDP

RELIGIOUS HOUSE: KANSAS CITY

External: Movement memo goes out on schedule. Lorimor CEM document is ready to print. Pat Lilliard of Federal Executive Board in Kansas City requests more information re : LENS.

Internal: Roundtable continues as striking event while World Series calls forth sense of community new to Kansas City.

Contradiction: Incorporating World Series excitement into missional results. (Wk. 3)

RELIGIOUS HOUSE: MINNEAPOLIS

External: Week II LENS pedagogy with participation from Chicago and Kansas City regions and Minneapolis organizations launches 10 day LENS training and marketing program. The demonstration on ABC, Inc. reflects each person's own office situations. The tactical system, grounded in real contradictions, draws a round of applause.

Internal: All new ICA office systems are in place with new decor, space arrangement and data management.

Contradiction: Creating strategy for taking the offensive for programs and movement formation in all metros. (Wk. 4)

RELIGIOUS HOUSE: ST. LOUIS

External: First regional newsletter goes out while the countdown is in final week toward Mill Shoals CEM. Surprize project culminations this week are the announcement of

\$800,000 from Environmental Protection Agency for sewer and the paving of Highway 45 through the town.

Internal: Youth Matt Hockley leads collegium study on Prolegomena of the Order while emerging generation Bridget Harvey stars in her preschool fundraising event.

Contradiction: Involving Mill Shoals' citizens and extension network leadership in the CEM. (Wk. 2)

RELIGIOUS HOUSE: INDIANAPOLIS

External: The staff continues an established pattern of holding five cadre meetings in three different metros. Office receives five registrations for RS-1, November 1—2.

Internal: Two Guardians provide adult presence in House and enable youth cluster to celebrate Denise Stanley's sixteenth birthday and the victory of all youth making the honor role.

Contradiction: Keeping the House dynamic operating while staff members dispersed to four different states (Wk.3)

RELIGIOUS HOUSE: DETROIT

External: Quad-metro activities intensify metro circuits with a Town Meeting in Madison Heights, appointments in Lansing and Flint and a speaking engagement in Toledo.

Internal: Following a Guardians report meeting that may be the beginning of a regular event, the House celebrates a birthday and anniversary at House Church with 17 people present.

Contradiction: Operating metro circuits without objectifying metro strategies. (Wk. 4)

RELIGIOUS HOUSE: CLEVELAND

External: Implementation of mailings to over 100 prospects, set up of the regional command post and recruitment over the telephone shifts regional consult preparation from first year to third.

Internal: Dialogue through roundtable engages one and all, with one colleague exclaiming "this is amazing".

Contradiction: Reaching everyone about symposium, at same time getting commitment and handling practices. (Wk. 4)

NEW YORK

RELIGIOUS HOUSE: NEW YORK

External: PSU with region, House and nexus participation creates area development plan for year.

Internal: Daily Office witness on "betrayal" sparks conversations and brooding on the exemplary life, destiny and the mission.

Contradiction: Articulating the strategy for all six metros which ensures winning circuiting. (Wk. 4)

RELIGIOUS HOUSE: PITTSBURGH

External: Regional circuits break loose many possibilities in Sewickley, Fairmont and Morgantown—inkind, too.

Internal: Regional mailing gets done fast as metro colleagues and House put together automated system for computer typesetting, offset printing and folding.

Contradiction: Balancing time to do circuits and development when both have number one priority. (Wk. 2)

RELIGIOUS HOUSE: ROCHESTER

External: One planned follow-up and spontaneous meetings result in two Binghamton Directors conference proposals being implemented by new coalitions within two weeks after event. CEM plans, recruitment going full blast, Buffalo Core takes shape and Rochester Core adds a morning to their schedule.

Internal: Two conference calls per week established for "house meetings" as way to symbolize "one house for the region".

Contradiction: Creating the imaginal constructs which allow us to experience being one region with active cores in every metro. (Wk. 2)

RELIGIOUS HOUSE: WASHINGTON, D.C.—IVY CITY HDP

RELIGIOUS HOUSE: BALTIMORE—WIDEN HDP

External: Community workday accomplishes much at gym and grill, augmented with young adults from Coraopolis, Pennsylvania churches. Extension serice aids in locating prospective manager for the Widen Manufacturing Co..

Internal: Apple and pumpkin pies aid revamping of slide show and end of day mini-celebrations.

Contradiction: Parceling the comprehensive mission into manageable units to allow individuals to take responsibility in a corporate context. (Wk. 4)

RELIGIOUS HOUSE: PHILADELPHIA

External: First Evening at the Institute for the year produces requests from Lutheran Student Center for speakers, an inquiry on how to join ICA and general amazement with the Youth Cluster's presentation on their experiences in HDP's last year. House evaluates state of region during reflection/training week.

Internal: Awe of victory permeates the House as the Phillies win first World Series — ever; and ponder how to invent the structures that will keep the momentum of the winning self-story alive for colleagues in the city and region.

Contradiction: Journeying cores with ad hoc timelines—which become manifestly inadequate. (Wk. 4)

RELIGIOUS HOUSE: BROOKLYN—STARKS HDP

External: In a week of brinkmanship, signal events come off. The woodshop payroll is paid on Friday, the State Board of Advisors and village SEC give first go ahead for Starksdays (CEM). A wingding workday burns brush and prepares community room for wallboard.

Internal: Donna Denis, sojourner of one week, transforms house curtains and spirit and gets boyfriend and parents here for workday; task force team departs leaving three around table.

Contradiction: Mobilizing troops from village and state to get the whole task done. (Wk. 4)

RELIGIOUS HOUSE: BOSTON

External: House and regional colleagues participate in 150th anniversary celebration at Fishel's church and meet the new bishop. Update labels for 125 families are typed and 55 families receive letters asking them to recruit two people for November RS-1.

Internal: Self-support moves forward as Sandra Moore negotiates \$2200 raise, Rich McKay gets new teaching job and Catherine Goerdts lands job on first day of looking.

Contradiction: Holding the tension between immediate and long range tasks in a way that calls forth new participants. (Wk. 4)

MONTREAL

RELIGIOUS HOUSE: MONTREAL

External: Tri-region (Montreal/Quebec/Sudbury) weekend builds three key strategies for the quarter.

Internal: Sarah Kelder attends roundtable, Bronwyn Rees starts work, and PSU weekend topped by fondue celebration.

Contradiction: Handling the care structures and local formation while encompassing care for the whole geography. (Wk. 4)

RELIGIOUS HOUSE: TORONTO

RELIGIOUS HOUSE: OTTAWA

RELIGIOUS HOUSE: HALIFAX—LORNE DE L'ACADIE HDP

External: Montreal and Halifax Houses meet in Lorne for Thanksgiving feast and strategy session on cluster for north shore of New Brunswick (near Lorne). Lorne HDP core host elders Thanksgiving dinner — a great event with all food and decor materials inked by members of LHDP.

Internal: John Rader arrives to complete House team, House does Quarter battleplanning with local core represented — session includes looking at history and social/economic contradictions and proposals for 10 communities on the north shore

Contradiction: Launching regional activity with power and excitement. (Wk. 4)

CARACAS

RELIGIOUS HOUSE: CARACAS—CANO NEGRO HDP

External: Area Caracas hosts continental area representatives from Guatemala, Jamaica, Brazil, Chile and Peru for five days of planning at the beach resort in Caraballeda, producing consensus on continental calendar for the year and bringing into being a continental development task force. Cluster villages request weekly cadre meeting as more Barlovento TMs are visited and set up. Mrs. Hodding Carter and J. Walter Thompson visit Cano Negro HDP as site visits become a weekly occurrence.

Internal: Saturday evening celebration around the pool, highlighted with wild water games leads continent to conclusion that the team is indeed a forceful dynamic; Inkind food victories cut Continental Council costs in half.

Contradiction: Building consensus on one story that allows missional activity in six teams. (Wk. 2)

BUENOS AIRES

RELIGIOUS HOUSE: SANTIAGO—SOL DE SEPTIEMBRE HDP

External: Week of Community Planning is completed. Daytime visits gather data and plenaries are held in Community Center in the evening. Final plenary interrupted momentarily by lights going out, but continues in high spirits in candlelight with all Guilds creating their symbols and a joy-filled feast of accomplishments.

Internal: House enables sector visits and plenaries in the midst of visits to dentist and doctor and other contingencies.

Contradiction: Creating the climate-context for event-filled events in midst of propensity to only find fault and see failures. (Wk. 3)

RIO DE JANEIRO

RELIGIOUS HOUSE: RIO DE JANEIRO—BANANEIRAS HDP

External: In a week of victories: The new model guinea pig cage nears completion; one of the local churches offers a model for community responsibility for the preschool; the regional health office announces the health outpost will open in November with a staff of two, including a doctor, once a week; a company donates a Volkswagen bus; the new youth club nominates temporary officers at its second meeting; and the president of Mobral, community development organization, is interested in LENS.

Internal: Greta Hanson celebrates her 14th birthday with a party attended by the House and community youth.

Contradiction: Preparing for extension while keeping momentum in Bananeiras. (Wk. 3)

HAVANA

RELIGIOUS HOUSE: KINGSTON—WOBURN LAWN HDP

MEXICO CITY

RELIGIOUS HOUSE: GUATEMALA CITY—CONACASTE HDP

External: A great quarter planning weekend with 250 residents of Conacaste, a full two-day children's program, Spanish dancers, marimba band and visiting mayors reveals the community's longing to be a demonstration sign for Guatemala through solid plans for the quarter.

Internal: Ed Shinn arrives with George West and Gene Boivin from continental council in Caracas to coordinate the plan for the establishment of the house in Mexico next year.

Contradiction: Rationalizing the quarter plan and organizing the timeline so that realistic assignments can be made to cover all fronts. (Wk 2)

LIMA

RELIGIOUS HOUSE: LIMA—SAN VINCENTE DE AZPITIA HDP

External: Azpitia core spends one week in intense planning for coming quarter. Follow-up event to Community Forum in mining community reveals possibilities for wool industry. Training short course prepares auxiliary for training others.

Internal: Two-day council solidifies images for the coming year; George Packard, Jim and Karen Newkirk go to Caracas for continental council.

Contradiction: Living out of images that someone else is in charge. (Wk. 2)

THE GLOBAL ORDER CENTRUM REPORT

BRUSSELS
BOMBAY
SINGAPORE
HONG KONG
CHICAGO

QUARTER II WEEK FIVE

GLOBAL DEVELOPMENT CENTRUM

Global Development Centrum reports that program income prospects increase dramatically through LENS in Japan. Representatives of the major Indonesian Chinese businessmen's foundation visit Kelapa Dua. Two years committed tax rebate from U.K. hits the bank and German program funding totals nearly \$1000. Regional preparation for development talks increases effectivity in appointments. The key contradiction lies in the arena of allowing new income goals to be the practical images of possibility in every region.

GLOBAL RESEARCH CENTRUM

Global Research Centrum reports the Regional Consult Procedures Manual (First Edition) is created by cross-centrum team in time for Cleveland Pilot set-up. PSU on Order study books selection narrows field down for a decision this week. Songbook cover stock (Order Green) was inkinded with a phone call. Hong Kong reports publication of *Seapac Soundings Vol. IV No. 2*, and a breakthrough in setting the six-week HDTS into a three-week time design for Sudtonggan HDTI. The key contradiction lies in the arena of discerning the emphasis of Quarter II in midst of unsettled program schedule.

GLOBAL OPERATIONS CENTRUM

Global Operations Centrum reports that the first teams are sent to prepare for Regional Consults in Cleveland, Lusaka and Medan. Hong Kong Centrum participates with Nam Wai in workday and sees ways to capitalize on the new images released there following election of new board. Interchange grows as a photocopier enables more mailing to all regions in one week than ever before in the Singapore zone and as Brussels mails the second biweekly interchange packet. The key contradiction lies in the arena of managing the transitional assignments, scheduling and interchange that will powerfully usher in regional thrusts.

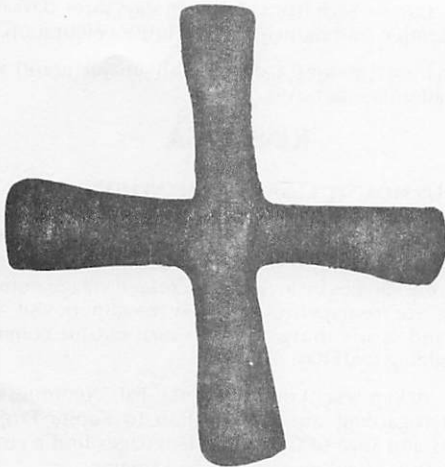
GLOBAL MANAGEMENT CENTRUM

Global Management Centrum reports that Singapore enhances Interchange Support Services with a photocopier in residence and Brussels' accounts are operational for the year after a trek to Rome. Chicago hosts a National Association of Neighborhoods (NAN) — VISTA training group on the sixth floor pointing to possibility of the building paying for itself and concretizing the image of International Training Center. The trend in time from Brussels is regular contact with Houses; the space-breakthroughs include Singapore implementing a sophisticated management space design and Hong Kong claiming the year with fresh decor; and the inkind on-the-road breakthrough in Chicago affirms the serious importance of inkind touching arenas of largest expense. The key contradiction lies in the arena of focussing in-service training and building and equipment maintenance as futuric issues in the midst of immediacies — realizing the Turn to the World has now become the *world responding*.

THE GLOBAL ORDER REPORT

QUARTER II WEEK SIX

NOVEMBER 3-NOVEMBER 9, 1980



LONDON

RELIGIOUS HOUSE: LONDON—ISLE OF DOGS HDP

External: The gathering of the clans: The movement meets in Manchester and consens on Bristol for first Regional Consult. Order members' families gather in London House for Guest Night which enables the creation of a human face for the ICA.

Internal: New depth of teamwork emerges in preparation for important Guest Night—team includes constant engagement of guests in the task.

Contradiction: Focusing power on key breakloose arenas to journey every region. (Wk. 3)

RELIGIOUS HOUSE: GLASGOW

External: Human Development Zone PSU by House and colleagues kicks off practical research events with discussion of collegial roles within the Movemental Order and the discovery that the question of the HDZ is the question calling the Movement to care for the region. A Baptist clergyman, who two years ago sojourned in the Isle of Dogs, uses the services of the ICA in Leeds, Yorkshire — the ICA conducts a four-hour workshop (Town Meeting) with the entire assembly of Yorkshire Baptist Ministers (35 present) including document creation.

Internal: Decision to push on development leads to file sorting, warboard creation and the setting of initial appointments.

Contradiction: Caring for the entire area, while regional demands are intensifying. (Wk. 3)

RELIGIOUS HOUSE: BRISTOL—TAI'RGWAITH HDP

External: Visit to Aberjan secures blessings of author of *The Call To The Valleys* for ICA work. Facility is booked for Symposium of Bristol Regional Consult.

Internal: House overflows with colleagues from Brussels, Glasgow, London and Cardiff to build plan for regional consult.

'Why have you come here? You hate me and you sent me away.' They answered, 'We have seen plainly that the Lord is with you, so we thought, Let the two of us put each other to the oath and make a treaty that will bind us. We have not attacked you, we have done you nothing but good, and we let you go away peaceably. Swear that you will do us no harm, now that the Lord has blessed you.'

Genesis 26:27—29

Contradiction: Webbing together project, regional consult and development to ensure maximum effectivity for all. (Wk. 4)

MADRID

RELIGIOUS HOUSE: MADRID

External: Registration is finally signed, sealed and stamped approved as not-for-profit association, No. 3882, Department of Interior. Circuit to Bilbao Region results in first Town Meeting demonstration and date set for November 5 and 6.

Internal: Community Church of Madrid Retreat opens many international community opportunities, and fulltime job at American School offered Mary Kaye Soderland for \$25,000 U.S.

Contradiction: Covering geography for long enough to do impact and engagement. (Wk. 3)

PARIS

RELIGIOUS HOUSE: PARIS

External: Wednesday Training Academy turns into an event of possibility with informal translation methods that make neither English or French a block. Dominique is sent out to Cairo on LENS trek.

Internal: Preparation of Clithero apartment and Iseley conversation make Week II a fine low key event.

Contradiction: Imaging self-support job search as integral part of corporate vision. (Wk. 3)

RELIGIOUS HOUSE: BRUSSELS NEXUS

External: Facility search uncovers several good possibilities.

Internal: Limerick writing (the poet) continues trend of game related to the exemplar as a tool for transisting into the roundtable evening.

Contradiction: Pinpointing the missional differences in the midst of a missional landscape that is very much different to the one anticipated at the beginning of the year. (Wk. 4)

RELIGIOUS HOUSE: BRUSSELS

External: Several visits while searching for housing are occasions of longrange visioning and additions to national board of advisors.

Internal: Sojourner. Pieter Schrijnen, is enlivening presence at roundtable and construction projects around the house.

Contradiction: Structuring core night into first priority formulation events. (Wk. 4)

ROME**RELIGIOUS HOUSE:ROME—TERMINE HDP****LAGOS****RELIGIOUS HOUSE: LAGOS—IJEDE HDP****ABIDJAN****RELIGIOUS HOUSE: ABIDJAN**

External: Proposal for work with the National Office for Rural Development is written, translated and submitted after an appointment with the director.

Internal: Marking the Fast is initiated with conversation in which House names the "on behalf of" and is culminated with feast and mounting of a beautiful wooden world grid.

Contradiction: Getting preparations for Ghana trip on schedule: the trip leaves tomorrow and preparations are a week behind. (Wk. 2)

FRANKFURT**RELIGIOUS HOUSE: FRANKFURT**

External: Development and program income move into new orbit with 2600 DM from program, 500 from churches, and 500 from individuals in the first two weeks of October. A presentation on the woman's role in development to a church women's event reaches over 300 women, pays 250 DM and extends sector penetration in Ludwigshafen.

Internal: New house rhythm becomes fully operational as old responsibilities for finances, food, EG, etc. are transferred and new support arenas assumed.

Contradiction: Finding ways to increase German-speaking circuit set-up staff so as to get momentum under regional intensification. (Wk. 4)

RELIGIOUS HOUSE: BERLIN—KREUZBERG OST HDP

External: The House welcomes new ICA members at an Open House attended by project people as well as others from Berlin with a good representation from the Turkish community.

Internal: The joys and struggles of development become clear as people write a proposal in English, German and Turkish.

Contradiction: Forging ahead with a strike force while unclear about its context and future implications. (Wk. 4)

RELIGIOUS HOUSE: AMSTERDAM

External: Pastors visited during Koln circuit experience relief from the secular/religious tension and plan events in Lerna and Dortmund as staff explains the action factor/myth factor model, and talk about GCF in terms of confession, praise and dedication.

Internal: Roundtable with Dr. Peter Borg is a delight of German foods and conversation; Guardian Sherry Thorson, from Area San Francisco, visits brother during family assigned Week II.

Contradiction: Increasing interchange mechanisms in midst of increasing circuit contacts. (Wk. 3)

STOCKHOLM**RELIGIOUS HOUSE: COPENHAGEN**

External: Mrs. Orm Hansen, wife of renowned World War II general and Mrs. Mona Mollerup commit the use of their names as European Advisors. Mrs. Bredde in NORAD pulls out all stops to unblock the Kenya grant and suggests a wider structural relationship in future. Area development story is completed and a model for focusing in the Set locations is created.

Internal: Danina Sach from Hamburg stays three days during school vacation and participates in House celebration.

Contradiction: Landing a decent fish (major grant) with a rather inadequate net. (Wk. 4)

KINSHASA**RELIGIOUS HOUSE: LUSAKA—KAPINI HDP**

External: Kapini Expansion gets underway with visits by auxiliary and project headmen to fourteen villages nearby regarding participation. Every headman's insistence that all his neighboring villages be included increased village number to 31, calling for remaneuvering. New headmen visit village council and nearly thirty outsiders turn out for community clinic-building workday.

Internal: Ackim is sent out to Nigeria; PSU continues all day Saturday regarding auxiliary relation to Kapini Project as catalyzers and seven EG in three languages find a common language in curriculum activities and singing.

Contadiction: Getting the extension development plan and expansion frame in place.(Wk. 3)

CAIRO**RELIGIOUS HOUSE: GIZA—EL BAYAD HDP**

External: Door-to-door visitation secures baseline data on every family in El Alalma cluster village, men of village consent for women's course to be held and will help publicize it. Local government cluster council gives powerful authorization letter for use with development and inkind in Cairo. Cluster expansion activities intensify and visions of possibility begin to swirl in heads of all involved.

Internal: Rochmat Djatmiko arrives from Indonesia — all assigned are finally on location.

Contradiction: Consensing on images and models for engaging Those Who Care in ongoing ICA activities. (Wk. 2)

NAIROBI**RELIGIOUS HOUSE: NAIROBI—KAWANGWARE HDP**

External: Ford Foundation funds women's LENS and five pilot Women's Advancement Modules with 98,000 Kenya Shillings in conjunction with the national women's organization, Maendeleyo Ya Wanawake. Three day advance training school ends with troops ready to do five new village consults.

Internal: House experiences a new quarter beginning as 232 people receive assignments, send out Stansburys to Malaysia, welcome Rebecca Nichols from Hong Kong and Masika Nakaremana from the HDTI and first stipend of the new year is sent out.

Contradiction: Building adequate support structures to sustain momentum. (Wk. 3)

RELIGIOUS HOUSE: KAMWELENI—KAMWELENI HDP**BOMBAY****RELIGIOUS HOUSE: BOMBAY—MALIWADA HDP**

External: Maliwada Sukdi factory reopens with a new contract. Work with Brussels and Bombay Nexus completes 25

page, Phase III document which will launch four sector absorption.

Internal: House experiment with nexus with Quarter II strategy watch and collegium suggests calling the daily address, "The Declaration" for the day.

Contradiction: Securing the government commitment to Phase III that will release four sector engagement. (Wk. 2)

RELIGIOUS HOUSE: BOMBAY-NEXUS

DELHI

RELIGIOUS HOUSE: DELHI-SIKROR HDP

External: One hundred people at village assembly welcome new auxiliary and decide four keystones for quarter. Training begins in village on sweater knitting machine for six women representing three main castes. Community Development Association manager announces need to move outwards to surrounding villages.

Internal: Auxiliary get training in Town Meeting (Gram Sabha) cluster campaign and three villagers attend opening roundtable.

Contradiction: Expanding movement engagement in midst of fast-moving accomplishments. (Wk. 2)

MADRAS

RELIGIOUS HOUSE: HYDERABAD-NADLAPUR HDP

External: Eleven electric poles are raised for the first fully electrified colony in the taluka. The dairy project is catalyzed with over two hundred "Hawaiian Giant" fodder plants.

Internal: Village enjoys three days of celebration for Dhusara and Batkamma; K. Samsons' family visits the project.

Contradiction: Securing a final victory on the housing colony by November 14. (Wk. 3)

CALCUTTA

RELIGIOUS HOUSE: CALCUTTA

External: Presentation to BATA managers from across India. The Team and Team development elicits possibility of future LENSs.

Internal: Emerging Generation curriculum designed and structures begun, facility search on and inkind donors revisited to start the Quarter.

Contradiction: Preparing, providing, and procuring in the arena of internal life in such a way as to enable and not block significant engagement in the external mission. (Wk. 2)

SINGAPORE

RELIGIOUS HOUSE: SINGAPORE NEXUS

External: Nexus focuses on LENS set up in Kuala Lumpur.

Internal: First roundtable held with two guests and the House welcomes new photo copier to set up interchange.

Contradiction: Making a formation event out of coming meeting of the Board. (Wk. 2)

RELIGIOUS HOUSE: KUALA LUMPUR—SUNGAI LUI HDP

External: Three regional treks illuminate strategic program openings in diverse parts of Malaysia. Local bank officials enable trek teams as hosts and calling partners. A plane ticket is inkinded for Sungai Lui leader to attend Bontoa consults.

Internal: The Hari Raya celebration and Mark's birthday fall on the same day providing great opportunity for traditional village visiting and an open house in Sungai Lui for nexus and Kuala Lumpur colleagues.

Contradiction: Finding the effective balance in time design to maintain project relationships, do the regional expansion and formulate metro colleagues. (Wk. 3)

RELIGIOUS HOUSE: JAKARTA-KELAPA DUA HDP

External: New Indonesian brochure sent to inkind advertising firms for art work/copy. Kabupaten Cooperative sets up bookkeeping training for small loan monitoring.

Internal: Japanese volunteer for refugee camp work and old movement colleague, Chiyoko, visits Kelapa Dua; roundtable surprises and impacts House with Sukarno generalship.

Contradiction: Creating unified regional thrust through effective troop use and prioritized actions inclusive of areal demands. (Wk. 3)

RELIGIOUS HOUSE: MEDAN-BUBUN HDP

External: Two hour meeting with Health Coalition lays out context for what a coalition is. Jaring Halvs, one of the Bubun cluster villages, hosts a meeting with Cannat, officials, villagers and ICA, to discuss possibility of their Kecamatan being the site of cluster extension.

Internal: A phone call to Chicago Nexus during Quarter I and II planning session with Sherwood, John Epps, Dick, Gail and Medan House reveals that Chicago Nexus and Indonesia consensed on the same timeline by intuition the night before.

Contradiction: Preparing housing for 80 guests and keeping the marathon movement going in the Bubun Cluster with only 27 days before the regional consult begins. (Wk. 2)

RELIGIOUS HOUSE: UJUNG PANDANG-BONTOA HDP

External: First nighttime workday, held by lamplight involves 40 from all the stakes breaking rocks for meters of village lanes. A week of documenting year II is full of surveys—one shows a 250% increase in school attendance and stories of changed lives.

Internal: Water is still scarce with drinking water having to be brought in daily; Aida and Englai arrive after eight day boat trip completing staff personnel.

Contradiction: Ensuring maximum participation of Bontoa in doing the cluster consults and plans as well as in the second year anniversary. (Wk. 2)

HONG KONG

RELIGIOUS HOUSE: HONG KONG NEXUS

External: Our first evening at the Institute includes Japanese and Chinese guests. New development troops arrive and are immediately on the road. Faculty for the HDTS in Philippines is sent out.

Internal: A glorious floating roundtable has whole house on a Sanpan on the bay in front of the House as we celebrate the Cheung Yung Holiday.

Contradiction: Allowing intuitions that the structures of society are ready for ICA methods to become actual possibilities. (Wk. 3)

RELIGIOUS HOUSE: HONG KONG-NAM WAI HDP

External: Second Annual General Meeting of Nam Wai Foundation elects 28-year-old chairman and sets stage for workdays, government, business and village calls, and site visits in preparation for grand ICA reception for the new board in week 5.

Internal: Collegium on de Riencourt's "The Soul of China" reveals insights into pillars of Chinese culture and windows through which the Order can glimpse future models of action in Chinese culture; Peter Ballard ties his shoes and rides a two-wheel bike for the first time, all in one week.

Contradiction: Ensuring village engagement during critical week of tasks without which the board reception will not happen. (Wk. 3)

RELIGIOUS HOUSE: KAOHSIUNG-HAI OU HDP**RELIGIOUS HOUSE: MANILA**

External: U.S.A.I.D. gives grant of US\$125,000 for Mactan 24 and Davao 6, Philippine Government gives grant of US\$10,000 for 60 auxiliary salaries, five corporations give \$2,000 each, making it the largest development month ever in the Philippines.

Internal: First RH-13 shows Philippine self-support in the black. The Philippines celebrate the birth of three babies: Andrea Milagros Knutsen, Simon Orion Leenhouts, Karl Kristopher Reusora.

Contradiction: Maintaining the long view while at the same time orchestrating this year's necessary leaps into the new. (Wk. 2)

RELIGIOUS HOUSE: TAIPEI

External: Second week of year's first development trek yields additional commitments of US\$5,500 bringing total for two week trek to US\$30,000. Systematic development circuit to Kaoshiung breaks through for first time in Taiwan resulting in US\$3,500 in commitments for the year and US\$700 in hand.

Internal: Research on Lao Tse, weekly roundtable and edge collegiums on the four-year context for this year's program provide ways to release corporate imagination on the global task in the decade of the 80s.

Contradiction: Deciding on the participants of the first HDTS in Taiwan in the context of a four-year program framework for human development expansion on the island. (Wk. 4)

RELIGIOUS HOUSE: CEBU—SUDTONGGAN HDP

External: Electricity poles from mainline to Sudtonggan are erected day after Ben Potot makes deposit. Preschool buildings in Suba Panas and Basak are built in two weekends. Seventeen demonstration toilets are under construction.

Internal: Cebu staff welcomes the ICA Davao Cluster and Manila house staff for a weekend council of villages highlighted by celebrative meal at Tambuli Beach Hotel.

Contradiction: Developing the plan for national extension that takes Mactan and Langub across the Philippines. (Wk. 2)

RELIGIOUS HOUSE: DAVAO—LANGUB HDP

External: Water is sold for 10 centavos per can to help maintain the Langub Water System. LaPaz General Store inventory and profits for September total 9,000. Nine preschools now in full operation across the Mountain with the children weighed monthly and food provided for daily feedings.

Internal: Seven staff attend Council of Villages at Training Center and spend three days in Practical Seminar led by Sudtonggan administrative staff on village incorporation including the training for village bookkeeping.

Contradiction: Extending Langub's three victories—road, water, and electricity—across the mountain. (Wk. 2)

TOKYO**RELIGIOUS HOUSE: TOKYO**

External: Five day Area Council at a camp in Seoul features a one day HDZ research trip to Kuh Du E Ri, a meeting with the provincial governor, four new songs, a great Korean meal celebration, and a final night as guests of the Hyatt Regency Hotel.

Internal: National Sports Day is observed with an all day picnic in the park, followed by a shabu-shabu (beef) feast at the house.

Contradiction: Acting tactically while thinking strategically. (Wk. 2)

RELIGIOUS HOUSE: SEOUL**RELIGIOUS HOUSE: CHUN CHEON—KUH DU E RI HDP**

External: Life methods filled full the preschool consultant's week. Workshop in Kuh Du E Ri creates one week of curriculum and another in Man Cheon I Ri creates another, with Miss Park Soon OK, teacher in KDER spiritizing both events. Images of releasing the methods throughout the zone are lifted up by colleagues following the second workshop.

Internal: New working decor of 13 week event timeline and newly redrawn Kuh Du E Ri map enables seeing both the details of the village and the weekly requirements to fulfill the decisions for the quarter.

Contradiction: Structuring Guardian relationships to enable fuller participation. (Wk. 3)

RELIGIOUS HOUSE: FUKUOKA

External: The second day of leadership training is held in chiku gun (county), now all the towns have been done and are ready for the next step. Advisors meeting is held with three new people and two of the advisors there for the first time. A youth leadership Town Meeting is held in Saga Perfection with youth 22 to 30 years old.

Internal: House and advisors spend day decorating the fourth floor collegium room to the theme of "The Globe to the Local Building the Region"—the presence of the room is power.

Contradiction: Deciding and creating the form for volunteers and the structures, advisors, women, youth, etc. (Wk. 3)

RELIGIOUS HOUSE: OSAKA

External: First volunteer meeting at the new house shows volunteers eager to schedule service as well as celebration. Friday Night at the Institute has 23 around the table and plans to hold this year's Philippine trip in December.

Internal: Rebecca Boon arrives and house begins four new jobs.

Contradiction: Knowing which opportunities will release the next step. (Wk. 2)

RELIGIOUS HOUSE: SAPPORO—OYUBARI HDP**SYDNEY****RELIGIOUS HOUSE : SYDNEY**

External: RS-I is held in House this weekend with strong group of new colleagues, having been set up completely by regional colleagues. John Murchland and Graham Lawrie who attended RS-I ten years ago came to the closing feast to witness to the power of that event.

Internal: Labor Day launches week and House takes outing to Victor Harbor picnicing, climbing on rocks and finding penguin holes in the sand.

Contradiction: Making the shift from preparation to actuation. (Wk. 3)

RELIGIOUS HOUSE: PERTH

External: Two metro circuit teams visit Albany Metro (Week I and Week II), getting back in touch after two years, setting up two CYFs and two film events. Nashua: Perth donates labels, paper, photocopying, typewriter and typist for newsletter, and figures they could do it every month.

Internal: First mobile roundtable of the year is a great spirit event; personnel man who helped Mike find a job brings his family for dinner and wants to return for roundtable next week.

Contradiction: Shifting from looking for the perfect circuit model to becoming the model creators. (Wk. 4)

RELIGIOUS HOUSE: ADELAIDE

External: Development is initiated for the quarter with collegium and phoning and visits to colleagues to sustain and increase the regional support base.

Internal: Collegium rationale for quarter is set in place and collegium room is transformed with new decor to be celebrated with birthday party, a great roundtable and Saturday night house celebration.

Contradiction: Symbolizing the immediate demands as the necessary foundations for the quarter's and year's victories. (Wk. 2)

RELIGIOUS HOUSE: MELBOURNE

External: House sets appointments with both corporations and individual donors to launch development year.

Internal: House finds the right facility in the right location at the right price.

Contradiction: Organizing the House's move in such a way to allow the external mission to move forward. (Wk. 2)

RELIGIOUS HOUSE: CANBERRA—MURRIN BRIDGE HDP

External: LENS marketing is the major thrust engraved on everyone's eyes as the country aim of the Sydney Regional Team markets in Orange, Torbes, Molong, Dubbo and Parkes. Breakthrough occurs in industry marketing with \$1500 order for boomerangs. Soft goods orders for \$300 are dispatched.

Internal: Regional team meeting after 10 day intensive city house search, leaves Ken and Jolu in Murrin Bridge, Debbie assigned to Sydney city permeation and Elaine to Sydney City Team.

Contradiction: Articulating future directions for Murrin Bridge and an aboriginal strategy. (Wk. 3)

RELIGIOUS HOUSE: BRISBANE

External: Eleven people at half day regional core meeting work seriously in teams to plan year's thrust in development, framing and colleague engagement. The core decides to hold regular breakfast meetings to prepare for roundtable.

Internal: Fine roundtable concludes with a great game of canasta taught by Pom and Henny Lightermot from Perth Region who are touring Australia.

Contradiction: Constantly changing clarity of images and intents of team tasks leads to unresolved tensions between doing and not doing for both house members and regional leadership. (Wk. 4)

SUVA**RELIGIOUS HOUSE: AUCKLAND**

External: Stocks' resume is submitted to Presbyterian Church through the church at Tamatea. Opportunities continue to open up through dialogue on many fronts. The Majuro \$200,000 note is renewed.

Internal: First sojourner, Olga Jones, arrives.

Contradiction: Holding the creative tension between preparing space and preparing the staff with the demonstration LENS one week away. (Wk. 4)

RELIGIOUS HOUSE: APIA—SALANI HDP

External: White Sunday is celebrated with great feasting as staff participates in two toonai and supplies the ice cream still hard despite long Sunday service.

Internal: New finance system enhances long range financial responsibility while a flurry of painting and building equip house with a new collegium blackboard, increased storage space, a tool box and painted bathrooms.

Contradiction: Moving from planning to action. (Wk. 3)

SAN FRANCISCO**RELIGIOUS HOUSE: SAN FRANCISCO**

External: Basil Sharp circuits in Sacramento and shares the roundtable construct with the metro core there.

Internal: House experiences a celebration that celebrated the struggle of life as permeators told adventure stories.

Contradiction: Discerning the significating event which gives focus to the multiplicity of activities. (Wk. 4)

RELIGIOUS HOUSE: SAN JOSE—RICHGROVE HDP

External: Planning with forces from Los Angeles and San Francisco for January HDTS releases practical vision and timeline. School Board approves expansion of preschool for migrant children providing 60 more children access to education. A \$52,000 grant will renovate present preschool facilities.

Internal: The assignment of Peter Fuchs from the Los Angeles House to Richgrove for work on the HDTS brochure swells numbers to four as well as expands imagination for the possibilities to Richgrove youth.

Contradiction: Releasing expanded leadership to participation in effective corporate forms. (Wk. 2)

RELIGIOUS HOUSE: SEATTLE

External: Continent, area and region interchange sent out after six-page regional council collating, folding and stuffing in midst of an all-fronts rush on the year.

Internal: House hosts colleague family from Vancouver B.C. at Saturday night fiesta dinner featuring homemade enchiladas following youth newsletter writing and cheering Bellevue High to its first touchdown of the season.

Contradiction: Steering a course through the quarter with incomplete "Talking Paper" for the year and huge gaps in our missional decor. (Wk. 5)

RELIGIOUS HOUSE: LOS ANGELES

External: Methods Academy provides exciting evening for 25 people—for ten participants, it is the first contact with the ICA. Paper and typesetting are inked for the Richgrove HDTS brochure.

Internal: Week II is spent developing and implementing new systems for office, finances, mailings and metro colleague care.

Contradiction: Prioritizing the abundant possibilities for engagement as quarter is planned and year's calendar is scheduled. (Wk. 5)

RELIGIOUS HOUSE: PHOENIX

External: The regional swirl of Oktoberfest continues to build as regional team — house and HDP staff and guardians — brings off Elder Town Meeting Training events in Wilcox, Tuscon and Yuma for White House Conference with over 150 attending, holds first Albuquerque roundtable with ten, and sets up two global film showings with Navajos for next month. Phoenix guardians meet with development to discuss Annual Appeal completion and work on guardians' covenant.

Internal: House youth hold collegium and hear Alex St. Clair do CYF spin.

Contradiction: Creating system of data accessibility to sustain regional momentum and guardian engagement. (Wk. 3)

RELIGIOUS HOUSE: WICHITA—PISINEMO HDP

External: Two attend Solar Adobe School. Eight go to Indian training meeting.

Internal: Project volunteer begins work at Head-start and sojourner obtains part-time job.

Contradiction: Developing skills among community leadership in technical areas of purchasing, marketing and public relations. (Wk. 5)

RELIGIOUS HOUSE: BILLINGS—INYAN WAKAGAPI HDP

External: Circuit to Bullhead begins with four showings of slides of 1973 community event by local VISTA. Industry purchases two trucks at GSA auction.

Internal: Two participate in regional roundtable, while rest of house has pre-Halloween celebration of pizza, beer and Charlie Brown's *The Great Pumpkin*.

Contradiction: Doing the region in midst of house transition and believing less is more. (Wk. 4)

RELIGIOUS HOUSE: DENVER

External: Boulder Neighborhood Town Meetings continue with two more neighborhoods holding meetings this week. October edition of *Communities on the Move Newsletter* is printed and mailed to 400 plus. Circuit to Dolores County Co. launches the Dove Creek cluster.

Internal: House hosts the regional roundtable, Area San Francisco polity dynamic—one person per house, for great weekend of work and celebration including profound conversation on movie *Ordinary People*.

Contradiction: Longing for simplicity instead of celebrating complexity. (Wk. 4)

EDMONTON

RELIGIOUS HOUSE: EDMONTON

RELIGIOUS HOUSE: VANCOUVER

External: Bits and pieces come together as preparation for first circuit to Victoria Metro begins. Regional team spiritizes Guardian's report, finalizes quarter timeline and releases old colleagues into new roles. Article on CYF is printed in local education magazine.

Internal: Self-support moves ahead as YWCA calls Elizabeth for interview as executive director and five appointments are held in Vancouver.

Contradiction: Creating the bold new story which will free risking in brand new strategies. (Wk. 4)

RELIGIOUS HOUSE: ANCHORAGE-MINTO HDP

External: Team Meetings for the Anchorage Metro circuit plan a "Walking About" to get to know the metro, the first regional newsletter, *The Voice of the North*, and the second great film event of the quarter for October 28.

Internal: Reorganizing our decor in the collegium room releases one wall for "manuever" temporary decor.

Contradiction: Effectively grounding our quarter manuevers in daily structures to release motivity. (Wk. 4)

RELIGIOUS HOUSE: SASKATOON

RELIGIOUS HOUSE: WINNIPEG—VOGAR HDP

External: House sends out mailing for Week 6 Imaginal Education Seminar and begins set-up procedures. Colleagues and House are creating regional newsletter.

Internal: New colleagues participate in roundtable as we look into the Other World through the transparent life of Sadat.

Contradiction: Working structurally with colleagues without imposing old structures but creating new routes for care. (Wk. 2)

HOUSTON

RELIGIOUS HOUSE: HOUSTON

External: Visits this week with two corporations, one

university and an agency reveal a depth collegiality expressed as LENS referrals, sharing global networks, introductions and financial support.

Internal: House swells as Larry returns from two weeks of testing the shuttle and Alfrieda returns from four weeks of shuttling then depletes again as Sue and Ray get admitted to hospitals for repairs and swells again as Joe Crocker joins us for development and Daphne Britain visits for weekend.

Contradiction: Developing practical images of victory for each of the metros, particularly Houston. (Wk. 2)

RELIGIOUS HOUSE: AMARILLO—INDIAHOMA HDP

External: Annual commitments swell to \$23,000 with Kamala Parekh spending the week in the region and ending her stay with a luncheon in Indiahoma with Mayor, VISTA volunteers and other community leaders. Tom Whitsett and Dane and Glenda Adkinson represent the region at continental Guardians Meeting in Chicago. Bartlesville sets TM date for November 2 and Indiahoma Park Board begins to form with excitement over dance pavilion.

Internal: House holds CEM PSU, continues office systems creation and enjoys great candlelight roundtable.

Contradiction: Sharing methods of leadership, planning and depth reflection while maintaining distance and indirection. (Wk. 2)

RELIGIOUS HOUSE: SAN ANTONIO—ASHERTON HDP

External: Community submits day care proposal and publishes *La Voz*. Several meetings are held to handle the location of library and health clinic as both structures are in process of expansion.

Internal: House submits tutoring proposal for self-support; addition to Nelson family is expected in March 1981.

Contradiction: Riding the wave of transition to discover new auxiliary role and effective modes of catalysis. (Wk. 4)

RELIGIOUS HOUSE: DALLAS

RELIGIOUS HOUSE: NEW ORLEANS

RELIGIOUS HOUSE: MEMPHIS—DELTA PACE HDP

External: First Memphis Metro Council identifies the beginning of the metro core group and receives a surprise \$1200 pledge paid in full. Michael Shaw returns from Guardians' Consult and North American Priors' meeting and David Zahrt and George Howard are sent out to area frame workshop. Mrs. Betty (Hodding) Carter drops in for a Pace HDP visit and asks how she can help ICA.

Internal: Here on the Management Trek, Doug Allan's visit impacts the House as the sage and is cause for a finishing celebration at the famous Blues Alley.

Contradiction: Declaring the consensed-on directions through naming the year's regional priorities that allow moving with a sense of being about one thrust. (Wk. 4)

RELIGIOUS HOUSE: ATLANTA

External: Atlanta Metro holds Saturday planning meeting. A fine framing and development weekend is held in New Orleans. Preparation for the Gibson CEM continues.

Internal: The Atlanta Metro outnumbers the House four to one and hosts a fine roundtable.

Contradiction: Keeping the fantastic web of relationships from getting all tangled up. (Wk. 5)

RELIGIOUS HOUSE: MIAMI

External: Twenty staff members of Albany, Georgia Mental Health Agency are trained in town meeting method. Ten of them help with Town Meeting for 65 retarded citizens and are convinced that the method works with anyone. John Scoville

returns from area framing Week II in New Orleans with new demands in development and the Regional Consult date.

Internal: House is impacted by collegiums this week dealing with finances, house-hunting and "Harbingers of Hope".

Contradiction: Making clear missional strategies which will overcome the limitations felt in-house. (Wk. 5)

CHICAGO

RELIGIOUS HOUSE: CHICAGO NEXUS

External: McDonalds LENS with 160 participants and four symbolic order staff in a faculty of 30 is a great event and demonstrates the catalytic power of the course. National Association of Neighborhoods 30-participant VISTA 5-day training course on sixth floor and local black catholic school CYF pedagogy in Lumumba Room concretize the image of the nexus as an ongoing training center.

Internal: Sixth graders manning the cockroach extermination campaign, and a fine Student House parents/guardians/faculty dinner reaffirm missional family order structures as being right for the times. North American Area priors are hosted.

Contradiction: Discerning and articulating the corporate Win that brings everything off. (Wk. 5)

RELIGIOUS HOUSE: CHICAGO—FIFTH CITY HDP

RELIGIOUS HOUSE: OMAHA—LORIMOR HDP

RELIGIOUS HOUSE: KANSAS CITY

External: Movement memo goes out on schedule. Lorimor CEM document is ready to print. Pat Lilliard of Federal Executive Board in Kansas City requests more information re: LENS.

Internal: Roundtable continues as striking event while World Series calls forth sense of community new to Kansas City.

Contradiction: Incorporating World Series excitement into missional results. (Wk. 3)

RELIGIOUS HOUSE: MINNEAPOLIS

External: Week II LENS pedagogy with participation from Chicago and Kansas City Regions and Minneapolis organizations launches ten day LENS training and marketing program. The demonstration on ABC, Inc. reflects each person's own office situations. The tactical system, grounded in real contradictions, draws a round of applause.

Internal: All new ICA office systems are in place with new decor, space arrangement and data management.

Contradiction: Creating strategy for taking the offensive for programs and movement formation in all metros. (Wk. 4)

RELIGIOUS HOUSE: ST. LOUIS

External: First regional newsletter goes out while the countdown is in final week toward Mill Shoals CEM. Surprise project culminations this week are the announcement of \$800,000 from Environmental Protection Agency for sewer and the paving of Highway 45 through the town.

Internal: Youth Matt Hockley leads collegium study on Prolegomena of the Order while emerging generation Bridget Harvey stars in her preschool fund raising event.

Contradiction: Involving Mill Shoals' citizens and extension network leadership in the CEM. (Wk. 2)

RELIGIOUS HOUSE: INDIANAPOLIS

External: Staff is dispersed across region — Meg and Joni to Lafayette, John to regional command post set up in Cincinnati for upcoming Tri-State Conference.

Internal: Youth Cluster has an exciting week with both Cluster and Council meetings producing six definite action areas.

Contradiction: Coordinating transportation needs for travel, shopping and rides to school. (Wk. 5)

RELIGIOUS HOUSE: DETROIT

External: Quad-metro activities intensify metro circuits with a Town Meeting in Madison Heights, appointments in Lansing and Flint, and a speaking engagement in Toledo.

Internal: Following a Guardians report meeting that may be the beginning of a regular event, the House celebrates a birthday and anniversary at House Church with 17 people present.

Contradiction: Operating metro circuits without objectifying metro strategies. (Wk. 4)

RELIGIOUS HOUSE: CLEVELAND

External: Three proposals are submitted for neighborhoods. Five hundred dollars are committed for Regional Symposium scholarships.

Internal: Roxanna gets job at Cleveland Clinic.

Contradiction: Keeping all the neighborhoods spinning until the Consult is completed. (Wk. 5)

NEW YORK

RELIGIOUS HOUSE: NEW YORK

External: PSU with region, House and nexus participation creates area development plan for year.

Internal: Daily Office witness on "betrayal" sparks conversations and brooding on the exemplary life, destiny and the mission.

Contradiction: Articulating the strategy for all six metros which ensures winning circuiting. (Wk. 4)

RELIGIOUS HOUSE: PITTSBURGH

External: Regional circuits break loose many possibilities in Sewickley, Fairmont and Morgantown—in kind, too.

Internal: Regional mailing gets done fast as metro colleagues and House put together automated system for computer typesetting, offset printing and folding.

Contradiction: Balancing time to do circuits and development when both have number one priority. (Wk. 2)

RELIGIOUS HOUSE: ROCHESTER

External: Charlottesville CEM—a keystone event—comes all in style as representatives from nine agencies in Schoerrie County join regional team representatives in a seminar to build a vision for cooperative care for the county. Binghamton Directions Conference continues to produce—work continues on plans for tulip planting on the riverbanks before the snow falls. Regional team converges on Charlottesville for fourth weekend this quarter from Albany, Rochester, Binghamton and Cortland.

Internal: Region welcomes Mitsuko Kawasaki, Tokyo colleague, now a college student at State University College Oreonta, 20 miles from Charlottesville.

Contradiction: Using one free hand to help others aboard without losing a grip on this wildly gyrating quarter. (Wk. 5)

RELIGIOUS HOUSE: WASHINGTON, D.C.—IVY CITY HDP

External: Ivy City Human Development Corporation receives its 501-C3 tax exempt status in time for fourth anniversary celebration which includes reception and film showing with 70 guests. Community contacts 151 households for participation in festival activities. Festival is complete with birthday candles and two huge cakes.

Internal: House celebrates with Florizell and Ann Marie Foy on the birth of their daughter Antoinette Angela, October 16th.

Contradiction: Structuring community engagement to recapture vitality and excitement missing because of routine due to back burner attention. (Wk. 5)

RELIGIOUS HOUSE: BALTIMORE—WIDEN HDP

External: Community workday accomplishes much at gym and grill, augmented with young adults from Coraopolis, Pennsylvania churches. Extension service aids in locating prospective manager for the Widen Manufacturing Co..

Internal: Apple and pumpkin pies aid revamping of slideshow and end of day mini-celebrations.

Contradiction: Parceling the comprehensive mission into manageable units to allow individuals to take responsibility in a corporate context. (Wk. 4)

RELIGIOUS HOUSE: PHILADELPHIA

External: First Evening at the Institute for the year produces requests from Lutheran Student Center for speakers, an inquiry on how to join ICA and general amazement with the Youth Cluster's presentation on their experiences in HDP's last year. House evaluates state of region during reflection/training week.

Internal: Awe of victory permeates the House as the Phillies win first World Series — ever; and ponder how to invent the structures that will keep the momentum of the winning self-story alive for colleagues in the city and region.

Contradiction: Journeying cores with ad hoc timelines— which become manifestly inadequate. (Wk. 4)

RELIGIOUS HOUSE: BROOKLYN—STARKS HDP

External: The first rainless Saturday in a month allows many outdoor Cornshop rehab tasks to be completed on the workday. Six students, advisor Sara Pillod from Northfield-Mt. Herman boarding school in Massachusetts and electrician/handyman John Milke help with workday and do not stop working until 10 p.m. Two Town Meetings are held with Department of Agriculture staff, bringing the total participants in forums since mid-September to 500.

Internal: Changing of the guard takes place as Jim Kilgore arrives and is welcomed by 30 from Starks and Wendy Rose is sent out to the Academy.

Contradiction: Enabling the Cornshop/Woodshop financial crunch to be solved now—and be the community's victory. (Wk. 4)

RELIGIOUS HOUSE: BOSTON

External: House and regional colleagues participate in 150th anniversary celebration at Fishel's church and meet the new bishop. Updated labels for 125 families are typed and 55 families receive letters asking them to recruit two people for November RS-I.

Internal: Self-support moves forward as Sandra Moore negotiates \$2200 raise, Rich McKay gets new teaching job and Catherine Goerdt lands job on first day of looking.

Contradiction: Holding the tension between immediate and long range tasks in a way that calls forth new participants. (Wk. 4)

MONTREAL

RELIGIOUS HOUSE: MONTREAL

External: Staff hosts numerous guests for dinners and film show which opens doors to university film show and workshop and volunteer time. Week of phoning sets Week 5 development, R.O., and French organizations' appointments.

Internal: House sets up foundational support systems and spends evening on Hong Kong file systems and painting guest room.

Contradiction: Expanding narrow base of local colleagues. (Wk. 4)

RELIGIOUS HOUSE: TORONTO

RELIGIOUS HOUSE: OTTAWA

External: Framing and authorization visits along with follow-up calls in Pontiac County and Kauata and a four-day circuit to the Kingston Metro reveal colleague strength and indicate opportunities for future events in cluster programming. Circuit office is set up with metro grid decor.

Internal: Roundtable is the signal event of the week as House experiences interchange with Pat Moriarty visit, Ruth Yost returning from Guardian Consult, and George Yost leaving for Charlottesville CEM.

Contradiction: Covering the turf but having a fuzzy vision of the edge of the mission. (Wk. 4)

RELIGIOUS HOUSE: HALIFAX—LORNE DE L'ACADIE HDP

External: Visits along the North Shore near Lorne reveal great openness in business community for sets, and the Belledune Planning Commission requests a proposal.

Internal: Major self-support victory — Staples lands public relations consultant job with Brunswick Mining and Smelting Corporation, (Noranda), second largest company in New Brunswick and the major employer in the North Shore area, on a highly remunerative basis.

Contradiction: Concretizing the story that will allow additional support to emerge for the North Shore cluster. (Wk. 4)

CARACAS

RELIGIOUS HOUSE: CARACAS—CANO NEGRO HDP

External: Movement formation accelerates: Foro training with 17 villagers, Maracaibo events such as the film, Evening at the Institute and completing the first section of roof of the area Caracas Training Center.

Internal: House discovers that when a celebration takes place in the midst of events that is great but it becomes greater and more significant when it happens in the midst of fulfillment of all the events manifested in external mission.

Contradiction: Articulating the vision of a spirit movement in Area Caracas that goes beyond doing ICA programs. (Wk. 4)

BUENOS AIRES

RELIGIOUS HOUSE: SANTIAGO—SOL DE SEPTIEMBRE HDP

External: Week of Community Planning is completed. Daytime visits gather data and plenaries are held in Community Center in the evening. Final plenary interrupted momentarily by lights going out, but continues in high spirits in candlelight with all Guilds creating their symbols and a joy-filled feast of accomplishments.

Internal: House enables sector visits and plenaries in the midst of visits to dentist and doctor and other contingencies.

Contradiction: Creating the climate-context for event-filled events in midst of propensity to find only fault and see failures. (Wk. 3)

RIO DE JANEIRO

RELIGIOUS HOUSE: RIO DE JANEIRO—BANANEIRAS HDP

External: An inked VW bus arrives to do Bananeiras extension work. CYF in village solidifies Youth Club membership with equal number of girls and boys. Hughes Tool Co. and R.J. Reynolds Tobacco Co. contribute money.

Internal: "Missional Contradictions" collegium is highlight of week and the three youth intentionalize studies with comprehensive timelines for completion.

Contradiction: Setting up self-support income without adequate visas and moving ahead without certainty of a breakthrough. (Wk. 4)

HAVANA

RELIGIOUS HOUSE: KINGSTON—WOBURN LAWN HDP

External: Trek to Region Port of Spain (Trinidad) opens exciting program possibilities and makes area real for all of staff. Village celebrates Heroes Day with workday and takes very practical steps towards "taking care of itself" and staff. Meeting with Anglican Church opens new arenas of service to the church.

Internal: Wards return from Trinidad trek and all units of regional team debrief before remaneuvering after continental council.

Contradiction: Implementing bold new moves while remaining flexible in light of present political instability. (Wk. 4)

MEXICO CITY

RELIGIOUS HOUSE: GUATEMALA CITY—CONACASTE HDP

External: Guild meeting dramatically illustrates new level of decision as leadership reports activities of arranging for the Department of Roads to send five machines for three days work on Conacaste roads. Request for doctor in residence for six months is made and The Voice is printed and distributed to all residents. LENS follow-up produces an A-1 letter of praise for the course from supervisory staff of Exmibal Co. that can be used in future course marketing.

Internal: Workday on staff housing and external space is first step toward acting out visual expression of care in the community.

Contradiction: Defining the key focus that would pull everyone into one thrust. (Wk. 3)

LIMA

RELIGIOUS HOUSE: LIMA—SAN VICENTE DE AZPITIA HDP

External: Initial beehives prove successful beyond expectations. Preparations initiated for receiving a donation of 1000 trees. Reports on continental council give new perspective of urgency and plans are underway for regional consult.

Internal: House celebrates three birthdays and receives George Packard and Jim Newkirk back from continental council.

Contradiction: Operating out of broad images, rather than concrete plans. (Wk. 2)

THE GLOBAL ORDER CENTRUM REPORT

BRUSSELS
BOMBAY
SINGAPORE
HONG KONG
CHICAGO

QUARTER II WEEK SIX

GLOBAL DEVELOPMENT CENTRUM

Global Development Centrum reports that program income prospects increase dramatically through LENS in Japan. Representatives of the major Indonesian Chinese businessmen's foundation visit Kelapa Dua. Two years committed tax rebate from U.K. hits the bank and German program funding totals nearly \$1000. Regional preparation for development talks increases effectivity in appointments. The key contradiction lies in the arena of allowing new income goals to be the practical images of possibility in every region.

GLOBAL RESEARCH CENTRUM

Global Research Centrum reports the Regional Consult Procedures Manual (First Edition) is created by cross-centrum team in time for Cleveland Pilot set-up. PSU on Order study books selection narrows field down for a decision this week. Songbook cover stock (Order Green) was inkinded with a phone call. Hong Kong reports publication of *Seapac Soundings Vol. IV No. 2*, and a breakthrough in setting the six-week HDTs into a three-week time design for Sudtonggan HDTI. The key contradiction lies in the arena of discerning the emphasis of Quarter II in midst of unsettled program schedule.

GLOBAL OPERATIONS CENTRUM

Global Operations Centrum reports that the first teams are sent to prepare for Regional Consults in Cleveland, Lusaka and Medan. Hong Kong Centrum participates with Nam Wai in workday and sees ways to capitalize on the new images released there following election of new board. Interchange grows as a photocopier enables more mailing to all regions in one week than ever before in the Singapore zone and as Brussels mails the second biweekly interchange packet. The key contradiction lies in the arena of managing the transitional assignments, scheduling and interchange that will powerfully usher in regional thrusts.

GLOBAL MANAGEMENT CENTRUM

Global Management Centrum reports that Singapore enhances Interchange Support Services with a photocopier in residence and Brussels' accounts are operational for the year after a trek to Rome. Chicago hosts a National Association of Neighborhoods (NAN) — VISTA training group on the sixth floor pointing to possibility of the building paying for itself and concretizing the image of International Training Center. The trend in time from Brussels is regular contact with Houses; the space-breakthroughs include Singapore implementing a sophisticated management space design and Hong Kong claiming the year with fresh decor; and the inkind on-the-road breakthrough in Chicago affirms the serious importance of inkind touching arenas of largest expense. The key contradiction lies in the arena of focussing in-service training and building and equipment maintenance as futuric issues in the midst of immediacies — realizing the Turn to the World has now become the *world responding*.