

SAN FRANCISCO  
REGIONAL REPORT



JULY, 1982

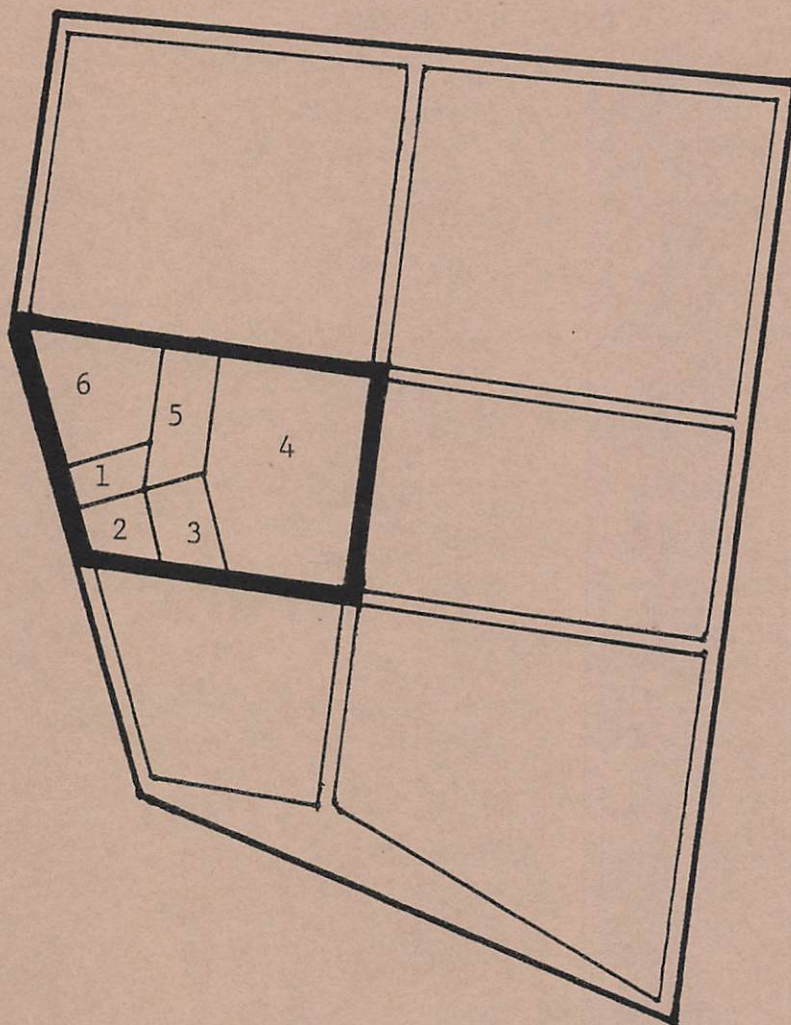


TABLE OF CONTENTS

REGIONAL GRID	Pg. 1
REGIONAL SONG	Pg. 2
PROGRAM YEAR EVENTS 1981-82	Pg. 3
REGIONAL VISION - 1982-83	Pg. 4-5

REGIONAL GRID

SAN  
FRANCISCO  
REGION



METROS

1. San Francisco
2. San Jose
3. Fresno
4. Reno
5. Sacramento
6. Redding

REGIONAL SONG

NEW DREAMS

(Tune: "High Hopes")

Once there was a sunny young land  
Believed all life was fun in the sand  
Fun in the sand is so grand  
But it slips through your hand!

But we've got new dreams,  
We've got new teams  
We've got new, can-come-true, we-can-do schemes.  
Come on! Pick up your life and live  
You've got gifts to give. WOW!  
Look! Here comes another possible Now.

Urban life goes up and goes down  
Webs of freeways connecting the towns  
But everyone knows we clown 'round  
Movin' from town to town!

And we've got new dreams,  
We've got new teams  
We've got new, can-come-true, we-can-do schemes.  
Come on! Pick up your life and live  
You've got gifts to give. WOW!  
Look! Here comes another possible Now.

Agriculture made a big flip  
Fell into technology's grip.  
Take a computer chip tip  
And your screen'll go blip!

But we've got new dreams,  
We've got new teams  
We've got new, can-come-true, we-can-do schemes.  
Come on! Pick up your life and live  
You've got gifts to give. WOW!  
Look! Here comes another possible  
Look! Here comes another possible  
Look! Here comes another possible NOW!

## PROGRAM YEAR EVENTS 1981-82

YEAR OF PILOT PROGRAMS											
REGIONAL FORMATION						METRO FORMATION					
STAGING THE REGION			PROGRAM PILOTS			REGIONAL TEAM TRAINING			METRO PROGRAMS		
A	S	O	N	D	J	F	M	A	M	J	J
COURSES /EVENTS						PLACE			DATE		#
Area Council						San Anselmo			Sept. 1981		110
Regional Council						Millbrae			Sept. 1981		40
LEAP PSU						San Francisco			Oct. 1981		20
Global Academy						Chicago			Oct-Nov. 1981		2
Imaginal Education Training						San Francisco			Nov. 1981		8
LENS Training						San Francisco			Nov. 1981		12
Community LENS						Sanger			Nov. 1981		55
Imaginal Education						San Francisco			Nov. 1981		8
Ethical Studies I						Millbrae			Dec. 1981		22
Cultural Studies I						Millbrae			Dec. 1981		18
California Strategy Meeting						Los Angeles			Dec. 1981		27
Regional Council						San Francisco			Jan. 1982		26
Religious Studies I						Pittsburgh			Feb. 1982		24
Community LENS						Watsonville			Feb. 1982		50
Panchayat Visit						San Francisco			Mar. 1982		50
Area Council						San Francisco			Mar. 1982		50
Film Event						Sanger			Mar. 1982		12
Vocational Lab						Santa Cruz			Apr. 1982		23
Global Academy						Chicago			Apr-May 1982		1
Religious Studies I						San Francisco			May 1982		16
Vocational Lab PSU						San Francisco			May 1982		10
Film Event						Hoopa Reservation			May 1982		13
Film Event						Berkeley			May 1982		20
Film Event						Davis			May 1982		20
Vocational Lab						San Francisco			June 1982		24
6 Metro Events						Each Metro			June 1982		45
Regional Council						San Francisco			June 1982		9
26						-			-		715

## REGIONAL VISION - 1982-83

The SAN FRANCISCO REGION stands at the completion of a grand year and looks with anticipation to the coming program year. This past year we have articulated to the globe this region's unique gifts and programmatic breakthroughs. Through courses and events we have provided a vehicle for corporate journeying of the regional team and metro forces formulation. The San Francisco Region stands at the crossroads of shaping the new movement both in its revolutionary context and geographical coverage. The following six paragraphs attempt to briefly articulate the vision of the six metros: the strategic direction, its gift and next year's focus.

SAN FRANCISCO METRO

The San Francisco Metro's strategic direction for the program year 1982-83 is EXPERIMENTATION with impact tools and equipping of the Regional Team.

The gift of the metro is its movement history, its urban diversity and its mythic identity as a cosmopolitan center.

The next year's focus will be in utilizing the House as a training center and in exploring the possibilities of Vocational Labs, university forums, and guild formation. A consultation in the Hunter's Point neighborhood will point toward community development methods. New troops will be raised up and global assignments made.

SAN JOSE METRO

The San Jose Metro's strategic direction for the program year 1982-83 is PENETRATION of the social matrix of the metro.

The gift of the metro lies in the broad base of contacts which has already been established through visitation and methods presentations by means of Town Meetings, LENS demonstrations and other events.

The next year's focus will be the utilization of the Vocational Labs, and exploration and development of LENS prospects, resulting in the establishment of a core of awakened colleagues and the building of the Regional Team.

FRESNO METRO

The Fresno Metro's strategic direction for the program year 1982-83 is DEMONSTRATION of viable community coalitions.

The gift of the metro is a spread of colleagues throughout the metro and their communities.

The next year's focus will be to accelerate the work from the Sanger Community LENS, hold another city wide LENS focused on social issues, and create events that the youth play a significant role in. A Community LENS in Firebaugh is committed along with a Global Womens Forum made up of Asian women and a Fresno District Public School Teachers Speaking Engagement. Several events in the City of Fresno are targeted in order to break loose funding and new colleagues.

REGIONAL VISION - 1982-83

(Continued)

RENO METRO

The Reno Metro's strategic direction for the program year 1982-83 is EXPLORATION of the new programmatic edges.

The gift of the metro is its wild vivaciousness and perservation of history.

The next year's focus will be to probe contacts within Reno University for programs and make initial calls for doing LENS with hospitals and churches. A herculean attempt will be made to break into the casino network.

SACRAMENTO METRO

The Sacramento Metro's strategic direction for the program year of 1982-83 is FORMATION of expanded metro teams.

The gift of the metro is a committed core of colleagues ready for engagement.

The next year's focus will be on catalyzing the Vocational Lab, through recruitment of contacts from the 1981 Regional Consult as well as colleagues, and an RS-I, through local church recruitment in the metro. In order to sustain this metro and create a story of regional team participation, a monthly roundtable event will occur. Academy recruitment as an on-going push will enable metro colleagues to be conscious of their participation in the movement on behalf of the globe.

REDDING METRO

The Redding Metro's strategic direction for the program year 1982-83 is to PROBE the possibilities of this wilderness area.

The gift of this metro is it's natural resources and folks concern for the environment.

The next year's focus will be on research in order to do events through community contacts and educational structures. Old church contacts will be visited along with Town Meeting grads.

The Region begins a new year standing on the foundation of a winning story. Next year's victories have been proclaimed along with the certainty of many surprises in store. The year's focus will be on building hard regional models that enable broad program penetration and metro coverage. The eliciting and equipping of the regional team is paramount in all the maneuvers that will be designed. The decision to corporately care for the Region is the promise of fulfilled living.